

Muleshoe Junior High football squads won a 7-6 squeaker in Estacado of Plainview 8th graders here Tuesday night, wound up the 7th grade season as a 6-6 tie. The teams coached by Bobby Graves, listed by Ronnie Jones. Stephen Black scored Muleshoe's 7th grade TD, and the Muleshoe 8th grade counter was made on a pass from Robert McKworth to Tonnie Barrett. Jim Putman kicked the POT. Next Tuesday, the junior high teams meet Morton, the 7th grade game starting at 6 o'clock. Admission prices are 25 cents and 50 cents.



HELPING HAND — One of the agencies which receives help funds from the Muleshoe Area United Fund is the American Red Cross, and service officer here is Justice of the Peace Joe Vaughn, shown handing a check to a transient stranded in Muleshoe. Vaughn receives no money for this service. (Journal Photo)

Next week will be picture-taking time for Muleshoe schools when individual pictures will be made of all children in the system, Superintendent Neal Dillman announced. The pictures are to be made by Grover Little, Odessa, who has been taking Muleshoe school pictures for several years. The schedule includes: Richland Hills and Hilltop Monday morning, junior high Monday afternoon; DeShazo Tuesday morning and senior high Tuesday afternoon.

Winner of a 19-inch portable television given by Sears Roebuck & Co. at the opening of their new store and order house here last week was Maria Costello, general delivery, Muleshoe.

Schedule for the High Plains Bookmobile for the balance of this week was announced Wednesday by Georgia Pena, librarian. The unit will be in Progress, Oklahoma, Lane and Rhea community this morning, and at Friona and Black this afternoon. Friday's schedule includes Hub and White's Elevator in the morning, at Lazbuddie during the noon hour and at Clay's corner Friday afternoon. The bookmobile will be in Farwell Saturday morning and at Friona that afternoon.

Pvt. Angel Aleman, son of Mr. and Mrs. Encarnacion Aleman, Friona, has completed advanced training as a cannoner at Army Artillery and Missile Center, Fort Sill, Okla.

The "Muleshoe Mighty M Marching Band" came back to Muleshoe Monday from the South Plains Fair at Lubbock with a first place trophy and See MULESHOE, Page Five

Muleshoe Gets First '65 Cotton

Muleshoe's first bale of 1965 cotton was reported this past week when Ernest Bass, who lives 10 miles west of town in the West Camp community, brought in the first bale. The cotton was taken to Purdy & Son gin in Muleshoe, who reported that the bale weighed 505 pounds and brought a 50-cent premium. The gross weight was 1800 pounds.

3rd Time No 'Charm' For Check - Writers

Two young check-writers who were able to get cash on two worthless checks Sunday, bumped into trouble Monday when they tried to cash a third worthless piece of paper. They landed in jail after pleading guilty to "theft by false pretense" in county court here.

Judge Glen Williams set their fines at \$15 each and sentenced each to a day in jail on two counts for each lad. The two youths, Roy Junior Duncan and Edgar James Williams, both 18, were charged with theft in connection with checks cashed at two local stores.

At noon Wednesday the fines had not been paid, and the two were still being held in county jail.

The hearing before Judge Williams revealed that the two had given a check Sunday to L&H

Temperatures

	High	Low
Sept. 26	75	51
Sept. 27	80	53
Sept. 28	70	52
Sept. 29	85	52
	Sunrise	Sunset
Sept. 30	6:41	6:33
Oct. 1	6:41	6:32
Oct. 2	6:42	6:31
Oct. 3	6:43	6:29

grocery for \$15, and then early Monday had passed a \$25 check at Cashway store. A short time later they attempted to pass a \$25 check at Red's Food market, but when the owner, Red Simmons called the bank for verification, the boys tore up the check and fled.

A short time later they were caught by Deputy Sheriff Bob Henderson at the home of one of the boys.

Two other persons, a man and a woman arrested with the youths, were released after officers were unable to establish any connection between the couple and the young check-writers.

Slow Vehicles Now Have Own Caution Emblem

Slow-moving vehicles, such as tractors and cotton trailers, now may have their own caution triangle with bright orange fluorescent paint. Here in Bailey county they are being offered by the Farm Bureau through a number of gins, implement houses and oil and gas dealers, it was announced Thursday by Morris McKillip, chairman of the sales.

McKillip says the signs, now optional on such vehicles, may eventually be mandatory. The signs may be mandatory by 1967.

The triangles, which reflect a bright red glow in the path of auto headlights at night, are available at \$2.25 each, and the price includes mounting brackets. Many persons are buying two such emblems to use on both front and rear of slow-moving vehicles.

One gin in this area has bought more than 100 of the special reflectors to use on cotton trailers, and several individuals have bought the triangles for all their equipment.

Selling the signs at e Jones Farm Store, Baker's Farm Supply, Muleshoe Fertilizer, Westdie Nichols Gin, Larlet Gin, Muleshoe Gin, Needmore Coop Gin, Raymond Gage Gin, Purdy Gin, Baileyboro Gin, West Camp Gin, Shafer Gin, Progress Gin, Raysdale Gin, Maple Cooperative, Nichols Gin, Pleasant Valley; Enoch's Coop Gin; Johnson & Nix, Whitt & Watts, Fry and Cox, Gulf Wholesale Oil and Western 66 oil,

Muleshoe Journal

DEDICATED TO THE PROGRESS AND DEVELOPMENT OF BAILEY COUNTY AND THE GREAT MULESHOE COUNTRY

12 Pages

Published Every Thursday At Muleshoe, Bailey County, Texas —79347

VOL. 43 — NO. 39

THURSDAY, SEPT. 30, 1965

U.F. Ready For Blast-Off Of 1965 Drive

Muleshoe United Fund will blast off its 1965 campaign Oct. 22 with a drive to conclude Oct. 22. Gil Lamb, campaign chairman has announced. At the same time, Marie White, United Fund president, outlined the "needs and services" of the Muleshoe Area United Fund which this year is seeking \$13,500, a slight increase over last year's budget.

Mrs. White said she thought it was well "to explain the 10 agencies which are to receive funds under our program, since people thus could learn of the workings of the various agencies."

Following is a breakdown of the 10 agencies, as outlined by Mrs. White:

Bailey County Jr. Livestock Show — \$3025. This agency serves to challenge the interests and abilities of the 500 boys and girls active in 4-H Clubs and FFA Chapters in the Muleshoe Area. Approximately 100 of these youngsters actually entered the 1965 show, exhibiting animals which they had fed and cared for from 4 to 12 months.

Boy Scouts of America — \$2350. Through a comprehensive program of scouting, this agency makes a substantial contribution to the physical, social, and character development of school age boys throughout the Muleshoe area.

Record Output Of Feed Grains Possible In '65

If present estimates are realized, the nation's feed grain production — corn, oats, barley and sorghum grains — for 1965 will set a new record. John G. McHaney, Extension economist at Texas A&M University, said the production of about 157 million tons will be due entirely to higher per acre yields; up 15 per cent from last year and 8 percent above the 1963 record.

The acreage planted to feed grains in 1965 totaled 119 million acres, four million acres less than in 1964 and 32 million below the acreages for 1959 and 1960.

Despite the smallest carryover of feed grains since 1957, McHaney said the total supply for the 1965-66 grain marketing year is now estimated at 212 million tons, nearly 6 million above last year but 10 million tons below the 1959-63 average. The expected 1965 bumper crop, he added, should be large enough to meet feed grain demands for the 1965-66 marketing year and perhaps add a small amount to the carryover at the end of the year.

The sorghum grain crop in 1965 is now expected to total 624 million bushels, up 27 percent from 1964. The total supply, carryover plus the '65 production, for the 1965-66 marketing year is estimated at 1,214 million bushels, 42 million bushels above the 1959-63 average and 7 percent larger than last year's total supply. McHaney said heavier domestic consumption and exports are in prospect for the year ahead as compared to the past year.

In commenting upon prices, the economist said the prospective increase in production plus See OUTPUT, Page Five

ed the 1965 show, exhibiting animals which they had fed and cared for from 4 to 12 months. This competition provides constructive activity, character development, and vocational training for rural youth in this primarily agricultural area. The money is spent entirely for prizes and materials. All labor is supplied through a dedicated board of volunteer directors, headed this year by Eugene Black.

The county agent and vocational agriculture teachers cooperate with the board by properly supervising boys and girls who undertake to fit and show hogs, lambs, and beef calves in the show staged annually one week prior to the Lubbock Fat Stock Show.

Salvation Army — \$1800. This agency offers a variety of welfare, health, recreation, and rehabilitation services to area residents, servicemen, and transients. In addition, it stands ready to provide major assistance if disaster should strike. Family welfare, aid to transients passing through the area, summer camps for boys, hospital and home for unwed mothers in San Antonio, alcoholic rehabilitation centers in Dallas, Ft. Worth, San Antonio, and Houston, aid to veterans, and prison parolee rehabilitation are among the features of the widespread program.

Mules Seek Fourth Victory At Friona

Muleshoe Mules, their record spotless after three tries, move to neighboring Friona camp tomorrow night for their next-to-last non-conference game. And chances are they will face plenty stiff opposition in the Friona outfit.

The Mules have bested Dimmitt, Morton and Olton, and last week had a week off with an open date on the schedule. Next week they take on Denver City here and will launch their conference scramble Oct. 22 in Dumas.

Muleshoe hopes to offset a big and experienced line at Friona by playing a flashy, speedy brand of ball. The Friona line is anchored by tackle Ray Braxton, a 6-1 husky weighing 190 pounds who is also a fine punter and all-district defender. There's also Guard Bob Sims and halfback Larry Johnson and Joe Mabry who have to be contended with in the backfield.

Quarterback Lonnie Ellis and Travis Graves and deep backs Tim Herring, Eldon Long and Bob Jordan are expected to make the going rough for Willie McAlpin's lads.

The Friona game blasts off at 8 o'clock.



SMV EMBLEM — A new triangle-shaped piece of metal that glows in vivid fluorescent orange is making its appearance in the Muleshoe area. It's an SMV (slow moving vehicle) emblem and is being offered by a number of area firms at \$2.25 each, with mounting bracket. Here Morris McKillip, of the Farm Bureau holds one of the 4.5 by 15-inch emblems. (Journal Photo)

Enrollment Is Still Higher Than In '64

Enrollment in Muleshoe schools, while down slightly from the peak a week or so ago, is still 55 greater than at the same time last year.

These figures were revealed by Superintendent Neal Dillman who gave the total at 2130 as of last Friday, the last time a complete check has been made.

"This is to be expected, the slight drop from the peak early enrollment," the superintendent said "However, we cannot say definitely just why the enrollment fluctuates from day to day; by the time we take a complete nose-count next Friday the number may be back up to its peak."

Dillman said the latest breakdown of enrollment by schools showed the following: Senior high, 439 pupils; junior high, 528; DeShazo Elementary School, 485; Richland Hills Elementary, 530; and Hilltop 48. This brings the total to 2130 as compared with the peak of 2154 on Sept. 14.

Meantime Dillman said that all are new buildings and additions are "being used, although not all are completed. He termed the building program as down to the "odds and ends" stage, but that all systems are "go". He said the roof is being put on the new junior high gymnasium, last of the \$8 million building projects

to get underway. That unit was not due for completion this semester.

He said partitions are being built along one side of the new gymnasium and that the conversation of the old cafeteria into homemaking rooms is "just about complete."

Dillman said the schools will observe National Fire prevention week, and that a full schedule is slated for the schools, from now until the Christmas holidays.

Among meetings, Dillman See SCHOOLS, Page Five

Jones Is Week's Grid Guesser

James Roy Jones, Muleshoe, with only a two-point error, was the leading guesser in last week's Journals' football prediction contest, and finishing in second place was Bo Bryant, 112 E. Jones, Dimmitt, a former Muleshoe resident.

Both Jones and Bryant picked all the winners, but Jones did a slightly better job of guessing the tie-breaker; he put the score at Yale 7 and Connecticut 14, but the score was 6-13. Bryant guessed the score at 12-14 in favor of Connecticut.

The contest continues this week with details on page B-3



FIRST PLACE — L-R Jimmy Frances, Terry Bryant and David Gupton admire the trophy the Muleshoe Band brought home from the South Plains Fair at Lubbock Monday. The band also won \$100 cash. (Journal Photo)



DOWN BROADWAY — While Richard Fox and Delton Bass proudly strut with the Muleshoe banner, Sonja Bass, drum major, and her three majorettes lead the

Mighty M band down Broadway in Lubbock Monday to take first place in III-A class. (Journal Photo)

Muleshoe Women Attend Seminar

A day-long conference on health careers was held Wednesday at the Holiday Inn West in Amarillo sponsored by the High Plains Council on Health Careers.

Honorable F. V. Wallace, ma-

yor of Amarillo, welcomed more than 130 physicians, school officials, nurses, and civic leaders from 35 cities in Texas, New Mexico, Kansas, and Oklahoma.

Dr. James P. Cornette, president, West Texas State University, Dr. A. B. Martin, president, Amarillo College, and Dr. Lee Williamson, assistant superintendent of Amarillo public schools, spoke to the group

on these topics: "Health, the Concern of Every Person," "Projection for the Future," and "A Hunt for the Seventies."

Dr. David Wade, an Austin psychiatrist and president of the Texas Medical Association, gave the keynote address at the luncheon. Dr. Wade said, "Texas has a shortage of 10,000 nurses per year. Instead of 2,000 new nurses per year, Dr. Wade pointed out, schools of nursing are graduating fewer than 700."

New job opportunities in medical and paramedical fields are offered to the youth each time there is a scientific breakthrough and advance in medicine. The present shortage of health personnel is rapidly becoming critical.

Mrs. Gordon Tiller, Muleshoe school nurse, and Mrs. John Watson, curriculum director, attended this conference.

Unusual Color Schemes Spot Autumn Scene

By Vivian Brown AP Newsfeatures Writer

Fall home refurbishers might keep in mind the formula passed on by interior designer Dorothy Paul to daughter Penny when she began working full-time with her mother:

Last year's styles in dress fashions can make this year's decorating scheme. Women are receptive to styles and colors they've become familiar with in their wardrobes, in the opinion of the Los Angeles interior designer.

"Sometimes, it takes a while to sell people on an idea, like when we began using pink and orange together in homes. People were shocked. Now that many of them were pink and orange, they enjoy having the color scheme in their living rooms," says Mrs. Paul.

Even those who don't wear dramatic colors enjoy them in their homes if other people are wearing them. The more unusual the color scheme nowadays, the more salable it is, whether the client is a meat packer or psychologist, Mrs. Paul explains.

Penny likes to work with young married people, "who are sort of chi-chi" rather than the tailored-clothes type. She finds decorating on a low budget a challenge, whereas many long-time decorators find it a bore, she says.

"Young people are looking for a new point of view in decorating," she says. "Their ideas are different. They concentrate on quality even with a little bit of money; they like to play up art and their hobbies. I like them because I'm on the same age level with them, and I can understand their problems. It's fun to see how much you can squeeze out of a little bit of money," she says.

Penny grew up surrounded by tape measures, sketches and fabric. Now she and her mother pool their thoughts to weld two generations of ideas when they are working together.

She earned her interior de-

Service Guild Hears Speaker From Earth

Mrs. Betty Sulser, Earln, was the speaker for the evening at the Wesleyan Service Guild meeting Monday evening in the home of Lola Bray.

Bess Edwards, president, opened the meeting with prayer and welcomed all members and visitors.

Minutes of the previous meeting were read and corrected and the treasurers report was heard.

Evelyn Johnson reported on the District Guild meeting Sept. 19 in which several members attended.

All guild members were urged to visit new comers and prospective guild members.

Annita Elrod introduced the

sign degree at Woodbury College after she was graduated from the University of Southern California. While at Woodbury she worked for her mother afternoons as part of the school plan of half-day work. Like her mother, she is a member of the American Institute of Interior Designers.

Penny's youthful point of view pays off. She has the courage to think young, and is backed up by her mother's decorating acumen in any unusual idea.

When the two were planning a family room, it was Penny who thought of a piece of resistance for teen-agers — an "upholstered" telephone booth. The booth is one with a cushioned seat, space underneath it for telephone books, and a little shelf for leaning and jotting down notes, good illumination. The only hazard: it may be difficult to extricate the rest of the family from it, too.

"After all there should be some attraction for teenagers in the family room, or it really isn't a family room," she says.

She's popular with little children, too.

"I give them the hottest possible colors — orange, yellow, red, and they love it. Some children's rooms are so dreary they roam the house looking for more attractive places," she points out.

The Pauls believe backgrounds of rooms are very important. They like wallpaper, and in one family room used a Colonial brick vinyl on part of the walls with the same Kentile on the floor. A handsome ceramic stove stands in front of the tiled and papered wall that is dressed also with two colorful prints.

In kitchens they'll use brick vinyl floorings, shelves of different colors, special illumination, new laminates for counters. They like to think of kitchens as "indestructible."

Ten years is about the average length of time to keep one decorating scheme, Mrs. Paul explains. At the moment the design team is doing over four houses that she decorated a decade ago. Penny's youthful views come in handy with the homes, says Mrs. Paul.

speaker, Mrs. Sulser. Her scripture was read from the book of Acts and closed with a prayer.

"Breathe on Me" was rendered by Mrs. Kate Belew, Earln, in the form of a solo.

Mrs. Sulser gave her interpretation of the first two chapters of the book of Acts in an interesting and impressive manner closing with the group singing "Bless Be The Tie".

Refreshments were served to Maurine Ivy, Evelyn Johnson, Elizabeth Harden, Betty Burkhead, Hazel Gilbreath, Bess Edwards, Annita Elrod, Lois Schenberger, Thelma Powell, Jackie McAlpin, Ruth McCarty, and Mary Jo Bray.

Four visitors were present, Mrs. Betty Sulser and Mrs. Kate Belew, Earln and Mrs. Myrtle Gregory, Mrs. Gerie Allen from Muleshoe.

Thelma Powell dismissed the meeting with prayer.

When Terry's Secret won the 1965 running of the Sunset Handicap at Hollywood Park in Inglewood, Calif., he became the first 3-year-old to win the race since 1950 when Hill Prince Triumphed.

Garth Patterson led the Monmouth Park jockeys with winners this year with 51. Sam Boulmetis finished second with 35.

Forty-five different jockeys won races at Monmouth Park's 1965 meeting at Oceanport, N.J.

To make a quick mustard sauce for baked ham, use heavy cream and season with prepared yellow mustard, sugar and salt.

When an old-fashioned recipe for yeast bread, directs you to allow the dough to rise until "light," make this test: poke the dough with your finger — if the impression remains, the dough is ready.



Wynell Barnes

Wynell Barnes, Larry White Set November Wedding Date

Mr. and Mrs. Wesley Barnes, Lazbuddie, announce the engagement and forthcoming marriage of their daughter, Wynell, to Larry Glenn White, son of Mrs. Seth White and the late Mr. White, Elizabethton, Tenn.

Vows will be exchanged at the First Baptist Church, Lazbuddie on Nov. 26, at 5 p.m.

The ancient city of Carthage was founded by the Phoenicians before 800 B.C., near what is today the city of Tunis.

BE SURE TO SEE OUR SHOWING THURSDAY, OCTOBER 14 OF THE NEW "1966" OLDSMOBILE and BUICK Brock Motor Co. Inc.

SPORTS FANS!

KMUL RADIO SAYS "JOIN US THIS WEEKEND" FOR

- * THE MULESHOE HI SCHOOL SPORTS REVIEW FRIDAY - 7:50 A.M.
- * THE MULESHOE HI SCHOOL PEP RALLY FRIDAY - 3:45 P.M.
- * THE LAZBUDDIE HI SCHOOL SPORTS REVIEW FRIDAY - 4:15 P.M.
- * THE 3-WAY SCHOOL SPORTS REVIEW FRIDAY - 4:30 P.M.
- * THE BULA HI SCHOOL SPORTS REVIEW FRIDAY - 4:45 P.M.
- * PIGSKIN ROUNDUP-SOUTHWEST CONFERENCE HIGHLIGHTS SATURDAY - 11:00 A.M.
- MULESHOE - FRIONA GAME (TAPE-RECORDED PLAY-BY-PLAY) SATURDAY - 8:05 A.M.
- LAZBUDDIE - SUNDOWN GAME (TAPE-RECORDED PLAY-BY-PLAY) SATURDAY - 1:30 P.M.

K M U L RADIO

1380 KC — 1000 WATTS MULESHOE

THE NEW '66'S ARE HERE!

YOU ARE INVITED TO THE "UNVEILING"

FRIDAY OCTOBER 1 FORDS & MERCURYS

OVER 5,000 NATIONAL PRIZES 13 LOCAL PRIZES COME BY AND REGISTER!

FREE COFFEE & CANDY BALLOONS FOR THE KIDDIES

"MOVE AHEAD"

IN '66

WITH FORD & MERCURY

MULESHOE MOTOR CO.

At The Crossroads

"Car Capital of the West Plains"

Phone 2510



Announcing

I WILL RE-OPEN MY BEAUTY SALON MONDAY, OCTOBER 4. AFTER ATTENDING THE FALL FASHION CLINIC AT THE KOKO INN, LUBBOCK, FEATURING THE DISTINGUISHED ARTIST, DAVID LONG OF HOUSTON, I WOULD LIKE TO SHOW YOU THE NEW FASHION TREND IN HAIR STYLING.

NANCY GLEASON BEAUTY SALON LAZBUDDIE

PHONE 965-2721

Anthony's C.R. ANTHONY CO.

SPECIAL PURCHASE SALE

STARTS: THURSDAY, SEPT. 30

NEW FALL FABRICS

2 RICH BEAUTIFUL GROUPS OF FINE QUALITY SPORT FABRICS COTTON SUITINGS

VALUE TO... \$1.79 3 DAY SALE PRICE

\$1 YD.

BURLINGTONS SARAH LYNN ASSORTMENT OF RICH FALL SPORT FABRICS

OR SPILKE'S 65% DACRON 35% COTTON SUITINGS

STRIPES, SOLIDS, CHECKS TWEEDS OR HERRING BONES

THURS., FRI. & SAT. ONLY

You PONTIAC will give you better service with AMALIE 100% Pure Pennsylvania Motor Oil

Why? Today's high compression engines running at high or low speeds; running in grueling stop and go traffic require the superior oiliness, the heat resistance found only in AMALIE Pennsylvania Oil.

AMALIE is the oil refined from the world's finest crude by special low-heat process. AMALIE stands up under engine heat long after conventional oils break down, thin out, drain off. Cuts wear, insures long miles of smooth engine performance...

change to AMALIE 100% Pure Pennsylvania Motor Oil!

Your service station man will stock AMALIE for you... Just ask him.

Wiedebush & Childers

outs Planning dio Jamboree

veral hundred Boy Scouts, lers, and adult leaders of Boy Scouts of America who rate licensed amateur radio

stations will take part in the eighth Jamboree-on-the-Air over the weekend of Oct. 16-17. Hundreds of others in Scouting, not licensed ham operators, will talk to brother Scouts around the world on those days. This year's program is dedicated to international cooperation in tribute to the Interna-

tional Cooperation Year. And this year, while chatting about their normal Scouting activities, a new element has been added. The United States for the first time will be host to a Boy Scouts World Jamboree scheduled for August 1 to 9, 1967 at Farragut State Park in Idaho. Here some of the world's Scout

ham operators, will be able to meet face-to-face and man the Jamboree's own shortwave station.

The object of the Jamboree-on-the-Air is to introduce Scouts to amateur radio and to electronics, generally by letting them talk or listen to other Scouts. This promotes a deeper understanding of the reality of the world brotherhood of Scouting.

Last year, it is estimated some 50,000 Boy Scouts and some Girl Scouts or Guides took part in the Jamboree-on-the-Air from 2,000 ham operated stations in 70 countries. There are now 84 countries who are members of the Boy Scouts World Conference.

A participation certificate will be issued to anyone who reports his activity as a ham, a listener, or a visitor to a ham station jamboree program. Reports from the United States may be sent to VE3WSB, the Boy Scouts World Bureau, 77 Metcalfe Street, Ottawa 4, Canada, or to K2-BFW, the Boy Scouts of America national station in the Johnstone Historical Museum at New Brunswick, N.J. 08903.

Center To House New Fire Truck For, Maple Area

By Mrs. H. W. Garvin
THREE WAY A meeting was held in the community center Thursday night regarding department equipment. A small building will be remodeled and used to store the fire truck. use of the center for the fire department quipmnt. A small building will b remodeled and used to store the fire truck Both building will be remodeled and repaired.

The Rev. DeWitt Sego, Brownfield, held quarterly conference at the Three Way Methodist Church Sunday afternoon.

Mr. and Mrs. Cecil Lindsey visited in Levelland Friday evening with his mother and a sister from California.

Curtis Wheeler, West Camp, spent the weekend with her grandparents Mr. and Mrs. Johnnie Wheeler.

Mr. and Mrs. H. W. Garvin returned from a trip to New Mexico and Colorado. They visited a daughter and her family in Farmington, N. M., a sis-

LATE WANT ADS

For Sale. By owner. Brick front, 3 bedroom, 2 baths and den house and lot located at 501 East Austin St. Contact Wendell Speck at 965-2762 after 6 or call 2560 before 6. 8-39t-2tc

Cattle: Must sell. E. E. Herling or H. H. Caldwell pens. Clovis, N. M. 11-39t-4tp

Nice front bedroom. Private bath. For rent - 807 W. 7th. Night-7772 - Ph. 7771. 6-39t-3tp

1960 Chev. truck 2 ton, 2 speed 16 ft. grain bed with hoist. 2 row corn header for '58 Baldwin Combine. Used very little.

A used McEachern Reel for combine. 1958 Hobbs Semi-trailer 38' long. Gilt top combine trailer. Jock Holsomback, 706 West 26th. Plainview, Texas. Phone CA 3-2730. 39t-2tc

Card of Thanks
We should like to express our sincere appreciation for the many acts of kindness and good deeds shown by Dr. McDaniel and all the nurses. We are deeply grateful to all for the many thoughtful messages and beautiful flowers and food and every expression of sympathy during the illness and death of our loved one.
H. G. Harvey & family
39t-1tc

LEGAL NOTICE THE STATE OF TEXAS COUNTY OF BAILEY NOTICE OF SALE UNDER ORDER OF SALE AS UNDER

ter in Dove Creek, Colo., and a daughter in Denver.

Mrs. Bill Dupler was a patient in Green Memorial Hospital this past week.

Mr. and Mrs. R. L. Reeves were in Truth or Consequences, N. M. fishing this past week. Mr. and Mrs. Poul Powell have returned from a trip to Arkansas, Tennessee and Mississippi.

Mr. and Mrs. Neal Smith have returned from vacation.

Mr. and Mrs. Johnnie Wheeler attended the wedding in Sudan Saturday evening of Mr. Wheeler's nephew, Albert Harrison and Glenda Masten. The wedding took place in the First Methodist Church.

The WMS of the Maple Baptist Church met Tuesday morning in the D. L. Tucker home when a Royal Service program was held. Present were Mrs. T. D. Davis, Mrs. A. E. Robinson, Mrs. Dennis Herd, Mrs. Wright, Mrs. E. M. Lowe and Mrs. D. L. Tucker. The hostess served cake and coffee after the services.

Bobby Sanders visited his grandmother, Mrs. A. E. Robinson Friday. Bobby is the son of Mr. and Mrs. Robert Sanders, Muleshoe and is in the Navy. Bobby Sanders was to fly back to base then go to Veat Niam.

Mr. and Mrs. Roland Sheppard of Hart spent the weekend in the John Sheppard home. Other guest in the Sheppard home were Mr. and Mrs. James Sheppard, Lubbock; Mr. and Mrs. Bill Welch, Enochs, and Mr. and Mrs. George Holley and daughter.

Mr. and Mrs. Gib Dupler, Mr. and Mrs. Bill Dupler, Mr. and Mrs. Joe Sowder and Mr. and Mrs. Mickey Sowder, all of Three Way visited in the Everett Sowder home at Arch, N. M. Sunday. The Sowders had a family reunion with 50 having lunch together.

Munch, munch, munch... lot of nibbling bills? Find LOANS fast in the YELLOW PAGES. Where your fingers do the walking,



EXECUTION

By virtue of an order of sale issued out of the District Court of Bailey County, Texas, on a judgment rendered in said Court on the 7th day of September, 1965, in favor of M. W. Bulloch and against E. S. Abbott, et al. in the case of M. W. Bulloch against E. S. Abbott, et al, No. 2827 in such Court, I did on the 28th day of September, 1965, at 10:00 o'clock A.M., levy upon the following described lots, tract or parcel of land situate in the County of Bailey, State of Texas, and more particularly described as follows, to-wit:

All of Lots Numbers Eleven (11) and Twelve (12), Block Number Forty Three (43), Original Town of Muleshoe, Bailey County, Texas, and on the 2nd day of November, 1965, being the first Tuesday of said month, between the hours of 10:00 o'clock A. M. and 4:00 o'clock P. M. on said day, at the courthouse door of said County, I will offer for sale and sell at public auction, for cash, all the right, title and interest of the said E. S. Abbott in and to said property. Dated at Muleshoe, Texas, this 28th day of September, 1965.

Dee Clements, Sheriff of Bailey County, Texas. 39t-3tte

Anne Stine Ingstad in August 1964 in L'Anse au Meadow, Newfoundland, found a piece of carved soapstone which served as a flywheel on a wool-spinning spindle. The find supports the claim that Norsemen colonized the New World long before Columbus.

For centuries, South American Indians have used darts dipped in a special curare-type drug to capture live prey.

The Phoenix Zoo hopes to build its herd of oryres to about 40 animals.



VAL MOORE—One of Muleshoe's twirlers, Val Moore, is shown here as she and two other majorettes, Linda Griffiths and Diane Bryant and drum major, Sonja Bass, lead the "Mighty M Marching Band" down the main part of Lubbock Monday at the annual South Plains Fair. (Journal Photo)

BE SURE TO SEE OUR SHOWING THURSDAY, OCTOBER 14 OF THE NEW "1966" OLDSMOBILE and BUICK Brock Motor Co. Inc.

TO WAIT OR NOT TO WAIT?

If that's your question on buying a new car, we've got the answer for you... either way!

TO WAIT

On Oct. 7, see the sensational '66 Chevrolets before considering any '66 car purchase! We promise you'll be glad you waited to compare our '66 Chevrolet value against any other '66 make!

NOT TO WAIT

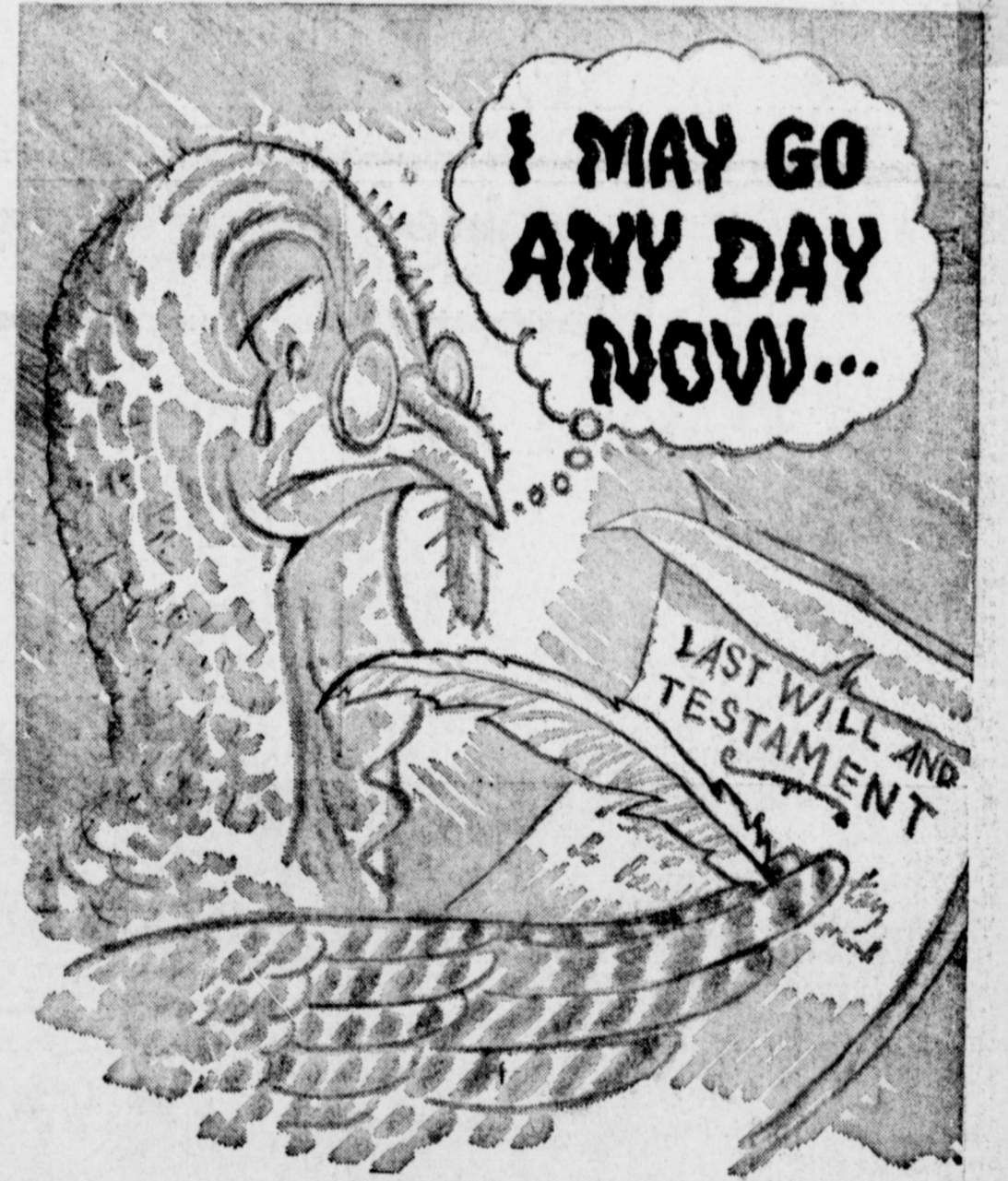
Take advantage of a big savings opportunity! Now is the No. 1 time to get a No. 1 deal on a brand new car, a 1965 Chevrolet, Chevelle, Chevy II or Corvair!

We have the answers to your new car needs!
CROW CHEVROLET

201 MAIN



PHONE 3-1060



There was a time when I could feel safe until November. But the member-owned Bailey County Electric Cooperative has changed all that. With food freezers in so many homes, poultry processing plants, electric brooders and all that modern electric wizardry, they are processing turkeys all year long. I'm Lucky I've lasted this long. In case I end up in your giblet gravey, just remember this... the Bailey County Electric Cooperative may be fine for rural people, it may be helping Texas grow and it may be the greatest example of rural people working together to brighten their lives. But it has played havoc with my life expectancy.

Bailey County Electric Cooperative Association



SOUTH PLAINS COLLEGE OFFICERS— Elected to head the sophomore class at South Plains College, Levelland, for the 1965-66 year are (l-r) Ben Creighton, Elida, N.M.; Marsha Buhman, Muleshoe, secretary; treasurer; Lynnada Fennings, Whiteface, reporter; and Wayne Daugherty, Miami, president. Miss Buhman is the daughter of Mr. and Mrs. K. H. Buhman who live in YL Community.

Former Muleshoe Resident Dies

Funeral services were held in Central Baptist Church Tuesday at 2 p.m. for O. A. Nowell, a native of Italy, Tex. and formerly of the YL Community.

The Rev. Darvey Lavender, pastor of the church, assisted by the Rev. Alfred Richards, Ruidoso, will officiate at the services.

Nowell died at his home at Anton Monday.

Survivors in the Muleshoe area is a son, Virgil; brothers, Elbert, Muleshoe, Ernest, Lubbock; a daughter, Mrs. Alta; a son, Claude D. Lubbock; a daughter, Mrs. Dyle R. Vaughan, Burk Burnett; two brothers, Orbin, Lubbock; Ardie, Lovington; three sisters, Mrs. Elmer Kenney, Lubbock; Mrs. O. D. Kennedy, Slaton; Mrs. Sammy Taylor, Denver City; 16 grandchildren and 9 great-grandchildren.

Grandsons of Nowell served as pallbearers.

Burial was in Muleshoe Memorial Park, directed by Hammond Funeral Home, Littlefield.

If you like, you may substitute brewed coffee for the water called for in a boiled frosting recipe. This coffee combination tastes good on spice cake.

Jacinto Vasquez turned in the best riding feat at Monmouth Park's 1965 meeting by winning five races on July 16.

Season For Bow, Arrow Hunters Opens Friday

Bow and arrow hunters will have an expanded opportunity to stalk big game in Texas this fall but the complete schedule has not yet been worked out because of assorted differences as to location and species to be hunted.

Generally, there will be an archery season opening Oct. 1, yet there are so many variations as to targets and bag limits that J. B. Phillips, law enforcement coordinator for the Texas Parks and Wildlife Department, suggested that the bow folks consult their local game wardens. And he may not yet have been fully informed since deliberations ranging on up to the Department level are pending to determine details.

For the first time, through action of the 59th Legislature, landowners with overpopulations of deer in one nine-county Edwards Plateau group will be issued antlerless deer permits on September 27 for use during their special archery season.

These counties are: Blanco, Burnet, Gillespie, Kendall, Llano, Mason, McCulloch, San Saba and Travis. Landowners will receive permits at county courthouses on Sept. 27 only.

The 30-day archery season in that area will include as legal game wild buck deer and also antlerless deer by permit, wild bear, wild turkey, quail and collared peccary or javelina. In other areas antlerless deer will not be legal game.

In some counties having the archery seasons dates will be thirty days directly preceding regular big game harvest and in other counties the dates are Oct. 1 through Oct. 31. There are some variations from these two major dates.

Bread rolls made with yeast raised dough should be cooled on wire racks, just as you would cool a cake or cookies.

Television stations will be build its herd of oryxes to about Saudi Arabia.

Cashes Entertain Guests At Enochs

By Mrs. Jerome Cash
ENOCHS — Those visiting in the Jerome Cash home Sunday were Mr. and Mrs. James Casá, Nita, Shaon, and Gale, Hereford, Mrs. H. H. Snow Norvell Roberts, Lubbock.

Mr. and Mrs. E. C. Gilliam and Vester took Mrs. Gilliam's mother, Mrs. F. M. Scillian home after a four weeks visit with her daughter last week. They went by Adrian to visit a son, Lester and family, then to Hereford to visit another son, Jimmie and family. They then went to Amarillo to visit still another son, Carlton and family. While in Clarendon they saw Mrs. Scillian's sister, Mrs. J. N. Riley.

They went on to her mother's home in Quannah and on the way home they visited a nephew, Donald Huffaker who is a relative of Mr. Gilliam's living at Hale Center.

Linda Gilliam spent the weekend with Gayle Gant at Three-Way.

Loveta Jo and Carol Sue Mil-sap, Muleshoe, are spending a few days with their grandparents, Mr. and Ms. Joe Mil-sap, Lubbock, spent a few days last week with their grandparents, Mr. and Mrs. E. N. McCall.

Mr. and Mrs. C. H. Byars visited in Lubbock Sunday with their daughter and family, Mrs. Jack Parr.

Mr. and Mrs. J. D. Bayless visited in Levelland Sunday afternoon with her sister and nephew, Mrs. Grace Swanner and Jimmie.

Those attending the W.M.U. workshop in Lubbock Tuesday were Mrs. J. D. Bayless, Mrs. J. W. Layton, Mrs. J. E. Layton, Mrs. Dale Ni-Mrs. Flora Nichols, Mrs. J. M. Angel, Mrs. Ralph Beasley, Mrs. Bud Pierce, and Mrs. J. O. Dane.

'Realistic' Farm Bill Approved By Sen. Tower

By Sen. John G. Tower
Although I did not agree with all the provisions in the various sections of the Farm Bill passed by the Senate last week, I voted for its final passage because I believe it is the most realistic Farm Bill we have achieved in the Senate in many years.

The cotton section of the Farm Bill is of particular significance for Texans. For years, because of government intervention in the marketplace, cotton was under a "two-price" system. This means it sold for one price here at home and for another when exported. This artificial two-price system involved payment of subsidies at five points in the marketing chain.

The Senate adopted an amendment which I was proud to support assuring that a one-price system be maintained for cotton. This action was contrary to the cotton section reported by the Senate Agriculture Committee which would have restored the old two-price system under which the cotton industry was plunging toward disaster.

Our state is the leading cotton state, and it is most important to Texans that the cotton industry be rescued from its decline. It has been my continuing goal to achieve legislation under which cotton can move into the market — not into surplus storage — under which cotton can move toward a competitive position with synthetic fibers.

I have offered in the Senate a resolution calling for a complete restudy of the farm programs. It is my feeling that politics must be removed from the farm program if we are to reverse the trend toward higher prices for consumers, massive surpluses in storage, and lower returns for farmers.

Members of both parties have assured me that the President will soon announce a National Commission on Agriculture, which would bring about by executive order that which I proposed in my resolution.

A nonpartisan, dispassionate review of our agriculture laws is badly needed, and a commission on agriculture could go a long way in accomplishing this. I am hopeful such a study will lead toward a return to the free market and a reduction of federal controls.

Vaughn Attends State Conference For Veterans

Joe Vaughn County Service Officer accompanied by Alf Stovall last week attended 18th annual statewide conference in Austin.

Among many subjects discussed was the State Veterans Land Program which according to statements by Vaughn is in excellent condition, the land program was started sixteen years ago and in spite of the early scandal reported through the press and other news media it is one of the soundest state endeavors in modern times, it has not cost the taxpayer one cent in extra taxes, neither is it a dole of public lands, it is a sound self sustaining business.

Today more than 34,500 purchases have been made by the Veterans Land Board consisting of almost three million acres of land, the land program has not only given the state an opportunity to aid the men and women of Texas who served their country during World War II and the Korean conflict it has boosted the state economy and will produce an eventual profit on the \$200,000,000 sale of bonds to finance veterans land purchases, the \$200,000,000 paid for the land has been placed in circulation and since every dollar invested changes hands approximately eight times, this investment has aided virtually every man and woman in Texas by boosting the economy, some of those receiving direct benefits from this program are the realtors and brokers, surveyors, the abstractors, abstract examiners, closing attorney, builders and suppliers of all types of building material, laborers, appliance dealers, insurance agents and many others not to mention numerous indirect benefits.

Although the program is in its 16th year it has not yet been able to provide equal opportunity for nearly all the 1,000,000 eligible veterans in Texas to purchase a tract of land, if the Constitutional amendment passed during the last session of the Legislature is approved by the voters on November 2, 1965 money will again be available for purchases of additional land for the veterans of Texas without a waiting period, and each veteran will be permitted to purchase a tract of land costing up to \$10,000 compared to \$7,500 under the present program.

More than 1,800 Texas communities are totally dependent upon highways for their economic survival.

The word "scuttlebutt" is a Navy word with two meanings: a. A water fountain b. Gossip

The Christmas census, conducted by the National Audubon Society from Dec. 25 to Jan. 2 annually since 1900, indicates bird population trends and migration patterns.



BAND TRAILER — Mrs. Murray Lemons drove the band trailer to the fair and in the parade Monday. The band trailer is used to haul the instruments for the band. (Journal Photo)

In a recent experiment, fishermen lived in isolation for a month, breathing the same air over and over with the aid of chemical purifier and drinking water recovered from their own wastes.

When Joshua C. Stoddard Pawlet, Vt., patented the steam calliope in 1855, he named after the Greek muse of eloquence and epic poetry.

At the age of 68, Emperor Tiberius moved his court from Rome to Capri. He ruled the Roman Empire from the island communicating by smoke signals and messengers.

Within one year following World War II, the U. S. Marines demobilized from 500,000 to 100,000 men.

BE SURE TO SEE OUR SHOWING THURSDAY, OCTOBER 14 OF THE NEW "1966" OLDSMOBILE and BUICK Brock Motor Co. Inc.

THANKS
TO THE PEOPLE OF MULESHOE AND SURROUNDING AREA FOR THE FINE RECEPTION GIVEN US DURING OUR GRAND OPENING. WE WILL BE LOOKING FORWARD TO SEEING YOU IN THE FUTURE

SEARS
129 MAIN PHONE 2370

Announcing: Mercury for 1966

a new definition of driving pleasure

MERCURY PARK LANE 4-DOOR HARDTOP

Moving ahead in the Lincoln Continental tradition

This is the year to move ahead to the new, Mercury's year. Your year. And just look at all the news there is! Ride news: the way Mercury moves is unique. Smooth, substantial, hushed—the finest ride this side of the Lincoln Continental. Style news: clean, classic lines—the only car in its class with a look all its own. Power news: engines range up to a muscular 428 cu. in. V-8. Luxury news: options such as the Stereo-Sonic Tape System that uses plug-in cartridges. Safety news: helpful options such as cornering lights that show you the way when turning into dark driveways. Exclusive options such as rear doors that lock automatically at 8 miles per hour. And in every Mercury, without extra cost, you get 12 important safety features, including back-up lights, emergency flasher, padded dash and visors, four seat-belts front and rear, and outside rear-view mirror. Model news: the widest choice of Mercurys ever, 17 models in 4 series—sedans, hardtops, convertibles, and 2 wagons with the new Dual-Action Tailgate that turns into a door. Now's the time to see your Mercury dealer—and move ahead with Mercury

MULESHOE MOTOR CO.
MULESHOE, TEXAS American Blvd at 1st Street

LINCOLN-MERCURY DIVISION OF Ford

WE SALUTE OUR 4-H YOUTH

a 4-H leader is always ready to help... and so are WE

HEALTH..... FOR BETTER LIVING AND BETTER SERVICE TO THE CLUB, COMMUNITY AND COUNTRY

HEAD..... FOR CLEARER THINKING FOR BETTER JUDGEMENT

HEART..... FOR LOYALTY TO THE UNITED STATES AND THE AMERICAN WAY OF LIFE

HANDS..... FOR THE NECESSARY SKILL TO MEET THE TASKS THAT ARE IN THE FUTURE.

FIRST NATIONAL BANK
MEMBER FDIC

United

(Continued from Page One)

None of the funds obtained to go to support "Corps" operations, which maintain "Chairs" in larger cities. Ten local men and women serve on the volunteer Service Unit Committee, of which W. D. Moore is chairman.

Girl Scouts of America — \$1525. This is another vital youth agency, providing supervised group recreation, individual training, and character-building. Over 200 girls in Muleshoe and Bailey County are active in Brownie, Junior Cadette, or Senior Scout units. Approximately 60 adults are working with these girls as volunteer leaders, committee members, or Neighborhood Association members.

This budget allocation makes possible membership in the Carpool Council, and through it, participation in camping and activities above the local unit level. The council provides Field Service out of its Lubbock Headquarters, including professional coordinating, leadership training, and various instructional materials. Mrs. Joanne Mayhugh is chairman of the Neighborhood Association.

Babe Ruth League — \$1500. Through a program of summer baseball, this agency contributes substantially to the social, physical, and character development of area boys. Boys learn about sportsmanship, teamwork, and leadership, at the same time enjoying the wholesome outdoors vacation of the "national pastime."

Last year 60 boys on 4 teams played a full schedule of games, and there was all-star competition at the end of the season. Volunteer adults serve as league officers, board members, team managers, and coaches. The budget allocation provides only deficit financing necessary after normal revenues are considered. Murl Stevenson is chairman of the board, and Mrs. Jack Julian serves as secretary.

American Red Cross — \$750. Services to the armed forces, veterans, and their families have been the most prominent of this agency's activities in this area. Other features of the national program are disaster, blood, nursing, and safety services. In a sense, our contribution serves as a sort of

insurance premium in the nation wide disaster relief system, which is designed to render assistance when and where needed. About one-third of the budget remains here for local use. Joe Vaughn is the local representative.

Muleshoe Area Youth Center — \$600. Stated purposes of this agency are "to promote the welfare of children and youth in home, school, church, and community and to promote supervised social, athletic, and recreational affairs of children and youth of Muleshoe and surrounding areas." It has done much to meet the general lack of recreation available to area high school age youngsters. There is also a "sub-teen" program.

Programs are planned by a youth board and approved by an adult board. All activities are chaperoned by at least 6 adult sponsors. The budget allocation covers only the estimated deficit of the organization after membership and admission charges are considered. Totie Middlebrook is chairman of the adult board, and L. T. Green, III is chairman of the youth board.

United Service Organizations — \$200. (USO) Texas has over 300,000 men stationed within its borders at 71 military installations. This is reported to be the largest number of troops stationed in any state in the Union. The USO is serving these 300,000 plus men and women at 18 USO centers throughout the state.

There are more than 140,000 Texas men and women in service stationed all over the world. In fact, it is reported that Texas has the largest number of men and women stationed overseas.

The United States Department of Defense is strongly urging the USO to provide more adequate overseas facilities. The more-than-ever present threat of communism and aggression demand the highest degree of preparedness and morale in our armed forces.

4-H Youth Development Corp. — \$150. This agency provides a variety of activities above the county level for 4-H members and volunteer leaders. The allocation is the Bailey County "fair share" of a statewide budget of \$128,000 used to benefit more than 83,000 Tex. boys and girls and 20,000 volunteer adult and junior leaders. The

money provides leader training, area workshops, citizenship training, college scholarships, State 4-H Club Roundup, International Exchange of Farm Youth, Annual 4-H Club Horse Show, and other state and area 4-H programs.

About 400 youngsters are 4-H club members in this county. J. K. Adams, county agent, and Barbara Jean Martin, county home demonstration agent, supply training materials, and supervision to these clubs.

Medical Research Foundation Of Texas

This Research Foundation grants 'seed money' that is used to begin research for new techniques to answer the many disease problems facing the medical profession today. These initiated productive investigations by researchers have in many cases, led to larger grants from other sources for more exhaustive research.

This Foundation — with specialized interests in the broad realm of health — is filling a great need which is not satisfied by other agencies. The Foundation has the endorsement and approval of both the Texas Medical Association and the Texas Dental Association, attesting to acceptance of the program by both the medical and dental professions.

The Medical Research Foundation of Texas is unique in that every dollar contributed goes directly to research in the medical and dental schools in Texas. This factor will become increasingly important to the medical schools in our state as more and more channels become available for 'pilot projects' through research dollars.

The Medical Research Foundation of Texas has meant the assurance of a steady flow of research from laboratories, the support and encouragement of young promising investigators, and an orientation of the entire faculty and student body of medical schools toward the importance of medical research today. It is a privilege and a responsibility to receive the assistance of interested, enlightened individuals and communities through the agency of the of Texas.

Oliver Wendell Holmes described the Supreme Court of the United States in 1913 by saying, "We are very quiet there, but it is the quiet of a storm center."



THREE BUSESSE — Muleshoe took three buses to Lubbock Monday to carry the band students and followed the band down Broadway. Driving busses were Wendel Speck, J.W. Johnson and Tom Howard. (Journal Photo)

Output

(Continued from Page One)

lower loan rates in 1965 may result in slightly lower prices this fall and winter compared with a year ago. He expects prices to farmers for corn and grain sorghum to average nearer the loan rates than was the case in 1964-65. This is due, he said, because the 1965 crop probably will meet total requirements for feed grain, whereas the 1964 crop was well below total consumption needs.

All indications point to a continuation of heavy exports, he said. A new record may be set this year, and may exceed the 1964-65 exports by 5 to 10 percent, he said. A large share of exports are now moving through commercial channels without government assistance, about 90 percent of the 1964-65 fiscal year exports were commercial transactions.

PATZER
CHIROPRACTIC CLINIC
 MULESHOE, TEXAS
 Phone 3-9670
 1540 American Blvd.
KEEP SMILING

Classifieds Get Results!

Schools

(Continued from Page One) and several other administrators will attend a day-long conference at Eastern New Mexico University Saturday when Dr. Guy Waid will be in charge. He

is education professor at ENMU.

Dillman said the theme will be "Federal Funds."

Dillman also pointed to a busy athletic program. Freshman will meet Plainview freshmen and B-teams, teams today, and the varsity outfit will journey to Friona Friday for their next-to-last non-conference affray.

Muleshoe

(Continued from Page One)

\$100 cash which they won in III A competition. Several other surrounding schools competed for the trophy. The band, under the direction of Bill Bradley, and led by Sonja Bass, drum major, marched down Broadway at 10 a.m. Monday morning and on to the fair grounds where they spent a long day enjoying the displays and various rides featured at the fair.

The total U. S. resident population June 1, 1965, was 163,644,000 — an increase of 1.3 percent over June 1964, according to Census Bureau estimates. The new figure represents an increase of 8 percent since April 1, 1960.

Fouad I University in Cairo was established more than 1,500 years ago, although it was not officially called a university until 1925.

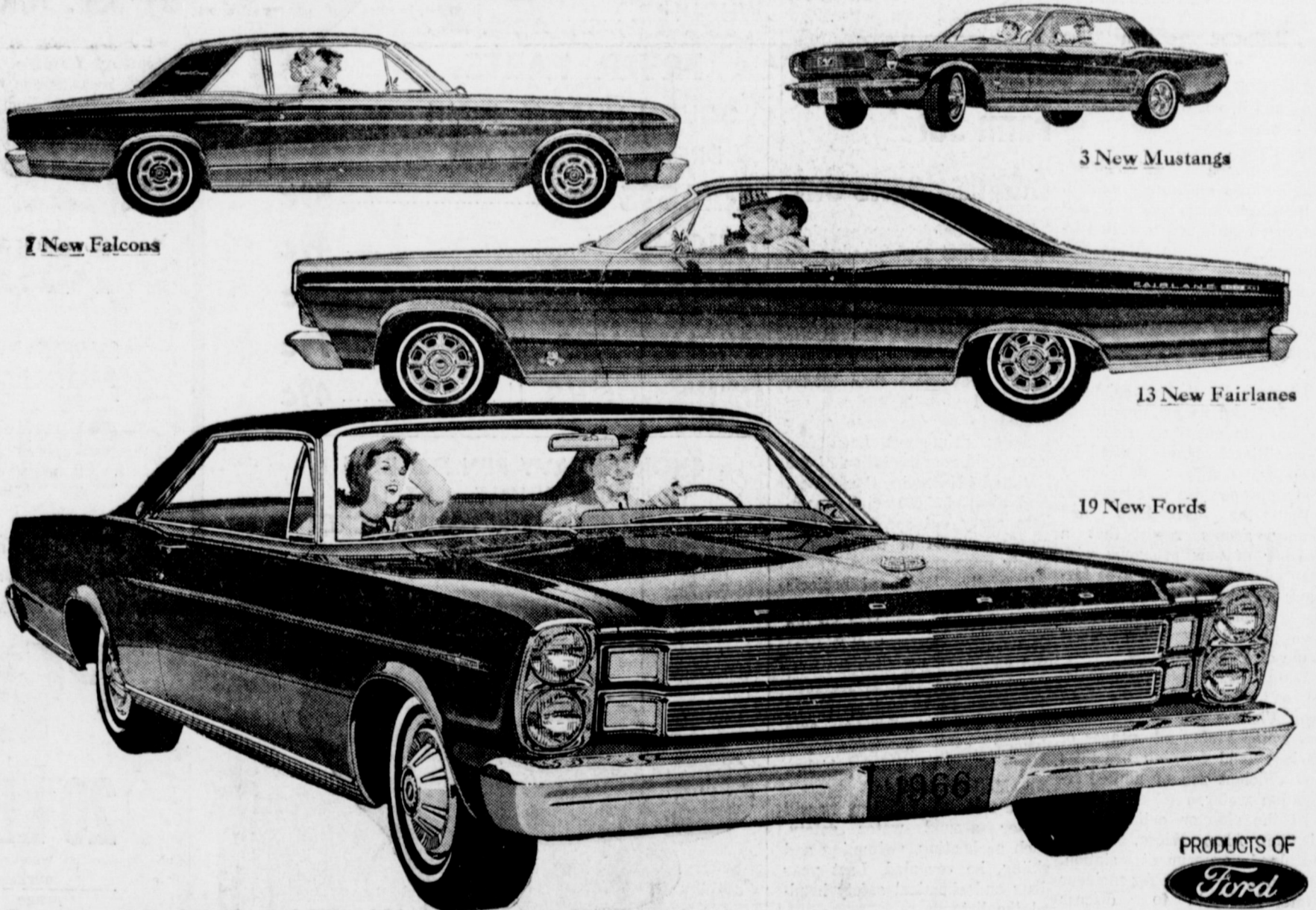
CO-OP Chatter by FARMERS CO-OPERATIVE ELEVATOR



FARMERS CO-OPERATIVE Elevator
 FERTILIZER • GRAIN • SEED
 H.L. WARD, Manager
 MULESHOE, TEXAS
 Phone 5350 6660

ANNOUNCING THE '66s FROM FORD!

FORDS: new quiet, ultra-luxurious LTD's, new high-performance 7-Litre models with 428-cu.in. V-8. **FAIRLANES:** lively new XL's, GT's, convertibles. **FALCONS:** new flair for the economy champ. **MUSTANGS:** more fun-filled than ever. **FEATURES:** from a new stereo tape player option...to a new Magic Doorgate for wagons (swings out for people and down for cargo).



PRODUCTS OF Ford

See them! Drive them! The '66s

at your Ford Dealer's: • 19 new Fords—offering one of the world's quietest rides. New Stereo-sonic Tape Player option—provides over 70 minutes of music. New station wagon Magic Doorgate—swings out for people and down for cargo. New V-8 power up to 428 cu. in. New 7-Litre high-performance series. • Seven new

Standard Safety Package features for all '66 cars from Ford) including emergency flasher system. • 13 new Fairlanes—new looks, liveliness, luxury. New convertibles, wagons, XL's, GT's and GT/A's. GT/A's have new "Sport Shift" Cruise-O-Matic—it's automatic or manual. • 7 new Falcons—now America's Economy Champ is

smoothest, smartest, the most spacious Falcon ever. Lively 170-cu. in. Six. • 3 new Mustangs—more fun than ever in America's Favorite Fun Car. New stereo tape player option, new 5-dial instrument cluster, 200-cu. in. Six, bucket seats, sporty floor shift, carpeting—all standard. Come try Total Performance '66.



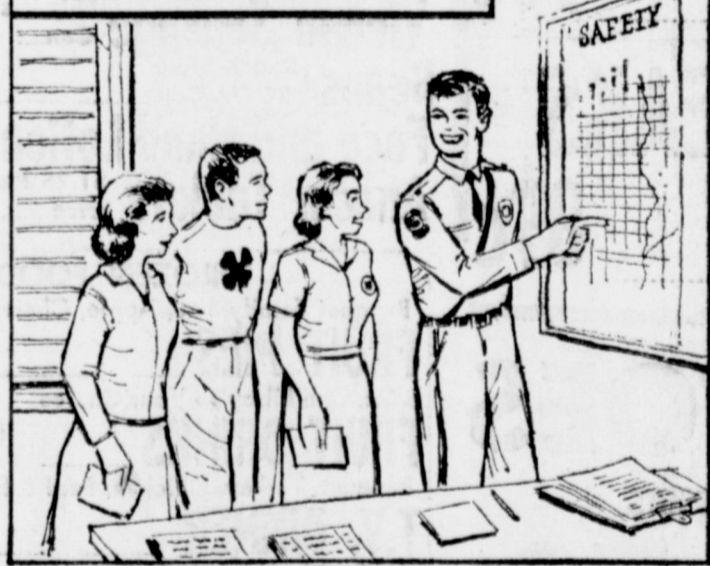
MULESHOE MOTOR CO.

MULESHOE, TEXAS

AMERICAN BLVD. AT 1st STREET

"LEARNING FOR LIVING"

4-H'ers LEARN AUTO-SAFETY



GROW WITH 4-H....

LEADERS OF TOMORROW.....THESE WILL COME FROM THE GROUP OF YOUNG PEOPLE WHO ARE PRACTICING GOOD CITIZENSHIP TODAY. SUCH ARE THE 4-H MEMBERS. THEY ARE LEARNING EARLY THE BEST WAYS TO SERVE COMMUNITY FAMILY AND THEMSELVES. THE KNOWLEDGE AND HABITS THEY ACQUIRE MEAN A BETTER AMERICA!

PRODUCTION CREDIT ASSOCIATION

WILBER LeVEQUE, MULESHOE MGR.



DRAWING A WINNER — Chamber of Commerce Manager Roy Davis drew this week's "Weekend at the Ramada Inn" winner from the 13 who had previously been drawn from as many participating firms. Name of the person drawn by Davis will be announced next Sunday. (Journal Photo)

South Plains Field Day Shows Strides Made In Cost-Cutting Experiments

LUBBOCK — After a one-week delay forced by heavy rains, the annual field day and openhouse at the South Plains Research and Extension Center was held from 1 to 5 p.m. Tuesday.

The major agricultural event had to be postponed after six inches of rain drenched the research center in two days making roads there impassable and putting parking space underwater.

However, Superintendent C. E. Fisher reports there was only slight damage to research plots.

This year's field day emphasized research that shows promise for reducing crop production costs when adapted to on-farm situations, Fisher said.

The center is located 7 1/2 miles north of Lubbock on U. S. 87 and the event was open to the public.

The field day will include a tour and discussions of selected research plots, a chance to see educational plant displays in air-conditioned greenhouses and a large machinery exhibit.

Research plots visited and discussed pertained to cotton irrigation, verticillium wilt, cotton mechanization, water conservation, grain sorghum breeding and soil fertility. Other field projects were explained as tour trailers went through the center.

Displays in the greenhouses are designed as an opportunity to learn to identify various abnormalities in plants caused by diseases, fertilizer deficiencies and improper use of chemicals.

Both the researchers and county agents report that a number of new problems with plants have confronted area farmers recently and they believe the greenhouse displays will give added knowledge about some of these problems.

Water usage was emphasized on two stops of the field tour. Visitors will be told about the water saving advantages of various land forming practices and efficient use of limited irrigation water.

At the stop on cotton mechanization, Allen Wiese, of the Bushland experiment station, teamed with center Ag-engineer Elmer Hudspeth to discuss weed control. They covered costs, rates and degree of control with various types of chemicals.

Some of the work of Hudspeth and his co-workers was on display in the large commercial machinery exhibit. The exhibit included models of cotton strippers equipped with greenball separators and on-the-bed planters. The special planters and strippers resulted directly from research at the center.

Verticillium wilt got special emphasis, Scientist Levon Ray

talked about effects and control of the wilt on the field tour while cotton with the disease can be closely examined in the greenhouses.

Ray is having some success in developing a long staple storm proof cotton and he says that he may have a small display showing an example of the improved varieties.

Grain sorghum researchers told about a new hybrid, which was developed at the center and recently released to breeders. It is a headsmut resistant, that can be harvested earlier than later varieties and should get by with one less irrigation.

South Plains county agents will be on hand to serve as tour guides. They and the research staff encourage anyone interested in agriculture to attend the field day and open house.

4-H Stressing Farm Safety, Adams Points Out

The 4-H Safety program plays an important part in keeping children, adults and communities alert to hazards of everyday living. County Agent J. K. Adams pointed out. This is National 4-H week.

This year more than 825,000 boys and girls in 4-H are expected to receive some safety training, points out Leon McNair, field representative of the National 4-H Service Committee. And about 575,000 club members carry out specific assignments as part of the national safety program.

Carefully planned projects with emphasis on special areas of safety are supervised by the Cooperative Extension Service and volunteer 4-H Club leaders. Emphasis for 1965 is on traffic safety. Clubs and individual 4-H'ers call attention to safe driving, safe highways and safety check of motor vehicles, Mr. McNair said.

The 1966 safety endeavors will center around water safety, such as boating, swimming and skiing, he revealed. Last year drug and chemical safety headed the list.

Interest in safety among youngsters is on the upswing, as shown by the high enrollment in the safety program. Last year 27,800 members were added.

For more than two decades, General Motors has sponsored the national 4-H Safety program. Training aids, awards and involvement of GM personnel throughout the country have helped to bring home the safety and citizenship responsibilities of 4-H members and parents, Adams declared.

FREE
COME IN AND REGISTER
"RAMADA Week-end"

COMPLETE DETAILS IN BAILEY CO. JOURNAL
Need not be present to win
Drawing Every Week, Register Here For
Each week's Drawing
DATES SUBJECT TO AVAILABILITIES

OLD-FASHIONED SAVINGS



IMPERIAL PURE CANE

SUGAR 10 LB. BAG **98¢**

MARYLAND CLUB - DRIP OR REG.

COFFEE 1 LB. TIN **75¢**

DEL MONTE - SLICED OR HALVES

PEACHES NO 2 1/2 CAN **4 FOR \$1**

FRYERS

GOLDEN NUGGET "USDA"

GRADE A

29¢

WHOLE LB.

FRYER PARTS

GOLDEN NUGGET FRESH

DRESSED MARKET CUT

BREASTS Lb. **59¢**

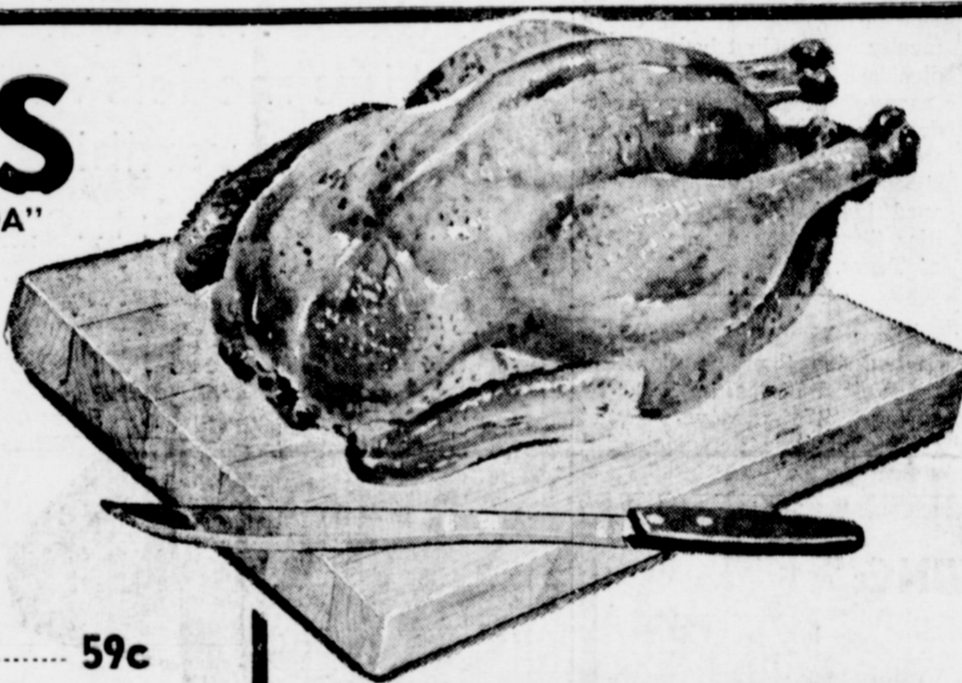
THIGHS Lb. **49¢**

WINGS Lb. **19¢**

WISHBONES Lb. **79¢**

DRUMSTICKS Lb. **49¢**

CHOICE HEAVY PEN FED BEEF
HALF OR WHOLE. CUT UP
AND WRAPPED FOR YOUR LOCKER
OR DEEP FREEZE Lb. **49¢**



T-BONE STEAKS

SWIFTS PREMIUM **98¢**
PROTEN BEEF, Lb.

SIRLOIN STEAKS

SWIFTS PREMIUM **89¢**
PROTEN BEEF, Lb.

POTATOES

COLORADO RUSSETS

20 LB. BAG 79¢

APPLES

JONATHAN **10¢**
FANCY RED Lb.

SQUASH

YELLOW **9¢**
BANANA Lb.



GRAPES

CALIFORNIA **15¢**
TOKAY'S Lb.

PEARS

WASHINGTON **19¢**
FANCY Lb.

SHORTENING

SNOWDRIFT

3 LB. TIN 59¢

CRACKERS

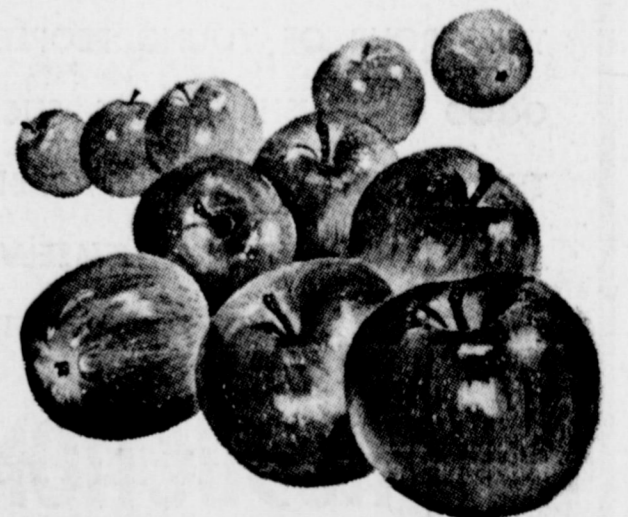
CRACKER BARREL

1 LB. BOX 19¢

- Filler Paper Note Book 500 69¢
- Mars - Milky Way, Snickers, Three Musketeers 10 5c
- Candy Bars 35¢
- Milk Kimbell 3 For 39¢
- Facial Tissue Kleenex 200 2 Ply 25¢
- Pillsbury Bavarian Cream & Vienna White Style
- Cake Mixes 4 For \$1.00
- R.C.s & Diet-Rite Cola 3 For \$1.00
- 6 Bottle Ctn. King Size
- Preserves Zestee Pure Apricot 18 Oz. 35¢
- Glass Tumbler
- Peanut Butter Kitchen Craft 99¢
- 3 Lb. Jar
- Cookies Pillsbury Refg. 39¢
- Your Choice
- Marshmallows Kraft Toasted Coconut 25¢
- 10 Oz Cello pkg. 59¢
- Dash Dash 2¢
- Chili Kimbells 59¢
- No. 2 Can
- Asparagus Del Monte all Green Tips & 29¢
- Spears No. 300 Can
- Tomato Juice Hunts 46 Oz. 3 For 89¢
- Can
- Vienna Sausage Ellis 1/2s 2 For 49¢
- Can
- Beans Ranch Style 19¢
- 24 Oz. Can
- Face and Hand Lotion So-Soft 45¢
- \$1.25 Reg.
- Anacin Tablets Price 99¢

FROZEN FOOD

- Banquet Family Size, Apple, Cherry, Peach
- FRUIT PIES 25¢
- 6 Oz. Can Libby's - Your Choice
- FRUIT DRINKS 9 For \$1.00
- Banquet, Turkey, Chicken, Beef & Ham
- T.V. DINNER 39¢
- 10 Oz. Pkg. Libby's Chopped
- Turnip-Collard Greens 2 For 35¢
- 10 Oz. Pkg. Birdseye
- Green Peas and Celery 29¢



BE SURE TO SEE OUR
SHOWING
THURSDAY, OCTOBER 14
OF THE NEW
"1966"

OLDSMOBILE and BUICK
Brock Motor Co. Inc.

GUNN BROS.
STAMPS
DOUBLE EVERY
WEDNESDAY.

White's **CASHWAY**

Listen To
MULETRAIN
10:15 A.M.
over KMUL
sponsored by
CASHWAY

Schoolman Chooses: Busses Or Teachers?

By John Lengel
Associated Press Writer
LAS VEGAS, Nev. (AP) —

The applicant for the key position sat opposite the school superintendent and stated his qualifications.

"You're dumb, your applying for the job shows it," said the superintendent. "Your record shows you don't surround yourself with good people."

The applicant was astonished. "So, I'm going to recommend you," said the superintendent. "And you know what?" says Dr. Lelaad Newcomer cheerfully. "That man is now one of the best we have. He surrounded himself with good people and is doing a great job."

This personnel technique is just one approach Newcomer has to the problems of the gambling capital's schools, one of the fastest growing districts in the nation.

His formula is long hours, innovation, "intellectual excitement," thoughtful analysis and bluff.

In 1963, he canceled school bus service to preserve budget money for a teachers' pay increase. This forced legislators into special session amid legends of marching mothers.

rate of the irrigation system.

4. Determine the water distribution pattern in the effective area between two sprinklers on a lateral.

5. Field check the operating characteristics of the system.

Irrigation sprinkler evaluations have been run recently on the J. B. McPherson farm and on the Beulah Duensing farm. Any farmer or rancher on an irrigation design and/or a layout of an irrigation system can be assisted by contacting the local Soil Conservation Service, who will be glad to assist anyone.

The following procedure is suggested and used by technicians when checking a sprinkler irrigation system:

1. Determine the amount of water needed to refill the soil in the root zone.

2. Make an inventory of the sprinkler system parts and determine the operating procedure.

3. Determine the application

He will cut all services if necessary, he says, to keep money available for good teachers and equipment. Services, or "shared responsibilities" as he calls them, include athletics, driver training, school buses, health and hygiene, art and music.

"These responsibilities have been forced on the schools by the church, home and government," says lean, crew-cut Newcomer.

"They're fine, too. But if the legislature wants them, it will have to pay for them."

Newcomer, 44, came to Las Vegas in 1961 from the Covina, Calif., school system.

He stepped in amid rousing controversy, waves of resignations. District officials were jabbing and scratching at soaring school enrollment, 17,000 in 1955, 28,000 in 1960, 58,000 today. In 1962, enrollment jumped 8,000.

"When I took over here they said, 'Sit back, get the lay of the land, find where the power is,' I don't believe that. When you're hired you have a six-month honeymoon period in which you can get a lot of things done."

"Take the members of the power structure. They don't have kids in school. They don't care. Those are the people I talked to first."

While still conversing with parents, Newcomer runs a Massachusetts-size district of 80 schools which includes computer programming and a one-room school in a ghost town. Nine more schools open this fall, eight more are planned.

Is Size Always Stifling? To troubleshoot his system, Newcomer recruited a young staff which has earned the name of "Newcomer's \$100,000 infield."

Some highlights: — In 13 months, voters ap-

proved \$37 million in school bonds.

— This fall for the first time since 1935, there will be no double sessions in Las Vegas schools.

— To attract foundation money, Newcomer hired an expert for \$15,000 who brought \$600,000 to the district in six months.

Newcomer attributes the solving of school problems to a concerned, progressive community and school board and a talented staff.

"I have a hypothesis to test. Can a large school district grow without becoming rigid, stifled? It can."

"In large districts, I've seen a new teacher check in, be issued a manual and step into the classroom."

"I believe teaching is an art which should be cultivated."

To do this, Newcomer decentralized the county school system, cut out curriculum supervisors and gave responsibility to his field commanders, the school principals.

"Our principals are free to innovate, probably more free than elsewhere. They can do virtually anything they want as long as it's consistent with the over-all aims and goals of education."

Under Newcomer, one elementary principal with 600 students faced double enrollment sessions the next fall. He sent her to Harvard for eight weeks. She came back and organized the curriculum without double sessions. She handled 1,050 students in the same space she had taught 540.

Modular Scheduling At a high school, modular scheduling is the rule, the result of a pilot project the year before.

"With this approach, we can teach to a student's weakness. IQ tests don't mean a thing. A kid may be brilliant in science, but barely be able to write."

With modular scheduling, this same student can spend extra hours in English and has an excellent opportunity to expand his science knowledge through supervised individual

research.

Accenting the modular approach at the high school is piped in music instead of bells, rugs in the halls to reduce noise and maintenance costs, fan-shape lecture rooms to focus a pupil's attention on the instructor.

In some schools, a pilot program is underway that allows a student credit for a course by simply passing the final examination. "We've found 30 percent of the students are a year ahead anyway," Newcomer says.

Meanwhile, the superintendent is attempting to insure that his system has enough money.

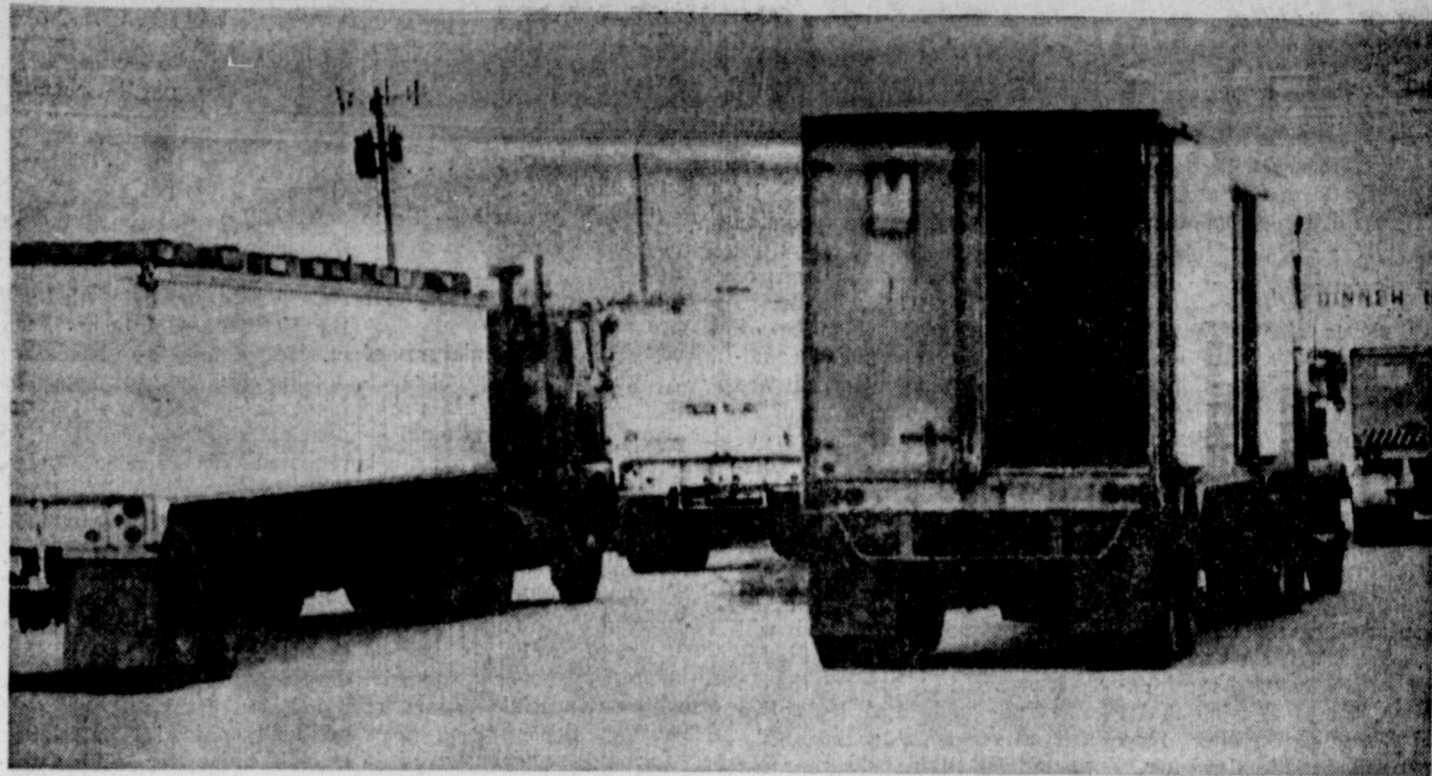
His approach, Newcomer says, is to bring the ranching, business and gambling communities together for the first time to study a long-term taxation program.

While battling for his system, Newcomer has also made enemies.

"You're bound to, I came here because I saw room for progress, for new ideas, for intellectual excitement. Nevada is a small state where you can get a lot of things done. If people here want to, they could make the state a leader in education."

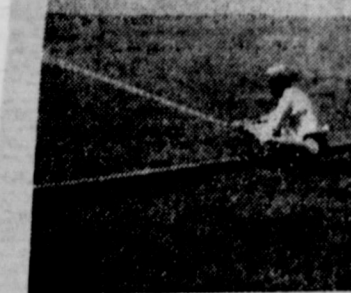
"I'll fight for this — for

waiting the time harvesting can resume. The trucks arrived over the weekend, will haul the crop to LaJunta, Colo. for canning. (Journal Photo)



TOMATO TRUCKS IDLE — It's tomato harvest time in Muleshoe but unseasonably cool weather and rains have delayed ripening of the commercial crop. Here are empty trucks lined up on a parking lot here, a-

waiting the time harvesting can resume. The trucks arrived over the weekend, will haul the crop to LaJunta, Colo. for canning. (Journal Photo)



HECKING — Here is Charles all of the local SCS office, checking a sprinkler nozzle size at nozzle pressure on the J. McPherson farm southwest of Muleshoe. These are just two of the steps used in a sprinkler irrigation evaluation. (SCS photo)

SCS Conducting Irrigation Tests For Efficiency

Soil Conservation Service technicians in the Local Blackwater Valley Soil Conservation District evaluate a number of irrigation systems on sprinkler and surface irrigation systems in an attempt to obtain more information, which can be used to help each Blackwater Valley district cooperators. These evaluations are used in checking the overall adequacy of the existing system.

The following procedure is suggested and used by technicians when checking a sprinkler irrigation system:

1. Determine the amount of water needed to refill the soil in the root zone.

2. Make an inventory of the sprinkler system parts and determine the operating procedure.

3. Determine the application

rate of the irrigation system.

4. Determine the water distribution pattern in the effective area between two sprinklers on a lateral.

5. Field check the operating characteristics of the system.

Irrigation sprinkler evaluations have been run recently on the J. B. McPherson farm and on the Beulah Duensing farm. Any farmer or rancher on an irrigation design and/or a layout of an irrigation system can be assisted by contacting the local Soil Conservation Service, who will be glad to assist anyone.

The following procedure is suggested and used by technicians when checking a sprinkler irrigation system:

1. Determine the amount of water needed to refill the soil in the root zone.

2. Make an inventory of the sprinkler system parts and determine the operating procedure.

3. Determine the application

rate of the irrigation system.

4. Determine the water distribution pattern in the effective area between two sprinklers on a lateral.

5. Field check the operating characteristics of the system.

Irrigation sprinkler evaluations have been run recently on the J. B. McPherson farm and on the Beulah Duensing farm. Any farmer or rancher on an irrigation design and/or a layout of an irrigation system can be assisted by contacting the local Soil Conservation Service, who will be glad to assist anyone.

The following procedure is suggested and used by technicians when checking a sprinkler irrigation system:

1. Determine the amount of water needed to refill the soil in the root zone.

2. Make an inventory of the sprinkler system parts and determine the operating procedure.

3. Determine the application

rate of the irrigation system.

4. Determine the water distribution pattern in the effective area between two sprinklers on a lateral.

5. Field check the operating characteristics of the system.

Irrigation sprinkler evaluations have been run recently on the J. B. McPherson farm and on the Beulah Duensing farm. Any farmer or rancher on an irrigation design and/or a layout of an irrigation system can be assisted by contacting the local Soil Conservation Service, who will be glad to assist anyone.

THE FAMILY LAWYER

Of Law and Love

WHEN TEARS FLOW

Weeping and sailing in the big trial scene is something that happens not only in the movies. In actual life too, especially in serious criminal cases, gusts of emotion often ruffle the judicial calm of the courtroom.

This raises a touchy problem. Won't the tears of the victim, or of the victim's family, stir prejudice against the person accused of the crime?

The danger is real. The poet Ovid said tears can melt iron. They can also shape the minds and conquer the hearts of a jury. In some circumstances a court will find an outburst so compelling as to invalidate the entire proceedings. Then, in all fairness to the defendant, there

things I think are right. But when enough people don't want me, I'll leave. I'll try some place else."

After all, perfect composure is too much to expect from people who are reliving dire and

must be a new trial and a new jury.

In one case involving seduction, the accusing girl collapsed on the witness stand. Her mother, coming to her aid, broke into a torrent of tear.

"Nobody knows how we have suffered over this trouble!" she wailed. "Lord have mercy on us!"

Such poignant drama, in full view of the jury, was held grounds for a new trial. The court said there was too much chance that sympathy, not reason, would guide the jury to its verdict.

However, in less extreme circumstance, the law relies on timely action by the trial judge to minimize the possibility of prejudice. For example:

In a manslaughter case, the victim's aunt began weeping at the sight of his bloody clothing. The judge had the women escorted from the courtroom to regain control of herself. He also cautioned the jury not to let the incident affect its judgment. These steps, an appellate court ruled later, were enough to protect the defendant's rights without having to start the proceedings all over again.

After all, perfect composure is too much to expect from people who are reliving dire and

dreadful events. Besides, at a second trial emotions might flare just as irresistibly as at the first.

So, within reasonable limits, the law relies on the jury to distinguish between crocodile tears, artfully shed, and honest tears, sincerely shed. And the law also relies on the jury to give, even to honest tears, no more weight than they justly deserve.

A public service feature of the American Bar Association and the State Bar of Texas. Written by Will Bernard.

Hydrofoil boats look like airplanes that can't get into the air, or ships that have taken up waterskiing.

Please pick up your forms for your weddings and announcements at the Journal office. We would be glad to help you with your story if you will come by the office. Glossy prints may be used for your weddings. Also, if you will contact The Journal on your wedding shower, a picture can be arranged. Also forms are available for your club reporters at the office.

October 8 is your LAST DAY to sign up!

WIN! Warm-up jacket, helmet or regulation-size PP&K football, or handsome PP&K trophy! You compete only with boys your own age. It's free! It's fun! It's easy! FREE instruction book on punting, passing, kicking . . . also, an attractive PP&K tie-lapel pin when you register. Bring dad when you sign up. Get full details at . . .

MULESHOE MOTOR CO. "At The Crossroads"

MULESHOE MOTOR CO.

"YOUR GOOD NEIGHBOR SINCE 1914"

MULESHOE MOTOR CO.

"At The Crossroads"



Introducing the lively new driving machines: the big, new-generation Comets.

Listen to the roar of the '66 Comets. They're bigger, wider, up to 8 inches longer than any Comet before. They make driving other cars seem like walking. Comet's new fire and spirited luxury come in 11 roomier models.

For a sample of Comet's style, take the Caliente. Notice the smart upholstery . . . the handsome, simulated wood-grain panels. For spine-tingling action try Comet's new Cyclone GT. Its new 390 4-barrel V-8 delivers

the kind of go that can shove you right back in your bucket seat. Whatever you want — action cars with pure excitement, 3-speed or 4-speed manual transmissions or automatics, inviting interiors — Comet's got it.

Plus a long, tempting list of options that includes built-in air conditioning . . . power windows, power brakes, and power everything. All this in the most exciting parade of Comets ever. Drive a real driving machine at your Mercury dealer's today.



MULESHOE MOTOR CO. MULESHOE, TEXAS American Blvd at 1st Street LINCOLN-MERCURY DIVISION OF Ford

Meet the MULESHOE STATE BANK CUSTOMER of the Week



Mrs. Bonnie Haberer

This week's customer of the week is Mrs. Bonnie Haberer of the Pleasant Valley community. She lives 14 miles north east of Muleshoe. Mrs. Haberer has farming interests. The First Baptist Church of Earth is the church she attends. Mrs. Haberer said she had banked with the Muleshoe State Bank about 45 years and "I still say anyone who has banked with a bank 45 years is pleased with the service. It speaks for itself." We are proud to recognize this customer of the week.

Muleshoe State Bank "YOUR GOOD NEIGHBOR SINCE 1914"



BOYS 8 through 13 enter our free PUNT, PASS & KICK competition!

October 8 is your LAST DAY to sign up!

WIN! Warm-up jacket, helmet or regulation-size PP&K football, or handsome PP&K trophy! You compete only with boys your own age. It's free! It's fun! It's easy! FREE instruction book on punting, passing, kicking . . . also, an attractive PP&K tie-lapel pin when you register. Bring dad when you sign up. Get full details at . . .

MULESHOE MOTOR CO. "At The Crossroads"

It's Hats-In-Ring Time For Politicians

By Vern Sanford
Texas Press Association

AUSTIN — Battle lines are forming! In the political arena, that is.

Big gloves already have been laced on the champ vote-getter — Gov. John Connally. He's in the ring and squared away — ready to battle any challenger. Question now is — will he win by default? It's possible. He has a record few will challenge.

Very likely there will be a free-for-all in most other races. Texas' second highest state office could be an exception. There Preston Smith holds forth in rather firm command as Lt. Governor.

Popular young Waggoner Carr already has proclaimed his interest in becoming U. S. Senator and is agilely dancing around the ring readying for the first sign of Democratic opposition to Republican John Tower's post. This may come from Congressman Jim Wright who is skipping rope to get in shape for something bigger. But so far he hasn't entered the ring.

Secretary of State Crawford Martin has set up his training camp for Carr's to-be-vacated post as Attorney General of Texas. Most likely he will have

Connally's blessing, since he was the Governor's appointee as Secretary.

State Sen. Franklin Spears of San Antonio is trying to decide whether he wants to take on Martin. Other possible candidates for Attorney General are Former Sen. Frank Owen of El Paso, Sen. Galloway Calhoun of Tyler, and Harris County District Atty. Frank Briscoe.

U. S. Sen. John Tower told Austin reporters that Texas Republicans will concentrate their statewide efforts on the senate race in 1966, and will field no active candidate for governor. In reference to his own race and local legislative and congressional contests, Tower predicted a good year for the GOP.

U. S. Sen. John Tower told Austin reporters that Texas Republicans will concentrate their statewide efforts on the senate race in 1966, and will field no active candidate for governor. In reference to his own race and local legislative and congressional contests, Tower predicted a good year for the GOP.

Announcements this early a burned oiled '66 — or several Battles of the Century.

As opponents warm up, only time will tell.

From the Capitol Dome and the focal point of all races — Austin — it looks right interesting.

Meanwhile, better buy yourself a ticket while still available at the box office . . . er, poll tax headquarters.

Death Penalty Out! — Some attorneys contend that the new code of criminal procedure abolishes the death penalty for crimes in Texas.

They believe that absence of procedures for assessing punishment — where the state asks for execution of a criminal — makes it impossible for a death penalty to stand up in appellate court even if assessed by a jury.

A member of the State Legislature, Rep. Bob Armstrong of Austin, is asking Governor Connally to submit proposed revisions in the controversial code to a special session of Armstrong; the revision goes too far in requiring accused persons to be warned of their rights against giving statements to police.

Seek Federal Funds — Twenty-five Texas school districts filed applications for a share of the \$81,000,000 provided under a federal act aimed mainly at helping under-privileged children. Aid will be dispersed at the rate of about \$195 a pupil for those from families with incomes of less than \$2,000 a year.

First districts applying were Houston, San Antonio, San Angelo, Poteet, Lipan, Fannin-dale, Paducah, Longview, Dim-

mitt, Del Valle, Crystal City, Taft, Gonzales, Rochester County Line, Dickinson, St. Jo, East High School, Deport, Laneville, Graham, Jasper, Bandera, Giddings and Witharrall.

Row Goes On — Attorney General Carr and the Republicans still are swapping legal broadsides over congressional redistricting.

Carr, in a new brief filed with the Houston federal court, urged judges to give lawmakers another chance at reapportionment in 1967 if the 1965 redistricting act is invalidated. He repeated his earlier opinion that the law adopted this year meets the court's specifications, however, since population variance among the 23 districts is below 15 per cent.

A new GOP brief chides Carr on "sheer lunacy" and demands that it be redone by electorally-minded legislators, critical computers rather than

Tourist Conference — Some 500 Texans are expected to attend a tourist development conference in Austin on Oct. 14. Purpose is to insure better cooperation between state and community efforts to promote travel.

Governor Connally will keynote the sessions. Other speakers will include John McCarty, chairman of Texas Tourist Development Agency board; pollster Joe Belden; Kern Tips, TTDA advertising account executive; Tom Taylor, State Highway Department travel and information division head; J. Weldon Watson, Parks and Wildlife Department director; John Ben Shepperd, president of Texas State Historical Survey Committee; and Don Esperson, Texas Tourist Council executive director.

Meetings are open to the public, says TTDA Director Frank Higlebrand.

AG Opinions — Attorney General Carr has ruled that

either parent may consent to the marriage of a minor, and a County Clerk may issue a marriage license.

However, if both parents are alive, the mother's consent is sufficient upon a written affidavit subscribed and sworn to by her that she and the minor have lived in the county more than a year, and the father has been out of the county for more than six months, or that the mother and father are divorced and she has had custody of the minor more than six months.

In other official opinions, he ruled that:

A college student who takes and passes an advanced standing examination in the field of American History, or Texas History, does not fulfill specified requirements by merely passing the examination.

Commissioners Court of Jefferson County is not authorized to grant salary increases of the Criminal District Attorney, the Judge of the County Court at Law, or the Judge of County Court at Law, Number 2.

Hearings Proposed — Legislative budget writers are considering joint hearing by House and Senate committees as a method of abolishing controversial riders to spending bills.

Budget Board staff reviewed for members a long list of governmental studies it has been called on to undertake.

Appointments — Thomas E. Riggs, Certified Public Accountant in Austin, has been appointed executive director of the Texas Hospital Association, replacing Bob Burkhardt who joined the staff of the State Department of Health.

Governor Connally has appointed Benjamin Orland Sims of Paint Rock and reappointed M. L. Schull of Eola and Cur-tis L. Stevens of Millersview to the Concho River Water and Soil Conservation Authority.

House Speaker Ben Barnes named to key committee to study adequacy of faculty compensation in state colleges and universities Amarillo attorney Wales Madden and Reps. Tom Bass of Houston, W. Reed Quilliam Jr. of Lubbock and W. C. (Bud) Sherman of Fort Worth. Lt. Gov. Smith earlier named Sens. D. Roy Harrington of Port Arthur, Andy Rogers of Childress and Pete Snelson of Midland to panel. Barnes emphasized need for more "fringe benefits" to faculty members.

Education Leap — A major characteristic of the Texas government's budget this year is a leap forward on education.

Texas spent 40.8 per cent of the state tax dollar on education during the last two years, but it will spend 44.5 per cent for the next two-year period.

Welfare and assistance will drop from 27.8 to 23.5 per cent. Welfare and assistance will rise from 15.6 to 16.6 per cent; health and hospitals will decline from 4.9 to 4.6 per cent. Other state activities are expected to hold even.

Study Committees — Lt. Gov. Smith has announced the appointment of nine Texas Legislative Council study committees to direct staff work on interim projects and formulate recommendations to the 60th Legislature in 1967.

Committees include state assistance to municipalities for arterial streets, mass transportation, education and services for the deaf, a brochure on the Texas State Capitol, preservation of Texas forts and missions, facilities for delinquent and dependent and neglected children, water laws and problems, county government and statutory revisions.

SHORT SNORTS

Commissioner William M. King reports ten applications for permits to sell \$4,019,038 in securities in Texas have been filed with the State Securities



HAIR TOO LONG? — Stephen Mackey, 14, of Houston and son of a Rice University professor, was barred from school a second time because of his "Prince Charles" hair style. Stephen's father plans to take the issue before the school board. (AP Wirephoto)

First New Cars For '66 Are Due In Showrooms

AUSTIN — New model automobiles will begin appearing in the showrooms of Texas franchised dealers on Oct. 1, and the Texas Automobile Dealers Association this week made several suggestions to purchasers of 1966 cars.

H. C. Pittman, executive vice president, said new car buyers in Texas lose thousands of dollars annually by failing to read operating instructions on the care and use of their new automobiles and by not understanding the warranty issued with each new car sold.

"Buyers will save time and money by reading immediately upon purchase their warranty and instructions," Pittman said.

He also urged buyers to trade with established automobile dealers. "This assures you of a title to your car promptly, and also a warranty," he said.

New model cars will begin appearing at Texas dealerships Oct. 1, and by Oct. 15 all dealers will have 1966 models on hand, Pittman said. Prices will remain about the same as last year, even though most factories have made several important improvements on 1966 models that will make the new cars safer and more comfortable, he said.

The TADA executive predicted that sales of the 1966 models would reach an all-time high, not only in Texas, but nationwide. He said he expected 9,000,000-plus new cars to be sold during the model year.

LONDON (AP) — British actress Susannah York, who recently completed work with Stanley Baker on "Sands of the Kalahari," has signed to make "The Doctor and the Devil." The movie, based on the only film script written by the late Dylan Thomas, tells the story of a group of bodysnatchers in Edinburgh in the 10th Century. Producer Nick Ray will make the movie this autumn in Yugoslavia.

LONDON (AP) — British actor Albert Finney, who played the title role in the movie "Tom Jones," was made an honorary doctor of letters at Sussex University. The citation said Finney was "a rejuvenator of our literary culture."

Good highways are the arteries of our economic system. Virtually everything that Texans buy or sell, make or use moves over the Texas highway system at some time.

Classifieds Get Results!

JUGGLING all your goals in one savings account? Open several-one for each goal!

"WHAT'S THE DIFFERENCE?" you might ask. "One savings account or several?"

With 2 or more accounts, you can earmark your savings for each goal...plan your progress carefully. And you may have special needs—where a trust or investment account would best serve you. Choose from a wide variety of savings accounts here. All earn the same liberal return.

First Federal Savings & Loan

Home Office
4th & Pile
Clovis, N.M.

Branch Office
2nd & Abilene
Portales, N.M.

"CURRENT DIVIDEND 4 1/2%"

CHEVY'S BUILT FOR BIGGER THINGS IN '66!

NEW CHEVROLET WORKPOWER IS HERE!

NEW HEAVYWEIGHTS UP TO 65,000 LBS. GCW!
The all-new Series 7000 and 8000 models are here—the biggest Chevies ever built, out to do the biggest jobs any Chevrolet trucks have ever done! They're ready to cut costs with new V6 gasoline engines, new V6 and V8 diesels. They offer, also, a new 92" cab that's the best yet for working efficiency, new higher capacity frames and axles and a high 65,000-lb. GCW rating.

NEW LIGHT-DUTY WORKPOWER!
The most widely used of all truck engines—the famous Chev light-duty Six is built for bigger things in '66 with a big new 250-cubic-inch design. It's the standard power plant in most light-duty models. Also, users of 1/2-ton models can now specify a big 327-cubic-inch V8—the most powerful engine ever offered in a 1/2-ton Chevy truck. See the new Chevies now, at your Chevrolet dealer's.

Here's low-cost Chevy-Van—economy champ of Chevrolet's long, strong covered delivery truck line.

Telephone your Chevrolet dealer about any type of truck.

42-5827

CROW CHEVROLET CO.

201 MAIN MULESHOE PH. 3-1000

IDL FALL SALE

INDEPENDENT DRUGGISTS' TRADE DRUG STORES

NEW! Gillette HEADS UP
HAIR GROOMING IN LIQUID OR TUBE
55c

SUN MARK 8 TRANSISTOR RADIO
FULLY GUARANTEED Complete with Carrying Case, Earphone and Battery
\$9.95

NEW Family Economy Size NEW INSTANT Medi-Quik
first-aid spray
\$1.19

NEW ECONOMY SIZE Lysol SPRAY DISINFECTANT
88c

IDL BOOK MATCHES CADDY OF 50
19c

1 Family Compact Automatic Razor Set regular \$1.50 value . . .
2 Plus Special Offer . . .
Send in the coupon on the back with \$1.00 and get this Gillette Official Automatic Razor Set . . . with the names of 10 National or American League Players . . . it's a top quality razor! . . . yours for just \$1.00
77c

Plus White MARGE TUBE
62c

ALLEREST Reg. \$1.25
88c

NEW! KODAK INSTAMATIC CAMERA
with built-in Flash Cube Socket
\$14.44

Miss America recommends Toni
with hidden body
\$1.44

Cepacol ANTIBACTERIAL MOUTHWASH GARGLE
66c

Williams "Lectric Shave"
55c

Lady Lectric
for electric shavers, moisturizes dry skin, aerosol spray
99c

REVOLUTIONARY FLASHCUBE
shoots 4 flash photos in 5 seconds
\$1.44

WESTERN DRUG
MULESHOE, TEXAS

VALUE

MULESHOE'S ANNUAL



FOOTBALL CONTEST

1st Place Winner -
James Roy Jones
2nd Place Winner -
Bo Bryant



MULESHOE
AT
FRONA
FRIDAY
8 P.M.

CONTEST RULES

MULESHOE PUBLISHING CO.
Box 449 — Muleshoe, Texas

- * Only one entry per person may be made for any one contest.
- * Weekly contests are open to everyone except employes and families of this newspaper.
- * Entries are to be judged by the sports editor and staff of this newspaper. All decisions of judges are final.
- * Entries must be submitted on the official form, as printed in this paper.
- * Bring or mail your entries to the Journal office. Mailed entries must be post marked not later than 5 p.m. Friday.
- * The deadline for weekly submission is 5 p.m. Friday.
- * Winners names will be published in this newspaper each Thursday following the close of the weekly contest.
- * Choose team you think will win.
- * 10 points for 1st. place, 5 points for 2nd place determines Grand Prize Winner.

WIN WEEKLY PRIZES!

1st. Place \$5 2nd. Place \$3

GRAND PRIZE \$50

FOR EXPENSES AND TWO TICKETS TO THE COTTON BOWL AT DALLAS, TEXAS. THERE WILL ALSO BE A CONTEST AND PRIZES FOR THE BOWL GAMES!

YOU MAY WIN!

THIS CONTEST MADE POSSIBLE BY THE FOLLOWING FIRMS:

Brock Motor Co.

Western Drug

Piggly Wiggly

James B. Glaze Ins.

W. Q. Casey Insurance

Heathington Lumber

E. R. Hart Co.

First National Bank

Muleshoe Floral

Beavers Flowerland

Paul's Cafe

L & H Grocery

Ladd Pontiac

Muleshoe Motor Co.

Muleshoe Co-op Gin

Ben Franklin Store

Cashway Grocery



Jennings Insurance

Muleshoe State Bank



The Fashion Shop OF MULESHOE

D & G Grocery

Pool Insurance

Johnson-Pool Furniture and Appliance



Farmers Co-op Elevator

Dari Delite

King Bros Grain & Seed Co.

Johnson Furniture

Central Texaco Sta.

Muleshoe Auto Parts

LET'S BACK

THE

MULES!

ENTER TODAY!

FUN! PRIZES!

Only One Entry Per Person

OFFICIAL ENTRY FORM

One Entry Per Person

- Auburn vs Kentucky.....
- Michigan St. vs Illinois.....
- Army vs Boston College.....
- Michigan vs Georgia.....
- Notre Dame vs Northwestern.....
- West Virginia vs Pittsburg.....
- Navy vs Oklahoma.....
- Iowa St. vs Nebraska.....
- Kansas vs California.....
- Tie Breaker.....

Texas Tech A & M.....
SCORE SCORE

NAME PHONE
ADDRESS CITY

SHOP MULESHOE FIRST

Television Schedule For Muleshoe Area

KING BROS.
GRAIN & SEED CO.
Complete ELEVATOR SERVICE AND SEED PROCESSING FOR The Muleshoe Area.

FIRST NATIONAL BANK MULESHOE
4%
ON 12 - MONTH CERTIFICATES OF DEPOSIT
3%
ON SAVINGS COMPOUNDED QUARTERLY
FINANCE YOUR CAR WITH US! PERSONAL LOANS

LUMBER PAINT
and Hardware
Chas. L. Lenay

LUMBER COMPANY
202 E. Ash

KGNC - TV (4) Amarillo
Muleshoe Cable 4
Mon. thru Fri. Daytime Viewing
7:00 - Today Show
8:00 - Today Show
9:00 - F. Phrases
9:25 - News
9:30 - Concentration
10:00 - M. Star
10:30 - P. Boy
11:00 - Jeopardy
11:20 - P. Office
11:55 - NBC News
12:00 - News
12:10 - Weather
12:20 - Ruth Brent
12:30 - Make A Deal
12:55 - NBC News
1:00 - Truth
1:30 - The Doctors
2:00 - Another Wor
2:30 - C-Don't Say
3:00 - Match Game
3:20 - NBC News
3:30 - Sheriff Bill
4:30 - Laramie
5:30 - Hunt-Brink.
6:00 - News
Thursday Evening
6:15 - Weather
6:25 - Sports
6:30 - D. Boone
7:30 - Laredo
8:30 - Mona Mc.
9:00 - D. Martin
10:00 - News
10:15 - Weather
10:25 - Sports
10:30 - C-Tonight
Friday Evening
6:15 - Weather
6:25 - Sports
6:30 - Showtime
8:30 - Mr. Roberts
9:00 - U.N.C.L.E.
10:00 - News
10:15 - Weather
10:25 - Sports
10:30 - C-Tonight Sh
12:00 - Sign Off

KGNC - TV (4) Amarillo
Muleshoe Cable 4
Mon. thru Fri. Daytime Viewing
6:30 - Wake-up
7:00 - Crop-Stock
7:15 - Weather
7:20 - News
7:30 - Wells Fargo
8:00 - Movie
9:30 - Exercise
10:00 - Young set
11:00 - Donna
11:30 - Father
12:00 - Ben Casey
1:00 - Nurses
1:30 - A Time
1:55 - Women's Nev
2:00 - Gen. Hosp.
2:30 - Young Mar.
3:00 - Trailmaster
4:00 - L. Beaver
4:30 - H. Patrol
5:00 - P. Jennings
5:15 - News
5:30 - Rifleman
6:00 - Bat Mastejr.
Thursday Evening
6:30 - S. Burke
7:30 - Crackerby
8:00 - Bewitched
8:30 - Peyton Plac
9:00 - Hot Summer
10:00 - Local News
10:15 - Weather
10:30 - Aquanats
11:00 - Movie
Friday Evening
6:30 - Flintstones
7:00 - Tammy
7:30 - Adams
8:00 - Honey West
8:30 - P. Place
9:00 - J. Dean
10:00 - News
10:15 - Weather
10:30 - Football
10:55 - News
11:30 - Movie
Saturday Viewing
7:00 - Roy Rog.
8:00 - The Jetsons
8:30 - Atom Ant
9:00 - Squirrel
9:30 - Underdog
10:00 - Top Cat
1:30 - C. John
10:30 - Fury
11:00 - Movie
1:00 - C. John
2:00 - Football
5:30 - R. Diamond
6:00 - News
6:15 - Weather
6:25 - Sports
6:30 - Flipper
7:00 - I Dream
7:30 - Get Smart
8:00 - Movie
10:00 - News
10:15 - Weather
10:25 - Sports
10:30 - Movie
12:45 - Sign Off

KGNC - TV (4) Amarillo
Muleshoe Cable 4
Mon. thru Fri. Daytime Viewing
7:30 - Comedy Tin
8:00 - C. John
8:30 - Dixie
9:30 - A & Trial
11:00 - Church
12:00 - Meet Press
12:00 - Checkmate
1:30 - College Bow
2:00 - Sunday
2:30 - Football
5:30 - R. Diamond
6:00 - News
6:15 - Weather
6:25 - Sports
6:30 - Flipper
7:00 - I Dream
7:30 - Get Smart
8:00 - Movie
10:00 - News
10:15 - Weather
10:25 - Sports
10:30 - Movie
12:00 - Sign off

KVII - TV (7) Amarillo
Muleshoe Cable 5
Mon. thru Fri. Daytime Viewing
6:25 - Sign On
6:27 - Meditation
6:30 - College
7:00 - Farm News
7:20 - News
7:30 - Tri Report
7:50 - News
8:00 - Capt. Kang.
9:00 - I Love Lucy
9:30 - McCoys
10:00 - M. Star
10:30 - P. Boy
11:00 - Jeopardy
11:30 - P. Office
12:00 - News
12:10 - Weather
12:20 - Farm & Ra
12:30 - The World T
1:00 - Password
1:30 - Art Linklette
2:00 - To Tell Tru
2:30 - CBS News
3:00 - Secret Storm
3:30 - S. Preston
4:00 - Proud Eagle
5:00 - Lone Ranger
5:30 - CBS News
6:00 - News
Thursday Evening
6:30 - S. Burke
7:30 - Crackerby
8:00 - Bewitched
8:30 - Peyton Plac
9:00 - Hot Summer
10:00 - Local News
10:15 - Weather
10:30 - Aquanats
11:00 - Movie
Friday Evening
6:30 - Flintstones
7:00 - Tammy
7:30 - Adams
8:00 - Honey West
8:30 - P. Place
9:00 - J. Dean
10:00 - News
10:15 - Weather
10:30 - Football
10:55 - News
11:30 - Movie
Saturday Viewing
7:00 - Movie
8:30 - College
9:00 - Shenanigans
9:30 - Church
10:00 - Casper
10:30 - Porky Pig
11:00 - Bugs Bunny
11:30 - Milton
12:00 - Hoppity
12:30 - Bandstand
1:30 - Movie
3:00 - R. Derby
4:00 - Sports
5:30 - Rifleman
6:00 - Masterson
6:30 - Shindig
7:00 - King Fam.
8:30 - H. Palace
9:30 - Music
9:45 - Preview
12:00 - Movie
1:30 - Thriller
Sunday Viewing
7:00 - To Whom
7:15 - Church
7:30 - Chris Oto
8:00 - Herald of Tru
8:30 - Oral Roberts
9:00 - Church
9:30 - Beany
10:00 Bullwinkle
10:30 - Discovery
11:00 - N. V. Peale
11:30 - D. Funk
12:00 - Discovery
12:30 - Issues Ans.
1:00 - H. Jungle
1:30 - Movie
3:00 - Chamber
3:30 - Topper
4:00 - Beatles
5:00 - R. Rider
5:30 - O'Toole
6:00 - Voyage to
7:00 - F. B. I.
8:00 - Movie
10:00 - News
10:15 - Weather
10:30 - Joe Kirbe
11:00 - Movie

KVII - TV (7) Amarillo
Muleshoe Cable 5
Mon. thru Fri. Daytime Viewing
6:25 - Sign On
6:27 - Meditation
6:30 - College
7:00 - Farm News
7:20 - News
7:30 - Tri Report
7:50 - News
8:00 - Capt. Kang.
9:00 - I Love Lucy
9:30 - McCoys
10:00 - M. Star
10:30 - P. Boy
11:00 - Jeopardy
11:30 - P. Office
12:00 - News
12:10 - Weather
12:20 - Farm & Ra
12:30 - The World T
1:00 - Password
1:30 - Art Linklette
2:00 - To Tell Tru
2:30 - CBS News
3:00 - Secret Storm
3:30 - S. Preston
4:00 - Proud Eagle
5:00 - Lone Ranger
5:30 - CBS News
6:00 - News
Thursday Evening
6:30 - S. Burke
7:30 - Crackerby
8:00 - Bewitched
8:30 - Peyton Plac
9:00 - Hot Summer
10:00 - Local News
10:15 - Weather
10:30 - Aquanats
11:00 - Movie
Friday Evening
6:30 - Flintstones
7:00 - Tammy
7:30 - Adams
8:00 - Honey West
8:30 - P. Place
9:00 - J. Dean
10:00 - News
10:15 - Weather
10:30 - Football
10:55 - News
11:30 - Movie
Saturday Viewing
7:00 - Movie
8:30 - College
9:00 - Shenanigans
9:30 - Church
10:00 - Casper
10:30 - Porky Pig
11:00 - Bugs Bunny
11:30 - Milton
12:00 - Hoppity
12:30 - Bandstand
1:30 - Movie
3:00 - R. Derby
4:00 - Sports
5:30 - Rifleman
6:00 - Masterson
6:30 - Shindig
7:00 - King Fam.
8:30 - H. Palace
9:30 - Music
9:45 - Preview
12:00 - Movie
1:30 - Thriller
Sunday Viewing
7:00 - To Whom
7:15 - Church
7:30 - Chris Oto
8:00 - Herald of Tru
8:30 - Oral Roberts
9:00 - Church
9:30 - Beany
10:00 Bullwinkle
10:30 - Discovery
11:00 - N. V. Peale
11:30 - D. Funk
12:00 - Discovery
12:30 - Issues Ans.
1:00 - H. Jungle
1:30 - Movie
3:00 - Chamber
3:30 - Topper
4:00 - Beatles
5:00 - R. Rider
5:30 - O'Toole
6:00 - Voyage to
7:00 - F. B. I.
8:00 - Movie
10:00 - News
10:15 - Weather
10:30 - Joe Kirbe
11:00 - Movie

KVII - TV (7) Amarillo
Muleshoe Cable 5
Mon. thru Fri. Daytime Viewing
6:25 - Sign On
6:27 - Meditation
6:30 - College
7:00 - Farm News
7:20 - News
7:30 - Tri Report
7:50 - News
8:00 - Capt. Kang.
9:00 - I Love Lucy
9:30 - McCoys
10:00 - M. Star
10:30 - P. Boy
11:00 - Jeopardy
11:30 - P. Office
12:00 - News
12:10 - Weather
12:20 - Farm & Ra
12:30 - The World T
1:00 - Password
1:30 - Art Linklette
2:00 - To Tell Tru
2:30 - CBS News
3:00 - Secret Storm
3:30 - S. Preston
4:00 - Proud Eagle
5:00 - Lone Ranger
5:30 - CBS News
6:00 - News
Thursday Evening
6:30 - S. Burke
7:30 - Crackerby
8:00 - Bewitched
8:30 - Peyton Plac
9:00 - Hot Summer
10:00 - Local News
10:15 - Weather
10:30 - Aquanats
11:00 - Movie
Friday Evening
6:30 - Flintstones
7:00 - Tammy
7:30 - Adams
8:00 - Honey West
8:30 - P. Place
9:00 - J. Dean
10:00 - News
10:15 - Weather
10:30 - Football
10:55 - News
11:30 - Movie
Saturday Viewing
7:00 - Movie
8:30 - College
9:00 - Shenanigans
9:30 - Church
10:00 - Casper
10:30 - Porky Pig
11:00 - Bugs Bunny
11:30 - Milton
12:00 - Hoppity
12:30 - Bandstand
1:30 - Movie
3:00 - R. Derby
4:00 - Sports
5:30 - Rifleman
6:00 - Masterson
6:30 - Shindig
7:00 - King Fam.
8:30 - H. Palace
9:30 - Music
9:45 - Preview
12:00 - Movie
1:30 - Thriller
Sunday Viewing
7:00 - To Whom
7:15 - Church
7:30 - Chris Oto
8:00 - Herald of Tru
8:30 - Oral Roberts
9:00 - Church
9:30 - Beany
10:00 Bullwinkle
10:30 - Discovery
11:00 - N. V. Peale
11:30 - D. Funk
12:00 - Discovery
12:30 - Issues Ans.
1:00 - H. Jungle
1:30 - Movie
3:00 - Chamber
3:30 - Topper
4:00 - Beatles
5:00 - R. Rider
5:30 - O'Toole
6:00 - Voyage to
7:00 - F. B. I.
8:00 - Movie
10:00 - News
10:15 - Weather
10:30 - Joe Kirbe
11:00 - Movie

KFDD - TV (10) Amarillo
Muleshoe Cable 6
Mon. thru Fri. Daytime Viewing
6:25 - Sign On
6:27 - Meditation
6:30 - College
7:00 - Farm News
7:20 - News
7:30 - Tri Report
7:50 - News
8:00 - Capt. Kang.
9:00 - I Love Lucy
9:30 - McCoys
10:00 - M. Star
10:30 - P. Boy
11:00 - Jeopardy
11:30 - P. Office
12:00 - News
12:10 - Weather
12:20 - Farm & Ra
12:30 - The World T
1:00 - Password
1:30 - Art Linklette
2:00 - To Tell Tru
2:30 - CBS News
3:00 - Secret Storm
3:30 - S. Preston
4:00 - Proud Eagle
5:00 - Lone Ranger
5:30 - CBS News
6:00 - News
Thursday Evening
6:30 - S. Burke
7:30 - Crackerby
8:00 - Bewitched
8:30 - Peyton Plac
9:00 - Hot Summer
10:00 - Local News
10:15 - Weather
10:30 - Aquanats
11:00 - Movie
Friday Evening
6:30 - Flintstones
7:00 - Tammy
7:30 - Adams
8:00 - Honey West
8:30 - P. Place
9:00 - J. Dean
10:00 - News
10:15 - Weather
10:30 - Football
10:55 - News
11:30 - Movie
Saturday Viewing
7:00 - Roy Rog.
8:00 - The Jetsons
8:30 - Atom Ant
9:00 - Squirrel
9:30 - Underdog
10:00 - Top Cat
1:30 - C. John
10:30 - Fury
11:00 - Movie
1:00 - C. John
2:00 - Football
5:30 - R. Diamond
6:00 - News
6:15 - Weather
6:25 - Sports
6:30 - Flipper
7:00 - I Dream
7:30 - Get Smart
8:00 - Movie
10:00 - News
10:15 - Weather
10:25 - Sports
10:30 - Movie
12:45 - Sign Off

KFDD - TV (10) Amarillo
Muleshoe Cable 6
Mon. thru Fri. Daytime Viewing
6:25 - Sign On
6:27 - Meditation
6:30 - College
7:00 - Farm News
7:20 - News
7:30 - Tri Report
7:50 - News
8:00 - Capt. Kang.
9:00 - I Love Lucy
9:30 - McCoys
10:00 - M. Star
10:30 - P. Boy
11:00 - Jeopardy
11:30 - P. Office
12:00 - News
12:10 - Weather
12:20 - Farm & Ra
12:30 - The World T
1:00 - Password
1:30 - Art Linklette
2:00 - To Tell Tru
2:30 - CBS News
3:00 - Secret Storm
3:30 - S. Preston
4:00 - Proud Eagle
5:00 - Lone Ranger
5:30 - CBS News
6:00 - News
Thursday Evening
6:30 - S. Burke
7:30 - Crackerby
8:00 - Bewitched
8:30 - Peyton Plac
9:00 - Hot Summer
10:00 - Local News
10:15 - Weather
10:30 - Aquanats
11:00 - Movie
Friday Evening
6:30 - Flintstones
7:00 - Tammy
7:30 - Adams
8:00 - Honey West
8:30 - P. Place
9:00 - J. Dean
10:00 - News
10:15 - Weather
10:30 - Football
10:55 - News
11:30 - Movie
Saturday Viewing
7:00 - Roy Rog.
8:00 - The Jetsons
8:30 - Atom Ant
9:00 - Squirrel
9:30 - Underdog
10:00 - Top Cat
1:30 - C. John
10:30 - Fury
11:00 - Movie
1:00 - C. John
2:00 - Football
5:30 - R. Diamond
6:00 - News
6:15 - Weather
6:25 - Sports
6:30 - Flipper
7:00 - I Dream
7:30 - Get Smart
8:00 - Movie
10:00 - News
10:15 - Weather
10:25 - Sports
10:30 - Movie
12:45 - Sign Off

KFDD - TV (10) Amarillo
Muleshoe Cable 6
Mon. thru Fri. Daytime Viewing
6:25 - Sign On
6:27 - Meditation
6:30 - College
7:00 - Farm News
7:20 - News
7:30 - Tri Report
7:50 - News
8:00 - Capt. Kang.
9:00 - I Love Lucy
9:30 - McCoys
10:00 - M. Star
10:30 - P. Boy
11:00 - Jeopardy
11:30 - P. Office
12:00 - News
12:10 - Weather
12:20 - Farm & Ra
12:30 - The World T
1:00 - Password
1:30 - Art Linklette
2:00 - To Tell Tru
2:30 - CBS News
3:00 - Secret Storm
3:30 - S. Preston
4:00 - Proud Eagle
5:00 - Lone Ranger
5:30 - CBS News
6:00 - News
Thursday Evening
6:30 - S. Burke
7:30 - Crackerby
8:00 - Bewitched
8:30 - Peyton Plac
9:00 - Hot Summer
10:00 - Local News
10:15 - Weather
10:30 - Aquanats
11:00 - Movie
Friday Evening
6:30 - Flintstones
7:00 - Tammy
7:30 - Adams
8:00 - Honey West
8:30 - P. Place
9:00 - J. Dean
10:00 - News
10:15 - Weather
10:30 - Football
10:55 - News
11:30 - Movie
Saturday Viewing
7:00 - Roy Rog.
8:00 - The Jetsons
8:30 - Atom Ant
9:00 - Squirrel
9:30 - Underdog
10:00 - Top Cat
1:30 - C. John
10:30 - Fury
11:00 - Movie
1:00 - C. John
2:00 - Football
5:30 - R. Diamond
6:00 - News
6:15 - Weather
6:25 - Sports
6:30 - Flipper
7:00 - I Dream
7:30 - Get Smart
8:00 - Movie
10:00 - News
10:15 - Weather
10:25 - Sports
10:30 - Movie
12:45 - Sign Off

KCBDB - TV (11) Lubbock
Muleshoe Cable 2
Mon. thru Fri. Daytime Viewing
7:30 - Headlines
7:05 - Farm Report
7:25 - Weather
7:30 - Today
8:25 - News Report
8:30 - Today
9:00 - News
9:25 - News
9:30 - Concentrat
10:00 - M. Star
10:30 - P. Boy
11:00 - Jeopardy
11:30 - P. Office
11:55 - News
12:00 - N and W
12:15 - Com. Closeup
12:30 - Let's Deal
12:55 - News
1:00 - Truth
2:00 - Another Worl
2:30 - C-Don't Say
3:00 - Match Gam
3:25 - Afternoon Rep
3:30 - Rebus
4:00 - Father Knows
4:30 - Ranger
5:00 - Cartoons
5:30 - Hunt-Brink.
6:00 - News
Thursday Evening
6:30 - D. Boone
7:30 - Laredo
8:30 - Mona Mc.
9:00 - D. Martin
10:00 - News
10:15 - Weather
10:30 - C-Tonight
Friday Evening
6:00 - News
6:10 - Weather
6:20 - News
6:30 - Munsters
6:30 - Gilligan
8:00 - Movie
10:15 - News-Wea.
10:45 - Movie
11:00 Movie
Saturday Viewing
5:55 - Sign On.
6:00 - Summer Sen
6:30 - S. Preston
7:00 - Bugs
7:30 - Porky
8:00 - Heckle - Jeel
8:30 - Ten. Tuxedo
9:00 - Mighty Mous
9:30 - Beatles
10:00 - Tom & Jerry
10:30 - Casper
11:00 - Sky King
11:30 - Lassie
12:00 - Baseball
3:00 - Bandstand
4:00 - Wrestling
5:00 - Wilburn b.
5:30 - Pickin T.
6:00 - Porter Wagon
6:30 - Jesse James
7:00 - Shenandoah
7:30 - Rawhide
8:30 - The Loner
9:00 - Gunsmoke
10:00 - News-Wea.
10:20 - Movie
1:30 - Sign Off
Sunday Viewing
6:55 - Sign On
7:00 - Bullwinkle
7:30 - TBA
8:00 - Linus
8:30 - Movie
10:30 - Cartoons
10:45 - Church
11:45 - Inquiry
11:45 - Inquiry
12:00 - Nation
12:30 - News-Wea.
12:45 - Football
3:30 - Scoreboard
3:45 - Music
4:00 - Bowling
4:30 - Amateur
5:00 - 20th Cen.
5:30 - Green Acres
6:00 - Voyage
7:00 - FBI
8:00 - P. Mason
9:00 - C. Camera
9:30 - D. Van Dyke
10:00 - News
10:20 - Movie
12:00 - Sign Off

KCBDB - TV (11) Lubbock
Muleshoe Cable 2
Mon. thru Fri. Daytime Viewing
7:30 - Headlines
7:05 - Farm Report
7:25 - Weather
7:30 - Today
8:25 - News Report
8:30 - Today
9:00 - News
9:25 - News
9:30 - Concentrat
10:00 - M. Star
10:30 - P. Boy
11:00 - Jeopardy
11:30 - P. Office
11:55 - News
12:00 - N and W
12:15 - Com. Closeup
12:30 - Let's Deal
12:55 - News
1:00 - Truth
2:00 - Another Worl
2:30 - C-Don't Say
3:00 - Match Gam
3:25 - Afternoon Rep
3:30 - Rebus
4:00 - Father Knows
4:30 - Ranger
5:00 - Cartoons
5:30 - Hunt-Brink.
6:00 - News
Thursday Evening
6:30 - D. Boone
7:30 - Laredo
8:30 - Mona Mc.
9:00 - D. Martin
10:00 - News
10:15 - Weather
10:30 - C-Tonight
Friday Evening
6:00 - News
6:10 - Weather
6:20 - News
6:30 - Munsters
6:30 - Gilligan
8:00 - Movie
10:15 - News-Wea.
10:45 - Movie
11:00 Movie
Saturday Viewing
5:55 - Sign On.
6:00 - Summer Sen
6:30 - S. Preston
7:00 - Bugs
7:30 - Porky
8:00 - Heckle - Jeel
8:30 - Ten. Tuxedo
9:00 - Mighty Mous
9:30 - Beatles
10:00 - Tom & Jerry
10:30 - Casper
11:00 - Sky King
11:30 - Lassie
12:00 - Baseball
3:00 - Bandstand
4:00 - Wrestling
5:00 - Wilburn b.
5:30 - Pickin T.
6:00 - Porter Wagon
6:30 - Jesse James
7:00 - Shenandoah
7:30 - Rawhide
8:30 - The Loner
9:00 - Gunsmoke
10:00 - News-Wea.
10:20 - Movie
1:30 - Sign Off
Sunday Viewing
6:55 - Sign On
7:00 - Bullwinkle
7:30 - TBA
8:00 - Linus
8:30 - Movie
10:30 - Cartoons
10:45 - Church
11:45 - Inquiry
11:45 - Inquiry
12:00 - Nation
12:30 - News-Wea.
12:45 - Football
3:30 - Scoreboard
3:45 - Music
4:00 - Bowling
4:30 - Amateur
5:00 - 20th Cen.
5:30 - Green Acres
6:00 - Voyage
7:00 - FBI
8:00 - P. Mason
9:00 - C. Camera
9:30 - D. Van Dyke
10:00 - News
10:20 - Movie
12:00 - Sign Off

KCBDB - TV (11) Lubbock
Muleshoe Cable 2
Mon. thru Fri. Daytime Viewing
7:30 - Headlines
7:05 - Farm Report
7:25 - Weather
7:30 - Today
8:25 - News Report
8:30 - Today
9:00 - News
9:25 - News
9:30 - Concentrat
10:00 - M. Star
10:30 - P. Boy
11:00 - Jeopardy
11:30 - P. Office
11:55 - News
12:00 - N and W
12:15 - Com. Closeup
12:30 - Let's Deal
12:55 - News
1:00 - Truth
2:00 - Another Worl
2:30 - C-Don't Say
3:00 - Match Gam
3:25 - Afternoon Rep
3:30 - Rebus
4:00 - Father Knows
4:30 - Ranger
5:00 - Cartoons
5:30 - Hunt-Brink.
6:00 - News
Thursday Evening
6:30 - D. Boone
7:30 - Laredo
8:30 - Mona Mc.
9:00 - D. Martin
10:00 - News
10:15 - Weather
10:30 - C-Tonight
Friday Evening
6:00 - News
6:10 - Weather
6:20 - News
6:30 - Munsters
6:30 - Gilligan
8:00 - Movie
10:15 - News-Wea.
10:45 - Movie
11:00 Movie
Saturday Viewing
5:55 - Sign On.
6:00 - Summer Sen
6:30 - S. Preston
7:00 - Bugs
7:30 - Porky
8:00 - Heckle - Jeel
8:30 - Ten. Tuxedo
9:00 - Mighty Mous
9:30 - Beatles
10:00 - Tom & Jerry
10:30 - Casper
11:00 - Sky King
11:30 - Lassie
12:00 - Baseball
3:00 - Bandstand
4:00 - Wrestling
5:00 - Wilburn b.
5:30 - Pickin T.
6:00 - Porter Wagon
6:30 - Jesse James
7:00 - Shenandoah
7:30 - Rawhide
8:30 - The Loner
9:00 - Gunsmoke
10:00 - News-Wea.
10:20 - Movie
1:30 - Sign Off
Sunday Viewing
6:55 - Sign On
7:00 - Bullwinkle
7:30 - TBA
8:00 - Linus
8:30 - Movie
10:30 - Cartoons
10:45 - Church
11:45 - Inquiry
11:45 - Inquiry
12:00 - Nation
12:30 - News-Wea.
12:45 - Football
3:30 - Scoreboard
3:45 - Music
4:00 - Bowling
4:30 - Amateur
5:00 - 20th Cen.
5:30 - Green Acres
6:00 - Voyage
7:00 - FBI
8:00 - P. Mason
9:00 - C. Camera
9:30 - D. Van Dyke
10:00 - News
10:20 - Movie
12:00 - Sign Off

KLBK - TV (13) Lubbock
Muleshoe Cable 3
Mon. thru Fri. Daytime Viewing
6:25 - Sign on
6:30 - Sun. Ser
7:00 - Farm
7:20 - Second cup
7:35 - News
8:00 - Capt. Kangar
9:00 - Donna
9:30 - McCoys
10:00 - Andy
10:30 - D. Dyke
11:00 - Love of Life
11:25 - CBS News
11:30 - Search
11:45 - Guiding
12:00 - WTTN News
12:10 - Farm & Ra
12:25 - Weather
12:30 - World Turns
1:00 - Password
1:30 - Houseparty
2:00 - Gen. Hos.
2:30 - Edge of Light
3:00 - Secret Storm
3:30 - Y. Marrieds
4:00 - Trailmaster
5:00 - Rifleman
5:30 - News
Thursday Evening
6:00 - News
6:10 - Weather
6:20 - News
6:30 - Munsters
6:30 - Gilligan
8:00 - Movie
10:15 - News-Wea.
10:45 - Movie
11:00 Movie
Friday Evening
6:00 - News
6:10 - Weather
6:20 - News
6:30 - Wild West
7:30 - Hogans Herc
8:00 - G. Pyle
8:30 - Bewitched
9:00 - J. Dean
10:00 - News
10:30 - Movie
Saturday Viewing
5:55 - Sign On.
6:00 - Summer Sen
6:30 - S. Preston
7:00 - Bugs
7:30 - Porky
8:00 - Heckle - Jeel
8:30 - Ten. Tuxedo
9:00 - Mighty Mous
9:30 - Beatles
10:00 - Tom & Jerry
10:30 - Casper
11:00 - Sky King
11:30 - Lassie
12:00 - Baseball
3:00 - Bandstand
4:00 - Wrestling
5:00 - Wilburn b.
5:30 - Pickin T.
6:00 - Porter Wagon
6:30 - Jesse James
7:00 - Shenandoah
7:30 - Rawhide
8:30 - The Loner
9:00 - Gunsmoke
10:00 - News-Wea.
10:20 - Movie
1:30 - Sign Off
Sunday Viewing
6:55 - Sign On
7:00 - Bullwinkle
7:30 - TBA
8:00 - Linus
8:30 - Movie
10:30 - Cartoons
10:45 - Church
11:45 - Inquiry
11:45 - Inquiry
12:00 - Nation
12:30 - News-Wea.
12:45 - Football
3:30 - Scoreboard
3:45 - Music
4:00 - Bowling
4:30 - Amateur
5:00 - 20th Cen.
5:30 - Green Acres
6:00 - Voyage
7:00 - FBI
8:00 - P. Mason
9:00 - C. Camera
9:30 - D. Van Dyke
10:00 - News
10:20 - Movie
12:00 - Sign Off

KLBK - TV (13) Lubbock
Muleshoe Cable 3
Mon. thru Fri. Daytime Viewing
6:25 - Sign on
6:30 - Sun. Ser
7:00 - Farm
7:20 - Second cup
7:35 - News
8:00 - Capt. Kangar
9:00 - Donna
9:30 - McCoys
10:00 - Andy
10:30 - D. Dyke
11:00 - Love of Life
11:25 - CBS News
11:30 - Search
11:45 - Guiding
12:00 - WTTN News
12:10 - Farm & Ra
12:25 - Weather
12:30 - World Turns
1:00 - Password
1:30 - Houseparty
2:00 - Gen. Hos.
2:30 - Edge of Light
3:00 - Secret Storm
3:30 - Y. Marrieds
4:00 - Trailmaster
5:00 - Rifleman
5:30 - News
Thursday Evening
6:00 - News
6:10 - Weather
6:20 - News
6:30 - Munsters
6:30 - Gilligan
8:00 - Movie
10:15 - News-Wea.
10:45 - Movie
11:00 Movie
Friday Evening
6:00 - News
6:10 - Weather
6:20 - News
6:30 - Wild West
7:30 - Hogans Herc
8:00 - G. Pyle
8:30 - Bewitched
9:00 - J. Dean
10:00 - News
10:30 - Movie
Saturday Viewing
5:55 - Sign On.
6:00 - Summer Sen
6:30 - S. Preston
7:00 - Bugs
7:30 - Porky
8:00 - Heckle - Jeel
8:30 - Ten. Tuxedo
9:00 - Mighty Mous
9:30 - Beatles
10:00 - Tom & Jerry
10:30 - Casper
11:00 - Sky King
11:30 - Lassie
12:00 - Baseball
3:00 - Bandstand
4:00 - Wrestling
5:00 - Wilburn b.
5:30 - Pickin T.
6:00 - Porter Wagon
6:30 - Jesse James
7:00 - Shenandoah
7:30 - Rawhide
8:30 - The Loner
9:00 - Gunsmoke
10:00 - News-Wea.
10:20 - Movie
1:30 - Sign Off
Sunday Viewing
6:55 - Sign On
7:00 - Bullwinkle
7:30 - TBA
8:00 - Linus
8:30 - Movie
10:30 - Cartoons
10:45 - Church
11:45 - Inquiry
11:45 - Inquiry
12:00 - Nation
12:30 - News-Wea.
12:45 - Football
3:30 - Scoreboard
3:45 - Music
4:00 - Bowling
4:30 - Amateur
5:00 - 20th Cen.
5:30 - Green Acres
6:00 - Voyage
7:00 - FBI
8:00 - P. Mason
9:00 - C. Camera
9:30 - D. Van Dyke
10:00 - News
10:20 - Movie
12:00 - Sign Off

KLBK - TV (13) Lubbock
Muleshoe Cable

BUY and SELL WANTED BETTER JOBS LOST and FOUND BUSINESS LEADS REAL ESTATE

WANT ADS -- PHONE 2350

1 time per word — 4c 3 times per word — 10c
 2 times per word — 7c 4 times per word — 13c
 After 1st issue, 3c per word each additional time.
 Minimum charge 50c
 Card of Thanks \$1.00

DEADLINE FOR CLASSIFIED ADVERTISING PAGE:
 For Thursday's Issue: Monday, 12 Noon
 For Sunday's Issue: Thursday, 12 Noon
TO...LATE...TO...CLASSIFY
 Thursday Issue — Tuesday 5 P.M.
 Sunday Issue — Friday 3 p.m.
 Double Rate for Blind Ads.

I. Personals

LUZIER'S COSMETICS
 Free Demonstration
 Satisfaction Guaranteed
MRS. E. E. HOLLAND
 Ph. Off. 3-2930 - Res. 3-2930
 121 American Blvd.
 1-49s-tfc

Will do baby sitting or ironing in my home, 1214 W. Ave. C 1-341-tfc

FOR RENT: 15 ft. camper by day or week, call 3-1630. 1-35s-tfc

Custom cutting wanted. Call Weldon Slayton, 965-2140 or contact 6 mi. North of Muleshoe where Mid Way Fertilizer formerly was. Turn left, 1st house on right. 1-37s-tfc

Sewing wanted. Call Mrs. Weldon Slayton, 965-2140 or see at 6 miles North of Muleshoe, turn left where Mid-Way Fert. formerly was located. First house on right. 1-371-tfc

4. Houses for Rent

FOR RENT: 3 bedroom brick house in country, Phone 4600, Russell Bryant, 4-351-tfc

For rent - Small house unfurnished. Ph. 3-4682 or see at 224 E. 5th. 4-37s-tfc

Three bedroom house for rent, 516 W. 3rd. Phone 7900 or Ph. 3-0310 R. E. Kelley 4-38s-tfc

For Rent. 5 room house. Newly decorated inside. See Marie Engram, 416 West 4th. 4-391-tfc

5. Apts. for Rent

FOR RENT: Two bedroom apartment, carpeted, draped, built - ins. Phone 3-4960 or 3-33-50. 5-28s-tfc

FOR RENT: 3 room furnished apartment, trailer space. 323 West Ave. E. Phone 8120. 5-31s-tfc

Briscoe Trailer Park and Apartments, Large or Small, furnished or unfurnished. Call 3-4650. 5-311-tfc

For Rent. Furnished apartment. 519 West Ave. E. Adults only. 5-37s-tfc

Furnished - 1 side of a duplex furnished, air conditioned, bills paid, Mrs. C. E. Layne, Ph. 4960, Next to Beaver's Flowerland. 5-351-tfc

For rent. Furnished apt. 3 rooms and bath. See Mrs. Jack Lenderson or call 3-0380. 5-39s-tfc

6. Rooms for Rent

Bedroom for rent - See Ida Tapp. Last house north of Calvert's grocery 6-4s-tfc

7. Wanted to Rent

Want to rent: Two - three bedroom home, with garage and fenced yard. Possibly, option to buy. Near Richland Hills School. Unfurnished only. Will furnish references. Reply quoting price and complete information to: Box 449, Muleshoe Journal. 7-37s-tfc

8. Real Estate for Sale

3 bedroom house for sale. Newly painted outside and re-decorated inside. New fenced-in back yard. See at 202 East Cedar, or call 3-0640. Low Equity. 8-381-tfc

Home
 413 East Dallas
 IS NOW FOR SALE

Located in Lenau addition, with school bus stop at "front door" -

Three bedroom home, 18 foot by 18 foot living room, 1 1/2 bathrooms, newly floored and cabinet topped kitchen; utility room, garage -

Trees, flowers, lawns back yard is fenced.

Occupancy sometime after Sept 15; upon completion of new home.

Shown by appointment, please.

Phone or see:
 L. B. Hall
 413 East Dallas
 Home: 7490 Office: 2350
 8-34s-tfp

3 bedroom brick in Lubbock, sale or trade for house in Muleshoe. SW 5-5467 after 6 p.m. 8-37s-91p

9. Autos for Sale

1963 Ford Galaxie 500, 406" Engine, 4 speed, air conditioned, new tires. Excellent condition. \$1696. Consider trade. 919 Fig Ave. Ted Weaver. Box 212. 9-371-tfc

For Sale: 1962 4 door Bel Air factory air, radio and heater. \$1095. Buford Bates. 946-2416. 9-381-5tp

10. Farm Equip for sale

NEW 1965 GMC PICKUP DELIVERED \$1749.00 LADD PONTIAC Muleshoe, Tex. Ph. 3-3089 10-341-tfc

FOR SALE

I.H. No. 21 Stripper With Green Ball Atch. \$550.00
 I.H. Front Single Wheel \$75.00
 13 Ft. Shafter Wheel Disc \$225.00
 Ford Rear Scoop \$45.00
 I. H. Combine Corn Head \$250.00
 Cline Land Lever \$375.00
 Cotton Basket \$5.00
 Ford Tractor And Loader \$475.00

NORWOOD USED IMPLEMENTS
 1926 South Main
 Muleshoe Ph 3-3213
 10-391-tfc

12. Household Goods

Wanted responsible party to take over payments on late model Singer sewing machine in Muleshoe area. Will zig-zag, fancy stitching, etc. 5 payments \$4.96 or \$25.00 cash. Write Credit Department, 1114 19th Street, Lubbock, Texas. 12-341-tfc

15. Miscellaneous

DO YOU HAVE ROACHES!!
 CALL 3-3030 or 3-9040
 Akin Exterminating Co.
 Home Owned & Operated
 15-321-tfc

It's terrific the way we're selling Blue Lusture for cleaning rugs and upholstery. Rent electric shampooer, \$1. Higginsbotham - Bartlett. 15-391-tfc

FOR
 Steel Barns
 AND
 Commercial Buildings
 Call Your
 Better Buildings
 Representative
 15 percent dn. - fall term
 Call
 Horace Henley Jr.
 Dimmitt, Tex. Ph. 647-3501
 after 7:00 p.m. 15-39s-tfc

Good Merchandise
 Buena Mercancia
 Economart Main Street
 Mayur Calle
 Muleshoe, Texas - 79347
 15-271-tfc

Ask for information on Retirement Income, Family Income, Educational Plans, Mortgage Cancellation, Life, Hospitalization and Funeral Ins. Contact - C. D. GILBERT 1714 Ave. F., Muleshoe, Phone 5023. 15-28s-26tp-s

Maise Cutting and Hauling wanted. Leave word at Ray Griffiths elevator or call Porter 3-5175. Clovis, Collect. C. P. Johnson. 15-371-tfc

SHOP MULESHOE FIRST 391-tfp

LEGAL NOTICE

THE STATE OF TEXAS
 TO: Mary E. Crawford and Owan D. Reed, Defendants,
 Greeting;

You are hereby commanded to appear by filing a written answer to the Plaintiffs' Petition at or before ten o'clock A.M. of the first Monday after the expiration of forty-two days from the date of the issuance of this citation, same being Monday the 8th day of November, 1965, at or before ten o'clock A.M. before the Special Commissioners duly appointed by the Judge of the County Court of Bailey County, Texas, at the Court House of said County in Muleshoe, Texas.

Said Plaintiffs' Statement was filed with the County Judge of Bailey County, Texas on the 20th day of September, 1965, in this Cause numbered 731, and styled The State of Texas, et al. plaintiffs vs. Bennie St. Cyr, et al.

The names of the parties are as follows:
 The State of Texas and Bailey County are plaintiffs, and Bennie St. Cyr and wife, Cecile R. St. Cyr and J. O. Crawford, Roy Reed, Welma Dange, Wanda Hargrove, Owan D. Reed, Delsie Dove, Nell Meek, Ben Crawford, Douglas Ruby, and Jess Osborn are defendants.

A brief statement of the nature of this suit is as follows, to wit:
 Proceedings in eminent domain in connection with the State of Texas constructing, laying out and reconstructing a highway, designated as a part of the State Highway System by the State Highway Commission of the State of Texas, in Bailey County, Texas, and that such construction, reconstruction and maintenance upon said highway is surveyed through, across and upon, and will cross, run through and upon the following described real property situated in Bailey County, Texas:

0.247 acre of land, more or less, same being part of a one acre tract, more or less, out of that portion of the Northwest one-fourth of Sec. 21, Block Y, State Capitol Land, Bailey County, Texas, lying South of U. S. Hwy. 84 known as Tract No. 1, Parsons Subdivision, same same Tract No. 1 having been conveyed to J. O. Crawford by H. D. Crawford by deed dated May 1, 1945, and of record in Vol. 41, Page 231, Deed Records of Bailey County, which 0.247 acre of land, more or less, being all of the following described 0.283 acre of land, more or less, save and except 0.036 acre thereof included in the right-of-way of a public road 40 ft. wide, the centerline of which lies along the North line of Sec. 21, which 0.283 acre of land, more or less, being more particularly described by metes and bounds as follows:

THENCE S 89 deg. 13' E with the North line of Sec. 21 a distance of 67.56 ft. to a point in the South right-of-way line of present U. S. Hwy. 84;

THENCE with the South right-of-way line of present U. S. Hwy. 84, from a tangent bearing S 48 deg. 21' 14" E around a curve to the right having a radius of 2,814.93 ft. a distance of 184.39 ft. to a point in a tangent bearing S 44 deg. 36' 03" E, same point being the most easterly corner of the aforesaid one acre tract of land, same point being the most northerly corner of a tract of land owned by Eva Murrah;

THENCE S 48 deg. 58' 48" W with the Southeast line of the aforesaid one acre tract and the Northwest line of the Eva Murrah property a distance of 44.93 ft. to a point;

THENCE from a tangent bearing N 52 deg. 06' 21" W around a curve to the left having a radius of 2,864.93 ft. a distance of 94.71 ft. to a point in a tangent bearing N 54 deg. 06' W;

THENCE N 54 deg. 06' W 102.56 ft. to a point;

THENCE N 89 deg. 13' W 9.53 ft. to a point in the West line of Sec. 21;

THENCE N 1 deg. 16' E with the West line of Sec. 21 a distance of 40.00 ft. to the point of beginning.

As is more fully shown by Plaintiffs' petition on file in this suit.

If this citation is not served within ninety days of the date of its issuance, it shall be returned unserved.

The officer executing this process shall promptly execute the same according to law, and make due return as the law directs.

Issued and given under my hand and the Seal of the County Court, at office in Muleshoe, Texas, this 21st day of September, 1965.

Attest:
 Hazel Gilbreath Clerk, Bailey County Court, Bailey County, Texas. 381-41tc

17. Seed & Feed

FOR SALE: Early Sumac Cane Seed. Phone 965-2675, Morris McKillip. 17-22s-tfc

Tascosa wheat seed first year from certified \$1.75 bu. 9 mi. North, 1 1/2 West Muleshoe. P.H. 965-2372. Clarence R. Mason. 17-361-8tp

FOR SALE - Hay. Call 965-2140 or contact Weldon Slayton, 6 miles north Muleshoe. 17-301-tfc

Card of Thanks

We wish to express our appreciation to everyone who was so kind and thoughtful and helped in so many ways during the illness and death of our mother, Mrs. Cecelia Hicks.

Mr. and Mrs. Jack Hicks and family, Mr. and Mrs. Alfred Hicks and family, Mr. and Mrs. Medford Seifres and family, and Ethel Mayo Hicks.

"Learning for living" is the theme of the 1965 National 4-H Club Week. For more than 50 years 4-H Clubs have guided young people in their personal development.

Bailey County Resident Dies

Mrs. Minnie Lou Billingsley, 76, who had lived in Bailey County for some 30 years died Friday morning at Clovis Memorial Hospital. She was the mother of Clark Billingsley, Farwell.

She is also survived by her husband, Ernest; another son, Hershel R., Big Springs; two daughters, Mrs. Llewellyn Ogletree, Monterey, Calif., and Mrs. Johnnie May Baughan, Yuma, Ariz.; a sister, Mrs. Oma Hawks, Bokchito, Okla.; 14 grandchildren, 22 great-grandchildren, four nephews and a niece.

Funeral services were held at 4 p.m. Saturday at the Hamlin Memorial Methodist Church in Farwell with the Rev. W. C. Strickland, pastor and the Rev. Billy Moe Foster officiating.

Burial will be in Sunset Terrace Memorial Park at Farwell under the direction of Steed Funeral Home.

particularly described by metes and bounds as follows:
 Beginning at the Northwest corner of Sec. 21;

THENCE S 89 deg. 13' E with the North line of Sec. 21 a distance of 67.56 ft. to a point in the South right-of-way line of present U. S. Hwy. 84;

THENCE with the South right-of-way line of present U. S. Hwy. 84, from a tangent bearing S 48 deg. 21' 14" E around a curve to the right having a radius of 2,814.93 ft. a distance of 184.39 ft. to a point in a tangent bearing S 44 deg. 36' 03" E, same point being the most easterly corner of the aforesaid one acre tract of land, same point being the most northerly corner of a tract of land owned by Eva Murrah;

THENCE S 48 deg. 58' 48" W with the Southeast line of the aforesaid one acre tract and the Northwest line of the Eva Murrah property a distance of 44.93 ft. to a point;

THENCE from a tangent bearing N 52 deg. 06' 21" W around a curve to the left having a radius of 2,864.93 ft. a distance of 94.71 ft. to a point in a tangent bearing N 54 deg. 06' W;

THENCE N 54 deg. 06' W 102.56 ft. to a point;

THENCE N 89 deg. 13' W 9.53 ft. to a point in the West line of Sec. 21;

THENCE N 1 deg. 16' E with the West line of Sec. 21 a distance of 40.00 ft. to the point of beginning.

As is more fully shown by Plaintiffs' petition on file in this suit.

If this citation is not served within ninety days of the date of its issuance, it shall be returned unserved.

The officer executing this process shall promptly execute the same according to law, and make due return as the law directs.

Issued and given under my hand and the Seal of the County Court, at office in Muleshoe, Texas, this 21st day of September, 1965.

Attest:
 Hazel Gilbreath Clerk, Bailey County Court, Bailey County, Texas. 381-41tc

Proceedings in eminent domain in connection with the State of Texas constructing, laying out and reconstructing a highway, designated as a part of the State Highway System by the State Highway Commission of the State of Texas, in Bailey County, Texas, and that such construction, reconstruction and maintenance upon said highway is surveyed through, across and upon, and will cross, run through and upon the following described real property situated in Bailey County, Texas:

0.247 acre of land, more or less, same being part of a one acre tract, more or less, out of that portion of the Northwest one-fourth of Sec. 21, Block Y, State Capitol Land, Bailey County, Texas, lying South of U. S. Hwy. 84 known as Tract No. 1, Parsons Subdivision, same same Tract No. 1 having been conveyed to J. O. Crawford by H. D. Crawford by deed dated May 1, 1945, and of record in Vol. 41, Page 231, Deed Records of Bailey County, which 0.247 acre of land, more or less, being all of the following described 0.283 acre of land, more or less, save and except 0.036 acre thereof included in the right-of-way of a public road 40 ft. wide, the centerline of which lies along the North line of Sec. 21, which 0.283 acre of land, more or less, being more particularly described by metes and bounds as follows:

THENCE S 89 deg. 13' E with the North line of Sec. 21 a distance of 67.56 ft. to a point in the South right-of-way line of present U. S. Hwy. 84;

THENCE with the South right-of-way line of present U. S. Hwy. 84, from a tangent bearing S 48 deg. 21' 14" E around a curve to the right having a radius of 2,814.93 ft. a distance of 184.39 ft. to a point in a tangent bearing S 44 deg. 36' 03" E, same point being the most easterly corner of the aforesaid one acre tract of land, same point being the most northerly corner of a tract of land owned by Eva Murrah;

THENCE S 48 deg. 58' 48" W with the Southeast line of the aforesaid one acre tract and the Northwest line of the Eva Murrah property a distance of 44.93 ft. to a point;

THENCE from a tangent bearing N 52 deg. 06' 21" W around a curve to the left having a radius of 2,864.93 ft. a distance of 94.71 ft. to a point in a tangent bearing N 54 deg. 06' W;

THENCE N 54 deg. 06' W 102.56 ft. to a point;

THENCE N 89 deg. 13' W 9.53 ft. to a point in the West line of Sec. 21;

THENCE N 1 deg. 16' E with the West line of Sec. 21 a distance of 40.00 ft. to the point of beginning.

As is more fully shown by Plaintiffs' petition on file in this suit.

If this citation is not served within ninety days of the date of its issuance, it shall be returned unserved.

The officer executing this process shall promptly execute the same according to law, and make due return as the law directs.

Issued and given under my hand and the Seal of the County Court, at office in Muleshoe, Texas, this 21st day of September, 1965.

Attest:
 Hazel Gilbreath Clerk, Bailey County Court, Bailey County, Texas. 381-41tc

HARRISON IN REMAKE
 LONDON (AP) - Rex Harrison will play the lead in a musical re-make of the famous Robert Donat movie "The Ghost Goes West" next year.

The U. S. Coast Guard installed or maintained 42,000 aids-to-navigation (lighthouses, buoys, etc.) in 1964.

The designated Texas highway system totaled 66,524 miles on August 31, 1965. This included 3,927 miles of Interstate highways, 25,740 miles of U. S. - and State - numbered highways (primary system) and 37,757 miles of Farm - and Ranch-to-Market Roads (secondary system.)

Robinson's Boot Shop
 127 Main—Phone 7219
FINE WESTERN WEAR
Men, Women & Children
SHOE REPAIR SHOP
 Ike Robinson
 Serving Muleshoe since 1925.

LEGAL NOTICE

THE STATE OF TEXAS
 TO: Mary E. Crawford and Owan D. Reed, Defendants,
 Greeting;

You are hereby commanded to appear by filing a written answer to the Plaintiff's Petition at or before ten o'clock A.M. of the first Monday after the expiration of forty-two days from the date of the issuance of this citation, same being Monday the 8th day of November, 1965, at or before ten o'clock A.M. before the Special Commissioners duly appointed by the Judge of the County Court of Bailey County, Texas, at the Court House of said County in Muleshoe, Texas.

Said Plaintiffs' Statement was filed with the County Judge of Bailey County, Texas on the 20th day of September, 1965, in this Cause numbered 730, and styled The State of Texas, et al. plaintiffs vs. J. O. Crawford, et al. The names of the parties are as follows:
 The State of Texas and Bailey County are plaintiffs, and J. O. Crawford, Mary E. Crawford, Roy Reed, Welma Dane, Wanda Hargrove, Owan D. Reed, Delsie Dove, Nell Meek, Ben Crawford, Douglas Ruby, and Jess Osborn are defendants.

A brief statement of the nature of this suit is as follows, to wit:
 Proceedings in eminent domain in connection with the State of Texas constructing, laying out and reconstructing a highway, designated as a part of the State Highway System by the State Highway Commission of the State of Texas, in Bailey County, Texas, and that such construction, reconstruction and maintenance upon said highway is surveyed through, across and upon, and will cross, run through and upon the following described real property situated in Bailey County, Texas:

0.247 acre of land, more or less, same being part of a one acre tract, more or less, out of that portion of the Northwest one-fourth of Sec. 21, Block Y, State Capitol Land, Bailey County, Texas, lying South of U. S. Hwy. 84 known as Tract No. 1, Parsons Subdivision, same same Tract No. 1 having been conveyed to J. O. Crawford by H. D. Crawford by deed dated May 1, 1945, and of record in Vol. 41, Page 231, Deed Records of Bailey County, which 0.247 acre of land, more or less, being all of the following described 0.283 acre of land, more or less, save and except 0.036 acre thereof included in the right-of-way of a public road 40 ft. wide, the centerline of which lies along the North line of Sec. 21, which 0.283 acre of land, more or less, being more particularly described by metes and bounds as follows:

THENCE S 89 deg. 13' E with the North line of Sec. 21 a distance of 67.56 ft. to a point in the South right-of-way line of present U. S. Hwy. 84;

THENCE with the South right-of-way line of present U. S. Hwy. 84, from a tangent bearing S 48 deg. 21' 14" E around a curve to the right having a radius of 2,814.93 ft. a distance of 184.39 ft. to a point in a tangent bearing S 44 deg. 36' 03" E, same point being the most easterly corner of the aforesaid one acre tract of land, same point being the most northerly corner of a tract of land owned by Eva Murrah;

THENCE S 48 deg. 58' 48" W with the Southeast line of the aforesaid one acre tract and the Northwest line of the Eva Murrah property a distance of 44.93 ft. to a point;

THENCE from a tangent bearing N 52 deg. 06' 21" W around a curve to the left having a radius of 2,864.93 ft. a distance of 94.71 ft. to a point in a tangent bearing N 54 deg. 06' W;

THENCE N 54 deg. 06' W 102.56 ft. to a point;

THENCE N 89 deg. 13' W 9.53 ft. to a point in the West line of Sec. 21;

THENCE N 1 deg. 16' E with the West line of Sec. 21 a distance of 40.00 ft. to the point of beginning.

As is more fully shown by Plaintiffs' petition on file in this suit.

If this citation is not served within ninety days of the date of its issuance, it shall be returned unserved.

The officer executing this process shall promptly execute the same according to law, and make due return as the law directs.

Issued and given under my hand and the Seal of the County Court, at office in Muleshoe, Texas, this 21st day of September, 1965.

Attest:
 Hazel Gilbreath Clerk, Bailey County Court, Bailey County, Texas. 381-41tc

Farley Insurance Agency
 Real Estate and Insurance

FARM & CITY LOANS
SERVICE BEYOND THE CONTRACT

209 West Avenue B
 Off. Ph. 7270 — Res. 3-0343

HEATHINGTON LUMBER COMPANY
 Lumber, Paint,
 Builders Hardware
 Clovis Rd. — Ph. 7970

COTTONSEED DELINTED
 Phone 3-2510 — Muleshoe

WILLIAMS SEED CLEANING CO.

SINGLETON FUNERAL HOME
 24 HOUR AMBULANCE SERVICE
 PHONE 2350

Mary Maxwell Feted At Shower

Mary Maxwell, daughter of Mr. and Mrs. Everett Maxwell, Lazbuddie, was feted with a wedding shower Saturday afternoon in the Lazbuddie Home-making Cottage. The cottage carried out colors of blue and white.

Hostesses for the occasion were Mrs. Don Schumann, Mrs. J. J. McDonald, Mrs. Alford Steinbock, Mrs. Raymond McGeehee, Mrs. Neal Bradshaw, Mrs. Shanks Ivy, Mrs. Euel Michell and Mrs. Freeman Davis.

Among many nice gifts was the hostesses gift of an electric coffee maker.

Charlotte Seaton registered the guests and the hostess served refreshments of banana nut bread, fruit punch, mints and nuts to the 28 guests attending.

Highway Week in Texas is sponsored by the Texas Good Roads Association the last full week of September each year. Theme of the 1965 observance is "Building Highways for Tomorrow."

This is the 4-H pledge: "I pledge my Head to clearer thinking, my Heart to greater loyalty, my Hands to larger service, and my Health to better living for my club, my community and my country."

Classifieds Get Results!

-SPECIAL-
 Steak fingers \$3.85
 Salad and French fries
 Rich, Thick
MALT or SHAKE
 30c
BILL'S DRIVE IN
 Phone 7250
 19th and Clovis Road

OTWELL'S VACUUM CLEANER REPAIR
 Filter Queen Distributor
 Disposable Bags For
SALES SERVICE
 All Vacuum Cleaners
 Repaired
 After 6 p.m. or before 8 a.m.
 Phone 3-1630 918 East Hickory

Farley Insurance Agency
 Real Estate and Insurance

FARM & CITY LOANS
SERVICE BEYOND THE CONTRACT

209 West Avenue B
 Off. Ph. 7270 — Res. 3-0343

BUSINESS DIRECTORY

Farley Insurance Agency
 Real Estate and Insurance

FARM & CITY LOANS
SERVICE BEYOND THE CONTRACT

209 West Avenue B
 Off. Ph. 7270 — Res. 3-0343

HEATHINGTON LUMBER COMPANY
 Lumber, Paint,
 Builders Hardware
 Clovis Rd. — Ph. 7970

COTTONSEED DELINTED
 Phone 3-2510 — Muleshoe

WILLIAMS SEED CLEANING CO.

SINGLETON FUNERAL HOME
 24 HOUR AMBULANCE SERVICE
 PHONE 2350

Safe 'n' Sound

Lee R. Pool

Unlike the Space Probers of today, adequate insurance protection is down-to-earth business. No day-dreaming of flights into the wild, blue yonder for us - - - just safe and sound, comforting knowledge that we can and will properly protect you financially in the event of a fire or other disaster...Anything less than adequate insurance is not enough...In the light of today's spiraling values, yesterday's insurance is not adequate...Bring your insurance up to par...don't be caught under-insured...We'll gladly help you work out this problem on a practical down-to-earth basis...No shooting at the moon!

For the Best Farm Loans and Home Loans Contact **POOL Insurance Company**
 Phone 2950 Muleshoe

THESE PRICES GOOD IN MULESHOE
SEPTEMBER 30, OCTOBER 1, 2, 1965

FREE!
Cannon NYLONS

ONE PAIR WITH \$15.00 IN PIGGLY WIGGLY GREEN CASH TAPES, DATED AFTER SEPT. 14

WE RESERVE
THE RIGHT TO LIMIT QUANTITIES

HEALTH AND BEAUTY AIDS!

Breck, Dry, Normal, or Oily, 7c off Reg. 60c

SHAMPOO 4 OZ. BOTTLE..... **39c**

One-A-Day Reg. \$2.49 100 Ct. Btl.

Vitamins **\$1.99**

Reg. 95c 60 Ct. Btl.

Bufferin **73c**

Listerine, Reg. 79c 7 Oz. Btl
Mouthwash **69c**

CHEF PRIDE

PINTO BEANS 4 LB. BAG **49c**

VAN CAMP, IN TOMATO SAUCE

PORK 'N' BEANS 8 NO. 300 CANS **\$1.00**
CAMPFIRE PORK 'N' BEANS 10 No. 300 Cans \$1.00

DOUBLE STAMPS

FRIDAY and SATURDAY OCT. 1, 2, 1965

KING SIZE DR. PEPPER 6 BOTTLE CARTON

COCA-COLA **29c**

HOLLY

SUGAR 10 LB. BAG **89c**

STOKELEY'S HALVES OR SLICES YELLOW CLING

PEACHES 5 No 2 1/2 CAN **\$1.00**

4 LB. BAG **49c**

8 NO. 300 CANS **\$1.00**

CAREFULLY SELECTED FOR TENDERNESS! PIGGLY WIGGLY MEATS!



CHUCK ROAST
49c

USDA CHOICE
AGED, HEAVY
BEEF, VALU-
TRIMMED
LB.....

Lean Northern Pork Center Cut Rib Chops

PORK CHOPS Pound..... **69c**

USDA Grade A 10 to 14 Lb. Average

HEN TURKEYS Pound..... **39c**

BUTCHER BOY, BOLOGNA, SALAMI, LIVER, MACARONI, CHEESE,
LUNCH MEAT Olive or Pickle Loaf 3 6 Oz. Pkg. **\$1.00**

USDA, Choice, Aged, Heavy Beef Valu-Trimmed Kraft American 12 Oz Pkgs
Short Ribs Pound **23c** **Sliced Cheese** 2 For **\$1**

USDA, Choice, Aged, Heavy Beef Valu-Trimmed Sliced
Rib Steak Pound **75c** **Pork Liver** Pound **29c**

GALLON

Antifreeze RED BARN \$1.39
PRESTONE \$1.59

Libby, Garden Sweet

Green Peas 5 No. 303 Cans **\$1.00**

Stokely's Fancy Golden C.S. or W.K.

Corn 6 No. 303 Cans **\$1.00**

Robnett, Grade AA, Small

Eggs Dozen **29c**

Pillsbury, Layer Cakes, Asst.

Cake Mix 3 20 Oz. Pkg. **\$1.00**

Top Kick

Dog Food 4 No. 1 Cans **29c**

Brookdale, Chum

Salmon No. 1 Can..... **49c**

homemakers
on a budget
appreciate
Piggly Wiggly's
low prices

TOKAY GRAPES

12 1/2c

CALIFORNIA
EXTRA
FANCY
LB.....

TEXAS
CARROTS 1 LB. CELLO BAG..... **2 FOR 15c**



FRESH PIGGLY WIGGLY FROZEN FOODS!

CREAM PIES Banquet All Flavors Family Size..... **5 FOR \$1**

SPINACH Seabrook Chopped Or Leaf..... **5** 10 Oz. Pkg. **89c**

Libby's All Flavors
DRINKS 6 Oz. Cans **9 For \$1.00**

Lowest Prices... Greatest Variety... always at...

Piggly Wiggly