

'Fair' Season Seen for Mule Football Team

By Jay Spain
Football is here again! Monday at 8 a.m. the 1965 Muleshoe Mules began their workouts in preparation for their first game September 3.

There were 14 lettermen at practice sessions Monday morning and a possibility of two reporting next Monday morning. Seven offensive starters and six defensive starters and much sophomore and junior talent reporting in will make this year's squad tougher and faster than the "experts" claim.

According to coach Willie McAlpine, the young men as a whole, have a better attitude, more enthusiasm and want to play football. There will be a lot of juniors playing and the sophomores pushing to beat them out of their positions.

Ronnie Swint, senior fullback, weighing about 200 pounds, will be hard to stop as he totes the pigskin for the Mules.

John Thompson who will be leading the Mules this year is a southpaw who throws a mean ball.

Coach McAlpine says in all probability there will be more passing this year than in past seasons.

Joe Adams, senior halfback, who has, in the past two years, been a hard runner, promises to be even better this year. He is to be the place kicker and is also an understudy for quarterback.

Gary Edwards, Don Douglas, Sandy Culbert, senior tackles, and Charles Jones, senior guard, give the Mules a promise of a good defensive line.



and a fast breaking offensive line.

Coach McAlpine's 1965 Mules hope that speed and maneuverability will make up for the lack of size and weight.

There were 46 boys Monday morning and more were expected.

Devaney Named State Director Of Jaycees

Elvon DeVaney, former president of the Muleshoe club, has been named a state director for Region 1-D, and Jay Spain takes DeVaney's place as inter-club director.

DeVaney was elected to the state post at last weekend's area meeting of Jaycees, held in Borger. Muleshoe was well represented at the district session with 18 Jaycees and Jaycee-ettes attending.

At a breakfast session of the local organization Tuesday, directors discussed the annual sandhills crane project sponsored by the club, and named Dr. Jerry Gleason as chairman.

Joe Gonzales was named to the board of directors, succeeding Melvin Malone who has moved from Muleshoe. Also named to a local office was Ernest Martin, "Spoke" chairman.

DeVaney's region area includes clubs at Silverton, Tulia, Hereford, Farwell, Bovina, Friona, Dimmitt and Muleshoe. See JAYCEES, Page Five

Suspended Sentences Given Four In District Court Here

Four persons were given suspended sentences in district court here this week, one following a jury trial and the other three (charged jointly) after pleas of guilty. Judge Pat Boone presided.

Lloyd Allen Reid was found guilty of a charge of burglary after a jury trial and was given a two-year sentence by Judge Boone. However, the sentence was suspended.

Reid had originally been charged with two other men, William A. Fines and Larry Joe Jackson. Jackson pleaded



TACKLE OF 1971? — Muleshoe Mules started working out Monday for the 1965 season, but the most interested bystander was an unidentified lad of around 10 years who was especially intrigued by one

of the tackle skids. This is lesson No. 1 for many of the Grid Class 1965, and all over the high school hill, skids like this one were being attacked vigorously by the football hopefuls. (Journal Photo)

Livestock Prices Good To Strong In Local Sales

Cattle and hog prices were good to strong in last Saturday's local auction sales and horses were fair. Cattle sales totaled 301 head, 35 hogs were sold and 11 horses.

Prices included: Cow-calf market, \$135 to \$185 per pair; stocker calves, (300 to 450 pounds) up to \$26.50 and fat cows up to \$15.10. Baby calves brought \$13 to \$40 per head and weaner pigs \$12 to \$17 per head. Horses sold at \$50 to \$150 per head.

Market on ted hogs and shoats was extra strong, according to Col. Clayton Meyers, operator of the Muleshoe Livestock Auction Sales.

Muleshoe Journal

DEDICATED TO THE PROGRESS AND DEVELOPMENT OF BAILEY COUNTY AND THE GREAT MULESHOE COUNTRY

10 PAGES Published Every Thursday At Muleshoe, Bailey County, Texas—79347

VOL. 43 — NO. 33

THURSDAY, AUG. 19, 1965

United Fund Ready '65 Campaign; Final Budget Hearing Is Tonight

Muleshoe's United fund will set its 1965 budget at a budget and admissions committee meeting tonight when representatives of agencies seeking

to participate in the campaign will be invited to make their wants known. The announcement was made Wednesday by Robert Hooten, B&A committee chairman, and Marie White, United Fund president. The final session for the committee will be held in the First National Bank's community room, starting at 7:30 p.m.

Two previous meetings already have been held; tonight's meeting will get down to the serious business of actually setting the allocations, Hooten said. A meeting of the board to approve the committee's action will come later this month, it was indicated.

Only one of the 10 agencies which participated in the 1964 campaign has failed to seek funds for 1965, and in most cases, an increase in allocations is sought. However, the agency which has not yet made its wants known, Muleshoe Area Youth Center, is expected to be represented at tonight's session. Each of the agencies which has filed requests so far has already had a preliminary "examination" by the committee.

Members of the committee, in addition to the chairman and Mrs. White are Inez Bobo, Roy Davis, Roy Whitt, Clifton Griffith, B. Z. Beaty, Jesse Osborn, Arlene Phelps, Charles Alsop, Bobby Airhart, Jim Cox, Myron Pool II, and Joe Harbin. The fund is now entering its

in
muleshoe
With the Journal Staff

The Muleshoe Men's and Women's Bowling Association is holding its first annual invitational Bowling tournament at the Tri-Co Bowling Center Aug. 20, 21, 22, and 27, 28 and 29th, and Sept. 3, 4 and 5. Entry blanks are available at the Tri-Co Bowling Center, Phone 4310, or from Jack Beddingfield, 225 Elm Street, Phone 3-4300, or Ruby Faubus Box 224, Phone 3-0630.

Loraine Sooter, along with volunteers, will be managing the library while the librarian, Anne Camp attends a workshop in Lubbock.

Mrs. W. H. McMillian, mother of Mrs. J. K. Adams, and Bill and Joe McMillian, Mrs. McMillian's sons, together with a daughter, Mrs. B. F. Miller and daughters Barbara and Janet, all from Mineral Wells, have been visiting in the J. K. Adams home here. Mrs. McMillian said it was the first time all members of the family had left the McMillian farm at the same time for a visit in more than half a century.

Seaman Recruit Jimmy Cabrera, USN, son of Mr. and Mrs. George Cabrera, Muleshoe, has reported to the recruit training

Plans for the courtesy have not been completed, but a prominent speaker will make the principal talk of the day, and a

Teachers' Annual Luncheon Set For August 31

Muleshoe business firms will show their appreciation for Muleshoe's school staff with a luncheon in the high school cafeteria, now nearing completion, it was announced Wednesday by the Chamber of Commerce.

The luncheon will be held at noon Tuesday, Aug. 31, on the final day of a four-day workshop for the teachers opening Thursday, Aug. 26.

All teachers, administrators, board members and supervisors will be guests of the business hostesses of Muleshoe for the luncheon.

Ramada Contest Starts; Many Signing Up

"Weekend at the Ramada" contest, sponsored by The Journals with local business firms co-operating, got under way this week, and many area folk are dropping by participating stores and signing up.

Bright red boxes already are filling with coupons at participating stores, and first drawing will be made this weekend. The contest, based purely on drawings, will permit a Muleshoe area family to spend the weekend at a Ramada Inn, only cost to the winner being transportation to and from the chosen inn. Ten families — one each week — will receive the free weekend.

Each store is conducting a drawing from its own particular sign-ups, and then these winners will be placed in another box for the weekend winner drawing.

Firms participating include Richland Hills Texaco, Ray Griffiths & Sons, C. R. Anthony's, Brock Motor Co., Tri-County Savings & Loan, Plains Auto Parts, L & H Grocery and Market, White's Cashway Grocery, The Fashion Shop, Cobb's Department Store, Dari-Delight, Perry's and Beaver's Flowerland.

People wishing to enter the contest may register at any or all the participating firms each week, it was explained.

The contest is open only to those who are of legal age or are married.

Temperatures

August 15	81	58
August 16	81	63
August 17	90	65
August 18	90	65
August 19	.03 Rain	
	Sunrise	Sunset
August 19	5:58	7:13
August 20	5:59	7:12
August 21	5:59	7:11
August 22	6:00	7:10

Muleshoe Schedule

- SEPTEMBER 3 — DIMMITT — Here, 8 p.m.
- SEPTEMBER 10 — MORTON — There, 8 p.m.
- SEPTEMBER 17 — OLTON — Here, 8 p.m.
- SEPTEMBER 24 — Open
- OCTOBER 1 — FRIONA — There, 8 p.m.
- OCTOBER 8 — DENVER CITY — Here, 8 p.m.
- OCTOBER 15 — Open
- *OCTOBER 22 — DUMAS THERE, 7:30 p.m.
- *OCTOBER 29 — TULIA — Here, 7:30 p.m.
- *NOVEMBER 5 — HEREFORD — There, 7:30 p.m.
- *NOVEMBER 12 — CANYON — There, 7:30 p.m.
- *NOVEMBER 20 — PERRYTON — Here, 2 p.m. (Saturday, homecoming.)
- * Conference Games



A BOY AND HIS RIBBONS — Joe Adams, 17 year old 4-H club member, got out all the trophies and ribbons he has won in swine projects during the last eight years, and they came to

quite a display. Here he's shown with the 8-years' accumulation. The trophies and ribbons do not include his crop winnings and land-judging prizes. (Journal Photo)

ANOTHER TOTAL ELECTRIC HOME

POOL-STOCKARD CONS.

ALL-ELECTRIC HOME — Muleshoe is joining area towns served by Southwestern Public Service company in a week-long open house for a brand-new all-electric home showing at 327 W. Ave. J. The home is open each evening from 6 to 8 p.m. and on Sunday from 2 to 6 p.m. It's a Pool-Stockard house. Here are Lee Pool and S.P. Stockard, builders, in front of the home. (Journal Photo)



GOLDEN WEDDING ANNIVERSARY — Mr. and Mrs. J.M. Pruitt will be celebrating their golden wedding anniversary Aug. 29 from 2 to 5 p.m. in the Oklahoma Lane Community Center Building. Friends of the couple are to attend the event which is to have no gifts. The open house will be hosted by the children of the couple. (Photo By Clines)

Darlene Carpenter, Forest Creamer United In Lawn Ceremony Sunday

Darlene Carpenter, daughter of Mr. and Mrs. Donny Carpenter, and Forest Creamer, son of Mr. and Mrs. W.F. Creamer, were united in a single-ring lawn wedding here in Muleshoe Sunday at 4 p.m.

The bride, given in marriage by her father, was attired in a white street-length dress featuring three-quarter sleeves and pink accessories.

The ceremony was read by the Rev. Kenneth Martin, pastor of the Primitive Baptist Church here before an archway flanked in greenery and wedding bells.

Linda Rutherford served as bride's maid. She wore pink and white also carrying out the bride's colors.

Travis Creamer, served his brother as best man.

Following the ceremony, a reception was held in the groom's home at 615 W. 3.

The bride's table was covered with pink satin and overlaid with a lace table cloth. Pink punch and white cake with pink flowers were served from the table.

After a wedding trip to points of interest the new Mr. and Mrs. Forest Creamer will be at home at 824 S. 1. The groom is employed at Anthony's Department Store.

Reading Program Near Completion

Children who have not finished their summer reading program are urged to do so, according to Anne Camp, librarian.

Anne Camp informed The Journal that all records should be in the library by Aug. 31, to receive your certificates from the State Library.

Muleshoe Cheerleaders Return From Cheerleading Camp At S.M.U.

The Muleshoe High School cheerleaders returned Saturday with a ribbon for each day of competition and three second place ribbons and an honorable mention.

The girls returned Saturday from the annual cheerleading camp held every summer on the S. M. U. campus at Dallas.

The "B" team squad received a third place ribbon. Both the varsity and the "B" team cheerleaders learned more about the art of cheerleading by going to the summer camp.

The "B" team is composed of Renee Dyer, head cheerleader, Vickie Hinckson, Debbie Reed, Connie Julian and Cindi Smith.

High School Cheerleaders making the trip were Diane Wilson, head cheerleader, Sharon Chisholm, Jeannie Wagon, Jeannie King, Joyce Pickett and Brenda Ellis. The girls learned several stunts, yells and ways to raise the school spirit in M. H. S. in the 1965-66 season.

They were in competition with other cheerleader squads from Kansas, Oklahoma, Ohio and Wisconsin.

They were graded by the qualifications of an ideal cheerleader. A few of those qualifications are enthusiasm, personality, poise, co-ordination, the ability to create a better school spirit and other useful ideas.

To kick off the 1965-66 season there will be a bonfire Sept. 2, and a pep rally Sept. 3.

E.H. Halls Return From Port Isabel

Mr. and Mrs. E. H. Hall were fishing at Port Isabel last week Mrs. Hall reported they went deep sea fishing and caught 163 pounds of red snappers.

The Halls gave a fish fry Friday night. Present for the fish fry were Mr. and Mrs. Jeff Peeler, Mr. and Mrs. R.L. Scott and children, Mr. and Mrs. Buford Hunt, Mr. and Mrs. Woodrow Surratt, Mr. and Mrs. Tommy Hall and children, Mr. and Mrs. Mack Hall and children and Mrs. Hall's mother and brother, Mrs. Katie Crouch and Billy.



MULESHOE 4-H GIRLS — Tani Murrah, seated, representing the junior division, and Ruth Ann Duckworth, representing the senior division, brought home red ribbons on their dresses last Thursday at the annual 4-H Dress Revue.

**WE ARE NOW
OPEN
FOR
BUSINESS**

"YOU CAN'T BEAT OUR SERVICE"
WASH & GREASE LUBRICATION
WE FIX FLATS

**WATCH FOR OUR
FORMAL OPENING**

RICHLAND HILLS
TEXACO STATION
TOMMY BUSH, MGR.
CLOVIS HWY. MULESHOE PH. 8560



SUE WILL TAKE APPOINTMENTS EVERY DAY EXCEPT WEDNESDAY

SUE INVITES ALL HER CUSTOMERS, OLD AND NEW TO COME BY - OR CALL - FOR AN APPOINTMENT

**ANNOUNCING
SUE MOORE
BEAUTICIAN
AT
MAIN STREET BEAUTY SALON**

115 MAIN PHONE 3-4480
SUE IS AN EXPERIENCED
HAIR STYLIST ... THE LATEST
IN STYLING AND CUTTING
.....RAZOR CUT, LONG LINE
CUT AND 4 WAY CUT. SHE
IS A GRADUATE OF ISBELL
POWELL SCHOOL OF HAIRDRESSING
LUBBOCK. SHE WAS FORMALLY
WITH DOROTHY'S BEAUTY SALON.

Library Workshop Set Next Week

Texas State Library in conjunction with the Texas Tech Library is having a 5-day workshop on children's literature at the Texas Tech Library the week of Aug. 23-27.

The workshop is to be conducted by Olive B. Wheeler, associate professor at Tech.

The 5-day workshop is free except for your transportation, lodging and food.

Certificates will be given at the completion of the 5-days.



Of Law and Love

To The Rescue!

Motorist A, rounding a curve too fast, knocks Motorist B into the ditch. C, a Good Samaritan, drags the injured B from the wreckage. But in doing so, C wrenches his own back. May C collect damages from A, the original wrongdoer?

In court, A would probably argue something like this: "I'll admit I'm to blame for the injury to B, but I had nothing to do with C. He came to the rescue on his own initiative. He took his own chances." But the court would hold A liable for C's injury as well as for B's. The law says a motorist should foresee not only that careless driving may cause an accident but also that a rescuer may be injured at the scene. In the words of Judge Benjamin Cardozo:

"Danger invites rescue. The cry of distress is the summons to relief. The wrong that imperils life is a wrong to the imperiled victim; it is a wrong also to his rescuer."

Here are other examples of the "law's special concern for the rescuer:

A woman was injured saving a child from a position of danger on a defective merry-go-round. The court granted her claim for damages from the negligent proprietor.

A woman, answering a call for help in an apartment building, stumbled over broken flooring in the hallway. The court granted her claim for damages from the building owner.

A man was injured halting a run-away horse, negligently let loose on a busy street. The court granted his claim for damages from the owner of the horse.

Of course, in all fairness to the original wrongdoer, his liability should not be extended to far. If the rescuer is more fool than hero, he usually cannot collect.

In one such case, a man sued the electric company for burns he suffered when he picked up a fallen wire. He explained that, even though he knew the wire was live, he wanted to safeguard some children who were playing a considerable distance away. But the court denied his claim, holding that his very good intentions were no excuse for his very bad judgment.

However, the law will overlook a reasonable amount of impulsiveness in the face of an emergency. As one judge put it:

"In such cases the courts will not require the person to stop and hesitate and weigh probabilities until it is too late to make the rescue."

A public service feature of the American Bar Association and the State Bar of Texas. Written by Will Bernard.

REDDY'S TOTAL ELECTRIC HOME FAIR

LOOK AT THESE DELIGHTFUL PRIZES... 101 IN ALL... AND YOU MAY BE A WINNER. VISIT THE TOTAL ELECTRIC HOME NEAREST YOU AND BE SURE TO REGISTER. YOU MAY WIN ONE OF THE VALUABLE PRIZES LISTED IN THIS ADVERTISEMENT.

COUNT 'EM • 101 PRIZES!!!

5 OSTERIZERS BY **Oster**

5 JUMBO FRY PANS BY **PRESTO**

5 ELECTRIC GRIDDLES BY **Westinghouse**

5 COFFEEMAKERS BY **UNIVERSAL**

5 ALL-PURPOSE MIXERS BY **GE**

5 VACUUM CLEANERS BY **Shetland LEWYT**

5 ELECTRIC KNIVES BY **HAMILTON BEACH**

5 CAN OPENERS BY **Sunbeam**


5 OVEN BROILERS BY **TOASTMASTER**

5 36-CUP PARTY PERKS BY **West Bend**

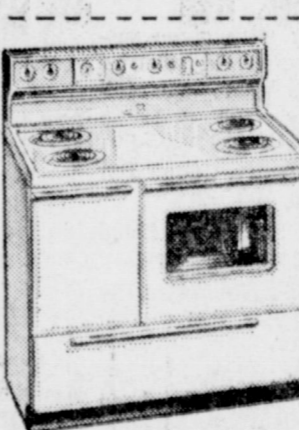
PRIZE RULES

Residents of the area served by Southwestern Public Service Company who are 18 years of age or married may register to participate in the prize drawing. Prizes will be awarded as soon after August 22nd as possible, by drawing, and in the order of value starting with the color TV set and ending with the 46th electric charcoal igniter. Winners will be notified by Southwestern Public

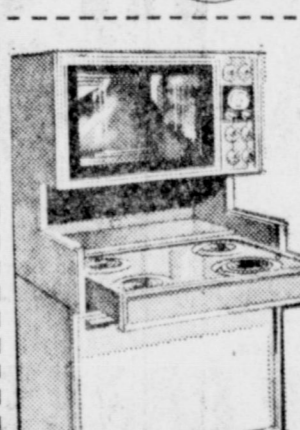
Service Company and need not be present at the drawing. Eligible participants may register in each home once each day of the Total Electric Home Fair period, August 15 through 22, 1965. Employees of Southwestern Public Service Company, other electrical power suppliers, distributors or manufacturers, home builders, and their immediate families, are not eligible for prizes. Watch Sunday's paper for locations.



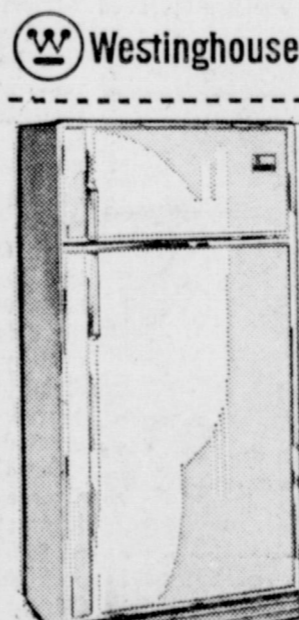
ULTRA-COLOR TELEVISION SET



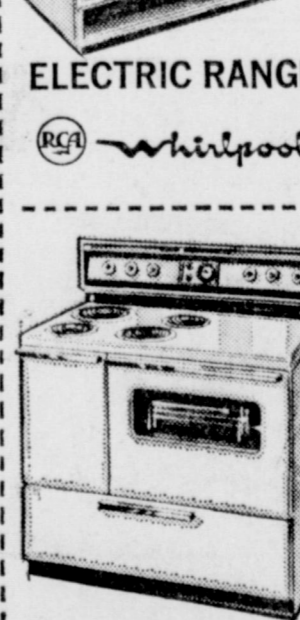
ELECTRIC RANGE



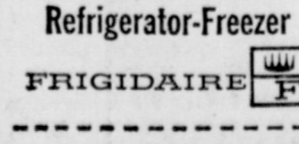
ELECTRIC RANGE



Refrigerator-Freezer



ELECTRIC RANGE



CHARCOAL IGNITERS

46 ELECTRIC



**Reddy's
ELECTRIC
Home Fair**

G-3

**99% OF THE COOKING
AT THE WORLD'S FAIR
IS PROVIDED BY
GAS**

Pioneer Natural Gas Company

A weekly public service feature from the Texas State Department of Health

Accent on Health

J.E. PEAVY, M.D.
Commissioner of Health

AUSTIN — The waning days of summer vacation activities are attracting more and more Texas parents and their children out into the wonderful outdoors for a last fling at fun in the sun before the reopening of school starts confining them to home.

exposure to the hazards of accidents and unexpected emergencies which inevitably come with accelerated outdoor activity.

Of the approximately 70,000 people who die each year in Texas, about 10 percent die as a result of accidents. Doubtless, many are saved by prompt emergency care, but many more could be saved.

It's not at all uncommon to find that many people throw all responsibility on the physician or rescue squad personnel who respond to emergency calls, undertaking none themselves except to telephone for help.

Many times they simply do not know what to do; other times they are too excited to think or act wisely. The urgency of the situation may lead people to give grossly improper care for burns, internal in-

Beat The Champ Tourney Slated At Tri-Co Lanes

The American Machine & Foundry Company's "Beat The Champ" bowling tournament kicked off Monday at the Tri-Co Bowling Center in Muleshoe.

This no-entry-fee tournament offers bowlers qualifying in local rollofs a chance to test their skill in finals against AMF Staff of champion members Dick Weber and Donna Zimmerman, two of the top professional bowlers in competition.

A series of four weekly rollofs have gotten underway at Tri-Co Bowling Center Monday, Aug. 16, and will run through Sunday, Sept. 12. The starting dates of the second, third and fourth weekly rollofs will be Monday, Aug. 23, Monday, Aug. 30, and Monday, Sept. 6. There will be a total of six winners each week, the three top-scoring men and the three top-scoring women. The 24 winners of the four weeks of rollofs will then compete in a final house elimination on Sept. 26 at Tri-Co Bowling Center in Muleshoe to determine the three top men and three top women bowlers who will roll against Dick Weber and Donna Zimmerman in the finals. Each of the winning finalists in the Tri-Co Bowling Center eliminations will receive AMF silver plated serving bowls, now on display at Tri-Co.

There will be no entry fee in the tournament; however, each participant will contribute fifty-cents to an expense fund to help offset the cost of taking

"Hurry cases" of first aid include cessation of breathing, severe bleeding and poisoning. In such cases a delay of even a few minutes could result in death. Rescue squads save extremely few people who have stopped breathing unless someone has given artificial respiration or resuscitation on the spot.

Teaching Texans to react promptly and efficiently in emergencies is one of the prime goals of the "medical self-help" courses conducted around the state by local medical societies, local health departments and civil defense organizations.

The important rule to keep in mind when summoning medical help or an ambulance in event of serious injury or sudden illness is this: ask what first aid measures you should take.

Under the "Beat The Champ" tournament rules, anyone who has a 1964-65 ABC or WIBC league average, based on a minimum of 21 games, is welcome to enter the rollofs and try for the "Beat The Champ" finals to be held at Eastridge Bowling Palace, Amarillo, on Oct. 3.

The top men and women bowlers to the finals and bowling at the finals. The only other expense to the bowler will be there regular 45 cents charge per game at Tri-Co Center. Men use a 75 per cent handicap of 200 scratch, a 135 pin maximum three-game handicap. Women use 75 per cent handicap of 190 scratch, also a 135 pin maximum three-game handicap.

When the finals are held at Eastridge Bowl, Amarillo, Dick Weber and Donna Zimmerman will roll on the same lanes as the finalists.

The men and women will both be bowling with the regular tournament handicap against the AMF Champions. The first prize for both the top man and woman bowlers rolling with the champions in the finals will be \$50. in cash. Second-place winners will receive \$25 and third-place winners will receive \$15. Fourth and fifth place winners get \$10 and sixth through tenth place finishers each receive \$7.50.

THE TRI-CO BOWLING CENTER CAFE IS NOW UNDER THE MANAGEMENT OF MARGIE HAWKINS FEATURING HER SPECIALITY "HOME MADE CREAM PIES" AND DELICIOUS HOME COOKED FOOD AS ONLY MARGIE CAN PREPARE IT WE ARE OPEN FROM 9 A.M. TO 11 P.M. MONDAY THRU SATURDAY SUNDAY 2 P.M. TO 11 P.M. COME BY TODAY AND TRY SOME REALLY GOOD FOOD

The Sandhills Philosopher



Editor's note: The Sandhills Philosopher on his Johnson grass farm is undisturbed over news of a new gadget in Washington, his letter this week indicates.

Dear editor: According to an inside-dope column I read in a newspaper last night during a repeat television show which I didn't even like the first time, the news has leaked out that many government officials in Washington are using machines to sign their names.

Somebody has perfected a robot that learns how to sign a name exactly like an official signs it, then all the official has to do is dictate a bunch of letters and a secretary hands a fountain pen to the robot and it scratches out the signature. The official can be a thousand miles away while the machine is in his office signing his name to his mail.

This commentator was outraged at the news, claiming it could lead to all sorts of complications, especially if the machine fell into the hands of the wrong person.

Well, I guess it does have its hazards, like raising children, but I have thought about it and have concluded its advantages far outweigh its disadvantages, the same as with children, generally speaking.

Take check-writing. I don't have the exact figures, don't guess anybody has, but there must be at least 10 million government checks written every month in this country, with more being added every time Congress gets a quorum, and without some sort of automatic check-writer, the job would finally get so big that it would take a third of the population full time writing checks for the other two-thirds. With machines taking over, this is eliminated and everybody can have a check.

Yours faithfully,
J. A.

SHOP MULESHOE FIRST

Anthony's
C. R. ANTHONY CO.

BIG BUYS IN BLANKETS

CHATHAM, RAYON & ACRYLIC

\$3.99

BACK to SCHOOL Shoppers' Center

RUTH BARRY

STRETCH STRAP BRAS \$1.22

GIRLS

HALF SLIPS Reg. \$1.99 **\$1.57**

GIRLS

PANTIES Reg. 29c **4 Pr. 88c**

LADIES

PANTIES Reg. 39c **3 PR. 87c**

MENS' HANAWAY

BRIEFS Reg. 2 For \$1.39 **2 For \$1¹⁵**

MENS' HANAWAY WHITE WITH SPORT BAND

SOCKS Reg. 49c Pr. **2 Pr. 77c**

MENS' HANAWAY

STRETCH SOCKS Reg. 39c Pr. **4 Pr. \$1⁰⁰**

WESTERN DOGGIE JEANS 2 Pr. **\$3.22**

MENS HANAWAY T-SHIRTS Reg. 2 For \$1.59 **2 For \$1.22**

JUNIOR BOY'S HANAWAY Reg 2 For \$1.39

T-SHIRTS 2 For **\$1¹⁵**

JUNIOR BOY'S HANAWAY Reg. 2 For \$1.19

BRIEFS 2 For **97c**

BOY'S HANAWAY

SOCKS White With Color Band **4 Pr. 88c**

JR. & MISSES **CANVAS SHOES** Reg. \$1.99 **\$1³³ Pr.**

350 SHEETS **ONWARD TYPE - PAPER** **77c**

500 SHEETS GOOD QUALITY **ONWARD FILLER PAPER** **74c**

300 SHEETS GOOD QUALITY **ONWARD FILLER PAPER** **47c**

STOCK UP NOW!

WHILE THEY LAST

Bird Bath \$3.69 Val. 30" Now Ea. **50c**

Shoes Ladies & Childrens Values To \$3.00 Ea. **55c**

Throw Rugs Cut Pile, 30x50 Reg. \$2.99 Now **\$1⁹⁹**

Croquet Sets 4 Player Reg. \$1.98 Now **66c**

Dish Drainers Reg. \$1.98c Now **33c**

Shirts Bays & Mens Values To \$3.98 Now **99c**

Lamps Table Values To \$5.98 Now **\$1³³**

500 45 RPM RECORDS

ONE FREE WITH PURCHASE

Complete Stock of School Supplies
Top Quality At Bargain Prices

BEN FRANKLIN STORE

The Mulshoe Journal

Published each Thursday by The Mulshoe Publishing Co.
304 West Second Street, Mulshoe, Texas
Member of The Associated Press
Entered as second class matter at the Mulshoe Post Office under act of Congress, March 3, 1897.

SUBSCRIPTION RATES
Immediate Territory \$4.00
Out of Territory \$4.50
Combined with Bailey County Journal \$5.50
Both Papers outside territory \$6.25
Advertising Rate on Application.

L. B. HALL Publisher
RAMON MARTIN Editor
PAT JOHNSON Woman's Editor
JAY SPAIN Mech. Supt.



(C) Copyright 1965
Mulshoe Publishing Co.
P.O. Drawer 449 — 304 W. 2nd. St.
Mulshoe, Texas 79347

BOOKMOBILE SCHEDULE

Thursday, Aug. 18	Friday, Aug. 20	Saturday, Aug. 21
Progress 8:30 - 9:30	Rhea Community 11:35 - 12:30	White's Elevator 10:00 - 11:00
Okl. Lane 9:50 - 10:50 (Farm Store)	Black 2:00 - 3:00	Lazbuddie 12:00 - 1:00
		Clay's Corner 1:15 - 2:15
		Farwell 8:45 - 11:45
		Friona 1:00 - 4:00

Half a million people visit the world's largest chocolate factory each year. It is in Hershey, Pa.

WCS At Bula Studies 'Money For Lord's Work'

By Mrs. John Blackman
BULA — Woman's Society of Christian Service met Wednesday afternoon at 3 p.m. in the home of Mrs. F. L. Simmons with 11 in attendance.
A short business session was conducted by the president, Mrs. Ethel Bahlman before the lesson study. At this time Mrs. Harvey Whittenburg was elected Secretary of missionary work for this year.

Mrs. Simmons presided over the program, taken from the program book entitled "A Tool for Fulfillment," a story as the Lord teaches how we should spend our money. To carrolate with the study, Mrs. Simmons had on display a book written by Mrs. J. F. Ward entitled "Gardening for the Master." Mrs. Ward, 91, is a resident of King's Manor.

Mrs. Medlin gave the opening prayer and Mrs. Bahlman read the scripture reading. Others having parts on the lesson were Mrs. Whittenburg, Mrs. Kirk and Mrs. Roy Young. Following each talk an open discussion by

group was held. Lesson concluded by Mrs. Simmons reading prayer from the program book.
Refreshments of chicken salad sandwiches, cake, tea and coffee were served by hostess, Mrs. Simmons.
Attending were Judy Kirk, Rosa Young, Oleta Young, Rita Whittenburg, Loraine Cox, Ethel Bahlman, Betty Medlin, Parazette Lancaster, Nettie Blackman and hostess Mrs. Simmons.
The Rev. and Mrs. Walter Smith and grandson, Bobby Smith, of Spangburg, were guests the first of the week in the J. L. Latham home.

Juana Young recently returned from a two-weeks' visit with Janice Piatek at Jourdanton. MYF of the local Methodist church met Sunday afternoon at 6 p.m. in the L. H. Medlin home for their regular meeting.

Following the meeting the group enjoyed games of volleyball, singing and jumping on the trampoline.

Tommie Kirk youth director for the MYF was given a surprise birthday gift from members of the MYF.

Mrs. Medlin served refreshments of birthday cake, and home made ice cream to sponsors Mr. and Mrs. Tommy Kirk, Brenda and Barbara Clawson, Juana Yoding, Diana Cox, Mariya McCall, L. D. Holt, Sherryl and Dennis Medlin.

Mr. and Mrs. Tom Bogard and daughter Opal left Monday for a visit with their son Jake and family at Eddington, Okla. Also with her mother Mrs. Lura Rhodes at McLean.

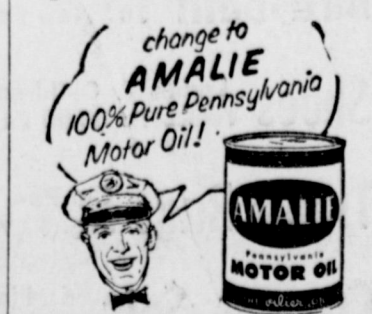
Mrs. Charlene Brown and grandchildren, Carolyn and Lawrence and Peggy Dickey of Hobbs visited last week in the J. L. Latham and W. L. Clawson homes.

Mr. and Mrs. Wayne Johnson, Lubbock spent Sunday in the home of Mr. and Mrs. Harvey Whittenburg.

Mrs. John Blackman entertained her Wednesday evening class of the Church of Christ with a party at her home Friday evening from 6 to 8 o'clock. Games of baseball, contests were enjoyed followed by serv-

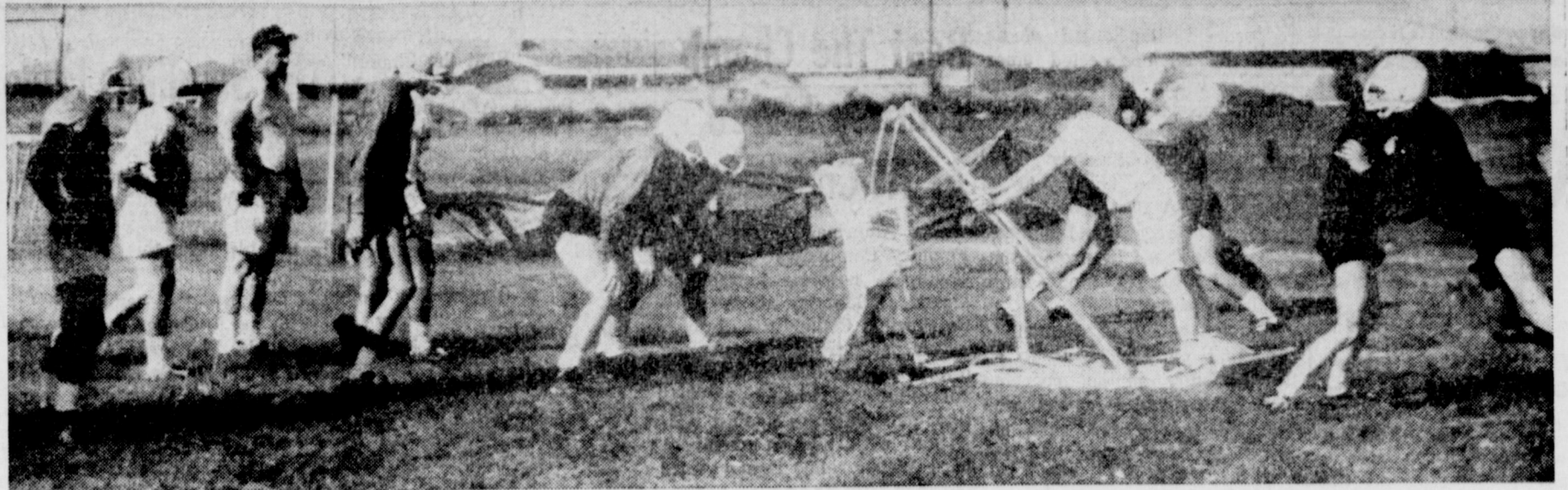
You PONTIAC will give you better service with AMALIE 100% Pure Pennsylvania Motor Oil

Why? Today's high compression engines running at high or low speeds; running in grueling stop and go traffic require the superior oiliness, the heat resistance found only in AMALIE Pennsylvania Oil.
AMALIE is the oiler oil refined from the world's finest crude by special low-heat process. AMALIE stands up under engine heat long after conventional oils break down, thin out, drain off. Cuts wear, insures long miles of smooth engine performance...



Your service station man will stock AMALIE for you... Just ask him.

Wiedebush & Childers



TOUGHENING UP EXERCISE — While Head Coach Willie McAlpin (third from left) watches carefully, football hopefuls for 1965 tackle the old skid and then bounce off the bump shoulders with teams in a basic football training operation. (Journal Photo)

ing of sandwiches, potato chips, cheese twists, cookies and punch.

Attending were Jackie Withrow, Ann Harlaw, Karen and Cindy Drake, Barbara Black, Patricia and Larry Robertson, Douglas and Steve Crockett, Craig McDaniels and Bennie Williams.

Visiting in the home of Mrs. L. L. Walden last week were Mr. and Mrs. Don Potter and children, Linda, Glenda, Mike and Curtis from California. Also Mrs. Marie Aaron and Mrs. Nancy Bennett and children of Carlsbad, N. M.

Also Mr. and Mrs. Stanley Aaron and girls of Littlefield,

Mr. and Mrs. Lowell Walden and Mr. and Mrs. Delvin Walden of Springlake.

Mrs. B. L. Balckman spent the weekend in Lovington visiting in the W. T. Carter and R. L. Blackman homes.

Mr. and Mrs. Eugene Bryan were in Lubbock Sunday to help observe the birthday for his sister, Mrs. Hattie Alexander at the home of her daughter, Mr. and Mrs. Bill Williams.

Sunday guests for lunch in the home of Mrs. Ruby Reid and children Joiene and Gerald were Mr. and Mrs. Glenn Reid and daughter Trena and Mr. and Mrs. Mulligan of Amarillo. Others to visit in the after-

Mrs. Tobv Hatch Is New Teacher

Mrs. Toby Hatch was recommended and accepted as the new teacher for the T. F. L. Sunday School class, and Rose Allen assistant teacher.

Mrs. W. B. Harlan hosted the class meeting of the First Bap-

noon were Mr. and Mrs. John Aduddell of Lazbuddie, Mrs. W. C. Ringer, Mr. and Mrs. De Witt Tiller and Mr. and Mrs. Jack Aduddell of Bula. Also Mr. and Mrs. Gary Everett of Odessa.

tist Church last Tuesday as Myrtle Alsop, president presided.

Martha Byers brought the devotion from Psalms 40. Mrs. Myrtle Alsop gave an inspirational talk on "Remember We Just Have Today".

Group leaders gave good reports and the group also heard the treasurer's report.

A Sunday School calendar is to be made by the Sunday School class for the next year. Refreshments were served to 10 members and four visitors, Jean Cox, Mrs. W. T. Andrews, Lois Shook and Mrs. Horace Blackburn.

"Bless Be The Tie", was sung for the closing hymn.



\$5.98

The right fit in the right fabric!

WHITE LEVI'S

in heavyweight CORDUROY

The long, lean look of WHITE LEVI'S looks even better, accented in the vertical ribbing of handsome, heavyweight, carefree corduroy. A must for your school wardrobe—better get a couple of pairs!

Auto Tires... Truck Tires... Retreads... Ten Days Only!!

TIRE CLEARANCE

A DEAL FOR EVERY WHEEL!

WHITEWALLS
NEW ALL-WEATHER "42" NYLONS WITH TUF SYN

STARTING AT

\$11

6.70 x 15 tube-type

MOVE UP TO the extra value of Goodyear tires, the extra class of gleaming whitewalls.

RETREADS BUY 7.50 x 14 at \$12.25
For Chevy, Dodge, Ford, Plymouth, Mercury, Pontiac, Rambler, Studebaker, and Willys.

BIG CAR SPECIAL: 8.00 x 14 For Chrysler, De Soto, Pontiac, Oldsmobile, Mercury, and many station wagons.

All prices plus tax and trade-in tire.

AUTO RETREADS

\$8.88

plus tax and recappable tire 7.50 x 14. All other sizes at low, low prices.

NYLON All-Weather CLOSE-OUT!

25% OFF

no trade-in price. These are brand-new Goodyears, made with Tufsyn rubber and 3 T nylon cord. The tread design has been discontinued and we're closing 'em out at one-fourth off our no-trade-in price—all sizes! NO TRADE-IN NEEDED.

RIB HI-MILER TRUCK TIRES

2 FOR \$29.95

6.00 x 16 size, plus tax and 2 recappable tires. Value-packed deal on this tire built especially for light commercial and farm trucks. Save by the pair!

GO GOODYEAR

JOHNSON - POOL TIRE CO.

301 N. 1ST. PH. 7680

THE NAME LEVI'S IS REGISTERED IN THE U. S. PATENT OFFICE AND DENOTES MARKETS MADE ONLY BY LEVI STRAUSS & CO., 56 BATTERY STREET, SAN FRANCISCO 9

Fund

(Continued From Page One)

It was pointed out that the son's share of the United Fund program here goes for various youth programs. Health and safety come in for funds, and aid to service men and their families is included in at least three of the 10 agencies listed in last year's budget. Welfare is considered in two of the units seeking a spot on the 1965 program.

Last year's budget under Mrs. White's leadership with Myron Pool II as budget and admissions committee chairman, was \$12,000. However, the figure was pared from requests

totaling \$13,701. Final figures for the 1964 campaign were as follows: Bailey County Junior Livestock Show, \$2750; Boy Scouts of America, \$2200; Salvation Army, \$1500; Girls Scouts of America, \$1431; American Red Cross, \$1000; Muleshoe Area Youth Center, \$850; Babe Ruth League, \$750; Texas United Fund (11 agencies) \$450; 4-H Youth Development Corporation, \$150; Campaign expense fund, \$319; Contingencies (pledge losses due to death, etc.) \$600.

The Livestock show has asked for \$3873 this year, and Boy Scouts have asked that their portion be upped to \$2700; Salvation Army seeks \$1800; Girl Scouts, \$1525; Red Cross, \$1960; Babe Ruth League, \$2500; 4-H youth, \$150 (unchanged).

The livestock show, Boy Scouts, Girl Scouts, the youth center, Babe Ruth League and 4-H organization all deal primarily with youth. Salvation Army and Red Cross, which both have youth programs,

KILL ATHLETE'S FOOT GERM
One application of T-4-L stops itch and burning in MINUTES on your itchy back. In 3 to 5 days, infected skin sloughs off to expose more germs for the kill. Then watch HEALTHY skin appear! TODAY at

DAMRON DRUG

PATZER
CHIROPRACTIC CLINIC
MULESHOE, TEXAS
Phone 3-9670
1540 American Blvd.
KEEP SMILING



AND IT CAME THROUGH, TOO! — Mrs. R.C. Tanon, Durant, Okla., decided to try something different in the way of addresses when she wrote her daughter,

Mrs. Jimmie Crawford in Muleshoe recently. Drawing of a mule and a Muleshoe sufficed for the town. The Crawfords received the letter.

deal primarily with welfare. The Salvation Army, the Red Cross and the Texas United Fund also aid service men and their families.

The 11-agency organization known as the Texas United Fund, this year will be carried on here in only two agencies, officers say — the Medical Research Foundation, and the USO. The former received \$150 last year and the latter \$250. The local organization, while not contributing to the support, with main membership in other

Tani Murrah and Ruth Duckworth Bring Home Ribbons In 4-H Revue

Tani Murrah and Ruth Ann Duckworth who both represented Bailey County at the annual 4-H Dress Revue in Lubbock, brought home red ribbons on their dresses. Tani entered in

the junior division and Ruth Ann escorted by Morris Lewis, in the senior division.

The group attending from Muleshoe were the two girls, Jean Martin, Mr. and Mrs. Gordon Murrah, Mr. and Mrs. Ike Stinson and Morris Lewis. They had dinner in the main ballroom of the Student Union Building at 6:30 p.m., as guests of Plains Co-op Oil.

A feature attraction of the revue which had for its theme, "Silhouette of Fashion," Miss Nancy Bernard, Lubbock Maid of Cotton, modeling some of her wardrobe.

units of the Texas United Fund, it was explained.

Muleshoe Chamber of Commerce provides office and clerical assistance, maintaining files at its office, 224 W. 2nd, and agencies which have not yet made their requests known, may file their requests at this office before tonight's meetings.

Less than 50 percent of those Marines requesting duty as drill instructors at Marine Corps recruit training centers are accepted.

"However, we sincerely hope that every agency which is seeking funds under our Muleshoe United Fund drive this year will send a representative to tonight's meeting to make a personal presentation," officers summed up.

Gil Lamb will be campaign chairman for the 1965 drive which is due to take place in October.

The first American ship to reach Alaska, in 1867, was the Coast Guard Cutter Lincoln.

Jaycees

(Continued From Page One)

The directors also named "Jaycee of the Month" at their session Tuesday morning, but the name will not be made public until next Monday's luncheon session of the club.

The L. O. Norwoods spent the weekend in Denver City with Mrs. Norwood's brother and family, the Bill Jernigans.

Mr. and Mrs. Wayne Hardage, Ricky and Randy spent the weekend at Ute Lake where they fished, enjoyed swimming and boating and rested.

The "masters," or captains, of the first Coast Guard cutters received a pay of \$30.00 per month. The "boys," or seamen, received \$4.00 per month.

Less than 50 percent of those Marines requesting duty as drill instructors at Marine Corps recruit training centers are accepted.

AT THE WORLD'S FAIR
GAS
DOES 80% OF THE AIR CONDITIONING
Pioneer Natural Gas Company

Muleshoe

(Continued From Page One)

command at San Diego for nine weeks of basic training.

Four Bailey county youths left today for Austin to attend the annual Attorney General's youth conference. They are Sammy Nichols, Enoch; David Burrows, Muleshoe; Larry Meyers, Muleshoe, and Doyleen Davis, Goodland.

Mr. and Mrs. E. L. White were Sunday visitors in the Ramon Martin home here. The Whites are from Big Spring and Mrs. White is the Martin's daughter.

Visitors in the Bill Johnson over the weekend were Mr. and Mrs. J. G. Black, Ginger, Mandy and Randy from Hale Center. The Blacks are former Muleshoe residents.

SHOP MULESHOE FIRST

Luncheon

(Continued From Page One)

master of ceremonies is to be named. "Teachers themselves will not have to take part on the program; they are our guests instead," spokesman for the merchants said.

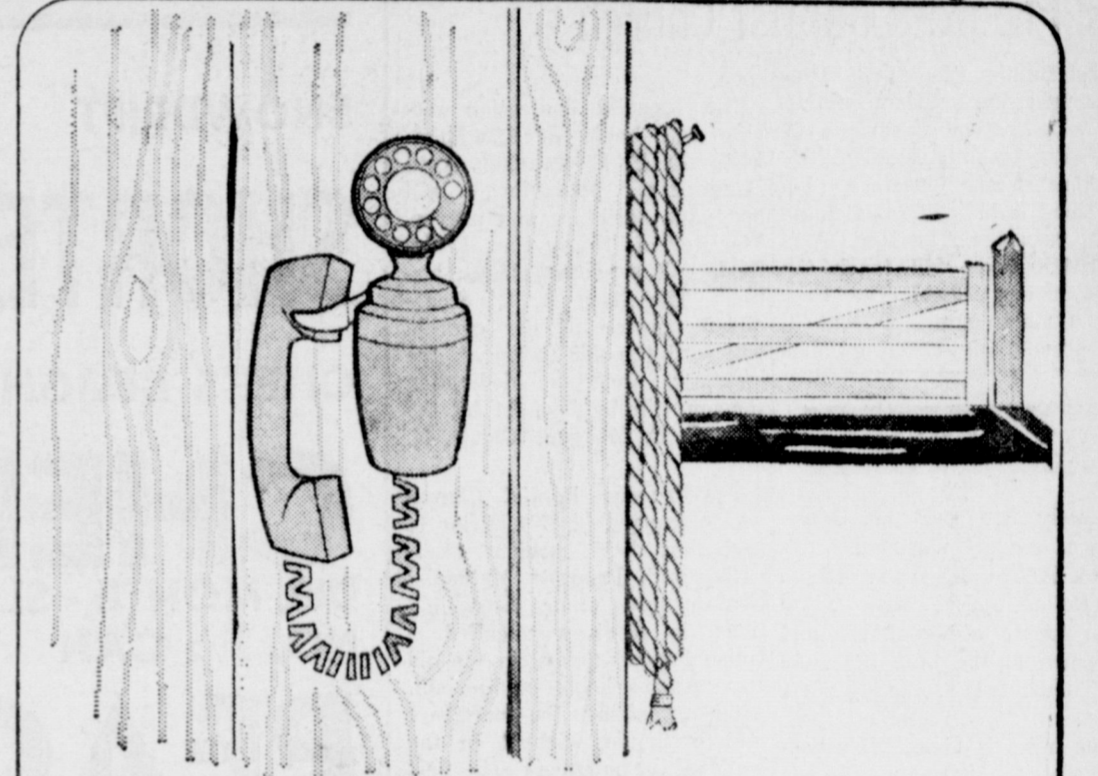
be prepared for the teachers including souvenirs, gift certificates and advertisements. Merchants and business firms desiring a part in this phase of the program are asked to bring such items to the Chamber headquarters not later than Meantime, gift packages will Monday, Aug. 30.

CO-OP Chatter by FARMERS CO-OPERATIVE ELEVATOR



FARMERS CO-OPERATIVE Elevator
FERTILIZER • GRAIN • SEED
H.L. WARD, Manager
MULESHOE, TEXAS
Phone 5350 6660

COMMUNICATIONS — Your Tool for Progress



What! An extension telephone in the barn?

Time was when a telephone in the barn was the last thing you'd ever expect. Not so today. Many of our rural customers have extension telephones in barns, stables and poultry houses, to save time and trouble just as city people do. Here is another example of how Communications can be your Tool for Progress. For full information about our many communications services, please call our Business Office.

GENERAL TELEPHONE

IDL BACK TO SCHOOL
INDEPENDENT DRUGGISTS LEAGUE DRUG STORES

ST. REGIS PENCILS
No. 2 or No. 3
2 FOR 5¢

SHEAFFER Cartridge Pen SPECIAL
66¢

Excise Tax Repealed Save up to 10%

HOME SCHOOL OFFICE

UNIQUE NYLONS Seamless

Westclox New Travel Ben \$9.98

ALLEREST Regular \$1.25 **88¢**

PRO TUFTED STYLE TOOTHBRUSHES 2 FOR **69¢**

VO-5 SHAMPOO Regular \$1.00 Value **77¢**

NEW AQUA - VELVA MENTHOL 4 Oz. Reg. 79¢ Value **49¢**

LADY GILLETTE TRAVEL SHAVE TOTE Regular \$1.98 Value **\$1.33**

ALBERTO VO5 HAIR DRESSING Regular \$1.00 Value **77¢**

BIG BALL PEN SCHOOL SPECIAL 3 PENS Reg. 87¢ Value **49¢**

SALE DATES THURS.-FRI.-SAT., AUG. 19-20-21

WESTERN DRUG

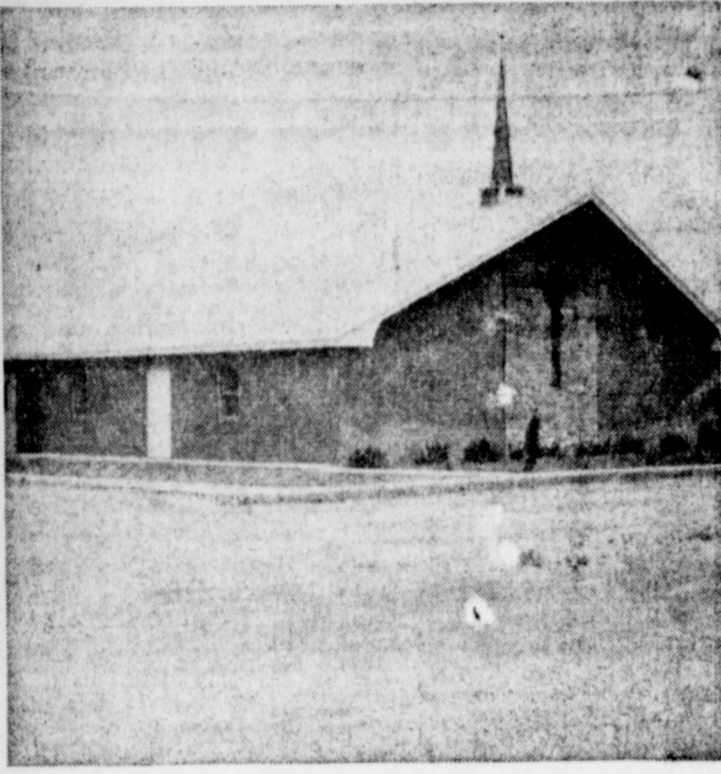
MORE QUALITY! MORE VALUE! MORE SERVICE!

\$100,000 WHALE OF A 'STOCK REDUCTION SALE'

ALL 1965 FORDS & MERCURYS AT CLOSE OUT PRICES

-SAVE NOW-

MULESHOE MOTOR CO.
"AT THE CROSSROADS"
PHONE 2510



★ ★ ★ ★ ★

Dedication Service Scheduled For Progress Baptist Church

First Baptist Church of Progress will have Homecoming and Dedication Services of their new building Sunday.

Several former pastors plan to attend and will participate in the services. The Rev. Cone Merritt, Snyder, will teach the adult Sunday School. The Rev. Ray Cunningham, O'Donnell, will preach the morning mes-

sage. The special dedication service will begin at 2:30 p.m. when Dr. F. E. Swanner, Area Missionary, Plainview, will bring the scripture and prayer. The Rev. J. Henry Cox, Littlefield, will read the church history; The Rev. B. C. Stonecipher, pastor of the church, will lead the dedication of the building; and the dedication sermon will be brought by the Rev. C. C. Morgan, Clovis, N. M.

The Progress Baptist Church was organized in 1947. Prior to that, they held services alternately with Progress Methodist Church and other denominations in what was called a Union Sunday School in the old Progress school auditorium. After organizing, the members met for Sunday School in the home of the members. The first building was built in 1948.

The new building, valued at approximately \$48,000 includes educational facilities for all age groups, a beautifully furnished auditorium will seat 250, equipped with central heating, air-conditioning, and modern kitchen.

All churches in the Muleshoe area, former members, and present members are invited to attend all the services.



Nobody can say that Muleshoettes don't get around. This is Ole Hugo T. (Hugo Templeton Speck, who wrote some poems about mules and published at the time Ole Pete was dedicated) sounding off again.

This news is about Muleshoettes who attended a Hughes family reunion held at the Beckley Square field house in South Dallas, Sunday, Aug. 8.

I was at the reunion with my mother because one James Franklin Hughes, who started the clan, was my great-grandfather and was buried at Paint Rock in Concho county, 10, many years ago.

Those by the name of Hughes attending the reunion were Mr. and Mrs. James Hughes, 1818 West Avenue E and their daughters, Brenda, who will attend Muleshoe Junior High School this fall and Jan, who will attend the Richland Hills Elementary School as a fourth grader. James is the Borden representative in that area.

Also attending were Mr. and Mrs. L. E. Bratcher (Lynn and Nettie) of Route 2 - Farm Road 1760, Lynn's mother, Mrs. T. J. Bratcher, and a Hughes, was there from Artesia, New Mexico and probably came the greatest distance to attend the reunion. My mother, Mrs. Minnie Templeton Speck, was the oldest person attending the reunion - 83.

About 100 adults and children attended the reunion - all the progeny of one James Franklin Hughes.

After the reunion it came to me who I undoubtedly like mules. I remembered vaguely that my great-grandfather once owned a jack he would give chewing tobacco to as a treat. Hugo Speck

LATE WANT ADS

FOR SALE: 3 bedroom white stucco home, carpeted, lovely lawn and flowers, price \$8,000 with \$1,000 down payment. Clara Cross, Cross Real Estate and Ins. Office Phone 5790. 8-331-2tc

A placid, glacial pond, Walden is fringed by oak, hickory, maple and pine.



Shopping? Vacationing? Sightseeing? Business? A the exciting international city invites you to visit . . . stay at the



Formerly THE HILTON HOTEL

Overlooking the historic Plaza in the heart of downtown.

Within walking distance of fine stores and everything downtown . . . just a stone's throw from Juarez, Mexico . . . minutes away from North America's most beautiful dog and horse track . . . the Plaza offers you the convenience of free parking, comfortable rooms, gracious service, fine food, and reasonable rates.

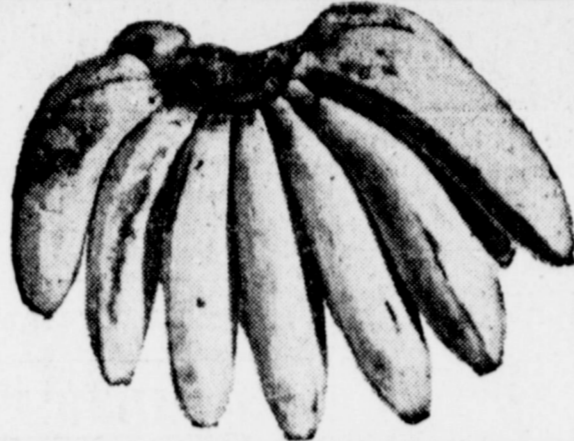
On your next trip to El Paso, combine luxurious comfort with the utmost in convenience. Make the Plaza Motor Hotel—Oregon at Mills—your El Paso address.



Phone, wire or write JACK GREGORY, Gen. Mgr. For reservations Phone 532-5661

FREE COME IN AND REGISTER "RAMADA Week-end"

COMPLETE DETAILS IN MULESHOE JOURNALS
Need not be present to win
Drawing Every Week, Register Here For Each Weeks Drawing
DATES SUBJECT TO AVAILABILITIES



COLORADO WHITE RUSSETS

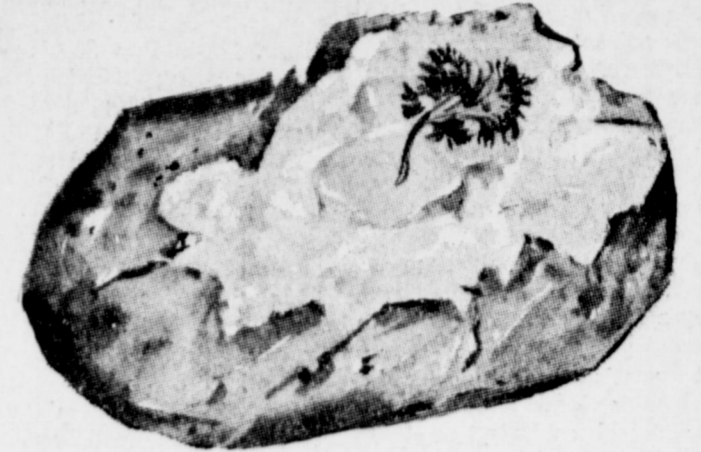
POTATOES

10 LB. BAG 69¢

BANANAS

GOLDEN RIPE

LB. 10¢



ARIZONA VALENCIAS ORANGES LB. 15c
CALIFORNIA CRISP GREEN CELERY LB. 9c
CALIFORNIA GARDEN FRESH CARROTS 1 LB. PKG. 9c

SNOWDRIFT

SHORTENING 3 LB. TIN 59¢

CHEF'S DELIGHT

CHEESE 2 LB. BOX 59¢

DEL MONTE - SLICED OR HALVES NO. 2 1/2 CAN

PEACHES

DEL MONTE

SWFET PEAS NO. 303 CAN 19¢

59¢
59¢
4 FOR \$1
19¢

FRYERS PARTS

MARKET CUT

GOLDEN NUGGET FRESH DRESSED USDA GRADE A

DRUMSTICKS LB. 49¢
THIGHS LB. 49¢
BREASTS LB. 59¢

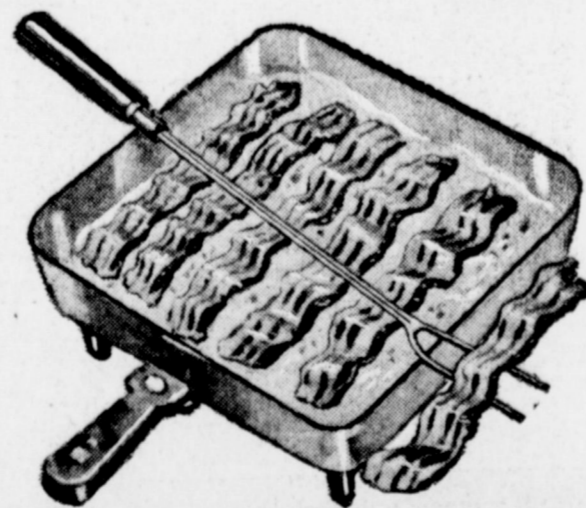


WINGS LB. 19¢ WISHBONES LB. 79¢

BACON

PICKNEYS SUN-RAY SLICED

2 LB. PKG. \$1.59



SWIFTS PREMIUM PROTEN BEEF T-BONE STEAK LB. 98¢
SWIFTS PREMIUM PROTEN BEEF SIRLOIN STEAK LB. 89¢
SWIFTS PREMIUM PROTEN BEEF CLUB STEAK LB. 79¢

LUNCH MEATS

WILSONS CERTIFIED VAC PAC BOLOGNA, PIC. & PIM., OLIVE SPICED LUNCHEON, MAC. & CHEESE SALOMI AND LIVER LOAF

6 OZ. PKG. 29¢

FROZEN FOODS

BANQUET FAMILY SIZE, LEMON, STRAWBERRY, CHOCOLATE & COCONUT CREAM PIES 29c
12 OZ. CAN WHOLE - SUN ORANGE JUICE 2 For 69c
MORTONS 'HOME BAKE BREAD' 3 - 1 Lb. Loaves 59c
OCEAN BEAUTY 1 Lb. PKG. PERCH FILLETS 49c
10 OZ. PKG. KEITHS BROCCOLI SPEARS 2 For 35c

KIMBELLS RSP

CHERRIES

NO. 303 CAN

19¢

Crackers Sunshine Hi-Ho 1 Lb. Box 35c
Ice Cream Foremost Asst. Flavors 1/2 Gal Ctn. 59c
Grape Jelly Kraft Pure Concord 18 Oz. Glass Tumbler 39c
Honey Waxahachie Chief Pure 4 Lb. 4 Oz. Can 99c
Peanut Butter Jif 18 Oz. Refg. Jar. 59c
Oleo Solids Blue Seal 1 Lb. Pkg. 2 For 29c
Joy Liquid Detergent Giant Size 59c
Grahams Nabisco Honey 1 Lb. Box 35c
Crackers Supreme 1 Lb. Box 31c
Detergent Ajax Laundry Giant Size Box 69c
Napkins Kim Luncheon 200 Count Pkg. 35c
Aluminum Foil Reynolds Wrap 25 Ft. Roll 29c
Gladiola Flour 5 Lb. Bag 49c
Gladiola Magic Cake Mixes 8 Oz. Pkg. 2 For 23c
Vienna Sausage Ellis 1/25 Can 2 For 39c
Dr. Pepper 6 Bottle Ctn King Size 3 For \$1.00
Coffee Maxwell House Drip or Reg. 1 Lb. Tin 75c
Beets Del Monte Cut No 303 Glass 15c
Maccaroni Skinners Sea Shell 10 Oz Cello Pkg. 17c

GUNN BROS. STAMPS DOUBLE EVERY WEDNESDAY

White's CASHWAY

Listen To MULETRAIN 10:15 A.M. over KMUL sponsored by CASHWAY

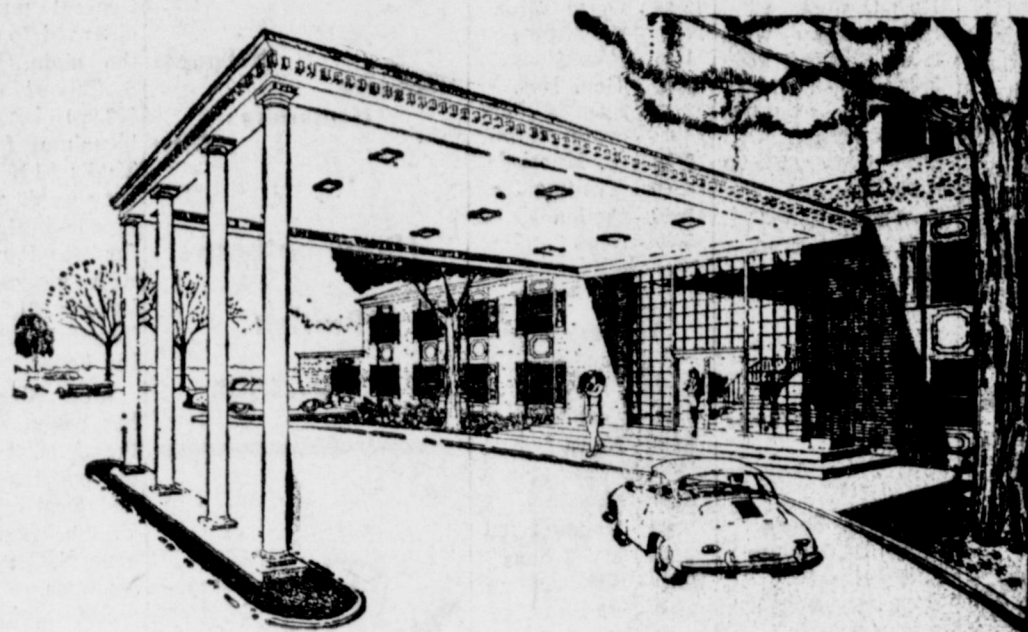
WIN A FREE FUN-FILLED WEEK END



RAMADA INN

"Luxury for Less"

FOR YOUR FAMILY.



NEW TRIP
EACH WEEK
For 10
Weeks

CONTEST RULES

1. Winner to receive a free week-end at participating Ramada Inns.
2. Week-end includes two nights lodging and food for an individual family of up to five members. Meals include two breakfasts, Saturday Lunch, Saturday Evening Dinner, and Sunday Dinner for each member of the party.
3. Winning family will provide own transportation to and from.
4. You may enter in as many stores as you wish each week. No purchase necessary.
5. Winner must be married or of legal age, and reside in trade area.
6. One preliminary winner will be drawn each week at each participating store. Three winners from each store will then be placed in the final prize drawing that week. New contest each week.
7. Winners must give the Journal two weeks notice before taking their trip.

BE SURE TO STOP BY THESE FRIENDLY MULESHOE MERCHANTS AND REGISTER TODAY

CASHWAY GROCERY

DARI DELITE

Cobb's

BEAVER'S FLOWERLAND

RICHLAND HILLS TEXICO STA.

BROCK MOTOR CO., INC.

PLAINS AUTO PARTS

L & H GROCERY

5 & 10 PERRY'S 10 & 20

RAY GRIFFITHS and SONS



The Fashion Shop
OF MULESHOE

SHOP MULESHOE FIRST

Television Schedule For Muleshoe Area

C Indicates Color Programs

Station	Channel	Daytime Viewing	Thursday Evening	Friday Evening	Saturday Viewing	Sunday Viewing
KGNC-TV (4) Amarillo	Muleshoe Cable 4 Mon. thru Fri.	7:00 - Today Show 8:00 - Today Show 9:00 - T or C 9:30 - C-What's this 9:55 - News 10:00 - Concentration 10:30 - C-Jeopardy 11:00 - Bluff 11:30 - I'll Bet 11:55 - NBC News 12:00 - News 12:10 - Weather 12:20 - Ruth Brent 12:30 - Make A Deal 12:55 - NBC News 1:00 - Truth 1:30 - The Doctors 2:00 - Another Wot 2:30 - C-Don't Say 3:00 - Match Game 3:25 - NBC News 3:30 - Sheriff Bill 5:30 - Hunt-Brink 6:00 - News	6:15 - Weather 6:25 - Sports 6:30 - D. Boone 7:30 - Dr. Kildaire 8:30 - C-Frazet 9:00 - Kraft 10:00 - News 10:15 - Weather 10:25 - Sports 10:30 - C-Tonight	6:15 - Weather 6:25 - Sports 6:30 - Showtime 7:30 - Bob Hope 8:30 - Jack Benny 9:00 - Jack Parr 10:00 - News 10:15 - Weather 10:25 - Sports 10:30 - C-Tonight Sh 12:00 - Sign Off	7:00 - Roy Rog. 8:00 - Top Cat 8:30 - Hector H. 9:00 - Underdog 9:30 - Fireball, XL-5 10:00 - Dennis Menac 10:30 - Fury 11:00 - Superman 11:30 - Cotton John 12:00 - Football 3:00 - Sportsman 3:15 - Movie 4:30 - Movie 6:00 - News 6:15 - Weather 6:25 - Sports 6:30 - Flipper 7:00 - Kent. Jones 7:30 - America 8:00 - Movie 10:15 - News 10:30 - Weather 10:40 - Sports 10:45 - Movie 12:45 - Sign Off	7:30 - Dixie 8:30 - Cotton John 9:00 - U. S. Navy 9:30 - Movie 11:00 - Church 12:00 - Superman 12:30 - Checkmate 1:30 - Wie Country 2:30 - Football 5:30 - R. Diamond 6:00 - News 6:15 - Weather 6:25 - Sports 6:30 - W. Disney 7:30 - Buckskin 8:00 - Bonanza 9:00 - The Rogues 10:00 - News 10:15 - Weather 10:25 - Sports 10:30 - Director's 11:30 - Sign Off
KVII-TV (7) Amarillo	Muleshoe Cable 5 Mon Thru Fri	Daytime Viewing	6:30 - John Quest 7:00 - Donna Reed 7:30 - My 3 Sons 8:30 - Peyton Place 9:00 - Jimmy D. 10:00 - Local News 10:15 - Weather 10:20 - Movie	6:30 - Flintstones 7:00 - Wells Fargo 8:00 - Addams 8:30 - Valentine 9:00 - P. Place 9:30 - 12-High 10:00 - News 10:15 - Weather 10:20 - Movie	8:27 - Sign On 8:30 - Market 9:00 - College 9:30 - Church 10:00 - Casper 10:30 - Porky Pig 11:00 - Bugs Bunny 11:30 - Hoppity 12:00 - Baseball 3:00 - Bandstand 4:00 - Sports 5:30 - Trails 6:00 - Church 6:30 - King Family 7:30 - Lawrence Wel 8:30 - H. Palace 9:30 - Bob Young 9:45 - Preview	7:30 - N. V. Peale 8:00 - Herald of Iru 8:30 - Oral Roberts 9:00 - Church 9:30 - Christophers 10:00 - Beany 10:30 - Bullwinkle 11:00 - Church 12:00 - Sea Hunt 12:30 - Dory Funk 1:00 - Movie 3:00 - Stage West 4:00 - Challenge 4:30 - Ray Milland 5:00 - Wrestling 5:00 - FDR 6:30 - Wagontrain 12:00 - News 8:00 - Movie 10:00 - News 10:15 - Weather 10:20 - Movie
KFDA-TV (10) Amarillo	Muleshoe Cable 6 Mon. thru Fri.	Daytime Viewing	6:30 - Munsters 7:00 - Perry M. 8:00 - Movie 10:00 - News 10:15 - Weather 10:25 - Editorial 10:30 - Movie 10:55 - News 11:00 - Big Flicker	6:30 - Rawhide 7:30 - Cara W. 8:00 - Our World 8:30 - Vacation 9:00 - Slattery 10:00 - News 10:15 - Weather 10:25 - Background 10:30 - Movie 10:55 - News 11:00 - Movie	6:45 - Cartora Tim 7:00 - Mr. Mayor 8:00 - Alvin Show 8:30 - Tenn. Tux. 9:00 - Quick Draw 9:30 - Mighty Mouse 10:30 - Lion Hearted 10:30 - Jetsons 11:00 - Sky King 4:30 - Pioneers 11:45 - News 12:00 - Football 3:00 - Golf 5:00 - Wilburn B. 5:30 - Porter Wagon 6:00 - News 6:20 - Weather 6:30 - Al Hirt 7:30 - Gilligan 8:00 - Secret 9:00 - Gunsmoke 10:00 - News 10:15 - Weather 10:30 - Movie 11:45 - News 11:50 - Movie	
KCBD-TV (11) Lubbock	Muleshoe Cable 2 Mon. thru Fri.	Daytime Viewing	6:30 - D. Boone 7:30 - Dr. Kildare 8:30 - Hazel 9:00 - Kraft The. 10:06 - News 10:30 - Tonight	6:30 - Lawrence W. 7:30 - Bob Hope 8:30 - J. Benny 9:00 - Jack Parr 10:00 - News 10:30 - C-Tonight	7:55 - Sign On 8:00 - Hoppity Hoop 8:30 - Cartoons 9:00 - R. Rogers 10:00 - The Drama 10:30 - L. World 10:45 - Church 11:45 - Air Force 12:00 - Football 3:00 - Sports 4:00 - Checkmate 5:00 - Meet Press 5:30 - Top Plays 6:00 - News 6:30 - World World 7:30 - Broadside 8:00 - C-Bonanza 9:00 - The Rogues 10:00 - News 10:30 - Movie	
KLBK-TV (13) Lubbock	Muleshoe Cable 3 Mon. thru Fri.	Daytime Viewing	6:00 - Weather 6:10 - News 6:20 - News 6:30 - Munsters 7:00 - Donna Reed 7:30 - My 3 Sons 8:00 - Bewitched 8:30 - P. Place 9:00 - Combat 10:00 - News & Weat 10:30 - Movie	6:00 - Weather 6:10 - News 6:20 - News 6:30 - Munsters 7:00 - Donna Reed 7:30 - My 3 Sons 8:00 - Bewitched 8:30 - P. Place 9:00 - Combat 10:00 - News & Weat 10:30 - Movie	6:55 - Sign On 7:00 - Bullwinkle 7:30 - Sgt. Preston 8:00 - Linus 8:30 - Adventures 9:00 - Herald 9:30 - This is Life 10:00 - Cutting 10:30 - Church 10:45 - Baptist 11:45 - T. Topics 12:00 - Football 2:30 - Golf 4:00 - Amos & And 4:30 - Amateur 5:00 - 20th Cen. 5:30 - Flintstones 6:00 - Lassie 6:30 - Martian 7:00 Ed Sullivan 8:00 - Movie 10:00 - News 10:30 - La's Show 12:00 - Sign Off	

KING BROS.

GRAIN & SEED CO.

Complete

ELEVATOR

SERVICE

AND SEED

PROCESSING

FOR

The Muleshoe

Area.

FIRST NATIONAL BANK
MULESHOE
4%
ON 12 - MONTH
CERTIFICATES OF
DEPOSIT
3%
ON SAVINGS
COMPOUNDED
QUARTERLY
FINANCE
YOUR CAR
WITH US!
PERSONAL
LOANS

LUMBER
PAINT

and

Hardware



Chas. L. Lennox

LUMBER

COMPANY

202 E. Ash

For All
Your Needs
Prescriptions

— CALL ON YOUR —

WALGREEN AGENCY

WESTERN DRUG

Phone 3-1060

Veterinary

Cosmetics

Austin Poll Tax Test Case Filed

By Vern Sanford
Texas Press Association

AUSTIN — Federal authorities have brought suit here to abolish the poll tax as a requirement for voting in Texas elections. Suit was filed under the new voting rights act.

If they are successful in getting an early hearing, a special session of the Legislature may be necessary to enact a valid voter registration statute.

Texas' poll tax is the only existing form of registration for state and local elections. However, there is a procedure for obtaining "free" poll taxes to vote in federal elections.

Observers feel near chaos would result at the polls next year if a final ruling is handed down in favor of the federal suit, without enactment of registration procedures.

Although the U. S. Attorney General maintains the tax is not used to raise revenue for the state, Comptroller Robert S. Calvert estimates over \$5,000,000 income for the next biennium from that source.

That's \$5,000,000 the state treasury won't get if the poll tax is repealed. Reliable estimates so far see the biennium ending with government in the black by only \$1,300,000 to \$4,200,000 including income from all existing levies.

Atty. Gen. Waggoner Carr has announced he will oppose the federal suit to invalidate the poll tax and to enjoin state and local officials from enforcing its requirements for any general, special or primary elections.

Suit seeks to direct Travis County Tax Collector Fritz Robinson and his employees to compile and certify local voter lists "without regard to payment of the poll tax or any other tax."

APPOINTMENTS — Gov. John Connally named five public members to the new Legislative Study Committee on Multiple Use and Pollution of All Waters of Texas.

They are Dr. Carl J. Lind Jr., Stone Wells and Charles Sowell, all of Houston, John Clegg of Port Lavaca and Bill Senter of Abilene. Legislative members selected earlier are Sens. Culp Krueger of El Campo, Criss Cole of Houston and Charles Herring of Austin and Reps. Gus Mutscher of Brenham, John Mobley of Kilgore and Dean Neugent of Texas City.

Charles W. Lindsey was the Governor's choice for judge of the new Criminal District Court No. 3 of Tarrant County.

Connally picked Lester Prokopf, Houston builder and lumber executive, to succeed Judge Robert L. Lowry of Houston as a member of Texas State Historical Survey Committee.

Lt. Gov. Preston Smith appointed Sens. Martin Dies Jr. of Lufkin, D. Roy Harrington of Port Arthur and A. R. Schwartz of Galveston to a committee to study possible development of a state park on Pleasure Island near Port Arthur.

Smith named Sens. Jim Bates of Edinburg and Herring to a panel to negotiate for the return of a flag captured by Mexican forces at the Alamo. Governor Connally has stated he prefers to leave the negotiations in the hands of the U. S. State Department and will name no members of the state committee himself.

BOUNDARY DISPUTE — First meeting of negotiating committees from Texas and Louisiana reached no firm conclusions in their effort to settle a long-standing boundary dispute between the states.

Room was seen for arbitration of the dividing line in the Sabine River ship channel at the Gulf jetties. But the river boundary question seems likely to end up in federal courts.

At stake in the dispute are valuable mineral rights along the river, as well as control of fishing and future barge traffic.

Texas contends the middle of the Sabine should be the boundary between the states. Louisiana claims the line was extended to the west bank of the river by the 1803 Louisiana Purchase.

Negotiators agreed to keep trying — perhaps to study possible extension of a federal boundary running between jetties bordering the channel — and to exchange briefs in future meetings.

Land Commissioner Jerry Sadler presided at the initial conference. High State officials and legislators from both states were present.

ENROLLMENTS TO SOAR — Texas Commission on Higher Education forecasts that college and university enrollments in Texas will zoom from 280,106 to nearly 400,000 by 1971.

Enrollments in the state-supported institutions are due to increase from 168,000 to 240,000.

Nearly all Texas schools report they are short on space for their present students. Predicted increase will affect every one of the existing state-supported institutions. Commission believes.

OPINIONS — In recent official opinions, Atty. Gen. Waggoner Carr has held that: A valid surface lease on land being purchased under the state veterans' land program cannot be given in excess of 10 years.

First assistants and chief deputies in state departments are entitled to reimbursement for actual meals, lodging and incidental expenses while traveling on official business inside or outside the state.

Employees of the State Highway Department who drill or supervise drilling of an occasional water well on land owned by the state do not have to be registered as drillers under new act.

Unclaimed wages and personal property held in Texas by foreign corporations for persons whose last known address is unknown or outside Texas must be reported to the State Treasurer under escheat statutes.

Vouchers issued to colleges and universities providing teacher training under a plan approved by Central Education Agency and U. S. Government

Miss Mabel Smith, formerly of Somerville, will retire August 31 after record 44-year service with Texas State Library.

Lloyd R. Bell, Dallas junior high school principal, will become assistant director of Division of Public Relations for Texas State Teachers Association on September 1.

Texas Commission Railroad has set September 15 for hearing Missouri Pacific Railroad Company's request to discontinue Houston to Brownsville passenger trains.

State Rep. Dick Cherry of Waco has been named administrative assistant to Sen. Ralph Yarborough.



When they build their real homes, we'll be here to help them with home loans. If you need a home loan now, talk it over with us today. We are home loan specialists.

First Federal Savings & Loan
Clovis, N.M. Portales, N.M.
Home Office Brance Office
4th & Pile 2nd & Abilene
MEMBER OF THE SAVINGS AND LOAN FOUNDATION
PONSOR OF THIS ADVERTISEMENT IN LOOK MAGAZINE



Higginbotham
Bartlett
Building Needs

Lumber
Paint
Wallpaper
Hardware
Houseware
Gifts

Higginbotham
Bartlett
MULSHOE



For Year-Long
Enjoyment

INSTALL NOW
Three
Plans
for
Hook-Up
Muleshoe
Antenna Co-
Call Now

107 East Third
Phone 3-3100

ALSUP
CLEANERS
Offer These
FINE SERVICES

1. Drive-In Window Service for your convenience in cold weather.

2. Re-sizing of cottons to finer texture for that like-new look.

3. Alterations of all kinds of men's, women's and children's clothing

4. A personal touch for your clothing by people who care how you look.

Whoaaaooops!
Splash. Get help on the spot. Find CLEANERS & DYERS fast in the YELLOW PAGES. Where your fingers do the walking.



THAT'S
ALSUP
CLEANERS
Phone 3-0760

Spining Tests To Prove Value Of Area Cotton

Three more cotton spinning test projects will soon be started by Plains Cotton Growers, Inc., aimed at showing three more textile mills how they can use Texas High Plains cotton to their advantage.

James S. Parker, Textile Consultant for Plains Cotton Growers, has just returned from the textile region of the Southeast where the test projects were set up as a part of PCG's free technical consulting service to mills. Parker visited with top mill officials and cotton buyers in Alabama, Georgia, North Carolina and South Carolina.

He points out that not every project results in a mill switching to cotton from this area, but said: "We have high hopes that in these three cases testing will prove that High Plains cotton will spin into the yarns they manufacture with comparable quality and reduced raw fiber costs." He added that the recent trip left him much more optimistic about the near-term picture for consumption of cotton from this area.

This optimism stems largely from follow-up work on previous consultation and testing for three mills. In Alabama, a mill indicated to Parker that plans call for stepping up use of our cotton from 65,000 to 75,000 bales per year. And two textile mills in Georgia are increasing use of this area's cotton, one almost doubling the amount used previously.

"These," said Parker, "are steady customers for High Plains cotton, and we know that our technical consulting service is at least partially responsible for this fact."

Asked what products on retail shelves normally contain our kind of cotton, Parker replied that the most common, everyday items made from High Plains cotton are blue denim and khaki twills. In addition there are ducks, muslins, toweling, osnaburgs and other constructions well suited to the use of shorter stapled cotton, he stated.

He reports that the free tex-

tile service being provided by cotton producers in this area through Plains Cotton Growers is extremely well received and has made a multitude of friends as well as customers for the High Plains since its beginning in 1962. In addition to specific test projects, the service gives mills access to technical reports on textile research done by PCG through the facilities of the Textile Research Laboratory at Texas Technological College. And information in these reports was directly responsible for one of the mills mentioned above wanting a test project on production of their yarns from High Plains cotton. The Texas Tech fiber laboratory and pilot spinning plant, with over 1,000 spindles, are among the most complete and modern found anywhere and PCG research reports compiled there have gained the respect of textile people around the world.

According to Parker the High Plains will produce this year about 100,000 bales or more of cotton with a staple length over one inch — cotton which sells "real fast". And while prospects for expanded use of High Plains cotton already look good, Parker says many, many more mills could be induced to buy in this area if we had a larger supply of this longer stapled cotton to offer. "The amount of this type cotton being grown this year is a decided increase over past years," he went on, "and indications more and more point to greater interest in growing this cotton which can be marketed on a much broader base." For this reason, at least five or six cotton buyers for large mills to plan to visit the area this Fall to look over the 1965 crop.

Generally speaking, Parker finds that through PCG advertising, promotion and technical service, the textile people know us well and believe the High Plains to be a very promising area for the production of their raw fiber needs. Mill people, he said, are always complimentary and appreciative of the technical service being provided, and many have made the statement that we are on the right track to increased markets. "No other producer organization provides a comparable

service," he continues, "and the textile industry is very favorably impressed with our sincerity in wanting to grow cottons that fit their need, and with our willingness to conduct pilot plant tests and fiber studies toward that end."

Parker also sees a future for the High Plains as the site for additional textile installations, calling attention to the mill already in operation at Ralls and the fact that plans have been completed for two others to start construction in the near future. And, during his recent visit, two mills in the Southeast were asking questions about the possibility of establishing plants in this area.

Summing up, Parker said the textile industry itself is in excellent condition, using more cotton than at any time in recent years, and with continued hard work and product improvement, the High Plains can look forward to an ever-increasing percentage of this expanding raw fiber market.

Minister, Family Feted At Party

The Rev. Ray Vinson and his family were feted with an ice-cream social at the First Christian Church Thursday night.

Mr. Vinson and his family are on a month's vacation from his pastorate at Antelope Valley Christian Church, Calif.

Attending the church fellowship were: The Rev. and Mrs. Ray Vinson and daughters, Kathy, Karen and son Micky; The Rev. Clifton Cocoran; The Rev. and Mrs. Charles M. Grow; Mr. and Mrs. Joe Pat Wagon and daughters, Deborah and Tyree; Mr. and Mrs. Bobby McGee and daughters, Lydia and Ara; Mr. and Mrs. S. E. Goucher; Mr. and Mrs. Thurman White; Mr. and Mrs. Joe Costen; Mr. and Mrs. Allen Haley and daughter, Sandra; Mr. and Mrs. Bill Brown and daughter, Lissa, Mrs. John Moore; Mr. and Mrs. Glen Maltby; Mrs. Leota Wilterding, Tom and Eric Hunke; Mr. and Mrs. John Young and son Robbie, and daughter, Laurie; Mrs. Marjorie Platt; Mr. Frank Ellis; Mrs. Norman R. Cross, Detroit, Mich. and Charles, Dale and Paul Bell.



This Week!
AUG. 16 THRU 22
ALL RIDES AT RIMROCK CITY IN LUBBOCK, ONLY

9 WITH FREE COUPONS AT PIGGLY WIGGLY

Give the kids a treat this weekend! Collect a handful of free coupons at Piggly Wiggly and have a ball at Lubbock's Rimrock City playground! All rides are only 9c each with the coupons you receive at Piggly Wiggly, East of Loop 289 on Buffalo Lakes Road! Coupons good this week only... so plan a Rimrock City outing now!

SANTA ROSA	PINEAPPLE JUICE 46 OZ. CAN	25c	COFFEE 1 Lb. Can	69c
CRISCO, 4c OFF	SHORTENING 3 LB. CAN	75c	OLEO 2 Lb. Pkg.	29c
HOLLY	SUGAR 5 LB. BAG	49c	BISCUITS 3 - 5 Ct. Cans	10c
RITZ, ASSORTED COLORS	TOILET TISSUE 10 ROLL PACKAGE	69c	BLEACH 1/2 Gallon	29c
SUNLIGHT, FULLY GUARANTEED	FLOUR 5 LB. BAG	39c	FLOUR 5 Lb. Bag	55c
FROZEN FOODS!!!	FRUIT PIES Johnston, Apple, Cherry, Pineapple 79c Value	59c	TOMATOES No. 303 Cans	12 1/2c
	MEAT PIES Swanson, Beef-Chicken, Turkey	4 For \$1.00	CAKE MIX 4 - 19 Oz. Box	\$1.00
	LEMONADE Tip - Top, Pink	2 For 35c	TISSUE 4 Roll Pkg.	27c
			(With 7c coupon in Newspaper..without 34c)	

Meet the MULESHOE STATE BANK CUSTOMER of the Week



V.B. Mays

Mr. V.B. Mays of 2623 30th St. Lubbock, is our customer of the week. Mays is a salesman for Ferrer Advertising Inc. of St. Louis. He is also a Bailey County farm owner. Mays and his wife, Adelaide, attend the Methodist Church. Mays said he had banked with the Muleshoe State Bank since 1932 and "The overall banking service here has been very pleasant and satisfactory." We are proud to recognize this customer of the week.

Muleshoe State Bank
"YOUR GOOD NEIGHBOR SINCE 1914"



FOR ECONOMY AND GOOD, GOOD EATING...
SERVE A TURKEY FROM PIGGLY WIGGLY

HEN TURKEYS

U.S.D.A. GRADE A, SUNCO
10 - 12 LB. AVERAGE
POUND

39¢



ROUND STEAK Pound	89c
PORK CHOPS Pound	79c

Franks Pound	69c
Ground Chuck Pound	59c
Beef Steak 20 Oz. Pkg.	89c
Bacon 2 Lb. Pkg	\$1.59

SUMMERTIME PRODUCE!

POTATOES LB.	8 Lb. Bag	59c
PEACHES LB.		12 1/2c



These Prices Good in Muleshoe Aug. 19-20-21, 1965

FILLER PAPER Reg. 25c	2 For 25c
THEME BOOK Reg. 89c	39c
TYPING PAPER 100 Count	29c
BALL POINT PENS	2 For 29c

Elmers, Reg. 59c, Plastic Bottle
WHITE GLUE 4 Oz. Btl.

47c

