

HEY, UP THERE — A lifeguard has to get used to pretty girls staring admiringly at him atop his perch. Here Muleshoe Lifeguard Scott Oliver "ignores" the admiring stare of pretty Teri Weidubush. (Journal Photo)

## Salaries To Boost Budget

The new pay schedule for teachers will lift the 1965-66 budget considerably above last year's levels, a temporary budget adopted by the board Monday night indicates.

Last year's budget totaled \$1,802,929. No total was given for the new year's budget since an auditor's report will be necessary before the final figure can be reached.

Tentatively the board sees a \$67,000 increase in teachers' salaries for the new year, climbing from \$553,500 last year to around \$613,500 this year. By the same token, teaching supplies will increase by \$1500, climbing to \$17,500 during the new year.

Administrative salaries under the new pay system also will have a boost, climbing to \$49,000 as compared with \$37,500 last year, an increase of \$2500.

In the instructional section of the budget, which includes salaries, costs will run something like this: Textbooks, \$300 unchanged. Library and audio visual, \$2000, unchanged; and other expenses unchanged at \$2500. Including all these items (and salaries) total cost should run to \$635,800 this year as compared with \$574,300 last year, an increase of \$61,500.

Health services also will increase slightly, \$5042 for the new school year as compared with \$4812 last year. Only a \$300 boost in pupil transportation costs (including salaries) is foreseen, bringing the total figure to \$52,900. Plant operation is estimated at \$39,000, a \$1500 increase.

Maintenance costs will be up \$4762, most of it coming in the addition of a man to the janitor's staff. Salaries will climb from \$11,000 last year to \$13,662 for the new year. In that department, contracted services will be unchanged at \$4500, but equipment replacement will rise from \$3000 to \$3600, and "other" expenses from \$7000 to \$8300.

Even "fixed" charges will be up slightly, rising to \$3170 as compared with \$2500 last year. Insurance costs will be \$3000, it is estimated, as compared with \$2200 this past year. "Community Services" will be down slightly—from \$346 to \$333 estimated. Debt services' total, less building fund, has been estimated at \$980,306 as compared with \$912,808 last year.

On the other side of the ledger, total revenue from local sources is estimated at \$461,595, and from the state at \$517,211, with \$1500 additional from sale of property or net insurance recovery. This brings the total estimated revenue for the

(See SALARIES Page 4)

# Muleshoe Journal

8 PAGES

Published Every Thursday At Muleshoe, Bailey County, Texas—79347

VOL. 43 — NO 32

THURSDAY, AUG. 12, 1965

## Rains Boost Crop Prospects; 94,000-Bale Cotton Crop Seen

### 'Spotted' Hail Hits Country

Rains, which ranged from a half inch to an inch or more, boosted crop prospects in Bailey county, despite the fact that hail in scattered areas did some damage, especially in the West Camp and Lazbuddie areas.

A generally bright farm picture was painted, and a bumper cotton crop was forecast by experts who looked into their crystal ball and came up with a 94,000 - bale prediction for this county.

This compares with 74,300 bales last year, but is considerably below the 1963 output of 104,000 bales.

While the hail damage from Sunday night activity was spotted, on farms where hit, damage was generally heavy. Dub Bartley, who lives eight miles west of Muleshoe on FR 1769, said something like two-thirds of the tender cotton crop was chopped at his home place.

The damage didn't extend east, west or south of his heavily damaged field.

Another area reporting damage was the Lazbuddie section where eight farmers said Monday that they had suffered heavy damage from hail.

However, experts pointed out, these damaged stalks should recover and produce blooms in abundance by mid-August, and these stalks in turn will have a fair chance of producing mature cotton provided the frost date is normal or later. The average date for a killing frost here is Oct. 28.

Authorities here contend that ample fertility in the soil under the cotton will make the crop if time permits. Foliar remedies are unnecessary if ample fertility is present in the soil, these experts pointed out.

The south end of the county continues to get spotted showers, and late cotton is making

(See RAIN Page 4)



COACHES "SKULL" SESSION — Muleshoe's six coaches began their pre-session "skull" sessions this week, mapping plays for the coming season. Shown are (standing) Bob Graves and Ronnie Joe Jones, and (seated) Duke Frisbie, Head Coach Willie McAlpin, Darrell Oliver and Charlie Beaston. (Journal Photo)

## Lazbuddie School Pickets Disappear

Two pickets who had paraded on the highway in front of the Lazbuddie school last week, apparently packed up their signs and left over the weekend.

The pickets were protesting "unfair wages" paid plumbers

working on Lazbuddie school's building project, the signs declared.

"They apparently became satisfied that the sub-contractor for the plumbing project is paying fair wages," explained Oris McDonald, general superintendent for the John Moss Contracting Co., the firm which holds the general contract for the project.

He said the two men carried signs which declared that Malcolm Hinkle, Pampa plumbing contractor, "was not paying prevailing wages." Hinkle, however, pointed out that the two plumbers on the Lazbuddie job are drawing top wages, and when this information was relayed to the pickets, "they just up and left," McDonald explained.

The entire project is being done by union men with the exception of the plumbing portion.

The John Moss firm, despite the delay caused by the pickets, is still shooting for its Jan. 1 deadline for completion of the

(See PICKETS Page 4)

## Class Schedule For Enrollment Is Announced

Enrollment schedule for Muleshoe schools was announced Wednesday by Neal Dillman superintendent of schools, due to open Wednesday, Sept. 1.

Regular classroom work will begin at 8:45 on the opening day, but first enrollment period will be 10 days before the kick-off of the 1965-66 term.

Senior students will enroll Aug. 23 from 8:30 until 12 noon. Junior students are to trek to school for enrollment that same day between 1:30 and 4:30 p.m.

Then sophomores are to sign up for the new year Aug. 24 between 8:30 and 12 noon, and again that afternoon between 1 and 4:30 p.m.

Aug. 25 will be devoted to enrollment procedures for freshmen, starting at 8:30 a.m. and 1 p.m.

Workshop for teachers is to be held on Aug. 26, 27 and 30 and 31, Dillman announced.

Aug. 27 also will see enrollment for junior high and elementary students between the hours of 8:30 and 4:30, Dillman said.



With the Journal Staff

Pre-school beginner band program will start Monday and run through Friday until school starts. Bob Breckenridge announced Wednesday. Classes will be from 1 until 4 p.m. then on Thursday, Aug. 12, from 4 until 8 p.m., an instrument display in the high school band hall when students may buy or rent an instrument. The pre-school beginning classes are for 6th and 7th graders. Schedule is as follows: 1 p.m., flutes; 1:45, clarinets; 2:30, cornets; 3:15, trombones, baritones, French horns and basses; 4 p.m. drums. Breckenridge can be reached at 5600 or 3-1940.

Speaker at Tuesday's Rotary club luncheon was Joe Adams, son of Mr. and Mrs. J. K. Adams, who told of his experience as this county's delegate to Boys' Town in Austin, sponsored by the American Legion.

Eighteen members of the Bailey County Farm Bureau board of directors and FB personnel were guests of Ben Cockrell, agent - manager, for a dinner at Paul's last Thursday. Jim Wallace and Barney Locke, volunteer firemen, were presented expense and tuition checks for the recent state fireman's school held in College Station. Joe Wheeler, FB county president, showed slides of their recent trip, "Institute on Wheels," and Lester Howard gave a legislative report.

Joann Bray, assistant educational director of the Bailey County Electric Co-operative, will speak on "Member Services Advisors" at the annual state-wide meeting of electric co-operatives this week.

Mr. and Mrs. W. F. Harper (See MULESHOE Page 4)

## 'Weekend At Ramada Inn' Contest Is Announced Here

The Muleshoe Journal and The Bailey County Journal, with local firms participating, have announced a "Ramada Inn Weekend" contest to run for 10 weeks.

Firms participating in the contest include Beaver's Flowerland, Perry's, Dari - Delite, Cobb's Department Store, The Fashion Shop, White's Cashway Grocery, L & H Grocery and Market, Plains Auto Parts, Brock County Savings and Loan, Brock Motor Co., C. R. Anthony's Ray Griffiths & Sons and Richland Hills Texaco.

Placards in windows indicate participating firms where contestants may register. To enter, a contestant must be married or of legal age and reside in this trade area. The area was described as including Bailey county and all adjoining counties.

No purchase is necessary in

order to enter the contest, sponsors explained, and those taking part may register as many times as desired each week. One preliminary winner will be drawn each week at each participating store, and these winners from each store then will be placed in the final prize drawing that week. A new contest will start each week.

The Ramada weekend includes Luxury accommodations Friday and Saturday nights, the finest of food in the Ramada tradition, starting with breakfast Saturday morning through Sunday Dinner. Full use of the Ramada Inn's facilities such as swimming pool, private club, shuffleboard and playground area. Winning families to include both parents and up to three un-married children, transportation is not furnished.

Ramada Inn Roadside Hotels have been planned, designed, and constructed to provide a

nation-wide network of hotels offering the guest "Luxury for Less" accommodations with a maximum of comfort and convenience.

Contemporary with the needs of the great traveling population, Ramada is the pace-setter in the flourishing motor hotel industry, dedicated to commercial hospitality. Each Ramada Inn offers a combination of

(See CONTEST Page 4)

## Miss LaFon Wins Sorghum Title

Miss Lanell LaFon, 19, daughter of Mr. and Mrs. Rufus Gilbreath, Muleshoe, was crowned "Miss Grain Sorghum of the Nation for 1965" at ceremonies in Dimmitt last Friday night. She defeated 25 other area young women to win the coveted title which includes a \$500 scholarship.

The night before she had won the Bailey County Farm Bureau queen's contest, and last winter was named runner-up in the South Plains Maid of Cotton contest.

Miss LaFon was sponsored by the Muleshoe Chamber of Commerce, and for her talent number sang, "It's Almost Like Being in Love."

She will be a sophomore this year at Texas Tech.

## Football Practice To Start

Football is back in the air again.

Coaches have started their "skull" sessions. Junior is toughening his feet to give them "tolerance" to heavy gridiron footwear, and practice sessions blast off next Monday. Physical exams, too, are near at hand.

Muleshoe's six coaches began a series of around-the-table sessions in senior high library this week. Plays will be worked out—on paper—which the six big boys hope will work well on this year's playing fields in conference and non-conference games alike.

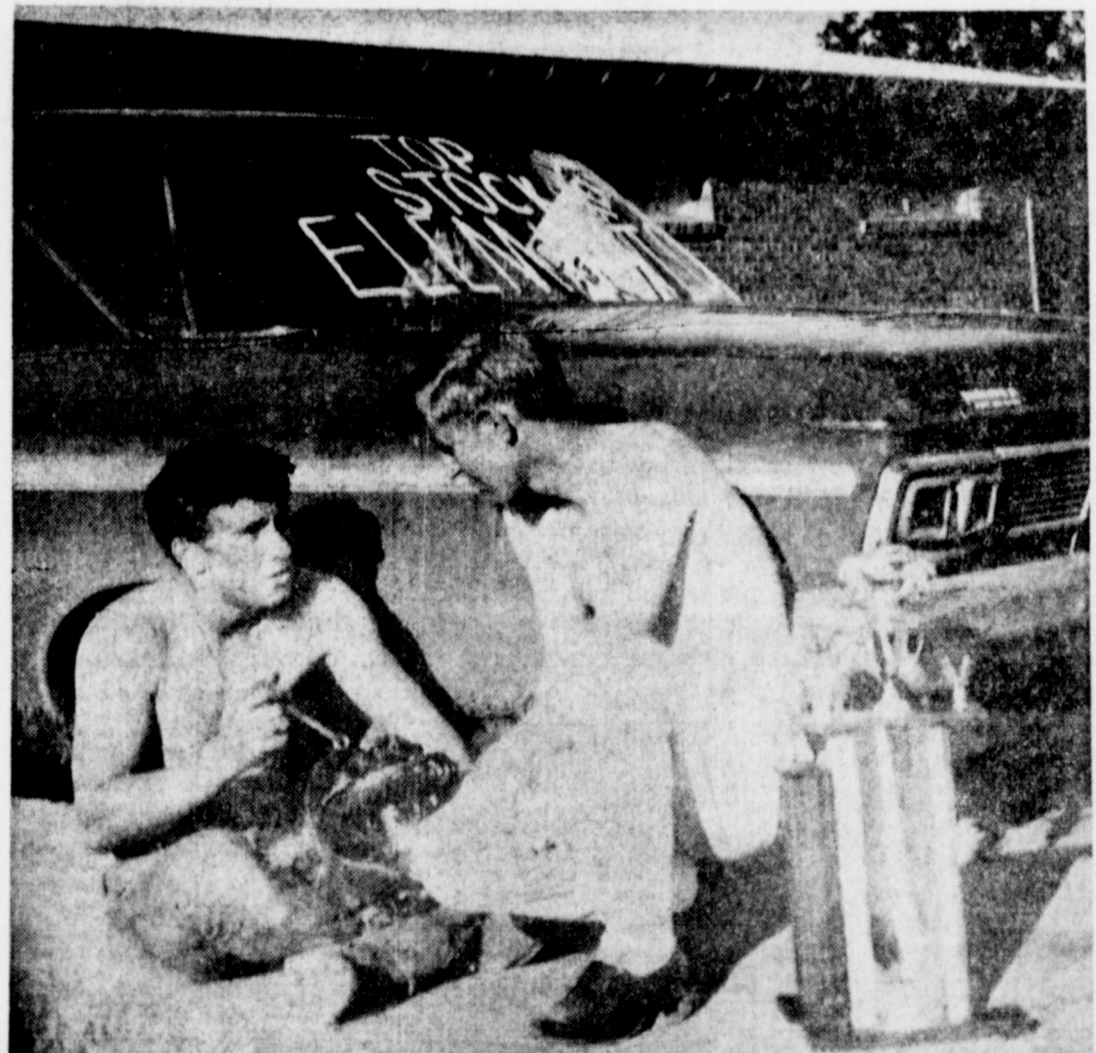
The shoes were issued Wednesday on a "no comment" basis, Head Coach Willie McAlpin said. By this he meant that the coaches are prohibited from giving any instruction; it's just up to Junior to trot around the playing field to toughen his summer-tender feet.

The blisters that the big shoes will make will have time to heal before down-to-earth workouts start.

Physical examinations for all boys who plan to turn out for

(See FOOTBALL Page 4)

Temperatures			
	High	Low	Rain
Aug. 8	95	62	
Aug. 9	93	60	.95
Aug. 10	89	63	
Aug. 11	90	59	
Sunrise Sunset			
Aug. 12	5:53	7:21	
Aug. 13	5:54	7:20	
Aug. 14	5:54	7:19	
Aug. 15	5:55	7:18	



SUPER HOT-RODDER — Nineteen-year-old Gary Smith, Muleshoe, (right) has been gathering a lot of stock car and hot rod trophies recently, the most recent "top stock eliminator" at Childress last Sunday. He already has won the National Hot Rod Association, division IV, regional title at Abilene. Here he's shown with one of his mechanics, Harold Bush, 18, Albuquerque, as they pour over the intricacies of a differential. Gary is the son of Mr. and Mrs. John Smith. (Journal Photo)

ing minimum wage provisions which would "price all labor right out of the farmers' reach."

Speaking on labor legislation was Ed Dean, labor relations representative of Plains Cotton Growers, who told of moves to boost minimum pay to \$1.70 per hour, "and this," he claimed, "would simply price the farmer out of business."

The move to repeal the right-to-work features of the Taft-Hartley bill were teamed "a simple movement to unionize the entire labor market, including farmers." The right-to-work provisions of the Taft-Hartley act (Section 14-B) provides that a worker does not have to belong to a union to work for any firm.

## Pending Omnibus Farm Bill Spells Doom, Experts Claim

Speakers at a public forum here Monday night painted a gloomy picture for West Texas future if cotton features of the pending omnibus farm bill are passed.

Land will be worth "practically nothing, farmers will have to pay unreasonable labor costs, and the entire economy of the area will decline," Roy B. Davis, manager of Plains Co-operative Oil Mill in Lubbock, told the 150 persons who attended the session.

The cotton bill, HR 9811, is due for floor consideration soon in Congress, and most experts say it stands a "more than likely chance" for passage.

Labor also came in for much discussion at the meeting, speakers pointing to the pend-

H. L. King, district fieldman for Farm Bureau, Brownfield, told of Farm Bureau's stand against both the farm bill and the repeal of right-to-work legislation. Moderator was Ed Wilkes, KFYO farm director, Lubbock.

The meeting was held in conjunction with a Plains Cotton Growers session when two directors from Bailey County were named.

Guy Nichols was named as business man director and Jenks Meyers was renamed as farmer director to the PCG board. Nichols succeeds Earl Richards who did not seek reelection.

The meeting was held in the senior high school auditorium.

## Muleshoe Eastern Star Formed In 1926 Continues To Prosper

Muleshoe Chapter No. 799, Order of the Eastern Star, was organized June 28, 1926, by Mrs. Adella Drew, Plainview, District Deputy Grand Matron of the Grand Chapter of Texas.

This ceremony was held in the meeting place upstairs in the building now occupied by the Corner Drug Store.

The Chapter was received, by the Chapter, Oct. 28, 1926 with the following members signing the Charter: Dora McCarty, Fannie Klump, Ruth White, Gladys Gupton, Pauline Aldridge, Pauline Waugh, A. V. McCartney, Fr. R. J. Klump, Taylor White, Connie D. Gupton, J. E. Aldridge, Treva Skeeters, Nellie D. Lawrence, Mabel Milligan, Truna Griffiths and Sybil March.

Mabel Milligan was the first Worthy Matron and R. J. Klump was the first Worthy Patron.

In those early days, there were just the bare necessities for holding chapter meetings, but the members were very enthusiastic and eager to progress.

ed for the price of \$150 and the music added much to the meetings. Various money-raising projects were promoted, by the Finance Committees and the meeting place was changed to the old high school building. Then a two-story building on Avenue D, just west of the Courthouse, was procured and the meetings were held there until 1946.

When the present Hall was built by the Masons in 1949, the chapter was moved to the new hall where the meetings are held at the present time.

July 5, 1938, the old piano was traded in on a new one. The new one cost \$300 and \$100 was allowed on the old one. That piano is still in use in the Ma-

sonic Hall. The schools of Instruction were held in Lubbock, Littlefield, and in Plainview. Lubbock and Littlefield, at that time, were part of this section. Each Worthy Matron made some contribution for improvement to the chapter and it continued to grow and prosper. Many of the members who served as Worthy Matron are still active in Muleshoe Chapter, and R. J. Klump served for 21 years as Worthy Patron was active in the chapter until the last two or three years when his health didn't permit him to attend.

Those serving as Worthy Matrons over the period of years are: Mabel Milligan, Rosa Stidham, Dora McCarty, Nina Elrod Barfield, Sibyl March, Bertie B. Taylor, Fannie Klump, Lora Mae Coker, Hattie Griffiths, Virginia Wyer, Stella Eason, Zula Carlyle, Mary DeShazo, Elizabeth Harden, Beulah Cartes, Mary Hart Childers, Elizabeth Gardner, Emma Dee Copley, Jackie Tate, Naomi St. Clair, Alcorn, Ruth McCarty, Melzine Elliott, Mary Frances Holt, Margaret Collins, Bettie Burkhead, Viola Layne, Ruby Cox, Billie Mathis, Lola Bray, Anna Lucy McAdams, Lou Freen, Callie Smith, Mildred Wingo, Ada Thomson, Mary Farley, Fewell Stron, Hazel Nowell, Luvonne Hinkson and the present Worthy Matron, Lois Norwood.

The Worthy Patrons, other than R. J. Klump were: J. B. Roberts, Ray Griffiths, Clyde Holt, J. E. Mills, W. F. Creamer, John Thomson, Tom Smith, Elbert Nowell, Frank Hinkson, and the present Worthy Patron, W. F. Creamer.

April 2, 1946, the Muleshoe Chapter voted to sponsor the Muleshoe Assembly Order of the Rainbow for Girls, and in June of that year the Assembly was organized, with Elizabeth Harden serving as the first Mother Advisor.

Many improvements have been made in the chapter room, the kitchen and banquet room of Masonic Hall, and each year the chapter birthday is observed with a shower of appropriate gifts.

Lois Norwood is the present Worthy Matron and Buck Creamer is the Worthy Patron. The chapter will be having their annual friendship night on Aug. 31.



CETA CANYON — Bound from the First Methodist Church and surrounding churches left for a week's camping at Ceta Canyon Monday. The group is shown

here at the First Methodist Church at departure time. The juniors will arrive back in Muleshoe Friday at approximately 3 p.m.

### ★ ★ ★ Juniors Camping At Ceta Canyon

Sixteen Juniors left the First Methodist Church here Monday at 12 o'clock enroute to Ceta Canyon to attend a week's church encampment. Counselors are Mrs. J. Frank Peery, Kathy Moore and Leasel Richardson.

Juniors making the trip from the First Methodist Church and surrounding churches are Janice Head, Beverly Ewins, Judy Newman, Frank Ellis Jr., Rusty Peery, Mark Edwards, David McVicker, Martha Jane Chapman, Charlotte Wedel, Mark Dillman, Jack Allison, Rickey Daniels, Steven Black, Dana Cockrell, Patsy Murray and Debra Parks. Parents who took cars to camp were Mrs. Ben Cockrell, Mrs. Horace Edwards, Mrs. Neal Dillman and Mrs. James Daniels. Mrs. Lindal Murray, Mrs. Eugene Black, Mrs. Harold Allison and Leasel Richardson are to bring the campers back to Muleshoe Friday. They are to depart from Ceta Canyon Friday at 11:45 a.m. and arrive in Muleshoe at 12 o'clock.

### BOOKMOBILE SCHEDULE

Wednesday, Aug. 11	
Whiteface	9:40 — 10:40
Lehman	11:05 — 11:30
Bledsoe	12:00 — 1:00
Maple	2:15 — 3:00
Goodland	3:15 — 4:00
Thursday, Aug. 12	
West Camp	9:00 — 10:00
Lariat	10:30 — 11:30
Bovina	1:00 — 4:00
Friday, Aug. 13	
Lums Chapel	10:00 — 10:45
Spade	12:00 — 1:30
Hart Camp	1:45 — 2:30
Littlefield	2:45 — 3:30
Saturday, Aug. 14	
Olton	9:15 — 11:45
Littlefield	1:15 — 4:00

### Martha Martinez, Mr. Trevino Exchange Vows

Guadalupe Trevino and Martha Martinez were married and received the Holy Sacrament of Matrimony Sunday in the Immaculate Conception B. V.

Mary Catholic Chapel here with Roel Trevino and Oralia Rodriguez as the official witnesses.

Freddy Farias, Carlos Reyes and Andrew Ybarra were the altar servers. More than 100 persons attended the wedding.

### CONWELLS HAVE SON

Mr. and Mrs. Gene Conwell, Canyon, former Muleshoe residents, are the parents of a son born July 31 and named Jonathan Paul. The seven-pound, 12 ounce boy has three sisters and two brothers.



Paul McClung

### ★ ★ ★ County Reunion Held In Lubbock

### Church Of Christ Plans Meeting

Muleshoe Church of Christ has announced its annual gospel meeting for Aug. 16 to Aug. 22 with Paul McClung, evangelist, as the speaker. The announcement was made by the minister, D. L. Thompson. Services will be held each day at 10 a.m. and at 7:30 p.m., and a special youth night has been set for Thursday evening when Mr. McClung will speak on "If I Were Young." He extended an invitation to all area young people to attend this special service. Mr. McClung, widely known as an evangelist, is minister of the Faith Village Church of Christ in Wichita Falls.

The 16th annual Comanche County Reunion will be held in Mackenzie State Park in Lubbock Aug. 22. A basket lunch will be served at 12:30 followed by singing in the afternoon. The event is to be attended by all Comanche County residents and ex's according to John Scitern.

SHOP MULESHOE FIRST

### CO-OP Chatter by FARMERS CO-OPERATIVE ELEVATOR



**FARMERS CO-OPERATIVE Elevator**  
FERTILIZER • GRAIN • SEED  
H. L. WARD, Manager  
MULESHOE, TEXAS  
Phone 5350 6660

## Meet the MULESHOE STATE BANK CUSTOMER of the Week



Mrs. J.E. Burch

Mrs. J.E. Burch, saleslady for Anthony's is our customer of the week. The Burches live at 223 Ave. I. They have two sons: Ronald of Alamogordo & Darrel, Muleshoe. Mr. and Mrs. Burch attend the First Baptist Church. They have banked with the Muleshoe State Bank since moving here two years ago. Mrs. Burch said "I think this bank is really nice. We have enjoyed doing our banking here." We are proud to recognize this customer of the week.

**Muleshoe State Bank**  
"YOUR GOOD NEIGHBOR SINCE 1914"

## Coming August 15th



# REDDY'S TOTAL ELECTRIC HOME FAIR

Don't miss it! A week-long show of total electric homes in cities served by Reddy Kilowatt. You'll see the latest in good home building, including modern electric comfort heating, and, of course, total electric kitchens. Best of all you'll be able to register for prizes from electric charcoal lighters to big electric ranges. The only requirements are that you be 18 years of age or married and live in the area served by Southwestern Public Service Company. Watch this paper for full information.

See this home in Muleshoe at 327 W. Ave. J. Built by Pool & Stockard.



### People, Spots In The News

**COMIN' IN!** Paratroopers of 173rd Airborne ready to land from bustling helicopters north of Bien Hoa airbase in South Vietnam.



**MANY-HATTED** bat boy at Williams College tries on four helmets at once.



**'MEASLES'** is code name for electronic parts Bendix Corporation is rushing for new Boeing 707 and 720 jets.



**INTERESTING PART** of this picture (the original caption implied) is that the four Las Vegas beauties made their own Bikinis, with needle 'n' thread! But, of course, not too much thread.

## It's Moving Time For State Offices

By Vera Sauford  
Texas Press Association

**AUSTIN** — State offices are playing a game of musical chairs.

Better make note of these departmental moves that have just taken place, are now being made or will be completed this month:

Teacher Retirement System of Texas has moved from the fourth floor of the Sam Houston State Office Building, formerly State Office Building No. 1, to the third floor of the Lowich Building.

Texas' new Coordinating Board of Higher Education soon will occupy the entire sixth floor of the Sam Houston State Office Building.

Parks Division of the Texas Parks & Wildlife Department moves out of the Sam Houston Building — into the newly acquired American Legion Building — to make room for the Board of Higher Education.

State Building Commission will move from the Reagan State Office Building (State Office Building No. 2) into the west wing of the Sam Houston Building.

Texas Tourist Development Agency, now in the Sam Houston Building, will move into offices in the Reagan Building vacated by the Building Commission.

State Water Commission will move from the American Legion Building into the east wing of the Sam Houston Building.

**AG OPINIONS** — Atty. Gen. Waggoner Carr reached these conclusions in official rulings:

City employees installing rest rooms must be paid the prevailing wage rate.

Board of Pardons and Paroles has no authority to recommend, and the governor no power to grant, a posthumous full pardon to a deceased convicted felon on application of a relative or other interested party.

An act authorizing Grayson County Commissioners Court to appoint a juvenile officer and assistant is unconstitutional as a "local and special" law.

State employees can collect \$12 a day travel allowance if staying at regular public lodgings, but only \$7 if they stay on military installations or at educational or eleemosynary institutions.

**APPOINTMENTS** — Governor Connally has named Judge James Ellis of Lubbock's County Court at Law as judge of the

new 137th District Court in Lubbock County.

Lt. Governor Preston Smith appointed to the interim committee on state and local tax policy Sens. Galloway Calhoun Jr. of Tyler, David Ratliff of Stamford and Jack Strong of Longview. On the committee for restoration of the flag of Santa Anna, he placed Sens. Dorsey B. Hardeman of San Angelo and Charles Herring of Austin.

House Speaker Ben Barnes selected five public - at - large members of a committee to study the problem of salt pollution of underground and surface water of inland areas and recommend legislation that's needed. They are former Congressman Joe Kilgore of Austin, former Smith County Judge Harry Loftis of Tyler, Charles P. McGaha of Wichita Falls, Runnels County Judge W. H. Rappy and former Atty. Gen. John Ben Shepperd of Odessa.

Barnes named Reps. G. F. Mutscher of Brenham; and Maurice S. Pipkin of Brownsville to the Legislative Budget Board. Reps. W. S. Healy of Paducah and Ben Atwell of Dalhart automatically are budget board members since they are chairmen of appropriations and revenue and taxation committees of the House.

Earlier Barnes picked a committee composed of Reps. Roger Thurmond Jr. of Del Rio, Bill Rapp of Raymondville, John E. Blaine of El Paso, Dick McKissack of Dallas and Jack McLaughlin of Fort Worth to study the Texas liquor control act.

**PROJECTS OKAYED** — Three more Community Action programs and four additional Neighborhood Youth Corps applications have been approved by Governor Connally.

Community Action projects in Houston, San Antonio and Mercedes carry federal grants totaling more than \$2,000,000.

NYC grants of \$155,040 will permit employment of 393 students in Luling, Anderson County, San Jacinto County and Trinity County.

**CHEMICAL PLANT AT DIBOLL** — Borden Chemical Company has purchased a 100-acre site at Diboll on which to construct a synthetic resins plant. Governor Connally announced.

An initial \$1 million expenditure is contemplated. Company reportedly will market resins cations as plywood and particle board adhesives and foundry core binders.

Selection of Diboll for the new plant site attests to the growth of and prospects for the southern pine plywood industry in

Texas, said Connally.

**CANAL DILEMMA** — Joe Moore has a \$400,000 problem and, so far, no solution.

Moore, a member of Gov. John Connally's staff, is trying to find a way to allow Texas to live up to its commitment made by Gov. Allen Shivers exactly 10 year ago.

In August 1955, Governor Shivers gave the state's endorsement to a proposal for the widening and deepening of the Intracoastal Waterway from the mouth of the Sabine River to just south of the Brazoria County line across West Bay.

He assured the U. S. Army Corps of Engineers that local sponsors would meet the cost of the right-of-way so that the canal could be widened to 140 feet from 125 feet.

"All that was needed to keep the project going in 1955 was the state's commitment," Moore said. "There was no need to produce the right-of-way money then. But there is now, if we're not going to lose the project. The state has at least a moral commitment to aid in getting local sponsors."

Although no firm figures are available, Moore believes acquisition of right-of-way for the project through Jefferson, Chambers and Galveston Counties would cost about \$400,000. The federal government's cost of widening and deepening the waterway is expected to be in excess of \$6,000,000.

Completion of the project would open the channel to Mississippi River barges.

**TRAIN LAKES** — Changing times were reflected in three recent actions of the Texas Water Commission.

Actions amend West Texas Water permits at the request of the Gulf, Colorado and Santa Fe Railway.

Company built three lakes years ago—in Nolan, Lampasas and Mills Counties—so that their steam - boiler engines would have water supplies.

Permission to use the lakes for recreational purposes now has been granted, since today nearly all engines are diesel and don't need water.

Nolan County's lake also will provide irrigation water for the Sweetwater Country Club.

**SHORT SNORTS** Texas Railroad Commission has ordered its staff to devise tests for oil fields over the state similar to those used in East Texas.

Texas Parks and Wildlife Department will send hunting and fishing licenses to 2,500 dealers earlier this year to avoid the usual last-minute scramble.

Detailed hunting and fishing regulations for key areas now are available from the Parks and Wildlife Department.

Texas Railroad Commission is hearing opponents of an application to approve lower interstate rates on mixed shipments of interstate and intrastate products. Truck lines oppose the practice long followed by railroads.

Cigarette tax receipts increased \$280,118 in July over the same month in 1964, but liquor stamp sales dropped off \$108,182 and wine stamp receipts declined \$53,458, according to Comptroller Robert S. Calvert.

Charles H. Huff of Austin is the new executive secretary of the Texas Veterinary Medical Association.

State Auditor reports that as of August 31 last year the University of Texas system held investments worth nearly \$463,000,000.

Fourteen Texas cities have filed applications to participate in the Texas Aid Airport Program, which will have \$200,000 to spend during the coming fiscal year. They include Brownwood, Caldwell, Clarksville, Comanche, El Campo, Floydada, Gatesville, Hallettsville, Hearne, Jacksboro, Lampasas, Paducah, Pineland and Post.

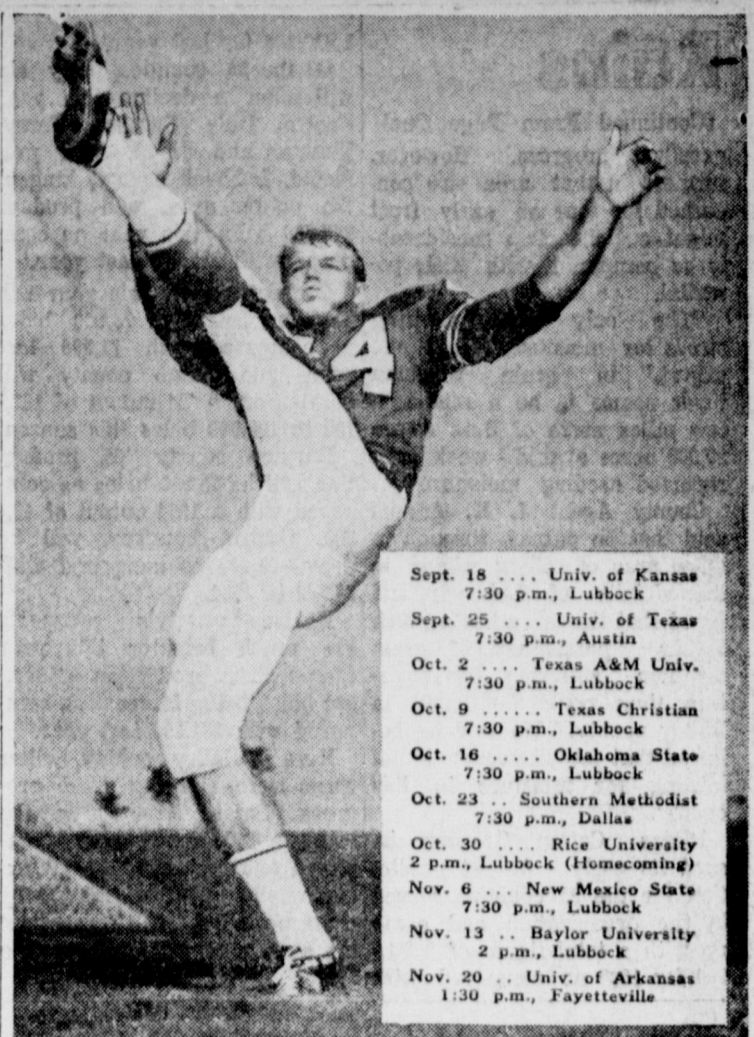
Attorney General Carr says his office will sponsor a series of 14 regional seminars over the state to acquaint law officers with the new Texas Code of Criminal Procedure and recent US Supreme Court decisions pertaining to criminal laws.

Governor Connally tentatively is planning to go to Japan on October 20 with a group of Governors participating in an exchange program sponsored by the Japanese government and the US State Department. A Viet Nam side trip still is uncertain.

Texas League of Women Voters has issued the first of two Guides that will be published relative to this year's Constitutional Amendments.

Indications are that more than the initially predicted 1.6-00 youths will participate in the Attorney General's Youth Conference on Crime to be held in Austin on August 19-22.

Texas draft boards will be inducting a "considerable number" of 19-year-olds by fall, if draft calls remain high, according to Col. Morris S. Schwartz, state Selective Service director. Amended September quota for Texas is 1,459 men; estimated October call, 1,780. This compares with recent monthly quotas of 700 to 900. Schwartz said that mostly 21-year-olds will be called in August.



**ALL-AMERICA DONNY ANDERSON** and his Red Raider teammates face one of Texas Tech's toughest schedules this fall. Seven of the foes will be met in the Raiders' Jones Stadium.

Sept. 18	Univ. of Kansas	7:30 p.m., Lubbock
Sept. 25	Univ. of Texas	7:30 p.m., Austin
Oct. 2	Texas A&M Univ.	7:30 p.m., Lubbock
Oct. 9	Texas Christian	7:30 p.m., Lubbock
Oct. 16	Oklahoma State	7:30 p.m., Lubbock
Oct. 23	Southern Methodist	7:30 p.m., Dallas
Oct. 30	Rice University	2 p.m., Lubbock (Homecoming)
Nov. 6	New Mexico State	7:30 p.m., Lubbock
Nov. 13	Baylor University	2 p.m., Lubbock
Nov. 20	Univ. of Arkansas	1:30 p.m., Fayetteville

Business outlook is bright for the last half of 1965, according to UT's Bureau of Business Research. On the basis of reports from 20 cities, the Bureau found business activity 13 per cent better for the first six months this year than January-June, 1964, and saw "nothing to dim prospects of continued prosperity" for the rest of 1965.

Paricutin, a volcano about 200 miles west of Mexico City, first appeared in a cornfield in February 1943. Within six days it was 500 feet high and by 19-61 it had risen 2,120 feet.

The first record of a shoemaker in America can be traced back to 1692. The first shoemaker's name was Thomas Baird, of Beard. He arrived in Salem, Mass., in 1629, and was engaged by the Massachusetts Bay Company to make shoes for the colonists.

The total retail sales value of domestically consumed photographic goods in West Germany amounts to approximately \$250 million each year.

**FAT OVERWEIGHT**  
Available to you without a doctor's prescription... our product called Galaxon. You must lose ugly fat or your money back. Galaxon is a tablet and easily swallowed. Get rid of excess fat and... live longer... Galaxon costs \$3.00 and is sold on this guarantee: if not satisfied for any reason, just return the package to your druggist and get your full money... back. No questions asked. Galaxon is sold with this guarantee by:

**WESTERN DRUG STORE**  
Mail Order Filled  
Muleshoe

**99% OF THE COOKING AT THE WORLD'S FAIR IS PROVIDED BY GAS**

Pioneer Natural Gas Company

### The Sandhills Philosopher



Editor's note: The Sandhills Philosopher on his Johnson grass farm reports on a dream he claims he had. May have been something he ate.

Dear editor:  
I don't dream very often, mainly because I don't go to sleep at night with any big unsolved problems on my mind, which I manage by not thinking up any during the day time, but the other night I had a dream.

According to it, President Lyndon Johnson woke up one morning in the White House, bounced out of bed eager for the day's work, and then discovered there wasn't a single piece of legislation left for him to get passed.

"What?" he demanded of an assistant. "You mean to say there's not anything left to pass? Not even any minor legislation? Not one teeny one?"

"No sir, Mr. President, there's nothing left, Medicare, Civil Rights, Voting Rights, Income Tax Cut, Aid to Elementary Schools, the Housing Bill, War on Poverty, Higher Education Bill, Foreign Aid, Cigarette

**KILL ATHLETE'S FOOT GERM**  
One application of T-4-L stops itch and burning in MINUTES or your 48¢ back. In 3 to 5 days, infected skin sloughs off to expose more germs for the kill. Then watch HEALTHY skin appear! TODAY at

**DAMRON DRUG**

Smoking, the Drug Bill, the Gold Reserve Bill, Presidential Succession, The Transportation Bill, the Agricultural Bill, the Immigration Bill, the Space Exploration Bill, the Flood Control Bill, the Highway Bill, the Urban Renewal Bill... there's just absolutely nothing left.

"Of course," another assistant put in, "we've still got foreign affairs to work on."

"Oh, I know that," the President cut in, "that's my main job, but what I want to know is what am I going to do for recreation? A man can't spend all his waking hours on foreign affairs; he's got to have some domestic legislation to get his mind off his work."

About that time a bi-partisan delegation of Congressmen and Senators came in and they were restless too.

"Look," their spokesman said, "something's got to be done, Mr. President. Here we had enough legislation stacked up for what we figured was a lifetime of work, and here it is not even Labor Day and we're out of bills already."

"I've got an idea," a Presidential advisor spoke up, but about that time my dog barked and I woke up and I have no notion what the idea was. I believe though somebody will

think of something.  
Yours faithfully,  
J. A.



When they build their real homes, we'll be here to help them with home loans. If you need a home loan now, talk it over with us today. We are home loan specialists.

**First Federal Savings & Loan**  
Clovis, N.M. Home Office  
Portales, N.M. Branch Office  
4th & Pile  
2nd & Abilene  
MEMBER OF THE SAVINGS AND LOAN FOUNDATION  
SPONSOR OF THIS ADVERTISEMENT IN LOOK MAGAZINE

**WE ARE NOW OPEN FOR BUSINESS**

"YOU CAN'T BEAT OUR SERVICE"  
WASH & GREASE LUBRICATION  
WE FIX FLATS

**WATCH FOR OUR FORMAL OPENING**

**TEXACO STATION**  
RICHLAND HILLS  
TOMMY BUSH, MGR.  
CLOVIS HWY. MULESHOE PH. 8560

worth your wait in

**GO TO IT!**

**Chevrolet Impala Sport Coupe.**

You couldn't pick a better time than now to buy a Chevrolet! Plenty of beautiful driving weather ahead, and your Chevrolet dealer is making allowances for your old car that are even more beautiful. Come drive a great deal.

**Chevrolet Corvair Monza Sport Coupe.**

**Chevrolet Chevelle Malibu Sport Coupe.**

Now's the time to get a No. 1 buy on the No. 1 cars.

**CHEVROLET**

**CROW CHEVROLET COMPANY**

201 MAIN MULESHOE PH 3-1000

# Rains

(Continued From Page One)  
 excellent progress. However, farmers in that area are concerned for fear an early frost might cut the crop considerably as compared with their potential.  
 "The only area showing stress for moisture," said one expert, "in grain sorghum fields seems to be a region a few miles north of Bula where 26,000 acres at mid-week were reported needing moisture."  
 County Agent J. K. Adams said that he passed through a large area of rolling plains in the vicinity of Lubbock and found that that area has a much higher "percentage of grain sorghum suffering for moisture than could be found in Bailey county." He said he believed that feed, however, is not hurting for moisture in this county.  
 Plains Cotton Growers issued its early August prediction for the 23 counties served by the organization and came up with a total figure of 2,061,000 for 1965 as compared with

1,913,100 for last year.  
 Of the 23 counties, only six will show a decline this year. Castro, Hale, Swisher, Terry, Yoakum and Floyd, PCG predicted. Lubbock county, king of the cotton area, will produce 248,000 bales this year as compared with 235,900 last year.  
 Cochran county this year will have an output of 75,000 bales as compared with 71,300 last year, and Lamb county will climb from a '64 output of 181,100 to 190,000 bales this season.  
 Parmer county '65 production will be 55,000 bales as compared with a 1964 output of 49,300. Castro, however, will be down—65,000 as compared with 77,700 in 1964.  
 Hockley county's prospects are much brighter this year than last, a production of 177,000 bales being forecast as compared with 154,500 last year.  
 Here in Bailey county, other crops were showing good progress. Potato harvest on the county's 270 acres was completed and yields, while not exceptionally high, were aided by a strong price trend throughout the season, running above the \$7-per-cwt. mark.

Cucumber harvest has started at two farms having considerable acreage in cucumbers, the Jimmy Wedel farm and the Myron Pool III farm, both in the West Camp area.  
 Although some areas are showing some midge damage in grain sorghum, the insect has caused little damage so far in this county.  
 One expert who made a tour of the southern regions of the county said there was no midge damage. He also reported very little worry from cotton boll worm. Even though fleahopper numbers have built up in some fields, he did not feel that the infestation was high, adding, "farmers are being smart in putting off any spray program until boll worms are here in sufficient numbers to warrant control."

# Muleshoe

(Continued From Page One)  
 and Mr. and Mrs. L. O. Norwood returned Monday after spending a few days fishing at Lake Ute, Logan, N. M.

Mr. and Mrs. Bill Johnson, Cheryl, Donnie and Jamey, spent the weekend in Ute Lake enjoying swimming, boating and skiing.

Mr. and Mrs. Ray Martin spent Sunday with Mr. and Mrs. Tom Smith and children near Logan, N. M.

Mr. and Mrs. Bill Caldwell are the parents of a new daughter, Kelley Suzanne. The little girl was born last Thursday in Beowawe, Nevada. She weighed five pounds, nine ounces. The Caldwell's are former Muleshoe residents now living in Sheridan, Wyo.

Vickie Clay is spending the summer with her grandmother Mrs. S. C. Caldwell. Vickie is from Pocatello, Idaho. Vickie, Renee and Kay Caldwell have just returned from a two-week visit at Camp Blue Haven in Las Vegas, N. M.

Mrs. John Furr and Mrs. S. C. Caldwell have been visiting with relatives at Andrews, Pecos, Hamlin, Peacock, Post and Slaton

# LATE WANT ADS

FOR SALE: One good boat and motor with reverse. \$100 and motor for \$40. 1518 West Ave. B or call 7842. 11-321-tf

FOR RENT: Furnished apt., 3 rooms and bath. See Mrs. Jack Lenderson or call 3-0380. 5-321-tf

2 bedroom house for rent or sale. Mrs. Humiston, call 965-2601. 4-321-tf

Take soil away the Blue Lustray way from carpets and upholstery. Rent electric shampooer \$1. Higginbotham-Bartlett. 15-321-tf

FOR SALE: 3 bedroom brick medallion, bath and 3/4, fenced and patio, 602 Chicago St. Phone 3-3950. 8-321-tf

FOR SALE: Riding tractor, 7/4 hp or 10 hp. Call Lonnie Merriott Day 3-5110 after 7 p.m. 3-4854. 11-321-tf

FOR SALE: 1961 No. 55 John Deere Combine. Real clean can finance. Call 3-1890 after 7 p.m. 10-321-tf

# NOTICE TO BIDDERS

THE STATE OF TEXAS, COUNTY OF BAILEY. NOTICE IS HEREBY GIVEN that the Commissioners' Court of Bailey County, Texas will receive sealed bids until 11:00 o'clock A. M. on the 2nd day of September, A. D., 1965, at the

last few days.

Mr. and Mrs. Alex Little, Decatur, spent last week with their children the Jack Littles, Mr. and Mrs. Ed Little and boys and Mr. and Mrs. Walter Sam and children.

Dr. and Mrs. George Chambers and family were visiting with friends last week. The Chambers, from Mt. Pleasant, are former Muleshoe residents.

# Football

(Continued From Page One)  
 football are to be given next Sunday at 2 p.m. in the Mule Barn, and a physician will be on hand to give the tests for free. Players who failed to show up for the Sunday afternoon exams must take their physicals at their own expense. Either way, UIC rules demand that all players have physicals before they can participate for the season.  
 First "full - padded" workouts are to start next Monday and will be held daily from 8 a. m. until 10 a. m. and from 6 p. m. two days a week.  
 First game for the Mules will be Sept. 3 when they meet Dimmitt here to blast off a 10-game season. The Mules have two open dates.

# Contest

(Continued From Page One)  
 luxurious atmosphere and convenient location designed to meet the needs of the most discriminating travelers, whether on business, vacation, or convention.  
 A standardized quality of fine service is maintained throughout the chain, assuring the guest that wherever he finds the sign of the Ramada Friendly Innkeeper he will be offered complete hotel service by hospitable management.  
 You may win a "Ramada Week-end" by simply registering at any of the participating business firms. A new week-end is given away each week, so be sure to register each week. You may register at as many business firms as you please as often as you visit them.  
 Area Ramada Inns are participating in the contest. Winners are required to notify the Journals the date they expect to spend their "weekend at the Ramada Inn." This notice should be given at least two weeks in advance of the time they would like to go.

# Precinct No. 3

One (1) new tandem drive diesel powered motor grader with not less than a 115 horsepower motor to be equipped with a cab, heater, defroster, windshield wipers, lights, 14 foot hydraulic sideshift mould-board and 1300 x 24 tires front and rear.

AS PART PAYMENT Bailey County offers to trade - in: one (1) of the following described motor graders:

A. One (1) used 1946 model 99-H, Austin-Western motor grader;

B. One (1) used 1954 model 99-M, Austin-Western motor grader;

C. One (1) used 1956 model 99-L, Austin-Western motor grader.

The balance of the purchase of the above mentioned road machinery and equipment will be paid for in cash out of the Bailey County Precinct No. 3, Road and Bridge Fund.

All of the said machinery and equipment to be delivered properly serviced in Bailey County.

# Pickets

(Continued From Page One)  
 project, a \$200,000 building program which includes a new cafeteria, five new classrooms, offices and storage rooms.  
 "We are making good progress on the entire building program," McDonald summed up.  
 Meantime, reports that two Negro men, driving a Cadillac bearing Dallas county tags, were in the Lazbuddie community last week, making inquiries of farmers on wage and living conditions.  
 Several farmers reported that the two had stopped at their homes and had made inquiries.  
 One farmer said that the "questions asked dealt mostly with wages we are paying." He said the Negroes made no comments when told of wages being paid, and he added that they were "polite and very quiet-spoken."  
 If they were trying to determine whether Negro farm help is being used in the area, the farmers questioned were unaware of it.

# Salaries

(Continued From Page One)  
 year to \$908,306.  
 But the "unencumbered fund balances" cannot be figured until after the audit. These include such things as state and county available fund, local maintenance fund, transportation fund, interest and sinking fund and the building fund. Until these items are known, the total revenue figure cannot be determined.  
 Assessed valuation is expected to be \$26,400,000. A tax rate of \$1.85 has been set.

Twice a day a figure of the Pied Piper, half life-size, marches onto a platform below the face of the new town clock in Hamelin, Germany. He is followed by a procession of rats, then by children. The new clock is a reproduction of one destroyed in World War II.

A cashier's or certified check, issued by a Texas Bank, payable without recourse to the order of Glen Williams, County Judge of Bailey County, Texas, in the amount of five (5 percent) per cent of the amount of the bid must accompany each bid as a guarantee that if awarded the contract the bidder will promptly enter into contract and execute bonds in the amount and the form required by law.

The Court reserves the right to reject any or all bids.  
 Signed: Glen Williams  
 Glen Williams, County Judge  
 Bailey County, Texas.  
 321-21tc

# SHOP MULESHOE FIRST

**IN THIS WORLD**  
 HUMAN EXPERIENCE IS THE STEWARD OF KNOWLEDGE...  
 IT'S A RARE PERSON, INDEED, WHO DOES NOT RECOGNIZE THE STIMULANT OF THE UNADULTERATED TASTE OF THEIR FAVORITE SOUP AS IT FLOWS FROM AN ICE-COLD SPARKLING BOTTLE...  
 MAN AS THE STEWARD OF THE GOOD THINGS OF LIFE, MUST FIRST RESPECT THEM IF HE IS TO ENJOY THEM... FOR EXAMPLE, DO LITTLE THINGS LIKE PLACING THE EMPTY CONTAINERS, BOTTLES AND WRAPPERS IN PROPER DISPOSAL BASKETS AT PICNIC GROUNDS, PARKS, BEACHES AND AROUND HIS HOME.

**Salaries**  
 (Continued From Page One)  
 year to \$908,306.  
 But the "unencumbered fund balances" cannot be figured until after the audit. These include such things as state and county available fund, local maintenance fund, transportation fund, interest and sinking fund and the building fund. Until these items are known, the total revenue figure cannot be determined.  
 Assessed valuation is expected to be \$26,400,000. A tax rate of \$1.85 has been set.  
 Twice a day a figure of the Pied Piper, half life-size, marches onto a platform below the face of the new town clock in Hamelin, Germany. He is followed by a procession of rats, then by children. The new clock is a reproduction of one destroyed in World War II.

**AMALIE**  
 100% Pure Pennsylvania Motor Oil  
 Your service station man will stock AMALIE for you... Just ask him.  
**Wiedebush & Childers**  
 Pioneer Natural Gas Company

**SPECIAL ENROLLMENT FOR SENIOR CITIZENS NEW MEDICAL-CARE PLAN**  
 NOW AVAILABLE TO MULESHOE TRADE AREA RESIDENTS ENDS AUGUST 17, 1965  
 This is an insurance program made up of more than one policy. All or any part of this program may be obtained.

TEXAS MODERN MIRACLE OFFER	POLICY FORM RATE*
1. Hospital Room Up to \$20.00 per day	C 55 (No Age Limit) \$1.46 per Month*
2. Surgery ..... Up to \$1100.00	HA22 (Age Limit 95) \$3.67 per Month*
3. Some Misc. Expenses ..... No Limit	HA33 (Age Limit 95) \$3.35 per Month*
4. Doctor Calls Up to \$6.00 per visit	HA44 (Age Limit 95) \$4.76 per Month*
5. Accidental Death Benefits \$1000.00	
6. Nurse Care ..... Up to \$600.00	

Ask for Plan HA 33-11-22 For Above Benefits

This enrollment is only handled thru your answer and not by any Local Agent.

**IMPORTANT FEATURES**

1. No Age Limit
2. No Medical Exam
3. No Waiting Period on C 55
4. Life Time Protection
5. No Limit on number of times You Can Collect on Policy
6. World-Wide Coverage
7. Pays in Addition to Other Insurance

BE FULLY COVERED HOSPITAL BILLS HAVE GONE UP

The Plans Underwritten by **INTERNATIONAL AMERICAN LIFE INS. CO.**  
 Home Office — Fort Worth, Texas

No Obligation — Cut Out Coupon and Mail Today To:

**International American Life Insurance Co.**  
 Post Office Box 5544  
 Amarillo, Texas 79107

Your present Age ..... Number in Family ..... Please see that I receive complete free information about the Medical Care Plan I read about in the Muleshoe Journal

Name .....  
 Address .....  
 City ..... Occupation .....

**JOB PRINTING**  
**COMMERCIAL PRINTING**  
**Social PRINTING**

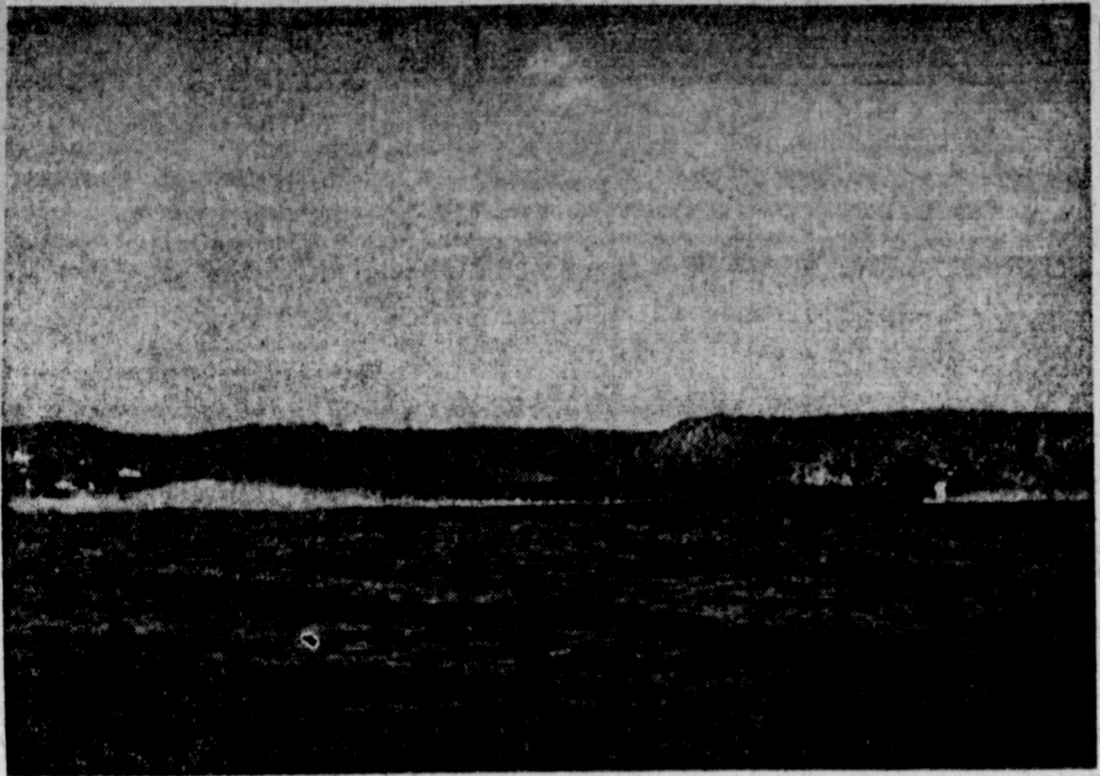
**EVERY JOB WELCOME**

**NO JOB IS TOO LARGE OR TOO SMALL**

**LET US PUT OUR PRESSES TO WORK FOR YOU!**

**MULESHOE PUBLISHING CO.**  
 304 W. 2ND PHONE 2350

**Yattata, yattata, yattata**... have you heard? You'll find **BEAUTY SALONS** fast in the **YELLOW PAGES**. Where your fingers do the walking.



WEEKEND AT UTE — If you wonder where your neighbor was last Sunday probably he was up at Ute lake near Logan, N.M., one of the newest big lakes in this area. The lake, which dams up the Canadian, has risen several feet

during the last few days, making skiing and boating exceptionally appealing. Here are two scenes on the big lake which now stretches back in a "Y" up the Canadian river and Ute creek. (Journal Photos)

### Home Fair Features Home In Muleshoe

Muleshoe will be one of 12 homes which will be on display cities in the service area of the throughout the electric company's service area and visitors to the Muleshoe home will have an opportunity to register for "Reddy's Total Electric Home Fair" during the week of August 15 to 22.

The total electric home which will be Muleshoe's contribution to the Fair will be located at 327 West Ave. J. It was built by Pool-Stockard Construction.

The home will be open to visitors from 2 p.m. until 6 p.m. on weekends and from 6 p.m. until 8 p.m. on weekdays during the Total Electric Home Fair.

One hundred-one prizes are being offered to visitors to the

placed under cover to serve as a study or office. The home has one and three-quarter baths and a double garage.

The heating and cooling are done by a baseboard electric heating system and refrigerated air conditioning. Electric water heating is also a feature of the home. Special lighting effects are found over the fireplace and the breakfast bar.

The modern kitchen has a built-in electric range and oven, a dishwasher and food waste disposer.

Representatives of the builder and of the electric company will be available during the show hours to assist visitors in their tours of the home.

The first U. S. offensive land action of WWII was accomplished when the Marines landed at Guadalcanal on August 7, 1942.

### Midsummer Fruits and Vegetables

CALIFORNIA, EXTRA FANCY, VINE-RIPE <b>TOMATOES</b> <b>15¢</b> LB.	FRESH, FIRM GREEN <b>LETTUCE</b> <b>25¢</b> 2 LARGE HEADS
California, Green Pascal <b>CELERY HEARTS, Each</b> ..... 29c	California, Fresh for Your Salad <b>LEAF LETTUCE</b> ..... 2 Bunches 25c
Fresh Home Grown <b>YELLOW SQUASH, Pound</b> ..... 9c	California, Extra Fancy, Yellow-Ripe <b>PEARS, Pound</b> ..... 19c



THESE PRICES GOOD IN MULESHOE AUGUST 12, 13, 14, 1965

<b>EGGS</b> Ideal, Grade A, Medium Dozen	<b>39c</b>
<b>FLOUR</b> Sunlight Fully Guaranteed 10 Lb. Bag	<b>69c</b>

**DR. PEPPER** OR 7-UP King Size 6 Bottle Ctn ..... **29¢**

**SALAD DRESSING** Suzan Quart Jar ..... **29¢**

**CRACKERS** Pride Salted 1 Lb. Box ..... **19¢**

FROZEN FOODS

TIP TOP, Plain or Pink  
**LEMONADE**  
**12 6 Oz Cans \$1**

Seabrook, Cut or French 9 Oz Pkg  
**Green Beans 2 For 49c**

Minute Maid 6 Oz Can  
**Orange Juice 3 For 79c**

Minute Maid 12 Oz. Cans  
**Orange Juice 49c**

NON FOOD SPECIALS

AQUA NET, Reg. \$1.49  
**HAIR SPRAY**  
**49c**  
14 Oz. Can

Bayer, Reg. 79c 100 Ct. Btl.  
**Asprin 62c**

Johnson & Johnson, Plain or Merc., Reg. 65c  
**Bandaid 55c**

Pacquin, Dry or Reg., 12c off Large Size  
**Hand Cream 79c**

Marshall, Golden Cream Style <b>CORN</b> No. 303 Cans	<b>8 For \$1.00</b>
Rosedale <b>PEAS</b> No. 303 Cans	<b>6 For \$1.00</b>
Texsun <b>TOMATO JUICE</b> 46 Oz. Cans	<b>4 For \$1</b>
Santa Rosa <b>Pineapple Juice</b> 46 Oz. Cans	<b>3 For \$1</b>
Van Camp <b>TUNA</b> 1/2 Cans	<b>5 For \$1.00</b>
Campfire in Tomato Sauce <b>Pork &amp; Beans</b> No. 2 1/2 Cans	<b>5 For \$1</b>
Hunt's, Halves or Slices <b>PEACHES</b> No. 2 1/2 Cans	<b>3 For 87c</b>
Santa Rosa <b>TOMATOES</b> No. 300 Cans	<b>7 For \$1</b>

**NOW AVAILABLE RE-PRINTS OF NEWS PICTURES**

FROM OUR NEGATIVES APPEARING IN THE BAILEY COUNTY OR MULESHOE JOURNAL

DUE TO A NEW PROCESS, WE CAN NOW MAKE DUPLICATES AVAILABLE TO THE PUBLIC

<b>5 X 7</b>	<b>90c</b>
<b>8 X 10</b>	<b>\$1.50</b>

**MULESHOE PUBLISHING CO.**

304 W. 2ND PHONE 2350



### QUALITY MEATS FROM PIGGLY WIGGLY

U.S.D.A. Grade A, Whole Gold Nugget <b>Fryers</b> POUND	<b>29c</b>
U.S.D.A. Choice, Aged, Heavy Beef, Valu-Trimmed <b>Round Steak</b> POUND	<b>89c</b>
Lean 100 per cent All Beef, Dated to Assure Freshness <b>Ground Beef</b> 3 Pounds	<b>\$1.00</b>
U.S.D.A. Choice, Aged, Heavy Beef, Valu-Trimmed <b>Family Steak</b> Pound	<b>59c</b>
Town & Country, Family Pack <b>Fryer Breast</b> 2 Pound Pkg.	<b>\$1.09</b>
Sliced Rath's Black Hawk <b>Sliced Bacon</b> Pound	<b>79c</b>

Lowest Prices . . . Greatest Variety . . . always at . . .

**Piggly Wiggly**

# SHOP MULESHOE FIRST

## Television Schedule For Muleshoe Area

☐ Indicates Color Programs

**KING BROS.**  
GRAIN & SEED CO.  
Complete ELEVATOR SERVICE AND SEED PROCESSING FOR The Muleshoe Area.

**FIRST NATIONAL BANK MULESHOE**  
**4%** ON 12-MONTH CERTIFICATES OF DEPOSIT  
**3%** ON SAVINGS COMPOUNDED QUARTERLY  
**FINANCE YOUR CAR WITH US! PERSONAL LOANS**

**LUMBER PAINT**

Hardware  
**Chas. L. Lenay**

**LUMBER COMPANY**  
202 E. Ash

**KGNC-TV (4)**  
Amarillo  
Muleshoe Cable 4  
Mon. thru Fri.  
Daytime Viewing  
7:00 - Today Show  
8:00 - Today Show  
9:00 - T or C  
9:30 - C-What's this  
9:55 - News  
10:00 - Concentration  
10:30 - C-Jeopardy  
11:00 - Bluff  
11:30 - I'll Bet  
11:55 - NBC News  
12:00 - News  
12:10 - Weather  
12:20 - Ruth Brent  
12:30 - Make A Deal  
12:55 - NBC News  
1:00 - Truth  
1:30 - The Doctors  
2:00 - Another Wor  
2:30 - C-Don't Say  
3:00 - Match Game  
3:25 - NBC News  
3:30 - Sheriff Bill  
5:30 - Hunt-Brink.  
6:00 - News  
Thursday Evening  
6:15 - Weather  
6:25 - Sports  
6:30 - D. Boone  
7:30 - Dr. Kildaire  
8:30 - C-Tazel  
9:00 - Kraft  
10:00 - News  
10:15 - Weather  
10:25 - Sports  
10:30 - C-Tonight  
Friday Evening  
6:15 - Weather  
6:25 - Sports  
6:30 - Showtime  
7:30 - Bob Hope  
8:30 - Jack Benny  
9:00 - Beauty  
10:00 - News  
10:15 - Weather  
10:25 - Sports  
10:30 - C-Tonight Sh  
12:00 - Sign Off  
Saturday Viewing  
7:00 - Roy Rog.  
8:00 - Top Cat  
8:30 - Hector H.  
9:00 - Underdog  
9:30 - Fireball, XL-5  
10:00 - Dennis Menat  
10:30 - Fury  
11:00 - Rod Rocket  
11:30 - Space Angel  
12:00 - Cotton John  
12:30 - Movie  
2:00 - Mack & My  
2:15 - Movie  
4:00 - Superman  
4:30 - Movie  
6:00 - News  
6:15 - Weather  
6:25 - Sports  
6:30 - Flipper  
7:00 - Kent Jones  
7:30 - America  
8:00 - Movie  
10:15 - News  
10:30 - Weather  
10:40 - Sports  
10:45 - Movie  
12:45 - Sign Off  
Sunday Viewing  
7:30 - Dixie  
8:30 - Cotton John  
9:00 - U. S. Navy  
9:30 - Movie  
11:00 - Church  
12:00 - Superman  
12:30 - Hullabaloo  
1:30 - Football  
4:30 - Diamond  
5:00 - Cloak  
6:00 - News  
6:15 - Weather  
6:25 - Sports  
6:30 - W. Disney  
7:30 - Buckskin  
8:00 - Bonanza  
9:00 - The Rogues  
10:00 - News  
10:15 - Weather  
10:25 - Sports  
10:30 - Director's  
11:30 - Sign Off

**KVII-TV (7)**  
Amarillo  
Muleshoe Cable 5  
Mon Thru Fri  
Daytime Viewing  
7:27 - Sign on  
7:30 - Mod. Ed.  
8:00 - Movie  
9:30 - Exercise  
10:00 - Ray Milland  
10:30 - Price Right  
11:00 - Donna  
11:30 - Father  
12:00 - Texas News  
12:15 - Weather  
12:22 - Market  
12:30 - Rebus  
1:00 - Action  
1:30 - A Time  
1:55 - Women's Net  
2:00 - Gen. Hosp.  
2:30 - Young Mar.  
3:00 - Trailmaster  
4:00 - Wells Fargo  
4:30 - Challenge  
5:00 - Leave Beav.  
5:30 - Rifleman  
6:00 - News  
6:10 - Weather  
6:15 - News  
Thursday Evening  
6:30 - John Quest  
7:00 - Donna Reed  
7:30 - My 3 Sons  
8:00 - Bewitched  
8:30 - Peyton Plac  
9:00 - Jimmy D.  
10:00 - Local News  
10:15 - Weather  
10:20 - Movie  
Friday Evening  
6:30 - Flintstones  
7:00 - Wells Fargo  
8:00 - Addams  
8:30 - Valentine  
9:00 - P. Place  
9:30 - 12-High  
10:00 - News  
10:15 - Weather  
10:20 - Movie  
Saturday Viewing  
8:27 - Sign On  
8:30 - Market  
9:00 - College  
9:30 - Church  
10:00 - Casper  
10:30 - Porky Pig  
11:00 - Bugs Bunny  
11:30 - Hoppity  
12:00 - Baseball  
3:00 - Golf  
4:30 - Bandstand  
5:30 - B. Picture  
6:00 - Church  
6:30 - King Family  
7:30 - Lawrence Wel  
8:30 - H. Palace  
9:30 - Bob Young  
9:45 - Preview  
Sunday Viewing  
7:30 - N. V. Peak  
8:00 - Herat of iru  
8:30 - Oral Roberts  
9:00 - Church  
9:30 - Christophers  
10:00 - Beany  
10:30 - Bullwinkle  
11:00 - Church  
12:00 - Sea Hunt  
12:30 - Dory Funk  
1:00 - Movie  
2:00 - Golf  
4:00 - Hoppity  
4:30 - Ray Milland  
5:00 - Wrestling  
6:00 - FDR  
6:30 - Wagontrain  
7:30 - Broadside  
8:00 - Movie  
10:00 - News  
10:15 - Weather  
10:20 - Movie

**KFDA-TV (10)**  
Amarillo  
Muleshoe Cable 6  
Mon. thru Fri.  
Daytime Viewing  
6:25 - Sign On  
6:27 - Meditation  
6:30 - Public  
7:00 - Farm News  
7:20 - News  
7:30 - Tri Report  
8:00 - Capt. Kang.  
9:00 - CBS News  
9:30 - I Love Lucy  
10:00 - Andy  
10:30 - McCoy  
11:00 - Love of Life  
11:25 - CBS News  
11:30 - Search T.  
11:45 - Guiding Ligt  
12:00 - News  
12:10 - Weather  
12:20 - Farm & Ra  
12:30 - The World T  
1:00 - Passport  
1:30 - Art Linkette  
2:00 - To Tell Tru  
2:25 - CBS News  
2:30 - Edge of Nigt  
3:00 - Match Gam  
3:25 - Afternoon Rep  
3:30 - Bus  
4:00 - Father Knows  
4:30 - Ranger  
5:00 - H. Hound  
5:30 - Hunt-Brink.  
6:00 - News  
6:15 - Weather  
Thursday Evening  
6:30 - Munsters  
7:00 - Perry M.  
8:00 - Movie  
10:00 - News  
10:15 - Weather  
10:25 - Editorial  
10:30 - Movie  
10:55 - News  
11:00 - Big Flicker  
Friday Evening  
6:30 - Rawhide  
7:30 - Cara W.  
8:00 - Our World  
8:30 - Vacation  
9:00 - Slattery  
10:00 - News  
10:15 - Weather  
10:25 - Background  
10:30 - Movie  
10:55 - News  
11:00 - Movie  
Saturday Viewing  
6:45 - Cartoon Tim  
7:00 - Mr. Mayor  
8:00 - Alvin Show  
8:30 - Tenn. Tux.  
9:00 - Quick Draw  
9:30 - Mighty Mous  
10:00 - Lion Hearted  
10:30 - Jetsons  
11:00 - Sky King  
11:45 - Baseball  
2:30 - Movie  
5:00 - Wilburn B.  
5:30 - Porter Wagon  
6:00 - News  
6:20 - Weather  
6:30 - Al Hirt  
7:30 - Gilligan  
8:00 - Secret  
9:00 - Gunsmoke  
10:00 - News  
10:15 - Weather  
10:25 - Sports  
10:30 - Movie  
11:45 - News  
11:50 - Movie  
Sunday Viewing  
8:00 - Fisher Family  
8:30 - Church Serv.  
9:30 - Gospel  
10:30 - Religious  
11:00 - Baseball  
1:30 - Movie  
3:30 - Teen Talk  
4:00 - Zoo - A - Ra  
4:30 - Amateur  
5:00 - 20th Cen.  
5:30 - News  
5:45 - Weather  
6:00 - Lassie  
6:30 - Martian  
7:00 - Ed Sullivan  
8:00 - Twilight  
9:00 - Candid Came  
9:30 - W. My Line  
10:00 - News  
10:15 - Weather  
10:25 - Movie  
10:55 - News  
11:00 - Movie

**KLDB-TV (11)**  
Lubbock  
Muleshoe Cable 2  
Mon. thru Fri.  
Daytime Viewing  
7:30 - Headlines  
7:05 - Farm Report  
7:25 - Weather  
7:30 - Today  
8:25 - News Report  
8:30 - Today  
9:00 - Kartoons  
9:30 - What's Song  
9:55 - Morning Re.  
10:00 - Concentrat  
10:30 - C-Jeopardy  
11:06 - Bluff  
11:30 - I'll Bet  
12:00 - N and W.  
12:15 - Com. Closeup  
12:30 - Let's Deal  
12:55 - News  
1:00 - Truth  
1:30 - Doctors  
2:00 - Another Wor  
2:30 - C-Don't Say  
3:00 - Match Gam  
3:25 - Afternoon Rep  
3:30 - Bus  
4:00 - Father Knows  
4:30 - Ranger  
5:00 - H. Hound  
5:30 - Hunt-Brink.  
6:00 - News  
Thursday Evening  
6:30 - D. Boone  
7:30 - Dr. Kildare  
9:00 - Kraft The.  
10:00 - News  
10:30 - Tonight  
Friday Evening  
6:30 - Lawrence W.  
7:30 - Bob Hope  
8:30 - J. Benny  
9:00 - Beauty  
9:00 - News  
10:30 - C-Tonight  
Saturday Viewing  
7:30 - Movie  
8:30 - Hector He.  
9:00 - Underdog (C  
9:30 - Fireball XL-5  
10:00 - Dennis Menat  
10:30 - Fury  
11:00 - Top Cat  
11:30 - Cartoons  
11:45 - Sports  
2:30 - Ramar  
3:45 - Zombies  
4:45 - Sportsman  
5:00 - Shndig  
6:00 - News  
6:30 - Flipper  
7:00 - Kentucky J.  
8:00 - Movie  
10:00 - News  
10:30 - Movie

**KLBB-TV (13)**  
Lubbock  
Muleshoe Cable 3  
Mon. thru Fri.  
Daytime Viewing  
6:25 - Sign on  
6:30 - Sum. Ser  
7:50 - Farm  
7:20 - News  
7:30 - King Odie  
8:00 - Capt. Kangar  
9:00 - Donna  
9:30 - I Love Lucy  
10:00 - Andy  
10:30 - McCoy  
11:00 - Love of Life  
11:25 - CBS News  
11:30 - Search  
11:45 - Guiding  
12:00 - WTTN News  
12:10 - Names in N  
12:20 - Farm  
12:25 - Weather  
12:30 - World Turns  
1:00 - Passport  
1:30 - Houseparty  
2:00 - Gen. Hos.  
2:30 - Edge of Nigt  
3:00 - Secret Storm  
3:30 - Y. Marrieds  
4:00 - Trailmaster  
5:00 - Action  
5:30 - News  
Thursday Evening  
6:00 - Weather  
6:10 - News  
6:20 - News  
6:30 - Munsters  
7:00 - Donna Reed  
7:30 - My 3 Sons  
8:00 - Bewitched  
8:30 - Tea  
9:00 - Combat  
10:00 - News & Weat  
10:30 - Movie  
Friday Evening  
6:00 - Weather  
6:10 - News  
6:20 - News  
6:30 - Rawhide  
7:30 - Addams  
8:00 - Our World  
8:30 - Playhouse  
9:00 - Burke  
10:00 - News  
10:30 - Movie  
Saturday Viewing  
6:20 - Sign On  
6:30 - Summer Sem  
7:00 - Bugs  
7:30 - Porky  
8:00 - Alvin Show  
8:30 - Ten. Tuxedo  
9:00 - Quick Draw  
9:30 - Mighty Mouse  
10:00 - Casper  
10:30 - Jetsons  
11:00 - Sky King  
11:30 - Baseball  
2:30 - Feature  
3:00 - Bandstand  
4:00 - Wrestling  
5:00 - Wilburn Bro  
5:30 - Pickin Time  
6:00 - Porter Wagon  
6:30 - Al Hirt  
7:30 - P. Mason  
8:30 - Peyton  
9:00 - Gunsmoke  
10:00 - N. & W.  
10:15 - Movie  
12:00 - Movie  
1:30 - Sign Off  
Sunday Viewing  
6:55 - Sign On  
7:00 - Bullwinkle  
7:30 - Sgt. Preston  
8:00 - Linus  
8:30 - Adventures  
9:00 - Herald  
9:30 - This is Life  
10:00 - Cutting  
10:30 - Church  
10:45 - Baptist  
11:45 - T. Topics  
12:00 - Football  
2:30 - Golf  
4:00 - Amos & And  
4:30 - Amateur  
5:00 - 20th Cen.  
5:30 - Flintstones  
6:00 - Lassie  
6:30 - Martian  
7:00 - Ed Sullivan  
8:00 - Movie  
10:00 - News  
10:30 - Late Show  
12:00 - Sign Off

**Higginbotham Bartlett Building Needs**  
Lumber Paint Wallpaper Hardware Houseware Gifts  
**Higginbotham Bartlett MULESHOE**  
**Abel Cable**

For Year-Long Enjoyment  
**INSTALL NOW**  
Three Plans for Hook-Up  
**Muleshoe Antenna Co.**  
Call Now  
107 East Third  
Phone 3-3100  
**ALSUP CLEANERS**  
Offer These FINE SERVICES  
1. Drive-In Window Service for your convenience in cold weather.  
2. Re-sizing of cottons to finer texture for that like-new look.  
3. Alterations of all kinds of men's, women's and children's clothing  
4. A personal touch for your clothing by people who care how you look.  
**THAT'S ALSUP CLEANERS**  
Phone 3-0760

### Tech Slating 7 Home Games; Opener Sept. 18

LUBBOCK — Texas Tech, for the first time since 1938, will play seven home football games this season.  
Coach J. T. King could be pardoned for hoping that's an omen, for in 1938 Texas Tech enjoyed its only undefeated football season and wound up in the Cotton Bowl.  
But a glance at the schedule shows that the Red Raiders will have to call on more than hope to come out on the plus side of the ledger, not to mention the almost-unprecedented perfect season.  
University of Kansas, a Big Eight power, coached by former Tech assistant Jack Mitchell, could spoil things right off the bat. The Jayhawks open the season in a 7:30 p.m. contest at Jones Stadium Sept. 18.  
Following a visit to Austin for Southwest Conference favorite Sept. 25, the Raiders favorite three home contests in a row—Texas A&M Oct. 2, Texas Christian Oct. 9, and Oklahoma State, another Big Eight foe Oct. 16. All are at night.  
Southern Methodist will be played at Dallas before the Raiders conclude their home stand with another trio of games—with Rice Oct. 30, New Mexico State Nov. 6, and Baylor Nov. 13. Rice, homecoming, will be in the afternoon, at 2 p.m., as will Baylor.  
To finish the season, the Raiders run up against University of Arkansas at the Razorbacks' homecoming, in a regionally televised game Nov. 20.  
Season tickets for Texas Tech's seven home games may be purchased from the Athletic Department for \$35, \$38.50, \$42, and \$49. Mail orders should include a 50-cent mailing fee. Individual game tickets cost \$5, \$5.50, \$6 and \$7. Orders for individual games are being accepted now but will not be filled until September, to give priority to season ticket purchasers.  
The porpoise, or bottle-nosed dolphin (*Tursiops truncatus*), is surprisingly human-like. It is the subject of intensive research.



KING FOR A DAY!

**In Our Time**  
THE OLD FREIGHT TRAIN YOU USED TO WATCH SNAKING AROUND A CURVE HAS VANISHED...  
NOW, A HOST OF SPECIAL NEW CARS MADE POSSIBLE BY MODERN STEELS HAS BROUGHT THE RAILROADS BOTH A NEW LOOK AND NEW CUSTOMERS...  
LONGER AND BETTER STEEL TANK CARS, REFRIGERATION CARS, EXTRA LONG FLATCARS AND TRI-LEVEL CARRIERS TO HAUL AUTOS.  
EVEN THE OLD BOX CAR HAS CHANGED. NOW THEY'RE MADE BIGGER BUT PROPORTIONATELY LIGHTER WITH HIGH-STRENGTH STEELS THAT HAVE HELPED BOOST PAYLOADS AND RAILROAD EFFICIENCY.

**SEE THEM AT THE MINNEAPOLIS-MOLINE TRADIN' FAIR**  
It's that Dealin' Season again! Come on in to our TRADIN' FAIR. We've got Bargains you can't afford to pass up in our complete line of MM equipment. Be sure to see the new GRAND CHAMPION M-670 tractor -- a blue ribbon winner in the six-plow class. Set a date to test drive it on your farm. This Big M-670 is a new force in power farming, designed to give you "MORE HOURS OF POWER... MORE YEARS OF WORK". Come in soon! We can offer you a fair trade for your old equipment on a new line of MM implements and on the new M-670 tractors. We can arrange financing for you.  
VISIT the BIG MM "TRADIN' FAIR" NOW  
At  
**FRY & COX INC.**  
Your Friendly & Complete One Stop Farm Supply  
401 S. First Phone 3-3660

For All Your Needs — CALL ON YOUR — Phone 3-1060  
**WALGREEN AGENCY** Veterinary  
**WESTERN DRUG** Cosmetics

# BUY and SELL BUSINESS LEADS WANT BETTER JOBS ADS LOST and FOUND REAL ESTATE

## WANT ADS -- PHONE 2350

Time per word — 4c 3 times per word ..... 10c  
 2 times per word — 7c 4 times per word ..... 13c  
 After 1st issue, 3c per word each additional time.  
 Minimum charge 50c  
 Card of Thanks \$1.00  
**ADLINE FOR CLASSIFIED ADVERTISING PAGE:**  
 For Thursday's Issue: Monday, 12 Noon  
 For Sunday's Issue: Thursday, 12 Noon  
**TO LATE TO CLASSIFY**  
 Thursday Issue — Tuesday 5 P. M.  
 Sunday Issue — Friday 3 p.m.  
 Double Rate for Blind Ads.

### Personals

**LUZIER'S COSMETICS**  
 Free Demonstration  
 Satisfaction Guaranteed  
**MRS. E. E. HOLLAND**  
 n. Off. 3-2930 • Res. 3-2930  
 121 American Blvd.  
 1-49s-tfc

Interested in making  
 and buying first and second  
 lien notes secured with  
 m and ranch lands. J. J.  
 ele, Citizens Bank Building,  
 vis, N. M. Dial 763-4471 or  
 -6455.  
 1-31s-tfc

Golden Guernsey milk deliv-  
 7. Mon., Wed., and Fri. 80  
 its a gal. Cattle are TB and  
 ng tested. R. H. White, Star  
 ute, Sudan, Texas.  
 1-32s-4tp

Look!! We need someone IN  
 OUR AREA to assume very  
 nall payments on fine SPIN-  
 T PIANO. NO DOWN PAY-  
 ment. Write Credit Manager,  
 chroeder Piano Co., Inc., 1436  
 ., McDowell, Phoenix, Ariz.  
 1-32t-2tp

### LOST & FOUND

LOST: Hydraulic Cylinder for  
 B. Moline between 3 miles  
 est of Lazbuddie and 11 miles  
 west of Dimmitt. Finder call  
 -2551 Muleshoe, 415 West 6th.  
 . R. Watson.  
 2-32s-tfc

### Help Wanted

WANTED — Experienced beauti-  
 cian. Full or part time. Call  
 3-4480.  
 3-49s-tfc

WANTED — Farm Laborer. Will  
 pay \$1.25 per hour for first 40  
 hours per week, and this is  
 guaranteed, and \$1.25 per hour  
 for each hour over 40 hours  
 per week, plus housing, utilities,  
 transportation from hands  
 house to field, and on the job  
 insurance. C. A. Horsley, 306  
 E. 3rd. Muleshoe, Tex.  
 3-31s-4tp

### Houses for Rent

Two bedroom house for rent  
 Call 3-0380 or see Mrs. Jack  
 Lenderson.  
 4-15s-tfc

FOR RENT: One bedroom  
 house with utility and carpeted.  
 \$50 per month. Call 5730 day,  
 night 964-2488.  
 4-31s-tfc

FOR RENT: 3 room house  
 furnished, air conditioned.  
 Layne Apartments, Phone 49-  
 60.  
 4-31t-tfc

For Rent: 3 bedroom, brick  
 house. Call 3-3190 before 5  
 o'clock.  
 4-32t-tfc

### 5. Apts. for Rent

FOR RENT: Two bedroom  
 apartment, carpeted, draped,  
 built - ins. Phone 3-4969 or 3-33-  
 50.  
 5-28s-tfc

For Rent: 4 room furnished  
 apartment. Can be seen at 1412  
 West Ave. C. Phone 4630.  
 5-32t-3tc

FOR RENT: 3 room furnis-  
 ed apartment, trailer space.  
 323 West Ave. E. Phone 8120.  
 5-31s-tfc

FOR RENT: 3 room furnis-  
 ed apt. For adults only. 319  
 West Ave. E.  
 5-29s-tfc

FOR RENT: 3 room and  
 bath furnished apt. See Sam  
 Johnson at Sam's Auto.  
 5-31t-tfc

Briscoe Trailer Park and  
 Apartments, Large or Small,  
 furnished or unfurnished. Call  
 -4650 .  
 5-31t-tfc

### 6. Rooms for Rent

Bedroom for rent — See Ida  
 Tapp. Last house north of  
 Calvert's grocery 6-4s-tfc

A nice quiet bedroom for  
 rent. Rosie McKillip, 410 W.  
 2nd.  
 6-32s-tfc

### 8. Real Estate for Sale

FOR SALE: 2 bedroom, Lenua  
 addition Call 3-4300 or 3-3472  
 for appointment. 8-16t-tfc

Wanted low cost lots, phone  
 3-1910 or 5881. 8-31s-tfc

**McGe-Dutton Real Estate**  
 Farms - Ranches -  
 Motels - Trades.  
 like new 3 bedroom home  
 will take good truck for  
 down payment.  
 Insurance, Life or Hospital.  
 Farm Loans, the best.  
 Give us your listing,  
 and see us for all your  
 Real Estate needs, please  
 Office 3-4080  
 A. J. Dutton . . . . 4419  
 J. A. McGee . . . . 3-4690  
 8-14t-tfc

**HOUSES FOR SALE**  
 Redi-Built or  
**BRICK, 3-BEDROOMS,**  
**2-BATHS, 90-FT. LOT**  
**APARTMENTS FOR RENT**  
 Licensed Plumber for  
 all your needs  
**CALL—**  
**BILLY MORRISON**  
 Ph. 4850 or 3-2130

FOR SALE  
 —3 bedroom, 2 bath, car-  
 pet, fence, woodburning  
 fireplace, central heat and  
 refrigerated air, complete  
 electric kitchen, choice lo-  
 cation. \$28,500.  
 —3 bedroom, 2 bath, brick  
 2 - car garage, woodburning  
 fireplace, small down  
 payment, would trade \$21-  
 500.  
 —New 3 bedroom, 2 baths,  
 fireplace, 2 - car garage,  
 central heat and air condi-  
 tioned, easy terms, \$18,500.  
 —3 bedrooms, 2 baths, car-  
 pet, 2 - car garage, Brick,  
 Richland Hills Addition  
 Small down payment will  
 trade, \$17,500.  
 Call 3-4960 or 3-3350  
 8-24t-tfc

### NEW HOMES

**100% Financing**  
 1 - 2 - 3 Bedrooms Built  
 on your lot - or - acreage,  
 or Farm, anywhere - or.  
 We will buy you a lot.  
 Prices \$3500 - \$8,000 Pay-  
 ments— \$48.55 - 89.00 Mo.  
 Ph. 3-1910  
**KREBBS REAL ESTATE**  
**COMPANY**  
 Res. Ph. 5881 or 8420  
 8-26s-tfc

FOR SALE: Three bedroom  
 house, new carpet, and in ex-  
 cellent condition. Convenient to  
 all schools. A small down pay-  
 ment moves you in. Phone 4520.  
 8-27t-tfc

FOR SALE — 128 A irrigated  
 farm in Bailey County, nice  
 house, good allotments, \$500 A.  
 \$20,000 down. Rent goes to Aug.  
 15. Your listing appreciated.  
 Cross Real Estate  
 Phone 5790  
 511 South First  
 8-32s-2tc

FOR SALE: New 3 bedroom  
 brick home. Call 3-4300 or 3-3472  
 8-16t-tfc

FOR SALE—2 bedroom car-  
 peted house. See Joe Smith be-  
 hind Calvert's Grocery.  
 8-32s-2tp

We would appreciate your  
 listings, to buy or sale farm,  
 ranch, or city property. Have  
 buyer for small place near  
 Muleshoe or Friona. 2 Demp-  
 ster Drills ready to go with  
 hitch. A. L. Carlton Real -  
 Estate, Friona. Call Day 247-  
 2770, night call 247-2266.  
 8-31t-tfc

FOR SALE: 43 acres 15 - cot-  
 ton, 14 grain, 10 permanent  
 grass, 8 - in. well, sprinkler  
 system, New Domestic well,  
 New 1,950 sq. ft. Home with  
 central heat, and air condi-  
 tioning, built - in appl., 2 bath,  
 carpet, Barn and storage shed,  
 4 miles out on Plainview Hwy.  
 and ½ mi. north from Muleshoe  
 intersection.  
 8-27s-tfc

—Beautiful 3 bedroom home  
 in Richland Hills.  
 —3 Br. bath and ¾ Medallion  
 home in Lenua Addition.  
 —320 Acres with 75 acres cot-  
 ton 2 wells, \$325 per acre.  
 —160 Acres good improve-  
 ments, 8" well good terms.  
 Ranches — Large and small  
 well located.  
 Eddie Lane Real Estate  
 P. O. Drawer 610  
 Phone 4390 — Res. 3-5741  
 8-28t-tfc

### 10. Farm Equip for sale

**NEW 1965**  
**GMC PICKUP**  
**DELIVERED \$1749.00**  
**LADD PONTIAC**  
 Muleshoe, Tex. Ph. 3-3080  
 10-34t-tfc

### FOR SALE

1.H. Combine Corn  
 Head .... \$250.00  
 68 New Holland  
 Baler .... \$600.00  
 Cline Land Leveler  
 \$375.00  
 13' Hoeme \$200.00  
 13' Schafer Tandem  
 \$225.00  
 3 Bottom J.D. Spinner  
 \$475.00  
 3 Pt. J.D. Rotary Hoe  
 \$85.00  
 2 Row Ford Cultivator  
 \$125.00  
 M.M. Rubber Tire  
 Cultivator \$85.00  
 2" Irrigation Tubes  
 65c  
 Servis Shredder .. \$200.00

### NORWOOD USED IMPLEMENTS

1026 South Main  
 Muleshoe Ph 3-3213  
 10-31T-TFC

### QUITTING BUSINESS

Hesston 500 ft. Swather with  
 conditioner, Massey-Ferguson  
 swather, canvas type, 12 ft.  
 New Holland 271 hay liner baler  
 with engine, W. D. 45 Allis-  
 Chalmers tractor all equipment  
 in top shape. Ready to work.  
 Contact Henry Humphreys, Air  
 Post Motel, Phone 3-3431.  
 Plainview  
 10-32s-tfc

### 11. For Sale or Trade

**ENGINES FOR SALE**  
**ONE BIG SIX CHRYSLER**  
**ONE V8 CHRYSLER**  
**COMPLETE AND READY**  
**TO GO \$350.00 EACH**  
**ONE - 261 - CHEVROLET**  
**HOMER MILLSAP**  
**MOTORS**  
**PLAINVIEW HIGHWAY**  
**MULESHOE, TEXAS**  
 11-30s-tfc

### TO SELL FARM

THURSDAY, AUGUST 12  
 Mr. and Mrs. Harry Mitchell  
 will sell their farm at auction  
 Thursday at 1:00 p.m. The  
 farm is 1 mile west of hwy. 84  
 to farm road 1760 then 4 miles  
 west, 2 miles south of Mule-  
 shoe. All under irrigation, has  
 125 acres growing alfalfa.  
 11-32t-tfc

### 12. Household Goods

FOR SALE: Electric Range.  
 Like new. Priced right. Call 3-  
 1249 after 5 p.m.  
 12-31t-tfc

### 17. Seed & Feed

FOR SALE: Early Sumac Lane  
 Seed. Phone 965-2675, Morris Mc-  
 Killip.  
 17-22s-tfc

FOR SALE — Hay. Call 965-  
 2140 or contact Weldon Slayton,  
 6 miles north Muleshoe.  
 17-30t-tfc

### —SPECIAL—

Steak fingers \$.85  
 Salad and French fries  
 Rich, Thick  
**MALT or SHAKE**  
 30c  
**BILL'S DRIVE IN**  
 Phone 7250  
 19th and Clovis Road

### The Dominican Republic occupies the eastern two-thirds of the mountainous green island of Hispaniola.

## Guard Cannoneers Send a Big One Whistling on Way to Target



For Army Guard artillerymen, the rewards of training occur when the firing battery goes into action during Annual Field Training. Weekends during the year, gun crews run through steps of the drill until each man is letter-perfect in his assignment. Meanwhile, other Army Guard redlegs sharpen communications, target plotting and fire-direction control talents, so that when a battery moves out to the range, every man understands exactly what is expected of him. It takes a 12-man crew to aim, load and pull the lanyard on this giant eight-inch howitzer, which can fire a 200-pound high explosive projectile nine miles. In wartime operations this artillery "old soldier" can be armed with a nuclear warhead. This is one of several weapons in the current arsenal, which gives the Army National Guard combat forces a nuclear capability.

## West Texan Sheds A Bitter Tear For New York's 'Drouth' Victims

Editor's Note: A West Texas rancher from Mertzon looked over the window-box farming situation in Gotham and decided to write a letter to the West Texas Livestock Weekly, shedding a few tears for the plight of the New York "farmers." Here is his letter.

By Monte Noelke  
 MERTZON — Days have passed while I've been making

### 15. Miscellaneous

DO YOU  
 HAVE ROACHES !!  
 CALL 3-3050 or 3-9040  
 Akin Exterminating Co.  
 Home Owned & Operated  
 15-32t-tfc

Good Merchandise  
 Buena Mercancia  
 Economat Main Street  
 Mayur Calle  
 Muleshoe, Texas - 79347  
 15-27t-tfc

### YARD SERVICE

Plowing, Leveling, Seeding  
 Satisfaction guaranteed or  
 your money back. Call Lonnie  
 Merriott, Day 3-5110 after 7 p.  
 m. 3-4854.  
 15-19t-tfc

Do you have roaches? Call  
 3-5050 or 3-9040. Akin Extermi-  
 nating Co. Home owned and  
 operated.  
 15-29t-tfc

Attention Farmers & Ranch-  
 ers, use building materials at  
 old Muleshoe School. Salesman  
 at site.  
 15-28t-10tp

Ask for information on  
 Retirement Income, Family  
 Income, Educational  
 Plans, Mortgage Cancellation,  
 Life, Hospitalization and  
 Funeral Ins. Contact—  
 C. D. GILBERT 1714 Ave.  
 F., Muleshoe, Phone 5023.  
 15-28s-26tp-s

Repossessed late model  
 Singer Sewing Machine in 5 -  
 drawer walnut cabinet; will  
 zig - zag; blind hem, embroider  
 patterns. \$27.50 cash or 6  
 payments at \$5.05. Must have  
 good credit. Write Credit De-  
 partment, 1114 19th St. Lub-  
 bock, Texas.  
 15-28t-tfc

### 17. Seed & Feed

FOR SALE: Early Sumac Lane  
 Seed. Phone 965-2675, Morris Mc-  
 Killip.  
 17-22s-tfc

FOR SALE — Hay. Call 965-  
 2140 or contact Weldon Slayton,  
 6 miles north Muleshoe.  
 17-30t-tfc

—SPECIAL—  
 Steak fingers \$.85  
 Salad and French fries  
 Rich, Thick  
**MALT or SHAKE**  
 30c  
**BILL'S DRIVE IN**  
 Phone 7250  
 19th and Clovis Road

up my mind whether to chance  
 discussing the drouth that the  
 New York water shortage has  
 imposed on the penthouse and  
 window sill gardeners in that  
 huge metropolis.

As is well known by anybody  
 who has ever marketed any-  
 thing on four legs, from a pet  
 coon to a fence-breaking bi-  
 son, livestock buyers in this  
 country are the most resource-  
 ful in the world when it comes  
 to using any weather disaster—  
 major or minor — to justify  
 breaking the market to 50 cents  
 to \$1 cwt.

However, a lady columnist  
 has already revealed that New  
 York window and roof top agri-  
 culturalists are so desperate as  
 to consider appealing to Mr.  
 Johnson to bring in federal aid.  
 Now I feel that we West Texas  
 ranchers being practically the  
 fathers and inventors of dry  
 weather, cannot turn our backs  
 on those far-removed, high-up  
 tillers of the soil.

We must sympathize with  
 them. For even though the na-  
 tive New Yorker is able to cope  
 with a fog of air so impure that  
 were it condensed in a  
 test tube and fed to an excep-  
 tionally strong-stomached an-  
 eater, it would result in a fit of  
 retching that would make a  
 night club bouncer take notice  
 the big city dweller is in no  
 condition to face a drouth.

Also, we are honor bound to  
 extend sympathy, at least, to  
 any soul owning a plot of dry  
 dirt—be a box provided for a  
 cat stabled in the house, or an  
 expanse of land like unto the  
 King Ranch. We must rally and  
 send our drouth stricken fellow  
 agrarians some encourage-  
 ment, even though we risk giv-  
 ing wiley livestock traders the  
 chance to open all their pur-  
 chasing spiels with a sad tale of  
 the bad drouth on the 32nd  
 floor of such-and-such building  
 on 127th Street, and how this is  
 affecting the price of 400 -  
 pound crossbred calves bunched  
 in the southeast corner of a  
 pasture 2000 miles from New  
 York.

If nothing else is sent (need-  
 less to say, neither our bankers  
 or our old clothes), we must at  
 least send them instructions on  
 how to survive a type of disaster  
 most of us were born in and  
 have grown up under.

Therefore I submit a rough  
 draft of a letter that might be  
 rewritten so it will help relieve  
 some of the misery experienc-  
 ed by New York City farmers:  
 My Dear City Cousin

I am taking the liberty of offer-  
 ing some counsel in regard to  
 the drouth. I understand the  
 petunia beds and other roof top  
 vegetation is suffering in your  
 city.

As you may know, the section  
 of the country I happen to inhabit  
 has these scourges all the  
 time, contrary to the popular  
 misconception I mean is, the  
 idea held by Easterners that in  
 Texas our trains have to stop  
 for hours to let herds of rattles-  
 nakes pass across the tracks is  
 a myth.

trains ever stop out here is that  
 the dust gets so bad the engi-  
 neer can no longer see or feel  
 the notches on his throttle.

Of course it will be different  
 for me to direct your operation  
 from so many floors and miles  
 away, but I will list some things  
 that help until the rains come.

1. Do not ask Mr. Johnson to  
 help you out in this disaster. In  
 the first place the Vietnam situ-  
 ation is about to get in bed  
 with him. Secondly, he wouldn't  
 know what to do about a drouth  
 beyond burning a prickly pear.

2. By all means write Mr.  
 Freeman. He is the Secretary  
 of Agriculture and doesn't  
 have the burden of know-  
 ing about such crackpot  
 schemes as burning pear and  
 tampling sotol. He just might  
 send you some money. In case  
 you don't know it, this is one  
 of the most consoling things to  
 have handy during a dry spell.

3. From now on, rotate your  
 crops. That is, plant half the  
 plot one season and the other  
 half next time. If there is a  
 County Agent in Manhattan, he  
 has a whole stack of literature  
 on preparation of the soil for  
 dry weather; and if he is simi-

lar to the agents down here, he  
 has all kinds of personal advice  
 on what to do. Even if he  
 doesn't know what action to  
 take he can refer you to some-  
 one in the neighborhood who  
 has written volumes on how to  
 ranch farm in dry weather. (I  
 may have to strike this from  
 the letter, as I am not certain  
 whether literary drouth experts  
 are based in Manhattan or Bos-  
 ton.)

4. Don't run from the drouth.  
 This is a basic Texas rule and  
 must not be violated. In other  
 words, if it comes a shower  
 over Yonkers don't load up and  
 move your petunia plants over  
 expecting more rain. Just tough  
 it out where you are, or the  
 trucking expense will eat you  
 alive.

5. Avoid joining protest

marches or any other move-  
 ment resembling other agrarian  
 revolts. This will only sap your  
 energy.

You must understand the  
 basic characteristics of all  
 drouths. They are not unjust-  
 rich and poor share alike in the  
 misery-and Congressmen even  
 pause to listen to your woes.

If this is not feasible, grow  
 more fervent in whatever you  
 use for religion. Some tempo-  
 rary relief can be derived from  
 whiskey, and opium or any  
 other derivatives of the poppy  
 plant give superb momentary  
 alleviation of the misery.

Please keep in mind, dear  
 unknown cousin, that our hearts  
 go out to you and we hope it  
 rains for the sake of your daisy  
 crop and your sanity.

**OTWELL'S VACUUM CLEANER REPAIR**  
 Filter Queen Distributor  
 Disposable Bags For  
**SALES SERVICE**  
 All Vacuum Cleaners  
 Repaired  
 Phone 3-1630  
 After 6 p.m. or before 8 a.m.  
**NEW and USED  
 Cleaners**  
 918 East Hickory

# BUSINESS DIRECTORY

**Farley Insurance Agency**  
 Real Estate and Insurance  
 FARM & CITY LOANS  
 SERVICE BEYOND THE  
 CONTRACT  
 209 West Avenue B  
 Off. Ph. 7270 — Res. 3-0343

**HEATHINGTON LUMBER COMPANY**  
 Lumber, Paint,  
 Builders Hardware  
 Clovis Rd. — Ph. 7970

**COTTONSEED DELINTED**  
 Phone 3-2510 — Muleshoe

**WILLIAMS SEED CLEANING CO.**

**SINGLETON FUNERAL HOME**  
 24 HOUR AMBUANCE SERVICE  
 PHONE 2860 — MULESHOE

**Robinson's Boot Shop**  
 127 Main—Phone 7219  
**FINE WESTERN WEAR**  
 Men, Women & Children  
**SHOE REPAIR SHOP**  
 Ike Robinson  
 Serving Muleshoe since 1925.

**Safe 'n' Sound**  
 Myron Pool  
 Congratulations to all  
 you young couples who  
 are buying your new home  
 and are busily decorat-  
 ing it and plan-  
 ning for the fu-  
 ture... our best wish-  
 es and good luck in it!  
 We sincerely hope that in  
 the rush of buying and  
 getting settled you did  
 not forget one important  
 matter; this is to protect  
 your own personal equity  
 in it against loss by fire,  
 windstorm, explosion, and  
 other similar hazards. Under  
 the terms of your  
 mortgage contract the  
 mortgagee is covered for  
 his interest ... but have  
 you made sure your in-  
 terest are covered..If you  
 have not done so call this  
 agency and let us help  
 you protect what you  
 have worked so hard to  
 get.

For the Best Farm Loans  
 and Home Loans  
 Contact  
**POOL**  
 Insurance Company  
 Phone 2950  
 Muleshoe



**JUST FOR PRACTICE** — Firemen participate in the industrial fire protection section of the 36th Texas Firemen's training school at Texas A&M University battle a refinery process unit blaze. The inferno was caused by propane leaks from broken flanges and damaged pump packing. Goal of the school each year is to help reduce industrial fire damages through extensive training of personnel. Five firemen from Bailey county attended. (AP Wirephoto)

**Burnettes Have Cookout Party At Lazbuddie**

By Mrs. C. A. Watson  
LAZBUDDIE — Mr. and Mrs. Burnette and children entertained friends with a cookout supper at their home Friday evening.

Attending were the Rev. and Mrs. Calvin Beach, Mr. and Mrs. Scotty Windham and children, Mr. and Mrs. Wayne Moore and children, the Ted Treider family, the Jim Burgess family and the Chuck Smith family.

Mr. and Mrs. Harvey Blackstone announce the birth of a daughter, born Aug. 3 in a Littlefield hospital. She weighed 9 pounds, 15 ounces, and has been named Shanna Kay. Grandparents are Mr. and Mrs. T. G. Brown, Morton, and Mr. and Mrs. W. L. Blackstone, Springdale, Ark.

Mr. and Mrs. Charlie Watson entertained with a cookout supper at their home Tuesday night. Attending the event were Mr. and Mrs. Bernard Gowens and children, Friona; Mr. and Mrs. P. E. Cargile and children, Lariat; Mr. and Mrs. O. R. Chandler and children, El Paso. Mr. and Mrs. Howard Watson, Muleshoe, and Mrs. Harvey Bass and Carolia, Muleshoe.

Paul Wilbanks has accepted a job for the remainder of the summer at Western Drug in Muleshoe, working the pharmacy. Paul, the son of Mr. and Mrs. Fred Wilbanks, Lazbuddie, graduated from Lazbuddie high school in 1962 and attended West Texas University, Canyon, and Southwestern State College, Weatherford. He will return to Southwestern in September where he is majoring in pharmacy.

Mr. and Mrs. Jo Bates Jennings and Tamara returned from Truth or Consequences, N. M. the last of the week after attending a Davis family reunion. They also visited friends and relatives in Alamogordo.

Mr. and Mrs. Jack Templar and children have moved to near Mansfield, Ark. Templar has accepted a job on a ranch there.

Happy Jennings returned Friday from the Jennings' ranch near DeKalb. He has been working there for the past several weeks.

Sgt. B. W. Templar, Fort Wan City, Ariz., visited his mother Irma Templar and other relatives in the area last week.

Mr. and Mrs. Wayne Clark and Mr. and Mrs. Jerry Templar and children, Irma Templar spent the day Sunday and had a picnic lunch at Clovis Memorial Park.

Mrs. Fred Burch is recuperating in the Clovis Memorial Hospital after having undergone surgery last week.  
Mrs. Alton Morris is a surgical patient in the Clovis Memorial hospital.

Birthday greetings this week go to Judy Watson, Donna McDonald, Preston Cargile, John Gammon, Karen Paul, Bobby Baldress, Mrs. T. L. Byrd, Everett Maxwell, Henry San Miguel, Mike Bean, John Ward and Karen Cargile.

**Earth Farmer On State Co-Op Dallas Session**

Clarence Hamilton, Earth farmer and Springlake school teacher, will be featured on the program at the statewide annual meeting of the electric cooperatives of Texas this week in Dallas.

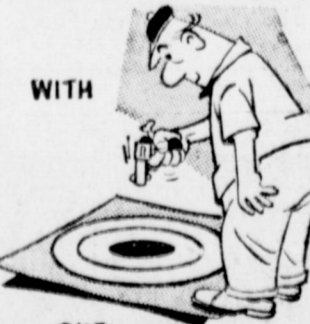
Vice president of Bailey County Electric Cooperative, Muleshoe, Hamilton will preside at the Second General Session of 1000 rural electric leaders on Thursday, August 12, at the Sheraton-Dallas Hotel.

Theme of the 25th anniversary annual meeting of Texas Electric Cooperatives, Inc., is "Helping Texas Grow." The convention will assemble representatives of the 79 member-owned electric cooperatives which serve in rural areas of all but eight counties in the state.

Featured speakers on the program include Secretary of Interior Stewart Udall, REA Administrator Norman Clapp, former Texas Secretary of State Tom Beavley and the national president of the American Dairy Association, Troy Kern of Cooper, Texas.

One of the convention highlights will be the selection of Miss Texas Rural Electrification. Donna Perry of Shallowater will compete as one of five finalists representing South Plains Electric Cooperative, Lubbock, winner of the Texas title will vie for the national crown in Las Vegas early next year.

YOU CAN'T MISS!



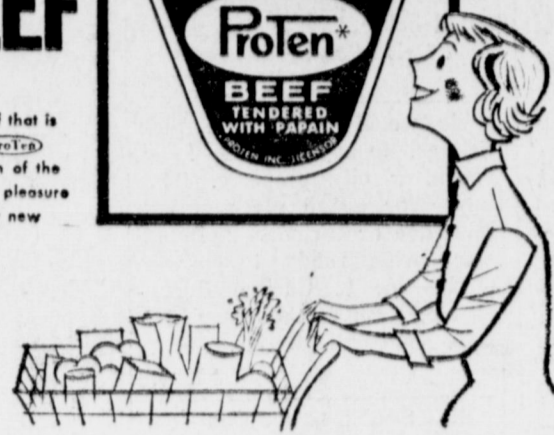
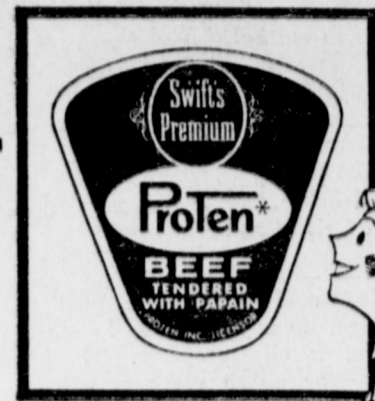
OUR WANT ADS

**WHITE'S CASHWAY**

**THE SIGN OF TENDER BEEF**



At last... a new achievement in tenderness... beef that is tender in every cut, everytime! Swift's Premium Proten Tender Beef is the sign to look for... it's a sign of the latest and the newest in beef awaiting your family's pleasure... it's a sign that our market is always looking for new ways to please you.



**RANCH STEAK** Swift's Premium Proten Beef, Lb. **69c**

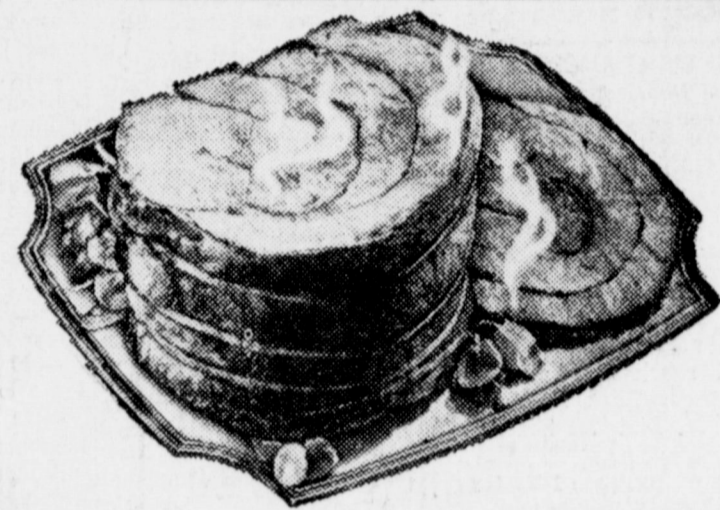
**CLUB STEAK** Swift's Premium Proten Beef, Lb. **79c**

**SHORT RIBS** Swift's Premium Proten Beef, Lb. **29c**

**MIAMI ROLL OVEN ROAST**

Boneless Waste Free

Swift's Premium Proten Beef, Lb. **89c**



**MIAMI ROLL OVEN ROAST**... The last word in a fashionable roast that's tender, lean, and flavorful every time!

**HAMS**

PICKNEYS SUNRAY SUGAR CURED

**WHOLE** Lb. .... **59**  
**BUTT HALF** Lb. .... **55**  
**SHANK HALF** Lb. .... **49**

**ARM ROAST**

Swifts Premium Proten Beef Pound. **59c**

**TOMATOES**

VINE RIPE CALIFORNIA



**LB. 15c**

No. 1 Red **POTATOES** Pound **7c**

No. 1 Yellow **ONIONS** Pound **7c**

**NECTARINES**

CALIFORNIA CHOICE FRUIT

**LB. 19c**

**APPLES**

WASHINGTON DELICIOUS

**LB. 15c**

**BACON** CUDAHYS NUTWOOD

Thick Sliced **2 Lb. Pkg. \$1.59**

**FROZEN FOODS**

Longhorn **BEEF STEAKETTES** 1 Lb. Pkg. **69c**  
Mortons Family Size **PECAN PIES** **69c**  
Dole, 6 Oz. Can **PINEAPPLE JUICE** 2 For **49c**  
Fox-De-Lux, Hamburger or Pepperoni **PIZZA** **79c**  
Grove Sliced, 10 Oz. Pkg. **STRAWBERRIES** **19c**

Vanilla Wafers Nabisco 12 Oz. Box **35c**  
Detergent Dove Liquid Giant Size **49c**  
Cleanser Comet Reg. Size **2 For 29c**  
Hamburger Chips Kosher Dill Paramount 22 Oz **35c**  
Tomato Catsup Hunts Family Size Bottle 20 Oz. **29c**  
Salad Dressing Mortons Qt. Jar **39c**  
Glass Tumbler 18 Oz. Zestee Pure **39c**  
Strawberry Preserves Schilling Pure **39c**  
Black Pepper 4 Oz. Can **39c**  
Prune Juice Shedd's Lady Betty 40 Oz. Bottle **49c**  
Coca Cola 6 Bottle Ctn King Size **3 For \$1.00**  
Spinach Del Monte Fancy No 303 Can **15c**  
Hi-C Orange Drink 46 Oz Can **3 For 89c**  
Flour Purest 25 Lb. Sack **\$1.69**  
Whip 'N Chill Jello Ass't. Flavors **19c**  
Tuna Del Monte Chunk Style 1/2 Can **3 For \$1.00**  
Pork & Beans White Swan No 300 can **2 For 25c**  
Hominy White, Kimbell No. 300 Can **3 For 25c**  
Oleo Deckers 1 Lb. Ctn. **3 For 49c**

**PUREX**

**BLEACH** GALLON SIZE **59c**

**KIMBELL, DRIP OR REG. COFFEE** 1 Lb. TIN **69c**

**POLY-UNSATURATED WESSON OIL** 38 OZ. BOTTLE **59c**

**DIAMOND, CRUSHED PINEAPPLE** NO. 300 CAN **19c**

**AURORA, BATH ROOM TISSUE** 2 ROLL PKG. **19c**

**GUNN BROS. STAMPS DOUBLE EVERY WEDNESDAY**



Listen To MULETRAIN 10:15 A.M. over KMUL sponsored by CASHWAY

**PATZER CHIROPRACTIC CLINIC**  
MULESHOE, TEXAS  
Phone 3-9670  
1540 American Blvd.  
**KEEP SMILING**