

It's A Bad Day For Road Hogs Garrison Says

(By Col. Homer Garrison, Director Department of Public Safety)
The new Texas traffic law, going into effect Friday, will make things rough for those people who think they are the only ones on the road. The person who drives up in the middle of the road, or wanders from one side to the other, will now be liable to arrest. So will the person who passes one vehicle when

another is coming to meet him. A driver must stay on the right except when passing, when driving on a one-way thoroughfare, or when the right side of the road is blocked. The middle lane of a three-lane highway is to be used only for passing and for making left turns, and then only when nobody is using it from the other direction. One vehicle may not pass another when they are at, or approaching, an intersection or railroad crossing; when approaching a bridge, viaduct or tunnel; or when in a designated No Passing zone, marked by a broken stripe or any

Now Displaying

New Fall Sample Line Of

Men's and Ladies' Suits and Top Coats

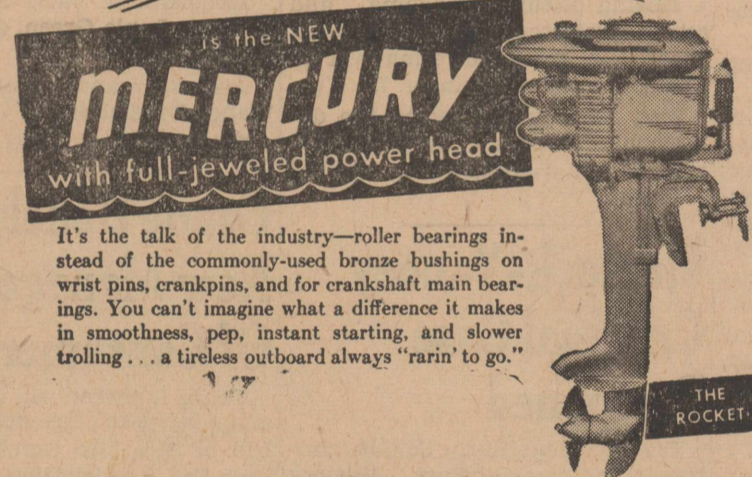
Priced from \$47.50 to \$99

Phone 90

Stratford Cleaners

Try A New **MERCURY** for size

THE BIG NEWS IN OUTBOARD MOTORS



It's the talk of the industry—roller bearings instead of the commonly-used bronze bushings on wrist pins, crankpins, and for crankshaft main bearings. You can't imagine what a difference it makes in smoothness, pep, instant starting, and slower trolling... a tireless outboard always "rainin' to go."

OWN A MERCURY... Matchless in Outboard Excellence

Regardless of the model you select, your Mercury Outboard Motor is made up of specially engineered components — each part the product of an engineering project, developed, proved, and produced for the sole purpose of making your Mercury Outboard all you have desired — the most outboard per dollar.

You must drive a Mercury and see for yourself just what it will do — you will be happy with the ease of starting — astonished by its power and speed — comfortable at its controls — pleased with its rugged durability.

Mercury has pioneered and brought to you the "outboard of all time" — it is conservative in its horsepower rating, but still provides the greatest performance per pound of weight. Consider just a few of the most outstanding features built into your mercury, "full jeweled power" — full-feathered safety steering — proper cooling at any speed — truly waterproof magneto — due-flex propeller drive, and dozens of others. Yes, try a Mercury for size and select your favorite; then you are set to enjoy the ultimate in outboard performance.

Cowdrey Hwd. & Impl.
J. I. CASE SALES AND SERVICE

COPPER CARB FOR TREATING SEED

Calcium Chloride FOR TRACTOR TIRES

1-10 Foot Windmill FOR SALE

GASOLINES

OILS

GREASES

DIESEL FUEL

Consumers Co., Inc.

"We are Open 24 Hours a Day"

Retired (?) Lady Farmers



POTTER VALLEY, CALIF.—Miss Alice Clarke (left) and Mrs. Nettie Whalley left a profitable candy business in town to retire to the farm and earn their living dairying. Their farm is located near here. These two ladies do all of the work connected with their successful dairy. Here they are shown at milking time.

other means.

The question of right-of-way is clearly defined in the new law. The vehicle that gets into an intersection first has the right-of-way. If two vehicles get there at the same time, the one on the right has the right-of-way. In other words, if the other car is on your right, you must let it go ahead. If the other car is on your left, it should let you go ahead.

When you are making a left turn at an intersection, you must not cut in front of other vehicles so as to create a hazard. But you may turn ahead of opposing traffic after you have signalled for your turn and let the cars by that are in, or right at, the intersection.

Observance of rural stop signs, whether on highways or county roads, has never been enforced, because the old law did not actually make it a violation to run a rural stop sign. But it's a different story under the new law. Those stop signs now mean stop. Furthermore, after stopping, you must be careful not to start up again in such a way as to interfere with other traffic, thereby creating a hazard.

Hay-wagon turns are outlawed. To make a left turn, you must start the turn from the position nearest the center of the street or road. A right turn must be made only from the lane nearest the right side of the street or road. Turns should be short, not a wide angle such as one must make when he's driving a hay-wagon with a double span of horses.

Definite signals must be given before a driver turns, slows down, or stops.

Most of us will use the prescribed hand-and-arm signals. But busses and trucks will have to be equipped with electrical or mechanical signalling devices if they are built so that hand-and-arm signals cannot readily be seen. Owners of farm trucks with wide, blind bodies or narrow cabs should check up on this matter right away.

Hand and arm signals are given in this manner: the hand and arm are extended out and up for a right turn; straight out and pointing to the left for a left turn; and out and down toward the ground for slow or stop.

Light Form of Mumps

Provides Adult Immunity

Thirty per cent of the American people probably have had mumps without knowing it, the result being a high degree of immunity to epidemics of this common, but sometimes quite serious, disease of childhood, according to University of Pennsylvania and Harvard university medical scientists under a contract with the surgeon general's office of the army.

Mumps and measles usually are paired as childhood maladies. Each is caused by a specific filterable virus. Both diseases are very contagious. One virus presumably is as widely disseminated in the population as the other. Yet the studies show that about 33 per cent of young adults have a probable acquired immunity to the disease indicating some past infection of which they were unaware. One attack of mumps is believed to protect an individual against further attacks of the virus for the rest of his life. Statistical studies have shown that whereas about 90 per cent of the American population suffer from measles at some time or other only 60 per cent are victims of mumps.

The immunity of a person was determined by the so-called "complement fixation" test of the blood serum with mumps virus cultivated in incubated chicken eggs, and also by a skin test with similar material. In this hidden reservoir of acquired immunity, mumps seems to bear some likeness to poliomyelitis, also a virus disease of children. It is believed that about 90 per cent of the population have had polio in a sub-clinical form at some time, with the result that they are permanently protected against it.

One ton of farmers stock Spanish peanuts (unshelled) will produce an average of 600 pounds of oil, 900 pounds of meal and 400 pounds of hulls and foreign material.

Almost three-fourths of Texas' 170 million acres are in forests and grasslands.

Hank Says:

You know, down in Brazil they

are holding an inter-American defense conference and it looks like they are getting along wonderfully, in fact it seems that everyone is making friends with everyone else. Of course they are enjoying a little elbow bending too but anyway it looks encouraging for if there's anything this world needs it's friendship. But there's something discouraging about it too— it's so much easier to make new friends than it is to keep your old ones.

Yours,

Hank Sherrod.

Electric Wiring Contracted

FREE Estimates on all Houses Furnished Without Obligation.

Experienced in Wiring Homes on REA Lines.

IF IT'S ELECTRIC — SEE US

Bill Woodard -or- Virgil Chisum

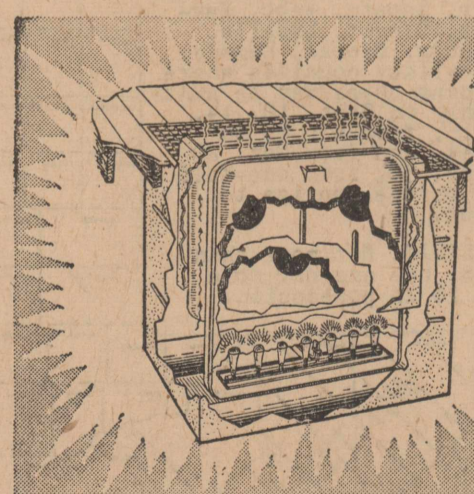


The LITTLE GUY who WAITED too LONG!

BE PREPARED

when WINTER comes

INSTALL AN **EMPIRE** gas FLOOR FURNACE Now!



NO BASEMENT REQUIRED

- ✓ UNIFORM HEAT
- ✓ CLEANLINESS
- ✓ ECONOMY

Plan NOW to switch to the uniformity, cleanliness, and economy of heating by gas—with an EMPIRE Gas Floor Furnace—before winter comes! Adaptable to any type home and any type of available gas supply. Easy to install, no fussy adjustments or costly servicing are necessary. Enjoy modern home heating at its best—the EMPIRE way. It's economical, too.

COME IN NOW FOR FULL DETAILS!

Duby Plumbing & Electric

Exclusive Dealer In Stratford

USED BY THOUSANDS THROUGHOUT THE COUNTRY

EMPIRE gas FLOOR FURNACE

Giant Spud Gave Famed Actress 'Lift' for Show

Some interesting stories have been told concerning food "fads" of famous people. One of these stories concerns Sarah Bernhardt, the famous French actress, and her passion for giant-size baked potatoes. Miss Bernhardt was scheduled for a performance at Keith's Hippodrome theater in Cleveland in 1917, but shortly before curtain time she wired John F. Royal, manager of the Hippodrome, that she was too ill to make her appearance. Royal knew that Miss Bernhardt, then 73 years old, was under constant medical care. One leg had been ampu-

tated three years before. So he made elaborate preparations for Miss Bernhardt's comfort—even installing a kitchen range in her dressing room and borrowing the Hotel Statler chef who had cooked for her on a previous visit to Cleveland. The chef had informed Royal that Miss Bernhardt had a great passion for giant baked potatoes served with big slabs of butter. So the grocery stores of Cleveland were scoured for Idaho titans. When Miss Bernhardt arrived at the theater, she revived a bit at her first sniff of baked potatoes, and quickly consumed two of them. In the middle of her third baked Idaho, the great actress looked up, announced that she felt better, and would make her appearance after all.

'Operation Crossroads' Aid To Ship Design, Says Writer

The atom bomb tests at Bikini atoll must be regarded as "the most widely misunderstood scientific experiment in all history," Philip W. Swain, editor of the technical magazine, Power, declares. Asserting that Operation Crossroads was "brilliantly planned and managed," Mr. Swain said that the tests were conducted primarily to "get points on a set of curves," and that data so obtained were worth many times the expenditure. The intelligent use of these curves by the men who build and operate the navy will be worth many times the estimated \$100,000,000 cost, he said.

Asserting that "both Bikini tests were brilliantly planned and managed," Mr. Swain said that while the air burst bomb missed the target ship Nevada by 1,500 to 2,000 feet, falling astern and slightly to port that "this will not greatly hamper the primary curve-plotting operation, based on the measured distance of ships from the actual burst."

The editor's own summary of the effect of an air blast on today's typical warships was given as follows: up to one-fifth mile, sinking; to one-half mile, heavy damage; to three-fourths mile, moderate damage; to one mile, slight damage. He estimated that the underwater bomb can sink ships up to 2,000 or even 2,500 feet away.

Striking Scenery

Nature has created striking effects in the Wurttemberg-Baden region of Germany. The great rift valley of the upper Rhine, part of which forms the western border of Baden, is a broad trench of fertile

Imperial Barber & Beauty Shop

Whiskers Died Here

WELLA KALESTRAL SCALP HEAT TREATMENTS Available For Both Men and Women
We take appointments for these treatments.

Imperial Barber & Beauty Shop
Phone 33 For Appointments With Beauty Operator

farmlands, orchards and vineyards, dotted with industrial towns. Beyond the Rhine gap, the wooded hills that spread across Baden into Wurttemberg present another type of country, one of lonely lakes and waterfalls, rocky gorges and the solitude of the firs and beeches of the Black forest. In this historic section of central Europe, old towns and ruined castles depict events from Roman to late medieval times, when feudal barons struggled for power. At Ulm, on the Danube in the southeast corner of American-occupied Wurttemberg, the Austrian General Mack surrendered to Napoleon. Baden's Heidelberg, with its famous castle and university, claimed nearly 200,000 visitors every year.

Oscillating Bed

An oscillating bed which aids infantile paralysis victims in breathing, and which public health officials say may have many other uses in treating respiratory diseases, is now being used in the treatment of polio sufferers. The bed is mounted on a motor-driven frame which an electronic drive see-saws in rhythm with the patient's normal breathing. The patient may sleep in any position without losing the effectiveness of the treatment. Neither the bed nor the motion restricts usual care or treatment of the patient in any way. Basically the bed is a standard hospital bed with crank control for raising the patient's head and knees. A clever rocker device eliminates the jolt ordinarily present when an oscillating bed changes its direction of motion.

House Plants

Suit the house plant to the window where it will stand. Different plants vary in their needs for light and sun. Most flowering plants must have sunshine to bloom. A north window, therefore, is a poor location for them, and a south window is best for profuse blooming. Geraniums and begonias are among the favorite house plants that do best with plenty of sunshine during the winter. African violets will thrive with the minimum of sun and may be grown successfully at east or west windows. In contrast, foliage plants may do well at north windows as they need little or no sun.

Steel Vessels

By 1335, iron and steel ships were being built up and down the Atlantic seaboard, in San Francisco; Portland, Ore.; Pittsburgh; Wyandotte, Mich.; Dubuque, Iowa; Cleveland, and in a number of other cities. Of 48 ships built in that year, 6 were of steel. Six years later, 8 of 40 were of steel. The navy, then being built under full draft, was to be almost entirely of steel. By 1890 and 1891, more steel ships were being made than of iron. Even in Bath, Maine, one of the last strongholds of the old wooden sailing vessels, a steel sailer was built in 1894. By 1897, steel predominated to the extent that 67 out of 68 ships were made of steel. In that year, Newark, N. J., led production with 14 vessels.

Robert L. Sanford, of Coalinga, California, formerly a gunner's mate, third class, with the Seabees,

landed on Iwo Jima two days before D-Day, by swimming 500 yards to the beach to reconnoitre. The Japs concentrated their fire on him, but he returned to his ship untouched. Later a Jap bomber came over, scored a hit on the ship and put Sanford in the hospital.

HAND MADE BOOTS

Made To Order
Three to Four Weeks Delivery

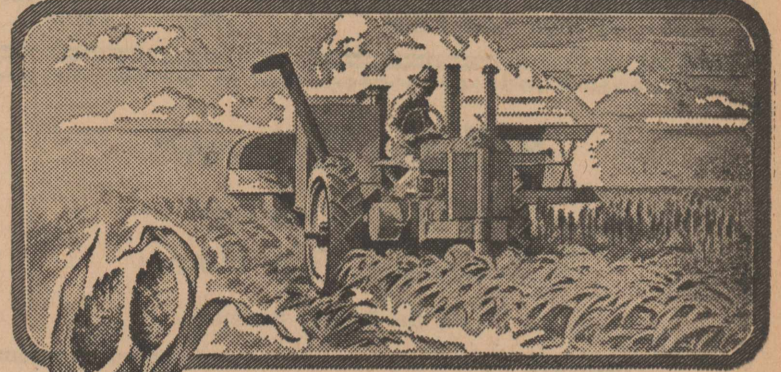
M. C. MARTIN
Fenton's Shoe Service

BOISE CITY

OKLAHOMA



How One Stalk Of Sorghum....



Grew into a \$23,000,000 Business

One day about 10 years ago, a marvelous thing happened! A man we know found ONE STALK of growing sorghum in his drouth ridden field.

Seed carefully nurtured from that same stalk today is found in hundreds of profitable sorghum fields in the area we serve.

And today sorghums—never very profitable in the old days—are a \$23,000,000 crop in the Panhandle-Plains-Pecos Valley area!

We have so much confidence in the sorghum industry—and all other industries we serve, that we are investing 35 million dollars in a building program. This expansion program in our territory will bring more dependable electric service to industry and better living—electrically—to everyone!

SOUTHWESTERN PUBLIC SERVICE COMPANY

23 YEARS OF GOOD CITIZENSHIP AND PUBLIC SERVICE

VETERANS Hold on to your bonds!

Veterans! Set an example of level-headed thrift. Don't cash your terminal-leave bonds now, unless you must.

If you need the money desperately—or are in debt—that's different. Otherwise, hold on to your bonds. You'll be glad later.

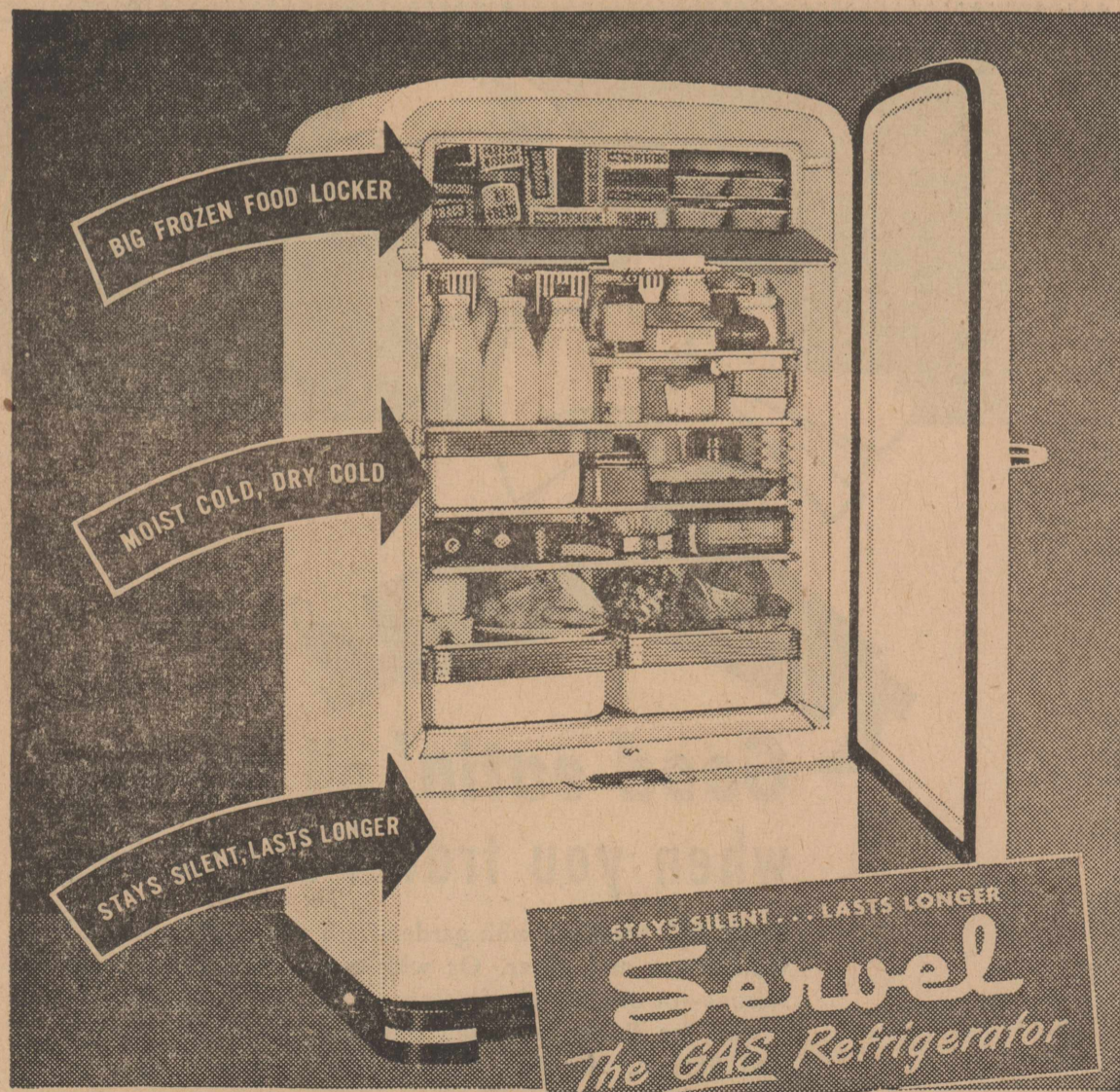
Every terminal-leave bond earns interest at 2½% a year. A \$100 bond is worth \$112.50 to you if you hold it to maturity.

So hold those bonds until you can get full interest and full value.

T. O. C. Motor Co.

STUDEBAKER

Great 1947 SERVEL GAS REFRIGERATOR



It's here—the famous silent Servel Gas Refrigerator with no moving parts in its freezing system! New and finer for 1947, it brings you every modern refrigeration convenience. A big Frozen Food Locker, plus moist cold and dry

cold for fresh meats, fruits, and vegetables, plus the basically different operating system that more than 2,000,000 happy owners know stays silent, lasts longer. Come see the new Servel Gas Refrigerators now on display.

OPERATES ON NATURAL OR LIQUIFIED GAS

Order Now For Early Delivery

VAN B. BOSTON

Distributed by Consolidated Appliances, Inc., Amarillo

Certified Seed Wheat

"Good Seed Wheat of a Recommended Variety is the Foundation of a GOOD WHEAT CROP"

See any of the following growers for your certified Wheat Seed:

WESTAR GROWERS	Bushels
R. D. Tomlinson, Guymon, Okla.	500
Medlin Patterson, Spearman, Texas	300
Wright Hale, Spearman, Texas	1,000
Ellzey Vanderburg, Spearman, Texas	3,500
Ned Turner, Spearman, Texas	2,800
M. J. Groves, Waka, Texas	3,000
Sam Patterson, Spearman, Texas	3,000
R. L. Porter, Spearman, Texas	6,000
TENMARQ GROWERS	Bushels
R. D. Tomlinson, Guymon, Okla.	2,000
Roy Chase, Gruver, Texas	3,000
COMMANCHE GROWERS	Bushels
Roy Chase, Gruver, Texas	500

Hansford County Seed Growers Association

Contact Zack Jagers, Secretary, Spearman, Texas For Further Information

Notice of County Budget Hearing

Notice of a public hearing on the budget of Sherman County for the year 1948, as prepared by the County Judge, will be heard by the Commissioners' Court at the courthouse in Stratford, Texas, Monday, September 8, 1947, at 10:00 A. M.

MRS. LELAH BONEY,
County Clerk, Sherman
County, Texas.
8-21, 28; 9-4.

Explorers' Fancy Names Lured Settlers to New Regions

Explorers often have proved themselves good salesmen by bestowing enticing names on their discoveries, says the National Geographic society. The titles have stimulated the imagination of stay-at-home people and not infrequently have spurred colonization.

Greenland is perhaps the coldest area with a land-boom name. Eric

the Red explored its bleak coasts for three years, and in A. D. 985 gave it a pleasant name to lure settlers to his shores.

Man's search for gold, in fact, has named spots all around the globe. The Gold Coast and Rio de Oro of Africa's western bulge, Mindoro (Mine of Gold) in the Philippines, Goldfield in Nevada, Oroville and Havilah (biblical "land of gold") in California are examples. El Dorado (the Gilded One) was a fabulous land of gold and silver presumed by 16th century Spaniards to lie somewhere in the Andes highlands. From it, nearly a score of American towns have taken their names.

Silver, rivaling gold in the dreams of explorers, has its share of place namesakes. Rio de la Plata, on South America's Atlantic coast, means River of Silver. It is not a river, but the estuary of two rivers—the Parana and the Uruguay. No silver has been mined near its banks. Sebastian Cabot misnamed it in 1520, having noticed the silver ornaments worn by Indians in the region.

Swiss Miss Has Sad Story For Waiting Vet; Jilted

NEW YORK.—Michael Lonardo, 20, of New Haven, Conn., waited at the pier to greet the Swiss girl he had courted as a G. I. in Paris two years ago.

It was not 22-year-old Jeanette Smirnoff Provost who walked down the gangplank to greet the former staff sergeant.

Lonardo was confronted by Dr. Robert M. Tirman of Brooklyn, ship doctor and former army medical officer.

"I'm sorry," Dr. Tirman told Lonardo, "but she is going to marry me."

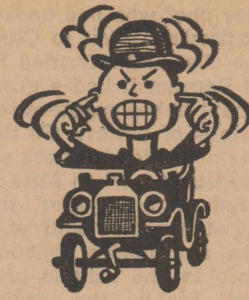
Dr. Tirman, 30, explained he had met Miss Provost on a Paris bus. She became ill and he attended her.

Tirman related that Miss Provost said "I don't want to see him" and asked Tirman to tell Lonardo of her decision when the boat docked.

"Well, I'd like to see her," Lonardo said as he shook hands with the doctor.

But Tirman's efforts to obtain a pass to admit Lonardo to the ship were unsuccessful. Immigration officials are holding the girl at Ellis Island.

Dairy cows need their vitamins. Good legume hay put up in the barn now will help prevent a vitamin-lack this winter.



The Car Situation Is Tough!
But You Don't Have To Drive Them In This Condition

Drive in and let us check your motor troubles — you may be pleasantly surprised to find that we have the parts needed to place Your Chevrolet in perfect condition.

Davis Motor Co.
"YOUR CHEVROLET DEALER"

Ice House

Will Be Open Only From 8:00 A. M. to 10:00 A. M. On Sundays

Please do not ask us to open our doors at other times during the day on Sunday.

Harrison Poultry & Feed

STUDEBAKER SALES & SERVICE

COMPLETE PARTS STOCK — ACCESSORIES

Fully equipped Body and Paint Shop

Complete Mechanical Service on all Makes of Cars.

AUTO GLASS

Phone or write for appointment.

KOEHLER MOTOR COMPANY

Phone 123 P. O. Box 1072
302 Rock Island Ave. Dalhart, Texas

Building Materials

It's Time To Think About

Repairing Your Home

for the Winter Season

Although we are not in a position to announce a complete lumber supply for building many of the types of homes you desire — we have the supplies which will enable you to make needed repairs to provide a warm comfortable home this winter.

Foxworth-Galbraith Lumber Co.

Motorola Car Heaters

The Thermostatically Controlled, Fire Proof Gasoline Motorola Car Heaters, connect directly to the gasoline tank. You may set the controls at the temperature you wish your car to be kept and the heater maintains that temperature even though your motor is not running.

Have a Motorola Heater installed in your car before the rush during the winter months when heaters will be scarce.

Direction Indicator Lights for Trucks
OUR LIGHTS MEET LEGAL REQUIREMENTS

TOC Motor Co.
Studebaker Sales and Service

Take Home a Package



THE NEW-STYLE "Umbrella" TYPE OIL FILTER ELEMENT

KEEPS OIL CLEAN TWICE AS LONG

Be prepared to keep your tractor engine fully protected. Make sure that the oil which reaches vital engine parts is free from dirt, sludge and abrasive particles. The new International Harvester "umbrella" type filter element removes all such harmful material . . . filters out even the tiny, micron-size particles. This new-style element is made of special, creped cellulose, resin-impregnated and baked to form a plastic-like material that withstands hot oil without collapsing. Its extra-large filtering capacity keeps engine oil clean twice as long (120 hours for gasoline engines). By replacing the filter element regularly full protection is assured even under adverse operating conditions.

Take home a supply of the new-style "umbrella" element today.

W. T. MARTIN

INTERNATIONAL HARVESTER FARM EQUIPMENT HEADQUARTERS

Sick Wife Gains After Operation, Prayers Heard

Sympathy of Whole Nation Aroused; Churches Hold Special Services.

BALTIMORE.—One day a tall, well-dressed man walked into Johns Hopkins hospital, where his wife, 41, was critically ill, and faced two doctors. Although sympathetic, the doctors didn't mince words.

They told the 51-year-old Austin G. White: "Your wife is dying."

It was explained that an operation was the only way to stop internal bleeding.

"But she is so weak that she probably will not survive the operation," he was advised.

White bowed his head. His wife, Audrey, was his world. He had spent the money he and Audrey had saved for a home to provide the best hospital care and doctors. But it was not enough.

"In the Hands of God."

"I knew then that she was in the hands of God," White said. "I never was much of a Christian and I didn't go to church very often."

"But, when all hope is gone, you turn to Him."

White prayed for his wife and appealed to the public to pray, too.

His story appeared in the newspapers, was picked up on the radio, went out over the news wires of the nation.

And all over the country, people began to pray.

They prayed for a woman they never had seen, whom they didn't know; prayed because one man had asked for their help, the only help they could give.

Some wrote White not to give up hope. A schoolgirl in Chicago made daily trips to church. A woman in Cleveland said morning and evening prayers in her home. A steelworker in Pittsburgh asked St. Jude to intercede.

She Grows Stronger.

In Baltimore, people called White at the hospital to tell him they were praying. Hundreds of others visited his home to offer encouragement. A minister conducted prayers in his church and groups of school children sent up their prayers, too.

At the hospital the doctors operated.

Mrs. White did not die, as they expected. Instead, she grew stronger. Her voice, which had been a whisper, became clear. A touch of color returned to her cheeks. She was getting well. In a matter of days she was sitting up.

Today White walked into a press association office to express his thanks to the people who had prayed.

"Their prayers brought a miracle," he said.

Read Star Ads—It Pays

WAITRESS HATTY By Palace Cafe

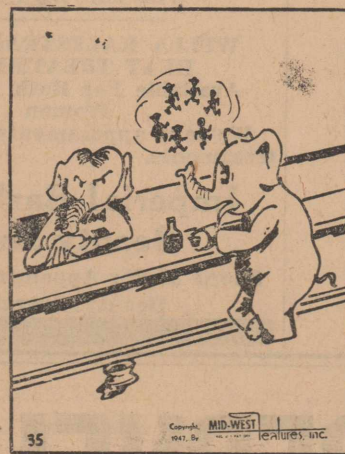


"Gosh, Dora, look . . . and to think that it could only happen in Hollywood!"

Palace Cafe

RUSSELL BEALL, Proprietor

INCY-DENTS By Moss-Yates



"Burp!"

Announcing Headquarters For School Supplies

Our Complete New Line of School Supplies includes such popular items as —

Leather Zipper Note Books
Sheaffer Fountain Pens
Sheaffer Inks

Meet Your Friends at Our Fountain For Delightful Refreshments

Yates Drug



Good eatin' all the way when you travel Santa Fe!

START OFF breakfast with garden-fresh strawberries, topped with cream and sugar. Or with raspberries, blueberries, melons—or others fruits in season.

And, for dinner, take your choice of entrees like Filet of Red Snapper *Amadine*, Fried Chicken *Southern Style*, or Charcoal Broiled Filet Mignon.

These are actual dishes taken from a single menu on a Santa Fe train. And whenever or wherever you travel Santa Fe, you get fine Fred Harvey food—the best in dining-car meals.

To assure you the utmost in freshness, milk, pies, and cakes are picked up en route from Fred Harvey kitchens.

Yes, folks, those fine Fred Harvey meals are another big reason why you'll enjoy going Santa Fe!

Santa Fe System Lines

Serving the West and Southwest

Let your local Santa Fe agent help you with your travel plans

Buyers of farms have paid cash in more than half the farm purchases made in each of the last three years. In 1946, the commercial production of mushrooms in this country reached 63 million pounds, over twice as much as in 1938.

We Build!

STEEL TRUCK BEDS
STEEL WINDMILL TOWERS
STEEL CATTLE GUARDS

Radiators Cleaned and Soldered
Plow Shares and Chisels Hard Faced
DISC ROLLING

Davis Brothers
Wright Davis, Mgr.

New Modernistic

WRIST WATCH BANDS

Bring Out The Beauty In The Average Wrist Watch

FOR MEN
Kumfit, Expansion, Leather, Link and Stainless Steel Bands

FOR LADIES
Mesh, Single and Double Snake Chains, Link Bands, Expansion, Cord and Leather Bands

We offer these Watch Bands in a wide price range to please every purse.

Burns Gem Shop
Two Doors South of Post Office

Batteries
Batteries
Batteries

Ford Batteries

Fit Right and Are
Priced Right

Now Available for Most Any
Make of Car

Stratford Motor Co.
YOUR FORD DEALER

Just Arrived

A New Shipment Of
Beautiful Gaberdine
SKIRTS

In Assorted Colors and Sizes

Lovely Selections Of
Fitchene Original
BLOUSES

also some new
Sunkist
DRESSES

Ross Bros. Dry Goods



Electric Bath Towel?

ST. LOUIS, MO.—Paula McCance, 21-year-old model, drying her swim suit with a new type bagless vacuum cleaner which sucks up water and other liquids as well as dry dirt. Inventor of the device, H. J. McAllister of Wheaton, Ill., says: "Now the housewife can launder her upholstered furniture and rugs, and dry them in half an hour."

Legionnaires Bitterly Oppose Communism

The American Legion in its closing session of the National Convention in New York City adopted a program for the coming year stressing a militant anti-Communist stand at home and abroad, and elected James F. O'Neil of Manchester, New Hampshire, a World War I infantryman, as its new national commander.

In winding up the convention, the Legionnaires not only loosed blasts against Communism but also recommended that the nation guard its greatest weapon by declining to reveal atomic energy secrets to anyone and build up its manpower reservoir by adopting universal military training.

The convention gave full approval of the Marshall plan for aid to Europe after terming "the aggressive spirit of Communism the greatest menace facing America," and called for outlawing of the Communist Party as a political group in the United States.

It backed our active policy plan in the Balkans, and strongly approved the Truman doctrine of aid to Greece and Turkey.

The adopted majority report declared "We cannot ignore the fact that the Communists are actively hindering European rehabilitation for the very purpose of creating chaos."

If the European nations which the Marshall plan seeks to rehabilitate should collapse, "the Red tide would pour through to the Atlantic," the committee said.

Born After Mother's Death, Caesarean Baby Follows Her

CLARKSVILLE, ARK.—A 6-pound 7-ounce baby girl, born by Caesarean section after the death of her mother, died here.

Dr. James M. Kolb said death of the baby — Alga Louise Kreipke — was due to "pulmonary edema," which he described as an abnormal accumulation of fluid in the lungs and bronchial passages.

The baby's mother died of a blood clot while being rushed to a hospital in her husband's truck after she had been stricken at the farm home.

SEE...WORKLESS WASH DAY

You set a dial — add soap — Bendix does the rest. Bendix washes... rinses three times... damp dries... shuts itself off!

SAVE...HOT WATER, CLOTHES, SOAP, LIFTING.

Only Bendix has these famous features! Gentle Tumble-Action washing! Water-Saver Cylinder! Basket-Level Porthole!

NOW...BEING DEMONSTRATED DAILY

You'll see a complete washing with no work at all! No tubs to empty or fill. No clean-up work!

BENDIX automatic Home Laundry DOES ALL THE WORK!

The Bendix washes clothes super clean—rinses three times—changes its own water—damp dries clothes—cleans itself—shuts itself off! See it for yourself—the easiest wash-day on earth! The only automatic washer that's been performing these washday miracles for nine whole years! There's no question about the Bendix. It's been proved in use. Come in for a demonstration now!

Van B. Boston

The Stratford Star
Published Weekly By
Brown Ross

Entered as second class matter at the Post Office in Stratford, Texas, under the act of March 3, 1879.

Subscription Rates
\$2.00 per year in Sherman and adjoining counties. \$2.50 per year outside first zone.

Classified and Legals
10 cents per line per insertion; 7½ cents per line subsequent insertions. Display rates on application.

Beavers are still reported in fairly large number in 42 Texas counties, being found mostly along the Pecos, Rio Grande, Colorado, and Llano Rivers and other streams in the Edwards Plateau.

Since the period 1935-39, farm land values for the country as a whole have increased 95 percent.

Texhoma School Opens Monday

The Texhoma, Texas grade school will open Monday morning with an anticipated enrollment of from 55 to 60 students according to County Judge L. P. Hunter.

A new heating system has been installed in the school building and streets adjacent to the building are being paved.

Sherman Holt is president of the Texhoma Independent School District Board and Paul Gaddy is Secretary-Treasurer.

FOR
Rawleigh Products
See
MRS. W. J. LOWE

See the New 1948 Golden Voice

Motorola Radios

Now Available In Cabinet Combination, Table and Portable Models

Blonde or Dark Mahogany Cabinet
Hoffman Combination RADIOS \$159.50

New 1948 Models In
Delco Combination Radios

New 1948 Model
Hoffman Combination Radio
Has Automatic Recorder and Record Changer

Take One Of Our New Portable Radios to College With You

Raymond's Radio Service
"Where Radio Is a Business and Not Just A Sideline"

FROZEN FOODS
WASTE-FREE! VITAMIN-FRESH! TIME-SAVING!

Your Grocery Patronage Appreciated

Wholesale Meats FOR LOCKERS

Front Quarter Grade A BEEF	Pound	29
½ Or Whole Grade A BEEF	Pound	37

Stratford Frozen Food Lockers

Going UP TOGETHER WITH NEW WHEATS
Comanche · Westar · Wichita
Were Top Yielders in This Area This Year!

COMANCHE . . . At or near top in all field tests . . . good straw . . . good test weight . . . drought resistant . . . popular with all growers who try it.

WESTAR . . . Consistently high yields . . . similar to Comanche but higher yielding in the Panhandle . . . stands well for combining . . . resistant to leaf rust . . . exceedingly popular in the Panhandle . . .

WICHITA . . . Early . . . equal to Early Blackhull in yields . . . stands much better for combining . . . resistant to drought and disease

. . . safest and surest of early varieties . . . large acreages assured in 1948!

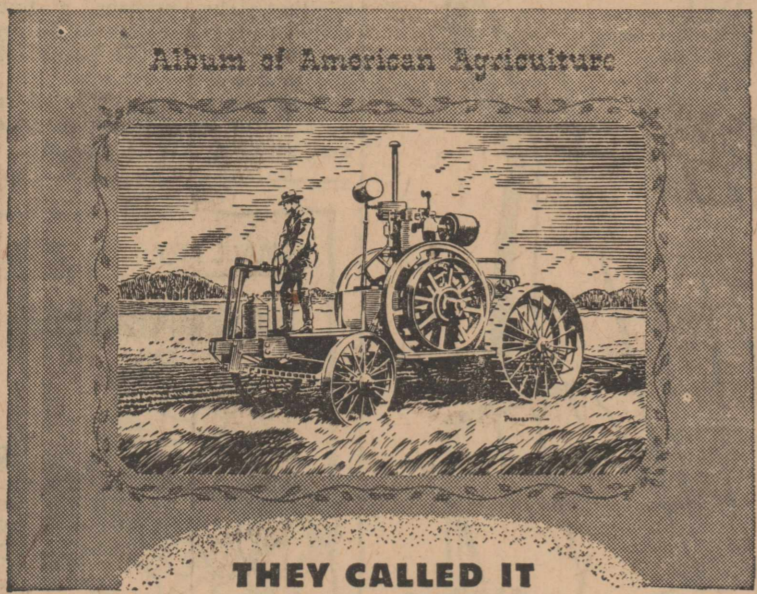
Housewives demand quality bread . . . this requires strong gluten . . . beardless varieties have weak gluten . . . flour mills this year stayed out of areas raising beardless wheat . . . they are shipping in outside wheat to strengthen their mix . . . Exports have been heavy and are present outlet for poor baking flour . . . these are apt to be curtailed anytime . . . We must regain our local markets . . . start NOW to find seed of these new high yielding, high quality varieties!

Avoid future discounts. Help improve our local wheat variety reputation. Seed of these new wheats already in heavy demand. See the County Agent or call on us.

Stratford Grain Co.

Stratford Abstract Co.

Minnie Laura Jackson, President
 Incorporated 1907 — 39 years of Satisfactory Service to
 Sherman County Land Owners
Let Us Make Your Abstracts
 WE SHOW THE RECORDS
 Office on Corner of Main Street and Grand Avenue



Album of American Agriculture
**THEY CALLED IT
 A TRACTOR**

DURING the summer of 1892, in the shade of a village store in northern Iowa, John Froelich built the first gasoline tractor that propelled itself either forward or backward. On the day of its first trial, Froelich's one-cylinder, gasoline burner stilled the most rabid critic and proved that it could pull drawn equipment as well as operate belt-driven machines.

The tractor company organized by John Froelich and his friends later became a part of the John Deere organization. From this beginning, came the famous John Deere Model "D" tractor—developed to meet the unprecedented demand for power equipment unleashed by World War I.

Today, the modern line of John Deere Tractors is playing a vital role in the power farming age. Come in soon and let us show you why a John Deere Tractor will be your best tractor investment.

Bennett Implement Co.

JOHN DEERE QUALITY FARM EQUIPMENT

4-H Boy Wheat King To Win \$100 Prize

Members of both the Future Farmers of America and the 4-H Club in Texas will have a chance to be crowned King starting with wheat planting time, according to an announcement received from Keats Soder, Director of the Texas-Oklahoma Wheat Improvement Program, Oklahoma City.

County winners in both contests will receive gold medals but must qualify by starting with certified seed, having a minimum acreage, keeping their seed pure and managing the plot personally. Local elevators will furnish certified seed at cost or will trade bushel for bushel. Local shows will be judged on the boy's production record as well as on the grain that he shows at the fair.

The state contest to be held in connection with the State Wheat Show at Amarillo in the fall of 1948 will include milling and baking tests of the top grain samples. The winning FFA boy and the winning 4-H boy will be given trophies, a \$100 cash award and the title FFA or 4-H Wheat King of Texas. In addition the top four winners in each contest and their adult leaders or teachers will be awarded all-expense trip to a major terminal market to study wheat handling, marketing and processing as guests of the Texas and Oklahoma millers.

"Boys interested in competing should get their copy of the regulation from the county agent or vocational agriculture teacher, locate their seed, and select their field as soon as possible," advises Mr. Soder. "Every boy in the contest will be a winner because he will get pure seed at a reduced price, learn about seed production and have valuable seed for sale next fall," according to Soder.

Oxygen Starvation Threat To Life of New Infant

Oxygen starvation, which is often promoted in childbirth by popular drugs for the alleviation of the mother's pain, may be the cause of unnecessary death for the infant or severe permanent damage to his central nervous system with a resulting lowered intelligence, according to Dr. Herbert F. Traut, professor of obstetrics and gynecology at the University of California Medical

school. Dr. Traut explained that the mechanism whereby oxygen is channeled to the human fetus is probably the least efficient of any of the higher animals. Red blood cells circulating from the mother to the fetus are the primary source of oxygen. The supply from this source is decreased in many cases in the following ways: by a natural lowering of circulation to the fetus in the last three months; by a degeneration of connective tissue with clotting and decreased circulation, apparently an

inherited factor; and by nutritional deficiencies, such as vitamin shortages. The physician said that the use of nitrous oxide for anesthesia, and of morphine, scopolamine or pituitrin in labor further decreases the oxygen supply to the infant. He said that in any case where a shortage of oxygen to the fetus is indicated use of these agents should be avoided and the patient should breathe pure oxygen.

Henry G. Hammerly, formerly a carpenter's mate, second class, in the Navy's Seabees, is constantly reminded of his wartime association with his fighter-builder buddies and the Seabee motto "Can Do". Henry's hometown is Cando, N. D.

Last year, each farmer in the United States spent an average of \$270 on clothing for himself and his family.



IT'S THE *Morning Glory* DREAM TEAM

MORNING GLORY INNERSPRING MATTRESS and MATCHING BOX SPRING TAYLOR-MADE PRODUCT CONVENIENT \$49.50 EACH GUARANTEED FOR 10 YEARS

Here's the perfect combination for perfect sleeping!

The unique, perfectly matched Equi-Balanced spring assemblies of the tuftless, double-cushioned Morning Glory Dream Team are the finest in the world—to give you form-fitting, soft-yet-firm "floating support!"

Ward Floor Furnaces

55,000 and 70,000 BTU

In Stock For LP Gas

Also We Are Showing A Few Model Heaters

Buy Now While They Are Available

Okeefe and Merrit Gas Ranges

Finest On The Market

Bendix Radios

A Demonstration Will Convince You

SEE OUR NEW

Living Room Furniture

New Styles — New Covers

Bed Room Suites To Suit Your Taste

LINOLEUM

In 6, 9, and 12 Foot Widths

RUGS

6x9 to 12x15

Polishes, Waxes, Cleaners, Paste

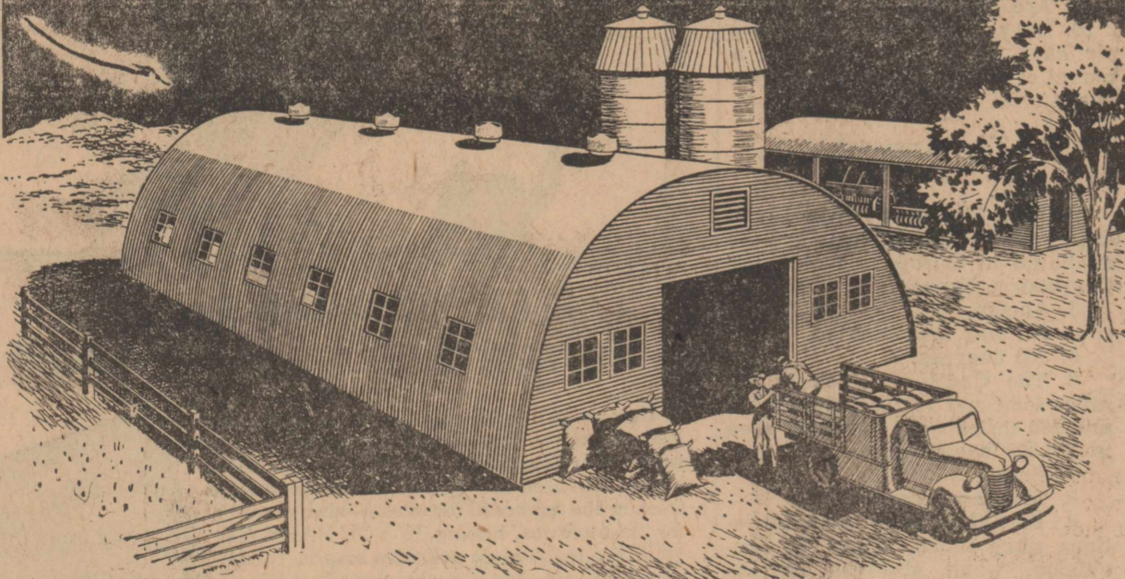
SEVERAL NEW AND USED

Electric Motors

Slay's Furniture & Appliances

Maytag Bendix Thor

Your Judgment Will Tell You... THIS BUILDING HAS WHAT YOU NEED!



THE STRAN-STEEL "Quonset 40"

We'll tell you what this famous "Quonset 40" has to offer, and let you decide whether it "has what it takes" to increase the value, productivity and efficiency of your farm operations.

SPACE The "Quonset 40" is 40 feet wide and as long as you want it—40'x40', 40'x60', 40'x80', 40'x100' and so forth. Interior is clear-span, so that every inch of space is usable.

LOW COST The "Quonset 40" is the first high-quality steel building to be made available at low cost. This is made possible by the unmatched efficiency of the Stran-Steel framing system, with its nailing groove that permits siding and roofing to be nailed directly to the framing members.

DURABILITY The "Quonset 40" is framed with steel and covered with steel to give you the sturdiest, most durable building ever produced for the farm. It is fire-safe, sag-proof, rot-proof, warp-proof—strong with the uniform strength of steel.

PROVED IN USE Tens of thousands of "Quonsets" have been produced by Great Lakes Steel Corporation to meet the needs of the armed forces in all climates.

"Quonset 20" Here are the same features and advantages as in the "Quonset 40" in a smaller building—20' wide and as long as you want it. Framed with durable Stran-Steel.

"Quonset 24" This adaptable, 24'-wide building is available with open side—with sliding doors—or with solid side panels. It provides an ideal building for many farm uses.

Come in and talk it over



Ralph Harding

Keep COOL with COOLING FOODS

CEREALS	FRESH, TASTY PRODUCE
Kellogg's PEP 8 Ounces 15	Fancy, Ripe TOMATOES 15
Cherrios 7 Ounces 16	Fresh Corn Ear 7
Nabisco Shredded Wheat 12 Ounces 16	Green Beans 2 Pounds 29
	CARROTS Bunch 9
	CABBAGE Pound 10
	Cauliflower Head 23
	No. 1 Red POTATOES 10 Pounds 49
	Fresh, Crisp CUCUMBERS 2 Pounds 25
	BEVERAGES
	Canada Dry Ginger Ale Quart 25
	V-8 Vegetable Juice 47 Ounces 37
	Houston Club Sparkling Water 12 Ounces 12
	MEATS
	Choice Lean Salt Pork Pound 43
	Good Aged CHEESE Pound 46
	For Your Picnics Large Bologna 39
	Best Quality Beef Roast Pound 46
	EVERYDAY NEEDS
Jumbo Ripe OLIVES 15 Ounces 69	
GREEN PEELED CHILIES 4 Ounces 16	
Hunts Country Style PICKLES Pint 62	
Admiration COFFEE 1 Pound Can 43	
	MEATS
	Assorted COLD CUTS Pound 43
	VEL
	For Fine Washing VEL Large Size 33

Brown's Food Store