



**Addition To Consumers Building Nearing Completion**

The brick addition to the Consumers Company building in Stratford is nearing completion.

**Imperial Barber & Beauty Shop**

Whiskers Died Here

WELLA KALESTRAL SCALP HEAT TREATMENTS Available For Both Men and Women We take appointments for these treatments.

**Imperial Barber & Beauty Shop**  
Phone 33 For Appointments With Beauty Operator

**Roxy Theatre**  
STRATFORD, TEXAS

April 17 and 18

"It's A Joke, Son"

Kenny Delmar - Una Merkel

April 19

"Sunset Pass"

James Warren - Nan Leslie

April 20 and 21

"Two Years Before The Mast"

Alan Ladd - Brian Donlevy

April 22 and 23

"Bamboo Blonde"

Frances Langford - Russell Wade

**HAPPY BIRTHDAY**



Sweeten the Occasion

with **King's Chocolates** for "American Queens"

Give King's, the chocolates with a royal flavor, to sweeten any occasion. They're always in good taste.

**Bonar Pharmacy**

**.22 Automatic Pumps and Rifles**

These new .22 Guns are the type the average boy has been wanting for his hunting trips and represent the finest in workmanship.

FISHING TACKLE BOXES

FISHING TACKLE  
Of All Kinds

LINES — RODS — REELS

PLUGS — SPOONS

SPINNERS

TROT LINES

Get Your Fishing supplies now and be ready to take advantage of the entire fishing season when the sport is at its best.

**Cowdrey Hwd. & Impl.**  
J. I. CASE SALES AND SERVICE

Manager John Steel hopes to have the company's wash and grease room back in operation the latter part of the week.

**V. H. Garoutte Building New Home**

Mr. and Mrs. Virgil Garoutte have let a contract for construction of a 28x32 foot frame house east of the J. W. Garoutte residence on Grand Avenue, where they will make their home. J. W. Garoutte has the building contract.

**F. A. Sewell, Jr. Married Saturday In Sapulpa**

Mr. and Mrs. F. L. Yates attended the wedding of his nephew, F. A. Sewell, Jr., in Sapulpa, Oklahoma Saturday. They visited Mr. and Mrs. Frank Sewell in Oklahoma City Sunday on their return home.

The First Presbyterian church at Sapulpa was the setting Saturday night for the wedding of Miss Barbara Jane Berry, daughter of Mr. and Mrs. Guy L. Berry, Sapulpa, to Frank A. Sewell, Jr., son of Mr. and Mrs. Frank A. Sewell, Oklahoma City. The vows were read by the Rev. Roy Smith.

A program of nuptial music was presented by the organist and "Ave Maria" and "At Dawning" was sung by Miss Joan Seneker.

The altar was decorated with baskets of white gladioli and huckleberry against a background of woodwardia fern. Arches of greenery decorated the two center aisles. The bride, escorted to the altar and given in marriage by her father, was costumed in a gown of lustrous ivory bridal satin fashioned with fitted bodice with net yoke outlined with a band of satin roses, the yoke forming a drop shoulder effect. The full skirt fell into a cathedral train and her veil of silk illusion fell from a halo of rosepoint lace. She carried a Bible topped with an arrangement of white orchids. Her only ornament was an antique gold and diamond gracetel belonging to Mrs. Wayne Bayless.

A reception at the Oaks Country club followed the ceremony. After the wedding trip to Grove Park Inn, Asheville, N. C., the couple will be at home at Clinton.

**Mrs. Bachman In Northwest Texas Hospital**

Mrs. Henry Bachman was taken to Northwest Texas Hospital in Amarillo Tuesday afternoon by her husband. She will undergo an operation there in the next few days.

**Mrs. Kelp Honored With Dinner**

Mr. and Mrs. Russell Kelp entertained in their home with a birthday dinner party Tuesday evening honoring their mother, Mrs. Ernest Kelp. After the lovely dinner was served from a lace covered table, the guests were entertained at the picture show.

**Mrs. Wisdom Hostess To Best Yet Club**

The Best Yet Club met Friday in the home of Mrs. Charles Wisdom. Roll call was answered by "Timely Sayings". Seventeen members were present.

Miss Dorothy Dixon, Home Demonstration Agent, presented the



**LET'S PLAY EDITOR**—At the Texas Scottish Rite Hospital for Crippled Children in Dallas, the patients take their editing mighty seriously as they buckle down to getting out their four-page play newspaper, "Little Scotty" which goes to 57 hospitalized subscribers, "every so often." During the long periods of treatment and convalescence the children find much pleasure in preparing cartoons and copy for their tiny paper. Pictured are "City Editor" Kenneth Garner, 4, of Cisco a polio victim of the 1946 epidemic; Sharon Ereanbrack, 9-year old San Antonian, undergoing treatment for a bone infection, and Barbara Allison, 10, another polio patient whose home is in Texarkana.

The Scottish Rite Hospital, which is supported by individual contributions, offers the best possible medical care and treatment at no cost to Texas crippled children whose parents are unable to provide for adequate medical services.

demonstration on "Preparing Poultry for Freezing." Guthrie, J. W. Smith, Ben Biddy, Jack Golladay, S. J. Lavake, Harold Those present were Mesdames W. O'Quin, Wayne Harding, Kenneth W. Sandifur, Baskin Brown, Leon Borth, Roscoe Dyess, Shuler Donel-

**IT'S A GOOD YEAR TO Start Chicks**

Yes, eggs may sell for a dollar a dozen next fall, but you'll have to start chicks this spring — to cash in on this golden opportunity.

Our advice is buy good chicks and start them right. Feed them —

**PURINA CHICK STARTENA**

to get them off to a flying start — it's America's Favorite Chick Starter for Life and Growth and this year it's the best Purina ever made. We have a good supply in stock. Come in and see us for chicks and all your chick raising needs.

**Harrison Poultry & Feed**

**INTERNATIONAL HARVESTER** says:

**"Any price is too high if it can be reduced."**



**We second the motion We'll do our part!**

International Harvester has reduced prices to save users of its products \$20,000,000 a year. The reductions apply to a selected list of various products made by the Company.

In making its announcement to the general public last week, International Harvester said:

"We believe there is nothing more important to this country than to lower the prices of goods people buy.

"The American people have insisted that the government withdraw from its attempts to control prices in peacetime. That places the responsibility where it belongs—in the hands of business and industry.

"Because we believe price reduction is vital, we are willing to assume the risks involved."

As International Dealers we will do our part. We will pass International Harvester's price reductions to our customers.

And now a word of gratitude to our friends who have patiently waited for the new machines they need. As most of our customers are aware, International Harvester has done everything possible—and some things that seemed impossible—to maintain and increase production.

The outlook is somewhat better. Soon we hope to supply equipment to all of those who have cooperated so faithfully with us.

Meanwhile, the same top-quality International Service and Parts that have kept equipment operating for our customers during the difficult years are available from us. We urge our friends to continue to use these facilities to obtain maximum operating economy.

International Harvester is doing its part with quality, increased production and reduced prices.

We will do our part in this territory

**W. T. MARTIN**

son, Zada Arnold, Raymond Keener, Walter Pendleton, Miss Dixon, and the hostess, Mrs. Wisdom. The next meeting will be in the home of Mrs. Zada Arnold Friday, April 25, at 11:30 A. M.

**How Long Has It Been Since You've Had Your Portrait Made?**

Don't delay any longer. Let us make a portrait of you that expresses your true personality.

**Bond Studio**  
In Cactus Tuesday and Friday Afternoon.

**Regal China Dinnerware**

We have just received several new patterns of Regal China Dinnerware. The following patterns are on display at our store and we invite you to call and see them.

- 53 Piece Honey Lee Pattern
- 35 Piece Set Genevieve 22 Kt. Gold Trim
- 35 Piece Set Golden Century
- 53 Piece Set Manhattan
- 37 Piece Sets Capistrano Dinnerware
- "Sharpe" Rock Crystal
- "Tropic Rose" Patterns

**Lovelace Dept. Store**  
"Where Customers send their Friends"

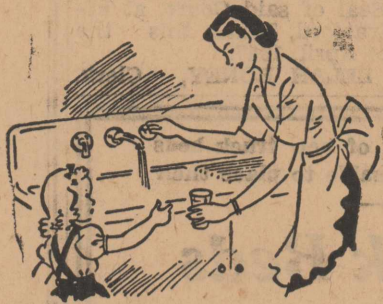
**Continue Deep Well Irrigation Project At Goodwell**

Panhandle A. & M. College has had an experiment in supplemental deep water irrigation in operation since 1933. The project is lo-

cated east of Goodwell on the college farm. Water for the project is supplied by two deep-water wells powered by stationery natural gas engines. The wells were drilled to an average depth of 300 feet to tap the reserve water supply of this area and deliver an average output

of 900 gallons per minute. A reservoir covering approxi-

**Your Home**  
By Frances Ainsworth SC



The other afternoon I dropped in to see one of my neighbors and she invited me to stay for a cup of tea. I was surprised to see her pouring bottled water into the kettle, and asked why she didn't use the tap water. For answer, she turned on the sink faucet and showed me the almost muddy—reddish brown water that came out. Well . . . I knew the explanation the minute I saw the water, for we had a similar experience a few years ago. My plumber explained to me that the pipes carrying the water were rusted—and of course, the rust discolored the water. We took the plumber's advice and replaced the rusted pipe with copper water tube in our home—and since then have had no trouble at all. You see copper water tube can be installed without tearing up floors and walls. Copper water tube, of course, is rust proof—and as our plumber explained it, when water is drawn through copper tube and from a brass faucet it's as clear and pure as when it left its source!

When I told all this to my neighbor, she immediately went to her phone and called her plumber. She said she hadn't realized that the plumbing could make such a difference, and when it comes to something so important to the whole family, one just can't afford to take chances. And after all—the right plumbing equipment is certainly much less expensive than special table water every day, isn't it?

I have other friends who when building their own homes insisted on having Red Brass pipe for all hot and cold water lines. Red Brass can't rust either and resists corrosion.

mately four acres is used to supply a large water head for surface flooding. Irrigation is used here only as a supplement to the normal rainfall of the area.

(Continued on Page 4)

**ORDINANCE NO. 116**  
AN ORDINANCE PROHIBITING THE PARKING OF LARGE TRUCKS AND MACHINERY ON MAIN STREET.

Whereas, by ordinance passed on the 3rd day of April 1947, the City Council of the City of Stratford,

Texas, ordered that parking of machinery and trucks exceeding 122-inch wheel base will be prohibited on Main Street from the intersection of the Rock Island Railroad northwest to the intersection of Collins Avenue.

Persons failing, resisting or refusing to comply with any of the conditions of the requirements of this ordinance, shall be deemed guilty of a misdemeanor and upon conviction thereof shall be fined the sum of not less than \$1.00 nor more than \$100.00, for each of-

fense; and each failure to comply with the conditions of this ordinance shall be deemed as a separate offense, and shall be fined as in other cases.

This ordinance shall take effect and be in force after four publications in the Stratford Star.

Passed and approved this 3rd day of April, A. D. 1947.

G. R. GARRISON, Mayor,  
The City of Stratford,  
Texas.

Attest: Brown Ross, Secretary.  
4-10 17 24 5-1

**Wilson Funeral Directors**

AMBULANCE SERVICE  
FUNERAL SERVICE

Boise City, Okla. Phone 31  
Stratford, Texas Phone 60

**ABSTRACTS**

WE HAVE A COMPLETE  
ABSTRACT PLANT

Covering All Real Estate In Sherman  
County

We Furnish Quick, Efficient Service  
On Short Notice

**Sherman County Abstract Co.**

Royal Pendleton, Manager Stratford, Texas

DEPOSITS INSURED  
BY  
**The Federal Deposit Insurance Corporation**  
WASHINGTON, D. C.  
\$5000 MAXIMUM INSURANCE  
FOR EACH DEPOSITOR \$5000

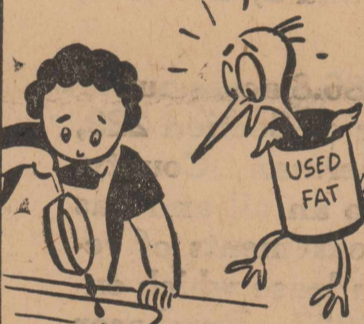
Old Friends  
Or  
New Friends

It doesn't matter which you are, you will find that this bank is equipped and ready to meet your financial requirements.

YOU ARE WELCOME  
HERE

**First State Bank**  
OF STRATFORD

THIS IS A  
DOWN-THE-DRAINER



'NOT DOWN THE DRAIN!' SAYS THE SALVAGE BIRD—'SAVE THAT PRECIOUS USED FAT!'

DON'T YOU BE A 'DOWN-THE-DRAINER'—SAVE USED FAT

In FLY-CASTING or GASOLINE  
**IT'S Control THAT COUNTS!**

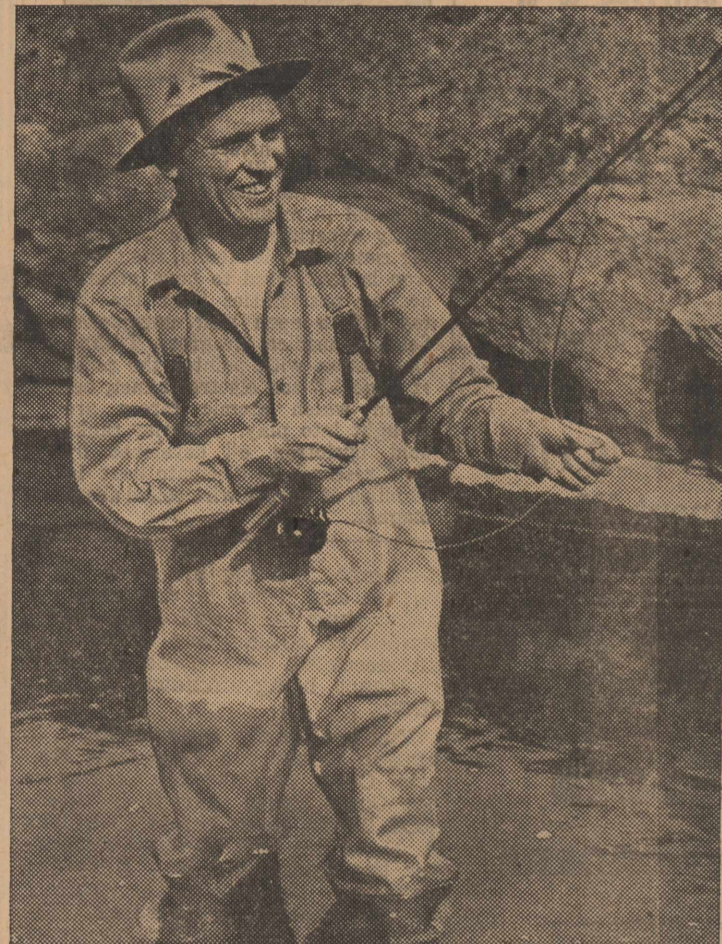
PHILLIPS 66 IS  
CONTROLLED\* FOR  
BETTER DRIVING!

Placing a fly just where you want it, or blending a gasoline for climate both take control. And Phillips 66 knows how to control gasoline!

For smooth driving and snappy engine operation, the volatility of Phillips 66 Gasoline is varied from season to season. Phillips great variety of quality blending components makes this possible.

See what this Phillips 66 control can do for your car! Stop at the nearest Phillips 66 Station today!

\*PHILLIPS GREAT RESERVES OF HIGH-TEST NATURAL GASOLINE ENABLE US TO CONTROL PHILLIPS 66 FOR YOUR CLIMATE!



"VOLATILITY CONTROLLED" to give you POWER, PICK-UP and PEP!

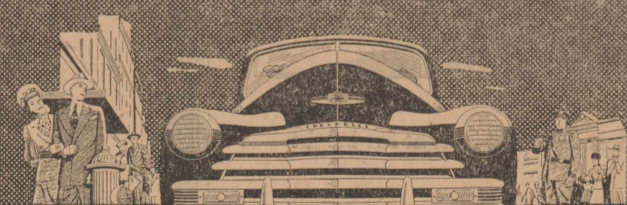
PHILLIPS 66  GASOLINE

**Ralph Harding**

Phillips 66 Wholesale and Retail Products

Everywhere, you hear it said

**ONLY CHEVROLET GIVES  
BIG-CAR QUALITY  
AT LOWEST COST**



The new and even bigger-looking, better-looking Chevrolet for 1947 is the only car in its field with all these Big-Car advantages:

Big-Car beauty, comfort and safety of Body by Fisher



Big-Car riding-smoothness and road-steadiness of Unitized Knee-Action



Moreover, in addition to being the only car that brings you all these enviable features of BIG-CAR QUALITY AT LOWEST COST, Chevrolet also stands out as the lowest-priced line of cars in its field!

\*\*\*

Place and keep your order with us for a new Chevrolet—product of America's largest builder of motor cars. Meanwhile, let us give you skilled service on your present car now and at regular intervals.

Big-Car performance and dependability of a Valve-in-Head Thrift-Master Engine



Big-Car safety of Positive-Action Hydraulic Brakes



You see more...  
you get more...

in the thrilling new  
postwar Studebaker

The Champion...The Commander  
The extra-long-wheelbase Land Cruiser  
Completely new postwar dream cars

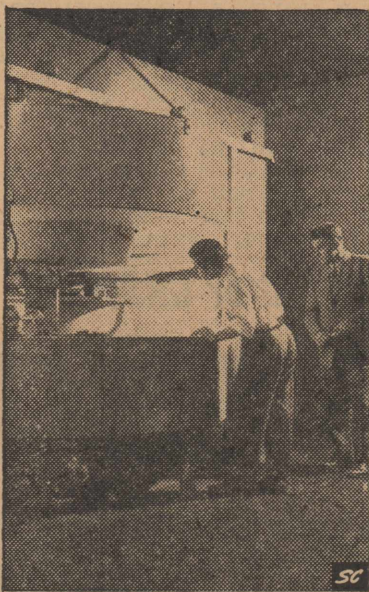
YOU see more through the extra-large windows of this new Studebaker—you drive more confidently... You get more deep-down comfort and more real advancements than your money buys in any other car... Exclusive "black light" dash dials... Brakes that automatically adjust themselves... See this low, luxurious postwar Studebaker now.

**T. O. C. Motor Co.**

**Davis Motor Co., STRATFORD, TEXAS**

**CITATION BY PUBLICATION**  
 THE STATE OF TEXAS:  
 TO: Mary V. Waldo, widow, J. D. Rawlings, Bert E. Nash, Carrie B. Nash, wife, J. M. Cole, Harry H. Cole, H. H. Cole, Fred T. Cole, Lottie M. Cole, female, if married, her husband, whose name is unknown, Josephine E. Cole, female, if married, her husband, whose name is unknown, C. P. Scrinener, Chas. P. Scrinener, Charles Percy Scrinener, J. W. Aylor, whose places of

**Atomic Power-  
 For Healing**



PITTSBURGH, PA. — Business end of the wizard-like, new cyclotron at the University of Pittsburgh, which will harness atomic forces for the peacetime use of mankind in medical research. Already experimented with in treating cancer and leukemia, the cyclotron is considered to have greater healing possibilities than the X-ray and to open vast, unexplored fields to medical progress. Technician shows with pointer the poles of huge 100-ton electromagnet, between which atomic forces are brought into play. Circular tanks hold cyclotron oil developed by Gulf research to dissipate heat in 18 miles of copper wire coiled about magnet.

residence, if living are each unknown, and if any be deceased, the heirs, their heirs and legal representatives, respectively of such as are deceased, names and places of residence, being unknown, GREETING:

You are hereby commanded to appear before the Honorable District Court of Sherman County at the Court House thereof, in Stratford, Texas, at or before 10 o'clock A. M. of the first Monday next after the expiration of forty-two days from the date of the issuance of this citation, same being the 19th day of May, 1947, then and there to answer Plaintiff's Petition filed in said Court, on the 4th day of April, 1947, in this cause, numbered 1109 on the docket of said court the names of the parties being: H. B. Naugle, Plaintiff, Mary V. Waldo, J. D. Rawlings, Bert E. Nash, his wife, Carrie B. Nash, J. M. Cole, Harry H. Cole, H. H. Cole, Fred T. Cole, Lottie M. Cole, female, if married, her husband, whose name is unknown, Josephine E. Cole, female, if married, her husband, whose name is unknown, C. P. Scrinener, Chas. P. Scrinener, Charles Percy Scrinener, J. W. Aylor, and the unknown heirs, their heirs and legal representatives of each and all of said persons who may be deceased, if any, DEFENDANTS;

A brief statement of the nature

of this suit is as follows, to wit:

A suit in trespass to try title, to recover rents, damages, costs of suit, writ of restitution and remove cloud, plaintiff pleading statutory trespass to try title and also title by ten years statute of limitation, and seeking general and special relief, in law and equity, of, for and concerning the Southwest quarter of Section 127, Block 1-T, Cert. 30/64; T&NO R. R. Co., Sherman County, Texas, containing 160 acres, as is

more fully shown by Plaintiff's Petition on file in this suit.

The officer executing this process shall promptly execute the same according to law, and make due return as the law directs. If this citation is not served within 90 days after the date of its issuance, it shall be returned unserved. Issued and given under my hand and the Seal of said Court, at office in Stratford, Texas, this the 4th day of April, 1947.

Attest: LELAH BONEY, Clerk,

District Court, Sherman County, Texas.  
 4-10 17 24 5-1

**CONTINUE DEEP WELL—**  
 380 acres are now contained in

the project, 175 of these are in alfalfa, which has been very successful. Other crops included in the experiment are wheat, oats, sorghums, and various green pastures

**Stratford Lodge 874**  
 A. F. & A. M.  
 Stated  
 Communication  
**SECOND FRIDAY NIGHT OF EACH MONTH**  
 MELVIN PHILLIPS, W. M.  
 W. O. BRYANT, Secretary.

**Pioneer Beauty Shop**  
 Is Ready To Serve You  
 For That Well Groomed Look  
 Featuring  
**HELEN CURTIS**  
 Permanent Waves

Mable McKee - Mrs. J. L. Faris  
 Beauticians

**Meals**  
**SHORT ORDERS**  
**COFFEE**

Served to Please your desire  
 and Appetite

When We Please You—  
 Tell Others

When You Are Dissatisfied  
 Tell Us

**Palace Cafe**  
 RUSSELL BEALL, Proprietor

Customers contemplating the need of new truck beds for the Harvest Season will find it advisable to place their orders early while we have sufficient —

**Steel for Truck Beds**

TRACTOR TIRES Of All Sizes

AUTOMOBILE PAINTING

A smooth finished paint job not only increases the value of your car through its appearance but gives a protective coating rust resistance protection to the body of the car.

**Davis Brothers**

Wright Davis, Mgr.

The following described tracts of Real Estate and Mineral will be sold at

**Public Auction**

on vacant lot south of courthouse in the City of Stratford, Texas, on the

**22nd Day of April 1947**

beginning at 2:00 P. M. for Cash to the highest bidder, one-fourth to be paid on sale date, balance on approval of title.

TRACT ONE: Lots 4 and 5, Block 9, Stratford.

TRACT TWO: Lots 4 and 5, Block 49, Stratford.

TRACT THREE: Lots 1 to 4, Block 2, Stratford, Stokes Addition.

TRACT FOUR: Lots 1 and 2, Block 6, Stratford.

TRACT FIVE: Being 186.8 acres out of the N.W. Corner of Section 229, Block 1-T, Sherman County, Texas, subject to an oil and gas lease, all valid easements of record, and a farm lease which expires August 1, 1947. Purchaser gets 1/4th of 1947 wheat crop delivered to elevator.

TRACT SIX: Section 231, Block 1-T, Sherman County, Texas, subject to an oil and gas lease, all valid easements of record, and a farm lease which expires August 1, 1947. Purchaser gets 1/4th of 1947 wheat crop delivered to elevator.

TRACT SEVEN: South 1/2 of Section 146, Block 1-T, Sherman County, Texas, subject to an oil and gas lease, all valid easements of record, and a farm lease which expires August 1, 1947. Purchaser gets 1/2 of 1947 wheat crop delivered to elevator.

TRACT EIGHT: East 1/2 of East 1/2 of Section 12, Block M-27, Mrs. C. Barclay Survey; and Section 5, J. C. Patton Survey, Dallam County, Texas, and that part of Section 1, Block 1, P.S.L., Sherman County, Texas, lying west of County road, containing approximately 1950 acres, subject to all valid easements of record, and a farm lease on about 730 acres of growing wheat which expires August 1, 1947. Purchaser gets 1/4th of 1947 wheat crop delivered to elevator. Up-

on delivery of Deed, purchaser can have possession of grass.

TRACT NINE: North 1/2 of Section 10, and Section 11, Block M-2, Moore County, Texas, except 5/8ths of minerals, subject to valid oil and gas lease on 3/8ths of minerals, all valid easements of record, and a farm lease which expires August 1, 1947. Purchaser gets 1/4th of 1947 wheat crop delivered to elevator.

TRACT TEN: NE 1/4 of Section 11, Block 3-B, Sherman County, Texas, subject to an oil and gas lease, all valid easements of record, and a farm lease which expires August 1, 1947. Purchaser gets 1/4th of 1947 wheat crop delivered to elevator.

TRACT ELEVEN: East 3/4ths of N.E. 1/4 of Section 220, Block 1-T, Dallam County, Texas, subject to all valid easements of record, and a farm lease which expires August 1, 1947. Cash rent, no crop rent to go with this tract.

TRACT TWELVE: South 1/2 of Section 2, Township 1, Range 8, Cimarron County, Oklahoma, subject to all valid easements of record, and a farm lease which expires August 1, 1947. Purchaser gets 1/4 of 1947 wheat crop delivered to elevator.

TRACT THIRTEEN: One-Half undivided interest in 300 acres of mineral in Section 180, Block 1-T, Sherman County, Texas, described as follows: Lot 3, 4, 5, and 6 in Block 11, all of Blocks 3, 4, 5, 6, 12, 13, and 14, all in Neals Addition, Section 180, Block 1-T, T&NO Ry. Co. survey, Sherman County, Texas, containing approximately 300 acres, subject to a valid oil and gas lease thereon.

All the above described property is owned by co-tenants, and each co-tenant reserves for himself the right to bid at the sale. For further information concerning the description, location, and terms of sale contract of the above described property contact

**W. N. PRICE**

STRATFORD,

TEXAS

**We've Built a Home For  
 HAPPY LIVING**

with  
**Adequate  
 Electric  
 Wiring**



We've built our home for happiness. Planned it right for bright living, electrically.

We're going to spend the best part of our lives in this home, and so we've planned it just the way WE want it.

We've placed outlets conveniently in every room so we can move lamps and appliances around at will. We've made sure the wire installed is large enough to carry all the current needed for the lights and appliances in every room, and we've had large enough circuits installed to handle all the low cost electricity we'll need for years to come.

**WHAT ADEQUATE WIRING MEANS**

**ENOUGH CIRCUITS** for serving efficiently and safely all the appliances you have.

**ENOUGH OUTLETS** and switches for convenient living.

**LARGE ENOUGH WIRE** for serving your present and future needs.

SOUTHWESTERN PUBLIC SERVICE CO.  
 (Please Mail to Your Nearest Public Service Co. Office)  
 Please send a representative to advise me on better lighting and adequate wiring.  
 Name \_\_\_\_\_  
 Street Address \_\_\_\_\_  
 City \_\_\_\_\_ State \_\_\_\_\_

We are acting only in an advisory capacity.  
 We have nothing to sell but good electric service.

**SOUTHWESTERN  
 PUBLIC SERVICE  
 COMPANY**

22 YEARS OF GOOD CITIZENSHIP AND PUBLIC SERVICE

**Mrs. Wohlford Entertains El Martes**

The El Martes Club met with Mrs.

Sam Wohlford Tuesday. There were five tables of "42". Lovely refreshments were served to the following visitors and members: Mesdames

# Radios

- 1—Motorola Table Model FARM RADIO.
- 2—Electric Table Model RADIOS. (White and Brown Cases)
- 1—Olympic Table Model Brown Case RADIO.
- 1—Motorola Table Model Brown Case RADIO.
- 1—Portable Battery & Electric Sonora RADIO.
- 1—Small Portable Battery and Electric Motorola Playboy RADIO.
- 1—RCA Battery RADIO.
- 1—Used Aerial Table Model RADIO.
- 2—Used Battery RADIOS, Cheap.
- 1—Used Cabinet Model RADIO, Very Cheap.

CAR AERIALS — RADIO TUBES

Place Your Orders For Car Radios  
CADILLAC VACUUM CLEANERS  
With All Attachments

## Raymond's Radio Service

"Where Radio Is a Business and Not Just A Sideline"

# Two Good Mechanics

**Austin McLaughlin  
Bill Blackwell**

Are available in our repair department to furnish you with our guaranteed repair service in the repair of Cars, Pick-Ups, Trucks, and Tractors.

We are prepared to handle a great volume of work, but suggest that you play safe and bring in your repair jobs early so that we will be able to assist you in avoiding those costly last minute delays when harvest is in progress.

## TOC Motor Co.

Studebaker Sales and Service

# PAINTS

Our current stock of Paints include:

**White Outside  
Paint**

**Linseed Oil**

**FLOOR FINISHES**

**Varnish**

**TURPENTINES**

**Paint Thinner**

**KEM-TONE**

**Plicote**

You will find our line of paint represents one of the most complete offerings in this territory. Regardless of your needs, we believe that we either have the proper paint in stock or will be able to secure it for you with a few days notice.

**Van B. Boston**

# Stratford Abstract Co.

Minnie Laura Jackson, President

Incorporated 1907 — 39 years of Satisfactory Service to Sherman County Land Owners

Let Us Make Your Abstracts

WE SHOW THE RECORDS

Office on Corner of Main Street and Grand Avenue

## More Fun Than The Circus



By MOLLIE MARTIN

When spring comes, can the Circus be far away? Not for youngsters who have found some wonderful new circus toys. Why not take a hint from the children and make their spring party a Circus shindig, with "Big Top" refreshments?

Try decorating the table with a paper-ruffed clown for the centerpiece, and as a souvenir at each place, use one of the movable circus toys which can be found in a well-known red, white, and blue cereal package this month. There are Leo, the trick lion, Twinkletoes, the dancing clown, Zippo, the human cannonball, Kliecko, the monkey that actually climbs, and many others. Putting them together without paste or scissors is ducksoup for small fry, and after the party, these toys will provide many happy hours.

For refreshments in a truly carnival style, try Zippo Cannon Balls, simple to make and digest, and just the thing for a child's sweet tooth. Served with Grape-Nuts Ice Cream — m-m-m — delicious.

**Zippo Cannon Balls**

- 1/2 cup sugar
- 1/2 teaspoon salt
- 1/2 teaspoon soda
- 1/2 cup dark corn syrup
- 1/2 cup milk
- 1 teaspoon vanilla
- 1/2 cup butter or margarine
- 4 cups corn flakes

Combine sugar, salt, soda, corn syrup, and milk. Bring to a boil, stirring until sugar is dissolved. Then cook, stirring occasionally, to 233° F. or until a small amount of mixture forms a very soft ball in cold water. Remove from heat and cool about 1 minute. Add vanilla and butter and beat until thick. Pour over corn flakes and stir until well mixed. Shape into 1-inch balls, buttering hands lightly to prevent sticking. Makes about 4 dozen balls.

**Grape-Nuts Ice Cream**

- 2 teaspoons speed-up gelatine
  - 1 cup milk
  - 1/2 cup sugar
  - Dash of salt
  - 2 cups light cream
  - 1 teaspoon vanilla
  - 1/2 cup Grape-Nuts
- Place speed-up gelatine in bowl; add 1/4 cup milk and mix well. Heat remaining 3/4 cup milk. Add to speed-up gelatine mixture; stir until gelatine is dissolved. Dissolve sugar and salt in hot mixture. Add cream and vanilla. Turn into freezing tray of automatic refrigerator, setting control for coldest freezing temperature. When partially frozen, remove from tray and beat with rotary egg beater until fluffy and smooth. Fold in Grape-Nuts. Return to tray and freeze 30 minutes longer; stir. Then freeze until firm. Freezing time: 3 to 4 hours. Makes 1 quart.

Leonard Plunk, H. T. Jackson, Bob Pendleton, J. K. Richardson, G. R. Garrison, S. J. Calvird, Herbert Folsom, J. R. Knight, I. D. Divine, D. L. Buckles, R. C. Buckles, Royal Pendleton, Homer Smith, Arthur Milton, Archie Arnold, Tim Flores, John Kidwell, A. E. Pronger, Earl Shirik, M. Dortch, J. C. O'Brien.

**Arthur Miltons Entertained Saturday**

Mr. and Mrs. Arthur Milton were surprised with a lovely anniversary dinner Saturday evening at 6 o'clock in the home of Mrs. D. L. Buckles. Those enjoying the affair, were Mr. and Mrs. R. C. Buckles, Dickie Buckles, Rev. and Mrs. G. M. Eastman, Orville Eastman, Misses Nettie Beth Evertt, Ruby Sweny, and Aline Eastman.

**Rev. Eastman To Attend Masonic Rites At El Paso**

Rev. G. M. Eastman will be one of

the delegates to the Masonic rites to be held in El Paso the latter part of the week and will not be able to fill the pulpit at the Christian Church Sunday.

**WTSC Rodeo Saturday**

CANYON, April 16.— The "west" in West Texas State College will be no mere formality Saturday when students don spurs and Stetsons in celebration of the first T-Anchor annual rodeo, an all-college affair, sponsored by the campus Aggie club.

With 35 colleges of the region invited to send contestants, the Aggies plan two shows, one beginning at 2:30, the other at 7:30 o'clock. Admission will be one dollar for adults, 50 cents for children 12 and under, proceeds going toward the Aggie loan fund, which enables boys to continue their schooling.

In anticipation of the western-day festivities, the male population

We have a Carload of Select and Certified

# SEED

Including

MARTIN MILO, PLAINSMAN MILO, HEGARI And Other Field Seeds

Phones 40 and 86

**Stratford Grain Co.**

of the school is encouraging abstinence from razors, to cultivate heavy growths for a featured beard contest.

**SOMETHING WORSE**

**THAN RUSSIANS**

Everybody seems to be getting madder and madder every day at Russian Communists. Did it ever

occur to you that American Communists are several degrees worse than the foreign breed, who have Communist heritage?

**HOTEL STRATFORD**

"Once a Guest—Always a Booster"

Mrs. Areace LeBleu, Prop.  
Phone No. 7

"THERE'S THE ONLY PLACE YOU CAN BUY GENUINE JOHN DEERE PARTS!"



WHEN you buy replacement parts for your John Deere Farm Equipment, don't take a chance! You're assured of genuine John Deere Parts when you buy from a John Deere Dealer.

Genuine John Deere Parts are made in the same factories, of the same high quality material, by the same skilled workmen, from the same patterns and dies as the parts they replace. Genuine John Deere Parts are your assurance of continued fine field service that was yours when your John Deere equipment was new!

The next time you need replacement parts, insist on genuine John Deere Parts. Order your parts from us the next time you're in town.

## Bennett Implement Co.

JOHN DEERE QUALITY FARM EQUIPMENT

# Gleaner-Baldwin Combine Parts

We have a large stock of Gleaner-Baldwin Combine parts to place your machinery in condition for a bumper harvest. Although we do not have a complete line including every part, you will find by buying early that we have —

## Bearings

for most any shaft used in the Gleaner-Baldwin Combine.

## Combine Repair Service

We are prepared to offer you combine repair service in addition to our established automotive service. Bring in your Combine Motors whose durability for handling a heavy load during harvest is questionable. We will place them in condition for dependable service during the rush season.

**Stratford Motor Co.**  
YOUR FORD DEALER

**LOCAL NEWS**

Dalhart Tuesday.  
Mrs. Ernest Kelp accompanied  
Mrs. Tom Gibbons, Texhoma, to Major and Mrs. Jewel Holt visited

**Made to Measure Suits**  
WITH EXTRA PANTS  
FOR MEN

**Ladies Tailored Suits**

New Selection of Samples on Display for your approval.

**Order Your Made To Measure  
SPRING PANTS**

Now

**Replace Worn Out Zippers With New  
Ones**

We have a large stock of assorted colors on hand.

**Stratford Cleaners**



**Have Your MEATS Processed Before  
The Harvest Rush**

Our Curing Is Delicious and Waste Free

We guarantee our complete processing job. Come in and give us a trial.

SOMETHING NEW AND DELICIOUS

All Popular Flavors Of

Lady Borden  
ICE CREAM

Pint

**35<sup>c</sup>**

Slightly More Expensive and Well Worth the Difference

**Stratford Frozen Food Lockers**

**FOR BETTER MILEAGE--  
LONGER WEAR**

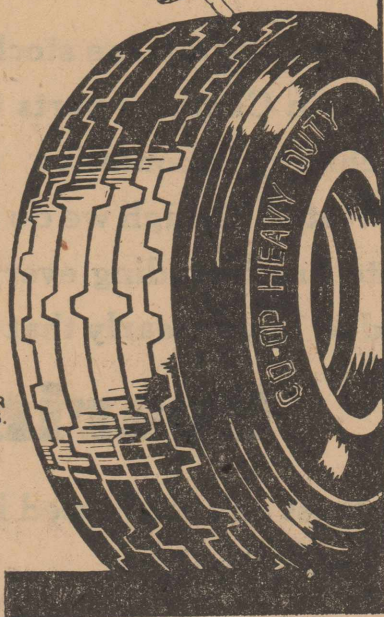
Use  
**CO-OP  
Tires**

Controlled  
CONSTRUCTION  
QUALITY  
PRICE



The quality of Co-op tires is controlled by the consumers themselves... there can be no better guarantee of quality. They're good... they have to be to meet exacting consumer demands. Look around and see how many of your neighbors and friends have already changed to Co-op Tires! For better performance use Co-op butyl tubes.

RAYON CORD AND NATURAL RUBBER CONSTRUCTION IN LARGER SIZES.



**BAILING WIRE**

22-Inch and 26-Inch DISCS

ANGEL ONE-WAY PLOW PARTS

CAR, TRUCK And TRACTOR TIRES

GASOLINE, OILS And GREASES

We now have a Truck for Country Deliveries of Gasoline. With our meter and pump we can give you the amount of gasoline you desire, and at the time you want it.

**Consumers Co., Inc.**

"We are Open 24 Hours a Day"

**POPULAR DECCA RECORDS**

POPULAR SHEET MUSIC  
Francis Martin and Cemar Pottery  
Hand Painted Tyndale China  
Hand Decorated Table and Floor Lamps  
COSTUME JEWELRY  
Bracelets, Ear Screws and Pins  
LADIES WATCHES  
Florn Musical Electric Kitchen Clocks  
"We Give S. and H. Green Stamps"

**Robbie's Gift Shop**

with relatives in Stratford and Spurlock over the week-end. They were enroute from Glendale, California to Florida where Major Holt will be stationed.

Mr. and Mrs. Haskell Suddeth of Bovina visited Mr. and Mrs. Dick Diehl Tuesday evening.

Mr. and Mrs. W. C. Martin came home Tuesday from Phoenix, Arizona, where they had been for a week.

Mr. and Mrs. Alan Bryant and daughter, Gay, are in California for a visit with relatives.

Johnnie Steel is a guest in the home of his grandparents, Mr. and Mrs. W. W. Steel.

Mr. and Mrs. W. J. Thompson, Jr., and son, Ordway, Colorado, were here over the week-end for a visit with his parents.

Mrs. J. C. O'Brien, Mrs. Earl Smith, and Mrs. Jack Smith were visitors in Amarillo Wednesday.

Mr. and Mrs. Leo Cook, Wichita, Kansas, were guests in the home of his parents, Mr. and Mrs. W. O. Cook, over the week-end.

Mr. and Mrs. Earl Riffe were visitors in Amarillo Tuesday.

Mr. and Mrs. H. W. Raymond are visiting relatives in Amarillo this week.

H. L. McMahan transacted business in Amarillo Monday.

Mr. and Mrs. Allan Mansfield Ottawa, Kansas, were guests in the home of Mr. and Mrs. J. W. Elliott Friday and Saturday.

Mr. and Mrs. Bert Slay are spending the week in Hot Springs, New Mexico.

H. C. Sherrod transacted business in Amarillo Monday.

Mrs. Bill Garrison spent the week-end with her mother in Dalhart.

John Steel brought his wife home from Loretta Hospital Monday.

William Glenn Hart, James Bradley, and Boyd McWilliams were visitors in Higgins and Woodward Thursday.

Mrs. L. E. Bonar and daughter, Kathryn, visited relatives in Woodward, Oklahoma Thursday. Oren Highley, a nephew, and band director in Woodward, escaped injury, having taken an ill pupil home just before the twister struck. One

member of the band was killed when the band hut was struck.

Mrs. D. B. Kendall, Dalhart, spent the week-end in Stratford.

Bill Garrison and Gene French are in Evansville, Indiana receiving new cars for the Garrison Motor Co. Roberts and Stone Brothers, operators of the Conlen Trading Post and Cafe, were visitors in Stratford Tuesday morning.

Mrs. E. J. Massie and son returned home Monday from a visit in Hereford.

Mrs. L. N. Lee, who has been seriously ill with pneumonia, is much improved.

Mr. and Mrs. C. E. Hawkins transacted business in Dalhart Saturday afternoon, and went from there on to Amarillo, spending Saturday night and Sunday with their children, Mr. and Mrs. D. D. Ashlock and son.

Mr. and Mrs. E. W. Butler returned home Tuesday from Helena, Arkansas, where they visited their daughter, Mrs. Jessie Lee Dowda.

Mr. and Mrs. Gregg Van Bebbler and Ira Guthrie came home last week-end for a visit with their parents, and brought with them a friend, Wayne Mahoney.

Louie Green is a visitor in Graham, Texas this week.

Dick Diehl and Roy Mitchell attended the horse sale in Amarillo Saturday.

Mrs. W. W. Steel and son, William, returned home Wednesday of last week from Halstead, Kansas where they received medical examinations.

The G. M. Eastman family had as dinner guests Sunday, Mr. and Mrs. R. C. Buckles and Dickie, Mrs. D. L. Buckles and Miss Nettie Beth Everett.

Mrs. Tom Gibbons and daughter, Amariylls, Texhoma, brought Mrs. Gibbons home Tuesday. She had been visiting them for the last two weeks.

Mr. and Mrs. D. B. Grimes were Amarillo visitors Monday.

Mrs. R. K. Everett visited relatives in San Antonio last week.

Neil Jackson, student at West Texas State College, Canyon, visited his parents, Mr. and Mrs. H. T. Jackson, over the week-end.

W. G. O'Brien and J. C. O'Brien

left Tuesday on a business trip to Lubbock and Rotan.

Art Ross, who has been attending school in Denton, Texas, returned home last week to work on Ross Bros. ranch.

Mrs. A. W. Klawetter and Miss Jeanne Price spent last week-end in Amarillo.

Rev. and Mrs. H. A. Nichols were visitors in Higgins Tuesday.

**Bargains!**

**Bargains!**

FARM RADIOS \$25.00

KITCHEN SINKS \$9.95

STAINLESS-STEEL SINKS \$15.00

USED GAS RANGE \$25.00

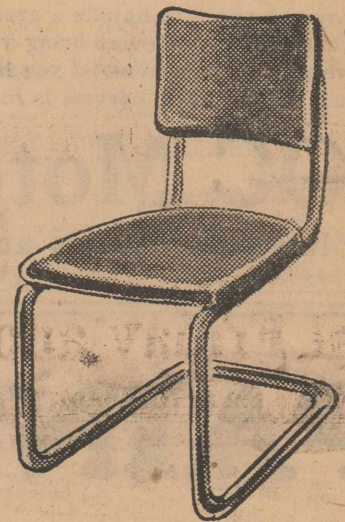
WALL HEATERS \$25.00

54 Inch DOUBLE DRAIN SINK \$59.95

**Duby Plumbing & Electric**  
"Your Frigidaire Dealer"

**Special**

Porch  
AND  
Lawn  
Chairs  
\$7.25



A nice, heavy tubular Steel Frame, with Comfortable Form Fitting Seat and Back. Colors— Red and Green.

**McMahan Furniture**

Your Complete Home Furnisher — Phone 137

Shop In South Stratford

Yes, We Have Some More Beautiful



LADIES  
SPRING  
Coats  
And  
Suits

These new spring creations are offered in 100% Wool Gaberdines and Crepes.

We also have an attractive display of —

Spring Blouses

**Ross Bros. Dry Goods**

**Week-End  
Food Specials**

SLAB BACON Pound	58	CABBAGE Pound	3 1/2
SLICED BACON Gold Crown Pound	59	TOMATOES Package	35
Armour's SHORTENING 3 Pounds	\$1.35	DILL PICKLES 1 Pint Jar	9
BEEF RIBS Pound	35	SPUDS Red or White 10 Pounds	45
MILK Armour's Small Cans 4 For	25	PEARS Nile Brand No. 2 1/2 Can	35
PLUM JAM 1 Pound Jar	24	PORK & BEANS White Swan 1 Pound Can 2 For	25
TOILET TISSUE Roll	10	ORANGE JUICE No. 2 Can	9

**Richard's Cash Grocery**

Located on Main Street at intersection of U.S. 54

**LOCAL NEWS**

Miss Kathryn Bonar left Sunday to join her sister, Miss Ermalee Bonar, in schooling at Wichita, Kansas.

F. E. McMinn and son, Martha, Oklahoma, were week-end guests in the home of Mr. and Mrs. O. L. McMinn.

Mr. and Mrs. Frank Burhenn and family visited relatives in Stonington, Colorado last week-end.

C. E. Hawkins transacted business in Amarillo Thursday of last week.

**Spurlock News**

Tom Ellison, Billie Ann and Don

Ellison went to Amarillo Friday night to meet their cousin, Miss Mary Katherine Chase, of Jefferson City. She will be visiting here for a few weeks in the homes of Mr. and Mrs. Oma Ellison and Mr. and Mrs. A. H. Ellison.

Mr. and Mrs. Cline Gilbert, Mr. and Mrs. Meritt Sweny and Ina Fay spent Saturday evening in the home of Mr. and Mrs. Homer Foreman of Dumas.

Jim Sweny visited in Childress over the week-end.

Mr. and Mrs. H. A. Carter, who have just torn down their home, are building a new modern farm home.

Mr. and Mrs. Oma Ellison were in Dumas and Dalhart on business Monday.

Mr. and Mrs. Harvey Spurlock have work started on their new home they are building in Sunray.

**The Stratford Star**  
Published Weekly By  
Brown Ross

Entered as second class matter at the Post Office in Stratford, Texas, under the act of March 3, 1879.

**Subscription Rates**  
\$2.00 per year in Sherman and adjoining counties. \$2.50 per year outside first zone.

**Classified and Legals**  
10 cents per line per insertion; 7 1/2 cents per line subsequent insertions. Display rates on application.

Better insect control will be obtained when: 1. The control is started early; 2. The proper insecticide is obtained and used; 3. The insecticide is applied thoroughly; 4. Applications are repeated 7 to 10 days until control is achieved.

The following insecticides are effective for chewing insects: cryolite, lead arsenite, calcium arsenate. For sucking insects, nicotine sulfate, sabadilla, lethane and pyrethrum are effective when used properly.

The annual reunion of the 35th Division will be held in Kansas City, Missouri June 5 to 7, 1947.

Approximately 56,000 American soldiers and sailors married British girls during World War II.

The acreage of rice harvested in Texas during 1946, which was 412,000 acres, was the largest in the

**DAE Auto Paint**  
The new wonder paint for automobiles. Just wipe it on. Leaves factory-like paint job, guaranteed two years. \$5.95 paints car. Free literature. Dealers wanted in Panhandle. Wholesale-retail distributors. Cover Co., 1911-N, Lubbock, Tex.

**WANT ADS**

**FOR SALE:** 2 practically new cotton mattresses for single beds. Mrs. Joe Duby. 24-tfc

**FOR SALE:** 1 Frigidaire Pop Box in good condition.—Stratford Frozen Food Lockers. 25-tfc

See Mrs. Roy Allen for buttons, button holes and buckles. 28-2tp

**SALESMAN** with machinery and equipment experience, or mechanically-inclined, offered an excellent opportunity with a Company whose men are earning from five thousand upwards. Local territory. Must have car. Knowledge of farm trade helpful. Write age, experience, availability and full information to **FORNEY MANUFACTURING CO.**, 301 Southland Life Building, Dallas, Texas. 28-1tc

Mr. Renter and Investor, we have a good farm or ranch in Western Kansas or Eastern Colorado to fit your needs, priced from \$15 to \$75 per acre, write us now.—G. W. Jesse, Arnold, Kansas. 25-8tp

**LOST OR STRAYED:** 1 sorrel 5-year old horse, white skim on right eye-ball, unbranded, please give information as to whereabouts to Roy Mitchell, Stratford. 28-3tp

**FOR SALE:** 4-room house with unfinished bath.— See Harold Leonard at Mid-Way Cafe. 25-tfc

**FOR SALE:** Bargains, 1 4-piece used bed room suite, 1 used kitchen range.— McMahan Furniture. -1tc

**WATER WELL DRILLING.** Robertson Bros., Box 148, Dalhart, Texas, Phone 871-W. 25-6tp

**FOR SALE:** Two 100 pound capacity ice refrigerators, 1 gas range, 1 kitchen cabinet.— Mrs. Earl Smith 28-2tp

**FOR SALE:** 1931 Baldwin 12 foot combine.— Ed Honeman, Hooker, Okla. 27-3tp

**WANTED:** Spring custom plowing, equipment available any time.— Kenneth Connally, Texhoma, Oklahoma, Box 614. 28-4tp

state's history.

The 5,992,000 acres of wheat harvested last year set a new record for the state.

Seed improvement and soil improvement, together with good cropping systems, are the basis of successful field crop production.

**Scarce Items**

NOW IN STOCK

Window Units

Doors

Siding

Oak Flooring

2x4's to 2x12's

1x6 Rough Fencing Lumber

1 Inch Sheathing Lumber

5x5 Rough Windmill Towers

Small Stock Watering Tanks

Shingles, Cedar or Composition

Roll Roofings

Cement — Lime — Plaster

White House Paint and Enamel

Red Picket Fence

Screen Wire

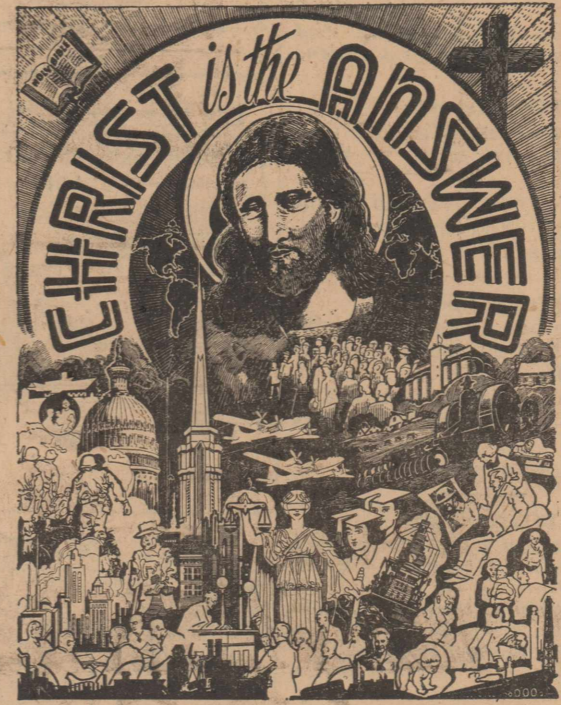
Screen Doors

Window Screens

We have numerous other supplies which will be of interest to those who wish to build or repair — Give Us A Visit.

**Foxworth-Galbraith Lumber Co.**

**We BELIEVE That**



"Believe on the Lord Jesus Christ, and thou shalt be saved."— Acts 16:31.

HEAR

**Rev. Wilson Wood**

TRINIDAD, TEXAS

**Preaching Daily**

10:00 A. M. 8:00 P. M.

**First Baptist Church**

April 20 - - - 27

**Du Barry Cosmetics**

With Beauty Preparations for the Teen-Age Skin in Special Cleansing Preparations, Special Cleansing Cream, Cleansing Cream for Dry Skin, Skin Freshener, Foundation Lotion, Tissue Softening Cream, Special Astringent, Dainty-Dry Deodorant, Bath-Soap, Hand Beauty Cream, Face Powder, and Lip-stick.

If you're a teen-ager, you'll want to start a daily Du Barry beauty routine.

"We Give S. & H. Green Stamps"

**YATES DRUG**

**Buy the Best for Less**  
**Special Friday and Saturday**

<b>WEINERS</b>		<b>ONION SETS</b>	<b>25</b>
Sun-Ray	<b>33</b>	3 Pounds	
Pound			
<b>OLEOMARGARINE</b>		<b>ONION PLANTS</b>	<b>25</b>
Nu-Maid Or	<b>42</b>	3 Bunches	
Meadolake			
Pound		<b>ENGLISH WALNUTS</b>	<b>45</b>
<b>SHORTENING</b>		No. 1 Diamond	
Mrs. Tuckers	<b>\$1.35</b>	Pound	
3 Pound Carton			
<b>CHILI</b>		<b>PECANS</b>	<b>45</b>
Van Camps	<b>31</b>	No. 1 Paper Shell	
17 Ounce Jar		Pound	
<b>CRACKERS</b>		<b>CATSUP</b>	<b>24</b>
Sunshine Krispy	<b>43</b>	Hunts C.H.B.	
2 Pound Box		14 Ounce	
<b>KRAUT</b>		<b>Bottle</b>	
No. 2 1/2 Can	<b>15</b>	<b>FRUIT COCKTAIL</b>	<b>39</b>
<b>SALMON</b>		White Swan	
White Swan	<b>65</b>	No. 2 1/2 Can	
Red Sockeye			
Tall Can		<b>CHERRIES</b>	<b>39</b>
<b>SALAD DRESSING</b>		Red Pitted	
Del Haven	<b>17</b>	No. 2 Can	
8 Ounce Jar			
<b>CORN</b>		<b>BLACKBERRIES</b>	<b>37</b>
White Swan	<b>19</b>	No. 2	
Golden Sugar		Can	
No. 2 Can		<b>BLENDED ORANGE</b>	<b>19</b>
<b>BAB-O</b>		And GRAPEFRUIT	
The Grease	<b>11</b>	JUICE	
Dissolving Cleanser		46 Ounce Can	
<b>STARCH</b>		<b>TOMATO SOUP</b>	<b>19</b>
Elastic	<b>25</b>	White Swan	
3 Boxes		10 1/2 Ounce Can	
		2 For	<b>19</b>
		<b>DICED CARROTS</b>	<b>25</b>
		Del Monte	
		16 Ounce Jar	
		2 For	

**ALBERT'S**  
**Grocery & Market**

**RHYMES OF REASON** Words and Music By **McIntosh**



Anniversary Sale Continues With Big Values For All

<b>Berkshire</b>	<b>\$1.40</b>	<b>MARIETTA WOOL</b>	<b>One Group Ladies</b>
<b>NYLONS</b>		<b>YARN</b>	<b>SWEATERS</b>
<b>COTTON YARN</b>	Regular 59c per Skein	<b>Now 2</b>	<b>Reg. \$3.49 Value \$1</b>
In All Colors		<b>For</b>	<b>Now</b>
Regular .29 Per Skein		<b>36" Inch FLANNEL</b>	<b>One Group Girls</b>
<b>Now 4</b>	<b>\$1</b>	Pink, Blue and White	<b>DRESSES</b>
<b>For</b>		<b>3 Yards</b>	<b>Sizes 3 to 6</b>
<b>Boy's 'T' SHIRTS</b>	<b>\$1</b>	<b>For</b>	<b>50c</b>
Reg. 69c-98c			
<b>Now 2 For</b>			

**McINTOSH DRY GOODS**

**ALL COATS**  
**And**  
**SUITS**

Further Reduced  
To 1/2 Price

One Group Boys'  
2-Piece SUITS  
Sizes 2 to 6 **98c**

How to Take Care Of the New Baby

BRINGING UP BABY



After-Bath Care

MANY new mothers wonder whether to put oil or powder on baby's skin after a bath. Which you use isn't so important. What kind you use is vital, however.

Some baby powders contain stearate of zinc. If this chemical is inhaled, a serious and often fatal form of pneumonia develops. You can safely use talcum powder.

Taking care of a new baby is a full-time job. Our new booklet No. 203 can help you in countless ways. Send 25 cents (coin) for "Baby Care" to Weekly Newspaper Service, 243 West 17th St., New York 11, N. Y. Print name, address, booklet title and No. 203.

JUST KIDDING

**Natural Result**  
Teacher—Fritz, your essay titled "Mother" is just the same as your brother's.  
Fritz—Yes'm; you see we have the same mother.

**Press Time**  
Farmer—And this is the cider press, ma'am.  
City Visitor—How interesting. And when do you run off the next edition?

**Plain Nosey!**  
"Who is that letter from?"  
"What do you want to know for?"  
"There you are. What do I want to know for? You're the most inquisitive person I've ever met!"

**Quality Counts**  
Sue—The boy I had a date with last night kissed me a hundred times. Did you ever have a boy kiss you a hundred times?  
Patricia—Of course not. Boys only go after quantity when they can't get quality.

**Disappointed**  
"I haven't seen you at church lately, William," said the preacher. "What's the matter?"  
"My daughter's learning to play the harp," replied William.  
"But what's that got to do with it?"  
"Well, I'm not to keen now on going to Heaven as I was!"

**Courteous**  
First Singer—Did you notice how my voice filled the hall last night?  
Second Singer—I noticed several people leaving to make room for it.

**That's That!**  
Mack—Any similarity between you and a human being is purely coincidental.  
Jack—Thanks, and we're not even related.

The girl who doesn't make a hit usually is safe at home.

**Black Leaf 40** FOR GARDEN PROTECTION

Spray with Black Leaf 40. One ounce in 6 gallons of water makes an effective spray.

Black Leaf 40 also controls leaf hoppers, leaf miners, most thrips, mealy bugs, lace bugs, young sucking bugs and similar insects.

**TOBACCO BY-PRODUCTS & CHEMICAL CORP., INCORPORATED**  
Louisville 2 Kentucky

Look for the Leaf on the Package

Wichita's Greatest Values In **HOUSE TRAILERS**

SEE NEW TRAVELERS—UNIVERSALS Used Trailers Bought and Sold.

Bring this ad for free trailer dishes with new trailer purchase. We also pay for gas on trip to Wichita.

**General Sales Company**  
1108 E. Central, Wichita. Tel. 2-8977.

**NO FEED GAMBLE HERE!**

A Dodson Silo protects you from rising feed costs, makes feeding easier, builds better beef, increases butter fat. Customers prove it. Literature on silos, grain bins, water tanks, and farm buildings.

**DODSON**  
1463 BARWISSE WICHITA 2, KANSAS

**GIRLS! WOMEN! try this if you're NERVOUS**

On "CERTAIN DAYS" Of Month—

Do female functional monthly disturbances make you feel nervous, irritable, so weak and tired out—at such times? Then do try Lydia E. Pinkham's Vegetable Compound to relieve such symptoms. It's famous for this! Taken regularly — Pinkham's Compound helps build up resistance against such distress. Also a great stomachic tonic!

**LYDIA E. PINKHAM'S VEGETABLE COMPOUND**

**CROSS TOWN**  
By Roland Coe

"When you meet me at the train to show me your report card it must be a corker, eh?"

**BOBBY SOX**  
By Marty Links

"Don't, Robert—don't spoil our wonderful devotion to each other by asking me not to see other men!"

**NANCY**  
AUNT FRITZI-- MAY I GO SKATING?  
NO-- YOU WERE BAD THIS MORNING  
BUT I WAS GOOD THIS AFTERNOON  
THAT'S NOT FAIR--- I WAS GOOD FOR HALF A DAY  
THAT MAKES NO DIFFERENCE

**By Ernie Bushmiller**

**LITTLE REGGIE**  
SORRY RUMPUS YOU CANT COME. IVE GOTTA MIND MRS HIGHTOWERS BABY!  
OOO THERE YOU ARE REGINALD. IVE BEEN WAITING FOR YOU!  
BEFORE I LEAVE... IS THERE ANYTHING YOU NEED?  
NO MAM - IM ALL SET!

**By Margarita**

**MUTT AND JEFF**

THE RENT OR OUT?  
JUST FOR THAT WE'LL GET OUT!  
SURE! THIS HOUSING SHORTAGE IS THE BUNK! I'LL FIND US A PLACE!  
-AND I WON'T COME BACK UNTIL I DO!  
HELLO, MUTT! PACK OUR THINGS! I FOUND A PLACE!  
OH, GREAT! WHERE ARE YOU?  
POINT BARROW, ALASKA!

**By Bud Fisher**

---AND MUTT! TRADE IN OUR REFRIGERATOR FOR A COUPLE PAIR OF SKIS!

**JITTER**

**By Arthur Pointer**

LOCAL SOCIETY FOR THE PREVENTION OF CRUELTY TO ANIMALS

**REG'LAR FELLERS**

I WANNA HOT DORG BUT I WANT IT IN A ICE-CREAM CONE--NOT A ROLL!  
WHAT?  
LISSEN! YOU AIM T'PLEASE, DON'TCHA? WELL, FOLLER MY ORDERS! AN GO LIGHT WITH TH' LIP!  
OKAY, BUT IT DON'T MAKE SENSE!  
HE'D SEE IF IT MADE SENSE IF HE HADDA GO HOME BY THIS STREET LIKE I DO!

**By Gene Byrnes**

**VIRGIL**

C'MON IN, DONNA-- I'M JUST PLAYIN' A FEW OF MY FAVORITE RECORDS  
I DON'T LIKE THAT RECORD-- I WANT TO HEAR THIS ONE  
NOW WAIT A MINUTE! THIS IS MY HOUSE... WE'LL LISTEN TO WHAT I WANT TO HEAR!!

**By Len Kleis**

WIMEN! PHOOEY

**SILENT SAM**

**By Jeff Hayes**

NEXT A.M.

CLASSIFIED DEPARTMENT

AUTOS, TRUCKS & ACCESS.

NEW & USED TIRES and Tubes, large selection. Mail orders, Sun. noon. EAGLE TIRE CO., 2463 Larimer, Denver, Colo.

BUSINESS & INVEST. OPPOR.

PLUMBING, Heating and Appliance business doing an average monthly business well over \$5,000. Stock, tools and equip. including 2 trucks with inventory approx. \$9,000. All good saleable stock at cost. Will sell business without bid. Wait taker Agency, 917 1/2 Elm, Rocky Ford, Colo.

Operate profitable mail order business. Splen. oppor. For details write A. G. Henry, 10118 Madison Ave., #86, Cleveland 2, O.

FARM MACHINERY & EQUIP.

WESTERN RED CEDAR FENCE POSTS Sold by Carloads.  
BONNER CEDAR CO. Sandpoint, Idaho.

FARMS AND RANCHES

170-ACRE DAIRY FARM FOR SALE by owner, edge of city limits. With city conveniences. Good six-room house, fine large barn, well fenced also other improvements. Write or see GEORGE CROCKETT Colony, Kans.

MOVE RIGHT IN

Dandy improved 60 on 12 1/2 Acre Pavement CLARENCE HART, Severy, Kansas

SEVERAL THOUSAND ACRES Colorado wheat land, from Denver to Kansas, Nebraska state lines. Wheat up and good stand; on some farms all wheat goes. 180 to 2000 acre tracts, improved, unimproved. \$20.00 to \$40.00 per acre.  
JACK WEINER LAND OFFICES  
4522 E. Colfax Denver, Colo.  
Phone Dexter 1511.

160 ACRES between Douglas and Mulvane, Kansas; 80 acres wheat, 20 acres alfalfa, balance in pasture. Good house, barn and silo; plenty water; electricity; and telephone. Ideal dairy farm. On all-weather road, mail and milk route. Price is right.  
JOE SHAFER, 126 N. Pinecrest, Wichita, Kansas Phone 6-4371.

FOR SALE: HALF SECTION improved eastern Colorado sandy loam, half pasture and balance good farm land. Seven miles from town on school and mail routes. Lots of trees including fruit trees. This is one of the best little farms in the country. No trades.  
RUTH MILLER Karval, Colo.

3,754 ACRE Cattle or Sheep Ranch, 2,514 deeded, 1,240 leased. Excellent grass with plenty of water. Fenced and cross-fenced. 250 acres farm land, good improvements. On mail and school bus routes. Price \$30,000. Loan arranged for \$20,000. Wait-taker Agency, 917 1/2 Elm, Rocky Ford, Cal.

1,340-ACRE STOCK RANCH  
300 acres partly irrigated hay and grain, balance pasture. Electricity, telephone, gravelled road, 12 miles from town on mail and milk route. Two other good buildings. \$26,000. Terms, W. K. HALSTON, Steamboat Springs, Colorado.

200 ACRES, 6 S., 8 E. of Peabody, Kansas. Excellent land. Large barn, new granary, good house. 35 in pasture, 16 alfalfa. Balance cultivation. \$20,000.  
NEWTON FINANCE & INVESTMENT CO. Newton Kansas

MISCELLANEOUS

**BUTANE TANK SPECIALS**  
New tanks with fittings and regulators. 222 gal. tanks \$135.95. Prices F.O.B. Wichita, 2% sales tax. Approved by A. S. M. E. fire underwriters and state fire marshals. Mail Check—Write—Wire  
PLANEVIEW FURNITURE COMPANY  
Box 1678 Wichita, Kansas

ROLL Developed — Overnight Service, 2 High Gloss Prints each negative. All sizes, 25c. Re-prints, 3c each. Montana FOX STUDIOS — Billings, Montana

POULTRY, CHICKS & EQUIP.

U. S. APPROVED Pullorum Tested Chicks in all popular breeds, culled for quick maturing; straight run chicks as low as \$9.50 per 100; send for prices and quantities. GIBBS HATCHERY, Ladonia, Mo.

REAL ESTATE—HOUSES

All Mod. 7-rm. hse.; good cond. In Bunce-ton, Mo. Immed. poss. Priced to sell. Elizabeth Johnston, 1102 Barrett, Sedalia, Mo.

REAL ESTATE—MISC.

TEXAS TRIPS—Selling Orange, Grapefruit, winter vegetable land. Write MOOREHOUSE — Cameron, Mo.

For Your Future Buy U. S. Savings Bonds

JUNGLE HAMMOCKS

New War Surplus  
For the home, yard, farm, camping, scouting and many other uses.

Made of high grade Poplin for the U. S. Army. Complete with ropes, canvas, and protection against mosquitoes and other insects. Comes individually packed. Ready for immediate shipment. \$4.95  
Add 10% for Postage.

ROKO COMPANY

729 BALTIMORE KANSAS CITY, MO.

GIVE MUSIC 206 E. Douglas

**Bennett's**

Cut out, mail for Catalog WICHITA, KANSAS

Famous name Spinnet Piano. Trade in your used piano. Come to Wichita or Write

NAME \_\_\_\_\_  
ADDRESS \_\_\_\_\_  
35 years Kansas Music Center

WNU—H 16-47

When Your Back Hurts

And Your Strength and Energy Is Below Par

It may be caused by disorder of kidney function that permits poisonous waste to accumulate. For truly many people feel tired, weak and miserable when the kidneys fail to remove excess acids and other waste matter from the blood.

You may suffer nagging backaches, rheumatic pains, headaches, dizziness, getting up nights, leg pains, swelling. Sometimes frequent and scanty urination with smarting and burning is another sign that something is wrong with the kidneys or bladder.

There should be no doubt that prompt treatment is wiser than neglect. Use Doan's Pills. It is better to rely on a medicine that has won countrywide approval than on something less favorably known. Doan's have been tried and tested many years. Are at all drug stores. Get Doan's today.

DOAN'S PILLS





**April 25 Is Senior Day At PAMC**

Seniors from thirty-nine high schools in five states, Oklahoma, Texas, Kansas, New Mexico, and Colorado, have been invited to the Third Annual Senior Day at Panhandle A. & M. College on Friday, April 25, according to information released by Mildred Cox, student council secretary.

General arrangements and plans for the day are under the supervision of the Student Council of Panhandle A. & M. with Larry Scott, council president, as general chairman of the day. Plans include athletic events, an assembly program, tours of the campus and entertainment during the evening. Schools invited include Stratford, Hooker, Adams, Beaver, Forgan, Boise City, Kees, Felt, Plainview.

**Stratford Laundry**

**Your Helpy Selfy Laundry**  
Everyone Is Welcome — And We Appreciate Your Business  
**We Do Finish Work — Wet Wash and Rough Dry with Flat Work Finished At No Extra Charge**

We do each laundry separately with the same gentle care that you would give your own laundry.  
Give Us A Ring and We Will Pick-Up and Deliver FREE  
Mr. and Mrs. C. E. Hawkins Phone 8

Come In And Visit Our Store For New Arrivals In

**Jewelry**

LADIES WATCHES \$39 To \$71.50

MEN'S WATCHES \$23.50 To \$65

All watches sold are guaranteed for one year against defective parts.

**WATCH BANDS**

Leather, Link and Expansion

Diamond and Masonic Rings

Guaranteed Watch Repair Service  
New Cases and New Dials Carried In Stock

**Burns Gem Shop**

Two Doors South of Post Office

**Chrysler-Plymouth**

PARTS And REPAIR SERVICE

Skilled mechanics provide convenient, dependable service.

**Seat Covers**

And

**Batteries**

FOR ALL TYPES OF CARS, TRUCKS AND PICK-UPS

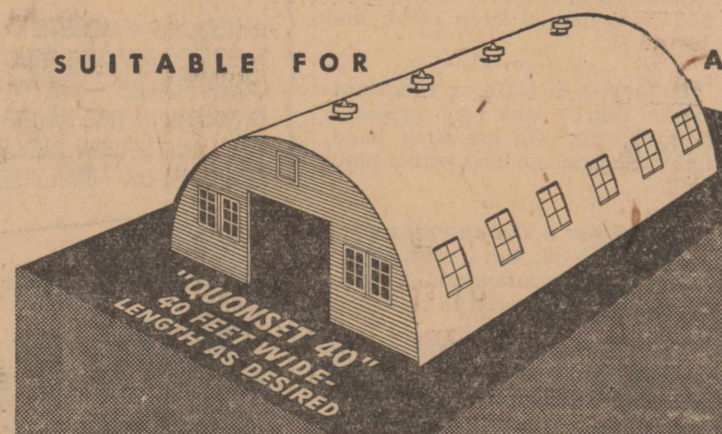
MAGNOLIA

Wholesale and Retail Products

**Garrison Motor Co.**

Your Chrysler-Plymouth Dealer

SUITABLE FOR ANY PURPOSE



**STRAN-STEEL "QUONSETS"**

**Ralph Harding**

Stran-Steel "Quonsets" are products of Great Lakes Steel Corp.

Increased demand for these buildings have slowed deliveries. It is advisable that you place your orders immediately to insure storage for the coming harvest.

Prices Quoted for Erected Building Or You May Buy the Materials and Erect Your Own Quonset.

**REGULAR MEALS SHORT ORDERS**

C. E. Leonard  
Harold Leonard  
**MID-WAY CAFE**

**BUTANE - PROPANE**

TANKS - BOTTLES

Thermostats - Regulators

BOTTLE EXCHANGE

Slay's Furniture

**GOOD FOODS**

Cooked and Served The Way You Order Them

Eat a trial meal with us and see if you aren't pleased.

E. L. KOONTZ

**ROCK ISLAND CAFE**

Texhoma, Goodwell, Guyton, Shattuck, Buffalo, Bakersburg, Turpin, Hardesty, Gage, Balko, Tyrone, Gate, and Bethany in Oklahoma, Ulysses, Liberal, Plains, Elkhart, and Hugoton in Kansas; Spearman, Dalhart, Fallett, Booker, Dumas, Gruver, Perryton, Texline, Pampa, and Borger, in Texas; Clayton, New Mexico, and Springfield, Colorado.

**Hegari Silage Protects Feeders From Rising Costs**

Herschel L. Thomason, Bailey County, bought 200 tons of Hegari from a neighbor and dug a trench silo to store it for the cost of \$1,000. At present Thomason estimated that the feed is worth at least \$2,000 or \$10.00 a ton.

The Bailey County Agricultural Agent advances this theory for stockmen who are buying cattle to feed while the market nears a level which may cause feeders to either dispose of cattle or feed them at a loss.

**OUR DECADENT TARIFF POLICY**

In olden times the Republicans protected American interests by tariff laws that balanced the differences in costs of production between foreign countries and the United States, our Nation being stabilized on levels because of higher wages and natural advantages. Cordell Hull eased in "trade treaties," which were in fact twin-sisters to free trade. The Republicans still believe that their old protective tariff was a better system.

**Hurry! Hurry! Hurry!**

We Are Covered Up With

**Linoleum Rugs**

All Sizes and Colors  
Prices are Lower

**Radio Phonographs**

In Table Models - Consoles - and Portables. Any Size or Price you want.

**Vacuum Cleaners**

In Five Price Ranges

All The Latest RECORDS

By Victor - MGM and Majestic

MORNING GLORY

**Innerspring Mattresses**

In Damask and Sateen Covers

BOX SPRINGS To Match

**\$10** For Your Old Mattress and Springs

COIL SPRINGS In All Sizes

KEM-TONE - LIN-X - BRUSHES

THOR AUTOMAGIC GLADIRONS

Axminister Throw RUGS

HOME FREEZERS

GAS RANGES

Cabinets - Sinks - Bases - Water

Heaters At A Reduction

LAWN CHAIRS And GLIDERS

**Slay's Furniture & Appliances**

MAYTAG KELVINATOR RCA EUREKA

Waiting for You **NOW!**

THE GREAT NEW 1946

**KELVINATOR**



★ Greater in Beauty  
★ Greater in Dependability  
★ Greater in Extra Value

Here's all the beauty, all the convenience you've been waiting for so long... big, roomy interiors with loads of shelf space and new convenience features. (Up to 12.2 square feet!) Plus the famous Kelvinator Polarsphere power unit that's sealed-in-steel to give you year 'round, trouble-free service. COME IN AND SEE IT TODAY!

\*Prices shown are for delivery in your kitchen with five-year protection plan. State and local taxes extra. Prices and specifications subject to change without notice.

Get the Best Things First—Get

**Kelvinator**

**THE PICK OF THE CROP for your SPRING Salad**



SERVE Salads OFTEN!

Quality Marshmallows 9 Ounce Box	33
Divens PINTO BEANS Tall Can	13
Hershey's CHOCOLATE SYRUP 16 Ounces	13
Hearts Delight CATSUP 14 Ounce Bottle	29
Del Monte SPINACH No. 2 Can	17
Philadelphia CREAM CHEESE	17

Large Washington APPLES 2 Pounds For	29
--------------------------------------	----

Large Avacadoes Each	23	Large, Juicy Oranges Dozen	43
Frosted Mixed Fruits 1 Lb. Box	59	Green Onions 2 Bunches	9
Vegetable Salad Mix 1/2 Lb. Pkg.	15	Fancy Hot House Cucumbers Each	39

**DRIED FRUIT Specials**

Fine for Pies Dried Peaches 2 Pounds for	69
Thompson Seedless Raisins 2 Pounds for	59
Del Monte Prunes 1 Pound Box	32

Household Bleach CLOROX Quart	17	Harvest Home PEANUT BUTTER 1 Pound Jar	29
LIFEBUOY Health Soap Regular	10	WE BUY FRESH COUNTRY EGGS	
Fancy Del Monte DICED BEETS 2 For			75

For A Good Meal Pork Roast Pound	43	Lean Ground BEEF Pound	34
Best Quality PORK SAUSAGE Pound	39	Smoked BACON SQUARES Pound	39
Fresh Creamed COTTAGE CHEESE Pound	25	SLICED BACON Pound	65
Boneless Catfish STEAKS Pound	49		

We Sell Plains Grade A MILK Only

**Brown's Food Store**