



BURGLARS STRIP HOUSE - Burglars who moved in sometime last week and made off with most of the furniture in Mr. and Mrs. Shirley Miller's brandnew home west of Muleshoe, apparently didn't care for bedlamps or night stands. A king-sized bed stood between the tables, and in the foreground a 40-year-old dining suite.

Retirement To Country Home Here? They're Not Sure Now

When Shirley and Doris Miller close up their grocery store on 19th street in Lubbock for the last time, they always figured they would get in their car and drive to their 160-acre tract west of Muleshoe and settle down for good.

"A few cows, maybe, and a garden — things like that," says Miller.

In fact they've been planning

ahead for a long time toward that end. Now they are not so sure.

Charles Lenau, lumberman, has just about finished building their house on the 160-acre plot between the sandhills south of Lariat. It's a pretty little place with redwood siding and dark walnut paneling inside, and it has a bathroom that's all done out in the usual pink and

blues. There's a pantry, king-sized to delight a grocery-man, and a big storeroom and an all-electric kitchen complete with a dishwasher and a combination freezer-refrigerator.

And there's a huge living room with an open front stove that burns logs like a fireplace. In fact, it has all the illusion of a fireplace, even to the brick hearth. Just to be on the safe side, there's also a propane furnace.

Mostly the house is one room — living room and dining room. Even the bedroom and kitchen notch off from the big main room. Mrs. Miller has hung frilly curtains at the windows, and has put up tricky wall lights, even trivets.

(See RETIREMENT Page 4)

County's Poll Tax Payments Reach 1355

Poll tax payments in 1965 exceeded all expectations, pushing to 1355 before Saturday night's deadline, says Jean Lovelady, county tax assessor-collector.

This is only about half as many as were sold last year, but officials were quick to point out that 1965 is an "off-year" election-wise, while 1964 had national, state and county positions at stake.

"We had thought we would be doing well if as many as 1000 receipts were issued," Mrs. Lovelady said. "I think the last-minute spurt which pushed the total to 1355 was due to the splendid publicity which the program received, and to the work of groups who pitched in to help."

Muleshoe Jaycees sold 162 Friday and Saturday, while the

Jayceeettes sold 48. Total sales at Three Way were 56.

Poll tax receipts will be necessary in order for persons to vote in two April elections, the city council and school board elections. Payments also will be necessary in case any special elections, such as bond matters, are held.

Meantime, sale of 1965 automobile licenses started Monday morning and opening sales were "good but not rushing." Vehicle owners have until April 1 in which to buy their tags, although vehicle inspection stickers must be in place not later than April 15.

Up to Tuesday night, the local automobile tag office had issued 92 passenger car tags and 42 pickup and bob-tail truck licenses.



BRICK FOR DESHAZO - Construction of walls for the new DeShazo Elementary school structure has reached the brick-laying stage. This is one of the brick-layers at work, Charles Cobb, Amarillo.

Public Meeting Is Called To Discuss Need For Parks, Other Recreation Projects

Because more people suggested the need of parks than any other item in forum sessions last autumn, Muleshoe Area Improvement Forum will devote an entire evening to discussion of this program, Dr. Charles L. Lewis, Chamber of Commerce president, announced Wednesday.

The parks and recreation session will be held in the Bailey County Electric Cooperative community room next Tuesday, starting at 7:30.

The public is invited. Special invitations are being sent to the city council members and to county commissioners, Dr. Lewis said.

This will be the second gen-

eral session held by MAIF in the follow-up programs. Others will follow.

First session was held a week ago when the entire program was discussed, all phases of the improvement plan being touched on. Sessions in the future probably will be devoted to one phase at a time.

One hundred seventeen persons suggested the need for city park facilities when discussions were held last autumn. This was the greatest number of suggestions made at the meetings. They also included suggestions for adequate playground equipment with tennis courts specifically mentioned.

Other suggested needs included a skating rink, drag strip, improved swimming pool facilities, all-age ball park, a municipal golf course and a miniature golf course. All will be discussed fully at next Tuesday night's session.

The chamber explained that the general meetings to discuss

the proposals are necessary before planning for activating the program can be done. It is also necessary to discuss the matters fully before deciding on a development schedule, setting up immediate and short-range goals.

At the first general session to discuss the report last week labor came in for a considerable discussion. Elvon DeVaney, chairman of the labor group, told the general session that "labor is the key to a \$1 million vegetable production, and housing is the key to labor. Without adequate housing, DeVaney pointed out, it would be impossible to secure industry which would bring in many new families. "We simply wouldn't have any place to put them," he said.

Also discussed fully at the first general session was the proposed junior college for Muleshoe. Alex Williams who made the report had gone ex-

tensively into the possibilities of a junior college. He and others had visited Levelland's South Plains Junior College and learned first-hand the procedure for securing such a college here. He told the group that Muleshoe is ideally situated for such a school, and that with the cooperation of neighboring school districts, a junior college could quite possibly be established here.

West Texas Chamber of Commerce has compiled the suggestions into six categories and formed them into a detailed report. Other phases discussed at the first general session included industrial development, business development, com-

(See MEETING Page 4)

69 More Donors To Maple's Fire Fund Are Listed

Sixty-nine additional donors to Maple's new fire department were listed Wednesday. A new fire truck has been purchased and put into use at Maple for the south end of Bailey County as "Unit 41" of the Bailey County Volunteer Fire department.

New donors to the fund are listed below by the Three Way Lions Club, one of the sponsoring agencies. The new gifts total \$2552.

Morton Insurance, \$25; State Line Butane, \$100; Maple Seed (See DONORS Page 4)

Forgery Try Fails: Teller Tips Officers

Three persons — a woman and two men — are in the Bailey County jail pending the filing of charges of attempted forgery as a result of an unsuccessful attempt to cash a \$75 check at Muleshoe State Bank Monday.

An alert teller at the bank, Elizabeth Thompson, became suspicious when two men appeared at her window and presented a \$75 check allegedly bearing the signature of E. H. Childs, a Bailey County farmer.

She left the men at the window and went to the bookkeeping department to compare the signature on the check with Child's official signature on the bank records. When she returned the men had fled.

The name, incidentally, was spelled "Chelds" instead of "Childs."

The sheriff's department, informed of the attempted forgery, immediately went into action. A border patrolman reported he had seen two men an-

swering the description trying to catch a ride on U. S. 84 west of Muleshoe.

Sheriff's deputies hustled out on the highway, but the hitchhikers had caught a ride and were nearing the Bailey county line when the officers caught up with them.

(See FORGERY Page 4)

Retailers Planning Feb. 22 Sales Event

Muleshoe retailers will stage a Washington's Birthday bargain sales event Monday, Feb. 22, it was decided at a breakfast meeting of the retailers held at Paul's Cafe Tuesday morning.

The event will be similar to last year's Feb. 22 program which was described as highly successful. As in the past, stores will feature the figure "22" in bargains — such as items to sell for 22 cents or for items costing \$1.22, etc.

Doug Haynes, chairman of the Chamber of Commerce's retail committee, presided at the Tuesday breakfast. Haynes appointed a special sub-committee, headed by Harvey Bass, to draw up plans for a March sales event also. Bass's group will make a report to the full committee at another breakfast session next Tuesday morning at Paul's.

Assisting with Bass on the sub-committee are Franklin

Mann, Olin Burrows, Lonnie Merriott, Robert Hooten, Roy Roberts and Lyndal Murray.

At Tuesday morning's breakfast the Feb. 22 event was discussed, as well as the proposed March promotion sale.

The idea also was advanced of the need for an intensified retail program in Muleshoe this year, setting up a year-long series of events to boost retail sales in Muleshoe. The full schedule probably will be aired at next Tuesday morning's breakfast.

Attending the breakfast Tuesday morning at Paul's were Doug Haynes, Franklin Mann, Harvey Bass, Lonnie Merriott, Robert Hooten, Olin Burrows, Vic Benedict, Dr. Charles Lewis, president of the chamber; Thurman White, Joe Pat Waggoner, Roy Davis, chamber manager; Lyndal Murray, Earl Harris, Roy Roberts, Bill McDonald and Ray Martin.

Business Was Light In Justice Court

Business was "light" in Justice of the Peace J. D. Vaughn's court over the weekend.

In fact, only two traffic citations were filed — one for failure to have a driver's license and another for speeding.

Also filed in his court was a case charging removal of mortgaged property.

in muleshoe
With the Journal Staff

If the groundhog is frightened by even a feeble type of sunshine, then there's going to be six more weeks of winter in Muleshoe. The sunshine was not of the usual West Texas intensity Tuesday when Mr. G. Hog made his annual weather check-up, but it was sunshine just the same.

Muleshoe Rotary club initiated a new member at its luncheon Tuesday. Installed as a new member was Johnny Shelton, a new banker at Muleshoe State. Jim White, Plainview, and Harold Cadd, Lubbock, were guests. It was announced that Rotary directors will meet at Paul's Friday at 7 o'clock. Speaker Tuesday was Alex Williams.

Mr. and Mrs. R. D. Precure and Mr. and Mrs. H. M. Gable are on an extended trip to Australia and other points of interest.

James Freeman is expected home at mid-week after being confined to a Clovis hospital with bronchial pneumonia since Friday.

The home of the Horace Huttons was the scene of a party for members of the cast of the "Music Man."

Funeral services were held at 2 p.m. Sunday in Electra First Baptist Church for Mrs. Lena Prescott, sister of C. M. Brown and aunt of Mrs. Noah Kinser, Muleshoe.

Mrs. Prescott, 77, died Friday morning after an illness of several months.

(See MULESHOE Page 4)



EARLY TAG-BUYERS - Automobile tags went on sale Monday, and business was fairly brisk at Tax Assessor-Collector Jean Lovelady's office. Here are buyers lined up to get some of the first tags.

MAIF In Action - Part III

Additional 'Adaptable' Industry Cited As Area Need

Muleshoe needs to woo small industry — "adaptable industry."

This was the opinion of three-score persons who attended last autumn's Muleshoe Area Improvement Forum public sessions.

Industrial development is category No. 3 in the six-category summary of the forums prepared by the West Texas Chamber of Commerce from last autumn's public suggestions.

The report said: "Industrial development did not receive the attention of your people as was to be expected. This phase of

chamber activity is claiming the attention of practically every community, both large and small. In most cases heavy demand is being made on the local chamber to accelerate its program and develop more effort to secure industry."

As to why the response here was not so great, the report said: "We have two observations: 1. Likely your people are not aware of the role the chamber can have in industrial development, and 2. It is likely they are more concerned about the future development of agriculture and expansion of irriga-

tion as this is your major economy."

The report continued: "However, the development of light industry can be a part of your program. . . the committee should make available buildings and building sites and your assets should be made known to the widest possible areas where there is possibility of attracting light industry."

Nevertheless, response to this phase of the community needs did come in for considerable attention at the open meetings late in 1964. For instance 60 persons said "continue ef-

forts to locate small adaptable industries. This constituted the largest number of suggestions in this classification and was of a general nature.

Sixteen persons also suggested that a study be made of "the feasibility of processing and freezing of locally produced vegetables."

Another suggestion, made by three persons, that a garment factory be sought for Muleshoe, and the same number of persons suggested that efforts be made to secure a meat-packing plant. The suggestions also was made that work be done "wish exist-

ing industry and encourage expansion."

The fact that the number of suggestions in the industrial development category was smaller than in other fields that did not indicate that there was no interest in this important field of endeavor, it was pointed out. Even so, 83 suggestions were made by Muleshoe area folk for industrial development.

It also was pointed out that much interest was exhibited in the area of locating "adaptable" industries, but the suggestions were of a general nature. (See INDUSTRY Page 4)

Miss Pamela Jean Bowers And Glenn Campbell Exchange Marriage Vows In Double Ring Ceremony

Miss Pamela Jean Bowers and Glenn E. Campbell exchanged double ring vows at 3 p.m. Sunday in the bride's home with Rev. Jerry Haley, minister of County Line Baptist Church, officiating.

Parents of the couple are Mr. and Mrs. E. A. Bowers, Goodland, and Mr. and Mrs. Erwin F. Campbell, Otton.

Maid of honor was Miss Donna Furgeson, friend of the bride. Miss Furgeson wore a dress of red moiré featuring a round neckline and short sleeves. She carried a nosegay of red and white chrysanthe-

mums.

Miss Doylene Davis, organist, was attired in a white suit, and wore a corsage of white carnations. Selections included "I Believe", "Because" and "The Wedding March".

Bac ground for the marriage was an arch of ivy and stephanotis. Sprays of red gladiolas and white mums were placed at either side of the arch.

The bride's father presented her in marriage. She was wearing a white dacron knit suit with a cowl neckline and short sleeves. A white organza rose

studded with seed pearls held the short silk illusion veil. The bridal bouquet was red rosebuds with white ribbon streamers, carried on a white Bible.

Best man was Leslie Fine, cousin of the groom.

Reception followed the wedding in the home of the bride's parents. The bride's table was covered with an ecru cutwork cloth and centered with a four tiered wedding cake made by Mrs. Cass Stegall. It was accented with white roses and swans and topped with a miniature bride and groom. Coffee, punch, nuts and mints were served with the cake to 45 guests. Serving were Miss Jane Luper, Miss Charlotte Shepard and Miss Jelene Campbell.

Miss Shirley Batteas presided at the bride's wedding book. She was attired in a white brocade dress and added a corsage of white carnations.

For a short trip to Roswell, N. M. the bride wore a white suit with blue accessories. Mr. and Mrs. Campbell will

Rainbow Girls Installation Set Saturday

New officers of Muleshoe Order of Rainbow for Girls will be installed in a ceremony at 8 p.m. Saturday in Masonic Hall.

They are Sonja Bass, Worthy Advisor; Pam Kerr, Worthy Associate Advisor; Judy Elliott, Charity; Jeannine Wagon, Hope; Marcie Williams, Faith; Lynn Ericson, Chaplain; Doris King, Drill Leader; Sheridan Porter, Love; Cindy Davis, Religion; Brenda Harrison, Nature; Pam St. Clair, Immortal-

Study Club Names "Clubwoman of Year" Officers Elected For 1965

Muleshoe Study Club members attended a meeting held in the J. A. Nickels home and hosted by Mrs. O. N. Jennings.

The program was on Federation Day and opened by Mrs. Cecil Cole giving the Collect. Mrs. Rufus Gilbreath conducted the business meeting and members were reminded to pay their Poll Tax.

A paper concerning the Diamond Jubilee Celebration was given by Mrs. O. N. Jennings. Mrs. Ray Martin spoke on

"Honor Grove", the GFWC project.

Announcement was made that Mrs. O. N. Jennings had been named "Clubwoman of the Year" and Mrs. Martin was in charge of the ceremony.

Officers for the coming year were announced. They are: Mrs. Ray Martin, president; Mrs. Cecil Cole, vice - president; Mrs. W. H. Elrod, second vice-president; Mrs. J. Frank Peery, recording secretary; Mrs. G. L. Splawn, corresponding secretary; Mrs. W. T. Andrews, parliamentarian; Mrs. John Farley, critic; Mrs. Rufus Gilbreath, reporter; Mrs. J. G. Aram, treasurer; Mrs. Horace Blackburn, historian; Mrs. O. N. Jennings, Federated Councilor.

Nominating committee is composed of Mrs. Cecil Cole, Mrs. W. H. Elrod, Mrs. Rufus Gilbreath and Mrs. S. L. Benefield.

Forming the finance committee is Mrs. Mervia Wilterding, Mrs. J. G. Aram and Mrs. Charles Grow.

In the Library committee is Mrs. Jennings, Mrs. Blackburn, and Mrs. Les Bruns.

On the membership committee is Lena Casey and Mrs. J. G. Aram.

Community affairs are Mrs. Gilbreath, Mrs. T. R. White and Mrs. Splawn.

Social and flower committee is Mrs. John Farley, Mrs. R. O. Gregory and Mrs. W. T. Andrews.



Mr. and Mrs. Coy Gabbert

Miss Joyce Gore And Coy Gabbert Married in Ceremony Read Saturday

Miss Wilma Joyce Gore became the bride of Coy Lynn Gabbert in a quiet ceremony read Saturday at 4 p.m.

For her wedding the bride

chose a two - piece suit of white lace designed along sheath line and featuring a rounded neckline and three - fourth length sleeves. She carried a bridal bouquet of white roses with white streamers attached.

Matron of honor was Mrs. Claude Don Holmes. She wore a dress of turquoise embossed cotton, turquoise accessories and carried a white rose corsage.

Melvin Malone served as best man for the ceremony.

A reception followed in the home of the newlyweds, 519 West Avenue E.

The bride's table was covered with a crochet tablecloth of white and centered with a wedding cake designed with three heart - shaped layers and topped by a single layer holding a miniature bride and groom.

Mr. and Mrs. Gabbert are both graduates of Muleshoe High School and both are presently employed by Muleshoe Publishing Company.

The couple are at home in Muleshoe following a wedding trip to Fort Worth and Arlington.

Tops Club Extend Contest After Tie

Muleshoe Jenny TOPS Club met Thursday with 12 members present. The meeting was opened with the reciting of the TOPS pledge and singing of the Fellowship song.

Each member weighed and measured and Lucille Harp was named "Queen of the Week" with a loss of 5 pounds. Princesses were Ethel Allison and Cecile Cunningham.

A contest, underway for the past month, based on two sides vying for most guests attending, ended in a tie and was extended for another month.

Myrtle Wells demonstrated tuckered pillows made from towels and led the group in playing of games.

Special guest of the Muleshoe branch of the American Association of University Women will be honored at a coffee and special meeting Saturday afternoon at 2:30 p.m. in the Community Room of the Muleshoe State Bank will be the Texas Division president of A. A. U. W.

Mrs. R. H. Weiss of Kerrville, the distinguished visitor, will discuss the new program topics for the 1965 - 67 biennium with the local university women.

Mrs. C. E. Moore, local A. A. U. W. president, announced that prospective members have been invited to attend the meeting Saturday.

Hostesses for the coffee will be Mrs. Ed Johnson and Mrs. Joe Costen.

SHOP MULESHOE FIRST



WELLBORN BEAUTY SHOP HAS ADDED TWO NEW HAIR DRESSERS TO ITS STAFF. LEFT IS VANITA HARKLEY, A GRADUATE OF AMARILLO COLLEGE OF HAIR DRESSING. VANITA WILL TAKE APPOINTMENTS TUESDAY THROUGH SATURDAY. RIGHT IS GLORIA RAGLAND, A GRADUATE OF JESSIE LEE'S HAIR DESIGN INSTITUTE OF LUBBOCK. GLORIA, A SENIOR STUDENT IN MULESHOE HIGH SCHOOL, WILL TAKE APPOINTMENTS AFTER SCHOOL TUESDAY THROUGH FRIDAY AND ALL DAY SATURDAYS.

WELLBORN'S BEAUTY SHOP

1101 Ave J.

Ph. 3-4040

**GET YOUR STATE
AUTOMOBILE INSPECTION
STICKER
AT
MULESHOE MOTOR CO.
AT THE CROSSROADS**



INVENTORY MARK DOWN SALE

DRESSES

1, 2 and 3 piece styles for casual, daytime, after-5 and formals. Every new & beautiful fabric for junior, Misses and half sizes.

ORIG. \$24.95

\$12.98

ORIG. \$39.95

\$22.95

ORIG. \$99.95

\$49.95

Sports Wear

Wide selection of all types of sportswear broken sizes but all sizes in the group. Wools, wool flannels, rayon crepes, cotton, Dacron polyester, all sizes in group.

**SKIRTS
BLOUSES
PANTS
SWEATERS
CAR COATS**

1/2 PRICE

AND LESS

LINGERIE

Lovely famous name sleepwear and foundations now marked down affording you great savings during our Inventory Mark Down Sale. Don't miss this Final Clearance.

1/2 PRICE

Winter Hats

VALUES TO \$16.98

NOW

\$1.00

**HURRY IN TO YOUR
FORD DEALER'S BIG SALE-OUR
FALCON-FAIRLANE
TRADING FAIR**

IF THEY'RE SELLING SO WELL, HOW COME YOU'RE HAVING A SALE, CHARLIE BROWN?

IN THIS BUSINESS YOU CAN'T STAND STILL



© 1965 United Feature Syndicate, Inc.



'65 Fairlane's new 200-cu. in. Six delivers 20% more power!



'65 Falcon has more power, saves more gas!

HURRY! HURRY! HURRY! LIMITED TIME ONLY!

MULESHOE MOTOR CO.

MULESHOE, TEXAS

American Blvd at 1st Street

Methodist Circles Hold Joint Meeting In Allison Home

The Doreas and Esther Circles of the First Methodist Church met in a joint meeting Tuesday in the home of Mrs. Harold Allison.

Mrs. Frank Peery, chairman of the Esther Circle, presided at the meeting. Members were asked to turn in any money from projects. They were also asked to save Betty Crocker and Gift Star coupons to help in furnishing the kitchen in the new Fellowship Hall. The treasurer reminded the members of due pledges.

Mrs. Oscar Allison, general chairman, announced that no general meeting was scheduled for Tuesday, February 3, however, an executive meeting would be held that day.

Also, instead of the regular meeting, all circles will meet with the Guild on February 22. Joe Salem, Sudan will be guest speaker for the day's program.

Mrs. Peery reported that the postmaster had not received information concerning reduced rates for mailing magazines to Indonesia.

Members are saving magazines to be sent until further information is received.

Mrs. J. A. Nickles gave the study based on the book, "Death of a Myth." The book concerns different denominations' work among Spanish-Americans.

Mrs. Peery gave the devotional "Seeing Ourselves as Christ Sees Us."

A combined collection from the two circles was taken to be used as an action from the study the Circles are now having.

Present were Mrs. Neal Dillman, Mrs. Horace Edwards, Mrs. Frank Ellis, Mrs. Sam McKinstry, Mrs. J. A. Nickles, Mrs. C. R. Farrell, Mrs. J. E. McVicker, Mrs. Ralph Douglas, Mrs. J. Frank Peery, Mrs. Fay Holt, Mrs. Arnold Morris, Mrs. Lida Murray, Mrs. Oscar Allison, and the hostess, Mrs. Harold Allison.

Trailblazers Depicted In Skit

Den Two, Pack 620 under the direction of Mrs. Vernon Bleeker, den mother, was in charge of the program at the January 29 Pack 620 meeting.

Following the presentation of the flag by the den, each member participated in a skit entitled "Trailblazers", depicted in costume and signs were historic figures from history past and present.

Jim Shafer, Cubmaster, presided at the business meeting and presented awards to Billy Wimberly, Lion badge and s.c. Bobcat badge and demer stripe; and Jeff Taylor, Bobcat badge and demer stripe.

Announcements included plans for an active month of February, including Boy Scout week, a banquet at the Pack Blue and Gold Banquet to be held Thursday, February 25, at 7:30 p.m. at the High School Auditorium.

A committee meeting was held Monday night and the Den Mothers meeting will be held tonight (Thursday) at Shafer's home at 7:30 p.m. On Feb-

Manure Proves Valuable Every 2nd to 3rd Year

UNIVERSITY PARK, N. M. — People who think it is no longer worth while to spread manure on their land are wrong, according to Gordon Hoff, agronomist with the New Mexico State University Cooperative Extension Service.

"Manure is valuable both as a fertilizer and as a physical soil conditioner," Hoff said. "It is a good nitrogen fertilizer, the phosphorous in it is effective, and it contains sulfur, potassium, magnesium, zinc, iron, boron — in fact all the mineral nutrients needed by crops."

Manure should be spread as thinly as possible — 6 tons per acre on dryland and 10 tons per acre on irrigated land — every second or third year, he said.

This enables the farmer to cover more acres and get maximum benefits from the manure, he said. If manure is plentiful, use 20 to 30 tons on irrigated crops. The manure releases about half of its nitrogen the first year and carries over the rest until the next year, he pointed out.

In addition to the fertilizer value, Hoff said, studies show that regular manuring increases soil aggregation and water intake and decreases erosion losses.

"This means that manuring has made the soil more porous, made it a better medium for the plant roots to grow in," he said.

Also, Hoff said, experiments show that regular application of manure helps maintain or build up the available phosphorus in the soil, if the manure were applied at least once every three or four years.

February 8 the Council Roundtable will be held in Littlefield.

The pack voted to send a gift of appreciation to Caesar Bazita, field representative who is being transferred to Enid, Okla.

Dial 2350 For Classified Ads

BULANEWS

By MRS. JOHN BLACKMAN
Miss Jacque Risinger was the recipient of a miscellaneous shower, given Friday afternoon, Jan. 22, from 3 to 5 o'clock



ASSIGNED — Army Spec. 4 Gordon R. Graves, son of Mr. and Mrs. John A. Graves, Sudan, has been assigned to the Airborne Division at Fort Bragg, N. C. He completed his basic at Fort Polk, La. Graves is 20 years old.

(U. S. Army Photo.)

Beth Watson Makes Solo Trip

Beth Watson made her solo flight Monday at Muleshoe Flying Service. Mrs. Watson, who flies her own Tri-Pacer, made the flight locally after being given the "o. k." sign by her instructor, Morgan Locker.

Locker said the student "did real well" on the solo flight. She plans to be checked out in her husband's Debonair soon and to continue flight training for her Private License.

Profile of Teacher

By Marcille Airhart and Suzanne Byrd
We are glad to welcome Richard Hill's two new teachers this year. One of them is Latoya Howell, a fourth grade teacher who enjoys her work.

After graduating from Muleshoe High in 1960, she worked at Draughon's Business School in Lubbock for half a year before attending West Texas State University. Upon graduation from college in 1964, she decided to teach in the Muleshoe

in the Bula School lunchroom. Guests were greeted and registered at the door by Jolene Reid, cousin of the bride.

Program was two readings given by former high school class mates of the honoree. The "Beauty of Marriage", read by Wanda Hubbard and "Home" read by Mrs. Jerry Cox, who presented the array of gifts to

The serving table was covered with white linen cutwork over pink. A circular mirror surrounded by garden flowers, held a bride doll for the center of interest, crystal candle holders with pink churning tapers completed the arrangement.

Mrs. Jerry Cox served the white cake squares, centered with pink rose buds and Wanda Hubbard served the pink iced punch.

The honoree, her mother and grandmother were presented fringed carnation corsages by the hostess.

Miss Risinger was assisted in packages by her mother, Mrs. W. C. Risinger, grandmother, Mrs. Neil Fronbarger, while Mrs. Ruby Reid registered each gift for the brides book.

Hostesses for the hospitality were Mrs. L. H. Medlin, Mrs. Leon Kessler, Mrs. R. P. McCall, Mrs. Jerry Cox, Mrs. Lorraine Cox, Mrs. John Hubbard, Mrs. Dewitt Tiller, Mrs. A. M. McBee, Mrs. Tom Bogard, Mrs. John Blackman and Miss Wanda Hubbard.

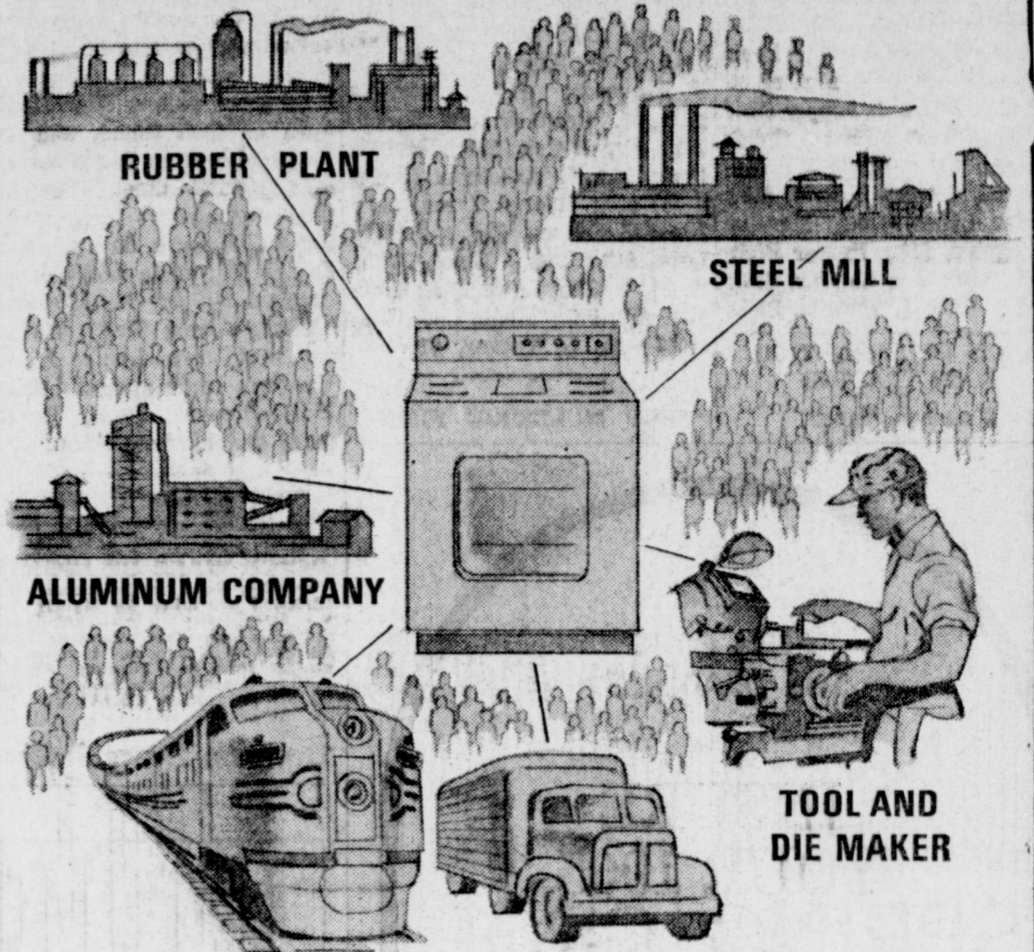
Their gift to the bride-to-be was an electric blanket and bed spread.

Mr. and Mrs. J. W. Layton left Monday for Possum Kingdom.

Mr. and Mrs. Leo Holt, visited Friday in Lubbock with his mother, Mrs. C. K. Holt.

Mrs. Drake, local P-TA president urges everyone that possibly can to attend the Bi-county council meeting to be held at the local school Thursday, Feb. 2 from 2 to 3 p.m.

WE EMPLOY 50 MILLION WORKERS!



RUBBER PLANT

STEEL MILL

ALUMINUM COMPANY

TOOL AND DIE MAKER

The money spent by Bailey County Electric Cooperative members for electric appliances and equipment travels great distances and ends up in many paychecks. It starts with the hometown merchant who makes the sale and includes the freight carrier, packager and the legion of workers in every field who helped manufacture these items.

This year members of the Bailey County Electric Cooperative will spend \$2,000,000 for appliances. And every penny will be spent to use the electricity the member-owners provided for themselves. The dependable, efficient electric system offered by the rural electric cooperative is helping Texas and the nation grow through rural electrification.

BAILEY COUNTY ELECTRIC COOPERATIVE

GROW SLIM WHILE YOU EAT
WITH SAFE VITAMIN-FORTIFIED diet-master
REDUCING PLAN
Be a good loser. DIET on balanced meals without loss of energy, hunger pangs or jumpiness. DIET on the DIET-MASTER REDUCING PLAN... fully guaranteed to help you lose excess weight, or your money back.
WESTERN DRUG

ANNOUNCING OUR NEW RECORD SHOP

1/2 FOR A LIMITED TIME ONLY

PRICE

GET ACQUAINTED INTRODUCTORY OFFER ON MORE THAN 500 ALBUMS OF NEW RECORDINGS BY

RCA VICTOR DECCA DOT CAPITAL COLUMBIA AND MANY OTHERS

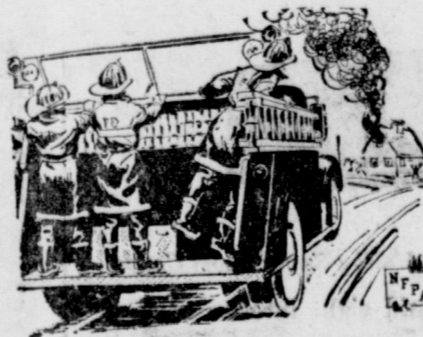
JOHNSON-POOL APPL.

320 MAIN

PH. 7370

JOIN THE CROWDS HURRYING TO OUR HOUSE AFIRE USED CAR SALE!

YOU'LL "SPARK" TO THESE RED HOT VALUES!



JOIN THE FUN... KICK THE TIRES... CHECK THE VALUES... AND ACT NOW!!!

MULESHOE MOTOR CO.

At the Crossroads

"Car Capital of the West Plains"

Phone 2510

Methodist Circles Hold Joint Meeting In Allison Home

The Dorcas and Esther Circles of the First Methodist Church met in a joint meeting Tuesday in the home of Mrs. Harold Allison.

Mrs. Frank Peery, chairman of the Esther Circle, presided at the meeting. Members were asked to turn in any money from projects. They were also asked to save Betty Crocker and Gift Star coupons to help in furnishing the kitchen in the new Fellowship Hall. The treasurer reminded the members of due pledges.

Mrs. Oscar Allison, general chairman, announced that no general meeting was scheduled for Tuesday, February 3, however, an executive meeting would be held that day.

Also, instead of the regular meeting, all circles will meet with the Guild on February 22. Joe Salem, Sudan will be guest speaker for the day's program.

Mrs. Peery reported that the postmaster had not received information concerning reduced rates for mailing magazines to Indonesia.

Members are saving magazines to be sent until further information is received.

Mrs. J. A. Nickles gave the study based on the book, "Death of a Myth." The book concerns different denominations' work among Spanish-Americans.

Mrs. Peery gave the devotional "Seeing Ourselves as Christ Sees Us."

A combined collection from the two circles was taken to be used as an action from the study the Circles are now having.

Present were Mrs. Neal Dillman, Mrs. Horace Edwards, Mrs. Frank Ellis, Mrs. Sam McKinstry, Mrs. J. A. Nickles, Mrs. C. R. Farrell, Mrs. J. E. McVicker, Mrs. Ralph Douglas, Mrs. J. Frank Peery, Mrs. Fay Holt, Mrs. Arnold Morris, Mrs. Linda Murray, Mrs. Oscar Allison, and the hostess, Mrs. Harold Allison.

Trailblazers Depicted In Skit

Den Two, Pack 620 under the direction of Mrs. Vernon Bleeker, den mother, was in charge of the program at the January 29 Pack 620 meeting.

Following the presentation of the flag by the den, each member participated in a skit entitled "Trailblazers", depicted in costume and signs were historic figures from history past and present.

Jim Shafer, Cubmaster, presided at the business meeting and presented awards to Billy Wimberly, Lion badge and sash; Bobcat badge and denner stripe; and Jeff Taylor, Bobcat badge and denner stripe.

Announcements included plans for an active month of February, including Boy Scout week, maxing at the Pack Blue and Gold Banquet to be held Thursday, February 25, at 7:30 p.m. at the High School Auditorium.

A committeeman's meeting was held Monday night and the Den Mothers meeting will be held tonight (Thursday) at Shafer's home at 7:30 p.m. On Feb-

Manure Proves Valuable Every 2nd to 3rd Year

UNIVERSITY PARK, N. M. — People who think it is no longer worth while to spread manure on their land are wrong, according to Gordon Hoff, agronomist with the New Mexico State University Cooperative Extension Service.

"Manure is valuable both as a fertilizer and as a physical soil conditioner," Hoff said. "It is a good nitrogen fertilizer, the phosphorus in it is effective, and it contains sulfur, potassium, magnesium, zinc, iron, boron — in fact all the mineral nutrients needed by crops."

Manure should be spread as thinly as possible — 6 tons per acre on dryland and 10 tons per acre on irrigated land — every second or third year, he said.

This enables the farmer to cover more acres and get maximum benefits from the manure, he said. If manure is plentiful, use 20 to 30 tons on irrigated crops. The manure releases about half of its nitrogen the first year and carries over the rest until the next year, he pointed out.

In addition to the fertilizer value, Hoff said, studies show that regular manuring increases soil aggregation and water intake and decreases erosion losses.

"This means that manuring has made the soil more porous, made it a better medium for the plant roots to grow in," he said.

Also, Hoff said, experiments show that regular application of manure helps maintain or build up the available phosphorus in the soil, if the manure were applied at least once every three or four years.

February 8 the Council Roundtable will be held in Littlefield.

The pack voted to send a gift of appreciation to Caesar Buzita, field representative who is being transferred to Enid, Okla.

Dial 2350 For Classified Ads

BULANEWS

By MRS. JOHN BLACKMAN
Miss Jacque Risinger was the recipient of a miscellaneous shower, given Friday afternoon, Jan. 22, from 3 to 5 o'clock



ASSIGNED — Army Spec. 4 Gordon R. Graves, son of Mr. and Mrs. John A. Graves, Sudan, has been assigned to the Airborne Division at Fort Bragg, N. C. He completed his basic at Fort Polk, La. Graves is 20 years old. (U. S. Army Photo.)

Beth Watson Makes Solo Trip

Beth Watson made her solo flight Monday at Muleshoe Flying Service. Mrs. Watson, who flies her own Tri-Pacer, made the flight locally after being given the "o. k." sign by her instructor, Morgan Locker.

Locker said the student "did real well" on the solo flight.

She plans to be checked out in her husband's Debonair soon and to continue flight training for her Private License.

Profile of Teacher

By Marcell Airhart and Suzanne Byrd
We are glad to welcome Richard Hill's two new teachers this year. One of them is Latoya Howell, a fourth grade teacher who enjoys her work.

After graduating from Muleshoe High in 1959, she worked at Draughon's Business School in Lubbock for half a year before attending West Texas State University. Upon graduation from college in 1964, she decided to teach in the Muleshoe

in the Bula School lunchroom. Guests were greeted and registered at the door by Jolene Reid, cousin of the bride.

Program was two readings given by former high school class mates of the honoree. The "Beauty of Marriage", read by Wanda Hubbard and "Home" read by Mrs. Jerry Cox, who presented the array of gifts to the bride.

The serving table was covered with white linen cutwork over pink. A circular mirror surrounded by garden flowers, held a bride doll for the center of interest, crystal candle holders with pink churning tapers completed the arrangement.

Mrs. Jerry Cox served the white cake squares, centered with pink rose buds and Wanda Hubbard served the pink iced punch.

The honoree, her mother and grandmother were presented fringed carnation corsages by the hostess.

Miss Risinger was assisted in packages by her mother, Mrs. W. C. Risinger, grandmother, Mrs. Nell Fronabarger, while Mrs. Ruby Reid registered each gift for the brides book.

Hostesses for the hospitality were Mrs. L. H. Medin, Mrs. Leon Kessler, Mrs. R. P. McCall, Mrs. Jerry Cox, Mrs. Lorraine Cox, Mrs. John Hubbard, Mrs. Dewitt Tiller, Mrs. A. M. McBea, Mrs. Tom Bogard, Mrs. John Blackman and Miss Wanda Hubbard.

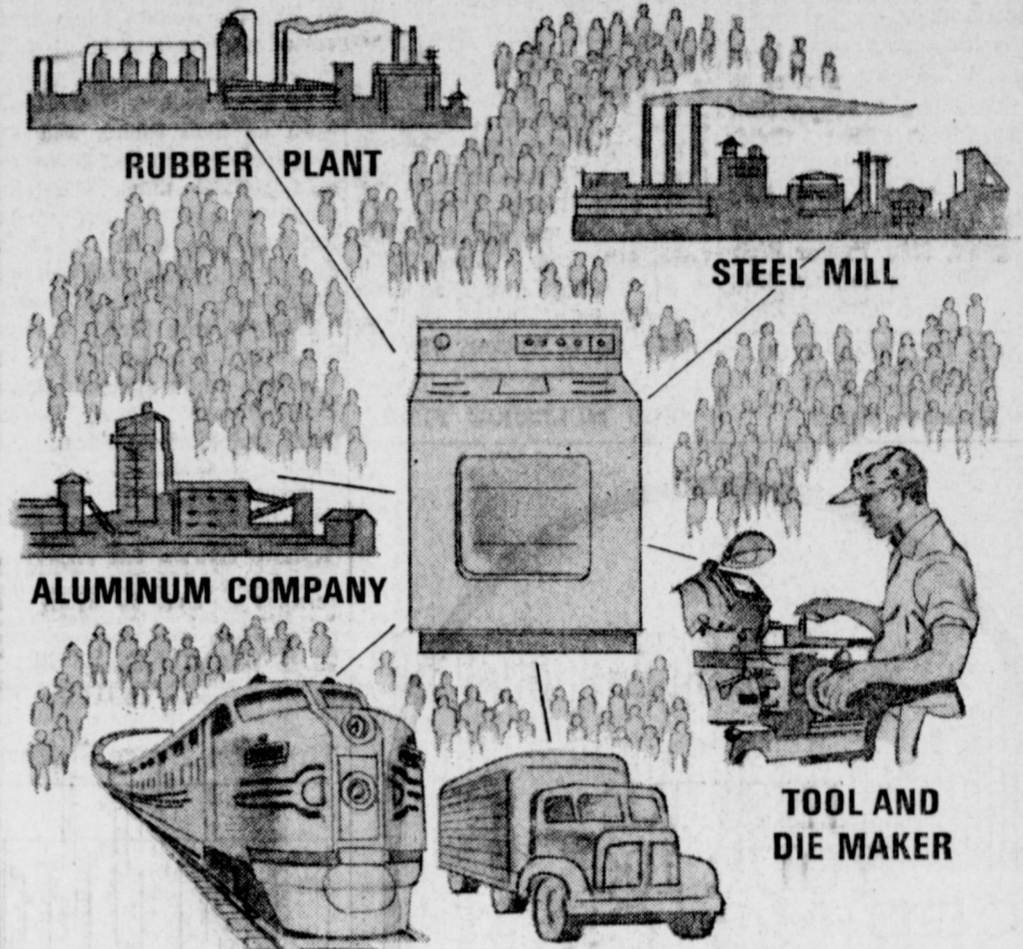
Their gift to the bride-to-be was an electric blanket and bed spread.

Mr. and Mrs. J. W. Layton left Monday for Possum Kingdom.

Mr. and Mrs. Leo Holt, visited Friday in Lubbock with his mother, Mrs. C. K. Holt.

Mrs. Drake, local P-T-A president urges everyone that possibly can to attend the Bi-county council meeting to be held at the local school Thursday, Feb. 2 from 2 to 3 p.m.

WE EMPLOY 50 MILLION WORKERS!



The money spent by Bailey County Electric Cooperative members for electric appliances and equipment travels great distances and ends up in many paychecks. It starts with the hometown merchant who makes the sale and includes the freight carrier, packager and the legion of workers in every field who helped manufacture these items.

This year members of the Bailey County Electric Cooperative will spend \$2,000,000 for appliances. And every penny will be spent to use the electricity the member-owners provided for themselves. The dependable, efficient electric system offered by the rural electric cooperative is helping Texas and the nation grow through rural electrification.

BAILEY COUNTY ELECTRIC COOPERATIVE

GROW SLIM WHILE YOU EAT
WITH SAFE VITAMIN-FORTIFIED diet-master
REDUCING PLAN
Be a good loser. DIET on balanced meals without loss of energy, hunger pangs or jumpiness. DIET on the DIET-MASTER REDUCING PLAN... fully guaranteed to help you lose excess weight, or your money back.

WESTERN DRUG

ANNOUNCING OUR NEW RECORD SHOP

1/2 FOR A LIMITED TIME ONLY

GET ACQUAINTED INTRODUCTORY OFFER ON MORE THAN 500 ALBUMS OF NEW RECORDINGS BY

RCA VICTOR DECCA
DOT CAPITAL COLUMBIA
AND MANY OTHERS

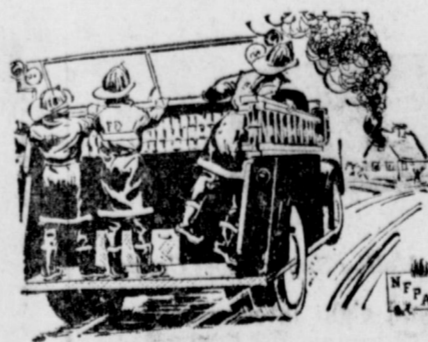
JOHNSON-POOL APPL.

320 MAIN

PH. 7370

JOIN THE CROWDS HURRYING TO OUR HOUSE AFIRE USED CAR SALE!

YOU'LL "SPARK" TO THESE RED HOT VALUES!



JOIN THE FUN... KICK THE TIRES... CHECK THE VALUES... AND ACT NOW!!!

MULESHOE MOTOR CO.

At the Crossroads

"Car Capital of the West Plains"

Phone 2510

Donors...

(Continued from Page 1) and Delinting \$100; Maple Fertilizer, \$50.; Worley Grain, \$100.; Goodland Shop, \$25.; Maple Coffee Shop, \$5.; John Shepard, \$20.; Earlton Waff, \$5.; Foard Foods, \$5.; Maple Supply, \$50.; Maple Dry Goods, \$5.; Billy Carter, \$5.; Leon Hamilton, \$5.; Gene Gardner, \$1.; H. L. Hanna, \$1.; Hawkins Olds, \$10.; Doyle Ray Fowler, \$1.; Bedwell Implement, \$5.; Farm Equipment, \$50.; Louis Henderson, \$5.; Ed McClellan, \$27.; Luper Tire & Supply \$25.; Doss Thriftway, \$50.; Childs Menwear, \$25.; Ray's Hardware, \$5.; Silvers Butane, \$10.; Frontier Lanes, \$10.; McAllister Huggins, \$10.; Homer Richardson, \$20.; Joe Sowder, \$20.; J. P. & Paul J. Powell, \$100.

FRANCIS IMPLEMENT CO. FORD TRACTOR Muleshoe, Texas

Melvin Hale, \$3.76; Bill Moore, \$10.; John Gunter, \$5.; Pool Insurance, \$10.; Casey Insurance, \$10.; Muleshoe State Bank, \$25.; Farmers Coop Elevator, \$15.; Whitt & Watts Imp. Co., \$15.; Crow Chevrolet, \$25.; Ladd Pontiac, \$25.; Johnson Nix, \$5.; Sam Fox, \$25.; Vansory Bros., \$20.; Neal Smith, \$75.; T. D. Davis, \$75.; Jim H. Johnson, \$25.; Pat Bobo, \$25.; Johnson Pool Tire Co., \$5.; St. Clair's Muleshoe, \$10.; Roy H. Lackey, \$20.; W. C. McCelvey, \$10.; L. D. Sanderson, \$20.; J. F. Furgeson, \$100.; Marie's gifts, \$5.; Caton & J. W. Tyson, \$25.; Fry & Cox, \$20.; Damron Drug, \$5.; Higginbotham (Muleshoe) \$20.; George Tyson, \$10.; Leonard Groves, \$5.; Johnny Love, \$10.; Dub Black, \$20.; E. M. & Glen Lowe, \$25.; Rev. Kirby, \$15.; Maple Coop Gin, \$1000.; D. L. Tucker, \$10.

SHOP MULESHOE FIRST

Forgery...

(Continued from Page 1) They told the officers that a woman, who had remained in Muleshoe for the time being, had actually forged the signature and had given it to one of the men to cash.

The youth who actually tried to cash the check was described by officers as being 18 years old. His companion was a man 45, and the woman allegedly involved was said to be 41 years old. All three gave a New Mexico town as their home, and said they had been in this county for only a short time. The older man was said to have worked for Childs for a day or so, although this angle had not been checked out by the officers. Charges were filed Wednesday morning in Justice J. D. Vaughn's court against Luciana Marie Romero, Jessie P. Romero and Modesto Jaramillo.

SHOP MULESHOE FIRST

DON'T WAKE UP NIGHTS Your 39c back in 24 hours when BUKEETS are taken for nightly bladder irregularity. Functional kidney disorders can cause disturbed sleep, leg pains, backache, frequent or scanty flow and burning. After 3 tablets, if not pleased your 39c back at any drug store. TODAY at

Damron Drug Store



world news in focus

The Christian Science Monitor One Norway St., Boston, Mass. 02115 Please enter my subscription to the Monitor for the period checked below. I enclose \$ (U.S. Funds) 1 YEAR \$24 6 months \$12 3 months \$6 Name Street City State ZIP Code

Meeting...

(Continued from Page 1) munity improvement, publicity and cultural beautification and creational improvement.

Next Tuesday night's general session will bring out many recreational projects also suggested in the earlier sessions. These include such long-range goals as a community concert, summer fine arts festival and a golden age club. "We hope everyone interested in the improvement of the Muleshoe area will be present at Tuesday night's general meeting," Dr. Lewis summed up. "Only by working together can we put these suggestions into action. We need the thinking of all the people to work out the best possible improvement projects and to set up a work schedule."

Students...

(Continued from Page 1) went to Bill Harbin who played the lead in the recent three-night presentation of "The Music Man." The best actor award was won by Dwayne Calvert. Both youths did an exceptionally fine job in the musicale.

Jane Branscom received the best actress award for her very fine work in the play, and John Gully the best supporting actor prize. He played the part of the mayor who always wanted to make a speech but never actually got the opportunity. The best supporting actress was Tonye Welch for her part as Mrs. Paree and the best junior actor was Scott Bliss. Best junior actress was Martha Chapman. Best stage crew member was Walter Denny. The school's annual Sweetheart Banquet is slated for Saturday night, Feb. 13.

Muleshoe...

(Continued from Page 1) Installation of officers and Mother Advisor of the Order of Rainbow for Girls will be held Saturday at 8 p.m. in Masonic Hall.

Joella Lovvorn, who is assistant editor of the Baptist Beacon, Phoenix, and a former Journal staffer, sends us a publication "It Is True" of the First Baptist Church, West Palm Beach, Fla., which contains a picture of a Muleshoe highway sign taken by the movie actor, Gregory Walcott when he came through here recently. Walcott, who is also 2nd vice-president of the Southern Baptist Convention, wrote: "I was passing

Retirement...

(Continued from Page 1) For several weeks now Mr. and Mrs. Miller have been closing up their store along about 11 o'clock each Sunday night (it's a seven-day-a-week store) and getting into their car and driving northwest to the "retreat." Each time their station wagon is loaded with goodies and with additional items for the new home on the edge of the sandhills.

"Sometimes we brought pictures, sometimes trivets, sometimes dishes and whatnots. And some times additional pieces of furniture," says Mrs. Miller. "We would stay in the house for a day or so and then drive back to Lubbock. Always we have figured sooner or later we would figure out the store which we have operated for so many years and just come out here to live the rest of our days." As we said, now they are not so sure.

Sunday night they closed up the store as usual and hurried to their well-loaded station wagon. They drove through a sand storm all the 75 or 80 miles to the "retreat." They got there at 2 a.m.

Shirley got out and went in while Doris stayed in the car and waited until he got the lights turned on. A few seconds later he was back. "Well, it looks like somebody has cleaned up out," he announced.

"Look, dear," she came back. "I'm too tired for jokes at this hour of the morning." "I'm not kidding. Come see for yourself."

She did. He wasn't kidding. In the bedroom niche where the king-sized oak bed, had stood, there was just empty space. In the kitchen the refrigerator-freezer was gone. The pantry which had been well-stocked, was empty. Even the trivets had been stolen. A portable TV was gone, and three coffee makers were missing.

Oddly enough the burglars had left such items as two big chairs in the living room, and they obviously thought that the electric stove in the kitchen was built in. They had jimmied the dishwasher considerably, trying to pry it out of its niche beside the sink.

And they left a cabinet full of tricky dishware, and even the little lamps that hung above the bed. They didn't bother with a

through a famous city in West Texas some weeks ago. I discovered why it was famous. The enclosed photograph will reveal my findings.

A committee from the retail merchants' committee of the Muleshoe Chamber of Commerce will meet this week to make plans for spring and summer merchants' promotions. Doug Haynes, retail chairman, announced Wednesday. On the sub-committee are Harvey Bass, chairman; Olin Burrows, Franklin Mann, Lonnie Merritt, Robert Hooten, Roy Roberts and Lyndel Murray.

roll-away bed in the store room or with an extra mattress also in the storeroom. The elaborate electric fixtures were untouched.

On the other hand, they didn't miss a bet on things which they thought they could sell. For instance they broke into the pump house and made off with Miller's tools, some of them dating back to the long-ago days when he worked in the oil fields and had a full set of heavy tools.

"Well, first of all Doris just sat down and cried," says Miller. "And then after she had got her cry over with we decided we had better get into the station wagon and drive back to Muleshoe and tell the sheriff."

"I suggested that we go to a motel, but Doris said, 'no, I want to go back to the retreat, even if the furniture is about all gone.' And we did. We slept on a mattress, and we had only one blanket for cover because the thieves had taken away all the blankets and things.

Whether they will go ahead with their plans to live in the pretty little house on the edge of the sandridges — well, they just don't know. "Maybe we will, maybe we won't," Miller says. "We haven't decided. If the thieves hit our house once, what's to keep them from coming back. I just don't know."

There are no clues. Sunday's sandstorm erased the truck tracks completely. And the Millers don't know exactly when the robbery was committed; probably sometime between Wednesday and Sunday night.

Just in case you happen to run across any suspicious-looking characters trying to peddle their loot, here's the list that the Millers gave to the sheriff of items taken:

A 40-year-old walnut dining room suit, newly redone, with a buffet to match. There were also print-covered chairs. A portable GE television set with 9-inch screen; an Elgin bed, mattress and springs; White brocaded king-sized bedspread; yellow king-sized blanket; green electric blanket; wine-colored car blanket with "Shirley Miller" embroidered in orange; five other blankets; five bed pillows; a nine-cup Universal electric percolator, a nine-up decorated enamel coffee pot, and a china blue and white camister set; four quilts; a Frigidaire refrigerator-freezer combination, pink inside; four large water color pictures; an electric-wall clock made like an oversized pocket watch; four king-sized sheets, still in wrappers, pantry full of groceries — many hand tools and several trivets.

"Beats me about those triv-

Industry...

(Continued from Page 1) Presumably this meant industries that would be farm-related, such as processing plants for locally-produced crops, as well as fertilizers and equipment plants.

The report did not attempt to break down the suggestions into long-range and immediate suggestions, although it did say that both types of programs were suggested at the meetings.

The portion dealing with processing and freezing locally-produced vegetables came in for considerable discussion. This idea is not new to the Muleshoe area; many persons have been interested in the possibilities of such a project, and some experimenting has been done along this line. Since vegetable-growing in the Muleshoe area is on the increase, this phase of the program offers possibilities for the immediate as well as the long-range aspects, it was pointed out.

Additional articles in this six-part series will include agriculture and livestock, parks and recreations and organizational, the last named dealing with suggestions for carrying out the program.

Next: Agriculture and Livestock.

ets," Mrs. Miller muses, "they were just dime-store trivets, pretty and gaudy, but not valuable. In wonder why they bothered to take those off the wall?"

Two Area Cities Plan Downtown Revamp Projects

Downtown Hereford and Littlefield are to be revamped in elaborate park-like designs drawn by McMorris & Associates of Amarillo, it was announced this past week.

Hereford's plans were approved this week to convert the downtown section into "Variety Park". Features include widening of Main Street by five feet, laying new (and narrow-

(See PROJECTS, Page 6)

LATE WANT ADS

Blue Lustre not only rids carpets of soil but leaves soft and lofty. Rent electric shampooer \$1. Lane Furniture. 12-51-11c

FOR SALE BY OWNER Modern motel, 25 units, located in one of the most progressive towns in the Panhandle. Reason for selling, health conditions. Would consider some trade. Sands Motel, Dimmitt, Texas 647-3378. 8-54-4tp

FOR RENT: Furnished house. Roy H. White, Phone 3-9166. 4-51-11c

PATZER CHIROPRACTIC CLINIC MULESHOE, TEXAS Phone 3-9670 1540 American Blvd. KEEP SMILING

PROBLEM... find the hole! Can't be done, because we've re-woven it invisibly. We can do the same for cuts, rips, cigarette burns, moth-holes, etc. in your clothes. You'll be amazed. Prompt Service Sensible Prices Work done on our Own Premises

CONTACT: DORIS ENGLISH 322 W. AVE. B MULESHOE PH. 5951

APRIL 30 IS THE DEADLINE INSURE YOUR 1965 SPRING CROP AGAINST ALL RISKS You Can't Avoid with improved, expanded FEDERAL CROP INSURANCE SIGN UP NOW and protect your cash investment in your '65 crop against 120 risks you can't avoid—hail, drought, winter-kill, flood, insects, disease—many more. See your Federal Crop map, or write. FEDERAL CROP INSURANCE CORPORATION 1611 AVENUE M, LUBBOCK, TEXAS U. S. DEPARTMENT OF AGRICULTURE

discover the difference in the '65 Chevrolets Impala Super Sport Coupe CHEVROLET Redecorate your driveway Park out front, at least for a while, and let the neighbors enjoy that sleek Impala Super Sport styling. After all, you have everything else to yourself: the luxurious Super Sport interior with its cushy bucket seats, center console and carpeting; the smooth and easy Chevrolet ride; and Chevrolet power, starting with our famous 140-hp Turbo-Thrift 230 Six. This '65 Chevrolet's a home improvement if you ever saw one. CHEVELLE Looks, luxury and lots more Malibu Super Sport Coupe The looks you can see. The luxury that's a Malibu Super Sport you can imagine: bucket seats, full carpeting, patterned vinyls and eight interior color schemes. The rest you'd better sample for yourself. CORVAIR Everything's new but the idea The idea still is, make Corvair the sportiest low-priced car this side of the Atlantic. So look: suave new continental styling, even better handling, same rear-engined traction, Driving's fun, Try it. Drive something really new—discover the difference at your Chevrolet dealer's Chevrolet • Chevelle • Chevy II • Corvair • Corvette CROW CHEVROLET COMPANY 201 MAIN MULESHOE PH. 3-1000 42-5827 Wiedebush & Childers

Your PONTIAC will give you better service with AMALIE 100% Pure Pennsylvania Motor Oil Why? Today's high compression engines running at high or low speeds, running in grueling stop and go traffic require the superior oiliness, the heat resistance found only in AMALIE Pennsylvania Oil. AMALIE is the finer oil refined from the world's finest crude by special low-heat process. AMALIE stands up under engine heat long after conventional oils break down, thin out, drain off. Cuts wear, insures long miles of smooth engine performance... change to AMALIE 100% Pure Pennsylvania Motor Oil Your service station man will stock AMALIE for you... Just ask him. Wiedebush & Childers

Need a New Tractor? BUY IT with a PCA Loan! Buy your next tractor with a PCA loan. Or, if you have a PCA line of credit, add the cost to your present loan. Either way, you get the advantages of modern PCA financing: Low Interest Rates... and you pay interest only on the money you use and the time you actually use it. Experience... you deal with men who know agriculture, whose only purpose is to serve you. Repayment Schedule... spread the cost of equipment over several years, with payments scheduled when you sell crops or livestock. PCA loans can be used for all expenses. Let us show you why over a half-million farmers and ranchers use PCA credit. PCA LOANS MULESHOE PRODUCTION CREDIT ASS'N 312 W. 2ND.

Lazbuddie Boys, Girls Capture Hereford Prizes

By MRS. C. A. WATSON

Lazbuddie boys and girls entered 27 exhibits in the recent junior livestock show in Hereford and came home with a number of prizes. They entered nine barrows, 15 lambs and three steers.

Theresa Seaton, daughter of Mr. and Mrs. Jimmie Seaton, exhibited the champion Hampshire barrow which previously had won first place for his breed. Theresa also placed third with a heavyweight Berkshire barrow.

Foy Dale Clark, son of Mr. and Mrs. Wayne Clark, exhibited the champion Chesterwhite. Others having entries from Lazbuddie were Darrell Embury, Bobby Gleason, Ronald Mayfield, Eddie Cartmel, Mack Holt, Charlotte Seaton, David Nelson, Sammy Harlin, Larry Davis, Billy Jones, Terry Parham, Timmy Foster, Johnny Mitchell, James Koelzer, Bobby Redwine, Happy Jennings, Royce Barnes and Buster Steinbock. Several came home with second, third and fourth places.

Lazbuddie P-TA met Monday when Howard Bridges gave the opening prayer, and Brenda Tanner sang, accompanied by Susie Turner.

During the business meeting, it was decided to push through plans for a tennis court, being sponsored by the P-TA and the Future Homemakers. P-TA committee members on the project are Freeman Davis, Wayne Hardage, Gaither Vandiver and Harley Ethridge.

The committee reported fund drive is successful, with nearly enough money already raised. The court is to be completed within the near future.

Lazbuddie P-TA also is making plans for an outsiders' volleyball tournament to be held again this year. Proceeds from the tournament will be used for the tennis court.

Last year's tournament is credited with getting the tennis court project off the ground. Mrs. Bridges' second grade room won the room count for having the greatest percentage of parents present at Monday night's meeting. Mrs. Ted Treider, Mrs. Kenneth Cox and Mrs. Raymond Treider Jr. were nominated to a committee to select new officers for the P-TA for next year.

Ralph and Bobby Broyles returned from Milburn, Okla. where they had been with their brother, J. C. Broyles who had

been injured in an automobile accident near Milburn. He has been dismissed from a hospital and is reported as making satisfactory progress. Mrs. J. C. Broyles also had been hospitalized after falling while at work in a clothing factory in Coalgate, Okla.

Mr. and Mrs. Billy Hardage were here during their term vacation, visiting with his parents, Mr. and Mrs. L. H. Hardage. They are students at Wayland Baptist College, Plainview.

Don Schumann visited last week in San Diego, Calif., with his mother, Mrs. Beatrice Schumann. Gene Schumann of San Diego returned with his brother and is visiting this week in the Schumann home.

The Junior High basketball girls will play Bovina there Thursday night. The Lazbuddie

team has won 14 games and lost only four to date.

Mr. and Mrs. Jimmie Johnson and children moved to Muleshoe this week. They will be missed in the Lazbuddie community.

Mr. and Mrs. John Agee attended funeral services in Frederick, Okla. Monday, Jan. 18, for John Larkin, Mr. Agee's cousin.

FHA members honored their parents with a dinner Monday night in the school cafeteria. The tables were laid with red and white with arrangements of red roses and red and white candles. Parents were introduced by Katie Blackstone.

Mr. and Mrs. Gene Smith visited Mr. and Mrs. Joe Paul in Spearman last week. The Paul family moved to Spearman recently from Lazbuddie.

Mrs. Annie Vaughn and Myr-

The Muleshoe Journal

Published each Thursday by The Muleshoe Publishing Co.
304 West Second Street, Muleshoe, Texas
Member of The Associated Press
Entered as second class matter at the Muleshoe Post Office under act of Congress, March 3, 1897.
SUBSCRIPTION RATES
Immediate Territory \$4.00
Out of Territory \$4.50
Combined with Bailey County Journal \$5.50
Both papers in territory \$5.50
Both Papers outside territory \$6.25
Advertising Rate on Application.

L. B. HALL Publisher
RAMON MARTIN Editor
DORIS KINSER Society Editor



TREFLAN

**STOPS GRASS AND WEEDS
IN COTTON ALL SUMMER
LONG**

**LEARN ABOUT TREFLAN
THURSDAY, FEBRUARY 4
7:30 P. M.**

**AT JONES FARM
STORE**

**REFRESHMENTS WILL BE
SERVED**

THIS WEEK!
STEBENVILLE'S FAIRLANE
COFFEE CUP

70¢ VALUE
Only 9¢ WITH EACH \$5.00 PURCHASE

**GET THIS GIANT
WEBSTER DICTIONARY
SECT. 1 FREE WITH
COUPON YOU RECEIVED
IN MAIL**

Plus FREE 50 S & H Green Stamps when you buy section 2 of the Webster Dictionary. Only 99¢ plus Coupon.

Piggly Wiggly Meats! Table Trimmed For Economy!

<h3 style="text-align: center;">PORK CHOPS</h3> <p style="text-align: center;">Rodeo's Lean, Northern Pork Center Cut Rib Chops</p> <p style="text-align: center;">Pound 69¢</p> <p>Armour Star, Aged Heavy Beef Valu-Trimmed Chuck Roast, Lb 45c Armour Star, Aged Heavy Beef Valu-Trimmed Swiss Steak, Lb 65c</p>	<h3 style="text-align: center;">PORK ROAST</h3> <p style="text-align: center;">Rodeo's, Lean, Northern, Pork Picnic Cut</p> <p style="text-align: center;">Pound 29¢</p> <p>Loin Half - Sliced Half Pork Loin, Lb. 59c Rodeo's, Lean, Northern Pork, Boston Butt, Semi - Boneless Pork Roast, Lb. 45c</p>
--	--

Rodeo's Lean Northern Pork, First Cut Chops

<h3 style="text-align: center;">Pork Chops</h3> <p style="text-align: center;">Rodeo's, Lean Northern Pork, Small Riblets</p> <p style="text-align: center;">POUND 49¢</p>	<h3 style="text-align: center;">Spare Ribs</h3> <p style="text-align: center;">POUND 49¢</p>
---	---

Wortz, Salted CRACKERS 1 LB BOX	19c
Red Dart Cut GREEN BEANS No. 303 Can	10c
Campfire PORK and BEANS 3 No. 300 Cans	25c
Bonnebelle, Smooth PEANUT BUTTER 2 1/2 Pound Jar	79c
Good N Rich, Assorted Flavors CAKE MIX 19 Oz Box	19c
EGGS Ideal Grade A Medium	3 Dozen \$1.00
EGGS Ideal Grade A Large Dozen	37c

<h3 style="text-align: center;">TIDE</h3> <p style="text-align: center;">Heavy Duty Detergent 10c Off Label Giant Box</p> <p style="text-align: center;">59¢</p>	<h3 style="text-align: center;">SOUP</h3> <p style="text-align: center;">CAMPBELL'S TOMATO NO. 1 CAN</p> <p style="text-align: center;">10¢</p>
<h3 style="text-align: center;">BABY FOOD</h3> <p style="text-align: center;">Heinz Strained Banana, Custard, Mixed Fruit, Vegetable Beef, Vegetable Ham 2c off Label</p> <p style="text-align: center;">3 JARS 19¢</p>	<h3 style="text-align: center;">SALMON</h3> <p style="text-align: center;">Whitney Chum No. 1 Can</p> <p style="text-align: center;">39¢</p>
<h3 style="text-align: center;">JUICE</h3> <p style="text-align: center;">Texsun, Grapefruit Unsweetened</p> <p style="text-align: center;">3 46 OZ. CANS \$1</p>	<p style="text-align: center;">HAIR SPRAY 59¢</p> <p style="text-align: center;">Stripe 7c off Label Giant Size 39c Rinall with Doppet, Regular 89c Retail NOSE DROPS 1 Oz Bottle 79c Bayer's Regular 79c Retail ASPIRIN 100 count btl. 62c Congestaid, Regular \$1.19 Retail VAPORIZER 5 Oz Can 99c</p>

These Values are Good
in Muleshoe, February 4-
5-6, 1965

We reserve the right to
Limit Quantities.

GREEN
STAMPS

J.B. Knight
DISTRIBUTING COMPANY

BROWNFIELD, TEXAS

DESIGNERS, ENGINEERS & MANUFACTURERS OF

Tri-Matic

SELF PROPELLED MULTI-LINE
SPRINKLER IRRIGATION
SYSTEM

Proudly Announces
The Appointment of
GIFFORD-HILL-WESTERN

AS DISTRIBUTORS OF
THE TRI-MATIC SYSTEM
IN
BAILEY COUNTY

HEALTH AND BEAUTY AIDS!

Aqua Net, Regular \$1.49 Value. Tax 7c 13 Oz. Can

HAIR SPRAY 59¢

Banquet Fried Chicken DINNER

Dinners

Banquet, Beef, Chicken
or Turkey

3 11 OZ. PKG. \$1

Garden Fresh Produce Always From Piggly Wiggly!

Bananas

Central American Golden Ripe

POUND **12 1/2¢**

Also Get These Money Savers!

Kentucky Wonder Beans, New
Potatoes, Italian Squash, Red
Grapes, Fresh Limes, Coconuts
Rhubarb

Fresh Long Green Slicers Cucumbers, 1 1/2 Lbs. 19c	Fresh Green Romaine Lettuce, Lrg. Bu. 19c
--	--

Grapefruit

Texas Ruby Red

LB. BAG **5 39¢**

Softply, Assorted Colors PAPER TOWELS Jumbo Size	27c
Bingo, Regular or Chopped Horsemeat DOG FOOD	4 No. 1 Cans 49c
Fleischmann's, Golden Corn Oil OLEO	2 Pound Ctn 85c

Lowest Prices ... Greatest Variety ... always at ...

DOUGH BREAD RANCH OVEN 2 - 1 Lb Loaves Per PKG. **3 \$1**

SHOP MULESHOE FIRST

Television Schedule For Muleshoe Area

☐ Indicates Color Programs

KING BROS.

GRAIN & SEED CO.

Complete ELEVATOR SERVICE AND SEED PROCESSING FOR The Muleshoe Area.

FIRST NATIONAL BANK MULESHOE

4%

ON 12 - MONTH CERTIFICATES OF DEPOSIT

3%

ON SAVINGS COMPOUNDED QUARTERLY

FINANCE YOUR CAR WITH US! PERSONAL LOANS

PAINT

Hardware

Chas. L. Lenau

LUMBER COMPANY

202 E. Ash

KGNC-TV (4) Amarillo
Muleshoe Cable 4
Mon. thru Fri. Daytime Viewing

6:30 - Classroom
7:00 - Toony Show
8:00 - Today Show
9:00 - Make Room
9:30 - C-What's this
9:55 - NBC News
10:00 - Concentration
10:30 - C-Jeopardy
11:00 - C-Truth or C
11:30 - C-Say When
11:55 - NBC News
12:00 - News
12:10 - Weather
12:20 - Ruth Brent
12:30 - Make A Deal
12:55 - NBC News
1:00 - Loretta Young
1:30 - The Doctors
2:00 - Another World
2:30 - C-Don't Say
3:00 - Match Game
3:25 - NBC News
3:30 - Sheriff Bill
5:30 - Hunt - Brink
6:00 - News

Thursday Evening

6:15 - Weather
6:30 - D. Boone
7:30 - Dr. Kildare
8:30 - C-Haze
9:00 - Perry Como
10:00 - News
10:15 - Weather
10:25 - Sports
10:30 - C-Tonight
11:00 - Mass

Friday Evening

6:15 - Weather
6:25 - Sports
6:30 - Showtime
7:30 - C-Bob Hope
8:30 - Jack Benny
9:00 - C-Paar
10:00 - News
10:15 - Weather
10:25 - Sports
10:30 - C-Tonight Sh
12:00 - Sign Off

Saturday viewing

7:00 - C. Cargo
7:30 - Roy Rogers
8:30 - Hector H.
9:00 - Underdog
9:30 - Fireball, XL-5
10:00 - Dennis Menat
10:30 - Fury
11:00 - S. Temple
12:30 - Cotton John
1:00 - Movie
2:30 - Movie
4:00 - Golf
5:00 - R. Rogers
6:00 - News
6:15 - Weather
6:25 - Sports
6:30 - Flipper
7:00 - Kentucky
7:30 - Mr. Magoo
8:00 - Movie
10:15 - Weather
10:25 - News
10:30 - Movie
12:00 - Sign Off

Sunday Viewing

7:30 - Dixie
8:30 - Cotton John
9:00 - Amarillo
9:30 - Movie
11:00 - Church
12:00 - Director's
1:30 - Science
2:00 - America
2:30 - Golf
4:00 - Kingdom
4:30 - G. E.
5:00 - Hula-Halo
6:00 - News
6:15 - Weather
6:25 - Sports
6:30 - C-Walt Disney
7:30 - Branded
8:00 - C-Bonanza
9:00 - The Rogues
10:00 - News
10:15 - Weather
10:25 - Sports
10:30 - Meet Press
11:00 - Checkmate
11:30 - Sign Off

KVII-TV (7) Amarillo
Muleshoe Cable 5
Mon Thru Fri.

Daytime Viewing

10:00 - Modern Edu
10:30 - Price Right
11:00 - Donna
11:30 - Father
12:06 - Texas News
12:15 - Weather
12:22 - Market
12:30 - Tenn. Ernie
1:00 - Flame
1:30 - Day in Court
1:55 - Women's New
2:00 - Gen. Hosp.
2:30 - Young Mar.
3:00 - Trailmaster
4:00 - Zane Grey
4:30 - Sea Hunt
5:00 - Leave to Bear
6:00 - News

Thursday Evening

6:16 - Weather
6:15 - News
6:20 - Johnny Ques
7:00 - Donna Reed
7:30 - My 3 Sons
8:00 - Bewitched
8:30 - Peyton Place
9:00 - Jimmy Dean
10:00 - Locat News
10:15 - Weather
10:20 - Movie

Friday Evening

6:16 - Weather
6:15 - ABC News
6:30 - Flintstones
7:00 - Farm Daugh.
7:30 - Adams Fam.
8:00 - Valentines D
8:30 - Wells Fargo
9:00 - 12 High
10:00 - News
10:15 - Weather
10:20 - Movie

Saturday Viewing

8:30 - Farm to
9:00 - Shenanigans
9:30 - Annie Oakley
10:00 - Casper
10:30 - Beany & Cec
1:00 - Bugs Bunny
11:30 - Hoppity
12:00 - Bandstand
1:00 - Wings
1:30 - Derby
2:30 - Bowlers
4:00 - Sports
5:30 - Sportsman
6:00 - ABC
6:30 - King
7:30 - Lawrence Wel
8:30 - Hollywood
9:30 - Preview
Thriller after
Movie

Sunday Viewing

8:00 - Herald of Tru
8:30 - Oral Roberts
9:00 - Christ
9:30 - Beany
10:00 - Bulwinkle
10:30 - Discovery
11:00 - Christophers
11:30 - S. S.
12:00 - Directions 63
12:30 - Dory Funk
1:00 - Basketball
3:00 - Golf
4:00 - Sportsman
5:00 - Wrestling
6:00 - Campaign
6:30 - Aqua Variety
7:30 - Broadside
8:00 - Movie
10:00 - News
10:30 - Weather
10:35 - Movie

KFDA-TV (10) Amarillo
Muleshoe Cable 6
Mon. thru Fri. Daytime Viewing

6:25 - Sign On
6:27 - Meditation
6:30 - Public Servie
7:00 - Farm News
7:20 - News
8:00 - Capt. Kanga
9:00 - CBS News
9:30 - I Love Lucy
10:00 - Andy
10:30 - McCoys
11:00 - Love of Life
11:25 - CBS News
11:45 - Guiding Light
12:00 - News
12:10 - Weather
12:20 - Farm & Ranc
12:30 - The World Tu
1:00 - Password
1:30 - Art Linkletter
2:00 - To Tell Truth
2:25 - CBS News
2:30 - Edge of Night
3:00 - Secret Storm
3:30 - Jack Benny
4:00 - Proud Eagle
4:30 - Superman
5:00 - Lone Ranger
5:30 - CBS News
6:00 - News
6:15 - Weather

Thursday Evening

6:30 - Dead or Alive
7:00 - Perry Mason
8:00 - Password
8:30 - Baileys
9:00 - Defenders
10:00 - News
10:15 - Weather
10:25 - Editorial
10:30 - Movie
10:55 - News Report
11:00 - The Big Flick

Friday Evening

6:30 - Rawhide
7:30 - Broadway
8:00 - Gomer Pyle
9:30 - Slattery
10:00 - News
10:15 - Weather
10:25 - Sports
10:30 - Movie
10:55 - News
11:00 - Movie

Saturday Viewing

6:45 - Cartoon Tim
7:00 - Mr. Mayor
8:00 - Alvin Show
8:30 - Tenn. Lux.
9:00 - Quick Draw
9:30 - Mighty Mouse
10:00 - Lion Hearted
10:30 - Jetsons
11:00 - Sky King
11:30 - Flicka
12:00 - Gorilla
12:30 - News
4:30 - Potamus
5:00 - Grand Ole O
5:30 - Porter Wagon
6:00 - News
6:20 - Weather
6:30 - J. Gleason
7:30 - Gilligan
8:00 - Entertainers
9:00 - Gunsmoke
10:00 - News
10:30 - Flicker
11:00 - Flicker

Sunday Viewing

8:00 - Fisher Family
8:30 - Church Serv.
9:30 - Gospel
10:30 - R. Question
11:00 - Ac. Theatre
1:30 - CBS
3:00 - Teen Talk
3:30 - Survival
4:00 - Jack Benny
4:30 - Amateur
5:00 - 20th Cen.
5:30 - News
5:45 - Weather
6:00 - Lassie
6:30 - Marlian
7:00 - Ed Sullivan
8:00 - People
9:00 - Candid Came
9:30 - W. My Line
10:00 - News
10:15 - Weather
10:25 - Movie
10:55 - News
11:00 - Movie

KCBD-TV (11) Lubbock
Muleshoe Cable 2
Mon. thru Fri. Daytime Viewing

7:00 - Headlines
7:05 - Farm Report
7:25 - Weather
7:30 - Today
8:25 - News Report
8:30 - Toony
9:00 - C-What's Song
9:55 - Morning Re.
10:00 - Concentration
10:30 - C-Jeopardy
11:00 - C-Say When
11:30 - C-T. or C.
12:00 - N and W
12:15 - Com. Closeup
12:30 - Let's Deal
12:55 - News
1:00 - Truth
1:30 - Doctors
2:00 - Another World
2:30 - C-Don't Say
3:00 - Match Gam
3:25 - Afternoon Rep
3:30 - Price Is Right
4:00 - Father Knows
4:30 - Superman
5:00 - Woolly Wood.
5:30 - Hunt-Brink
6:00 - News ..

Thursday Evening

6:30 - Farmer's Dat
7:00 - Donna Reed
7:30 - Dr. Kildare
8:30 - Hazel
9:00 - Perry Como
10:00 - News
10:30 - Tonight

Friday Evening

6:30 - Lawrence Wel
7:30 - Bob Hope
8:30 - Betting
9:00 - C-Paar
10:00 - News
10:30 - C-Tonight

Saturday Viewing

7:30 - Movie
8:30 - Hector He.
9:00 - Underdog (C
9:30 - Fireball XL-5
10:00 - Dennis Menat
10:30 - Fury
11:00 - Exploring
12:00 - Movie
1:30 - Movie
2:30 - Movie
3:30 - Sportsman
4:00 - Golf
5:00 - D. Boone
6:00 - News
6:30 - Flipper
7:00 - Kentucky J.
7:30 - Magoo
8:00 - Movie
10:00 - News
10:30 - Movie

Sunday Viewing

7:55 - Sign On
8:00 - Hoppity Hoop
8:30 - Shenanigans
9:00 - Buffalo Bill
9:30 - Annie Oakley
10:00 - The Drama
10:30 - Living
10:45 - Church
11:45 - Air Force
12:00 - Discovery
12:30 - Faith
1:00 - Basketball
3:00 - Sports
4:00 - Kingdom
4:30 - G. E. Colleg
5:00 - Meet Press
5:30 - Red Raider
6:00 - News
6:30 - Wond. World
7:30 - Broadside
8:00 - C-Bonanza
9:00 - The Rogues
10:00 - News
10:30 - Movie

KLBB-TV (13) Lubbock
Muleshoe Cable 1
Mon. thru Fri. Daytime Viewing

☐ 2 - Sign On
6:30 - Sum. Ser
7:00 - Farm
7:30 - King Odie
7:30 - Cartoons
8:00 - Capt. Kangar
9:00 - Donna
9:30 - I Love Lucy
10:00 - Andy
10:30 - McCoys
11:00 - Love of Life
11:25 - CBS News
1:30 - Tenn. Ernie
12:00 - WTTN News
12:10 - Names in Ne
12:25 - Weather
12:30 - World Turns
1:00 - Password
1:30 - Houseparty
2:00 - Tell the Tru
2:30 - CBS News
2:30 - Edge of Night
3:00 - Secret Storm
3:30 - General Hosp
4:00 - Trailmaster
5:00 - Amos 'N And
5:30 - News

Thursday Evening

6:00 - Weather
6:10 - News
6:20 - News
6:30 - Munsters
7:00 - Perry Mason
8:00 - Bewitched
8:30 - Peyton
9:00 - Derenders
10:00 - News & Weat
10:30 - Movie

Friday Evening

6:00 - Weather
6:10 - News
6:20 - News
6:30 - Rawhide
7:30 - Addams
8:00 - TBA
8:30 - Gomer Pyle
9:00 - Burke's Law
9:30 - McHales
10:00 - N-W
10:30 - Late Show

Saturday Viewing

6:20 - Sign On
6:25 - Farm Fare
6:30 - Summer Sem
7:00 - Bowery Boys
8:00 - Alvin Show
8:30 - Ton. Tuxedo
9:00 - Quick Draw
9:30 - Mighty Mouse
10:00 - Casper
10:30 - Jetsons
11:00 - Sky King
11:30 - Flicka
12:30 - Bugs
12:30 - Porky
1:00 - Bandstand
2:00 - Wrestling
2:30 - Sports
3:00 - Bowling
4:00 - Golf
5:00 - Opry
5:30 - Pickin Time
6:00 - Porter Wagon
6:30 - Wagon Train
7:30 - Combat
8:30 - Peyton
9:00 - Gunsmoke
10:00 - N-W
10:15 - Movie
12:00 - Movie

Sunday Viewing

6:55 - Sign On
7:00 - Bullwinkle
7:30 - Sgt. Preston
8:00 - Linus
8:30 - Adventures
9:00 - Herald
9:30 - This is Life
10:00 - Lubbock Minis.
10:30 - Church
10:45 - Baptist
11:00 - Church
11:30 - Bible
12:15 - Nation
12:45 - Alumni
1:00 - NBA
1:15 - Music
1:30 - CBS
3:00 - Golf
4:00 - Amateur
4:30 - Science
5:00 - 20th Cen.
5:30 - Mr. Ed
6:00 - Lassie
6:30 - Flintstones
7:00 Ed Sullivan
8:00 - Living Doll
8:30 - Password
9:00 - Candid Camera
9:30 - What's My Li
10:00 - News
10:30 - Late Show
12:00 - Sign Off

Higginbotham Bartlett Building Needs

Lumber Paint Wallpaper Hardware Houseware Gifts

Higginbotham Bartlett MULESHOE

Abel Cable

For Year-Long Enjoyment

INSTALL NOW Three Plans for Hook-Up

Muleshoe Antenna Co. Call Now

107 East Third
Phone 3-3100

ALSUP CLEANERS

Offer These FINE SERVICES

1. Drive-In Window Service for your convenience in cold weather.
2. Re-sizing of cottons to finer texture for that like new look.
3. Alterations of all kinds of men's, women's and children's clothing
4. A personal touch for your clothing by people who care how you look.

THAT'S Alsup Cleaners Phone 3-0760

From Your Librarian

Where do I go for help, Can I get information through the mail, who do I see first, or what do I do first? These questions and many more are asked by the troubled loved ones of the person who seems to be mentally ill. It is estimated that one out of every ten of us, at some time in our life - span are in need of psychiatric help or consultation. With the growing needs, the book "Mental Health Services" was designed and published by The Texas Association for Mental Health. This Directory was donated to the Muleshoe Area Public Library by Jess Osborn, and by courtesy of the publishers. It has a listing of all Mental Health agencies in the State of Texas; the names and addresses of all registered Psychiatrists; private Psychiatric Hospitals; State Mental Hospitals; US Gov. Hospitals; and the treatment centers offered for the care of emotionally disturbed and mentally retarded children. It also has the information needed regarding the admission to the State supported institutions. I didn't know, and possibly others might not, that a person who feels the need may make written application to the head of the hospital (State supported) and enter the hospital, voluntarily for an examination. The terms of rules of such voluntary admission are outlined in the book, as well as the rules for emergency admission by a health of peace officer.

The Library has also received a new book, this week, entitled "My Ministry in a Mental Hospital"; This book was authored by H. E. Snell, minister, and chaplain at the Wichita Falls State Hospital. The author says the books was written in the hope that his view of what goes on behind the walls of a mental hospital to aid struggling, groping and often forgotten people, might stimulate the public to a great interest in and understanding of the work done by the staffs of our State hospitals. His counseling methods might be of interest to ministers, his rare insight and sympathetic understanding would be appreciated by any thoughtful person, who takes the time to read this 61 page book. We have Mrs. Darrell Pattie to thank for donating our copy, and it is interesting to note that the Rev. Snell is Mrs. Pattie's brother. Mrs. Pattie wrote and asked to buy copies of the book for friends and for our library.

Donated by Mrs. Fred Johnson (21) magazines - One of the controversial "Look", which has the article titled "Conspiracy", USA".

By Tom Hunke: "Sherman, Fighting Prophet", which is illustrated by many maps, engraving, and photos. Donated by Doris Holt; "The

Projects...

(Continued from Page 4)

sidewalks in varying pastel colors, the installation of canopied park benches and flower boxes and the elimination of parking meters.

Also included will be a widening of sidewalks at corners into pedestrian stations and extend about 12 feet into the streets, thus shortening the distance of pedestrian's crosswalk. Either canopied benches constructed of colored steel and concrete or large canopied planter boxes will be located at the terminals of each block with four such structures at each corner. The center traffic lights will be replaced by corner traffic signals.

Colored canopies, shaped like giant toadstools, also are to be located in the center of each of the four blocks being redesigned.

Littlefield's proposed revamping covered four downtown blocks and four adjacent side streets.

The Hereford program was approved this past week by merchants along the downtown strip. Cost will be \$75,000, the outlay to be borne by firms and property owners along the route.

For Classified Ads Dial 2350

Betting on Horse Racing

Channel 11 8:30 - 9:00 p. m.

FRIDAY Feb. 5th

Francis Implement Co. FORD TRACTOR Muleshoe, Texas

SHOP MULESHOE FIRST

Home Improvement Loans

Remodeling - New Floors - Additional Rooms - Landscaping - Sewer, Water or Electrical Revamping. Non - FHA. No Hidden or Flat Charges. Low Monthly Payments - Reasonable Rates - We Finance Autos and Appliances -

Muleshoe Federal Credit Union

306 W. 2nd. Dial 3-5230, Muleshoe

PLAINS AUTO PARTS

We have JOBBER CONTRACTS on many top quality parts lines.

- UNITED DELCO
- AUTO LITE
- HASTINGS
- McQUAY - NORRIS
- VICTOR
- CHAMPION
- MONROE
- THOMPSON
- AND MANY MORE

Phone 7150 - Muleshoe, Texas

- May We Serve You -

TRADING CARS? SEE CROW CHEVROLET CO.

For All Your Needs Prescriptions

— CALL ON YOUR —

WALGREEN AGENCY WESTERN DRUG

Phone 3-1060

Veterinary Cosmetics

TIPS...

FROM THE OFFICE OF HOME DEMONSTRATION AGENT
CLEANSER FOR FIXTURES
Jean Martin

The kind of cleanser you use on your bathroom fixtures can have a decided bearing on how well the finish lasts.

A harsh, gritty cleanser will soon scratch and mar the surface.

Try this test to check the abrasiveness of a cleanser.

Put a small amount of cleanser between two pieces of glass. Rub them together. If the glass is scratched, the cleanser is too harsh to use on the bathroom fixtures.

AIR DRY FOAM RUBBER-BACKED HOUSEHOLD ITEMS
Items having foam rubber backing or padding can be fire hazards.

Potential threats are the padded knees of children's crawlers and the foam rubber backs of many skid-proof rugs.

It's best to air dry these items since the foam may build up heat in the dryer and catch on fire if left at a high temperature for a long period of time.

If these items are accidentally dried in the dryer, lay them aside to cool away from the rest of the laundry. Folding and stacking with other items will hold in the heat and it may continue to build up in the foam until there are flames from spontaneous combustion.

WASHABLE BELT BACKINGS, BUCKLES, AND "EYE-LETS." Double-layer cotton belt backing can be bought in a package containing enough to make one belt plus a washable

buckle. This is easy to use, since the fabric's raw edges can be tucked between the folds for easy stitching. Single-layer cotton belt backing is sold by the yard. Non-woven interfacing or preshrunk cotton, doubled and stitched closely, can also be used to give "body" to belts.

WASHABLE OR REMOVABLE BUTTONS. Button forms to be covered should be labeled as rustproof. White pearl crystal, and jet buttons, plus plastic and porcelain buttons, marked washable, can go into suds safely. If you want to use wood, metal, leather, ivory, jeweled, or colored pearl buttons, attach them with safety pins which have a "hump" for easy pinning. This makes it easy to remove them before washing the garment. Or use removable stud buttons.

SHOP MULESHOE FIRST

FRANCIS IMPLEMENT CO.
FORD TRACTOR
Muleshoe, Texas

Whoaaaooops!

Splash. Get help on the spot. Find CLEANERS & DYERS fast in the **YELLOW PAGES.** Where your fingers do the walking.



LAZBUDDIE

(Continued from Page 5)

The Steinbock visited the H. T. Hutchenson family in Cloudcroft, N. M. over the weekend.

Birthdays being observed this week include Dorothy Ward, Herbert Whitefield, James Harvey, Jr., Jerry Engelking, Eddie Joe Hall, Angelia Kay Matthews, Larry Vaughn, Robert Quantallis, Randy Hardage, Marsha Schumann, Dan Cargile, Edwin Parker, Sara Gaummon and Linda Baldress.

Nine members and one guest were present at the Lazbuddie Home Demonstration club meeting held in the home of Mrs. Demp Foster last week. The guest, Mrs. Cricket Taylor, gave the program on "Family Living."

Mrs. Clayton Greaf was chosen to fill the unexpired term of secretary-treasurer. The members voted to serve lunch at a farm sale to be held Thursday. The members will meet in the home of Mrs. Clayton Greaf for this week's meeting.

Demp Foster attended the Smith-Douglass work shop in Oklahoma city last week. The purpose of the meeting was to learn more about soil testing and fertilizer needs for certain crops grown in this area.



WESTERN
deep well
TURBINES
last up to 3 TIMES
longer than other pumps

Western's exclusive redwood lined tubeline eliminates bronze bearings and shaft wear. Saves you money all around. For more details without obligation call your Western Pump dealer today.

EDWARDS GIN AND IRRIGATION



WHO WOULD YOU TURN TO FOR A NEW PERMANENT?

The Best Place To Save And To Borrow...

Certainly you shouldn't come to us. The specialist you need is a beautician. We specialize in saving accounts and loans for homes. In fact, that is our only business, and because it is, we can concentrate all our efforts on these services.

SPECIALIZING IN SAVINGS ACCOUNTS and HOME LOANS

First Federal Savings & Loan

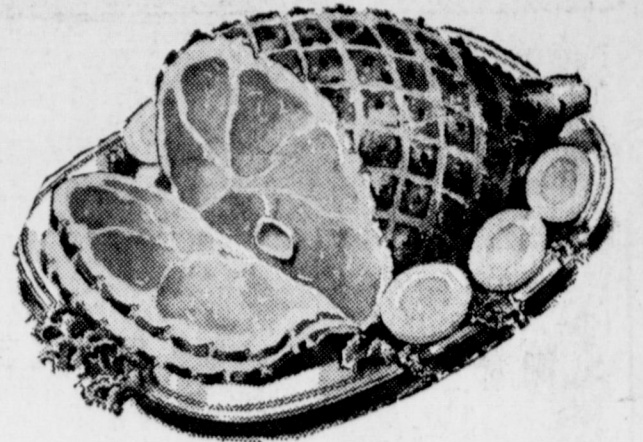
Home Office
Clavis, N.M.
4th & Pile

Branch Office
Portales, N.M.
2nd & Abilene

PICKNEY'S SUN - RAY SUGAR CURED



WHOLE Lb. 39c
SHANK HALF Lb. 39c
Butt Half Lb. 45c



WILSON'S CORN KING SLICED

BACON 1 LB. PKG. 53c

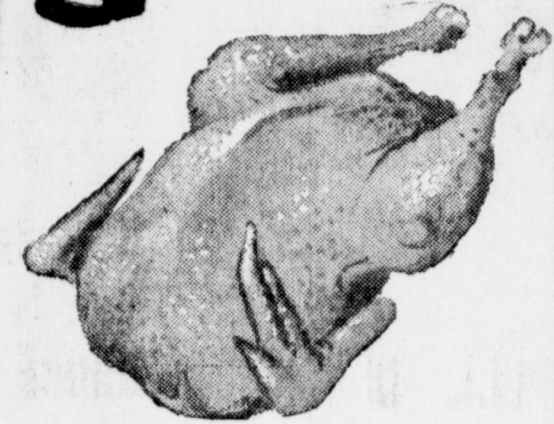
PICKNEYS JUMBO PAC

FRANKS 3 LB. PKG. \$1.00

Fryers

CLARYS USDA GRADE A
WHOLE .. FRESH DRESSED

LB. 29c



LUNCH MEATS

Wilson's Certified Bologna, Salami Liver Loaf, Spiced Luncheon, Mac and Cheese Pic and Pim. Olive Loaf 6 Oz. PKGs

4 FOR \$1.00

CARROTS

1 LB. CELLO PKG 2 for 19c

Mixed Nuts LB. 29c

POTATOES

COLORADO REDS

8 Lb.

CELLO BAG

69c

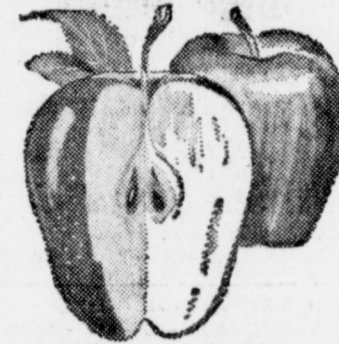


APPLES

Utah Rome Beauty

For Cooking or Eating

LB. 15c



CABBAGE

FIRM GREEN HEADS LB. 3 1/2c

ONIONS

NO 1 YELLOW LB. 5c

FROZEN FOOD

Fox De Lux Cheese - Hamburger & Pepperoni 79c
Birds Eye Italian GREEN BEANS 9 oz. Pkg. 25c
Keith's Speckled Butter Beans 10 oz. Pkg. 2 For 39c
Banguet Chicken-Turkey-Beef POT PIES 8 oz. Pkg. 2 For 29c

Crackers Sunshine Honey Graham 1 lb. Box 35c
Chili Frito Brand No. 2 Can 59c
Vanilla Wafers Sunbeam 39c Cello Pkg 29c
Tissue Waldorf Bath Room 4 roll pkg. 2 For 69c
Milk Kimbells Tall Cans 3 For 39c
Flour Gladiola 5 lb. Bag. 49c
Cleanser Handy Andy 15 oz Bottle 29c
Bleach Kimbells Kalex 1/2 Gal. Plastic Cont. 39c
Detergent Kim Pink Lotion 22 oz. 39c
Olives Kimbells Salad 10 oz. Jar 39c
Jelly Zestee Pure Grape 18 oz. Glass Tumbler 29c
Pop Corn Kimbells 2 lb. Cello Pkg. 19c
Pears Kimbells Bartlett No 303 Can 25c
Dr. Pepper 6 Bottle Ctn. King Size 3 For \$1.00
Blackeye Peas Ranch Style No 300 Can 2 For 25c
Oysters Geisha Whole 8 oz. Can 29c
Green Beans Diamond Cut No 303 Can 2 For 29c
Grape Drink Welchade Qt Can 3 For \$1.00

KLEENEX 600 HI-COUNT BOX 29c
FACIAL TISSUE

SUGAR HOLLY OR CRYSTAL 5 LB. BAG 45c

COFFEE KIMBELLS DRIP OR REG. 1 LB. TIN 69c

COCOA KIMBELLS 8 OZ. BOX 25c

GUNN BROS. STAMPS

DOUBLE EVERY Wednesday

White's CASHWAY

SHORTENING

SWIFTS JEWEL

3 LB. TIN 59c

SALAD DRESSING

KRAFT

MIRACLE WHIP

Qt. JAR 49c

Listen To MULETRAIN over KMUL 10-15 A. M. sponsored by CASHWAY