

In muleshoe

With the Journal Staff

Sandra Scott, daughter of Mr. and Mrs. Paul Scott, Muleshoe, will be playing one of the major roles in Lubbock Christian College's production of "The Mikado" Feb. 11 - 13. She is a home economics major and a 1964 graduate of Muleshoe High School.

Muleshoe congregation of Jehovah's Witnesses will attend a mid-winter convention in Hobbs, N. M. Jan. 22 - 24, the minister, the Rev. Boyd Lowery announced this week. Theme will be "Obedience to God Admit a Wayward World."

Men from this area named to the High Plains Underground Water Conservation board in elections last week included Ina Brown, and E. J. French Sr., Morton; Troy Moss, Littlefield and Roger Haberger, Earth, and Ralph Shelton, Friona, and Carl Rea, Bovina. In Bailey county committee members are Marvin Nieman, Muleshoe, and Homer W. Richardson, Maple. Ross Goodwin is the new district director for Bailey, Castro and Parmer counties.

Edwin Hall, Littlefield, conducted Sunday services (See MULESHOE, Page 7)

City Reimburses Builders' Water, Sewer Expenses

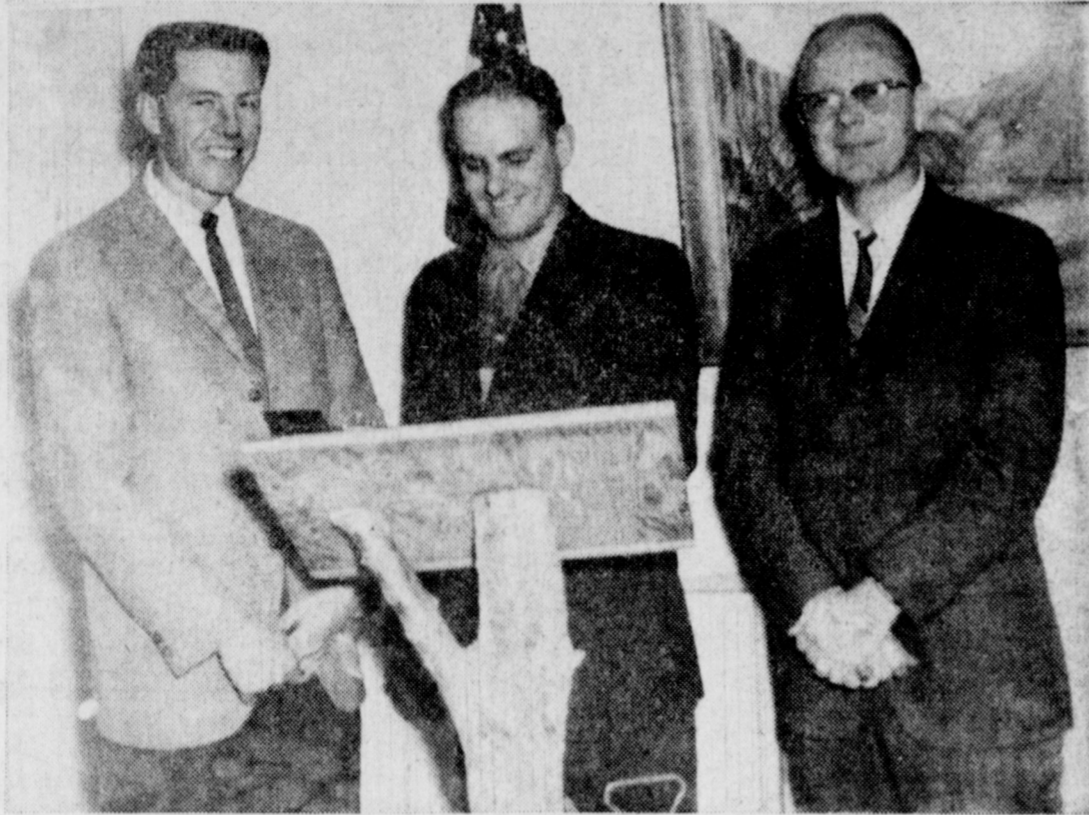
Muleshoe city council has agreed to pay Moss & Leftwich \$7,000 for sewer and water lines which the builders put down in Richland Hills addition. This, it was explained, is a customary procedure when builders install lines in a new area. They later are reimbursed by the city.

The payment was agreed on at a recent meeting of the council.

A request to rope off a section of Main street between Ave. C and American Blvd. for a street dance this month was denied by the councilmen.

The councilmen also heard reports from the volunteer fire department and Librarian Anne Camp, telling of activities during the last quarter of 1964.

The council agreed to pay \$100 to Aldridge, Aldridge & Harding for examining the title to the airport, and \$53.25 to Muleshoe Abstract Co. for supplemental abstract for title to the airport.



JAYCEE SPEAKERS - Ken Foreman, Plainview, and Jerry Fowler, Hereford (right and left) were speakers at Monday's Muleshoe Jaycee luncheon. Elvon DeVaney, president, is shown in center. Foreman was campaigning for Lonnie Crew for area vice-president, and Fowler was campaigning for himself for the same post.

Public to Learn City, Area Needs At Open Session Friday

John Q. Public will hear first-hand tomorrow night what the area's own people believe Muleshoe and the area needs - presently and in the future.

An open, public session will be held in American Legion Hall, starting at 7:30 p.m. with Dr. Charles Lewis, president of the Muleshoe Chamber of Commerce presiding.

"The public has been waiting since November to see a summary of the suggestions which people made at November forums," said Roy Davis, Cham-

ber manager. "Now we are ready to bring those findings to the people in concise, clear summaries."

He said the suggestions range all the way from simple present needs up to elaborate, long-range suggestions.

The program is an outgrowth of Muleshoe Area Improvement Forum, conducted by the chamber with the aid of West Texas Chamber of Commerce. The WTCC summarized the suggestions and catalogued them into both present and long-range ideas. They also are classified

by subject matter. "We believe the suggestions offered by the public are very clear" (See PUBLIC Page 8)

County Funds Deposit Sought

Bailey county commissioners will receive bids for the depository of state, county, school district and trust funds held by the county, it was announced Wednesday.

The bids are to be opened Monday, Feb. 8, at the commissioners' February session, County Judge Glen Williams said.

He explained that depository bonds, covering county funds are separate and apart from those covering school funds.

The court has also announced that it reserves the right to reject any and all bids.

Usually the commissioners accept the bid of the bank offering the highest rate of interest for county funds.

Cotton Season Near Finish; Yield Fair

Cotton season is virtually over, ginners said here Wednesday, and the USDA has closed its classing offices in Brownfield and Lamesa, a further indication of the end of the season.

"Some" gins were running on a part-time schedule in the Muleshoe area, it was reported, but one ginner summed it up with, "for all practical purposes the season is virtually at an end."

By mid-January, classing of samples at the Lubbock office had dropped to only 1500 daily, and the last full week of classing operations, ending Jan. 13, saw only 35,700 samples for the remaining offices.

That the year's production is off was further indicated by the total number of samples classed for 1964 season ran only to 1,820,100 as compared with 1,973,930 at the same time a year ago.

Californian Writes A Poem, Dedicated To Our 'Old Pete'

John Davidson, who lives in Madera, Calif., came recently to visit his wife's great grandmother, Mrs. Roscoe Lackey at Maple, and was fascinated by

the name Muleshoe. "Never heard of a name like that for a town," he commented.

And then when he learned that Muleshoe is planning a memorial to its "namesake," the mule, he couldn't resist the temptation to sit right down and write a poem about Old Pete, the mule who is modeling for the life-sized statue which is being built and will be erected in downtown Muleshoe to immortalize the mule from hence forth.

He sent a copy of the poem, written on plywood and duly framed, to his great grandmother.

That is what he wrote, calling it "Ole Pete.":

I'm old Pete, seen many a hard day

From the time of F. D. R. to L. B. J.

And now that the "Great Society" has dawned

I'm headed for Mal's Paradise - the great beyond.

But ere I go - out in the wind blown' sand and snow

They're gonna erect a statue so all may know

That even if we Ornerly Critters were cussed as fools

Time's come to honor us loped-eared mules.

So the great day is come for the mule - lover's few

When my statue will be finished and in fiber glass too!

Fifteen hands high and weighing fifteen hundred pounds

Immune to all kinds of weather from all around.

Jaycees Find City Parks, Community Center Top Needs

Need for better parks and recreational facilities for young people and a "large community center to facilitate large groups for meetings," top the list of needed improvements in

the city of Muleshoe. These were the conclusions of the Muleshoe Jaycees after they had compiled results of a survey conducted by the young men in 10 areas of the city.

Approximately 200 forms were distributed by the Jaycees. Eighty-nine were returned, and for several weeks the Jaycees have been pouring over the forms, checking responses.

In addition to 60 questions asked on a multiple choice questionnaire ranging from "poor" to "good," people were asked to list the things they liked most about Muleshoe. The most common answers were:

1. Friendliness of local people and business personnel;
2. Large choice of attractive churches;
3. Cooperation of social groups and interest in community development.

But they said these things were needed:

Youth Planning Saturday Dance

Muleshoe Youth Center has scheduled a dance for Saturday night from 8 o'clock until midnight at the American Legion Hall; it was announced Wednesday.

Providing the music will be the Kados. Admission price will be 75 cents for members, \$1 for non-members. Area youth are invited to attend.

7th, 8th Graders To Meet Morton In Double Bill

Muleshoes seventh and eighth grade teams will journey to Morton next Monday night for games starting at 6 p.m., continuing their 1964 - 65 basketball season.

The two Mule teams split a double-header with Plainview's Cornado Junior High Monday night, the 7th graders winning their game and the 8th graders losing to Plainview.

Seventh graders, coached by Ronnie Jones, nosed Plainview 28 - 24 with Ronnie Barrett leading the scoring at 12. Jim Putman got six, Roy McCormick and Larry Ratliff each scoring four points, and Gerald Haberger got 2.

Plainview beat Muleshoe's eighth graders 41 - 34. Leading scorer for the Mules was Melvin Brown with 14 points, Bobby Berger got eight, Harold Campa rung up three, Johnny St. Clair four points, and Tommy Hays and Lee Embry each scored two points. Lowry Lewis got one point.

Solons Study New Farm Labor Rulings, Workers Ask Delay

Muleshoe area cotton farmers may be hard-hit by the end of the bracero program, says Plains Cotton Growers Association. And "with an eye to fore-

stalling serious farm labor shortages and possible crop losses," representatives of the organization met in Washington this week for hearings conducted by Sen. Allen J. Ellender, Louisiana, on new regulations by the Secretary of Labor.

"The new regulations set forth the criteria farmers are required to meet prior to being certified for the contracting of Mexican National or other foreign workers," says the association.

"These criteria," PCGA pointed out, "increase the required wage offering to domestic workers to \$1.15 an hour in Texas and also require farmers to offer written contracts to do-

1. Improve present and establish new recreational facilities for young people.

2. Build and maintain better park facilities to serve the entire town.

3. Build a large community center to facilitate large groups of people for meetings, etc.

4. Encourage new industrial plants and job opportunities for local people.

5. Encourage local civic pride in improvement of the appearance of the city in both industrial and residential areas.

6. Furnish home delivery of mail to all parts of the city.

After checking answers given to all 60 of the questions asked, the Jaycees came up with the following average results:

Water pressure, good; sewerage disposal, good; storm water drainage, good to average; garbage collecting, good to average; gas pressure for cooking and heating, good; electricity, excellent to good; telephone service, good to poor; postal service, excellent to good; news coverage by newspaper, average.

Television and radio programs, good to average; fire protection, good; law enforcement and police protection, good to average; court services, good to average; zoning ordinances, average; legal services, good to average; medical services, good; dental services, good; hospital services, good to average; health department, good to poor;

Welfare services (aid to families) (See JAYCEES, Page 7)



RADIOMAN - Muleshoe Jaycees took to the microphone - literally - Tuesday as part of National Jaycee Week. Everybody got into the act. Here's just one of the many who took stints before the mike. It's Jimmy Lane giving a "commercial."

Eight Electric Co-Op Leaders Going To Miami

Bailey County Electric Cooperative Association, with offices in Muleshoe and Morton, serving a five county area, will send six of its Board members, Manager, and Educational Director to Miami Beach, Fla. to participate in the 23rd annual meeting of the National Rural Electric Cooperative Association (NRECA), Jan. 24 - 28.

They will be among the 8,000 rural electric members who are expected to attend the meeting from nearly every state in the country.

Attending from Bailey County Electric Cooperative Association will be: Clarence R. Mason, Van Rogers, Clarence Hamilton, Chester Setliff, L. E. Warren, Jessie Clayton, Joe Farbin, and D. B. Lancaster. Mrs. Mason and Mrs. Rogers will accompany their husbands (See EIGHT Page 5)

'Quiet' Weekend Sees 7 Arrests

Weekend in Muleshoe was "fairly quiet," a check of sheriff's and police department records revealed Wednesday.

Lodged in the county jail by city police were two drunks and one charged with simply assault.

The sheriff's office arrested one for disturbing the peace and resisting arrest, tagged two persons for bootlegging liquor, and one for contributing to the delinquency of a minor.

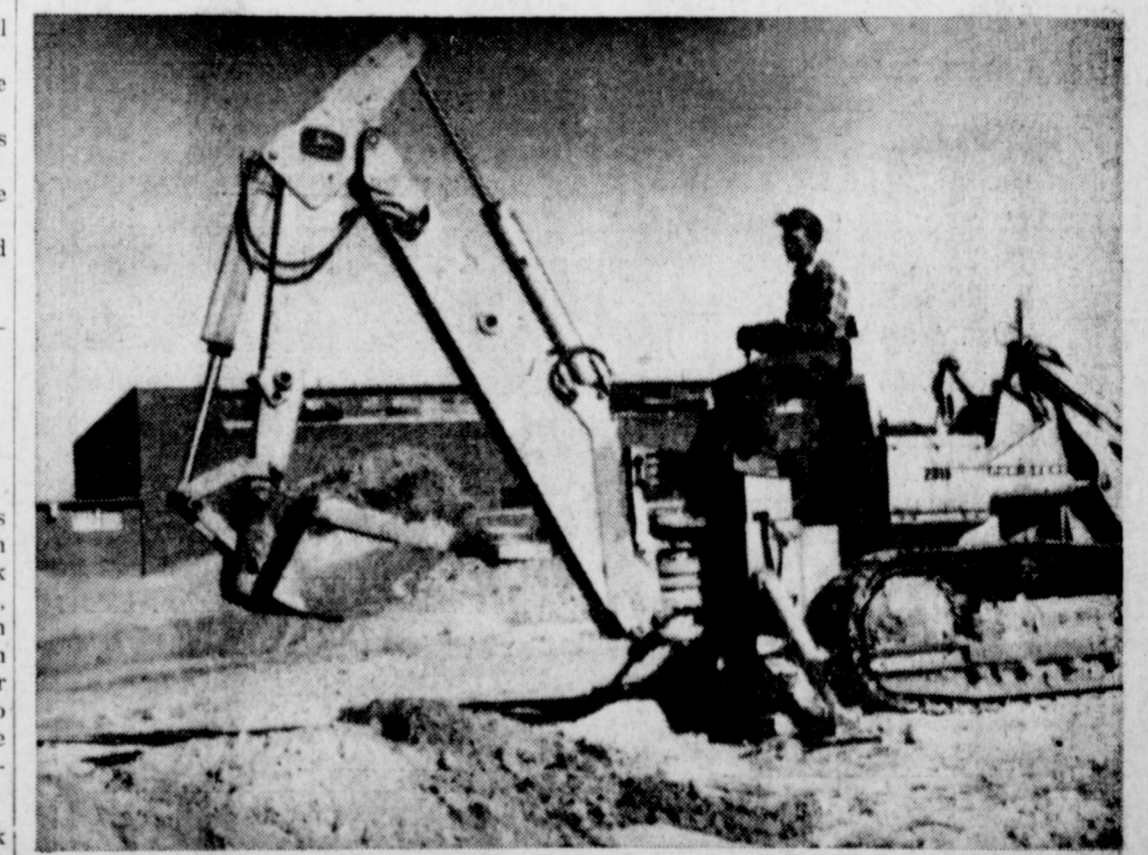


SCOUT LEADERS - Scout workers from Muleshoe and the surrounding areas, gathered in Muleshoe last Saturday for a Cub Scout training program, and they brought with them a number of Scouts who are being trained for Den Chiefs. Adults, who had their own work session included (seated, l. to r.) Owen Jones, George Wheeler, Marshall Haney, Cesar Buzzitta, Scout Executive; and (back row) Jim Beller, Joe Sooter, Robert Bliss, Ray Hodges and Jim Shafer.

Muleshoe Boy's Herefords Win

Larry Jones, Muleshoe, was the big winner in the Green Belt Junior Breeders Livestock in Childress last weekend, showing the grand champion Heifer, the grand champion steer, and first place in summer yearling heifer class. He also won first and second place awards in the heavy steer division.

Terri Jones, his sister, took second place in the senior Hereford steer division, got a third in the heavyweight steer division, and a third in the medium weight steer class.



SCHOOL BUILDING MAKES PROGRESS - Building program for the Muleshoe school district, a \$900,000 project, is making progress. Here a dirt-moving machine is being used at DeShazo school. Similar programs are under way at junior high and senior high schools.

Allisons Parents Of New Arrival

PFC. and Mrs. Mack Allison are the parents of a son born January 9, at the Cannon Air Force Base hospital at Clovis, N. M. The little boy weighs 6 lbs. and 9 oz., and has been named Donnie Mac.

The father is presently with the Armed Forces near Seoul, Korea, and Mrs. Allison and Donnie Mac are residing with her parents.

Grandparents are Mr. and Mrs. Oscar Allison and Mr. and Mrs. James Freeman. Great-grandparents are Mrs. Tom Morgan of Canyon, formerly of Muleshoe, and Mrs. Sam McKinstry of Muleshoe.

Vows Solemnized In Midland Chapel

Marriage vows were solemnized Sunday evening at the First Christian Church Chapel, Midland, for Mrs. Juanita Wilson, Lubbock, and Gilbert Lamb, Muleshoe.

Rev. Dick Clayborne officiated for the service.

Attendants for the couple were long-time friends of both the bride and bridegroom: Mr. and Mrs. Jim Sadler, Mr. and Mrs. Lamb left Wednesday for Jackson, Miss. Hammond, La., New Orleans and Houston.

SHOP MULESHOE FIRST



Coffee Honoree Miss Pat Keesee and Mrs. Don Harmon

Miss Crawford On Dean's List

Beverly Crawford, daughter of Mr. and Mrs. V. O. Crawford has been named to the Dean's Honor List for the past semester at South Plains College.

Her average was 3.40, above the required 3.25 average.

She was presented the College Scholarship Award.

Though rare in the United States, the Everglad kite, a hawk-like bird, is commonly seen in parts of Cuba, Mexico and Central and South America.

Coffee Honors Two Newcomers

A coffee was given Saturday morning in the home of Mrs. W. A. Finn introducing Miss Pat Keesee and Mrs. Don Harmon.

Assisting with the courtesy as co-hostesses were Mrs. Ab Carroll, Mrs. Ross Goodwin and Mrs. Joe Mack Wagnon.

The serving table was laid with a white lace cloth and centered with a stagecoach holding a large red Valentine. The Valentine motif was used throughout the home as party decorations.

Mrs. Joe Mack Wagnon introduced the two new residents as guests called from 9:30 to 11 a.m.

Assembly of God Church Held Dedication Service; Revival Starts

Dedication Day for the Assembly of God Church was Sunday January 17 at the new location on the Morton Highway.

A record number attended morning services, approximately 350, with 271 in Sunday School.

Lunch was served in the dining hall of the Church.

The dedication service was held at 2 p.m. with Rev. J. A. Thomas, Lubbock, district superintendent, delivering the message. The dedicatory prayer was given by Haskel Rogers, Levelland.

Sunday's services were the beginning of a revival now in progress and will continue through Sunday, January 24 with Tommy and Ester Lance, Mexia, as evangelists. The services are being held each evening, 7:30 p.m. with the exception of Saturday.

Attending the dedications were former pastors, Rev. D. W. Calcote, Plainview and Rev. R. V. Lana, Andrews. Other ministers attending from out-of-town were Rev. Homer T. Goodwin, a returned missionary and his daughter-in-law, Sandra Goodwin, Rev. and Mrs. McVinn Sasse, Clovis, Rev. and Mrs. Gene Davis, Needmore; and Rev. and Mrs. David Watson, Morton.

Noted Singer To Visit At Threeway Church

Joe M. Calerson, noted gospel singer who was soloist at the organization of the United Nations in San Francisco in 1945, will present a program of Sunday evening January 24 at 7:00 p.m. in Three Way Methodist Church, Maple.

For the past eighteen years, Mr. Calerson has been primarily a singer of gospel songs, and has led revival singing and given song programs in many churches of all sizes in this country. He is now the soloist for the International Language Broadcast, which is beamed world-wide to forty nations.

A graduate of the College of the Pacific, Joe Calerson studied music under Mr. Bachman of Redlands in California, and also studied voice under Mrs. Barnhart, who was with the Munich Opera twenty years. Formerly a Fort Worth citizen, Calerson is now moving to Lubbock.

Among the vocal selections he plans to present are "How Great Thou Art", "Follow Me", "A Charge to Keep I Have", an "The Lord's Prayer", and other favorites. The public is invited to attend.

Fund Raising Project Set: Meeting Held

The Lazbuddie Home Demonstration Club met Monday in the home of Mrs. Demp Foster.

Highlight of the meeting was a program on "Family Living."

The presentation was given by Parmer County Agent, Mrs. Cricket Taylor.

During the business meeting, the group voted to serve lunch at a farm sale Thursday, the biggest fund-raising project slated by the Club.

The secretary resigned and Mrs. Clayton Greaf was elected to fill the vacancy.

Nine members and one guest attended the meeting.

Jaycee-ettes Elect Officers

Muleshoe Jaycee-ettes met January 15 in the Community Room of the First National Bank and elected officers.

Officers elected were Linda Lane, president; Shirley Walker, vice-president; Virginia Bellar, secretary; Darlene Henry treasurer; Barbara Mills, reporter and Margaret Gleason, state director.

The installation of the officers will be held February 13.

The hand used in measuring height of horses is four inches.

The Wabash River was named for the Indian word "ouabache" meaning white.

Women Attend Club Workshop

Six Muleshoe Study Club members attended the workshop for Caprock District of Federated Women's Clubs held Saturday in Hemphill Wells, Lubbock.

A luncheon was held in the Gold Room.

Going from the Muleshoe Club were Mrs. Cecil Cole, Mrs. W. H. Elrod, Mrs. W. T. Andrews, Mrs. R. O. Gregory, Mrs. Ray Martin and Mrs. G. L. Splawn.

Rev. Herbert Peiman To Attend Area-Wide Conference In Lubbock

The Rev. Herbert F. Peiman, pastor of St. John Lutheran Church, Lariat, will spend Thursday and Friday of this week at Lubbock. The conference hosted by Christ Lutheran Church, of which the Rev. Harold Kaestner is pastor, will include some 75 pastors and ministers of education coming from as far north as Perryton, and as far south as Ft. Stockton and from Abilene on the east to the New Mexico border.

The Lariat pastor will be on the conference program both Thursday and Friday morning with an exegetical paper on Titus 2:6-11. The Thursday night session will be a communion service in which the Rev. Herbert Driessner of the Perry-Dumas parish will preach the sermon and the host pastor will read the liturgy.

The 10:30 service at the Lariat church Sunday morning will feature a sermon by the pastor on the question, "May a Christian Boast or Brag?" The text is Jeremiah 23:24. "A careful study of the Scriptures leads to the conviction that about the only thing a Christian may boast or brag about is the grace of God which is kind enough and big enough to save a sinner like me", the pastor commented.

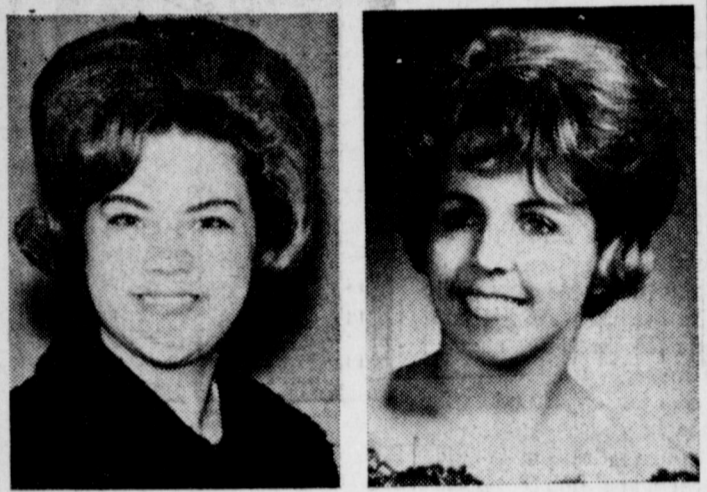
Funeral Held For Garza Youth

Services for Caterino Garza, 10, were held at Vespers, Evening ceremonies at 3 p.m. Sunday in Immaculate Conception of Mary Catholic Chapel with a memorial Mass recited at 10:30 a.m. in the Earth Theatre, Earth.

Burial was in Earth City Cemetery.

The Organization of American States had developed instrument for the peaceful settlement of disputes, for the common defense and to promote the general welfare of all the American peoples.

SHOP MULESHOE FIRST



WELLBORN BEAUTY SHOP HAS ADDED TWO NEW HAIR DRESSORS TO ITS STAFF. LEFT IS VANITA HARKLEY, A GRADUATE OF AMARILLO COLLEGE OF HAIR DRESSING. VANITA WILL TAKE APPOINTMENTS TUESDAY THROUGH SATURDAY. RIGHT IS GLORIA RAGLAND, A GRADUATE OF JESSIE LEE'S HAIR DESIGN INSTITUTE OF LUBBOCK. GLORIA, A SENIOR STUDENT IN MULESHOE HIGH SCHOOL, WILL TAKE APPOINTMENTS AFTER SCHOOL TUESDAY THROUGH FRIDAY AND ALL DAY ON SATURDAYS.

WELLBORN'S BEAUTY SHOP
1101 Ave. J Ph. 3-4040

We can fix it in a hurry!

Invisible Re-Weaving
Cigarette Burns Moth Holes Cuts and Tears

BEFORE re-woven like new on all types of garments AFTER

CONTACT: DORIS ENGLISH
322 W. AVE. B MULESHOE PH. 5951

Anthony's CLEAN-UP
YOUR FAMILY STORE

PRE INVENTORY FINAL 3 DAYS THUR. FRI SAT. MEN & BOYS DEPT. LADIES DEPT.

23 ONLY MULESHOE MULES SHIRTS SWEAT	\$3.98 REG. 97c
16 ONLY BOYS JACKETS & COATS	VAL. TO \$16.95 \$6
123 ONLY MENS LONG SLEEVE SPORT SHIRTS	Val TO \$5.95 \$2.87
31 ONLY MENS SWEATERS	VAL. TO \$14.95 \$8
9 ONLY MENS OR BOYS FULL LENGTH ALL WEATHER COATS	REG. \$16.95 \$5
13 ONLY MEN'S SWEATERS	VAL. TO \$6.95 \$3
BOYS 17% NYLON BUCKHIDE JEANS	REG. \$2.69 \$2
137 ONLY BOYS SPORT SHIRTS	REG. \$1.98 \$2.98 2 For \$3
FAMILY SHOE DEPT.	
63 PR. ONLY LADIES & CHILDRENS SHOES	VAL. TO \$7.95 \$3
MEN & BOYS DRESS SHOES	VAL. TO \$10.95 \$4
51 PR. HIGH HEEL SHOES	VAL. TO \$8.95 \$4
87 ONLY FALL & WINTER DRESSES SUITS COATS	1/2 PRICE
LADIES FLANEL, NYLON, RAYON SLEEPWEAR GOWNS - ROBES PAJAMAS VAL. TO \$4.98	\$2
130 PR. ONLY DARK SEAM NYLONS	4 For \$1
63 PR. ONLY LADIES SLIM PANTS	REG. VAL. UP TO \$3.98 \$1.77
146 PIECES FALL JEWELRY 4 FOR	REG. \$1.00 & \$1.50 \$1
21 ONLY FALL BAGS	REG. \$4.98 & \$5.95 \$3
54 ONLY GIRLS DRESSES	VAL. TO \$6.95 \$2
31 PR. LADIES CORDUROY COVERALLS	REG. \$6.95 \$3.87
230 H. W. BETTER SWEATERS	REG \$16.95 AND \$18.95 \$14.87

THUR. FRI. SAT. **3 DAY FINAL CLEAN-UP**

If you want to mix business with pleasure

Your Ford Dealer has the truck that's right for you!

Whether you're on the job, or off on a family outing, Ford's Twin-Beam comfort makes it the best pickup for you. Two front axles smooth the roughest roads. Each front wheel is suspended independently on forged I-beam axles and heavy-duty coil springs cushion the ride for comfort you never found in a tough truck before. Find out for yourself what two front axles do for pickup ride—on or off the job!

'65 FORD TWIN-BEAM PICKUPS

Come in and test the ride that's tailored for **TEXANS**

MULESHOE MOTOR CO.
MULESHOE, TEXAS American Blvd at 1st Street

COLD REMEDIES

CONTACT CAPSULES
REG. \$1.49 SPECIAL 88c

VICKS FORMULA 44
REG. 98c SPECIAL 67c

DEEP HEAT MENTHOLATUM
REG. \$1.69 SPECIAL \$1.15

SCORE For the Hair	REG. 79c	SALE 44c
SCHICK STAINLESS STEEL BLADES	\$1.49	\$1.09
SCHICK HOT LATHER	\$1.00	67c
ORA-FIX	73c	49c
LILT MILK WAVE LOTION	\$2.19	\$1.45
GLEEM TOOTHPASTE	69c	45c
BAYER ASPIRIN 50 CTN. BTL.	79c	56c

Thursday - Friday - Saturday ONLY
3 REGISTERED PHARMACISTS
TO FILL YOUR PRESCRIPTION

DAMRON DRUG *ReXall*

Horse - Betting Bill To Draw Fire In Legislative Halls

Editor's note: The following story was written by David Lopez and appeared in the San Angelo Standard - Times recently. Since it deals with the proposed horse betting bill, it is of interest to all Texans. The story, as it appeared in the Standard - Times, follows:

AUSTIN — A Houston legislator asked Texans to shed some light on the issue of legalized betting on supervised horse racing in Texas.

State Rep. J. C. Whitfield urged Texans to turn on their porch lights between 8 and 10 p.m. last Friday, Saturday and Sunday to signal homecoming

legislators that they are against legalized gambling on the ponies.

Whitfield dashed from the starting gate to lead opposition to the bill which would legalize horse race gambling where approved by a local option election.

"The plain facts are that legalized racing and gambling

not only damage the moral fabric of our people but that the revenues they bring in are more than offset by losses in other lower legitimate fields of commerce," Whitfield said.

State Rep. Maurice Pipkin of Brownsville, who announced he will introduce in the House a bill backed by the Texas Racing Association, had other ideas on the subject.

Baptist General Convention have been putting together their own statewide organization of prominent professional and businessmen.

Kilpatrick said the council and the Baptist General Convention of Texas are "encouraging" the organization which will be based in Dallas, but they are not necessarily sponsoring the group or running it.

on all bets on a sliding scale of 4 per cent of the first \$10 million; 5 per cent on bets after \$10 million and up to \$20 million and 6 per cent on bets of more than \$20 million.

In addition, counties and cities each could levy a total of \$100 a racing day and a 10 per cent tax on admission charges.

A 13 per cent share of the betting pool would go to the track operators to cover prizes, expense and profits.

The governor would appoint a three-man Texas Horse Racing Commission to regulate and supervise all horse races where there is betting. The commission would issue licenses to track operators, officials, jockeys, trainers and others connected with the race track.

Persons owning interests in tracks would be disqualified from serving on the commission, but horse breeders would be eligible.

Racing days would be allocated by the commission, with any county with 100,000 population or more in 1960 being allowed not more than 50 racing days a year, and a limit of 150 racing

days being placed for all counties in the classification.

A county with less than 100,000 population would be allowed no more than 14 racing days a year.

The bill makes provisions for a Quarter Horse racing and provides that on every racing day at least one race will be limited to Texas bred horses. Texas bred horses also would be 10 per cent bonus in addition to their share of the purse when they win a race.

Texas has had legalized betting since 1933. Gov. James V. Alford led the fight to outlawing on horse racing for two

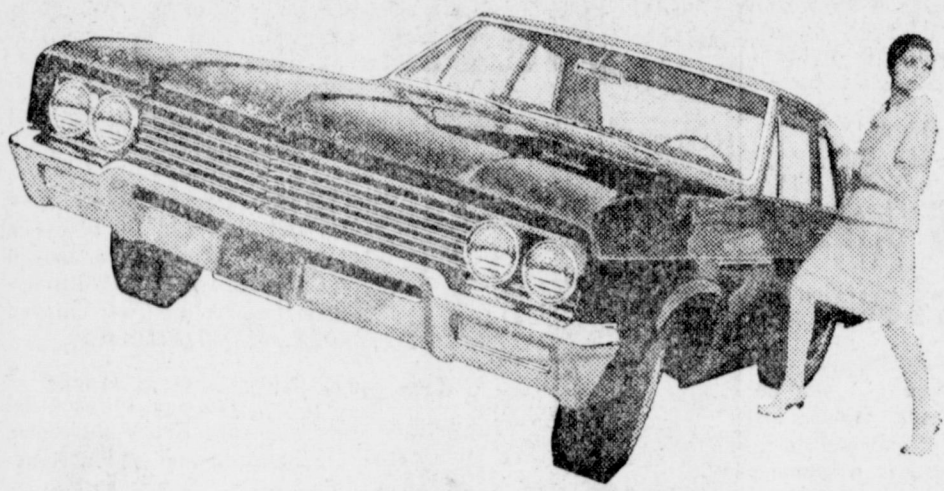
four-year periods — 1905 - 1909 and 1913 - 1917. At the last session, a proposal for a constitutional amendment to allow local option race track betting in 10 counties was defeated soundly. In the final vote, even its author, Rep. V. E. (Red) Berry of San Antonio, voted to lay it on the table killing it.

A 1962 referendum vote was 632,000 against and 313,000 for legalizing horse betting with about 300,000 voters not marking ballots either way.

SHOP MULESHOE FIRST

Buick Special V-6 goes easy on gas.

Its low price goes hard on your resistance.



We put 6 big reasons to buy a Buick Special under the hood. And another small one on the price tag. The six are a set of the liveliest, thriftiest cylinders that ever zipped you merrily on your way. They're all arranged in neat, smooth V-fashion. They add up to 225 cubic inches and 155 horsepower, and make other arrangements of 6 cylinders seem primitive. That's not all. Special sports Buick comfort, Buick style and traditional Buick quality. The price tag? We saved the best for last.

\$2343.00

Manufacturer's suggested retail price for Special V-6 2-dr. coupe. Price includes Federal Excise Tax and suggested dealer delivery and handling charge (transportation charges, accessories, other optional equipment, state and local taxes additional).

Wouldn't you really rather go first class?

BUICK MOTOR DIVISION

See your local authorized Buick dealer

TUNE IN "LOWELL THOMAS AND THE NEWS"—CBS RADIO

As to the public morals, Pipkin said, "We have races and betting all over Texas every Sunday, but they are not properly supervised, and the state gets no money from them."

Pipkin said 37 states in the country already have legal betting on horse racing, and he said his bill is a combination of the best features of the laws in those states. He said Texas is the only one of the 10 most populated states without legalized horse betting.

The battle for the bill will be fought not only in the legislative halls. The Texas Racing Association, whose officers include king-sized names in Texas ranching and business, has raised more than \$150,000 to promote the bill and conduct a public information program to explain its provisions. Two church groups, meanwhile, have been girding for the battle to squelch the gambling bill.

Harold Kilpatrick of the Texas Council of Churches said the council, which is due much of the credit for the defeat of the two part - mutual betting referendums in 1962, "will continue to oppose organized gambling in any form."

The council and Christian Life Commission of the Texas

WE CONGRATULATE THE CHURCH OF CHRIST

ON YOUR MAGNIFICENT NEW CHURCH BUILDING

WE ARE HAPPY TO HAVE HAD A PART IN ITS CONSTRUCTION

BOB HOPPER ELECTRIC

1119 29TH

LUBBOCK, TEXAS

PHONE SH. 4-4902

FOR A COMPLETE LIFE INSURANCE AND HOSPITALIZATION SERVICE....REMEMBER TO ALWAYS THINK OF GREAT AMERICAN AND 'PEE WEE' WILLIAMS



GEORGE (PEE WEE) WILLIAMS
YOUR GREAT AMERICAN OF DALLAS
INSURANCE COMPANY'S MULESHOE AREA
REPRESENTATIVE. OVER 3,000 POLICY
HOLDERS IN THE MULESHOE AREA.

AS THE GENERAL AGENTS AND MANAGERS OF ALL COMPANIES REPRESENTED IN THE LUBBOCK AREA, 1963 ROOKIE OF THE YEAR AWARD, A WINNER OF THE THE 1964 GREAT AMERICAN TRAVIS T. WALLACE CLUB AND QUALIFIER IN THE 1963-1964 TEXAS LEADERS ROUND TABLE LIFE UNDERWRITERS ASSOCIATION.....

"PEE WEE" WILLIAMS WISHES TO EXPRESS HIS APPRECIATION TO HIS CUSTOMERS FOR MAKING IT POSSIBLE FOR HIM TO WIN THESE AWARDS.



OFFICERS ELECTED - Officers have been named by the Richland Hills Parent Teacher's Association. They are pictured (left to right) Mrs. Owen Jones, second vice-president; Mrs. Joe Wheeler, first vice-president; Mrs. Clarence Mason, president; Mrs. Allen Haley, secretary; Mrs. Gordon Doss, parliamentarian; Mrs. Benny Pena, treasurer and not pictured, Mrs. Robert Bliss, historian.

KIDNEY DANGER SIGNALS
Getting up nights, burning, frequent or scanty flow, leg or back pains may warn of functional kidney disorders—'Danger Ahead.' Give kidneys a gentle lift with BURETS green tablets. Increase and regulate output in 4 DAYS or your 20¢ back at any drug store. NOW at

LATE
WANT ADS

LEGAL NOTICE
NOTICE FOR BIDS ON COUNTY DEPOSITORY

Notice is hereby given that the Commissioner's Court of Bailey County, Texas, will receive bids for the Depository of State, County, School District, and of Trust Funds held by the County & District Clerk, at its regular meeting to be held at the Courthouse in Muleshoe, Texas, on Monday the 8th, day

of February A. D. 1965, at 10:00 a.m.; Depository Bonds covering County Funds are separate and apart from those covering school funds. Said bids to be for the years 1965 - 66. The Court reserves the right to reject any and all bids.

Witness my official hand and seal of office, this the 19th, day of January, A. D. 1965.
Signed: Glen Williams
County Judge
Bailey County, Texas 31-31c

FOR SALE - 4 bedroom, 2 bath, den with fireplace, electric kitchen, brick, very reasonably priced. Located in Richland Hills. Phone 3-5722. 8-31-6c

FOR SALE - 160 A. land southwest of Lariat, 10" well, 10 ton fertilizer, 26 A. cotton, the rest grain sorghum, all fully allotted. Call 481-3843 Farwell. 8-31-11p

WANTED: Full time beautician.
FOR SALE Ranchero pick - up in perfect condition. Also '61 Mercury loaded or would trade for equity in rent house. Call Lucille Cherry. 3-31-6c

Local Boy Scout To Represent District At Austin Meeting

Jerry Don Haskins has been selected to represent George White District at the Annual Report to the Governor in Austin during Boy Scout Week. This outstanding Scout is the son of Mr. and Mrs. George Haskins, Muleshoe, and was also recognized at the Council Banquet held Tuesday night in Lubbock at Koko Palace. To qualify for the representative of the districts, a candidate must be a registered Boy Scout or Explorer; an active member of a troop or post, be between the age of 14 and 18 years, have received the Eagle Award; have earned the Public Speaking merit badge or produced statement certifying that he has had equivalent training and experience. Also submit an autobiography in his own handwriting of 200 to 400 words including where born, extracurricular activities, jamboree, Phémont, junior leader training, Explorer conference, leisure interests; submit his personal, scouting, school, and religious records as requested. The representatives are to leave from Lubbock by charter planes Friday at 2:30 p.m. and will return Saturday afternoon. The report ceremony will be held Saturday at 11 a.m. The official luncheon will be held at 1 p.m. Saturday. An ice skating party will be held at the Austin Ice Skating Rink and a historical tour will be conducted by bus that morning. Jerry Don has been active in scouting program here for a number of years and has received many types of Scout badges and outstanding awards through the program.



Jerry Don Haskins

Osteopath Tests Passed By Local Colleague Youth

Gary Albertson, son of Mr. and Mrs. Roger Albertson Muleshoe, has been accepted by Kirksville College of Osteopathy and surgery at Kirksville, Mo. He took the medical entrance examination Oct. 17.

The youth is a student at Southwestern State (Oklahoma) College in Weatherford, Okla. and is the fifth Southwestern student to be accepted by medical schools. Only about 25 percent of all students who take the tests are accepted and most of these are not informed until spring.

Albertson is married to the former Twila Gollmon, Lazbuddie, and works for Lou Lea Manor Nursing Home.

A second semester sophomore, Albertson began his college education as a special student in high school and attended summer school. At Southwestern, he is majoring in biology.

GUESTS OF FREEMANS
Visiting in the James Freeman home Sunday were Mr. and Mrs. Grady Freeman of Floydada, and Mr. and Mrs. Orland Howard of Dougherty. They visited with the Freeman's new grandson, and attended open house at the Church of Christ.

Outlook Bright For Feed Grain; Supplies Lower

Feed grain supplies for the present marketing year are down six percent from last year; demand is expected to remain high and prices probably will average a little higher during the 1964 - 65 marketing year than for the year just passed, says County Agent J. K. Adams, who quotes John G. McHaney, Extension economist of Texas A&M University.

Supplies have dropped during three of the last four years and the carryover at the beginning of the 1965 - 66 marketing year is expected to be around the 38 million ton level. This compares with a carryover of 69 million tons at the start of the present marketing year and the record 85 million tons in 1961 - 62. The reduced carryover is the result of a 1964 feed grain crop estimated at 10 to 12 million tons below total disappearance.

Feed grain acreage, according to the economist, was down 5 percent from 1963 and 21 percent below the 1959-60 average, the base period for the Feed Grain Program. Fewer acres and lower yields in 1964 accounted for the 12 percent drop in total production.

Livestock feeding rates have been influenced by rising feed costs and declining prices for livestock and livestock products. Domestic use of feed grains is expected to drop slightly during the present marketing year's record of 18.7 million tons, says McHaney.

The economist believes prices will continue the general upward movement of the past three years. Prices received by farmers rose slightly in 1963-64 from the year before and were up about 10 percent above the post-war low of 1960 - 61.

The sorghum grain supply is about 8 percent below that of a year ago resulting from a smaller acreage harvested and lower per acre yields. Domestic use of sorghum grain is expected to show little change for the 1964 - 65 year but exports are expected to continue near the high level of the past two

MAPLE NEWS

By MRS. ORAN REAVES

Several of the women of the Maple Church of Christ went to the Portales Children Home, Tuesday to help with the ironing. Those going were Mrs. Odell Henderson, Mrs. C. L. Taylor, and Mrs. Foy Lewis.

week with her parents, Mr. and Mrs. Jack Burkett.

We are happy to welcome Mr. and Mrs. Bill Dolle to our community. They have moved on the place the Mike Watts lived on last year. They moved here from Littlefield.

Mr. and Mrs. Oran Reaves and Sheila visited Friday afternoon and night with their son and wife, Mr. and Mrs. Oran Reaves Jr., Hereford.

Some of those on the sick list this week are Kenneth Byburn, Dan Simpson and Sheila Reaves.

Minister and Mrs. Odell Henderson and Mr. and Mrs. Foy Lewis attended a meeting at the Church of Christ in Sudan Jan. 11.

Mr. and Mrs. Virgil Holley and Randy were dinner guests in the Ed Holley home Sunday.

Mr. and Mrs. Norman Preston visited in Shallowater with his parents, Mr. and Mrs. Preston.

Mr. and Mrs. Frank Griffith visited Tuesday in Amherst with Mr. and Mrs. Tarrell.

Mrs. Jack Kosk and boys Lubbock spent several days this

Mr. and Mrs. Fred Brown, Dimmitt, visited Saturday afternoon in the home of her nephew, Mr. and Mrs. Oran Reaves.

Profile of Teacher

Ronnie Jones is one of the new teachers in Muleshoe Junior High this year. He teaches seventh grade history and science in Muleshoe Junior High and is also coaching the seventh grade boys in sports.

Jones was born February 28, 1941, in Hollis, Oklahoma. He lived there until 1955. Lazbuddie then became his home for three years. Upon finishing his junior year, he moved back to Hollis and graduated in 1959 from Ron High School.



He attended Southwestern State College, Weatherford, Oklahoma, where he majored in social studies and minored in physical education. Upon graduation in 1963, he taught history and civics for one year in Snyder, Oklahoma.

Jones is welcomed to Muleshoe Junior High.

Fat Overweight

Available to you without a doctor's prescription, our product called Galaxon. You must lose ugly fat or your money back. Galaxon is a tablet and easily swallowed. Get rid of excess fat and live longer. Galaxon costs \$3.00 and is sold on this guarantee: if not satisfied for any reason, just return the package to your druggist and get your full money back. No questions asked, Galaxon is sold with this guarantee by:

WESTERN DRUG STORE MULESHOE - MAIL ORDERS FILLED



CUT Pump Repair Bills!
WESTERN deep well TURBINES
last up to 3 TIMES longer than other pumps
Western's exclusive redwood lined tubeline eliminates bronze bearings and shaft wear. Saves you money all around. For more details without obligation call your Western Pump dealer today.

EDWARDS GIN AND IRRIGATION

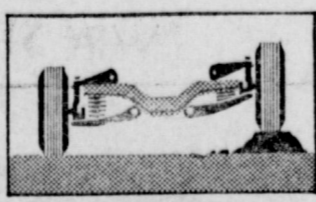
Chevrolet



workpower

"walks" right over bumps and trouble

Independent front suspension takes the "truck" out of truck ride. It smooths rough roads, protects truck, driver and cargo from excessive jolting. And on Chevrolet pickups it's a proved system with millions of miles of user experience behind it. Try it out on one of Chevrolet's great Fleetside or Stepside pickups. It's one of the big reasons that Chevrolet is first choice with pickup users from coast to coast.



Telephone your Chevrolet dealer about any type of truck

CROW CHEVROLET COMPANY

201 MAIN MULESHOE PH. 3-1000

CONGRATULATIONS TO THE MULESHOE CHURCH OF CHRIST

WE ARE PLEASED THAT WE HAD A PART IN THE CONSTRUCTION OF YOUR BEAUTIFUL NEW CHURCH BUILDING

A-1 GLASS CO.

1603 AVE. H. LUBBOCK, TEXAS PHONE PO. 2-0449



GUESTS OF JAYCEES - Ministers were guests of Muleshoe Jaycees at their Monday luncheon, and here are four members of the clergy with Carl White (standing), secretary of the Jaycees. Left to right are Kenneth Dye, Lariat Church of Christ; the Rev. Bill Felt, Muleshoe's Calvary Baptist Church; the Rev. Father Clifton Corcoran, Immaculate Conception Catholic Church, and the Rev. Herbert Peiman, Lariat Lutheran Church.

Boy Scout District Gets New Executive

Ben Kella, who has been serving the Arrowhead District of the Boy Scout Council, is to be the new District Executive of the George White District, which includes Bailey, Lamb, Cochran, and Hockley Counties, effective Feb. 1. He replaces Cesare Buzzitta, who is going to a similar post in Enid, Okla., it was announced.

Kella has been with the South Plains Council since July 1959. During that time he has also been camp director of Camp Tres Ritos, and has guided the Arrowhead District to high levels of training and finance organization. His work in Lubbock has been significant in the Negro and Latin America communities. He currently lives in Lubbock with his wife, Bonita and three children.

As Scoutmaster, Executive Board Member, roundtable commissioner, district commissioner, camp director, troop committee chairman, and Explorer training chairman in two different councils, he served as a volunteer Scouter for nine years before becoming a professional Scouter. While serving the Arrowhead District he has participated in five professional training conferences and also national camp school. He holds the Woodbadge Training certificate and the professional intermediate training certificate from Philmont.

He has been active as a Lions Club member and officer, Kiwanis Club member, P-TA President, V. F. W. member and as a member of the Masonic Lodge. He is a member of the First Methodist Church.

Buzzitta had been in the George White District for three years. He resigned to take a similar position at Enid, Okla., where he will be serving a one county area. The George White District has grown from about 1,300 boys to 1,500 boys during the time Buzzitta was there.

Buzzitta was a member of the Sacred Heart Church of Littlefield and the Knights of Columbus in Levelland.

Poem...

(Continued from Page 1)
But in answer to the long-gone Muledriver's "get goin'" shout
Can I ask? Aren't mules just Texans turned inside out?
This statue will vindicate males' long lost glory
So oft maligned as "sick in the head" and "sorry"
And even tho' muledrivers were a cantankerous crew
We kicked more than kicked us, with the old muleshoe.
Yes, a West Texas town may be "heaven on earth"
Although I'm not sure of its Real Estate worth
But just as long as Old Pete's statue, out there stands tall
I'll carry Muleshoe's fame, Summer, Winter, Spring and Fall.

MUSEUM TO LEAVE SHOP

DAYTON, Ohio (AP) — The Air Force Museum, organized in 1923 and presently housed in a Wright-Patterson Air Force Base, is scheduled to have a new site and structure by 1967. The Air Force Museum Foundation, a private nonprofit organization, has started a \$10 million fund-raising program to provide a gigantic steel canopy, covering eight acres, to house some of the many displays on a new 190-acre site at the base near here.



Ben Kella

SHOP MULESHOE FIRST

Farmers Drilled 112 New Wells Durino 1964

One hundred twelve new water wells were drilled in Bailey County last year, 10 of them replacements, the High Plains Underground Water conservation district No. 1 reported Wednesday.

The year 1964 proved to be the "most active year for drilling of irrigation wells in the district since 1957," the report said, attributing the unusual activity to a dry summer.

Permits were issued for 98 new permits in this county, and 13 dry holes were reported.

Greatest number of new permits issued was in Lubbock county, 414, with Deaf Smith county only a shade behind with 371 permits. Parmer county had new permits for 262 wells and Castro for 252.

Of the 1965 year, the district report said: "Permits rolling into the county offices during January indicate 1965 may be the largest year for well development in the district's history." The report said the district (13 Panhandle and South Plains counties) now has 22,669 wells recorded.

Solons Should Finish Session On Time Despite Heavy Load

By VERN SANFORD
Texas Press Association
AUSTIN — The 19th Legislature, faced with the heaviest work load in state lawmaking history, eased into its second week with some top Senators and Representatives on the absent list. A good many legislators took off for Washington to attend the inauguration of President Johnson.

These events highlighted the Legislature's opening week.

Rep. Ben Barnes of DeLeon was elected Speaker of the House by acclamation. He is the youngest speaker named since reconstruction days.

Sen. Tom Creighton of Mineral Wells was named president pro tempore of the Senate, to preside when Lt. Gov. Preston Smith is not present. In choosing Creighton, the Senators went against tradition when they passed over Sen. A. R. Schwartz of Galveston, who was next on the seniority list. Schwartz has opposed closed door sessions.

A record \$3.5 million budget bill, calling for an increase of \$97,300,000 in general revenue spending, was introduced in the Senate. Proposal calls for \$667,300,000 general revenue spending, compared to \$599,500,000 recommended by Gov. John Connally.

Lieutenant Governor Smith

named full membership on 24 Senate standing committees. The Senate was thus organized and ready for business on the second day of the session.

In the House, Barnes—whose speakership campaign had to be conducted in a few days due to unexpected appointment of ex-Speaker Byron Tunnell to the Railroad Commission—conferred with members day and night in an effort to speed committee appointments there.

Representatives drew priority numbers for bills.

Both houses completed appointment of employees, other necessary routine and marked time before the big battles ahead.

Despite controversial decisions to be made on congressional and legislative redistricting, big finance and other matters, Smith and Barnes expressed confidence the Legislature can complete its work within 140 days. But some lawmakers weren't so sure.

An early pioneer in paperback books was a Venetian, Aldus Manutius, who issued a pocket series of classics in 1501. Softcover books flourished in the 19th Century. The Tauchnitz Editions of Leipzig issue more than 5,000 English and American titles for German readers.

On sale now through April 30th! Big travel bargain for cities along Santa Fe

It's Chico Bargain Fare time again on the Santa Fe—through April 30, 1965.

For example, a regular round-trip ticket costing \$100 will be sold at the off-season bargain fare of \$80. Round trips costing \$75 now will be only \$60, and similar reductions will apply for round-trip tickets from all stations except for local trips within the State of California.

No matter where you travel on Santa Fe trains, round-trip bargain fares will save you approximately 20%. Tickets on sale every day with a return limit of 30 days. Yes, bargain fares apply for both round-trip coach and first-class tickets.

Now you can leave the car at home and save money traveling by Santa Fe.

See the Santa Fe Agent in your home town for complete information



Eight...

Leaders from the Johnson administration, the Congress, and labor groups will take major roles in the Miami meeting. The meeting will center on the theme "Rural Electrifica-

tion — Today and Tomorrow". Topics ranging from the future of water and power resource development to rural poverty programs and the need for consumer action on a broad front will be discussed during the five-day meeting.

Featured speakers will include Senators A. S. "Mike"

Monroney of Oklahoma, Thomas Kuchel of California, and Lee Metcalf of Montana; Assistant Secretary of Agriculture Dorothy Jacobson; Eric Sevareid, national news correspondent for the Columbia Broadcasting System; and U. S. Representatives John Moss of California and John Stennis of Mississippi.

HURRY! FINAL DAYS! CLEARANCE

ALL FALL AND WINTER MERCHANDISE FURTHER REDUCED TO NEW LOW LOW PRICES

SHOP NOW AND SAVE!

The Fashion Shop For Lovely Women

THE HOME OF WHITE'S GREATER VALUES MR. BIG SAVER SAYS: Extra Savings! Greater Values In White's JANUARY SALE! HURRY! 3 Last Days! THURS. - FRI. - SAT.

PRICE SLASHING PRICE SLASHING

A GROUP OF CLOSE - OUT WHITEWALL PASSENGER AND MUD AND SNOW TIRES

ALL FISHING EQUIPEMENT RODS REELS LURES ETC.

STOCK UP TODAY

1/2 OFF

ONE STEREO TABLE MODEL

REG. \$259.95 NOW \$119.95



BICYCLES

26"

\$29.88

SPECIAL

ALL TOYS

1/2 PRICE

BUY NOW AND SAVE!



ONE 15 LB.

WASHER

REG. \$259.95

\$209.88 WT

ONE TV

REG. \$279.95

NOW

\$188.00

WHITE'S the Home of Greater Values



FOUNDATION GOING IN - L. to R. Ellis Sterling, Harold Brown, Hugh Rush, and Ocell Diggs are busy at work pouring the foundations for a new classroom at Mary DeShazo elementary school.

SHOP MULESHOE FIRST

A DRIVE IS NOW ON FOR DONATIONS..... FOR THREE WAY'S NEW FIRE TRUCK

LION MEMBERS WILL SOON BE CALLING ON YOU, BE READY TO GIVE TO A WORTHY CAUSE.

OUR FIRE TRUCK SERVICES

- MAPLE ■ STEGALL ■ GOODLAND
- THREE WAY AND ADJOINING AREAS

DRIVE STARTS JAN. 23

YOU MAY MAIL YOUR DONATIONS TO..... LION SEC. DUTCH POWELL, MAPLE, TEXAS

Lazbuddie Men Hold Special Church Service

By MRS. C. A. WATSON

Special services were held at the First Baptist Church at Lazbuddie Sunday when men who were not singing in the choir were asked to help with the staging. After the welcome and announcements, the offertory was given by Elaine Burgess and Marcella Mayfield. Sam Bradley discussed, "What the Church Means to Me," and Fred Wilbanks spoke on "Living for Christ in Public." Joe Mocre gave "What it Means to be a Baptist," and Euel Mitchell spoke on "What it Means to be a Christian."

Lazbuddie folk attending the Southern Baptist state convention in Dallas are the Rev. and Mrs. Calvin Beach, Mr. and Mrs. Wesley Barnes, Mr. and Mrs. Ted Treider and Mr. and Mrs. Bert Gorden.

Birthdays greetings for the week go to Noia Treider, Mrs. Johnny Mitchell, Paul Martinez, Maudine Barnes, Mrs. Paul Templeton, Jan Mitchell, David Koelzer, Betty Whiteside, Gerado Olvera, Connie Harlin and Connie McDonald.

Dale Blackstone, Lazbuddie, was elected vice - chairman for Parmer county 4-H council for 1965 at a recent meeting in the Hub Community building. He also was elected a delegate for the district 4-H meeting to be held this year. Date for the next council meeting has been set for April 10 at 10 a.m. in the Hub community building.

Mr. and Mrs. Pete Jesko are the parents of a son, born Jan. 19 in the Clovis Memorial hospital. He weighed 9 pounds, 10 ounces. Grandparent are Mr. and Mrs. Frank Musil, Stamford, and Mr. and Mrs. Joe Jesko, Lazbuddie. He has been named Frank Joseph Jesko.

Lazbuddie soon will have a new building, a Red Barn Chemical building. Manager will be Bill Dennis.

Mr. and Mrs. Littlejohn and Jaymie, Minneapolis; Mr. and Mrs. Buddie Letcher and sons, Tucumcari; Mr. and Mrs. Ed-

Three Way News

By MRS. H. W. GARVIN

Mid-term tests are over in the school. We hope all are nappy and ready for the last semester.

We extend our sympathy to Mrs. Addie Masten, whose brother Lea Eledge passed away on Friday at Westover. Also to Mr. and Mrs. Rayford Masten.

The Maple City water well is in the process of being drilled. The well is located southwest of Maple. They had completed drilling of the well Saturday.

Mrs. H. W. Garvin and Mrs. Johnnie Wheeler visited in Clovis Thursday afternoon with grandmother Wheeler who is eighty - four.

Mrs. L. E. Warren spent three days in Green Memorial Hospital in Muleshoe the past week. She is doing fine now.

Mr. and Mrs. Leon Reeves, Mr. and Mrs. H. W. Garvin, Mr. and Mrs. Arthur Cooper ate lunch at Kates Kitchen in Morton Sunday then visited in the Cooper home that afternoon.

Everyone is invited to special program of Gospel Hymns given in the Three Way Methodist Church Sunday evening at seven p.m.

Mr. and Mrs. Gib Dupler went to Church Sunday at Lingo, N. M. Sammy Sowder is

gar Byrd and children, Clovis, and Mr. and Mrs. Willie Strong, Muleshoe, visited Mr. and Mrs. T. L. Byrd Sunday. Mrs. Littlejohn and Mrs. Letcher are daughters of the Byrds and Edgar Byrd is their son. Mrs. Strong is a sister of T. L. Byrd.

Mrs. Ira Wimberley is in Dimmitt hospital, recovering from major surgery performed last week.

Dan Bridges suffered a broken toe Friday of last week while participating in physical education at school. He was treated at Green Memorial Hospital in Muleshoe and released.

Mrs. E. C. Echols returned to Lazbuddie from Andrews last week where she had been a patient in Andrews hospital, suffering from influenza. Mr. and Mrs. Echols had been visiting in Andrews when she became ill.

Word has been received from Calvin Clark who is under going cobalt treatment in a Wichita Falls hospital.

Karla Mae Littlefield, Hub, spent Thursday an Friday nights of last week with her grandparents, Mr. and Mrs. Frank Hunt.

Mr. and Mrs. Charlie Glover visited last week in Memphis, Texas, with her sister, Mrs. J. R. Mitchell.

Word has been received here that Lena Menefee is happy in her new home, King's Manor in Hereford. She moved there recently.



ANNOUNCERS, ALL - When Muleshoe Jaycees took over KMUL for the day Tuesday they took over - literally. Here are half-dozen announcers (wisecrackers) at work. Left to right are Jaycee President, Elvon DeVaney, Terrell Johnson, Jimmy Lane Curtis Walker, Pat Glover and Buddy Black.

The Sandhills Philosopher



Editor's note: The Sandhills Philosopher on his Johnson grass farm reviews the highway situation this week.

Dear editor:

According to an article I read in a newspaper last night while my television set was having cable trouble, the Bur-

pastor of the church there, Rev. Sowder is Mrs. Dupler's brother. He lives at Portales and is a student at E. N. M. U. Sammy was born and raised in the Three Way Community and is ordained Baptist Minister.

Basketball teams of Three Way High School won four thrillers last week, defeating Muleshoe and Pep teams. On Tuesday, Jan. 12, the girls' team beat the Muleshoe first team 40 - 35. Madalyn Galt was high pointer for Three Way with 21 tallies. Three Way boys beat Muleshoe's "B" team handily, 52 - 42, with Tommy Terrell scoring 28 for Three Way.

Friday evening, Jan. 15, the cagers played Pep in their first district tilt. Three Way girls forged ahead 20 - 17 at half-time, and snowballed to a final score of 43 - 28. Sharyn Wittner put in 16 for Three Way; and Jamie Kuhler racked up 12 points for Pep. The boys' game was hard - fought, with only a point or two often between the teams. At halftime, Three Way was ahead 22 - 11, and they won at the final whistle. Terrell put in 16 for Three Way, and Joanny Harris followed with 15. For Pep, high scorers were Gery Franklin with 13, and William Sakora with 12.

Mr. and Mrs. Mike Pollard of Lubbock visited relatives here last weekend.

The Arthur Cooper family visited Saturday evening in Lubbock with a son, Mr. and Mrs. Harold Cooper and Mark, and on the previous Monday in Tahoka with a daughter, Mr. and Mrs. Lamar Taylor and Lisa.

eau of Public Roads has discovered it has underestimated the cost of the vast interstate highway system which is supposed to span the United States by 1972 by about \$6,000,000,000, or 6 billion, to spell it out in case The Journal doesn't have that many zeroes in its plant.

Originally, they'd figured the 41,000 miles of super - highways would cost 41 billion, or a billion dollars a thousand miles, but due to rising costs, such as higher costs of land as everybody knows farm land is worth more in a highway than in cultivation, the cost has risen to about 47 billion dollars.

I know how these things are. You start out a year in January figuring it'll cost so much to get by on, but by the time September rolls around you find so many unexpected things have piled up your estimate was no better than the United States Bureau of Public Roads.

But what interested me in the highway article was the statement that the vast system was "designed to handle traffic 20 years beyond the design period."

As I understand it, the project is supposed to be completed in 1972, however they've been working on it for several years already, with 19,000 miles open to traffic and 22,000 still to go.

What this means is that by the time they get the last of it built, the first of it will be 20 years old and already out of date. It'll be like a woman wearing a 1965 hat and 1945 shoes. In other words, we're building new cars faster than we can build roads to run them on and the future looks dark unless we can step up the rate of accidents.

I don't like to stand in the way of progress, sit, maybe, but not stand, but it is hard for me to figure out a place a thou-

and miles from here which it's worth a billion dollars worth of highway to get to. Certainly I can't imagine anybody that far from here willing to spend that kind of money to reach this place.

This figures out to be \$1,000,000 a mile, but I guess there's some satisfaction in realizing, after you've driven 60 minutes at 60 miles an hour, you've just ridden over \$60,000,000 worth of comfort, although to tell the truth I can get almost the same comfort sitting in a four-dollar rocking chair out here on this Johnson grass farm.

Yours faithfully,
J. A.

The world's largest pure nickel coins, each weighing nearly one ounce, are the Belgian 20-franc pieces minted in 1931. The smallest are the current 10-cent pieces of the Netherlands, each weighing one - twentieth of an ounce.

FRANCIS IMPLEMENT CO.
FORD TRACTOR
Muleshoe, Texas

GROW SLIM WHILE YOU EAT

WITH SAFE VITAMIN-FORTIFIED diet-master

REDUCING PLAN
Be a good loser. DIET on balanced meals without loss of energy, hunger pangs or lumpiness. DIET on the DIET-MASTER REDUCING PLAN... fully guaranteed to help you lose excess weight, or your money back.

WESTERN DRUG

BEST WISHES

TO THE CHURCH OF CHRIST ON THEIR NEW MODERN CHURCH BUILDING

WE ARE HAPPY TO HAVE HAD A PART IN THE ERECTION OF THE CHURCH OF CHRIST

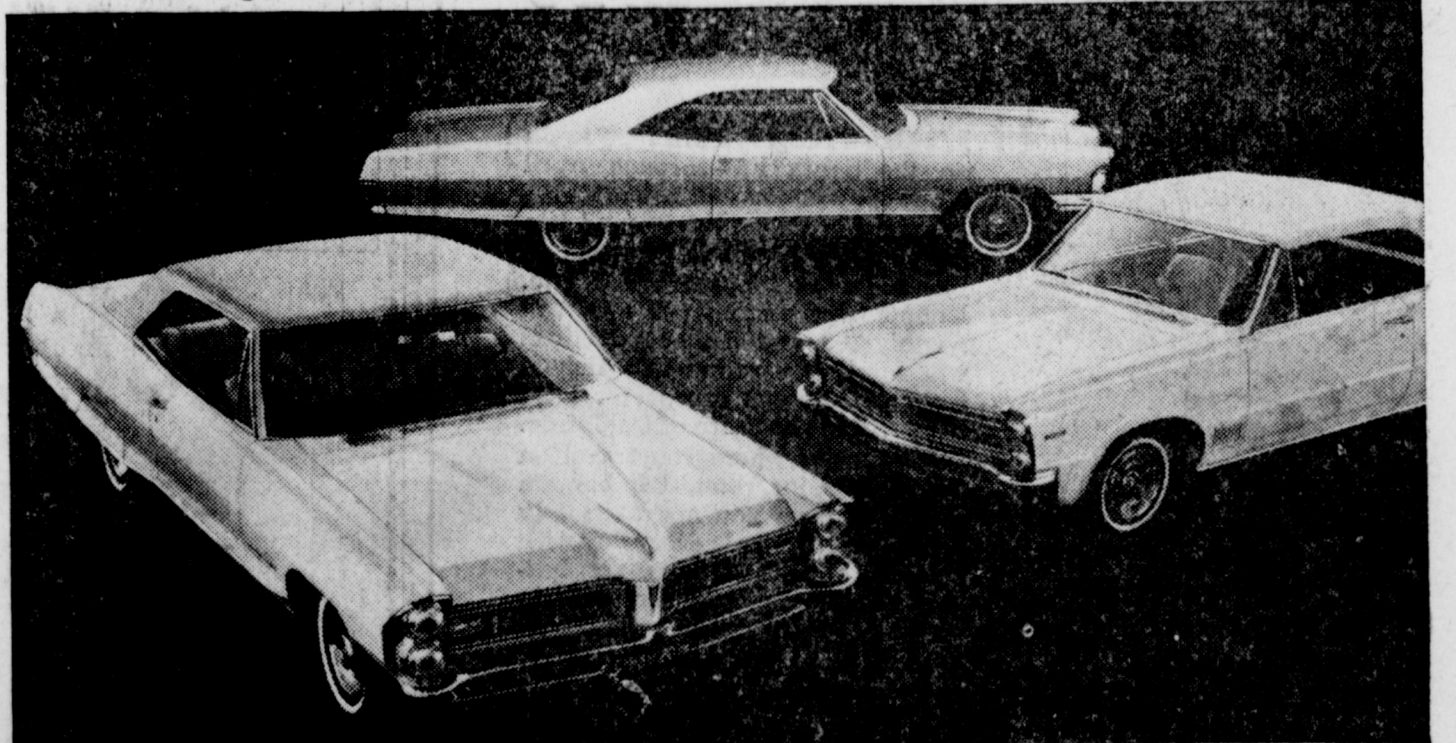
Payne Heating & Air Conditioning

1611 4TH ST
PHONE PO 2-0241
LUBBOCK, TEXAS

L.P. McKinley Plumbing Co.

PHONE SW. 5-2884
LUBBOCK, TEXAS

The Tiger of the year was just named Car of the Year by Motor Trend.



If that isn't enough of a hint, try Quick Wide-Track. (This is their year.) Or Turbo Hydra-Matic, the new transmission. Pontiac Quick Wide-Track Tigers

SEE THE NEW BONNEVILLE, STAR CHIEF, GRAND PRIX, CATALINA, 2+2, LEMANS, GTO AND TEMPEST AT YOUR AUTHORIZED PONTIAC DEALER.

LADD PONTIAC

602 West American Blvd.

Muleshoe, Texas



SCOUTS VISIT JOURNAL - Members of Cub Scout Den two visited the Journal last week to see the process of publishing a newspaper. They are pictured here by the press. They are (front row) Randy Black, Doug Doss, Vance Tucker, Bobby Haney and Vance Tucker. Second row Denny Blaylock, Gary Hooten, and Mike Harland. Walter Denny, Den Chief is standing behind the Cubs. Den mothers are Mrs. Gordon Doss and Mrs. Robert Hooten.

Jaycees...

(Continued from Page 1) ties with financial and marital problems, etc.) poor; public transportation to other communities, average to poor, public transportation inside the community, poor; parking in business district, average; street layout, good to average; traffic signals and signs, good to average; maintenance and cleaning of streets, average; sidewalks, good to poor; recreational opportunities for children, poor; recreational opportunities for adults, below average to poor; recreational opportunities for older people, poor;

Public meeting places for teenagers' social activities, average to poor; swimming facilities, average; golfing facilities, good to average; playgrounds for children, below average to poor; fields for baseball and other outdoor sports, average; parks and picnic areas, poor; public meeting place for large groups, poor; cultural opportunities, average to poor.

Elementary school educational program, good to average; elementary school buildings and equipment, good to average; junior high school staff, good; junior high school educational program, good to average;

Junior high school buildings and equipment, good to average; senior high school staff, good; senior high school educational program, good; buildings and equipment, senior high, good to average; library, good; restaurants, average to poor; hotels and motels, average; shopping facilities, good to average; service and repair facilities, good to average; public rest rooms in business district, poor; job opportunities for persons under 18, poor; job opportunities for persons 18 to 39, average to poor; job opportunities for persons 40 - 64, average; job opportunities for persons 65 and over, poor; community planning and development program, average, and general appearance and attractiveness of community, average.

day ending with a banquet that evening.

SHOP MULESHOE FIRST

Muleshoe...

(Continued from Page 1) at the First Presbyterian Church in the absence of Rev. Don Boles. Mr. Boles was attending a church conference in Denton.

Muleshoe Band Boosters met Monday night, 7:30 in the Band Hall. The group voted to pay expenses of the 31 band students going to Lubbock Thursday and Friday. Reports were given on the results of the Fruit Cake sale by the Boosters and also a report from Bill Bradley concerning a new horn which had arrived. Bradley told the group that Muleshoe students accepted from the Thursday and Friday try-outs would be participating in a concert Saturday, 7:30 p.m. in Monterey High School Auditorium.

Attending the District Missionary Council conference in Littlefield last week were Opal Lambert, Edith Lambert, Sylvia Vandiver, Mrs. John Sied, Mrs. Tom Watson, Mrs. Eubanks, and Lela Mae Seaton.

Joe Robert King, Muleshoe, is a candidate for bachelor of business administration degree at the Jan. 23 graduation at the University of Texas.

Mr. and Mrs. Gilbert Lamb left Wednesday on a trip and speaking engagement tour of Louisiana, Mississippi and Houston. Lamb is to speak first in Jackson, Miss. then in Hammond, La. January 23 and in Houston January 27.

Four leaders in the Bailey County Farm Bureau attended a state legislative conference in Austin last week. Going were Joe Wheeler, president; Ed Little, vice-president; Lester Howard, national legislative chairman, and Ernest Ramm, state legislative chairman. They made the trip by plane with Little as the pilot. The meeting started at 9 a.m. with conferences throughout the

Solons...

(Continued from Page 1) meetings as Labor Relations Representative of Plains Cotton Growers and alternate director of the NCAE from Texas. NCAE recommendations included: "That before the proposed criteria be implemented and wage rates increased above those in effect for 1964, there should be made by the committees of Congress most directly concerned with agriculture, a comprehensive analysis of the impact of the proposed criteria on the production of high labor requirement crops in the United States, and on employment in related processing, servicing, and marketing concerns, and

"That action be taken immediately to assure that an adequate supply of supplementary foreign labor be available to meet grower's needs, in the absence of sufficient numbers of willing and qualified domestic farm workers."

"This action led to the setting up of hearings before the full Senate Agriculture Committee. Testifying before this committee were the Department of Labor; the Department of Agriculture; the Department of State; grower representatives from California, Florida and similar areas where labor shortages already threaten loss of perishable crops, and J. B. Kirklin, President of the NCAE. It is expected, Dean said, that the facts gathered at the hearing will be taken to the administration in hopes that the Secretary of Labor can be persuaded to spend the new regulations and permit the importation of foreign workers under something similar to criteria in effect during 1964.

Since 1961, 110,000 Americans have applied for service in the Peace Corps. More than 10,000 have served; 5,000 continue to volunteer each month; Peace Corpsmen and women have been sent to 46 countries; 24 other nations are on the waiting list; and the backlog of requests for volunteers from foreign governments surpasses 50,000.

SHOP MULESHOE FIRST!!

Francis Implement Co. FORD TRACTOR Muleshoe, Texas



LOADED 'IN' BASKET

TAOS CATCHES UP SANTA FE, N. M. (AP) — A 50-star flag will wave in the future over Taos Indian Pueblo, thanks to Gov. Jack M. Campbell.

The governor made a personal presentation of two 50-star United States flags to Taos Pueblo officials, after learning that Taos did not have a 50-star flag.

LOUISVILLE (AP) — It looked as if Santa Claus came early to a Louisville home, but missed the chimney.

A few days before Christmas, the Filson Deans found Christmas gifts scattered over their front lawn.

Police theorized someone had stolen the gifts, then, fearing capture, tossed them onto the lawn.

The Muleshoe Journal
 Published each Thursday by The Muleshoe Publishing Co.
 304 West Second Street, Muleshoe, Texas
 Member of The Associated Press
 Entered as second class matter at the Muleshoe Post Office under act of Congress, March 3, 1897.
SUBSCRIPTION RATES
 Immediate Territory \$4.00
 Out of Territory \$4.50
 Combined with Bailey County Journal
 Both papers in territory \$5.50
 Both Papers outside territory \$6.25
 Advertising Rate on Application.
 L. B. HALL Publisher
 RAMON MARTIN Editor
 DORIS KINSER Society Editor

SHOP MULESHOE FIRST

PAY YOUR POLL TAX

QUALIFY YOURSELF TO VOTE DURING 1965 DEADLINE JANUARY 31

PAY YOUR STATE AND COUNTY TAXES BEFORE JANUARY 31, AND AVOID PENALTY

THE MULESHOE JAYCEE-ETTES WILL BE SELLING POLL TAX JANUARY 27 AT CASHWAY GROCERY AND PIGGLY WIGGLY.

THE JAYCEES WILL BE AT MULESHOE STATE BANK & FIRST NATIONAL BANK THE MORNING OF SATURDAY, JAN.30. AFTER CLOSING HOURS, THEY WILL BE AROUND THE CORNER DRUG, ON MAIN ST, SELLING POLL TAX.

1965 CAR REGISTRATION STARTS FEBRUARY 1

JEAN LOVELADY
 BAILEY COUNTY TAX ASSESSOR - COLLECTOR

WE ARE PROUD TO HAVE HAD THE OPPORTUNITY TO DO THE LANDSCAPING FOR MULESHOE'S NEW CHURCH OF CHRIST

CONGRATULATIONS TO CHURCH OF CHRIST ON YOUR NEW BUILDING

SUN VUE NURSERY

2600 DIMMIT HWY. PLAINVIEW, TEXAS PH. CA 4-7739

JANUARY

NEW CAR Clearance FANTASTIC SAVINGS

ALL 1964 NEW CARS AND DEMONSTRATORS ARE NOW BEING OFFERED AT UNBELIEVABLE LOW LOW PRICES

COME IN WHILE THEY LAST

MULESHOE MOTOR CO.

At the Crossroads "Car Captol of the West Plains" Phone 2510

Central States News Views

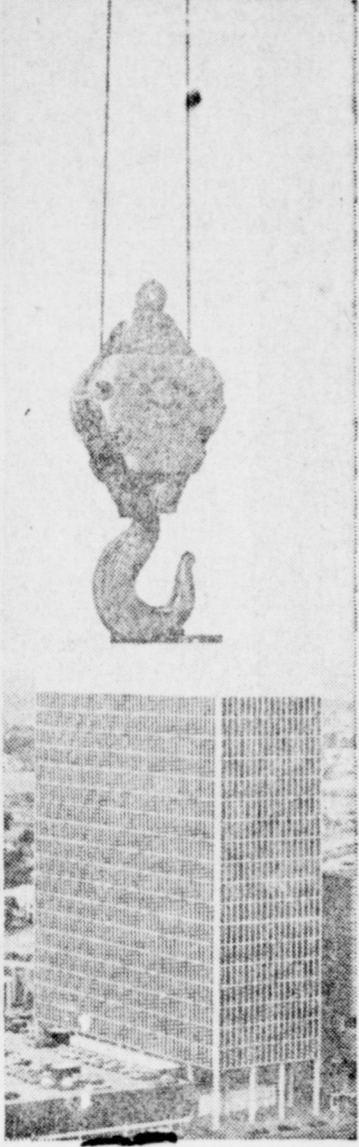


MAGNIFICENT LUNTS, Alfred and wife Lynn Fontaine, make rare TV appearance on NBC's Hallmark Hall of Fame Jan. 28 as Judge Oliver Wendell Holmes and his wife in "The Magnificent Yankee." The Lunts live in Genesee Depot, Wis.



HIGH-LEAPING Yuri Shumilin flies over heads of chorus during rehearsal by touring Soviet Mokeyev Dance Company.

BIG CRANE HOOK appears to be setting Cullen Center of Houston in new location. Actually, crane is four blocks away atop another building and photographer's perspective gives that "big lift" feeling.



Public...
(Continued from Page 1)

good, and many of the ideas brought forth at those November session will result in fulfillment," said Davis. "The public's response at all the forum meetings was good and I'm certain that people will be interested in hearing a review of those ideas."

The summaries, prepared by WTCB will be presented by categories, teams bringing the WAIF suggestions to the meeting.

Giving the reports at tomorrow night's meeting will be Roger Albertson, Joe Harbin, Mrs. Bernard Phelps, Doug Haynes, Vic Benedict, Alex Williams and Roy Davis.

After each team leader has presented some phase of the program, the group will form itself into a panel for open discussions.

"It is our hope that everyone present will enter heartily into the discussions which will follow the formal presentations," Davis said, "and help us decide our procedure from this point on — in what order and by what means we will carry out the suggestions which John Q. Public has made for the improvement of Muleshoe and the area."

Support for the program has been "most gratifying," chamber officials said, "and we see much hope for the future of Muleshoe through this carefully worked-out program."

Scores of suggestions were made, ranging all the way from simple traffic betterment ideas to a full-scale industrial development program. Also included were a number of farm improvement projects. Labor also came in for its part of the discussion especially farm labor which has been hard hit program, farmers say.

SHOP MULESHOE FIRST

Whoaaaooops!
Splash. Get help on the spot. Find **CLEANERS & DYERS** fast in the **YELLOW PAGES**.
Where your fingers do the walking.



Tulia Maintains Perfect Record, Nips Mules 71-61

Tulia kept its District 3-AAA record clean here Tuesday night, whipping Muleshoe, 71-61. Jack Brooks hit 19 for Tulia, which now stands 3-0 in loop action. Ronnie Swint scored 16 for Muleshoe, which is 0-3.

Tulia also won the girls game, 46-38. Sheila Barnett hit 19 for Tulia, and Carolyn Embry scored 17 for the Mullettes.

In a Boys B-game, Tulia took an 83-72 decision.

London's bow bells were silent for nearly 20 years after a bombing in World War II. With the restoration of the bells followed by reconsecration of the Church of St. Mary-le-Bow in the business heart of London in June 1964, Cockneys feel the war is finally over.

African craftsmen, long famous for their starkly primitive tribal masks and statues, are now being praised for their pottery.

Your OLDSMOBILE will give you better service with AMALIE 100% Pure Pennsylvania Motor Oil

Why? Today's high compression engines running at high or low speeds; running in grueling stop and go traffic require the superior oiliness, the heat resistance found only in **AMALIE** Pennsylvania Oil.



Your service station man will stock **AMALIE** for you... Just ask him.

Wiedebush & Childers

CHICKEN PARTS

CLARY'S USDA GRADE A FRESH DRESSED



THIGHS

Lb. 49c

WINGS

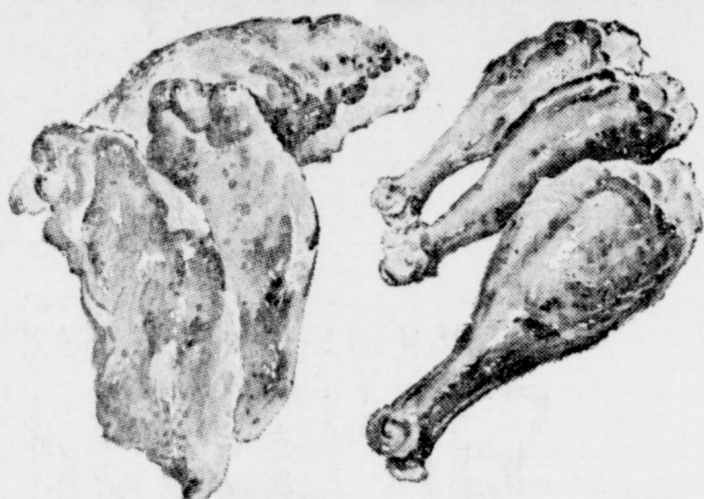
Lb. 19c

BACKS & NECKS

Lb. 10c

BREASTS

DRUMSTICKS



ALL PARTS CUT FRESH AT THE MARKET BUY What You Need

Lb. 59c

Lb. 49c

Lb.

PICNICS

ARMOUR'S FULLY COOKED

3 LB. CAN \$1.79

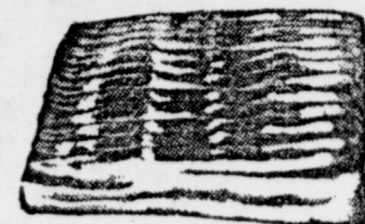


BACON

Decker's Korn Kist Sliced

2 lb. Pkg.

79c



CHUCK ROAST

Choice Heavy Pen Fed Beef

Lb.

49c

ARM ROAST

CHOICE HEAVY PEN FED BEEF

Lb.

55c

CRYSTAL

SUGAR 5 LB. BAG 49c

TIDE GIANT SIZE BOX 59c

CRACKER BARREL

CRACKERS 1 LB. BOX 19c

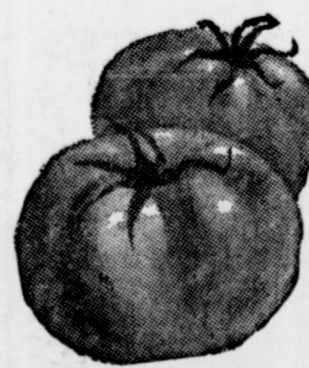
ROSEDALE-WHOLE SPICED

PEACHES No. 2 1/2 Can 19c

PRESERVES 18 OZ 39c

APPLES Fancy Red Delicious 4 LB. CELLO BAG 39c

TOMATOES 1 LB. Cello Pkg. 19c



POTATOES

THRIFTY PACK REDS

10 LB. CELLO BAG

79c



Mustard Greens 2 FOR 19c

GARDEN FRESH - BUNCH

CELLERY California Crisp Green Stalk 10c

Listen To MULETRAIN over KMUL 10-15 A. M. sponsored by CASHWAY

GUNN BROS. STAMPS DOUBLE EVERY Wednesday

White's CASHWAY

Range Improvement Irrigation Aided State's Economy In 1964

Demonstrations covering many phases of range management were conducted in every section of Texas during 1964. These demonstrations, supervised by local county agents and their program building committees, involved hundreds of ranches and millions of acres of rangeland, report G. O. Hoffman and B. J. Ragsdale, Extension range specialists of Texas A&M University.

Brush, weed and poisonous plant control programs involved the most demonstrations, 947. More than 241,600 acres were involved. Chemicals were used on more than 70,000 acres of the total. Control measures were carried out on more than 1.3 million acres outside of the supervised demonstrations, the specialists said.

Proper stocking rate demonstrations, number 470 in 147 counties, involved 1.9 million acres but according to the information supplied by county agents, the acreage properly stocked during 1964 exceeded 7.2 million acres. Deferred and rotation grazing demonstrations with more than 1 million acres involved.

In order to improve stock watered facilities, county agents reported to Hoffman and Ragsdale that more than 2,400 wells and 6,700 tanks were added to the capital assets of stockmen in 208 counties.

Crossfencing, 6,400 miles of it, and moving salt away from watering areas were methods used to get more uniform grazing over pastures and ranges and thus better utilization of available forage.

Other demonstrations included the seeding of abandoned cropland, denuded rangeland and seeding following brush control with adapted pasture and range grasses. These involved more than 200,000 acres. Weed control by mechanical and chemical methods involved more than 2 million acres.

Texas 4-H Club members are also doing their part to establish good range management practices by participating in grass and range judging contests, by conducting range management demonstrations and as members of range demonstration teams.

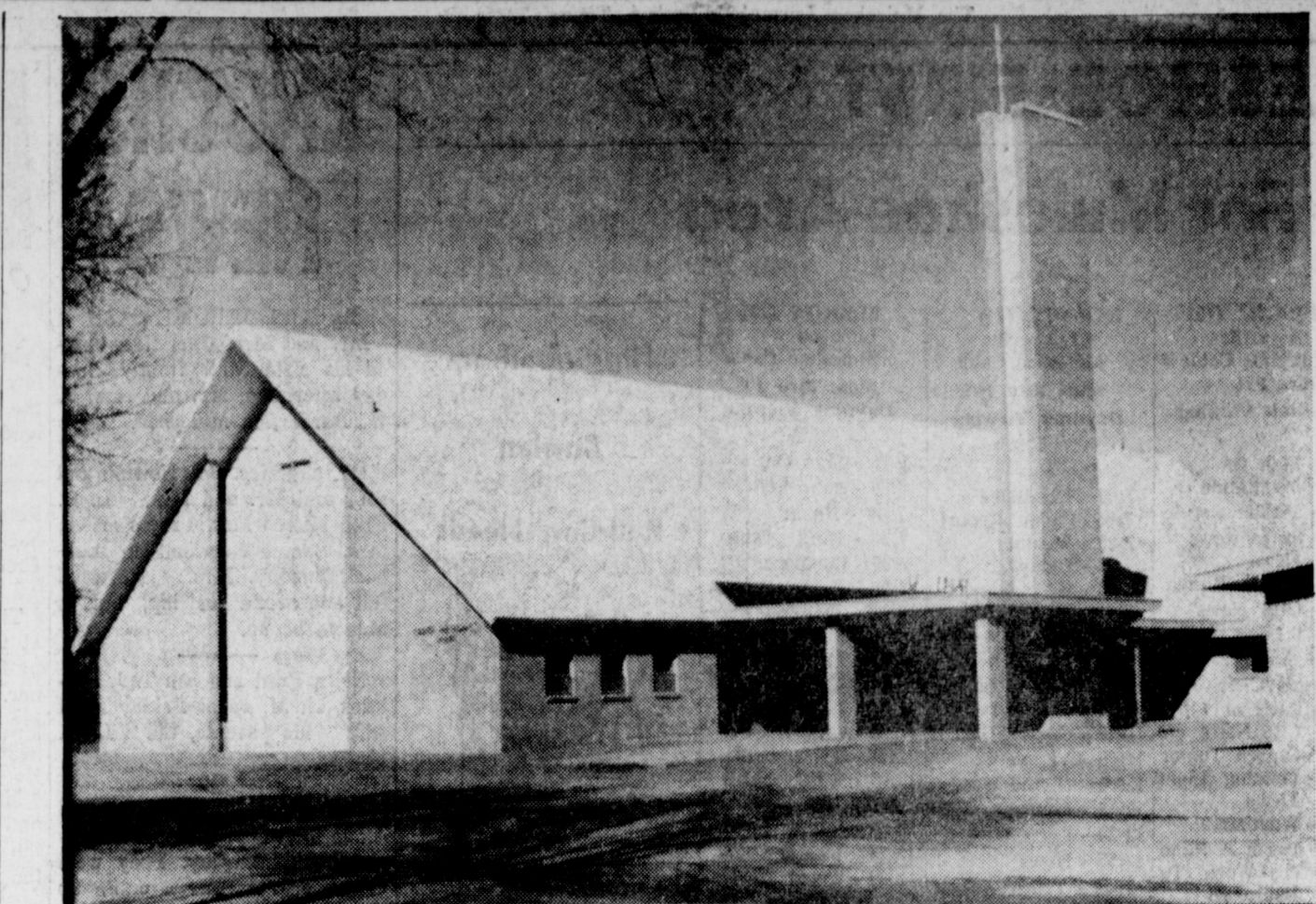
Len Rogers, 43 Dies In Crash Near Beaumont

A prominent former Muleshoe resident was killed in a plane crash near Woodville, 60 miles north of Beaumont in the "Big Ticket" country Tuesday. He was Leonard (Len) Rogers, 43, a building contractor.

Searchers found the wreckage after it was spotted from the air by a pilot landing at Woodville Airport Thursday, 40 hours after the plane was reported missing.

A passenger in the plane, the Rev. T. V. Farris, 37, a former missionary to Japan, survived the crash and was conscious when rescue teams reached the scene. He suffered multiple fractures.

The men had been to an evangelistic conference in Evadale and were returning to their home in Duncanville.



FORMAL OPENING SET - Earth Methodist Church will have formal opening and first service in its new sanctuary Sunday, the Rev. Albert F. Lindley, pastor, announced. The new \$153,000 structure is an addition to the present education building which consists of six classrooms, a

fellowship hall, kitchen, and parlor, and will seat 325 persons, plus a 36-member choir. A processional from the old sanctuary to the new will start at 10:45 with the pastor and Dr. J.E. Shewbert, Plainview, district superintendent, participating. Open house will be held at 3 p.m.

Soil Management, Good Cropping Spell Success, Says Agronomist

Good soil management practices and well-adapted cropping systems provide the basis for continued prosperity in agriculture.

Roers had gained nationwide fame for building an underground home in Duncanville. Funeral services were held Saturday in Dallas under direction of Rnoex Rogers Funeral Home.

Survivors include Rogers' wife; a daughter, Mrs. Linda K. Lyle, Plainview; a son, Jerry L. Rogers, San Diego, Calif.; five brothers, Milton and Elmer, both of Colorado City; Ol-in, Yucaipa, Calif.; Curtis, Midland, and Tee of Fort Worth; his mother, Mrs. Molly Rogers, Colorado City and three sisters, Mrs. Laura Philbrock, Fort Stockton, Mrs. Vera Britton, Portales, and Mrs. Ruby McClain, Marysville, Calif.

The moon's path around the sun is a sinuous curve.

However, those who depend on the soil for livelihood sometimes find this valuable resource, and this can prove costly, says John Box, associate agronomist for the Texas Agricultural Extension Service.

Crop production directly reflects a soil's physical condition and fertility status. Physical properties can be controlled by good use of residues, rotations, cover crops and manures to maintain a deep, mellow soil condition, rather than a soil which is tight and hard to work, points out J. K. Adams, Bailey

county agent in summarizing Box's report.

Organic matter plays a prime role in keeping soil in good physical condition, points out the agronomist. It insures a good population of beneficial soil bacteria, aids in water penetration, improves the soil's structure and water storage capacity, and adds nutrients and humus.

Since many Texas soils show deficiencies in nitrogen, phosphorus, potash and lime, fertilization is essential to insure maximum yields and higher production. Box advises a soil test to determine the amount and type of fertilizer needed.

Crop rotations can also aid in improving soil productivity, and

high residue crops tend to boost and rotation program. Legumes supply nitrogen to the soil, while both legumes and grasses provide organic matter and grazing. Legumes, however, require adequate levels of soil fertility if they are to thrive and give top production.

Almost every farm operator follows some type of soil management or cropping plan, of the fact. For a prosperous 1965, develop a good production plan and carry it out, says the agronomist.

Several million tons of dust drift down through the atmosphere each year and mix with dirt from terrestrial sources. Now and then a housewife may sweep up a trace of space dust, not dreaming it came from the moon or beyond.

SHOP MULESHOE FIRST

Court House News

LICENSE ISSUED
Kenneth Dale Metcalf and Judy Parker.
C. G. Mick and Sandra Ann Bandy.
Melvin Coleman Wood and Mary Jane Mitchell.
Durward Gammon Ivy and Jonnie Marie Burris.
Steve Gene Sena and Grace Valera Virgil.
Kenneth Wayne Heathington and Dianne B. Chappell.
Charlton Talmage Heard and Patricia Ann Holt.
Joe Valero and Ann Perez Salazar.
James E. Gross and Ruby Carolyn Pruitt.
R. G. Bennett, III and Patricia Estelle Evans.
Thomas Jefferson Cochran, Jr. and Patsy Carole Dobbins.
Clifford William White and Frankie Carolyn McClellan.

WARRANTY DEEDS
Mary E. Childers to Bailey County Cooperative Association, Lots 10, 11 and 12: Block 3, Original Town of Muleshoe.
Jewel Martin Farmer to Edward Pierce Farmer, the East 60 acres of the W. 1/2 Survey number 45, Orphan Asylum, Jones County School Land, Bailey County, Texas.
W. M. Pool, Jr. to P. M. Cozby, East 70 foot, lots 1 and 2, East 4th Street.
Jesse Park to Jenie Lee Sharply, all of labors 6 and 15

in League 210, Deaf Smith County School Land in Bailey County.
Julian Lenau to J. A. McGee all of lot 16 and the southwest 15 feet of lot 11 Ladd Subdivision.

Roy C. Dyer to R. L. Mathieson, lot 55, Richland Hills Addition.
M. W. Bulloch to E. K. Angeley, lots 3, 4, and 5 of the H. O. George Subdivision, Bailey County.
L. G. Eubanks to Ana E. Koshnick, Lot 6, block 1, Riverside Addition.

CAR REGISTRATION
C. W. Stallings, Oldsmobile, Wayne Wallace.

Vada Smith, Ford, Harper Ford Sales.
John Fried, International Truck, Ladd Pontiac.
J. C. Gatewood, Muleshoe Motor Co., Ford Fordor.
Donald Armstrong, Ford Fordor, Muleshoe Motor.
Leon Wilson, Pontiac, Rier-son Pontiac.
William Stewart, McQuerry Tractor - Wayne Wallace.
Lewis Embry, Ford, Muleshoe Motor.

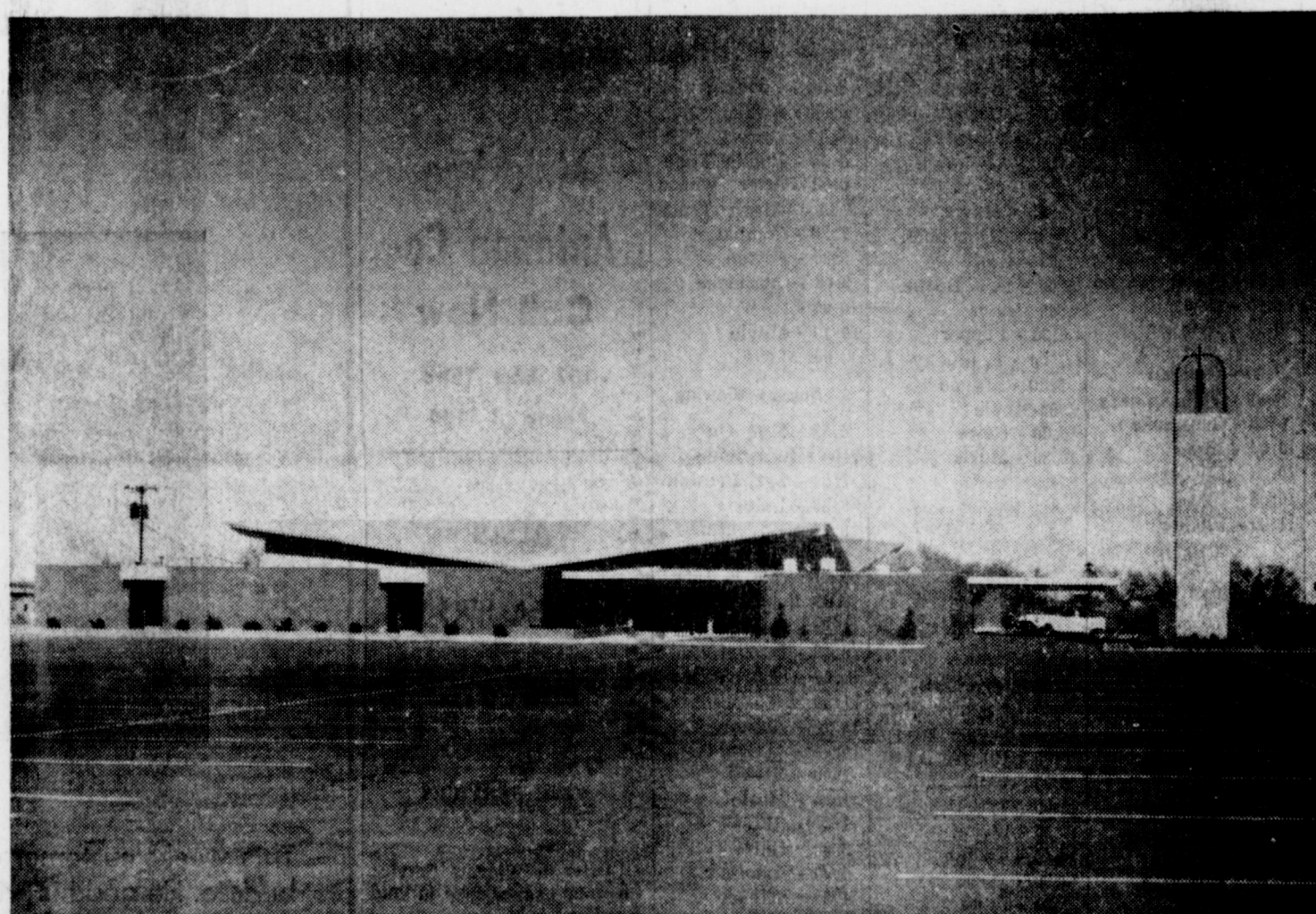
W. B. Wagon, Jr., Oldsmobile, Brock Implement.
Sam Fox, Muleshoe Motor, Olds.
Carl Pollard, Pickup, Crow Chevrolet.
Reese Witterding, Ford, Muleshoe Motor Co.
Ernest Kube, Ford Pickup, Muleshoe Motor.
Elmer Downing, Ford Fordor, Muleshoe Motor.
Lonnice Wilhite, Ford, Muleshoe Motor.

(See COURTHOUSE, Page 2)

PATZER
CHIROPRACTIC CLINIC
MULESHOE, TEXAS
Phone 3-9670
1540 American Blvd.
KEEP SMILING

SEE US FOR
FURNITURE UPHOLSTERING
AUTO PAINT AND BODY REPAIR
AUTO CLEANING & POLISHING
MILLS UPHOLSTERY & AUTO TRIM SHOP
208 W. AVE. B MULESHOE PH 6830

Congratulations CHURCH OF CHRIST ON YOUR MAGNIFICENT NEW CHURCH BUILDING



CHURCH OF CHRIST AMERICAN BOULEVARD & 21ST STREET

- OFFICE AREA
- 30 CLASSROOMS
- NURSERY
- CRY ROOM
- 7 REST ROOMS

- KITCHEN
- FELLOWSHIP ROOM
- LARGE PARKING AREA
- REFRIGERATED AIR
- CENTRAL HEATING

WE ARE PROUD TO HAVE HAD A PART IN THE CONSTRUCTION OF THE NEW CHURCH OF CHRIST BUILDING

G & G CONSTRUCTION CO.

2221 34th St.

LUBBOCK, TEXAS

PHONE SH 4-2308

SHOP MULESHOE FIRST

Television Schedule For Muleshoe Area

☐ Indicates Color Programs

KING BROS.

GRAIN & SEED CO.

Complete SERVICE AND SEED PROCESSING FOR The Muleshoe Area.

KGNC-TV (4) Amarillo
Muleshoe Cable 4
Mon. thru Fri.
Daytime Viewing

6:30 - Classroom
7:00 - Today Show
8:00 - Today Show
9:00 - Make Room
9:30 - C-What's this
9:55 - NBC News
10:00 - Concentration
10:30 - C-Jeopardy
11:00 - C-Say When
11:30 - C-Truth or C
11:55 - NBC News
12:00 - News
12:10 - Weather
12:20 - Ruth Brent
12:30 - Make A Deal
12:55 - NBC News
1:00 - Loretta Young
1:30 - The Doctors
2:00 - Another World
2:30 - C-Don't Say
3:00 - Match Game
3:25 - NBC News
3:30 - Sheriff Bill
5:30 - Hunt - Brink
6:00 - News

Thursday Evening

6:15 - Weather
6:30 - D. Boone
7:30 - Dr. Kildare
8:30 - C-Haze
9:00 - Suspense
10:00 - News
10:15 - Weather
10:25 Sports
10:30 - C-Tonight
11:00 - Mass

Friday Evening

6:15 - Weather
6:25 - Sports
6:30 - Showtime
7:30 - C-Bob Hope
8:30 - Jack Benny
9:00 - C-Paar
10:00 - News
10:15 - Weather
10:25 - Sports
10:30 - C-Tonight Sh
12:00 - Sign Off

Saturday Viewing

7:00 - C. Cargo
7:30 - Roy Rogers
8:30 - Hector H.
9:00 - Underdog
9:30 - Fireball, XL-5
10:00 - Dennis Menac
10:30 - Fury
11:00 - S. Temple
12:30 - Cotton John
1:00 - Movie
2:30 - Movie
4:00 - Golf
5:00 - R. Rogers
6:00 - News
6:15 - Weather
6:25 Sports
6:30 - Flipper
7:00 - Mr. Magoo
7:30 - Kentucky Jo
8:00 - Movie
10:15 - Weather
10:29 News
10:30 - Movie
12:00 - Sign Off

Sunday Viewing

7:30 - Dixie
8:30 - Cotton John
9:00 - Amarillo
9:30 - Movie
11:00 - Church
12:00 - Director's
2:00 - Profiles
3:00 - America
3:30 - Golf
5:00 - Science
5:30 - Bear
6:00 - News
6:15 - Weather
6:25 - Sports
6:30 - C-Walt Disne
7:30 - B. Dana
8:00 - C-Bonanza
9:00 - The Rogues
10:00 - News
10:15 - Weather
10:25 Sports
10:30 - Meet Press
11:00 - Checkmate
11:30 - Sign Off

KVIL-TV (7) Amarillo
Muleshoe Cable 5
Mon. thru Fri.
Daytime Viewing

Daytime Viewing

10:00 - Modern Edu
10:30 - Price Right
11:00 - Donna
11:30 - Father
12:00 - Texas News
12:15 - Weather
12:22 - Market
12:30 - Tenn. Ernie
1:00 - Flame
1:30 - Day in Court
1:55 - Women's New
2:00 - Gen. Hosp.
2:30 - Young Mar.
3:00 - Trailmaster
4:00 - Zane Grey
4:30 - Sea Hunt
5:00 - Leave to Bea
6:00 - News

Thursday Evening

6:16 - Weather
6:15 - News
6:30 - Johnny Ques
7:00 - Donna Reed
7:30 - My 3 Sons
8:00 - Bewitched
8:30 - Peyton Place
9:00 - Jimmy Dean
10:00 - Local News
10:15 - Weather
10:20 - Movie

Friday Evening

6:16 - Weather
6:15 - ABC News
6:30 - Flintstones
7:00 - Farm Daugh.
7:30 - Adams Fam.
8:00 - Valentines D
8:30 - Wells Fargo
9:00 - 12 High
10:00 - News
10:15 - Weather
10:20 - Movie

Saturday Viewing

8:30 - Farm to
9:00 - Shenanigans
9:30 - Annie Oakley
10:00 - Casper
10:30 - Beany & Ceci
11:00 - Bugs Bunny
11:30 - Hoppity
12:00 - Bandstand
1:00 - Wings
1:30 - Derby
2:30 - Bowlers
4:00 - Sports
5:30 - Sportsman
6:00 - ABC
6:30 - King
7:30 - Lawrence Wel
8:30 - Hollywood
9:30 Preview
Thriller after
Movie

Sunday Viewing

8:00 - Herald of Tru
8:30 - Oral Roberts
9:00 - Christ
9:30 - Porky Pig
10:00 - Bulwinkle
10:30 - Discovery
11:00 - Christophers
11:30 - This Is Life
12:00 - Directions 65
12:30 - Dory Funk
1:00 - Basketball
3:00 - Golf
4:00 - Science
4:30 - S. S.
5:00 - Wrestling
6:00 - Campaign
6:30 - Wagon Train
7:30 - Broadside
8:00 - Movie
10:00 - News
10:30 - Weather
10:35 - Movie

KFDA-TV (10) Amarillo
Muleshoe Cable 6
Mon. thru Fri.
Daytime Viewing

6:25 - Sign On
6:27 - Meditation
6:30 - Public Service
7:00 - Farm News
7:20 - News
8:00 - Capt. Kanga
9:00 - CBS News
9:30 - I Love Lucy
10:00 - Andy
10:30 - McCoys
11:00 - Love of Life
11:25 - CBS News
11:30 - Search Tomor
11:45 - Guiding Light
12:00 - News
12:10 - Weather
12:20 - Farm & Ranc
12:30 - The World Tu
1:00 - Password
1:30 - Art Linkletter
2:00 - To Tell Truth
2:25 - CBS News
2:30 - Edge of Night
3:00 - Secret Storm
3:30 - Jack Benny
4:00 - Proud Eagle
4:30 - Superman
5:00 - Lone Ranger
5:30 - CBS News
6:00 - News
6:15 - Weather

Thursday Evening

6:30 - Dead or Alive
7:00 - Perry Mason
8:00 - Password
8:30 - Baileys
9:00 - Defenders
10:00 - News
10:15 - Weather
10:25 - Editorial
10:30 - Movie
10:55 News Report
11:00 - The Big Flick

Friday Evening

6:30 - Rawhide
7:30 - Broadway
8:30 - Gomer Pyle
9:00 - Slattery
10:00 - News
10:15 - Weather
10:25 - Sports
10:30 - Movie
10:55 News
11:00 - Movie

Saturday Viewing

6:45 - Cartoon Tim
7:00 - Mr. Mayor
8:00 - Alvin Show
8:30 - Tenn. Tux.
9:00 - Quick Draw
9:30 - Mighty Mouse
10:00 - Lion Hearted
10:30 - Jetsons
11:00 - Sky King
11:30 - Flicka
12:00 - Gorilla
12:45 - Movie
4:30 - Potamus
5:00 - Grand Ole O
5:30 - Porter Wagon
6:00 - News
6:20 - Weather
6:30 - J. Gleason
7:30 - Gilligan
8:00 - Entertainers
9:00 - Gunsmoke
10:00 - News
10:30 - Flicker
10:55 - News
11:00 - Flicker

Sunday Viewing

8:00 - Fisher Family
8:30 - Church Serv.
9:30 - Gospel
10:30 - R. Question
11:00 - Ac. Theatre
1:30 - CBS
3:00 - Teen Talk
3:30 - Survival
4:00 - Jack Benny
4:30 - Amateur
5:00 - 20th Cen.
5:30 - News
5:45 - Weather
6:00 - Lassie
6:30 - Martian
7:00 - Ed Sullivan
8:00 - People
9:00 - Candid Came
9:30 - W. My Line
10:00 - News
10:15 - Weather
10:25 - Movie
10:55 - News
11:00 - Movie

KCBD-TV (11) Lubbock
Muleshoe Cable 2
Mon. thru Fri.
Daytime Viewing

7:00 - Headlines
7:05 - Farm Report
7:25 - Weather
7:30 - Today
8:25 - News Report
8:30 - Today
9:00 - C-What's Song
9:55 - Morning Re.
10:00 - Concentration
10:30 - C-Jeopardy
11:00 - C-Say When
11:30 - C-T, or C.
12:00 - N and W.
12:15 - Com. Closeup
12:30 - Let's Deal
12:55 - News
1:00 - Truth
1:30 - Doctors
2:00 - Another Work
2:30 - C-Don't Say
3:00 - Match Gam
3:25 - Afternoon Rep
3:30 - Price Is Righ
4:00 - Father Knows
4:30 - Superman
5:00 - Woolly Wood.
5:30 - Hunt-Brink.
6:00 - News ..

Thursday Evening

6:30 - Farmer's Dat
7:00 - Donna Reed
7:30 - Dr. Kildare
8:30 - Hazel
9:00 - K. Theatre
10:00 - News
10:30 - Tonight

Friday Evening

6:30 - Lawrence Wel
7:30 - Bob Hope
8:30 - Jack Benny
9:00 - C-Paar
10:00 - News
10:30 - C-Tonight

Saturday Viewing

7:30 - Movie
8:30 - Hector He.
9:00 - Underdog (C
9:30 - Fireball XL-5
10:00 - Dennis Menac
10:30 - Fury
11:00 - Exploring
12:00 - Mars
1:00 - Movie
3:30 - Sportsman
4:00 - Golf
5:00 - D. Boone
6:00 - News
6:30 - Flipper
7:00 - Kentucky J.
7:30 - Magoo
8:00 - Movie
10:00 - News
10:30 - Movie

Sunday Viewing

7:55 - Sign On
8:00 - Hoppity Hoop
8:30 - Shenanigans
9:00 - Buffalo Bill
9:30 - Annie Oakley
10:00 - The Drama
10:30 - Living
10:45 - Church
12:00 - Discovery
12:30 - Faith
1:00 - Basketball
3:00 - Sports
3:30 - Golf
5:00 - Meet Press
5:30 - Red Raider
6:00 - News
6:30 - Wond. World
7:30 - Broadside
8:00 - C-Bonanza
9:00 - The Rogues
10:00 - News
10:30 - Movie

KLKB-TV (13) Lubbock
Muleshoe Cable 3
Mon. thru Fri.
Daytime Viewing

6:20 - Sign On
6:30 - Sun. Ser
7:00 - Farm
7:30 - King Odie
7:30 - Cartoona
8:00 - Capt. Kangarc
9:00 - Donna
9:30 - I Love Lucy
10:00 - Andy
10:30 - McCoys
11:00 - Love of Life
11:25 - CBS News
11:30 - Tenn. Ernie
12:00 - WTTN News
12:10 - Names in N
12:20 - Names in Ne
12:25 - Weather
12:30 - World Turns
1:00 - Password
1:30 - Houseparty
2:00 - Tell the Tru
2:25 - CBS News
2:30 - Edge of Night
3:00 - Secret Storm
3:30 - General Hosp
4:00 - Trailmaster
5:00 - Amos 'N And
5:30 - News

Thursday Evening

6:00 - Weather
6:10 - News
6:20 - News
6:30 - Munsters
7:00 - Perry Mason
8:00 - Bewitched
8:30 - Peyton
9:00 - Derenders
10:00 - News & Weat
10:30 - Movie

Friday Evening

6:00 - Weather
6:10 - News
6:20 - News
6:30 - Rawhide
7:30 - Addams
8:00 - TBA
8:30 - Gomer Pyle
9:00 - Burke's Law
9:30 - McHales
10:00 - N-W
10:30 - Late Show

Saturday Viewing

6:20 - Sign On
6:25 - Farm Fare
6:30 - Summer Sem
7:00 - Bowery Boys
8:00 - Alvin Show
8:30 - Ten. Tuxedo
9:00 - Quick Draw
9:30 - Mighty Mouse
10:00 - Casper
10:30 - Jetsons
11:00 - Sky King
11:30 - Flicka
12:30 - Bugs
12:30 - Porky
1:00 - Bandstand
2:00 - Wrestling
2:30 - Sports
3:00 - Bowling
4:00 - Golf
5:00 - Opry
5:30 - Pickin Time
6:00 - Porter Wagon
7:30 - Combat
8:30 - Peyton
9:00 - Gunsmoke
10:00 - N-W
10:15 - Movie
12:00 - Movie

Sunday Viewing

6:55 - Sign On
7:00 - Bullwinkle
7:30 - Sgt. Preston
8:00 - Linus
8:30 - Adventures
9:00 - Herald
9:30 - This is Life
10:00 - Lubbock Minis.
10:30 - Church
10:45 - Baptist
11:00 - Church
11:30 - Bible
12:15 - Nation
12:45 - Alumni
1:00 - NBA
1:15 - Music
1:30 - CBS
3:00 - Golf
4:00 - Amateur
4:30 - Science
5:00 - 20th Cen.
5:30 - Mr. Ed
6:00 - Lassie
6:30 - Flintstones
7:00 - Ed Sullivan
8:00 - Living Doll
8:30 - Password
9:00 - Candid Camera
9:30 - What's My Li
10:00 - News
10:30 - Late Show
12:00 - Sign Off

Higginbotham

Bartlett

Building Needs

Lumber

Paint

Wallpaper

Hardware

Houseware

Gifts

Higginbotham

Bartlett

MULESHOE

Abel Cable

For Year-Long Enjoyment

INSTALL NOW

Three Plans for Hook-Up

Muleshoe Antenna Co. Call Now

107 East Third Phone 3-3100

ALSUP CLEANERS

Offer These FINE SERVICES

1. Drive-In Window Service for your convenience in cold weather.

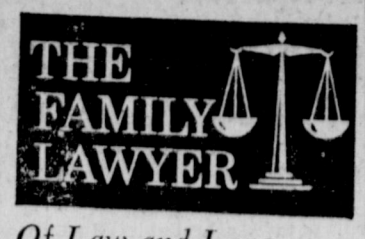
2. Re-sizing of cottons to finer texture for that like-new look.

3. Alterations of all kinds of men's, women's and children's clothing

4. A personal touch for your clothing by people who care how you look.

THAT'S Alsup Cleaners Phone 3-0760

ENOCHS NEWS



Of Law and Love

By MRS. JEROME CASH
Mr. and Mrs. Carl Hall visited his sister and family Sunday afternoon, Mr. and Mrs. J. W. Barber, in Muleshoe.

Mr. and Mrs. Bob Newton and sons and Mr. and Mrs. L. E. Fred visited Mrs. Fred's sister, Mrs. Bonnie Norwood in Lubbock Sunday. Mrs. Norwood fell and broke her hip, but is able to be up.

Keith Fred and son Tod, Portales, N. M. spent Friday night with his parents, the L. G. Freeds.

Mr. and Mrs. R. P. McCall drove to Ruidoso, N. M. Friday and back Saturday. They went to winterize their cabin up there.

BACK SEAT DRIVING
In the folklore of motordom, few characters rank as low as the back seat driver. His pesky, loud-mouth advice (coming from either a front or back

iting her son here and in Lubbock with a daughter, Mrs. Freeman Kyle this week.

There will be a study course at the Baptist Church, taught by Dr. Swanner and Mrs. Swanner. Start in Jan. 31 and lasting 4 days. They will study the book of Deuteronomy.

Mr. and Mrs. Robert George and children, Lubbock, spent the weekend with her parents the E. N. McCalls.

Melonie, Barin, and Timothy Roberts spent Saturday night and Sunday with their grandmother, Mrs. Bertha Roberts, Morton.

seat) takes all the joy out of life for the long-suffering man at the wheel.

To a considerable degree, the law shares in this disdain. Back-seat driving has been judicially described as "this abominable practice."

But the law isn't thinking about etiquette. It is thinking about safety. The law frowns on back seat driving because it so often rattles the driver. One court estimated that in nine cases out of 10, it does more harm than good.

Still, what about that 10th case? When safety says "so, back seat driving may be 'not just permitted but even required. The passenger who is injured in an accident may find his right to collect damages jeopardized by his own failure to voice a protest.

Thus, a court denied the claim of an injured passenger who had made no complaint about a speed of 30 miles an hour through a blinding mist. By his very silence, said the court, "he willingly joined the driver in testing the danger."

(See **LAWYER**, Page 4)

FRANCIS IMPLEMENT CO.
FORD TRACTOR
Muleshoe, Texas

ANNOUNCING

THE OPENING OF THE MILK JUG

WILL OPEN MONDAY FEB. 1

MILK GAL. 80c

BUTTER LB. \$1.00

CREAM PT. 90c

GRADE A DAIRY

S.F. (BOOTS) DAVIS

101 MAIN ST. MULESHOE TEX.

Meet the MULESHOE STATE BANK CUSTOMER of the Week

J. L. Ivy

This weeks customer of the week is J.L. Ivy. Ivy farms at Laz-buddie. He and his wife Odessa, have two daughters: Evadean and Jonnie Beth. The Ivys attend the Church of Christ. Ivy said he had banked with the Muleshoe State Bank for 38 years and "I think they are alright." We are proud to recognize this customer of the week.

Muleshoe State Bank
"YOUR GOOD NEIGHBOR SINCE 1914"

FIRST NATIONAL BANK MULESHOE

4% ON 12-MONTH CERTIFICATES OF DEPOSIT

3% ON SAVINGS COMPOUNDED QUARTERLY

FINANCE YOUR CAR WITH US! PERSONAL LOANS

PAINT

and Hardware

Chas. L. Lenau

LUMBER COMPANY

202 E. Ash

For All Your Needs Prescriptions

— CALL ON YOUR —

WALGREEN AGENCY WESTERN DRUG

Phone 3-1060

Veterinary

Cosmetics

CLASSIFIED ADS

WANT ADS -- PHONE 2350

1 time per word ... 4c 3 times per word ... 10c
 2 times per word ... 7c 4 times per word ... 13c
 After 1st issue, 3c per word each additional time.
 Minimum charge 50c
 Card of Thanks \$1.00
DEADLINE FOR CLASSIFIED ADVERTISING PAGE:
 For Thursday's Issue: Monday, 12 Noon
 For Sunday's Issue: Thursday, 12 Noon
TO LATE TO CLASSIFY
 Thursday Issue — Tuesday 5 P.M.
 Sunday Issue — Friday 3 p.m.
 Double Rate for Blind Ads.

Personals

For "Your Dependable Auctioneer" call T. L. "Mickey" Dent. Let us plan your sale. Phone 257-4911. Earth, Texas. Office call 257-461. 1-42s-tfc

LUZIER'S COSMETICS
 Free Demonstration Satisfaction Guaranteed
 MRS. E. E. HOLLAND
 h. Off. 3-2930 - Res. 3-2930
 121 American Blvd. 1-49s-tfc

Will do baby sitting in your home day or night. Call 6184. 1-2s-tfc

Help Wanted

ANTED — Sheep and Goat rder, and fence builder. Will do \$150 per month, plus room, ard, housing and on the job urance; all guaranteed. \$1.00 hour in excess of 208 hours month, in addition to the 0. Single persons desired. L. Lovelady, Box 655, Muleshoe, Texas. 3-3s-tfc

Man wanted for office work. Some selling. Must use typewriter. Bookkeeping not essential but helpful. Farm and irrigation experience desired. Permanent job for right man. Apply in person. Peerless Pumps J. E. McVicker, Muleshoe. 3-49t-tfc

ANTED: Farm hand \$1.00 r hour for any kind of farm rk 40 hours per week guaranteed. All in excess of 40 r week, \$1.00 pr hour. Plus sportation on the farm, using, utilities and on the job urance. See Dan Darsey, Rt. Muleshoe, Texas. Furnish references. 3-2t-4tp

ANTED — Experienced beaurican. Full or part time. Call 480. 3-49s-tfc

Houses for Rent

2 bedroom house for rent — 9 les west Muleshoe. Call Lella Phillips 825-2462, Okla. Lane ch. 4-44s-tfc

ow bedroom house for rent. 11 3-0380 or see Mrs. Jack erson at 1818 W. Ave. D. 4-2t-tfc

R RENT: Three bedroom use. Phone 4520. 4-3t-tfc

OR RENT: Modern 3-room use. Call 3-9183 or see Barbara Burton. 4-3t-tfc

Apts. for Rent

inished apartment for rent. 1 3-4650. 5-2t-tfc

Wanted to Rent

Want to buy — Two or three room house. To be moved. one 285-2961, Olton, Texas. 7-3t-2tc

Wanted to buy: Two 70 horse- wer Amarillo gearheads. E. Angeley. Phone 965-2487. 7-53t-tfc

Real Estate for Sale
ARMS — CITY PROPERTY AND RANCHES
 F. H. A. — G. I. — CONVENTIONAL LOANS
REBBS REAL ESTATE CO.
 10 S. First Morton Hwy.
 Office Ph. 3-1910 Res. 5881
 Muleshoe, Texas. 8-46-tfc

SHOP MULESHOE FIRST

FOR SALE BY OWNER: 40A good land, good improvements, plenty of water. 1 mile south and 1 mile west of Progress Gin. Tom Payne. Phone 925-34-35. 8-2s-4tp

FOR SALE: 2 bedroom house, dining room and kitchen combined. Large utility room. Phone 3-0053 — 7911 or 7649. 8-42s-tfc

FOR SALE BY OWNER: 160A. good irrigated farm. Cotton, maize and wheat allotments. Strong 8" well, underground tile, natural gas. Located between Hub and Bovina, 1 1/2 mile from pavement. Call or see D. H. Nelson, Friona, Texas. Phone 247-3108. 8-2s-6tp

THE CITY OF LITTLEFIELD HAS FOR SALE: 80 acre farm, located approximately three miles northeast of Littlefield. In good irrigation district, no well dug. No minerals but owner has water rights. Approximately 28.3 acres of cotton allotment 24.9 acres of feed allotment 77.3 acres presently in soil bank at \$15.40 per acre. A new owner has option of leaving acreage in soil bank or cancelling. Price per acre is \$351.11. Contact City Manager at the City Hall of the City of Littlefield, Phone 385-4411 for further information. 8-2t-4tc

FOR SALE: Brick Home. 3 bedrooms and den or 3 bedrooms. 2 full baths. Carpeted, central heating, fenced. Call Kenneth Hanks, 965-2471. 8-11s-tfc

FOR SALE
 — Nice 2 - bedrm. & bath stucco home, Harvey Addition, price \$10,500, small down payment.
 — 2 - bedrm. & bath home, fenced yard, Murrah Addition, price \$4,500, small down payment.
 — 2 - bedrm & bath brick home, Ashwood panel kitchen & den, walk-in-closets, thick carpet with life-time padding, attached garage, nice lawn and shrubs, Richland Hills addition.
 — 3 bedrm. 2 bath brick home, high back - yard fence, like-carpet lawn, priced below market value, approved FHA Loan, small down payment, restricted area.
 — 8 - rm. 3 - bath, 2 - garage & store-rm home, situated 4 1/2 lots, lovely landscaped lawn, own water - system, price \$24,000, shown by appointment only.
 — 310 acre Stockfarm in Erath Co. fair improvements, price \$125,000 per acre, half down payment.
 Cross Real Estate & Ins.
 Off. Ph. 5790 — Res. 5700
 Muleshoe 8-3t-2tc

FOR SALE: 1959 730 John Deere with 4 row equipment. Excellent condition. Also 11 ft John Deere wheel type Tandem disk Call 227-4111 Sudan Monday through Friday. 10-3s-6tc

FOR SALE: 1959 730 John Deere with 4 row equipment. Excellent condition. Also 11 ft John Deere wheel type Tandem disk Call 227-4111 Sudan Monday through Friday. 10-3s-6tc

FOR SALE: 1959 730 John Deere with 4 row equipment. Excellent condition. Also 11 ft John Deere wheel type Tandem disk Call 227-4111 Sudan Monday through Friday. 10-3s-6tc

FOR SALE: 1959 730 John Deere with 4 row equipment. Excellent condition. Also 11 ft John Deere wheel type Tandem disk Call 227-4111 Sudan Monday through Friday. 10-3s-6tc

FOR SALE: 1959 730 John Deere with 4 row equipment. Excellent condition. Also 11 ft John Deere wheel type Tandem disk Call 227-4111 Sudan Monday through Friday. 10-3s-6tc

FOR SALE: 1959 730 John Deere with 4 row equipment. Excellent condition. Also 11 ft John Deere wheel type Tandem disk Call 227-4111 Sudan Monday through Friday. 10-3s-6tc

FOR SALE: 1959 730 John Deere with 4 row equipment. Excellent condition. Also 11 ft John Deere wheel type Tandem disk Call 227-4111 Sudan Monday through Friday. 10-3s-6tc

FOR SALE: 1959 730 John Deere with 4 row equipment. Excellent condition. Also 11 ft John Deere wheel type Tandem disk Call 227-4111 Sudan Monday through Friday. 10-3s-6tc

FOR SALE: 1959 730 John Deere with 4 row equipment. Excellent condition. Also 11 ft John Deere wheel type Tandem disk Call 227-4111 Sudan Monday through Friday. 10-3s-6tc

FOR SALE: 1959 730 John Deere with 4 row equipment. Excellent condition. Also 11 ft John Deere wheel type Tandem disk Call 227-4111 Sudan Monday through Friday. 10-3s-6tc

FOR SALE: 1959 730 John Deere with 4 row equipment. Excellent condition. Also 11 ft John Deere wheel type Tandem disk Call 227-4111 Sudan Monday through Friday. 10-3s-6tc

FOR SALE: 1959 730 John Deere with 4 row equipment. Excellent condition. Also 11 ft John Deere wheel type Tandem disk Call 227-4111 Sudan Monday through Friday. 10-3s-6tc

FOR SALE: 1959 730 John Deere with 4 row equipment. Excellent condition. Also 11 ft John Deere wheel type Tandem disk Call 227-4111 Sudan Monday through Friday. 10-3s-6tc

FOR SALE: 1959 730 John Deere with 4 row equipment. Excellent condition. Also 11 ft John Deere wheel type Tandem disk Call 227-4111 Sudan Monday through Friday. 10-3s-6tc

FOR SALE: 1959 730 John Deere with 4 row equipment. Excellent condition. Also 11 ft John Deere wheel type Tandem disk Call 227-4111 Sudan Monday through Friday. 10-3s-6tc

FOR SALE: 1959 730 John Deere with 4 row equipment. Excellent condition. Also 11 ft John Deere wheel type Tandem disk Call 227-4111 Sudan Monday through Friday. 10-3s-6tc

FOR SALE: 1959 730 John Deere with 4 row equipment. Excellent condition. Also 11 ft John Deere wheel type Tandem disk Call 227-4111 Sudan Monday through Friday. 10-3s-6tc

FOR SALE: 1959 730 John Deere with 4 row equipment. Excellent condition. Also 11 ft John Deere wheel type Tandem disk Call 227-4111 Sudan Monday through Friday. 10-3s-6tc

FOR SALE: 1959 730 John Deere with 4 row equipment. Excellent condition. Also 11 ft John Deere wheel type Tandem disk Call 227-4111 Sudan Monday through Friday. 10-3s-6tc

10. Farm Equip for sale

AUCTION SERVICE: Sales of all kinds. Call Joe Tarter 965-2150 Lazbuddie or Bill Flippin 247-2415 Friona. 10-2t-24tp

Indexed List Finders — For efficient telephone lists — personal or business.
 Now only \$2.29 each at The Muleshoe Journal. 10-43-tfc

NEW 1965 GMC PICKUP DELIVERED \$1749.00 LADD PONTIAC Muleshoe, Tex. Ph. 3-3080 10-34-tfc

FOR SALE — 1 M Farmall tractor, No. 21 International Cotton Stripper and 16 cotton trailers. Call 3-1140 or 965-2661. 10-49s-tfc

FOR SALE: 1959 730 John Deere with 4 row equipment. Excellent condition. Also 11 ft John Deere wheel type Tandem disk Call 227-4111 Sudan Monday through Friday. 10-3s-6tc

FOR SALE: 1959 730 John Deere with 4 row equipment. Excellent condition. Also 11 ft John Deere wheel type Tandem disk Call 227-4111 Sudan Monday through Friday. 10-3s-6tc

FOR SALE: 1959 730 John Deere with 4 row equipment. Excellent condition. Also 11 ft John Deere wheel type Tandem disk Call 227-4111 Sudan Monday through Friday. 10-3s-6tc

FOR SALE: 1959 730 John Deere with 4 row equipment. Excellent condition. Also 11 ft John Deere wheel type Tandem disk Call 227-4111 Sudan Monday through Friday. 10-3s-6tc

FOR SALE: 1959 730 John Deere with 4 row equipment. Excellent condition. Also 11 ft John Deere wheel type Tandem disk Call 227-4111 Sudan Monday through Friday. 10-3s-6tc

FOR SALE: 1959 730 John Deere with 4 row equipment. Excellent condition. Also 11 ft John Deere wheel type Tandem disk Call 227-4111 Sudan Monday through Friday. 10-3s-6tc

FOR SALE: 1959 730 John Deere with 4 row equipment. Excellent condition. Also 11 ft John Deere wheel type Tandem disk Call 227-4111 Sudan Monday through Friday. 10-3s-6tc

FOR SALE: 1959 730 John Deere with 4 row equipment. Excellent condition. Also 11 ft John Deere wheel type Tandem disk Call 227-4111 Sudan Monday through Friday. 10-3s-6tc

FOR SALE: 1959 730 John Deere with 4 row equipment. Excellent condition. Also 11 ft John Deere wheel type Tandem disk Call 227-4111 Sudan Monday through Friday. 10-3s-6tc

FOR SALE: 1959 730 John Deere with 4 row equipment. Excellent condition. Also 11 ft John Deere wheel type Tandem disk Call 227-4111 Sudan Monday through Friday. 10-3s-6tc

FOR SALE: 1959 730 John Deere with 4 row equipment. Excellent condition. Also 11 ft John Deere wheel type Tandem disk Call 227-4111 Sudan Monday through Friday. 10-3s-6tc

FOR SALE: 1959 730 John Deere with 4 row equipment. Excellent condition. Also 11 ft John Deere wheel type Tandem disk Call 227-4111 Sudan Monday through Friday. 10-3s-6tc

FOR SALE: 1959 730 John Deere with 4 row equipment. Excellent condition. Also 11 ft John Deere wheel type Tandem disk Call 227-4111 Sudan Monday through Friday. 10-3s-6tc

FOR SALE: 1959 730 John Deere with 4 row equipment. Excellent condition. Also 11 ft John Deere wheel type Tandem disk Call 227-4111 Sudan Monday through Friday. 10-3s-6tc

FOR SALE: 1959 730 John Deere with 4 row equipment. Excellent condition. Also 11 ft John Deere wheel type Tandem disk Call 227-4111 Sudan Monday through Friday. 10-3s-6tc

FOR SALE: 1959 730 John Deere with 4 row equipment. Excellent condition. Also 11 ft John Deere wheel type Tandem disk Call 227-4111 Sudan Monday through Friday. 10-3s-6tc

FOR SALE: 1959 730 John Deere with 4 row equipment. Excellent condition. Also 11 ft John Deere wheel type Tandem disk Call 227-4111 Sudan Monday through Friday. 10-3s-6tc

FOR SALE: 1959 730 John Deere with 4 row equipment. Excellent condition. Also 11 ft John Deere wheel type Tandem disk Call 227-4111 Sudan Monday through Friday. 10-3s-6tc

FOR SALE: 1959 730 John Deere with 4 row equipment. Excellent condition. Also 11 ft John Deere wheel type Tandem disk Call 227-4111 Sudan Monday through Friday. 10-3s-6tc

FOR SALE: 1959 730 John Deere with 4 row equipment. Excellent condition. Also 11 ft John Deere wheel type Tandem disk Call 227-4111 Sudan Monday through Friday. 10-3s-6tc

FOR SALE: 1959 730 John Deere with 4 row equipment. Excellent condition. Also 11 ft John Deere wheel type Tandem disk Call 227-4111 Sudan Monday through Friday. 10-3s-6tc

FOR SALE: 1959 730 John Deere with 4 row equipment. Excellent condition. Also 11 ft John Deere wheel type Tandem disk Call 227-4111 Sudan Monday through Friday. 10-3s-6tc

Lost — bright carpet colors— restore them with Blue Lustre. Rent electric shampooer \$1. Lane Furniture. 12-3t-1tc

13. Property for Lease
 For Sale Cheap: 320 acres 10 miles East of Happy. For information call 965-2661 or 3-1140. 13-34s-tfc

14 Farm Property
 FOR RENT: 271 acres at Arch. N. M. Has six wells. Must buy equipment. Phone 3-3040 after 7 p.m. 14-2t-4tp

15. Miscellaneous
STEEL PIPE SPECIAL NEW PIPE
 6% OD x 12 GAGE STEEL PIPE 95c FT.
 8% OD x 12 GAGE STEEL PIPE \$1.20 FT.
 F.O.B. YARD MULESHOE
BROWN IRRIGATION MULESHOE PH 2790
 Refrigerator cars for rent for storage for \$25 each a month. Located at King Tire Co. Contact E. K. Angeley, Rt. 1 Box 152 Muleshoe. 15-44-tfc

11. For Sale or Trade
FOR SALE: Box cars. E. K. Angeley, 965-3487 or 5520. 11-5t-tfc

FOR SALE OR TRADE: For farm machinery, by owner. 3 bedroom brick, utility, garage, fenced back yard, \$5,000 equity. 1628 West Ave. B. Phone 3-1890. 11-42s-tfc

12. Household Goods
 Repossessed 1964 Singer sewing machine in optional 4 drawer walnut cabinet, equipped to blind hem, zig-zag, fancy stitches, etc. 5 payments at \$7.22 or will discount for cash. Must have good credit. Write Credit Department, 1114 19th Street, Lubbock, Texas. 12-2t-tfc

17. Seed & Feed
FOR SALE: Early Sumac Cane Seed. Phone 965-2675, Morris McKillip. 17-22s-tfc

HARLIN RADIO & TV
 Located in Johnson Pool Appl. 320 MAIN Have serviced over 10,000 Tv's PHONES Days 7370 3-3820 Night 3-4900 17-22s-tfc

OTWELL'S VACUUM CLEANER REPAIR
 Filter Queen Distributor Disposable Bags For All Makes SERVICE SALES All Vacuum Cleaners Repaired After 6 p.m. or before 8 a.m. Phone 3-1630 918 East Hickory

DOMESTIC PUMP SERVICE
 SALES & SERVICE PUMPS PULLED AND SET. ALL TYPES. SEE WESLEY HAWKINS LOWE DRILLING CO Clovis Hwy. Ph. 5970 2s-6TC

FRANCIS IMPLEMENT CO.
 FORD TRACTOR Muleshoe, Texas

UNITED DELCO AUTO LITE HASTINGS McQUAY - NORRIS VICTOR CHAMPION MONROE THOMPSON AND MANY MORE
 Phone 7150 — Muleshoe, Texas — May We Serve You —

FRANCIS IMPLEMENT CO.
 FORD TRACTOR Muleshoe, Texas

FRANCIS IMPLEMENT CO.
 FORD TRACTOR Muleshoe, Texas

FRANCIS IMPLEMENT CO.
 FORD TRACTOR Muleshoe, Texas

FRANCIS IMPLEMENT CO.
 FORD TRACTOR Muleshoe, Texas

FRANCIS IMPLEMENT CO.
 FORD TRACTOR Muleshoe, Texas

FRANCIS IMPLEMENT CO.
 FORD TRACTOR Muleshoe, Texas

FRANCIS IMPLEMENT CO.
 FORD TRACTOR Muleshoe, Texas

FRANCIS IMPLEMENT CO.
 FORD TRACTOR Muleshoe, Texas

FRANCIS IMPLEMENT CO.
 FORD TRACTOR Muleshoe, Texas

FRANCIS IMPLEMENT CO.
 FORD TRACTOR Muleshoe, Texas

FRANCIS IMPLEMENT CO.
 FORD TRACTOR Muleshoe, Texas

FRANCIS IMPLEMENT CO.
 FORD TRACTOR Muleshoe, Texas

FRANCIS IMPLEMENT CO.
 FORD TRACTOR Muleshoe, Texas

FRANCIS IMPLEMENT CO.
 FORD TRACTOR Muleshoe, Texas

MAPLE NEWS

By MRS. ORAN REVES
 Mr. and Mrs. Joe Bob Wyrick and children, Ralls, spent Saturday night in the home of Mr. and Mrs. R. L. Davis, and the Wyricks and Davis' were all dinner guests in the Ted Simpson home Sunday.

Guests in the home of Mr. and Mrs. Guy Smyer, Sunday afternoon were their daughter, Mrs. Wayne Cash and Jerry and a granddaughter, Mrs. Sue Massey and daughters, Lubbock.

Minister and Mrs. Odel Henderson visited in Muleshoe Thursday with his uncle and aunt, Mr. and Mrs. A. C. Bell. Mr. Bell has been sick for several weeks.

Weekend guests in the Foy Lewis home, were their daughter and family, Mr. and Mrs. Jack Wright and children, Odessa, and another daughter and husband, Mr. and Mrs. Mike Clappitt, Morton, were dinner guests for dinner Sunday.

Mr. and Mrs. Hugh Yeates and children visited over the weekend in Dickens with his parents, Mr. and Mrs. Yeates.

Mr. and Mrs. Oran Reaves visited Monday in Hereford with their son and wife, Mr. and Mrs. Oran Reaves, Jr.

Mr. and Mrs. Jake Burkett are the grandparents of a grandson born Jan. 10, in Lubbock, to Mr. and Mrs. Jack Kosloskie.

Mr. and Mrs. Ted Simpson and children visited in Leveland Saturday night with Mr. and Mrs. Bill Robinson. The Robinsons have a new adopted son born Dec. 20. He has been

named, Michael Lawrence. Kee at O'Donnell.

The WMS of the Maple Baptist Church met in the home of Mrs. Doyle Davis, Jan. 11, for Royal Service program. Mrs. Davis had charge of the program, "Christ for the Cubans." Cake, orange juice and coffee were served to Mrs. Dennis Heard, Mrs. George Fine, and Mrs. A. Robinson.

Mrs. Bailey Griffith and Hud are visiting this week with her parents, Mr. and Mrs. Van Me-

Mrs. Bailey Griffith and Hud are visiting this week with her parents, Mr. and Mrs. Van Me-

Mrs. Bailey Griffith and Hud are visiting this week with her parents, Mr. and Mrs. Van Me-

Mrs. Bailey Griffith and Hud are visiting this week with her parents, Mr. and Mrs. Van Me-

Mrs. Bailey Griffith and Hud are visiting this week with her parents, Mr. and Mrs. Van Me-

Mrs. Bailey Griffith and Hud are visiting this week with her parents, Mr. and Mrs. Van Me-

Mrs. Bailey Griffith and Hud are visiting this week with her parents, Mr. and Mrs. Van Me-

Mrs. Bailey Griffith and Hud are visiting this week with her parents, Mr. and Mrs. Van Me-

Mrs. Bailey Griffith and Hud are visiting this week with her parents, Mr. and Mrs. Van Me-

Mrs. Bailey Griffith and Hud are visiting this week with her parents, Mr. and Mrs. Van Me-

Mrs. Bailey Griffith and Hud are visiting this week with her parents, Mr. and Mrs. Van Me-

Mrs. Bailey Griffith and Hud are visiting this week with her parents, Mr. and Mrs. Van Me-

Mrs. Bailey Griffith and Hud are visiting this week with her parents, Mr. and Mrs. Van Me-

Mrs. Bailey Griffith and Hud are visiting this week with her parents, Mr. and Mrs. Van Me-

Mrs. Bailey Griffith and Hud are visiting this week with her parents, Mr. and Mrs. Van Me-

SHOP MULESHOE FIRST

Mr. and Mrs. V. L. Wall, Rogers, N. M. visited in the Oran Reaves home Monday afternoon.

Miss Junie Shults, Tatum, N. M. visited in the C. L. Taylor home over the weekend.

Mrs. Bailey Griffith and Hud are visiting this week with her parents, Mr. and Mrs. Van Me-

Mrs. Bailey Griffith and Hud are visiting this week with her parents, Mr. and Mrs. Van Me-

Mrs. Bailey Griffith and Hud are visiting this week with her parents, Mr. and Mrs. Van Me-

Mrs. Bailey Griffith and Hud are visiting this week with her parents, Mr. and Mrs. Van Me-

Mrs. Bailey Griffith and Hud are visiting this week with her parents, Mr. and Mrs. Van Me-

Mrs. Bailey Griffith and Hud are visiting this week with her parents, Mr. and Mrs. Van Me-

Mrs. Bailey Griffith and Hud are visiting this week with her parents, Mr. and Mrs. Van Me-

Mrs. Bailey Griffith and Hud are visiting this week with her parents, Mr. and Mrs. Van Me-

Mrs. Bailey Griffith and Hud are visiting this week with her parents, Mr. and Mrs. Van Me-

Mrs. Bailey Griffith and Hud are visiting this week with her parents, Mr. and Mrs. Van Me-

Mrs. Bailey Griffith and Hud are visiting this week with her parents, Mr. and Mrs. Van Me-

Mrs. Bailey Griffith and Hud are visiting this week with her parents, Mr. and Mrs. Van Me-

Mrs. Bailey Griffith and Hud are visiting this week with her parents, Mr. and Mrs. Van Me



WASHINGTON NEWSLETTER
FROM SENATOR **JOHN TOWER**
Committee Banking and Currency
Labor and Public Welfare



In this report today, I will make only generalized comments concerning some proposals sent to the Congress by the President, and other proposals that I have submitted to the Congress or have joined other Senators in submitting to the Congress. I will make detailed reports to you on each of these as work of this Congress progresses.

As you know, the President outlined broad and rather non-specific goals in his State of the Union address. All Americans share the desire for a better life for all our people. It is in how to achieve those goals that we differ. In that regard, I feel that I must set forth now, in this first report of the 89th Congress, my general approach to recommendations made to the Congress by the President, or by other members of Congress. This approach will also determine the bills and resolutions I will introduce in this session.

In general, I shall support moves to increase the responsibility of our states, particularly in areas of education and public welfare. I will support grants going to our states and local political subdivisions for educational purposes, for water research, conservation and development. I will support a move, indeed, I have already co-sponsored a proposed constitutional amendment, that will allow our states to appoint one body of the state legislature on a basis other than population if that state so desires. I will support bi-partisan studies in this session, as I did in the last, aimed at solving the problems on our farms. I will support

moves to strengthen our national defense and will support the President in any confrontation between the United States and international Communism.

Conversely, of course, I will oppose any attempts to further spending moves that I believe to be unwise. I will oppose any moves that I believe will result in a weaker national defense for America. I will oppose federal control of education. You may expect my legislative actions to follow the general outlines I have just explained.

I should add that as far as specifics mentioned in the President's State of the Union message, I will oppose Medicare under social security and I will oppose repeal of section 14(b) of the Taft-Hartley Act, which allows our states to have right-to-work laws.

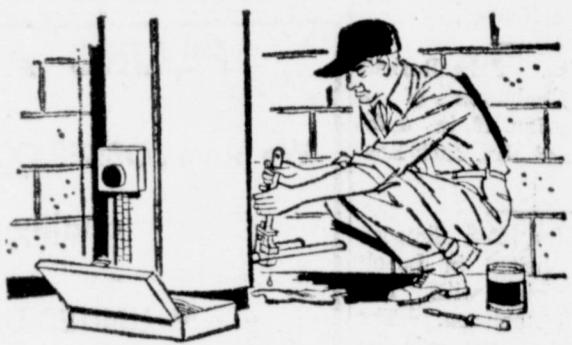
I have already introduced separate measures to cut off military and economic aid to President Sukarno of Indonesia and Premier Nasser of the United Arab Republic. The anti-American tirade of both these political leaders is well known. They have given us the back of their aid paid for by the Ameri-

can taxpayers. In return, they have given us the back of their hand. Mr. Nasser has told us to go "drink up the sea," at the same moment, I might add, that his government was supplying arms to Congolese tribesmen who have slaughtered practically every white person and educated Congolese they can capture. Too, he ridiculed our rescue missions in the Congo. Both Nasser and Sukarno have systematically denied any vestige of democracy within their countries. I do not think we ought to tax our own people in order that they — the Nassers and Sukarnos — may receive foreign aid.

I also introduced, in the opening days of this Congress, a bill to extend the G. I. Bill to veterans of the South Vietnam conflict, along with another bill granting certain tax exemptions to officers and enlisted men serving there, and a resolution calling on our government to supply our men in Vietnam with the best available equipment and supplies.

The treaty ending the War of 1812 was signed by American and British emissaries at Ghent, Belgium, on Dec. 24, 1814, but the new did not reach the United States for many weeks. In the meantime, the Battle of New Orleans broke out on Jan. 8, 1815.

SHOP MULESHOE FIRST



WHO WOULD YOU CALL TO REPAIR FAULTY PLUMBING?

You might call on a "jack of all trades" (like hubby), but if you wanted a specialist, you'd call a plumber! You have a similar choice when you look for a place to save, or borrow to buy a home. If you prefer a specialist you'll come to us!

The Best Place to Save and to Borrow . . .

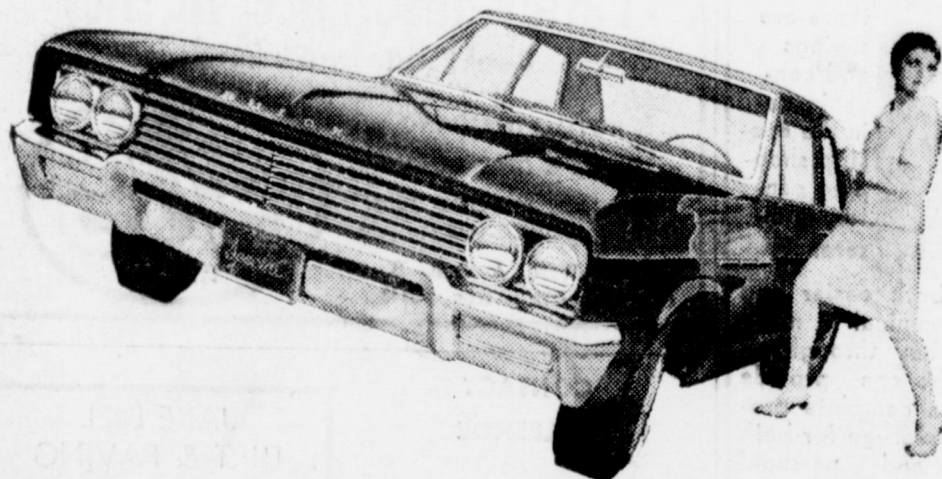
SPECIALIZING IN SAVINGS ACCOUNTS and HOME LOANS

First Federal Savings & Loan

Home Office: Clovis, N.M.
Branch Office: Portales, N.M.
4th & Pile: 2nd & Abilene

Buick Special V-6 goes easy on gas.

Its low price goes hard on your resistance.



We put 6 big reasons to buy a Buick Special under the hood. And another small one on the price tag. The six are a set of the liveliest, thirstiest cylinders that ever zipped you merrily on your way. They're all arranged in neat, smooth V-fashion. They add up to 225 cubic inches and 155 horsepower, and make other arrangements of 6 cylinders seem primitive. That's not all. Special sports Buick comfort, Buick style and traditional Buick quality. The price tag? We saved the best for last.

\$2343.00

Manufacturer's suggested retail price for Special V-6 2-dr. coupe. Price includes Federal Excise Tax and suggested dealer delivery and handling charge (transportation charges, accessories, other optional equipment, state and local taxes additional).

Wouldn't you really rather go first class?

See your local authorized Buick dealer

BUICK MOTOR DIVISION

TUNE IN "LOWELL THOMAS AND THE NEWS"—CBS RADIO

Brock Implement Company Inc.

422 North First

Muleshoe, Texas



COMING SOON
...BEAUTIFUL STEUBENVILLE FAIRLANE DINNERWARE

- Sunlight, Fully Guaranteed
- FLOUR** 29c
- Mission Garden, Sweet
- GREEN PEAS** 2 No 303 Can 25c
- Allen's Whole
- CHICKENS** 52 Oz Can 69c
- Campfire
- VIENNA SAUSAGE** No 1/2 Can 10c
- Stokely Sliced or Halves
- PEACHES** No 2 1/2 Can 25c
- Holsum, Frozen
- ROLLS** 24 Count Bag 25c
- Patio, Enchilada, Frozen
- DINNERS** 12 Oz Pkg. 39c

HEALTH AND BEAUTY AIDS!

- Reg. \$1.49 Retail 10 Ct Pkg.
- CONTAC** 99c
- Breck, Regular or Dry, Regular 98c
- SHAMPOO**, 4 Oz. Tube 79c
- Gleem, Regular 53c
- TOOTHPASTE**, Large Size Tube 44c
- Jeannette, Glass, Brown, Yellow, Green, Orange, Regular 19c
- COFFEE MUGS** 6 For \$1
- Jeannette, Currier & Ives Pattern, Reg \$1.39
- UTILITY DISH** 2 1/2 Quart Size 99c

WATCH YOUR MAIL. For Valuable Piggly Wiggly Coupon Book

Redeem coupons you receive in your mailbox soon for this lovely ovenproof table ware and many other money-savers. These values are good in Muleshoe, January 21-22-23, 1965. We reserve the right to limit quantities.

ALL FREEZER MEAT ITEMS CUT, WRAPPED, AND QUICK FROZEN TO YOUR SPECIFICATIONS, NO EXTRA CHARGE!

Beef Fores 42¢

Armour Star, Aged Heavy Beef, Consists of Chuck Roast, Arm, Swiss Rib Roast Rib Steaks, Lean Ground Beef, Short Ribs. POUND

Armour Star, Aged, Heavy Beef, Consists of all the Cuts in a carcass of beef

HALF BEEF Pound 49c

Armour Star, Aged, Heavy Beef, Consists of Sirlion, T-Bone and New York Steaks Porterhouse

DEEF LOINS, Pound 79c

Armour Star, Aged Heavy Beef, Consists of Round Steak, Rump & Pikes Peak Roast, Ground Round, and Boneless Stev.

BEEF ROUNDS, Pound 65c

PORK LOINS

Rodeo's Lean Northern Pork, Half or Whole

LB. 59c

Armour Star, Aged, Heavy Beef, Consists of Round Steak, Sirlion Porterhouse and T Bone Steaks, Sirlion Tip Steaks Rump & Pikes Peak Roast

BEEF HINDQUARTERS Pound 59c

STEAK Armour Star, Aged Heavy Beef, Round or Sirlion Pound 89c

Yearling Livor, Uniform Slices Skinned and Deveined

BABY BEEF LIVER Lb. 49c

Sea Star

Turkeys Pound 39c **Fish Sticks** 4 8 Oz Pkgs. \$1

- ORANGE JUICE** SEALED SWEAT FROZEN 3 12 Oz CANS \$1
- CAKE MIX** GOOD N RICH ASSORTED FLAVORS 10 OZ. BOX 19¢
- MEDIUM EGGS** IDEAL GRADE A DOZEN 39¢
- CANNED MILK** CARNATION OR PET EVAPORATE 3 TALL CANS 39¢
- SUGAR** HOLLY, C & H OR IMPERIAL 5 LB. BAG 45¢

- FROZEN FOODS!**
- Banquet Apple, Peach, Cherry, Family Size
 - Fruit Pies** 29c
 - Banquet, Beef, Chicken or Turkey
 - DINNERS** 3-11 Oz. Pkgs. \$1
 - Seabrook, Cut
 - CORN** 5 - 10 Oz. Pkgs. \$1
 - Ore Ida
 - TATER TOTS** 2 Pound Pkg. 49c
 - Banquet, Beef, Chicken, or Turkey
 - MEAT PIES** 7 8 Oz Pkgs \$1

VITAMIN RICH PRODUCE ALWAYS AT PIGGLY WIGGLY!

POTATOES RUSSETS ALL PURPOSE

8 LB. BAG 59¢

- California, Fresh
- PEARS**, Pound 15c
- Green Pascal
- CELERY HEARTS**
- Cello Bag 29c
- Avocados, Fresh
- Spinach, Parsley,
- Yellow Squash,
- Acorn Squash,
- Brussel Sprouts,
- Pineapple.



- Santa Rosa Crushed
- PINEAPPLE**, No 300 Can 19c
- Du Rite, Liquid
- BLEACH** 1/2 Gallon 29c
- Stokely's Finest
- TIMATO SAUCE** 3 - 8 Oz Cans 25c

Lowest Prices . . . Greatest Variety . . . always at . . .

TEXAS TABLE SIZE **CARROTS** 2 1 LB. CELLO BAGS 19¢

Piggly Wiggly