

## Chamber Of Commerce And Industrialization Muleshoe May Get Canning Plant Because of Effort

This Week (April 1 thru 7) is Texas Industrial Week. One of the Muleshoe Chamber of Commerce's platform planks for 1964 is to do all possible to obtain industry for the Muleshoe area. . . . And this year the plank is more than just a few pretty words to be uttered at a banquet. This year the business group means business.

So far this year the group has proven its seriousness by purchasing a 17 acre industrial site; attending several national manufacturers' conventions and carrying out detailed promotional activities.

The group has also attended several workshops on the state level to learn just what is necessary for a town to have and do in order to obtain industry.

The program has not been expensive and some persons are asking: Is it worthwhile?

Judge for yourself.

Since the program began three months ago a solid half dozen inquiries from expanding manufacturing businesses have been received here. All were serious feelers and all are still active, and may possibly work into something definite.

Tonight there is a meeting of local farmers in the Production Credit office at 8 p.m. which may bring a new industry to Muleshoe almost immediately.

Western Food Products, a tomato canning concern located in Colorado is interested in opening a \$250,000 plant here. The company's decision will be based primarily on whether or not local farmers wish to grow tomatoes for the plant. Approximately 80 acres of tomatoes are necessary to satisfy the company's first year's production demands.

It is expected that the firm will employ about 200 persons during peak seasons. Just what does that mean to Muleshoe?

Here are a few figures:

According to the United States Chamber of Commerce, if a new industry adds 10 workers to the local labor force the community gains 359 more people.

Sixty-five additional persons

### Farmers Union

Parmer County Farmers Union will meet Friday, April 11th, at 8:00 p.m. at the Hub Community Building. Guest speaker will be Jay Naman, Texas Farmers Union president. Naman will discuss current farm legislation before Congress, and will answer questions on that subject.

will be employed in non-manufacturing.

There will be 91 more school children.

\$710,000 more personal income.

100 more households to purchase food, furnishings, clothing, etc.

\$331,000 more retail sales per year.

91 more passenger cars sold and registered.

\$229,000 more bank deposits.

A minimum of three new retail establishments.

Why does Western Food Products wish to establish in Muleshoe? The reason is for the tomatoes, of course. But let's go one step further and ask what began them thinking about Muleshoe?

They heard that a choice industrial site was available in the area on what might be advantageous terms and that Muleshoe wanted and would welcome industry. Both are a direct result of the chamber of commerce's industrial drive. . . . and it's only three months old. In other words, it's just beginning.

Industry, with its job opportunities, is the soundest and quickest way for causing an economic advance here; and if Muleshoe expects to grow in population and develop its economic base, it must be done through economic expansion.

A good business climate is not something that just happens — it is a combination of circumstances, conditions, and attitudes which are prevalent in the community. It often requires a long period of time to build a good business climate, and can be maintained only through great effort in most cases. However, a good business climate seems to have been established in Muleshoe in record time — and the results are beginning to show. This again is a direct result of the chamber's activities this year.

A good business climate in most cases is dependent on stable, progressive city, a stable and enlightened city and county friendly community attitude, labor pool and materials.

Most of these Muleshoe has today. What it may be lacking it can get tomorrow — if it wants it.

Back your chamber of commerce — it pays off.

## Voters To 'Yea' Or 'Nay' Bond Issue And Select Board Members Sat.

### \$900,000 Issue Will Raise Taxes 25 Cents Per \$100

Residents of the Muleshoe Independent School District are expected to turn out in record breaking numbers Saturday to elect two new school board members and vote 'yes' or 'no' on Muleshoe's \$900,000 school bond issue.

The issue, if passed, will provide:

1. A 24 unit classroom building to replace the elderly Mary DeShazo, which will be torn down entirely with the exception of the present gym and cafeteria.

Cost of the new construction will be about \$419,000.

2. Eight new classrooms and a new gym at the Junior High School.

Estimated cost of the junior high part of the proposal is \$241,000.

3. A new Junior and Senior High School cafeteria with a seating capacity of 600 students.

Cost of the new cafeteria will be about \$106,000.

4. A new vocational building and remodeling of present home-making rooms and cafeteria into classrooms.

Estimated cost of these plans is about \$91,000.

Total architect's fees will amount to about \$43,000 or 5 1/2 per cent.

The entire bond issue, according to Neal Dillman, superintendent of schools and members of the school board, can be paid off with a 15 per cent raise in school district taxes.

Here is how it will be done: The school board has a firm commitment for a sliding scale interest rate of from three to three and seven-eighths percent. The first five years (1965-9) the interest will be three percent. The next five years (1970-4) will be three and one-half per cent. The next five years (1975-9) will cost the district three and three-fourths percent interest and the last five years (1980-2) will cost three and seven-eighths per cent interest.

The total assessed valuation of the Muleshoe Independent School

District will climb to \$25-million dollars next year if the bond issue is passed. Current assessed valuation is \$24,614,719.

A 15 per cent increase would raise the present rate 25 cents to \$1.85 per \$100. Current taxes are running a \$1.60 per \$100. The assessed valuation is one-third of the total appraisal valuation of the entire school district.

The next bond issue would raise annual bond indebtedness payments \$60,000 a year. The 25 cent increase would produce increased income of \$62,500.

The extra \$2,500 will allow for four percent delinquent tax payments.

## Insurance Co. Helps Fire Dept.

Muleshoe Volunteer Fire Chief Earl Ladd this week received a check for \$75 from the Texas Farm Bureau Insurance Company under the firm's new policy of donating a flat rate to fire companies assisting in containing fires.

The check was presented by Farm Bureau President Ed Little. It was the first to be presented in Bailey County since the insurance company adopted its new policy recently.

The company will pay a flat rate of \$75 to the fire department for each fire call it makes to prevent or contain a fire on property owned and member insured by the firm.

The first donation was received for a call several weeks ago to the E. D. Chitwood Jr. farm. Chief Ladd stated on receiving the check, "This is wonderful. It's a fine thing that an insurance company should be concerned enough about volunteer fire departments to set up something like this. It costs the insured nothing additional and will help offset the operational costs of the departments."

**AH . . . WELL NOW —**  
Local Farm Bureau manager John Gregg says: "must not be cigarette smoking that causes all these lung cancers. . . . cause women smoke as much as men and are less prone to have the disease . . . so, he surmises it must be the lipstick men get from kissing all the women."



FEATURED SPEAKER — Jim Reese, Jaycee State vice-president, and leading candidate for the president's office, was the featured speaker at the 16th Annual Muleshoe Installation Banquet this week.

## Muleshoe Jaycees Annual Banquet Held

Approximately 125 Muleshoe and High Plains Jaycees and their guests attended the 16th Annual Muleshoe Jaycee Installation Banquet held in the American Legion Hall this week.

Jim Reese, state vice-president and leading candidate for next year's state president, was the featured speaker. His talk was titled "Let George Do It", and showed how a "let the next guy do it" attitude created Hitler and Stalin. He detailed what Jaycees and every other citizen should do to create and keep good government.

Jaycees representing Farwell, Plainview, Sudan, Dimmitt, Tullia, Odessa and Littlefield applauded special guests Pete Wright, state vice-president and Lonnie Crow, incoming state director.

Following the banquet, special awards were presented to the outgoing officers by ex-president Jay Spain. Outgoing officers were Pat Glover, 1st vice-president; Ben Yeager, 2nd vice-president;

Creston Favor, treasurer; Wayne Wilhite, secretary; and Delbert Barry, director.

Two unexpected special awards were presented by the club to Bill Kinard for his work as chairman of the Fun Fiesta and Poll Tax committees, and to Jay Spain and his wife, Wanda for their efforts on behalf of the organization.

New officers were installed in ceremonies conducted by Rayphard Smithson, retiring state director.

Incoming officers were Elvon DeVaney, president; Ben Yeager, 1st vice-president; Wayne Wilhite, 2nd vice-president; Creston Favor, treasurer; Carl White, secretary; Jay Spain, inter-club director; Bill Kinard, director; Pat Glover, director and Mel Malone, director.

Roy Davis was master of ceremonies.

Approximately 90 Jaycees remained after the banquet to attend a reception in honor of the incoming officers. Music was furnished by the Western Aces, a local band.

The special award presented Spain and his wife was the first official act of the new president. His second was the issuance of a club proclamation in support of the proposed \$900,000 bond issue.

It reads as follows:  
To the Tax Payers and Voters of the Muleshoe Independent School District:

Be it known that we, the Muleshoe Jaycees favor:

1. Safe School Facilities,
2. Vocational Opportunities for High School Students,
3. Reasonable Space for our children in classrooms,
4. Adequate School Facilities.

Let it be further recognized that the longer we delay the more (See Jaycees Page 5)

### ATTENTION FARMERS:

Be sure to attend the tomato growing meeting in the Production Credit Bldg., at 8 p.m., tonight to decide whether or not Muleshoe area farmers want a tomato canning plant.

## One Dies; 9 Injured In Butane Blast Here

### Two Children Not Expected To Live. Others Are Critical

A four year-old girl died Wednesday morning and two other children are not expected to live as the result of a tremendous explosion which injured nine of 17 persons living in a two bed-

room house near Goodland Tuesday.

Angelita Vasquez died of burns and shock in Cochran County Hospital early Wednesday morning. Burns covered 95 per cent of her body.

Two other children, Josephine Vasquez, 1, and Elizabeth, 3, are in extremely critical condition at the Morton hospital. Burns cover 95 per cent of their bodies, also. Three doctors have been on constant duty caring for the injured.

Persons injured in the butane explosion are:

Jessie Vasquez, 26, who was burned over 75 per cent of his body.

Lupe Vasquez, 31, who was burned over 50 per cent of her body.

Josephine, 1, who was burned over 95 per cent of her body.

Elizabeth Vasquez, 3, who also suffered burns over 95 per cent of her body.

Benny Vasquez, 2-months, who was slightly burned about the face.

Sally Trivino, badly burned.

Francis Trivino, badly burned.

Juanita Trivino, badly burned.

Angelita Vasquez, 4, who died of burns and shock.

Sheriff Dee Clements, who was on the scene, described it as something one might have seen in Europe during the war. All windows were blasted from the overcrowded shack. Heavy rafters were twisted and torn from the roof. Walls were pushed out from one to one-and-a-half feet and plaster torn from the walls.

Although the cause of the explosion and resulting fire are unknown, evidence points to either a leaking gas pipe or stove. Clements believes the gas must have accumulated in the house for several hours and then been touched off, either by the kitchen stove's pilot light or a heater in the bath room.

The explosion's force was so vicious that it picked up Francis Vasquez and blasted her from the house. It was not known whether she was tossed through a wall or a window.

At the time of the explosion seven other children were playing outside the house. They were uninjured.

Today the Three Way Lions Club is laying plans to assist the

(See Blast Page 5)

Featured on the program will be Lloyd Langford and Jim Valiant of the High Plains Research Foundation, who will discuss sorghum ridge research and the latest information available on grain sorghum variety tests performed at the research foundations farms at Haltway.

## 1962-63 Cotton Crop Placed At 111,956 Bales

The U. S. Department of Commerce released its final official figures totaling the 1962-63 cotton crops production this week and gave Bailey County an official 111,956 bales ginned.

This compares with an official 113,241 bales ginned in 1962-63.

The report gives Castro County 23,195 for '63 and 24,001 for '62; Cochran County, 14,483 in '63 and 11,740 in '62; Deaf Smith 10,948 in '63 and 12,141 in '62, and Parmer County, 59,594 in '63 and 80,328 in '62.

## Bargain Bonanza Raises \$660 For Permanent Area Library

Last week's Muleshoe Friends of the Library Bargain Bonanza Sale netted over \$660 for the permanent Muleshoe Area Library Fund.

The week-long rummage sale's success was attributed to the "tremendous cooperation afforded by members of the FLA, city and county businessmen and city and county clubs and organizations who believe the Muleshoe area needs permanent library facilities," said Mrs. Larry Hall and Mrs. Vic Benedict, co-chairmen of the event in a joint statement.

The money has been turned over to the library board to be used in any way deemed necessary for the benefit of the library. Part of the total amount will probably be used to pay for shelving, which is expected to arrive here from the New Jersey manufacturer this week.

Mrs. Vic Benedict and Mrs. Larry Hall, co-chairmen of the Bargain Bonanza sales last week, expressed their appreciation to the committees, clubs, individuals

and merchants who so generously participated.

Members of the Friends of the Library who formed the Bonanza Sale Committee and others who assisted in the sale are:

Sale directors, Mrs. Matilda Stemmmons, Mrs. Pat Bobo, and Mrs. Charles Lenau, sale treasurer, Harmon Elliott.

Pricing, Roger Albertson, Mrs. Thurman White and Mrs. George Mayo.

Transportation, Elvon DeVaney, Tom Hunke, Charles Lenau, Thurman White, Ben Yeager.

Publicity, Mrs. Bo Bryant and Mrs. Elvon DeVaney, Magaan Lamb, Mrs. Hall.

Interclub coordinator, Roy Davis.

Merchants' contact committee, Mrs. Les Bruns, Mrs. Ralph Douglas, Mrs. W. F. Birdsong, Mrs. Rufus Gilbreath, and Miss Lamb.

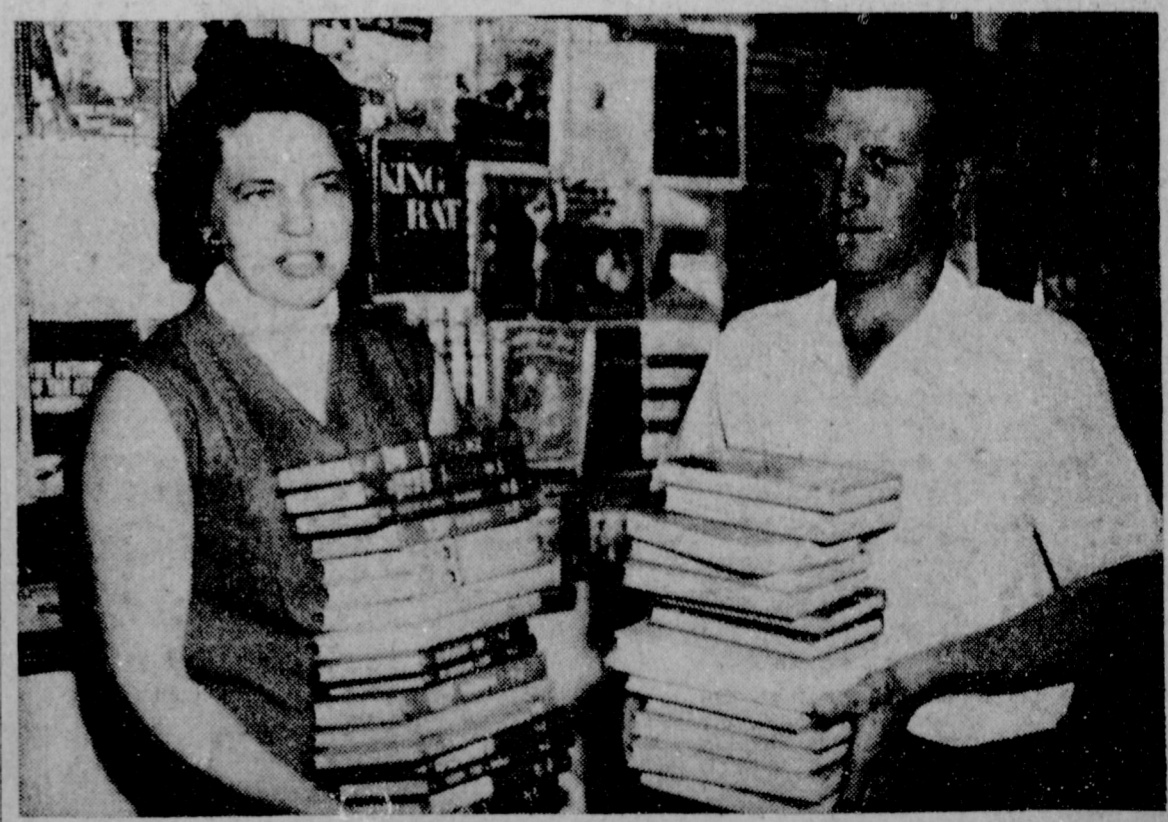
Others assisting with sales: Mrs. Richard Engelking, Mrs. John Gunter, Mrs. O. N. Jennings, Mrs. Joe Dameron, Mrs. O. D.

Ray, Mrs. Ray Griffith, Mrs. B. Z. Beaty, Mrs. Robert Dunn, Mrs. Tye Young, Mrs. Jackie Tate, Mrs. A. J. Dutton, Lester Howard, Mrs. Charles Mayhugh, Vance Tucker, Brent Blackman, Perry Hall, Roger Williams, Doug Doss, Paul Lenau, J. Frank Peery, Jay Spain, Vic Benedict, Curtis Wellborn, Mildred Davis, Mrs. Jerrill Otwell, Mrs. Noah Kinser, Mrs. Clarence Jones.

Clubs included the Friendship Club, Muleshoe Study Club ESA Rotary, F. H. A. girls, Speech Club, Jaycees, Cub and Boy Scouts.

Other businesses contributing Saturday were KMUL and The Fashion Shop.

Mrs. Benny Pena, bookmobile librarian, is today sorting and detailing from 6,000 to 8,000 books that have been received from the state library during the past few days. It is expected she will finish the laborous work sometime between now and April 15th when the bookmobile is expected to make its first four county swing.



FUN AND GAMES AT THE LIBRARY — Bookmobile Librarian Georgia Pena and Driver-Clerk Larry Hartsell sorting, stacking and detailing some 8,000 books at the bookmobile headquarters here. To make matters more interesting, all 8,000 books must be completely detailed by April 15th when the bookmobile is expected to start its first four county swing—



## Piano Students Presents Recital At Muleshoe First Baptist Church

Students of Mrs. A. M. Bradley were presented in a recital at 8 p.m. March 24 at the First Baptist Church.

The program of music was opened with Cynthia Puckett playing "Indian Wigwam." Others following were Debbie McDaniel and Cynthia Puckett, "Egg Pert Hen"; Jerrell Ray Carpenter and Billy Conwell, "The Yellow Rose of Texas"; Ricky Daniel, "Ruffy and Tuffy"; Vickie McDaniel, "The Little Black Bear"; Shirley Kay Carpenter and Shirley Jones, "Broken Wings";

sang a duet and were accompanied by Judy Jones.

Harold Carpenter sang "When Irish Eyes Are Smiling" and was accompanied by Judy Jones. Jerrell Carpenter played "Deep In the Heart of Texas" and Bicycle Built For Two" on his guitar.

Lance Puckett played "Swans on the Lake"; Shirley Carpenter, "My Wild Irish Rose"; Judy Nell Jones, "Nutcracker"; Mary Pesina, "Over the Waves" and "Chop Sticks" was played by a trio composed of Vera Conwell, Brenda McGuire, and Glenda James.

Merced Puente, "Battle Cry of Freedom"; Mike Duncan and

Lance Puckett, "Swing Along"; Brenda McGuire "Down In the Valley"; Glenda James, "While Strolling Through the Park One Day"; Anna Cuevos, "Alma Mater"; and "Lullaby" by Linda Payne.

"Tchaikovsky Concerto" was by Shirley Carpenter and Shirley and Judy Jones and "Black Hawk Waltz" by Mary Pesina. A foursome played "Battle Hymn of the Republic". The y were Shirley Carpenter, Shirley and Judy Jones, and Cindy Phillips.

Vera Conwell sang the Irish Melody, "Londonderry Air" and Mike Duncan played two selections "Sailors Hornpipe" and "Tavern in the Town."

Judy Jones accompanied Shirley Carpenter, Linda Payne, Anna Cuevos, and Gerald and Harold Carpenter as they sang "On the Wings of a Dove."

Mike Duncan and Lance Puckett playing "Country Gardens" completed the first part of the presentation.

The second part was dedicated to sacred music and was op-

ened with the audience singing "God of Our Fathers" directed by Cindy Phillips as Judy Jones played.

"Rock of Ages" was played by Glenda James with Jerrell Carpenter and Vera and Billy Conwell singing.

"Whispering Hope" was played by Shirley Carpenter and "The Nail Scarred Hand" by Shirley Jones. Four numbers were presented by Cindy Phillips. She was assisted by Judy Jones playing "When I Survey the Wondrous Cross". Others were "Fascination", "How Great Thou Art" and "The Holy City", Mary Peina played "Neath the Banner" and Harold Carpenter sang the spiritual "Lord I'm Comin' Home".

Mike Duncan concluded the evening of music with the selection "Triumphal March."

## Music Festival Benefits School At Three Way

Thursday evening, March 19, students of Three Way school and area people presented an evening of music to the public, with the proceeds going to help buy new curtains for the stage. Almost sixty dollars was realized from sale of tickets, and donations for the curtains are still being solicited.

The program had the Easter theme, with Steve Pierce as the bunny, and Madalyne Galt playing popular Easter music. A number of piano, vocal, and stringed band numbers were given. Piano soloists included Rena Neutzler, Judith Strickland, Wenhon Williams, Janna Sue Lane, Maxine and Gayle Gant, Donna Furgeson, Doyleen Davis, J. L. Hutcherson, Larry Neutzler, Kathy Wittner, and Sam Feagley. Vocalists in both solo and quartettes included Karen Eubanks, Sandra Kenley, Julia Burkett, Linda Heard, and Harold Carpenter. The vocalizing of "the Beatles" was almost drowned out by cheers from the teen-age section; the faces under those wierd wigs belonged to Kenneth Petree, Tommy Terrell, Gary Mack Toombs, and J. L. Lemons. A cute variety number, "The Alley Cats" was given in a twirling routine by seven high school girls. The junior high section gave fort hits cheers for the talented Abbe family, Charley, Geno, and Sheryl, on their string trio. John Tucker acted a master of ceremonies; and the evening was rounded out by the "Rebel Four" with Jim Petree, Troy Tyson, Donny Petree, and Leslie Fine.

With the Rice Hotel as headquarters, the family went on sightseeing, tours of the city with an old friend Marvin Rosmarin, as a guide.

Some of the points of interest was the 45 story Humbel building, the Manned Space Center and San Jacinto Battle Monument. They enjoyed their visit to the Bay region and beach.

They spent part of Saturday fishing in the bay in a 16 foot fiber glass boat.

They began their return trip Sunday, boarding a 707 Jet for the flight back to Dallas. After lunch in the terminal building, their flight to Lubbock was aboard a four-engine DC-6. From Lubbock airport, they went by cab to the bus station and traveled by bus back to Muleshoe.

Senior Class Play  
The Senior class of Three Way school will present a rollicking comedy, "The Late Mr. Early" in the school gymnasium on Friday, April 3, beginning at 8 p.m.

Easter Holidays  
Mr. and Mrs. Jim Small, Kim and Jaime spent the Easter holidays with their parent in Tahoka.

## Double Ring Ceremony Read For Betty McGuire, Frank Wuerflein

Miss Betty Lou McGuire, Earth, became the bride of Frank Wuerflein, Pleasant Valley, in a ceremony read in the Earth First Baptist Church at 7 p.m. Tuesday. Rev. M. B. Baldwin read the double ring ceremony before an altar decorated with baskets of gladiolas and candleabras flanking the satin-covered kneeling bench. An archway of greenery and wedding bells formed the background.

Mr. and Mrs. Stanley McGuire, Comanche, Okla. are parnets of the bride and Mrs. Lillie Wuerflein, Pleasant Valley is the mother of the bridegroom.

Escorted and presented in marriage by her father, the bride wore a formal gown fashioned from Chantilly lace featuring a portrait neckline, a pointed sculptured bodice and long petal point sleeves. The bouffant skirt was highlighted in the back by an inset of alternating ruffled tiers terminating in a modified chapel train. Her rolled-edge veil of imported illusion cascaded from an open crown adorned with pearls.

Traditional wedding music was provided by Mrs. Elizabeth Laing, Earth. Duane Harris, minister of music at the Earth First Baptist Church.

## Jack Littles Back From Houston Trip

Mr. and Mrs. Jack Little and sons, Bruce, Walter, Jr., and Tommy, left Thursday on a trip to Houston, taking means of travel on which the boys had never ridden.

Enroute, they traveled by train leaving here around 5 p.m. and arrived in Houston at 8:15 the following morning.

With the Rice Hotel as headquarters, the family went on sightseeing, tours of the city with an old friend Marvin Rosmarin, as a guide.

Some of the points of interest was the 45 story Humbel building, the Manned Space Center and San Jacinto Battle Monument. They enjoyed their visit to the Bay region and beach.

They spent part of Saturday fishing in the bay in a 16 foot fiber glass boat.

They began their return trip Sunday, boarding a 707 Jet for the flight back to Dallas. After lunch in the terminal building, their flight to Lubbock was aboard a four-engine DC-6. From Lubbock airport, they went by cab to the bus station and traveled by bus back to Muleshoe.

Easter Holidays  
Mr. and Mrs. Jim Small, Kim and Jaime spent the Easter holidays with their parent in Tahoka.

ist sang "Oh Promise Me," "Whither Thou Goest," and "The Lord's Prayer."

Carolyn Reynolds, Fairfax, Okla. was maid of honor. Dewanda Terhunc Comanche, Okla., niece of the bride, was flower girl and Pruda Sanders was candlelighter.

They wore dresses of blue and white. Miss Reynolds' was of blue chiffon over a white lace bodice and blue chiffon over taffeta for the bouffant skirt. Her blue veil was attached to a blue chiffon bow hat. She carried a blue and white bouquet. Dewanda was attired in a dress of blue with white lace and a white lace veil. She wore a wrist corsage.

Edward Wuerflein, brother of the groom, served as best man. Ushers were Marvin Sanders, Earth; Barry Morgan, Portales, N. M. James Rinker, Earth, and Billy Harmon, Farwell.

A reception followed in the church social hall. The bride's table was centered with the maid of honor's bouquet beside a three tiered cake adorned with a bride and groom under an arch. White punch with blue ice was served with the cake.

For travel, the bride chose a light green boxer suit with a white blouse and white accessories.

Mrs. Wuerflein is a 1959 graduate of Maysville High school, Maysville, Okla. and was graduated from East Central State College, Ada, Okla. in 1963. She is a second grade teacher in Springlake school. Wuerflein is a 1958 graduate of Muleshoe High School.

After a short wedding trip, the couple will be at home three miles north of Earth where he is engaged in farming.

## Couple Exchange Marriage Vows In Freeman Home

Mr. and Mrs. Earlon Wall, Maple, announce the marriage of their daughter, Juanita Louise Wollam, to Glen Earl Getz, son of Mr. and Mrs. Harold Getz, Kalamazoo, Mich.

Vows were read by Rev. J. Frank Peery at 8 p.m. March 27 in the home of Mr. and Mrs. Garland Freeman, Muleshoe.

Attendants of the couple were Mr. and Mrs. Garland Freeman, Muleshoe.

The bride chose for her wedding a Copen blue wool flannel wool suit with black accessories.

Attending the reception in the Freeman home which followed the ceremony were Stanley, Mike and Sherri Woolam, children of the bride; Mr. and Mrs. Earlon Wall, Maple; Mr. and Mrs. J. J. Brackman, Muleshoe; Randy Bussey, Amarillo; Rosemary Tinney and Delbert Wood, Muleshoe.

Mrs. Getz was a former resident of Muleshoe and was dispatcher for the local Police Department.

After a short wedding trip, the couple will make their home in this locality.



MRS. FRANK WUERFLEIN

## Revival Underway At Three Way and Maple Churches

The Southern Baptist Churches at Maple and Three Way held revival services during the Easter season. The pastor of each church conducted the services.

Friday, March 27, the Three Way Baptist Church began a ten day revival, with morning services at 10:30 A.M. and evening services at 8 p.m. Beryle C. Lovelace, of the First Baptist Church, Littlefield, is leading the singing, and Donna Kay Furgeson is the pianist. Rev. C. E. Strickland, the pastor is bringing the messages.

The Maple Baptist Church began a full week of revival services Easter Sunday with the pastor, Rev. Dennis Heard, doing the preaching.

Chester Petree is leading the singing, and Doyle Davis is pianist. Services are at 7:30 both morning and evening for all weekdays, except Friday, April 3 when the meeting will be held at 6:30 p.m. to avoid conflict with the senior play.

Sunday services will continue through April 5 and services that day will be held at the regular time.

TO HEREFORD  
Attending the breakfast honoring Sen. John Tower at the Hereford Bull Barn Wednesday morning were Mr. and Mrs. Clarence Mason, Mr. and Mrs. John Gregg, Mr. and Mrs. Leslie Bruns and Mr. and Mrs. Raymond Precure.

**GROW SLIM WHILE YOU EAT**

WITH SAFE VITAMIN-FORTIFIED diet-master

**REDUCING PLAN**

Be a good loser. DIET on balanced meals without loss of energy, hunger pangs or jumpy nerves. DIET on the DIET-MASTER REDUCING PLAN... fully guaranteed to help you lose excess weight, or your money back.

**WESTERN DRUG**

**PATZER CHIROPRACTIC CLINIC**

1538 American Blvd.  
MULESHOE, TEXAS  
Phone 3-9670

**KEEP SMILING**

**BEST PRODUCE**

Bananas	LB. 5 <sup>c</sup>
Cabbage	LB. 6 <sup>c</sup>
Onions WHITE	2 LBS. 35 <sup>c</sup>
Lemons	Doz. 49 <sup>c</sup>
Lettuce 2 large heads	35 <sup>c</sup>
Bell Peppers	LB. 29 <sup>c</sup>
Cucumbers	lb. 29 <sup>c</sup>
Potatoes SWEET	3 lbs. 25 <sup>c</sup>
Tortillas	Lb. 10 <sup>c</sup>
Pinto Beans	9 lbs. \$1

Open 7 Days A Week  
9:00 A.M. to 9:00 P.M.

**Muleshoe Fruit Mkt**

410 E. Am. Blvd. Muleshoe

Where will your fertilizer dollar go the farthest?

**BELL FERTILIZER, INC.**

At the place where you can get your analysis in terms tailored to fit your needs. We can make any analysis your soil test might call for with any added elements you might want. Then why spend money for materials you do not need to get the analysis desired: also, why waste money on terms you do not need? We do not use credit cards or sign time contracts, but work out your individual needs on an individual basis. Be sure to see us for all your fertilizer needs -- in analysis or dry materials -- before you buy.

Bell offers this service to all of their customers  
**DON'T GUESS -- SOIL TEST**

Locally Owned and Operated  
123 WEST BIRCH AVE. PHONE 3-2750 or 4690

T. L. Glasscock, President  
J. H. Dunbar, Vice-President

DICK BELL, Mgr.

Dick Bell, Sec.-Treas.  
C. L. Saylor, Director

**WELLBORN'S BEAUTY SHOP**

1101 Ave. J Ph. 3-4040

**SPEC'S GOLD LANTERN COCKTAIL LOUNGE**

We Are Happy To Announce The Return Of **Darlene Kaye**

Playing Nightly For Your Pleasure at the Piano -- 9 P.M. to 1 A.M.

For An Evening Of Relaxation Visit The **GOLD LANTERN "CLOVIS" ONLY PIANO BAR"**

905 MAIN HOURS 9 A.M. TO 2 A.M. CLOVIS, N.M.

**Anthony's C.R. ANTHONY CO.**

**SHOP AND SAVE**

HOT ROCKET SPECIALS

**SPECIAL Quantity Purchase Thursday, Friday And Saturday ONLY!**

SPECIAL PURCHASE  
MEN'S BUCKHIDE BRAND  
Type IV Grey Khaki

**WORK SUITS**

\$5<sup>22</sup> Suit

SPECIAL PURCHASE  
Spring Cotton

**FABRICS**

Prints and Solids  
Reg. 49c and 59c  
SEW AND SAVE!

3 yds. \$1

Men's, Ladies, and Children's

**White Crew Socks**

Reg. 59c  
3 DAY SALE

3 for \$1

TOTS' 1 to 6 Years

**SPORTS SHIRTS**

New Spring Prints

REG. \$1.39 **99c**



### Tanguma From Valley

Syl Tanguma and daughter returned Monday from McAllen where they had been with her who were ill.

Her mother is improving following a fall and injury some weeks ago when Mrs. Tanguma was an attraction at the Rodeo.

Tanguma said the valley was beautiful, everything green and flowers in full bloom. She visited with relatives all the valley and attended the rodeo show in Mercedes. Clint was an attraction at the Rodeo which followed. Residents of McAllen are preparing for a visit from Candida's Allen Funt who has been on his tour for early Spring.

### Projects Planned For District 4-H Contest May 9

A joint meeting of the Progress 4-H Club was held Monday night at the Methodist Fellowship Hall in Progress.

Projects were chosen for the District contest which will be held in Lubbock May 9.

Eugene Black had charge of the boys meeting and Jean Martin met with the girls following the joint meeting.

The boys discussed the possibility of a livestock judging team, a rifle team and other individual events.

The girls also discussed the different projects in which they could participate in district contests.

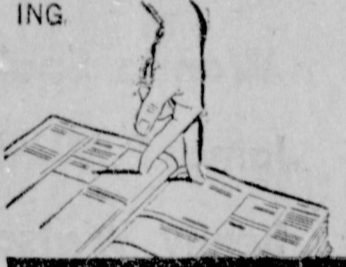
At the conclusion of the discussion period, recreation was led by David Lee and refreshments were served by attending adults.

#### VISITED PARENTS

Mr. and Mrs. Gaylord Tate, Houston, visited his parents, Mr. and Mrs. Cecil Tate, during Easter holidays.

## UP A TREE

Need someone to trim a tree, or fix your TV? The quick and easy way to find help is in the YELLOW PAGES... where YOUR FINGERS DO THE WALKING.



### John F. Kennedy

By Lutishia Watson

J - John John, Caroline and Jacqueline  
O - Oh how heavy your hearts were when

H - Hundreds, weeping stood and watched  
N - Near the Cadence perfect march.

F - From the Rotunda to Arlington

I - In the dazzling brilliant sun

T - There six white horses carried our J. F. K.

Z - Zoom beat the drums, shrilled pipes shrilled the way.

G - Great and powerful men marched behind

E - Each one mourning, yet so kind.

R - Rendering service in meditation

A - All to help bear the grief of the nation.

L - Looking at the Cadence splendor

D - Dear hearts wishing they might render

K - Kind words to bear up the weak.

E - Each so sad they could not speak.

N - Now the Cadence neared the end

N - Now the time had come when

E - Everyone must leave the grave.

D - Death claimed our warrior that was so brave.

Y - Yonder his life is with God, only his body lies in the sod.

The above poem, (each line beginning with a letter in Kennedy's name) was sent to Jacqueline Kennedy soon after her husband's death. Recently Mrs. Watson received the letter edged in black with the appreciative note bearing the words "Mrs. Kennedy is deeply appreciative of your sympathy and grateful for your thoughtfulness."

### Supper Honors Three Way Girls

A St. Patrick's Day supper was given to honor the girls' varsity team of Three Way High School on March 17, in the Tommy Galt home. The tables were decorated with gold basketballs, both miniature and fullsize, surrounded by green candles and shamrocks. Green and gold are the colors of the Eaglette team. Donna Furguson gave the invocation.

The menu was of ham, baked and cheese, relishes, ice-box-pie, and tea. The group took pictures after the supper.

Present were all the members of the team but two: Sharyn Wittner, Karen Eubanks, Donna Furguson, Janice Toombs, Doyleen Davis, Julia Burckett, Gracie Davila, Geneva Huff, Kay Lemons, Katherine Masten, Wenonah Williams, Linda Klutts (manager), and Madlyn Galt; also the coach and his wife, Mr. and Mrs. Sam Mayo.

### Marriage Read In Church Chapel

Erlinda Ruiz Manuel, Earth, and Alfonso Guerrero, Stamford, received the Holy Sacrament of matrimony in the Immaculate Conception of Mary Catholic Chapel recently.

Jose and Ecria Ruiz, Earth were official witnesses. Freddy Anzaldua was the acting acolyte and Carlos Reyes was the Holy Bible reader.

#### SERVICEMEN VISIT

A-3c Wayne Harris and two of his friends from the Amarillo Air Force Base spent Saturday and Sunday here visiting his parents and brothers, Mr. and Mrs. C. F. Harris, Johnny and Glen. The friends were A-3c Johnny Doyal of Dallas, and A-3c W. J. Hylemon of Alabama. They were accompanied back to Amarillo by Mrs. C. F. Harris, Johnny Harris, and Allen Davis, who visited Sunday night and Monday with Mrs. Harris' sister-in-law, Mrs. Lavern Driskill.

#### SINGING CONVENTION

The Primitive Baptist Church will hold a singing convention here this weekend. Singing will begin at 10 a.m. Saturday, lunch will be served at noon and singing will resume for an afternoon session.

Supper will be served before singing begins again that night. Sunday song service will begin at 1 a.m. and the schedule will be the same for the day as that of Saturday.

#### WEEP NO MORE

To peel onions the easy way, just cut off tip from both ends and then peel under cold running water.

### Mrs. Garvin Hosts WSCS Meeting

The Woman's Society of Christian Service of Three Way Methodist Church met Tuesday in the home of Mrs. Wayland Garvin, with six members present.

Mrs. Leon Reeves taught the study book Chapter 2 an ad, entitled "The Christian Family and Its Money."

Mrs. Cass Stegall presided over the business session. The Society voted to buy the literature to be used in Vacation Church School this year.

The officers were nominated and elected as follows: Mrs. Rayford Masten, president; Mrs. secretary of literature; Mrs. Cass Mrs. M. L. Reeve, secretary of promotion and Missions; Mrs. Wayland Garvin, secretary of Spiritual life; Mrs. Rayford Masten, secretary of youth; Mr. Garvin Long, secretary of students; Mrs. Arthur Cooper, secretary of children's work; and Mrs. Cecil Cole, secretary of

These officers are for the new church year, beginning June 1. The meeting was dismissed with prayer and refreshments were served by the hostess.

#### Services Conducted For Mrs. Hernandez

Funeral services were held Saturday for Orphelia Hernandez at the Immaculate Conception of Mary Catholic Church Chapel. Mrs. Hernandez died Friday.

For her services, Freddy Farias was the acting acolyte. Burial was in Muleshoe Cemetery under direction of Singleton Funeral Home.

### TIPS...

FROM THE OFFICE OF HOME DEMONSTRATION AGENT

Are you built like an ironing board? Few - very few - women are. That is why you should press the darts in your clothes on a pressing ham. A pressing ham is a pressing aid about 18" by 12" which is shaped like a ham (thus its name) and is stuffed with either wool scrapes or sawdust to make it firm. When pressing a garment place it over the ham so that its contours are similar to that of your body and its fullness will make the points of darts easier to press. When using the ham for pressing one is not likely to get bubbles or pleats at the points of darts. A pattern for making a ham can be obtained at the home demonstration agent's office next door to the Journal Office.

The third meeting of the Bailey Co. Advanced Dressmaking Workshop met March 19th with 15 women present. Mrs. Stanley Williams demonstrated the single thread dart for use on sheer fabrics and on darts on the outside of the garment. She also demonstrated the correct way to press a dart using a pressing g. ham. Mrs. Gordon Murrah demonstrated covering a belt and buckle. She suggested that a thin strip of belting be put inside the keeper on a belt to make it stand up better.

The Emeralds from Canyon will supply the music.

The event is being sponsored by 24 couples parents of some of the students.

ATTENDS SERVICES  
Mr. and Mrs. Karl Freyer and girls Tina and Jennifer were in Plainview Sunday to attend Easter morning services at St. Mark's Episcopal Church.

LATE  
WANT ADS  
Howard Griffins General Contractor Building, Decorating and Repair Phone 3-1182 Muleshoe 15-14t-tfc

FRANCIS IMPLEMENT CO. FORD TRACTOR Muleshoe, Texas

### Revival Services To Start April 5 At Lazbuddie

Revival services will begin at the Lazbuddie First Baptist Church April 5 and will continue through April 12.

Morning services will begin at 10:00 a.m. and evening services will begin at 8:00 p.m.

Rev. Ted Brian, Plainview, will be the evangelist who will use the theme, "New Life In Christ." The services are in cooperation with the Southern Baptist Convention's Jubilee Revivals.

Russell Hughes, music director at the Lazbuddie Church, will lead the congregation singing and

### Donald Taylor Named To Dean's List At Academy

ANNAPOLIS, MD. (FHTNC)—Midshipman First Class Donald O. Taylor, 23, son of Mr. and Mrs. Donald W. Taylor of 313 Birch Ave., Muleshoe, Tex., has been named to the superintendent's List for the first half of the second semester at the Naval Academy, Annapolis, Md.

To be named to the Superintendent's List he must have an overall "B" average with no grade lower than "C" in academic subjects. In addition he must have an aptitude and conduct mark of "B" or better; satisfactory status in physical education and be recommended by the Commandant of Midshipmen.

Twenty-seven percent of the 4,000 Midshipmen are now on the superintendent's List.

### Dance Set For Juniors - Seniors

A dance for juniors and seniors will be held in American Legion Hall, Saturday, April 18 following the Junior-Senior banquet.

The Emeralds from Canyon will supply the music.

The event is being sponsored by 24 couples parents of some of the students.

ATTENDS SERVICES  
Mr. and Mrs. Karl Freyer and girls Tina and Jennifer were in Plainview Sunday to attend Easter morning services at St. Mark's Episcopal Church.

LATE  
WANT ADS  
Howard Griffins General Contractor Building, Decorating and Repair Phone 3-1182 Muleshoe 15-14t-tfc

FRANCIS IMPLEMENT CO. FORD TRACTOR Muleshoe, Texas

### 30-voice revival choir.

"Everyone has a cordial invitation to attend", according to the church's pastor, Rev. Calvin Beach.

### BAPTISMAL REGISTER

Baptism at the Immaculate Conception of Mary Catholic Church recently are Adeline Morello, daughter of Mr. and Mrs. Raoul Morello; Senaida Maria Rojas, daughter of Mr. and Mrs. Antonio Rojas and Sylvia Anguano, daughter of Mr. and Mrs. Leopoldo Anguano.

Mr. and Mrs. Jesse Leal were sponsors

FISHERMEN RETURN  
Jack Brown, Clark Polson, Vic Benedict and Dr. Coy Dean have returned from a recent fishing trip to Lake Brownwood. Fishing was good the reports were unbelievable. One group of men from Hub had caught a 1.00 lbs. in a few days time.

BEST SPANISH FOOD IN THE SOUTHWEST!  
LA FIESTA  
521 W. 7th PO 2-1362 CLOVIS

Custom-Fitted COSMETICS BEAUTY COUNSELOR By Appointment In Your Home  
Eva M. Alsop  
424 W. Ave. B  
Phone 5440

Complete Repair service on any make of irrigation engine! Ratio changes and repair service on gear drives!  
Phone 3-4260 for Fast Service  
D. H. SNEED, Owner

SNEED REPAIR SHOP  
New Engines, Priced Right

Continental Red Seals  
Chrysler (6 Models)  
Oldsmobile 394  
Pontiac 389  
Chevrolet 292 Truck  
Reconditioned Engines

1-5820 Continental  
1-R602 Continental  
1-T427 Continental  
1-M330 Continental  
1-V856A Chrysler

Complete Repair service on any make of irrigation engine!  
Ratio changes and repair service on gear drives!

Phone 3-4260 for Fast Service  
D. H. SNEED, Owner

#### SHOP MULESHOE FIRST

COX DRIVE-IN THEATER  
Fri., Sat., April 3 - 4

ELVIS PRESLEY  
FUN IN ACAPULCO  
Sun., Mon., April 5 - 6

ELIZABETH TAYLOR RICHARD BURTON  
The V.I.P.s

WHITE'S MAGIC 50 TIRE  
The Only Tire in the World Guaranteed NOT TO WEAR OUT for 40,000 Miles! Plus 40,000 Mile Road Hazard Guarantee.

WHITE'S the Home of Greater Values

FOR GREATER FARM PROFITS SEE  
BELL FERTILIZER, INC.  
CONTINENTAL Blend-O-Mix Factory  
All Analysis -- Bagged or Bulk Material  
State Guaranteed Analysis  
Anhydrous Ammonia --- Rental Equipment  
Book your PAG Planting Seeds with us NOW, for GUARANTEED Delivery for 1964. There will be a SHORTAGE on these SEEDS  
See—  
BELL FERTILIZER, INC.  
Locally Owned and Operated  
123 WEST BIRCH AVE. PHONE 3-2750 or 4690  
DICK BELL, Mgr.  
T. L. Glasscock, President  
J. H. Dunbar, Vice President  
Dick Bell, Sec-Treas.  
C. L. Saylor, Director

ROBERT L. REAL ESTATE  
Owning your own home is a good investment  
... and when you finance your home with us, the dollars you pay each month are "growth dollars." Each payment you make increases your equity until you own your home debt-free. And in the meantime you enjoy it. Why not let some of these "growth dollars" work for you? Let us arrange a home loan for you tailored to your needs  
First Federal Savings & Loan Ass'n. of Clovis  
Home Office: 4th and Pike Streets  
Branch Office: 2nd and Abilene, Pottawatomie, N.M.  
MEMBER OF THE SAVINGS AND LOAN FOUNDATION, INC. SPONSOR OF THIS ADVERTISEMENT IN LIFE AND PARENTS MAGAZINE.

Follow the Chemagro Practical Cotton Program  
The Chemagro Practical Cotton Insect Control Program combines Di-Syston Systemic Insecticide with careful field checks to give you effective and low-cost control of cotton insect pests.

Plant your cotton with protection  
Di-Syston GRANULAR INSECTICIDE  
Di-Syston is absorbed as soon as root system forms to protect entire plant against sucking pests up to 8 weeks.  
Good Early Growth with Di-Syston  
Di-Syston is a granular systemic insecticide that is applied in the furrow with seed at planting time. It protects cotton from damage caused by thrips, aphids and mites from the time it emerges, but it does not harm beneficial insects. Di-Syston kills harmful pests as soon as they pierce any part of the plant to suck plant juices. It gives your crop an early, vigorous start. Cotton sets fruit earlier to make high quality bottom bolls. Di-Syston works from inside the plant where it is unaffected by weather. It can't wash off or blow away. Control lasts from 6 to 8 weeks and more. And many growers report season-long suppression of red spider mite because of the excellent early-season control. For good early growth and more uniform stands, protect your cotton at planting time with Di-Syston.  
CHEMAGRO CORPORATION  
KANSAS CITY 20 • MISSOURI



# WE THE UNDERSIGNED WISH TO RECOMMEND THE \$ 900,000. SCHOOL BOND ISSUE TO OUR FRIENDS AND NEIGHBORS.

## WE HEREBY SOLICIT THEIR ASSISTANCE IN PASSING THIS BOND ISSUE IN ORDER THAT THE YOUNGSTERS IN THE MULESHOE INDEPENDENT SCHOOL DISTRICT MAY HAVE ADEQUATE AND SAFE EDUCATIONAL FACILITIES.

A. S. Stovall  
Duane Lloyd  
Wylie R. Baker  
Richard Hawkins  
Jay Wyr  
Carl White  
J. L. Redwine  
Lola White  
H. W. Hendon  
Bryan Brady  
Woodie Lambert  
Lönnie Dee Merriott  
C. F. Jones  
Mrs. C. W. Freeman  
Carl Thomas  
Glenda Dale  
Mildred Neely  
Ben A. Yeager  
C. O. Harris  
Aurelio Cuevas  
H. G. Howell  
Mrs. George Bragg  
Doris Kinser  
Noah Kinser  
J. M. Forbes  
Mrs. Fred Beene  
Mrs. R. J. Parks  
Mrs. Bo Bryant  
Bo Bryant  
Tommy Haley  
John W. Smith  
John T. Gregg  
Mrs. Elmo Owens  
Haney Poynor  
Mrs. W. A. Hail  
Mrs. Raleigh Mason  
Mrs. M. F. Blackman  
Mrs. J. J. Brackman  
James R. Jennings  
W. E. Meyers

Archie Scarlett  
Harmon Elliott  
Ralph W. Douglas  
Clifton Finley  
Allan Harris  
Billy J. Kinard  
Frank Matthews  
Frank Swint  
Clarence E. Mason  
Velma Jones  
Mrs. J. Lewis Morris  
Mary Malone  
Melvin Malone  
Noraene Stallings  
M. E. Simmons  
Dudley Malone  
Mrs. Jesse Fox  
Jesse E. Fox  
Mrs. Jim Jennings  
Thursie Reid  
Mrs. S. L. Benefield  
S. L. Benefield  
Mrs. F. D. Arnold  
Mrs. Agnes Chatman  
Mrs. Cecil Rundell  
Mrs. A. E. Callahan  
Carl Bamert  
Matilda Slemmons  
Gene Cox  
Marie Lenau  
Richard Goodrow  
Mrs. Dewey Darsey  
Jessica Hall  
Ece Benedict  
Mrs. Pearl Smith  
Mrs. Harold Reynolds  
Harold Reynolds  
Pat Nickles  
Mrs. Harold Allison  
Charles Lenau

Cecil H. Tate  
James A. Cox  
Jim Burkhead  
Frank Ellis  
George E. Hicks  
Bill Jim St Clair  
Dough Haynes  
Lindal Murray  
Anna Bearden  
Russell Bryant  
Sikie Watkins  
Mrs. Sam Damron  
Sam Damron  
Mrs. James Phipps  
Spencer Beavers  
Ernest Kerr  
M. D. Locker  
C. T. Lumsden  
Randall Riley  
Joe Harbin  
Melvin R. Evans  
W. F. Birdsong, M.D.  
A. V. Wood  
Wayne Williams  
Verge Lane  
Olan Burrows  
D. B. Lancaster  
Doc Botkin  
Sam Cook  
Gil Lamb  
Ralph Stevenson  
Jacque Baker  
D. S. Anderson  
Albert L. Field  
Bill McDonnel  
Glen Williams  
Neal Dillman  
Lee R. Poo  
Ray Daniel  
N. L. Johnson

Karl H. Freyer  
Chris Freyer  
Opal Boothe  
Harvey Bass  
Vic Benedict  
Roger Albertson  
Franklin Mann  
J. C. Spain  
Wanda Spain  
James P. Wedel  
Benny Watson  
Harry Waddle  
Wilma Waddle  
Robert Hooten  
Mrs. A. W. Copley  
Gil Wollard  
William Pogach  
C. M. Osborne  
Mrs. T. W. Berry  
Mrs. W. M. Oliver  
Mrs. Claude Riley  
Barbara Fielding  
Mrs. Delbert Barry  
Bernice Holdeman  
Mrs. Claude Faubus  
Mrs. Lee R. Pool  
Mrs. Ethel Devald  
Jerrell Otwell  
Polly Otwell  
Ida Tapp  
Elizabeth Barnett  
C. M. Brown  
Tana Holmes  
Richard Puckett  
Barbara Puckett  
C. A. Barnett  
Jack Lee  
Myrtle Lee  
J. M. Hefner  
Lera Mae Hefner  
Claude Don Holmes  
L. B. Hall



### SHOP MULESHOE FIRST!

#### EXCEPTIONAL OPPORTUNITY

I would like to interview a man or woman between the ages of 23 and 45, who wants to consider a business opportunity which is very worth while. This person should have a reasonably good education. We are prepared to invest considerable money in the right person; so if you are interested in earning from \$4800 to \$7200 a year to start, depending upon your qualifications, write Box 449 care of Muleshoe Publishing Co.

### NEED ANOTHER PLUG...

... or a switch on that hall light?

call

## A & L ELECTRIC

### Phone 4630

ALBERT THOMAS

MULESHOE

LEWIS BLAYLOCK

### Jaycees--

(continued from page 1)

it will cost and the greater will be the actual physical danger to our children who now attend school in unsafe buildings.

We therefore urge your support for Safe, Adequate, Educational Facilities for our children.

And we urge your consideration and positive support in voting in favor of the School Bonds on April 4, 1964.

Muleshoe Jaycees In other recent Jaycee activities the group voted to furnish transportation for persons who wish to vote in the April 4th election. Persons needing transportation are to call 3-2590 or call auto dispatch. Ask for DeVaney.

#### WEEKEND GUESTS

Weekend guests in the home of Mr. and Mrs. J. G. Ann were their daughter, Gail Ann, Lubbock and Freida Reed, Santa Fe, N. M.

#### CARD OF THANKS

We appreciate the kindness and help of our many friends and neighbors who so generously gave of their time to console and help us at the death of our father, Al Cassidy.

The thoughtfulness for food, flowers and sympathy, are gifts of kindnesses which will not be forgotten.

Mr. and Mrs. Kenneth Precure and family

Mr. and Mrs. W. A. McWilliams

FRANCIS IMPLEMENT CO. FORD TRACTOR Muleshoe, Texas

### THREE WAY NEWS

Easter guests of Mr. and Mrs. Johnny Wheeler included their two sons and families, Mr. and Mrs. Joe Wheeler and children of West Camp, and Mr. and Mrs. Jimmy Wheeler and children of Lovington, N. M.

Mr. and Mrs. Bud Warren had as Sunday guests Mr. and Mrs. John Hodnett and daughters of Muleshoe, and also from this community, Mr. and Mrs. Lloyd Warren, Mr. and Mrs. Clifford Dupler, and Mr. and Mrs. Wesley Warren.

Visiting Mr. and Mrs. Cecil Lindsey last Sunday were his mother and sister, Mrs. W. A. Lindsey and Mrs. Myrtle Fry of Levelland; also two sons and families, Mr. and Mrs. Ricky Lindsey and daughter, Morton, and Mr. and Mrs. Don Lindsey and sons of Levelland.

Mr. and Mrs. James Courtney and son Pat, and Mr. and Mrs. Frank Stegall II left Thursday afternoon to spend the Easter week-end with relatives in Paris, Texas.

Mr. and Mrs. Bill Davis and children of Lubbock visited last Sunday with her parents, Mr. and Mrs. R. L. Reeves and other relatives.

Mr. and Mrs. Arthur Cooper had as guests last weekend their five daughters and families; Mr. and Mrs. Paul McMahan and children, Littlefield; Mr. and Mrs. Lamar Taylor and Lisa, Mrs. Buddy Davis and Mike, Miss Doris Cooper, all of Lubbock; Mrs. Carlton Earp and Charles of Abilene. Also visiting were Mrs. Lester B. Taylor, Sarah Ann and Larry of Tulsa, and Mr. Ronald Corkins of Lubbock.

Recent guests of Mr. and Mrs. Garvin Long and Marvi were their daughter, Mr. and Mrs. Carl Miller and Carolyn of Canyon.

Mr. and Mrs. Bill Dupler spent last weekend in Denver City, visiting her sister, Mr. and Mrs. Luther Edwards.

Mr. and Mrs. W. L. Welch and Gary went to Muleshoe Easter Sunday for a family dinner at the home of her niece, Mrs. Bobby Joe Newman in Muleshoe. Also present were Mrs. Welch's father, Mr. M. C. Street of Littlefield, and two of her sisters and a brother of Muleshoe.

Easter Revivals continue through Sunday April 5 at the Baptist Churches here. Maple Baptist Church meets at 7:30 A. M. and P.M.; with their pastor, Rev. Dennis Heard doing the Church meets at 10:0 A.M. and 8:0 P.M. for preaching, and

#### SHEPHERD AFB

Mr. and Mrs. Butler Stevens, Muleshoe, and Mr. and Mrs. Dewey Watson and children, Plainview, spent the weekend in Wichita Falls where they visited their son and brother, Airman Glen C. Stevens who is stationed at Shepherd AFB.

#### ATTENDS BANQUET

Mr. and Mrs. John Gregg and daughter, Shelley and Brenda, visited in Amarillo Friday with friends, Mr. and Mrs. Charlie Scruggs.

While in that city, they attended a banquet honoring millard Shivers, democratic candidate for State Commissioner of Agriculture.

### Blast--

(continued from page 1)

family which lost all its possessions. The Three Way Baptist Church which was holding a revival at the time of the explosion immediately began collecting other items from among its congregation.

#### GOODLAND BIBLE CLUB

Mrs. W. C. McCelvey, Jr., was the hostess for the Goodland Bible at its March 17 meeting. The study of the book of Ephesians was completed. Those present included Mrs. Pete Tarlton, Mrs. Baker Johnson, Mrs. L. D. Sanderson, Mrs. Buck Ragsdale, Mrs. E. A. Kenley, and the hostess, Mrs. McCelvey.

#### ON FEDERAL PAY RAISE

In what may have been called election year hitters, the house voted "no" to a \$10,000-a-year pay raise.

It was a surprise that the House killed a bill that would have boosted the salaries of 1.7 million government workers.

The Senate, however, can revive the pay boost drive later this session, at more modest proportions. But veteran observers consider this unlikely.

#### INCOME & TAX CUT

The new tax law shifts some of the income tax burden onto persons with high incomes but leaves the bulk of the load on the middle income group.

Persons with income of over \$5.0 will pay 9.5 per cent compared with 8.8 per cent, those with 8.8 per cent, those with incomes of over \$20,000 will pay 24.4 per cent compared with the present 32.1 while those in the \$10,000-\$20,000 class will pay 27.6 per cent, compared with the present 26.8.

Those in the \$5.0 will pay 38 per cent, compared with the present 38.6.

#### LOWER DRAFT AGE

President Johnson wants Congress to lower the draft age from 18 to 17 to give his war on poverty a chance to aid needy youngsters a year earlier, an official source reports.

The approximately 500,000 who fail the Army's general classification test each year will be given a chance to enter schools, where they will take special educational and vocational courses.

It's wise to cut meat for steaks into cubes that are at least 1 inch.

### FROM EL PASO COLLEGE

Karen Jones, a student at Texas Western College, El Paso, spent the holidays here with her family, Mrs. Norma Jones, Ransom and David and other relatives and friends.

### HALLS IN PLAINVIEW

Mrs. L. B. Hall, Perry and Lauren were in Plainview Friday through Monday with her parents, Mr. and Mrs. E. Q. Perry. Hall joined his family there for Easter Sunday.

### PREPLANT THE FULL MIGHT OF NITROGEN



BAKER FARM SUPPLY H. M. GABLE SEED & FERTILIZER

## We Wish To Thank...

... all the fine folks we've had the pleasure of doing business with over the past few years as dealer for Massey-Ferguson Farm Equipment, and to announce that due to the expanding requirements of our Buick Agency, we have sold the Massey-Ferguson dealership to FRY & COX BROS. We know that you will receive the same fine service from them that we have always tried to give in the past, and wholeheartedly recommend them to you!

## BROCK MOTOR CO.

INCORPORATED

422 N. 1st

Muleshoe

## Greater Farm Profits

From

# RED BARN CHEMICALS

## Fertilizer Program

Plan Your Farming Around These

### Profit Proven Products...

- TREFLAN Pre-emergence herbicide for Cotton
- RED BARN Liquid 10 - 34 - 0 Nitrogen Phosphate
- RED BARN Ammonium Sulfate and Ammonium Nitrate
- RED BARN Anhydrous Ammonia
- RED BARN Chelated Iron and Zinc Solutions
- TILLAM Pre-emergence herbicide for Sugar Beets
- PROPAZINE 80-W Pre-emergence herbicide for Grain Sorg

Custom Application

Delivered to your Field

Free Soil Analysis

Dual Applicator For Ammonia and Liquids

## RED BARN HEMICALS

Contact David Hardison

410 N. 1st.

Muleshoe, Texas

Ph. 7850

## BAILEY COUNTY

# GRAIN SORGHUM PRODUCERS

## ANNUAL MEETING

From High Plains Research Foundation

- Lloyd Langford and Jim Valliant discuss Grain Sorghum varieties and Sorghum Midge.
- Annual election of officers and directors
- Refreshments will be served

If You Are Interested In Grain Sorghum, Be At-

## BAILEY COUNTY ELECTRIC BLDG.

FRIDAY, APRIL 3rd., 7:30 P.M.

## Announcing

THE ADDITION OF

# Massey-Ferguson

## Sales & Service

Fry and Cox Bros. would like to invite all Massey-Ferguson equipment users to come in and see the Massey-Ferguson equipment... And if you will bring in the model and serial number of your Massey-Ferguson equipment, we will put it on record so that we may be better able to serve you in the future!

## Fry & Cox Bros.

MULESHOE

401 S. 1st

Phone 3-3660



### Muleshoe Invited For Volleyball

Muleshoe volleyball enthusiasts will be interested to know that Plainview is joining the volleyball tournament circuit this spring, and welcomes the entrance of both men and women's teams from Muleshoe.

The tourney will run five nights, Monday through Saturday (skipping Wednesday) April 20-25. Entry fee will be \$5, but it will be returned when the team completes its first game.

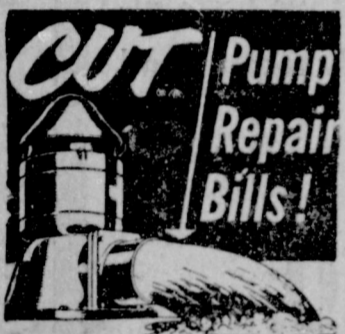
Locale will be the Plainview High School gymnasium, with the tourney under the sponsorship of the Bulldog Booster Club of Plainview.

Runt Burch, seasoned in the art of staging volleyball tourneys, will be tournament director. Entries should be sent to him at 167 Lexington in Plainview. Team name, \$5 entry fee and name of person to which bracket is to be mailed should be included.

Games will be two 12-minute halves. Trophies will be awarded. Teams will be limited to eight players. Entries must be received by April 11.

SHOP MULESHOE FIRST!!

FRANCIS IMPLEMENT CO.  
FORD TRACTOR  
Muleshoe, Texas



**WESTERN**  
deep well  
**TURBINES**  
last up to 3 TIMES  
longer than other pumps

Western's exclusive redwood-lined tubeline eliminates bronze bearings and shaft wear. Saves you money all around. For more details without obligation call your Western Pump dealer today.

**EDWARDS GIN**  
AND IRRIGATION  
Ph. 5670 Muleshoe



JIM C. LANGDON is now serving on the Railroad Commission and doing a fine job. Texas oil production has gone up 3 per cent, meaning more income for Texans and more tax revenue. JIM LANGDON is a former high court judge who understands the problems of oilmen, truckers, butane dealers, the railroads and other industries he helps to regulate in the public interest. Texas must keep this man of integrity and ability on the job. Vote in the Democratic Primary May 2 for Railroad Commissioner

**JIM LANGDON**

(Vol. Adm. Paid for by Jim Langdon Campaign Committee, Charles Langdon, Chairman.)

### Progress News

By MRS. M. O. NIGH

The Progress W. M. U. met Tuesday for its monthly business meeting.

The Intermediate Girls Auxiliary met Tuesday in the home of Mrs. V. T. Tanner after school.

The spring revival was held this past week at the Progress Baptist Church. The visiting evangelist was Rev. Troy Walker, Muleshoe. The revival closed Sunday night. There were several visitors in Church Sunday morning.

Wanda Rogers is taking treatments in Lubbock each week. But she spends the weekend at home.

Mr. and Mrs. O. M. Self returned Sunday after visiting Mr. and Mrs. Hop per Ivy and Mr. Sid Goodwin in Oklahoma, and her sister and family, Independence, Kansas and Mr. and Mrs. George Stotts, Coffeyville Kansas.

Mr. and Mrs. Byron Swyn visited over the Easter weekend with their daughter and family, Mr. and Mrs. Joe Walker and children at Hobbs, N. M.

Mrs. Mary Lookadoo, Canyon, is visiting with her parents, Mr. and Mrs. George Gross and children.

Mr. and Mrs. V. T. Tanner and family, visited her mother at Sara, Okla. during Easter vacation.

Mary Wdel, and Pat Thompson were both home from college over the holiday.

Trudy Davis of N. M. U., Portales, was home with her parents over the weekend.

W. S. C. S. will meet April 2 in the home of Mrs. Ann Hill. They are studying the book, "The Changing City". It is being conducted by Elvita Gray.

Mr. and Mrs. Barney Smith visited Mrs. Mattie Griffen Sunday afternoon.

#### STUDENT HOME

Clifford White, Texas Tech, spent the holiday here with his parents, Mr. and Mrs. T. R. White.

#### IN SUNDOWN

Mr. and Mrs. Leslie Smith and children and Mr. and Mrs. Delbert Barry and Billy, spent Sunday with Mrs. Smith's and Barry's parents, Mr. and Mrs. U. O. Barry, Sundown.

**ARM ROAST LB. 49¢**

Choice Heavy Pen Fed Beef

**Chuck Roast** Center Cuts Choice Heavy Pen Fed Beef **lb. 49c**

**Chuck Roast** Blade Cut Choice Heavy Pen Fed Beef **lb. 39c**



**BACON**

WILSON'S CORN KING

Sliced

**1 lb. pkg. 45c**

**SAUSAGE**

Pinkney's Pure Pork

**2 LB. PKG. 49¢**

**Club Steaks** lb. 69c

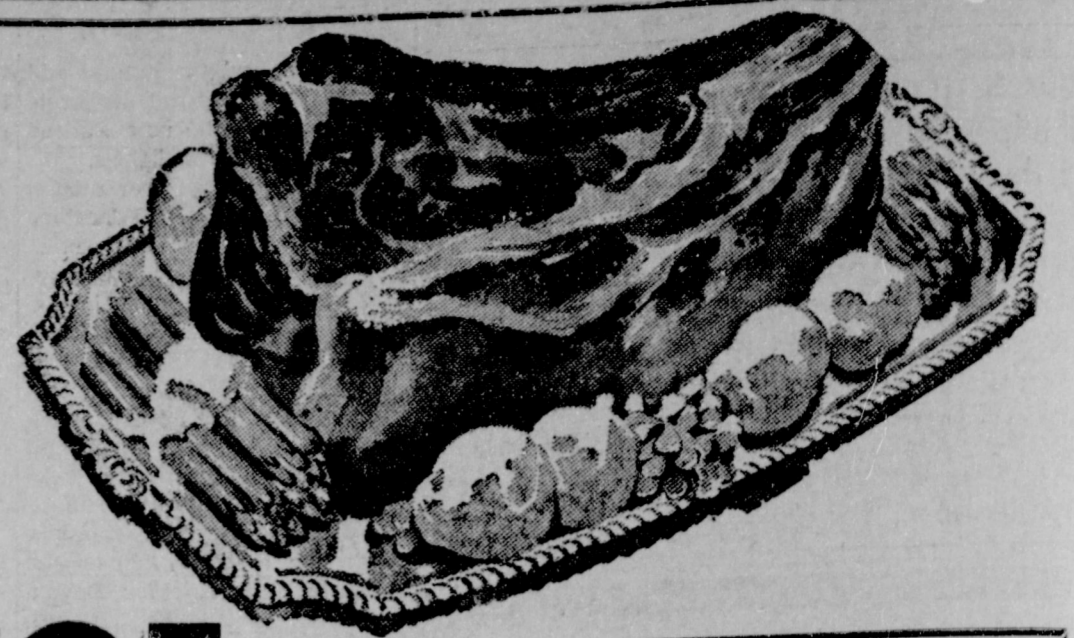
CHOICE HEAVY PEN FED BEEF

**Short Ribs** lb. 19c

Boneless - Choice Heavy Pen Fed Beef

**Stew Meat** lb. 59c

Choice Heavy Pen Fed Beef



**FOR YOUR LOCKER OR DEEP FREEZE Cut and Wrapped**

**CHOICE HEAVY PEN FED BEEF**  
HALF BEEF **lb. 45c**  
Hindquarter Beef **lb. 55c**  
Forequarter Beef **lb. 39c**

**HAMBURGER MEAT** 3 lbs. **85c**  
Fresh Ground

**FRANKS Pinkney's** 3 lb. **\$1.00**  
Jumbo Pak

**MILK**

KIMBELLS TALL CANS

**9 FOR \$1.00**

**PEAS**

MISSION SWEET NO. 303 CAN

**7 FOR \$1.00**

**SPINACH**

Del Monte Fancy

**7 FOR \$1.00**

**TISSUE**

Bath Room Delsey (4 Roll Pkg.)

**2 for \$1.00**

**TOMATO JUICE**

HUNT'S 46 oz. Can

**4 for \$1.00**



**POTATOES**

20 lb. 69c

WHITE RUSSET CELLO BAGS

**LEMONS**

LB. 13¢



CALIFORNIA, Sun Kist

#### FROZEN FOOD

**Potatoes** Ore-Ida Crinkle Cut 2 Pound Package **39c**

**CORN** Keith's Cut 10 oz. Pkg. **2 for 39c**

**Brussels Sprouts** Keith's 10 oz. pkg. **2 for 39c**

**Blueberry Pies** Morton's Family Size **39c**

**Mixed Melon Balls** Birdseye 16 oz. Pkg. **39c**

**Perch Fillets** Ocean Beauty 1 lb. pkg. **39c**

**Tomatoes** ctn. 29c

Plastic Ctn. of 4

**Broccoli** lb. 23c

Garden Fresh

**Cucumbers** lb. 29c

Fresh Green Slicers

Detergent Tablets **69c**

**Salvo** Giant Size Box

**HAND SOAP** **2 for 29c**

**LAVA** Bath Size

**Cake Mixes** Duncan Hines, White, yellow, Devil Food **3 for 89c**

**Instant Milk** Carnation 14 Qt. Size Box **\$1.09**

**Shortening** Mrs. Tuckers 3 lb. tin **59c**

**Gladiola Flour** 25 Pound Bag **\$1.98**

**Dog Food** Kim No. 1 Tall Cans **12 for \$1**

**RC Cola or Upper 10s** 3 for **\$1.00**

(6 Bottle Ctn. King Size)

**Baby Food** Heinz or Gerbers Strained **11 for \$1.00**

**Blackeye Peas** Kimbells Fresh 300 can **7 for \$1**

**Green Beans** Del Monte Blue Lake cut No. 303 Can **4 for \$1.00**

**Coffee** Maxwell House Drip or Reg., 1 lb. Tin **75c**

**Pineapple** Diamond Crushed No. 300 Can **19c**

**Luncheon Meat** Kimbells 12 oz. Can **39c**

**Pickles** Best Maid (Sour or Dill) Qt. Barrel Jar **29c**

**Cookies** Supreme Buttercup 9 1/2 oz. Box **19c**

**Chocolate Dainties** Hershey 6 oz. Pkg. **19c**

**Coconut** Bakers Southern Style 4 oz. Can **19c**

**Shampoo** White Rain 60c Size **39c**

**Headache Pwd** B.C. 10c size pkg. **3 for 25c**

GUNN BROS.

STAMPS  
Double Every  
Wednesday

**White's CASHWAY**

Listen To  
MULETRAIN  
over KMUL  
sponsored by  
CASHWAY.



# Archaeologists Locate Solomon's Bronzes

By DAVID LANCASHIRE

JERUSALEM (AP) — A massive stone staircase leading to a lost city 5,000 years old — a set of bronze dishes belonging to a jeweled skeleton — a crude mummy unlike anything found before in the Holy Land — these are scientists to a new link with the great temple of King Solomon in the Old Testament.

Archaeologists led by Dr. James B. Pritchard of the University of Pennsylvania have struck it rich in the Jordan River Valley where they have excavated a mound of ruins 700 feet below sea level, looking for remains of Solomon's sacred temple vessels.

"This was a big metropolitan city," says Pritchard, speaking of the sloping mound of rubble at Sa'diyeh, near the green banks of the river 70 miles northeast of Jerusalem.

"In the Iron Age, about 3,000 years ago, it had a technological culture far more advanced than Jerusalem. We don't know its name, but it could be the city of Zarethan in the Old Testament," he adds.

The Bible's Book of Kings says Solomon had the bronzes for his fabled temple at Jerusalem made in the Jordan Valley between Succoth and Zarethan, but archaeologists, have never before found pieces of the bronze-wear.

Pritchard's team, which began work New Year's Day in the biting wind and chilly rains of Jordan, unearthed the long-sought bronzes within weeks. Digging

with a crew of 150 Arab laborers, they found the twisted remains of a large bowl, and then discovered a bronze sword, a perfectly preserved dish the size of an LP record, a mirror of bronze, a metal tripod and other implements.

**Layer Cake of Cities**  
The search turned up more spectacular finds in the mound, revealing it as a layer cake of ancient cities.

Atop the hump, scattered with shreds of ancient pottery, runs the foundation of a 24-foot-thick casemated wall, built around 3,000 years old. The city was destroyed about 90 years before Christ, but the house walls are still there, ashes still filled the red pottery ovens, and grains of wheat were preserved in a bin.

Twelve feet beneath the city, workers found floors from houses built 5,000 years ago, and Pritchard believes when the mound is cleared down to that level next year, even older ruins may be revealed.

Down the hillside, diggers struck the stone steps of a huge staircase leading to a spring below. Once roofed over and camouflaged, the concealed stair allowed townspeople to bring in water unseen, meaning the city could withstand a siege for months.

West of the walls, Pritchard's workers uncovered an Iron Age cemetery from about 1,200 B. C., and what Pritchard calls "the most elaborately furnished tomb of this period ever found in Jordan."

In it was the skeleton of a wealthy lady Pritchard says may have been a queen. She wore more than 10 feet of necklaces — 670 orange cornelian beads and 72 gold beads. Beside her were four ivory boxes and cosmetic bowls, with Egyptian designs, and mirror. Fastened to her neck was a silver chain, and on her breast lay two bright toggle pins and two silver plates.

"Now that we have found gold we have had to put a guard on the cemetery, and the site will have to be guarded until we start digging again next winter," says the Rev. John F. Huesman, a Jesuit priest from Alma College in Los Gatos, Calif., a member of the expedition.

Another tomb held a skeleton coated with bitumen from the nearby Dead Sea, showing a crude attempt to imitate an Egyptian mummy. The corpse carried a small bronze sword.

From two scarabs bearing Egyptian seals, Pritchard concludes the city may have been sacked and burned by the troops of Pharaoh Shishak, whose records in havoc in the Jordan Valley about 916 B. C.

**Solomon's Bronzes**  
"This is the largest mound in the Jordan Valley — more than twice as big as the one at Jericho — and may turn out to be a richer find than Jericho," Pritchard says. "In terms of objects of wealth discovered, it already is."

"But the bronze is the important thing. You can take the gold beads and the silver pins, but I'll take the bronzes," says Pritchard, who puffs a pipe and wears an Arab sheepskin vest while he works.

"These are probably the best indication we have to date of the type of bronze workmanship that was used in the temple of Solomon. It will be shown to schoolchildren for years."

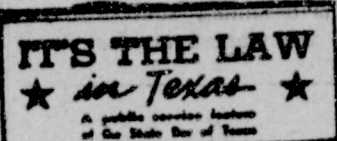
The theory that Solomon's bronzes came from this area was developed by Dr. Hendricus Franken of Leiden University, a Dutch archaeologist who has been digging for four years at a mound a few miles from Pritchard's. So far Franken has found ancient furnaces for making bronze, but no finished products.

Pritchard, 53, a tall, gray-haired Bible expert who has spent the last four seasons uncovering the Biblical city of Gibeon near Jerusalem, has been digging off and on in the Holy Land since 1934. He is so accustomed to dealing in centuries that he has trouble remembering his own age.

When not shoveling in Jordan, he is curator of Biblical archaeology at the university's museum, and a professor religious thought.

With him on the dig are Father Huesman, who has shed his priests' clothes for a plaid shirt.

Dr. Robert Smith of Wooster College in Ohio, Thomas McClellan of the Lutheran Seminary at Gettysburg, Pa., Gustav Materna, a German draftsman from Frankfurt, Jacques Lagarde, a French student from Jerusalem, British artist Terry Ball of London and five Jordanian experts from the government Antiquities Department.



### IN CONTEMPLATION OF DEATH

Uncle Joe, a widower, had more money than he would ever need. This enabled him to make generous gifts over a period of years to a number of friends and relatives.

When Uncle Joe died and his estate was probated, the heirs were shocked when the federal Treasury Department levied estate taxes on all the gifts made during the past three years. How could this be?

The tax law is clear: Any transfer of property within three years preceding the date of death — except on a bona fide sale for adequate and full consideration — is presumed to be in contemplation of death and taxable, unless shown by the donor's estate to the contrary. But any gift or transfer more than three years before death is not taxed as part of the estate.

This law has a valid public purpose. It is aimed at preventing people from avoiding estate taxes by giving away their property before they die. Of course, one seldom knows exactly when he will die, but an older person or one with an illness may reasonably know that his years are limited. Thus the law raises the presumption that any transfer within the three-year period is in contemplation of death.

Anyone can make gifts of his property at any time. Those gifts other than purely nominal ones must be reported for gift tax purposes. Sizeable tax exemptions are allowed for gifts, but the tax laws are so contrived as to present a wealthy person giving away all his property before death tax-free.

In Uncle Joe's case the gifts will be taxable unless the estate can rebut the presumption that they were made in contemplation of his death so as to avoid the estate tax or as a substitute for a will.

(This newfeature, prepared by the State Bar of Texas, is written to inform — not to advise.

## STATE CAPITAL Highlights AND Sidelights by Vern Sanford TEXAS PRESS ASSOCIATION

AUSTIN, Tex. — Top finance officials of the state now feel reasonably sure the next fiscal year for Texas governmental operations will down with an unfamiliar general revenue surplus on hand.

Texas' hard-pressed general fund has been in almost constant deficit for more than six years. As of March 25 it still was \$36,600,000 in the red.

However, budget-makers are impressed with optimistic U. S. Treasury reports that the income tax cut is going to boom state and local revenues by putting more money in circulation. (Theory: more money spent, more sales taxes collected.)

"There will be a surplus. The question is how much," commented one veteran finance observer. Ideas on "how much" stretch all the way from a relatively modest \$35,000,000 estimated by the comptroller's office — to upwards of \$900,000,000.

While the feeling is general that the Legislature will begin its budget writing next year with prospects of money on hand, the surplus likely will not be big enough to avert a new tax bill.

Public school teachers are campaigning for a \$405 annual pay raise which would cost the state \$68,000,000 for the next biennium. Texas Commission on Higher Education has endorsed a program which totals \$86,000 additional spending for the college and university system for 1965-67.

Other state agencies are continuing to grow and few have been known to ask less money. The surplus should provide a protective cushion. However, governmental finance experts feel that taxpayers won't get by the 1965 legislative session unscathed.

**LOAN REGULATIONS PROPOSED** — The terms "easy payments," "no red tape," and "repayment in easy installments" are considered misleading advertising by money lenders under regulations proposed by Francis A. Miskell, regulatory loan commissioner.

Miskell served notice of his first four "rules of practice and procedure" for lenders and scheduled a public hearing on them for May 8.

Regulations cover books, files and records; advertising; insurance and collection practices. Under other proposed advertising rules, almost any "comparative" term such as "new reduced rates" or "new type of service" must stand a rigid test of accuracy. Miskell also proposed to ban business solicitation by such devices as "credit cards" and "letters of credit," claiming the borrowers have an established credit standing.

Strong-arm collection practices would be strictly prohibited. In fact, under the rules, lenders

could not solicit payment from anyone other than the borrower, members of his immediate family or signers of the note. Employers could be called on to help collect by their own consent.

Miskell gave the loan firms until May 1 to submit their written views on the rules.

The regulatory loan agency, set up by the Legislature last year to regulate loans up to \$1,500, just now is moving into full scale operation.

**ASKS RUBY MOVED HERE** — Jack Ruby's new lawyer, University of Texas Professor Dr. Hubert Winston Smith, wants the accused slayer of Lee Harvey Oswald moved to the Austin State Hospital for more lab tests.

Smith has indicated he will rely on the university's law-science institute to determine whether Ruby suffers from any form of brain damage.

Smith is both attorney and doctor. He holds degrees from Harvard law and medical schools.

**FIRST TEXAS TRAVEL ADS BOOKED** — Texas begins its first official advertising of its vacation attractions in national publications on April 15.

Initial ad shows a pretty girl on a Texas beach and boasts of Texas fishing, scenery, golfing and horseback riding. It will appear in the spring vacation and travel section of the New York Times. Same ad will run in the Chicago Tribune's travel section on April 12.

Texas Tourist Development Agency plans a number of advertisements in out-of-state newspapers and magazines this spring and summer.

Funds for the travel and tour-

ist promotion, first ever appropriated to the state, were provided by the 58th Legislature.

**WATER HEARINGS** — Texas Water Commission postponed until May 25 hearings on five reservoir projects in the Brazos River watershed.

Reservoirs are Proctor in Comanche County; Stillhouse Hollow in Bell County; Somerville in Washington County; Decordova Bend in Hood County; and Belton in Bell County.

**POPULATION TREND** — Calculations on population growth made by University of Texas re the population explosion. They estimate that Texas experienced a yearly gain in population of 1.8 per cent between April 1, 1950, and April 1, 1963, which would amount to quite a slow-down from the 2.2 per cent annual gain during the 10 years from 1950 to 1960.

Even more significant, the researchers noted, was an evident brake in the population increases in Texas' 21 major cities. Where they gained 3.5 per cent a year from 1950 to 1960, they gained only 2.2 per cent a year in the year prior to April 1, 1963.

**RETAIL SALES** — February, usually a bright spot after drab January receipts, showed a four per cent drop in retail sales, reports University of Texas Bureau of Business Research.

But the bureau had good news for merchants. It reported that retail sales in February topped those of February, 1963, by four per cent. So the state's accelerated economy continues the upward climb of the past three years.

**VOCATIONAL SCHOOL** — Although the State Board of Education has recommended that the Southwestern Vocational Educational School authorized last year by the U. S. Congress be located at the inactive Camp Gary Air Force Base in San Marcos, several other Texas cities are making a bid for the \$4,200,000 program.

City of Marshall have developed a presentation for the U. S. some Valley groups also are

making a try. They all are hoping to nab the school for Texas, but are competing with neighboring states.

**FASTER CARS FOR GAME WARDENS** — State Parks and Wildlife Department is replacing some six-cylinder cars used by game wardens with modern motor mounts called "Police Specials."

Department's executive director, Weldon Watson, said the new V-8's are faster and "will help overcome a serious handicap to our warden force."

**TRADEMARKS** — Registration notices are being sent to some 20,000 trademark holders in Texas by Secretary of State Crawford C. Martin.

Martin said that, originally, trademark registrations were perpetual, but in 1961 the Legislature imposed a 10-year limitation. He urged anyone who acquired trademark rights before 1964 to get in touch with his office immediately. All such registrations expire May 3.

**SHORT SNORTS** — Sen. William T. Moore of Bryan was named to the Texas Legislative Council (research arm of the Legislature) to replace Sen. Frank Owen III of El Paso, who resigned . . . Atty Gen Waggoner Carr announced the filing of 10 additional civil penalty suits for alleged slant-hole well activities, making a total of 91 . . . Gov. John Connally's Committee on Education Beyond the High School agreed on need for expanded use of educational television and year-round use of existing campuses. . . Court of Criminal Appeals scheduled April 8 arguments on Billie Sol Estes' second appeal from an eight-year prison sentence for swindling . . . Kiwanis clubs all over the state are raising money to furnish a Prayer Room in the State Capitol which was provided by the last Legislature. . . Dr. J. S. Wiseman, State Health Department Entomologist, says diseases transmitted by insects have been on the wane since DDT was first used in 1949. . . Commercial Bank and Trust Company (See Highlights Page 2)

## BUY FERTILIZERS NOW!

**DOLLAR FOR DOLLAR. SIDE BY SIDE. YOU JUST CAN'T BEAT MIDWAY FERTILIZER**

For Range of Formulation or Low Price!  
**Anhydrous & Dry Fertilizers**  
Any kind of mixed dry fertilizer you may want!

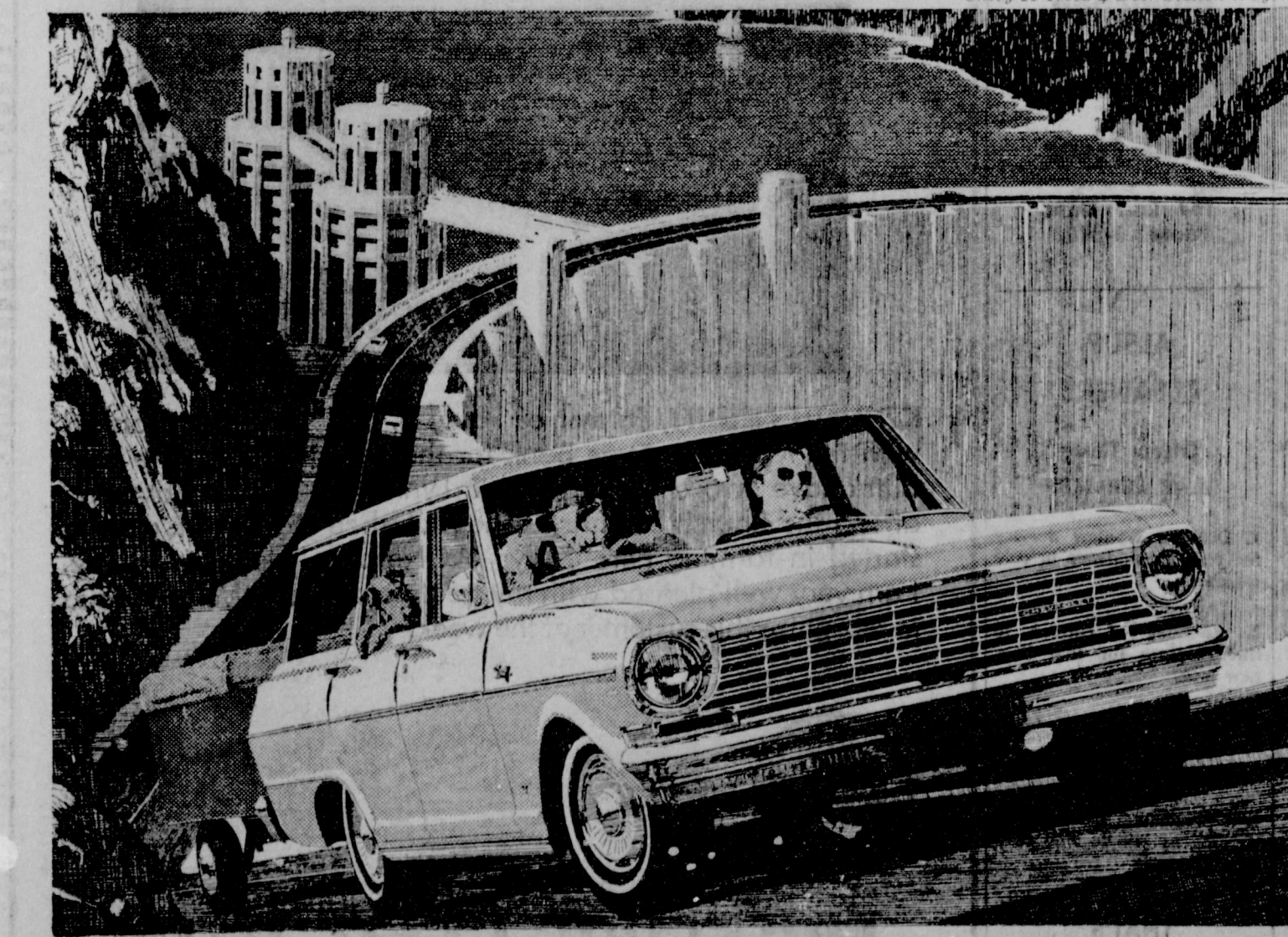
- New Cotton Super
- New Plow Down & Sorghum Fertilizer
- New Wheat Special

**MIDWAY FERTILIZER CO.**  
Phone 965-3583 Midway, Texas

## CHEVY II by Chevrolet

How to get away from it all including the high cost of travel!

A Chevy II Station Wagon is the way to get the whole family there and back on a small vacation budget. You get 76 cu. ft. of cargo space for less than you'd pay for most sedans. You get money-saving, easy-care features, too. And you'll go so far between gas stops you'll think we built in a spare tank. And now that it's Trade 'N' Travel Time at your Chevrolet dealer's, you'll never find a better time to buy a Chevy II. There's a wide range of engines and transmissions to choose from. And whatever you pick, you can be sure you'll always get a good run for your money.



CHEVY II Nova 4-Door Station Wagon

CHECK THE T-N-T DEALS ON CHEVROLET · CHEVELLE · CHEVY II · CORVAIR AND CORVETTE NOW AT YOUR CHEVROLET DEALER'S

# CROW CHEVROLET COMPANY

201 Main Street MULESHOE Phone 3-1000

## Your OLDSMOBILE will give you better service with AMALIE

100% Pure Pennsylvania Motor Oil

Why? Today's high compression engines running at high or low speeds; running in grinding stop and go traffic require the superior oiliness, the heat resistance found only in AMALIE Pennsylvania Oil.

AMALIE is the oilier oil refined from the world's finest crude by special low-heat process. AMALIE stands up under engine heat long after conventional oils break down, thin out, drain off. Cuts wear, insures long miles of smooth engine performance...

change to AMALIE 100% Pure Pennsylvania Motor Oil!

Your service station man will stock AMALIE for you... Just ask him.

**Wiedebush & Childers**

## Weather Forecast

# CLEAR and RAIN

The Bailey County Electric Cooperative produces rain at the twist of a wrist, regardless of the weather forecast.

The dependable electric service offered by the Bailey County Electric Cooperative pumps the water that has made rural areas bloom and brought city conveniences to the rural scene.

Let others call on the water witcher, professional rain maker or the Indian rain dance. The member-owners of Bailey County get their water inside or outside the home, WHEN they want it, WHERE they want it . . . thanks to an efficient, dependable, locally-owned electric system that is building a brighter tomorrow . . . Today

**Bailey County Electric Cooperative Ass'n.**



Highlights--

(Continued from Page 1)

my of Irving has applied for a charter from the State Department of Banking...

Muleshoe Area Cotton Farmers Ready Season's Planting

Planting time is once more just down the road a ways and Muleshoe area cotton farmers are again pre-watering...

boosted his yields on cotton by 50 percent and increased grain sorghum production by 40 percent.

The yield increase of 50 percent for cotton came when wind and sand damage were not a factor...

time in order to allow cotton to get maximum protection from the faster growing sorghum.

Micronaire on interplanted cotton in 1963 averaged 4.3 as compared to a 3.3 average for cotton in a simple skip-row pattern.



CRAMPED PRISON - James Bumgardner, 17, peers from inside a coin-operated clothes drier in Fort Worth...

Television Schedule For Muleshoe Area

C Indicates Color Programs

KING BROS. GRAIN & SEED CO. Complete ELEVATOR SERVICE AND SEED PROCESSING FOR The Muleshoe Area. SHOP MULESHOE FIRST Lane's Furniture NEW "BLUE LUSTRE" Carpet Shampoo Machine Just Phone 6430 and We Will CLEAN YOUR CARPET For You. or Rent Our Shampoo Machine by the hour or day Lane's Furniture 111 Main St., and Save PAINT and Hardware Chas. L. Lenau LUMBER COMPANY 202 E. Ash 218 S. 1st.

KGNC-TV (4) Amarillo Muleshoe Cable 4 Mon. thru Fri. Daytime Viewing 6:45 - Devotional 6:50 - Weather 6:55 - Farming Today 7:00 - Today Show 8:00 - Cartoon Magi 8:45 - King & Odie 9:00 - Say When 9:25 - NBC News 9:30 - C-Word for V 10:00 - Concentration 10:30 - C-Missing Li 11:00 - C-1st Impres 11:30 - C-Truth or C 11:55 - NBC News 12:00 - News 12:10 - Weather 12:20 - Ruth Brent 12:35 - Burns & Allen 1:00 - Let's Deal 1:28 - NBC News 1:30 - The Doctors 2:00 - Loretta Young 2:30 - C-Don't Say 3:00 - Match Game 3:25 - NBC News 3:30 - Room for Dad 4:00 - Cartoon Magi 5:00 - Yogi Bear 5:30 - Hunt-Brinkley 6:00 - News 6:15 - Weather 6:25 - Sports 6:00 - Temple Hous 7:30 - Dr. Kildare 8:30 - C-Hazel 9:00 - Kraft Theatre 10:06 - News 10:15 - Weather 10:25 - Sports 10:30 - C-Tonight 7:30 - Heckel and Je 8:00 - Bullwinkle 8:30 - C-Ruff & Red 9:00 - C-Hector He 9:30 - C-Fireball XI 10:00 - Dennis 10:30 - Fury 11:00 - Sergeant Pre 11:30 - Cartoon Magi 1:00 - Cotton John 1:30 - Theatre 2:49 - Super Car 3:15 - Matinee 4:30 - Tarzan 6:00 - News 6:15 - Weather 6:25 - Sports 6:30 - Lieutenant 7:30 - C-Joey Bisho 8:00 - C-Movie 10:00 - News-W-9 10:30 - Theatre 8:00 - Herald of Tru 8:30 - Oral Roberts 9:00 - Christ World 12:00 - Movie 1:30 - Movie 4:30 - Science 4:30 - C-Bowl 5:00 - C-Meet Pres 5:30 - Biography 6:00 - News 6:15 - Weather 6:25 - Sports 6:30 - C-Walt Dism 7:30 - Grindl 8:00 - Bonanza 9:00 - Du Pont Sho 10:00 - News 10:15 - Weather 10:25 - Sports 10:30 - Bill Dana 11:0 - Checkmate 8:00 - Fisher Family 8:30 - Church Serv. 9:30 - Gospel Singin 10:30 - Sunday Show 1:00 - Religious Q 1:30 - Sports 3:00 - Action Theatr 4:30 - Amateur Hou 5:00 - 20th Century 5:30 - News 5:50 - Weather 6:00 - Lassi 6:30 - Favorite Mart 7:00 - Ed Sullivan 8:00 - Judy Garland 9:00 - Candid Came 9:30 - What's My L 9:00 - News 10:15 - Weather 10:55 - News Report 11:00 - Movie 8:00 - Alvin Show 8:30 - Tennessee Tu 9:30 - Quick Draw 9:30 - Mighty Mouse 10:00 - Rin Tin Tin 10:30 - Roy Rogers 11:00 - Sky King 11:30 - Action Theatr 12:00 - Box Office 5:30 - Porter Wagon 6:00 - News 6:20 - Weather 6:30 - Jackie Gleaso 7:30 - Defenders 8:30 - Phil Silvers 9:00 - Gunsmoke 10:00 - News 10:15 - Weather 10:30 - Movie 10:55 - News 11:00 - Movie 8:00 - Alvin Show 8:30 - Tennessee Tu 9:30 - Quick Draw 9:30 - Mighty Mouse 10:00 - Rin Tin Tin 10:30 - Roy Rogers 11:00 - Sky King 11:30 - Action Theatr 12:00 - Box Office 5:30 - Porter Wagon 6:00 - News 6:20 - Weather 6:30 - Jackie Gleaso 7:30 - Defenders 8:30 - Phil Silvers 9:00 - Gunsmoke 10:00 - News 10:15 - Weather 10:30 - Movie 10:55 - News 11:00 - Movie 8:00 - Alvin Show 8:30 - Tennessee Tu 9:30 - Quick Draw 9:30 - Mighty Mouse 10:00 - Rin Tin Tin 10:30 - Roy Rogers 11:00 - Sky King 11:30 - Action Theatr 12:00 - Box Office 5:30 - Porter Wagon 6:00 - News 6:20 - Weather 6:30 - Jackie Gleaso 7:30 - Defenders 8:30 - Phil Silvers 9:00 - Gunsmoke 10:00 - News 10:15 - Weather 10:30 - Movie 10:55 - News 11:00 - Movie 8:00 - Alvin Show 8:30 - Tennessee Tu 9:30 - Quick Draw 9:30 - Mighty Mouse 10:00 - Rin Tin Tin 10:30 - Roy Rogers 11:00 - Sky King 11:30 - Action Theatr 12:00 - Box Office 5:30 - Porter Wagon 6:00 - News 6:20 - Weather 6:30 - Jackie Gleaso 7:30 - Defenders 8:30 - Phil Silvers 9:00 - Gunsmoke 10:00 - News 10:15 - Weather 10:30 - Movie 10:55 - News 11:00 - Movie

KVII-TV (7) Amarillo Muleshoe Cable 5 Mon. thru Fri. Daytime Viewing 9:30 - J. LaLanne 10:00 - Price Right 10:30 - Object Is 11:00 - Seven Keys 11:30 - Father Knows 12:00 - Tenn. Ernie 12:30 - Billy Bailey 12:40 - Weather 12:45 - Charlie Keys 1:30 - Day in Court 1:55 - Women's New 2:00 - Gen. Hosp. 2:30 - Queen for Day 3:00 - Trailmaster 4:00 - Rifleman 4:30 - Zane Gray 5:00 - Sea Hunt 5:30 - Beaver 6:00 - News 6:00 - Texas News 6:30 - C-Flinstones 7:00 - Donna Reed 7:30 - My Three So 8:30 - Jimmy Dean 9:30 - ABC News 10:00 - Local News 10:10 - Weather 10:20 - Movie 9:00 - Farm to Mkt. 9:30 - The Jetsons 10:00 - Casper 10:30 - Benny & Ceci 11:00 - Bugs Bunny 11:30 - Bandstand 12:30 - Movie 1:30 - Challenge Go 2:30 - Golf Tourney 4:00 - Sports 5:30 - Sportsman 6:00 - Peter Gunn 6:30 - Hootenanny 7:30 - L. Welk Show 8:30 - H. Palace 10:30 - Movie 8:00 - Fisher Family 8:30 - Church Serv. 9:30 - Gospel Singin 10:30 - Sunday Show 1:00 - Religious Q 1:30 - Sports 3:00 - Action Theatr 4:30 - Amateur Hou 5:00 - 20th Century 5:30 - News 5:50 - Weather 6:00 - Lassi 6:30 - Favorite Mart 7:00 - Ed Sullivan 8:00 - Judy Garland 9:00 - Candid Came 9:30 - What's My L 9:00 - News 10:15 - Weather 10:55 - News Report 11:00 - Movie 8:00 - Alvin Show 8:30 - Tennessee Tu 9:30 - Quick Draw 9:30 - Mighty Mouse 10:00 - Rin Tin Tin 10:30 - Roy Rogers 11:00 - Sky King 11:30 - Action Theatr 12:00 - Box Office 5:30 - Porter Wagon 6:00 - News 6:20 - Weather 6:30 - Jackie Gleaso 7:30 - Defenders 8:30 - Phil Silvers 9:00 - Gunsmoke 10:00 - News 10:15 - Weather 10:30 - Movie 10:55 - News 11:00 - Movie 8:00 - Alvin Show 8:30 - Tennessee Tu 9:30 - Quick Draw 9:30 - Mighty Mouse 10:00 - Rin Tin Tin 10:30 - Roy Rogers 11:00 - Sky King 11:30 - Action Theatr 12:00 - Box Office 5:30 - Porter Wagon 6:00 - News 6:20 - Weather 6:30 - Jackie Gleaso 7:30 - Defenders 8:30 - Phil Silvers 9:00 - Gunsmoke 10:00 - News 10:15 - Weather 10:30 - Movie 10:55 - News 11:00 - Movie

KFDA-TV (10) Amarillo Muleshoe Cable 6 Mon. thru Fri. Daytime Viewing 6:25 - Sign On 6:27 - Thought for I 6:30 - Travelogue 7:00 - Farm News 7:20 - News 7:30 - Editorial 7:35 - Weather 7:40 - Sports 7:45 - Freddie 8:00 - Capt. Kangaro 9:00 - Freddie 9:30 - I Love Lucy 10:00 - The McCoy 10:30 - Pete & Glad 11:00 - Love of Life 11:25 - CBS News 11:30 - Search Tomor 11:45 - Guiding Light 12:00 - News 12:10 - Weather 12:20 - Farm & Ranc 12:30 - The World Tu 1:00 - Password 1:30 - Art Linkletter 2:00 - To Tell Truth 2:25 - CBS News 2:30 - Edge of Night 3:00 - Secret Storm 3:30 - Pioneers 3:30 - Soldiers of F 4:00 - Freddie 5:00 - Superman 5:30 - Cronkite News 6:00 - News 6:20 - Weather 6:30 - Mister Ed 7:00 - Rawhide 8:00 - Perry Mason 9:30 - The Nurses 10:00 - News 10:15 - Weather 10:25 - Editorial 10:30 - Movie 10:55 - News 11:00 - Movie 6:45 - Cartoon Time 7:00 - Capt. Kangaro 8:00 - Alvin Show 8:30 - Tennessee Tu 9:30 - Quick Draw 9:30 - Mighty Mouse 10:00 - Rin Tin Tin 10:30 - Roy Rogers 11:00 - Sky King 11:30 - Action Theatr 12:00 - Box Office 5:30 - Porter Wagon 6:00 - News 6:20 - Weather 6:30 - Jackie Gleaso 7:30 - Defenders 8:30 - Phil Silvers 9:00 - Gunsmoke 10:00 - News 10:15 - Weather 10:30 - Movie 10:55 - News 11:00 - Movie 8:00 - Alvin Show 8:30 - Tennessee Tu 9:30 - Quick Draw 9:30 - Mighty Mouse 10:00 - Rin Tin Tin 10:30 - Roy Rogers 11:00 - Sky King 11:30 - Action Theatr 12:00 - Box Office 5:30 - Porter Wagon 6:00 - News 6:20 - Weather 6:30 - Jackie Gleaso 7:30 - Defenders 8:30 - Phil Silvers 9:00 - Gunsmoke 10:00 - News 10:15 - Weather 10:30 - Movie 10:55 - News 11:00 - Movie 8:00 - Alvin Show 8:30 - Tennessee Tu 9:30 - Quick Draw 9:30 - Mighty Mouse 10:00 - Rin Tin Tin 10:30 - Roy Rogers 11:00 - Sky King 11:30 - Action Theatr 12:00 - Box Office 5:30 - Porter Wagon 6:00 - News 6:20 - Weather 6:30 - Jackie Gleaso 7:30 - Defenders 8:30 - Phil Silvers 9:00 - Gunsmoke 10:00 - News 10:15 - Weather 10:30 - Movie 10:55 - News 11:00 - Movie

KCBD-TV (11) Lubbock Muleshoe Cable 2 Mon. thru Fri. Daytime Viewing 7:00 - Headlines 7:05 - Farm Report 7:25 - Weather 7:30 - Today 8:25 - News Report 8:30 - Today 9:00 - Say When 9:25 - News Report 9:30 - C-Word for V 10:00 - Concentration 10:30 - C-Missing Li 11:00 - C-1st Impres 11:30 - C-T, or Cons 11:55 - Day Report 12:00 - Noon Report 12:15 - Closure 12:30 - Price Is Right 1:00 - Let's Deal 1:30 - People Wil 1:25 - News 1:30 - The Doctors 2:00 - Loretta Youn 2:30 - C-Don't Say 3:00 - Match Gam 3:25 - Afternoon Rep 3:30 - Room for Dad 4:00 - Father Knows 4:30 - Superman 5:00 - W. Woodpeck 5:30 - Hunt. Brinkley 6:00 - News 6:30 - Temple Hous 7:30 - Dr. Kildare 8:30 - C-Hazel 9:00 - C-Kraft The 10:00 - News 10:30 - C-Tonight 6:30 - Fugitive 7:30 - C-Bob Hope 8:30 - That Week 9:00 - C-Jack Paar 10:00 - News 10:30 - C-Tonight 7:30 - Nebraska 8:30 - C-Ruff & Re 9:00 - C-Hector He 9:30 - Fireball XL-5 10:00 - Dennis Menac 10:30 - Fury 11:00 - Sergeant Pre 11:30 - C-Bullwinkle 12:00 - Exploring 1:00 - Wizard 2:30 - Movie 4:30 - Lone Star Sp 5:00 - Showtime 6:00 - News 6:30 - Lieutenant 7:30 - Joey Bishop 8:00 - C-Movie 10:00 - News 10:30 - Fantastic Fea 9:00 - Mormon Conf 11:00 - Top Plays 11:30 - Special 12:00 - The Answer 1:00 - Desilu 2:00 - Movie 3:30 - Sunday 4:30 - College Bowl 5:00 - Meet Press 5:30 - Bill Daza 6:00 - News 6:30 - C-Walt Dism 7:30 - Grindl 8:00 - C-Bonanza 9:00 - Movie 10:00 - News 10:30 - Espionage 11:30 - Meet McGraw 7:00 - Bob Poole 8:00 - Bible 8:30 - Herald of Tru 9:00 - Oral Roberts 9:30 - This Is Life 10:00 - Lubbock Mini 10:30 - Church 12:00 - Golf 1:00 - Face Nation 1:30 - Spectacular 3:00 - Golf 4:30 - Science 5:00 - 20th Cent. 5:30 - Mr. Ed 6:30 - Martin 7:00 - Ed Sullivan 8:00 - Hollywood 9:00 - Candid Came 9:30 - My Line 10:00 - News 10:30 - Showtime 11:30 - Peter Gunn

KLBK-TV (13) Lubbock Muleshoe Cable 3 Mon. thru Fri. Daytime Viewing 6:20 - Sign On 6:25 - Farm Fare 6:30 - Sunrise Seme 7:00 - Cartoons 7:45 - King & Odie 8:00 - Capt. Kangaro 9:00 - Seven Keys 9:30 - I Love Lucy 10:00 - The McCoy 10:30 - Pete & Glad 11:00 - Love of Life 11:25 - CBS News 11:30 - Tenn. Ernie 12:00 - WTN News 12:20 - Names in Nev 12:25 - WTTN Weath 12:30 - World Turns 1:00 - Password 1:30 - Houseparty 2:00 - Tell Truth 2:25 - CBS News 2:30 - Edge of Night 3:00 - Secret Storm 3:30 - Trailmaster 4:30 - Popeye 5:00 - Amos N Andy 5:30 - CBS News 6:00 - WTTN Weath 6:10 - WTTN News 6:20 - Roundup 6:30 - Password 7:00 - Rawhide 8:00 - Perry Mason 9:00 - Burke's Law 10:00 - News 10:30 - Great Advent 11:30 - Peter Gunn 6:30 - Combat 7:30 - Route 66 8:30 - Arrest & Tri 10:00 - News 10:30 - Late Show 6:20 - Sign-On 6:25 - Farm Fare 6:30 - Sunrise Seme 7:00 - Kangaroo 8:00 - Alvin Show 8:30 - Tennessee Tu 9:00 - Quick McGra 9:30 - Mighty Mous 10:00 - Rin Tin Tin 10:30 - Roy Rogers 11:00 - Sky King 11:30 - Bugs Bunny 12:00 - Cartoons 12:30 - Bandstand 1:30 - Westling 2:30 - Trails West 3:00 - Golf 4:00 - Trailmaster 5:00 - Hootenanny 6:00 - Porter Wagon 6:30 - Wagon Trai 8:00 - Defenders 9:00 - Gunsmoke 10:00 - Movie 7:00 - Bob Poole 8:00 - Bible 8:30 - Herald of Tru 9:00 - Oral Roberts 9:30 - This Is Life 10:00 - Lubbock Mini 10:30 - Church 12:00 - Golf 1:00 - Face Nation 1:30 - Spectacular 3:00 - Golf 4:30 - Science 5:00 - 20th Cent. 5:30 - Mr. Ed 6:30 - Martin 7:00 - Ed Sullivan 8:00 - Hollywood 9:00 - Candid Came 9:30 - My Line 10:00 - News 10:30 - Showtime 11:30 - Peter Gunn

Higginbotham Bartlett Building Needs Lumber Paint Hardware Houseware Gifts Higginbotham Bartlett MULESHOE Thursday Evening 6:30 - Password 7:00 - Rawhide 8:00 - Perry Mason 9:00 - Burke's Law 10:00 - News 10:30 - Great Advent 11:30 - Peter Gunn Friday Evening 6:30 - Combat 7:30 - Route 66 8:30 - Arrest & Tri 10:00 - News 10:30 - Late Show Saturday Viewing 6:20 - Sign-On 6:25 - Farm Fare 6:30 - Sunrise Seme 7:00 - Kangaroo 8:00 - Alvin Show 8:30 - Tennessee Tu 9:00 - Quick McGra 9:30 - Mighty Mous 10:00 - Rin Tin Tin 10:30 - Roy Rogers 11:00 - Sky King 11:30 - Bugs Bunny 12:00 - Cartoons 12:30 - Bandstand 1:30 - Westling 2:30 - Trails West 3:00 - Golf 4:00 - Trailmaster 5:00 - Hootenanny 6:00 - Porter Wagon 6:30 - Wagon Trai 8:00 - Defenders 9:00 - Gunsmoke 10:00 - Movie Sunday Viewing 7:00 - Bob Poole 8:00 - Bible 8:30 - Herald of Tru 9:00 - Oral Roberts 9:30 - This Is Life 10:00 - Lubbock Mini 10:30 - Church 12:00 - Golf 1:00 - Face Nation 1:30 - Spectacular 3:00 - Golf 4:30 - Science 5:00 - 20th Cent. 5:30 - Mr. Ed 6:30 - Martin 7:00 - Ed Sullivan 8:00 - Hollywood 9:00 - Candid Came 9:30 - My Line 10:00 - News 10:30 - Showtime 11:30 - Peter Gunn

Abel Cable For Year-Long Enjoyment INSTALL NOW Three Plans for Hook-Up Muleshoe Antenna Co. Call Now 107 East Third Phone 3-3100 ALSUP CLEANERS Offer These FINE SERVICES 1. Drive-In Window Service for your convenience in cold weather. 2. Re-sizing of cottons to finer texture for that like-new look. 3. Alterations of all kinds of men's, women's and children's clothing. 4. A personal touch for your clothing by people who care how you look. THAT'S Alsup Cleaners Phone 3-8760

PLAINS AUTO PARTS We have JOBBER CONTRACTS on many top quality parts lines. UNITED DELCO AUTO LITE HASTINGS McQUAY - NORRIS VICTOR CHAMPION MONROE THOMPSON AND MANY MORE Phone 7150 - Muleshoe, Texas - May We Serve You -

Meet the Muleshoe State Bank CUSTOMER of the Week KENNETH NESBITT, farmer of Route 2, Muleshoe, has banked with the Muleshoe State Bank for the past 10 years. The Nesbitts have two children, Robbie Lynn and Tannie Gay, and attend the Church of Christ. "The Muleshoe State Bank got me started in farming here", says Mr. Nesbitt, "Needless to say, I am very well pleased with my treatment here." We are proud to recognize this customer of the week. MULESHOE STATE BANK Member FDIC

For All WALGREEN AGENCY - CALL ON YOUR - Your Needs WESTERN DRUG Prescriptions Veterinary Cosmetics Phone 2220



READ AND USE

# CLASSIFIED ADS

FOR FAST RESULTS

## WANT ADS -- PHONE 2350

Time per word ..... 4c  
2 times per word .... 7c  
3 times per word .... 10c  
4 times per word .... 13c  
After 1st issue, 3c per word each additional time.

Minimum charge 50c  
Card of Thanks \$1.00

### DEADLINE FOR CLASSIFIED ADVERTISING PAGE:

For Thursday's Issue: Monday, 12 Noon  
For Sunday's Issue: Thursday, 12 Noon  
TO LATE TO CLASSIFY  
Thursday Issue — Tuesday 5 P. M.  
Sunday Issue — Friday 3 p.m.  
Double Rate for Blind Ads.

### 1. Personals

**REPAIR Sales and Supplies.**  
Phone 8190. 1-12-tfc  
Watkins Products for sale. Call W. O. Burford. Phone 965-3765. 1-30-tfc

Medical management of the overweight.  
Dr. G. Youngblood  
519 Pile Phone PO3-7733  
Clovis, N. M. 1-49-tfc

I paint anything of value. Spray or Brush. Commercial rig. Cotton trailers \$7.50 plus paint. Phone 3-5930. Dub Ashley. 1-25-tfc

For Home Delivery of Clovis News Journal and Amarillo Globe call Tommy Cornelison. 3-340. 1-5-tfc

### 3. Help Wanted

WANTED: Full time Beautician. Call 3-4430. 3-41-tfc

SALESMAN WANTED — Good salary and commission plus expenses. No overnight traveling. Send resume and salary requirements to box 54, Muleshoe. 3-12-tfc

SALES LADY WANTED: Managerial qualifications. Gift Goods — Household utility and Decorations. Write Box 449 Muleshoe Journal, giving qualifications including office experience if any. If convenient, enclose small snapshot. 3-125-tfc

EXPERIENCED MECHANIC WANTED: See John Crow at Crow Chevrolet Co. Muleshoe, Texas. 3-14-tfc

### 4. Houses for Rent

FOR RENT: 3 rooms and bath unfurnished cottage. One person or couple preferred. See at Robinson Boot shop or corner of 104 West 1st and Ave. E. 4-5-tfc

FOR RENT: Nice re-decorated 3 bedroom house. 6 miles N. E. of town. Call 965-3658. 4-10-tfc

FOR RENT: 3 rooms and bath house. See Sam Gholson at Sam's Auto Store. 4-10-tfc

FOR RENT: 3 bedroom house contact Bert Gordon, Route 3. Phone 965-3376. 4-13-tfc

FOR RENT: 2 bedroom house Air conditioner, T. V. Aerial, wall furnace. Close to school — church and stores. Call 8120. 4-13-tfc

FOR RENT: 3 bedroom house Phone 6680 or 7442. 4-14-tfc

FOR RENT OR SALE: 3 bedroom house. See Joe Smith, in back of Calvert's Grocery. 4-14-tfc

FOR RENT: 2 bedroom house. \$45.00 month. R. E. Luttrell. Phone 3-4683. 4-14-tfc

### 5. Apts. for Rent

FOR RENT: 3 room and bath apartment. Phone 3-4650. 5-14-tfc

### 8. Real Estate for Sale

**FARMS — CITY PROPERTY AND RANCHES**  
KREBBS REAL ESTATE CO.  
210 S. First Morton Hwy.  
Office Ph. 3-1910 Res. 5881  
Muleshoe, Texas. 8-46-tfc

FOR SALE: Brick Home. 2 bedrooms and den or 3 bedrooms. 2 full baths. Carpeted, central heating, fenced. Call Kenneth Hanks. 965-3571. 8-118-tfc

**WRECKING YARD**  
New and Used Parts  
MOTOR EXCHANGE  
B. W.'s GARAGE  
B. W. McCleendon  
Phone 3-4230 — Night 3-0080  
1720 American Blvd.  
SHOP MULESHOE FIRST!!

**FOR SALE**  
NEW BRICK HOUSES  
Two and three Bedrooms  
Country Club Addition  
Contact: Billy Morrison  
Billy's Superette  
Phone 4850 or 3-2130  
8-25-tfc

**FOR SALE:** 2 yr-old Brick home in Richland Hills. 3 br., den, 2 full ceramic tile baths, attached double garage. Call 3-9950. 8-41-tfc

**FOR SALE:** 3 Bedroom house. Large utility room. \$11,500. Phone 946-2485. 8-5-tfc

**FOR SALE:** North Side Texaco Service Station 4 blocks north of Rail Roads tracts. See E. H. Hall 8-2-tfc

Exclusive: 45 A. 8' well. Level underground pipe 15 A. cotton, rest grain-Hay. 2 bedroom home can be handled for \$12,000 down. On farm road 1760 4 1/2 M from town. **Farms-Ranches-Motels City Property**  
**HOLLAND REAL ESTATE**  
Just West of Crossroads Cafe  
121 West American Blvd.  
Phone Day or Night 3-2930  
Muleshoe, Texas 8-41-tfc

**REAL ESTATE**  
—Dwelling & Duplex located at 121 Ave. J. This property is well located for rental on paving. Good return on investment. Priced to sell at \$12,500 for both dwelling & Duplex.  
— 3 bedroom home located at 506 Dallas priced to sell.  
— 3 bedroom — den 614 Austin St. low down payment.  
— 3 bedroom, 2 baths, located at 822 West 6th St. Good terms.  
— 3 bedroom, located at 209 E. Birch this property is priced for a quick sale.  
Eddie Lane Real Estate  
Phone 4390 or 5680  
8-135-tfc

**FOR SALE:** 304 A. choice land 7 miles north east of Muleshoe on Earth Highway. 108 a cotton allotment, 137 a grain base. Three 10" wells. Minerals 1/2 under 160 a, 1/4 under 144 A. 1 1/4 miles underground pipe. Immediate possession. Priced \$450 A. Shown by calling Lazbuddie 965-3665. Call PO 5-5922, Lubbock or Roland W. Clem 998-4462 Tahoka. Hurlbut and Holder Real Estate 1521 Texas Ave. Lubbock, Texas 8-11-tfc

**FOR SALE:** 1960 Dynamic Olds 88 4 drs. Holiday full power and factory air, provincial white, 19-64 tags, sticker, lots good service at \$1295.00 1960 Mercury Comet Station Wagon, radio, heater, automatic trans, factory air, new tires, 64 tags and sticker. \$895. Brock Motor Co. Phone 6450. Muleshoe. 9-135-tfc

**Political Announcements**  
The following candidates have authorized The Journal to announce their candidacies for the offices indicated, subject to the action of the Democratic and Republican Primaries in May, 1964.  
**County Tax Assessor and Collector**  
DESS STAFFORD, D  
JEAN LOVELADY, D  
C. O. LaRUE, R  
**Bailey County Sheriff**  
DEE CLEMENTS, D  
JIM BELLER, R  
JOHN THOMSON, R  
**Constable**  
J. J. REDWINE, D  
EARL LADD, JR., R  
**County Commissioner**  
Bailey County Precinct No. 1  
I. M. "IKE" STINSON, D  
C. E. (CHECK) LAYNE, D  
FLOYD B. RUTHARDT, D  
BILLY MORRISON, R  
**County Commissioner**  
Bailey County Precinct No. 3  
W. H. (BILL) EUBANKS, D  
C. A. (CHESTER) PETREE, D  
**District Attorney**  
JACK YOUNG, D  
**Congressman for 19th Congressional District**  
JOE B. PHILLIPS, R  
**Board of Trustees Muleshoe Independent School District**  
Subject to election April 4, 1964  
R. L. (RAYMOND) SCOTT

**FOR SALE:** Three bedroom brick home, carpeted—2 baths, central heat, double garage, fenced. Call 3-2970 8-85-tfc

**For Sale:** 2 bedroom and bath home about 7 years old. New roof, new storm screen doors, well located, \$750. down will handle.

**CROSS REAL ESTATE**  
Office 5790 Resident 5700  
Muleshoe, Texas 8-14-tfc

**FOR SALE:** 177 A irrigated land, 2 irrigation wells, sprinkler system complete. Approximately 60A cotton allotment. 3 bedroom house and other out buildings. Also have 2 different 1/2 sections of dry land can sell with irrigated place. Call Dick Bell. 3-2750 or 4690. 8-14-tfc

**FOR SALE:** Rose-colored brick home, 2 large bedrooms, ceramic tile bath, ashwood panel den and kitchen, walk-in closets, carpeted, living-dining room efficiency, attached garage, in restricted area, priced to sell will take some farm equipment on down payment.  
Spacious 2-bedroom & den or 3-bedrooms, 2 1/2 ceramic tile baths beautiful enameled steel kitchen cabinet with dishwasher & disposing unit encircles kitchen & eating-area, music may be projected throughout house, carpeted, double garage price \$22,000 large loan  
Cross Real Estate & Ins.  
Off. Ph. 5790 — Res. Ph. 5700  
Muleshoe, Texas 8-14-tfc

**FOR SALE:** Two bedroom house, unattached garage with storage facilities, on large lot. Will G. I. with no money down. Please call 3-2350 or write Melvin O. Treider, 6837 Timothy Drive, Dallas, Texas. 8-14-tfc

**9. Autos for Sale**  
**YANKEE MOTORS**  
General Automotive Repair  
504 E. American Blvd.  
Phone 5620 Res. 3-3600  
9-26-tfc

**FOR SALE:** 1960 Dynamic Olds 88 4 drs. Holiday full power and factory air, provincial white, 19-64 tags, sticker, lots good service at \$1295.00 1960 Mercury Comet Station Wagon, radio, heater, automatic trans, factory air, new tires, 64 tags and sticker. \$895. Brock Motor Co. Phone 6450. Muleshoe. 9-135-tfc

**FOR SALE:** 1951 V-8 Ford Pick-Up, good tires, new battery, new radiator. Runs good. Will make a good irrigation pick-up. \$195.00 13th and Ave. B. D. O. Smith. 9-13-tfc

**10. Farm Equip for sale**  
**FOR SALE:** No 70 John Deere tractor, Lister and Planter Tandem disk. Contact Martin Oliver. Irrigation Supply. Phone 3-3540. 10-13-tfc

**Indexed List Finders — For efficient telephone lists — personal or business.**  
Now only \$2.29 each at The Muleshoe Journal. 10-43-tfc  
Set up your system now as Harvesting progresses in our IDEAL Farm Record Book.  
Binders, refill sheets for all types of records at the Muleshoe Journal. 10-43-tfc

**FOR SALE:** 261 cu. in. 6 cyl. truck motor complete. Butane and Gasoline combination. Joe Simmacher Rt. 2 Box 139 Phone 925-3121. 10-135-tfc

**11. For Sale or Trade**  
**FOR SALE:** Box Cars. E. K. Angeley, 965-3487 or 5520. 11-5-tfc

**BUILDING SUPPLIES**  
3/4" Sheet Rock — \$1.29  
1/2" Sheet Rock — \$1.29  
15 lb. Felt — \$1.95 Roll  
Fry 2 15 lb. Shingles — \$4.98 50.  
1/2" Steel — 5 cent ft.  
80 Box Nails — \$8.95 Hd.  
16d Box Nails — \$8.95 Hd.  
1 1/4 Galv. Sheet Rock Nail — 50 lb. Box — 5.95  
4" Orangeburg — 29 cents Ft.  
2X6 — 18' & 20' 1 lb. WC Fir 12 cents ft.

**BITNER SUPPLY**  
3 BLK N Cauton Light Earth, Texas 11-125-tfc

**FOR SALE:** Fresh milk. 85 cents Gal. 3 miles East of Cricle-cent or I will deliver if I can get enough customers. R. H. White, Star Rt. Sudan, Texas 11-14-tfc

**CARPETS and life too can be beautiful if you use Blue Lustre. Shampooer For Rent. Lane's Furniture. 11-14-tfc**

**12. Household Goods**  
**KIRBY SALES AND SERVICE**  
Phone 7470  
1908 West Avenue B  
Muleshoe, Texas  
**FOR SALE:** Used furniture and Cafe equipment. Phone 3-1280. Theron West. 12-115-tfc

**SHOP MULESHOE FIRST!!**

**RED INTRUSION**  
The Defense Department reports that there have been "numerous incidents in which Communist bloc planes have intruded into NATO territory. The report also states that there is no record of U. S. interceptors firing on them.  
This is not the Soviet technique. Twice this year Russian fighters have shot down U. S. Air Force planes which flew into East Germany, killing the 3-man crew of the first and seizing the 3-man crew of the second.

**KNOW YOUR ONIONS**  
Clean, firm, well-shaped mature onions with dry skins are usually of good quality. Smart buyers shake bagged onions and listen for the characteristic "rattle" of sound struck.

**15. Miscellaneous**  
Water well drilling with Spudder. H. L. Stratton. 321 E. Dallas. Ph. 3-9250. 15-32-tfc  
Cesspools and lines cleaned out. 1 load \$7.50 or 3 loads \$13.50. Phone 3-5930. Dub Ashley. 15-25-tfc

**WANTED:** Custom yard work. We can do it all while you are at home or on vacation. All work guaranteed. Call 3-5110 day or 3-4554 after 6 p.m. Lonnie Merriott. 15-115-tfc

**Decorated Cakes**  
For All Occasions  
Letha West  
phone 3-1280 15-12-tfc

**16. Livestock**  
**WANTED:** Two lambs. Will pay \$5.00 each. Call Muleshoe Journal 2350. Dick Goodrow. 16-6-tfc

**17. Seed & Feed**  
**FOR SALE:** 2000 Bales Threshed Rye Straw. Clean and bright. Excellent stock bedding. 75 cents per bale or \$25.00 per ton. About 50 lb. bales. From Muleshoe, 9 miles East on Hwy. 70, 1 3/4 miles North. Gerald Allison. 17-45-tfc

**—SPECIAL—**  
6 Jumbo Shrimp  
French Fries  
Salad and Tartar sauce  
Thick toast \$1.00  
4 Fish Sticks  
French Fries  
Tartar Sauce  
Thick Toast \$65  
**BILL'S DRIVE IN**  
Phone 7250  
15th and Clovis Road

**6. Farm Equip for sale**  
**FOR SALE:** No 70 John Deere tractor, Lister and Planter Tandem disk. Contact Martin Oliver. Irrigation Supply. Phone 3-3540. 10-13-tfc

**10. Farm Equip for sale**  
**FOR SALE:** No 70 John Deere tractor, Lister and Planter Tandem disk. Contact Martin Oliver. Irrigation Supply. Phone 3-3540. 10-13-tfc

**FOR SALE:** 261 cu. in. 6 cyl. truck motor complete. Butane and Gasoline combination. Joe Simmacher Rt. 2 Box 139 Phone 925-3121. 10-135-tfc

**11. For Sale or Trade**  
**FOR SALE:** Box Cars. E. K. Angeley, 965-3487 or 5520. 11-5-tfc

**BUILDING SUPPLIES**  
3/4" Sheet Rock — \$1.29  
1/2" Sheet Rock — \$1.29  
15 lb. Felt — \$1.95 Roll  
Fry 2 15 lb. Shingles — \$4.98 50.  
1/2" Steel — 5 cent ft.  
80 Box Nails — \$8.95 Hd.  
16d Box Nails — \$8.95 Hd.  
1 1/4 Galv. Sheet Rock Nail — 50 lb. Box — 5.95  
4" Orangeburg — 29 cents Ft.  
2X6 — 18' & 20' 1 lb. WC Fir 12 cents ft.

**BITNER SUPPLY**  
3 BLK N Cauton Light Earth, Texas 11-125-tfc

**FOR SALE:** Fresh milk. 85 cents Gal. 3 miles East of Cricle-cent or I will deliver if I can get enough customers. R. H. White, Star Rt. Sudan, Texas 11-14-tfc

**CARPETS and life too can be beautiful if you use Blue Lustre. Shampooer For Rent. Lane's Furniture. 11-14-tfc**

**12. Household Goods**  
**KIRBY SALES AND SERVICE**  
Phone 7470  
1908 West Avenue B  
Muleshoe, Texas  
**FOR SALE:** Used furniture and Cafe equipment. Phone 3-1280. Theron West. 12-115-tfc

**SHOP MULESHOE FIRST!!**

## Sufficient Weevils Over-Winter To Endanger This Year's Crop

Final ground trash examinations to determine winter survival of the boll weevil have been completed and sufficient weevils are still alive to cause serious damage to the 1964 cotton crop according to W. L. Owen, Entomologist at the Texas Research and Extension Center, Lubbock. "weather conditions before and after cotton is planted greatly influence survival and later weevil infestations, making it impossible to forecast weevil activity for 1964 with any degree of certainty."

leading entomologists who have studied weevils all over the cotton belt advised that the weevil is an ominous and very definite threat to cotton production on the High Plains. These specialists in boll weevil migration and wintering habits have said that this threat will continue to hang over farmers' heads regardless of weevil activity in any given year unless strenuous measures are taken to stop him.

ted itself to taking such measures in the form of fall "diapause" control, which consists of killing the weevil with repeated sprayings immediately prior to the time he goes into hibernation. While Plains Cotton Growers is the project, actual control and direction is in the hands of various committees organized late in 1963 for that purpose.

### Fresh Apple Flavor In Cheese Cake



Cheese Cake rates almost as high as Apple Pie as one of America's favorite desserts. When it's laced with crisp, crunchy tidbits of fresh Washington apples, you've a very special dessert indeed! This a timely recipe, too, for the tart and tangy, all-purpose Washington State Winesaps are in your market now. Noted for fine-grained white meat, sturdiness and versatility, concentrated flavor is peculiar to Washington State Winesaps because of the unique and beneficial growing conditions there. Introduce this new, tangy apple version of Cheese Cake at your next party or buffet supper; it'll be a "rave" dessert!

- Apple-Cheese Cake**
- |                                       |                             |
|---------------------------------------|-----------------------------|
| 1 1/2 cups fine graham cracker crumbs | 1 tsp. cinnamon             |
| 5 tbsp. sugar                         | 1/2 cup butter or margarine |
- Blend together, thoroughly, all ingredients. Reserve 2 tbsp. of the mixture for crumb topping. Turn remainder of crumb mixture into a 9-inch spring-form pan. Press mixture evenly over bottom and 2 inches up sides of pan. Chill or bake 10 minutes in a 375° F. oven to set crust.
- |   |   |
|---|---|
| 2 envelopes (2 tsp.) unflavored gelatin     | 2 cups cream-style, large curd, cottage cheese, sieved                |
| 1 cup water                                 | 3 cups Washington State Winesap apples, coarsely shredded, and peeled |
| 1/2 tsp. salt                               | 2 egg whites  |
| 2 egg yolks, beaten                         | 2 tsp. shredded orange peel   |
| 1 cup orange juice                          | 4 tsp. sugar  |
| 1/2 cup sharp American cheese, finely diced | 1 cup heavy cream   |
|   | thin unpeeled apple slices (dipped in lemon juice to hold color)      |

Soften gelatin in water in saucepan. Add salt, beaten egg yolks, and orange juice. Stir over low heat until gelatin is completely dissolved. Cool. Stir in peeled, shredded apple, sieved cheese, and sieved cottage cheese. Chill, stirring occasionally, until mixture begins to "mound." Beat egg whites until fairly stiff. Gradually add sugar, while continuing to beat, until sugar is dissolved. Fold into chilled mixture. Whip and fold in cream. Test for sweetness, adding a little sugar, if desired. Turn into crumb crust. With spoon "groove" top and sprinkle reserved crumbs into grooves. Chill at least 4 hours, preferably overnight. Before serving, garnish with Washington apple crescents dipped in lemon juice. Serves 10-12.

# BUSINESS SERVICES DIRECTORY

**Robinson's Boot Shop**  
127 Main—Phone 7219  
FINE WESTERN WEAR  
Men, Women & Children  
SHOE REPAIR SHOP  
Ike Robinson & John Howard

**IT PAYS TO BORROW MONEY FROM US.**  
We can save you money when you buy a new or used car. We're here to help you... with low cost, easy-to-repay loans. We can help you in other ways too. It will pay you to talk to us, and no obligations. — Farm Loans.  
**POOL INSURANCE COMPANY**  
Phone 2950 — Muleshoe  
W. M. POOL, Jr. — LEE R. POOL

**MISS YOUR PAPER? Call Circulation Department 2350 Weekdays 8 to 5**

**PRINTING—ART OR TRADE?**  
To us, printing is not merely a trade, it's a creative art, an exact science. Our staff has the technical skill, with that plus factor: creativity — to make your every printing order distinctive!  
OFFSET and LETTERPRESS  
COMMERCIAL PRINTING  
SOCIAL PRINTING  
Muleshoe Publishing Co.  
304 W. 2nd Phone 2350

**COTTONSEED DELINTED**  
Phone 3-2510 — Muleshoe  
**WILLIAMS**  
SEED CLEANING CO.

**Kelton Barber**  
Shop  
— BARBERS —  
Omer Kelton  
Leonard Strickland

Sell Us Your  
**USED FURNITURE**  
And APPLIANCES  
**SWAP SHOP**  
Phone 3-0740

**DR. B. Z. BEATT**  
dentist  
118 South First Street  
Office Hours 9-12 — 1:30-4  
Closed Saturday Afternoon  
Off. Ph. 4300 — Res. 8511

**HEATHINGTON LUMBER COMPANY**  
Lumber, Paint, Builders Hardware  
Clovis Rd. - Ph. 7970

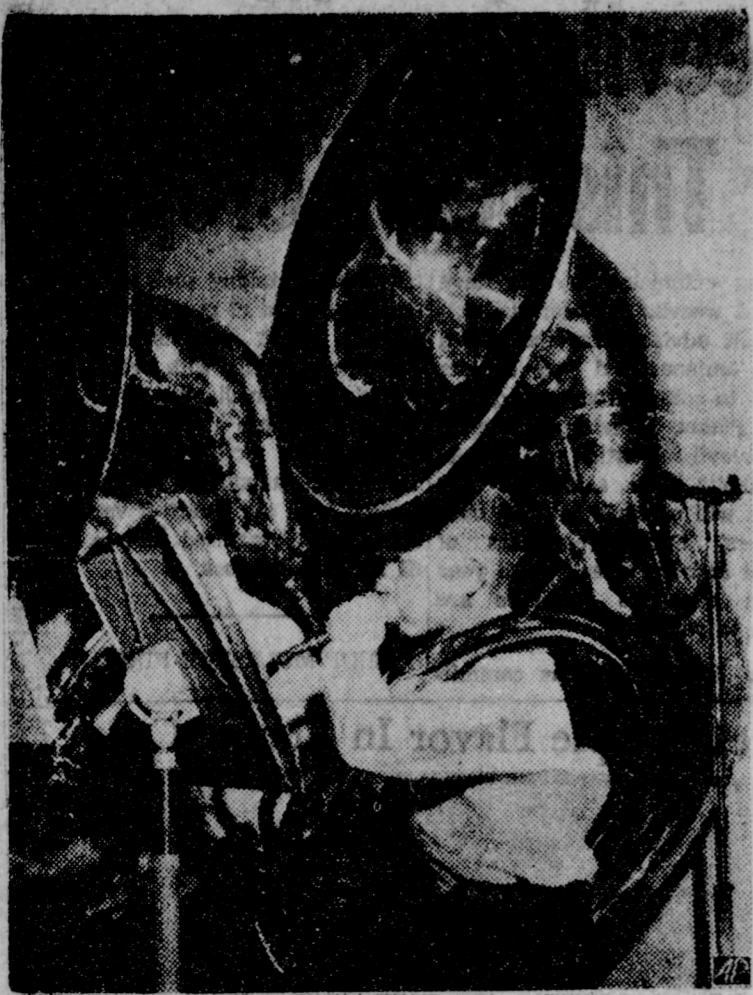
**Farley Insurance Agency**  
Real Estate and Insurance  
AUTO FINANCING  
FARM & CITY LOANS  
SERVICE BEYOND THE CONTRACT  
Over Bank, Muleshoe, Texas  
Off. Ph. 7270 — Res. 3-0343

**JOHN J. MOCK**  
LICENSED STATE LAND SURVEYOR  
925 Clovis Hwy.  
Phone 6760  
MULESHOE

**JAKE DIEL DIRT & PAVING**  
Land Leveling  
Terracing  
Ph. 8410 or 3-5940  
Unit 333 Box 581  
Plainview, Hwy.

**SINGLETON FUNERAL HOME**  
24 HOUR AMBULANCE SERVICE  
Phone 2950





**LITTLE BOY BIG HORN** — Little Robert Springer seems to have little difficulty in playing a big bass horn which weighs 25 pounds. Robert, a seventh grade student at Andress High School, El Paso, weighs 70 pounds and is only 4 feet, six inches tall. (AP Photo)

**Washington Notes**

Washington, D. C. — Race segregation will almost certainly end this year in hospitals, health centers and other medical facilities seeking federal money under the Hill Burton Act.

Language eliminating the "separate but equal" proviso from the grant program is included in a bill now pending before the House Commerce Committee to extend the act for another five years.

As drafted by Chairman Ora Harris (D Ark) the measure does not specifically say that the facilities must be open to Negroes or other non-whites on an equal basis.

It does, however, specify that the federally-aided institution shall "be made available to all persons residing in the area which it serves."

The Harris version is a substitute for an Administration proposal supported by Secretary Anthony Celebrezze of the Department of Health, Education, and Welfare which would have specifically spelled out prohibition of any discrimination on racial grounds.

Objecting to that on the grounds that it would stir up "needless civil rights agitation" the committee chairman has nonetheless conceded the milder language will have the same practical effect.

And the committee, itself, is interpreting the provision to mean a future applicant for Hill Burton money would have to agree not to bar patients or even doctors from using the facility because of their race.

The Hill-Burton program, operating since 1946, has up to now been one of only two federal programs which allowed use of government money for segregated facilities.

Even without the repealer in the extension bill, however, continuation of such permission would be meaningless in light of recent court decisions holding the hospital segregation unconstitutional.

That was the finding of the Fourth Circuit Court of Appeals, upheld by the Supreme Court only a few weeks ago, in a suit to require the Come Hospital in Greensboro, N. C. to open its doors to Negro patients and doctors.

The decision was based on the fact the hospital had received federal money in the past, under the act, and obviously sets a precedent for similar legal action against other institutions in the same category.

Principal effect of the new bill, which takes that court decision into account, is to say that future applicants must agree in advance not to discriminate in use of future funds they hope to receive.

**Local FFA Wins Farm Contest**

Muleshoe's FFA Chapter won 1st place and \$75.00 prize money in the Farm Mech. contest sponsored by Deaf Smith County Electric Cooperative. Hereford, Lamb County Electric Cooperative, Inc. Littlefield, Bailey County, Electric Cooperative, Muleshoe.

The Farm Mechanics contest was held at Muleshoe High School Saturday for the Littlefield FFA District members. Contest consisted of welding, electrical wiring, plumbing skills and an identification test over tools equipment and supplies used in shop work.

**John Lawrence Tapped For ODK Frat**

Oklahoma Baptist University leadership fraternities for men Omicron Delta Kappa and Zeta Chi for women had a formal tapping ceremony for their 18 spring initiates in Chapel Thursday.

John Lawrence, Omicron Delta Kappa member, is the son of Mr and Mrs. John Lawrence, Earth, and a graduate of Springlake High School. Lawrence has received the following honors, offices, and Memberships: Student Government Association Congress, President Young Democrats, Governors Club, Order of the Bison, Omicron Delta Kappa, Phi Eta Sigma.

Ancient Romans used to grind together sesame and cumin seeds to make a seasoned spread for bread.

Add new variety to stuffed baked potatoes by including some crumbled Bleu cheese along with the usual seasoning.



**MILK**

**1/2 GALLON 39¢**

BORDEN'S  
Foremost  
BELL or  
Tennessee

**Health and Beauty Aids**

<b>TOOTH PASTE</b> Pepsodent, White Gt. Size, 6c off label <b>39¢</b>	<b>SHAMPOO</b> Helene Curtis, reg. \$1.89 Value, Giant Size Jar <b>\$1.39</b>	<b>DURA GLOSS</b> , 5c off label, Plus 3c Tax, 3 oz. Bottle <b>29c</b>	<b>POLISH REMOVER</b> Pyrex, Special Label 3 Piece Set <b>\$1.66</b>
<b>DEODORANT</b> Ban, Roll-on, reg. 73c, plus 6c Tax, Large Size. <b>59c</b>			

**CHUCK ROAST**  
ARMOUS STAR  
Aged Heavy Beef  
Valu-Trimmed  
Blade Bone Cut, Lb. **39¢**

Big Chief  
**PINTOS 4 39¢**  
lb. Bag

Kounty Kist, Golden, Whole Kernel  
**CORN 8 12 1**  
oz. cans

Del Monte, Sliced or Halves, in Heavy Syrup, No. 2 1/2 Can  
**Peaches 29¢**

**Freshest Frozen Foods**

<b>DINNERS</b> BANQUET, Ham, Salisbury Steak, Chopped Beef <b>3 11 1</b> oz. pkg.	Seabrook <b>BROCCOLI SPEARS</b> 2 10 oz. pkgs. <b>49c</b>	Tip Top, Plain or Pink, <b>LEMONADE</b> 2 6 oz. cans <b>25c</b>
<b>BERRY PIES</b> Banquet, Blueberry, & Boysenberry 20 oz. Pkg. <b>47c</b>	Seabrook, Fancy <b>PEAS</b> 2 10 oz. pkgs. <b>45c</b>	Libby's, Sliced, 16 oz. Pkg. <b>STRAWBERRIES</b> <b>39c</b>

**Garden Supplies**

<b>Peat Moss</b> Michigan <b>50 lb. 99c</b> bag	<b>Ammonium Nitrate</b> 80 lb. Bag Phillips <b>\$3.89</b>
Kraft, with Cheese, without coupon <b>49c</b>	Lady Betty, Quart Bottle <b>39c</b>
<b>PIZZA MIX</b> with 7c Coupon <b>39c</b>	Prune Juice <b>39c</b>
Kraft, without coupon <b>49c</b>	Libby's, 24 oz. can <b>49c</b>
<b>Spaghetti &amp; Meat Sauce</b> 1 1/2 oz. <b>39c</b> with 7c Coupon	<b>BEEF STEW</b>
Sunlight, Fully Guaranteed, <b>FLOUR</b> 5 lb. bag <b>39c</b>	Delsey, Ass't. Colors, Toilet Tissue <b>4 roll pack 53c</b>
Del Monte, 3 45 oz. cans	Taste-T-Chew <b>DOG FOOD</b> 5 lb. bag <b>53c</b>
<b>Pineapple Grapefruit Drink</b> <b>51</b>	

**ODE TO EVAPORATIVE COOLER**

I know that I shall never see,  
A home as cool as those by fe.  
A home that's closed to dirt and dust,  
Yet will cool as those by Taylor must.  
No windows are open, no doors are ajar,  
Yet the coolest homes, both near an far.

Poetic License No. 768

Hurry, before I write more poetry

**TAYLOR METAL PRODUCTS**

Phone 4210 Daytime and 8250 at Night

"Winter Special Still On!"

**PIGGY WIGGLY, THE ONLY PLACE TO BUY THE BEST BEEF**



- |  |   |
|--|---|
| Armour Star, Aged, Heavy Beef, Valu-Trim, Excess Fat Removed, <b>SIRLOIN STEAK</b> Pound <b>89c</b>                            | Armour Star, Heavy Aged Beef, Valu-Trim, Guaranteed Tender, lb. <b>CHUCK STEAK</b> <b>59c</b> |
| Standing Ribs from Armour Star, Heavy Aged Beef, Valu-Trim, Oven <b>RIB ROAST</b> Ready, Pound <b>69c</b>                      | For the Small Family, Sweet, Hickory <b>Half Picnics</b> Smoked, lb. <b>35c</b>               |
| Boneless, Armour's Star, Heavy Aged Beef, Valu-Trim, Double Your Money <b>New York Steak</b> back guarantee, lb. <b>\$1.49</b> | Perfect for Pan Broiling or Frying <b>SLICED PICNICS</b> Pound <b>39c</b>                     |
| Lean, 100% Pure Beef, Dated for <b>Ground Beef</b> freshness, lb. <b>39c</b>   | Hereford's Eat-More, 12 oz. Pkg. <b>BEEF STEAKS</b> <b>59c</b>                                |
|  | Butcher Boy, All Meat, Thick or Thin, <b>SLICED BOLOGNA</b> Pound <b>49c</b>                  |
|  | Kraft's Cracker Barrel, Mild or Mel-<br><b>Cheddar Cheese</b> low, 10 oz. pkg. <b>45c</b>     |

**PICNICS** Decker's, Mild,  
Sweet, Smoked,  
Flavor,  
Whole, Pound **29¢**

**BACON** Sliced  
Ranch & Rail  
Pound **39¢**

**SAUSAGE** PINKNEY'S  
ALL  
PORK **2 lb. 49¢**  
pkg.

Vitamin Rich Produce from Piggly Wiggly

**Carrots**

TEXAS	1 lb.	<b>15¢</b>
TABLE	Cello	
SIZE	Bags	

Fresh Green, Large Bunch, **ROMAINE** Each **19c**

Large Bunch, **RADISHES** Each **5c**

**Cantaloupe** First of the Season, Delicious Flavor, Pound **19c**

<b>Shortening</b> Bessie Lee, All Vegetable, Highly Unsaturated <b>3 lb. 59c</b> can	<b>Medium Eggs</b> IDEAL Grade A Dozen <b>39c</b>
<b>Green Beans</b> Del Monte Fancy Cut <b>4 303 \$1</b> cans	<b>Sweet Peas</b> Del Monte Garden Sweet <b>5 303 \$1</b> Cans
<b>Tomato Catsup</b> Hunt's Fancy <b>14 oz. Btl. 19c</b>	<b>Pork and Beans</b> Camp-Fire <b>12 300 \$1</b> Cans

Lowest Prices . . . Greatest Variety . . . always at . . .

**Piggly Wiggly**