

April 15th Sticker Deadline

The time is almost here — April 15th is the deadline for having your 1964 Motor Vehicle Inspection sticker displayed in the lower right hand corner of your windshield. Only 5 percent of the 604,369 registered vehicles in Region No. 3 of the Texas Department of Public Safety have visited safety inspection stations and obtained their 1964 safety inspection sticker, according to the state.

Residents of Bailey County own 6,500 registered vehicles and 3,20 have not been inspected as yet, according to the reports.

Under the law there can be no extension of the deadline, and motorists who fail to display the new sticker on and after April 16th are subject to arrest. Authority for the enforcement of the provisions of the Motor Vehicle Inspection Act is vested in any Sheriff or Deputy Sheriff and City Policeman as well as the enforcement officers of the Texas Department of Public Safety.

There are 6 state approved inspection stations located in this county.

The law provides a fine of from one dollar to two hundred dollars plus court costs for operators subject to the Motor Vehicle Inspection Act without a valid current inspection sticker.



High School Honors Four Students

Dianne Chappell, Nine Ed Bovell, Doris King and Ellen English have been named as Muleshoe High School's Students of the Month, according to Near Dillman, superintendent of schools and Ralph Stevenson, principal.

They were selected for their outstanding character, service, leadership and scholarship, according to the school officials.

Dianne is a senior and during her high school years had participated in the following: Basketball, volleyball, tennis; FHA; FTA; FBIA; Spirit Club; Class Officer; Class Favorite; Cutest Freshman, Most Beautiful candidate; Student Council Play; Dusty Pages; Sportsmanship Award; Miss MHS; Princess of Friendship Football Queen; M Club; Junior Olympics.

Nine Ed is a junior and has participated in Thespian Club; Spanish Club; Debate; Speech Club Play; Student Council Play; Junior Play; Spirit Club; FTA; FHA; Who's Who in Social Studies.

Ellen English is a sophomore and has been very active in band. She also receives the honor of being in Regional Band.

C of C Fetes Friona Girls

Friona squaws, new state basketball champions (girls), were presented with letters of congratulation by the Muleshoe Chamber of Commerce, when they stopped in Muleshoe Sunday while on a victory tour.

The team stopped at the Piggy Wiggly parking lot where the store presented them with refreshments and Roger Albertson, Chamber president, Roy Davis, Chamber manager, and a crowd of residents congratulated them.

HOSPITALITY & WELCOME COMMITTEE — Mrs. Cecil Tate, chairman of the newly formed Hospitality and Welcome Committee of the Chamber of Commerce and Roger Albertson, chamber president after a meeting which outlined the duties of the committee. The committee is composed of all members of the Muleshoe Friendship Club who will visit all newcomers and hold monthly get acquainted meetings which will help welcome newcomers into Muleshoe society.

Research Foundation Outgrew Muleshoe

The High Plains Research Foundation has undergone quite a face lifting since it first set up shop in Clyde Bray's real estate office in Muleshoe seven years ago.

Those seven years have been progressive ones, not only for the High Plains area served by the Foundation, but for the Foundation's appearance as well.

Today, the Foundation boasts one of the most modern centers of agricultural research in the world, and more is in store when a \$2 million fund drive now underway over the area is completed this month.

Bulk of the Foundation's facilities are located at the headquarters at Halfway. Offices are housed in the beautiful Kilgore Memorial Building which was provided by a gift of the Kilgore Foundation and Pioneer Natural Gas Co., of Amarillo, in 1962. The Kilgore building also houses the laboratory and conference room.

Adjacent to the Kilgore building is the Jim Hill Greenhouse, also built in 1962 with funds provided by the Jim Hill Estate of

FLA Plans Huge Bargain Bonanza Librarian Hired; Hunting Driver

Savings and Loan Association Sets June As Opening Target

Although many persons don't realize it, progressive Muleshoe is on the move. During the last few months the entire area has shown signs of progressive and solid growth. . . And it's just beginning.

Another sign of Muleshoe's growth came this week when word was received here that the area was on the verge of receiving its third savings institution.

The State of Texas has granted Tri-County Savings and Loan a state charter to open in Muleshoe and operate in the tri-county area.

Today officers of the new institution are compiling a list of 200 depositors who will open subscription withdrawable accounts. About 180 persons have

Bookmobile Expected To Make Its First Run April 1: Gholz

What is expected to be one of the biggest white elephant rummage sales ever held in the Muleshoe area is today being mustered for the benefit of the permanent Muleshoe Area Library.

The benefit bargain bonanza has been scheduled to be held in the new library headquarters building (ex-Hunke Electric) on Ash Street Wednesday, March 25th.

Articles to be sold will range from oil paintings donated by local artists to household appliances. The idea took form when Tom Hunke, who rented the library building before it was purchased for its present use, gave much of its contents to the Friends of the Library.

Mrs. Vic Benedict and Mrs. Larry Hall, co-chairman of the newly born bargain bonanza committee, conceived the idea of turning the windfall into what is expected to be a history-making sale.

Today antiques, books, clothing, appliances, furnishings, toys, gifts used furniture, tools, baked goods, canned goods, works of art, phonographs, records, stoves and other articles of all types, sizes, color and description are flowing into the new library building.

The new library will be open from 1 a.m. to 2 p.m. every day except Sunday when it will be open from 1 p.m. to 3 p.m. A member of the Friend of the Library will be there to receive the white elephants during those hours.

The F. L. A. finance committee is urging all county residents to clean out their closets and garages and businessmen to check their stocks for items for the sale.

Local Gas Group Pressing For Service

Blackwater Valley Gas Association, a new group formed to obtain gas service for farms in the Progress area, met last week to elect officers and obtain signatures for the line.

The group elected W. M. Pool II as president, Houston Hart, secretary-treasurer and Arnold Prater, Joe Costen, Earnest Martin, Bud Williams and Marvin Shurbet directors.

The farmers in the area south of Progress have combined in an effort to obtain a gas line in the area.

The group met in the First National Bank this week to discuss how to best get a natural gas line run southward from Progress. Such a line would do much to lower the cost of fuel to farms in the area, according to its adherents.

According to the plan the Pioneer Natural Gas Company would lay five miles of pipe beginning at the Progress Gin and traveling southward.

A similar effort was made to obtain a gas line three years ago. At that time it failed. The gas

was born and educated through high school in Muleshoe.

Interest rates will be 4½ percent, according to Allison. The new institution will invest only in real property.

The group forming the savings and loan association is headed by Allison. Directors are Lyndall Murray, Anthony's manager; George Johnson, Johnson Brothers Investments; Mack Baum, ex-mayor of Friona, Joe Darnon, Darnon Drug; M. J. Stacy, Spencer Beavers, postmaster.

The group will move almost immediately into temporary quarters here.

It is anticipated the new association will move into its own structure in about a year. Neither the temporary or permanent locations have yet been chosen, according to Allison.

The association has a capital structure of \$300,000 divided into a \$150,000 capital & a \$150,000 surplus.

In making the announcement, Allison stated, "An institution of this type has been badly needed in the Tri-County area for a long time. It is our intention to devote the new association to helping the entire area grow as a High Plains business-farming area by specializing in long-term, low interest building and improvement loans.

The F. L. A. finance committee is urging all county residents to clean out their closets and garages and businessmen to check their stocks for items for the sale.

Local Grain Farmers To Re-Evaluate Acres

A recent change in the payment rate on qualified diverted acres from feed grains could result in Bailey County farmers re-evaluating portions of the program for 1964.

These changes affect the diverted acres that are planted to certain oilseed crops. These oilseed crops most applicable to Bailey County include sesame and castor beans, reports county agent J. K. Adams.

The original interpretation of the payment rate was that it would be "... a percentage of the minimum feed grain diversion payment rate."

Under the new changes, a producer who diverts 40 percent or more of his base acreage (up to 50 percent) from feed grain production is eligible to receive ½ of normal payment rate of \$40.00 replaces the one-half minimum payment rate called for under the old rules.

For example, lets assume a normal payment rate of \$40.00 per acre for diverted acreage. If the producer should elect to plant castor beans or sesame on this acreage (and this acreage is 4 percent or more of his feed grain base), he could collect one-half the normal payment rate, or \$20.00 per acre.

The other provisions, to date, have not been changed. A producer could still get up to ½ his eligible payment at the time he signs up in the county ASCS office. Those producers already signed up to participate in the 1964 Feed Grains Program and who had planned to plant sesame or castor beans on at least 40 percent of their diverted acres, may be able to collect additional diverted acreage payments.

Additional details regarding this change can be obtained from the local ASCS or county agents' office.

\$900,000 Bond Issue Is Gaining Support

The Muleshoe Independent School District's proposed \$900,000 bond issue which Bailey County will vote on April 7th is gaining rapid public support.

This week the Muleshoe Jaycees voted to "stand behind wholeheartedly and work for the bond issue by any and all possible means," according to Elvon DeVaney, president.

The Jaycee vote closely followed a similar vote by the Muleshoe Chamber of Commerce which stated, "If the Muleshoe area is to progress its children must have a first class education."

In other action on the issue the school board has released a area school population growth record which projects the student population into 1969.

The chart projection is based on statistical percentages of an average yearly growth of five percent which the following figures show has been the average since 1954. (Note that this year's peak enrollment of 2,100 is all the present facility can possibly hold).

The projection shows next years anticipated enrollment at 2,265 students. In plain language, this means the present facility can not handle that number. There is no room for the 165 new students expected next year not to mention the 656 new pupils expected between now and 1969.

Even this chart is extremely conservative. It does not take in the possibility of possible extra growth factors such as a small industry selecting Muleshoe as a site.

The projection follows:

How Are Reapportionment Acres Divided Among Eligible Areas?

One of the most current and relevant questions to reach this office lately has been: "How did such and such county get more cotton acres from the Release and Reapportionment program than my county?" After much discussion with ASC officials on both local and state levels, we will attempt to explain here the "how" of release and reapportionment for 1964.

The number of cotton acres allocated to a given High Plains county through Release and Reapportionment in 1964 was determined by (1) the total acreage available for reallocation to the High Plains, (2) the total acreage requested by the High Plains, (3) the number of acres the county itself requested and (4) a set of rules drawn up by the State ASC Committee.

Only two of the State Committee's rules had any significant effect on High Plains counties. One of these prohibited an individual farmer from requesting acres that would bring his total acres in cotton to more than 50 percent of his total land in cultivation. The other stated that a county could not request acres in excess of 50 percent of its base allotment. Therefore a farmer with 20 acres in cultivation and a 90 acre cotton allotment could request only 10 additional acres to bring his total to 5 percent of cultivated land. True, he could file for more than that but his county ASC was required to adjust his request back to 10 acres before including it in the total county request to the State Committee.

By the same token, a county with a 50.00 acre allotment could request 10,000 additional acres but the State Committee would consider only 50 percent of the county's base allotment, or 25,000 acres.

After all county requests were adjusted in this manner, the total was compared to the total acres available for distribution to the High Plains. It was found that the total available acres came to approximately 2.62 percent of the total asked for, and this factor was impartially applied to each county's adjusted request. Thus if a county's adjusted request came to 1,000 acres, it received 26.2 acres.

LUBBOCK COUNTY farmers filed requests with the local ASC office totaling 234,391 acres. But, Lubbock county cotton allotments already average about 42 percent of cultivated land, so the county office was required to adjust these requests (individually, to keep each within the "5 percent of cultivated land" provision) down to a total county acreage request of only 35,948 acres. (When applied to the 20.62 (Acres Page 6)

Comparative Analysis of Area Schools

School	Assessed Valuation	Per Cent of Actual Valuation	Tax Total	Rate Bond	Bonds Outstanding	Per Pupil Cost	Enrollment	Current Budget
MULESHOE	24,614,790	33 1-3%	1.60	.37	1,060,000	\$333.	2100	799,184
ABERNATHY	20,400,000	49%	1.90	.62	1,279,000	360.	1350	625,000
CANYON	26,342,000	40%	1.85	.57	1,931,000	1970	904,440	
DIMITT	27,426,924	70%	1.50	.50	2,050,000	386.	1552	703,072
FRIONA	14,000,000	25%	1.90	.40	794,000	345.	1209	509,485
HEREFORD	47,669,626	40%	1.60	.50	2,443,000	420.	3500	1,180,797
LITTLEFIELD	22,500,000	48%	1.80	.52	1,583,000	2400	907,681	
MORTON	14,193,695	26%	1.80	.60	1,200,000	311.	1350	550,559
OLTON	13,000,000	1.80	.45		784,000	338.	1500	550,000
TULIA	27,000,000	33 1-3%	1.47	.37	1,130,000	2057		862,000
AVERAGE PER PUPIL COST COMPARED WITH STATE AND NATIONAL AVERAGES								
NATIONAL PER PUPIL COST						\$432.		
STATE PER PUPIL COST						\$379.		
MULESHOE PER PUPIL COST						\$333.		

Gospelairees Stay Busy As New Trend In Music Sweeps Country

With the new trend and interest toward Folk Singing and Gospel Quartet Music, The Gospelairees Quartet of Muleshoe are keeping quite busy.

The Quartet has been singing over a year and do Gospel Favorites, Spiritual Songs, and Hymns of the Church. The Group has given several performances in the surrounding area of Muleshoe and Sudan. They have given one performance at Roaring Springs, Texas and are returning there for a Concert at the High School, April 3, 7:30 P.M. Everyone is invited.

by no means newcomers of this community. Jack Young, who sings bass is a life time resident and presently our District Attorney; Doyle Trapp, the tenor, has resided in Muleshoe twenty-six years and is now co-owner of The Muleshoe Mule Barber Shop; Tye Young, singing baritone, has been engaged in farming here for the past forty years; and Wayland Ethridge, who sings the lead and is Pianist for the Quartet, is a 1957 graduate of Muleshoe High School, and presently teaches in Friona High School.

Members of the Quartet are

WELLBORN'S BEAUTY SHOP
1101 Ave. J. Phone 3-4040

PATZER CHIROPRACTIC CLINIC
1538 American Blvd. MULESHOE, TEXAS
Phone 3-9670
KEEP SMILING

CORNER DRUG
202 MAIN
Bayer ASPIRIN 100 tablets 59c reg. 79c
BOBBIE PINS 2 for 25c reg. 25c ea.
Aqua Velva SHAVE LOTION 67c Reg. 98c
TOILET TISSUE 10 Roll Pkg. 98c
SHOPPERS SPECIALS Prices Good 1 Week Starting Thursday



AHSO - Yummies under the Yum Yum ming tree are the smiling Geisha girls who assisted Mrs. Pat Bobo, narrator, in presentation of Llano Estacado Style Show at Richland Hills auditorium. Club members shown under the black and grey ming tree are Elinor Yerby, Kay Kimbrough, Betty Wilkerson and Jackie McAlpin.



FASHION SHADOWS — Style Show via Tokyo models cast a delightful, cool forecast for spring and summer days ahead. This parade of new styles was made Friday night by Janet Wagnon (left), Sue DeVaney, Pam St Clair, little miss Santos and Rheata Peeler.

Fashions Echo In Llano Estacado Civic Club's Third Annual Presentation: 'Style Show Via Tokyo'

Models strolled through the so-called screens past the Chasoki tea ceremony room at Friday night's Llano Estacado Civic Club's preview gala for a truly enchanted evening.

The Style Show via Tokyo theme was carried out by mistress-of-ceremonies Inez Bobo, attired in a mauve kimono and the commentator on fashions from beneath the artistry of a ming tree, Mrs. Jimmy Craft, nee Nabuko Natsumoto of Japan, brought the oriental aura musically to a capacity audience. Her accompanist was Mrs. George Laing.

Medish men and colorfully gowned women, from the sand-pile set through teen-agers and misses to the older women, made their entrance in Anthony's, Haydon's Shoes, Cobbs, Fashion Shop, St. Clair's and Montgomery Ward fashions.

and white check suit by Judy Fisher; Lollie Precure, silk knit suit by Cadillac of Italy, right, year around, packable, with right 1 button silk bound white gloves; Cookie Barnett, lovely white Moogashel Irish linen with lace; Wenona Jordan, perfect in navy rayon and silk sheath with navy accessories; Lena Hawkins, classic in 100 per cent rayon traveling outfit, beige with black accessories; Judy Calvert, stylish in white midly type sleeveless blouse, skirt of arnel by Honey Togs; Janet Wagnon, striking in all black and white, suit Italian silk by Ann Murray; Lucilia Eoff, acrylic double knit with braid trim, tangerine scarf, white lightening calf shoes and bag by Valentine from Haydon's Shoe Store.

Colors were rampant, with yellows and pinks in preference. The Journal noted Linda Griffith, in white nylon formal with controlled look in layers of tiny shirred ruffles of lemon yellow and white. Cozette Blackwood, in Ronna Knits shift of canary yellow with luscious yellow, orange white whipped cream print blouse. Brenda St. Clair, Tiny Women's matching yellow coat with yellow print dress, Sunday School classic. Linda Gleason, an afternoon Howard Wolf ensemble with white lace jacket lined with yellow, yummy. Grace Prater, pretty in two-piece mauve pink linen with lace and matching picture straw. Kitty Miss, hot pink, shockingly fashionable, in two-piece linen suit by Renlyn with soft mauve lining, gloves. Doris King was stunning in her white lace over pink formal by Nadine. The beautiful creation featured a new back bustle with bows and built-up shoulders with short, short gloves in nylon suede. Her gown was accented by a single strand of pearls, pearl bracelet and the iridescent, sequin evening bag she carried.

HATS — new styles noted have sweeps, swoops and buns — straws — rollers, more rollers. Especially nice were Mary Moore's beautiful hat of black and grey plaid straw with roller brim tilted to side with supple Black crepe jumper. Sharon Hutton, bright yellow straw roller hat was cute over her wispy bangs with chic threesome of Botany wool, Verde Arm, neutral silk coatdress with smart beige braid in straw brim, with black accessories.

Shoes and bags — black patent or colored patina (the finish will never crack chip or peel, they say) are fashionable bests, with bags smaller this year, but the big ones are always available. Men's styles at random: Tommy Black, the rage is olive slacks and Italian collared shirt. Irvin St. Clair, bright in woodlooking sports jacket. Tommy St. Clair, sharp in neat all-weather suit. Stanley Black, impeccable in Glen plaid suit. Kelly St. Clair, ready for action in plaid walking shorts and knit shirt. Buck Johnson, well-dressed in charcoal ivy league slacks and striped Italian shirt, with young Master Jeff Johnson matching dad's outfit with continental slacks and striped shirt, but he added a special grin and studious interest in the audience — adding that little boy stealing the show touch!

Club chairmen responsible for

Girl Scouts Say 'Thank You' For Local Support

Girl Scout week ended March 14 and the cookie and nut sale is in the final days. The Brownies, Girl Scouts and adult workers thought this an appropriate time to join in a "thank you" to the people of Muleshoe and Bailey County, for the wonderful support they have given Girl Scouts this year and in years past.

We hope Girl Scouts will always deserve and warrant your support. If at any time you can use the Girl Scouts in your programs or activities, won't you please ask them to help?

We want to thank each and everyone of you who contributed to Girl Scout through the Muleshoe United Fund, to the Llano Estacado Club for its support, to K. M. U. L., Muleshoe Journal, and to all that donate things to the Scout House, and to all that have helped us in any way. You have all been grand.

Muleshoe Girl Scouts

CUT Pump Repair Bills!
WESTERN TURBINES
deep well
last up to 3 TIMES longer than other pumps
Western's exclusive redwood-lined tubeline eliminates bronze bearings and shaft wear. Saves you money all around. For more details without obligation call your Western Pump dealer today.
EDWARDS GIN AND IRRIGATION
Ph. 5670 Muleshoe

Meet the Muleshoe State Bank CUSTOMER of the Week



VIRGIL WOOD, farmer on Star Route, Sudan, has banked with the Muleshoe State Bank since 1945. Mr. Wood and his wife Bessie have four boys — Virgil Lee, Donald, David and Wayne — and five daughters — Athylene, Barbara, Mary, Linda and Margie. The Woods attend Circleback Baptist Church. "This is the best bank I've ever done business with," says Mr. Wood, "coming in here is just like visiting with friends and neighbors." We are proud to recognize this customer of the week.

MULESHOE STATE BANK
Member FDIC

Art Association Sets Meeting At Methodist Church

Members of the Muleshoe Art Association will hold their regular monthly meeting Monday 23 at the First Methodist Church in observance of Holy Week. Members are to meet at 12:05



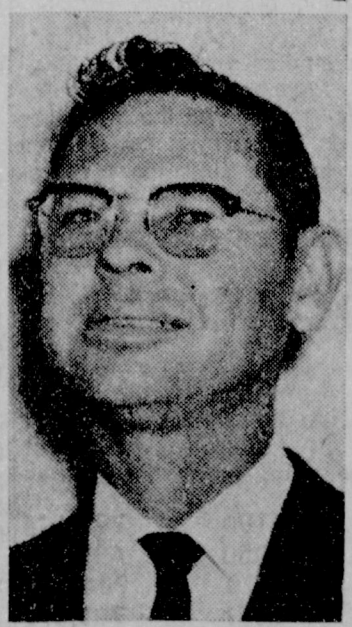
Kabro
EASTER SUIT
\$24.95
Kabro's beautiful silk-look suit is exquisitely tailored with jacket and skirt completely lined. Beautifully detailed with fold over collar, bound buttonholes, little cuffs, Rayon and silk blend, black and Spring pastels. 10 to 20.

Domino Party Set At Needmore Club

Needmore Club Women are sponsoring a domino and 42 party at 7:30 p.m. in the Needmore Community Center building. Everyone is extended a cordial invitation to attend, bring your dominoes and join in the fun.

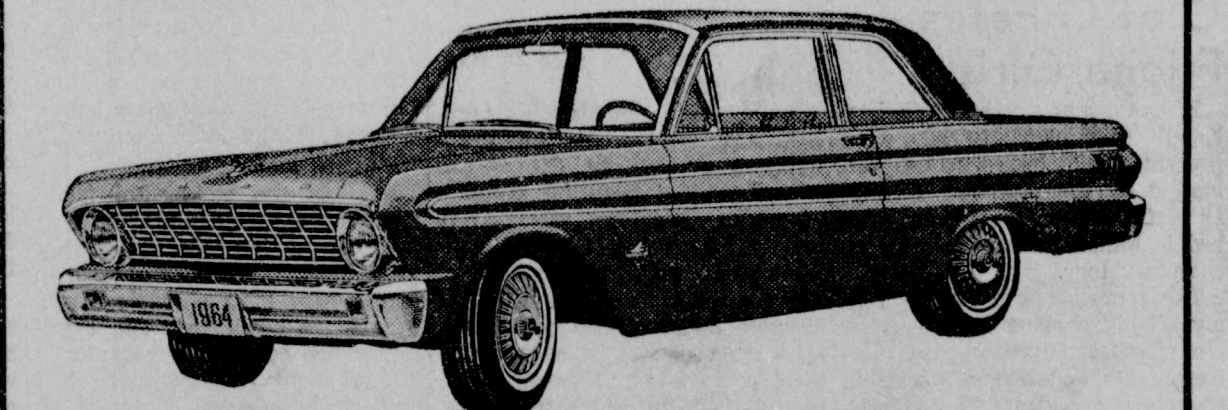
LAKE KEMP FISHERS

Fishing recently on Lake Kemp were Harold Toombs and sons, Gary Mack and Monte; Garvin Leng and Marvin, Glen Lowe and Mike Heard.



Rev. Troy Walker
Evangelist
REVIVAL SERVICES
Starting Today
March 22 — 29
PROGRESS BAPTIST CHURCH
Morning 10:00
Evening 7:30

FREE 1964 FORD FALCON



SEE THE MAYTAG WASHERS AND DRYERS AT JOHNSON-POOL HARDWARE AND APPLIANCE, THEN REGISTER FOR A FREE 1964 FALCON NOTHING TO BUY... YOU MAY BE THE LUCKY WINNER!

-MARCH MAYTAG SPECIALS-
Model A-100 Automatic Washer with trade \$184.50
Model DE-105 Halo of Heat Dryer with trade \$154.50
Model N-2-L Wringer Washer with trade \$139.50
JOHNSON-POOL Hdwr., Appl.
320 Main Phone 7370



'Not A Helpless Invalid' Is Theme Revealing Inspiration

(Editor's note: The following is a theme written by Jeannine Coffman for college work at Wayland Baptist College, Plainview, where she is a freshman. Miss Coffman received a grade of "A" on the theme concerning the inspiration her grandfather, H. G. Harvey, is to her: something his life has also been to many area people who have known him through the years. He is a member of the First Baptist Church. Miss Coffman is the daughter of Mr. and Mrs. C. S. Coffman.

NOT A HELPLESS INVALID

By Jeannine Coffman
My grandfather is an inspiration to all those who know him. He has lived a life which is exemplary of the Christian life each of us should live. He always attended church, as did his wife and their seven children. He was always a very active man, as his occupation was farming.

fact that it was his old phlebitis, but this time it was much worse. The leg would have to be amputated. He was moved to another hospital where the surgery was performed. They took his leg just above the knee because gangrene had already set in.

He would sit by his hospital window, watch the people walk by, and cry like a small child because he would never be able to walk like that again. But once he got home and was able to ride around the farm, his spirits rose to their normal height again. He began driving the car as soon as possible and then before anyone knew what was happening, he was back on the tractor. But every Sunday, he was at church, sitting on the front pew, near the west exit. His crutches made him very self-conscious, but he swallowed his pride, for nothing could keep him away from God's House.

About two years later, tragedy struck again — this time, his right leg. Knowing what would happen, he put off seeing the doctor until gangrene had set in again. This operation was much harder for him to accept because he faced spending the rest of his life in a wheel chair. Being the strong person he is, he arrived home somewhat blue, but a trip to the farm helped. The children had had the car equipped to that he could drive it and had built a ramp four more feet long. This was some three years ago.

Today, H. G. Harvey, aged seventy-five, drives his car anywhere he wants to go. He felt himself still useful for he had a pulley fixed in a tree so that he can, with some assistance, lift himself onto the tractor, and do some work around the farm. He is not a helpless invalid. His love for life is enough to make us ashamed of how little we do when we have leg and feet to move around with instead of two big steel wheels.

Engineering, Fraternity.

The bride-elect is a graduate of Ralls High School and is now a Junior secretarial administration major at Texas Tech.

The couple will pledge wedding vows June 7 in the Ralls First Methodist Church.

Couple To Pledge Marriage Vows In Methodist Chapel

The engagement and approaching marriage of Miss Margaret Nell Laminack to Darrell Boyd Lancaster, Jr. has been announced by her parents, Mr. and Mrs. John L. Laminack, 1415 Tilford St., Ralls.

Darrell is the son of Mr. and Mrs. D. B. Lancaster, 1520 West Avenue C. He was an honor graduate of Muleshoe High School in 1961. He is now a senior Electrical Engineering Major at Texas Tech where he is a member of two honor fraternities, Phi Eta Sigma and Eta Kappa Nu Association, an honorary Electrical



Coffee To Honor Mrs. Odell Logan

Mrs. Odell Logan will be honored with a farewell coffee in the home of Mrs. Irvin St. Clair Friday from 9:30 to 11 A. M.

The Logans are moving to Amarillo in about two weeks where they will be engaged in farming between Amarillo and Claude.

Hostesses for the event will be

Douglass, Jr., Mrs. Sherman Sweetman, Mr. H. L. Barbour, Mrs. Clyde Holt, Mrs. Houston Hart, Mrs. J. Pat Wagnon and Mrs. T. R. White, Mrs. H. A. Mrs. Woodrow Lambert.

IN NEW MEXICO Mr. and Mrs. Neal Smith are in Truth or Consequences, N. M. for a few days' stay.

SHOP MULESHOE FIRST!

GUARANTEED
CLOCK REPAIR
ANY MAKE, MODEL OR SIZE — ALSO ELECTRIC
3 to 5 DAY SERVICE
RAY'S REPAIR SERVICE AT MULESHOE JEWELRY

JUNE WEDDING SET — Mr. and Mrs. J. T. Montgomery, Roswell, N.W., announce the engagement and approaching marriage of their daughter, Sharon, to James Kenneth Wells, son of Mr. and Mrs. Clayton Wells, Muleshoe. Vows are to be exchanged June 14 at the Roswell First Baptist Church. She is a 1962 graduate of Roswell High School and attended Eastern New Mexico University where she pledged Alpha Delta Pi Sorority. Wells graduated from ENMU and was a member of Sigma Alpha Epsilon Fraternity. He is currently serving with the United States Reserve at Fort Bliss.

Miss Jean Tyson, Darnell Williams Wed In Ceremony

Miss Floy Jean Tyson became the bride of Darnell Alva Williams Friday evening in the home of her parents, Mr. and Mrs. George Tyson, Maple. The Rev. Jerry Haley, County Line, officiated for the double ring rites. Mr. and Mrs. C. A. Williams, Sudan, are parents of the bridegroom.

Traditional wedding music was provided by Sandra Kenley and Mrs. Jerry Haley, soloist.

Candles were lighted by Barbara Williams, sister of the bridegroom and Troy Tyson, twin brother of the bride.

Mrs. George Holley, friend of the bride, was matron of honor. She wore an off-white knit suit with red accessories and carried a long stemmed red rose.

David Williams of Lubbock served as his brother's best man.

The bride, given in marriage by her father, wore a street length dress of white slipper satin with scoop neckline and petal point sleeves. The slim skirt featured an overskirt of silk organza. Her finger tip veil of silk illusion was attached to a headpiece of white rose petals. She carried a cascade arrangement of red and white sweetheart roses atop a white Bible.

A reception for the bridal party and 50 guests was held in the home immediately following the ceremony.

For a wedding trip to Ruidoso, the bride changed to a white jumper with matching silk blouse and black patent accessories.

Mrs. Williams is a 1963 graduate of Three Way High School and her husband is a 1959 graduate of Bula High School. He is engaged in farming.

Guests attending the wedding and reception from out of town were: Mr. and Mrs. W. B. Price, Denison; Mr. and Mrs. T. J. Durham, Lubbock; and Mr. and Mrs. Dutch Young, Denver City.

MAKE DALLAS TRIP

Mrs. Bud Warren, accompanied by her mother, Mrs. H. W. Garvin, spent the weekend in Dallas and surrounding area.

They visited their sister and daughter and families, Mr. and Mrs. John Flinn and children, the Mrs. Kennet hFoxes and Janet in Irving.

GROW SLIM WHILE YOU EAT

WITH SAFE VITAMIN-FORTIFIED diet-master

REDUCING PLAN
Be a good loser. DIET on balanced meals without loss of energy, hunger pang, or limpness. DIET on the DIET-MASTER REDUCING PLAN... fully guaranteed to help you lose excess weight, or your money back.

WESTERN DRUG

Revival Slated At Progress Baptist Church

The Progress Baptist Church will begin revival services March 22 with Rev. Troy Walker, pastor of Muleshoe's Trinity Baptist Church, as the evangelist.

Pre-services began Wednesday, March 18 and will continue until the date of the stated revival services.

A fellowship dinner will be held at 8 p.m. Wednesday at the church; song and praise services will be featured Thursday.

According to the pastor, Rev. B. C. Stonecipher, morning services will begin at 10 o'clock and evening services are set for 7:30. The revival will conclude Easter Sunday.

PRE-EASTER SALE

All Suits And Coats

1/3 off

the **FASHION SHOP**

MULESHOE

jeanne durrell

ORIGINATORS NOT IMITATORS

of "FREE AIR" EVAPORATIVE COOLING
No Windows No Doors
To Open Average House Installation with Your Cooler
"So Low You Won't Believe It"

New Evaporative Coolers Factory List plus 10% for Handling—
Your choice of many brands.
We have over 200 cool satisfied home owners.

TAYLOR METAL PRODUCTS
Phone 4210 — 8250 Nites
General Sheet Metal
"Taylor's 35 Years Experience Protects You"

Noonday Service Starts Monday

The third annual Holy Week Noonday Services will start Monday and continue through Friday. Time has been set from 12:05 to 12:35.

Special groups will attend the services as such.

SHOP MULESHOE FIRST!

Does BLADDER IRRITATION MAKE YOU NERVOUS?

After 21, common kidney or bladder irritations affect twice as many women as men and may make you tense and nervous from too frequent, burning or itching urination both day and night. Secondly, you may lose sleep and suffer from headaches, backache and feel old, tired, depressed. In such irritation, CYS-TEX usually brings fast, relaxing comfort by carbine irritating agents in strong, acid urine and by analgesic pain relief. Get CYS-TEX at druggists. Feel better fast.

What's so surprising about Oldsmobile's Jetstar 88?

Its price... lower than 30 models with low-price names!
Its size... a big-car 123-inch wheelbase!
Its performance... zestier 330-cu.-in. Jetfire Rocket V-8!

Sensational performance for everyday owner driving.

GO OLDS... WHERE THE ACTION IS!

BROCK IMPLEMENT COMPANY, INC.
422 NORTH FIRST — MULESHOE

See These Upcoming Features At

COX Drive-IN theater

CATTLE KING
M-G-M ROBERT TAYLOR IN EASTMAN COLOR

SUNDAY IN NEW YORK
M-G-M METROCOLOR

ROBERTSON RONDA TAYLOR

Bob Hope A GLOBAL AFFAIR

UNDER THE YUM YUM TREE
Eastman COLOR A COLUMBIA PICTURE

Be Sure To Come To The **FREE SHOW**

FRIDAY, MARCH 20

"Wild and Innocent"

starring

- AUDIE MURPHY
- JOANNE DRU
- SANDRA DEE

SHOWTIME 7:30 P.M.

If you would like us to mail you a **FREE SHOW SCHEDULE** Just leave your name at the Box Office

THE WHEELER DEALERS

SINATRA • MARTIN EKBERG • ANDRESS 4 FOR TEXAS

THE INCREDIBLE JOURNEY

JERRY LEWIS "Who's Minding The Store?"

WALT DISNEY'S THE MISADVENTURES OF MERLIN JONES

PAUL NEWMAN THE PRIZE

ELVIS PRESLEY FUN IN ACAPULCO

JOHN WAYNE + MAUREEN McINTOCK!

M-G-M PRESENTS The V.I.P.s
PANAVISION® and METROCOLOR

'Movies Are Better Than Ever'

SUDAN NEWS

By EVELYN M. SCOTT
 Jake Diehl of Muleshoe was scheduled to be the guest speaker at the meeting Tuesday evening of the Baptist Brotherhood organization.

An Easter Cantata at the First Baptist Church is being planned for March 22. Richard Powell is directing the musical.

Rev. Willie Hazel is conducting revival services at the Grandview Baptist Church in El Paso.

The cast for the Baylor Theatre production "Lil Abner" was announced last week and Anita Kay Whitmore, daughter of Mr. and Mrs. Cleo Whitmore, was among those named in the chorus.

The show will be presented in the college theatre and will run from April 28 through May 2.

Mrs. John Doolen, daughter of Mr. and Mrs. Raymond Pippin, underwent major surgery last Thursday in the Clovis Memorial Hospital.

Mrs. Doolen, the former Vivian Pippin, has been surgical nurse at the hospital a number of years.

Mr. and Mrs. R. E. Scott and Randy were supper guests Friday evening in the home of Mr. and Mrs. Charles Heffington of Spade.

Mrs. Arthur Shuttlesworth visited relatives in Amarillo during the weekend.

Mrs. A. F. Walker has been ill and confined to a hospital in Muleshoe.

Mr. and Mrs. Lee Capps, Jr.

FRANCIS IMPLEMENT CO.
FORD TRACTOR
 Muleshoe, Texas

Your OLDSMOBILE
 will give you better service with **AMALIE**
 100% Pure Pennsylvania Motor Oil

Why? Today's high compression engines running at high or low speeds; running in grueling stop and go traffic require the superior oiliness, the heat resistance found only in **AMALIE** Pennsylvania Oil.

AMALIE is the oiler oil refined from the world's finest crude by special low-heat process. **AMALIE** stands up under engine heat long after conventional oils break down, thin out, drain off. Cuts wear, insures long miles of smooth engine performance...



Your service station man will stock **AMALIE** for you... Just ask him.

Wiedebush & Childers



WHITE "MAGIC 50" TIRE
 The Only Tire in the World Guaranteed NOT TO WEAR OUT for 40,000 Miles! Plus 40,000 Mile Road Hazard Guarantee.

WHITE'S the Home of Greater Values

of Bovina visited recently in the home of Mr. and Mrs. Martin Maxwell. Guests Wednesday in the Maxwell home were Mr. and Mrs. R. H. Middleton of Levelland.

The Sudan Sewing Club will meet Thursday afternoon in the home of Mrs. Alice Frazier when a covered dish luncheon will be served.

Mrs. Otis Markham, Mrs. Thomas Lee Harper, and Mrs. Lonnie Horn were in Portales Wednesday for a work day at the Portales Children's home.

Luncheon guests Sunday in the home of Mr. and Mrs. Martin Maxwell and Mr. and Mrs. Raymond Maxwell, Freddie and Wanda.

Mr. and Mrs. Pat Christal of Amarillo visited during the weekend in the home of her father, J. W. Olds and with her sister and family, the Byron Lynns.

Mrs. Weldon Wiseman is visiting relatives in Oklahoma City. She accompanied Mr. and Mrs. Clarence Damron of Needmore.

Fishing at Falcon last week were Jack Downs, Dick West, and son Whitmore.

Mr. and Mrs. Prentiss Fields and Randy of Paducah visited last week in the home of his brother and family, Mr. and Mrs. Louis Fields.

Mrs. J. M. Shuttlesworth was the honoree for a coffee Friday morning held in the home of Mrs. Jinks Dent on the occasion of her seventy-third birthday.

Mrs. Shuttlesworth was born March 6, 1891 in Tuscaloosa County, Alabama. She is the daughter of the late Mr. and Mrs. R. E. Howard. She was married in 1908 to Mr. Shuttlesworth and they to Texas in 1919. After farming two years at Lakeview in Hall County, they moved to Sudan in 1922.

Assisting Mrs. Dent with hostess duties for the coffee was Mrs. Wayne Doty. Cake, coffee and tea were served approximately twenty guests attending.

Mrs. Audrey West was hostess for a bridge party Thursday afternoon when the following were present, Mrs. Bill Palmer, Mrs. Arthur Nelson, Mrs. Richard Powell, Mrs. Billy Chester, Mrs. Glen Chester, Mrs. R. E. Scott, Mrs. Gerald Chisholm.

Jimmy Lynn Fields, son of Mr. and Mrs. Louis Fields, was feted to a party Friday afternoon on the occasion of his seventh birthday.

The circus motif was used for party decorations and favors were Ballons, bubble gum, and suckers.

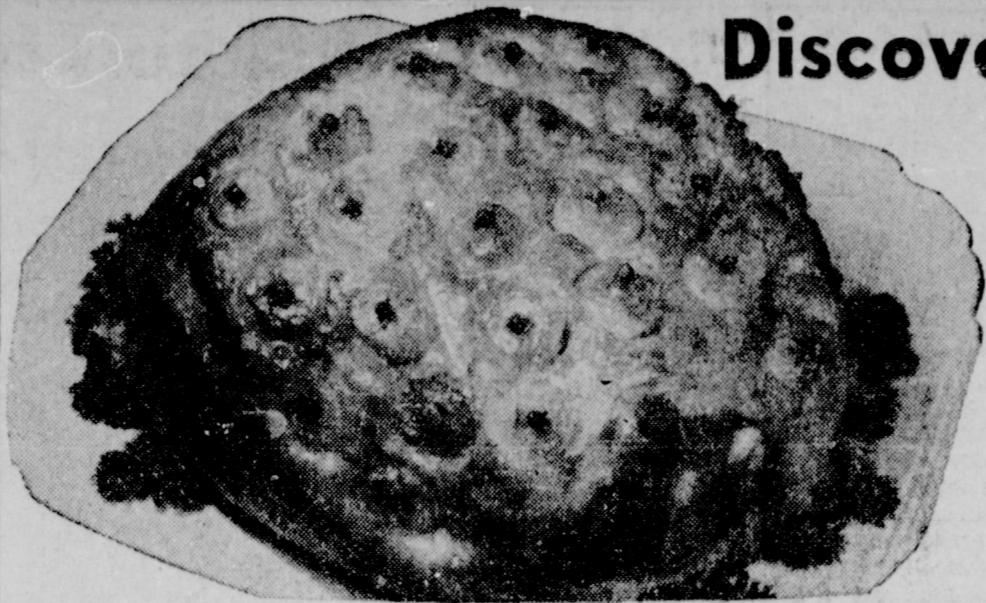
Refreshments of cake and ice cream were served the following guests: Tracy Bowling, Travis Wiseman, Mitch Wiseman, Randy Fields, Bill, Jim and Kathy Fynn, Byron Roby, and Debbie Fields.

QUILTING DONE

The WMA of the Richland Hills Baptist Church are quilting for \$5. per quilt with each individual furnishing their own materials.

Proceeds will be used to carry on their church projects. Call Mrs. Lynn Stevens or Mrs. G. L. Splawn for information.

Floyd S. Wilson, Harvard basketball coach since 1954, played the game at Springfield College.



Discover the extra economy of Piggly Wiggly Meats! Guaranteed to please!

DECKER'S
SMOKED PICNICS

PORK CHOPS

FRYERS 29[¢]
19[¢]
 USDA Grade A
 Fresh Frozen
 Pound

Piggly Wiggly Beef
 Double Your Money Back
 Guaranteed.



CHUCK ROAST Armour Star, Aged, Heavy Beef, Pound **39[¢]**

SLICED BACON Armour Star, Thick or Thin 2 lbs. **98[¢]**

BISCUITS Holsom Sweetmilk or Buttermilk 2 cans **5[¢]**

GREEN BEANS LIBBY Fancy Cut No. 303 Can **19[¢]**

MELLORINE BELL, FOREMOST, or Borden's 1/2 Gal. Ass't. Flavors **25[¢]**

TISSUE TOILET Veletia, Assorted Colors 4 Roll Pack **21[¢]**

CAKE MIX GOOD-N-RICH Devil Food, White and Yellow, 8 oz. pkg. **10[¢]**



These values good in Muleshoe, March 19, 20 & 21, 1964. We Reserve the Right to Limit Quantities.

Garden Supplies
Rose Bushes 39c
 Nice Selected Plants, Two Years Old, Each
Peat Moss Michigan 50 lb. bag **99c**

Maxwell House, Copper Canister, Drip, Fine or Regular, COFFEE 1 Pound Can	75c
2 Pound Can	\$1.49
Blue Bonnet, Whipped, qtrs., 1 lb. pkg MARGARINE	31c
Carnation, Chunk, No. 1/2 Can TUNA	25c
Woritz, Salted, 1 Pound Box CRACKERS	19c
Bonnebelle, Sweet Cream qtrs. BUTTER 1 Pound Package	69c
Borden's, 1/2 Gallon CHOCOLATE MILK	47c
Nabisco, 16 oz. Pkg. FIG NEWTONS	39c
Niblets, Golden, Whole Kernel, CORN 12 oz. Can	19c
Green Giant, No. 303 Can GREEN PEAS	23c
Green Giant, Cut, No. 1 Can ASPARAGUS	27c

Parkerhouse Rolls HOLSOM 24 ct. Pkg. **19c**

Colonial Cakes Banana, Chocolate Fudge, Coconut, and German Chocolate, 24 oz. Pkg. **89c**

Banquet, 20 oz. Apple, Peach & Cherry FRUIT PIES 29c Hills O Home, 10 oz. Pkg. BLACK EYE PEAS 19c

Seabrook, 10 oz. Pkg. BABY LIMAS 27c Swanson, 16 oz. Pkg. MEXICAN DINNER 59c

Sugar IMPERIAL or C&H 5 lb. bag **55c**

Black Pepper MAISON Pure 4 oz. can **29c**

Cheese Food CHEF DELIGHT 2 lb. box **49c**

Wesson Oil ALL VEGETABLE 24 oz. Btl. **33c**

Medium Eggs IDEAL Grade A Dozen **39c**

Sherbert BORDEN'S Ass't. Flavors 1/2 Gallon **59c**

Vitamin Rich Produce from Piggly Wiggly

Potatoes RUSSETS, The All Purpose Potato 10 lb. Bag **39c**

FRESH GREEN
Collard Greens 2 large bunches **25[¢]**

Carrots CALIFORNIA CLIPPED TOPS POUND **15[¢]**

Apples Washington Extra Juicy Red Delicious 2 lbs. **29c**

HEALTH AND BEAUTY AIDS

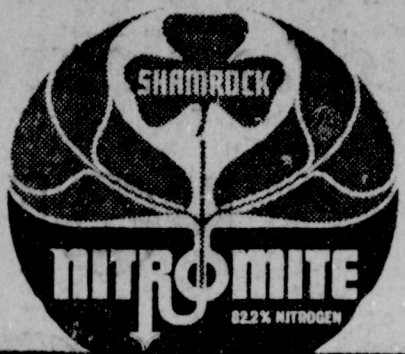
Hair Coloring New Dawn 12 Different Shades Reg. \$2.00 retail, Tax 15c **\$1.49**

Right Guard, reg. 98c retail, tax 8c, MICRIN, Reg. 69c retail, Medium Size **59c**
 SPRAY DEODORANT King Size **79c** MOUTHWASH

St. Joseph, reg. 59c retail, 100 ct. btl. Mennen's, Plastic Bottle, reg. \$1. retail, **49c** ASPIRIN **88c**

Lowest Prices... Greatest Variety... always at...
Piggly Wiggly

PREPLANT THE FULL MIGHT OF NITROGEN



BAKER FARM SUPPLY H. M. GABLE SEED & FERTILIZER

Acres-- (Continued from Page 1) factor Lubbock county got only 7,395 reappportioned acres, or 3.7 percent of its 215,704 acre base allotment.

This example, plus the explanation, should help clear the air as to "how" reappportioned acres were divided among High Plains counties. As to the "why" of it, members of the State ASC Committee contend that this was the most fair and equitable system that could be found and have expressed their willingness to hear suggestions from anyone who has found a better way.

Before leaving the subject, however, it might be well to note

that this program of Release and Reappportionment, especially from the High Plains viewpoint, has been one of the better things to come from Washington in recent years. Since its beginning in 1961 the program has brought a total of almost 30,000 acres of cotton to the High Plains over and above the areas base allotment.

Multiply that figure by an average of a bale per acre and a gross sale price for each bale and its seed of \$150.00 and you have a "pay raise" for High Plains farmers of \$45 million in the four years. Then, consider that each dollar of this gross income circulates seven times before leaving the High Plains and

farmers and merchants together, by the end of this year, will have enjoyed an increase in gross income amounting to over \$300 million.

And, even that impressive figure is not the whole story of Release and Reappportionment, because the program is also responsible for keeping the base cotton allotment for Texas as high as it has been since 1960. The way the national allotment (now at the statutory minimum of 16 million acres) is divided among the states, any state which has not planted all of its available acres in previous years automatically loses some of those acres to states which have compiled a

better cotton "history."

There are some areas of East and South Texas where farmers do not plant all of their allotted cotton acres, usually because they have found it more profitable to raise some other commodity. Release and Reappportionment allows these farmers to release unwanted acreage to their ASC Committee for transfer to other farmers, within the state, who will plant them and in this way preserve the state's history. Otherwise the unwanted acres would be lost to other sections of the country -- at the expense of Texas farmers who want and need larger cotton allotments.

Services Slated For Hi Bearden

Hi Bearden, 54, well-known pioneer of Bailey County died Saturday, March 14, at his home in Omak, Wash. Graveside services will be held at 2:30 p.m. Friday in Muleshoe Cemetery with Rev. David Branson, pastor of the First Christian Church, officiating.

Bearden had lived in Omak for the past 20 years, moving there from Muleshoe where he had lived since 1908.

He was born March 20, 1873 in Kentucky and was a retired farmer.

Survivors include three sons, Russell, Muleshoe; Edward, Salem, Ore.; Vern, Lubbock; one stepson, Frank Grant, Grand Island, Neb.; five daughters, Mrs. Leota Wilterding, Muleshoe; Mrs. Mable Robison, Spokane, Wash.; Mrs. Emma Myers, Mrs. Helen Cox, and Mrs. Ruth Rockey, all of Omak, Wash. Twenty-four grandchildren also survive.

Grandsons will be pallbearers. Interment will be in Muleshoe Cemetery under direction of Singleton Funeral Home.

FATHER DIES IN EUREKA SPRINGS

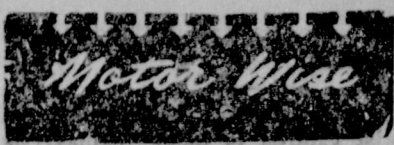
George Surratt, Eureka Springs, father of Woodrow Surratt, died there Sunday.

Services were held at 2:30 p.m. Wednesday.

SHOP MULESHOE FIRST!

FRANCIS IMPLEMENT CO.

FORD TRACTOR Muleshoe, Texas



South Side Golf



If your car is laying down a smoke-screen, better bring it in and let us have a look at it. We feature the best in service know-how and materials.

We Give Gunn Bros. Stamps 501 S. First - Ph. 3-5716

Television Schedule For Muleshoe Area

C Indicates Color Programs

KING BROS. GRAIN & SEED CO. Complete ELEVATOR SERVICE AND SEED PROCESSING FOR The Muleshoe Area. SHOP MULESHOE FIRST Lane's Furniture NEW "BLUE LUSTRE" Carpet Shampoo Machine Just Phone 6430 and We Will CLEAN YOUR CARPET For You. or Rent Our Shampoo Machine by the hour or day Lane's Furniture 111 Main St., and Save LUMBER COMPANY 202 E. Ash 215 S. 1st.

Table with 2 columns: Station (KGNC-TV 4, KVII-TV 7) and Program Schedule (6:45 Devotional, 7:00 Weather, etc.)

Table with 2 columns: Station (KFDA-TV 10, KCBQ-TV 11) and Program Schedule (6:25 Sign On, 7:05 Farm Report, etc.)

Table with 2 columns: Station (KLBB-TV 13) and Program Schedule (6:20 Sign On, 6:25 Farm Fare, etc.)

Table with 2 columns: Station (Higginbotham) and Program Schedule (Bartlett Building Needs, Lumber, Paint, etc.)

Table with 2 columns: Station (Higginbotham) and Program Schedule (Bartlett MULESHOE, 6:30 Password, 7:00 Rawhide, etc.)

Table with 2 columns: Station (Higginbotham) and Program Schedule (Abel Cable, For Year-Long Enjoyment, INSTALL NOW, etc.)

Table with 2 columns: Station (Higginbotham) and Program Schedule (Research-- (Continued from Page 1) 6.63 plots on the farm. Acreage was more than doubled recently, however, with the purchase of 504 more acres, etc.)

Table with 2 columns: Station (Higginbotham) and Program Schedule (Church Visitors - Out of town visitors at the First Methodist Church last Sunday were Mrs. Roy Sooter and Susan, Albuquerque; Mrs. Ven Mason, Santa Fe; and Mrs. Reuel Kirby and sons, Baileyboro.)

UNDER NEW MANAGEMENT KELLY'S CAFE Formerly West's Diner 101 MAIN STREET "We appreciate your continued patronage and invite everyone to come visit us!" --Mr. and Mrs. Kelly

MUSHY BRAKES? PUT YOUR CAR IN EXPERT HANDS Have your wheels aligned, balanced by us. Eliminate annoying vibrations, excessive tire wear. Drive in today for complete tire service. Line up with "BEAR" Front End Equipment PLAINS AUTO PARTS SERVICE DEPARTMENT 421 S. MAIN Phone 7150

BELL FERTILIZER, INC. Where will your fertilizer dollar go the farthest? At the place where you can get your analysis in terms tailored to fit your needs. We can make any analysis your soil test might call for with any added elements you might want. Then why spend money for materials you do not need to get the analysis desired: also, why waste money on terms you do not need? We do not use credit cards or sign time contracts, but work out your individual needs on an individual basis. Be sure to see us for all your fertilizer needs -- in analysis or dry materials -- before you buy. DON'T GUESS -- SOIL TEST Bell offers this service to all of their customers Locally Owned and Operated 123 WEST BIRCH AVE. PHONE 3-2750 or 4690 T. L. Glasscock, President J. H. Dunbar, Vice-President DICK BELL, Mgr. Dick Bell, Sec.-Treas. C. L. Saylor, Director

For All Your Needs Prescriptions WALGREEN AGENCY - CALL ON YOUR - WESTERN DRUG Phone 2220 Veterinary Cosmetics THAT'S Alsip Cleaners Phone 3-0760

FRANKLY

SPEAKING

By J. Frank Peery



The Doctrine of Common Sense

Every good newspaper has its file of materials that are going to be used in writing the obituaries of prominent people when the time comes. This, by nature of good old common sense, reminds us that obituaries — while published after death — are ac-

tually written in life. Civilizations, like men, have their separate envelopes in the obituary file of history. Amos, in the Old Testament, pulled out the envelopes of half a dozen nations, including his own, and with terrifying brevity and lucidity told his world what he saw. Historians have pulled out the cards marked "Greece" and "Rome" and other cards which total 32 civilizations. The obituaries have been written and the files closed.

Historians are saying in our day such things as, "modern man moves toward extinction," "modern man is obsolete." Several others have said that modern civilization isn't dying, it's already dead.

I do not believe that this is the consensus of opinion; however, we must face a fact of truth. Modern civilization isn't dead — yet! — it is acutely ill and could become the next world obituary.

Teenage Beatlemania reminds us (though we need no reminder) that adolescents — like the poor — we have with us always. If it isn't one craze it's another: swallowing goldfish, pushing beds, jamming telephone booths, party raids, beer parties, sex parties, screaming and swooning before modern idols, and the latest fad, knitting. The startling fact is that the adolescent range reaches and includes all ages. In a recent youth outburst of drinking and sex in a midwestern hotel, a parent was called about the conduct of his daughter. When he arrived on the scene, he said, "Thank God it's just a wild party. I thought, maybe, she had been in a wreck." She was a wreck. Who is delinquent?

Such happenings are writing our modern-day obituary.

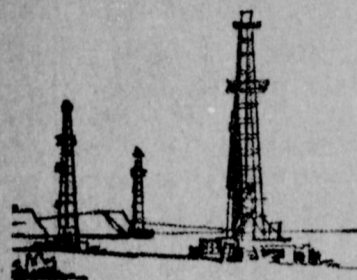
How long will we dodge the doctrine of common sense about conditions of our civilization? If we continue to wage life with weapons of fear, hate, and bad faith, it can cost us not only our unity but our character and purpose as a free people. Our doctrine of common sense should remind us that in the realm of sin when one man sins against another more is involved than the impairment of a man-to-man relation. God is involved. The sinner, then, is a standing assertion that there is no God. God is the source of all life. If we forget God, then life becomes indeed death.

Frankly Speaking — WE have spent so much precious time, money, and energy over small matters of no meaning that we seem to be writing our modern obituary. However, the end of modern civilization is not yet come. We are not yet past the point of no return. If we love and serve God as God loves and serves us, our civilization will live forever.

Coach Walton and his track team went to Brady for track contest Friday and Saturday of last week. The group returned Sunday afternoon.

Mr. and Mrs. Elgan Baccus are at Lake Brownwood this week.

Mr. and Mrs. Valton Morris moved last week into the house vacated by Mr. and Mrs. John Addudel. Mr. Morris is employed by Western 66.



Sharpest pickup

IN THE Southwest

Smart as a station wagon inside—and as comfortable! And wait till you try Ford's new long-wheelbase ride!



From the sharp way it looks and handles, you might call our '64 F-100 Styleside an "uncovered wagon." When you see what a 128-in. wheelbase does for riding comfort, you'll want to call it yours!

In back, you'll find a strong new box with one-hand tailgate. Underneath, big-truck muscle for extra durability. Come look it over, all over!

DRIVE IT TODAY AT YOUR

FORD DEALER'S

MULESHOE MOTOR CO. Muleshoe, Texas

BUY FERTILIZERS NOW!

DOLLAR FOR DOLLAR.

SIDE BY SIDE. YOU JUST CAN'T BEAT

MIDWAY FERTILIZER

For Range of Formulation or Low Price!

Anhydrous & Dry Fertilizers

Any kind of mixed dry fertilizer you may want!

- New Cotton Super
- New Plow Down & Sorghum Fertilizer
- New Wheat Special

MIDWAY FERTILIZER CO.

Phone 965-3583

Midway, Texas

Meats and Poultry

PORK STEAK PICKNEY'S FRESH SHOULDER lb. 29c
PORK ROAST PICKNEY'S Fresh Extra Lean lb. 39c

FRYERS

FRESH DRESSED CLARY'S USDA GRADE A WHOLE lb. 19c



HAMS

Sun Ray Sugar Cured, Whole, Pound PICKNEYS 39c

Hams PICKNEY'S SUN RAY Butt Half lb. 45c

Hams PICKNEY'S SUN RAY Shank Half lb. 43c



BACON Cudahy's Chuck Wagon Thin Sliced LB. 39c
Oysters EAST POINT FRESH 12 oz. Can 69c

BISCUITS KIMBELLS OVEN READY CAN 5c

SHORTENING ARMOUR'S VEGETOLE 3 LB. CAN 49c

CRACKERS CRACKER BARREL 1 LB. BOX 19c

EGGS XIT GRADE A LARGE DOZEN 39c

WE PROMISE... QUALITY FOOD at LOWEST PRICES ALL THROUGH THE YEAR!



GREEN ONIONS Garden Fresh Bunch 5c
TURNIPS SOUTH TEXAS PURPLE TOP lb. 9c

Apples School Boy Delicui 4 lb. cello bag 29c

POTATOES COLORADO REDS US. NO. 1

10 lb. cello bag 39c

AVOCADOS CALIFORNIA Fancy Large Size, Each 10c

FROZEN FOODS

GRAPE JUICE Libby's 6 oz. Can 19c

PERCH Ocean Beauty 1 lb. pkg. 39c

STEAKS Blue Morrows Quick Fixen, 20 oz. Pkg. 79c

DUZ	Spic & Span
All Purpose Detergent Starter Size Box 49c	Reg. Size Box 25c
Kotex Reg. Size Box 35c	
Facial Tissue Kleenex 300 ct. box 3 for 49c	
Salad Dressing Kraft Miracle Whip Quart Jar 49c	
SALT Kimbells Plain or Iodized 26 oz. Round Box 2 for 19c	
Hollywood's 5c Bars	
Candy Smooth Sailing, Pay Day, Butter Nut, Milk Shake 6 for 19c	
Flour Gold Medal 25 Lb. Bag. \$1.98	
Copper Toned Canister Maxwell House 1 Lb. Tin 75c	
Copper Toned Canister Maxwell House 2 Lb. Tin \$1.49	
Lima Beans & Ham Ellis 300 Can 29c	
Vienna Sausage Libby's 1/2's can 2 for 39c	
Sauer Kraut Del Monte No. 303 can 2 for 35c	
Pineapple Juice Del Monte 46 oz. can 39c	
Peas & Carrots Del Monte 303 can 2 for 39c	
Green Beans Kimbells Cut 303 Can 2 for 29c	
Apples Comstock Pie-Sliced No. 2 Can 19c	
Cookies Supreme Chocolate Fudge Sandwich, 1 lb. pkg. 35c	
Cucumber Wafers Shedd's Lady Betty 15 oz. jar 25c	

Listen To MULETRAIN over KMUL sponsored by CASHWAY

White's CASHWAY

GUNN BROS. STAMPS Double Every Wednesday