

McKENNEY ON BRIDGE

By William E. McKenney, America's Card Authority

If you hope to win championships you must learn how to handle suit combinations and high cards. These are the gadgets used by the experts in winning tournaments, and we will see many such plays at the national games in Richmond, Va., the week of Dec. 1.

East properly played the jack of diamonds on the opening lead and declarer allowed it to hold. When the deuce of diamonds was re-

♠ Q8	♠ A 10 8 4 3	♠ A 10 7 3
♥ J 6 5	♥ Q 9 7 2	♥ J 2
♦ Q 10 9 7	♦ 8 6 4	♦ Q 8 6
♣ 3	♣ A 10 5	
♠ Dealer		
♠ K 9 6 4 2		
♥ K		
♦ A K 5		
♣ K 9 4 2		

Duplicate—None vul.

South	West	North	East
1 ♠	Pass	2 ♥	Pass
2 N.T.	Pass	3 N.T.	Pass

Opening—♦ 10. 21

turned, South won with the king and elected to play the spade suit. He led a low spade, played the queen from dummy and East won with the ace, returning a low heart. South's singleton king won, the king of spades was cashed, and when the suit failed to break, declarer complained of his bad luck.

South should have protected himself against a bad break. He selected the right suit, spades, but the thing he had to guard against was the loss of three spade tricks. If the spades were split 3-3, it would cost him nothing to finesse the eight-spot, as he still would not lose three spade tricks. But with a four-two split, he must play the eight-spot to make sure that the opponents do not win three spade tricks. Hal he done that, he would have made his contract.

Appraiser Says City Man Makes Market For Land

By Ledgerwood Sloan, Associated Press Staff

The city man is making the market for land, says the appraiser for one of the largest insurance companies in Texas.

Tenants are buying also, adds the expert who has appraised land in nearly every county in Texas during the last 30 years.

In Northeast Texas, land is selling at \$40 to \$50 an acre, an increase of \$5 to \$15 an acre over prices of three years ago.

Central West Texas farm land is

bringing \$25 to \$40 an acre which is below boom day prices.

In North Central Texas good blackland is going at from \$40 to \$50. A leading Temple broker says there is little chance for farm prices to rise much until those which were foreclosed during the depression are sold by involuntary owners.

In South Texas the demand for top farm land is the best in years and it is difficult to find top places at \$115 to \$125 an acre.

Good land away from Dallas on hard surfaced roads and close to electric lines is bringing \$75 to \$80 an acre. Nearer Dallas the price is higher, said the insurance company executive.

Desire to Own Farms

City men, he added, are buying mostly 100 to 500 acre stock farms with few going in for wheat, cotton and corn lands. This has put stock farms up 25 per cent in price. A

few live on their farms, some week-end there while a great many look upon them as "something to play with." He considers well located farms and ranches good buys on the present market, but believes buyers have bid prices in some areas higher than production prospects justify.

Farm lands around Wichita Falls are bringing \$25 to \$100 an acre, an increase of 20 per cent, according to County Agent G. R. McNeil. He said values had increased gradually during the last two years.

McNeil reports the trend toward farm tenancy is increasing, with 65 per cent of the farms occupied by non-owners in that section. He adds that high values put on lands by some owners have hampered the government's rehabilitation program to encourage tenants to own their own farms.

In Central West Texas, President

Crane Student Suffers Broken Leg At School

CRANE (Special)—Richard Prater, son of Mr. and Mrs. John L. Prater, was hospitalized with a fracture of the left leg received in a fall at school.

ACC Faculty Member To Speak At Church

Paul C. Witt, head of the department of science at Abilene Christian College, will speak at the Church of Christ at 11 a. m. and 7:30 p. m. Sunday.

He will fill the pulpit for the minister, C. C. Morgan, who is conducting a meeting at Highland Church in Abilene.

CHOSEN TO DINE AT ROCKEFELLER MANSION

Billy Noyes, son of Mrs. Iva M. Noyes, was one of 10 soldiers chosen from the 20,000 at Fort Eustis, to be entertained with a Thanksgiving dinner on the John D. Rockefeller estate at Williamsburg, Va. Ten campus beauties from a college were to be dates for the boys who would be entertained with a dance in the ballroom of the Rockefeller mansion after the dinner.

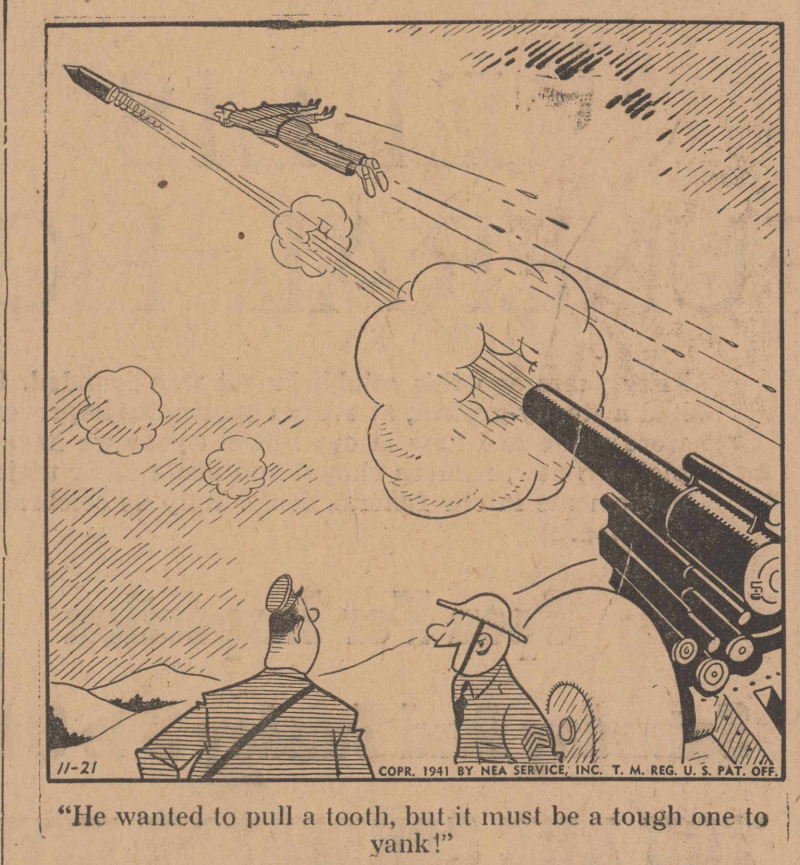
Wichita Falls Girl To Christen Vessel

NEWPORT NEWS, Va. (AP)—Ready for launching six months ahead of schedule, the towering battleship Indiana awaited James River high tide Friday for her christening at the hands of Mrs. Lewis C. Robbins of Wichita Falls, Texas, daughter of the Indiana governor, Henry F. Schricker.

The 35,000-ton vessel, of the same class as the South Dakota and the Massachusetts which were launched at other yards earlier this year, represents 731 days' work at the Newport News Shipbuilding and Dry Dock Company. Her keel was laid Nov. 20, 1939.

Secretary of Navy Frank Knox, speaking at the launching of the battleship, declared the great steel vessel was a symbol of the nation's will to survive in a world at war.

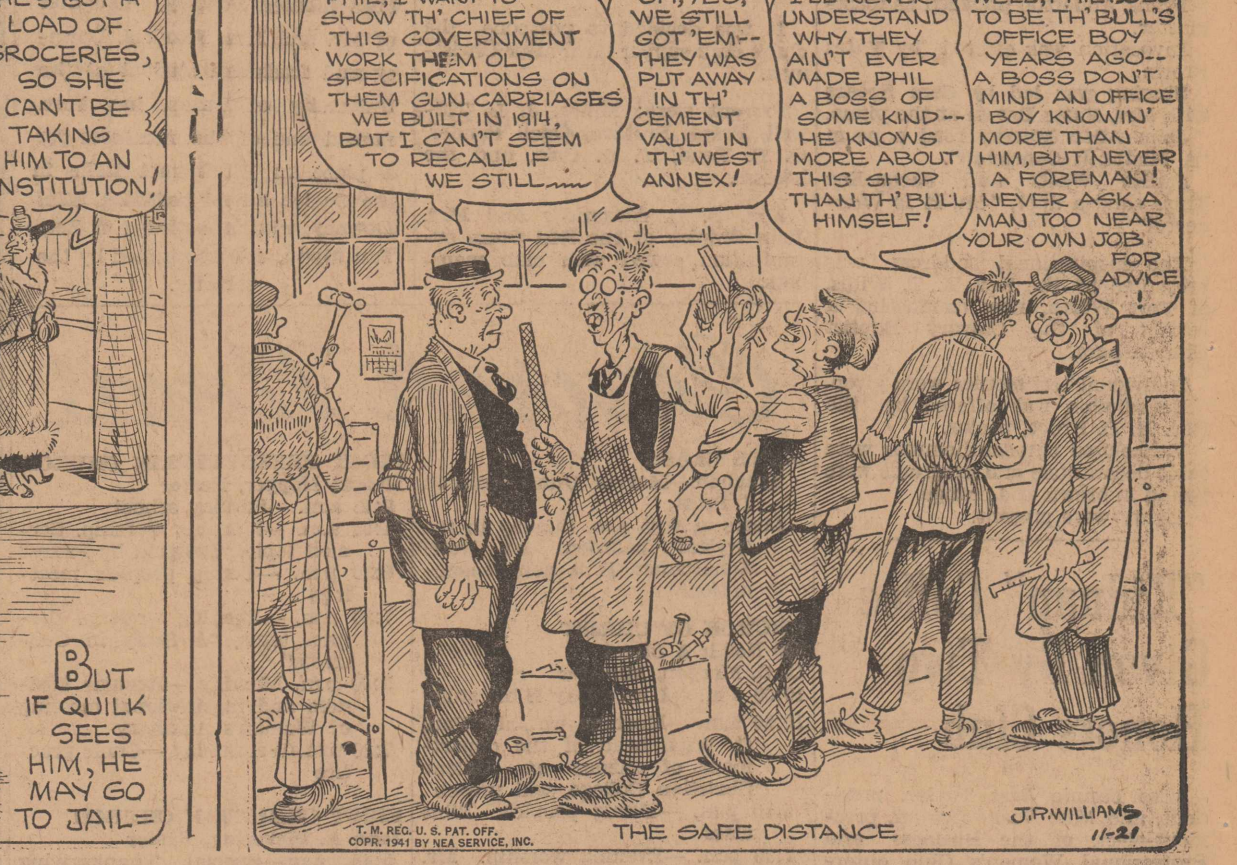
Funny Business



OUR BOARDING HOUSE with MAJOR HOOPLE



OUT OUR WAY



ARMY PROMOTES CRANE SOLDIER IN MISSOURI

CRANE (Special)—Charles Passur, son of Mr. and Mrs. N. Passur, has been promoted to private first class at Fort Leonard, Wood, Missouri.

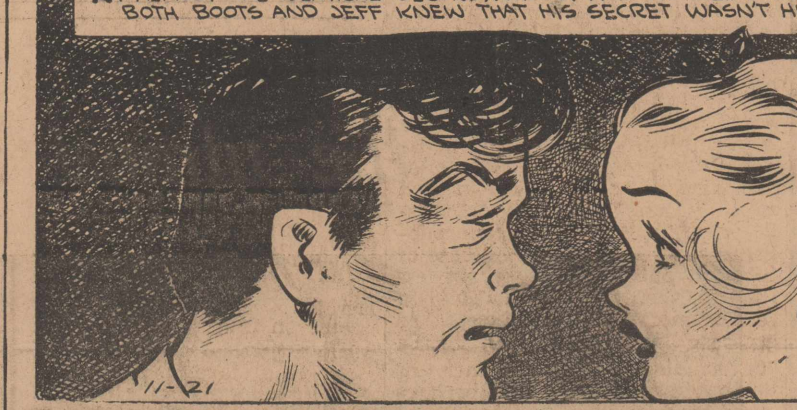
CRANE HUNTER CUTS HAND DRESSING DEER

CRANE (Special)—A. L. Moore, who was dressing a seven-point blacktail buck bagged in the Big Bend country, cut his left hand and five stitches were taken.

Side Glances



BOOTS AND HER BUDDIES



WASH TUBBS



Girdled Frock



The wide smooth girdle, the deep neckline and the soft, gathered skirt are the details which give this dress an air of femininity and a loveliness which is most desirable. Here is a dress for special occasions when you want to look extra fine—it has so many flattering qualities that you will take great pride in letting it lend grace to your appearance. It's a dress for smooth rayon, wool or silk crepes or for velvet or velveteen.

Pattern No. 8004 is in sizes 12 to 20. Size 14, short sleeves, takes 5 yards 36-inch material.

For other excellent styles for 15c in coin, your name, address, pattern number and size to The Reporter-Telegram Today's Pattern Service, 211 W Wacker Drive, Chicago.

For other excellent styles for school wardrobes see our Fashion Book, a complete review of patterns for winter. Order your copy today.

Pattern 15c; Pattern Book 15c; one pattern and Pattern Book, ordered together 25c.

"Bert never misses bringing the streamliner in right on the dot—but his wife always meets him so he won't forget to get home in time for dinner."

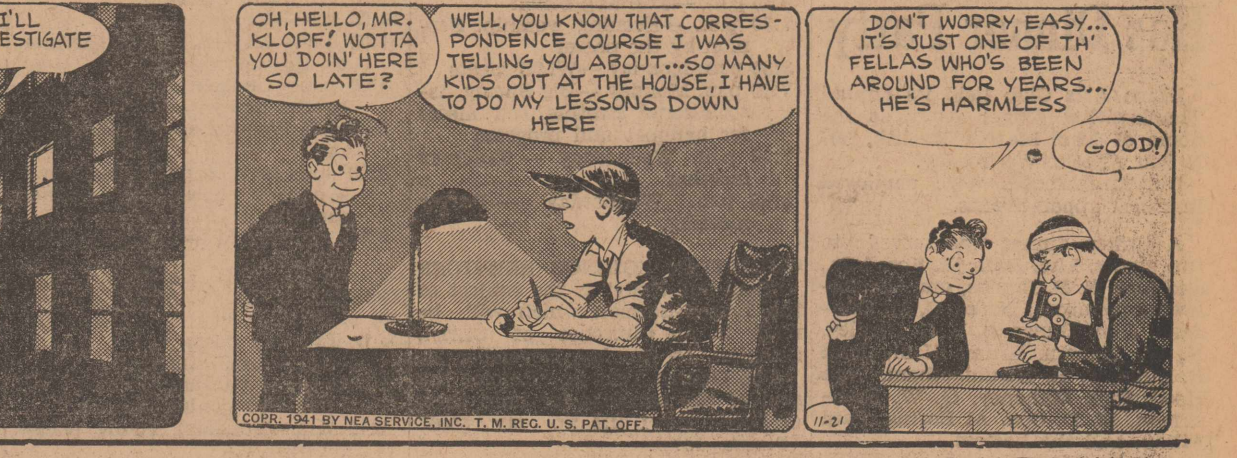
THIS CURIOUS WORLD



ALLEY OOP



ALLEY OOP



RED RYDE!



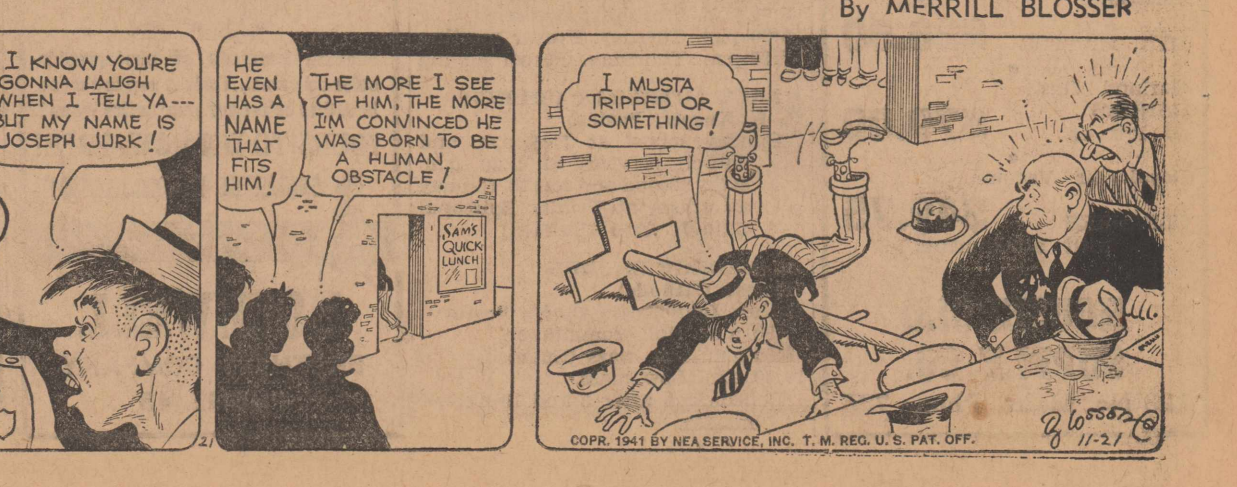
RED RYDE!



FRECKLE'S AND HIS FRIENDS



FRECKLE'S AND HIS FRIENDS



Next: Pertaining to plomaine.

