

# Allies Strive to Quit Channel Ports

## 1890-1940 in Nurses' Styles



(NEA Photo.)

Lache Opel, left, of Corpus Christi, models the nursing uniform of 1890 in contrast to the costume of today as shown by Miss Johnnie Donoho of Grandview, Tex. Celebration of the golden jubilee of the establishment of the Sealy Nurses' Home in Galveston on June 1 calls for the showing of the older garb. John Sealy Hospital in Galveston is the oldest nurses' school west of the Mississippi.

## President to Ask Another Billion For Defenses

WASHINGTON, May 30. (AP).—Stephen Early, presidential secretary, told reporters today President Roosevelt hoped to send to congress tomorrow a message recommending additional defense expenditures of over \$1,000,000,000 to be used for tanks, guns, planes and accumulating reserves of materials.

## Red Cross Goal Is Oversubscribed in One-Day Drive Here

Midland residents oversubscribed the goal of the Red Cross drive conducted here yesterday, Curt Inman, in charge of the drive, announced today.

## RESERVE OFFICERS MEET

Final Permian Basin group schedule for reserve officers of this area was held here last night with 15 members present.

## Escapee From the Odessa Jail Caught in Indiana Town

TIPTON, Ind., May 30. (AP).—A young woman, identified by Sheriff C. D. Hobbs as Isabelle Messmer, of Elwood, Ind., who escaped jail April 8 at Odessa, was arrested Wednesday as she left a motion picture theatre.

## Scouts to Prepare For Merit Badges

Final preparations will be made for Scouts who are to receive badges at the court of honor at the meeting of troop 54 tonight at the Scout hall. The meeting will start at 7:30 and close at 9:30.

## AIRPORT LANDINGS

Two BT-14's and a B-18 landed at Midland Municipal Airport today. Flown by Major H. Smith and Lieut. R. W. Simmons, the BT-14's came from El Paso.

## TO ARIZONA

Mrs. B. L. Crites and children left this morning for a trip to Phoenix and other places in Arizona. They will visit relatives.

## Italy Stands Ready to Leap Into the War

### Mediterranean Area Expected to Be the Scene of First Action

By the Associated Press  
ROME, May 30.—Italy still teetered last night on the brink of war.

Many foreign and Italian observers expected her to take the plunge within a few days, but in the Mediterranean and southward rather than directly against France.

The newspapers splashed "annihilation" of Allied armies in Northern France and Southwestern Belgium as a foregone conclusion and gave the Allied capture of Narvik, Norway, about the same prominence as a minor traffic accident.

## Tonette Band Will Start Work Monday

The Tonette and Melody Fun offer a world of musical enjoyment as well as a thorough musical education to young students. Fourth, fifth and sixth grade students are eligible to join the Tonette Band, starting next Monday morning at 9 o'clock in the band hall.

Tonette bands have been organized in Midland and have been very successful. Many of the former Tonette pupils are now studying band and orchestra instruments.

There are classes for those who already have studied music and wish to start on the regular instruments. Also there is a Junior Band and a Senior Band which meet three times weekly. In fact, there is a class or band for six levels of ability so everyone who joins the summer band classes may be assured that they will not be in a group in which they will be unsuited.

Mr. Armstrong, the director, will be in the band office in the gymnasium Friday and Saturday for interested new pupils. All persons interested in this project are urged to join by Monday for it will be the last chance this summer to take advantage of a fine opportunity to begin or continue playing in a band or orchestra—just for fun and enjoyment or as a vocation.

## TO BIG SPRING.

Chamber of Commerce Manager Bill Collins this morning attended a meeting of the executive committee of U. S. 80 Highway Association of West Texas in Big Spring. Collins is a member of the executive board.

## Hide-and-Seek With Death



They have seen the sight feared by the thousands of refugees toiling along Belgium's roads—a German warplane in the sky above them. The bicycle, with their scant belongings, is abandoned as the two men tumble into the roadside ditch. The old woman—still wearing her kitchen apron—clings fearfully to the protective trunk of a huge tree. Photo passed by British censor.

## Dairy Cattle Show Scheduled Here for Next Wednesday

Sponsored by the Midland Dairy Association and the Midland Chamber of Commerce, first annual Midland Dairy Day will be held here on Wednesday, June 5, both dairy cattle and dairy products to be exhibited. The event will be held at the pavilion of Texas Cattle Sales, Inc., in southeast Midland.

More than 100 head of dairy cattle from counties in the Midland territory are expected to be shown, entries already having been received from Martin, Dawson, Ector, Andrews, Gaines, Howard and Midland counties. The show will be open to all exhibitors.

E. R. Budaly and G. G. Gibson of College Station, extension service dairy specialists, will place the dairy cattle. There will be six classes of dairy cows and five classes of dairy bulls, with a special class of four producing dairy cows owned by one exhibitor.

Judging in the dairy products division will be by D. V. Maddox, extension service dairy products specialist. Classes in the dairy products division will be milk, cream, butter, American cheese, cooked cheese, cottage cheese and Nourched cheese. Miss Jennie Camp, extension service specialist, in home demonstration work, will conduct a demonstration in dairy products. The dairy products exhibit will be in charge of the Midland County Home Demonstration club of which Miss Alpha Lynn is agent. Miss Ruth Thompson is the district agent.

Officers of the Midland Dairy Association are president, Lynton Brunson; vice president, R. O. Brooks; secretary-treasurer, D. W. McDonald, and J. C. Miles, Jim W. Baker, F. E. Armstrong and O. C. Collins, directors.

## Memorial Services Will Be Held Here This Evening

Memorial services honoring war-dead will be held this evening, the preliminary service on the courthouse lawn at 6 o'clock sharp and the ritual at Fairview cemetery afterward. The services are sponsored by the American Legion, that organization inviting the D. A. R., Spanish-American War Veterans, Daughters of the Confederacy, and other patriotic groups to take part in the honoring of the dead.

## 20,000 Motorcycle Soldiers Help Germany in Overrunning the Allies

BERLIN, May 30. (AP).—Adolf Hitler has put soldiers mounted on motorcycles to new destructive uses behind enemy lines in carrying out his blitzkrieg plans through Belgium and northern France.

Dubbed "blue devils" by the French, the motorcyclists, were sprung as a surprise on the Allies in the Picardy section of France, from Amiens to the channel, north of the Somme.

Authorized quarters tonight said these motorcyclists, trained and used only for scouting duty, were estimated at 20,000 in number. They were sent into Picardy during the encirclement operations against the Allies with orders to break all possible communication lines linking the Allied northern armies and those south of the Somme.

In addition they were to harass the enemy in every other possible way. An authorized spokesman said the "blue devils" raced over the countryside 50 to 60 miles an hour in groups of eight or ten.

Each cycle has a sidecar. The crews are equipped with automatic pistols, carbines and light machine-guns.

Without reducing speed they strafed enemy marching units and encamped troops alike.

The motorcycles throw off a thick blue exhaust which acts as a smoke screen and gives the riders their nickname.

Specialized motorcycle units follow the first squads. These later machines are equipped with wire cutting tools, hand grenades, and other destructive devices for use against power lines, transformers and other key objects.

Among the most ingenious instruments is a rope with a cutting edge. This rope can be thrown over a wire in such a way as to cut it by see-saw motion, although the users are insulated and safe.

These forays are repeated frequently to hinder effective repairs. The "blue devils" employ time bombs for use on bridges and switching-control towers.

The squads are composed of picked men who know the terrain to which they are assigned, either as of World War experience or special travels as tourists.

Losses among the "blue devils" are few, the spokesman said, because they move too fast and rarely ever appear at the spot which has prepared a defense for them.

"The blue devils," he said, "are a blitzkrieg in Lilliputian form."

## Second Soma Pool Well Fills With Oil, Heads Today

Lewis & Shannon No. 1 Noelle Livestock company, east offset to the discovery well of the shallow Soma Pool in western Crockett county, headed an estimated 40 to 50 barrels of oil, cleaning hole, following second running of baller this morning after a 12-hour overnight shutdown. Hole filled with oil during the 12 hours. This morning, operators were drilling ahead below 1,078 feet in sand.

The well, second for the pool, found first piling in sand from 1,084, 72 feet, filling 300 feet with oil in an hour, but gas volume was estimated at only 100,000 cubic feet daily, in direct contrast to the 50,000,000 feet a day shown by its west offset. Drilling ahead, the Lewis & Shannon test found increase in oil and gas in sand from 1,075-78 feet. Gas volume jumped to between 250,000 and 500,000 cubic feet daily.

Moore Exploration Company of Midland and Olson Drilling Company No. 1 Noelle, indicating opening of a new pool five miles southeast of the Soma, pumped seven barrels of oil hourly on preliminary test and now is preparing to take potential gauge.

Water In Delaware Well.  
Slack and Merry Brothers & Perini No. 1 Bird S. Hayes, western Ward county Delaware sand prospect near Quito, was reported today in some quarters to be flowing an estimated one barrel of fluid hourly, cut 10 per cent with salt water. Gas volume is upwards of 10,000,000 cubic feet. Flow is through 4-inch line off 7-inch casing, and (See OIL NOTES, page 8)

## FRENCH UNITS SAID QUITTING

LONDON, May 30 (AP).—Thousands of the first arrivals from the Flanders battlefields reached England tonight in warships, transports, and hospital ships, their uniforms torn, their faces grim, powder burned.

The ships were conveyed across the channel through a tempest of bombs and machine gun fire.

Retreating Allied troops fought desperate rear-guard actions today against an estimated 500,000 Germans rushing across the plains of Flanders to crush them before they can escape by sea.

Many French units, severed from the British in the 12-mile pocket around Lille, were reported laying down arms.

The German high command declared the great battle of Flanders was fast nearing an end and the Allied armies "destroyed."

Nazis also claimed dive-bombers sank 16 transports and three British warships and damaged 34 other vessels waiting to embark the Allies at channel ports.

## LATE NEWS

PARIS, May 30 (AP).—Three American cemeteries are in German hands and a fourth under fire. Frederic Beckman said today at Memorial Day services held at the American Cathedral church.

LONDON, May 30 (AP).—Several hundred Americans are stranded in Britain and Ireland without the \$300 each passage fare to the United States liner President Roosevelt sailing from Falway, Ireland, next week.

British military circles insisted British forces still held main base depots in Flanders.

Eighty nine allied planes were reported shot down or destroyed by the Germans.

The German high command said the British expeditionary force was in "full dissolution," forsaking enormous quantities of war material.

Wholesale destruction of troop formations of broken allied armies of Flanders to escape the German campaign of annihilation embarked at the English channel today under protecting fire of French and British fleets.

Military authorities estimated 700,000 German infantrymen were attacking about 270,000 French and British troops.

transports and protecting naval craft centered around the flame-ravaged French channel port of Dunkerque.

Nazis insist that even if the retreating allies, estimated at 300,000, reach the coast escape has been cut off by the terrific artillery and air bombardment of Dunkerque.

British Face Big Task in Removal Of 500,000 Troops

Oddly matched weapons of power and speed in land and sea warfare stood ready today to wage a battle without precedent as the final phase of the Allies' 1940 disaster in Flanders.

The British stake is removal to England of some 500,000 troops, or what may be left of them, from the deadly steel triangle which collapsed on them abruptly after the surrender of the Belgian King Leopold two days ago.

In prospect, the final desperate retreat from Flanders may turn into the most diversified land-and-sea battle ever fought.

Apparently the allies intend to withdraw from their slender remaining foothold at Dunkerque, France's furthest seaport.

Outside and up along the captured coasts of Belgium and the Netherlands presumably lie numerous Nazi "mosquito boats"—the speedy little suicide craft carrying quickly-launched torpedoes to sting the bulky British convoys to the death. This hit-and-run warfare already has claimed a British destroyer, Germans report.

Menacing transports from above are Nazi dive-bombers and fighters flying from captured continental bases. Battling them are the desperate though outnumbered Allied aircraft.

Linking below the surface may be Nazi submarines recently unheard of until their resumption of raiding this week as shown by the sinking of three merchant ships off Spain.

In summary, it promises to be a battle of three strata, on the sea — air, surface and below, abetted by land batteries that can arch across the channel from both England and France.

The greatest new test may be the mosquito fleet attacking the warships of England in a side battle of maneuverability against bombing power.

As evidence that anything can happen in this war—not barring secret weapons even—a tank was reported attacking a warship in the English channel this week.

All this prospective battle-soneto-sea may be witnessed by Britons within sight of the homeland that hasn't been invaded since William conquered Harold at Hastings in 1066.

Even Napoleon got no closer to England than the channel coast, where he fretted long but stood hitched to the continent.

PATIENTS DISMISSED  
Mrs. N. J. Bingman and Mrs. O. R. Jeffers Jr. were dismissed from a Midland hospital today.

## BULLETIN

INDIANAPOLIS, May 30. (AP).—Wilbur Shaw today won the 500 mile Indianapolis speedway class with a time of four hours and 22 minutes, an average time of 114.277 miles an hour. Rex Mays of Glendale, Calif., was second, two and a half miles behind. The race was then stopped on account of rain.

WASHINGTON, May 30. (AP).—Acting with the approval of President Roosevelt, Senator Byrnes, South Carolina, proposed today the relief bill be amended to provide training of civil conservation corps enrollees in non-combatant activities essential to the army and navy in war time.

Byrnes prepared the amendment to permit training 300,000 CCC men in maintenance of motor vehicles, first aid and other activities.

TRANSFERRED HERE  
Rhea Clark of Kilgore has been transferred to Midland by the Railroad Commission.

# THE REPORTER-TELEGRAM

Evenings (except Saturday) and Sunday Morning  
MIDLAND PUBLISHING COMPANY, PUBLISHERS  
112 West Missouri, Midland, Texas

T. PAUL BARRON, Publisher

Entered as second class matter at the postoffice at Midland, Texas, under the Act of March 30, 1879

Subscription Price  
Daily, by Carrier or Mail  
Per Year.....\$5.00  
Per Month.....50¢

Advertising Rates  
Display advertising rates on application. Classified rate, 2¢ per word; minimum charge 25¢. Local readers, 10¢ per line.

Any erroneous reflection upon the character, standing or reputation of any persons, firm or corporation which may occur in the columns of The Reporter-Telegram will be gladly corrected upon being brought to the attention of the firm.



## The Town Quack

The American Legion is an educational institution. We do not have police power. It is not our mission to apprehend persons whom we believe to be conspiring against the Government. We should not take the law into our own hands.

We offer the following suggestions after having discussed this subject with the Department Commander and others:

1. The American Legion Posts should not join with any other groups or persons for the purpose of organizing vigilance committees or investigating bodies.

2. Immediately report suspicious actions, giving the name or names of individuals, and the addresses, to the FBI or your local peace officers, sheriff, chief of police or highway patrol. These officers have their instructions and are capable of investigating such charges and enforcing the law if there has been a violation.

3. The work should be done secretly. There is no use for a town meeting. Let the officers give the information to the press, after an investigation has convinced them that off-color activities have been engaged in, thus innocent people will not suffer.

Where and how do all the disaster rumors get started? At least 50 persons called this office and others came around to it yesterday afternoon after someone had started a rumor that the ship President Roosevelt, enroute to Europe to return American citizens, had been sunk.

Each person had talked to someone who had heard it over the radio or from someone else. I'm not blaming the radio, however, because not one of the inquiring persons would admit hearing the story over the air.

\*\*\*

If Charley McClintic is ever going to loosen up to the coffee guzzlers he should have this morning because he got another inch of rain on his ranch yesterday afternoon.

\*\*\*

Vacation season is here again. And that brings up the thought of the Big Bend national park. We should do all we can to make it an actuality because American tourists are going to be seeing their own country this year instead of going abroad. And those tourist dollars help just as much as one taken in from a local citizen.

Many persons have suggested that the American Legion take over the job of halting any "fifth column activities" in this country. In order to show what the ex-soldiers are doing along that line we print the following letter from the state adjutant general to post commander "Red" Steele:

We have had so many letters asking what the American Legion Posts should do to combat "fifth column" influences. Many resolutions have come in from all parts of the State placing the Post at the disposition of the President of the United States for all purposes. Conditions are serious. The groups working within our gates, however, have been known to the American Legion for several years. There is no use for us to get excited over the matter.

## Crystalize Your Ideas on Dinner



DAINTY crystal servers like this lend quite a professional touch to serving appetizing shrimp. The center cavity contains the tangy sauce; the shrimp curl temptingly on the wide shallow flange. Or, for desert, fill the center with whipped cream and range plump, red strawberries about the edge.

# PLASTIC PLANE MAY BE KEY TO MASS PRODUCTION

BY BILL PORTER  
NEA Service Staff Correspondent

LOS ANGELES.—The key to the speed-up of national defense and perhaps mass production of President Roosevelt's 50,000 fighting ships may turn out to be a plastic plane.

They have just flown one out here—fresh from the oven. Molded and baked, lighter, cheaper, more quickly assembled, this plane gives the aviation industry its first chance to turn out planes as rapidly as automobiles. Both precious time and costly materials are saved with the revolutionary development.

The plastic plane, moreover, lends itself particularly to wartime use; the plastic is impervious to water and oil and highly resistant to fire. An oxy-acetylene torch held on the material does not even scar it. And the saving in weight means greater bomb loads. Minor repairs may also be made in the field by a simple process.

## MAY OPEN UP BOTTLENECK

MONTHS of research behind closed doors have made this startling new plane possible. The first plastic plane, however, was designed by Col. V. W. Clark, two years ago. Clark was chief of the army's aviation engineering during the World War.

Designer of the ship just tested is Walter A. Hite, chief engineer of Timm Aircraft Corp. The ship is an open tandem, two-place, military type primary trainer with a wing spread of 36 feet. It is 24 feet 10 inches long and 7 feet 9 inches high. Empty, the plane weighs 1435 pounds, with a load capacity of 615 pounds. Maximum speed is 140 miles while the plane cruises at 129 miles, but much greater speeds may be attained with larger motors.

One of the worst bottlenecks of the airplane industry, long prohibiting mass production, has been assembly. Building wing shells and covering them with metal "skin", building and covering the

fuselage is a slow and delicate job requiring highly skilled workmen.

It takes an average of four hours to buckle one square foot of "skin" on a plane. A crew requires from four to six working days to build the complete structure of a wing. The largest airplane plant in the United States took 18 months to complete one order of 600 planes for the allies.

Not so for the plastic plane. After ordinary spruce is used to build a form, giving the plane its rough shape, and each layer is coated with a phenolic resin plastic, the plane is then placed under terrific pressure and baked in huge ovens. The pressure causes the plastic to impregnate each layer of spruce and so solidify the structure into one firm mass.

The planes are then made in sections and quickly fitted together. Construction is so simple large-scale production would be easy, according to R. A. Powell, general manager of the Timm corporation.

## NEARLY PERFECT AERODYNAMICALLY

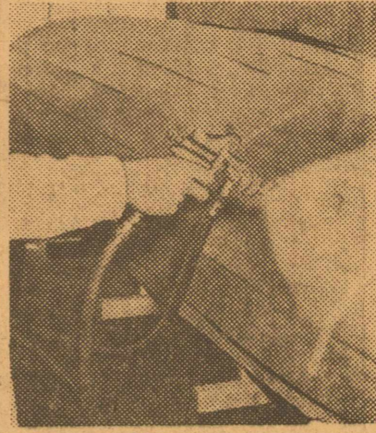
A SUCCESSFUL plastic plane could be assembled as fast as motors and parts were supplied. One aviation authority estimates 200 men with 10 sets of plastic molds could build wings, fuselage and tail parts for 300 planes a month, in a factory area equal to one average city block. Step that up to 100 dies and 2000 men and you have a reasonably potential production of 36,000 planes a year.

And because of mass production and materials these planes would be considerably cheaper, perhaps 25 per cent less. Materials are common, easily obtained, and in some cases exceptionally low-priced.

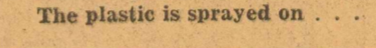
Finally, the plastic plane proves to be more nearly perfect aerodynamically. It has excellent structural, "torsional" strength and absolute smooth surface. It attains 7 per cent greater speed because it weighs 20 per cent less than other planes of comparable size. These are factories of tremendous military importance.



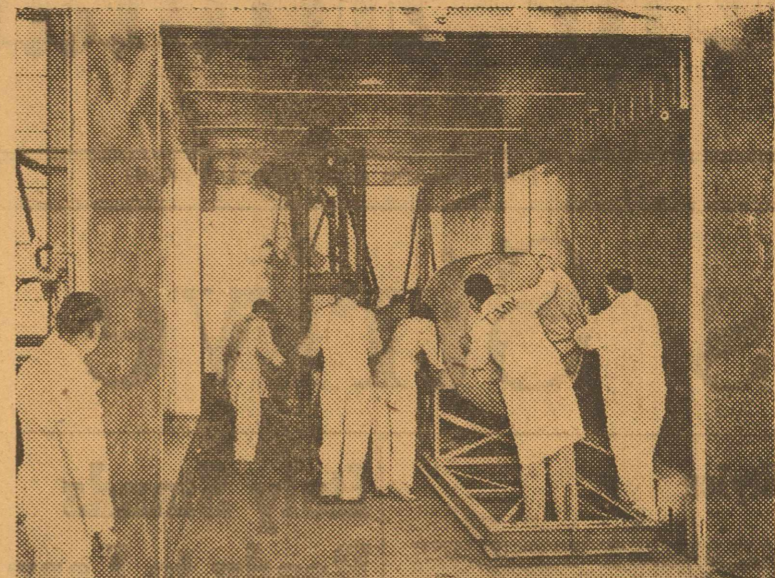
Powder, two liquids mixed . . .



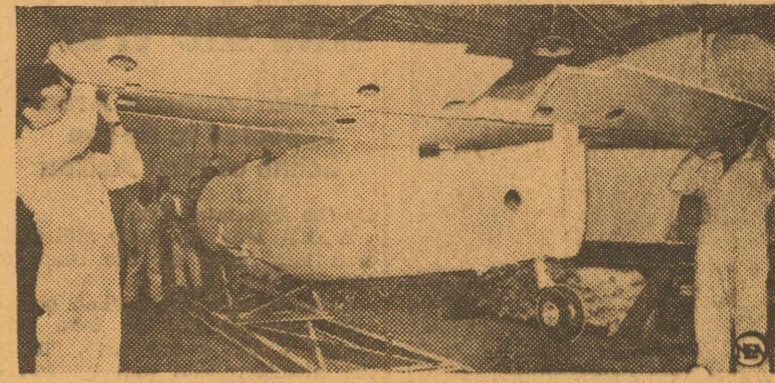
A fuselage is wheeled into an oven to be baked . . .



The plastic is sprayed on . . .



A fuselage is wheeled into an oven to be baked . . .



Both sections molded, a tail piece is fitted to a fuselage . . .

## Play Facilities Are Built for NYA Boys

AUSTIN.—While receiving first aid, health and hygiene instruction on NYA Projects, Texas boys are building recreational facilities for other youth over the State, according to J. C. Kellam, State NYA Administrator.

Texas cities which have acquired football stadiums through NYA

youth labor are Alto, Castroville, Alice, Robstown, Benavides, and Merkel, and at this time two are under construction at Kemp and San Diego. Baseball courts have been built at Quitman, Purnela, Castroville, Goliad, and O'Donnell, and a croquet court is now being constructed at Avery.

Navasota, Big Spring, and Rotan golf courses have been improved and repaired, and NYA boys are working on a San Antonio course. At this time a gymnasium is being built at Blanco, and gymnasiums have been completed at DeKalb and Sutherland Springs. Softball diamonds have been built at China, Liberty, and Meridian, and a fishing pier has been constructed at Waco.

During the past year, tennis courts have been constructed by NYA boys at Gilmer, Gainesville, Waller, Hillsboro, Hallettsville, San Antonio, Goliad, George West, Jourdanon, Corpus Christi, McAllen, San Juan, Hermleigh, Pylon, O'Donnell, Abilene, Merkel, Colorado, Brownsville, and Brenham.

Bathhouses and swimming pools are being added to recreational facilities at Stockdale, Raymondville, and Lufkin (Jones Lake) through National Youth Administration Projects. Honey Grove is cooperating with the NYA to build an athletic

## Medical Attention Is Urged When Sick

AUSTIN.—"The responsiveness of the American public to sound health suggestions from friends, acquaintances, and other less impersonal sources is very general. Fads and fancies, lacking basic worth as well as common sense, thus literally are rampant throughout the land. While many of the so-called friendly suggestions that are ardently applied by the too-trusting or gullible are not responsible for more than temporary harm or inconvenience, others are likely to result in serious complications and may ever terminate in death," states

field house there, and two have recently been completed at Pearsall and McAllen. Cinder tracks have been added to high school athletic facilities at Orchard and Benavides, and NYA boys will soon complete one at San Diego.

"Through these NYA Projects the National Youth Administration seeks not only to give work experience to Texas youths," the State Youth Administration said, "but also hopes to encourage in them a sense of community responsibility."

## Air Conditioning System Not Needed At Boy Scout Camp

Artificial refrigeration is not necessary where Buffalo Trail Council's Scouts will camp this summer. A screened-in cabin at the altitude of 8500 feet in the shade of huge pine and fir trees is all that is necessary. Meats, vegetables, bread, all keep for several days. Ice water is not necessary either since the spring from which water is piped nearby pours out 60 gallons of water per minute and its temperature is 35 degrees Fahrenheit. Hot shower baths are furnished in the Scouts' Cabins since it was found that cold showers were not being used very often.

Local Scouts who will attend Camp have been warned to bring at least four blankets and two sheets. The mattresses and cots will be furnished by the camp. In the day time the weather is pleasantly cool but as soon as the sun goes down all must reach for heavy sweaters.

The cost of the camp to Scouts of this Council is \$10.00 for each ten day period. Camp begins on June 9 and ends on June 29th. Registration fees of 50¢ for each period of camp are literally swamping Scout Headquarters in Sweetwater.

Those who have not registered should do so immediately and also call W. R. Upham, District Boy Scout Camping Chairman to ascertain if a place is available at Camp and to learn about transportation facilities.

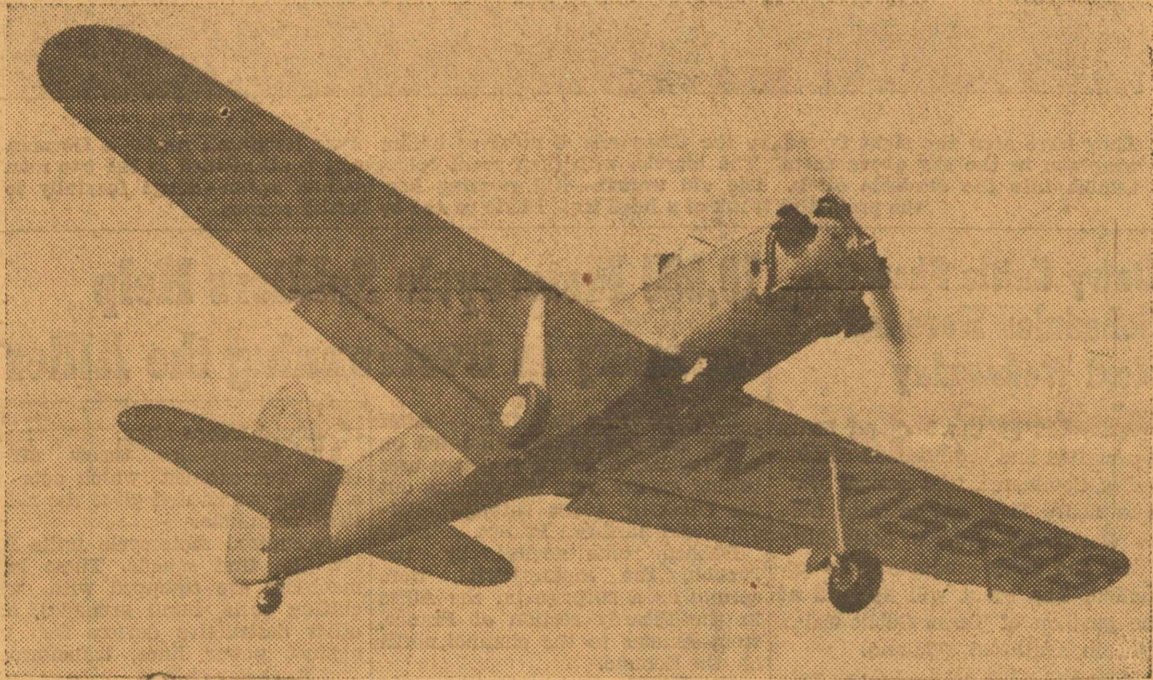
Dr. Geo. W. Cox, State Health Officer.

"As a case in point, some time ago a man, while at an evening gathering, suddenly experienced abdominal pain, and was advised by no less than three of the party to take a dose of oil. This suggestion he immediately adopted. He actually was suffering from appendicitis, and taking the oil aggravated an extensive peritonitis which caused the loss of his life. His fate, however, may influence others who experience pain of this type, or in fact an illness of any kind, to seek professional counsel rather than to rely upon the usually spontaneous suggestions of well-meaning though ill-informed persons.

"While health and illness are high up in the conversational scale, the fact remains that only those skilled in the practice of medicine should be relied upon for advice of any kind relating both to bodily health and to the curing of an ailment.

Doctors, through long training and wide personal experience, are qualified to recognize the cause of symptoms and thus define the illness. Proper diagnosis is essential to proper treatment. And those outside the profession, bright as they may be in their particular fields, cannot assume the role of family physician, either for themselves or for others.

Bowling 15¢ until 6 p. m. except Sundays. Plamor Palace. (Adv.)



The Timm plastic plane in flight.

Photos show steps in making a plastic plane. Forms are made of ordinary spruce wood over which spruce plies 1/25th of an inch thick are laid so that the grains of the layers criss-cross. A coat of phenolic resin plastic liquid is sprayed on each layer. This plastic is similar to bakelite. The plane now has its rough shape and is ready for baking in huge ovens under tremendous pressure. The pressure causes the plastic to impregnate each layer of spruce and solidifies the whole structure into a strong but somewhat elastic mass. After baking, the plane sections are quickly fitted together to form the final smooth, light shell, well nigh perfect aerodynamically. The fuselage is molded in just two matching halves and the absence of rivets and seams means added speed. So simple is this construction that many aviation experts believe mass production is possible—and soon.

## This Much We Can Do



## NEW GOVERNOR-GENERAL

**HORIZONTAL**

1 The governor-general of Canada.  
12 A patent.  
13 Gold house.  
14 Feather scarfs.  
16 Deep hole.  
17 Cent.  
18 Left-hand page.  
19 Point (abbr.).  
20 To incline.  
21 Beam.  
22 Ell.  
23 Greaser.  
25 Fashionable assembly.  
27 Ancient.  
28 Portrait statue.  
30 Purple seaweed.  
32 Musical note.  
33 Silent.  
36 Mastic.  
38 Forward.  
40 Organ

**Answer to Previous Puzzle**

CHINA REPUBLICS  
OAR TAIL SEEDER  
ROT IDLE LITEA  
CENSUS SANG ASS  
O YELLS TEES EH  
NT TEEM  
FUSS SO  
LATER  
I ASID  
CAT BAB  
TRIO ISLE RIA  
COWER AMA ORA  
MONETARY MANCHU

15 He is an ex- or military man.  
17 By.  
18 Weathercocks.  
20 Mercenary.  
21 Pirate.  
24 Quantity.  
26 Gibbon.  
29 Black and blue.  
31 To free.  
34 Quoted.  
35 X.  
37 New York (abbr.).  
39 Hawaiian thrush.  
41 One that reads.  
45 Dispositions.  
46 Empty boasting.  
48 Parts of chair legs.  
50 Auditory.  
52 Small shield.  
53 Sprite.  
54 Postscript (abbr.).  
55 Each (abbr.).

**VERTICAL**

1 Amatory.  
2 To perform.  
3 Sun god.  
4 Sheaf.  
5 Long teeth.  
6 To temper by heat.  
7 Plaything.  
8 Hour (abbr.).  
9 To mind.  
10 Neither.  
11 Artists' frames.  
12 He was chosen for office.  
55 Each (abbr.).

containing life.  
42 Fabric colorer  
43 Tree.  
44 Ringworm.  
47 To prosper.  
48 Grazed.  
49 Wild ox.  
51 Wages.  
53 Redacts.  
54 Step.  
55 Oleoresin.

56 He was a former governor-general of

2 3 4 5 6 7 8 9 10 11

12 13 14 15

16 17 18 19

20 21 22

23 24 25 26 27

28 29 30 31 32

33 34 35 36 37

38 39 40 41 42

43 44 45 46

47 48 49 50

51 52 53

54 55

56

# CASH & CARRY GRO. & MKT.

Specials for FRIDAY & SATURDAY, MAY 31-JUNE 1

WE DELIVER—PHONE 41

We Reserve the Right to Limit Quantities

PRICE MEANS NOTHING UNLESS IT IS LINKED WITH QUALITY

- SUGAR, 10 pounds ..... 52¢
- BANANAS, golden ripe, dozen ..... 14¢
- COFFEE, Folger's, pound ..... 26¢



24 pounds ..... 83¢

- SOAP, Jergen's, 4 bars ..... 15¢
- CORN FLAKES, 3 packages ..... 25¢
- MILK, Armour's, 6 small or 3 large ..... 21¢
- PURE LARD, 4-lb. carton ..... 34¢
- GRAPE JUICE, pint ..... 15¢
- SALMON, No. 1 tall, 2 for ..... 25¢
- Gallon PRUNES ..... 26¢
- Magic WASHING POWDER for faster suds ..... 19¢

## MARKET SPECIALS

- BUTTER, Dairyland or Banner, pound ..... 28¢
- SHORT RIBS OF BEEF, 2 pounds ..... 27¢
- CHUCK ROAST, from grain fed home killed beef, pound ..... 18¢
- CHEESE, Kraft's Longhorn, pound ..... 18¢
- BACON, Armour's Star, pound ..... 21¢
- No. 1 DRY SALT BACON, pound ..... 11¢
- BACON, hand sliced, pound ..... 17¢

# EXTRA

## READ ALL ABOUT THE BIG FRESH FRUIT AND VEGETABLE BARGAINS AT CONNER BROS. PIGGLY WIGGLY

SPECIALS for FRIDAY and SATURDAY  
MAY 31st—JUNE 1st

### CANNED GOODS

- Del Monte PEACHES, No. 2½ can, 2 for..... 35c
- Del Monte PEARS, No. 2½ can, each..... 23c
- Del Monte PINEAPPLE, No. 2½ can, each..... 23c
- Del Monte PINEAPPLE JUICE, 12-oz., 3 for. 25c
- Del Monte FRUIT COCKTAIL, No. 1 tall, 2 for 29c
- Del Monte PINEAPPLE No. 1 flat, each..... 9c
- Del Monte PINEAPPLE, No. 2 can, 2 for..... 35c
- Del Monte SPINACH, No. 2 can, 2 for..... 29c
- Country Gentleman  
Del Monte CORN, No. 2 can, 2 for..... 29c
- Golden Bantam  
Del Monte CORN, 12-oz. can, 2 for..... 27c
- No. 2 Can  
Del Monte Whole GREEN BEANS, 2 for..... 35c
- Snapped and Shelled  
Pecan Valley B. E. PEAS, No. 1 can, 3 for..... 27c
- TOMATO JUICE, CHB, 14-oz. can, 3 for..... 21c
- PORK & BEANS, Denco, No. 1 can, each..... 5c
- Plymouth Maid  
Golden Bantam CORN, No. 2 can..... 10c
- V-8 COCKTAIL, large size, 2 for..... 23c
- Heart's Delight JUICES, 3 for..... 23c
- DOG FOOD, Archers or Guardian, 6 for..... 25c
- Yacht Club TUNA, 7-oz. can..... 18c
- No. 1 Tall Can  
SALMON, Angostura flavor, pink, each..... 15c
- Mrs. Paley's BABY FOOD, 3 for..... 25c
- All 9c Sellers  
Hershey's CHOC. SYRUP, 16-oz., 3 for..... 27c
- SANDWICH SPREAD, Rath's, lge. can, 3 for 25c
- VIENNA SAUSAGE, Armour's Star, 3 cans..... 25c
- LARGE SANIFLUSH, can..... 19c
- D-8 FLY SPRAY, quart..... 33c
- D-8 FLY SPRAY, pint..... 19c
- D-8 FLY SPRAY, half pint..... 10c
- P & G SOAP, 6 for..... 23c
- LIFEBUOY SOAP, bar..... 5c
- LUX SOAP, bar..... 5c
- PAPER NAPKINS, 80 count, 2 for..... 15c
- SWANS DOWN CAKE FLOUR..... 29c
- BISQUICK, large package..... 35c
- SHREDDED WHEAT, package..... 10c
- VEGETABLE  
**Shortening**  
PURE CANE  
**SUGAR 10** lb. Cloth Bag 49c  
3-lb. Pancrust 44c  
3-lb. Spry... 48c
- FLOUR**  
6 pounds 27c  
12 pounds 48c  
24 pounds 85c  
48 pounds \$1.63

**CRACKERS**  
1½-lb. SALTINES  
Each 20c

**LIPTON'S TEA**  
¼-lb. with GLASS FREE  
All for 23c

**CANDY**  
PURE PEPPERMINT STICK  
120 Count 85c

**VANILLA WAFERS**  
1-lb. Tulip 23c

**APPLE JELLY**  
MA BROWN  
2-lb. Jar 23c

**SUGAR**  
Powdered and Brown  
Pound Package 2 for 15c

**ADMIRATION COFFEE**  
Pound Can Drip Type Pot \$1.29

**KRAFT SPAGHETTI DINNER**  
2 for 29c

**EGGS**  
Fresh from the Country.  
Stamped, Infertile and Guaranteed  
2 Doz. 29c

**BUTTER BANNER or DAIRYLAND**  
Pound 29c

**GRAPE JUICE**  
CHURCHES Pints  
2 for 37c  
Quarts 36c

**CANTALOUPE**  
Vine-ripened pre-cooled Cantaloupes from California. The flavor is delicious  
2 for 25c



CALIFORNIA  
**ORANGES** 2 Doz. 29c




CALIFORNIA  
**LEMONS** 2 Dozen 25c



FRESH  
**RHUBARB** 2 pounds 15c



No. 1 Quality Fresh Green  
**Cucumbers** LB. 6c



Extra Fancy No. 1 Fresh Green  
**BEANS** 2 lbs. for 15c



**FRESH OKRA** Pound ..... 15c  
**WHITE SQUASH** 2 pounds ..... 5c  
**YELLOW SQUASH** Pound ..... 5c  
**FRESH B. E. PEAS** 2 lbs. .... 9c  
**NEW POTATOES** 6 lbs. for ..... 25c  
**SWEET WHITE ONIONS** 2 lbs. 15c  
**ASPARAGUS** Extra Fancy 1-lb. Bunch ..... 10c  
**RUSSET POTATOES** 10-pound mesh bag 35c  
**WINESAP APPLES** Dozen .... 29c  
**RED RIPE PLUMS** 2 lbs. .... 15c

**PLENTY OF CHOICE MILK-FED FRYERS . . . DRESSED WHILE YOU WAIT**  
Hotel Packed  
PEYTON'S SPECIAL  
**SLICED BACON, lb. . . . . 21c**  
RED RIND WISCONSIN  
**CHEESE** POUND . . . . 35c

**BANANAS**  
Golden Yellow Fruit From South America  
Be Sure to Buy These DOZEN 19c



**NEWS FLASH!**  
Fresh fruits and vegetables galore! We really have them for you this week-end. Two truck loads of fresh vegetables from the Rio Grande Valley and one truck load of fresh fruits from California. All of our produce is the best quality that money can buy. Be sure and visit our store and see our large display. Do not be misled about our produce items, for we handle only the best and you will not find our stock depleted, but will find that we have plenty for every one. Also bear in mind that it is possible for us to buy an inferior grade of produce and offer it to you at a lower price, but we do not do this. We buy the best for our customers.

**CORN**  
WHITE PEARL & WHITE CHAMPION  
This Is the Finest Corn Grown  
**HERE IS A BARGAIN**  
LARGE EARS FOR 6 FOR 15c



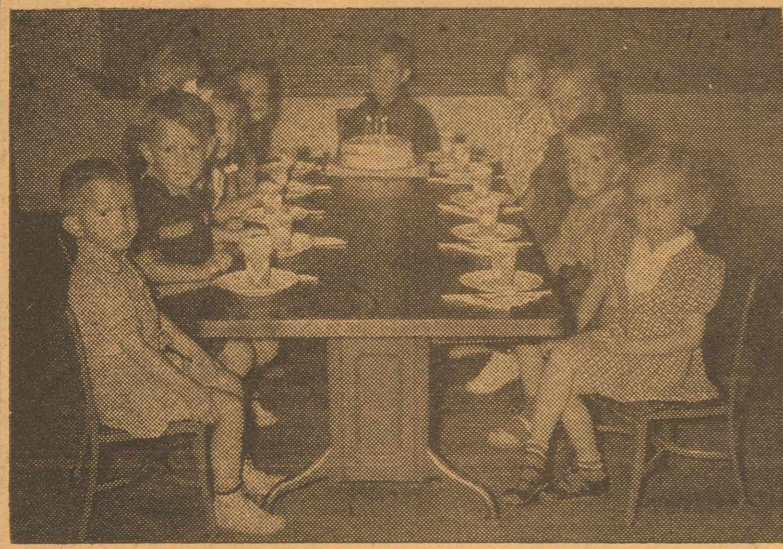
**MEATS**

- BACON** Armour's Star Sliced—Per Pound . . . . 21c
- BACON** Sugar Cured Sliced—Per Pound . . . . 15c
- LARGE WEINERS** Pound . . . . 15c
- PORK SAUSAGE** Pound . . . . 10c
- ROAST** Pork Shoulder—Pound . . . . 15c
- CHOICE BABY BEEF**
- CHUCK ROAST** Pound . . . . 18c
- CANADIAN BACON** Pound . . . . 39c
- SWIFT'S PREMIUM**
- DRIED BEEF** ¼-Pound Package—2 for . . . . 25c
- BREAST OF VEAL** Pound . . . . 15c  
Fine for Baking

Mrs. Leonard to Present Pupils in Program Tonight

Concluding this year's work in her voice and piano classes, Mrs. Maud Leonard will present her students in a recital at the First Presbyterian church this evening at 8 o'clock.

Scene at Nursery School



Work of home economics students of Midland high school in conducting a nursery school here was commended by Miss Elsie Wolfe, visiting educator, Wednesday.

FEMININE FANCIES

By Kathleen Eiland

It seems useless even to talk about the European war. It has reached a point where it is fantastically unbelievable, like some dreadful tale of men from Mars, and as unpredictable as West Texas weather.

Bobbie Joe Walden Honored With Party On First Birthday

Mrs. Sam Kelton, 1340 S. Main, honored her grand-daughter, Bobbie Joe Walden, on her first birthday anniversary with a party for a group of small guests Monday afternoon.

Home Demonstration Club Work

Plans Exhibits For Dairy Day

"I'll have exhibits of all three kinds of home made cheeses for the Dairy Day Show next Wednesday," reported Mrs. Arthur Judkins, 1940 dairy demonstrator of the Greasewood home demonstration club.

Greasewood Club Has Tri-Part Program At Midkiff Home

Greasewood club met in the home of Mrs. Dick Midkiff Wednesday for a three-part program.

Coming Events

- Belmont Bible class will meet with Mrs. C. E. Nolan, 1406 S. Big Spring, Friday afternoon at 3:30 o'clock.
- Mirlan club will meet with Mrs. Paula Blacklock, 309 W. California, Friday evening at 8 o'clock.

Banner Sewing Club Plans for Weiner Roast at Park

Plans for a monthly social in the form of a weiner roast at Cloverdale Park this evening at 8 o'clock were made at the meeting of the Banner Sewing club at the home of Mrs. J. P. Smith on West Pennsylvania street, Wednesday afternoon.

Mrs. Jorgensen Is Hostess to Dos Reales Club

Dos Reales club met with Mrs. J. A. Jorgensen hostess Wednesday afternoon at her home, 402 Holmsley street.

Kodak Film Specials

No. 116V, Reg. 35¢ Special . . . . . 28¢ No. 616V, Reg. 35¢ Special . . . . . 28¢ No. 120V, Reg. 30¢ Special . . . . . 24¢ No. 620V, Reg. 30¢ Special . . . . . 24¢ Discount on Other Sizes

KINBERG STUDIO & GIFT SHOP

White-Plaza Hotel Formerly The Hilton Main at Harwood "BEST LOCATION IN DALLAS" Air Conditioned \$2-2.50-3 - Single

DANGER ROMANCE AHEAD

BY TOM HORNER

YESTERDAY: Larry is caught in the hangar. Bentley imprisons him in a cellar, orders his men to steal Hayhook calves and make it appear Larry is the thief.

CHAPTER XIII

LARRY sat in the semi-darkness of the basement room that formed his prison, trying to decide that Bentley intended to do with him.

Coming Events

Midland University club will have its June dance in the Crystal Ballroom of Hotel Scharbauer, Saturday night, dancing will be from 10:00 o'clock until 2, with Jack York and his Orchestra playing.

Mrs. Jorgensen Is Hostess to Dos Reales Club

Dos Reales club met with Mrs. J. A. Jorgensen hostess Wednesday afternoon at her home, 402 Holmsley street.

Kodak Film Specials

No. 116V, Reg. 35¢ Special . . . . . 28¢ No. 616V, Reg. 35¢ Special . . . . . 28¢ No. 120V, Reg. 30¢ Special . . . . . 24¢ No. 620V, Reg. 30¢ Special . . . . . 24¢ Discount on Other Sizes

KINBERG STUDIO & GIFT SHOP

White-Plaza Hotel Formerly The Hilton Main at Harwood

"BEST LOCATION IN DALLAS" Air Conditioned \$2-2.50-3 - Single

Mrs. Lige Midkiff Is Honored With Surprise Shower

Mrs. John W. Rhoden and Mrs. Marvin Douglas were hostesses at the home of the former, 906 W. Kentucky, Wednesday evening, for a pink-and-blue shower honoring Mrs. Lige Midkiff.

Nursery School Project Praised by Visiting Official

Miss Elsie Wolfe of Lubbock, state education department official visiting the nursery school conducted by home economics students of the school here yesterday, praised the project.

MIND Your MANNERS

Test your knowledge of correct social usage by answering the following questions, then checking against the authoritative answers below:

- 1. Is it good manners to "talk down" to school-age children? 2. Should guests make remarks like "Isn't she cute" in front of a child old enough to understand what is being said?

Western Specials

- Generators (air cooled), Chevrolet, '38, '39, '40, exchange . . . \$3.45 Armature (Ford 8), exchange . . . . . \$1.85 DeLuxe Battery (45 plate) 2-year guarantee, exchange . . . . . \$5.55 Oil (100% pure), 2-gal. can . . . . . 95c Fuel Pump (rebuild), exchange . . . . . 95c Water Pump (Ford 8) . . . . . \$1.65 Muffler (Ford 8) . . . \$1.42 Tail Pipe (Chevy. '37, '38) . . . . . \$1.15

REMOVAL NOTICE

We Have Moved From 210 SOUTH MAIN to 201 EAST WALL Building Formerly Occupied by Drake-Jones

AUTO BODY REPAIR WORK

Standard Gas, Oil & Other Products WASHING & LUBRICATING SAME PHONE NUMBER—477 Southern Body Works

\$5.00 Per Month

Buy a New Fence Phone 149 A. & L. Housing & Lumber Co. "Always at Your Service"

TAXI 15c

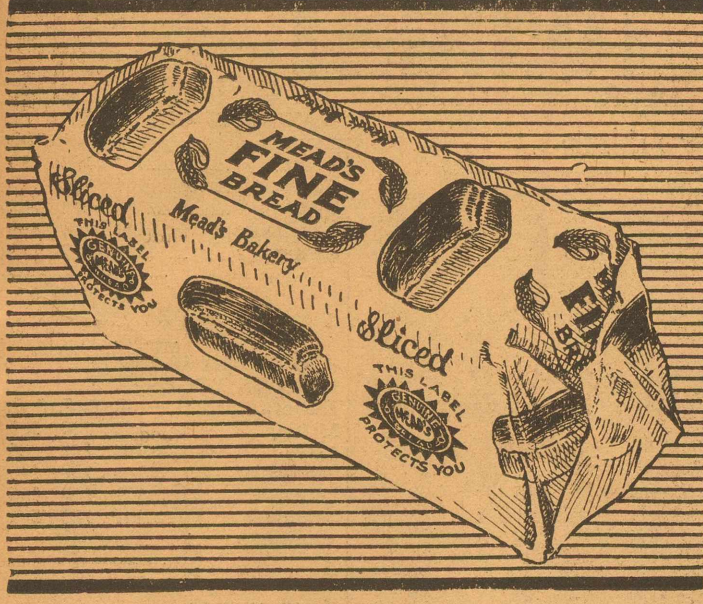
MOTORCYCLE DELIVERY 10c CITY CABS, Inc. PHONE 80 OR 500

Advertisement for Midland Steam Laundry featuring a woman with laundry and text: "Don't Let Wash Day Keep You From Summer Outdoor Activities" "Play tennis . . . golf or swim. The day is yours while we do the laundry for you." "Phone 90 Midland Steam Laundry"

Advertisement for Kinberg Studio & Gift Shop featuring a woman with a basket and text: "Don't Let Wash Day Keep You From Summer Outdoor Activities" "Play tennis . . . golf or swim. The day is yours while we do the laundry for you." "Phone 90 Midland Steam Laundry"

Advertisement for Golf and Archery featuring a man with a bow and text: "GOLF AND ARCHERY" "Midland Driving Range" "Now open under new management. Plenty of good balls and clubs. Just West of Pagoda Pool"

Advertisement for Southern Body Works featuring a car and text: "REMOVAL NOTICE" "We Have Moved From 210 SOUTH MAIN to 201 EAST WALL" "AUTO BODY REPAIR WORK" "Standard Gas, Oil & Other Products" "\$5.00 Per Month Buy a New Fence" "TAXI 15c" "MOTORCYCLE DELIVERY 10c" "CITY CABS, Inc. PHONE 80 OR 500"



**REMEMBER—**  
A LOAF OF  
**MEAD'S FINE BREAD**

**CATTON'S WASHINGTON COLUMN**

BY BRUCE CATTON  
Reporter-Telegram  
Washington Correspondent

WASHINGTON.—England's drastic law for the control of men and money in war-time doesn't go such an awful lot farther than the program the U. S. government has in mind—should this country be forced into the war.

The British law goes whole-hog and simply turns the entire country and everything in it over to the disposal of the government.

America's famous industrial mobilization plan, as drafted by the War and Navy Departments, would accomplish just about the same thing, but it would cushion the shock a little. Theoretically, it would stop short of actual confiscation of property and conscription of labor; actually, it would go a long way in both directions.

This plan is not a law, of course—not yet. It is, however, just what the army and navy want. Legislation to put it into effect has been drafted, and the general opinion is that it would go through pretty much as is if the nation found itself on the verge of war.

**PRESIDENT COULD DRAFT EXECUTIVES**

ASSUMING the industrial mobilization plan should be adopted, what would be the effect?

The President of the United States would be given wartime powers almost equal to those just given Mr. Churchill. If he deemed it advisable for the successful prosecution of the war, he could:

1. Draft any executive in any industry and make him run his plant under War Department orders—or, if he chose, transfer him and put somebody else in his job.
2. Fix prices on anything and everything sold in the United States.
3. Requisition any manufactured product or raw material necessary to the prosecution of the war.
4. Commandeer any factory, or—short of that—compel any manufacturer to make what the government directed him to make.
5. Close all security exchanges for the duration of the war.
6. Draft every workman into the army, under a setup which is generally interpreted to mean that any worker could, at any time, be ordered from the factory to the army at the President's discretion.
7. Control, in short, all of the nation's resources, through licensing, rationing, requisitioning, and regulation of the sale, use, transportation, manufacture or distribution of any product.

**CAPITOL WOULD BE IN STRAIGHT JACKET**

VARIOUS New Deal critics of this scheme have objected that it would hit labor harder than capital; that control of labor would be absolute, while provisions limiting wartime profits would be less drastic. However, that may be, it is certain that capital would find itself in a pretty tight straight jacket.

As a matter of fact, laws already on the books give the President pretty broad powers. Section 120 of the National Defense Act authorizes him to place compulsory orders for either finished products or raw materials, with government seizure of the plant the penalty for non-compliance. The Naval Emergency Fund act grants similar powers, specifically broadened to include aircraft plants and with the words "raw material" so defined as to include any commodity out of which war materials are made.

**Shrimp Supply Periled Along Coast of Dixie**

SAVANNAH, G. (UP)—The South Atlantic shrimp industry faces the greatest crisis in its history, representatives of the U. S. Bureau of Fisheries have warned fishers and canners in the Savannah district.

The bureau said the supply had been severely depleted by heavy fishing and the harsh winter, and that unless the season is closed until Aug. 1, there may be no crop for the coming season.

The statement exists, in part: "A crisis now exists in the shrimp industry. Unless immediate action is taken it is highly probable that this most valuable of South Atlantic fisheries will fail to produce a crop for the coming season. Due to heavy fishing, combined with a severe winter, the spawning supply is in a precarious state and needs all the protection that can be afforded it."

"No comparable situation has ever occurred in the past history of the shrimp industry in the states of North Carolina, South Carolina, Georgia and Florida."

living," the 38-year-old apiarist said.

Beebaum does all the work among the hives, building the new colonies and selling the honey from a wayside stand. He also makes deliveries over a 10-mile radius, using a three-wheeled motorized scooter for locomotion.

The antelope jack rabbit, by contracting muscles along its sides, causes its coat to appear darker or lighter at will.

**YOUR PENNIES WILL BUY PLENTY AT**



**TEA KEEPS YOU COOL**  
Orange Pekoe 1/4-lb. Pkg. **15c**

**Canterbury TEA 15c**

**Granulated Soap SU-PURB**  
24-oz. pkg. and 8-oz. pkg. Both for **19c**

**Dressing** Duchess Salad Pint Jar **17c**  
**Bleach** White Magic Pint Bottle **7c**  
**Mustard** French's 6-oz. Jar **9c**

**Harper House PEARS**  
2 No. 1 Cans **25c**

**Triple Creamed SPRY**  
3 lb. Tin **47c**

**Assorted Flavors JELL-WELL**  
3 Reg. Pkgs. **10c**

**Mammy Lou MEAL**  
20 lb. Bag **45c**

VALUES	VALUES
<b>Sunbrite</b> 13-oz. Can <b>5c</b>	<b>Beans</b> Standard Cut Green No. 1 Can <b>5c</b>
<b>Tissue</b> Zee Tinted Roll <b>5c</b>	<b>Hominy</b> Texas Special No. 300 Can <b>5c</b>
<b>Spinach</b> Fresh No. 1 Can <b>5c</b>	<b>Matches</b> Favorite 2 Boxes <b>5c</b>
<b>Tomatoes</b> Standard No. 1 Can <b>5c</b>	<b>Spaghetti</b> Phillip's 10-oz. Can <b>5c</b>
<b>Pork &amp; Beans</b> Phillip's Can <b>5c</b>	<b>Potted Meat</b> Morrell's 1/2 Size Can <b>5c</b>

**Sugar Cured Tender HAM**

Whole or Half 5 to 7 lb. Shank Cuts  
lb. **17c** lb. **14c**

**All Center Slices, lb. 29c**

Old Fashion Cure, the Kind That Makes the Good Red Ham Gravy

**Kraft's American Loaf CHEESE**  
2 lb. Box **45c**

**Fat Selected Fryers**  
Dressed & Drawn  
Large Size EACH **53c**

**Pressed Ham** lb. **29c**  
Serve Hot or Cold

**Beef Roast** Chuck Cut lb. **19c**

**Sausage** lb. **10c**

**Pork Chops** lb. **19c**

**Bologna** lb. **10c**

**Sliced Bacon** lb. **21c**

**Bacon** lb. **9c**

**SAFEWAY**

**Edward's Fine COFFEE**  
Drip or Regular Grind 1-lb. Tin **21c**

**Airway Fresh COFFEE**  
2 1-lb. Pkg. **25c**

**Cherub MILK** "It's Baby Pure" 3 Tall Cans **18c**

**Cherub MILK** "It's Baby Pure" 6 Small Cans **18c**

**Safeway Fresh Butter** Solids or Quarters lb. **27c**

**Texas Maid Shortening** 4 lb. Ctn. **37c**

**FRUITS AND VEGETABLES**

**TOMATOES**  
U. S. No. 1 Texas—Nice for Slicing 2 lbs. **15c**

**Well Filled Ears CORN**  
4 for **9c**

**Oranges** Sunkist 288 Size Doz. **19c**

**Cherries** Fancy Bing's lb. **25c**

**Lemons** Sunkist 432 Size Doz. **15c**

**Peas** Fresh English 2 lbs. **15c**

**Peas** Fresh Green Blackeyes 3 lbs. **10c**

**Potatoes** Louisiana New Red 5 lbs. **19c**

**Potatoes** California White Rose 10 lbs. **29c**

**Pineapple** Large Size Quality Mexican Sugar Loaf 2 for **25c**

**10¢**

**Peaches** Castle Crest No. 2 1/2 Can **15c**

**Lux Flakes** 5-oz. Pkg. **10c**

**Cigarettes** Raleigh's Pkg. **15c**

**Blue Bird BROOMS**  
Each **25c**

**Camay Toilet SOAP**  
2 Reg. Bars **11c**

**Lux Toilet SOAP**  
2 Reg. Bars **11c**

**Apricots** Highway No. 1 Can **10c**

**Peas** American Wonder No. 2 Can **10c**

**Pickles** Cut Sour or Dill Quart Jar **10c**

**Kleenex Soap** P & G 150-sheet Pkg. **10c**

**Cocktail Raisins** Timely Fruit No. 1 Can **10c**

**Macaroni** Seedless Cello Pkg. 1-lb. **10c**

**Spaghetti** Cello Pkg. 1-lb. **10c**

**Vanilla Wafers** 1-lb. Cello Pkg. **10c**

**Get Your FREE Copy of the "Family Circle" Out Each Thursday!!**

**Sale!**

**Sheep-to-Socks Knitting Hobby Of Aged Ohioan**

DEFIANCE, O. (UP)—G. F. Balse, 88, believes in doing things from start to finish—so he spends his spare time making mittens and socks, doing all the work himself

from the sheep to the finished product.

"I guess you'd call it just a hobby—and I've been at it for 15 years," he said. "I wouldn't think of buying yarn—that would spoil the fun."

Balse shears the wool from his own sheep in the spring. The rest of the year he spends cleaning, combing, spinning and knitting. He uses an old-fashioned spinning wheel to produce the strands but prefers steel knitting needles to the older bone-type ones. The product of his work he gives to neighborhood children.

But Balse often does work of a more active type. Last fall he cut, shocked and husked 300 shocks of corn.

"I don't approve of tobacco, strong drinks or these jitterbugs who jump around," he said, "but I certainly do like to knit!"

**Harvard Students Get Tasty Cheese in Class**

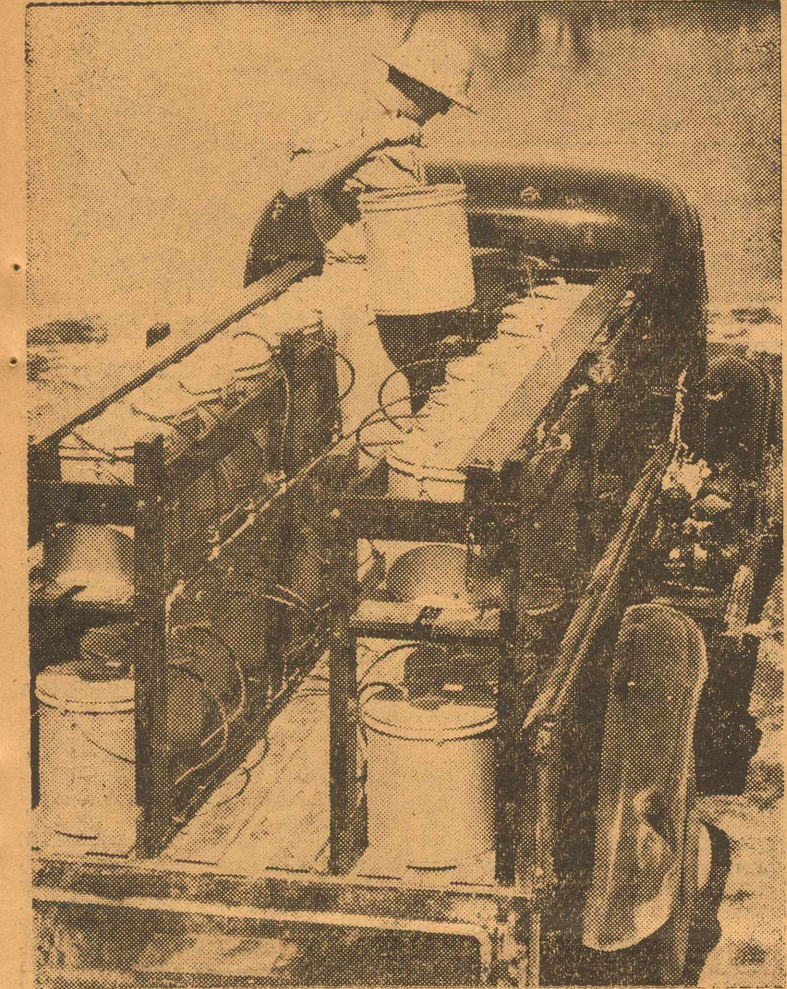
BOSTON (UP)—If you're passing by Sever Hall in Harvard Yard these days you're apt to catch some scents that will seem out of place. Harvard students are becoming, wine, perfume and cheese

conscious!

Leroy J. Benoit, an instructor in romance languages who is a expert on French wines, perfumes and cheeses, gives a series of lectures on what he has learned. By way of class-room illustration he brings along samples of each to be sampled by his students.

Midland Dairy Day, June 15 at Sales Barn.

**How Live Fish Are Delivered**



Above is shown a truck equipped with the fish cans which extensive tests have shown will save the Texas game, fish and oyster commission thousands of dollars. The new-type of fish delivery containers carry twice the number of fish as did the ten-gallon milk cans formerly used although they are only half the size. Thus the department need make only half as many trips as formerly to deliver the same number of fish. Too, smaller trucks may be used, thus cutting down additional expense. The cans operate by suction, being connected by metal and rubber tubing to the motor of the car. Air is pulled through the water constantly, and tests all last summer show that not one fish in 10,000 is lost. Should the car motor fail, an auxiliary motor placed on the side of the truck keeps air circulating through the containers. All of the 32 cans with which each of the 10 state hatcheries has one truck equipped can be operated as a unit, or each container can be used individually. The can was invented by a San Antonian.

**Cripple Finds Bee in Bonnet Yields Profit**

DETROIT, (UP)—Walter F. Beerbaum figuratively got a bee in his bonnet one day nearly 20 years ago and today he's got them all over his place.

Beerbaum's business is not unusual, but the difficulties surmounted in building an apiary of

54 colonies and selling 6,000 pounds of honey a year are a tribute to the ingenuity of Beerbaum, who cannot walk.

In the spring of 1920 physicians informed the youth he would be a cripple the rest of his life. A few months before he had suffered an attack of arthritis.

While he was convalescing on his father's 40-acre farm in Taylor township, Beerbaum became interested in bees.

"I went and got literature on bees and in this way I hit upon the idea of raising bees to make a

**SMOOTH**

That's what folks say who sip the thirst-soothing, refreshing goodness of...



**GRAND PRIZE**



Try GRAND PRIZE and you'll know what we mean by a Truly Fine Beer

Dunagan Sales Co.  
210 South Pecos  
Phone 345

Pale Dry Light IN FACT... JUST RIGHT!



# Classified Advertising

## RATES AND INFORMATION

**RATES:**  
 2c a word a day,  
 4c a word two days,  
 6c a word three days.  
**MINIMUM CHARGES:**  
 1 day 25c.  
 2 days 50c.  
 3 days 75c.  
**CASH MUST accompany all orders for classified ads, with a specified number of days for each to be inserted.**  
**CLASSIFIEDS** will be accepted until 12 noon on week days and 6 p. m., Saturday, for Sunday issues.  
**PROPER classifications of advertisements** will be done in the office of the Reporter-Telegram.  
**ERRORS** appearing in classified ads will be corrected without charge by notice given immediately after the first insertion.  
**FURTHER** information will be given gladly by calling 7 or 8.

## NOTICE

**Classified advertising is CASH WITH ORDER except to business establishments with an accredited rating. Please do not ask us to deviate from this regulation.**

### 2—For Sale

FOR FLOWERS see your local dealer. Vestal Flower Shop, phone 408, 104 South H Street. 6-1-40

NEW electric refrigerator; 1939 Philco conservator; 7 cubic foot size; wholesale cost is all we want. Household Supply Co. (69-3)

SPECIAL for Friday and Saturday: Ground ear corn, \$1.05 sack. Carson Feed Store. (71-2)

FOR SALE or trade: 1938 Buick sedan, 1937 Pontiac coupe; both nice and in good mechanical condition. Geo. D. McCormick, phone 565 or 740-J. (71-3)

### 3—Furnished Apts.

CLEAN, cool, front room apartment; close in; utilities paid. 209 East Texas. (67-6)

THREE rooms; private bath; inner-spring mattress; Frigidaire, \$35.00. Also 3-room garage apartment; utilities paid. \$24.00. 409 A. West Texas Avenue. (69-3)

NICE, clean apartments; inner-spring mattresses; reasonable. 321 S. Baird. Phone 1098-W. (69-6)

THREE room furnished apartment; couple only; no dogs. 610 North Big Spring. (70-6)

CLOSE in; ladies preferred. Phone 627. (71-3)

TWO room apartment; close in; convenient; utilities paid. 315 N. Baird. (71-3)

SMALL efficiency apartment; close in; utilities paid. 222 North Baird. (71-3)

### 4—Unfurnished Apts.

THREE unfurnished rooms. 401 W. New Jersey, real cheap. (70-2)

THREE room apartment; also 3-room garage apartment; bath. Apply 605 North Weatherford. (71-3)

### 5—Furnished Houses

FOUR room unfurnished house; close in. Apply 408 North Big Spring. (70-3)

NICELY furnished 4-room house; double garage; also nicely furnished apartment; couple only. Phone 138. (71-3)

### 6—Unfurnished Houses

LOVELY 6-room house; 2-room furnished apartment. Pearl Boone, phone 1276. (70-6)

### 7—Houses for Sale

FOR SALE: 5-room modern frame house; garage; desirable location. Call 149. (70-6)

### 10—Bedrooms

FOR RENT: Attractive southeast bedroom with four windows; walking distance. 501 West Storey. (67-6)

BEDROOM; adjoining bath; close in. 507 West Texas Ave. (70-3)

NICE cool bedroom; reasonable; private entrance. 600 North A, phone 723-W. (71-3)

GARAGE room; nicely furnished; close in; private bath; water heater; inner-spring mattress; maid service. 507 North Pecos, phone 1531-M. (71-3)

### 10-a—Room & Board

ROOM and board at Rountree's; every meal is carefully planned and beautifully served; rooms privately arranged for girls or boys; inquire for rates on one, two and three meals; meal tickets; home environment. 107 South Pecos, phone 278. (6-1-40)

MRS. ALEXANDER'S air-conditioned dining room; meals family style; one block west of Petroleum Bldg. 121 North Big Spring. (67-6)

### 12—Situations Wanted

STENOGRAPHER—office girl desires work of any kind. Address A. L. H. 3237 Cockrell Avenue, Ft. Worth, Texas. Phone 4-3883. (69-4)

BOOKKEEPER, stenographer experienced in all office procedure, desires employment. Wall, phone 1670. (71-1)

### 14—Personal

CONSULT Estelle Norman THE READER, 113 North Big Spring. (70-6)

### 16—Miscellaneous

WE have some space to store your furniture at low cost where it is looked after every day. Inquire at McMullan's, South Main. (63-10)

PICTURE framing, diplomas a specialty. Rio Grande Paint Store. (70-6)

INSURANCE Fire, Tornado, Liability, Compensation, Burglary, etc. BONDS: Fidelity—Court—Surety West Texas Insurance Agency J. D. Brown, Manager 203 Thomas Building (6-1-40)

BUILDING CONTRACTOR Complete Service and Financing Also General Repair Work J. R. PRETAG Phone 1671 6-5-40

LOANS! \$10.00 to \$2,500! FOR ANY PURPOSE Secured by Automobile—Furniture—Personal Endorsements—Low Rates Up to 18 Months to Pay!

Peoples Loan Co. Box 124 Telephone 698 102 W. Third Odessa, Texas 6-14-40

Good Grade "A" Raw Milk Scruggs Dairy PHONE 9000

G. BLAIN LUSE For New EUREKA, MAGIC-AIRE and PREMIER DUPLEX VACUUM CLEANERS All Makes Used Cleaners Bigger trade-ins with payments to suit you. G. BLAIN LUSE Services the cleaners for Texas Electric Service Co. in 10 towns. Why not yours? —Phone 74—



America's Social Companion

As a form of salutation residents of Tibet stick out their tongues.

## 'Liz' Whitney Gets Niche in Fame Hall

By NICK BOURNE  
 United Press Staff Correspondent.  
 RENO, Nev. (UP)—Mary Elizabeth (Liz) Whitney, here to divorce multi-millionaire sportsman John Hay Whitney of New York, while not through her six-week Reno residence requirement, already is bidding for a niche in Reno's hall of fame.

In three weeks she: Lived in three different places—a hotel and two ranches. Led a cow named Dotty into a Reno night club. Broke into tears after a press conference.

Mrs. Whitney now resides at a ranch south of Reno, where she is free to indulge her fancy for animals—she is an expert on horses. She moved from the hotel, where she first registered on her arrival, and after a very few days sent to Southern California for three of her horses and took them with four of her dogs to the Lichtenstein ranch south of Reno.

While at the Lichtenstein ranch, she became acquainted with a cow named Dotty, which she saddled, decorated with the Whitney racing colors, and took on a tour of Reno night clubs.

A few days later, she moved to the Stevenson ranch, near the foot of Geiger grade, on the road to historic Virginia City. There she has her horses and dogs and probably will remain until the judge, in a routine Reno decree, says, "divorce granted" at a five-minute trial.

Mrs. Whitney wears sports clothes when she appears in Reno, usually no hat adorning her black, straight hair.

She comes to Reno each evening for her mail and finds not a few "crank" letters, asking for a million dollars, more or less, or offering advice on her marital affairs.

But, while Reno papers did not print the story about her and Dotty, the cow at the night clubs, that sally has been a town topic, enjoyed as much as other famous Reno stories, such as:

**Other Figures Recalled.**  
 Mildred Tilton Holmsen, New York socialite, who rode her bicycle in shorts and declined to wear shoes in restaurants in 1934; Gloria Debevoise Spreckels, who appeared on the streets in triple-short shorts and was queen of the Reno Rodeo in 1936; Cornelius Vanderbilt, Jr., who chased artist Peter Arno down a country lane in 1930, and the unnamed man who jumped from a fourth-story hotel room into a tree where the fire department rescued him a few years ago.

Business has been a little slack in Reno this year, high-lighted only by Dorothy Ledyard Knight, who camped and decamped when her head-standing husband refused to give her a divorce.

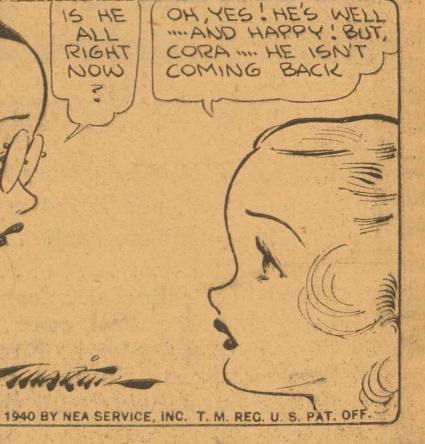
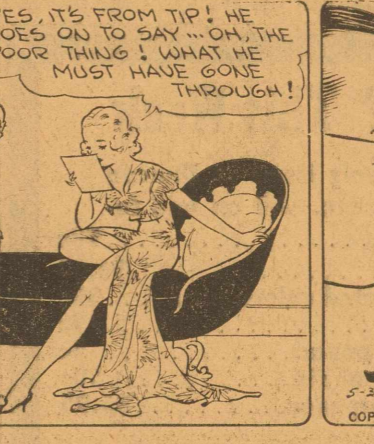
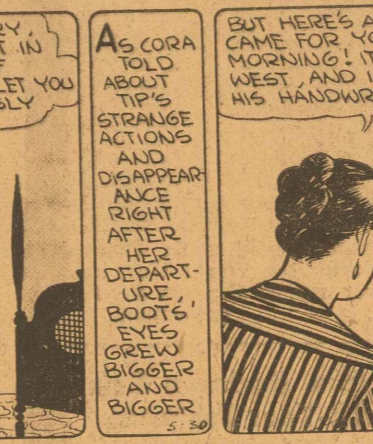
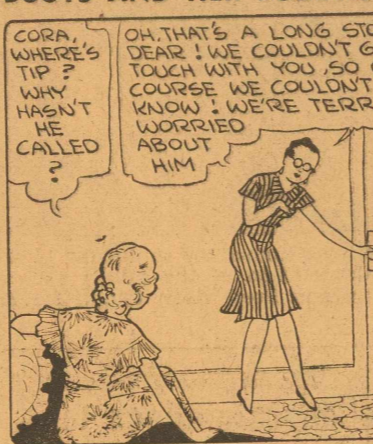
It is reported that Mrs. Whitney will appear in motion pictures after her divorce.

**LOANS FOR NEW BUILDINGS OR REPAIRS**  
 ASK US FOR DETAILS  
**Burton-Lingo Co.**  
 Phone 58—119 E. Texas Ave.

**PICTURE FRAMING WALL PAPER VALSPAR VARNISH VENETIAN BLINDS MURPHY PAINTS & ENAMELS**  
**RIO GRANDE PAINT STORE**  
 122 NORTH MAIN—PHONE 43

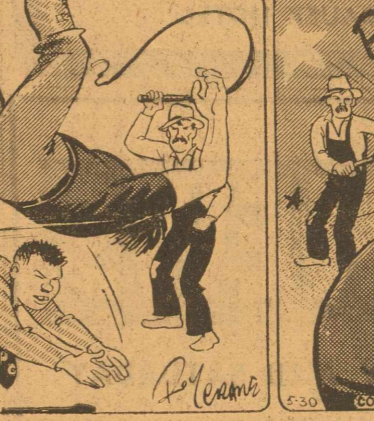
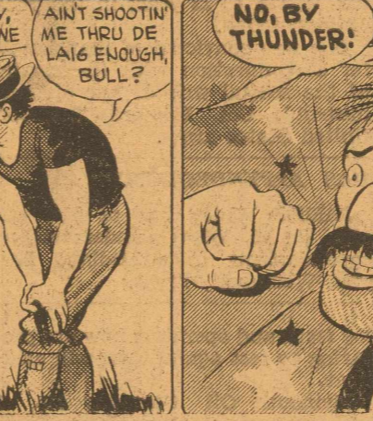
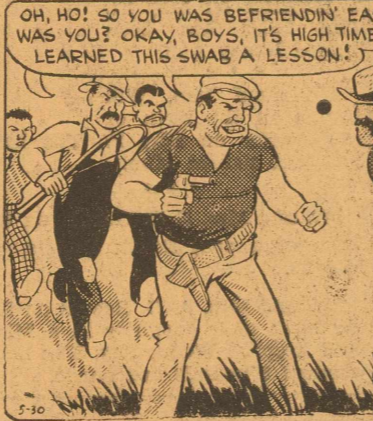
**BEDDING PLANTS ARE NOW IN!**  
**MIDLAND FLORAL CO.**  
 Member Florist Telegraph Delivery  
 1705 WEST WALL—PHONE 1286

### BOOTS AND HER BUDDIES



By EDGAR MARTIN

### WASH TUBBS

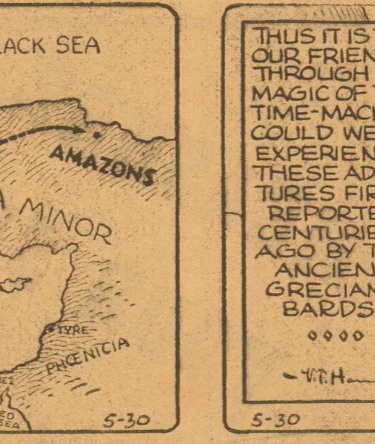
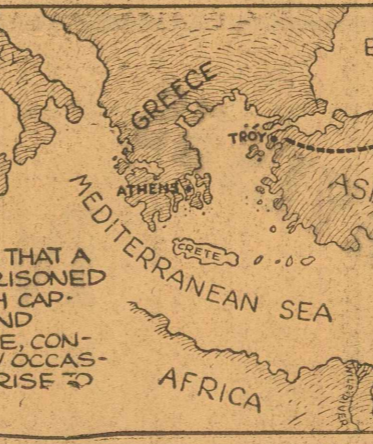


By ROY CRANE

### ALLEY OOP

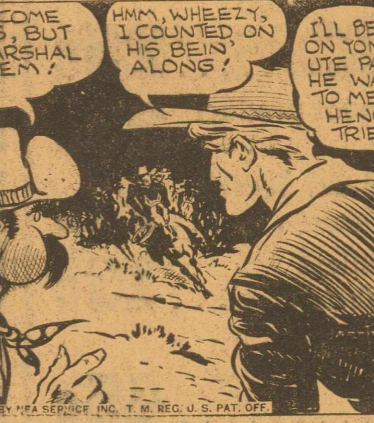
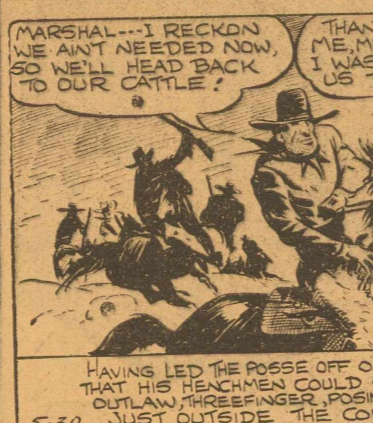
**MYTHO-HISTORICAL NOTE**  
 THE EXISTENCE OF A NATION OF AMAZONS, LONG OPEN TO QUESTION, MAY HAVE HAD SOME BASIS IN FACT, DUE TO THE MANY REFERENCES IN MYTHOLOGY TO THESE WARRIOR WOMEN

ONE PLAUSIBLE THEORY\* IS THAT A GREAT ASIATIC EMPIRE GARRISONED ITS WESTERN FRONTIER WITH CAPTIVE WOMEN, WELL ARMED AND TRAINED IN MILITARY SCIENCE. CONTACT WITH THIS OUTPOST BY OCCASIONAL WANDERERS GIVING RISE TO THE AMAZON LEGEND.  
 \*NO FACTUAL EVIDENCE



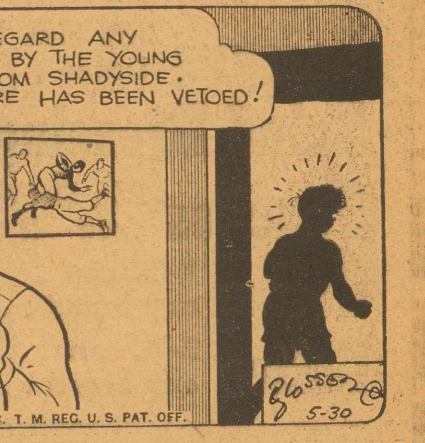
By V. T. HAMLIN

### RED RYDER



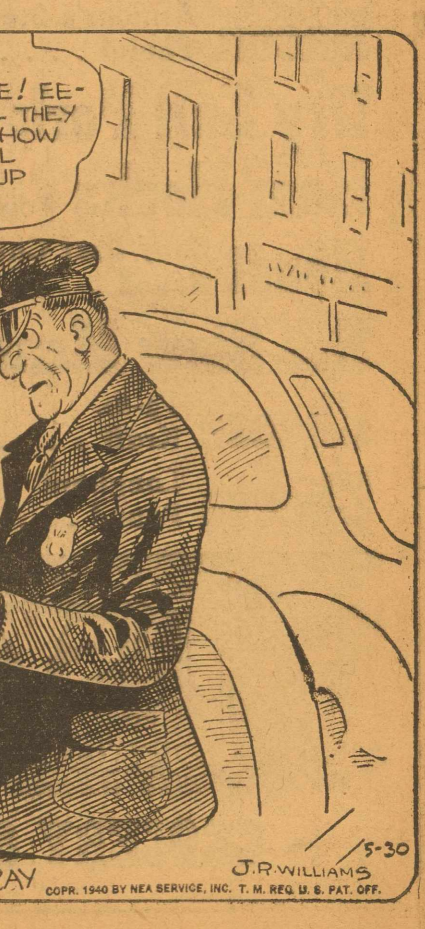
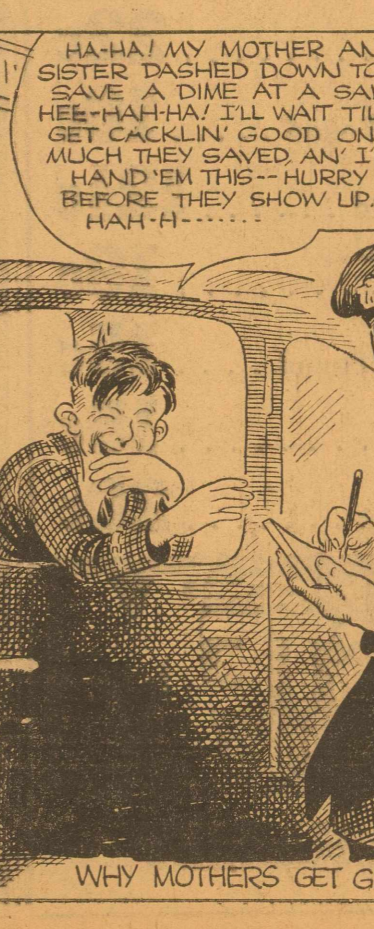
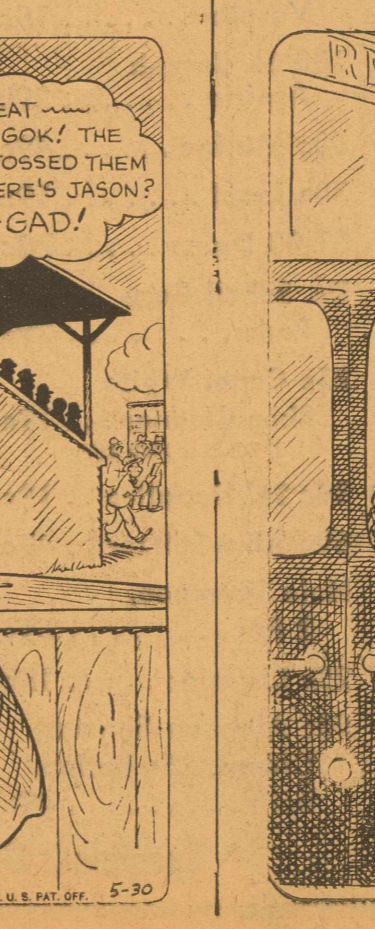
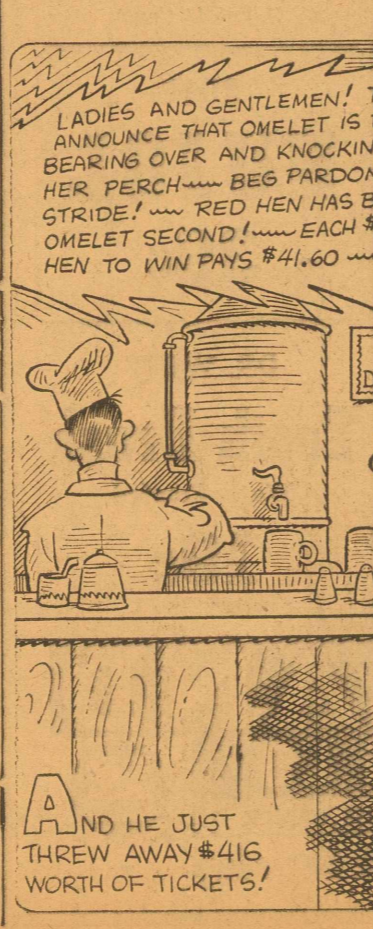
By FRED HARMAN

### FRECKLES AND HIS FRIENDS



By MERRILL BLOSSER

### OUR BOARDING HOUSE



By J. R. WILLIAMS

**Hospital Ship Said Gunned From Planes**

LONDON, May 30. (AP).—A hospital ship arrived today at a south coast port carrying British wounded. Her portholes had been smashed by machine gun bullets. British sources said German planes attacked the vessel in a French port yesterday while loading wounded.

**RETURNS HOME**

J. W. Linebery has returned to his home from a Midland hospital where he was treated for pneumonia.

Bowling 15c until 6 p. m. except Sundays. Plamor Palace. (Adv.)

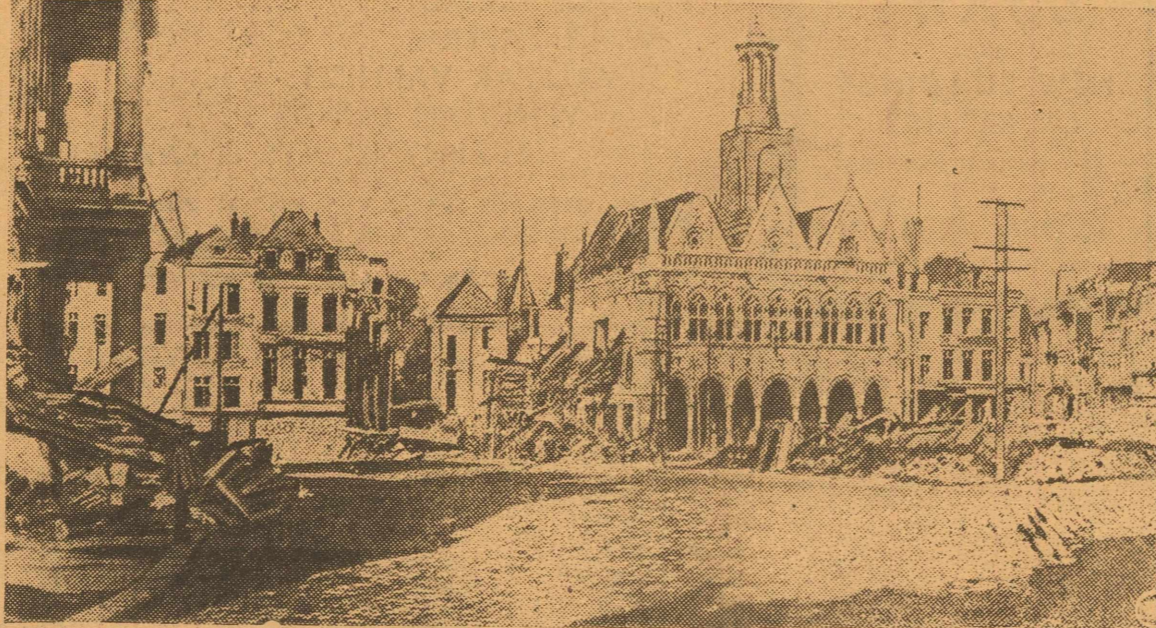
**Italian Cabinet to Meet Next Tuesday**

ROME, May 30. (AP).—Premier Mussolini today summoned the cabinet for next Tuesday to discuss "important matters." Some foreign quarters believed action might then be taken to plunge Italy into war.

**CLUB MEETING CHANGED**

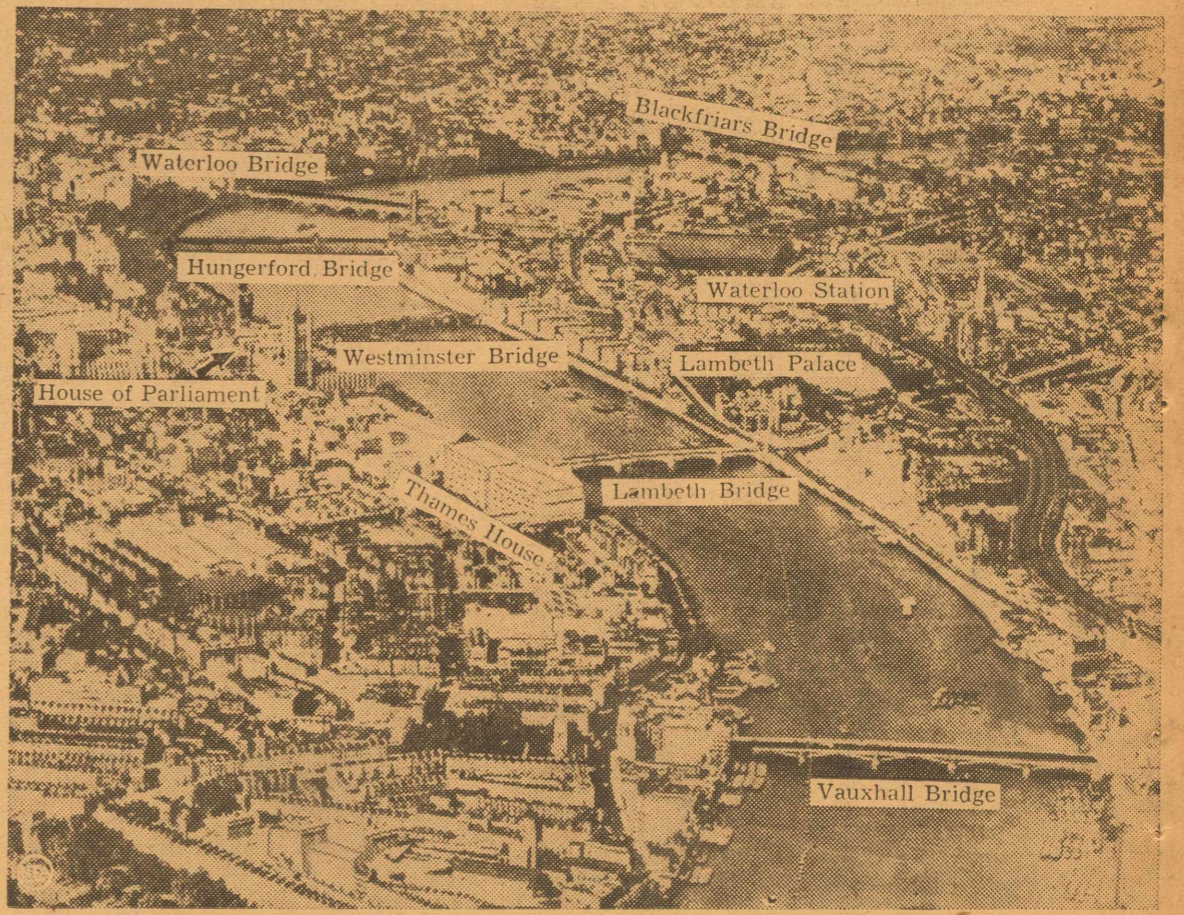
Miriam club will meet with Mrs. C. C. Carden, 811 S Colorado, Friday evening instead of with Mrs. Caula Blalock as scheduled. The change was made because of illness in the family of the hostess.

**St. Quentin Again Shudders Under War's Blows**



Fatefully located in the path of German invaders, St. Quentin, France, well knows the shattering blows of war. The photo above, taken after the World War, shows the devastation of the public square. Once more the savage tides of war surged through the town as Nazi and Frenchman fought for its possession.

**Bomber's Eye View of London**



The light-reflecting waters of the Thames River make a tempting guide-line leading Nazi bombers to the heart of Britain's capital. This air-view shows many of the city's important buildings and vulnerable communication lines such as the Thames bridges, and Waterloo Station, terminus of the Southern Railway whose tracks wind toward lower right. Thames House is Imperial Chemical Industries' headquarters. Lambeth Palace is the Archbishop of Canterbury's London residence.

**Whose Wrong? This Week**

- EXTRA SPECIAL: Many lovely items in Duncan glass, RumRill Pottery, etc. All on one table—Choice, each . . . . . 98c**
- Vigoro, 100 lbs. . . . . \$4.00
  - Metal Waste Baskets, decorated colors, each . . . . . 39c
  - Long Handle Shovel, each . . . . . 79c
  - Charcoal for Barbecue Pits, pound . . . . . 5c
  - White Cups and Saucers, set of six . . . . . 50c
  - Eclipse Lawnmower with sharpener . . . . . \$5.95

**WILCOX HARDWARE**

WEST OF SCHARBAUER HOTEL

**Big FOOD NEWS**

SPECIALS FOR FRIDAY AND SATURDAY  
MAY 31st & JUNE 1st

WE DELIVER—PHONE 562

- Cake Flour 2 3/4 lbs. Swans Down . . . . . 27c
- New Potatoes Extra fancy Pound . . . . . 4c
- Country Butter Fresh & guaranteed—lb. . . . . 25c
- MAGIC Washing Powder Large package . . . . . 22c
- VAN CAMP'S Pork & Beans 16-oz. 2 cans . . . . . 15c
- Facial Tissues 500 Sheets . . . . . 25c
- Dog Food Pard, a meat product 3 cans . . . . . 23c
- Tomato Juice 14-oz. Swift's 3 cans . . . . . 21c
- Grapes No. 1 tall seedless Heart's Delight . . . . . 13c
- California Valencia Oranges 288 Size 2 dozen . . . . . 45c
- Bon Ami Cleaning powder 2 cans . . . . . 25c
- Lemons 360 Size Sunkist Dozen . . . . . 23c
- Salad Dressing Quart Bestyet . . . . . 26c
- Peaches 2 1/2 Del Monte table fruit—2 cans . . . . . 35c
- Coffee 1-lb. can any brand . . . . . 27c
- Coffee 2-lb. can any brand . . . . . 52c

**MARKET SPECIALS**

- Bacon Armour's Star Pound . . . . . 22c
- Dry Salt Pork Pound . . . . . 10c
- Ham Hocks Pound . . . . . 12 1/2c
- Roast Baby Beef Chuck Pound . . . . . 19c
- Rib Stew Meat Pound . . . . . 15c
- Cheese 1/2-lb. Kraft . . . . . 15c
- Cheese Longhorn Pound . . . . . 20c

**M SYSTEM**  
SAVES FOR THE NATION  
**GROCERY & MARKET**

**Oil News---**

(Continued From Page One)

trap pressure is 25 pounds. Some termed the water to be fresh, and estimated its percentage as low as two per cent. Total depth is 5,088 feet in sand and lime. Delaware sand was topped at 5,041 feet.

Gulf Oil Corporation No. 5 Wristen Brothers, in southeastern Ward, is coring at 7,416 feet. Insoluble residue analysis is said to have placed top of Silurian at 6,830 feet, with a white crystalline dolomite break, possibly Montoya, upper Ordovician, occurring at 6,835 feet.

Atlantic Refining Company No. 1 Wickett-University Ward discovery two miles west of the Monahans pool, swabbed down, then swabbed eight to 10 gallons of drilling water per hour, with slight seum of oil, when tested after cementing back to 2,911 from 2,920 to shutoff bottom-hole water. Formation has been perforated with 30 shots from 2,895 to 2-

**Mrs. Burleson Gets 12-Year Sentence**

COLUMBIA, May 30. (AP).—Judge Duncan Bellinger sentenced Mrs. May Walker Burleson, Galveston, Texas, to 12 years in the penitentiary today.

She was convicted of manslaughter in connection with the slaying of the second wife of her divorced husband, Col. Richard Burleson, United States army.

**HAS APPENDECTOMY**

JAMES White, son of Mr. and Mrs. J. M. White, underwent an appendectomy in a Midland hospital Wednesday night.

905 feet, and operators now are preparing to test again, then will acid-treat.

Plymouth Oil Company No. 1 Richard Levy et al, northern Pecos county Ordovician test, this morning had drilled to 3,648 feet in Permian lime.

**Congratulations to:**

Mr. and Mrs. W. P. Elledge on the birth of a daughter on May 27. The baby has been named Nancy Ann.

Mr. and Mrs. Will Levins on the birth of a daughter on May 27. The baby has been named Minnie.

Mr. and Mrs. E. B. Garner on the birth of a son, Edwin Buddie, on May 22.

Mr. and Mrs. A. C. Reeves on the birth of a daughter in a Midland hospital Wednesday. The baby weighed 8 pounds one ounce.

Only in fiction stories do animals' eyes glow in pitch darkness. In reality, there must be a light for the eyes to reflect.

**Keep Cool With These Hot Tricks**

BY ALICIA HART  
NEA Service Staff Writer

COOLING cologne and lightly scented toilet water have a very definite place in the summer beauty picture.

The smart woman uses perfume (light floral odors) for evening, but after her morning bath and during the hot daytime hours, she prefers cologne or a toilet water.

She likes, too, some of the after-bath friction rubs which have a cooling effect which seems to last for hours. When she's in a lavish mood, she pours a bit of toilet water or friction lotion into her tub and pats it on after bathing as well.

For shower addicts, there are special attachments to be fastened to the shower head and then filled with bath salts. Thus the water is scented and softened as it passes through the shower head.

**IT'S NEVER "TOO HOT TO BOTHER"**

If you have spent more hours in the sun than you intended or if you notice that your skin just isn't as soft and smooth as it should be, try an olive oil rub just before stepping under the shower.

Simply heat a little olive oil and, using a cotton pad, cover yourself from head to foot with a thin film of the oil. Massage and pat it into elbows, hands, knees and feet. Leave it on for about twenty minutes, then

shower, using plenty of soap and water. This is an inexpensive way to counteract the drying effects of too much sunshine, active sports and the like.

Remember from now on that meticulous grooming is all-important. The woman who bathes at least twice a day, wears clean, carefully pressed dresses and snowy white accessories is bound to be more attractive and therefore will mind the heat less than one who stubbornly says "It's just too hot to bother."

**Gift for Motorists.**

An appropriate gift for the enthusiastic motorist might be a matching road map holder and motor log. Of a convenient size and not bulky, they are bound in black morocco leather, hazel pigskin or, less expensive, in brown or red simulated leather.

**VISITS PARENTS**

Mrs. Joe Caldwell and children of El Paso have arrived in Midland for a visit in the home of her parents, Mr. and Mrs. M. D. Johnson Sr., and of Mr. Caldwell's mother, Mrs. J. M. Caldwell.

**MEASURE YOUR SAVINGS NOW**

Know in advance exactly how much money our low, low prices save for you on your favorite nationally advertised home drugs, toiletries and accessories. Check these values, NOW . . . compare them and measure your savings before you buy! Then come to MIDLAND DRUG where service is friendly and helpful and you shop as leisurely or as quickly as you wish.

Specials for THURSDAY, FRIDAY, SATURDAY  
No Deliveries on Specials

**SPECIAL PALMOLIVE SOAP . . 4 1/2c**  
(Limit 2 Bars)

- 440-Sheet Kleenex . 25c
- No. 1 White Vaseline . . . . . 10c
- 100 St. Joseph Aspirin . . . . . 29c
- 60c Murine . . . . . 49c
- 30c Lysol . . . . . 19c
- \$1.00 Drene . . . . . 79c
- Dr. Scholl Corn Pads . . . . . 29c
- 25c Cenol White Shoe Cleaner . . 19c (Will Not Rub Off)
- 30c Sal Hepatica . . 19c
- 60c Alka-Seltzer . . 49c
- Halo Shampoo, 2 for . . . . . 51c
- 25c Listerine . . . . 19c
- 50c Mennen Shaving Cream, 25c Lotion, both . . . . . 49c
- \$1.00 Hinds Honey and Almond Cream . 39c
- Lentheric Colognes . . . \$1.00
- 50c Milk Weed Cream . . . . . 39c
- 12-oz. Squibb Milk Magnesia . . . . . 29c
- 25c Carter Liver Pills . . . . . 19c
- 25c Feen-a-Mint . . 19c
- 25c Castor Oil . . . 19c
- 8-oz. Epsom Salts . . 9c
- 75c Fountain Syringe . . . . . 39c
- 50c Teel . . . . . 39c
- 50c J & J Baby Oil . . . . . 39c

**LARGE DREFT**  
(Limit 1 box with each 50c purchase)  
**18c**

Stokely  
**Baby Food**  
12 Cans  
**75c**  
(Limit 12 Cans)

PINT  
**NUJOL**  
**39c**

DR. WEST  
**Tooth Brush**  
Water Proofed  
**19c**

**YUCCA**  
LAST DAY  
He was wanted by the police and all their daughters!

PLUS! Musical—Travel

**RITZ**  
ENDS TONITE  
The picture every mother will want her daughter to see!

PLUS! Musical—Sport

**Note:** We do not recommend this picture to children unless accompanied by their parents!

**10c REX 15c**  
TODAY & FRIDAY  
GEO. RAFT  
in  
**"I STOLE A MILLION"**

**DRUG SPECIALS**  
for  
**FRI., SAT. & SUN.**

- \$2.50 Absorbine Jr. . . . . \$1.75
- 60c Bottle Sal Hepatica . . . . . 35c
- 60c Bottle Lysol . . . . . 35c
- 60c Bottle Zonite . . . . . 35c
- 60c Bottle Syrup Pepsin . . . . . 35c
- Two 50c Bottles Halo Shampoo . . . . . 48c
- Two 50c Bottles Pepsodent Antiseptic . . . . . 48c
- Two 50c Size Pebecco Tooth Paste . . . . . 48c
- \$1.00 Bottle Wildroot Tonic . . . . . 57c
- \$1.00 Bottle Lucky Tiger Tonic . . . . . 57c
- 25c Calox Tooth Powder . . . . . 15c
- Two 25c Tubes Gillette Shaving Cream . . . . . 25c
- Two 25c Tubes Colgate Shaving Cream . . . . . 25c
- 3 bars P. & G. Soap . . . . . 10c
- 3 bars Cashmere Bouquet Soap . . . . . 18c
- 3 bars Lux Toilet Soap . . . . . 18c
- 500 sheets Cleansing Tissue . . . . . 23c
- \$1.00 jar Luxuria Cream . . . . . 69c
- 60c jar Phillips Cream . . . . . 49c
- 50c Size Milk Magnesia . . . . . 29c

**PALACE DRUG CO!**  
Phone 38 or 9501  
Your Credit Is Good at the Palace Jewelry Department

**MIDLAND DRUG CO.**  
BARNEY GREATHOUSE, OWNER  
Specials 3 Days—Thursday, Friday & Saturday