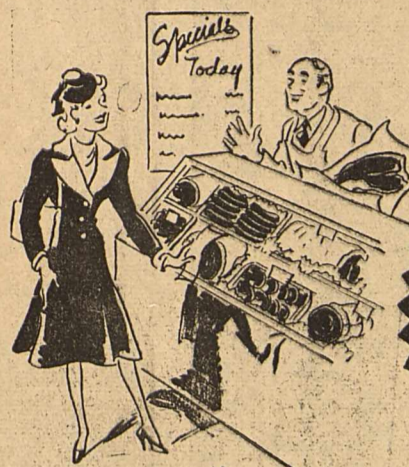


# BUNCH VEGETABLES

These bunch vegetables are fresh from San Angelo, Texas. They are in their original bunches and have not been split or retied. Our variety includes Mustard Greens, Turnips and Tops, Green Onions, Beets, Carrots, Radish, Swiss Chard and Collards.

# 3 for 10<sup>c</sup>



## Quality MEATS

**SPECIAL FOR TWO DAYS FRIDAY AND SATURDAY APRIL 19th and 20th**

### ASSORTED LUNCH MEATS

lb. **19c** lb. SMALL SIZE

### WEINERS

lb. **19c** lb.

Try some of our famous BIRDS EYE BRAND of FROZEN FRUITS and VEGETABLES



FROM CHOICE CORN FED BABY BEEF

**ROUND Steak** lb. **29c**

**SEVEN Roast** lb. **17c**

**SHOULDER ARM Roast** lb. **19c**

PURE PORK **Sausage** lb. **10c**  
**PORK SHOULDER ROAST** lb. **15c**

Wisconsin Corn King Extra Lean **SLICED BACON** lb. **19c**

SUGAR CURED SLICED **BACON** lb. **15c**

GROUND **BEEF** No Cereal or Water Added 2 lbs. **25c**

KRAFT'S MEL-O-CURE **LONGHORN Cheese** lb. **19c**

KOSHER **Dill Pickles** 2 for **5c**

ARMOUR'S STAR **SLICED BACON** lb. **21c**  
Plenty of MILK FED **FRYERS** Dressed While You Wait

A complete assortment of pickles for your picnic lunch. Sweet Mixed, Chow Chow Mustard, Fresh Cucumber and Sweet Gherkins. Your Choice **PINT 29c**

- NICE LARGE EXTRA FANCY **ASPARAGUS** PER BUNCH . . . . . **10c**
- NEW CROP TEXAS BERMUDA **SWEET ONIONS** 2 Pounds . . . . . **15c**
- FRESH FROM THE RIO GRANDE VALLEY **GREEN BEANS** 3 Pounds for . . . . . **25c**
- FRESH DUG RED TEXAS **NEW POTATOES** 4 Pounds for . . . . . **25c**
- WHITE OR YELLOW **FRESH SQUASH** Pound . . . . . **12c**
- MOUNTAIN CABBAGE** LB. . . . . **3c**
- 125 SIZE **WINESAP APPLES** Dozen . . . . . **29c**
- NICE SIZE CALAVOS **AVOCADOS** Try Some for Salads EACH . . . . . **10c**

**Small FRESH Eggs**  
2 doz. **29c**

PURE CANE **SUGAR** 10 Pound Cloth Bag **51c**

**JELL-O** ANY FLAVOR PACKAGE **5c**

**TENDER LEAF TEA**  
1 1/2-oz. 3 1/2-oz. 7-oz.  
**8c 16c 31c**

GEORGIA 4-oz. **5c**  
**Pimientos** 7-oz. **9c**  
15-oz. **15c**

TEXAS GRAPEFRUIT JUICE 46-oz. Can **25c**  
2 for . . . . .

ROYAL GELATIN **DESSERT** All Flavors Pkg. . . . . **5c**

ANCOSTURA FLAVORED **PINK SALMON** No. 1 Tall Can . . . . . **15c**

CASTLETON BRAND **FACIAL TISSUE** No Finer Facial Tissue 2 for . . . . . **19c**

**Carnation MILK** 2 LARGE or 4 SMALL **15c**

MARECHAL NEIL **FLOUR**  
6 Pound Sack **26c**  
12 Pound Sack **48c**  
24 Pound Sack **79c**  
48 Pound Sack **\$1.49**

- A PURE VEGETABLE SHORTENING **Pan Crust** 3-lb. Pail . . . **47c**
- CHASE AND SANBORN'S DATED **COFFEE** Pound Pkg. . . . . **23c**
- SANKA OR **Kaffee Hag** lb. Can . **39c**
- N. B. C. **Shredded Wheat** Pkg. **10c**
- GIANT SIZE **DREFT** With 10c pkg. free . . **60c**

FEATURING THIS WEEK **PIGGLY WIGGLY PRODUCTS**  
Our Own Special Packed

**PIGGLY WIGGLY COFFEE** Ground to Suit Every Pound Good **18c**

**PIGGLY WIGGLY DRESSING** QUART . . . . . **29c**  
Wonderful for Sandwiches

**PIGGLY WIGGLY TEA** 1/2-Pound . . . . . **24c**  
Iced tea season is here. Serve some at once

**PLYMOUTH PEANUT BUTTER** 32-oz. Jar . . . . . **25c**  
For a Real Treat, Take Home Some Now

**FIVE-CENT SALE**

Gulf King 10-oz. String Beans; Scott's 12 1/2-oz. Hominy; Mayfield 9-oz. Corn; Natex 9-oz. Spinach; Scott's 9-oz. Kraut; Scott's 9-oz. Fresh Carrots and Dried Peas; Scott's 9-oz. Diced Carrots; No. 1 Can Standard Tomatoes; 11-oz. Can Gibbs Pork and Beans.

Your choice of any of the above canned items: **EACH 5<sup>c</sup>**

**PARD DOG FOOD** 3 for **23c**

**Miracle Whip Salad Dressing** QT. **34c**

- HEINZ CHOPPED **BABY FOOD** Can **10c**
- HEINZ REGULAR **BABY FOOD** Doz. **89c**
- HEINZ APPLE CIDER OR WHITE **VINEGAR** Pint, 2 for . . . . . **25c**  
Quart . . . . . **21c**
- HEINZ FRESH JUMBO CUCUMBER **PICKLES** Jar . . . . . **21c**
- HEINZ LARGE **KETCHUP** Jar . . . . . **19c**

**BANNER SOUR CREAM** Pound **29c**

# PIGGLY WIGGLY

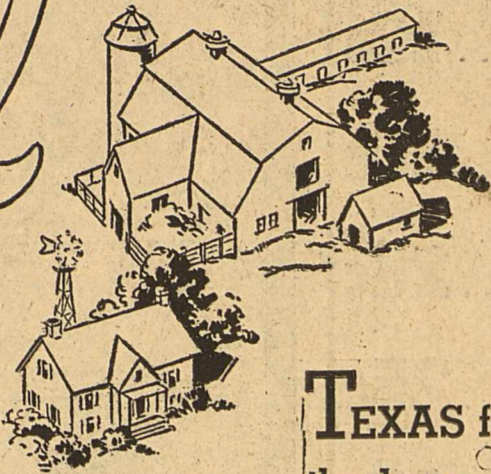
MIDLAND, TEXAS

Specials for Friday and Saturday, April 19th and 20th

MIDLAND, TEXAS

# PARTNERS IN A GREAT TEXAS ENTERPRISE

*Oil*

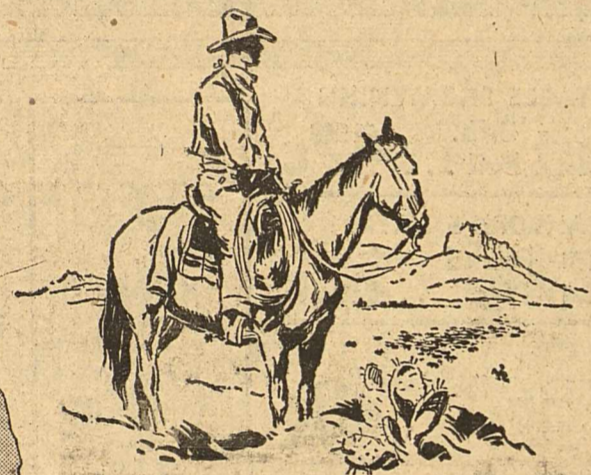
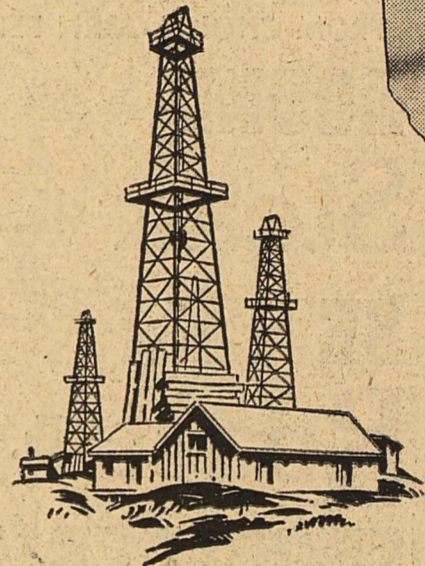


**T**EXAS farmers and ranchers received last year from oil men the huge sum of \$132,478,000 for leases and royalties as their share in this partnership.

All but seven of Texas' 254 counties now share in this cash return from leases and production on more than 50,000,000 acres of Texas land.

Then too, the Texas farmers and ranchers sell to oil workers and their families more than \$60,000,000 worth of farm and livestock products each year.

Thus the farmers and ranchers of our state receive nearly 200 million dollars a year as their share of oil's total expenditure of 750 million dollars annually in Texas. These 200 million dollars in turn flow into every channel of Texas trade.

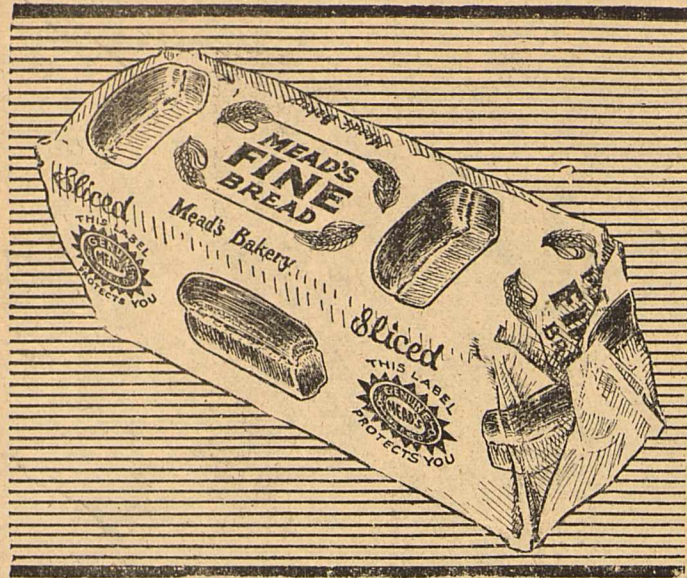


The Texas farmer and rancher and the oil man are partners in the development of Texas.



*This Advertisement Paid for by Various Units of the Industry and Sponsored by*

**TEXAS MID-CONTINENT OIL AND GAS ASSOCIATION**



REMEMBER—  
A LOAF OF  
**MEAD'S fine BREAD**

**"Falso" Wright Sprints 100 Yards For Touchdown in Last Minute to Give Seniors 18-18 Grid Game Tie**

Thomas "Falso" Wright, an all-district halfback for the Midland Bulldogs in 1933 but who was not eligible last fall, proved to the 1940 team and about 100 spectators out at Lackey Field yesterday afternoon that he has not forgotten a thing he learned by pacing the seniors to an 18-18 tie with the boys that will represent Midland this fall.

Wright's supreme effort came in the last 10 seconds of the game when, with the ball on the seniors' one-yard stripe, he took the ball about three yards behind the goal, cut around the right end of his own line and never slowed up until he had crossed the other goal to tie up the score. The game ended about the time "Falso" hit the 50 but by that time he was so far ahead of all pursuers that he waltzed the rest of the way.

Both teams were handicapped—and plenty—by a cold north wind that whipped sand over the field and stands throughout the game. Wright's long dash was the only score made against the wind. All the other five touchdowns were made at the south end of the field.

Jay Francis, probably the greatest back ever to finish up here, wound up his career yesterday for the high school in typical fashion. He was a constant threat to score all the way through the game, catching several long runs, but was able only once to get completely loose. It was early in the second period that he took the ball from center on his own 40 and started one of his weaving, twisting and whirling runs that made him famous. He had to fight loose from a half dozen would-be tacklers during the first 20 yards but shook loose and was long one.

The 1940 boys got the jump early in the game by scoring two touchdowns in the first period. After a punt by the seniors had been blown back by the wind for a 15-yard loss, the senior 3-yard line Wendell Williams crashed over for the first score of the game. A little while later, a concerted drive, with Jim White and Williams alternating at carrying the ball, gained to the senior five and White went over. That was all the scoring until Francis got loose soon after the second half started.

A short while after Francis' long run, he, Wright and Temple Harris matched down to the one-yard stripe and Wright dived over for the score that tied up the game.

Once next year's boys got the wind to their backs in the last quarter they lost little time scoring. A punt by Jim White that was good for 70 yards was killed on the senior 10 and the junior boys recovered a fumble on the first play. Two line plays failed and White passed to Maurice Bratton over the goal for a touchdown to put his team ahead again. The two teams rocked back and forth for several minutes in the last period until the seniors got the ball on their own one with only seconds to go after Temple Harris had intercepted a pass behind the goal line and attempted to run it out. Wright then took off on the run that ended the game.

The seniors were in surprisingly good shape, managing to last through the game with only two substitutes. Coach Bud Taylor used about 25 boys during the game for his 1940 aggregation.

White and Williams did most of the heavy offensive duty for the juniors with Bratton, Eldson and Rehders, along with Cocks, doing most of the work in the line. Several times White and Williams unloosed long runs but could never get completely loose.

The game wound up the spring training season for the Bulldogs, one of the best ever held. The coaches were well pleased with play of the boys yesterday and it was of a quality that indicates the Bulldogs are not going to be exactly a "soft push" for other teams this fall. Lack of reserves is going to be a handicap but the starting line-up boasts more power than many had thought it would.

**Ancient Catalogs Preserved.**

The British Museum has specimens of Chinese catalogs and pamphlets made more than 1500 years ago and still in an excellent state of preservation.

**DYNAMIC IN SCOPE—SENSATIONAL IN VALUES!**

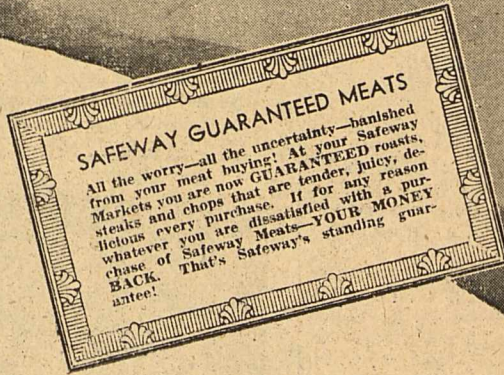
**SAFEWAY**

**SILVER-JUBILEE**  
BARGAINS EVERYDAY DURING MONTH OF APRIL!

**MEAT SPECIALS**

THAT WILL MAKE YOUR PURSE-STRINGS TINGLE!

Loin End or Blade Cuts <b>PORK CHOPS</b> lb. <b>15c</b>	Dry Salt <b>Bacon</b> Pound <b>8c</b> Hockless Sugar Cured <b>Picnics</b> Pound <b>13c</b>	<b>Pork Liver</b> lb. <b>10c</b>
	<b>Sliced Bacon</b> Bulk Sugar Cured lb. <b>15c</b> <b>Sliced Bacon</b> Safeway Maximum lb. <b>23c</b>	



**GROCERIES**

Harvest Blossom <b>Flour 48</b> lb. Bag <b>\$1.29</b>	Quick Mixing <b>Snowdrift 3</b> lb. Tin <b>45c</b>	Delicious Crisp <b>Post Toasties 2</b> 13-oz. Pkgs. <b>15c</b>	Granulated Soap <b>Su-Purb</b> 24-oz. Pkg. <b>17c</b>	Lux <b>Flakes</b> 5-oz. Pkg. <b>10c</b>	Sierra Pine Toilet Soap <b>White Magic</b> 3 Bars <b>19c</b>	Bleach <b>Assorted Flavors</b> 2 Bottles <b>25c</b>	Jell Well <b>Safeway Fresh Butter</b> Solid 1 lb. <b>29c</b> or Quarters	Van Camp's <b>Pork &amp; Beans</b> 2 No. 300 Cans <b>15c</b>	Canterbury <b>Tea</b> 1/2 lb. Pkg. <b>29c</b>	Airway <b>Coffee</b> 2 1-lb. Pkgs. <b>25c</b>	Edwards <b>Coffee</b> 1-lb. Tin <b>21c</b>	Chase & Sanborn <b>Coffee</b> 1-lb. Pkg. <b>23c</b>	Durkee's Varieties <b>Spices</b> 1 1/2-oz. Pkg. <b>5c</b>	Castle Crest <b>Peaches</b> No. 2 1/2 Can <b>15c</b>	Zee Toilet <b>Tissue</b> Roll <b>5c</b>	Vigo <b>Dog Food</b> 3 No. 1 Cans <b>14c</b>
--	---	---	--	--	---	--	--	---	--	--	---	--	--	---	--	---

<b>ROUND STEAK</b> LB. <b>29c</b>	<b>SHORT RIB ROAST</b> LB. <b>14c</b>	<b>CHUCK ROAST</b> LB. <b>17c</b>	<b>CLUB STEAK</b> LB. <b>25c</b>	<b>LOIN STEAK</b> LB. <b>25c</b>
-----------------------------------	---------------------------------------	-----------------------------------	----------------------------------	----------------------------------

<b>FRUITS &amp; VEGETABLES</b> <b>STRAWBERRIES</b> Fancy Fresh Louisiana Pint Box <b>11c</b>	<b>CARROTS RADISHES GREEN ONIONS</b> 3 large bchs. <b>5c</b>	Fresh Crisp Florida <b>Celery</b> 4-Doz. Size 2 Stalks <b>15c</b>	White or Yellow <b>Squash</b> 2 lbs. <b>15c</b>	Extra Fancy Winesap <b>Apples</b> 138 Size Doz. <b>19c</b>	Sunkist <b>Oranges</b> 176 Size Doz. <b>29c</b>	Sunkist <b>Lemons</b> 432 Size Doz. <b>15c</b>	Fancy Texas <b>GREEN BEANS</b> 2 lbs. <b>19c</b>	No. 1 Texas New <b>POTATOES</b> 4 lbs. <b>19c</b>
---	--	--	--	---	--	---	---	--

<b>TROPIC SWEET GRAPEFRUIT JUICE</b> No. 2 Can <b>5c</b>	<b>PHILLIPS TOMATO JUICE</b> 6 10-oz. Cans <b>25c</b>	<b>HARPER HOUSE PEARS</b> No. 2 1/2 Can <b>19c</b>
<b>Imperial Pure Cane Sugar</b> 10 lb. Cloth Bag <b>49c</b>		

**SAFEWAY** YOUR FRIENDLY GROCER

**Wink Reinstated in League by Officials of District 7-A**

Wink high school was reinstated by Texas Interscholastic League officials in the football district 7-A yesterday.

The state executive committee made the re-acceptance ruling on recommendation of the 7-A district committee.

Wink, five times a regional football champion, last fall shortly before what was to have been the final game of its 7-A schedule was ruled out by the district committee on charges of subsidization of players growing out of declaration that five of the Wink football team members were housed in a school-owned building—received inducements to live in Wink and play football.

Three of the five players are to be in Wink high school next fall. Their names are Youngblood, Divilbiss and Campbell. Each came up from Wink junior high school into

the senior high school.

The question of whether or not the district committee will permit these three lads to represent Wink on the football field next season is to be decided later by the district committee.

The basketball and track districts in which Wink participated, and which is separate from the football district 7-A, ruled all five players eligible for competition this past winter and spring in basketball and track. The other two athletes banished by the football circuit are J. R. Callahan and Bob Aberding.

**NOTICE**  
I will not be responsible for any debts charged to me, or checks written on my account, by any person or persons other than myself.  
Signed:  
**FRANK GARDNER**  
(35-3)

**Quincy, Mass., Will Open Century Time Capsule**  
QUINCY, Mass. (UP)—On May 25, a century-old mystery will be solved.  
As a feature of the 300th anniversary of the town of Braintree, of which Quincy once was a part.

**W. L. Thompson's Son Youngest Air Passenger**  
Youngest "passenger by air" was booked by the Midland Travel Service conducted by Mrs. Erma Mancill, she announced today, when Mrs. W. L. Thompson and her six weeks old son took off from Los Angeles for Midland. Mr. Thompson, with an oil company, is already located here.

**WIN THIS GLAMOROUS FIESTA 90-PIECE DINNER ENSEMBLE SERVICE FOR SIX**

AT OUR **Love Brothers PLAX COLOR FIESTA**

Win this glamorous Fiesta Service—come to our store this Friday and Saturday and enter this easy local contest.

Of course you can write a simple 25 word statement telling in your own words why PLAX is the new universal beauty finish. And that statement may win for you this local contest in which only your friends or neighbors will compete. So don't miss this opportunity to win this beautiful Fiesta Dinner Ensemble and get a free can of PLAX.

Just get your entry blank at our store, either this Friday or Saturday, and then turn in your statement within one week.

**FREE CONTEST ENTRY BLANKS**

**BURTON-LINGO CO.**  
Phone 58—119 East Texas—Midland, Texas

**TAXI 15c**  
**MOTORCYCLE DELIVERY 10c**  
**CITY CABS, Inc.**  
**PHONE 80**  
OR 500

**DON'T TRUST TO LUCK**

Be sure that your property and valuables are adequately insured. Our services are at your disposal... We shall be glad to investigate your requirements carefully.

**Sparks & Barron**  
General Insurance & Abstracts  
First Natl. Bank Bldg.  
Phone 79





Midland Girl Has Part in Play

Miss Julianan Cowden, daughter of Mr. and Mrs. Edd Dick Cowden, will play a prominent part in the Hockaday Junior College annual Greek play to be presented on the terrace of the campus Wednesday, April 23. She will take the part of Thanatis.

class in the play house on the campus Monday, April 22. Miss Cowden is on the executive committee which is planning the program for the day. The entertainment will include dramatic skits taken from pioneer life and Texas history, square dances, old play party games, and a box supper. Students will appear in appropriate costumes.

ON VACATION Mr. and Mrs. F. R. Schenck are on a vacation trip to New Orleans. They may also visit Pensacola before their return here.

Oil News—

(Continued From Page One)

test in northern Ector, is preparing to swab for test after initial acid treatment with 1,000 gallons. Hole is bottomed at 5,214 feet, plugged back with cement from 5,220 to shut off possible sulphur water indicated in core, and 2-inch tubing is set at 5,210.

Buckner Coring. First core in T.C. Water Associated Oil Company No. 1 Oran Buckner, southern Terry county wildcat, showed recovery of three feet of dense lime and anhydrite from zone between 4,890 and 4,900 feet, present depth. This morning the cell was coring ahead below 4,700. Wire-line core-barrel is being employed.

Stanoilind No. 2 American Warehouse Company, short northwest extension of the Cedar Lake pool in central Gaines, is moving out rotary after shooting with 760 quarts from 4,600 to 4,740 feet, total depth. Delta Drilling Company No. 1-B R. L. Slaughter, Jr., one-mile northeast outpost to the Slaughter field in southwestern Hockley, halted drilling at 5,038 feet in lime and is running tubing to acidize.

Health Work—

CONTINUED FROM PAGE ONE.

Knot-Hole club at the ball park was referred to the board of directors of the club.

"Hay Fever" Gives Evening of Gay Entertainment

BY KATHLEEN EILAND

Hilarious is the word for "Hay Fever" final play to be presented by Midland's Civic Theatre for the current season. Aimed at nothing except entertaining the hearers, the play, as presented by a local cast at the Yucca Theatre Wednesday evening, definitely did that.

"Hay Fever," Noel Coward's farcical comedy of modern life, pictures of guests on a weekend visit to the Bliss family at their Connecticut home.

Sweetie Jones Peck as Judith Bliss, former actress who even in the midst of family life cannot get away from the dramatic leanings of her nature, was excellently cast and lived the part. So did Walter Wahe, young newcomer to Midland, who as Judith's son, Simon Bliss, was a "natural" for the part he portrayed. Although all members of the cast were pleasing and effective in their portrayal, Judith and Simon supported the leading roles.

Elma Graves as Clara, the over-worked but highly articulate maid, drew applause for her work.

Cub Wheeler, as Judith's novel writing husband, was convincing especially in the table-pounding part and his reproaching of his wife because the children were not better behaved.

Beulah Pritchard as Jackie Cory-

ton was realistically "timid."

Elizabeth Payne as Sorel Bliss who wanted the family to be less rude, John Turner Jr. as Sandy Tyrrell, Erma Mancill as Myra Arundel who is certain she does NOT want her hand held, and "Red" Roark as Richard Greatham, all turned in pleasing performances.

Entirely convincing was the amount of noise the combined Bliss family was able to make around the family breakfast table.

With no heart-touching drama and no intent to teach a lesson, "Hay Fever" provided an evening of carefree enjoyment and was a pleasant finale to the Civic Theatre's first year's work.

Stage scenery showed the same careful and effective work which has been displayed in previous plays. Mrs. Wilmer Stowe, who has carried on her shoulders the task of directing for this year's plays, proved the versatility of her ability again in this presentation, of a different type from those preceding it. She was assisted by Mrs. Donald L. McKibbin.

FROM FORT WORTH

F. H. Schouten of Fort Worth is here on business. A former resident of Midland, he now is division geologist for the Stanoilind Oil and Gas Company.

CONDITION SAME

Condition of Mrs. Henry Butler, ill with pneumonia in a Midland hospital, was reported today to be "about the same."

Allies, Norwegians Seek to Dislodge Germans in North

STOCKHOLM, April 18. (AP).—Combined Allied and Norwegian forces fought hard last night to blast strong German forces out of a 20-mile stretch above the Arctic Circle, from the port of Narvik to the Swedish border.

In the south the Nazis strengthened their positions behind a potential defense line all the way across central Norway.

On the northern front the Allied expeditionary force, made up of French and Canadian troops, joined the disorganized Norwegians in the offensive against the Germans. But the Germans apparently were holding the upper hand with superior numbers.

The Allied force, originally intended for the aid of Finland, is reported to have landed in the general vicinity of Narvik.

HERE FOR PLAY

Editor and Mrs. J. E. Kelly of the Stanton Reporter were among visitors to the Civic Theatre play, "Hay Fever," Wednesday night.

BABY IN HOSPITAL

Mrs. Lamar Lunt has taken her baby to a Fort Worth hospital, where it is receiving treatment for pneumonia.

SERVICES SUNDAY

Preaching services will be held at the home of Rev. J. D. Jackson, 712 S. Pecos, Sunday afternoon at 3 o'clock. The public is invited. It is requested that all pledges and donations for the Gospel Hall church which is being erected on S. Lorraine street be sent to Gospel Hall, Box 297, or to Rev. J. D. Jackson at Bobby's Barber Shop.

Philadelphia bought its first fire-fighting apparatus from England in 1719.

C-C EXECUTIVES MEET

Chamber of Commerce Manager Bill Collins will leave early Friday morning for Colorado City where he will attend the annual convention of Chamber of Commerce Managers Association of West Texas being held there tomorrow and Saturday. Collins is president of the regional group.

NOTICE: Dr. H. C. Wright, Foot Specialist, will be at the Scharbauer Hotel for four days beginning May 1st. (Adv.)

Advertisement for Studebaker Champion car. Features: Saves you 10% to 25% on gas! Averaged 29.19 miles per gallon officially! Prices begin at \$660. Best-looking, best-riding car of lowest price.

BROADWAY GARAGE. Heil's Service. 207 West Wall—Phone 140—Midland, Texas.

OUR 3rd ANNIVERSARY in MIDLAND. THANKS TO EVERYBODY FOR YOUR SUPPORT. SPECIALS FOR THIS WEEK: 15-oz. Footed Iced Tea Glasses, 6 for . . . 50c; A Garden Hoe or Rake, each . . . 50c; Whirling Lawn Sprinkler . . . 79c; Eclipse Built Lawn Mower With Sharpener . . . \$5.95; Vigoro, 100 pounds . . . \$4.00.

At the YUCCA TODAY Thru SATURDAY. The things you've always dreamed about doing—THEY DID! You have Read it... Now Live It! "SWISS FAMILY ROBINSON" featuring Thomas Mitchell, Edna Best, Freddie Bartholomew, Tim Holt, Bobbie Quilman.

RITZ LAST DAY. MONEY TO SPEND... except for what they wanted! Penny SINGLETON, Arthur LAKE, Larry SIMMS. BLONDIE ON BUDGET. RITA HAYWORTH, Danny Mummert. PLUS! Sport Comedy.

WEEK-END FOOD SPECIALS FOR FRIDAY & SATURDAY, APRIL 19-20. WE DELIVER—PHONE 562. Corn Flakes Large size Jersey brand . . . 10c; Ketchup 14-oz. Heinz . . . 22c; Salt 26-oz. American table 2 packages . . . 15c; Eggs Strictly fresh country Per dozen . . . 15c; Yams Fancy Porta Rican Per pound . . . 5c; Dreff Large size . . . 22c; Bunch Vegetables 3 for . . . 10c; Sugar 10 lbs. cloth bag Pure cane . . . 54c; BOSTON Brown Bread Monarch . . . 15c; Lemons Sunkest 490 size 10 for . . . 10c; Soap Laundry—6 bars . . . 23c; Asparagus Extra fancy in 1-lb. bunches . . . 10c; Potatoes Shoe string Ready to serve . . . 10c; Marshmallows 1-lb. cello bags . . . 15c; Limas Del Monte No. 2 Early Garden . . . 16c.

MARKET SPECIALS. Bacon Armour's Star Pound . . . 21c; Ham Ends Pound . . . 15c; Dry Salt Pork Pound . . . 10c; Roast Baby beef chuck Pound . . . 18c; Roast Leg of lamb Pound . . . 23c; Veal Braisettes Swift's Pound . . . 35c; Cheese Kraft Mel-o-Cure Pound . . . 21c; Roast Baby beef arm Pound . . . 23c; Seven Steaks Pound . . . 20c; Ham Hocks Pound . . . 12 1/2c.

M SYSTEM SAVES FOR THE NATION GROCERY & MARKET.

SURE TO SCORE IN SAVINGS. HIT VALUES. 100 ST. JOSEPH ASPIRIN 35c. \$1.00 VITALIS 79c. 50c IPANA 3 for 81c (Limit 3). DREFT Large Size 21c. MOTH BALLS 1 Pound 19c. 75c Squibb MINERAL OIL 59c.

Vitamin B-One Solution for Plants 50c. Vitamizes 200 Gallons of Water.

Photographic. ARGUS CAMERA \$14.50 \$9.95. 8 mm Kodachrome . . . \$3.40; 16 mm Magazine Kodachrome \$4.65; Portrait Attachment, all cameras . . . \$1.00 to \$1.50; Color Filter, all cameras, up from . . . \$1.75.

PATENTS. \$1.00 Cardui . . . 69c; \$1.25 Pe-Ru-Na . . . 98c; \$1.25 Absorbine Jr. . . . 98c; \$1.00 Nervine . . . 83c.

SUNDRIES. 49c Goodrich Rubber Gloves, size 7 1/2 . . . 39c; GE Light Globes . . . 15c; \$2.95 Electric Grill . . . \$1.98; Alarm Clocks . . . 98c.

Here's a line-up of hit values that are sure to score in savings for you. Each and every one is a star performer . . . a consumer-accepted brand that has proved its quality through daily use in millions of homes. Come in today for the things you need and see how well QUALITY and ECONOMY team up with INTELLIGENT SERVICE to win your satisfaction.

Barbara Gould CLEANSING CREAM. An amazing value—the full size jar of Barbara Gould Cleansing Cream at half price. Get several jars today because this exquisite cream goes back to its regular price immediately after the sale. FOR A LIMITED TIME ONLY. \$2 JAR \$1 FOR.

Creomulsion 89c. PABLUM 39c. Dextri-Maltose 59c. 50c Bridge Cards . . . 39c; 10 lbs. Sulphur for Plants . . . 69c.

MIDLAND DRUG CO. BARNEY GREATHOUSE, OWNER. WE DELIVER PHONE 258. We Reserve the Right to Limit Quantities.