



# THE REPORTER-TELEGRAM

Evenings (except Saturday) and Sunday Morning  
 MIDLAND PUBLISHING COMPANY, PUBLISHERS  
 112 West Missouri, Midland, Texas

E. PAUL BARRON, Publisher  
 Entered as second class matter at the postoffice at Midland, Texas, under the Act of March 30, 1879

Subscription Price  
 Daily, by Carrier or Mail \$5.00  
 Per Year \$50.00  
 Per Month \$4.17  
 Advertising Rates  
 Display advertising rates on application. Classified rate, 2¢ per word; minimum charge 25¢. Local readers, 10¢ per line.

Any erroneous reflection upon the character, standing or reputation of any person, firm or corporation which may occur in the columns of the Reporter-Telegram will be gladly corrected upon being brought to the attention of the firm.

## BRUCE CATTON IN WASHINGTON

WASHINGTON. — Don't overlook Congressman Lee Geyer's bill to abolish the poll tax. It has some far-reaching political possibilities.

The tax exists in eight states—Virginia, South Carolina, Georgia, Arkansas, Alabama, Mississippi, Tennessee and Texas. Geyer estimates that it disfranchises 60 per cent of the whites and 90 per cent of the Negroes in that area. What knocking it out might mean is illustrated by this:

A southern congressman flagged him the other day and said: "Lee, you aren't really going to push that bill, are you?"

"Sure," said Geyer. "Why not?"

"Why not? Why, because a lot of us will lose our jobs if it passed. We'd have to build our machines all over again, from the ground up."

### VOTING LIGHT IN SOME DISTRICTS

CITING election returns and census figures, Geyer argues that some of the most influential men in Congress actually represent only a fraction of the electorate in their districts. Average congressional district contains somewhere between 240,000 and 300,000 people; in an ordinary northern district, the total vote in a non-presidential election will run from 70,000 to 120,000.

But here are the votes cast in the 1938 elections in the home districts of important poll-tax-state congressmen:

- Sam Rayburn, majority leader—16,877.
- Hatton Summers, chairman of the judiciary committee—10,889.
- Eugene Cox, chairman boss of the rules committee—517.
- Marvin Jones, chairman of the agriculture committee—19,048.
- William Whittington, chairman of flood control committee—2172.
- Henry Steagall, chairman of banking and currency—10,090.
- Carl Vinson, chairman of naval affairs committee—4388.
- John Rankin, chairman of the World War veterans legislation committee—4384.

### CLAIMS BILL AIMED AT POOR WHITES

GEYER put his bill into the hopper last summer, managed to get hearings on it before a sub-committee of the judiciary committee just recently. He has been getting help from representatives of the liberal Southern Conference on Human Welfare.

... Poll tax came into being in most

of the eight states ostensibly as a means of disfranchising Negroes, but actually—according to Geyer—to make the poor whites behave. In all of these states but Tennessee, he says, there are educational tests in the election laws which would keep Negroes from voting. Also, in all of these states, the poll tax is embedded in the state constitution and hence can't be removed by the legislature.

### BILL HAS MANY OBSTACLES

GETTING the bill to a vote is apt to be tough. The sub-committee now holding hearings on it reports to the judiciary committee—whose leader, Congressman Summers, is highly unlikely to send it any further. Getting a rule from Congressman Cox will be equally tough. Getting any help from Majority Leader Rayburn won't be simple, either. In the end, Geyer will probably have to circulate a petition to discharge the bill from committee.

### MAYOR'S ENDORSEMENT

The cooperation of every member of every family, every teacher and city official, every business and individual group with the Midland Tuberculosis Association in the Early Diagnosis Campaign, to be held throughout the coming month, is imperative if we are to make rapid progress toward the eradication of the dread disease, tuberculosis.

Great victories over the disease have been won in this city but I must warn you that the battle against one of our oldest enemies is far from being won.

Tuberculosis is still killing in this country at the rate of one person every eight minutes.

We, as individuals and as a city, must put into active use the strong protective measures against tuberculosis that the Midland Tuberculosis Association will clearly point out to us during the campaign.

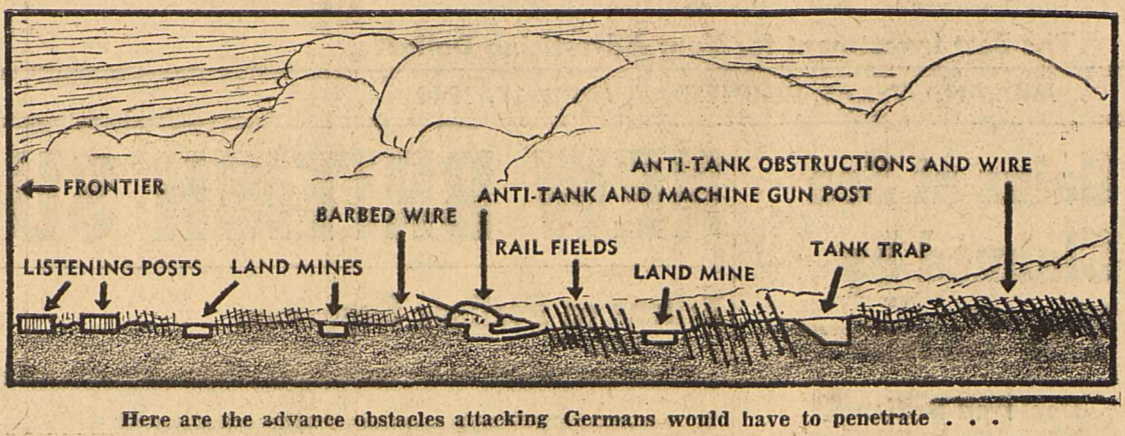
Authorities assure us that the disease can be eradicated in this country if a concentrated drive, using all our knowledge of the disease, would be met with full cooperation from the people.

We have our choice. We can present to the next generation a newly created liberty—a liberty to live free from the menace of tuberculosis—or we can pass along a fight we failed to finish.

I appeal to all of you—let us give our full support to every phase of the Early Diagnosis Campaign. In one month, if we heed the leaders in the fight against the disease, we can make a long advance toward our goal—the eradication of tuberculosis.

(Signed) M. C. ULMER, Mayor.

# NAZIS CAN BREAK THE MAGINOT LINE, THOMAS M. JOHNSON SAYS



Here are the advance obstacles attacking Germans would have to penetrate . . .

BY THOMAS M. JOHNSON  
 NEA Service Military Writer.

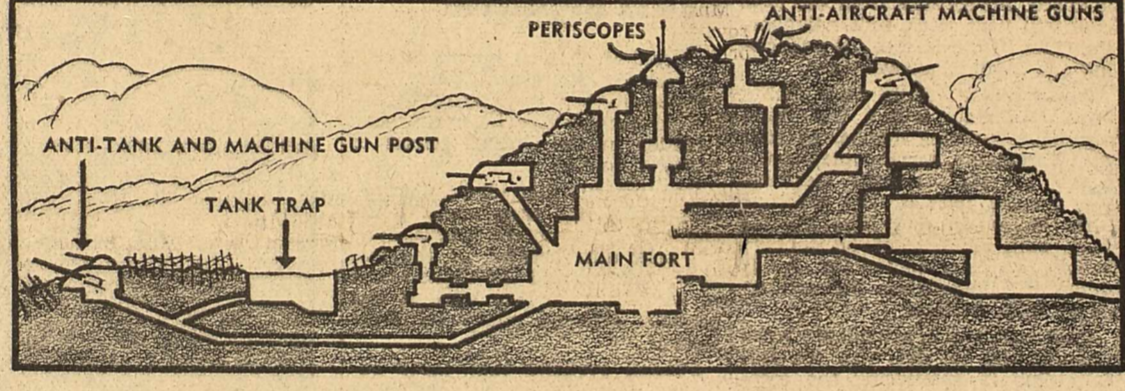
CAN the Nazis break France's Maginot Line? That question is a close second in importance to: Can Nazi air power beat British sea power?

One answer the world is getting now in Scandinavia. The other may come at any moment in France, for the Germans are showing signs of attacking the Maginot Line. Perhaps it will be only a diversion to hold back Franco-British troops from Scandinavia, but more likely it will be a tremendous attempt to break through and end the war.

This stupendous undertaking the Nazis would justify by their military doctrine and even more by their state of equipment. For if ever a host was armed to break the strongest fortress in history, that host is today's Reichswehr. They have more, better and newer weapons than any army ever had in the world's history. They have artillery, German and Czech that is unequalled for the task of shattering the concrete casemates topped with steel cupolas that the backbone of the famous line.

### AIR BOMBING BIG FACTOR

THOSE casemates can hardly be rocked by shell fire as were the less deeply anchored Finnish pillboxes. But there are also pillboxes on the Western Front—outposts of the



... to get at a mighty main fort of the Maginot Line, strongest defense on earth.

## Too Many Inquiries About Pensions for Officials to Answer

AUSTIN, April 17. — Because of the limited funds available for postage and supplies and because of the large volume of letters received in the State office for persons interested in obtaining old age assistance for various applicants, the State Department of Public Welfare has been forced to curtail its letter writing.

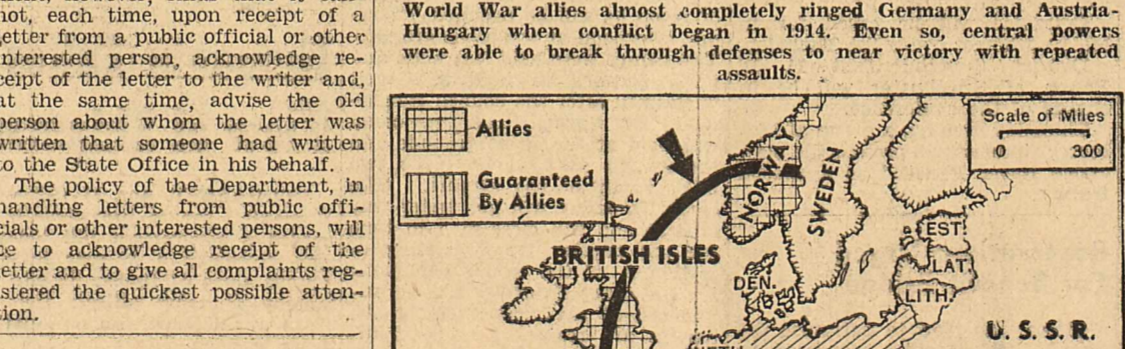
The Department receives thousands of letters from applicants and recipients and attempts to acknowledge receipt of all of these letters and to give any complaints received attention at the earliest possible date. In addition to letters from applicants and recipients attention is given, however, the Department receives other thousands of letters written by public officials or other interested persons in behalf of applicants or recipients.

Officials of the Department of Public Welfare wish to make clear that these letters in behalf of old persons will receive attention as quickly as possible. The Department, however, finds that it cannot, each time, upon receipt of a letter from a public official or other interested person, acknowledge receipt of the letter to the writer and, at the same time, advise the old person about whom the letter was written that someone had written to the State Office in his behalf.

The policy of the Department, in handling letters from public officials or other interested persons, will be to acknowledge receipt of the letter and to give all complaints registered the quickest possible attention.

## New Battle Front Recalls German Handicap of 1914

World War allies almost completely ringed Germany and Austria-Hungary when conflict began in 1914. Even so, central powers were able to break through defenses to near victory with repeated assaults.



## No Surprise in Such A Habit as This One

LUBBOCK. — Liquids are more popular with students than solids as a between-meal refreshment, figures at the Texas Tech college bookstore indicate.

Daily consumption of coffee, most popular beverage, averages ten gallons daily, but falls off slightly in warm weather. About 240 bottles of 'oke,' 96 bottles of Dr. Pepper, and 72 bottles of 'pop' are poured down collegiate gullets each day at the campus lunch stand, in addition to one-half gallon of hot tea, one gallon of fruit and tomato juices, and four gallons of milk.

Average daily sale of candy bars is about 25; of gum, 54 packages; cigarettes, 50 packages of 14 different brands. All 13 brands of 18-cent cigarettes stocked exceed in popularity the one 15-cent brand.

Still fighting on a single front, thanks to friendly neutrality of Russia, Italy and Hungary, Germany has extended that front by her own choice north through Denmark and up through Scandinavia to the Arctic Circle. Possible new fronts indicated by dotted lines.

The collision of automobiles with pedestrians accounted for 12,470 deaths, or 38.9 per cent of the total persons killed during 1939.

As of February 1, 1940, the average retail price of gasoline was 13.43 cents a gallon, as compared to 13.53 cents on January 1, 1940.

Built by  
**CADILLAC**  
 and Cadillac  
 Builds Best!

FOR ALMOST as long as the automobile industry has existed, Cadillac engineering and manufacturing have been Standard of the World. Cadillac introduced precision engineering and scores of basic innovations besides. And LaSalle is a Cadillac product. That's why two out of three medium-price car buyers who try it buy it. LaSalle performance is Cadillac performance—and that's the best there is. For proof take a ride—today.

**LA SALLE**

81240 for the Series Fifty Coupe, delivered at Detroit. Sedans start at \$1280. Transportation based on rail rates, state and local taxes (if any), optional equipment and accessories—extra. Prices subject to change without notice.

**ELDER CHEVROLET CO.**  
 123 East Wall—Midland, Texas

**The Town Quack**

Midland, Texas  
 April 17, 1940

"Dear Mr. Mayor:  
 I've got a little favor I'd like to ask about. I never was much of a feller to bother people but I think you'll hear my request.  
 I'd like to make a pig pen twixt my house and my neighbors on one side fur to put some shoats in. Ye see I got two kids and one allus did like to be around pigs. On t'other side of my house I shore would like to put a cow and her calf, fur my other kid likes to be around cows.  
 I don't think my neighbors will care cause two or three of them got horses around fur their yungins and old ladies.  
 I think it'll be sanitary cause I promise to pick up all the fertilizer and put it in the ally and on a vacant lot close to me. Besides, my neighbors and me live in brick and stucco houses and I don't think the flies can get into the houses cause we all got screens. And as fur the smell, who is it what don't like to smell the odor of fresh manure, I do cause I was raised among it, and I know my neighbors was cause they is so crazy about horses.  
 Please Mr. Mayor, let me build a pen for these pigs and cows as my yungins would enjoy em so much, and to, we could get milk and butter and some day fresh pork.  
 "Your friend,  
 HILLBILLY IKE."

Whether my recent recommendation that Midland needed a dude ranch had anything to do with Marcus Gist's decision, or whether he had planned something of the sort all the time, I don't know. But I heard this morning by good authority that he will make an announcement in a few days of a riding academy, roping club and sort of close-in dude ranch which will be available to the public. Horses have been bought and preparations are under way. I believe Marcus has the right idea.

However, horses have their various angles. The Mayor got a letter from a fellow by the name Hillbilly Ike, and the Mayor read between the lines where Ike might not be too anxious to have saddle horses up too close to his house. The letter said:

Now, More Than Ever

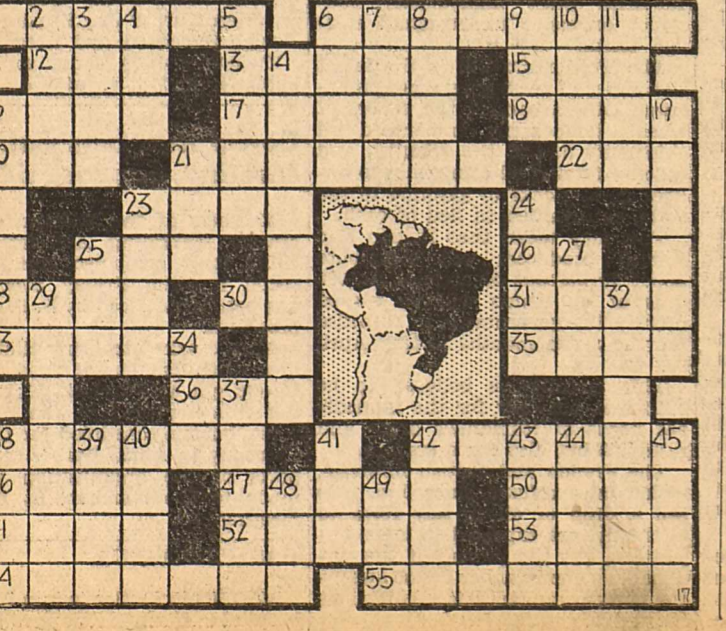
OUR NATIONAL SHIRT

U.S.

## MAP PUZZLE

- HORIZONTAL
- 1 Map of South American state.
  - 6 Its — or speech is Portuguese.
  - 12 Frozen dessert.
  - 13 Rounded molding.
  - 15 Afternoon meal.
  - 16 Spanish measure.
  - 17 Twenty-fourth part.
  - 18 Kind of fine malt drink.
  - 20 Poisonous extracts.
  - 22 Near the ear (prefix).
  - 23 Unless.
  - 25 Stroke of success.
  - 26 Form of "be."
  - 28 Onto.
  - 31 Lasso.
  - 33 Cut with a saw.
  - 35 Story.

- ANSWER TO PREVIOUS PUZZLE
- VENUS, APHRODITE, ADO, RULLION, DAW, NEPS, PRUNE, MILE, NAUT, ENDIC, COOL, PAL, LEU, LAKE, OLM, M, LA, TROD, ROOD, PIL, LAPE, BAY, SIAD, SOL, NIMBUS, TEREDEO, ECU, LUIS, DER, TCU, WEST, ANA, LEAN, AES, THE, MACIC, RESIE, PROTECTRESS
- 36 Custom.
- 38 Its most important river.
- 42 To retract.
- 46 Piece of timber.
- 47 Musical tragedy.
- 50 Species of pier.
- 51 Virginia willow.
- 52 Fortification.
- 53 Principal actress.
- 54 Sanctuary.





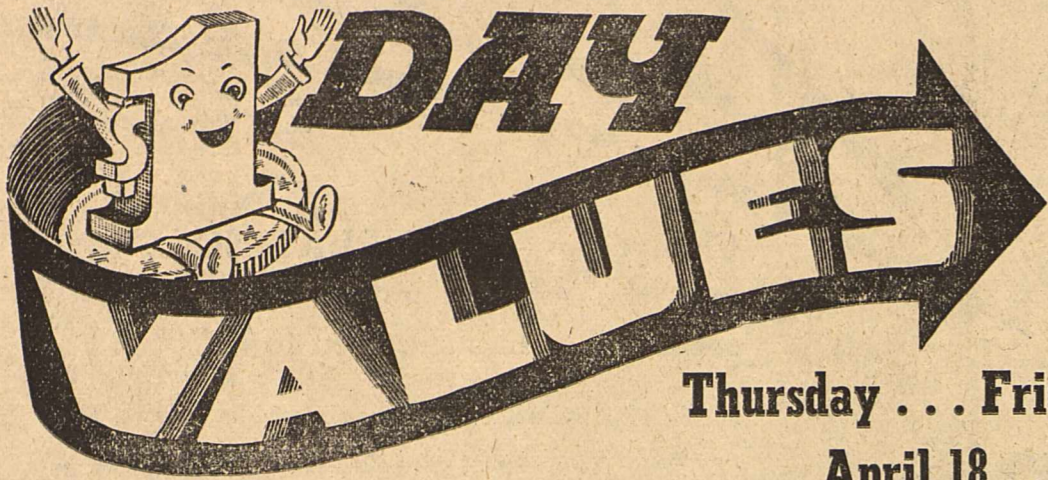






DEPENDABLE

# Wadley's OVERFLOW OF



## THREE BIG DAYS

Thursday . . . Friday . . . Saturday  
April 18 . . . 19 . . . 20

We couldn't confine all the wonderful values to one page. Read every item . . . Large savings throughout the store.

### DOLLAR DAY SPECIALS IN THE MEN'S DEPARTMENT



**MEN'S \$1.65 SHIRTS**  
\$1.35

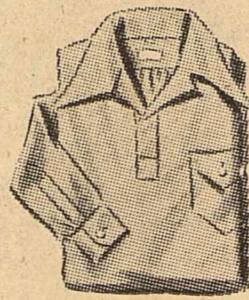
The best looking quality shirt that you ever saw at \$1.65 brought to you for April Dollar Days at \$1.35. Thirty-six dozen just unpacked in all the newest novelty fabrics and patterns. Sanforized shrunk, colorfast. Sizes 14 to 17. \$1.35 each, 3 for **\$4.00**

**\$1.39 SHIRTS \$1.00**

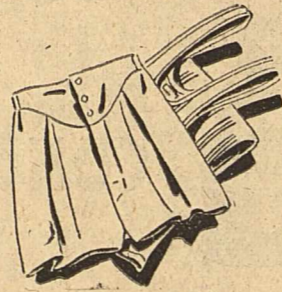
Full size, colorfast, permanent shrunk, fused collar, smartly styled and correctly tailored, spring and summer materials and patterns. Sizes 14 to 17. **\$1.00** EACH

**MEN'S SPORT SHIRTS \$1.00**

Just at the beginning of the sport season we bring you Arrow, Glover and Bedford sport shirts to \$1.50 for one dollar. Meshes, slubs, shantung, short sleeves, long sleeves, regular collars, crew neck, solids, multi-colors, all sizes. **\$1.00** EACH



**50¢ SHIRTS AND SHORTS**  
35¢



Our regular 50¢ Kerry-Kut fast color broadcloth shorts with gripper fasteners, and the regular 50¢ Kerry-Knit fine combed yarn athletic undershirts; special for these three days at 35¢ each or **\$1.00** 3 for

### READY-TO-WEAR DEPT.

**DRESSES TO \$3.95**  
Choice **\$1.00**

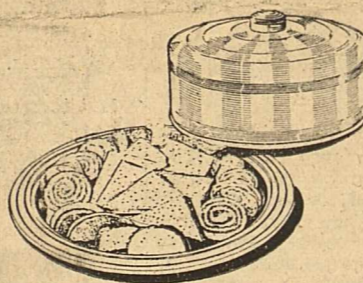
All taken from regular stock and a value that you must not overlook. In keeping with our policy to bring you bigger and better values, choose from this varied assortment of good dresses Thursday, Friday and Saturday at **\$1.00**



**SLACKS—SHORTS—COULOTTIS**  
69¢ Each

This lot of sport clothes range in values to \$2.00. To make April Dollar Days worthwhile for all members of the family, choice 69¢, 3 for **\$2.00**

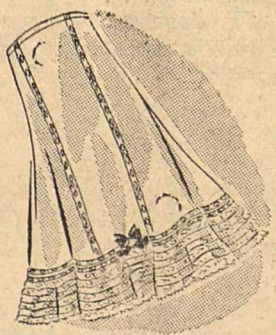
### GIFTWARE SECTION



**SPUN ALUMINUM SERVING HUMIDOR \$1.00**

This large covered tray has a unique humidifier in the cover for keeping sandwiches, cakes and baked goods fresh . . . Another outstanding value that distinguishes Wadley's Dollar Days from others . . . Thursday, Friday and Saturday, Each **\$1.00**

### SHOP THE DRY GOODS SECTION FOR THESE SPECIALS



**MISS ELAINE SATIN PETTICOATS \$1.00**

Hand embroidered, ruffle trim, lastex band petticoats that you would expect to pay as much as \$1.50 for this type of merchandise. Tea rose only. For Thursday, Friday and Saturday, Each **\$1.00**

**\$1.95 SEWING BOXES \$1.00**

These attractive cedar lined moth-proof sewing boxes with quilted finish and decorations on a light ground, will go very quickly at **\$1.00**

**MOTH-PROOF KNITTING BAGS**  
**\$1.00**

A Kirk Guild creation that is cedar lined . . . double silk cord handle and an item that you will use plenty! Assorted colors. Each **\$1.00**

**69¢ BRIDGE TABLE COVERS 50¢**

These attractive hand painted crash bridge table covers, bound in colors of red, blue or brown, and being absolutely sun and tubfast will be another item that we doubt you could duplicate at 50¢ or **\$1.00** 2 for

**BRASSIERES TO \$1.00—CHOICE 50¢**

An assortment of lovable brassieres in white and tea rose, sizes 32 to 38, just received in time to include in these three bargain days. Choose from the various styles at 50¢ each, 2 for **\$1.00**

**MONTAG'S STATIONERY**  
35¢

An assortment of Montag's quality stationery, consisting of 50¢ to \$1.00 values. The box 35¢ or **\$1.00** 3 boxes

# Wadley's

A Better Department Store  
Midland, Texas

**HAND PAINTED SHOE & LAUNDRY BAGS 50¢**

Guaranteed sun and laundry fast, hand painted in America, these Sunshine items are extremely outstanding at 50¢ each or **\$1.00** 2 for

## A SMASHING LET-GO!



of

**All Dark Shoes - - - None Excepted**

- I. Miller
- Johansen
- Red Cross
- Naturalizers
- Forest Park
- Velvet Step
- Simplex
- Glamour Debs

**Black Patent, Black Gaberdine . . Blue Kid, Beige, Turf Tan, Etc.**

## Certified VALUES

During This "PAL" Sale!

Two pairs for the price of one, or less.

**ONE LOT  
210 Pairs  
DARK SHOES**

- Black
- Brown
- Blush, Etc.

Values to \$7.50

**2 Pair  
\$2.00**

"Bring a Pal"

**ONE LOT  
350 PAIRS**

- Johansen
- Red Cross
- Simplex
- Forest Park
- Tupper
- Glamour Debs

Black Patent, Turf Tan, Blue, Beige  
Pumps, Straps, Ties

**2 Pair \$5.00**

"Bring a Pal"

**ONE LOT  
500 PAIRS**

- Johansen
- Naturalizers
- Red Cross
- Forest Park
- Black Patent
- Blue Calf

Pumps, Straps and Ties  
Values \$5.95 to \$7.50

**2 Pair \$6.00**

"Bring a Pal"

**ONE LOT  
30 PAIRS  
I. MILLER  
SHOES**

- Turf Tan
- Black Patent
- Brown Alligator

Pumps . . . Straps

**2 Pair \$10.00**

"Bring a Pal"

**ENTIRE STOCK  
I. MILLER  
DARK SHOES**

- Black Patent
- Black Serge
- Blue Serge

None Excepted

Pumps . . . Straps . . . Ties  
Single Pair \$8.95

**2 Pair \$17.50**

"Bring a Pal"

All From  
Regular Stock!

# Wadley's

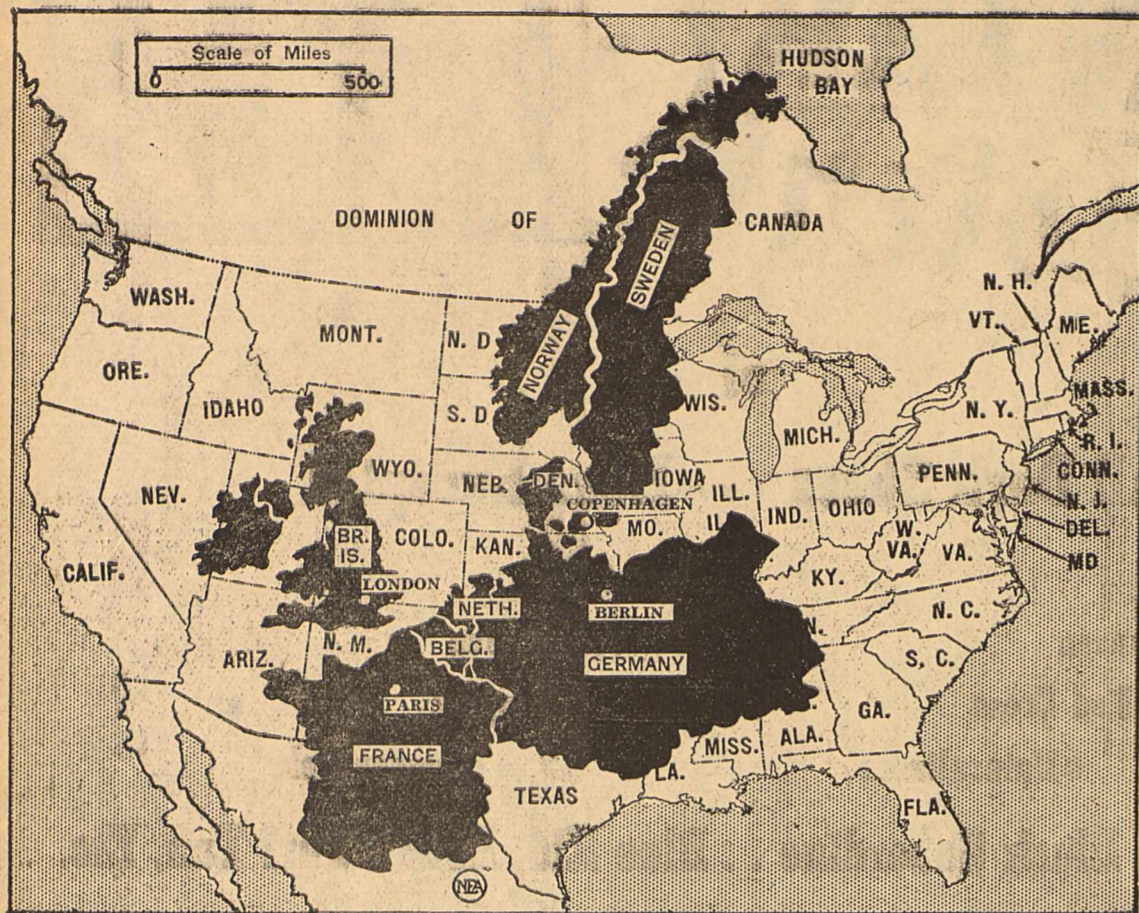
A Better Department Store  
Midland, Texas

Not One Single  
Style Excepted!

DEPENDABLE

Thomas M. Johnson, NEA Military Expert,  
Looks at Northern Blitzkrieg, Declares---

# Total War Begins



The war area in Europe has grown, but it is still small compared to North America. The warring nations are shown in the same scale, superimposed on the U. S. and Canada.

BY THOMAS M. JOHNSON  
NEA Service Military Writer.

TOTAL war by sea, land and air—long the world's dread—begins with Germany's attack up Denmark and Norway.

It promises to be a war open and infinitely varied, using every modern weapon to answer the great question: Which is stronger—British sea power or German air power?

The war may not finally be won or lost in the northland, but its ultimate winning or losing may well be decided there. Not alone through the action of ships and machines and the mechanics who operate them, but by the men on foot—the infantry, "the queens of battles."

Already German infantry has won the first stunning move by overrunning Denmark. Franco-British infantry must have failed upon the already rehearsed enterprise—a landing on Norway's west coast.

For this the two best ports are only to keep Franco-British troops from landing in Norway, but to seize Norwegian soil and establish bases. From these, German bombers can cut in half the flying time to attack British vessels in the North Sea, naval bases in Scotland, and also docks, factories and perhaps—as dreaded—cities.

### RAIL FACILITIES LIMITED.

If the Germans can hold Bergen, the blow to the Norwegians and allies is serious, since Norway's railway facilities for supplying allied landing forces are limited.

To hinder such landings is probably the main mission of the German light naval forces entering Norwegian waters.

The Germans are more likely to mine and torpedo troop ships than to challenge Britain's battleship strength.

Nevertheless, off Norway's coast may occur a series of naval actions unusual in character and great in importance.

The German aim will be not

only to keep Franco-British troops from landing in Norway, but to seize Norwegian soil and establish bases. From these, German bombers can cut in half the flying time to attack British vessels in the North Sea, naval bases in Scotland, and also docks, factories and perhaps—as dreaded—cities.

That opportunity is only one advantage Germany gains from her lightning move.

By gobbling Denmark, the "Dairy of Europe," she eases her fats shortage and gains freer entrance to the North Sea and Atlantic for her submarines, her raiding cruisers and even her fast new battleships. Also she greatly strengthens her hold over the western entrance to the Baltic.

### UP TO BRITAIN.

THESE advantages are so important that a Britain eager to show itself aggressive may try to snatch them away through a big naval ac-

tion. This would be a tremendous risk because, while German battleships and cruiser power is inferior, German submarine and mine laying power is considerable. More than that, the tremendous German air force.

For Britain's fleet to enter the Skagerrak would be to invite a bombing attack unequalled in history.

British bombing of German airdromes might bring on the hell of bombed cities, but would be necessary, especially if joint action were to be undertaken with the Norwegian and Swedish navies. Sweden is not likely to be kept out

of this war by the Russian threat, as she was kept out of the Finnish war by the German. Stalin, unless he trusts Hitler more than appears, would scarcely welcome his closer approach through Swedish conquest.

We for once may sympathize with Stalin, for overnight Hitler has put himself in the way of Stalin's doing what we have feared—entering the western hemisphere by way of two unprotected waystations in the famous northern air route to America, Iceland and Greenland. PROBLEM FOR U. S. ICELAND'S king is Denmark's

king. Greenland is a Danish colony to whose soil we waived our former claim when we bought the Danish West Indies.

But today does that renunciation hold?

This very moment Washington must be debating: Shall we send troops to occupy Greenland now, or wait and see what Hitler is going to do?

He has taken the war to the northland and from the northland the distance to the western hemisphere is not so great.

	Denmark	Norway	Sweden	Total Scandinavia	Total Germany
Army	161,000	90,000	885,000	1,136,000	3,000,000
Planes	90	100	250	440	8,600
Modern Cruisers and Battleships	0	0	0	0	15
Other Ships	3	4	9	15	2
Destroyers	20	8	16	44	43
Submarines	12	9	16	37	59

Chart shows how Germany's military might dwarfs the combined power of the Scandinavian nations. Figures are for the start of the European war. Germany's army is now much larger, her air power is increased, and she is believed to have built submarines faster than they have been destroyed. "Other ships" referred to are mostly obsolete and of little use in modern war.

### Mexico Builds Scenic Railway

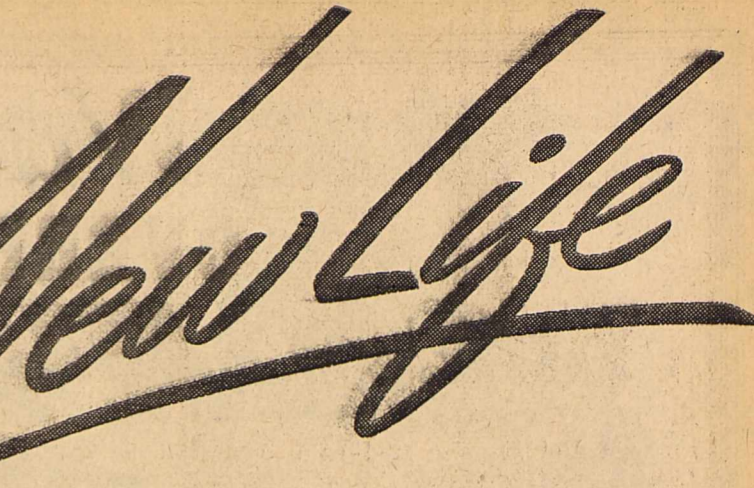
SAN ANTONIO, Tex. (UP).—Mexico is constructing an alternate section of the Inter-American highway that will run between Popocatepetl and Ixtaccihuatl volcanoes and will be the "most spectacular motor drive on the continent." William H. Furlong said on his return from a visit to the scene. Furlong, director general of the Inter-American Highway Association and a veteran good-roads enthusiast, said that the section between Amecameca and Atlixco, through the Pass of Cortez, was the most scenic route he ever saw. "The plan is to follow as nearly as possible the route Hernan Cortez took after the battle of Cholul-

lu," he explained. "History has it that it was from 'The Saddle' that Cortez and his conquistadores first beheld the Valley of Mexico, then with its beautiful lake and little towns and cities dotting its shores lying more than a mile below." The Inter-American Highway's Mexican section has been completed from Laredo, Tex., southward to Monterrey and on to Mexico City. It is now under construction to Oaxaca. The main route south of Mexico City is to Amecameca, Cuautla, Jonacatepec, Izucar de Matamoras, Tehuicongo, Petalcingo, Huapupam de Leon, Nochistlan, Tehuacan, Edla, and Oaxaca. Furlong said that it first was decided that the extension of the highway from Mexico City to Guatemala would be via Puebla and Tehuacan, to Huapupam de Leon and thence to Oaxaca, but

he said, "after looking into the matter more thoroughly it was decided that because the area between Mexico City and Tehuacan was favored by rail, plane and pavement, it would be a good idea to find another location which would be a good idea to find another location which would lie through sections that never before had been served by transportation facilities—and they did that."

### Steeplejack Atop Stack Clings Long in Peril

LONDON (UP).—A young steeplejack, Edward Teagle, 23, had a terrifying experience for more than half an hour as he clung to the top of an 80-foot chimney with no means of descent, while his mate lay dead on the ground below where he had fallen. Teagle and James Braham, 45,

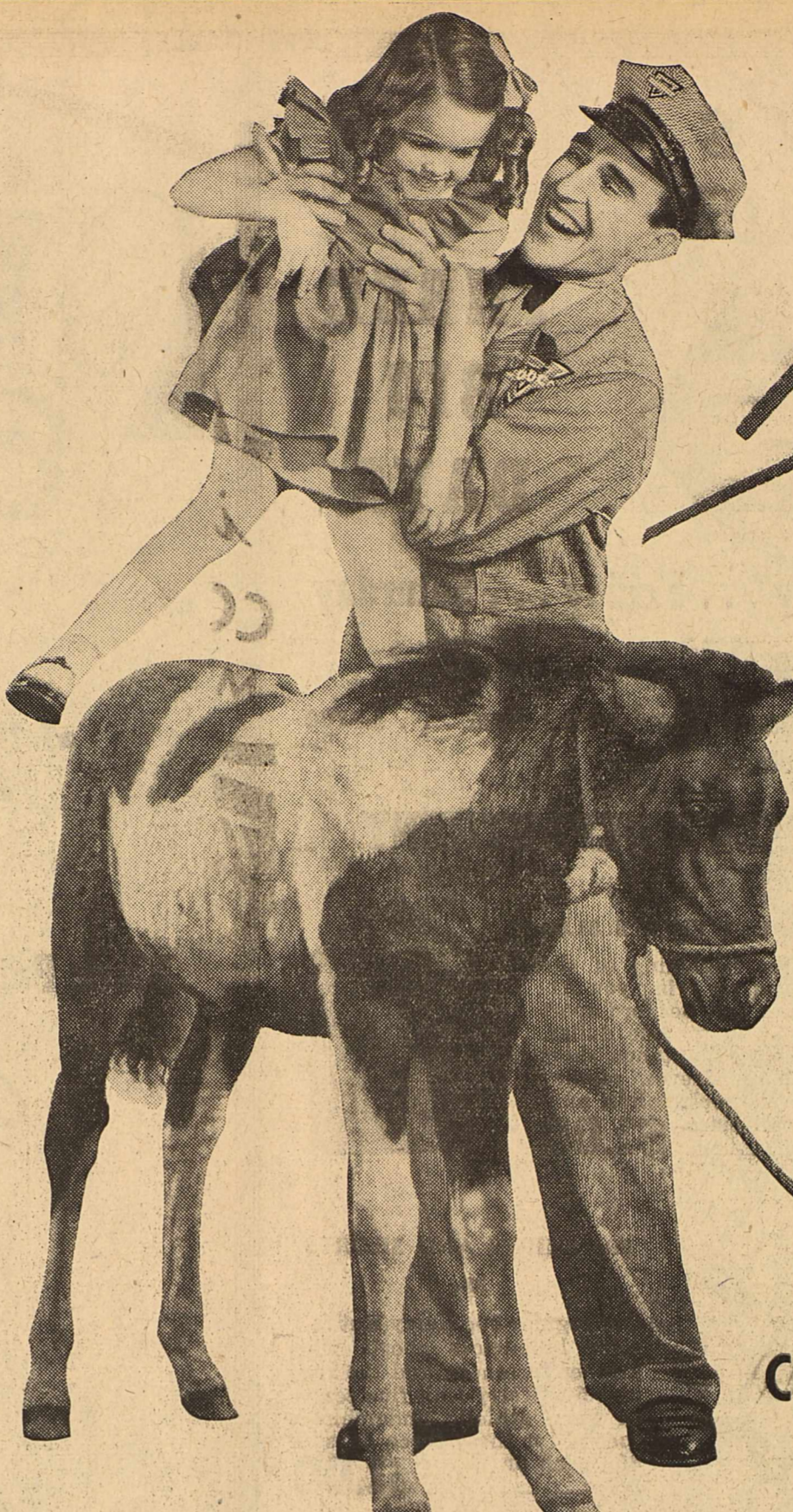


Change now to OIL-PLATING... and "the old gray engine seems more like she used to be"

At birth her cylinder walls were almost like mirrors. The more of that polish you want to keep, the more you want your engine OIL-PLATED by changing now to patented Conoco Germ Processed oil.

OIL-PLATING in your engine, like chrome-plating on bumpers, stays constantly PLATED UP. For an apparently magnet-like attraction comes to Germ Processed oil from its man-made extra ingredient, so that engine parts are surfaced with their close-held shield of OIL-PLATING... drain-proof.

Remaining fully PLATED UP in the highest-speed engines, OIL-PLATING plainly keeps Wear from doing Summer "business as usual." Wear once thrived during starting periods, but now before the starter ever starts, your OIL-PLATED engine is ready-lubricated—a positive step toward preserving the old gray engine... or a new one. OIL-PLATED cylinders long keep the roundness of youth, and that makes your Germ Processed oil keep. Change today—to Your Mileage Merchant's Conoco station. Continental Oil Co.



## CONOCO GERM PROCESSED OIL



## SAM WARREN, CONOCO COMMISSION AGENT

PHONE 31

### England Welcomes Back Old Time Middy Blouse

LONDON (UP).—Guess who's back again? The old middy blouse. Remember? Not since the early 1900s, when

were standing on top of the chimney knocking away bricks with hammers and chisels. Braham lost his balance and fell. Clutching the ladder as he fell, he broke off the top portion, which went with him. Teagle thus was stranded.

Firemen, using extension ladders, finally rescued him. Two days later, Teagle was back at work on top of the chimney.

American women brought this fashion to England, has anything like a middy-been worn here.

The new middy is cut straight and worn over a skirt without a belt. The square sailor collars are braided.

A new spring "three-piece" ensemble, including a white middy blouse with blue braiding and scarlet silk lanyard, navy skirt and reefer jacket, is being shown. A red sailor hat with navy and white ribbon provides the finishing touch.

Brass buttons are worn on the jacket, which has high revers and plenty of pockets. The skirt is short and flared.

*"It's always on my shopping list"*

A six-bottle carton of Coca-Cola is so easy to buy and to carry home. And it brings pure, wholesome refreshment within easy reach of you and your family. The taste of Coca-Cola has a charm all its own and you'll like the happy after-sense of refreshment.

BOTTLED UNDER AUTHORITY OF THE COCA-COLA CO. BY TEXAS COCA-COLA BOTTLING COMPANY

**L-A-Z-Y OR SMART?**

She doesn't do her own washing... She doesn't own a wash tub or washing machine...

Is she lazy or smart?

**GET THE PROOF**

She's Smart...

She saves by sending her washing to **Midland Steam Laundry.**

Laugh at Wash Days and **Just Phone**

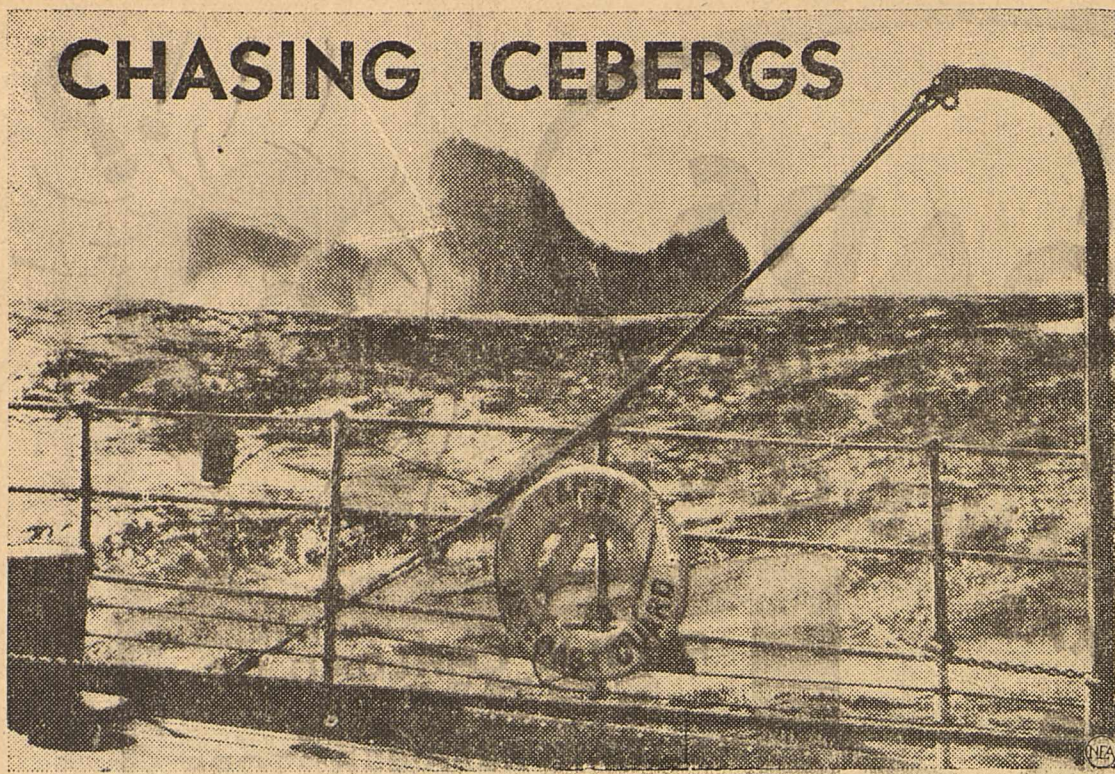
Phone 90

**Midland Steam Laundry**





# CHASING ICEBERGS



By NEA Service.  
WHILE their warships blast away at each other's merchantmen, Britain and Germany still co-operate in saving lives and ships from iceberg peril in the North Atlantic.

Along with France and 23 other nations, these enemies help maintain a U. S. Coast Guard ice-berg patrol off the Banks of Newfoundland. It's a little tougher for the patrol this year, however, because steamers plying the northern route to and from Europe are keeping their radios silent. In previous years, all icebergs sighted along the way were reported to the Coast Guard.

The patrol was established as a direct result of the Titanic tragedy in 1912, when more than 1500 persons lost their lives in the luxury liner's iceberg collision. Coast Guardsmen figure more lives have been saved since 1912 than were lost in the Titanic disaster.

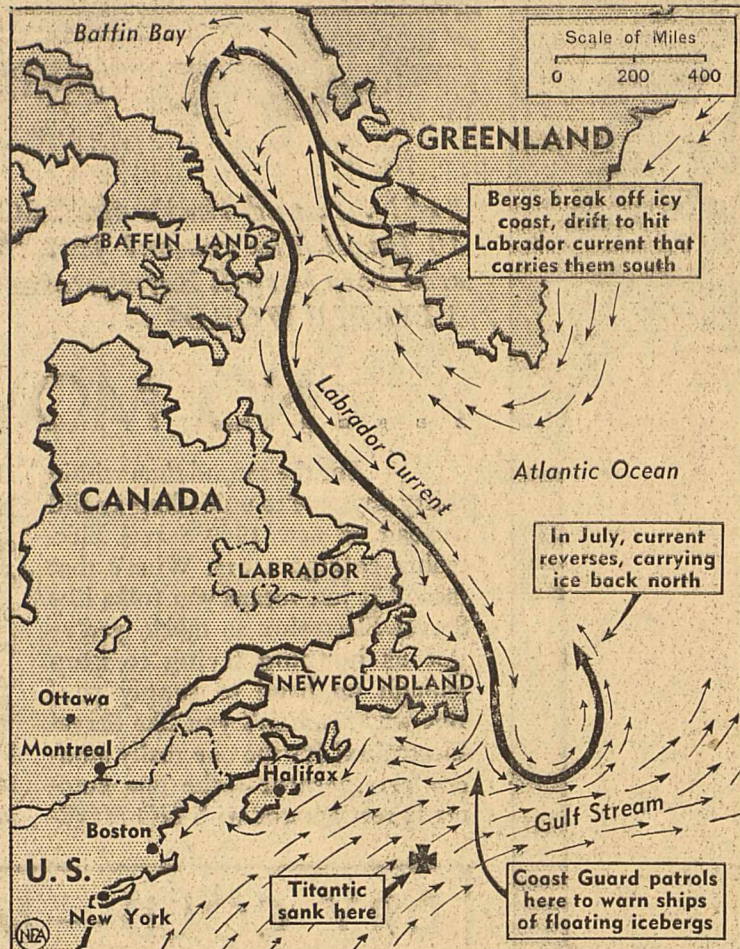
### CUTTERS ARE NOW ON THEIR WAY.

CUTTERS are steaming northward right now for their annual international ice patrol duty.

Fascinating work? Not to the men in the service.

"I'm afraid there isn't much romance, excitement and adventure in our work," drawled husky, dark-haired Richard M. Hoyle, veteran of many ice patrols, now executive officer of the cutter Pontchartrain. His trim white vessel was tied to a Staten Island pier, waiting for orders.

"Our work's all observation and little action. After all, we can't destroy the bergs. The big fellows may weigh three billion pounds



How icebergs travel is shown by heavy line charting their annual circuit. Small arrows indicate flow of ocean currents.

apiece. About all we can do is locate them and plot their course. Then we broadcast, four times a day, information about their size, speed and course. That's all there is to it."

### PATROL CHARTS COURSE OF BERGS.

KNOWING where an iceberg is going helps a lot. And most of them follow a pretty definite route. They are usually gigantic chips off Greenland's northwest coast, and they drift north and west until they strike the cold Labrador current near Baffin Land. Then they turn about.

It takes from one to three years for the bergs, nine-tenths submerged, to drift down past Newfoundland's Grand Banks. It isn't until they get this far that the ice patrol is interested in them.

Most of the patrol's work is confined to the period from early spring to mid-summer. By the middle of July, usually, the ocean is sufficiently warm off Newfoundland to reverse the direction of the icy Labrador current.

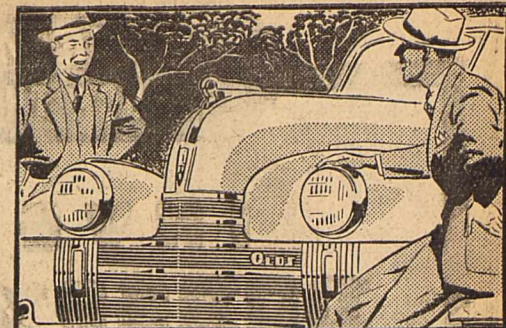
Since the Titanic disaster, not one life has been lost in collisions with icebergs.

### \$10,000 Baby

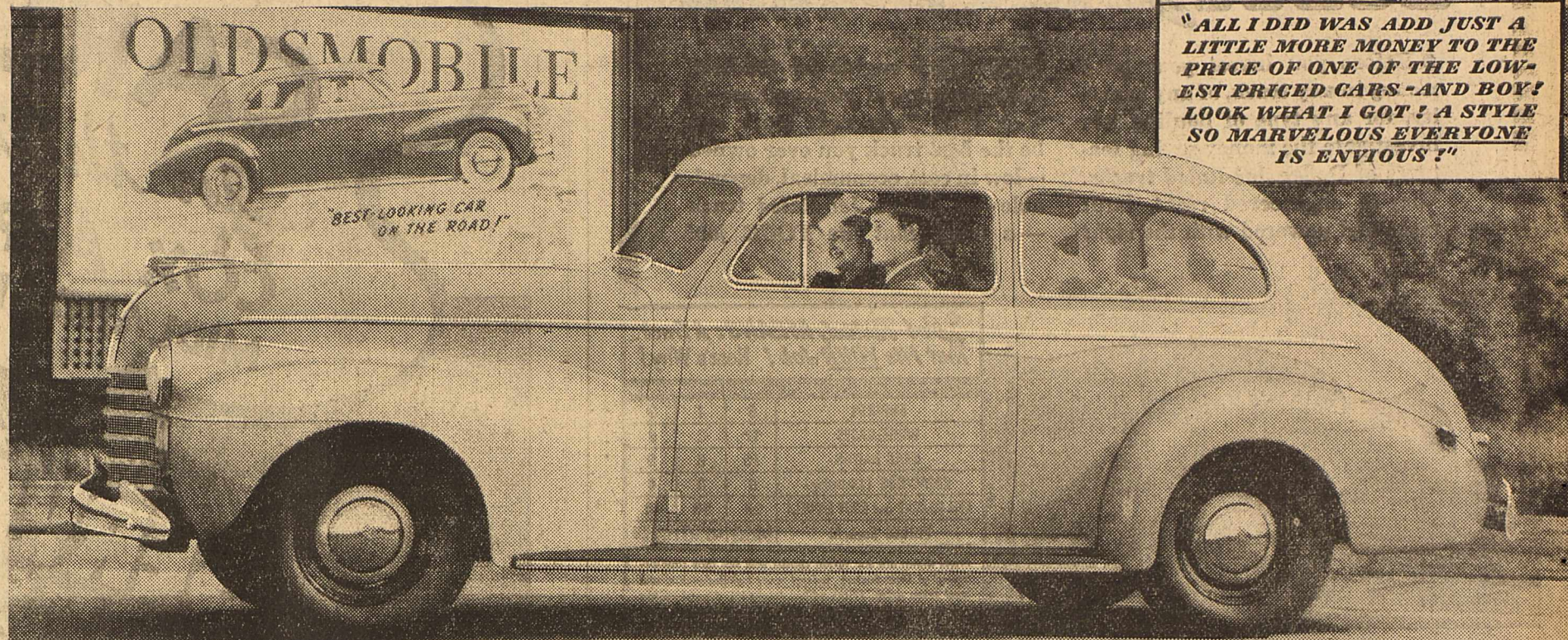


Meet "Hank," recently born at the Ringling Bros., Barnum and Bailey Circus in New York. He's five feet tall, and, at current giraffe prices, is valued at \$10,000.

# "FOR ONLY A FEW DOLLARS MORE - I GOT THE BEST LOOKING CAR ON THE ROAD!"



"ALL I DID WAS ADD JUST A LITTLE MORE MONEY TO THE PRICE OF ONE OF THE LOWEST PRICED CARS - AND BOY! LOOK WHAT I GOT! A STYLE SO MARVELOUS EVERYONE IS ENVIIOUS!"



SIXTY DELUXE 2-DOOR SEDAN \$853\*

\*Olds prices begin at \$807 for Coupes, \$853 for Sedans, delivered at Lansing, Michigan. Transportation based on rail rates, state and local taxes (if any), optional equipment and accessories—extra. Prices subject to change without notice. A GENERAL MOTORS VALUE

IT'S good looking because it's big looking—because it's so smart, so modern, so de luxe. People call it the "best looking car on the road!" But style is only the beginning of Oldsmobile's value story.

The big Olds Sixty gives you more length, more weight, more power, more quality, more safety and more prestige. Finally, Oldsmobile is a sensational economy car. In the 1940

Gilmore-Yosemite Economy Run an Olds Sixty Sedan averaged 23.22 miles per gallon of gas over a rugged 306-mile course. Come in! Let us show you how easily you, too, can own an Olds!

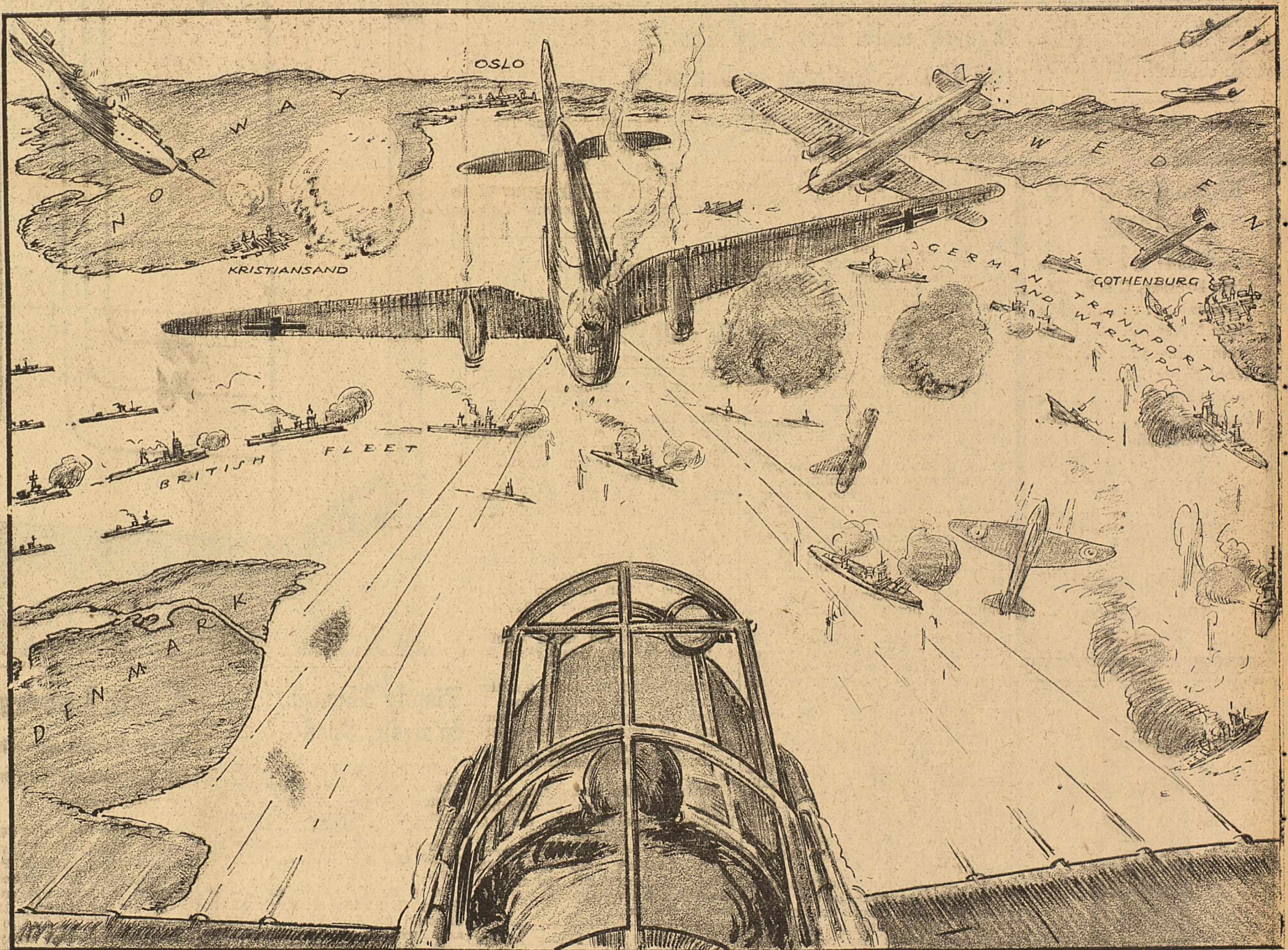
# OLDSMOBILE

"BEST LOOKING CAR ON THE ROAD!"

ELDER CHEVROLET CO.

123 East Wall—Midland, Texas

# YANKS AREN'T COMING--BUT THEIR PLANES REALLY ARE



The great naval and air battle off the coast of Sweden, as sketched by NEA Service Staff Artist Harry Grissinger. This conception shows the British fleet rounding the tip of Denmark after forcing the heavily mined Skagerrak. The British encounter a large fleet of German warships and transports sneaking for Norway along the

Swedish coast near Gothenburg. Working in co-operation with their air force and submarines, the British open fire to start the greatest naval battle since Jutland. The German fleet had strong support from the Nazi air force, but soon was badly beaten. In the foreground a British fighter plane is shooting down a German bomber.

BY THOMAS M. JOHNSON  
NEA Service Military Writer.

THE Yanks may not be coming, but their planes are.

The word reaching Europe may well change the course of the war. News that American combat planes that can fly 400 miles an hour will soon be shipped to the allies may bring on the world's greatest air battles—battles that will decide the outcome of the war in the north.

Germany apparently has lost so much naval strength already that she must resist Franco-British naval superiority mainly through her formidable air force. Air bombing attacks are now the greatest threat to allied control of the seas.

Should the allies lose that control, then from western Norway the Nazis could not only bomb Scotland and northern Britain, but after that bombing had sunk enough British warships, they could invade Scotland.

BEST DEFENSE ALSO AIRCRAFT. AGAINST that danger the allies'

best defense is also aircraft, and they have not enough.

The French especially have considerably fewer than the Germans, but with today's news from this country the allies can draw on their reserves, knowing there will be reinforcement at least equaling anything in quality the Germans have.

But before these reinforcements can arrive the Germans will be likely to shoot the works. Audacity—always a Frenchman's word—has just been put into astounding deeds, first by Germans and now by Britons.

For Churchill is gambling little less than Hitler.

RISK—AND PLENTY OF IT.

THE British ships that steamed into Oslo harbor to cut the main troop ferry for the Nazi invasion of Norway certainly took a risk.

They dared mines and torpedoes in the narrow seas. To stay they

dared attack by Germany's capital ships and airplanes.

Yet the British allowed these foemen more time by postponing shelling Oslo to save its civilians.

But the risks the British take are those calculated risks that must be taken in a war so dazzling as this new war in the north, and in this region Britain's stakes are more vital than anywhere on the continent save the low countries.

Once let Germany establish herself on the western Norwegian coast 300 North Sea miles from Scotland, and her submarines and planes could attack British commerce, naval bases and cities with a violence and persistence to make previous raids look like a peck on the cheek.

SPRING AIDS NAZI BOMBERS.

RIGHT now spring weather is removing two protections Britain has enjoyed all winter—a 40-mile head wind and a thick, low-lying

cloud bank.

If German bombers can whittle down the British fleet, German transports could bear troops across those 300 miles from Norway to invade Scotland.

The British must show audacity along that whole 1000-mile Norwegian seafloor before the Germans can link hands with larger and probably mechanized armored forces trying to push northward.

BRITISH BACK TO THE WALL.

WARSHIPS attacking fixed land fortifications always are handicapped, but the British cannot too miserably count the cost. They are fighting primarily not to gain Norway as a springboard to invade Germany, but to push Germany off a springboard whence she might invade Britain.

The British have their backs to the wall—in effect, that seawall that hitherto has been their rampart. But the wall may best be

defended from the air by the Yanks' planes that now at the crucial moment are coming.

### "Iron Ration" Gives Way To Vitamized Food Bar

LONDON. (UP)—Tommy has become scientifically vitamized. His famous "iron rations"—a tin of bully beef and a few stale biscuits—has disappeared and its place has been taken by what looks like a 6-ounce bar of chocolate. Actually it is composed of 25 parts by weight of double refined cocoa; 34 parts of dried protein, which is prepared from milk, and 27 parts of refined icing sugar.

All this is prepared in pure cocoa butter. To the dried protein is added sodium bicarbonate of not more than 7 per cent to make the protein soluble as a food.

The only true wading bird found in considerable numbers in North America is the white-faced glossy ibis.

READ THE CLASSIFIEDS

## Every town in Texas is within her easy reach

To Miss Long Distance, there is no distant land—every town and city in Texas is within her easy reach—foreign countries are only minutes away.

She has finger-tip control of a huge, far-flung telephone system—nearly 3 million miles of wire in Texas, millions of dollars worth of complex telephone equipment, more than 550,000 Bell telephones in the state and some 163,000 telephones served by other companies. She plugs a cord in the switchboard, flips a key, and sends your voice racing over miles and miles of tiny copper voice highways.

Building, operating, and maintaining the telephone plant that serves Texas is the day-to-day job of 8,500 Texas telephone people who work together with one common goal—to furnish fast, accurate, dependable telephone service at the lowest possible cost.



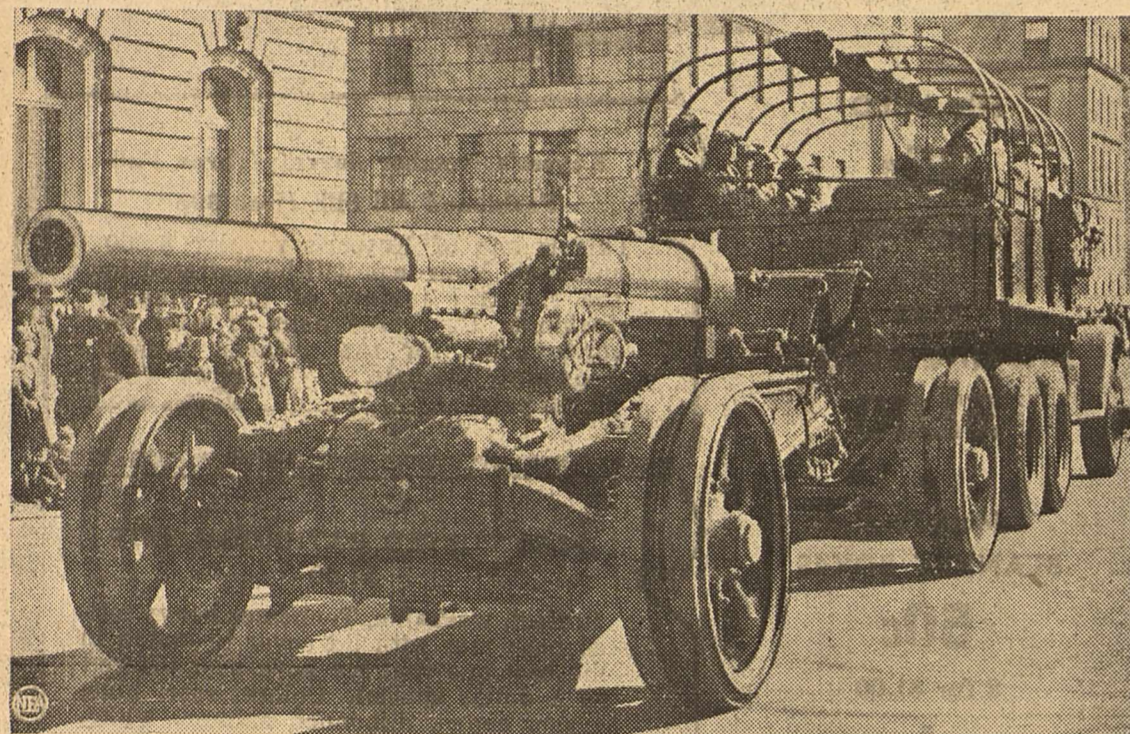
SOUTHWESTERN BELL TELEPHONE COMPANY

These Twins Are Not Rude—It's All Very Scientific



Sticking out their tongues like that, these three sets of twins may seem pretty rude. But they're not. They are "tongue rolling"—a scientific test stunt—for one of the physicians gathering data on multiple offspring at Baylor University's Twin Convention in Waco, Tex. Tongue-rolling twins above are, left to right: Elsie and Elvie Acord; Doris and Dorothy Blank and Pearl and Nell Spencer.

Little Bertha Makes Her Debut



This sturdy 155 mm. gun made its first public appearance on New York's Fifth Avenue in recent Army Day parade. The piece, firing a 95-pound projectile over ten miles, is part of new equipment recently allotted by the U. S. Army to local national guard armories.

Salmon Boats Carry History As Sea Raiders

SEATTLE Wash. (UP)—It's a far cry from sea battles to salmon, but two German raiders of the World War are meekly hauling salmon while thousands of miles away the guns of another war are booming. Formerly they were known as the

Prinz Eitel Friedrich and the Prinz Sigismund. Now they are the Osego and the Gen. W. C. Gorgas, both part of the Libby, McNeill & Libby fleet.

The Friedrich sank a score of merchant ships after turning raider. Before that it was a North German Lloyd liner. It was interned by the U. S. government and taken over by the shipping board after the vessel had slipped into the harbor of Newport News, Va., with 350 prisoners aboard. Subsequently the Friedrich was sold to its present owners.

The story of the Sigismund is not essentially different. The ship was interned in Panama during the World War. Later it operated for a time between New York and Colon for the Panama Steamship & Railway Co.

Autogiro's Use On West Front Held Feasible

PHILADELPHIA (UP)—Capt. Louis B. Ely, army artillery instructor, predicts that the autogiro may provide the French army with a means of cracking the German West Wall.

Ely said that new unannounced developments in the autogiro field have brought the attention of military experts to the possible extensive use of this type aircraft in military operations.

Ely pointed out that the autogiro is of considerable use in observation work because of its ability to rise and lower itself within a very small space. It also can be protected effectively with small arms from the ground, Ely said.

With a fleet of autogiros, observing French artillerymen could place a few shots in the West Wall, correctly note placement of their shots and then lay down a devastating barrage, believes Ely.

Woman Awarded Croix de Guerre



Smiling wistfully, 24-year-old Mile. Kurtz is pictured above after becoming first French woman to receive prized croix de guerre in the current war. She was wounded while on duty as ambulance driver.

Did You Fail to Find Your Reporter-Telegram?

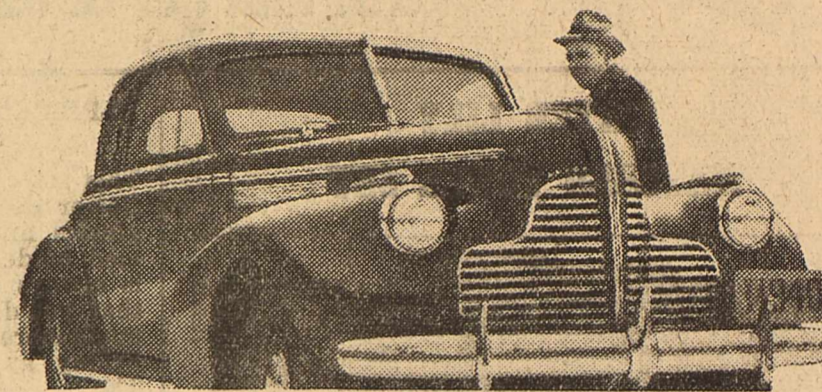
PHONE 80

And one will be brought out immediately.

Please make your calls between 6 and 7 p. m. evenings and 8 and 9:30 a. m. Sundays.

CIRCULATION DEPT. THE REPORTER-TELEGRAM

It's our biggest year—so you'll find some of the "best deals ever" at your Buick dealer's. Here's where Smart Money Looks First



No less than six dozen new features—tops in room, comfort, style, performance, value!

THERE'S one automobile you simply can't overlook—if you want to make sure your money buys all it should this year.

It's jam-packed with "must" features that spell value—it's priced to let you step up from the lowest-price class for only a few more dimes per day.

But here's what is even more important:

Not until you've actually tried a Buick have you any real idea of what your money ought to buy this season in size, style, room, comfort or performance.

Not until you've laid your own two hands on this great traveler—felt it come to smooth, powerful, thrilling life beneath you—can you really appraise what any other 1940 car is worth.

Prices on this strapping big Buick start at \$895 \*for the business coupe, delivered at Flint, Mich., with transportation based on rail rates, state and local taxes (if any), and optional equipment and accessories extra as usual. Prices subject to change without notice.

But there are mighty few such "extras" you'll want, so complete is the equipment that's included in the Buick price, so perfectly satisfying is this honey as it stands.

In fact, that's one of the reasons why you'll go for Buick—and why all over the country people are saying:

Best buy's Buick at \$895 and up

ELDER CHEVROLET CO.

123 East Wall—Midland, Texas

BRING US YOUR LIVESTOCK. Hereafter, there will be a man at our barns day and night to BUY OR SELL any kind of livestock. Always ready to trade! LIVESTOCK AUCTION EVERY TUESDAY AT 1 P. M. See or Call J. C. MILES, President—H. L. HULL, Auctioneer EARL RAY, Secy.-Treas. TEXAS CATTLE SALES, INC.

TAXI 15c MOTORCYCLE DELIVERY 10c CITY CABS, Inc. PHONE 80 OR 500

Printing —ALL KINDS— ACCURATE WORK MODERATELY PRICED Phone 7 or 8 The Commercial Ptg. Co. 112 West Missouri

Gum Deposits Tracked Down; Bars in Lead

NEW YORK (UP)—The favorite place for depositing used gum in hotels is underneath the overhang of bars.

This was revealed in a survey conducted by 34 hotels in the Times Square section in line with Mayor Fiorello H. LaGuardia's drive against gum chews who deposit gum in unwanted places.

The mayor's campaign apparently was a success, it was said, because waste baskets jumped from No. 10 favorite to No. 3, and there has been a decrease of "almost 22 per cent in the amount of gum deposited on hotel chairs, carpets and other spots usually regarded as fair game by the gum-chewing fraternity."

The 10 favorite depositories run as follows: 1—under the overhang of bars, 2—under dining room chairs, 3—in wastebaskets, 4—in potted plants, 5—ground into lobby rugs, 6—in window drapes, 7—on telephone booth walls, 8—in napkins, 9—in wash basins, and 10—behind picture frames.

White Stripe in Highway Existed 400 Years Ago

CHICAGO (UP)—The narrow white stripe in the center of modern paved highways is not a device of the automobile age.

The Chicago Motor Club reports a narrow section of light-colored stone was found under the middle of roads constructed in Mexico more than 400 years ago. The stripe was inserted, history has it,

Distant Future May Find Mind Free of Worry

SEATTLE, Wash. (UP)—People and monkeys worry too much, according to Dr. J. P. Fulton, professor of psychology at Yale University, who admits—guardedly—that "folks have to worry some or they'd never learn anything."

Since monkeys demonstrate worrying abilities, Dr. Fulton explained, they are used to experiment with the nature and results of worry.

"We had a chimpanzee that was taught something and later did it wrong," the psychologist recalled. "The chimp worried and fretted like a frustrated child. But after we removed its frontal lobe (portion of the brain) it didn't worry about anything."

Of course, he warned, people who didn't have a frontal lobe would go about touching hot stoves eternally, because that's the part of the brain associated with memory and the trial-and-error device.

By studying the simians, Dr. Fulton explained, scientists eventually will be able to diagnose worries—and perhaps eliminate them to a great extent in a far-off day.

DR. GREEN, Dentist General Practice Office Main at Wall—Over Wes-Tex Food Mkt.—Midland DR. H. T. GREEN

Modern College Girl Seeks Early Marriage

ST. LOUIS (UP)—The fact that the modern college girl is more eager to marry than was her sister of a generation ago does not mean that she is more successful in getting a man, Dean Harriet M. Allyn told the National Association of Deans of Women here.

Dean Allyn said the modern college girls wants to marry within a year or so after graduation instead of waiting for eight or ten years, as they formerly did.

"This would make it appear that, because that's the part of the brain associated with memory and the trial-and-error device.

By studying the simians, Dr. Fulton explained, scientists eventually will be able to diagnose worries—and perhaps eliminate them to a great extent in a far-off day.

Will Create Quandary; Money Left to Deity

MURPHY, N. C. (UP)—Among the last wills and testaments recorded in Cherokee county, N. C., is that of an eccentric woman who left part of her estate to God.

In an endeavor to settle the case properly, the usual suit, naming God a party there, was filed. And at the summons, the sheriff made this response:

"After due and diligent search, God cannot be found in Cherokee county."

more college graduates are marrying," she said, "but according to statistics at Mount Holyoke only about 50 to 60 per cent of the alumnae have ever married. The percentage hasn't changed in recent years."

WANTED Good Clean White Cotton Rags at This Office 5c per pound The REPORTER-TELEGRAM

