

# STOCK MARKET DAILY JOURNAL

A Daily Commercial Newspaper for Modern Farmers and Stockmen and An Advertising Medium That Reaches the Buyers

Vol. XVI. No. 116

ST. JOSEPH, MO., MONDAY, JANUARY 6, 1913

LAST EDITION.

TERMS: SINGLE COPY, 5 CENTS PER YEAR, \$4.00.

## STEERS FIRMLY HELD

**MODERATE CROP OF BEEF CATTLE CLEANED UP AT FULL STEADY PRICES.**

## COW STUFF RULES ACTIVE

**Spots Strong to 10c Higher on the Better Kind—Bulls Strong—Calves About Steady—Stockers Fairly Active.**

The week's trade in cattle opened with around 1,800 head on sale at this point, a decrease of 800 from last Monday. The five markets reported 56,000 cattle in sight as against 52,400 a week ago and 33,900 corresponding day a year ago. Chicago had more than half of the five market aggregate and this did not help the general situation any. A few thousand less cattle at Chicago and a few thousand more at "the river" would have been better for the selling and producing interests.

A comparatively light quota of the arrivals here today consisted of beef steers and the run included nothing particularly noteworthy from a quality standpoint. Chicago was reported opening steady to 10c lower. The late arrival of quite a few cattle as a result of the first real snow storm of the season for this immediate territory, gave the trade a rather slow appearance. The feeling, however, despite the signs of weakness at Chicago, was generally steady and sellers did not experience any serious difficulty in turning their holdings on a basis of prices even with the close of last week. Early sales of steers ranged from \$6.30 to \$8.05.

**Dressed Beef and Shipping Steers.**  
No. Ave. Price No. Ave. Price  
1.....1225.8 25 3.....1050.7 40  
2.....1245.8 25 4.....870.7 40  
3.....1215.8 25 5.....1150.7 40  
4.....1175.8 25 6.....870.7 40  
5.....1250.8 25 7.....1170.7 25  
6.....1285.7 25 8.....993.7 45  
7.....1117.8 25 9.....1230.7 45  
8.....1181.7 25 10.....855.6 45  
9.....1218.7 25 11.....1028.6 25  
10.....1131.7 25 12.....850.6 25

**COWS, BULLS AND MIXED.**  
Broad demand, embracing practically every class, featured the market in cows and heifers today. The supply of butcher classes was fair in proportion to the general run of cattle putting in appearance here. Buyers were quick to note the probable effects of the storm in cutting down receipts of cattle later in the week and were easily interested in the offerings. Good choice cows and heifers were in light quota and these ruled firm with spots figured 10c higher than the close of last week. Medium grades, while showing no particular strength, moved freely at full steady prices. Some sellers found it an easy proposition to clear the canner and cutter classes at unchanged prices compared with late last week. The heavy, cowboys moved actively pleasing to the selling interests.

Bulls sold steady to strong with the demand for the good fat grades in excellent supply. The market for heavy bulls sold at \$6.25 to \$6.50, and packers secured very little material in the bull under \$5.25. Light and medium weight calves sold readily at steady prices. The heavy, cowboys kinds were somewhat slower sale and in some instances were quoted weak.

**Heifers.**  
No. Ave. Price No. Ave. Price  
1.....1092.7 25 3.....640.6 25  
2.....865.7 25 4.....649.6 25  
3.....827.7 15 5.....498.6 25  
4.....837.7 10 6.....635.6 25  
5.....1184.7 25 7.....1192.6 25  
6.....820.7 00 8.....830.6 25  
7.....970.7 00 9.....780.6 25  
8.....825.7 00 10.....707.6 25  
9.....1287.6 25 11.....650.6 25  
10.....678.6 25 12.....650.6 00  
1.....720.6 75 3.....643.6 00  
2.....1013.6 75 4.....572.6 00  
3.....850.6 50 5.....630.6 25  
4.....750.6 50 6.....630.6 25  
5.....1005.6 50 7.....700.6 75  
6.....920.6 50 8.....720.6 75  
7.....771.6 50 9.....750.6 75  
8.....870.6 40 10.....634.6 50  
1.....800.6 25 11.....730.6 50

**W. A. Chitwood, one of the representative progressive farmers and feeders of Franklin county, Nebraska, disposed of fifty steers, averaging 1,215 lbs., at \$8.95 on the local market this morning. Mr. Chitwood had these cattle billed to Kansas City, where the train was late and he unloaded here, where he received a bid that soon started his offerings to go up around \$8.90 for his steers at Kansas City and in view of a steady to 10c lower market at that point today he was more than pleased with the price realized here.**

Among other Nebraskans on the market today was J. P. Jensen, of Nuckolls county, who was well satisfied with the sale of four cars of cattle to his own feeding. Three loads of his steers averaged 1,172 lbs. and brought \$8.90, while a load of cows sold at \$6.70. Mr. Jensen is a progressive farmer and stockman of this locality. He generally comes to this market with his stock as he has found that this is where he gets the highest net returns. The longer haul to Kansas City or Chicago does not appeal to him any more.

## SNOW WON'T KEEP 'EM AWAY

**Poland China Men Coming for Banquet Tomorrow Night.**

Indications point to a good attendance of members of the Standard Poland China Record association at the banquet to be tendered them by the stock yards interests at the Transit House tomorrow night on the eve of the annual meeting of the association in Exchange Hall. The snowstorm raging today over a big section of the middle west will not keep many of the hog breeders who had planned to attend the meeting away, it is believed. The banquet itself will be more elaborate than any of its predecessors. It is announced, and the speaking program arranged for to include some of the best public speakers of the city. The mayor of St. Joseph, the president of the Commerce Club, the editor of the News-Press and others are billed to speak. A. H. Baker, president of the St. Joseph Live Stock Exchange, will be toastmaster.

## STRONG STEERS AT \$7.85

**Wilcox, Neb., Shipper Cashed Six Loads of Stock Here Today.**

R. M. Strong, a prominent young feeder and one of the big regular shippers operating in Nebraska, was here from Wilcox today with six loads of stock, four cars of cattle and two of hogs that sold to good advantage. The hogs were billed to Kansas City but Mr. Strong ordered them cashed here after being unloaded owing to a late train service. Three loads of the cattle were of his own feeding and brought \$7.85.

## HOGS TREND UPWARD

**AFTER A HESITATING START MARKET DEVELOPS ACTIVITY AND STRENGTH.**

## MOSTLY STRONG TO 5c UP

**Exceptions Steady—Tops \$7.49, With Bulk of Sales Ranging From \$7.25 to \$7.37 1/2—Pigs Show Advance.**

A fair Monday run of hogs was on sale at Missouri river markets and a liberal supply at Chicago. The latter point had 52,000 head, against 42,000 a week ago. Locally, the run figured around 7,000 head, as compared with 3,849 last Monday. Combined receipts of 83,500 were 12,000 greater than the aggregate run a year ago. The general tone of the trade at outside points was weak but demand here was of liberal proportions and prices trended higher. The probability that the next few days will witness light runs as a result of the storm and zero temperatures was perhaps a factor in stimulating a good local inquiry for today's offerings. Buyers, at the start, tried to use the argument of weaker prices elsewhere as a bear card and some of the early bids were a shade lower but sellers held off and when a movement toward the scales was started it was at prices generally strong to 5c higher than Saturday, with a few exceptions quoted steady. A top of \$7.40 was reached on best of the offerings, with a spread of \$7.25 to \$7.37 1/2, making a good slice of the crop. Quality was of fair to good average.

Pigs were sparingly offered and the few here met a keen demand at prices 15c to 25c higher. Bulk of sales ranged from \$5.70 to \$6.15. Prices for hogs averaging 140 lbs. and up ranged from \$7.15 to \$7.40, with the bulk selling at \$7.25 to \$7.37 1/2. The bulk Saturday sold at \$7.20 to \$7.35 a week ago at \$7.10 to \$7.30, a month ago at \$7.00 to \$7.25, a year ago at \$6.50 to \$7.25, two years ago at \$6.50 to \$7.25, three years ago at \$6.50 to \$7.25, and four years ago at \$6.50 to \$7.25.

**Representative Hog Sales.**  
No. Av. Sbk. Price No. Av. Sbk. Price  
54.....312.80 740 20.....219.80 723 1/2  
19.....308.70 400 21.....219.80 723 1/2  
51.....313.80 40 45.....316.80 723 1/2  
68.....290.80 737 69.....303.80 733 1/2  
88.....293.80 727 57.....214.80 733 1/2  
67.....291.80 737 83.....189.80 723 1/2  
72.....227.80 737 52.....221.80 733 1/2  
72.....242.80 737 81.....205.80 733 1/2  
52.....300.80 735 78.....213.80 733 1/2  
82.....287.80 735 88.....189.80 723 1/2  
77.....221.80 735 88.....189.80 723 1/2  
74.....216.80 735 81.....216.80 733 1/2  
74.....217.80 735 49.....229.80 733 1/2  
74.....205.80 735 84.....241.80 733 1/2  
67.....285.80 735 78.....223.80 733 1/2  
61.....248.80 735 69.....247.80 733 1/2  
49.....222.80 735 61.....234.80 733 1/2  
49.....221.80 735 60.....210.80 733 1/2  
83.....218.80 735 61.....210.80 733 1/2  
79.....218.80 735 82.....215.80 723 1/2  
67.....200.80 735 66.....196.80 723 1/2  
83.....200.80 735 81.....189.80 723 1/2  
61.....203.80 735 89.....194.80 723 1/2  
70.....214.80 735 77.....209.80 723 1/2  
64.....219.80 735 77.....191.80 723 1/2  
65.....204.80 735 30.....189.80 723 1/2  
66.....235.80 735 83.....179.80 723 1/2  
20.....250.80 735 41.....285.80 723 1/2  
66.....191.80 40 323 60.....189.80 723 1/2  
63.....283.80 735 34.....187.80 723 1/2  
81.....229.80 735 78.....217.80 723 1/2  
69.....250.80 735 97.....152.80 723 1/2  
123.....114.80 735 82.....180.80 723 1/2  
74.....249.80 735 82.....180.80 723 1/2  
85.....215.80 735 89.....179.80 723 1/2  
63.....250.127 735 88.....198.80 723 1/2  
76.....288.80 735 84.....187.80 723 1/2  
82.....220.80 735 77.....171.80 723 1/2  
70.....241.80 735 77.....196.80 723 1/2  
20.....322.80 735 72.....175.80 723 1/2  
83.....283.80 735 81.....182.80 723 1/2  
84.....294.80 735 75.....186.80 723 1/2  
63.....265.80 735 65.....183.80 723 1/2  
61.....212.80 735 67.....180.80 723 1/2  
40.....237.80 735 60.....149.80 723 1/2

**Feeding Cows and Stock Heifers.**  
No. Ave. Price No. Ave. Price  
1.....500.5 50 5.....988.5 00  
1.....640.5 50 11.....850.5 00  
1.....600.5 25 11.....1090.4 75  
10.....771.5 10 11.....650.5 00  
2.....855.5 00 2.....1002.4 60  
4.....872.5 00 4.....777.4 25  
2.....475.5 00 11.....540.3 75  
19.....521.5 30 11.....651.3 75

**Packers' Cattle Purchases.**  
Swift & Co. .... 600  
Morris & Co. .... 400  
Hammond Packing Co. .... 300  
Total ..... 1,300

## GOT MORE THAN EXPECTED

**W. A. Chitwood Had Started to Kansas City But Stopped Here.**

W. A. Chitwood, one of the representative progressive farmers and feeders of Franklin county, Nebraska, disposed of fifty steers, averaging 1,215 lbs., at \$8.95 on the local market this morning. Mr. Chitwood had these cattle billed to Kansas City, where the train was late and he unloaded here, where he received a bid that soon started his offerings to go up around \$8.90 for his steers at Kansas City and in view of a steady to 10c lower market at that point today he was more than pleased with the price realized here.

## SNOW WON'T KEEP 'EM AWAY

**Poland China Men Coming for Banquet Tomorrow Night.**

Indications point to a good attendance of members of the Standard Poland China Record association at the banquet to be tendered them by the stock yards interests at the Transit House tomorrow night on the eve of the annual meeting of the association in Exchange Hall. The snowstorm raging today over a big section of the middle west will not keep many of the hog breeders who had planned to attend the meeting away, it is believed. The banquet itself will be more elaborate than any of its predecessors. It is announced, and the speaking program arranged for to include some of the best public speakers of the city. The mayor of St. Joseph, the president of the Commerce Club, the editor of the News-Press and others are billed to speak. A. H. Baker, president of the St. Joseph Live Stock Exchange, will be toastmaster.

## STRONG STEERS AT \$7.85

**Wilcox, Neb., Shipper Cashed Six Loads of Stock Here Today.**

R. M. Strong, a prominent young feeder and one of the big regular shippers operating in Nebraska, was here from Wilcox today with six loads of stock, four cars of cattle and two of hogs that sold to good advantage. The hogs were billed to Kansas City but Mr. Strong ordered them cashed here after being unloaded owing to a late train service. Three loads of the cattle were of his own feeding and brought \$7.85.

## LIVE STOCK RECEIPTS

**Today's Receipts.**

Cattle	Hogs	Sheep
1,200	1,200	1,200
1,200	1,200	1,200
1,200	1,200	1,200

**Receipts from Jan. 1 to Date.**  
The following shows the local receipts from January 1, 1913, and receipts for the corresponding time in 1912:

Cattle	Hogs	Sheep
1913	1912	Inc.
20,435	21,954	*6,119
4,130	14,307	*10,177
637	419	*218
447	82	353

**Live Stock in Sight.**  
The following shows the estimated receipts of cattle, hogs and sheep at the five principal western markets today and comparisons:

Chicago	St. Joseph	St. Louis	Omaha	Des Moines
29,000	13,000	13,000	13,000	13,000
29,000	13,000	13,000	13,000	13,000

**Receipts by Cars.**  
The following shows the number of cars of stock handled today by railroads centering at the local yards today:

C. & N. W. west	C. & N. E. east	Great Western	Missouri Pacific	Grand Island	Santa Fe
89	51	13	18	13	6
195	195	195	195	195	195

## ITEMS IN BRIEF

Geo. Cruise, one of Cass county, Iowa, regular shippers, boosted receipts by sending in four loads of cattle for today's market.

Champion Molasses Feed shortens feeding period, increases gain, reduces cost per pound of gain, equals good with ensilage.—Adv.

Adair county, Iowa, was represented in today's trading by Jno. Ewing and G. A. Jones, each marketing a load of cattle.

Champion Molasses Feed, cattle like it, cattle feeders like it, because it makes them money. Try a few cars. Champion Feed Co., Taylor, Mo.—Adv.

H. W. Bernath also sent in a shipment of cattle from Adair county, Iowa, which he disposed of on today's market.

Try Hilger's 25c merchants lunch and be convinced it's the best in the city. 207 So. 6th St.—Adv.

A. D. McCordell, a regular shipper of Clinton county, Missouri, cashed a mixed load of stock on today's market.

Among the regular shippers having cattle on today's market was Enoch Devoe, who shipped two loads of cattle from Cass county, Iowa.

Champion Feed saves corn.—Adv. Wright & Pinn represented DeKalb county, Missouri, in the day's receipts by forwarding one load of cattle.

Hilger's 207 So. 6th St.—Adv. Listed among those contributing hogs to local receipts today was David Keane of Richardson county, Nebraska. Mr. Keane sent in one load which he disposed of on today's market.

## LIVE MUTTON STEADY

**MODERATE SUPPLY CLOSED OUT AT PRICES SHOWING NO QUOTABLE CHANGE.**

**GOOD LAMBS BRING \$8.50**

**Bulk of the Sales Pegged at That Figure—Sheep in Limited Quota and Prices Are Nominal—by Steady.**

There was some enlargement in receipts of sheep both locally and at the live leading centers compared with a week and year ago but the increase in marketing was not large enough to seriously impair the tone of the trade. Around 1,500 head arrived here as against 1,174 last Monday and 323 corresponding day a year ago. The five markets reported a total of 69,500 head as compared with 59,700 a week ago and 43,300 a year ago. Lambs comprised the bulk of the local offerings, only two decks of sheep being included. The lambs averaged an well in point of weight. While the market did not show any particular activity, business was sufficiently brisk to afford clearance for the bulk of the supply before noon at prices fully steady with the level in force at the close of last week. A good share of the lambs sold at \$8.50, same as last Friday's top. A few ewes of an ordinary grade sold at \$4.35.

Good to choice lambs are quotable today at \$8.25 to \$8.50; fair to good yearlings, \$6.75 to \$7.25; fair to good wethers, \$6.25 to \$6.75; good to choice wethers, \$4.75 to \$5.00; good to choice ewes, \$4.50 to \$4.80; fair to good ewes, \$4.50 to \$4.80; breeding ewes, \$3.75 to \$4.50; feeding lambs \$6.50 to \$7.25.

**249 Western lambs..... 78 8 50**  
**249 Western lambs..... 78 8 50**  
**250 Western lambs..... 75 8 50**  
**32 Western lambs..... 63 7 00**  
**10 Western lambs..... 63 7 00**  
**154 Western ewes..... 114 4 35**  
**154 Western ewes..... 114 4 35**  
**60 Western ewes..... 89 3 00**

**Packers' Sheep Purchases.**  
Morris & Co. .... 500  
Swift & Co. .... 418  
Hammond Packing Co. .... 154  
Total ..... 1,072

## OTHER LIVE STOCK MARKETS

**CHICAGO.**  
CHICAGO, Union Stock Yards, Ill., Jan. 6.—The Live Stock World reports: Cattle—Receipts, 29,000. Market steady to 10c lower; top \$9.00. Hogs—Receipts, 32,000. Market steady to 5c lower. Top \$7.62 1/2, bulk \$7.45 to \$7.55. Sheep—Receipts, 35,000. Market mostly 15c higher.

**KANSAS CITY.**  
KANSAS CITY, Mo., Jan. 6.—Special to The Journal: The Drovers Telegram reports: 13,000. Market slow, weak to 10c lower; cows and heifers steady to weak; stockers and feeders firm to higher; calves steady.

**SOUTH OMAHA.**  
SOUTH OMAHA, Neb., Jan. 6.—Special to The Journal: The Drovers Telegram reports: 5,500. Market steady to 10c lower.

**EAST ST. LOUIS.**  
EAST ST. LOUIS, National Stock Yards, Ill., Jan. 6.—Special to The Journal: The National Live Stock Reporter reports: Cattle—Receipts, 7,000. Including 3,000 southern. Market 10c higher. Hogs—Receipts, 12,500. Market 5c lower. Top \$7.60, bulk \$7.35 to \$7.50. Sheep—Receipts, 3,900. Market steady.

**FORT WORTH.**  
FORT WORTH, Tex., Jan. 6.—Special to The Journal: The Daily Live Stock Reporter reports: Cattle—Receipts, 2,300. Market steady. Hogs—Receipts, 2,500. Market steady to 5c lower. Top \$7.72 1/2, bulk \$7.35 to \$7.65. Sheep—Receipts, 300. Market steady.

**ST. LOUIS CITY.**  
ST. LOUIS CITY, Ill., Jan. 6.—Special to The Journal: The Live Stock Reporter reports: Cattle—Receipts, 4,000. Market generally steady to 10c lower. Hogs—Receipts, 3,500. Market 5c lower. Top \$7.25, bulk \$7.10 to \$7.20. Sheep—Receipts, 500. Market steady.

## HEAVY HOGS AT THE TOP

**J. N. Culver Received \$7.40 for Shipment Averaging 363 Lbs. Today.**

Buyers have been showing partiality to the good fat medium and light hogs as against the heavy weight classes recently but there was a load of "heavies" offered today that through their quality and finish commanded a high market value. This was a shipment of 363-pound hogs from the feedlots of J. W. Culver, of Orleans, Neb., that sold at \$7.40, or \$2.86 per head.

Mr. Culver, who also had a load of cattle on sale, was well pleased with his sales and with the yardage and weighing facilities here. In the past he has sent the bulk of his live stock to Kansas City but he intimated today that a larger share, if not all, of his shipments would be billed to St. Joseph. He is an extensive feeder and has two loads of hogs and a few cattle back on feed.

C. Jordon, of Union county, Iowa, contributed one load of cattle to the day's receipts. Mr. Jordon is a regular patron of the local market.

## EARLY KANSAS LAWS

**"BORDER RUFFIAN STATUTES" WERE ADOPTED ON THE PRAIRIE IN 1855.**

## MISSOURI LAWS COPIED

**First Territorial Legislature Met at Shawnee and Members Camped Out and Cooked Their Own Meals While En Route.**

A preface to the old "Border Ruffian" statutes of Kansas Territory gives some early history which is of interest to many people of the present day. These statutes were named at the Shawnee Manual Labor School, 140 miles west of the Missouri river, and where the first legislature of the territory met, July 25, 1855, at the call of Governor Reeder, who was the first governor, the territory having been organized June 20, 1854. For lack of accommodations, the legislature had removed its sessions from Pawnee, where that body had to camp out, in the open air, and cook their own provisions. These statutes were passed at said session of the legislature and purported to be published at the Shawnee school by John T. Brady, publisher. The facts were they were printed by the St. Louis Republican, and some old St. Joseph printers helped on the job. The copy was sent to Missouri statutes worked over and made to apply to the conditions in Kansas Territory.

Kansas was part of the Louisiana Territory ceded by France to the United States in 1803, which was later divided, being called the Territory of New Orleans, and the northern portion of the territory, Amos Stoddard of the United States Congress, received the formal surrender of the upper province from Don Carlos DeBault de-Lessus, the lieutenant-governor of Louisiana. The people of the territory, however, were not satisfied with the name of Louisiana Territory to Missouri Territory. The governor, judges and courts of Indiana gave jurisdiction to over this territory. To insure all laws which they might deem conducive to good government of the inhabitants of the territory, Nebraska territory once embraced all of Kansas and so continued till the Kansas-Nebraska bill became a law May 30, 1854, creating the two territories. The people rushed to Kansas in large numbers to secure the name of Nebraska Territory. Before that it was "Nebraska Territory" to St. Joseph citizens, who only had to cross the river to reach it.

Among the acts passed by the Shawnee legislature was one defining the boundaries of various counties. Atchison, Doniphan, Nemaha, Marshall and Brown were among them. The act was passed by the legislature. They appointed Thomas H. Crane, A. Payne and M. P. Rively, a board of commissioners "to locate the seat of justice of Doniphan county, within six miles of the center of the same, and the county, to meet on Oct. 1, 1855. The other counties to the west were attached to those hereby organized for special purposes. It is noted that a "final act" was attached to the final act of Brown county, as now spelled, and the original boundaries have never been changed. Many acts were passed. Former St. Joseph Mayor E. H. Crane, incorporated as the Doniphan Town Company, among others being P. L. Slaughter, Sinclair K. Miller, Daniel Vandercamp, John A. Hays, John Foreman and Felix Robidoux. The incorporators of Atchison were John H. Strinzinger, Peter T. Abell, Samuel A. Dickinson, E. H. Norton, Lewis Burnes and Ira Norris. Most of them being from Platte county.

Many acts were passed for establishing ferries on the Missouri river near here, and for building roads in all directions on the Kansas Territory. So acts authorizing mining companies, coal mining companies, cemetery companies, insurance companies, jails, stage companies, school societies, lodges, The Wathena plank and macadamized road was incorporated being Joel P. Blair, E. Dickinson, D. Vandercamp, William Matthews, George B. Moss, William Ridenbough, T. W. Watterston and Carey Whitehead.

Many early settlers were St. Joseph men who went to Kansas and were incorporators of many of the above institutions, some of them not becoming citizens. Among them were William P. Richardson, Reuben Middleton, Uriah Griffith, Albert Hays, John Colburn, Dr. W. D. Hudnall, John McAleer, Isaac M. Veitch, John Stairwalt, William Sublett, William Sallee, Jesse Brown, Milton Bryan, John Curd, John A. Dolman, John Duff, the railroad builder; Charles E. Kearney, M. V. E. Rogers, John Doniphan, B. O'Driscoll, Lucien J. Eastin and others. Lewis, Daniel D. James, N. and Calvin Burnes received charters to establish and operate ferries at Atchison and Kickapoo.

## RECORD LOAD OF CORN.

**Johnson County Farmer Markets 80 Bushels in One Wagon.**

Olathe, Kan., Jan. 6.—The largest load of corn ever hauled to market in Johnson county was delivered to the elevator at Bonita, five miles south of here. The load measured eighty-six bushels, ten pounds, and the owner, Mr. Vol Norman, received a check for \$35.25. On account of the good roads, Norman was able to haul the load to the elevator, several miles distant, with a pair of small mules. Mr. Norman already held the record for delivering the largest load of corn. Two years ago he marketed several averaging seventy-five bushels each.

## WEATHER FORECAST.

**For Missouri: Cloudy and colder tonight; Tuesday fair and continued cold.**

**Kansas: Generally fair tonight and Tuesday; rising temperature Tuesday.**

**Nebraska: Fair and continued cold tonight; Tuesday fair with rising temperature.**

**Iowa: Generally fair tonight and Tuesday; colder in east portion tonight and in west portion Tuesday.**

## THEATRICAL AMUSEMENTS.

**At the Tootle—Mme. Calve, Friday only. Revival of "The Bohemian Girl," by the Aborn Opera company, Saturday only.**

**At the Lyceum—"Freckles," four days starting Sunday. "Gypsy Love," Thursday only. "Officer 666," Friday and Saturday.**

**At the Lyceum—"Freckles," four days starting Sunday. "Gypsy Love," Thursday only. "Officer 666," Friday and Saturday.**

**At the Lyceum—"Freckles," four days starting Sunday. "Gypsy Love," Thursday only. "Officer 666," Friday and Saturday.**

**At the Lyceum—"Freckles," four days starting Sunday. "Gypsy Love," Thursday only. "Officer 666," Friday and Saturday.**



STOCK YARDS DAILY JOURNAL

The St. Joseph Journal Publishing Co., Publishers.

W. E. WARRICK, Editor and Manager.

Largest Outside Circulation of Any Paper Published in Buchanan County, Mo.

Entered at the Postoffice in St. Joseph, Mo., as Second Class Matter, September 3, 1897.

Subscription Rates: Daily, per year, \$4.00; Daily, six months, \$2.00; Daily, three months, \$1.00; Daily, one month, .40; Tri-Weekly, per year, \$2.00; Semi-Weekly, per year, \$1.50; Weekly, per year, \$1.00.

In making change of address, please state your former postoffice. State whether you pay for it, or some one else stock commission firm, and if the latter, the name of the firm.

Do not send checks on country banks. Remit with postal order or draft, payable to St. Joseph Journal Publishing Company.

Advertising Rates Furnished on Application.

Small 25 per cent commission allowed publishers, who are authorized to take subscriptions.

ONE POINT UNSETTLED.

One point that has not been settled officially is whether we should call it parcel or parcels post.

THE SHORTAGE IN CATTLE.

Complete statistics covering receipts at the six leading markets for 1912 show a shortage of \$23,395 cattle received as compared with 1911 arrivals.

THE HORRID THINGS!

A young woman of Owensboro, Ky., took a live, squealing pig to the post-office and informed Uncle Sam's hired man at the receiving window she wished to send his plump to a friend by parcel post.

INADEQUATE INFORMATION.

The unusually wide divergence of views in reference to the cattle situation goes to show that the trade is inadequately supplied with information as to the prospective available supply of beef in the country and this in turn amounts to a confession on the part of the government of its inability, with its present statistics gathering machinery, to get any reliable and dependable information on live stock matters.

INCENTIVE FOR PRODUCTION.

That the acute stage of cattle scarcity has not yet been reached is the opinion of most trade authorities.

All this means incentive for increased production. The stereotyped cry that beef cattle raising on high priced corn belt land is in the nature of things unprofitable is already being ignored by many, otherwise demand for female stock would be less urgent.

IOWA FIRST; MISSOURI SECOND.

Iowa, Missouri, Illinois, Kansas and Nebraska in the order named ranked highest among the states in 1909 in gross value of domestic animals sold, each reporting more than \$100,000,000.

While Iowa reported the sale of more horses than any other state, Missouri ranked first in the combined



Daddy's Bedtime Story - The Wizard and The Bundle Of Sticks

THE bedtime hour was at hand. Jack and Evelyn were waiting for their story.

"Well," said daddy, "once upon a time in a quaint little cottage on the edge of the forest lived a worthy couple who had six fine sons.

"They were bright and good looking children, and their parents would have been very proud of them, but the boys had one fault—they seldom agreed. They quarreled over everything.

"The parents were often much provoked, for no matter what they set the boys to do they were always behind with the task because they had to argue so much about the way it should be done.

"One day an old wizard, who was a very wise and kind old man, stopped at the farmer's house. The farmer and his wife and the six sons made him welcome and gave him the best of all they had.

"The wizard was much pleased. When he was about to leave he said to the farmer, 'Friend, what favor can I do for you?'

"Sir Wizard, as you see, I have six fine sons, yet they do not seem to get along in the world. They wish me to ask you how they can succeed.'

"I shall be pleased to oblige you and help your sons," answered the wizard good naturedly. 'Please call your sons in.'

"The six sons came crowding in, thinking the wizard was going to give them some wonderful charm or do some feat of magic to help them.

"In his hand the wizard held a bundle of sticks tightly tied together. 'Will you do me a favor?' he asked, handing the bundle of sticks to the eldest son. 'Break these sticks for me.'

"The young man took the bundle, and, though he did his best, he could not break it.

"Then the second son tried, and so on till all of the six had a chance at the bundle of sticks. None of them could break it.

"Then the wizard untied the bundle and, handing the loose sticks to the eldest son, said, 'Now, see what you can do with these.'

"With a laugh the young man broke the sticks one after another.

"See," said the wizard, "how strong the sticks were when they were united and how weak they were when alone. If a dozen sticks were so strong when united, think, my young friends, how strong six young men united to help one another might be."

"The young men understood, and from that day their quarreling stopped. Instead of trying to bother one another when anything was to be done they would fall to and work together so heartily that the family was soon rich and respected. The sons had learned that helping one another to get along was the best way for all."

number of horses, mules, and asses and burros sold, the number of mules sold by Missouri farmers being nearly twice as great as the number sold by the farmers of any other state.

CLEAR \$7,564 ON FRUIT.

Biggest Part of Profit From Orchard Thought Worthless.

Troy, Kan., Jan. 4.—Mrs. Frank Kotsch of Troy, manager of the Frank Kotsch fruit farm, cleared \$7,564.59 this year from 25 acres of apples and 13 acres of berries. The gross receipts for the products of the 4-acre berry market the 3955 barrels of apples, making a total of \$7,522,175.999. To the total value of animals sold, cattle, including calves, contributed \$719,015,999, or 45.4 per cent; horses, mules, asses, and burros together, \$395,457,999, or 19.6 per cent; swine, \$467,911,999, or 29.1 per cent; and sheep and goats, \$53,452,999, or 5.3 per cent.

WANTS PRISON REFORMS.

Governor Hadley Will Recommend Working Convicts on Farms.

Jefferson City, Mo., Jan. 4.—Many prison reforms will be recommended in a special farewell message by Gov. Hadley, if the reforms meet the approval of the legislature.

BURN OUT CHINCH BUGS!

Governor May Declare War and Set Day for Pest's Extirpation.

Manhattan, Kan., Jan. 4.—If the governor will issue the necessary proclamation Kansas will have a "bug-killing week" some time this month. Chinch bugs caused \$10,000,000 worth of damage to crops in Kansas last year. In 1910 only two cars of "ones" were harvested. The Kotsches accepted the profit with thanks.

IN WOMAN'S REALM

RECIPES WORTH KEEPING.

Cheese Souffle.—Make a cup of white sauce as directed in the first recipe, and before taking from the fire stir into it a cupful of grated cheese.

Cheese Corn Souffle.—Make a white sauce as already directed, stir into it a cupful of grated cheese, and when this is blended add a cupful of canned corn drained from liquid and chopped fine.

Corn and Tomato with Cheese.—Cook a sliced onion for five minutes in a tablespoonful of butter; remove the onion, put in a heaping cupful of grated cheese, and stir until this is melted.

Macaroni and Ham.—Break a half-pound of macaroni into inch lengths; boil it tender in hot salted water.

Steamed Macaroni.—Break a quarter pound of macaroni in short pieces and cook it until tender in salted boiling water.

Savoring Rice with Ham.—Boil a cupful of rice in two quarts of salted water for twenty minutes, having the water at a galloping boil when the rice goes in.

Eggs a la Southern.—Two or three cold boiled potatoes, two hard-boiled eggs, one cup of white sauce, and three-quarters cup of buttered cracker-crumbs.

SENT FREAK PACKAGES.

"Funny" Men Take Liberties With New Parcel Post.

Chicago, Jan. 4.—Freak packages used to transport parcel post partly clogged the mails in this city Wednesday.

The Famous One-Day Specials

Are Surely Business a Lively Business

Last week was the busiest after-Christmas business we have ever enjoyed.

For Tuesday Only

200 Pairs Ruffled Swiss Curtains, plain with four rows of tucking, full size with French seams. Regular 75c. Tuesday only, pair 50c

For Wednesday Only

100 Wilton Velvet Rugs, 27x54 inches, beautiful styles, extra good quality. Regular \$2.00. Wednesday only \$1.15

For Thursday Only

50 Pairs Cable Net Curtains, dainty effects, white or Arab, very durable and dainty. Regular \$2.25 pair. Thursday only, pair \$1.50

For Friday Only

500 Yards Fancy-Colored Border Curtain Scrim, double border, in all colors. Regular 20c per yard. Friday only, yard 10c

For Saturday Only

200 Mill Samples Ingrain Carpet, 1 yard long, with selvege ends, make nice rugs. Saturday only, each 20c

The Brady Carpet and Drapery Co.

St. Joseph's Popular Carpet Store.

Members Retail Merchants' Association Railroad Fares Rebated.

A FEW SPECIALTIES...

Supreme Hams Supreme Bacon Supreme Lard Supreme Sausage Supreme Dried Beef and Supreme Canned Meats

MORRIS & COMPANY CHICAGO ST. JOSEPH KANSAS CITY ST. LOUIS

CLASSIFIED BUSINESS DIRECTORY

Reliable Professional Men and Business Institutions Who Want the Trade of Readers of The Stock Yards Daily Journal.

PRINTING: Combe Printing Company, St. Joseph, Mo. RESTAURANTS: Freeman's Cafe, 15th and Edmond, Open All Night.

INSURANCE: LAURENCE O. WEAKLEY, Insurance, 312 Corby-Forsue Building, St. Joseph, Mo.

Blair Horse and Mule Co.

Stock Yards St. Joseph, Mo.

At Our Special Auction Friday, January 10

We will sell without reservation

500 HEAD OF HORSES 500 Consisting of Heavy Draft Horses and Mares, Farm Chunks and Wagon Horses and nice Southern Mares.

500 HEAD OF MULES 500 Consisting of heavy Farm Mules and nice Cotton Mules.

If you are wanting anything in the way of horses and mules for spring and summer work, farmers will find an excellent assortment from which to choose and will also find they can purchase at as good, if not better, advantage here than at any other market.

10,000 Feeder Cattle

On Exhibition and at Public Sale

NATIONAL WESTERN STOCK SHOW

UNION STOCK YARDS DENVER, COLO.

January 20-25, 1913

The big western event of the year.

The National Western Stock Show is recognized as one of the great stock shows of the country.

Under the lessons taught in this great annual show, western range cattle breeders have developed the highest class of commercial beef cattle to be found in the world.

STOCK SHOW HORSE SHOW

POULTRY SHOW AGRICULTURAL SHOW

INDUSTRIAL SHOW

REDUCED RATES ON ALL RAILROADS

Farmers and Stockmen Take Notice

(We Solicit Your Trade)

Keep This Ad—It Has a Value Good for 50 cents

You may return this ad. in part payment on a trial order for 2 gallons of Keebro's Whisky at \$3.95 a gallon.

For prompt service, we are not excelled. Good service holds business and gets more. Give us a trial and be convinced.

KEGAN BROTHERS Box 51, St. A, St. Joseph, Mo., opp. U. D., 1212 So. 6th

Imported Stallions—Percheron, Shire, Belgian

Each year we show our new importation the same month they land. Each year they win more than all other exhibitors combined.

PERCHERON IMPORTING CO.

CHAS. R. KIRK SOUTH ST. JOSEPH, MO.

Lightning Pileless Scales

New Pattern Solid Channel Steel Frame

Channels are seven inches which is the height of platform from ground.

Write for our prices and description before buying.

KANSAS CITY 647 PAGES 22. 565 Hill St. Kansas City, Mo.

Advertise in "The Journal."



ST. JOSEPH HAY MARKET.

Local Quotations Corrected to Date by Local Dealers. The following quotations are furnished daily by the St. Joseph Hay Receivers and Shippers association...

ST. JOSEPH HAY AND FREQ.

When you want to buy or sell Hay write or call J. L. Frederick Grain & Hay Co. Office, 1011-12 Corby-Frank Bldg.

KANSAS CITY HAY AND GRAIN.

The following quotations are furnished daily by the Kansas City Hay Receivers and Shippers association...

KANSAS CITY HAY AND FREQ.

The BEST WAY To Dispose of Your ALFALFA HAY is to Write PRODUCERS HAY CO. KANSAS CITY, MO.

HAY Clark Wyrick & Co.

Live Stock Exchange Bldg. Room 750. KANSAS CITY, MO. When shipping to Kansas City give us a trial. Liberal advance and quick returns.

HAY Wanted!

Will purchase on your track or handle on commission. Write us what you have.

NORTH BROTHERS

128-27 Live Stock Ex., Kansas City, Mo. SWARBUCK WHISKY DISTILLED FOR MEDICAL USE. 10 YEARS OLD. M.J. SHERIDAN, PROPRIETOR.

WANTED TO BUY

Horses, Mares and Mules from \$10 to \$100. Stock must be fat and broke to work. Highest cash price paid.

VARICOCELE CURED IN 5 DAYS

Without Knife, Pain or Danger. During 27 years in Kansas City, I have cured thousands of cases of varicocele, hemorrhoids and related troubles.

PUBLICITY PAID

Try an Advertisement in THE JOURNAL.

STUDENTS TAUGHT FARMING

Two Crops Raised on Plot Near Fort Worth, Texas, by Boys. Fort Worth, Tex., Jan. 5.—Real agriculture, not theory, is one of the important studies at the Fort Worth Central High School.

GOOD BUTTER MAKING.

Cleanliness and Thorough Working Essential Points. Proceed with the milk of one cow as you would with that of twenty.

DEBT OF AGRICULTURE.

Indebted to Nomad's Wife for Greatest of Economic Services. Professor J. Russell Smith in Harper's Magazine.

PLANS FOR FEDERAL ROAD

Submit Scheme for Government Road to Governor Aldrich. Lincoln, Neb., Jan. 4.—The state engineer's office has completed the plat showing the road which the governor has selected as the government road.

RAILROAD HELPING FARMERS

Frisco Has an Elaborate Plan to Promote Agriculture. The Frisco line have just completed the organization of a department of development covering all the territory along its lines.

HEAVEN COMING INTO ITS OWN.

The number and magnitude of the poultry shows indicate increased interest in poultry culture. Better prices old and new settlers personally and encourage in every proper way the development of the country tributary to Frisco rails.

LARGER OUTPUT OF GOLD

The World's Production in 1912 Estimated at \$465,000,000. Washington, Jan. 4.—The world's production of gold during 1912 was \$5,500,000 greater than in 1911.

FARMERS' CONGRESS.

The Agricultural and Industrial Congress of the Fourth district of Kansas will be held at Eureka, January 7 and 8, 1913.

STOCKHOLDERS' MEETING.

Notice is hereby given that the annual meeting of the stockholders of the St. Joseph Stock Yards Bank will be held and convened at the office of said bank.

STOCKHOLDERS' MEETING.

Notice is hereby given that the annual meeting of the stockholders of the St. Joseph Cattle Loan Company will be held and convened at their office.

STOCKHOLDERS' MEETING.

Notice is hereby given that the annual meeting of the stockholders of the St. Joseph Journal Publishing Company will be held and convened at the office of the St. Joseph Stock Yards Company.

STOCKHOLDERS' MEETING.

Notice is hereby given that the annual meeting of the stockholders of the St. Joseph Live Stock Commission Co. will be held at its office.

STOCKHOLDERS' MEETING.

Notice is hereby given that the regular annual meeting of the stockholders of the Missouri Live Stock Commission Co. will be held at its office.

Classified

Real Estate Advertising. 1 cent per word first insertion; 1/2 cent per word each subsequent insertion.

FOR SALE

290 acres in Audrain Co., Kan., seven miles from Mexico and two miles from shipping station; choice smooth land; 140 in cultivation.

FOR SALE

290 acres in Marshall Co., Kan., good bottom, second bottom and fine upland, can be divided in three tracts.

Cheap Corn and High Hogs

now offer an unusual chance for Big Profits in the hog business. Full rations of corn with one-half pound per day of Swift's Digester Tankage.

STOCKHOLDERS' MEETING.

Notice is hereby given that the annual meeting of the stockholders of the St. Joseph Stock Yards Bank will be held and convened at the office of said bank.

STOCKHOLDERS' MEETING.

Notice is hereby given that the annual meeting of the stockholders of the St. Joseph Cattle Loan Company will be held and convened at their office.

STOCKHOLDERS' MEETING.

Notice is hereby given that the annual meeting of the stockholders of the St. Joseph Journal Publishing Company will be held and convened at the office of the St. Joseph Stock Yards Company.

STOCKHOLDERS' MEETING.

Notice is hereby given that the annual meeting of the stockholders of the St. Joseph Live Stock Commission Co. will be held at its office.

STOCKHOLDERS' MEETING.

Notice is hereby given that the regular annual meeting of the stockholders of the Missouri Live Stock Commission Co. will be held at its office.

STOCKHOLDERS' MEETING.

Notice is hereby given that the annual meeting of the stockholders of the St. Joseph Stock Yards Bank will be held and convened at the office of said bank.

STOCKHOLDERS' MEETING.

Notice is hereby given that the annual meeting of the stockholders of the St. Joseph Cattle Loan Company will be held and convened at their office.

STOCKHOLDERS' MEETING.

Notice is hereby given that the annual meeting of the stockholders of the St. Joseph Journal Publishing Company will be held and convened at the office of the St. Joseph Stock Yards Company.

STOCKHOLDERS' MEETING.

Notice is hereby given that the annual meeting of the stockholders of the St. Joseph Live Stock Commission Co. will be held at its office.

STOCKHOLDERS' MEETING.

Notice is hereby given that the regular annual meeting of the stockholders of the Missouri Live Stock Commission Co. will be held at its office.

STOCKHOLDERS' MEETING.

Notice is hereby given that the annual meeting of the stockholders of the St. Joseph Stock Yards Bank will be held and convened at the office of said bank.

STOCKHOLDERS' MEETING.

Notice is hereby given that the annual meeting of the stockholders of the St. Joseph Cattle Loan Company will be held and convened at their office.

STOCKHOLDERS' MEETING.

Notice is hereby given that the annual meeting of the stockholders of the St. Joseph Journal Publishing Company will be held and convened at the office of the St. Joseph Stock Yards Company.

Classified

Real Estate Advertising. 1 cent per word first insertion; 1/2 cent per word each subsequent insertion.

FOR SALE

290 acres in Audrain Co., Kan., seven miles from Mexico and two miles from shipping station; choice smooth land; 140 in cultivation.

FOR SALE

290 acres in Marshall Co., Kan., good bottom, second bottom and fine upland, can be divided in three tracts.

Cheap Corn and High Hogs

now offer an unusual chance for Big Profits in the hog business. Full rations of corn with one-half pound per day of Swift's Digester Tankage.

STOCKHOLDERS' MEETING.

Notice is hereby given that the annual meeting of the stockholders of the St. Joseph Stock Yards Bank will be held and convened at the office of said bank.

STOCKHOLDERS' MEETING.

Notice is hereby given that the annual meeting of the stockholders of the St. Joseph Cattle Loan Company will be held and convened at their office.

STOCKHOLDERS' MEETING.

Notice is hereby given that the annual meeting of the stockholders of the St. Joseph Journal Publishing Company will be held and convened at the office of the St. Joseph Stock Yards Company.

STOCKHOLDERS' MEETING.

Notice is hereby given that the annual meeting of the stockholders of the St. Joseph Live Stock Commission Co. will be held at its office.

STOCKHOLDERS' MEETING.

Notice is hereby given that the regular annual meeting of the stockholders of the Missouri Live Stock Commission Co. will be held at its office.

STOCKHOLDERS' MEETING.

Notice is hereby given that the annual meeting of the stockholders of the St. Joseph Stock Yards Bank will be held and convened at the office of said bank.

STOCKHOLDERS' MEETING.

Notice is hereby given that the annual meeting of the stockholders of the St. Joseph Cattle Loan Company will be held and convened at their office.

STOCKHOLDERS' MEETING.

Notice is hereby given that the annual meeting of the stockholders of the St. Joseph Journal Publishing Company will be held and convened at the office of the St. Joseph Stock Yards Company.

STOCKHOLDERS' MEETING.

Notice is hereby given that the annual meeting of the stockholders of the St. Joseph Live Stock Commission Co. will be held at its office.

STOCKHOLDERS' MEETING.

Notice is hereby given that the regular annual meeting of the stockholders of the Missouri Live Stock Commission Co. will be held at its office.

STOCKHOLDERS' MEETING.

Notice is hereby given that the annual meeting of the stockholders of the St. Joseph Stock Yards Bank will be held and convened at the office of said bank.

STOCKHOLDERS' MEETING.

Notice is hereby given that the annual meeting of the stockholders of the St. Joseph Cattle Loan Company will be held and convened at their office.

STOCKHOLDERS' MEETING.

Notice is hereby given that the annual meeting of the stockholders of the St. Joseph Journal Publishing Company will be held and convened at the office of the St. Joseph Stock Yards Company.

St. Joseph Water Co.

From remote antiquity the highest value has been set upon an abundant and pure water supply, and centers of population sprang up in ancient times around those points when it was readily available.

The St. Joseph Water Co. is the only water company on the Missouri river which filters its entire water supply and the results of this filtration is shown by the mortality statistics of this city, which shows a lower number of typhoid fever cases in St. Joseph than in other cities in this country.

St. Joseph Water Co.

The water supply of St. Joseph is first pumped from the river into two large settling basins, each basin being of 3,000,000 gallon capacity and the slow motion of the water, while passing through these basins, leaves much of the sediment and sand settle to the bottom and the water becomes partially clear.

The St. Joseph Water Co. has a standing invitation to the citizens of St. Joseph to visit the Water Works, as a more delightful trip, in and about St. Joseph, cannot be taken or imagined.

St. Joseph Water Co.

We Are in the Market Every day for Cattle, Hogs and Sheep. WE are especially bidding for Range Cattle and Sheep, both for slaughter and feeding.

St. Joseph Water Co.

Our packers furnish a daily market for all kinds of cattle, ranging from Canners to Export Cattle. Look up your R. R. connections, you will find them in our favor.

PROTECT YOUR CATTLE FROM BLACKLEG

Take No Chances. Blacklegoids are Simplest, Safest and Surest Preventive. No Dose to Measure. No Liquid to Spit. No String to Rot.

PARKE, DAVIS & COMPANY

DEPARTMENT OF ANIMAL INDUSTRY, DETROIT, MICH. U.S.A.

YOU CAN GET A Stronger Made Trunk

Suit Case, Grip or Handbag and cut out middleman's profit if you buy of E. R. BIRD, Trunk Factory

Milo Maize The Dry Weather Corn

Contains heavy crop of snow dry soil or in regions where ground is unfavorable conditions yield is not less than 75 bushels per acre.

YOU CAN GET A Stronger Made Trunk

Suit Case, Grip or Handbag and cut out middleman's profit if you buy of E. R. BIRD, Trunk Factory

Milo Maize The Dry Weather Corn

Contains heavy crop of snow dry soil or in regions where ground is unfavorable conditions yield is not less than 75 bushels per acre.

YOU CAN GET A Stronger Made Trunk

Suit Case, Grip or Handbag and cut out middleman's profit if you buy of E. R. BIRD, Trunk Factory

Milo Maize The Dry Weather Corn

Contains heavy crop of snow dry soil or in regions where ground is unfavorable conditions yield is not less than 75 bushels per acre.

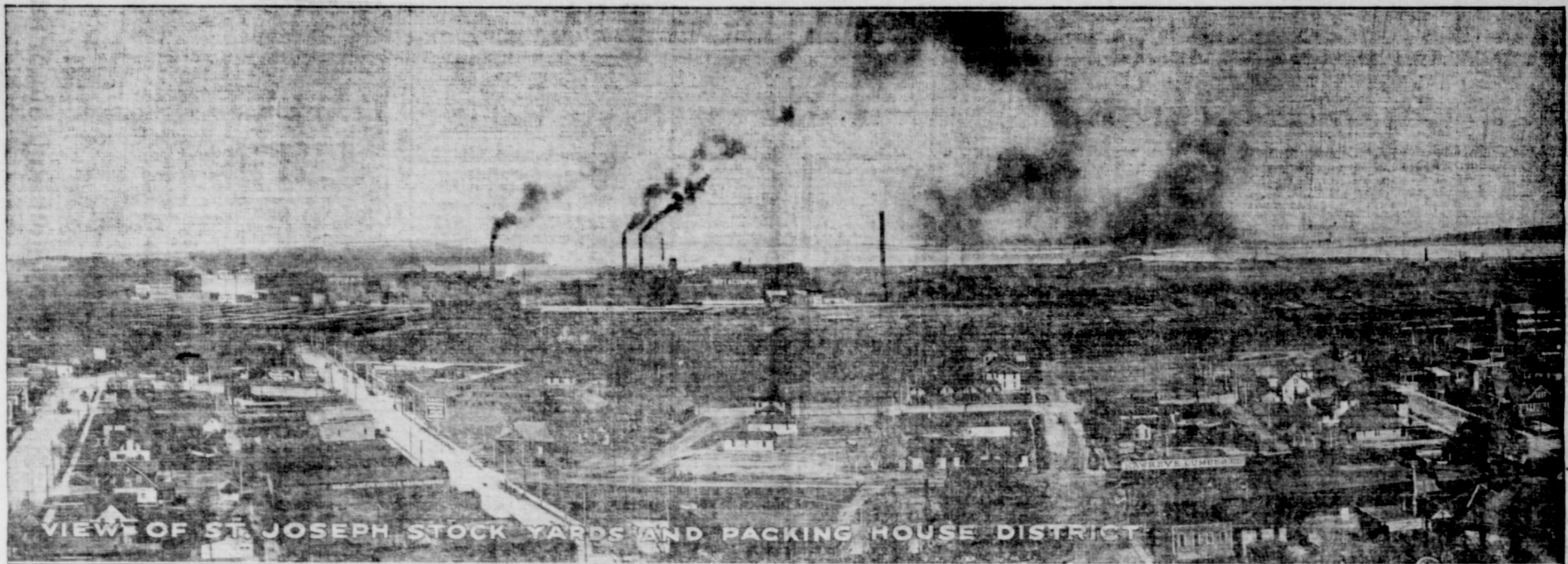
YOU CAN GET A Stronger Made Trunk

Suit Case, Grip or Handbag and cut out middleman's profit if you buy of E. R. BIRD, Trunk Factory

Milo Maize The Dry Weather Corn

Contains heavy crop of snow dry soil or in regions where ground is unfavorable conditions yield is not less than 75 bushels per acre.





VIEW OF ST. JOSEPH STOCK YARDS AND PACKING HOUSE DISTRICT

# St. Joseph Live Stock Market

## Best on the Missouri River

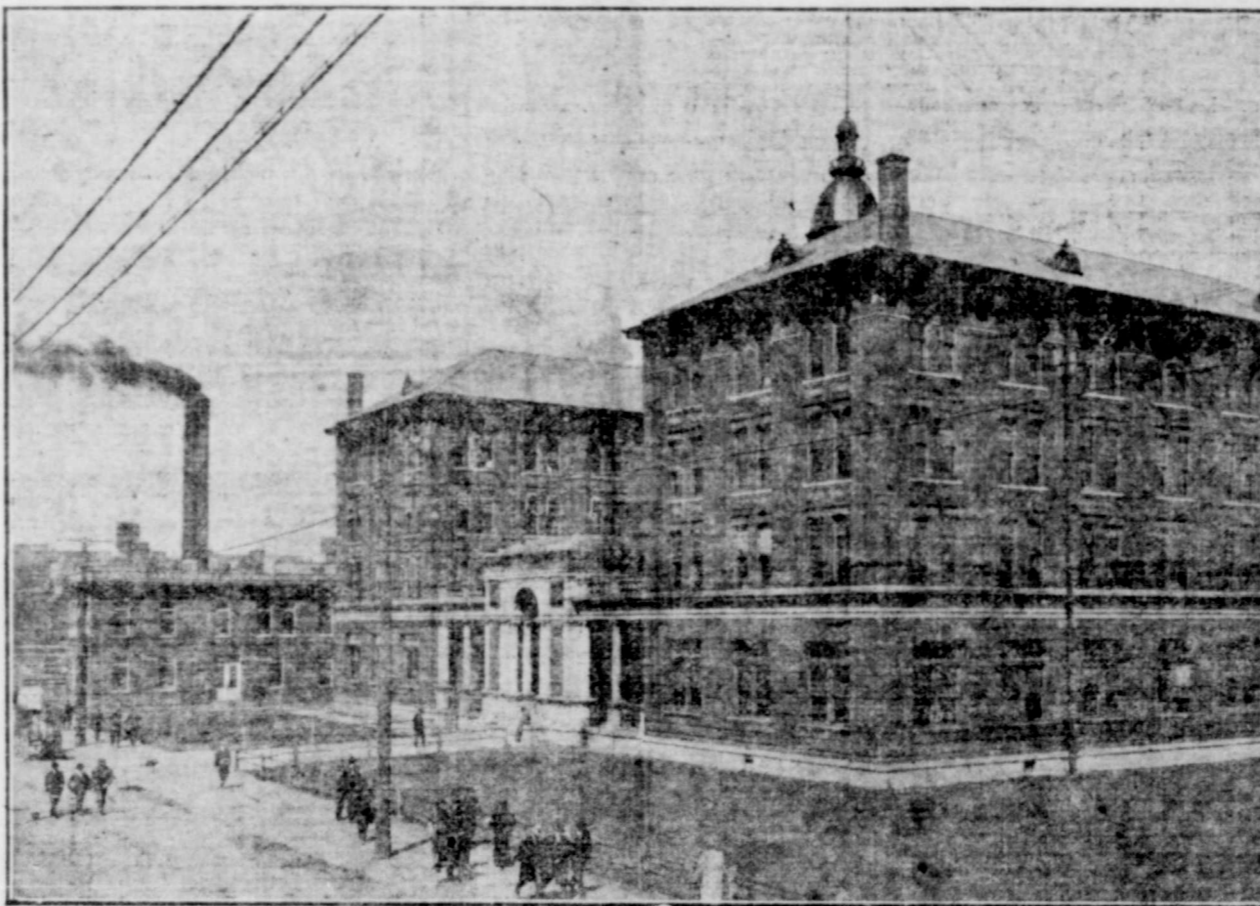
### List of Commission Firms

St. Joseph Stock Yards.

Butler, J. H.  
Byers Bros. & Co.  
Clay Robinson & Co.  
Crider Bros. Live Stock Co.  
Daily, C. M. & Co.  
Davis & Son.  
Drinkard, Emmert & Co.  
Emmert Commission Co.  
Great Western Commission Co.  
Kansas City Live Stock Commission Co.  
Knollin Sheep Commission Co.  
Lee Live Stock Commission Co.  
Missouri Live Stock Commission Co.  
National Live Stock Commission Co.  
Nichols, Blanchard & Gilchrist.  
Prey Bros. & Cooper.  
Shay, R. O.  
St. Joseph Live Stock Commission Co.  
Wood Live Stock Commission Co.

### List of Stocker and Feeder Dealers and Speculators

Maxwell & Spayde	P. S. Wright
J. V. Alkins	M. H. Gillette
W. H. Morlock	W. O. Timerman
Joe Baker & Son	Charles Reynolds
W. E. Roundtree	James Strook
Charles Tramp	George Adcock
	William Lobb Co.



Handsome Live Stock Exchange Building

### List of Packers

Swift & Company  
Morris & Company  
Hammond Packing Company  
(Now Armour & Co.)  
Freund Packing Company

St. Joseph Stock Yards Bank  
(Capital and Surplus \$350,000.00)  
St. Joseph Cattle Loan Company  
(Capital and Surplus \$290,000.00)

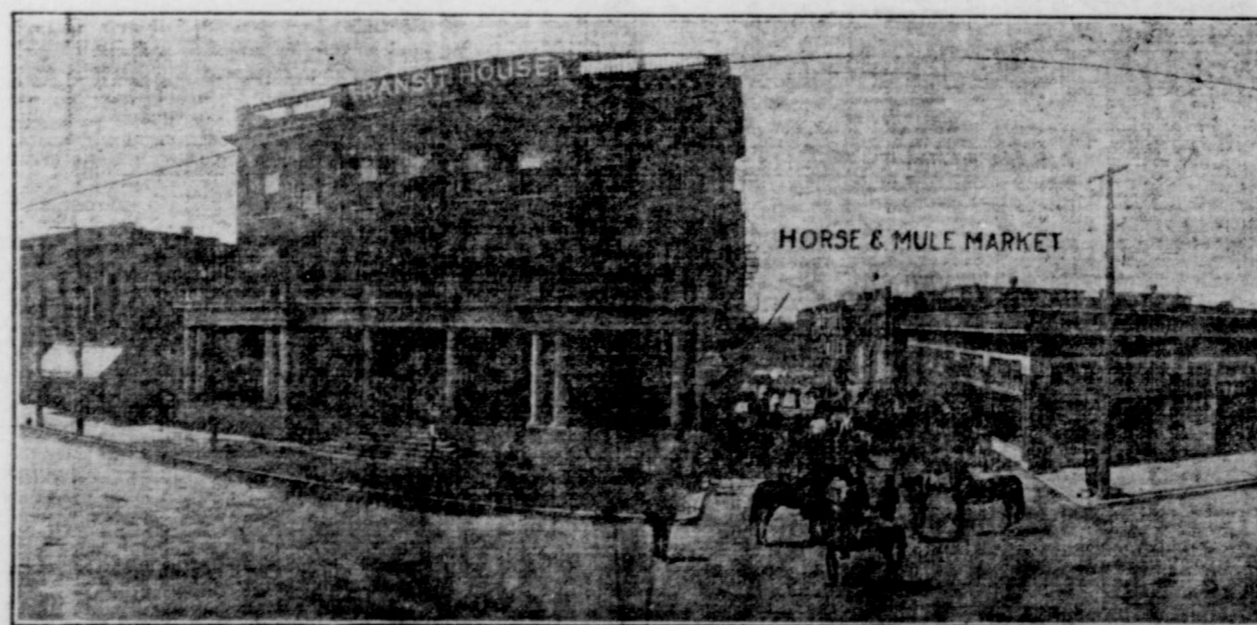
Blair Horse & Mule Company  
A. J. Evans, Mule Dealer  
J. P. Evans, Mule Dealer

Large increase in Stockers and Feeders for both Cattle and Sheep. Come to St. Joseph for your Feeders.

## The Best of Railway Service in All Directions

Large Increase in Business Over All Competitors

Values in St. Joseph Now Equal Eastern Points



The Transit House Offers Modern Hotel Facilities

Yard Facilities Unexcelled, Insuring the Most Economical and Satisfactory Handling of Live Stock

**We Solicit Your Business**