

PAGE ONE

A QUICK READ OF THE NEWS

Cat attack leads to trauma

In May, several months after the Escondido, Calif., library's resident cat attacked Richard R. Espinosa's 50-pound Labrador-mix assistance dog, Espinosa filed a \$1.5 million claim against the city.

His lawsuit stated he was in bad shape because of the dog's injuries. According to the legal papers, Espinosa suffers "significant lasting, extreme and severe mental anguish and emotional distress including, but not limited to, terror, humiliation, shame, embarrassment, mortification, chagrin, depression, panic, anxiety, flashbacks, nightmares, loss of sleep (and) loss of full enjoyment of life as well as other physical and mental afflictions of pain (and) suffering."

Museum finding a home

The actor's pals, who have been searching for a home for the Burt Reynolds Museum ever since he lost his Jupiter, Fla., ranch to bankruptcy, are close to announcing a formal deal, according to reports that began in August.

They hope to house the memorabilia in an old bank building in downtown Jupiter.

There are thousands and thousands of effects from his movie, TV and sports career, as well as gifts and autographs from others in the business. They include his gold watch, reading "Not for a day, not for a year, but for always, Sally 1981."

Jupiter is at Exit 59 on I-95 and Exit 116 on the Florida Turnpike, and overnight accommodations are plentiful.



Drawing date: Saturday, Sept. 15
Winning numbers: 17-25-32-41-43-44
Estimated jackpot: \$16 million
Winners: 0
Next drawing: Wednesday, Sept. 19
Estimated jackpot: \$19 million

On this date in history

- Sept. 16** — Mexico declares its independence from Spain (1810).
- Sept. 17** — Texas signs an agreement with Mexico's rebel state of Yucatan to rent out the Texas Navy for \$8,000 per month (1841).
- Sept. 18** — The Republic of Texas signs a treaty with the Netherlands (1840).

LOCAL WEATHER

Although the National Weather Service's long-range forecast hasn't exactly been on target recently, it continues to call for high temperatures reaching only the low 80s. Thursday morning is expected to drop to about 55, with the following mornings reaching the low 50s through Monday. Isolated thunderstorms are possible all weekend.

Editor Ronn Smith can be reached at 272-4536 or ctyankee@fivearea.com

Missed your paper? Call carrier Bobby Flores at 272-6719 or the Journal during business hours, 8:30 a.m.-5 p.m.

Commissioners OK \$92,700 bid to rewire courthouse

JOURNAL STAFF REPORT

The Bailey County Commissioners' Court met in special session Monday to approve a bid for rewiring the county courthouse.

County Judge Marilyn Cox said two good bids were received, and commissioners took the lower one — from Acme Electric of Lubbock.

The bid has been reviewed and approved by County Attorney Criss Cleavinger, Cox said. Commissioners authorized Cox to sign it once it comes back from the attorney's office, Cox said.

The bid also includes rewiring the courthouse telephones and computers, including upgrading the computer networking.

Not only that, Cox added, but there will be new light fixtures throughout the building and fans will be installed in the courtroom as part of the \$92,700 project.

Commissioner recovering after tumble from ladder

JOURNAL STAFF REPORT

Bailey County Commissioner C.E. Grant said Tuesday that he might be released from Covenant Lakeside in Lubbock as early as Wednesday after undergoing surgery for injuries suffered in a fall over the weekend.

Doctors implanted pins Sunday in a broken elbow and a shattered knee.

"I think I'll get the cast off of my arm in three or four weeks," Grant said. "After that, I may still have some time on crutches. I'm in a cast nearly to my waist."

He was re-installing an overhead door when he fell from a 16-foot ladder.

He was in good spirits Tuesday; a hospital spokeswoman said his condition was stable. His wife, Sharon, was with him.

Pipeline Group schedules yearly contractors' dinner

JOURNAL STAFF REPORT

The annual public education/contractor awareness program sponsored by The Pipeline Group has been scheduled for 7 p.m. Sept. 27 at the Bailey County Coliseum.

The program is sponsored by a group of companies interested in preventing accidents and damage to underground pipelines and utilities. Contractors in Bailey, Parmer, Lamb and Castro counties have been invited.

A free dinner will be catered by Lavonne Henderson, followed up by a program on accident prevention and general pipeline safety.

There will be discussion of the Texas requirement for notification before excavation begins, and sponsors will provide promotional materials.

More information is available at the group's website, www.pipelinegroup.com, or by calling them at (800) 982-8742.

Lazbuddie explodes in 52-6 trouncing of Jayton Jaybirds

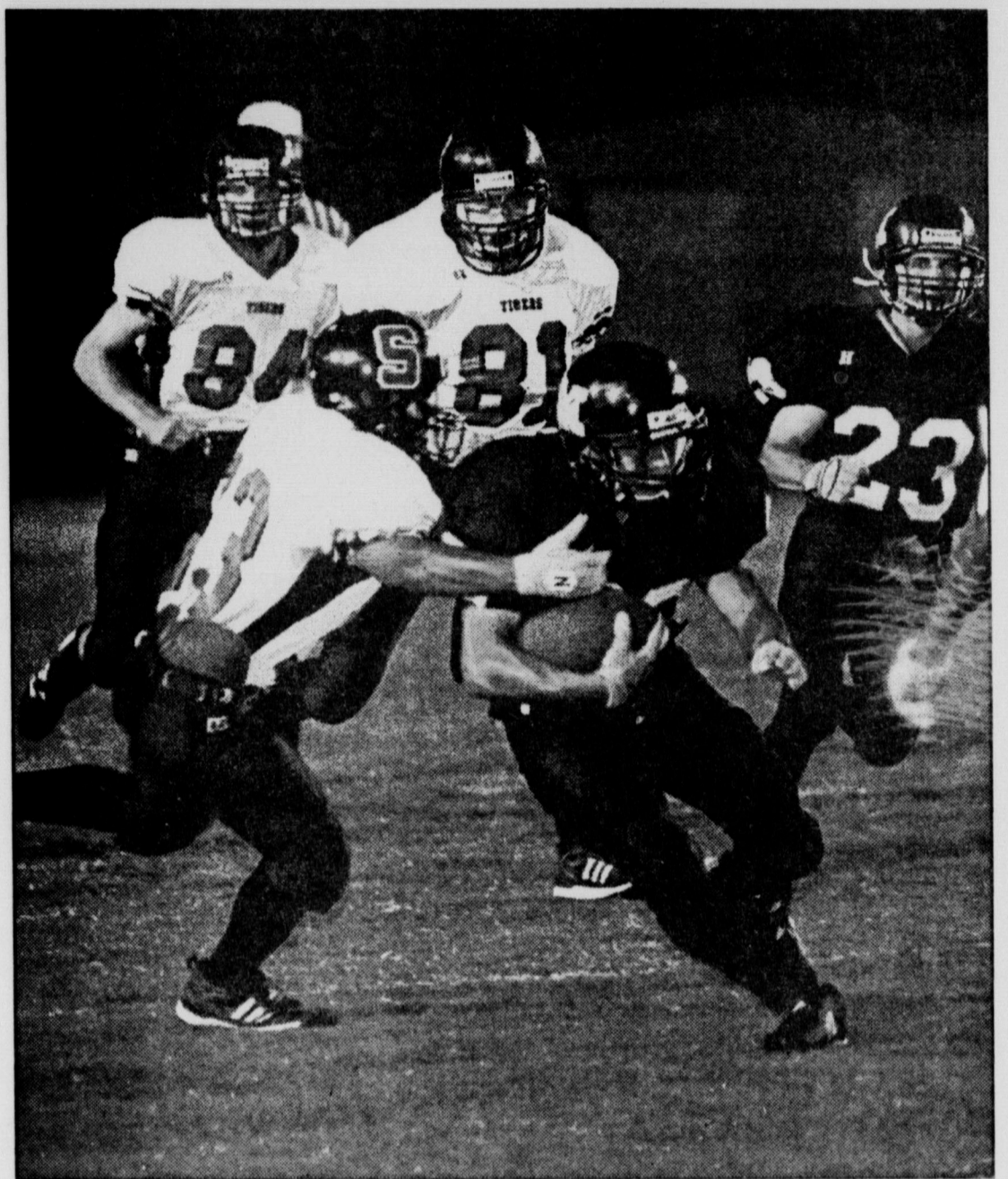
JOURNAL STAFF REPORT

The Lazbuddie Longhorns were in a mood to gore somebody Friday night, and it just happened to be the usually tough Jayton's turn in the bullpen.

Both starting quarterbacks were disabled in the first quarter en route to the 52-6 whipping, which ended with the third quarter because of the 45-point rule, Longhorn coach Mark Scisson said. Lazbuddie is now 2-1 on the season.

The Martínez boys — Andrew and Michael — were Lazbuddie's top rushers, with Michael carrying nine times for 89 yards and Andrew only three times but gaining 106 yards and three touchdowns.

see LAZBUDDIE on page 2



Journal photo: Mike Hahn

Flores on the move

The Mules' A.J. Flores carries the ball Friday during Muleshoe's 36-18 victory over Slaton. Tadd Lutz (No. 23) also is close to the action. The Mules, now 2-0, meet Friona at 8 p.m. this Friday for homecoming.

Orozco tops second week of football contest

JOURNAL STAFF REPORT

Richard Orozco of Muleshoe charged to the head of the class this week in the Journal football contest, coming closer on the tiebreaker score than the other contestants who only

missed a single game.

Orozco guessed that the combined Muleshoe-Slaton score would be 56, and it turned out to be 54.

Phillip Gonzales of Muleshoe finished in second place by guessing 51

on the tiebreaker.

Both Orozco and Gonzales missed only the Southland at Amherst game.

Third-place winner see CONTEST on page 2



Journal photo: Beatrice Morin

Queen candidates

Muleshoe High School homecoming queen candidates are (from left) Ashley May, Britni Gartin, Megan Barrett, Minday Locker and Laura Wood. All are seniors except Locker, who is a junior.



Journal photo: Beatrice Morin

Lazbuddie royalty crowned Friday

Lazbuddie homecoming king Jake Louder and queen Kayla Kimbrough are flanked by attendants Savannah Black and Tobin Redwine (left), Kelsey Jones and Trey Nickles and Jodie Coker and Shannon Redwine. In front are bearers Austin Mason and Madison Jesko. More photos, page 6.

'Youth are our future' means we're in good hands

Had I been ask what was on my mind and how I felt about it on Monday, Sept. 10, I would have said the Mules had just defeated the Caprock Longhorns and the season looked to be another fun and successful one for the Mules.

That all seemed right with the world because the freshman and junior varsity teams had also had successful outings during the week.

However — and you knew there was going to be a however in here somewhere — Tuesday morning as I was getting ready to start my day I heard the talking heads say something about a plane hitting one tower of the World Trade Center in New York City.

I stepped into the bedroom where the television showed the smoke beginning to billow from one of the two tallest buildings in New York City. As I

watched and listen to the commentator, a passenger jet crashed into the Trade Center's second tower.

I felt sympathy for the people working on the floors directly affected by the planes, but growing up in Bailey County left me with very limited experience with skyscrapers: I assumed the buildings were designed to handle such things.

In fact, at first glance, the scene did not appear to be as bad as the Murrah Building bombing in Oklahoma City.

While I was having my morning coffee, one of the other regulars came in and said another plane had crashed into the Pentagon.

For the first time it began to soak in that this was more than an isolated accident. This could be considered war, but who was the enemy?

FROM THE STANDS

By Delton Wilhite

Returning to the house around 10:30 a.m., I watched the replay of the towers collapsing. Many of the people employed in the firms that occupied the buildings were still inside during the collapse, along with many firefighters and emergency workers that had responded to the call.

These events drastically altered my thinking of what was important and how I felt about the status of the world in general. Thoughts of my children, my grandchildren and the young athletes in and around Muleshoe that I take great pleasure in watching, talking to, and writing about flashed through my head. What will happen now?

This is being referred to as a second Pearl Harbor, yet unlike that surprise attack by forces of a government, the enemy now is impossible to immediately identify. There were no identifying markings on the attacking planes except for names of companies that carry millions of Americans each year on vacation and business trips.

As the days pass and the country recovers from the initial shock, "normal" is the order of the day. I was pleased that Texas' University Interscholastic League chose to allow the state's high schools to play the games as scheduled this past weekend. After attending games on Thursday and Friday, I can truthfully tes-

tify it was refreshing to watch the young people at their best.

Watching the players perform put the events of the week back into perspective. The loss of life is high, and such a terrible waste, but just as with losses suffered in previous wars, the United States has not just survived, it has flourished, because Ameri-

cans joined together against a common enemy.

If past history is an indicator of what is to come, America will be fine. The young men and women of this country are our future, and if their performance on the athletic fields and classrooms are a gauge of where we are going, I would not want to live anywhere else.

OBITUARIES

BOB JORDAN

Services were held Monday at Lake Ridge United Methodist Church in Lubbock for Bob Jordan, 73, of Lubbock. The Rev. Bill Couch and John Burk officiated. Burial was in City of Lubbock Cemetery.

Rix Funeral Directors of Lubbock handled arrangements.

Mr. Jordan was born March 6, 1928, in Bailey County. He died Sept. 13 at home.

He served in the U.S. Army in Korea.

He established Bob Jordan Amusement Co. in Lubbock in 1952. He had interests in real estate, restaurants and hotels; he was involved in the 50th Street Caboose, the Copper Caboose and the Koko Inn Hotel.

He had served on Lubbock's planning and zoning board and was a past president of the Monterey Boosters Club, the Hillcrest Country Club (where he was a member for more than 40 years) and the Amusement Operators of Texas. He was a member of the Red Raider Club and Lake Ridge United Methodist Church.

He is survived by his wife, Mitzi; a son, Curtis Jordan of Lubbock; a daughter, Toni Levenson of Lubbock; two stepdaughters, Kriss Ethridge of Lubbock and Kamie Ethridge of Manhattan, Kan.; a sister, Shirley Gunn of Plano; and four grandchildren.

He was preceded in death by a brother, Donald Jordan, in 1992 and a stepson, Kirk Ethridge, in August 2000.

The family suggests memorials to Lubbock Meals

on Wheels (2304 34th St., Lubbock 79411) or Hospice of Lubbock (P.O. Box 53276, Lubbock) 79453.

JOYCE R. SHIFFLETT

Services were held Tuesday at Ellis Funeral Home Chapel in Morton for Joyce R. Shifflett, 84, of Plains. The Rev. Bill Wright and Millard Owens officiated. Burial was in Morton Memorial Cemetery.

Ellis Funeral Home of Morton handled arrangements.

Mrs. Shifflett was born Jan. 21, 1917, at Bonita, Texas. She died Friday at Brownfield Regional Medical Center.

She married Amos H. Shifflett on June 9, 1931, in Marietta, Okla. The moved to Plains in 1960 from Denver City.

She was a homemaker and a Baptist.

Mrs. Shifflett is survived by her husband; a son, Homer Shifflett of Wolforth; three daughters, Ruth Imogene Owens of Emmett, Idaho; Virgie Carol Collins of Moorcroft, Wyo., and Wanda Lois Clevenger of Aztec, N.M.; 17 grandchildren; and several great-grandchildren.

She was preceded in death by a son, Gene Shifflett, on Feb. 11, 2001.

The family suggests memorials to the American Diabetes Association (8008 Slide Road, Lubbock

79424).

MARY A. KIRK

Graveside services were held Wednesday at Morton Memorial Cemetery for former Lehman resident Mary A. Kirk, 81, of Kingsland, Texas. The Rev. Randy Johnson officiated.

Ellis Funeral Home of Morton handled arrangements.

Mrs. Kirk was born Sept. 6, 1920, at Bells, Texas. She died Saturday in Llano (Texas) Memorial Hospital.

She married Cecil S. Kirk on Jan. 31, 1938, in Las Cruces, N.M. He died April 8, 1988.

She moved to the Lehman-Morton area from Lubbock in 1951. She was a homemaker, and had lived in the Kingsland Hills Care Center for a few years.

HOSPITAL NEWS

Muleshoe Area Medical Center reported the following patient load:

Sept. 11 — Elaine Damron, Irene Flores, Frank Hinkson, Ada L. Murrah, Joan M. Rempe, Robert E. Servatius, Ava N. Sewell, John Vaughn and Caleb Wood.

Sept. 12 — Elaine Damron, Frank Hinkson, Joan M. Rempe, Robert E. Servatius, Ava N. Sewell, John Vaughn and Caleb Wood.

Expert Jewelry and Watch Repairing

- Ring sizing - 2-3 days
- Ring re-mounting • Jewelry appraising
- All makes watch batteries • Faster service

HOLMBERG JEWELRY
Celebrating 60 years
Jewelry Accents • Credit Program; Always 90 Days Same As Cash
1908 N. Prince • Clovis, NM • 762-9376
New Saturday Hours: 9:30 - 12:00

IGLESIA METODISTA UNIDA
"EL DIVINO SALVADOR"
presenta
ELSA DIAZ
Y PREDICADOR EVANGELISTA
ROBERTO DIAZ




DOMINGO
23 DE SEPTIEMBRE
5:00 P.M.
619 E. 5TH STREET
MULESHOE, TEXAS
Para informacion:
272-3781 o 272-6888

JOE'S BOOT SHOP

We Ship Everywhere!

1-800-658-6378 106 E. American Blvd. Muleshoe, Texas

And Country Junction



Come In and See the Newest Decorating Trends.

Shabby Chic Has Arrived!

We've Been to Market & New Items are Arriving Every Day.



Select Floral Arrangements 20% Off

Patriotic T-Shirts

With each donation to the local Red Cross agency you make here, Joe's Boot Shop & Country Junction will give you a FREE Patriotic T-Shirt. (\$5 minimum donation, while supplies last)

"We're ready to help!"

Come see Gloria or Pam, the friendly Loan Specialists at

Continental Credit
LOANS \$100 to \$467

¡Se Habla Espanol!

CREDIT STARTER LOANS ♦ LOANS WHILE YOU WAIT
PHONE APPLICATIONS ACCEPTED

Mon.-Thurs. 9:00 a.m. to 5:30 p.m., Fri.-9:00 a.m. to 6 p.m.

CONTINENTAL CREDIT
206 S. Main • Muleshoe • 272-3673

Have a story or photo idea? Let us know! 272-4536

'Extending the season' now routine for vegetable growers

By RONN SMITH
Editor

My generation grew up thinking the idea of a cold frame or hot bed was too old-fashioned — if we heard the terms at all.

Now, of course, we're the old fogeys, and may look differently at an old-fashioned idea if it gets us home-grown tomatoes, peppers and cantaloupes a month earlier in the spring or a month later in the fall.

There are many modern products to help make a cold frame or hot bed less work, too, of course.

The fabric or polyester row covers make a good cover for a simple cold frame (which can be made of almost anything), and little Velcro patches stuck on the covering and the frame make opening and closing easy.

The difference between a cold frame and a hot bed is that the latter has manure added to the soil to raise the temperature slightly.

These will allow you to have fresh salads nearly all winter — radishes, lettuce, etc. — and then can be used to start vegetable (or flower) plants in the spring.

Particularly good for early-spring tomatoes, peppers and eggplants is a product called Wall-o'-Water. It's a circle of plastic tubes that you place over the plant, then fill the tubes with water.

As far as I know, the manufacturer still states only that the product will protect plants at temperatures down to 16 degrees, but they have been proven in everyday use down to 9 degrees.

That allows you to start tender vegetables VERY early in our area. Just don't start the tomatoes (and especially squash, cantaloupes or watermelons) too early or they'll outgrow the Wall-o'-Water before the first of May, and then you'll have a problem!

If you only want to experiment with a few plants, you



while the plants are growing, but that isn't true. I would wait until winter to prune tree limbs that are bigger than your fist; other than that, prune anytime — making allowances for the blooming or fruiting season of the particular plant involved.

You're more likely to be around your trees when the weather is nice, so you're more likely to notice that a branch is growing at too sharp an angle — or any of the myriad other problems that are solved by pruning.

If you go get the pruning saw and take care of the offending branch when you notice it, you don't have to try to remember to do it the following winter — which probably means you'll be looking at the same offending branch the following summer.

You probably have noticed how the recent rainfall has caused the fall-sprouting weeds to come up by the hundreds.

If they're in a place where you can get a hoe to them before they gain some size, now's the time.

Most of them form flat rosettes of leaves right against the ground, so trying to pull them can be frustrating. Anything, however, is better than having a tangled carpet of chickweed next spring when you get the urge to start planting.

Squash rot seems to be a problem in yellow squash this year. While it is similar to blossom-end rot in tomatoes and is supposed to be caused by an uneven moisture supply, it is usually easy to deal with.

First, as each little fruit begins to swell, make sure the blossoms are picked off. If there is any decay already starting, scratch it off very lightly with your thumbnail.

A little scar will form where you scratched, but it should

go ahead and produce a healthy fruit.

If this rot really is caused from an uneven moisture supply (as the experts say), then

mulching to conserve moisture should take care of the problem.

Happy planting!
Questions and comments

may be directed to Garden Writer, 571 County Road 1018, Muleshoe, Texas 79347, or e-mailed to ronnsmith@hotmail.com.

can make your own "walls of water" by filling plastic containers with water and placing them around the plants. Wrapping with a sheet of plastic provides a windproof barrier.

Still another similar method is what I continue to call the "Charles Guthals post-hole method." Depending on how early you want to start this, the hole should be 12 or more inches deep and wide, with the plants and some compost placed in the bottom. (Obviously, with tomatoes, the hole can be quite deep to start, then gradually filled in — the plant will form roots along the stem. Squash and melons are more problematic because the hole has to be wider and shallower.)

And finally, a sheet of black plastic can be placed over the planting area three or four weeks before you plan to add plants.

This will heat up so much on sunny days that the soil temperature may be spring-like before the end of February.

Planting is simply a matter of cutting holes in the plastic and doing your thing.

If you're pruning trees or shrubs now in order to avoid much regrowth, just make sure you wrap it up by about Oct. 1 to give the wound time to harden off before freezing weather arrives.

Of course, you should not be pruning right now on shrubs that bloom early in the spring — not unless you're willing to give up most of next year's flowers.

Generally, people believe that pruning of trees and shrubs should not be done

the Eagles a 7-0 lead.

With just less than a minute remaining before halftime, the scoring pace picked up. Jesus Chapel struck first with 56 seconds showing on the clock when Matt Hoover pushed over from four yards out and the extra-point try failed.

Chris Kindle located Anthony Furgeson open in the end zone for a 14-yard scoring strike as the clock ticked down to 16 seconds and giving the Eagles a 13-6 advantage. But with the final tick remaining on the clock, the Chargers' John Moreira completed a 39-yard scoring toss and run to Josh Hunter. The kick after was good, giving the Chargers their first lead of the night, 14-13.

Until late in the third period, the teams exchanged blows like two boxers, with neither team scoring. With only 47 seconds remaining in the third period, Moreira hit Brady Paselk for a 22-yard scoring throw to increase the Chargers' lead. Jesus Chapel would find

paydirt twice more before the Eagles' Rodríguez would score on a one-yard dive. Furgeson's kick was good cutting the Eagles' deficit to 34-21.

The Chargers added six points to their tally with 2:25 left in the game.

Kindle fielded the ensuing kickoff and, using the wall set up by the return team, scampered 70 yards to cap the scoring.

Rodríguez led Three Way in rushing with 27 carries for 159 yards. Furgeson was Kindle's favorite target Friday night, catching four passes for a total of 70 yards. Three Way generated 14 first downs and gained 216 total yards of offense.

Jesus Chapel racked up 17 first downs by rushing for 205 yards on 41 carries, giving them a total offense of 433 yards. The Chargers' Hunter led all rushers with 23 carries for 177 yards.

The Eagles will host Wellman-Union at 7:30 p.m. Friday.

LOOKING FOR THE Best Deal On A New Pontiac Buick Or GMC Stop By Today!

RB RICHARD BARTON
"A familiar name known for service, honesty, and easy dealing"
3300 Mabry Drive Clovis, NM 88101 505-762-2986 / 1-888-569-1900

PONTIAC "Excitement Matters" BUICK "It's All Good" GMC "We are professional grade."

www.richardbarton.com
Se Habla Espanol

Eastern New Mexico University COLLEGE DAZE RODEO

LEWIS COOPER ENMU RODEO ARENA
PORTALES, NM

September 20-21-22
Nightly Performances at 7:30 p.m.

Ticket Prices:
\$5 for Adults
\$3 Students
ENMU Students Free with ID

Country & Western Dance
Friday, Sept. 21
9 p.m. - 1 a.m.
Campus Union Building
Sponsored by Collegiate FFA
Admission \$5

FOR MORE INFORMATION CALL 562-2269

Three Way falls to Jesus Chapel

By DELTON WILHITE
Journal correspondent

Perennial Texas Association of Private and Parochial Schools six-man powerhouse Jesus Chapel from El Paso visited the Three Way Eagles on Friday night. The Eagles stayed with the Chargers for the first 20 minutes but fell behind as the second half unfolded.

The Eagles fell 40-27, with the Chargers putting 26 points on the board in the second half to only 14 by Three Way.

Completions were the key difference between the two teams. The Eagles managed to grab only five of 14 passes for 65 yards while Jesus Chapel pulled down 12 of 17 for 228 yards.

With less than two and half minutes off the clock in the initial period, Eagle running back Robert Rodríguez streaked 14 yards to the end zone for the game's first tally of the night. Rhett Richardson then found Ivan Navarro open in the end zone to give

TORNADO • FLASH FLOOD • EARTHQUAKE • WINTER STORM • HURRICANE • FIRE • HAZARDOUS MATERIALS SPILL

Emergency Preparedness Checklist

The next time disaster strikes, you may not have much time to act. Prepare now for a sudden emergency.

Learn how to protect yourself and cope with disaster by planning ahead. This checklist will help you get started. Discuss these ideas with your family, then prepare an emergency plan. Post the plan where everyone will see it—on the refrigerator or bulletin board.

For additional information about how to prepare for hazards in your community, contact your local emergency management or civil defense office and American Red Cross chapter.

Emergency Checklist

Call Your Emergency Management Office or American Red Cross Chapter

- Find out which disasters could occur in your area.
- Ask how to prepare for each disaster.
- Ask how you would be warned of an emergency.
- Learn your community's evacuation routes.
- Ask about special assistance for elderly or disabled persons.

Also....

- Ask your workplace about emergency plans.
- Learn about emergency plans for your children's school or day care center.

Create an Emergency Plan

- Meet with household members. Discuss with children the dangers of fire, severe weather, earthquakes and other emergencies.
- Discuss how to respond to each disaster that could occur.
- Discuss what to do about power outages and personal injuries.
- Draw a floor plan of your home. Mark two escape routes from each room.
- Learn how to turn off the water, gas and electricity at main switches.
- Post emergency telephone numbers near telephones.
- Teach children how and when to call 911, police and fire.
- Instruct household members to turn on the radio for emergency information.
- Pick one out-of-state and one local friend or relative for family members to call if separated by disaster (it is often easier to call out-of-state than within the affected area).
- Teach children how to make long distance telephone calls.
- Pick two meeting places.

1) A place near your home in case of a fire.
2) A place outside your neighborhood in case you cannot return home after a disaster.

- Take a basic first aid and CPR class.
- Keep family records in a water and fire-proof container.

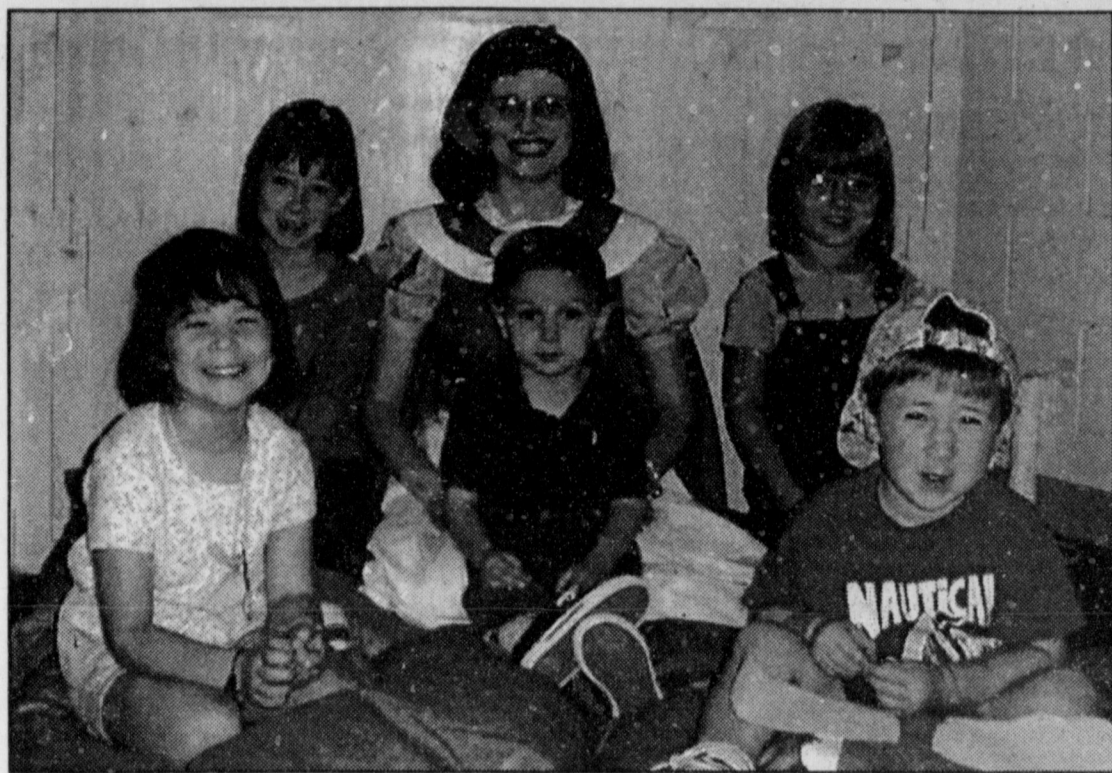
Prepare a Disaster Supplies Kit

Assemble supplies you might need in an evacuation. Store them in an easy-to-carry container such as a backpack or duffle bag.

Include:

- A supply of water (one gallon per person per day). Store water in sealed, unbreakable containers. Identify the storage date and replace every six months.
- A supply of non-perishable packaged or canned food and a non-electric can opener.
- A change of clothing, rain gear and sturdy shoes.
- Blankets or sleeping bags.
- A first aid kit and prescription medications.
- An extra pair of glasses.
- A battery-powered radio, flashlight and plenty of extra batteries.
- Credit cards and cash.
- An extra set of car keys.
- A list of family physicians.
- A list of important family information; the style and serial number of medical devices such as pacemakers.
- Special items for infants, elderly or disabled family members.

Brought to you by
BAILEY COUNTY RED CROSS STEERING COMMITTEE MEMBERS:
Noe Anzaldúa, Lt. Otis Carpenter, Jarlet Claborn, Donna Kirk and Robert Montgomery
AND MULESHOE JOURNAL STAFF MEMBERS:
Scott Stinnett, Lisa Stinnett, Rom Smith, Leah Bell, Beatrice Moran and Yolanda Martínez



Courtesy photo: Muleshoe Area Public Library

Snow White visits library

Gathered for last Monday's reading program at Muleshoe Area Public Library for a program on "Snow White" are (from left) Kayla Preston, Stephanie Stancell, "Snow White" Dyan Shipley holding Zachary Duncan, Bethany Prater and Austin Stancell. Next Monday, the program will celebrate the first day of fall with stories about autumn.

Eighth-grade Mules annihilate Slaton Tiger Cubs

By DELTON WILHITE
Journal correspondent

The eighth-grade Mules opened the 2001 football season exactly as they ended their 2000 season — with a victory. A 50-0 victory, in fact.

This group has yet to be defeated on the football field, and the future does appear bright.

The Mules spent a majority of the first half in the Slaton Tiger Cubs' end zone. After the first 16 minutes, the Mules were on top 42-0.

The Cubs kicked off to start the second half and Juan Carlos Reyes fielded the ball on the Mule 20-yard line. He cut to the sideline behind a wall of blockers and returned the ball 80 yards for the Mules final touchdown of the day.

TODAY'S RECIPE

- SUGAR COOKIES**
1/2 cup butter or margarine, softened
3/4 cup sugar
1 egg
1 tsp. vanilla
2 cups all-purpose flour
1/2 tsp. baking soda
1/4 tsp. salt

Place butter and sugar in a mixer bowl. Attach the bowl and flat beater to mixer. Beat at Speed 6 for about 1 1/2 minutes.

Stop and scrape bowl. Add egg and vanilla. Beat for about another minute at Speed 6.

Combine flour, soda and salt; add to mixer bowl. Beat for about 30 seconds at Speed 4. Stop and scrape bowl. Beat for about another 30 seconds at Speed 4.

Shape dough into a ball. Wrap in plastic wrap. Chill in refrigerator for two to three hours.

Divide dough into thirds and roll each portion 1/8-inch thick on lightly floured waxed paper.

Cut with cookie cutters and place on lightly greased baking sheets.

Bake at 375 degrees for seven to 10 minutes or until edges are light brown.

Remove from baking sheets immediately and cool on wire racks. Yield: 48 servings.

Kevin Kilmer called the signals for the extra-point attempt and dropped back and found Brady Black open in the end zone to raise the score to 50-0.

Reyes' kick off return was his third visit to the end zone in the game. He had

made a 26-yard run for the Mules' first points of the day and then got back in the end zone on a 55-yard run. He also added the two extra points after a Kilmer-to-Black toss that covered 53 yards.

The other touchdowns

came when Jared Flores broke loose for a 19-yard run and Black ran 53 yards to paydirt. Rodrigo Mendoza covered 46 yards on his journey to the end zone.

Offense is only part of the story for these Mules.

feating the Slaton Tiger Cubs.

Dustin Barker and Eric Washington shared the majority of the carries for the night. T.J. Brantley and Conner proved to be Robertson's favorite targets as the Mules mixed the run and pass to keep the Cubs off balance on defense.

The game opened with the Mules fumbling the kickoff, allowing Slaton to set up shop on the Mule 40. Washington, Cade Smith and Francisco Ramirez made tackles that stopped Slaton's initial drive.

Facing a fourth and 19, the Cubs tried to run a pitch wide, but Washington got to the Cub quarterback as he pitched the ball. The ball

hit the ground and Brantley covered it, giving the Mules possession on their 46.

The Mules drove the ball to the Cubs' three but fumbled it away to Slaton.

The defense again stepped up and refused to allow the Cubs to move the ball. Slaton lined up in punt formation, but Conner sniffed out the fake and tackled the Cub ball carrier in the end zone, giving the Mules a 2-0 lead.

The Mule defensive philosophy is to bend and not break, waiting for the opposition to make a mistake. This team has learned its lessons well and shut out the Cubs in the second half.

The seventh-graders face Friona at home Sept. 20.

PUBLIC NOTICE

BRIEF EXPLANATORY STATEMENTS OF PROPOSED
CONSTITUTIONAL AMENDMENTS
Special Election
NOVEMBER 6, 2001

PROPOSITION 1 (HJR 52)

Proposition 1 would amend the constitution to relinquish the state's claim to certain disputed land in Bastrop County. The amendment would confirm legal title to that land, excluding any mineral interests, to the individuals who hold a disputed title to the land. The amendment would prevent a loss of title by people who bought and paid for property that was never transferred by the state because of faulty surveys.

The proposed amendment will appear on the ballot as follows: "The constitutional amendment providing for the clearing of land titles by the release of a state claim of its interest to the owners of certain land in Bastrop County."

PROPOSITION 2 (SJR 37)

Proposition 2 would amend the constitution to establish the process for issuing up to \$175 million of state general obligation bonds and notes to provide aid to counties for access road projects to serve border colonies. Generally, a colonia is an economically distressed geographic area with inadequate public services (such as water supplies, sewer services, or paved roads) in a county without adequate resources to provide such services. These projects could include the construction of access roads, the acquisition of materials used in maintaining those roads, and projects related to the construction of those roads, such as road drainage. The Texas Transportation Commission, in consultation with the Governor, would be authorized to determine what constitutes a border colonia for purposes of selecting the counties and projects that would receive assistance.

The proposed amendment will appear on the ballot as follows: "The constitutional amendment authorizing the issuance of state general obligation bonds and notes to provide financial assistance to counties for roadway projects to serve border colonies."

PROPOSITION 3 (SJR 47)

Proposition 3 would amend the constitution to authorize the legislature to exempt green coffee and raw cocoa held in Harris County from property taxes in order to qualify Harris County as an exchange port for coffee by the New York Board of Trade. The authorization of exemption would not apply to any other county.

The proposed amendment will appear on the ballot as follows: "The constitutional amendment to authorize the legislature to exempt from ad valorem taxation raw cocoa and green coffee that is held in Harris County."

PROPOSITION 4 (HJR 1)

Proposition 4 would amend the constitution by setting the term of the fire fighters' pension commissioner at four years. The constitution currently provides that the duration of all offices not otherwise fixed by the constitution may not exceed two years.

The proposed amendment will appear on the ballot as follows: "The constitutional amendment providing for a four-year term of office for the fire fighters' pension commissioner."

PROPOSITION 5 (SJR 32)

Proposition 5 would amend the constitution to allow a municipality to donate outdated or surplus equipment, supplies, or other materials used in fighting fires to an underdeveloped country. Current state law does not allow anything of value belonging to the state or its political subdivisions to be donated to another nation.

The proposed amendment will appear on the ballot as follows: "The constitutional amendment authorizing municipalities to donate outdated or surplus firefighting equipment or supplies to underdeveloped countries."

PROPOSITION 6 (HJR 45)

Proposition 6 would amend the constitution to require the governor to call a special session of the legislature so that the legislature can appoint presidential electors when the governor determines that it is reasonably likely that the outcome of the election for a presidential candidate's electors will not be clearly determined in time for the appropriate deadline to cast their votes. Under current law, when the people vote for a particular candidate for president, in reality they are voting for that candidate's electors who will meet to cast their votes for president. If the electors are not determined by the certification date, no electoral votes may be cast for the state. The proposed amendment ensures that the state's electoral votes will be cast.

The proposed amendment will appear on the ballot as follows: "The constitutional amendment requiring the governor to call a special session for the appointment of presidential electors under certain circumstances."

PROPOSITION 7 (HJR 82)

Proposition 7 would amend the constitution to authorize the Veterans' Land Board to issue and sell up to \$500 million of additional general obligation bonds to finance additional home mortgage loans to veterans. Additionally, the proposed amendment would authorize the Veterans' Land Board to use assets from the land and housing assistance funds to create, operate, and improve veterans' cemeteries.

The proposed amendment will appear on the ballot as follows: "The constitutional amendment authorizing the Veterans' Land Board to issue up to \$500 million in general obligation bonds payable from the general revenues of the state for veterans' housing assistance and to use assets in certain veterans' land and veterans' housing assistance funds to provide for veterans cemeteries."

PROPOSITION 8 (HJR 97)

Proposition 8 would amend the constitution to allow the legislature to authorize the Texas Public Finance Authority to issue and sell up to \$850 million of general obligation bonds. The proceeds of the sale of the bonds would pay for construction and repair projects or for the purchase of needed equipment by the General Services Commission, the Texas Youth Commission, the Texas Department of Criminal Justice, the

Texas Department of Mental Health and Mental Retardation, the Parks and Wildlife Department, the adjutant general's department, the Texas School for the Deaf, the Department of Agriculture, the Department of Public Safety, the State Preservation Board, the Texas Department of Health, the Texas Historical Commission, or the Texas School for the Blind and Visually Impaired.

The proposed amendment will appear on the ballot as follows: "The constitutional amendment authorizing the issuance of up to \$850 million in bonds payable from the general revenues of the state for construction and repair projects and for the purchase of needed equipment."

PROPOSITION 9 (HJR 47)

Proposition 9 would amend the constitution to authorize the legislature to provide for filling vacancies in the legislature without an election if only one person is a qualified candidate in the election to fill the vacancy. Under current law, a special election must be held to fill a vacancy in the legislature even if there is only one qualified candidate.

The proposed amendment will appear on the ballot as follows: "The constitutional amendment authorizing the filling of a vacancy in the legislature without an election if a candidate is running unopposed in an election to fill a vacancy."

PROPOSITION 10 (SJR 6)

Proposition 10 would amend the constitution to authorize the legislature to exempt certain items of personal property from property taxation by political subdivisions of the state if the property is warehoused temporarily in a location in Texas to be assembled, stored, manufactured, processed, fabricated, or repaired and then forwarded to another location inside or outside Texas. The proposed amendment would authorize a political subdivision that imposes ad valorem taxes, at its option, to tax this type of property after a local public hearing on the matter.

The proposed amendment will appear on the ballot as follows: "The constitutional amendment to promote equal tax treatment for products produced, acquired, and distributed in the State of Texas by authorizing the legislature to exempt from ad valorem taxation tangible personal property held at certain locations only temporarily for assembling, manufacturing, processing, or other commercial purposes."

PROPOSITION 11 (HJR 85)

Proposition 11 would amend the constitution to allow a schoolteacher, a retired schoolteacher, or a retired school administrator who serves as a member of a governing body of a school district, city, town, or other local governmental district, including a water district, to receive compensation for serving on such a governing body. Currently, state employees or other individuals who are compensated directly or indirectly from state funds are barred from receiving a salary for such service.

The proposed amendment will appear on the ballot as follows: "The constitutional amendment to allow current and retired public school teachers and retired public school administrators to receive compensation for serving on the governing bodies of school districts, cities, towns, or other local governmental districts, including water districts."

PROPOSITION 12 (HJR 75)

Proposition 12 would amend, repeal, or relocate several sections of the current

constitution to improve the clarity, organization, and consistency of the constitution.

The proposed amendment will appear on the ballot as follows: "The constitutional amendment to eliminate obsolete, archaic, redundant, and unnecessary provisions and to clarify, update, and harmonize certain provisions of the Texas Constitution."

PROPOSITION 13 (SJR 2)

Proposition 13 would amend the constitution to allow the legislature to authorize a board of trustees of an independent school district to donate real property and improvements formerly used as a school campus in order to preserve that property. The board may make the donation if the board determines that the property has historical significance, that the donation will help to preserve the property, and that the school district no longer needs the property for educational purposes.

The proposed amendment will appear on the ballot as follows: "The constitutional amendment authorizing the legislature to authorize the board of trustees of an independent school district to donate certain surplus district property of historical significance in order to preserve the property."

PROPOSITION 14 (HJR 44)

Proposition 14 would amend the constitution to allow the legislature to authorize a taxing unit, other than a school district, to exempt travel trailers from property taxation as long as the travel trailers are lawfully registered with the state and are not held or used for the production of income.

The proposed amendment will appear on the ballot as follows: "The constitutional amendment to authorize the legislature to authorize taxing units other than school districts to exempt from ad valorem taxation travel trailers that are not held or used for the production of income."

PROPOSITION 15 (SJR 16)

Proposition 15 would amend the constitution to create the Texas Mobility Fund, which would be administered by the Texas Transportation Commission. The Fund would finance the construction, acquisition, and expansion of state highways and would pay a portion of the costs of public toll roads and other public transportation projects. The legislature may reserve specific sources of state revenue for the Fund and may authorize the Commission to guarantee the payment of any obligations or credit agreements with the full faith and credit of the state. The attorney general shall determine the legality of any such obligations or credit agreements.

The proposed amendment will appear on the ballot as follows: "The constitutional amendment creating the Texas Mobility Fund and authorizing grants and loans of money and issuance of obligations for financing the construction, reconstruction, acquisition, operation, and expansion of state highways, turnpikes, toll roads, toll bridges, and other mobility projects."

PROPOSITION 16 (HJR 5)

Proposition 16 would amend the constitution to reduce the waiting period required for a valid home improvement lien on a homestead from 12 days to 5 days. Currently, a lien may not attach to a homestead for a home improvement loan if the homeowner executed a contract for the improvements less than 12 days after applying for the loan. In addition, the proposed amendment would

authorize the conversion and refinancing of a personal property lien secured by a manufactured home to a lien on a homestead.

The proposed amendment will appear on the ballot as follows: "The constitutional amendment prescribing requirements for imposing a lien for work and material used in the construction, repair, or renovation of improvements on residential homestead property and including the conversion and refinancing of a personal property lien secured by a manufactured home to a lien on real property as a debt on homestead property protected from a forced sale."

PROPOSITION 17 (HJR 53)

Proposition 17 would amend the constitution to allow the state to relinquish claim to certain state land and to clear title defects for persons who claim title to those lands. The proposed amendment would apply to land whose owners have disputed title to the land, but for which no patent from the state, giving clear title to the land, was ever issued. Among other requirements, all of the taxes due on the land must have been paid. Under current law, there is no procedure allowing the state to settle title disputes without a constitutional amendment for each piece of land in dispute.

The proposed amendment will appear on the ballot as follows: "The constitutional amendment authorizing the legislature to settle land title disputes between the state and a private party."

PROPOSITION 18 (SJR 49)

Proposition 18 would amend the constitution to authorize the legislature to create a program to consolidate and standardize the collection, deposit, reporting, and payment of criminal and civil court fees. If the legislature creates such a program, any new fees imposed by the legislature may not take effect before January 1 of the following year, unless an earlier effective date is approved by a vote of two-thirds of the members of each house of the legislature.

The proposed amendment will appear on the ballot as follows: "The constitutional amendment to promote uniformity in the collection, deposit, reporting, and remitting of civil and criminal fees."

PROPOSITION 19 (HJR 81)

Proposition 19 would amend the constitution to allow the Texas Water Development Board to issue up to \$2 billion of additional general obligation bonds. The Board issues bonds to pay for water supply projects, water quality enhancement projects, flood control projects, state participation in water and wastewater facilities, and projects for economically distressed areas. Current law limits the amount of bonds that the Board can issue.

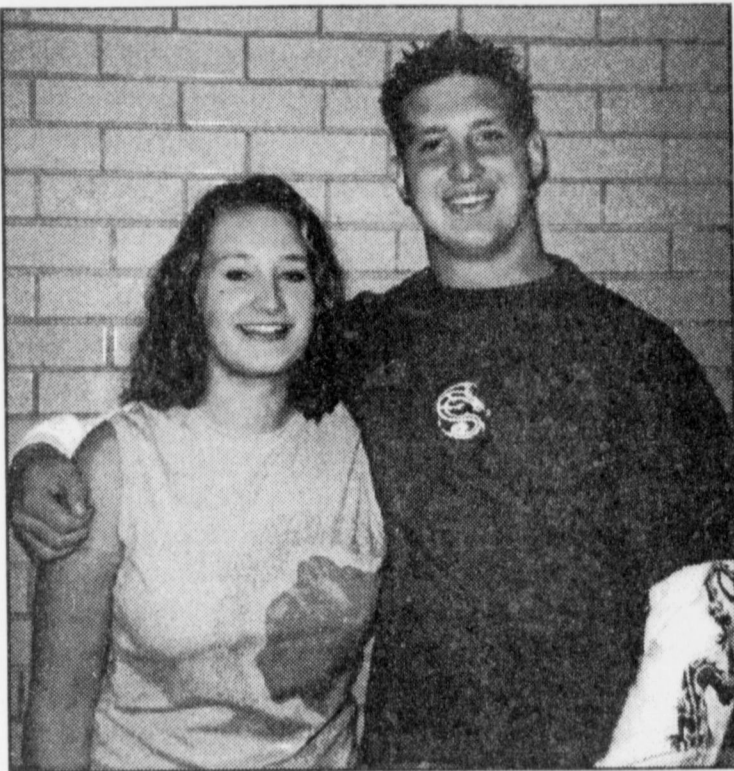
The proposed amendment will appear on the ballot as follows: "The constitutional amendment providing for the issuance of additional general obligation bonds by the Texas Water Development Board in an amount not to exceed \$2 billion."

Estos son los informes explicatorios sobre las enmiendas propuestas a la constitución que aparecerán en la boleta el 6 de noviembre de 2001. Si usted no ha recibido una copia de los informes en español, podrá obtener una gratis por llama al 1/800/252/8683 o por escribir al Secretario de Estado, P.O. Box 12060, Austin, TX 78711.

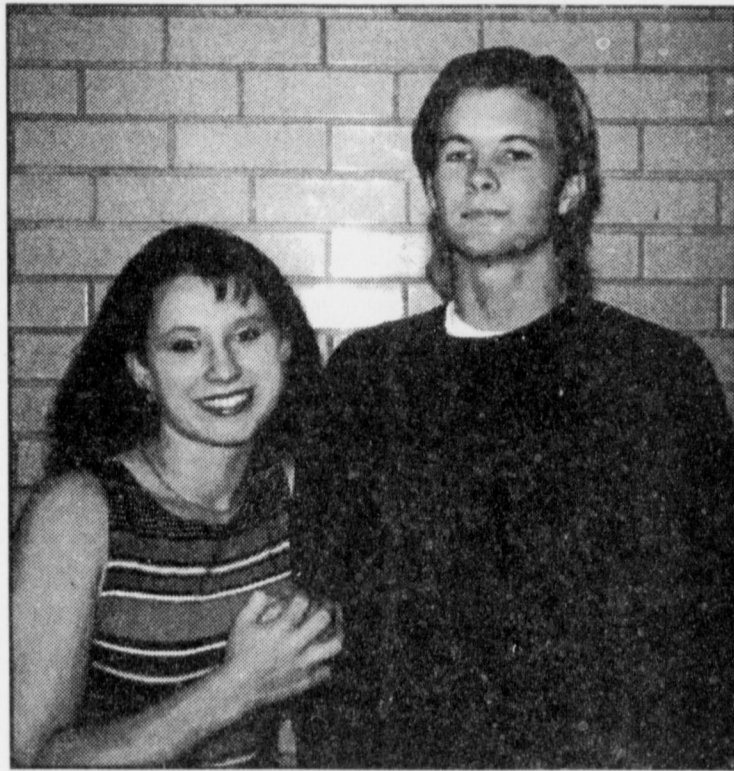
PUBLISHED BY SECRETARY OF STATE HENRY CUELLAR, Ph.D.

ACE SCHWINN BICYCLES
On the Corner of 1st & Main, Clovis
9 am - 5:30 pm - Mon. - Sat.
The ONLY full-service bicycle dealer in the Clovis area.
Trained Technicians • Large Parts Inventory • Guaranteed Service
An authorized dealer of Schwinn Cycling & Fitness Co.

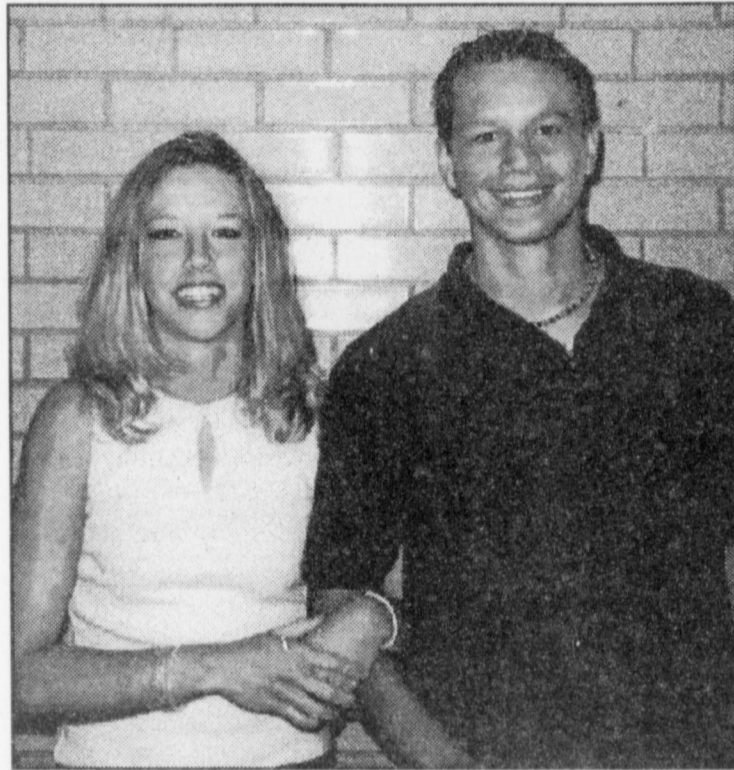
Lazbuddie homecoming candidates



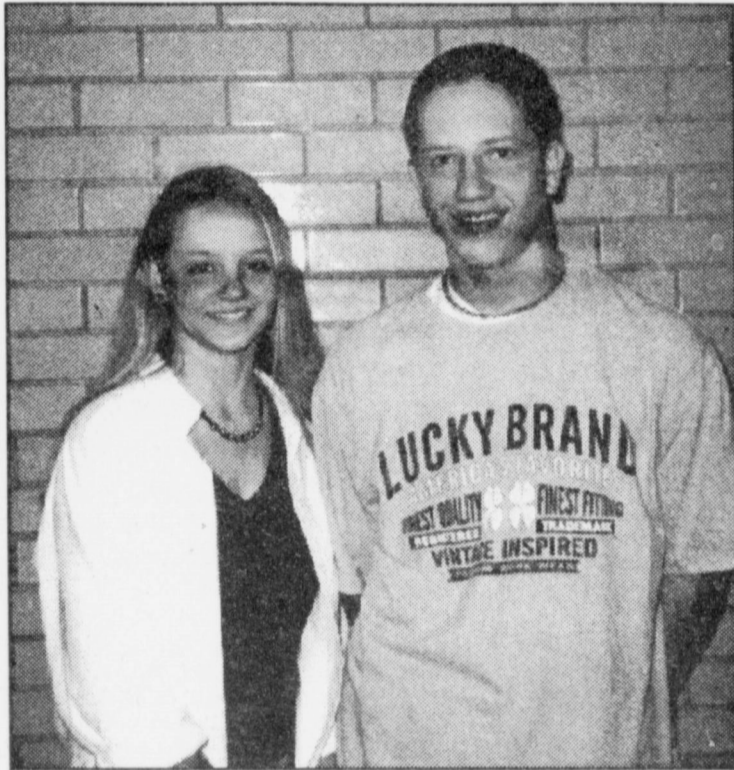
Kelsey Jones and Jake Loudder



Kayla Kimbrough and Trey Nickels



Savannah Black and Tobin Redwine



Jodie Coker and Shannon Redwine

Children's Chorale auditioning

A second round of auditions for the High Plains Children's Chorale at Clovis Community College has been scheduled for Sept. 20 from 4 p.m. to 5 p.m. (Mountain time).

Auditions will be held in Room 186 on campus. A Christmas holiday program is planned for December; rehearsals will be on Thursday evenings. There is a \$25 tuition fee.

Retirement Sale
All Ready To Wear

60 - 75% Off

Still have a good selection of

- LADIES JEANS
- DENIM SLACKS & SHORTS
- ARROW DRESS SHIRTS
- LADIES SPORTSWEAR (including some Fall merchandise)
- LINGERIE
- GIRLS INFANT-14 SIZES
- Entire stock of Hanes
- HOSIERY 50% OFF**

Items for sale also include:

- Cash Registers • Bow Maker
- Racks • Wrapping Paper & Ribbon

Tiffin II

715 E. Hwy. 70 • Earth, TX • 257-2223

Fireplace can make home warm and cozy

SPECIAL TO THE JOURNAL
With fall's chillier temperatures, choosing a new fireplace can be a priority. Just remember it costs to keep the home fires burning.

"Today's fireplace is a quantum leap ahead of the standard stonework of years past," said Richard Roll, president of American Homeowners Association. "Fireplaces must burn more efficiently from a design perspective and as a result of air pollution and energy-efficiency rules."

Whether installing a fireplace in an existing home or selecting a builder's option for a new home, the choice boils down to two options: wood-burning or gas-fueled.

At the lower end of the price scale are the popular gas fireplaces, typically under \$2,000 installed.

Gas has several advantages. First, gas units are easy to install because no chimney is required—just a direct vent to the outside air.

Gas fireplaces are adjustable, too, and there are no ashes to clean up.

On the downside, operating costs are higher since natural gas prices have soared recently.

A traditional, crackling wood fire still may be desired, though it may cost more—to the tune of several thousand dollars installed.

To meet stiff anti-pollution standards, they must burn cleanly — which means achieving operating temperatures up to 2,000 degrees Fahrenheit. Crank the thermostat down

and enjoy the radiant warmth for hours after the fire burns out.

The pellet stove is a compromise for the wood purist who can't quite pic-

ture gas as a fuel. Pellets store easily and burn longer than raw wood.

More information on any aspect of buying or owning a home is available at

www.realhome.com or www.ahahome.com.

You snooze, you lose. Read the News!

HOROSCOPES

SEPTEMBER 23-29 For entertainment purposes only

Aries - March 21/April 20
Be aggressive when it comes to something that you want early in the week, Aries. No one is going to hand it to you. You have a lot going on, and this money can make some things a little easier. Be supportive, and try to help him or her. However, tell him or her how you really feel about the situation.

Taurus - April 21/May 21
An unexpected windfall has people knocking on your door this week. Don't try to help others until you help yourself. You have a lot going on, and this money can make some things a little easier. An acquaintance wants to start a relationship with you. Think about your feelings before answering him or her.

Gemini - May 22/June 21
A business crisis has co-workers on edge. Don't get upset. Remain calm, and try to find a way to help the situation. The answer is right in front of you. That special someone has a surprise for you. Let him or her know how much you appreciate it. Aries plays an important role on Wednesday.

Cancer - June 22/July 22
A disagreement with a loved one turns into a family feud. Before you add fuel to the fire, think about what you really want to happen. You don't need everyone angry with each other. So, try to calm things down. If you stay relaxed, you can get others to listen to you. A close friend offers you constructive criticism. Listen to him or her.

Leo - July 23/August 23
Before you jump to conclusions about a difficult situation, Leo, find out the facts. There is more going on here than you know. If you overreact, you're just going to make yourself look foolish. You meet an intriguing person late in the week. Be yourself, and you're sure to make a good impression.

Virgo - Aug 24/Sept 22
Don't be too critical of yourself early in the week, Virgo. You have nothing to do with a business dispute. Instead of beating yourself up, try to help the situation. Your logical argument will help those involved to resolve things. A close friend needs romantic advice.

Libra - Sept 23/Oct 23
It's a good thing that you like people, because you have to deal with a lot of them this week. Your professional career and your personal plans put you right in the middle of some important discussions. Stay focused, and you can make valuable contributions.


Scorpio - Oct 24/Nov 22
Don't fly off the handle when you hear distressing news late in the week. People are counting on you to be strong. Stay calm, and you can work things out. An old friend wants to see you. Say yes, because you really should hear what he or she has to say. Cancer plays a key role.

Sagittarius - Nov 23/Dec 21
A chance occurrence early in the week makes you remember an event from long ago. Enjoy the memories, but don't live in the past. Look toward the future. A loved one asks for your help with a family problem. Be supportive. Capricorn plays an important role during the weekend.

Capricorn - Dec 22/Jan 20
That special someone calls it quits, Capricorn. While you're upset, try to move on. He or she really isn't the right person for you, and deep down inside, you know that. A close friend has good news that he or she wants to share with you. Help him or her celebrate in style.

Aquarius - Jan 21/Feb 18
Even though it may feel like it, you're not alone this week, Aquarius. Your friends and loved ones are there for you. Open up to them, because they want to help you solve your problems. A close family friend will have the best advice for you. You meet an interesting person late in the week. Don't be shy.

Pisces - Feb 19/March 20
You have a lot going for you, Pisces — don't let it slip away by being too cavalier. Go after what you want. A loved one asks for your advice about a romantic relationship. Don't be too shy to tell him or her what you really think. Your honesty is what's needed.



Muleshoe Cattle Market
SATURDAY, SEPT. 15, 2001

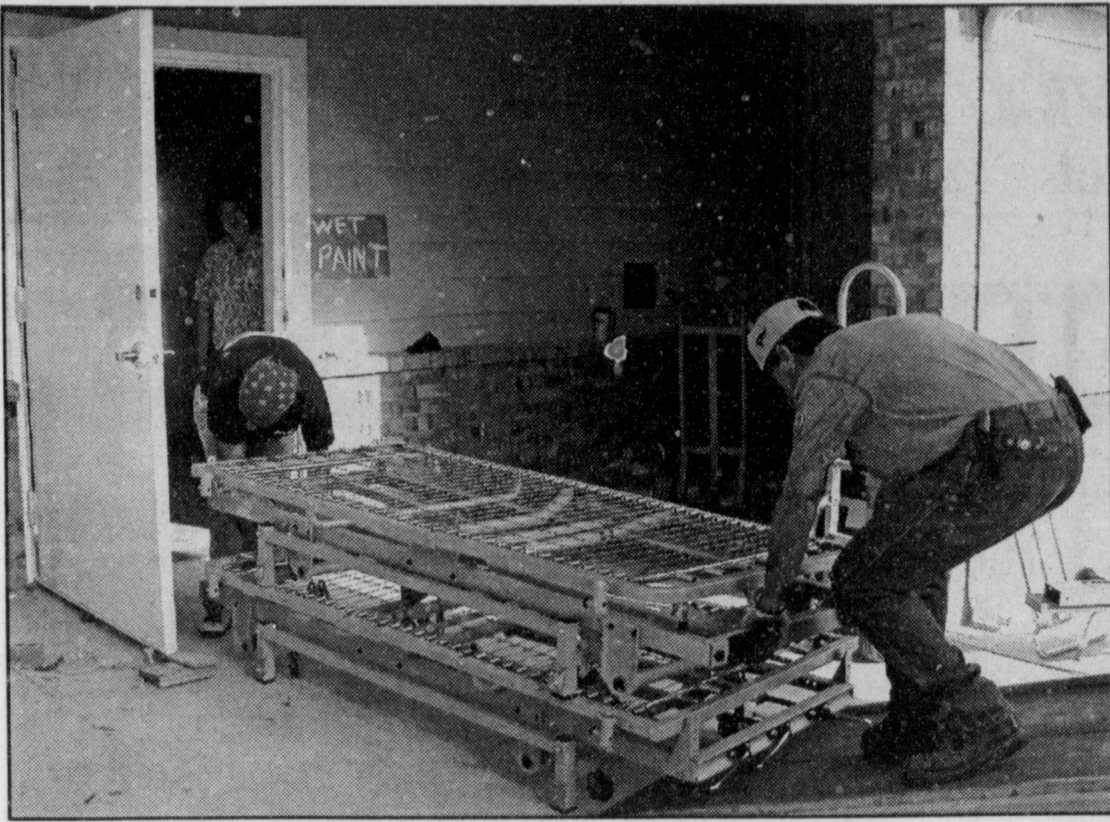
REPRESENTATIVE SALES

843 head of cattle, 102 hogs and 337 sheep and goats for a total of 1,282 animals were sold at the Sept. 15th sale. Market steady to 2 dollars lower on stocker cfs. Feeder cattle steady. Pairs and Bred cows higher. Packer cows and Bulls steady.

The Muleshoe Cattle Market is brought to you each week by Muleshoe Livestock Auction, located east of Muleshoe on U.S. 84. Muleshoe Livestock conducts sales every Saturday, beginning with hogs, sheep and goats at 10 a.m. and cattle following at approximately noon.

FOR INFORMATION ON SALES OR TO CONSIGN CATTLE, CALL (806) 272-4201

Seller, City	#	Type	Wt.	CWT or PH
Jean Glenn, Elida, NM	2	Blk. Strs.	243 lbs.	at \$141.00
John Casey, Elida, NM	3	Blk. Bulls	287 lbs.	at \$130.00
John Casey, Elida, NM	2	Blk. Bulls	315 lbs.	at \$121.00
Joe Miller, Amherst	4	Mxd. Strs	420 lbs.	at \$113.00
Joe Miller, Amherst	3	Red Strs	463 lbs.	at \$111.00
Joe Miller, Amherst	14	Mxd. Strs	519 lbs.	at \$98.00
Jimmy Cooper, Monument, NM	2	Blk. Strs	383 lbs.	at \$125.00
Chris Cleveland, Plains	3	Blk. Strs	467 lbs.	at \$108.00
A&B Cattle, Muleshoe	2	Blk. Strs	638 lbs.	at \$93.50
A&B Cattle, Muleshoe	13	Blk. Strs	719 lbs.	at \$86.50
Birdwell Cattle, Hereford		Blk. Hfr	340 lbs.	at \$104.00
J&M Ent., Clovis, NM		RWF Hfr	340 lbs.	at \$109.00
KP Farms, Lubbock	9	Blk. Hfrs	376 lbs.	at \$107.00
KP Farms, Lubbock	8	Blk. Hfrs	434 lbs.	at \$98.00
Joe Miller, Amherst	5	Red Hfrs	401 lbs.	at \$104.00
Joe Miller, Amherst	10	Mxd. Hfrs	522 lbs.	at \$90.50
Jimmy Cooper, Monument, NM	5	Mxd. Hfrs	452 lbs.	at \$95.00
Jimmy Cooper, Monument, NM	6	Mxd. Hfrs	518 lbs.	at \$89.00
Jimmy Cooper, Monument, NM	4	Mxd. Hfrs	630 lbs.	at \$80.00
A&B Cattle, Muleshoe	4	Blk. Hfrs	679 lbs.	at \$80.50
JimPat Claunch, Enochs		Blk. Pair		\$810.00
JimPat Claunch, Enochs		RMF Pair		\$840.00
JimPat Claunch, Enochs	3	Char. Cows P5		\$530.00
JimPat Claunch, Enochs		Brin. Cow P7		\$650.00
JimPat Claunch, Enochs	2	Char. Cows P8		\$700.00
Tommy Lewis, Morton	2	Mxd. Cows	1135 lbs.	at \$44.50
Phil Wienast, Springlake		Gray Cow	1095 lbs.	at \$45.00
Roy Hartzog, Bovina		Blk. Cow	1350 lbs.	at \$44.50
Kelly Harrison, Muleshoe		Blk. Cow	1290 lbs.	at \$44.00
Jimmie T. Cooper, Monument		Limo. Bull	1785 lbs.	at \$61.75
Jimmie T. Cooper, Monument		Limo. Bull	1930 lbs.	at \$60.50



Journal photo: Beatrice Morin

Home furnishings

Doug Logsdon (right) of Muleshoe Area Hospital District maintenance helps with Tuesday's unloading of furniture at Park View, the district's new nursing home scheduled to be dedicated Sept. 29. On the other end of the load is José Ibarra of Wheaton Moving Services, while Robin Dickerson, the district's food-service manager, watches from the doorway. The public dedication is scheduled to begin at 2 p.m.

Quail numbers down this year

With quail season scheduled to begin Oct. 27, Texas Parks and Wildlife biologists are saying that the birds' numbers are down considerably this year throughout the Panhandle area according to roadside surveys. The surveys are conducted annually in August. This year, 42 surveys were conducted in the Panhandle and Rolling Plains regions, according to biologist Charlie Newberry of Lockney. The results showed an average of nine birds per route compared to 14.8 birds per route last year. Newberry predicts a "fair" hunting season. "Quail numbers

appear to be slightly lower this year when compared to last year, so hunters might have to work a little harder in some counties to be successful," he said. The highest concentrations of quail in the region are off the Caprock in Kent, Fisher, Collingsworth, Motley, Stone-wall, Foard and Cottle counties, he added. The up-and-down change in quail numbers can be attributed to several factors such as the availability of quality habitat, amount and timing of precipitation, and land-management practices. Precipitation at the right time

encourages the growth of grasses, weeds, seeds and insects, which are essential for feeding, nesting, protective cover, and rearing of young birds. Landowners and managers who want to learn more about what they can do to better manage should contact a local Parks and Wildlife biologist or call the district office at (806) 655-3782. This year's season runs through Feb. 24 with a daily bag limit of 15 birds and a possession limit of 45 birds. Legal shooting hours are half an hour before sunrise to half an hour after sunset.

LETTERS TO THE EDITOR

Dear Editor,

I would like to commend the manager and employees at McDonald's in Muleshoe.

On Aug. 26, we went to the restaurant after church with friends. I left my purse sitting under the table.

I didn't realize what I had done until the next morning. I made a mad dash to McDonald's, almost frantic, only to find my purse—the employees had found it and stored it in a safe place. Words cannot express what relief I felt.

I am so thankful to live in a small town where people care about others and honesty still prevails.

People sometimes put down our teen-agers, but I want you to know there were a lot of teens working at McDonald's Sunday night. I want to praise them.

McDonald's has been an asset to our community in many ways, but they certainly won me over even more after my experience. **LOUVENIAGARLINGTON Muleshoe**

Dear Editor,

It never ceases to amaze me, going into our communities as an outreach worker, the depth of commitment that people have in, and the desire for, making their communities better places in which to raise families.

For the second time in two years, representatives

of Muleshoe service and health agencies, businesses such as Leal's Restaurant, individuals, and media such as radio station KMUL, have lent their support to a community health fair that has provided information, referral services and health screenings.

I salute your good will in allowing this Catholic Family Services representative to come into your community and initiate these projects, and I applaud your past and present efforts.

My most sincere gratitude to Gail Gladden with Texas Cooperative Extension and to the women from TRLA-Plainview, SHAPES, South Plains Health Providers, the Texas Department of Human Services-Muleshoe and, last but not least, the sponsorship from Victor Leal and the support of the Gladden family. **SOILA REYES Plainview**

Dear Editor,

On behalf of members of the nursing-home furnishing committee, I want to commend the community for the support and contributions that will furnish rooms at our new care facility, Park View.

Because you care and you contributed generously, this committee has reached its first goal of \$110,000.

We will continue to work on the second-phase goal,

and with your help we will reach it.

It is rewarding to see our community work together for the betterment of our residents at Park View.

Each committee member is pleased with the warm reception of the many willing donors. We appreciate each one, as well as others such as volunteers at donation booths at Leal's Restaurant, Lowe's Marketplace, United Supermarket, Sheryl the artist, Bob Stovall Printing, Channel 6, KMUL Radio and the Muleshoe Journal, cooks and servers of hamburgers and fajitas, makers of homemade ice cream, organizers and workers for Friends of Gordon Wilson and Friends of Charles Lewis and many more who worked behind the scenes to make this project a success. Your efforts made it possible to furnish the rooms at Park View. Committee members are James Allison, Hubert Kidd, Marlene Martin, Darlene Henry, Glen Williams, Rheata White, Donald and Norma Prather, Chester and Elinor Yerby and Ronnie Holt. Please plan to attend the dedication ceremony for the facility at 2 p.m. Sept. 29 at 1100 W. Avenue J. **KENNETH R. HENRY Committee chairman Muleshoe**

Journal Classifieds

STOP & SHOP

Deadlines are 5 p.m. Monday and Thursday

Call 272-4536

September 20, 2001

FARM SERVICE

Albo's Custom Harvesting

HAS THE NEWEST, MOST COST-EFFICIENT EQUIPMENT FOR CUSTOM COMBINING BLACK-EYE PEAS, MILO, ETC. ALSO, WHEAT PLANTING (One No Till Drill, One Regular), & SHREDDING. CALL 806-272-5385 or 806-946-8841

HELP WANTED

The Town & Country Difference

BUSINESS IS GROWING!
TOWN & COUNTRY IS NOW SEEKING TO FILL EVENING & OVERNIGHT SHIFTS

- ADVANCEMENT AVAILABLE
- REGULAR RAISE STRUCTURE
- COLLEGE TUITION REIMBURSEMENT
- FULL/PART TIME
- FLEXIBLE SHIFTS
- INSURANCE PLAN
- WEEKLY PAYCHECK
- 2 WEEKS PAID PERSONAL LEAVE

DAY & EVENING SHIFTS \$5.75 STARTING
OVERNIGHT SHIFTS \$6.00 STARTING

SEE STORES FOR APPLICATION
PRE-EMPLOYMENT DRUG TESTING REQUIRED
EQUAL OPPORTUNITY EMPLOYER

Good Value. Great People.

REAL ESTATE

Completely Remodeled 3 1/2 Home. 1 mile North of Muleshoe. Garage, Storage, Barn & Corrals. New Septic, Roof & Stucco. 26.25 Acres Included. Contact 797-1066.

Land of the Free and Home of the Brave!

REAL ESTATE

Home For Sale
3-1-1 brick home. Very well maintained. 807 W. Ave. J. 272-6782

Put our classified section to work for you. Call Beatrice at 272-4536.

REAL ESTATE

FOR SALE BY OWNER
RICHLAND HILLS AREA
3 bedrooms, 2 baths, living room, sunroom, 2 fireplaces, basement, carport, central heating & air, plus storage bldg. Approximately 3,000 sq. ft. By appointment only! Call 272-4943 or 272-4903

God is in the details!

REMODELING

Colonial Contracting Remodeling • Additions
Bathrooms • Kitchens
Framing • Drywall
Painting • Ceramic Tile & Roofing
Serving West Texas For All Your Construction Needs!
License • Bond • Insured
Free Estimates!
Call 505-799-1011 or 505-762-7689

CHILD CARE

Need a babysitter? Mother of one looking to babysit 1 to 2 kids on weekdays. Mon.-Fri. Charging \$75 a week per child. If interested please call 272-8912.

HELP WANTED

INTERNATIONAL BUSINESS NEEDS HELP! Work from home. Mail order/e-commerce. \$500-\$5000/Mo. PT/FT. Free information. 888-395-4225 www.cymoneytalk.com

FOR SALE

For Sale - Lennox Natural Gas Forced Air Horizontal Furnace 120,000 btu & Air Conditioner Down Draft, 2 Speed, 5,500 cfm. Call 272-4662.

Need CDL Drivers with tanker and HAZMAT endorsement. Muleshoe area. Great benefits! Call Terry-Toll Free: 866-273-5966 ext. 148

GARAGE SALE

HUGE 3- Family Garage Sale. Furniture, all sizes of clothes, yam, toys, & lots of miscellaneous. Farm Road 1760 (Portales cutoff). Saturday only, 8 to 5.

The City of Muleshoe is taking applications for a worker in the street department. High School Graduate/GED required. Upon employment, subject may be required to pass a drug test. Applications can be picked up at City Hall, 215 South First, Muleshoe, TX. Position open until filled. EOE, ADA.

HEALTH

OPTIMAL HEALTH & LONGEVITY
See for yourself how glyconutritional fit into your health goals. Call: **Tucker 965-2159**

HELP WANTED

NOW HIRING!!!
Enthusiastic Servers, Cooks & Drivers. Competitive pay! Apply in person at Pizza Hut 1412 W. Amer. Blvd.

Muleshoe & Bailey County Journal
\$22 carrier/year,
\$24 mail in-county/year,
\$26 mail out-of-county/year.
Special rate for college students - \$22 mail/year
Send check to:
Muleshoe Journal
P.O. Box 449
Muleshoe, TX 79347

REAL ESTATE

FOR RENT
3 Bedrooms, 1 Bath. Newly Refurbished! \$500 monthly 307 W. 11th Call 806-359-9260

FOR SALE - Country Home. 2100+ sqft. 3 bedrooms, 2 baths, office, utility & 2 living areas. 4 1/2 miles West of Muleshoe. 925-6479

REPO SPECIAL!!!

Large (2,670 sqft) ranch style home that needs some TLC. NEW 25 YR. ROOF. 3 bedrooms and 3 baths. 2 car attached garage. Large 140'x150' lot. REDUCED TO \$79,500 with FINANCING AVAILABLE. Drive-by 707 2nd St., Farwell, then call **Dennis Whalen, Property Sales Dept, 1-800-757-9201, Ext. 7374, (M-F 8:00 am to 5:00 pm) Pacific Time.**

PRODUCTION POSITION AVAILABLE

Now accepting applications for production position at HI-PRO FEEDS. Company insurance, 401(k), paid holidays. Must pass drug screen. Apply in person at HI-PRO FEEDS in Friona.

MISCELLANEOUS

SUSAN'S SCENTS
605 W. Amer. Blvd. (Cellular 2000 building)
Strongly scented homemade candles starting at \$3.95. Refills 40¢/oz. 20+ scents or request your favorite. 272-7523 or 272-5153

You read this ad. Chances are your neighbors did, too. Sell it in the classified!

There's a time for all things!

Nieman Realty

116 E. Ave. C • George Nieman, Broker • 272-5285 or 272-5286

RICHLAND HILLS - PARK RIDGE AREA

- NICE 3-3-1 Brick, Cent. heat, evap. air, built-ins, fans, 2000+ lv. area, fenced yd., patio, stor. bldg.!! \$57.5K! RH-1
- WE HAVE SEVERAL NICE LOTS, CALL FOR DETAILS!!

HIGHLAND AREA

- 3-2-2 Brick, Cent. Heat, built-ins, fans, fenced yd., large workshop/stor. bldg.!! \$52.5K!! HL-2
- NICE 3-1-1+1 carport Home, Cent. Heat & Air, carpet & hardwood, 4 fans, fenced yd., MORE!! \$23.5K!! HL-4

LENAU - COUNTRY CLUB AREA

- 3-2 Brick, Cent. A&H, fenced yd., corner lot!! \$40K!!
- 3-2-2 Brick, Cent. A&H, built-ins, Fireplace, 2000' lv. area, cov. patio, fenced yd., \$85K!!

COMMERCIAL

- An approx. 5.1 acre tract w/ approx. 144.5' frontage on Hwy. 84, approx. 1584' office, 1320' shop, 4000' shop, & 2880 bldg., has railroad access, 2 mobile home hookups, MORE!!
- Duplex (2-2 bdrm. 1 bath units) plus 1 (2 or 3 bdrm) for residence or rental. PRICE REDUCED \$25K!!
- GOOD INCOME PROPERTY - approx. 3490' bldg., paved parking, good net lease!! PRICED TO SELL!
- Established Business: Land, Bldg. & Equip., \$75K!!
- 200 Main & E. Ave. B-4 rental units plus upstairs & basement or renovate for your own special use!! \$65K!!
- VERY NICE 2300' bldg., Cent. A&H, 175' frontage on Hwy 84 & 70!! MUCH MORE!!
- 140'X100' tract on Hwy. 84 & 70, 1760' bldg., 1500' storage, 2400' cov. area, paved parking !! \$49.5K!!

HIGH SCHOOL AREA

- VERY NICE 3-1-1 Brick, Heat pump, DW, nice carpets, fenced yd., MORE!!! \$30's !!! HS-1
- 3-2 Home, corner lot, fl. furn. heat, fenced yd. \$25K! HS-10
- NICE 3-2 1/2-2 carport Home, Cent. A&H, built-ins, FP, 2650' + Lv. area, fans, storm windows & doors, new roof, cov. patio, concrete cellar, fenced yd. w/ add. 2 carport, large workshop, & stor. bldg. PRICED REDUCED \$60K!! HS-7
- 2-1 1/2-2 Home, Cent. Heat, win. air, built-ins, fans, workshop/stor., fenced yd.!! \$50K!! HS-2
- 3-2 Brick, corner lot, fenced yd. \$25K "AS IS"!! HS-3

RURAL

- EXCELLENT DAIRY LOCATION-1120 ac., 7 circles, 20 wells, very nice 3-2-3 Home w/ basement, 40'x60' barn w/ 30'x40' shed, 3 mil. lb. grain facility, add. 3 bdrm. home, 2 mobile homes, on pavement convenient to Muleshoe, Clovis, Portales, & should have 5K head permit within 60 days!!! Could be split if needed!!
- PLEASANT VALLEY, Approx. 160 acres, 2 bdrm home, 1 bath, 2 car detached garage, on pavement!!!
- W. of SUDAN-NICE 3-3-2 Brick Home, 5 acre tract on Hwy. 298, Cent. Air & Heat, built-ins, large Quonset Barn, MORE!!! \$95K!!!
- PRICE REDUCED - 108 acres or 7 acre tract on Hwy. 70, approx. 2100' office area, 16,900' commercial bldg. w/ loading dock, 3,400' warehouse, new well, 2,800' runway!!!
- EARTH - 4-2-2 carport home, Heat Pump, fans, storage-workshop!! \$35K
- 2-2-2 carport Mobile Home on 1.997 acres on pavement close to town, storage, 45' x 74' barn, pens, & fenced pasture!!



Lowe's Marketplace

401 W. American Blvd. Muleshoe, Texas 272-4585

WE RESERVE THE RIGHT TO LIMIT QUANTITIES IN TEXAS

WESTERN UNION MONEY TRANSFERSM
"The fastest way to send money"

AFFILIATED FOODS INC. MEMBER STORE AT PARTICIPATING STORES



WEEKLY PRICES EFFECTIVE SEPTEMBER 19-25, 2001

MEAT

- X-TRA SAVINGS PAK BEEF BONELESS **ARM ROAST** LB **\$1³⁹**
- X-TRA SAVINGS PAK BEEF BONELESS **CHARCOAL STEAKS** LB **\$1⁶⁹**
- X-TRA SAVINGS PAK BEEF BONELESS **SHORT RIBS** LB **\$2²⁹**
- X-TRA SAVINGS PAK BONELESS SKINLESS **CHICKEN TENDERS** LB **\$1⁹⁹**
- DECKER **MEAT FRANKS** 12 OZ. PKG **69¢**
- FOSTER FARMS **CORN DOGS** 16 OZ. TRAY PK. **\$1⁶⁹**
- DECKER REG. OR THICK SLICED **MEAT BOLOGNA** 12 OZ. PKG **99¢**
- 6 PACK **COCA-COLA, SPRITE OR DR. PEPPER** 5 LITER BTLs **2/\$5**

PRODUCE

- LARGE GREEN **BELL PEPPERS** **5/\$1**
- U.S. NO. 1 **RUSSET POTATOES** 10 LB. BAGS **2/\$3**
- MILD MEDIUM **YELLOW ONIONS** LBS **3/\$1**
- FRESH **BROCCOLI CROWNS** LB **99¢**
- MINI **CARROTS** 1 LB. PKG **\$1**
- SNACK SIZE **VALENCIA ORANGES** **8/\$1**
- ASSTD. FLAVORS **CAPRISUN OR TANG DRINKS** 6 OR 10 CT. POUCHES **2/\$5**
- ASSTD. KRAFT **VELVEETA OR DELUXE MAC & CHEESE DINNERS** 9.4-14 OZ. **2/\$4**

FROZEN & DAIRY

- RED BARON ORIGINAL ONLY, EXCLUDES RISING CRUST **12" PIZZA** BUY ONE, GET ONE **FREE**
- SPAM ORIGINAL ONLY **LUNCHEON MEAT** 12 OZ. **3/\$5**
- 7" BANDED **CHILI BOWLS** **3/99¢**
- SHURFINE ASSTD. SALTINE **CRACKERS** 15-16 OZ. **69¢**
- ORIGINAL W/BEANS OR ORIGINAL OR HOT NO BEANS **HORMEL CHILI** 19 OZ. CAN **97¢**
- LOWE'S SANDWICH **WHEAT BREAD** 24 OZ. LOAF **69¢**
- ASSTD. **CRISCO OIL** 48 OZ. BTL **\$1⁶⁹**
- CASA DE LOWE'S HOMESTYLE OR BURRITO SIZE **FLOUR TORTILLAS** ... 10 CT. PKG **79¢**

SPECIAL X-TRA SAVINGS PRICING GOOD THRU OCT. 2, 2001



- 1 LB. ROLL OWENS **BREAKFAST SAUSAGE**
- 1 LB. PKG. RAMIREZ **CHORIZO**
- 30 CT. COUNTY POST **EGGS**

1¢

(Each with 1 Reward Coupon)



25 LB. BAG SHURFINE **ALL PURPOSE FLOUR** (with 1 Reward Coupon)

1¢

Have Breakfast with....



Use Your Reward Coupons To Save Big! Our Prices Are LOWER!

Here's How It Works!

Lowe's is giving you deep discounts on many of the items you purchase everyday! For each dollar you spend at Lowe's, we will give you a point. After 50 points (or \$50), you will receive a Lowe's X-tra Savings Reward Coupon. This coupon can then be redeemed for deep discounts on selected items. Each month, Lowe's will select from our most popular items in the store and deeply discount them for our X-tra Savings Reward Coupon holders. Present your coupon and receive incredible savings on selected items.

X-tra Savings Reward Program

- Each Dollar You Spend Is Worth ONE (1) Point.
- After you earn 50 points, you will receive a Lowe's X-tra Savings Reward Coupon
- Use your Lowe's X-tra Savings Reward Coupon to get deep discounts on one of the selected items.
- Only ONE (1) item can be purchased with each Reward Coupon. • Items will be changed monthly.



- | | | | |
|---|-----------|--|-----------|
| WRIGHT BRAND SLICED BACON
12 OZ. PKG (with 1 Reward Coupon) | 1¢ | LUCKY LEAF APPLE JUICE
64 OZ. BTL (with 1 Reward Coupon) | 1¢ |
| • 14 OZ. CINNAMON TOAST CRUNCH
• 12 OZ. TRIX
• 14 OZ. HONEY NUT CHEERIOS
• 15 OZ. HONEY NUT CHEX | | DELICIOUS GRAPEFRUIT
5 LB. BAG (with 1 Reward Coupon) | 1¢ |
| GENERAL MILLS CEREAL
YOUR CHOICE (with 1 Reward Coupon) | 1¢ | SELECT GRINDS FOLGERS COFFEE
11.5-13 OZ. CAN ... (with 1 Reward Coupon) | 1¢ |
| PACIFIC VALLEY HASH BROWN TATER PATTIES
20 CT. PKG (with 1 Reward Coupon) | 1¢ | LOWE'S SPLIT TOP WHEAT BREAD
24 OZ. LOAF (with 1 Reward Coupon) | 1¢ |
| LOWE'S OR SHURFINE MILK
ALL VARIETIES GAL. (with 1 Reward Coupon) | 1¢ | YOUR CHOICE ASSTD. COKE, SPRITE OR DR. PEPPER
6 PACK CANS (with 1 Reward Coupon) | 1¢ |
| AUNT JEMIMA PANCAKE MIX
32 OZ. BOX (with 1 Reward Coupon) | 1¢ | 7 LB. BAG OF ICE
PER BAG (with 1 Reward Coupon) | 1¢ |
| AUNT JEMIMA PANCAKE SYRUP
24 OZ. BTL (with 1 Reward Coupon) | 1¢ | MINUTE MAID FROZEN ORANGE JUICE
12 OZ. CAN (with 1 Reward Coupon) | 1¢ |
| KELLOGG'S ASSTD. POP-TARTS
14 OZ. BOX (with 1 Reward Coupon) | 1¢ | FRESH STRAWBERRIES
1 LB. PKG. (with 1 Reward Coupon) | 1¢ |
| BAMA OR WELCH'S GRAPE JELLY
32 OZ. JAR (with 1 Reward Coupon) | 1¢ | | |
| LOWE'S ASSTD. SOFT DRINKS
12 PACK CANS (with 1 Reward Coupon) | 1¢ | | |
| IMPERIAL PURE CANE SUGAR
4 LB. BAG (with 1 Reward Coupon) | 1¢ | | |

THE X-TRA SAVINGS REWARD PROGRAM GOOD AT LOWE'S MULESHOE, CANYON AND TUCUMCARI STORES ONLY! Points are not transferable between stores. No substitutions please on X-tra Savings Reward Items. Only one item may be purchased at the special deep discount per Reward Coupon.