

## PAGE ONE

A QUICK READ OF THE NEWS

### No speech permit required

Thirteen people signed up to be the first Singaporeans allowed to speak publicly without a license.

The 13 came forward on the first day of registration for those wanting to vent their opinions at a new "Speakers Corner," said Chee Wing Cheong, an officer at the Kreta Ayer police post.

For years, residents of the Singapore city-state wanting to speak out in public have had to wait for authorities to issue special licenses. But authorities decided to create the new venue after a rise in public calls for more speech freedoms.

Writer James Gómez, one of the 13 who registered, said he would make a speech "pushing for more freedom of expression" in tightly controlled Singapore.

Gómez said Singaporeans, known for their reluctance to publicly question authority, are restrained more by their own fear than by government repression. Many worry that criticizing the government could hurt their career prospects or cause them other problems, he said.

Singapore's Speakers Corner is loosely based on its historic, anything-goes namesake in London's Hyde Park. But the Singaporean version, in a downtown park, has its limits.

Topics that could incite racial or religious hostilities are not allowed. Orators must show identification and register with police before speaking, and a law that allows detention without trial for anyone deemed a threat to public security still applies.

Some free-speech advocates have praised the idea as a breakthrough while others have scoffed at it because of its restrictions.

Singapore's leaders argue that their strict policies have ensured the safety and stability that have made Singapore one of Asia's wealthiest countries.



Drawing date: Saturday, Jan. 27  
Winning numbers: 4-14-19-33-35-45  
Estimated jackpot: \$23 million  
Winners: 0  
Next drawing: Wednesday, Jan. 31  
Estimated jackpot: \$4 million

### On this date in history

Feb. 1 — Baylor University receives its charter at Independence, Texas (1845); it is moved to Waco in 1886.

Also on Feb. 1 — The groundbreaking is held for the Texas State Capitol building (1882).

Also on Feb. 1 — The Ordinance of Secession from the United States is adopted by the Texas Secession Commission (1861).

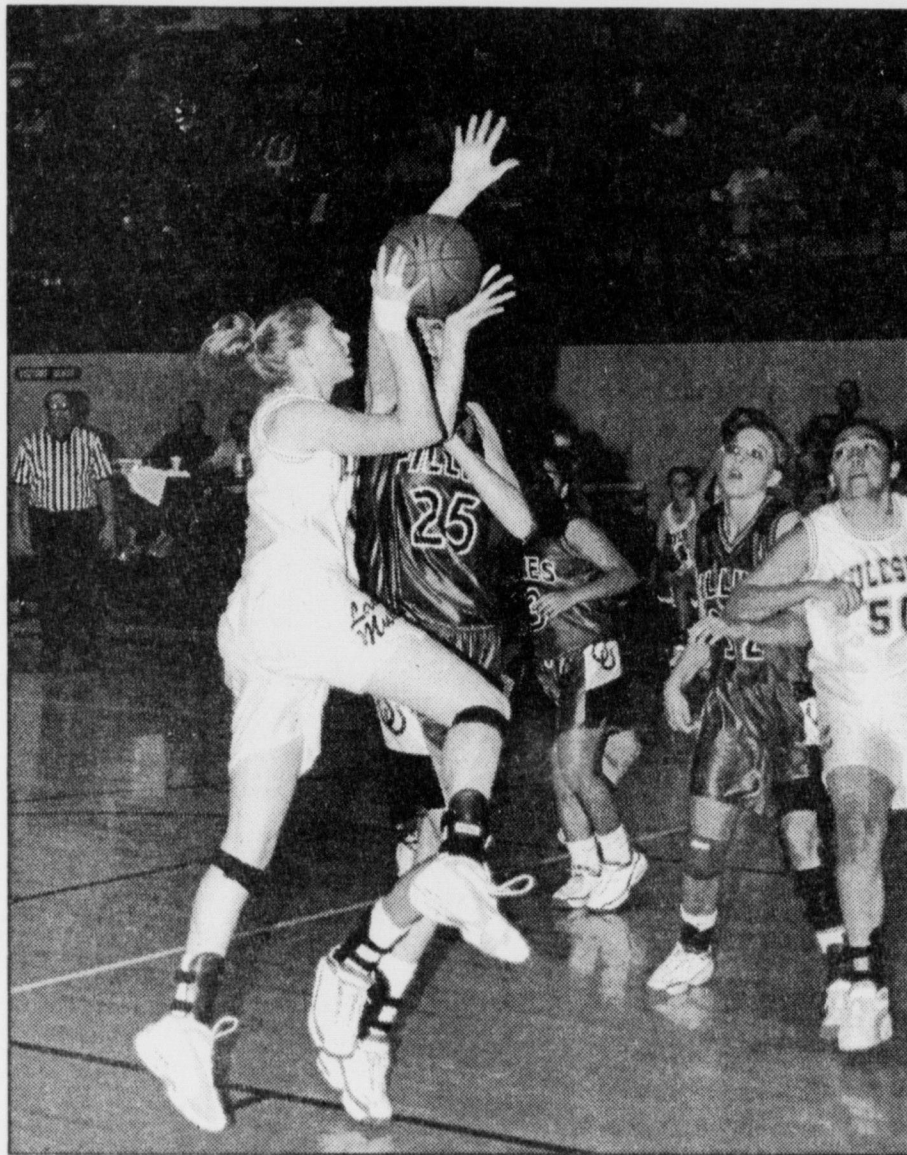
Feb. 2 — The "Committee on Public Safety" is directed to seize U.S. federal property in Texas (1862).

### LOCAL WEATHER

The weather should be more sunny than cloudy for the next several days. Expect high temperatures of about 55 Thursday, 64 Friday, 61 Saturday, 51 Sunday and 58 Monday. Mornings should be in the 20s with the exception of Sunday, which might drop into the upper teens. Saturday and Sunday should be partly cloudy, with Thursday, Friday and Monday being sunnier.

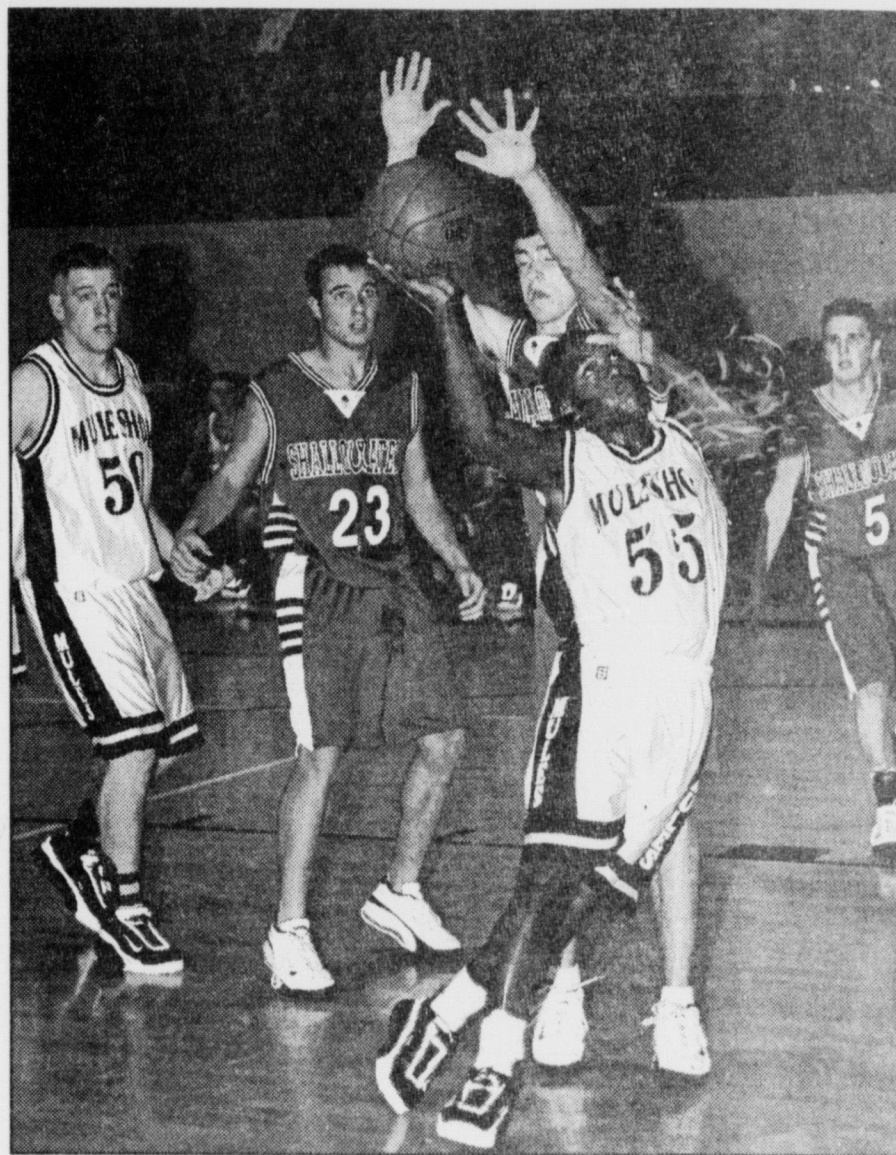
Editor Ronn Smith can be reached at 272-4536 or ctyankee@fivearea.com

Missed your paper? Call carrier Melissa Flores at 272-6719 or the Journal during business hours, 8:30 a.m.-5 p.m.



Courtesy photo: Mike Hahn

Megan Tipps drives for the basket against the Shallowater Fillies.



Courtesy photo: Mike Hahn

It looks like ballet, but it's Darrell Lewis in action against Shallowater.

## Mules, Lady Mules still playoff possibilities

### Girls beat Cooper 38-33

By DELTON WILHITE  
Journal correspondent

The Lady Mules took one more step toward the playoffs Friday night with a 38-33 victory over the Lubbock Cooper Lady Pirates.

Home court may have been the deciding factor in the game. The Muleshoe fans, especially the student section, became very involved in the final two periods and may have given the Lady Mules the inspiration to overcome a one-point third-quarter deficit.

With the fans urging them on, the Lady Mules — struggling on offense — turned up the defensive pressure and held the Lady Pirates to only six points in the final period.

Kayla Glover made a free throw to tie the game with six minutes remaining. Shani Rasco blocked a Cooper shot, and Glover got out on a fast break only to be fouled making the layup. She again converted the free throw to give the Lady Mules their first lead since late in the second period.

Rasco topped off the score when she moved in to rebound a missed Cooper shot, was fouled and made both charity tosses.

In the first period, both teams had trouble getting their offense in gear. Cooper made two shots from behind the arc; Britni Gartin made a free throw to end the quarter in a 6-6 tie.

see GIRLS on page 4

## Muleshoe student to participate in Houston scramble

HOUSTON — Fifteen-year-old Joel Cowart of Muleshoe will participate in a calf scramble Feb. 17 during the 4 p.m. performance of RodeoHouston at the Houston Livestock Show and Rodeo.

Cowart, a Muleshoe FFA member, will join 27 other 4-H and FFA members in attempting to catch and halter one of 14 calves that will be released into the 1.86-acre Reliant Astrodome area.

Each winning individual gets a \$1,000 certificate toward the purchase of a registered beef heifer. "Hard luck" certificates also are awarded to individuals who don't catch a calf but are recognized for their efforts.

With youngsters and calves scattered about and moving in every direction across the arena floor, the scramble is often one of the most chaotic events of the show.

Cowart is the son of JoEllen and Barry Cowart.

By DELTON WILHITE  
Journal correspondent

The Muleshoe Mules lost a 62-53 heartbreaker to the Lubbock Cooper Pirates in Muleshoe on Friday, but have still not been eliminated from the playoff picture.

"It was one of those games," Mule coach Ralph Mason said. "We missed a couple of shots and they made some shots in the end. Then it comes down to free throws, and they were automatic tonight. The kids did everything I asked them to; the shots just did not fall for us tonight."

The game stayed close for the first three and a half periods of play. Neither team could gain an advantage and open more than a three-point lead in

the first three periods.

The Mules led 10-9 at the end of one and Cooper was ahead 17-15 at the half. The teams battled in the third quarter, bucket for bucket and point for point. The Mules trimmed one point off Cooper's lead and trailed 34-33 at the close of the third period.

The score continued to seesaw back and forth for almost four minutes of the final quarter. Then the Mules' game broke down for about 90 seconds and Cooper gained a 47-39 advantage. Jeff Shelburne converted a free throw after being fouled while scoring

see BOYS on page 4

## Three Way livestock show held on ice

JOURNAL STAFF REPORT

Exhibitors and spectators braved Saturday morning's ice storm to go to the Three Way Junior Livestock Show. Once inside, the youngsters became all business and the well-organized show ran like clockwork.

When the judging ground to a halt, the big winners were young Rowdy Davis with grand champion swine on a Duroc and Cody Kirby with reserve champion on a Hampshire.

Chris Kindle was named the champion showman and Colton Heinrich the reserve showman.

Seniors competing in showmanship were Kindle, Katy Cook, Kara Heinrich, Cody Kirby and Caleb Heinrich. Juniors were Colton Heinrich, Tiffany Davis and Stephanie Kirby.

Among the winners at breed level, Kindle had champion Berkshire, champion Spot and champion cross.

In addition to winning the Hampshire class, Cody Kirby had champion Chester and reserve Spot; Jennifer Kirby had champion Poland; Cassie Kirby had champion Yorkshire and reserve Hampshire; Stephanie Kirby had reserve Yorkshire; Kara Heinrich had reserve Chester and reserve Poland; and Caleb Heinrich had reserve cross.

see SHOW on page 4



Journal photos: Ronn Smith

At top, Rowdy Davis displays his grand champion banner over the back of his winning pig, a Duroc. Misty Davis holds his other awards. Immediately above, Chris Kindle shows off his champion Spot.



# AROUND MULESHOE

## Speech team tops again

The Muleshoe High School speech team again captured the sweepstakes championship at a tournament.

The latest win came Saturday at Hereford with 25 schools participating.

Winners from Muleshoe include:

- Prose interpretation — first, Louie Pacheco; second, Jason Riggs;
- Poetry interpretation — first, Aubrey Ruthardt; second, Pacheco; third, Eric Madrid;
- Interpretive speaking — second, Riggs;
- Informative speaking — first, Madrid;
- Solo acting — first, Pacheco;
- Duet acting — second, Ruthardt and Joey Stone;
- Impromptu speaking — first, Madrid; and
- Debate — first, Westin Price and Rocky DeHoyos.

## Junior high Valentine dance set

A Valentine dance for junior high students is scheduled for 8 p.m. to 11 p.m. Feb. 17 at the Muleshoe fire station.

A spokeswoman for the event said it is a fund-raiser to send local junior high students on a trip to New York City. Admission is \$3 per person or \$5 per couple (strictly one male, one female).

## Oklahoma Lane anniversary scheduled

The 75th anniversary of the Oklahoma Lane Methodist Church will be observed March 4 at the church.

There will be a catered noon meal, and organizers ask that anyone planning to attend RSVP by Feb. 15 to either Alma Pierson (Route 1, Box 26A, Farwell 79325 or 806-225-6822) or Doris Sides (Route 1, Box 96, Farwell or 806-825-3500).

The activities will begin with a 10 a.m. worship service featuring guest speakers and special music.

## Energy assistance available

South Plains Community Action Association has received funding from the Texas Department of Housing and Community Affairs to operate the Comprehensive Energy Assistance Program through this calendar year.

The assistance is available to low-income households, with priority given to those containing one or more people age 60 or older, handicapped individuals or children under the age of 6.

Documentation required includes original copies (not duplicates) of the applicant's Social Security card and driver's license (with photo), birth certificate or college ID (with photo).

Documentation required from all household members includes Social Security card, birthdates and proof of income.

The household also must furnish current utility bills or statements with account numbers and their billing history for the past 12 to 18 months. Other information may be required also.

—More information is available by calling 272-7533 or going by the office at 804 W. American Blvd.

## Financial Aid Seminar set

The Jennyslippers will sponsor the annual Financial Aid Seminar at 7 p.m. Feb. 1 in the high school cafeteria.

Representatives of colleges, universities and lending institutions are expected to give short presentations. Afterward, parents and students may meet with the representatives individually.

The seminar is open to high school juniors and seniors, their parents, and any adult who is interested in higher education.

## Academy plans Valentine's dinner

A Valentine's dinner to benefit the Life in Christ Academy

preschool at Lariat is scheduled for 11:30 a.m. to 1:30 p.m. Feb. 11 in the Bailey County Coliseum.

Tickets are \$8 for adults and \$5 for children ages 12 and under. Children under the age of 3 can eat free.

The menu will include brisket, beans, coleslaw, potato salad, dessert and drink.

Takeout will be available, and the event also includes a silent auction. It is sponsored by St. John Lutheran Church of Lariat.

## Lazbuddie plans Valentine's supper

The senior class of Lazbuddie High School plans a "Valentine's supper" from 11:30 a.m. to 1:30 p.m. Feb. 18 in the school cafeteria.

The menu will include enchiladas, refried beans, Spanish rice, tossed salad, tostados and salsa, and homemade pie.

The cost will be \$6 (\$4.50 for a "lite plate"), and take-out and deliveries will be available.

The class also sells anniversary/birthday calendars for \$5 each.

## Public calendar

**Feb. 1** — 5 p.m. Meeting in the Muleshoe High School library to discuss plans for the junior-senior banquet.

**Feb. 4** — 6:30 p.m. Johnny Ray Watson in concert at First United Methodist Church.

**March 8** — Deadline for Muleshoe students to apply for the Kristy M. Landers Memorial Scholarship; application forms are available at the high school counseling office.

## Texas cattle population still falling

AUSTIN — The inventory of Texas cattle and calves totaled 13.70 million head on Jan. 1, down 1 percent from last year's inventory of 13.90 million head and 3 percent below the 1999 inventory of 14.10 million head.

"Drought conditions during late spring to early fall forced continued liquidation of cattle herds," said Robin Roak, state statistician.

Texas continued to rank first in the nation in total number of cattle and calves with 14.1 percent of the total U.S. inventory.

Beef cow inventory, at 5.47 million head, was up 1 percent from last year's total of 5.43 million head. Milk-cow inventory, at 345,000 head, was down 1 percent from the 1999 total of 350,000 head.

Beef replacement heifers totaled 720,000 head, down 5 percent from last year's total of 760,000.

Save up to 50%  
On most Prescriptions, Medical Supplies  
& Personal Care Needs!

**Heartland**  
10200 13<sup>th</sup> Street • Clovis, NM 88307

Call for a Free Catalog  
or Price Quote!  
1-800-228-3353

Program Code T999-0000-0000

**FREE TAX REFUND ESTIMATES**

**GET YOUR TAX REFUND FAST**  
with electronic filing. **e-file**

**It's Your Money!**

- Low Service Fees
- Refund Loans in 1-3 Days!
- Direct Deposit
- Tax Preparation Available

**Gold Star FINANCE**

• Phone Applications Welcome  
• 30 Minute Approval In Most Cases!

Open: Mon.-Fri. 9 am - 6 pm (MDT)

**1407 N. Main • (505) 742-2737**  
Clovis, NM **¡Se Habla Español!**

**24/7**

**Is your tax preparer as sophisticated as your tax situation?**

We have the experienced tax professionals you need for your complex return.

Call **1-800-HRBLOCK** or visit **hrblock.com**.

**H&R BLOCK**

**104 Avenue C, Muleshoe**  
Ph# (806) 272-3332 Fax (806) 272-5309  
**hrblock@fivearea.com**  
If no answer call (806) 946-3696 or (806) 373-6050

**Muleshoe Journal USPS 367820**

Established February 23, 1924. Published by Triple S Publishing, Inc. Every Thursday at 304 W. Second, Box 449, Muleshoe, TX 79347.

Second Class Postage paid at Muleshoe, TX.

POSTMASTER: Send address changes to the Bailey County Journal, P.O. Box 449, Muleshoe, TX 79347.

We are qualified members of:

- Panhandle Press Association, National Newspaper Association, West Texas Press Association and Texas Press Association

WEST TEXAS PRESS ASSOCIATION

PPA Panhandle Press Association

**TA** MEMBER 2000  
**TEXAS PRESS ASSOCIATION**

Scot Stinnett, Publisher  
Lisa Stinnett, Vice-President/Comptroller  
Ron Smith, Editor  
Beatrice Morin, Classifieds  
Leah Bell, Advertising

© 1990

SUBSCRIPTIONS: Muleshoe Journal and Bailey County Journal  
By Carrier Yearly - \$22.00  
Bailey County — by mail - \$24.00  
Elsewhere - \$26.00  
Advertising Rate Cards on Application

\*Advertisers should check their ad the first day of insertion. The Journals will not be liable for failure to publish an ad or for a typographical error or errors in publications except to the extent of the cost of the ad for the first day of insertion. Adjustment for errors will be limited to the cost of that portion of the ad where the error occurred.\*

**JOE'S BOOT SHOP**

We Ship Everywhere!

1-800-658-6378 106 E. American Blvd. Muleshoe, Texas

**And Country Junction**

Register To Win An Autographed **LOS TIGRES** 6X Stetson Felt Hat

(\$212 Value - Autographed by All Los Tigres Del Norte Members)

To Be Given Away on Friday, Feb. 2 at 5 pm

Plus, Register to Win One of Six **FREE Dance Tickets from Joe's!**

FREE Poster Giveaways all day Fri. & Sat., Feb. 2 & 3 (while supplies last)

**Los Tigres del Norte** will be performing in Amarillo, TX on Saturday, **FEBRUARY 3<sup>RD</sup>**

**REGISTER TO WIN FREE TICKETS AT JOE'S BOOT SHOP!**

Tickets are for this dance date only.

**JUST FOR FUN**

|    |    |    |    |    |    |    |    |   |    |    |    |    |    |
|----|----|----|----|----|----|----|----|---|----|----|----|----|----|
| 1  | 2  | 3  | 4  | 5  | 6  | 7  | 8  | 9 | 10 | 11 | 12 | 13 |    |
| 14 |    |    |    | 15 |    |    |    |   | 16 |    |    |    |    |
| 17 |    |    | 18 |    |    |    |    |   | 19 |    |    |    |    |
| 20 |    |    |    |    |    |    |    |   | 21 |    |    |    |    |
|    |    |    | 22 |    |    | 23 | 24 |   |    |    |    |    |    |
| 25 | 26 | 27 | 28 |    |    | 29 |    |   |    | 30 | 31 | 32 |    |
| 33 |    |    |    |    |    | 34 |    |   |    | 35 |    |    |    |
| 36 |    |    |    |    |    | 37 | 38 |   |    | 39 | 40 |    |    |
| 41 |    |    |    | 42 | 43 |    |    |   |    | 44 |    |    |    |
| 45 |    |    | 46 | 47 |    |    |    |   |    | 48 |    |    |    |
|    |    |    |    | 49 |    |    |    |   |    | 50 |    |    |    |
| 51 | 52 | 53 |    |    |    | 54 |    |   |    | 55 | 56 | 57 | 58 |
| 59 |    |    |    |    |    | 60 | 61 |   |    |    |    |    |    |
| 62 |    |    |    |    |    | 63 |    |   |    | 64 |    |    |    |
| 65 |    |    |    |    |    | 66 |    |   |    | 67 |    |    |    |

Clues ACROSS

1. Fissures
5. Front of a blouse
10. Plaza
14. Minerals
15. Link
16. John Glenn's state
17. First and second
20. Alliances
21. Jewish spiritual leader
22. Dieter's concern (abbr.)
23. March 15
25. Similar to the giraffes
29. Painful disorder
33. Argentinian rodents
34. Suffer
35. Household god (Roman)
36. Decays
38. One of the original 13 Colonies
41. Memory board
42. Despot
44. Region of India
45. Flower that yields detergent

Clues DOWN

1. Hockey great
2. Asian nation
3. So that not
4. Tennis great
5. Cabals
6. Saint
7. Tastes
8. Word element meaning "ear"
9. Large integer
10. Demure
11. Whaling-ship captain
12. Appendage
13. Melt off
18. Cut
19. Location
23. More frozen
24. European herb
25. Units of measure
26. African plateau
27. Distinctive odor that is pleasant
28. Paper
29. Anwar el-\_\_\_\_, Egyptian statesman
30. Whitish tropical fruit
31. Weight unit
32. Where sports events take place
37. Greek portico
39. Admirer
40. Lacking vigor, force or effectiveness
43. No seats available
46. Residences
47. Drunk (slang)
48. Does a dance
50. Sediments
51. Sandwiches
52. Mammal genus
53. Antelopes
54. \_\_\_\_ Frank's diary
55. Sleeps
56. Small island
57. West African language
58. Negatives
60. Law degree
61. Zero

**Crossword Answers**

|    |    |    |    |    |    |    |    |   |    |    |    |    |    |
|----|----|----|----|----|----|----|----|---|----|----|----|----|----|
| 1  | 2  | 3  | 4  | 5  | 6  | 7  | 8  | 9 | 10 | 11 | 12 | 13 |    |
| 14 |    |    |    | 15 |    |    |    |   | 16 |    |    |    |    |
| 17 |    |    | 18 |    |    |    |    |   | 19 |    |    |    |    |
| 20 |    |    |    |    |    |    |    |   | 21 |    |    |    |    |
|    |    |    | 22 |    |    | 23 | 24 |   |    |    |    |    |    |
| 25 | 26 | 27 | 28 |    |    | 29 |    |   |    | 30 | 31 | 32 |    |
| 33 |    |    |    |    |    | 34 |    |   |    | 35 |    |    |    |
| 36 |    |    |    |    |    | 37 | 38 |   |    | 39 | 40 |    |    |
| 41 |    |    |    | 42 | 43 |    |    |   |    | 44 |    |    |    |
| 45 |    |    | 46 | 47 |    |    |    |   |    | 48 |    |    |    |
|    |    |    |    | 49 |    |    |    |   |    | 50 |    |    |    |
| 51 | 52 | 53 |    |    |    | 54 |    |   |    | 55 | 56 | 57 | 58 |
| 59 |    |    |    |    |    | 60 | 61 |   |    |    |    |    |    |
| 62 |    |    |    |    |    | 63 |    |   |    | 64 |    |    |    |
| 65 |    |    |    |    |    | 66 |    |   |    | 67 |    |    |    |



## Some groundcovers actually prefer alkaline soils

By RONN SMITH  
Editor

Of all the problems that gardeners grapple with, I doubt that any are considered more mysterious than soil pH.

I'm not going to pretend to be an expert on it, but for our purposes you generally don't need to know a lot about it.

This "rating" is expressed as a number, with 7 being neutral. Most of our area soils are pretty close to neutral — maybe just slightly on the alkaline side, like 7.1. I've never officially looked into it, but I'm told that much of the soil around Portales is somewhat more alkaline, and there are spots around Muleshoe as well. I'm told that there are readings up to 7.4 — but, once again, that is hearsay.

Readings below 7 are acid soils, which tend to occur where there is more rainfall.

Alkaline soils are usually shallow, stony and well-drained — that is, on the sandy side and, in our area, likely to be over beds of caliche that reach near the surface.

Anyway, the reason this is critical to plants is that alkaline soils are that way because they contain lime, and lime locks up iron and magnesium. Certain plants then have a hard time getting the iron, etc., out of the soil. This produces a stunted look with mottled or yellow leaves, a condition known as chlorosis.

There are things you can add to help ease chlorosis quickly (ammonium sulfate may be the most common). Adding peat moss or ericaceous compost may change the pH less radically but the effect will be longer-lasting. Chances are, you'll never work the soil amendment deep enough to take



care of deep-rooted specimens that require acid soil, such as the acid-loving species of holly and the barberry family. (But there are members of both families that tolerate alkaline soils.)

In recent years, many mail-order nurseries have begun including information about the pH tolerance of the plants they sell. That is an acknowledgement — at last — that there are gardeners in the western U.S. and other areas that have alkaline soils.

All this is leading up to the fact that if you have alkaline soil, there are groundcovers that will tolerate it or even prefer it, saving you the work of lowering the pH if you don't want to mess with it.

One that can serve as either groundcover or specimen shrub is the sweet box or Christmas box (*Sarcococca humilis*), which grows a couple of feet tall and up to 4 feet across.

I suspect that the main reason this shrub is not better known is that until recently all garden writing was oriented toward the East Coast, where sweet box's preference for acid soils is no advantage — and where many showier shrubs grow easily.

True, this species' white flowers (some tinged with pink) do not attract attention from across the street. However — and this is a big however — they occur in the winter time and one mature

shrub in bloom will perfume a big section of the yard. Hello! Does everything have to have neon-colored flowers in order to be worth growing?

Aside from flowering in the winter, sweetbox will produce a crop of blue-black berries later, so you get another season of ornament.

It's not hard to grow, either, although it does require one thing in our climate: shade.

Several other species of *Sarcococca* are readily available, some of them with red berries, but they generally grow to 4 feet tall. All of them, as far as I know, bloom during the winter and share the sweet box's dense growth habit. Most of them are known as winter box.

Most plants that like alkaline soil have smallish leaves, adapted to dry climates, but one that has big, almost tropical-looking leaves is *Bergenia cordifolia*, commonly known as just bergenia.

This plant also has clusters of sensational flowers on stems well above the leaves, pink to purple-pink in color and very attractive. (There are bergenia species with white flowers also.)

Bergenias also bloom very early, with *B. cordifolia* in flower from late winter into spring. The leaves often take on hues of red or purple during cold weather.

Although everything I read about bergenia says it will tolerate full sun, I don't have the nerve to try it there. I just suspect that the kind of sun we have would scorch those big leaves, so I prefer it where it gets afternoon shade.

You may already have plants in the garden that will make alkaline-tolerant groundcovers. One that is very common is the

horned violet (*Viola cornuta*), a 4-to-6-inch-high perennial midget that makes lush foliage and pretty little lilac-blue flowers. Shade helps keep them from requiring extra water, though they will grow in full sun if you take care of the moisture needs.

Another possibility, more common in old gardens that haven't been "modernized," is santolina or lavender cotton (*Santolina* species). Looking like miniature sagebrush, there is a species with silvery-gray foliage and one with bright green foliage. The flowers are little yellow ball-shaped affairs in late summer.

Most santolinas can reach a height of 2 feet, but I have seldom seen them that tall. Some are about as wide as they are tall, while some can spread as wide as 4 feet. Sun and drought generally don't bother them much.

A unique succulent groundcover can be formed from a member of the euphorbia family (*Euphorbia myrsinites*). The branches sprawl outward and only get about 4 inches high but 2 feet across. The acid-yellow flowers clothe the ends of the branches for long periods. Don't try this one in shade.

A couple of years ago, there was a spectacular example of euphorbia in Tucumcari just south of the Quay County Sun office. I haven't been by to check it recently, so I don't know if it's still there.

Happy planting!  
Questions and comments can be directed to Garden Writer, 571 County Road 1018, Muleshoe, Texas 79347, or e-mailed to [ronnsmith@hotmail.com](mailto:ronnsmith@hotmail.com).



CHAMPION YORKSHIRE  
Cassie Kirby

Best Wishes To All Three Way  
Livestock Show Winners & Participants!

Cox Auto Supply Co.  
210 S. Main • Morton • 266-8811 or 266-8986

¡Se Habla Español! Phone Applications Accepted Mon.-Thurs. 8:30-5:30 pm Fri. 8:30-6 pm

**272-3673**

LOANS \$100 TO \$467

CREDIT STARTER LOANS  
LOANS WHILE YOU WAIT

**CONTINENTAL CREDIT**

206 S. Main Street  
Muleshoe, Texas

## HONORS

### ENMU HONOR ROLL

Four students from the Muleshoe area are among the 481 named to the dean's honor roll for the fall semester at Eastern New Mexico University in Portales.

The local students John Bryan Cowart, psychology; Rosa María Ramírez, family consumer sciences; Nichole Lynn Sutton, elementary education; and Dora Bermea Toscano, elementary education.

In order to make the dean's honor roll at Eastern, a student must complete a minimum of 15 hours for the semester and maintain a 3.25 grade-point average.

## UNHEARD OF LOW PRICES ON THE BEST HEARING AIDS MONEY CAN BUY NOW AVAILABLE IN MULESHOE

featuring Digital & Programmable technology

Start the new millenium hearing the best you can by taking advantage of these fantastic savings. These products provide state-of-the-art technology and are backed by LIVINGSTON'S MONEY BACK GUARANTEE. Your satisfaction is 100% guaranteed, or your money back. Call today!

COMPUTER PROGRAMMABLE  
IN THE EAR (ITE)

Retails for \$4,225 ea.

**\$725**

COMPUTER PROGRAMMABLE  
CANAL AID (ITC)

Retails for \$4,525 ea.

**\$825**

HIGH DEFINITION  
MOSTLY IN THE CANAL

Retails for \$4,750 ea.

**\$1,250**

HIGH DEFINITION  
COMPLETELY IN THE CANAL

Retails for \$4,750 ea.

**\$1,250**

Monday, Feb. 5  
Bailey County Coliseum  
in Muleshoe  
Toll Free 1-800-628-0722  
[www.livingstonaudiology.com](http://www.livingstonaudiology.com)

**LIVINGSTON**  
Audiology & Hearing  
Aid Centers

## INTRODUCING an Old Friend



On January 1, 2001, four of Texas' most respected agricultural lenders,

First Ag Credit FLBA, Ag Credit of Texas PCA,

Wichita Falls PCA and El Campo PCA joined forces to create

First Ag Credit, Farm Credit Services.

For years, the Land Bank has served the real estate borrowing needs of rural Texans, while PCA has provided production and equipment financing. At First Ag Credit, we believe you deserve a convenient full-service Farm Credit lender. Secure, strong and able to meet the changing financial needs of rural America. That's why we are combining our resources to provide you with the most competitive short- and long-term lending products available.

*First Ag Credit.* Our name is changing, and our financial services are expanding. But you can count on the same friendly, knowledgeable staff in the same convenient Land Bank and PCA locations that rural Texans have depended on for generations.



First Ag Credit. *First in the Field.*

1-800-687-5261

[www.agmoney.com](http://www.agmoney.com)

Cellular Phone Service At It's Best!

**2000 MINUTES**  
for **\$39.99**

Call Susan for details!  
Phone Applications Accepted.  
Offer Ends Soon! Some Restrictions Apply.

For A Limited Time Only!  
**STARTAC**  
**3000**  
with activation  
**99¢**

Ask Us About Our Other Offers At  
**CELLULAR 2000**  
202 Main Street • Muleshoe  
272-7523/272-5153  
CELLULAR ONE Open: 10:00 am to 5:30 pm



**SHOW**

from page 1

Complete results by class include:

**MARKET SWINE**  
**Berkshire**  
 One class — 1. Chris Kindle.  
**Chester Whites**  
**Lightweight** — 1. Cody Kirby; 2. Kara Heinrich; 3. Caleb Heinrich; 4. Landon Gray.  
**Heavyweight** — 1. Misty Davis; 2. Colton Heinrich; 3. Canaan Heinrich.  
**Champion Chester White**  
 Cody Kirby, Lightweight  
**Reserve Champion Chester White**  
 Kara Heinrich, Lightweight  
**Durocs**  
 One class — 1. Rowdy Davis; 2. Katy Cook; 3. Stephanie Kirby; 4. Chris Kindle; 5. Tiffany Davis.  
**Champion Duroc**  
 Rowdy Davis

**Reserve Champion Duroc**  
 Katy Cook  
**Hampshires**  
**Lightweight** — 1. Tiffany Davis; 2. Canaan Heinrich; 3. Jennifer Kirby; 4. Rowdy Davis.  
**Heavyweight** — 1. Cody Kirby; 2. Cassie Kirby; 3. Landon Gray; 4. Stephanie Kirby.  
**Champion Hampshire**  
 Cody Kirby, Heavyweight  
**Reserve Champion Hampshire**  
 Cassie Kirby, Heavyweight  
**Polands**  
 One class — 1. Jennifer Kirby; 2. Kara Heinrich.  
**Champion Poland**  
 Jennifer Kirby  
**Reserve Champion Poland**  
 Kara Heinrich  
**Spots**

**One class** — 1. Chris Kindle; 2. Cody Kirby; 3. Rowdy Davis; 4. Marvin McCaul.  
**Champion Spot**  
 Chris Kindle  
**Reserve Champion Spot**  
 Cody Kirby  
**Yorkshires**  
**Lightweight** — 1. Cassie Kirby; 2. Stephanie Kirby; 3. Colton Heinrich; 4. Jennifer Kirby; 5. Misty Davis.  
**Heavyweight** — 1. Marvin McCaul; 2. Colton Heinrich; 3. Kara Heinrich; 4. Caleb Heinrich; 5. Canaan Heinrich.  
**Champion Yorkshire**  
 Cassie Kirby, Lightweight  
**Reserve Champion Yorkshire**  
 Stephanie Kirby, Lightweight  
**Crossbreeds**  
**Lightweight** — 1. Caleb Heinrich; 2. Tiffany Davis; 3. Cassie Kirby; 4. Misty

Davis.  
**Heavyweight** — 1. Chris Kindle; 2. Rowdy Davis; 3. Tiffany Davis.  
**Champion Crossbreed**  
 Chris Kindle, Heavyweight

**Reserve Champion Crossbreed**  
 Caleb Heinrich, Lightweight  
**Grand Champion Swine**  
 Rowdy Davis, Duroc  
**Reserve Champion Swine**

Cody Kirby, Hampshire  
**Champion Showman**  
 Chris Kindle  
**Reserve Showman**  
 Colton Heinrich

**GIRLS**

from page 1

In the second quarter, Rasco put back a rebound, blocked a Lady Pirate shot and got the ball down court to Gartin to finish the fast-break opportunity. Myndi Heathington put up a shot from the three-point line that bounced three times on the rim before falling through to give Muleshoe a 13-6 advantage. But then Cooper answered with an 11-point run and went to the dressing room up 17-14. Cooper continued its scoring run in the third quarter with a pair of threes and a bucket to open a 10-point lead over the Lady Mules in the first three minutes of the second half. The Lady Mules then

outscored Cooper 12-6 in the final quarter. "It took a lot of character for us to come back from being down by 10 points," Lady Mule coach Shana Simms

said. Rasco and Gartin shared Lady Mule scoring honors, 10 each. The Lady Mules stand 4-3 in district play.

**BOYS**

from page 1

in the lane; that cut the Pirate lead to five with just under three minutes remaining. Cooper answered every Mule threat in the final minute and a half, making nine of 10 free throws to preserve the win. Mason told the Mules after the game, "Losing is not fun, but . . . if you are a true competitor, it should make you want

to work a little harder and get after it a little more." Shelburne's 21 points led the Mules; Darrell Lewis had 19. The team is 2-3 in district.

**DIABETICS**

With Medicare or Insurance  
 (No HMOs)


Medicare Pays For Diabetic Testing Supplies.  
 Get Diabetics Supplies Mailed To Your Home  
 With No Shipping Or Handling Charges.

For Additional Information Call

**1-800-337-4144**

Diabetic National Services, Founded 1995  
 (also available - male impotency product - not a pill)

**Bailey County Electric Co-Op Assn.**  
 305 E. Ave. B • Muleshoe, TX  
 272-4504 (in Muleshoe) or 266-8600 (in Morton)



**CHAMPION CHESTER**  
 Cody Kirby

*Congratulations To All The  
 Three Way Stockshow Participants!*

**YOU CAN TRUST CHUCK**

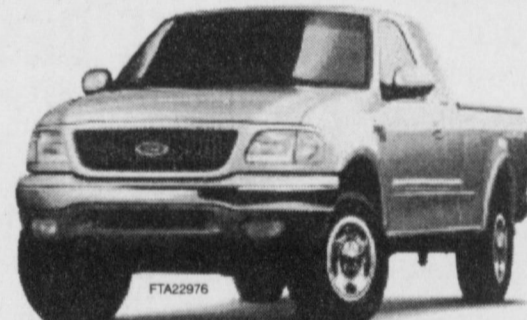
*That's why so many people trade with Chuck Daggett Ford Dodge in Portales!*

**CHUCK WILL SAVE YOU MONEY!**

**BOTTOM DOLLAR PRICES ON A GREAT SELECTION OF VEHICLES!**



**\$1000**  
 Factory Rebate



**\$500**  
 Factory Rebate

**Brand new 2001 F-150 XLT**  
 • Power windows • Power door locks • Overhead console • 40/60 split bench seat • Cruise control  
 • Fuel injected 4.2L V6 • 4 speed overdrive transmission • Air conditioning • Tilt steering wheel  
 • Am/Fm stereo 6 disc CD changer • 16" white letter all-terrain tires • Much more!

**YOUR PRICE ONLY \$263**

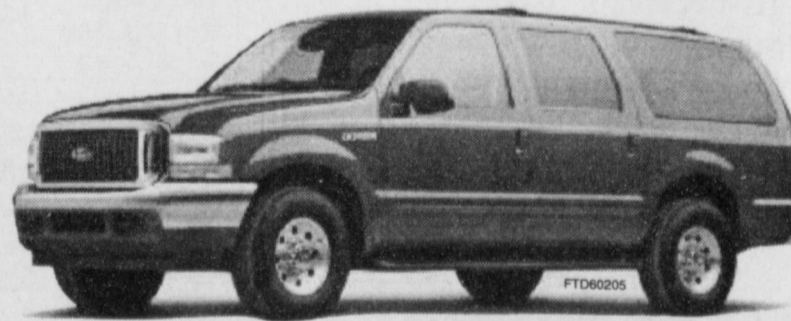
**Brand new 2001 F-150 SUPER CAB 4x4**  
 • 4 door Super Cab • Fuel injected 5.4L V8 • 4 speed automatic overdrive transmission  
 • Am/Fm stereo/clock/cassette • Air conditioning • Cruise control • Tilt steering wheel  
 • Trailer towing package • Skid plates • 16" white letter all-terrain tires • Much more!

**YOUR PRICE ONLY \$349**



**Brand new 2001 WINDSTAR LX**  
 • Third row seating • Power windows • Power door locks • Am/Fm stereo/clock/cassette  
 • Rear air conditioning system • Cruise control • Tilt steering wheel • Luggage rack  
 • Fuel injected 3.8L V6 • 4 speed automatic overdrive transmission • Much more!

**SAVE \$3,000 ON ALL 2001 WINDSTARS**



**Brand new 2000 EXCURSION LIMITED**  
 • Leather interior • Heated front seats • Third row seating • Rear A/C and heat • Heated power mirrors  
 • Illuminated running boards • Fuel injected 6.8L V10 • 4 speed automatic transmission  
 • Premium Am/Fm cassette/6 disc CD changer • Reverse sensing aid • Cruise control • Much more!

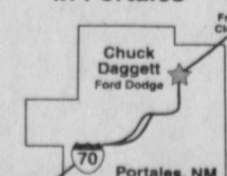
**SAVE \$7,000 ON ALL 2000 EXCURSIONS**

**CHUCK GIVES YOU THE VALUE YOU DESERVE!**

*Need a truck? CALL CHUCK!*


**Chuck DAGGETT**

On the first curve from Clovis in Portales



(505) **356-8581** 115 N Chicago Portales, NM

**CENTRAL COMPRESS & WAREHOUSE**  
 205 Railroad Ave. • Sudan, TX • 227-2388



**CHAMPION BERKSHIRE**  
 Chris Kindle

**WE'RE PROUD OF YOU!**



**WEDDING**



Mr. and Mrs. Doug Bales Courtesy photo: Lonnie Adrian

**Watts, Bales wed in Muleshoe**

Anna Watts of Salem, Ind., and Doug Bales of Muleshoe were married Dec. 13 at the Muleshoe Church of Christ. George Heisel officiated. A reception followed in the church's Fellowship Hall, hosted by Mr. and Mrs. Kem Bales and friends. The bride has been self-employed for 28 years in the business of health and skin-care products. The groom is in agricultural sales as well as being with same the company as his wife. The couple went to New Mexico for their honeymoon and are at home in Muleshoe.

**Christian singer plans free Lubbock concert**

Entertainer Carman is scheduled to appear in concert Feb. 19 at United Spirit Arena in Lubbock. The performance is part of his 70-city Heart of a Champion tour. Admission to the concert itself is free. Tickets for early admission, good for admission only between 5:30 p.m. and 6 p.m., are available for \$10 through Select-A-Seat. The doors open to the public at 6 p.m., and the concert begins at 7 p.m. The show features flames, fireworks, two jumbo video screens, eight dancers, eight musicians and three backup singers in addition to the artist himself. The tour began last fall and has played 28 cities. Rendy Lovelady, Carman's manager, said the show is "definitely

**'CREATIVE LIVING'**

Information on making Victorian jewelry, Bananas Foster and basic silhouette patterns will be featured on "Creative Living" on Feb. 6 at 1 p.m. and Feb. 10 at 3 p.m. (All times are Central.)

"Creative Living" airs on public broadcasting station KENW-TV from Eastern New Mexico University in Portales.

Tonya Williams, an artist from Los Lunas, N.M., will show how to make gift items featuring Victorian jewelry.

Janel Franklin, a cookbook author from Tahoka, will share her version of "3-Minute Bananas Foster."

Sewing experts Edna L. Dunston and Barbara Evant will explain how to work with a basic pattern to create a personal silhouette to use when fitting garments and sewing. Dunston is from Lutz, Fla., and Evant is from Oradell, N.J.

Information on rolled fondant icing and tips and tricks for easy decorating will be featured Feb. 6 at 10:30 p.m. and Feb. 8 at 1 p.m.

Nancy Siler of Woodridge, Ill., representing Wilton Industries Inc., will show how to work with rolled fondant icing.

Dianne Giancola of Stamford, Conn., representing Prym/Dritz Corp., will show some fashionable window treatments, including rods and finials.

"Creative Living" is produced and hosted by Sheryl Borden of Portales.

The show is carried on more

than 100 PBS stations in the United States, Canada, Guam and Puerto Rico, and is distributed by Westlink of Albuquerque.

Viewers can request copies of

**BIRTHS**

**TYSON**

Monica and James Tyson of Austin are the parents of a daughter, Sierra Denee, born at 5:31 p.m. Jan. 4 at Seton Hospital in Austin. She weighed 8 pounds, 12 ounces and was 20 1/2 inches long.

Grandparents are Alan and Kay Swint Caraway of Muleshoe and Loretta Tyson and the late Otis Tyson of Los Angeles.

**SNELL**

Chelana and Douglas Snell of Wichita Falls are the parents of a son, Reese Alexander Snell, born at 7:59 a.m. Jan. 4 in Wichita Falls.

He weighed 7 pounds, 9 ounces and was 21 inches long. He has one brother, Christian Douglas.

Grandparents are Janice and Gene Snell of Muleshoe, Sherry Holland of Mineral Wells and Cathy and Chris Kerlick of Harlem, Ga.

Great-grandparents are Julia Symcox of Farwell and Joanne Dunlap of Jacksboro, Texas.



RESERVE CHAMPION POLAND Kara Heinrich

**HIGGINBOTHAM-BARTLETT CO.**

201 WNW 2nd • Morton • 266-5255

Thanks for a great show Three Way! We're proud of all of you!



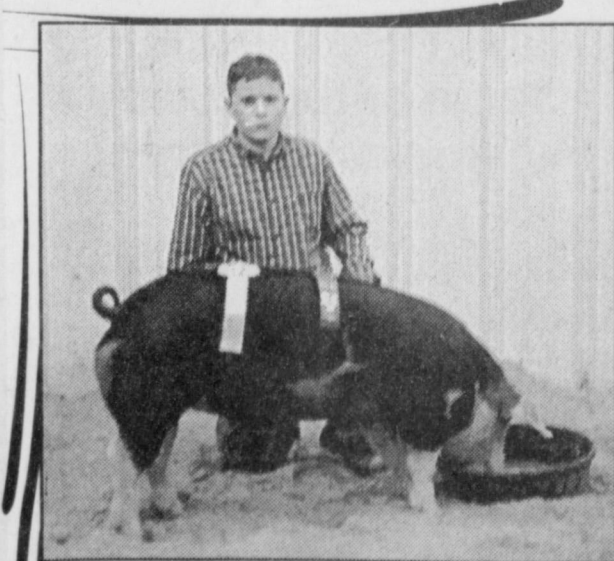
**The Muleshoe Journal's 7th Annual CUTEST BABY CONTEST**

is coming soon!

Look for details in upcoming editions of the Journal!

All entries' photos will be printed in the Easter 2001 edition of the paper. The winner will receive a Savings Bond.

So, start digging out those adorable baby photos today!



RESERVE CHAMPION SPOT Cody Kirby



RESERVE CHAMPION YORKSHIRE Stephanie Kirby

Great Show Three Way!

**King Ag Aviation, Inc.**

FM 746 East Sudan

946-3399 or 946-7309

**REPRESENTATIVE SALES**

1350 head of cattle, 200 hogs and 176 sheep and goats for a total of 1,726 animals were sold at the Jan. 27th sale. Market fully steady on all classes of stocker and feeder cattle with very good buyer participation, even with the icy weather all day Saturday. Packer cows sold steady to a dollar higher.

The Muleshoe Cattle Market is brought to you each week by Muleshoe Livestock Auction, located east of Muleshoe on U.S. 84. Muleshoe Livestock conducts sales every Saturday, beginning with hogs, sheep and goats at 10 a.m. and cattle following at approximately 12 noon.

FOR INFORMATION ON SALES OR TO CONSIGN CATTLE, CALL (806) 272-4201

| Seller, City                 | #     | Type        | Wt.       | CWT or PH   |
|------------------------------|-------|-------------|-----------|-------------|
| Larry Luedtke, Miles, TX     | 7     | Hol. Strs   | 264 lbs.  | at \$108.00 |
| Brian Boehning, Earth        | 18    | Hol. Bulls  | 244 lbs.  | at \$116.50 |
| Brian Boehning, Earth        | 67    | Hol. Bulls  | 302 lbs.  | at \$105.00 |
| Brian Boehning, Earth        | 8     | Blk. Bulls  | 239 lbs.  | at \$300.00 |
| Paula Nix, Springlake        | 8     | Mxd. Bulls  | 338 lbs.  | at \$118.00 |
| M.E. Edwards, Sudan          | 5     | BWF Strs    | 420 lbs.  | at \$114.00 |
| M.E. Edwards, Sudan          | 2     | RWF Strs    | 525 lbs.  | at \$98.00  |
| M.E. Edwards, Sudan          | 5     | Mxd. Strs   | 632 lbs.  | at \$88.00  |
| Rodney Geissler, Springlake  | 2     | Mxd. Strs   | 440 lbs.  | at \$104.00 |
| Ranch, Whiteface             | 6     | Char. Strs  | 546 lbs.  | at \$102.50 |
| D.C. Pearson, Ropesville     | 4     | Limo. Strs  | 669 lbs.  | at \$82.50  |
| Thiessen Cattle, Seminole    | 8     | Mxd. Strs   | 675 lbs.  | at \$90.25  |
| Thiessen Cattle, Seminole    | 4     | Red Strs    | 844 lbs.  | at \$83.00  |
| Roy Don Coker, Friona        | 4     | BWF Strs    | 675 lbs.  | at \$88.00  |
| Roy Don Coker, Friona        | 12    | BWF Strs    | 864 lbs.  | at \$82.50  |
| Joe Steelman, Bovina         | 6     | Mxd. Hfrs   | 372 lbs.  | at \$107.00 |
| Bryan Boehning, Earth        | 9     | Blk. Hfrs   | 229 lbs.  | at \$295.00 |
| Paula Nix, Springlake        | 8     | Mxd. Hfrs   | 374 lbs.  | at \$109.50 |
| Rodney Geissler, Springlake  | Char. | Hfr         | 375 lbs.  | at \$110.00 |
| C.E. Grant, Muleshoe         | 2     | Mxd. Hfrs   | 443 lbs.  | at \$98.00  |
| Harvey Patterson, Amherst    | 5     | Red Hfrs    | 458 lbs.  | at \$95.00  |
| D.C. Pearson, Ropesville     | 3     | Limo. Hfrs  | 682 lbs.  | at \$85.00  |
| D.C. Pearson, Ropesville     | 5     | Limo. Hfrs  | 768 lbs.  | at \$81.50  |
| Thiessen Cattle, Seminole    | 3     | Char. Hfrs  | 753 lbs.  | at \$81.50  |
| Thiessen Cattle, Seminole    | 4     | Brang. Hfrs | 850 lbs.  | at \$77.00  |
| Phil Garrett, Muleshoe       |       | Limo. Pair  |           | \$690.00    |
| Harvey Patterson, Amherst    |       | Red Cow P7  |           | \$590.00    |
| Texas Boys Ranch, Lubbock    |       | BMF Cow P7  |           | \$550.00    |
| Louis Howsman, Portales, NM  |       | BWF Cow P5  |           | \$570.00    |
| Dan Paxton, Portales, NM     | 2     | RWF Cows    | 1170 lbs. | at \$44.00  |
| Luis Melendez, Sudan         |       | Blk. Cow    | 1345 lbs. | at \$46.00  |
| Tommy Lewis, Morton          | 14    | Blk. Cows   | 1035 lbs. | at \$50.00  |
| Randy Davis, Rogers, NM      |       | Gray Cow    | 1115 lbs. | at \$47.50  |
| Broken H Farms, Sudan        |       | Red Cow     | 1665 lbs. | at \$49.00  |
| Prairie View Dairy, Muleshoe |       | Hol. Cow    | 1655 lbs. | at \$44.25  |
| Do Rene Dairy, Earth         | 2     | Hol. Cows   | 1320 lbs. | at \$41.00  |
| Michael Parchel, Vega        |       | Hol. Cow    | 1095 lbs. | at \$42.75  |
| Manuel Barrera, Portales, NM |       | Hol. Cow    | 1340 lbs. | at \$42.25  |
| White Cattle Co., Lubbock    |       | RWF Bull    | 1675 lbs. | at \$57.50  |
| J.T. French, Seminole        |       | Loho. Bull  | 1350 lbs. | at \$55.50  |



# The really good cowboys combine many skills in unique ways

I've often been asked the question, usually by gentiles (urban people), what my definition of a cowboy is. I'm not sure what they expect my answer to be.

Maybe someone who is strong, forthright and brave? Or a professional rodeo hand? Or a movie-star idol like John Wayne?

Although those answers do cover facets of cowboydom, they miss the heart of the job description. My definition of a cowboy is "someone who can replace a uterine prolapse in a range cow in a three-section pasture with nothing but a horse and a rope." Thinkin' that through, you can see the breadth of the skills and experience required. There are many people who can ride a horse better than a regular cowhand. Many who can outlope him. Also others who are smoother or more qualified to replace a prolapse. But not many who can do it all ... by themselves.

The first thing that defines a cowboy is that he is there, on the scene, on duty to herd, guard, watch, protect, serve and save the cow.

Range cows are good-sized critters a long way from the vet clinic. Which means if she is in trouble, the lone cowboy is often the difference between life and death for her. Whether she's stuck in a mud bog, mauled by a mountain lion, hung in a tree fork, shot by an arrow, afflicted with pneumonia, attacked by screw worms ... or prolapsed.

To help her, first she has to be

## TOPS NEWS

Fourteen TOPS No. 34 members attended the Jan. 25 meeting at the usual site, the Muleshoe Church of Christ.

The TOPS prayer and pledge were led by leader Laverne James. Polly Otwell, co-leader, read the previous week's minutes in the absence of secretary Janie Hughes, and they were accepted as read.

Weight recorders Betty Jo Davis and Alene Bryant called the roll and conducted the weigh-in.

The best loser was Sherry White. Elaine Coburn was first runner-up and Tommie Fulcher the second runner-up.

White joined at the last meeting. Another new member, Anna Bales, joined at this meeting.

Lucille Harp, card chairperson, gets the greeting cards ready each week to be signed by the members before being mailed.

Cards were sent to Juanice Bridgeman, Evelene Harris, Jewel Peeler, Alma Robertson and Aurora Mata.

The next TOPS No. 34 meeting will be at 5:30 p.m. Feb. 1 at the same site. Visitors are welcome.

restrained. Even though they are domesticated animals, range cows are not tame. They're like Kmart employees — you can't actually walk up to one.

So the cowboy must be able to approach her on horseback, capture her, then hold her so he can work on this ailment.

This first part of the definition involves quite a bit. Say you rope her. What do you do then?



## BAXTER BLACK

ON THE EDGE OF COMMON SENSE

There are no corrals, no squeeze chute, no cowboy assistant, tranquilizer gun, winch or net, so you neck her to a tree or trip her

then sideline to cross-tie her with a piggin' string.

Part 2, putting in the prolapse. This is no small procedure even

in the antiseptic surroundings of a veterinary clinic: It's still like stuffing a smoked ham down a sink drain. It's no easier on the banks of a cottonwood creek or on the shale hillside of a winter permit.

But whether it's a prolapse, a wire around the foot, or a sick calf, the Palo Duro Canyon, the Tonto Basin or the Alvord Desert, it's still cowboy, horse

and rope — the basic essentials.

I've overheard people compare the abilities of trick ropers, bronc riders, horse trainers and veterinarians to those of the workin'-for-wages cowboy. That he is not as accomplished at their skills as they are. They seem disappointed.

I remind these folks that he is not a professional cowboy. He just does it for a living.

## RETIRED TEACHERS

The Muleshoe Area Retired Teachers met Jan. 19 in the Fellowship Hall of 16th and Avenue D Church of Christ.

Musical entertainment was provided the Rev. Jack Stone. He sang several hymns, including some of his most loved songs, and provided one of his tapes to be given away at the end of the meeting. It was won by Maxine Ragsdale.

Another drawing was a \$10 gift certificate from United Supermarket, won by Mary Nell

Bleeker.

Stone also announced that there is to be a Gospel Jubilee in March at Muleshoe's First Assembly of God, and he invited everyone to attend.

It was announced the Retired Teachers convention will be in April, and local President Aline Bryant ask that each member think about attending.

The next meeting will be Feb. 15 with Nancy Kidd informing members about the proposed senior citizen building.


The members wish to thank Joy Stancell for coming in November and informing them about the new nursing home which is now in the process of being built. She showed the layout of the rooms and the arrangement of the building as well as telling about the needs of the home and the need for more volunteers.

Those in attendance in the January meeting were visitors Jenne McVicker, Myrtle Puckett and Rev. Jack Stone (guests are always welcome.) Members

attending were Georgia Peña, Wilma Smith, Frankie Lunsford, Maxine Ragsdale, Lucy Faye Smith, Mary Crane, Evelyn Ellington, Joyline Costen, Rose

Sain, Norma Prather, Paulette Crawford, Mary Nell Bleeker and Alene Bryant. Hostesses were Norma Prather and Paulette Crawford.





### PARMER CO. COTTON GROWERS CO-OP GIN

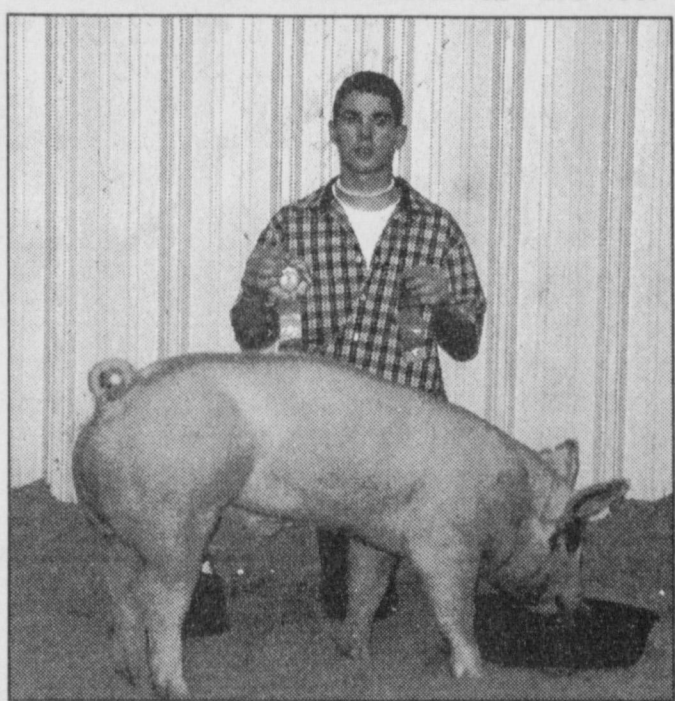
Farwell, TX • 825-3701  
RON RILEY-GENERAL MGR.

CHAMPION POLAND  
Jennifer Kirby


*A Special SALUTE to the Winners of the Three Way Livestock Show!*

## BAILEY COUNTY FARM BUREAU

1612 W. American Blvd. • Muleshoe • 272-4567



CHAMPION CROSS  
Chris Kindle



*We're Proud Supporters of the Three Way Stock Show!*

# HOROSCOPES

For entertainment purposes only

## FEBRUARY 4-10

**Aries - March 21/April 20**  
Keep your temper in check when an acquaintance purposely tries to upset you early in the week, Aries. Don't let this person get to you. If you do, you're sure to say things that will get you into a lot of trouble. So, just stay calm. A close friend turns to you for romantic advice. Be honest with him or her. Gemini plays a key role.

**Taurus - April 21/May 21**  
Don't be stubborn when it comes to making plans with that special someone this week. Listen to his or her suggestions; they're not as bad as you think. Remember that the important thing is for you two to be together — no matter what you end up doing. A loved one needs a shoulder to cry on. Be there for him or her.

**Gemini - May 22/June 21**  
A fast-talking acquaintance gets you involved in a difficult situation on Wednesday. You have to react quickly if you want to get out of this without any problems. Just stay calm, and you're sure to rectify everything easily. A close friend needs your help with a personal problem. Do what you can.

**Cancer - June 22/July 22**  
Don't let your sadness show when a loved one shares some important information with you. Just keep your feelings to yourself. This person doesn't mean to hurt you; he or she just wants your advice. Try to stay objective. That special someone has a surprise for you on Tuesday. Enjoy!

**Leo - July 23/August 23**  
You meet someone interesting when out with business associates this week, Leo. Get to know this person better, because he or she can offer you a lucrative opportunity. Don't let this slip away. A close friend gives you some romantic advice. Take it, because it's sure to help.

**Virgo - Aug 24/Sept 22**  
Be honest when an acquaintance asks your opinion about a personal matter. Don't try to spare this person's feelings; he or she deserves to know the truth. Your forthrightness will be appreciated. The person whom you've been seeing wants to intensify your relationship. Say yes, because this is exactly what you want too.

**Libra - Sept 23/Oct 23**  
Don't take a close friend's ribbing to heart. This person doesn't mean anything by it; he or she is just making a joke. Try to understand that. A loved one turns to you in a time of need. While you're reluctant to help, you must do all that you can for him or her.

**Scorpio - Oct 24/Nov 22**  
Don't let your pride get in the way of asking for help this week. There is a lot to do, and you can't accomplish everything on your own. You need some assistance. Ask for it. That special someone needs a shoulder to cry on late in the week. Be there for him or her. Aquarius plays a key role.

**Sagittarius - Nov 23/Dec 21**  
Don't back down from a challenge on Thursday, Sagittarius. You know that you are right. If you just stay calm and present the facts, you're sure to win this disagreement. Those around you will be impressed with your composure. An acquaintance asks to borrow money. Say yes, because this person is very reliable.

**Capricorn - Dec 22/Jan 20**  
Don't be shy when you run into an old flame early in the week, Capricorn. Fate brings the two of you together again; take advantage of this opportunity. A loved one asks for your help with a family matter. Do what you can for him or her. Your efforts will be appreciated.

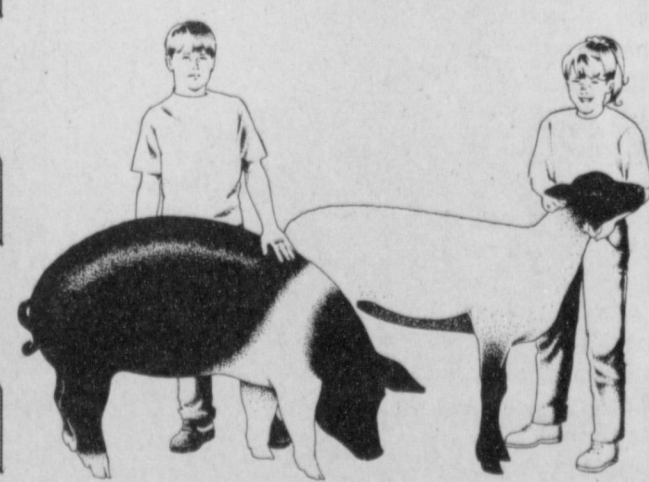
**Aquarius - Jan 21/Feb 18**  
Be realistic when planning your week, Aquarius. There is a lot to accomplish, but you can't do it all by yourself. So, don't try. You have to prioritize things if you want to make any progress at all. Turn to a loved one for encouragement and help if you need it. Leo plays a key role.

**Pisces - Feb 19/March 20**  
Keep your sense of humor about you this week, Pisces, because you're going to need it. Things are going to be quite hectic for a while. Laughing at the obstacles you encounter will make everything much easier to deal with. Don't forget that!

# CONGRATULATIONS

to all the participants and winners of the Area Livestock Shows!

We salute each of you for your hard work and dedication in raising some of the finest livestock in the area!



## THE FIVE AREA TELEPHONE ORGANIZATION

**Five Area Telephone Cooperative, Inc.**

**West Plains Telecommunications, Inc.**

**Five Area Systems, Inc.**

**Five Area Long Distance**

**Plateau Wireless Cellular**

**Five Area Paging**

**fivearea.com**  
Your local Internet Provider

2233



**RED WING SHOES**  
Made in U.S.A.

**The Fair Store**  
120 Main 272-3500




# HONOR ROLL

**THREE WAY Third Six Weeks All "A"**  
**Third Grade** — Justin Perry.  
**Fourth Grade** — Brittany Cuellar.

**Fifth Grade** — Tiffany Davis, Cenee Hood and Cassie Kirby.  
**Ninth Grade** — Katie Cook and Landon Gray.  
**Tenth Grade** — Monica Walker.

**Eleventh Grade** — Jordan Gray and Kara Heinrich.  
**Twelfth Grade** — Ernesto Navarro.  
**"A" Average**  
**First Grade** — Rowdy Davis, Desiree Kingsley and Ashley Thomas.  
**Second Grade** — Enrique Garcia and Kevin Perry-Ketchum.  
**Third Grade** — Clancy Kingsley, Stephanie Kirby, Pricilla Pérez, Monica

Rubalcava and Angelica Salamanca.  
**Eleventh Grade** — Anthony Furgeson, Amanda Kingsley and Ivan Navarro.  
**Twelfth Grade** — Cynthia Baeza, Michael Soliz and Eric Sowder.  
**Seventh Grade** — Caleb Heinrich and Trevor Hood.  
**Eighth Grade** — Jennifer Kirby.  
**Tenth Grade** — Julie

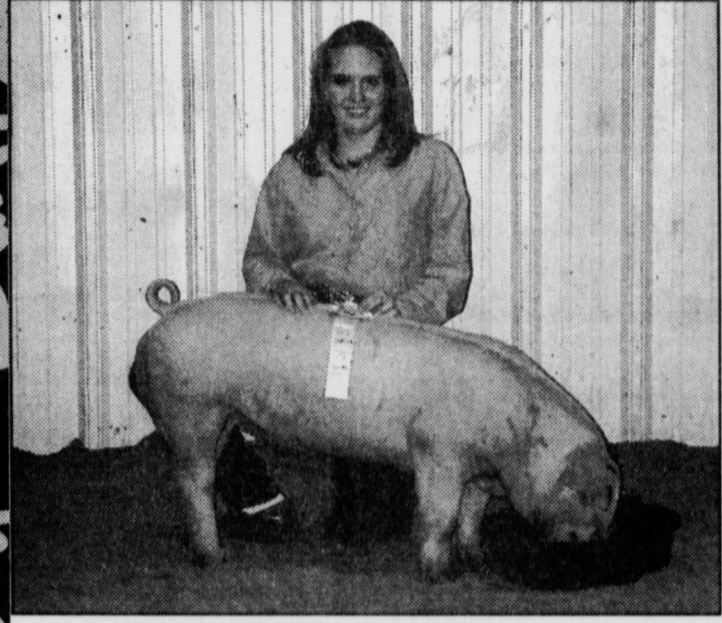


**CHAMPION HAMPSHIRE**  
Cody Kirby

*Congratulations Kids!*  
*Thanks for a Great 2001 Show!*

**Muleshoe Journal**  
 304 W. 2nd • 272-4536  
 email:ctyankee@fivearea.com

**MORTON INSURANCE AGENCY**  
 120 S.E. 1st Street  
 Morton, Texas  
 (806) 266-5561 (806) 266-5365  
 FAX (806) 266-8944 Email: morton@windmill.net

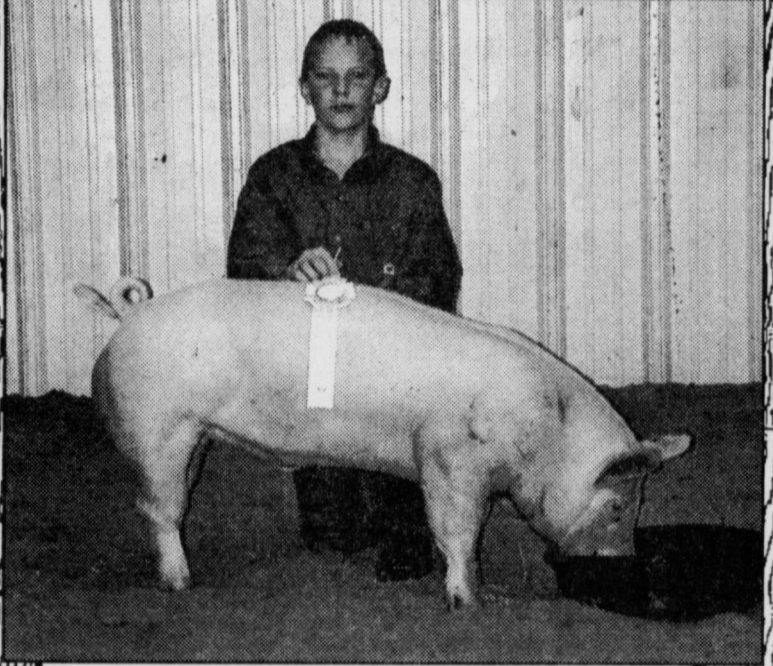


**RESERVE CHAMPION CHESTER**  
Kara Heinrich

**Good Show Kids!**

**PRECURE ELECTRIC, INC.**  
 424 N. 1st St. • Muleshoe • 272-4844 or 946-7322 Mobile

*Congrats to all the kids from Three Way!*  
**Great Show 2001!**



**RESERVE CHAMPION CROSS**  
Caleb Heinrich



*We're proud to support our Three Way youth!*

**Farmers Co-Op Gin Assn. of Enochs**  
 Enochs, TX • Mgr. Wade Baker  
 927-5511 or 927-5512

**RESERVE CHAMPION HAMPSHIRE**  
Cassie Kirby



**RESERVE CHAMPION DUROC**  
Katy Cook

**CONGRATULATIONS**  
 Three Way Stock Show Winners.  
 We're Proud of You!

**JOHN DEERE**  
 FARM EQUIPMENT DEALER  
 Muleshoe Hwy. • Morton, TX • 266-5535

# Journal Classifieds

Deadlines are 5 p.m. Monday and Thursday      Call 272-4536      February 1, 2001

**LEGAL**

**MULESHOE INDEPENDENT SCHOOL DISTRICT**  
 Muleshoe ISD is accepting bids for the leasing of twelve large copy machines and four small machines. Specifications may be picked up at 514 West Ave G., or by calling 806-272-7400. Sealed bids must be received by February 5th, 2001. Muleshoe ISD reserves the right to accept or reject any and/or all bids in the best interest of the District. Published in the Muleshoe Journal January 25 and February 1 and in the Bailey County Journal January 28 and February 4, 2001.

**HELP WANTED**

**Homeworkers Needed \$635 weekly processing mail. Easy! No experienced needed. Call 1-800-440-1570 Ext 5085 24Hrs**

**DEADLINES FOR CLASSIFIED ADS**  
**Monday 5 PM for Thursday's issue**  
**Thursday 5 PM for Sunday's issue**

**SERVICES**

**AIR CONDITIONING**  
 Financing available on new central refrigerated air conditioning-heating equipment. As low as \$59 a month. Bad credit? Bankruptcy? No Problem! **WE WILL FINANCE YOU!**  
 Air America 791-1093

**UNBELIEVABLE DEAL!**  
 2000 MINUTES FOR \$39.99  
 FREE PHONE  
 FREE ACTIVATION  
 FREE CASE WITH PURCHASE OF CAR CHARGER  
 CALL AMERICA TOLL FREE INCLUDES 750 WEEKEND MINUTES AND 750 EVENING MINUTES  
**CELLULAR 2000**  
 202 MAIN STREET  
 (806)272-7523 OR 272-5153

**REAL ESTATE**

**160 ACRES IRRIGATED FARM**  
 One well. Lays good. Southeast of Lazbuddie.

**320 ACRES IRRIGATED FARM**  
 Southwest of Lariat. 4 Wells. 2 Sprinklers. Priced to Sell!!!  
 Call Daren at J.B. Sudderth Realty, Inc. 806-481-3288.

**3/2/1 plus large carport.**  
 Geo-Thermo heating/air. Fully carpeted. Yard sprinkler system. Call for an appointment at 272-3856.

**For Sale, 3 Bedroom, 2 bath with large carport on 1 acre, 2 1/2 miles North on Hwy. 214. Call (505)355-4241**

**REAL ESTATE**

**Nieman Realty**

116 E. Ave. C • George Nieman, Broker • 272-5285 or 272-5286

**RICHLAND HILLS - PARK RIDGE AREA**

- NICE 2-1-1 Brick, Cent. Heat, win. evap. air, built-ins, new carpet & paint, storm windows & doors, approx. 1515' lv. area, fenced yd., MORE!!! \$39.5K!! RH-4
- VERY NICE 3-2 1/2-2 Brick Home, new paint, carpet, tile, & vinyl, new shingles, Hi-Eff. Cent. A&H, built-ins, FP w/ Country Comfort insert provides heat savings, also has approx. 600 sq. ft hobby/game room attached by breezeway, with nice carpet, wall heat, win. evap., 1/2 bath plus extra stor. bldg. & MUCH MORE!!! \$93K!! RH-3
- LOT 83, PKRDG. - \$1000 .00, SEVERAL OTHER NICE LOTS ARE AVAILABLE - CALL FOR MORE INFO!!
- NICE 3-3-1 Brick, Cent. heat, evap. air, built-ins, fans, 2000' + lv. area, fenced yd., patio, stor. bldg.!! \$57.5K!! RH-1
- JUST LISTED-NICELY REMODELED 3-2-3 Brick Home on corner lot, new paint, carpets, whirlpool tub, shower unit, & heat pump. Home also has built-ins, fireplace, fenced yd., Stor. Bldg. & MUCH MORE!!! \$79,900!! RH-2

**HIGHLAND AREA**

- NICE 3-1-1 Brick, Cent. heat & evap. air, nice carpet, fans, 2 stor. bldgs., fenced yd., MORE!!! \$36.5K!! HL-1

**LENAU - COUNTRY CLUB AREA**

- 2-1-1 Home, wall furn. heat, \$18K!! L-4

**COMMERCIAL**

- Duplex (2-2 bdrm. 1 bath units) plus 1 (2 or 3 bdrm) for residence or rental. \$30K!!!
- GOOD INCOME PROPERTY - approx. 3490' bldg., paved parking, good net lease!! PRICED TO SELL!!
- Established Business: Land, Bldg. & Equip., \$75K!!

- 6,600 sq. ft. metal building with approximately 1080 sq. ft. additional storage area on Hwy. 70-84, 140' x 100' tract!! \$34K!!
- 200 Main & E. Ave. B-4 rental units plus upstairs & basement or renovate for your own special use!! \$65K!!

**HIGH SCHOOL**

- VERY NICE 3-1-1 Brick, Heat pump, DW, nice carpets, fenced yd., MORE!!! \$30's!!! HS-1
- REMODELED 3-2-1 carport Home, Cent. A&H, built-ins, new carpet & vinyl, 5 fans, new roof, MORE!!! \$38K!! HS-2
- VERY NICE 3-1-1 Brick, Cent. A&H, stove, DW, fenced yd., MORE!!! \$38K!! HS-4
- 3-2 Home, corner lot, floor furnace heat, fenced yd. \$25K!! HS-10
- PRICE REDUCED - NICE 3-1-1 Home, Cent. Heat & Cent. Evap. Air, built-ins, stor. bldg., fenced yd., MORE!!! \$35.5K!! HS8
- 3-1-1 Brick, Dual Fuel Heat Pump, DW, Disp., 4 fans, cov. patio, 2 stor. bldgs., fenced yd. \$34,500!! HS-3
- VERY NICE 3-1-1 Brick, Cent. A&H, 3 ceiling fans, stor. bldg., fenced yd. \$38K!! HS-5
- VERY NICE 2-1-1 Brick, Elec. Heat Pump, stove disp. fans, deck, fenced yd., MORE!!! \$32.5K!! HS-13
- 3-1-1 Brick, Cent. heat, evap. air, Dishwasher, fenced yd.!! \$28K!! HS-6
- NICE 3-2 1/2-2 carport Home, Cent. A&H, built-ins, FP, 2650' + Lv. area, fans, storm windows & doors, new roof, cov. patio, concrete cellar, fenced yd. w/ add. 2 carport, large workshop, & stor. bldg.

**RURAL**

- PLEASANT VALLEY, Approx. 160 acres, 2 bdrm home, 1 bath, 2 car detached garage, on pavement!!!
- W. of SUDAN-NICE 3-3-2 Brick Home, 5 acre tract on Hwy. 298, Cent. Air & Heat, built-ins, large Quonset Barn, MORE!!! \$95K!!!
- PRICE REDUCES - 108 acres or 7 acre tract on Hwy. 70, approx. 2100' office area, 16,900' commercial bldg. w/loading dock, 3,400' warehouse, new well, 2,800' runway!!!
- 3-2-1 Home, Cent. A&H, built-ins, fenced yd., man, splkr., 300' stor. on .84 acre on pavement, edge of town!! \$40's!!
- PROGRESS - VERY NICE 3-2-2 Home on 21.8 acres on Hwy. 84, Elec. Heat Pump, built-ins, FP, 3 fans, 10 hp., sub. irrig. well, undrgd. tile, valves, & gated pipe!!! MORE!!! \$55K!!!
- EARTH - 4-2-2 carport home, Heat Pump, fans, storage-workshop!! \$35K
- 3 Bedroom 2 Bath Home at edge of town on pavement, .8 acre, wall furnace heat, evap. air, DW, FP, fenced yd., 20' x 24' gar./shop w/ loft stor., 1 hp. dom. well!!! \$49,500!!!

**HELP WANTED**

The City of Muleshoe is taking applications for a worker in the water & sewer department. High School graduate/GED required. Upon employment, subject may be required to pass a drug test. Applications can be picked up at City Hall, 215 South First, Muleshoe, TX. Position open until filled. EOE, ADA.

**Keep Smiling!**

**Many are called, but few are chosen!**

**Subscribe Today!**

**Muleshoe and Bailey County Journal,**  
**\$22 Carrier (year),**  
**\$24 in-county (mail - year),**  
**\$26 out-of-county (year),**  
**College Students \$22**  
 Send Check to  
**Muleshoe Journal,**  
**P O Box 449,**  
**Muleshoe, TX 79347**

**House for Sale at 823 W. Ave. D Call 806-481-5041 for an appointment**

**Lazbuddie Area**  
 640 Acres - 4 Sprinklers  
 350 to 500 gallons water big wheat & grazing goes, possible 50-70 thousand return by June 1.  
 Contact Wayne Clark at 806-965-2895.



# NATIONAL BRANDS SALE

PRICES EFFECTIVE JANUARY 31-FEBRUARY 6, 2001

## MEAT

- Preferred Trim Boneless Beef  
**Chuck Roast** ..... lb. **\$1.89**
- Preferred Trim Boneless Beef  
**Chuck Steak** ..... lb. **\$1.99**
- Fresh  
**Ground Chuck** ..... lb. **\$1.79**
- Preferred Trim Boneless  
Family Pack Pork  
**Sirloin Roast** ..... lb. **\$1.29**
- Tenderized Pork  
**Cube Steak** ..... lb. **\$2.39**
- Preferred Trim  
Boneless Sirloin  
**Pork Chops** ..... lb. **\$1.59**
- Boneless  
**Pork for Stir Fry** ..... lb. **\$1.99**
- Boneless Pork  
**Stew Meat** ..... lb. **\$1.99**
- Pilgrim's Pride  
Jumbo Pack Split  
**Fryer Breasts** ..... lb. **89¢**
- Shank Portion Bone-In  
**Cook's Ham** ..... lb. **89¢**
- Butt Portion Bone-In  
**Cook's Ham** ..... lb. **\$1.09**
- All Varieties Fully Cooked  
Ready To Eat  
**Hormel Entrees**.. 17 oz. pkg **\$4.69**
- Hormel Links or Patties  
**Little Sizzlers** .... 10-12 oz. pkg **99¢**
- Hillshire Farm All Varieties  
**Smoked Sausage** ... 1 lb. **\$1.99**
- Decker  
**Sliced Bacon** ..... 12 oz. pkg **\$1.39**
- Decker  
**Meat Franks** ..... 12 oz. pkg **69¢**
- Decker Reg. or Thick Sliced  
**Meat Bologna** ..... 12 oz. pkg **99¢**
- Decker Luncheon Meat  
**Variety Pack**..... 1 lb. pkg **\$1.99**
- Decker  
**Cooked Ham**..... 10 oz. pkg **\$1.99**
- Decker  
**Chopped Ham** .... 10 oz. pkg **\$1.59**
- All Varieties Decker Sliced  
**White Turkey**..... 1 lb. pkg **\$1.99**
- Owens Reg. or Hot  
**Breakfast Sausage** ..... 2 lb. roll **\$3.39**
- Owens All Varieties  
**Breakfast Sausage** ..... 1 lb. roll **\$1.69**
- Owens Reg. or Hot  
**Sausage & Biscuits** ..... 12 oz. pkg **\$1.99**

## PRODUCE

- Cello Wrapped Large  
**Iceberg Lettuce** .... heads **2/\$1**
- U.S. No. 1  
**Baking Potatoes** .... lbs. **3/\$1**
- Large Stalk  
**Celery**..... 2/\$1
- Garden Fresh Crisp  
**Broccoli**..... lb. **79¢**
- Cello Pack Whole  
**Mushrooms** ..... 8 oz. **99¢**
- Super Select Crisp  
**Cucumbers** ..... 2/\$1
- Extra Large Green  
**Bell Peppers** ..... 2/\$1
- Cello  
**Carrots** ..... 1 lb. pkg **2/\$1**
- Large Navel  
**Oranges**..... lbs. **2/\$1**
- Red Seedless  
**Grapes**..... lb. **\$1.29**
- Sweet Juicy  
**Cantaloupe**..... lb. **49¢**
- Large Red Ripe  
**Tomatoes** ..... lb. **99¢**
- Select Group Luncheon Meat  
**Spam** ..... 12 oz. **\$1.89**
- Hunt's Tomato  
**Ketchup**..... 24 oz. btl **99¢**
- Hunt's Asstd.  
**Spaghetti Sauce** .. 26-26.5 oz. **89¢**
- Kraft Reg. or Hickory  
**BBQ Sauce** ..... 28 oz. **\$1.69**
- 12 oz. Trix, 14 oz. Lucky Charms  
or 13.7 oz. Cocoa Puffs  
**General Mills Cereal**..... your choice **2/\$4**
- Quaker Asstd. Instant  
**Oatmeal** ..... 11.8-16.2 oz. **2/\$5**
- Old Fashioned or Quick  
**Quaker Oats** ..... 18 oz. box **2/\$3**
- Select Group  
**Shake 'n Bake** ..... 5-7.7 oz. **2/\$3**
- Swiss Miss Instant Reg.  
or w/Marshmallows  
**Hot Cocoa Mix** ..... 10 ct. **2/\$3**
- Hunt's Asstd. Juicy  
Gels or Pudding  
**Snack Pack** ..... 4 pk. **99¢**
- Long Grain  
**Wonder Rice** ..... 42 oz. **2/\$3**
- Rotel Asstd.  
**Pico de Gallo**..... 16 oz. **2/\$3**
- Dinty Moore  
**Beef Stew** ..... 24 oz. **\$1.99**
- Select Group Rotel  
**Tomatoes** ..... 10 oz. **69¢**
- Select Group Hunt's  
**Tomato Sauce** .... 8 oz. cans **4/\$1**
- Chun King Asstd.  
**Chow Mein** ..... 42 oz. **\$2.99**
- Chun King Teriyaki Sauce or  
**Soy Sauce** ..... 10 oz. **\$1.29**
- Chun King Noodles/Bamboo  
Shoots/Sliced or Whole  
**Water Chestnuts** ... 5-8 oz. **99¢**
- Select Group Kraft Salad  
**Dressing** ..... 14-16 oz. **2/\$4**
- Schilling Asstd.  
**Chili Seasoning** .... 1.25 oz. **79¢**
- Schilling  
**Black Pepper**..... 4 oz. **\$1.99**
- Pre-Priced \$2.29  
**Fritos® or Chee-tos** ..... 2/\$3

## FROZEN & DAIRY

- Plains Reg., Non Fat  
or Slim N' Trim  
**Cottage Cheese** .... 24 oz. **\$1.99**
- Lowfat chocolate or Buttermilk  
**Plains Milk** ..... 1/2 gal. **\$1.59**
- Asstd. Country Crock  
**Shedd's Spread** ..... 48 oz. **2/\$3**
- 1/2 Moon Longhorn Colby/  
Colby Jack/Cheddar  
**Kraft Cheese** ..... 10 oz. **\$1.99**
- Kraft Reg. or Extra Thick Sliced  
**Velveeta Cheese** ... 12 oz. **\$1.99**
- Blue Bunny Asstd.  
**Ice Cream** ..... 1/2 gal. squares **\$2.99**
- Plains  
**Orange Juice** ..... gal. **\$2.99**
- Asstd. Punch  
**Tampico** ..... 128 oz. **99¢**
- Select Group Bird's Eye  
• Broc./Carrots w/Chestnuts  
• Pepper or Broc. Stir Fry  
• Broccoli & Cauliflower  
• Broc./Caul./Carrots  
• Broc./Beans/Onions/Pep.  
• Broc./Corn/Red Pepper  
**Vegetable Blends** ..... 16 oz. **2/\$3**
- Select Group Bird's Eye  
**Voila!** ..... 20 oz. **2/\$7**
- Select Group  
**José Olé Bowls** ..... 12 oz. **\$2.99**
- José Olé Select Group  
10.6 oz. Wraps or 12 oz. Burritos  
**Wraps or Burritos** ..... your choice **\$1.99**
- José Olé Beef or Chicken  
**Chimichangas** ..... 20 oz. **\$2.99**
- Select Group Lean Pockets or  
**Hot Pockets** ..... 9-11.5 oz. **2/\$4**
- Select Group  
**Toaster Breaks** ..... 12.7-12.9 oz. **2/\$4**
- Select Group Ore-Ida  
**Bagel Bites** ..... 7 oz. **2/\$3**
- Select Group Michelin's  
**Dinners** ..... 8-9.2 oz. **99¢**
- Fisher Boy  
**Fish Sticks** ..... 16 oz. **2/\$5**
- Fisher Boy Pub Style  
**Fish Fillets** ..... 12 oz. **2/\$5**
- Betty Crocker Asstd.  
Roll-Ups, Fruit By The Foot or  
**Fruit Snacks**..... 4.5-9 oz. pkg **2/\$3**
- Tree Top Apple Cider/  
**Apple Juice** ..... 64 oz. **2/\$4**
- Ocean Spray Ruby Red Bold  
or Ruby Red Strawberry Grapefruit  
**Juices**..... 64 oz. **2/\$4**
- Select Group Ocean Spray  
**Cranberry Blends**.. 64 oz. **2/\$5**
- Select Group Ranch Style  
**Beans** ..... 15 oz. cans **2/\$1**
- Select Group Rosarita  
**Refried Beans** .... 15.5-16 oz. **69¢**
- Betty Crocker Select  
Group Specialty  
**Potatoes** ..... 5-7.5 oz. **99¢**
- Oil or Water Pack Chunk Light  
**Star-Kist Tuna** ..... 6 oz. **2/\$1**
- Select Group Kid's Pastas  
**Chef Boyardee** ..... 15 oz. **2/\$1**
- Select Group With Meat  
**Chef Boyardee** .. 14.7-15.5 oz. **99¢**
- Hormel Reg. or Hot  
**Tamales** ..... 15 oz. **99¢**

## HEALTH & BEAUTY

- 8.5 oz. Deep Treatment/  
13.5 oz. Pantene Pro-V  
**Shampoo or Conditioner** ..... your choice **\$3.89**
- Asstd. Scope  
**Mouthwash** ..... 33 oz. **\$3.99**
- Select Group  
**Drixoral** ..... 10-12 ct. **\$4.48**
- Original No Drip  
**Afrin** ..... 15 ML **\$4.99**
- 12 oz. Reg./8 oz. Max. Str.  
**Pepto Bismol**..... your choice **\$3.99**
- Select Group Solid  
**Arrid XX** ..... 1.7-2 oz. **2/\$3**
- Select Group Colgate  
**Shave Cream**..... 11 oz. **99¢**
- Med. or Soft Large Angle Crest  
**Toothbrush**..... ea. **2/\$3**
- Select Group Crest  
**Toothpaste** ..... 4.6 oz. **2/\$3**
- Economy Size  
**Polident Tablets**.... 40 ct. **\$1.99**
- Charmin White or Ultra  
Double Roll  
**Bath Tissue** ..... 4 roll pkg. **\$2.19**
- Charmin White Reg. Roll  
**Bath Tissue** ..... 4 roll pkg. **99¢**
- Reg. Roll Coronet Print  
**Paper Towels** ..... rolls **2/\$1**
- 100 oz. Asstd. Ultra Liquid or  
87 oz. Ultra 2 Powder  
**Tide Detergent**.. your choice **\$5.99**
- Reg. or With Bleach  
**Surf Ultra** ..... 80-81 oz. box **\$3.99**
- Reg. or Free Liquid  
**All Ultra** ..... 100 oz. btl **\$3.99**
- Asstd. Glass Cleaner  
**Windex** ..... 26 oz. btl **2/\$5**
- Reg./Spring Blossom  
40 oz. Ultra Liquid/80 ct.  
Reg./Scented Sheets  
**Snuggle** ..... your choice **\$2.99**
- Store It With  
**Glad Wrap** ..... 200 ft. **2/\$4**
- 15 ct. Gal. Freezer • 20 ct.  
Gal. Storage • 20 ct. Qt. Freezer  
• 12 ct. Qt. Standup • 9 ct. 1/2  
Gal. Standup • 10 ct. Trash Q/Tie  
• 15 ct. Tall Kitchen Q/Tie • 18 ct.  
Med. Garbage • 8 ct. Trash H/Tie  
**Glad Bags**..... your choice **2/\$4**
- Select Group Hershey's  
**Candy Bars**..... reg. size **4/\$1**
- Keebler  
**Zesta Crackers** ..... 16 oz. **99¢**
- Select Group FAC  
Excludes Decaf.  
**Folgers Coffee** ... 34.5-39 oz. **\$4.99**
- Corn, Canola or  
Right Blend Mazola  
**Cooking Oil** ..... 48 oz. **\$1.69**
- Select Group  
**Hamburger Helper Dinners** ... 6.25-9.3 oz. **99¢**
- Campbell's  
**Tomato or Chicken Noodle Soup**..... 10.7 oz. **59¢**
- Kraft  
**Mac & Cheese Dinners**..... 7.25 oz. **59¢**
- Hormel Brand Reg. with  
Beans/Reg./Hot No Beans  
**Chili** ..... 19 oz. can **99¢**
- Asstd. Citrus Punch  
**Sunny Delight**..... 64 oz. **99¢**



All Types-Asstd. Varieties  
**PEPSI & MOUNTAIN DEW** ... 6 pk. cans **3/\$5**

All Types-Asstd. Varieties  
**PEPSI & MOUNTAIN DEW** ..... 2 liter btl **99¢**

WESTERN MONEY UNION TRANSFER<sup>SM</sup>  
"The fastest way to send money"

**LOWE'S**  
MARKETPLACE

401 W. American Blvd. Muleshoe 272-4585

**WE RESERVE THE RIGHT TO LIMIT QUANTITIES IN TEXAS**