

# STOCKYARDS DAILY JOURNAL

A Daily Commercial Newspaper for Modern Farmers and Stockmen and an Advertising Medium that Reaches the Buyers

Vol. XI, No. 281.

ST. JOSEPH, MO., TUESDAY, JULY 28, 1908

LAST EDITION.

TERMS: PER YEAR \$4.00  
SINGLE COPY 5 CENTS

## DAILY MARKETS

Official Receipts, 45 Cars, 1,298  
Cattle; 66 Cars, 4,638 Hogs;  
25 Cars, 5,844 Sheep.

## STEER VALUES HOLD STEADY

Market For Fat Beeves Showed  
More Life Than Monday on  
Moderate Receipts.

## RANGE SUPPLY IS SMALL

More Action in Market For Butcher Stuff  
Than Yesterday. Tendency of Values  
Higher—Bulls About Steady—Calf Mar-  
ket Steady—Stocker and Feeder Trade  
Shows Signs of Activity, Values Steady  
to Firm—Live Pork Trade 5@10 Cents  
Lower—Sheep and Lamb Market Active  
and Firm.

RECEIPTS FROM JANUARY 1, 1908.  
The following table shows the receipts  
from January 1, 1908, and receipts for  
the corresponding time in 1907:

|        | 1908      | 1907      | Dec. Inc. |
|--------|-----------|-----------|-----------|
| Cattle | 257,284   | 284,812   | 66,828    |
| Hogs   | 1,476,269 | 1,261,627 | 214,642   |
| Sheep  | 322,415   | 608,628   | 171,211   |
| Horses | 14,129    | 17,860    | 3,735     |

LIVE STOCK IN SLIGHT.  
The following shows the estimated  
receipts of cattle, hogs and sheep at the  
five principal western markets:

|                | Cattle | Hogs   | Sheep  |
|----------------|--------|--------|--------|
| Chicago        | 5,000  | 10,000 | 15,000 |
| Kansas City    | 11,000 | 9,500  | 7,200  |
| South Omaha    | 1,500  | 6,600  | 7,500  |
| St. Joseph     | 1,800  | 4,600  | 5,200  |
| East St. Louis | 5,000  | 7,500  | 6,000  |
| Total          | 24,300 | 37,300 | 41,000 |

RECEIPTS BY CARS.  
The following shows the number of  
cars of stock handled today by railroads  
centering at the stock yards:

|                           | Cattle | Hogs | Sheep |
|---------------------------|--------|------|-------|
| C. B. & Q.                | 32     | 45   | 32    |
| C. R. I. & P.             | 45     | 41   | 35    |
| Great Western             | 43     | 43   | 33    |
| Missouri Pacific          | 42     | 42   | 32    |
| St. Joseph & Grand Island | 23     | 23   | 15    |
| A. T. & S. F.             | 15     | 15   | 15    |
| Total                     | 176    | 176  | 176   |

## CATTLE.

Better Pulse Shown in Trade But Prices  
No More Than Steady.  
While the weather continues extremely  
unfavorable for the development of a  
lively demand for beef cattle, there was  
a little better pulse prevalent today, al-  
though not sufficient to warrant any ad-  
vance in prices. Supplies here and at  
leading outside points are showing a  
moderate increase over last week, the  
total for two days at five points being  
78,500, an increase of 18,000 over same  
time last week. While supply shows the  
increase noted the total is not larger than  
should warrant a good, active and healthy  
market with consumptive channels in  
normal condition.

On the local market there was a some-  
what better showing of steers from corn-  
belt feed lots than on opening day of the  
week. Buyers moved more as though they  
had a place for the cattle and trade was  
good to going in fair season with prices  
ruling about steady compared with yester-  
day.

Offerings included some very good,  
though not fancy, steers of strong weight  
that sold at \$6.20 and there was a mod-  
erate showing of attractive light and  
handy weight steers that sold fairly steady  
at a range of \$5.75 to \$6.15. Less attractive  
steers of light and medium weight but  
carrying some corn fat went at \$5.00 to  
\$5.60, while common to fair light adult  
grassers went at \$4.25 to \$5.00.

Cooler weather will be necessary to  
create any material improvement in the  
demand for beef cattle.

Decided Beef and Shipping Steers.  
20..... 12.40-12.50  
21..... 12.00-12.10  
22..... 11.80-11.90  
23..... 11.60-11.70  
24..... 11.40-11.50  
25..... 11.20-11.30  
26..... 11.00-11.10  
27..... 10.80-10.90  
28..... 10.60-10.70  
29..... 10.40-10.50  
30..... 10.20-10.30

more freedom than yesterday and prices  
ruled strong. The under grades were not  
better than steady.

Arrivals from the Panhandle constituted  
bulk of a liberal run of calves on sale  
today. The market ruled fairly active and  
prices were strong to 25 cents up.

A two-load of native calves sold at  
\$5.50. Good light range veals sold up  
to \$6.50.

|    | 40    | 45    | 50    | 55    | 60    | 65    | 70    | 75    | 80    | 85    | 90    | 95    | 100   |
|----|-------|-------|-------|-------|-------|-------|-------|-------|-------|-------|-------|-------|-------|
| 1  | 14.80 | 14.75 | 14.70 | 14.65 | 14.60 | 14.55 | 14.50 | 14.45 | 14.40 | 14.35 | 14.30 | 14.25 | 14.20 |
| 2  | 14.10 | 14.05 | 14.00 | 13.95 | 13.90 | 13.85 | 13.80 | 13.75 | 13.70 | 13.65 | 13.60 | 13.55 | 13.50 |
| 3  | 13.20 | 13.15 | 13.10 | 13.05 | 13.00 | 12.95 | 12.90 | 12.85 | 12.80 | 12.75 | 12.70 | 12.65 | 12.60 |
| 4  | 12.30 | 12.25 | 12.20 | 12.15 | 12.10 | 12.05 | 12.00 | 11.95 | 11.90 | 11.85 | 11.80 | 11.75 | 11.70 |
| 5  | 11.40 | 11.35 | 11.30 | 11.25 | 11.20 | 11.15 | 11.10 | 11.05 | 11.00 | 10.95 | 10.90 | 10.85 | 10.80 |
| 6  | 10.50 | 10.45 | 10.40 | 10.35 | 10.30 | 10.25 | 10.20 | 10.15 | 10.10 | 10.05 | 10.00 | 9.95  | 9.90  |
| 7  | 9.60  | 9.55  | 9.50  | 9.45  | 9.40  | 9.35  | 9.30  | 9.25  | 9.20  | 9.15  | 9.10  | 9.05  | 9.00  |
| 8  | 8.70  | 8.65  | 8.60  | 8.55  | 8.50  | 8.45  | 8.40  | 8.35  | 8.30  | 8.25  | 8.20  | 8.15  | 8.10  |
| 9  | 7.80  | 7.75  | 7.70  | 7.65  | 7.60  | 7.55  | 7.50  | 7.45  | 7.40  | 7.35  | 7.30  | 7.25  | 7.20  |
| 10 | 6.90  | 6.85  | 6.80  | 6.75  | 6.70  | 6.65  | 6.60  | 6.55  | 6.50  | 6.45  | 6.40  | 6.35  | 6.30  |

Range in prices is much wider than  
recently, due to the presence of so large  
proportion of immature light and grassy  
stock.

Prices ranged from \$6.00 to \$6.45, with  
the bulk selling at \$6.20 to \$6.35. The bulk  
yesterday sold at \$6.25 to \$6.35, a week ago  
at \$6.35 to \$6.45, a month ago at \$6.10 to  
\$6.20, a year ago at \$6.10 to \$6.20, two years ago  
at \$6.25 to \$6.37, three years ago at \$5.75 to  
\$5.85, four years ago at \$4.95 to \$5.05.

Figgs and Lights—199 lbs. and Under.  
No. Av. Shk. Price No. Av. Shk. Price  
93..... 175..... 22..... 105..... 172..... 40 1/2 17 1/2  
48..... 179..... 22..... 105..... 172..... 40 1/2 17 1/2  
69..... 180..... 20..... 106..... 171..... 40 1/2 17 1/2  
28..... 183..... 40 1/2 20..... 106..... 171..... 40 1/2 17 1/2  
70..... 183..... 40 1/2 20..... 106..... 171..... 40 1/2 17 1/2  
71..... 183..... 40 1/2 20..... 106..... 171..... 40 1/2 17 1/2  
72..... 183..... 40 1/2 20..... 106..... 171..... 40 1/2 17 1/2  
73..... 183..... 40 1/2 20..... 106..... 171..... 40 1/2 17 1/2  
74..... 183..... 40 1/2 20..... 106..... 171..... 40 1/2 17 1/2  
75..... 183..... 40 1/2 20..... 106..... 171..... 40 1/2 17 1/2  
76..... 183..... 40 1/2 20..... 106..... 171..... 40 1/2 17 1/2  
77..... 183..... 40 1/2 20..... 106..... 171..... 40 1/2 17 1/2  
78..... 183..... 40 1/2 20..... 106..... 171..... 40 1/2 17 1/2  
79..... 183..... 40 1/2 20..... 106..... 171..... 40 1/2 17 1/2  
80..... 183..... 40 1/2 20..... 106..... 171..... 40 1/2 17 1/2  
81..... 183..... 40 1/2 20..... 106..... 171..... 40 1/2 17 1/2  
82..... 183..... 40 1/2 20..... 106..... 171..... 40 1/2 17 1/2  
83..... 183..... 40 1/2 20..... 106..... 171..... 40 1/2 17 1/2  
84..... 183..... 40 1/2 20..... 106..... 171..... 40 1/2 17 1/2  
85..... 183..... 40 1/2 20..... 106..... 171..... 40 1/2 17 1/2  
86..... 183..... 40 1/2 20..... 106..... 171..... 40 1/2 17 1/2  
87..... 183..... 40 1/2 20..... 106..... 171..... 40 1/2 17 1/2  
88..... 183..... 40 1/2 20..... 106..... 171..... 40 1/2 17 1/2  
89..... 183..... 40 1/2 20..... 106..... 171..... 40 1/2 17 1/2  
90..... 183..... 40 1/2 20..... 106..... 171..... 40 1/2 17 1/2  
91..... 183..... 40 1/2 20..... 106..... 171..... 40 1/2 17 1/2  
92..... 183..... 40 1/2 20..... 106..... 171..... 40 1/2 17 1/2  
93..... 183..... 40 1/2 20..... 106..... 171..... 40 1/2 17 1/2

Heavy and Mixed—300 lbs. and Upward.  
74..... 250..... 40 1/2 54..... 244..... 120 1/2 27 1/2  
75..... 250..... 40 1/2 54..... 244..... 120 1/2 27 1/2  
76..... 250..... 40 1/2 54..... 244..... 120 1/2 27 1/2  
77..... 250..... 40 1/2 54..... 244..... 120 1/2 27 1/2  
78..... 250..... 40 1/2 54..... 244..... 120 1/2 27 1/2  
79..... 250..... 40 1/2 54..... 244..... 120 1/2 27 1/2  
80..... 250..... 40 1/2 54..... 244..... 120 1/2 27 1/2  
81..... 250..... 40 1/2 54..... 244..... 120 1/2 27 1/2  
82..... 250..... 40 1/2 54..... 244..... 120 1/2 27 1/2  
83..... 250..... 40 1/2 54..... 244..... 120 1/2 27 1/2  
84..... 250..... 40 1/2 54..... 244..... 120 1/2 27 1/2  
85..... 250..... 40 1/2 54..... 244..... 120 1/2 27 1/2  
86..... 250..... 40 1/2 54..... 244..... 120 1/2 27 1/2  
87..... 250..... 40 1/2 54..... 244..... 120 1/2 27 1/2  
88..... 250..... 40 1/2 54..... 244..... 120 1/2 27 1/2  
89..... 250..... 40 1/2 54..... 244..... 120 1/2 27 1/2  
90..... 250..... 40 1/2 54..... 244..... 120 1/2 27 1/2  
91..... 250..... 40 1/2 54..... 244..... 120 1/2 27 1/2  
92..... 250..... 40 1/2 54..... 244..... 120 1/2 27 1/2  
93..... 250..... 40 1/2 54..... 244..... 120 1/2 27 1/2

Odessa, Ends and Wagon Weights.  
19..... 199..... 40 1/2 20..... 199..... 80 1/2 25  
20..... 199..... 40 1/2 20..... 199..... 80 1/2 25  
21..... 199..... 40 1/2 20..... 199..... 80 1/2 25  
22..... 199..... 40 1/2 20..... 199..... 80 1/2 25  
23..... 199..... 40 1/2 20..... 199..... 80 1/2 25  
24..... 199..... 40 1/2 20..... 199..... 80 1/2 25  
25..... 199..... 40 1/2 20..... 199..... 80 1/2 25  
26..... 199..... 40 1/2 20..... 199..... 80 1/2 25  
27..... 199..... 40 1/2 20..... 199..... 80 1/2 25  
28..... 199..... 40 1/2 20..... 199..... 80 1/2 25  
29..... 199..... 40 1/2 20..... 199..... 80 1/2 25  
30..... 199..... 40 1/2 20..... 199..... 80 1/2 25  
31..... 199..... 40 1/2 20..... 199..... 80 1/2 25  
32..... 199..... 40 1/2 20..... 199..... 80 1/2 25  
33..... 199..... 40 1/2 20..... 199..... 80 1/2 25  
34..... 199..... 40 1/2 20..... 199..... 80 1/2 25  
35..... 199..... 40 1/2 20..... 199..... 80 1/2 25  
36..... 199..... 40 1/2 20..... 199..... 80 1/2 25  
37..... 199..... 40 1/2 20..... 199..... 80 1/2 25  
38..... 199..... 40 1/2 20..... 199..... 80 1/2 25  
39..... 199..... 40 1/2 20..... 199..... 80 1/2 25  
40..... 199..... 40 1/2 20..... 199..... 80 1/2 25  
41..... 199..... 40 1/2 20..... 199..... 80 1/2 25  
42..... 199..... 40 1/2 20..... 199..... 80 1/2 25  
43..... 199..... 40 1/2 20..... 199..... 80 1/2 25  
44..... 199..... 40 1/2 20..... 199..... 80 1/2 25  
45..... 199..... 40 1/2 20..... 199..... 80 1/2 25  
46..... 199..... 40 1/2 20..... 199..... 80 1/2 25  
47..... 199..... 40 1/2 20..... 199..... 80 1/2 25  
48..... 199..... 40 1/2 20..... 199..... 80 1/2 25  
49..... 199..... 40 1/2 20..... 199..... 80 1/2 25  
50..... 199..... 40 1/2 20..... 199..... 80 1/2 25  
51..... 199..... 40 1/2 20..... 199..... 80 1/2 25  
52..... 199..... 40 1/2 20..... 199..... 80 1/2 25  
53..... 199..... 40 1/2 20..... 199..... 80 1/2 25  
54..... 199..... 40 1/2 20..... 199..... 80 1/2 25  
55..... 199..... 40 1/2 20..... 199..... 80 1/2 25  
56..... 199..... 40 1/2 20..... 199..... 80 1/2 25  
57..... 199..... 40 1/2 20..... 199..... 80 1/2 25  
58..... 199..... 40 1/2 20..... 199..... 80 1/2 25  
59..... 199..... 40 1/2 20..... 199..... 80 1/2 25  
60..... 199..... 40 1/2 20..... 199..... 80 1/2 25  
61..... 199..... 40 1/2 20..... 199..... 80 1/2 25  
62..... 199..... 40 1/2 20..... 199..... 80 1/2 25  
63..... 199..... 40 1/2 20..... 199..... 80 1/2 25  
64..... 199..... 40 1/2 20..... 199..... 80 1/2 25  
65..... 199..... 40 1/2 20..... 199..... 80 1/2 25  
66..... 199..... 40 1/2 20..... 199..... 80 1/2 25  
67..... 199..... 40 1/2 20..... 199..... 80 1/2 25  
68..... 199..... 40 1/2 20..... 199..... 80 1/2 25  
69..... 199..... 40 1/2 20..... 199..... 80 1/2 25  
70..... 199..... 40 1/2 20..... 199..... 80 1/2 25  
71..... 199..... 40 1/2 20..... 199..... 80 1/2 25  
72..... 199..... 40 1/2 20..... 199..... 80 1/2 25  
73..... 199..... 40 1/2 20..... 199..... 80 1/2 25  
74..... 199..... 40 1/2 20..... 199..... 80 1/2 25  
75..... 199..... 40 1/2 20..... 199..... 80 1/2 25  
76..... 199..... 40 1/2 20..... 199..... 80 1/2 25  
77..... 199..... 40 1/2 20..... 199..... 80 1/2 25  
78..... 199..... 40 1/2 20..... 199..... 80 1/2 25  
79..... 199..... 40 1/2 20..... 199..... 80 1/2 25  
80..... 199..... 40 1/2 20..... 199..... 80 1/2 25  
81..... 199..... 40 1/2 20..... 199..... 80 1/2 25  
82..... 199..... 40 1/2 20..... 199..... 80 1/2 25  
83..... 199..... 40 1/2 20..... 199..... 80 1/2 25  
84..... 199..... 40 1/2 20..... 199..... 80 1/2 25  
85..... 199..... 40 1/2 20..... 199..... 80 1/2 25  
86..... 199..... 40 1/2 20..... 199..... 80 1/2 25  
87..... 199..... 40 1/2 20..... 199..... 80 1/2 25  
88..... 199..... 40 1/2 20..... 199..... 80 1/2 25  
89..... 199..... 40 1/2 20..... 199..... 80 1/2 25  
90..... 199..... 40 1/2 20..... 199..... 80 1/2 25  
91..... 199..... 40 1/2 20..... 199..... 80 1/2 25  
92..... 199..... 40 1/2 20..... 199..... 80 1/2 25  
93..... 199..... 40 1/2 20..... 199..... 80 1/2 25

There was a little more life to the  
stocker and feeder trade than Monday,  
although prices were not materially im-  
proved. Supply was moderate, consisting  
largely of light and medium weight stock-  
ers. Best qualities sold with more life  
than yesterday and spots were strong.  
Plain, light stockers held about steady,  
but a pretty good clearance was effected.  
Some Kansas feeders, weighing around  
1,640 lbs. were taken out yesterday at  
\$4.00. Most of the light stockers sold  
today at \$3.00 to \$3.50. Good bushy feeders  
were a scarce article on the market.  
Stock holders sold about steady with  
yesterday, or 10@15c lower than the finish  
of last week.

Stockers and Feeders.  
There was a little change in the market  
for range cows and heifers compared with  
Monday. Offerings were mostly of an in-  
ferior class and values held steady.  
Calves were strong. Two cars of Pan-  
handle calves sold straight at \$5.50.  
Stockers and feeders were a little stronger  
than opening day of the week.

60 Kan. 1024.4 00  
15..... 600..... 3 40  
11..... 625..... 3 15  
4..... 625..... 3 00  
4..... 650..... 3 10  
1..... 650..... 3 10  
8..... 657..... 3 00  
7..... 720..... 2 90  
102 Kan. 1024.4 00  
1 Okla. 1270.4 00  
13 Tex. 848.2 85  
15 Tex. 800.2 75  
1 Okla. 490.3 75  
8 Okla. 170.6 25  
150 Tex. 205.5 50  
1 Tex. 1139.2 50  
1 Okla. 1270.4 00  
13 Tex. 848.2 85  
15 Tex. 800.2 75  
1 Okla. 490.3 75  
8 Okla. 170.6 25  
150 Tex. 205.5 50  
1 Tex. 1139.2 50  
1 Okla. 1270.4 00  
13 Tex. 848.2 85  
15 Tex. 800.2 75  
1 Okla. 490.3 75  
8 Okla. 170.6 25  
150 Tex. 205.5 50  
1 Tex. 1139.2 50

Nothing was reported on sale in the  
Texas division up to a late hour, although  
a train was scheduled to arrive. Con-  
ditions were nominally unchanged.

Swiff and Company..... 500  
Hammond Packing Co..... 425  
Morris Packing Co..... 390  
Total..... 1,225  
Swiff and Company..... 430  
Hammond Packing Co..... 844  
Morris Packing Co..... 296  
Total..... 1,546

ed with packers winning out and buying  
the hogs at around 5 cents lower for the  
bulk with sales in some instances indi-  
cating a 10 cent reduction. Later in the  
day, however, the market rallied con-  
siderably and finishing prices were strong  
to a point higher than the average of  
Monday.

Range in prices is much wider than  
recently, due to the presence of so large  
proportion of immature light and grassy  
stock.

Prices ranged from \$6.00 to \$6.45, with  
the bulk selling at \$6.20 to \$6.35. The bulk  
yesterday sold at \$6.25 to \$6.35, a week ago  
at \$6.35 to \$6.45, a month ago at \$6.10 to  
\$6.20, a year ago at \$6.10 to \$6.20, two years ago  
at \$6.25 to \$6.37, three years ago at \$5.75 to  
\$5.85, four years ago at \$4.95 to \$5.05.

Figgs and Lights—199 lbs. and Under.  
No. Av. Shk. Price No. Av. Shk. Price  
93..... 175..... 22..... 105..... 172..... 40 1/2 17 1/2  
48..... 179..... 22..... 105..... 172..... 40 1/2 17 1/2  
69..... 180..... 20..... 106..... 171..... 40 1/2 17 1/2  
28..... 183..... 40 1/2 20..... 106..... 171..... 40 1/2 17 1/2  
70..... 183..... 40 1/2 20..... 106..... 171..... 40 1/2 17 1/2  
71..... 183..... 40 1/2 20..... 106..... 171..... 40 1/2 17 1/2  
72..... 183..... 40 1/2 20..... 106..... 171..... 40 1/2 17 1/2  
73..... 183..... 40 1/2 20..... 106..... 171..... 40 1/2 17 1/2  
74..... 183..... 40 1/2 20..... 106..... 171..... 40 1/2 17 1/2  
75..... 183..... 40 1/2 20..... 106..... 171..... 40 1/2 17 1/2  
76..... 183..... 40 1/2 20..... 106..... 171..... 40 1/2 17 1/2  
77..... 183..... 40 1/2 20..... 106..... 171..... 40 1/2 17 1/2  
78..... 183..... 40 1/2 20..... 106..... 171..... 40 1/2 17 1/2  
79..... 183..... 40 1/2 20..... 106..... 171..... 40 1/2 17 1/2  
80..... 183..... 40 1/2 20..... 106..... 171..... 40 1/2 17 1/2  
81..... 183..... 40 1/2 20..... 106..... 171..... 40 1/2 17 1/2  
82..... 183..... 40 1/2 20..... 106..... 171..... 40 1/2 17 1/2  
83..... 183..... 40 1/2 20..... 106..... 171..... 40 1/2 17 1/2  
84..... 183..... 40 1/2 20..... 106..... 171..... 40 1/2 17 1/2  
85..... 183..... 40 1/2 20..... 106..... 171..... 40 1/2 17 1/2  
86..... 183..... 40 1/2 20..... 106..... 171..... 40 1/2 17 1/2  
87..... 183..... 40 1/2 20..... 106..... 171..... 40 1/2 17 1/2  
88..... 183..... 40 1/2 20..... 106..... 171..... 40 1/2 17 1/2  
89..... 183..... 40 1/2 20..... 106..... 171..... 40 1/2 17 1/2  
90..... 183..... 40 1/2 20..... 106..... 171..... 40 1/2 17 1/2  
91..... 183..... 40 1/2 20..... 106..... 171..... 40 1/2 17 1/2  
92..... 183..... 40 1/2 20..... 106..... 171..... 40 1/2 17 1/2  
93..... 183..... 40 1/2 20..... 106..... 171..... 40 1/2 17 1/2

Heavy and Mixed—300 lbs. and Upward.  
74..... 250..... 40 1/2 54..... 244..... 120 1/2 27 1/2  
75..... 250..... 40 1/2 54..... 244..... 120 1/2 27 1/2  
76..... 250..... 40 1/2 54..... 244..... 120 1/2 27 1/2  
77..... 250..... 40 1/2 54..... 244..... 120 1/2 27 1/2  
78..... 250..... 40 1/2 54..... 244..... 120 1/2 27 1/2  
79..... 250..... 40 1/2 54..... 244..... 120 1/2 27 1/

STOCK YARDS DAILY JOURNAL

405 West Illinois Ave., St. Joseph, Mo. The St. Joseph Journal Publishing Co., Publishers. W. E. WARRICK, Editor and Manager.

SUBSCRIPTION RATES: Daily, per year, \$4.00; Daily, six months, \$2.00; Daily, three months, \$1.00; Daily, one month, .50; Tri-Weekly, per year, \$1.50; Semi-Weekly, per year, \$1.00; Weekly, per year, .75.

In asking change of address, please state your former postoffice. State whether your paper is Daily, Tri-Weekly, Semi-Weekly or Weekly. State whether you pay for it, or some live stock commission firm, and if the latter, the name of the firm.

Advertising Rates Furnished on Application. Usual 25 per cent commission allowed postmasters, who are authorized to take subscriptions.

BRIEF CITY NEWS.

Despite the hot weather several candidates were in the suburb yesterday. W. T. Harper and son, 302 Alabama avenue, spent Sunday in Excelsior Springs. Miss Laura Hyllock of Forest City, Mo., is the guest of her uncle, Dr. E. H. Bultock.

FUNERAL OF OLD CITIZEN.

Was Here When Robidoux Laid Out This City. The funeral of Thos. J. Gibson, who died Sunday afternoon after a residence of seventy years in this city, having come here before the founding of St. Joseph by Joseph Robidoux, was held at 2 o'clock this afternoon. Burial in Oakland cemetery.

One of the stories Mr. Gibson was wont to tell of the early days in St. Joseph was that he used to run to the river landing every time a steamboat would whistle from his home, a big farm at Elwood and Atchison streets.

The pioneer's family were heavy slave owners and when they came to Missouri brought them along. Mr. Gibson used to say that one way his parents could tell it was Sunday was by hearing the negro boys pound corn on blocks in the yard.

COMMERCE BLOCK CHOSEN.

Calumet Club Committee Selects New Quarters. The location committee of the Calumet club has decided on the Commerce building, King Hill and Missouri avenues, as the new quarters of the club.

A change of location has been contemplated for some time, the choice lying between the new Putter building and the building which has been selected.

COMMON EDUCATION.

Drivers Journal: Education does not create brains or instincts, but equips the recipient to use to better advantage the talent that comes from natural inheritance. Education polishes, disciplines and enlightens the understanding and equips the individual to battle more successfully with the problems of the survival of the fittest.

White signal success in accumulating wealth has been achieved in isolated examples by uneducated persons, there is no question but their success would have been augmented if they had enjoyed the advantages of a liberal education.

REAL ESTATE BOOMING.

Government Restrictions on Nine Million Acres Removed. Muskogee, Okla., July 27.—At midnight last night the law removing the government restrictions on nine million acres of Indian land in eastern Oklahoma went into effect.

CHARGE DISCRIMINATION.

Physicians Protest Against Bell Telephone Company. Discrimination against certain physicians on the part of the Bell Telephone Co. is alleged in a petition presented to Mayor Clayton by twenty-five local physicians who complain that they are taxed more for their 'phone service than others in the city.

FREE CONCERTS AT PARK.

Tyrolean Singers Appear a Week, and It's Free. Beginning yesterday afternoon Hirschhorn's Tyrolean Singers opened a week's engagement at Krug Park, where concerts will be given every afternoon and evening up to and including next Sunday night.

JUDGES TO HEAR NEW LAW.

The county court yesterday made an order that all election judges, appointed last Saturday, shall next Saturday afternoon appear at the courthouse and receive instructions from a committee of three lawyers as to how to conduct the booths during the primaries.

USE OF SELF-FEEDER.

From investigations made at the Indiana station the self-feeder seems to be more in general use during the summer than winter. By this method cattle can be fed once or twice per week rather than per day, and the labor involved is very much less.

POULTRY RAISING IN MONTANA.

Unless all the signs fail, the poultry industry in Montana is going to assume large proportions within a few years. The tens of thousands of dollars sent out of the state every year for eggs and poultry prove there is a home market and at better prices than prevail anywhere in the country.

COUCH COVERS AT 89c

Just 100 of these pretty Couch Covers in Roman or Persian stripes, in a variety of color combinations; fringed all around; well made and well finished; 3 yards long, 50 inches wide; very special value at 89c.

35c Sleeve Board, 19c

1 Lot Padded Sleeve Board, regular 35c quality, special, each, 19c. 1 Lot Ironing Boards with Sleeve Board attached, regularly \$1.25, special, \$1.23.

Mail Box Sale

The latest improvement in R. F. D. Mail Boxes at special reduced prices. Made of cast iron and thoroughly japanned, strong and slightly locks securely, two sizes: Regular 40c size, for, 29c. Regular 50c size, for, 34c.

Advertisement for Ladies' Washable Wearing Apparel Greatly Reduced. Exceptional values are to be secured this week in Wash Suits, Skirts and Waists, the lines so varied and the price range so large that a personal inspection is necessary in order to appreciate the extent and character of the offerings.

Advertisement for The New Cross-Bar Underwear. Cross-Bar Muslin Underwear is the very latest fad in London and Paris; something entirely new and very attractive and will appeal strongly to all lovers of the artistic in underwear.

Advertisement for A Bunch of Attractive Third Floor Specials. Ruffled Swiss Curtains, with plain or figured centers, and 5 1/2 inch hemstitched ruffle. Made of a fine quality washable Swiss and has that cool refreshing appearance so essential for bedrooms; 2 1/2 yards long, 45 inches wide; our regular \$1.25 curtain, at, per pair, 95c.

Advertisement for Fancy Drapery Muslins. Fancy colored materials for Curtains and Bed Draperies; one of the most popular materials made. White ground work, with blue, pink, green or yellow designs; colors absolutely fast and washable; 36 inches wide; regular 15c quality; special, per yard, 11c.

Advertisement for Townsend & Wyatt Dry Goods Co. THE BEST STORE. Mail Box Sale. Regular 40c size, for, 29c. Regular 50c size, for, 34c.

Advertisement for Special Wednesday. Whether you buy your flour here or elsewhere, we would advise you to buy it now, as some mills have commenced to grind some new wheat, and if you get this you are apt to have poor bread.

Advertisement for ALLEN'S. Some Exceptionally Strong Values for the Last Bargain Day in July—Tomorrow. Special Wednesday. There's always something special doing at the Big Grocery every Wednesday.

Advertisement for SHAMROCK WHISKEY. Is Distilled for Medicinal Purposes From Rye and Barley Malt. Age, ten years. No fast oil, no drugs. Prices, 60c per quart, \$1.00 per liter, \$5 per half dozen quart bottles, or \$4 per gal.

Advertisement for JAMES KERSEY, Wines, Liquors and Cigars. Stock Yards, Southwest Corner Illinois and Lake Avenues, Wines, Liquors and Cigars. Old Telephone No. 165. SOUTH ST. JOSEPH, MO.

Advertisement for WILL PROBE RATE INCREASE. Washington, July 28.—The Interstate Commerce Commission issued a statement Monday to the effect that, without waiting for the filing of formal complaints, it will institute an investigation on its own motion for the purpose of determining whether advances in freight rates are justified.

Advertisement for FOR SALE—25,000 HEAD OF CATTLE. 20,000 steers four years old and up in fine condition, 5,000 fat heifer calves, in lots to suit. These cattle can be delivered from August to December in stock yards at El Paso, Texas.

Advertisement for HAMMOND'S. "MISTLETOE" Hams, Breakfast Bacon, Lard and Canned Meats. Are the Finest that the Packing House Art Can Produce. Hammond Packing Co. Chicago, Ill. St. Joseph, Mo.

Advertisement for MORRIS & COMPANY. A FEW SPECIALTIES—Supreme Hams, Supreme Bacon, Supreme Lard, Supreme Sausage, Supreme Dried Beef, Lion Brand Canned Meats. MORRIS & COMPANY. CHICAGO ST. JOSEPH KANSAS CITY ST. LOUIS

Advertisement for TRANSIT HOUSE. ST. JOSEPH STOCK YARDS, ST. JOSEPH, MO. FINEST STOCKMEN'S HOTEL IN THE COUNTRY. Rates: American Plan, \$2.00 and \$2.50 Per Day. European Plan, 75c, \$1.00 and \$1.25. A. W. KOHLER, Manager.

Advertisement for Blacklegoids. Simplest, Safest, Surest Vaccination for the prevention of BLACKLEG IN CATTLE. NO DOSE TO MEASURE. NO LIQUID TO SPILL. NO STAINING TO ROT. Just a little pill to be placed under the skin of the animal by a single thrust of the instrument.

Advertisement for FOR SALE OR TRADE. Market doing good business; equipped with all kinds of tools and machinery for rendering and sausage making, and located on main street in town. To buy live stock of all kinds best equipped market in town. A good thing for some one. Reason: Poor health. For information and particulars, address, G. A., STOCK YARDS JOURNAL.

SATURDAY'S BUSINESS

CATTLE.

Easier Turn on Finish But Fat Steers Higher For Week.

Practically no fresh cattle were on the market today, some through stock being the only fresh arrivals in car lots reported early in the day.

The weather is usually steady, but is not such as to stimulate or warrant a big run for opening days of next week.

There has been an entire absence of strictly dry smooth heifers; these would sell readily at \$7.00 to around or over \$7.50.

About half the week's supply has been from the southern and southwestern ranges.

COWS, BULLS AND MIXED.

It was the usual small week-end trade in cows and heifers today. Notably the market was unusually steady.

An exceptionally small proportion of the cattle arriving this week have been cows and heifers.

There has been no material change in the bull market this week.

Calf trade is closing 50¢ higher than a week ago.

STOCKERS AND FEEDERS.

Trade in stockers and feeders this week has been of light volume as receipts have been limited to small proportions.

RANGE CATTLE—NATIVE DIVISION.

Cattle receipts this week have included a fair proportion of range from Colorado, Kansas, Oklahoma and the Panhandle.

QUARANTINE DIVISION.

The week has seen a fairly liberal movement of cattle from below the quarantine line, but the big end of supply was marketed on two days, Monday and Thursday.

15 cents was demanded by the buying fraternity.

Total for the week at \$4,900, against 45,503 last week, 48,507 a month ago, 36,628 a year ago, 39,699 two years ago, 42,003 three years ago and 14,703 four years ago.

Prices ranged from \$6.00@6.45, with the bulk selling at \$6.25@6.45.

The aggregate at five points is 281,700, against 301,500 last week, 331,200 a month ago, 301,200 a year ago, 306,200 two years ago, 291,200 three years ago and 143,300 four years ago.

Prices ranged from \$6.00@6.45, with the bulk selling at \$6.25@6.45.

Fig. and Lights—100 lbs. and Under.

Heavy and Mixed—200 lbs. and Upward.

Cows, Bulls and Mixed.

Veal Cattle.

Stocks and Feeder.

Feeding Cows and Stock Heifers.

Feeding Bulls and Steers.

Range Cattle—Native Division.

Quarantine Division.

Monday's Business.

CATTLE.

Heifers.

Cows.

Bulls.

HOGS.

Lighter Receipts Than Week Ago.

Market Falls to Italy.

The day was largely done on this basis.

The best offerings were medium weights of a class to sell around \$6.65.

Dressed Beef and Shipping Steers.

COWS, BULLS AND MIXED.

Heavy and Mixed—200 lbs. and Upward.

Cows.

Veal Cattle.

Stocks and Feeder.

Feeding Cows and Stock Heifers.

Feeding Bulls and Steers.

Range Cattle—Native Division.

Quarantine Division.

Monday's Business.

CATTLE.

Heifers.

Cows.

Bulls.

HOGS.

Lighter Receipts Than Week Ago.

Market Falls to Italy.

Free Your Choice of a Sample Bottle.

S. H. OPPENHEIMER

sellers would not let go at this kind of a basis and by middle of the forenoon there was some business being done at around a nickel under Saturday prices.

Total for the week at \$6,250@6.35.

Fig. and Lights—100 lbs. and Under.

Heavy and Mixed—200 lbs. and Upward.

Cows.

Veal Cattle.

Stocks and Feeder.

Feeding Cows and Stock Heifers.

Feeding Bulls and Steers.

Range Cattle—Native Division.

Quarantine Division.

Monday's Business.

CATTLE.

Heifers.

Cows.

Bulls.

HOGS.

Lighter Receipts Than Week Ago.

Market Falls to Italy.

Free Your Choice of a Sample Bottle.

S. H. OPPENHEIMER

HORSES AND MULES

DON'T FORGET

BIG

Range Horse Auction

1500 RANGE HORSES

At B. & M. Stock Yards

GILLETTE, WYO.

MONDAY AND TUESDAY... AUG. 3 and 4

Under the Management of E. W. ANSPACH, of South Omaha, Neb.

1500 Head First-Class Range Horses

These horses will be assigned by the different horse breeders in the vicinity of Gillette, Wyo., and are known from coast to coast as being the very best type of draft horses in all the West.

This vast offering will consist of all kind, from the unbranded suckling colt to the big 4 and 5-year-old rugged mares and geldings.

For further particulars of this great sale write or wire me.

E. W. ANSPACH

I. C. GALLUP, Auctioneer. South Omaha, Neb.



JACKS AND JENNETS

FOR SALE - Registered Shropshire sheep, yearlings and ram lambs for sale. Also limited number of ewes.

FOR SALE

Registered Shropshire sheep, yearlings and ram lambs for sale.

POPULAR ADVERTISING

J. C. NEDENBERG, 418 Francis St. Abstract of Title of the City of St. Joseph and Buchanan County. Telephone No. 857.

KODAKS

KODAK FINISHING W. F. UHLMAN, 716 Francis St. ST. JOSEPH, MO.

Paulins, Machine Covers, Hay Stack Covers, Wagon Covers

E. W. KLOS MFG CO., 113-115 N. Second St., ST. JOSEPH, MO. Phone, Main 342.

STOCKMEN, TAKE NOTICE!

KEYWOOD'S CAFE Eat and Drink Cor. Lako and Illinois Aves. Headquarters for Good Steers.

BELTING!

LEWIS SUPPLY CO., 115 S. 4th St., St. Joseph, Mo.

GOLDEN DEW

NO OTHER CAN COMPARE WITH IT. Every Drink Refreshing, Stimulating, Exhilarating, Nourishing.

W. L. DOUGLAS SHOES

For Men and Women, Boys and Youths The W. L. DOUGLAS SHOESTORE N. W. Cor. 8th and Edmund Street. WILLIAM H. KUEKER, Mgr.

H. O. SIDENFADEN Undertaker and Embalmer

Both Phones 325 211-13-15 North 10th St

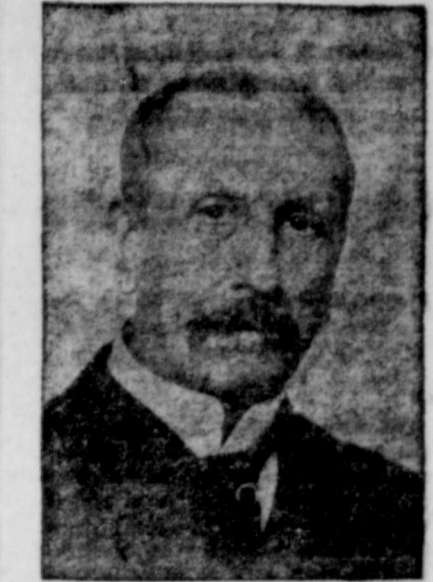
MINER & COMPANY

GRAIN, PROVISIONS, STOCKS, BONDS Private wires to all market centers. Cash business a specialty. L. M. SICKELS, Local Manager, 8 Board of Trade, St. Joseph, Mo.

C. F. Rock Plumbing & Heating Co.

Modern Plumbing, Steam and Hot Water Heating 115 NORTH WILD STREET Telephone 809

POLITICAL ANNOUNCEMENTS



JOSEPH ANDRIANO Candidate for SHERIFF Subject to the Republican Primary to the Republican Primaries.

Mr. Andriano is one of our oldest and most respected citizens. He is a man possessed of great sense of justice; liberal in his views, true to his friends, honest, courageous and competent in every respect.

For further particulars of this great sale write or wire me.

JOS. ALBUS

SHERIFF Subject to the Republican Primary Election, August 4, 1908

THOMAS F. RYAN Candidate for Judge of Criminal Court Subject to Democratic Primary August 4, 1908

CHAS. T. PAULETTE Candidate for SHERIFF Subject to Decision of the Democratic Primary, August 4.

CHARLES F. KELLER Democratic Candidate for Prosecuting Att'y Subject to Primary Election, Aug. 4, '08

JOHN W. MUIR Democratic Candidate for Prosecuting Attorney Primary August 4, 1908

RICHARD D. FULKS Candidate for SHERIFF Subject to the Decision of Democratic Primary, August 4, 1908

ELL HOLLAND For Prosecuting Att'y Subject to Democratic Primary to be held on Tuesday, Aug. 4, '08

L. J. EASTIN Candidate for Circuit Judge, District No. 2 Subject to Decision of Democratic Primary August 4, '08

OTTO THEISEN Democratic Candidate for SHERIFF Subject to Primary Election, Tuesday, August 4, 1908

DAVID H. HATFIELD Republican Candidate for SHERIFF Subject to Primary Election, Tuesday, August 4, 1908

VOTE FOR GEORGE KNOPINSKI Candidate for SHERIFF Subject to Democratic Primary, Tuesday, Aug. 4, '08

HENRY M. RAMEY Candidate for Circuit Judge, District No. 2 Subject to Decision Democratic Primary, August 4, 1908

PUBLICITY PAYS Try an Advertisement in THE JOURNAL

A FREIGHT RULING

COMMERCE COMMISSION FAVORS SMALL SHIPPERS IN DECISION RENDERED MONDAY.

CAN COMBINE SHIPMENTS

Arrangements Can be Made Among Themselves or Through Forwarding Agency—Grounds for the Ruling.

Washington, July 28.—According to a decision by the Interstate Commerce commission Monday shippers may combine small quantities of freight of various ownership, either by arrangement among themselves or through the medium of a forwarding agency and ship the combined lot at the relatively lower rates applicable to large shipments.

The commission decided in favor of the smaller shippers upon the ground that the ownership of property tendered for shipment cannot be made a test as to the applicability as to carriers rates. The interstate commerce law forbids discrimination between shippers, and the fact that one shipper tenders a "bulked shipment" made up of property of various ownership consolidated before delivery to the carrier will not justify the carrier in making a different charge than for a shipment of similar character tendered by a shipper who is also the owner.

The commission rests its decision principally upon the case of Wight vs. United States, where the supreme court held that the phrase "under substantially similar circumstances and conditions" as found in section two of the act prohibiting discrimination, refers to the matter of carriage. The decision also follows the English cases interpreting the so-called "Equality clause" of the English act, which clause has been substantially incorporated into the interstate commerce law.

This decision was made by Commissioner Lane, based on a complaint by the California Commercial association vs. Wells, Fargo & Co. The express company refused to apply its quantity rates to shipments which consisted of a combination of packages of various ownership, tendered at one time and one place by a single consignee and consigned to a single consignee under one bill of lading.

The export shipping cases in which several railroads are named as defendants, arise from a similar situation. The complainant is engaged as a forwarding agent at Chicago and New York, assembling packages of merchandise of various ownership, consolidating them into carload lots, and shipping at the carload rate.

The refusal of the carrier to accept carload rates for these combined shipments was under the official classification which the commission now declares to be illegal. "The enforcement of such a rule," the commission says, "we feel safe in saying, would do incalculable injury; indeed, it would so affect transportation practices as to be nothing short of revolutionary. New practices have become more firmly established in the transportation world than that of combining small quantities of freight of various owners and shipping at the relatively lower rates applicable to large consignments and under this practice has developed an immense volume of traffic which otherwise could not have been brought into being. It is not an exaggeration to say that the enforcement of such a rule by the carriers of the United States would bring disaster upon many of the smaller industries and more surely establish the dominance of the greater industrial and commercial institutions."

Another Pittsburg Storm. Pittsburg, July 28.—Exceeding in intensity the several severe electrical storms of the past two weeks, this city and vicinity, was visited again Monday afternoon by rain, lightning and thunder. At least one person was killed and a score of others injured by lightning. A great number of small fires occurred and thousands of cellars were partially filled with water. It is estimated that two hundred street cars were slightly damaged during the storm by lightning.

Must Have Honorable Discharge. Washington July 28.—The attention of all recruiting officers is called to a circular issued at the war department forbidding the enlistment in the regular army of a man who has been a member of the national guard of a state or territory until he has presented satisfactory evidence that he has been honorably discharged from the service.

Oil Suits Compromised. Little Rock, Ark., July 28.—The several suits pending against the Waters Pierce Oil company in the circuit court here charging violation of the anti-trust laws of the state and illegal discrimination terminated Monday when the attorneys for the defendant company accepted a compromise penalty of \$10,000.

Millionaire Politician Dead. Shelbyville, Ill., July 28.—T. F. Dove, 62 years old, an attorney and prominently identified with Democratic politics of southern Illinois, dropped dead at his home here Monday. He leaves an estate valued at about \$1,000,000.

THE FINAL PREPARATIONS

CINCINNATI READY FOR NOTIFICATION CEREMONIES.

Mr. Taft Addressed State Central and Executive Committees—Foraker's Status.

Cincinnati, O., July 28.—Two important events politically resulted from the meetings and conferences in the final notification day preparations Monday. William H. Taft addressed a joint meeting of the Ohio State Central and Executive committees, identifying himself closely with the state campaign and making it plain that whatever had been done by Arthur L. Vorys and other state leaders, had been recognized and approved by him. Just what is to be the status of Senator Foraker at the opening of the campaign at Youngstown, September 5, is to be decided by a special committee of the state executive committee appointed Monday. The duty of this committee is to decide a speaker's program with particular instructions to report on the advisability of inviting the senior Ohio senator to make an address. It was stated that the committee would consider the Foraker matter in three aspects: whether to invite the senator to speak unconditionally; to invite him on condition that he indicate in advance the position he is to take, or not to invite him. No prediction could be obtained as to which of these courses will be pursued, or as to the probable report the committee will make.

The state central committee settled the three county contests in favor of what is termed the "Simon pure Taft men." Elmer Dover, secretary of the national committee, reached the city Monday and reiterated his disclaimer of any intention of resigning his position. He had a long talk with Mr. Taft late in the afternoon. The work of putting the finishing touches on the city, in the way of decorations, continued throughout the day, and by night the streets were a blaze of color and illumination. A holiday has been declared for Tuesday and this holiday virtually began so far as the celebration feature is concerned Monday night. Many excursionists reached the city during the day and evening.

TO WELCOME ATHLETES. American Olympic Victors May be Invited to Sagamore Hill.

Oyster Bay, N. Y., July 28.—President Roosevelt Monday in a message which he sent to the American commissioner of the Olympic games, in London, expressed a desire to shake hands with every one of the men whose feats placed the flag of the United States at the head of the colors of all nations in the athletic games which ended Saturday. That he will gratify this desire to grasp a hand of each of the athletes there is no doubt. Secretary Loeb, when asked whether the president would go to New York when the victorious American team arrived there and take part in the ovation which is planned in their honor, said it was too early yet to say in just what way the president would extend his welcome. He asked how many men there are in the team and it is thought that he had in mind plans for a reception of the athletes at Sagamore Hill. It is expected that when more definite information is received as to when the athletes will arrive the president will announce whether he will go to New York or ask the men to come to Oyster Bay so that he may meet and talk with them.

Motor and Train Collide. Glen Head, L. I., July 28.—Two persons are dead and two seriously injured as the result of a collision here Monday night between an automobile and the "Millionaire's Express" of the Long Island railroad, a train that carries many wealthy New Yorkers to their summer homes on Long Island. Miss Leigh Townsend, a New York girl of social prominence, who was a passenger in the automobile, died a few minutes after the accident, and Charles Smith, the chauffeur, was killed outright.

Japanese Evade Officials. Bellingham, Wash., July 28.—Thirteen Japanese coolies slipped across the international border near Blaine Sunday night and 11 are now at liberty on this side making their way southward. Immigration inspectors at Blaine received word from the officers stationed at Cloverdale, B. C., too late to intercept them at the border.

Milwaukee to Relieve the Albany. Washington, July 28.—It was announced at the navy department Monday that the cruiser Milwaukee had been ordered to Annapolis, a port on the coast of Honduras to relieve the cruiser Albany. The Milwaukee is now at Honolulu and will proceed without delay to Honduras. The Albany, on being relieved, will proceed to San Diego, Cal.

After the Motor Boat Cup. New York, July 28.—The motor boat Wolsely Siddely, owned by the duke of Westminster, which will attempt to win back the international cup captured by the American motor boat Dixie in English waters last year, arrived from London Monday on board the steamer Minneapolis.

BRYAN AT OMAHA

A NON-PARTISAN DINNER GIVEN THE DEMOCRATIC PRESIDENTIAL CANDIDATE.

HE RODE THE GOAT BY PROXY

Newspaper Man Goes Through Secret Society Initiation in Place of Mr. Bryan—A Busy Day.

Omaha, Neb., July 28.—William J. Bryan was Monday night admitted to the mysteries of the Knights of Ak-Sar-Ben, an order composed of the business men of Omaha and the state of Nebraska. A large number of Lincoln business men came to Omaha to witness and participate in the initiation. Mr. Bryan's welcome on his return to Nebraska from his trip to Chicago to meet the Democratic leaders was strictly non-partisan, but none the less cordial. Arriving here at one o'clock Monday afternoon, he was met by a committee from the governing board of the Knights of Ak-Sar-Ben and escorted to the Omaha club, where luncheon was served. At two o'clock he was the speaker at a pole raising by the John A. Creighton Democratic Marching club. At six o'clock he was a guest of the Ak-Sar-Ben directors at dinner at the Omaha club.

Here Mr. Bryan spoke briefly. He was followed by Congressman G. M. Hitchcock, publisher of the Omaha World-Herald; Mayor James C. Dahlman and Victor Rosewater, Republican national committee for Nebraska and proprietor of the Omaha Bee. The name of the organization of which he was the guest is the word Nebraska spelled backward and Mr. Bryan said it appealed especially to him for habitual backwardness has been a matter of comment. He thanked his hosts especially for their invitation to join their order as it would put him in touch with the representatives of the business interests of the state, declaring that he had heretofore found it difficult to get within speaking distance of the business men of the country.

Mr. Rosewater in his remarks declared that the two greatest sources of advertising for Nebraska in recent years had been the distinguished guest of the day and the organization which was entertaining him. He raised a laugh at the expense of Mr. Bryan by relating in a facetious manner the story of his recent meeting in Chicago with Chairman Hitchcock of the Republican national committee.

Other guests at the dinner were the newspaper representatives who accompanied Mr. Bryan on his trip and who will remain with him during the campaign. After the dinner the party was taken in automobiles to the castle where Mr. Bryan, with several hundred other candidates, was invested with the honors of knighthood according to the rites of King Ak-Sar-Ben.

Very entertaining are the many features of the initiation, including a "battleship trip around the world" for the candidates. By gracious permission of his majesty, Mr. Bryan chose as his substitute for active participation in these rites, Charles A. Cotterill of the Washington office of the Associated press, and when the initiation was complete the latter expressed the opinion that he "got all that was coming" to his distinguished principal.

After the ceremonies were through, Mr. Bryan made a brief speech, addressing his hearers as his friends and neighbors and omitting political reference.

Avenge His Sister. New York, July 28.—Charles Haldi, an Italian youth 23 years old, committed murder Monday night to avenge a dishonored sister. His victim was Peter Disbenschy, 38 years old. Disbenschy was shot and killed without warning as he sat in his home at Green Point. After the shooting Haldi surrendered and told why he had committed the crime. Six months ago Haldi's sister Annie, aged 13, disappeared from her home. Haldi set himself to search for her and Monday found her with Disbenschy.

The Western Federation. Denver, Col., July 28.—The Western Federation of Miners' convention Monday adopted a resolution giving all ladies auxiliaries in the federation representation at future conventions. The convention also rejected an amendment to the constitution to elect officers by a referendum vote and took like action on an amendment preventing an officer from holding any office more than two terms.

Harriman Coming West. New York, July 28.—E. H. Harriman will leave this week on a trip through the west, it was stated Monday night. He will take a vacation in the wilds of Oregon, camping and roughing it for a part of the time, and on his return to New York within the next two months, he will have inspected several departments of the Union Pacific properties.

Bolivia's President-Elect Buried. La Paz, Bolivia, July 28.—The funeral of Fernando Guachalla, the president-elect of Bolivia, and former minister to the United States, who died suddenly July 24, was held here Monday.

A NOVEL RACE PROPOSED

AN AEROPLANE AND A BALLOON MAY COMPETE.

Aero Club of America Trying to Arrange Contest Between Baldwin and Farman.

Washington, July 28.—Augustus Post, representing the Aero club of America, is here in an effort to arrange a competitive flight between Capt. T. S. Baldwin in his dirigible balloon, and Henri Farman, the daring Englishman, in his aeroplane, Farman, the winner of the Deutsch-Aerchdeacon prize is scheduled to make his first flight in this country at Brighton Beach on Saturday, and Capt. Baldwin expects to make the first flight in his new military dirigible balloon at Fort Meyer on the same day. It is now proposed that the two aeronauts make a competitive flight at the Brighton Beach at the earliest possible date.

"Aeronautics is for the most part in the experimental stage," said Capt. Baldwin Monday, "and a man who is deeply interested in its problems is very apt to get visionary in his ideas but I think that a contest such as the Aero Club of America is endeavoring to arrange will be of inestimable value in aiding the advancement of the science. A simultaneous flight of an aeroplane and a dirigible has never been witnessed and the idea offers many possibilities."

When the practical mechanic gets to work on the aeroplane then you can look for results that will be practical. Today a man carrying aeroplane weighs from 600 to 900 pounds, but when the mechanic starts to define the crude machines in use, I think there will be built an aeroplane that will weigh but 20 pounds for each man carried."

INDIAN LAND PRICES UP.

Plans of the White Buyers Went Awry in Oklahoma.

Muskogee, Ok., July 28.—The negroes gave the white land buyers the laugh Monday by refusing to sell their land except at prices nearly double what they had agreed to take. The eagerness of the buyers defeated their own purpose. After corralling, feeding and entertaining the negro allottees who have homesteads to sell, buyers find their money and their time lost.

Only 64 deeds were filed Monday morning, when thousands were expected. Two buyers had 67 negroes locked up in a building all day and all Sunday night, bought two barrels of near beer, a wagon load of watermelons and a cart load of sandwiches for them, but when morning came the negroes refused point blank to sign deeds. Other buyers had the same experience on a smaller scale. Many registrars of deeds in different counties opened their offices before daylight Monday morning, but the expected rush did not follow. The allottees are learning the value of their land.

Tulsa, Ok., July 28.—One hundred deeds and contracts totaling of as many transfers of Indian lands were recorded here Monday following the removal of the restrictions on the 9,000,000 acres of Indian lands in eastern Oklahoma. The day was exceedingly short for the real estate men. Business was so heavy that it was nightfall before the realization came. Prominent buyers assert that the rush will last at least two weeks.

Leavenworth, Kan., July 28.—Upon the removal of the restrictions upon the sale of Indian lands Monday, scores of prospective purchasers visited the United States penitentiary here seeking to buy the lands of Indian convicts. There are 40 Indians confined in the federal prison here and many of them have large holdings of valuable land in Oklahoma. The Indians are following the advice of the officials of the prison and refuse to sell their lands.

Negro Attacks Kansas Girl. Kansas City, Kan., July 28.—Fifty men, women and children, armed with revolvers, shotguns, clubs and brooms, joined in a chase Monday afternoon after a negro who attacked Miss Ollie McKenzie in her home in Fauteck's addition, west of Kansas City, Kan. The chase lasted an hour. The negro was captured, handcuffed and landed in the Wyandotte county jail. Miss McKenzie was slightly injured.

Will Defend the Cup. New York, N. Y., July 28.—E. J. Schroeder's high speed power boat Dixie II, built expressly this year to defend the international cup, formerly known as the Harmsworth cup, was selected Monday after she had finished a 30-mile course off Huntington, L. I., as one of the defenders of the cup.

An Indian Land Decision. St. Louis, July 28.—The federal court of appeals Monday rendered a decision upholding the provisions of a law to prevent the transfer of lands allotted to Indians of the Quapaw tribe of Oklahoma, within a period of 25 years after the allotment.

Winnipeg Harvest Begins. Winnipeg, Man., July 28.—The wheat harvest began Monday in southern Alberta. The yield is bountiful and the quality is good.

St. Joseph, Mo. Topeka, Kan. Wichita, Kan. Grand Island, Neb. TALLOW, FURS, PELTS, WOOL, HIDES. You will note prices we are quoting for hides for the coming week. The market for hides at this date is good and prices are 1c per pound more than at this time last year. Tanners seem to be feeling bad over the recent hide boom and it may be that they will be backing down soon, so take no chances on their feelings but dispose of your hides at below prices. Wool market is unchanged, with demand very slow. Tallow is steady at unchanged prices. GREEN CURED HIDES, DRY HIDES, WOOL. Send sample, get our prices. We also handle wool on commission. We have a large store house at St. Joseph; you can ship us your wool to be sold on commission and we will look after your interests to the best of our ability. Charges for storing and selling 1c per pound. JAMES C. SMITH & CO. Second and Edmond Sts., St. Joseph, Mo. - Bell Telephone 995.

The Southwest Needs More Dairymen and Stock-Raisers. There is great profit for the breeder of cattle or horses and the producer of milk and butter on low priced lands of Southern Missouri, Arkansas, Louisiana, Oklahoma and Kansas than any where else in the world. Long Grazing Seasons, Mild Climate, Pure Water and Good Markets. No one of the states named yields enough dairy products to supply the market demand, and there is a new field here for the breeder of high-grade cattle and horses. If you are raising stock or running a dairy on the high-priced lands of the north, where the long winters make the feeding and housing of your stock expensive, let us tell you about the rich stock regions of the southwest, where grass and grain are abundant—where the cost of production is lowest and the profits greatest. The Missouri Pacific-Iron Mountain Touches the Most Fertile Sections of the Southwest. On the first and third Tuesdays of each month Homesteaders' Excursions are run into all parts of the Southwest country at very low rates. These afford an opportunity for you to see what the land offers, for information and literature apply to any representative of the company, or address, B. H. PAYNE, Gen'l Pass' and Ticket Agent, ST. LOUIS, MO.

DUTTON WAY. Saves Teeth, Pain and Money. It will pay you to learn more about this way, which so many praise so highly. DUTTON BROS. DENTISTS, 412-414 Polix Street. Retail Merchants' Association Rebates Our Patients' Railroad Fares.

URINARY DISCHARGES RELIEVED IN 24 HOURS. SANTAL MIDY. Each Capsule bears the name MIDY. Beware of counterfeits. ALL DRUGGISTS. BEECH-KEEVER GRAIN CO. Consignments of Grain and OPTION ORDERS. At Kansas City, Mo.

Swift's Digester Tankage—for Growing Pigs. Growing Pigs cannot build up Bone and Muscle and take on Flesh unless their rations are properly balanced with a liberal supply of digestible Protein. Feeds rich in fat, make fat and not Flesh. What It Costs. Less than half a pound of Digester Tankage, costing under one cent will balance the daily ration and produce maximum gains. For booklets giving facts and figures write—"Protein for Profit" tells the story. Ask for it. Swift & Company, U. S. A. Animal Food Department, South St. Joseph, MO.

ST. JOSEPH STOCK YARDS COMPANY. ST. JOSEPH, MO. We are in the Market every day for Cattle, Hogs and Sheep. We are especially bidding for Range Cattle and Sheep, both for slaughter and feeding. Located on fourteen railroads, and in the center of the best corn and live stock district in the United States, we are prepared to furnish a good market for all kinds of live stock. Our charges for yardage and feed are: YARDAGE. Cattle, per head, .25c; Hogs, per head, .25c; Sheep, per head, .50c. FEED. Corn, per bushel, .05c; Hay, per 100 lbs., .90c. Our packers furnish a daily market for all kinds of Cattle, ranging from Canners to Export Cattle. Look up your railroad connections, and you will find them in our favor. M. J. DONEGAN, Plumber, Gas, Steam, Oil and Weld. Hose, Packing, Pumps, Gas Fittings, Closets, Bath Tubs, Rollers, Brass Goods, Lawn Sprinklers, etc. Estimates furnished on application. Fourth and Fifth Sts., Southeast Cor. St. Joseph, Mo.