

# STOCK YARDS DAILY JOURNAL

A Daily Commercial Newspaper for Modern Farmers and Stockmen and an Advertising Medium that Reaches the Buyers

Vol. XI, No. 150.

ST. JOSEPH, MO., FRIDAY, FEBRUARY 14, 1908.

LAST EDITION.

TERMS: PER YEAR \$4.00  
SINGLE COPIES, 10 CENTS

## DAILY MARKETS

**Official Receipts, 13 Cars, 463 Cattle; 138 Cars, 10,215 Hogs; 8 Cars, 2,145 Sheep.**

## CATTLE RUN VERY LIGHT

**Fat Steer Trade a Quiet Affair on a Steady Basis of Values.**

## QUALITY MEDIUM TO POOR

**Small Supply of Cows and Heifers Sells Fully Steady, Not Much Change in Week's Prices—Calves Steady—Market For Stock Cattle Closing Week in Fairly Good Condition. Values Steady—Hog Trade Slow and Prices Are Forced Big Dime Lower—Sheep 10c Higher, Lambs at \$6.95.**

## RECEIPTS FROM JANUARY 1, 1908.

The following table shows the receipts from January 1, 1908, and receipts for the corresponding time in 1907:

	1908	1907	Dec. Inc.
Cattle	63,835	79,856	6,221
Hogs	431,754	295,546	119,418
Sheep	93,565	107,051	13,486
Horses	2,759	4,663	1,904

## LIVE STOCK IN SIGHT.

The following shows the estimated receipts of cattle, hogs and sheep at the five principal western markets:

	Cattle	Hogs	Sheep
Chicago	2,000	40,000	7,000
Kansas City	1,500	12,000	2,000
South Omaha	2,100	10,000	2,000
St. Joseph	500	10,000	2,100
St. Louis	1,000	10,000	1,900
Total	7,100	82,000	14,100
Yesterday	17,700	80,200	22,600
Week ago	15,100	102,700	20,400
Month ago	14,900	102,500	13,700
Year ago	16,000	150,500	15,000

## RECEIPTS BY CARS.

The following shows the number of cars of stock handled today by railroads centering at the stock yards:

C. B. & Q. west	53
C. B. & Q. east	27
C. R. I. & P.	27
Great Western	10
Missouri Pacific	11
St. Joseph & Grand Island	2
A. T. & S. F.	2
Total	164

## CATTLE.

**Small Friday Run All Around, Little Change in Prices.**

Only a meager run of cattle arrived here today and the total at five points was below a Friday average. The local offerings included a few loads of steers that were on medium order, the best being of a grade to sell around the \$5.00 mark with bulk of light and medium short-fed steers that sell below \$5.00. The market was steady as to prices and a good clearance was made, although the weather was not such as to attract buyers to the yards.

The week has not brought about much change in the general run of steer prices. Supplies have been running a little larger all around than last week, the local increase over last week being about 1,100 while the 150,000 at five points shows an increase of 13,000. During early part of the week prices for steers were a little lower, but the small loss has been fairly regained and finishing prices for the week are about the same as a week ago. While supplies have shown a small increase, there has been a corresponding decrease in some all offerings right along at prices that are fully in line with all competitive points. There have been no strictly prime steers here, but a very good class of steers weighing close up to the 1,500 lb. notch sold at \$5.70 and there have been a quite a number of medium to strong weights selling at \$5.25 to \$5.50, with bulk of beef steers of all weights selling in a range of \$4.60 to \$5.25, although common to fair light killers are selling as low as \$4.00.

## DRESSED BEEF AND SHIPPING STEER

No.	Av. Price	No.	Av. Price
17	117.5	2	125.5
10	125.5	4	125.5
5	124.5	8	124.5
9	122.5	4	122.5
6	120.5	4	120.5

## COWS, BULLS AND MIXED.

The supply of cows and heifers on sale was below a Friday average. Quality was ordinary. There was a good demand for the limited supply and offerings were disposed of in good season, prices holding to yesterday's level. Bulk of the cows and heifers sold at \$3.25 to \$4.00. Calves and bulls sold steady with yesterday.

A pretty good demand for cows and heifers has existed all week. There is not much difference in current prices and those of a week ago. The common to medium grades were off a little first of the week, but the loss has been fully regained. Good cows and heifers met an active demand and closing prices are steady to the higher than a week ago. Closing days developed a lively tone to the trade and the week finishes with the market in good, healthy condition. Best cows and heifers sold in a range of \$4.00 to

4.50, with a few selling up to \$5.00. Bulk of the medium to fairly good grades sold at \$3.25 to \$3.99. Mixed heifers and steers went largely in a range of \$4.25 to \$4.75. Canners and cutter cows close about steady with finish of last week. Bulk sold this week at \$2.40 to \$3.00.

There has been a fairly good demand for bulls all week. Prices show little change compared with a week ago. Best shipping and export bulls sold at \$3.75 to \$4.25; good butcher and bologna styles at \$3.40 to \$3.75 and medium to common grades ranging from \$3.25 down to around \$2.75.

Calves values have appreciated 25c this week. Quotations range from \$2.75 to \$6.25 for common to choice styles.

HEIFERS	400-500	500-600	600-700	700-800	800-900	900-1000
1	1170	1160	1150	1140	1130	1120
2	1160	1150	1140	1130	1120	1110
3	1150	1140	1130	1120	1110	1100
4	1140	1130	1120	1110	1100	1090
5	1130	1120	1110	1100	1090	1080
6	1120	1110	1100	1090	1080	1070
7	1110	1100	1090	1080	1070	1060
8	1100	1090	1080	1070	1060	1050
9	1090	1080	1070	1060	1050	1040
10	1080	1070	1060	1050	1040	1030
11	1070	1060	1050	1040	1030	1020
12	1060	1050	1040	1030	1020	1010
13	1050	1040	1030	1020	1010	1000
14	1040	1030	1020	1010	1000	990
15	1030	1020	1010	1000	990	980
16	1020	1010	1000	990	980	970
17	1010	1000	990	980	970	960
18	1000	990	980	970	960	950
19	990	980	970	960	950	940
20	980	970	960	950	940	930
21	970	960	950	940	930	920
22	960	950	940	930	920	910
23	950	940	930	920	910	900
24	940	930	920	910	900	890
25	930	920	910	900	890	880
26	920	910	900	890	880	870
27	910	900	890	880	870	860
28	900	890	880	870	860	850
29	890	880	870	860	850	840
30	880	870	860	850	840	830
31	870	860	850	840	830	820
32	860	850	840	830	820	810
33	850	840	830	820	810	800
34	840	830	820	810	800	790
35	830	820	810	800	790	780
36	820	810	800	790	780	770
37	810	800	790	780	770	760
38	800	790	780	770	760	750
39	790	780	770	760	750	740
40	780	770	760	750	740	730
41	770	760	750	740	730	720
42	760	750	740	730	720	710
43	750	740	730	720	710	700
44	740	730	720	710	700	690
45	730	720	710	700	690	680
46	720	710	700	690	680	670
47	710	700	690	680	670	660
48	700	690	680	670	660	650
49	690	680	670	660	650	640
50	680	670	660	650	640	630
51	670	660	650	640	630	620
52	660	650	640	630	620	610
53	650	640	630	620	610	600
54	640	630	620	610	600	590
55	630	620	610	600	590	580
56	620	610	600	590	580	570
57	610	600	590	580	570	560
58	600	590	580	570	560	550
59	590	580	570	560	550	540
60	580	570	560	550	540	530
61	570	560	550	540	530	520
62	560	550	540	530	520	510
63	550	540	530	520	510	500
64	540	530	520	510	500	490
65	530	520	510	500	490	480
66	520	510	500	490	480	470
67	510	500	490	480	470	460
68	500	490	480	470	460	450
69	490	480	470	460	450	440
70	480	470	460	450	440	430
71	470	460	450	440	430	420
72	460	450	440	430	420	410
73	450	440	430	420	410	400
74	440	430	420	410	400	390
75	430	420	410	400	390	380
76	420	410	400	390	380	370
77	410	400	390	380	370	360
78	400	390	380	370	360	350
79	390	380	370	360	350	340
80	380	370	360	350	340	330
81	370	360	350	340	330	320
82	360	350	340	330	320	310
83	350	340	330	320	310	300
84	340	330	320	310	300	290
85	330	320	310	300	290	280
86	320	310	300	290	280	270
87	310	300	290	280	270	260
88	300	290	280	270	260	250
89	290	280	270	260	250	240
90	280	270	260	250	240	230
91	270	260	250	240	230	220
92	260	250	240	230	220	210
93	250	240	230	220	210	200
94	240	230	220	210	200	190
95	230	220	210	200	190	180
96	220	210	200	190	180	170
97	210	200	190	180	170	160
98	200	190	180	170	160	150
99	190	180	170	160	150	140
100	180	170	160	150	140	130

## COWS.

1	2	3	4	5	6	7	8	9	10
1170	1160	1150	1140	1130	1120	1110	1100	1090	1080
1160	1150	1140	1130	1120	1110	1100	1090	1080	1070
1150	1140	1130	1120	1110	1100	1090	1080	1070	1060
1140	1130	1120	1110	1100	1090	1080	1070	1060	1050
1130	1120	1110	1100	1090	1080	1070	1060	1050	1040
1120	1110	1100	1090	1080	1070	1060	1050	1040	1030
1110	1100	1090	1080	1070	1060	1050	1040	1030	1020
1100	1090	1080	1070	1060	1050	1040	1030	1020	1010
1090	1080	1070	1060	1050	1040	1030	1020	1010	1000
1080	1070	1060	1050	1040	1030	1020	1010	1000	990
1070	1060	1050	1040	1030	1020	1010	1000	990	980
1060	1050	1040	1030	1020	1010	1000	990	980	970
1050	1040	1030	1020	1010	1000	990	980	970	960
1040	1030	1020	1010	1000	990	980	970	960	950
1030	1020	1010	1000	990	980	970	960	950	940
1020	1010	1000	990	980	970	960	950	940	930
1010	1000	990	980	970	960	950	940	930	920
1000	990	980	970	960	950	940	930	920	910
990	980	970	960	950	940	930	920	910	900
980	970	960	950	940	930	920	910	900	890
970	960	950	940	930	920	910	900	890	880
960	950	940	930	920	910	900	890	880	870
950	940	930	920	910	900	890	880	870	860
940	930	920	910	900	890	880	870	860	850
930	920	910	900	890	880	870	860	850	840
920	910	900	890	880	870	860	850	840	830
910	900	890	880	870	860	850	840	830	820
900	890	880	870	860	850	840	830	820	810
890	880	870	860	850	840	830	820	810	800
880	870	860	850	840	830	820	810	800	790
870	860	850	840	830	820	810	800	790	780
860	850	840	830	820	810	800	790	780	770
850	840	830	820	810					

STOCK YARDS DAILY JOURNAL

406 West Illinois Ave., St. Joseph, Mo. The St. Joseph Journal Publishing Co., Publishers.

W. E. WARRICK, Editor and Manager. Largest Outside Circulation of Any Paper Published in Buchanan County, Mo.

Entered at the Post-Office in St. Joseph, Mo., as Second Class Matter, September 8, 1877. SUBSCRIPTION RATES: Daily, per year, \$4.00; Daily, six months, \$2.00; Daily, three months, \$1.00; Daily, one month, .40; Tri-Weekly, per year, \$1.50; Semi-Weekly, per year, \$1.00; Weekly, per year, .80.

In asking change of address, please state your former postoffice. State whether your paper is Daily, Tri-Weekly, Semi-Weekly or Weekly. State whether you pay for it, or some live stock commission firm, and if the latter, the name of the firm. Country subscriptions are payable in advance. Do not send checks on country banks. Remit with postal order or draft payable to St. Joseph Journal Publishing Company.

Advertising Rates Furnished on Application. Usual 20 per cent commission allowed postmasters, who are authorized to take subscriptions.

AT THE THEATRES TONIGHT. Crystal—Advanced Vaudeville. Lyric—Renfrow's Stock Co.

BRIEF CITY NEWS.

Mrs. A. W. Kohler returned yesterday morning from Galesburg, Ill., where she attended the funeral of her cousin.

Friendship lodge No. 1894, M. E. A., initiated five candidates at its meeting, Wednesday evening. The lodge will attend the meeting of St. Joseph lodge No. 398, Monday evening.

Mrs. Robert Dland and Mrs. Arthur Reed, of Savannah, Mo., and Mrs. William Beattie and Mr. John Andrews of Avenue City, Mo., are the guests of Mr. and Mrs. G. W. Hickeron and Mrs. Mary Minton, 6924 Pryor avenue.

M. Wolf, president of the Bank of Commerce, Lincoln, Neb., was a guest of the officers of the Stock Yards Bank yesterday.

Former Governor Morrill, now president of the Morrill & James bank of Hiawatha, Kan., was a visitor at the First National bank in this city a short time yesterday.

H. C. Bostwick, president of the South Omaha National bank, and C. E. French, examiner for the St. Louis Clearing House association, St. Louis, Mo., were visitors at the German-American bank yesterday.

Councilman J. C. Schopp, A. Wendover, Moses Apple and A. W. Kohler went to Omaha, Neb., yesterday to attend a whist tournament which is in progress there.

WOMEN TALK TO BOYS.

The county detention home was visited by several women yesterday, who spent the afternoon investigating the premises and in entertaining the seven boys confined there. Each of the women made a short address to the boys, and several selections of music were rendered. Those in the party were: Mrs. A. E. Rush, secretary of the Carnegie Culture club; Mrs. George Wertz, Mrs. A. W. Morton, Mrs. L. Bottenstein and Mrs. W. H. Watson.

ON PLAYGROUND PLAN.

Rabbi Bernstein Speaks at Temple Tonight. Rabbi Louis Bernstein, who has been one of the active spirits in the establishment of a juvenile court and a playgrounds association in St. Joseph, will speak at Temple Adath Joseph, Sixth and Jule streets, tonight, on the playground movement.

Plans looking toward the opening of three playgrounds in the city have been inaugurated by the association of which Rabbi Bernstein is a member.

FIND INDIAN'S SKELETON.

What is thought to be an Indian skeleton was unearthed yesterday afternoon by excavators of the new tarara street. The skeleton is a district sewer and leads up Harvard street to the new Benton school. Work on the sewer has been going along slowly, owing to the fact that most of the work has to be done by blasting.

Scattered around the spot where the skeleton was unearthed, pottery and a shell resembling that of a mussel were also found. There were also lots of small particles of earthware.

BIG SHORTAGE OF CATTLE.

"There is a big shortage of cattle on feed in my section," said Mr. Fred Schlater, of Tecumseh, Neb., who was here yesterday with a shipment of stock. "Not over one-half the usual amount of feeding is being done this year." "What few cattle are on feed are principally in the hands of the big feeders and their operations are not as extensive as usual. Two or three loads of hogs are being shipped every week, but there still seems to be plenty left in the country. There is some disease among hogs. We had a nice rain this week which was of great benefit to wheat as it has been very dry all winter."

TO STAMP OUT DISEASE.

The Poland-China men gave the subject of tuberculosis in hogs a pretty thorough discussion. The matter of increase in the percentage of hogs cut down by the government inspectors and tanked for being diseased was a surprise to the breeders. Before adjournment, action was taken looking to the inspection of all herds owned by members of the association and the taking of steps to eradicate the disease as far as possible.

ROOSEVELT HIS SUBJECT

Representative Champ Clark, of Missouri, Talks of President's Recent Message.

INTEREST OF THE HOUSE WAS AROUSED

Mr. Clark Said the President Waxed Stronger and Stronger From His Many Battles—His Personal Friend But Political Opponent—Thought Him Better Than His Party.

Washington, Feb. 14.—Representative Champ Clark of Missouri, occupied the attention of the house of representatives Thursday for over an hour in an address upon the President's recent special message to congress, the financial disturbance of last fall, and the tariff question. It was a characteristic talk and aroused the interest of the house to a high degree.

In opening, Mr. Clark asserted that a reasonable view should be taken on all matters touching the president, but that it had not been done as a rule. "He is such a belligerent personage," he declared, "that his slightest word is a challenge to combat." The president, he said, could not express his views upon any question under heaven, "even upon a subject so prosaic and threadbare as the passing of the state of the weather," without precipitating a row, his extreme adherents swearing that there never had been "such a weather prophet on earth since Adam and Eve were driven from the garden of Eden with flaming swords from paradise and his extreme enemies vociferating that he knows no more about the weather than does a ground hog."

The president's whole public life, said Mr. Clark, had been one long succession of spectacular fights. No man had been more viciously assailed by men of his own party, "and none was ever, while still in the flesh, so lavishly lauded by some of the opposing party."

"But," he said, "the truth is that this extraordinary man has waxed stronger and stronger by waging his battles." Even defeat, he declared, had made him a larger and more commanding figure. "So," he said, "amid the swirl of things, the deluge of words the shouting of the captains, the beating of the tom-toms, the groans of the crippled republicans, the yell of friend and foe," one who was a personal friend of Theodore Roosevelt, the man, but political opponent of Roosevelt, the politician or statesman had "but little chance perhaps of being heard in this babel of voices."

Mr. Clark spoke of the claim that President Roosevelt was better than his party, "which fact," he estimated, "could be established without running any imminent danger of being translated after the manner of Elijah in a chariot of fire by reason of his goodness."

Coming to the subject of the recent financial disturbance, Mr. Clark laid it at the door of the republicans. The self-constituted defenders of the president, he said, charged that "Harriman and his crowd" did it, while on the other hand, "Harriman and his crowd" did it. It did not become an innocent bystander, he asserted, to decide which were the ideal republicans. "One thing we do know," he said, "and that is that Mr. Harriman was a delegate to the last republican national convention which nominated Col. Roosevelt by a unanimous vote and that he was a liberal contributor to the republican campaign fund." It therefore, he said, did not lie in the mouths of republicans to disown him for he was once "my dear Mr. Harriman," but now he was another sort of Harriman, "beginning with a big, big D," but he charged Harriman was and is "a republican of high degree."

Mr. Clark criticized the recent bond issue and said that the issuance of bonds in a time of peace was the identical thing for which the republicans "pilloried a democratic president before high Heaven."

Much attention was paid by Mr. Clark to the charge that Mr. Hepburn had threatened "to run over" the leaders of the house. "That threat," he declared, already had brought into line Mr. Payne, of New York, the majority leader, who announced there would be tariff revision. "If," he said, still referring to Mr. Hepburn, "he will be kind enough to let us know when he intends to start his roller over the gentleman from Pennsylvania, Mr. Dalzell, and over Uncle Joe to disfigure them, he can safely count on a full house and an audience breathless with expectation and delirious with joy." Indeed, he said, further, "there will be something doing on that occasion and no mistake." He referred to Mr. Hepburn as "the defender of the white house faith," and spoke of his "valorous defense" of the president against "the lofty panegyric of Mr. Bourke Cockran."

After poking fun at Mr. Payne's recent speech in the house, Mr. Clark turned his attention to Mr. Dalzell. One third of Mr. Payne's speech, he declared, had been delivered in a whisper apparently for the sole benefit and spiritual instruction of Mr. Dalzell.

A Kansas Joint Robbed.

Leavenworth, Feb. 14.—The saloon of Charles Walkenwitz, was held up and robbed at 1:30 Thursday morning by two masked men. They secured \$800 from the bartender whom they compelled at the point of revolvers to give them the contents of the safe. The robbers then backed out through the rear door and escaped.

Regulation Abrogated.

Washington, Feb. 14.—An order has been issued by Postmaster General Meyer abrogating the regulation heretofore enforced respecting the height and weight of postal clerks.

WOULD CONTROL WIRELESS

Congress Asked to Insure Non-Interference with Official Messages.

President Sent to Senate With His Approval Recommendations of Secretary of Navy.

Washington, Feb. 14.—The president Thursday transmitted to the senate with his approval a recommendation by the secretary of the navy for legislation to allow the government to control wireless telegraphy in order to insure non-interference with official messages. The following recommendations are made:

"Making punishable the transmission of a false message purporting to be official, breaking in on or interfering with wireless stations, while they are transmitting an official message and refusing to cease sending a private wireless message when called upon to do so by an operator having an official message to be sent."

The purpose of asking government control of wireless telegraphy to the extent outlined, are shown further by one paragraph of a letter written by Secretary Metcalf as follows: "Frequent occasions have arisen to illustrate the possible consequence of wireless interference; on one occasion an important message to the president of the United States while embarked on a naval vessel was interfered with and held up for a considerable time by the workings of a commercial station; instances have occurred wherein the naval stations at Newport, Washington and San Francisco have at different times been interfered with by persons operating with no serious object."

Hermit and His Money Parted.

Chattanooga, Tenn., Feb. 14.—Possessing a fortune of at least \$150,000, John McMillan, aged 86 years, died Thursday morning in a hotel in the outskirts of Chattanooga. He had for years lived in apparent poverty, being seen on the streets at infrequent intervals. When away from his shack he invariably carried a clip basket which, it has been learned since his death, contained cash and papers worth over \$100,000. At one time he owned a great deal of real estate, but six years ago his son committed suicide after which the man converted most of his property into cash. So far as known he left no will and his fortune will go to his only daughter, Mrs. James McCluggage, of Rose Hill, Kan. It is said that the old man and his daughter had been estranged for many years.

Strange Conditions in Lisbon.

Lisbon, Feb. 14.—It has been learned that a bomb was found under the landing stage where King Carlos landed on the day of the assassination. It had failed to explode because of a defect in the fuse. A number of persons have called at the late home of Bulca, one of the dead assassins, to give money to his mother in law for the support of his children. The proprietor of a department store has opened a subscription for them with \$1,000, also giving them free use of their homes. A curious fact has come to light. Shortly before the crime Bulca had competed with the king in a shooting match, beating his royal opponent by several points.

Protecting the Dry States.

Washington, Feb. 14.—The senate Thursday discussed the law governing the reserves of national banks, that subject being brought up by Senator Rayner who reverted to a controversy over statements he made in the senate Wednesday, when the Aldrich currency bill was under consideration. The criminal code bill also was a subject for discussion during a couple of hours, Senator Clay and others securing the substitution of the old law instead of the proposed revised sections, which will effectually prevent intoxicating liquors being sent through the mails into "dry" states or counties.

The Packers Will Fight.

Lincoln, Neb., Feb. 14.—Swift & Co., in an answer filed Thursday in the county court, asserted that the state law, requiring the branding of net weight on ham and bacon packages, was unconstitutional. After describing the methods of wrapping such packages, the packing company declares accurate branding is impossible. Suits were filed against the packers about two months ago by Food Commissioner Johnson who charged that the net weight was not stamped on meat packages.

Protecting Japanese There.

Ottawa, Feb. 14.—The Canadian government has sent instructions to the agent of the justice department in British Columbia to take legal steps to prevent the provincial authorities enforcing any penalties against Japanese citizens under the Natal act just passed by that province. As soon as the act reaches Ottawa it will be disallowed.

Bristow a Candidate.

Topeka, Kan., Feb. 14.—J. L. Bristow, of Salina, Thursday night said he would issue a statement in a few days formally declaring his candidacy for United States senatorial nomination. He denied existence of any deal between himself and W. R. Stubbs, candidate for governor.

Believes in Combinations.

He Declares the People Are Awake and Old Political Tricks Will No Longer Serve to Win Elections. Wabash, Ind., Feb. 14.—Senator Albert J. Beveridge addressed the Indiana Lincoln League of Republican clubs here Thursday night, delegates being present from all parts of the state. The address was considered a fitting climax to the most enthusiastic gathering in the history of the Lincoln league. The senator was presented to the audience by E. E. Gates, the retiring president of the league. Mr. Beveridge said in part: "The Indiana delegation is going to Chicago for Vice-President Fairbanks. Statements are being sent out that, after a few ballots shall have been cast for him, the delegation is to be delivered to this or that candidate. This is an insult to the republicans in this state which, in their name, I denounce. The republicans in Indiana whom we will represent are not to be traded or delivered. We will vote for our candidate until he is nominated, or until he himself tells us to vote no longer for him; and if that time ever comes, the delegation will not be delivered to any one. The self-respecting, independent men who compose that delegation will then vote for whom they please. As a body, we are going to Chicago for Mr. Fairbanks, and for him, alone."

Believes in Combinations.

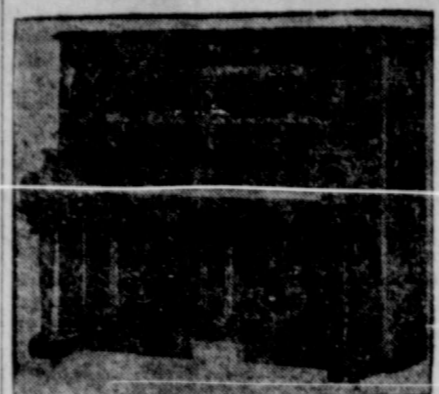
He Declares the People Are Awake and Old Political Tricks Will No Longer Serve to Win Elections. "A straight-out revenue tariff gives everything away and gets nothing in return, a straight-out protective tariff gives nothing away, and gets nothing in return. We must have a tariff by which we can open the markets of the world—one highly protective tariff to apply to the nations that will not grant us favors in their markets, and another tariff, still protective, for nations that will give us favors in their markets."

"Laws must be passed to help labor. If the laboring man is treated justly, he will not be a menace, but a blessing. "The period will be called in history the renaissance of American conscience. The tricks of politics no longer deceive the people. It will not do in these days to talk about the flag and human brotherhood; it will not do to denounce our political opponents; you cannot take the people's minds in that way from the burning questions of the day. The old and disgraceful political devices can no longer win elections. A ticket nominated by money or intrigue now means certain defeat at the polls."

"Let the people decide, let the people rule, unthought by money, unfluenced by bribes of any kind. Promises of official positions at Indianapolis or at Washington are just as much bribery as the paying over of actual cash."

"Let us have definite policies flowing from high ideals, for the republican party; pure primaries for the republican party; unbossed conventions for the republican party; fearless, truthful, clean candidates for the republican party. These must be our republican watchwords. The time has gone by when a bad man can put a placard on his coat with the word 'republican' printed on it, and because of that name get republican votes."

Brussels, Feb. 14.—The committee of the Interparliamentary Peace conference has decided that the conference will be held this year in Berlin. The German emperor will receive the delegates.



Schiller Pianos Unquestioned Excellency

A true realization of the highest ideals of piano construction. They embody all that is best—most modern ideas, most artistic case designs, finest finish, workmanship unexcelled and the very best materials obtainable.

The perfect internal mechanism of the Favorite Schiller Piano insures a lifetime durability. Nothing is spared in this wonderful instrument to maintain its highest Standard of Excellence.

It will pay you, Mr. Piano Buyer, to investigate the Schiller before buying a piano elsewhere and paying twice our price for something not half as good.

We are factory representatives for the Favorite Schiller Piano. From Factory to You. SCHILLER PIANO CO. 119 So. 8th, P. F. CROSBY, Mgr. The Factory Store.

Blacklegged's Simplest, Safest, Surest Vaccination for the prevention of BLACKLEG IN CATTLE. NO DOSE TO MEASURE. NO LIQUID TO SPILL. NO STRING TO ROT. Just a little pill to be placed under the skin of the animal by a single thrust of the instrument. You cannot afford to let your cattle die of blackleg when a few dollars spent on Blacklegged's will save them. Write for circular. PARKER, DAVIS & COMPANY HOME OFFICE AND LABORATORIES, DETROIT, MICH. NOTICE—For a limited time we will give to any customer an injector free with his first purchase of 100 vaccinations.

Very Low One Way Rates to California, Nevada, Washington, Oregon, Arizona, New Mexico, Mexico, Montana, Idaho, Wyoming, Utah. On Sale During March and April. Please ask for Rates, Booklets, etc. GEO. BUTTERLY, City Passenger Agent, 601 Edmund Street, St. Joseph, Mo.

FOR MR. FAIRBANKS Senator Beveridge Says Indiana Delegation Will Stay with the Vice-President. BELIEVES IN COMBINATIONS He Declares the People Are Awake and Old Political Tricks Will No Longer Serve to Win Elections.

Wabash, Ind., Feb. 14.—Senator Albert J. Beveridge addressed the Indiana Lincoln League of Republican clubs here Thursday night, delegates being present from all parts of the state. The address was considered a fitting climax to the most enthusiastic gathering in the history of the Lincoln league. The senator was presented to the audience by E. E. Gates, the retiring president of the league. Mr. Beveridge said in part: "The Indiana delegation is going to Chicago for Vice-President Fairbanks. Statements are being sent out that, after a few ballots shall have been cast for him, the delegation is to be delivered to this or that candidate. This is an insult to the republicans in this state which, in their name, I denounce. The republicans in Indiana whom we will represent are not to be traded or delivered. We will vote for our candidate until he is nominated, or until he himself tells us to vote no longer for him; and if that time ever comes, the delegation will not be delivered to any one. The self-respecting, independent men who compose that delegation will then vote for whom they please. As a body, we are going to Chicago for Mr. Fairbanks, and for him, alone."

Lightning Portable WAGON AND STOCK Scale. All above ground. Steel frame, only 3 inches high. Octagon levers. Tool steel bearings. Compound beam. Most accurate and durable. Write for catalog and price. KANSAS CITY HAY PRESS COMPANY, 699 Mill Street - Kansas City, Mo.

SHAMROCK WHISKEY Is Distilled for Medicinal Purposes From Rye and Barley Malt. Age, ten years. No fusil oil, no drugs. Prices, \$1 per quart, \$10 per doz., \$5 per half dozen quarts bottles, or \$1 per gal. freight paid to any railroad station on receipt of order, or will ship C. O. D. Write for complete price list. Business record 25 years. Reference, National Bank of St. Joseph. ST. JOSEPH, MO. M. J. SHERIDAN, New Telephone 340. Importer and Dealer in Wines and Liquors.

Alluring Clearance Sale Prices

On Women's and Children's Shoes For Saturday. In order to make room for our immense spring stock of Men's, Women's, Misses' and Children's Shoes which is arriving daily, we will make big reductions on all discontinued and broken lines for the above mentioned day.

54 Pairs Men's Shoes—In patent leather, calf, in black and tan. Not a full run of sizes and widths. Regular \$3.50 and \$5.00 values, at \$1.98. 260 Pairs Misses' Kid Lace Shoes—Patent leather tips; a neat, stylish shoe; a regular run of sizes, from 1 1/2 to 2. Regular \$1.50 values, at, per pair 95c. 310 Pairs Ladies Shoes—Made from patent coil, kid, and veal; in black, tan and dull finished leathers; in well and turn soles; button, lace and Blucher styles. Regular \$3.00 and \$3.50 values, at, per pair \$1.95. THE BEST STORE Townsend and Wyatt Dry Goods Company. Mo. where Retail Merchants Association, Railroad Fare Reduced.

AMUSEMENTS Crystal Theatre FIFTH AND CHARLES STREETS. POLITE VAUDEVILLE. Souvenirs for Ladies Tuesdays and Fridays. 4 Shows Daily.

LYRIC THEATER THIS WEEK "LORD BALTIMORE" An Advertisement in The Journal Is a Business Getter. ME J. N. RENFROW In his great original part of Asmer Montrose Ferdinand O'Hooligan. Souvenir Bargain Matinee Wednesday, 10c.

L. F. SWIFT, President. JOHN DONOVAN, Vice-Pres. and Gen. Mgr. L. D. W. VAN VLIET, Asst. Gen. Mgr. M. B. IRWIN, Traffic Mgr. CHAS. PASCHIE, Secretary. P. P. WELLY, Treasurer. LOUIS SIEMENS, Superintendent. Cashier.

ST. JOSEPH STOCK YARDS COMPANY ST. JOSEPH, MO. We are in the Market every day for Cattle, Hogs and Sheep. We are especially bidding for Range Cattle and Sheep, both for slaughter and feeding. Located on fourteen railroads, and in the center of the best corn and live stock district in the United States, we are prepared to furnish a good market for all kinds of live stock. Our charges for yardage and feed are: YARDAGE Cattle, per head, .25c; Hogs, per head, .6c; Horses, per head, .25c; Sheep, per head, .5c. FEED Corn, per bushel, .90c; Hay, per 100 lbs., .90c. Our packers furnish a daily market for all kinds of Cattle, ranging from Canners to Export Cattle. Look up your railroad connections, and you will find them in our favor.

Lightning Portable WAGON AND STOCK Scale. All above ground. Steel frame, only 3 inches high. Octagon levers. Tool steel bearings. Compound beam. Most accurate and durable. Write for catalog and price. KANSAS CITY HAY PRESS COMPANY, 699 Mill Street - Kansas City, Mo.

SHAMROCK WHISKEY Is Distilled for Medicinal Purposes From Rye and Barley Malt. Age, ten years. No fusil oil, no drugs. Prices, \$1 per quart, \$10 per doz., \$5 per half dozen quarts bottles, or \$1 per gal. freight paid to any railroad station on receipt of order, or will ship C. O. D. Write for complete price list. Business record 25 years. Reference, National Bank of St. Joseph. ST. JOSEPH, MO. M. J. SHERIDAN, New Telephone 340. Importer and Dealer in Wines and Liquors.

C. F. Rock Plumbing & Heating Co. Modern Plumbing, Steam and Hot Water Heating. Telephone 899. 115 NORTH THIRD STREET.

CHESMORE-EASTLAKE MERCANTILE CO., 838 South 4th Street, St. Joseph, Mo. SEEDS—FIELD, GRASS AND GARDEN. Alfalfa, Blue Grass, Clover, Mill et. Cann. Alyske, Kaffir, Red River Early Ohio Potatoes, Pure Bred Seed Corn, Rival Chick Feed and Egg Force. Seeds and Poultry Supplies of All Kinds. Get Our Prices on 1 Catalogue.

J. G. PEPPARD BUYS AND SELLS MILLET, CANE, KAFFIR, POPCORN, SEED CORN, ALFALFA, TIMOTHY, CLOVER AND ALL KINDS OF FIELD AND GRASS SEEDS. 1101 to 1117 West 5th St., Near Santa Fe St., KANSAS CITY, MO.

WEDNESDAY'S BUSINESS

CATTLE.

Receipts Moderate, But Demand Not Lively Steers About Steady.

Receipts of cattle at this point dropped down to less than a week's day average and total at five points was not large. However, the demand did not appear to be urgent and the moderate supply for a middle day of the week did not stimulate any material strength in the trade. As has been the case all week the supply ran largely to steers of medium to fairly good quality with nothing offered that was on choice order. The rain of last night put the yards in sloppy condition and many of the cattle presented an unattractive appearance due to their having been out in the rain. This was, perhaps, one factor against a lively trade. While there were no strictly choice heifers offered, there were a few bunches of the good medium weight kinds that have been selling at \$5.25@5.40 and these found outlet at steady prices. In fact, the general market for steers was not notably different from steady with bulk being of grades that sell between \$4.75 and \$5.15 with common to good light weights going at \$4.00@4.65.

Receipts for the half-week at this point are 1,600 ahead of last week, while total for five points shows an enlargement of 29,000 over like period last week.

Table with columns: DESIGNED BEEF AND SHIPPING STEERS, No., Av. Price, No., Price. Lists various grades of beef and shipping steers with their respective prices.

COWS, BULLS AND MIXED.

Steady to strong was the condition of the market for cows and heifers today. A small supply stimulated pretty stiff competition for the desirable grades and the trade had brisk tone until everything had been cleared up. Occasional transactions looked a dime higher than yesterday. At the general trade was steady to strong. Quality was ordinary, there being few cows and heifers offered good enough to cross the \$4.00 line. Canners and cutters which were such a dull proposition yesterday moved more readily today, although prices were not better than steady.

Table with columns: COWS, No., Price, No., Price. Lists various grades of cows with their prices.

BULLS AND STAGS.

Table with columns: BULLS AND STAGS, No., Price, No., Price. Lists various grades of bulls and stags with their prices.

RECEIPTS AGAIN LIBERAL, DEMAND FAIR, PRICES STABLE TO 5 CENTS HIGHER.

Table with columns: RECEIPTS AGAIN LIBERAL, DEMAND FAIR, No., Price, No., Price. Lists various grades of cattle with their prices.

THURSDAY'S BUSINESS

CATTLE.

There was a little better feeling prevalent in the trade in stockers and feeders today. Regular dealers were out in good season and soon cleaned up the limited supply, prices ruling steady to strong at yesterday's level. Good strong weight feeding steers were scarce, bulk of the offerings being on the stocker order with quality only fair. A better inquiry from the country is reported by regular dealers and that was the basis for the activity noted in the trade out of first hands today. There was a fair number of stockers and feeders sent to the country yesterday and there was a pretty good attendance of country buyers at hand this morning. Offerings in the stocker division comprise...

though in an instance or two there were some fairly choice lots to be seen. Buying interests were in the rounds in fairly seasonable hour, but did not appear willing to grant any concessions in the way of stronger prices. The best cattle here were of the good heavy weight style that have been selling around \$5.25, but there were not many of a class to sell above \$5.00 and bulk of supply went over the scales in a range of \$4.75@5.00 with decent light killers going at \$4.40@4.75 and common to fair at \$4.00@4.40.

Table with columns: DESIGNED BEEF AND SHIPPING STEERS, No., Av. Price, No., Price. Lists various grades of beef and shipping steers.

Table with columns: STOCKERS AND FEEDERS, No., Price, No., Price. Lists various grades of stockers and feeders.

Table with columns: YEAHLINGS AND CALVES, No., Price, No., Price. Lists various grades of yearlings and calves.

Table with columns: FEEDING COWS AND STOCK HEIFERS, No., Price, No., Price. Lists various grades of feeding cows and stock heifers.

Table with columns: FEEDING BULLS AND STAGS, No., Price, No., Price. Lists various grades of feeding bulls and stags.

HOGS.

Receipts Again Liberal, Demand Fair, Prices Stable to 5 Cents Higher.

The market movement of hogs continues very large, but there is still an under-current to the trade indicating that packers want all that come. The supply at this point for the expired half week shows an increase of 9,900 over the first half of last week and at five points the aggregate total of 202,000 for three days is \$5,000 in excess of number arriving at same points for the like period last week.

Table with columns: HOGS, No., Price, No., Price. Lists various grades of hogs with their prices.

COWS, BULLS AND MIXED.

Prices ranged from \$4.05@4.45, with the bulk selling at \$4.20@4.35. The bulk yesterday sold at \$4.15@4.30, a week ago at \$4.20@4.45, a month ago at \$4.40@4.55, a year ago at \$5.95@6.07 1/2, two years ago at \$5.30@5.40, three years ago at \$4.30@5.05, four years ago at \$4.55@5.10.

PIGS AND LIGHTS—190 LBS. AND UNDER

Table with columns: PIGS AND LIGHTS—190 LBS. AND UNDER, No., Price, No., Price. Lists various grades of pigs and lights.

HEAVY AND MIXED—200 LBS. AND OVER.

Table with columns: HEAVY AND MIXED—200 LBS. AND OVER, No., Price, No., Price. Lists various grades of heavy and mixed hogs.

BULLS AND STAGS.

Table with columns: BULLS AND STAGS, No., Price, No., Price. Lists various grades of bulls and stags.

COWS, BULLS AND MIXED.

Table with columns: COWS, BULLS AND MIXED, No., Price, No., Price. Lists various grades of cows, bulls, and mixed.

RECEIPTS FALL OFF AT ALL POINTS—MARKET RECEIPTS, BOTH LOCALLY AND OUTSIDE MARKETS WAS NOTED TODAY.

Table with columns: RECEIPTS FALL OFF AT ALL POINTS—MARKET RECEIPTS, No., Price, No., Price. Lists various grades of cattle with their prices.

Prices Weaken Under Continued Liberal Receipts, Mostly Be Lower.

Local supplies of hogs were again liberal and bring total for the week up to 49,000, an increase of 11,000 over corresponding period last week. Total for five days at the five leading market points is 290,000 and shows an increase of 67,000 over corresponding figures last week.

Under this continued liberal marketing it was scarcely more than natural that the buying interests were bearish from the start today. Offering bids were around 50 to 100 cents lower, but it did not take long for opposing factions to get together on a basis of prices weak to 5 cents lower than the average market of the previous day and at this basis there was a considerable volume of business done up to the noon hour.

The afternoon market showed further weakness and final sales of the day, including quills large proportion of the crop, sold at \$4.20@4.45, a week ago at \$4.25@4.40, a month ago at \$4.30@4.45, a year ago at \$5.92 1/2@6.07 1/2, two years ago at \$4.85@4.95, four years ago at \$4.85@4.95.

HOGS.

Receipts Again Liberal, Demand Fair, Prices Stable to 5 Cents Higher.

The market movement of hogs continues very large, but there is still an under-current to the trade indicating that packers want all that come. The supply at this point for the expired half week shows an increase of 9,900 over the first half of last week and at five points the aggregate total of 202,000 for three days is \$5,000 in excess of number arriving at same points for the like period last week.

Table with columns: HOGS, No., Price, No., Price. Lists various grades of hogs with their prices.

COWS, BULLS AND MIXED.

Prices ranged from \$4.05@4.45, with the bulk selling at \$4.20@4.35. The bulk yesterday sold at \$4.15@4.30, a week ago at \$4.20@4.45, a month ago at \$4.40@4.55, a year ago at \$5.95@6.07 1/2, two years ago at \$5.30@5.40, three years ago at \$4.30@5.05, four years ago at \$4.55@5.10.

PIGS AND LIGHTS—190 LBS. AND UNDER

Table with columns: PIGS AND LIGHTS—190 LBS. AND UNDER, No., Price, No., Price. Lists various grades of pigs and lights.

HEAVY AND MIXED—200 LBS. AND OVER.

Table with columns: HEAVY AND MIXED—200 LBS. AND OVER, No., Price, No., Price. Lists various grades of heavy and mixed hogs.

BULLS AND STAGS.

Table with columns: BULLS AND STAGS, No., Price, No., Price. Lists various grades of bulls and stags.

COWS, BULLS AND MIXED.

Table with columns: COWS, BULLS AND MIXED, No., Price, No., Price. Lists various grades of cows, bulls, and mixed.

RECEIPTS FALL OFF AT ALL POINTS—MARKET RECEIPTS, BOTH LOCALLY AND OUTSIDE MARKETS WAS NOTED TODAY.

Table with columns: RECEIPTS FALL OFF AT ALL POINTS—MARKET RECEIPTS, No., Price, No., Price. Lists various grades of cattle with their prices.

Prices Weaken Under Continued Liberal Receipts, Mostly Be Lower.

Local supplies of hogs were again liberal and bring total for the week up to 49,000, an increase of 11,000 over corresponding period last week. Total for five days at the five leading market points is 290,000 and shows an increase of 67,000 over corresponding figures last week.

Under this continued liberal marketing it was scarcely more than natural that the buying interests were bearish from the start today. Offering bids were around 50 to 100 cents lower, but it did not take long for opposing factions to get together on a basis of prices weak to 5 cents lower than the average market of the previous day and at this basis there was a considerable volume of business done up to the noon hour.

The afternoon market showed further weakness and final sales of the day, including quills large proportion of the crop, sold at \$4.20@4.45, a week ago at \$4.25@4.40, a month ago at \$4.30@4.45, a year ago at \$5.92 1/2@6.07 1/2, two years ago at \$4.85@4.95, four years ago at \$4.85@4.95.

HOGS.

Receipts Again Liberal, Demand Fair, Prices Stable to 5 Cents Higher.

The market movement of hogs continues very large, but there is still an under-current to the trade indicating that packers want all that come. The supply at this point for the expired half week shows an increase of 9,900 over the first half of last week and at five points the aggregate total of 202,000 for three days is \$5,000 in excess of number arriving at same points for the like period last week.

Table with columns: HOGS, No., Price, No., Price. Lists various grades of hogs with their prices.

COWS, BULLS AND MIXED.

Prices ranged from \$4.05@4.45, with the bulk selling at \$4.20@4.35. The bulk yesterday sold at \$4.15@4.30, a week ago at \$4.20@4.45, a month ago at \$4.40@4.55, a year ago at \$5.95@6.07 1/2, two years ago at \$5.30@5.40, three years ago at \$4.30@5.05, four years ago at \$4.55@5.10.

PIGS AND LIGHTS—190 LBS. AND UNDER

Table with columns: PIGS AND LIGHTS—190 LBS. AND UNDER, No., Price, No., Price. Lists various grades of pigs and lights.

HEAVY AND MIXED—200 LBS. AND OVER.

Table with columns: HEAVY AND MIXED—200 LBS. AND OVER, No., Price, No., Price. Lists various grades of heavy and mixed hogs.

BULLS AND STAGS.

Table with columns: BULLS AND STAGS, No., Price, No., Price. Lists various grades of bulls and stags.

COWS, BULLS AND MIXED.

Table with columns: COWS, BULLS AND MIXED, No., Price, No., Price. Lists various grades of cows, bulls, and mixed.

RECEIPTS FALL OFF AT ALL POINTS—MARKET RECEIPTS, BOTH LOCALLY AND OUTSIDE MARKETS WAS NOTED TODAY.

Table with columns: RECEIPTS FALL OFF AT ALL POINTS—MARKET RECEIPTS, No., Price, No., Price. Lists various grades of cattle with their prices.

First Entertainment. She was a very little girl, and she had charge of a still smaller boy, her baby brother Jim. Timidly approaching one of the booking-office windows at Clapham, she asked how much the fare was to Waterloo. The clerk told her, and she moved away.

But presently she returned and made the same innocent inquiry, once more to be informed with the same courtesy. A few minutes later she was there again.

"Look here, my little girl," said the clerk, "this is the third time you've asked me the same question."

"Yes, sir," said the little girl, "I know that; but Jim likes to see you peep out of your window, because there's a lot of bars across it, and he says it's just like being at the zoo!"

In the Prevailing Mode. "The Wheeler has got a scoop at last."

"What is it?" "The society editor's new hat"—Cleveland Plain Dealer.

POPULAR ADVERTISING

J. C. HEDENBERG 418 Francis St. ST. JOSEPH, MO. Abstract of Title of the City of St. Joseph and Buchanan County. Telephone No. 827.

ELL HOLLAND, Attorney-at-Law

Drillers & Merchants Bank, St. Joseph, Mo. Old Phone-Office, South 254; Residence, Main 2667.

BELTING!

For the Best write to LEWIS SUPPLY CO. 115 S. 4th St., St. Joseph, Mo.

FOR SALE

23 head of yearling steers, all native, dehorned and good quality. For particulars write or phone R. J. HOUSTON, Hopkins, Mo.

CARLISLE COM. CO.

1215 W. 11th St. Kansas City, Mo. WHOLESALE HAY AND GRAIN We solicit your shipments. Established 1880. Unusually facilities. Reference—Any Kansas City bank or any Mercantile agency.

HILTON'S HOTEL

215 FRANCIS STREET Formerly THE ST. JAMES HOTEL American Plan, Rates \$1.25 Per Day Located in the heart of business center. The only hotel in St. Joseph that caters particularly to the stock men. You get your moneys' worth here. Good meals and clean beds.

CONSIGN YOUR HAY

TO THE J. L. FREDERICK'S Hay Company. The Old Reliable hay firm of St. Joseph, Mo. We handle exclusively on commission. Write us for information. Consign to us for best results.

HARNESS

J. A. ANISER 608-610 MESSANIE ST. ST. JOSEPH, MO. We are the Largest Saddlery in the United States selling direct from the manufacturer to the consumer. Send for our large illustrated free catalogue.

SHEEP.

A moderate mid-week run of sheep was in sight this morning, five markets reporting only 24,100, 8,100 less than arrived at same points a week ago. The local supply was limited to 1,700 and this number included three cars of lambs direct to packers. Offerings were all from local territory, nothing arriving from Colorado.

HAMMONDS

Mistletoe Hams, Breakfast Bacon, Lard and Canned Meats

526 fed west lambs... 81.60 55 nat lambs... 97.65 125 fed west lambs... 71.60 12 fed west lambs... 74.65 96 fed west lambs... 80.65 10 fed west lambs, cls. 67.50 6 nat lambs, culs... 68.50 116 nat lambs, culs... 60.50 2 nat sheep... 105.50 8 nat lambs, culs... 62.50 6 nat ewes, culs... 100.35

STOCKERS AND FEEDERS.

Trade in stocker and feeder steers had an active tone and supplies in first hands were readily moved on a steady to strong basis of prices. Medium to strong weight feeders were in good request, but offerings of this description were scarce. Usual classes of stocker stuff sold readily and most sales looked 10c higher than Tuesday or about steady with the close of last week. Country demand shows considerably more activity than early in the week and dealers state the prospects are good for a complete cleanup before Saturday night. There is still on sale in the stocker division however, a good representation of all the popular weights and qualities of stockers and feeders.

STOCKERS AND FEEDERS.

Table with columns: STOCKERS AND FEEDERS, No., Price, No., Price. Lists various grades of stockers and feeders.

YEAHLINGS AND CALVES.

Table with columns: YEAHLINGS AND CALVES, No., Price, No., Price. Lists various grades of yearlings and calves.

Farms For Sale

By Boomer & Williams

Savannah, Missouri.

Rhodes farm, 150 acres, all rich bottom land, 2 miles from Rosedale or Wrens, 150 in cultivation, 5 acres timber; fair 2-room house, barn, new, 40x48, etc., well watered, handy to church and school; Price \$7,000 per acre. No. 694

Dandy large farm of 340 acres, 20 acres in clover, timothy and blue grass; all smooth land in high state of cultivation; well fenced, well watered, fine view, good large dwelling, large barn and all necessary outbuildings. Everything first class. Price \$800 per acre. No. 695

The Terhune farm, 182 acres, 14 miles southwest of Rosedale, slightly wooded, rich and in high state of cultivation. Well fenced, well watered, fine view, good large dwelling, large barn, 20 acres in tame grass for several years. Price \$700 per acre. No. 617

Geo. Feuling farm of 300 acres, 10 miles from St. Joseph, 200 in cultivation; rich smooth prairie farm, good 6-room house, good barns and outbuildings. Well fenced and well watered, water piped into tanks. Owner leaving state for health of family and wants business. Price \$200 per acre; one-half on time at 5 per cent interest. No. 618

A fine 100 acre, 2 miles from Helena; good two story residence, good, large barn, fenced in 4 fields, 30 acres wooded, fine view, good water, well wind mill, etc. Lumber enough for farm use; land is mostly in tame grass. 01,250. No. 619

Weddle stock and grain farm of 287 acres in Platte township. All the land is rich, productive and in a high state of cultivation and all well fenced and cross-fenced hog tight, 5-room dwelling, barn, 20 acres in clover, timothy and blue grass, coal house, all kinds of fruit, 4 wells, a windmill and tanks, one large supply tank; 20 acres young timber, 20 acres meadow, 75 acres under plow, balance in corn. This farm is in the class of \$800 land, but owner wants to close out and quit farming and will sell for \$500 per acre. Three and one-half miles from depot. No. 612

A snap, 100 acre farm, 7 1/2 miles north of St. Joseph, 2 1/2 miles from Savannah, 7-room house, barn 30x40 and all necessary outbuildings, 30 acres clover, 20 acres blue grass, rolling land, very rich bottom. All kinds of fruit. Good dairy or stock farm. Price only \$650 per acre. No. 614

Fine stock farm, 196 acres, 2 miles southeast of Guilford, 120 acres corn land, fair 6-room house, smoke house, arched house, fair outbuildings, well fenced and watered. Will take small farm in exchange. Price \$200 per acre. No. 615

Fine farm, 100 acres, near Clyde, Nodaway county. Land all smooth and rich, 20 acres meadow, balance pasture, 6-room house, low land, 7-room house, good barn, 20 acres in corn, 20 acres in clover, fenced and watered. This farm is especially desirable to a man who has a large family and wants to get out of farming. Price \$12,000—\$2,000 or more cash, balance on time. No. 616

Kansas Farm & Ranch Lands

Two Kansas Land Snaps

A section of land eight miles north of Russell on a fine miles from Paradise. About 200 acres in cultivation and two-thirds is good farm land. Half is fenced for pasture with three acres on stone posts. No buildings. School house on corner. This section can be divided and make two good farms. One quarter \$1,200. Balance \$250 an acre if all sold together. Time on part at 6 per cent.

E. W. VOORHIS, Russell, Kansas.

LOOK! LOOK!!

Three model ranches and a choice farm. All good, rich productive corn, wheat and alfalfa land. Well located and modern improvements. Will stand rigid inspection. One is in the famous Beaver Valley, Central Nebraska. Only \$10 per acre, perfect title.

FRANK GEE, LAWRENCE, KANSAS.

TRANSIT HOUSE

ST. JOSEPH STOCK YARDS, ST. JOSEPH, MO. FINEST STOCKMEN'S HOTEL IN THE COUNTRY

arc the finest that the Packing House Art Can Produce. HAMMOND PACKING COMPANY Chicago, Ill., St. Joseph, Mo.

H. O. SIDENFADEN Undertaker and Embalmer

Both Phones 325 211-13-15 North 10th St

ONLY A BLUFF

Mr. Rainey Says the President's Fight on Standard Oil Is Not Sincere.

REMOVE PETROLEUM TARIFF

If Duty of 15 Cents Per Gallon Was Removed Foreign Competition Would Curtail Power of the Trust.

Washington, Feb. 14.—That the fight of the administration against the Standard Oil company was "only a bluff," was asserted in the house of representatives Thursday by Mr. Rainey of Illinois who spoke at length on his bill placing on the free list petroleum, crude or refined, or its products. He did not think it was possible, he said, to make a presidential campaign "on the strength of a \$29,000,000 fine and some messages denouncing the Standard Oil company."

He charged that whenever a particularly nefarious trust was threatened with some injury it rushed for protection to the republican party. The Standard Oil company, he said, at the time when it was threatened with competition in the United States by Russian oil had applied to the republican party for assistance and "that party, true to its traditions, took it in its arms and folded it to its bosom."

Mr. Rainey held up the republicans to ridicule for not having, as he said, the temerity to announce their candidate for president. He said they did not have the courage to declare for Speaker Cannon, "because that means the end of the White House dinners this winter for all of you. You have not the courage to say you are for Cannon because that might interfere with your committee assignments."

Bad Start for the Automobiles.

Albany, N. Y., Feb. 14.—Four of the automobiles exhibited in the New York Paris race, via Siberia, had reached or passed Albany at a late hour Thursday night. The American, one French and the Italian reached here soon after noon and went on west. The first German car, that in which Lieutenant Koppert of the German army is traveling, arrived here at 10 p. m. will pass the night here and leave at 6:30 a. m. The other French car is reported as spending the night at Hudson; the second German car is said to be at Rhinebeck, opposite Kingston. All the cars have experienced great difficulty with heavy snow drifts and soft roads.

Read, for the Fleet.

Santiago, Chile, Feb. 14.—Everything is in readiness at Valparaiso for a review of the American fleet as it passes that port on its way to Callao. President Montt, accompanied by a large number of government officials, has gone to Valparaiso and will review the fleet from the training ship General Baequedano. The members of the diplomatic corps of the various countries also will be on board this vessel, where following the review a formal dinner will be given. It is expected that the American fleet will pass Valparaiso about two o'clock Friday afternoon.

New Employers Liability Bill.

Washington, Feb. 14.—A comprehensive employers liability bill was introduced in the senate and house Thursday by Senator LaFollette of Wisconsin and Representative Sterling of Illinois. The authors say the bill has the endorsement of the Brotherhood of Locomotive Engineers, Brotherhood of Locomotive Firemen and Engineers and Brotherhood of Railroad Trainmen and is intended to meet the recent decision of the supreme court in which the employers liability act of June 11, 1906, was declared unconstitutional.

Judge Wallace Would Be Governor.

Kansas City, Feb. 14.—Judge William H. Wallace, of the criminal court of this city, who recently has been making a vigorous campaign for Sunday observance, Thursday announced his candidacy for the democratic nomination for governor of Missouri. His platform declares for "the state wide and permanent enforcement of our Sunday and liquor laws."

A Laundry Trust Dissolved.

Cincinnati, Feb. 14.—The eleven laundries under indictment for organizing to raise prices Thursday pleaded guilty and each was fined \$50 and cost. The trust also agreed to dissolve, and the indictment against the laundry proprietors were nolleed. The indictments were returned more than a year ago.

VIOLATED THE POSTAL LAWS

Suit Has Been Filed Against American Express Company.

It is Charged With Having Carried First Class Mail Matter Without a Stamp Being Affixed.

Cincinnati, O., Feb. 14.—Violation of the postal laws by carrying first-class mail matter was charged against the American Express company in a suit filed in the United States district court here Thursday by District Attorney McPherson.

This suit was the first gun in a campaign which the government proposes to wage against common carriers for carrying first class mail matter contrary to law. In the information which Attorney McPherson filed he alleges that the American Express company on January 5 carried a letter from Belton, Texas, to Cincinnati. The letter was from Mrs. Will Brown, of Belton, and in it she ordered from a glove company 12 pairs of gloves, and enclosed an express money order for \$2.50 in payment. Attorney McPherson claims the letter did not relate to the business of the express company and that the envelope did not bear a postage stamp as required by law. The penalty for violation of this provision of the federal statutes is \$100.

Colonel Holmes, postoffice inspector in charge, said:

"The government is very jealous of its right to carry the mails and insists on it always. When public carriers carry letters not bearing postage stamps and not pertaining to the business of the carrier, they are preventing the government from deriving a postage money from the sale of stamps. "About four or five years ago the government waged war against carriers for such an offense. It is the opinion of the government officials that common carriers are becoming too lax in reference to carrying mail matter not properly stamped, and that prosecution of a few cases is necessary to bring to their attention the fact that they are violating the law."

In Memory of Boxer Victims.

Pekin, Feb. 14.—Six bronze tablets from the Rock Island arsenal, Illinois, were Thursday placed on the monuments that have been erected at Tien Tsin in memory of the American soldiers and sailors who lost their lives in the boxer outbreak of 1901. The monuments have officially been transferred to the American legation by Colonel Webb C. Hayes, president of the Chinese battlefield commission, and a son of the late President Rutherford B. Hayes. A seventh tablet will be placed on the monument erected in memory of Colonel Emerson H. Lisicum, who commanded the Ninth regiment of infantry and lost his life during the attack of the allied forces at Tien Tsin in July 1900. The tablets were unveiled by Colonel Hayes.

Clark Interjects the House.

Washington, Feb. 14.—General debate on the legislative appropriation bill was brought to a close in the house of representatives Thursday after a session full of interest and entertainment. Several speeches were made on the issues of the day, the most notable being by Champ Clark of Missouri, who commanded the attention of the house for an hour and a half. Upon the conclusion of his remarks he was accorded an ovation by democrats and republicans alike. Mr. Clark arraigned the republicans for their attitude on the tariff question and said that the announcement that there would be a revision of the tariff after election was simply "in preparation of another stupendous confidence game on the people."

Appealed From Schmitz Decision.

San Francisco, Cal., Feb. 14.—Assistant District Attorney Heney filed a petition in the supreme court Thursday for a rehearing of the case in which the court of appeals is asked to reconsider its famous decision practically declaring Ex-Mayor Schmitz and former Political Boss Abraham Ruef guiltless of the crime of extortion and reversing the judgment of the lower court in the Schmitz case. In his petition Heney declares in effect that the decision of the appellate court is not based upon law and that it is not sustained by the authorities cited.

Missed His Engagement.

Harrisburg, Pa., Feb. 14.—Believing that he has an important business engagement with President Roosevelt at Washington, Walter White, en route from Madison, S. D., was taken from a Pennsylvania railroad train Wednesday night and committed to the Dauphin county prison. White claims he met a party of friends in Chicago and they doped him to prevent him from getting to Washington to see the president.

Senate Amends Rate Law.

Washington, Feb. 14.—The senate Thursday passed a bill amending the railroad rate laws in relation to free transportation. Senator Clapp explaining the change of law effected by the measure, said it merely includes superannuated, disabled and furloughed employees within the scope of the free transportation clauses of the law and also allows such transportation for employes back and forth on the road as occasion requires.

Valuable Fossil Found.

Santiago, Feb. 14.—The fossil remains of a plesiosaurus have been unearthed at Talcahuano bay. The body of this marine reptile of a bygone age was 45 feet long.

TO KEEP THE PEACE

Troops Have Been Ordered, by the President to Fairbanks, Alaska.

MINERS MAKING THREATS

From Fort Gibbons the Distance is 155 Miles and the Only Means of Conveyance is by Sleds.

Washington, Feb. 14.—By direction of the president, Acting Secretary Oliver Thursday ordered a company of infantry from Fort Gibbon, in Alaska, to Fairbanks, in that territory, to preserve order during the mining strike in that section. This action was taken upon representation from the United States court in Alaska to the attorney general that the presence of federal troops was needed. Attorney General Bonaparte promptly brought the matter to the attention of the president and by his instruction, afterward consulting with Acting Secretary Oliver, who, through Gen. Bell, chief of staff, forwarded the necessary orders for the movement of troops to the military commander at Fort Gibbon.

Telegrams from Fairbanks to the attorney general, state that open air mass meetings are being held by the striking miners and that threats of violence have been made. The marshal has been directed by the attorney general to use all the force at his command to arrest law breakers and to prevent intimidation. The military is expected to give the marshal moral support and also to take action should the disorder prove too great for any force he may be able to secure. The latter has been given strict orders as to the energetic use of all the force he can command. The striking miners have picketed the trail between Valdez and Fairbanks. Most of the newly arrived laborers are Russians.

The distance from Fort Gibbons to Fairbanks is 155 miles and the troops will be carried by sleds over the route which is said to be a very good one. If there is urgent necessity for the presence of the soldiers at Fairbanks they can get there in four or five days. Fairbanks is in the center of a mining country with a population of 7,000 or 8,000. Persons in Washington familiar with the conditions existing at Fairbanks say the trouble is the outcome of a strike a year or more ago for higher wages and shorter hours for the miners. This the operators have resisted and their determination to operate their mines independently of the Western Federation of Miners may, it is feared, lead to trouble.

Receiver for Harvester Company.

Springfield, O., Feb. 14.—The Farmers' Co-Operative Harvesting Company of America, a corporation organized by William N. Whiteley, known as the "Reaper king" sent into the hands of a receiver Thursday evening, C. S. Olinger of this city having been named in that capacity by the court. The concern was incorporated five years ago, following the organization of the so-called binder trust, known as the International Harvester company. Large amounts of stock were sold by Whiteley's agents all over the United States, principally among farmers and it is thought there is about \$350,000 of this stock outstanding. The liabilities are not given.

Conditions in Alaska.

Washington, Feb. 14.—A report of a startling nature, in regard to interior conditions in Alaska, was received by the senate Thursday from United States Judge Gunnison at Juneau. He said that the impossibility of making natives understand contagion constituted a menace to the entire population of Alaska, including the whites. The report showed that tuberculosis and trachoma as well as other contagious diseases are common among the natives and that they disregard all rules of sanitation.

Glass Plants to Resume.

Pittsburg, Pa., Feb. 14.—At a meeting of the Window Glass Cutters and Platters' association, window glass manufacturers and representatives of Blowers and Gatherers' Protective association held here Thursday, the sliding wage scale of the latter organization was adopted with a few minor changes, and as a result 35 window glass plants in this district will resume work, it is said, within a few days, after being idle for eight months.

Another Railroad Receiver.

Indianapolis, Ind., Feb. 14.—On representations made by George A. Ferri and Co., a banking firm of Boston, Mass., the Chicago, Cincinnati & Louisville Railroad company was placed in the hands of a receiver in the United States circuit court late Thursday afternoon. James P. Goodrich was appointed receiver and after filing a bond of \$50,000 left Thursday night for Cincinnati to take charge of the property.

Trouble Brewing in San Domingo.

Washington, Feb. 14.—Taken in connection with the recent seizure in Porto Rico of several boxes marked "old iron," but really containing cartridges and other ammunition, the departure of the cruiser Tacoma Wednesday for San Juan is attracting some attention. Indefinite information of the possibility of trouble in San Domingo reached the war department here some days ago.

Protein for Profit

Is the title of a pamphlet giving facts and figures about

Swift's Digester Tankage

(Protein 60 per cent)

For Hogs

For a copy, complete information and prices, address

Swift & Company

Animal Food Department

St. Joseph, Mo.

PUBLICITY PAYS Try an Advertisement in THE JOURNAL

TALLOW, FURS, PELTS, WOOL, HIDES



As shipments have been light the past week we will leave our consignment prices unchanged. The Chicago Tanner market is one half cent lower and very few sales at that. We are not begging for hides at these prices but will take them and make prompt returns.

Furs still in demand but not as active as few weeks ago. We advise all our fur shippers to keep well cleaned up, as the warm weather will evidently cause the quality to become poor very early in spring. The below prices will hold good until Washington's birthday. Write, wire or phone us on car lots.

Table listing various furs and hides with prices. Includes categories like Green Cured Hides, FURS, and DRY HIDES.

JAMES C. SMITH & CO. Second and Edmond Sts., St. Joseph, Mo. - Bell Telephone 995.

HORSES AND MULES Auction Sale EVERY OTHER TUESDAY We will have 250 head of Horses and Mules of all kinds, Tuesday, February 18, 1908. Saunders & Maggard of Poplar Plains, Ky., have 18 Kentucky Jacks for Sale privately at our barn.

WANTED TO BUY Registered Shropshire sheep, yearlings and ram lambs for sale. Also limited number of ewes. Also high class Jacks and Jennets and young mules in corded lots or by pairs. S. B. UZ, South St. Joseph, Mo. Yard 'phone 702 South 4 Rings.

FOR SALE! One registered black Percheron stallion, weight 1775, 12 1/2 years old. Also seven Jacks and seven Jennets. HOWARD WOLF, Latroy, Mo.

ST. JOSEPH LUMBER CO. 14th Street and Frederick Avenue St. Joseph, Missouri

W. L. DOUGLAS SHOES For Men and Women, Boys and Youths The W. L. DOUGLAS SHOESTORE N. W. Cor. 5th and 10th. WILLIAM H. KUEKER, Mgr.

ANNOUNCEMENT TO OUR MAIL ORDER CUSTOMERS During January and February we shall throw our big wholesale mail-order house open to you when you come to Kansas City. We do this so you may become acquainted with the magnitude of our institution, whose motto is: "From maker to user at lowest known cost" and whose familiar name is: "The House that Saves You Money."

To convince you that we are selling Harness and Saddles direct to you at prices lower than any other Saddlery House, write to us for price on this saddle. WE PAY THE FREIGHT

AGENTS FOR INSECTENE Which we guarantee to exterminate ROACHES BED BUGS FLEAS LICE, MITES And all Vermin A POSTAL WILL BRING TO YOU OUR FINELY ILLUSTRATED 104 PAGE CATALOGUE HORSE AND MULE MARKET HARNESS SHOP Stock Yards - South St. Joseph, Mo.