

Robert Lee Observer

Vol. 92, No. 15

Robert Lee, Coke County, Texas (76945), Friday, Oct. 9, 1981

Single Copy 25c

Homecoming For 1981 One Of The Greatest

Fall holiday air prevailed in Robert Lee last Friday as the city and school celebrated the largest homecoming in memory. Many residents welcomed back old friends and family.

Homecoming activities began with the Beta Club Tea at 1:15 p.m., which honored cheerleaders of the past ten years and the 1931 graduating class. It was well attended by former cheerleaders and three of the 11-member class of '31 made it back; Lloyd Bradley of San Angelo, Mrs. George Moore (Beth Gilmore) of Cross Plains, and Mrs. Bud Jones (Yvonne Kerley) of Hermleigh. They didn't need any wheel chairs, either!

Daily business stopped as a large crowd lined the main streets to watch the parade at 2:30 p.m. The Stompin' Steer Band sounded sharp and a large number of floats participated. Winning the float contest was the junior class, with the sophomores taking second. Third place went to the freshmen.

The parade wound its way to the school where the gym was elaborately decorated with that black, orange, and white for the weekly pep rally and was jam-packed with supporters. Superintendent Jim Bickley and Coach Jerold Epperson spoke, along with several football players. Former cheerleaders for the past ten years were introduced and performed various skits. Miss Susan Blasingame was honored for her fine work as a cheerleader sponsor.

Festivities continued as the Steers took on the Irion County Hornets at 8 p.m., with the stands full. Half-time saw the "old" cheerleaders and the '31

grads acknowledged again, Miss R.L.H.S., Mary Galvan and Mr. R.L.H.S., Scot Long honored, and climaxed by the crowning of the Homecoming Queen and King who had been elected last week by the school's student body, with secret ballots. Gaining the honor were Brenda Gray, daughter of Mr. and Mrs. Les Gray, and Darren Williams, son of Mr. and Mrs. Sherman Williams. The Steers cooperated in making Homecoming complete by shutting out the Hornets 28-0.

A reception for the exes and friends was held in the school cafeteria following the game. Coffee, punch, and cookies were served to a large group with a lot of "remember whens," and introducing children and grandchildren.

Merchants and individuals donating prizes for the gathering were Roach's, Dawn Floral, The Flower Sack, and Frances Rabb Henderson. The prize for the oldest graduate went to Lloyd Bradley of San Angelo. Graduates with the most children graduating from Robert Lee went to Mr. and Mrs. J.C. Wallace and Mr. and Mrs. Douglas Gartman, both of Robert Lee, with five each. Coming the longest distance were Mr. and Mrs. Wayne Blair of Pueblo, Colo.

The number of guests registered totaled almost 100, with some probably failing to register.

In an informal show of hands, the group voted to return next year. Mrs. Bobby Roberts was elected chairman to make plans for next Homecoming, and it will have to go some to top this one!

Dogies Bury Bearcats, 20-2

The Robert Lee Dogies gave the Garden City Beatcats a sound licking Thursday night of last week in a game played here. Coach Max Anthony was well pleased with his team and noted they are improving each week.

The first counter for the Dogies came on a 20 yard run by Kevin Johnson. The try for extras was no good.

The second Dogie touchdown was made by Jim Bob Jacobs who carried the ball for 30 yards to cross the double strip. Jacobs also ran the three yards necessary for two extra points.

The longest touchdown run of the night was made by Kevin Johnson who went for 50 yards and six points. The try for extras was no good.

Commenting further on the game with Garden City, the coach said, "This was a team effort by every member of the team and I was very pleased with their performance."

The Dogies were scheduled to travel to Sterling City Thursday night for a game with the junior high Eagles. Next Thursday, Oct. 15, they will travel to Forsan. Fans are reminded that some of the most hard fought football played is between teams at the junior high level. Everyone is urged to attend the junior high games and give the Dogies full support.

Robert Lee Area Hit By Heavy Downpours

The big rain that everybody was hoping for in September came a little late, but it got here Tuesday. Up to 6 inches fell in some places in the county. The official measurement for the City of Robert Lee was 4.6 inches.

The heaviest amount reported in the Robert Lee area came from C.E. McGuire who had an even 6 inches. His place is about half way between Robert Lee and Bronte. Bobby Baker, whose place is in the Wildcat community, was close behind with 5.3 inches.

Some residents of Bronte believe they got about 6 inches.

Band Boosters Busy Selling New Calendars

Members of the Robert Lee School bands have been selling band calendars all this week and sales will continue until Monday.

The calendars are \$1.50 and each listing (such as birthday, anniversary, etc.) is 25 cents.

Anyone who has not been contacted by band students, can place their orders by calling Mickey Flowers or Jeffie Roberts.

Band Boosters will meet at 7 p.m. Tuesday, Oct. 13, at the school to start compiling the calendars.

since 5½ inch rain gauges ran over. However, the official rain recorder for The Bronte Enterprise, H.J. Winchester, said his gauge showed 5.3 inches.

Wilbern Millican, whose place is in the Pecan area, reported 4.0 inches, while Hadley Richards of Valley View community had 4.5 inches. J.P. Jameson reported 2.25 inches at Silver and Teddy Pitcock recorded 3.3 inches at Sanco. A 2.5 inch measurement was recorded at the Austin Ranch

CROSS COUNTRY TEAM STILL IN THE RUNNING

Lupe Munoz, Garry Palmer, Jim Herring and Bob Flowers competed Saturday in the San Angelo Cross Country Meet. Munoz finished third in the varsity girls division with a time of 13:06 for two miles. Palmer led the boys as he finished 33rd in the varsity boys division with a time of 18:39 for three miles. They will compete this Saturday in Big Spring at 10 a.m.

Steers Travel To Roby Friday To Open District Play Of 1981

The Robert Lee Steers will begin district play in the East Zone of District 3-A Friday night when they travel to Roby for a contest with the Lions.

Pre-season predictions put the Steers down pretty far on the list

nine miles north of Robert Lee.

The rain started early Tuesday morning and showers fell off and on through the day. Shortly after noon, however, it really got down to business and the bottom fell out. The heavy downpour continued until about 11 p.m. Tuesday.

The rain came a little late to grow much grass before frost, but it will do a lot of good, especially for small grain fields.

Wednesday's forecast predicted that the wet weather will continue through the day, with good chances for more rain.

Mr. and Mrs. Dean Danielson of Tustin, Calif., Mrs. Vivian Samuelson of Anaheim, Calif., and Eric Samuelson of Austin left for their homes this week after spending several days with friends here. They attended memorial services at Sanco, Sunday, for Arnold M. Samuelson who died in Robert Lee, Sept. 11.

of possible district winners, but it's a little hard to find a Steer player or coach who agrees with the pre-season placings.

Flushed with last week's big victory over the Irion County Hornets, Head Coach Jerold Epperson sounded pretty optimistic this week when he talked about his team's chances Friday night.

"We've been playing off and on type ball all season," the coach said, "but I feel like our win last weekend will carry over into district play."

Roby's record of 1-2 is not too impressive, unless consideration is given to their losing their first three games of the season and then winning two straight.

Coach Epperson said he knows his Steers are going to have to work hard all this week and go into the game with a winning attitude.

The coach said Tuesday night that his team has had a couple of good workouts this week, even though they did have to work inside Tuesday afternoon because of the rain. He was hoping for a sunny day Wednesday, so his boys could get back on the field.

"We're going to have to play defensive ball against Roby," the coach said. "They've got a 140 and a 130 pound back who are fast and capable of breaking loose for the big play, and that's what we've got to watch."

"I believe our kids can do it," he said, "for we played our third game of this season last week and held the offense to less than 100 yards."

Coach Epperson said his team needed the win they earned last week and they need another one this week.

Fans are urged to follow the Steers to Roby Friday night.

Angelo Man Is Killed Sunday

A San Angelo man was killed about 2:30 a.m. Sunday, Oct. 4, in a three-car collision 7½ miles south of Robert Lee on Highway 208. Two other men were injured in the accident.

Joel D. Rodriguez, 36, was killed when the vehicle he was driving was in a head-on collision with a car driven by Jesse Costilla of Robert Lee. Rodriguez was test driving tires in a four-car convoy when the accident occurred.

According to a report from the Department of Public Safety, the Costilla vehicle crossed the center stripe, side-swiped another car in the convoy and ran head-on into Rodriguez's car.

Costilla was taken to Shannon Hospital where he was said to be in serious condition. The identity or extent of injuries of the driver of the third car could not be learned.

Funeral mass for Rodriguez was held at 10 a.m. Wednesday in St. Mary's Catholic Church in San Angelo.

He is survived by his wife, a son, a step-daughter, a step-son, his mother, four sisters, two brothers and a grandfather.

Rodriguez was employed by Transportation Testing, Inc.



PRESENTS CHECK--Winton Milliff, left, assistant manager for Union Texas Petroleum, presents a \$500 check to Fire Chief

J.C. Wallace Jr. of the Robert Lee Volunteer Fire Department, for the department's use.

Union Texas Presents \$500.00 To Robert Lee Fire Department

The Robert Lee Volunteer Fire Department received an unusually generous donation at Monday night's meeting when a \$500 check was presented from Union Texas Petroleum, a subsidiary of Allied Chemical Co.

The \$500 check was presented by Winton Milliff, assistant plant manager, to Fire Chief J.C. Wallace Jr. at the regular Monday night meeting of the department.

Union Texas Petroleum is a Houston based firm which op-

erates major gas gathering and processing facilities in Coke County.

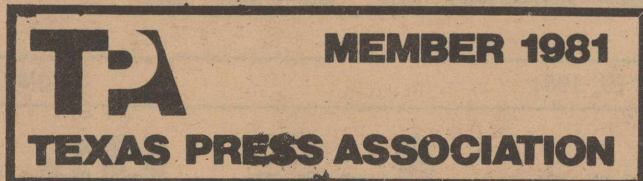
Appropriately, Milliff, who presented the check, also is an active member and president of the Robert Lee Fire Department.

Fire Chief Wallace said he wished to express the appreciation of the firemen for the gift and stated it will be used to purchase needed equipment which will be used to improve fire protection in the area.

ROBERT LEE OBSERVER
PUBLISHED EVERY FRIDAY
(USPS 467-480)

Phone 453-2433

P.O. Box 127



Entered at the Post Office at Robert Lee, Texas 76945 as second class matter.

Editor and Publisher Ben Oglesby

SUBSCRIPTION RATES

Per Year In Coke County.....\$7.00
Per Year Elsewhere In Texas.....\$9.00
Per Year Outside Texas.....\$12.00

Any reflection on the character or standing of any person, firm or corporation is not intended and will be corrected upon notification.

RL SCHOOLS HONOR ROLLS

Principal William Hood has released the following honor roll for Robert Lee Elementary School for the first six weeks:

Third Grade: Jody Brashear, Emily King, Janet Pentecost and Vivian Ybarra.

Fourth Grade: Karla Aldridge, Tiffany Jameson and Dawn Kleiber.

Fifth Grade: Cody Anthony, Lisa Bower, Ericka Clendennen and Johanna Service.

Sixth Grade: Sherry Bagley, Stevie Ebenstein, Randy Gartman, Jason Herring, Rachel Metcalf, Robert Runnion, Kelly Tomlinson and Claudette Walker.

The following honor roll has been released by Principal Jerry Gibbs for the first six weeks at Robert Lee High School:

12th: Scott Long, Kenda Rasco, Becky Ross, Shery Ross, Frankie Walker and Darren Williams.

11th: Quint Anthony, Stan Ray and Leigh Ann Runnion.

10th: Sheri Ebenstein.

9th: Heath Gardner, Doug Roberts and Michael Wilson.

8th: Dana Anthony and Patty Bloodworth.

7th: Rebecca Clendennen, Melissa Grim, Lin Long and Lee Ann Molinar.

CLASS OF 1956 ENJOYS REUNION

The 1956 graduating class of Robert Lee High School met on Saturday, Oct. 3, in the Recreation Hall at the County Park. Thirty-four guests were able to attend, many having attended last Friday's annual Homecoming for the school. Several prizes were given in various categories. Coming the farthest distance to the reunion was Wayne Blair of Pueblo, Colo. Colleen Franklin of Abilene was the graduate with the most children. The class member looking most like he did at graduation was Jerrel Harmon of San Angelo.

A spokesman stated "the class enjoyed the week-end enormously and voted to meet again in five years."

Meeting Saturday afternoon in the home of Mr. and Mrs. Bill Helwig were the members of the 1974 graduating class. Eleven members, their relatives and friends attended, enjoyed snacks, old and new photographs, and lots of catching up.

Mr. and Mrs. Larry Thomas of Fort Worth are visiting this week in the home of Mrs. Thomas' parents, Bascom and Barbara Chesney, and other friends and relatives.

MRS. RUSSELL HOME

Mrs. Leon Russell was able to return home Monday, after a one week stay in Shannon Hospital in San Angelo. She is slightly improved after suffering a gland and mouth infection.

Pansy Bloodworth had surgery Monday morning at Angelo Community Hospital in San Angelo.

Notice:

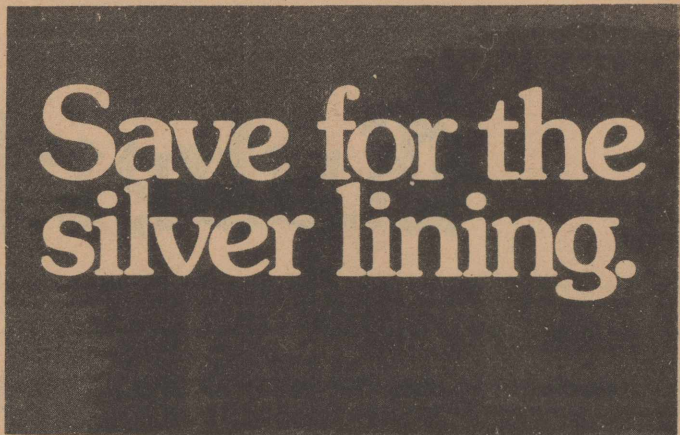
I. Edna Havins, tax assessor-collector for the City of Robert Lee, in accordance with the provisions of Article 7244c, Sec. 1, VTCS, have calculated the tax rate which may not be exceeded by more than three percent by the governing body of the City of Robert Lee without holding a public hearing as required by Article 7244c, Sec. 2, VTCS. That rate is as follows:

\$.24 per \$100. value

Edna Havins
Tax Assessor-Collector
City of Robert Lee
October 5, 1981

ASPARTAME NEW SWEETENER

A new sugar substitute--aspartame--is expected to be on the market in about six months, says a food technologist with the Texas Agricultural Extension Service, Texas A&M University System. The new product will be marketed under the tradename "Equal" by C.D. Searle Co. Composed mainly of two amino acids, phenylalanine and aspartic acid, the produce is about 180 times sweeter than sucrose (sugar). Aspartame is supposed to be virtually indistinguishable from sugar in taste, has no bitter or metallic aftertaste, and seems to act like a flavor enhancer for some fruits.



There's an old song that advises you to look for the silver lining. Certainly a good piece of advice. But here's some better advice! *Save for the silver lining.*

Save enough to line those dark clouds. It's easy. Buy U.S. Savings Bonds through the Payroll Savings Plan. On the Plan, you set aside a little each payday for Bonds. And that'll chase some gloom away, right off.

But if dark skies should appear, remember, Bonds can help you find the sunny side of life.



Available October 1st.

TAX-FREE INTEREST ON YOUR SAVINGS

at the

Robert Lee State Bank

ROBERT LEE, TEXAS

It's the All Savers Certificate, a high-yield savings plan which allows you to exclude interest earnings from your federal income tax. By investing in this plan, you'll be able to exclude up to \$2,000 if you file a joint return; up to \$1,000 if you file a single return.

A minimum investment of \$500 is all that's required to open your account, but you are allowed to invest whatever amount necessary to take full advantage of the tax exclusion. More than one All Savers Certificate may be purchased during the effective period, October 1, 1981 to December 31, 1982.

The All Savers Certificate has a one-year maturity, and any withdrawal prior to maturity results in a loss of the tax-exempt status. Federal law also requires a penalty of three months loss of interest for early withdrawal from this account. The interest yield may vary monthly since it is based upon the average investment yield on one-year U.S. Treasury bills; however, you will be guaranteed the interest yield in effect at the time of your investment.

The All Savers Certificate is an insured savings plan, backed by the Federal Deposit Insurance Corporation to \$100,000.

PROBABLE ANNUAL INTEREST RATE, ALSO CURRENT YIELD* -12.61%

The chart below will indicate the net yield you can expect from your All Savers Certificate.

NET TAXABLE INCOME	RATE OF TAX ON NEXT DOLLAR OF NET TAXABLE INCOME		INTEREST YOU WOULD HAVE TO RECEIVE TO NET 12.61%* AFTER FEDERAL INCOME TAX	
	Married, filing jointly	Individual	Married, filing jointly	Individual
\$20,200	28%	34%	17.51%	19.11%
\$25,000	32%	39%	18.54%	20.67%
\$35,200	43%	49%	22.17%	24.73%
\$50,000	49%	50%	24.73%	25.22%

The approximate figures above are based upon the 1981 tax tables.

*The interest yield of 12.61%, effective for the All Savers Certificate issued October 1, 2 or 3, is equal to 70% of the average investment yield on one-year U.S. Treasury bills as of the September 3, 1981, auction.

Call or come by The Robert Lee State Bank for full details on this savings plan.

ROBERT LEE STATE BANK

MEMBER FEDERAL DEPOSIT INSURANCE CORPORATION

Steers Down Irion Co. In Homecoming Game

BY STAN RAY

HOMEcomings WAS FANTASTIC! It was like taking candy from a baby when the mighty Robert Lee Steers beat up on the Mertzon Hornets something fierce-- 28-0.

It all started with 7½ minutes left in the first quarter, when Eddie Hood launched the football to William Henderson for a 54 yard gain. That little jolt down the field set up for another pass to Scot Long for the first of several

Range Planning Is Important To Operation

The most important factor in the success of a planned grazing system is the man managing the system. The old adage, "The eye of the master fattens the cow," was never more true than when it comes to a successful range improvement program, according to Mark Moseley, area range conservationist with the Soil Conservation Service in San Angelo.

The range manager of today, more than ever before, has to be knowledgeable in several areas. The economic situation has never been like this before. High production costs force each manager to evaluate each decision he makes and each improvement practice he installs on a cost return basis. Each ranch is an individual in this regard.

Operators that stay abreast of practices that have proven themselves locally as well as staying informed on the newer innovations are in a better position to make decisions for their own operations. People truly interested in range improvement need to know how to make soil store more rainfall, how to graze to improve the vegetation and how this relates to economics, wildlife and domestic livestock.

The Soil Conservation Service people that work in each soil and water conservation district are trained to help ranchers evaluate different ways to make their rangeland produce more of what they want it to. Their experience with other ranchers in the district enables them to "take the best ideas and leave the rest," so to speak.

"No grazing system will work unless the manager understands why it works and how it works," said Moseley. The SCS has information on the advantages and disadvantages of several types of grazing systems and can refer interested persons to ranchers that are successfully using grazing systems. Give the local district office a call, Moseley said.

touchdowns (the PAT was good.

After intercepting a Mertzon pass, the Steers drove the ball down the field to about the Irion County 25. Only eight seconds had ticked off the second quarter when Hood completed a pass to Armando Sanchez for another touchdown (the PAT was good) and a 14-0 lead.

Mertzon had the ball just long enough to fumble it to Larry Palmer and give Darren Williams the chance to put the icing on the cake with three consecutive runs and a 5 yard touchdown (the PAT was good). After unsuccessful field goal attempt by the Steers, the first half ended with the Steers on top; 21-0.

After Jimmy Skinner, Williams, and Palmer all took turns running the ball down the field, Williams flew around the left end for his second touchdown of the night and a 28-0 lead for the Steers, late in the third quarter.

The Hornets did manage one nice drive shortly after that, but due to a Mertzon fumble, the Steers had control again, as they did for most of the remaining game. The Steers did not score during the fourth quarter and they sure did not let Mertzon score, but they did rack up a total of 314 yards, compared to Mertzon's 102 total yards. The final score: Steers - 28, Hornets - 0.

STATISTICS

CARRIES	YDS.	AVG.
Williams-17	67 yds.	3.9
Skinner-12	39 yds.	3.3
Hood-10	12 yds.	1.2
Sanchez-1	9 yds.	9.0
Palmer-4	25 yds.	6.1
Abalos-3	21 yds.	7.0
PASS RECEPTIONS	YDS.	
Long-3	47 yds.	
Henderson-1	54 yds.	
Sanchez-1	25 yds.	
Williams-2	15 yds.	
PASS ATTEMPTS COMP.	YDS.	
E. Hood-10	6	122 yds.
D. Williams-1	1	19 yds.
S. Long-1	0	0 yds.

Fumbles lost - 0
Fumbles recovered - L. Palmer -1;
Q. Anthony-1-2
Interceptions- S. Long-1; A. Sanchez-1-2
Punts- Q. Anthony-5 for 33 yd. avg.
Scoring- Williams-16 pts.; Long-6pts.; Sanchez-6 pts.

TRUCK WRECK, SHOOTING RESULT IN INJURIES

A one vehicle accident occurred about 10:30 a.m. Tuesday 10 miles south of Robert Lee on Highway 208. It was reported that a truck hauling a bulldozer overturned, resulting in injuries to the driver.

Robert Lee Ambulance Service was called and the driver, who was not identified, was taken to a San Angelo hospital, suffering from injuries received in the accident.

Sheriff Marshall Millican reported that a man was taken to West Coke County Hospital last weekend and it was determined he was suffering from a puncture wound. Millican said the injury apparently was caused by a gunshot. He said information he had been able to obtain indicated that the incident took place in San Angelo, and the man was not carried in for medical care until after he came to Robert Lee.

Stop - Shop - Save



Russet **POTATOES**
10 lb. bag **\$1.59**

GREEN CABBAGE lb. 15c
AVACADOES 3 for 89c
YELLOW ONIONS lb. 23c

Sugar Imperial 10 Lb. Bag **\$2.59**



GOOCH SAUSAGE, Pure Pork 2 lb. bag \$2.49
ARMOUR STAR BACON lb. pkg. 1.79
MEADOWLAKE SOFT OLEO lb. bowl 59c

Toilet Tissue Nice and Soft 4 Roll Pkg. **\$1.09**

SPILLMATE TOWELS each 79c
KLEENEX BOUTIQUE TISSUES 125 ct. 79c
MORRISON CORN KITS, 6 Oz. 4 for \$1.00

Coffee Maryland Club Lb. **\$1.99**

Kraft American Cheese 24 ct. singles \$2.19
Crown Prince Chunk Sardines 7 oz. can 69c
Sunlight Levon Liq. Detergent 32 oz. \$1.79

Shortening Bakerite 3 Lb. Can **\$1.59**

WOLF CHILI 300 size can 99c
SUNSHINE VANILLA WAFERS 11 oz. 79c

Zesta Crackers By Keebler 2 Lb. Box **\$1.39**

Prices Effective Oct. 9 & 10



West Way Grocery



10TH & BISHOP

PHONE 453-2652



LIONS CLUB MEETING

1st & 3rd Tuesday of each month-7 P.M.

LIONS CLUB COMMUNITY CENTER

WORSHIP WITH US AT THE

Southside Church of Christ

BIBLE STUDY ..10:00 a.m. EVENING WORSHIP . 6 P.M.
WORSHIP11:00 a.m. WED. BIBLE STUDY . 7 P.M.

-THE FRIENDLY CHURCH-

WHERE THE BIBLE IS TAUGHT

Ivey Has "Real Good Turnout" At New Ford, Mercury Showing

Ivey Motor Company reported "a real good turnout", at the recent showing of the new 1982 Fords and Mercurys.

Cumbie Ivey Jr., owner of the local agency, expressed his appreciation to the large number of persons who stopped by to see the new cars and invites everyone who missed the official showing to come by anytime to see the

Lake Spence Fishing News

PAINT CREEK

Ken and Denny Cole, Friona - 16 white Bass 1½ to 2½ lbs. on Pico Chico, by old gravel pit.

Jack Nalepka, San Angelo and Jim Petty, Colorado City - Oct. 3 - 1 - 3 lbs. black Bass in Salt Creek on a jitterbug.

HILLSIDE

Noah and Billy Barrett, Joe and Betty Barrett, all of Robert Lee - 22 crappie to 2½ lbs. on minnows.

TRIANGLE GROG & BAIT

Robert and Jamie Settler, Midland - 77 crappie to 2 lbs.

50 Years Ago

Farmers are taking advantage of government loans for groceries which went into effect last week. Three months is all they will agree to carry you. Better be careful, boys, your aliable to get into a fix that you can't get a bite to eat after that time.

For sale - two bedsteads, one gas refrigerator, three burner kerogas cook stove, twenty gallon wash kettle, and a 10 room house for rent. See Mrs. Griffith in Robert Lee.

A letter from the "Eat More Lamb" Club informs us that there are two whole members in Coke County that belong to it, the two being J.R. Mims and Joe Schooler. If this editor keeps on boosting it and puts out about a thousand dollars worth of time and labor setting type, maybe so in a couple of years, we can get them another member or two to eat the dog-gone things.

The Methodist and Baptist Women's Missonary Societies were guests at a social given in the home of Mrs. J.N. Buchanan with Mrs. S.C. Cooper as a joint hostess on Wednesday from 3-5 p.m.

It was on Irish theme and in the limerick contest Mesdames J.C. and J.L. Snead won prizes to delight an Irish heart. Mrs. J.S. Gardner gave an interesting history of St. Patrick, Mrs. Cortez Russell in her usual artistic manner gave a piano solo.

A delightful game called "Blarney" was followed by a vocal duet "My Wild Irish Rose", by Mrs. J.C. and J.L. Snead with Mrs. Russell on the piano. Stunt programs in which half of the guests entertained the other half in turn was amusing. Another Irish contest was won by Mrs. Sam Powell and Miss Naomi Brown.

A dainty salad course with shamrock leaves as favors was served to sixty guests.

The first of June found us with water meters on our pipe lines here for the first time since the city built her own water works. Guess we're kindly spoiled, been getting our water for \$2.00 all these years and now we gotta go to paying for what we use. Maybe so some of us will gripe and bellyache for a while but just as well get used to it now and forget it. Every dog has his day, we've done had our'n.

new models.

Refreshments were served to those attending and names were registered for door prizes.

The following were winners of the prizes given by the Company: 1st prize- Electric Roly Toaster- Margaret Roane; 2nd- Igloo Cooler- Judy Millican; 3rd- Electric Knife- Mrs. Thomas E. Watson of Mertzon; 4th- Electric Can opener- Cathy McGinley; 5th- Vacuum Bottle- Kristy Roe and 6th- Food Scales- Anna Kaye Tinkler.

COUPLES TOUR 12 STATES

Bascom and Barbara Chesney, accompanied by Turney and Irma Casey, enjoyed a two week drive through 12 states. Some points of interest visited were Dahlenega, and Helen, Ga.; Washington D.C.; Shenandoah Valley, Va.; Pigeon Forge and Gatlinburg, Tenn.

While in Virginia, the two couples visited with the Floyd Casey family, brother to Turney. On the return trip, a stop was made in Stamps, Ark. to visit friends of the Chesneys.

West Coke Hospital News

West Coke County Hospital reported the following admissions and dismissals.

Sept. 29: David Chesshir, admitted and Jessie Key dismissed.

Sept. 30: Oleta Armstrong admitted and no dismissals.

Oct. 1: No admissions and David Chesshir dismissed.

Oct. 2: No admissions or dismissals.

Oct. 3: Nola Harmon admitted and no dismissals.

Oct. 4: No admissions or dismissals.

Oct. 5: No admissions and Nola Harmon dismissed.

ALPHA OMICRON NU BRINGS CIRCUS TO TOWN

The circus has come to town! It arrived Sept. 29, in the home of Kay Grin, complete with clowns, ponies, elephants, and assorted acrobats.

The members of Alpha Omicron Nu hosted the circus and had seven guests present for the gala affair. The guests were: Ara Burns, Kaye Pitcock, Kristy Roe, Cathy McGinley, Cindy Frerich, Lana Poehls, and Nadine Davis.

Linda Link gave the program. AON's next meeting will be Oct. 13 in the home of Kathy Post.

Mrs. Bryan Promotes Choirs For Texas Federated Clubs

Mrs. Wilson Bryan attended fall board meeting and work shop of Texas Federation of Women's Clubs in Odessa Sept. 29-Oct. 1. As director of TFWC's Volunteer Choir for four years, her singers have become very popular at the annual fall meeting as well as at state convention each spring. Her original compositions have been well received and are being used over the state by local organizations.

Mrs. Bryan has been directing

VARNADORE BOYS DO WELL AT GEORGIA LAMB SHOW

Clay and Clint Varnadore made an outstanding showing at the recent Georgia State Lamb Show. The evening started out with Clint winning the Pre-club Showmanship and Clay winning Junior Showmanship. Clint and Clay both exhibited first place lambs in the weight classes. Clay's lamb was selected Grand Champion lamb and Georgia Bred Champion lamb.

Clay and Clint are the sons of Bill and Betty Varnadore of Nicholson, Ga., grandsons of A.V. Hughes, W.K. Varnadore, and Edna Russell, and great-grandsons of Henry and Grace Varnadore.

volunteer choirs for fall and spring meetings for Heart of Texas District, of which The '64 Study Club is a member, since the choir's creation in 1975, and her dream that similar activities might be adopted by each of the 14 districts in Texas seems nearer realization every year. Interest has been generated among officials of performing arts on a national level (General Federation of Women's Clubs).

It is therefore possible that Mrs. Bryan's annual admonition to her TFWC singers might finally be realized: "Come on, Girls! Let's make Texas the Singingest, Swingingest state in Federation!"

Mr. and Mrs. Dave King recently returned home after spending a week with the Dennis Blair family in LaPryor. The Kings had as their week-end guests Mr. and Mrs. Dwayne Blair of San Angelo and Mr. and Mrs. Wayne Blair, their daughter, Mrs. Jeanett Begelow and a friend, all of Pueblo, Colo.

The Blair brothers are Mrs. King's sons and attended the Robert Lee School Homecoming as well as visiting various relatives.

NOTICE OF TAX INCREASE

The West Coke County Hospital District proposes to increase your property taxes by more than 3 percent. (from 19c to 22c per \$100.00 evaluation)

A public hearing on the increase will be held on October 20, 1981, 7:00 P.M. at West Coke County Hospital Dining Room, 307 West 8th St., Robert Lee, Texas.

The West Coke County Hospital District has considered the proposal and voted in a meeting of the West Coke County Hospital Board of Directors as follows: T. M. Wylie, Jr., President

FOR the proposal:
Wayne McCabe
Steve Oleksiuk
Teddy Pitcock

AGAINST the proposal:
None

ABSENT and not voting:
Barbara Chesney

Coke County Property Tax Mess May Foreshadow Statewide Clash

The following article was researched and written by Steve Kelton of Bronte, who is a staff writer for The Livestock Weekly, published in San Angelo. Members of the Coke County Tax Payers Association felt his article summed up very well the tax mess in Coke County and that it would be of interest to all county taxpayers. We appreciate Kelton's generosity in giving us permission to reprint the article, and also thank Stanley Frank, publisher of The Livestock Weekly, for allowing us to reprint the article in your Coke County Newspapers.

By Steve Kelton
ROBERT LEE, Tex. —
Coke County taxpayers could be excused for thinking the carpetbagging era of post-Civil War Reconstruction has returned. Stunned citizens county-wide recently received notices showing their estimated 1981 taxes to be roughly 10 times what they paid last year.

Many local folks compare the situation to those bitter days more than a century ago when human scavengers from the North gained enough control over the war-shattered South to run up taxes, then took over the forfeited property for pennies on the dollar.

Some of the rage and frustration is a hangover from the initial shock of seeing that 1000-percent increase on the valuation notice; taxes actually won't go up that much. Still, what's known as "local" taxes are generally expected to rise, some substantially.

The final tax impact will depend on tax rates set by the taxing bodies themselves—school districts, cities and the county. But wherever the taxing entities set their rates, mineral and industrial interests will benefit at the expense of "local" property, and some elected officials are bound to feel a voter backlash.

Unless, that is, the new valuations are changed. This year's tax roll was recently certified, which would normally rule out such a change, but then this isn't a normal year for Coke County taxpayers—not by a long shot. This year's valuations were set under a totally new and so far voluntary appraisal system that most of the county's taxpayers are hoping they can volunteer themselves back out of.

It's not entirely an isolated situation. An additional 87 Texas counties are going through the same type of tax pains this year in varying degrees, and the remainder of the state will experience it within the next two years.

The situation traces back to a 1979 law that requires all taxing entities within each county to turn their appraisal chores over to a single countywide appraisal district. The original law set a 1982 deadline for the switch and the county-wide reappraisal that must accompany it; an amendment this year moved the deadline back to 1983.

Coke is one of the 88 counties that chose to join the single appraisal district concept early, and its experiences so far may prove less than heartening for those counties yet to make the plunge.

The concept of the single appraisal law was deceptively simple, but the problems its execution has spawned are multi-faceted. In theory, the law provided only that all property within a given county be taxed at a single value established by a single appraising board. This would supposedly simplify taxpayers' understanding of how their property was being valued, eliminate duplication of effort among various taxing entities and thus save money. It would give taxpayers a single place to go with tax valuation complaints. The mandated reap-

praisal was supposed to assure that all property would be valued "fairly," not to mention the obvious need to set a starting point for the new appraisal board.

Reality has a disconcerting habit of shooting theory to pieces.

The Coke County experience is proving that the single appraisal board method actually moves tax valuation control farther from the people rather than closer to them, giving taxing entities a barricade to hide behind. It can end up costing more than the method it replaces, and can confuse taxpayers no end.

Now, instead of being responsible for the full tax package—both the appraisal and the rate—taxing entities and their elected officials have only the tax rate to answer for. They can argue that any tax problem is the fault of the appraisal, which is out of their hands. The taxing entities appoint the appraisal board members, of course, and under recent amendments will have considerable veto power over that board, but their direct accountability for even outrageous appraisal decisions is comfortably obscured.

And because the all-important appraisal board is made up of appointed officials, taxpayers have no control over its actions.

On top of that, individuals or groups seeking to redress taxing wrongs must go to two or more separate bodies now. The taxing entity sends them to the appraisal or equalization boards, blaming the valuation, and those bodies send them back to the taxing entity, blaming the tax rate. While all this shuttling and buck-passing is going on, the very short time between notification and certification of the year's taxes can conveniently run out.

The fact that the various boards meet only once or twice each during this period and are allowed to conduct business only at such times further weakens taxpayers' chances to accomplish anything.

Then there's the spending factor. As Coke County people have learned, the single appraisal concept can be many times as expensive as the decentralized method it replaces. Particularly if the board contracts its reappraisal chore to a private firm, as many—including Coke's—have.

Even though its paid staff included at least one local citizen formerly employed as the official appraiser for one of the taxing entities, the Coke board paid nearly \$90,000 for the services of a Hereford, Tex. firm. That's almost half the board's first year budget. The result was a county-wide appraisal whose individual figures even the private company's top man couldn't support under specific questioning.

Beyond that huge outlay are other expenses that have taxpayers fuming. At a taxpayer association organizing meeting early last week, one

group spokesman pointed out that the board's \$3000 budget item earmarked for stationery and letterheads represents the equivalent of about 37,500 sets of letterheads and envelopes—for a county of little more than 3000 men, women and children.

The board budget also includes a \$10,000 item for maps, a special type of property ownership map that can be written on and erased. The same individual who took umbrage at the envelope entry told his colleagues that an area map company was offering a better quality map set for \$400. That got a rise out of the crowd, and they rose even further when another man volunteered that the \$10,000 map set the board planned to purchase was being peddled by the same firm that did the appraisal.

Needless to say, taxpayers have no direct voice in the appraisal board budget, neither the line items nor the total. It's just up to them to pay it.

As for the across-the-board reappraisal itself, a commanding percentage of Coke County taxpayers have demonstrated that they don't consider it the least bit "fair." Nor are they at all happy about the way it's been imposed.

County Judge D. W. Sims has spearheaded the taxpayer revolt which began in earnest after the single equalization board hearing provided for by law passed almost unnoticed. Sims contends the hearing, the only one at which taxpayer complaints, valuation errors and the like could be officially noted and corrected, was convened hastily and in violation of the state open meetings law.

He advised the board chairman of his contention, he says, and was told in no uncertain terms that the equalization board considered the matter closed.

"That left me four choices. I could file criminal misdemeanor charges against the board, file a district court injunction to reopen the hearing, file a challenge petition against the valuations, or I could roll over and belly up. I wasn't about to roll over."

Sims also didn't relish the thought of filing criminal charges against neighbors, nor did he want to go through the often frustrating and usually drawn-out procedure of seeking an injunction.

So, armed with evidence of obvious errors and discrepancies in the valuations, he filed a challenge petition.

The second hearing that resulted began shortly after noon on a Thursday and lasted until almost dawn the next day. Sims' petition calling for a 30 percent across-the-board rollback in "local" taxes was one focus of the re-hearing. He based the figure on such errors as a \$9000 valuation applied to a piece of property that had sold only last year for \$3500, as well as discrepancies already noted by other counties that had contracted their reappraisals out to the same Hereford appraising firm.

The equalization board gave him half the rollback he argued for and corrected some gross errors in individual valuation that would have gone unamended had the board not been forced to conduct the second hearing.

That apparently hasn't smoothed many feathers. Sims says the amended valuations still lift an estimated \$1 million in tax burden from the oil and gas industry and such large "outside" interests as the telephone company, placing the load on homeowners and other "local" property.

Predictably, the beneficiaries of the load shift generally contend that it's a "fair" reappraisal, that their valuations have been more current than those on local property for some time and the reappraisal simply up-

Oct. 9, 1981

Robert Lee Observer

PAGE 5

dated other local property values to their proper level.

Sims isn't buying that. He points out that mineral and other "outside" valuations rose only 500 percent over two years, including the mass reappraisal, whereas "local" property jumped 10 times in the one year.

Further, Sims charges, most if not all of the overall mineral valuation increase can be tied to a rise in real values, spurred by oil de-control and helped along even more by a dramatic spurt in oil and gas activity. In other words, little or no "paper value" increase.

He says local property, on the other hand, has increased in value almost entirely on paper. In fact, actual property values may well have declined in recent years. Sims isn't alone in this contention.

Area real estate broker Tommy Lee says a number of economic factors have combined to weaken property values in the county, particularly in the Bronte area.

Foremost among them is tight money. As many as three-fourths of the homes in Bronte are financed through the Farmers Home Administration, and budget cutbacks have reportedly forced that federal agency to put a "lid" on reappraisals for resale purposes. In other words, FmHA won't finance the difference between what's left on an outstanding home loan and that home's current inflated "market" value. That gap, or equity, must be filled with cash or through some other lending institution—and most prospective buyers who can find a lender can't afford his interest rates.

The bottom line is that most property, if it's going to sell at all, must be sold at a hefty discount below what would otherwise be considered its "fair market value." Both Sims and Lee contend that the new Coke County appraisal totally ignores this reality.

For all these and various other reasons, the Coke County taxpayer group formed last week has vowed a last-minute attempt to slip out from under the single appraisal noose. The group has seized on what it hopes is an "escape hatch" passed by the Legislature during this summer's special session.

The amendment provides that full implementation of a central appraisal office can be delayed for a year by a two-thirds vote of all taxing units in the county. One catch is that the group must corner these votes before Oct. 1, an admittedly tight squeeze.

Another catch is that the amendment doesn't go into effect until the end of the year—meaning it applies to 1982 taxes, not the 1981 taxes that have Coke County in such turmoil. If they're going to avoid the trap next year, Coke Countians must swing that 2/3 vote this week, but to squeeze out of this year's tight, they must take another tack as well.

Lee, a member of the taxpayer association's board of directors, says relief this year is up to the appraisal district board itself.

Because this year's participation was voluntary, he explains, the only thing really making it stick is the contracts drawn up between the appraisal district and the various taxing entities. Those contracts can be dissolved by mutual agreement, and at least some of the taxing entities are reportedly seeking such relief.

Whether or not the appraisal district will go along is an open question so far; there's the matter of huge expenses already incurred, employees who would probably be terminated, and any number of smaller considerations. In addition, no one's overlooking the fact that the appraisal and equalization boards were in a visible hurry in recent weeks to get their version of county valuations "locked in" under a certified tax roll. Expecting them to voluntar-

ily undo what they've been in such a hurry to do may be a bit over-optimistic.

On the other hand, some hopeful taxpayers point out, Coke County is a rural area where neighborliness still means something, and everyone on the appraisal board neighbors someone.

If Coke County manages to revert to the old appraisal system this year, the payoff could be a big one with implications for the future.

Texas Farm Bureau legislative affairs director Pat Smith says 1981 has "always been the year the taxing bodies intended to sock it to the taxpayers," and that intent can be seen in both the 1979 law and its 1981 corrections.

Smith is referring to a form of "initiative and referendum" written into the law which allows voters to limit the degree of annual tax increase. That provision in its current form allows taxpayers through petition and vote to limit annual tax increases to no more than eight percent.

It's a fairly simple procedure, and its inclusion undoubtedly helped pass the law in the first place, but it has a sharp hook lying just under the surface. It doesn't become effective until next year.

"We went all around the state begging people not to implement the single district this year," Smith says, "but some of them didn't listen. Now they're being stuck with huge increases that they could have stopped if they'd waited."

Should the Coke County postponement attempt fail, about the only practical recourse taxpayers have aside from chancy legal action is to attempt to influence the rates set by the individual taxing entities. That won't change the mineral/local mix, but it could bring taxes back down to a more survivable level.

The taxing entities in Coke County, by and large, plan to reduce their tax rates substantially in an effort to compensate somewhat for the tremendous leap in valuations. Judge Sims says he thinks the county itself will apply a tax rate in the neighborhood of 35 cents per \$100 valuation compared to \$1.17 in 1980. He thinks most of the other taxing bodies will reduce their rates by about two-thirds, as well.

The big question mark appears to be the Bronte School District on the county's east side. Because of confusion over precisely what the school's tax base would be under the new valuations, school officials were still mum about their intended tax rate early this week. One figure making the rounds early, however, was \$1.13, down only nominally from last year's \$1.23 and a potential windfall in view of the valuation surge.

Taxpayer association members from the Bronte district worry that such a heavy-taxing philosophy could literally destroy the area's tax base, crowding out most businesses, scaring off potential new residents and eventually reducing the Bronte school to something less than a full 12-year facility if not killing it outright. They also make it clear that current school officials would be retired from office by popular demand long before then.

That last political point doesn't appear to be lost on elected officials within the county's various taxing entities. Even Bronte school officials have conducted two informal public meetings on the tax issue within the last week.

The single appraisal district concept seems to be one of those cases where legislators picked up a sweet-looking stray dog to guard the kids, only to discover later that the mongrel had rabies. The big question is how many of the kids still have time to take the shots.

Paid Adv.



Representative
Larry Don Shaw
Reports from Austin

Dear Neighbors,

As you've no doubt heard, we are back to square one on the drawing of new State House of Representatives and State Senate district lines. The Governor, of course, vetoed the Senate plan passed by the Legislature, but the fate of the House plan was up in the air until a couple of weeks ago when the State Supreme Court upheld a district court ruling throwing the plan out. The courts held that the plan was unconstitutional because it split too many counties into two or more legislative districts. The ruling came as no big surprise, since the plan approved by the Legislature actually divided more counties than the 1971 plan which was eventually thrown out for the same reason.

Needless to say, I'm pleased with the ruling. As you know, the plan would have "paired" me in the same district as Rep. W.E. Heatly of Paducah, the Dean of the House, and the district would have extended all the way from Howard and Dawson Counties to Wilbarger County up on the Red River-- hardly the compact district required by the Texas Constitution.

I'm told that the Redistricting Board will probably complete drawing a new plan by around the end of this month, and I have reason to be optimistic that I not only will not be paired but quite likely will be a given a much more compact district more in our neighborhood of the state. Ideally, as I've said before, I'd like to keep the six counties currently in the 63rd District and add one or two more counties to fill out the approximately 95,000 target population.

The Nov. 3 general election ballot will contain seven proposed constitutional amendments, so I thought it might be helpful to give you a brief rundown on what they are:

PROPOSITION #1 (Tax increment financing and tax abatement)-- This amendment is designed to allow cities and towns to designate certain blighted areas as "reinvestment zones." The city then can then make certain improvements, such as streets, parking, and lighting. As private developers build new industries, stores or offices in the zone, property values will rise. The city, school district, county and other taxing units in the area will continue to receive tax revenues based on the original values. The tax revenues on the increased property value will go into a "tax increment fund" to pay off the bonds issued to pay for the capital improvements. Once the bond debt is repaid, the total value of the property goes on the tax rolls normally and all the taxes go into the general funds of the taxing units.

PROPOSITION #2 (Patents for public free school land)-- This amendment would authorize the Land Commissioner to issue pat-

ents (prima facie evidence of title) for public free school land if the School Land Board determines that a person is qualified to receive a patent. It's designed to help some folks in East Texas who recently found out they don't have clear title to land they bought and have paid taxes on.

PROPOSITION #3 (state finance management)-- This would empower the Legislature to authorize a state finance management committee (Governor, Lt. Governor, Speaker, and chairs of Senate Finance and State Affairs Committees and House Appropriations and Ways & Means Committees) to manage state spending once the Legislature adjourns.

PROPOSITION #4 (Water trust fund)-- Would automatically dedicate half of excess state revenues to a water trust fund; would raise interest ceiling on state water bonds from 6% to 12%; would authorize pledging of up to \$500 million of state's credit against a billion dollars of local water bonds.

PROPOSITION #5 (Exemption of livestock from taxation)-- This amendment would specifically exempt livestock and poultry from property taxes under the section of the Constitution that exempts farm products and family supplies.

PROPOSITION #6 (Property tax relief for homeowners)-- This amendment is designed to give local governments a tool to cushion the blow from the massive shift in tax burdens expected to occur in 1982. It would permit each taxing unit, on a local option basis, to grant tax relief to residence homesteads. The governing body of a political subdivision could exempt up to 40% of the market value of all homesteads from taxation in 1982, 1983 and 1984. From 1985 through 1987, the maximum exemption would be 30%. Subsequently, the maximum exemption would be 20%. Each homestead in a taxing unit that granted an exemption would have to receive an exemption of at least \$5,000, regardless of the value of the property, unless the Legislature "prescribes other monetary restrictions on the amount of the exemption." The new exemptions would be in addition to all existing exemptions.

PROPOSITION #7 (Veterans' Land Fund)-- The Veterans' Land Fund offers long-term, low-interest loans of up to \$20,000 to Texas veterans to buy 10 or more acres of Texas land. Currently, the Fund makes 40-year loans at an interest rate one percentage point higher than the Fund's bonds are sold for. Loan repayments both retire the bonds and pay the program's administrative costs. The Veterans' Land Board is currently authorized to issue \$700 million in general obligation bonds for the Fund. Since the Fund's inception in 1949, Texas voters have six times approved the issuance of new bonds. Proposition 7 on this year's ballot would authorize the issuance of an additional \$250 million in general obligation bonds to augment the Fund.

Don't hesitate to contact me if you have questions about any of these amendments.

B&D Builders
"WE BUILD"
Steel Patio, Carport and
Mobil Home Covers.
BARN, STORAGE
BUILDINGS AND STEEL
STRUCTOR HOMES.
ALSO REMODELING

Contact
Jack White
282-2618



WATCH KIDS' WEIGHT

Parents, pay attention to children's weight, advises Dr. Cass Ryan-Crowe, a food and nutrition specialist with the Extension Service

PAGE 6

Robert Lee Observer

Oct. 9, 1981

Eight of every ten obese children become obese adults, she says

Weight control for children is

an important factor in the prevention of obesity later in life, the specialist adds

Buy and Sell with Want Ads

Redecorate a desk.

When it's time to redo, you can't do without our deskphone. It comes in 4 colors and 13 different faceplates. We've got all the right connections. And you can hear about them by calling your General Telephone business office.



DESK PHONE

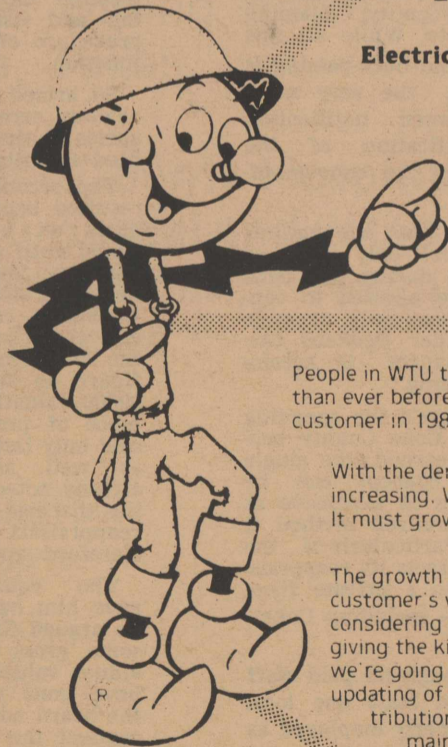


"Touch Calling available in most areas"

WE ARE ENJOYING A WHOLE LOT OF A GOOD THING

For many years now, most of us have taken a plentiful supply of electricity for granted. We've found more and more uses for electricity, because, as Reddy Kilowatt kept telling us:

- Electricity is Reliable
- Electricity is Clean
- Electricity is Efficient
- Electricity is Quiet
- Electricity is Flexible
- and
- Electricity is Low in Price



Electricity is still all of these things... even low in price compared to other goods and services. But there's no escaping the fact that costs of supplying it are constantly going up... and so is usage.

People in WTU territory are using more electricity than ever before (9,020 kilowatt-hours per residential customer in 1980, compared to 5,856 in 1970).

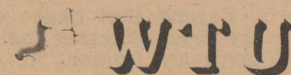
With the demand for its product steadily increasing, WTU can't stand still. It must grow, too.

The growth is carefully planned, with the customer's welfare foremost in mind. WTU is considering only the necessities. But to keep giving the kind of service you're used to, we're going to be involved in some costly updating of production, transmission and distribution facilities. And, of course, we must maintain a staff of people qualified to keep the system operating. You can depend on WTU to continue providing a reliable supply of electricity. But let's all realize what it takes to produce it, and use it wisely.

Reddy Supplies the Energy...
But Only You Can Use It Wisely.

It's too good to take for granted.

WEST TEXAS UTILITIES COMPANY



A Member of The Central and South West System

65,000 Texans To Lose Their Food Stamps

Some 65,000 Texans lost their eligibility for the food stamp program at midnight Wednesday when the 1982 federal fiscal year began. Another 32,000 Texas residents became ineligible for the Aid to Families with Dependent Children program. (AFDC).

The mandatory reductions were the result of the Omnibus Reconciliation Act signed by President Reagan in August. The Act created more restrictive eligibility requirements for both food stamps and AFDC, thereby reducing the numbers of participants in the programs.

Marlin W. Johnston, commissioner of the Texas Department of Human Resources, said the tighter eligibility requirements will reduce the AFDC program from its present 326,513 participants to 294,476. Benefits will fall correspondingly about \$9 million annually, from \$132.7 million to \$123.7 million.

Before Wednesday, there were 1,290,250 Texans eligible for food stamps, Johnson said. The new eligibility requirements will reduce that number to 1,225,092. The food stamp program had been putting \$726.9 million annually into the Texas economy. This will fall to \$660.5 million, the commissioner said, for a reduction of \$66.4 million.

The new eligibility standards for AFDC dictate that a family becomes ineligible if its gross income exceeds 150% of the state's need standard. For example, a family of four would be ineligible if its gross income exceeds \$301.50.

Also reduced is the total amount of resources permitted, excluding a home and car. The resource limit was \$3000 for a family and \$1,800 for an individual. This has been reduced for federal regulation to \$1000 per family.

Food stamp eligibility now has a gross income limitation pegged at or below 130% of the poverty line with certain exceptions for the aged and disabled.

The AFDC program provides a cash assistance grant averaging \$34 monthly per person to dependent children deprived of the support of one or both parents.

4-H'ERS LOOKING AT "FUTURE" PATHWAYS"

4-H members across Texas and the nation are using the theme, "4-H Pathways to the Future," in observing National 4-H Week, Oct. 4-10. 4-H is America's largest out-of-school youth organization with a membership of almost five million. Texas boasts about 140,000 4-H'ers. There also are more than 550,000 volunteer leaders involved in the 4-H program across the nation, with some 22,000 in Texas. This year's 4-H week theme challenges members to become self-directing, productive and contributing members of society, says the state 4-H and youth leader with the Texas Agricultural Extension Service, Texas A&M University System.

STAY WITH YOUR LIST

On a budget -- and want to stick to it? Before going into any store, plan and write down the purchases you want to make, and try to stay with your list, suggests Linda McCormack, a family resource management specialist with the Extension Service.

NOTICE OF ELECTION (AVISO DE ELECCION)

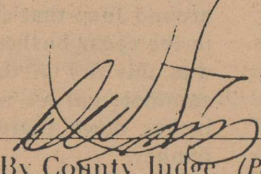
To the Registered Voters of the County of Coke, Texas:
(A los votantes registrado en el Condado de)

Notice is hereby given that the polling places listed below will be open from 7:00 a.m. to 7:00 p.m. November 3, 1981 for voting in the Special Election for the purpose of submitting seven (7) proposed Constitutional Amendments.

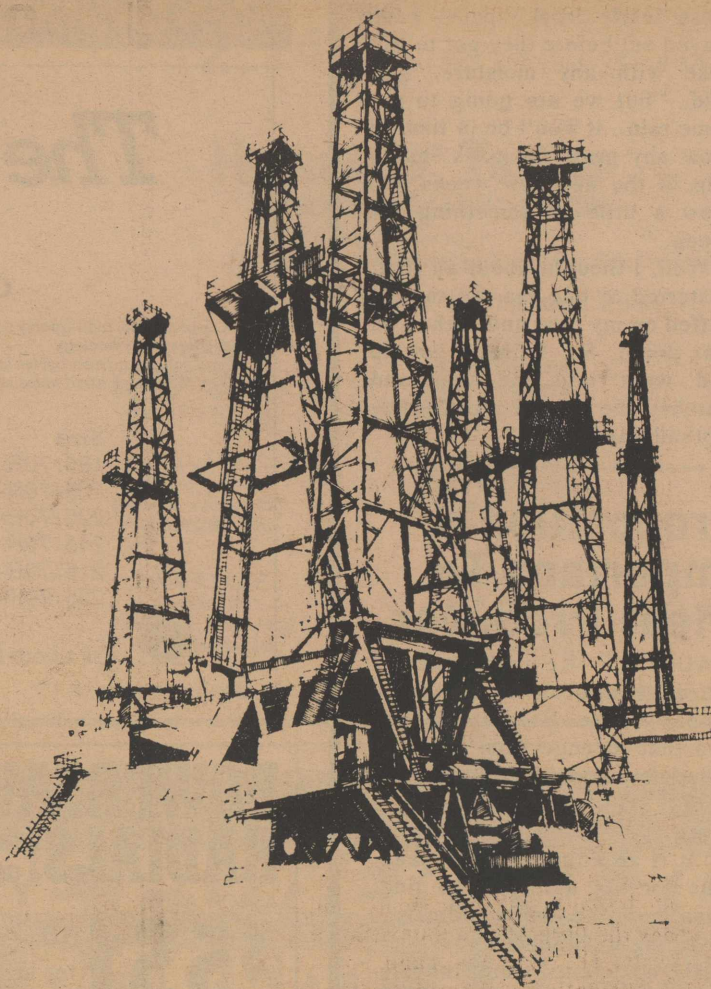
(Notifíquese, por la presente, que los sitios de votación indicados abajo se abrirán desde las 7:00 a.m. hasta las 7:00 p.m. el 3 de noviembre de 1981 para votar en la Elección Especial con el propósito de someter siete (7) enmiendas propuestas a la Constitución.)

LOCATION(S) OF POLLING PLACES (DIRECCION(ES) DE LOS SITIOS DE VOTACION)

Precinct #1	Recreation Hall	Robert Lee, Texas
Precinct #2	City Hall	Bronte, Texas
Precinct #3	Courthouse	Robert Lee, Texas
Precinct #4	School House	Tennyson, Texas
Precinct #5	Depot	Bronte, Texas
Precinct #9	Pecan Baptist Church Annex	Highway Intersection #158 and FM #2059


By County Judge (Por el Juez del Condado)

Why gas is plentiful:



19,000 Wells

About 19,000 wells, in addition to pipeline agreements, now supply the natural gas we sell to you. Because of Lone Star's aggressive purchasing program, our supply position is strong. And we will contract for more gas

whenever we can negotiate for terms favorable to you. Our ability to deliver all the gas you need for your home is another reason to be glad you're served by the Lone Star system.

Gas. It's plentiful, efficient and right for the times.



Lone Star Gas Company



Jerry Lackey's Country Folk

P.O. Box 1542
San Angelo, TX 76902

The other day I pulled one of my rockers up on the screened porch at my Caparrosa Ranch in the Texas Hill Country and for an hour or more enjoyed the peace and quiet away from my typewriter and phone.

Looking toward the hills in the distance through the Live Oak trees that encircle my two story house, one could see the changing of the seasons. The autumn haze hung over the creek valley and to the hills. The fall crispness was in the air.

Yet, taking a spin through the pasture it was obvious, that with a month of autumn behind, it was a different season from recent years. Usually, generous rains have come in September.

Beef Growers Seek Identical Inspections

Identical inspection standards should be required of foreign meat as those required of domestic meats says the president of the Independent Cattlemen's Association.

Roy Wheeler of Pleasanton says his group strongly supports an amendment to the 1981 Farm Bill requiring all meat products imported into the United States to be "subject to the inspection, sanitary, quality, species verification and residue standards applied to products produced in the United States."

The amendment, sponsored by Senator John Melcher of Montana co-sponsored by Senator Lloyd Bentsen of Texas, was passed unopposed in the Senate version of the farm bill.

Wheeler pointed out American consumers can't protect themselves from foreign beef because it is co-mingled with domestic beef. Adequate meat inspections must be made of both domestic and foreign products before they reach the American public.

The proposed legislation could relieve an inequity American cattlemen have been burdened with for years, Wheeler says.

"The present standards our own beef must meet are stringent and costly to American packing houses," Wheeler says. "Some small slaughter houses have been forced to close their doors rather than make the expensive changes required to process meat. If this is the price we must pay for the high quality meat Americans demand, then these standards must be imposed equally."

Copperas Creek has stopped running. The grass in the pasture has turned brown. In places, the dusty ground has cracked open, like the day it did in the drought years of the 1950s.

Still, stockfarmers of that area are breaking ground and planting oats and wheat with the hope that October will bring much needed moisture to get the crops up.

But dry times are not exclusive to the Hill Country. On a trip to Abilene from San Angelo last week, the only ground cover that was still green was the broomweeds, and boy is there a broomweed crop!

Henry Clark says it's dry in the Del Rio area, "all the way to Mexico. It's so dry the ground is cracking open a few feet from Amistead Lake," he added.

Lawrence Bledsoe, a Sutton County ranchman, commented in the coffeeshop the other morning, that it's so "dry down around Juno that all the green is in the cedar bushes. Last year it was this dry in the spring and summer, but we received seven inches down there during September."

Mrs. Emmett Brosig Sr. says a few ranchmen around Lowake have started feeding livestock already.

D.K. McMullan of Big Lake says he has about wore out the knob on his radio trying to get weather reports. "Every one of those early cool spells have played out before they got to Big Lake with any moisture," he said, "but we are going to get some rain...it won't be in time to grow any grass for cows, but a rain in the new few weeks will grow a little of something for sheep."

Well, I thought about all that. It started to bug me the more I puffed on my pipe and rocked on that porch. So, I finally got up and went into the den and watched the rest of the Cowboy football game.

Proposition 5 Important To Meat Producer

AUSTIN -- Kenneth Graeber, executive director of the State Property Tax Board, Monday said that revenue from taxes on livestock and poultry often cannot justify the administrative expense.

"It is an administrative headache for tax assessors to find, value and tax these animals," according to Graeber.

His comments were in reference to Proposition Five, which will appear with six other proposed Constitutional Amendments on the ballot November 3. Proposition Five would include livestock and poultry with other farm products which are exempt from property (ad valorem) taxation. As the administrative head of a state agency, Graeber would not express either his approval or disapproval of this or any of the other propositions on the ballot.

"But, it has always been difficult to tax livestock because they are difficult to locate on open rangeland, and it's even more difficult to value them correctly," he said. These factors present a problem to tax officials.

Boecking, Pentecost Nominated For Appraisal Board Directors

Coke County Commissioners Court voted unanimously in a special session Monday to nominate Charlie Boecking of Bronte and James B. Pentecost of Robert Lee as members of the board of directors of the Coke County Appraisal District.

The commissioners had an audience of about 15 interested members of the Coke County Taxpayers Association present while they discussed and acted on the county's nominees for directors.

Joe R. Ash, president of the taxpayer group, was asked by Judge D.W. Sims if he had any recommendations to make for the organization. Ash spoke briefly, and told the commissioners and others present that the decision at the meeting was important "now and for along time to come." He then recommended Boecking and Pentecost for the association.

Some discussion of the matter followed Ash's recommendations. It was brought out that all present board members' terms expire Jan. 1, 1982, and nominations for new board members have to be made by Oct. 15.

Judge Sims asked the commissioners if they had any nominations, but none was made.

Mrs. Cumbie Ivey Jr., secretary of the Coke County Taxpayers Association, thanked the commissioners for their past and present consideration of the requests from taxpayers.

After the discussion, Commissioners George Newby made a motion to elect Boecking and Pentecost as the court's nominees. Commissioner Jerry Parker seconded the motion, and the vote carried unanimously as

Commissioners Bobby Vaughn and Finis Millican also raised their hands to vote "aye".

Robert Lee School is entitled to two members on the board and Bronte School is entitled to one member. Both school boards will have to elect their nominees by Oct. 15.

Buy and Sell with Want Ads

We Greatly Appreciate The Wonderful Response Given THE COKE COUNTY TAXPAYERS ASSOCIATION

We need and earnestly solicit the membership of everyone in Coke County. The dues are whatever you feel you can pay. We have received checks for \$2.00 to over \$100, and we appreciate all of them. Send whatever you can to help us fight this battle against higher taxes.

The Main Thing We Want Is **YOUR SUPPORT**
Even If You Can't Send a Penny

Mail Your Membership Today to:
Box 344, Robert Lee, Texas 76945

BFGoodrich

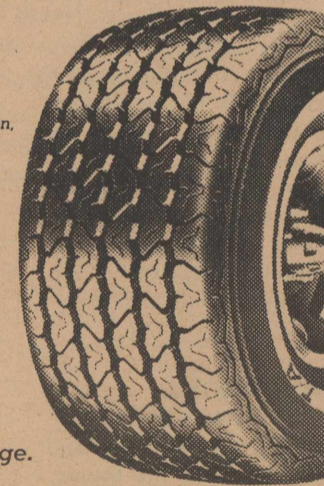
The Advantage T/A™

The Radial Born of High Technology.

- A dependable, high-quality radial produced by integrating materials, construction, and design technology.
- Dual compound tread gives long mileage and excellent traction.
- A traction block tread helps improve handling and cornering in the wet.

Size	Our Price	F.E.T.
185/70R-13	54.80	2.13
205/70R-14	113.40	2.55
225/70R-14	97.50	2.91
245/70R-14	75.30	3.12
215/70R-15	122.60	7.75
235/70R-15	138.90	3.50

Ask about Free Replacement Warranty Coverage.



POWERSAVER RADIALS: Save eight ways AS LOW AS

\$551¹⁰ for size 18.4X34 plus 14.80 F.E.T.

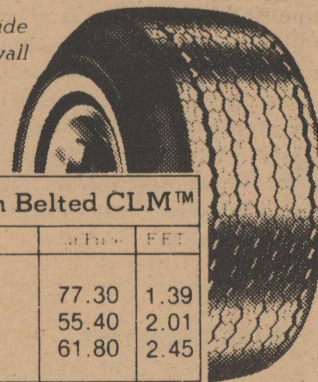
Before you specify any tractor tire, learn why Powersaver Radial HT™ tires are used on more American tractors than all other makes of radials combined.

BFGoodrich Powersaver Radials			
Size	Ply	Price	F.E.T.
16.9X38	6	573.70	14.95
18.4X34	6	551.10	14.80
24.5X32	10	1,271.70	27.71

Strength! Stability! Great Savings! Belted CLM™ A great value at an affordable price!

\$54⁵⁰ FOR SIZE P195/75B14

- Fiberglass cord belts give strength and stability
- Good traction, smooth, quiet ride
- Modern whitewall styling



BFGoodrich Belted CLM™		
Size	Price	F.E.T.
P165/80B13	77.30	1.39
P195/75B14	55.40	2.01
P225/75B14	61.80	2.45

BRONTE TEXACO

Raymond & Gwyn Smith & Ronald (Doc) Hester
Smile. Jesus Loves You. He Really Does

Contracting Range Cubes

20% Protein
7% Fiber
25,000 Units Vit. A
Corn & Milo
Bag or Bulk

San Angelo Elevator

827 Culwell-653-3933
Wayne Sherrod
Johnie Boyles

Homecoming Tea A Success

The Beta Club's homecoming tea last Friday afternoon was one of the most successful in years. A total of 63 guests registered. Special honorees at the tea were members of the RLHS Class of 1931 and cheerleaders from 1971 to 1981.

Three members of the 1931 Class were present for the tea: Yvonne Jones of Hermleigh, Elizabeth Moore of Cross Plains, and Lloyd Bradley of San Angelo.

Beta Club members expressed their thanks to those members of the 1931 Class for returning. Each 1931 graduate expressed pleasure at being invited and all of them said they enjoyed the fellowship.

Of the 29 ex-cheerleaders invited, 19 participated in the skit and rode in the parade. Others attended the game, and the entire group was recognized at halftime. Those involved in the pep rally and parade were:

Jackie Conley Grace, Jana Mauldin Percifull, DeeAnna Percifull Thompson, Rena Masburn, Jane Hughes, Susan Wallace Millican, Cheri Baker Mashburn, Janice Bloodworth Burnett, Cindy Ash Bessent, Theresa Percifull Mauldin, Rosa Sanchez Long, Stella Bickley, Carla Wojtek, Renea Flanagan, Jana Hood, Lisa Devoll, Cindy Walker Riley, Kellye Percifull and Teena Barrett Bosworth.

The RLHS cheerleaders expressed their thanks to all the "old" cheerleaders for coming. "Some traveled long distances and missed class or work to attend," they said, "and we appreciate their time and efforts which made such a successful homecoming."

B Team Whips Miles Bulldogs

The Robert Lee Steer "B" Team rolled to its third straight victory with a 28-14 defeat of the Miles Bulldogs. This avenged an opening season 16-6 defeat. The young Steers now own a 3-1 record.

Greg Grim got the scoring started on a 3 yard run. The extra point kick was wide to the right. Grim scored again on a 1 yard run. Kirby Rasco passed to Darryl Mulkey for the 2 extra points. The score at half time was 14-14.

Grim got the second half started right with an 83 yard touchdown run. David Rodriguez was barely stopped short on the extra point try. The final score of the game came on a 51 yard run by Rasco. Rasco added the extra points. This brought the final score to 28-14.

Miles was geared to stop the running of Rodriguez which left Grim and Rasco open for those long touchdown runs. Rasco also hit on some crucial first half passes to Cesar DeLaPena, Garry Palmer, Rodriguez, Grim and Mulkey.

The steers had some difficulty stopping the Bulldog's offense in the first half. However, they were able to come back the second half and shut them down. The defense was led by defensive linemen Johnny Torres, Doug Bell, John Hinnard, and Michael Wilson; linebackers, Grim, DeLaPena and Phillip Stephens; defensive backs, Palmer, Rodriguez, Rasco, and Mulkey.

Joe Torres, Harold Jameson, and Douglas Roberts also contributed much to the victory.

Waymon Robertson was released from St. John's Hospital last Saturday. He had been a patient there three weeks and underwent lung surgery.



WHO IS THIS?--This young man had a complete cowboy outfit and even had a six shooter to make his authority known. However, as with many other persons, his ambitions changed and he no longer uses his pistol. He was chosen October "Lion of the Month" by Robert Lee-Silver Lions Club. Can you identify him? Watch next week's Observer for the revelation as to his identity.

NOTICE OF CALCULATION OF EFFECTIVE TAX RATE FOR ROBERT LEE INDEPENDENT SCHOOL DISTRICT

I. Reba Roberts, Chief Appraiser for Coke County and for the Robert Lee Independent School, in accordance with the provisions of Article 7244C, Sec. 1, VTCS, have calculated the tax rate which may not be exceeded by more than 3 percent by the governing body of the Robert Lee Independent School District without holding a public hearing as required by Art. 7244C, Sec. 2, VTCS. That rate as follows: \$.35 per \$100 of value -- with 3% the maximum 1981 rate would be \$.36.

Reba Roberts,
Chief Appraiser

ITC

COMPTROLLER OFFICER TO VISIT ROBERT LEE

State Comptroller Bob Bullock will have a representative from his San Angelo office in Robert Lee on Oct. 20 to assist local taxpayers and answer questions about state taxes.

Bullock said Enforcement Officer Dru Beck will meet local taxpayers in the Commissioner's Courtroom at the County Courthouse from 9 to 10 a.m.

"If Robert Lee area merchants, or anyone else for that matter, have any questions about state taxes or need help in preparing state tax forms, Ms. Beck will be there to assist them," Bullock said.

LUNCHROOM MENU

Monday, Oct. 12: Pigs in Blankets with mustard, Cheese Stuck, French Fries with Catsup, Baked Beans, Milk and Peach Hall.

Tuesday, Oct. 13: Pizza, Green Salad, Corn, Milk, Peanut Choc-

Oct. 9 1981

Robert Lee Observer

PAGE 9

olate Clusters.

Wednesday, Oct. 14: Pinto Beans, Spinach, Pickled Beets, Cornbread with Butter, Milk and Fruit Cobbler.

Thursday, Oct. 15: Hamburgers, Lettuce, Tomato, Onion, Pickles, French Fries with Cat-

sup, Milk and Ice Cream.

Friday, Oct. 16: Turkey Casserole, Carrots, English Peas, Hot Rolls with Butter, Milk and Pear Half.

*Sell What You Don't Need
With a Want Ad*

NOW OPEN ON SATURDAY MORNINGS From 9:00 A.M. TO 12:00 NOON YOU EARN MORE with any Heart O'Texas Savings PLAN

- 16.20%** 2½ Year CD *
\$100 minimum, available thru Oct. 9, 1981
Insured by FSLIC
- 14.468%** 6 Month Money Market CD *
\$10,000 minimum, rate effective thru Oct. 9, 1981
Insured By FSLIC
- 14.25%** SECURITY REPURCHASE
\$2,000 minimum. This obligation is not a savings account or deposit and is not insured by the FSLIC
- 12.14%** ALL SAVERS CERTIFICATE
Rate effective Oct. 4-Oct. 31

Heart O' Texas SAVINGS ASSOCIATION

HOME OFFICE SAN SABA
200 East Wallace Street San Saba, Texas 76877 Phone 915/372-5121

3rd oldest Savings and Loan in Texas

BALLINGER
718 Hutchings Ave
Ballinger, Texas 76821
Phone 915/365-5146

BIG LAKE
606 2nd Street
Big Lake, Texas 76932
Phone 915/884-3696

ROBERT LEE
403 West 10th
Robert Lee, Texas 76945
Phone 915/453-2345

SONORA
409 Hwy. 227 North
Sonora, Texas 76950
Phone 915/387-2179

SAN ANGELO
4112 College Hills Blvd.
San Angelo, Texas 76901
Phone 915/944-0545

SAN ANGELO
337 W. Twohig
San Angelo, Texas 76901
Phone 915/653-6778

RICHLAND SPRINGS
P.O. Box 8
Richland Springs, Texas 76971
(915) 452-3470

WINTERS
102 S. Main
Winters, Texas 79567
Phone 915/754-4513

ELDORADO
Hwy 277 & 190
Eldorado, Texas 76936
Phone 915/853-3272

* Federal regulations require a substantial interest penalty for early withdrawal.

MORE POWER TO YOU, ROBERT LEE

This fall you'll get the best of local news and CBS programming brought to you by KCTV's new 1500 foot tower and transmitting facility. Reach for TV-8 and reach for the stars.

**KCTV-TV8
SAN ANGELO**





It's **FOOTBALL** *time*
© SCW, INC.

FRIDAY

THERE — 8 P.M.

**ROBERT LEE
 STEERS
 VS.
 ROBY
 LIONS**

THIS AD SPONSORED BY THE FOLLOWING STEER BOOSTERS

- | | | |
|--|--|---|
| TRIANGLE CAFE, GROCERY & BAIT
HENRY and WYVONNE AUTREY | SHAFFER FUNERAL HOME | MR. AND MRS. J. C. WALLACE |
| MR. AND MRS. O. B. JACOBS | ROACH'S DRY GOODS | HARPER METHOD HAIR & SCALP TREATMENT
NITA SCHNABEL |
| COKE COUNTY PHARMACY | SKINNY'S NO. 29
LA DAIR, NANCY and KATHY | BILL J. HELWIG
ATTORNEY AT LAW |
| DAWN FLORAL & SPECIALTIES | BUTANE SALES CO.
DOUG and GRACE DITMORE | FRANKIE'S BEAUTY SALON
FRANKIE and ROYCE HOOD |
| MRS. WINNIE WALDROP
COUNTY CLERK | BARRETT'S WHOLESALE
LIVE BAIT, MINNOWS and GOLDFISH | HEART O' TEXAS SAVINGS ASSN. |
| MATHEWS LUMBER AND HARDWARE | ROSS CONOCO SERVICE STATION | ALLEN INSURANCE AGENCY |
| BAHLMAN CLEANERS
MRS. EVAH MAHON | THE ROADRUNNER GROCERY | FARM BUREAU & INSURANCE
DENNIS WEAVER-GEORGE DEMERE-JIM ALLEN |
| KEY FEED STORE | BAKER'S GROCERY & MARKET | FUNDERBURG COMPANY, INC.
SILVER, TEXAS |
| BURWICK OIL FIELD SERVICES
THERELL and GLENN BURWICK | ERNEST CLENDENNEN, INC.
SILVER, TEXAS | OLENE'S BEAUTY SHOP |
| J.E.D. CONSTRUCTION CO.
DOSS, PETTIGREW, SAUNDERS & SAUNDERS | BELL AUTO PARTS
JIMMY and BEVERLY BELL | KONNER'S KORNER
MELBA, KYLE, and RANDY |
| THOMPSON BUTANE CO.
J. R. and MYRLDEEN THOMPSON | WEST WAY GROCERY | ADD AND JOAN DAVIS |
| MR. AND MRS. JOHN HENDERSON
JOHNNY, JR. and WILLIAM | SKINNER'S GROCERY AND STATION
JIM and GEANETTE SKINNER | KWIK SERVICE & SUPPLY CO.
KEN COLSTON, MGR. |
| MR. AND MRS. FINNELL SMITH | ADAMS LAND & REALTY CO. and
ADAMS ABSTRACT CO. | DR. & MRS. PHILIP RAY |
| ROBERT LEE OBSERVER | WESTERN AUTO ASSOCIATE STORE
BOB and PHELAN WRINKLE | IVEY MOBIL SERVICE
ANN, H, and DENNIS |
| ROBERT LEE-SILVER LIONS CLUB | IVEY MOTOR CO. | |
| COKE COUNTY CABLEVISION
TOTAL ENTERTAINMENT-PHONE 453-2228 | BEN BESSENT CHEVROLET | |

WANT ADS

CLASSIFIED ADVERTISING RATES

1st Insertion Per Word 10c (\$1.50 Minimum)
 2nd and Subsequent Insertions Per Word 7c (\$1.00 Minimum)
 Additional 50c for Blind Ads
 Cards of Thanks... Same Rates
 Legal Notices Same Rates

COPY DEADLINE

Class. Ads 4 P.M. Tuesday
 Display Ads ... 4 P.M. Tuesday

Classified ads and Cards of thanks are payable in advance unless customer carries a regular account.

PIANO TUNING AND REPAIR. 30 years experience. Phone Ben G. Arnold, 453-2361, Robert Lee. 13-tnc

MOORE DIRT CONTRACTOR. Bronte, Tex. Phone 473-3474. We do caliche and dirt work, septic systems, road building, repair and new. 24tfc-BP

FURNISHED APARTMENT For Rent. All bills paid. Call Ben Bessent, 453-2492 or 453-2632. 25-tfc

M & M VACUUM SERVICE: Septics and cesspools pumped. Phone 473-3474 or 473-7811. 27-tfc-BP

SAVE 20% on MANUFACTURER'S 1st quality steel building. All sizes from \$2.69 sq. ft. - up. Builders welcome 1-800-821-7700 Ext. 803 or 417-736-2183. 14-3TP

WILL TAKE bee swarms and remove bees from buildings. 453-2989 41-tnc

AAI REPAIR SERVICE-Mobile home repairs and service, power rotary sewer line cleaning. 453-2775. 3-tnc

FOR SALE- 1976 Santana self-contained camper van. \$9,500.00 or best offer. 453-2142. 14-4TP

MILLER LIQUID FEED SERVICE. James Miller, 473-2811. 10-tfcBP

WILL DO SMALL BREED DOG GROOMING at reasonable prices. Call 453-2810. 12-4TP

AMWAY PRODUCTS come to you satisfaction guaranteed or your money back. June Gulley, 453-2848. 12-4TP

FOR SALE: Small house on 3 lots. Located on Colorado City Hwy. Call Bill Allen. 12-TNC

Monuments

LETTERING
 LOT COVERING
SAM L. WILLIAMS
 Robert Lee, Texas

SAVE \$4.00

CAR WASH, CHANGE OIL (5 Qts. Ford Oil, and FILTER CHANGE)

Reg. Price \$23.80

NOW \$19.80

Unusually muddy or vehicles with road tar—Extra Charge.

IVEY MOTOR CO.

FOR SALE
 14x72 1977 Model Arcraft Mobile home-2 bedroom, 2 full baths, all electric. Located on 2 lots. Unattached carport.
ADAMS LAND & REALTY CO.
 Phone 453-2723 or 453-2721 or 655-9429

FOR SALE- 1978. 15 ft. Lampro Tri-hull boat with walk-through windshield, 115 H.P. Evinrude motor, 2 gas tanks, top and Dilly drive-on trailer. Call 453-2493, Robert Lee. BP 14-2TC

FOR SALE HOUSE- 3 bedroom, 2 bath, central air & heat. 323 N. Randell 915-473-5601. 1tp-BP

2 BEDROOM TRAILER for rent. Bills paid. Edith Estates - 453-2187. 15-1tp-BP

RUMMAGE AND BAKE SALE, Friday and Saturday, Oct. 9-10, 9 a.m. Lions Club Building, Robert Lee. Coke County Pageant Association. 15-1tcBP

FOR SALE - 78 Ford Ranger Pickup, 75 Ford Elite - 2 door, John Deere Model 70. Call 453-2507. 15-1tcBP

CARD OF THANKS
 Special thanks to our many friends for the cards, prayers, visits, flowers, food and other kindnesses extended to us during my recent illness and hospital stay.
 Roy and May Ross
 15-1tp

FOR SALE: Two Houses and a garage on two lots, one corner. Established yard with pecan trees. Fenced pen in back. Phone 453-2592, if no answer, phone 453-2646. 15-TNC

HOUSE FOR SALE- 1600 sq. feet, central air and heat, Phone 453-2486 or 806-797-3581. 15-4tc

FOR SALE- Modern black leather couch and chair. In excellent condition. Phone 453-2426. 15-tnc

LOST, in front of Robert Lee post office Oct. 1, Spur ear stud. Greatly treasured gift. Mrs. R.G. Blackwood, General Del., Robert Lee. 15-2tp

FOR SALE- 1979 KZ750 Kawasaki Windjammer, AM-FM radio, 7400 miles, \$2500.00. Will negotiate. Call 453-2731. 15-2tp

GARAGE SALE- 1302 Childress, all day Sat and Sun. afternoon. Clothes, bed springs, space heaters, boots, shoes, bicycles and misc. Jen Anthony 15-1tp

FOR SALE- 2 male border collies, 9 mos. old 453-2375 15-1tc

CARPENTRY SALE- Friday and Saturday, 801 Houston. (If it's not raining). 15-1tc

NURSERY ATTENDANT needed at Methodist Church on Sundays. Hours 10:00 a.m.-12:00 noon. Pay, \$10.00 References requested. Call Sara Reynolds 453-2417. 15-1tc

Antique China cabinet, 42" round table and 8 chairs, all oak. New oak claw foot 48" round table with one leaf and 23x67" plate glass mirror. Also 3 speed boy's bike. Phone 453-2418.

FALL YARN SALE
 starts Tuesday 10:00 a.m.
 ends Thursday, Oct. 22
 4:00 p.m.
THE THREAD SHED

QUALITY ROOFING
KENT ELLIOTT ROOFING
 655-2800
 SAN ANGELO

LESS TAXES WITH NEW LAWS
 New tax laws give individuals and businesses a chance to cut their 1981 taxes -- but not without careful planning, says an economist with the Texas Agricultural Extension Service, Texas A&M University System. Changes in asset depreciation, investment tax credit, leasing, inventory methods and tax rates can all help reduce the tax bite for 1981, particularly as they relate to agribusinesses. The depreciation process has been simplified and December purchases now receive the full tax write-off. Investment tax credit has also been simplified and liberalized, certain leasing restrictions have been removed, and marginal tax rates have been reduced.



Submerging a lemon in hot water for 15 minutes before squeezing will yield much more juice.

So says the VA... **TWITCH** by How' Rands

TWITCH, DID YOU KNOW CERTAIN GI BILL STUDENTS CAN EARN ADDITIONAL ALLOWANCES UNDER THE VA WORKSTUDY PROGRAM?

RED HOT IDEA! I'LL GET RIGHT DOWN TO THE VA OFFICE AND APPLY.

AL SMITH FEATURE SERVICE **How' Rands**

Contact nearest VA office (check your phone book) or a local veterans group.

THAT'S A FACT

BIRD TALK!

THE GREAT FRIGATE BIRD OF HAWAII HAS A WING SPAN OF 7 FEET - IN PROPORTION TO ITS WEIGHT THE GREATEST WING SPAN OF ANY BIRD!...

AND...

THE MALE HAWAIIAN DUCK QUACKS - BUT THE FEMALE HISSES!

"THE BEST LAID SCHEMES... OF MICE AND MEN GANG AFT A- GLEY" WROTE POET ROBERT BURNS. IN OTHER WORDS THE MONEY YOU PLAN TO SAVE SOMEHOW GETS SPENT. THE WAY TO AVOID THAT TRAP IS TO SIGN UP FOR THE PAYROLL SAVINGS PLAN AND KNOW THAT A LITTLE IS SET ASIDE FROM EACH PAYCHECK. THESE FUNDS ARE USED TO BUY U.S. SAVINGS BONDS AND THAT'S A GOOD SCHEME!

★★★★★

We Goofed On City Tax Action

(Editor's note: The following notice was turned into the Observer this week. It was submitted by officials of the City of Robert Lee and should be of interest to readers.)

NOTICE:

Last week the Observer erroneously reported that the City of Robert Lee failed to take any action concerning the postponement of the new tax appraisal and evaluation until 1983 as presented in a petition to the City. This is not true.

Notice was posted Tuesday calling for an emergency meeting of the Council at 7 p.m. to consider the proposal.

The Council met with four members present and one absent. Also present was Edna Havins, City Secretary and Tax Assessor-Collector. The Council deliberated almost two hours before voting on the petition.

Mayor Vaughan reported that over the past few years he and Councilwoman Alice Beaty had attended several seminars and meetings in an effort to keep informed on the laws concerning the implementation of the new tax appraisal offices. He also reported that Edna Havins had attended these and had completed three of the schools required for the certification of tax appraisers. Mrs. Havins reported on a seminar held in Atilene the week before explaining the new amendments passed in the special session of the legislature in August. She told the Council that she and several others had conferred with Rick Fine, attorney for the state tax board concerning the situation in Coke County and obtained his opinion on it. A letter from the former general counsel for the state tax board was read and discussed. After the almost two hours of discussion the motion was made to honor the 1981 contract and to continue with the Coke County Appraisal District. The vote was three for, one abstaining, with one absent.

A certified copy of this resolution was delivered to the Coke County Appraisal District office Wednesday after 1 p.m. A single telephone call to City Hall, the mayor, councilmembers, or the appraisal office would have verified this action.

First of all, as publisher of the Observer, I offer my sincerest apologies to the mayor, city council and City of Robert Lee for not contacting the right person last Wednesday to determine if the City of Robert Lee had taken any action on the tax situation before the Oct. 1 deadline.

We were so harrassed and busy on Wednesday, Sept. 30, which is the day we put together your Coke County newspapers, that we took as truth the reports from other sources that the City of Robert Lee had not acted to change anything about its tax situation for 1981.

It was a mistake; I should have contacted a city official to determine if any action had been taken, but I didn't. Taking re-

ports from both school boards and the commissioners' court, plus all the other items we had to get together simply lured me to sleep on the unconfirmed reports about the aciton to the City of Robert Lee. This was especially true, since a few days earlier Mayor Vaughan had assured me that he had no interest at all in making any changes in the city's arrangement for 1981 tax collections. But that's not a good reason at all for not ascertaining our information.

I do beg to differ, however, with the first paragraph of the above notice which says, "the Observer erroneously reported that the City of Robert Lee failed to take any action concerning the postponement of the new tax appraisal and evaluation until 1983 as presented in a petition to the City."

The fact of the matter is the Observer said in part of one paragraph that "the City of Robert Lee failed to take any action on changing the taxing procedure." That's exactly what I think the city council did. If they made any changes at their Tuesday night emergency meeting I don't know about them.

Mayor Vaughan and I had a good conversation Monday afternoon, and he said he didn't want the citizens of Robert Lee to think that the city government was not hearing them. I can appreciate his feeling on that matter and think the citizens of Robert Lee should be pleased that he called the emergency meeting last Tuesday night. The mayor and other council members are working for the people of the city. Their interest and action proves that they are on the job.

The last paragraph in regard to a telephone call could work the other way. If a single telephone call had been made to the Observer office, we wouldn't have had this misunderstanding. It all took place after our Tuesday afternoon deadline, and a call from a city official certainly would have been appreciated.

—Editor

Payne Service Held At R-Lee

Graveside services were held Saturday, Sept. 26, in the Robert Lee Cemetery at 4 p.m. for Barney Lee Payne, 68, of Fort Worth. He died Thursday, Sept. 24, at his home there, after a sudden illness.

Mr. Payne was born April 11, 1913, in Robert Lee, the son of Mary E. and William A. Payne, long-time Coke County settlers. He attended Indian Creek School between Robert Lee and Bronte, near the Payne home place.

Survivors include his wife, Mattie Kirchman Payne of Fort Worth; one son, Bobby Payne of Fort Worth; two sisters, Irene Reed of Robert Lee and Alta Mae Snyder of Van Horn; two brothers, Alonzo Payne and Loyd Payne, both of Robert Lee; and three grandchildren.

Miracle Whip

Salad Dressing Qt.

\$1.39

HUNTS PEACHES

2 1/2 can 87c

DELMONTE CATSUP

24 oz. bottle 99c

Veg All Mixed Vegetables, 303 can

2 for 89c

Kounty Kist Whole Kernel Corn, 303 can 2/73c

Green Beans

Kounty Kist Cut 303 Can 2 For

69c

KOUNTY KIST SWEET PEAS, 303 can 2/89c

WONDER LONG GRAIN RICE 28 oz. bag 69c

STALEYS PANCAKE SYRUP 28 oz. \$1.29

Wesson Oil

48 Oz. Bottle

\$2.39

SWIFT VIENNA SAUSAGE

2 for 98c

LIQUID JOY

32 oz. bottle \$1.59

Bold Detergent

King Size

\$3.09

PARKAY OLEO

1 Lb. Quarters

59c

LITE FLUFF BISCUITS

2 for 39c

MORTON HONEY BUNS

pkg. 65c

Orange Juice

Wholesun 12 Oz. Can

79c



Pork Chops

Loin End Cuts Lb.

\$1.39

PORK CHOPS, Center Cuts

lb. \$1.69

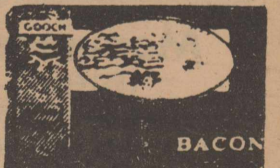
GOOCH FRANKS

12 oz. pkg. 99c

BACON

Gooch Blue Ribbon Lb. Pkg.

\$1.59



SAUSAGE

Home Made Pure Pork Lb.

\$1.69

BAKER'S Groc. & Mkt.

WE INVITE YOU

TO BE WITH US FOR WORSHIP AND STUDY AT ALL THESE SERVICES

SUNDAYS: 10 a.m. and 6 p.m. - WEDNESDAYS: 7:30 p.m.

NORTHSIDE CHURCH OF CHRIST

CLYDE DUKES, Minister

Phone 453-2375

CHADBOURNE AND W. 9TH ROBERT LEE