

PAGE ONE

A QUICK READ OF THE NEWS

Nothing to Snicker about

Kenneth Payne III of Tyler drew a 16-year prison sentence last month after being convicted of swiping a Snickers candy bar from a convenience store.

It wasn't the first time Payne's chocolate craving prompted a run-in with the law: He has a previous conviction for stealing Oreos.

The district attorney's office tried Payne as a habitual offender, bumping the misdemeanor shoplifting charge to felony theft, making him eligible for a sentence of up to 20 years in prison.

Payne's attorney said she will appeal.

So far there is no report that the taxpayers of Texas object to supporting Payne for 16 years over a candy bar and a bag of cookies.

Follow the yellow brick . . .

Two dogs, accompanied by their owners, responded to a casting call over the weekend by Theatre West Virginia for the role of Toto in its production of *The Wizard of Oz* in Beckley, W. Va.

Lickerish, a Schnauser-poodle mix, and Barney, a registered Australian terrier, vied for the chance to run the yellow brick road.

The role pays \$25 a week for 12 weeks, is demanding. Producers say they will select the lucky dog by April 10.

The strange viola saga

A Chicago woman who stole a rare Italian viola from a junk dealer, conspired to have him murdered and later married him, has been sentenced to two years in federal prison.

Wednesday's sentence ended a bizarre saga that went awry when Quintella Benson and her co-conspirator hired an undercover FBI agent masquerading as a professional killer to bump off Boiesie Watson.

Benson, 35, admitted stealing a 274-year-old Dom Nicolo Amati viola that Watson had bought at a flea market and giving it to Robert Heiss, who took it to a dealer for appraisal. The dealer recognized it as property of the Chicago Symphony Orchestra and called police.



Drawing date: Saturday, April 1
Winning numbers: 7-11-17-19-37-46
Estimated jackpot: \$9 million
Winners: 0
Next drawing: Wednesday, April 5
Estimated jackpot: \$13 million

On this date in history

April 8 — Texas patriot Dr. James Long, imprisoned in Mexico City, is shot "accidentally" (1822) and the Civil War's Battle of Mansfield is fought near Mansfield, Texas.

April 9 — Confederate Gen. Robert E. Lee surrenders to the Union Army at Appomattox, Va. (1865).

LOCAL WEATHER

Mostly sunny skies should prevail through Saturday, with more clouds moving in Sunday and Monday. Highs should reach 80 on Thursday, low 70s on Friday and Saturday and upper 70s Sunday and Monday. Low temperatures should range from a chilly 34 on Friday to a milder range of about 42 Thursday and about 43 Monday. Expect mid-30s early Saturday.

Editor Ronn Smith can be reached at 272-4536 or ctyankee@fivearea.com

Missed your paper? Call carrier Melissa Flores at 272-6719 or the Journal during business hours, 8:30 am-5 pm.

Muleshoe ISD wins spring sweepstakes award

By RONN SMITH
Editor

Muleshoe School Board members were informed Tuesday night that Muleshoe has won the University Interscholastic League's spring academic sweepstakes award for District 2-AAA.

High School Principal David Jenkins told board members the award was presented to Muleshoe on Saturday before the UIL competition was even completed.

"They gave us the award last Saturday before we even had the one-act (play). We were so far ahead nobody could catch us," he added.

"To my knowledge, this is the

first time MHS has won sweepstakes without the spring sports being added in," he said. "We placed in events that we have not placed in during the six years I've been here," he added.

He also pointed out that Muleshoe's one-act play won first place in the district after the sweepstakes award presentation.

The one-act play cast will perform in area competition Saturday in Plainview, while other events go straight to regional competition later in Odessa.

Muleshoe racked up 345 points to second-place Friona's 253 and third-place Shallowater's 250.

Winners in the March 25 district competition, held in Friona, included the following Muleshoe students (in individual events, the first three go to regional competition and the next three are alternates; in team events, the winner advances and second-place is the alternate):

- Accounting (individual) — second, Kesha Graves; sixth, Kristi Villalobos;
- Accounting (team) — second, Muleshoe (Villalobos, Kesha Graves and Vicki Martínez);
- Calculator applications (individual) — second, Kamal Bhakta;
- Calculator applications (team) — second, Muleshoe (Bhakta, Leo

Joyner and Ricardo Umburto);

- Computer applications — first, Leisha Wallace; second, Blake Gartin;

- Computer science (individual) — first, Megan Tipps; third, Leo Joyner; fifth, Chris Hall;

- Computer science (team) — first, Muleshoe (Tipps, Leo Joyner and Chris Joyner);

- Current issues and events (individual) — second, Kamal Bhakta;

- Current issues and events (team) — second, Muleshoe (Bhakta, Megan Tipps and T.J. Hutto);

see AWARDS on page 2

Recent rains help farmers temporarily

SPECIAL TO THE JOURNAL
COLLEGE STATION — Recent rains throughout Texas have improved the outlook for spring crops, but more rain is needed to ensure crop success, the Texas Agricultural Extension Service reports.

"We're in a much better situation than we were," said Dr. Travis Miller, an agronomist with the Texas Agricultural Extension Service. "But without normal or even above normal rainfall during the crop season, we can expect to run out of water if we haven't refilled the soil profiles."

The rain also has been beneficial for livestock producers. Pastures in much of the state are in a recovery mode after the recent rainfall.

"The rains are a godsend," said District Extension director Randy Upshaw. "We've had a complete turnaround on the pasture and forage situation."

Miller said the Corpus Christi area and the High Plains have received enough rain for a good soil profile, which is 5 to 10 inches of available moisture in the top 10 feet.

Other parts of the state have not come close to a full soil profile, he said.

Miller said the long-range outlook from the National Oceanic and Atmospheric Association is below normal rainfall and above normal temperatures.

"If we have that type of situation

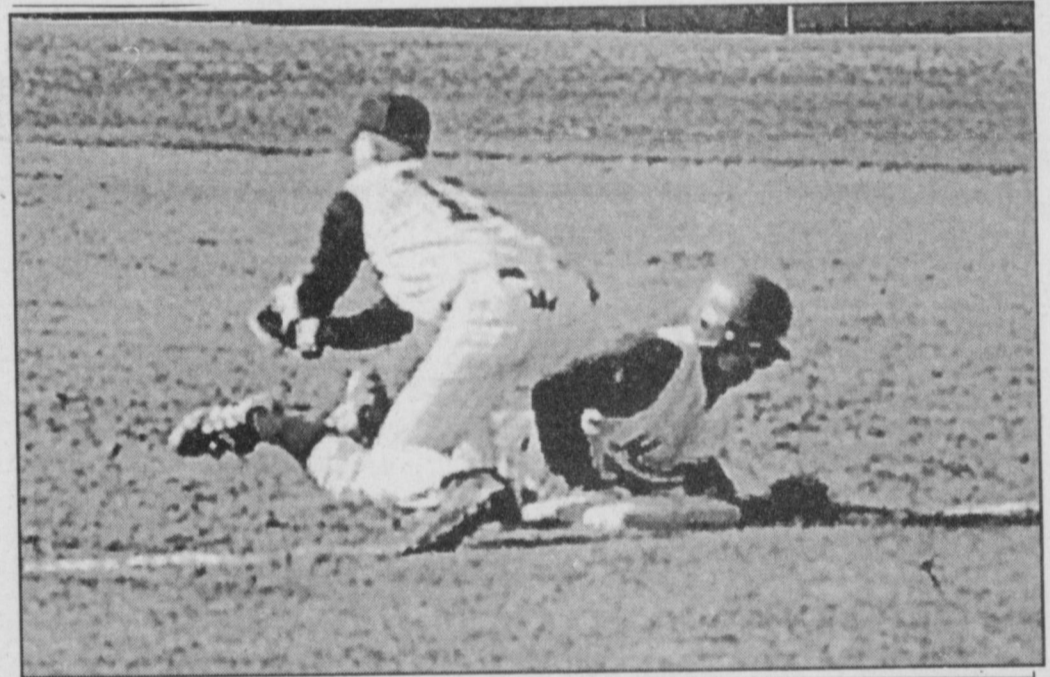
see RAIN on page 2



Journal photos: Beatrice Morin

On the diamond

In action against Shallowater on Monday, Muleshoe's Chris Barrera (No. 6, above) is thrown out, while Lucio Soto returns safely to his base after trying to steal (at right). The Mules lost to the Mustangs 8-1 for their first district loss. Muleshoe's record is now 2-1 in district and 7-8 for the season so far. See story on Page 4.



Meetings seek to expand area's Mexico trade

SPECIAL TO THE JOURNAL

LUBBOCK — Government, civic and business leaders from Mexico and West Texas discussed new roads of trade at three meetings this week hosted by the Alliance of Northeast Chihuahua and West Texas.

"ACT is comprised of private businesses and government representatives from West Texas and the Mexican state of Chihuahua," said Steven B. Paz, an alliance director and Texas Agricultural Extension Service computer specialist.

"The goal is to facilitate business ventures and trade relationships between the U.S. and Mexico — chiefly through the Ojinaga-Presidio port of entry on the Texas-Mexico border" and affecting the South Plains, he said.

The meetings will announce Chihuahua's intent to develop the existing road between Chihuahua City and the Ojinaga-Presidio port of entry into a four-lane highway, and outline the alliance's economic development programs, said Zan Matthies, the alliance secretary and Pecos County Extension agent.

"Developing this road to direct at least half of the traffic now using the El Paso port of entry to Ojinaga-Presidio is one of ACT's long-standing goals," Matthies added. "Increased traffic to the port of entry at Ojinaga-Presidio will translate into more economic development opportunities for businesses in Mexico and Texas —

see TRADE on page 2

Interactive TV bringing new world to MHS

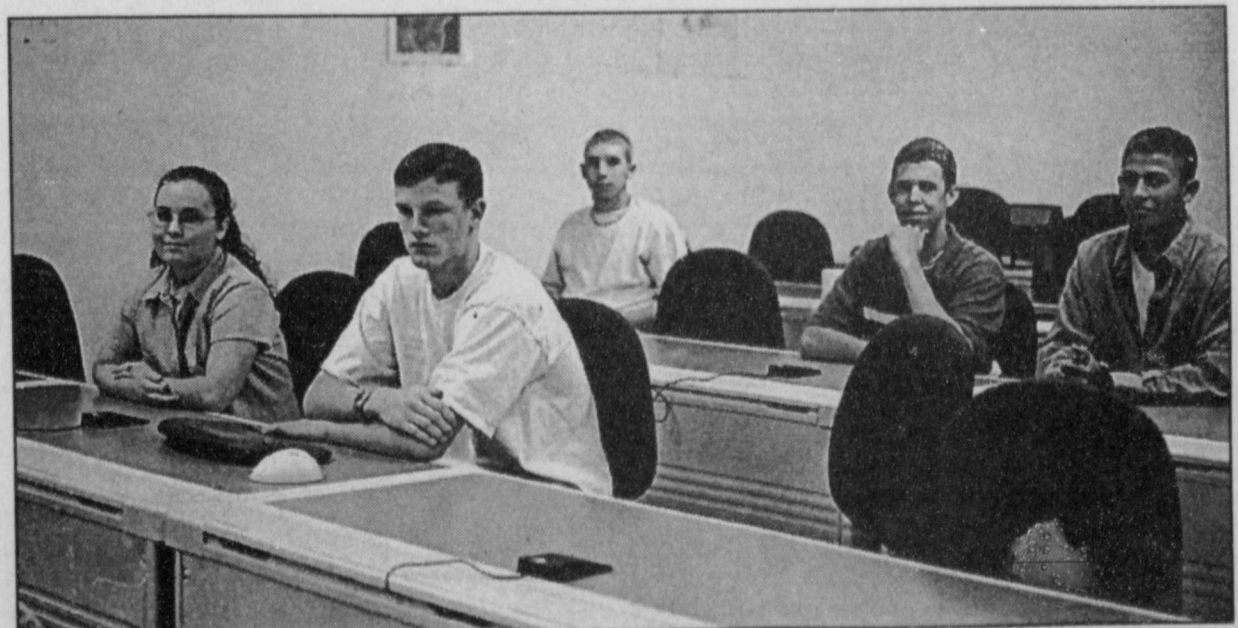
JOURNAL STAFF REPORT

As of Jan. 1, a consortium of school districts implemented an interactive television network that includes Muleshoe.

A grant of \$999,995 awarded by the Texas Infrastructure Fund Board was provided for this purpose.

The FACT Consortium (for Five Area Community Telecommunications) was formed in 1995 and named in honor of Hubert Kidd of Five Area Telephone, described as a "visionary" for his

see TV on page 2



Journal photo: Beatrice Morin

Preparing for a session in the interactive television classroom are (back row, from left) Lucio Soto, Jordan Pool and Hadley Henderson; (front row, from left) Joey Tucker and April Kelly. Through the ITV system, Muleshoe School District can offer specialized classes even though only a few students are interested in enrolling.

AROUND MULESHOE

Babe Ruth League plans car wash

Weather permitting, the Muleshoe Babe Ruth League (13-year-olds) baseball organization plans a car wash starting at 9 a.m. April 8 in the United Supermarket parking lot.

The cost will be on a donation basis, with proceeds going to purchase equipment for the players.

Revival scheduled at Lazbuddie

Jim and Judith Fullingim, active ministers for many years, are scheduled to be involved in a revival April 9-12 at the Lazbuddie Methodist Church.

Sunday services will be at 10:30 a.m. and 7 p.m. Weekday evening services will be at 7:30 p.m.

Jim Fullingim has recorded such songs as "What a Healing Jesus," "Desperado," "Thank You" and "Midnight City," the latter receiving air play on a Hereford station.

The Fullingims have been especially active in prison ministry.

'Tune Out Violence' supported locally

Bailey County members of the Family and Community Education clubs joined members of similar clubs nationally Wednesday in supporting "Tune Out Violence," a night in which they were encouraged not to watch television shows with violent content.

The national organization issued a proclamation stating that viewing television programs with violent content desensitizes people to violence and asserting that children who watch a large number of violent programs "tend to favor using aggression to resolve conflict."

Little League tryouts are Thursday

Muleshoe Little League tryouts are scheduled for April 6 at Roger Miller Park.

Eight- and 9-year-old Minor League tryouts are set for 5:30 p.m., while 10-, 11- and 12-year-olds who were not on a Major League team last year will try out at 7 p.m.

Eleven- and 12-year-olds will be eligible only for Major League play. Ten-year-olds will be placed in either league as needed to fill out rosters.

Applications will be available until April 6 at Williams Athletics, and applications for late signup will be available at tryouts.

'Greater Tuna' returns April 8

The Muleshoe Chamber of Commerce is sponsoring a performance of the two-man show "Greater Tuna" at 8 p.m. April 8 in the Muleshoe High School auditorium.

The production stars Roger Sowder and Kimble Kearns. Tickets are \$20 each and are available at the chamber office and United Supermarkets.

Early voting in runoff ends Friday

Voters have until April 7 to participate in early voting in the Democratic and Republican runoffs to select candidates for the November general election.

All voting in the runoffs will be conducted at the Bailey County courthouse. For voters who do not participate in early voting, election day is April 11.

Democrats will be choosing between Charles Gandy and Gene Kelly for the U.S. Senate race to oppose incumbent Sen. Kay Bailey Hutchison.

Republicans will be selecting candidates in three races for seats on the state Court of Criminal Appeals.

The polling place will be open from 7 a.m. to 7 p.m. on election day.

Women's retreat set at Coliseum

The annual Eastern New Mexico and West Texas Women's Spiritual Growth Retreat is scheduled for April 7-8 at the Bailey County Coliseum.

The speaker for this year's event will be Margaret Thurkleson of Lexington, Ky., a speaker and teacher on prayer and the spiritual life. She is the author of *Realizing the Presence of the Spirit* and *The Love Exchange*.

Registration forms are available at Master's Books and Gifts in Clovis.

More information is available by calling (800) 452-6818 or contacting Rachel Clark at (806) 295-6811.

Roping to help Lazbuddie seniors

A team-roping event to benefit the Lazbuddie High School senior class has been scheduled for April 16 at Dusty Rhodes Arena in Muleshoe.

Entries will be taken at 12:30 p.m. and roping begins at 1 p.m. Top-quality Corriente cattle are to be used.

All average winners will receive jackets, and there will be full concession-stand service on the grounds.

More information is available by calling Thurman Myers at 272-3598.

The deadline for items to appear in Around Muleshoe is 5 p.m. Monday for Thursday's edition and 5 p.m. Thursday for Sunday's edition. Items may be brought to 304 W. Second, mailed to P.O. Box 449, called in to 272-4536 or faxed to 272-3567.

TRADE

from page 1

from Chihuahua to West Texas, and on to the South Plains and High Plains."

The first two meetings were held April 3, at the Lubbock Chamber of Commerce office and at the Midland Center, adjacent to the Midland Chamber of Commerce. The final meeting was April 4 at the Pecos County Civic Center.

The planned highway development in Chihuahua will help connect West Texas with the Pacific port of Topolobampo, Mexico—one of that country's main import-export terminals.

Formed in 1995 by the Texas Agricultural Extension Service, the international alliance's mission is to organize, coordinate, sponsor and facilitate trade missions and business partnering trade shows; and to provide publications that promote ac-

tivities, products and services.

"Our organization has been well-received and supported by businesses on both sides of the border," Paz said.



1104



The Fair Store
120 Main 272-3500

Muleshoe Journal USPS 367820
Established February 23, 1924. Published by Triple S Publishing, Inc. Every Thursday at 304 W. Second, Box 449, Muleshoe, TX 79347.
Second Class Postage paid at Muleshoe, TX.
POSTMASTER: Send address changes to the Bailey County Journal, P.O. Box 449, Muleshoe, TX 79347.
We are qualified members of:
Panhandle Press Association, National Newspaper Association, West Texas Press Association and Texas Press Association

WEST TEXAS PRESS ASSOCIATION

PPA
Panhandle Press Association

MEMBER 2000

TA
TEXAS PRESS ASSOCIATION

Scot Stinnett, Publisher
Lisa Stinnett, Vice-President/Comptroller
Ron Smith, Editor
Beatrice Morin, Classifieds
Leah Bell, Advertising

© 1990

SUBSCRIPTIONS: Muleshoe Journal and Bailey County Journal
By Carrier Yearly - \$22.00
Bailey County — by mail - \$24.00
Elsewhere - \$26.00
Advertising Rate Cards on Application

Advertisers should check their ad the first day of insertion. The Journals will not be liable for failure to publish an ad or for a typographical error or errors in publications except to the extent of the cost of the ad for the first day of insertion. Adjustment for errors will be limited to the cost of that portion of the ad where the error occurred.

TV

from page 1

work in developing the project.

Several students are already using the system to take dual-credit classes from South Plains College, according to Don McElroy, the consortium's system administrator/coordinator and grant project manager.

The interactive television system allows students at any or all of the consortium's six high schools — Muleshoe, Sudan, Lazbuddie, Three Way, Olton and Springlake-Earth — to take classes via television at the same time, talking with the instructor at South Plains.

The potential exists for students to enter college as sophomores because of the course

work done via ITV, McElroy said.

Adults can work on continuing education credits and graduate courses without having to be on a college campus.

"This high-speed, high-bandwidth network will carry this area well into the 21st century," he said. "Thanks to FACT and Five Area's work and vision, the six school districts and communities will reap economic and educational benefits for a long time."

He also said, "This mode of education is the wave of the future — education anytime, anywhere from the institution of your choice. Many students

can't afford college for various reasons, but now they can still work and take courses via ITV and the Internet.

"Only the imagination will limit the potential of these six school districts and their respective communities," he continued. "FACT administrators and teachers are planning ways that they can offer more electives and courses that before were not possible. For instance, they couldn't hire a foreign language teacher, or couldn't afford a science or math teacher that was at one of the other districts. Now, these districts have the potential to share these teachers."

RAIN

from page 1

ation, we will definitely be in a drought situation before we're through with this crop season," he added.

Dr. Cloyce Coffman, Extension agronomist, said, "This is the time of year when we can have adverse weather and hail damage, so farmers need to be prepared."

Panhandle soil temperatures are in the 40s and most planting will be done within weeks, said Bob Robinson, district Extension director.

In North Texas, farmers have begun to plant milo and fertilize pastures, said Randy Upshaw, district Extension director. Some landowners have stocked ponds with fish and are harvesting saw timber.

In the Panhandle, soil moisture is short to adequate; rainfall from a trace to 1 inch and more has been recently recorded.

Land preparation continues

for corn, sorghum, soybeans, sunflowers and cotton.

Panhandle wheat is rated from very poor to good. Cattle conditions are good, with continued supplemental feeding.

On the South Plains, soil moisture is short to adequate.

Warm weather and high winds are being reported.

Irrigated wheat is in poor to fair condition. Pastures and ranges are in fair condition. Land preparation and supplemental feeding of livestock continue.

EVENTS

from page 1

- Literary criticism (individual) — first, Eric Podadas; second, Blake Gartin; third, Kamal Bhakta;
- Literary criticism (team) — first, Muleshoe (Podadas, Gartin and Bhakta);
- Mathematics (individual) — second, Leo Joyner; fifth, Kamal Bhakta;
- Mathematics (team) — second, Muleshoe (Joyner, Bhakta and Eric Podadas);
- Lincoln-Douglas debate — first, Phillip Hardt; fourth, Jo-

- seph Anguiano;
- Informative speaking — first, Phillip Hardt; second, Chris Gatewood; third, Joseph Anguiano;
- Persuasive speaking — second, Westin Price; third, Eric Madrid;
- Poetry interpretation — first, Jason Riggs; third, Amber Futch; fourth, Aubrey Ruthardt; and
- Prose interpretation — third, Louis Pacheco; fifth, Westin Price.

JOES & BOOT SHOP

1-800-658-6378 106 E. American Blvd. Muleshoe, Texas

And Country Junction

We're **SMASHIN'** High Prices

CINCH JEANS Regularly \$45 Now 20% Off

Now **\$36**

For Men

And BUSTIN' OUT New Arrivals!

PAINTER PANTS

ROCKIES DRAWSTRING JEANS

NEW STYLE! Large Pocket, Front Drawstring

by **CRUEL GIRL**

Chores may multiply out of hand at this time of year

By **RONN SMITH**
Editor

In about another month, the tomatoes and peppers and squash should be able to survive outdoors on their own — and that means the summer gardening season will be in full swing.

If you're waiting to plant your garden crops in the open ground rather than starting them indoors or buying started plants, you may be reading about experts who advise you to "hill up" certain crops — corn, the cucurbit family (squash, cucumbers, melons) and beans. (This is slightly different from planting in hills, which works for squash, melons, tomatoes and other sprawling plants.)

Now, if you go out right now and mound up the soil 4 or 5 inches higher than the surrounding level, you can gain some benefit — the more exposed soil will warm more quickly and thus aid in germination. The main advantage for most people in mounding up the soil, though, is to improve drainage



— in other words, they live in areas where the soil may retain more moisture than the young plants need. Your garden probably doesn't have that problem, and unless you just want it to look nice, I wouldn't bother with mounding.

Planting in hills, on the other hand, just means you dig holes a certain distance apart (depending on the spacing required for the vegetable you're planting) and drop seeds (usually five to seven) close together in each hill. (You may need to thin the seedlings — some people pull up all but one plant per hill. For me, that's a guarantee something will eat the one remaining, so I leave two or three — as far apart as possible. If you leave three and

they all survive, you can pull out the weakest one later.)

Incidentally, if you're planning to grow potatoes and haven't planted them yet, why dig the ground before you do? If you have been gardening in the same place for a few years, the soil's tilth should already be good.

You can just place the potatoes on top of good soil and then cover them with 7 or 8 inches of straw or some other mulch. Use a lawn sprinkler to soak it thoroughly.

With that much moisture-holding straw on top, you would have to really neglect your spuds for them to dry out. Just keep them moist until the potatoes start maturing. When you're ready to "dig" them, rake the straw back and gather your potatoes.

This might be the year for you to participate in Plant a Row for the Hungry, in which gardeners are encouraged to

grow a little extra produce for local food banks, soup kitchens or homeless shelters.

Before planting, it's a good idea to contact the agency where you'd be donating the produce to see what their needs are and what regulations might apply.

The program is sponsored by the Garden Writers of America, and details are available by calling (877) GWAA-PAR or visiting www.gwaa.org.

The Sunset Western Garden Annual suggests that people in our climate try planting several warm-weather flowers and vegetables in April, such as:

- Flowers — ageratum, calliopsis, celosia, cosmos, four o'clock, globe amaranth, gloriosa daisies, kochia, lisianthus (a beautiful flower becoming popular for dry, hot climates), marigolds, tithonia, vinca rosea and zinnias;
- Veggies — Cucumbers, melons, squash and watermel-

ons.

The theory is that the seeds won't sprout until the weather is right, so if turns cool they wait.

So far, so good.

But Sunset also recommends that we set out eggplant, pepper, sweet potato and tomato plants.

I say that, too, if you're willing to protect them for the first two or three weeks, but if you set them out and leave them completely exposed, you're on your own!

The unusually warm weather has people buying plants earlier than usual in Clovis, and they may luck out and be just

fine. But any tender plants I set out in April will get some protection until the first week of May. Mother Nature and I go back a long ways, and this time of year I don't trust her a bit.

Good advice the book offers is to give just about everything in the yard a good feeding now, if it didn't get one last month.

Spreading 2 or 3 inches of mulch may be a little late to keep down weeds, with the rain we've had, but you'll still benefit from it all summer because of the moisture it will conserve.

Questions and comments can be sent to Garden Writer, Route 2, Box 880, Muleshoe, Texas 79347.

NOTICE!!

The Journal publishes Obituaries, Engagements, Weddings, Showers, Births, 50 plus Wedding Anniversaries and First Birthdays FREE OF CHARGE as a courtesy to our readers.

Drop by the Journal office at 304 W. 2nd to pick up a form and drop off your pictures. Or call 272-4536 to find out more about this service. All materials will be returned upon request.

We're striving to be your local news source!

Is the mortgage lender paying escrow bills?

SPECIAL TO THE JOURNAL

What could be worse than getting a delinquency notice on homeowner's insurance or a property tax bill?

The mortgage lender may be the one who missed the payment, but the property owner is the one stuck with late fees — or even worse, a cancelled insurance policy.

"Most lenders reliably pay the hazard insurance and tax bills on time, but sometimes the system breaks down and a lender fails to follow through," said Richard Roll, president of American Homeowners Association.

"Homeowners need to monitor the payments, especially when their mortgage loan is transferred to a new loan servicer," he added. More information is available by visiting www.ahahome.com

On most home mortgage loans, the lender collects an additional sum as part of the monthly mortgage payment to cover hazard insurance and property taxes. That money goes into an escrow account.

In theory, the lender collects just enough to cover those items on an annual basis, and then pays the tax or insurance bills when they're due.

Unfortunately, what works in theory doesn't always work in the real world: Sometimes the lender's system breaks down.

Perhaps the property owner will find out the hard way, when a local tax authority assesses a late fee. A worse scenario is when the insurance premium doesn't get paid and the homeowner's policy gets canceled.

Certain warning signs should tip you to potential lapses by your lender. First of all, don't ignore the most obvious signal — a delinquency notice. When it arrives, contact the lender immediately and demand payment.

Be especially vigilant if a home loan is transferred to a different mortgage loan company. By law, property owner should get a notice when the transfer happens. That's when to begin watching like a hawk.

The old lender has to send payment information to the new lender, including the name and address of the insurance company or local tax collector. If inaccurate information is sent, or if none is sent, the new lender could miss payments.

In these cases, it can be a good idea to contact the insurance company and make sure the premium gets paid, well before the due date. Federal law requires the lender to send an annual statement revealing ongoing balances in the escrow account and when the bills were paid. Check those payment dates against the due dates in your insurance policy or tax bill.

Local Dialogue on Poverty is scheduled in Levelland

South Plains Community Action Association, which serves the Muleshoe area, will sponsor a local Dialogue on Poverty at 1 p.m. April 11 at the Housing and Community Service Building in Levelland.

The local forum is part of the nationwide Dialogue on Poverty 2000: Leading America to Community Action, sponsored by the National Association of Community Action Agencies.

The intention is to involve low- and middle-income Americans in finding local solutions through an ongoing discussion about poverty.

The long-term goal is to determine ways to help alleviate

poverty locally and to educate public officials, the private sector and the general public about current poverty-related problems.

"Too often the voices of low- and middle-income people simply are ignored in the decision-making processes that directly and significantly affect their lives," said Bill Powell, executive director of the South Plains agency.

A state-level meeting is scheduled for May at the state capitol, and the results of all the meetings will be compiled for presentation at a national conference in San Antonio in September.

Area Business Directory

A Store Full of **New** **SPRING** Arrivals
Just Back from Market
STERLING SILVER JEWELRY
Fall & Winter Merchandise
LAST CHANCE SALE
60-75% Off
Sheree's Attic and **MERLE NORMAN COSMETIC STUDIOS**
1519 W. American Blvd. • 272-3459

April Specials

Lg. BBQ Sandwich	\$1.50
Sm. BBQ Sandwich99¢
(3) Tacos	\$1.99
Chicken Fried Steak & Drink with salad, toast & gravy	\$4.99
Hungr Buster Combo 2 for \$5.00	Dairy Queen
BLIZZARDS - Yukon Cruncher, Georgia Mud Fudge or Whoppin' Wild ...	\$1.29

DAIRY QUEEN
1201 W. American Blvd. • Locally Owned

This Week's Featured Business...

4.9% FINANCING.
MAKES THEM GO FASTER.

4.9% FINANCING FOR 12 MONTHS.*

	LX255 Lawn Tractor • 15 hp • 42-inch Convertible mower deck • Automatic transmission Now \$3,299* SAVE \$200
	LX155 Lawn Tractor • 15 hp • 38-inch mower deck • Automatic transmission \$2,499*
	LX133 Lawn Tractor • 13 hp • 38-inch mower deck • 5-speed shift-on-the-go transmission \$1,999*

Looking to add a little speed to your yardwork? Don't miss Deere Season 2000, because now through July 5 we're offering 4.9% financing on several John Deere Lawn Tractors and Lawn and Garden Tractors. So head to your participating John Deere dealer and see for yourself...quickly.

Dent & Co.
2800 W. American Blvd. • 272-4296

*Offer ends July 5, 2000 and is subject to approved credit on John Deere Financing Plan. Some restrictions apply, so see your dealer for complete details and other financing options. Savings advertised are off list price.

UNIQUE LEADED GLASS DECOR
Creations made in Leander, TX

"Live and let live, love and let love, flower and fade, and follow the natural curve, which flows on, pointless."
-D.H. Lawrence

Muleshoe Art Loft
1529 W. American Blvd. • 272-3485

	LX133 Lawn Tractor • 13 hp • 38-inch mower deck • 5-speed shift-on-the-go transmission Just \$1,999*
	JA60 Walk-Behind Mower • 6 hp • 21-inch aluminum deck Now \$429* \$70 OFF

Home Service Kit for Tractors
It includes oil, air, and fuel filters; foam pre-cleaner; spark plugs; and two quarts of oil.

During Deere Season 2000, you can take home the Deere of your dreams and leave no money down. Just visit your John Deere dealer before July 5, 2000, for details.

Dent & Co.
2800 W. American Blvd. • 272-4296

*Offer ends July 5, 2000 and is subject to approved credit on John Deere Financing Plan, for noncommercial use only. Available from participating dealers. Taxes, freight, setup, and delivery not included. Savings advertised are off list price.

"Give me a place to stand, and I will move the earth." - Archimedes

GREEN MAKER
ferti-lome SLOW RELEASE LAWN FERTILIZER

• DECORATIVE • ELEGANT **METAL ART PLANTERS**

BULK GARDEN SEED BACCTO POTTING SOIL

Kristy's Plants
•710 E. American Blvd. Muleshoe, TX 272-5536

YOU'RE CAREFUL BEHIND THE WHEEL,
ARE YOU AS CAREFUL CHOOSING YOUR CAR INSURANCE?

Like a good neighbor, State Farm is there.[®]
Don't trust just anyone to insure your car, see State Farm Agent:

Mark Morton
101 S. Main St. • Muleshoe
272-7519 or 1-800-867-9178

State Farm Mutual Automobile Insurance Company (not in NJ), State Farm Indemnity Company (NJ) • Home Office, Bloomington, Illinois



Journal photo: Beatrice Morin

Winners at science fair

Victors at the March 24 South Plains Regional Science Fair in Lubbock included these seven fifth-graders from Mary DeShazo Elementary School in Muleshoe. They are (from left, back row) Cade Smith, Kate Lepard, T.J. Brantley and Timothy Conner; (from left, front row) Calli Hancock, Madison

Myers and Brittini Carter. Smith, Hancock and Lepard received second places; Myers, Brantley, Carter and Conner received first-place ribbons and medals. Conner also received a second-place trophy overall in the biological division. There were about 300 entries in the science fair.

ENMU Symphony schedules spring concert

PORTALES — Music is in the air on the Eastern New Mexico University campus as the ENMU Symphony Orchestra rehearses for its spring concert, scheduled for 7 p.m. (Mountain time) April 15.

The concert, sponsored by the University Symphony League, will be held in the School of Music's Buchanan Hall. A reception will follow the concert.

Tickets are \$4 for general admission and \$1 for students. Seating is limited to 230.

All proceeds will benefit the University Symphony League Scholarship Fund.

Tickets are available at the ENMU School of Music, Portales National Bank (109 E. Second St.) and McDaniel's Furniture (1020 N. Main St., Clovis).

The University Symphony is comprised of ENMU students, members of the Portales, Clovis, and Cannon Air Force Base communities, and guest artists from the region.

The program will feature works by Vivaldi (soloists Robert Vastano of ENMU and Gary Mortenson of Kansas State University); Mozart (vocal soloist Cristina Grieco, winner of Eastern's concerto/aria competition); Brahms and Tchaikovsky.

Nancye Gressett of Clovis is president of the league, whose goals include promoting the orchestra's concerts and encouraging greater attendance; encouraging the participation of more public school children in the School of Music's preparatory program; increasing the league's Endowment for Strings; providing financial support for orchestra scholarships for solo and/or support personnel; and for outreach activities involving the orchestra.

More information about the league is available by contacting Gressett at (505) 762-0619.

Mules bow to Shallowater Mustangs

By KEVIN WILSON
Editor

Four second-inning errors plus strong Mustang pitching resulted in an 8-1 Shallowater victory over the Muleshoe Mules on Monday afternoon.

In a game postponed from Friday because of rain, Shallowater's Beck pitched a complete game, allowing one run on five hits. Beck also struck out six Mules in his seven innings of work.

(A call on Tuesday to Shallowater schools asking for first names of the baseball players was transferred to the high school principal's office because no one was in the athletic office. A spokesman for the principal's office said, "I don't know how this call got transferred to me, but I'm not going to take it right now.... Why don't you call us back at another time?")

The loss to Shallowater puts Muleshoe back under .500 for the season at 7-8 and puts a dent in the Mules' district record, which stood at 2-1 going into Tuesday's game at Friona.

DeLeón singled on starting pitcher James Barrett in the second inning for the Mustangs' first hit. Barrett had pitched a 1-2-3 in the first inning, picking up two strikeouts.

Next for Shallowater, Bewley came up and hit a 1-0 pitch up the middle. DeLeón advanced to third, though Bewley was tagged out at second. He later scored on a failed pickoff attempt.

After the run, designated hitter Dave Janssen walked on five pitches.

Shallowater's DeLeon then hit a 1-0 pitch past the Mule infield. The ball also escaped both Danny Ramirez and T-Bird Cox. Janssen scored the second unearned run for the Mustangs and DeLeon advanced

to third.

A poorly fielded pitch allowed DeLeon to score later for a 3-0 lead. Shallowater added one more run with an RBI single from D Hudson.

In the second inning, the Mules allowed four runs on five hits with four errors. Only one of the runs was earned.

With a 4-0 lead, Beck continued to pitch strong. Cameron Nix singled to open the inning, but Beck struck out Cox and Clint Black grounded into a double play to end the second.

The Mustangs added more insurance in the third, with DeLeon scoring on a single from Bewley. Bewley then made the score 6-0 on a single from Janssen.

D.J. Dominguez then replaced Barrett, who had allowed six runs (only three earned) on eight hits.

Muleshoe got on the scoreboard in the bottom of the third when Ricky Rudd singled to score Julio Soto, who tripled earlier in the inning. However, a strikeout and a double play ended the Mule threat as quickly

as it had started.

Both teams could do nothing with the fourth inning, but Shallowater sealed the victory in the fifth. Kerr hit a two-run homer off Dominguez, scoring Janssen for an 8-1 lead. Muleshoe threatened in the seventh inning with a single by Cox and a walk by Black. But Beck ended the threat and the game by striking out Chris Barrera on four pitches.

Look for our new
CHILDREN'S NOOK
EASTER DRESSES
Little Girl Sizes 2, 4 & 6
Antiques & Fine Things
2104 W. American Blvd. • 272-4217

Extra, Extra Photo Savings!

FREE 2nd Set! Don't Forget to buy Kodak Film!

3" ALCO Advantage Prints
OR
4" or 5" Kodak Prints
PREMIUM PROCESSING

Every Tuesday & Saturday!

ALCO Advantage

Daily: 9 A.M. to 8 P.M.
Sunday: Noon to 6 P.M.
1401 W. American Blvd. • Muleshoe, TX 79347

Offer available on 3" Alco Advantage Processing or 4" or 5" Kodak Premium Processing prints. 3" prints from 110, 126, disc and 35mm film. 4" or 5" prints from 35mm film only, C-41 Process only. Not available on Advanced Photo System—Advantix, Panoramic or 1/2 frame 135 film. Cannot be combined with any other offer.

LETTERS TO THE EDITOR

Helpful teens

Dear Editor,

I would like to take the opportunity on behalf of the BCMA Food Pantry to thank publicly the two young ladies who helped me recently as I was shopping for supplies for our mission.

I had amassed three baskets of goods and was checking out when they offered to help me sack, load and move the materials to my car.

Neither of these young ladies knew me, which makes it even more special... they just saw someone needing a helping hand and responded in kind.

We can be proud of Lily Ruiz and Carmen González for helping fulfill a need where it was seen.

I commend their parents for the lessons in manners and servanthood that they have taught these young ladies.

To say I was impressed is an understatement; to say I appreciated the help doesn't seem adequate.

I look forward to the coming years as I watch these two young ladies mature. I know they will be actively involved in serving and filling the gap where it is needed.

May we all be models for young people to emulate, but just as important, let's take a lesson or two from those who are already practicing the role of "helping their neighbor."

We are fortunate to have Lily and Carmen in our community. I hope you will take the opportunity to say thanks to them when you see them.

KAY GRAVES
Volunteer coordinator,

BCMA Food Pantry Thanks from Earth

Dear Editor,

The Earth Fire Department recently repaired and upgraded the public warning sirens in the city of Earth.

A new siren was installed in the southeast part of town, and at the school grounds, and all will be tested on the second and fourth Mondays of each month (except during bad weather).

We would like to thank some local companies and people for their support and help with the repairs and upgrades to the warning system.

Five Area Telephone Cooperative and the companies associated with it contributed by installing new relays at each siren.

Southwestern Public Service removed and disconnected the old equipment and helped find a location for the new siren.

To make all the necessary updates and repairs, an overhead bucket truck was needed. To rent one would have cost about \$45 an hour, but Steve Edwards agreed to loan us his truck. We used it a total of 12 hours, so his loan saved the fire department a lot of money.

Again, the Earth Fire Department would like to thank these companies and individuals for their quick response in getting the warning sirens repaired and updated.

We got a late start on the repairs, but with this help, the project was completed before the severe-weather season started.

MITCH LOWE
Chief
Earth Fire Department

A variety of homestead exemptions could lower your property taxes!

A homestead exemption lowers the property taxes on your home by lowering its taxable value. If your home is valued at \$50,000 and you receive a \$15,000 homestead exemption, your home will be taxed as if it were worth \$35,000.

Who qualifies for an exemption?

Anyone who owned a home on January 1 (and used it as a primary residence on that date) is entitled to a \$15,000 homestead exemption to lower school taxes this year...and it doesn't matter if your home is a house, condominium or mobile home. (Counties, cities and special taxing districts may also offer homestead exemptions.)

Are other exemptions available?

If you're disabled—or if you're 65 years old or older—you are entitled to an additional \$10,000 school tax exemption on your home. And if you qualify for the over-65 exemption, you're also entitled to a permanent, locked-in "ceiling" on the school property taxes on your home. (The ceiling does not apply to county or city property taxes, and those entities may offer other exemptions.) The over-65 homeowner's exemptions and school tax ceiling transfers to the surviving spouse, if the spouse is 55 years of age or older at the time of death and lives in and owns the home. Over-65 homeowners also may transfer the percentage of school tax paid, based on their former home's over-65 school tax ceiling, to a new home.

Do I have to apply each year?

No. If you had a homestead exemption on your home in 1999, you won't need to reapply for 2000 unless your chief appraiser requires it. However, if you haven't received an exemption on your present home—or if you've moved to a new home—you'll need to file for an exemption for 2000. If you are 65 this year, you may file for the over-65 exemption up to one year after the date you turned 65. And if you became disabled during 1999, you need to file for the disabled person's exemption.

When and where should I file?

File applications by May 1 at your appraisal district office. If you need more time, contact us at:
BAILEY CENTRAL APPRAISAL DISTRICT
302 Main Street • Muleshoe, Texas 79347 • (806) 272-5501
For more information, stop in or call for a free copy of

"Texas Property Taxes: Taxpayers' Rights, Remedies & Responsibilities"

Or contact:

Comptroller's Property Tax Division
P.O. Box 13528
Austin, TX 78711-3528

Let Our Classified Section Work For You!
Talk with Bea about placing an ad today! 272-4536

NOTICE OF PROPOSED INCREASE IN ENVIRONS GAS RATES AND SERVICE CHARGES

On March 8, 2000 Energas Company filed a statement of intent with the Railroad Commission of Texas to increase its gas rates in the unincorporated areas ("Environs") surrounding the sixty-seven West Texas Cities listed below. The proposed increase would affect all classes of environs tariff customers including Residential, Commercial, Public Authority, Small Industrial and Air Conditioning customers and would be identical in relative magnitude to those proposed by the Company for the sixty-seven West Texas cities in the Company's pending Appeal at the Railroad Commission. The proposed effective date for the increase is April 27, 2000. The Railroad Commission may delay the proposed effective date for up to 150 days. However, the environs rates will not be changed until the rates inside the sixty-seven West Texas Cities are changed. There are approximately 22,275 Environs customers in the unincorporated areas surrounding the sixty-seven West Texas Cities from which the Company has appealed to the Railroad Commission. The proposed changes in environs rates are expected to increase the Company's annual revenues by approximately \$1.0 million or 8.5%, adjusted for normal weather. The change is a "major change" under state law only in the environs of Lubbock and Odessa.

Energas proposes to restructure its gas rates to moderate bill variability during the heating season, to increase its revenues from gas service by increasing the customer charges and lower pricing blocks, and to increase its charges for miscellaneous services such as reconnecting gas services following nonpayment. The Company also proposes changes to its Gas Cost Adjustment ("GCA") Clause to collect all of the gas cost and related taxes instead of just the difference between actual gas cost and a base cost of gas in the base rates. Copies of the proposal may be obtained at the Energas Office at 5110 80th, Lubbock, Texas, 79424.

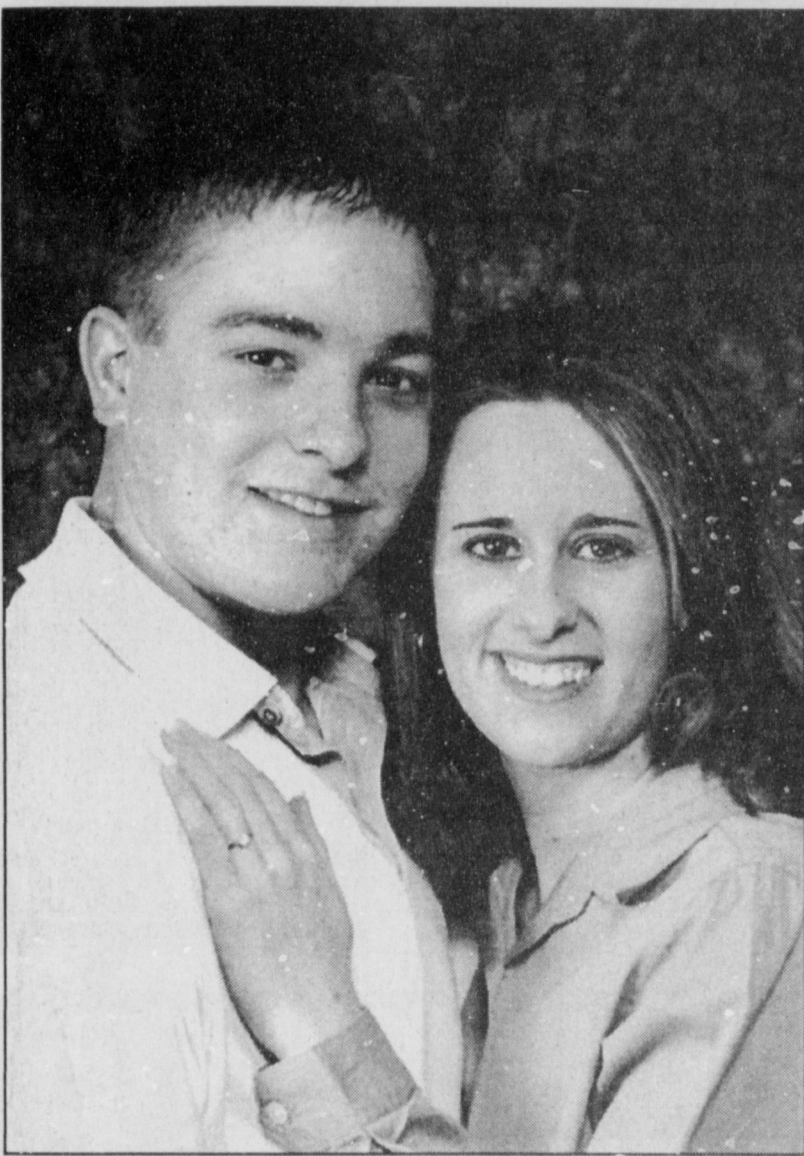
Customers who are affected by the proposed environs rate changes may, within 30 days following the proposed effective date, file written comments or a protest with:

Docket Services Section
Legal Division (Re: Docket No. 9002-9068)
Railroad Commission of Texas
P.O. Box 12967
Austin Texas 78711-2967

Any such protest must be received by the Commission no later than May 27, 2000. The deadline to file a petition to intervene in the case as a party is May 27, 2000.

Abernathy	Lamesa	Quitaque
Amherst	Levelland	Ralls
Anton	Littlefield	Ransom Canyon
Big Spring	Lockney	Ropesville
Elovina	Lorenzo	Seagraves
Brownfield	Los Ybanez	Seminole
Buffalo Springs Lake	Lubbock*	Shallowater
Canyon	Meadow	Silverton
Coahoma	Midland	Slaton
Crosbyton	Muleshoe	Smyer
Dimmitt	Nazareth	Springlake
Earth	New Deal	Stanton
Edmondson	New Home	Sudan
Floydada	Odessa*	Tahoka
Forsan	O'Donnell	Timbercreek Canyon
Friona	Olton	Tulla
Hale Center	Opdyke West	Turkey
Happy	Pallsades	Vega
Hart	Pampa	Wellman
Hereford	Panhandle	Wilson
Idalou	Petersburg	Wolfforth
Kress	Plainview	
Lake Tanglewood	Post	

ENGAGEMENT



Wall - Noble

Sally and Donnie Wall of Amarillo and Iva and Brian Noble of Muleshoe announce the engagement of their children, Amber Wall and Nathan Noble, both of Amarillo.

The wedding is scheduled for 2:30 p.m. July 29 at Comanche Trail Church of Christ in Amarillo, with the reception following.

The bride-elect graduated from Amarillo Caprock High School and is attending Amarillo College. She is employed by United Supermarkets as an office assistant.

The prospective groom graduated from Muleshoe High School and received a certificate in airframe and power plant at Amarillo Technical Center and Amarillo College. He is a mechanical assembler at Bell Helicopter Textron.

Kitchen tips can assist in healthy eating

SPECIAL TO THE JOURNAL
HOUSTON — Simply re-thinking how you shop and store groceries could help your family eat healthier, say nutritionists with Baylor College of Medicine in Houston.

"Expecting busy family members to stop and peel a carrot or remember apples stashed in the crisper is unrealistic," said Becky Gorham, a research dietitian with Baylor's USDA/ARS Children's Nutrition Research Center. "The snacks that are usually eaten are quick, easy to find and easy to eat."

To help improve your family's diet, Gorham offers these "kitchen makeover" tips:

- Easy does it: Bulk purchases might cost less per pound, but individual portions are more attractive to the "eat-it-now" crowd.

Stock the refrigerator with "grab-and-go" plastic pint bottles of flavored low-fat milk and water, boxes of 100 percent calcium-fortified juice, easy-to-eat "tubes" of yogurt, cubed cheese, low-fat string cheese and snack bags of mini-carrots.

Pack pantry shelves with mini boxes of raisins. Re-portion packages of whole-wheat crackers and trail mix into easy-to-grab snack bags.

For faster, healthier family meals, stock no-fuss "salad in a bag" salads, individually frozen poultry pieces and plenty of canned and frozen vegetables. Also, consider grilling extra chicken to slice and freeze for quick chicken quesadillas, barbecued chicken sandwiches or to add to soup.

- Create attention-grabbing snacks: Place a bowl of tempting easy-to-eat fresh fruit on the kitchen counter. Snip washed grapes into snack-size portions. Keep pre-cut fruits, ready-to-eat vegetables and a small bowl of low-fat dip on the most visible shelf in the refrigerator.

- Make small healthy changes: Switch to 100 percent fruit juice, 100 percent whole-grain bread and ready-to-eat cereals, soft or liquid margarine, and low-fat milk and dairy products.

Add nuts, seeds or fruit to salads.

- Select more fish, poultry and leaner cuts of meat. Incorporate

vegetarian entrees, stir-fries or other dishes that feature vegetables and grains into your menu planning.

- Downsize treats: Super-size bags of snack foods are no nutritional bargain. Help the family practice restraint by downsizing the packages that come into the house. Also consider limiting the variety of snack food to reduce temptation.

- Consider advertising: Post "ads" on the front of the refrigerator and inside the pantry door to let the family know what healthy foods are in the house. Don't be afraid to be flashy and creative. The kids might even be

enticed to help design signs and "promotions."

- Try a marketing campaign: Place a chart on the front of the refrigerator and encourage family members to track their progress toward eating two servings of fruit, three servings of vegetables, at least one serving of whole grains and three or more servings of dairy foods or other high-calcium food each day.

"For many families, healthier eating starts when the healthy choice is the most obvious, convenient and tempting one," Gorham said.

'CREATIVE LIVING'

Information on cookies and swing sleeves will be featured on "Creative Living" April 11 at 1 p.m. and April 15 at 3 p.m. (All times are Central.)

"Creative Living" airs on public broadcasting station KENW-TV from Eastern New Mexico University in Portales.

Donna Reynolds of Cary, N.C., a product specialist with KitchenAid in Benton Harbor, MI, will share some making, baking, and storing tips for a variety of cookies and talk about the best way to package and ship cookies.

Clotilde, a sewing expert and author from Fort Lauderdale, Fla., will explain several things about sleeves and show how to reduce sleeve cap ease.

Making chicken fajitas and free-motion quilting will be featured on April 11 at 10:30 p.m.

and April 13 at 1 p.m.

Jane Butel will demonstrate the speed, beauty and ease of making fajitas. She'll also share serving tips and ideas for garnishing this Southwestern dish that's become popular all across the country. Butel owns Jane Butel's Southwestern Cooking School in Albuquerque.

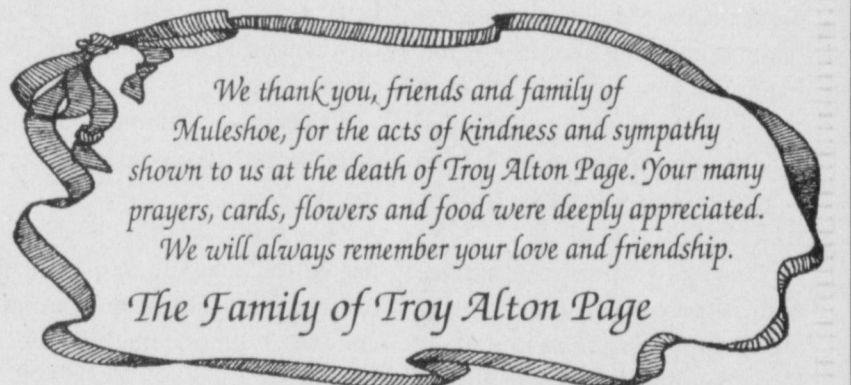
Donna Major, owner of Major Attractions in Clovis, will demonstrate free-motion quilting, or what is referred to as

heirloom machine quilting.

"Creative Living" is produced and hosted by Sheryl Borden of Portales.

Viewers can request copies of materials offered on the show by sending a first-class stamp for each handout requested.

Send stamps, along with name, address and booklets requested, to "Creative Living" Requests, c/o KENW-TV, 52 Broadcast Center, Portales 88130.



ALLSUP'S

Store #34
 312 W. AMERICAN BLVD.
 Muleshoe, TX
 (806) 272-4862

ALLWAYS
 LOW PRICES!

ALL VARIETIES
DR PEPPER

6 PACK OR 3 LTR. BTL. **\$1.59**

12 PACK **\$3.49**

ALL VARIETIES TOM'S
TORTILLA CHIPS

REG. 99¢ **79¢**

ALLSUP'S
WHEAT BREAD

1-1/2 LB. LOAF

2 FOR \$1.29
 OR 79¢ EA.

SHURFINE CORN, GREEN BEANS,
 SWEET PEAS OR PORK & BEANS
VEGETABLES

MIX & MATCH

3 FOR \$1

BLUE BUNNY VANILLA
CHAMP CONES

EA. **59¢**

18 CT. LGE/24 CT. MED
CUDDLES DIAPERS

REG. \$4.99 **\$3.99**

LANA'S
EGG ROLLS

2 FOR \$1

NEW ITEM! BAR-S
HOT LINKS

2 FOR 99¢

PRICES EFFECTIVE APRIL 2 - 15, 2000 WHILE SUPPLIES LAST

Texans identify world hot-spot priorities

SPECIAL TO THE JOURNAL

The former Soviet Union and Europe should remain the primary focus of America's foreign policy, according to those readers who replied to my annual questionnaires this past December and January.

The question I asked you was, "The U.S. is the world's last remaining superpower. We are capable of deploying troops to almost every crisis in the world. But if we are careful, we could overextend our troops and weaken our ability to respond to the big crises that demand a superpower's attention."

"Please rank the importance of the following regions, with 10 being the most important and 1 being the least important region:

- **Europe** — Our 50-year involvement in the North Atlantic Treaty Organization and our historic ties to Western Europe.

- **Asia** — Our long-standing treaties with allies Japan and South Korea, our special commitment to Taiwan and the rise of a more powerful China.

- **Russia** — Helping Russia's transition from communism to democracy and a free market and trying to contain the proliferation of its nuclear arsenal.

- **Latin America** — Anti-drug assistance to Mexico and Colombia and ensuring security of the Panama Canal.

- **Middle East** — Our long-time commitment to Arab-Israeli peace and our protection of Persian Gulf oil supplies.

Your answers were definitive, with 34 percent of you identifying Russia as your most important foreign policy concern, followed by Europe, 19 percent; Asia, 17 percent; Latin America, 16 percent; and the Middle East, 14 percent.

Here are some of your com-



U.S. SENATOR
KAY BAILEY HUTCHISON

ments:

- **From Bryan** — "We have to keep an eye on Russia but work to make sure it becomes a firm member of Europe, not an enemy."

- **McKinney** — "The jury is still out on whether Russia is truly stable, and if China is willing to stay inside its own borders."

- **Wadsworth** — "I am concerned that Russia has become more sympathetic to China and the Middle East countries that opposed us."

- **Angleton** — "The stability of Russia ought to be a top concern."

- **Greenville** — "This is a no-brainer. China is building up its military, shooting rockets at Japan, and Russia still has nuclear missiles. Until this changes, it is our major challenge."

- **Austin** — "Whatever we do, we have to cooperate with Western Europe. For all our differences, their values are the closest to ours."

- **Perrin** — "China is far and away the most dangerous and daring."

- **Corpus Christi** — "Our trading with China and letting them into the White House was wrong, and we will eventually pay a price."

- **Childress** — "We should pay less attention to the Middle East, and concentrate on developing our own oil supply."

- **San Antonio** — "I'm still

worried about Iraq. I don't think we've heard the last from Saddam Hussein."

- **Yorktown** — "We need to build our relationships with Europe, England and Japan, but on an equal partnership basis with them."

- **Kerrville** — "My main worry is small-time dictators with long-range nuclear weapons."

A significant number of you also raised concerns about the Chinese government's activities in the Panama Canal zone. We must watch that situation very closely and be ready to respond

HOSPITAL NEWS

Muleshoe Area Medical Center reported the following patient load:

March 23 — Max Crim, Arthur Gast, Adolf H. Haseloff, Jason R. Sexton, Oneita Wagnon, Wanda Griffin, W.G. Sanderson.

March 24 — Carl Ellington, Adolf H. Haseloff, Bonnie Marlow, W.G. Sanderson, Jason R. Sexton.

March 27 — Carl Ellington, Lindsey Field.

March 28 — Lindsey Field, Mary F. Holt, Jesús López.

March 29 — Lindsey Field, Mary F. Holt, Jesús López.

March 30 — Mahala Logsdon, Jesús López.

— with military force if necessary — to make sure the world knows that it is a vital security interest of the United States that the Panama Canal remain open to the world's shipping.

Your responses show that Texans understand our superpower commitment to maintain stability in many important spots on the globe.

My priority in the Senate has been to focus our foreign policy and defense resources on those areas where our direct involvement is critical — in Asia, where the Chinese must understand our resolve; in NATO, our strongest defense alliance; in Russia to establish relations and prevent nuclear proliferation; to be a stabilizing force in the Mideast; and to try to establish trade within our hemisphere.

BIRTHS

BREONNA GRISWOLD

Rebecca and Danny Griswold announce the birth of a daughter, Breonna Lynn Griswold, at 5:55 a.m. March 3.

She weighed 5 pounds, 8 ounces and was 18 inches long.

Grandparents are Mike and Dorena Proudfoot, Judy and Donald Griswold and Ross Feagley, all of Muleshoe.

ELIZABETH FISHER

Jarrod and Jennifer Fisher announce the arrival of a daughter, Elizabeth Marie Fisher, born March 14 at Plains Regional Hospital in Clovis.

She weighed 6 pounds, 11 ounces and was 20 inches long.

Gr. iparents are Kearney and Jackie Scoggin of Muleshoe and Kenny and Connie Fisher of Sudan.

PUBLIC RECORD

MULESHOE POLICE

March 15
Freddy Coleman, 21, warrant for no driver's license, no insurance and no registration.

March 18
Nydia Valenzuela, 33, driving while license suspended.

March 19
Orlando Arredondo, 22, public intoxication.
Rudolph Nuñez, 26, assault — family violence.

Adam Camillo Villa, 28, assault — family violence.
Leroy Flores, 21, assault.
Borjas Gonzales, 22, DWI.

March 20
Donald Lee Lowater, 28, public intoxication.

March 21
Christopher Charles Walker, 24, injury to an elder.
Joshua John Robert Long, 17, unlawful carrying of a weapon and no driver's license.

March 24
Ralph Tarango, 22, public intoxication.
Rosendo Pérez, 25, public intoxication.

March 25
Raymond Ortega Armendaris, 23, public intoxication.

March 25
Bobby Dean Fried, 56, disorderly conduct (discharge of a firearm) and possession of marijuana under 2 ounces.

March 27
David López Navejar, 32, possession of marijuana.

March 31
Dennis Ray Howard, 18, warrant for no driver's license.

April 1
Maria DeLaLuz Jasso, 60,

selling alcoholic beverages in a dry county.

April 2
Enrique Rodríguez Castillo, 56, no driver's license, no insurance, immigration hold.

Onario Castillo, 32, public intoxication.

SHERIFF'S OFFICE

March 21
Michael Ray Rodríguez, 39, DWI — sentencing.

March 22
Larry D. Richardson, 43, Bailey County warrant — bond forfeiture.

March 24
Epimanio Arzola Holguín, 25, Bailey County warrant — theft by check.

STATE POLICE

March 19
Jacob Thiessen Peters, 25, driving while license suspended.

March 21
Theodore Benson Lewis, 21, Travis County warrant for possession of a controlled substance.

March 25
Margarita Garza, 36, traffic warrant from Lubbock County.

March 26
Robert Tafoya, 35, public intoxication.

Katherine A. Cole, 38, DWI and possession of a controlled substance.

March 28
Raul Gonzales Jr., 31, possession of a controlled substance with intent to deliver.

April 2
Lucio Ortiz, 27, public intoxication.

Ernesto Salazar, 25, DWI.

KENW-TV

Public Television

The American President

The American President is the first documentary series ever to profile all 41 of America's chief executives. The 10-hour series tells the nation's story from the perspective of the highest office in the land and features exclusive interviews with President Clinton and all the living former presidents except the ailing Ronald Reagan. Each of the series' one-hour programs presents the stories of several presidents, linked by a common theme. The two-episode premiere, "A Matter of Destiny," opens with "Family Ties" which addresses American political dynasties and concentrates on John Quincy Adams, Benjamin Harrison, Franklin D. Roosevelt, and John F. Kennedy. The second part, "Happenstance," highlights Tyler, Fillmore, Andrew Johnson, Arthur, and Truman, vice presidents who assumed the office upon the death of the president.

The second evening, "Politics and the Presidency," begins with "An Independent Cast of Mind" which focuses on America's occasional proclivity to elect a president who claims to be independent of partisan politics. As the program suggests through recounting the stories of John Adams, Taylor, Hayes, and Carter, independence doesn't always lead to effectiveness. "The Professional Politician" examines the relationship between the skills required for success in politics and the skills required by a successful president. The episode highlights Van Buren, Buchanan, Lincoln, and Lyndon Johnson.

"Executive Vision" opens with "The American Way," featuring presidents who advocated limiting the powers of the federal government. Though Jefferson, Coolidge, Hoover, and Reagan may have understood the special character of America in different ways, each was guided by a belief that there is a distinctly American way of doing things. "The World Stage" highlights Monroe, McKinley, Wilson, and Bush, four men engaged in the task of securing a stable world in which American interests could be asserted and defended.

The fourth evening, "The Candidate," starts with "The Heroic Posture" which examines men of military fame who became Commander-in-Chief — Washington, W.H. Harrison, Grant, and Eisenhower. In "Compromise Choices," viewers see what happens when a president is chosen less for his positive qualities than for his relative lack of negative ones. As the presidential careers of Pierce, Garfield, Harding, and Ford demonstrate, the results can be surprising.

The final evening, "An Office and Its Powers," begins with "Expanding Power," a look at the presidencies of Jackson, Cleveland, Theodore Roosevelt, and Nixon, each of whom expanded — or overstepped — the powers of the presidency. The series concludes with "The Balance of Power," exploring the rise and fall of the powers vested constitutionally in the three branches of the federal government. The episode focuses on Madison, Polk, Taft, and Clinton.

The American President will be broadcast on five consecutive evenings in two-hour blocks (2 episodes per night), Sunday through Thursday, April 9th — 13th at 9:00 p.m. Ten one-hour episodes will repeat Saturdays at 11:00 p.m. beginning April 15th.

Channel 3 Television from

Eastern New Mexico University, Portales, New Mexico

OBITUARY

FANNIE LUE STOKES

Services were held Tuesday at the First Missionary Baptist Church of Morton for former Morton resident Fannie Lue Stokes, 92, of Bronte, Texas. The Rev. Jackie Gestes and Randy Johnson officiated. Burial was in Morton Memorial Cemetery.

Ellis Funeral Homes handled arrangements.

Mrs. Stokes was born Sept. 15, 1907, at Cresson, Texas. She died April 1 at Bronte Rehabilitation Nursing Home.

She married Clayton H. Stokes in Clovis on Nov. 23, 1932. He died May 1, 1993.

She had been a resident of Blackwell, Texas, since December 1992, moving there from Morton. She lived in Cochran County for 59 years and was a member of the First Baptist Church of Morton and the Morton Senior Citizens.

She is survived by two daughters, Viola Walker of Blackwell and Jimmie Ruth Stokes of Lubbock; nine grandchildren; 15 great-grandchildren; and three great-great-grandchildren.

She was preceded in death by two sons, Johnny Delbert in 1942 and

Stetcher in 1991; a grandson, Rodney Stokes, in 1956; a great-granddaughter, Paula Kinyon, in 1982; and two great-grandsons, Wayne Cooper in 1984 and Elijah Hinkle in 1999.

Pallbearers were Rob Walker, Monte Walker, Dale Frazier, Cody Frazier, Scott Wesley and Jimmy Hargis.

The family suggests memorials to Hospice of San Angelo (36 E. Twihog Suite 11000, San Angelo 76903).

CASKETS AND MONUMENTS

"SAVE HUNDREDS OF DOLLARS!"

FREE DELIVERY to your funeral home of choice within 100 miles of Hereford.

337 N. MILES
HEREFORD, TX
363-2700

CREDIT STARTER

\$100 TO \$467

LOANS WHILE YOU WAIT
PHONE APPLICATIONS ACCEPTED

¡Se Habla Español!

Mon.-Thurs. 8:30 a.m. to 5:30 p.m.
Fri.-8:30 a.m. to 6 p.m.

Continental Credit

206 S. Main Street
Muleshoe, TX 272-3673

LOANS

¡Varias exenciones de residencia pueden rebajar sus impuestos de propiedad!

Una exención de residencia reduce sus impuestos de propiedad. Por ejemplo, si su residencia tiene un valor de \$50,000 y Ud. recibe una exención de \$15,000, sus impuestos se calcularán como si el valor de su residencia fuera \$35,000.

¿Quién califica para una exención?

Cualquier dueño de una residencia principal el día 1 de enero tiene derecho a una exención de residencia de \$15,000 este año para rebajar sus impuestos escolares... y no importa si la residencia es casa, condominio o casa móvil. (Los condados, municipios y distritos especiales de impuestos también pueden ofrecer exenciones de residencia.)

¿Hay otras exenciones?

Si Ud. es incapacitado—o si tiene 65 años o más—tiene derecho a una exención adicional de \$10,000 en sus impuestos escolares de propiedad. Y si Ud. califica para la exención para los que ya cumplieron 65 años, también tiene derecho a un "cielo máximo" permanente en sus impuestos escolares de residencia. (El cielo máximo no tiene que ver con impuestos de propiedad de los condados o municipios, y esas entidades pueden ofrecer otras exenciones.) La exención para los que ya cumplieron 65 años y el cielo máximo se pueden transferir al esposo/esposa sobreviviente si el o ella tiene 55 ó más años de edad y es dueño/dueña de la casa en donde vive. También el dueño de una casa nueva que tiene más de 65 años puede trasladar un porcentaje de cielo máximo de los impuestos escolares que le tocaron en su domicilio vieja.

¿Debo solicitarla cada año?

No. Si Ud. recibió una exención de residencia en 1999, no hay necesidad de solicitarla de nuevo en 2000—al menos que se lo pida su jefe de valoraciones. Sin embargo, si no ha recibido una exención en su residencia actual—o si ha cambiado de domicilio tendrá que solicitar una exención para 2000. Si Ud. cumplirá los 65 años durante este año, tiene hasta un año de esa fecha para solicitar una nueva exención. Y si cumplió los 65 años o resultó incapacitado en 1999, tendrá que solicitar las exenciones adicionales.

¿Donde y cuando debo solicitar mis exenciones?

Su solicitud debe llegar en su oficina local del distrito de valoraciones antes del día 1^o de mayo. Si necesita más tiempo, favor de ponerse en contacto con nosotros antes:

BAILEY CENTRAL APPRAISAL DISTRICT

302 Main Street • Muleshoe, Texas 79347 • (806) 272-5501

Si desea mas información, visítenos y obtenga una copia gratis de

"Impuestos Sobre la Propiedad en Texas: Derechos, Recursos y Responsabilidades del Contribuyente de Impuestos"

ó escriba a

Comptroller's Property Tax Division

P.O. Box 13528

Austin, TX 78711-3528

Read It First In The Journal!

April workshops to deal with pricing of cotton

SPECIAL TO THE JOURNAL LUBBOCK — Cotton producers can learn how pricing strategies affect profitability and get help in developing pricing strategies tailored to fit their own operation at two cotton marketing workshops slated in April.

"We can't control prices, but we can control how all or part of our crop is priced and when to take a price," said Dr. Jackie Smith, Texas Agricultural Extension Service agricultural economist based in Lubbock.

"Producers who know how to evaluate pricing alternatives can formulate pricing strategies that will help them maximize profit.

"These workshops will focus on evaluating price alternatives and developing pricing strategies. All pricing alternatives are directly or indirectly linked to the futures market. So, we will be closely studying the basics of futures and options."

The workshops are scheduled for April 11 in Littlefield and April 12 at the Swisher County Extension meeting room in Tullia.

Workshop speakers include Smith and Dr. Carl Anderson, a Texas A&M Extension econo-

mist and cotton marketing specialist. They will cover:

- Developing a marketing plan;
- Estimating production costs;
- Break-even prices;
- Localizing the futures market with basis;
- An introduction to options;
- Marketing alternatives;
- Developing a marketing plan;
- Current pricing strategies;
- The cotton market situation and outlook; and
- Marketing clubs.

"Each workshop will run from 9 a.m. to 4:30 p.m.," Smith said.

"Registration costs \$30 per person, payable at the door. The fee includes a noon meal and an extensive set of materials. If possible, spouses should also attend — couples can register for \$30, too, if they share a set of course materials."

Producers can register for these workshops, or get more information, by calling Smith at (806) 746-6101; Michael Clawson, Swisher County Extension agent, at (806) 995-3726; or Dirk Aaron, Lamb County Extension agent, at (806) 385-4222.



Muleshoe Cattle Market

SATURDAY, APRIL FOOLS, 2000

396 head of cattle, 63 hogs and 194 sheep and goats for a total of 653 animals were sold at the April Fools sale. Receipts lower due to rainy conditions on Friday & Saturday morning. Market fully steady on all classes of cattle with good demand.

The Muleshoe Cattle Market is brought to you each week by Muleshoe Livestock Auction, located east of Muleshoe on U.S. 84. Muleshoe Livestock conducts sales every Saturday, beginning with hogs, sheep and goats at 10 a.m. and cattle following at approximately 12 noon.

FOR INFORMATION ON SALES OR TO CONSIGN CATTLE, CALL (806) 272-4201

REPRESENTATIVE SALES

Seller, City	#	Type	Wt.	CWT or PH
Jessie Valdez, Portales, NM	2	Hol. Strs	213 lbs.	at \$104.00
Joe Garcia, Albuquerque, NM	2	Hol. Strs	360 lbs.	at \$90.00
CM Cattle, Muleshoe	3	Red Bulls	193 lbs.	at \$310.00
CM Cattle, Muleshoe		Yell. Bull	255 lbs.	at \$137.50
Raider Farms, Bovina	2	RMF Strs	410 lbs.	at \$119.00
Raider Farms, Bovina	2	RMF Strs	443 lbs.	at \$111.00
Raider Farms, Bovina	2	Blk. Strs	543 lbs.	at \$101.00
FM Farms, Brownfield	3	Blk. Bulls	450 lbs.	at \$118.00
Bob Bradley, Clovis, NM	2	Yell. Strs	448 lbs.	at \$102.00
Bob Bradley, Clovis, NM	3	Blk. Strs	660 lbs.	at \$85.00
Terry Pollard, Portales, NM		Blk. Bull	730 lbs.	at \$87.00
Tommy Lewis, Morton		Blk. Bull	725 lbs.	at \$84.00
CM Cattle, Muleshoe		Red Hfr	295 lbs.	at \$108.00
Raider Farms, Bovina	2	Red Hfrs	380 lbs.	at \$99.00
Raider Farms, Bovina	2	Mxd. Hfrs	475 lbs.	at \$91.00
Stanley Dixon, Portales, NM	2	Blk. Hfrs	625 lbs.	at \$80.00
Tom Jinks, Muleshoe	4	Mxd. Hfrs	608 lbs.	at \$84.50
Tom Jinks, Muleshoe	6	Mxd. Hfrs	683 lbs.	at \$81.00
Mike Beauchamp, Bovina		Blk. Pair		\$800.00
Mike Beauchamp, Bovina	2	Blk. Cows P7		\$610.00
D&L Livestock, Spade		Fed Pair		\$880.00
D&L Livestock, Spade	2	Char. Pairs		\$790.00
FM Farms, Brownfield		Char. Cow P8		\$670.00
FM Farms, Brownfield		Blk. Cow P7		\$540.00
D&L Livestock, Spade		Red Cow	1260 lbs.	at \$43.75
D&L Livestock, Spade		Char. Cow	1535 lbs.	at \$44.25
Mike Beauchamp, Bovina		BMF Cow	1260 lbs.	at \$42.75
KP Farms, Lubbock		Red Cow	1160 lbs.	at \$44.00
Bill Benham, Muleshoe		Blk. Cow	1180 lbs.	at \$42.25
W.S. Graham, Friona		Blk. Bull	1365 lbs.	at \$54.00
CM Cattle, Muleshoe		Limo. Bull	1700 lbs.	at \$55.00

Journal Classifieds

STOP & SHOP

Deadlines are 5 p.m. Monday and Thursday

Call 272-4536

Deadlines are 5 p.m. Monday and Thursday

HELP WANTED	HELP WANTED	SERVICES	HELP WANTED	FOR SALE	FOR SALE	FOR SALE	REAL ESTATE
<p>Now taking applications for help. Apply in person at TJ's Donuts, 328 S. Main before 2PM</p>	<p>Homeworkers Needed \$635 weekly processing mail. Easy! No experience needed. Call 1-800-440-1570 Ext 5085 24Hrs</p>	<p>COUPON \$1 Off Laura's Ironing 85¢ shirts & pants \$1.50 dresses 5 pieces or more 1 coupon per visit 324 W. Ave. K 272-6848 Bring your own starch.</p>	<p>3-Thread Overlock Serger Still in Box \$200 OBO Call 272-5209</p>	<p>1998 Ford Explorer, white - tan interior, power windows and locks. AM/FM/CD 20,000 miles asking \$22,000 Call 806-272-5209</p>	<p>Home For Sale Excellent condition updated Brick Home For Sale in Country Club edition 3-2-2, corner lot, storage shed, Geo-Thermal Heating and Cooling, Plaitation Shutters, new fence, sprinkler system. Call 806-272-5274 806-783-9307</p>	<p>House for Sale By Owner 3-2, Carport. Lg. storage & apt. bldg., brick veneer, fenced & cable hook-ups. N 214 on pavement. Call 272-5865, mornings.</p>	<p>First Texas Ag Credit Financing Rural Housing Operating & Improvements AgFASt Credit Approval Cash Percentage Program Low Stock Requirement 2% to \$3,000 Maximum Equipment Leasing 316 South Main Muleshoe, Texas 806-272-3010</p>
<p>Summer Babysitting Wanted full or part time Call Andi Black 272-5209</p>	<p>Wanted Experienced Cook Apply in person at Country Club or call 272-4250 ask for Joe Sowder</p>	<p>HELP WANTED Muleshoe Independent School District is now taking applications for bus drivers. For information, please call Richard at MISD, 272-7329</p>	<p>We do custom farming, combining & shredding For more information- (806) 272-3090 or leave a message</p>	<p>REASONABLY PRICED! La-Z-Boy couch with two recliners. Two Lane recliners -1 leather, 1 cloth, both blue. Pub table with two chairs. Microwave stand. Call 272-4819 and leave message.</p>	<p>FOR RENT - CONDO Ruidoso Condo 3 Bedroom 3 Bath Sleeps 8 Call Debbie at (505) 420-6700 or (806) 285-3053</p>	<p>HOUSE FOR SALE 3-2-2, heat pump and fireplace, located on 21 acres at Progress. Call 272-3557 or 272-5711</p>	<p>Smile!</p>
<p>RN's/LVN's Now Hiring RN's & LVN's as Charge Nurse Supervisors Different shifts available with differential on night shift. Excellent working environment and benefits. Apply in person to: Dee Hendley Director of Nursing Prairie Acres 201 E. 15th Friona, TX 79035 (806) 250-822-3922 EEOC</p>	<p>Buckner Children and Family Services of Lubbock has a full time position available for a Case-aide to provide Homemaker services to families with children at risk. Experience required, bilingual preferred. To be officed in Littlefield, please apply in person at 129 Brentwood Ave., Lubbock, Tx</p>	<p>Muleshoe Pea & Bean is now accepting applications for 2 full time positions. Apply in person at West Office. Prefer Class B CDL. 806-272-5589</p>	<p>Will do ironing for the public. Please call. 272-3140</p>	<p>5-Shelf Lawyer-style Bookcase with drop front glass \$200 OBO Call 272-5209</p>	<p>For Rent One Bedroom Apartment Refrigerator and stove furnished. Call 272-3482</p>	<p>Garth Sheet Metal * General Sheet Metal * Metal Roofs Irrigation * Motor Covers * Ornamental Iron Work 1024 W. 2nd Street Muleshoe, TX (806) 272-3337</p>	<p>Look! Wanted Welders with wire experience. Call 272-5742</p>
<p>Have A Great Day! Muleshoe ISD has an opening for a Special Programs Director Qualifications: The Director of Special Programs shall have the general qualifications of a teacher in the state. The Director of Special Programs shall hold a Bachelor of Arts degree, or higher from an accredited college or university. The Director of Special Programs shall have at least three (3) years of teaching experience and hold a valid Texas teaching certificate. The Director of Special Programs shall be ESL certified. Duties: The Director of Special Programs shall be under the general supervision of the Assistant Superintendent. Supervises the budgets, applications and coordination for services in the following areas: Compensatory Title Programs, GT, ESL, Parental Involvement, Migrant, and Staff Development. SDOE. To obtain a job description, please come by the Muleshoe ISD Administration Office at 514 West Ave. G. Please submit a letter of interest and resume by April 7, 2000 to Muleshoe Independent School District Mr. Adrian Meador 514 West Avenue G Muleshoe TX 79347</p>	<p>Employment Specialist performs on the job training for persons who secure supported employment, completes documentation accurately & promotes productive & cohesive work environment. High School diploma/GED & valid TX driver's license required. Apply: CPC, 2700 Yonkers, Plainview, 79072 or Fax resume: 806-296-5804 EOE/AEE.</p>	<p>Honeycomb welcomes Sheila Black nail technician Specializing in acrylic tips, overlays, manicures and pedicures. Introductory offer: Full set \$25 Wednesday 9AM to 3PM Thursday 12PM to 6PM Call now to start booking your appointment April 5th & 6th. 272-5209 or 272-5108</p>	<p>Will babysit in my home. Daily or weekly rates. Have references. 272-3140</p>	<p>FOR SALE BUYING? SELLING? www.iwantacar.com We can help!</p>	<p>HIGHLAND AREA • VERY NICE 2-1-1 Carport home, nicely remodeled, Cent. Heat, DW, fans, fenced yd., stor. bldg. \$29.5K!!! HL-1 • PRICE REDUCED-3-2-2 Brick, corner lot, wall furnace heat, cent. evap. air, fenced yd., stor.-workshop!! MORE!! \$49,500!! HL-4 • 3 bdrm., 2 bath Brick, Cent. heat, evap. air, approx. 1730' lv. area, stor. bldg., fenced yd. \$40K!!! HL-2</p> <p>LENAU - COUNTRY CLUB AREA • 2-1-1 Home, Cent. A&H, DW, MORE!! \$29.5K!!! L-3 • 2-1-1 Home, 2 wall furnace units, win. evap. air, fenced yd. \$22K!!! L-2 • NICE 3-2-2 Brick, Cent. Heat & Cent. Evap. air, built-ins, FP, fenced yd., stor. bldg.!!! \$40's!!! CC-1 • 3-1-1 Home, wall heat, DW, fenced yd., \$20's!! L-5 • 2-1-1 Home, Cent. A&H, new carpet, 4 fans, manual splkr, stor. bldg., fenced yd. \$28K!! L-1 • VERY NICE 3-2-1 Brick, Elec. Heat Pump, built-ins, fans, fence yd., MORE!!! \$39K!!! L-4</p> <p>COMMERCIAL • Duplex (2-2 bdrm. 1 bath units) plus 1 (2 or 3 bdrm) for residence or rental. \$30K!!! • R.V./Mobile Home Park on 2.95 acres, home, office, 3 M.H. units. LET'S LOOK TODAY!! • APPROX. 4,800' shop plus 600' office area on a 60' x 130' lot!!! PRICE REDUCE!! 40K!!! • 246' x 145' tract, Hwy. 84, \$29.5K!! • VERY NICE 51 UNIT MOTEL, Priced to sell!!! Call for details!!! • NICE 26 UNIT MOTEL, Priced to Sell!!! Call for details!!! • 56' x 140' tract, approx. 4700' bldg., \$35K!!! • GOOD INCOME PROPERTY - approx. 3490' bldg., paved parking,</p>	<p>good net lease!! PRICED TO SELL! • Established Business: Land, Bldg. & Equip., \$75K!! • Nice Building with approximately 15,450 sq. ft. of shop area plus approx. 1,044 sq. ft. office (Dual Fuel Heat Pump for Office), 6 station phone system, restrooms (1 w/shower), loading dock, approx. 195 foot frontage. MORE !!!</p> <p>HIGH SCHOOL • NICE 3-1-1 Brick, cent. heat, evap. air, DW, fans, fenced yd., workshop-storage, extra garage, MORE!! \$38K!!! HS-6 • VERY NICE 3-1-1 Brick, Heat pump, DW, nice carpets, fenced yd., MORE!!! \$30's!!! HS-1 • NICE 3-2-1 Brick, Cent. A&H, built-ins, fenced yd., stor. bldg. \$50's!! HS-2 • VERY NICE 3-1-1 Home, Cent. A&H, nice carpets, six fans, 2 stor. bldgs., fenced yd., \$30's!! HS-5 • VERY NICE 3-1-1 Brick, Cent. A&H, stove, DW, fenced yd., MORE!! \$38K!!! HS-4 • 3-2-2 Brick, Dual Fuel Heat Pump, built-ins, fans, storage bldg., fenced yd., MORE!! \$60K!!! HS-7 • NICE 3-1-1 Home, Cent. Heat & Cent. Evap. Air, built-ins, stor. bldg., fenced yd., MORE!! \$41.5K!!! HS8</p> <p>RURAL • PLEASANT VALLEY, Approx. 320 acres, 2 bdrm home, 1 bath, 2 car detached garage, on pavement!!! • VERY NICE 4 bdrm., 2 bath, Brick Home on Hwy. 70, total elec., Geo Heat Pump, built-ins, FP, loads of storage, fenced yd., auto splkr., storage bldg. & shed, 2 acre tract. MORE!!! • W. of SUDAN-NICE 3-2-2 Brick Home, 5 acre tract on Hwy. 298, Cent. Air & Heat, built-ins, large Quonset Barn, MORE!!! \$95K!!! • 5 Acre tract on pavement close to town! • Approx. 108 acres on Hwy. 70, approx. 2100' office area, 16,900' of commercial bldg. w/loading dock, 3,400' warehouse!! 2,800' runway!! • FIX UP-3-2-2 Carport Home & 2-1-1 Home on 20 acre tract, 50' x 150' shed, 54' x 80' sheet metal barn, MORE!!! \$55K!!! • EARTH - (Hite Park Add.), 3 bdrm. 2 bath!! Call for Details!!</p>	

So Smart! So Simple! So Easy!

At Lowe's... we've got

april showers of savings

See How Far Your April Savings Will Get You With Your X-tra Savings' Card



Bar S or Corn King Whole Ham

50¢
5 LB.
With 4 Reward Coupons

ASSORTED Plains Milk GALLON



10¢
With 1 Reward Coupon

Here's How It Works!

Lowe's is giving you deep discounts on many of the items you purchase everyday! For each dollar you spend at Lowe's, we will give you a point. After 50 points (or \$50), you will receive a Lowe's X-tra Savings

Reward Coupon. This coupon can then be redeemed for deep discounts on selected items.

Each month, Lowe's will select from our most popular items in the store and deeply discount them for our X-tra Savings Reward Coupon holders. Present your coupon and receive incredible savings on selected items.

X-tra Savings Reward Program

- Each Dollar You Spend Is Worth ONE (1) Point.
- After you earn 50 points, you will receive a Lowe's X-tra Savings

Reward Coupon.

- Use your Lowe's X-tra Savings Reward Coupon to get deep discounts on one of the selected items.
- Only ONE (1) item can be purchased with each Reward Coupon.
- Items will be changed monthly.

Xtra Use Your Reward Coupons... TO SAVE BIG! Xtra Savings

YOUR CHOICE
Coke or Pepsi Products
6 pack
12 oz. cans

25¢
EACH with 1 Reward Coupon

SAVE \$2 OFF
Ground Beef
with 1 Reward Coupon

Shurfine Frozen Pie Shells
9" Pie Crust Shells
REGULAR OR DEEP DISH
with 1 Reward Coupon

1¢

Cool Whip Whipped Topping
ASSORTED 8 OZ. TUB
with 1 Reward Coupon

1¢

Mrs. Smith's Pies
ASSORTED 37 OZ.
with 1 Reward Coupon

50¢

County Post Eggs
30 CT. PKG.
with 1 Reward Coupon

10¢

Lay's Potato Chips
PRE PRICED \$2.99
with 1 Reward Coupon

25¢

Betty Crocker Hamburger Helper
HAMBURGER ONLY
with 1 Reward Coupon

1¢

Shurfine 5 lb. Flour or 4 lb. Sugar
with 1 Reward Coupon

1¢

Malt-O-Meal Cereals
ASSORTED 13 TO 19 OZ. BAGGED
with 1 Reward Coupon

1¢

Russet Potatoes
10 LB. BAG
with 1 Reward Coupon

5¢

Whole Watermelon or Cantaloupe
with 1 Reward Coupon

10¢

Bounty Paper Towels
REGULAR ROLL
with 1 Reward Coupon

1¢

Field Trial Dog Food
17.6 LB. BAG
with 1 Reward Coupon

50¢

Why shop at your neighborhood Lowe's Supermarket?...

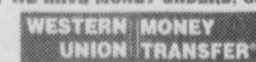
Our Prices are LOWER!

SPECIAL PRICING GOOD APRIL 5TH THRU MAY 9TH, 2000

Prices Good At Muleshoe Store Only!



WE HAVE MONEY ORDERS, CHECK CASHING AND PHONE CARDS.



The Fastest way to send money worldwide.

ACCEPTED IN SELECT LOWE'S STORES...



WE RESERVE THE RIGHT TO LIMIT QUANTITIES - NOT LIABLE FOR TYPOGRAPHICAL OR PICTORIAL ERRORS.

The X-tra Savings Reward Program Good at Lowe's Muleshoe Store Only

Offer expires May 9, 2000. Points are not transferable between the two stores. No substitutions please on X-tra Savings Reward Items. Only one item may be purchased at the special deep discount per Reward Coupon.