

PAGE ONE

A QUICK READ OF THE NEWS

Nothing fits like homemade

Dick Alexander of East Canton, Ohio, knows where he's going when he dies: right into the coffin he's fashioned for himself.

Concerned about burdening his family with a casket's cost, Alexander spent the last six months building his own.

His poplar handiwork cost \$500, much less than the usual retail price. "I had a lot of fun building it," said the 76-year-old retired carpenter.

"I did slip into it to see if it would fit," he added. "No problem."

Heir advertiser needs air

Clayton Goward had a problem: He was looking for someone who could inherit his \$375,000 estate.

Now the Pine City, Minn., man has a bigger problem: He can't get any peace and quiet.

Since the 79-year-old retired lathe operator placed an ad in the *Minneapolis Star Tribune* last month asking for advice on how to find a suitable heir, he's been besieged with 22,000 letters, postcards and packages.

He got so many phone calls — from as far away as Europe — that he had to change his number to an unpublished one.

"I sought only ideas and a solution for making my will, nothing more," Goward said. "What followed is not what I wanted. Worldwide coverage resulted, and I am now swamped. About anything that you can think of has been written."

He said most of the responses have come from women with romantic proposals or stories of hardship.



Drawing date: Saturday, July 31
Winning numbers: 10-19-42-47-48-50
Estimated jackpot: \$4 million
Winners: 0
Next drawing: Wednesday, Aug. 4
Estimated jackpot: \$7 million

On this date in history

Aug. 5 — The first trans-Atlantic cable is completed, stretching from Newfoundland to Ireland (1858).

Aug. 6 — Gertrude Ederle becomes the first American woman to swim across the English Channel (1926).

Aug. 7/8 — The order of the Purple Heart, a decoration for military service, is established by George Washington (1782).

LOCAL WEATHER

	High	Low	Pre.
Friday	100	64	—
Saturday	99	64	—
Sunday	95	65	—
Monday	80	62	—
Prec. to date	11.49		

EXTENDED FORECAST

Scattered thunderstorms are expected to continue, diminishing somewhat by Friday. Expect lows near 60 with a high Thursday of about 84 and Friday about 83. Saturday should be partly cloudy and warmer, with a high of 88 following a low of 64.

Editor Ronn Smith can be reached at 272-4536 or ctyankee@fivearea.com

Missed your paper? Call carrier Melissa Flores at 272-6719 or the Journal during business hours, 8:30 am-5 pm.

County discusses cuts to avoid raising taxes

By RONN SMITH
Editor

Bailey County commissioners are looking for ways to balance next year's budget without cutting services or raising taxes, and it won't be easy.

With a declining population a declining tax base, and lower interest being earned on county deposits than in years past, offset by infla-

tion and a mandate to provide services to the citizens, there were some serious faces at Monday's budget workshop by the commissioners' court.

One reason this year's picture is so bleak is the expectation of two local murder trials during the coming fiscal year, requiring the line item covering them to be increased from \$10,000 to \$100,000.

County Judge Marilyn Cox first outlined cuts that would be necessary to balance the budget even with a tax rate increase. Then she said the increase might be avoided by shifting money from the precincts back into the general fund for a year to see if the situation looks brighter next year.

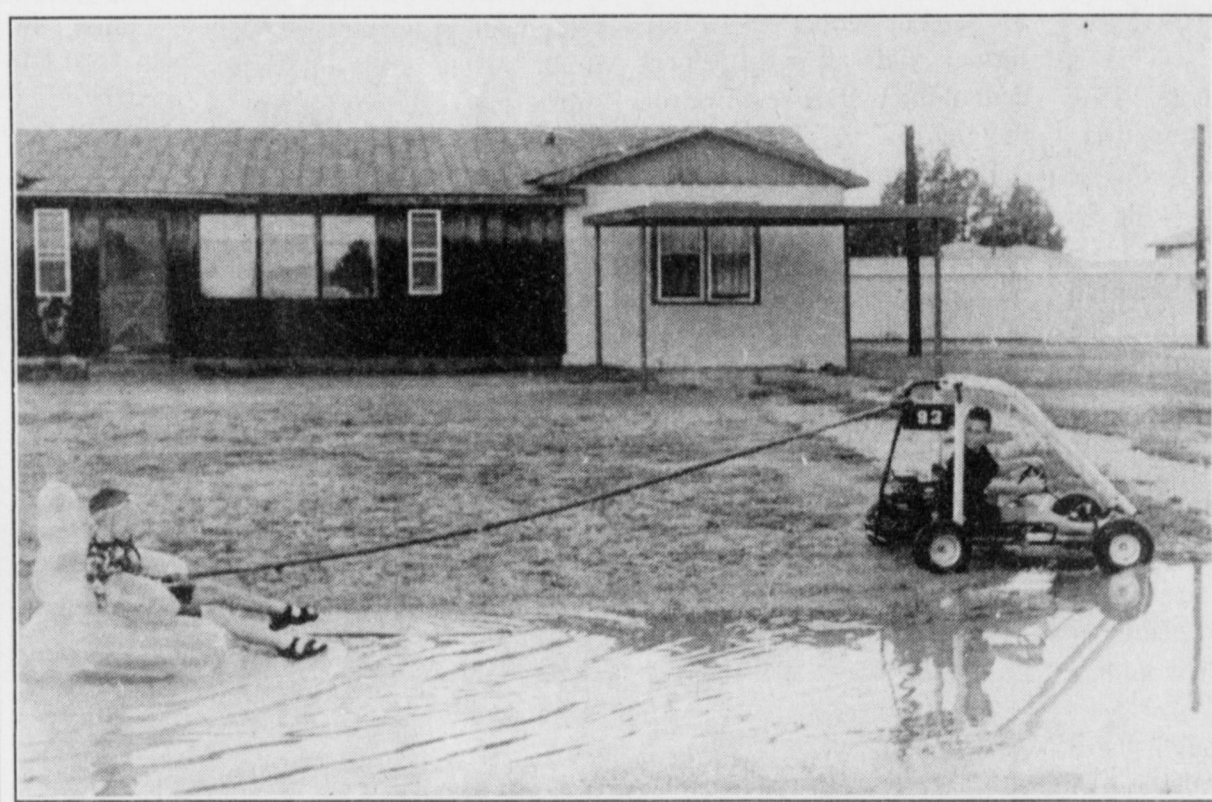
Commissioners discussed the issue at length and agreed that might

be the move to make.

The money involved — about \$28,000 per precinct — is 5 cents of the tax levy that in recent years has gone to the precincts to help get them on a more solid financial footing than they once were.

Cox told commissioners that all four precincts are in better shape

see COUNTY on page 2



Rainy-day crazies

Some people just don't know how to handle it anymore when they see more than a few drops of rain at a time. Brett Bamert uses his Go-Kart to give his friend, Ashley Dickson, a very chair-y ride Tuesday north of Muleshoe alongside Texas 214. Motorists honked and waved in the spirit of the performance after two brief downpours hit Muleshoe.

Second-generation corn borers hit fields

SPECIAL TO THE JOURNAL
LUBBOCK — South Plains farmers growing corn should scout their crop soon for evidence of Southwestern corn borer eggs, a Texas Agricultural Extension Service integrated pest management agent said.

"The second-generation Southwestern corn borer recently began laying eggs in Castro County. Even though egg counts were relatively low the week of July 19, we will likely see increasing egg numbers in the next two weeks,"

said Johnna L. Patterson, Extension IPM agent for Castro and Lamb counties. "As a result, producers should plan to scout their fields soon.

"Second-generation Southwestern corn borers usually begin laying eggs after plants have tasseled. Most of these eggs will be found on the plant's middle seven leaves — from four leaves below to two leaves above the ear leaf."

These borers often lay single eggs, but masses of two or more eggs are not uncommon.

The eggs overlap each other,

much like fish scales or roof shingles. Freshly-laid eggs are creamy white in color, while day-old and older eggs sport three red-colored bands. The eggs usually hatch in about five days.

"Hatchling larvae from these eggs will feed behind the plant's leaf collars and ears, and beneath the shucks of the primary ear," she said.

"Older larvae will bore in the stalk and continue feeding on the plant," she added. The mature dull-white larvae are about 1 inch long.

Texas citizens to get sales-tax break

JOURNAL STAFF REPORT

Texans will get their first-ever break on sales taxes Aug. 6-8 — at least if they're in the market for certain items.

Almost any type of clothing and footwear that costs less than \$100 falls under the terms of the break. That's enough to save shoppers about \$8 per \$100 spent, according to the office of Carole Keeton Rylander, the state comptroller of public accounts.

Back-to-school buyers can save the tax on shirts, pants (including jeans), coats and jackets, gym wear, caps,

socks, jerseys, lingerie, sweaters, raincoats and ponchos, shorts and suits.

The exemption even covers formalwear and tuxedos (even rentals) at one extreme and work clothing at the other.

Rylander says Texans are expected to take advantage of the tax break to the tune of \$69.2 million in state tax savings, plus a smaller amount in local sales tax.

Merchants expect the "tax holiday" to be a boon for sales.

Questions may be directed to Rylander's office at (800) 252-5555.

Hunting licenses to go on sale Aug. 11

SPECIAL TO THE JOURNAL

AUSTIN — Hunting and fishing licenses go on sale Aug. 11, and Texas Parks and Wildlife is encouraging dove hunters to purchase their licenses well in advance of opening day — Sept. 1 in much of Texas — to avoid peak sales periods.

Anyone planning to hunt migratory game birds, such as dove and waterfowl, must be certified under the Harvest Information Program. HIP certification will automatically be printed on the license at the time of purchase after a brief series of questions have been

answered.

Lifetime license holders must also be HIP-certified in order to hunt migratory birds.

"There are only a few basic questions," said Allison Arnold, Parks and Wildlife's HIP coordinator. "It takes just a minute to answer the questions, and if you don't hunt migratory birds, you don't have to answer."

The objective of the program, which was initiated by the U.S. Fish and Wildlife Service, is to create a harvest database

see LICENSES on page 4

House Ag Committee OKs improvements to crop insurance plan

WASHINGTON, D.C. — The U.S. House Committee on Agriculture finalized proposed improvements to the federal crop insurance program Tuesday.

The changes are designed to attract more farmers and ranchers purchasing policies through improved crop protection and the development of new coverage for lost market revenue, and livestock losses.

H.R. 2559, "The Agricultural Risk Protection Act of 1999," meets the commitment of Agriculture Chairman Larry Combest (R-Texas) to affordable, flexible coverage based more closely on productive capability than the financially harsh actual production history formula.

Instead, the committee bill allows farmers to exclude the recorded yield in any crop year when such yields are below 60 percent of the transitional yield, and to replace with a yield equal to 60 percent of the applicable transition yield.

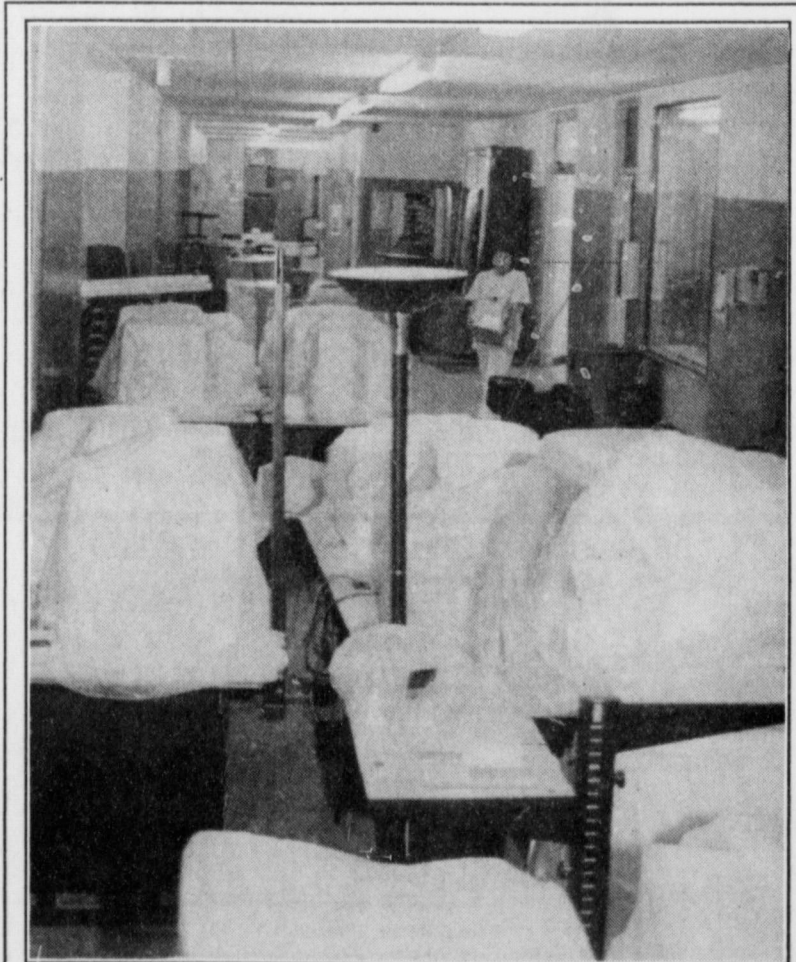
Combest said improved coverage and increased federal premium assistance provide incentives for producers to reach out to a strengthened farm safety net.

"Too many producers are forced into the financially risky decision to work without a crop insurance safety net, judging that policies are not effective in coverage nor cost," Combest said.

"Unpredictable weather damage and fluctuating world markets threaten farm families with a financial free-fall. This bill's insurance against crop, livestock and revenue losses offers more secure anchors for a stronger safety net that producers need and want."

Premium assistance levels would increase for 50/100 coverage from the current 55 percent to

see INSURANCE on page 2



Get to class!

The hallways at Muleshoe High School are still a little more congested than usual in preparation for Wednesday's opening of school. Principal David Jenkins says, however, that things have improved considerably in the past few days. Last-minute details for school-bound students and parents are on Pages 5-7 in today's *Journal*.

AROUND MULESHOE

Athletic boosters to meet

A meeting of the Athletic Boosters Club has been scheduled for 7:30 p.m. Aug. 9 in the Muleshoe High School science wing. This is the first meeting of the year, so everyone interested is urged to attend.

PTA plans 'Meet the Teachers'

The Muleshoe PTA has scheduled an evening to "Meet the Teachers" for 6:30 p.m. Aug. 10 in the DeShazo Elementary School gym.

The public is invited; a door prize will be given and watermelon will be available.

Mule-Putt events scheduled

The Jennyslippers, managers of Mule-Putt Miniature Golf, have scheduled some special events during August.

They also remind players that Aug. 6 will be the last of the Friday-night games for the season, although party reservations still can be made for Fridays. Watch for details of special events.

BUDGET

from page 1

now, and that leaving the \$130,000 in the general fund would be a major step toward balancing the budget for one more year without a tax increase.

"This year is a bad year to be raising taxes," Commissioner Butch Vandiver said. "Any year is a bad year, but this one's especially bad."

Early in the discussion, Commissioner C.E. Grant expressed the down side of shifting the money back into the general fund.

"If we take that out (of precinct funds), we could get ourselves in hot water real quick," he said.

Vandiver asked whether the county's red ink is coming from anywhere other than the ambulance service and the sheriff's office.

"Those are the only departments we can cut," Cox said. "The rest of us are already barebones."

She said she strongly favors giving raises to the county's employees but not necessarily to members of the commissioners' court. "I think these employees definitely need a raise, but I don't think we do," she said.

She added that the raises proposed for the sheriff and chief deputy already had been revised downward — to \$1,000 for the sheriff (from \$2,000) and to \$750 (from \$900) for the chief deputy.

In regard to the sheriff's pay, she added, "I think that is a pitiful, pitiful salary that he makes."

Figures show that Bailey County does pay its sheriff less than surrounding counties.

Major cost-cutting possibilities that were discussed included not buying a new car for the sheriff's department (to save \$23,000), cutting the sheriff's staff by one deputy (to save \$29,000), not buying a new ambulance (to save \$30,000 this year and about

\$88,000 total), and cutting one paramedic.

The ambulance service is "really our black hole," Cox said, but as far as cutting it, she added, "I don't think this is going to be popular with the citizens."

"We have got a topnotch EMS service — the best one around," she said. "I think we may have a nicer EMS service than we can afford. Our people have grown accustomed to what we have, and it's a source of security."

Grant asked, "If you cut back a deputy, is there an opening in the jail so that person wouldn't be unemployed?"

Cox said she thought there would be, but it would be up to Sheriff Coy Platt to decide what to do if the cut were made.

Grant also pointed out that if one deputy is cut from the staff, the department's overtime would increase, eating up part of the anticipated savings.

Vandiver asked whether leaving the precinct transfers in the general fund, plus cutting a deputy and not buying a new ambulance this year (but otherwise leaving the ambulance service as it is) would balance the budget.

Cox heaved an almost visible sigh of relief and said she thought it would.

She also said she would hate to see the sheriff's office bear the brunt of the budget squeeze.

"I hate for the sheriff to take all the cuts. We're cutting what he thought he was going to get as a raise, we're cutting his chief deputy's raise. That doesn't set well with me," she said. "Give it some thought and see what you think."

While Vandiver's scenario might get the county through the coming budget cycle, it may not be a permanent solution.

Cox summed up the situation when she said: "We have got to get something in the county to bring in some money, or I don't know what we're going to do."

INSURANCE

from page 1

67 percent; for 55/100 coverage premium assistance increases from 46.1 percent to 64 percent; for 60/100 up from 37.8 percent to 64 percent; while 65/100 assistance increases from the current 41.7 percent to 59 percent; for 70/100 assistance rises from 31.9 percent to 59 percent; for 75/100 assistance goes from the current 23.5 percent to 54 percent; for 80/100 the assistance rises from 17.3 percent to 40.6 percent; and for 85/100 coverage the premium assistance increases from 13 percent to 30.6 percent under the legislation as approved.

(As an example, a 65/100 policy is shorthand for 65 percent yield coverage that sets a 35 percent deductible for the farmer, that will pay 100 percent of the USDA-set price for the yield.)

Provisions of the act include:

- Affordable coverage at every level, with strong incentives to purchase higher levels of protection, and new flexibility for producers to choose the level of coverage that best meets their needs;

- More affordable policies to protect farmers against price and income loss, in addition to production loss;

- Encouragement of greater flexibility and diversity of coverage by expanding policy development and providing incentives for the creation of new policies;

- Introduction of a livestock pilot program to test the effectiveness of risk management tools to protect livestock producers; and

- Strong compliance and enforcement provisions against fraud, waste and abuse through substantial sanctions for violations and monitoring by the Farm Service Agency.

DSS SYSTEM

DIRECTV with over 200 channels available to you!



TWO NEW SPANISH CHANNELS AVAILABLE!*

only \$99⁹⁵

*Galavision & Univision

WILSON APPLIANCE

117 S. Main St. • Muleshoe • 272-5532

NOTICE!!

The Journal publishes Obituaries, Engagements, Weddings, Showers, Births, 50 plus Wedding Anniversaries and First Birthdays FREE OF CHARGE as a courtesy to our readers.

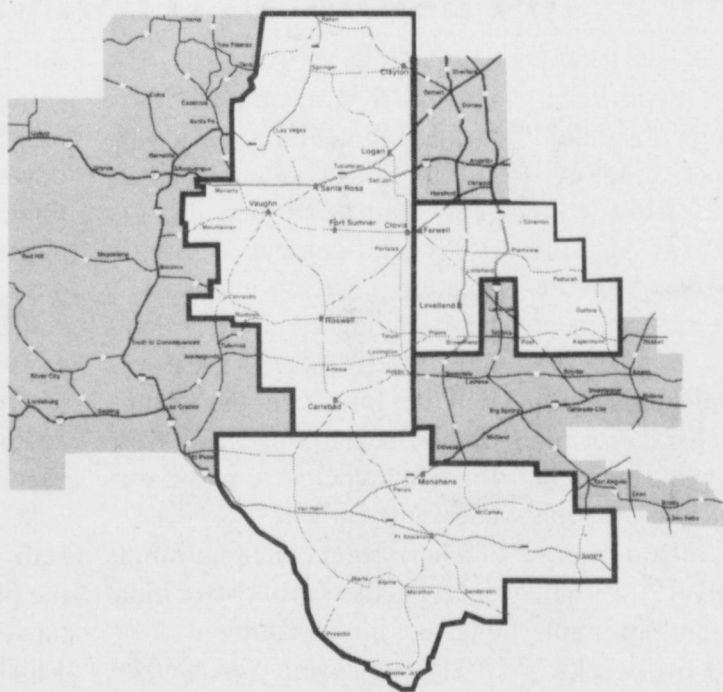
Drop by the Journal office at 304 W. 2nd to pick up a form and drop off your pictures. Or call 272-4536 to find out more about this service. All materials will be returned upon request.

We're striving to be your local news source!

Win a trip to NASCAR Weekend in NYC in the "Race to Nokia" Sweepstakes!

MEETING YOUR NEEDS. IT'S OUR GOAL.

Your New Home Area.



New Simple Rates.

SIGN UP FOR ONE OF PLATEAU'S GREAT NEW RATE PLANS!		
Introductory Plan	\$12.50	0 minutes 75¢ per minute
Choice Plan	\$25	100 minutes
Choice Plus Plan	\$25	100 minutes
Company Plan	\$20	100 minutes
Digital Choice Plan	\$40	500 minutes

All plans include New Plateau Home Area.

Now Our Rates And Coverage Are Even Better!

PLATEAU
Wireless

1-877-PLATEAU
(752-8328)

For these or other great offers, call or visit:

New Mexico
CLOVIS
Plateau
Telecommunications
600 Main
(505) 389-1234

Texas
ALPINE
Morrison True Value
Hardware
301 N. 5th
(915) 837-2061

ALPINE
AerLite Auto Rental
504 E. Holland Ave
(915) 837-3463

BIG LAKE
Fisher Lease Service
200 Garden City Hwy
(915) 884-2454

DIMITT
D&C/McLean
Enterprises
FM 1055
(806) 647-5103

BOVINA
Kevin's Auto
105 Gardner
(806) 238-1689

BROWNFIELD
Cellular Plus
405 Lubbock Rd.
(806) 637-6232

DELL CITY
Deicom, Inc.
610 S. Main
(915) 964-2402

JEM
Cellular
400 S. Lee St.
(915) 964-2820

FRIDONA
WT Services
1910 Columbia
(806) 250-5555

FRIDONA
Frima Wheat Growers
103 E. 5th St.
(806) 250-3211

FRIDONA
Plateau
Telecommunications
1003 N. Pecan
(915) 940-7070

FRIDONA
Price Electronics
N. Hwy 18
(915) 547-2040

FRIDONA
Earth Reink
304 W. Main
(806) 257-2291

FRIDONA
Farwell
ENR+Plateau
200 Ave. A
(806) 481-3800

FRIDONA
Kermit Electronics
511 N. Pine
(915) 586-2345

FRIDONA
Levelland
Plateau Wireless
701 College Ave.
(806) 638-1400

FRIDONA
Lonestar
Communications
219 Cactus
(806) 894-8881

FRIDONA
BAE Radio Shack
712 Austin
(806) 894-8053

FRIDONA
Gary Polk
502 E. Adams
(806) 894-9072

FRIDONA
LITTLEFIELD
Larry's Radio Shack
601 Hill Ave.
(806) 385-3422

FRIDONA
Richardson
Enterprises
147 E. Delano
(806) 385-7836

FRIDONA
LUBBOCK
Commercial Radio
302 Uvalde
(806) 744-5333

FRIDONA
Lubbock
Communications
1819 N. University
(806) 774-2626

FRIDONA
MIDLAND
The Telephone Store
4410 N. Midkiff Rd.
Ste. C8
(915) 689-9885

FRIDONA
MONAHANS
Plateau
Telecommunications
101 S. Betty
(915) 943-3268

FRIDONA
MORTON
Farm Equipment Co.
Levelland Hwy
(806) 266-5517

FRIDONA
MULESHOE
Free Area Telephone
Group
(806) 272-5533

FRIDONA
Wilson Appliance
117 Main St.
(806) 272-5532

FRIDONA
OZONA
John Henderson
312 Ave D
(915) 392-3503

FRIDONA
PECOS
Radio Shack
1120 S. Eddy
(915) 447-6184

FRIDONA
PLAINS
Plains Depot
802 Cowboy Way
(806) 456-7112

FRIDONA
PLAINVIEW
Two Way Radio &
Paging
404 Columbia
(806) 296-2672

FRIDONA
Radio Shack
3435 Olson Rd.
(806) 296-6738

FRIDONA
Cartwright Cellular
2315 W. 5th St.
(806) 296-6368

FRIDONA
SANDERSON
Dudley Motors
214 Oak
(915) 345-2503

FRIDONA
SAN ANGELO
Western
Communications
3562 Knickerbocker
Rd.
(915) 949-3000

FRIDONA
SONORA
Rushing Enterprises
107 Main
(915) 387-3592

FRIDONA
VAN HORN
Van Horn Office Supply
100 Broadway
(915) 283-2920

Muleshoe Journal USPS 367820

Established February 23, 1924. Published by Triple S Publishing, Inc.
Every Thursday at 304 W. Second, Box 449, Muleshoe, TX 79347.

Second Class Postage paid at Muleshoe, TX.

POSTMASTER: Send address changes to the Bailey County Journal, P.O. Box 449, Muleshoe, TX 79347.

We are qualified members of:

Panhandle Press Association, National Newspaper Association,
West Texas Press Association and Texas Press Association

WEST TEXAS PRESS
ASSOCIATION



MEMBER 1999

TEXAS PRESS ASSOCIATION

PPA
Panhandle Press Association

Scot Stinnett, Publisher
Lisa Stinnett, Vice-President/Comptroller
Ronn Smith, Editor
Andrea Kemp, Classifieds
Leah Bell, Advertising

© 1990

SUBSCRIPTIONS: Muleshoe Journal and Bailey County Journal
By Carrier Yearly - \$22.00
Bailey County — by mail - \$24.00
Elsewhere - \$26.00
Advertising Rate Cards on Application

Advertisers should check their ad the first day of insertion. The Journals will not be liable for failure to publish an ad or for a typographical error or errors in publications except to the extent of the cost of the ad for the first day of insertion. Adjustment for errors will be limited to the cost of that portion of the ad where the error occurred.

PEOPLE YOU KNOW, COMMUNICATIONS YOU TRUST.

Some plants provide more than one season's show

By RONN SMITH
Editor

I'm sure there will always be a place for such one-shot flowering plants as bearded iris and Oriental poppies.

And actually, even though we usually think of bearded iris as one-season wonders — and its a spectacular spring blooming season — they actually serve well throughout the summer with their strongly vertical foliage, providing a good strong accent in contrast to more rounded or droopy plants.

There are also repeat-blooming varieties now that give us another, smaller burst of bloom later in the season.

As for Oriental poppies, I doubt that repeat-bloomers are within the plant breeder's power, and if you want to see just how ratty foliage can get as the growing season begins to wind down, I have some poppies that seem happy to demonstrate it.

But today's gardeners also keep an eye out for plants that will be eye-catching in more than one season. This can take the form of spring flowers and fall fruit, colorful fall foliage or even interesting winter seed pods.

It can also take the form of color in spring buds as the leaves unfold. Some species flash bits of pink, red or orange at this season. Granted, it's more subtle than a flame-colored tree in the fall, but then our eye is more likely to notice



small patches of color in early spring, after the drab of winter.

Among the interesting winter seed pods are some common flowering plants: sedum (*Sedum spectabile*), that standby of gardeners in dry climates everywhere, has flat flower heads that retain their shape well into winter — and longer if the weather is dry; love-in-a-mist (*Nigella damascena*) has long-lasting and bizarre-looking seed pods; and the popular native purple coneflower (*Echinacea purpurea*) bears globular seed heads that are popular with birds during the winter.

Our area has seemed slower than most to embrace the idea of fruiting shrubs, and that fact sort of mystifies me.

The endless varieties of yapon holly (*Ilex vomitoria*) do well here, given some extra water for the first few years to get them going.

They vary from dwarf bushy types to head-high and taller. Most have the typical red berries, but there are yellow-fruited and orange-fruited ones as well.

To get the fruit (as with most hollies), you have to make sure you plant a male somewhere

near the females. And if you want simply the look without the berries, you can plant all males.

One male variety of yaupon that I find interesting is the cultivar 'Will Fleming,' named for a Houston nurseryman.

This type can grow 10 feet tall but only 2 feet wide, a growth pattern known as "fastigate" and present in many plants that otherwise have bushy growth.

If you're prepared to give them the water, winterberry (*Ilex verticillata*) is another nice holly — and, for us on the dry High Plains, it has the advantage of dropping its leaves in the winter so that the winds can't scorch it so badly. (The previously mentioned yaupon doesn't seem as susceptible to dry winds as most hollies are.)

The way I "cheat" to grow winterberry here is to sink children's wading pools into the ground and plant inside them. (For winterberry, the pool needs to be at least a foot or so deep.) That holds the moisture, and in fact will keep the soil soggy for weeks after a rain.

A classic combination for winterberry is the male 'Southern Gentleman' with a heavy-bearing female such as 'Winter Red' (excellent together) or 'Sparkleberry.'

There also are dwarf types of winterberries easily available.

Certainly one of the most spectacular fruiting shrubs is the beautyberry (*Callicarpa* species), with its heavy crops

of amethyst-colored berries.

Both the American and the Japanese species grow well here, though they may need a dose of powdered sulfur if they start looking chlorotic.

The only problem with them (for me, anyway) is that I haven't persuaded them to bloom and bear fruit here. Both species seem to freeze to the ground when the temperature gets close to the 0-degree mark; at first I thought they must bear fruit on old wood, and that was the problem.

But I've read books that advise cutting them back heavily in the spring, anyway, so I guess old wood isn't necessary. Anyone out there getting fruit on these things?

There's a whole family of nice viburnums — enough to fill a book, rather than a column. They tend to be big (from

6 to 20 feet, depending on which species you pick), and just about all of them except for the common snowball produce berries. Those can be in a rainbow of colors, depending on species and cultivar.

There are two that I know grow easily here. The wayfaring tree (*Viburnum lentana*), which seldom gets more than 8 feet tall despite its name, has downy leaves and a sturdy but flexible branching habit that should help it resist ice and piled-on snow.

The cherry-leaf viburnum (*Viburnum prunifolium*) is about the same size but very different looking: It has shiny leaves that do resemble those of cherries.

All of these shrubs can take sun, though the beautyberries can appreciate some afternoon shade and the cherry-leaf viburnum doesn't seem to mind it.

Happy planting!
Questions can be addressed to Garden Writer, Route 2, Box 880, Muleshoe, Texas 79347.

Make Another Smart Financial Decision

You're where you are today because you took control of your financial future and planned. Like many adults, you're probably self-insuring for the possibility of long-term care. Now there's a smarter way to self-insure with MoneyGuard.

It's a whole different kind of insurance that links the benefits of life and long-term care insurance. What does that mean for you? Your premium is not lost if you don't need long-term care—

Here's how MoneyGuard® works:	
Example is for a healthy non-smoking male, age 65	
You have:	\$150,000 in liquid assets available for self-insuring long-term care expenses
You move:	\$50,000 into MoneyGuard as a single premium
You receive:	\$97,500 in immediate death benefit or long-term care benefit, if needed
	\$97,500 in additional long-term care benefit
	\$195,000 total long-term care benefit*
You keep:	\$100,000 of your initial liquid assets that may now be invested more aggressively because those assets are better protected against long-term care expenses

* In this example, MoneyGuard pays up to \$133 a day for home health care, nursing home care or assisted living, or up to \$66 a day for adult day care.

MONEYGUARD
Life Insurance for Living

Champ and Blake show Dad a thing-or-two about pool at...

B/S AND MORE FAMILY FUN

129 Main Street
Muleshoe, Texas

Come join the fun!

In addition, MoneyGuard works as an asset shelter—protecting your hard-earned funds from the demand of long-term care expenses.

Speaker:
Mike Kelley
Phoenix, AZ
Principal: Kelley Financial Services

Kenneth & Darlene Henry

\$50,000 May Be Paid Thru A Seven Pay Annuity Or From Your Personal Funds Using The Same Amounts A Healthy Non-Smoking Female Will Get \$220,000 Of Benefit.

Sponsored By:
HENRY INSURANCE AGENCY, INC.
111 W. Ave. B Muleshoe, TX 79347
888-658-4581 or 806-272-4581

Location: **BAILEY COUNTY COLISEUM**
Muleshoe, TX 79347
Date: **AUGUST 19, 1999**
Time: **9:30 AM until 11:30 AM**

The MoneyGuard universal life insurance policy has riders that protect the death benefit and more for long-term care expenses. It is underwritten by First Penn-Pacific Life Insurance Co., a part of Lincoln National Corporation. The illustration and outline of coverage describe the benefits, costs, exclusions and limitations of MoneyGuard. Benefits vary by age, health status and state availability. First Penn is not licensed in New York. © 1998 First Penn-Pacific Life Insurance Co. All rights reserved. Policy form number L-2020 series. Rider form numbers: L-2900 series.

SOMETHING SPECIAL'S

CLOSEOUT SALE

**Everything On Sale!
Everything Must Go!**

Starts August 2

No Gift Wrapping.
 No Layaways.
 All Sales Final. No returns.

40% OFF

NOTICE! Anyone who has an unused gift certificate must redeem it within 30 days of start of sale.

222 Main Street • Muleshoe, Texas • 272-4933



Studious dudes?

Seventeen-year-old Gonzalo Puyol of Spain makes a point to Tyson Purdy of Muleshoe during a visit to the Muleshoe Public Library. Puyol is visiting Purdy's family this summer, and Purdy plans to return the favor by visiting Puyol's family in Madrid next year. Teachers should not be too optimistic about the teen-agers' trip to the library — they just stopped by on their way to Lubbock!

REBEKAH NEWS

Noble Grand June Green called the Muleshoe Rebekah Lodge No. 114 to order at 7:30 p.m.

Pro-tem Mary Ann Ramirez gave the opening prayer. Secretary Patsy Chance called the roll, with five members answering. The minutes of the previous meeting were read and approved.

It was reported that Ruby Garner and Sylvia Lira were ill. Ina Wilemon reported that her medical checkup was OK.

Members were invited to Polly and Jerrell Otwell's 50th wedding anniversary celebration on July 31.

Amarillo Lodge No. 410 is hosting a tea for Jessie Earthman, warden of the Rebekah Assembly of Texas, from 2 p.m. to 4 p.m. on Aug. 22.

Joyline Costen will use the

lodge Aug. 19 for a scrapbook workshop.

Rebekah-sponsored skating dates for this year are Aug. 20, Sept. 24, Oct. 15 and Nov. 19 at the Bailey County Civic Center. Admission is \$1.

The bakeless bake sale will continue until Aug. 31, and do-

nations are still welcome.

With no further business, the meeting was closed by Wilemon with the Rebekah Creed and two verses of the song "An Evening Prayer."

Members enjoyed going to McDonald's after lodge meeting.

TOPS/KOPS NEWS

A K.O.P.S. graduation honoring Lucille Harp was held July 29 at the Tops No. 34 meeting at the Muleshoe Church of Christ.

To become a K.O.P.S., a member must first reach their goal weight and maintain it for a certain amount of time.

The letters K.O.P.S. stand for Keep Off Pounds Sensibly,

while TOPS stands for Take Off Pounds Sensibly.

Thirteen members were present at the meeting, one of whom — Jewel Peeler — was recognized for recently having her 85th birthday. She is a faithful and long time member of TOPS.

Betty Jo Davis and Alma Robertson were the weight re-

corders. According to their report, Rose Sain was the best loser followed by Harp as first runner-up. Tied as second runners-up were Peeler and Ruth Clements.

The next meeting was set for Aug. 5 at the same location. Guests are welcome.

Two local Classroom Teachers Association members attend leadership conference

Muleshoe Independent School District teachers Alice Liles and Donna Green were among more than 450 Texas Classroom Teachers Association members attending the association's Leadership Conference July 8-9 in San Antonio.

The district educators are local officials of the Muleshoe Classroom Teachers Association, affiliated with the statewide group representing 40,000 classroom teachers throughout Texas.

Conference participants attended a session on school vio-

lence, focusing on ways to diffuse potentially dangerous situations and how to protect themselves and others in the classroom.

They also discussed the recent legislative session and share information on effective local leadership.

The association is a non-profit, non-union group founded in 1927, and is the only Texas education association that limits active membership to public school teachers and related non-administrative education personnel.

LICENSES

from page 1

of ducks, doves, geese and other migratory birds.

This will be the second year Texas has fully participated in this federally mandated program.

For the avid outdoorsperson, the Super Combo license includes a resident combination hunting and fishing license plus all seven state hunting and fishing stamps for \$49. Sold separately, the face value of the package is \$82.

Several other popular items can be bought wherever licenses are sold, including the new Big Time

Texas Hunt special drawings, which include the Texas Grand Slam and Texas Exotic Safari.

The annual public hunting permit, which allows hunters access to more than 45,000 acres of public dove leases and more than 1.4 million acres in the Parks and Wildlife public hunting program, also may be purchased at all license sales outlets.

Map booklets and dove lease supplements will be mailed unless the permit is purchased at Parks and Wildlife law-enforcement offices.

DO OUR OPPONENTS KNOW

TACKLING A MULE

is like

RAMMING into A SOLID BRICK WALL

FIND OUT IN SEPTEMBER. READ THE JOURNAL.

Don't Miss Classic Cable's

BACK TO SCHOOL SPECIAL

50% off Installs or Upgrades

Classic Cable will donate \$5.00 to the local high school for each new install or upgrade during the month of August!

Classic CABLE

Back to School

1-800-999-8876

Community * Commitment * Customer Service

1999

WELCOME TO THE FAIR!

Roosevelt County Fairgrounds, Portales, NM

AUGUST 11-14

ENTRY DAY — TUESDAY, AUG. 10

Tuesday, Aug. 10

6 pm Roosevelt County Junior Rodeo (Special Events Arena)

Wednesday, Aug. 11

6:30-8:30 am Pork Chop Breakfast Square Dance (On the Slab)

7 pm McCallie Rodeo Productions (Special Events Arena)

9 pm-Midnight Dance on the slab to Music by Larry Buchanan Band "Rozz-Well and The Aliens"

Thursday, Aug. 12

Pioneers' Day

6 pm CGRA Barrel Race (Special Events Arena)

7-9 pm Gospel Singing on the slab

9 pm-12 am Dance on the Slab to Music by "Janet Denton 6-shooter Band"

Friday, Aug. 13

10 am Fiddler's Contest (Armory)

2 pm Resume Fiddler's Contest (Armory)

6 pm Junior Livestock Sale (Show Arena)

8 pm Ranch Rodeo (Special Events Arena)

9 pm-12 am Dance on the slab to Music by "Tripod"

Saturday, Aug. 14

9 am Kids' Kiwanis Pet Show

10:30 am Kids' Roping Contest

7 pm Chili Cook-Off Public Tasting

8 pm Ranch Rodeo

9 pm-12 am Dance on the slab to Music by "Bill Case Combo"

CARNIVAL NIGHTLY!

Arm Bands Nightly 7-11 pm

FREE Entertainment Nightly with purchase of Gate Ticket

ADMISSION:

Adults \$3

Children ages 3-11.....\$1

* Season Passes Available!

Chill Cook Off

Sat., Aug. 14 — 3 pm

For more information call the Roosevelt County Extension Office (505) 356-4417

MARY DESHAZO ELEMENTARY INFORMATION & SUPPLY LIST

Contacts — Barbara Finney, principal, or Connie Kenmore, counselor.

Secretaries: Janice Brantley and Cindy Magby, 272-7356

Children who are new to Muleshoe schools or were not here at the end of school last year for pre-registration are asked to come to school between 8 a.m. and noon or 1 p.m. and 4 p.m. weekdays and register.

Third-, fourth- and fifth-graders attend Mary DeShazo.

Registration requires the child's birth certificate, health records, Social Security number and previous school's withdrawal sheet or report card if possible.

Home-room placement for all students will be posted on the front (or north) doors on Aug. 6.

The first day of school is

Aug. 11. Students are to report directly to their homeroom each morning and should be in their homeroom class by 7:55 a.m.

Lunch time schedule includes third-graders at 10:45 and 11, fourth at 11:15 and 11:30 and fifth at noon and 12:15.

Regular lunch price is \$1.20 and reduced lunch is 40 cents. Regular breakfast is 50 cents and reduced breakfast is 30 cents.

Students may eat at the Yellow Jacket or go home for lunch, but must have written permission from their parents to do so.

All students will be dismissed at 3:20 p.m. Parents who pick up students should park on the north or east side of the building. Students who live in town may ride the bus to a designated bus stop near their

Back to School Checklist

home.

Please call Finney, Brantley or Magby with questions. The school number is 272-7365.

SUPPLY LIST

- 2 No. 2 pencils;
- 2 red pens;
- 1 medium (6 oz) bottle Elmer's glue (not Ross);
- 1 medium package notebook paper (wide-ruled);
- 1 box Crayola brand crayons (24 count);
- 1 Fiskars brand pointed scissors;
- 1 ruler (12" metric/English);
- 6 flat pocket folders
- 1 zipper pouch (sturdy canvas)

vas)

- 2 boxes of Kleenex;
 - 1 package assorted construction paper (third grade only);
 - 1 glue stick;
 - 1 package color-coded dividers; and
 - 1 three-ring binder.
- Additional supplies required for fifth-graders include highlighters and map pencils.

SALES TAX HOLIDAY

FOR CLOTHING AND FOOTWEAR

August 6th & 7th

No Sales Tax on these items*! Item price under \$100.00*

ATHLETIC SHOES • CLOTHING • SOCKS

August 5th thru 14th
One Style NIKE-2 colors
RUNNING SHOE \$59⁹⁵

BACKPACKS & SPORTS BAGS 20% Off

EXAMPLE: You purchase one pair of Nike running shoes for \$65, two T-shirts for \$18 each and a pair of Nike socks for \$5. Your total purchase is \$116. WITH NO SALES TAX ADDED, YOU SAVE \$9.57.

*Certain items are taxable.

Williams Athletics
322 Main St. • Muleshoe, Texas • 272-6853



DILLMAN ELEMENTARY INFORMATION & SUPPLY LIST

Contacts — Helen Grigsby, principal, or Ruth Locker, counselor.

Secretaries: Anna Gutierrez and Mary Toscano — 272-7382.

Students who are new to the district may register from 8 a.m. to noon or 1 p.m. to 3:30 p.m. Aug. 5-6.

Please bring shot records and the child's Social Security number, birth certificate and records from previous schools attended.

The school day at Dillman is from 8 a.m. to 3:10 p.m. Students will be considered tardy after 8:05 a.m. Students who eat breakfast at school should arrive between 7:30 a.m. and 7:45 a.m. Students should not be at school before 7:30 a.m., and breakfast will not be served after 7:55 a.m.

Parents who deliver their children to school or pick them up after school should park on the Avenue E side of the building. Students who do not ride a bus should enter and exit the building at the west doors next to the gym. To avoid excessive congestion in front of the building, parents are requested not to use the circle drive to drop students at school.

Names of homeroom teachers will be posted on the front doors Aug. 6.

Required supplies for individual grades include (no trap-keepers, please!):

• Pre-K Supply List

1 change of clothes (shirt, pants, socks, underwear); and 1 box of Kleenex.

• Kindergarten Supply List

2 regular-size No. 2 pencils; 2 4-oz. size Elmer's Glue All (not paste);

- 1 glue stick;
- 2 boxes of crayons — eight count (not fluorescent), regular size;
- 1 box washable Crayola markers—classic colors, large size;
- 1 large box Kleenex;
- 2 packages construction paper, 9x12 sheets, assorted colors;
- 1 pair metal (Fiskars brand) scissors (right- or left-handed, whichever the child needs);
- 1 complete change of clothes — boys: shirt, pants, underwear and socks; girls: dress or pants and blouse, panties and socks;
- 2 pocket folders;
- 1 Kinder rest mat (vinyl);
- 1 box gallon Ziploc bags (for

those whose last name begins with A-L);

1 box pint Ziploc bags (for those whose last name begins with M-Z)

1 plastic school box;

1 set of Crayola watercolors;

1 spiral notebook (120 count);

1 roll 35mm film (24 exposure);

1 box of wipes;

1 box of safety pins; and 124-oz. water bottle (pop-top lid).

Please use a permanent marker to label each individual

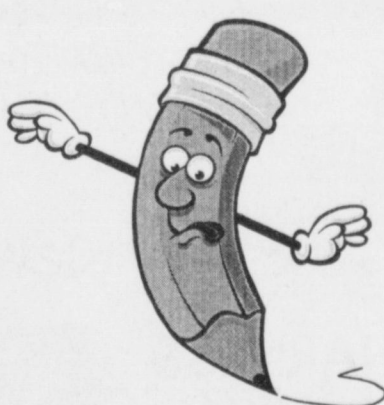
item with your child's name.

• First-grade Supply List

- 1 school box;
- 1 package pencil-top erasers;
- 1 dozen regular-size No. 2 pencils;
- 3 large boxes of Kleenex
- 28-oz. bottles Elmer's white glue;
- 4 pocket folders;
- 1 pocket folder with brads;
- 2 boxes of crayons
- 1 pair of small pointed scissors — Fiskars metal scissors for kids (no plastic blades). Right-handed for right-handed children and left-handed for left-handed children;
- 1 package wide-ruled notebook paper (100 count);
- 1 package stickers;
- 1 box pint-size Ziploc bags (for those whose name begins with A-M);
- 1 box snack-size Ziploc bags (for those whose last name begins with N-Z);
- 1 watercolor paint set (eight colors);
- 1 package washable markers; and
- 1 container baby wipes.

• Second-grade Supply List

- 1 box (16-count) crayons;
- 1 spiral notebook;
- 12 No. 2 pencils;
- 4 red pencils;
- 18-oz. White Elmer's glue;
- 1 pair of sharp-pointed Fiskars scissors;
- 2 boxes of Kleenex;
- 2 pocket folders;
- 1 box of large washable Crayola markers;
- 1 small school box
- 1 box sandwich-size Ziploc bags; and
- 1 package construction paper.



WATSON JR. HIGH INFORMATION & SUPPLY LIST

Contacts — Shelia Joyner, principal; Ronnie Jones, assistant principal; and Brian Arnold, counselor.

Secretaries — Pam Thomason and Diana Gallegos.

Registration for returning students in grades six, seven and eight will be Aug. 9 from 3 p.m. to 6 p.m. and Aug. 10 from 9 a.m. to 11 a.m., 1 p.m. to 3 p.m. and 5 p.m. to 7 p.m. Students must be accompanied by a parent.

During this time the student will receive their schedule of classes, checkout their textbooks and receive their locker assignment. The parent will complete the registration documents.

New students to Watson in grades six, seven or eight may register between 9 a.m. to 11 a.m. or 1 p.m. to 3 p.m. through Aug. 6.

New students need to bring their parent(s)/guardian, a birth certificate, Social Security card,

shot record, report card and test scores. School will begin Aug. 11 at 8 a.m.

Supply List

For the first day of school, students will need pens (red and blue or black), No. 2 pencils, wide-ruled notebook paper, eight pocket folders with brads, eraser, highlighter, 12 or 24 count box of Crayola colored pencils and two boxes of facial tissue (175- or 250-count boxes) No spirals will be used.

LOANS! LOANS! LOANS!

¡PRESTAMOS!

¡PRESTAMOS!

¡PRESTAMOS!

LOANS WHILE YOU WAIT!



Rush in to see us!

Continental Credit

¡Sa Habla Español!

206 Main Street

Muleshoe, Texas

\$100-\$467

272-3673

Open: Mon.-Thurs. — 8:30 am to 5:30 pm., Friday 8:30 am to 6 pm

Phone applications welcome.

Vacation \$\$\$!

Vacation \$\$\$!

Vacation \$\$\$!

DOORS OPEN FRIDAY AT 7 AM

PAY NO SALES TAX

ON ALL APPAREL & SHOES AT OUR BIG BACK2SCHOOL SALE!

*Some restrictions apply. See in store for details.

7-10 AM, FRI. & SAT. ONLY

EXTRA 10% OFF EVERYTHING!†

†Excludes cosmetics & fragrances, Levi's, shoes, and designer collections. Additional 10% savings will be applied at the register to regular prices & already reduced sale prices. All Doorbuster purchases must be completed 7 AM-10 AM. Interim markdowns may have been taken.



BEALLS

For the store nearest you, call 1-800-324-1313 or log on at www.beallsstores.com

321 Main Street • Muleshoe, TX • (806) 272-3478 Open: Monday thru Saturday 10 am to 6 pm, Sunday Noon to 6 pm

YOUR ELECTED Officials

1999-2000 MISD SCHOOL BUS ROUTES

Rural bus routes will be the same as last year; families new to the area should call Richard Hawkins at 272-7369 to arrange for student transportation on a rural bus route.

City of Muleshoe bus routes for this year have changed slightly and will stop only at the designated stops.

Students living in the general area should walk to one of these locations to board the bus and should ride the same bus to and from school each day. Students and parents are reminded that it is a privilege to ride the bus.

Questions about specific stops may be answered by calling Hawkins at 272-3729. Questions about regulations and policy may be directed to Assistant Superintendent Adrian Meador at 272-4706.

- Bus No. 1 — 301 E. Sixth, Housing Authority Apartments East Sixth and Avenue F DeShazo Dillman High School/Watson
- Bus No. 2 — East Sixth and Avenue F East Sixth Housing Authority Apartments East Fifth and Avenue D DeShazo Dillman

High School/Watson
• Bus No. 3 — East Austin and East Cedar

East Austin and East Elm Friona Highway
• Bus No. 5 East Fourth and Avenue F

Dillman High School/Watson (All Dillman students who get off at DeShazo ride Bus 5)

- Bus No. 6 — West Birch and Chicago Muleshoe Cotton Compress West Date and Boston West Cedar and Dallas
- Bus No. 7 — West Avenue J and South First

West Avenue J and Eighth East Fourth and Avenue D East Fourth and Avenue B DeShazo

West 10th and Avenue D West 14th and Avenue D West 18th and Avenue D Dillman

West 18th and Avenue D West 14th and Avenue D West 10th and Avenue D DeShazo

West Seventh (between I and J)

High School/Watson
• Bus No. 10 — Behind Ranch House

• Bus No. 12 — 18th and Avenue B East Hickory (across from



Roger Miller Park)
East Birch and East Fir (next to church)
East Gum (between Ithaca and Joliet)

10th and Avenue C 14th and Avenue C Dillman

14th and Avenue C, east-bound 10th and Avenue C, east-bound

DeShazo High School/Watson (All DeShazo students going to Dillman or in the area of Dillman and West Avenue C ride Bus 12).

• Bus No. 13 — Behind the Carrousel

Reno and Ash Quincy and Railroad Avenue Pasadena (middle of the street)

• Bus No. 14 (PM only) West 10th and Avenue D West 14th and Avenue D West 18th and Avenue D Dillman

West 18th and Avenue D West 14th and Avenue D

West 10th and Avenue D
• Bus No. 27 — Behind the Dinner Bell Kinder Corner (West Ninth and Avenue G)

MHS INFORMATION

Contacts — David Jenkins, principal; Vince Erdman, assistant principal; and Gayla Gear, counselor. Secretaries: Beatrice Padilla and Cordy Aguirre — 272-7302.

Students in the district are already registered for the upcoming year. Students new to the district will register through Aug. 6 from 9 a.m. to 3 p.m.

On Aug. 10, schedules, locker and parking permits can be obtained by seniors from 11 a.m. to noon, juniors from 1 p.m. to 2 p.m., sophomores from 2 p.m. to 3 p.m. and freshmen from 3 p.m. to 4 p.m.

Students will begin school Aug. 11. All students are to meet in the high school auditorium at 8:15 a.m. for an opening assembly.

LAZBUDDIE SCHOOLS SUPPLY LIST

PRE-KINDERGARTEN

- 4 No. 2 regular size pencils
- 2 boxes of 8-count Crayons (regular size)
- 1 Elmer's glue (no glue sticks or colored glue)
- 1 box Kleenex (200 count)
- 1 box for supplies
- 1 extra set of clothing (pants, shirt, underwear, socks)

KINDERGARTEN

- 4 No. 2 regular size pencils
- 2 boxes of Crayons (8-count)
- 2 Elmer's glue (no glue sticks or colored glue)
- 1 pair sharp-pointed scissors (Fiskars recommended)
- 1 rest mat
- 1 large paint shirt
- 1 box watercolor paints
- 1 extra set of clothing (pants, shirt, underwear, socks)

FIRST GRADE

- 4 No. 2 regular size pencils
- 1 pair sharp-pointed scissors
- 1 box Crayons (24-count)
- 1 12-inch ruler (metric and standard)
- 1 box watercolor paints (8-color set)
- 1 small supply box (needs to fit in desk)
- 1 box Kleenex
- 1 eraser
- 1 colored pencils
- 1 set Colorific markers
- 4 folders with pockets
- 1 large Elmer's glue

SECOND GRADE

- 1 set map colors
- 4 No. 2 pencils
- 2 large glue sticks

- 1 pair sharp-pointed scissors
- 4 folders with brads and pockets
- 1 box Crayons (24-count)
- 1 small box for supplies
- 1 box Kleenex
- 1 set watercolors with brush
- 1 set Magic Markers
- 1 big eraser
- 1 red pen
- 2 spiral notebooks
- 1 12-inch ruler (metric and standard)

THIRD GRADE

- 4 No. 2 pencils
- 1 Elmer's glue
- 1 box Crayons (24-count or more)
- 1 pair sharp-pointed scissors
- 3 folders with pockets
- 1 folder with brads and pockets
- 1 12-inch ruler (metric and standard)
- 2 erasers
- 2 red pens (not felt tip)
- 1 box Tempra poster paints and brush
- 1 glue stick
- 1 large box Kleenex
- 1 large package wide-rule notebook paper
- 2 spiral notebooks
- 1 set map colors
- 1 set Magic Markers
- 1 yellow highlighter
- 1 clipboard
- 1 supply box

FOURTH GRADE

- 4 No. 2 Pencils
- 1 black Sharpie marker
- 1 set map colors
- 2 erasers
- 2 yellow highlighter (only yellow)
- 1 box Kleenex

- 1 box Tempra poster paints and brush
- 2 spiral notebooks of 100 pages
- 1 set Magic Markers
- 2 red pens
- 1 small Elmer's glue
- 2 glue sticks
- 1 box Crayons (24-count or more)
- 1 12" ruler (metric and standard)
- 1 erasable pen
- 1 pair sharp-pointed scissors
- 1 three-ring notebook
- 1 thesaurus (may have dictionary, too)
- 1 large package wide-ruled notebook paper
- 1 folder with brads and pockets

FIFTH GRADE

- 1 protractor and compass
- 1 yellow highlighter
- 1 box Kleenex
- 2 spiral notebooks
- 1 set Tempra poster paints and brush
- 1 set Magic Markers
- 1 large package of wide notebook paper
- 1 — Red Pen and 1 Black Sharpie Marker
- 5 folders with pockets and brads
- 1 small Elmer's glue and 1 small glue stick
- 1 box Crayons (24-count or more)
- 1 clipboard
- 1 12" ruler (metric and standard)
- 2 erasable pens
- 1 pair sharp-pointed scissors
- 1 set map colors
- 2 No. 2 pencils

LAZBUDDIE REGISTRATION

Registration for new and returning students, grades six through 12, is scheduled at the Lazbuddie school office:

• Aug. 5 — 9 a.m. to noon and 1 p.m. to 4 p.m. for grades 10, 11 and 12.

• Aug. 6 — 9 a.m. to noon and 1 p.m. to 4 p.m. for grades six, seven, eight and nine.

Students may register on any of these dates if there is a conflict with the assigned times.

Junior high students are encouraged to register Aug. 6.

Registration for new elementary students will be anytime during the week through Aug. 6.

No students may register Aug. 11-12 due to staff in-service.

The first day of classes will be Aug. 13.

Wow, It's Nifty Critter's Fifty!
Love, Your Family

- **U.S. Sen. Kay Bailey Hutchison (R-Dallas)**
703 Hart Building
Washington, DC., 20510-4301
(202) 224-5922
- **U.S. Sen. Phil Gramm (R-College Station)**
370 Russell Building
Washington, DC., 20510
(202) 224-2934
Lubbock Office: Federal Building, Suite 113, 1205 Texas Ave., Lubbock, TX 79401
(806) 743-7533
- **U.S. Rep. Larry Combest (R-Lubbock)**
19th Congressional District
1026 Longworth Building
Washington, D.C. 20515
(202) 225-4005
Lubbock Office: Federal Building, Suite 810, 1205 Texas Ave., Lubbock, TX 79401
(806) 763-1611
- **State Rep. Pete Laney (D-Hale Center)**
Legislative Dist. 85
1400 N. Congress Ave.
Austin, TX 78701
(512)463-1000
- **State Sen. Teel Bivins (R-Amarillo)**
Senatorial Dist. 31
203 W. 8th Street, Suite 301
Amarillo, TX 79101
(806) 374-8994
- **Bailey County Commissioners Court**
300 S. First Street • 272-3307
Precinct 1: Butch Vandiver
Precinct 2: C.E. Grant
Precinct 3: Joey Kindle
Precinct 4: Jerry Damron
- **Muleshoe City Council**
215 S. First Street • 272-4528
City Manager: Rick L Hanna
Mayor: Robert Montgomery
Council members: Cliff Black, Juan Chavez, Jerry Hicks, Sharon Grant
- **Muleshoe Area Hospital District**
708 S. First Street • 272-4524
Hospital Administrator: Jim Bone
President: Buck Campbell
Vice President: Victor Leal
Secretary: Phil Kent
Board Members: L.T. Johnson, Mike Miller
- **Muleshoe Independent School District**
514 W. Ave. G • 272-7404
Superintendent: David Hutton (as of July 1)
President: Cindy Purdy
Vice President: Curtis Shelburne
Board Members: Sergio Leal, Arnold Price, Thurman Myers, David Tipps, Nick Barnert

Brought to you by the
Muleshoe Journal
We urge you to get involved in your local government.

Have a great year kids & teachers!

JOES BOOT SHOP
1-800-658-6378 106 E. American Blvd. Muleshoe, Texas
And Country Junction

BACK TO SCHOOL Savings
SAVE MORE THAN A BUCK-OR-TWO ON YOUR LITTLE BUCKAROO!

Entire Stock ARIAT BOOTS \$10 OFF

HARNESS CHUKKA \$10 off
Regular \$98

Entire Stock CHUKKAS \$10 OFF
New Style!
JUSTIN Regular '79 & '89
WORKBOOT \$10 off

Get a **FREE Justin Bag** with purchase of Justin sale boots. Offer good while supplies last.

Wrangler RIATA JEANS
Regular \$32.99 **\$26⁹⁹**
Other Furniture Specials throughout the store!

Country Junction CHINA HUTCH
SALE PRICE **\$175** Regular \$245.00
Contemporary design three shelf hutch with lots of display area. Perfect for your collectibles!

BACK TO SCHOOL

The Journal's Back To School Info

Muleshoe Journal, Muleshoe, Texas
Thursday, August 5, 1999, Page 7

LAZBUDDIE SCHOOLS CALENDAR

LAZBUDDIE I.S.D. 1999-2000 SCHOOL YEAR CALENDAR SEMESTER AND SIX WEEKS INSTRUCTIONAL DAYS -180

8/13 - 9/24	1st	30	Days
9/27 - 11/5	2nd	29	Days
11/8 - 12/17	3rd	27	Days
1ST SEMESTER			
1/3 - 2/11	4th	29	Days
2/14 - 4/7	5th	33	Days
4/10 - 5/26	6th	32	Days
2ND SEMESTER			
		94	Days



LAZBUDDIE SCHOOL CALENDAR HOLIDAYS

Sept. 6 — Labor Day
Oct. 11 — Fall holiday
Nov. 24-26 — Thanksgiving
Dec. 20-31 — Christmas
March 13-17 — Spring break
March 31- April 3 — Easter
Weather days — April 17, May 15
(Weather days become holidays if not used.)



Teacher in-service and work days (staff development): Aug. 9, Aug. 10, Aug. 11, Aug. 12, Dec. 18, Jan. 21 (comp day) and May 26.

THREE WAY SCHOOLS SUPPLY LIST

KINDERGARTEN

Large box Kleenex
Crayons
Washable markers
FISKAR scissors
Two pencils (standard size)
Pencil box
Glue
Glitter
Ziploc bags
Paper towels
Nap pad
Change of clothes

FIRST GRADE

Elmer's washable glue (at least 8 oz.)
10 hard-lead pencils
Crayons (at least 24)
1 roll of paper towels
1 pair FISKAR scissors
1 school box (small one to fit in desk)
1 box of Ziploc bags (any size)
Markers
1 coloring book (student's choice)
2 bottles of glitter (any color)
4 red pencils
1 box colored pencils (map colors)

SECOND GRADE

9 pencils
4 red marking pencils
Plastic storage box (size of shoe box)
FISKAR scissors, sharp point
Box of Kleenex
Gladlock gallon freezer bags
Crayons (at least 24)
Map pencils (12 or more)
16 oz. school glue
Roll of paper towels
Markers

THIRD GRADE

2 folders with pockets
2 red pencils
Elmer's school glue
Large box Kleenex
Wide-rule notebook paper
Eraser
Crayons
Pointed scissors
Ruler, marked with centimeters and inches
Notebook (3 rings)

FOURTH GRADE

FISKAR sharp-pointed scissors
No. 2 pencils
2 red lead pencils
Small bottle glue
Colored pencils (map) or
Box of crayons
Plastic storage box (13"x7"x4") (shoe size with snap-on lid)
2 spiral notebooks (70 pages)
Box of Kleenex
Notebook paper
Markers (optional)

FIFTH GRADE

3 folders with pockets
Plastic storage box (small)
Eraser
Crayons or markers
Pencils
Scissors
2 boxes of Kleenex
2 red pencils
Back pack (optional)
Notebook paper
Ruler, marked with centimeters and inches
Glue
Gallon freezer bags

SIXTH GRADE

Crayons
Map pencils
Ruler, metric and regular
Kleenex (two boxes)
Glue stick
No. 2 pencils
Notebook paper
Markers
Erasers

ELA/READING/ TEXAS HISTORY

Three ring binder (one for each class)
Loose leaf notebook paper - wide rule
Subject dividers (one for each class)
Assignment notebook
Ruler, marked with centimeters and inches
Pencils
Blue or black pens (No green,

TEXAS HISTORY

Map colors
pink, etc.)
3 red pens
Large eraser
Large glue stick
Large box of Kleenex
Webster's paperback dictionary

SOCIAL STUDIES AND SPAN-ISH

Pens
Pencils
Map pencils or makers (color)
1 pair scissors
2 dab-N-stick glue with sponge tip appl.
1 pkg. construction paper

THREE WAY SCHOOLS CALENDAR

Aug. 6	Teacher Workday
Aug. 9	First Day of School
Sept. 6	Holiday — Labor Day
Oct. 11	Holiday
Oct. 28	End of Second Six Weeks
Oct. 29	Staff Development/Student Holiday
Nov. 24-28	Thanksgiving Holiday
Dec. 17	End of Third Six Weeks and First Semester
Dec. 18	Teacher Workday
Dec. 19-Jan. 2	Christmas Holidays
Jan. 3	Begin second Semester
Feb. 11	End of Fourth Six Weeks
Feb. 25	Bad Weather Day
March 11 - 19	Spring Break
March 31	End of Fifth Six Weeks
April 7	Bad Weather Day
April 21	Holiday — Easter
May 19	End of Sixth Six Weeks End of Second Semester End of School Graduation
May 20	Teacher Workday

Wanted!



Meals on Wheels Drivers

One hour a week.

Call Berta 272-3647

Put your wagon to good use.

A-W Produce

Progress, Texas

5 miles west on Hwy. 84 — Ann & Marshall Williams

FRESH VEGETABLES

- ▶ CANTELOUPES
- ▶ MELONS ▶ TOMATOES
- ▶ Sweet Onions
- ▶ Squash

272-3715

Buy & Sell Local Produce
Wholesale or Retail

Other
veggies as
they come
off!

WELCOME BACK KIDS!

PAY NO
SALES TAX

DOORBUSTER BONUS! 7-10 AM • FRI. & SAT. ONLY
EXTRA 10% OFF EVERYTHING!

STARTS TODAY!

BACK 2 SCHOOL SALE

JUNIORS'

19.99 & 29.99

CASUAL DRESSES

Athletic knits, stretch twills,
more. Reg. 29.00-39.00.

25% OFF
STRETCH WOVEN TOPS
Reg. 20.00-26.00,
SALE 15.00-19.50.

25% OFF
STRETCH SWEATERS
3/4-sleeves. Reg. 24.00-32.00,
SALE 18.00-24.00.

14.99-34.99
UNIONBAY SEPARATES
Tops, tees, cargo jeans, more.
Reg. 20.00-44.00.

25% OFF
TWILL PANTS & SKIRTS
Stretch looks. Reg. 28.00-34.00,
SALE 21.00-25.50.

SHOES & ACCESSORIES

BUY ONE, GET ONE
1/2 OFF
REG.-PRICED FAMILY SHOES*
Casual, dress, athletic styles.
*2nd pair must be of equal or lesser value.
Excludes clearance, Dr. Martens,
Easy Spirit, Daniel Green.

25% OFF
FASHION JEWELRY
Also watches. Reg. 4.00-30.00,
SALE 3.00-22.50.

*No sales tax offer valid Fri., Aug. 6 - Sun., Aug. 8. Restrictions apply. See in store for details. Excludes cosmetics, fragrances, shoes, Levi's, designer collections. Additional 10% savings will be applied at the register to regular or already-reduced sale prices. All Doorbuster purchases must be completed 7 a.m. to 10 a.m.

CHARGE IT!
GET 10% OFF
ALL DAY
WHEN YOU OPEN A NEW STORE ACCOUNT
Excludes may apply. Subject to credit approval.

LEVI'S® JEANS SALE!

Juniors'

Levi's® 512™ & 555™ Red Tab™
stonewash jeans. Reg. 35.00, SALE 29.99.

Young Men's

Levi's® 550™ & 505™ Red Tab™
stonewash jeans. Reg. 35.00, SALE 29.99.

YOUNG MEN'S/BOYS' 8-20

25% OFF
YOUNG MEN'S OP®
Reg. 16.00-32.00,
SALE 12.00-24.00.

25% OFF
ALL ATTITUDE TEES
Reg. 15.00-18.00,
SALE 11.25-13.50.

14.99-19.99
GRAPHITE® SHORTS
For young men. Also jeans
and pants. Reg. 20.00-25.00.

SALE! 17.99
POINT ZERO® KNIT TOPS
For young men. Short-sleeved.
Reg. 25.00.

CHILDREN'S

25% OFF
GIRLS' 7-16 CAPRIS
Reg. 18.00 & 20.00,
SALE 13.50 & 15.00.

25% OFF
BOYS' 4-7 URBAN® SHORTS
Reg. 22.00, SALE 16.50.

18.99
LEVI'S® STONWASH JEANS
550™ Red Tab™ stonewash
jeans. Girls' 4-6X & Boys' 4-7.
Reg. 22.00.

PLUS! GET A FREE PHAT CD
with your \$50 Levi's purchase.
One CD per customer, please, while supplies last.

REGISTER TO WIN PRIZES
TOTALING OVER \$10,000
Register through August 29, 1999 for your chance to win.
*No purchase necessary. See store for official rules.

BEALLS

For the store nearest you, call 1-800-324-1313 or log on at www.beallsstores.com

NURSING HOME NEWS

by Joy Stancell

Thursday morning Nancy Lemons came for ceramic painting classes. Juanita Teague, Florence Harvey, Nettie Quesenberry, Grace Scarbrough, Kathryn Hancock, Aline Locke, Jackie Davenport, Pearlie Helmer, Nan Gatlin, Bootie Tiller, Rosie Martin and Kathrine Rogers all participated in the class.

Brother Dave McIntire, Zona Gatewood and Anna B. Lane directed our devotional singing service Thursday morning. Jolene Franklin also participated.

Thursday afternoon Helen Linskey and Mollie Johnston were honored with a July birthday party. Mr. and Mrs. J.C. Snitker, Mr. and Mrs. Curtis Snitker entertained, and Lasting Impressions gave each birthday lady a rose corsage. Volunteer Plus and the activity department hosted the event.

Friday morning Pat Watson and four of her grandchildren prepared a music program for the residents.

At noon Friday, Jackie Davenport, Bootie Tiller, Grace

Scarbrough, Aline Locke and Olon Gatlin attended the local meeting of the American Association of Retired Persons at the Civic Center. Dorena Proudfoot and Joy Radford went with us to assist the residents.

Sunday morning Loyce Killingsworth taught the Sunday school class.

Brother and Sister Green, Debra Noble and Glenda Copley of the Progress Baptist Church directed the church service Sunday afternoon.

Brother Randy Tucker, pastor of Richland Hills Baptist Church, brought a devotional for the residents Monday morning.

Tuesday morning the activity department hosted a "Christmas in July" party for the residents.

Tuesday afternoon Beverly Wagnon, Pat Watson, Mary Jo Burge, Claudine Embry and Dorothy Turner came to shampoo and set the ladies' hair and give a lot of TLC.

Joe Embry and Harold Burge were among our friendly visi-

tors Tuesday, also Mr. Bleeker. Irene Splawn was visited by two of her cousins Friday.

Doris Jackson of Hereford was here visiting with her mother, Mrs. Underdown.

Grace Scarbrough was visited recently by Mr. and Mrs. Morris McKillip and Gladys Wilson and Cathy. The latter also brought us cookies.

Happy August birthdays to Leta Neely, Aug. 6, 1906; Kathrine Rogers, Aug. 11; and Bootie Tiller, Aug. 28.

This month's birthday party is scheduled for 3 p.m. Aug. 26.

Dee Clements was visited last week by his grandson and his wife, Mr. and Mrs. Dennis Clements, their two sons and a daughter from Lubbock. Tuesday he went out with his wife, Ruth, to have dinner in the home of his son and daughter-in-law, Mr. and Mrs. Olan Clements.

Webb Watts' daughter, Joy Whitt, takes him out to the farm and to her house several times a week.

Jeff Peeler enjoys a "block party" with his wife and daugh-

ter, Rheata, and several of the male residents each week.

Wednesday morning Harold and Mary Jo Burge and Buster and Wanda Kittrell served coffee, juice and muffins at the coffee time and table gathering. Brother Steve Claybrook,

Buster Kittrell and Loyce Killingsworth directed the devotional/sing-spiration time.

Glenda Jennings and Jackie Scoggins entertained Wednesday afternoon with music, songs, stories and a puppet show.

ALCO CUSTOMERS
Due to a printing error the sale price on the Limp Bizkit "Significant Other" cassette shown on pg. 17 should read 14.99 CD 9.99 Cassette. We regret any inconvenience.
ALCO STORES, INC.

JENNYSLIPPERS NEWS

Members of the Jennyslippers (Women Associates of the Muleshoe Chamber of Commerce & Agriculture) met for their July meeting at the Jennyslipper Mule Putt Miniature Golf Course on July 27.

Everyone brought salads, chips and dips for refreshments and then enjoyed a game of golf. Special guests were Lacie Kirk, Stephanie Kirk and Jerry Bruton. Members present were Ruby Green, Nelda Merriott, Billie Downing, Ellen Ladd, Peggy Bruton, Donna Kirk, Bobbie Harrison, Gail Hargrove and Vivian White.

A brief business meeting was held. Green called the meeting to order, and Downing gave the opening prayer. The minutes were read and motion made by Hargrove and seconded by White. All in favor.

Pictures were presented by Hargrove for the Muleshoe Quilt that is being considered.

Donna Kirk brought a picture of the current Garden Spot.

A report was given on the work night at the Putt Putt. Many came and worked; a lot of cleaning and fixing up was done.

Names were drawn for the August work nights and parties can still be booked almost any time, except Saturday and Sunday evenings.

Keeping the carpet clean is a big undertaking and needs to

be done each time we are open. A big commercial-size blower/vacuum is needed. Hargrove offered to look into it, and Downing made the motion to go ahead with the purchase. Seconded by Peggy Bruton. All in favor.

Appreciation was expressed for the hole sponsors at the Jennyslipper Mule Putt Golf Course: Five Area Telephone, West Plains Telecommunications, Five Area Long Distance, Plateau Cellular, Dairy Queen, Patricia Brookreson/Taco Mayo, WesTex Feedyards Inc., Central Compress and Warehouse, Muleshoe State Bank, Blanche and Jack Lenderson, Michael and Ginger Caldwell, Joe's Boot Shop in memory of Dusty Rhodes, Higginbotham-Bartlett Co., Bailey County

Farm Bureau, Muleshoe Pea and Bean, Decorator's Floral and Gifts, Muleshoe Chamber of Commerce and Agriculture, and Logan and Kathy Puckett in memory of Lance Puckett. Certificates of appreciation are being distributed.

Hargrove thanked the Jennyslippers for their contribution to buying mailboxes for the residents of the Harmon Elliott Senior Citizen Complex. She reported that the mailboxes have been placed and the residents expressed delight at having mail delivery to their door.

The Jennyslippers will again man a rest stop for the Tour de Muleshoe, which raises money for the Heritage Foundation of Muleshoe. Ladd made the motion to adjourn, seconded by Merriott. All in favor.

Overall odds of winning, 1 in 20. Must be 18 years or older to play. ©1999 Texas Lottery

TEXAS MILLION

To play Texas Million, just pick 4 numbers or Quick Pick (QP) for the \$1,000,000 cash prize, and you automatically get 6 more sets of random numbers for more ways to win. In fact, Texas Million offers a \$10 cash prize for matching just 2 numbers within any of the seven sets and \$300 for matching 3. What more could you ask for?

7 Chances To Cash In.

ALLSUP'S
312 W. AMERICAN BLVD.
Muleshoe, TX
(806) 272-4862

Store #34
ALL OFFERS WHILE SUPPLIES LAST
PRICES EFFECTIVE
August 4-10, 1999

All Varieties Regular or Wavy
LAY'S
Regular \$1.49
99¢

ALL FLAVORS V8 SPLASH 64oz.

PEPSI
6 pack 12 oz. cans **\$1.69**
3 liter **\$1.69**

SMART BUY
\$3.49 EACH

RED WING SHOES
Made in U.S.A.

The Fair Store
120 Main 272-3500

402

RED WING SHOES
Made in U.S.A.

The Fair Store
120 Main 272-3500



Muleshoe Cattle Market

SATURDAY, JULY 30, 1999

The Muleshoe Cattle Market is brought to you each week by Muleshoe Livestock Auction, located east of Muleshoe on U.S. 84. Muleshoe Livestock conducts sales every Saturday, beginning with hogs, sheep and goats at 10 a.m. and cattle following at approximately 12 noon.

FOR INFORMATION ON SALES OR TO CONSIGN CATTLE, CALL (806) 272-4201

REPRESENTATIVE SALES

Seller, City	# Type	Wt.	CWT or PH
Jim West, Hereford	7 Hol. Strs	317 lbs.	at \$78.00
Raul Ramirez, Plainview	Hol. Str	340 lbs.	at \$73.00
FM Farms, Brownfield	RMF Bull	225 lbs.	at \$118.00
Rose Medrano, Levelland	Blk. Bull	245 lbs.	at \$109.00
Bill Verden, Earth	Blk. Bull	276 lbs.	at \$116.00
Raymond Vasquez, Plainview	2 Red Strs	370 lbs.	at \$97.00
Jimmie Cooper, Monument, NM	RWF Str	475 lbs.	at \$91.00
Ray McKinney, Littlefield	2 Mxd. Strs	668 lbs.	at \$77.50
A&T Cattle, Sudan	5 Mxd. Strs	717 lbs.	at \$71.50
Jimmie Cooper, Monument, NM	7 Corr. Strs	772 lbs.	at \$57.00
Bill Verden, Earth	Char. Hfr	290 lbs.	at \$91.00
Gene Colburn, Muleshoe	Red Hfr	310 lbs.	at \$85.50
Raymond Vasquez, Plainview	Limo. Hfr	350 lbs.	at \$84.00
KP Farms, Lubbock	13 Mxd. Hfrs	370 lbs.	at \$86.00
B&L Farms, Hereford	Char. Hfr	445 lbs.	at \$81.00
Diamond Y Cattle, Muleshoe	2 Blk. Hfrs	533 lbs.	at \$76.00

760 cattle, 208 hogs and 225 sheep & goats. Market steady on good quality stocker cifs., yearlings and feeder cattle.

Seller, City	# Type	Wt.	CWT or PH
Elogio Castillo, Sudan	2 Red Hfrs	650 lbs.	at \$73.00
Randy Johnson, Muleshoe	34 Mxd. Hfrs	707 lbs.	at \$70.00
Randy Johnson, Muleshoe	52 Mxd. Hfrs	797 lbs.	at \$67.75
Fermin Salinas, Hereford	Char. Hfr	780 lbs.	at \$67.50
Jason Featherston, Levelland	YWF Pair		\$765.00
Jason Featherston, Levelland	WF Cow P5		\$460.00
Keith Battey, Friona	2 Red Pairs		\$670.00
B&L Farms, Hereford	RWF Pair		\$620.00
John Carnes, Levelland	BWF Cow	1000 lbs.	at \$37.25
C&C Cattle, Littlefield	WF Cow	1125 lbs.	at \$39.00
Stanley Sadler, Littlefield	2 Red Cows	1325 lbs.	at \$36.50
Rosa Medrano, Levelland	Blk. Cow	1165 lbs.	at \$37.50
Jimmie Cooper, Monument, NM	BMF Cow	1020 lbs.	at \$39.00
Gene Colburn, Muleshoe	Longhorn Cow	920 lbs.	at \$39.75
Gene Colburn, Muleshoe	Limo. Bull	1740 lbs.	at \$54.75
Lust & Dodd, Canyon	Blk. Bull	2025 lbs.	at \$50.00

Journal Classifieds

STOP & SHOP

Deadlines are 5 p.m. Monday and Thursday

Call 272-4536

Deadlines are 5 p.m. Monday and Thursday

LEGAL

The City of Muleshoe will host a public hearing on August 17, 1999 at 8:30 a.m. This meeting will be held in the council chambers of City Hall, 215 S 1st Street. The City Council has proposed to enter into a long term lease of city owned property with the Muleshoe Area Hospital District. The purpose of this arrangement is to construct a nursing home and assisted living facility. The proposed location is north of Ave. J and South of the city park. In proximity of the 1100, 1200 and 1300 blocks in the Parkridge Addition. All interested residents are welcome and comment is encouraged. Published in the Muleshoe Journal on August 5, 1999 and August 8, 1999.

The City of Muleshoe will conduct a public meeting on August 17, 1999 at 8:45 a.m. This meeting will be held in the Council Chambers of City Hall, 215 S. 1st Street. Residents of the Lenau addition petitioned the Council for reduced speed limits in this residential addition. The council will be presented an ordinance following this hearing that would reduce speed limits in this area from 30 mph to 20 mph. All interested parties are encouraged to attend. Public comment is welcome. Published in the Muleshoe Journal on August 5, and August 8, 1999.



BUSINESS OPPORTUNITIES

MOTHER'S DREAM
Stay home! • Lose Weight! Make Money!
Michelle B. lost 18 lbs. and earned over \$2,000 in one month!
Call 1-800-870-3466

BUSINESS FOR SALE
Vending Route for sale. 50 locations. Great income. \$1200 per month avg. Cost \$3000.
www.vendingroutes.com
1-800-963-5123

GARAGE SALE

GARAGE SALE
Evap. cooler, bicycle, child's carbed, recliner, love seat, table & chairs, glassware, sheets, lamps, sewing machine, child's clothes. Also selling antique furniture & glassware and filing cabinet.
Aug 6 & 7 - 6 a.m. - ?
Directions: From Sudan - 303 to Hwy. 54, Right, on 54, 2 miles FR-65, 2nd house. 806-933-4373

BIG GARAGE SALE!

JARMAN SEED
on American Blvd.
Friday, Aug. 6, 3 - 9 p.m.
Saturday, Aug. 7, 9 a.m. - 1 p.m.

GARAGE SALE

Two family garage sale.
1916 W. Ave. F
Sat. Aug. 7
8 a.m. to ?

FARM EQUIPMENT

•Gleaner L2
24' Header
field ready
•Massey Ferguson
850 24' header,
ready to cut
thewheat
(505) 359-1775
or
(505) 276-8423

HELP WANTED

SECRETARY WANTED
Bookkeeping Experience
Required. Please send
resume to P.O. Box 741,
Muleshoe, Tx 79347
29S 4tch

EXCITING CAREER
Start a new career with
AVON.
For a limited time, you
can start for FREE!
Don't miss out on an exciting
experience and opportunity!
Offer ends Aug. 9!
For more information, call
Misty at 272-3713.

NEEDED HARDWORKING INDIVIDUALS

TX Sesame is teaming up
with SOS Employment for
fall Harvest.
We are looking for dedicated,
hardworking individuals
for plant/warehouse employment.
Locations for
current employment
are Flagg/Springlake areas.
If interested please call
800-242-5369.

Apply in
person at
LEAL'S
between
2 p.m. & 4 p.m. daily
PREP
COOK
WANTED

**SMALL HOMELIKE
NURSING HOME
NEEDS LVNs & CNAs
TO JOIN OUR FAMILY**
If you enjoy geriatric nursing
& consider yourself a top notch
person as well as a nurse, CALL US!
We want only the best & are
expecting to pay appropriately.
Your Pay will be based solely on
your abilities and attitude. Call
Kara at (806) 266-8866

SEEDS

GAYLAND WARD SEED CO.
800-299-9273

Beardless Wheat: TAM 109;
Longhorn; Russian Beardless;
Weathermaster 135; or Lockett.
TX A&M's promising, newly-released
beardless grazing wheat.
Rye: Maton; Elbon; Strain Cross;
Okon. Barley: Schlyer; Post;
TAMBAR 401. Oats: Walken;
Bob; Nora; Coronado. Wheat:
TAM 101; TAM 105; TAM 107;
TAM 110; TAM 200; TAM 202;
Jagger; Concho; Scout; Ogallala;
2137; Custer. Triticale: Presto;
Jenkins; 430; T-23; Full Season
Trit Blend Grazing Blends: 50/50
Triticale & Rye; 40/40/20
Triticale, Beardless Wheat &
Walken Oats; 60/40 Wheat & Rye.
Custom order blends. Registered,
Certified or Select Seed Available.
Bagged or bulk delivery available.
Call Gayland Ward Seed Co.,
Hereford, TX
806-258-7394 or 800-299-9273

MOVING SALE!!

Lots of bargains
1001 W 7th Street
Aug. 6 & 7
8 - ?

MISCELLANEOUS

DURACOOl NM
HERE AT LAST!!!
REPLACES AND MIXES
WITH R12 OR 134A
NO CERTIFICATE
NEEDED
\$8/CAN OR CASE LOTS
LIMITED QUANTITIES
(505) 760-4516
OR
(505) 356-6876

Quality overhang work
and windows for your
Home. Call 505-359-
1640 31s 9tpd

FOR RENT

HOUSE FOR RENT
3 bedroom house for rent.
S/E of Clay's Corner. \$375.
per month.
Call 806-298-2040.

Wanted
Large bales, corn stalks,
milo or wheat straw.
Will pay \$33/ton
Baling/Hauling Available

HOUSE FOR SALE.
3-2, Brick, Fireplace and
Large Shop. Ready to
move into. Shown by
appt. ONLY! Call 806-
925-6463.

FOR SALE

Sweet corn and veggies.
DVJ Farms 202 7th Street,
Farwell, Tx. (806) 481-

FOR RENT
60' X 80' Shop Building.
Airlift, Wash-pit, Office, &
Storage.
Will rent to RESPONSIBLE PARTY
Call CLAUDE RILEY at
272-4775

Ruidoso Condo
3 Bedroom 3 Bath
Sleeps 8
Call Debbie at
(806) 285-3053

SMILE!

New! New! New! New! New! New! New!

CHOICE HOMES INC.
4100 MABRY DRIVE 505-763-1788 4100 Mabry Drive • Clovis, NM

Bank Liquidation Sale! Banker's Loss. Your Gain!

1999 16x80	was \$30,383.00	NOW \$27,854.00
1998 18x80	was \$40,464.00	NOW \$34,489.00
1999 28x60	was \$51,465.00	NOW \$45,174.00
1999 28x60	was \$51,417.00	NOW \$46,128.00
1999 32x44	was \$39,928.00	NOW \$34,469.00

All prices include delivery, set-up, skirting and refrigerated A/C installed. DL#00891

OUT WITH THE OLD. IN WITH THE NEW. DON'T MISS THIS RARE CHANCE TO BUY HOMES THIS REASONABLE!

Call Anna Loya or Kim Humble
888-316-6111 or 505-763-1788

Payments as low as \$200 mo.

New! New! New! New! New! New! New!

Call the Journal for all your Classified Needs!

AUCTION

August 7, 1999 9:00am
Friona Community Center

Selling estates of Randy Weatherly and June Floyd

1-Living Room Suite
1-China Cabinet
1-Kitchen Table w/4 chairs
1-Refrigerator
1-Upright Freezer
1-Gas Cookstove
1-Washing Machine
1-Clothes Dryer
1-Kingsize Waterbed with Dresser
1-Full size bed
1-Set bunk beds
1-Twin bed
2-Night Stands
1-Custom Made 12 Gun Cabinet
2-Wooden End Tables
1-6 Drawer Metal Desk
1-4 Drawer Metal Filing Cabinet
1-Rocker Recliner
1-Rocking Chair
1-Glass Display Case
1-Lot Kitchenware
1-Coin Collection (app. 72)
1-Pocket Knife Collection
1-Pocket watch collection (app. 7)
1-Belt Buckle Collection (5)

GUNS
Winchester 30WCF Western Field 20ga. Remington Wingmaster 870 Daisy 880 BB Gun Winchester Model 94XTR 375 Mauser Model Argentino 1591 Winchester Ranger 140 12 ga. Remington Sportsman 48 20 ga. Winchester Model 190 22 w/scope Remington 1100 410 ga. Winchester Model 170 22 Springfield 944 Series A 12 ga. Stevens Model 860c 22 ga. 2-Remington 22 ga. 1-Lot Tools 1-Lot Camping Equipment 1-Lot Fishing Rods & Tackle 2-Butane Grills (1 new)

SADDLES
1-Kid Saddle
1-Chearuss Youth Saddle 12 1/2
1-ML Leddy 15 1/2
1-Colorado Saddlery 15
1-Saddle 14 1/2
1-Lot Bits
1-Lot Tack
1-Lot Saddle Racks
1-Horse Walker
19-Livestock Panels
1-20' Gooseneck Stock Trailer
1-12' Stock Trailer
1-Lot Feed & Water Troughs

VEHICLES
1-Yamaha 125 Motorcycle
1-Kawasaki 375 3 Wheeler
1-1985 4 Door Ford Pickup
1-1977 Chev. Pickup
1-1958 Grain Truck

Many more items too numerous to list!

VAN SPIKES AUCTIONEER

lic.# 12061 Phone 940-959-3925
Rodney Dunhan auctioneer-lic.# 12052

Real Estate
Block 1 Lots 4 and 5 Drake Edition-same being house and lots located at 1364 Columbia St. Friona, TX
Real Estate will sale at app. 10:00am and is subject to approval of estate.
5% escrow due on sale day and close within 30 days
Jack & Jack REALTORS Ford Spikes Broker lic.# 0256858

Terms of sale: All purchases must be paid for in full on the day of the sale, you may use cash or cashier's check. Company or personal checks must be accompanied by a letter from your bank guaranteeing payment to Van Spikes Auctioneer. Descriptions of items in this sale are believed to be correct and have been conscientiously set forth. Condition, year, models, etc., as set forth in no way warranty or guarantee. Any discrepancies at time of sale take precedence over printed material. All items must be removed from sale site the day of the sale. Items listed on this brochure are subject to deletions or additions.

Nieman Realty

116 E. Ave. C • George Nieman, Broker • 272-5285 or 272-5286

RICHLAND HILLS - PARK RIDGE

- We have several single and multi-family lots in this area!!!!
- 3-2-2 Brick, cent. A&H, built-ins, FP fenced yd. NICE!! \$59.5K!!
- VERY NICE 2-2-2 Brick, Heat Pump, built-ins, FP, fans, fenced yd., stor. bldg., MORE!!! RH-2

HIGHLAND - HARVEY AREA

- VERY NICE 2-1-1 carport Home, nicely remodeled, Cent. Heat, DW, fans, fenced yd., Stor. Bldg., MORE!!! \$30.5!! HL-1
- 3-1-1 carport Home, wall furnace heat, evap. air, large yd., MORE!!! \$20.5!!! HV-2
- 3-2-2 Brick, Cent. A&H, built-ins, gas log FP, fenced yd., stor. bldg., MORE!!! Price Reduced!! HL-5
- 2-1-1 carport home, wall furnace heat, evap. air, DW, 5 fans, cov. patio, gas grill, fenced yd., MAKE OFFER!!! HL-2
- 3-2-2 Brick Home, corner lot, wall furnace heat, Cent. Evap. Air, fenced yd., stor. bldgs., MORE!!! HL-4
- 2-1-1 Home, Cent. A&H, built-ins, corner lot!! \$23,500!! HV-1
- VERY NICE 3-1-1 Brick, Cent. A&H, nice carpet, fans, fenced yd., 2 stor. bldgs., MORE!!! \$36.5K!! HL-3

LENAU - COUNTRY CLUB AREA

- VERY NICE 2-1-1 Brick, Cent. A&H, fenced yd., MORE!!! \$30.5!! CC-2
- NICE 3-1-1 CP Home, Cent. Heat, evap. air, fenced yd. stor. bldg!! \$32K L-1
- PRICE REDUCED 2-1-1 Carport Home, wall furnace, nice carpet, storm shelter, stor. bldg., fenced yd. \$19K!! CC-3
- NICE 3-2-2 Brick, Cent. Heat & Cent. Evap. air, built-ins, FP, fenced yd., stor. bldg.!! \$40.5!! CC-1
- 2-1-1 carport Home, wall furnace, evap. air, fenced yd.!! L-2

COMMERCIAL

- GOOD INCOME PROPERTY - approx. 3490' bldg., paved parking, good net lease!! PRICED TO SELL!!
- Six Unit Apartment Complex (4-2 bdrm. & 2-1 bdrm. units)!!!
- Established Business: Land, Bldg. & Equip., \$75K!!
- 56' x 140' tract, approx. 4700' bldg., \$35K!!
- NICER.V. Storage, 14'X40' metal bldg, 12 doors, 50X140 corner lot HIGH SCHOOL
- NICE 2-2-1+1 carport Home, Geo. Heat Pump, built-ins, FP, fans, fenced yd., MORE!!! \$30.5!! HS-2

- VERY NICE 3-2-2 Brick, Heat Pump, built-ins, fans, nice carpet, stor. bldg., fenced yd., MORE!!! \$60.5!! HS-3
- VERY NICE 3-1-1 Brick, Heat pump, DW, nice carpets, fenced yd., MORE!!! \$30.5 !!! HS-1
- 1-14' x 60' and 1-12' x 40' Mobile Home on a 98' x 75' lot, both have cent. heat, evap. air, stove, & ref., cov. patios, fenced yd.!!!
- 3-2-2 Home, corner lot, floor furnace heat, Cent. Air, auto. spkrl., stor. bldg., fenced yd., MORE!!! \$50.5!! HS-10
- 2-1-1 Home, wall furnace, win. evap. stove, refrig., W&D, fenced yd.!!! \$23,000!! HS-11
- PRICE REDUCED Nice 3-2 Home, Heat pump, built-ins, fenced yd., stor. bldg., \$35,000!! HS-8
- NICE CHURCH BUILDING, approx. 2 acre tract, with 3-2 Mobile Home for classrooms or parsonage !!!

RURAL

- VERY NICE 4-2-2 Brick on 3.5 acres, edge of town, Cent. A&H, built-ins, FP, sunroom, basement, pool & hot tub, auto. spkrl., fenced yd., plus 50' x 100' metal barn w/office, 1/2 bath, and workshop!! MANY MORE EXTRAS!! \$225K!!!
- PRICE REDUCED- NICE 3-2 home, 40 acre tract, Geo. Heat Pump, built-ins, 5" irrig. well, Hi-Pre. lines, sprinkler pipe, barn, pens, tractor & equip!!! \$59K!!!
- W. of SUDAN-NICE 3-2-2 Brick Home, 5 acre tract on Hwy. 298, Cent. Air & Heat, built-ins, large Quonset Barn, MORE!!! \$95K!!!
- 5 Acre tract on pavement close to town!
- FRIONA-HUB-3.20 acres, 3-6" wells, 2 circle sprinklers, good soil. PRICED TO SELL!!!
- Approx. 108 acres on Hwy. 70, approx. 2100' office area, 16,900' of commercial bldg. w/loading dock, 3,400' warehouse!! 2,800' runway!!
- LONGVIEW - GOOD Dryland Labor, fully allotted, planted in wheat. \$225.00 per acre.
- 152.8 acres, 15 hp & 20 hp. sub., Lockwood spkrl., 85 acres seed grasses & 35 acres wheat. \$475.00 per acre.
- 160 acres, 2 bdrm. home, garage, storage, barn, 8" irrig. well! \$42K!!!
- EARTH - 2 Homes (Hite Park Add.), 3 bdrm. 2 bath!! Call for Details!!

Smart BACK TO SCHOOL BUYS at Lowe's

- Colorific **Pink Eraser** ea. **25¢**
- Clear 6 Inch **Protractor** ea. **25¢**
- Pointed or **Safety Scissors** 4.5-5 in. **49¢**
- Clear Plastic **12" Ruler** ea. **19¢**
- Mead 3 Brad w/Pockets **Cover** ea. **25¢**
- Mead 3-Subject **Notebook** 120 ct. **79¢**
- Pressboard **Report Cover** 3 inch **69¢**

- Paper Mate Black **Eraser Mate** 3 pack **\$1.49**
- Small **Zipper Pouch** ea. **25¢**
- Elmer's School **Glue Stick**21 oz. **49¢**
- Pentel Gizmo Mechanical **Pencil**5 mm. **99¢**
- Pentel Techniclick **Pencil**5 mm. **\$1.39**
- Colorific **Map Pencils** 12 ct. **99¢**
- Twin **Sharpener** ea. **35¢**

- Crayola **Crayons** 16 ct. **99¢**
- Crayola Washable **Markers** 8 ct. **\$2.49**
- Ecowriter No. 2 **Pencil** 8 pk. **69¢**
- Paper Mate Black or Asstd. **Dynagrip Pens** 3 pk. **\$2.49**
- Mead Spiral **Theme Book** 70 pg. **3/99¢**
- Black/Blue/Red Roller Ball Pens **Pilot G-2** ea. **99¢**
- Yellow **Brite Liner** ea. **2/\$1**

- Elmer's Glue-All or **School Glue** 4 oz. **79¢**
- 5 Tab Index **Dividers** 8"x11" **29¢**
- BIC Black/Blue Medium **Round Stic** 10 pk. **99¢**
- BIC Mechanical **Pencil** 5 pk. **\$1.25**

Shurfine & Shursaving BACK TO SCHOOL

MEAT

- Fryer 10 lb. Bag **Leg Quarters** lb. **29¢**
 - Fryer Small Pack **Leg Quarters** lb. **39¢**
 - Preferred Trim Boneless Beef **Top Round Roast** lb. **\$1.49**
 - Preferred Trim Boneless Beef **Top Round Steak** lb. **\$1.69**
 - Tenderized Beef **Cube Steak** lb. **\$2.39**
 - Fresh **Ground Round** lb. **\$1.79**
 - Preferred Trim Boneless Center Cut **Pork Chops** lb. **\$2.69**
 - Farm Raised **Catfish Nuggets** lb. **\$1.49**
 - Whole Boneless Center Cut **Pork Loins** lb. **\$1.99**
 - Preferred Trim Boneless Beef **Rib Eye Steak** lb. **\$4.99**
 - Shursaving Regular/Hot **Pork Sausage** 1 lb. roll **79¢**
 - Shurfine **All Beef Wieners** 12 oz. **\$1.19**
 - Shurfine Breakfast **Sausage Links** 11 oz. **89¢**
 - Shurfine **Meat Bologna** 1 lb. **99¢**
 - Shurfine **Sliced Bacon** 1 lb. **\$1.69**
 - Shurfine Stack Pack **Bacon** 1.5 lb. **\$2.49**
 - Shurfine Meat Bologna, Salami or P&P Loaf **Luncheon Meat** 6 oz. **59¢**
 - Shurfine Regular/Polish **Smoked Sausage** .. 1 lb. **\$1.49**
 - Shurfine **All Meat Wieners** .. 12 oz. **59¢**
 - Shurfine **Cooked Ham** 6 oz. **\$1.49**
 - Shurfine **Chopped Ham** 6 oz. **\$1.19**
 - Shurfine Sliced Wafer Thin • Turkey • Chicken • Beef • Pastrami • Ham • Corned Beef **Deli Meats** 2.5 oz. **39¢**
 - Shurfine **Corn Dogs** 27 oz. **\$2.49**
 - Shurfine **Corn Dogs** 1 lb. pkgs **2/\$3**
 - Shurfine Pimento **Cheese Spread** 7 oz. **\$1.19**
 - Shurfine Pimento **Cheese Spread** 12 oz. **\$1.89**
- 13 Varieties Shurfine • Regular/No Salt Cut Green Beans • French Sliced Green Beans • Mixed Vegetables • Crisp 'N' Sweet Whole Kernel Corn • Regular/No Salt Whole Kernel Corn • Sliced/Diced Carrots • Regular Cream Style Golden Corn • Whole Kernel Sweet Golden Corn • White/Golden Hominy
- Vegetables** 12-15.5 oz. **3/99¢**
 - Assorted Varieties **Shursaving Soft Drinks** .. 12 pk.-12 oz. cans **2/\$3**
 - Shurfine Creamy/Chunky **Peanut Butter** 18 oz. **99¢**
 - Shurfine **Grape Jelly** 32 oz. **99¢**
 - Shursaving White **Bath Tissue** 6 roll pkg **99¢**
 - Shursaving All Purpose **Flour** 25 lb. bag **\$2.99**
 - Shursaving All Purpose **Flour** 5 lb. bag **79¢**
 - All Types Sprite, Dr. Pepper or **Coca-Cola** 6 pk.-12 oz. **2/\$3**
 - All Types Sprite, Dr. Pepper or **Coca-Cola** 3 liter bt. **\$1.78**

PRODUCE

- Large Cello Wrapped **Iceberg Lettuce** ea. **39¢**
 - Golden Ripe **Bananas** lbs. **3/\$1**
 - Sweet Juicy **Peaches** lb. **99¢**
 - Summer Sweet **Nectarines** lb. **99¢**
 - Washington Extra Fancy Red **Delicious Apples** lb. **69¢**
 - Red Ripe Roma **Tomatoes** **7/\$1**
 - Spicy **Jalapeño Peppers** .. lbs. **2/\$1**
 - Red Ripe **Strawberries** 1 lb. **\$1.69**
 - Large Sno White **Cauliflower** ea. **\$1.39**
 - Extra Large **Bell Peppers** **3/\$1**
-
- Shurfine Blended or **Vegetable Oil** 48 oz. **2/\$3**
 - Shurfine Select Group **Skillet Dinners** ... 7-8.5 oz. **99¢**
 - Shurfine Heavy Duty Spoons/Forks/Combo **Plastic Ware** 24 ct. **2/\$1**
 - Shurfine Regular/Clear/Tail **Kitchen Bags** 15 ct. **89¢**
 - Shursaving Lemon **Dish Liquid** 40 oz. **99¢**
 - Shursaving 9" **Paper Plates** 100 ct. **89¢**
 - Shurfine Real **Chocolate Chips** .. 12 oz. **\$1.29**
 - Shurfine **Pinto Beans** 4 lb. **99¢**
 - Shurfine **Lunch Bags** 50 ct. **2/\$1**
 - Shurfine **Sandwich Bags** ... 150 ct. **2/\$1**
 - Shurfine **Instant Rice** 14 oz. **99¢**
 - Shurfine Chicken **Noodle Soup**.. 10.75 oz. cans **2/\$1**
 - Shurfine Deco **Paper Towels** big roll **99¢**
 - Shursaving **Tea Bags** 100 ct. **99¢**
 - Shurfine **Iced Tea Mix** 64 oz. **\$2.99**
 - Shurfine Ice Cream **Cake Cones** 12 ct. **69¢**
 - Shurfine Sport Cap **Spring Water** ... 16.9 oz. btls **4/\$1**
 - Shurfine Cereal **Corn Flakes** 18 oz. **99¢**
 - Shurfine Assorted RTS **Frostings** 16 oz. **99¢**
 - Shurfine Asstd. Deluxe Moist **Cake Mixes** 18.25-18.5 oz. **69¢**
 - Shurfine • 15 oz. Fruit Rings • 14 oz. Magic Stars • 13.75 oz. Cocoa Crunchies **Cereal** your choice **2/\$3**
 - Shurfine Select Group **Pickles** 32 oz. **\$1.79**
 - Shurfine Assorted **Spaghetti Sauce** .. 26.5 oz. **79¢**
 - Shursaving Apple **Juice Cocktail** 64 oz. **99¢**
 - Shurfine Potato Au Gratin or Scaloped **Potatoes** 5.5 oz. **99¢**
 - Shurfine **Honey Bear** 12 oz. squeeze **99¢**
 - Shurfine Tomato **Ketchup** 20 oz. squeeze **79¢**

FROZEN & DAIRY

- Shurfine Regular Vanilla • Chocolate • Strawberry **Ice Cream** 5 qt. tub **\$3.99**
 - Shursaving Assorted **Twin Pops** 18 ct. **\$1.99**
 - Shursaving Oil **Vegetable Spread** .. 32 oz. tub **79¢**
 - Shurfine **Sour Cream** 1/2 pint **69¢**
 - Shurfine **Sour Cream** pint **99¢**
 - Shurfine **Cottage Cheese** .. 24 oz. **2/\$3**
 - Shurfine Butter Flavor or Buttermilk **Jumbos Biscuits** .. 16 oz. **99¢**
 - Shurfine Jumbos **Cinnamon Rolls** .. 16.9 oz. **2/\$3**
 - Shurfine Longhorn Cheddar/Colby **Halfmoon Cheese** .. 10 oz. **2/\$3**
 - Shursaving **Sandwich Singles** .. 10.6 oz. **79¢**
 - Shurfine Assorted **Shredded Cheese**.. 32 oz. **\$4.99**
 - Plains Assorted **Fruit Drink** gallon jug **75¢**
 - Shurfine Chilled **Orange Juice** gal. jug **\$2.99**
 - Shurfine **Drinking Water** ... gal. jug **2/\$1**
 - Shurfine Frozen **Orange Juice** 16 oz. **2/\$3**
 - Select Group • Cut Green Beans • Whole Kernel Corn • Green Peas • Peas & Carrots • Mixed Vegetables **Shurfine Vegetables** .. 16 oz. **89¢**
 - Shurfine Mini **Corn on the Cob** .. 8 ear pkg. **2/\$3**
 - Shurfine Assorted Round **Waffles** 11 oz.-8 ct. **\$1.25**
 - Shurfine Regular **Whipped Topping** .. 12 oz. **\$1.29**
 - Shurfine Frozen Pink or Regular **Lemonade** 12 oz. **\$1.49**
-
- Shurfine White **Facial Tissues** 175 ct. **79¢**
 - Shursaving **Long Grain Rice** 4 lb. **99¢**
 - Shurfine Medium/Large **Basic Diapers** 18-24 ct. **\$2.99**
 - Shursaving Regular Elec. Perk or Drip **Coffee** 11.5 oz. **2/\$3**
 - Pre-Creamed Shursaving **Shortening** 42 oz. **99¢**
 - Shursaving Fabric Softener **Rinse** 128 oz. **99¢**
 - Shursaving Elbow Macaroni or Long **Spaghetti** 32 oz. **99¢**
 - Shursaving Assorted Sandwich **Cookies** 32 oz. **2/\$3**
 - Shursaving Pancake **Syrup** 24 oz. squeeze **99¢**
 - Shurfine Assorted **Instant Oatmeal** .. 12-15 oz. **\$1.79**
 - Shurfine Chunk or Gravy **Dog Food** 40 lb. **\$5.99**
 - Shurfine Assorted Ration **Dog Food** 13 oz. cans **4/\$1**
 - Save On **Frutopia** 4 pk. **\$2.99**
 - Shurfine Instant Lighting **Charcoal** 8 lb. bag **\$1.49**

HEALTH & BEAUTY

- Western Family Assorted **Toothpaste** 5-7 oz. tube **79¢**
 - Western Family Full Angle Soft or Medium **Toothbrush** each **99¢**
 - Western Family Assorted **Maxi Pads** 16-24 ct. pkg **\$1.99**
 - Western Family Mint/Peppermint **Mouthwash** 24 oz. **99¢**
 - Western Family **Petroleum Jelly** ... 7.5 oz. **2/\$3**
 - Western Family **Vitamin C Tablets** .. 100 ct. **\$1.99**
 - Western Family Assorted **Cough Drops** 40 ct. bag **75¢**
 - Western Family Tablets/Caplets **Ibuprofen** 50 ct. btl **\$1.99**
 - Western Family Tablets **Stay Awake** 16 ct. **\$1.29**
 - Western Family Children's Tablets **Multi Vitamins**... 100 ct. chewable **\$2.99**
 - Western Family **Anti-Plaque Rinse** .. 16 oz. **\$1.99**
 - Western Family **Aspirin Free Captabs** 100 ct. **\$3.99**
 - Western Family **Mint Antacid** 12 oz. **2/\$5**
 - Western Family **One Daily Vitamins** 100 ct. **\$2.19**
 - Western Family Lady's Disposable Twin **Razors** 10 ct. **\$1.99**
 - Western Family **Disposable Razors** .. 10 ct. **99¢**
 - Western Family **Skin Cream** 10 oz. **\$1.99**
 - Western Family Regular or Aloe Lanolin Skin Care **Lotion** 15 oz. **\$1.99**
 - Western Family Regular **BisMate** 16 oz. **\$2.37**
 - Western Family Normal/Oily **Dandruff Shampoo** .. 15 oz. **\$1.99**
 - Western Family Assorted **Nail Polish Remover** .. 6 oz. **99¢**
 - Western Family Blue Marble/Gold **Deodorant Soap** ... 3 bars **99¢**
-
- Shursaving Reg. w/Bleach **Ultra Detergent**... 109 oz. **\$2.29**
 - Shursaving Granulated **Sugar** 4 lb. bag **\$1.29**
 - Shurfine Assorted **Saltines** 15-16 oz. box **69¢**
 - Regular **Shursaving Bleach** .. gal. **69¢**
 - Shurfine Dinners **Macaroni & Cheese** 7.25 oz. boxes **5/\$1**
 - Shurfine Assorted **Napkins** 120 ct. **79¢**
 - Shurfine Reclosable **Snack Bags** 50 ct. **89¢**
 - Shurfine Assorted **Cat Food** 5.5 oz. cans **5/\$1**
 - Shurfine Large/Medium **Dog Biscuits** 26 oz. **99¢**

SAVE AN ADDITIONAL 50¢ ON CHARCOAL WITH IN-AD (CIRCULAR) COUPON!



401 W. American Blvd. Muleshoe 272-4585

WESTERN MONEY UNION TRANSFERSM
"The fastest way to send money"

MEMBER STORES AT PARTICIPATING STORES

WE RESERVE THE RIGHT TO LIMIT QUANTITIES IN TEXAS