

PAGE ONE

A QUICK READ OF THE NEWS

Muleshoe students in news

The efforts of four former Watson Junior High students were recently recognized in *Earth Preservers*, an environmental newspaper for kids published nationally during the school year.

Carmen Flores, Zac Yanis, Kyle Atwood and Mylissa Thompson researched the problem of soil erosion in West Texas and made presentations to local groups. The students traveled to New Hampshire in the spring and made a presentation at an environmental education symposium sponsored by Wheelabrator Technologies and the Christa McAuliffe Planetarium.

Miller second at Big XII

Jon Colby Miller of Lazbuddie finished second in pole vault Saturday in the Big XII Conference indoor track meet at Kansas State University in Manhattan.

The senior at the University of Kansas cleared a personal-best height of 17-4 1/2. He narrowly missed three attempts at 17-10.

Former high school rival Jacob Davis of the University of Texas was the meet winner with a vault of 18-8 1/4.

Miller expected to hear Tuesday if he qualified for the NCAA Division I meet to be held on March 5-6 in Indianapolis.

BEST BETS

The Friends of the Muleshoe Library are holding a lasagna dinner from 11 a.m. to 2 p.m. on Thursday at the Bailey County Coliseum.

Tickets are \$6 at the door.

NUMBERS

Muleshoe ISD

Superintendent • 272-7404
Watson Junior High • 272-7349
DeShazo Elementary • 272-7364
Dillman Elementary • 272-7382
Muleshoe High School • 272-7303
Counselor • 272-7304
Athletics • 272-7308



Drawing date: Saturday, Feb. 20
Winning numbers: 01-03-05-16-41-42
Estimated jackpot: \$14 million
Winners: none
Next drawing: Wednesday, Feb. 24
Estimated jackpot: \$18 million

On this date in history

Feb. 25 — Congress is empowered to levy income taxes by the 16th Amendment to the U.S. Constitution (1913).
Feb. 26 — New York's first subway line is opened to the public (1870).
Feb. 27 — The U.S. Supreme Court outlaws "sitdown strikes" (1939).

LOCAL WEATHER

	High	low	Pre.
Friday	68	25	—
Saturday	57	29	—
Sunday	72	24	—
Monday	56	30	—

Prec to date 11 inches (snow)

EXTENDED FORECAST

Partly cloudy throughout the remainder of the week turning mostly sunny over the weekend. Highs will remain in the low to mid 70s. Lows 30-35. Light winds throughout the latter part of the week.

Managing Editor Rick White can be reached at 272-4536 or ctyankee@fivearea.com.

MISSED YOUR PAPER? Call carrier
Melissa Flores at 272-6719 or the
Journal during normal business hours.

Dimmitt dashes Lady Mules' dream

By RICK WHITE
Managing Editor

LEVELLAND — The "Comeback Kids" were forced to call it quits.

Dimmitt ended Muleshoe's improbable playoff run, fighting off the Lady Mules 72-66 Tuesday in a girls Class 3A regional quarterfinal game at Levelland High School.

Muleshoe had won its two previous playoff games by a combined three points with some late-game heroics.

But Heather Wise converted a key three-point play and the Bobbies capped an amazing effort from the free throw line by sinking four-straight free throws in the final 17 seconds.

Using some late magic of its own, Dimmitt (22-9) closed with a 12-3 run in the final three minutes.

"I thought we did a good job of coming back again, but we just didn't finish it," Muleshoe coach Jim Gruhlkey said.

Muleshoe (15-17) had rallied from a 10-point deficit to shock heavily-favored Denver City 55-53 in the area round and beat Tulia on a last-second 3-pointer in bi-district.

"I'm awfully proud of the kids. I can't say enough about their effort. They played with more guts during the last two weeks than any team I've coached," Gruhlkey said.

District 1-3A champion Dimmitt (22-9) won the game with its uncanny accuracy from

"I'm awfully proud of the kids. I can't say enough about their effort. They played with more guts during the last two weeks than any team I've coached."

— Muleshoe coach
Jim Gruhlkey

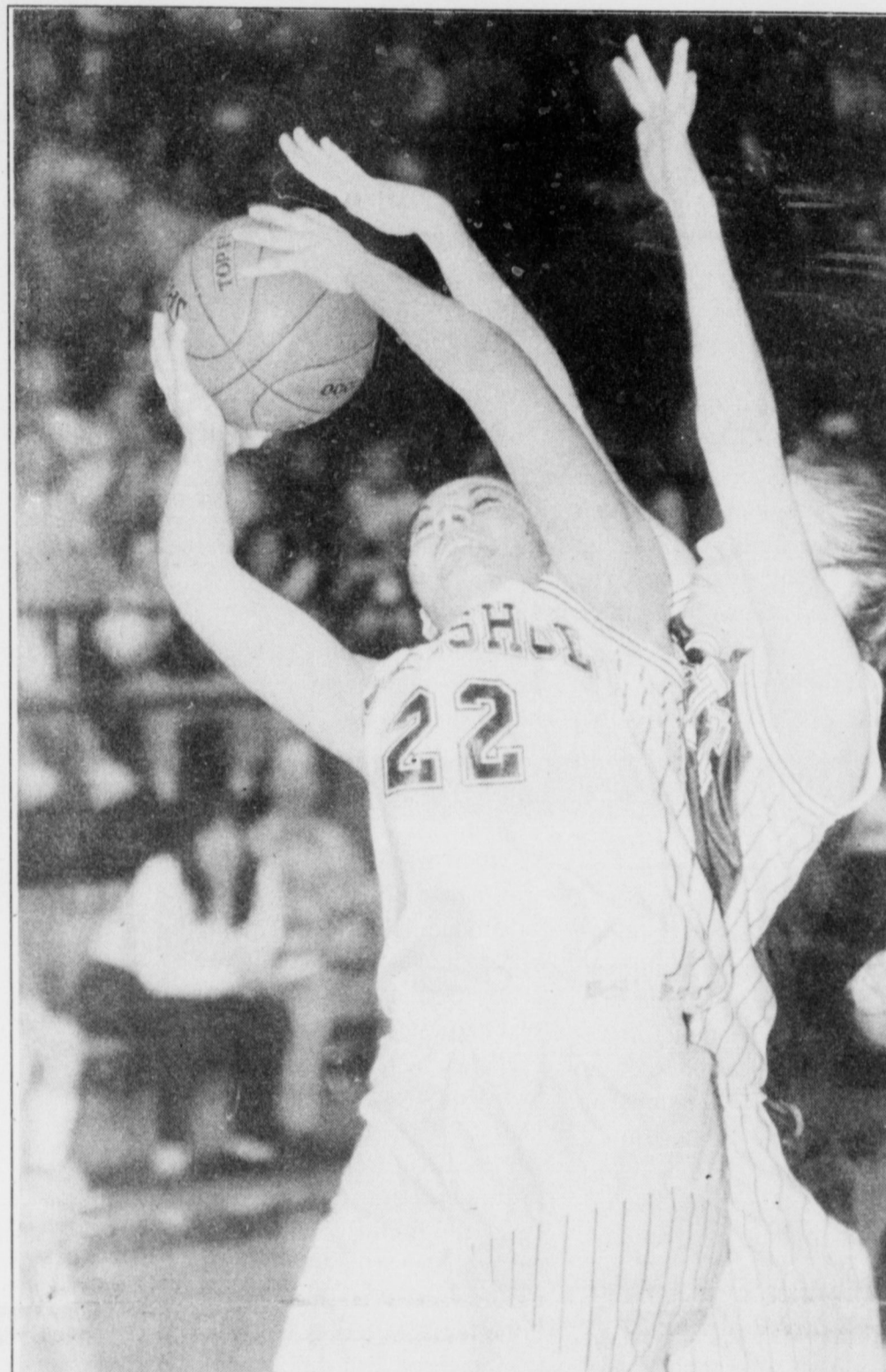
the free throw line, converting 26 of 35 free throws, including 17 of their last 18. The Bobbies also forced 26 Muleshoe turnovers.

"These kids just play with a lot of heart and get after it," said first-year Dimmitt coach Chris Edwards. "We've gone to a 94-foot style of basketball this year and we've been able to wear teams down."

Senior Erin Wilhite continued her strong playoff play, finishing with a game-high 22 points for Muleshoe. Junior Lindsey Field added 17 points and Chyla Torres finished with 10.

Stephanie Hinosoja led Dimmitt with 18 points, Shawna Kenworthy had 13 and Wise finished with 12. The trio combined canned 15 of 17 free throws.

see LADY MULES on page 5



JOURNAL PHOTO BY RICK WHITE

Tough two

Muleshoe's Chyla Torres gets off a shot despite being hounded by a Dimmitt defender during Tuesday's Class 3A regional quarterfinal game.

Livestock production fuels huge increase in ag products

By PATTI DRIVER
Journal staff writer

Although the number and size of full time farms in Bailey County decreased over the last five years, the value of products sold from these farms increased 146 percent over the same period.

According to the 1997 Census of Agriculture, the number of farms in the U.S. decreased (less than one percent) with full time farms taking the biggest hit showing an overall decrease of 8.7 percent.

The market value of agricultural products sold has increased 21 percent across the nation and just over 14 percent in Texas. The value of crops increased about 30 percent and the value of livestock and their products rose 13 and 9 percent in the U.S. and Texas respectively.

According to the census, Texas is ranked first in livestock sales with over \$9.4 billion, fifth in crop sales with \$4.3 billion, and overall is the number two agricultural producer in the nation.

Bailey County ranks 18th out of 254 counties in Texas with the total value of agricultural products sold over \$171 million, an average of \$389,286 per farm. Livestock sales accounted for 79 percent of sales with \$135 million (a 209 percent rise from 1992) even though the number of Bailey County livestock producers decreased from 221 to 167.

Nearby Castro County ranked number one in Texas with \$668 million in total sales of agricultural products.

Texas is ranked number one in the

see CENSUS on page 2

Muleshoe debate team qualifies for state

By PATTI DRIVER
Journal staff writer

Two Muleshoe High School students qualified for the state UIL Debate contest scheduled for March 14-16 in Austin.

The team of junior Chris Gatewood and sophomore Westin Price placed second at the recent district contest behind a strong team from Friona. They qualified in the cross-exam debate category and will compete against 62 other teams that qualified in class 3A.

"Both these teams have a good chance of finishing in the top four at state this year," said Dr. Kerry Moore, debate coach. The Friona team placed third last year. The top eight teams



Chris Gatewood (left) and Westin Price qualified for state debate meet

Bailey County



- Land in farms decreased 6 percent from 432,939 acres in 1992 to 408,936 in 1997.
- Average size of farm decreased 13 percent from 1,066 acres in 1992 to 927 acres in 1997.
- Full-time farms decreased 2 percent from 304 farms in 1992 to 299 farms in 1997.
- Market value of agricultural products sold increased 146 percent to \$171 million in 1997.
- Livestock sales accounted for 79 percent of the increase in market value.

Classic responds to price variance

By RICK WHITE
Managing editor

A Classic Cable ad placed in a neighboring newspaper caught the attention of Muleshoe city manager Rick L. Hanna.

Classic Cable is offering basic cable service in Friona and Bovina for nearly half the rate charged to Muleshoe customers. In fact, the Kansas-based cable television company just raised its Muleshoe rate by \$3.

In a February 12 ad, Classic announced it is dropping its "standard basic" rate in the Friona/Bovina area from \$25.95 to \$19.95 per month. In Muleshoe, "standard basic" costs \$35.17 including tax.

Hanna met with Classic regional manager Dennis Knipher last Friday, but he wasn't happy with the reason he was given for the price discrepancy — Classic has competition in Friona.

The new Muleshoe city manager asked Classic Cable representatives to come discuss their new rates at a March 16 city council meeting.

"I think they need to explain

see CLASSIC on page 2

see DEBATE on page 2

Lovelady wins broadcasting award

Tisha Lovelady got scooped on the biggest story of her short broadcasting career.

A surprised Lovelady was presented a plaque for finishing second in a junior high school broadcasting competition by her teacher Tom Boutell during an assembly Thursday at the high school auditorium.

"I didn't have any idea what was going on," Lovelady said.

The Watson Junior High eighth-grader placed second in the anchor division in a contest sponsored by West Texas A&M University and the National Broadcasting Society.

Every other day, Lovelady anchors Mule News, a student-run news program at WJHS. Her winning entry included stories about the Muleshoe Mules winning their first district title since 1979, Hurricane Mitch and the possibility of President Clinton getting impeached. She researched and wrote all three stories.

Lovelady likes seeing herself on television and the fact



Award winner

WJHS teacher Tom Boutell presents an award for anchor broadcasting to Trisha Lovelady last Thursday during an assembly in the high school auditorium.

that "the whole school" gets to see her. Pronouncing words has been the biggest struggle.

She credited Boutell and the program with making her a better student.

"He's taught me a lot," Lovelady said.

Tisha is the daughter of Roy and Debbie Lovelady.

— Rick White

Around Muleshoe

Babe Ruth League meeting March 1

A meeting for parents interested in forming a Babe Ruth League in Muleshoe will be held at 7 p.m. on Monday, March 1 in the Bailey County Electric Co-op meeting room.

For information contact David Marricle at 272-4863.

Muleshoe PTA meeting Monday

The Muleshoe PTA is holding a meeting at 6 p.m. Monday, March 1 in the DeShazo Elementary School gymnasium.

The fifth-grade music class will perform a program called "The History of Rock 'n Roll."

The deadline for items to appear in *Around Muleshoe* is 5 p.m. Monday for Thursday's edition and 5 p.m. Thursday for Sunday's edition. Items can be mailed (PO Box 449), called in (272-4536) or faxed (272-3567).

HELP SUPPORT THE MULESHOE PUBLIC LIBRARY!

Attend the benefit

Lasagna Lunch Thursday, Feb. 25

11 am to 2 pm

Bailey County Coliseum

\$5 Advance tickets

\$6 At the door

Advance tickets available at the Library — 322 W. 2nd
Or call 272-4707

CATCH MULE MANIA!

CENSUS

from page 1

production increased 17 percent. The amount of acreage for producing corn, sorghum, wheat, and soybeans fell in Bailey County as well as the total harvested.

The average farmer in Bailey county is 57 years old, up from 54 in 1992. There has also been an increase in women and minorities operating farms across Texas and Bailey county. The average value of the land, buildings, equipment, and machinery of the farms in Bailey County has increased from \$424,651 to \$464,740, a rise of over 9 percent.

These statistics are posted on the internet at: www.nass.usda.gov/census.

CLASSIC

from page 1

to the city council about the rates," said Hanna, who has been working on a franchise agreement with Classic. He added that he was in the process of visiting with other companies about providing television to the city of Muleshoe.

Knipher also told the Journal that competition was the reason for the large discrepancy in rates.

"Friona is giving us a chance to experiment on how to combat direct competition," Knipher said.

WT Services of Hereford is Classic's competitor in the

Friona/Bovina area. It is a satellite company of West Texas Rural Telephone, which is also competing against GTE for the city's telephone service.

"It's been great for us," said Friona city manager Paula Wilson. "We're getting better service, especially phone service."

Knipher added that "Muleshoe has a great cable system. The picture is good and clear. Friona doesn't have that advantage."

Classic Cable has approximately 1,500 customers in Muleshoe, and they serve 70-plus communities in the Panhandle.

this year and has placed in the top three in all but one. Gatewood said, "It's been a team effort."

"We couldn't have done it without each other," added Price.

Price and Gatewood plan to compete together next year. "We've put in a lot of hard work that has paid off," said Price. "It's all been worth it," he added.

This is the 20th Muleshoe team to go to state — seven have returned as champions.

DEBATE

from page 1

will qualify for UIL academic scholarships.

The year long topic for the cross-exam debate is 'How the US should resolve to change its foreign policy with Russia.' The team brings four boxes of research material with them to each tournament.

"We've devoted a lot of time after school and on weekends. There has been a lot of research. It's not easy," said Gatewood.

The team has competed in seven invitational tournaments

Have A Nice Day!

R R E R BUSINESS DIRECTORY

RECIPE

OPEN Mon.-Fri. 5 am to 2 pm Sat. 5 am to 1 pm

Go to T.J.'s Donuts! We have a full breakfast menu and daily lunch specials!

Thursday—Ribeye steak, baked potato, salad, dessert & drink

Friday—ALL NEW! Beer-battered fish, hush puppies, french fries, salad, dessert & drink

Monday—Roast beef plate, mashed potatoes, brown gravy, salad, dessert & drink

Tuesday—Turkey and dressing, mashed potatoes or baked yams, green beans, dessert & drink

Wednesday—Hot steak sandwich, french fries, salad, dessert & drink

T.J.'S DONUTS

328 S. Main St. • Muleshoe • 272-3542

James Crane Tire Co.

107 S. Main St.
Muleshoe
272-4594

RECAP IRRIGATION TIRES

(11-24.5)

\$107⁵⁰ EACH

WHY ARE 37 MILLION CARS INSURED WITH STATE FARM?



JUST ASK A GOOD NEIGHBOR.

Don't trust just anyone to insure your car, see me:

Mark W. Morton INSURANCE

101 S. Main St. Muleshoe
272-7519
1-800-867-9178



Mark Morton, Agent

Like a good neighbor, State Farm is there.®



State Farm Mutual Automobile Insurance Company (not in NJ)
State Farm Indemnity Company (NJ) • Home Offices: Bloomington, Illinois

TIFFANY STYLE LAMPS



Several Sizes

Priced from \$47⁵⁰

Muleshoe Art Loft

1529 W. American Blvd. • 272-3485

NATIVE GRASSES, INC.

Experts in the sowing and harvesting of native grasses of the Great Plains and of the Southwest

- Specializing in native American grasses of the Great Plains and the Southwest
- Most native grass seeds available at wholesale prices with turnkey sowing jobs.
- All work done in compliance with Government specifications.

Please Call:

Darwin Simmacher
505.762.7817

FAX 505.763.9115 Email simmacher@3lefties.com

Or Vince Simmacher

806.946.3461 FAX 806.946.3604

References provided upon request.

YOU'RE CAREFUL BEHIND THE WHEEL,

ARE YOU AS CAREFUL CHOOSING YOUR CAR INSURANCE?

Don't trust just anyone to insure your car, see me:

Mark W. Morton Insurance

101 S. Main St. Muleshoe
272-7519 1-800-867-9178



Like a good neighbor, State Farm is there.®



Mark Morton, Agent

Stop by today...

Muleshoe Feed Barn

We Stock A Full Line Of Hi-Pro Products

ALFALFA HAY FOR SALE!

HI-PRO

FEEDS



311 W. American Blvd. • 272-5626

Muleshoe police in pursuit of safety

By PATTI DRIVER
Journal staff writer

Muleshoe police officer Benny Parker used skills learned during a tactical police driving class last weekend to apprehend a fleeing suspect.

Parker assisted a Bailey County Sheriff's deputy on an attempt to stop a suspect for driving violations. Parker and the deputy stopped the subject with one officer in front of the car and the other behind. The subject made a u-turn and drove in the opposite direction to a residence northwest of the initial attempt to stop. The suspect was placed under arrest and brought to the jail where it was determined he had outstanding warrants from other agencies.

"Officer Parker said he was able to use quite a few things he had learned from the course in the incident," Sheriff Coy Plott said.

Muleshoe police Sgt. Joe

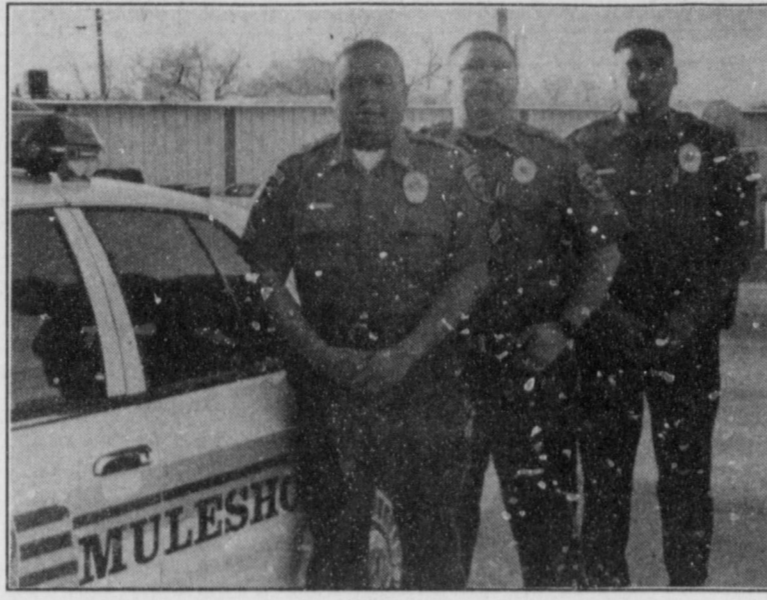
Orozco and officers Parker and Raul Gomez attended the first National Academy for Professional Driving 'Tactical Police Driving Class' held on Feb. 10-12 at Reese Center in Lubbock.

The three-day program consisted of 1/3 classroom lecture and 2/3 hands-on driving. The students had to pass a written test and meet qualification standards on four separate driving exercises. Officers received a certificate from the NAPD upon completion of the course.

"They taught us these skills with the public's safety in mind along with defensive skills," Parker said. "No arrest is worth risking a citizen's life or your own."

"We were taught to know when to call a pursuit off," added Orozco.

There are no plans currently to send the four other members of the police department to the course because of



Certified

Muleshoe police officers (from left) Joe Orozco, Benny Parker and Raul Gomez attended a driver safety class in Lubbock.

scheduling conflicts with court dates and other department business.

"Once all officers are certified, the police department's insurance will be lower, saving the city money," Lt. Otis Carpenter said.

If a certified officer is in-

involved in an accident, the NAPD offers an expert witness to attest to the level and type of training the officer has received.

Officers who pass must attend an eight-hour recertification course each year.

Liles chairs teacher's board

AUSTIN — Alice Liles, an English teacher at Muleshoe High School, has been elected as statewide chair of the Texas Classroom Teachers Association Legislation Committee.

TCTA is a nonprofit, non-union professional education association representing more than 40,000 classroom teachers and related nonadministrative personnel in Texas public schools. As Legislation Committee chair, Liles will oversee the committee that guides the Association's efforts in working with the Texas Legislature and with other statewide elected leaders on behalf of Texas teachers and the students they serve. As chair of a statewide committee, Liles will also serve on the 10-member TCTA Executive Committee and on the Board of Directors.

Liles was elected to a two-year term as Legislation committee chair on Feb. 6 at TCTA's annual convention in Austin. Her term begins on June 1, 1999.

She is a longtime TCTA member, having served as a district 17 director for the past five years.

She has served as chair of the Professional Standards Committee, member of the Legislation Committee, and currently is on the board of ACT for TCTA (political action committee). Liles also is very active in the Muleshoe Classroom Teachers Association, having served as president for 10 years and in several other elected posts.

Liles earned a bachelor's degree from Texas A&M University and a master's degree from the University of Houston-Victoria.

Jewelry & WATCH REPAIR

- 7 Day Ring Sizing & Repairs
- Remounting & Diamond Setting
- Full Line Watch Batteries
- Neck Chains Repaired
- Jewelry Appraised For Insurance

Faster Service

Holmberg Jewelry
1941 1999
38 YEARS

1908 N. Prince, Clovis
762-9376 (Across from K-Mart)

Bailey County needs 2-8 inches of rain prior to spring planting

Bailey County producers may need from two to eight inches of water from irrigation and/or precipitation to bring the five-foot zone soil profile to field capacity prior to spring 1999 planting, according to pre-plant soil moisture data released by the Water District and the USDA-Natural Resources conservation Service.

At the time pre-plant soil moisture readings were made in November/December 1998, approximately 22 percent of the portion of Bailey County served by the High Plains Water District needed about two to four inches of moisture to bring the

soil to field capacity. Approximately 58 percent of the county needed four to six inches of moisture and the remaining 20 percent needed from six to eight inches of moisture.

However, two precipitation events have occurred since the 1999 pre-plant soil moisture survey was conducted. Precipitation totals ranging from a half inch to three inches were recorded within the 15-county Water District service area in late January.

"This precipitation reduced the soil moisture deficit. Therefore, it is extremely important

for producers to check soil moisture conditions in their individual fields before the start of pre-plant irrigation," said Gerald Crenwelge, USDA-NRCS Soil Scientist.

A Water District publication, Estimating Soil Moisture By Feel And Appearance, can guide producers in assessing their soil moisture conditions. Anyone within the High Plains Water District service area can request a free copy by contacting the District's Lubbock office at (806) 762-0181.

If it is determined that pre-plant irrigation is needed to bring

the soil to field capacity, it is recommended that it be done early enough so that the 1999 crop has a full soil moisture profile to draw on during the growing season. In addition, producers are reminded to utilize techniques such as furrow diking to keep rainfall from running off the field.

"Once moisture is stored in the soil, producers should help keep it there by limiting tillage practices that might turn moist soil to the surface, where the moisture can evaporate and no longer be available for plant use," Crenwelge said.

Muleshoe Journal USPS 367820

Established February 23, 1924. Published by Triple S Publishing, Inc. Every Thursday at 304 W. Second, Box 449, Muleshoe, TX 79347.

Second Class Postage paid at Muleshoe, TX.

POSTMASTER: Send address changes to the Bailey County Journal, P.O. Box 449, Muleshoe, TX 79347.

We are qualified members of:
Panhandle Press Association, National Newspaper Association,
West Texas Press Association and Texas Press Association

WEST TEXAS PRESS ASSOCIATION



PPA Panhandle Press Association

Scott Stinnett, Publisher
Lisa Stinnett, Vice-President/Comptroller
Rick White, Editor
Mari Guadalcasar, Classifieds
Leah Bell, Advertising

SUBSCRIPTIONS: Muleshoe Journal and Bailey County Journal
By Carrier Yearly - \$22.00
Bailey County — by mail - \$24.00
Elsewhere - \$26.00
Advertising Rate Cards on Application

Advertisers should check their ad the first day of insertion. The Journals will not be liable for failure to publish an ad or for a typographical error or errors in publications except to the extent of the cost of the ad for the first day of insertion. Adjustment for errors will be limited to the cost of that portion of the ad where the error occurred.



GET THE FACTS

ABOUT BOLL WEEVIL ERADICATION



Northwest Plains Zone Unique

If we pass this referendum, we become the first zone in this country to begin an eradication program before widespread damage and control costs have adversely impacted farmers' ability to grow cotton. The NWP budget calls for only \$63 per acre over four years. Other zones have budgeted costs of \$95 to \$174 per acre.



Assessment Designed to Handle Worst-Case Scenario

The assessment you are voting on is a maximum assessment. You can never pay more than \$12 per acre on irrigated land or more than \$5 per acre on dryland. Efforts to appropriate state funds for boll weevil eradication could reduce total assessments by as much as 30%.



Program Essentially Pays for Itself

At a loan price of 50 cents per pound, a grower only needs to protect 24 pounds of yield to pay for this program.



Management Burden Shifts Under Eradication

Some growers who admit that we have a weevil problem say that \$12 per irrigated acre is just too much to pay and they would rather treat their weevils themselves. If you treat the weevil on your own \$12 will get you only the two overwinter sprays needed to START a personal control effort and leave no money for diapause sprays in the fall. You would also have added expense involved in trapping your fields. In an eradication program you know what your costs will be and the Texas Boll Weevil Eradication Foundation handles all trapping and spraying operations and their costs.



If You Have Additional Questions

If You Have Questions about the Northwest Plains Boll Weevil Eradication Proposal, Please Contact: The Texas Boll Weevil Eradication Foundation at 1-800-687-1212.

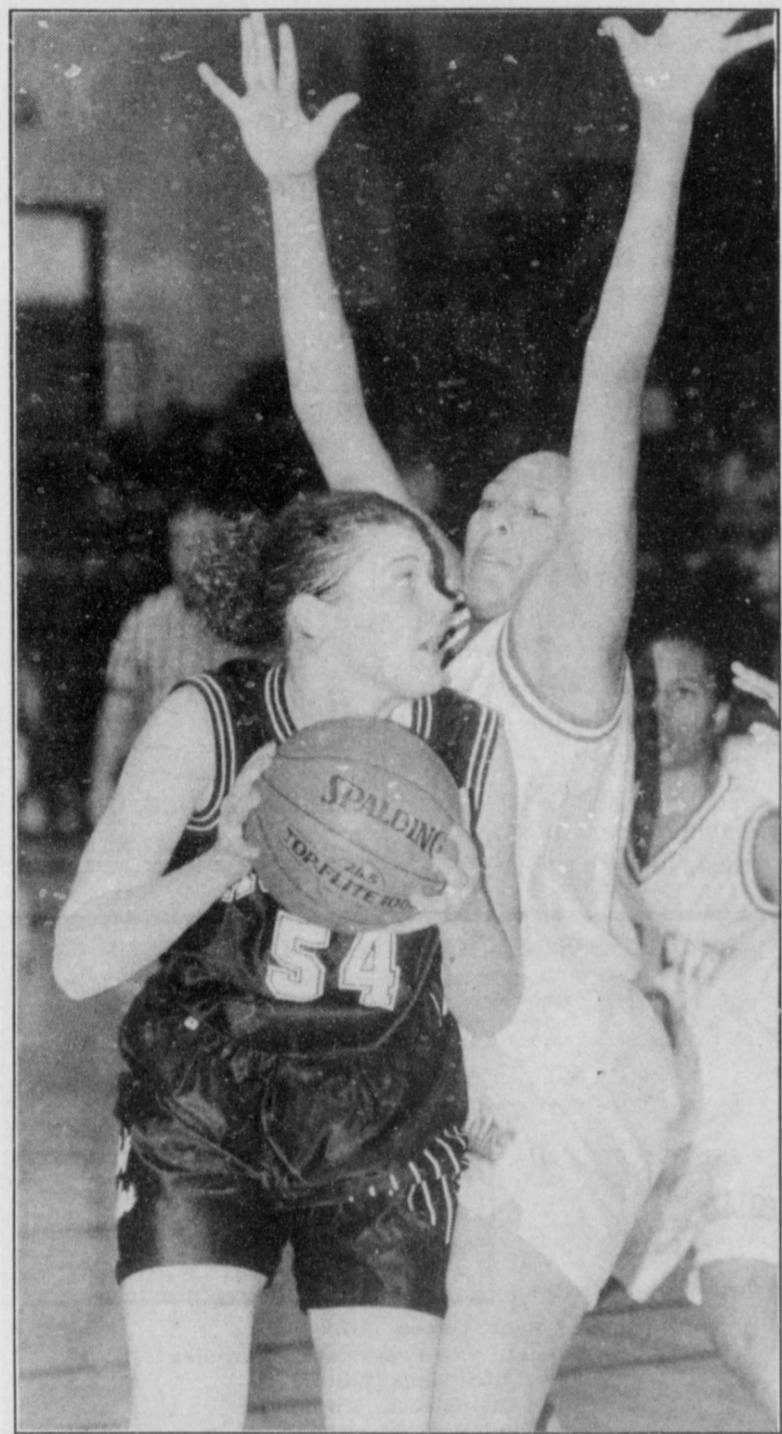
SEND IN YOUR BALLOT &



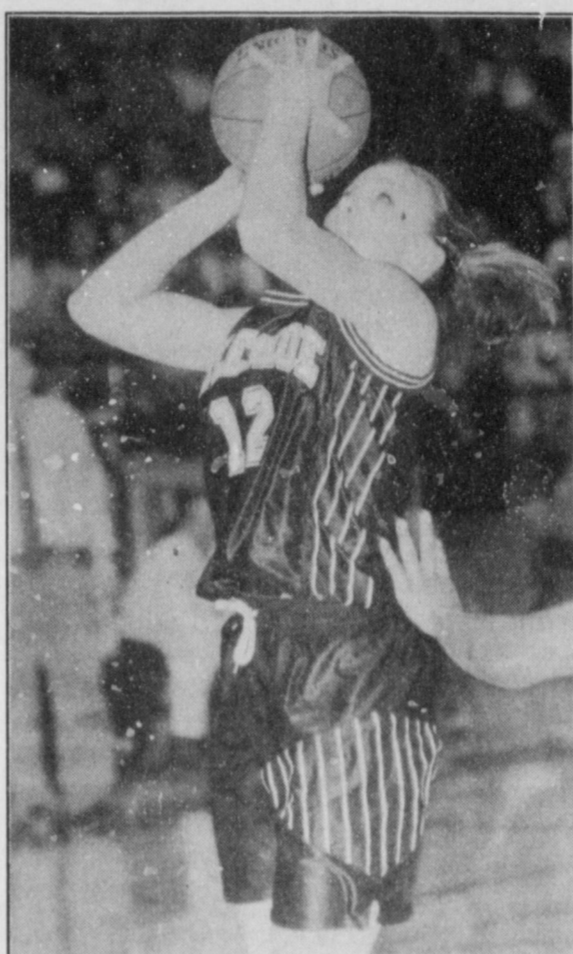
THIS AD SPONSORED BY NORTHWEST PLAINS COTTON GROWERS AND ALLIED COTTON INDUSTRY.

MULESHOE 55, DENVER CITY 53

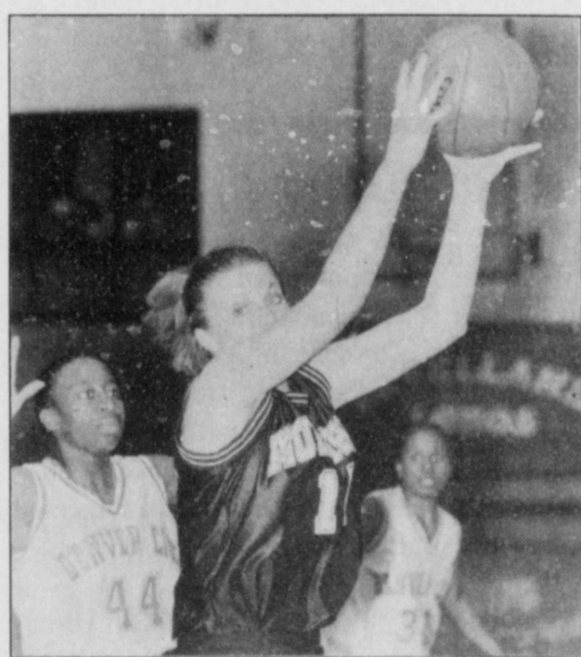
Upset in the making



(left)
Tall task
Muleshoe senior Erin Wilhite looks to maneuver past Denver City's Shenika Griffin during a Class 3A area playoff game at Levelland High School. Wilhite scored 17 points in the Lady Mules' 55-53 win.



(top)
Easy two
Junior Lynsie Black scores late in the second half.



(left)
Field test
Junior Lindsey Field catches an entry pass while sneaking a peek over her shoulder. Field finished with 10 points.

GIRLS STATE PLAYOFF PAIRINGS

Class 3A Region I Regional quarterfinals Tuesday	Class 1A Region I Regional quarterfinals Monday Tuesday
Perryton (R1) (23-5) vs Shallowater (W2) (29-4)	Smyer 57, Meadow 46
Graham (R5) (23-6) vs Merkel (W6) (26-6)	Sterling City (R4) (14-15) vs Sudan (R8) (28-2)
Muleshoe (R2) (15-16) vs Dimmitt (W1) (21-9)	Garden City (W4) (26-2) vs Vega (W8) (20-11)
Comanche (W7) (22-9) vs Bowie (W5) (28-3)	Whiteface (W12) (26-7) vs Whitharral (R13) (20-9)
Area	Area
Perryton 74, Presidio 37 Shallowater 53, Seminole 40 Graham 61, Whitney 55 Merkel 50, West 40 Muleshoe 55, Denver City 53 Dimmitt 51, Slaton 50 Comanche 37, Abilene Wylie 35 Bowie 60, Clifton 50	Sterling City 45, Fort Hancock 37 Sudan 39, Fort Elliott 31 Smyer 59, Groom 48 Meadow 61, Guthrie 49 Garden City 56, Wink 44 Vega 55, Booker 44 Whiteface 80, Claude 63 Whitharral 37, Silverton 29

PLAYOFF BOX SCORES

Class 3A Area playoffs Friday at Levelland High MULESHOE 55, DENVER CITY 53	Denver City 14 12 16 11 53
Muleshoe (55) — Black 3 0-0 6, Field 4 2-2 10, Torres 2 1-2 5, Heathington 4 1-3 10, Gartin 30-0-7, Williams 0 0-0 0, Wood 0 0-0 0, Wilhite 4 7-10 17. Totals 20 11-21 55.	3-pointers — Muleshoe 4 (Wilhite 2, Gartin, Heathington). Field goals: Muleshoe 20-50, Denver City 22-63. 3-point field goals: Muleshoe 4-13, Denver City 0-10.
Denver City (53) — Trout 11 7-7 29, Tate 0 0-0 0, Jordan 1 1-3 3, Beal 3 0-0 6, Navarez 0 0-0 0, Humphries 2 0-1 4, Griffin 5 1-1 11 52 Totals 22 9-12 53.	Rebounds: Muleshoe 36 (Field 8), Denver City 34. Blocked shots: Denver City 6. Assists: Muleshoe 13 (Field 5). Steals: Muleshoe 13 (Torres 4). Turnovers: Muleshoe 15, Denver City 13. Total fouls: Muleshoe 16, Denver City 21. Fouled out: Muleshoe, Field; Denver City, Humphries, Griffin. Records: Muleshoe 15-16, Denver City 26-3.
Muleshoe 8 15 14 18 55	

Littlefield knocks off Dimmitt 67-63

LEVELLAND — Steven McCain scored 17 points as Littlefield stunned Dimmitt 67-63 Tuesday in a boys Class 3A bi-district game. Littlefield (20-7) had an 11-point cushion in the fourth quarter and held on despite hitting just 11 of 21 free throws in the final stanza. Derek Buckley scored 17 points for Dimmitt (20-7), which was on the same side of the bracket as Muleshoe.

Teamwork

is Muleshoe's calling card this season

By RICK WHITE
Managing Editor

Strong senior leadership, solid work habits and a close-knit locker room is the winning formula that produced Muleshoe's first boys district basketball title since 1957.

Muleshoe has plenty of talent, led by all-state candidate Dustin Cleavinger, but the will-

ingness to work together was the difference this year.

"Every team's goal is to make it to the state tournament," said the 6-foot-6 Cleavinger, averaging 21 points and 10 rebounds a game. "But I honestly think this team believes we can get to Austin."

"I think our team chemistry is a big part of that. Everybody seems to understand what their role on the team is."

Muleshoe (23-7) will take an 11-game winning streak into the Class 3A playoffs (counting a 62-55 practice game win against Wellington Saturday) when it faces the winner of a

bi-district contest between Lamesa and Kermit later this week. The Mules earned a first-round bye by winning the District 2-3A title with a perfect 10-0 mark.

Senior point guard Carlton Lewis, who won two district games this season on last-second shots, said it's been a dream season so far.

"Everybody is saying it's because of football," said Lewis, who is averaging 9.7 points and 5.9 assists plus leads the team with 72 steals. "But I think it's the chemistry. We

see MULES on page 5

BOYS STATE PLAYOFF PAIRINGS

CLASS 3A Bi-district Tuesday	Marathon (W3) (16-11) vs Ranklin (R4) (22-5) (n)
Dimmitt (R1) (22-10) vs Littlefield (T2) (22-10)	Sudan 66, Hartley 47
Crane (W4) (20-7), bye	Fort Elliott 58, Booker 48
Lamesa (R13) (16-13) vs Kermit (T4) (13-13)	Tuesday
Muleshoe (W2) (22-7), bye	Balmorhea (W1) (6-8) vs Fort Hancock (R2) (19-7)
Graham (R5) (15-12) vs Brady (T6) (11-14)	Hedley (W9) (22-5) vs Kress (R10) (17-10)
Waco La Vega (W6) (22-4), bye	Happy (W11) (19-6) vs Lorenzo (R12) (22-5)
Breckenridge (R7) (20-9) vs West (T8) (19-11)	Whitharral (W13) (12-13) vs O'Donnell (R14) (17-5)
Clyde (W6) (28-4), bye	Motley County (W15) (19-9) vs Wilson (R16) (13-13)
Shallowater (R2) (20-11) vs Sanford-Fritch (T1) (10-15)	Marfa (W2) (15-8) vs Sierra Blanca (R1) (6-10)
Seminole (W3) (31-2), bye	Irion County (W4) (21-6) vs Grandfalls-Royalty (R3) (10-8)
Greenwood (R4) (16-15) vs Denver City (T3) (15-14)	Gruver (W6) (17-7) vs Allison (R5) (13-11)
Tulia (28-2), bye	Nazareth (W8) (16-10) vs Adrian (R7) (4-19)
Merkel (R6) (23-7) vs Bowie (T5) (19-11)	Paducah (W10) (25-2) vs Groom (R9) (12-10)
Glen Rose (W7) (27-3), bye	Whiteface (W12) (25-7) vs Lazbuddie (R11) (22-9)
Waco Connally (R8) (16-11) vs Eastland (T7) (17-13)	Aspermont (W14) (13-3) vs Three Way (R13) (14-13)
Childress (W5) (20-6), bye	Jayton (W16) (19-7) vs Guthrie (R15) (20-9)
CLASS 1A Bi-district Monday	

Whiteface eliminates Lazbuddie

LUBBOCK — Whiteface broke open a tight game with a 25-point third quarter and sailed past Lazbuddie 83-69 Tuesday in a boys Class 1A bi-district.

John Allison scored a game-high 25 points for the No. 8-ranked Antelopes (26-7).

Brandon Foster paced Lazbuddie (22-11) with 22 points. Josh Morris added 16 points and Cade Morris had 12.

Leading 41-35 at half-time, Whiteface outscored LHS 25-9 in the third quarter.

Three Way falls

LUBBOCK — Aspermont pulled away in the second half and beat Three Way 60-46 in a Class 1A bi-district game at Cooper High.

Jonathan Kindel led Three Way (13-14) with 17 points.

MULESHOE ECONOMIC DEVELOPMENT CORPORATION

1999 QUEST FOR CASH

Deadline to register for seminars is March 1, 1999

The Muleshoe Economic Development Corporation's (MEDC) Quest for Cash is designed to assist entrepreneurs in launching a new small business or expanding an existing small business. Everyone who participates will gain a better understanding of how to develop and follow a realistic business plan, and qualifying entrants can request a share of up to \$50,000 in available grant funds. The MEDC, in conjunction with the Texas Tech University, College of Business Administration Small Business Development Center, will help participants prepare for the true quest: succeeding in business for themselves. If you are interested, fill out the reply form and return it to the Muleshoe Economic Development Corporation. Participants are required to attend SBDC workshops. Deadline to register for seminars listed below is March 1, 1999.

<p>Starting Your Own Business (A 4 Part Series, for participants proposing a new business)</p> <p>Part 1 — Monday, March 8th 6-9 p.m. Part 2 — Tuesday, March 9th 6-9 p.m. Part 3 — Monday, March 15th 6-9 p.m. Part 4 — Tuesday, March 16th 6-9 p.m.</p>	<p>REGISTRATION, PROGRAM MATERIALS, AND SEMINAR INFORMATION MAY BE OBTAINED BY CONTACTING SUSIE PIERCE AT 272-4528 OR COME BY MULESHOE CITY HALL 215 SOUTH FIRST STREET</p>
--	--

Marketing and Business Planning
(A 2 Part Series, for participants proposing to expand an existing business)

Part 1 — Tuesday, March 9th 6-9 p.m.
Part 2 — Monday, March 15th 6-9 p.m.

MEDC 1999 QUEST FOR CASH REGISTRATION

NAME: _____ SOCIAL SECURITY #: _____
ADDRESS: _____ BIRTH DATE: _____
PHONE: _____ TODAY'S DATE: _____

I HEREBY GRANT THE MULESHOE ECONOMIC DEVELOPMENT CORPORATION PERMISSION TO CONDUCT A CHECK OF MY CREDIT HISTORY.

LEGAL NAME: _____ SIGNATURE: _____

RETURN THIS FORM TO: MULESHOE ECONOMIC DEVELOPMENT CORP., ATTN: SUSIE PIERCE, 215 SOUTH FIRST STREET, MULESHOE, TEXAS 79347

The Small Business Development Center, which operates under the auspices of the Texas Tech College of Business Administration, is partially funded by the U.S. Small Business Administration. The Center provides confidential, in-depth counseling to small businesses, at no charge, in order to promote growth and management improvement in the community. Any opinions, findings, and conclusions or recommendations expressed in this publication are those of the author's and do not necessarily reflect the views of the U.S. Small Business Administration. All SBDC programs are extended to the public on a nondiscriminatory basis. Reasonable arrangements for persons with disabilities will be made if requested two weeks in advance.

Mules holds off Wellington 62-55

CANYON — Muleshoe probably took Wellington too lightly.

Dustin Cleavinger scored 20 points and Muleshoe held off the Skyrockets 62-55 Saturday at Randall High School in a practice game for the upcoming state playoffs.

Playing their first game in eight days, the Mules (23-7) built a 37-18 halftime lead before getting sloppy.

"I don't know if it was the layoff as much as the kids didn't really get up for the game because they weren't really playing for anything," Muleshoe coach Ralph Mason said.

Carlton Lewis and Bret Clements added 10 points each for the Mules, who await the winner of Tuesday's bi-district game between Lamesa and Kermit. Muleshoe received a first-round bye after winning the District 2-3A title.

Muleshoe (62) — Lewis 4 2-4 10, Bruns 2 0-0 5, Sinclair 4 0-1 9, Mason 1 2-2 5, Clements 4 2-3 10, Hahn 0-0 1 0, Cleavinger 9 1-3 20, Turney 1 1-2 3. Totals 25 8-16 62.

Wellington (55) — Turrentine 3 0-0 6, Nash 1 1-1 3, Shrub: 1 1-2 3, Valles 0 0-0 0, Munn 0 0-0 0, Shrub: 4 3-5 12, Kaupur 6 1-2 13, Shrub: 5 1-5 13, Falcon 2 0-1 4. Totals 22 7-17 55.

Muleshoe 18 19 11 14 62
Wellington 9 9 19 18 55
3-pointers — Muleshoe 4 (Bruns, Sinclair, Mason, Cleavinger). Records: Muleshoe 23-7.

MULES

from page 4

don't care who takes the shots. We just work together and have a lot of confidence in each other."

"I think the biggest thing is the confidence in my teammates that we're going to win," Cleavinger said. "I remember going into some games last year hoping we were going to win."

Cleavinger credits the Mules success in football (winning its first district title since 1979) for the new-found confidence.

"I think we learned what it takes to win during the football season," Cleavinger said.

Muleshoe coach Ralph Mason has praised his team's maturity and work ethic all season.

"This year has been one of my easiest years to coach," said

Mason, who gained his 200th high school coaching win late in the season. "The kids have learned how to work hard and understand what it takes to win."

Mason is concerned about Muleshoe's long layoff between the end of the regular season and its first playoff game (two weeks).

Lewis is just getting antsy.

"I can't wait to play the first game," Lewis said. "It's good to get some rest and let some injuries heal up. But we've got to get back into game situations."

Lewis is widely credited with jump-starting Muleshoe's undefeated run to the district title.

The crafty senior scored on a

14-foot baseline jumper at the buzzer as Muleshoe knocked off Littlefield 54-52 in its district opener.

"Starting the district season like that really got us going and gave us a lot of confidence," Cleavinger said.

Lewis also hit the game-winner in a 38-36 win against Friona.

"I always want the ball in my hands at the end," Lewis said. "I'm just lucky my teammates have the confidence to get me the ball. But I don't try to force anything."

Cleavinger and Lewis have had plenty of help this season.

"Every night it seems like somebody else steps up," Ma-

son said.

Senior Mason Sinclair and junior Mitch Mason average better than nine points a game. Sinclair does a lot of the little things that don't show up in the scorebook while Mason is the team's top outside threat with 47 3-pointers.

Junior Bret Clements averaged 8.2 points and 4.7 rebounds in district play after recovering from a knee injury.

During the 10-game district season, Muleshoe shot 48 percent from the field, including 35.6 percent from 3-point range while outscoring its opponents by 21 points a game. The Mules also shot 73 percent from the free throw line.

MULESHOE SPRING SPORTS SCHEDULES

VARSITY BASEBALL		WJHS TRACK	
Feb. 27	Crane (at Seminole)	April 1-2	Idalou (Girls)
Feb. 27	Seminole (at Seminole)	April 9-10	Dimmitt (Boys)
March 4-6	Brownfield Tournament	April 9-10	Amarillo (Girls)
March 9	at Dimmitt	April 15-16	District at Littlefield
March 11-13	Mule Classic	April 30-May 1	Regional at Odessa
March 18-20	West Texas Classic	May 14-15	State at Austin
March 23	at Portales	March 5-6	Morton
March 26	Littlefield*	March 11	Muleshoe
March 30	at Roosevelt*	March 26-27	Hart
April 2	at Shallowater*	April 10	Shallowater (Dist.)
April 6	Friona*	BOYS GOLF	
April 10	Cooper*	Feb. 26	Denver City
April 13	at Littlefield*	March 4	Friona
April 17	Roosevelt*	March 10	Seminole
April 20	Shallowater*	March 13	Tulia
April 24	at Friona*	March 19-20	Amarillo Relays
April 27	at Cooper*	March 22	Roosevelt*
	* - District games	March 29	Cooper*
		April 5	Friona*
JV BASEBALL		April 26-27	Regional Tournament
March 2	Portales	May 10-11	State Tournament
March 8	Dimmitt		
March 22	at Littlefield	Feb. 26	Denver City
March 25-27	Seminole Tournament	March 3	Friona
March 29	Roosevelt	March 13	Tulia
April 1	Portales (2 games)	March 19-20	Amarillo Relays
April 5	at Portales (2 games)	March 22	Shallowater*
April 9	at Cooper	March 30	Muleshoe*
April 12	Littlefield	April 5	Littlefield*
April 16	at Roosevelt	April 26-27	Regional Tournament
April 19	Levelland (2 games)	May 10-11	State Tournament
April 23	Dora (2 games)		
April 26	Cooper	TENNIS	
BOYS & GIRLS TRACK		March 5-6	Friona Tournament at Canyon
Feb. 27	Randall	March 12-13	Friona Tournament at Plainview
March 6	Floydada	March 26-27	Lubbock Tournament
March 12-13	Hereford	April 2-3	Hart Tournament
March 19-20	Odessa (Var Boys)	April 9-10	Amarillo Tournament
March 26-27	San Angelo (Var Boys)	April 13-14	District Tournament at Lubbock
March 26-27	Hart (Girls/JV Boys)	April 28-29	Regional Tournament at Odessa
April 1-2	Amarillo (Boys)	May 12-13	State Tournament at Austin

LADY MULES

from page 1

Muleshoe fought back from a 10-point deficit in the second half and grabbed a 63-60 lead with four minutes left in the game.

But Dimmitt responded by making the big plays down the stretch. None bigger than when Wise chased down a long rebound in the lane and banked home an eight-footer while getting fouled. Her free throw gave Dimmitt a 66-64 lead.

The Lady Mules tied the game when Wilhite fed sophomore Chyla Torres underneath. Dimmitt took the lead for good at 68-66 when Carol Summers worked free for a layup with 1:10 left.

Muleshoe had an opportunity to retake the lead, but freshman Britni Gartin missed a 3-pointer with Tonya Robertson rebounding for Dimmitt.

After a timeout, the Bobbies milked nearly a half-minute off the clock before Wise was fouled with 17 seconds left. She calmly swished both ends of the one-and-one, stretching Dimmitt's lead to 70-66 which sends the Bobbies to the Region I tournament.



Lady Mule backers

Muleshoe students Ryan Hodge and Matt Turney cheer on the Lady Mules during Tuesday's Class 3A regional quarterfinal game against Dimmitt.

Wilhite scored 16 points to keep Muleshoe in the game in the first half. Her three-point play gave Muleshoe a 24-19 lead early in the second quarter.

But the Bobbies stormed back, outscoring Muleshoe 22-6 the rest of the quarter and taking a 41-33 halftime lead.

Muleshoe was 11 of 14 from the field in the first half, but committed 14 turnovers against the Bobbies' relentless pressure.

Hinojosa and Robertson hit 3-pointers early in the second half, stretching Dimmitt's lead to 47-37.

Field responded with nine

points for Muleshoe, including a three-point play that made it 54-51 heading into the fourth quarter.

Dimmitt (72) — Hinojosa 6 4-6 18, Summers 4 3-5 11, Kenworthy 3 6-6 13, Schulte 1 1-2 4, Wise 3 5-5 12, Robertson 2 5-6 10, Ortiz 1 0-0 2, Traylor 0 2-5 2. Totals 20 26-35 72.

Muleshoe (66) — Black 1 0-0 2, Field 8 1-3 17, Benham 0 0-0 0, Torres 4 1-5 10, Heathington 1 1-2 4, Gartin 1 3-4 5, Williams 1 0-0 2, Wood 1 0-0 2, Hernandez 1 0-0 2, Wilhite 7 8-11 22. Totals 25 14-25 66.

Dimmitt 18 23 13 18 72
Muleshoe 19 14 18 15 66
3-pointers — Dimmitt 6 (Hinojosa 2, Kenworthy, Schulte, Wise, Robertson), Muleshoe 2 (Torres, Heathington). Dimmitt 22-9, Muleshoe 15-17.

Every Day Is Your Lucky Day!



LOANS

\$100 to \$446

ALL APPLICATIONS ACCEPTED

Ask for Norma or Yolanda

Open:
Mon. thru Thurs.—9 am to 5 pm
Fri.—9 am to 6 pm

Continental Credit

206 South Main Street Muleshoe, TX
272-3673



We Ship Everywhere

1-800-658-6378 106 E. American Blvd. Muleshoe, Texas

And Country Junction



Accent any home...beautifully!

We invite you to come in and browse around & see our "new look" at

Country Junction

WHAT'S NEW?
Southwest Furniture,
Western Pottery &
Decorative Copper

An ALL NEW bath area featuring Soap By The Slice

Olio Soap Expressions are made from quality ingredients, pure & natural, and were developed to moisturize the skin while rinsing cleanly away.

Each soap is handmade and created by artisans. No two soaps are exactly alike.



REMEMBER: February is the month to shop at Joe's to receive a

FREE STEAK DINNER FOR TWO!

(with a \$250 purchase or more)

Sprinkler use up

Approximately 877 center pivot sprinkler systems are currently in operation within Bailey County, according to a recent High Plains Underground Water Conservation District No. 1 inventory.

This represents an additional 83 center pivot sprinkler system installed in county since the 1995 inventory.

Given an average cost of \$35,000 per center pivot sprinkler system, the 877 pivots in operation within Bailey County represent a \$30,695,000 investment in water conservation by local agricultural producers.

"This inventory shows that farmers are making huge investment to be more efficient in applying ground water for irrigation," said Ken Carver, High Plains Water District Assistant Manager.



Employee of the month

The Muleshoe Chamber of Commerce and Agriculture selected MISD superintendent Bill Moore as the February Employee of the month. Pictured above are (left to right): Pam McCaul, Joe Flores, Susie Sowder, Sheila Stevenson, Gary Gilleland, Bill Moore, Chuck Smith, Adrian Meador, and Mark Washington.

REBEKAH NEWS

Noble Grand June Green called the Muleshoe Rebekah Lodge #114 to order at 7:30 p.m. The opening prayer was given by Ruby Green and assisted by Berni Marts. Patsy Chance called the roll with 10 members answering. The minutes of the previous meeting were read.

Elva Marts was reported to have gone to the doctor and had her cast replaced with a split. Her hip is still giving her problems. She had some tests run and will know the results later this week. Clara Lou Jones, not doing well, is still in Lubbock. Berni Marts, Ruby Green, June Green, Alene Bryant and

Mary Ann Ramirez undraped the charter for deceased Sister Juanita Busby.

Berni Marts was in charge of our program this week on The Four Emblems of Peace. Bonita Rainey, Thursie Reid, Joyline Costen and Ruby Green helped. We would like to thank ev-

our traveling bake sale, Feb. 12. Those that weren't able to make it to lodge this week were missed. Hope to see you next week. With no further business the lodge was closed by Vice Grand Bonita Rainey with the Rebekah Creed, and 2 verses of the song "An Evening Prayer."

FFA week observed

AUSTIN — Texas FFA members join thousands of other high school students across the country in observance of National FFA Week, Feb. 22-26, 1999. The National FFA organization is made up of more than 450,000 students preparing for leadership roles and career opportunities in the science, business and technology of agriculture.

FFA's mission is to make a positive difference in the lives of students by developing their potential for premier leadership, personal growth and career success through agricultural education. The organization has over 7,000 local chapters. Local, state and national activities and award programs provide opportunities for students to apply knowledge and skills learned in the classroom.

The Texas FFA currently has

the largest membership in the national organization with 975 local chapters and 55,521 members representing approximately 13% of the national membership total. The Texas FFA Association headquarters is located in Austin and in 1997-98 presented over \$1,000,000 in scholarships to members.

There are approximately 1,500 agriculture science teachers in Texas who serve as advisors for the local FFA chapters. More than 100,000 high school students are enrolled in agriculture science and technology classes where they not only learn about the importance of agriculture science, but also gain valuable skills through participation in career development events, leadership development events and supervised agriculture education projects.

For Control Of Household Insect & Rodent Pests Call...

PESTEX EXTERMINATION

Kenneth King

272-3817

Cloud seeding to resume in area

Three underground water conservation districts in the Texas High Plains have resumed precipitation enhancement operations within a 17-county target area in an attempt to increase the natural recharge to the Ogallala Aquifer.

Effective February 1, the 1999 Central Southern High Plains Rainfall Enhancement Program target area includes Bailey, Castro, Cochran, Hale, Hockley, Lubbock, Lamb, Lynn, Parmer, Terry, and Yoakum Counties, as well as portions of Armstrong, Crosby, Deaf Smith, Floyd, Potter, and Randall Counties. Curry, Roosevelt, and Southwestern Quay Counties of New Mexico are expected to join the program on May 1.

"We hope we will have more precipitation enhancement opportunities this year," said A. Wayne Wyatt, High Plains Water District manager. "Because of persistent drought conditions, there were many days last year when we did not have a cloud in the sky. When clouds finally formed, it appeared that they were affected by smoke particles in the atmosphere resulting from the forest fires in Mexico. This eliminated many clouds as suitable targets for cloud seeding."

Precipitation enhancement, or cloud seeding, is an attempt to stimulate clouds to generate more rainfall that they would otherwise be adding silver iodide as a seeding agent. The silver iodide provides additional condensation nuclei that can allow more cloud moisture

to be converted to large enough raindrops to survive the fall through the dry sub-cloud layer and reach the ground as meaningful rainfall.

The agricultural and social benefits associated with increased precipitation include the potential for increased crop yields, improved livestock grazing conditions, reduced irrigation pumpage, improved water quality, and increased rainfall runoff into reservoirs used for drinking water supplies and recreational purposes.

Weather Modification Incorporated (WMI) of Fargo North Dakota is returning as the contractor for the 1999 project. Under the contract, WMI provides a project meteorologist who uses weather radar displays, standard meteorological data and forecasting procedures, surface weather observations, and pilot reports to select clouds suitable for seeding. With this information, the meteorologist in the C-band radar unit at the Littlefield airport can direct aircraft stationed at Amarillo and Lubbock to eject silver iodide flares at cloud-top levels into selected clouds within the target area. A third aircraft will be stationed at Portales when the New Mexico participants join the program on May 1.

Information about the 1999 precipitation enhancement program is available on the Internet at www.hpwd.com or by contacting the High Plains Underground Water Conservation District, 2930 Avenue Q, Lubbock, Tx 79405-1499 or by calling (806) 762-0181.



Baby dolphins are born tail first, and immediately swim to the surface, sometimes with their mother's help, for a first breath of air.

BLUE BOOK™ OFFICIAL GUIDE SINCE 1926 BENDER'S ANNUAL NO DICKER STICKER SALE!

All Used Cars Priced At Wholesale or Below! Hurry in for the Greatest Bargains of the Year!

• CADILLAC • CHEVROLET • OLDSMOBILE	1989 DODGE GRAND CARAVAN LE WAGON #72450A • 125K Miles • Dark Blue • V6 3.0 Liter • Automatic • Front Wheel Drive • Air • Power Steering, Windows, Door Locks • Tilt • Cruise • AM/FM Stereo • Cassette Blue Book Suggested Retail \$6,120 BENDER'S NO DICKER STICKER \$3,850	1996 GEO PRIZM SEDAN 4D #5462 • 33K Miles • 4 Cyl 1.6 Cyl Liter • 5 Speed • Front Wheel Drive • Air • Power Steering • Dual Air Bags • Tilt • Cruise • AM/FM Stereo • Cassette Blue Book Suggested Retail \$10,240 BENDER'S NO DICKER STICKER \$7,850
	1994 PONTIAC SUNBIRD LE SEDAN 4D #5418A • 48K Miles • Gray • 4 Cyl 2.0 Cyl Liter • Auto • Front Wheel Drive • Air • Power Steering, Door Locks • ABS (4 Wheel) • AM/FM Stereo • Cassette Blue Book Suggested Retail \$7,585 BENDER'S NO DICKER STICKER \$6,895	1998 CHEVROLET VENTURE EXTENDED WAGON #5512 • 22K Miles • Red • Automatic • Front Wheel Drive • Second Sliding Door • Front & Rear Air • Power Steering, Windows, Door Locks • Tilt • Cruise • AM/FM Stereo • Cassette • Dual Air Bags • ABS (4 Wheel) • Privacy Glass • Alloy Wheels Blue Book Suggested Retail \$20,695 BENDER'S NO DICKER STICKER \$17,325
• DODGE • PLYMOUTH • CHRYSLER	1996 PLYMOUTH GRAND VOYAGER SE WAGON #852181 • 76K Miles • V6 3.3 Liter • Auto • Front Wheel Drive • Air • Second Sliding Door • 7 Passenger • Rear Air • Power Steering, Windows, Door Locks • Tilt • Cruise • AM/FM Stereo • Cassette • Dual Air Bags • ABS (4 Wheel) • Roof Rack • Privacy Glass Blue Book Suggested Retail \$16,625 BENDER'S NO DICKER STICKER \$12,300	1996 PLYMOUTH NEON HIGHLINE COUPE 2D #6234 • 24K Miles • White • 4 Cyl 2.0 Liter • Automatic • Front Wheel Drive • Air • Power Steering • Tilt • Cruise • AM/FM Stereo • Cassette • Dual Air Bags Blue Book Suggested Retail \$10,650 BENDER'S NO DICKER STICKER \$7,825
	1995 DODGE INTREPID SEDAN 4D #990052 • 48K Miles • V6 3.5 Liter • Auto • Front Wheel Drive • Air • Power Steering, Windows, Door Locks • Tilt • Cruise • AM/FM Stereo • Cassette • Dual Air Bags • Power Seat • Alloy Wheels Blue Book Suggested Retail \$12,710 BENDER'S NO DICKER STICKER \$9,400	1997 DODGE PU 1500 1/2 CLUB CAB SHORT BED #852001 • 39K Miles • V8 5.2 Liter • Automatic • 2 Wheel Drive • SLT • Air • Power Steering, Windows, Door Locks • Tilt • Cruise • AM/FM Stereo • Cassette • Power Seat • Sliding Rear Window • Alloy Wheels Blue Book Suggested Retail \$20,755 BENDER'S NO DICKER STICKER \$16,575
• HONDA • NISSAN	1997 HONDA ACCORD SPECIAL EDITION 4D #62121 • 35K Miles • Silver • 4 Cyl 2.2 Liter • Automatic • Front Wheel Drive • Air • Power Steering, Windows, Door Locks • Tilt • Cruise • AM/FM Stereo • CD • Dual Air Bags • Moon Roof • Alloy Wheels Blue Book Suggested Retail \$18,095 BENDER'S NO DICKER STICKER \$15,400	1996 NISSAN PICKUP SE KING CAB #6112 • 33K Miles • Silver • 4 Cyl 2.4 Liter • 5 Speed • 4 Wheel Drive • Air • Power Steering, Power Door Locks • Tilt • Cruise • AM/FM Stereo • Cassette • CD • Flip-Up Sun Roof • Sliding Rear Window • Bed Liner • Alloy Wheels Blue Book Suggested Retail \$17,605 BENDER'S NO DICKER STICKER \$13,900

BENDER Family of Dealerships

You're going to like our family!

CHEVROLET • OLDSMOBILE CADILLAC 2500 MABRY DRIVE (505) 763-4465	HONDA NISSAN 3000 MABRY DRIVE (505) 762-3701	CHRYSLER • PLYMOUTH DODGE 3400 MABRY DRIVE (505) 762-4511
--	---	--

Pro-voucher group demonstrates on Capitol steps

AUSTIN — Members of the group "Putting Children First" and other proponents of private school vouchers demonstrated on the Capitol steps last week.

The crowd urged lawmakers to pass a law that would help children in low-performing schools to transfer to private schools under a tax-funded program.

Such a measure already has the support of Gov. George W. Bush and Lt. Gov. Rick Perry, both Republicans.

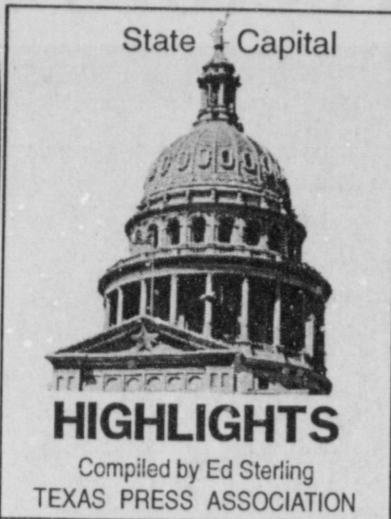
"Those parents should be free to send their children to other public, private, or religious schools," Perry said.

However, a February Scripps-Howard Texas Poll showed that only 41 percent of respondents said they support the idea of private school vouchers.

The percentage of support gauged by the poll has melted slowly since the winter of 1995, when it was measured at 55 percent.

Samantha Smoot, chief of the voucher-opposing Texas Freedom Network, said she opposed programs that would take money away from Texas public schools.

"When Texans understand that vouchers mean millions of dollars leave our public schools, support for the idea evaporates," Smoot was quoted by the *San Antonio Express-News*.



Still, the measure is expected to be hotly debated as the legislative session continues.

Teacher-protecting bills filed
Over the last three school years, assaults against Texas classroom teachers have averaged more than 4,000 per year, according to the Texas Education Agency.

Three Republican state legislators are taking action to put a stop to student assaults on teachers.

Sen. Teel Bivins of Amarillo, chairman of the Senate Education Committee, and Reps. John Shields and Frank Corte of San Antonio have filed bills that would make any form of assault on a teacher an offense punishable by expulsion.

Under current law, a student may be expelled for assaulting a teacher if the student uses a weapon, the teacher suffers serious bodily harm or the assault takes place in an alternative school.

Rep. Art Reyna, D-San Antonio, has filed a bill of his own, seeking to upgrade the penalty for an assault of a teacher from a misdemeanor to a third-degree felony.

"Safety is a big factor," said Annette Cootes, spokeswoman for the Texas State Teachers Association, a group that favors legislation requiring the immediate expulsion of students who assault teachers. But, TSTA stops short of supporting a bill that would make teacher assault a felony instead of a misdemeanor.

"Whatever it takes to get dangerous children off the campuses and into treatment, we would support," Cootes said. "But by merely making it a felony, I'm not sure it's going to work."

Long distance cuts proposed
Southwestern Bell Telephone Co. would be required to cut in half the 12 cents per minute it charges long distance companies to connect long distance calls within Texas

borders, under telecommunications deregulation legislation filed last week.

Senate Bill 560, by Sens. David Sibley, R-Waco, and Troy Fraser, R-Horseshoe Bay, also would require long distance companies to pass on the savings to customers.

Sibley said the reduced rates would be phased in over the next couple of years because "we are trying not to cause a large financial disruption to any company."

Other Highlights
■ The Senate Economic Development Committee last week passed a bill to crack down on telephone companies and power companies that switch services or add unwanted services without permission by taxpayers. SB 86, by Sen. Jane Nelson, R-Flower Mound, moves to the full Senate for consideration.

■ Members of the Senate Natural Resources Committee last week voted to continue funding the Texas Low-Level

Radioactive Waste Disposal Authority, a state agency which so far has spent 16 years and \$55 million in planning a nuclear waste dump that was denied a license to operate.

■ After meeting last week with Republican state office-holders from New Jersey and South Carolina who were in Austin to urge him to run for president in 2000, Gov. Bush said he is "warming to the task."

■ U.S. Sen Phil Gramm and Texas Bank Commissioner Cathy Ghiglieri last week said Texas banks are among the best-prepared financial institutions for handling the "Y2K" computer problem.

404

RED WING SHOES
Made in U.S.A.

The Fair Store
120 Main 272-3500

Have A Nice Day!

CRP CRP CRP CRP

- Native Grass Is Our Business - 40 Years Experience
- Knowledge And Quality You Can Trust - At No Extra Charge

CURTIS & CURTIS, INC.
Clovis, New Mexico

800-753-4649
CALL FOR QUOTES!



Long time employee celebrates retirement
Mary Hicks was honored with a reception celebrating her retirement after 27 years of service to the City of Muleshoe. The reception was held Feb. 19 at City Hall.

Ag policy outlook

Florida — Farmers aren't likely to see any substantial changes in existing farm legislation until 2000, the year of the next presidential election, said John Maguire, the National Cotton Council's chief Washington lobbyist, at the Beltwide Cotton Conference here this week.

"Still, we could see some slight revisions of Freedom to Farm in 1999. Crop insurance will be high on that list, along with additional supplemental farm program payments," Maguire said. "Most people will only remember 1998 as the 'year of Lewinsky,' but it also was a year of Congressional realignment that could benefit agriculture.

"Moderates now control the balance of power in Congress, and that's good for agriculture. The Republicans hold only a six-vote margin in the House of Representatives. Larry Combest, R-Lubbock, will head the House Ag Committee and Charles Stenholm, D-Stamford, is the ranking minority member of the

House. And in the Senate, Richard Lugar, a strong ag advocate, still chairs the ag committee."

Congress is likely to boost ad hoc disaster relief beyond 1998 levels at a time when budget matters will dominate legislative debates on Capitol Hill, he added.

National Cotton Council president Jack Hamilton noted that NCC will compare ag policy recommendations from cotton industry leaders during its annual meeting in Memphis, Tenn., next month.

"Keeping a cotton marketing loan in place, restoration of full-year Step 2 export enhancement funds and revision of Step 3 cotton import regulations will be high on our list of farm policy recommendations in any farm bill debate," he said. "These points of policy need to be addressed and revised to keep our cotton competitive in today's global marketplace and to help ensure reasonable domestic prices for American cotton growers."

season PREVIEW SALE

TODAY THRU MONDAY, SAVE ON THE SEASON'S BEST, PLUS STOREWIDE CLEARANCE!



25% OFF
CASUALS
FOR JUNIORS
Reg. 16.00-36.00,
SALE 12.00-27.00.



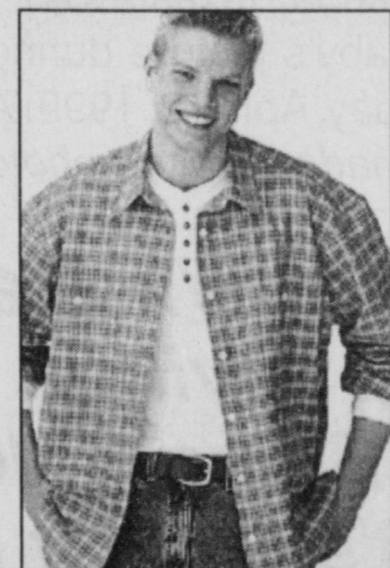
33% OFF
ENTIRE STOCK
MISSES' SAG HARBOR®
Reg. 34.00-44.00,
SALE 22.78-29.48 ea.



9.99-19.99
ENTIRE STOCK
MISSES' SWEATER SETS
Each piece sold separately.
Reg. 14.00-28.00.



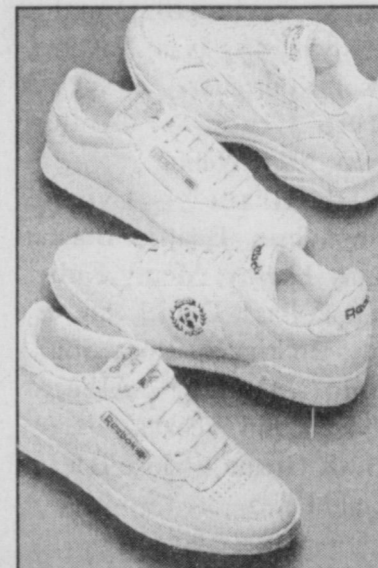
21.99-31.99
MEN'S DOCKERS®
CASUAL SHORTS, PANTS
Several styles and colors.
Reg. 26.00-35.00.



29.99-39.99
MEN'S LEVI'S®
DENIM JEANS
Choose silverTab®, 505®,
550® and 569® styles.



25% OFF
ENTIRE STOCK KIDS'
PLAYWEAR SEPARATES
Reg. 9.00-20.00,
SALE 6.75-15.00.



34.99-59.99
MEN'S & WOMEN'S
ATHLETIC SHOES
From Nike, Reebok®
and Guess®.



25% OFF
GRUEN® AND RELIC®
WATCHES
Reg. 40.00-80.00,
SALE 30.00-60.00.

STOREWIDE FALL & WINTER CLEARANCE EVENT!

SAVE 65% WHEN YOU TAKE AN EXTRA 33% OFF ALL RED-TICKETED MERCHANDISE*

Just a sample of the savings you will find. Interim markdowns may have been taken. Styles, sizes and colors may vary by store. *Total savings off of original prices. Excludes outerwear.

For the store nearest you, call 1-800-324-1313 or log on at www.beallsstores.com

CHARGE IT!
GET 10% OFF ALL DAY
WHEN YOU OPEN A NEW STORE ACCOUNT.
Excludes every apply. Subject to credit approval.

BEALLS

HONOR ROLLS

Lazbuddie ISD 4th Six Weeks Honor Roll

"A" Honor Roll

2nd Grade — Richie Aguilar, Alexandra Ballanger, Alejandra Estrada, Ryan Mason, Jacob Schacher, Morgan Smith, Cassie Steinbock, Brock Steinbock, RaJon Thorn, Stefanie Welker.

3rd Grade — Crescent Crawford, Jason Davis, Jonathon Lennon, Chelsea Nichols, Brianna Sanchez, Brittny Schacher, Dakota Williams.

4th Grade — Castle Crawford, Amberlee Steinbock, Montana Steinbock, Stephanie Williams.

5th Grade — Madison Smith, Richard Welker.

"A-B" Honor Roll

2nd Grade — Jessica Arce, Trevor Coker, Leticia Mendoza.

3rd Grade — Regina Mata.

4th Grade — Brandy Hudson, Kyra Kimbrough, Adrian Mancilla.

5th Grade — Zachary Ballanger, Kirby Kimbrough, Roper Smith.

Lazbuddie Junior High and High School 4th Six Weeks Honor Roll

"A" Honor Roll

6th Grade — Mandy Haney.

7th Grade — Shonnah Black, Nicole Lewandowski, Katy Loudder, Robby Martin, Raul Mata, Shawndee Nichols, Michelle Scott, Kolby Wilkerson.

8th Grade — Andy Martin, Brady Mimms, Tobin Redwine.

9th Grade — Savannah Black, Jodie Coker, Candice Randolph, Jay Seaton.

10th Grade — Kati Mimms, Crystal Scott.

11th Grade — Scottie Brown, Veronica Mata, Leah Turner.

12th Grade — Seth Black, Jill Hodges, Josh Morris, Kia Morris, Cade Morris, Shena Seaton.

"A-B" Honor Roll

6th Grade — Kaylee Burnett, Chris DeLeon, Ana Hernandez, Brett Mimms, Melanie Winders.

7th Grade — Violet Aguilar, Suzanne Aragon, Kelli Harris, Kera Lewandowski, Amanda Martinez, Lacey Pope, Bethenie Sanchez, Sterling Via.

8th Grade — Amanda Burton, Lucas DeLeon, Lucinda Guzman, Andrew Martinez, Natalie Ovalle, Michelle Puckett, Marisol Robles.

9th Grade — Jeffrey Guillen, Kelsey Jones, Kayla Kimbrough, Omar Lopez, Shannon Redwine.

10th Grade — Triston Thorn, Kendra Gallman, Landon Parham, Stephanie Sharp, Cole St. Clair, Laura Via.

11th Grade — Amy Angeley, Desirae Brakebill,

Staci Foster, Jason Jesko, Lacy Loudder, Garrett Magby, Zulema Marquez, Bobby Martha, Brandon Randolph, Jeffery Seaton, Laramie Wood.

12th Grade — Holly Engelking, Brandon Foster, Christina Martha, Joshua McDonald, Amber Richardson, Rachel Rodriguez, Adam St. Clair.

Three Way Honor Roll

Fourth Six Weeks

All "A" Honor Roll

1st Grade — Angelica Salamanca.

2nd Grade — Shaelynn Cannon, Brittany Cuellar.

3rd Grade — Tiffany Davis, Colton Heinrich, Cenee Hood, Austin Thomas.

4th Grade — Nadia Mann.

5th Grade — Caleb Heinrich, Trevor Hood.

6th Grade — Norma Baeza, Cory Contreras, Erika DeLaRosa, Kyla Ellis.

7th Grade — Kaylie James.

8th Grade — Monica Walker.

10th Grade — Ernesto Navarro.

11th Grade — Kasey Davis.

12th Grade — Jonathan Kindle.

"A" Average Honor Roll

1st Grade — Kyle Drew, Stephanie Kirby, Roberto Martha, Kenneth Patty, Pricilla Perez, Monica Rubalcava, Carlos Vironche.

2nd Grade — Brent Elmore, Harold Patty.

3rd Grade — Colby Gilbert, Cassie Kirby, Antonio Vironche.

4th Grade — Lorenzo Lopez, Susan Patty.

5th Grade — Nathan James, Cody Kirby, Lauren Layton.

6th Grade — Edgar Estrada, Sarah Furgeson, Jennifer Kirby, Chris Kindle, Elizabell Lopez, Rigo Rodriguez.

7th Grade — Katie Cook, Jennifer Cuellar, Cecilio Flores, Landon Gray, Buddy Holmes, Veronica Martha, Tereza Molina.

8th Grade — Victor Baeza, Sammy Castillo, Ashley Layton, Julie Salamanca, Clair Thompson.

9th Grade — Alma Castillo, Anthony Furgeson, Jordan Gray, Kara Heinrich, Jimmy James, Taylor McDonald, Christy Mills, Ivan Navarro, Robert Rodriguez.

10th Grade — Cynthia Baeza, April Webb.

11th Grade — Lynette Armendariz, Beatriz Baeza, Danny Kersey, Monty Kirby, Scott Pollard, Daniel Reeves, Patty Rodriguez, Rosa Soliz, Robin Tooley, Alberto Valderas, Sid Weekes.

12th Grade — Jose Baeza, Gerald Perez.

Members elect directors to board

Two new directors and one incumbent were elected to serve three-year terms on the Five Area Cooperative board of directors.

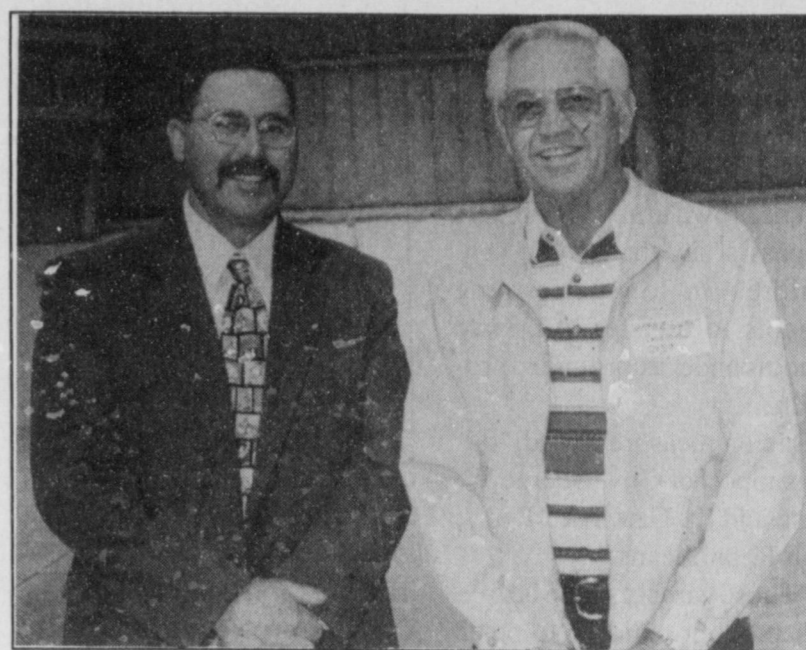
The election was held Feb. 20 at the Five Area Telephone Cooperative Annual meeting in the Bailey County Civic Center. Jon Gandy will return to the board for a second term representing District 7. Johnny Ferguson and Wayne Swart will be representing Districts 5 and 6 respectively.

The financial report was reviewed by the coop CPA. The net earnings show a 10 percent return on the coop's

equity. Sixty eight percent of the capital needs are met by member equity and not by long term debt.

Coop manager Hubert Kidd recognized some of the 40 employees of the coop who had earned service awards. They were Alton Carpenter, 25 years; Colleen Hailey and Kevin Harris, 15 years; and Patti Kent and Glenda Powell, 5 years.

After the meeting was adjourned, many of the members won door prizes and all were treated to a BBQ lunch catered by Bigham Smokehouse from Lubbock.



Pictured are Jon Gandy (left) and Wayne Swart. Not pictured is Johnny Furgeson.

OBITUARIES

BRYSON TYLER GRAY

Bryson Tyler Gray, infant son of Joshua and Christina Gray of Andrews, Texas, died Friday, Feb. 19, 1999 at University Medical Center in Lubbock.

A church service was held Tuesday at Northcrest Baptist

Church with Rev. David Humber, pastor of Northcrest Baptist Church, officiating. Burial was held in the Andrews North Babyland Cemetery under the direction of McNett Funeral Home.

Bryson was born Sep. 17, 1998 in Andrews.

He is survived by his parents, Joshua and Christina Gray, Andrews; maternal grandparents, Harland and Linda Weis, Andrews; paternal grandparents, Terry and Sandra Davis, Brownfield; maternal great grandparents, Beverly Denton, Andrews, and Betty Crockett,

Wichita, Kan.; paternal great grandparents, Mr. and Mrs. Bob T. Riley, Amarillo, Mr. and Mrs. Elmer Davis, Muleshoe, and H.B. Bingham, Brownfield; and paternal great great grandparents, Mr. and Mrs. Leon Dove, Denison, and Mrs. Albert Davis, Muleshoe.

ENTRY DEADLINE IS APRIL 6, 1999 AT 5 P.M.

The Muleshoe Journal's 5th Annual Cutest Baby Contest

Enter any child *born in 1998* who is special to you— children, grandchildren, nieces, nephews, friends, etc.

This year's contestants will appear in the Easter (April 11th) issue of the Bailey County Journal. A panel of unbiased judges will pick the most attractive picture to be the 1998 Cutest Baby. All baby pictures will be printed. Babies need not be born in this area.

Bring your favorite child's photo along with \$10 to the Muleshoe Journal office at 304 W. 2nd St., Monday-Friday between 8:30 a.m. and 5 p.m. or mail the coupon below with your child's photo and \$10 to Cutest Baby 1998, c/o Muleshoe Journal, P.O. Box 449, Muleshoe, Texas 79347. You may pick up your baby's picture during office hours after Monday, April 12, 1999. Arrangements must be made to return photos by mail!

Winner Will Receive a \$50 Savings Bond For Being Selected 1998's Cutest Baby!



Kaitlin Hope Foster
1997 Cutest Baby Contest Winner

Please provide phone number or address (it will not be published) so that we may contact you if we need additional information.

Baby's Name: _____
Date of Birth: _____
Weight at Birth: _____
Length at Birth: _____
Place of Birth: _____
Mom & Dad's Name: _____
Grandparent's Name: _____

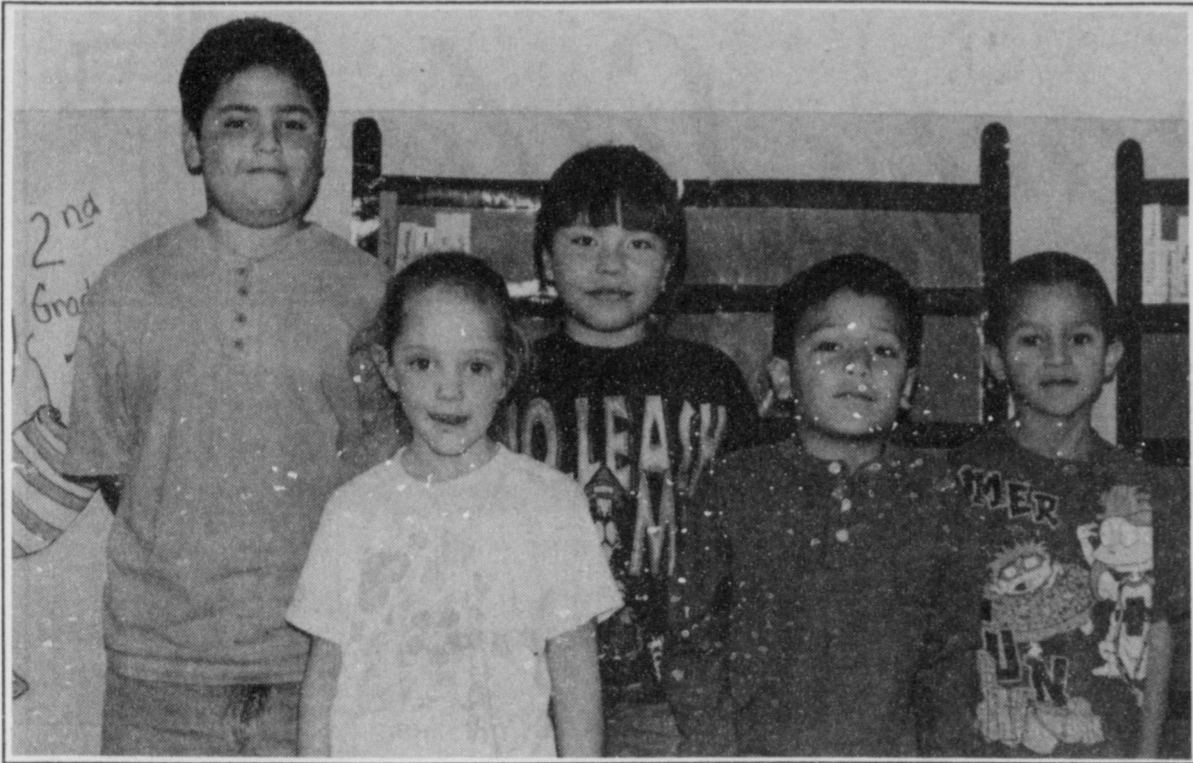
Lazbuddie poets compete



Poets pictured at left are: Erica Derma, Bryce Haney, Montana Steinbock, Amberlee Steinbock, Brandy Hudson, Kyra Kimbrough, and Elisa Torres.

Earlier this year, seven fourth grade students from Lazbuddie ISD entered a poetry contest for young poets from Texas. The winners have a chance to be published in the book *A Celebration of Texas' Young Poets*. The students selected for this honor were: Erica Derma, Bryce Haney, Montana Steinbock, Amberlee Steinbock, Brandy Hudson, Kyra Kimbrough, and Elisa Torres.

ENTRY DEADLINE IS APRIL 6, 1999 AT 5 P.M.



Superkids

Dillman Elementary announced the Superkids for February. Pictured from left to right are Juan Vidana, Taylor Hardt, Vanessa Gomez, Zachary Toscano, and Eddie Herrera. Not pictured are Yvette Bustillos, Beau Avila, and Dena Mata.

RETIRED TEACHERS NEWS

The Muleshoe retired teachers met Feb. 19 in the Fellowship Hall of the 16th & D Church of Christ. Curtis Shelburne gave an update on the Muleshoe ISD.

Shelburne said the most pressing item for the board is to replace Superintendent Bill Moore. Moore has done so much to help the schools that he will be hard to replace. The board has hired a consultant firm to search for a replacement. Hopefully one will be placed by May.

The Muleshoe schools have many things to be proud of. The athletic department in the direction of David Wood is on the winning track. The football team did well last fall. The girls and boys basketball teams have both done well this year. Not only have they excelled on the field and courts, but have excelled following the rules of the school and state-grades and behavior.

The fine arts department under the direction of Mr. Moore has been in good hands for a long time. The choir is getting better and the band is on the upbeat.

TAAS scores are going up in all areas. The science program in technology has moved at an unbelievable rate. The school is now interacting with Clovis Community College and Eastern New Mexico University. The schools are utilizing the internet. There are many other things happening. We should be proud of the job our teachers do to help our students.

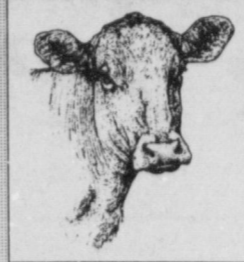
MISD is bond free. The school buildings are in good shape and without debt. DeShazo has improved the office space to be more business-like. The roofs of the buildings have been repaired. The gym floor has been replaced

and upgraded.

After Shelburne's speech, the retired teachers selected Lucy Faye Smith and Mary Nell Bleeker to attend the state convention on April 10-13 in Dallas.

Hostesses for the evening were Jean Allison and Lucy Faye Smith. Others attending were: Norma Prather, Letha Patterson, Mary Nell Bleeker, Betty Jo Davis, Ann Oyler, Wilma Smith, Pauline Guinn, Alene Bryant, Rose Sain, and Maude Blaylock.

The March meeting will be a fun time. Each person is asked to bring a \$5 gift to be given as bingo prizes. The retired teachers meet the third Friday of each month at the 16th & D Church of Christ in the Fellowship Hall. All those interested are encouraged to attend.



Muleshoe Cattle Market

SATURDAY, FEB. 20, 1999

REPRESENTATIVE SALES

951 cattle, 209 hogs and 104 sheep & goats. Bulk of receipts consisted of 5-800 lb. feeder cattle with very good quality cattle coming off local wheat & grass. Market was steady. Pairs & Bred cows sold steady. Packer cows also sold steady from a week ago.

The Muleshoe Cattle Market is brought to you each week by Muleshoe Livestock Auction, located east of Muleshoe on U.S. 84. Muleshoe Livestock conducts sales every Saturday, beginning with hogs, sheep and goats at 10 a.m. and cattle following at approximately 12 noon.

FOR INFORMATION ON SALES OR TO CONSIGN CATTLE, CALL (806) 272-4201

Seller, City	#	Type	Wt.	CWT or PH
Christina Keyser, Hereford	5	Hol Bulls	290 lbs.	at \$70.00
Francisco Cavazos, Smyer		Hol Str	375 lbs.	at \$67.00
Byrd Ranch, Monument, NM		Bwf Bull	260 lbs.	at \$103.00
Saul Escontrias, Denver City		Blk Str	235 lbs.	at \$106.00
Sue Hill, Morton		BMF Bull	330 lbs.	at \$108.00
Keith Battey, Friona		Red Str	310 lbs.	at \$97.00
Ben Teichroeb, Seminole	3	Mxd. Bulls	352 lbs.	at \$103.00
Ben Teichroeb, Seminole	5	Mxd. Bulls	441 lbs.	at \$91.50
F. Henley Brown, Texico, NM		BWF Str	420 lbs.	at \$93.50
Tom Jinks, Muleshoe	3	Mxd. Strs	537 lbs.	at \$80.00
Welch Farms, Muleshoe	8	Limo. Bulls	549 lbs.	at \$77.25
Welch Farms, Muleshoe	6	Limo. Bulls	666 lbs.	at \$72.25
Raymond Hall, Morton	5	RWF Bulls	649 lbs.	at \$69.50
Norris Conklin, Muleshoe	11	Mxd. Strs	631 lbs.	at \$76.00
Chico Cattle, Abernathy	2	BMF Strs	688 lbs.	at \$71.00
Shafer Farms, Inc., Muleshoe	18	Limo. Strs	626 lbs.	at \$75.75
Shafer Farms, Inc., Muleshoe	22	Limo. Strs	720 lbs.	at \$72.00
John Hill, Abernathy	6	Blk. Strs	790 lbs.	at \$68.00
3M Cattle, Muleshoe	52	Mxd. Strs	828 lbs.	at \$68.00
BJ Gully, Rowena, TX	3	Mxd. Hfrs	225 lbs.	at \$88.00
Kenneth Wilhite, Muleshoe	3	Mxd. Hfrs	257 lbs.	at \$91.00
Mimms Bros., Muleshoe		Blk. Hfr	275 lbs.	at \$85.00
Ben Teichroeb, Seminole	4	Mxd. Hfrs	391 lbs.	at \$82.00
Tom Jinks, Muleshoe	4	Mxd. Hfrs	540 lbs.	at \$74.50
Welch Farms, Muleshoe	3	Limo. Hfrs	587 lbs.	at \$73.00
Stanley Sadler, Littlefield	6	Red Hfrs	596 lbs.	at \$69.50
D&D Cattle, Friona	4	WF Hfrs	615 lbs.	at \$69.00
Clayton Myers, Muleshoe	5	Mxd. Hfrs	636 lbs.	at \$70.00
Norris Conklin, Muleshoe	4	Mxd. Hfrs	641 lbs.	at \$68.00
Shafer Farms, Inc., Muleshoe	12	Limo. Hfrs	580 lbs.	at \$75.00
Shafer Farms, Inc., Muleshoe	13	Limo. Hfrs	751 lbs.	at \$67.50
Bill Verden, Earth	3	Mxd. Hfrs	720 lbs.	at \$67.00
Elogio Castillo, Sudan		Blk. Cow P5		\$410.00
FM Dixon, Selvelland	3	BMF Cows P7		\$420.00
Bill Verden, Earth		Gray Cow	1495 lbs.	at \$39.00
Byrd Ranch, Monument, NM		BWF Cow	1000 lbs.	at \$39.25
Greg Young, Muleshoe		Limo. Cow	1325 lbs.	at \$41.50
Shafer Cattle, Muleshoe		Blk. Cow	1200 lbs.	at \$38.00
Olson Cattle, Hereford		Blk. Cow	1280 lbs.	at \$38.00
A&B Cattle, Muleshoe	2	Limo. Cows	1060 lbs.	at \$40.50
A&B Cattle, Muleshoe		Blk. Cow	1500 lbs.	at \$40.75
Prairie View Dairy, Muleshoe	2	Hol. Cows	1470 lbs.	at \$38.75
Prairie View Dairy, Muleshoe	3	Hol. Cows	1315 lbs.	at \$38.00
Saul Escontrias, Denver City		Hol. Cow	1005 lbs.	at \$38.00
Clayton Myers, Muleshoe		WF Bull	1730 lbs.	at \$49.50
Byrd Ranch, Monument, NM		RMF Bull	1540 lbs.	at \$47.50

Journal Classifieds

Deadlines are 5 p.m. Monday and Thursday

Call 272-4536

Deadlines are 5 p.m. Monday and Thursday

STOP & SHOP

FOR SALE OR LEASE

Large, 3 bdrm 2 bath home. In nice area. \$395 per month. 272-4480 or (602) 816-4003.45s-tfc

HOMES

HADLEY HOMES, INC.

Family Owned
Raymond & Sherry Hadley
Se Habla Español
(505) 763-1788 or
1-888-316-6111
4100 Mabry Drive
Clovis, NM
Fax (505) 763-0698
Sales Reps: Bowie Howard & Anna Loya

HELP WANTED

Assistant Food Service Director, must be responsible and dependable. Experience in healthcare setting helpful. Contact Robin Dickerson, Food Service Director, Muleshoe Area Medical Center, 708 South 1st, Muleshoe, Tx 79347. (806) 272-4524.8s-3tch

FOR SALE

Glass top dining room table with 8 chairs. Call 272-3418 after 5 p.m.8s-2tch

Farm Land FOR SALE

160 irrigated acres. Valley center pivot, good water, Oklahoma Lane Area. (806) 925-6463.8s-4tch

Farm Land FOR SALE

Approximately 560 acres on Bailey/Lamb county line. Two irrigated quarters with 2 Valley pivots and 4 wells, 215.4 acres CRP. Separate 80 acre tract improved grassland. \$199,000.00. Financing available to qualified buyers.
Contact:
Jay Messenger
Muleshoe State Bank
(806) 272-4561

FOR RENT

Ruidoso Condo
3 Bedroom 3 Bath
Sleeps 8
Call Debbie at
(806) 285-3053

Storage Rooms Available

\$25- \$30
Call Ted Barnhill
272-4903

REAL ESTATE

2-1-1 Home with floor furnace, fenced yd., storage building. Call 272-4084.8s-9tcd

3 BEDROOM 2 BATH & 2 CAR GARAGE HOME
ON CORNER LOT!
400 SWIFTA IN SUDAN.
GOOD NEIGHBORHOOD
CALL 933-4491

HELP WANTED

Accounting personnel needed. Apply at C & H Equipment.7t-2tch

SERVICE

COUNTRY DUMPKSTER'S
RURAL GARBAGE SERVICE
(NO LONG TERM CONTRACTS)
Locally Owned & Operated
Reasonable Prices
806-385-4585

HENDERSON SERVICE CO.

MAJOR APPLIANCE & MINOR HOME REPAIRS
272-4450

WANTED

Want to purchase used center-pivot, in good condition. Prefer LEPA system. (806) 983-3730, Leave message. 7t-6tch



Nieman Realty



116 E. Ave. C • George Nieman, Broker • 272-5285 or 272-5286

RICHLAND HILLS — PARK RIDGE

- We have several single and multi-family lots in this area!!!
- NICE 3 bdrm. 2 bath w/3 car detached garage/workshop-storage, Elec. Heat Pump, built-ins, FP, 2,380' lv. area, auto. splkr., fenced yd., More!!! RH-2
- NICE 3-2-2 Brick, Cent. A&H, built-ins, FP, approx. 2100' lv. area, storage, fenced yd., MORE!!! RH-1

HIGHLAND - HARVEY AREA

- 3-1-1 carport Home, wall furnace heat, evap. air, large yd., MORE!!! \$20's!!!!
- 3-2-2 Brick, Cent. A&H, built-ins, gas log FP, fenced yd., stor. bldg., MORE!!! Price Reduced!!! HL-5
- 2-1-1 carport home, wall furnace heat, evap. air, DW, 5 fans, cov. patio, gas grill, fenced yd., MAKE OFFER!!!
- 3-2-2 Brick Home, corner lot, wall furnace heat, Cent. Evap. Air, fenced yd., stor. bldgs., MORE!!! HL-4
- NICE 2-2-1 + 1 Carport Brick, 2,000 + living area., Cent. A&H, built-ins, fans, den w/WB stove, enclosed heated pool, corner lot, fenced yd., MORE!!! \$80's!!! HL-1

LENAU - COUNTRY CLUB AREA

- PRICE REDUCED 2-1-1 Carport Home, wall furnace, nice carpet, storm shelter, stor. bldg., fenced yd. \$19K!!! CC-3
- 2-1-1 Home, floor furnace, win. ref. air, fenced yd, stor. bldg., \$18,500 !! L-1
- 3-2-2 Carport Mobile Home, Cent. A&H, built-ins, nice yd., pecan & fruit trees!!! \$16K!!!

COMMERCIAL

- Six Unit Apartment Complex (4-2 bdrm. & 2-1 bdrm. units)!!!
- 100' x 140' tract, approx. 7,400' business & warehouse building on American Blvd., PRICED TO SELL!!!
- Established Business: Land, Bldg. & Equip., \$75K!!!
- 56' x 140' tract, approx. 4700' bldg., \$35K!!!
- NICE R.V. STORAGE, 14' X 40' metal bldg. 12 doors, 50X140 corner lot!
- SNACK SHACK - Lot, Buildings, furniture & fixtures!!! HIGH SCHOOL
- Nice 3-2-2 Brick, built-ins, heat pump, 5 fans, nice carpet, stor. bldg., fenced yd., MORE!!! \$60's!!! HS-3

- 2-2-2 BRICK, Cent. A&H, built-ins, corner lot, approx. 1800' lv. area!!! PRICE REDUCED! MAKE OFFER!!! HS-4
 - 3-1/2-1 Home on corner lot, fenced yd., storage bldg., MORE!!! \$20's!!! HS-9
 - NEWLY REMODELED 3-1-1 Home, cent. A & H, new carpet & vinyl, fenced yd., MORE !!! \$30's !!! HS-2
 - VERY NICE 3-1-1 Brick, Heat pump, DW, nice carpets, fenced yd., MORE!!! \$30's !!! HS-1
 - NICE 2-1-1 Brick, Heat Pump, nice carpets, well insulated, storm windows & doors. \$30's!!! HS-6
 - VERY NICE 3-1-1 Home, nice carpets and vinyl, heat pump, fans, fenced yd., stor. bldgs., MORE!!! \$30's!!! HS-5
 - PRICE REDUCED!!! 3-2-1 Brick, Heat Pump, built-ins, fans, screened porch!!! \$30's!!! HS-7
 - JUST LISTED- 2-1-2 CP Home, corner lot, metal siding, storm win. & doors, stor. bldg. \$20K!!! HS-8
 - 1-14' x 60' and 1-12' x 40' Mobile Home on a 98' x 75' lot, both have cent. heat, evap. air, stove, & ref., cov. patios, fenced yd.!!! \$20k!!!
 - 3-2-2 Home, corner lot, floor furnace heat, Cent. Air, auto. splkr., stor. bldg., fenced yd., MORE!!! \$50's !!! HS-10
- RURAL
- PRICE REDUCED- NICE 3-2 home, 40 acre tract, Geo. Heat Pump, built-ins, 5" irrig. well, Hi-Pre. lines, sprinkler pipe, barn, pens, tractor & equip!!! \$69K!!!
 - W. of SUDAN- NICE 3-2-2 Brick Home, 5 acre tract on Hwy. 298, Cent. Air & Heat, built-ins, large Quonset Barn, MORE!!! \$95K!!!
 - 5 Acre tract on pavement close to town!
 - LAZBUDDIE- PRICE REDUCED- NICE 3-2-2 Brick Home on pavement, 2204' lv. area, Cent. A & H, built-ins. FP, large sunroom!!! \$70's!!!
 - Approx. 108 acres on Hwy. 70, approx. 2100' office area, 16,900' of commercial bldg. w/loading dock, 3,400' warehouse!!! 2,800' runway!!!
 - LONGVIEW - GOOD Dryland Labor, fully allotted, planted in wheat & hoes with sale until 3-1-99. \$225.00 per acre. 152.8 acres, 15hp & 20hp. sub., Lockwood splkr., 85 acres seed brasses & 35 acres wheat. \$475.00 per acre.

Ad Rates
Reader Ads — 15 words or less are \$4.50 the first time your ad runs; \$4.15 the second time and thereafter for the same ad. 16 words or more are \$4.00 per word the first time your ad runs; \$3.30 per word the second time and thereafter for the same ad.
Display Classified Ads \$3.53 per column inch each time your ad runs.

•Buy It•
or
•Sell It•
In the
Journal
Classifieds!

For All Your Classified Needs Call 272-4536!
Ad deadlines are Tuesday at noon for The Muleshoe Journal & Friday at noon for the Bailey County Journal.



At Lowe's...Give Up High Prices For Lent

Lent Season Sale



PRICES EFFECTIVE FEBRUARY 24-MARCH 2, 1999

MEAT

- VALUED PACK FARM RAISED-LIMIT 4
- RAW CATFISH**LB **\$1¹⁹**
- WHOLE-LIMIT 4
- H&G WHITING FISH**5 LB **\$2⁹⁵**
- FRYER CHICKEN-LIMIT 4
- LEG QUARTERS**LB **19[¢]**
- VALUE PACK BONELESS SKINLESS
- CHICKEN BREAST**LB **\$2⁴⁹**
- PILGRIM'S PRIDE BONELESS SKINLESS
- CHICKEN BREAST OR STRIPS**LB **\$2⁶⁹**
- VALUE PACK BONELESS
- PORK SIRLOIN CHOPS**LB **\$1⁹⁹**
- HORMEL CURE 81 BONELESS
- HAM STEAK**LB **\$3⁹⁹**
- HORMEL CURE 81 BONELESS
- HALF HAM**LB **\$2⁹⁹**
- BAR S
- BAG FRANKS**2 LB. PKG **2/^{\$5}**
- BAR S BONELESS
- WHOLE HAM**5 LB **\$7⁹⁹**
- BAR S
- BEEF BOLOGNA**12 OZ. **\$1¹⁹**
- BAR S
- BACON**12 OZ. **\$1³⁹**
- BAR S
- COOKED HAM**12 OZ. PKG **\$2¹⁹**
- BAR S
- CHOPPED HAM**10 OZ. PKG **2/^{\$3}**
- BAR S
- MEAT BOLOGNA OR FRANKS**12 OZ. PKG **79[¢]**
- HORMEL LINKS OR PATTIES
- LITTLE SIZZLERS**10 TO 12 OZ. **89[¢]**
- BLACK LABEL
- HORMEL BACON**1 LB. PKG **2/^{\$4}**
- 12 OZ. PUB STYLE OR 16 OZ. ORIGINAL
- FISHER BOY FISH STICKS**YOUR CHOICE **2/^{\$4}**

- KRUSTEAZ
- OLD FASHIONED PANCAKE MIX**32 OZ. BOX **2/^{\$3}**
- ASSORTED
- ALPO DOG FOOD**13.2 OZ. CAN **2/^{\$1}**
- ASSORTED
- ALPO DOG GOOD**22 OZ. CAN **79[¢]**
- ARM & HAMMER
- ULTRA FRESH DETERGENT**340 OZ. BOX **\$7⁹⁹**
- POTPOURRI OR PET FRESH
- ARM & HAMMER CARPET DEODORIZER**21 OZ. **\$1²⁹**
- SNUGGLE
- FABRIC SOFTENER**64 OZ. BTL **\$2⁹⁹**
- ASSORTED REGULAR OR FAT FREE
- KRAFT SALAD DRESSING**8 OZ. BTL **\$1¹⁹**

Each Week you may purchase the 5 piece plate setting for only \$3.99 with each \$10.00 minimum purchase.

Affiliated Foods, Inc. presents

Chrome Stainless Steel Flatware!

Granada

GOURMET COLLECTION

At participating stores only.

5-Piece Place Setting

With Two Patterns To Choose From

We are giving you the opportunity to purchase a flatware set to suit your household at a fraction of the regular cost! Each week different completer pieces will be featured at a special feature price with coupon so you may round out your flatware collection. Lifetime Warranty, High Quality Shine, Made in Spain, Dishwasher Safe.

PRODUCE

- JUICY LARGE
- TANGERINES**LB **79[¢]**
- JEWEL GREEN
- LIMES** **10/^{\$1}**
- FRESH TANGY
- LEMONS** **10/^{\$1}**
- JALAPENO
- PEPPERS**LB **59[¢]**
- ROMAINE, GREEN OR RED
- LEAF LETTUCE** **2/^{\$1}**
- RED RIPE
- TOMATOES**LB **99[¢]**
- RUSSET BAKING
- POTATOES**LBS **4/^{\$1}**
- FRESH
- JICAMA**LB **69[¢]**
- DELICIOUS
- YELLOW, HOT OR ANAHEIM PEPPERS**LB **\$1¹⁹**

FROZEN & DAIRY

- ASSORTED
- BLUE BUNNY ICE CREAM** ...5 QT. PAIL **\$4⁶⁶**
- CHICKEN SANTA FE MEAL, HAM SKILLET BREAKFAST OR SHRIMP/BEEF/CHICKEN
- CHEF'S CHOICE STIR-FRY**24 OZ. **\$4⁹⁹**
- PRICE'S
- CHEESE OR JALAPENO SPREAD**7.5 OZ. **2/^{\$3}**
- ASSORTED (EXCLUDES OVEN RISING AND STUFFED CRUST)
- TOMBSTONE 12" PIZZA**20.5 TO 23.6 OZ. **\$2⁸⁸**
- ORE-IDA ASSORTED
- TATER TOTS**28 TO 32 OZ. **\$1⁶⁹**
- ORIGINAL OR SUGAR FREE
- WELCH'S GRAPE JUICE**11.5 TO 12 OZ. **89[¢]**
- CRINKLE CUT, CRISPERS! STEAK OR FRENCH
- ORE-IDA FRIES**20 TO 32 OZ. **\$1⁶⁹**
- ASSORTED
- EL CHARRITO DINNERS** ...13.25 TO 14.25 OZ. **\$1²⁹**
- ASSORTED
- PLAINS COTTAGE CHEESE**24 OZ. TUB **\$2⁴⁹**
- AMERICAN
- BORDEN SINGLES**12 OZ. **\$1⁹⁹**
- FLORIDA'S NATURAL ORIGINAL OR HOMESTYLE
- ORANGE JUICE**64 OZ. CTN. **2/^{\$5}**
- FLORIDA'S NATURAL
- RUBY RED GRAPEFRUIT**64 OZ. CTN. **2/^{\$5}**
- ASSORTED
- KRAFT CHUNK CHEESE**8 OZ. **\$1⁷⁹**

- ALL TYPES
- COCA-COLA, SPRITE OR DR. PEPPER**12 PK.-12 OZ. CANS **\$2⁹⁹**
- ALL TYPES
- COCA-COLA, SPRITE OR DR. PEPPER**6 PK.-.5 LITER **2/^{\$5}**
- 4 PACK
- POWERADE**24 OZ. **\$3⁴⁹**

\$3⁹⁹

with each \$10.00 purchase
Reg. Price \$6.99

HEALTH & BEAUTY

- CAPLETS OR TABLETS
- BAYER GENUINE ASPIRIN**50 CT. PKG **\$2⁹⁹**
- ASSORTED O/TIP
- WESTERN FAMILY TAMPONS**32+8 CT. BONUS **\$2⁹⁹**
- TABLETS OR CAPLETS
- ALEVE PAIN RELIEF**50 CT. PKG **\$4⁹⁹**
- WESTERN FAMILY ASSORTED
- MAXI PADS**20 TO 24 CT. **\$1⁹⁹**

- DONA MARIA
- NOPALITOS**15 OZ. JAR **99[¢]**
- REGULAR OR FAT FREE
- KRAFT TARTAR SAUCE**9 OZ. JAR **99[¢]**
- BETTY CROCKER ASSORTED
- TUNA HELPERS**7.75 TO 9.25 OZ. **95[¢]**
- CHICKEN OF THE SEA IN OIL OR WATER
- CHUNK LIGHT TUNA**6 OZ. CAN **2/^{\$1}**
- HONEY BOY
- PINK SALMON**15 OZ. CAN **2/^{\$3}**
- ASSORTED LAY'S®, WAVY LAY'S® OR DELI STYLE-REG. \$2.99
- POTATO CHIPS**YOUR CHOICE **3/^{\$5}**
- TOSTITOS®
- CON QUESO DIP**15.5 OZ. **2/^{\$5}**
- BETTY CROCKER ASSORTED
- BROWNIE MIX**20.5 TO 22.5 OZ. **2/^{\$3}**
- BETTY CROCKER BROWNIES, DEVIL'S FOOD, CARROT OR COFFEE CAKE
- STIR'N BAKE MIXES**10 TO 12.8 OZ. **\$1¹⁹**
- BETTY CROCKER ASSORTED
- POP•SECRET POPCORN**6 CT. PKG **\$2⁸⁹**
- ASSORTED-6 PK.
- SQUEEZE-IT**6 TO 6.75 OZ. **\$1¹⁹**
- SELECTED VARIETIES 6.75 TO 10 OZ.
- NABISCO CRACKERS**YOUR CHOICE **\$1⁹⁹**
- SHURFINE
- BLEACH**128 OZ. JUG **88[¢]**
- MRS. BAIRD'S
- HONEY BUNS**EACH **2/^{\$1}**
- MRS. BAIRD'S
- CHOCOLATE CUPS**2 CT. **2/^{\$1}**
- MRS. BAIRD'S
- BUTTER CUPS**2 CT. **2/^{\$1}**
- GRIFFIN'S
- WAFFLE SYRUP**24 OZ. **\$1⁶⁹**
- QUICK OR OLD FASHIONED
- 3 MINUTE OATS**18 OZ. **\$1²⁹**
- CORNBREAD, BUTTERMILK PANCAKE, YELLOW CORN MUFFIN OR BUTTERMILK BISCUIT
- SHAWNEE MILL MIXES**6 OZ. **3/^{\$1}**
- MANGO OR ORIGINAL
- TAMPICO CITRUS PUNCH**128 OZ. JUG **99[¢]**
- GENERAL MILLS CEREAL
- CINNAMON GRAHAMS, GOLDEN GRAHAMS OR COOKIE CRISP**12.25 TO 18 OZ. **\$1⁹⁹**
- AMERICAN BEAUTY ASSORTED
- LA BELLA ROSA PASTA** ..7 OZ. PKG **3/⁹⁹**
- MORNING FRESH
- SNUGGLE SHEETS**80 CT. **\$3⁵⁹**
- CUDDLE-UP OR SPRING BLOSSOM
- SNUGGLE ULTRA FABRIC SOFTENER**40 OZ. **\$3⁹⁹**
- CUDDLE-UP FRESH
- SNUGGLE SHEETS**40 CT. **\$1⁹⁹**

WESTERN MONEY UNION TRANSFERSM
The fastest way to send moneySM

Lowe's MARKETPLACE

401 W. American Blvd.
Muleshoe 272-4585



515 W. American Blvd.

WE RESERVE THE RIGHT TO LIMIT QUANTITIES IN TEXAS

Muleshoe 272-4406

WEEK 4
3 PIECE CHILD'S SET
\$3.99
WITH \$3.00 OFF COUPON.
REG. PRICE \$6.99

ONLY AT PARTICIPATING AFFILIATED FOODS MEMBER STORES. ONE COUPON PER COMPLETE PIECE.