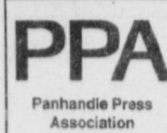




MULESHOE JOURNAL



Volume 76, No. 47 50¢ Published Every Thursday at Muleshoe, Bailey County, Texas 79347 50¢ Thursday, November 26, 1998

PAGE ONE

A QUICK READ OF THE NEWS

Moonlight Madness sale

The second of the four Moonlight Madness sales sponsored by the Muleshoe Chamber of Commerce will be held Friday. "This one kicks off Christmas shopping," said Chamber of Commerce member Dawn Williams.

Eighteen retail businesses and restaurants will be open late to give Muleshoe and out of town customers a chance to shop past regular business hours.

For every \$20 spent at a participating business, the customer's name will be put into a drawing for a \$50 gift certificate from a participating business. After the last Moonlight Madness sale, all the names of purchasing customers will be put into a box, and those people will get a chance to win \$1,000 in Muleshoe Mad Money. The giveaway will take place Dec. 21. The Chamber reminds everyone to shop Muleshoe first.

Williams said that participating stores and restaurants will be running their own specials and will set their own hours. Most will be open regular business hours and will have extended shopping hours starting at 6 p.m.

"It's our way of putting what we get from the community back into the community," said Williams, owner of Williams Athletics.

A taste of turkey trivia

■ In 1998, about 270 million turkeys will be raised. We estimate that 45 million of those turkeys were eaten at Thanksgiving, 22 million at Christmas and 19 million at Easter.

■ The Guinness Book of Records...states that the greatest dressed weight recorded for a turkey is 39.09 kg (86 lbs), at the last annual "heaviest turkey" competition held in London, England on December 12, 1989.

■ The bronze coloured wild turkey must fly to survive and can glide a mile without fluttering a wing.

LOCAL WEATHER

	High	low	Pre.
Friday	52	33	—
Saturday	69	27	—
Sunday	81	32	—
Prec to date	13.24 inches		

EXTENDED FORECAST

Sunny through the week. Highs in the mid to upper 70s. Lows in the upper 20s to mid 30s. Look for it to turn windy on Friday and continue into the weekend. Increasing cloudiness Saturday with a slight drop in temperatures.



JOURNAL PHOTO BY RICK WHITE

Morning fire

Capt. Jack Dunham of the Muleshoe fire department uses an axe to knock down the ceiling of a trailer at Valley Grain that caught fire Monday morning. Unoccupied at the time, the trailer received heavy damage to the roof.

SPS plans future price reductions

AMARILLO — Customers of Southwestern Public Service Company will see a reduction of almost \$210 million in costs of electric service between now and the end of 2002, SPS announced last week.

Beginning in 1999, reduction in overall rates will range from 7 percent to 11 percent. A residential customer of SPS using 1,000 kilowatt-hours monthly will save about \$48 annually.

Residential customers typically will see about a 7 percent reduction. Industrial customers and other high-volume electricity purchasers will see larger percentage decreases because fuel costs account for a greater portion of their total electric bill.

The decreased costs reflect amendments to contracts between TUCO, Inc., the coal supplier to SPS, and the Burlington Northern and Santa Fe Railway, the railroad company that hauls coal from Wyoming to fuel SPS power plants.

The reductions in coal-transportation cost will be realized

directly by SPS customers through lowered fuel costs; changes in fuel costs "flow through" to customers.

"We are delighted to provide these significant savings to our customers," said David M. Wilks, president of SPS. "The SPS fuel group and the fuel supplier TUCO certainly deserve credit for significant achievements on our customers' behalf."

Mark Freeman, SPS director of energy, said the \$210 million in total projected fuel savings is based on future coal transportation charges under the revised contract compared to what the railroad would have charged if SPS and TUCO had not disputed the railroad's rates.

David Hudson, SPS's director of regulatory and pricing administration, said SPS rates have been decreasing since 1983.

"SPS customers have enjoyed a trend of decreasing rates for 16 years, now," he said. "Our rates in 1999 will be approximately 25 percent lower than they were 16 years ago."

Ben Franklin's turkey doesn't fly

Most Americans associate turkeys with Thanksgiving, an identity that can be traced to the first Thanksgiving meal. But thanks to the work of many dedicated sportsmen and women and the National Wild Turkey Federation, wild turkeys are reclaiming their role as a symbol of the North American wilds.

Ben and the bird

Today, members of the National Wild Turkey Federation might support the popular legend of Ben Franklin proposing the wild turkey as America's national symbol. But not unlike the Federation's 180,000

supporters, Franklin's suggestion never got beyond a personal lobby, which kept the marvelous bird on the dinner table instead of on the national seal.

It has become a common part of folklore that one of America's founders, Benjamin Franklin, proposed the turkey as our national symbol in opposition to the bald eagle.

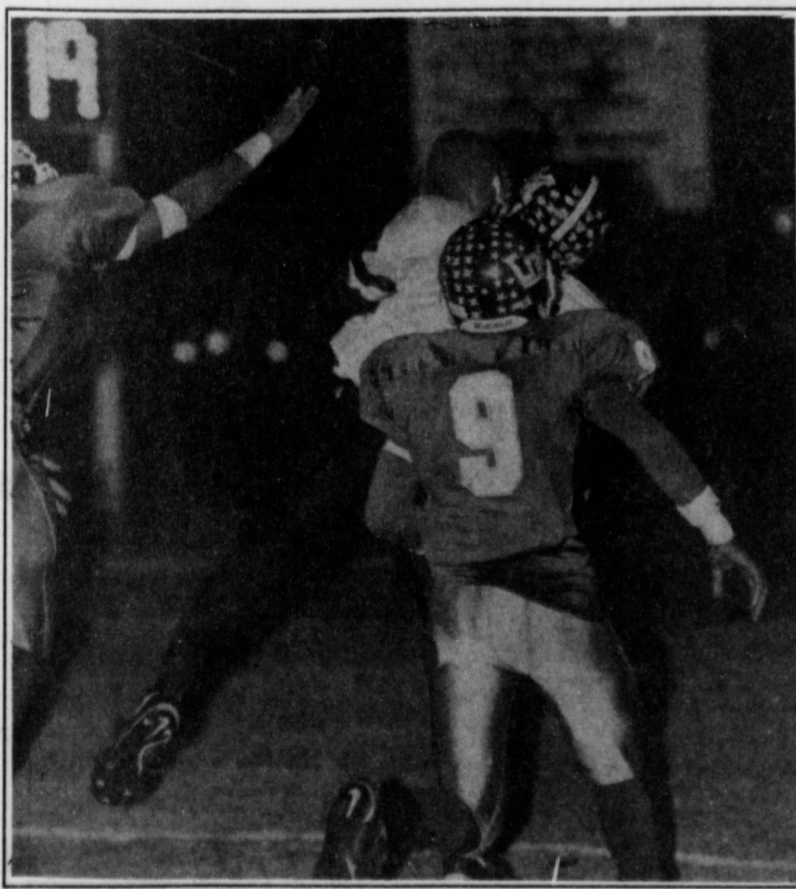
As with most myths, shreds of the truth are woven together, repeated and over time become as unshakable as the truth itself.

While he was living in France as

America's ambassador to that country, Franklin penned a letter to his daughter Sarah Bache on January 26, 1784. "I wish that the bald eagle had not been chosen as the representative of our country; he is a bird of bad moral character; he does not get his living honestly; you may have seen him perched on some dead tree, where, too lazy to fish for himself, he watches the labor of the fishing hawk (osprey); and when that diligent bird has at length taken a fish, and is bearing it to his nest for the support of his mate and the young ones, the bald

eagle pursues him and takes it from him. For in truth, the turkey is, in comparison, a much more respectable bird, and withal a true native original of America. Eagles have been found in all countries, but the turkey was peculiar to ours. . . ."

Although written after the fact, Franklin was nonetheless impressed with the originality of America's turkey. If pressed on the matter, it could be surmised that the elder statesman would not have chosen a gobbler as our sacred symbol and thus find an inferior Thanksgiving main course.



JOURNAL PHOTO BY RICK WHITE

Touchdown

Carlton Lewis hauls in a TD pass from Jesse Reyes Friday during a Class 3A playoff game against Crane.

Return helps Crane gain control

By RICK WHITE
Managing Editor

DENVER CITY — Muleshoe couldn't finish what it started.

Playing one of its finest halves of the season, Muleshoe built a 14-7 halftime lead against Crane Friday in a Class 3A Division II area playoff game.

Led by the passing of Matt McClanahan (4 of 5 for 111 yards, 1 TD), Muleshoe rolled up 243 yards against the state's second-ranked defense and clearly had the momentum heading into the second half.

But it all changed in a hurry. Sparked by Dorny Bishop's 86-yard kickoff return to start the second half and the passing of Clay McGuire, No. 5 Crane rallied to beat Muleshoe 28-14

before a crowd of 3,689 at Mustang Stadium.

Crane (12-0) plays Iowa Park (9-3) this week in the regional semifinals while Muleshoe ended its season at 10-2.

"Crane is just a good football team," Muleshoe head coach David Wood said. "They were able to put together a couple of drives when they needed them."

Muleshoe continued to move the ball in the second half, but couldn't come up with a big play when they needed one.

Down 21-14 early in the fourth quarter, Muleshoe methodically marched 59 yards to the Crane 21 — helped by a 29-yard pass from McClanahan to Dustin Cleavinger to the Crane 37.

But a bobbled snap on third down left the Mules with

fourth-and-five at the 21 with 5:57 left in the game.

Blitzing linebacker Tyler Nelson sacked McClanahan for a 12-yard loss to end the threat.

Crane took advantage of the big defensive stop by driving 68 yards for an insurance touchdown.

Facing third-and-12 at midfield, McGuire found Eddie Muguira on a crossing route for a 39-yard gain to the Muleshoe 11. Three plays later, Bishop scored on a one-yard plunge with 1:50 left to put the game out of reach.

The junior quarterback and Division I recruit hooked up with Muguira for a 43-yard completion on the same pattern in the third quarter, which led to the Golden Cranes' third touchdown.

"He's just a good quarterback," Wood said. "We took away his first option and he adjusted and made the big plays."

McGuire (5 of 7 for 118 yards) and Willie Morris (45 yards on nine second half carries) helped Crane control the ball in the second half.

Muleshoe was limited to four second-half possessions — the others ended with a punt from the Crane 37, a fumble and a last-second interception.

Despite being stung by Bishop's 79-yard touchdown run on Crane's second offensive play of the game, Muleshoe dominated the first half.

Muleshoe's offense was

see MULES on page 5

Legislators get jumpstart on filing bills



AUSTIN — With the opening of the 1999 Texas Legislature two months away, state lawmakers itching for a quick start began pre-filing bills last week.

A sampling of pre-filed legislation:

■ Sen. Jane Nelson, R-Flower Mound, filed a bill that would abolish parole for violent offenders.

■ Rep. Tony Goolsby, R-Dallas, filed a bill that would require the Department of Public Safety to ensure that residents age 75 or older can control the vehicles they are licensed to drive.

■ Rep. Senfronia Thompson, D-Houston, filed a bill that would increase classroom teacher and full-time librarian salaries by \$6,000, beginning with the 1999-2000 school year.

■ Rep. Joe Pickett, D-El Paso, filed a bill that would make it a state jail felony to mark with graffiti a public or private school or institution of higher education.

■ Reps. Henry Cuellar, D-Laredo, and Bill Seibert, R-San Antonio, filed a bill that would make state and county jail inmates reimburse the state for the costs of their jail stay.

■ Rep. Steve Wolens, D-Dallas, filed a bill that would amend the Texas Open Meetings Act to include "staff briefings" — certain meetings at which a governmental body receives information from third persons, including government employees.

No room for politics

In a mild allusion to standing Attorney General Dan Morales, Attorney General-elect John Cornyn last week said politics will have no place in his administration.

While Cornyn did not give examples of the office's duties being compromised by politics, he said it has influenced decisions "on whether to defend or not to defend state laws."

Morales defended, however,

decisions he has made in office, saying he based them on a choice to have a "strong, independent perspective."

Cornyn told the Austin American-Statesman his "standard for retention" at the attorney general's office is "pretty simple: Number 1, no political hacks, and Number 2, people who are doing their job."

He said the attorney general's office is staffed mostly by people who have been "faithful public servants. They're not political people, they're just doing a good job. And as I said, to the extent that they continue to do a good job and they don't play politics, I intend to ask them to stay."

"The only people I think who need to be concerned are the people who have politicized the office."

In other news, Cornyn said his transition team would be led by Larry York, who served as first assistant attorney general from 1973 to 1974 under

Democrat John Hill.

Bush denies role in GOP coup
Gov. George W. Bush last week said he had nothing to do with the Republican Party's push to replace House Speaker Newt Gingrich.

A rumor aired on national television "credited" Bush with making a call indicating that if he was to lose the presidential election in 2000, he wanted it to be because of him, not because of Gingrich. The call purportedly resulted in swift action by the party to withdraw support for Gingrich.

Karen Hughes, spokeswoman for Bush, said the rumor is groundless.

Bush said his wife and twin daughters will figure into his decision whether to run or not, and that his main priorities are child literacy and working with the 1999 Texas Legislature.

Other Highlights

■ Insurance Commissioner Elton Bomer has signed an order adopting an appointment

process for professional engineers to serve as qualified windstorm inspectors. After Feb. 1, all engineers must be approved and appointed by the state insurance agency.

■ Last week, the University of Texas board of regents considered a proposal by UT President Larry Faulkner to reopen the observation deck of the campus clock tower. The 28-story, 231 foot-tall building has been closed since 1975.

■ The University of Texas is acquiring through gift and purchase the Suida-Manning collection of 700 Old Masters paintings and drawings valued at nearly \$35 million. The collection will be unveiled in March.

■ Haskell County — the home county of Lt. Gov. elect Rick Perry, is considering a bid for the low-level nuclear waste repository project that failed to win acceptance in Sierra Blanca last month. Haskell County is 50 miles north of Abilene..

REBEKAH NEWS

Acting Noble Grand June Green opened the Nov. 17 meeting with eight members answering roll call.

It was nice that our new member, Sylvia Lira, was able to make the meeting. Sister Bonita Rainey, with the help of Sisters June Green and Sylvia Lira, served refreshments before lodge.

It was reported that if Bernie Marts' mother gets a good report, Bernie should be home this weekend. Adam was re-

ported to have gone to the emergency room last week and then to see Dr. Wells in Lubbock. He will be in the hospital Friday (at 6 a.m.) after Thanksgiving for the surgery.

The first week of nomination of new officers was done tonight and next week we nominate again. The vote the first week in December.

The district deputy gave a short school of instruction. We'd like to thank all those folks that came to our Annual

Thanksgiving Dinner.

We missed those that weren't here this week, hope to see you next week.

There being no further business, Chaplain Bonita Rainey closed the lodge with love to all until next week.

Happy Thanksgiving
FROM THE JOURNAL STAFF

Sheree's Attic & MERLE NORMAN COSMETIC STUDIOS

Moonlight Madness Friday-Nov. 27
Saturday-Dec. 5
Saturday-Dec. 19

Moonlight Madness starts at Daylight Nov. 27th!
Open at 10 am — Specials good all day

15% off All "Christmas" Clothing
20% off Brighton Belts, Jewelry & Access.
20% off All Sterling Silver Jewelry
20% off Selected Groups

Much...Much... More!!!
Any **\$10 off Broomstick Skirt** (reg. price only)

All major credit cards accepted
1519 W. American Blvd. • 272-3459

Muleshoe Journal USPS 367820
Established February 23, 1924. Published by Triple S Publishing, Inc. Every Thursday at 304 W. Second, Box 449, Muleshoe, TX 79347.
Second Class Postage paid at Muleshoe, TX.
POSTMASTER: Send address changes to the Bailey County Journal, P.O. Box 449, Muleshoe, TX 79347.
We are qualified members of:
Panhandle Press Association, National Newspaper Association, West Texas Press Association and Texas Press Association

WEST TEXAS PRESS ASSOCIATION
MEMBER 1998

PPA
Panhandle Press Association

Scot Stinnett, Publisher
Lisa Stinnett, Vice-President/Comptroller
Rick White, Editor
Mari Guadaluca, Classifieds
Leah Bell, Advertising

SUBSCRIPTIONS: Muleshoe Journal and Bailey County Journal
By Carrier Yearly - \$22.00
Bailey County — by mail - \$24.00
Elsewhere - \$26.00
Advertising Rate Cards on Application

Advertisers should check their ad the first day of insertion. The Journals will not be liable for failure to publish an ad or for a typographical error or errors in publications except to the extent of the cost of the ad for the first day of insertion. Adjustment for errors will be limited to the cost of that portion of the ad where the error occurred.

Pa'nache

Holiday Sale
20% to 50% Off
Nov. 27, 28 & 29
Storewide

- Broomstick Skirts • Lingerie
- Denim & Brocade Jackets
- Sweaters • Vests • Blouses
- Pantsuits • Purses • Belts

Gift Certificates Available

Pa'nache North Plains Mall

Trim Your Budget By
Trimming Joe's Tree

1-800-658-6378 106 E. American Blvd. Muleshoe, TX
And Country Junction

WITH YOUR PURCHASE YOU AUTOMATICALLY HAVE AN ORNAMENT ON JOE'S TREE!

WIN
For every \$20 purchase, you draw an ornament to get chances to win a **\$1000** Gift Certificate and/or over **\$4000** worth of Joe's Boot Shop Merchandise

Moonlight Madness
Friday Nov. 27th
OPEN TILL MIDNIGHT!!!

Storewide **20% off** Special (excluding hats, boots and Wrangler)

Come in and register to win Two Las Vegas National Finals Rodeo tickets to be given away Nov. 27 (Rodeo dates-Dec. 4-6) NO PURCHASE NECESSARY
Sponsored by Joe's Boot Shop-Mass register at Joe's

BAILEY FELT HAT SALE

Felt 2X & 3X.....	\$59
Felt 5X.....	\$99
Felt 7X.....	\$129
Felt 10X.....	\$149
Felt 20X.....	\$229
Felt 30X.....	\$259

AND MANY, MANY MORE ITEMS!!

All to be given away Saturday, December 19th at 11 pm CDT.
MUST BE PRESENT TO WIN!!!

FREE ENTERTAINMENT EACH MOONLIGHT MADNESS 7 PM-11 PM
Nov. 27 Entertainment—Heather Shipman

All Boots Get Cheaper By The Hour!!

6:00 p.m. —	\$6 OFF
7:00 p.m. —	\$7 OFF
8:00 p.m. —	\$8 OFF
9:00 p.m. —	\$9 OFF
10:00 p.m. —	\$10 OFF
11:00 p.m. —	\$11 OFF

Moonlight Madness
Fri., Nov. 27 • Sat., Dec. 5 & 19

* Make your purchases with these participating businesses and get a chance to win \$1,000 in Muleshoe's Mad Money (with every \$20 spent, every \$10 spent at participating restaurants) or a \$50 Gift Certificate from a participating merchant!

Harvey Bass Appliance	Lowe's
Art Loft	Treasures from the Heart
Dairy Queen	Sheree's Attic & Merle
Bealls	Norman Cosmetics
Circle E Pets	Wilson Appliance
Fry & Cox	Williams Athletics
Higginbotham-Bartlett Co.	Muleshoe Feed Barn
James Crane Tire Co.	Leal's Mexican Restaurant
Joe's Boot Shop	Pizza Hut
McDonald's	

Moonlight Madness hours and specials vary with each business! Ask these local merchants for details!
* The winner of Muleshoe's Mad Money can be spent at any business participating in Moonlight Madness 1998.



JOURNAL PHOTO BY RICK WHITE

Avoiding problems at holidays can be tricky for stepfamilies

HOUSTON—Holidays can give stepfamilies a chance to start new traditions.

"It's unrealistic for newly formed stepfamilies and their relatives to expect the stepfamily to function as a typical nuclear family and to carry on the same holiday traditions," said Dr. James Bray, a psychologist at Baylor college of Medicine in Houston.

"They need to realize that the children belong to more than one family, and adjust their holiday routines to accommodate the situation," he said.

Problems can arise when stepfamily members' traditions clash. Everything from how to carve a turkey to how many gifts to buy and when to open them has the potential to start an argument.

"The best way to minimize conflict is to discuss expectations before the holidays and then negotiate and compromise," said Bray, director of the Department of Family and Community medicine's Family Counseling Clinic and Family Psychology Programs at Baylor.

If one family is used to opening presents on Christmas Eve and the other family has always waited until Christmas morning, the stepfamily can compromise by opening a few

gifts on Christmas Eve and saving the rest for Christmas Day.

"It's important that the stepfamily develop new rituals for celebrating holiday traditions because it gives them a sense of identity," Bray said.

He cautions new stepparents against making dramatic changes too soon in the way the stepfamily celebrates the holidays. "Over time, the new stepparents' wishes and needs should be considered more strongly," he said. "But the stepparent would be wise to just blend in at first to help minimize the amount of change the kinds must cope with during their first year as a stepfamily."

Alternating which family the children will spend a particular holiday with each year is a

standard option. When scheduling long-distance travel arrangements, be sure to have contingency plans for weather-related delays and canceled plane flights and bus trips.

Bray encourages stepfamilies to be open to creative ideas when trying to resolve holiday-related conflicts, such as not being confined to a particular date for the celebration.

Some stepfamilies plan their Thanksgiving dinner of Christmas celebration for a day other than the actual holiday so that all members of the family can be there.

This arrangement enables children to spend the holiday with one biological parent and celebrate with the other biological parent at another time.

Emergency CRP grazing extended

Based on the continuing severe weather conditions and circumstances involved, the Bailey County FSA Committee submitted a request to extend the 1998 CEP Emergency Grazing period through Feb. 28.

The Bailey County FSA Office has received notification that the request has been approved and the grazing will be extended. To ensure that overgrazing does not occur, participants must leave at least 25% of each filed or contiguous fields ungrazed for wildlife, or graze no more than 75% of the stocking rate as determined by NRCS. The State Committee and County Committee shall review conditions and discontinue authorization when conditions no longer warrant emergency grazing of CRP acreage.

WESTERN FINANCE

LOANS Up To \$900

GUARANTEED WITH YOUR CLEAR CAR TITLE

(CAR MUST BE LICENSED AND RUNNING. BE ABLE TO VERIFY INCOME AND ADDRESS)

NO CREDIT? • BAD CREDIT? • BANKRUPTCY?

No Problem!!

NO CAR TITLE? GOOD CREDIT?

COME SEE US FOR A PERSONAL PROPERTY LOAN

•IMMEDIATE SERVICE—WHILE YOU WAIT•

1412 N. PRINCE • CLOVIS, NEW MEXICO
769-0947

A shopping experience you don't want to miss...

Carolyn's Christmas Creations

A Unique Christmas Store With Many One-Of-A-Kind Handmade Creations

- ★ Ceramic Art and Figurines
- ★ Christmas Pillows, Stockings & Tree Skirts
- ★ Hand Crocheted/Starched Santas
- ★ "Beauty From Within" & Texas Candles
- ★ Hand-Blown Glass Oil Lamps
- ★ Hand-Painted Bisque Nativity Scenes
- ★ Luxurious Gift Bags
- ★ Holiday Centerpieces
- ★ Inspirational and Whimsical Santas
- ★ Serene, Earth and Renaissance Angels
- ★ Hand-Painted Lamp Shades
- ★ Gift Baskets
- ★ Hummel Ornaments
- ★ Handmade Wreaths and Swags
- ★ Rags To Riches Mr. & Mrs. Claus and Snowman
- ★ "Real Men" Boxer Shorts
- ★ Hand-Molded Clay Collectibles
- ★ Beanie Santas
- ★ Kitchen Delights Like Hot Buttered Rums, Beer Bread Mix, Lady Caroline's English Teas, Cookie Mix & Homemade Jellies, Relishes & Jerky!
- ★ Much, much more!

Carolyn's 'Spirit of the West' Santas and Collectibles Now Available at Joe's Country Junction!

Register to win a large, custom-painted **BISQUE SANTA** \$250 value

Open Wed. — Sat. from 10 am to 6 pm

Open **THANKSGIVING DAY** from 2 pm to 6 pm!

Shop early for Christmas!

218 W. 18th Street • Muleshoe

PREVIEW TERRIFIC THANKSGIVING SAVINGS STOREWIDE!

PRE-THANKSGIVING SALE

ALL DAY WEDNESDAY

10% OFF YOUR TOTAL PURCHASES* STOREWIDE!

ALL REGULAR-PRICE, SALE & CLEARANCE MERCHANDISE!

*Excludes cosmetics, fragrances, Levi's® 501® & JNCO® jeans, Dr. Martens® shoes & designer collections. Additional 10% savings will be applied at the register to regular prices or already-reduced sale prices.

CLOSED TOMORROW FOR THANKSGIVING.

www.beallsstores.com

CHARGE IT! GET 10% OFF ALL DAY WHEN YOU OPEN A NEW STORE ACCOUNT. Excludes may apply. Subject to credit approval.

BEALLS

Muleshoe #649
321 Main St. • 272-3478

Wilson Appliance Is An Authorized Representative For Plateau Cellular Phone Service.

FREE • FREE • FREE

*** FREE ACTIVATION**

It's A Great Time To Buy A Hand Held Phone

(CM-H777)

* Some restrictions may apply
* With New Activation Only

WILSON APPLIANCE
117 Main St. • Muleshoe, TX • 272-5532



JOURNAL PHOTO BY RICK WHITE

Avoiding problems at holidays can be tricky for stepfamilies

HOUSTON — Holidays can give stepfamilies a chance to start new traditions.

"It's unrealistic for newly formed stepfamilies and their relatives to expect the stepfamily to function as a typical nuclear family and to carry on the same holiday traditions," said Dr. James Bray, a psychologist at Baylor college of Medicine in Houston.

"They need to realize that the children belong to more than one family, and adjust their holiday routines to accommodate the situation," he said.

Problems can arise when stepfamily members' traditions clash. Everything from how to carve a turkey to how many gifts to buy and when to open them has the potential to start an argument.

"The best way to minimize conflict is to discuss expectations before the holidays and then negotiate and compromise," said Bray, director of the Department of Family and Community medicine's Family Counseling Clinic and Family Psychology Programs at Baylor.

If one family is used to opening presents on Christmas Eve and the other family has always waited until Christmas morning, the stepfamily can compromise by opening a few

gifts on Christmas Eve and saving the rest for Christmas Day.

"It's important that the stepfamily develop new rituals for celebrating holiday traditions because it gives them a sense of identity," Bray said.

He cautions new stepparents against making dramatic changes too soon in the way the stepfamily celebrates the holidays. "Over time, the new stepparents' wishes and needs should be considered more strongly," he said. "But the stepparent would be wise to just blend in at first to help minimize the amount of change the kinds must cope with during their first year as a stepfamily."

Alternating which family the children will spend a particular holiday with each year is a

standard option. When scheduling long-distance travel arrangements, be sure to have contingency plans for weather-related delays and canceled plane flights and bus trips.

Bray encourages stepfamilies to be open to creative ideas when trying to resolve holiday-related conflicts, such as not being confined to a particular date for the celebration.

Some stepfamilies plan their Thanksgiving dinner of Christmas celebration for a day other than the actual holiday so that all members of the family can be there.

This arrangement enables children to spend the holiday with one biological parent and celebrate with the other biological parent at another time.

Emergency CRP grazing extended

Based on the continuing severe weather conditions and circumstances involved, the Bailey County FSA Committee submitted a request to extend the 1998 CEP Emergency Grazing period through Feb. 28.

The Bailey County FSA Office has received notification that the request has been approved and the grazing will be extended. To ensure that overgrazing does not occur, participants must leave at least 25% of each filed or contiguous fields ungrazed for wildlife, or graze no more than 75% of the stocking rate as determined by NRCS. The State Committee and County Committee shall review conditions and discontinue authorization when conditions no longer warrant emergency grazing of CRP acreage.

WESTERN FINANCE

I feel good

Senior drum major Nathan Keller tries to rev up the Muleshoe crowd Friday during halftime of the Mules' Class 3A playoff game against Crane. The 28-14 loss to the No. 5 Golden Cranes not only marked the end of the Mules' 1998 football season but also was the Mighty 'M' Band's last marching performance of the year.

LOANS Up To \$900

GUARANTEED WITH YOUR CLEAR CAR TITLE

(CAR MUST BE LICENSED AND RUNNING. BE ABLE TO VERIFY INCOME AND ADDRESS)

NO CREDIT? • BAD CREDIT? • BANKRUPTCY?

No Problem!!

NO CAR TITLE? GOOD CREDIT?

COME SEE US FOR A PERSONAL PROPERTY LOAN

•IMMEDIATE SERVICE—WHILE YOU WAIT•

1412 N. PRINCE • CLOVIS, NEW MEXICO
769-0947

A shopping experience you don't want to miss...

Carolyn's Christmas Creations

A Unique Christmas Store With Many One-Of-A-Kind Handmade Creations

- ★ Ceramic Art and Figurines
- ★ Christmas Pillows, Stockings & Tree Skirts
- ★ Hand Crocheted/Starched Santas
- ★ "Beauty From Within" & Texas Candles
- ★ Hand-Blown Glass Oil Lamps
- ★ Hand-Painted Bisque Nativity Scenes
- ★ Luxurious Gift Bags
- ★ Holiday Centerpieces
- ★ Inspirational and Whimsical Santas
- ★ Serene, Earth and Renaissance Angels
- ★ Hand-Painted Lamp Shades
- ★ Gift Baskets
- ★ Hummel Ornaments
- ★ Handmade Wreaths and Swags
- ★ Rags To Riches Mr. & Mrs. Claus and Snowman
- ★ "Real Men" Boxer Shorts
- ★ Hand-Molded Clay Collectibles
- ★ Beanie Santas
- ★ Kitchen Delights Like Hot Buttered Rums, Beer Bread Mix, Lady Caroline's English Teas, Cookie Mix & Homemade Jellies, Relishes & Jerky!
- ★ Much, much more!

Carolyn's 'Spirit of the West' Santas and Collectibles Now Available at Joe's Country Junction!

Register to win a large, custom-painted **BISQUE SANTA** \$250 value

Open Wed. — Sat. from 10 am to 6 pm

Open **THANKSGIVING DAY** from 2 pm to 6 pm!

Shop early for Christmas!

218 W. 18th Street • Muleshoe

PREVIEW TERRIFIC THANKSGIVING SAVINGS STOREWIDE!

PRE-THANKSGIVING SALE

ALL DAY WEDNESDAY

10% OFF YOUR TOTAL PURCHASES* STOREWIDE!

ALL REGULAR-PRICE, SALE & CLEARANCE MERCHANDISE!

*Excludes cosmetics, fragrances, Levi's 501® & JNCO® jeans, Dr. Martens® shoes & designer collections. Additional 10% savings will be applied at the register to regular prices or already-reduced sale prices.

CLOSED TOMORROW FOR THANKSGIVING.

www.beallsstores.com

CHARGE IT! GET 10% OFF ALL DAY WHEN YOU OPEN A NEW STORE ACCOUNT. Excludes may apply. Subject to credit approval.

BEALLS

Muleshoe #649
321 Main St. • 272-3478

Wilson Appliance Is An Authorized Representative For Plateau Cellular Phone Service.

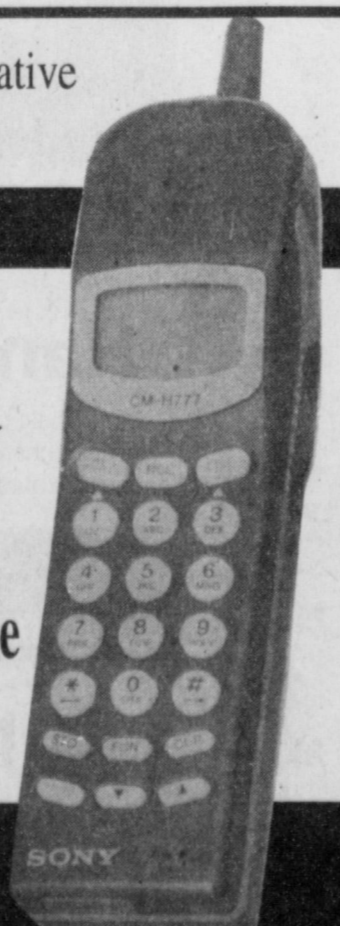
FREE • FREE • FREE



*** FREE ACTIVATION**
It's A Great Time To Buy A Hand Held Phone

(CM-H777)

* Some restrictions may apply
* With New Activation Only



WILSON APPLIANCE

117 Main St. • Muleshoe, TX • 272-5532

Farwell stuns MHS in OT

Muleshoe expected to take some lumps in games early in the season in hopes of getting better — but this wasn't one of those games.

Playing the game at its preferred tempo — fast and frenzied — Farwell upset Muleshoe 47-43 in overtime Saturday in a non-district game at WJHS gym.

Farwell outrebounded Muleshoe 39-26 and forced 23 turnovers.

Muleshoe coach Jim Gruhlkey said it's a hard sell trying to tell his team they can't afford to get caught up in Farwell's style of play.

"They press so hard that you can get a numbers advantage at the other end," Gruhlkey said. "But you better take advantage of it. We didn't. We missed too many layups and easy shots."

Ashley Crawford scored five of her game-high 14 points in overtime for the Class 2A Lady Blue, who handed Muleshoe (0-2) its second-straight loss. Chelsi Kaltwauser sealed the win with a pair of free throws with 20 seconds left.

Erin Wilhite paced Muleshoe with 12 points, including a

layup with 22 seconds left that sent the game into overtime. Chyla Torres, Myndi Heathington and Melissa Williams added seven points each for the Lady Mules.

Farwell (1-1) grabbed the early lead in overtime, but Lysnie Black's hoop insidied the game at 43.

Crawford scored on a drive with 2:10 left to put Farwell up 45-43. After a Muleshoe miss, the Lady Blue knocked nearly two minutes off the clock before Crawford missed a free throw jumper. But Kaltwauser was fouled hustling down the rebound and made both free throws.

After a low-scoring first quarter, Muleshoe took a 12-9 lead on Rhonda Copley's 3-pointer a minute into the second stanza.

But Marni Lunsford fueled a 9-0 run with a 3-pointer and a jumper that gave Farwell the game's largest lead at 18-12.

Wilhite and Torres scored four points each in a 9-2 spurt, helping Muleshoe to a 21-20 halftime lead.

Crawford and Torres traded 3-pointers midway through the third quarter, which ended with



JOURNAL PHOTO BY RICK WHITE

Splitting defenders

Muleshoe's Melissa Williams slips past Lisa Herington and several other Farwell defenders Saturday during a varsity game at WJHS gym. Farwell won in OT 47-43.

Farwell up 29-28.

Muleshoe took its last lead at 34-33 when Copley hustled down a long rebound and canned a 14-footer.

Farwell (47) — Crawford 6 1-2 14, Miller 3 2-3 8, Gast 0 0-0 0, Hunt 0 0-0 0, Stout 1 0-1 2, Lunsford 3 1-2 8, Kaltwauser 1 2-2 4, Bennett 3 0-0 6, Woods 1 0-0 2, Herington 0 3-6 3.

Totals 18 9-16 47.

Muleshoe (43) — Black 2 1-6 5, Torres 22-37, Copley 20-05, Morris 0 0-0 0, Heathington 3 0-0 7, Williams 2 3-5 7, Wood 0 0-2 0, Wilhite 4 4-4 12. Totals 12 (3) 10-20 43.

Farwell 5 15 9 10 8 47

Muleshoe 9 12 7 11 4 43

3-pointers — Farwell: Crawford, Lunsford. Muleshoe: Torres, Copley, Heathington. Records: Farwell 1-1, Muleshoe 0-2.

Morris scores 20; leads Lazbuddie to 85-32 rout

AMARILLO — Kia Morris led five players in double figures with 20 points and Lazbuddie won its second-straight game 85-32 Friday against Trinity Christian.

The Lady Longhorns (2-0) outscored Trinity 53-11 in the second half.

"We just physically wore them down with our pressure and fastbreak," Lazbuddie coach Carey Sudduth said. "All eight players played well. It didn't seem to matter which five were out there."

Holly Engelking and Scottie

Brown added 16 points each for the Lady Longhorns while Rachel Rodriguez and Maria DeLeon had 10 points each.

Nicole Taute led Trinity Christian with 11 points.

Lazbuddie (85) — Foster 0, 0-6 0, Engelking 5 5-9 16, Brown 6 4-8 16, Rodriguez 3 4-8 10, Turner 3 0-0 6, Via 3 1-2 7, Morris 8 4-7 20, DeLeon 5 0-0 10. Totals 33 18-40 85.

Trinity (32) — Riedinger 3 0-0 7, White 0 2-2 2, Romero 10-0 2, Smith 0 0-2 2, Cox 1 0-0 2, Thompson 3 2-2 8, Taute 5 1-2 11. Totals 13 5-10 32.

Lazbuddie 13 19 19 34 85

Trinity 11 10 6 5 32

3-pointers — Lazbuddie: Engelking; Trinity: Riedinger. Records: Lazbuddie 2-0.

'Horns get first win

AMARILLO — Brandon Foster scored 21 points, including his fourth 3-pointer with 30 seconds left, leading Lazbuddie to a 78-70 win Friday against Trinity Christian.

Josh Morris added 18 points and Bryce Ronek contributed 13 points and 13 rebounds off the bench, helping Lazbuddie (1-1) pick up its first win of the season. Foster and Morris combined for seven of Lazbuddie's 10 3-pointers.

Evan Curry had four 3-pointers and 23 points for Trinity Christian and 6-6 post Russell Patrick added 19 points.

Lazbuddie coach Rich Pow-

ers said the keys for the Longhorns were limiting their turnovers against Trinity's pressure defenses and strong bench play.

Lazbuddie (78) — Foster 7 3-3 21, A. St. Clair 1 0-2 2, J. Morris 6 3-5 8, C. St. Clair 3 1-3 7, Black 2 0-4 6, Ronek 3 7-11 13, Seaton 1 2-4 4, Morris 2 2-3 7. Totals 15 (10) 18-35 78.

Trinity (70) — Curry 8 3-5 23, Ko. McCarrell 2 0-0 4, Selvidge 4 0-0 8, Johnston 1 0-1 2, Reid 0 2-2 2, Ky. McCarrell 5 0-0 10, Smith 1 0-0 2, Patrick 6 7-13 19. Totals 23 (4) 12-21 70.

Lazbuddie 20 13 15 30 78

Trinity 18 14 15 23 70

3-pointers — Lazbuddie: Foster 4, J. Morris 3, Black 2, C. Morris. Trinity Christian: Curry 4. Records: Lazbuddie 1-1.

WJHS 8th wins Sudan JH title

SUDAN — Watson Junior High won the 8th-grade championship and the 7th-graders finished third at the Sudan girls junior high tournament held Nov. 19-21.

Kylie Henderson scored 14 points and Tiffany Flores added 12, leading the 8th-grade Lady Mules to a 53-37 win against Littlefield in Saturday's championship game.

Gradee Adrian tallied nine points and Flores added seven in a 37-19 semifinal win against Happy.

Shani Rasco paced WJHS with 10 points in a 28-14 first-round win against Springlake-Earth.

In the 7th-grade tournament, Sara Benham scored 13 points and the Lady Mules beat Sundown 33-23 in the third-place game.

Tabitha Obenhaus led WJHS with six points while Megan Mason and Erin Hancock added

five each in a 24-20 semifinal loss to Olton.

Benham scored 15 points and Laura Perez added seven as WJHS routed Springlake-Earth 37-23 in the first round.

SUDAN JH TOURNAMENT Nov. 19-21

8TH GRADE

First round

WJHS 28, SL-EARTH 14

WJHS (28) — Pylant 2, Rasco 10, Hawkins 4, Flores 6, Bailey 1, Henderson 3, Adrian 2, Kitchens, Allison, Cleavinger, Locker, Barrier.

Semifinals

WJHS 24, HAPPY 19

WJHS (24) — Rasco 2, Hawkins 2, Flores 7, Cleavinger 4, Henderson 5, Adrian 9, Pylant, Kitchens, Barrier, Bailey.

Championship

WJHS 53, Littlefield 47

WJHS (53) — Rasco 4, Hawkins 4, Flores 12, Cleavinger 6, Locker 3, Barrier 2, Henderson 14, Adrian 8, Pylant, Kitchens.

7TH GRADE

First round

WJHS 39, SL-EARTH 24

WJHS (39) — Obenhaus 2, Mason 6, Black 1, Benham 15, Whalin 2, Glover 2, Perez 7, Rudd 2, Hancock, Hamilton, Hernandez, Morgan, Lopez.

Semifinals

Olton 24, WJHS 20

WJHS (20) — Obenhaus 6, Mason 5, Hancock 5, Benham 2, Perez 2, Black, Whalin, Glover, Hamilton, Rudd, Morgan, Lopez.

Third place

WJHS 37, SUNDOWN 23

WJHS (33) — Obenhaus 2, Mason 6, Hancock 2, Benham 13, Whalin 2, Glover 4, Perez 2, Black, Rudd, Morgan, Lopez.

Mules open hoop season Tuesday

The Muleshoe boys varsity basketball team opens its 1998-99 season on Dec. 1 at Denver City.

The Mules cancelled their first four games because the football team was still involved in the Class 3A playoffs. Muleshoe's first home game is Dec. 8 against Dimmitt.

SLAM DUNK SALE

Nov. 27 Moonlight Madness
Open from Noon to 10 pm on the 27th!

Nike Basketball
Socks • Towels • Wrist Bands • Water Bottles
Athletic Shorts and T-Shirts
Get ready for some hoops!
20% Off

One Rack
Ladies Champion... 20% Off

Night time savings from 6 pm to 10 pm
All Nike Shoes... 20% Off

Men's Golf
Shirts • Socks • Caps • Visors
20% Off

Golf Shoes
30% Off
(limited sizes)

Get A Chance To Win \$1000 In Muleshoe Mad Money With Every \$20 Purchase or A \$50 Gift Certificate From Williams Athletics During Moonlight Madness. Given away on Dec. 21!

Kids' Apparel 20% OFF

Williams Athletics
322 Main St. • Muleshoe, TX • 272-6853

North Plains Mall

Gift with Purchase

Durable khaki colored bag has zippered and mesh pockets inside to hold necessities. Sturdy hook lets the bag hang open for easy access. Yours for only \$150 in collected mall merchants receipts.

Open Early
November 27th - 8am-9pm

North Plains Mall
2809 N. PRINCE • 769-2308 A property of JP Realty, Inc.

Legislators get jungstart on filing bills



AUSTIN — With the opening of the 1999 Texas Legislature two months away, state lawmakers itching for a quick start began pre-filing bills last week.

A sampling of pre-filed legislation:

■ Sen. Jane Nelson, R-Flower Mound, filed a bill that would abolish parole for violent offenders.

■ Rep. Tony Goolsby, R-Dallas, filed a bill that would require the Department of Public Safety to ensure that residents age 75 or older can control the vehicles they are licensed to drive.

■ Rep. Senfronia Thompson, D-Houston, filed a bill that would increase classroom teacher and full-time librarian salaries by \$6,000, beginning with the 1999-2000 school year.

■ Rep. Joe Pickett, D-El Paso, filed a bill that would make it a state jail felony to mark with graffiti a public or private school or institution of higher education.

■ Reps. Henry Cuellar, D-Laredo, and Bill Seibert, R-San Antonio, filed a bill that would make state and county jail inmates reimburse the state for the costs of their jail stay.

■ Rep. Steve Wolens, D-Dallas, filed a bill that would amend the Texas Open Meetings Act to include "staff briefings" — certain meetings at which a governmental body receives information from third persons, including government employees.

No room for politics

In a mild allusion to standing Attorney General Dan Morales, Attorney General-elect John Cornyn last week said politics will have no place in his administration.

While Cornyn did not give examples of the office's duties being compromised by politics, he said it has influenced decisions "on whether to defend or not to defend state laws."

Morales defended, however,

decisions he has made in office, saying he based them on a choice to have a "strong, independent perspective."

Cornyn told the Austin American-Statesman his "standard for retention" at the attorney general's office is "pretty simple: Number 1, no political hacks, and Number 2, people who are doing their job."

He said the attorney general's office is staffed mostly by people who have been "faithful public servants. They're not political people, they're just doing a good job. And as I said, to the extent that they continue to do a good job and they don't play politics, I intend to ask them to stay."

"The only people I think who need to be concerned are the people who have politicized the office."

In other news, Cornyn said his transition team would be led by Larry York, who served as first assistant attorney general from 1973 to 1974 under

Democrat John Hill.

Bush denies role in GOP coup

Gov. George W. Bush last week said he had nothing to do with the Republican Party's push to replace House Speaker Newt Gingrich.

A rumor aired on national television "credited" Bush with making a call indicating that if he was to lose the presidential election in 2000, he wanted it to be because of him, not because of Gingrich. The call purportedly resulted in swift action by the party to withdraw support for Gingrich.

Karen Hughes, spokeswoman for Bush, said the rumor is groundless.

Bush said his wife and twin daughters will figure into his decision whether to run or not, and that his main priorities are child literacy and working with the 1999 Texas Legislature.

Other Highlights

■ Insurance Commissioner Elton Bomer has signed an order adopting an appointment

process for professional engineers to serve as qualified windstorm inspectors. After Feb. 1, all engineers must be approved and appointed by the state insurance agency.

■ Last week, the University of Texas board of regents considered a proposal by UT President Larry Faulkner to reopen the observation deck of the campus clock tower. The 28-story, 231 foot-tall building has been closed since 1975.

■ The University of Texas is acquiring through gift and purchase the Suida-Manning collection of 700 Old Masters paintings and drawings valued at nearly \$35 million. The collection will be unveiled in March.

■ Haskell County — the home county of Lt. Gov. elect Rick Perry, is considering a bid for the low-level nuclear waste repository project that failed to win acceptance in Sierra Blanca last month. Haskell County is 50 miles north of Abilene.

REBEKAH NEWS

Acting Noble Grand June Green opened the Nov. 17 meeting with eight members answering roll call.

It was nice that our new member, Sylvia Lira, was able to make the meeting. Sister Bonita Rainey, with the help of Sisters June Green and Sylvia Lira, served refreshments before lodge.

It was reported that if Bernie Marts' mother gets a good report, Bernie should be home this weekend. Adam was re-

ported to have gone to the emergency room last week and then to see Dr. Wells in Lubbock. He will be in the hospital Friday (at 6 a.m.) after Thanksgiving for the surgery.

The first week of nomination of new officers was done tonight and next week we nominate again. The vote the first week in December.

The district deputy gave a short school of instruction. We'd like to thank all those folks that came to our Annual

Thanksgiving Dinner.

We missed those that weren't here this week, hope to see you next week.

There being no further business, Chaplain Bonita Rainey closed the lodge with love to all until next week.

Happy Thanksgiving
FROM THE JOURNAL STAFF

Sheree's Attic & MERLE NORMAN COSMETIC STUDIOS

Moonlight Madness Friday-Nov. 27
Saturday-Dec. 5
Saturday-Dec. 19

Moonlight Madness starts at Daylight Nov. 27th!
Open at 10 am — Specials good all day

15% off All "Christmas" Clothing
20% off Brighton Belts, Jewelry & Access.
20% off All Sterling Silver Jewelry
20% off Selected Groups

Much... Much... More!!!
Any **\$10 off Broomstick Skirt** (reg. price only)

All major credit cards accepted
1519 W. American Blvd. • 272-3459

Muleshoe Journal USPS 367820
Established February 23, 1924. Published by Triple S Publishing, Inc. Every Thursday at 304 W. Second, Box 449, Muleshoe, TX 79347.
Second Class Postage paid at Muleshoe, TX.
POSTMASTER: Send address changes to the Bailey County Journal, P.O. Box 449, Muleshoe, TX 79347.
We are qualified members of:
Panhandle Press Association, National Newspaper Association, West Texas Press Association and Texas Press Association

WEST TEXAS PRESS ASSOCIATION

PPA Panhandle Press Association

Scot Stinnett, Publisher
Lisa Stinnett, Vice-President/Comptroller
Rick White, Editor
Mari Guadalcasar, Classifieds
Leah Bell, Advertising

SUBSCRIPTIONS: Muleshoe Journal and Bailey County Journal
By Carrier Yearly - \$22.00
Bailey County — by mail - \$24.00
Elsewhere - \$26.00
Advertising Rate Cards on Application

Advertisers should check their ad the first day of insertion. The Journals will not be liable for failure to publish an ad or for a typographical error or errors in publications except to the extent of the cost of the ad for the first day of insertion. Adjustment for errors will be limited to the cost of that portion of the ad where the error occurred.

Pa'nache

Holiday Sale
20% to 50% Off
Nov. 27, 28 & 29
Storewide

- Broomstick Skirts • Lingerie
- Denim & Brocade Jackets
- Sweaters • Vests • Blouses
- Pantsuits • Purses • Belts

Gift Certificates Available

Pa'nache North Plains Mall

Trim Your Budget By
Trimming Joe's Tree

1-800-658-6378 106 E. American Blvd. Muleshoe, TX

And Country Junction

WITH YOUR PURCHASE YOU AUTOMATICALLY HAVE AN ORNAMENT ON JOE'S TREE!

WIN

For every \$20 purchase, you draw an ornament to get chances to win a **\$1000**

Moonlight Madness
Friday Nov. 27th
OPEN TILL MIDNIGHT!!!

Gift Certificate and/or over **\$4000** worth of **Joe's Boot Shop Merchandise**

Storewide **Special 20% off** (excluding hats, boots and Wrangler)

Come in and register to win Two Las Vegas National Finals Rodeo tickets to be given away Nov. 27 (Rodeo dates-Dec. 4-6) NO PURCHASE NECESSARY (Sponsored by Joe's Boot Shop-Must register at Joe's)

BAILEY FELT HAT SALE

Felt 2X & 3X	\$59
Felt 5X	\$99
Felt 7X	\$129
Felt 10X	\$149
Felt 20X	\$229
Felt 30X	\$259

AND MANY, MANY MORE ITEMS!!!

All to be given away Saturday, December 19th at 11 pm CDT. MUST BE PRESENT TO WIN!!!

FREE ENTERTAINMENT EACH MOONLIGHT MADNESS 7 PM-11 PM
Nov. 27 Entertainment—Heather Shipman

All Boots Get Cheaper By The Hour!!

6:00 p.m.	— \$6 OFF
7:00 p.m.	— \$7 OFF
8:00 p.m.	— \$8 OFF
9:00 p.m.	— \$9 OFF
10:00 p.m.	— \$10 OFF
11:00 p.m.	— \$11 OFF

Moonlight Madness
Fri., Nov. 27 • Sat., Dec. 5 & 19

* Make your purchases with these participating businesses and get a chance to win \$1,000 in Muleshoe's Mad Money (with every \$20 spent, every \$10 spent at participating restaurants) or a \$50 Gift Certificate from a participating merchant!

Harvey Bass Appliance	Lowe's
Art Loft	Treasures from the Heart
Dairy Queen	Sheree's Attic & Merle
Bealls	Norman Cosmetics
Circle E Pets	Wilson Appliance
Fry & Cox	Williams Athletics
Higginbotham-Bartlett Co.	Muleshoe Feed Barn
James Crane Tire Co.	Leal's Mexican Restaurant
Joe's Boot Shop	Pizza Hut
McDonald's	

Moonlight Madness hours and specials vary with each business! Ask these local merchants for details!

*The winner of Muleshoe's Mad Money can be spent at any business participating in Moonlight Madness 1998.

MULES

from page 1

clicking on all cylinders in the first half moved the ball at will against a team that had allowed just 55 points all season.

Muleshoe hurt the Golden Cranes with several new looks.

Danny Ramirez picked up 24 yards on four carries on the quick pitch and Mitch Mason picked up 59 yards on three catches out of the backfield.

But Muleshoe failed to capitalize on one and maybe two additional opportunities to put more points on the board.

Muleshoe responded to Crane's quick score by driving 92 yards in nine plays, with a

picture perfect 48-yard pass from Matt McClanahan to Manuel Campolla getting the Mules on the scoreboard early in the second quarter. (Campolla later broke a collarbone on a kickoff return early in the second half).

One play later, Muleshoe got the game's first break when Matt Turney recovered a bobbled pitchout at the Golden Cranes' 20.

Carlton Lewis hauled in Jesse Reyes' halfback option in the back of the end zone on the next play for Muleshoe's second touchdown in 16 seconds.

Muleshoe was driving again after forcing a Crane punt, but went to the trick play well once too often.

After moving the ball 38 yards to the Crane 25 — keyed by McClanahan's 19-yard run — Reyes was again called on to throw the halfback option. But the poorly thrown pass was intercepted by Bishop at the 5. Muleshoe's opening drive of the game was sabotaged when Campolla was caught for a 10-yard loss on a first down reverse after the Mules had reached the Crane 23.

Muleshoe outgained Crane 375-328 in total yards.

McClanahan finished with 9 of 14 for 164 yards and added 55 yards on 15 carries. Greg Pena had 74 yards on 12 carries.

Bishop had a monster night for Crane. The 5-10, 180-pound senior finished with 111 yards rushing, added two catches for 24 yards and scored three touchdowns. Plus on defense, he had two interceptions and recovered a fumble.

CRANE 28, MULESHOE 14

MULESHOE 0 14 0 0 14
CRANE 7 0 14 7 28

SCORING SUMMARY

FIRST QUARTER

CRA — Donny Bishop 79-yard run (Luis Hernandez kick), 5:15. **Drive:** 81 yards in 2 plays. **Key plays:** Takes over on downs at 19. **Crane 7, Muleshoe 0**

SECOND QUARTER

MUL — Manuel Campolla 48-yard pass from Matt McClanahan (Ryan Hodge kick), 11:50. **Drive:** 92 yards in 9 plays. **Key plays:** McClanahan 10-yard run to Muleshoe 23. McClanahan 9-yard run to Muleshoe 36. Danny Ramirez 18-yard run to Crane 40. **Muleshoe 7, Crane 7.**

MUL — Carlton Lewis 20-yard pass from Jesse Reyes (Hodge kick), 11:34. **Drive:** 20 yards in 1 play. **Key plays:** Matt Turney recovers fumble at Crane 20. **Muleshoe 14, Crane 7.**

THIRD QUARTER

CRA — Bishop 86-yard kickoff return (kick blocked), 11:40. **Muleshoe 14, Crane 13.**

CRA — Eddie Murguia 5-yard run (Murguia pass from Clay McGuire), 3:50. **Drive:** 80 yards in 7 plays. **Key plays:** Willie Morris 13-yard run to Crane 33. Murguia 43-yard pass from McGuire to Muleshoe 23. Morris 8-yard run to Muleshoe 7. **Crane 21, Muleshoe 14.**

FOURTH QUARTER

CRA — Bishop 1-yard run (Hernandez kick), 1:30. **Drive:** 62 yards in 9 plays. **Key plays:** Takes over on downs at own 38. McGuire 5-yard run to Muleshoe 48. Murguia 39-yard pass from McGuire to Muleshoe 11. Eric Carrasco 13-yard pass from McGuire to Muleshoe 3. **Crane 28, Muleshoe 14.**

TEAM STATS

	Mule	Crane
First downs	17	15
Yards-rushes	41-192	38-210

Passing yards	183	118
Total yards	375	328
Att-comp-int	10-16-2	5-7-0
Fumbles-lost	2-1	3-2
Punts-avg.	1-37	1-33
Penalties-yards	5-37	3-25

PLAYER STATS

RUSHING — Muleshoe: Greg Pena 12-77, Matt McClanahan 16-53, Danny Ramirez 4-33, Jesse Reyes 5-24, Darrell Lewis 2-8, Vela 1-4, Manuel Campolla 1-(-10). **Crane:** Donny Bishop 12-112, 2 TDs, Willie Morris 8-45, Clay McGuire 7-39,

Tubby Collins 5-12, Eddie Murguia 3-1, 1 TD, Luther Davenport 3-(-5).

PASSING — Muleshoe: McClanahan 9 for 14 for 164 yards, 2 TDs, 1 int., Reyes 1-2 for 20 yards, 1 TD, 1 int.; **Crane:** McGuire 5 for 7 for 118 yards.

PASS RECEIVING — Muleshoe: Mitch Mason 4-66, John McClanahan 2-17, Dustin Cleavinger 1-29, Carlton Lewis 1-20, 1 TD, Manuel Campolla 1-48, 1 TD, Danny Ramirez 1-5; **Crane:** Murguia 2-82, Bishop 2-23, Eric Carrasco 1-13.

DALE WAYNE VISE

Farm Bureau Agent in Bailey County awarded the LUTCF designation



Dale Wayne Vise

The Texas Farm Bureau and Southern Farm Bureau Life are proud to announce that Dale Vise, agent of the Bailey County Farm Bureau, has recently received the LUTCF (Life Underwriter Training Council Fellow) designation. The LUTCF designation is conferred upon only those who can meet or exceed the exacting qualification standards determined by two professional organizations which jointly sponsor LUTCF: The National Association of Life Underwriters and The Life Underwriter Training Council.

Bailey County Farm Bureau
1612 West American Boulevard
806-272-4567

Journal Classifieds 272-4536

TREASURES FROM THE HEART

wishes you a
Happy Thanksgiving
and we'll see you on
Friday, November 27
for Moonlight Madness

Open: Mon-Sat. 10 am to 5:30 pm
Tues-Open till 6:30 pm • Sun-1:30 pm to 5:30 pm
Layaways Welcome
2104 W. American Blvd. • Muleshoe • 272-4217

Super Prices On These Super Products



Changing Entertainment. Again.™



RCA DS5120RB
RCA Digital Satellite System

- Compact Receiver
- 18" Wide Antenna Dish
- Universal Remote
- Over 200 Channels
- Super Quality Picture
- One-Touch Tuning

Tune directly to a program highlighted on the program guide with the touch of one button. (Features by StarSight™)

Only \$99



Start Your Holiday Shopping Today!

- RCA P56830BL
56" Home Theatre TV
- TV Guide Plus+® On-Screen Program Guide
 - Digital Focus
 - Twin Tuner™ Picture-In-Picture
 - Sound Logic™ Audio Leveler

as low as

* \$67/mo.

* With Approved Credit

WILSON APPLIANCE

117 Main St. • Muleshoe, TX • 272-5532

STATE PLAYOFFS

Region I-3A playoffs

Division II

Regional semifinals

Colorado (W3) (10-2) vs Childress (W5) (10-2), 2 p.m., Saturday, Lowery Field, Lubbock.

Crane (W4) (12-0) vs Iowa Park (R5) (9-3), 7:30 p.m., Friday, Shotwell Stadium, Abilene

AREA

Colorado 27, River Road 14
Childress 21, Glen Rose 14
Crane 28, Muleshoe 14
Iowa Park 51, Waco La Vega 35

Division I

Monahans (4) (6-6) vs Breckenridge (7) (12-0), TBA

AREA

Monahans 20, Perryton 10
Breckenridge 21, Abilene Wylie 7



1104

RED WING SHOES
Made in U.S.A.

The Fair Store
120 Main 272-3500

FRESH CUT!



Christmas just wouldn't be the same without a visit to
ALLSUP'S FOREST!



ALLways Available • ALLways Fresh
Allsup's ALLways!

Store #34

312 W. American Blvd.
272-4862 • Muleshoe

ONLY \$14.99 EA.

PRICES EFFECTIVE NOVEMBER 25 - DECEMBER 23 • OFFER GOOD WHILE SUPPLIES LAST

OBITUARIES

MARIAN PORTER

MORTON — Marian Taylor Porter, 78, of Houston died Saturday, Nov. 21, 1998 at West Houston Hospital.

A graveside service was held Tuesday at Morton Memorial Cemetery with Rev. Gary Boles of First United Methodist Church of Morton officiating. Funeral services were under the direction of Ellis Funeral Home of Morton.

She was born Oct. 29, 1920 in Houston. She was married to James T. Porter for 58 years. He preceded her in death on May 11, 1993.

Mrs. Porter had lived in Houston since 1957, moving from Morton. She was a member of the First United Methodist Church. She was a Past Worthy Matron of Morton Eastern Star. She worked in the driver's license office for the Texas Department of Public Safety.

She is survived by one son, James T. Porter, Jr. of Houston; three grandchildren and five great grandchildren.

The family suggests memorials be made to the American Cancer Society, 2411 73rd St., Lubbock, TX 79423.

MARGARET SMART

MORTON — Margaret Ledbetter Smart, 48, of Morton died Friday, Nov. 20, 1998 at University Medical Center in Lubbock.

A memorial service was held

Tuesday at First United Methodist Church in Morton with Rev. Ken Peterson, pastor of First United Methodist Church in O'Donnell, and her brother, Charles Ledbetter of Denver, Colo., officiating.

Burial was held Tuesday in Morton Memorial Cemetery under the direction of Ellis Funeral Home of Morton.

She was born on Aug. 25, 1950 in Littlefield. She married Billy Smart in Morton on May 16, 1970. He died on July 16, 1998.

Smart had lived in Morton most of her life. She was a 1968 graduate of Morton High school and a 1971 graduate of Texas Tech University. She taught school in Roosevelt, Amarillo, and for the past 12 years, in Morton. She and her late husband had owned and operated Smart's Food Mart for many years. She was a member of the Morton Classroom Teachers

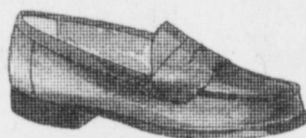
Association and the Morton Athletic Booster Club. She received the Wohelo Medallion, the highest honor awarded in Camp Fire Girls, and was a member of the Emlea Smith Study Club.

She is survived by two sons, Ken and Kyle Smart of Morton; one daughter, Molly Smart of Morton; her mother, Mary Louis Ledbetter of Morton; her brother Charles; three sisters, Mary Brownlow of Amherst, Vivian Kern of Morton and Zoellen Fields of Lubbock. She was also preceded in death by her father, Judge M.C. Ledbetter on Dec. 11, 1989 and her sister, Betty Lou Kuehler on June 19, 1990.

The family suggests memorials be made to First United Methodist Church, 419 W. Taylor, Morton, TX 79346 or "Twice Blessed House", 2732 Gaston St., Suite 119, Dallas, TX 75226.

**AFTER THANKSGIVING
SHOE SALE**

Pre-Christmas Savings!



**Women's, Men's
& Children's Shoes**

**20% to 50%
OFF**

*Many Selected
Styles!!*



Dayhoff's Shoes

Randy's Shoes

403 Main
(505) 762-1174

&

410 Main
(505) 763-6047

Downtown Clovis, NM

TOP NEWS

There were 13 members who weighed in Nov. 19 at TOPS #34 meeting held in the fellowship room of the Church of Christ on American Boulevard.

Laverne James was first runner-up and Aurora Mata was second runner-up.

A skit, Surfing Safari, was presented. Those members having a part in the skit were Janey Hughes, Aurora D. Mata, Laverne James and Joline Franklin.

Your Wish Come True!

Quality Used Vehicles. Incredibly Low Prices.

- 1995 Chevy Crew Cab
Diesel, fully loaded.....only **\$19,995**
- 1989 Mazda RX7 Convertible
AM/FM, cassette, CD player.....now only **\$7,495**
- 1982 Kawasaki 750
.....only **\$1,495**
- 1983 Ford F250 S/C and 5th Wheel
Together! Hunter's special.....only **\$6,995**
- 1979 Mercedes 300 D
4 door.....was \$3,695.....now only **\$3,495**
- 1990 Nissan Sentra
4 door.....only **\$2,995**
- 1989 GMC Sonoma
.....only **\$2,995**
- 1992 Ford Escort Wagon
.....only **\$3,495**

Have A Safe and Happy Thanksgiving holiday!

Portales' Premier Pre-Owned Vehicle Headquarters

TRADER HORN MOTOR COMPANY

620 S. Ave. C • Portales, NM

(505) 359-0947
(505) 359-1775

**It Stacks up
as a great
Christmas!**

3 Day Only Specials

(Friday, Saturday and Sunday)

Rip's *7th Texico*

**314 Wheeler
482-3363**

CHRISTMAS HOURS:

Monday - Saturday: 9:00 a.m. to 7:30 p.m. cst
Sunday: 1:00 p.m. to 5:00 p.m. cst

We Accept

Sale Starts Friday, Nov. 27

MENS' SUITS, SPORT COATS, DRESS PANTS & SHIRTS 20% Off

Rip's Special 4X Beaver HATS Starting at \$7500 All other Hats 20% Off

All Winter Coats 20% Off Children's HATS \$29.98

Ladies' Apparel 20% Off All Accessories 10% Off

GIFT ITEMS
* Billfolds & Handbags
* Hand Tooled Belts (Personalized Free)
* All Men's & Children's Handmade Leather Chaps & Chinks
* Children's Ropes & Spurs
* Fragrances for Men & Women
* Boot Bags & Boot Jacks

All Full Quill \$399.98 All Ariat Lacers \$129.98

All Smooth Ostrich Boots \$199.98 Red Wing Boots #1155 \$50.00

Ladies' Silk Blazers Ladies' Silk Tees 30% Off

Brighton Aromatherapy, Home Decor Items and Accessories 10% Off

Complimentary Gift Wrapping

Layaways Welcome!

LETTER TO THE EDITOR

Official believes in deregulation of electric industry

Dear Editor:

I would like to answer the question posed by this headline of Oct. 8: Is Deregulation Good? Yes. Deregulation—rather restructuring—of the electric utility industry is good because it will create a competitive marketplace where all customers can benefit. It's time for the Texas Legislature to create a competitive electricity market.

Restructuring does indeed appear imminent. Three states already have competition in place; only two states in the entire country are not actively discussing electric service competition; and Congress predicts passage of federal restructuring legislation in the 1999 Session. The Texas Legislature would be wise to ensure that Texas doesn't fall behind the national shift toward a competitive electricity market.

Many Texans will take the long view that sweeping changes to a necessary commodity like electric service won't emerge overnight and will require consumer safeguards. Rural and residential cus-

tomers can be comfortable in the knowledge that electricity providers vying for a share of Texas' competitive market will eagerly seek their business. In addition, advances in technology have made serving even sparsely populated areas cost effective. Finally, some plans under discussion would allow individual customers and small businesses to join with others—neighborhoods, farm organizations, alumni groups, chambers of commerce—to negotiate for the best price.

The Legislature has learned a great deal from the experiences of other states and will recognize that no other state is a model for implementing competition in Texas. Members of the Texas Senate Interim Committee are working hard to learn about this complicated issue. We are confident the Legislature will create a competitive retail electricity market that lives up to the State's history as a trailblazer and the envy of the Nation.

— Very truly yours, **John W. Fainter, Jr.**
Association of Electric Companies of Texas, Inc.



Muleshoe Cattle Market

SATURDAY, NOV. 21, 1998

REPRESENTATIVE SALES

760 cattle, 331 hogs and 238 sheep & goats. Market steady on stocker str. & hfr. cfs. weighing 3-450 lbs. 450 lbs. & up sold 1-3 lower. Pairs & Bred cows steady. Packer cows & Bulls steady from a week ago. Remember: No Sale This Week In Observance Of The Thanksgiving Holiday.

The Muleshoe Cattle Market is brought to you each week by Muleshoe Livestock Auction, located east of Muleshoe on U.S. 84. Muleshoe Livestock conducts sales every Saturday, beginning with hogs, sheep and goats at 10 a.m. and cattle following at approximately 12 noon.

FOR INFORMATION ON SALES OR TO CONSIGN CATTLE, CALL (806) 272-4201

Seller, City	#	Type	Wt.	CWT or PH
Mary Sanchez, Enochs	8	Hol. Hfrs	270 lbs.	at \$98.00
Mary Sanchez, Enochs	4	Hol. Hfrs	386 lbs.	at \$95.00
Prairie View Dairy, Muleshoe	13	Hol. Hfrs	928 lbs.	at \$46.25
Domingo Medrano, Hereford		Hol. Str	510 lbs.	at \$48.00
Crystal Luna, Hereford		Hol. Str	660 lbs.	at \$46.00
KC Land & Cattle, Muleshoe	3	Mxd. Bulls	267 lbs.	at \$87.00
KC Land & Cattle, Muleshoe	2	Blk. Strs	775 lbs.	at \$62.25
Don Rhodes, Hereford	2	Blk. Strs	340 lbs.	at \$81.00
M&H Cattle, Muleshoe	4	Blk. Bulls	355 lbs.	at \$90.00
M&H Cattle, Muleshoe		Char. Bull	420 lbs.	at \$80.00
A&T Cattle, Sudan	4	Mxd. Strs	419 lbs.	at \$79.00
Antonio Garcia, Hereford		Yell. Str	430 lbs.	at \$79.00
ACU, Morton	20	Mxd. Strs	483 lbs.	at \$74.00
ACU, Morton	16	Mxd. Strs	550 lbs.	at \$71.50
Laverne Burnett, Causey, NM	5	Blk. Strs	502 lbs.	at \$73.50
Otey Shadden, Abernathy	5	Limo. Bulls	555 lbs.	at \$67.00
MC Street, Muleshoe		BMF Str	555 lbs.	at \$70.00
T&C Cattle, Amherst		YWF Bull	585 lbs.	at \$66.00
Johnny & Marie Williams, Mshe		BWF Str	630 lbs.	at \$61.00
A&T Cattle, Sudan	4	Mxd. Hfrs	378 lbs.	at \$72.50
M&H Cattle, Muleshoe	5	Mxd. Hfrs	408 lbs.	at \$67.50
MC Street, Muleshoe	2	Mxd. Hfrs	460 lbs.	at \$65.00
KC Land & Cattle, Muleshoe	4	Blk. Hfrs	386 lbs.	at \$70.00
KC Land & Cattle, Muleshoe	2	Blk. Hfrs	458 lbs.	at \$69.00
Jamie Petty, Muleshoe		Red Pair		\$560.00
Willie Gallegos, Belen, NM		Brown Pair		\$515.00
KP Farms, Lubbock		Blk Cow P6		\$430.00
Mike Crane, Amherst		Blk. Cow	890 lbs.	at \$43.00
Loyce Metcafe, Muleshoe		Blk. Cow	810 lbs.	at \$43.00
Double J&E Dairy		Hol. Bull	850 lbs.	at \$49.00
Double J&E Dairy		Hol. Cow	1590 lbs.	at \$27.00
Willie Gallegos, Belen, NM		Yell. Cow	1020 lbs.	at \$35.00
Ricky Arend, Littlefield		Red Cow	1215 lbs.	at \$29.25
Lucia Aguirre, Muleshoe		Blk. Cow	1335 lbs.	at \$30.25
Prairie View Dairy, Muleshoe	2	Blk. Cows	1205 lbs.	at \$30.25
Duane White, Farwell		WF Cow	875 lbs.	at \$31.50

NOW OPEN!!!

Continental Credit

Loan\$ from \$100 to \$446

Come by and see Jackie or Norma today!

☎ Phone Applications Welcome ☎

Open: Monday thru Thursday—9 am to 5 pm & Friday—9 am to 6 pm

206 South Main Street • Muleshoe • 272-3673

Journal Classifieds

REAL ESTATE
AUTOMOBILES
HELP WANTED
GARAGE SALES

STOP & SHOP

Deadlines are 5 p.m. Monday and Thursday

Call 272-4536

Deadlines are 5 p.m. Monday and Thursday

<p>LEGAL</p> <p>Notice is hereby given that original Letters Testametary for the Estate of Inez Ruby Sanders, Deceased, were issued on Nov. 16, 1998, in Docket No.2174, pending in the County Court of Bailey County, Texas, to Joyce L. Sanders Beasley. The residence of the Independent Executor is in Bailey County, Texas, the post office address is: Box 98 Enochs, Texas 79324. All persons having claims against this Estate which is currently being administered are required to present them with in the time and in the manner prescribed by law. Dated Nov. 16, 1998 by J.C. Adams, Jr. Attorney for the Estate. State Bar No. 008634300. 109 W. Washington, Morton, Tx. 79346, (806) 266-5582. Published in the Muleshoe Journal November 24, 1998.</p> <p>FOUND</p> <p>Childs Jean Jacket at Crane Football game. Call 272-4122.48t-2tch</p> <p>FOR RENT</p> <p>Nice, Large, 3 bdrm 2 bath home. In nice area. \$475 per month. 272-4480 or (602) 816-4004.45s-tfc</p> <p>2 bedroom 1 bath apt. Central heat and cooling. Good location. \$350 per month, 272-4889.48t-tfc</p> <p>Lost</p> <p>Handmade quilt, that blew out of a pickup from Earth to Muleshoe. Call Tanya (806)285-2607.48t-2ch</p>	<p>LEGAL</p> <p>The City of Muleshoe is currently accepting sealed bids from persons desiring to purchase the following described city-owned property. Bid #1 - 4872.3 acres, more or less, out of League No. 220, Castro County School Lands, Labor 4, League No. 205, Garza County School lands, and of Secs. 9, 10 and 11, Block S-2, John H. Stephens Survey, Bailey and Lamb Counties, Texas. This land is commonly known as the East Well Field. The City of Muleshoe reserves the right to accept or reject any and/or all bids. Bids will be accepted until 10:00 A.M. Tuesday, December 8, 1998. All bids must be clearly marked "East Well Field Bid" and should be delivered to the City of Muleshoe, 215 South First Street, Muleshoe, Texas 79347. No bid will be accepted after the deadline. For further information, City Hall at (806) 272-4528. Published in the Bailey County Journal November 22 and 26, 1998.</p> <p>SERVICE</p> <p>Sewing & Alterations All types. One day service on most. 310 W. 16th W 272-6764</p> <p>REAL ESTATE</p> <p>Nice 3-1-1 brick home, Country Club addition, central heat and refrigerated air, new roof, wooden deck, 272-5879 evenings or leave message.36t-tfc</p>	<p>HELP WANTED</p> <p>Make extra money for Christmas.Call Carol at 272-3011 after 5 p.m.48s-4tch</p> <p>We need you! To deliver the new GTE Levelland/Littlefield and Muleshoe telephone directory in your area. Earn up to \$8 per hour or more depending upon your speed of delivery. Must have a valid driver's license, a vehicle with a current license plate an have 4-8 daylight hours available. For More Information Call 1-800-839-5022, Mon-Fri, 10:30 a.m.-6 p.m.48s-2tch</p> <p>Needed: Vehicle maintenance person. Apply in person. Cattleman's Feedlot. Olton, Tx. (806) 285-2616.47s-2tch</p> <p>Needed: Welder, Apply in person. Cattleman's Feedlot. Olton, Tx. (806) 285-2616.47s-2tch</p> <p>Pizza Hut is now hiring for waitstaff and delivery drivers. Apply on Mondays from 1 to 5 pm.37t-tfc</p> <p>Need truck drivers to haul cotton seed from Sudan to Lubbock. \$800 per week. CDL required. Call (806) 946-3461, (806) 946-7998. 38t-1tfc</p>	<p>HELP WANTED</p> <p>HINSA SOUTHWEST CORPORATION</p> <p>A rapidly expanding company needs a full-time receptionist/secretary to work in a fast pace environment.</p> <p>JOB SKILL REQUIREMENTS:</p> <ul style="list-style-type: none"> Bilingual: proficient in Spanish & English a Must Knowledgeable in General Office and Computers Able to handle multiple phone lines <p>PERSONAL REQUIREMENTS:</p> <ul style="list-style-type: none"> Initiative Self-motivation Organizational Skills <p>COMPETITIVE SALARY & GREAT BENEFITS Bring resume to 11 1/4 Miles E. Hwy 84 Muleshoe, Tx. 79347 or Fax it @ (806) 272-5135 by November 20, 1998. Attention: Gina Smith/Office Manager, Pastor Ayala/Human Resource manager. Eligibility requirements must be met.</p> <p>FOR SALE</p> <p>Duncan Fife Drop Leaf Table & 6 chairs. Excellent condition, \$800. Call 272-6815.48t-9tch</p> <p>Large refinished oak office desk, 100 year old upright piano; lounge chair. Need to sell by Dec. 1. There will be other items. Come see 1 mile south and 1 mile west of Muleshoe Thanksgiving weekend or call (512)572-9395.47t-tfc</p> <p>MA Phillips will have fresh shelled pecans on Dec. 1.48s-2tpd</p>
---	---	--	---

Nieman Realty

116 E. Ave. C • George Nieman, Broker • 272-5285 or 272-5286

RICHLAND HILLS—PARK RIDGE

- We have several single and multi-family lots in this area!!!
- NICE 3-2-2 Brick, Cent. A&H, built-ins, FP, cov. patio, fenced yd. \$50's!!
- NICE 3 bdrm. 2 bath w/3 car detached garage/workshop-storage, Elec. Heat Pump, built-ins, FP, 2,380' lv. area, auto. splkr., fenced yd., More!!! RH-2

HIGHLAND AREA

- Very Nice 3-2 Mobile Home, 2-car carport, Cent. Heat, Evap. Air, built-ins, workshop-storage, fenced yd., MORE!!!
- 3-2-2 Brick, Cent. A&H, built-ins, gas log FP, fenced yd., stor. bldg., MORE!! Price Reduced!! HL-5
- 2-1-1 carport home, wall furnace heat, evap. air, DW, 5 fans, cov. patio, gas grill, fenced yd., MAKE OFFER!!!
- 3-2-2 Brick Home, corner lot, wall furnace heat, Cent. Evap. Air, fenced yd., stor. bldgs., MORE!!! HL-4

LENAU - COUNTRY CLUB AREA

- 2-2-1 Carport home, Cent. A&H, fenced yd., concrete cellar, stor. bldg. !!! \$25K!!! L-2
- 2-2-2 Brick Home, Cent. A&H, nice carpets, fenced yd. \$40's!!! L-4
- PRICE REDUCED 2-1-1 Carport Home, wall furnace, nice carpet, storm shelter, stor. bldg., fenced yd. \$19K!!! CC-3
- 2-1-1 Home, floor furnace, win. ref. air, fenced yd, stor. bldg., \$18,500 !! L-1

COMMERCIAL

- Six Unit Apartment Complex (4-2 bdrm. & 2-1 bdrm. units)!!!
- 100' x 140' tract, approx. 7,400' business & warehouse building on American Blvd., PRICED TO SELL!!!
- Established Business: Land, Bldg. & Equip., \$75K!!
- 56' x 140' tract, approx. 4700' bldg., \$35K!!!
- NICE R.V. STORAGE, 14' X 40' metal bldg. 12' doors, 50X140 corner lot!
- SNACK SHACK - Lot, Buildings, furniture & fixtures!!!

HIGH SCHOOL

- 2-2-2 BRICK, Cent. A&H, built-ins, corner lot, approx. 1800' lv. area!!! \$35K!!! HS-4
- NEWLY REMODELED 3-1-1 Home, cent. A & H, new carpet & vinyl, fenced yd., MORE !! \$30's!!! HS-2
- VERY NICE 3-1-1 Brick, Heat pump, DW, nice carpets, fenced yd., MORE!!! \$30's!!! HS-1
- NICE 2-1-1 Brick, Heat Pump, nice carpets, well insulated, storm windows & doors. \$30's!!! HS6
- VERY NICE 3-1-1 Home, nice carpets and vinyl, heat pump, fans, fenced yd., stor. bldgs., MORE!!! \$30's!!! HS-5
- 3-2-1 Brick, Heat Pump, built-ins, fans, screened porch!!! \$30's!!! HS-7
- JUST LISTED- 2-1-2 CP Home, corner lot, metal siding, storm win. & doors, stor. bldg. \$20K!!! HS-8
- 1-14' x 60' and 1-12' x 40' Mobile Home on a 98' x 75' lot, both have cent. heat, evap. air, stove, & ref., cov. patios, fenced yd.!!! \$20k!!!

RURAL

- PRICE REDUCED- NICE 3-2 home, 40 acre tract, Geo. Heat Pump, built-ins, 5' irrig. well, Hi-Pres. lines, sprinkler pipe, barn, pens, tractor & equip!!! \$69K!!!
- W. of SUDAN-NICE 3-3-2 Brick Home, 5 acre tract on Hwy. 298, Cent. Air & Heat, built-ins, large Quonset Barn, MORE!!!! \$95K!!!
- 5 Acre tract on pavement close to town!
- LONGVIEW AREA- 4 labors, (2 in CRP, other 2 out of CRP) PRICE TO SALE!!!
- FOR BID: Approx. 4,870 acres (Bailey and Lamb Co.), water rights negotiable, 54 wells (only 2 pumps and motors), approx. 33 circles w/center pivot pads, 40'x86' tile block barn, 40'x100' Quonset barn w/elec., 20'x30' shop, 3 sets pipe corrals, 2 sets wire corrals!!
- LAZBUDDIE-PRICE REDUCED-NICE 3-2-2 Brick Home on pavement, 2200' Lv. area, Cent. A & H, built-ins, FP, large sunroom!!! \$70's!!
- Approx. 108 acres on Hwy. 70, approx. 2100' office area, 16,900' of commercial bldg. w/loading dock, 3,400' warehouse!! 2,800' runway!!
- LARIAT-240 acres, 3 wells, underground tile, good productive land!!!

Holiday Deadlines:

DUE TO THE UPCOMING HOLIDAY WE ASK THAT FOR ANY AND ALL YOUR CLASSIFIED ADS, YOU CALL IN AHEAD OF TIME. THE DEADLINE FOR THURSDAY'S PAPER IS MONDAY, NOV. 22 AT 12 NOON SO THAT THE PAPER WILL BE READY FOR ALL OF OUR READERS ON TUESDAY. FOR THE WEEKEND PAPER THE DEADLINE IS WEDNESDAY NOV. 24 AT 12 NOON. WE APPRECIATE YOUR BUSINESS. HAVE A WONDERFUL THANKSGIVING. FROM ALL OF US AT THE JOURNAL.

'Tis the season to... SAVE AT LOWE'S

PRICES EFFECTIVE NOVEMBER 27-DECEMBER 1, 1998

MEAT

- WHOLE SLAB
- PORK SPARE RIBS**.....LB **89¢**
APPROX. 80% LEAN
MARKET MADE
- FRESH CHILI MEAT**.....LB **\$1¹⁹**
APPROX. 80% LEAN
MARKET MADE BEEF
- HAMBURGER PATTIES**.....LB **\$1²⁹**
GREAT WITH BEANS
- SMOKED PORK HOCKS**.....LB **99¢**
BEEF CHUCK TENDER
- ROAST OR STEAKS**.....LB **\$1⁹⁹**
BLOCK CUT
- BEEF TRIPE**.....LB **49¢**
CUBED
- BEEF TRIPE**.....LB **69¢**
SPLIT
- PORK FEET**.....LB **49¢**
PORK
- NECKBONES**.....LB **49¢**
ADVANCE BREADED BEEF
- FINGERS OR PATTIES**.....12 OZ. **\$1¹⁹**
ADVANCE BREADED CHICKEN
- NUGGETS, STRIPS
OR PATTIES**.....12 OZ. **\$1⁶⁹**
-
- ALL TYPES
**COCA-COLA, SPRITE
OR DR. PEPPER**.....12 PACK, 12 OZ. CANS **\$2⁹⁹**
- ALL TYPES
**COCA-COLA, SPRITE
OR DR. PEPPER**.....3 LITER BTL. **2/\$3**
- ALL TYPES
**COCA-COLA, SPRITE
OR DR. PEPPER**.....6 PACK, .5 LITER **2/\$5**

PRODUCE

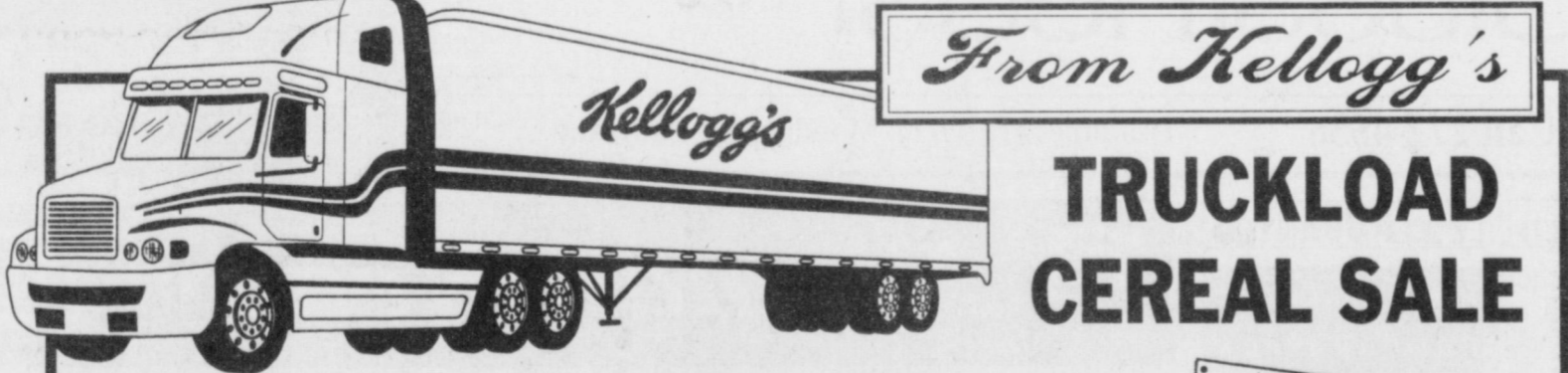
- JUICY SWEET CALIFORNIA
4 LB. BAG
- ORANGES**.....EA. **\$1⁴⁴**
- CELLO WRAPPED
- ICEBERG LETTUCE**.....EA. **59¢**
LARGE
- TOMATOES**.....LB **99¢**
A-RED
- POTATOES**.....LBS. **3/\$1**
WASHINGTON EXTRA FANCY
RED OR GOLDEN
- DELICIOUS APPLES**.....3 LB. BAG **2/\$3**
FRESH
- GREEN BEANS**.....LB **\$1¹⁹**

FROZEN & DAIRY

- SHURSAVING
- SHOESTRING POTATOES**...20 OZ. PKG. **4/\$1**
ORE-IDA
- CORN-ON-THE-COB**.....4 EAR PKG. **2/\$3**
ASSORTED REGULAR OR NON-FAT
- BLUE BUNNY
ICE CREAM**.....1/2 GAL. SQUARE **2/\$5**
BLUE BUNNY 10 CT. MISSISSIPPI
MUD OR 12 CT. VANILLA/NEAPOLITAN
- ICE CREAM**
- SANDWICHES**.....YOUR CHOICE **\$2⁷⁹**
SELECT VARIETIES
- BANQUET
VALUE MENU DINNERS**...9 TO 11 OZ. PKG. **99¢**
ASSORTED
- PATIO BURRITOS**.....5 OZ. PKGS. **4/\$1**

HEALTH & BEAUTY

- WESTERN FAMILY
- SKIN CARE LOTION**.....15 OZ. BTL. **88¢**
- ASSORTED
**SUAVE SHAMPOO
OR CONDITIONER**.....15 OZ. BTL. **88¢**
- ASSORTED
**SPECIAL VALUE PACK INCLUDES
ONE PAIR FREE!
3 PAIRS OF KNEE HIGHS FOR
THE PRICE OF 2!
NO NONSENSE**
- KNEE HIGHS**.....VALUE PACK **\$1⁵⁴**
-
- SOFT'N GENTLE WHITE/ASSORTED
- BATH TISSUE**.....4 ROLL PKG. **78¢**
PRE-PRICED \$5.99
PURINA
- MAINSTAY DOG FOOD**.....17.6 LB. BAG **\$4³⁹**
ASSORTED
- ALPO DOG FOOD**.....13.2 OZ. CANS **2/\$1**
- BEST MAID
- POLISH SPEARS,
BREAD & BUTTER
PICKLES OR KOSHER**
- DILL SPEARS**.....16 TO 24 OZ. JAR **\$1⁵⁹**
BEST MAID
- WHOLE SWEET PICKLES**.....16 OZ. JAR **\$1⁷⁹**
- 100 OZ. REGULAR LIQUID
 - REGULAR OR W/BLEACH
 - 83 TO 87 OZ. POWDER
- SURF ULTRA
DETERGENT**.....YOUR CHOICE **\$5²⁵**
- 80 CT. SHEETS
 - 40 OZ. ASSORTED FABRIC SOFTENER
- ULTRA SNUGGLE**.....YOUR CHOICE **\$3¹⁹**
SPRING BLOSSOM
- ULTRA SNUGGLE REFILL**.....40 OZ. **\$2⁹⁹**
ASSORTED
- WINDEX GLASS CLEANER**...22 OZ. BTL. **\$1⁹⁵**
REYNOLDS
- HEAVY DUTY FOIL**.....18", 37.5 SQ. FT. **\$1⁶⁵**
SHURFINE
- FUDGE GRAHAMS,
STRIPED SHORTBREAD,
PEANUT BUTTER FUDGE OR
FUDGE MALLOWS**...10.75 TO 16 OZ. PKGS. **3/\$4**
ASSORTED
- SHURFINE
MICROWAVE POPCORN**.....3 CT. PKG. **88¢**



TRUCKLOAD CEREAL SALE

**KELLOGG'S
CORN FLAKES**
24 OZ. BOX
2/\$5

**KELLOGG'S
RICE KRISPIES**
19 OZ. BOX
\$2⁴⁴

**KELLOGG'S
RAISIN BRAN**
25.5 OZ. BOX
\$2⁴⁸

**KELLOGG'S
MARSHMALLOW
FROOT LOOPS**
14 OZ. BOX
\$1⁸⁸

**KELLOGG'S
CORN
POPS**
15 OZ. BOX
2/\$4

**KELLOGG'S
FROSTED
MINI-WHEATS**
19 OZ. BOX
\$1⁹⁸

Blue Willow Dinnerware...

**3 PIECE
PLACE
SETTING** DINNER PLATE,
CUP & SAUCER **\$3⁹⁹**
with each \$10
purchase,
w/out purchase \$4.99

SPECIAL ITEM ON
SALE AT ALL TIMES
**JUMBO
MUG**
\$2⁹⁹

SPECIAL ITEM ON
SALE AT ALL TIMES
**WALL
CLOCK**
\$24⁹⁹

SPECIAL ITEM ON
SALE AT ALL TIMES
**BLUE WILLOW
AFGHAN**
\$19⁹⁹

ALL COMPLETER PIECES AVAILABLE AT BIG SAVINGS WITH YOUR VALUABLE COUPONS...NOW THROUGH DECEMBER 5, 1998

LAST WEEK TO COMPLETE YOUR BLUE WILLOW DIN-
NERWARE! OFFER ENDS SATURDAY, DEC. 5, 1998



See ya at
LOWE'S

WESTERN MONEY
UNION TRANSFERSM
"The fastest way to send money"

Lowes
MARKETPLACE

515 W.
American Blvd.
Muleshoe
272-4406

401 W. American Blvd.
Muleshoe 272-4585

Pay-n-Save
WE RESERVE THE RIGHT
TO LIMIT QUANTITIES
IN TEXAS