

*Now we  
Begin to Live*



## Electric Service

*Comes to*

# DUNN

*and*

## COMMUNITY

**A**FTER MONTHS, and even years, of planning for electric service in Dunn and surrounding communities, it has finally become reality. It is the result of many hours of work on the part of many of the citizens of the area—time spent in contacting prospective patrons of the lines, conferring with governmental attaches and officials of Texas Electric Service Company.

**D**UNN IS GLAD to avail itself of the conveniences and comforts afforded by this modern means of light and power. Citizens of the community have been quick to appreciate the service, and are showing this appreciation by signing up for service with the lighting concern nearly 100 per cent. The coming of electricity to Dunn is one of the first such movements in this part of the state.

### *The Following Merchants Extend Congratulations and Offer Their Services to Electric Patrons*

**TEXAS ELECTRIC SERVICE COMPANY**

**JOHN KELLER—Norge Refrigerators and Stoves  
and Grunow Radios**

**ROCHE & GILMORE—Philco Radio, Electric Service**

**H. L. WREN HARDWARE—Kelvinator Refrigerators**

**D. & D. AUTO SUPPLY—Stewart-Warner Radios  
and Refrigerators**

**KING & BROWN—Frigidaire Refrigerators**

**SEARS, ROEBUCK & COMPANY, Sweetwater—  
Coldspot Refrigerators and Appliances**

### *All the Comforts and Conveniences of the City—*

... are now available to the people of the Dunn section with the coming of Electric Service. Ample energy for power in many forms, dependable and efficient lighting, and the hundred-and-one little gadgets about the house will make living more worthwhile.



# Dreams Come True for Leaders at Dunn

## LIGHTS, POWER REACH COUNTY

The switch that plunged Dunn and Buford out of darkness into light was pulled last Thursday afternoon.

A dream of several progressive Dunn citizens . . . a dream that had returned fitfully for several years . . . had come true.

For it was in Dunn, town of less than 30 homes, that the entire rural electrification plan, already expanded to Buford and destined to spread to several other Scurry and Mitchell communities, was born and nurtured.

### Dunn Folks Elated

Dunn folks are elated over building of the Texas Electric Service Company highline—first truly rural line of any length ever to have been built in West Texas, it is believed.

Stores, homes, churches and the school are taking advantage of the new lines. Shining new meters jut from some portion of all except three or four buildings in the town. The total customers at Dunn is 25. The customer load is increased by Buford and farms along the 10-mile line, which converges with a large highline two miles below Buford.

### Ira Hopes for Line

A survey has already been made for an electric line into Ira. The electric company has not committed itself to building along this route, but Ira citizens, with farmers along the route, believe the customer load will prove heavy enough to justify a line.

Hope for a line in this direction is increased by the new oil play—two wells drilling and one preparing to drill near Ira.

Other communities that are seeking electric service include China Grove, German, Pyron, Plainview and Union in Scurry County; Valley View and Longfellow in Mitchell County.

## KNOW TEXAS

By F. L. McDonald, Texas State College for Women, Denton

No section of Texas is beyond the reach of some of the higher educational institutions. There are 116 colleges, universities and academies in the state, 71 of which are fully accredited.

In accredited schools, there are 51,950 students enrolled, and the un-accredited institutions claim 11,320, making a total of 63,270 young men and women registered in Texas schools of higher learning. The enrollment in a single school varies from 90 to 8,000.

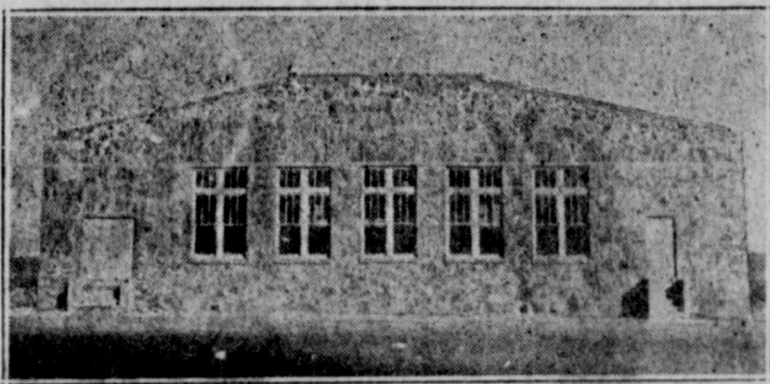
The state supports 16 colleges and universities. Largest of the state schools is the University of Texas at Austin, with more than 8,000 students in its regular session. Following the university in size are A. & M. at College Station, Texas Technological at Lubbock, and Texas State College for Women at Denton. This latter school is the largest standard college for women in the United States.

Within the state's borders are 33 denominational schools, 4 private schools, and 18 municipal schools. Junior colleges number 34, and they are topped by 36 four-year schools. There are 61 accredited co-educational schools in the state, 6 women's colleges, 3 men's colleges, 7 teachers' colleges, 2 medical schools, and 2 theological seminaries. Texas also provides for the education of negroes, with four negro colleges enrolling approximately 5,000.

Diner—"I can't find any chicken in this chicken soup."  
Waitress—"Well, you won't find any horse in the horseradish, either."

Chemistry teacher—"What is HNO?"  
Student—"Oh, er, er—it's right on the tip of my tongue."  
Teacher—"Well, spit it out. It's nitric acid."

## Rear View of Dunn's Gymnasium



This is a rear view of the new gymnasium at Dunn—one of the most modern and complete plants to be found in West Texas.

## Wives on 40-Hour Week Sought by Power in France

Complete electrification of farm homes on a one-year trial basis has been started in a French community "to put wives on a 40-hour work week." At the expiration of the trial period the customers, all located in the village of Hilaire-Sur-Helpe, will have the option of returning all electrical appliances without restrictions. Of the 83 families in the village, eighty per cent joined in the experiment.

M. Antoine, administrator of the Northern Electric & Gas Co., which is credited with initiating the project, conducted ceremonies dedicating the electrification of practically the entire village, which is near the Belgian border. Several high French government officials attended.

Even before the experiment started, 70 per cent of the rural consumers in the region had electric ranges. In view of the encouraging fact and in order to prepare for the future, it was decided to try to electrify the region as a whole, and to a maximum extent, by putting at the disposal of consumers electric ranges, water heaters, boilers and other appliances. At the expiration of the trial period the villagers will be under no obligation to keep the appliances which were left with them.

The utility company expects to obtain interesting figures of electricity consumption in rural district and also to get a symposium of farmers' opinions as to which appliances they like best. The value of appliances loaned to farmers is from 4,000 to 5,000 francs per residence.

"The experiment we are undertaking demonstrates," M. Antoine said, "that it is necessary to spend considerable amounts of money in order to increase our generating installations and to extend our rural lines

if we want to increase the utilization of electricity. This program could not be carried out without the confidence of the investing public in the stability of our public utility enterprises.

"On such solid foundations must the revival of our activity be based. This will permit us not only to have confidence in our future, but also to work for this better future.

"You see how we conceive this future: Substitution of complete electric service for the simple supply of electric current. Electricians, contractors, distributors of current—they all must join together in order to assure the best service to our customers.

"Why don't we put forth the slogan for the future: 'Increase your leisure time with the aid of electricity'?"

"Why don't the heads of families give their wives the equivalent of a 40-hour week with the aid of convenient electrical equipment?"

France is in the front rank of nations in making available to agriculture the many benefits of power and light service.

"How much is that rat poison?" asked the customer.

"That AAA poison costs you 75c."  
"Haven't you got any cheaper?" asked the customer.

"Yes, here is a pretty good poison, the CCC brand, that I can recommend, for 50c."

"Anything still cheaper that you can recommend?"

"Well," said the druggist, "here is our WPA brand that will not kill them, but it will make them so lazy that you can stomp them."

"Mary," said her mother reprovingly, "every time you are naughty I get another gray hair."

"Well, Mom, you must have been a terror when you were young. Look at Grandma."

No dashing rain can make us stay When we have tickets for a play, But if a drop the walk besmirch It is too wet to go to church.

## Small Change in Livestock Totals From 1936 to 1937

Although the numbers of every class of livestock on farms January 1, 1937, except sheep, were lower than they were one year previously, the change has been relatively small, according to Guy W. Miller, specialist in rural economics, Ohio State University.

The number of hogs on farms in the United States was very close to last year's figure, but was 26 per cent below the 1930-34 average. Ohio farmers had 15 per cent more hogs than one year previously, so they are in better position to produce pork than growers in the western part of the corn belt.

Miller says large storage stocks of pork may largely offset the effect of the expected decreased slaughter supplies in March and April. No great price change is expected in that period, and there probably will be a decline later, when the marketings from the 1936 fall pig crop start late in April or May.

The estimated number of all cattle and calves on United States farms January 2, was two per cent less than one year before, and Ohio had reduced its herds about the same as the rest of the country. The slaughter of federally inspected calves was the largest in January for any one month since 1919, but the total slaughter of cattle and calves is expected to be smaller in 1937 than for any of the last three years.

Miller estimates a 1.6 per cent decline in milk cows and heifers in the country, but Ohio had only one per cent less on January 1, than a year previously. There were 10 per cent more yearling heifers on Ohio farms

than the year before, but there were five per cent fewer heifer calves. Mild weather had somewhat offset the effect of high grain prices, so the production of milk was one per cent higher than on February 1, 1936.

The decrease in numbers of mules and horses in the United States was the least in any year since the decline began about 1916. There was a marked increase in numbers of horses and mules under one year of age as compared with recent years. Values for this class of livestock were higher January 1 than for the same date in any year since 1920. Ohio farmers had one per cent more horses and mules than a year ago.

Little Susie had been naughty, and her mother suggested that she mention the matter in her prayers. She did so, and this is what she said before going to sleep: "Dear Lord, I know I'm a bad little girl, and I do wish you would help me to be better, and if at first you don't succeed, try, try again."

"Make me a child again, just for tonight."

Once said a scotsman—and Scotsmen are tight.

"I'm leaving on a rail trip to Ayr; Make me a child and I'll travel half-fare."



# NORGE Refrigerators

Are causing a sensation everywhere. See this unusual box now on display at our store in Snyder!



5.25 Cubic Foot Models—\$165.00  
6.25 Cubic Foot Models—\$190.00

Ask to See the New Norge Gas Range

# John Keller

West Side Square—Snyder



## 3 Essential Points in PRINTING

Good Presswork, Good Typography, Good Paper

We seek perfection on each order we print. An order here does not mean just so much paper and ink but a happy combination of the printer's craft and

HAMMERMILL PAPERS

KNOWN FOR THEIR QUALITY  
BUY YOUR PRINTING AT HOME  
YOU'LL BE BETTER SERVED

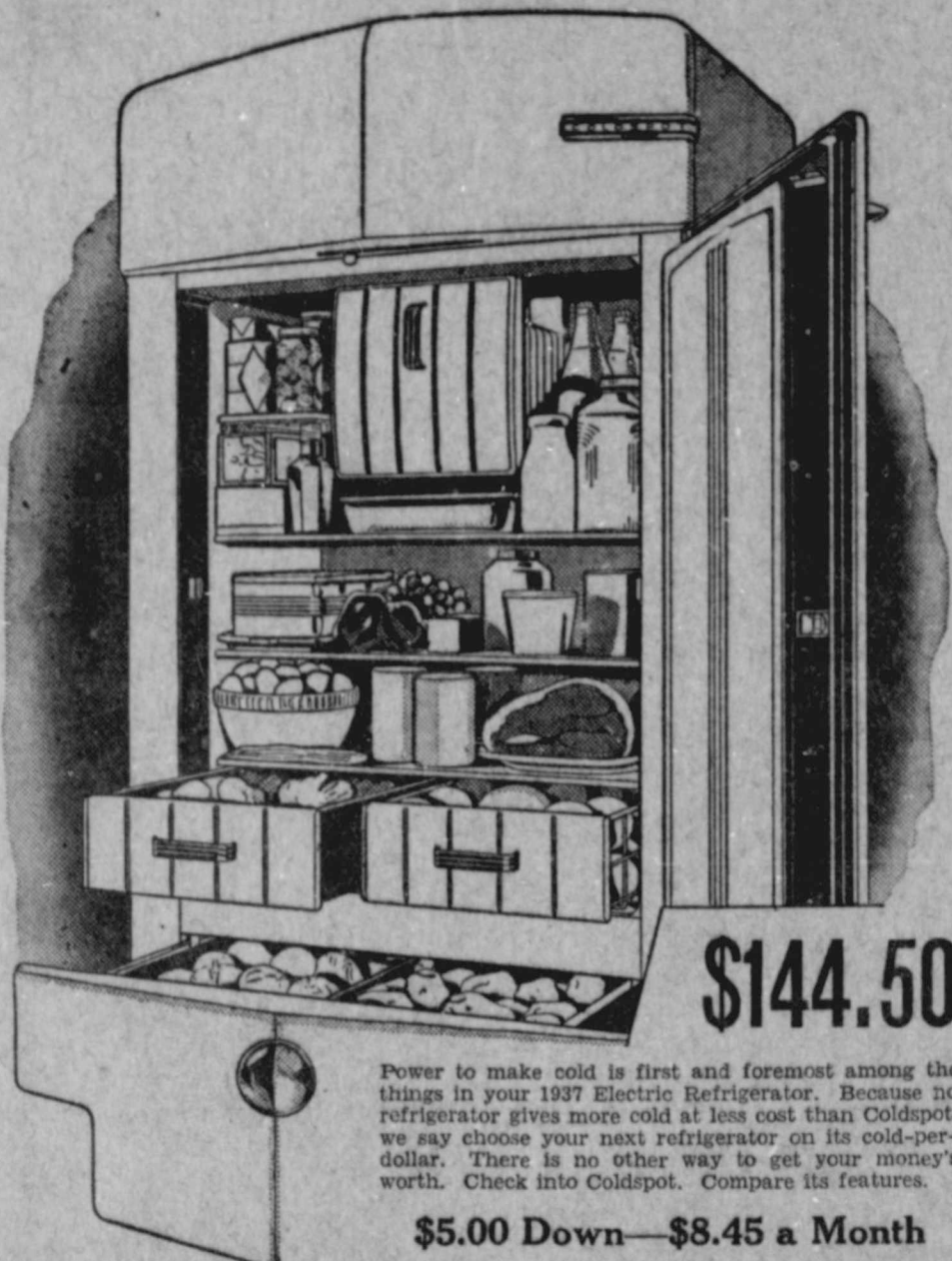
# Sears MARCH VALUE DEMONSTRATION

SEARS, ROEBUCK & COMPANY

SWEETWATER, TEXAS

## SEARS Salutes All Electric Patrons!

### SEE THIS NEW 1937 COLDSPOT



### \$144.50

Power to make cold is first and foremost among the things in your 1937 Electric Refrigerator. Because no refrigerator gives more cold at less cost than Coldspot, we say choose your next refrigerator on its cold-per-dollar. There is no other way to get your money's worth. Check into Coldspot. Compare its features.

**\$5.00 Down—\$8.45 a Month**

Save 20% 6-Pound  
**HEATMASTER IRON**

**\$2.89**

With Cord

Fully automatic. Chrome plated . . . won't rust, stain or tarnish. Beveled edge for getting under pleats and buttons. Tilted cord handle. Save now!

**Challenge Electric Iron—89c**



### TABLE LAMPS

### \$1.49



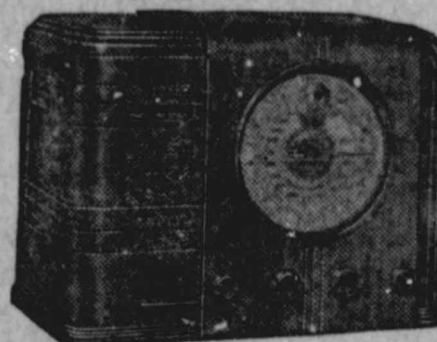
New lamps to brighten your home for Spring! Get them in Value Demonstration and pay less! Smart table lamps that offer you the advantage of 40, 60 or 100-watt lighting with the new Tri-Way socket and Three-U-Lite bulb. May be used, too, with any standard bulb. Lovely china bases in wide range of styles, with harmonizing parchment or fabric-covered shades. White, rust, green or red.

**Complete Stock Electric Wiring Needs and Fixtures. Let Us Help You**

### 7-Tube All-Wave Set **\$29.95**

**\$5 Down—\$4 Month**

Yes, sir—world wide reception. And that's not all! For this handsome table model Silvertone has also an electronic tuning eye which makes for perfect, accurate tuning. Continuously variable tone control; automatic volume control—an unbeatable value!



### KENMORE WASHER

With Mullins Aluminum Tip-Out Head Wringer

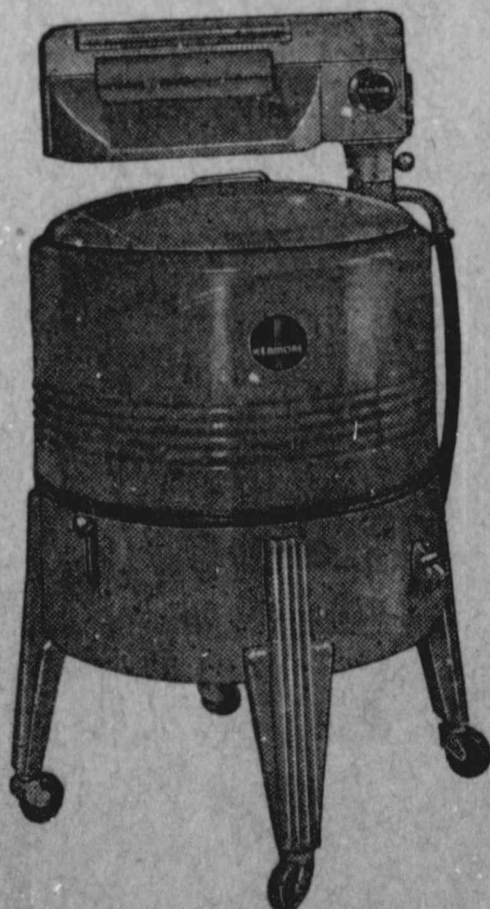
### \$59.95

**\$5 Down—\$5 Monthly**

(Plus Small Carrying Charge)

Scientific Water Action Porcelain Tub 2 1/4-Inch Wringer Rolls

Twenty dollars lower than a washer of comparable quality! Pocket this saving! Kenmore will give you whiter, cleaner clothes than you've been able to get with hand laundering! Gently loosens the dirt with scientific water action. Beauty, safety, efficiency and durability. Handsome gray porcelain tub with Mullins aluminum tip-out head wringer and 2 1/4-inch balloon rolls. Long-life motor. Machine-cut gears. Outside clutch. Heavier, sturdier construction throughout. Real washer value at your Sears store!



Save \$20 to \$30! 8-Tube A. C. Silvertone

### ALL-WAVE CONSOLE

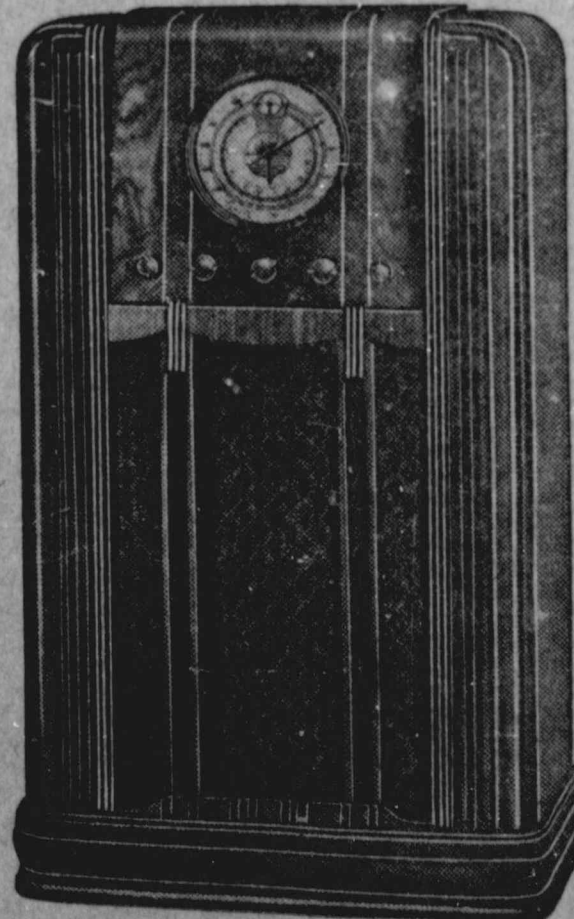
With the Sensational Tuning Eye

### \$44.95

**\$5 Down—\$5 Monthly**

(Plus Small Carrying Charge)

Every new, proved 1937 feature has been built into this superb all-wave console. Super-abundant power chassis brings new high standard of performance on American and foreign broadcasts. Sturdy, beautifully styled cabinet with inclined instrument panel of figured walnut veneer and white holly inlays. And what a host of features! Electronic tuning eye, automatic volume control, variable selectivity, continuously variable tone control, auditorium dynamic speaker, etched gold dial, band spread, foreign stations by name, two-speed tuning, and built-in aerial tuning systems. Hear it perform!



### Warm Water for Stock Possible on Powered Farms

Humans seem to be the only members of the animal kingdom that have developed the ice-water habit. Here again is another instance in which our furred and feathered friends are much more sensible than we. They prefer to drink warm water, and biologists tell us that the animals are right. They thrive much better when their water is not too cold.

Stock farmers have known this for a long time, and they have for many years warmed the water in the stock tanks. However, the old methods of heating with wood, coal and oil were troublesome. There were always ashes to be removed, fires to be kindled, and drafts to be made.

But the farmer with electricity has bid farewell to these problems. For the use of electricity to warm drinking water for animals is both convenient and economical.

The practice has become increasingly popular, and many stockmen are using thermostatically controlled electric water warmers to take the chill off drinking water and to keep ice from forming over the drinking trough.

After extensive experiments with stock-tank warmers, the University of Idaho concluded that warm water is valuable for fattening lambs and steers during the cold winter months.

Steers drinking warmed water gained eight pounds more per animal, on the average, than steers drinking icy or cold water, stated the university experimenters after a 23-day test. Over another 30-day period, power consumption for 22 dairy cattle averaged about 5.2 kw-hr. per day. The water was kept at 55 degrees F. and each cow drank some 13 gallons daily.

Water-warming is equally important for poultry. There is little reason to use electric lights to lengthen the feeding day, unless plenty of feed is available. And hens will not eat the required amount of feed unless there is also a constant supply of water before them at a temperature of 40 degrees to 50 degrees F.

Slumps in winter egg production result from lack of water because of freezing, or because the temperature of poultry drinking water drops near the freezing point. The need for water at a determined temperature is obvious. A fresh egg contains about 65 per cent water, and a dozen eggs weighing about 4 1/2 pounds contain about a pint of water. A hundred hens laying at the rate of approximately 60 eggs per day in midwinter drink about 5 1/2 gallons of water per 100 eggs laid, or over half a cup per pullet per day.

Midwinter experiments in Oregon and Idaho indicate that there is an increase of about 20 per cent in the consumption of poultry water when it is warmed. In western Washington it has been found that warm water during the winter makes a difference of around 15 eggs per hen per year. With warm water, pullets in this section have been made to lay at 85 per cent of "capacity" during the fall and early part of the winter when the egg prices are high.

Severity of climate, warmth of the poultry house, temperature of water supply, insulation of drinking fountains, and capacity of fountains are factors that determine the size of warmer unit necessary. From 40 degrees to 50 degrees F. appears to be sufficient temperature for poultry water, because as much water is consumed at 50 degrees as at 70 degrees, tests indicate. Therefore, it is recommended that the size of the heater selected should give the lowest desired temperature of water at the minimum power consumption. The range for economical operation appears to vary from 25 watts to a possible 200 to 300 watts. In reasonably warm poultry houses, where there is little danger of severe freezing, a 75-watt warmer will probably be sufficient to maintain a temperature of 50 degrees F. in the drinking water for 200 birds, but in cold houses heaters of greater capacity will be required. In order to keep the water at 40 degrees to 50 degrees F., but no warmer, and thus avoid waste of elec-

### NUTS AND BOLTS



"Yessir! We'll all be a-flyin' soon."

Attention, drivers! Let's talk about inattention. High on the list of traffic sinners is the man whose eyes wander all over the landscape when they should be on the road ahead and whose mind, if any, is always on vacation from the business of driving. Not only does he risk his own life, and the lives of his wife and kiddies, but

he is also a menace to every other driver on the road.

Statistics show that 3,400 persons were killed last year when motorists drove off the roadway. Another 4,600 met death when they got over on the wrong side of the road. Most accidents of that type wouldn't happen to alert drivers. Enlist today in the ranks of Safe Drivers. Eyes front! Attention!

### HELPS FOR HOUSEWIVES

Beeswax mixed with equal portions of salt will remove rust from irons. Other stains and ways in which they may be removed are: (1) coffee, tea or chocolate stains on cups—moisten a little salt with cold water; (2) flower stains in vases—fill vase with a mixture containing two tablespoons of vinegar to each half a cup of boiling water and wash it out—after 10 minutes or so—in hot water and soap suds; (3) stains on brass or copper—use equal portions of salt and vinegar.

Spiced fruits add a delicious flavor to meals. Pears, pineapple, apricots, peaches, apples, oranges or even grapes—all of them spiced—may be served with the main course. They will also lend an interesting flavor to the fruit cocktail or salad. Candied ginger is another favorite.

The children's toy box can often supply the materials for unusual table decorations. Tiny houses may be placed on a mirror "rink" for a skating party and little people and furniture used for a bridal shower.

Tangerines are delicious in salad and cocktail combinations. They are easily peeled and freed of the fibrous portions, and blend well with pineapple, pears, cherries, grapefruit and bananas.

Chintz draperies should be shaken out every few weeks and then brushed off with a stiff brush. It is best to shake them out-of-doors if possible.

When you're buying pans for the kitchen, choose those with round corners whenever possible. Round-cornered pans are much easier to keep clean than those with square corners.

Correct, even measurements are important for success in cooking.

Electricity, poultry water warmers with thermostatic controls are useful.

Water warmers also have their place in the brooding of new baby chicks. It is a practice among many poultrymen to keep drinking water for chicks at body temperature for the first week or two.

As a means for increasing the consumption of electricity, water warmers are relatively unimportant because they may be used only a few months of the year. But as devices which may be conveniently operated in the winter with a view to more profitable egg or meat production, water warmers have demonstrated their value.

### Home Heating by Electricity Might Come True Soon

Those who know—electrical engineers and scientists—say that a practical system for heating our homes by electricity is on the way. Such a method could scarcely be used with present technique, because of the high cost of energy.

However, many families are accustomed on cold mornings to take the chill out of the bedroom or bathroom with small electric heaters. Progressive farmers have found several specific applications of space heating that are becoming generally adopted. For example, electric space heating is used in poultry houses and for supplying warmth for sick animals in barns.

In general, space heaters are used for supplemental heat. They have been placed in fruit and vegetable storage rooms to prevent freezing. A relatively small heater will protect quite a large area, depending upon the insulation of the house and the severity of the weather.

It is in the doctoring of animals, however, that the space heater has a definite place in the work of the farm. Many farmers have made it a practice to bring sick lambs and calves into the kitchen and put them by the stove. The same result can be affected by using a small electric heater in the corner of the barn. The heater may prove especially valuable to dairy cattle that freshen in extreme weather and develop udder trouble, due to chills.

Some poultrymen advise the use of supplemental heat with electric brooders during extreme weather. Electric heaters have also been used in various corners of laying houses when the weather becomes very cold. This practice enables the hens to feed in relative comfort.

Wet litter is one of the most bothersome winter problems of the poultryman. Numerous attempts have been made to control wet litter by use of ventilation and space heaters, but the practice of heating the entire floor by a forced air system is usually preferred. There are actually two floors, the upper some six or eight inches above the lower. The air-duct in between is filled with warm air that quickly dries the litter. The heating unit consists of a coal burning stove encased in a sheet-metal jacket and attached to the end of air ducts. An electric fan causes the heated air to

**Tate on Fall Honor Roll.**  
Erton Tate, son of B. S. Tate, has been placed on the fall honor roll at Texas Technological College, Lubbock. Tate, formerly a teacher in Scurry County, made an average grade of "A" for the fall semester, according to an announcement from the Lubbock school this week.

"Madam," said the menagerie man, "please keep your children away from the bear cage."

"You don't think my children would hurt the bears, do you?" asked the woman.

"No, but this bear almost choked to death on a knife in the pocket of the last boy he ate."

Chemistry professor—"Name three articles containing starch."

Student—"Two cuffs and a collar."

circulate between the floors. Soil-heating cable has been used in some experiments for the same purpose.

**SHOWCARD**

# Ink

Fresh, Bright Colors

Every Bottle Guaranteed

**THE TIMES**  
OFFICE SUPPLIES

**THE MOST USABLE**

## Kelvinator Refrigerator

**EVER BUILT**

When you buy a Kelvinator you buy more than an ordinary electric refrigerator. You receive for your purchase price the greatest dollar for dollar value possible to obtain . . . for back of every Kelvinator stands the integrity of a manufacturer whose experience is the greatest in the domestic electric refrigeration field.

—The two most important facts in choosing your Refrigerator:

1. The new Kelvinator is Plus-Powered. It has as much as double the cooling capacity of other well-known refrigerators of equal size.
2. The new Kelvinator runs only half as many minutes per day . . . during the rest of the time it maintains low temperatures using no current at all.

**H. L. Wren**  
HARDWARE  
North Side Square Snyder

# We Are Happy

*To Announce*

*Completion of the Transmission Lines  
and the*

## Switching on of the Current

*This Week, Which Gives the First  
Dependable*

# Electric Service for Dunn and Vicinity

*Through the Facilities of Texas Electric Service Co.*



*Friends, we welcome you to our big happy family of patrons in this section of West Texas. We pledge you our utmost efforts to give you the Best Electric Service that modern methods and equipment make possible.*

*May our relations always be pleasant ones throughout the years to come.*

# Texas Electric Service Company

*"Your Electric Servant"*

## Workshop Turns Out to Be Paying Project on Farm

Adequately powered and lighted by electricity, a workshop which may be kept reasonably warm during cold winter months will prove a worthwhile investment for almost any farmstead.

There the farmer can spend many profitable and interesting hours during seasons of slack work outside, especially between the fall harvest and spring planting, in reconditioning his tools and machines and in making furniture, pieces of small equipment, and an endless variety of crates, boxes, and containers for storage purposes.

Such a workshop may occupy part of the garage or tool shed, or a lean-to against one of the barns—in fact any convenient shelter that can be warmed during cold weather with a small wood or coal stove.

The size and equipment of the workshop will depend upon the jobs the farm operator wants to accomplish. Some workshops may be sufficiently large and thoroughly enough equipped to do everything from gumming a coarse-toothed bucksaw at the electric grinder to shoeing a horse at the electrically blown forge.

Electricity is the great time and money saver of the farm workshop. Equipped with a portable drill, a drill press, a grinder, a circular saw, a band saw and a small forge—all powered by electricity—hundreds of tasks may be accomplished during a few winter months in a farm workshop with a corresponding reduction of outside repair bills.

Where much machinery repair work is to be done, a portable electric drill is a good investment. Holes may be drilled with it as needed for repairing by means of metal straps, bolts and rivets, at great convenience. Otherwise it would be necessary and often difficult to remove the parts to be worked and place them under the drill press. By incre-

## Plan Pan-American Olympics



Officials of the Greater Texas and Pan American Exposition welcome George Marshall to Dallas, where he will stage an international summer sports program, to open with the exposition, June 12.

In the picture, left to right: Frank L. McNeny, director general; William H. Hitzelberger, chairman of the exposition's athletic committee; Marshall and Frank N. Watson, assistant director general.

ly fitting the shaft of a wire brush into the chuck of the drill, the portable drill may also be used for such tasks, as cleaning the moldboard of a plow or preparing metal surfaces for painting.

With any great amount of farm machinery to be overhauled, it is desirable to install a stationary electric drill press to be used along with the portable electric drill. A stationary drill press with a 1/2-inch chuck and a cone pulley to permit a variety of speeds will drill all sizes of holes required in the repair of most farm machinery.

For a maximum of valuable service, electric grinders on the farm should be equipped with a number of detachable grinder wheels designed for various jobs. In sharpening most any coarse-toothed saw, a

summer wheel run at high speed by a fractional-horsepower motor will prepare the saw teeth for filing in a short time. A beveled sickle grind-

er turned by electric power will grind a sickle blade in jig time. Enslage cutter blades may be given a straight beveled edge that will stand up under heavy operation by holding the cutter blade lengthwise against the regular grinder wheel instead of across the wheel, and thus perfectly accomplish a farm grinding job that is exceptionally tiresome by hand.

One of the principal uses of the grinder is the grinding of a disk harrow. In doing this, the disk gangs should be removed from the frame or merely raised free of the floor while the grinder should be removed from the bench and suspended by a piece of rope and inner tube which together will support the grinder and keep it flexible for close operation. The free gang of disks, supported by blocks of wood or a standard, may then be rotated by one person, while the other sharpens the edges with the suspended grinder.

A circular power saw, equipped with both crosscut and rip saw attachments, may be sufficiently employed to warrant its purchase for many farms. If powered by a 3-4-horsepower motor and equipped with a V-belt and pulleys that permit the motor's weight to keep the drive belt taut, a 10-inch circular saw will prove both reliable and large enough for most farm workshops.

For many varied and intricate sawing tasks, a small bandsaw becomes indispensable. Such a saw will give good performance if it is equipped with a V-belt and pulleys

## CUSTOMERS

The following Dunn homes have been connected with the new electric line: W. A. Taylor, Cleo W. Tarter, J. C. Denson, J. C. Beakley, W. C. Hooks, H. G. Brown, James Welch, Mrs. J. T. Billingsley, Mrs. Ruby West, W. B. Newhouse, Rev. C. D. Damron.

Rural homes served in Scurry County are H. F. Billingsley, W. M. Cepeland and J. E. Hanson.

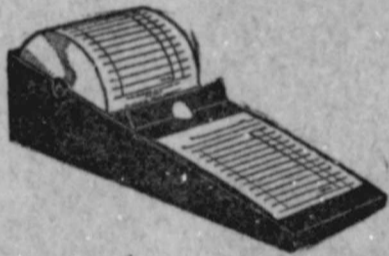
Combination stores or service stations and homes served in Dunn include E. E. Russell, W. B. Smallwood, Mrs. R. C. Vaught, Chester Johnston. Separate meters are also in the Welch store and service station.

Other connections are at the Methodist Church, Church of Christ, Baptist Church and the school. The gin will probably connect when ginning season begins.

ball-bearing shaft, and a fractional horsepower motor.

Heat sufficient for heating horse-shoes for the anvil and for many small blacksmithing jobs may be produced with a farm forge having its blower powered with as small as a 1-16-horsepower motor for which the current consumption will amount to about as much as that of a vacuum cleaner in the farm home.

Showcard ink at Times office.



## CURMANCO NEW DUPLICATING SALES REGISTER

The patented features of Curmanco Registers eliminate all gears, springs, cogs and moving parts. This fool-proof register gives the same results as a large machine at a big saving in price.

Carried in Stock by

# Times

OFFICE SUPPLIES

# the New 1937

# STEWART WARNER offers MORE FEATURES FOR YOUR MONEY

- ✓ SAV-A-STEP
- ✓ SLID-A-TRAY
- ✓ 16-POINT ILLUMINATED COLD CONTROL
- ✓ REVERSIBLE EVAPORATOR DOOR
- ✓ VAPOR SEALED CABINET
- ✓ SLO-CYCLE TWIN CYCLINDER COMPRESSOR
- ✓ TILT-A-SHELF
- ✓ SAFETY ZONE TEMPERATURE CONTROL
- ✓ JUMBO VEGETABLE FRESHENER
- ✓ JUMBO FRUIT BASKET

## SAV-A-STEP

SAVES TIME... STEPS... MONEY  
... REFRIGERATION'S GREATEST CONVENIENCE

THEY'RE HERE... for your inspection and feature-by-feature comparison! See for yourself the advancements in design and engineering that make the new Stewart-Warner refrigerators today's top value. A liberal deferred payment plan brings you one of these without straining your budget. At these low prices, you will understand why we call these models the year's biggest value. Come in today!



NO MONEY DOWN  
3 YEARS TO PAY

RUNS LESS  
COSTS LESS

# D & D Auto Supply

North of Bank

Snyder, Texas

## Rural Electrification Is Interesting Many Communities of United States

Opening within the present month of the rural electrification lines in Scurry and Mitchell Counties call attention to the fact that this movement is spreading into many parts of the United States. The local project is the first strictly rural line in West Texas.

The following quotations serve to show the keen interest that is being manifested in rural electrification:

Louisville (Ky.) Courier Journal—  
"There is no more pressing need just now in Kentucky than rural electrification, and the state Legislature could do no more important work than to take the necessary steps to provide state cooperation with the federal government to secure this service. Modern civilization is incomplete in a progressive age without the new advantages of electricity."

Rural Electrification News—"A large percentage of French farms are electrified, much of the electrification having been done since 1923."

M. Antoine, administrator of a French rural electric company—"The experiment we are undertaking demonstrates that it is necessary to spend considerable amounts of money in order to increase our generating installations and to extend our rural lines if we want to increase the utilization of electricity. This program could not be carried out without the confidence of the investing public in the stability of our public utility enterprises."

Rural Electrification News—"Adequately powered and lighted by electricity, a workshop which may be kept reasonably warm during cold winter months will prove a worthwhile investment for almost any farmstead."

Baton Rouge (La.) Times—"The lighting facilities offered are not the only advantages of electricity to the rural person. It will make the life of the farm wife easier because now she will be able to use electric irons, electric washing machines, electric sewing machines, and all other devices which, having electric-driven power, make human power unnecessary. . . . This rural electrification project is one of the greatest booms that could come to the farmers."

Grand Junction (Colo.) Sentinel—

"There is no place in American life and industry where the magic power of electricity can serve such a diversity of purposes as on the farm."

L. O. Kelsey, Cornell University extension service—"Poultry breeding, a major industry in New York's agricultural program, has forged ahead because of the benefits of electricity. Poultrymen find that electricity helps them from the time the egg is laid until the fowl is dressed and ready for the table."

Rural Electrification News—"With electricity available to less than 2.5 per cent of its farms, Texas is forging ahead in its rural electrification plans. . . . Texas power companies in 1935 constructed 3,000 miles of rural electric lines serving about 15,000 customers."

Lying lips do not hide an evil brain. Learning is often the process of unlearning.



### The New MARKWELL STAPLER

Staples, Pins or Tacks  
Ask for a Demonstration

STAPLERS AND  
STAPLES  
CARRIED IN STOCK

Times Publishing  
Company

"Markwell" Stapler and  
Staples for Every Need

Your Electrolux Refrigerator Dealer

## ROCHE & GILMORE

Presents

A SPECIAL 30-MINUTE  
PROGRAM

### "THE CRIME REPORTER"

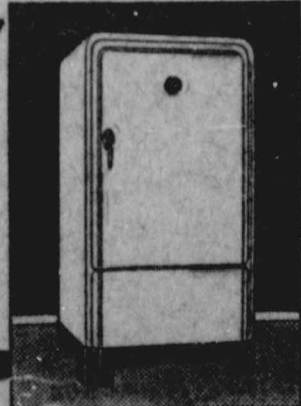
Over

RADIO STATION KRLD

Each Monday Night  
9:00 to 9:30 o'clock

**Now On Display!**  
New 1937

SERVEL ELECTROLUX  
The Kerosene Refrigerator  
FOR HOMES BEYOND THE  
GAS MAINS AND POWER LINES



MAIL THIS COUPON FOR FULL DETAILS

ROCHE & GILMORE

Gentlemen: Please send me, without obligation, complete information about Servel Electrolux, the Kerosene Refrigerator.

Name \_\_\_\_\_  
Street or R.F.D. \_\_\_\_\_  
Town \_\_\_\_\_ State \_\_\_\_\_

- Keeps food fresh for days
- Freezes ice cubes—desserts
- Saves steps, work, money
- Needs no daily attention
- No water or electricity
- Has no machinery to wear

# ROCHE & GILMORE

Radio, Refrigerator and Electrical Service

PHILCO RADIOS

Motor Rewinding—Commercial Wiring

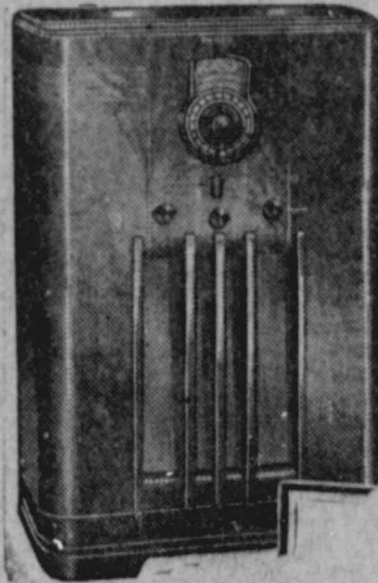
SOUTH OF PALACE THEATRE

SNYDER, TEXAS

# \$32.00

FOR YOUR OLD RADIO ON THIS  
NEW 1937

# PHILCO



\$ 130

Less 32

# \$98

(Complete with Aerial)

NO DOWN  
PAYMENT  
\$2.25  
WEEKLY  
▼  
SEE THIS  
VALUE!

- Nine Tubes
- Automatic Tuning
- Magnetic Tuning
- Spread Band Dial
- Philco Foreign Tuning
- World Wide Reception
- And Many Other Features

**HURRY! Only a Few Left to Go At This Price!**

# Roche & Gilmore

South of Palace Theatre—Snyder

# Project History Began Several Years Ago

## REA PROPOSAL INVESTIGATED

Dreams of electric service in Dunn had disturbed the minds of leading citizens for several years, but it was early in 1936 that the dreams began having any tangible results.

Led by W. C. Hooks, J. C. Beakley and others, the community contacted officials of the Rural Electrification Administration, new government agency for bringing electricity into rural homes.

Encouraged after investigating government requirements, the small group contacted a number of individuals in Dunn and surrounding communities. A central committee was named at Dunn, with Hooks as chairman, Cleo W. Tarter and John Brown as members.

### Committees Are Named.

It was early in December that concrete plans for REA connections were worked out. With the idea of extending the service, committees were named in Buford, Ira, Longfellow, China Grove, German and Valley View communities.

Assisted by W. R. Lacey, Scurry county agent, and B. J. Baskin, Mitchell county agent, the committees began having meetings to learn details of REA proposals and to determine the number of customers that could be secured.

Texas Electric Service Company officials met with community groups several times, and out of these contacts grew a central meeting of all committees and a number of other citizens at the Dunn Methodist Church Wednesday afternoon, January 6.

### Geer Presents Plan.

Lon J. Geer, Sweetwater, district manager of the electric company, presented his company's plan, based on rate scales and service similar to that offered by REA. Definitely promising to bring the service to Buford and Dunn, later into other communities where customers justified lines, Geer offered the interested group a maximum of service with a minimum of organization and management on their part.

The company's plan was accepted, after committeemen from the various communities conferred. W. C. Hooks of Dunn was made chairman of a general committee. Others on the committee are: Elmer L. Taylor, Ira, secretary; Joe Hairston, China Grove; Rufus Mize, German; B. W. Scott, Longfellow; Earl Brown, Valley View, and G. W. Webb, Buford.

Geer proposed a minimum customer rate of \$2 for 10 kilowatt hours.

Customer surveys were begun within a few days, and surveying of the proposed line was begun shortly afterward. Actual construction had started by late January. Right-of-way was donated by land-owners along the route.

Dunn and Buford had electric service almost exactly one and one-half months after actual construction began—less than four months after organization of community committees was begun.

## Scientific Rates Impossible Says U. S. Commission

By Frank Saponaro, REA Engineering Division.

In the introduction to its recent report on electric rates, the Federal Power Commission made the following statement:

"It has been stated frequently that there is no such thing as a scientific wage; so it may be said there is no such thing as a scientific electric rate. If there were, the bewildering variety and complexity of existing rate practices would be unpardonable."

In this same report, which was based upon the most intensive and exhaustive study ever made, the commission admitted that—"It is not known how many schedules there are in the United States."

Behind this maze of confusion and complexity a vehement controversy seethes. This commenced almost at the birth of the industry, and still continues. What is the cost of electric service? What discrimination in prices or price differences are reasonable between different types of customers? What form of schedule most accurately reflects these cost differences? Until these questions are answered or their influence on rates minimized, electric rates will continue to be a mystery to those not schooled in their intricacies.

There are two cost factors which are inherent in most electric rates. First, electric service must be available for immediate use at all hours. But electricity cannot be stored economically in large quantities. Hence there must always be enough generating equipment available to meet the maximum demand the customers might make upon the system. And there must always be enough current generated to meet the maximum demand at a given time. When less than the maximum is demanded, some of the equipment stands idle, or only a part of its capacity is used. That is why the relation of the peak demand to the average is important in determining costs.

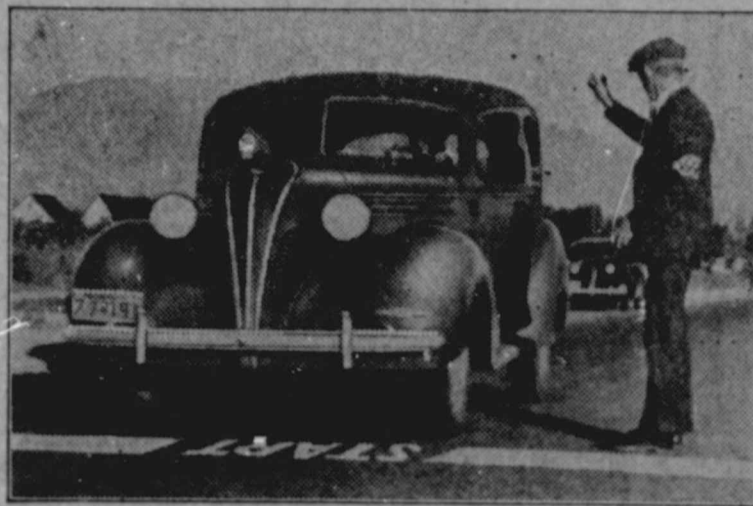
Second, to deliver electricity, there must be a physical link between each customer and the source of supply.

These two items give rise to a relatively large investment per customer and a still larger investment where a customer demands a large amount of service at once compared with the customer who demands the same amount of service but will take it in a small flow over a long period of time. This situation, where the main costs of generating and distributing electricity are overhead, makes it possible and necessary to offer additional amounts of service at sharply reduced prices.

Guide to the museum—"This Egyptian mummy is about 5,000 years old. It is possible that Moses saw it."

Tourist—"But was Moses ever in Paris?"

## Sets "Get-Away" Records



New records for rapid "get-away" and fast acceleration have just been set by the new 1937 Terraplane and its "big brother," the Hudson eight. The picture shows

an American Automobile Association contest official starting a stock Terraplane on one of the record runs. Terraplanes are handled here by J. Ralph Hicks.

Mrs. Simmons—"Now, which one of you can name five things that contain milk?"

Steve—"I can; butter and cheese and ice cream and two cows."

It isn't what you would do with a million if riches should e'er be your lot, it's what you are doing at present with the six bits that you've got.

## 2,000 New Trees Planted in 1937 Along Highways

G. R. Austin, superintendent in Scurry and Borden Counties for work of the State Highway Department, reports that more than 2,000 trees have been planted since January 1 along Highways 7 and 15 near Snyder.

Most of the new trees are salt cedars. The majority of them have been placed along the outside of curves and alongside culverts and bridges.

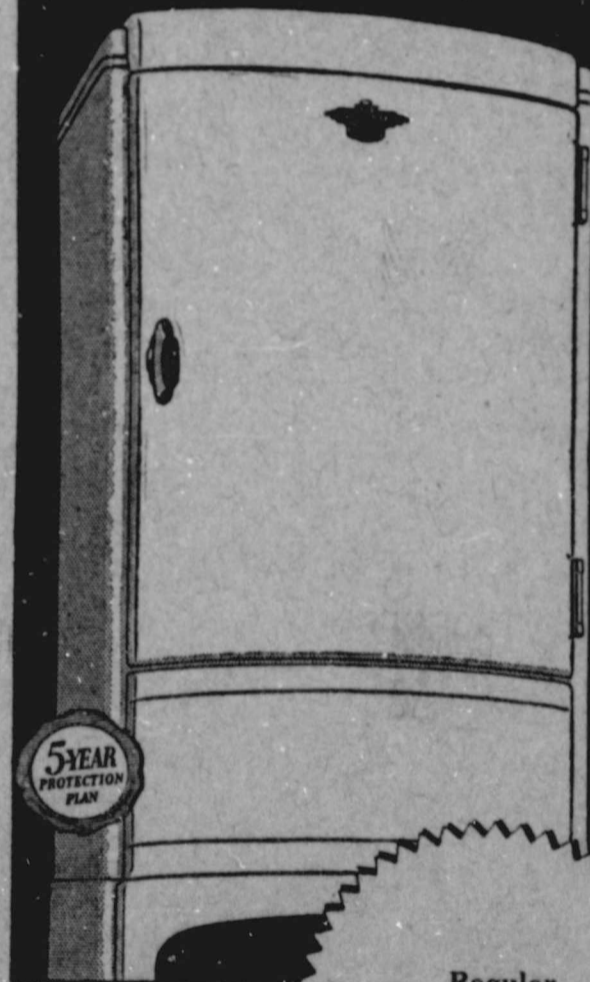
Austin's two counties were among the first in West Texas to begin the state-wide highway beautification program, the unique roadside park near Dermott being the outstanding example of the work in which he has taken the leading role.

Extensive work has been done here in recent weeks on the warehouse and surrounding grounds of the State Highway Department in Southeast Snyder. A high heavy wire fence is being built, almost 300 trees and other plants have been set out, and the entire plot has been cleaned up and beautified. Several dozen rose bushes and other plants are included in recent plantings.

# Today's Big News!

## NEW "SUPER-DUTY" FRIGIDAIRE

### WITH THE METER-MISER



### Brings Sensational Advance in ALL 5 BASIC SERVICES for Complete Home Refrigeration

*Come in. See the Proof!*

- 1. GREATER ICE-ABILITY**  
Ends "Cube-Struggle" and "Ice-Famine"!
- 2. GREATER STORAGE-ABILITY**  
New 9-Way Adjustable Interior!
- 3. GREATER PROTECT-ABILITY**  
Keeps food safer, fresher, longer!
- 4. GREATER DEPEND-ABILITY**  
5-Year Protection Plan, backed by General Motors.
- 5. GREATER SAVE-ABILITY**

Only Frigidaire has the **Meter-Miser**

Cuts Current Cost to the Bone!

Simplest refrigerating mechanism ever built!

Only 3 moving parts, including the motor...

... permanently oiled, sealed against moisture and dirt. Gives SUPER-DUTY at amazing saving. SEE THE PROOF with an actual electric meter test.



### THRILLING TO SEE AND USE! PAYS FOR ITSELF!

Yes, the 1937 Frigidaire is today's big news! For it brings you sensational new completeness in ALL 5 BASIC SERVICES for home refrigeration—and gives you PROOF of all 5!... So don't buy on mere claims. Come in and see the PROOF that the new Frigidaire is the most complete ice-provider, food-storer and food-preserver ever known! PROOF that it will save you enough on food and current bills to pay for itself and pay you a profit besides. Save money... save regret... see our Frigidaire PROOF-DEMONSTRATION first!

Only FRIGIDAIRE has the INSTANT CUBE-RELEASE See it in Action!

It's in every ice-tray in every "Super-Duty" Frigidaire. Instantly releases ice-cubes from tray, two or a dozen at a time. Yields 20% more ice by ending faucet melt-ice waste. Come in. See its quick, easy action.

Regular G. M. A. C. Time Payment If Desired



## SNYDER GENERAL HOSPITAL

FULL X-RAY EQUIPMENT AND COMPLETE CLINICAL LABORATORIES



### STAFF

Dr. Grady Shytle, General Surgeon and Consultation

Dr. H. E. Rosser

Dr. W. R. Johnson

Dr. R. L. Howell

Dr. A. C. Leslie

Dr. A. O. Scarborough

Dr. J. G. Hicks, D. D. S.

# KING & BROWN

Phone 12

Snyder, Texas













County Line News

Mrs. Lawrence Brown, Corresp.
to had weather, there was no
school in our community
day.

Ennis Creek News

Fae Floyd, Correspondent
Wade Rogers returned from Chil-
dres, where he has been working.

Inadale News

Mrs. C. C. Brannon, Correspondent
Mr. and Mrs. Lee Roy Moore of
Monahans visited in the home

Gibbons Finds Young Adventurer



Floyd Gibbons sparring with 15-year-old David Steurer, now almost completely recovered from infantile paralysis which kept him in bed for several years.

Lloyd Mountain

Mrs. Faye Rogers, Correspondent
Miss Arlon Looz entertained her
many friends Thursday, celebrating
her thirteenth birthday.

Midway News

Callie DeShazo, Correspondent
Mrs. Oscar Auecht had as her
guests Sunday Mr. and Mrs. Womack
and children of Big Spring.

Gail News

Honoring Mrs. D. Dorward on her
birthday, Mrs. W. D. Smith entertain-
ed with a surprise party Friday
afternoon at the Smith home.

Fluvanna News

Mrs. Alvin Tatum, Correspondent
Our community received another
shower last week.

Dermott News

Mrs. J. E. Sanders, Correspondent
Miss Christine Flippin spent Sat-
urday night and Sunday with Miss
Nila Irion at Turner.

Murphy News

Mrs. W. W. Weathers, Corresp.
We extend our sympathy to Mrs.
Jim Wilson and relatives in their
sad hour.

Canyon News

Luella Layne, Correspondent
We wish to express our sympathy
to Mrs. A. A. Crumley in the loss
of her mother, Mrs. Fargason of
Hermleigh.

Hermleigh News

Mrs. J. M. Bralley, Correspondent
March 22 has been set for the rab-
bit drive on the Pyron ranch.

Lone Star News

Mrs. E. N. Smiley, Correspondent
People are certainly rejoicing
over the recent rains, but not so
much over the late freeze.

Mrs. J. T. Sullenger is doing nicely
since last Sunday a week ago.
She was seriously injured about the
head in a car wreck.

Mrs. Mary Greenfield and Inez
Sanders were business visitors in
Roscoe Wednesday last week.

Bell News

Mrs. Will Caffey, Correspondent
L. H. Bean, who was sick all last
week, is no better at this writing.

Pleasant Hill

Ruth Merritt, Correspondent
Leonard Stock of Canyon returned
Sunday, after visiting here since
Thursday.

Crowder News

Thelma Kinney, Correspondent
Mr. and Mrs. Evans Millhollan of
Canyon were Wednesday visitors in
the J. A. McKinney home.

Mrs. Emma Leggett of Roscoe,
who has been visiting in the E. M.
Mahoney home, returned to her
home Thursday last week.

Mrs. H. O. Greenfield entertained
with a birthday party, honoring Miss
Velma Lee Edmonson, Friday night.

Boren-Grayum Insurance Agency

All Kinds of Insurance
NOTARY PUBLIC
Bonds - Legal Papers
Abstracts Drawn

Confidence Comes of Understanding

People naturally steer away from anything that they don't understand. Confidence in anything strange comes of knowing what it's all about.

MARKWELL

STAPLES AND STAPLERS
Carried in Stock by THE TIMES
Also—Plenty of Staples for ALL Makes of Hand Staplers

Fluvanna High School News

Chapel last Thursday and Friday
consisted of one and a half hour
programs filled with Intercollegiate
League numbers.

Mrs. H. O. Greenfield entertained
with a birthday party, honoring Miss
Velma Lee Edmonson, Friday night.

Confidence Comes of Understanding

People naturally steer away from anything that they don't understand. Confidence in anything strange comes of knowing what it's all about.

Confidence Comes of Understanding

People naturally steer away from anything that they don't understand. Confidence in anything strange comes of knowing what it's all about.

MARKWELL

STAPLES AND STAPLERS
Carried in Stock by THE TIMES
Also—Plenty of Staples for ALL Makes of Hand Staplers

MODERNIZE YOUR BUSINESS

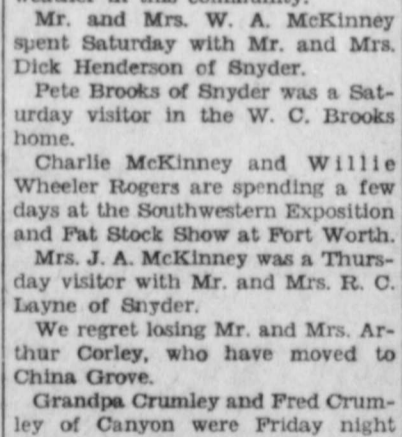
With the Correct Form For Every Purpose and BINGI Speed Binder



Standard B & P Professional and General Business Forms are designed with the co-operation of accountants in each business in which the forms are to be used.

MODERNIZE YOUR BUSINESS

With the Correct Form For Every Purpose and BINGI Speed Binder



Standard B & P Professional and General Business Forms are designed with the co-operation of accountants in each business in which the forms are to be used.

FREE to sufferers of STOMACH-ULCERS HYPERACIDITY

Willard's Message of Relief
PRICELESS INFORMATION for those suffering from STOMACH OR DUODENAL ULCERS, DUE TO HYPER-ACIDITY, INDIGESTION, ACID DYSPEPSIA, SOUR STOMACH, GASTRITIS, HEADACHES, CONSTIPATION, BAD BREATH, SLEEPLESSNESS OR HEADACHES, DUE TO EXCESS ACID.



Confidence Comes of Understanding
People naturally steer away from anything that they don't understand. Confidence in anything strange comes of knowing what it's all about.

MARKWELL

STAPLES AND STAPLERS
Carried in Stock by THE TIMES
Also—Plenty of Staples for ALL Makes of Hand Staplers

Union Chapel

Ruth Barnett, Correspondent
We are having some cold weather
at this writing.

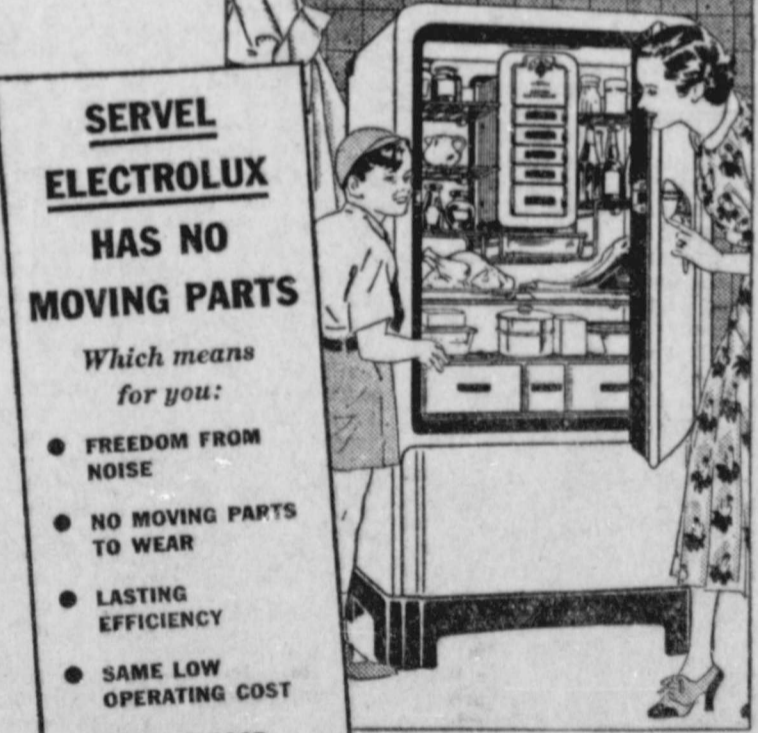
Stinson Drug Co.

ANNOUNCING
Greater Happiness and Savings for Every Home

SERVEL ELECTROLUX REFRIGERATOR

Runs on Gas or Kerosene (Coal Oil) For only a few cents a day.

Which means for you:
FREEDOM FROM NOISE
NO MOVING PARTS TO WEAR
LASTING EFFICIENCY
SAME LOW OPERATING COST
FULLEST FOOD PROTECTION
SAVINGS THAT PAY FOR IT



Choose the GAS refrigerator for longer, more satisfying service!

THERE'S good reason why Servel Electrolux is a favorite of thrifty women! Year after year, it provides the same worthwhile savings—the same comfort of silence—it did when new! For, this basically different refrigerator hasn't a single moving part in its freezing system.

Times Publishing Company
Telephone — No. 47

Times Publishing Company
Telephone — No. 47

Times Publishing Company
Telephone — No. 47

Times Publishing Company
Telephone — No. 47

Times Publishing Company
Telephone — No. 47

Times Publishing Company
Telephone — No. 47

Times Publishing Company
Telephone — No. 47



