

Carpenter's murder trial underway

BY RICK WHITE
Managing Editor

Joseph Doyle Carpenter is incapable of murder or any other act of violence according to his defense attorney.

Dan Hurley, Carpenter's velvet-voiced lawyer, painted a picture of a meek and easily manipulated man who is being wrongfully charged with murder based on a coerced confession.

Opening arguments were made Tuesday in the murder trial of Carpenter, a 35-year-old Muleshoe man charged with the 1997 beating death of Faviola Mendoza, a 20-year-old housewife.

Carpenter lived next door to Mendoza, who had moved from her native Mexico to the United States five months before her death.

Dressed in a blue blazer and tan slacks, the stoic Carpenter sat facing a jury of 10 women and two men selected Monday as his lawyer described him as shy and quiet, easily manipulated and intimidated by people in authority.

Contrary to Hurley's emotional plea, District Attorney Johnny Atkinson stuck to the facts and argued that Carpenter should be found guilty based on his confession to police.

"Unfortunately, at the end of

the case there will be no winners," Hurley said. The defense lawyer said the Mendoza family has obviously suffered a terrible tragedy while being wrongfully charged with the murder has been an irreversible nightmare for Carpenter and his family.

"But the worst tragedy of all is the person that killed Faviola Mendoza could still be walking the streets of Mexico or could be living in Mexico," Hurley said.

Both sides agree the trial is going to hinge on a single confession Carpenter made to police several days after the murder. A second and similar confession was ruled inadmissible before the trial by District Court Judge Jack D. Young.

Hurley said his client was only trying to help police when he agreed to take a polygraph test. After allegedly being told he failed the test, Hurley claims police browbeat a confession out of Carpenter.

"He was being accused of lying and being threatened with the death penalty," Hurley said. "He felt hopeless and felt he was going to die if he didn't make a decision. He was responding to leading questions."

Officials have estimated the trial will last 10 days to two weeks.



Prime target

Senior B.J. Gonzales takes his turn shaving Muleshoe head football coach David Wood's head Friday after the Mules beat Littlefield 28-15 in the District 2-3A opener for both teams (See related story on page 4.)

Mules confident in backups

■ Broken hand will keep Vela out for a while

BY RICK WHITE
Managing Editor

Muleshoe's upset win Muleshoe's upset win proved Littlefield last week proved costly.

Senior tailback and offensive sparkplug Gilbert Vela broke three bones in his right hand late in the game and is out for at least two to four weeks

— and possibly the season. Vela rushed for 105 yards and two touchdowns in the Mules' eye-opening 28-15 win, his fourth 100-yard game of the season.

"I think the team is so confident now that it doesn't really matter who we put in there," Muleshoe head coach David Wood said.

Junior Jesse Reyes will take Vela's spot in the starting lineup when Muleshoe hosts Shallowater at 7:30 p.m. Friday at Benny Douglass Stadium

in Week 2 of the District 2-3A season.

"Any time you can beat Littlefield at home, it's a big win," Shallowater head coach Keith Kitchens said. "Muleshoe is going to be sky-high this week and we're going to have to be if we're going to have a chance to win."

Even though it's still early, the outcome of Friday's game could have major ramifications for both teams.

Shallowater (4-2 overall, 0-1 in district) suffered a 30-2

setback to Friona last week and another loss would put the Mustangs in a huge hole.

"We just have to take it one game at a time," Kitchens said. "Friona is doing the drain. We have to get ready this week for a pretty good Muleshoe team. If we lose this week, I wouldn't say it would be impossible to make the playoffs, but it would be difficult."

A win would thrust Muleshoe (5-1, 1-0) into prime

see MULES on page 9

PAGE ONE

A QUICK READ OF THE NEWS

Toscano stops streak

Rosalinda Toscano of Muleshoe broke Lazbuddie's stranglehold on the Journal's weekly football contest.

By winning Week 6 of the Journal's football contest, Toscano ended a streak of four-straight weeks that Lazbuddie contestants took home the top prize.

Toscano captured the \$25 first prize in a five-way tie-breaker by coming closest to the total number of points scored in Arizona's 20-7 win against Chicago.

Scott Brown of Lazbuddie took home the \$15 second prize and Richard Orozco of Muleshoe earned the \$10 third prize.

All three winners correctly picked 15 of 18 high school, college and NFL games last week.

Look for entry forms each Sunday in the Bailey County Journal.

LOCAL WEATHER

	High	low	Pre.
Friday	88	43	—
Saturday	89	42	—
Sunday	80	47	—
Monday	82	49	—
Total to date	9.25 inches		

EXTENDED FORECAST

Sunny and warm Thursday, turning windy Friday as a cold front moves in. Showers Saturday with highs in the mid 60s and lows in the 40s over the weekend.



Texas Tech history professor Dr. Paul Carlson was the guest speaker Monday at the Muleshoe Heritage Foundations annual membership meeting.

Preserving area's history important according to Texas Tech professor

By LESLI RADFORD
Journal staff writer

Dr. Paul Carlson, professor of history at Texas Tech University, said separating truth from myth is the key to preserving the area's heritage.

Dr. Carlson was the guest speaker Monday at the 13th annual Muleshoe Heritage Foundation membership meeting at the Old Depot.

A member of the West Texas Historical Association, he spoke on the importance of history.

"All of us use history," he said. "It's a historian's job to

seek the truth. We try to take the myth out of history."

Dr. Carlson gave a history of the cowboy.

"The definition of a cowboy is one who tends cattle," he said. Carlson said that a cowboy was usually a young boy who was underpaid and participated in long cattle drives.

He said that today's "cowboy" is a guy that wears Wrangler's and boots with points and a ten-gallon hat with a matching belt buckle "the size of a tin coffee can lid" some of the time, and at other times he's wearing basketball shoes

and a baseball cap — "nothing like that of the first real cowboy."

To keep Muleshoe's heritage from turning to a myth, it needs to be restored. "That's most important," said Carlson.

Later, Vivian White, Heritage Foundation president, gave a review of projects that were recently finished and still in progress. The rail fence around the Foundation was one of the completed projects along with the installation of a sprinkler system and security

see HERITAGE on page 2

DeShazo receives recognition for work with migrant students

Mary DeShazo Elementary of Muleshoe Independent School District has been recognized by the Texas Education Agency for successfully educating its migrant students.

TEA's Division of Migrant Education has selected Mary DeShazo Elementary as a winner of the 1998 Certificate of Merit Award, given to school campuses and school districts that have high TAAS passing rates among their migrant students. Statewide, 73 school districts and 391 campuses are receiving this

recognition.

The purpose of the award is to recognize school districts and campuses that are helping to meet the unique needs of migrant children and their families and helping migrant students meet high academic standards.

Recipients will be listed in the program at the 1998 Migrant State Conference and will also be honored during a luncheon, both of which will take place at the Camino Real Hotel on Nov. 11-13 in El Paso.

In order to receive the district award, school districts had to attain at least 80 percent passing all areas of TAAS of their migrant student populations.

Campus winners also were awarded in four categories: exceptional, excelling, promising and acknowledged. Some 53 campuses were distinguished as exceptional. Exceptional campuses had 10 migrant students or more tested in all areas (math, reading and writing) of the Texas Assessment of Academic Skills (TAAS), and had at

least 90 percent of migrant students passing all areas of TAAS. There were 80 campuses identified as excelling. Excelling campuses had 10 migrant students or more tested in all areas of TAAS, and had at least 80 percent of migrant students passing all areas of TAAS.

One hundred and twenty six schools were acknowledged as promising. Mary DeShazo Elementary was recognized as a promising campus. Promising campuses had

see DESHAZO on page 2

AROUND MULESHOE

Senior class hosting pre-game supper

The Muleshoe High School senior class will host a pre-game supper from 5-7 p.m. on Oct. 16 before the Shallowater game in the high school cafeteria.

A Mexican pile-on will be served. Tickets are \$5 for adults and \$3.50 for children 12-and-under.

Deliveries are available until 6:30. Call 272-4360.

MHS band parents sponsoring dance

The Muleshoe High School Band parents are sponsoring a dance Friday, Oct. 16 from 10 p.m. to 1 a.m. at the American Legion Hall. Admission is \$4.

Breast cancer screening clinic Nov. 2

The Women's Center of the Don and Sybil Harrington Cancer Center and Baptist/St. Anthony's Health System will conduct a Breast Cancer Screening Clinic at Muleshoe Area Medical Center, 708 S. First St., on Nov. 2.

The cost is \$75 and includes a mammogram and instruction in self-examination by a registered nurse.

A minimum of 15 women need to register in order for the mobile mammography clinic to come. Funding is available through the Texas Department of Health for Texas residents who qualify for assistance.

All exams are done by appointment only. Call (806) 356-1905 or 1-800-377-4673 for more information.

Retired teachers to attend conference

The Muleshoe Area Retired Teachers will attend the District 17 Fall Conference, Friday, Oct. 16 at the Bailey Book Store in Lubbock.

After the conference, members will tour a Lubbock winery as part as a field trip.

Members are asked to be at the 16th & D Church of Christ parking lot by 7:30 a.m. to leave for Lubbock.

PTA Fall Festival being held Oct. 24

The Muleshoe Elementary PTA Fall Festival will be held from 6-9 p.m. on Saturday, Oct. 24 in the Bailey County Coliseum. There will be games, cakewalk and prize-winning Bingo.

All proceeds benefit elementary school classrooms.

Christian mime group to perform

Silent Witness, a local Christian mime group led by Toni and Kenneth King, will present a special program at 1:30 p.m. on Sunday, Oct. 18 at the 16th & D Church of Christ.

Silent Witness has a unique ministry which is an unusual blending of music and drama that wordlessly presents a powerful and uplifting Christian message.

Anyone interested is welcome to attend. For more information, call 272-4619.

Music of Bill Case & Velvetones Oct. 17

The Bailey County Chapter of the American Heart Association is sponsoring an evening of food and music Saturday, October 17, at the Bailey County Coliseum, featuring the big band sound of Bill Case and the Velvetones.

A potato pile-on will be served 7-8 p.m. Followed by entertainment (listening or dancing) from 8 - 10 p.m.

Tickets for meal and music will be \$12 or \$6 for music and can be purchased at the door or from any AHA member.

Call Nancy Kidd at 272 - 5448 or Joyce McGehee at 965 - 2950 for information.

The deadline for items to appear in Around Muleshoe is 5 p.m. Monday for Thursday's edition and 5 p.m. Thursday for Sunday's edition. Items can be mailed (PO Box 449), called in (272-4536) or faxed (272-3567).

Odds & Ends Clearance Blowout

Top Quality Merchandise At A Fraction Of The Cost!!

ONE DAY ONLY *10 am to 4 pm*
Saturday-October 17

Adults & Kids
Windsuits & Coats... \$35-\$45
Tee Shirts..... \$5-\$10
Shoes..... \$10-\$35

Williams Athletics
322 Main St. • Muleshoe, TX • 272-6853

Muleshoe Journal USPS 367820

Established February 23, 1924. Published by Triple S Publishing, Inc. Every Thursday at 304 W. Second, Box 449, Muleshoe, TX 79347.
Second Class Postage paid at Muleshoe, TX.
POSTMASTER: Send address changes to the Bailey County Journal, P.O. Box 449, Muleshoe, TX 79347.
We are qualified members of:
Panhandle Press Association, National Newspaper Association, West Texas Press Association and Texas Press Association

WEST TEXAS PRESS ASSOCIATION

PPA

Panhandle Press Association

TA

MEMBER 1998

TEXAS PRESS ASSOCIATION

Scot Stinnett, Publisher
Lisa Stinnett, Vice-President/Comptroller
Rick White, Editor
Leah Bell, Classifieds
Leah Bell, Advertising

SUBSCRIPTIONS: Muleshoe Journal and Bailey County Journal
By Carrier Yearly - \$22.00
Bailey County — by mail - \$24.00
Elsewhere - \$26.00
Advertising Rate Cards on Application

Advertisers should check their ad the first day of insertion. The Journals will not be liable for failure to publish an ad or for a typographical error or errors in publications except to the extent of the cost of the ad for the first day of insertion. Adjustment for errors will be limited to the cost of that portion of the ad where the error occurred.

Follow the Fortunes of the Muleshoe Mules in the Bailey County Journal • 272-4536

HERITAGE

From page 1

This group later became the SCAC (Student Community Action Club) organization. Labor and supplies were donated to restore the old building.

"This is a great organization," said advisor Jim Gruhlkey on behalf of the SCAC. "It is a great organization for our kids to be a part of the community."

Advisor Chris Mardis and a group of Muleshoe High School students made a video on the importance of holding

on to Muleshoe's heritage. SCAC's president, Amber Bruns, acknowledged this year's officers and talked about projects they have championed to help support the Heritage Foundation. She then presented a check for \$2,000 to the foundation.

Peggy Bruton, Heritage hostess, then presented certificates to several businesses that have supported their existence. A special plaque will be hung in the depot with several

individual's names that have shown major support to the Heritage Foundation. New officers selected to the board to fill the four directors positions were Smokey Little, Bill Liles, Victor Leal and James Allison.

The ceremony closed with refreshments and live music.

Emergency loans available from FSA

Applications for emergency farm loan losses caused by extreme fire hazards conditions are being accepted at the Farm Service Agency (FSA) office located on 111 E. Ave D., according to farm loan manager Joyce M. Thompson.

Bailey County was one of the adjacent States that are contiguous to New Mexico that has been recently named by President Bill Clinton as eligible for loans to cover part of actual production losses resulting from extreme fire hazard conditions.

Thompson said farmers may be eligible for loans of up to 80 percent of their actual losses or the operating loan needed to continue in business or \$500,000, whichever is less. For farmers unable to obtain credit from private commercial lenders, the interest is 3.75 percent.

"As a general rule, a farmer must have suffered at least a 30 percent loss of production to be eligible for an FSA emergency loan," Ms. Thompson said. Farmers participating in Federal Crop Insurance program will have to figure in proceeds from those programs in determining their loss.

Applications for loans under this emergency designation will be accepted until March 2, 1999 farmers should apply as soon as possible. Delays in applying

could create backlogs in processing and possible over into the new farming season," Ms. Thompson said.

FSA is a credit agency of the U.S. Department of Agriculture. It is authorized to provide disaster emergency loans to recognized farmers who work at and rely on farming for a

substantial part of their living. Eligibility is extended to individual farmers who are U.S. citizens and to farming partnerships, corporations or co-operatives in which U.S. citizens hold a majority interest.

The FSA office in Muleshoe is open from 8-5 p.m. Monday through Friday.

Win A Computer With Classic Cable!

LOOKING FOR A LITTLE ACTION ON SATURDAY NIGHTS?



Sign up for cable today and be automatically entered in a drawing for a DELL Dimension home computer!

Call Today! 1-800-999-8876

Community • Commitment • Customer Service

Follow the Mules in the Journal

JOE'S BOOT SHOP

1-800-658-6378 106 E. American Blvd. Muleshoe, Texas

And Country Junction

We Ship Everywhere

Country Junction wants to be your Holiday Headquarters!

All New Scents! **YANKEE CHRISTMAS CANDLES**

• Christmas Eve • Christmas Cookie
• Hollyberry • Christmas Wreath • Bayberry

We still have a great selection of Harvest Wreaths, Scarecrows & Fall Floral Arrangements!!

Lots of new **Christmas Wreaths** handmade by Barbara

Lots of New Arrivals!

SPECIAL ORDERS WELCOME

It's not too early to layaway for Christmas!

My Cattle Feedin' Partner

"I just bought us a new set of feeders," exclaimed my Texas cattle feeding partner last January. I could hear the excitement in his voice. It was like he had just cashed a twenty dollar check and stepped up to the craps table.

It got me fired up, too. "What are they like?" I asked. He paused for effect, "They're weighin' 256, they're outta Florida and they're bullet proof!"

I can't remember how I reacted to such an enthusiastic description. Maybe that was when I sold all my mutual funds and bought stock in the Afghanistan tourism industry, or put down payment on the ranch of my dreams, or told my wife to quit her job.

Anyway, we were in it again.

Early spring he wrote to say, "They're knockin' em dead in the growin' yard."

I guess how you interpret that comment would depend on what you did for a living. I knew he didn't work for a packin' house, so I took it as a positive sign.

The summer 'Goin to



BAXTER BLACK

ON THE EDGE OF COMMON SENSE

Grass' report cited only 3 deads with a note that any tailenders, cripples, chronics, pore doers or rat-tailed BVD lungers will be sorted off and sold as team roping steers. The long range forecast was for rain. "We're counting on El Nino," were his exact words.

If you followed the drought in Texas last summer you might not be surprised to hear that we started protein cubes immediately, with the plan to continue until the "grass gets lush". It was a long summer.

Now we're lookin' at wheatgrass or the feedlot. My partner continues to be optimistic and it's like talking to a Sunrise Rotarian. "We're still okay," is the by word, "grain's cheap."

Well, your guess is as good as mine as to how we'll come out on the deal. I'd like to make a little on the steers but either way I think I'll be disappointed when the ride ends.

It's more fun than the stock market and no broker could be near as entertaining as my partner.

So, when he calls next spring and says,

"I've got the perfect deal. They're weighin' 485, they're Holstein cross outta Puerto Rico and they're just like money in the bank."

I'll say, "Count me in. Should I go ahead and get the Corvette now?"

Quote from a Nebraska cattle feeder last summer, "The ones that made the most are the ones that died of sickness early."

By coincidence I noticed back behind in yonder corner that the other heifer also had her baby up and suckin' and wa puttin' on a show.

It was sorta satisfyin'. I admit I paused a minute to appreciate life's mysteries, although mostly I was thinkin' only ninety-six to go.



RCA
Only 18 Inches Wide

Model DS5120RB
RCA DIGITAL SATELLITE SYSTEM
The Next Generation

- Compact Receiver
- 18" Wide Antenna Dish
- Universal Remote
- Over 200 Channels
- Super Quality Picture
- One-Touch Tuning

Tune directly to a program highlighted on the program guide with the touch of one button. (Features by StarSight®)

\$99

WILSON APPLIANCE
117 Main St. • Muleshoe, TX • 272-5532

THE MULESHOE JOURNAL IS FOOD FOR THE BRAIN

Is your head growling? Feed it today.
Call 272-4536 to subscribe! Call 272-4536 to subscribe!

LETTER TO THE EDITOR

Be careful what you read

I would like to comment to last week's letter to editor.

You can't believe everything you read in the newspaper.

Have Americans forgot that the press writes articles to sell their paper. Do you really believe everything you read? People can't judge who killed Ms. Barraz and Mrs. Mendoza according to what you read in

the newspaper.

Evidence is the main key in a murder and in every issue of life.

Let the Lord decide who is guilty or innocent, and let Him decide how to punish. The guilty will eventually pay.

So again, don't get caught up in everything journalists write. They are only out for a story. Whether it's politics, murders, fraud, the weather, gossip — they go for whatever sells. True or not. Fact or fiction. Proof or no proof. What they heard or what someone told them.

— Angela Reyes Farwell

WJHS drops pair of games at Littlefield

LITTLEFIELD — Watson Junior High School dropped a pair of District 2-3A games Thursday against Littlefield.

The Littlefield 8th-graders downed WJHS 28-8 and the Wildcat 7th-graders beat the Mules 30-12.

In the 8th-grade contest, Watson Junior High scored on a 30-yard touchdown pass from Brennan Broyles to Fabian Fabela late in the game. Joel Cowart ran for the two-point conversion for the Mules, who are 3-3 overall and 0-1 in district.

Bryan King scored a pair of touchdowns in the second half for the 7th-grade Mules.

King's 26-yard run in the third quarter cut Littlefield's 14-0 halftime lead to 14-6. King scored again in the fourth quarter on a three-yard run that pulled WJHS (1-3, 0-1) to within 22-12. But Littlefield returned the ensuing kickoff 70 yards for a touchdown.

WJHS hosts Shallowater this week. Game times are 5:30 and 7 p.m.

DESHAZO

From page 1

campus. Promising campuses had 10 migrant students or more tested in all areas of TAAS, and had a least 70 percent of migrant students passing all areas of TAAS.

I THINK CHRISTMAS

OCTOBER 19th - 24th

MULESHOE ART LOFT

1529 WEST AMERICAN BLVD. 272-3485

ALL OFFERS WHILE SUPPLIES LAST.



ALLways
Open, Fast & Friendly

Effective Dates: October 14-27, 1998

Store #34
312 W. American Blvd.
272-4862 • Muleshoe



PEPSI
\$1.49
6 pk. 12 oz. cans



Milk
Allsup's Regular, 1%
Light or Shurfine 2%



Popcorn Chicken Bites
"Spicy or Homestyle"
and a Tallsup
\$1.99



Tom's Potato Chips
SPECIAL! 79¢ bag



Lana's Pork or Southwest Egg Rolls
SPECIAL! 2\$1 for



Blue Bunny Vanilla or Neapolitan Ice Cream Sandwiches
SPECIAL! 2\$1 for



Canadian Valley Chopped Ham
SPECIAL! \$1.59 12 oz.



All Flavors Little Hugs Drinks
SPECIAL! 4\$1 for 8 oz.



Clorox Liquid Bleach
SPECIAL! \$1.49 Gal.



SHURFINE DRY DOG FOOD
20 lb. bag
\$4.99



FOLGERS COFFEE
13 oz. can
\$3.99



FITTI DIAPERS
med. or lg.
\$5.19



BRAWNY PAPER TOWELS
\$1.09 roll

BUY 12 GALLONS OF MILK GET ONE FREE

PLUS... You Get A Chance To Win FREE Milk For A Year!

DISTRICT 2-3A ROUNDUP

Week 5

Friona 30, Shallowater 2

SHALLOWATER — With its normally high-octane offense sputtering, Friona relied on defense and turnovers to beat Shallowater 30-2.

Friona (6-0 overall, 1-0 in district) forced five Shallowater turnovers and harassed Mustang quarterback **Chris Cody** into his worst game of the year. Cody completed just 4 of 18 passes for 32 yards and was intercepted twice. Shallowater finished with 137 total yards.

Friona came into the district opener averaging 420 yards per game, but Shallowater (4-2, 0-1) bottled-up Chieftain RB **Matthew Kendrick** and held Friona to 189 total yards. Kendrick, the area's leading rusher in Class 3A with 803 yards through five games, finished with 89 yards and one touchdown.

Friona scored twice in the second quarter on Kendrick's two-yard run and a five-yard pass from **Justin Daniel** to **Noel Garjeda**. **Daniel Wiseman** scored on a 36-yard fumble recovery in Friona's 13-point fourth quarter.

Justin Stone led Shallowater in rushing with 55 yards in 11 carries.

Cooper 16, Roosevelt 13

WOODROW — **Carl Pankratz** booted a 20-yard field goal with 32 seconds to complete Lubbock Cooper's 16-13 comeback win against Lubbock Roosevelt.

District 2-3A		
	Dist.	All
Friona	1-0	6-0
Muleshoe	1-0	5-1
Lubbock Cooper	1-0	3-3
Littlefield	0-1	4-2
Shallowater	0-1	4-2
Lubbock Roosevelt	0-1	1-5
Results		
Muleshoe 28, Littlefield 15;		
Friona 30, Shallowater 2; Lub-		
bock Cooper 16, Lubbock		
Roosevelt 13		
This week's games		
Shallowater at Muleshoe, 7:30		
p.m.; Lubbock Cooper at		
Littlefield; Lubbock Roosevelt at		
Friona		

see ROUNDUP on page 5

MULESHOE 28, LITTLEFIELD 15

Muleshoe	0	21	7	0	28
Littlefield	0	7	2	6	15

SCORING SUMMARY

SECOND QUARTER

MUL — Gilbert Vela 4-yard run (Ryan Hodge kick), 10:34. **Drive:** 68 yards in 7 plays. **Key plays:** Matt McClanahan 44-yard pass to Dustin Cleavinger to Littlefield 23 on 3rd-and-9. McClanahan 10-yard run to Littlefield 13. **Muleshoe 7, Littlefield 0.**

LIT — Chris Weaver 50-yard run (Jeremy DeLosSantos kick), 2:17. **Drive:** 62 yards in 2 plays. **Key plays:** Josh Brandes recovers a Muleshoe fumble at Littlefield 38. Weaver 12-yard run to 50. **Muleshoe 7, Littlefield 7.**

MUL — Mitch Mason 5-yard pass from McClanahan (Hodge kick), 1:17. **Drive:** 5 yards in 2 plays. **Key plays:** Manuel Campolla 80-yard kickoff return to Littlefield 5. **Muleshoe 14, Littlefield 7.**

MUL — Vela 28-yard run (Hodge kick), 1:01. **Drive:** 28 yards in 1 play. **Key plays:** Jeff Shelburne recovers Littlefield fumble at the Wildcat 28. **Muleshoe 21, Littlefield 7.**

THIRD QUARTER

MUL — Dustin Cleavinger 19-yard pass from McClanahan (Hodge kick), 7:03. **Drive:** 80 yards in 10 plays. **Key plays:** McClanahan 20-yard pass to Cleavinger to Muleshoe 46 on 3rd-and-4. Vela 24-yard run to Littlefield 22 on 3rd-and-1. **Mule-**

shoe 28, Littlefield 7.

LIT — Safety, Muleshoe snaps ball out of end zone on punt attempt, 2:06. **Muleshoe 28, Littlefield 9.**

FOURTH QUARTER

LIT — Steven McCain 64-yard pass from Jason Brashear (kick failed), :34. **Drive:** 80 yards in 3 plays. **Key plays:** Brashear 18-yard pass to Kevin Reed. **Muleshoe 28, Littlefield 15.**

TEAM STATS

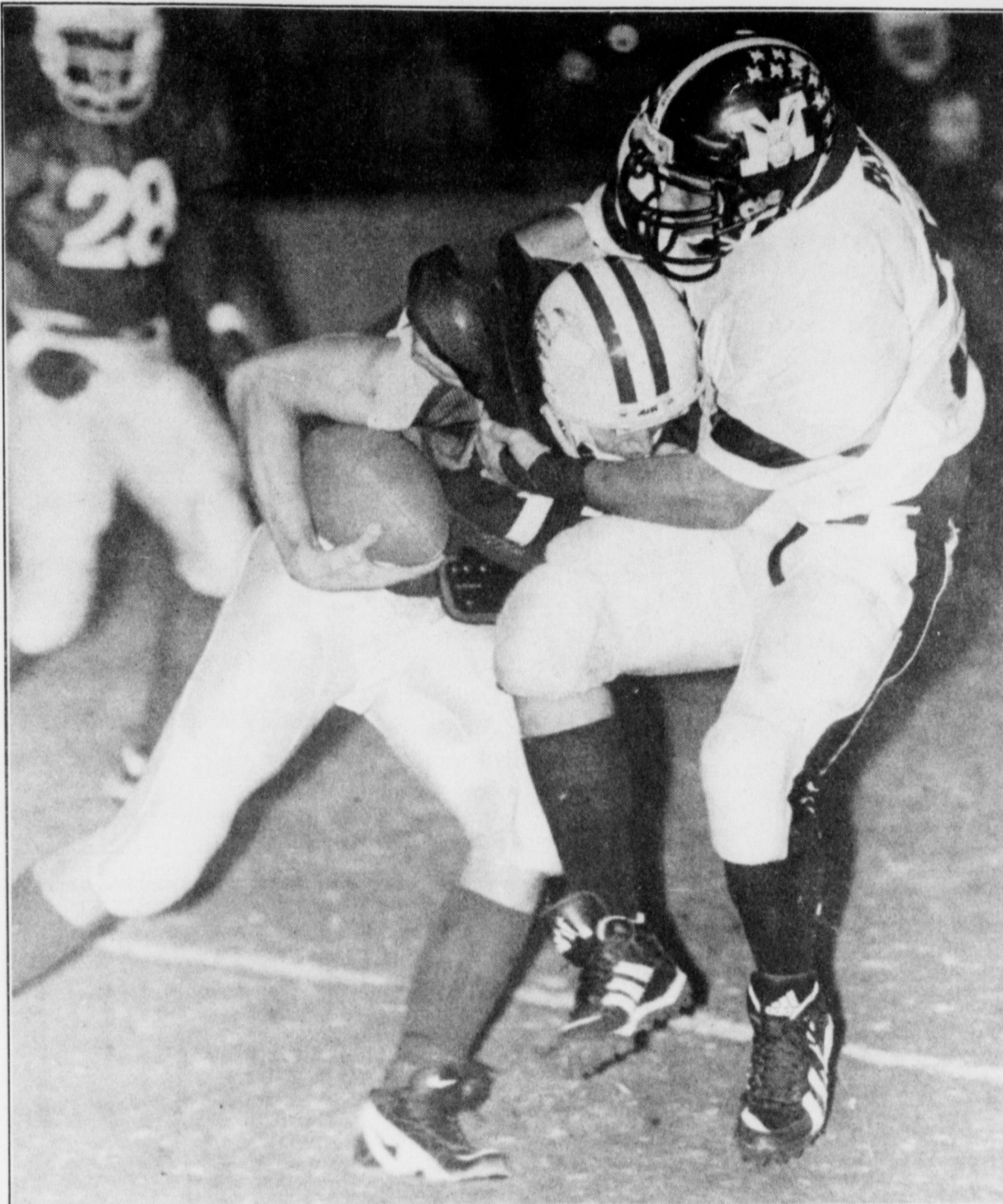
	Mul	Lit
First downs	14	11
Yards-rushes	44-184	25-160
Passing yards	95	121
Total yards	279	281
Att-comp-int	5-11-0	3-7-0
Fumbles-lost	4-1	6-5
Punts-avg.	4-38.8	3-35.3
Penalties-yards	6-36	1-10

PLAYER STATS

RUSHING — Muleshoe: Gilbert Vela 22-105, 1 td, Greg Pena 5-16, Matt McClanahan 12-38, Mitch Mason 3-18, Jesse Reyes 2-15. **Littlefield:** Chris Weaver 16-164, 1 td, Jason Brashear 7(-5), Josh Brandes 1-1, Eric Garcia 1-0.

PASSING — Muleshoe: Matt McClanahan 5-10, 95 yards, 2 tds, B.J. Gonzales 0-1. **Littlefield:** Jason Brashear 3-7, 121 yards, 1 td.

PASS RECEIVING: Muleshoe: Dustin Cleavinger 3-82, 1 td, Mitch Mason 2-13, 1 td, Gilbert Vela 1-28, 1 td. **Littlefield:** Steven McCain 2-101, 1 td, Kevin Reed 1-20.



JOURNAL PHOTO BY RICK WHITE

Bulldoggin'

Muleshoe linebacker Greg Pena corrals quarterback Jason Brashear Friday during the Mules' 28-15 win at Littlefield. The Mules' hard-hitting defense forced five turnovers in the District 2-3A opener for both teams.

Holts leave Three Way seeing double

By RHONDA HOOD
Special to the Journal

SILVERTON — The eighth-ranked Silvertown Owls opened District 3-1A play by handing the Three Way Eagles their first defeat in eight games.

The Eagles went down 69-47 Friday night after a gallant effort against a strong Silvertown team.

The Eagles, playing "catch-up ball" all night, let the Owls

score with 4:38 left in the first quarter on Jared Holt on a 64-yard run. Twin brother Jeremy Holt added the PAT to make the score 8-0.

It took the Eagles' Marvin McCaul less than a minute to put points on the Eagles side of the scoreboard as he scampered 58 yards for a touchdown. With 1:24 left in the opening quarter, Jeremy Holt scored on a 14-yard run for the Owls.

McCaul answered the Eagle cry for points as he scored on a 43-yard run. The PAT by Monty Kirby was good.

Silvertown's Jeremy Holt added two quick touchdowns to give the Owls a comfortable lead, but only for a few minutes.

Three Way's Monty Kirby brought the Eagle offense to

see EAGLES on page 5

District 3-1A

	Dist.	All
Amherst	1-0	6-0
Whitharral	1-0	5-1
Silvertown	1-0	5-1
Lazbuddie	0-1	4-2
Three Way	0-1	5-1
Cotton Center	0-1	2-4

Results

Amherst 42, Lazbuddie 34; Silvertown 69, Three Way 47; Whitharral 62, Cotton Center 16

This week's games

Cotton Center at Lazbuddie, 7:30 p.m.; Whitharral at Three Way, 7:30 p.m.; Silvertown at Amherst

Coaching: It can get hairy at times

David Wood won't have to reach far for a reminder of the biggest win of his young coaching a career.

The third-year Muleshoe head football coach need only to run his hand over the stumble that once was a full head of slightly-graying hair.

Muleshoe players lopped chunks of Wood's hair off with barber's shears last Friday as a reward for beating Littlefield 28-15 in the District 2-3A opener for both teams.

A brave Wood wore the

Edward Scissorhands-gone-wild haircut until Monday night, keeping the promise he made to the team.

No one can question Wood's commitment to winning.

"It gives the kids something to play for," Wood said. "You've got to make it fun for kids today because there is so much else going on around them."

Wood admitted it was a heavy price to pay — but well worth it.

— Rick White



JOURNAL PHOTO BY RICK WHITE

Sideline catch

Muleshoe's Mitch Mason cradles the ball against his body while catching a Matt McClanahan pass Friday during the Mules' 28-15 win at Littlefield.

Amherst edges 'Horns in District 3-1A opener

LAZBUDDIE — Lazbuddie coach Mark Scisson believes the District 3-1A six-man race is still wide open for the Longhorns despite a loss in the first week of district play.

Amherst (6-0) jumped out to a two-touchdown lead before the Longhorns' offense took the field Friday and held on for a 42-34 win that kept the Bulldogs unbeaten.

It was the Longhorns' second-straight loss.

"I don't think we've ever been shutout in the first quarter since I've been here," said Scisson, now in his seventh year as the Longhorns' head coach. "We didn't come out ready to play and they're too good a football team to fall behind by two touchdowns that early."

Lazbuddie (4-2) scored twice in the second quarter and tied the game at 22-22 in the third quarter on Adam St. Clair's two-yard run.

But Amherst's Matt Hood, who scored four touchdowns, picked off a Josh Morris pass and returned it 45 yards for a

touchdown later in the quarter to give the Bulldogs the lead for good. Hood's 11-yard touchdown pass from Dusty Miller early in the fourth quarter tipped the Bulldogs' lead to 34-22.

Morris completed 18 of 30 passes for 264 yards, but was intercepted twice. Adam St. Clair added 96 yards and two touchdowns on 16 carries for the Longhorns (4-2), who finished with 404 total yards.

Victor Cueto gained 104 yards on 18 carries for the senior-laden Bulldogs, who have 14 seniors. Amherst won back-to-back state titles in 1994-95.

"We didn't play well," Scisson said. "But that doesn't take anything away from Amherst. They're a good football team."

Lazbuddie hopes to snap its two-game losing streak this week when they host Cotton Center (2-4, 0-1).

Follow all the local sports action in the Journal



Sack attack

Muleshoe's Lupe Nunez tackles Littlefield's quarterback just as he is about to release the ball last week during a junior varsity game at Benny Douglass Stadium. The Mules beat Littlefield 26-0 and remained undefeated.

MHS players learning more than football

It's a perfect example of how the lessons learned through sports extend beyond the playing field.

Last week, the Muleshoe High School football team learned that Beau Hill of Dimmitt has a head injury that most likely ended his playing career.

Even though Hill played a huge role in ending the Mules' seven-game winning streak the previous week, Muleshoe players and coaches sent cards and notes of encouragement to Hill.

"The players have so much respect for him and the way he played the game," Muleshoe head coach David Wood said. "This was a way to show our support."

Wood said Hill was a relentless worker in the weight room and played hard every down.

A muscular 5-10, 200-pound senior, Hill rushed for 124 yards and four touchdowns in the Bobcat's 28-21 win.

He sat out several minutes the second half with blurred vision. The Dimmitt coaching staff thought at the time it was the result of a migraine headache.

But tests showed that Hill had some hemorrhaging in his head as a result of a concussion and will be undergoing further tests, according to Dimmitt head coach Bruce Dollar.

He sat out last week's loss to River Road.

— Rick White

EAGLES

From page 4

life as he threw a 63-yard touchdown pass to Gerald Perez.

In third quarter action, Jimmy James and Jon Kindler teamed up for two touchdown passes. Silvertown's Holt brothers were keeping their Owls just out of Eagle reach as they added the Owls third-quarter points.

Going into the fourth quarter down by 13 points, the Eagles came within eight points of the Owls. With 5:54 remaining in the game the score was 55-47, Silvertown leading.

The game boiled down to a solid effort on the Eagles part, but in the end the outstanding effort of Jeremy Holt tipped the scales in favor of the Owls.

"Gerald Perez was the outstanding player of the game for the Eagles. He played well on offensive and defense," Three Way coach Danny James remarked. "We missed an opportunity to beat Silvertown."

"We didn't play well defensively. We couldn't tackle Jeremy. He's a good solid ball player. Offensively we played well. We moved the ball well

and scored well."

Next week, the Eagles (5-1), face the Whitharral Panthers. Whitharral is rated No. 5 in one Texas 6-man poll.

"Whitharral is quick, they run well, pass well, and just do a lot of things effectively," James said.

When James was asked about Three Ways' district his thoughts were as follows.

"This thing is a long way from being over. If we can take care of business the next two or three weeks we will be right at the top of it all."

ROUNDUP

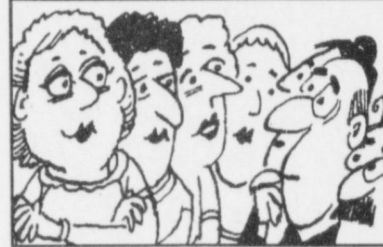
From page 4

The game-winning field goal finished off a 10-point rally in fourth quarter by the Pirates.

Cooper (3-3, 1-0) tied the game midway through the fourth quarter on Ray Pinkert's eight-yard run.

Roosevelt (1-5, 0-1) built a 13-6 on a 48-yard pass from Josh Sherman to Eric Rojas and Jeff Jackson's 57-yard run in the fourth quarter. Jackson finished with 92 yards on 14 carries.

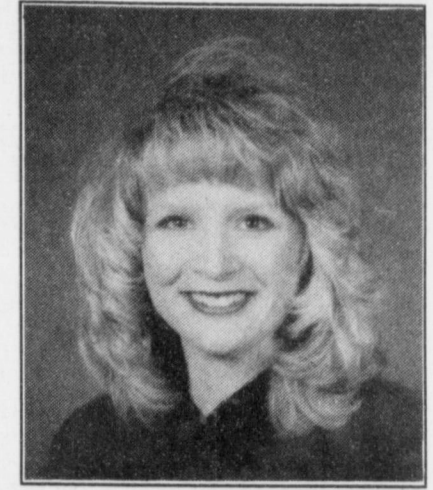
Sophomore quarterback Lynney Tucker completed 6 of 15 passes for 134 yards for Cooper, including a 58-yard pass to Albert Garza that gave the Pirates a 6-0 lead.



For every 100 women over 65, there are only 77 men.

ELECT
Sherrri Bessire
HARRISON

V
O
T
E



V
O
T
E

FOR BAILEY COUNTY CLERK
Qualified Dedicated
Certified Legal Assistant

Pol. ad. paid for by Sherrri Bessire Harrison, 510 W. 20th Street, Muleshoe, TX 79347.

Think Fall—Think Christmas

Think *Sheree's Attic &* **MERLE NORMAN[®]**
COSMETIC STUDIOS

Along With The Art Loft Invites You To

THINK CHRISTMAS
October 19th thru 24th, 1998

Layaway • Free Gift Wrapping

ONE DAY ONLY
TRUNK SHOW—Monday, October 19th
Sterling Silver Jewelry 20% Off

Every Day During Think Christmas
DRAWINGS for Brighton belts, keychains & jewelry

Special reductions throughout the store! All major credit cards accepted

1519 W. American Blvd. • 272-3459

Wilson Appliance Is An Authorized Representative
For Plateau Cellular Phone Service.

Offer good through November 13, 1998



Free Sony
Hand Held Phone
With New Activation

(CM-H777)

* Some restrictions may apply

WILSON APPLIANCE
117 Main St. • Muleshoe, TX • 272-5532



Portales' Premier Pre-Owned Vehicle Headquarters

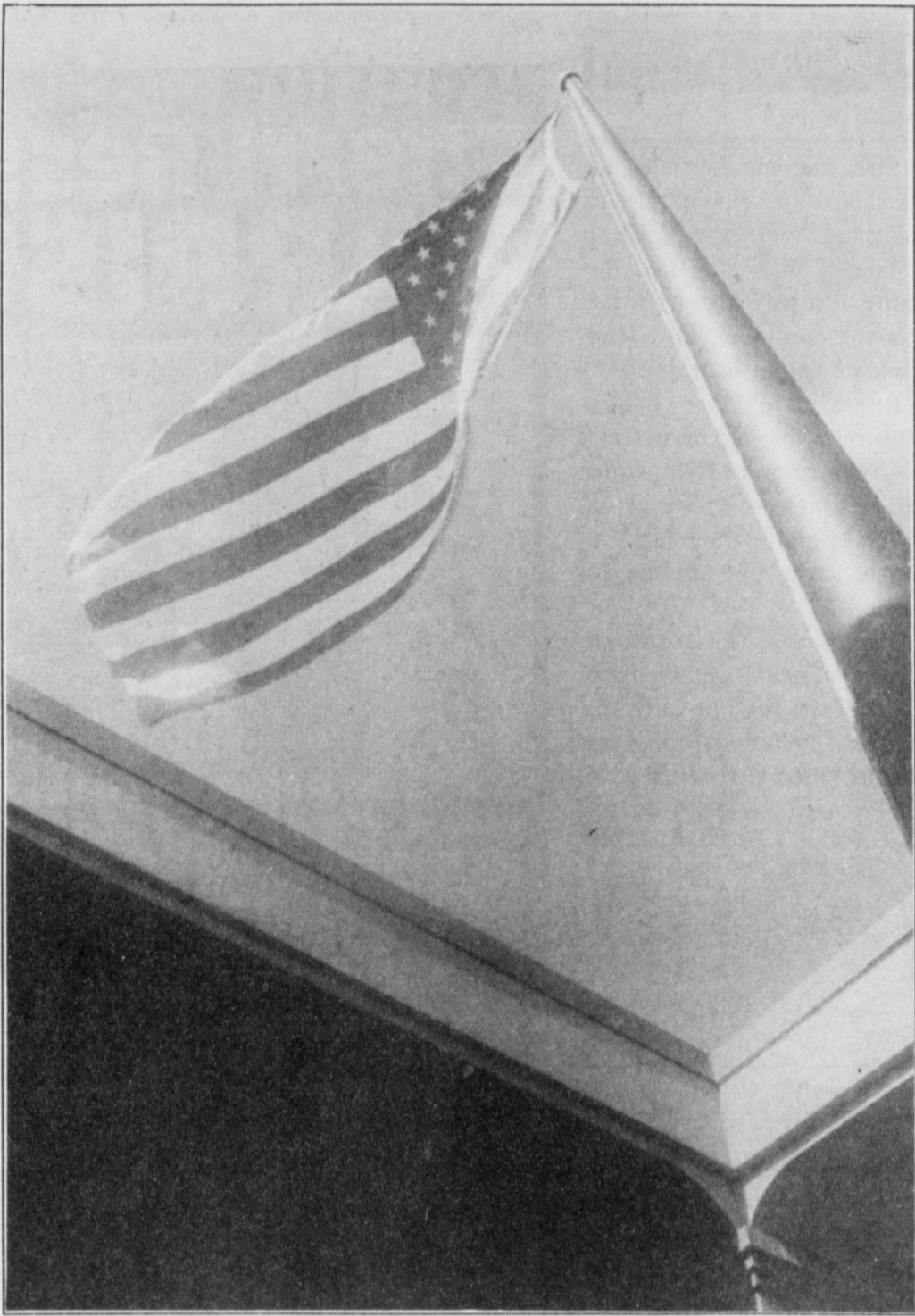
TRADER HORN MOTOR COMPANY

1989 Dodge Caravan was \$7,995 NOW \$6,995	1995 S-10 Extended Cab was \$10,895 NOW \$9,895	1994 Chevy Astro Van loaded, was \$15,995 NOW \$14,995
1994 Chevy Astro Van maroon, loaded, was \$12,995 NOW \$10,995	1995 Chevy Astro Van loaded, was \$14,995 NOW \$13,995	
1989 Chevy Suburban 4x4, diesel, nice ride, was \$11,995 NOW \$10,995	1992 Ford Aerostar loaded, was \$7,995 NOW \$6,995	1989 Chevy Suburban nice ride, was \$10,995 NOW \$9,995
1993 Chevy Van G-20 Conversion was \$9,995 NOW \$8,995	1989 Chevy Conversion Van was \$8,995 NOW \$7,995	

Visit us And Reap The Benefits Of
Harvest Time Savings!

620 S. Ave. C • Portales, NM
(505) 359-0947 or (505) 359-1775

Flying high
A giant flag at Muleshoe State Bank flutters in the wind Monday in celebration of Columbus Day. Christopher Columbus is credited with discovering America on Oct. 12, 1492.



Classic's 'Back-to-School' program a success

According to Jennifer Hauschild, marketing manager for Classic Cable the company's "Back-to-School" program was a huge success and generated nearly \$13,000 company-wide for local high schools. Muleshoe High School will receive a check for \$103 that can be used for any event or purchase the school chooses. During August, Classic Cable agreed to donate \$5 to local high schools company-wide, for each new installation of cable service or the upgrade of a premium service. Additionally, HBO contributed \$1 for each HBO sale. Customers also received 50% off the regular

installation fee. Ms. Hauschild stated, "Classic Cable has been focusing its efforts on community, commitment and customer service in 1998. We are working hard on being good neighbors in the communities we serve and we believe the education of our children is vitally important. This campaign demonstrates our commitment and contin-

ued involvement in our communities." Classic Cable currently provides most local schools with free basic service and has established a college scholarship fund for graduating seniors. This "Back-to-School" campaign is one more way Classic Cable displays their commitment to being good neighbors in the communities they serve.

TOPS NEWS

TOPS # 34 met Thursday, Oct. 8, at the Church of Christ on American Boulevard. Fifteen members attended. The meeting was called to order by Laverne James. Cherryl de Groffenreid was the best loser. Polly Otwell was first runner up and Rose Sain was second runner up.

District offering windbreak trees

"As a service to the Bailey County area, the Blackwater Valley Soil and Water Conservation District is now taking orders for windbreak trees," according to Johnny Ferguson, chairman of the district.

Windbreak trees help control wind erosion in fields, beautify and protect farmsteads, and can provide excellent wildlife food and shelter.

This year the Blackwater Valley SWCD will have more than 25 species of windbreak and wildlife seedlings available. In addition to the seedlings there will be larger containerized trees available in one and five gallon sizes.

Orders will be taken until March 4, 1999.

Ferguson said "some species are limited in quantity so early ordering is advised." All orders must be prepared. The seedlings will be available for pickup on March 13, 1998.

Supplemental watering is an essential part of a successful windbreak planting, therefore the SWCD also has drip irrigation systems available to ensure good seedling survival.

For more information on prices, orders, species availability, etc., contact the Natural Resources Conservation Service, 105 E. Ave. D. Muleshoe, 272-5124.

Fall Arts & Crafts Show

OCTOBER 16, 17, 18
Hours: Monday-Saturday 10 am-9 pm
Sunday noon-6 pm

NORTH PLAINS MALL
2809 N. Prince St.,
Clovis, NM 88101
(505) 769-2308

JAN CAN . . .

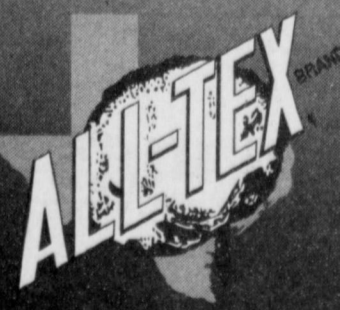



and IS doing the Job!
Elect Jan Pierce Bailey County Clerk
Your vote will be appreciated - Paid for by Jan Pierce, Democrat

Miss your paper?
Call 272-4536 weekdays
272-6719 weekends

MR. COTTON PRODUCER

Choose **Levelland Delinting** and get a **FREE Afghan.**

Call Levelland Delinting or your local gin to have your cotton seed delinted and we will reward you with a beautifully loomed 100% cotton "Cotton Country" Afghan! The 51" x 69" Cotton Country afghan illustrates the 7 primary steps in growing cotton.

Don't take a chance! Trust your cotton seed with the most experienced and qualified delinter, Levelland Delinting.

For 23 years, Levelland Delinting has been providing:

- Quality Delinting - Both Standard and Custom
- Prompt Service and Competitive Prices
- Complete Tests on All Seed
- Free Pickup, Delivery and Storage
- All Warehouses And Seed Fully Insured
- Ask About Our Bulk System
- Complete Fumigation Program
- All Seed Treated With Captan & Lorsban at no charge

Levelland Delinting, Inc. and All-Tex Seeds, Inc.
806-894-4901 • 1-800-7ALLTEX (725-5839)
Box 1057 Levelland, Texas 79336

DOES THIS BELONG TO YOU?



THIS SUNDAY
WE'LL HAVE GOOD NEWS FOR THOUSANDS OF TEXANS. WILL YOU BE ONE OF THEM?

Every day, banks and businesses report unclaimed cash and valuables to the state—uncashed checks or refunds, forgotten bank accounts, jewelry and the other abandoned contents of safety deposit boxes.

Once each year, in an effort to reunite these unclaimed assets with their rightful owners, we insert the most recent **Unclaimed Property** list in the Sunday editions of 33 daily newspapers across the state.

In the past year, we've returned *more than \$38 million* in unclaimed property to Texans.

But more than \$800 million *remains unclaimed*. And in selected Sunday newspapers, we'll print the updated, latest edition of the list.

- Pick up a Sunday newspaper carrying the list and look for your name and the names of your relatives.
- Or call us toll-free at **1-800-654-3463**.
- Or visit our Web site at <<http://www.window.state.tx.us>>.
- Or write to **Comptroller John Sharp, Unclaimed Property Section, P.O. Box 12019, Austin TX 78711-2019**.

If you find your name on the list, give us a call, drop us a line, or send us an e-mail at <unclaimed.property@cpa.state.tx.us> and we'll get you back together with your property.

JOHN SHARP
TEXAS COMPTROLLER OF PUBLIC ACCOUNTS

IF IT'S YOURS, WE WANT TO HELP YOU GET IT BACK!

ENGAGEMENTS



Drake — Wiley

Tom and Judi Drake of Davis, Okla. announce the engagement and approaching marriage of their daughter, Ashley Susan Drake, to Guy Duane Wiley, son of Kent and Wanda Wiley of Muleshoe. The couple will exchange wedding vows at 4 p.m. Feb. 6, 1999 at the First Baptist Church in Davis, Okla. The future bride is a graduate of Davis High School and Oklahoma State University, where she was a member of Kappa Delta Sorority and graduated with a bachelor's of music degree. She now resides in Sevierville, Tenn., and she is employed by Dollywood Productions in Pigeon Forge, Tenn. as a lead singer and dancer. The future groom is a graduate of Muleshoe High School and attended Western Texas College and South Plains College, where he studied sound technology with emphasis on sound reinforcement. He also resides in Sevierville and is employed by Music Mansion Theater in Pigeon Forge as an audio designer and engineer.

The Journal runs announcements for weddings, engagements and bridal and baby showers as a courtesy service to our readers. Stop by the Journal to pick up a form.

MISD part of rural program

Muleshoe ISD is one of 26 schools statewide that will benefit from a grant from the National Science Foundation focusing on math and science instruction.

This initiative is led by West Texas A&M University and the Texas Engineering Experiment Station (TEES), a state research agency and member of the Texas A&M University System.

"The grant will focus on improving the way mathematics and science are taught and learned," says project director Judy Kelly, associate director of the TEES division at West Texas A&M. "It will address barriers to high quality science and mathematics in rural schools and will partner with schools to improve achievement for all students in those

disciplines," Kelly said.

One goal of the initiative is to help isolated rural schools that normally aren't able to build partnerships with universities and other groups.

Muleshoe superintendent Bill Moore said, "Although we have already begun this process with Eastern New Mexico University and the Sandia Lab in New Mexico, this grant will provide additional opportunities for our students and our teachers."

The grant, which is for \$10 million over a five-year period, will serve the 26 rural school districts as well as 17 universities and statewide organizations. Goals of the grant include assisting teachers currently in the classroom by providing additional training and assistance in

implementing the state's new curriculum — the Texas Essential Knowledge and Skills (TEKS), and providing the soon-to-be teachers in colleges across the state with training in the most current technologies and most effective instructional strategies.

Moore said: "The ultimate beneficiaries of all this will be all of our students who will be better prepared to take that next step in their life after graduation whether it is to attend college or enter the workforce."

Test for SPC nursing program Oct. 28

LEVELLAND—The final pre-admissions test this fall for the South Plains College associate degree nursing program will be given Oct. 28.

The test will be administered 1-5 p.m. in the SPC Student Assistance Center on the third floor of the Library. Fee is \$20.

The next round of classes in the two-year program begins in January.

For more information, contact the SPC Allied Health Department of Guidance and Counseling Office at 806-894-9611, ext. 2391 or ext. 2366.

Jewelry & WATCH REPAIR

- 7 Day Ring Sizing & Repairs
- Remounting & Diamond Setting
- Full Line Watch Batteries
- Neck Chains Repaired
- Jewelry Appraised For Insurance

Faster Service

Holmberg Jewelry
1941 37 YEARS 1998

1908 N. Prince, Clovis
762-9376 (Across from K-Mart)

PUMPKIN CONTEST

October 19th-23rd
Awards given
October 24th

CLASSES:
Age 3-12
1st \$25 2nd \$15 3rd \$10
Age 13 and up
1st \$25 2nd \$15 3rd \$10

North Plains Mall
2804 N. PRINCE • 769-2308
A property of JP Realty, Inc.

Overstocked With Trade-Ins

DUE TO THE TREMENDOUS SUCCESS OF OUR YEAR END CLEARANCE SALE, WE HAVE 100'S OF CARS WE MUST SELL

CARS • CARS • CARS • CARS

DESCRIPTION	PRICE	DOWN	APR	MO	PAYMENT
1988 Ford Escort #5340A	\$ 1,995	\$ 10	12.9%	24	\$ 94
1995 Ford Escort Wagon #76268B	\$ 5,442	\$ 125	10.9%	54	\$ 125
1991 Chevy Cavalier #5289B	\$ 3,995	\$ 0	12.9%	36	\$ 134
1996 Chevy Corsica	\$ 8,624	\$ 0	9.9%	66	\$ 170
1994 Pontiac Sunbird #5418A	\$ 7,500	\$ 172	10.9%	54	\$ 172
1997 Chevy Cavalier #5320A	\$ 9,995	\$ 181	9.9%	72	\$ 181
1985 Buick Regal #5116A	\$ 3,995	\$ 181	12.9%	24	\$ 181
1997 Pontiac Sunfire #5469	\$10,995	\$ 199	9.9%	66	\$ 213
1996 Chevy Lumina #5179	\$10,995	\$ 217	10.9%	66	\$ 218
1995 Dodge Intrepid #86268A	\$10,786	\$ 223	9.9%	60	\$ 224
1995 Chevy Monte Carlo #82021A	\$12,491	\$ 265	10.9%	60	\$ 265
1997 Chevy Monte Carlo #5428	\$13,995	\$ 292	9.9%	60	\$ 292
1993 Cadillac Sedan Deville #5286A	\$12,583	\$ 295	11.9%	54	\$ 295
1997 Buick Lesabre #5360	\$16,644	\$ 500	9.9%	72	\$ 300
1992 Chevy Corvette #5467	\$19,995	\$1995	9.9%	60	\$ 382
1997 Buick Park Avenue #5386	\$21,995	\$ 850	9.9%	72	\$ 391
1994 Cadillac Seville #5413	\$21,093	\$ 900	9.9%	66	\$ 398
1993 Chevy Corvette #96071A	\$21,995	\$2199	9.9%	60	\$ 420
1996 Cadillac Sedan Deville 2 to choose from	\$23,995	\$ 800	9.9%	72	\$ 429
1996 Chevy Corvette #5465	\$27,950	\$2795	9.9%	72	\$ 465
1997 Cadillac Sedan Deville #5398	\$26,995	\$ 995	9.9%	72	\$ 480
1998 Cadillac Sedan Deville #5471	\$30,950	\$ 995	9.9%	84	\$ 496
1996 Cadillac El Dorado #5344	\$30,995	\$1500	9.9%	72	\$ 545

TRUCKS • VANS • TRUCKS • VANS

DESCRIPTION	PRICE	DOWN	APR	MO	PAYMENT
1989 Dodge Caravan #72450A	\$ 4,995	\$162	12.9%	36	\$ 163
1993 Ford Aerostar Van #86365A	\$ 7,247	\$189	12.9%	48	\$ 189
1996 Chevy S10 Ext Cab #5446	\$14,750	\$285	9.9%	66	\$ 285
1998 Chevy S10 Ext Cab #5450	\$17,757	\$295	9.9%	72	\$ 323
1998 Chevy Astro Van #96050A	\$20,800	\$338	9.9%	84	\$ 339
1996 Dodge Grand Caravan #86093A	\$17,785	\$343	9.9%	66	\$ 344
1996 Chevy 1500 Ext Cab #5288A	\$17,995	\$347	9.9%	66	\$ 348
1997 Chevy Blazer 4x4 S-10	\$20,342	\$369	9.9%	72	\$ 369
1996 Chrysler Town & Country Van #5406	\$21,237	\$385	9.9%	72	\$ 385
1997 Chevy 1500 Pick Up #96063A	\$19,995	\$386	9.9%	66	\$ 386
1997 Chevy 1500 Ext Cab #86042A	\$20,325	\$392	9.9%	66	\$ 393
1998 Chevy 1500 EC 3 Door #86397A	\$21,995	\$750	9.9%	72	\$ 393
1994 Chevy 2500 4x4 Ext Cab #5438	\$17,995	\$839	9.9%	54	\$ 395
1995 Chevy 3500 Crew Cab Dually #5445A	\$19,995	\$950	9.5%	60	\$ 400
1997 Chevy 2500 Ext Cab #5329	\$23,540	\$950	9.9%	72	\$ 417
1997 Chevy 1500 4x4 EC #86211A	\$23,500	\$875	9.9%	72	\$ 418
1998 Chevy S10 Blazer #5433	\$23,500	\$875	9.9%	72	\$ 418
1998 Chevy 2500 Ext Cab #5439	\$23,780	\$975	9.9%	72	\$ 421
1998 Chevy 2500 Ext Cab #86393A	\$23,987	\$965	9.9%	72	\$ 425
1998 Chevy S10 Blazer 4x4 #5363	\$23,995	\$895	9.9%	72	\$ 427
1997 Chevy 2500 Ext Cab 4x4 #5327	\$24,876	\$958	9.9%	72	\$ 442
1998 Chevy 3500 Crew Cab Dually #5425	\$27,995	\$950	9.9%	84	\$ 448
1995 Chevy Suburban #86070A	\$21,920	\$455	9.9%	60	\$ 455
1996 Chevy Suburban 4x4 #86173A	\$26,678	\$885	9.9%	72	\$ 477
1996 Chevy Suburban #96028A	\$24,995	\$483	9.9%	66	\$ 483
1997 Chevy Suburban #96027A	\$27,865	\$875	9.9%	72	\$ 499

BENDER

You're going to like our family!

CHEVROLET • OLDSMOBILE • CADILLAC
2500 Mabry Drive • (505) 763-4465

UNITED STATES POSTAL SERVICE Statement of Ownership, Management, and Circulation (Required by 39 USC 3685)

1. Publication Title: Muleshoe Journal
2. Publication Number: 367-820
3. Filing Date: 10-8-98
4. Issue Frequency: Weekly
5. Number of Issues Published Annually: 52
6. Annual Subscription Price: \$24 in-county, \$26 out-of-county
7. Complete Mailing Address of Known Office of Publication (Street, city, county, state, and ZIP+4): 304 W. Second, Muleshoe, Bailey, TX 79347-0449
8. Complete Mailing Address of Headquarters or General Business Office of Publisher (Not printer): 304 W. Second, P O Box 449, Muleshoe, TX 79347-0449
9. Full Names and Complete Mailing Addresses of Publisher, Editor, and Managing Editor (Do not leave blank):
Publisher: Marshall Scot Stinnett, P O Box 449, Muleshoe, TX 79347
Editor: Marshall Scot Stinnett, P O Box 449, Muleshoe, TX 79347
Managing Editor: Rick White, P O Box 449, Muleshoe, TX 79347
10. Owner (Do not leave blank. If the publication is owned by a corporation, give the name and address of the corporation immediately followed by the names and addresses of all stockholders owning or holding 1 percent or more of the total amount of stock. If not owned by a corporation, give the names and addresses of the individual owners. If owned by a partnership or other unincorporated firm, give its name and address as well as those of each individual owner. If the publication is published by a proprietor, give the name and address.)
Full Name: Complete Mailing Address:
Marshall Scot Stinnett P O Box 449, Fort Sumner, NM 88119
Lisa W. Stinnett P O Box 448, Fort Sumner, NM 88119
Jane Anne Stinnett 3301 79th Street #A, Lubbock, TX 79423
11. Known Bondholders, Mortgagees, and Other Security Holders Owning or Holding 1 Percent or More of Total Amount of Bonds, Mortgages, or Other Securities. If none, check box: None
Full Name: Complete Mailing Address:
L B Hall 1007 W. 7th, Muleshoe, TX 79347
12. Tax Status (For completion by nonprofit organizations authorized to mail at special rates) (Check one)
 The purpose, function, and nonprofit status of this organization and the exempt status for federal income tax purposes.
 Has Not Changed During Preceding 12 Months.
 Has Changed During Preceding 12 Months (Publisher must submit explanation of change with this statement).
13. Publication Title: Muleshoe Journal
14. Issue Date for Circulation Data Below:
15. Extent and Nature of Circulation: Average No. Copies Each Issue During Preceding 12 Months | Actual No. Copies of Single Issue Published Nearest to Filing Date
a. Total Number of Copies (Net press run) | 2500 | 2500
b. Paid and/or Requested Circulation: (1) Sales Through Dealers and Carriers, Street Vendors, and Counter Sales (Net amount) | 813 | 787
(2) Paid or Requested Mail Subscriptions (Include advertiser's proof copies and exchange copies) | 727 | 687
c. Total Paid and/or Requested Circulation (Sum of 15b(1) and 15b(2)) | 1540 | 1474
d. Free Distribution by Mail (Samples, complimentary, and other free) | 88 | 88
e. Free Distribution Outside the Mail (Carriers or other means) | 150 | 150
f. Total Free Distribution (Sum of 15d and 15e) | 238 | 238
g. Total Distribution (Sum of 15c and 15f) | 1778 | 1712
h. Copies not Distributed: (1) Office Use, Leftovers, Spoiled | 527 | 618
(2) Returns from News Agents | 195 | 170
i. Total (Sum of 15g, 15h(1), and 15h(2)) | 2500 | 2500
Percent Paid and/or Requested Circulation (15c / 15g x 100) | 91% | 91%
16. Publication of Statement of Ownership: Publication required. Will be printed in the 10-15-98 issue of this publication.
 Publication not required.
17. Signature and Title of Editor, Publisher, Business Manager, or Owner: Date: 10-8-98
Signature: [Handwritten Signature] Title: [Handwritten Title]

HONOR ROLLS

LAZBUDDIE

(first six weeks)
Grade 6

All "A" — Kaylee Burnett, Mandy Haney and Ana Hernandez.

A - B Honor Roll — Taryn Burnett, Christopher DeLeon, Tanner Gartin, Brett Mimms, Garrett Scisson and Melanie Winders.

Grade 7

All "A" — Shonah Black, Katy Loudder, Robert Martin, Shawndee Nichols and Bethanie Sanchez.

A - B Honor Roll — Violet Aguilar, Suzanne Aragon, Kelli Harris, Miriam Hernandez, Kera Lewandowski, Nicole Lewandowski, Amanda Martinez, Raul Mata, Michelle Scott, Sterling Via and Kolby Wilkerson.

Grade 8

All "A" — Andy Martin
A - B Honor Roll — Britany Brakebill, Lucas DeLeon, Lucinda Guzman, Brady Mimms, Naomi Puckett and Tobin Redwine.

Grade 9

All "A" — Savannah Black, Jodie Coker and Candice Randolph.

A - B Honor Roll — Jeffrey Guillen, Kayla Kimbrough, Jared Nickels, Shannon Redwine, Jay Seaton and Triston Thorn.

Grade 10

All "A" — Kati Mimms and Crystal Scott.

A - B Honor Roll — Kendra Gallman, Clifton Harris, Cole St Clair and Laura Via.

Grade 11

All "A" — Amy Angeley, Veronica Mata and Leah Turner.

A - B Honor Roll — Desirae Brakebill, Leslee Brown, Staci Foster, Jason Jesko, Larissa Loudder, Garrett Magby, Zulema Marquez, Bobby Martha, Brandon Randolph, Bryce Ronek, Jeffery Seaton and Laramie Wood.

Grade 12

All "A" — Seth Black, Jill Hodges, Kellen Morris, Kia Morris, William Morris and Shena Seaton.

A - B Honor Roll — Holly Engleking, William Johnson, Rosalinda Marrufo, Joshua McDonald, Amber Richardson, Rachel Rodriguez and Adam StClair.

ELEMENTARY

"A" Honor roll
2nd Grade

Richie Aguilar, Jessica Arce, Alexandra Ballenger, Aljandra Estrada, Ryan Mason, Jacob Schacher, Morgan Smith, Cassie Smith, Brock Steinbock, RaJon Thorn, Stefanie Welder.

3rd Grade

Crescent Crawford, Jason Davis, Jonathon Lennon, Chelsea Nichols, Brittany Schacher.

4th Grade
Castle Crawford, Amberlee Steinbock, Montana Steinbock, Stephanie Williams.

5th Grade

Madison Smith, Richard Welder.

"A-B" honor roll

2nd Grade

Jose Cervantes, Trevor Coker, Leticia Mendoza.

3rd Grade

Regina Mata, Brianna Sanchez, Dakota Williams.

4th Grade

Brandy Hudson, Elisa Torres.

5th Grade

David Campos, Kirby Kimbrough, Roper Smith.

THREE WAY

(First six weeks)

Grade 1

All "A" — Stephanie Kirby, Robert Martha.

"A" Average — Kyle Drew, Gabriela Estrada, Pricilla Perez, Monica Rubalcava, Angelica Salamanca and Carlos Vironche.

Grade 2

All "A" — Shaelynn Cannon and Brittany M. Cuellar.

Grade 3

All "A" — Tiffany Davis, Colton Heinrich, Jessica Hillard, Cenee' Hood, Cassie Kirby and Alberto Vironche.

Grade 4

All "A" — Nadia Mann
"A" Average — Joe Cuellar and Lorenzo Lopez

Grade 5

All "A" — Caleb Heinrich, Trevor Hood and Cody Kirby.

"A" Average — Lauren Layton, Jeanne Mann and Antonio Vironche.

Grade 6

All "A" — Norma Baeza, Cory Contreras, Erika DeLaRosa, Kyla Ellis, Edgar Estrada, Chris Kindle and Rigo Rodriguez.

"A" Average — Sarah Furgeson, Mikkie Holmes, Jennifer Kirby and Elizabell Kirby.

Grade 7

All "A" — Katye Cook and Kaylie James.

"A" Average — Amy Castillo, Landon Gray and Buddy Holmes.

Grade 8

All "A" — Sammy Castillo and Monica Walker.

"A" Average — Victor Baeza, Ashley Layton and Julie

Salamanca.

Grade 9

All "A" — Anthony Furgeson and Jimmy James.

"A" Average — Joal Armendariz, Alma Castillo, Carlos Contreras, Jordan Gray, Kara Heinrich, Taylor McDonald, Christy Mills, Ivan

Navarro and Robert Rodriguez.

Grade 10

"A" Average — Cynthia Baeza, Heather Kersey, Ernesto Navarro, Michael Soliz, Eric Sowder and April Webb.

Grade 11

"A" Average — Beatriz Baeza, Kasey Davis, Monty

Kirby, Scott Pollard, Daniel Reeves, Patty Rodriguez, Rosa Soliz, Alberto Valderas and Sid Weekes.

Grade 12

All "A" — Jose Baeza and Jonathan Kindle.

"A" Average — Gerald Perez.

Pete Laney

A Voice For Us A Speaker For Texas


Only one of the 150 members of the House of Representatives is chosen as Speaker of the House. And that's Pete Laney, our State Representative.

It means Pete Laney is in an influential position to help projects that benefit our area.


It means our schools get the best classroom technology available.

It means the needs of our rural communities won't be ignored in the Legislature, where more than three-fourth of the members represent urban areas.

Pete Laney... hometown values... real leadership... working for us.

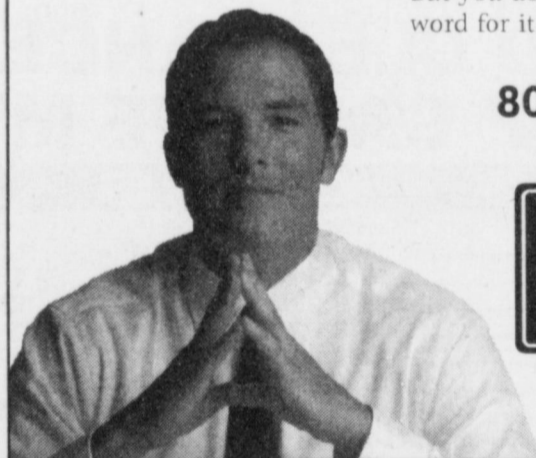


Pete Laney
State Representative



Protecting my home was as simple as dialing a number!

Texas Farm Bureau Mutual Insurance Co.
Texas Farm Bureau Underwriters
Southern Farm Bureau Casualty Insurance Co.
Southern Farm Bureau Life Insurance Co.



My Texas Farm Bureau insurance agent's phone number.

My agent answered all my questions, stays available to help if I have a problem, and can be counted on to provide the home insurance coverage and options that fit my needs... all at competitive rates.

Whether it's protecting my family through *auto, home or life insurance*, Texas Farm Bureau Insurance helps me be there for the ones I love.

But you don't have to take my word for it. Just call!

806-272-4567



Visit our website at www.txfb-ins.com
SFB-TX-N2-98-L

JOURNAL INFORMATION...News You Can Use

EDITORIAL INFORMATION

(1) In order to help accommodate our readers, we urge everyone to keep in mind that the newspaper is put together on Tuesday and Friday. To increase the probability that your information will be placed in your preferred edition, the earlier that stories, information about meetings or any editorial subject is brought to the Journal office the better!

(2) Deadlines for "Around Muleshoe" — Monday at 5 pm (Thurs. edition) and Thursday at 5 pm (Sun. edition).

(3) The following represents a list of information that appears **FREE in the Journal**:

- Weddings • Engagements • Bridal Showers • Baby Showers
- Birth Announcements • First & 90+ Birthdays • 50th+ Anniversaries

(forms are available at the Journal office, 304 W. 2nd, for weddings, engagements, bridal and baby showers)

(4) Pictures run in the Journal are given away **FREE OF CHARGE** to the public on a first come, first serve basis. (Some exceptions apply.)

ADVERTISING INFORMATION

(1) Display ads are located throughout the newspaper. Ad costs are based on the number of column inches that the ad occupies. The Journal's open rate is \$3.23/col. inch. Discounts are available under certain conditions. Borders and artwork are added at no extra cost!

(2) DEADLINES FOR DISPLAY ADVERTISING are Tuesday at Noon (Thurs. edition) and Friday at Noon (Sun. edition). If you are a business or individual in need of placing a DISPLAY AD or you have questions about display advertising, call Leah at 272-4536.

(1) Classified ads are located on the NEXT TO LAST PAGE OF THE NEWSPAPER. These ads include (but are not limited to) FOR SALE, LEGAL NOTICES, HELP WANTED, GARAGE OR ESTATE SALES, VEHICLES, FOR RENT, ETC...

(2) Ad cost is based on the number of words within the ad or the type of

classified ad that is desired. Contact Mari at 272-4536 for more info.

READER ADS:
15 and under words \$3.90 (first run)
15 and under words \$3.30 (each time thereafter)
16+ words .26¢/word (first run)
16+ words .23¢/word (each time thereafter)

DISPLAY CLASSIFIED: Charged by column size of ad. This type of ad will appear in the classified section, but will have a surrounding border. This classified ad is "dressed up." Cost is \$3.36 per inch.

MULESHOE AND BAILEY COUNTY JOURNAL
Lots of news for very little \$\$\$\$\$\$\$

The Journal is printed 52 weeks a year — 2 issues per week!

RATES

Carrier.....\$22/year
Mailed In Bailey County.....\$24/year
Mailed Outside Bailey County.....\$26/year
College Student Rate.....\$22/year

CARRIERS: BOBBY AND MELISSA FLORES

For carrier route customers: If you miss the paper, call the Journal during office hours at 272-4536. We'll gladly bring you a paper. Evenings and weekends, contact Bobby or Melissa at 272-6719.

Carrier Route Customers

SAVE THIS NUMBER FOR FUTURE REFERENCE SHOULD YOU MISS YOUR PAPER!!!!

272-6719

(evenings and weekends only)

We appreciate the Muleshoe community! We also encourage Muleshoe and surrounding area residents to submit story ideas.

WE WANT TO BE YOUR LOCAL NEWS SOURCE AND YOU CAN HELP!!



2231

RED WING SHOES
Made in U.S.A.

The Fair Store
120 Main 272-3500

MULES

From page 1

position to lock up one of the district's three playoff berths.

Wood said before district started, he told his team they needed to at least split the first two district games.

The ante just went up. "A win would put us in the driver's seat," Wood acknowledged. "We don't have to win the game, but after beating Littlefield, a loss to Shallowater might put a little bit of doubt in our minds."

Wood didn't think he'd have trouble convincing the Mules to put the Littlefield win behind them.

"This team knows what's got them where they are," Wood said. "They haven't had this kind of success before, so I don't think they're going to take anything for granted."

Shooting linebackers and safeties from all angles, Muleshoe forced five turnovers (all fumbles) against Littlefield. Defensive coordinator Flint Bigham's attacking defense has produced 18 turnovers, leading to an all-important plus 8 turnover ratio for the Mules through six games.

Expect the same kind of aggressive approach against Shallowater, which likes to put

Shallowater at Muleshoe

7:30 p.m. Friday

the ball in the air.

"We're going to go after the quarterback," Wood said. "That's not a secret now. We're not going to sit back in our base defense."

Chris Cody has passed for 590 yards and three touchdowns for the Mustangs. Under heavy pressure against Friona, the Mustangs senior quarterback completed just 4 of 18 passes for 32 yards and was intercepted twice.

Sophomore Alex Casarez is the leading rusher for Shallowater, which averages 244 yards a game. But the Mustangs lack a true game-breaker.

"Their defense keeps them in games," Wood said. "But their offense is fully capable of taking advantage of turnovers."

The Mustangs held a potent Friona offense to 189 yards. The unbeaten Chieftains came into the game averaging more than 420 yards per game.

"They held a great offense to very few yards," Wood said.



Muleshoe Cattle Market

SATURDAY, OCT. 10, 1998

REPRESENTATIVE SALES

594 cattle, 285 hogs and 249 sheep & goats. Stocker calves steady to 2 higher. Feeder cattle steady. Pairs & Bred cows steady to higher with better demand. Packer cows & Bulls steady.

The Muleshoe Cattle Market is brought to you each week by Muleshoe Livestock Auction, located east of Muleshoe on U.S. 84. Muleshoe Livestock conducts sales every Saturday, beginning with hogs, sheep and goats at 10 a.m. and cattle following at approximately 12 noon.

FOR INFORMATION ON SALES OR TO CONSIGN CATTLE, CALL (806) 272-4201

Seller, City	#	Type	Wt.	CWT or PH
Juan Romero, Portales, NM	Hol. Bull245 lbs.	at \$53.00
Jerry Veach, Plainview10	Hol. Strs793 lbs.	at \$42.75
Joyce Roberson, Amherst	Char. Bull220 lbs.	at \$93.00
Blass Rodriquez, Hereford	Char. Str230 lbs.	at \$88.00
Jose Gallegos, Friona	Blk. Bull265 lbs.	at \$84.00
Robert McCurry, Springlake	RWF Bull305 lbs.	at \$88.00
Francis Harding, Levelland	Red Str325 lbs.	at \$77.00
F&T Rowland, Morton	Red Bull370 lbs.	at \$72.00
Joe Garcia, Albuquerque, NM	BWF Str405 lbs.	at \$72.00
Joe Garcia, Albuquerque, NM3	Mxd. Strs478 lbs.	at \$66.00
Jerry Reagan, Littlefield	Red Str480 lbs.	at \$72.00
D.C. Pearson, Ropesville3	Limo. Strs483 lbs.	at \$71.50
D.C. Pearson, Ropesville7	Limo. Strs584 lbs.	at \$66.00
G.R. Kirkland, Denver City3	Char. Strs650 lbs.	at \$64.50
Robert McCurry, Springlake2	Red Bulls783 lbs.	at \$54.50
Blass Rodriquez, Hereford	BMF Hfr240 lbs.	at \$76.00
F&T Rowland, Morton2	Blk. Hfrs278 lbs.	at \$77.00
Joyce Roberson, Amherst	Char. Hfr405 lbs.	at \$64.50
Robert McCurry, Springlake3	Red Hfrs423 lbs.	at \$68.00
Jim Birkenfield, Denver City2	Char. Hfrs472 lbs.	at \$63.75
D.C. Pearson, Ropesville5	Limo. Hfrs546 lbs.	at \$65.50
Dan Templeton, Earth2	Blk. Hfrs720 lbs.	at \$57.00
Marvin Newton, Portales, NM	BWF Pair	\$475.00
Francis Harding, Levelland	Blk. Pair	\$540.00
Francis Harding, Levelland	Red Cow P7	\$470.00
Adolph Wittner, Sudan	Red Pair	\$530.00
Adolph Wittner, Sudan	Red Cow P7	\$475.00
White Land & Cattle, Lubbock4	RWF Cows P5	\$400.00
Lewis Fm. & Ran. St., Morton3	Mxd. Cows P5	\$410.00
Dan Templeton, Earth	Blk. Cow1540 lbs.	at \$32.00
Robert McCurry, Springlake	BWF Cow1515 lbs.	at \$33.75
Tim Lust, Abernathy	Blk. Cow1030 lbs.	at \$29.50
James Snow, Whiteface	Blk. Bull1545 lbs.	at \$41.75
Beth Watson, Muleshoe3	Char. Cows1152 lbs.	at \$31.75
Beth Watson, Muleshoe	Char. Bull1910 lbs.	at \$39.25
D&J Dairy, Rogers, NM	Hol Cow1300 lbs.	at \$28.50
Prairie View Dairy, Muleshoe3	Hol Cows1555 lbs.	at \$30.25
Prairie View Dairy, Muleshoe18	Hol Cows1565 lbs.	at \$29.00

Journal Classifieds

STOP & SHOP
REAL ESTATE
AUTOMOBILES
HELP WANTED
GARAGE SALES

Deadlines are 5 p.m. Monday and Thursday

Call 272-4536

Deadlines are 5 p.m. Monday and Thursday

LEGALS

Muleshoe I.S.D. will be accepting bids for the retrofitting of 16 Heat Pump Package Units to be installed at Muleshoe High School. Bid specifications may be obtained by calling Sam Whalin at (806) 272-4828 or (806) 272-3911 between 8 a.m. and 5 p.m. Monday thru Friday. Sealed bids are due in no later than 4 p.m. Tuesday November 10, 1998. Send bids to Muleshoe ISD, 514 W. Ave. G, Muleshoe, TX. 79347. Muleshoe I.S.D. reserves the right to accept or reject any and/or all bids in the best interest of the District. Published in the Bailey County Journal October 11 and 18, 1998. 42s-2tch

Muleshoe I.S.D. will be accepting bids for the installation of chair seating on the home side of the Watson Jr. High Gymnasium. Bid specifications may be obtained by calling Sam Whalin at (806) 272-4828 or (806) 272-3911 between 8 a.m. and 5 p.m. Monday thru Friday. Sealed bids are due in no later than 4 p.m. Thursday November 12, 1998. Send bids to Muleshoe ISD, 514 W. Ave. G, Muleshoe, TX. 79347. Muleshoe I.S.D. reserves the right to accept or reject any and/or all bids in the best interest of the District. Published in the Bailey County Journal October 11 and 18, 1998.

Call Mari at 272-4536 to get your ad placed in the Journal Classified section today!

HELP WANTED

Nurses Unlimited, Inc. needs attendants for personal care and light housekeeping in the Farwell area. Please call Gabrielle Monday-Friday, 8 a.m.-5 p.m., 1-800-458-3257. E.O.E. 42t-4tch

D.O.N Position Available. Seeking professional local person. Excellent pay and benefits available. Call Debbie at White Dove, 385-6600 or page her at 788-9191. 42t-2tch

Need truck drivers. CDL required. Contact Alan or Ted Harrison, 272-3825. 42t-4tch

Leal's Restaurant needs full or part-time waitstaff. Apply in person between 2-5 p.m. 41t-3tch

Need truck drivers to haul cotton seed from Sudan to Lubbock. \$800 per week. CDL required. Call (806) 946-3461, (806) 946-3402, (806) 946-7998. 39t-tfc

Pizza Hut is now hiring for waitstaff and delivery drivers. Apply on Mondays from 1 to 5 pm. 37t-tfc

Needed-Feed mill personnel with experience. Apply in person at Cattlemen's Feedlot. Olton, Tx. (806) 285-2616. 42s-4tch

Needed-Management personnel for feeding department. Apply in person at Cattlemen's Feedlot. Olton, Tx. (806) 285-2616. 42s-4tch

Needed-Pen rider. Experience required. Apply in person at Cattlemen's Feedlot. Olton, Tx. (806) 285-2616. 42s-4tch

REAL ESTATE

Large lot with two bedroom house. House needs total refinishing. See at 220 Reno, Muleshoe. Call 272-3137. Make an offer! 42t-4tch

Approx. 160 acres. 13 miles west on Hwy 1760. (580) 326-2935. 40s-8tch

FOR SALE

20 cubic foot Frigidaire side by side, runs good. \$150. 272-4960. 42t-2tch

1985 16x80 Cameo mobile home. 3-2, fireplace, to be moved. Call after 6 p.m. 272-3759 42s-2tch

Fresh shelled pecans. \$5 per lb. 272-3606. Call after 5 p.m. 42s-2tch

BEANIE BABY OCT. SPECIAL free gift (value over \$10) with each \$50 purchase from me. Bring in this ad for 10% off. Vendor #350 at Treasures from the Heart, Muleshoe. 42s-4tch

2 choice cemetery lots at Muleshoe Memorial Park Cemetery (580) 326-2935. 40s-8tch

Cable-Nelson piano. 806-933-4373. 42t-1tch

Call 272-4536 to get your ad placed today!

REAL ESTATE

FOR SALE BY OWNER

Brick home
Large living and kitchen area. 3-2-2 with fireplace, lots of built-ins, sprinkler system, storage building, storm cellar, water softener and osmosis. Large covered patio. **272-4643** 42t-4tch

145 acre farm, good water, good allotment, excellent grazing. 272-5536 day, 272-5134 night. 35s-tfc

Nice 3-1-1 brick home, Country Club addition, central heat and refrigerated air, new roof, wooden deck, 272-5879 evenings or leave message. 36t-tfc

LAZBUDDIE AREA, 640 acres, 4 sprinklers, 4 wells, 400-500 gallons of water with houses or without. With barn, cattle pens. (806) 965-2895. 39s-8tch

LOST

Female, gray miniature Schnauzer. Lost near Ave. J. (10-5-98). Leave message 272-3451. 42s-3tch

VEHICLES

1991 Ford 1 ton dump with 10-foot steel bed, 30-inch tall sides and swinging tailgate. New 351 engine. Good tires. Good truck. Call 744-3084 or 794-2228 after 6 p.m. 42t-2tch

1992 Chevy 1/2 ton pickup. V-6, auto., air, good tires, tool box and racks. 49k miles. Excellent truck. Call 744-3084 or 794-2228 after 6p.m. 42t-2tch

CARS FOR \$100. Upcoming local sales of government seized and surplus sports cars, trucks, 4x4's, utility vehicles... Call free 1-800-863-9868 Ext. 2534. 41t-8tch

SERVICE

Raul's Painting and Dry Wall. Specializing in residential and commercial painting. References. Free estimates in Parmer and Bailey counties (505) 763-5773. 40s-8tch

Sewing and Alterations All types. HALLOWEEN COSTUMES!
One day service on most. **310 W. 16th • 272-6764**

STORAGE FOR RENT

Take Your Garage Back!
Rent your own storage room and clean your garage out.
Call J & J Storage at 272-4307
1503 W. Ave. C • Muleshoe, Tx.

FRESH VEGETABLES

Green Chilies (roasting available), 1015 sweet onions, tomatoes, melons. DVJ Farms, 202 7th St., Farwell, TX, (806) 481-9420. 39t-tfc

RENT OR SALE

For rent or sale: 3 or 4 bedroom house, 1 1/2 bath. Owner will carry w/ good down payment. (806) 655-0200 or 272-4153. 40s-TFC

BUILDING MATERIAL

Steel Buildings, Never Put Up. 40x30 was \$6,212 will sell for \$3,497, 50x88 was \$17,690 will sell for \$8,970. Must sell. Daryl 1-800-292-0111. 42s-2tch

FOR LEASE

Tractor For Lease to run module builder. Will lease with or without person to build modules. Call 272-4193 evenings. 42s-2tch

BUY IT! SELL IT! TRADE IT! USE THE CLASSIFIEDS! 272-4536

Nieman Realty

116 E. Ave. C • George Nieman, Broker • 272-5285 or 272-5286

RICHLAND HILLS — PARK RIDGE

- We have several single and multi-family lots in this area!!!
- NICE 3-2-2 Brick, Cent. A&H, built-ins, FP, cov. patio, fenced yd. \$50's!!!

HIGHLAND AREA

- 3-2-2 Brick, Cent. A&H, built-ins, gas log FP, fenced yd., stor. bldg., MORE!! Price Reduced!! HL-5
- Nicely Remodeled 3-2-1 Brick home, 2100' + lv. area, Cent. A&H, built-ins, large den w/FP, fenced yd., stor. bldg. \$50's!!! HL-3
- 2-1-1 carport home, wall furnace heat, evap. air, DW, 5 fans, cov. patio, gas grill, fenced yd., MAKE OFFER!!!
- 3-2-2 Brick Home, corner lot, wall furnace heat, Cent. Evap. Air, fenced yd., stor. bldgs., MORE!!! HL-4

LENAU - COUNTRY CLUB AREA

- 2-2-1 Carport home, Cent. A&H, fenced yd., concrete cellar, stor. bldg. !!! \$25K!!! L-2
- 2-2-2 Brick Home, Cent. A&H, nice carpets, fenced yd. \$40's!!! L-4
- PRICE REDUCED 2-1-1 Carport Home, wall furnace, nice carpet, storm shelter, stor. bldg., fenced yd. \$19K!!! CC-3
- 2-1-1 Home, floor furnace, win. ref. air, fenced yd, stor. bldg., \$18,500 !!! L-1

COMMERCIAL

- Six Unit Apartment Complex (4-2 bdrm. & 2-1 bdrm. units)!!!
- 100' x 140' tract, approx. 7,400' business & warehouse building on American Blvd., PRICED TO SELL!!!
- Established Business: Land, Bldg. & Equip., \$75K!!!
- 56' x 140' tract, approx. 4700' bldg., \$35K!!!
- NICE R.V. STORAGE, 14' X 40' metal bldg. 12' doors, 50X140 corner lot!
- SNACK SHACK - Lot, Buildings, furniture & fixtures!!!

HIGH SCHOOL

- 2-2-2 BRICK, Cent. A&H, built-ins, corner lot, approx. 1800' lv. area!!! \$35K!!! HS-4
- NEWLY REMODELED 3-1-1 Home, cent. A & H, new carpet & vinyl, fenced yd., MORE !! \$30's !!! HS-2
- VERY NICE 3-1-1 Brick, Heat pump, DW, nice carpets, fenced yd., MORE!!! \$30's !!! HS-1
- NICE 2-1-1 Brick, Heat Pump, nice carpets, well insulated, storm windows & doors. \$30's!!! HS6
- VERY NICE 3-1-1 Home, nice carpets and vinyl, heat pump, fans, fenced yd., stor. bldgs., MORE!!! \$30's!!! HS-5
- 3-2-1 Brick, Heat Pump, built-ins, fans, screened porch!!! \$30's!!! HS-7
- JUST LISTED- 2-1-2 CP Home, corner lot, metal siding, storm win. & doors, stor. bldg. \$20K!!! HS-8

RURAL

- PRICE REDUCED- NICE 3-2 home, 40 acre tract, Geo. Heat Pump, built-ins, 5" irrig. well, Hi-Press. lines, sprinkler pipe, barn, pens, tractor & equip!!! \$69K!!!
- W. of SUDAN-NICE 3-3-2 Brick Home, 5 acre tract on Hwy. 298, Cent. Air & Heat, built-ins, large Quonset Barn, MORE!!!! \$95K!!!
- 5 Acre tract on pavement close to town!
- LAZBUDDIE-PRICE REDUCED-NICE 3-2-2 Brick Home on pavement, 2200' Lv. area, Cent. A & H, built-ins, FP, large sunroom!! \$70's!!!
- FOR BID: Approx. 4,870 acres (Bailey and Lamb Co.), water rights negotiable, 54 wells (only 2 pumps and motors), approx. 33 circles w/center pivot pads, 40' X 86' tile block barn, 40' X 100' Quonset barn w/elec., 20' X 30' shop, 3 sets pipe corrals, 2 sets wire corrals!!!
- Approx. 108 acres on Hwy. 70, approx. 2100' office area, 16,900' of commercial bldg. w/loading dock, 3,400' warehouse!!! 2,800' runway!!!
- LARIAT-240 acres, 3 wells, underground tile, good productive land!!!

STORAGE FOR RENT

Rent a Storage room now, GET NOVEMBER FREE!
(new tenants only)
Call J & J Storage at 272-4307
1503 W. Ave. C • Muleshoe, Tx.

Customer Appreciation—\$10,000 Cash! 1st Prize \$7,500.-2nd Prize \$2,500:

• Registration Oct. 11-24, 1998

• No purchase required.

• Must be 18 yrs. or older to register.

• See Affiliated Foods member stores for details.

• Employees of: Affiliated Foods, Inc., Affiliated member stores and immediate family, General Mills, their subsidiaries, affiliates, advertising or promotion agencies not eligible to participate.

• Winner is responsible for all taxes.

SWEEPSTAKES

PRICES EFFECTIVE OCTOBER 14-20, 1998

MEAT

PREFERRED TRIM BEEF BONELESS ARM ROASTLB	\$1⁰⁹
PREFERRED TRIM CENTER CUT BONELESS PORK CHOPSLB	\$2⁴⁹
TIP TOP GRADE A BAKING HENSLB	89¢
WHOLE CENTER CUT BONELESS PORK LOINSLB	\$1⁹⁹
PREFERRED TRIM BEEF RIB-EYE STEAKSLB	\$4⁶⁹
WRIGHT BRAND QUALITY MINI PIT BONELESS HALF HAMSLB	\$2¹⁹
PREFERRED TRIM BEEF BONELESS ARM CHARCOAL STEAKLB	\$1⁵⁹
PREFERRED TRIM BEEF BONELESS TOP BLADE STEAKLB	\$1⁸⁹
CUBED BEEF STEW MEATLB	\$1⁸⁹
FRESH GROUND CHUCKLB	\$1⁴⁹
PREFERRED TRIM BEEF BONELESS BEEF SHORT RIBSLB	\$1⁸⁹
ADVANCE COUNTRY FRIED BREADED BEEF PATTIES OR STEAK FINGERS12 OZ. PKG	99¢
ADVANCE CHICKEN BREADED STRIPS, NUGGETS OR PATTIES12 OZ. PKG	\$1⁴⁹
BAR S REGULAR OR GARLIC SLICED MEAT BOLOGNA12 OZ. PKG	89¢
BAR S MEAT FRANKS12 OZ. PKG	59¢
BAR S CHOPPED HAM10 OZ. PKG	\$1⁴⁹
BAR S COOKED HAM10 OZ. PKG	\$1⁹⁹
WRIGHT VAC PACK SLICED BACON12 OZ. PKG	\$1²⁹
LAS CAMPANAS 40 OZ. ASSTD. FAMILY PACK BURRITOS OR 16 OZ. BEEF TAQUITOSYOUR CHOICE	\$2³⁹
JIMMY DEAN REGULAR OR HOT PORK SAUSAGE2 LB. ROLL	\$3³⁹
JIMMY DEAN 1 LB. ASSTD. OR 12 OZ. LIGHT PORK SAUSAGEYOUR CHOICE	\$1⁷⁹
OSCAR MAYER MEAT COTTO SALAMI OR RED RIND MEAT BOLOGNA1 LB. PKGS	2/\$3
OSCAR MAYER ROASTED WHITE TURKEY, HAM & CHEESE OR CHOPPED HAM1 LB. PKG	\$2⁴⁹
OSCAR MAYER COOKED HAM1 LB. PKG	\$3⁴⁹
LOUIS RICH ASSORTED TURKEY VARIETY PACKS9-12 OZ. PKG	\$1⁷⁹
LOUIS RICH GROUND TURKEY1 LB. PKG	89¢
DEL MONTE SELECT GROUP SLI./CRU./CHUN./TIDBIT/SPRS. PINEAPPLE15-15.2 OZ. CAN	59¢
ASSORTED DEL MONTE SPAGHETTI SAUCE26-26.5 OZ. CAN	89¢
SELECT GROUP DEL MONTE •REG./LITE/NAT. FRUIT COCKTAIL • VERY CHERRY MIXED FRUIT • REG./LITE/ NAT. CHUNKY FRUIT • REG./LITE SLI./RASP. YC OR FREESTONE PEACHES • REG./ LITE/NAT. PEACH HALVES • SLI. LITE PEARS • REG./LITE/NAT. PEAR HALVES	89¢
DEL MONTE FRUIT15-15.2 OZ. CAN	89¢
CAMPBELL'S ASSORTED CHUNKY SOUPS19 OZ. CANS	2/\$3
TROPICAL, BERRY BLEND OR STRAWBERRY KIW V8 SPLASH64 OZ. BTL	2/\$5
CHICKEN NOODLE OR TOMATO CAMPBELL'S SOUP10.7 OZ. CANS	5/\$3
SCHILLING BLACK PEPPER4 OZ. CAN	\$1⁹⁹
SCHILLING ORIG., SPICY, GARLIC OR PEPPERED SEASON•ALL2.1-3.5 OZ. CAN	89¢
KRUSTEAZ ASSORTED MUFFIN MIX14-17 OZ. BOX	\$1⁷⁹
FOR MACHINES KRUSTEAZ ASSTD. BREAD MIX14 OZ. BOX	\$1³⁹
ASSORTED VARIETIES SPAM® LUNCHEON MEAT12 OZ. CAN	\$1⁸⁹
SELECT GROUP—MIX OR MATCH YORK • REESE'S • ALMOND JOY • ASSTD. MINIATURES • REG. W/ALMOND KISSES • HUGS • NUGGETS	2/\$5
HERSHEY'S MINIATURES13 OZ. PKGS	2/\$5
POLAR PINK SALMON14.7 OZ. CAN	\$1⁷⁹
AMERICAN BEAUTY ELBO-RONI THIN OR LONG SPAGHETTI24 OZ. PKG	99¢
KIBBLES AND CHUNKS OR CHEEZY CHEWS PURINA DOG FOOD20 LB. BAG	\$7⁹⁹
MEOW MIX, REG. OR TUNA CAT CHOW PURINA CAT FOOD3.15-3.5 LB. BAG	\$3²⁹
OIL OR WATER PACK CHUNK LIGHT	
STARKIST TUNA6 OZ. CANS	2/\$1

PRODUCE

Produce Sale!!
YOUR CHOICE
BARTLETT PEARS, JEWEL GREEN LIMES, TANGY LEMONS,
CALIFORNIA ORANGES, 1 LB. BAG CELLO CARROTS, NEW
CROP YELLOW ONIONS, GOLDEN DELICIOUS APPLES,
WASHINGTON EX-FANCY RED DELICIOUS APPLES, GRANNY
SMITH APPLES OR TEXAS GRAPEFRUIT

10¢ EACH

FROZEN & DAIRY

PLAINS SLIM N' TRIM/REG./NON-FAT COTTAGE CHEESE24 OZ. CTN	\$1⁷⁹
MANGO OR CITRUS TAMPICO PUNCHGAL. JUG	99¢
DRINKING OR DISTILLED CULLIGAN WATERGAL. JUG	2/\$1
PLAINS SNACK ATTACK CHOCOLATE MILKQUART CTN	99¢
PLAINS ORANGE JUICEGAL. JUG	\$2⁹⁹
JIMMY DEAN SAUSAGE & BISCUITS12 OZ. PKG	\$1⁹⁹
OSCAR MAYER ASSORTED FUN PACK LUNCHABLES4.5-13.1 OZ. PKG	\$1⁸⁹
SELECT GROUP GREEN GIANT VEGETABLES16 OZ. BAG	99¢
ASSORTED TOTINO'S PARTY PIZZA9-10 OZ. BOX	\$1²⁹
PILLSBURY ASSTD. TOASTER STRUDEL11.5 OZ. BOX	\$1⁷⁹
BUTTER TASTIN', FLAKY OR BUTTERMILK HUNGRY JACK BISCUITS9.5 OZ. CAN	89¢
HUNGRY JACK BUTTERMILK/HOMESTYLE WAFFLES12 OZ. PKG	\$1²⁹
ASSORTED BIG COUNTRY PILLSBURY BISCUITS12 OZ. CAN	89¢
PILLSBURY CRESCENT ROLLS8 OZ. CANS	2/\$3
PILLSBURY SELECT GROUP COOKIE DOUGH18 OZ. ROLL	\$2²⁹
PILLSBURY READY PIE CRUST15 OZ. PKG	\$1⁷⁹
PILLSBURY CORNBREAD TWISTS/BREADSTICKS/ DINNER ROLLS11-11.3 OZ. CAN	\$1³⁹
FISHER BOY CRUNCHY FISH STICKS16 OZ. BOX	\$1⁹⁹
KRAFT REGULAR OR LIGHT VELVEETA SPREAD32 OZ. LOAF	\$3⁹⁹
KRAFT SELECT VARIETIES SINGLES12 OZ. PKG	\$1⁸⁹
KRAFT HALFMOON LONGHORN COLBY OR MILD CHEDDAR14 OZ. PKGS	2/\$5
OLD EL PASO TACO SHELLS18 CT. PKG	\$1⁹⁹
OLD EL PASO TRADITIONAL REFRIED BEANS31 OZ. CANS	2/\$3
OLD EL PASO ASSORTED ENCHILADA SAUCE10 OZ. CAN	89¢
OLD EL PASO ASSTD. SALSA/MILD/MED. PICANTE SAUCE20 OZ. BONUS JAR	\$1⁷⁹
OLD EL PASO CHOPPED GREEN CHILIES7 OZ. CAN	\$1¹⁹
ALL TYPES PEPSI-COLA12 PK.-12 OZ. CANS	2/\$5
ALL TYPES PEPSI-COLA3 LITER BTL	\$1³⁹
ALL TYPES PEPSI-COLA6 PK.-24 OZ. BTL	2/\$5
ALL TYPES DR. PEPPER6 PK.-12 OZ. CANS	\$1⁷⁹
ALL TYPES DR. PEPPER3 LITER BTL	\$1⁷⁹

SELECT GROUP FACIAL PUFFS TISSUE64-175 CT. BOX	99¢
OIL OF OLAY SELECT GROUP-EXCLUDES AGE DEFYING FACIAL LOTION4 OZ. BTL	\$5⁷⁹
SELECT GROUP STRAIGHT/ANGLE CREST TOOTHBRUSH	\$1⁹⁹
WHITE SAFEGUARD/REG. OR WHITEWATER FRESH ZEST SOAP3 BAR PACK	3/\$5
IVORY UNSC. MOIST. BAR ASSTD. BEAUTY BAR OIL OF OLAY2 BAR PACK	3/\$5
ORIGINAL OR PEPPERMINT SCOPE MOUTHWASH36 OZ. BTL	\$3⁴⁹
ASSORTED SHAMPOO OR CONDITIONER PANTENE PRO-V10.2-13 OZ. BTL	\$2⁹⁹
EXCLUDES MULTI-FRESH ASSORTED CREST TOOTH PASTE6.4 OZ. TUBE	\$1⁸⁹
REG./E PEDIATRIC. REG., E,M OR D VICKS FORMULA 444 OZ. BTL	\$2⁹⁹
REGULAR DAYQUIL, REGULAR OR CHERRY NYQUIL LIQUID6 OZ. BTL	\$3³⁹
REG./ W/BLEACH, TIDE FREE/ REG./ W/BLEACH MTN. SPR. TIDE ULTRA 2 DETERGENT92-94 OZ. BOX	\$5⁹⁹
SELECT GROUP PAPER BOUNTY TOWELSREG. ROLL	79¢
ASSORTED REGULAR ROLLS CHARMIN TISSUE4 ROLL PKG	99¢
REG. OR W/BLEACH MOUNTAIN SPRING, REG. OR W/BLEACH TIDE ULTRA LIQUID100 OZ. BTL	\$5⁹⁹
LEMON GEL OR SELECT GROUP POWDER CASCADE AUTOMATIC	
DISH DETERGENT45-50 OZ. BOX/BTL	\$2¹⁹
GENTLE BREEZE OR REGULAR BOUNCE SHEETS40 CT. BOX	\$2¹⁹
REGULAR OR MOUNTAIN SPRING DOWNY ULTRA20 OZ. BTL	\$2¹⁹
EXCLUDES FAT FREE! ASSORTED PRINGLES CHIPS6-7 OZ. CAN	99¢
SIZES 1-6 BABY-DRY SELECT GROUP PAMPERS DIAPERS18-40 CT. PKG	\$6⁴⁹
KRAFT ASSORTED DINNERS MAC & CHEESE7.2-7.25 OZ. BOXES	3/\$2
KRAFT ASSTD. VELVEETA OR DELUXE MAC & CHEESE DINNERS9.4-14 OZ. BOXES	2/\$4
KRAFT ASSORTED REG. OR FREE SALAD-EXCLUDES LIGHT DRESSINGS16 OZ. BTL	\$1⁷⁹
REGULAR OR LIGHT KRAFT MAYO32 OZ. JARS	2/\$4
FAC/COLOMBIAN/GOURMET SUPREME/GRENCH ROAST FOLGERS COFFEE34.5-39 OZ. CAN	\$5⁸⁸
REG. ALL PURPOSE/UNBLEACHED GOLD MEDAL FLOUR5 LB. BAG	79¢
OIL OR WATER PACK CHUNK LIGHT STAR•KIST TUNA6 OZ. CANS	2/\$1
GENERAL MILLS 12 OZ. TRIX, 14-15 OZ. REG. OR HONEY NUT CHEERIOS BREAKFAST CEREALYOUR CHOICE	2/\$4
BETTY CROCKER ASSORTED RTS FROSTINGS12-16 OZ. CAN	\$1⁴⁹
BETTY CROCKER ASSTD. SWEET REWARDS OR SUPERMOIST CAKE MIXES18-18.25 OZ. BOX	79¢
BETTY CROCKER ASSTD. TUNA OR HAMBURGER HELPER DINNERS3-9.25 OZ. BOXES	2/\$3
BETTY CROCKER ASSORTED SPECIALTY POTATOES5-7.6 OZ. BOX	\$1¹⁹
BETTY CROCKER ASSTD. MICROWAVE POPCORN POP•SECRET3 CT. BOX	\$1⁶⁹
BETTY CROCKER ASSORTED FRUIT BY THE FOOT OR ROLL-UPS FRUIT SNACKS4.5-5 OZ. PKG	\$1⁸⁹
DEL MONTE REG./NO SALT SELECT GROUP • CUT GREEN BEANS • FR. SLI. GREEN BEANS • WK SUMMER CRISP GOLD CORN • CS/WK GOLDEN CORN • SLICED CARROTS • CHOP./WHOLE SPINACH • MIXED VEGETABLES • SWEET PEAS • WHOLE NEW POTATOES	
VEGETABLES11-15.2 OZ. CANS	5/\$2
DEL MONTE TOMATO SAUCE8 OZ. CANS	6/\$1
DEL MONTE TOMATO KETCHUP28 OZ. SQ. BTL	79¢
SELECT VARIETIES WITH OR WITHOUT BEANS WOLF BRAND CHILI15 OZ. CAN	99¢
GLADIOLA YELLOW/WHITE CORNBREAD MIX6 OZ. POUCHES	3/89¢

Get your
Blue Willow
Dinnerware
today!!!
See store for details

WESTERN MONEY
UNION TRANSFERSM
"The fastest way to send money"

Lowe's
MARKETPLACE

515 W. American Blvd.
Muleshoe 272-4406

401 W. American Blvd.
Muleshoe 272-4585

WE RESERVE THE RIGHT
TO LIMIT QUANTITIES
IN TEXAS