

## PAGE ONE

A QUICK READ OF THE NEWS

### Field dedication Tuesday

Muleshoe's newest baseball field, a joint venture between the City of Muleshoe and Muleshoe Independent School District, will host its first baseball game at 5:30 p.m. Tuesday, March 10 when the Muleshoe Mules take on the Littlefield Wildcats.

Prior to the game, there will be a brief dedication ceremony starting at 5 p.m.

Superintendent Bill Moore said, "Both the City and the school district want to take this opportunity to thank the many people and organizations that have helped make this facility become a reality. It will serve Muleshoe well for many years to come."

Among the organizations being introduced and recognized for their support will be the Muleshoe City Council, the MISD Board of Trustees, the Muleshoe Athletic Booster Club, Bailey County Electric, Five Area/West Plains Telecommunications, Lowe's Marketplace, Southwestern Public Service and Southwestern Coca-Cola Bottling Co.

### Banquet tickets on sale

Tickets for the Muleshoe Chamber of Commerce & Agriculture's annual banquet are now on sale.

The banquet includes an all-you-can-eat steak and shrimp dinner, Chamber awards and entertainment by hypnotist Ken Whitener. The theme for this year's banquet is magic, mystery and mirth.

Tickets are \$50 per person and can be purchased from any Chamber director, Susie Sowder at Landmark Label or Dawn Williams at Williams Bros. Athletics.

For more information, call 272-3113.

### Poll locations for primary

Bailey County voting locations for the national, state and local March 10 primary are:

- Voting box 1, Precinct 1, Bailey County Courthouse.
- Voting box 2, Precinct 2, Bailey County Coliseum.
- Voting box 3, Precinct 3, Three Way School.
- Voting box 4, Precinct 3, Bailey County Extension Office.
- Voting box 5, Precinct 4, Bula community center.
- Voting box 6, Precinct 4, Needmore community center.
- Voting box 7, Precinct 4, Muleshoe City Hall.

The location of the proper voting site will be listed on your voter registration card.

Polls will be open 7 a.m. to 7 p.m.

For more information, contact Bailey County Clerk Jan Pierce at 272-3044.

### LOCAL WEATHER

	High	low	Pre.
Friday	48	20	—
Saturday	47	22	—
Sunday	50	19	—
Monday	52	15	—
Total to date	1.31 inches		

### EXTENDED FORECAST

Dry Thursday and Friday. Chance of showers Saturday. Lows in the 30s and highs in the mid 50s.

### Readers left seeing double

Human error led to the same picture being run twice in Sunday's edition of the Bailey County Journal. The picture, run on page 1 and page 4, was of Lazbuddie basketball player Adam St. Clair.

The Journal regrets the error and any double vision it may have caused.

# 'Horns bounced in quarterfinals

By RICK WHITE  
Managing Editor

SHALLOWATER — Lazbuddie knew what to expect — full-court pressure and plenty of it.

Still, Lazbuddie wasn't prepared for Lorenzo's quick feet and even quicker hands as the Hornets romped to a 65-43 victory Tuesday in a Region I-1A boys quarterfinal playoff game before a crowd of 700 at Shallowater High School.

Lorenzo (28-4) controlled the tempo from the get-go, forcing Lazbuddie out of its offense with a relentless full-court press. The Longhorns finished with 28 turnovers.

Lazbuddie (18-8) wore down its first two playoff opponents with size, but never could get into an offensive rhythm and missed too many shots inside early in the game.

"We just couldn't get started," said Lazbuddie's 6-7 senior post Jason Thomas, who mined the offensive boards for most of his team-high 21 points. "When we finally got started in the second half, it was too late."

"You've got to give them credit. They played a good game and deserved to win."

The Hornets led by as many as 23 points in the second quarter before settling for a 36-17 halftime lead.

Seniors Silas McCaddon, Kane Swetnam and Erasimo Garcia combined for all of the Hornets' first-half points.

McCaddon finished with 28 points, but must have been arm weary after firing up at least a dozen shots in the second half. Swetnam, a 6-3 post, added 20 points and was the Hornets' best player Tuesday night.

"We jumped on them real quick," said Lorenzo coach Larry Birdwell, who is taking his senior-laden team to its second-straight regional tournament appearance. "I think they were maybe shell-shocked and they never did recover."

"I don't think they've really seen our brand of basketball before. And we really played well."

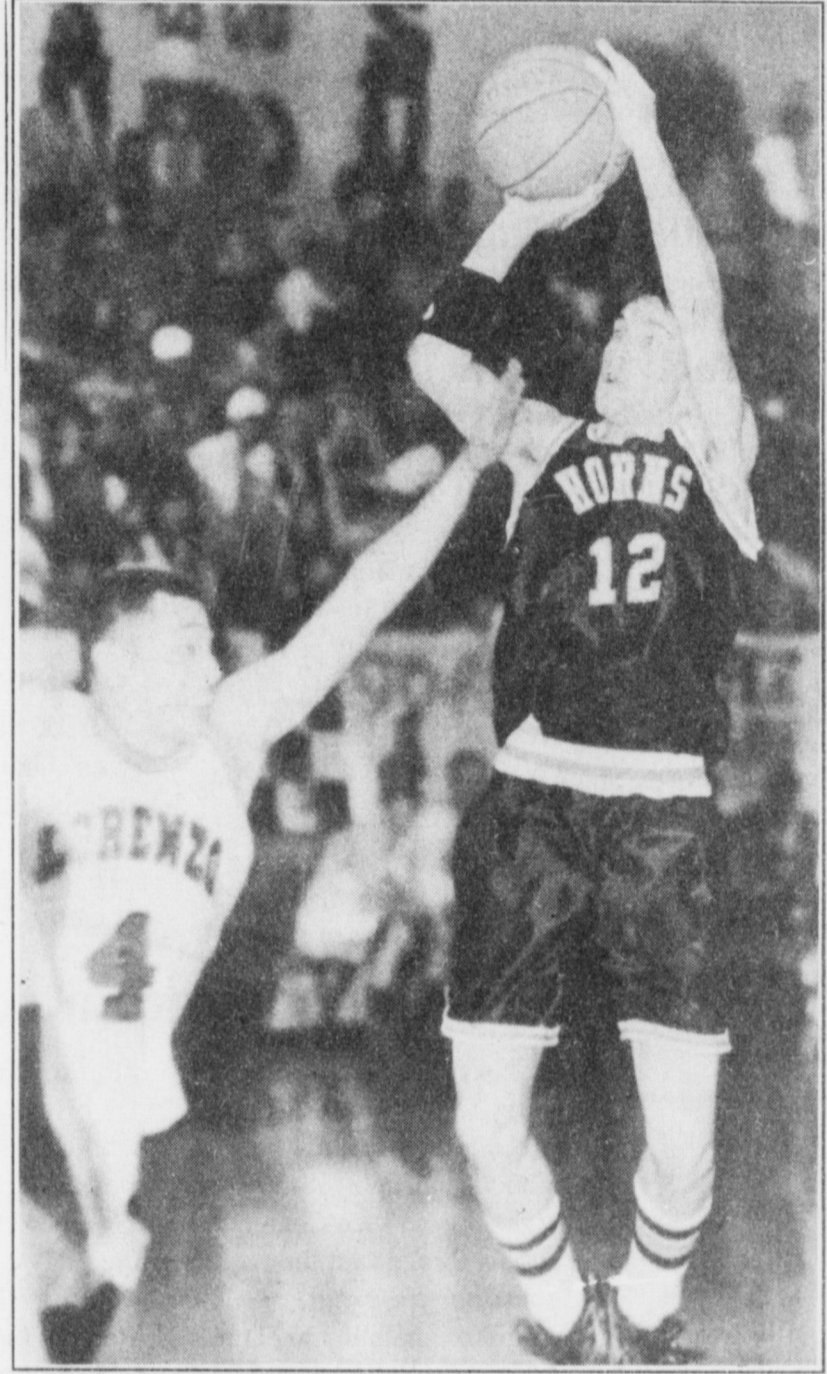
The Longhorns drew within 14 points twice in the second half, the second time on Brandon Foster's 15-foot jumper midway through the third quarter. But the Hornets closed the quarter with a 10-2 run to push their way back up to 22.

Lorenzo jumped out to a 18-5 lead six minutes into the game.

By that time, Lazbuddie coach Phil Warren had already used three time-outs trying to stem the tide.

"We just lost our composure," Warren said. "We took some ill-advised shots early. They got us into an up-and-down game early and we haven't won a game like that all year."

Foster and Adam St. Clair added six points each for LHS.



Lazbuddie's Brandon Foster shoots a jumper in the lane during Tuesday's 65-43 loss to Lorenzo in a Region I-1A boys state playoff game at Shallowater High School. The Longhorns ended the season at 18-8.

### UIL state boys basketball playoff pairings

#### CLASS 3A

Area  
Tulia 63, Greenwood 50  
FW Diamond-Hill Jarvis 64, Merkel 62  
Dimmitt 73, Clint 59  
Clyde 74, Bridgeport 54

#### CLASS 1A

Quarrelfinals  
Lorenzo 65, Lazbuddie 43  
Whiteface 59, Munday 48  
Paducah 72, Aspermont 59  
Gruver 82, Silverton 60

## County deputy handled Earth murder suspect

Bailey County Sheriff's deputy Benny Clifton remembers Eddie Rowton's stone-cold demeanor and penchant for lying.

He describes Rowton as a drifter with a criminal past.

Rowton was recently identified as the main suspect in the 1992 disappearance and murder of five-year-old Shawnlee Perry of Earth.

An arrest warrant was drawn up last week on Rowton, who lived around the corner from the Perry home when the girl was reported missing, according to published reports.

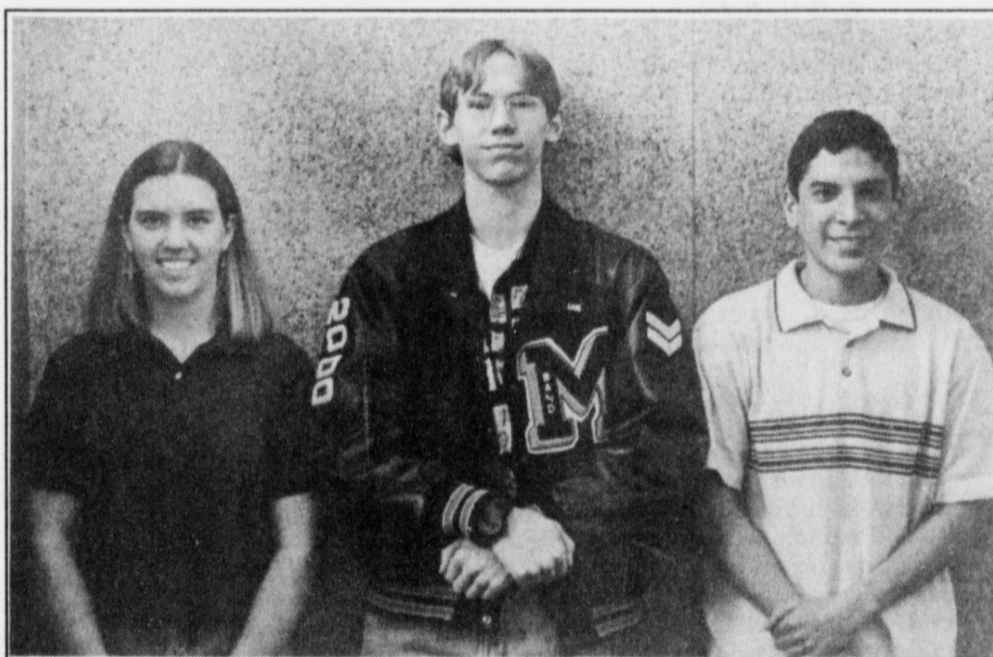
The warrant, which has not been served, is for capital murder.

Rowton, 47, is serving a 35-year sentence in Brazoria County state prison for sexual assault, according to Clifton, who worked the case. The rape occurred in Bailey County six days after Perry's disappearance.

Perry was reported missing May 7. She was found dead about three months later in a field northwest of Earth, more than five miles from her home.

Rowton and an accomplice confessed to the May 13, 1992 sexual assault of a middle-aged Portales, N.M. woman.

see SUSPECT on page 2



### Regional champs

A team of Muleshoe High students won the Region 17 Division II computer programming title in Lubbock. Team members are (from left) Julie Slayden, Leonard Joyner and Eric Posadas.

## GETTING WITH THE PROGRAM

### ■ Muleshoe students win computer contest

Three local computer whizzes are headed to a state-wide competition after proving to be the best programmers in the area.

Last weekend, Muleshoe High School senior Julie Slayden, and sophomores Leonard Joyner and Eric Posadas were awarded first place in the Texas Computer Education Association's programming contest.

The team competed in Lubbock against 20 other schools for the Region 17 Division II title. Winning the event qualifies the students to compete on the state level in May.

Slayden, the daughter of Mike and Teresa Slayden, is the team captain and

a one-year veteran of the contest.

This was the first year of participation for Joyner, son of Shelia Joyner, and Posadas, son of Hector and Lucy Posadas.

In Saturday's competition, the team was given two hours to write as many programs as possible. The students had to write data to accomplish specific tasks and calculations for each program.

Using Visual Basic, the MHS students were able to correctly write four programs, beating out the second place team from Littlefield, which wrote two.

The Muleshoe team will travel back to Lubbock in May to compete against schools from across Texas for the state computer programming championship.

## County 911 system being revamped

By TERESA STONE  
Journal staff writer

The local 911 service is being revamped in order to provide better emergency response to Bailey County residents.

Over the past 18 months, Five-Area Telephone, the local 911 provider, and South Plains Association of Governments have been working to make the emergency response system more efficient.

With the new system, local 911 operators will be able to identify the exact location of a caller, provided they are not on a cellular phone.

"This is supposed to take the guess work out of it," said Muleshoe Chief of Police Don Carter. "Emergency personnel have always had a good response time provided the caller could describe their location. Now, even if someone is able to dial 911 but can't talk or gets disconnected, we know exactly where they are and can either call back or send someone out."

Implementing the new system has been a gradual process, said Carter, who also serves as a member of the project's advisory committee. He explained

see REVAMPED on page 3

## AROUND MULESHOE

### Little League meeting March 5

There will be a Little League meeting at 7 p.m. March 5 at the First Baptist Church Activity Center (next to the police station).

The purpose of the meeting is to elect new officers and begin preparation for the upcoming season.

### A Toast to Texas celebration March 5

The Jennyslippers invite everyone to their annual "Toast to Texas" Thursday, March 5. The celebration will begin at 1:30 p.m. on the Bailey County Courthouse lawn in Muleshoe.

Entertainment will include singer Glenda Jennings accompanied by her cowboy puppet Billy Bob. Fiddle player Cliff Allen will also be entertaining the audience with his music and stories of making things for today's traditional Texas cowboys such as saddles. Steven Madrid, a Muleshoe High School student, will be playing the National Anthem on his trombone. Other entertainment will also be provided.

Everyone is invited to come help celebrate Texas.

### Community roller skating March 6

The Rebekah's are sponsoring roller skating from 7 - 9 p.m. Friday, March 6 at the Bailey County Coliseum. Admission is \$1.

### Libertarian Party convention March 10

A Parmer County Libertarian Precinct Convention will be held on primary night at 7:30 p.m. March 10 at the Lazbuddie Fire Department, Clay's Corner.

In order to be a member of the Libertarian Party, voters cannot participate in the Democratic or Republican primaries.

For more information, contact Helen Precure at (806) 965-2981. The state-wide phone number for the Libertarian Party of Texas is (800) 442-1776.

### Support group for Epilepsy patients

Epilepsy Foundation for the South Plains is holding their monthly support group meeting for patients and family who have seizures or epilepsy.

The meeting is scheduled for 7 p.m. Tuesday, March 10, in the first floor conference room, by the emergency room, of Highland

Medical Center in Lubbock.

This month's meeting will focus on the breakthrough treatment of epilepsy by the Cyberonics Brian Stimulator. Dr. Dasheiff will be the guest speak. He will also be showing videos of the surgery and patients who wear special devices.

### Watson Junior high choir concert

The Watson Junior High choir invites everyone to an evening filled with patriotic songs performed by local sixth through eighth graders.

The concert is scheduled for 7:30 p.m. Thursday, March 12 in the high school auditorium. Admission is free.

### MHS parents raise money for prom

Parents of Muleshoe High juniors and seniors are sponsoring a drawing for a Spring make-over valued at \$250. The funds raised will be used to defray the cost of the banquet and prom.

Tickets for the drawing are \$1. They will be sold throughout March. The drawing will be April 6, 1998 at the Fine Arts Night to Shine. Tickets are available from any junior or senior parent.

### Lazbuddie VFD interested in sale

The Lazbuddie Volunteer Fire Department is interested in holding a community equipment sale.

Whether or not to have the sale will be decided by the number of calls by interested people and by consignments of equipment. The possible site for the sale will be Easter Grain with the proposed date at the end on March.

Those who have questions or are interested, call Fritz Friemel at Easter Grain in Lazbuddie at (806) 965-2817. The Lazbuddie VFD will need a list of equipment by March 9.

### Local students at ACU earn honors

ABILENE—Holly Ann Hutton, Mark Alan McGuire and Russell Grant McGuire of Muleshoe were named to the dean's honor list for the fall of 1997 semester at Abilene Christian University.

To make the Honor Roll, a student must be enrolled full-time and earn a 3.45 or higher grade point average.

### SIMNACHER NATIVE GRASSES

Experts in the sowing and harvesting of native grasses of the Great Plains

Most native grass seeds available at wholesale prices when purchased with turnkey sowing jobs.

We also have a large quantity of high quality Native & Hachita Blue Grama. All work done in compliance with Government specifications.

Please call:

Darwin Simnacher  
(505) 762-7817  
Fax (505) 763-9115

Vince Simnacher  
(806) 946-3461  
Fax (806) 946-3604

or  
Thomas Simnacher  
(806) 285-2491

References provided upon request.

### Muleshoe Journal USPS 367820

Established February 23, 1924. Published by Triple S Publishing, Inc. Every Thursday at 304 W. Second, Box 449, Muleshoe, TX 79347.

Second Class Postage paid at Muleshoe, TX.  
POSTMASTER: Send address changes to the Bailey County Journal, P.O. Box 449, Muleshoe, TX 79347.  
We are qualified members of:  
Panhandle Press Association, National Newspaper Association,  
West Texas Press Association and Texas Press Association

WEST TEXAS PRESS  
ASSOCIATION

PPA

Panhandle Press Association

TA

MEMBER 1997

TEXAS PRESS ASSOCIATION

Scott Stinnett, Publisher  
Lisa Stinnett, Vice-President/Comptroller  
Rick White, Editor  
Mary Ann Dominguez, Classifieds  
Leah Bell, Advertising

SUBSCRIPTIONS: Muleshoe Journal and Bailey County Journal  
By Carrier Yearly - \$22.00  
Bailey County - by mail - \$24.00  
Elsewhere - \$26.00  
Advertising Rate Cards on Application

\*Advertisers should check their ad the first day of insertion. The Journals will not be liable for failure to publish an ad or for a typographical error or errors in publications except to the extent of the cost of the ad for the first day of insertion. Adjustment for errors will be limited to the cost of that portion of the ad where the error occurred.\*

## SUSPECT

From page 1

Clifton said the woman had been assaulted several times and "left for dead" about six miles north of Muleshoe.

The woman, a casual acquaintance of Rowton, survived the attack and identified both men, who were eventually captured in Corpus Christi and returned to Muleshoe.

They were each sentenced to 35 years as part of a plea bargain, Clifton said.

Clifton described Rowton as cold and calculating during police interviews and said he never showed any signs of remorse for what Clifton described as an "extremely brutal assault."

Authorities have not said what led them to Rowton in connection with the Earth homicide.

Clifton said Rowton was a suspect during the original investigation but could not elaborate further because it was not his case.

## Muleshoe group attends parent conference

The Texas Parent Coordinating Council's 18th annual state conference was held in Lubbock on Feb. 18-20 with Region 17 Service Center and schools throughout the region sponsoring the event.

Approximately 500 parents from all over the state gathered to learn how to support public educators in their never-ending

effort to educate all students.

Muleshoe Independent School District was one of the sponsoring schools and 10 parents and educators attended the three-day conference.

Attending were Margie Alarcon, Janie Balderas, Georgia Pena, Mr. and Mrs. Manuel Galindo, Nina Agundis, Maria Valdez, Janie Mejia, Celia

Flores, and Eva Avila.

Nina Agundis acted as facilitator in several of the sessions which stressed the importance of parent involvement in the educational process.



Richard Blechynden, an Englishman trying to increase the use of tea in the U.S., first served iced tea at the Louisiana Purchase Exposition (also known as the St. Louis World's Fair) in 1904.

## A variety of homestead exemptions could lower your property taxes!

A homestead exemption lowers the property taxes on your home by lowering its taxable value. If your home is valued at \$50,000 and you receive a \$15,000 homestead exemption, your home will be taxed as if it were worth \$35,000.

### Who qualifies for an exemption?

Anyone who owned a home on January 1st (and used it as their primary residence on that date) is entitled to a \$15,000 homestead exemption to lower their school taxes this year...and it doesn't matter if your home is a house, condominium, or mobile home. (Counties, cities, and special taxing districts may also offer homestead exemptions.)

### Are other exemptions available?

If you're disabled—or if you're 65 years old or older—you are entitled to an additional \$10,000 school tax exemption on your home. And if you qualify for the over-65 exemption, you're also entitled to a permanent, locked-in "ceiling" on the school property taxes on your home. (The ceiling does not apply to county or city property taxes, and those entities may offer other exemptions.) The over-65 homeowner's exemptions and school tax ceiling transfers to the surviving spouse, if the spouse is 55 years of age or older at the time of death and lives in and owns the home. Over-65 homeowners also may transfer the percentage of school tax paid, based on their former home's over-65 school tax ceiling, to a new home.

### Do I have to apply each year?

No. If you had a homestead exemption on your home in 1997, you won't need to reapply for 1998 unless your chief appraiser requires it. However, if you haven't received an exemption on your present home—or if you've moved to a new home—you'll need to file for an exemption for 1998. If you are 65 this year, you may file for the over-65 exemption up to one year after the date you turned 65. And if you became disabled during 1997, you need to file for the disabled person's exemption.

### When and where should I file?

File applications by April 30 at your appraisal district office. If you need more time, contact us at:

**Bailey County Appraisal District**  
302 Main St., Muleshoe, TX • (806) 272-5501

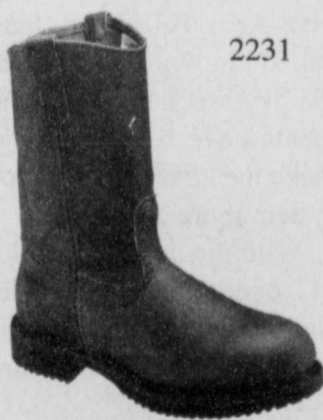
For more information, stop in or call for a free copy of

"Texas Property Taxes: Taxpayers' Rights, Remedies & Responsibilities"

Or contact:

Comptroller's Property Tax Division  
P.O. Box 13528  
Austin, TX 78711-3528

Have a nice day!



2231

RED WING  
SHOES  
Made in U.S.A.

The Fair Store  
120 Main 272-3500



An astrolabe is an instrument ancient astronomers used to measure the angles of celestial bodies above the horizon.

# CROP INSURANCE WITH THE SERVICE YOU DESERVE

To Better Serve The Needs Of Our Crop Producers, We Will Be Adding An Extra Feature To Our Crop Insurance Program. We Will Be Mapping All Of Our Insureds' Crops. These Maps Are For Our Records And Will Be Available To Any Producer. These Maps Are Color Coded Showing Acres And Crops In Each Field.

It's All About Doing A Better Job For Our Clients. When You Insure Your Crops With Roosevelt County Insurance, You Are Putting A Massive Amount Of Resources To Work For You.

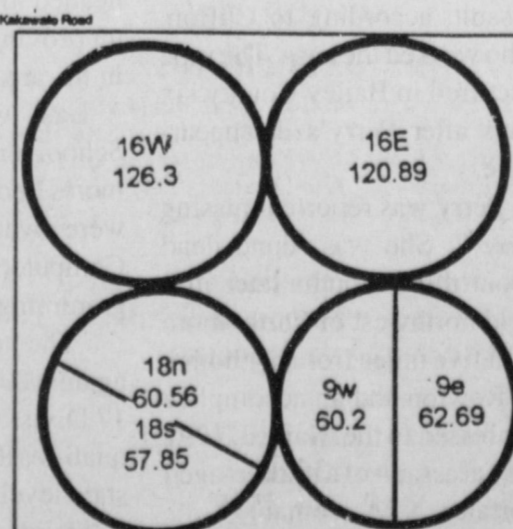
The Price Is The Same No Matter Where You Buy Your Insurance- It's The Service That Is Different! It's Very Easy To Transfer Your Crop Insurance To Roosevelt County Insurance. All You Have To Do Is Sign A Transfer Form. It Takes About 3 Minutes.

Remember March 15, 1998 Is The Final Day To Make Transfers Or Purchase New Insurance!

Serving Eastern New Mexico and West Texas

## Roosevelt County Insurance Agency

700 S. Ave. C • Portales, NM • (505) 359-1227 or Toll Free 1-800-748-2825





**On top of it**

Bailey County deputy Johnny Bermea and good samaritan Jason Jones render aid Monday to an Amarillo man who rolled his truck while traveling south on Highway 214.

**Truck accident makes a masa**

Several Bailey County inmates said they've sworn off corn tortillas for life after unloading and reloading about 25,000 pounds of masa into the wee hours of Tuesday morning, according to Bailey County Sheriff Coy Plott.

Five jail trustees were hired as laborers after a tractor-trailer truck containing thousands of bags of corn meal rolled over in a one-vehicle accident Monday afternoon about four miles south

of Muleshoe on Highway 214.

The truck was hauling a load of masa from Minsa Southwest to El Paso when it veered off the road and through a barbed wire fence before coming to rest on its side, according to Plott.

The driver, Cary Roberts, 35, of Amarillo was transported to the Muleshoe Area Medical Center by the Bailey County EMS and kept overnight for observation. He was released

Tuesday morning. No citations were issued.

Plott said the driver apparently drifted across the center line and veered off the road. There were no skid marks.

A blood test was taken at the hospital. But police do not believe alcohol or drugs were involved.

Rescue workers had to break out the front windshield to get Roberts out of the vehicle. Plott also found a small puppy hiding under the passenger's seat.

The inmates worked from about 10:30 p.m. Monday to 3 a.m. Tuesday transferring the corn meal sacks from one trailer to another.

Plott said when the inmates were returned to jail, they were covered from head-to-toe by the white corn meal and looked like ghosts.

**REVAMPED**

From page 1

that the first step involved clearly numbering and blocking every road in rural Bailey County.

Second, the local telephone company matched phone numbers throughout the area with the proper address. When someone outside of town calls 911, the computers now identify their location by block number and road number, for example 903 county road 1043.

"Before, with the old system, it was very difficult for emergency personnel to read maps and drive," said Carter. "This new system is no different than reading an address in town, it's not just random."

Currently, road signs are being purchased and put up at intersections for easier identification of county roads.

The next major step involves the postal service. Eventually, the post office will notify resi-

dents of their new address.

Carter said that once people know their new address they will be able to verify their location, which will allow police and emergency personnel to specifically pinpoint their location.

**¡Varias exenciones de residencia pueden rebajar sus impuestos de propiedad!**

Una exención de residencia reduce sus impuestos de propiedad. Por ejemplo, si su residencia tiene un valor de \$50,000 y Ud. recibe una exención de \$15,000, sus impuestos se calcularán como si el valor de su residencia fuera \$35,000.

**¿Quién califica para una exención?**

Cualquier dueño de una residencia principal el día 1 de enero tiene derecho a una exención de residencia de \$15,000 este año para rebajar sus impuestos escolares... y no importa si la residencia es casa, condominio, o casa móvil. (Los condados, municipios, y distritos especiales de impuestos también pueden ofrecer exenciones de residencia.)

**¿Hay otras exenciones?**

Si Ud. es incapacitado—o si tiene 65 años o más—tiene derecho a una exención adicional de \$10,000 en sus impuestos escolares de propiedad. Y si Ud. califica para la exención para los que ya cumplieron 65 años, también tiene derecho a un "cielo máximo" permanente en sus impuestos escolares de residencia. (El cielo máximo no tiene que ver con impuestos de propiedad de los condados o municipios, y esas entidades pueden ofrecer otras exenciones.) La exención para los que ya cumplieron 65 años y el cielo máximo se pueden transferir al esposo/esposa sobreviviente si el o ella tiene 55 ó más años de edad y es dueño/dueña de la casa en donde vive. También el dueño de una casa nueva que tiene más de 65 años puede trasladar un porcentaje de cielo máximo del los impuestos escolares que le tocaron en su domicilio vieja.

**¿Debo solicitarla cada año?**

No. Si Ud. recibió una exención de residencia en 1997, no hay necesidad de solicitarla de nuevo en 1998—al menos que se lo pida su jefe de valoraciones. Sin embargo, si no ha recibido una exención en su residencia actual—o si ha cambiado de domicilio tendrá que solicitar una exención para 1998. Si Ud. cumplirá los 65 años durante este año, tiene hasta un año de esa fecha para solicitar una nueva exención. Y si cumplió los 65 años o resultó incapacitado en 1997, tendrá que solicitar las exenciones adicionales.

**¿Donde y cuando debo solicitar mis exenciones?**

Su solicitud debe llegar en su oficina local del distrito de valoraciones antes del día 30<sup>a</sup> de abril. Si necesita más tiempo, favor de ponerse en contacto con nosotros antes: BAILEY COUNTY APPRAISAL DISTRICT • 302 MAIN, MULESHOE • (806) 272-5501 Si desea más información, visítenos y obtenga una copia gratis de

"Impuestos Sobre la Propiedad en Texas: Derechos, Recursos y Responsabilidades del Contribuyente de Impuestos"

ó escriba a

Comptroller's Property Tax Division  
P.O. Box 13528  
Austin, TX 78711-3528

**Pain may be eliminated for millions**

(SPECIAL)-- A drug that is exciting researchers in the treatment of pain has been formulated into a new product known as "Arthur Itis," and is being called a "Medical Miracle" by some, in the treatment of debilitating conditions such as arthritis, bursitis, rheumatism, painful muscle aches, joint aches, simple backache, bruises, and more. Although the mechanism of action is unclear, experiments indicate that Arthur Itis, relieves pain by first selectively attracting, and then destroying the messenger chemical which carries pain sensations to the brain, thus eliminating pain in the affected area. Arthur Itis, is available immediately without a prescription in an odorless, greaseless, non-staining cream or new roll-on lotion form. Arthur Itis, is guaranteed to work or your money back.

Use only as directed © 1996, Stellar Health Products, Inc.

AVAILABLE AT:

DAMRON DRUG STORE INC. 308 Main St. 272-4210	WESTERN DRUG 114 Main St. 272-3106
--	--

**Police believe graffiti gang related**

Some may think of graffiti as a big city problem, but this past weekend Muleshoe became a victim of such vandalism twice.

Friday, random buildings throughout Muleshoe, including Beall's Department Store, were defaced with gang graffiti. In response to what was drawn, Muleshoe police suspect that a second group retaliated by adding to the graffiti.

Muleshoe police report that they have a good idea of the groups involved.

Complete Line  
Monuments - Markers  
Memorials  
Granites - Bronze

**Muleshoe Memorial Park Cemetery, Inc.**

1631 W. American Blvd.  
P.O. Box 373 • Muleshoe, TX  
272-5727 or 272-3263

**PUBLIC NOTICE**

Southwestern Bell Telephone Company (Southwestern Bell) filed an application with the Public Utility Commission of Texas (PUC) to charge an additional 26 cents per month per line to recover costs for providing Expanded Local Calling service (ELC) to certain Texas Customers.

The 26 cents per month surcharge would not be billed to customers who receive ELC. However, customers who receive ELC and pay less than the maximum \$3.50 a month residential ELC charge or less than the maximum \$7 business ELC charge will have to pay the additional 26 cents per month charge.

Expanded Local Calling was created in 1993 by Texas legislation that requires telephone companies to provide toll-free calling between small towns that share a community of interest such as a school or hospital district. The legislation allows telephone companies to recover costs not paid through customer charges by applying a surcharge to all other customers in the state who do not receive the ELC service or who do not pay the maximum ELC rate. The maximum monthly ELC rate allowed under state law is \$3.50 per line for residential customers and \$7 per line for business customers.

Southwestern Bell estimates that the 26 cents per month per line charge will recover the \$27 million annual cost of providing ELC service that is not recovered from ELC rates.

If approved by the PUC, the monthly statewide surcharge of 26 cents per line per month will begin with the April, 1998 billing cycles, with an agreement to refund all or part of the charge if the PUC does not approve it.

For questions about the reasons for the charge, please call the Southwestern Bell Business Office listed in your directory.

The PUC assigned Docket Number 18513 to this proceeding. The deadline for intervention in this matter is March 31, 1998. Persons who wish to intervene or comment in these proceedings should notify the PUC by March 31, 1998. All requests to intervene should be mailed to the Public Utility Commission of Texas, P.O. Box 13326, Austin, TX, 78711-3326. For information intervening, please call the PUC at 1-888-782-8477 or at 512-936-7120.

**AVISO PUBLICO**

Southwestern Bell Telephone Company (Southwestern Bell) presentó una solicitud ante la Comisión de Servicios Públicos de Texas (PUC) para cobrar 26 centavos más al mes por línea para recuperar los costos por el servicio de Llamadas Locales Ampliadas (ELC) a ciertos clientes en Texas.

El cargo de 26 centavos al mes no se cobrará a los clientes que reciben ELC. Sin embargo, los clientes que reciben ELC y pagan menos del máximo de \$3.50 al mes por el servicio ELC residencial o menos del máximo de \$7 por el servicio ELC comercial, tendrán que pagar 26 centavos adicionales a su pago mensual.

El servicio de Llamadas Locales Ampliadas (ELC) fue establecido en 1993 por la legislación del estado de Texas y requiere que las compañías prestadoras de servicios telefónicos ofrezcan llamadas de larga distancia gratuitas entre pequeñas poblaciones que comparten un interés común tales como distritos escolares y de hospitales. Esta ley permite que las compañías telefónicas recuperen los costos no pagados mediante cargos a clientes, a través de un cargo a todos los demás clientes en el estado que no reciben el servicio ELC o que no pagan la tarifa máxima del servicio ELC. La tarifa máxima mensual permitida por la ley estatal es \$3.50 por línea para clientes con servicio residencial y \$7 por línea para clientes con servicio comercial.

Southwestern Bell calcula que los 26 centavos al mes por línea cubrirán los \$27 millones del costo anual del servicio ELC que no está cubierto por las tarifas de ELC.

Si la PUC autoriza el cargo mensual estatal de 26 centavos al mes por línea éste comenzará a partir de los ciclos de facturación de abril 1998, con el acuerdo de reembolsar todo o parte del cargo si la PUC no lo autoriza.

Para preguntas relacionadas con este cargo, por favor llame a la Oficina Local de Southwestern Bell listada en su directorio telefónico.

La PUC asignó el número de registro de 18513 a este procedimiento. El plazo de intervención sobre este asunto terminará el 31 de marzo de 1998. Las personas que deseen intervenir o hacer comentarios sobre este procedimiento deberán notificar a la PUC antes del 31 de marzo de 1998. Todas las solicitudes de intervención deberán enviarse por correo a Public Utility Commission of Texas, P.O. Box 13326, Austin, TX 78711-3326. Para mayor información sobre la intervención, por favor comuníquese con la PUC al 1-888-782-8477 o al 512-936-7120.



**JOE'S BOOT SHOP**

We Ship Everywhere

1-800-658-6378 106 E. American Blvd. Muleshoe, Texas

**And Country Junction**

**HAVE YOU MADE YOUR GUESS? HAVE YOU BROUGHT IT IN TO JOE'S?**

Joe's Boot Shop is giving away a pair of Justin First Quality Full Quill Ostrich Ropers to the person who comes closest to guessing the location indicated by our riddle! Bring your guess in and you could be eligible to win! Contest winner will be announced on April Fools Day.

**CRAZY 'BOU' BOOTS CONTEST**

Here's the Riddle One Time More...  
Make Sure You Start at Joe's Front Door!

If you put yourself in Joe's boots headed west, each boot heel to toe, just how far from Joe's place do you think you would go?

We're Your Triple S Boot Shop

**Joe's Service Selection** - Largest Boot & Western Wear shop in West Texas & Eastern New Mexico!

Over 16,000 Pairs of Boots Over 7,000 Hats

Every Day Low Prices!

Justin Regular Ropers \$89 Justin Lacers \$99

OLATHE RIOS OF MERCEDES TONY LAMA

March Special  
**JUSTIN First Quality Full Quill Ostrich Ropers \$399**

Congratulations to Roberto Vitolas of Bovina, TX!  
Winner of a Bailey 5X Felt Hat during Saturday's "Shop at Joe's" Giveaway!  
Coming Saturday, March 7, win a pair of MWZ Wrangler Jeans just for shopping at Joe's on Saturday!

Every Saturday • Buy at Joe's • Win at Joe's.

## Aguirre wins shot; Mules take fourth

Ricko Aguirre won the shot put and Muleshoe finished fourth in the Muleshoe Relays held Saturday at Benny Douglass Stadium.

Brownfield used its depth to capture the team title while Springlake-Earth got three wins from James Williams and finished second on a cool but mostly sunny day.

Brownfield won six individual events and the 400-meter relay while piling up 147 points. Williams captured the high jump and 110 and 300-meter hurdles as Springlake-Earth finished with 110 points.

### MULESHOE RELAYS

Abernathy was third with 84 points.

Muleshoe, which also got second-place finishes from Dustin Cleavinger, Brady Broyles and Gilbert Vela, finished with 79 points.

Aguirre recorded his winning toss of 48-2 on his first attempt in the shot put.

Cleavinger cleared 6-0 in the high jump, Broyles went 10-6 in the pole vault while Vela covered the 200 meters in 24.68 seconds. MHS was third in the 400 relay.



**Walking on air**

Muleshoe sophomore Jesse Reyes shows his winning form Saturday in the long jump in the Muleshoe Relays held at Benny Douglass Stadium.

## Benham, Locker lead Lady Mules to Relay crown

Kendra Benham and Stacy Locker were double winners and Muleshoe started the season by winning the girls title Saturday in the Muleshoe Relays held at Benny Douglass Stadium.

Benham, a senior, won the 100 meters and triple jump while Locker, a sophomore, doubled in the 800 and 1600 meters.

Muleshoe finished with 198 points to lead the four-team field. Brownfield was second with 163 points and Littlefield finished third with 65 points.

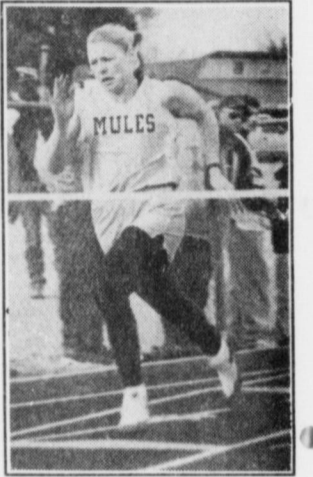
Lindsey Field added a win in the high jump, freshman Myndi Heathington won the 100-meter hurdles and Muleshoe captured all three relays.

Benham breezed to the 100 meters title in 13.56 seconds and soared 32-8 1/2 in the triple jump. Locker won the 800 meters by more than 45 seconds with a time of 2:30.71 and ran a 6:09.11 to win the 1600.

Field cleared 4-10 in the high jump.

Benham added second-place finishes in the 200 meters and shot put while Locker ran on the winning 1600-meter relay team.

Tommie Hernandez added a second in the discus.



**Muleshoe's Kendra Benham winning the 100 meters Saturday**

## JV Mules run away with title

Muleshoe dominated the field events and cruised to the boys junior varsity title Saturday in the Muleshoe Relays held at Benny Douglass Stadium.

The JV Mules picked up four wins and 70 points in the field events while piling up a team total of 166 points.

Abernathy was a distant second with 101 points and Springlake-Earth third with 92.

Picking up wins for Muleshoe were Matt Turney, discus; Darrell Lewis, shot put; Jesse Reyes, long jump; Stephen Woodard, triple jump; Jeff Bruns, 100 meters; and Chris Vela, 200 meters.

The Mules also won the 400-meter relay and finished second in the 1600-meter relay.



### Senior power

Seniors Layne Kemp (left) and Rodney Alanis have been full-time starters since their sophomore year. Muleshoe opened its season Thursday at the Brownfield Tournament.

## Mules open season with experience, pitching depth

By RICK WHITE  
Managing Editor

Muleshoe has a new baseball diamond and a gem in senior pitcher/third baseman Layne Kemp.

The Mules will field seven returning starters when they open their season Thursday at the Brownfield Tournament, including Kemp, an all-district selection last year.

Other key returning starters are senior third baseman/pitcher Rodney Alanis, senior catcher Aaron Purdy and junior center fielder Matt

McClanahan.

"I think the experience will definitely help us," said third-year Muleshoe coach Brad Hill, who noted the Mules lost five one-run games in district last season. "And we've got a lot more depth."

The Mules have depth at every position except possibly catcher, Hill said.

"We've got kids to fill every position this year and people behind them pushing for their spot," Hill said.

Hill said his players are excited about playing at the new

city baseball field, which was built over the winter and is taking shape as one of the best high school fields in the South Plains.

"Having a facility like this can do nothing but improve the program," Hill said. "It will give the kids coming up something to look forward to when they get to high school."

Muleshoe plays its first home game Tuesday at 5:30 p.m. against Littlefield.

Last year, Kemp batted .512

see MULES on page 5

## Home Folks Caring For Folks At Home. MULESHOE AREA HOME HEALTH Agency

### Featured Patient

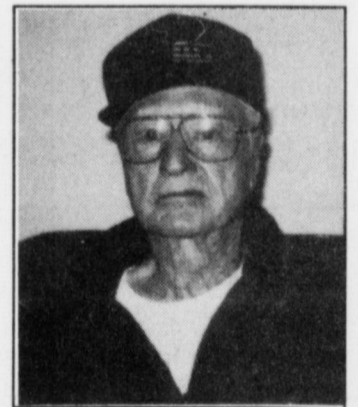
Randy Johnson was born October 6, 1921 in Conway, Arkansas. He moved to Oklahoma, where he lived for a couple of years. Mr. Johnson finally settled down in Muleshoe in 1932. He is proud to be one of the pioneer settlers of this area and can remember when there weren't many people or businesses here. The area had grassland, dirt roads and not much more.

Johnson married Betty Pool in late August of 1940. Betty has lived in Muleshoe most of her life. Randy and Betty have three children: Ronda Johnson of Lubbock, Ronald Johnson of Amarillo, and Stanley Johnson of Cleburne, TX. They have seven grandchildren: Jenifer Johnson Scott, Jill, Matthew, Ashley, Jeremy, Calli and AnnMarie Johnson.

Randy and his wife were 20 year proprietors of Johnson & Pool which handled appliances and hardware. Randy has also actively farmed and ranched for many years. Mr. Johnson still enjoys taking care of his cattle and is versed in Muleshoe's history- including most of this area's early ranches.

Randy is a past member of several social organizations here in Muleshoe and remains a member of the Texas Cattlemen's Assn. He is an active member of the First Baptist Church of Muleshoe.

He greatly appreciates the girls at M.A.H.H.A. for taking such good care of him during his recovery.



Randy Johnson

Home Care



Home is where the heart is

Affiliated with Lubbock Methodist Hospital Systems

**New Out Of Hospital Advance Directives Now Available!**

**24 Hour # 272-3346  
Local Nurse on call 24 hours a day to offer prompt service.**

We accept Medicare, Medicaid and Private Insurance  
**It Is Your Right To Choose The Home Health Agency You Prefer.**

**To receive Home Health Services, talk with your physician or talk with hospital personnel when you are hospitalized.**



## Survey shows loss of license would deter teenage smoking

Some 64 percent of Texas youth said the threat of losing their drivers license would keep them from smoking, according to a recent statewide survey conducted for the Texas Department of Health (TDH). Another 23 percent said the sanction would make them cut back on smoking.

Senate Bill 55 imposes a range of penalties for tobacco use by Texans under 18, including mandatory attendance at tobacco education classes, required community service, a \$250 fine and suspension of the drivers license for repeat offenders.

The 75th Texas Legislature charged TDH with conducting a public education campaign aimed at curbing tobacco use among youth. NuStats International conducted the survey for the department to identify the attitudes of Texas children ages 10 through 17 and their parents about tobacco and the new state law that aims to keep kids tobacco-free.

"We surveyed young Texans and their parents to find out what would have the best chance of making kids think twice before using tobacco," explained TDH Commissioner Dr. William Archer. "Overwhelmingly, teens said that losing their driver's license is the sanction most likely to deter them from using tobacco."

NuStats interviewed 233 sets of parents and children (466 total), chosen to represent the geographic, ethnic, and socio-

economic diversity of Texas. Survey findings include:

- Youth surveyed said the threat of losing driver's licenses (64 percent) and the \$250 fine (48 percent) would be the top two deterrents for youth smoking.

- Tobacco education class (45 percent) and community service (44 percent) would be slightly less effective deterrents.

- More than half (58 percent) of Texas youth say family members smoke and about a third (34 percent) have close friends who smoke.

- About half the parents and youth were not aware of the new law.

- 86 percent of parents and

87 percent of youth approve of Texas' new tobacco prevention law.

"Tobacco is the leading cause of preventable deaths in Texas, and is the only product that, when used as directed, causes mass addiction, disease and death," Archer said. "Yet, the survey revealed that most parents and youth do not believe the fact that tobacco kills more Texans than alcohol, AIDS, illegal drugs, auto accidents, suicides, homicides, and fires combined."

While some of the provisions of Senate Bill 55 took effect in September, the most far-reaching aspects took effect in January. Highlights of the law include:

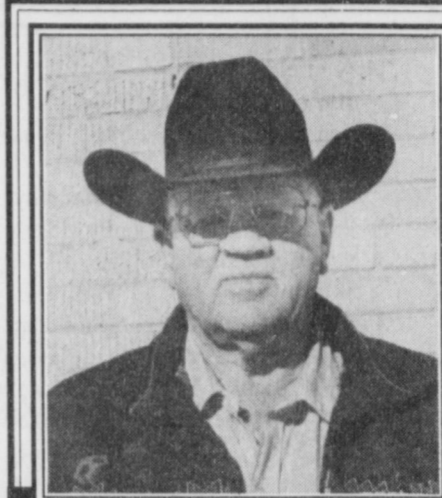
- Prohibits minors from buying, using or possessing tobacco products except in the presence of their parent or guardian.

- Allows law enforcement officers to write citations to minors caught smoking or possessing tobacco products.

- Penalizes minors for violating the law by requiring them to attend eight hours of tobacco awareness class or pay the fine.

- Prohibits the sale of "kiddie packs" containing fewer than 20 cigarettes.

- Restricts cigarette vending machines and other self-service sales except in places not open to those under 18 or in places used as cigar humidors.



**Bennie Claunch**

*"I thank you for your past support and would greatly appreciate your support in the upcoming election."*

**Re-Elect Bennie Claunch  
Bailey County Commissioner  
Precinct 4**

paid political adv.

# QUALITY USED VEHICLES

1991 Chevy Cavalier	#76037A	\$129 Down	12.9% APR	48 mo	Price \$4,946.43	\$129 <sup>00</sup> per mo.
1994 Pontiac Sunbird	#5141A	\$168 Down	12.9% APR	54 mo	Price \$6,995	\$167 <sup>31</sup> per mo.
1996 Chevy Corsica	7 to Choose From	\$179 Down	9.9% APR	60 mo	Price \$8,624	\$179 <sup>00</sup> per mo.
1993 Buick Century	#86050B	\$195 Down	12.5% APR	54 mo	Price \$7,806	\$185 <sup>00</sup> per mo.
1996 Olds Cutlass	#5116	\$197 Down	10.9% APR	66 mo	Price \$9,944.51	\$197 <sup>00</sup> per mo.
1997 Chevy Cavalier	4 to Choose From	\$199 Down	9.9% APR	72 mo	Price \$9,995	\$199 <sup>00</sup> per mo.
1994 Chevy Lumina	#5174	\$199 Down	11.9% APR	54 mo	Price \$8,500	\$199 <sup>28</sup> per mo.
1995 Chevy Lumina	#5001	\$185 Down	11.9% APR	60 mo	Price \$9,500	\$206 <sup>73</sup> per mo.
1992 Chevy Caprice	#72263A	\$200 Down	12.5% APR	54 mo	Price \$8,999	\$220 <sup>43</sup> per mo.
1994 Chevy Lumina Euro	#5194	\$220 Down	12.9% APR	60 mo	Price \$9,995	\$221 <sup>91</sup> per mo.
1996 Cutlass Supreme	#5116	\$225 Down	10.9% APR	60 mo	Price \$10,839	\$225 <sup>00</sup> per mo.
1995 Buick Regal	#5130	\$220 Down	11.9% APR	60 mo	Price \$10,500	\$229 <sup>28</sup> per mo.
1992 Chevy Astro Van	#86406A	\$195 Down	12.9% APR	48 mo	Price \$8,995	\$234 <sup>64</sup> per mo.
1992 Chevy Conversion Van	#86162A	\$199 Down	12.9% APR	48 mo	Price \$8,998	\$235 <sup>35</sup> per mo.
1996 Buick Regal	#5172	\$250 Down	10.9% APR	66 mo	Price \$11,995	\$237 <sup>37</sup> per mo.
1996 Chevy Lumina	2 to Choose From	\$250 Down	10.9% APR	66 mo	Price \$12,619	\$250 <sup>00</sup> per mo.
1997 Chevy Lumina	#5177	\$279 Down	10.9% APR	72 mo	Price \$14,995	\$279 <sup>35</sup> per mo.
1995 Olds Silhouette Van	#72323A	\$265 Down	11.9% APR	60 mo	Price \$12,995	\$282 <sup>52</sup> per mo.
1996 Chevy Tahoe	#5206	\$750 Down	10.9% APR	72 mo	Price \$23,995	\$441 <sup>25</sup> per mo.
1995 GMC Suburban	#73440A	\$750 Down	10.9% APR	66 mo	Price \$23,500	\$459 <sup>79</sup> per mo.
1996 Chevy Suburban	#86070A	\$750 Down	10.9% APR	66 mo	Price \$23,500	\$459 <sup>79</sup> per mo.
1997 Chevy Suburban	#86090A	\$1690 Down	10.9% APR	72 mo	Price \$27,995	\$499 <sup>34</sup> per mo.

1991 Ford Ranger #76459A \$4,995	1994 Chevy 1/2 Ton Pickup #5259A	1994 Nissan P/U 4X4 Reg. Cab 4X4 #76209B Reg. 12,995	1993 Nissan Pickup 4x4 #76296A	1995 Chevy P/U #76385A \$11,995	1992 Ford Explorer #86182A	1996 GMC 1/2 Ton Pickup Reg. Cab #76050B Reg. \$16,995	1997 Chevy 1/2 Ton Pickup Reg. Cab #76028A Reg. \$17,995
<b>\$3,995</b>	<b>\$8,995</b>	<b>\$8,995</b>	<b>\$8,995</b>	<b>\$9,995</b>	<b>\$10,995</b>	<b>\$14,995</b>	<b>\$16,500</b>
1996 Chevy 1/2 Ton Pickup Ext. Cab. #76384A Reg. \$18,995	1996 GMC 1/2 Ton Pickup Ext. Cab #76076A Reg. \$18,995	1995 Lincoln Town Car #86063A Reg. \$20,995	1997 Chevy 1/2 Ton Pickup Ext. Cab 2WD #86042 Reg. \$22,995	1997 Chevy 3/4 Ton Pickup Ext. Cab #5260	1997 GMC 1/2 Ton Pickup Ext. Cab 3 Dr. #5245 Reg. \$24,995	1997 GMC 1/2 Ton Pickup 4x4 Ext. Cab 3 Dr. #8607A Reg. 25,995	1998 GMC Yukon 4X4 #5308
<b>\$17,500</b>	<b>\$17,500</b>	<b>\$17,995</b>	<b>\$21,500</b>	<b>\$21,995</b>	<b>\$22,500</b>	<b>\$23,995</b>	<b>\$31,995</b>

# BENDER

YOUR GOING TO LIKE OUR FAMILY!

Chevrolet • Oldsmobile • Cadillac  
2500 Mabry Drive • (505) 763-4465

**30 Color Photos**  
**\$12<sup>99</sup>**

1- 10x13 Wall Photo 99c Deposit \$12.00 Due at Pick up  
1- 8x10  
2- 5x7  
2- 3x5  
16- King Size Wallets  
8- Regular Size Wallets

AT  
**LOWE'S MARKETPLACE**  
401 W. American Blvd.  
Muleshoe, TX  
Friday & Saturday  
March 13<sup>th</sup> & 14<sup>th</sup>  
from 9:30 am to 6 pm

Group charge  
99c per person

During this promotion  
you will receive  
4 FREE 3X5's  
with each \$12.99  
package purchased.



Local news for local folks  
The Muleshoe Journal

## MULESHOE HIGH HONOR ROLL

**Freshmen** — Lindsey Altman, Adrienne Ashford, Letti Barrera, Brandon Broyles, Jessica Hernandez, Stephanie Kirk, Jerrell Otwell, Melissa Flores, Melinda Scott, Joey Stone, Meagan Tipps, Joshua Williams and Casey Hall.

**Sophomores** — James Barrett, Lysie Black, Kamal Bhakta, Matthew Conklin, Jeffrey Bruns, Maria Flores, Gary Gartin, Ryan Hodge, Leonard Joyner, Stacy Locker, Michelle Lopez, Mitchell Mason, Eric Posadas, Amanda Jones, Leisha Wallace, Tyson Purdy, Ebony Russ and Michelle Toscano.

**Juniors** — Amber Bruns, Deepa Bhakta, Larhonda Copley, Jill Gladden, Nathan Keller, Amanda Messenger, Kelley Morris, Any Ronek, Blair Saylor, Erin Wilhite and Melissa Williams.

**Seniors** — Sherri Altman, Kendra Benham, Katie Black, McKenzie Brown, Angela Castorena, Cassidy Cleavinger, Damon Davenport, Louisa Garcia, Jana Johnson, Amanda Hahn, Amy Hooten, Brianna Locker, Gerardo Loya, Steven Madrid, Yadira Marquez, Matthew Mason, Scotty Mills, Jasmina Patel, Melinda Schuster, Julie Slayden, David Vaughn and Charlee Wood.

## ARREST REPORT

### MULESHOE PD

**Feb. 18** — Simon Orlando Chavez Jr., 22, arrested on warrants for speeding and failure to assist.

**Feb. 21** — Prajendez Patricio Vela, 26, arrested on warrants from Lubbock County.

**Feb. 23** — Saul Sigala Sanchez, 29, arrested for driving while intoxicated.

**Feb. 26** — Francisco Sanchez, 29, arrested for public intoxication.

**Feb. 26** — Reynaldo Fernandez Jr., 22, arrested for public intoxication.

**Feb. 26** — Hilberto (Gilbert) Villegas Herrera, 22, arrested on warrants from DPS Amarillo.

### BAILEY COUNTY SO

**Feb. 20** — Laura Flores Orozco, 29, arrested on motion to revoke probation.

**Feb. 21** — Juan Manuel Camarillo, 35, arrested for driving while intoxicated, fourth offense.

**Feb. 21** — Felipe Salinas, 24, arrested for public intoxication.

**Feb. 22** — Charles C. Smith, 26, arrested for driving while intoxicated and possession of a controlled substance.

**Feb. 22** — Antonio Pena, 22, arrested for disorderly conduct.

**Feb. 22** — Arturo Sanchez Jr., 22, arrested for disorderly conduct.

**Feb. 22** — Jesus Sanchez, 17, arrested for disorderly conduct.

**Feb. 23** — Andres Sigala, 35, arrested for public intoxication.

**Feb. 24** — Roberto Ramirez, 19, arrested for driving with a suspended license and criminal mischief.

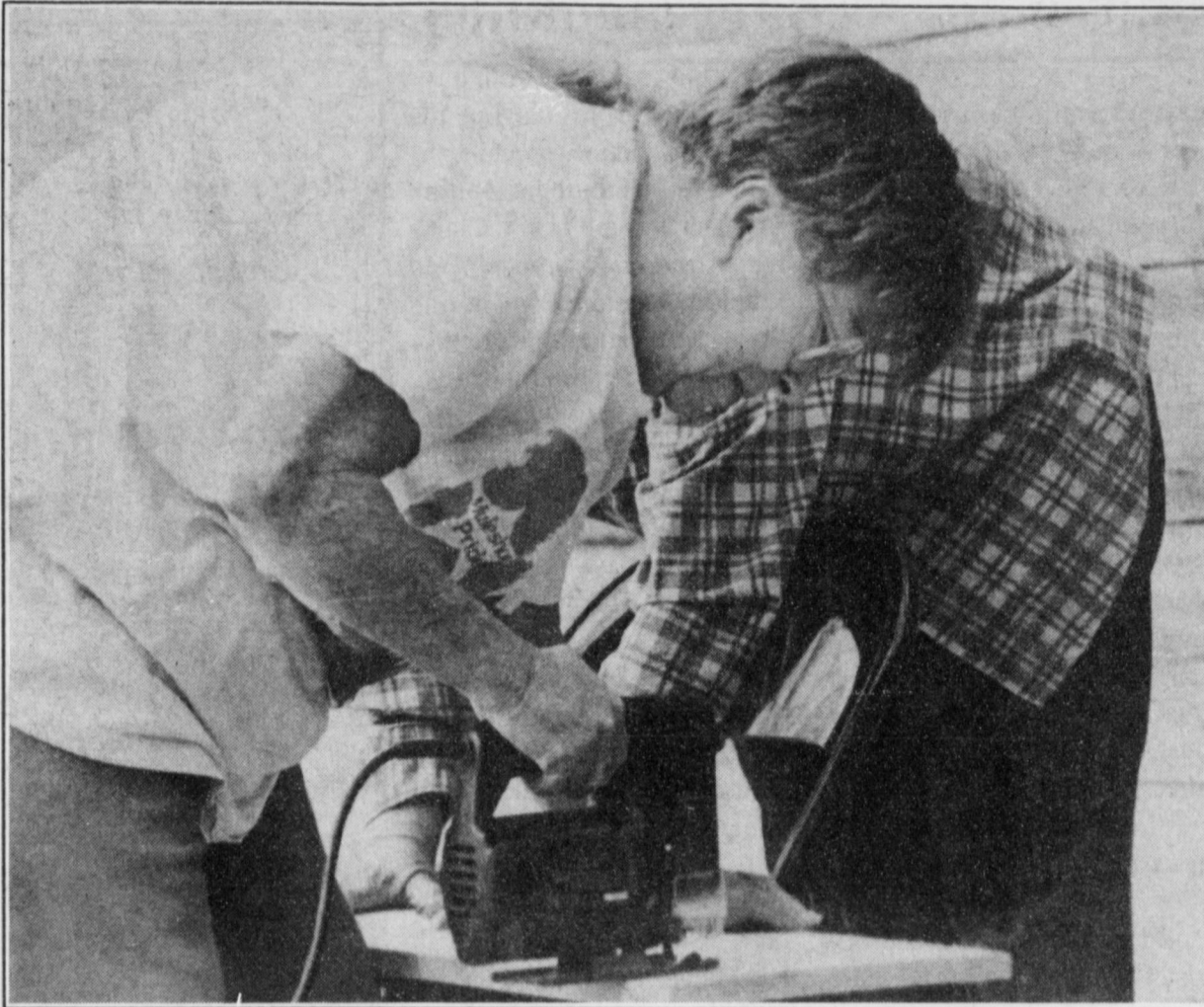
**Feb. 25** — Ramon Rivera Rivas, 32, arrested for assault, family violence.

**Feb. 25** — Abigail Rivas, 32, arrested for assault, family violence.

**Feb. 26** — Freddy Sanchez, 22, arrested for public intoxication.

**Feb. 26** — Jessie Camarillo, 32, arrested for theft by check.

**Mar. 2** — Mario Avila Flores, 23, arrested for driving while intoxicated.



### A woman's work is never done

Patsy Chance cuts a plank to size while working to repair the Rebakah Lodge late last month. Lodge members hope the repairs will keep pigeons out of the building's attic.

### Senior workers have much to offer

For over thirty years, Green Thumb, Inc. has operated the Senior Community Service Employment Program which provides our nation's seniors with part-time employment and training opportunities.

Through their participation, these senior workers maintain their dignity and remain as productive member of their communities.

Each year *Hire the Older Worker Week* spotlights the contributions our seniors bring to the labor force and encourages employers to profit from their skills, abilities, and experience.

According to Diane Cowan, Green Thumb director, "during this important week, March 8 through 14, let us recognize and highlight the work force contributions of our seniors while we strengthen our commitment to assuring that we invest in their talents and resourcefulness as productive partners in tomorrow's future." Operating primarily in the

rural areas of 132 Texas counties, Green Thumb has given older, economically-disadvantaged jobseekers the opportunity of sharing their years of experience, hard work, and dedication through local community service employment and training projects.

Funded through the U.S. Department of Labor, the program's emphasis upon training allows participants to transition back into private sector employment.

Green Thumb encourages employers to utilize the skills and abilities of seniors for their job openings not only during *Hire the older worker week*, March 8 — 14, but every other week also.

Hiring experience, dependability, reliability, and dedication is just good business!

For more information regarding senior employment and training opportunities, contact Green Thumb, Inc. P.O. Box 7898, Waco, Texas 76714, or call 254/776-4081.

## ON PUBLIC TV Festival '98

March 6th — 22nd

During Festival '98, community leaders, radio and television personalities, and other volunteers from throughout the viewing area will be in our studios to host Community Nights.

### Featuring Special Nights & Programs

- 7th - Valencia School, Portales**  
9:00 p.m. *Cincinnati Pops Big Band Hit Parade*
- 9th - Texico Chamber of Commerce**  
8:00 p.m. *Championship Ballroom Dancing (1996)*  
11:10 p.m. *Red Skelton Show*
- 10th - Clovis/Curry County Chamber of Commerce**  
8:00 p.m. *That's Entertainment II*
- 11th - Roosevelt County Chamber of Commerce**  
8:00 p.m. *Harry Connick Jr.: Romance in Paris*  
9:10 p.m. *Great Performances "Frank Sinatra: The Very Good Years"*
- 13th - Tucumcari Chamber of Commerce**  
10:10 p.m. *Bill Cosby: Mr. Sapolsky, with Love*
- 17th - Melrose Chamber of Commerce**  
8:00 p.m. *Riverdance*  
9:45 p.m. *Andre Rieu: The Vienna I Love*
- 19th - Roswell Chamber of Commerce**  
8:00 p.m. *Mystery "Inspector Morse: Death is Now My Neighbor"*  
10:15 p.m. *Frank Sinatra - Concert for the Americas*
- 21st - Floyd Lion's Club**  
9:00 p.m. *John Denver Remembered*

Television Worth Watching!

**kenw 3**  
EASTERN NEW MEXICO UNIVERSITY  
PORTALES, NM

You Snooze, You Lose. Read the News

## Extra, Extra Photo Savings!

**FREE 2nd Set!**

3" ALCO Advantage Prints

OR

4" Kodak Prints

PREMIUM PROCESSING

Every Tuesday & Saturday!

**ALCO Advantage**

Daily: 9 A.M. to 8 P.M.

Sunday: NOON to 5 P.M.

1401 W. AMERICAN BLVD. • Muleshoe, TX 79347



Offer available on 3" Alco Advantage Processing or 4" Kodak Premium Processing prints: 3" prints from 110, 126, dsc and 35mm film; 4" prints from 35mm film only. C-41 Process only. Not available on Advanced Photo System, Panoramic or 1/2 frame 135 film. Cannot be combined with any other offer.



Wind from the west, fishing is best; wind from the east, fishing is least. Or so they say.

## Precure Chiropractic Clinic

### ARE YOU HURTING?

#### A HANDS-ON APPROACH TO...



- Headaches
- Tight, sore muscles in neck or back
- Athletic injuries
- Automobile or on-the-job injuries
- Fatigue, stress or soreness
- Chronic back or neck pain
- "Trigger points" in muscles
- Scoliosis
- "Subluxations" of the spine

There's no need to put it off any longer; you should see what chiropractic care has to offer. Dr. Mike Precure offers a wise choice for sensible, smart and effective care to keep you healthy and going strong!

Call 272-6784 today for an appointment or complementary consultation  
Or come by Monday-Friday • 8 am to Noon, 1 pm to 5 pm  
Located in Suite 4 in the Muleshoe Area Medical Center.

## STARTS TODAY!

# CLEARANCE FALL & WINTER MERCHANDISE

# 70% OFF ORIGINAL PRICES

NEW REDUCTIONS TAKEN ON A HUGE SELECTION OF

FALL & WINTER FASHIONS FOR THE WHOLE FAMILY!

- MISSES' & JUNIORS' SPORTSWEAR & DRESSES
- SPECIAL SIZES • INTIMATE APPAREL
- SHOES • ACCESSORIES • CHILDREN'S APPAREL
- MEN'S DRESS CLOTHING & SPORTSWEAR

Total savings: off original prices. Interim markdowns have been taken. Styles, sizes and colors may vary by store.

CHARGE IT! GET 10% OFF ALL DAY WHEN YOU OPEN A NEW STORE ACCOUNT. Exclusions may apply. Subject to credit approval.

**BEALLS**  
We're all about you!

MULESHOE #649  
321 Main St.  
272-3478

**OBITUARIES**

**ADDIE MOYER**

Addie Moyer, 94, of Muleshoe died Saturday, Feb. 28, 1998 at the Muleshoe Area Health Care Center.

Memorial services were held Tuesday, March 3, 1998 at the Ellis Funeral Home Chapel with Rev. Brad Reeves, pastor of First United Methodist Church of Muleshoe, officiating.

Burial followed in West Park Cemetery in Hereford.

Moyer was born Sept. 26, 1903 in Arkansas City, Mo. In 1926, she married Lindsay Johnson in Kansas City, Mo. She married Joe Moyer on July 13, 1935 in Wheeler, Texas. He died April 22, 1982.

Moyer moved to Muleshoe from Friona in 1989. She had lived in Friona since the late 1940s, moving from Canadian, Texas.

She was a member of the First United Methodist Church of Friona, a member of United Methodist Women, and had held all the offices in the Friona's Woman's Club.

She had been a school teacher in the Pleasant Valley School and the Cedar Hill School in Hemphill, Co.

Survivors include her son, L.T. Johnson of Muleshoe; three grandchildren and one great-grandchild.

The family requests that memorials be sent to Girl's Town or Cal Farley's Boys Ranch, Boys Ranch, Texas 79010.

**JANIE MARTINEZ**

Janie Martinez, 51, of Muleshoe died Monday, March 2, 1998 at Methodist Hospital in Lubbock.

Rosaries are scheduled for 7 p.m. Wednesday, March 4 and Thursday, March 5, at Ellis Funeral Home Chapel.

The memorial service is scheduled for 11 a.m., Friday, March 6, at Immaculate Conception Catholic Church in Muleshoe with Father Joseph Augustine officiating.

Burial will follow in Muleshoe Memorial Park Cemetery.

Martinez was born Sept. 5, 1946 in Kennedy, Texas. In 1950 she moved to Muleshoe where she married Atanacio Martinez on May 1, 1986.

Martinez, a homemaker, was a member of the Immaculate Conception Catholic Church. She and her husband owned and operated Southside Chevron Service Station in Muleshoe.

Survivors include her husband Atanacio; son, Toby

Martinez of Muleshoe; daughters, Christine Olivarez of Muleshoe, Ernestine Olivarez of Fort Worth; parents, Andrew and Monica Gonzales of Muleshoe; sisters, Dora Triana, Alice Gonzales, and Nora Gonzales all of Muleshoe; brothers, Andrew Gonzales of El Paso, Sammy Gonzales of Muleshoe; grandchildren, Joshua Hernandez of Muleshoe, Jacob Hernandez of Fort Worth, and Nicole Clark of Muleshoe.

**FRANCIS H. FRANKS SR.**

Francis H. Franks Sr., 79, died Monday, March 2, 1998 at Methodist Hospital in Lubbock.

Memorials services are scheduled for 2 p.m., Thursday, March 5, 1998 at First Baptist Church of Muleshoe with Rev. Stacy Conner officiating.

Burial will follow at Muleshoe Memorial Park Cemetery.

Franks was born Sept. 11, 1918 in Russell, Okla. He married Ruth Emma Brand Nov. 4, 1945 in Wilson, Minn. She died March 29, 1996.

Franks moved to the Muleshoe area in 1965 from Arch, NM. He was a member of the First Baptist Church of Muleshoe. He was a farmer and a veteran of WWII, serving in the US Army, European Theater of Operations.

Survivors include his sons, Francis H. Franks Jr. of Muleshoe, Danny Gene Franks and his wife Kathi of Muleshoe; sisters, Ina Ruth Hope of Fort Worth, Cora Bell Koller of Duarte, Calif.; brothers, Edwin Franks of Marysville, Calif., William Jack Franks of Sacramento, Calif., Carroll Franks of Carmichael, Calif., and J.C. Franks of Littlefield.

Franks was preceded in death by one sister, Mary Lou Simon.

The family requests that memorials be made to a favorite

charity or to the American Cancer Society.

**FRANKIE LONG**

MORTON— Frankie Long, 84, of Morton died Saturday, Feb. 28, 1998 at Cochran Memorial Hospital in Morton.

Memorial services were held Monday, March 2, 1998 at First Baptist Church in Morton with pastor Danny Jackson officiating.

Burial was held in Morton Memorial Cemetery.

Long was born June 25, 1913 in Carey, Texas. She married Horace Graham Long Dec. 16, 1933 in Childress. He died Jan. 5, 1976.

Long moved to the Morton area in 1939 from Memphis, Texas. She was a homemaker and a member of the First Baptist Church of Morton where she was a nursery attendant for many years.

In 1988 Long was honored

as Morton's Women of the Year. She had owned and operated a flower shop in Morton. She had worked for St. Clair's Department Store and Ben Franklin's as a salesman. She was employed by the Senior Companion Program.

Survivors include her daughters, Erma Williams and Linda Huckabee, both of Morton; brother, Edd Mills of Childress; five grandsons, Mike and Marty Williams, Brian, Bradley, and Josh Huckabee; six great grandchildren, Zachary, Brandon, Brittany, Brent, and David Huckabee, and Rhiannon Williams.

Casket Bearers were Tyson Tyler, Mike and Marty Williams, Brian, Bradley and Josh Huckabee.

The family requests that memorials be sent to First Baptist Church of Morton.

Mary Kay  
Cosmetics



Josie  
Flowers  
272-3865

**RANDY'S SHOES**  
semi-annual  
**Clearance**  
**SHOE SALE**

Many Styles Reduced In Price!

**Ladies Shoes**

Large Group  
Many Styles Now  
**40%-50% Off**  
Special Group **\$8<sup>99</sup>**  
Handbags  
(Many styles) **1/2 Price**

**Men's Shoes**

Many Styles  
Now...  
**40%-**  
**50% Off**  
Special Group  
**\$19<sup>99</sup>**

Men's • Ladies  
• Children's  
**Nike Shoes**  
Most styles  
**20%-50% Off**

**Children's Shoes**  
Large Group  
**1/2 Price**  
Special group **\$7<sup>99</sup>**

**Randy's Shoes**  
410 Main • Downtown Clovis

**Protect your rights!**  
**"Render" your taxable**  
**property by April 15th.**

A "rendition" is a report to the appraisal district that lists all the taxable property you owned or controlled on January 1st of this year. The rendition form is available at your local appraisal district office... or you may draft a similar form.

**Who must file a rendition?**

You must file a rendition if you own tangible personal property that is used to produce income—such as the inventory and equipment used by a business.

**Are there any advantages to you?**

The advantages of filing a rendition are:

- ☑ You give your opinion of your property's value. If the appraisal district believes the value is higher, it must notify you in writing of the higher value and explain how you can protest that value to the appraisal review board.
- ☑ You record your correct mailing address so your tax bills will go to the right address. If your bill is mailed to the wrong address, the law still holds you responsible for paying your taxes on time or paying extra charges for late payments.
- ☑ You can also file a "report of decreased value" to notify the appraisal district of significant depreciation of the value of your property in 1997. The district will look at your property before assigning a value in 1998.

**What's the deadline?**

The last day for filing 1998 renditions is April 15. Call your appraisal district for the last date the rendition may be post-marked, if mailing. You can get an extra 15 days if you ask for it in writing by the April 15 deadline.

**Where do you file?**

File renditions with your local appraisal district at:

**Bailey Central Appraisal District**  
302 Main St. • Muleshoe, TX 79347  
(806) 272-5501

For more information stop by your appraisal district and pick up

"Texas Property Taxes: Taxpayers' Rights, Remedies & Responsibilities"

Or contact:

Comptroller's Property Tax Division  
P.O. Box 13528  
Austin, TX 78711-3528

**WILSON APPLIANCE**

Authorized Agent for Plateau Cellular Phone Service

**MOTOROLA**  
**CELL PHONES**

- Call-In Absence Display
- Rechargeable NiCd Battery
- And more...

Cell Phones  
as low as

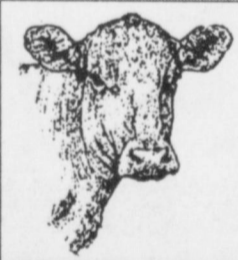
**\$9<sup>95</sup>**

Easy to use,

small enough to take anywhere!

\*Activation required with Plateau Cellular Phone Service.  
\*Some restrictions apply.

117 Main St. • Muleshoe, TX • 272-5532



**Muleshoe Cattle Market**

SATURDAY, FEB. 28, 1998

FOR INFORMATION ON SALES OR TO CONSIGN CATTLE, CALL (806) 272-4201

**REPRESENTATIVE SALES**

967 cattle, 127 hogs and 153 sheep & goats. Market steady on stocker steers. Stocker heifers 1-2 higher. Feeder cattle 2-3 dollars lower. Pairs & Bred cows steady. Packer cows & Bulls 1-2 lower.

The Muleshoe Cattle Market is brought to you each week by Muleshoe Livestock Auction, located east of Muleshoe on U.S. 84. Muleshoe Livestock conducts sales every Saturday, beginning with hogs, sheep and goats at 10 a.m. and cattle following at approximately 12 noon.

Seller, City	#	Type	Wt.	CWT or PH
Narcisco Gonzales, Hereford	3	Hol. Bulls	290 lbs.	at \$70.50
Brown & Brown, Lubbock	3	Mxd. Bulls	205 lbs.	at \$126.00
Tom Jinks, Muleshoe	YWF Str		220 lbs.	at \$118.00
Antonio Salazar, Lockney	BWF Str		270 lbs.	at \$112.00
Jacole Clark, Pampa	Blk. Bull		330 lbs.	at \$110.00
Carson Cattle, Bovina	BMF Bull		340 lbs.	at \$105.00
Carson Cattle, Bovina	2 Mxd. Strs		458 lbs.	at \$90.00
Alan Clark, Friona	Char. Bull		400 lbs.	at \$94.00
Sylvester Mayfield, Clovis, NM	13 Blk. Strs		430 lbs.	at \$94.50
Durwood Herring, Clovis, NM	2 Mxd. Strs		435 lbs.	at \$95.00
Thomas Pettit, Abernathy	2 Mxd. Strs		503 lbs.	at \$90.00
Thomas Pettit, Abernathy	3 Mxd. Strs		682 lbs.	at \$75.50
7C Cattle, Bovina	6 Mxd. Strs		638 lbs.	at \$82.00
Carson Cattle, Bovina	4 Char. Strs		623 lbs.	at \$80.00
Carson Cattle, Bovina	8 Mxd. Strs		751 lbs.	at \$73.50
Diamond Y Cattle, Muleshoe	10 Limo. Strs		615 lbs.	at \$85.00
Diamond Y Cattle, Muleshoe	6 Limo. Strs		748 lbs.	at \$74.00
Delbert Watson Estate, Mshe	Blk. Str		775 lbs.	at \$75.00
Carson Cattle, Bovina	2 Mxd. Hfrs		318 lbs.	at \$84.00
Carson Cattle, Bovina	7 Mxd. Hfrs		439 lbs.	at \$83.50
Alan Clark, Friona	2 Char. Hfrs		365 lbs.	at \$91.00
F&T Rowland, Morton	3 Mxd. Hfrs		395 lbs.	at \$85.00
Lite Cattle Co., Spade	6 Blk./BWF Hfrs		432 lbs.	at \$84.00
Henry Batenhorst, Hereford	3 Mxd. Hfrs		437 lbs.	at \$85.50
Brown & Brown, Lubbock	3 Blk. Hfrs		532 lbs.	at \$77.25
Jesus Torres, Muleshoe	4 Char. Hfrs		568 lbs.	at \$76.00
Thomas Pettit, Abernathy	Char. Hfr		575 lbs.	at \$75.00
Tom Jinks, Muleshoe	2 Red Pairs			\$715.00
Tom Jinks, Muleshoe	Blk. Pair			\$660.00
Bill Bradley, Amherst	Char. Pair			\$630.00
Carson Cattle, Bovina	2 Mxd. Pairs			\$680.00
Carson Cattle, Bovina	2 Red Cows P7			\$470.00
Carson Cattle, Bovina	Char. Cow P6			\$510.00
R.G. Davies, Bovina	Red Cow		1335 lbs.	at \$42.50
Lazy D Cattle Co., Portales	Blk. Cow		1115 lbs.	at \$41.25
Alkali Cattle Co., Portales, NM	Blk. Cow		1495 lbs.	at \$41.50
Randy Johnson, Muleshoe	RWF Cow		1025 lbs.	at \$42.75
Randy Johnson, Muleshoe	Brang. Cow		1520 lbs.	at \$40.25
Tom Jinks, Muleshoe	2 RWF Cows		1250 lbs.	at \$42.25
Tom Jinks, Muleshoe	Brin. Cow		1230 lbs.	at \$37.50
Prairie View Dairy, Muleshoe	Hol. Cow		1395 lbs.	at \$39.00
Prairie View Dairy, Muleshoe	Hol. Cow		1250 lbs.	at \$40.25
Harvey Morris, Clovis, NM	Red Bull		1555 lbs.	at \$50.50
R.G. Davies, Bovina	Limo. Bull		1565 lbs.	at \$53.75

**SENIOR NEWS**

The Bailey County Senior Citizens met at the Heritage Center Feb. 23rd for a luncheon. Sixteen members and two guest registered.


The opening prayer was given by J.C. Shanks. The meeting was called to order by President Margaret Collins.

Kay Graves and Jo Ellen Cowart shared a program on sharing thoughts and deeds by telephone as you are doing your work.

The minutes of last meeting were read and approved. The election of officers was held with Margaret Collins reelected president and Ada Murrah as Secretary/Treasurer. The birthday song was sang to Margaret Epting. Several get well and sympathy cards were sent.







**Happy 1<sup>st</sup> Birthday**  
**Natalya**  
 March 4, 1998

**We Love You!**

*Dad & Mom,  
 Zac and Gloria Yanis  
 Your Brothers,  
 Nikolai Aleksandr  
 and Zucarias Jr.  
 And Your Grandparents,  
 Silvester and Angie Garcia*

**Natalya Alexa Yanis**

The family of Delbert Watson extends its heartfelt gratitude to all for the outpouring of kindness and sympathy during our time of loss of Delbert, beloved husband, father and grandfather. To all of you who sent flowers, cards, brought food, attended services, called and helped with taking care of business needs, we thank you and may God richly bless you for your support.

Beth, Tom and Jim & families



**To Have & To Hold**

**Golden Anniversary**

The Children of Mr. & Mrs. Melvin Griffin request the pleasure of your company at a reception honoring their parents' Fiftieth Wedding Anniversary on Saturday, the seventh of March Nineteen Hundred and ninety-eight from 2:00 till 4:00 o'clock in the afternoon Bailey County Coliseum 2206 West American Boulevard - Muleshoe, Texas Cards only, please.

**Remember Folks: First Birthday and 50<sup>th</sup> (or above) Wedding Anniversary notices are FREE (one insertion only). We'll gladly offer congratulations & let everyone in on the celebrations you've planned!!**

Drop by the Journal office at 304 W. 2nd St. in Muleshoe or mail the information to P.O. Box 449, Muleshoe, TX 79347. All pictures will be returned. Ads are subject to space and size restrictions. Second notices of events are charged as regular display ads.

# Journal Classifieds

Deadlines are 5 p.m. Monday and Thursday Call 272-4536 Deadlines are 5 p.m. Monday and Thursday

**LEGAL**

**NOTICE TO BIDDERS**  
 Sealed bids for SUMMER 1998 ROOFING PROJECT \* MULESHOE HIGH SCHOOL will be received by Mr. William J. Moore, Superintendent of Schools, Muleshoe Independent School District in the Board Room of the Muleshoe Independent School District Administrative Office Building, 514 West Avenue G, Muleshoe, Texas until 4:00 p.m. Thursday, March 19, 1998. Any bids received after closing time will be returned unopened. The Project consists of removing and replacing designated areas of existing roofing. A prebid conference will be held in the Board Room of the Muleshoe Independent School District Administrative Office Building, 514 West Avenue G, Muleshoe, Texas on Tuesday, March 10, 1998. Drawings, specifications and related documents, including minimum wage rates, may be acquired from Adling Associates Architects, 2529 74th Street, Lubbock, Texas 79423-1405. Telephone 806/748-0880. Facsimile 806/748-0744. The Owner reserves the right to reject any or all bids, and to waive any or all formalities. Published in the Muleshoe Journal February 26, 1998 and March 5, 1998.

**LEGAL**

**NOTICE TO BIDDERS**  
 Sealed bids for SUMMER 1998 ROOFING PROJECT \* DESHAZO ELEMENTARY SCHOOL will be received by Mr. William J. Moore, Superintendent of Schools, Muleshoe Independent School District in the Board Room of the Muleshoe Independent School District Administrative Office Building, 514 West Avenue G, Muleshoe, Texas until 4:30 p.m. Thursday, March 19, 1998. Any bids received after closing time will be returned unopened. The Project consists of removing and replacing designated areas of existing roofing. A prebid conference will be held in the Board Room of the Muleshoe Independent School District Administrative Office Building, 514 West Avenue G, Muleshoe, Texas on Tuesday, March 10, 1998. Drawings, specifications and related documents, including minimum wage rates, may be acquired from Adling Associates Architects, 2529 74th Street, Lubbock, Texas 79423-1405. Telephone 806/748-0880. Facsimile 806/748-0744. The Owner reserves the right to reject any or all bids, and to waive any or all formalities. Published in the Muleshoe Journal February 26, 1998 and March 5, 1998.

**LEGAL**

**BID NOTICE**  
 The City of Muleshoe will be accepting bids for a 20-foot batwing rotary cutter until 10:00 a.m., Monday, March 16, 1998. Bid specifications may be picked up at City Hall, 215 South First, Muleshoe, Texas 79347. For further information, please contact Ramon Sanchez Jr. at 2-24528. The City of Muleshoe reserves the right to accept or reject any or all bids. Published in the Bailey County Journal and the Muleshoe Journal March 1, 5, 1998.

**LEGAL**

**NOTICE TO BIDDERS**  
 Sealed bids for SUMMER 1998 ROOFING PROJECT \* DILLMAN ELEMENTARY will be received by Mr. William J. Moore, Superintendent of Schools, Muleshoe Independent School District in the Board Room of the Muleshoe Independent School District Administrative Office Building, 514 West Avenue G, Muleshoe, Texas until 4:45 p.m. Thursday, March 19, 1998. Any bids received after closing time will be returned unopened. The Project consists of removing and replacing designated areas of existing roofing. A prebid conference will be held in the Board Room of the Muleshoe Independent School District Administrative Office Building, 514 West Avenue G, Muleshoe, Texas on Tuesday, March 10, 1998. Drawings, specifications and related documents, including minimum wage rates, may be acquired from Adling Associates Architects, 2529 74th Street, Lubbock, Texas 79423-1405. Telephone 806/748-0880. Facsimile 806/748-0744. The Owner reserves the right to reject any or all bids, and to waive any or all formalities. Published in the Muleshoe Journal February 26, and March 5, 1998.

**HELP WANTED**

"AVON", Representatives Needed Now! No Inventory Required, IND/SALES / REP, Toll Free, 800-611-6892. 10t-4tpd

**GARAGE SALE**  
 Garage Sale, Sat., March 7 8 a.m to 2 p.m. 1502 W. Ave C 10t-11ch

**REAL ESTATE**  
 For Sale; 2 bedroom, 2 bath, 1 carport, central air and heat, storm cellar. 272-5291. 10t-9tpd

**CONTINENTAL CREDIT**  
 Seeking local person Due to Rapid Expansion...  
**Manager Trainee's Wanted**

Training will be in Littlefield for the Muleshoe office.

We Offer:  
 \*Competitive Salary  
 \*Rapid Advancement Opportunities in Thirteen States  
 \*Paid Medical & Life Insurance  
 \*Paid Sick Days  
 \*Paid Holidays & Vacations  
 \*Optional Dental & Disability Insurance  
 \*Profit Sharing Plan  
 \*Exceptional Employee Saving Plan  
 \*401 K plan

Apply in Person:  
 318 Phelps • Littlefield, TX  
 Or Send Resume To:  
 Margaret Corwin  
 1507 Ave. G • Levelland, TX 79336

**MOBILE HOME**

**FLEETWOOD HOME CENTER**  
 Portales

Deluxe double wides, triple wides, or economical single wides at our beautiful Fleetwood Home Center in Portales. We are worth the drive or call toll free for floor plans and free information. Portales Homes DI. 366 1-800-867-5639 or Reality Homes-Cloviss DI. 772 (505) 762-3488.

**NOTICE TO BIDDERS**  
 Sealed bids for SUMMER 1998 ROOFING PROJECT \* DILLMAN ELEMENTARY SCHOOL will be received by Mr. William J. Moore, Superintendent of Schools, Muleshoe Independent School District in the Board Room of the Muleshoe Independent School District Administrative Office Building, 514 West Avenue G, Muleshoe, Texas until 4:30 p.m. Thursday, March 19, 1998. Any bids received after closing time will be returned unopened. The Project consists of removing and replacing designated areas of existing roofing. A prebid conference will be held in the Board Room of the Muleshoe Independent School District Administrative Office Building, 514 West Avenue G, Muleshoe, Texas on Tuesday, March 10, 1998. Drawings, specifications and related documents, including minimum wage rates, may be acquired from Adling Associates Architects, 2529 74th Street, Lubbock, Texas 79423-1405. Telephone 806/748-0880. Facsimile 806/748-0744. The Owner reserves the right to reject any or all bids, and to waive any or all formalities. Published in the Muleshoe Journal February 26, 1998 and March 5, 1998.

**NOTICE TO BIDDERS**  
 Sealed bids for SUMMER 1998 ROOFING PROJECT \* WATSON JUNIOR HIGH will be received by Mr. William J. Moore, Superintendent of Schools, Muleshoe Independent School District in the Board Room of the Muleshoe Independent School District Administrative Office Building, 514 West Avenue G, Muleshoe, Texas until 4:15 p.m. Thursday, March 19, 1998. Any bids received after closing time will be returned unopened. The Project consists of removing and replacing designated areas of existing roofing. A prebid conference will be held in the Board Room of the Muleshoe Independent School District Administrative Office Building, 514 West Avenue G, Muleshoe, Texas on Tuesday, March 10, 1998. Drawings, specifications and related documents, including minimum wage rates, may be acquired from Adling Associates Architects, 2529 74th Street, Lubbock, Texas 79423-1405. Telephone 806/748-0880. Facsimile 806/748-0744. The Owner reserves the right to reject any or all bids, and to waive any or all formalities. Published in the Muleshoe Journal February 26, 1998 and March 5, 1998.

**BID NOTICE**  
 The City of Muleshoe is currently accepting sealed bids from persons desiring to purchase the following described city-owned property. Bid #1- 4872.3 acres, more or less, out of League No. 220, Castro County School Lands, Labor 4, League No. 205, Garza County School lands, and of Secs. 9, 10 and 11, Block S-2, John H. Stephens Survey, Bailey and Lamb Counties, Texas; including water rights. Bid #2- The same property described above without water rights. The City may negotiate the use of some water rights. This land is commonly known as the East Well Field. The City of Muleshoe reserves the right to accept or reject any and/or all bids. Bids will be accepted until 3:00 P.M. Tuesday, March 31, 1998. All bids must be clearly marked "East Well Field Bid", must indicate whether the bid is with or without water rights and be delivered to the City of Muleshoe, 215 South First Street, Muleshoe, Texas 79347. No bid will be accepted after the deadline. For further information, please contact James Fisher, City Manager at (806) 272-4528. Published February 26, 1998.

**FOR SALE**  
 For Sale - 14 X 80 Mobile home 3 bedroom, 2 bath, on private fenced lot, 2 outside storage bldgs, 2 carports. Call 272-5394. 9s-6tpd

**Grass Seed Services Inc.**  
 "FOR YOUR CRP NEEDS"  
 High-Quality Seed, Available To Meet CRP Requirements! Please Give Us A Call Ph. 806-385-5229 Fax. 806-385-3017 PH-800-457-8742. 8s-8tch

**SERVICE**  
 Sewing and Alterations. Peggy 272-6764. Experienced, jeans, zippers, etc. 7s-tfc

**Nieman Realty**

116 E. Ave. C • George Nieman, Broker • 272-5285 or 272-5286

**RICHLAND HILLS**  
 3-3-1 Brick, cent. Heat, Evap. Air, built-ins, 2000' + lv. area, fenced yd., stor. bldg, MORE!!! \$60K !!! RH-2

**PARKRIDGE - NICE** 3-2-2 Brick, Cent. A&H, built-ins, FP, cov. patio, fenced yd. \$50's!!

**NICE** 3-2-3 Brick, corner lot, Cent. A & H, built-ins, FP, 2 stor. bldgs., storm cellar, fenced yd., MORE !!! \$60k!!! RH-1

**HIGHLAND AREA**  
 3-2-2 Brick, Cent. A&H, built-ins, gas log FP, fenced yd., stor. bldg., MORE!!! Price Reduced!! HL-5

**LENAU - COUNTRY CLUB AREA**  
 2-1-1 Carport Home, wall furnace, nice carpet, storm shelter, stor. bldg., fenced yd. \$20's!!! CC-3

2-1-1 Home, Cent. Heat, built-ins, Hardwood floors! \$19,500! L-3

2-1-1 Home, floor furnace, win. ref. air, fenced yd, stor. bldg., \$19,500 !L-1

**COMMERCIAL**  
 Established Business: Land, Bldg. & Equip., \$75K!!

175' x 140' tract, approx. 8500' bldg. on Main. \$35K!!!

56' x 140' tract, approx. 4700' bldg., \$35K!!!

NICE R.V. STORAGE, 14' X 40' metal bldg, 12' doors, corner lot!!

SNACK SHACK - Lot, Buildings, furniture, and fixtures!!!!

**HIGH SCHOOL**  
 Nice 3-2-2 Brick, Cent. A&H, built-ins fenced yd., MORE !!! \$40's !!! HS-5

Very Nice 3-1-1- Brick Home, cent. Heat & Air, built-ins, fans, woodburning stove, nice carpets, storage bldg., fenced yd., More !!! Price Reduced!!! HS-7

NEWLY REMODELED 3-1-1 Home, cent. A & H, new carpet & vinyl, fenced yd., MORE !!! \$30's !!! HS-2

VERY NICE 3-1-1 Brick, Heat pump, DW, nice carpets, fenced yd., MORE!!! \$30's !!! HS-1

NICE 2-1-1 Brick, Heat Pump, nice carpets, well insulated, storm windows & doors. \$30's!!! HS6

**RURAL**  
 3-2-2 Home on .92 acre at edge of town, Cent. Heat, evap. air, DW, storage bldg., fenced yd., & MORE !!! \$30K!!!

W. of SUDAN-NICE 3-3-2 Brick Home, 5 acre tract on Hwy. 298, Cent. Air & Heat, built-ins, large Quonset Barn, MORE!!! \$95K!!!

JUST LISTED- NICE 4-1-2 Home, Heat Pump, Built-ins fenced yd., 2 Stor. bldgs., approx. 10 acre tract, on pavement close to town!! \$ 50's !!!

5 Acre tract on pavement close to town!

NICE 3-2 Home, 40 acre tract, Geo-heat Pump, built-ins, 6" well, Hi-Pre. Lines, barns, corrals, tractor & equip.!!! \$75K!!!!

LAZBUDDIE- NICE 3-2-1 CP Brick Home on pavement, DW, Geo. Heat Pump, 4.73 ac., barns, corrals, & MORE!!! \$40's !!!

NICE 3-2-2 Brick on pavement, 2200' t, built-ins, FP, large sunroom!! \$80's !!!

# Say "Good-Bye" to Old Man Winter Say "Good Buy" to These National Brand Savings!

PRICES EFFECTIVE MAR. 4-10, 1998

## MEAT

Pilgrim's Pride Grade A <b>Whole Fryers</b> .....Lb.	<b>49¢</b>
Boneless <b>Half Ham</b> .....Lb.	<b>\$2<sup>19</sup></b>
Shurfine Quality Boneless <b>Whole Hams</b> .....Lb.	<b>\$1<sup>99</sup></b>
Preferred Trim Beef <b>T-Bone Steak</b> .....Lb.	<b>\$3<sup>99</sup></b>
Preferred Trim Boneless Beef Rump or Bottom <b>Round Steak</b> .....Lb.	<b>\$1<sup>59</sup></b>
Preferred Trim Boneless Beef Bottom <b>Round Steak</b> .....Lb.	<b>\$1<sup>79</sup></b>
Fresh <b>Ground Round</b> .....Lb.	<b>\$1<sup>89</sup></b>
Tenderized Beef <b>Cube Steak</b> .....Lb.	<b>\$2<sup>39</sup></b>
Stack Pack <b>Shurfine Bacon</b> ..... 1 1/2 lb. pkg.	<b>\$2<sup>29</sup></b>
Shurfine Quality <b>Sliced Bacon</b> ..... 1 lb. pkg.	<b>\$1<sup>59</sup></b>
Shurfine Pork <b>Sausage Links</b> ..... 11 oz. pkg.	<b>79¢</b>
Shurfine Quality Whole Hog Regular or Hot <b>Pork Sausage</b> ..... 2 lb. roll.	<b>\$2<sup>69</sup></b>
Shurfine Quality Whole Hog Regular or Hot <b>Pork Sausage</b> ..... 1 lb. roll.	<b>\$1<sup>39</sup></b>
Shurfine Beef <b>Wieners</b> ..... 12 oz. pkg.	<b>\$1<sup>09</sup></b>
Shurfine <b>Meat Wieners</b> ..... 12 oz. pkg.	<b>69¢</b>
Shurfine P&P Loaf, Salami or <b>Meat Bologna</b> ..... 6 oz. pkg.	<b>59¢</b>
Shurfine <b>Cooked Ham</b> ..... 12 oz. pkg.	<b>\$2<sup>59</sup></b>
Shurfine <b>Chopped Ham</b> ..... 12 oz. pkg.	<b>\$1<sup>79</sup></b>
Shurfine Regular or Polish <b>Smoked Sausage</b> ..... 1 lb. pkg.	<b>\$1<sup>39</sup></b>
Shurfine <b>Chicken or Ham Salad</b> ..... 7 oz. ctn.	<b>99¢</b>
Farm Raised <b>Catfish Fillets</b> ..... lb.	<b>\$2<sup>99</sup></b>
Farm Raised Breaded <b>Catfish Nuggets</b> ..... lb.	<b>\$1<sup>69</sup></b>
<hr/>	
Shurfine Homestyle Veg./Minestrone <b>Soups</b> ..... 19 oz. can.	<b>99¢</b>
Shurfine <b>Vanilla Wafers</b> ..... 12 oz. box.	<b>\$1<sup>39</sup></b>
Shurfine Homestyle Chicken Noodle/Chicken w/Rice <b>Soups</b> ..... 19 oz. can.	<b>\$1<sup>39</sup></b>
Shurfine Reg./Chewy Chip-A-Riffic or <b>Pecan-A-Riffic</b> ..... 16-18 oz. pkg.	<b>\$1<sup>99</sup></b>
Shurfine Spaghetti w/Cheese Sauce/Spaghetti Rings <b>Plain Pasta</b> ..... 15 oz. cans.	<b>2/\$1</b>
Shurfine Fudge Mallows, Fudge Grahams or Striped <b>Shortbread</b> ..... 12-16 oz. pkg.	<b>2/\$3</b>
All Types Dr. Pepper or <b>Coca-Cola</b> ..... 6 pk. 20 oz. btl.	<b>\$2<sup>19</sup></b>
All Types Dr. Pepper or <b>Coca-Cola</b> ..... 12 pk. 12 oz. cans.	<b>\$2<sup>97</sup></b>
All Types Dr. Pepper or <b>Coca-Cola</b> ..... 3 liter btl.	<b>\$1<sup>58</sup></b>

## PRODUCE

Fresh Crisp Head <b>Iceberg Lettuce</b> ..... ea.	<b>69¢</b>
Red Ripe <b>Roma Tomatoes</b> ..... 10/\$1	
Fresh <b>Sweet Cantaloupe</b> ..... lb.	<b>49¢</b>
Garden <b>Fresh Broccoli</b> ..... lb.	<b>69¢</b>
Full of Vitamin A <b>Crisp Carrots</b> ..... 1 lb. bags.	<b>3/\$1</b>
Washington Ex-Fancy Red <b>Delicious Apples</b> ..... 3 lb. bags.	<b>2/\$3</b>
Dole <b>Salad Mix</b> ..... 1 lb. bag.	<b>99¢</b>
Tropical <b>Juicy Mangos</b> ..... ea.	<b>69¢</b>
<hr/>	
Shurfine Regular or Natural <b>Applesauce</b> ..... 25 oz. jar.	<b>\$1<sup>29</sup></b>
Shurfine White Facial <b>Tissue</b> ..... 175 ct. box.	<b>89¢</b>
Shurfine Assorted <b>Napkins</b> ..... 120 ct. box.	<b>89¢</b>
Shurfine Creamy or Chunky <b>Peanut Butter</b> ..... 18 oz. jar.	<b>\$1<sup>49</sup></b>
Shurfine Tomato <b>Ketchup</b> ..... 28 oz. sq. btl.	<b>69¢</b>
Shurfine Assorted <b>Soda</b> ..... 3 liter btl.	<b>79¢</b>
Shurfine Evaporated <b>Milk</b> ..... 12 oz. cans.	<b>5/\$2</b>
Shurfine Oil or Water Pack Light <b>Chunk Tuna</b> ..... 6 oz. cans.	<b>2/\$1</b>
All Purpose <b>Shurfine Flour</b> ..... 25 lb. bag.	<b>\$3<sup>49</sup></b>
Shurfine Gravy or Chunk Style Dry <b>Dog Food</b> ..... 20 lb. bag.	<b>\$3<sup>99</sup></b>
Automatic Drip or Reg. Elec. Perc. <b>Shurfine Coffee</b> ..... 13 oz. can.	<b>\$2<sup>19</sup></b>
Shurfine Reg., Lite or Fat Free Coffee <b>Creamer</b> ..... 16 oz. jar.	<b>\$1<sup>19</sup></b>
Western Family Natural or w/Aloe <b>Baby Wipes</b> ..... 80 ct. ctn. (excludes pop-ups).	<b>\$1<sup>99</sup></b>
Western Family Natural or w/Aloe <b>Wipe Refills</b> ..... 80 ct. ctn.	<b>\$1<sup>89</sup></b>
Small, Medium, Large or Ex-Large Ultra Thins <b>Shurfine Diapers</b> ..... 18-36 ct. pkg.	<b>\$3<sup>99</sup></b>
Shurfine All Purpose <b>Flour</b> ..... 5 lb. bag.	<b>69¢</b>
Shurfine Mild, Med., or Hot <b>Picante Sauce</b> ..... 16 oz. jar.	<b>99¢</b>
Shurfine <b>Pinto Beans</b> ..... 4 lb. bag.	<b>\$1<sup>39</sup></b>
Shurfine Wavee or Assorted <b>Potato Chips</b> ..... 6 oz. bag.	<b>69¢</b>
Shurfine Nacho Cheese, Nacho or Restaurant Style <b>Tortilla Chips</b> ..... 40 oz. bag.	<b>\$1<sup>99</sup></b>
Shurfine Spag.w/Meatballs, Spag. Ring w/Meatballs, Reg. or Mini Beef Ravioli <b>Meat Pasta</b> ..... 15 oz. cans.	<b>79¢</b>
Shurfine Whole Kosher, Reg., Fresh Pk. Kosher, Polish or Reg. <b>Dill Pickles</b> ..... 32 oz. jar.	<b>\$1<sup>79</sup></b>
Shurfine <b>Luncheon Meat</b> ..... 12 oz. cans.	<b>2/\$3</b>
Shurfine Yellow <b>Corn Meal</b> ..... 5 lb. bag.	<b>\$1<sup>19</sup></b>
Shurfine Whole or Diced <b>Green Chiles</b> ..... 4 oz. can.	<b>69¢</b>
Shurfine Apple Juice or <b>Cider</b> ..... 64 oz. btl.	<b>2/\$3</b>
Shurfine Squeeze Yellow <b>Mustard</b> ..... 16 oz. btl.	<b>69¢</b>
Shurfine Assorted <b>Grapefruit Juice</b> ..... 48 oz. btl.	<b>2/\$3</b>
Shurfine Select Group Regular or Lite Salad <b>Dressings</b> ..... 8 oz. btl.	<b>89¢</b>
Shurfine Assorted Cranberry Juice <b>Cocktail</b> ..... 64 oz. btl.	<b>2/\$5</b>
Shurfine <b>Salad Dressing</b> ..... 32 oz. jar.	<b>\$1<sup>39</sup></b>

## FROZEN & DAIRY

Shurfine Pimento <b>Cheese Spread</b> ..... 7 oz. ctn.	<b>99¢</b>
Shurfine Pimento Cheese <b>Spread</b> ..... 12 oz. ctn.	<b>\$1<sup>79</sup></b>
Buttermilk, Fat Free Skim or Lite 1% Lowfat <b>Shurfine Milk</b> ..... 1/2 gal. jug.	<b>\$1<sup>19</sup></b>
Shurfine Chilled <b>Orange Juice</b> ..... gal. jugs.	<b>2/\$5</b>
Shurfine Cheddar or Mozzarella <b>Shredded Cheese</b> ..... 8 oz. pkg.	<b>\$1<sup>69</sup></b>
Shurfine <b>Cottage Cheese</b> ..... 24 oz. ctn.	<b>\$1<sup>79</sup></b>
Shurfine Soft <b>Margarine Spread</b> ..... 16 oz. tub.	<b>69¢</b>
Shurfine Buttermilk or Butter Flavored <b>Jumbos Biscuits</b> ..... 16 oz. can.	<b>99¢</b>
Shurfine Orange Danish or <b>Cinnamon Rolls</b> ..... 12.4-13.9 oz. can.	<b>3/\$4</b>
Shurfine IWS <b>American Singles</b> ..... 16 oz. pkgs.	<b>2/\$5</b>
Select Varieties Shurfine Halfmoon <b>Longhorn Cheese</b> ..... 16 oz. pkg.	<b>\$2<sup>99</sup></b>
Shurfine Old Fashioned Assorted Flavors <b>Ice Cream</b> ..... 1/2 gal. md. ctn.	<b>\$1<sup>79</sup></b>
Shurfine Ice Cream Bars or <b>Ice Cream Sandwiches</b> ..... 6 ct. pack.	<b>\$1<sup>39</sup></b>
Whole Baby or <b>Shurfine Cut Okra</b> ..... 16 oz. pkg.	<b>\$1<sup>19</sup></b>
Shurfine <b>Sliced Strawberries</b> ..... 16 oz. ctn.	<b>\$1<sup>39</sup></b>
• Broccoli Cuts • Chopped Broccoli • Broccoli & Cauliflower • Mediterranean Blend • Oriental Blend • California Blend <b>Shurfine Vegetables</b> ..... 16 oz. pkg.	<b>99¢</b>
Shurfine Regular or Lite <b>Whipped Topping</b> ..... 8 oz. tub.	<b>79¢</b>
Shurfine 24 oz. Tater Tots, 32 oz. Regular or <b>Crinkle Cut Fries</b> ..... your choice	<b>\$1<sup>29</sup></b>
Shurfine Mini <b>Corn on the Cob</b> ..... 8 ear pkgs.	<b>2/\$3</b>
Shurfine Regular or w/Pulp Frozen <b>Orange Juice</b> ..... 12 oz. can.	<b>69¢</b>
<hr/>	
Shurfine 12 oz. Plastic <b>Party Bowls</b> ..... 12 ct. pkg.	<b>69¢</b>
Shurfine 30 gal. Reg. or Clear <b>Trash Bags</b> ..... 20 ct. pkgs.	<b>2/\$5</b>
Shurfine Tall <b>Kitchen Bags</b> ..... 30 ct. pkg.	<b>\$1<sup>99</sup></b>
Shurfine Lemon Automatic Dish <b>Detergent</b> ..... 50 oz. box.	<b>\$1<sup>79</sup></b>
Shurfine Breeze/Fresh Fabric Softener <b>Sheets</b> ..... 40 ct. box.	<b>99¢</b>
Shurfine Dry <b>Cat Food</b> ..... 3.5 lb. bag.	<b>\$1<sup>69</sup></b>
Shurfine Frosted Moons, Apple Rolls or Zany Fruits <b>Cereals</b> ..... 12-15 oz. box.	<b>\$1<sup>99</sup></b>
Shurfine Cereal <b>Corn Crisps</b> ..... 9 oz. box.	<b>\$1<sup>59</sup></b>
Shurfine Select Group Instant <b>Oatmeal</b> ..... 12-15 oz. boxes.	<b>2/\$3</b>
Shurfine Complete <b>Pancake Mix</b> ..... 32 oz. box.	<b>\$1<sup>29</sup></b>
Shurfine Assorted Pancake/Waffle <b>Syrup</b> ..... 24 oz. btl.	<b>\$1<sup>29</sup></b>
Shurfine Assorted Toaster <b>Pastry Tarts</b> ..... 11 oz. box.	<b>99¢</b>
Shurfine Red Plum or <b>Grape Jelly</b> ..... 18 oz. jar.	<b>99¢</b>

## HEALTH & BEAUTY

Western Family Disposable <b>Razors</b> ..... 10 ct. pkg.	<b>99¢</b>
Western Family <b>Cotton Swabs</b> ..... 300 ct. pkg.	<b>99¢</b>
Western Family Hydrogen <b>Peroxide</b> ..... 8 oz. btl.	<b>3/\$1</b>
Western Family CF or DM Expectorant <b>Tussin</b> ..... 4 oz. btl.	<b>\$1<sup>99</sup></b>
Western Family Cold <b>Capsules</b> ..... 10 ct. btl.	<b>\$1<sup>69</sup></b>
Western Family Daytime or Nighttime <b>Liquid Caps</b> ..... 12 ct. pkg.	<b>\$2<sup>49</sup></b>
Western Family 5 gr. Non-coated <b>Aspirin</b> ..... 250 ct. btl.	<b>\$1<sup>39</sup></b>
Western Family Tabs or Caps <b>Ibuprofen</b> ..... 50 ct. btl.	<b>\$1<sup>99</sup></b>
Western Family 325 Mg. Tablets <b>Non-Aspirin</b> ..... 100 ct. btl.	<b>\$1<sup>89</sup></b>
Western Family Pain Reliever <b>Antacid</b> ..... 30 ct. pkg.	<b>\$1<sup>99</sup></b>
Western Family Reg. or Max. Strength <b>Bis-Mate</b> ..... 8 oz. btl.	<b>\$1<sup>99</sup></b>
Western Family Normal or Oily Dandruff <b>Shampoo</b> ..... 15 oz. btl.	<b>\$1<sup>99</sup></b>
Western Family Regular or w/Aloe Skin Care <b>Lotion</b> ..... 15 oz. btl.	<b>\$1<sup>99</sup></b>
Western Family Assorted Varieties <b>Toothpaste</b> ..... 5-7 oz. tube.	<b>99¢</b>
<hr/>	
Select Group • Reg./No Salt Cut Green Beans • French Sliced Green Beans • Wk Crisp'n Sweet Golden Corn • Reg./No Salt/Sweet/Wk Golden Corn • Reg. Cream Style Golden Corn • Reg./No Salt Sweet Peas • Diced/Reg./No Salt/Whole Peeled Tomatoes <b>Shurfine Vegetables</b> ..... 12-15.5 oz. cans.	<b>3/\$1</b>
Granulated <b>Shurfine Sugar</b> ..... 4 lb. bag.	<b>\$1<sup>19</sup></b>
Shurfine Fancy <b>Tomato Sauce</b> ..... 8 oz. cans.	<b>8/\$1</b>
Shurfine <b>Tomato Soup</b> ..... 10.75 oz. cans.	<b>3/\$1</b>
Fat Free, Regular, or Unsalted <b>Shurfine Crackers</b> ..... 15-16 oz. box.	<b>69¢</b>
Shurfine White <b>Bath Tissue</b> ..... 4 roll pkg.	<b>69¢</b>
Shurfine Decorator <b>Paper Towels</b> ..... big roll.	<b>69¢</b>
Shurfine All Varieties <b>Liquid Bleach</b> ..... gal. jug.	<b>79¢</b>
Shurfine Reg. or w/Bleach Ultra 2 <b>Detergent</b> ..... 39-44 oz. box.	<b>\$1<sup>99</sup></b>
Shurfine Blended or Reg. <b>Vegetable Oil</b> ..... 48 oz. btl.	<b>\$1<sup>69</sup></b>
Shurfine Fruit Cocktail or YC Halvs./Sliced <b>Peaches</b> ..... 29-30 oz. can.	<b>99¢</b>
Shurfine Trad., Mushroom or Flav. w/Meat Spaghetti <b>Sauce</b> ..... 26.5 oz. can.	<b>79¢</b>
Shurfine Elbow Mac. or Long <b>Spaghetti</b> ..... 24 oz. pkg.	<b>89¢</b>
Shurfine Regular Dinners <b>Mac &amp; Cheese</b> ..... 7.25 oz. boxes.	<b>5/\$1</b>
Shurfine Deluxe Shells & Cheddar <b>Dinners</b> ..... 12 oz. boxes.	<b>2/\$3</b>
Shurfine 16 oz. Plastic <b>Party Cups</b> ..... 20 ct. pkg.	<b>\$1<sup>19</sup></b>
Shurfine 9 Inch Plastic <b>Party Plates</b> ..... 15 ct. pkg.	<b>\$1<sup>49</sup></b>
Shurfine 7 Inch Plastic <b>Party Plates</b> ..... 15 ct. pkg.	<b>79¢</b>

See ya at  
**LOWE'S**

WESTERN MONEY UNION TRANSFER<sup>SM</sup>  
"The fastest way to send money"

**Lowe's**  
MARKETPLACE

515 W. American Blvd.  
401 W. American Blvd.  
Muleshoe 272-4585

**Pay-n-Save**  
515 W. American Blvd.  
Muleshoe 272-4406

WE RESERVE THE RIGHT TO LIMIT QUANTITIES IN TEXAS