

Dillman kids thankful for many things

By TERESA STONE
Journal staff writer

Thanksgiving was celebrated a few days early for Dillman Elementary first and second graders Monday.

Student-made cultural artifacts decorated the halls, second graders were decked out in paper Pilgrim and Indian outfits, and first graders were celebrating the end of harvest, all in part of understanding the history of Thanksgiving a little bit better.

"We've been studying about Indians, and thought by reenacting the celebration, the students would get a better understanding of how the two cultures came together," said second grade teacher Toby King.

"We've been learning how the Indians helped the pilgrims survive," said second grader Timmy Henderson. "Like how the Indians taught the Pilgrims to plant food, and use dead fish as fertilizer."

Talking to students about how they celebrate the holiday, it was apparent that food is just as important to the Thanksgiving celebration today as it was all those years ago when the Pilgrims first sat down with the Indians.

When asked what their favorite part of Thanksgiving was, overwhelmingly the students said food. Whether turkey

"After much thought, one little girl added, 'I'm thankful that my family has enough stuff, so we can share.'"

or dressing or their favorite dessert, eating was definitely on the student's minds.

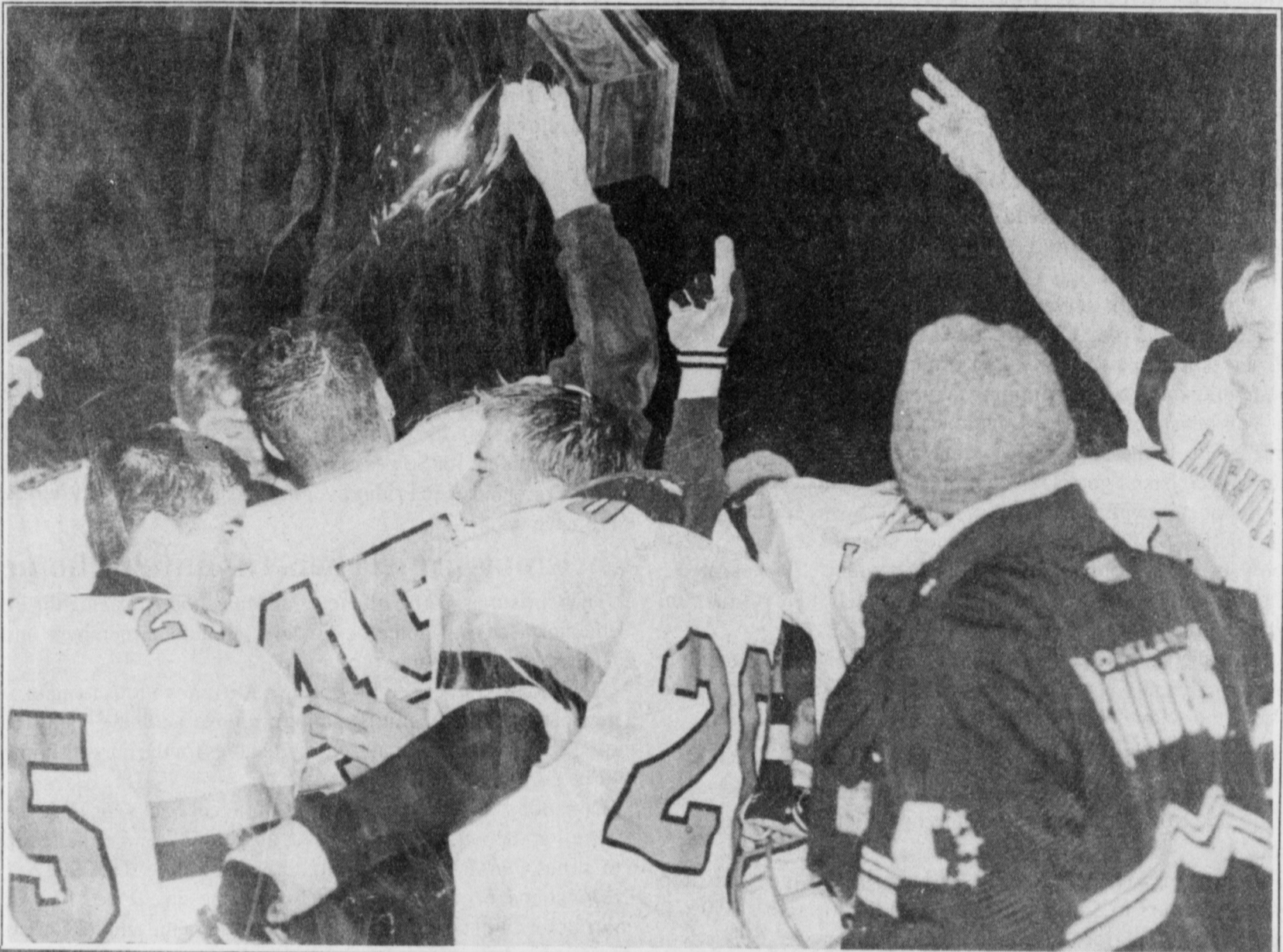
But the students also remembered that the holiday was a time to give thanks.

Yes, quite a few kids did say they were thankful for the turkeys that they get to eat. But once the second graders thought about what they were thankful for, their answers became quite a bit more serious and sentimental.

Samantha Calderon was thankful for her friends. Timmy Henderson was thankful that he has a home to live in.

Some classmates said they were thankful for their school and teachers. Others were thankful for their moms, dads and a vast array of other family members including the family pet.

After much thought, one little girl added, "I'm thankful that my family has enough stuff, so we can share."



Lazbuddie players celebrate a 46-22 win against Follett in the regional semifinals Friday in Groom

Sands no day at the beach

No. 3 Longhorns reach quarterfinals

By RICK WHITE
Managing Editor

Sands coach Bill Burnett said he has given up on trying to find Lazbuddie's weakness.

"They do a lot of things real well," said Burnett, whose team faces the No. 3-ranked Longhorns at 7:30 p.m. Friday at New Deal in a state six-man quarterfinal game. "They have speed. They have size. They can run. They can pass. I haven't found a weakness yet."

Burnett said it will take a near perfect effort to pull off an upset.

"We just have to mix it up and do what we do best," Burnett said. "We have to limit their big plays and make them earn everything. And hopefully we can catch a few breaks."

Burnett said the Mustangs' strengths lie on defense and special teams.

Sands (11-1) scored on an interception and punt return in a 52-44 win against Westbrook last week.

The Mustangs prefer to keep the ball on the ground. Jerrod Beall, a 6-2, 180-pound senior, leads a running attack by committee. Beall has rushed for 1,276 yards and

20 touchdowns.

Sophomore quarterback Coby Floyd, who has passed for 740 yards and 14 touchdowns, keeps teams honest.

"I really don't know a lot about them," Lazbuddie coach Mark Scisson said. "But from here on out, it doesn't matter who you play or what their record is, it's how you play that night."

Lazbuddie (11-1) is coming off its best defensive outing of the season in a 46-22 win against previously unbeaten Follett.

The Longhorns held all-state candidate Courtney Frazier in check while forcing

see LONGHORNS on page 5

Home health workers passionate about their work

By TERESA STONE
Journal Staff writer

Visiting with the nurses at the Muleshoe Home Health Agency, one thing is certain — they love what they do and they especially love their patients.

There are few professions where the employees are so passionate about their work.

"I love the patient contact and they love us," said case manager, Priscilla Hicks, RN. "I get very involved with each one personally. I want to help them get better. I want to 'fix' them, even though I know I can't always do that."

November has been designated as National Home Care month to recognize the importance of the services these agencies and their employees provide.

The Muleshoe Area Home Health Agency, which is a part of the hospital

district, provides skilled nursing care, physical therapy and speech therapy for an average of 40 to 50 patients.

"We offer a wonderful service by trying to help keep our patients out of nursing homes and in their own home longer," said assistant director, Tana Webb, RN. "Although the patients depend on us, especially to act as a liaison between themselves and their doctors, our service allows them to stay independent."

Although many of their patients are continually ill, the agency is designed primarily for short term medical care, said Webb.

"Because of this we have to focus on teaching," said Webb. "Giving instructions and showing patients how to

see HOME HEALTH on page 3



Muleshoe Home Health Agency worker Tana Webb checks Ina Myrtle Creamer's heart during a home visit this month

Mason scores career-high 19 as Mules stun Seminole 78-76

Matt Mason scored a career-high 19 points, including a pair of free throws with five seconds left that beat Seminole 78-76 in a wild game Monday before a crowd of 700 at WJHS gym.

Seminole rallied from a seven-point deficit in the final two minutes to tie the score at 76 on all-state candidate Chris Ogden's driving layup with 13 seconds left.

After a Muleshoe timeout, Mason was fouled while driving to the hoop.

Mason calmly canned both free throws to complete a perfect 6 for 6 effort from the charity stripe.

Seminole inbounded the ball to Eric Sheets near the 3-point circle, but his desperation shot bounced hard off the rim.

Muleshoe coach Ralph Mason

said beating Seminole, ranked in the top five Class 3A in most pre-season polls, was probably the biggest win since he's been at Muleshoe.

"I was real pleased with the way we kept out composure," Mason said. "A year ago, if we had gotten down by six or eight points like we did tonight, we probably we have lost by 15. The kids are more poised

and under control. They don't let things bother them."

Knocking down nearly every open shot, Seminole (1-1) led most of the first half, including by nine with a little under two minutes to go.

But Muleshoe closed with a 6-1 spurt to pull within 37-33 at intermission.

see MULES on page 5

PAGE ONE

A QUICK READ OF THE NEWS

Amarillo man dies in wreck

A 67-year-old Amarillo man was killed and his wife injured Friday evening when the car he was driving ran into the back of a cotton module truck about five miles north of Muleshoe.

Ray Girard was fatally injured when his 1987 Buick struck the back of the cotton truck shortly after 6:30 p.m., according to the police report. Both vehicles were traveling northbound on Highway 214.

Girard was pronounced dead at the scene. His wife Myrna, was a passenger in the car. She was treated and released from Muleshoe Area Medical Center.

The driver of the module truck, Kenneth Russell of Muleshoe, was not injured.

LOCAL WEATHER

	High	low	Pre.
Friday	56	31	trace
Saturday	58	33	—
Sunday	68	23	—
Monday	63	25	—
Total to date	20.22 inches		

EXTENDED FORECAST

Partly cloudy and breezy Thursday, highs between 65-75. Becoming cooler Friday with lows in the upper 30s to mid 40s, highs 50 to low 60s. A chance of rain, possibly mixed with snow Saturday with lows in the 30s and highs 45 - 55.

Around Muleshoe

Bailey County Arts and Crafts Bazaar

Everyone is invited to attend the annual Bailey County Arts and Crafts Bazaar to be held Dec. 5 and Dec. 6 in Muleshoe.

The bazaar will be open from 10 a.m. to 7 p.m. on Friday, Dec. 6, and from 9 a.m. to 4 p.m. on Saturday, Dec. 6. It will be held at the Bailey County Civic Center at 2200 W. American Blvd.

Special program presentations will be offered both days for no charge. On Friday, the presentations start at 11 a.m. with "Holiday Food Gifts and Holiday Meal Make Over." At 2 p.m., "Microwave Magic" will be presented. At 4 p.m., "Candle Making" is scheduled. On Saturday presentations scheduled include "Tree skirts" at 10 a.m., "Holiday candy" at 1 p.m., and "Tree Ornaments" at 3 p.m.

Thanksgiving festival to be held in Pep

The Pep community would like to invite everyone to their 52nd annual Thanksgiving Festival on Thanksgiving Day, Nov. 27 at St. Philip Neri Hall.

A dinner will be served from 11 a.m. to 2 p.m. with takeouts available until 3 p.m. Cost for adults is \$6, children under 10 are \$3, and take out plates are \$7. Pep's famous German sausage along with turkey and all the trimmings will be served.

This year's festivities will include a fish pond, a country store filled with homemade crafts, grab bags for the children, and homemade baked goods, an auction, a raffle and a dance.

An auction will start at 2 p.m. followed by the raffle drawing for \$600 in South Plains Mall Money, a queen size quilt, \$200 worth of Texas Lotto tickets, and a CD boombox. Tickets are \$5 each and only 500 will be sold. The dance will be held from 9 p.m. to midnight. Cost is \$5 per person.

To order sausage call 933-4343 or 933-4324. For more information call 933-4344, 933-4696, or 385-3387. For information on Nov. 26 or Nov. 27, call 933-4361.

Santa to visit Bealls Department Store

Santa Claus will be visiting with children from 9 a.m. to noon, Saturday, Nov. 29 at Bealls in Muleshoe. Pictures will be available.

Also from Nov. 29 to Dec. 13, children 12 and under can drop off their letters to Santa at Bealls. Bealls will give a \$50 gift certificate to one local participant. Company wide, Bealls will select three children who will each be awarded a \$500 savings bond. Judging will be Dec. 14.

Muleshoe Elementary PTA meeting

Muleshoe Elementary PTA will hold it's first meeting at 6:30 p.m., Dec. 1 in the Dillman Elementary School gym.

Second grade students and teachers will present a skit on the new Shurley English program. Please plan to join us and invite your family and friends.

Amarillo farm and ranch show Dec 2 - 4

The 1997 Amarillo Farm and Ranch Show will give local farmers and ranchers a first-hand look at the latest agricultural products offered by the nation's leading manufactures.

The show is scheduled for Dec. 2 - 4 at the Amarillo Civic Center. Show hours are 9 a.m. to 5 p.m. Admission is free.

The annual event will include educational seminars, professional organization meetings and exhibits to showcase new products for agricultural businesses. For more information on the meetings or exhibits, call 1-800-827-8007.

Jennyslippers annual holiday dinner

The Jennyslippers Annual Holiday Dinner will be from 11:30 a.m. to 2 p.m., Friday, Dec. 5 at the Bailey County Coliseum in conjunction with the Arts and Crafts Bazaar.

Jennyslippers will serve a Mexican Fiesta meal, with tea and dessert included, for \$6 per plate. Jennyslippers will also have a concession stand open Friday evening and all day Saturday during the Bazaar.

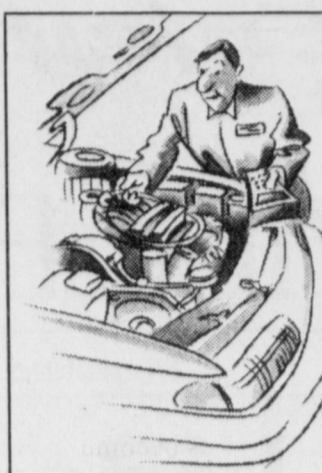
Christmas project benefits nursing home

The Christmas Card volunteers at Muleshoe Area Healthcare Center are seeking donations from community members and businesses for the annual fund raiser.

Donations will be used for Spring patio renovations to include a new patio cover, repainting patio furniture, and new plants for the garden. Also, extra chairs and card tables for the nursing home will be purchased with extra funds.

Donations can be dropped off at the local banks, or to Joyce Stancell at the nursing home. Also, donations can be mailed to Christmas Card Project, P.O. Box 202, Muleshoe, Tx. 79347.

Donations need to be made by Wednesday, Dec. 17. All contributors will be individually recognized in the annual Christmas Card to be published in the Bailey County Journal Dec. 22. For more information contact, Lona Embry or Joyeline Costen.



We're out to make your life a little easier with automotive service better than it's ever been before...

New GM Goodwrench Service Plus

Offering our traditional quality parts and service and factory-trained technicians.

- Plus Competitive Up-Front Pricing!
- Plus Courtesy Transportation!
- Plus Lifetime Guarantee on Parts and Labor!

OIL CHANGE

Includes:

- 5 Qts. of Oil
 - A/C Oil Filter
- Diesels and foreign cars may be higher

\$12³⁴ includes tax

COOLANT SPECIAL

Special Includes:

- Drain cooling system
- test for leaks and 1 gallon of anti-freeze.

\$26⁸⁷ includes tax

Expires 12/10/97

Bender Chevrolet

2500 Mabry Drive • Clovis, NM • 763-4465

GM Goodwrench Service Plus
The Plus means better.

See us for limited lifetime guarantee details.

www.gmgoodwrench.com

Heritage Center hosts Christmas celebration

Again this year the Muleshoe Heritage Foundation will be hosting an Open House immediately following the annual Muleshoe lighted parade on Saturday, Dec. 6.

The Heritage Center will be gleaming with the historic buildings framed with Christmas lights.

Mr. and Mrs. Santa Clause will be welcoming visitors upstairs at the Janes ranch house for picture-taking.

Throughout the evening, refreshments will be served by student volunteers and board members.

Muleshoe High and Junior High School choir members will be singing Christmas carols while other entertainment at the Janes ranch house will add to the festive spirit.

Each building at the Heritage Center will be decorated for Christmas. A beautiful tree will grace the Muleshoe depot. While two trees will be decorated for the James ranch house.

Once again members of the Student Community Action Club (SCAC) decorated an "Old Fashioned Christmas"

tree at the James ranch house. Under the tree will be gifts and canned goods brought by SCAC members for the needy. SCAC members are asking anyone who can to join them by bringing a gift or canned good.

Everyone is invited to come and join the festivities and see all of the additions that have been added to the Center in the past year.

Tours will be conducted throughout the evening by board and SCAC members.

LETTER TO THE EDITOR

Travelers appreciate kindness of strangers

Dear Editor:

On Oct. 7, 1997 while on our way to Colorado to hunt we had a wreck about 8 miles south of Muleshoe do to mechanical failure on our truck. Our travel trailer and truck were a total loss. We however, were uninjured.

We do so appreciated all of the people who stopped to help us, including the Bailey Co. Sheriff, the deputies, the State Trooper and the ambulance crew. They were great!

A very special thanks to Felicia Green who stopped to render first aid.

Our gratitude and thanks to the Bailey Co. Farm Bureau office staff, especially to Mr. Lyndal Favor their claims adjuster.

Mr. Faver stayed with us all day after driving us to Lubbock. He saw that we had a motel room, a rent vehicle and a replacement trailer. Our claims were settled in a matter of days so we were able to continue our trip. He certainly went beyond the call of duty.

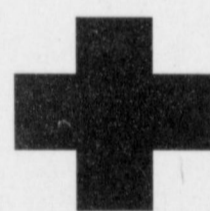
Farm Bureau and Muleshoe can be proud of him.

Thanks to all of you,
Bob and Annie Allen.

Muleshoe Journal
272-4536

If you snooze, you lose. Read the news!

Home Folks Caring For Folks At Home.



MULESHOE AREA HOME HEALTH Agency

November is National Home Care Month

We, as employees of Muleshoe Area Home Health Agency, would like to take this opportunity to thank our current and former patients for allowing us the privilege to care for you at home.

Muleshoe Area Home Health Agency was established in the Spring of 1993. The agency opened with a staff consisting of: one RN, one LVN, one office manager, one home health aide and one physical therapist. Since that time, the agency has grown to employ 25 people serving approximately 50 patients in eight counties within a 50-mile radius of Muleshoe,

excluding New Mexico. The agency provides skilled nursing, IV therapy, speech therapy, medical social worker services, home health aide services and physical therapy. The agency accepts referrals from family members, hospitals, physicians and prospective patients themselves. Acceptable payment methods include Medicare, Medicaid, Workmen's Compensation and private insurance. Muleshoe Area Home Health Agency has an RN on call 24 hrs. a day.

Our agency is hospital based and is an entity of Muleshoe Area Hospital District. We are proud to say that your tax dollars allow our services to be utilized by all citizens.

Our agency strives to provide the highest standard of nursing care.

The choice is yours in selecting a home health care provider, and Muleshoe Area Home Health Agency would appreciate you deciding to let us handle all your current and future home health needs.

To receive Home Health Services, talk with your physician or talk with hospital personnel when you are hospitalized.

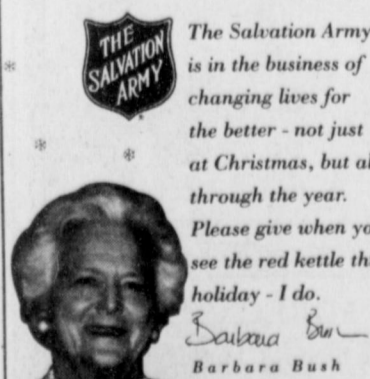
24 Hour # 272-3346
Local Nurse on call 24 hours a day to offer prompt service.

Affiliated with Lubbock Methodist Hospital Systems



Home is where the heart is

Christmas wouldn't be Christmas without The Salvation Army.



The Salvation Army is in the business of changing lives for the better - not just at Christmas, but all through the year. Please give when you see the red kettle this holiday - I do. Barbara Bush

Muleshoe Journal USPS 367820

Established February 23, 1924. Published by Triple S Publishing, Inc. Every Thursday at 304 W. Second. Box 449, Muleshoe, TX 79347.

Second Class Postage paid at Muleshoe, TX.

POSTMASTER: Send address changes to the Bailey County Journal, P.O. Box 449, Muleshoe, TX 79347.

We are qualified members of:

Panhandle Press Association, National Newspaper Association, West Texas Press Association and Texas Press Association

WEST TEXAS PRESS ASSOCIATION



PPA

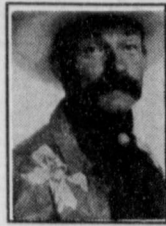
Panhandle Press Association

Scot Stinnett, Publisher
Lisa Stinnett, Vice-President/Comptroller
Rick White, Editor
Mary Ann Dominguez, Classifieds
Leah Bell, Advertising

SUBSCRIPTIONS: Muleshoe Journal and Bailey County Journal
By Carrier Yearly - \$22.00
Bailey County - by mail - \$24.00
Elsewhere - \$26.00
Advertising Rate Cards on Application

Advertisers should check their ad the first day of insertion. The Journals will not be liable for failure to publish an ad or for a typographical error or errors in publications except to the extent of the cost of the ad for the first day of insertion. Adjustment for errors will be limited to the cost of that portion of the ad where the error occurred.

The Dreaded Blue Box



BAXTER BLACK

ON THE EDGE OF COMMON SENSE

I had just finished loading 184 seven foot steel T-posts, old ones, by the way, in my pickup and unloading a mere 24 bales of hay from the front section of my gooseneck stock trailer. It was a hot, humid afternoon in the early fall when the dead branches begin to tick out of the cottonwood greenery and the garden starts goin' to hell and no one cares. I could almost smell the cummin from Ramon's #6 Combination Plate being distilled in my sweat from lunch earlier. Then I saw the blue box.

The dreaded blue box. It was still in the stock trailer. It needed moved.

The blue box is a metal tool box I have had since I bought my first set of *made in American* side cutters thinking they would last longer. I have now realized that all side cutters have sharpness longevity of fresh fruit. They should be thrown

out about as often as you empty the trash barrel in the shop.

Anyway, over the years the blue box has become my chain holder. It will hold four or five good log chains. I have always said that a hundred pounds of salt weighs more than a hundred pounds of anything else. But a 10 by 10 by 18 inch metal tool box full of log chains is harder to carry than a sheet of plywood in a hurricane.

There are other things that can stimulate a similar sinking feeling, i.e. the same cow prolapsing for the third time, somebody commenting that my horse seems to be favoring his left front, or the bedside phone ringing in the deep of night.

I don't know exactly what it is about the old tool box that I dread. I've heaved it, moved it, loaded it, dropped it, pushed it and cussed it through a lifetime succession

of jobs and homes, horses and kids, and ups and downs.

Maybe it's not because it's heavier than God's own anvil, clumsier than a ostrich in a Porta Potty, or uglier than a '58 Buick. No, maybe it's because I realize it's gonna outlive me a long time.

By its earthly clock I'm just a temporary passerby while it will still be here when men are walking on Pluto.

I have thoughts of storing my chains in a gunny sack, takin' the ol' tool box to the dump and reestablishing the peckin' order in my life. But everytime I get as far as step one, I see it layin' there like a concrete loaf of bread, like a two hundred pound rattlesnake and the dread sweeps over me in a wave.

So, I let it lay, or move it if I have to. I've come to realize there are some things you just can't do anything about.

BUSINESS NEWS

Wilson Appliance celebrates 30th anniversary

Thirty years ago, Muleshoe resident Gordon Wilson decided to start his own business and in Nov. 1967, he opened the doors to Wilson Appliance.

"We do business the same way we've always done business," said Wilson. "We develop personal relationships with our customers. They know us, they know our employees and that is what keeps us going."

Wilson Appliance was originally located on the corner of 202 Main Street. But five years after opening, the growing business needed more space.

In 1972, Wilson purchased and remodeled the old Palace Theatre at 117 Main. The business was moved to the new location and is still located there today.

After expanding space, Wilson expanded his business by

becoming a Radio Shack dealer in 1973. In 1994, Wilson opened a second store in Muleshoe, The Rental Place, which specializes in appliances, furniture, televisions, stereos and jewelry.

Wilson is very proud of his employees, Helen Cook who has worked for the appliance store for 27 years, Lee Roy Flores who has been working for Wilson for eight years, Amy Alvarado who has been working there for four years, and Andy Perez who has been working there for two years.

Gordon Wilson has not only been doing business in Muleshoe for a long time, but he's also a long time resident of the town, in fact, he has lived in Bailey County since he was six years old. He is a 1955 graduate of Muleshoe High School and worked for the post office for eight years before opening

Wilson Appliance.

Throughout the years, Wilson has been an active member of the community supporting the town and schools.

He serves as an elder in the Muleshoe Church of Christ. He served two terms on the school board. He was named "Man of the year" in 1986.

Wilson is married to Marilyn Mitchell. They have three children, Danny which owns a business in Levelland, Kim who lives in Elgin, Okla., and Kendra who teaches in Abilene. They also have six grandchildren and another one on the way.

Gordon and Marilyn have enjoyed the 30 years they have been in business. They appreciate all of their faithful customers through the years. An open invitation is extended to everyone to come by for a visit.

Texas DPS seeking new recruits

The Texas Department of Public Safety is seeking applicants for a recruit school scheduled to begin July 18, 1998.

"We're encouraging everyone interested in a career with the DPS to go by the nearest DPS office and get a complete application package and a list of qualifications," said Lt. Curley Colquitt, who heads the DPS's recruitment effort.

"The DPS is very interested in attracting qualified female and minority applicants, since historically those groups have been underrepresented in law enforcement," he said. "DPS offers a challenging and rewarding law enforcement career."

Applicants must be at least 20 years old on the date of probationary appointment to the position of trooper-trainee and be of good moral character and habits. Applicants must have at least 60 hours of college (prior law enforcement or military experience may be substituted for some or all college requirements.) A final conviction (including probation) for any DWI, DUID, or felony automatically will disqualify applicants. Both

oral and written statements given during the application process will be verified for accuracy.

Those selected for the recruit school will be required to successfully complete psychological testing, physical examinations, drug screening and additional physical demands. Character, habits, previous employment and other factors will also come under scrutiny.

HOME HEALTH

From page 1

manage what is going on with their bodies is a very important part of what we do."

Home care workers provide more than just skilled medical care and education for their patients. They provide companionship and more importantly friendship.

"Sometimes we're their only contact," said Hicks. "We go into their homes, meet their families, and we keep up with what's going on day to day in their life."

With insurance companies, as well as Medicaid and Medicare regulations, requiring shorter hospital stays, more people are turning to home care agencies.

Charakter, habits, previous employment and other factors will also come under scrutiny.

The application deadline for Texas residents is Feb. 17, 1998. The deadline for out-of-state residents is Dec. 19, 1997.

"It is very important that patients realize that they have a choice when choosing a home care provider," said Hicks. "No one, not the doctor, hospital, insurance company or government, can specify which agency a patient must use. It's the patients right to chose."

Webb and Hicks both hope that once patients and their families thoroughly research all of their options, they will see the benefits of using the Muleshoe Home Health Care Agency.

"I want people to know that we are available and that we will take very good care of them. We have a loving staff and treat all of our patients like family members," said Webb.

Join in Our Celebration

Limited Time Offer

FACT: No One Has Fewer Repairs*

Whirlpool LXR6232E
27" Extra-Large Capacity Automatic Washer
• 6 Automatic Cycles
• 2 Wash/Spin Speeds
• 3 Wash/Rinse Water Temp. Combinations **\$349**

Whirlpool LER3624E
Extra-Large Capacity Electric Dryer
• 3 Drying Cycles including Automatic Dry
• 2 Temperature Settings
• Side-Swing Door **\$249**

The Pair **\$598** Only

WILSON APPLIANCE
117 Main • Muleshoe, TX • 272-5531

All Fixtures For Sale

Quitting Business

Every Single Item In The Store Is On **SALE**

All Ladies' Dresses
1/2 OFF

All Ladies' Blouses
1/2 OFF

All Ladies' Vests
1/2 OFF

COUPON
This coupon Good for 50,000 Bonus Prize Dollars
Double Coupon Day • Monday
Limit One Coupon per Customer per Day
Expires 12/2/97

All Jewelry
75% OFF
Watches, Necklaces and Ear Rings

Sale Terms:
Cash
Check
MC/Visa/Discover
Prices Good Thru
Tuesday 12/2/97
All Sales Final

Queens N' Teens
500 Main Street
Clovis, NM 88101

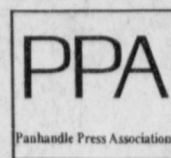
Sale Hours:
Monday-Friday
9 am - 5 pm
Saturday
9 am - 4 pm

SaleSaleSaleSale

The Man Who Can Anger You Conquers You.
-unknown



MULESHOE JOURNAL



SPORTS EXTRA

Page 4 Published every Thursday at Muleshoe, Bailey County, Texas 79347 Thursday, November 27, 1997

Mules need OT to finish Slaton

SLATON — The overtime magic continues.

After winning four of five overtime games last year, Muleshoe beat Slaton 80-68 in overtime Friday, rallying from a five-point late in the fourth quarter.

Junior Dustin Cleavinger had a monster night for the Mules with 28 points, 19 rebounds and four blocked shots as Muleshoe improved to 2-0.

Matt McClanahan and Layne Kemp scored six points each in the five-minute overtime when the Mules blitzed Slaton 20-8.

"I think they realized they had a new life," Muleshoe coach Ralph Mason said.

Trailing 60-55 with 30 seconds to go, Matt Mason made three free throws after being fouled on a 3-point attempt. Cleavinger's putback with 15 seconds left sent the game into overtime.

Coach Mason felt fortunate to send the game into overtime

"Slaton had the momentum and it didn't look like it would happen the way we were playing," Mason said. "But that's why we're always telling the

kids not to give up until the final buzzer.

Cleavinger went off in the second quarter, tossing in 14 points. Muleshoe forged a 36-29 halftime lead.

Kemp finished with 15 points, including a pair of 3-pointers. McClanahan added nine points and Carlton Lewis contributed eight points, five rebounds and three steals.

Matt Cottrell, a 6-7 senior, lead a balanced Slaton (0-2) attack with 14 points. Trevor Miller added 11 points and Shelton Johnson and Germaine Hall chipped in 10 points each.

Muleshoe (80) — Carlton Lewis 2 2-2 8, Chris Shelburne 0 0-0 0, Mason Sinclair 0 0-0 0, Matt Mason 1 4-5 6, Cyrus Norman 2 2-2 6, Douglass Field 1 5-6 7, Matt McClanahan 3 2-4 9, Bret Clements 0 1-2 1, Layne Kemp 6 1-2 15, Dustin Cleavinger 10 8-8 28. Totals: 25 25-31 80. 3-pointers: Lewis 2, Kemp 2, McClanahan. Turnovers: 16.

FG: 25-52. **3-point FG:** 5-17. **Rebounds:** 35, 13 offensive (Cleavinger 19). **Blocked shots:** 5 (Cleavinger 4). **Steals:** 11 (Lewis 3). **Assists:** 19 (Mason 6)

Slaton (68) — Scott 0 1-2 1, Elder 2 0-0 6, Baker 2 2-2 6, Hall 4 2-4 10, Johnson 4 2-2 10, Cottrell 7 0-2 17, T. Miller 3 5-6 11, J. Miller 3 0-0 7, Perkins 1 1-2 3. Totals 26 13-20 68. 3-pointers: Elder 2, J. Miller. Turnovers: 21.

Muleshoe	14	22	10	14	20	80
Slaton	12	17	16	15	8	68



MHS junior Carlton Lewis drives inside against Littlefield

Engelking cans 19, leads Lazbuddie past Bovina

LAZBUDDIE — Lazbuddie romped to a 71-44 win against Bovina Saturday behind new found depth and an uptempo style.

Holly Engelking paced three Lady Longhorns in double figures with 19 points. Roxann Warren and Scottie Brown added 15 points apiece as Lazbuddie (2-0) knocked off its second-straight Class 2A opponent.

Bonnie Quintana led Bovina (0-2) with 22 points.

The Lady Longhorns jumped on Bovina early, outscoring the Lady Steers 20-3 in the first quarter.

Lazbuddie scored at least 16 points in each quarter the rest of the way.

Lazbuddie shot 52 percent from the field.

Bovina (44) — Vargas 0 2-2 2, Casas 1 5-6 7, Quintana 7 6-7 22, Antillion 0 0-2 0, Cantu 3 (1-2 8, Guererra 0 1-2 1, Smith 1 0-0 2, Perez 1 0-0 2. Totals: 13 15-21 44. 3-pointers: Quintana 2, Cantu.

Lazbuddie (71) — Staci Foster 0 0-0 0, Holly Engelking 6 4-8 19, Scottie Brown 4 7-10 15, Leah Turner 1 0-0 2, Laura Jo Via 2 4-7 8, Kia Morris 2 5-8 9, Roxann Warren 6 3-8 15, Maria DeLeon 2 0-0 4, Rachel Rodriguez 0 0-0 0. Totals: 23 23-40 71. 3-pointers: Engelking 3.

Bovina	3	17	10	14	44
Lazbuddie	20	16	18	17	71

Records: Lazbuddie 2-0. Bovina 0-2. Next game: Tuesday vs Adrian.

Tigers top JV Mules 45-44

SLATON — Muleshoe couldn't dig itself out of an early hole and dropped a 45-44 decision to Slaton Friday.

Jesse Reyes led Muleshoe with 14 points, including two 3-pointers. Clint Black and John McClanahan added seven points each for the Mules (1-1).

Muleshoe fell behind by 12 points after one quarter before cutting Slaton's lead to 27-21 at halftime.

Muleshoe (44) — Ryan Hodge 0 0-0 0, Eric Posadas 0 0-0 0, James

Barrett 0 0-0 0, Sammy Baeza 0 0-0 0, Delwyn Latham 1 0-0 3, Clint Black 3 1-2 7, Chris Vaughn 0 0-0 0, Jesse Reyes 6 0-0 14, Mitch Mason 0 4, Jeff Bruns 2 1-2 5, Dusty Ramage 0 0-0 0, John McClanahan 3 0-0 7, Kyle Hahn 1 2-4 4. Totals 18 4-8 44. 3-pointers: Reyes 2, Latham, McClanahan.

Slaton (45) — Pettie 3 0-0 6, Jones 5 0-0 11, Olivarez 0 0-0 0, Fluellen 1 2-2 4, Wall 3 4-4 10, Mosako 7 0-0 14. Totals: 19 6-6 45. 3-pointers: Jones 3.

Muleshoe	4	17	9	14	44
Slaton	16	11	9	9	45

Records: Muleshoe 1-1. Next game: Dec. 2 vs Morton.



Touchdown!

Lazbuddie's Adam St. Clair bowls over a Follett defender on a first-quarter touchdown run during the Longhorns' 46-22 win Friday in Groom.

Perryton's playoff march continues

PLAINVIEW — District 1-3A could be producing another Cinderella story.

One year after Friona reached the state semifinals, Perryton is making noise in the Class 3A playoffs.

The 1-3A runner-up Rangers pulled off their second-straight upset Friday, beating Colorado City 31-10 Friday in the area round with a big second half.

Perryton (9-3) advances to face No. 4 Breckenridge (12-0) at 8 p.m. Friday at Lowrey Field.

Allan Adkison rushed for 159 yards and two touchdowns as the Rangers outscored Colo-

FOOTBALL	
Playoff pairings	
CLASS 3A	day, Lowrey Field
Region I	SIX-MAN
Area	Region I-II
Perryton 31, Colorado City 10	Regional
Seminole 35, Monahans 21	Lazbuddie 46, Follett 22
Aledo 17, Vernon 10	Silverton 20, Miami 6
Breckenridge 28, Bridgeport 0	Sands 52, Westbrook 44
Regional	Borden County 30, Grandfalls 26
Seminole (11-1) vs Aledo (12-0), TBA	Quarterfinals
Perryton (9-3) vs Breckenridge (12-0), 8 p.m. Fri-	Sands (11-1) vs Lazbuddie, 7:30 p.m., Friday, New Deal
	Silverton (9-3) vs Borden County, 2 p.m., Saturday, Idalou

rado City 28-3 in the second half.

Down 10-3 early in the third quarter, Adkison scored on runs of 6 and 62 yards to give the Rangers the lead for good.

Ryan Culwell gave the Rangers a two-touchdown lead early in the fourth quarter when he hustled past Colorado City punter Adam Wood for a bad snap and recovered the fumble

in the Wolves' end zone. Perryton, which did not attempt a single pass in the second half, finished with 292 rushing yards.

The Rangers held speedy running back Aerian Emerson to 61 yards on 16 carries.

Perryton knocked off previously unbeaten Denver City 9-3 in four overtimes in the opening round.

JOE'S BOOT SHOP

1-800-658-6378 106 E. American Blvd. Muleshoe, Texas

And Country Junction

November 28

MIDNITE MADNESS SALES

ESPECIALLY FOR MIDNIGHT MADNESS

BAILEY FELT HAT SALE

FELT 5X AND DOWN	\$49
FELT 7X	\$149
FELT 10X	\$169
FELT 20X	\$239
FELT 30X	\$289

RESISTOL BLACK GOLD 20X HATS \$325

Now Till Christmas

First Quality

Full Quill Ostrich Boots

RIOS OF MERCEDES

(reg. \$650)

\$499

1 Rack of

Men's Knit Shirts \$15

Double Welt and Crepe Sole, Red Lites

1 Lot of Tony Lama, Justin

Children's Boots ... 1/2 PRICE

Tony Lama, Full Quill, Reg. \$600

OSTRICH BOOTS .. NOW \$499

Tony Lama Smooth, Reg. \$259

OSTRICH BOOTS .. NOW \$179

AFTER 6 PM - Rocky Mountain, Blaze, Roper, Panhandle Slim

Ladies Jeans \$19.99

Earn Boot Bucks For Our FREE Auction OVER \$3000 IN PRIZES TO BE GIVEN AWAY SATURDAY, DEC. 20TH!

Joe's Welcomes

C&M Sports Cards

We're ready to ...

BUY 'EM

SELL 'EM

OR

TRADE 'EM!

All Men's Shirts 20% OFF

All Belts 15% OFF

Montana, Crumrine & Slapak

All Jewelry 15% OFF

MIDNITE MADNESS ENTERTAINMENT

Friday, Nov. 28

Home Cookin' Band

John & Jill Mulhair

Lady Tigers fend off MHS 49-41

SLATON — Slaton jumped on Muleshoe early and held on for a 49-41 Friday despite scoring just three field goals in the second half.

Trailing by 13, Keisha Whitt scored 10 of her game-high 14 points in a fourth quarter rally that drew the Lady Mules within four points late in the game.

Lindsey Field added seven points and four steals for the Lady Mules (1-1) while Mandy Myers and Amy Locker chipped in six points each.

Slaton (2-0) took advantage of sloppy ball handling to build a 14-4 first quarter lead. Muleshoe had nine turnovers in the first quarter compared to seven in the whole second half.

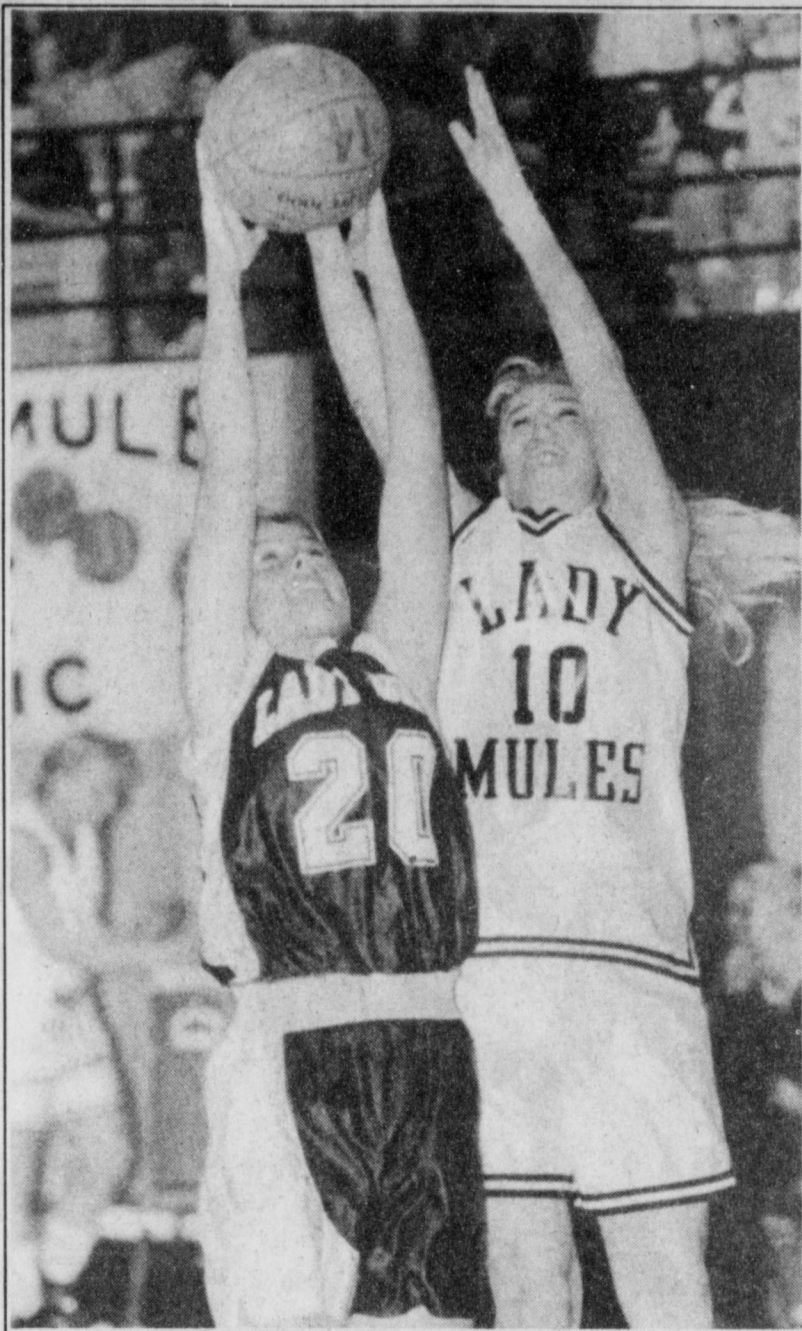
Locker scored six points in the second quarter when Slaton stretched its led to 29-15.

Muleshoe coach Jim Gruhlkey admitted his team might have been intimidated early.

"We came out a little timid and they took it right at us," Gruhlkey said. He said the Lady Mules were able to turn it around in the second half: "the score didn't change much but the game did."

Allison Lewis led a balanced Slaton offense with 11 points. Tiffany Turney and Patavia Whaley added nine points each.

Muleshoe played at Plains Tuesday and is schedule to play Shallowater in the first round of the Turkey Classic at 12:30 p.m. Thursday at Frenship High School.



Muleshoe senior Mandy Myers battles for a rebound in game against Littlefield earlier this season

Muleshoe (41) — Mandy Myers 2 2-2 6, Lindsey Field 0 7-12 7, Keisha Whitt 3 6-8 14, Rhonda Copley 0 0-0 0, Kellie Morris 0 0-0 0, Amy Locker 1 4-4 6, Melissa Williams 1 0-0 2, Kendra Benham 1 0-0 3, Erin Wilhite 1 1-3 1. Totals 9 20-29 41. 3-pointers: Whitt 2, Benham.

Slaton (49) — Caldwell 3 1-3 7, Huddleston 0 2-2 2, Turney 3 3-7 9, Whaley 4 1-4 9, Lewis 2 7-8 11, Krajocovic 0 3-4 3, Milliken 2 4-5 8, Meador 0 0-0 0. Totals 14 21-33 49. 3-pointers: none.

Muleshoe	4	11	12	14	41
Slaton	14	15	10	10	49

MULES

From page 1

The Mules (3-0) played most of the first half without leading scorer and rebounder Dustin Cleavinger, who picked up three quick fouls.

Cleavinger, who averaged 27 points in the Mules' first two wins, played most of the second half and finished with 12 points.

But it was Mason who was the man after intermission.

Held scoreless in the first half, the Mules senior point guard drained three 3-pointers in a one-minute span in the third quarter to wipe out what had been an eight-point Seminole lead.

The Mules went ahead for good, 56-53, on Douglass Field's three-point play with 1:29 left in the third quarter.

Mason finished with 11 points in the quarter. Mason Sinclair added a spark off the bench with a blocked shot, a 3-pointer and a driving assist midway through the quarter.

Muleshoe scored the first six points of the fourth quarter, taking its biggest lead of the game, 64-55, on two free throws by sophomore Bret Clements.

The teams then traded baskets, with Shane Hensley doing most of the work for Seminole.

Hensley (17 points) scored six-straight Seminole points as the Indians closed within 69-

66 with 3:30 to go.

Muleshoe countered with Cleavinger's 16-footer and a steal and layup by Mason.

Two free throws by Mason with 50 seconds left gave Mules a 75-72 lead.

Odgen led Seminole, who was missing two starters still playing football, with 20 points but was quiet most of the second half. The 6-7 junior is a highly-touted Division I recruit.

Field and Clements finished with 10 points each for the Mules.

"We needed some kids to step up without Dustin and we got that," Coach Mason said. "And Matt just took over in the second half."

2231

RED WING SHOES
Made in U.S.A.

The Fair Store
120 Main 272-3500

Randy's Shoes
After Thanksgiving Customer Appreciation Shoe Sale
Pre-Christmas Savings Friday & Saturday, Nov. 28th & 29th Only!

<p>Ladies Shoes</p> <p>Many Selected Styles of Shoes & Boots</p> <p>Easy Street "Foot Magic" 2 Styles, 7 Colors Sizes 5-12 N,M,W</p> <p>20% Off \$29⁹⁹ PR.</p>	<p>ALL NIKE'S</p> <p>20%-40% Off</p> <p>Mens • Ladies • Childrens</p>
<p>40% OFF</p> <p>On many styles of Ladies Dress Shoes & Casuals, Neutralizer, Hush Puppies, Nicole, Mootsies Tootsies, Eastland, Nike</p>	<p>Large Group Children's Shoes 1/2 Price</p>
<p>Handbags (Entire Selection)</p> <p>20% Off</p>	<p>Other Christmas Gift Ideas</p> <ul style="list-style-type: none"> • Daniel Green Slippers for Women & Men • Quality Workboots by Red Wing & Wolverine • Fashion Socks by Hot Sox • Work Socks • Fashion Earrings \$3⁹⁹ a Pair <p>A Tremendous Selection of Handbags & Belts</p>
<p>Men's Shoes</p> <p>(Selected Styles)</p> <p>Hush Puppies, Dexter, Stacy Adams, Nike, Nunn Bush, Eastland</p> <p>20 - 30% Off</p>	

RANDY'S SHOES
410 Main • Downtown Clovis

LONGHORNS

From page 1

five turnovers.

Frazier gained 117 yards on 21 carries but completed just 5 of 26 passes.

"We've been playing pretty well on defense for a while," Scisson said. "But we've got to step it up on offense."

Scisson said the Longhorns were inconsistent on offense even though they finished with 477 yards.

"We played well in spurts,

and got some big plays, but we just didn't execute like we can," Scisson said. He said run blocking was the biggest culprit, especially in short yardage situations.

Still, Lazbuddie had plenty of standouts against Follett.

■ Brice Foster led the Long-

horns with 165 yards and a touchdown on 11 carries. He also recovered two fumbles.

■ Josh Morris completed 13 of 22 passes for 197 yards and a touchdown.

■ Cameron Turner returned a punt 35 yards for a touchdown and had a goal line

interception.

■ Adam St. Clair rushed for three touchdowns.

■ Deon Gallman caught one pass for 15 yards and had an end zone interception.

■ Chris Smith caught three passes for 73 yards and a touchdown and recovered a fumble.

Lazbuddie 46, Follett 22

LAZBUDDIE	14	14	6	12	46
FOLLETT	6	8	0	6	22

SCORING SUMMARY

FIRST QUARTER

LAZ — Adam St. Clair 1-yard run (kick failed), 4:27. 20 yards in five plays, 2:04. Key plays: Brice Foster recovers fumble at Follett 20. Josh Morris 24-yard pass to Chris Smith to the Follett 1 on 4th-and-20. Lazbuddie 6, Follett 0.

FOL — Joe Thomas 9-yard run (kick failed), 2:22. 50 yards in eight plays, 2:05. Key plays: Courtney Frazier 24-yard run to Lazbuddie 26. Frazier 21-yard pass to Olin Gibson to Lazbuddie 17. Lazbuddie 6, Follett 6.

LAZ — Smith 40-yard pass from Morris (Jason Thomas kick), 1:52. 58 yards in two plays, :30. Key plays: Morris 18-yard pass to Foster at 40. Lazbuddie 14, Follett 6.

SECOND QUARTER

LAZ — St. Clair 5-yard run (Thomas kick), 9:25. 34 yards in five plays, 1:15. Key plays: Smith recovers Follett fumble at Lazbuddie 34. Morris 23-yard pass to St. Clair to Follett 23. Foster 15-yard run to Follett 14. Lazbuddie 22, Follett 6.

LAZ — St. Clair 1-yard run (kick failed), 5:56. 43 yards in five plays, 1:40. Key plays: Foster 31-yard run to Follett 7 on 4th-and-12. Lazbuddie 28, Follett 6.

FOL — Gibson 1-yard pass from Frazier (Thomas kick), :02. 60-yards in six plays, :59. Key plays: Stopped Lazbuddie on 4th-and-2 at Follett 22. Frazier 46-yard pass to Clint Montgomery to Lazbuddie 5. Lazbuddie 28, Follett 14.

THIRD QUARTER

LAZ — Foster 58-yard run (kick blocked), 6:32. 58 yards in 1 play, :11. Key plays: Lazbuddie stops on downs at Lazbuddie 22. Lazbuddie 34, Follett 14.

LAZ — Jeffery Seaton 35-yard run (kick failed), 2:47. 35 yards in 1 play, :10. Key plays: Forces Follett to punt from its 12. Lazbuddie 46, Follett 14.

FOL — Gibson 6-yard run (Thomas kick), 2:21. 38 yards in three plays, :26. Key plays: Gibson 32-yard pass to Montgomery. Lazbuddie 46, Follett 22.

DISCOVER THE OUTRAGEOUS SAVINGS

During our 97 Invoice Sale with the Lowest Prices (at invoice), Lowest Rates (as low as 2.9% APR) or largest rebate (as high as \$2500 on select models) = Lowest payments ever at Bender Chevrolet-Olds-Cadillac.

<p>METRO</p> <p>#76382</p> <p>\$147⁸⁵* PER MO.</p>	<p>TRACKER</p> <p>#76023</p> <p>\$262⁵⁰* PER MO.</p>	<p>MALIBU</p> <p>#76005</p> <p>\$257⁴⁸* PER MO.</p>
<p>VENTURE</p> <p>#76408</p> <p>\$395⁰⁰** PER MO.</p>	<p>LUMINA</p> <p>#76212</p> <p>\$264²⁷* PER MO.</p>	<p>MONTE CARLO</p> <p>#76070</p> <p>\$325¹¹* PER MO.</p>

*\$1500 down & 60 mos. @ 3.90% APR plus tax, title & license with approved credit. **\$2332 down & 60 mos. @ 3.90% APR plus tax, title & license with approved credit

SELECT PRE-DRIVEN VEHICLES

<p>1986 Chevy 1/2 Ton Pickup Reg. Cab</p> <p>#5249. Reg. \$6,995</p> <p>Sale \$5,995</p>	<p>1989 Chevy 1/2 Ton Pickup Reg. Cab</p> <p>#76370A. Reg. \$7,500</p> <p>Sale \$4,995</p>	<p>1990 Chevy 1/2 Ton Pickup Reg. Cab</p> <p>#86028B. Reg. \$9,995</p> <p>Sale \$8,550</p>	<p>1995 Chevy S10 Pickup Extended Cab</p> <p>#5203A. Reg. \$12,995</p> <p>Sale \$9,995</p>
<p>1995 Chevy Pickup Reg. Cab</p> <p>#76385D. Reg. \$11,995</p> <p>Sale \$9,995</p>	<p>1995 Chevy 1/2 Ton Pickup Ext. Cab 4x4</p> <p>#86018A. Reg. \$18,995</p> <p>Sale \$17,500</p>	<p>1996 Chevy 3/4 Ton Pickup Reg. Cab 4x4</p> <p>#5171A. Reg. \$18,995</p> <p>Sale \$17,500</p>	<p>1996 Chevy 1/2 Ton Pickup Extended Cab</p> <p>#76384D. Reg. \$18,995</p> <p>Sale \$17,500</p>

BENDER CHEVROLET

You're going to like our family

<p>BENDER CHEVROLET OLDSMOBILE CADILLAC</p> <p>2500 Mabry Drive • (505) 763-4465</p>	<p>BENDER CHRYSLER PLYMOUTH DODGE</p> <p>3400 Mabry Drive • (505) 762-4511</p>	<p>BENDER HONDA NISSAN</p> <p>3000 Mabry Drive • (505) 762-3701</p>
---	---	--

Water District conducting pre-plant soil moisture survey

Personnel from the High Plains Underground Water Conservation District No. 1 and the USDA-Natural Resources Conservation Service (USDA-NRCS) are now collecting data for the 1998 pre-plant soil moisture survey.

The survey is conducted annually to determine general pre-plant soil moisture availability and deficit trends within the 15-county water District service area. Using this information, area producers can conserve ground water by applying only what is needed to bring the soil profile to field capacity during pre-plant irrigation.

"As a result of above-average rainfall, we expect pre-plant soil moisture conditions within some areas of the Water District to be better than we have seen in recent years," said Ken Carver, High Plains Water district assistant manager.

Even though above-average rainfall has improved general soil moisture conditions, Carver noted that Interstate 27 could be used as a dividing line to differentiate between wetter and drier soil conditions within the District.

of the district west of Interstate 27 did not receive as much rainfall as the eastern portion and will be somewhat drier," he said.

Three teams are collecting pre-plant soil moisture data in the northern counties of the

Water District. They will work their way south as the soil moisture survey data collection progresses.

Terry Bridges and Glenn Blackmon will take soil moisture readings in Armstrong, Potter, Randall, Hale, and Lubbock counties. Arnold Husky and Scott Orr will work in Parmer, Bailey, Lamb, and Cochran Counties. Gerald Crenwelge and Kevin Coffman will work in Deaf Smith, Castro, Floyd, and Crosby Counties. Data will be collected later in Hockley and Lynn Counties. Data collection will be completed by Dec. 15, weather permitting.

Soil moisture monitoring sites are selected according to soil types, local saturated thickness of the Ogallala Aquifer which indicates potential water well yields, and local crop water requirements. Each site represents typical dryland or irrigated farming practices in the general area where the site is selected.

Data collected will be used to construct maps illustrating the amount of soil moisture available for plant use within the root zone soil profile and the amount of water needed to bring the soil profile to field capacity.

These maps, as well as the results of the 1998 pre-plant soil moisture survey, will be distributed to area news media and will be published in The Cross Section prior to the pre-plant irrigation season.

Additional information about the 1998 pre-plant soil moisture survey is available by contacting the High Plains Underground Water Conservation District No. 1, 2930 Ave. Q Lubbock, TX 79405-1499, or by calling (806) 792-0181. The District's web site address is www.hpwd.com.

ANNIVERSARY

50th Anniversary

Mr. and Mrs. Joe Ferris of Muleshoe celebrated their 50th wedding anniversary Nov. 23 at the Muleshoe Civic Center.

The reception was hosted by their children, Leland and Ann Ferris of Lubbock, and Lonnie and Lavelle Ferris of Columbus, Miss.

Joe Ferris and the former Verna Owen were married in Muleshoe on Nov. 27, 1947. They have five grand-



Mr. and Mrs. Ferris now



Mrs. and Mrs. Ferris just starting out

Students honored on national dean's list

Fourteen students from the area are included in the 20th Annual Edition of the National Dean's List, 1996-1997.

Students are selected for this honor by their college deans, registrars or honor society advisors and must be in the upper 10 percent of their class, on their school's "Dean List" or have earned a comparable honor.

The students are eligible to compete for \$50,000 in scholarship.

Students recognized from Texas Tech include Leland Brockman and Gary Gilleland, both of Muleshoe.

Students recognized from South Plains College include Sonya Smith of Muleshoe, Matthew Templeton of Earth; Tiffin Tiffin of Earth; Jerry Landrum of Farwell; Leslie Clawson of Sudan; Jenny Netherland of Sudan.

Students recognized from Lubbock Christian University include Linda D. Sneed of Earth; Neeley Byrum of Sudan; DeAnn Wilson of Sudan.

Also honored were Dawn Weir of Muleshoe, who attends Angelo State University and Eva Alcalá of Lazbuddie who attends Clovis Community College.

KENW-TV

Public Television

Vaudeville: An American MASTERS Special

Before television, before radio, even before silent movies, there was vaudeville. Dominating American popular culture for four decades, vaudeville was the first entertainment form to cross racial and class boundaries.

Vaudeville: An American Master's Special two-hour presentation explores the roots of this all-inclusive and hilariously homespun variety show milieu, where a single evening might include 20 acts, each ten minutes or less, ranging from major operatic talents, classical pianists, and beloved comics to exotic princesses picking up chairs with their teeth and sultans who put out fires with water spouting magnificently in an endless stream from their own mouths.

New York's Palace Theatre (for vaudevillians, the center of the universe) stopped presenting pure vaudeville in 1932, but some of the more prescient vaudevillians, who honed their performances and learned about their audiences (including George Abbott, Ethel Barrymore, Fred Allen, Bob Hope, Jimmy Cagney, Burns & Allen, Burt Lancaster, and Fannie Brice), went on to shape brilliant careers as rising stars in the expanding territories of musical comedy, radio, film, and television of the fifties and sixties.

Vaudeville: An American Master's Special airs Wednesday, November 26th at 7:00 p.m. It repeats Friday, November 28th at 10:00 p.m.



BirdWatch with Don and Lillian Stokes, a new 13-part series, is for the 80 million Americans who feed and watch birds. Birdwatching is America's #1 spectator sport and, next to gardening, the nation's most popular outdoor hobby. Birdwatchers now spend over \$5.2 billion on binoculars, birdseed, birdhouses, travel, and other items related to enjoying and attracting birds.

The series is hosted by Don and Lillian Stokes, top-selling nature authors who have written more than 20 books on birds and nature. Their work includes *Stokes Field Guide to Birds*, *Stokes Beginner's Guide to Birds*, and the upcoming *Bird Gardening*, which will be published this fall.

Each episode of **BirdWatch** involves viewers in the exciting world of watching North American birds, from the backyard to the wilderness. The Stokes present entertaining stories on attracting backyard birds, birdwatching tips, bird identification, bird behavior, birding hotspots all across the country, and successful bird conservation.

BirdWatch with Don and Lillian Stokes will be broadcast Saturdays at 10:30 a.m. beginning November 1st. It repeats Sundays at 7:00 a.m. beginning November 30th.

Channel 3 Television from Eastern New Mexico University, Portales, New Mexico

It Stacks up as a great Christmas!

Rip's in Texico

314 Wheeler

482-3363 • 800-748-2459

NEW STORE HOURS:

Monday - Saturday: 9:00 a.m. to 6:30 p.m. cst
Sunday: 1:00 p.m. to 6:00 p.m. cst

We Accept

Sale Starts Friday, Nov. 28

MENS' SUITS, SPORT COATS, DRESS PANTS & SHIRTS
20% Off
Rip's Special All Beaver HATS Starting at \$75.00

All Winter Coats
20% Off
Children's HATS \$29.98

Ladies' Apparel
20% Off
All Accessories 10% Off

Gift Items
* Billfolds & Handbags
* Personalized Free Hand Tooled Belts
* Children's Handmade Leather Chaps & Spurs
* Fragrances for Men & Women
* Boot Bags & Boot Jacks

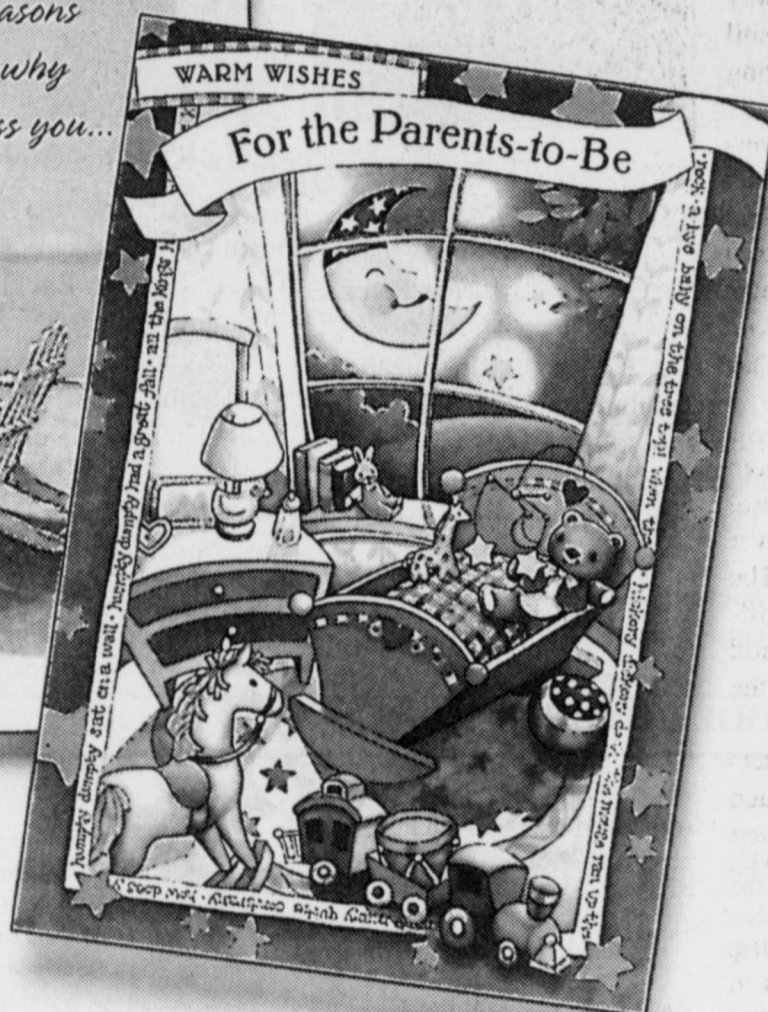
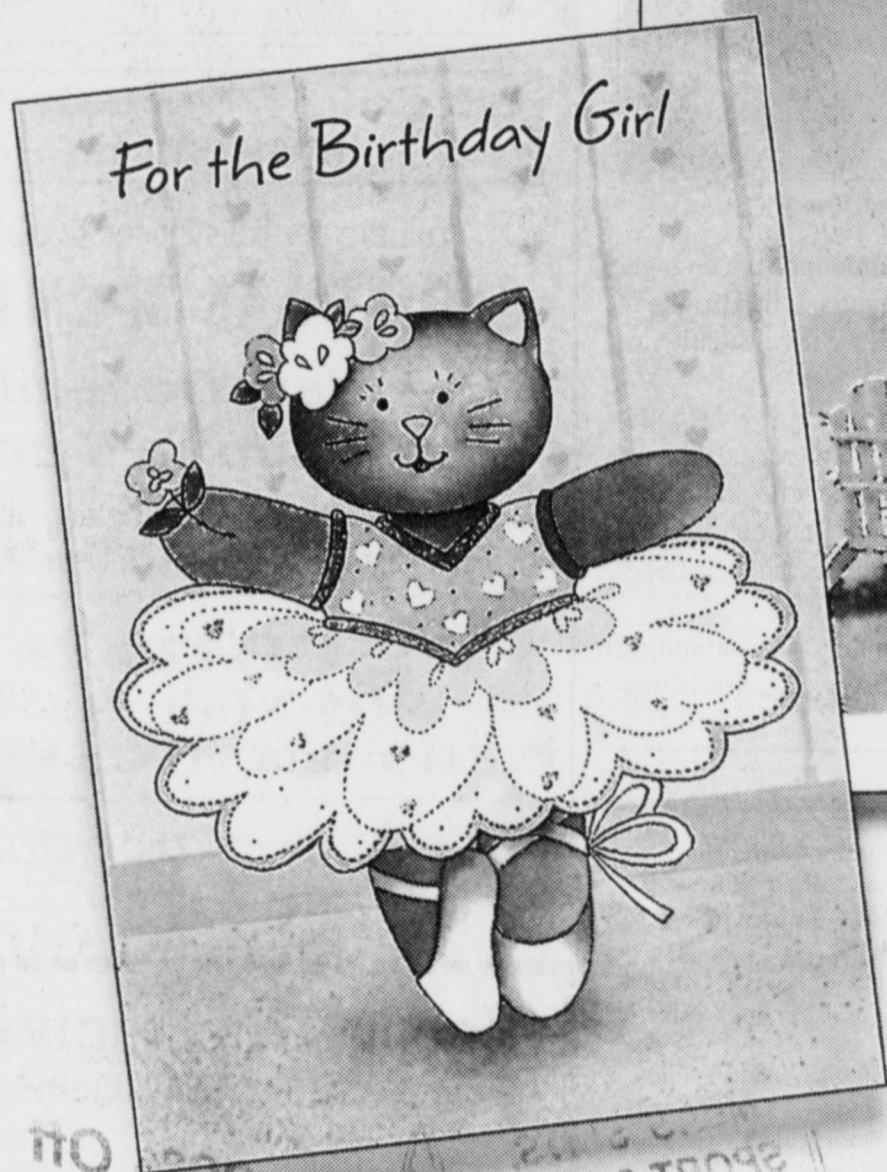
Tony Lama Smooth Ostrich Boots
\$219.98
Sanders & Tony Lama BULLHIDE
\$99.98

3 Day Only Specials
(Friday, Saturday and Sunday)
Ladies' Silk Blazers
Ladies' Silk Tees
50% Off

Complimentary Gift Wrapping

Layaways Welcome!

Grand Openings.



EXPRESSIONS
FROM

Hallmark

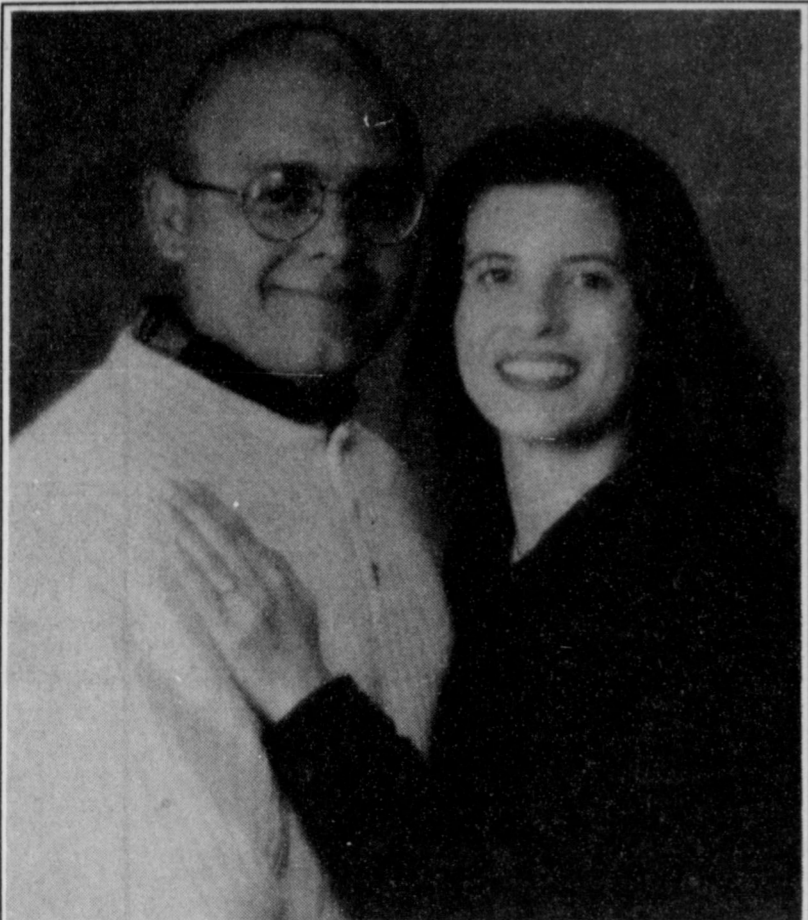
Announcing our
Expressions From Hallmark
department, opening this Friday.

Some cards are just better than others. Like Expressions From Hallmark. It's the latest collection of greeting cards, gift wrap and more from the name you've known and trusted for years. Which means every time you open these cards, it will be grand.

ALCO

Expressions From Hallmark available at participating Alco stores.

ENGAGEMENTS



PEREZ - WATSON

Jan Watson of Austin and Richard and Debbie Watson of Waco announce the engagement of their daughter, Jennifer Watson to Edward Perez of Muleshoe, son of Henry and Elfida Perez of Olton.

The couple will marry Dec. 20, 1997 at the St. Elizabeth's Catholic Church in Lubbock. A reception is immediately following the ceremony in the St. Elizabeth's Parish Hall.

Jennifer and Edward attended Texas Tech University. They are both currently employed as teachers for Muleshoe Independent School District.

Jennifer is a social studies teacher at Muleshoe High School. Edward is a coach and PE teacher at Watson Junior High School.



BUCKLEY - SINCLAIR

Mr. and Mrs. Joel Sinclair of Muleshoe announce the engagement and approaching marriage of their daughter Julia Brooke to Dustan Stephen Buckley, son of Mr. and Mrs. Steve Buckley of Dimmitt.

The couple will exchange vows at 7 p.m., Saturday, Dec. 27, 1997 at the First Baptist Church of Muleshoe. The reception will be held immediately following the service in the fellowship hall.

Brooke, a 1994 graduate of Muleshoe High School, attended South Plains Junior College in Levelland, and Amarillo College. She is presently employed by Pets Mart in Amarillo.

Dustan, a 1995 graduate of Dimmitt High School, is attending Amarillo College majoring in computer networking. He is employed by Builders Square in Amarillo.

THREE WAY SCHOOL HONOR ROLL

All "A"

1st Grade — Shaelynn Cannon, Brittaney Cuellar, Eloisa Salamanca
2nd Grade — Tiffany Davis, Cenee Hood, Cassie Kirby, Alberto Vironche
3rd Grade — Bronson Arington, Joe Cuellar, Lorenzo Lopez, J R Rodriguez
4th Grade — Caleb Heinrich, Trevor Hood, Cody Kirby

5th Grade — Kyla Ellis
6th Grade — Katie Cook, Buddy Holmes, Kaylie James, Veronica Martha
7th Grade — Monica Walker
8th Grade — Leanne Draus
10th Grade — Sid Weekes
12th Grade — Russell Pollard, Sammy Soliz, Josh Tooley

"A" Average

1st Grade — Rocky Amalla,

Carmen Medrano

2nd Grade — Colton Heinrich
3rd Grade — Noel DeLaRosa
4th Grade — Lauren Layton
5th Grade — Norma Baeza, Cory Conteras, Rigo Rodriguez
6th Grade — Virginia Amalla, Amy Castillo, Jennifer Cuellar
7th Grade — Victor Baeza, Sammy Castillo, Ashley Layton, Julie Salamanca
8th Grade — Alma Castillo, An-

thony Furgeson, Kara Heinrich, Jimmy James, Christy Mills
9th Grade — Ernesto Navarro, April Webb

10th Grade — Kasey Davis, Jessica Robinson, Rosa Soliz, Alberto Valderas

11th Grade — Jonathan Kindle
12th Grade — Katie Arens, Randal Rodriguez, Cristina Salamanca, Joey Smith, Cody Wilson

OBITUARIES

ELAND UPCHURCH

EARTH — Eland Upchurch, 84, of Earth died Nov. 23, 1997 at Methodist Hospital in Lubbock.

Memorial services were held Nov. 25, at New Covenant Church in Muleshoe with Rev. Jimmy Low officiating.

Burial services were held in Resthaven Cemetery of Lubbock under the direction of Parsons-Ellis Funeral Home.

Upchurch was born April 21, 1913 in Waxahatchi. He was a WWII veteran of the US Navy.

Upchurch had lived in Muleshoe since 1984, moving from Earth. He was a member of New Covenant Church in Muleshoe. He worked as a propane truck driver for Earth Oil and Gas for 25 years until he retired in 1989.

He was preceded in death by his oldest son, Eldon Upchurch.

Survivors include his wife Florene of Muleshoe; four children from his first marriage to Elvira Upchurch, Alvin Upchurch of Petersburg, Tex., Judy Louder of Sunnyside, Tex., Peggy Overby of Bellflower, Calif., and Vivian Gay Jaquess of Lubbock; sister, Fern Messer of Canon City, Colo.; two brothers, Buck Upchurch of Slaton, Rudy Upchurch of Phoenix; 11 grandchildren, 16 great-grandchildren.

MULESHOE RETIRED TEACHER NEWS

The Muleshoe Retired Teachers met Friday, Nov. 21. Norma Prather introduced our speaker, Stacy Conner, Pastor of First Baptist Church. He highlighted the three things we are all most thankful and the Biblical passages for them.

The business meeting was called to order by Mary Nell Bleeker. Ann Olyer gave a report on the district meeting in Lubbock. It was reported that the volunteer hours that the members do throughout the year would be counted from January to January now. The

Christmas meeting was also planned. All members are to bring their favorite food for the noon meeting and a white elephant gift to be exchanged.

The hostesses for the meeting were Joyeline Costen and Alene Bryant. Others present were Stacy Conner, Norma Prather, June Arnold, Maude Blaylock, Wilma Smith, Mary Nell Bleeker, Jean Allison, Ann Olyer, Letha Patterson, Margie Moore, Pauline Guinn, and Elizabeth Watson. After dismissal, the members who could stay attached tails on the mules

TEEN LEADERSHIP

This past week the Teen Leadership students at Muleshoe High School had the privilege of being taught by two outstanding individuals — Susan Taylor and Nelda Laney.

Students schedule guests to share their personal experiences and insights on leadership.

Students are encouraged to secure the speakers as part of their training in learning communications and scheduling events. Students earn points towards the Democracy in Action Tour for each speaker they scheduled.

Susan Taylor, niece of former President Lyndon Baines Johnson, came and shared her experience of living in the White House during the Johnson Administration. Susan, who now lives in Jefferson, Tex., was secured as a speaker by Teen Leadership Student, Payton Rennels.

Laney challenged the students to believe in themselves and be whatever they wanted to be. She shared personal stories of her families struggles and perseverance in living the American dream. Her presentation was enhanced by pictures and memorabilia she brought to share with the students.

Jill Gladden, a junior in the leadership class brought to the students Mrs. Nelda Laney, wife of House Speaker Pete Laney.

Laney shared a slide presentation with the students on the recently renovated State Capitol and the role she played in it becoming a reality. She also shared with students her personal beliefs and feelings on politics. She stressed to the students the importance of getting involved and making a difference in their school, their community, their state, and their country.

Clovis Equipment & Supply Co.



Clovis owned since 1977 Miller Authorized Sales Parts & Service

We deliver to Portales, Muleshoe, Farwell and Texico. We only sell welding supplies and we service what we sell. Miller factory trained technicians. We can repair all makes of welding machines, torches and regulators.

Call to see if We can help with delivery service and pricing.

821 E. 2nd 763-5569
Clovis, NM

Register To Win!
\$25 • \$50 • \$75 Gift Certificates
& a Brighton Purse

You are cordially invited to our annual
CHRISTMAS OPEN HOUSE
Tuesday, December 2nd
9 am to 6 pm

Refreshments • Complimentary Gift Wrapping
Visa, Mastercard, Discover & Layaways Welcome

Ingram's
705 Main
Frona, TX



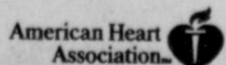
Happy Thanksgiving

From the Staff of The Muleshoe Journal & Bailey County Journal

Scratch Like There's No Tomorrow.



Get in all the scratching you can before November 30, 1997, because like all good things, Fishin' Frenzy, Honey Money and Happy Holidays are about to come to an end. Be sure to claim your prizes before May 29, 1998. Win up to \$2,000 with Fishin' Frenzy or Honey Money and up to \$40,000 with Happy Holidays. Prizes of up to \$599 can be claimed at any Texas Lottery retailer. Prizes of \$600 or more are redeemable at any one of the 24 regional Texas Lottery claim centers or by mail. Questions? Just call the Texas Lottery Customer Service Line at 1-800-37-LOTTO (1-800-375-6886).



Medical miracles
start with research

Journal classifieds

REAL ESTATE
AUTOMOBILES
HELP WANTED
GARAGE SALES

STOP & SHOP

Deadlines are 5 p.m. Monday and Thursday

Call 272-4536

Deadlines are 5 p.m. Monday and Thursday

FOR SALE

1994 GMC SLE extended cab with short bed. 350, V-8, automatic, tilt, air, cruise, power windows and lock. \$14,000. (505) 356-5509. 45t-1tnc

1995 Chevy Cheyenne short bed pickup. Tilt, cruise, air, auto., 4.3 Vortec engine, silver color. Under 13,000 miles. Very sharp! \$14,000 (505) 356-5509 45t-1tnc

ATTENTION!!

Kirby Sales & Service 207 W. 7th next to Sonic Drive-in. (505) 762-4991 Call for FREE Home demonstration or Repair work. Clovis, NM 35t-tfc

For Sale Trailers

Firewood
Stone Ground
Corn Meal
Whole Wheat Flour
272-3715. 47t-4tch

8 pairs ladies slacks-New. Size 36 waist, \$15.00 each pair. Call 272-4069. 48s-3tpd

1983 Chevy Blazer S-10, V6, automatic, 4 wheel drive \$1800.00. Call 272-4069. 48s-3tpd



GARAGE SALE

Muleshoe I.S.D will be holding a garage sale of miscellaneous items from Monday, Dec. 1st thru Thursday, Dec. 4th. All merchandise will be on display at the warehouse on West 3rd., South of the High School. Larger items such as buses, pickup, riding reel mower, cafeteria steam tables and others will be on a sealed bid basis which will be opened at 3 p.m., Thursday, Dec. 4th. Smaller items that include student desks, chairs, computers, projectors and other miscellaneous items will be priced and sold on a first come, first serve basis. We will open from 9 until 12 and 1 until 4 each day. If you have questions, please contact Sam Whalin at 272-4828. 48t-2tch

HELP WANTED

The City of Muleshoe is currently accepting applications for the position of Patrolman. Applicants should be certified. For more information and an application, contact Don Carter, Chief of Police, 215 South First Street, Muleshoe TX, 79347 (806) 272-4528. Position is open until filled. Upon employment subject will be required to pass a drug test. The City Of Muleshoe is an equal opportunity employer. 48t-1t

HELP WANTED

Feedtruck driver needed. Good benefits, pay negotiable, depending on experience. Apply in person to Randy Mitchell at Coyote Feedyard. 48s-2t

The City of Muleshoe is currently accepting application for the position of Sergeant for the Muleshoe Police Department. Intermediate certification desired. For more information and an application, contact Don Carter, Chief of Police, 215 South First Street, Muleshoe TX, 79347, (806) 272-4528. Upon employment, subject will be required to pass a drug test. The City of Muleshoe is an equal opportunity employer. 48t-1t

The City of Muleshoe is currently accepting applications for the position of Lieutenant for the Muleshoe Police Department. Advanced certification desired. For more information and an application, contact Don Carter, Chief of Police, 215 South First Street, Muleshoe TX, 79347, (806) 272-4528. Upon employment, subject will be required to pass a drug test. The City of Muleshoe is an equal opportunity employer. 48t-1t

Service

Counseled
Handgun Course
Dec. 6. 8 a.m. - 6 p.m. in Muleshoe. Contact Toby Turpen 806-367-6362. 48s-3t



MOBILE HOMES

ATTENTION!! IS THIS YOU?

• RENTING?
• A FIRST TIME BUYER?
• IN AN OLDER, TOO SMALL, MANUFACTURED HOME THAT IS PAID FOR? (OR CLOSE?)
• OWN YOUR LOT?
• HAVE GOOD JOB TIME?
• ABLE TO AFFORD \$250.00 PER MONTH?
IF ANY OF THE ABOVE DESCRIBE YOUR SITUATION, YOU MIGHT QUALIFY FOR A NEW, VERY LIMITED TIME, MANUFACTURED HOME OWNERSHIP PROGRAM. INFORMATION WILL BE SENT TO THE FIRST 100 INQUIRIES ONLY! 1-800-306-1211 FOR YOUR INFO. PAK.

FLEETWOOD HOME CENTER

Portales

Celebration double wides \$39,999 large 3 bedroom, lots of windows in beautiful island kitchen. Includes AC and free Maytag washer and dryer. Limited time only.

Portales Homes Hwy 70, 356-5639 or 800-867-5639 DL 366. WE WILL BE OPEN ON FRIDAY AND SATURDAY THE 28TH AND 29TH.

REWARD

Three Way I.S.D. Is offering a \$1,000 reward for information leading to the arrest and conviction of the person or persons involved in a theft on Thursday, November 6th. Any information can be forwarded to the Bailey County Sheriff's Office at 806-272-4268 or the school office at 806-927-5531. 47t-4tch

MOBILE HOMES

Better Living Homes
1997 Singlewide Mobile Home. \$19,000. Please Call (505) 356-5448. 17t-tfc

Nice 1979 14x70 Redman mobile home trailer to be moved. Includes porches & new Carrier Heating and Cooling System. (Can be bought separately). 806-925-6664. 32s-tfc

16 X 60 Skyline mobile home 2 brm, 2 Bath Needs to be moved. Air condition and heat included, take over payments. 965-2967.46t-tfc.

REAL ESTATE

Brick Home
3 BRM, 2 bath, utility room and basement.
Barns and buildings, water well, incinerator, tall TV tower, fruit tree, fenced back yard. Carport and closed in garage building. Located on 4.73 acres on FM Road 145 - 2 miles West of Lazbuddie. Call (806) 894-4305 for more details. 48t-2tpd

Service

House Cleaning
Weekly, bi, or monthly. House, real estate, business. Renee 272-5119 48s-4tpd

MOBILE HOMES

MOBILE HOMES

BETTER LIVING

Mobile Home Sales
Larry Pool - Owner
Sherry Hadley - Manager
DL Lic # 00681
Winter Hours
OPEN: Mon.-Thurs • 8 A.M.-7 P.M.
Fri-8 A.M.- 6 P.M.
Sat 9 A.M. - 6 P.M. • Sun 12 P.M. - 6 P.M.
002 NM 467 (on the Clovis Highway)
1-800-404-1324 or (505) 356-5448

.....
Have a Great Day!
.....

Nieman Realty

116 E. Ave. C • George Nieman, Broker • 272-5285 or 272-5286

RICHLAND HILLS

3-3-1 Brick, cent. Heat, Evap. Air, built-ins, 2000' + lv. area, fenced yd., stor. bldg, MORE!! \$60K !!! RH-2

PARKRIDGE - NICE 3-2-2 Brick, Cent. A&H, built-ins, FP, cov. patio, fenced yd. \$50's!!

HIGHLAND AREA

3-2-2 Brick, Cent. A&H, built-ins, gas log FP, fenced yd., stor. bldg., MORE!! Price Reduced! HL-5

2-1-1 Home, vinyl siding, wall furnace heat, fenced yd. \$17,000!!! HL-1

LENAU - COUNTRY CLUB AREA

2-1-1 Carport Home, wall furnace, nice carpet, storm shelter, stor. bldg., fenced yd. \$20's!!!CC-3

NICE 3-2-1 Home, Bls. Heat pump, DW, nice carpet, fans, fenced yd., MORE!! \$30's!!

2-1-1 Home, Cent. Heat, built-ins, Hardwood floors! \$19,500! L-3

2-1-1 Home, floor furnace, win. fer. air, fenced yd, stor. bldg., \$19,500 !!!L-1

Commercial Bldg. & Lot, Approx. 1790' area, Numerous uses!! \$22K!!!

HIGH SCHOOL

3-1-1 Brick, Cent. Heat!!! \$25K!!! HS-4

Nice 3-2-2 Brick, Cent. A&H, built-ins fenced yd., MORE !!! \$40's !!! HS-5

Very Nice 3-1-1- Brick Home, cent. Heat & Air, built-ins, fans, woodburning stove, nice carpets, storage bldg., fenced yd., More !!! \$40's!!! HS-7

NICE 2-1-1 Brick, Heat Pump, nice carpets, well insulated, storm windows & doors. \$30's!!! HS6

BUSINESS FOR SALE-SNACK SHACK - Lot, Buildings, furniture, and fixtures!!!!

NICE R.V. STORAGE, 14' X 40' metal bldg, 12' doors, corner lot!!

RURAL

3-2-2 Home on .92 acre at edge of town, Cent. Heat, evap. air, DW, storage bldg., fenced yd., & MORE !! \$30K!!!

W. of SUDAN-NICE 3-3-2 Brick Home, 5 acre tract on Hwy. 298, Cent. Air & Heat, built-ins, large Quonset Barn, MORE!!!! \$95K!!!

JUST LISTED- NICE 4-1-2 Home, Heat Pump, Built-ins fenced yd., 2 Stor. bldgs., approx. 10 acre tract, on pavement close to town!! \$ 50's !!!

5 Acre tract on pavement close to town!

W. of Sudan- 177 acre tract in CRP !!! Price To Sell !!!

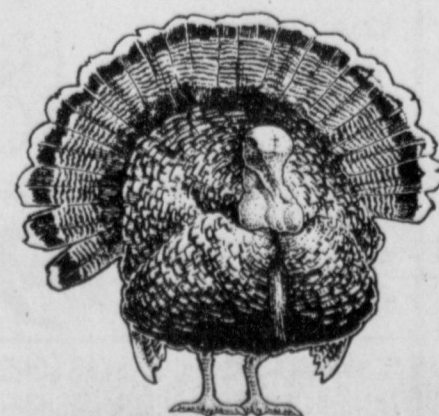
Needmore- 1.44 ac, 3 bldgs., \$5k!!!

FRIENDS FROM THE PAST

This Thanksgiving Holiday, take the time to remember family and friends who, no matter where they live, remain close at heart. It is the season to reflect back on fond memories and give thanks for all the blessings in our lives. Friends are amongst the greatest of blessings. The Longview community wants to identify names of classmates and friends from this 1933-1934 school picture. Do you know who they are? You may be surprised to find out who is tucked away in this photograph. We thought you would enjoy this trip down memory lane. The staff of the Muleshoe Journal and Bailey County Journal hopes that this Thanksgiving Day brings you fond new memories with loved ones and a belly full of wonderful food!



ALL THE BEST
TO YOU THIS
THANKSGIVING DAY!



LOWE'S

Prices Effective
November 28-December 2, 1997

WE RESERVE THE RIGHT TO LIMIT QUANTITIES - NO SALES TO DEALERS

Pay-n-Save
MARKETPLACE

ALL TYPES
Dr Pepper
2\$3 For 3
5 LITER BTL.

YOUR CHOICE
12 pack-12 oz. cans or
6 pack-.24 oz. btl.

ALL TYPES
Pepsi
2\$5 For 5



See ya at **LOWE'S**

THE PERFECT GIFT™
GIVE A LOWE'S
GIFT CERTIFICATE!
AVAILABLE
FOR ANY AMOUNT

PREMIUM QUALITY
LOWE'S HOMOGENIZED OR
ALL VARIETIES
SHURFINE LOW FAT
Milk
2\$17
gallon jug



LOWE'S WHITE
Sandwich Bread
2\$1
24 oz. loaves

Fresh Crisp Lettuce
2\$1
Cello Wrapped For

FRESH Ground Beef
79¢
lb.

JENO'S
Crisp'n Tasty
ASSORTED CRISP'N TASTY
Jeno's Pizza
2\$1
7.2-8.1 oz. pkgs.

ASSORTED 2ND FOODS
Gerber Baby Food
5\$1
4 oz. jars

SHURFINE
Corn Flakes
99¢
18 oz. box

AMERICAN BEAUTY
Long Spaghetti or Elbo Roni
1\$99
48 oz. pkg.

Nabisco
Snack Crackers
2\$3 For 3

SHURFINE
Tomato Sauce
8\$1
8 oz. cans

REGULAR W/BLEACH
MULTI-PURPOSE SPRING
Tide Ultra Liquid Detergent
5\$99
100 oz. jug

POWDER REGULAR, W/BLEACH,
TIDEFREE, MOUNTAIN SPRING
Tide Ultra 2 Laundry Detergent
5\$99
92-94 oz. box

ASSORTED
Fritos Corn Chips
2\$3
Reg. \$2.19 size

AGU SELECTED
New Cheese Creation Pasta Sauce
1\$38
17 oz. jar

RAGU ASSORTED TRADITION,
OLD WORLD, GARDEN STYLE
Spaghetti Sauce
1\$38
30 oz. jar

BLUE BUNNY FAT FREE YOGURT; OR
NO SUGAR ADDED, FAT FREE, FAT
FREE NO SUGAR ADDED, OR PREMIUM
Ice Cream
2\$79
1/2 gal. rnd.

FROZEN
TOMBSTONE ASSORTED
DiGiorno 12" Pizza
4\$99
29.43-35 oz. pkg.

BLUE BONNET
Margarine Quarters
2\$1
1 lb. pkgs.

FLORIDA'S NATURAL
Ruby Red Grapefruit Juice
1\$99
64 oz. ctn.

FLORIDA'S NATURAL ASSORTED
Orange Juice
1\$99
64 oz. ctn.

BAKERY
FRESH BAKED
French Bread
2\$1
16 oz. For

FRESH
Hoagie Rolls
99¢
4 ct.

Delicious Turnovers
2\$49
4 ct.

DELICIOUS Glazed Donuts
2\$19
12 ct.

DELI
FROM OUR HOT DELI
Burritos or Corn Dogs
2\$1 For 1

PEYTON'S AMERICAN
Cheese Slices
2\$39
lb.

ECKRICH
Chopped Ham
1\$69
lb.

ECKRICH ALL MEAT
Bologna
1\$49
lb.

LOWE'S VALUABLE COUPON
\$5.00 OFF
Any Deli Party Tray

Good Only At **LOWE'S** Expires Dec. 24, 1997
LIMIT ONE COUPON PER CUSTOMER

MEAT & PRODUCE

CENTER CUT
Armour Bacon
2\$3
12 oz. pkgs.

HEALTHY CHOICE HONEY HAM,
COOKED HAM, OVEN ROASTED TURKEY,
OVEN ROASTED CHICKEN BREAST,
ROAST TURKEY OR ROAST BEEF
Lunchmeats
1\$99
10 oz. zip-pk

HEALTHY CHOICE

GOLDEN COUNTRY
Sandwich Singles
99¢
10.7 oz. pkg.

FRESH GROUND BEEF
Chili Meat
1\$19
lb.

RED DELICIOUS
Apples
2\$1
lbs. For

Red Ripe Tomatoes
59¢
lb.

GARDEN FRESH
Hot Jalapenos
2\$1
lbs. For

WE ACCEPT WIC & TEXAS LONE STAR CARDS MONEY ORDERS & CHECK CASHING WESTERN UNION COUNT DOWN TO CHRISTMAS!!! ONLY 27 DAYS 'TIL CHRISTMAS NOT LIABLE FOR TYPOGRAPHICAL OR PICTORIAL ERRORS