

## Wes-Tax taking over city trash disposal Sept. 1

By RICK WHITE  
Managing Editor

The cost of taking out the trash will increase next month when a Midland firm takes over sanitation services for the City of Muleshoe.

Residential rates will rise slightly, while commercial rates will see a significant increase when Wes-Tex Waste Services, Inc. takes over Sept. 1.

The City Council approved the contract Monday after about a month and a half of negotiations.

Monthly residential rates will rise a \$1 to \$15.

The new fee also includes alley cleanup once a month, a service the city never charged for, according to City Manager James Fisher.

Local businesses will take a bigger hit.

Monthly rates will run between \$20-50 per dumpster, depending on the size of the dumpster and the number of pickups per week. Old rates ranged between \$14-32.

"For some reason, commercial rates run substantially higher than residential," Fisher said. "And I've never truly found out why. They just do."

Fisher is confident Wes-Tex will be cooperative in meeting the community's needs, "it's just that the City of Muleshoe has done a fantastic job of spoiling its citizens" when it comes to sanitation service.

"There will be a transition period that will be hard on everybody," Fisher said.

The City got out of the sanitation business because of the prohibitive cost of operating a landfill.

The five-contract with the waste company is for both Type I (perishable) and Type IV (bulk) garbage disposal.

Because of new state guidelines, the City must start closing its current landfill by October.

Fisher said the cost of building and maintaining a new landfill that would satisfy the Texas Natural Resources Conservation Commission's new environmental-conscious guides line would be exorbitant.

"We can't afford to operate a landfill," Fisher said.

As part of the agreement, Wes-Tex will purchase to sanitation trucks and about 700 dumpsters for \$80,000.

The money will go toward closing the City's Type I landill east of town, which Fisher estimates will cost about \$100,000.

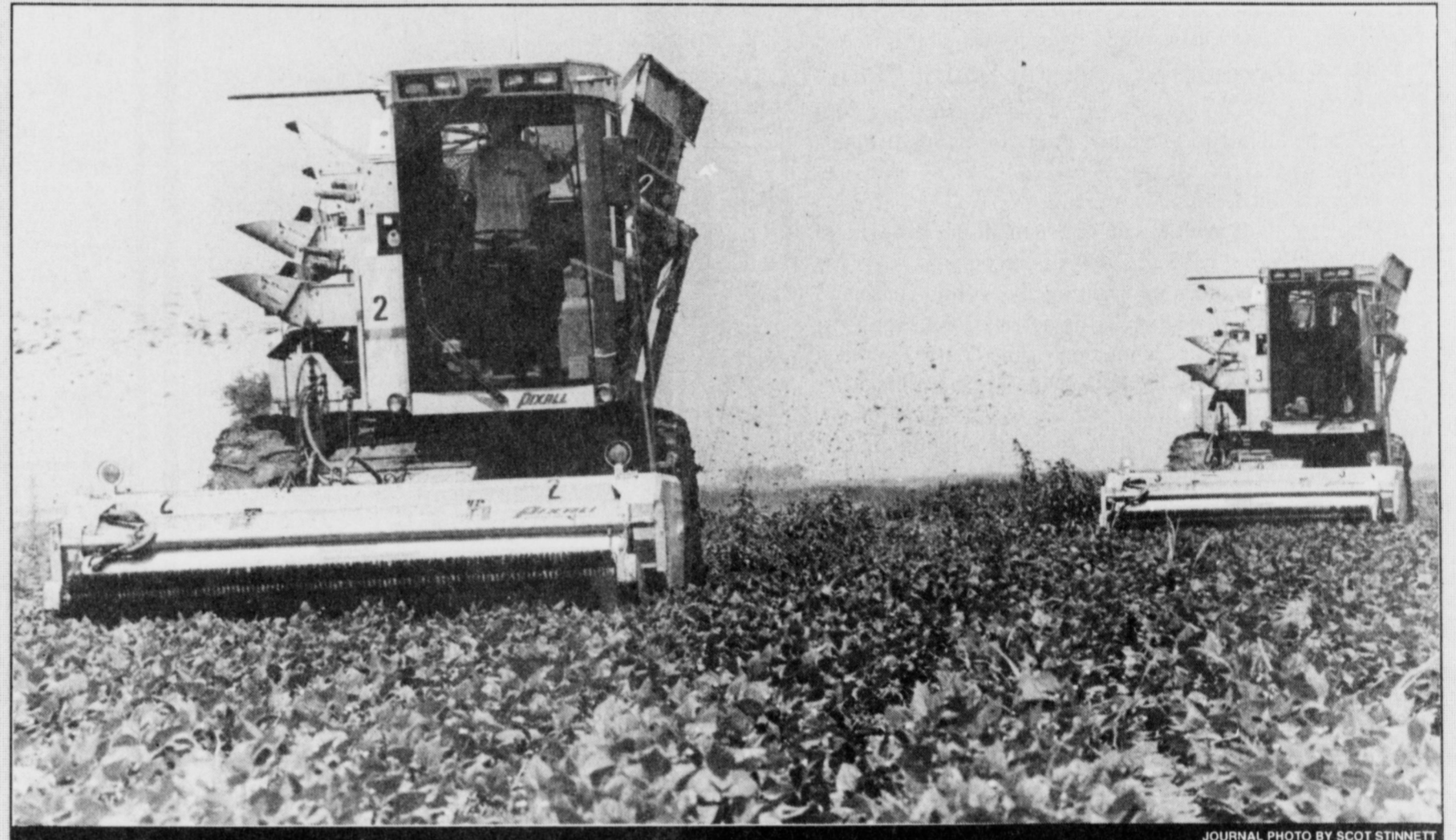
Fisher said the City will keep the Type IV landill is full, then they will shut it down.

The City has considered maintaining a Type IV landfill, but decided against it.

City personnel that worked in sanitation will continue working for the city in other departments.

Wes-Tex is a division of The J.C. Duncan Company, which services more than a million customers in Texas.

## GREEN ACRES



JOURNAL PHOTO BY SCOT STINNETT

Pickers from Allen Produce of Siloam Springs, Ark. glide through a green bean field owned by Royce Barnes of Lazbuddie. With 12 huge machines like this one, pickers can harvest up to 50 tons of beans per hour.



Dave Jenkins watches his putt on No. 18 Sunday

## GOLF

### Muleskinner Invitational

Muleskinner Invitational  
Aug. 2-3  
at Muleshoe Country Club  
Par 70 (35-35)

#### CHAMPIONSHIP FLIGHT

Akard/Salisbury .....	62-65 — 127
Kimbrough/Reeves .....	65-63 — 128
Shipman/Felan .....	67-66 — 133
Savage/Savage .....	68-66 — 134
Taylor/Wilson .....	66-69 — 135
Embry-Box .....	69-67 — 136
Burton/Calvert .....	69-68 — 137
Ott/Davis .....	66-71 — 137
Gonzales/Killough .....	70-68 — 138
Sudduth/Sudduth .....	69-71 — 140

#### FIRST FLIGHT

Loflin/Roden .....	69-66 — 135
Triana/Triana .....	67-69 — 136
Sheppard/Thomas .....	69-67 — 136
Gunstream/James .....	69-70 — 139
Simmons/Steffi .....	69-71 — 140
Stegall/Gear .....	69-72 — 142
Lee/Johnson .....	70-72 — 142
Willingham/Wallace .....	72-70 — 142
Marino/Marino .....	71-73 — 144
Carter/McMennan .....	72-73 — 145

#### SECOND FLIGHT

Jenkins/Vardeman .....	69-71 — 140*
Smith/Fox .....	68-72 — 140
Jesko/Agee .....	73-70 — 143
Welch/Sabala .....	69-75 — 144
Steinbock/Schacher .....	71-73 — 144
Vaughn/Gonzales .....	70-75 — 145
Crew/Sims .....	75-71 — 146
Fryer/Hedges .....	71-77 — 148

see SCORES on page 4

## South Plains Fair entries due Aug. 18

LUBBOCK — Junior and Open Livestock Show exhibitors showing animals at the September Panhandle South Plains Fair are reminded they face an Aug. 18 entry deadline, reports Steve L. Lewis, fair manager.

During the 80th annual fair, set for Sept. 20-27, exhibitors will be competing for more than \$96,000 in prize money in nine livestock shows, including junior market goat, junior swine, open beef, open dairy, junior dairy, open sheep, junior lamb, junior swine and junior beef heifer.

Livestock show entries must be postmarked no later than Aug 18, and accompanied by a nonrefundable fee. Junior entries and fees must be submitted as a group by a supervising county extension agent or agriculture teacher who can certify the exhibitor is the 4-H or FFA member who owns and cares for the animal.

Open livestock entries and fees will be accepted until the Aug. 18 deadline at the fair office, 105 E. Broadway, where entry forms are available.

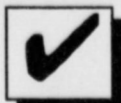
Lewis stressed that junior livestock exhibitors must be enrolled in public or private Texas schools, except for the junior dairy cattle show which is not limited to Texas students, but exhibitors must be 4-H or FFA members.

Tickets for Fair Park Coliseum shows during the fair by the Grand Ole Opry Show featuring Connie Smith and Stonewall Jackson with guest appearances by Bobby Bare and Stella Parton, Petra, Bill

see FAIR on page 7

## WHERE TO VOTE

The following are the locations of the Bailey County polling places for the Aug. 9 Constitutional Amendment election.



Polls are open from 7 a.m. to 7 p.m.

### PRECINCT 1

Voting box 1 Bailey County Courthouse

### PRECINCT 2

Voting box 2 Bailey County Coliseum

### PRECINCT 3

Voting box 3 Three Way school

### PRECINCT 4

Voting box 4 County Extension office

### PRECINCT 5

Voting box 5 Bula Community Center

### PRECINCT 6

Voting box 6 Needmore Community Center

### PRECINCT 7

Voting box 7 Muleshoe City Hall

## Late birdie lifts Lubbock golfers to Muleskinner Invite championship

Chass Akard birdied the final hole, breaking a tie and lifting the long-hitting Lubbock golfer and partner David Salisbury to the Muleskinner Invitational men's partnership title this weekend.

Akard and Salisbury fired 13-under-par 127 on the par-70 Muleshoe Country Club course during the two-day, 36-hole low-ball tournament.

Forty-nine teams competed in the tournament, which was seeded into six flights by handicaps before the first round.

Akard snaked in a 15-foot putt on No. 18, a 130-yard par 3. Ramey Kimbrough and Shawn Reeves of Plainview, who posted a Sunday-best round of 63 to put pressure on the leaders, parred 18 and finished one stroke back at 128.

Kimbrough and Reeves started the day three strokes back of Akard and Salisbury, who opened with a 62 Saturday.

Todd Shipman and Sid Felan of Muleshoe finished third at 133.

Akard saved par and probably the title when he parred the par 5, 11th hole despite a two-stroke penalty for hitting his tee shot out-of-bounds.

After Salisbury hit two balls OB from the fairway, Akard returned to the tee to hit. A driver, short iron and putt later he had his 5.

Friona's Brent Loflin and Rick Roden shot a 66 Sunday to win the First Flight with a 5-under 135.

see GOLF on page 4

AROUND MULESHOE

### Mini Mule cheerleader camp Friday

The Muleshoe High School varsity cheerleaders are holding a Mini Mule cheerleading camp from 8 a.m. to 3 p.m. Friday in the Watson Junior High School gym.

The camp is for children from 3 years old to sixth grade and the cost is \$15. Organizers ask that campers to bring a sack lunch.

### Dept. of Health immunization clinic

The Texas Department of Health will be conducting an immunization clinic Monday, Aug. 18 at the Muleshoe High School cafeteria.

The clinic will be open from 10 a.m. to 1 p.m. and from 2 p.m. to 6 p.m.

Fees are based on family income. Medicaid will be accepted. No one will be turned away due to inability to pay.

### Law enforcement classes at South Plains

LEVELLAND — A class in Special Investigative Topics is scheduled for Thursday, Aug. 14 at South Plains College.

Registration deadline is Aug. 12.

The class will meet 8 a.m. to 5 p.m. at the Brownfield Public Safety Field. Cost is \$15 per person.

The course includes information about child abuse and neglect, family violence, sexual assault and issues concerning sex offenders. On completion of the course, students will receive 10 hours of credit from the Texas Commission of Law Enforcement Officer Standards and Education.

A minimum of 10 persons is required to offer the course. Payment in full or a purchase order is required the first day of class.

To pre-register, contact the SPC Law Enforcement Office at 894-9611, ext. 2291.

### \$1 million shootout qualifying round

Two more chances are left to qualify for the Million Dollar Hole-in-One Shootout sponsored by Muleshoe Project Graduation 1998 and the Muleshoe Country Club.

Qualifying rounds are scheduled from 9 a.m. to 3 p.m.

Aug. 9 and Aug. 23.

The three participants closest to the hole on each Saturday will advance to the finals, which will take place at 1 p.m. Aug. 30.

There is an unlimited number of chances to qualify but each ball costs \$2, or 3 balls for \$5 or 7 balls for \$10.

For more information, contact Kevin Smith at 272-4051 during the day or 272-5234 after 5 p.m. Ronnie Kenmore can also be reached at 272-5533 during the day or 925-6756 at home.

### BBQ before 'Keepers of the Legend'

The Muleshoe Heritage Foundation board will be hosting a barbecue meal to be served each night before the outdoor production "Keepers of the Legend" on Aug. 8-11 at the Muleshoe Heritage Center.

This musical drama will be performed nightly at 8:30 p.m. Meal service begins at 6 p.m.

### LOCAL WEATHER AT A GLANCE

DATE	HIGH	LOW	PRECIP
8/2	90	65	—
8/3	93	68	—
8/4	94	66	.27
8/5	89	64	—
Year to date			15.87 inches

SOURCE: R.G. BENNETT, LOCAL NATIONAL WEATHER SERVICE OBSERVER. ALL TEMPERATURES AND PRECIPITATION READINGS ARE FOR THE PREVIOUS 24 HOURS.

### EXTENDED FORECAST

Continued pattern of hot, humid days through Saturday with a chance of afternoon and evening thunderstorms. Highs in the 90s and lows in the 60s.

## 'Sleeping sickness' documented in Texas

Equine encephalomyelitis, sometimes called "sleeping sickness," has been diagnosed in three horses in East Texas in Hardin, Cass, and Jasper Counties. Officials at the Texas Animal Health Commission (TAHC) and the Texas Department of Health (TDH) are urging owners to have their animals vaccinated to prevent disease and to control mosquitoes to help reduce the possibility of infecting other horses or humans. Horses, donkeys,

mules, many species of birds, including emus, ostriches and rheas are susceptible to this virus that is spread by infected mosquitoes.

"When horses are affected by "sleeping sickness," it alerts us that there is a potential for a human health problem and measures must be taken," said Dr. Jane Mahlow, a veterinarian in Zoonosis Control Division at TDH. "Humans can also contract the disease from infected mosquitoes, so control-

ling the pests and wearing mosquito repellent are the first lines of defense."

"Besides the laboratory confirmed cases, private practitioners have reported that several other horses have developed symptoms compatible with a diagnosis of equine encephalomyelitis. These have occurred in Chambers, Newton, Jefferson, Liberty and Orange Counties," said Dr. Max Coats, acting executive director for the TAHC, the state's

livestock health regulatory agency. "Nearly all the illnesses and death losses have occurred in horses with no history of vaccination."

Of the three types of "sleeping sickness," two occur sporadically in the U.S. In 1996, 136 equine and 49 birds contracted EEE, or Eastern Equine Encephalomyelitis. During the same time, five equine and one emu tested positive for WEE, or Western Equine Encephalomyelitis.

Carpet Rolls • Remnants • Area Rugs  
Wood Floors • Vinyl Flooring • Ceramic Tile

## STUBBLEFIELD'S RUGS & REMNANTS

Professional Installation - Financing Available  
(806) 296-7387 2408 W. 5th  
Plainview, TX 79072

**Bailey County Journal** USPS 040-200  
Established March 31, 1963. Published by Triple S Publishing, Inc. Every Sunday at 304 W. Second, Box 449, Muleshoe, TX 79347. Second Class Postage paid at Muleshoe, TX. POSTMASTER: Send address changes to the Bailey County Journal, P.O. Box 449, Muleshoe, TX 79347. We are qualified members of: Panhandle Press Association, National Newspaper Association, West Texas Press Association and Texas Press Association

WEST TEXAS PRESS ASSOCIATION

PPA Panhandle Press Association

MEMBER 1997

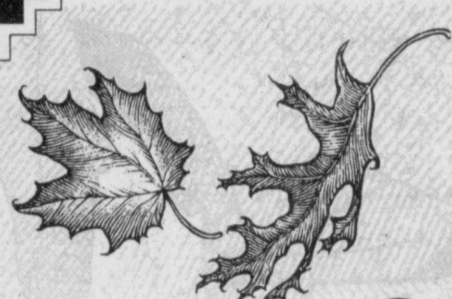
TEXAS PRESS ASSOCIATION

Scot Stinnett, Publisher  
Lisa Stinnett, Vice-President/Comptroller  
Rick White, Editor  
Jessica Orozco, Classifieds  
Pat Durben, Advertising

© 1990

SUBSCRIPTIONS: Muleshoe Journal and Bailey County Journal By Carrier Yearly - \$22.00  
Bailey County — by mail - \$24.00  
Elsewhere - \$26.00  
Advertising Rate Cards on Application

\*Advertisers should check their ad the first day of insertion. The Journals will not be liable for failure to publish an ad or for a typographical error or errors in publications except to the extent of the cost of the ad for the first day of insertion. Adjustment for errors will be limited to the cost of that portion of the ad where the error occurred.\*



## Clovis Community College

### Fall 1997 Registration

August 19 - 21  
Classes begin Monday, August 25

**Alphabetical Schedule**  
Register according to the first letter of your last name

**Continuing Student Registration**  
If you attended CCC in the '97 Spring or Summer Semester  
Tuesday, August 19

**Morning**

8:10 - 8:45 a.m. .... G and H  
8:45 - 9:15 a.m. .... E and F  
9:15 - 10 a.m. .... C and D  
10 - 10:45 a.m. .... I through L  
10:45 - 11:30 a.m. .... O through R

**Afternoon**

1 - 1:45 p.m. .... M and N  
1:45 - 2:30 p.m. .... A and B  
2:30 - 3:15 p.m. .... S and T  
3:15 - 3:45 p.m. .... U through Z  
5:30 - 6:30 p.m. .... Evening Registration  
A - Z (returning students)

**All Student Registration**  
Wednesday, August 20

**Morning**

8:10 - 8:45 a.m. .... A and B  
8:45 - 9:15 a.m. .... C and D  
9:15 - 10 a.m. .... E and F  
10 - 10:45 a.m. .... G and H  
10:45 - 11:30 a.m. .... I through L

**Afternoon**

1 - 1:45 p.m. .... M and N  
1:45 - 2:30 p.m. .... O through R  
2:30 - 3:15 p.m. .... S and T  
3:15 - 3:45 p.m. .... U through Z  
5:30 - 6:30 p.m. .... Evening Registration  
A - Z (returning students)

If you are a new student, you should complete your admission paperwork prior to registration.

**Late Registration will continue according to the following schedule:**

Monday, August 25 through Thursday, August 28  
8 a.m. to 4:30 p.m. • 6 p.m. to 7 p.m.  
Friday, August 29  
Registration hours: 8 a.m. to 4 p.m.  
Registration closes at 4 p.m., August 29

The complete list of courses and instructors will run in the Aug. 10th *Clovis News Journal* and the Aug. 12th *Six County Star*

For information, call  
**769-4009**

Pathway To Your Future  
417 Schepps Blvd. • Clovis, NM 88101-8381

# CURRY COUNTY FAIR

## STAR COUNTY FAIR

**AUGUST 11-16**

Live Entertainment FREE With Admission!

Gates Open To The Public  
8:00 p.m. Monday, August 11

**General Admission Daily:**  
\$4 Adults • \$2 Children

**Featuring ASLEEP AT THE WHEEL**  
on August 15 at the Entertainment Area!

**RAM HERRERA**  
August 14 at the Entertainment Area

**TOMMY SHANE STEINER & THE TEXAS STEAM**  
August 16 at the Entertainment Area

**WRIGHTS CARNIVAL**  
BIGGER & BETTER... THAN EVER!  
Come to the carnival EVERY NIGHT of the fair!

Monday, Aug. 11 • Entry Day  
Tuesday, Aug. 12 • Merchants Day  
Wednesday, Aug. 13 • 4-H & FFA Day  
Thursday, Aug. 14 • Parents Day  
Friday, Aug. 15 • Agriculture Day  
Saturday, Aug. 16 • Pioneer Day

**EXHIBITS OPEN**  
Tuesday - Saturday  
for viewing 10 a.m. - 10 p.m.

**• Fun For The Entire Family! •**



JOURNAL PHOTO BY RICK WHITE

**Casting doubts**

Callie Hancock (middle) and several other extras listen to director Sally Messenger's instructions Monday during a rehearsal for "Keepers of the Legend." Also pictured (clockwise from left) are Corrie Ann Black, Brandi Whalin, Shanna Rempe and Erin Gallman

**'Keepers of Legend' opens Friday**

By RICK WHITE  
Managing Editor

Sally Messenger might have done the best acting job during Monday's rehearsal of "Keepers of the Legend."

Amid sound checks, costume changes, a few fumbles lines — and the threat of yet another evening thunderstorm, she appeared calm.

Now in her third year as director of the outdoor musical drama, Messenger knows what to expect with opening night four short days away.

"Everything is going about how I expected," said Messenger, despite enduring several major cast changes. "I'm never really happy — because we can always get better — but I'm excited."

"Just because I appear clam on the outside, doesn't mean I'm that way inside. Inside, I'm a wreck."

"Keepers of the Legend" starts its four-night run at the Muleshoe Heritage Center at 8:30 p.m. Friday and continues through Monday.

Advanced tickets are \$8 and \$10 at the gate. Children's tickets are \$5. For more information, call 272-5612.

The two-act play, written by Bailey County native Paula Paul, depicts the struggle to incorporate Bailey County near the turn of the century while telling the legend of the Muleshoe sandhills.

According to the legend, an Indian tribe that settled in Bailey County was erased by an enormous sandstorm. The ghost of the tribe's chief is rumored to ride the Muleshoe sandhills at night.

One of the major cast changes is Twyla Gear, who replaces Cassidy Cleavinger as Ms. Rosalie Parker, a young school teacher and hopeless romantic who is the love interest of rival ranchers.

Nikki Felan, who had a smaller role the last

see **KEEPERS** on page 7



Cory Black (front) and Jeffrey Shelburne are extras in the play

**Keepers of the Legend**

An Outdoor Musical presented by  
MulePlex Production Co.

**August 8 - 11, 1997**

**8:30 p.m.**

at the Muleshoe Heritage Center  
West Amer. Blvd. Muleshoe, Texas

Tickets \$10.00 at gate or \$8.00 in advance

\$5.00 Children Ages 10 and Under

For Information Call 806/272-5612

Bar-B-Que meal each evening at 6:30 p.m.  
served by the Muleshoe Heritage Foundation

\$6.50 per plate

While in Muleshoe

Enjoy our fine Shopping, Dining, and Overnight Accommodations

Funded in part through the County Arts Endowment, a grant from the Texas Commission on the Arts, and a grant from the City of Muleshoe.



1-800-658-6378 106 E. American Blvd. Muleshoe, Texas

**And Country Junction**

**PRICES GONE NUTS!**  
Great Prices To  
Fit Everyones Budget!

Tony Lama Full Quill OSTRICH BOOTS \$449 (Reg. \$600)

Tony Lama Smooth OSTRICH BOOTS \$179 (Reg. \$259)

NEW SELECTION OF TONY LAMA SECONDS

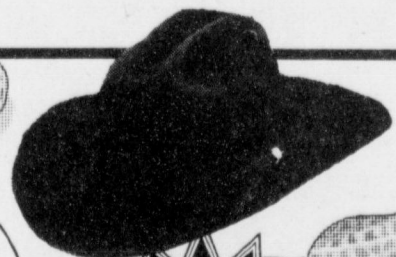
Buy Any BAILEY 7X-30X

**20% OFF**



Get Your Choice Of Any STRAW HAT

**FREE**



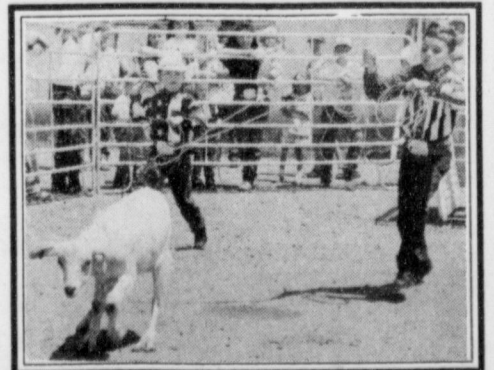
Over 65 Styles of Straws To Choose From!

Get Ready For The  
4th Annual World Champion  
Goat Team Roping on Foot

**FLOYD MOSIE BUCKLES**

To The World Champions!

**SATURDAY, AUG. 30**  
9:30 A.M. TO 6 P.M.



**Subscribe to the Journals today! 272-4536**

Attention Senior Citizens & Baby Boomers:

**WANTED!**

**MEN'S ONLY!**

- Men's Used Ble Denim 501 Levis •
- Used Blue Denim Shirts with White Snaps •
- Levi Jackets • Lee Jackets • Wrangler Jackets •

- We will pay up to \$16 for standard men's blue 501 Levis
- We will pay up to \$300 for one-pocket Lee or Levi Jackets
- We will pay up to \$100 for other silver button Levi Jackets
- We will pay up to \$100 for pre-1971 men's indigo 501 Levis
- We will pay up to \$300 for pre-1950 Levis
- We will pay up to \$50 for pre-1960 zipper Levis
- We will pay up to \$100 for button-fly Lee's

(all items will be graded by condition)

**We Will Be At Alco**

Wednesday • Thursday • Friday  
August 6, 7, 8 from 9 AM to 7 PM

CALL (806) 763-5500 WE'LL PICK 'EM UP!

(We will be in Earth, TX the following week!)

**Ranchers, Clean Out Your Bunk House!**

**LOOK FOR THE ORANGE TRUCK!**



**Welcome back**

Muleshoe Mayor Robert Montgomery (with scissors) and members of the Muleshoe Chamber of Commerce celebrated Dairy Queen's official grand reopening Friday with a ribbon cutting ceremony. Others pictured are (from left) Chamber director Patty Hartline, Robert Shafer and daughter Annie, Chamber president Hugh Young, DQ manager Steve Hamilton, Katrina Keener, Rose Vargas and DQ district manager Dennis Oarth.



**The Fair Store**  
120 Main 272-3500

**GOLF**

from page 1

The father-son team of Jose Triana of Muleshoe and Loy Triana of Sunray, the first round leaders with a 67, slipped into a second-place tie with Rollie Sheppard of Abilene and Mike Thomas of Lubbock at 136.

Dave Jenkins of Muleshoe

and Jim Vardeman of Portales need two extra holes to win the Second Flight championship.

Jenkins and Vardeman finished 36 holes tied at even par 140 with Weldon Smith of Muleshoe and John Fox of Clovis.

Vardeman won it with a par on the second playoff hole.

Terry Jesco and John Agee of Lazbuddie finished third at 143.

Sid Lee and Merle Rodgers of Lubbock won the third flight with a 5-over 145. Terry Hans and Ted Willock of Morton, Roger Buhrman and Gary Shipman of Muleshoe, and James Atwood of Muleshoe and Vinny Vaille of Lubbock finished in a three-way tied for second at 148.

Dale Dent and Bender of Clovis shot a 144 and beat Bob

Maganalles and Johnny Vera of Plainview by one stroke in the fourth flight. Larry Gonzales of Borger and Rick White of Muleshoe finished third at 148. Frank Torres of Muleshoe

and Juan Garza of Clovis romped to a five-stroke win the fifth flight with a 149.

Gabe Tapi and Richard Gallegos of Morton were second at 154.

**SCORES**

from page 1

**THIRD FLIGHT**

- Lee/Rodgers ..... 73-72 — 145
- Hans/Willock ..... 77-71 — 148
- Buhrman/Shipman ..... 73-75 — 148
- Atwood/Vialle ..... 77-71 — 148
- Bryan/Townsend ..... 73-78 — 151
- Miller/Cope ..... 75-79 — 154
- Reese/Damron ..... 75-80 — 155
- Spradling/Washington ..... 80-76 — 156

**FOURTH FLIGHT**

- Dent/Bender ..... 73-71 — 144
- Maganalles/Vera ..... 73-72 — 145
- Gonzales/White ..... 77-71 — 148
- Pool/Saylor ..... 74-76 — 150
- Stennett/McMahon ..... 74-82 — 156
- Sowder/Shanks ..... 78-82 — 160
- Glover/Brockman ..... 83-81 — 164

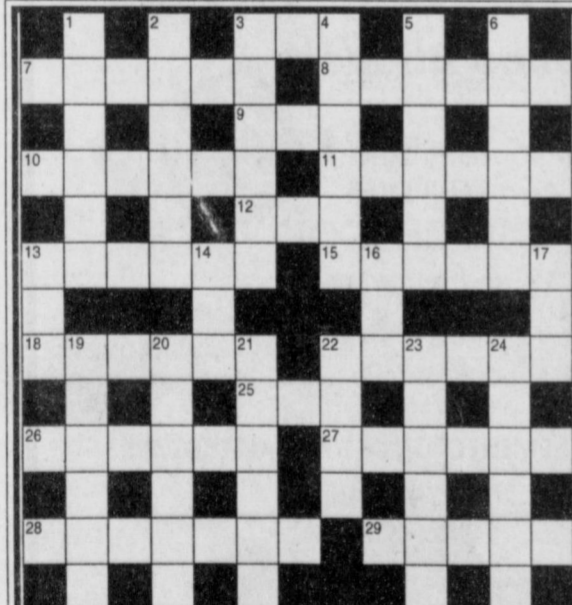
**FIFTH FLIGHT**

- Torres/Garza ..... 74-75 — 149
- Tapia/Gallegos ..... 75-79 — 154
- Bishop/Baxter ..... 81-76 — 157
- Webb/Webb ..... 74-84 — 158
- Wagnon/Gunstream ..... 79-81 — 160
- Dudley/Webb ..... 81-81 — 162

\* — won in playoff



Two cups of dry macaroni will yield about four cups cooked of macaroni.



- SOLUTIONS TO 7/31 PUZZLE**
- SOLUTIONS ACROSS**
1. Light-fingered
  8. Rotor
  9. Drama
  10. Hate
  11. Babbling
  14. Sashes
  15. Bucked
  17. Assai
  19. ASAP
  22. Sam
  24. Iciness
  25. Sorer
  26. Night watchman
- SOLUTIONS DOWN**
1. Leach
  2. Gyrate
  3. Tale
  4. Inroad
  5. Gadabout
  6. Rita
  7. Dragged
  12. ilk
  13. Pediment
  14. Station
  16. Cessna
  18. Sting
  20. Serum
  21. Perón
  23. Msec.

**CLUES ACROSS**

3. Woodcutter
7. Emotional shock
8. For a short time
9. Monetary unit
10. Disparaging term for small people
11. Resident of Seoul
12. Side sheltered from the wind
13. Comics character
15. Spiritual leaders
18. Mimosa tree
22. Serve
25. Urge a dog to attack
26. Surname of 13 across
27. Comics characters \_\_\_ and \_\_\_
28. Holy place
29. Securer

**CLUES DOWN**

1. Comics character
2. Georges Braque, for one
3. Try
4. Creator of 13 across and 26 across
5. Angel
6. Soluble salt
13. Cry made by sheep
14. Garland
16. Promotional materials
17. Posed
19. Neckwear
20. Coarse cloth with a bright print
21. Kind of hospital
22. Sustained pain
23. Ruler
24. Cruised

*Just in Time for BACK TO SCHOOL!*

# ANTHONY'S

## TOTAL INVENTORY LIQUIDATION SALE

**THE ENTIRE INVENTORY IS BEING SOLD AT DISCOUNT PRICES!**

**NOW SAVE**

# 40% TO 75%\*

**PRICES SLASHED AGAIN !!**

**\* LESSER DISCOUNTS ON LEVI'S, HANES, NIKE, DOCKERS, HAGGAR, WRANGLER WUNDIES, GENERATION X, UNION BAY, CALVIN KLEIN, JOE BOXER & PLAYTEX**

**HURRY IN FOR BEST SELECTION!**

**FINAL DAYS!!**

**EVERYTHING WILL BE SOLD!**

# ANTHONY'S

**321 MAIN • MULESHOE, TX**

CASH, VISA, & MASTERCARD CARD ACCEPTED. NO RETURNS, REFUNDS OR EXCHANGES. ALL QUANTITIES LIMITED TO STOCK ON HAND. ALL SALES FINAL. NOT ALL ITEMS AVAILABLE IN ALL STORES!

**Sponsored By:**

## Muleshoe Journal

P.O. Box 449 • 304 W. 2nd Street  
(806) 272-4536 • Fax: 272-3567

**See Answers In 8/14 Edition of Muleshoe Journal**

### Dillman registration starts Aug. 6

Students who will be in pre-kindergarten through second grade and were not enrolled last year should register at Dillman Elementary from 8 a.m. to 11:30 a.m. and 1 p.m. to 4:30 p.m. beginning on Aug. 6.

Please bring shot records, birth certificate, social security number, and withdrawal records or report card from previous schools when coming to register.

Homeroom placements will be posted on the front foors Friday, Aug. 15.

### OBITUARIES

#### W.C. "Mack" McMahon

W.C. "Mack" McMahon, 73, of Farwell died Aug. 4, 1997 at St. Mary's Hospital in Lubbock.

Services were held Aug. 6 at the Muleshoe Church of Christ, with Pastor John Knox of the Muleshoe Church of Christ and Dennis Dillon of Farwell Church of Christ officiating. Burial followed at the Muleshoe Memorial Park Cemetery.

Mr. McMahon was born July 18, 1924 in Mountainview, Ark. He married Hazel Polluck March 10, 1997 in Farwell.

Mack had lived in Farwell since 1994, moving from Muleshoe. He was president of the Residents' Council at the Farwell Convalescent Center. He was a tractor mechanic and serviceman. He was a member of the Muleshoe Church of Christ.

Survivors included his wife, Hazel; three sisters; Dorothy Mick of Abilene, Evelene Harris and Ruby Ward, both of Muleshoe; two brothers, Paul McMahon of Fort Worth and Clyde McMahon of Abilene.

The family suggests memo-

rials be made to the New Mexico Children's Home, HC 69, Box 48, Portales, NM 88130.

#### Tom Greer

MORTON — Tom Greer, 86, of Morton died Aug. 1, 1997 at Cochran Memorial Hospital.

Services were held Aug. 4 at the First Baptist Church of Morton, with the Rev. Bobby Lewis Fred of Denver City, Officiating. Burial followed at Morton Memorial Cemetery.

Mr. Greer was born May 15, 1911 in Ralston, Texas. He married Maurine Vaughn May 15, 1932 in Hollis, Okla.

Mr. Greer moved to Morton from Sundown. He was a graduate of Loco (Texas) High School and a member of the Morton Masonic Lodge. He was a farmer.

Survivors include his wife, Maurine; one son, Richard Greer of Morton, one sister, Juanita Chaudoin of Batesville, Ark.; and four grand children and 10 great grandchildren.

The family suggests memorials be made to the First Baptist Church of Morton.

### TOPS NEWS

Tops Chapter Number 34 met July 31 at the Muleshoe Church of Christ.

Leader Laverne James called the meeting to order. The Tops pledge was recited followed by the fellowship song.

James led the group in prayer.

Betty Jo Davis, weight recorder, called

the roll with 16 members answering with the amount they lost or gained. Minutes were read by Janie Hughes, secretary, and were approved.

Best loser for the week was Davis. Loretta Lloyd was first runner-up and Mollie Davis was second runner-up.

James read article about exercise, diet and the value of supplements.

Our contest ended with Cheryl DeGraffenreid winning a nice assortment of towels, hand towels and kitchen towels.

The meeting was adjourned with the good-night song.

## Energas Closes Local Office.

Beginning August 11, Energas will no longer process

- gas bill payments • night deposits or • payment arrangements at 101 W. American Blvd. in Muleshoe.

For all billing inquiries, service requests or emergency service please call . . .

**(806) 272-4284**

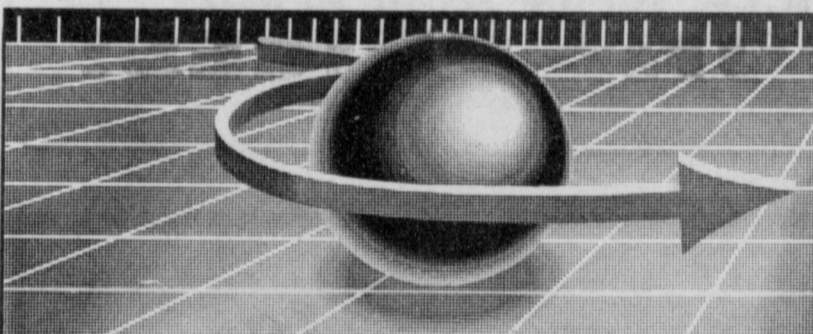
Remember, you may continue to pay by mail, sign up for convenient automatic bank draft by calling the above number, or

### Pay At Any Of The Following Locations.

**Lowe's Marketplace**  
401 W. American Blvd.

**Pay-N-Save**  
515 W. American Blvd.

# ENERGAS



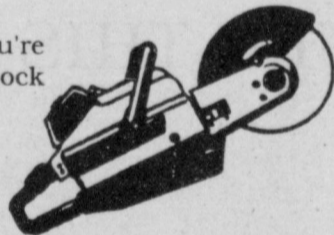
# BUSINESS DIRECTORY

## SUMMER 1997

### Cutoff Saw

The right tool for the job if you're cutting rebar, concrete, brick, block or steel. Very durable.

As Low As **\$40** Per Day



Higginbotham-Bartlett

**Best Rental Center**

215 Main Street 806/272-3351  
Muleshoe, TX 79347



P.O. Box 408 • 1612 West American Blvd.  
Muleshoe, Texas 79347 • (806) 272-4567

Life • Auto • Fire • Crop  
Retirement • Health

DALE VISE • RICKEY BARRETT • ALLEN MOUNT

## Classic Ropes

Handmade Bits, Headstals,  
Saddle Pads, and Much More!

**Muleshoe Feed Barn**

311 West American Blvd • 272-5626

New Fall Fashions  
Arriving Daily!

**BELLE POINTE**  
Texas Tech Sweater Vest  
& Fleece Jackets

**The Fig Tree**

Open 10 a.m.-5:30 p.m.  
Monday-Saturday

220 Main • Muleshoe, TX • 272-7561

We Carry A Full Line of  
Hi-Pro Feeds & Show Supplies!



We Also Carry

**ACCO, BLUEBONNET & GODBOLD FEEDS**



**FOR DOGS & CATS . . .**

We Have Several Different  
Feeds To Choose From,  
Plus Bio Spot Flea & Tick  
and Flea Collars.

**Muleshoe Feed Barn**

311 West American Blvd • 272-5626

**Sheree's Attic**

Summer Sale!  
**50%-75% OFF**  
New Looks For Fall Arriving Daily!  
Free Four Piece Gift With Purchase!

Owner Sheree Hunt  
1519 W. American Blvd. 272-3459

**Let Them Know  
You Saw It In the  
Muleshoe Journal.**

For Advertising Information Contact Pat

**Muleshoe Journal**  
272-4536

Bridal Selections  
Have Been Made For

**Heather Hutton**  
Bride-Elect Of  
Mark Long

**The Art Loft**

272-3485 • 1529 W. American Blvd.

# CANINE KIBITZING



**BAXTER BLACK**  
ON THE EDGE OF COMMON SENSE

When I hear a truck pull up in front of the house and the pandemonium of dogs barkin' would wake a sleeping mastodon, I relax. It's only my neighbor, D.K. come to borrow something of his back.

He doesn't get this ferocious reception because he's on the canine list of unsavory visitors or because he has the reputation of annoying domestic animals on a regular basis. It's because his two dogs usually accompany him on his rounds.

My dogs even bark at his pickup in anticipation that his dogs will be in the back. On those rare occasions he comes "undogged," my dogs give him a withering glance and stomp off. It's like they are disappointed.

After all, what else have they got to do? Watch the sheep through the fence? Go to the pasture and check the cows? Sneak up on the creek in hopes of scaring the urea out of ducks? Go roll in the dead carp stranded on the banks?

I watched them the last time I went to D.K.'s to borrow his brush hog. My dogs were leaning out over the side already clearing their throats as we neared his place. I deliberately drove by the first turn-in. Both dogs jerked their heads around and glared at me through the back window. I could see Hattie mouthing the words, "Hey

turkey, ya missed it!"

I turned in the second drive and we were met with the raucous sounds of a rabbit let go in a dog kennel. I pulled to a stop as D.K.'s dogs surrounded the pickup barking at the top of their lungs.

My dogs were leaning out over the side like seasick fishermen returning in kind, bark for bark. It was deafening.

But I noticed D.K.'s dogs never got quite close enough to touch noses and mine knew just how far to lean to avoid actual contact.

One might think it was all for show. Protecting their territory, as if his were shouting, "Don't you dare get out!" and mine were screaming, "No way we're lettin' you jump in this truck!"

Or they could just be visiting like old folks at a reunion, "HOW ARE YOU, TEX! I HEAR YOU GOT A NEW HEARING AID! WHAT KIND IS IT?!" "QUARTER TO FOUR!"

I've gotten to where I don't worry about it much. Dogs like to bark. It's in their job description. It probably doesn't irritate the dogs near as much as it does us humans. They just communicate at different decibel levels. It's part of nature. It's possible even aphids bark at each other and we just can't hear it. But it must drive the ants crazy.

## COTTON NEWS

By SHAWN WADE  
Plains Cotton Growers

Ever hear of the Caribbean Basin Initiative (CBI)?

Not many cotton producers have, but that doesn't mean it hasn't had a tremendous impact on the way their crops are bought and processed. The key to the CBI is the recent expansion of cotton textile imports from the Caribbean nations that make up the CBI and Mexico.

The important distinction for U.S. cotton producers is that CBI and Mexico cotton apparel imports contain about 80 percent U.S. raw cotton and cotton products such as fabric and yarn.

By contrast, Far Eastern cotton apparel imported into the U.S. is composed of only about 20 percent U.S. cotton.

Until recently Far Eastern imports accounted for well over 60 percent of the cotton apparel coming into the U.S. During the first five months of 1997 this trend has taken a significant turn.

Since 1990 CBI nations and Mexico have been making tremendous strides towards becoming competitive in the U.S. import arena. This turn-around has been the result of numerous factors, including the North American Free Trade Agreement and strong reinvestment programs by U.S. textile firms.

So far in 1997 the CBI and Mexico have accounted for 38 percent of the U.S. apparel imports compare to the Far East's 32 percent share.

For the U.S. cotton producer it means that more U.S. cotton is being purchased, processed and returned to the U.S. for consumption.

Efforts are underway to further enhance this effort and with additional progress the ultimate beneficiary will be the U.S. cotton producer.

High Plains cotton producers aren't ready to throw in the towel on the 1997 cotton crop even though the calendar appears to be working against them.

Early season rainfall helped get the area off to one of the better starts it has had in recent years. Unfortunately, those same rains brought a variety of detrimental side-effects. Trying to overcome everything from hail and blowing sand to below normal temperatures, the crop has been delayed 10-14 days.

The lateness of the crop is more of a concern in the shorter season Northern areas. South of Lubbock the crop is still behind schedule, but the calendar is a little more favorable to the producer.

Generally cotton in the area is progressing well. Some area's however, appear to be nearing the end of their bloom period, well in advance of what the calendar date indicates. Usually a producer can expect an Aug. 25 bloom to make a harvestable boll, depending of Fall weather conditions.

The most immediate problem across the area right now is a shortage of soil moisture in this layer and are beginning to show signs of stress and cut-out.

Irrigated producers are having a difficult time keeping up with the moisture requirements of the crop as it blooms and sets bolls.

The key to the 1997 crops will be conditions during the month of September. Producers in Northern areas can still make an average crop with favorable weather in September and some timely rainfall in the near future.

Producers in the Southern High Plains are also looking for and open September and timely rains to help carry their crop through harvest.

Plains Cotton Growers officials travel to Dallas next week to take part in a series of meetings to select new members to the governing bodies of several important cotton industry organizations.

National Cotton Council, Cotton Incorporated, and Cotton Board representatives will

be selected to fill a combination of new and expiring positions.



The word smog is a blend of the words smoke and fog.

*Home Folks Caring For Folks At Home.*



**MULESHOE AREA HOME HEALTH**

*Agency*

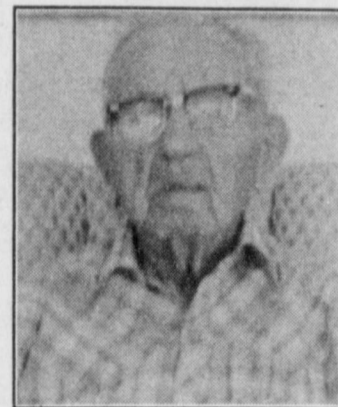
### Featured Patient

Mr. Tom Galt moved to Muleshoe from Hale Center in 1934. He was a farmer in the Goodland area.

Tom was married to the late Lyndell Gaddy-Galt. He has two children, Ricky Galt of Clovis, New Mexico and Madalyn Albus of Baytown, TX. He has four grandchildren.

Mr. Galt enjoyed farming, and has been a member of the Methodist Church for 75 years.

Mr. Galt loves the MAHHA. The girls treat him with great respect and he is very pleased to accept their services!



Mr. Tom Galt

**To receive Home Health Services, talk with your physician or talk with hospital personnel when you are hospitalized.**

**24 Hour # 272-3346**  
Local Nurse on call 24 hours a day to offer prompt service.

We accept Medicare, Medicaid and Private Insurance  
**It Is Your Right To Choose The Home Health Agency You Prefer.**

Affiliated with Lubbock Methodist Hospital Systems



**New Out Of Hospital Advance Directives Now Available!**

◆ **WANT MORE WEIGHT GAIN ON YOUR WHEAT PASTURE THIS YEAR?**

◆ **THEN CHECK OUT OUR WHEAT PASTURE FERTILIZER BLENDS FOR EXTRA GROWTH AND PROTEIN.**

**COME SEE US AT**

**Foster Fertilizer Inc.**

**3 MILES EAST OF LAZBUDDIE ON FM 145 OR CALL US AT (806) 965-2921**

*Serving Lazbuddie and the surrounding area since 1961*

## CLASSIFIED DEADLINES

For the Thursday Muleshoe Journal, **DEADLINE** is Monday at 5 p.m.  
For the Sunday Bailey County Journal, **DEADLINE** is Thursday at 5 p.m.

**FAIR**

from page 1

Engvall, Roberto and Bobby Pulido, Diamond Rio and Marty Stuart are on sale at the fair office and the following ticket outlets: Luskey's Western Store, 2431 34th St.; Ralph's Records, 909 University and 3322 82nd St.; and Tejas Western Store, 5717 19th.

**KEEPERS**

From page 3

two years, replaces Laura Wood as Lizzie Anderson, a ragamuffin who turns out to be the play's heroine. Other new cast members include District Court Judge Jack Young, who plays Sen. George Washburn, a pompous politician, and Jack Henderson, who plays Ollie, an old wrangler whose got his nose stuck in everybody's business. Messenger called both of them wonderful in their small but memorable roles.

Mail order show ticket requests continue to be accepted at the fair office. To order tickets by mail write; SHOW TICKETS, P.O. Box 208, Lubbock, TX 79408. Include a check or money order for the tickets ordered, a self-addressed, stamped envelope and \$1 per order handling charge. For additional ticket information call the ticket office at 744-9557.

**MAY THE SOURCE BE WITH YOU**

Don't let the dark forces of ignorance defeat you. Right in this galaxy you can tap into the source—the free Consumer Information Catalog.

It lists free and low-cost federal publications on such stellar topics as saving money, buying a house, educating your children, getting federal benefits, eating right and staying healthy, and so much more.

So dispel the darkness and get the source. Call toll-free 1-888-8 PUEBLO for your free Catalog.

Or set your coordinates for the Consumer Information Center web site: [www.pueblo.gsa.gov](http://www.pueblo.gsa.gov)



**Mulshoe Cattle Market**

SATURDAY, AUGUST 2, 1997

The Mulshoe Cattle Market is brought to you each week by Mulshoe Livestock Auction, located east of Mulshoe on U.S. 84. Mulshoe Livestock conducts sales every Saturday, beginning with hogs, sheep and goats at 10 a.m. and cattle following at approximately 12 noon.

**FOR INFORMATION ON SALES OR TO CONSIGN CATTLE, CALL (806) 272-4201**

**REPRESENTATIVE SALES**

Seller, City	#	Type	Wt.	CWT or PH
Charles Waggoner, Mulshoe	.....	Blk Str	.....	350 lbs. at \$111.50
Charles Waggoner, Mulshoe	.....	BWF Bull	.....	335 lbs. at \$114.50
Trejo Brothers, Littlefield	.....	2 Blk Bulls	.....	500 lbs. at \$87.00
Trejo Brothers, Littlefield	.....	Blk Bull	.....	730 lbs. at \$76.00
Brandon Thomason, Mulshoe	.....	Red Str	.....	820 lbs. at \$80.50
Autero Soto, Dimmitt	.....	2 Mxd Strs	.....	700 lbs. at \$76.00
Autero Soto, Dimmitt	.....	Char Bull	.....	925 lbs. at \$70.50
Ruben Sanadera, Albuquerque, NM	.....	8 Hol. Strs	.....	418 lbs. at \$69.50
John Strunk, Levelland	.....	Blk Hfr	.....	895 lbs. at \$69.50
Luke Steelman, Bovina	.....	Red Str	.....	910 lbs. at \$70.00
K.P. Farms, Lubbock	.....	BWF Bull	.....	395 lbs. at \$100.00
Russell Plemons, Morton	.....	3 Mxd Hfrs	.....	523 lbs. at \$81.00
Russell Plemons, Morton	.....	Red Bull	.....	575 lbs. at \$80.00
Robert McHam, Levelland	.....	2 Blk Strs	.....	695 lbs. at \$83.75
Robert McHam, Levelland	.....	3 Blk Hfrs	.....	617 lbs. at \$82.00
Robert McHam, Levelland	.....	7 Red Hfrs	.....	637 lbs. at \$81.00
Joe Langer, Mulshoe	.....	4 Mxd Hfrs	.....	461 lbs. at \$80.00
Kirby Cattle Co., Sudan	.....	Blk Hfr	.....	600 lbs. at \$79.50
Kirby Cattle Co., Sudan	.....	Blk Bull	.....	730 lbs. at \$76.00
Gary Glover, Mulshoe	.....	3 Char Hfrs	.....	530 lbs. at \$80.00
Gary Glover, Mulshoe	.....	Char Bull	.....	600 lbs. at \$77.50
Rex Bounds, Olton	.....	Char Bull	.....	400 lbs. at \$103.00
Dan Day, Meadow	.....	Brn Cow	.....	1295 lbs. at \$43.50
Dan Day, Meadow	.....	2 Mxd Cows	.....	975 lbs. at \$41.25
Charles Waggoner, Mulshoe	.....	Red Cow	.....	1105 lbs. at \$42.25
Luke Steelman, Bovina	.....	Red Bull	.....	1890 lbs. at \$50.25
Patricia Rodriguez, Bula	.....	Red Cow	.....	1025 lbs. at \$44.00
Kirby Cattle Co., Sudan	.....	Blk Cow	.....	1375 lbs. at \$42.50
The Howard Corp., Anton	.....	MF Cow	.....	1180 lbs. at \$43.00
Alvin Holmes, Hereford	.....	Brn Cow	.....	1055 lbs. at \$570.00/hd
Lonnie Bilbery, Sundown	.....	Blk Bull	.....	1380 lbs. at \$50.00
Bennett Cattle Co., Kress	.....	Red Pair	.....	1235 lbs. at \$670.00
Davy Clements, Morton	.....	Red Pair	.....	1160 lbs. at \$710.00
Red Bounds, Olton	.....	Red Cow	.....	1045 lbs. at \$44.25

**Journal Classifieds**

REAL ESTATE  
AUTOMOBILES  
HELP WANTED  
GARAGE SALES

**STOP & SHOP**

Deadlines are 5 p.m. Monday and Thursday

Call 272-4536

Deadlines are 5 p.m. Monday and Thursday

**FOR SALE**

For Sale: **BUSH HOG MODULE BUILDER.** Field Ready With Good Cab. Call (806) 946-3375. **32t-2tc**

**SEIZED CARS** from \$175. Porsches, Cadillacs, Chevy's, BMW's, Corvettes. Also Jeeps, 4WD's. Your Area. Toll Free 1-800-218-9000 ext. A-10574 for current listings.

• 13" Color TV w/ Remote per Shredder, Craftsman  
• 8" Direct Drive Talbe Saw on Stand  
• Trailer Hitch - Bolts Onto Auto Frame.  
Call 272-4908 **31t-4tc**

**FOR SALE**

**1983 L2 Gleaner** Combine 24' Header field ready.

**1981 850 Massey** Combine 24' Header field ready. (505) 359-0947, 477-2220, 760-7527, 760-7522. **24t-tfc**

**HAY FOR SALE** Oat & Alfalfa. Good Horse Feed. 272-4589. By the ton or the bale. **32s-8tpd**

**FARMS & RANCHES**

For Sale: 80 acres of grassland 3 miles north of Mulshoe. Reasonably Priced. Call HCR Real Estate, 806-364-4670. **26t-10tc**

**HELP WANTED**

**Bookkeeper Needed** Computer skills a must. Experience in Redwing prefer, Fax resume, (806) 272-4808, Call (806) 272-4365. **29t-tfc**

**HELP WANTED**

Experienced Grain Elevator Operator. Job begins Aug. 15th. Call 806-481-3810. **32s-4tc**

**Redi-Mix truck drivers** needed. Must have Texas Class A or B CDL. Must be able to pass drug screen & D.O.T. Physical. Clean Driving Record. Apply Lubbock Bld. Products, 2901 W. American Blvd., Mulshoe. **32s-5tpd**

**NOW HIRING!** Texas Sesame and VIP Plus is needing to hire people to help with office duties and scale operations (weighing trucks) for the upcoming harvest. Great Pay!!! Apply Now Positions Will Go Fast!!! Texas Sesame, 1600 Railroad Ave., Mulshoe, TX 806-272-4231 **32t-3tc**

**HELP WANTED**

**Suddenly Your future is Looking Better Than Ever** Because right now, Pizza Hut is looking for talented enthusiastic, ambitious individuals like you to become Assistant Managers.

Some prior food service experience (or equivalent of one year of college) is helpful. But what really counts is a positive, take change attitude. Must be at least twenty-one (21) years old and flexible about relocation. If you qualify as a Pizza Hut Assistant Manger or Manager Trainee, we offer a good starting salary, comprehensive management training and career that could lead you straight to the top! Plus, look at these other benefits, health care program (life and medical insurance) Ongoing management development Opportunities for promotion from within We are taking applications now at 1412 W. American Blvd. Ask for Tanes Moralez. If you're serious about success, Pizza Hut could be looking for you

**You Belong With The Best!** **31s-4tc**

**HELP WANTED**

**"AVON" & AVON OUT-LET** Representatives Needed! No Inventory Required, IND/ SALES/ REP, Toll Free 800-236-0041. **32s-4tpd**

**GARAGE SALES**

**GARAGE SALE 1627 West Ave. C** Friday, Aug. 8 7:30 a.m. - 5:30 p.m. Saturday, Aug. 9 8 a.m. - Noon **32t-1tpd**

**FOUND**

**FOUND: LABRADOR RETRIEVER.** Please Call Rachel or Kevin 272-3138 to claim. **32r-2tnc**

**MISCELLANEOUS**

**NEED TUPPEWARE?** Call Jan Springfield, 272-5827. **31s-11tc**

**Roundup Applications** Pipe-Wick mounted on high-boy. 30" or 4" rows. Cotton, Milo, Soy Beans and Corn. Call Roy OBryan, 806-265-3247. **25t-tfc**

**MOBILE HOMES**

**Nice 1979 14x70** Redman mobile home trailer to be moved. Includes porches & new Carrier Heating and Cooling System. (Can be bought separately. **806-925-6664. 32s-tfc**

**Better Living Homes** 1997 Singlewide Mobile Home. \$19,000. Please Call (505)356-5448. **17t-tfc**

**FLEETWOOD HOME CENTER**  
Portales Homes

**JUST ARRIVED!**  
**5 BEDROOM DOUBLEWIDE**  
1967 Sq. Ft. or maybe you would prefer a study, retreat, or a porch!  
Order It Your Way!  
Call Portales Homes 800-867-5639 DL. 366

**REAL ESTATE**

**For Sale** Nice 3-1-2 home on pavement close to town. 2 miles N. on 214, fireplace, central air/heat. Fenced back yard, sits on 1 acre. Call 272-4044 leave message. **31s-4tpd**

**House For Sale By Owner** 5-2 3/4 bath. over 2500 sq. ft. Central Heat & Air. **272-5479 32t-8tpd**

**For Sale: 2 bdrm, 1 bath,** brick entrance, fire place, outside storage, carport, patio, laundry, carpets & draperies. **Call 272-5672. 30s-tfc**

**For Sale by Owner:** 1912 W. Ave. H, 3 bdrm, 2 bath, 2 car garage, brick, new roof. Inside: new paint, remodeled, great location. **806-481-3872. 25t-tfc**

**4 Bedroom, 2 bath** Newly Remodeled. Central Heat & Cooling. Sudan 253-2571 or 253-2733. **32t-3tpd**

**SERVICES**

**CUSTOM SWATHING & BALING** \$12 a bale, David Schulte. 965-2489 or 647-7740. **16s-50tpd**

**VEHICLES**

**1993 Pontiac Grand Am** 2 door, white, \$7,995. (505) 359-0947, Portales, NM **32s-2tc**

**1989 Chevrolet Beretta** 5 speed, grey, \$1,995. (505) 359-1775, Portales, NM. **32s-2tc**

**1984 Chevy Suburban,** brown, extra clean \$4,495. (505) 359-0947, Portales, NM **32s-2tc**

**1993 Buick Park Avenue,** black, turbo charged. \$12,195. (505) 359-1775, Portales, NM **32s-2tc**

**1994 Mercury Cougar XR7,** \$10,995. (505) 359-1775, Portales, NM **32s-2tc**

**WANTED**

**Care provider needed** for Blanche Lenderson on Sundays (8 a.m. — 5 p.m.). \$6 an hour. Apply in person at the office of Michael R. Caldwell, P.C., 113 W. Ave D, Mulshoe. References required. **25t-tfc**

**BETTER LIVING MOBILE HOMES**

**Summer Blowout!!**

Save As Much As **\$6,500**<sup>00</sup>

**On Selected Homes**

- SATURNS, Including a 2,100 Sq. Ft. 4 Bdrm. Tape & Texture.
- PATRIOTS, Including a 2,100 Sq. Ft. 5 Bdrm, 3 Bath Home.

**Don't Miss Out!**

- All Sales Are Limited To Homes on Sales Lot.
- No Trade-Ins on Any Homes On Sale.

**Come See Nick & Sherry Today!**

Located 1/2 Mile North of Portales on U.S. 70  
**1-800-404-1321** Portales, NM (505)356-5448  
Lic. # D00681 'Se Habla Espanol'

**Help Wanted Reporter/ Photographer** Part or Full Time. Experience a definite plus, but not necessary. Contact Rick White at the Mulshoe Journal. 272-4536.

**GARAGE SALES** ESTATE/ GARAGE SALE Friday & Saturday, Aug. 8 & 9 405 Commerce Street Sudan, TX **32t-1tc**

**LAZBUDDIE SENIOR CLASS 1998 GARAGE SALE**

We will be sponsoring a Garge Sale on Friday, Aug. 9 from 8 a.m. - 4 p.m. at Jarman Seed in Mulshoe All proceeds will go toward a senior trip. **32t-1tc**

**IT PAYS TO ADVERTISE IN THE CLASSIFIEDS!**

Deadline for Thursdays Mulshoe Journal: 5 p.m. Mondays  
Deadline for Sundays Bailey County Journal: 5 p.m. Thursdays

**CALL 272-4536 TO PLACE YOUR AD!**

**Nieman Realty**

116 E. Ave. C • George Nieman, Broker • 272-5285 or 272-5286

**RICHLAND HILLS**

Nice 3-2-2 Brick, Geo. Heat Pump, built-ins, FP, fans, auto. sprinkler, stor. bldg. fenced yd. \$50's!!! RH-5

3-3-1 Brick, cent. Heat, Evap. Air, built-ins, 2000' + lv. area, fenced yd., stor. bldg. MORE!!! \$60K !!! RH-2

VERY NICE 3-2-1 Brick, Cent. A&H, built-ins, fans, new paint, carpet, & drapes, fenced yd. \$60K!!! RH-1

PARKRIDGE - NICE 3-2-2 Brick, Cent. A&H, built-ins, FP, cov. patio, fenced yd. \$50's!!!

**HIGHLAND AREA**

3-2-2 Brick, Cent. A&H, built-ins, gas log FP, fenced yd., stor. bldg., MORE!!! \$60K!!! HL-5

2-1-1 Home, vinyl siding, wall furnace heat, fenced yd. \$17,000!!! HL-1

BUSINESS FOR SALE-SNACK SHACK - Lot, Buildings, furniture, and fixtures!!!!

Commercial Bldg. & Lot, Approx. 1790' area, Numerous uses!! \$22K!!!

10,000+ sq. ft. bldg., approx. 105'x140' paved parking lot on U.S. 84 & 70!!

**LENAU - COUNTRY CLUB AREA**

2-1-1 Home, Wall Furnace Heat, Evap. Air, Fenced Yard!! \$20's!!! L-4

2-1-1 Carport Home, wall furnace, nice carpet, storm shelter, stor. bldg., fenced yd. \$20's!!! CC-3

NICE 3-2-1 Home, Elec. Heat pump, DW, nice carpet, fans, fenced yd., MORE!!! \$30's!!! L-2

2-1-1 Home, Cent. Heat, built-ins, Hardwood floors! \$19,500! L-3

**HIGH SCHOOL**

Very Nice 3-1-1- Brick Home, cent. Heat & Air, built-ins, fans, woodburning stove, nice carpets, storage bldg., fenced yd., More !!! \$40's!!! HS-7

3-2 Home, Cent. A&H, built-ins, fans, fenced yd., stor. bldg., MUCH MORE!!!! \$30's!!! HS-5

VERY NICE 3-2-1 Home on corner lot, Cent. A&H, built-ins, ceiling fans, fenced yd., stor. bldg.!! \$30's!!! HS-3

NICE 2-1-1 Brick, Heat Pump, nice carpets, well insulated, storm windows & doors. \$30's!!! HS-6

**RURAL HOMES**

W. of SUDAN-NICE 3-3-2 Brick Home, 5 acre tract on Hwy. 298, Cent. Air & Heat, built-ins, large Quonset Barn, MORE!!!! \$95K!!!

# BACK TO SCHOOL SAVINGS

All Types Dr. Pepper or COCA-COLA

2/\$5

12 pack 12 oz. cans or 3 Liter Blt. \$1.59

CHIPS AHOY! ASSORTED COOKIES 14.5-18 OZ. \$1.99

## MEAT

Preferred Trim Boneless Round Steak .....lb.	\$1.19	Shurfine All Beef Wieners .....12 oz. pkg.	\$1.19
Pilgrim's Pride Grade A thighs or Drumsticks .....lb.	79¢	Preferred Trim Boneless Beef Sirloin Tip Steak .....lb.	\$1.99
Fresh Pork Spare Ribs .....lb.	\$1.59	Preferred Trim Boneless Beef Rump Roast .....lb.	\$1.89
Preferred Trim Boneless Beef Rib Eye Steak .....lb.	\$4.49	Preferred Trim Tenderized Round Steak .....lb.	\$1.39
Shurfine Meat Wieners .....12 oz. pkgs.	2/\$1	Tenderized Beef Cube Steak .....lb.	\$2.19
Shurfine Quality Sliced Bacon .....1 lb. pkg.	\$1.99	Fresh Ground Round .....lb.	\$1.89
Shursaving Reg. or Hot Pork Sausage .....1 lb. roll	99¢	Shurfine Meat Bologna .....1 lb. pkg.	99¢
Shurfine P & P Loaf Bologna or Salami .....6 oz. pkg.	59¢	Shurfine Pork Link Sausage .....11 oz. pkg.	99¢
Shurfine Reg. or Polish Smoked Sausage .....1 lb. pkg.	\$1.59	Shurfine Boneless Turkey Hams .....lb.	\$1.59
Shurfine Chopped Ham .....12 oz. pkg.	\$1.79	Shurfine Corn Dogs .....1 lb. pkg.	2/\$3
		Shurfine Corn Dogs .....27 oz. pkg.	\$2.39

## PRODUCE

Golden ripe Bananas .....4lbs. /	\$1	Extra Large California Nectarines .....2/	\$1
Jumbo Sno-White Cauliflower .....each	\$1.49	Extra large, red, ripe Tomatoes .....lb.	89¢
Fresh Hot Jalapenos .....1 lb. pkg.	99¢	Extra large Valencia Oranges .....3/	\$1
Dole Garden Salad .....1 lb. pkg.	89¢	Extra Large Washington Red Delicious Apples .....lb.	59¢
		Extra large California Peaches .....3/	\$1

## HEALTH & BEAUTY

Western Family Cotton Swabs ...300 Ct.	\$1.39	Western Family Mint/ Waxed Dental Floss .....100 Yd.	99¢
Western Family Assorted Mouthwash .....24 oz.	\$1.39	Western Family Waxed Dental Tape .....50 Yd.	99¢
Western Family X- Strength Pain Relief .....100 Ct.	\$3.99	Western Family Transparent Tape .....1/2" x 800"	2/\$1
Western Family Caps or Tablets Ibuprofen .....50 Ct.	\$1.89	Western Family 5 Gr. Non-Coated Aspirin .....250 Ct.	\$1.49
Western Family 250 MG Orange Vitamin C .....100 Ct.	\$1.89	Western Family Assorted Toothpaste .....5-7 oz.	99¢

Shursaving assorted Soda Pop .12 pk. 12 oz. cans	\$1.69	Shurfine frosted bite size Shredded Wheat ....20.4 oz. box	\$1.99	
Shursaving granulated Sugar .....4 lb. bag	\$1.29	Shurfine Corn Flakes .....12 oz. box	89¢	
Shursaving tomato Sauce .....8 oz. cans	8/\$1	Shurfine assorted instant Oatmeal ....12-15 oz. boxes	2/\$3	
Shursaving • Pork and Beans • Pinto Beans • Mex. Style Chili Beans • CS/ WK Golden Corn • Golden/ White Hominy • Blackeye Peas • Short Cut Green Beans • Sauerkraut	Vegetables ..14-15.2 oz. cans	4/\$1	Shurfine assorted toaster Pastries .....11 oz. box	99¢
Shurfine white Bath Tissue ....9 roll pkg.	\$1.69	Shurfine elbow macaroni or long Spaghetti ....12 oz. pkgs.	2/\$1	
Shurfine asst. decorator 2 ply Paper Towels ....Rolls	2/\$1	Shurfine seedless Raisins .....15 oz. canister	\$1.49	
Shurfine assorted Cat Food .....5.5 oz. cans	4/\$1	Shurfine chunk, crushed, or sliced in natural juice Pineapple .....15.2 oz. can	69¢	
Shursaving all purpose Flour .....25 lb. bag	\$2.99	Shurfine 10 Inch Flour Tortillas .....each pkg.	\$1.19	
Shurfine reg. or w/ sports cap Spring Water ...33.8 oz. btl.	2/\$1	Shurfine Corn Tortillas .32 ct. pkg.	99¢	
Shursaving chunk Dog Food .....20 lb. bag	\$2.99	Shurfine made from concentrate Apple Juice ....48 oz. btl.	\$1.69	
Shursaving plain or ripple potato Chips .....16 oz. bags	2/\$3	Shurfine Assorted Cranberry Cocktail ...48 oz. btl.	\$1.99	
Shurfine assorted tortilla Chips .....40 oz. bags	2/\$5	Shurfine Assorted Grapefruit Juice ..48 oz. btl.	\$1.69	
Shurfine Pinto Beans ....4 lb. bag	\$1.69	Shurfine Bread and Butter or Kosher Sandwich Slices ...16 oz. jar	\$1.89	
Shursaving distilled white Vinegar .....gal. jug	\$1.39	Shurfine assorted ultra thins Diapers .....18-36 ct. pkg.	\$3.99	
Shursaving selected varieties • Sliced Carrots • Spinach • Mixed Vegetables • Sweet Peas • Tomatoes	Vegetables ..14-15 oz. cans	3/89¢	Shurfine size 2 medium or 3 large Training Pants .11-13 ct. pkg.	\$4.69
Shurfine cream or chunky Peanut Butter ...18 oz. jars	2/\$3	Shurfine assorted extra chunky Spaghetti Sauce ....30 oz. jars	2/\$3	
Shursaving saltine Crackers .....16 oz. box	69¢	Shurfine Spaghetti with Cheese sauce/ Spaghetti Rings	Plain Pasta..15 oz. cans	2/\$1
Shurfine Dinners Mac & Cheese ....7.25 oz. boxes	5/\$1	Shurfine select group Pasta w/Meat ...15. oz. can	79¢	
Select group • Skor • Milk Chocolate Reg. or with Almond • Mr. Goodbar • Mounds • Watchamacallit • Kit Kat • Nutrageous • Almond Joy • Reese's Cookie Cup • Reese's Peanut Butter Cup	Hershey's .....6 ct. pack	\$1.89	Shurfine fancy Tomato Juice ..46 oz. can	99¢
Shurfine white facial Tissue .....175 ct. box	89¢	Shursaving Yellow Cling Sliced Peaches .....16 oz. can	69¢	
Shursaving white paper Napkins .....250 ct. pkg.	\$1.69	Shursaving Concentrate Laundry Detergent .....10 lb. pail	\$3.99	
Shurfine assorted specialty coffee Creamers .....8 oz. jar	\$1.19	Shursaving Fabric Softener Sheets .....40 ct. box	\$1.19	
Shurfine Sandwich Bags...150 ct. pkg.	99¢	Shursaving regular liquid Bleach .....gal. jug	69¢	
Shursaving Plastic Wrap ..200 ft. roll	\$1.19	Shurfine lemon automatic dish Detergent .....50 oz. box	\$1.79	
Shurfine aluminum Foil .....12" x 75' roll	\$1.79	Shurfine First Bag at 99¢ w/ Coupon	Thereafter \$1.49	
Shurfine RS1420-15 oz Foam Cups ....20 ct. pkg.	\$1.69	Charcoal .....10 lb. bag	99¢	
Shurfine reg. or clear tall Kitchen Bags ...15 ct. pkg.	\$1.19			

## BACK TO SCHOOL SAVINGS!



Pink Eraser .....Each	33¢	3 Brad with Pocket Mead Cover ...Each	29¢
Map Color Pencils .....12 ct.	89¢	Yellow Pencils .....7 ct.	49¢
12" Wood/ Plastic Ruler .....Each	29¢	Crayola Crayons .....16 ct.	89¢
6 Inch Protractor .....Each	29¢	Acco Neon Binder .....Each	89¢
Twin Blade Sharpener.....Each	39¢	Medium Black/ Blue Bic Stic .....10 ct.	99¢
Pointed Safety Scissors .....Each	59¢	Bic Mechanical Pencils.....5 ct.	\$1.19
Small Zipper Pouch .....Each	39¢	Glue-All/ School Elmer's Glue ..4 oz.	59¢
Wide Ruler Mead Themebook ..70 page ct.	49¢	Elmer's School Glue Stick ....21 oz.	49¢
Mead 3 Subject Notebook .120 page ct.	89¢	5 Tab Index Dividers .....11" x 8"	39¢
Yellow Briteliner .....Each	59¢		

## DAIRY & FROZEN

Assorted Varieties Shurfine Ice Cream .....1/2 gal. md. ctn.	\$1.79	Shurfine Vegetable Oil Spread .....48 oz. tub	99¢	
Shurfine Ice Cream Sandwiches ....12 ct. boxes	2/\$5	Shurfine Low Fat Chocolate Milk .12 gal.	\$1.29	
Shurfine Frozen Orange Juice ..16 oz. can	99¢	Shurfine Assorted Texas Style Biscuits.....12 oz. cans	5/\$3	
Shurfine Apple Juice .....12 oz. can	99¢	Shurfine Bread Sticks ..11 oz. can	\$1.19	
Shurfine Sliced Strawberries ...10 oz. can	89¢	Shurfine English Muffins.....12 oz. pkgs.	59¢	
Shurfine Whipped Topping.....12 oz. ctn.	\$1.19	Shurfine IWS Sliced American Singles .....16 oz. pkg.	\$2.69	
Shurfine • Cut Green Beans • Crinkle Cut Carrots • Peas and Carrots • WK Corn • Green Peas or Mixed	Vegetables.....16 oz. pkg.	89¢	Shurfine Orange Danish or Cinnamon Rolls ..12.4-13.9 oz. can	\$1.39
Shurfine Taters .....24 oz. pkgs. 2/	\$3	Shurfine Crescent Rolls ....8 oz. can	\$1.39	
Shurfine 8 ct. Assorted Waffles .....11 oz. pkg.	\$1.29	Shurfine halfmoon longhorn Cheddar or Colby Cheese 10 oz. pkg.	\$1.69	
Shurfine Breast Tenders, Patties or Nuggets	Chicken.....9-10.5 oz. pkg.	\$1.79	Shurfine Assorted Shredded Cheese.....32 oz. pkg.	\$4.49
			Shurfine Chilled Orange Juice ..64 oz. jug	\$1.39

GOOD ONLY AT AFFILIATED FOOD PARTICIPATING STORES EXPIRATION: 8-13-97

**Shurfine**

**10# CHARCOAL Regular**

50¢ OFF

730002

1ST BAG AT 99¢ WITH COUPON THEREAFTER \$1.49 EACH

730002

WESTERN UNION MONEY TRANSFER™ "The fastest way to send money"

**Lowe's**

MARKETPLACE

515 W. American Blvd. Muleshoe 272-4585

**Pay-n-Save**

515 W. American Blvd. Muleshoe 272-4406

WE RESERVE THE RIGHT TO LIMIT QUANTITIES IN TEXAS