

Houston firm buys Anthony's

Store will be converted to Bealls

By RICK WHITE
Managing Editor

A Houston-based retailer has announced plans to convert Anthony's clothing store to a Bealls department store.

Stage Stores, Inc. recently acquired 426 Anthony's stores, including the one in Muleshoe.

Each Bealls will be geared toward meeting the needs of individual communities, according to Joanne Swartz, senior vice-president of marketing for Stage Stores.

The Anthony's has been rumored to be in financial trouble for the past few years.

"I think it's a step forward," said Patty Hartline, director of

the Muleshoe Chamber of Commerce. "(Having Bealls) is something that will improve the variety for Muleshoe shoppers and that's always positive. Lots of people from Muleshoe have been going to the Bealls in Clovis for years, so they'll be familiar with the products."

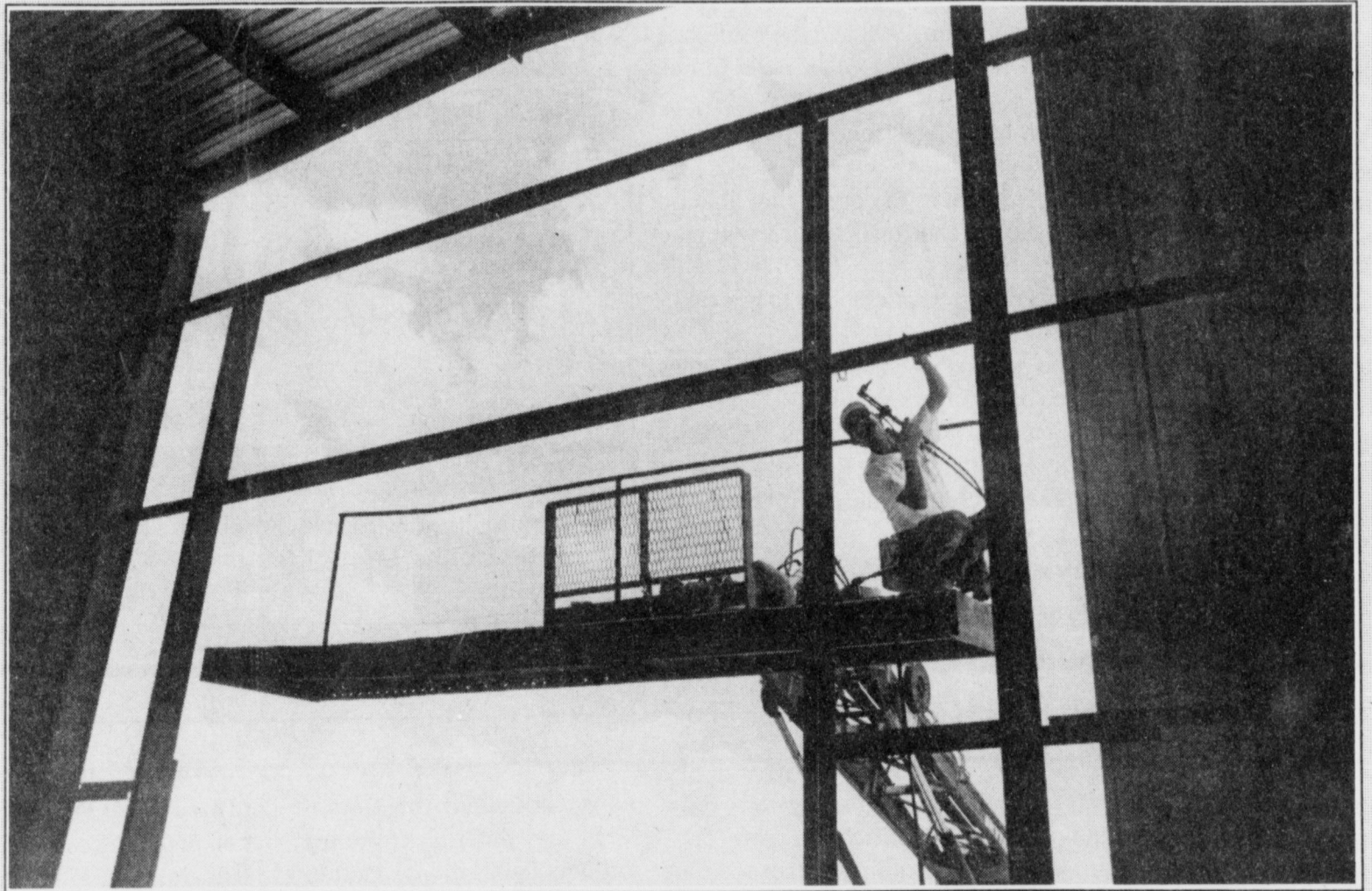
Swartz said the 14,000 square-foot Muleshoe store will be closed for a few weeks for remodeling before a grand reopening Sept. 11.

No personnel changes are anticipated as a result of the acquisition, Swartz said.

Muleshoe customers will find the same kind of merchandise they're used to finding (in Anthony's) and more, according to Swartz. She mentioned a full line of cosmetics, fine jewelry and fragrances and a broader line of sportswear as

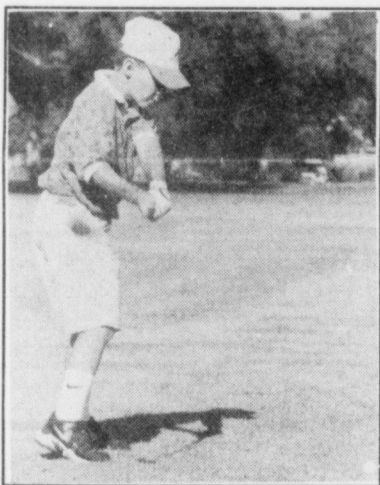
see STORE on page 4

SHEDDING SOME LIGHT



JOURNAL PHOTO BY RICK WHITE

Ron Hartman of Hartman Erectors of Amarillo welds a beam in place Monday afternoon, part of the construction of a new storage facility at Muleshoe Pea & Beam. The 100 foot by 200 foot sheet metal building will be able to house an estimated 6 to 7 million pounds of peas and beans.



Muleshoe's Trevor Turnbow is one of four local golfers that participated in the West Texas Junior PGA tournament this week in Odessa and Midland.

(Turn to page 5 for story)

USDA launches new weapon in battle of bugs

SHAFTER, Calif. — Government researchers are taking a fling at a different way of spreading beneficial insects into cotton fields.

Scientists at the U.S. Department of Agriculture's Shafter research station are using a launcher — the kind that flings clay pigeons into the air for trapshooters — to blast beneficial bugs into cotton fields.

The live bugs are put in discs that look like clay pigeons but are really limestone, a biodegradable material. Compressed manure or peat moss also could be used to make the discs, according to researchers.

The limestone disc are scattering widely along the ground as the launcher is moved down a row of cotton plants.

When the temperature is right, the good bugs leave the disc in search of bad bugs to devour.

Being thrown out with a cannon-like force does not seem to bother the insects.

Damage high from July 5 storm

By RICK WHITE
Managing Editor

A July 5 thunderstorm destroyed more than 10,000 acres of cropland and left a trail of possible of tornadic activity in western Bailey County.

The fast-moving storm packed with hail and high winds carved a path of destruction three to four miles wide from the West Camp area southeast to Baileyboro, affecting nearly 25,000 acres.

About half of those acres were destroyed, according to Kim Hanlin, director of the Bailey County Farm Service Agency.

Most of the acres affected were planted with cotton.

Because the storm came in the middle of the growing season, farmers were left with little choice but to

switch to cover crops or hope battered cotton and corn plants at least partially recover.

"This is worse than any storm we've had — so far," Hanlin said. "It couldn't have come at a worse time."

Insurance will cover some of the damage, but farmers will still take a big financial hit, according to Hanlin.

He said farmers have turned to sunflowers, peas and beans, or grain sorghum in hopes of recouping some of the loss.

Cotton fields were the hardest hit.

Bailey County Extension Agent Curtis Preston, who surveyed the damage last Monday with Hanlin, said hail stripped cotton plants so completely that the stems "looked like toothpicks."

What the hail didn't get, the wind

did.

Most of the damage south of the Coyote Lake Feedyards was wind related, Preston said.

Gusting winds of 50 miles per hour plus "sandblasted" cotton plants, turning the leaves black, Preston said.

Damage in corn fields from 10 to 100 percent, according to Hanlin.

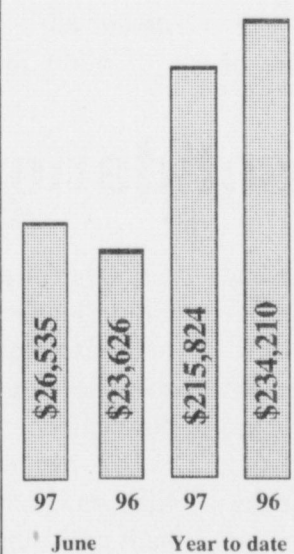
A possible tornado heavily damaged at least a half-dozen irrigation sprinklers and downed several utility poles in the Coyote Lake area.

The Bailey County Sheriff's Office reported no actual sightings but the twisted sprinklers hinted toward some tornadic activity.

The storm also dumped three to four inches of rain in some spots, temporarily closing several county roads due to flooding.

TAKING A CLOSER LOOK

Bailey County sales tax rebates



June sales tax rebates in Bailey County increased more than 12 percent compared to last year, but still lag well behind last year's total for the first six months.

The State Comptroller's office delivered a total of \$26,535 in June sale tax rebates to County businesses, compared to \$23,626 in 1996.

For the first six months of 1997, rebates have dropped 7.85 percent.

Statewide, sale rebates for the first six months are 5.7 percent higher than last year.

Note: Sales tax rebates are 1.5% of the gross taxable sales. Items like food and medicine are not taxable.

SOURCE: MONTHLY REPORT FROM STATE COMPTROLLER JOHN SHARP

No room for nervousness on stage

By RICK WHITE
Managing Editor

Shy won't fly when it comes to community theatre.

Fortunately, Twyla Gear, Nikki Felan and Sandra Ellis combined don't have a shy bone in their bodies.

All three are featured performers in this year's version of "Keepers of the Legend," which runs from Aug. 8-11 at the Muleshoe Heritage Center. The locally-produced outdoor drama is now in its third year.

Gear takes over the lead role of Ms. Rosalie Parker, a young school marm who becomes the love interest of the rival ranchers.

A recent Muleshoe High School graduate, Gear replaces Cassidy Cleavinger, who starred in the role the first two years.

An experienced one-act play

performer, Gear doesn't expect to be nervous, even though it's her first time performing in a musical.

"Well, maybe right before the start of the first performance," she conceded.

Director Sally Messenger selected Gear because of her strong stage presence.

"Her personality really comes across when she's on stage," said Messenger, while taking a rehearsal break Monday. "I also think she has an innocent quality that fits the role perfectly."

Gear also likes the depth of the role — "plus Ms. Rosalie is a hopeless romantic," she said.

Messenger calls Felan a natural.

After two years as an understudy, the Watson Junior High School 8th-grader is stepping into the role of Lizzie, a raga-



Keepers of the Legend cast members rehearse Monday at the United Methodist Church

muffin and the play's heroine. She acts if nervous is a foreign word.

"I love performing in front of people," said Felan behind a

100 megawatt smile. "I'm an outgoing person."

Felan describes her character as brave and unafraid to stand up for people.

Hardly a stretch for someone with no fear of standing up in front of people.

see KEEPERS on page 5

AROUND MULESHOE

Bus driver training classes offered

The Muleshoe Independent School District is holding two school bus driver training classes.

An eight-hour refresher course is being held from 8 a.m. to 5 p.m. Saturday, July 26 at the Muleshoe High School library. The refresher course is required for all drivers and the class is open to all Region 17 schools.

A 20-hour Texas certification course will be held July 28-Aug. 1. All new school bus drivers must take the course.

The class starts at 1 p.m. each day at the high school library.

For more information, contact instructor David Gray at 272-4412 or MISD Assistant Superintendent Adrian Meador at 272-3889.

Project Grad hosting \$1 million shootout

Muleshoe's Project Graduation 1998 and the Muleshoe Country Club will host a Million Dollar Hole-in-one Shootout.

Qualifying rounds will take place from 9 a.m. to 3 p.m. Saturday Aug. 9 and 23.

The three participants closest to the qualifying hole on each Saturday will advance to the finals, which will take place at 1 p.m. Aug. 30.

The three final qualifiers will be attempting to ace a 135 yard hole for the \$1 million.

There is an unlimited number of chances to qualify but each ball costs \$2, three balls \$5 or seven balls for \$10.

For more information, call Kevin Smith at 272-4051 during the day or 272-5234 after 5 p.m. Ronnie Kenmore can also be reached at 272-5533 during the day or 925-6756 at home.

Commission saving historical cemeteries

AUSTIN—The Texas Historical Commission has cre-

ated a new preservation tool to help save historic cemeteries in Texas. The Official Historic Texas Cemetery designation was developed to respond to the problem of the destruction and illegal removal of historic cemeteries in Texas.

Individuals or organizations may submit an application to the Texas Historical Commission to apply for this designation. If a cemetery meets the criteria of being at least 50 years old and is deemed worthy of preservation for its historic associations, a Declaration of Dedication, certifying the cemetery as historic on all deed records, will be issued to be recorded in the appropriate county clerk's office.

For more information, contact Gerron Hite, Local History Programs Division, Texas Historical Commission, 512-475-4167.

LOCAL WEATHER AT A GLANCE			
DATE	HIGH	LOW	PRECIP
7/18	100	65	—
7/19	98	66	—
7/20	95	65	—
7/21	93	65	—
7/22	94	65	—
Year to date		13.5 inches	

SOURCE: R.G. BENNETT, LOCAL NATIONAL WEATHER SERVICE OBSERVER ALL TEMPERATURES AND PRECIPITATION READINGS ARE FOR THE PREVIOUS 24 HOURS.

EXTENDED FORECAST

Partly cloudy through the weekend with a 20% chance of thunderstorms. Lows in the middle 60s. Highs in the low 90s.

8611

RED WING SHOES
Made in U.S.A.

The Fair Store
120 Main 272-3500

UNBELIEVABLE!

You Just Won't Believe The Buys In The Classifieds...

It's Easy To Place An Ad!
Call • 272-4536

DEADLINES:
Thursday • Muleshoe Journal
Monday, 5:00 p.m.
Sunday • Bailey County Journal
Thursday, 5:00 p.m.

Muleshoe Journal
P.O. Box 449 • 304 W. 3rd
Muleshoe, TX 79347
272-4536

MULESHOE MOTOR CO.
1225 W. American Blvd. • Muleshoe • 806-272-4251 or 800-43207616

\$295 DOWN & \$295 MONTH!*

1997 FORD MUSTANG

- Air Conditioning
- AM/FM Cassette
- Power Windows
- Power Seats
- Spoiler
- Speed Control
- 3.8 L. EFI Engine
- Tilt Wheel
- O/D Transmission
- Remote keyless Entry

We Want To Be Your Car or Truck Dealer!

COTTON NEWS

High Plains cotton producers who face the possibility of increased pressure from aphids in 1997 will likely be denied the use of, arguably, the most effective aphid control tool available, Furadan.

According to Lubbock-based Plains Cotton Growers, Inc. (PCG) the Texas Department of Agriculture has not received any written confirmation about the status of its Furadan Section 18 request. EPA officials have verbally notified TDA that the request has been denied.

Mississippi agriculture of-

ficials have already received written notification from the Environmental Protection Agency (EPA) denying a Section 18 request under the Federal Insecticide, Fungicide and Rodenticide Act (FIFRA) for Furadan, whose active ingredient is carbofuran.

The EPA letter denying the Section 18 request states that the reason for the denial is the inability to make a determination of "a reasonable certainty of no harm", primarily for infants and children under the age of 12.

Cotton industry organiza-

tions throughout the Cotton Belt are pulling together through the National Cotton Council in an attempt to reverse this decision.

PCG has signed on to a letter being sent to Lynn Goldman, MD, EPA Assistant Administration, laying out points of disagreement concerning EPA's decision.

The industry letter takes EPA to task for decisions made under the auspices of implementing the Food Quality Protection Act and the ever changing criteria EPA uses to make these decisions. The letter also asks for justification of the stan-

dard used to make the determination regarding carbofuran.

The loss of Furadan for aphid control means cotton producers who experience severe infestations may be left to fend for themselves. Finding effective control strategies for cotton aphids is difficult because of the explosive nature of infestations and the aphids ability to rapidly reproduce.

Often, producers forced to use less effective products must apply higher rates of the aphicides currently available more often in an attempt to gain the level of control possible with use of Furadan.

The SPS Muleshoe Employees Cordially Invite You To A Reception Honoring The Retirement Of

DOLORES GARRETT

At the Muleshoe Office • 230 Main Street
Muleshoe, TX • 2-4 p.m. • Friday, July 25

Subscribe Today!
Call the Muleshoe Journal
272-4536

Loan consolidation made easy online

Sallie Mae, the nation's leading source of funds for college, to say unveiled SMART LOAN online, the company's Web-based application for federal student loan consolidation. A new feature to Sallie Mae's award winning Internet site (www.salliemae.com), SMART LOAN Online enables borrowers to begin the process of consolidating their federal education loans by applying electronically.

After reviewing the online workbook, loan consolidation applicants can determine monthly loan payment and overall borrowing costs by using the online repayment calculator. They can also compute anticipated savings through SMART REWARDS Program (a 1% interest rate reduction after a first 48 scheduled payments are received on time) and Direct Repay plan (a quarter-point rate cut when payments are automatically deducted through the borrower's bank account). Applicants then enter their personal information and student loan data into the online form, which is then sent electronically (with encryption) to Sallie Mae. Before processing can begin, however, applicants, must print and review loan terms and conditions, sign and "promise to pay" document and forward it throughout the mail. Borrowers with at least

\$7,500 in eligible federal education loans can reference—or consolidate—their loans into one loan. In addition to the convenience of making one rather than multiple monthly loan payments, loan consolidation also appeals particularly to highly indebted borrowers who may have difficulty meeting their monthly loan obligations. By extending the term of their loan, borrowers receive their monthly payments, although overall borrowing costs will increase.

The Sallie Mae online SMART LOAN application was developed jointly with Universal Algorithms, Inc. (UAI), which through its ongoing partnership with Sallie Mae, has helped pioneer inno-

native, Web-based solutions within the education arena. UAI hosts the popular CollegeNET Web site (www.collegenet.com) providing college and scholarship search capabilities and fully Web-based, tailored admissions applications for more than 150 colleges and universities. The company was recently cited by Inc. magazine as one of the 500 fastest-growing private companies in the United States.

In addition to being named on the Internet's "25 Most Incredibly Useful Sites" by Yahoo! Internet Life, Sallie Mae's Web site has received a four-star rating by Magellan and "Choice Site" citation from Starting Point.

Muleshoe Journal USPS 367820
Established February 23, 1924. Published by Triple S Publishing, Inc. Every Thursday at 304 W. Second, Box 449, Muleshoe, TX 79347.
Second Class Postage paid at Muleshoe, TX.
POSTMASTER: Send address changes to the Bailey County Journal, P.O. Box 449, Muleshoe, TX 79347.
We are qualified members of:
Panhandle Press Association, National Newspaper Association, West Texas Press Association and Texas Press Association

WEST TEXAS PRESS ASSOCIATION MEMBER 1997

PPA Panhandle Press Association

TA TEXAS PRESS ASSOCIATION

Scot Stinnett, Publisher
Lisa Stinnett, Vice-President/Comptroller
Rick White, Editor
Jessica Orozco, Classifieds
Pat Durben, Advertising

SUBSCRIPTIONS: Muleshoe Journal and Bailey County Journal
By Carrier Yearly - \$22.00
Bailey County — by mail - \$24.00
Elsewhere - \$26.00
Advertising Rate Cards on Application

Advertisers should check their ad the first day of insertion. The Journals will not be liable for failure to publish an ad or for a typographical error or errors in publications except to the extent of the cost of the ad for the first day of insertion. Adjustment for errors will be limited to the cost of that portion of the ad where the error occurred.

SALE PRICED

Whirlpool ET18NKXD
17.9 cu. ft. Top-Mount Refrigerator
• Full-Width Adjustable DURAWHITE™ Wire Shelves
• Green Tint Crispers and Meat Pan
• Up-Front Temperature Controls and Lighting
• White or Almond Styling

\$599⁰⁰

Whirlpool LXR6232 Washer
• 27" Heavy Duty
• 27" Extra Large Capacity
• 2 Wash and Spin Speeds
• 3 Wash/Rinse Water Temperatures

\$599⁰⁰ Pair

Whirlpool LER3624 DRYER
Heavy Duty Extra Large Capacity
• 3 Drying Cycles
• 3 Temperature Settings (In Timer)
• White-On-White and Almond-on-Almond Styling

Wilson Appliance
117 Main St. Muleshoe 272-5531

JAIMICA FESTIVAL



Orieda Cavazos of Houston (left) and Lette Vargas of Bovina dance the macrena Sunday at the Jaimica festival



Tripes!

Pete DeLeon of Earth (left) and Richard Orozco of Muleshoe cook tripes for fajitas Sunday in spite of the heat during the annual Jaimica festival at the Immaculate Conception Catholic Church fair-grounds.

European cattle ban could be lifted

As expected, the World Trade Organization ruled July 1 that the European Union must lift the ban imposed in 1989 against cattle treated with growth-promoting hormones. The EU quickly vowed to appeal, reports DTN Meat Industry News.

WTO decided that in imposing the ban, the EU has made only an "arbitrary or unjustified" differentiation, lacking any basis in recognized scientific standards, between hormone-treated meat and other types of meat.

EU spokesman Gerard Kiely said the EU would likely file an appeal with the WTO in Geneva in late August. A new dispute panel would then have between 60 and 90 days to make a final ruling, he said.

If the EU loses the appeal, it would have to lift its ban or compensate the United States. A U.S. trade official said Washington would probably not be satisfied with compensation and would insist on market access for American beef.

The U.S. beef industry has long argued that the ban costs its members nearly \$250 million a year in European sales.

CENTERLINE ROOFING AND CONSTRUCTION

Serving Eastern New Mexico & West Texas
FULLY INSURED

Jeff Reed • Owner
License #53818 • 505-762-4892 • Clovis

ESTRADAS VZDEO

1210 West American Blvd. • Muleshoe • 272-3605

LIQUIDATION SALE ON VHS MOVIES

Out With The Old . . . In With The New!
Must Make Room For New Merchandise, Coming In August 1, Sale Starts Thursday, July 24, 1997.
VHS Movies will Sell For \$10 Each

RENTALS:

Regular Movies \$1 — New Releases \$2
5 Movies • 5 Dollars • 3 Days Only!

Jaimica draws thousands

Huge crowds enjoyed Mexican delicacies, games and live music during a hot, sunny day Sunday during the annual Jaimica festival hosted by the Immaculate Conception Catholic Church in Muleshoe.

The festival of food and fun serves as a major fundraiser for the church.

TRIBUTE TO JOE T.

We were very touched by the many acts of kindness and expressions of sympathy during the recent passing of our Dad, Joe T. Gonzales.

We take extreme comfort in knowing that Dad came to know the Lord and accepted the Lord Jesus Christ as his Saviour, and that we will see him again. We are also grateful to his wife Carol, and Elizabeth and Amanda for bringing much joy to his life. He lived a very full life and was fortunate to stay in contact with our Mother, Alice, whom many people of Muleshoe know. They kept each other informed of the latest involving the kids and grandkids, and have remained very dear friends.

This town will surely miss him. He was not wealthy, materially speaking, but was a constant reminder to all who knew him that one only has to believe in himself, his talents, and have the confidence and determination to work hard to succeed. He was only one man, yet touched so many. He provided jobs and he provided a skill so valuable to the livelihood of this community through his business. So many counted on him and his business, from a friend in need in the middle of the night, to helping raise his brother's children, to helping a total stranger with car trouble day or night.

Yes, Daddy will be missed, especially by those closest to him. He left his children and grandchildren an invaluable legacy. A legacy of strength, confidence, a strong work ethic, charm, and just the right touch of arrogance. Dad was anti-welfare, anti-abortionist, and very much pro-American. He embraced the privilege of being able to vote, and never missed an election. He was proud to be a veteran. He believed anyone living in this country could make it, with his third grade education he was living proof.

We thank each and everyone who brought flowers, cards, and food. We especially thank all of Mom and Dad's oldest and dearest friends who were there to support us. The Guadalupanas for all their hard work preparing a meal, the V.F.W., and to his friend, Mr. Ellis for such a beautiful service.

With much love and appreciation,
Daniel, Mary Ann, Eva, Bobby, and Diane



Have a nice day

JOE'S BOOT SHOP

1-800-658-6378 106 E. American Blvd. Muleshoe, Texas
And Country Junction

*We Ship
Everywhere*

All the folks at Joe's say **"THANKS"** for a great July 4th Celebration & Sale! We hope you were one of the many customers who took advantage of this annual customer appreciation event that we might give you good entertainment, food, Pepsi, and all day giveaways of merchandise because we appreciate your business!!!

SUMMER SAVINGS

CONTINUE AT JOE'S BOOT SHOP!

One Rack
JACKETS
Buy 1, Get 1
FREE!

One Group
TONY LAMA
SMOOTH OSTRICH
First Line **\$199⁰⁰**
Reg. \$259⁰⁰

Second Quality **\$139⁰⁰**

STRAW HATS . . . \$19^{and Up}

New! Just For Kids
CREPE SOLE DOUBLE WELT ROPERS
Infant Sizes 8 1/2 -6 Youth

TEXAS RANGE REPORT

Panhandle— Soil moisture short to adequate. Ranches good to excellent; weed problems persist in previously overgrazed areas. Cattle good to excellent. Corn good; hot, dry wind putting stress on crop. Wheat harvest underway. Sorghum good to excellent.

South Plains— Soil moisture adequate. Crop growth benefited by hot, dry weather. Sorghum planting nearing completion. Wheat, oat harvest underway.

Rolling Plains— Soil moisture adequate. Range grasses abundant; heavy weeds persist. Cattle good with weaning weights above normal; high fly numbers reported.

North— Soil moisture adequate to short. Warm temperatures allowing favorable crop, grass growth. Hay baling under way. Sorghum beginning to head, bloom. Favorable soybean yields being reported.

East— Soil moisture adequate. Pastures fair to good; warm temperatures drying crops, pastures rapidly. Corn crop in good condition. Excellent hay yields being reported.

Far West— Soil moisture short to adequate. Pastures, ranges good. Cattle fair to good; supplemental feeding continues.

West Central— Soil moisture short to surplus. Pastures, ranches good. Livestock in good condition. Sorghum, oats in excellent condition. Wheat harvest under way.

Central— Soil moisture adequate. High temperatures, high humidity stunting milk production. High hay yields being reported. Delayed planting, excessive amounts of Johnsongrass causing soybean midge problems.

Southeast— Soil moisture adequate. Pastures good; dryer weather has allowed increased field activity. Livestock good. Hay baling under way, but poor yield quality expected.

Southwest— Soil moisture adequate. Pastures, ranges excellent. Livestock in good condition. Some hay lost to wet fields; second hay cut underway. Peak growth, drying down of corn, sorghum crops.

Coastal Bend— Soil moisture adequate. Pastures, ranges excellent. Cattle good; prices on upswing.

South— Soil moisture short to adequate. Pastures, ranges good; extensive irrigation, cutting, haying under way. Livestock good. Corn in good condition. Sorghum good with harvesting under way; heading of crop completed.

Weather phenomenon brewing in Pacific

El Nino, meaning the little boy in Spanish, is an abnormal state of the ocean-atmosphere system that develops every few years. It involves anomalous warming of the surface waters in the eastern portion of the tropical Pacific Ocean. This yields important consequences for weather around the globe, especially the southern United states.

Usually, the trade winds blow westward across the tropical Pacific. In response, warm surface water accumulates over the western Pacific. Rainfall, associated with rising air over the warmer waters, is prevalent over the western Pacific.

During El Nino, the trade winds relax in the central and western Pacific Ocean. This allows the warmer surface water to move eastward across the tropical Pacific. Rainfall follows the warm eastward. The eastward translation of the atmospheric heat source above the warmest water results in large changes in the global atmospheric circulation.

As of June 1997, weather observations revealed unusually strong El Nino conditions over the tropical Pacific. Preliminary indications suggest this developing El Nino may be the strongest one since the fall and spring of 1982/1983. That El Nino was the

TAKING A CLOSER LOOK

Precipitation as a result of El Nino

El Nino Years	Nov to March Total	Percent of Normal
1991-92	8.00	261
1986-87	5.44	177
1982-82	6.75	224
1976-77	2.01	224
1972-73	5.89	192
1969-70	3.85	125
1965-66	1.23	40
1957-58	6.24	203
1940-41	7.27	237
1918-19	6.48	211
1914-15	7.43	242

(Measurements taken at Lubbock International Airport)

FAST FACTS

Averaging these periods, Lubbock receives 1.5 to 2 times it's "normal" rainfall during the 5 month window from November through March.

■ Wettest year ever in Lubbock: 1941 (El Nino year) Also, both the second and third wettest years (1915 and 1919) were also El Nino years.

■ Snowiest winter Lubbock winter were El Nino years.

greatest ocean-atmosphere disturbance ever recorded and its effects were felt across the U.S. and the world. Strong El Ninos affect West Texas weather, especially during the fall and winter.

STORE

From page 1

some added features.

"We don't want people to feel like they have to drive 45 minutes (to Lubbock) to find what they want," Swartz said.

Stage operates most of its stores in small cities, where populations average about 20,000.

Purchasing Anthony's is the third in a series of successful acquisitions for State Stores. Most recently, it acquired Uhlman's, Inc., a 34-store retailer in Bowling Green, Ohio, which added approximately \$460 million initially.

Coupled with Stage Stores' first transaction with Shreveport-based Bealls-Laydymon Group in 1994, and the Anthony's acquisition, it now gives them a total of 557 stores in 24 states.

HAVE A NICE DAY



TOWN & COUNTRY FOOD STORES is looking for a few good people to manage our stores.

If you like a great working environment, working in a progressive company with positive people, if you like a better than average paycheck, great benefits, if you want to be on the cutting edge with a fast growing exciting company, then you need to apply with us.

We need **MANAGER TRAINEES** with experience in either convenience stores or in fast food, both would be a definite plus. A degree in marketing or in Business Management will get you **TOP DOLLAR.**

We offer a salary commensurate with education and experience up to \$20,000 per year. Health, dental, life insurance, retirement & profit sharing are some of the benefits available to you and your families.

If you want to work for the best, send your resume, along with your salary requirements to:

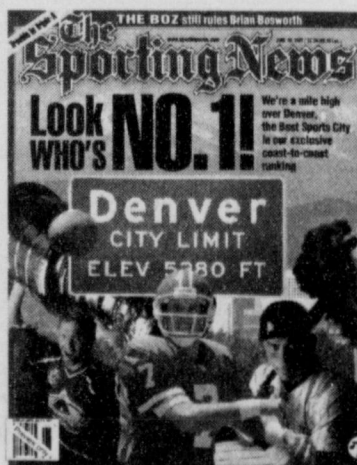
Town & Country Food Stores #135
Attn: Bryant Hance
700 Thornton
Clovis, NM 88101

GOOD VALUE GREAT PEOPLE!

newsworthy trends

Top 10 Sports Cities

(NAPS)—If you live in these ten cities you've a lot to cheer about...and probably have. They were named the top ten best sport cities in the United States by *The Sporting News*.



The rankings of the top sports cities in the United States were based on many things including sports climate, fan fervor, stadium quality and abundance of teams.

In order, they are:

1. Denver
2. Dallas-Fort Worth
3. Miami
4. Chicago
5. Oakland-San Francisco-San Jose
6. Detroit
7. Los Angeles-Anaheim
8. New York-Long Island-New Jersey
9. Baltimore-Washington
10. Philadelphia

For a city to have made the final cut it had to have at least one team in each of the four major professional leagues, as well as a school that plays Division I-A football and Division I basketball.

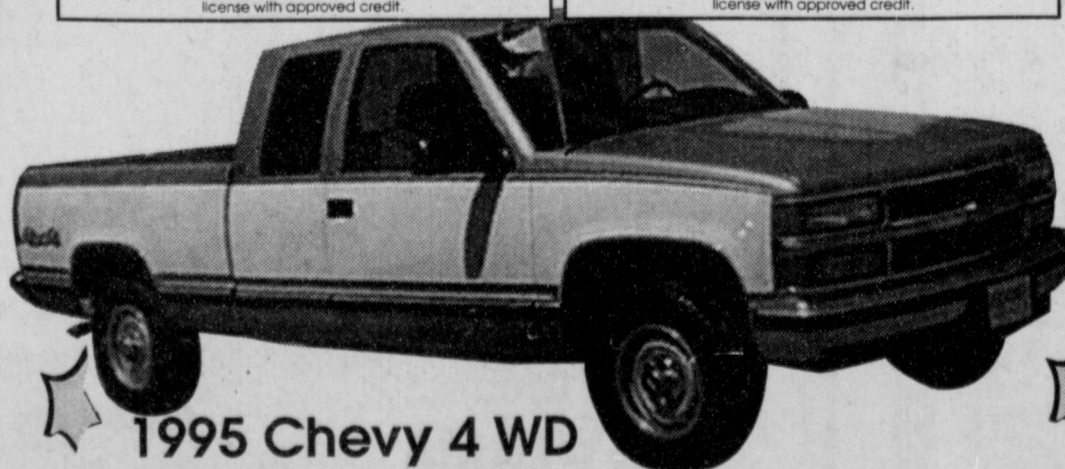


1992 Buick LeSabre
#5001
\$235⁰⁰ Down **\$239⁰⁰** per mo.
Cash price \$9500.00. 48 mo. @ 10.90% APR, plus tax, title & license with approved credit.

1993 Buick LeSabre
#5045A
\$159⁰⁰ Down **\$169³⁷** per mo.
Cash price \$7500.00. 54 mo. @ 10% APR plus tax, title and license with approved credit.

Our selection, service & savings add up to a great deal for you!

95 Chevy Geo Prism #5036 at only \$169 Down \$169 Month Cash price \$8,329.79. 60 months at 8.90% APR plus tax, title and license with approved credit.	95 Chevy Corsica #5127 at only \$175 Down \$175 Month Cash price \$8,625.40. 60 months at 8.90% APR plus tax, title and license with approved credit.	94 Chevy Lumina #5110 at only \$223 Down \$223 Month Cash price \$10,990.91. 60 months at 8.90% APR plus tax, title & license with approved credit.	96 Olds Cutlass #5074 at only \$250 Down \$274⁰⁸ Month Cash price \$13,500.00. 60 months at 8.55% APR plus tax, title and license with approved credit.
96 Chevy Cavalier #5144 at only \$187 Down \$187 Month Cash price \$9,216.66. 60 months at 8.90% APR plus tax, title and license with approved credit.	95 Dodge Spirit #5079 at only \$189 Down \$189 Month Cash price \$9,315.10. 60 months at 8.90% APR plus tax, title and license with approved credit.	93 GMC Jimmy #5008 at only \$295 Down \$295 Month Cash price \$13,081.06. 54 months at 10.0% APR plus tax, title and license with approved credit.	92 Olds 98 #72089A at only \$249 Down \$249 Month Cash price \$10,066.98. 48 months at 10.0% APR plus tax, title and license with approved credit.



1995 Chevy 4 WD
Ext. Cab Stock #76202A. List Price \$20,495
Special Price
\$18,995

BENDER
Chevrolet • Oldsmobile • Cadillac
2500 Mabry Drive • 763-4465
Clovis, NM

Local golfers qualify for PGA event

Four Muleshoe golfers qualified for the West Texas Junior PGA area championship tournament July 23-24 in the Midland-Odessa area.

Nine-year-olds Ariel Flores and Trevor Turnbow will play in an 18-hole tournament played over two days at Hogan Park in Midland while Kyle Embry and Keisha Whitt will play in 36-hole tournaments at Odessa Country Club.

Flores will play in the 7-9 year old co-ed division after winning a pair junior PGA regional tournament at Muleshoe and Olton this summer.

Turnbow qualified by winning the 10-11 age group at a tournament in Levelland last week. There was no 7-9 tournament that day.

It is uncertain if he will have to play in the 10-11 age group or if he will be allowed to drop back to his normal age group.

Embry qualified by winning the Junior PGA tournament at Muleshoe and Whitt won at Tulia in June.

WT Heat advance in BCI tournament

LUBBOCK — Muleshoe junior Erin Whilite is a member of the West Texas Heat girls basketball team that advanced to the quarterfinals of the Basketball Congress International Girls Summer Prep Tournament being held at Texas Tech.

The WT Heat beat the Oklahoma Express 53-41 Monday to advance to the quarterfinals, where they faced San Diego Showcase Blue at Municipal Coliseum.

The team is made up of high school players from the Panhandle-South Plains area, including three players from Denver City.

KEEPERS

From page 1

She also likes the fact that people will be coming from all over the area to a little town like Muleshoe to watch her perform.

"It's pretty neat," she said.

Ellis plays Grace Masters, the wife of rancher John Masters, a lead character who struggles to convince fellow ranchers of the need to incorporate Bailey County.

"It's a lot of hard work, but it's fun," said Ellis. "I like to sing and dance, but mostly it's a chance to socialize."

Previous experience in an outdoor drama in Crosbyton helped her land the role.

Ellis, who grew up in Muleshoe and is returning after 17

years to teach at Three Way school, will have to sing a solo, something she's never done before.

Still, Ellis didn't anticipate any knee-knocking jitters.

"The audience knows we're amateurs, — and we are — so their expectations aren't as high," Ellis said.

Besides, performing is something she does every day while teaching.

"In order to teach, you have to perform to hold their attention. If you don't hold their attention, they'll never learn anything."

Shy doesn't fly for teachers either.



Joy ride

Keena Diaz, 2 1/2, and Zachary Allen Subealdea, 3, both of Muleshoe, take a tractor ride Sunday during the annual Jaimica festival at the Immaculate Conception Catholic Church in Muleshoe. Thousands came from West Texas and eastern New Mexico to enjoy the fun.

H.I.S. - BUGLE BOY - LEE - RIDDELL

WRANGLER - HANES

ANTHONY'S

TOTAL INVENTORY LIQUIDATION SALE

30% TO 60% OFF

NEW PRICE REDUCTIONS!!

* LESSER DISCOUNTS ON LEVI'S, HANES, NIKE, DOCKERS, HAGGAR, WUNDIES, GENERATION X, UNION BAY, CALVIN KLEIN, JOE BOXER & PLAYTEX

ANTHONY'S

321 Main • Muleshoe, TX

CASH, VISA, & MASTERCARD CARD ACCEPTED. NO RETURNS, REFUNDS OR EXCHANGES. ALL QUANTITIES LIMITED TO STOCK ON HAND. ALL SALES FINAL. NOT ALL ITEMS AVAILABLE IN ALL STORES!

WRANGLER - HAGGAR - FILA - REEBOK - DOCKERS - LEVI'S - HANES

HURRY IN FOR BEST SELECTION!

DON'T MISS OUT!! SHOP NOW!!

EVERYTHING WILL BE SOLD!

THE ENTIRE INVENTORY IS BEING SOLD AT DISCOUNT PRICES!

ANTHONY'S

321 Main • Muleshoe, TX

CASH, VISA, & MASTERCARD CARD ACCEPTED. NO RETURNS, REFUNDS OR EXCHANGES. ALL QUANTITIES LIMITED TO STOCK ON HAND. ALL SALES FINAL. NOT ALL ITEMS AVAILABLE IN ALL STORES!

VAN HEUSEN - PLAYTEX - TEDDI

KENW-TV

Public Television



ANYPLACE WILD

Anyplace Wild, a new 13-part series, transports viewers to some of the world's most diverse, colorful, and challenging locations for real-life expeditions that stretch wits, endurance, and survival skills.

Hosted by John Viehman, executive editor of *Backpacker*, the programs explore some of the most exotic and wild landscapes. Desert and jungle hiking, kayaking, whitewater canoeing, low-impact caving, and ice climbing are all part of the real-life, human-powered adventures captured on film, as guests weave stories about each region's wildlife, indigenous cultures, and history.

Episodes include wilderness survival in California, kayaking Utah's Green River, jungle hiking in Belize, rain forest hiking in Washington, whitewater canoeing in Maine, desert hiking in Mexico, and much more.

Anyplace Wild will be broadcast Sundays at 12:30 p.m. beginning July 20th. The series repeats Thursdays at 10:00 p.m. beginning July 24th on KENW-TV.

Women's Basketball: The Road to Respect

As summer 1997 approaches, sports fans and the media turn to focus on women's basketball, as the Women's NBA bounds into the limelight. **Women's Basketball: The Road to Respect**, a one-hour documentary, traces the remarkable roots of the sport from its beginnings, soon after the invention of the game in 1891, to the popular full-court, fast-break sport it is today.

Vintage photos, rare video footage, and in-depth interviews with top-level contenders set the tone for this exciting history of women's hoops, highlighting players from the 1930s to the 1980s. Those players, whose teams ranged from industrial organizations such as Hanes Hosiery of Winston-Salem, NC (winners of 102 straight contests) to barnstorming teams such as the Arkansas Travelers and the all-American Redheads, reveled in the spirit of competition, building a sense of camaraderie that set a precedent for the modern game.

Women's Basketball: The Road to Respect airs Sunday, July 27th at 4:30 p.m. on KENW-TV.

Channel 3 Television from
Eastern New Mexico University, Portales, New Mexico

Nickels honored with bridal shower

Kayla Magby Nickels of Muleshoe was given a bridal shower July 19 at Richland Hills Baptist Church.

Special guests attending were Kristen Magby, sister of the bride, Mrs. Barbara Hall and Mrs. Boyd Magby, grandmothers of the bride, Mrs. Mildred Bartley, great-grandmother of the bride, Mrs. Ed Nickels, grandmother of the groom, and Nina Addudell, Doris Reeves, and Floris Gilley, great aunts of the groom.

Hostesses were Ricki Warren, Gayla Toombs, Hellen Adrian, Lena Gartin, Louvenia Garlington, Cris Cleavinger, Janice Bradshaw, Sherry Shipman, Paulette Foster, Maxine Rogers, Karen Harris, Dorothy Rea Harlan, Lona Embry, Connie Kemp, Lanelle



Kayla Magby Nickels

Skaggs, Pam Miller, Jana St. Clair, and Patti Kent.

The hostesses gift was a vacuum cleaner.

Kayla and Chad Nickels were married July 12, at the Richland Hills Baptist Church.

The bride is the daughter of Rich and Cindy Magby of Muleshoe. The groom is the son of Nicky and Debbie Nickels of Lazbuddie.



McDonalds celebrating 50th wedding anniversary

with the Rev. Jack Stone officiating.

Burial followed in the Muleshoe Cemetery under the direction of Ellis Funeral Home in Muleshoe.

Toten was born Oct. 8, 1908

in Montague County, Texas and married Flois Lillian Owens July 31, 1931 in Clovis NM. She preceded him in death Nov. 2, 1984.

Toten had lived in Muleshoe since 1927, moving from Bowie, Texas and was a member of the First Assembly of God. He was a construction

truck driver and was preceded in death by one son, Dorman Toten, in 1964.

Survivors include three daughters, Frances Bland of Muleshoe, Carolyn Collis Burch of Melrose, NM, and Theresa Jones of Dumas; two sisters, Ethel Pratt of Panhandle and Mary Ruth Sims of Amarillo; nine grandchildren and 14 great grandchildren.

McDonalds celebrate 50th anniversary

Leroy and Pauline McDonald, formerly of Lazbuddie and now living in Hereford, will celebrate their 50th wedding anniversary July 27.

A reception held in their honor and hosted by their children will be held from 2 to 4 p.m. Sunday, July 27 at K-Bob's Annex in Hereford.

Leroy married the former Pauline Rink July 27, 1947 at the First Baptist Church of Lazbuddie.

The couple lived and farmed in Lazbuddie and Farwell until 1962, when they moved with their children to Mesa, Ariz. They owned and operated

Harper's Janitor Supply. In 1964, the family and business moved to Hereford and become known as Hereford Janitor Supply. They retired in 1990.

The reception will be hosted by their children and their spouses, David and Carolyn McDonald of Hereford, Ronnie and Theresa McDonald of Amarillo, and Debbie and Randy Willey of Midland. Also assisting with the reception will be the couple's six grandchildren.

Friends of the couple are invited.

K-Bob's is located at 511 N. 25 Mile Ave.

OBITUARIES

Bennie Lee O'Brien

AMARILLO—Bennie Lee O'Brien, 80, of Muleshoe died July 18, 1997 at the Veterans Hospital in Amarillo.

Memorial services were held Monday, July 21, at Oklahoma Lane United Methodist Church in Parmer County, with Rev. Nelly Landrum officiating.

Mr. O'Brien was born March 4, 1917 in Cheyenne, Okla. and married Jean Hurley June 21, 1957 in Las Vegas, Nev.

O'Brien and his family moved to Muleshoe in 1993, from Whitney, Texas.

He was a member of the Oklahoma Lane United Methodist Church and the RLDS

Church in Oklahoma. He was a retired carpenter and a veteran of the U.S. Army, serving in World War II from 1942 to 1944.

Survivors include his wife, Jean Aurley of Muleshoe; son Terry Lee O'Brien of Weatherford, Texas; daughter Benna Ball of Whitney and sister Olivia Sandburg of Las Vegas.

Harvey Toten

Harvey Toten, 88, of Muleshoe died July 20, 1997 at the Muleshoe Area Medical Center.

Memorial services were held Tuesday, July 22 at the First Assembly of God Church,

Keeping an eye on Texas

Distribution of doctors uneven across the state

In Texas, there are about 2,000 people for every licensed physician. In some counties, however, each physician serves an average of more than 4,000 residents. Other counties have no doctors at all.

SOURCES: John Sharp, Texas Comptroller of Public Accounts, and Texas Board of Medical Examiners.

Home Folks Caring For Folks At Home.

MULESHOE AREA HOME HEALTH Agency

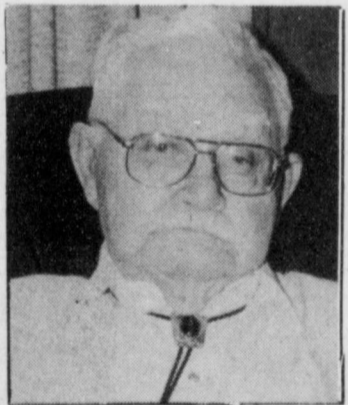
Featured Patient

Mr. Vernon Bryant has been a resident of Muleshoe since 1964.

He is a retired stock farmer. Mr. Bryant served for two years in the Navy during World War II. He now belongs to the Veterans of Foreign Wars and the Disabled American Veterans.

Mr. Bryant has been married to Violet for 59 years.

He enjoys the girls that come from the Muleshoe Area Home Health Agency!



Mr. Vernon J. Bryant

To receive Home Health Services, talk with your physician or talk with hospital personnel when you are hospitalized.

24 Hour # 272-3346
Local Nurse on call 24 hours a day to offer prompt service.

We accept Medicare, Medicaid and Private Insurance
It is Your Right To Choose The Home Health Agency You Prefer.



Affiliated with Lubbock Methodist Hospital Systems

New, Out Of Hospital Advance Directives Now Available!

Goodwrench Service Plus

Offers you MORE

GM Goodwrench Service Plus is more than just another way to service your vehicle—it's a better way. Because GM Goodwrench Service Plus has highly trained technicians who know your GM vehicle inside and out.

Plus

UP-FRONT COMPETITIVE PRICING

Which means no surprises when the bill comes.

Plus

COURTESY TRANSPORTATION

After you drop off your vehicle, we'll take you where you want to go.

Plus

LIFETIME SERVICE GUARANTEE

Parts and labor are covered for as long as you own your GM vehicle. See dealer for details of this limited warranty. Covered parts include:

- Air Conditioning Accumulator
- Air Conditioning Compressor
- Air Conditioning Condenser
- CV Joint/Boot Seal Kit
- Ignition Module
- Ignition Coils

- EGR Valve
- Fuel Injectors
- Fuel Pump
- Ignition Wire Set
- Individual Ignition Wires
- New/Remanufactured Generator

- New/Remanufactured Starter Motor
- Oxygen Sensor
- Shock Absorbers/Struts
- Throttle Body Injector
- Water Pump

Please present coupon prior to service

FOR LESS.

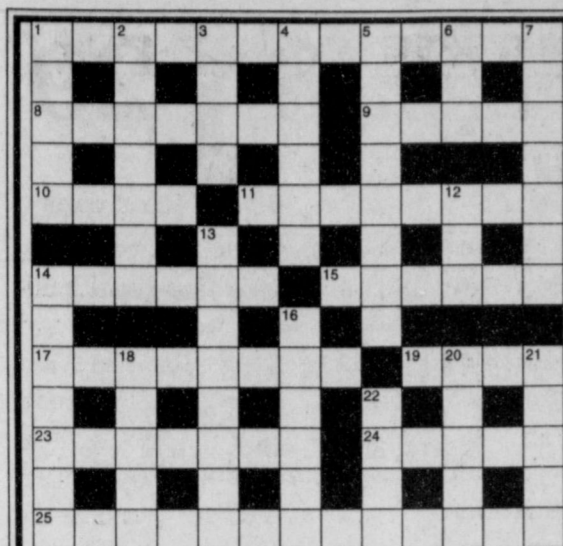
Prices Good July 1-31, 1997

<p>QUICK LUBEplus Lube, Oil & Filter Change Complete chassis lube; AC oil filter; up to 5 quarts quality motor oil, plus 10 point maintenance check Expires July 31</p> <p style="text-align: right; font-size: 2em;">\$14.00</p>	<p>Radiator Service/ Coolant Drain & flush cooling system. Replace coolant. Clean outside of radiator & air conditioning condenser. Pressure test entire system. Inspect condition of all hoses, clamps & belts. Expires July 31</p> <p style="text-align: right; font-size: 2em;">\$31.00</p>
<p>Air Conditioning Service Adjust drive belts. Tighten fittings. Check operating pressure. Check for leaks. Clean condenser fins. Performance-test system. Includes 1 lb. Freon. Expires July 31</p> <p style="text-align: right; font-size: 2em;">\$58.00</p>	<p>Engine Maintenance Service Replace spark plugs. Set timing & adjust idle. Inspect air filter. Check ignition timing, hoses, PCV valve. (Price for 6 and 8 cylinder slightly higher, 4 cylinder slightly lower). Expires July 31</p> <p style="text-align: right; font-size: 2em;">\$67.50</p>
<p>Tire Rotation/ Balance/ Brake Inspection Inspect for irregular tire wear. Check tire pressure. Rotate per manufacturer's specifications. Inspect rims. Computer balance 4 wheels. Check brake linings, rotors, drums, hydraulic system & master cylinder. Expires July 31</p> <p style="text-align: right; font-size: 2em;">\$36.00</p>	<p>\$20.00 Off Any Mechanical Service Repair This coupon may be redeemed for \$20.00 off any mechanical service repair of \$100.00 or more. May not be applied with any other service coupon offers. Expires July 31 See Dealer For Details</p>

BENDER

2500 Mabry Drive, Clovis, NM (505) 763-4465

Have A Nice Day!!!



SOLUTIONS ACROSS
 3. SSA
 7. Al Gore
 8. Branch
 9. Uncles
 10. Unique
 11. Ear
 12. Chorus
 14. Eagles
 17. Traded
 21. Depend
 24. Rice
 25. Umpire
 26. Cabana
 27. Victim
 28. Edicts
 29. Tad
SOLUTIONS DOWN
 1. Clench
 2. Roller
 3. Sensas
 4. Abuse
 5. Racing
 6. Accuse
 12. Cat
 13. Use
 15. Ace
 16. Sad
 18. Remain
 19. Dairy
 20. Dreamt
 21. Decked
 22. Public
 23. Ninety

CLUES ACROSS

1. Chinese barrier
8. Causes air to circulate
9. Renaissance card game
10. Feeling
11. Vain
14. Turned in chips
15. ___ Keach, actor
17. Changed, in a way
19. Knife
23. Visualize
24. ___ dashery
25. Pirate's quest

CLUES DOWN

1. Long, hard-hit fly ball
2. Servicemen
3. Vow
4. Bottle with a stopper
5. Pulls back
6. Swiss river
7. In an exposed way
12. Twitch
13. Advantages
14. Roman racing vehicle
16. Falling star
18. Astound
20. Piece of furniture
21. Cap with no brim or bill
22. Currently fashionable

Muleshoe Journal

P.O. Box 449 • 304 W. 2nd Street
 (806) 272-4536 • Fax: 272-3567

See Answers in 7/31 Edition of Muleshoe Journal



SATURDAY, JULY 19, 1997

775 head of cattle, 148 hogs, 265 sheep and goats were sold. The sale was good in general with all classes of cattle fully steady to higher.

The Muleshoe Cattle Market is brought to you each week by Muleshoe Livestock Auction, located east of Muleshoe on U.S. 84. Muleshoe Livestock conducts sales every Saturday, beginning with hogs, sheep and goats at 10 a.m. and cattle following at approximately 12 noon.

FOR INFORMATION ON SALES OR TO CONSIGN CATTLE, CALL (806) 272-4201

REPRESENTATIVE SALES

Seller, City	#	Type	Wt.	CWT or PH
Joe Garcia, Ponderosa, NM	1	RWF Bull	235 lbs.	at \$118.00
C.T. Farms, Sudan	3	RWF Strs	348 lbs.	at \$109.00
Johnny Ciseneros, Portales, NM	4	Blk Bulls	368 lbs.	at \$105.00
Bill Bradley, Amherst	1	Char Bull	275 lbs.	at \$115.00
Bill Bradley, Amherst	2	Mxd Strs	375 lbs.	at \$108.00
Buddy Beach, Earth	2	Bwf Bulls	420 lbs.	at \$96.00
Wesley Hill, Abernathy	1	Bwf Str	713 lbs.	at \$83.50
Shena Seaton, Muleshoe	2	Hol Strs	688 lbs.	at \$60.00
Dukatnik Farms, Levelland	2	Mxd Strs	608 lbs.	at \$87.00
Dukatnik Farms, Levelland	3	Mxd Strs	713 lbs.	at \$82.50
Tommy Lewis, Morton	13	Mxd Strs	659 lbs.	at \$85.75
Tommy Lewis, Morton	14	Mxd Strs	778 lbs.	at \$82.00
Tommy Lewis, Morton	9	Mxd Strs	829 lbs.	at \$78.50
Keila Kennedy, Muleshoe	1	Blk Str	770 lbs.	at \$80.25
CT Farms, Sudan	3	Mxd Hftrs	292 lbs.	at \$100.00
Martin Lopez, Lubbock	3	Mxd Hftrs	340 lbs.	at \$94.50
Martin Reynosa, Hereford	1	Bwf Hfr	365 lbs.	at \$97.00
Bill Bradley, Amherst	3	Mxd Hftrs	395 lbs.	at \$90.00
Luis Estrada, Texico, NM	1	Blk Hfr	455 lbs.	at \$88.00
Kelly Cure, Olton	6	Mxd Hftrs	599 lbs.	at \$80.50
Mike & Debra Beauchamp, Bovina	3	Mxd Hftrs	615 lbs.	at \$77.50
Herminio Gutierrez, Hereford	1	Blk Hfr	690 lbs.	at \$75.00
3M Cattle, Muleshoe	55	Mxd Hftrs	746 lbs.	at \$76.50
MW Livestock, Sudan	5	Simm Prs		\$775.00
MW Livestock, Sudan	2	Brang Prs		\$700.00
Chico Cattle, Abernathy	2	Blk Prs		\$700.00
Diamond Y Cattle, Muleshoe	1	Bwf Cow P7		\$610.00
Brian Campbell, Morton	1	Red Bull		\$925.00
Craig Smyer, Muleshoe	1	Red Cow	1245 lbs.	at \$44.25
Dusty Griffin, Olton	2	Mxd Cows	1310 lbs.	at \$43.25
B&B Cattle, Amherst	1	Char Cow	1200 lbs.	at \$44.00
Mike & Debra Beauchamp, Bovina	3	Char Cows	1355 lbs.	at \$43.50
Prairie View Dairy, Muleshoe	1	Hol Cow	1235 lbs.	at \$43.50
Kelly Cure, Olton	1	Char Bull	1620 lbs.	at \$50.00
Tommy Lewis, Morton	1	Blk Bull	1810 lbs.	at \$50.25

Journal classifieds

REAL ESTATE
 AUTOMOBILES
 HELP WANTED
 GARAGE SALES

STOP & SHOP

Deadlines are 5 p.m. Monday and Thursday

Call 272-4536

Deadlines are 5 p.m. Monday and Thursday

LEGALS

Notice To Creditors
 Notice is hereby given the original Letters of Administration for the Estate of Nathaniel Aaron Gutierrez, Deceased, were issued on July 9, 1997, under Docket No. 2121 pending in the Court of Bailey County, Texas, to Jose Y. Garcia. Claims may be presented in care of the attorney for the Estate addressed as follows:
 Jose Y. Garcia, Administrator
 Estate of Nathaniel Aaron Gutierrez, Deceased
 c/o Jerry Smith, P.C.
 Attorney At Law
 P.O. Box 1191
 Hereford, Texas 79045
 All persons having claims against this Estate which is currently being administered are required to present them within the time and in the manner prescribed by law.
 Dated: July 17, 1997
 Jerry Smith, P.C.
 Attorney At Law
 205 West 4th Street, Ste 101
 Hereford, Texas 79045
 (806) 362-8100
 (806) 364-8103 Fax

FOR SALE

1995 Dodge Neon • White, 4 door, \$6,995. (505) 359-1775, Portales, NM. 30s-1tc

1989 Chevy Conversion Van • \$6,995. (505) 359-1775, Portales, NM 30s-1tc

For Sale: **Finished Healing Horse**. Can Go Both Ends. 13 Year Old Gelding. Call (505) 742-1033. 30s-2tc

1996 Chevy Extended Cab • White, turbo diesel. \$19,995. (505) 359-0947, Portales, NM 30s-1tc

1983 L2 Gleaner
 Combine 24' Header field ready.
1981 850 Massey
 Combine 24' Header field ready.
 (505) 359-0947, 477-2220, 760-7527, 760-7522. 24t-tfc

1979 GMC VAN
 350 cu. in motor, low miles on engine. New tires, new AC, front & rear, tinted windows, captain chairs. Call 806-965-2869 30s-2tpd

FOR SALE

Circle E Pets & Grooming:
 Tropical Fish, Land hermit crabs, Cockatiels, Doves, Zebra finches, Parakeets, Chinchillas, Feeder mice, Rabbits, Large Iguanas, 1 block North of Intersection Hwy 1760 & Hwy 84. 272-4118. 29t-6tc

1997 Chevy Suburban • White, 4x4, Silverado, 400 miles, \$33,500. (505) 359-1775, Portales, NM 30s-1tc

CUSTOM SWATHING & BALING
 \$12 a bale, David Schulte. 965-2489 or 647-7740. 16s-50tpd

SOLID OAK KIMBALL
 Upright Piano. Excellent Condition. Bargain Price. Can Be Seen Locally. Call 806-272-3680. 30s-2tpd

1986 Chevy 3/4 Ton • 350, automatic, \$4,995. (505) 359-0947, Portales, NM 30s-1tc

GARAGE SALES

HUGE 5 FAMILY GARAGE SALE
Friday & Saturday
July 25 & 26 • 8 a.m. - 7 p.m.
 1 3/4 Miles North on Friona Hwy. (Brick House w/ flag pole on west side of hwy) King waterbed, 4 wicker chairs, bedspreads, lamps, toys, roller blades, trampoline, dishes, christmas decorations, clothes, and lots of knick-knacks! 30s-2tpd

MOVING SALE
 Everything Must Go! Fri. & Sat. July 25 & 26 8 a.m. - 5 p.m. • 5 1/2 Miles West on FM 1760 30t-1tp

HELP WANTED

Bookkeeper Needed
 Computer skills a must. Experience in Redwing prefer. Fax resume, (806) 272-4808, Call (806) 272-4365. 29t-tfc

HELP WANTED

Jobs! Jobs! Jobs!
 Minsa Southwest is Now hiring. Great pay, great hours. Benefits will start after 90 day probation. Apply at Minsa Southwest 1 1/2 miles south on Hwy 87. 30t-2tc

Help Wanted Reporter/ Photographer
 Part or Full Time. Experience a definite plus, but not necessary. Contact Rick White at the Muleshoe Journal. 272-4536. 17t-tfc

MOBILE HOMES

Better Living Homes
 1997 Singlewide Mobile Home. \$19,000. Please Call (505) 356-5448. 17t-tfc

MISCELLANEOUS

Bad credit? Erase bad credit, stop creditor harassment, lower monthly payments, eliminate interest. Send \$1 and SASE to: **JC and Associates, P.O. Box 967, Lamesa, Texas 79331.** 23s-tfc

Vending Route for Sale
 50 locations. \$800-\$1200 per month income. Cost \$2995.00. 1-800-963-6123. 30t-2tc

FARMS & RANCHES

For Sale: 80 acres of grassland 3 miles north of Muleshoe. Reasonably Priced. Call HCR Real Estate, 806-364-4670. 26t-10tc

Call 272-4536 To Place Your Ad



Better Living Summer Blowout!!

Save As Much As \$6,500⁰⁰

On Selected Homes

- **SATURNS**, Including a 2,100 Sq. Ft. 4 Bdrm. Tape & Texture.
- **PATRIOTS**, Including a 2,100 Sq. Ft. 5 Bdrm, 3 Bath Home.

Don't Miss Out!

All Sales Are Limited To Homes on Sales Lot. No Trade-Ins on Any Homes On Sale.

Come See Nick & Sherry Today!



Located 1/2 Mile North of Portales on U.S. 70
1-800-404-1321 Portales, NM (505) 356-5448
 Lic. # D00681 'Se Habla Espanol'

MISCELLANEOUS

Roundup Applications
 Pipe-Wick mounted on high-boy. 30" or 4" rows. Cotton, Milo, Soy Beans and Corn. Call Roy OBryan, 806-265-3247. 25t-tfc

MOBILE HOMES

FLEETWOOD HOME CENTER
 Portales Homes
Introductory Price
5 BEDROOM
 Retreat, Study or Porch Option. You Pick Colors.

QUICK DELIVERY • ONLY \$46,999!!
 Limited Orders. Show Model Here!
 Call Portales Homes 800-867-5639 DL. 366

LOST

Lost Billfold - Man's dark brown leather billfold Lost Tuesday morning. Billfold belongs to A.D. Stancell and contains several papers. **Offering Reward.** Please Call 272-3735 30t-2tc

REAL ESTATE

For Sale by Owner: 3-1/2-1, 1900 square foot living area with fireplace, storage building, fenced yard and heat pump. Call 272-4833 or 272-4464. 28s-8tc

For Sale by Owner: 1912 W. Ave. H, 3 bdrm, 2 bath, 2 car garage, brick, new roof. Inside: new paint, remodeled, great location. 806-481-3872. 25t-tfc

For Sale: 2 bdrm, 1 bath, brick entrance, fire place, outside storage, carport, patio, laundry, carpets & draperies. Call 272-5672. 30s-tfc

Muleshoe Journal

REAL ESTATE

FOR SALE: 3bdrm, 2 bath double car garage. Site on 6 acres. Location 7 miles north east of Muleshoe. Call 965-2795. Leave message. 27t-7tc

House for Sale or Rent with reduced Price or Rent: 3bdrm, 2 bath, 1,750 sq. ft. (Assumable note with small down payment.) 612 W. Ave F. 806-265-3413. 24t-tfc

Excellent price, Excellent location, excellent condition: 3-1^{3/4}-2, brick, central A&H (heat pump), fans, FP, fenced yard, storage building, sprinkler system. 1806 W. Ave E. Call-272-5940. 28t-5tpd

House For Sale: 10 Acres, 1 1/2 miles east of Sudan on Highway 84. 3 bdrm, 1 bath, extra room upstairs. Small office area. Central Heat & Air with three storage building. Call 227-2373 from 8 a.m. - 6 p.m. or 227-2587 after 6 p.m. 30s-3tc

REAL ESTATE

For sale: 7 acres, six miles from town. Partially fenced. Cash or owner financed. (806) 272-4975. 23t-tfc

SERVICES

Mary's Sewing Shop
 Mary Davis Owner 321 w 3rd Muleshoe, Texas, 79347 • Monday- Thursday 10:00 a.m. - 5:00 p.m. 30t-2tc

STORAGE

OPENING SOON
 Sudan storage, 8 x 10; 10 x 12 space available. Call Jan or Shirley (806) 933-4347, or at The Oak Tree Antique (806) 227-2325. 28t-4tc

WANTED

Care provider needed for Blanche Lenderson on Sundays (8 a.m. - 5 p.m.). \$6 an hour. Apply in person at the office of **Michael R. Caldwell, P.C., 113 W. Ave D, Muleshoe.** References required. 25t-tfc



Nieman Realty



116 E. Ave. C George Nieman, Broker 272-5285 or 272-5286

RICHLAND HILLS - PARKRIDGE AREA

NICE 3-3-1 Brick, cent. Heat, Evap. Air, built-ins, 2000' + lv. area, fenced yd., stor. bldg, MORE!! \$60K!!! RH-2
VERY NICE 3-2-1 Brick, Cent. A&H, built-ins, fans, new paint, carpet, & drapes, fenced yd. \$60K!!! RH-1
NICE 3-2-2 Brick, Cent. A&H, built-ins, FP, cov. patio, fenced yd. \$50's!!!
NICE 3-2-2 Brick, Cent. A&H, built-ins, FP, corner lot!! \$50's!!! RH-1

IN CONTRACT

HIGHLAND AREA
JUST LISTED-NICE 3-2-2 Brick, Cent. A&H, built-ins, gas log FP, fenced yd., stor. bldg., MORE!! \$60K!!! HL-5
2-1-1 Home, vinyl siding, wall furnace heat, fenced yd. \$17,000!!! HL-1

BUSINESS FOR SALE-SNACK SHACK - Lot, Buildings, furniture, and fixtures!!!!
 Commercial Bldg. & Lot, Approx. 1790' area, Numerous uses!! \$22K!!!
 10,000+ sq. ft. bldg., approx. 105'x140' paved aprking lot on U.S. 84 & 70!!

RURAL HOMES

2-2-1 carport Mobile Home on .665 acres on pavement close to town, Cent. heat, evap., air, DW, large barn, stor. bldg. and MORE!! \$25K!!! HR-5
W. of SUDAN-NICE 3-3-2 Brick Home, 5 acre tract on Hwy. 298, Cent. Air & Heat, built-ins, large Quonset Barn. MORE!!!! \$95K!!!

ASK ABOUT OUR COMMERCIAL LISTINGS!!!

SIZZLING

Prices Effective July 23-29, 1997

Summer Food Savings

ALL TYPES PEPSI \$1.29

6 pack 12 oz. cans

ASSORTED ALL SPORT DRINKS 20 OZ. 3/\$1



MIX OR MATCH ANY OF THESE ITEMS

SHURFINE ASSORTED/ CHERRY
TWIN POPS 6 PACK
SHEDD'S STICKS
COUNTRY CROCK 16 OZ. PKG.
PLAINS FRENCH ONION OR
GREEN CHILI DIP 8 OZ. TUB.

YOUR CHOICE
4/\$3

SHURFINE
MARSHMALLOW CREAM .7 OZ. JAR
CHUN KNIG SLICED OR WHOLE
WATER CHESTNUTS 8 OZ. CAN
KRAFT SPIRALS, ABC'S, ANIMANIACS, 123'S, OR RUG RATS
MACARONI & CHEESE ... 5.5 OZ. BOX

MEAT

PILGRIM'S PRIDE SMALL PACK CHICKEN
LEG QUARTERS LB. **36¢**
VALUE PACK APPROX 73% LEAN
GROUND BEEF LB. **89¢**
MARKET MADE APPROX. 81% LEAN
HAMBURGER PATTIES LB. **\$1.29**
BONELESS PORK
SIRLOIN CHOPS LB. **\$2.49**
OLD MILL
HOT LINKS LB. **\$1.69**
MARKET CUT RED RIND OR COLBY
JACK CHEESE LB. **\$2.29**
ADVANCED COUNTRY FRIED BREADED BEEF FINGERS OR
PATTIES 12 OZ. PKG. **\$1.39**

BEEF TRIPE LB. **49¢**
CUBED
BEEF TRIPE LB. **69¢**
SMOKED
PORK HOCKS LB. **\$1.09**
PEPPERONI OR COMBINATION
LUIGI'S PIZZA ... 8.5 OZ. PKG. **89¢**
DECKER
CHOPPED HAM 10 OZ. PKG. **\$1.79**
DECKER REGULAR, MAPLE, OR MESQUITE
SLICED BACON 12 OZ. PKG. **\$1.69**
DECKER THICK OR REGULAR SLICED
MEAT BOLOGNA 12 OZ. PKG. **\$1.15**



JUMBO
LETTUCE 2 HEAD / **\$1**
EXTRA LARGE
TOMATOES 2 LBS. / **\$1**
RED SEEDLESS
GRAPES LB **88¢**
RED DELICIOUS 3 LB. BAG
APPLES 2 / **\$3**

PRODUCE

4 LB. BAG
ORANGES 2 / **\$3**
ARTICHOKES 2 / **\$1**
GIANT SNO-WHITE
CAULIFLOWER 2 / **\$3**
DOLE AMERICAN BLEND
SALAD MIX 12 OZ. PKG. **\$1.99**

LOWE'S HAMBURGER OR
HOT DOG BUNS .. 8 CT. PKG. **2/88¢**
SELECTED VARIETIES FRITOS®
CORN CHIPS REG. \$2.19 **3/\$5**
CHILI CHEESE DIP, OR HOT/ ORIGINAL JALAPENO
FRITOS® BEAN DIP REG. \$2.19 **2/\$4**
YOGURT OR ASSORTED REGULAR,
DIET, OR LIGHT ICE CREAM
BLUE BELL 1/2 GALLONS **2/\$5**
ASSORTED MIX
CRYSTAL LIGHT ... MAKES 8 QTS. **\$2.99**
NABISCO SELECTED VARIETIES CEREAL BARS
SNACKWELL'S .. 7-8 OZ. 6 CT. PKG. **\$1.99**
• 13-17 CT. PULL-UPS 1-2-3
• 18-34 CT. SUPREME STEP 1-5
• 20-24 CT. OVERNITE 3-4
• 22-32 CT. ULTRA 3-4-5
HIM/HER HUGGIES ... YOUR CHOICE **\$6.79**

KLEENEX COTTONELL PRINT, WHITE,
OR ULTRA DOUBLE ROLL
BATH TISSUE ... 4 ROLL PKG. **\$1.89**
• 20 OZ. - 8 QT. SUGAR SWEET LEMONADE OR PINK
LEMONADE • 18 OZ. - 8 QT. SIPPER LEMON/STRAWBERRY,
OR SIPPER CRAN/RASPBERRY
COUNTRY TIME 2 / **\$5**
ULTRA REGULAR OR WITH BLEACH
CHEER LIQUID ... 100 OZ. JUG **\$4.99**
REGULAR, WITH BLEACH, OR CHEERFREE
CHEER ULTRA 2 .. 87-92 OZ. BOX **\$4.99**
KLEENEX VIVA
PAPER TOWELS ROLL **79¢**
HORMEL REGULAR OR CHICKEN
VIENNA SAUSAGE 5 OZ. CANS **2/\$1**
NABISCO • FAT FREE LOW CALORIE CRANBERRY NEWTON
• COBBLERS APPLE CINNAMON OR PEACH APRICOT
• REGULAR OR FAT FREE FIG NEWTON • FAT FREE APPLE,
RASPBERRY, OR STRAWBERRY NEWTON
NEWTONS 12-16 OZ. PKG. **\$2.39**
HORMEL
POTTED MEAT 3 OZ. CAN **29¢**

Deli Lunchmeat

TURKEY BREAST lb. **\$2.79**
JALAPENO LOAF lb. **\$1.79**
COOKED HAM lb. **\$2.79**
CHOPPED HAM lb. **\$1.79**
HAM & CHEESE LOAF lb. **\$2.99**
SALAMI lb. **\$1.79**
BOLOGNA lb. **\$1.79**

Ask Market Personnel

Libbey's **SHIVALRY** This Week's Feature
COLLECTION 23 oz. Ice Tea
Each **99¢**

HEALTH & BEAUTY

SCOPE ORIGINAL MINT OR PEPPERMINT
MOUTHWASH ... 36 OZ. BTL. **\$3.29**
REGULAR OR POWDER ANTI-PERSPIRANT
& DEODORANT SECRET OR SURE
ULTRA DRY 2.7 OZ. **\$2.79**
CLAIROL HERBAL ESSENCES RENEWER,
REVIVER, REPLENISH, OR REFRESHER
SHAMPOO 12 OZ. BTL. **\$2.99**
CLAIROL HERBAL ESSENCES RENEWER,
REVIVER, REPLENISH, OR REFRESHER
CONDITIONER ... 12 OZ. BTL. **\$2.99**



DAIRY & FROZEN

TOMBSTONE SELECTED VARIETIES 12"
(OVEN RISING NOT INCLUDED)
PIZZA 19.4-23.6 OZ. **2/\$6**
ORIGINAL/ CHERRY BULLETS, MINI RAINBOWS,
OR MINI CITRUS RAINBOWS
BLUE BELL 24 PACK **\$1.89**
SHURFINE
SOUR CREAM 1/2 PINT **69¢**

SHURFINE
CREAM CHEESE 8 OZ. BOX **99¢**
MINUTE MAID COUNTRY STYLE, ORIGINAL,
PLUS CALCIUM, OR PULP FREE
ORANGE JUICE 64 OZ. CTN. **\$1.88**
YOPLAIT SELECTED VARIETIES
YOGURT 6 OZ. TUBS **5/\$2**
SAUSAGE, PEPPERONI, HAMBURGER OR COMBINATION
MR. P'S PIZZA 7 OZ. PKG. **2/\$1**

WESTERN UNION MONEY TRANSFER™
"The fastest way to send money"

Lowe's **Pay-n-Save**

MARKETPLACE

401 W. American Blvd.
Muleshoe 272-4585

515 W. American Blvd.
Muleshoe 272-4406

WE RESERVE THE RIGHT TO LIMIT QUANTITIES IN TEXAS