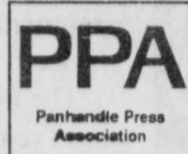




# Muleshoe Journal



Volume 75, No. 28

Published Every Thursday at Muleshoe, Bailey County, Texas 79347

Thursday, July 10, 1997

## 4th holiday gets mixed reviews

### ■ Wind, hail dim otherwise outstanding celebration

The 1997 Fourth of July will be remembered in the Muleshoe area as the holiday with a set of luggage that didn't match.

The mixed-bag holiday brought record crowds to town for the Joe's Boot Shop Tent Sale, the High Plains Junior Rodeo Association rodeo and the Muleshoe Chamber of Commerce and Agriculture's Fourth in the Park.

Welcomed rains on Thursday night and Saturday morning kept the heat down and made the celebration more pleasant with little adverse effect, other than delaying wheat harvest and making the rodeo arena a little muddy.

But the rain returned on Saturday night, bringing with it damaging winds and hail. The fast-moving storm left shredded corn, cotton, milo and

wheat in its path. For many Bailey County farmers, it was a bitter end to an otherwise fruitful holiday.

Damage was still being evaluated Tuesday, and most farmers were unsure what direction to pursue. Some of the most severe damage was reported near Coyote Lake Feedyard, where 800 acres of silage corn was a total loss.

"There is about 8-10,000 acres of crop damage," said Curtis Preston, agricultural extension agent. "It's too early to say what it's done to corn, probably a 20 percent to a total loss."

Preston said that farmers are limited to what they can do about their damaged crop, the deadline is too close. They can,

Continued on page 4



## PASSING BY MULESHOE

Country music legend Johnny Rodriguez brought his show to Muleshoe last weekend, playing at the Joe's Shop Tent Sale and the Muleshoe Chamber of Commerce and Agriculture's Fourth in the Park celebration. Rodriguez, a Tex-Mex music pioneer, played to a record crowd at Joe's and spent time signing autographs (above) and talking to fans. The Texas native also visited the Muleshoe Area Healthcare Center, stopping for a photo and chat with 87-year-old Ruby Wilson. Rodriguez was accompanied by his manager, Randy Willis (left) and his girlfriend, Debbie McNeely.



## Cyclists push into Muleshoe

Students from universities and colleges across the country cycled their way through Muleshoe Monday as a part of PUSH America's 10th annual Journey of Hope.

PUSH America is a non-profit organization that helps children and adults with mental and/or physical disabilities that encourages students to become more involved in their communities. The Journey of Hope, a program of PUSH America, donates and builds adaptive equipment through educational programs, and promotes volunteerism on college campuses.

Traveling through 22 states in 63 days, cyclists stop at certain points along their route to help at centers with disabled persons.

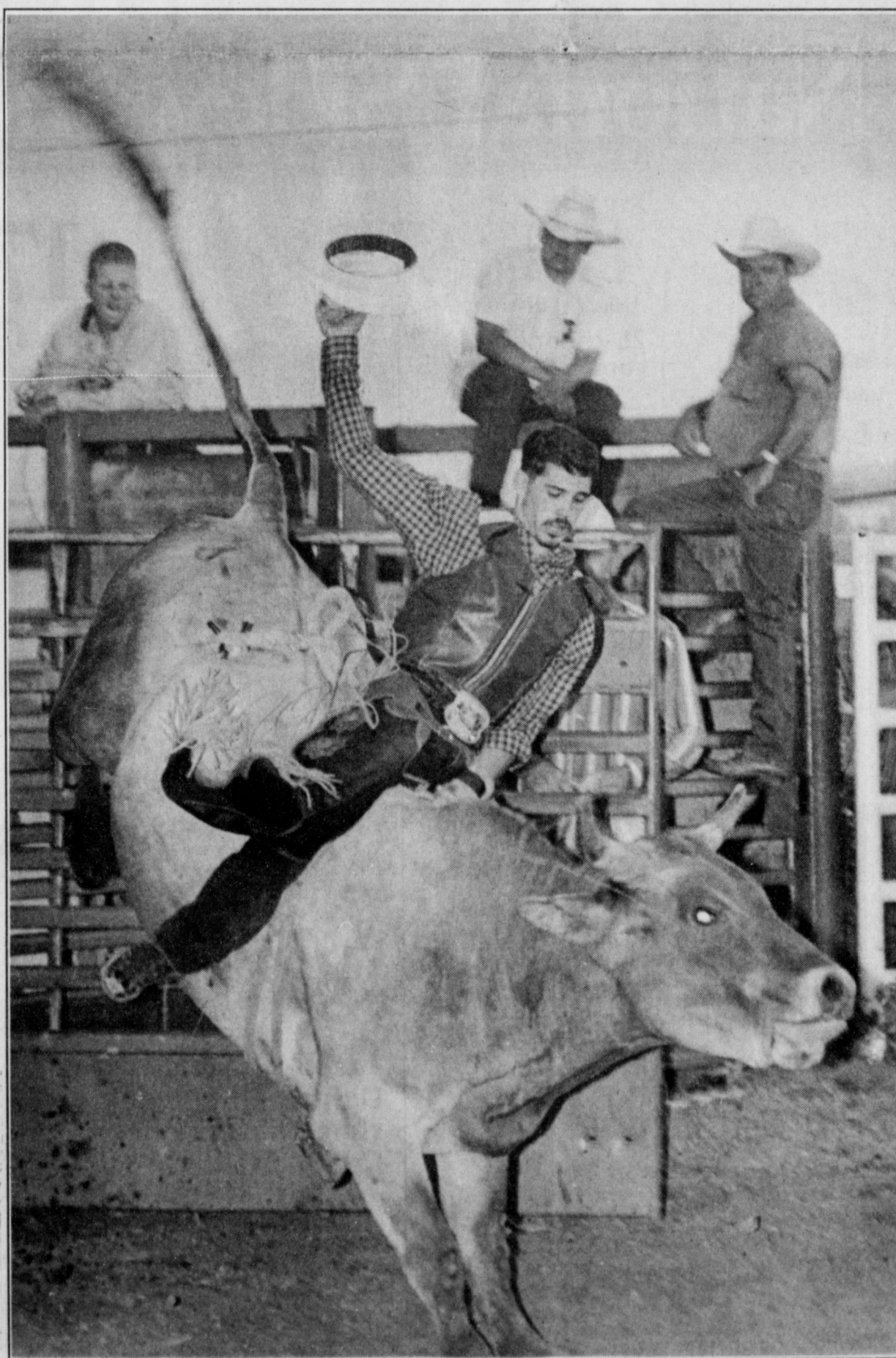
"It makes the ride worth while to know that I reached out to somebody," said Lyn Wright, a cyclist with the south route. "It's what keeps me riding."

In 1987, Bruce Rogers, a Pi Kappa Phi fraternity member, started PUSH America. Rogers traveled from Oregon to Virginia alone, raising awareness of the disabled.

Since then, the program has grown to an average of 60 cyclists per year, raising \$300,000.

To qualify for the team, bikers had to raise \$4,000 and crew members had to raise \$3,000. Team members were selected

Continued on page 2



## Hats off to High Plains

Robert Aragon of Mosquero, NM appears in control of his bull and his hat during the High Plains Junior Rodeo Association rodeo Saturday at Dusty Rhodes Arena. While Aragon was in the middle of the bull and received a score of 68, the hat was actually airborne and only appeared to be in his hand.

## Locals light up HPJRA rodeo

Area cowboys and cowgirls rounded up their share of the winnings during the High Plains Junior Rodeo Association rodeo sponsored by the Lazbuddie Senior Class July 3-5 at Dusty Rhodes Arena.

Lazbuddie's Jeffery Seaton had a huge weekend, winning the calf roping and the ribbon roping and placing second and third in the team roping in the 13-15 age group.

Seaton's Lazbuddie classmate Josh Morris also had a big weekend in the 13-15 division, placing first and third in the

team roping, second in the ribbon roping and ninth in the calf roping.

Other area competitors who had strong performances included Muleshoe's Julie Slayden, who was second in the 16-19 barrel race and sixth in the goat tying. Lazbuddie's Jason Thomas won the 16-19 team roping with Ryan Brewer of Seagraves and placed eighth in the chute dogging.

Sterling Via of Lazbuddie was a familiar name in the

Continued on page 7

## Applications now accepted for losses due to snow storm

Applications for emergency farm loan for losses caused by a snow storm, which occurred on April 25, 1997 are being accepted at the Farm Service Agency (FSA) office located on 115 E. Avenue D in Muleshoe, according to County Supervisor Joyce M. Thompson.

Bailey County is one of contiguous counties in Texas recently named by Secretary of Agriculture Dan Glickman as eligible for loans to cover part of actual production losses resulting from snow storm, which occurred on April 25.

Ms. Thompson said farmers

Continued on page 2



## Unwelcome sight

Shredded corn plants along FM 1760 west of Muleshoe show the result of last Saturday's devastating storm. It will be some time before actual damage is known.

AROUND MULESHOE

**Methodist to hold Vacation Bible School**

The First United Methodist Church is holding a vacation Bible school will be held on Sunday, July 13 in conjunction with Sunday school and the regular worship service.

The theme is Wild Frontier Bible Theme Park. Children 3 years of age through fifth grade are able to participate and are asked to wear casual clothing (shorts are acceptable). Activities such as a presentation, games and an ice cream social will begin at 9:30 a.m.

For more information, contact the Methodist Church at 272-5517.

**Three Way to hold school board meeting**

The Three Way School Board of Trustees will hold a regular meeting of the school board at 8 p.m. in the Administrative Office of the Three Way School, located at Maple.

**SPC registration scheduled Aug. 28**

South Plains College's fall 1997 registration is scheduled Aug. 28 on the Levelland campus. Enrollment at SPC Lubbock is Aug. 27 for returning students and Aug. 28 for new students.

Registration at the Reese Center is Aug. 25-26. Courses are offered by SPC in four 11-week sessions during the afternoon and evenings in partnership with the Frenship Independent School District.

Classes begin Sept. 2. To obtain a fall 1997 schedule of classes listing specific registration times on each campus, contact the SPC Office of Admissions and Records Office at 747-0576, ext. 4660, or the South Plains College Reese Center at 885-3048.

**Playday set for July 12 in Levelland**

A playday in Levelland will be held July 12 as a part of Early Settler's Day. The playday will be held at the Sheriff Posse Arena located southwest of the city park off of Ave. S.

Entry fees will be \$3 per event with five age groups and boys and girls competing separately. Trophies will be awarded. Books will open at 1 p.m. and the playday will begin at 2 p.m. Events include pole bending, potato race, straight-away barrels, flag race and cloverleaf barrels.

For more information, contact Susan at 894-8492 or

894-9017, or call Raymond at 894-6789.

**LVN Association to meet July 14**

The Licensed Vocational Nurses Association of Texas Lubbock Division 18 will meet July 14 from 7 p.m. to 9 p.m. in the Arnett room of St. Mary of the Plains Hospital.

Featured speaker will be Eric Benson, D.I.S. He will speak on sexually transmitted diseases.

All members are urged to attend to vote for the two members running for state office and pay their dues. For more information, call Melvena Coverdell at 828-4565.

**Clovis Chamber breakfast July 11**

The Clovis/Curry County Chamber of Commerce monthly membership breakfast will be at 7:30 a.m. Friday July 11 at ETSC Internet, 600 N. Main st.

During the meeting, Executive Director Ernie Kos will introduce new members, summarize May and June chamber events and update members on future events. Members are encouraged to attend, as is anyone interested in learning more about the chamber.

For additional information about this meeting, call 505-763-3435.

**LOCAL WEATHER AT A GLANCE**

DATE	HIGH	LOW	PRECIP
7/2	100	65	—
7/3	97	62	—
7/4	96	57	.35
7/5	78	57	.97
7/6	84	55	.45
7/7	85	60	—
7/8	90	62	—
<b>Year to date</b>			<b>13.14 inches</b>

SOURCE: R.G. BENNETT, LOCAL NATIONAL WEATHER SERVICE OBSERVER  
ALL TEMPERATURES AND PRECIPITATION READINGS ARE FOR THE PREVIOUS 24 HOURS.

**EXTENDED FORECAST**

Partly cloudy through Saturday with a 20 percent chance of rain. Highs in the upper 80s and lows in the 60s.

**Extra, Extra Photo Savings!**

**FREE 2nd Set!**

3" **ALCO Advantage** Prints

OR  
4" **Kodak** Prints

Every Tuesday & Saturday!

**ALCO Advantage**

1401 W. American Blvd. 272-5525  
Monday-Saturday 9 am-9 pm; Sunday 12 noon-9 pm

Offer available on 3" Alco Advantage Processing or 4" Kodak Premium Processing prints. 3" prints from 110, 126, disc and 35mm film. 4" prints from 35mm film only, C-41 Process only. Not available on Advanced Photo System, Panoramic or 1/2 frame 135 film. Cannot be combined with any other offer.

**Dr. A.R. Ploudre**

**Open your eyes to vision care that works with your budget!**

- Quality care at a reasonable cost
- Contact lenses
- Eyeglass prescriptions filled
- NM & Texas Medicaid, Medicare Assignment

*We are also proud to provide special assistance to low income families in need of vision care. Families who feel they qualify are encouraged to call for more information.*

Payment plan available • Se Habla Espanol

**1515 Gidding St., Clovis, N.M.  
(505) 762-2951**

**Loan**

Continued from page 1

may be eligible for loans of up to 80 percent of their actual losses or the operating loan needed to continue in business or \$500,000, whichever is less. For farmers unable to obtain credit from private commercial lenders, the interest is 3.75 percent.

"As a general rule, a farmer must have suffered at least a 30 percent loss of production to be eligible for an FSA emergency loan," Ms. Thompson said. Farmers participating in Federal Crop Insurance programs will have to figure in proceeds from those programs in determining their loss.

Applications for loans under this emergency designation will be accepting until February 16, 1998, but farmers should apply as soon as possible. Delays in applying could create backlogs in processing and possibly over into the new farming season," Ms. Thompson said.

FSA is a credit agency of the U.S. Department of Agriculture. It is authorized to provide disaster emergency loans to recognized farmers who work at and rely on farming for a

substantial part of their living. Eligibility is extended to individual farmers who are U.S. citizens and to farming partnerships, corporations or cooperatives in which U.S. citizens hold a majority interest.

The FSA office in Muleshoe is open from 8 a.m. - 5 p.m. Monday through Friday.

**Cyclists**

Continued from page 1

based on academic achievement, leadership ability, community service and letters of recommendation.

The journey started in San Francisco, Cali. on June 8 and both north and south route riders will meet in Washington, D.C. on Aug. 9.

**HAVE A NICE DAY**

The Journal staff

**Muleshoe Journal USPS 367820**  
Established February 23, 1924. Published by Triple S Publishing, Inc. Every Thursday at 304 W. Second. Box 449, Muleshoe, TX 79347.  
Second Class Postage paid at Muleshoe, TX.  
POSTMASTER: Send address changes to the Bailey County Journal, P.O. Box 449, Muleshoe, TX 79347.  
We are qualified members of:  
Panhandle Press Association, National Newspaper Association, West Texas Press Association and Texas Press Association

WEST TEXAS PRESS ASSOCIATION MEMBER 1997

PPA Panhandle Press Association

**TA TEXAS PRESS ASSOCIATION**

Scot Stinnett, Publisher  
Lisa Stinnett, Vice-President/Comptroller  
Rick White, Editor  
Jessica Orozco, Classifieds  
Pat Durben, Advertising

SUBSCRIPTIONS: Muleshoe Journal and Bailey County Journal  
By Carrier Yearly - \$22.00  
Bailey County — by mail - \$24.00  
Elsewhere - \$26.00  
Advertising Rate Cards on Application

\*Advertisers should check their ad the first day of insertion. The Journals will not be liable for failure to publish an ad or for a typographical error or errors in publications except to the extent of the cost of the ad for the first day of insertion. Adjustment for errors will be limited to the cost of that portion of the ad where the error occurred.\*

**The Shack National Sidewalk Sale**



**49<sup>99</sup>**  
**44% OFF**  
**25-channel cordless**  
Push a button to automatically select the clearest of 25 channels. Super CCT, 10-number memory. Digital coding for call security.  
reg. 89.99, #43-1049



**6<sup>97</sup>**  
**41% OFF**  
**Electronic organizer**  
Alphabetically stores up to 50 names and numbers. Search function. Scheduler with alarm. reg. 11.99, #65-861



**19<sup>99</sup>**  
**33% OFF**  
**Know the temp before you go**  
Indoor/outdoor thermometer measures humidity, too. reg. 29.99, #63-867 Requires 2 "AA" batteries



**20% OFF 11<sup>99</sup>**  
**8-level pocket tester**  
Analog tester is great for students or household testing. Measures AC or DC volts, DC current and resistance. reg. 14.99, #22-218 Requires "AA" battery



**17<sup>99</sup>**  
**40% OFF**  
**4-in-1 remote with easy-to-see lighted keys**  
No more guesswork in the dark! Controls TV, cable box, VCR and one more component.  
reg. 29.99, #15-1911 Requires 4 "AAA" batteries



**29<sup>99</sup>**  
**40% OFF**  
**Portable cassette "note taker"**  
Voice activated to save tape and shorten playback time. Great for personal reminders or meetings. reg. 49.99, #14-1110 Requires 4 "AA" batteries or adapter AC #273-1654, DC #273-1802



**19<sup>99</sup>**  
**HALF PRICE!**  
**Lightweight digital stereo headphones**  
The ultrawide 15-20,000Hz response is so accurate, you'll think you're hearing a live performance. 1/8" plug, in-line volume control.  
reg. 39.99, #33-1022

Owned and operated by  
**Wilson Appliance**  
117 Main 272-5531  
A RadioShack® Dealer

**RadioShack**  
You've got questions. We've got answers.®

Sale prices good through 7/26/97. Prices apply at participating RadioShack stores and dealers. Items not available at a participating store can be special-ordered (subject to availability) at the advertised price. A participating store will offer a comparable value if the product is sold out. Independent RadioShack dealers and franchisees may not be participating in this ad or stock or special-order every item advertised.



**Future farmers of America**

Vicki Villareal rides with the Girl Scouts in the July Fourth parade down Main Street. The Girl Scout float received second place in the float category.

**CENTERLINE ROOFING AND CONSTRUCTION**

Serving Eastern New Mexico & West Texas  
FULLY INSURED

Jeff Reed • Owner  
License #53818 • 505-762-4892 • Clovis

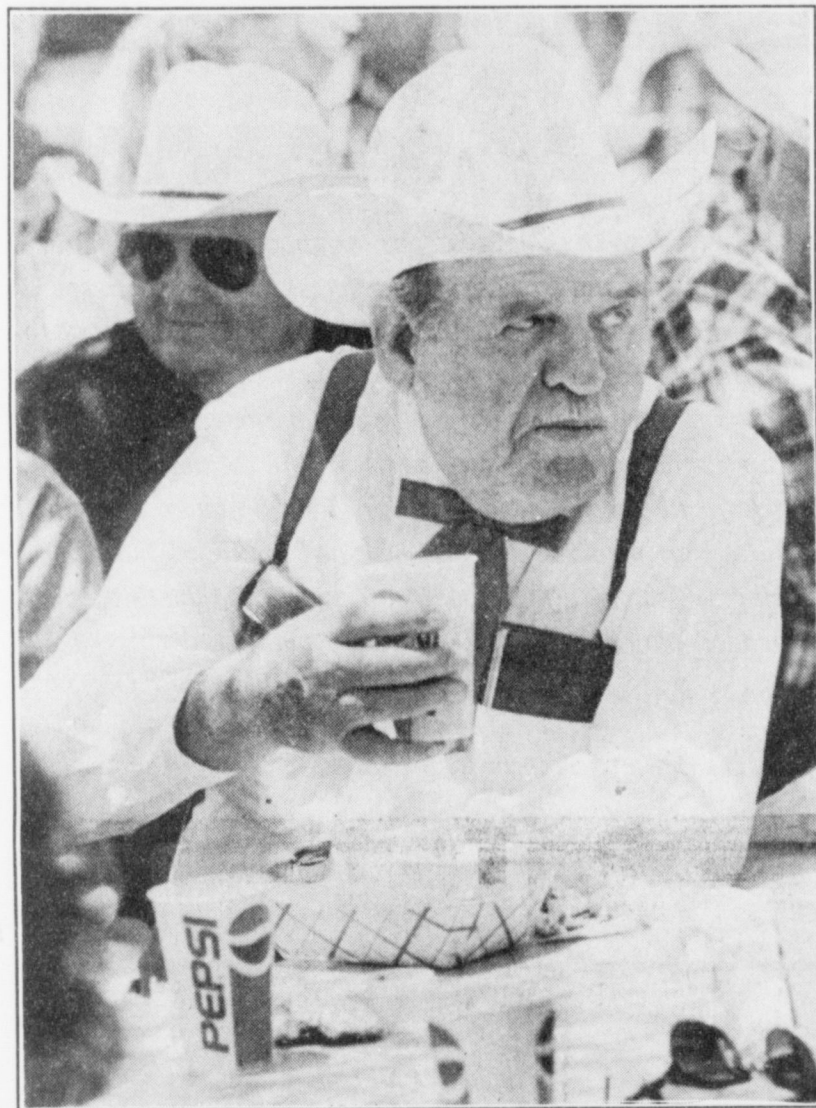
Bridal Selections  
Have Been Made For

*Kayla Magby*  
Bride-Elect Of  
*Chad Nickels*



*The Art Loft*

272-3485 • 1529 W. American Blvd.



**On looker**

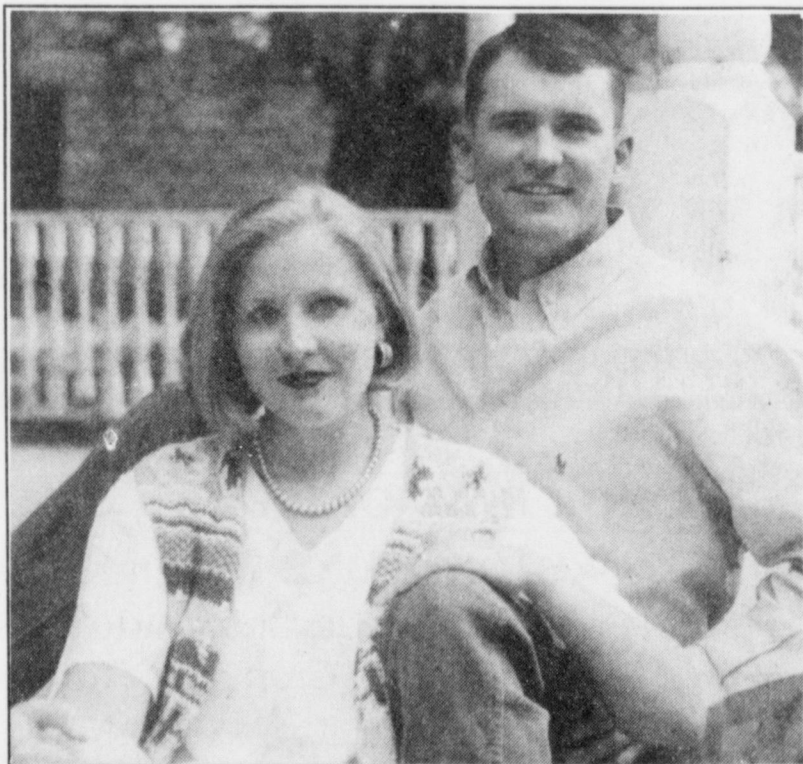
Joe's Boot Shop was the site for good conversation, good food and good entertainment during the annual tent sale. Huge crowds filled the parking lot daily for the 14th anniversary of the event. Bud Street of Muleshoe watches the live entertainment as he sips on a soda.

**ENGAGEMENTS**

Charles and Jeannie Bahlman of Winters, Texas and Lloyd and Janice Bradshaw of Lazbuddie, wish to announce the engagement of their children, Cara Bahlman and Casey Bradshaw.

A September 13, wedding has been planned in Winters, Texas.

Casey is a 1995 graduate of Texas A&M and is employed with Exel as a cattle buyer in Dodge City, Kansas. Cara is a 1997 graduate of Texas A&M with a degree in speech.



Cara Bahlman and Casey Bradshaw

Carlos and Marie Guerra of Friona, announce the engagement of their daughter, Michelle Guerra to Antonio Rosa of Earth, son of Garario and Juan Rosa.

The couple will marry July 19 at First United Methodist Church in Muleshoe.

Michelle is a graduate of Muleshoe, Antonio graduated in Springlake-Earth and attended South Plains College, he is currently employed at Excel Corp, in Plainview.

The Couple will reside in Plainview.



Antonio Rosa and Michelle Guerra

**ADMIT ONE** or more  
to Vacation Bible School

You're invited for  
Toe-tappin' music! • Fun-to-make crafts! • Great new games!  
• Exciting Bible stories you'll remember forever!

WILD  
BIBLE

Where Jesus is the Main Attraction!

**FIRST UNITED METHODIST CHURCH**  
507 WEST 2ND  
9:30 A.M. - 4 P.M.  
SUNDAY, JULY 13TH

**TENT SALE CONTINUES!**

**Joe's Boot Shop**  
and  
**Country Junction**  
**MULESHOE, TEXAS**  
**1-800-658-6378**  
Open Daily 9:30 am-6 pm CDT

Plenty of Bargains Remain!

**BOOT TENT SALE**

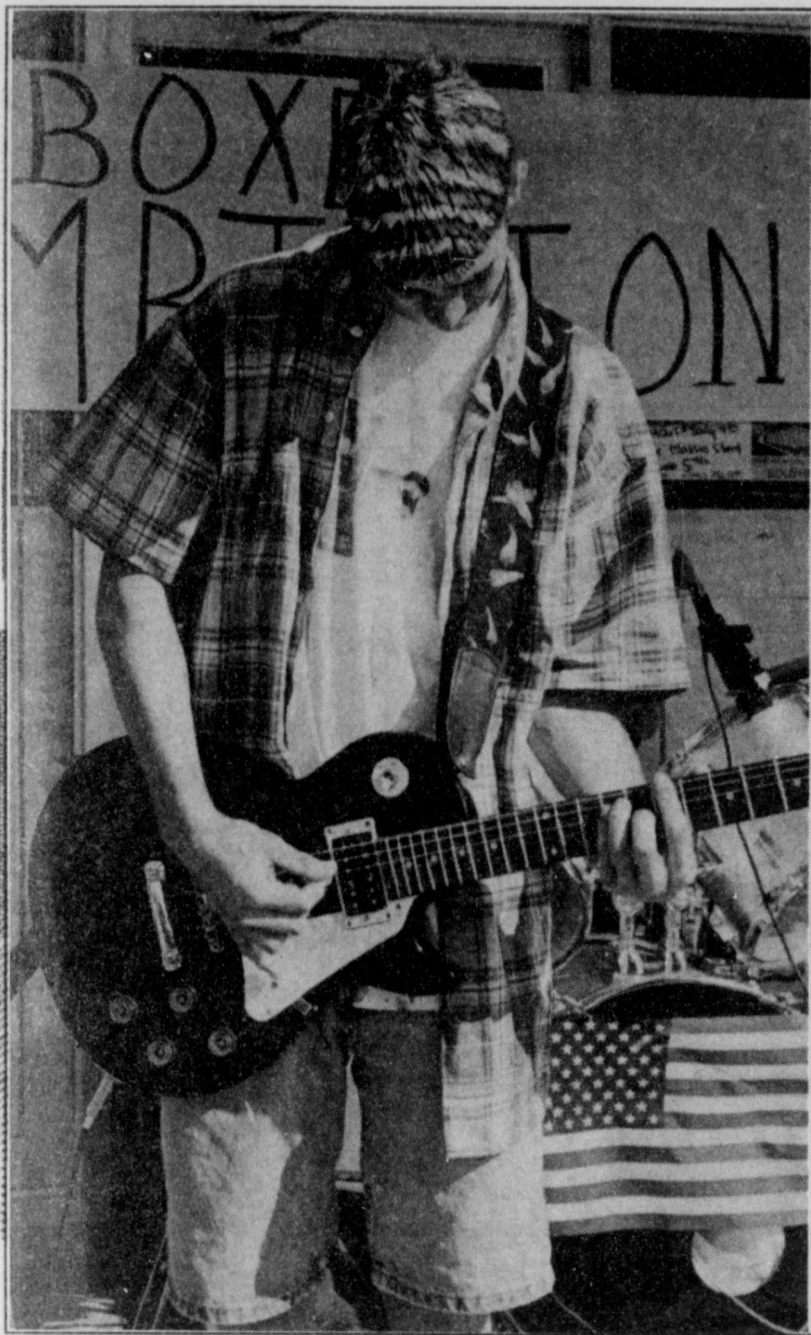
Over 4,000 pairs of Boots under the Tent!

**STOREWIDE SALE AT THE COUNTRY JUNCTION!**  
**MANY ITEMS REDUCED UP TO 1/2 PRICE!**

**SAVINGS**

<b>BOOTS</b> ★★★★★★	<b>ACCESSORIES</b> ★★★★★
TONY LAMA Calfskin 11" & 13" tops <b>\$49</b>	Hatbands <b>\$6</b>
Bullhide, Snakeskins & Lizards 13" tops <b>\$79</b>	Dashboard Spittoons <b>\$6</b>
Bullhide, Smooth Ostrich, Calfskin, Snakeskin & Lizard <b>\$45</b>	NOCONA, TONY LAMA & VOGT Belts (Many Exotics!!!) <b>\$10</b>
Bullhide, Crazy Horse & Buckaroos 13"-15", 17" & 18" tops <b>\$89</b>	<b>HATS</b> ★★★★★★
<b>GOLDEN DEALS !!!!!</b> <b>\$19</b>	BAILEY Felt Hats <b>\$29</b>
TONY LAMA & PANHANDLE SLIM Smooth Ostrich & Shark Skin <b>\$99</b>	RESISTOL 20X Black Gold Hats <b>\$325</b>
JUSTIN & MILLER HEELS DOWN Sport Lacers <b>\$45</b>	Kid's Straws 6X <b>\$16</b>
Ropers & Lacers <b>\$69</b>	Men's & Ladies' Straws 6X <b>\$19</b>
	<b>CLOTHING</b> ★★★★★★
	ROPER, BLAZE, ROCKY MOUNTAIN Jeans <b>\$19<sup>99</sup></b>
	Hundreds of Ladies' Blouses and Men's shirts <b>\$15</b>

Subscribe Today!  
Call the Muleshoe Journal  
**272-4536**



**Flag head**  
Aaron Faver makes his last performance with a local high school band, Boxed Ambition, as they play for the parade crowd Friday on Main Street.

## Holiday

Continued from page 1

however, resort to black-eyed peas, grain sorghum or some sort of hay crop, or just wait until the fall for wheat.

Despite the bad news, the celebration had its highlights. Country music recording star Johnny Rodriguez arrived a day early for his performances at Joe's Boot Shop and at the Chamber of Commerce's celebration in the park. Rodriguez took time out to visit the Muleshoe Area Healthcare Center and 87-year-old Ruby Wilson, a longtime fan who was unable to make the performance at Joe's or the park.

Rodriguez's performance brought the largest one-day crowd in the 14-year history of the Joe's Boot Shop Boot Tent Sale and he spent an hour between sets signing autographs and visiting with fans.

The High Plains Junior Rodeo, sponsored by the Lazbuddie Senior Class, added to the festivities with three full days (more than 650 runs) of rodeo.

There were 47 entries in the Chamber of Commerce's annual parade, as well as numerous bicycles, go-carts and three-wheelers, said chairman David Tipps.

An expanded schedule of youth events in the park added to the celebration. The traditional fireworks and entertainment, both by local talent and Johnny Rodriguez, made for a complete day.

"I was very pleased with the turn out at the parade and the park," said Chamber Manager Patty Hartline. "We were trying to do something different this year, trying to involve teenagers in activities and hopefully next year we can do even more."

Here are parade awards and results of the youth games in the park:

- Muleshoe Chamber of Commerce and Agriculture Fourth of July Parade
- Floats** — 1. Jennyslippers; 2. Girl Scouts; 3. Calvary Baptist Church.
- Horse-Drawn Vehicles** — 1. Whitehead's Surries; 2. Hargrove's Wagons; 3. Raymond McGehee's Mule Team.
- Commercial** — 1. Muleshoe Area

Home Health Care; 2. Kinder Korner; 3. Bailey Gin Company.

**Riding Clubs** — 1. Muleshoe Young Riders.

**Fourth of July in the Park**

**2-3 year olds**  
**Foot Race** — 1. Tyson Turnbow; 2. Colton Baker; 3. Danielle King.  
**Crab Crawl** — 1. Tyson Turnbow; 2. Cassie Torres; 3. Danielle King.  
**Hop Race** — 1. Tyson Turnbow; 2. Cassie Torres; 3. Danielle King.

**4-5 year olds**  
**Foot Race** — 1. Nathan Kirven; 2. Marshal Head; 3. Jackson Myers.  
**Crab Crawl** — 1. Marshal Head; 2. Jackson Myers; 3. Nathan Kirven.  
**Hop Race** — 1. Jackson Myers; 2. Marshal Head; 3. Natillie Head.

**6-7 year olds**  
**Foot Race** — 1. Kelsey Tipps; 2. Jonathan Heron; 3. Chelsey Nickels.  
**Crab Crawl** — 1. Jonathan Heron; 2. Chelsey Tipps; 3. Bennie Hamilton.  
**Hop Race** — 1. Chelsey Tipps; 2. Bennie Hamilton; 3. Jonathan Heron.

**8-9 year olds**  
**Foot Race** — 1. Trey Kirven; 2. Hillary Tipps; 3. Edwin Snell.  
**Crab Crawl** — 1. Trey Kirven; 2. Rafael Castillo; 3. Edwin Snell.  
**Hop Race** — 1. Edwin Snell; 2. Trey Kirven; 3. Hillary Tipps.

**3-Legged Race** — 1. Trey Kirven and Edward Snell; 2. Hillary Tipps and Aubrey Henderson; 3. Madison Myers and Lynn King.  
**Basketball Shootout** — 1. Corey Wallace; 2. Mitzi Hawkins; 3. Colby Carpenter.

**10-12 year olds**  
**Basketball Shootout** — 1. Jody Hawkins; 2. Jamie Carpenter; 3. Max Myers.

**13-14 year olds**  
**Basketball Shootout** — 1. Travis Tunnell; 2. (tie) Megan Barrett and Chris Noriega; 3. Landon Kirby.

**Turtle Races**  
1. Danielle King; 2. Austin Bamert; 3. Colton Baker.

**Punt, Pass and Kick**  
**8-9 year olds**  
**Punt** — 1. Trevor Turnbow, 68-0; 2. James Coffman, 65-0; 3. Jarrod Flores, 52-2.  
**Pass** — 1. Trevor Turnbow, 74-11; 2. James Coffman, 61-2; 3. Jarrod Flores, 53-0.  
**Kick** — 1. Jarrod Flores 67-5; 2. Trevor Turnbow, 65-0; 3. James Coffman, 52-10.

**10-12 year olds**  
**Punt** — 1. Micah Ruthardt, 92-1/2; 2.

Adrian Soto, 82-2; 3. Tatum Heathington, 76-0.

**Pass** — 1. Micah Ruthardt, 120-0; 2. Adrian Soto, 97-0; 3. Tatum Heathington, 82-0.

**Kick** — 1. Micah Ruthardt 104-0; 2. Adrian Soto 100-8; 3. Matthew Broyles 99-0.

**13-14 year olds**  
**Punt** — 1. Aubrey Ruthardt 126-0; 2. Raymond Toscano 110-0; 3. Travis Tunnell, 105-0.

**Pass** — 1. Aubrey Ruthardt, 146-0; 2. Raymond Toscano, 122-0; 3. Travis Tunnell, 119-0.

**Kick** — 1. Travis Tunnell, 124-0; 2. Raymond Toscano, 116-0; 3. Aubrey Ruthardt, 114-0.

# Texas cotton acres remain steady

AUSTIN — Texas upland cotton acreage for 1997 is estimated at 5.7 million acres, the same as last year but 11 percent below 1995. The first estimate of harvested acreage and production will be released on Aug. 12.

According to figures released by the Texas Agricultural Statistics Service, planted acreage estimates for wheat, peanuts, soybeans, dry beans and sunflowers are above 1996 levels, but acreages for most other crops are below last year. "Although wet soils delayed planting in many areas, most crops are off to a good start with excellent moisture conditions," state statistician Dennis Findley reported.

Based on results of a June 1 survey, Texas sorghum planted acreage totaled 3.3 million acres, down 25 percent from last year, when sorghum acreage increased following failed cotton. Producers expect to harvest 3.15 million acres, down 17 percent.

Planted acreage for corn is projected at 2.0 million acres, down 5 percent from 1996, while harvested acreage is ex-

pected to remain unchanged at 1.8 million acres, as less acreage is expected to be abandoned.

Texas' peanut planted acreage is estimated at 300 thousand acres, 11 percent more than 1996. Harvested acreage is also expected to increase 11 percent to 295 thousand acres.

Rice producers along the coast have planted 260 thousand acres, down 13 percent less than the 1996 acreage. Harvested acreage is estimated at 259 thousand acres, down 13 percent from last year.

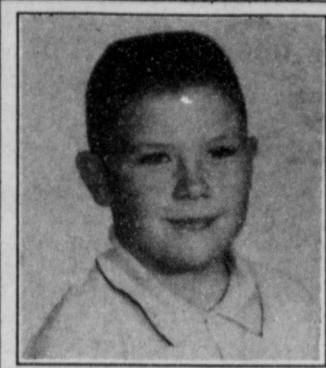
Acreage planted to soybeans is estimated at 420 thousand acres, up 45 percent from last year. Producers expect to harvest 400 thousand acres, compared with 270 thousand in 1996.

Planted acreage for winter wheat, at 6.3 million acres, is up 5 percent from last year. Harvested acreage, at 4.1 million acres, is up 41 percent from last year's drought-plagued crop but the same as 1995.

Texas' harvested acreage for all hay is estimated at 4.81 million acres, up 11 percent from last year.

United States Upland cotton acreage is estimated at 13.75 million acres, 4 percent below last year. Corn acreage, at 80.2 million, is up 1 percent, while sorghum acreage decreased 22 percent to 10.3 million acres.

Nationally, producers expect to plant 70.9 million acres of soybeans, up 10 percent from 1996, and 1.42 million acres of peanuts, up 1 percent.

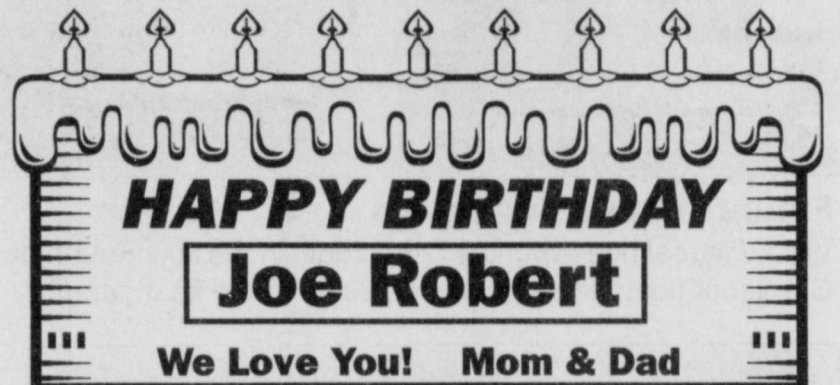


40...  
and still  
a cutie!  
Love,  
Cindi, Sarah & Micah



RED WING  
SHOES®  
Made in U.S.A.

The Fair Store  
120 Main 272-3500



♥ **WE WISH TO THANK OUR FRIENDS, NEIGHBORS AND OUR FAMILY FOR THEIR LOVE AND CONCERN, THE FLOWERS, THE FOOD AND ESPECIALLY THEIR PRAYERS DURING THE ILLNESS AND DEATH OF OUR LOVED ONE, KENNETH EVERETT.** ♥

*Words cannot express the thanks and appreciation to the staff, directors and volunteers of the Muleshoe Area Healthcare Center, to our pastor, John Wagner, and the ladies that prepared and served lunch at First Methodist Church. Thanks to James Withrow and Ellis Funeral Home for their very professional and caring manner.*

*May God Bless Each Of You,  
Ruby Everett, Shawn & Amy Everett & Family,  
Neil & Phylis Everett & Family, Nancy & David Stovall & Family*

♥ **WE WISH TO THANK OUR FRIENDS, NEIGHBORS AND OUR FAMILY FOR THEIR LOVE AND CONCERN, THE FLOWERS, THE FOOD AND ESPECIALLY THEIR PRAYERS DURING THE ILLNESS AND DEATH OF OUR LOVED ONE, KENNETH EVERETT.** ♥

# MORTON INSURANCE

**Experience • Versatile • More Options • More Companies**

W.C. Eubanks • Agent

### CROP HAIL OPTIONS

XS10IP • DXS 15 • DXS 30 • DXS 5/15  
Production Guarantee Add Ons - Crop Hail  
Many More Crop Hail Plans Available!

### REPRESENTING

RCIS • IGF • Rain & Hail

**Stepladder Policies 25% effective June 5  
Additional 5% per day until 100% in effect.**

**Companies Who Provide New & Innovative Products  
Your Full Service Insurance Needs**

**HOME • AUTO • LIFE • CROP • LIFE & HEALTH**

# CLASSIFIED DEADLINES

For the Thursday Muleshoe Journal, **DEADLINE** is Monday at 5 p.m.  
For the Sunday Bailey County Journal, **DEADLINE** is Thursday at 5 p.m.



**PUBLIC RECORD**

**OBITUARIES**

**Vernal King**

Vernal King, 84, of Muleshoe died July 3 at his residence in Muleshoe.

Memorial services were held at the First Baptist Church Saturday, July 5, 1997.

Burial followed in the Muleshoe Memorial Park Cemetery in Muleshoe under the direction of Ellis Funeral Home in Muleshoe.

Mr. King was born Aug. 1, 1912 in Anson, Texas. He married Frances Goforth Feb. 16, 1938 in Clovis, N.M. She died Sept. 27, 1985.

Mr. King was employed with Bailey County Electric Co-op, retiring in 1977. He was a member of the First Baptist Church of Muleshoe.

Pallbearers include his grandson, Jerry Bob Graves, Terry Graves, Lance Nickels, Bryan Nickels, Michael Dunham, Gerrick King and Steve Bradshaw.

Survivors include one son, Gary King of Bakersfield, Calif.; four daughters, Jo Ellen Nickels of Hobbs, N.M., Bobbie Dunham and Billie Graves of Muleshoe and Donnie Bradshaw of Abilene; one sister Oleta Baker of Portales, N.M.; two brothers, Ancil King of Clyde and Kenneth King of Ft. Worth, Texas; 12 grandchildren and 21 great-grandchildren.

The family suggests memorials to made to American Cancer Society, 2411 73rd, Lubbock 79423, and First Baptist Church of Muleshoe.

**Bessie E. Patterson Ratliff**

Bessie E. Patterson Ratliff, 93, of Muleshoe died July 4 in Olton.

Memorial services were

held Monday July 7 in the O'Donnell cemetery under the direction of Ellis Funeral Home of Muleshoe.

Bessie was born May 5, 1904 in Lee County, Mississippi. She was married to William Waddie Ratliff July 18, 1925 in Estellene, Texas. He preceded her in death. She was a member of the First United Methodist Church of Brownfield, also a homemaker.

Survivors include her Daughters; Vennie F. Beeler of Elizabeth, Ky; Audys Berchey of Houston, Novell Blevins of Pasadena, Texas; Sons, Conrad Ratliff of Oklahoma City, Ok, Milfred Ratliff of Muleshoe.

19-Grandchildren, 32 great grandchildren 8 Great- Great Grandchildren.

**O'Neal Gunn**

O'Neal Gunn, 80, of Atlanta, Texas died July 3 in Texarkana, Texas.

Memorial services were held July 5th at the Salem Baptist Church in Cass County, Texas, and buried at Place of Internment Salem Cemetery.

She was born June 3, 1917, in Savoy, Texas. Her Husband preceded her death July 5, 1979.

Mrs. O'Neal Gunn was a homemaker and a member of the Salem Baptist Church. She was very active in the Atlanta Womens Bowling Association.

Survivors include four daughters, Barbara Smith of Queen City, Texas, Vicky L. Ray of Atlanta, Texas, Sharon Plott of Muleshoe, Peggy Parker of Texarkana, Texas; one sister Mozelle Gunn of Atlanta; one sister-in-law, Idell Stalcup of Atlanta; one brother-in-law Robert Gunn of Atlanta;

10 grandchildren, 12 great-grandchildren; and numerous nieces, nephew.

**G.D. Lewis**

G.D. Lewis, 78, of Bledsoe, Texas died July 6 at the Methodist Hospital in Lubbock.

Memorial services were held in the Ellis Funeral Home Chapel in Morton Tuesday, July 8, 1997. Burial followed in the Morton Memorial Cemetery in Morton under the direction of Ellis Funeral Home in Morton.

Mr. Lewis was born July 9, 1918 in Cooke County, Texas. He married Edna Earl Cagle May 28, 1942 in Morton.

Mr. Lewis was a graduate of Ropes High School and Texas Tech University. He

had been a resident of Bledsoe Community since 1928 moving from Oklahoma. He was a farmer and a rancher and a veteran of WWII serving in the US Navy.

Survivors include his wife, Edna Earl; one son, Tommy Wynn Lewis; three daughters, Penny Alaine Schlaback of Lubbock, Janet Sue Smith of Ropesville, and Gwin Dean Jamerson of Ozona, Texas; one brother, Raymond Christopher Lewis of Mineola, Texas; 10 grandchildren and three great-grandchildren.

The family suggests memorials to be made to American Kidney Fund Inc., 6110 Executive Blvd., Rockville, MD 20852.



Bridal Selections Have Been Made For  
*Amber Green*  
Bride-Elect Of  
*Chad Towers*

*The Art Loft*

272-3485 • 1529 W. American Blvd.

**ROY PHILLIPS**

For All Your **ROOFING NEEDS!**

All Types of Residential Roofing

20 Years In Business

Lubbock Office (806) 785-1733 Days

Home Office In Levelland (806) 894-3014 Nights

- Most Roofs Done In One Day
- We Will Do Most Roofs At Insurance Price
- We'll Leave Your Yard Cleaner Than We Found It!
- Special Discounts To Churches and Their Members.



*Subscribe today!*

Call the Muleshoe Journal  
272-4536

**ANTHONY'S**

**DON'T MISS OUT!!  
SHOP NOW!!**

**TOTAL INVENTORY LIQUIDATION SALE**

**THE ENTIRE INVENTORY IS BEING SOLD AT DISCOUNT PRICES!**

**NOW SAVE 10% TO 60%**

**NOTHING HELD BACK!  
EVERYTHING WILL BE SOLD!  
HURRY IN FOR BEST SELECTION!**

**WRANGLER - HAGGAR  
FILA - REEBOK - DOCKERS  
LEVI - NIKE - HANES  
BUGLE BOY - LEE - RIDDELL  
VAN HEUSEN - PLAYTEX  
AND MANY MORE!**

**WOMEN'S APPAREL  
MEN'S WEAR  
CHILDREN'S APPAREL  
INFANTS CLOTHING  
SHOES - UNDERWEAR  
AND MUCH MORE!**

**HUGE SALE GOING ON NOW!!**

**ANTHONY'S**

321 Main • Muleshoe, TX

CASH, VISA, & MASTERCARD CARD ACCEPTED. NO RETURNS, REFUNDS OR EXCHANGES. ALL QUANTITIES LIMITED TO STOCK ON HAND. ALL SALES FINAL. NOT ALL ITEMS AVAILABLE IN ALL STORES!

**KENW-TV**

Public Television

**Russia's War**

**Russia's War** is a 10-hour documentary series that covers the history of the people of Russia from 1924 to 1953, concentrating on the conflict between Soviet Russia and Nazi Germany. The programs draw on Soviet archives, once-secret documents, and the scholarship of leading Russian historians to explore the tyrannical reign of Stalin before, during, and after World War II. Henry Kissinger introduces the series. Two hour-long episodes air at a time.

**Russia's War** will be broadcast Sunday mornings at 10:00 a.m. beginning July 13th on KENW-TV.

**The Message in the Music**

For the past eighteen years at an out-of-the-way farm in pastoral Mt. Union, Pennsylvania, 60,000 young people camp and share close quarters without incident, drug use, or profanity. The event is the Creation Festival, the largest Christian music festival in the country. This program takes a look at this festival and one of the fastest growing segments of the music industry — contemporary Christian music (CCM). It also features many of today's top CCM artists.

**The Message in the Music** will be broadcast Sunday, July 13th, 4:30 p.m. on KENW-TV.



*"Dance in America:  
Suzanne Farrell: Elusive Muse"*

One of the great dancers of the modern era is candidly profiled in "Suzanne Farrell: Elusive Muse," a presentation of **Great Performances**. The Oscar-nominated performance documentary details the remarkable career of the legendary ballerina and her intense professional and private relationship with George Balanchine, the choreographic genius who was 42 years her senior.

**Great Performances** "Dance in America: Suzanne Farrell: Elusive Muse" will be broadcast Thursday, July 17th at 9:00 p.m.

Channel 3 Television from  
Eastern New Mexico University, Portales, New Mexico

# Toxic Talk: Pesticide Safety

Statistics say someone in your neighborhood this year, perhaps a child, could experience vomiting, seizures, the heart slowing down to almost a stop, difficulty breathing and could possibly die. All this from pesticide poisoning.

## Organophosphates

This class of pesticides generally has the highest level of toxicity. A few of the organophosphates can be found in home and garden applications such as diazinon, malathion and chlorpyrifos. Symptoms in a poisoned child occur rapidly, are severe and can be prolonged. These symptoms include: excessive secretions in the airway, the heart slowing down, nausea, vomiting, diarrhea, seizures and possibly death.

Organophosphates are great pesticides, but with only a small amount needing to be ingested; or prolonged skin contact required to poison a child, extreme caution is required when utilizing these pesticides.

## Carbamates

Carbamates share the same symptoms of organophosphates; however are generally short lived in comparison (lasting only 6-8 hours). Examples such as sevin, propoxur and aldicarb are commonly found in outdoor use products. Carbamates can also be found in flea collars, dusting powders and pet shampoos.

## Chlorinated Hydrocarbons

The EPA has sharply curtailed the use of some of these

pesticides (ddt, aldrin, etc...) for their accumulation in the environment. Generally the public is aware that these pesticides are very dangerous. However, what the public is not aware of is that Lindane is related chemically to this group of pesticides. Lindane is the insecticide found in lice shampoo and creams. While lindane does not accumulate in the environment, lindane poses significant toxicity if used improperly. Over usage of Lindane on the skin or accidental ingestion can result in rapid prolonged seizures, difficulty in breathing, low blood pressure, and possibly death.

## Pyrethrins/Pyrethroids

Chrysanthemum flower extracts makeup this class of pesticides. Pyrethrins are of low toxicity to large mammals such as humans, though young children can be poisoned with this product since their metabolism is not fully developed. Pyrethrins are the most commonly found pesticide in the market today. These products are found in several spot sprayers, indoor aerosol cans (RAID), and certain indoor foggers. Primarily symptoms from an exposure to over the counter products are nausea, vomiting and skin irritation.

## Citronella oils

While not a class of pesticides, citronella deserves mention for its increasingly popularity in keeping insects away. Citronella is derived from ci-

tral which is the main product in lemon grass oil. Toxicity from this product is very low, usually resulting in only skin irritation and drowsiness.

## Guidelines

Pesticides and their individual toxicity vary widely. Symptoms can be anything from rapid seizures and death to mild drowsiness. Therefore it is imperative to use common sense prevention if using pesticide products. Here is a list of guidelines that may help:

1) Read the directions on the back of the bottle. You may get away with putting together a bike without instruction, but a bike can't be absorbed through the skin causing seizures.

2) Avoid wearing leather products, such as boots, gloves, belts, etc..., when applying pesticides. Leather readily absorbs pesticides and will persist in them. So if you really like your Nikes, take them off before application or they may have to be discarded.

3) Don't apply pesticides in the wind. Here in the panhandle that may be a little difficult. Applying pesticides in the wind can allow the sprays to blow back on you and cause an accidental exposure.

4) Washing your clothes after pesticide application takes special precautions. First, place the exposed clothes into a plastic bag immediately after use and keep separate from the rest of the laundry. Second, when washing, use the hottest water

possible, the full amount of laundry detergent recommended and utilize a pre-wash spray. Last, dry the clothes outside.

5) When applying pesticides outside avoid contaminating puddles of water, animals tend to drink out of those puddles creating a significant poisoning hazard.

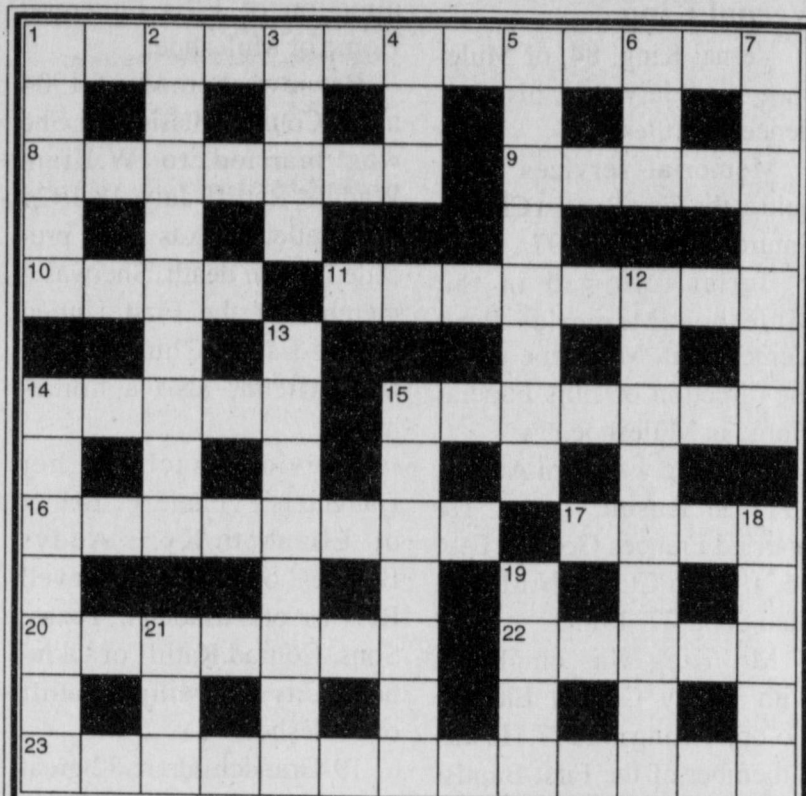
6) When setting off indoor foggers, make sure all people and pets are out of the house beforehand. The Poison Center receives a number of poisonings a year when an owner goes back inside the house, after the foggers are set.

7) When coming back inside after indoor fogger in use, wash all eating area, exposed eating utensils, plates and areas where children place their hands (such as window sill, etc...) with soap and water.

8) Do not think a little is good therefore a lot must be great! Many accidental exposures occur when large mounds of granular pesticides are applied to ant hills or other insect manifestations and kids go and play in and eat pesticides

9) Keep these products up very high in the garage. THEY ARE DANGEROUS!

10) If there is any possibility of an exposure or you have questions on safe application or would like a free brochure on application or types of poisons, call the Texas Poison Center Network at 1-800-764-7661 (1-800-Poison-1).



### CLUES ACROSS

1. This keeps the earth up
8. \_\_\_\_\_ Harper, actress
9. Get out
10. Freedom from difficulty
11. Gaughin subject
14. Refrigerator name
15. Longer and thinner
16. Artistic
17. Lettuce
20. Formerly South West Africa
22. Narratives
23. Ibsen play

### CLUES DOWN

1. Variety show
2. Charms
3. Japanese waist pouch
4. Wrath
5. Chattered
6. Express
7. With layers
12. Signed, in a way
13. Wanted by purchasers
14. Opposite word
15. Baseball dispute
18. More unworthy
19. King of Huns (Scandinavian)
21. Wrong, prefix

### SOLUTIONS TO 7/3 PUZZLE

- SOLUTIONS ACROSS**
1. Problematical
  8. Ousting
  9. Utter
  10. Foil
  11. Beriberi
  14. Abased
  15. Stools
  17. Creation
  18. Boar
  21. Amiable
  23. Climb
  24. Maladjustment
- SOLUTIONS DOWN**
1. Proof
  2. Obstinate
  3. Lair
  4. Magnet
  5. Tourists
  6. Cat
  7. Lorries
  12. Economize
  13. Deathbed
  14. Acclaim
  16. Code
  19. Rabat
  20. Soat
  22. Ill

Sponsored By: **Muleshoe Journal**  
 P.O. Box 449 · 304 W. 2nd Street  
 (806) 272-4536 · Fax: 272-3567  
 See Answers in 7/17 Edition of Muleshoe Journal

**GM Goodwrench Service Plus** Offers you **MORE**

GM Goodwrench Service Plus is more than just another way to service your vehicle—it's a better way. Because GM Goodwrench Service Plus has highly trained technicians who know your GM vehicle inside and out.

**UP-FRONT COMPETITIVE PRICING**  
Which means no surprises when the bill comes.

**COURTESY TRANSPORTATION**  
After you drop off your vehicle, we'll take you where you want to go.

**LIFETIME SERVICE GUARANTEE**  
Parts and labor are covered for as long as you own your GM vehicle. See dealer for details of this limited warranty. Covered parts include:

<input type="checkbox"/> Air Conditioning Accumulator	<input type="checkbox"/> EGR Valve	<input type="checkbox"/> New/Remanufactured Starter Motor
<input type="checkbox"/> Air Conditioning Compressor	<input type="checkbox"/> Fuel Injectors	<input type="checkbox"/> Oxygen Sensor
<input type="checkbox"/> Air Conditioning Condenser	<input type="checkbox"/> Fuel Pump	<input type="checkbox"/> Shock Absorbers/Struts
<input type="checkbox"/> CV Joint/Boot Seal Kit	<input type="checkbox"/> Ignition Wire Set	<input type="checkbox"/> Throttle Body Injector
<input type="checkbox"/> Ignition Module	<input type="checkbox"/> Individual Ignition Wires	<input type="checkbox"/> Water Pump
<input type="checkbox"/> Ignition Coils	<input type="checkbox"/> New/Remanufactured Generator	

**FOR LESS.** Please present coupon prior to service

Prices Good July 1-31, 1997

<p><b>GM Goodwrench QUICK LUBE<sup>plus</sup></b> Lube, Oil &amp; Filter Change Complete chassis lube; AC oil filter; up to 5 quarts quality motor oil, plus 10 point maintenance check</p> <p><b>\$14<sup>00</sup></b> Expires July 31</p> <p><small>Taxes not included. Applies to most GM vehicles. See dealer for details.</small></p>	<p><b>Radiator Service/ Coolant</b> Drain &amp; flush cooling system. Replace coolant. Clean outside of radiator &amp; air conditioning condenser. pressure test entire system. Inspect condition of all hoses, clamps &amp; belts.</p> <p><b>\$31<sup>00</sup></b> Expires July 31</p> <p><small>Taxes not included. Applies to most GM vehicles. See dealer for details.</small></p>
<p><b>Air Conditioning Service</b> Adjust drive belts. Tighten fittings. Check operating pressure. Check for leaks. Clean condenser fins. Performance-test system. Includes 1 lb. Freon.</p> <p><b>\$58<sup>00</sup></b> Expires July 31</p> <p><small>Taxes not included. Applies to most GM vehicles. See dealer for details.</small></p>	<p><b>Engine Maintenance Service</b> Replace spark plugs. Set timing &amp; adjust idle. Inspect air filter. Check ignition timing, hoses, PCV valve. (Price for 6 and 8 cylinder slightly higher, 4 cylinder slightly lower).</p> <p><b>\$67<sup>50</sup></b> Expires July 31</p> <p><small>Taxes not included. Applies to most GM vehicles. See dealer for details.</small></p>
<p><b>Tire Rotation/ Balance/ Brake Inspection</b> Inspect for irregular tire wear. Check tire pressure. Rotate per manufacturer's specifications. Inspect rims. Computer balance 4 wheels. Check brake linings, rotors, drums, hydraulic system &amp; master cylinder.</p> <p><b>\$36<sup>00</sup></b> Expires July 31</p> <p><small>Taxes not included. Applies to most GM vehicles. See dealer for details.</small></p>	<p><b>\$20<sup>00</sup> Off Any Mechanical Service Repair</b> This coupon may be redeemed for \$20.00 off any mechanical service repair of \$100.00 or more. May not be applied with any other service coupon offers.</p> <p>Expires July 31 See Dealer For Details</p>

**BENDER**   
 2500 Mabry Drive, Clovis, NM (505) 763-4465

*Home Folks Caring For Folks At Home.*

**MULESHOE AREA HOME HEALTH Agency**

**Featured Patient**

Mrs. Lena Ruthhardt has lived in Muleshoe for about forty years.

Mrs. Ruthhardt was married to the late F.B. Ruthhardt. She has 4 children, 10 grandchildren, and 15 great-grandchildren.

Mrs. Ruthhardt worked at the public library for nine years, she also was a house wife. She enjoyed quilting when she had extra time.

She is a member of the Assembly of God Church in Muleshoe. She says that the girls at Muleshoe Area Home Health Agency are great!

*To receive Home Health Services, talk with your physician or talk with hospital personnel when you are hospitalized.*

**24 Hour # 272-3346**  
Local Nurse on call 24 hours a day to offer prompt service.

We accept Medicare, Medicaid and Private Insurance  
**It Is Your Right To Choose The Home Health Agency You Prefer.**

*We care for you at home*

**New Out Of Hospital Advance Directives Now Available!**

Affiliated with Lubbock Methodist Hospital Systems

# HPJRA

Continued from page 1

9-12 age group, tying for third in the ribbon roping, placing sixth in the breakaway roping and eighth in the calf touching. Eric Magby of Lazbuddie was fourth in the 9-12 steer stopping, while Clay Myers of Muleshoe was seventh in the chute dogging. Mandy Myers of Muleshoe was seventh in the 16-19 pole bending and Brady Black of Muleshoe was ninth in the 8-under barrel race.

There were more than 650 runs over the three-day rodeo, which was made difficult at times by weather. After competitors battled windy, stormy conditions from the midway point of Thursday's first performance, Friday's weather was perfect. But two inches of rain in the early morning hours Saturday made arena preparations difficult. A storm with lightning, high winds and rain interrupted Saturday's final performance and left the arena sloppy in spots.

It was the second HPJRA event in Muleshoe this sum-

mer. The competitors will be in Colorado City July 10-12. Here are final results:

### High Plains Junior Rodeo Association Lazbuddie Senior Class Rodeo July 3-5, Dusty Rhodes Arena Muleshoe, TX

- (No. entries in parenthesis)
- 16-19 Bareback-Saddle Bronc Riding** (7) — 1. Robert Aragon, 71, \$105; 2. Chris Hill, 64, \$70.
- 8-under Calf Riding** (11) — 1. Kody Porterfield, 64, \$72.60; 2. Daniel Dietson, 62, \$48.40.
- 9-12 Steer Riding** (4) — No qualified rides.
- 13-15 Bull Riding** (12) — 1. Dusty Higgins, 70, \$110; 2. Nathan Tickner, 68, \$66; 3. (tie) Cole Randle and Josh Salazar, 65, \$22 each; 5. Walt Borden, 64.
- 16-19 Bull Riding** (12) — 1. Mitchell Rogers, 73, \$150; 2. (tie) Willie Eldridge and Robert Aragon, 68, \$75; 4. Chance Miller, 65; 5. Coy Dietson, 64; 6. Ron Lilley, 63.
- 9-12 Calf Touching** (28) — 1. Sterling Morris, 5.436, \$105.56; 2. Tommy Etchevery, 5.608, \$87.36; 3. Jake Cooper, 6.435, 69.16; 4. Brock McLemore, 7.172, \$50.96; 5. Chance Millican, 7.397, \$32.76; 6. Clint Tippy, 7.755, \$18.20; 7. J. Tom Fisher, 8.371; 8. Sterling Via, 8.835; 9. Grady Herrera, 9.162; 10. Hadley Hirt, 9.480.
- 13-15 Calf Roping** — 1. Jeffery Seaton, 10.669, \$150.60; 2. Clay Hardin, 10.785, \$124.80; 3. Monty Lewis, 12.211, \$98.80; 4. J.D. Kibbe, 12.488, \$72.80; 5. Rex Tippy, 12.724, \$46.80; 6. John Pete Etchevery, 12.452, \$28; 7. Rodey Wilson, 13.505; 8. Trey Dove, 13.900; 9. Josh Morris, 15.056; 10. Cinco Boone, 15.192.
- 16-19 Calf Roping** — 1. Dustin Dixon, 10.696, \$165; 2. J.D. Shields, 10.778, \$137.50; 3. Ryan Brewer, 11.424, \$96.80; 4. Rusty Henard, 11.748, \$82.50; 5. Ryon Swink, 12.223, \$55; 6. Clyde Jenkins, 12.247; 7. Kip Smith, 15.921; 8. Casey Willis, 15.921; 9. Ryan Lefevere, 18.169; 10. Deb Read, 19.839.
- 8-under Barrel Race** (19) — 1. Kody Armitage, 17.814, \$62.70; 2. Tiffani Sooter, 18.554, \$52.25; 3. Kimberly Jackson, 18.682, \$41.80; 4. Aaron Lide, 18.814, \$31.35; 5. Chelsey Callan, 19.093, \$20.90; 6. Hart Greenwood, 19.657; 7. Danielle McGuire, 20.196; 8. Tori Bilberry, 20.384; 9. Brady Black, 21.506; 10. Caitlyn McLaughlin, 22.076.
- 9-12 Barrel Race** (25) — 1. Paige Davis, 18.179, \$94.25; 2. Jaci Sant, 18.676, \$78; 3. Raelynn Gardner, 18.708, \$61.75; 4. Kaci Harrison, 18.745, \$45.50; 5. Tauna Higgins, 18.844, \$29.25; 6. Dana Lewis, 18.878, \$16.25; 7. Billie Joe Herring, 19.012; 8. Cristie Hendley, 19.059; 9. Ashley Branch, 19.609; 10. Bridgette Hecht, 20.005.
- 13-15 Barrel Race** (24) — 1. Katie Kirkes, 18.131, \$144; 2. Terri Robinson, 18.203, \$120; 3. Raquel Davis, 18.225, \$96; 4. Brandy Denton, 18.241, \$72; 5. Ericka Miller, 18.302, \$48; 6. Robin Warbois, 18.621; 7. Tonya Thomas, 18.808; 8. Amy Davis, 18.812; 9. Brooke Jones, 18.963; 10. (tie) Dana Dixon and Taylor Laws, 19.054.
- 16-19 Barrel Race** (24) — 1. Brandi Curtis, 18.093, \$180; 2. Julie Slayden, 18.252, \$120; 3. Jera Harris, 18.607, \$120; 4. Lauren Middleton, 18.872, \$90; 5. Tad Logemann, 18.896, \$60; 6. Staci Evans, 18.996; 7. Melissa Meyer, 19.002; 8. Carey Cox, 19.012; 9. Kristian Lovelace, 19.064; 10. Shvonne Farrow, 19.086.
- 8-under Pole Bending** (19) — 1. Kimberly Jackson, 21.556, \$62.70; 2. Aaron Lide, 21.706, \$52.25; 3. Kody Armitage, 22.184, \$41.80; 4. Lori Jo Lide, 22.306, \$31.35; 5. Chelsey Callan, 23.322, \$20.90; 6. Danielle McGuire, 23.323; 7. Cameron Callan, 24.795; 8. Payton Terry, 25.117; 9. Caitlyn McLaughlin, 27.935; 10. Jewlie Paiz, 28.656.
- 9-12 Pole Bending** (24) — 1. Paige Davis, 20.783, \$93.60; 2. Jaci Sant, 21.048, \$78; 3. Tauna Higgins, 21.568, \$62.40; 4. Raelynn Gardner, 21.900, \$46.80; 5. Dana Lewis, 22.054, \$31.20; 6. Ashley Branch, 22.237; 7. Ashley Denton, 22.660; 8. Haley Sanders, 23.172; 9. Bridgette Hecht, 23.480; 10. Kassandra Clark, 24.439.
- 13-15 Pole Bending** (19) — 1. Emily Smith, 20.984, \$114; 2. Raquel Davis, 21.121, \$95; 3. Brandi Harrison, 21.836, \$76; 4. Danna Dixon, 23.646, \$57; 5. Tamra Sanders, 23.481, \$38; 6. Taylor Laws, 23.967; 7. Crystal Hall, 24.029; 8. Lindsey Milroy, 24.727; 9. Jana Reese, 25.529; 10. Tonya Thomas, 26.834.
- 16-19 Pole Bending** (13) — 1. Brandi Curtis, 20.671, \$130; 2. Shvonne Farrow, 22.059, \$97.50; 3. Staci Evans, 22.317, \$65; 4. Marcey House, 22.150, \$32.50; 5. Sarah Boone, 22.171; 6. Abby Orcutt, 23.104; 7. Mandy Myers, 24.050; 8. Marisa Vetula, 24.234; 9. Amanda Kauffman, 24.707; 10. Sequin Downey, 25.938.
- Chute Dogging** (15) — 1. Clyde Jenkins, 3.062, \$150; 2. Dustin Dixon, 3.389, \$112.50; 3. Mickey Wilkins, 4.424, \$75; 4. Bryce Davis, 4.487, \$37.50; 5. Jason York, 4.625; 6. Brandon Hodges, 4.642; 7. Clay Myers, 5.672; 8. Jason Thomas, 8.830; 9. Clay Gamble, 10.260; 10. Jamie Higgins, 29.263.
- 8-under Breakaway Roping** (19) — 1. Chelsey Callan, 6.659, \$62.70; 2. Payton Terry, 9.230, \$52.25; 3. Tori Bilberry, 11.191, \$41.80; 4. Kody Porterfield, 15.550, \$31.35; 5. Aaron Lide, 17.259, \$20.90; 6. Clayton Hirt, 25.970.
- Boys 9-12 Breakaway Roping** (28) — 1. Jace Rowland, 3.227, \$105.56; 2. Dwayne Sanders, 3.332, \$87.36; 3. J. Tom Fisher, 3.572, \$69.16; 4. Jacob Martin, 3.626, \$50.96; 5. Max Graham, 3.692, \$32.76; 6. Sterling Via, 4.054, \$18.20; 7. Grady Herrera, 5.036; 8. Clint Tippy, 5.184; 9. Tommy Etchevery, 5.278; 10. Jay Dee Logan, 5.880.
- Girls 9-12 Breakaway Roping** (19) — 1. Christie Hendley, 3.605, \$74.10; 2. Kaci Friskup, 3.940, \$61.75; 3. Kelsy Friskup, 4.201, \$49.40; 4. Kenna Armitage, 6.206, \$37.05; 5. Dana Lewis, 6.335, \$24.70; 6. Bridgette Hecht, 6.835; 7. Melissa Harper, 7.934; 8. Ashley Branch, 8.055; 9. Tauna Higgins, 16.998; 10. Kimberly Howard, 26.735.
- Girls 13-15 Breakaway Roping** (15) — 1. Emily Smith, 3.872, \$120; 2. Brandy Denton, 4.065, \$61.75; 3. Megan Davis, 4.522, \$60; 4. Robin Warbois, 13.208, \$30.
- Girls 16-19 Breakaway Roping** (19) — 1. Kacy Henard, 3.234, \$142.50; 2. Sequin Downey, 3.454, \$118.75; 3. Lauren Middleton, 3.958, \$95; 4. Sarah Boone, 4.303, \$71.25; 5. Sadie Dove, 4.752, \$47.50; 6. Misty Meyer, 12.747; 7. Shawna Kay Rowland, 13.176.
- Boys 13-15 Breakaway Roping** (27) — 1. Rex Tippy, 2.700, \$156.60; 2. Clint Cooper, 3.014, \$129.60; 3. Monty Lewis, 3.204, \$102.60; 4. Miles Thompson, 3.619, \$75.60; 5. Vin Fisher, 3.931, \$48.60; 6. Dillon Lewis, 4.037, \$27; 7. Trey Dove, 4.184; 8. Cinco Boone, 4.449; 9. Dakota Perser, 4.592; 10. Seth Black, 4.651.
- 8-under Goat Tying** (18) — 1. Lori Jo Lide, 15.820, \$59.40; 2. Kimberly Jackson, 15.969, \$49.50; 3. Kody Porterfield, 17.179, \$39.60; 4. Danielle McGuire, 18.710, \$29.70; 5. Aaron Lide, 20.262, \$19.80; 6. Dustin McDaniel, 20.271; 7. Tiffani Sooter, 21.016; 8. Justin Smith, 22.097; 9. Clayton Hirt, 23.314.
- 9-12 Goat Tying** (20) — 1. Tauna Higgins, 11.049, \$78; 2. Bridgette Hecht, 11.187, \$65; 3. Kenna Armitage, 12.661, \$52; 4. Dana Lewis, 12.954, \$39; 5. Kimberly Howard, 13.189, \$26; 6. Raelynn Gardner, 13.672; 7. Taylor Fellows, 13.739; 8. Kristi McLaughlin, 14.260; 9. Lynde Orcutt, 14.474; 10. Christie Hendley, 14.718.
- 13-15 Goat Tying** (19) — 1. Katie Kirkes, 10.934, \$114; 2. Megan Davis, 10.968, \$95; 3. Emily Smith, 11.415, \$76; 4. Brandy Denton, 11.692, \$57; 5. Chezie Davis, 11.898, \$38; 6. Taylor Laws, 12.193; 7. Robin Warbois, 12.633; 8. Raquel Davis, 12.723; 9. Tonya Thomas, 12.993; 10. Terri Robinson, 13.840.
- 16-19 Goat Tying** (12) — 1. Sequin Downey, 10.932, \$150; 2. Paige Burelsmith, 11.069, \$90; 3. Darla Blackwell, 11.159, \$60; 4. Kaci Kibbe, 12.420; 5. Brandi Curtis, 12.924; 6. Julie Slayden, 12.982; 7. Kacy Henard, 13.171; 8. Jera Harris, 13.515; 9. Shvonne Farrow, 13.919; 10. Abby Orcutt, 15.246.
- Boys 16-19 Ribbon Roping** (21) — 1. Ryon Swink, 7.758, \$157.50; 2. Garland Spears, 7.787, \$131.25; 3. Ryan Brewer, 7.889, \$105; 4. Clyde Jenkins, 7.689, \$78.75; 5. Dustin Dixon, 8.063, \$52.50; 6. Clay Gamble, 8.785; 7. Kip Smith, 9.029; 8. Ryan Lefevere, 9.488; 9. Bryce Davis, 10.359; 10. Rusty Henard, 10.520.
- Boys 9-12 Ribbon Roping** (26) — 1. Gary Herrera, 8.714, \$98.02; 2. Tell Good, 9.934, \$81.12; 3. (tie) Jacob Martin and Sterling Via, 9.963, \$55.77 each; 5. Brock McLemore, 9.971, \$30.41; 6. Brad Good, 10.570, \$16.90; 7. Jimmie Cooper, 11.759; 8. Tommy Etchevery, 12.502; 9. Max Graham, 12.791; 10. Clint Tippy, 13.799.
- Boys 13-15 Ribbon Roping** (29) — 1. Jeffery Seaton, 7.644, \$168.20; 2. Josh Morris, 7.782, \$139.20; 3. J.D. Kibbe, 7.970, \$110.20; 4. Cinco Boone, 8.441, \$81.20; 5. John Pete Etchevery, 8.791, \$52.20; 6. Monty Lewis, 8.864, \$29; 7. Rex Tippy, 8.968; 8. Miles Thompson, 9.057; 9. Keith Jackson, 9.570; 10. Dillon Lewis, 9.646.
- Girls 13-15 Ribbon Roping** (7) — 1. Katie Kirkes, 11.440, \$84; 2. Robin Warbois, 15.733, \$56.
- Girls 16-19 Ribbon Roping** (8) — 1. Shelley York, 14.397, \$120; 2. Marcey House, 16.948, \$80; 3. Darla Blackwell, 20.822; 4. Amber Brewer, 21.871.
- 9-12 Steer Stopping** (25) — 1. Ashley Denton, 7.363, \$9.425; 2. Cimarron Thompson, 7.758, \$78; 3. C.W. Cathey, 7.827, \$61.75; 4. Eric Magby, 7.900, \$45.50; 5. Sterling Morris, 8.067, \$29.25; 6. Kenna Armitage, 8.428, \$16.25; 7. Justin Nevarez, 9.177; 8. Gary Herrera, 9.543; 9. Brad Good, 14.669; 10. Jimmie Cooper, 14.935.
- 13-15 Team Roping** (16) — 1. Monty Lewis and Josh Morris, 9.387, \$128/man; 2. Jeffery Seaton and Monty Eakin, 11.896, \$96/man; 3. Jeffery Seaton and Josh Morris, 16.307, \$64/man; 4. Lathe May and Wacey Moore, 16.796, \$32/man; 5. Chezie Davis and John Pete Etchevery, 18.559; 6. Trey Wheeler and Trey Dove, 19.601; 7. Cody Kinard and Walt Borden, 20.005.
- 16-19 Team Roping** (20) — 1. Jason Thomas and Ryan Brewer, 10.318, \$150/man; 2. Dustin Dixon and Jed Middleton, 11.179, \$125/man; 3. Shandon Stalls and Casey Crow, 11.253, \$100/man; 4. Casey Crow and Rusty Henard, 11.771, \$75/man; 5. Shandon Stalls and Rusty Henard, 12.382, \$50/man; 6. Ike Blasingame and Monty Eakin, 16.949; 7. Shelley York and Cody Lawrence, 17.359; 8. Bryce Davis and N/A, 19.692; 9. Jason York and Cody Lawrence, 26.343.

# Journal classifieds

REAL ESTATE  
AUTOMOBILES  
HELP WANTED  
GARAGE SALES

## STOP & SHOP

Deadlines are 5 p.m. Monday and Thursday

Call 272-4536

Deadlines are 5 p.m. Monday and Thursday

**FOR SALE**  
Customs Swathing & Baling  
\$12 a bale, David Schulte. 965-2489 or 647-7740. 16s-50tpd

**1983 L2 Gleaner**  
Combine 24' Header field ready.

**1981 850 Massey**  
Combine 24' Header field ready.  
(505) 359-0947, 477-2220, 760-7527, 760-7522. 24t-ffc

**AUTOMOBILE**  
'96 Heavy duty, 34x miles, \$25,000 or assume note. Linda 272-4524 after 5 p.m. Richard 927-5109 after 7 p.m. 28t-2tpd

'88 Delta 88 Oldmobile for sale, good work car, Contact at 272-3332 or 946-3696. 28t-2tc

Seized Cars from \$175. Porsches, Cadillacs, Chevys, BMW's, Corvettes. Also Jeeps, 4WD's. Your Area. Toll Free 1-800-218-9000 Ext. A-10574 for current listings. 28t-4tpd

**REAL ESTATE**  
For sale: 7 acres, six miles from town. Partially fenced. Cash or owner financed. (806)272-4975. 23t-ffc

FOR SALE: 3bdm, 2 bath double car garage. Sites on 6 acres. Location 7 miles North East of Muleshoe. Call 965-2795 Leave message. 27t-7tc

**For Sale by Owner:** 3-1/2-1, 1900 square foot living area with fireplace, storage building, fenced yard and heat pump. Call 272-4833 or 272-4464. 28s-8tc

**For Sale by Owner:** 1912 W Ave H, 3 bdrm, 2 bath, 2 car garage, brick, new roof. Inside: new paint, remodeled, great location. 806-481-3872. 25t-ffc

**REAL ESTATE**  
House for Sale or Rent with reduced Price or Rent. 3bdrm, 2 bath, 1750 sq. ft. (Assumable note with small down payment.) 612 W. Ave F. 806-265-3413. 24t-ffc

Excellent price, Excellent location, Excellent condition: 3-1<sup>3/4</sup>-2, brick, central A/H (heat pump), fans, FP, fenced yard storage building, sprinkler system. 1806 W. Ave E Call 272-5940

**FARMS & RANCHES**  
For Sale: 80 acres of grassland 3 miles North of Muleshoe. Reasonably Priced. Call HCR Real Estate. 806-364-4670. 26t-10tc

**Storage**  
Opening Soon  
Sudan storage, 8 x 10; 10 x 12 space available. Call Jan or Shirley (806)933-4347, or at The Oak Tree Antique (806)227-2325. 28t-4tc

**HELP WANTED**  
"Avon & Avon Outlet"  
Representatives needed now! No Inventory required, IND/DALES/REP, 800-236-0041. 27s-4tc

**HELP WANTED**  
Now Hiring: waitress, waiters, please apply in person (2p.m-3p.m), on Tuesday- Friday at Leal's Restaurant. 28t-4tc

**Estate Sale**  
**ONE DAY ONLY !!**  
Saturday, July 12  
809 W. Ave. K #808  
9 a.m. to 4 p.m.

**MOBILE HOMES**  
Better Living Homes  
1997 Singlewide Mobile Home \$19,000. Please Call (505)356-5448. 17t-ffc

**MISCELLANEOUS**  
Bad credit? Erase bad credit, stop creditor harassment, lower monthly payments, eliminate interest. Send \$1 and SASE to: JC and Associates, P.O. Box 967, Lamesa, Texas 79331 23s-ffc

**Roundup Applications**  
Pipe-Wick mounted on high-boy. 30" or 4" rows. Cotton, Milo, Soy Beans and Corn. Call Roy OBryan, 806-265-3247. 25t-ffc

**Need your house painted?**  
Inside or Outside. Call Raul's Painting. 1-505-763-5773. Clovis. Free Estimates. 26t-8tpd

**Office Space**  
Office space for rent or lease. Contact at 272-3332 on Mondays & Tuesday. Call 946-3696 all other days. 28t-4tc

**AUTOMOBILE**  
'90 Jeep Cherokee Laredo, 4x4, \$10,995., Portales, N.M. (505)359-1775

'95 Ford Super Cab, 4x4, 33,000 miles, \$14,400., Portales, N.M. (505)359-0947

'86 Chrysler New Yorker, nice, cold air, \$1,995., Portales, N.M. (505)359-1775

'93 Dodge 1 ton, dually, cummins diesel, \$12,995., Portales, N.M. (505)359-0947

'90 Ford F-150 extra nice, \$8,995., Portales, N.M. (505)359-1775.

For Sale 1968 Mustang Coupe. Call 925-6751. 26t-4tc

**NOTICE**  
Your Citywide addressing service is scheduled to paint luminous home addresses along your street. Your home will be included with your permission. This services is provided so the EMERGENCY SERVICES such as POLICE, FIRE DEPARTMENT, AMBULANCE and DELIVERY SERVICES can reach your home with minimum delay. Citywide addressing service does not represent the City of Muleshoe.

**BUY IT SELL IT FIND IT IN THE CLASSIFIEDS**

**Nieman Realty**  
116 E. Ave. C George Nieman, Broker 272-5285 or 272-5286

**RICHLAND HILLS - PARKRIDGE AREA**  
NICE 3-3-1 Brick, cent. Heat, Evap. Air, built-ins, 2000' + lv. area, fenced yd., stor. bldg, MORE!! \$60K!!! RH-2

VERY NICE 3-2-1 Brick, Cent. A&H, built-ins, fans, new paint, carpet, & drapes, fenced yd. \$60K!!! RH-1

NICE 3-2-2- Brick, Cent. A&H, built-ins, FP, cov. patio, fenced yd. \$50's!!!

NICE 3-2-2 Brick, Cent. A&H, built-ins, FP, corner lot!! \$50's!!!! RH-3

**HIGHLAND AREA**  
JUST LISTED-NICE 3-2-2 Brick, Cent. A&H, built-ins, gas log FP, fenced yd., stor. bldg., MORE!! \$60K!!! HL-5

2-1-1 Home, vinyl siding, wall furnace heat, fenced yd. \$17,000!!! HL-1

**BUSINESS FOR SALE-SNACK SHACK** - Lot, Buildings, furniture, and fixtures!!!!

Commercial Bldg. & Lot, Approx. 1790' area, Numerous uses!! \$22K!!!

10,000+ sq. ft. bldg., approx. 105'x140' paved aprking lot on U.S. 84 & 70!!!

**RURAL HOMES**  
2-2-1 carport Mobile Home on .665 acres on pavement close to town, Cent. heat, evap., air, DW, large barn, stor. bldg. and MORE!! \$25K!!! HR-5

W. of SUDAN-NICE 3-3-2 Brick Home, 5 acre tract on Hwy. 298, Cent. Air & Heat, built-ins, large Quonset Barn, MORE!!!! \$95K!!!

**LENAU - COUNTRY CLUB AREA**  
PRICE REDUCED!! \$42,000!! 2 1/2 bath double wide, corner lot, built-ins, heat pump, FP, Much More!! CC-2

2-1-1 Home, Wall Furnace Heat, Evap. Air, Fenced Yard!! \$20's!!! L-4

2-1-1 Carport Home, wall furnace, nice carpet, storm shelter, stor. bldg., fenced yd. \$20's!!! CC-3

NICE 3-2-1 Home, Elec. Heat pump, DW, nice carpet, fans, fenced yd., MORE!! \$30's!!! L-2

2-1-1 Home, Cent. Heat, built-ins, Hardwood floors!! \$19,500!! L-3

**HIGH SCHOOL**  
VERY NICE 3 bdrm, 2 bath Home on corner lot, Cent. A&H, built-ins, stor. bldg, fenced yd, Much More! \$40's!! HS-1

VERY NICE 3-2 Home, Cent. A&H, built-ins, fans, fenced yd., stor. bldg., MUCH MORE!!!! \$30's!!! HS-5

VERY NICE 3-2-1 Home on corner lot, Cent. A&H, built-ins, ceiling fans, fenced yd., stor. bldg!! \$30's!!! HS-3

NICE 2-1-1 Brick, Heat Pump, nice carpets, well insulated, storm windows & doors. \$30's!!! HS6



**LOST DOG**  
3 1/2 Id. Blond/ Redish hair Pomerain.  
Lost July 4th. She needs medical attention. There is a reward.  
Call Maria Hall 272-5638 or 272-4086.

**BETTER LIVING MOBILE HOMES**  
**Summer Blowout!!**  
Save As Much As \$6,500<sup>00</sup>

**On Selected Homes**

- SATURNS, Including a 2,100 Sq. Ft. 4 Bdrm. Tape & Texture.
- PATRIOTS, Including a 2,100 Sq. Ft. 5 Bdrm, 3 Bath Home.

**Don't Miss Out!**  
All Sales Are Limited To Homes on Sales Lot. No Trade-Ins on Any Homes On Sale.

**Come See Nick & Sherry Today!**

Located 1/2 Mile North of Portales on U.S. 70  
1-800-404-1321 Portales, NM (505)356-5448  
Lic. # D00681 'Se Habla Espanol'

BUY IT SELL IT FIND IT IN THE CLASSIFIEDS

ASK ABOUT OUR COMMERCIAL LISTINGS!!!

# PAY LESS TO FILL YOUR LIST

OUR PRICES ARE JUST LIKE OUR NAME!



ALL TYPES  
Coca-Cola, Sprite or  
**DR. PEPPER**

**\$1.29**  
6PACK  
12 OZ. CANS

ASSORTED  
**POWERADE**  
64 OZ.  
2/\$3



## MEAT

- PREMIUM GOLD ANGUS BEEF BONELESS  
**CHUCK STEAKS** ..... LB. **\$1.36**
- PREMIUM GOLD ANGUS BEEF BONELESS  
**CHARCOAL STEAKS** ... LB. **\$1.29**
- JUMBO PACK FRESH FRYER THIGHS OR  
**DRUMSTICKS** ..... LB. **68¢**
- PREMIUM GOLD ANGUS BEEF  
**CALIFORNIA ROAST** ... LB. **\$1.89**
- BONE-IN  
**PORK STEAK** ..... LB. **\$1.79**
- COUNTRY STYLE BONE-IN SMALL PACK  
**PORK RIBS** ..... LB. **\$1.39**
- PREMIUM GOLD ANGUS BEEF BONELESS  
**CHUCK ROAST** ..... LB. **\$1.69**
- PREMIUM GOLD ANGUS BEEF BONELESS  
**SHORT RIBS** ..... LB. **\$1.99**
- PREMIUM GOLD ANGUS BEEF  
**GROUND CHUCK** ..... LB. **\$1.99**
- PREMIUM GOLD ANGUS BEEF  
**STEW MEAT** ..... LB. **\$2.29**
- PREMIUM GOLD ANGUS BEEF  
**CHUCK EYE STEAK** ... LB. **\$3.99**
- BONE IN PORK  
**BUTT ROAST** ..... LB. **\$1.59**
- BONELESS COUNTRY STYLE  
**PORK RIBS** ..... LB. **\$1.48**
- BAR S  
**MEAT FRANKS** .. 12 OZ. PKG. **79¢**
- BAR S  
**BEEF FRANKS** .. 12 OZ. PKG. **\$1.39**
- BAR S  
**MEAT FRANKS** ... 2 LB. PKG. **\$2.79**
- BAR S  
**SMOKED SAUSAGE** ... 1 LB. PKG. **\$1.49**
- BAR S EXTRA LEAN  
**COOKED HAM** .. 10 OZ. PKG. **\$2.09**
- BAR S  
**CHOPPED HAM** ... 10 OZ. PKG. **\$1.69**
- BAR S GARLIC OR MEAT  
**BOLOGNA** ..... 12 OZ. PKG. **89¢**
- BAR S HICKORY 2 LB. SMOKED OR 1.5 LB. SLICED  
**EXTRA LEAN HAM** .. YOUR CHOICE **\$5.99**

## PRODUCE

- LARGE  
**BELL PEPPERS** ..... 6/\$1
- GREEN ONIONS** ..... 6/\$1
- SWEET & JUICY  
**CANTALOUPE** ..... EA. **67¢**
- CAULIFLOWER** ..... EA. **99¢**
- MINI PEELED  
**CARROTS** ..... 1 LB. PKG. **99¢**
- GARDEN FRESH  
**ZUCCHINI** ..... 2 LBS./\$1
- YELLOW  
**SQUASH** ..... 2 LBS./\$1

- IMPERIAL PURE CANE  
**SUGAR** ..... 4 LB. BAG **\$1.39**
- DOUBLESTUFF, REDUCED FAT OR ORIGINAL  
**OREO COOKIES** ... 20 OZ. PKG. **\$1.99**
- NESTLE BUTTERFINGER BB'S, BUNCHA CRUNCH,  
BABY RUTH, BUTTERFINGER, MILK CHOCOLATE,  
100 GRAND, CRUNCH, WHITE CRUNCH,  
ORIGINAL CHUNKY OR OH HENRY!  
**CANDY BARS** SINGLE BARS **3/\$1**
- PEDIGREE SELECTED VARIETIES  
**DOG FOOD** ... 13.2 OZ. CANS **2/\$1**
- ANGEL SOFT BATH  
**TISSUE** ..... 4 CT. PKG. **99¢**
- NABISCO SELECTED VARIETIES  
• WHEAT THINS • OAT THINS • BETTER CHEDDARS  
• SWISS CHEESE • BACON FLAVORED • TWIGS SESAME  
• SOCIABLES • CHICKEN IN A BISKIT • VEGETABLE THINS  
• TRISCUIT • HONEY MAID CRISP  
**SNACK CRACKERS** . 6.75-10 OZ. BOXES **2/\$3**
- PACE MEDIUM, MILD, OR HOT  
**PICANTE SAUCE** ... 24 OZ. JARS **2/\$5**
- NESTEA ORIGINAL OR DECAFFEINATED  
**100% TEA MIX** . 3 OZ. JAR **\$2.39**
- ASSORTED TOASTETTES  
**TARTS** ..... 13 OZ. 8 PACK **\$1.49**
- NABISCO ORIGINAL, CHEESE NIPS, FAT FREE PRETZELS, OR  
SOUR CREAM/ ONION  
**RITZ AIR CRISPS** ... 7-8.5 OZ. PKG. **2/\$3**



- PUFFS 250 CT. COLLATED, 144 CT. PLUS,  
OR 144 CT. EXTRA STRENGTH  
**FACIAL TISSUE** .. YOUR CHOICE **2/\$3**
- BRAWNY REGULAR OR DESIGNER  
**PAPER TOWELS** .... ROLL **79¢**
- SHURFINE CEREAL  
**PUFFED WHEAT** ... 6 OZ. BAGS **2/\$1**
- WHISKAS SELECTED VARIETIES  
**CAT FOOD** ..... 5.5 OZ. CANS **3/\$1**
- WISHBONE SELECTED VARIETIES  
**SALAD DRESSING** . 8 OZ. BTL. **\$1.19**
- PIONEER WHITE WINGS FLOUR  
**TORTILLA MIX**.. 20 LB. BAG **\$8.99**
- CASA FIESTA  
**TACO SHELLS**.. 12 CT. 4.5 OZ. PKG. **99¢**
- CASA FIESTA  
**REFRIED BEANS** ... 12 OZ. CAN **69¢**
- CASA FIESTA DICED  
**GREEN CHILIES** . 4 OZ. CAN **69¢**

### Deli Lunchmeat

- TURKEY BREAST** ..... lb. **\$2.79**
- JALAPENO LOAF** ..... lb. **\$1.79**
- COOKED HAM** ..... lb. **\$2.79**
- CHOPPED HAM** ..... lb. **\$1.79**
- HAM & CHEESE LOAF** ... lb. **\$2.99**
- SALAMI** ..... lb. **\$1.79**
- BOLOGNA** ..... lb. **\$1.79**

Ask Market Personnel

## DAIRY & FROZEN

- ASSORTED BLUE BUNNY  
**ICE CREAM** ..... 5 QT. PAIL **\$3.99**
- WEIGHT WATCHERS SELECTED VARIETIES ULTIMATE  
**90 YOGURT** .... 6 OZ. TUBS **2/\$1**
- SHURFINE TROPICAL OR  
**CITRUS PUNCH** .. 16 OZ. BTL. **3/\$1**
- SHURFINE  
**COTTAGE CHEESE** .. 24 OZ. CTN. **\$1.89**



- BEST MAID WHOLE  
**SWEET PICKLES** ... 16 OZ. JAR **\$1.99**
- BEST MAID SWEET  
**RELISH** ..... 22 OZ. JAR **\$1.79**
- BEST MAID HAMBURGER  
**DILL SLICES** ..... 32 OZ. JAR **\$1.99**
- BEST MAID HAMBURGER  
**DILL SLICES** ..... 32 OZ. JAR **\$1.99**
- BEST MAID BREAD-N-BUTTER, WHOLE DILL,  
OR HAMBURGER DILL SLICES  
**PICKLES** ..... 16 OZ. JAR **\$1.79**



- BLUE BUNNY VANILLA OR NEAPOLITAN ICE CREAM  
**SANDWICHES** . 12 CT. PKG. **\$2.79**
- NESTLE BUTTERFINGER  
**ICE CREAM BARS** ... 6 CT. PKG. **\$1.99**
- NESTLE ORIGINAL OR REDUCED FAT  
**CRUNCH BARS**. 6 CT. PKG. **\$1.99**

- 8 CT. ACTID REDUCER TABLETS
- 12 OZ. LIQUID COOL MINT OR CHERRY ANTACID  
**MYLANTA** ..... YOUR CHOICE **\$2.99**
- ASSORTED DEODORANT BODY POWDER  
**SHOWER TO SHOWER** 8 OZ. BTL. **\$1.99**



- BANQUET ASSORTED FRIED  
**CHICKEN** ..... 19-25 OZ. PKG. **\$2.99**
- TOMBSTONE SELECTED VARIETIES  
**12" PIZZA** 19.4-23.6 OZ. PKG. **2/\$6**
- SHURFINE BUTTERMILK OR SWEETMILK  
**BISCUITS** ..... 7.5 OZ. 10 CT. **5/\$1**



WESTERN MONEY  
UNION TRANSFER<sup>SM</sup>  
"The fastest way to send money"

# Lowe's

MARKETPLACE

401 W. American Blvd.  
Muleshoe 272-4585



515 W.  
American Blvd.

WE RESERVE THE RIGHT  
TO LIMIT QUANTITIES  
IN TEXAS

Muleshoe  
272-4406