



Muleshoe Journal



Volume 75, No. 16

Published Every Thursday at Muleshoe, Bailey County, Texas 79347

Thursday, April 17, 1997

Murder mystery in Muleshoe

Housewife found savagely beaten to death

By RICK WHITE
Managing Editor

Muleshoe police Tuesday were still trying to unravel the mystery of the violent death of Faviola Fabela Mendoza.

The attractive 20-year-old housewife was found savagely beaten to death Sunday morning in her Muleshoe home on West 20th Street.

Investigators have not identified a prime suspect yet, but are certain of at least one fact.

"I have no doubt she knew her attacker or attackers," Henegar said. "This was not a random act of violence."

Five Mexican nationals, including her husband of one year, were being held on unrelated charges as of Tuesday and were still being questioning.

The five are scheduled to be deported Wednesday, which only complicates matters.

Henegar said he doesn't consider any of the five a prime suspect.

Four of the men lived with the victim. The fifth is her brother-in-law. All five worked the midnight shift at the Excel meat packing plant in Friona.

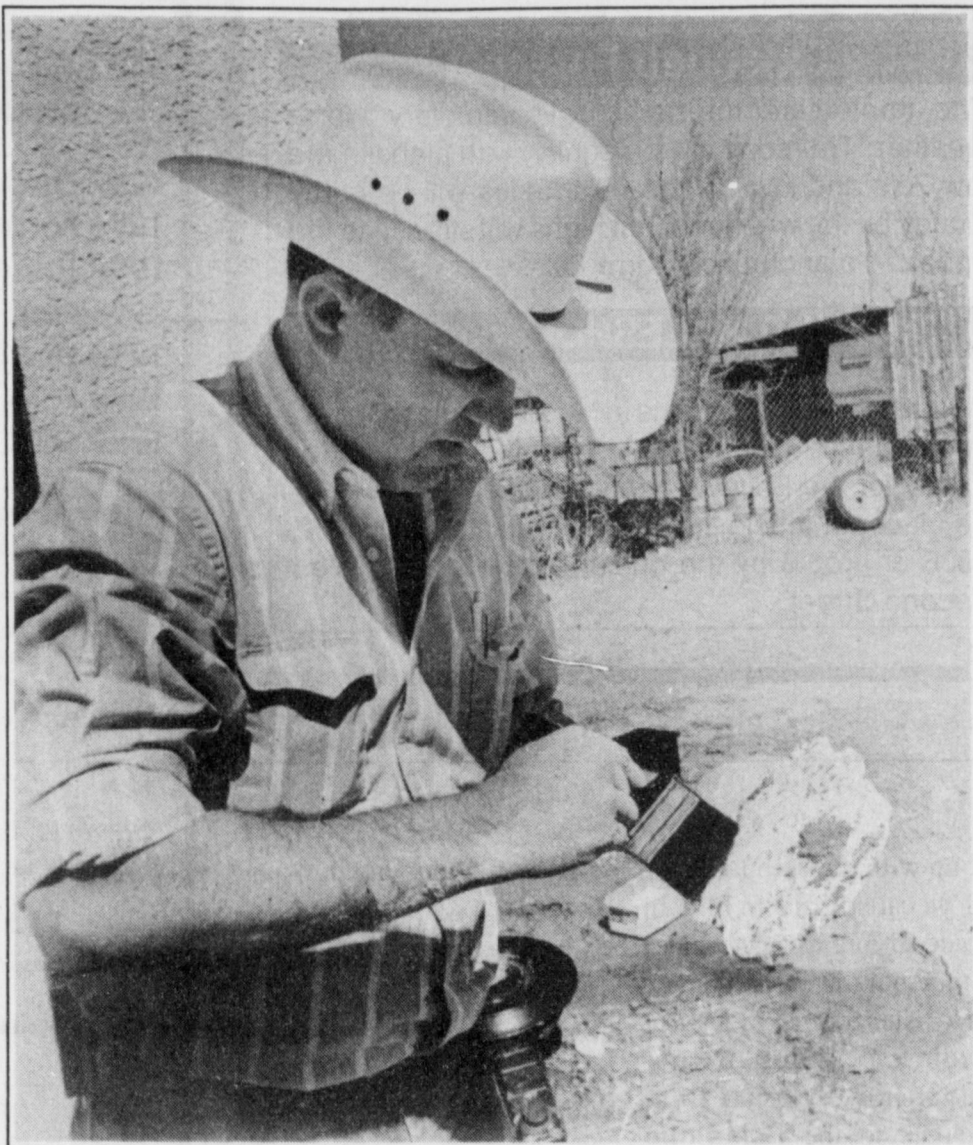
Two were scheduled to take a polygraph Tuesday — her 25-year-old husband, Jaime Mendoza, and 27-year-old family friend Antonio Rodriguez.

Mendoza was found bloodied and battered on the living room floor of the small, white stucco house. Police found a jar full of coins and cash in the house and about \$300 in her pocketbook, which ruled out robbery as a motive.

Investigators found no signs of forced entry.

Mendoza appeared to have been sexually assaulted, Henegar said. There were signs of a struggle in the house and bruises on the victim's hands further indicated she put up a fight.

An autopsy was performed Monday in Lub-



"I have no doubt she knew her attacker or attackers. This was not a random act of violence."



— Muleshoe Police Chief Rick Henegar

Searching for clues

Bailey County constable Curtis Hunt brushes dirt off a tire print taken in the driveway of the West 20th Street house (below) where a Muleshoe woman was murdered early Sunday morning. The case is under investigation and no arrests have been made.

bock, but Henegar wouldn't comment specifically on the results.

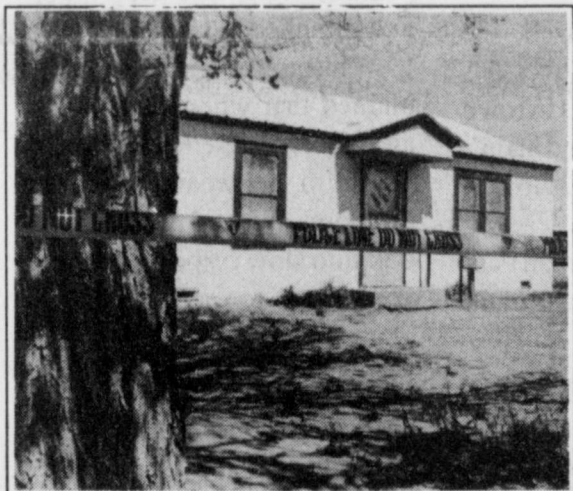
Rodriguez found the body shortly after 8 a.m. when he came home from work. He was also reportedly the last one to see her alive when he left for work around 1 a.m.

Henegar believes she was killed sometime between 1 a.m. and 3 a.m.

The official cause of death according to the coroner was blunt force trauma to the back of the head.

No weapon was found at the scene.

Continued on page 2



Cable guy gets poor reception from Council

By RICK WHITE
Managing Editor

Talk about bad timing.

In town to address the Muleshoe City Council about customer complaints, Classic Cable regional manager Rowdy Whittington turned on the television in his hotel room Monday night — and the cable was out.

The reception wasn't much better during Tuesday's City Council meeting.

Most of the complaints made by Councilmen and a handful of private citizens centered on rotten customer service and poor TV reception.

CITY COUNCIL

Whittington responded with promises of good intentions and that he would personally see that Muleshoe's problems became a top priority at Classic Cable.

Muleshoe city manager James Fisher gave a thumbs down to Whittington's performance

"I've sat here and listened to your song and dance and it sounds just like every other cable system representative I've ever dealt with. I will not sit here and put up with this," said Fisher, in a PG-rated tirade. "Our citizens deserve better service."

Other points Fisher raised were:

■ The City wasn't notified until two weeks later that Whittington had moved his office and changed his phone number.

■ Classic Cable still hasn't installed the emergency override system it promised the city when the company took over the cable system in 1995. The emergency system would allow the police dispatcher to break into programming to announce a tornado warning or other emergencies.

"You are endangering the lives of every citizen," said Fisher, chastising the unsuspecting Whittington on another promise not met. "The citizens are paying for a service and the city granted you a franchise, and it wasn't so you

Continued on page 2

Wheat watchers hold slim hopes

By RICK WHITE
Managing Editor

This weekend's record low temperatures, complete with a blanket of snow, left wheat growers a little numb.

"I'm really afraid it did some damage," said Don Bryant, who farms in the YL community. He said has about 150 acres planted to harvest for grain and another 500 acres of dryland wheat for grazing and hay. "But it's really too early to tell how much damage we've had right now. In about a week, we'll know."

Temperatures plunged into the low 20s and upper teens for three straight nights starting

Thursday. A half-inch of snow greeting church-goers Sunday morning.

"Even though we had record lows, it's not that unusual to get a freeze this time of year," said Johnny Wallace of the National Weather Service in Lubbock. "What was unusual was that we got it for three nights in a row."

Bailey County Extension agent Curtis Preston, who took a quick peek at a field of calf-high, lush-green wheat Monday afternoon, agreed it's too early to assess the damage.

But he didn't like what he

Continued on page 4



Field work

Bailey County Extension Service agent Curtis Preston checks a field of wheat south of Muleshoe for freeze damage Monday afternoon. Record-breaking low temperatures last weekend could cause major damage to this year's winter wheat crop.

Lady Mules headed for regionals

CANYON — Muleshoe won its first girls district golf title last weekend — on paper at least.

The Lady Mules were declared District 1-3A champions on a tie-breaker after the final round of the tournament was postponed three times last week because of rain and below-freezing temperatures.

Muleshoe and Tulia were deadlocked at 425 after the first round of the district tournament April 4 at Hereford Country Club.

Muleshoe won the tie-breaker on matching individual cards between the teams.

The scorecard playoff didn't last long because Muleshoe junior Keisha Whitt was the medalist with an 89, which also earned her the district title.

Perryton and River Road both finished 19 strokes behind the leaders at 244.

The top two teams and individuals advanced to the Region I-3A tournament April 21-22 at Ratliff Ranch in Odessa.

County Commission retains third Sheriff's deputy

By SAMUEL VILLARREAL
Journal Staff Writer

The Bailey County Commissioners Court Monday voted to keep three deputies in the County Sheriff's office.

In a 3-2 decision, the Court chose to divert County funds to pay for the deputy position that was scheduled to be eliminated in September.

Current deputy Joe Orozco was hired in 1992 through a state grant program. The grant expires at the

end of September.

The current budget allows for a sheriff and two deputies.

The third deputy position will be included in the 1998 fiscal budget, according to County Judge Marilyn Cox. The fiscal year begins in October.

Cox said taxes would only be raised the minimum amount needed to cover the budget amendment, if they are needed to be raised at all.

The total cost of salary, benefits, and car vehicle

maintenance for one year will be \$32,722.45.

The 1997 budget will be amended to cover Orozco's salary until the new budget is approved.

"The way I see it, we'll have no choice but to raise taxes," said Precinct 1 Commissioner Floyd "Butch" Vandiver. "I'm ready to take the flak to keep a deputy."

Precinct 4 Commissioner Bennie Claunch and Precinct 3 Commissioner Joey Kindel both voted against the

Continued on page 6

Continued on page 3

AROUND MULESHOE

Latham named All-American Scholar

Muleshoe High School senior Colby Latham has been named an All-American Scholar by the United States Achievement Academy. Latham will appear in the All-American Scholar Yearbook, which is published nationally. The Academy selects All-American Scholars upon the exclusive recommendation of teachers, coaches, counselors, and other qualified sponsors. Latham was sponsored by MHS coach and math instructor Jim Gruhley. Latham is the son of Gaylord and Linda Latham, both instructors with the Muleshoe Independent School District. Grandparents are Lawrence and Loudilla Davis of Beaver, Okla. and Bernice Latham of Earth.

Cosmetology exam at SPC April 24

A pre-entrance exam for South Plains College's cosmetology program is scheduled for April 4. The next round of cosmetology classes begins June 1. The test will be given from 9 a.m. - 1 p.m. in the SPC Student Assistance Center, on the third floor of the Library building. Fee is \$4. For more information, contact the Guidance and Counseling Office or cosmetology program at 894-9611, ext. 2366 or 2287.

Weigh Down group meeting April 23

The Weigh Down group orientation meeting will be at 5 p.m. April 23 at the 16th and D. Church of Christ. The Weigh Down Group is for anyone interested in losing weight through a scripture-based program and is not a diet. For more information, call 272-3792 or (after 4 p.m.) 272-4090.



Gloria Elliot
Gospelsinger Gloia Elliot will perform in concert at 11 a.m. April 20 at the 1st Assembly of God in Muleshoe. Elliot has performed across the county, and has appeared on *The 700 Club* and various Christian radio programs.

Extended Forecast

The immediate future holds some very warm weather. Thursday will be sunny, with highs in the low 70's and lows in the 40's. Skies will be partly cloudy by the weekend, but highs will still rise to the upper 70's and possibly low 80's.

"AROUND MULESHOE" deadlines

Deadlines to put an article in "Around Muleshoe" are noon Tuesday for the Muleshoe Journal and noon Friday for the Bailey County Journal. To place an article in "Around Muleshoe, call 272-4536 or drop it by the office, located at 304 West Second Street.

Muleshoe woman wins inspirational writing award

AMARILLO — Pat Watson of Muleshoe placed first in the inspirational article division at the annual writer's seminar of The Amarillo Chapter of Inspirational Writers Alive! April 5 at Kingswood United Methodist Church. Watson's article was called "Let Me Tell You About Martha (Ministering to Bereaved Grandparents)." She also received a second place in unrhymed poetry with "Walk with Me," and an honorable mention in devotional writing with "Submitting to God's Will."



| | |
|--|----------|
| 1997 Ford Ranger | 2.9% |
| 1996 Ford Explorer (4 door, 4x4) | \$21,800 |
| 1996 Thunderbird, LX (V8) | \$13,900 |
| 1995 Ford F150 (V8, automatic) | \$13,900 |
| 1995 Dodge Intrepid | \$10,990 |
| 1995 Ford Escort LX (4 door, 15,000 miles) | \$8,995 |
| 1989 GMC 1500 Supercab (4x4) | \$3,990 |

*2.9% for 24 months; 5.9% for 36 months; 7.9% for 48 months
1225 W. American Blvd. 806-272-4251 or 800-432-7617

Council

Continued from page 1

could come in, take our money, and run out the door." Fisher then made his own promise. "If things don't change, the city will find a new cable company when the franchise expires," Fisher said. Classic took over for Mission Cable in September of 1995 and was granted a five-year franchise extension. Classic has 1,500 subscribers in Muleshoe. To his credit, Whittington agreed that the City should "hold his feet to the fire" to get things done. "I urge you and any citizen to call us when there is a problem," said Whittington, who is

based in Kerrville. His territory covers 96 systems in Texas. Whittington noted that Classic now has a local customer number service number (272-4984) that can be called weekdays during normal working hours. Whittington said he didn't realize how dissatisfied the City was with Classic Cable's service. He said Matt Howell, the chief technician who oversees the local system, stops in town at least once a month and hadn't heard the complaints. Howell is based out of Tulia. Muleshoe businessman Paul Wilbanks said he's just plain

feed up with the company. "I've called 'til I'm blue in the face (trying to get service) and they put me on hold and I have to listen to Mickey Mouse recordings," Wilbanks said. "I've gotten every excuse from sun spots to the Hale-Bopp comet. I'm telling you, the service is terrible." Others at the meeting complained about how several stations bleed into each other and of unheeded service calls. Whittington patiently explained that when electronics are involved, there are always going to be weather-related problems. He said promised to look into slow response to service calls.

Whittington said he spent Monday night climbing poles with Howe fixing the cable outage, which turned out to be a short-circuit that left a large portion of the viewing area without cable for upwards of three hours. Such is the life of the cable guy.

Murder

Continued from page 1

"We're sort of at a dead end right now," Henegar said. Faviola Mendoza moved to Muleshoe in November from her native Mexico to be with her husband. She was accompanied by a brother, a cousin and Rodriguez. Jaime Mendoza had been working at Excel since March of 1996. Neighbors told police Faviola Mendoza always

locked the doors when her husband left for work. The five men usually drove to work together, Henegar said. But Saturday night, Rodriguez and Omar Mendoza, the brother-in-law, rode in a separate vehicle, according to investigators. Rodriguez dropped off Mendoza at his house just a few blocks away Sunday morning. When Rodriguez found the

body, he drove to Omar Mendoza's house and called police. The other three men, including Faviola's husband, arrived at the murder scene after the police, sometime between 8:45 and 9 a.m., according to reports. Henegar is asking that anyone with any information about the murder to please call him at 272-4569. All callers will be kept anonymous, he said.

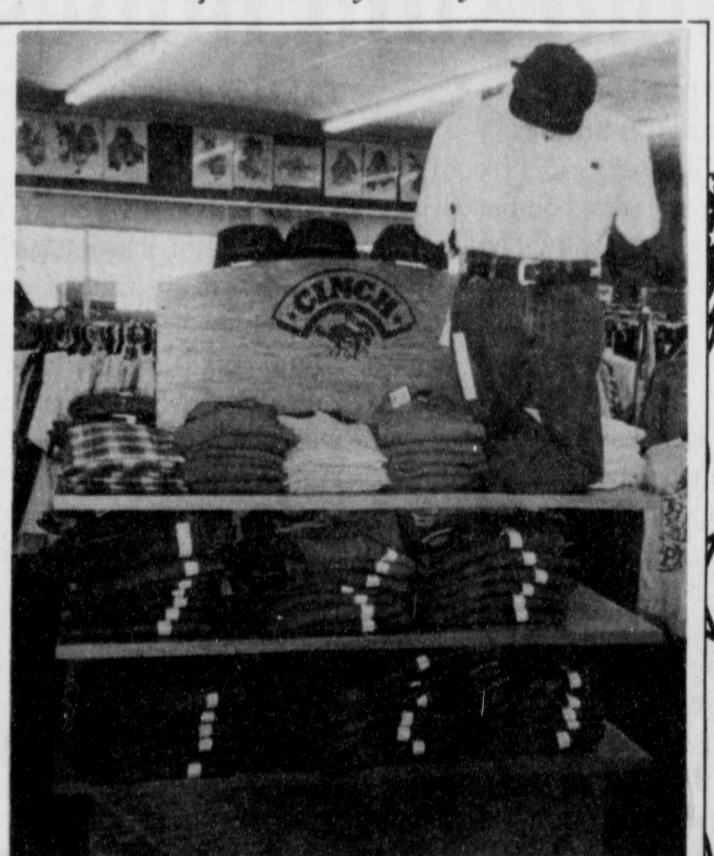
Muleshoe Journal USPS 367820

Established February 23, 1924. Published by Triple S Publishing, Inc. Every Thursday at 304 W. Second, Box 449, Muleshoe, TX 79347. Second Class Postage paid at Muleshoe, TX. POSTMASTER: Send address changes to the Bailey County Journal, P.O. Box 449, Muleshoe, TX 79347. We are qualified members of: Panhandle Press Association, National Newspaper Association, West Texas Press Association and Texas Press Association. WEST TEXAS PRESS ASSOCIATION MEMBER 1997 PPA Panhandle Press Association. Scot Stinnett, Publisher; Lisa Stinnett, Vice-President/Comptroller; Rick White, Editor; Jessica Orozco, Classifieds; Pat Durben, Advertising. SUBSCRIPTIONS: Muleshoe Journal and Bailey County Journal. By Carrier Yearly - \$22.00; Bailey and surrounding counties: by mail - \$24.00; Elsewhere - \$26.00. Advertising Rate Cards on Application. *Advertisers should check their ad the first day of insertion. The Journal will not be liable for failure to publish an ad or for a typographical error or errors in publications except to the extent of the cost of the ad for the first day of insertion. Adjustment for errors will be limited to the cost of that portion of the ad where the error occurred.



1-800-658-6378 106 E. American Blvd. Muleshoe, Texas And Country Junction

Introducing - **The New Cinch™ Jeans** for Men by Rocky Mountain



Introducing CINCH brand jeans and shirts for men from Rocky Mountain Clothing Company.

CINCH™ shirts are a combination of classic looks and young men's looks. There are non-western and western styling details. CINCH™ shirts are fashion-driven and feature premium construction in both knits and wovens. CINCH™ shirts are sized M-L-XL-XXL. **Jeans** - CINCH™ jeans are fitted in the waist and hip with a relaxed thigh and a bottom opening sized to go over boots. Our jeans are directed to the fashion-conscious Western customer who wants fashion style and finish, as well as premium labeling. CINCH™ jeans are available in lengths up to 40" and offer a new choice in a premium fashion jeans in a length long enough for the "Western Lifestyle." CINCH™ jeans feature a woven watch-pocket "Crest" label and distinctive "CINCH UP" label on the fly.

\$500 OFF

Any Cinch Jeans or Knit Shirts

Through the end of May

MEDICAL AND DENTAL OUTREACH
Hosted by THE MULESHOE CHURCH OF CHRIST
2201 WEST AMERICAN BLVD.
SATURDAY, April 26th 9-12 AND 1-5
SUNDAY, April 27th 1:30-4:30

- Free medical exams
- Screenings
- Free Samples
- Dental Education

Information for Diabetes and High Blood Pressure

A FREE CLOTHING GIVE AWAY WILL BE MADE AVAILABLE TO ALL WHO REGISTER.

Subscribe today! Call 272-4536

Ribbon cutting



Chamber welcome

The Muleshoe Chamber of Commerce & Agriculture marked the grand opening of Kat's Korral April 9 with a ribbon cutting ceremony. Pictured are (from left) Chamber manager Patty Hartline, restaurant owner Kathy Thomas, Bruce Hartline, Mayor Robert Montgomery, Wade King, Chamber president Hugh Young, Bill James and Dawn Williams. Kat's Korral is located at 121 Main Street.

Company promises MISD reduced energy bills

By SAMUEL VILLARREAL
Journal Staff Writer

A Lubbock-based energy consultation firm has approached the Muleshoe Independent School District about free energy management.

The MISD Board of Trustees Monday discussed a possible contract with W.D. Weley Company, a Lubbock-based energy management consultation firm.

If the contract is approved, the company would install computer operated heating and cooling units at each of the four MISD campuses at no cost to the district.

According to MISD Superintendent Bill Moore, the units are designed to be save money in energy cost. W.D. Wesley would receive a portion of the

savings to pay for the equipment.

"If we don't save money, they don't make money," Moore told Board members. "The only down side I see to this is the loss of individual control."

Moore said the room temperatures will be computer controlled, so teachers will not be able adjust room temperatures themselves.

Troy Weston, a representative of W.D. Wesley Company, said rooms can be programmed on an individual basis and teachers would be able to choose what temperature their rooms are programmed to maintain. Sensors in each classroom would monitor temperature and keep it within 1.5 degrees of the selected tempera-

ture. Board members chose to delay any decisions until the proposals can be discussed with teachers.

In other business, Board members approved a new food services contract with Aramark Corp.

Fine Host, an Arizona-based food services company, was the only other bidder.

Although the Fine Host contract proposed management and administrative fees of about \$4,200 less than Aramark, board members chose not to change their food service company.

Board members said their decision was based on Aramark's record of good service. Board members also expressed concern about the ef-

fects on employees' benefits if the district switched companies.

Aramark currently provides a retirement plan for its food service employees.

Board members also passed an ordinance to cancel the May 3 trustee election because all the candidates are running unopposed.

Board trustees Curtis Shelburne and Arnold Price will be sworn into office between May 6-13.

We want to express our appreciation to the Chamber of Commerce board for selecting us as business of the year. We also want to thank our many customers, throughout the years, we appreciate your business. We especially thank our dedicated employees, who have helped to make our business what it is.

Thanks to Chester Yerby, Mike Dale, Dianne Brown, Steve Benton and Andy Friesen. You are all a special group of people.

DALE OIL CO. - Gary & Glenda Dale

CUSTOMER APPRECIATION CELEBRATION AT SONIC!

10 a.m.-10 p.m. APRIL 19, 1997

FREE BALLOONS! FREE BROWN BAG TO EVERY 20TH CUSTOMER!

VANILLA CONES 25¢

REGULAR SINGLE BURGERS (cheese & chile extra) 79¢

49¢ REG. FRENCH FRIES

MED. SOFT DRINKS 29¢

1633 AMERICAN BLVD. MULESHOE 272-3998

APPRECIATION SPECIALS AVAILABLE AT THE MULESHOE LOCATION ONLY.

SONIC
Drive-In Fun & Change™

REGISTER TO WIN A MOUNTAIN BIKE!

Return completed entry blank to carhop. Winner will be notified by phone.

Name: _____

Address: _____

City/Zip: _____ Phone: _____

Lady Mules

Continued from page 1

It is the Lady Mules' second straight trip to regionals.

Last year, the Lady Mules made their first-ever regional appearance as the District 2-3A runner-up.

"The kids kind of had mixed

emotions," Muleshoe coach Ralph Mason said. "They didn't want to play in the weather — which shows they have some sense — but still wanted to prove they were the best on the course."

"They're real excited about going to regionals," Mason said.

The 36-hole regional tournament features 16 teams, with the top two advancing to state.

- Wilson Appliance - Authorized Distributor for Plateau Cellular Service



**FREE
ACTIVATION
THROUGH APRIL**

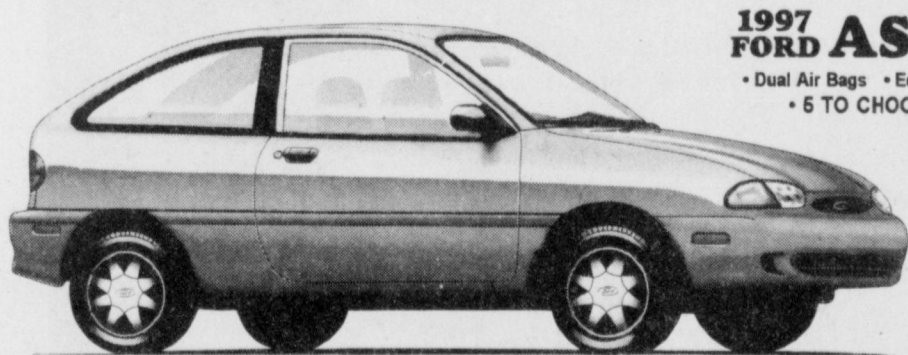
**Cellular
Phones
AS LOW AS
\$19⁹⁵**

Wilson Appliance

117 Main Muleshoe 272-5532

* Some Restrictions May Apply.

We're So Overloaded With Inventory... WE'RE PRACTICALLY GIVING AWAY NEW CARS!



1997 FORD ASPIRE

• Dual Air Bags • Economical 5 Speed
• 6 TO CHOOSE FROM!

WAS \$268
Per Month

NOW ONLY \$157
Per Month

1997 PLYMOUTH BREEZE

• Air Conditioning • AM/FM Stereo Cassette
• 2 TO CHOOSE FROM!

WAS \$269
Per Month

NOW ONLY \$233
Per Month



CHOOSE FROM A GREAT SELECTION OF FORDS & CHRYSLERS WITH REDUCED PAYMENTS!

| | | | |
|--|---|---|---|
| 1997 FORD ESCORTs DUAL AIR BAGS, ECONOMICAL 5 SPEED, 4 DOOR SEDAN WAS \$210 NOW ONLY \$159 | 1997 DODGE NEON AUTOMATIC, AIR CONDITIONING, CHILD SEAT, CASSETTE, MUCH MORE! WAS \$287 NOW ONLY \$226 | 1997 DODGE NEON AUTOMATIC, AIR CONDITIONING, CHILD SEAT, CASSETTE, MUCH MORE! WAS \$287 NOW ONLY \$226 | 1997 DODGE NEON AUTOMATIC, AIR CONDITIONING, ECONOMICAL 5 SPEED, CASSETTE, MUCH MORE! WAS \$248 NOW ONLY \$215 |
| 1996 FORD MUSTANG AIR CONDITIONING, POWER WINDOW/LOCK/REAR, TILT, CRUISE, CASSETTE WAS \$316 NOW ONLY \$245 | 1997 FORD CONTOUR AUTOMATIC, POWER WINDOW/LOCKS, TILT, CRUISE, CASSETTE, MUCH MORE! WAS \$300 NOW ONLY \$259 | 1997 FORD TAURUS GLs AIR CONDITIONING, POWER WINDOW/LOCKS, TILT, CRUISE, CASSETTE WAS \$308 NOW ONLY \$289 | 1997 FORD CROWN VICTORIAS AUTOMATIC, POWER WINDOW/LOCK, TILT, CRUISE, CASSETTE WAS \$418 NOW ONLY \$337 |

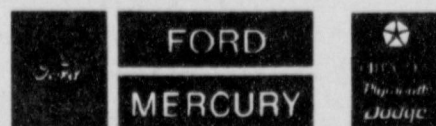
3.9% APR FINANCING UP TO 60 MONTHS!

HURRY IN WHILE SELECTION IS BEST!

* All payments based on 72 months @ 3.9% APR with \$1,000 down - cash or trade equity. ** On selected models. *** Subject to lender's approval and prior sale.

**TEAGUE
STREBECK**

The very best prices and service anywhere...
We personally guarantee it!



(505) 356-8581 (505) 762-3845
1115 North Chicago
Portales NM

(On the first curve into Portales)

State wheat estimates were high

AUSTIN — Texas wheat producers expect to harvest 110.0 million bushels this year, 46 percent above both the 1996 crop and 1995 crop.

That was before the recent freeze in the Panhandle and South Plains.

According to an April 1 survey conducted by the Texas Agricultural Statistics Service, planted acreage for the 1997 crop is estimated at 6.0 million acres, unchanged from 1996 but up 3 percent from 1995.

Production on the Northern High Plains is expected to total 44.0 million bushels, up 29 percent from a year ago. Irrigated fields across the region are in good condition, while dryland fields are in need of rain.

Wheat

Continued from page 1

saw. "When it warms up, we'll really be able to tell," Preston said.

Temperatures are supposed to reach the high 70s and lows 80s by Saturday, according to the Weather Service, with overnight lows in the 40s.

Planted in early fall and harvested in June and July, wheat becomes vulnerable to freeze damage in the spring.

Warming temperatures induce a big growth spurt and forms the heads from which grain is harvested, Preston said.

Johnny was a mule man



BAXTER BLACK
ON THE EDGE OF COMMON SENSE

Johnny was a mule man, which says a lot to me.

His motto: keep it simple. Lay it out for me to see.

If a kid can't understand it, it's prob'ly bound to fail.

He'd rather have a good man's word than a contract in the mail.

He never trusted horses or computers on the shelf,

He'd rather count the cattle, check the pasture for himself.

If he knew you knew your business, he'd back you to the hilt

And gladly give the credit for the fences that you built

But he'd ride you like a blanket so you couldn't go astray

'Cause to him it all was pers'nal . . . he knew no other way.

He didn't have the answers to each problem you were heir

But he figgered you could solve'm. That's why he put you there.

If you could tie a diamond hitch or pour the ol' concrete

That meant as much to him as runnin' out a balance sheet.

See, he knew that all the business in the end came down, somehow

To a single salaried cowboy who went out and checked a cow.

I guess he always thought himself no one of the elite

But a man who works for wages and just got a better seat.

And I'm sure he spent some sleepless nights doubting what he's done

But he trusted his opinion more than almost anyone's.

So, if he prayed, which most men do, when sleep is closing in,

He prob'ly prayed that Scottish prayer that suited men like him,

"Lord, grant that I am right, that my judgement's no gone blind.

For Thou knowest in Thy wisdom, it's hard to change my mind."

The tallest and most advanced wheat is most susceptible to damage.

Damage can vary from dead leaf tissue to stem damage and loss of the (grain) head, Preston said. Severely damaged fields will develop a strong odor similar to silage once temperatures warm up, he said.

Most of the 50,000 acres of a year of wheat grown in Bailey County is grazed and hayed, which could lessen the financial blow. Even moderately damaged wheat can still be grazed and hayed, although yields would suffer.

Flooding and cold temperatures throughout the upper Midwest is expected to create a shortage of wheat and a favorable seller's market.

"That's just part of being a farmer," Bryant said about the potential loss.

Other spring crops, like potatoes and alfalfa, are expected to receive moderate setbacks by the freeze.

West Texas potato farmers traditionally plant early hoping to gain a favorable market by being among the first to harvest in the country.

"It's a setback because it

affects the speed of growth and shortens the window of trying to get to market early," said Cliff Black, general manager of Springlake Potatoes. "Especially the red potatoes. The freeze will burn off anything that is above the ground, but that will grow back."

New alfalfa growth will probably be lost and that could delay the first cutting of the spring, Preston said.

Cattle inventory declining after reaching peak in 1996

The cattle inventory has peaked for this cycle and is now declining, James Nix, a USDA livestock analyst, said at a recent USDA Outlook Conference.

Beef cow slaughter, which was up 24 percent in 1996 from 1995, will slow this year as forage becomes available, he said, as reported by Knight-Ridder news.

However, he said the long-term decline in replacement heifers will reduce the industry's ability to rebuild. At the beginning of 1997, producers were holding 2.1 percent fewer replacement heifers than they had at the beginning of 1996. By Jan. 1, 1998, replacement numbers will be down about 4 percent from a year before, Nix forecasts.

Improved economic conditions this year will cause producers to slow down the slaughter of replacement heifers, but Nix predicted it will be 1998 before there will be much of an increase in the number of replacement heifers being added to the nation's herd.

He predicted the 1997 calf crop will be down 4 to 6 percent from last year's.

Dr. A.R. Ploudre
Open your eyes
to vision care that works
with your budget!

- Quality care at a reasonable cost
- Contact lenses
- Eyeglass prescriptions filled
- NM & Texas Medicaid, Medicare Assignment

We are also proud to provide special assistance to low income families in need of vision care. Families who feel they qualify are encouraged to call for more information.

Payment plan available • Se Habla Espanol

1515 Gidding St., Clovis, N.M.
(505) 762-2951



We even treat moms of fearless outlaws.

Making a happy homestead for a ruthless bandit can be rough on you. That's why we want to make sure that you get the special attention you've earned. At St. Mary Family Healthcare Centers, we'll look after you, your little cowboy,

and the whole outfit. Whether it's for a regular health check-up, or you or one of your clan isn't feeling well, we're notorious for our convenient locations. But not as notorious as, say, someone you may know.

ST. MARY
Family Healthcare Centers
Building Healthier Communities

Muleshoe

Mark McClanahan, D.O.
Family Practice

610 S. 1st
(806) 272-7544

Hours: M-F, 8:30 a.m. - 5 p.m.
(Closed noon - 1 p.m.)

Our Healthcare Centers welcome a variety of health insurance plans. Cash, checks and major credit cards accepted.

GM
Goodwrench Service Plus

Offers you
MORE

GM Goodwrench Service Plus is more than just another way to service your vehicle—it's a better way. Because GM Goodwrench Service Plus has highly trained technicians who know your GM vehicle inside and out.

UP-FRONT COMPETITIVE PRICING

Which means no surprises when the bill comes.

COURTESY TRANSPORTATION

After you drop off your vehicle, we'll take you where you want to go.

LIFETIME SERVICE GUARANTEE

Parts and labor are covered for as long as you own your GM vehicle. See dealer for details of this limited warranty. Covered parts include:

- Air Conditioning Accumulator
- Air Conditioning Compressor
- Air Conditioning Condenser
- CV Joint/Boot Seal Kit
- Ignition Module
- Ignition Coils
- EGR Valve
- Fuel Injectors
- Fuel Pump
- Ignition Wire Set
- Individual Ignition Wires
- New/Remanufactured Generator
- New/Remanufactured Starter Motor
- Oxygen Sensor
- Shock Absorbers/Struts
- Throttle Body Injector
- Water Pump

Please present coupon prior to service

FOR LESS.

QUICK LUBE plus
Lube, Oil & Filter Change

\$17

Complete chassis lube; AC oil filter; up to 5 quarts quality motor oil, plus 10-point maintenance check.

Offer expires 4-30-97

Taxes not included. Applies to most GM vehicles. See dealer for details.

24-Point Maintenance Inspection

FREE

Includes emission check, lights, engine, battery, brakes, cooling systems, general appearance, transmission operations, tires & steering. Needed repairs will be noted & a free written estimate will be provided.

Offer expires 06/1/00. Applies to most GM vehicles. See dealer for details.

Tire Rotation

\$18

Inspect for irregular tire wear. Check tire pressure. Rotate per manufacturer's specifications. Visual inspection of rims.

Offer expires 4-30-97

Taxes not included. Applies to most GM vehicles. See dealer for details.

Radiator Service/Coolant

\$25

Drain & flush cooling system. Replace coolant. Clean outside of radiator & air conditioning condenser. Pressure test entire system. Inspect condition of all hoses, clamps & belts.

Offer expires 4-30-97

Taxes not included. Applies to most GM vehicles. See dealer for details.

Air Conditioning Service

\$45

Adjust drive belts. Tighten fittings. Check operating pressure. Check for leaks. Clean condenser fins. Performance-test system (Freon extra).

Offer expires 4-30-97

Taxes not included. Applies to most GM vehicles. See dealer for details.

Tire Rotation/Balance/Brake Inspection

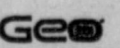
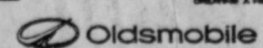
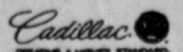
\$36

Inspect for irregular tire wear. Check tire pressure. Rotate per manufacturer's specifications. Inspect rims. Computer balance 4 wheels. Check brake linings, rotors, drums, hydraulic system & master cylinder.

Offer expires 4-30-97

Taxes not included. Applies to most GM vehicles. See dealer for details.

BENDER



2500 Mabry Drive, Clovis, NM (505) 763-4465

Muleshoe Art Association holds annual show

Ginnie Seinfert of Clovis, N.M. was awarded Best of Show last week at the Muleshoe Art Show for her painting "St. James."

Seinfert was awarded \$100 for her accomplishments.

Winners were also named in four divisions.

In the oil paintings, Carol Ellis of Friona won first place for her painting "Patro Garden."

Jackie Henderliten of Clovis won first place in the pastel division with her painting "Jamie."

First place in the watercolor division was taken by Jeanette Swanson of Anton for her work entitled "Kitchen Jars."

In the miscellaneous division, Erald Grose of Muleshoe took first place for her work entitled "Mums."

Muleshoe Art Show results
Best of Show — St. James, Ginnie Seinfert.

Oil — 1. Patro Garden, Carol Ellis; 2. Peaceful Valley, Marie Tidwell; 3. Hondo Valley Adobe, Beth Martin.

Pastel — 1. Jamie, Jackie Henderliten; 2. Old Days, Betty Embry.

Watercolor — 1. Kitchen Jars, Jeanette Swanson; 2. Spring Up North, Mildred Williams; 3. Red Bird, Beth Watson.

Misc. division — 1. Mums, Erald Grose; 2. Wild Roses, Dorothy Bowers.

Honorable mentions

Pastel — Kitchen Shelf, Ginnie Seinfert; Paula, Ginnie Seinfert.

Watercolor — Foggy Pier, Jeanette; A Splash of Color, Jackie Henderliten; Blue Chairs, Jackie Henderliten; Chill in the Air, Mildred Williams.

Misc. Division — Hands, Jackie Henderliten; Ibex, Carol Ellis;

Oil — Keping Warm, Jeanette Sanson; Yellow Ochre, Carol Ellis; Alaska, Beth Watson; Acoma, Jackie Henderliten; Heading Home, Frances Stegall; Glass Vase, Beth Watson; Adobe Snow Scene, Betty Embry; Bunch of Bull, Ginnie Seinfert.



Painter's pride

Beth Martin, president of the Muleshoe Art Association, explains one of her paintings she entered in Muleshoe Art Show last week held at Muleshoe State Bank. The painting earned a third place.

Jewelry & WATCH REPAIR

- Ring Sizing 5-7 Days Service
- Remounting & Diamond Setting
- Full Line Watch Batteries
- Neck Chains Repaired
- Jewelry Appraised For Insurance

Faster Service

Holmberg Jewelry
1941 55 YEARS 1997

1908 N. Prince, Clovis
762-9376 (Across from K-Mart)

1104

RED WING SHOES
Made in U.S.A.

The Fair Store
120 Main 272-3500

WJHS band earns UIL sweepstakes

By SAMUEL VILLARREAL
Journal Staff Writer

The Watson Junior High School band received all superior rating Thursday at University Interscholastic League competition in Plainview.

The WJHS band received their second straight concert sweepstakes award by receiving first division ratings in both concert and sight reading competition.

In the concert performance, bands performs three prepared musical pieces for a panel of three judges, who rate bands on a five point scale.

The program by the WJHS band included "March Atlantis" by Ken Harris, "Modal Song and Dance" by Elliot Del Bargo, and "A Two-Minute Symphony" by Bob Margolis.

In his critiques, one concert

judge wrote, "It is obvious this band has two excellent qualities, good learning and good teaching."

WJHS band director Martha Anthis said judges also complemented the band for its ability to play a variety of styles in their music.

In the sight reading competition, bands are given seven minutes to prepare an unknown musical piece.

No students or directors are allowed to play any parts of the music during the seven minutes, so band directors have to verbally explain the music to the students.

As in the concert competition, a three-judge panel critiques the band and gives them a rating of one through five.

The WJHS band received a first division rating from each judge.

The next competition for WJHS band members will be May 3, when they attend the Greater Southwest Music Festival in Amarillo.

Three Way fills school board slots

The Three Way Independent School District Board of Trustees has canceled the May 3 Trustee election.

Only three candidates filed for the three at large positions in the May 3 race; incumbents James Kindle and Terry Pollard and newcomer Craig Kirby.

Kirby will fill the position soon to be vacated by Robert Kindle, who chose not to run for re-election. He has been on the board since 1977.

The candidates will be sworn into office at the May 8 board meeting.

Chicanos Unidos awarded grant

Chicanos Unidos-Campesinos, Inc. of Muleshoe was awarded a grant from the Presbyterian Self-Development of People Committee, Louisville, Kentucky, for its Proyecto Mejoramiento.

Chicanos Unidos will use the funds to establish a central workshop for persons desiring to learn construction skills.

The grant will also be used to purchase materials to build the center and to provide on-the-job training of volunteers. After acquiring skills on construction and remodeling, they will apply these skills in the renovation of their residences.

The Self-Development of People ministry of the Presbyterian Church (USA) is a grant program that is designed to help people better their lives and communities.

Local news
about
local folks.

Muleshoe Journal

To
subscribe,
call 272-4536

Subscribe Today!
Call the Muleshoe Journal
272-4536

Arts & Crafts Show

April 17-20
Thursday thru Sunday
Visit over 40 arts and crafts displays this weekend at

North Plains Mall
One good thing after another...
CLOVIS, NM

You Can't Beat The Deals At D & D!

CLEAN SWEEP SALE

D & D Family Furniture
A Price You Can Trust!

5 Piece Pine Bedroom Set
ONLY \$1,195⁰⁰

5 Piece White Fresco Bedroom Set
NOW \$525⁰⁰

Sofa, Loveseat and Chair
Delirious Wheat \$845⁰⁰

Sofa & Loveseat - Leather Match
Available in Black & White
\$1,195⁰⁰

3 Piece Sofa, Loveseat and Chair
\$995⁰⁰

Sleeper & Loveseat
Poncia Festival \$895⁰⁰

Bookcase Bunkbed
With Mattress \$325.00
Sectional with 2 Incliners & Sleeper \$1,095.00

6 Piece Bedroom Set with Frames
ONLY \$1,295.00

Halogen Lamps NOW \$20.00
Futons, Full Size Bed \$165.00
Jewelry Cabinet \$95.00
Twin Sleeper \$275.00
Daybeds STARTING AT \$185.00
5 Piece Dinette with leaf \$275.00
5 Arm Lamps \$95.00
Oak or Cherry Finish Vanity \$155.00
Solid Wood 7 Piece Dinette \$495.00
7 Piece Dinette with leaf \$385.00
5 Piece Promotional Bedroom Set \$195.00
Twin Headboard Multi Colors \$25.00

Buy a Living Room Set and Receive a Horn Coffee & End Table **FREE**

| | FULL WARRANTY MATTRESS | | | |
|-----------------|------------------------|---------|---------|---------|
| | 10 year | 15 year | 20 year | 25 year |
| Twin Pillowtop | 165 | 195 | 295 | 325 |
| Full Pillowtop | 195 | 245 | 385 | 405 |
| Queen Pillowtop | 265 | 325 | 465 | 495 |
| King Pillowtop | 355 | 425 | 565 | 595 |

We can order California Kings.

D & D Family Furniture
114 E. Grand • Clovis, NM • 505-763-7223
OPEN Monday-Saturday 9:30-5:30

You Can't Beat The Deals At D & D!

Dayhoff Shoes

Spring Sale

4 DAYS ONLY! Wednesday - Saturday, April 16-19

All Selby - Enzo Angiolini - Lifestride - **20% OFF**

L.S. Studio - Johansen **\$14⁹⁹**

Women's Large Group
Connies Joyce & More Values to \$60.00

Women's Large Group Values to \$80.00 **\$29⁹⁹**

Large Women's Group **20%-50% OFF**

Largest selection in Eastern NM & West TX!

Dayhoff Shoes
403 MAIN 762-1174 DOWNTOWN CLOVIS, NM

"Put yourself in our shoes"

Smith receives 50-year award

On Friday, April 11, 1997, Callie Smith was presented a certificate for 50 years continuous membership in the Rebekah Lodge #114. Callie Smith joined the Rebekah Lodge on Dec. 17, 1946 and was active in Rebekah work for several years. Due to health problems she is no longer active.

Those attending the presentation were Thursie Reid, Ruby Green (daughter of Callie), Callie Smith, Mary Ann Ramirez and Patsy Chance.



Fifty-year Rebekah

Callie Smith (center) was recognized Monday for 50 years as a Rebekah member. Also pictured are (from left) Thursie Green, Ruby Green, Mary Ann Ramirez and Patsy Chance.

Callie Smith is the sixth Rebekah to reach the 50 year goal in Muleshoe Lodge. Others reaching that plateau are Fern Davis, Velma Howell, Ruby Green, Maud Young and Beaulah Kelton.

Fern Davis, Velma Howell and Ruby Green are charter members of Muleshoe Rebekah Lodge #114. The Lodge was instituted on Oct. 19, 1945.

REBEKAH NEWS

Our meeting was called to order by Noble Grand Mary Ann Ramirez with 12 members present.

Skating will be Friday 18 cost is \$1 and snacks are 35¢. Please bring your own skates. We sent a thank you card to Leo's Welding for the materials they donated to repair the limbo poles, and to Dave Marts for repairing the limbo poles.

South Plains Associate meeting is Saturday the 12th in Lubbock. The Muleshoe Rebekahs will be doing the Memorial Service.

We will be having a garage sale Thursday the 24th from 2 p.m. to 7 p.m. and Friday the 25th from 9 a.m. to 5 p.m. We will have a bag sale all you can put into a bag for \$5.

It was good to see Becci Venzor back at lodge.

Commission

Continued from page 1

amendment. The Commissioners said it would be hard to ask their constituents to pay higher taxes for an extra deputy when their area is rarely patrolled.

"I wish I could get a deputy there (in southern Bailey County), but we just don't have that kind of manpower," Sheriff Jerry Hicks said.

Another concern raised by commissioners was the effect on comp time for other deputies if the County loses a man.

Officers can work up to 171 hours during a 28-day period. After that, it is considered overtime.

In lieu of overtime, County employees receive one and a half hours paid leave for every overtime hour worked.

Hicks told Commissioners his department is already spread thin, and losing a deputy would only worsen the problem.

"People already ask us 'How come you can't get here

sooner?'" or 'How come you can't do this and that?'" Hicks said.

In other business, Commissioners resumed discussions about changes in the county's drug testing policy.

Currently, all county employees who drive with a commercial drivers license (CDL) are required to undergo random drug testing.

Commissioners had discussed the possibility of testing all persons who drive county-owned vehicles during an earlier meeting.

Cox said a representative of the Texas Association of Counties had informed her that such a change would not be advisable.

"We can't force a person to undergo a drug test if they were hired before we began testing, or there is the possibility that they could sue us," Cox said.

Head, Cook wed Easter Sunday at United Methodist

Helen Head and Marshall Cook, both of Muleshoe, were married Easter Sunday in the First United Methodist Church of Muleshoe.

The wedding was officiated by Pastor John Wagoner.

Kelley Head and Karen Leschper walked their mom down the aisle to the music of Alan Finney on trumpet and Sally Messenger on piano.

James Cook and Wes Cook stood up with their dad.

The bride's parents are George and Clydetta Mitchell of Muleshoe.

Hostesses of the luncheon at the First United Methodist Church after the ceremony were Gladys Black, Mattie Hicks, Marilyn Wilson and members of their families.

Out of town guests were Kelly, Sara and Abbey Head of Albany, Texas; Lance, Karen Logan, Landon Leschper of College Station; Rusty Treider of Panhandle; James, Leta, Amy and Chris Cook of Fort Worth; Wes and Shelly Cook of Plainview; Jacob and Andrew Wright of

Plainview; Jim, Anita, Grant and Pam Mitchell of Memphis; Bill, Linda and Breanne Mitchell of Santa Rosa, N.M.; Emogene Sterling of Snyder; Faye Morris of Amarillo; Bill and Jerri Savuto of Irving.

The bride is employed as the office manager at Wilson Appliance.

The groom is semi-retired, working part-time as a relief manager at the Bailey County Coliseum, a framer at the Art Loft and as an organist at First United Methodist Church.

A dinner was served in the home of J.D. and Julie Cage co-hosted with Robert and Maurine Hooten for 26 guests March 29 before the wedding for family and friends of Marshall and Helen.

She was honored with a bridal shower March 22 in the home of Elinor Yerby. The gift set was a set of Mary Kay Cosmetics. Hostesses were Glenda Dale, Myrt Feagley, Kay Graves, Elinor Yerby, Janie Hughes, Rowena Meyers, Wanda Shafer.

I want to thank everyone for all the prayers, cards, flowers and the visits. A special thanks to my doctors and the wonderful staff at the hospital. May God bless each and everyone of you.
Berta Kitchens

The children of Berta Kitchen's want to thank everyone for the prayers, cards, flowers and the concern you have shown to her. To her doctors and the staff at the hospital for the wonderful care they gave to her.
Larry & Rhonda Kitchens & family
Bunt & Ruth Kitchens & family
Gail & Mike Goodwin & family
Glena & Lynn Polson & family
Chock Lipke & family

ENOCHS NEWS

Mr. and Mrs. Dale Nichols their son-in-law and grandson Ronnie Rapstine and Chandler of Amarillo went fishing at Granbury Lake the past week. Chandler's picture with his fish he caught was put up in the Wal-mart at Granbury.

Bill Key has been a patient in the hospital in Lubbock and he is to have heart surgery Monday, April 14th. Get well soon Bill.

Mr. and Mrs. Royce Teaff attended the funeral of Don Thompson at Abernathy this Saturday.

Margie Peterson is home from visiting her sister Lucile Smith in Lubbock.

Saturday was the 50th year of the Cemetery meeting. This meeting was held Saturday in the Bula and Enochs community building. There were 50 in attendance, the one coming the farthest was Geneva Terry Simmons from Houston, then Mr. and Mrs. Howard Parsley from Oklahoma. A pot luck lunch was served at noon. J.E. Layton was in charge of the business meeting. Wanda Layton read the minutes, officers were elected for 3 years. Joyce Nall Slrouth of Lubbock who was Sun Shine Sally on TV auctioned off the items people brought. The money was put in the cemetery fund. It will be used to build a rock fence at the cemetery. Everyone enjoyed visiting and lots of pictures were taken.

Luella Lowe Leavella of Lubbock who attended Bula school who compiled the Bula/Enochs pictures of the cemetery will put one in the Modron Library in Lubbock and the Bailey County Library in Muleshoe. Thanks to Luella for all the hard work and expense in

making the albums.

Mrs. Oleta Burris of Wellman stayed with her sister and husband, Mr. and Mrs. J.E. Layton from Friday to Sunday morning.

Mrs. margie Peterson spent a few days with her daughter Rev. and Kay Abner in Lockney recently.

Guests in the home of Mr. and Mrs. J.C. Snitker Saturday evening were his mother, Mrs. Dicie Snitker and brother Stanley Snitker of Midland. His other brother, Mr. and Mrs. Cutis Snitker of Hart and grandson Caleb Snitker of Dimmitt they enjoyed visiting and playing music. Dicie and Stanley spent the night and went to the Baptist church with them Sun-

day morning.

Mr. and Mrs. Howard Parsley visited in the home of Mr. and Mrs. Dale Nichols after the Cemetery meeting.

Gleem and Carlene Stroud visited his parents Mr. and Mrs. Goldman Saturday afternoon. Mr. and Mrs. Steve Pollard and children Ryan and Megan of Morton were supper guests in the home of his parents, Mr. and Mrs. Harry Pollard Sunday.

A family gathering at the home of Mr. and Mrs. J.E. Layton Saturday afternoon were Mr. and Mrs. Harold Layton, Oleta Burris, Freda Maynard and daughter Jordan of Cress, Jarrol Layton and daughters, Keith and Julia

Layton and two children, Susan Nichols and son Landon. Harold and Norma Layton spent the night and attended church with J.E. and Wanda Sunday morning.

Diabetic Education

provided by
Dr. Bobby Lawson of Abilene, TX
at the Muleshoe Church of Christ
2201 West American Blvd.

Sunday, April 27th
2 p.m. - 4 p.m.

"We went to the store for sour cream and to check our numbers. We never did get the sour cream."

Prize:
\$4,823,749.44*

Winning Numbers:
1 6 29 37 38 50

Their System:
"I picked the first and last number, the age of my sons, how long we've been married and the number of grandkids."

First Purchase:
"I bought a tiller."

What She Did With Her Ticket:
"I signed it immediately and took it home and put it in a sealed plastic bag."

*Paid over 20 years.



"I saw that all six numbers matched, and I just went to dancing."

SUE CLEMENTS



OVER 200 MILLIONAIRES AND STILL COUNTING



Lazbuddie Elementary Students of the Month for April. Pictured are (back-left) Wesley Welch, Madison Smith, Bethenie Sanchez, Crescent Crawford, (front) Jackie Bryant, Castle Crawford, Morgan Smith.

LAZBUDDIE STUDENTS OF THE MONTH

The Lazbuddie High School and Junio. High student of the Month of March are:

Cameron Turner, 17, is the son of Vernon and Tammy Turner. His date of birth is Nov. 3, 1979. He enjoys thick, juicy steaks and a Dr. Pepper. "Long Day" represents his favorite song. Jerry Maguire won an award for Best Picture. Seinfeld typifies his idea of a great TV entertainment. Computer Science exemplifies his area of academic excellence. Playing sports and watching TV are activities which relax him. Navy blue ranks as top color. Matchbox 20 comprises his musical group. One Flew Over the Cuckoo's Nest suggest his area of literary interests. Being successful in everything he does is his long term goal.

Leah Turner, 14, is the daughter of Vernon and Tammy who was born on May 17. Pasta and water typify her favorite meal. "Frank Sinatra" represents her top tune. Romeo and Juliet won her best picture award. Lois and Clark expresses her ideal of great TV entertainment. Science

shows her area of academic expertise. Swimming, reading and watching TV express her pastime pleasure. Green is her color preference. Cake triumphs as top musical group. To Kill A Mockingbird suggests her favorite literary selection. Graduating from college is a long term goal for her.

Jeffrey Guillen, 13, is the son of Rosa Davis and Steven Phillips. His date of birth is Jan. 15. Pizza and Dr. Pepper make up his special meal. Wheel in the Sky typifies musical categories. Independence Day ranks as best film. Home Improvement rates TV viewing at its best. Math is an academic area in which he excels. Card collecting, reading and riding bikes presides as pastime entertainment activities. Red is his color preference. Journey represents his top band. Bone Chillers are his particular literary specialty. Finishing high school and attending college to become a lawyer or a doctor are his future goals.

Triston Thorn, 12, is the daughter of Garvin and Janette Thorn. Her date of birth is July 28. Pizza and Dr. Pepper are the epitome of a great meal. "Billy the Kid" is her top tune. Pete's Dragon represents Disney at his best. Mr. Ed typifies her idea a family viewing. Band comprises her musical expression. Horseback riding suggests he pastime activity. Purple is her color selection. Lazbuddie High School band represents her kind of musical enjoyment. "Piano Lessons Can Be Murder" expresses her mystery genre.



Students of the month Lazbuddie High School students of the month of March are Cameron and Leah Turner

LAZBUDDIE STUDENTS OF THE MONTH

The students of the month for April have been named at Lazbuddie Elementary School. These students have displayed outstanding qualities of character, citizenship and leadership. They have proven to be an asset to their class and to their school. Each student was presented a ribbon and commended for their efforts. They are the following:

Pre-Kindergarten — Jackie Bryant, daughter of Darrell & Polly Bryant
Kindergarten — Morgan

Smith, daughter of Keihm & Gina Smith

1st Grade — Crescent Crawford, daughter of Nathan & Sharli Crawford

2nd Grade — Castle Crawford, daughter of Nathan & Sharli Crawford

3rd Grade — Madison Smith, daughter of Keihm & Gina Smith

4th Grade — Wesley Welch, son of Sonjua Anstead

5th Grade — Bethenie Sanchez, daughter of Junior & Chandra Sanchez



Students of the month Lazbuddie Junior High students of the month for March are Jeffrey Guillen and Triston Thorn.

Advertise It In The Muleshoe Journal Classifieds!
Call 272-4536

ter of Garvin and Janette Thorn. Her date of birth is July 28. Pizza and Dr. Pepper are the epitome of a great meal. "Billy the Kid" is her top tune. Pete's Dragon represents Disney at his best. Mr. Ed typifies her idea a family viewing. Band comprises her musical expression. Horseback riding suggests he pastime activity. Purple is her color selection. Lazbuddie High School band represents her kind of musical enjoyment. "Piano Lessons Can Be Murder" expresses her mystery genre.

The family of Stella Washington would like to express our deepest gratitude and appreciation to everyone for their prayers and acts of kindness during our time of sorrow. It is a comfort to us to know that mother was cared for and loved by so many people. Thank you all again and please continue to keep us in your prayers.

Springtime Business Directory



Come By & See Our New Selection Of Do-It Yourself Rental Equipment

Higginbotham-Bartlett Best Rental Center

215 Main Street 806/272-3351
Muleshoe, TX 79347

New Shipment of Classic Ropes have arrived -

Come in and get your pick!

We Have All The Feed You Can Ask For -

Hi-Pro Cattle, Swine, Horse, and Range Feed & Mineral

Muleshoe Feed Barn

311 W. American Blvd. 272-5626

Fountains

the serene sound of water tinkling over pebbles in a brook a unique selection available

Muleshoe Art Loft

1529 West American Blvd. 272-3485

Bananas Video

804 W. American Blvd. 272-4334

| | |
|----------------------------|-------|
| Rent 1 Movie for 1 Day - | \$100 |
| Rent 2 Movies for 2 Days - | \$200 |
| Rent 3 Movies for 3 Days - | \$300 |
| Rent 4 Movies for 4 Days - | \$400 |
| Rent 5 Movies for 5 Days - | \$500 |

NEW RELEASES \$249

Bananas Video

804 W. American Blvd. 272-4334

NEW RELEASES this week...

- Emma
- The Associate
- 101 Dalmations
- The Ghost and The Darkness

FREE Popcorn

Friday & Saturday
April 19 & 20
With Any Video
New or Old

The Fig Tree 220 Main 272-7561

75% OFF Fall & Winter Merchandise

NEW ARRIVALS
Eagles Eye Sweaters, Vests & Tees

Spring Season Savings

To advertise in our Springtime Business Directory, call Pat at 272-4536 or come by the Muleshoe Journal 304 W. 2nd

Come Check our Rates!

We Have Monthly Auto Insurance

Delton E. Wilhite & Associates Insurance

1631 W. American Blvd. 272-3652

OBITUARIES

Helen Combs

MORTON — Funeral services for Helen Combs, 73, of Morton were held April 14 at First Baptist Church in Morton, with Rev. Danny Jackson and Rev. Gordon Renshaw of First Missionar Baptist officiating.

Burial followed in the Morton Memorial Park Cemetery under the direction of Ellis Funeral Home of Morton.

Mrs. Combs died April 12 at her residence in Morton. She was born Dec. 25, 1923 in Childress. She married Woodie Combs July 16, 1940 in Clovis, N.M.

He died June 11, 1973.

Mrs. Combs had lived in Morton since 1939. She worked many years for the Cochran County Appraisal District as a computer operator. She was a member of the First Baptist Church in Morton.

Survivors include two sons; Larry Combs of Muleshoe and Tommy Combs of Lubbock; a daughter; Lanita Gaye Jester of Lubbock; four sisters; Fay Hiner and Willie Ray Rozell, both of Morton, and Mary Ethel

Long and Vergie Mills, both of Memphis, Texas; one brother, Woodrow Zuber of Morton; and seven grandchildren.

Wesley Hargesheimer

SPUR — Graveside services for Wesley Hargesheimer, 78, of White River community were held April 13 at Littlefield Memorial Park Cemetery, with Charles Ball, minister of Highway 70 Church of Christ in Spur, and James Withrow of Sudan, officiating.

Burial followed in the Littlefield Memorial Park Cemetery under the direction of Ellis Funeral Home of Sudan.

Mr. Hargesheimer died April 10 at his residence. He was born Nov. 28, 1918 in Whitesboro, Texas. He married Cordia Owens Jan. 25, 1940 in Quannah, Texas.

Mr. Hargesheimer lived in the White River community since 1991, moving from Sudan. He was a mechanic and bus foreman for the Sudan Independent School District. He was a member of the Highway 70 Church of Christ of Spur.

He was a veteran of WWII, serving in the U.S. Army, receiving the EAME Ribbon, a Purple Heart, oak leaf cluster and other military awards.

Survivors include two sons; Thacker Hargesheimer of Tulia and Martin Hargesheimer of Jackson, Miss.; two daughters, Rebecca Feagley of Spur and Sherry Jones of San Antonio; two sisters; Hazel Austin of Orange, Texas and Glennis Wall of Illinois; fourteen grandchildren and twenty great-grandchildren.

The family suggests memorials to go to your favorite charity.

Stella Washington

Funeral services for Stella Louise Gennings Washington, 65, of Muleshoe were held April 9 at Muleshoe Church of Christ, with John Knox, pastor officiating.

Burial followed in the Muleshoe Memorial Park under the direction of McCarty Funeral Home of Littlefield.

She died April 5 at the Methodist Hospital in Lubbock. She was born May 15, 1931 in

Malakoff, Texas to A.B. and Carrie Gennings.

She married Herron Washington in 1949 in Dallas. Of this union nine children were born. Her husband died April 14, 1996.

She was a member of the Muleshoe Church of Christ. She obtained a bachelor of arts degree in University studies from Eastern New Mexico University in 1980.

She was employed by the Dinner Bell Cafe and Muleshoe Memorial Hospital. She also worked as a substitute teacher at Muleshoe Independent School District.

She was preceded in death by her parents, four sisters, two brothers, her husband, and one daughter, Tinnie Hawkins.

Pallbearers included Jerome Clemmons, David Lewis, Willard Norman, Milton Norman, Randy Norman, Mack Norman. Honorary pallbearers were Lawrence (Red) Fluellen, Arthur Graves, Raymond Lewis.

Survivors include her brother, John Wesley Gennings of Houston, Texas; her sister-in-law, Sylvia Goodloe of Corsicana, Texas; two sons, Willie Washington of Houston and Dwayne Washington of Tulsa, Okla.; six daughters, Brenda Griggs of Bovina, Sherry Canaday of Clovis, Debra Washington of Tucson, Ariz., Diane Johnson, Linda Hancox and Karen Washington all of Amarillo; twenty-nine grandchildren, twenty-four great-grandchildren; other relatives; and many friends.

KENW-TV

Public Television

The New Explorers

"Searching for the Real Shangrila"

The name "Shangrila," popularized in the James Hilton novel, *Lost Horizon*, comes from *Shambala*, which in ancient Buddhist texts refers to sacred, hidden valleys (or *beyuls*), protected places lying deep in the Himalayas that believers can seek and find in times of trial. Traveling to Nepal, host Bill Kurtis and the *New Explorers* team embark on a search for Shangrila with famed high altitude anthropologist, Dr. Johan Reinhard.

The destination of the expedition is Saisma, a pristine valley and recognized *beyul* lying deep in an area rarely visited by the uninitiated. But there is much to learn along the way to Shangrila. With anthropology at the forefront, the search reveals a delicious co-mingling of the earth sciences. As Bill Kurtis and Dr. Reinhard seek this place where people have dreamed a dream of peace and refuge for centuries, they discover that these mountains — these Himalayas — are as fragile and vulnerable as any place on earth.

The *New Explorers* "Searching for the Real Shangrila" airs Wednesday, April 16th at 8:00 p.m. It repeats Friday, April 18th at 2:00 p.m. on KENW-TV.

Before I Die:

Medical Care and Personal Choices

Driven by personal experience, newspaper headlines, and recent surveys, these questions allude to the growing, universal dismay with end-of-life care options. Is there a better way to die? Clearly, the time for a compelling and honest public dialogue has arrived.

Before I Die: Medical Care and Personal Choices offers viewers an excellent forum to learn about the personal end-of-life issues facing many Americans. The program is hosted by Tim Russert, anchor of "Meet the Press," and moderated by Arthur Miller of Harvard University Law School.

The one-hour program features a distinguished panel of experts who engage in a dramatic Socratic dialogue. During this conversation, Professor Miller presents a series of hypothetical scenarios that examine the lives and serious illnesses of three people. Viewers then witness as the panelists role-play and confront what they would do in situations where the right choices are not always clear.

Before I Die: Medical Care and Personal Choices will be broadcast Tuesday, April 22nd at 11:00 p.m.

Channel 3 Television from Eastern New Mexico University, Portales, New Mexico

Hereford concert series tickets on sale

"When Was The Last Time Your Television Got a Standing Ovation?" is the theme for the Hereford Community Concert Association's Spring Membership drive for the 1997-98 concert season runs from April 19 through May 9.

Bobby and Bera Boyd, Helen Langley, and Billie Hopson are serving as co-chairpersons for the drive.

Season memberships in Hereford Community Concert Association entitle the member to attend concerts in Pampa, Borger, and Plainview as well as the ones offered here in Hereford.

Approximately 12 concerts will be available with the one season reciprocal membership. Costs for memberships are Adults, \$20, Students, \$10, and Family, \$50.

Persons interested in becoming members may contact Elaine Damron, 272-4641 or Doris Wedel, 272-4187.

Kicking off the season in the Fall will be Dale Gonyea, a pianist who offers an evening of music and comedy. The New York City Theatre

Ballet, a most accomplished chamber ballet company, and "Banjomania," a toe-tapping evening of banjo-picking and entertainment will round out the year's offerings.

In addition, the Community Concerts will be bringing the Amarillo little Theatres yet-to-be-announced touring production to town once again for a possible fourth evening free to the members.

Persons who are interested in purchasing a season membership for the 1996-97 season are invited to attend the April 24 performance of the Dodge City Cowboy Band as guests of the association.

It will be held at 7:30 p.m. in the Hereford High School Auditorium. Memberships for next season will be sold in the foyer of the auditorium. Attending this season's finale will surely be the major selling point on the quality and richness of the entertainment offered by these concerts.



Muleshoe Cattle Market

SATURDAY, APRIL 12, 1997

592 head of cattle, 63 hogs and 185 sheep and goats were sold. The receipts were lower due to incimate weather. Prices stayed steady from a week ago with good buyer attendance.

REPRESENTATIVE SALES

| Seller, City | # | Type | Wt. | CWT or PH |
|------------------------------|---|----------------|-----------|-------------|
| Alberto Garcia, Muleshoe | 6 | Hol. Strs. | 260 lbs. | at \$66.00 |
| Olivera Aldape, Plainview | | Red Str. | 230 lbs. | at \$111.00 |
| Jim Bell, Morton | | Blk. Str. | 275 lbs. | at \$100.00 |
| John Hall, Seminole | 5 | Mixed Strs. | 347 lbs. | at \$96.00 |
| Dennis Brown, Morton | | Bwf. Bull | 425 lbs. | at \$85.00 |
| Mary Beth Roberts, Morton | 3 | Red Bulls | 540 lbs. | at \$88.00 |
| Mary Beth Roberts, Morton | 2 | Rwf. Bulls | 693 lbs. | at \$70.50 |
| Patsy Sowder, Sudan | 2 | Rwf. Bulls | 678 lbs. | at \$69.50 |
| Brice Thomason, Muleshoe | 2 | Rwf. Strs. | 683 lbs. | at \$71.00 |
| Tim Ford, New Deal | 3 | Rwf. Bulls | 625 lbs. | at \$71.00 |
| Terome Clemmons, Muleshoe | | Red Str. | 805 lbs. | at \$67.50 |
| McKinney Farms, Littlefield | | Rwf. Hfr. | 370 lbs. | at \$81.00 |
| John Hall, Seminole | 9 | Mixed Hfrs. | 359 lbs. | at \$92.50 |
| John Hall, Seminole | 6 | Mixed Hfrs. | 545 lbs. | at \$73.50 |
| Joaquin Andrade, Muleshoe | 4 | Blk. Hfrs. | 359 lbs. | at \$79.00 |
| Howard Tooley, Maple | | Bwf. Hfr. | 510 lbs. | at \$72.50 |
| Travis Bessire, Muleshoe | 3 | Rwf. Hfrs. | 503 lbs. | at \$75.00 |
| Mary Beth Roberts, Morton | 8 | Red Hfrs. | 586 lbs. | at \$72.50 |
| Tom Jinks, Muleshoe | 6 | Red Hfrs. | 675 lbs. | at \$68.00 |
| Patsy Sowder, Sudan | 3 | Mixed Hfrs. | 692 lbs. | at \$68.50 |
| Tim Ford, New Deal | | Rwf. Hfr. | 710 lbs. | at \$66.50 |
| BT Livestock, Morton | | Limo Pair | | \$810.00 |
| L.M. Smith, Muleshoe | | Red Pair | | \$770.00 |
| L.M. Smith, Muleshoe | 2 | Mixed Cows, P7 | | \$550.00 |
| MC Cattle, Levelland | 6 | Blk. Pairs | | \$750.00 |
| Randy Johnson, Muleshoe | | Blk. Pair | | \$720.00 |
| Benny Burlison, Lubbock | | Brown Pair | | \$540.00 |
| Keith Clayton, Springlake | 4 | Bwf. Pair | | \$570.00 |
| Randy Johnson, Muleshoe | | Bwf. Cow, P7 | | \$520.00 |
| Travis Bessire, Muleshoe | 2 | Blk. Cows | 1605 lbs. | at \$46.25 |
| Joe Wheeler, Muleshoe | | Blk. Cow | 1225 lbs. | at \$44.25 |
| Todd Bessire, Muleshoe | 2 | Wf. Cows | 1813 lbs. | at \$46.25 |
| Gerald Marnell, Hereford | | Blk. Cow | 1235 lbs. | at \$44.90 |
| Jeff Boehning, Earth | | Char. Hfr. | 1310 lbs. | at \$44.75 |
| Prairie View Dairy, Muleshoe | 2 | Hol. Cows | 1388 lbs. | at \$43.25 |
| Lee Jesko, Muleshoe | | Blk. Bull | 1710 lbs. | at \$55.00 |
| Doug Clements, Morton | | Red Bull | 1795 lbs. | at \$51.00 |

The Muleshoe Cattle Market is brought to you each week by Muleshoe Livestock Auction, located east of Muleshoe on U.S. 84. Muleshoe Livestock conducts sales every Saturday, beginning with hogs, sheep and goats at 10 a.m. and cattle following at approximately 12 noon.

FOR INFORMATION ON SALES OR TO CONSIGN CATTLE, CALL (806) 272-4201

Home Folks Caring For Folks At Home.



MULESHOE AREA HOME HEALTH

Agency

Featured Employee

Mattie Hicks is married to Jack Hicks. They have lived in Muleshoe all of their lives. They have 3 children - Jimmie Hicks of Wyoming, Andrea Novian of Brownfield, Tammye Barbar of Brownfield. They have 8 grandchildren and 4 great-grand children. They belong to the Methodist Church of Muleshoe.

For the last thirteen years, Mattie has taught in the nursing program at South Plains College in Levelland.

Mattie enjoys the patients. She enjoys taking care of them and working with the Muleshoe Area Home Health Agency. They are a lot of fun.



Mattie Hicks

To receive Home Health Services, talk with your physician or talk with hospital personnel when you are hospitalized.

24 Hour # 272-3346
Local Nurse on call 24 hours a day to offer prompt service.

We accept Medicare, Medicaid and Private Insurance
It Is Your Right To Choose The Home Health Agency You Prefer.

Affiliated with Lubbock Methodist Hospital Systems



New Out Of Hospital Advance Directives Now Available!

Journal classifieds

STOP & SHOP

Deadlines are 5 p.m. Monday and Thursday

Call 272-4536

Deadlines are 5 p.m. Monday and Thursday

LEGLALS

Request for Bid.
Motley County I.S.D. Will be accepting bids for repairing, and resurfacing of the school parking lot until May 13, 1997. If you are interested in submitting a bid for the project, please send bid to:

Motley County I.S.D., C/O Rick Copp, P.O. Box 310, Matador, TX 79244, Phone (806) 347-2676, Fax (806) 347-2871

The parking lot is located on the west side of the school at 1600 Bundy St., Matador, TX.

The project will need to be completed as soon after school is out for the summer on May 31 or at least by July 25, 1997.

Published in the Bailey county Journal April 13 and in the Muleshoe Journal April 17.

AUTOMOBILE

'90 Chevy Astro Mini Van, grey, loaded, 32,000 miles, \$15,695, Portales, N.M. (505)359-1775.

'96 Dodge Grand Caravan, 4 door, loaded, factory warranty, low miles, \$24,500, Portales, N.M. (505)359-0947.

'94 Ford 3/4 Ton, 4x4, flatbed, 70,000 miles, \$13,495, Portales N.M. (505)359-1175.

'94 Lincoln Towncar Signature Series, extra clean, leather, \$17,995, Portales, N.M. (505)359-0947.

'90 Chevy Suburban, 4x4, loaded, \$10,900, Portales, N.M. (505)359-1775.

WANTED

\$\$\$WANTED\$\$\$
We buy used mobile homes. We pay top dollar, any year, any condition. We need your used mobilehome. Please call 1-800-404-1321. 7t-1fc

Classifieds Work!!

Must Sell! 1995 GMC Suburban
4x4, conversion-pkg, leather, running boards, power windows, locks, tilt, cruise, 6 changer CD, alarm system, and much more, No old contract to assume, No back payments to make just need responsible party to make reasonable monthly payments.

Call Doug Hulderman in the Credit Dept.
Jones Pontiac, GMC, Buick
Clovis, N.M. 505/762-2986

REAL ESTATE

For Sale: 14x66 1986 Mobile Home, 3 bdrm, 2 bath, 272-5811 leave message. 14s-6tc

For Sale: 2 bdrm, 1 bath, brick entrance, fire place, outside storage, carport, patio, laundry, carpets and draperies. Call 272-5672. 15t-6tc

For Sale: 2-1-1 With backyard house, excellent condition. Close to schools and hospital. Mostly carpeted, new plumbing, wiring, insulation. 272-5156. 16s-1fc

MISCELLANEOUS

HANDYMAN
Painting — Plumbing — Electrical — Roofing — Carpentry — Yard Work. Call 272-3214. "Can Do Maintenance" No job too small. 15t-10tpd

Concealed Handgun Course
April 21, 22 and 24th
6 p.m. to 9 p.m.
each evening in Muleshoe.
Contact Toby Turpen
806-364-6362. 16s-3tc

Need to spruce up around the house for spring and summer? Will do yard work, repairs and painting — Call 272-4310. 16s-6tc

Have tractor and rotary tiller and would be able to do rotary tilling. 272-3684 after 6 p.m. 16t-7tc

Gov't Foreclosed homes from pennies on \$1. Delinquent Tax, Repo's, REO's. Your Area. Toll Free (1) 800-218-9000 Ext. H-10574 for current listings. 16t-4thurc

HELP WANTED

\$38,000 +
This can be your income complemented with an excellent Benefit Package if you are a competent and qualified JD Service Technician. If you want to join a team of committed professionals at a growing dealership, call us. Leoti Greentech, Inc. Leoti, KS. Mark Budde 1-800-783-2621. 15t-4tc

HELP WANTED

Service Technician. If you want to join a team of committed professionals at a growing dealership, call us. Leoti Greentech, Inc. Leoti, KS. Mark Budde 1-800-783-2621. 15t-4tc

Help Wanted at Feature Attractions — part-time — come by for applications. 16s-2tc

The Muleshoe Police Department is currently accepting applications for the position of **Animal Control Officer**. Applications must be willing to work rotating shifts, including weekends. Must become certified within one year of employment. Salary D.O.Q. Job description available upon request. Applications accepted until position filled. To apply for this position, contact:

Rick Henegar, Chief of Police, City of Muleshoe, 213 East Ave. B, Muleshoe, Texas 79347, 806-272-4569. 16s-2tc

The City of Muleshoe Police Department is currently accepting applications for the position of **Police Sergeant**. Applicants must be **TCLEOSE** certified with an Intermediate Certificate. Applicant should have a minimum 5 years experience in law enforcement and preferably, 2 years supervisory experience. Salary D.O.Q. Job Description available upon request. Applications accepted until position is filled. To apply for this position, contact:

Rick Henegar, Chief of Police, City of Muleshoe, 213 East Ave. B, Muleshoe, Texas 79347, 806-272-4569. 16s-2tc

"Now Hiring"

VIP Plus & Texas Sesame are hiring **mill workers**. Person will be responsible for loading railcars, driving trucks & tractors. Great pay for right person. Apply at Texas Sesame, 272-4231. 16t-1tc

Attention Travel Agents: Earn higher commissions — be self employed, join Aloha Travel Services team of outside independent travel contractors. If you are interested in a rewarding career in the travel industry

HELP WANTED

call 1-800-274-9777 or 806-797-3892 in Lubbock, Tx. 16t-2tc

GARAGE SALES

Thursday 18th
Friday 19th
8-?
Corner of East 3rd & Ave D
Chest of drawer, Pots & Pans, Tools, Lots of Miscellaneous. 16t-1tc

Garage Sale
Sponsored by Ladies Golf Association
Friday 18th — 9-6
Saturday 19th — 9-2
On the Friona Highway,
first building on the left. 16t-1tc

PET GROOMING

Circle E Pets & Grooming
1 block North at Intersection Hwy 1760 & 84
272-4118

Fish Available — Cory Cats, Mollies, Black Moors, Sharks, Tetras, Goldfish, Algen Enters, Cichlids, Shrimp, Danios, Snails, Male Bettas, Platys, Neons, Plecos, Swordtails, Shubinkin. Critters Available — Gerbils, Other small rodents, Chinchillas, free puppies. 16s-3tc

OPEN HOUSE

THIS WEEKEND!
All homes reduced!
Ready to sell.
Come by and see the great selection at **Portales Mobile Homes.**
OPEN Monday-Saturday 8-5:30,
Sunday 12-5:30

PORTALES HOMES

FLEETWOOD HOME CENTER
356-5639 or
1-800-867-5639
DL366

Must Sell! 1996 Mercury Cougar
V-8, Automatic trans, candau top, power windows, locks, tilt, cruise, am/fm stereo cassette, and much more, No old contract to assume, No back payments to make, Just need responsible party to make reasonable monthly payments.

Call Doug Hulderman in the Credit Dept.
Jones Pontiac, GMC, Buick
Clovis, N.M. 505/762-2986



#300727 4500 E. Mabry Drive
Clovis, NM
505-762-1211 FAX 505-762-6232

A Division of Clayton Homes

CHOOSE FROM CLOSE-OUT PRICES

1,600 sq. ft. 3 bedroom doublewide or
1,800 sq. ft. 4 bedroom doublewide.

THESE HOUSES MUST GO!

- Special during Manufactured Housing Association Week, April 18-20th.
- In addition to close-out pricing, receive a
- **\$600 REBATE** on your down payment.

Must Sell! 1993 Dodge Shadow
Automatic transmission, 2-door, am/fm stereo cassette, and much more, No old contract to assume, No back payments to make. Just need responsible party to make reasonable monthly payments.

Call Doug Hulderman in the Credit Dept.
Jones Pontiac, GMC, Buick
Clovis, N.M. 505/762-2986

Subscribe to the Muleshoe Journal 272-4536

BETTER LIVING

MOBILE HOMES

*We Have A Good Selection of
4 Bedroom Mobile Homes*

NOW ON SALE
1997
2 bedroom singlewide
starting at
\$19,900.00


— Doublewide, tape & texture, over 2000 square feet - nicest home on the market

WE EVEN HAVE 5 BEDROOMS AVAILABLE!


1-800-404-1321 Portales, NM (505)356-5448
Lic. # D00681 "Se Habla Espanol"

HAY FOR SALE
Haygrazer and large round bales. Delivery available. Discounts on quantity. Call (505) 276-7522, 477-2220, 359-0947, 276-7527 41t-1fc

FOR SALE
Customs Swathing & Baling \$12 a bale, David Schulte. 965-2489 or 647-7740. 16s-50tpd



Nieman Realty



116 E. Ave. C George Nieman, Broker 272-5285 or 272-5286

RICHLAND HILLS - PARKRIDGE AREA
NICE 3-3-1 Brick, cent. Heat, Evap. Air, built-ins, 2000' + lv. area, fenced yd., stor. bldg., MORE !! \$60K !!! RH-2

NICE 3-2-2 Brick, cent. A&H, built-ins, FP, approx. 2150' lv. area, fenced yd., MORE!!! \$69K!!! RH-7

VERY NICE 3-2-1 Brick, Cent. A&H, built-ins, fans, new paint, carpet, & drapes, fenced yd. \$60K!!! RH-1

NICE 3-2-2- Brick, Cent. A&H, built-ins, FP, cov. patio, fenced yd. \$50's!!!

HIGHLAND AREA
2 Bdrm, 1 bath home, fenced yard. \$16,500!!! HL-4

VERY NICE 3-2-2 Brick, Cent. A&H, built-ins, fenced yd., spklr. sys., MUCH MORE!!! \$60's !!! HL-1

NICE 3-2 Home, Heat Pump, FP, fenced yd., stor. bldg. \$30's!! HL-3

NICELY REMODELED 3-2-1 Brick, Cent. A&H, built-ins, FP, nice carpet & tile, fenced yard, storage building, MORE!!! \$60's!!! HL-8

JUST LISTED-NICE 3-2-2 Brick, Cent. A&H, built-ins, gas log FP, fenced yd., stor. bldg., MORE!! \$60K!!!HL-5

LENAU - COUNTRY CLUB AREA
PRICE REDUCED!!! VERY NICE 4 bdrm. 2 1/2 bath double wide, corner lot, built-ins, heat pump, FP, MUCH MORE !!! CC-2

NICE 2-2-2 Brick, on corner lot, heat pump, fenced yard, storage bldg., MORE! \$40's !!! L-1

2-1-1 Carport Home, wall furnace, nice carpet, storm shelter, stor. bldg., fenced yd. \$20's!!!CC-3

HIGH SCHOOL
VERY NICE 3 bdrm., 2 bath Home on corner lot, Cent. A&H, built-ins, stor. bldg., fenced yd., MUCH MORE!!! \$40's!!! HS-1

VERY NICE 3-2 Home, Cent. A&H, built-ins, fans, fenced yd., stor. bldg., MUCH MORE!!!! \$30's!!! HS-5

VERY NICE 3-2-1 Home on corner lot, Cent. A&H, built-ins, ceiling fans, fenced yd., stor. bldg.!! \$30's!!! HS-3

NICE 2-1-1 Brick, Heat Pump, nice carpets, well insulated, storm windows & doors. \$30's!!! HS6

BUSINESS FOR SALE-SNACK SHACK - Lot, Buildings, furniture, and fixtures!!!!

RURAL HOMES

2-2-1 carport Mobile Home on .665 acres on pavement close to town, Cent. heat, evap., air, DW, large barn, stor. bldg. and MORE!! \$25K!! HR-5

VERY NICE 3-11/2-1 Home on 8 acres, on pavement close to town, Cent. A&H, built-ins, sun room, concrete cellar, storage bldgs., fenced yd., RV cover, mobile home hookups, stock pens, fenced acreage, & MORE!! \$50's!! HR-6

ASK ABOUT OUR COMMERCIAL LISTINGS!!!

SECRETARIES...MINDING OUR NATION'S BUSINESS

PROFESSIONAL SECRETARIES WEEK

APRIL 20-26TH, 1997

If you would like to acknowledge your secretary during Professional Secretaries Week in the Sunday, April 20th issue,

call Pat at 272-4536 or come to the Muleshoe Journal 304 W. 2nd by 5:00 p.m. Thursday, April 17

SPRING Clean Sweep Sale



ALL TYPES
Coca-Cola,
Dr Pepper,
or Sprite
179
6 pack
12 oz. cans

MEAT



**BEEF BONE-IN
Chuck Steaks**
lb. **99¢**
BLADE-CUT OR 7-BONE

- Jumbo Pack **Drumsticks or Thighs** lb. **69¢**
- Small Pack, Beef **7-Bone Roast** lb. **\$1.39**
- Wisconsin Red Rind Calico Colby Jack Cheese or **Cheddar Cheese** .. lb. **\$2.59**
- Chuck Quality 81% Lean Preferred **Ground Beef** lb. **\$1.69**
- Any Size Pack, Beef **Stew Meat** lb. **\$1.99**
- Beef Boneless **Short Ribs** lb. **\$1.99**
- Fresh **Beef Kidneys** lb. **49¢**
- 12 oz. pkg. Cacique **Asadero Cheese** **\$2.59**
- 12 oz. pkg. **Ranchero Cheese** **\$2.99**
- 15 oz. pkg. Crema Mexicana **Cacique Cheese** **\$2.99**
- Santa Fe, 32 ct. pkg. **Yellow Corn Tortillas** **\$1.19**

BEEF BONELESS Arm Roast

lb. **\$1.59**

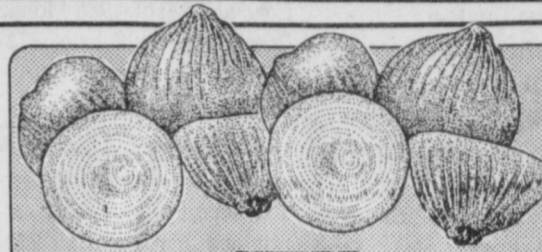
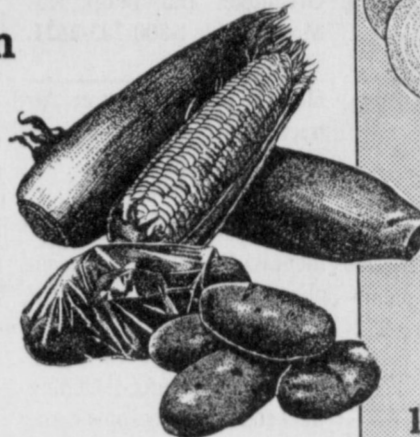
- Decker **Meat Corndogs** 1 lb. pkg. **\$1.79**
- Decker, 1 lb. rolls **Breakfast Sausage** **2/\$3**
- Decker **Meat Franks** 12 oz. pkgs. **2/\$1**
- Decker **Beef Chorizo** 8 oz. pkg. **\$1.19**
- Decker, 10 oz. pkg. **Cooked or Smoked Ham** **\$2.49**
- Decker **Chopped Ham** 10 oz. pkg. **\$1.79**
- Low Salt, Thick Sliced, or Regular **Bar S Bacon** 1 lb. pkg. **\$1.99**
- Bar S **Meat Franks** 12 oz. pkg. **89¢**
- Bar S Regular or Garlic **Meat Bologna** 12 oz. pkg. **89¢**
- Bar S Jumbo **Meat Franks** 1 lb. pkg. **\$1.19**
- Skinless Kielbasa or Smoked **Bar S Sausage** 12 oz. pkg. **\$1.19**
- Bar S Jumbo **Beef Franks** 1 lb. pkg. **\$1.69**
- Bar S Regular or Thick Cut **Meat Bologna** 1 lb. pkgs. **4/\$5**
- Bake or Grill **Turkey Drumsticks** lb. **69¢**
- Great For Pork Asado, Seasoned **Pork Stew Meat** lb. **\$1.99**
- Cry-O-Vac Approx. 10 lbs. pkg. **Fresh Beef Tripas** lb. **69¢**
- Any Size Pack **Pork Feet** lb. **59¢**
- Select Sliced **Beef Liver** lb. **99¢**

PRODUCE

Florida Super
Sweet Corn

ears
5/\$1

U.S. No. 1
Potatoes
10 lb. bag
99¢



SWEET
1015 Yellow Onions
lbs. **3/\$1**

- Garden Fresh **Broccoli** lb. **69¢**
- Hot **Jalapenos** lb. **99¢**
- Salad Size **Hass Avocados** **3/\$1**
- Fresh Green **Onions** bunches **3/\$1**

RED RIPE Strawberries

small baskets
3/\$2

ASSORTED Gatorade

32 oz. btl.
69¢

LIMIT 2
- ADDITIONAL
PURCHASES 79¢ EA.



6.7-11 OZ. PKG. ASSORTED
PASTA FAVORITES OR
Banquet Dinners **99¢**

SYLVANIA 60/75/100 WATTS
2 PACK, SOFT WHITE
Light Bulbs **69¢**

ASSORTED Aqua Net Hair Spray

7-8 oz. can, bonus
size where available

77¢

LIMIT 2 - ADDITIONAL
PURCHASES \$1.19 EA.

- MULTI FRESH POTPOURRI, COUNTRY HOME, OR SUNGLASS
Love My Carpet **2/\$3**
- LYSOL® **Pine Action Cleaner** **99¢**
- LYSOL® **Direct Multi Purpose Cleaner** **1.69**
- LYSOL® REGULAR OR WBLEACH
Toilet Bowl Cleaner **99¢**



GULF-LITE "ONE-MATCH" INSTANT Charcoal Briquets

3.99

- MORRISON YELLOW, WHITE, OR HONEY
Cornbread Mix **3/\$1**
- ABC123 PLAIN, DINOSAURS, NINJA TURTLES, OR SHARKS PLAIN
Chef Boyardee Pasta Shapes **5/\$3**
- UNDERWOOD **Deviled Ham Spread** **89¢**
- BAK **Corned Beef** **1.49**



- COMPLETE BUTTERMILK • COMPLETE ORIGINAL
Aunt Jemima Pancake Mix **2/\$3**
- HIDDEN VALLEY RANCH REGULAR ASSORTED
Salad Dressing **2.79**
- PEDIGREE® CRUNCHY BITES
Mealtime Dog Food **8.99**
- ASSORTED **Pedigree Dog Food** **2/\$1**



SYLVANIA 60/75/100 WATTS
Soft White Light Bulbs **69¢**

SYLVANIA 60/75/100 WATTS LAMP, 75W CRYSTAL POST
Halogen Light Bulbs **2.49**

SYLVANIA 60-100W
3-Way Bulb **1.29**

HUMMINGBIRD PLASTIC
Squeeze Mop **4.99**

HUMMINGBIRD SMALL
Angle Broom **4.99**

HUMMINGBIRD
Bowl Brush **1.59**

HUMMINGBIRD
Dust Pan **1.59**



SHURLINE WHITE
Paper Towels **1.39**

190 OZ. TIDE ULTRA LIQUID
REGULAR OR WBLEACH
62-103 OZ. TIDE ULTRA 2 POWDER
WBLEACH, TREFREE, OR REGULAR
Laundry Detergent **5.79**

YOUR CHOICE

100th Anniversary Diamond Instant Win Sweepstakes
Over 150,000,000 Specially Marked Cans

CAMPBELL'S CHUNKY
NEW ENGLAND
Clam Chowder Soup **1.59**

CAMPBELL'S
Cream of Mushroom **79¢**

CAMPBELL'S HEALTHY REQUEST
Cream of Mushroom **89¢**

CAMPBELL'S
Chicken Noodle Soup **69¢**

CAMPBELL'S
Tomato Soup **5/\$3**

Grand Prize!
A 10 carat total weight Diamond Necklace • 100 diamonds in total
100 First Prizes! A 1 Carat Diamond Solitaire Necklace
Over 100,000 Total Prizes!

SEE SPECIALLY MARKED
CANS FOR DETAILS



WESTERN | MONEY
UNION | TRANSFER™
"The fastest way to send money"

Lowe's

MARKETPLACE

515 W. American Blvd.
401 W. American Blvd.
Muleshoe 272-4585

Pay-n-Save

515 W. American Blvd.
Muleshoe 272-4406

WE RESERVE THE RIGHT TO LIMIT QUANTITIES IN TEXAS

PRICES EFFECTIVE APRIL 16-22, 1997
OPEN MONDAY-SATURDAY 7:30 A.M. - 8:00 P.M., SUNDAY 8:00 A.M. - 7:00 P.M.

ASSORTED REDUCED FAT, LOW SALT, OR REGULAR
Nabisco Snack Crackers
1.99
7-10 oz. pkg.

WHEAT THINS • BETTER CHEDDAR • SWISS CHEESE • BACON THINS • SESAME CHEESE TWIGS • SOCIABLES • CHICKEN IN A BASKET • VEGETABLE THINS • THINS CUTS

Original **wheat thins**

Baked Lay's
LOW FAT

SOLO Clear Cups
3/\$3
18 ct. 18 oz. For PLASTIC CUPS

BAKED LAY'S® SOUR CREAM & ONION, REGULAR, OR BAR-B-Q
Potato Chips
3/\$5
Reg. \$1.29 For

V-8 100% Vegetable Juice
2.19
46 oz. Plastic Btl.

ALUNT JEMIMA BUTTER LITE, LITE, OR ORIGINAL
Pancake Syrup
2.79
24 oz. Btl.

24 OZ. GRAPE-NUTS, 16 OZ. HONEY BUNCHES OF OATS PLAIN-WALMONDS
Post Cereal
1.99
YOUR CHOICE

TOMBSTONE OVEN RISING CRUST PIZZA

PREMIUM CURRY CHICKEN

FROZEN & DAIRY

MINUTE MAID REGULAR PLUS CALCIUM, COUNTRY STYLE, OR PULP FREE
Orange Juice
2.99
96 oz. jug

CURLEY DOG, TATERBARRIES, OR FANTA
Inland Valley Fries **1.29**

BLUE BUNNY ASSORTED
Ice Cream **2.79**

SKINLESS, HOT N' SPICY, SOUTHERN, ORIGINAL, OR COUNTRY
Banquet Fried Chicken **2.99**

PILLSBURY CARAMEL/ORANGE DANISH ROLLS OR CINNAMON ROLLS **1.69**

12.4-13.9 oz. can

2 CT. 8 OZ. SOFT • 1 LB. SOUZE • 1 LB. COUNTRY STYLE/REGULAR SPREAD
Shedd's Country Crock **99¢**

YOUR CHOICE

SHEDD'S COUNTRY CROCK
Spread Sticks **65¢**

YOU PAY ONLY **1.99** WITH COUPON
GLAD 10 Ct. Lawn Bags

5/15/97

EXTRA STRENGTH, REGULAR, SENSITIVE SKIN, ALOE LAMOLIN, OR HAND BALM

Vaseline Intensive Care Lotion
2.99
10 oz. Btl.

ASSORTED
Arm & Hammer Toothpaste
2.19
4.5-5 oz. tube