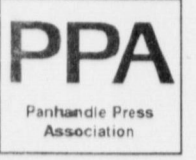




Muleshoe Journal



Volume 75, No. 6

Published Every Thursday at Muleshoe, Bailey County, Texas 79347

Thursday, Feb. 6, 1997

City closing in on police chief

By RICK WHITE
Managing Editor

The search for a city police chief is winding down.

Muleshoe City Manager James Fisher said Tuesday that Sgt. Rick Heneger of the Kermit Police Department is the prime candidate to become the city's next police chief.

Fisher said the city is currently running a thorough background check on Heneger, who has been with the Kermit PD for 14 years.

Heneger was one of three candidates interviewed last month by a search committee.

"He stood out during the interview process," Fisher said. "He seemed to be community oriented and had a lot of energy. It appeared (becoming a police chief) was something he was looking forward to doing for a long time."

If Heneger's background check is clean, he will be

brought in for an in-depth interview with the city council, according to Fisher.

Fisher hopes to have Heneger on board by March 1.

The city has been without a police chief since Julian Dominguez resigned in November of 1995.

The search was further delayed when longtime city manager Dave Marr resigned last summer in the middle of the search.

The City Council felt it was better to have Fisher conduct his own search.

Meanwhile, the city is back to square one on its search for an economic development director after a San Antonio man turned the job down last week.

Jeff Rogers, associate director for the Center of Economic Development at the University of Texas-San Antonio, told Fisher last week "that his family was not comfortable moving to the Panhandle."

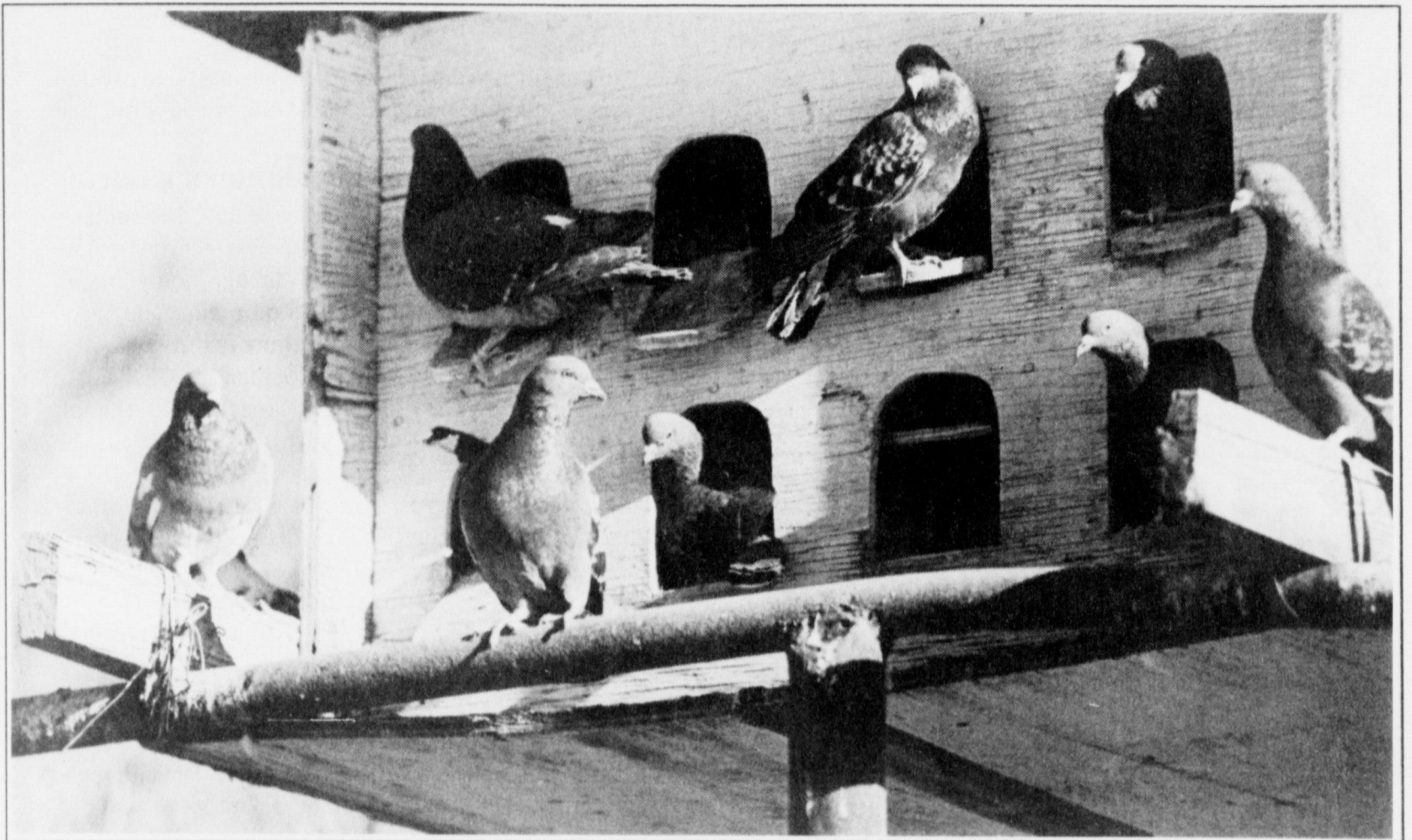
The salary offer was \$35,000.

Fisher said with corporate America downsizing and rural towns shrinking, competition to attract prospective businesses has become fierce.

"A lot of communities are rolling out the red carpet," Fisher said.

"We need to find someone that has connections and can make things happen," Fisher said. "We've got to get a key

Continued on page 2



JOURNAL PHOTO BY LESLI RADFORD

For the birds

Several pigeons roost in a bird house Monday afternoon in the yard of a home on East Sixth Street. After an unseasonably warm weekend with highs in the 70s, temperatures are expected to drop throughout the week.

County considers changes in coliseum policy

By SAMUEL VILLARREAL
Journal Staff Writer

The Bailey County Commissioners Court Friday discussed possible changes in the coliseum operational guidelines to allow the building to be used for commercial use.

"A commissioner was approached by a local businessman who wanted to rent the coliseum," County Judge Marilyn Cox said. "He found out that he couldn't rent the building for commercial purposes and he asked the commissioner if he could look into it."

The changes, proposed by Coliseum manager Kevin Smith, would allow for any individual or business within the county to rent the coliseum for commercial use.

Under the current guidelines, no indi-

COUNTY COMMISSION

vidual, company, or private corporation may use the coliseum for individual, business or corporate profit. Non-profit organizations have been allowed to rent the coliseum for exhibition shows, such as livestock, automobile, and art shows, even though such shows may result in profit.

Smith said he checked with similar exhibition arenas in the West Texas area, and found Bailey County Coliseum to be the only civic center in the area that can not be rented for commercial use.

"We're the odd man out," Smith told the commissioners.

In addition, individuals or business outside the county would be able to rent the

building for commercial use in they do not create competition against local businesses.

Rental rates would be slightly higher on those renting the coliseum for commercial use compared to non-commercial use.

Smith said that he has already received calls for commercial use of the coliseum, including an inquiry by a Chinese acrobatic group.

Due to the absence of commissioner Floyd "Butch" Vandiver, the court chose to delay any definite action until a future meeting, according to Cox.

In other business, commissioners approved the purchase of a new van for the County's Aging service.

The County received two bids in re-

Continued on page 3

Lopez named Abernathy police chief

ABERNATHY

Former Muleshoe police officer Chris Lopez recently was named Abernathy Police Chief.

The Abernathy City Council voted 4-1 Jan. 27 to hire Lopez. He replaces H.W. Grady, who resigned Dec. 9.

Abernathy City Manager Frank Russell said he was not involved in the final decision, adding that he didn't want to get involved in the "squabble."

When questioned further, Russell said that local citizens have questioned whether Lopez can gain the respect of Abernathy residents because of his involvement in a lawsuit against the City of Muleshoe.

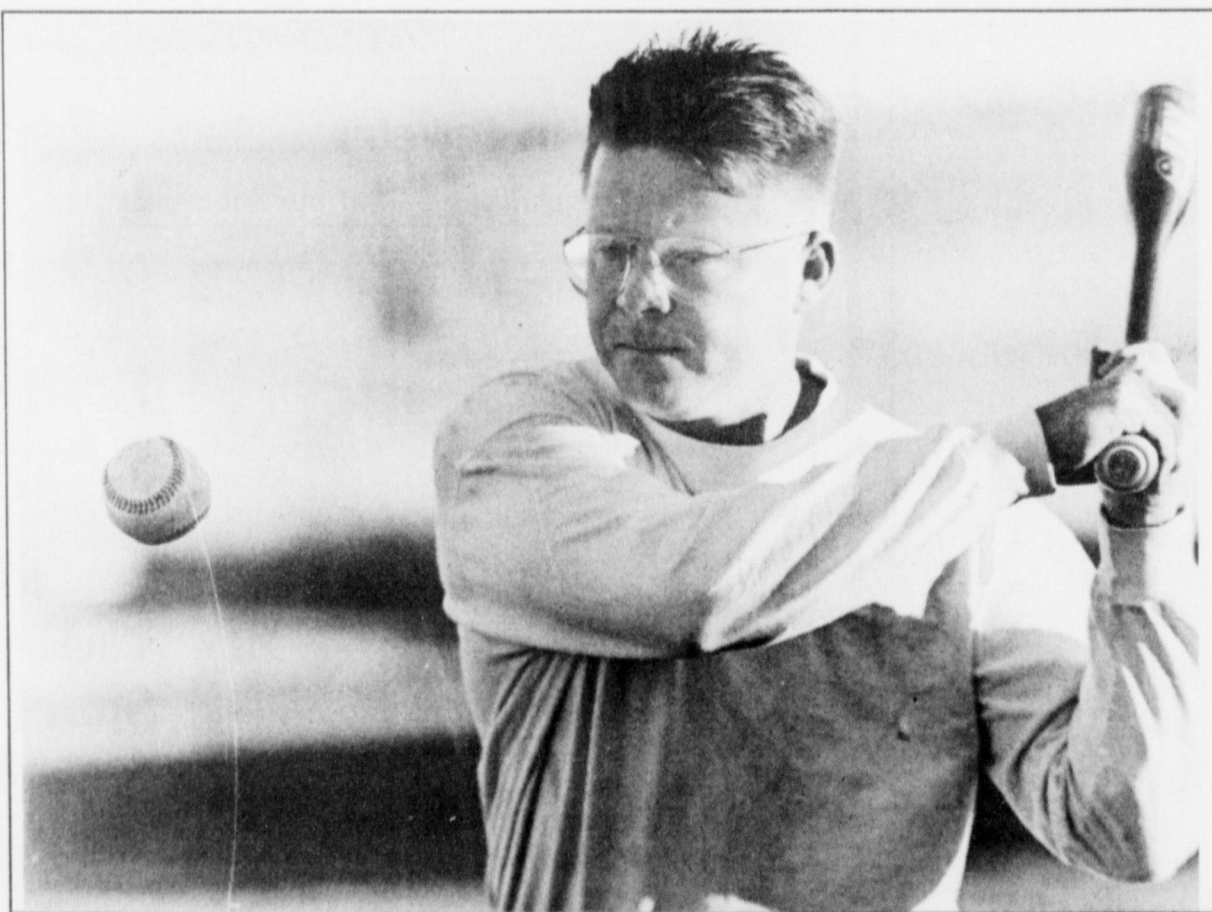
Lopez was fired from his position in the Muleshoe Police Department in April of 1995, days after he pulled over former City Manager Dave Marr. Lopez later filed the lawsuit against the City of Muleshoe, claiming he was actually fired for reporting wrongdoings by Muleshoe police chief Julian Dominguez.

Both Marr and Dominguez have since resigned.

Abernathy Councilman Lynn Goble cast the lone dissenting vote. Goble said he was worried if Lopez could gain the respect of the community while involved in lawsuit.

Other Abernathy councilmen could not be reached for comment.

Lopez is currently working his second stint with the Abernathy police.



Play ball

Muleshoe baseball coach Brad Hill hits fungoes Monday during practice. The Mules will scrimmage at Morton next Monday.

County man dies of gunshot wound

A Bailey County man died Monday in a Lubbock hospital from an apparent self-inflicted gunshot wound.

Johnie Calvert, 71, was pronounced dead shortly before noon from cardiac arrest at the University Medical Center in Lubbock.

A UMC spokeswoman said Calvert was in very critical condition when he was admitted, the result of a gunshot wound to the neck.

Calvert, a retired farmer, was found in his driveway of his home near Progress shortly

before 8 a.m. by deputies from the Bailey County Sheriff's Department. Deputies found a shotgun near the body, according to police reports.

He was taken to the Muleshoe Area Medical Center before being transferred to Lubbock.

The case is under investigation.

An autopsy was performed Tuesday, and investigators have not yet ruled out the possibility Clavert's death was an accident or that foul play was involved, according to a Sheriff's Department spokesman.

CRP ruling expected sometime this week

WASHINGTON — New rules for the Conservation Reserve Program are expected to be released this week, according to U.S. Rep. Larry Combest's office.

Combest said the U.S. Dept. of Agriculture's final plans will include the Erosion Index, the key factor in determining being included in the CRP program.

The guidelines for the federal program, which pays farmers to grow grass instead of crops on environmentally sensitive land, were rewritten by the USDA as part of the 1996 Farm Bill.

Combest, the chairman of the agriculture committee supervising the USDA's handling of the CRP, fought and gained approval last week of two significant factors that would increase West Texas farmers' chances of qualifying for the program.

The USDA agreed last week that keeping fields covered and not plowed to protect against the regions strong winds is worth points for both air quality and soil erosion.

Combest will hold a review hearing on proposals soon after the USDA releases its final

plans, which could come as early as Wednesday, according to a Combest spokesman.

The committee will then take appropriate action, which could include legislation to clarify or even change the rules.

The new proposals are slanted toward water erosion and environmental issues, rather than wind erosion and agriculture concerns, critics claim.

The contracts on more than 24 million of the 36.4 million acres enrolled in the CRP program will expire this fall and will be judged by the new rules for inclusion in the program, according to Combest's office.

Of the 4 million-plus acres CRP acres in Texas, 40 percent are in Combest's district, which includes 20 counties in the Panhandle-South Plains.

Combest also released corrected USDA rental rates for Texas counties.

The correct average rental rate for Bailey and Parmer Counties is \$36, a dollar more than previously release. The rental rate figures includes the \$5 reimbursement to landowners for coverage maintenance

Continued on page 3

AROUND MULESHOE

Basketball raffle Feb. 7 at WJHS gym

Parents will be raffling two basketballs during the Muleshoe-River Road basketball games Feb. 7. A ball signed by the varsity Lady Mules and a ball signed by the varsity Mules will be given away.

Tickets are \$1, or 6 for \$5, and can be purchased at Williams Bros. Athletics, or at the game.

Proceeds from the raffle will go towards Project Graduation '97, a project sponsored by parents to provide a drug-free, alcohol-free graduation night.

Lazbuddie HS seniors hosting fajita lunch

The Lazbuddie High School senior class will be hosting a fajita Lunch Feb. 9 from 11:30 a.m. - 2 p.m. in the LHS cafeteria.

The menu includes Fajitas, beans, Spanish rice, salad, dessert, and tea. Cost is \$6 for adults and \$4 for children and lite plates.

Lazbuddie Methodist sponsoring trap shoot

The youth group of the Lazbuddie Methodist Church will sponsor a trap shoot Feb. 9 at Clay's Corner. The shoot will begin at 1 p.m. and will continue until dark.

The types of shoots available will be regular, partnership, monkey shoots, and Annie Oakleys. There will also be plenty of shoots available for kids. Refreshments will be available.

Conklin named to Baylor dean's list

Norris Mason Conklin, son of Norris L. Conklin of Muleshoe, was named to the Dean's Academic Honor List.

To be named to the Dean's List, a student must be an undergraduate with a minimum grade-point average of 3.7 while enrolled in a minimum of 12 semester hours.

Miller honored by University of Kansas

Jon Colby Miller, son of Mike Miller of Lazbuddie, was among 258 student athletes honored by the University of Kansas for their academic achievements.

Athletes were recognized for maintaining at least a 3.0 grade point average for the 1996 spring and/or fall semester.

Hutton, McGuire named to ACU dean's list

Holly Hutton and Russell McGuire of Muleshoe were named to the Dean's Honor Roll for the fall 1996 semester at Abilene Christian University.

To be named to the honor roll, students at ACU must complete at least 12 semester hours for grades and earn a 3.45 or higher grade point average.

Wayland names students to dean's list

Wayland Baptist University recently released their Dean's List, with several area students among those honored. Included in the dean's list were Linda Brown and Robert Brown of Muleshoe, and Jimmy Watson of Lazbuddie.

To be named to the Dean's List, students must maintain at least a 3.5 grade point average while taking a full load of course work at the University.

Texas Tech names academic honor students

Texas Tech University has named several area students to the Dean's List for the fall 1996 semester. Among those named were Leland Brockman, an agronomy major, Jennifer Johnson, an early childhood major, and Jason Morris, an interdisciplinary agriculture major.

The University also named Samantha Caswell, a journalism major, Gary Gilleland, a mechanical technology major, and Erin Kelley, an English major, to the President's List.

Students on the President's List earned a 4.0 grade point average while enrolled in 12 or more semester hours of class work. Students who earned 12 or more hours with a GPA of 3.5 to 3.9 qualified for the deans list.

South Plains football officials recruiting

The South Plains Chapter of Football Officials is beginning study and preparation for the 1997 football season. Meetings are held the first Tuesday of every month at Lubbock Christian University's Christian Development Center, room 204, beginning at 6:30 p.m.

For more information, call Don Collins at 792-8203 or Rick Howard at 799-0303.

LOCAL WEATHER AT A GLANCE

	HIGH	LOW	PRECIP
2/1	74	37	—
2/2	74	31	—
2/3	66	28	—
2/4	67	26	—

Source: R.G. Bennett, National Weather Service

Chief

Continued from page 1

player who can get people's attention."

The city originally advertised the job salary in the low 20s. They received five applications. Rogers was the only applicant to get serious consideration, Fisher said.

Fisher said he hopes to attract better candidates by advertising the salary in the 30s.

"We don't want to make our salary structure top-heavy, but you've got to pay good people what they're worth."

City voters approved a 1/2 sale tax increase designated for economic development in 1993.

The city has nearly \$400,000 in its economic development fund.

Pain may be eliminated for millions

(SPECIAL) -- A drug that is exciting researchers in the treatment of pain has been formulated into a new product known as "Arthur Itis," and is being called a "Medical Miracle" by some, in the treatment of debilitating conditions such as arthritis, bursitis, rheumatism, painful muscle aches, jointaches, simple backache, bruises, and more. Although the mechanism of action is unclear, experiments indicate that Arthur Itis, relieves pain by first selectively attracting, and then destroying the messenger chemical which carries pain sensations to the brain, thus eliminating pain in the affected area. Arthur Itis, is available immediately without a prescription in an odorless, greaseless, non-staining cream or new easy applicator liquid form. Arthur Itis, is guaranteed to work or your money back.

Use only as directed © 1996, Stella Health Products, Inc.
AVAILABLE AT:
WESTERN DRUG
 114 Main, Muleshoe 272-3106

Muleshoe Journal USPS 367820
 Established February 23, 1924. Published by Triple S Publishing, Inc.
 Every Thursday at 304 W. Second, Box 449, Muleshoe, TX 79347.
 Second Class Postage paid at Muleshoe, TX.
 POSTMASTER: Send address changes to the Bailey County Journal, P.O. Box 449, Muleshoe, TX 79347.
 We are qualified members of:
 Panhandle Press Association, National Newspaper Association,
 West Texas Press Association and Texas Press Association

WEST TEXAS PRESS ASSOCIATION

PPA
 Panhandle Press Association

TA MEMBER 1996
 TEXAS PRESS ASSOCIATION

Scot Stinnett, Publisher
 Lisa Stinnett, Vice-President/Comptroller
 Rick White, Editor
 Jessica Orozco, Classifieds
 Pat Durben, Advertising

SUBSCRIPTIONS: Muleshoe Journal and Bailey County Journal
 By Carrier Yearly - \$22.00
 Bailey and surrounding counties: by mail - \$24.00
 Elsewhere - \$26.00
 Advertising Rate Cards on Application

Advertisers should check their ad the first day of insertion. The Journals will not be liable for failure to publish an ad or for a typographical error or errors in publications except to the extent of the cost of the ad for the first day of insertion. Adjustment for errors will be limited to the cost of that portion of the ad where the error occurred.

HEARTWARMING VALUES

New Manager VALENTINE SPECIAL

Valentine, Keep Your Sweetheart Warm With Bailey County Propane

79.9¢

per gallon

Call Becky
 Talk to George
 Ask Fele

100 gallon minimum

— CASH ONLY — Hurry, While Supply Lasts —

Bailey County Propane Inc.
 Friona Hwy. Muleshoe 272-4678

JOES & BOOT SHOP

1-800-658-6378 106 E. American Blvd. Muleshoe, Texas
And Country Junction

Valentine Specials

All Jewelry 15% OFF Storewide
 includes all Montana Silversmith & Crumrine Jewelry & Buckles



NEW! 12" Lace-Up Cross Riders Field Packers Horseshoe Tennis
 BY ROPER



NEW!
Chukka Cowhide Sport Lacers



BY JUSTIN

FEBRUARY SPECIALS



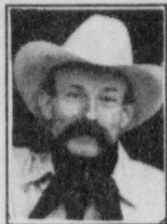
20X Bailey Felt \$250
30X Bailey Felt \$300
Resistol Black Gold \$325

One Group Justin
Sport Lacers
 CHILDRENS **\$29⁰⁰**
 ADULTS **\$49⁰⁰**
 New Arrivals of
 Childrens & Adults

Yankee Candles for Valentine's at Country Junction
 Strawberry - Raspberry - Hearts & Flowers
 Fragrances

Muleshoe Journal
 To subscribe, call 272-4536

Best of times; worst of times



BAXTER BLACK
ON THE EDGE OF COMMON SENSE

It is the best of times.

Calving at it's finest. The calling of those chosen to tend God's creatures. To take part in simple miracles. To alter the balance of life on earth by one small addition. It is the worst of times.

It is the worst of times.

Calving in the midst of a winter when one needs a depth finder to see the tip of the market. When it is less worrisome to lose oneself in the task of daily responsibilities easing the burden of birth than it is thinking about the price of next fall's over crowded weaner crop.

A dilemma, some would say.

But does knowing the decreased value of beef make a cowman think less of that heifer in trouble? Or that new calf layin' in the straw? Does her dollar price somehow affect her value as a creation... As a work of art. Planned, worked for and created by a cowman, a cow and God?

Does the price of a first calf heifer affect a cowman's responsibility to her well being? Does his effort, concentration and skill decreased when she's calving in a falling market? Does he try harder to get a live calf if she's worth more at the sale?

These questions are best answered, not philosophically or hypothetically, but in reality. At 3 a.m. when you hook the chains to newborn feet and start to pull, does cost cross your mind? When you rub the calf down and push him under her flank do you see dollar signs?

When you gaze at the turn out field and see cows grazing contentedly while calves chase each other around'em, do you get a good feeling? Smile, maybe relax for a moment thankful all is well. Or are you too occupied with their price to appreciate what you're seeing?

The dilemma I'm presenting really isn't much of a problem for most cow people I know. The calving barn is a long way in time and miles and thought from the auction ring.

After all, we tend to our flocks in bad weather, hard times, illness, chapped hands, achin' backs, mad patients and yes, bad markets.

I think when we lay down in the straw or mud behind a heifer needin' help, the price per pound is the farthest thing from our mind. So, in spite of all the well meaning (and correct) consultants who keep reminding us that what we do is a business, it is also, beyond any doubt, a way of life.

Windbreaks provide more than protection

On the plains of West Texas, one of the harshest elements can be the driving wind.

For many years, the Texas Forest Service (TFS) has been assisting High Plains landowners in the designing and planting of multiple row windbreaks.

Such windbreaks provide more than just protection, they also define the boundary between the production land and the homestead, or "yard".

One such windbreak is that of Bailey County residents

John and Diane Saylor. In 1993, this farming couple planted a four row homestead windbreak.

"I definitely think it's worth it," John Saylor said. "It sure makes your house look better. It kind of ends or stops the farm and gives it a definite break."

The Saylor's have used a variety of species in their windbreak, an element recommended by the TFS.

The TFS recommends a four-row windbreak, which

should consist of an outside shrub row, two interior evergreen rows, and an inside deciduous row.

The shrub row has two main benefits. Shrubs provide the best low-density protection, such as the prevention of snow accumulation. In addition, they produce fruit, cover and browse which will attract and sustain wildlife populations.

The interior evergreen rows, the backbone of the windbreak,

County

Continued from page 1

sponse to their search for a new van. Both were from Muleshoe Motors.

The 1997 Chevrolet van will cost the County \$22,665. Muleshoe Motors offered to accept the County's current van as a \$2,000 trade-in. Commissioners chose to keep the old van, which they will attempt to sell later at a higher price.

Continued on page 5

CRP

Continued from page 1

requirements. Other factors used to judge acceptance of land proposed for CRP include the Environmental Benefits Index.

USDA will award points for each category when scoring potential CRP land.

For acreage with wildlife habitat benefits, up to 100 points. For water quality benefits from reduced erosion and runoff, 100 points. For protection of farm topsoil, 100 points. Up to 50 points will be earned

for land deemed likely to remain covered with the benefit of natural grasses and brush after expiration of CRP contract.

Up to 25 points will be counted for air quality benefits from reduced blowing dust and wind erosion. Also, a total benefit of having the acres enrolled in CRP will also net 25 points.

The USDA will also weigh the benefits and costs of paying to keep fragile land out of production.

Texas Tech University Health Sciences Center



Memory Disorder Patients

The Department of Neurology at Texas Tech University Health Sciences Center, Lubbock, Texas, has been chosen as a research site to test an investigational medication to be studied in Alzheimer's disease and vascular dementia. If you know of someone who is experiencing progressive memory loss and would like more information, please call the number below.

Call (806) 743-2587

Dedicated to the support and education of patients and family members.

OPENING NOON THURSDAY, FEB. 6

SAVINGS STOREWIDE!

SAVE UP TO 60% OFF

NEW Reductions Being Taken!

 <p>Men's Knit and Woven Tops 30% to 40% OFF</p>	 <p>Children's Long Sleeve Tops 30% to 50% OFF</p>
 <p>Men's Flannel Shirts 7.99 <small>Reg. 14.99</small></p>	 <p>Select Group Women's Windsuits 40% to 50% OFF</p>
 <p>Large Selection Women's Outerwear 40% to 50% OFF</p>	 <p>Missy & Juniors' Related Separates 40% to 60% OFF</p>
 <p>Hiker Boots 30% to 40% OFF</p>	 <p>Winter Sleepwear, Robes & Loungers 40% to 50% OFF</p>
 <p>Men's Fashion Sweaters 40% to 50% OFF</p>	 <p>Assorted Gloves and Knitwear 40% OFF</p>

ANTHONY'S

Family Apparel & Shoes

321 Main - Muleshoe 272-3478
Monday-Saturday 9:00-6:00

EXTRA EXTRA EXTRA CLEARANCE EXTRAVAGANZA!

<p>5 Piece Room Group • Sofa • Loveseat • Cocktail Table & 2 End Tables \$899</p>	<p>Solid Oak Master Bedroom • Dresser • Mirror • Headboard • Nightstand ALL 4 PIECES \$799</p>	<p>FREE Night Stand <i>with purchase of this \$799 Bedroom</i></p>
<p>18th Century Cherry Bedroom • Dresser • Pediment Mirror • Headboard • Nightstand ALL 4 PIECES \$699</p>	<p>FREE Night Stand <i>with purchase of this \$699 Bedroom</i></p>	<p>Waterfall Back Sofa \$399 <i>GREAT BUY!</i> Plump Pillow Top Sofa \$399 <i>GREAT BUY!</i></p>
<p>Solid Oak Dining Set • Pedestal Table • 4 Press Back Chairs \$399</p>	<p>Solid Oak Audio/Video Center • Accommodates 32" TV • Side Door Storage • Brass Finish Accents <i>SUPER VALUE</i> \$299</p>	<p>Traditional or Contemporary Curio Cabinets <i>YOUR CHOICE</i> \$168</p>

Special Financing For This Sale Only!

Factory Direct Furniture

300 S. Ave. C Portales, NM (505) 356-4814

Master Card • Visa • Discover • American Express • True Value Card Accepted
STORE HOURS: Monday-Saturday 9a.m.-6 p.m.

\$10 DOWN, \$10 MONTH
- Same as cash option.
Brand Names at Factory Direct Prices!!



Muleshoe Journal



SPORTS EXTRA

Volume 75, No. 6

Published every Thursday at Muleshoe, Bailey County, Texas 79347

Thursday, Feb. 6, 1997

Lady Mules take pride in latest win

By RICK WHITE
Managing Editor

Playing for pride and third place, the Muleshoe Lady Mules beat Perryton 63-49 Friday in a District 1-3A game at WJHS.

A strong all-around game by senior Kristen Nichols and 57 percent shooting pulled the Lady Mules even with Perryton for third place in the district at 7-5.

Muleshoe (11-18) swept the season series against the Lady Rangers.

"I think we kind of have their number," Muleshoe coach Jim Gruhlkey said. "We were getting real makeable shots and we didn't try to force things."

Muleshoe was 27 of 47 from the field and made 8 of 11 free throws.

Muleshoe has two games left, Tuesday at Tulia and Friday when it hosts district-leading River Road. Friday is Senior Night.

Nichols, a 5-9 post, finished with 17 points, eight rebounds and nine assists. Senior Brandi Harrison added 14 points and sophomore Erin Wilhite had 14 points and nine rebounds.

Although Muleshoe's playoff hopes ended with a last-second loss at Dimmitt last

DISTRICT 1-3A

Girls		
	District	Overall
River Road	10-2	21-7
Dimmitt	10-2	19-12
Perryton	7-5	13-17
Muleshoe	7-5	11-18
Friona	6-6	10-16
Tulia	4-8	15-10
Dalhart	3-9	10-16
Sanford-Fritch	0-12	1-25

Friday's games — Muleshoe 63, Perryton 49; Friona 61, River Road 56; Dimmitt 71, Sanford-Fritch 31; Tulia 42, Dalhart 41

Tuesday's games — Muleshoe at Tulia, Dalhart at Perryton, Friona at Dimmitt, Sanford-Fritch at River Road

Friday's games — River Road at Muleshoe, Dimmitt at Dalhart, Tulia at Sanford-Fritch, Perryton at Friona

Tuesday, the Lady Mules played hard Gruhlkey said.

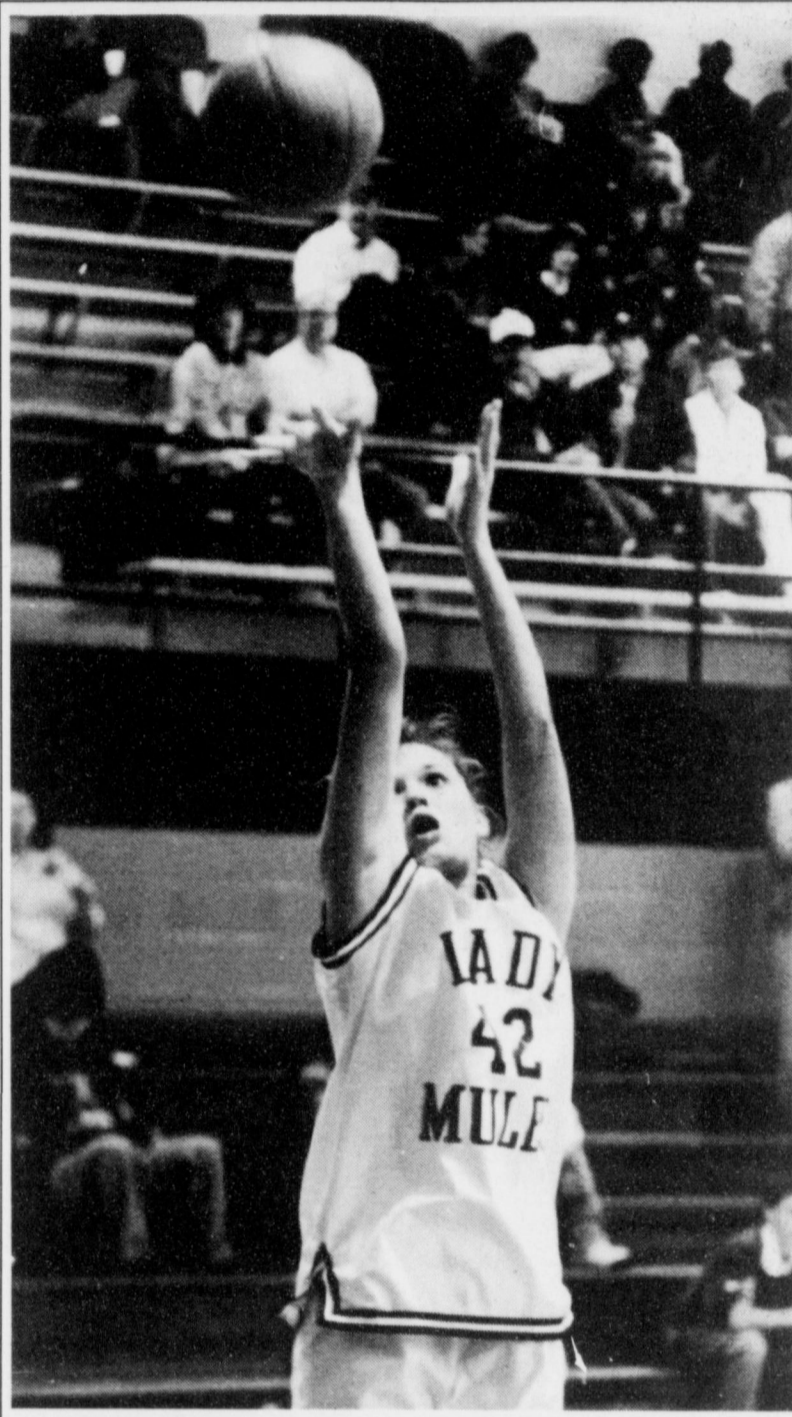
Jaclyn Nowlin led Perryton (13-17) with 19 points and Tobi Alexander finished with 14.

The Lady Rangers shot 37 percent from the field but made 16 of 21 free throws.

Combined with Dimmitt's win over Sanford-Fritch, the loss ended Perryton's slim playoff hopes.

Gruhlkey came away impressed with the Lady Rangers'

Continued on page 5



Nichols worth
Muleshoe senior Kristen Nichols shoots a jump shot during the second half of the Lady Mules' 63-49 win over Perryton Tuesday night at WJHS gym.

JOURNAL PHOTO BY LESLI RADFORD

SUPPORT MULESHOE ATHLETICS

Mules chasing 20-win season

By RICK WHITE
Managing Editor

The Muleshoe Mules have been sure-footed while surging into the upper division of the District 1-3A standings.

Not once have the third-place Mules stumbled and lost to a team below them in the district standings, improving to 7-3 in league play Friday with a 63-58 win against Perryton at WJHS.

"We were flat and didn't play that well, but we still found a way to win," Muleshoe coach Ralph Mason said.

The Mules (18-10) are closing in on their first 20-win season in recent memory.

"I don't even know when the last winning season was," said Mason, in his third year at Muleshoe. "I certainly don't know when the last season 20-win season was."

Even if the Mules upset district leader Tulia (24-2, 10-0) Tuesday, they would need help to make the playoffs. No. 7 Dimmitt is in second place at 9-1.

"We need help and I don't know of anybody else that can help," Mason said. "Including Tuesday's game, at second-ranked Tulia, there

DISTRICT 1-3A

Boys		
	District	Overall
Tulia	10-0	26-2
Dimmitt	9-1	23-6
Muleshoe	7-3	18-10
Perryton	4-6	11-13
Friona	4-6	7-8
Dalhart	3-7	14-12
River Road	2-8	11-16
Sanford-Fritch	1-9	10-18

Friday's results — Muleshoe 63, Perryton 58; Tulia 76, Dalhart 55; Dimmitt 57, Sanford-Fritch 44; Friona 81, River Road 68

Tuesday's games — Muleshoe at Tulia, Dalhart at Perryton, Friona at Dimmitt, Sanford-Fritch at River Road

Friday's games — River Road at Muleshoe, Dimmitt at Dalhart, Tulia at Sanford-Fritch, Perryton at Friona

are four games left in the season.

Dustin Cleavinger had 16 points and seven rebounds and Cyrus Norman (four 3-pointers) and Alfonso Mendoza scored 12 points each as the Mules overcame an 11-point first-quarter deficit against Perryton.

Post Brian Gilbert banged his way to 17 points for the fourth-place Rangers (11-13, 85-88) in their district game.

Continued on page 5

Laz boys set for showdown

LAZBUDDIE — Jason Thomas led a balanced attack with 15 points and Lazbuddie prepped for a critical showdown against Farwell by beating Vega 51-33 Friday in a District 3-1A game.

Justin St. Clair added 10 points Longhorns (18-6) and Josh Morris and Israel Lopez finished with nine points each.

Lazbuddie is tied for second in the district with Farwell at 4-2. The teams met Tuesday in Farwell.

Lazbuddie finishes the regu-

lar season Friday by hosting Nazareth, the district leader at 7-0 and ranked No. 1 in the state.

Farwell edged Lazbuddie 75-74 in the first meeting.

Vega (33) — Richardson 4 5-7 13, Fowler 0 (2) 0-0 6, Hodges 2 0-0 4, Kinsey 1 0-0 2, Hays 2 0-0 4, Flores 2 2-5 6. Totals 10 (2) 7-12.

Lazbuddie (51) — Mimms 0 0-0 0, St. Clair 3 4-4 10, Morris 2 (1) 2-2 9, Smith 1 2-2 4, Brown 1 1-2 3, Lopez 4 1-3 9, Thomas 4 7-10 15, Weir 0 1-2 1. Totals 15 (1) 18-25 51.

Vega 9 5 8 11 33
Lazbuddie 14 13 9 15 51

DISTRICT 3-1A

Boys		
	District	Overall
Nazareth	7-0	24-4
Farwell	4-2	20-54
Lazbuddie	4-2	18-6
Vega	1-6	10-16
Happy	0-6	3-21

Friday's results — Lazbuddie 51, Vega 33; Nazareth 76, Farwell 69.

Tuesday's games — Lazbuddie at Farwell, Vega at Happy, Nazareth, open

Friday's games — Nazareth at Lazbuddie, Farwell at Happy; Vega at Cotton Center

Lady 'Horns improving

LAZBUDDIE — Lazbuddie threw a big scare into Vega Friday before dropping a 52-45 decision in District 3-1A play.

Lazbuddie trimmed Vega's lead to three and had a chance to get within one with less than a minute left, but a charging call stalled the Lady Longhorns' run.

Vega (21-7, 2-5) then clinched the game at the foul line. Vega made 8 of 12 free throws in the fourth quarter.

Roxann Warren paced the Lady Longhorns (13-13, 0-6) with 12 points and Mandy Magby added 10.

"The kids aren't just playing out the string," Lazbuddie

coach Carey Sudduth said. "We scared Vega to death."

Vega (52) — Rea 1 2-2 4, Henderson 3 2-4 8, Artho 5 4-6 14, Sunderman 1 (1) 0-0 5, Selman 1 1-2 3, Bassford 0 1-4 1, Karber 2 3-6 7, Green 2 0-0 4, May 3 0-3 6. Totals 18 (1) 13-27 52.

Lazbuddie (45) — Foster 2 (1) 2-5 9, Brown 1 1-1 3, Rodriguez 0 2-4 2, Magby 2 6-8 10, Hill 0 2-2 2, Morris 3 1-4 7, Warren 4 4-14 12. Totals 12 (1) 18-38 45.

Vega 9 12 13 18 52
Lazbuddie 13 4 12 16 45

DISTRICT 3-1A

Girls		
	District	Overall
Happy	5-1	23-6
Farwell	4-2	20-54
Nazareth	4-3	18-10
Vega	2-5	21-7
Lazbuddie	0-6	13-13

Friday's results — Vega 52, Lazbuddie 45; Nazareth 78, Farwell 66.

Tuesday's games — Lazbuddie at Farwell, Vega at Happy, Nazareth, open

Friday's games — Nazareth at Lazbuddie, Farwell at Happy; Vega at Cotton Center

Muleshoe JVs sweep Perryton

Mason Sinclair and B.J. Gonzales scored 10 points each and Muleshoe hit six 3-pointers in a 45-43 win over Perryton Friday in a boys junior varsity District 1-3A game.

Aaron Purdy added six points for the Mules on a pair of 3-pointers.

Perryton (43) — Clevenger 3 0-0 6, Evans 2 0-0 4, Medina 1 (1) 0-2

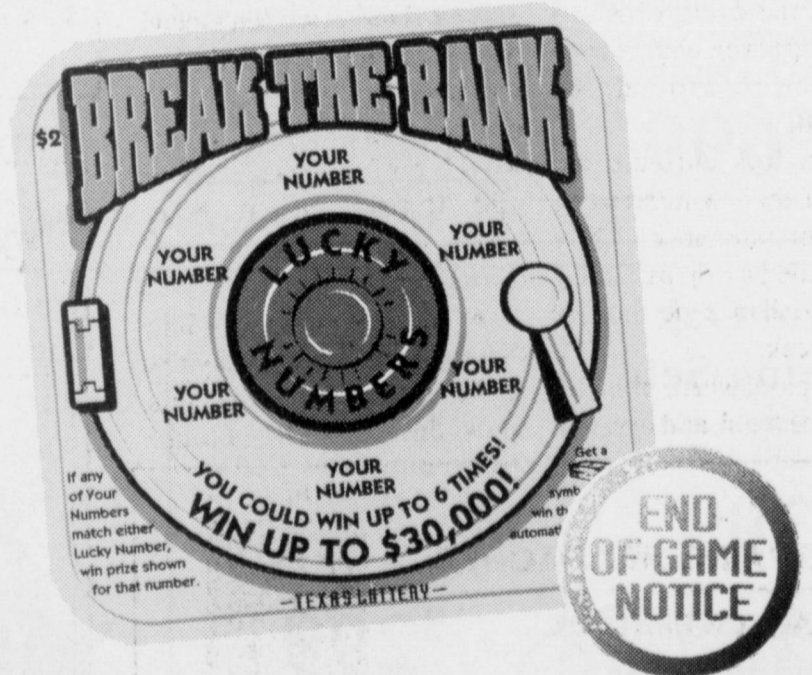
5, McLarty 3 0-0 6, Carroll 5 4-4 14, Bailey 4 0-2 8. Totals 18 (1) 4-8 43.

Muleshoe (45) — Sinclair 1 (2) 2-2 10, Pineda 0 0-0 0, Gonzales 2 (2) 0-1 10, Barrett 0 0-0 0, Hines 0 0-0 0, Black 2 0-0 4, Bruns 1 0-0 2, Mason 2 1 0-0 2, Campolla 2 1-2 5, Purdy 0 (2) 0-0 6, Hahn 1 0-0 2, Turney 2 0-0 4. Totals 12 (6) 3-5 45.

Perryton 12 13 8 10 43
Muleshoe 14 10 9 12 45

Continued on page 5

Last Chance To Withdraw Cash From This Bank.



That's right. This bank is closing soon. Break the Bank (Game #60), with a top prize of \$30,000, officially ends February 1, 1997. But you can still purchase any remaining tickets or claim any prizes until July 31, 1997.

You can claim your prizes of up to \$599 at any Texas Lottery retailer. Prizes of \$600 or more are redeemable at any one of the 24 regional Texas Lottery claim centers or by mail.

Any questions? Just call the Texas Lottery customer service line at 1-800-37-LOTTO (1-800-375-6886).



Have a nice day

Rangers

Continued from page 4

4-6) and Frankie Balizan added 14.

"They play hard and they've got the big bodies to stay in the game if they get on the boards," Mason said.

Tied at halftime, Muleshoe pulled out to a 53-45 third-quarter lead as Cleavinger scored six points and Norman and Matt McClanahan added 3-pointers.

Norman's fourth 3-pointer halted an 8-0 Perryton run to start the fourth quarter, giving Muleshoe a 56-53 lead with a little less than three minutes to go.

The Mules clinched the win by making five of six free throws in the last 48 seconds after the Rangers had crept within 58-56.

Muleshoe shot 49 percent from the field, including 58 percent from 3-point range (7-12). MHS also made 10 of 13 free throws.

Muleshoe outscored Perryton by a combined 43-24 in the middle two quarters.

Balizan scored eight point in the first quarter and used his quickness to hurt the Mules on the offensive boards in the first half. Shae Cunningham's 3-pointer off an inbounds play gave Perryton a 21-10 lead after the first eight minutes.

Muleshoe tied the game at

23 with a 13-2 run sparked by Carlton Lewis.

Lewis scored twice on drives and pulled the Mules within 23-18 with a steal and breakaway layup.

Norman hit a 3-pointer following a Perryton miss and Douglass Field scored from the right block to tie it at 23.

Cleavinger's 3-pointer and three-point play on consecutive possessions kept Muleshoe close in the second quarter, and Layne Kemp tied the game at 33, rebounding Mendoza's missed free throw.

"I was real pleased again with the way the kids responded to the circumstances and found a way to win," Mason said.

Perryton (58) — Duke 2 0-0 4, Cunningham 3 (1) 0-0 9, Graham 0-0 0, Hale 1 0-0 2, Balizan 7 0-0 14, Sunday 0 0-0 0, Paetzold 3 2-2 8, Alexander 2 0-0 4, Gilbert 5 7-8 17. Totals 23 (1) 9-10 58.

Total fouls: 13. Fouled out: none. Turnovers: 12.

Muleshoe (63) — Lewis 3 2-2 8, Shelburne 0 0-0 0, Mason 1 0-0 2, Norman 0 (4) 0-0 12, Mendoza 3 (1) 3-6 12, Williams 0 0-0 0, Field 2 0-0 4, McClanahan 9 (1) 2-2 5, Clements 1 0-0 2, Kemp 1 0-0 2, Cleavinger 5 (1) 3-3 16. Totals: 16 (7) 10-13 63.

FG: 23-47. 3-point FG: 7-12. Rebounds: 27, 7 off. (Cleavinger 7). Steals: 10 (Mendoza 3). Assists: 14 (McClanahan 4). Turnovers: 17. Total fouls: 13. Fouled out: none.

Perryton 21 12 12 13 58
Muleshoe 10 23 20 10 63

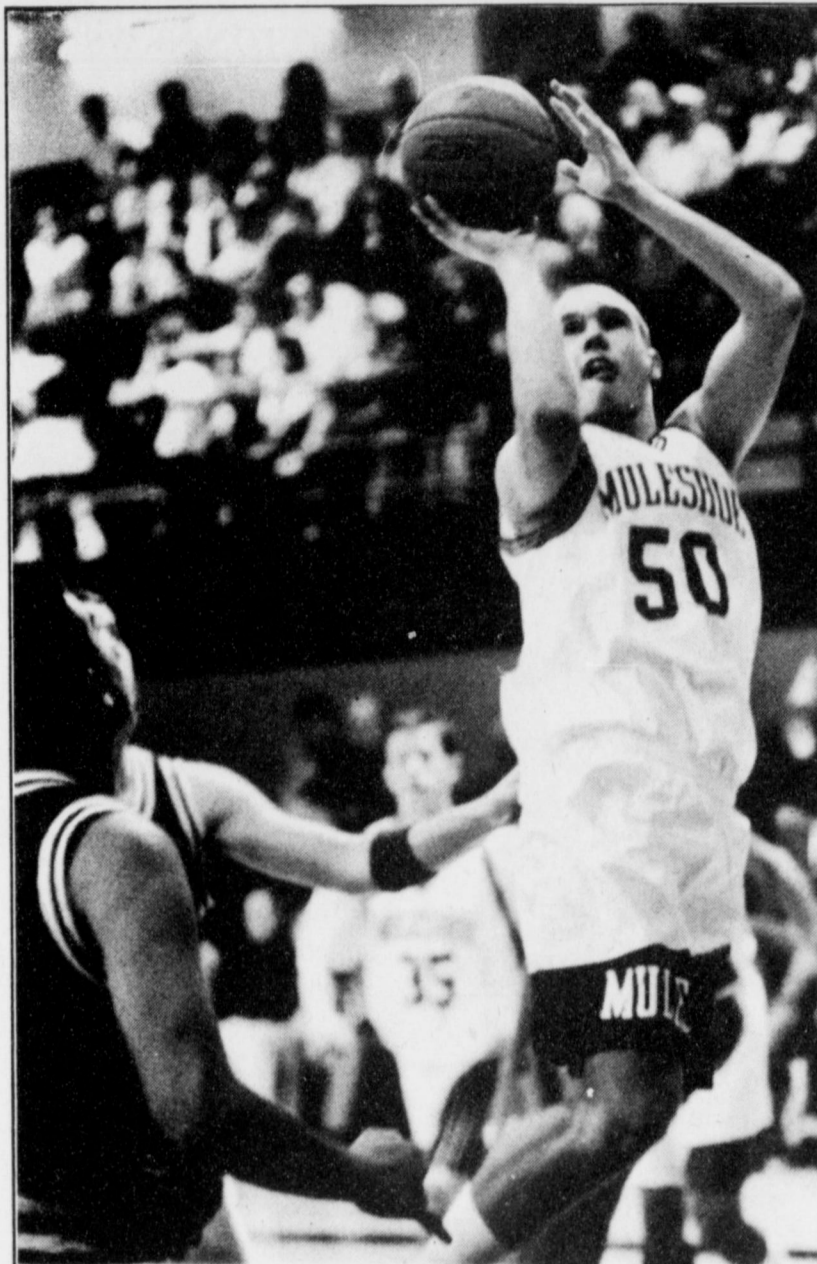


PHOTO BY LESLI RADFORD

Swooping sophomore

Muleshoe's Dustin Cleavinger scores during the first half of the Mules' 63-58 win over Perryton Friday at WJHS gym.

Pride

Continued on page 5

athleticism and potential.

"I think they're definitely on the rise," Gruhlkey said.

Muleshoe used a 13-2 run in the fourth quarter to win for the fourth time in five games.

Wilhite got the spurt started with a three-point play that put the Lady Mules up by 10.

Freshman Lindsey Field (10 points) scored off a pair of steals during the run and Nichols added a 12-foot jumper and picked up her ninth assist when she found Harrison cutting down the lane.

Wilhite scored 11 points and Nichols added eight in the first half, helping Muleshoe take a 33-28 lead.

The Lady Rangers got within 41-38 late in the third quarter on Nowlin's 3-pointer. But Muleshoe scored the last four points of the quarter on Nichols' short jumper and a 10-foot jumper by Mandy

Myers with two seconds left.

Gruhlkey said avoiding the three and four-minute scoreless stretches that have killed the Lady Mules this season was one of the keys to the win.

Perryton (49) — Carter 0 (1) 0-0 3, Deal 0 0-0 0, Nowlin 4 (2) 5-6 19, Ogden 2 7-8 11, Holt 0 0-0 0, Haberthur 0 0-0 0, Alexander 5 4-7 14, Watson 1 0-0 2, Leimer 0 0-0 0. Totals 12 (3) 16-21 49.

FG: 15-41. 3-point FG: 3-8. Rebounds: 22, 8 off. Turnovers: 15. Total fouls: 17. Fouled out: none.

Muleshoe (63) — Myers 1 0-0 2, Field 4 2-2 10, B. Locker 0 0-0 0, Gilleland 0 0-0 0, Aguirre 0 2-3 2, A. Locker 1 0-0 2, Nichols 6 (1) 2-4 17, Hooten 1 0-0 2, Harrison 7 0-0 14, Wilhite 6 2-2 14. Totals 26 (1) 8-11 63.

FG: 27-47. 3-point FG: 1-5. Rebounds: 25, 6 off. (Wilhite 9). Steals: 11 (Harrison 4). Assists: 21 (Nichols 9). Turnovers: 15. Total fouls: 13. Fouled out: none.

Perryton 12 16 10 11 49
Muleshoe 15 18 14 16 63

Records: Perryton: 13-17, 7-5. Muleshoe 11-18, 7-5.

Advertise It In The Muleshoe Journal Classifieds!
Call 272-4536

Sweep

Continued from page 4

Lady Mules 39-28

Kendra Benham scored nine points, leading the Muleshoe junior varsity girls to a 39-28 win against Perryton Friday in a District 1-3A game.

Krystal Heathington and Keisha Whitt added eight points each for the Lady Mules.

Perryton (28) — Hill 1 0-0 2, Henry 1 0-0 2, Colbert 2 0-0 4, Smith

3 0-2 6, Rima 0 0-0 0, Paetzold 6 0-0 12, Nall 1 0-0 2. Totals 14 0-4 28.

Muleshoe (39) — Heathington 4 0-0 8, Messenger 0 0-0 0, Whitt 4 0-0 8, Hooten 0 0-0 0, Cowart 0 0-0 0, Morris 1 0-2 2, Benham 4 1-3 9, Slayden 0 0-0 0, Copley 2 0-2 4, Angeley 0 0-2 0, Williams 3 0-0 6, Schuster 0 0-0 0, Black 1 0-0 2. Totals 19 1-9 39.

Perryton 8 8 2 10 28
Muleshoe 15 10 8 6 39

Windbreaks

Continued from page 3

create a year-round surveillance and foliage for up to seventy-five years or more.

The deciduous tree row produces a tall barrier quicker than the evergreens, providing early protection while the evergreens establish themselves. Together, the evergreens and deciduous trees extend the zone of protection around the homestead.

The Saylor's attribute the success of their windbreak to vigilant maintenance. They have installed a drip irrigation system to enhance the success of their break.

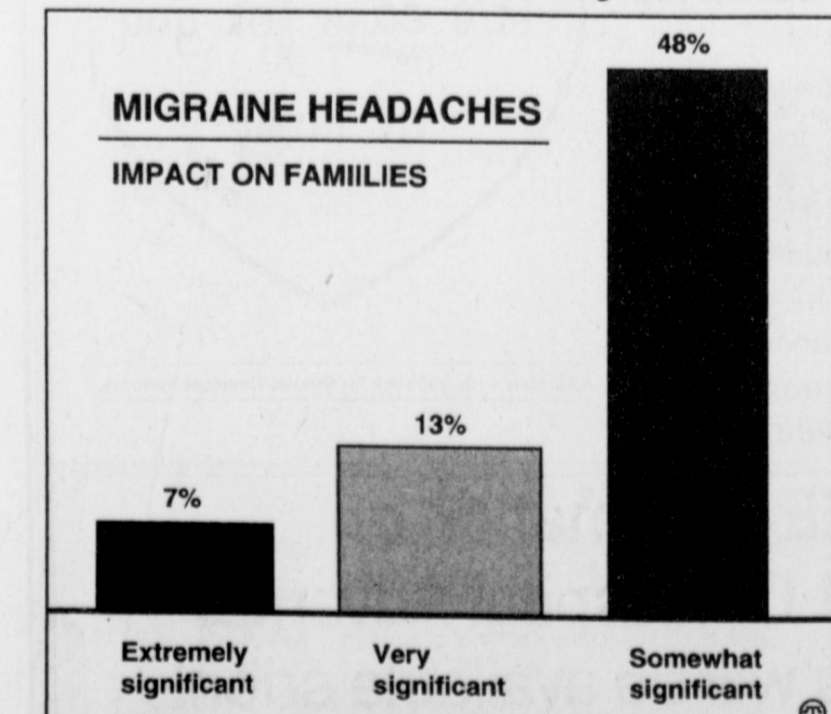
In a region where the climate can be harsh and dry, the

Saylor's have laid fabric over seedlings to prevent weeds from competing for the water supply.

While the tree growth continues, maintenance is on the decrease, according to Taylor.

"They get less and less every year. I mean, we don't spend near as much time with them as we used to, which they'd probably grow more if we would, but we don't," Saylor said. "But they are to the point where they do take care of themselves."

Windbreak seedlings like those planted by the Saylor's are available for order this winter through the Blackwater



Your doctor may be able to do more than you realize to relieve the pain and inconvenience of migraine headaches, which nearly two-thirds of female sufferers report has a significant impact on their families.

Area Business Directory

CHECK OUT OUR
SEED CORN VARIETIES -
NORTHROP KING, MYCOGEN, CARGILL,
- Also Available - GRAIN SORGHUM SEED

We Will Have A Limited Supply of
Delta Pine 2156 Cotton Seed
While It Last!

Muleshoe Feed Barn
311 W. American Blvd. 272-5626

Bridal Selections
Have Been Made For:

Audra Lee
Bride-Elect of
Eric Parker

The Art Loft
272-3485

SALE

On All Goodyear
Work Horse
Radials

James Crane Tire Co.
107 Main Muleshoe 272-4594

Sheree's Attic
Merle Norman Cosmetics

WINTER CLEARANCE SALE
40%-50%-60% OFF

Back From Market With Lots Of New Sterling Silver Jewelry
SWEETHEART SALE - 15% OFF
All Sterling Silver Jewelry - through Valentine's Day

Owner Sheree Hunt
1519 W. American Blvd. 272-3459

A

PAT ANGELEY
Certified Public Accountant

1910 W. American Blvd.
Muleshoe, TX 79347
272-7502
Fax: 272-4198

A

PAT ANGELEY
Certified Public Accountant

1910 W. American Blvd.
Muleshoe, TX 79347
272-7502 Fax: 272-4198

NEW ARRIVALS FOR *Spring*

E.L. Malik, Central Falls,
Northern Isles

Great Valentine Gifts!!

The Fig Tree
220 Main 272-7561
Owners: Shanna Glover - Sharon Williams



Dillamn Superkids

Dillman Superkids for January are (top, from left) Melissa Martinez, Xavier Cuevas, (middle row) Dustin Barker, Aly McDearman, Madison Myers, Belen Nunez, David Engebretson, and (bottom) Daniel Mendoza.

County producers need from 2 to 8 inches of rain to reach field capacity for spring planting

Bailey County producers within the High Plains Underground Water Conservation District No. 1 service area need two to eight inches of water from precipitation and/or irrigation to bring the five foot root zone soil profile to field capacity before Spring 1997 planting, according to pre-plant soil moisture survey data released by the Water District and the USDA-Natural Resources Conservation Service (USDA-NRCS).

"We found that 10 percent of the Water District service area will need from 2 to 4 inches of moisture to bring the soils to field capacity. About 40 percent of the area will need 4 to 6 inches of moisture, and 45 percent will need 6 to 8 inches of moisture. About five percent of the area needs 8 to 10 inches of moisture to refill the soil profile." Says Gerald Crenwelge, USDA-NRCS Soil Scientist.

Soil moisture readings are taken by lowering a neutron probe into a permanently-installed aluminum access tube

at each of the 299 monitoring sites within the 15-county Water District service area. Each site is chosen based upon the soil type, the variations in the saturated thickness of the Ogallala Aquifer which indicates potential well yields, and typical farming operations in the area.

Plant available soil moisture varies according to the previous crop produced at the site. For example, there is between 1.2 and 1.6 inches of soil moisture below the plow layer to five feet for the four main crops grown within the Water District service area (corn, cotton, grain sorghum, and wheat).

Historical data shows that above-average crop yields are more likely when the five foot root zone soil profile is at or near field capacity at planting.

"We hope the area will receive significant precipitation to help reduce these soil moisture deficits prior to planting," says Crenwelge. Rain gauge readings taken at soil moisture

sites in Bailey County indicated an average of 11.11 inches of rainfall during 1996.

Use of furrow dikes will help keep any moisture that falls between now and spring planting on the field so that it can soak into the soil.

The annual pre-plant soil moisture survey data informs producers about general plant available soil moisture conditions across the Water District. "Irrigators can use this information to estimate the amount of water needed to bring their soil closer to field capacity without wasting water by over-irrigating. This information reflects general soil moisture trends and should not be used in place of individual soil moisture testing on farms," says Crenwelge.

Copies of the regional and/or Bailey County soil moisture survey maps are available by contacting your local USDA-NRCS office or the High Plains Underground Water Conservation District No. 1, 2930 Avenue Q, Lubbock, Texas 79405-1499 or by calling (806) 762-0181.

COTTON NEWS

LUBBOCK — Year-end comparisons between Lubbock and Lamesa Cotton Classing Offices indicate the 1996 crop was very high in quality in addition to being a pleasant surprise in regard to total production.

According to Lubbock-based Plains Cotton Growers, figures from area cotton classing offices indicate the 1996 crop totaled 3,085,370 running bales compared to 1995's total of 2,576,979 running bales classed through February 8, 1996.

This marks an increase of about 19.7 percent in area-wide production despite the fact that as many as 800,000 acres of cotton were unable to be planted or were lost during the season.

When converted to statistical (480-pound) bales the 1996 crop jumps to 3,193,358 bales, up from 1995's eventual total of 2,629,300 480-pound bales. Final county production figures will be released by USDA at a later date.

Readings for Color and Strength appear to be lower on average than those seen in the 1995 crop. Measurements for Micronaire appear to have dropped slightly at Lamesa, but increased slightly at Lubbock.

Length appears to be slightly higher in 1996 at both locations. Base quality for the 1996

Upland Cotton Loan is Color 41 and Leaf 4.

Color grades appear to be about the same for grades 21 and 31 and grades 22 and 32 at both the Lubbock and Lamesa Classing offices. Leaf grades show a decrease with more bales receiving grades 2 or 3.

"The 1996 crop proved to be just as unpredictable as the weather in West Texas," notes PCG Executive Vice President Donald Johnson. "Early season expectations were much below our actual level of production due to the favorable weather patterns that developed across the area while the crop was fruiting."

Production dropped greatly in the Lamesa region with that office classing 451,291 bales in 1996. This is down from 1995's total of 619,279 bales.

The table below contains a comparison of bales classed and specific quality factors through the season. The 1996 figures indicate season totals through January 23, 1997. The 1995 figures indicate season totals through February 8, 1996.

Don't forget: The 40th Plains Cotton Growers, Inc. Annual Meeting has been scheduled for Friday, April 11, 1997 beginning with registration at 8:30 a.m. The Meeting will be held at the Lubbock Memorial Civic Center.

30
Color
Photos

\$ \$11.99

WE USE
KODAK PAPER

- 1- 10x13 (Wall Photo) 99¢ Deposit \$11.00 Due at Pick up (plus tax)
- 1- 8x10
- 2- 5x7
- 2- 3x5
- 16- King Size Wallets
- 8- Regular Size Wallets



Order your EASTER CARDS now. 25 for \$15.99

AT

Anthony's

321 Main-Muleshoe, TX
Friday & Saturday,
Feb. 14 & 15
PHOTO HOURS: 9:30-6

Group charge
99¢ per person

During this promotion
you will receive
4 FREE 3X5's
with each \$11.99
package purchased.



Subscribe Today!
Call the Muleshoe Journal
272-4536

Home Folks Caring For Folks At Home.



**MULESHOE AREA
HOME HEALTH**

Agency

Featured Patient

Rue Kimbrough, of Muleshoe, was married to the late Robert Kimbrough. She has two sons - Bob Kimbrough of San Antonio and Lee Kimbrough of Muleshoe. She has five grandchildren and eleven great grandchildren.

Mrs. Kimbrough is a charter member of the Richland Hills Baptist Church. She was a Pink Lady Volunteer for years at the hospital and nursing home. She taught Sunday School for just about 50 years.

The ladies at the Muleshoe Area Home Health Agency are perfect and she loves everyone of them.



Rue Kimbrough

To receive Home Health Services,
talk with your physician or talk
with hospital personnel when you
are hospitalized.

24 Hour # 272-3346
Local Nurse on call 24 hours a
day to offer prompt service.

We accept Medicare, Medicaid
and Private Insurance
It Is Your Right To Choose The
Home Health Agency You Prefer.

Affiliated with Lubbock Methodist Hospital Systems



Think Quick!

GM Goodwrench Quick Lube Plus oil change.
It's fast — or it's free!

Bring your car or light truck to us for a GM Goodwrench Quick Lube Plus oil change. We'll complete all of these services in 29 minutes or less or your next oil change is free:

- Refill your engine with up to 5 quarts of GM Goodwrench® Motor Oil
- Install a new ACDelco Oil Filter
- Perform a complete chassis lube
- Check fluid levels: brake fluid, differential fluid, power steering fluid, transmission fluid, windshield washer fluid, transfer case fluid (4wd vehicles)
- Inspect: drive belts, hoses, air filter, tire pressure

SPECIAL \$17.00

**GM Goodwrench
QUICK LUBE plus**

DOC STEWART
CHEVROLET • GEO • BUICK

2500 Mabry Drive
Clovis, NM
505-763-4465
1-800-530-8842

Classifieds Sell! **272-4536**

Call The Muleshoe Journal Today!

**FREE Information on
New Out Of Hospital Advance
Directives will be available soon!**

Watch this ad for further info as it comes available.

Thank You

To All Of The Following Contributors To The 1997 Bailey County Junior Livestock Show

SHOW BUYER'S POOL CONTRIBUTORS

Aleene's Executive Travel, Lubbock
Clifton Allen
Armstrong Herefords, Ft. Sumner
B & B Agritech
Bass Appliance
Eugene & Gladly Black
Gaylon Black
Blackwater Valley Soil
Boehing Dairy, Earth
Caswell Cattle Co., Muleshoe
Criss Cleavinger
Cox Auto Parts, Morton
Reagan and Marilyn Cox
D.G. Farms (Franks), Portales
Dale Oil Co.
Dameron Drug
Calvin & Lona Embry
Field Insurance Agency
First Federal Savings & Loan, Littlefield
James Glaze
Gordon Green
Mr. & Mrs. L.B. Hall
Heyco, Inc., Hereford
Bernice Holdeman
Robert Hooten
Curtis Hunt
Robert & Nelda Hunt
Irrigation Supply
J.D.F. Farms, Inc.
J.R. Farms (Franks), Portales
James Discount Furniture
Tom Jinks
K.C. Mufflers
Kendrick Oil Co.
L. & B Supply, Morton
Earl Ladd & Sons Eng.
Lambert Cleaners
Leo's Blacksmith Shop
Lewis Farm & Ranch, Morton
Mendoza Irrigation Co.
Kerry & Pat Moore
Allen Mount
Alan Newton Insurance, Littlefield
Mr. & Mrs. Bobby Perry, Bayfield, CO
Plains Ford New Holland, Hereford
Plainview PCA
Marshall Pool
Dr. Bruce Purdy
Ready Mix Concrete Co.
Riney Cattle Co., Olton
Mr. & Mrs. Clinton Rogers
Russell Spraying Service
S.D.F. Farms, Inc.
S.J.F. Farms, Inc.
Sain Irrigation Co.
Sanitary Barber Shop
W. Lewis Scoggin
R.L. Scott
Gerald Shanks
Joel Sinclair
Southwestern Public Service Co.
Ronnie Spies
Joe Bob Stevenson
Tammy's Kitchen
Butch Vandiver
Delbert Watson
Webb, Webb & Wright
Mr. & Mrs. Joe Wheeler
Delton Wilhite & Asso.

THOSE WHO PURCHASED ANIMALS

Altman Group Insurance, Lubbock
Arnn's Farms (J.G. Arnn)
AVI (American Valley, Inc.)
Bailey Gin
Bamert Seed Co.
Steve Bell
Travis Bessire
Mac Brown
Citizens Bank, Texico
Bennie Claunch
Jim Pat Claunch
Clay's Corner Gin
Clovis Livestock Auction
Corvette Farms (James Brown)
Coyote Lake Feed Yard
Mary Crane
Frank and Todd Ellis
Enochs Coop Gin
Feed Services, Lubbock
First United Bank, Earth
Ted Harrison
Aubrey Heathington
Hattie Heathington
Hereford Feed Industries, Hereford
Randy Johnson
Kendrick-McMahon, Houston
Ky and Keila Kennedy
Joey Kindle
Kyle Kindle
Craig Kirby
Reuel Kirby
Jarrol Layton
Leal's (Victor Leal)
Albert Lee
Lowe's Marketplace
Maple Grass
Morton Insurance
Muleshoe Coop Gin
Muleshoe Feed Barn
Muleshoe Livestock Auction
Muleshoe Motor Co.

Muleshoe Vet Supply
Parmer County Implement
Pay & Save
Plainview Dairy, Plainview
Terry Pollard
D.L. Redwine
Ronnie Richardson
Sharp-Strebeck Equipment, Clovis
Dan Simpson
Cliff Skiles
Strebeck AutoPlex, Clovis
T & T Farms, Muleshoe
Treasures from the Heart (Sheila Black)
Wes-Tex Feed Yard
West Camp Gin
Western Drug (Paul Wilbanks)
Mr. and Mrs. Joe Wheeler

THOSE WHO PURCHASED PRODUCTS

Ag Aviation (Fred Locker)
Ronnie Altman
Rodney Baker
Tony Barrier
Steve Bell
Jack Benham
Brady (Rex) Black
Kim Black
Curby Brantley
Bennie Claunch
Jim Pat Claunch
Dr. Barry Cowart
Starla Ellis
Derrel Embry
Johnny Furgeson
H & H Hay Co.
Erin Hancock
Larry Hancock
Pam Hancock
Harrison & Harrison
Alan Harrison
Kelly Harrison
Ted Harrison
Margaret Heathington
Cade Hooten
Gary Hooten
Coli Hunt
Curtis Hunt
Nelda Hunt
Robert Hunt
Dr. Steve Kennedy
King Ag Aviation
Muleshoe Motor
Thurman Myers
Dr. Jerry Redwine
Jerry Redwine
Alec Schuster
Dan Simpson
T & T Farms
Bradley Thomason
Brandon Thomason
Howard Tooley
Treasures from the Heart (Sheila Black)
Wes-Tex Feed Yard
West Camp Gin
Jackie Wheeler
Greg Young

CENTURY MEMBERS

A-1 Chemical Co., Inc., Hereford
ADM Specialty Grain, Muleshoe
Albus Farm Equipment, Morton
Amherst Grain & Fertilizer, Amherst
Ronald Ashford Electric
Associated Farmers Delinting, Littlefield
B & C Produce Co.
Bailey County Electric Cooperative
Rickey Barrett
Barrier Farms, Muleshoe
Jack Bates
Don Beerwinkle, Earth
BJM Sales, Hereford
Dean Black
Blackwater Agri Assn.
Bobo Insurance Agency
Charles Bratcher
Brad Bridges
Burton's Service Cneter
C & H Equipment
Michael Caldwell, PC
Caviness Packing, Hereford
Central Compress, Sudan
Citizen State Bank, Anton
Crockett Pump Co., Morton
Dent & Co., Muleshoe
Dinner Bell Cafe, Muleshoe
Double W Farms, Inc.
Energas Co.
Farmers Coop Assn., Sudan
Farmers Coop Elev. Assn., Levelland
Federal Land Bank
First Bank, Muleshoe

Foster Fertilizer, Lazbuddie
Gebo Distributing Co., Plainview
Genesis Farm (Vic Coker), Muleshoe
Godbold, Inc., Lubbock
Gore Brothers, Clovis
Grant Farms, Muleshoe
C.E. Grant
Green Brothers, Inc.
Davey Haberer Feeds, Earth
Bill Harmon
Hartline Construction (James Hartline), Littlefield
Henry Insurance Agency
Hereford Bi-Products
Jay Herington
Hi-Pro Feeds, Friona
Higginbotham-Bartlett
Ronnie Holt
Irrigation Pump, Muleshoe
Larry Jesko
Kerr Land & Cattle, Muleshoe
King Grain Co.
Kiwanis Club
Lariat Gin, Lariat
Layton Sons Farm
Dr. Robert Lepard, DDS
Tommy Lewis, Morton
Littlefield Delinting Co., Littlefield
Maple Coop Gin, Maple
McCormick Seed & Grain Co.
Minsa Southwest Corp
Keith Morris Cattle
Morton Equipment Co., Morton
Mark Morton Insurance
Muleshoe State Bank
Muleshoe Truck & Auto
Needmore Coop Gin
Pivot Products Co.
Curtis Preston
Della Puckett
Dr. Jerry Redwine, OD
Billy Robertson
John Roley Auto Center, Littlefield
Scoggin Ag Center
Scott's Car Wash
Security State Bank, Littlefield
Sherley-Anderson, Farwell
Silvers Butane Co., Morton
Thomas Simnacher
Southside Welding
Southside Gin, Ltd., Morton
Sudduth-Field Co.
Terra International, Inc.
Town & Country Stores
Trinity Co., Muleshoe
Valley Grain Co., Madera, CA
Dale & Nellie Vise
VTS (Vertical Turbine Services), Littlefield
James P. Wedel
West Camp Gin
West Plains Telecommunications, Inc.
Western 66 Co.
Wilbur-Ellis Tide, Littlefield

PRODUCT DONORS

Adrian Photography (Lonnie Adrian)
Bailey County Farm Bureau
Bailey County Propane
Blackwater Agri-Association
(Ronnie Black, Mrg.)
Alton Burton Service Center
Cliff's Saddle Shop (Cliff Allen)
James Crane Tire Co.
Dale Oil Co. (Gary Dale)
Murray Davis, Maple
Dent & Co.
Fig Tree
Fry & Cox True Value Store
Dale Griswold
Jerry Harrison
Don Heathington
Jay Herington & George Warner Seed Co.
Heritage Inn, Muleshoe
Honey Comb (Nancy Barnhill)
Jan's Unique Nails
Jarman Seed Co. (Gene Paul Jarman)
Joe's Boot Shop
K. C. Mufflers
Carqlyn Kindle (Mrs. Joey)
King Ag Aviation & Agrevo
King Ag Aviation & BASF
King Ag Aviation & FMC
King Ag Aviation & Helena
King Ag Aviation & Int. Humates
King Ag Aviation & Monsanto
King Ag Aviation & Navartis
King Ag Aviation & Rhone-Poulenc
King Ag Aviation & Terra
King Ag Aviation & Wilbur-Ellis
King Ag Aviation & Zeneca
Leal's (Victor Leal)
Fred Locker-Ag Aviation & Agrevo
Fred Locker-Ag Aviation & American Cynamid

Fred Locker-Ag Aviation & BASF
Fred Locker-Ag Aviation & Bayer
Fred Locker-Ag Aviation & Ciba Geigy
Fred Locker-Ag Aviation & Dow Elanco
Fred Locker-Ag Aviation & DuPont
Fred Locker-Ag Aviation & F M C
Fred Locker-Ag Aviation & Griffin
Fred Locker-Ag Aviation & Monsanto
Fred Locker-Ag Aviation & Rhone Poulenc
Fred Locker-Ag Aviation & Sandoz
Fred Locker-Ag Aviation & Shield
Fred Locker-Ag Aviation & Tri-State
Fred Locker-Ag Aviation & Uniroyal
Magby Trucking Co. (Rich Magby)
Merle Norman Cosmetics (Sherri Hunt)
Morrison Oil Co. (Herman Morrison)
Morton Delinting Co., Morton
Muleshoe Motor Co. & Bristo Battery & Supply, Lubbock
Muleshoe Trade Center (Mr. & Mrs. John Stevens)
Gary Pope Trucking
J.H. Puckett Trucking
Dr. Jerry Redwine (O.D.)
Roger's Tire & Supply, Morton
Scoggin Ag Center
Shafer Nursery (Robert Shafer)
Sherri's Attic (Sherri Hunt)
Sparkle Cleaners
Howard Tooley
Wiedebush & Co.
Williams Athletics
Williams Bros. Office Supply (Roger Williams)
Wilson Drilling Co.
Woods Implement Co.

BOARD OF DIRECTORS

Rex Black, Chairman
Jim Pat Claunch, Vice Chairman
Dr. Jerry Redwine, OD, Secretary-Treasurer
Alec Schuster
Joey Kindle
Murray Davis
Kelly Harrison
Derrel Embry
Terry Pollard
Mike Hahn
Kim Black
Craig Kirby
Don Heathington
Ronnie Altman
Dr. Barry Cowart, DVM
Larry Hancock
Dr. Steve Kennedy, DVM

AG SCIENCES TEACHERS

Carl Wheeler, Muleshoe ISD
Howard Tooley, Three Way ISD

AG BOOSTERS

Curtis Hunt, Muleshoe FFA
Jack Reeves, Three Way FFA

COUNTY EXTENSION AGENT-Agriculture

Curtis Preston

JUDGES

Tadd Knight, Swine
Cody King, Sheep
Dr. Chris Skaggs, Steers/Heifers
J.D. Ragland, Classifier

CONCESSION FACILITIES

Dani Heathington - Bailey Co. 4-H Coordinator
Teri Hahn - Bailey Co. 4-H Coordinator
Jackie Wheeler - Muleshoe FFA Coordinator
(and many mothers and youth who assisted during shifts)

ALL 4-H MEMBERS WHO ASSISTED IN THE RING

BAILEY COUNTY COLISEUM STAFF

Kevin Smith
Marshall Cook

BOOKKEEPERS/RECORD KEEPERS & OTHERS ASSISTING

Thurman Myers, Auctioneer
Susie Claunch, Auction
Brenda Black, Auction
Lyndon Huckaby, Announcer
Gail Gladden, Records
Karie Preston, Records
Kelly Kollar, Records
Pat Moore, Records

PICTURES

Scot Stinnett

4-H MEMBERS - To all who helped in awarding trophies and ribbons

4-H MEMBERS WHO HELPED WITH PAPERWORK

Amy Hooten
Keila Kennedy
Amanda Hahn
Krystal Heathington
Jill Gladden

NEWS MEDIA:

Channel 6 (Mrs. Magann Rennels and staff)
Muleshoe/Bailey County Journal (Scot Stinnett and staff)

We sincerely appreciate all contributions which have been made to the Bailey County Junior Livestock Show, whether monetary, by services, by donations, by purchases in the product and animal sale, or in whatever way of support you used. If we have inadvertently left anyone off of our "thank you" ad, we extend our apology. It has not been our intention to overlook anyone who supported our 4-H and FFA youth in the 1997 Show.

ENOCHS NEWS

By Mrs. J.D. Bayless

Bonnie Blackstone spent last Thursday night in Lubbock with her sister Mr. and Mrs. Jim Coats. She then flew to Arlington on Friday and was met by her daughter Ann Johnson. Gary and Ann Johnson and Shannon Blackstone, all of Arlington, took Bonnie to Tyler. On Saturday they all attended a reception for Beck and Shane Millian, daughter of Dale and Carolyn Blackstone. Other family members were Lee and Katie McDonald of Pampa; Robby and Kathy Blackstone of Arlington; Rachel and Magen Blackstone of Arlington; Cheryl Perry of Dallas. Bonnie flew back to Lubbock Sunday afternoon.

Visiting in the home of Mr. and Mrs. Royce Teaff the past week were Mike and Dianne Hiching from Sheyboygan, Wis. and Bill and Ann Hiching from Prairie Du Chien, Wis.

Harold and Norma Layton from Dell City came Friday for a visit with his brother J.E. and Wanda Layton. Other guests Sunday were Mr. and Mrs. Jarrol Layton and children also Mr. and Mrs. Dale Nichols visited with them in the afternoon.

Visitors at the Baptist Church Sunday morning were Mr. and Mrs. Harold Layton and Rev. Clarence Tedder from

Whitharral. Bro. Tedder also preached for us Sunday.

Jack and Oleta Stanley and Bud and Doris Huf went to Coleman Jan. 25 for Bud and Oleta's sister, Ardis Norvell's funeral. I express my sympathy to them and their family.

Harvey and Bonnie Blackstone visited their son and his family, Thomas, Terri, Seth and Ethan Blackstone in Littlefield Sunday afternoon attended Church and had supper with them.

Ellen Bayless went to Lubbock with Muleshoe Senior Citizens Monday to visit her brother-in-law Rev. Ray

Cunningham at St. Mary's Hospital plaza and be with him and his sister, Olene. I went back with them to Lubbock Thursday to see my eye Dr. for a checkup. Then I visited Ray

and Olene again. Ray went home Friday morning. I also enjoyed visiting with Rev. Jim Green who visited Ray.

Mr. and Mrs. Dale Nichols were in Lubbock Thursday afternoon to visit Rev. Ray

Cunningham. Later went for a visit with Mr. and Mrs. John Gunter. They are always so proud to see friends from Enochs.

Ellen Bayless went to Morton Tuesday morning to go with the Senior Citizens to Levelland shopping.

Weekend visitors in the Bula home of Nolan and Betty Harlan was their son Captain John Harlan, stationed at Laughlin Air Force Base near Del Rio. John was on his cross country training flight in the training jet and landed the plane at Reese Air Force Base. They met him there and also his wife Tearesa and daughter, Rhea drove up from Del Rio to be there to meet him. John was accompanied by Captain Bait Larson also of Laughlin Air Force Base. He also stayed with the Harlans. They took off Sunday morning from Reese on their way back to Laughlin. The pilots had spent Friday night at Holloman Air Force Base in New Mexico.



Cage—Theriot

Alexandra Carroll Cage, daughter of J.D. and Julie Cage of Muleshoe and John Anderson Theriot, son of Bob and Helen Theriot of Houma, La. were married at Casa Santo Domingo in Antigua, Guatemala Nov. 9. The couple will reside in Alexandria, Va. Alexandra graduated from St. Mary's Hall High School in San Antonio in 1988. She also graduated from Austin College in Sherman, Texas with a degree in International Relations in May 1992. She is currently a flight attendant with American Airlines, based out of Washington D.C. John graduated from Terrebonne High School in 1991, and graduated from Austin College with a degree in business administration in May 1995. He is currently employed as a regional repair supervisor for Enterprise Rent Car in Washington D.C.

Congratulations to Correy Roberts who was on the Dean's Honor Roll at South Plains College. He is the son of Mr. and Mrs. Burley Roberts. Several from our area attended the Five Area Telephone meeting at Muleshoe Saturday, they were Roxie Stroud, Ellen Bayless, Rose Nichols, Mr. and Mrs. Nolan Harlan and Bethelene Harper. Bethelene won a telephone and the Harpers won a prize.

Keeping an eye on Texas

Sweethearts send cards from Valentine

The post office in the tiny West Texas town of Valentine does a booming business in February, adding a unique postmark to an average of 20,000 Valentine cards sent all over the world. Here's how your sweetheart can receive a Valentine from Valentine:

- Place your Valentine card inside a larger envelope (cards must be a standard size, addressed and stamped for first class mail) Send the envelope to: Postmaster Valentine Station Valentine, Texas 79854-9998
- Your cards must be received by the Postmaster in Valentine by February 7 to be mailed by Valentine's Day, February 14.
- Each Valentine card will be hand-canceled with a postmark selected from designs submitted by 7th-12th grade students from the Valentine school, then mailed.

SOURCES: John Sharp, Texas Comptroller of Public Accounts, and Valentine Post Office.

MULESHOE CATTLE MARKET

Saturday, Feb. 1, 1997

583 head of cattle, 210 hogs and 210 sheep and goats were sold. The market was fully steady on both stocker and feeder cattle. Pairs and bred cows sold steady with good demand with packer cows and bulls also staying steady.

REPRESENTATIVE SALES

Seller, City	#	Type	Wt.	CWT or PH
Bill Bradley, Amherst	Red Bull	215 lbs.	at \$95.00
Antero Estrada, Texico, NM	Blk. Str.	240 lbs.	at \$93.00
F & J Cattle, Muleshoe	3 Char. Bulls	425 lbs.	at \$85.00
Mary Mullins, Portales, NM	Red Str.	425 lbs.	at \$78.00
Alan Clark, Friona	2 Char. Strs.	430 lbs.	at \$76.00
Dale Hart, Friona	2 Red Strs.	450 lbs.	at \$75.50
Green Harvest Farms, Earth	Red Str.	335 lbs.	at \$85.00
June Gandy, Bledsoe	2 Yell. Strs.	603 lbs.	at \$69.00
Dee Neill, Levelland	Blk. Str.	680 lbs.	at \$66.50
Chico Cattle, Abernathy	7 Blk. Strs.	637 lbs.	at \$71.50
John Hill, Abernathy	Blk. Str.	840 lbs.	at \$70.50
B & B Cattle, Abernathy	7 Blk. Strs.	700 lbs.	at \$64.00
Red Herman, Muleshoe	3 Mixed Hfns.	302 lbs.	at \$76.00
KP Farms, Lubbock	3 Red Hfns.	328 lbs.	at \$73.00
F & J Cattle, Muleshoe	5 Char. Hfns.	368 lbs.	at \$79.50
Green Harvest Farms, Earth	Blk. Hfr.	420 lbs.	at \$69.50
George Lopez, Dimmitt	Bwf. Hfr.	445 lbs.	at \$67.00
F & T Rowland, Morton	9 Mixed Hfns.	463 lbs.	at \$68.00
Alfredo Aguirre, Hereford	Red Hfr.	455 lbs.	at \$66.00
Rogelio Cruz, Muleshoe	Blk. Hfr.	495 lbs.	at \$65.00
Darrell Mullins, Portales, NM	2 Blk. Hfns.	575 lbs.	at \$65.00
Carl McInroe, Hereford	4 Blk. Hfns.	614 lbs.	at \$65.00
Tom Jinks, Muleshoe	19 Mixed Hfns.	615 lbs.	at \$64.25
Red Herman, Muleshoe	Char. Pair	\$550.00
Red Herman, Muleshoe	Blk. Pair	\$500.00
Red Herman, Muleshoe	Brang. Cow, P5	\$460.00
Preston Upshaw, Hart	Brang. Pair	\$505.00
Preston Upshaw, Hart	Rwf. Cow, P7	\$350.00
Parten & Delton Farms, Plains	Brang. Cow, P8	\$455.00
Eddie Morton, Plainview	Char. Hfr., P6	\$400.00
Green Harvest Farms, Earth	Brang. Cow	1355 lbs.	at \$36.00
Green Harvest Farms, Earth	Char. Cow	1230 lbs.	at \$35.25
J.R. Rodriguez, Bula	Char. Cow	1335 lbs.	at \$36.75
Cobb Ranch, Levelland	Red Cow	1155 lbs.	at \$38.50
Sergio Arce, Farwell	Blk. Cow	995 lbs.	at \$35.00
Benjamin Jacques, Sudan	Bwf. Cow	1405 lbs.	at \$35.00
Kyle Jones, Earth	Blk. Bull	2215 lbs.	at \$43.75

The Muleshoe Cattle Market is brought to you each week by Muleshoe Livestock Auction, located east of Muleshoe on U.S. 84. Muleshoe Livestock conducts sales every Saturday, beginning with hogs, sheep and goats at 10 a.m. and cattle following at approximately 12 noon.

FOR INFORMATION ON SALES OR TO CONSIGN CATTLE, CALL (806) 272-4201.

Count at least ten seconds every time you press a video camera's start button. The biggest single error novice film makers make is taking shots in very short spurts.

"I THINK HE'S STILL FILMING!"

"I GUESS HE DOESN'T WANT TO MAKE A MISTAKE..."

ENTER NOW!

The Muleshoe Journal's
3rd Annual 1996

Cutest Baby Contest

Enter any child that is special to you that was born in 1996 - children, grandchildren, nieces, nephews.

Winner Will Receive
\$50 SAVINGS BOND
For Being Selected
1996 Cutest Baby!

This years edition will appear in the Sunday, Feb. 23 issue of the Muleshoe Journal. A panel of unbiased judges will pick the most attractive picture to be the 1996 Cutest Baby. All baby pictures will be printed. Babies need not been born in this area. Bring your favorite child's photo along with \$9.75 to the Muleshoe Journal, 304 W. 2nd, Monday-Friday between 9 a.m. and 5 p.m. or mail coupon below with photo and \$9.75 to the Muleshoe Journal, Box 449, Muleshoe, TX 79347. You may pick up your baby's picture during office hours after Monday, Feb. 24, 1997.

Please leave phone number or address (it will not be published) so we may contact you if we need additional information.

Baby's name _____
Date of birth _____
Weight at birth _____
Place of birth _____
Length at birth _____
Mom & Dad's name _____
Grandparent's name _____

HURRY - DEADLINE IS FRIDAY, FEB. 14, 1997

Subscribe today!

Call the Muleshoe Journal
272-4536

Local chapter of American Heart Assoc. celebrating National Heart Month

February is National Heart Month.

CBS This Morning will televise a national kick-off to direct viewers to local community sites.

The Bailey County unit of the American Heart Association has planned several community functions to help educate the community about a heart healthy lifestyle.

Free blood pressure check-ups will be available Feb. 7 at the Muleshoe High School varsity and junior varsity basketball games. Free educational literature will be available at both sites.

The Bailey County unit will be encouraging local youth to become "heart smart" with their Jump Rope for Heart and Hoops for Heart projects. A Walk for Heart project is on tap for April for the young and young at heart.

The biggest project of the

year for the Bailey County Unit will be to make CPR (cardiopulmonary resuscitation) available to all local merchants and their employees. Board members will be contacting the merchants to set up times for training.

The board of directors of the Bailey County unit meet the third Friday of the month in the board room of Muleshoe Area Medical Center. Board members are Joyce McGehee, president, Joy Stancell, treasurer, Lucy Mardis, development chair, Glenda Powell, program chair, Jimella Clemmons, public affairs, Felicia Green, tobacco coordinator, Eileen Morton, worksite, chairperson, Heart at Work, Nancy Kidd, secretary, and Tina Davis, communications. Other members are Virginia Bowers, Lori Hall, Gall Hargrove, Riki Kelly, and Pam Lytal.



Enjoying a hearty laugh

Joyce McGehee, president of the Bailey County Chapter of the American Heart Association, checks Muleshoe Mayor Robert Montgomery's blood pressure. February is National Heart Month.

POLICE LOG

Arrest report

Muleshoe Police Dept.

Jan. 24 — Freddy Coleman, 18, charged with disorderly conduct.

Jan. 26 — Robert Rhinehart, 75, charged with public intoxication.

Jan. 26 — Anthony Rodriguez, 21, charged with disorderly conduct.

Jan. 26 — Roberto Toscano, Sr., 37, charged with disorderly conduct.

Jan. 26 — Robert Toscano, Jr., 20, charged with disorderly conduct.

Jan. 26 — Robert Lopez, 32, charged with disorderly conduct.

Jan. 27 — Alberto Diaz, 28, charged with disorderly conduct.

Feb. 1 — Paulette Aguilar, 24, charged with driving with-

out a license.

Feb. 1 — Atocha Chacon, 30, charged with driving without a license.

Feb. 2 — Marcos Elan Garcia, 22, arrested on Lubbock DPS warrants.

Feb. 3 — Victor Tafoya, 23, charged with public intoxication.

Feb. 3 — Marcelo Tafoya, 22, charged with driving without a license, driving while intoxicated, and failure to identify.

Sheriff's Dept.

Jan. 23 — Lawrence Rupert, 21, charged with theft by check.

Jan. 24 — Candida Montiel, 46, charged with theft.

Jan. 28 — Ruperto Baeza, 36, charged with false swear on a driver's license application.

EPSILON DELTA CHAPTER NEWS

The Epsilon Delta Chapter of Delta Kappa Gamma Society International met in the home of Joy and Ann Hedges in Amherst on February 3.

Ann Hedges is the Texas Area 11 Coordinator. The meeting was hosted by the Springlake/Earth members and was a Valentine delight for the 22 members attending.

Johanna Wrinkle, chapter president, presided over a short business meeting where pending educational legislative is-

ssues were discussed by the group following a legislative report given by Mary Smith from Sudan. Neal Kleman from Sudan gave a report on the plans for the invitation and initiation of new members to be held in May. Barbara Huckabee also gave her committee report.

The program was presented by Barbara Willingham, a teacher in the Amherst Junior High and High School. The interesting presentation dealt

with the use origami (paper folding) to teach various concepts within the school setting.

The next meeting of Epsi-

lon Delta will be held in Sudan on March 3 and the educator members will celebrate the 39th birthday of their chapter.

TRAP SHOOT

Sponsored by Lazbuddie Methodist Youth
Sunday, Feb. 9 1 p.m. til dark
at Clay's Corner

Regular Shoots, Partnerships, Monkey Shoots, Annie Oakley's.
There will also be plenty of shoots for the kids.
Refreshments will be available.
Y'ALL COME!

Subscribe today!

Call 272-4536

KENW-TV

Public Television

Creative Living

House Plant Tips, Tricks and Tonics from Jerry Baker

According to Master Gardener, Jerry Baker, "More house plants are bought and buried every year than any other group of plants combined, and that's a crying shame!" Baker will be a guest on **Creative Living** on Tuesday, February 11th at 1:00 p.m. and on Saturday, February 15th at 3:00 p.m. on KENW-TV and will share some of his astonishing plant tips, tricks, and tonics using common household items.

House plants are as important to your health and personal environment as the furnace in the basement, food in the cupboard, or water out of the faucet. Without oxygen, you don't need any of the others. Properly selected house plants can make you feel physically and psychologically more comfortable; they can also add to the attractiveness of any room in your house.

FEEDING AND WATERING: Baker combines instructions for feeding and watering chores into one operation because he says that's the way professionals do it. House plant food should be added to the water you use EVERY time you water your house plants. And, yes, he says there is a right time and a wrong time of the day to feed plants. Always feed plants before noon, and never in the evening. Plants can only ingest and digest solid foods during the day.

For the most part, you can alternate the kinds of plant foods you feed your plants. Plants, like people, get bored with the same diet day in and day out. Baker suggests you mix up batches of the following tonics, keep them handy, and feed with a different food each time you water.

GENERAL FOLIAGE PLANT FOOD

¼ tsp. instant tea
½ Tbsp. ammonia
½ Tbsp. hydrogen peroxide
1 vitamin tablet with iron
1 capful bourbon
1 gal. warm water

Mix all ingredients together and LABEL the container. For flowering house plants, use vodka instead of bourbon. Baker goes on to comment, "Plants, like people, can and should eat balanced meals on a regular basis. Most plant owners tend to feed their plants on a hit and miss basis, and in 9 out of 10 cases, it's all water and no food. So feed your plants every time you water!"

If you have a house plant question, you can call Jerry Baker "On the Garden Line," Saturday mornings from 8:00 am - 10:00 am EST. The toll-free telephone number is 1-800-634-3881.

Channel 3 Television from
Eastern New Mexico University, Portales, New Mexico

Boy Scouts

During National Boy Scout Week

During the developing years of youth, Boy Scouts learn to live and work together and to understand and respect nature. This is just one of the many aspects of positive interaction that happens in scouting. We thank and commend the members and leaders of this organization.

These area businesses salute the Boy Scouts -

**Sherley-Anderson
Lazbuddie Elevators**
LAZBUDDIE, TX 965-2922

Russell Spraying Inc.
RR 3, BOX 810 965-2624

Sudduth Field & Co.
104 W. 2ND ST., MULESHOE 272-4291

State Farm Insurance
101 S. MAIN MULESHOE 272-7519

**Pivot Products and
Kristy's Flowers**
710 E. AMERICAN BLVD. 272-5536

Hi-Tek Automotive
322 N. FIRST MULESHOE 272-3480

Muleshoe Journal
304 W. 2ND 272-4536

Joe's Boot Shop
106 E. AMERICAN BLVD. 1-800-658-6378

Leal's Restaurant
1010 W. AMERICAN BLVD. 272-3294

Dale Oil Co. Inc.
413 W. AMERICAN BLVD. 272-5576

McCormick Seed, Inc.
400 E. ASH AVE. 272-5602

*Keep up the hard work,
we are proud of you!*

Decorators Floral & Gifts
616 S. 1ST 272-4340

OBITUARIES

C.E. "Nick" Nichols

SUDAN — Funeral services for C.E. "Nick" Nichols, 83, of Sudan were held Feb. 2 at the Church of Christ-Sudan with Col. Richard M. Hartsell Chaplain of the Command Com Signal Corp., Ft. Huachuca, Ariz., Mike McDonald minister of Monahans Church of Christ, Terry Wilson minister of Sudan Church of Christ officiating.

Burial followed in the Sudan Cemetery under the direction of Ellis Funeral Home of Sudan.

Mr. Nichols died Jan. 29 at Methodist Hospital, Lubbock. He was born Jan. 23, 1914 in Groesbeck, Texas.

He married Maxine Hartsell June 7, 1935 in Teague, Texas. Nick moved to the Sudan area in 1928 from Groesbeck.

He was a graduate of Sudan High School and WWII veteran, serving in the U.S. Army. He was a member and president of Sudan Rotary Club and a member and president of Sudan Lions Club. He was a farmer in the Sudan community, 1939 to 1978.

He owned and operated Nichols Oil Company from 1955 to 1978. He was preceded in death by one brother Radney in 1977.

Pallbearers include Phil Kent, Edwin Harper, Adrian Martin, Joe Kent, Bobby Carson and James Withrow.

Survivors include his wife, Maxine Nichols of Sudan; two brothers, Herbert Milton "Jiggs" Nichols of Winters, Texas, Dr. E. Nelson Nichols of Lubbock.

The family suggests memorials to the Maxine Hartsell Nichols Scholarship Fund for Sudan Graduates Opportunity Plan, Inc., Educational Scholarship Funds, P.O. Box 1035, Canyon, Texas 79105.

Andy E. "Slim" Newsom

EARTH—Funeral services for Andy E. "Slim" Newsom, 87, of Earth were held Feb. 4 at First Baptist Church with the Rev. Bobby Broyles, pastor officiating.

Burial followed in the Springlake Cemetery, under the direction of Parsons Ellis Funeral Home of Earth.

Mr. Newsom died Feb. 1 at Muleshoe Area Medical Center after an illness. He was born Sept. 3, 1909 in Cass County, Texas. He married Christine Irvin Feb. 14, 1936 in Cass

County. Slim had been a resident of Earth since 1978, moving from Lazbuddie. He was a veteran of WWII, serving in the U.S. Navy. Slim was a farmer and a member of the First Baptist Church.

He was preceded in death by his sister, Cordie Daylor.

Survivors included his wife, Christine; five daughters, Minnie Lou Newsom of Earth, Annie Taylor of Tatum, N.M., Marrilen Kincaid of Ft. Worth, Wanda Lee Reynolds of Abernathy, Betty Jean Smith of Tuscon, Ariz.; three sisters; Lorene Stradler of Springlake, Ella Martin of Hughes Springs, Texas and Dora Lee Hutchinson of Springtown, Texas; two brothers, Oren Newsom and R.Z. Newsom, both of Hughes Springs, Texas;

15 grandchildren, 15 great-grandchildren, and one great-granddaughter; very close friends are Ruby Miller of Springlake, Bulah Shelby of Bovina, Lois Cantrell of Earth.

The family suggests memorials may be made to the American Heart Association, 3403 73rd St., Lubbock, Texas 79423.

Johnie L. Calvert

Funeral services for Johnie L. Calvert, 71, of Muleshoe were held Feb. 5 at Ellis Funeral Home Chapel with Earl McDonough of Plainview, Texas and Curtis Shelburne, minister of 16th & Ave. D Church of Christ, Muleshoe, officiating.

Burial followed in the Muleshoe Memorial Park Cemetery under the direction of Ellis Funeral Home of Muleshoe.

Mr. Calvert died Feb. 3 at University Medical Center, Lubbock. He was born July 12, 1925 in Flomot, Texas. He married Neva Stanley May 17, 1948 in Clovis, N.M.

Mr. Calvert moved to the Muleshoe area in 1955 from Idalou, Texas. He was a farmer.

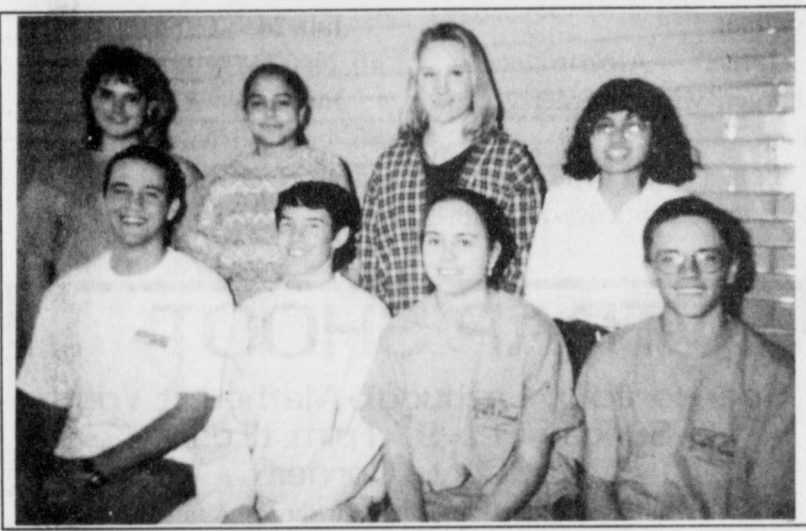
Survivors include his wife, Neva of Muleshoe; two sons, Larry and Scott Calvert of Lubbock; one daughter, Judy Davenport of Muleshoe; his mother, Mae Calvert of Farwell; two grandchildren, Misty and Damon Davenport of Muleshoe.

The family suggest memorials to be made to New Mexico Christian Children's Home, HC 69 Box 48, Portales, N.M. 88130.



LJHS all-region

Members of the Lazbuddie Junior High band that made all-region are (back-left) Kendra Gallman, Kelsey Jones, Savannah Black, (front) Colt Richardson, Sunshine Lueras



LHS all-region band

Members of the Lazbuddie High School band that made all-region were (back-left) Jamie Bohler, Rachel Rodriguez, Sarah Watson and Rocio Aguilar, (front) Brice Redwine, Brandon Foster, Kristen Carson, Michael Carson.

13 Lazbuddie band members all-region

Five members of the Lazbuddie Junior High School band and eight members of the high school band made A-AA All-Region band.

There were approximately 500 junior high students from about 25 schools auditioning for the 116-member band.

Lazbuddie JH students who made all-region were:

7th graders, Savannah Black, 3rd-chair trombone; Kelsey Jones, 2nd-chair bass

clarinet and Colt Richardson, 1st-alternate tuba.

8th graders included Kendra Gallman, 8th-chair clarinet and Sunshine Lueras, 26th-chair clarinet.

High School tryouts were held in Shallowater on Jan. 16 with 400 students trying out from 25 schools.

Lazbuddie high band members earning all-region were:

Freshman Kristen Carson, 14th-chair trumpet and Michael Carson, 3rd-chair trombone; sophomores Brandon Foster, 12th-chair Trombone and Rachel Rodriguez, 2nd-chair bass clarinet; junior Brice Redwine, alternate tuba; and seniors Rocio Aguilar, alternate bass clarinet; Sarah Watson, 1st-chair Mallets and Jamie Bohler, 7th -chair trumpet

If You Can't Come To Hearing Technologies, We'll Come To You
Our Hearing Aid Service Center is coming to a location near you.
Free Hearing Tests!
February 6 9am-4pm
Muleshoe Medical Center
Hearing Technologies Inc.

Lordy, Lordy Look Who's 60 WE LOVE YOU POP
Maggie, Robert, JoAnn, & girls

2231
REINFORCED TOES
Made in U.S.A.

The Fair Store
120 Main 272-3500

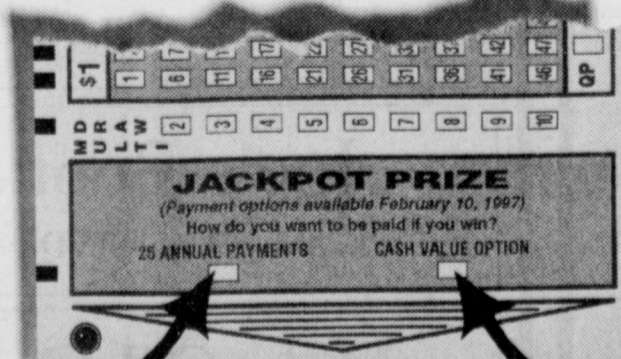
AMERICAN LUNG ASSOCIATION
It's Tee Time In Texas!
Golf Gift Packages Perfect For Valentine's Day

The Best Golf Book In Texas, Granting Access To Over 900 Of The Hottest Courses In The Western U.S. and Canada, including 130 In Texas. Also, Enter And Win A Fabulous Golf Vacation at Tanglewood Resort.

Proceeds Benefit The American Lung Association's Programs, Research And Community Service Efforts.
FOR MORE INFORMATION CALL 1-800-252-LUNG
Play At Over 900 Courses for \$25

MULESHOE AREA MEDICAL CENTER
welcomes
DR. MIKE PRECURE
and announces the opening of
PRECURE CHIROPRACTIC CLINIC
Now accepting appointments
Located in Suite 4 of the hospital
For appointments, call
806-272-6784

LOTTO Texas Players Have A Choice.



25 Annual Payments

Cash Value Option

Starting February 10, 1997, you can pick how you get paid if you win the jackpot prize. Mark the new "Cash Value Option" box if you want approximately half of the estimated jackpot all at once. Or mark the "25 Annual Payments" box if you want your prize paid over 25 years. If you don't pick an option, you will automatically be paid in 25 annual installments.



NATIONAL BRANDS

Wintertime Values of Savings

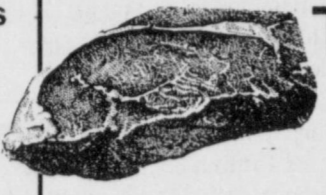


ALL TYPES
Pepsi Cola
2 49
12 pack
12 oz. cans

MEAT

Preferred Trim Boneless
Sirloin Steaks
lb. **\$2.39**

Sliced In One Pkg. FREE
Whole Boneless
Top Sirloin
lb. **\$1.69**



- CORN KING FULLY COOKED BONELESS
- Whole Hams lb. **\$1.39**
 - LENTEN SPECIAL - MARKET CUT RED RIND LONGHORN **Cheddar Cheese** ... lb. **\$2.39**
 - PREFERRED TRIM BONELESS RUMP OR BOTTOM **Round Roast** lb. **\$1.79**
 - PREFERRED TRIM BEEF EYE OF ROUND **Boneless Roast** lb. **\$2.39**
 - PREFERRED TRIM BEEF EYE OF ROUND **Boneless Steak** lb. **\$2.49**
 - PREFERRED TRIM BONELESS BOTTOM **Round Steak** lb. **\$1.99**
 - LENTEN SPECIAL - FARM RAISED BONELESS **Catfish Nuggets** lb. **\$1.99**
 - Catfish Fillets** lb. **\$2.99**

- FRESH
- Ground Round** lb. **\$1.89**
 - SANTA FE 8 INCH **Flour Tortillas** 12 ct. pkg. **\$1.09**
 - SANTA FE YELLOW **Corn Tortillas** 32 ct. pkg. **99¢**
 - BAR S **Meat Franks** 12 oz. pkg. **79¢**
 - BAR S **Meat Bologna** 1 lb. pkg. **\$1.19**
 - BAR S REGULAR, LOW SALT OR THICK **Sliced Bacon** 1 lb. pkg. **\$1.89**
 - BAR S REGULAR OR POLISH SKINLESS **Smoked Sausage** 12 oz. pkg. **99¢**
 - HORMEL LINKS OR PATTIES **Little Sizzlers** 10-12 oz. pkg. **\$1.19**
 - ADVANCE BREADED PATTIES, STRIPS OR **Chicken Nuggets** .. 12 oz. pkg. **\$1.69**
 - ADVANCE COUNTRY FRIED BREADED **Patties or Steak Fingers** 12 oz. pkg. **\$1.29**

PRODUCE

U.S. NO. 1 RUSSET
Potatoes
10 LB. BAG
79¢



DOLE
Salad Mix
1 LB. BAG **79¢**

- FRESH JUICY
- Navel Oranges** 4 lb. bag **79¢**
 - FRESH JUICY **Grapefruit** 5 lb. bag **79¢**
 - GARDEN FRESH STALKS **Celery** **2/79¢**
 - FRESH CELLO **Tomatoes** 4 ct. pack **79¢**
 - FRESH HOT **Jalapenos** 1 lb. pkg. **79¢**
 - CRISP **Carrots** 1 lb. pkg. **2/79¢**
 - GARDEN FRESH **Crisp Broccoli** lb. **79¢**
 - WASHINGTON RED DELICIOUS **Apples** 5 lb. bag **\$2.79**
 - DEL MONTE GOLD **Pineapple** each **\$1.79**
 - SNO WHITE **Cauliflower** each **79¢**

- LIBBY'S
- Potted Meat** 3 oz. cans **3/89¢**
 - REGULAR OR CHICKEN, VIENNA **Libby's Sausage** .. 5 oz. cans **2/89¢**
 - ASSORTED VARIETIES **Wesson Oil** 48 oz. btl. **\$1.89**
 - HUNT'S, 32 OZ. BLT. **Tomato Ketchup** **\$1.29**
 - HUNT'S REGULAR OR NO SALT **Tomato Juice** 46 oz. can **\$1.19**
 - PETER PAN ASSORTED **Peanut Butter** 17.6-18 oz. jar **\$1.79**
 - FAC PERFECT BALANCE, COLOMBIAN, REGULAR OR FRENCH ROAST, 12-13 OZ. CAN **Hills Bros® Coffee** **\$1.89**
 - ASSORTED VARIETIES, \$2.19 SIZE **Fritos® Corn Chips** **2/\$3**
 - ASSORTED VARIETIES, SPAM® **Luncheon Meat** 12 oz. can **\$1.89**
 - YELLOW OR WHITE GLADIOLA **Cornbread Mix** 6 oz. pouches **3/\$1**

- MILK, RICH OR WITH MINI MARSHMALLOWS
- Carnation Hot Coca Mix** 10 ct. pack **99¢**
 - CHICKEN, ROAST BEEF, DEVILED OR HONEY HAM, UNDERWOOD **Meat Spread** 4.2-4.75 oz. cans **99¢**
 - HEARTY GARLIC, BREAD & BUTTER, POLISH, ZESTY OR KOSHER DILLS **Vlasic Stackers** 16 oz. jar **\$1.99**
 - VAC PACK WK GOLDEN CORN, REG. OR NO SALT CUT OR FR. SLI. GREEN BEANS, PEAS OR CS/WK GOLDEN CORN **Del Monte Vegetables** ... 11-15.2 oz. cans **2/89¢**
 - DEL MONTE QUALITY **Tomato Sauce** 8 oz. cans **5/\$1**
 - REG./LITE/NAT. FRUIT COCKTAIL-VERY CHERRY MIXED FRUIT REG./LITE/NAT. CHUNKY FRUIT SLI. RASPBERRY FLAV. PEACHES-REG./LITE YC PEACH HALVES-REG./LITE NAT. SLI. YC PEACHES-REG./LITE/NAT. PEAR HALVES LITE SLICED PEARS **Del Monte Fruits** ... 15-15.2 oz. cans **89¢**

- SWANSON ASSORTED, 14.1-20 OZ. BOXES
- Hungry Man Dinners** **2/\$5**
 - ASSORTED, 10-11.5 OZ. DINNERS **Swanson Dinners** **\$1.79**
 - ASSORTED CAMPBELL'S CHICKEN NOODLE O'S, CHICKEN ALPHABET, CHICKEN W/RICE OR CHICKEN & STARS **Kid's Soups** 10 oz. cans **5/\$4**
 - SUPERIORE BEEF RAVIOLI, SPAGHETTI W/MEATBALLS OR TWISTS, 14.7-15 OZ. CAN **Franco American Home Cookin' Soups** **\$1.19**
 - ASSORTED CAMPBELL'S, 19 OZ. CAN **Potato Soup** 19 oz. can **\$1.29**
 - CAMPBELL'S HOME COOKIN' CREAMY **Noodle Soup** 10.7 oz. cans **3/\$2**
 - CHUN KING ASSORTED BI-PACKS WITH MEAT **Chow Mein** 42 oz. can **\$2.89**
 - CHUN KING TERIYAKI OR **Soy Sauce** 10 oz. btl. **\$1.29**
 - CHUN KING BAMBOO SHOOTS OR SLICED/WHOLE **Water Chestnuts** 8 oz. can **99¢**
 - 5 OZ. CAN **Chun King Noodles** **99¢**
 - REGULAR OR WITH BLEACH **Surf Ultra** 98-103 oz. box **\$4.99**
 - ASSORTED VARIETIES **Dove Bath Bars** 2 bar pack **\$1.99**
 - LIQUID DISH **Sunlight Detergent** 22 oz. btl. **99¢**
 - REGULAR OR W/BLEACH LIQUID **Wisk Ultra** 50 oz. jug **\$3.29**
 - ASSORTED ULTRA FABRIC SOFTENER **Snuggle Liquid** 40 oz. btl. **\$2.99**

- OLD FASHIONED OR QUICK
- Quaker Oats** 18 oz. boxes **2/\$3**
 - BEEF STEW MIX, MEAT LOAF MIX, ENCHILADA SAUCE OR BURRITO SEASONING MIX, 1.5-1.62 OZ. PKG. **Schilling Seasonings** **99¢**
 - ASSORTED VARIETIES, 1.25 OZ. POUCH **Schilling Taco Seasoning Mix** **2/\$1**
 - SCHILLING PURE GROUND **Black Pepper** 4 oz. can **\$1.99**
 - SCHILLING, 1.14 OZ. CAN **Chili Seasoning Mix** **\$1.29**
 - BETTY CROCKER ASSTD. SWEET REWARDS OR SUPERMOIST LAYER **Cake Mixes** 18-18.25 oz. box **79¢**
 - BETTY CROCKER ASSORTED RTS DELUXE **Frostings** 12-16 oz. can **\$1.39**
 - BETTY CROCKER ASSORTED SUPREME **Brownie Mix** 19.8-22.5 oz. boxes **3/\$5**
 - BETTY CROCKER, BLUEBERRY **Muffin Mix** 18.25 oz. boxes **3/\$5**
 - BETTY CROCKER ASSTD., 3-9.25 OZ. BOXES **Hamburger or Tuna Helper Dinners** **3/\$4**
 - AUTOMATIC POWDER OR GEL **Sunlight Detergent** ... 50 oz. box/btl. **\$1.99**
 - CLOROX REG. OR LEMON, 24 OZ. BTL. **Toilet Bowl Cleanser** **\$1.59**
 - REG. OR LEMON FRESH **Pine-Sol Cleaner** 28 oz. btl. **\$1.59**
 - REG. OR SOAP SCUM REMOVER **Tilex Cleaner** 16 oz. btl. **\$1.59**
 - REGULAR OR FRESH **Clorox Clean-Up** 32 oz. btl. **\$1.59**
 - LITTLE BITES OR DOG CHOW **Purina Dog Food** 22 lb. bag **\$6.69**
 - PURINA ASSORTED **Cat Food** 5.5 oz. cans **5/\$1**
 - PURINA **Meow Mix** 7 lb. bag **\$5.69**
 - REGULAR OR MULTI-CAT **Tidy Cat Cat Litter** 20 lb. bag **\$2.99**

- PLAIN/W/BEANS, REG./JALA.
- Wolf Chili** 15 oz. can **99¢**
 - REGULAR OR 1/3 LESS FAT **Parkay Quarters** 1 lb. boxes **2/89¢**

- REGULAR LIQUID
- Clorox Bleach** gallon jug **79¢**
 - MINUTE MAID FROZEN ASSTD. **Orange Juice** 10-12 oz. can **99¢**
 - RAISIN BRAN, FROSTED OR REG. SPOON SIZE SHREDDED WHEAT **Post Cereals** 17.2-20 oz. boxes **2/\$4**
 - REGULAR OR LITE **Log Cabin Syrup** 24 oz. btl. **\$2.49**
 - PLAIN OR IODIZED **Morton Salt** 26 oz. ctns. **2/79¢**

- ### Frozen & Dairy
- FAT FREE ASSORTED FLAVORS
- "TCBY" Yogurt** 6 oz. ctns. **2/89¢**
 - OSCAR MAYER MEAT COTTO SALAMI OR RED RIND **Meat Bologna** 1 lb. pkg. **\$1.49**
 - ASSORTED, LOUIS RICH **Variety Pack** 9-12 oz. pkg. **\$1.99**
 - ASSORTED, OSCAR MAYER **Lunch Meat** 1 lb. pkg. **\$2.39**
 - OSCAR MAYER ASSORTED **Fun Pack Lunchables** 10.8-13.2 oz. pkg. **\$1.79**
- MINUTE MAID ASSTD. FLAVORS
- Orange Juice** 64 oz. ctn. **\$1.99**

- WELCH'S FROZEN
- Grape Juice** 12 oz. can **89¢**
 - ASSORTED MAC & CHEESE DELUXE OR REGULAR OR LIGHT BONUS PACK **Kraft Velveeta Dinners** 9.4-14 oz. boxes **3/\$5**
 - KRAFT ASSORTED **Kraft Mayonnaise** 40 oz. jar **\$2.29**
 - KRAFT ASSORTED **Chunk Cheeses** 8 oz. pkg. **\$1.69**
 - KRAFT SLICED DELUXE **American Slices** 12 oz. pkg. **2/\$5**
 - KRAFT REGULAR OR 1/3 LESS FAT PHILADELPHIA **Cream Cheese** 8 oz. pkg. **\$1.19**
 - REGULAR, JALAPENO OR MILD MEXICAN **Kraft Cheez Whiz** 8 oz. pkg. **\$1.79**

- SIZES 3-4 OVERNIGHT, SIZES 3-5 ULTRA BOYS/GIRLS
- Huggies Diapers** 20-32 ct. pkg. **\$5.99**
 - BOYS/GIRLS 1-2-3 **Huggies Pull Up** 13-17 ct. pkg. **\$5.99**
 - ABSORBENT **Hi-Dri Paper Towels** reg. rolls **2/\$1**
 - ASOTED VARIETIES **Kotex Maxi Pads** 14-24 ct. pkg. **\$2.99**
 - REGULAR, UNSCENTED OR NATURAL **Huggies Baby Wipes** 80 ct. pkg. **\$2.99**
 - ASSORTED BATH TISSUE, DOUBLE ROLL **Kleenex Cottonelle** 4 roll pkgs. **2/\$4**
 - COLLATED WHITE OR COLD CARE W/LOTION 144-250 CT, BOXES **Kleenex Facial Tissue** **2/\$3**

ASSORTED OL. FASHION

- Blue Bunny Ice Cream** 1/2 gal. rnd. ctns. **2/\$6**
- BLUE BUNNY VANILLA OR COMBO THE CHAMP! **Cones** 6 ct. box **\$2.89**
- HERSHEY'S MINIATURES, YORK MINIATURES, REESE'S MINIATURES, ASSTD. HUGS & KISSES OR ALMOND JOY MINIATURES **Hershey's Candies** 13 oz. pkg. **2/\$5**
- KIT KAT, MOUNDS, ALMOND JOY, REESE'S PEANUT BUTTER CUPS, YORK PEPPERMINT PATTIES, HERSEY'S COOKIES & MINT OR 5TH AVENUE **Hershey's Candies** 10 ct. pack **99¢**

- Extended Relief
- Caplets, Extra-Strength Gelcaps, Geltabs, Caplets **Pain Reliever Tylenol** 50 ct. btl. **\$3.69**

- ### Health & Beauty Aids
- JOHNSON & JOHNSON LOTION, OIL, ASSTD. POWDER OR ASST. SHAMPOO/CONDITIONER
- Baby Products** 14-15 oz. size **2/\$5**
 - JOHNSON & JOHNSON **Cotton Swabs** 375 ct. pkg. **\$1.69**
 - REGULAR, CHERRY OR COOL MINT **Mylanta Liquid** 12 oz. btl. **\$3.69**
 - CHILDREN'S FRUIT OR BUBBLEGUM FLAVORED **Mylanta Liquid** 4 oz. btl. **\$2.99**
 - CHILDREN'S FRUIT OR BUBBLEGUM FLAVORED **Mylanta Tablets** 24 ct. pkg. **\$2.99**
 - 6 CT. PKG., CAPLETS **Imodium A-D** **\$2.39**
 - ASSORTED SHAMPOO OR CONDITIONER **Style Hair Care** 15 oz. btl. **69¢**
 - COMBINATION **Monistat 3** 32 oz. size **\$10.99**
 - 1 SIZE, ASSTD. SHEERS, REG. OR ASSTD., SPORT STRIPS **Band-Aids** 30-60 ct. pkg. **\$1.89**
 - ANTACID TABLETS **Pepcid AC** 6 ct. pkg. **\$2.29**

WESTERN UNION TRANSFER™
"The fastest way to send money"

Lowe's

MARKETPLACE

515 W. American Blvd. Muleshoe 272-4406

401 W. American Blvd. Muleshoe 272-4585

PRICES EFFECTIVE FEB. 5-11, 1997
OPEN MONDAY-SATURDAY 7:30 A.M. - 8:00 P.M., SUNDAY 8:00 A.M. - 7:00 P.M.

Pay-n-Save

WE RESERVE THE RIGHT TO LIMIT QUANTITIES IN TEXAS