

## Combest, Laney retain seats with landslide wins

Bailey County's two most influential politicians retained office in Tuesday's general election.

U.S. Rep Larry Combest (R-Lubbock) was a landslide winner in District 19 while Texas House Speaker Pete Laney (D-Hale Center) held off Republican challenger Hollis Cain of Springlake in District 85.

Bailey County also closely

followed the state trend of backing challenger Bob Dole for president.

The Dole/Jack Kemp ticket gathered 60 percent of the county vote. President Clinton received 34 percent and Reform Party candidate Ross Perot captured the remaining 5 percent.

County voters also supported Republican Sen. Phil

Gramm by a 2-1 vote over Democratic challenger and former school teacher Victor Morales.

In the county's only contested race, Democratic challenger Gary Don Gartin gathered 92 percent of the vote to defeat incumbent Rich Magby for Constable in Precinct 1. Magby

Continued on page 3

### ELECTION '96

How Bailey County voted  
**PRESIDENT**

(R) Dole 1,246  
(D) Clinton 706  
(I) Perot 109

**U.S. SENATE**

(R) Gramm 1,334  
(D) Morales 671

**U.S. REP (District 19)**

(R) Combest 1,512  
(D) Sawyer 513

**STATE REP (District 85)**

(R) Hollis Cain 829  
(D) Pete Laney 1,182

**CONSTABLE PCT. 1**

Gartin 387  
Magby 33

## Democratic devotion

By SAMUEL VILLAREAL  
Journal staff writer

Susan Copeland lived and died Tuesday night as each graphic flashed across the television screen.

Each Democratic win she cheered. The losses she took to heart. Such is life as the chairman of the Bailey County Democratic Party.

Copeland hosted a gathering of local Democrats at the Snack Shack in Muleshoe to monitor the bevy of local, state and national elections.

Copeland's biggest worry was quickly put to rest as President Clinton romped to a surprisingly easy win over Republican challenger Bob Dole to become the first Democrat to be re-elected to the presidency since Franklin D. Roosevelt.

Even though Dole carried Texas, Copeland remained optimistic.

Continued on page 3

## Lady Mules state bound

Muleshoe finishes third at regionals

By RICK WHITE  
Managing Editor

LUBBOCK — They waited. They worried. They wondered.

Had they done enough to advance to state? Could they have run harder? What are they wearing in Austin this fall?

Huddled on the gymnasium floor and in the stands, they were still waiting for the answers more than 45 minutes after the last of 99 runners crossed the finish line Saturday at the Region I girls Class 3A cross country meet at Mae Simmons Park.

Finally, one of the regional meet directors stepped up to the microphone.

The top three teams would advance to the UIL Class 3A state meet this weekend outside Austin, but would they be one of them?

"Finishing third in the Class 3A girls meet is . . .," said the female Bert Parks impersonator with a long dramatic pause. "Muleshoe with 104 points."

The gymnasium erupted as a large throng of family and friends celebrated Muleshoe's first trip to the state meet since 1992. There was more hugging and tears than a Richard Simmons confessional video.

"This was worse than the Miss America beauty pageant," said first-year Muleshoe coach Kim Zollinger, who chewed

"I'm so relieved. I wanted to go to state so bad. Everybody ran as hard as they could. Everybody said 'let's do it for each other.'"

— MHS senior  
Cari Faver

her lip, figured and refigured her unofficial results, and smiled nervously throughout the ordeal.

"I was fighting with my emotions," confessed Zollinger, who thought the Lady Mules were in, but wasn't sure. "I had a funny feeling that maybe I made an error."

"I'm so relieved," said senior Cari Faver, who finished second among the Lady Mules and 14th overall. "I wanted to go to state so bad. Everybody ran as hard as they could. Everybody said 'let's do it for each other.'"

It was that kind of teamwork that sent the Lady Mules to Saturday's state meet at Old Settler's Park in the Austin suburb of Round Rock. The race

Continued on page 5



### Good news

Members of the Muleshoe cross country team and fans react Saturday after learning the Lady Mules would be headed for the UIL state championships in Round Rock this weekend. MHS earned its first trip to the state meet since 1992 after finishing third Saturday at the Region 1 meet in Lubbock.

## Top three finish at state in sight

By RICK WHITE  
Managing Editor

Kim Zollinger never would have made it in the frontier days. She's not a settler.

Muleshoe's first-year cross country coach didn't bask long in the glory of qualifying for the state UIL cross country championship Saturday before going on the offensive.

The Class 3A Lady Mules finished third at the Region I meet at Mae Simmons Park in Lubbock Saturday behind Clint and Brownfield, earning a trip to this Saturday's state championship at Old Settler's Park in the Austin suburb of Round Rock. The race starts

at 1:20 p.m.

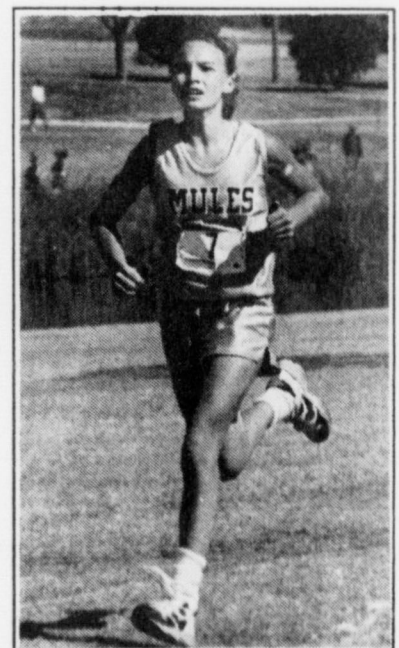
"It's going to be a different race," Zollinger said. "There's no pressure. We won't be running tight. They were so worried about making it to state."

Muleshoe had to sweat out a four-way battle for the last two spots with Brownfield, Dimmitt and Abilene Wylie. The top three teams qualify for state.

Muleshoe finished third, despite not having a runner place in the top 10.

A top three finish at state is not out of the question for Muleshoe. The top three teams from Region I last year finished

Continued on page 5



■ MHS freshman Lynsie Black heads toward the finish line during Saturday's Region I cross country meet at Mae Simmons Park in Lubbock.

## Muleshoe Police warn businesses of bogus \$100 bills

Although it appears to be an isolated incident, the Muleshoe Police Department Monday warned local businesses to be on the lookout for counterfeit \$100 bills.

A Muleshoe convenience store reported receiving a counterfeit \$100 bill sometime between Friday night and noon Saturday.

The bill appeared to be duplicated using a laser color copier, according to acting Muleshoe Police Chief Jay Livingston.

It was one of the new \$100 bills, introduced earlier this year in an effort to combat counter-

Continued on page 3

## Graves wins despite upset of Cowboys

Kay Graves of Muleshoe won the Journal's ninth weekly football contest.

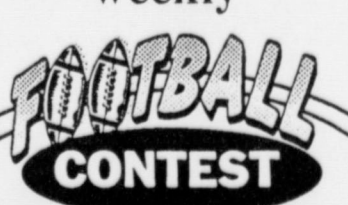
Graves won despite picking local NFL favorites Dallas and Houston. Both were upset.

Graves was also foiled by Colorado State's last-second win at Air Force. Graves did pick 15 of 18 games correctly and earned the \$15 first prize.

Kiko Torres of Muleshoe also got bit by Philadelphia's upset of Dallas but still won the \$10 second prize. Torres also put his faith in Muleshoe to beat Tulia. Torres finished with 14 correct picks out 18.

Five contestants picked 13 of 18 games correctly and were tied for the \$5 third prize be-

The Journal's  
weekly



fore the tie-breaker was applied.

Denver's 22-21 win over Oakland Monday eliminated two contestants.

But Alene Bryant of Muleshoe, Harold Pollard of Enochs and John David Agee of Lazbuddie all picked 45 points in the tie-breaker. They will split the \$5 third prize and receive \$1.67 each.

### CORRECT PICKS

Tulia  
Whitharral  
Friona  
Three Way  
Littlefield  
River Road  
Sudan  
Farwell  
Dalhart  
Lovington  
Dallas  
New England  
Kansas City  
Seattle  
Buffalo  
Kansas  
Syracuse  
Colorado State  
PennState  
tie-breaker — 43 point

## SPS seeks rate hike beginning next year

Escalating prices of natural gas used to generate electricity are the primary cause of a request Southwestern Public Service Company filed Friday with the Public Utility Commission of Texas for increases in the "fuel-cost recovery" portion of electricity bills.

The average Texas residential customer of SPS, using 800 kilowatt-hours of electricity a month, would see a bill increase of about \$1.96 on the monthly bill from January through June 1997, said Gerald Diller, SPS Vice President, Rates and Regulation. However, begin-

ning in July, the increase would drop to 79 cents monthly.

"Even with this fuel cost increase," Diller said, "SPS's residential rates will continue to be the lowest among all the investor-owned utilities in Texas."

The requested increase consists of two components, he explained. One component is an under-recovery of actual fuel costs over the past nine months, which would be recovered in the January-June period. The second component is the ex-

Continued on page 8

AROUND MULESHOE

**MISD board holding public hearing**

The Muleshoe Independent School District Board of Trustees will hold a public hearing Nov. 11 at 7 p.m. to review the state's yearly educational performance report on the district.

The report is based on data collected and provided by the Texas Education Agency for the 1995-95 and 1995-96 school years.

The meeting is at the MISD administrative office. The report is based on the indicators used in the Academic Excellence Indicator System, which include students' performance on the Texas Assessment of Academic Skills test, students attendance, and annual dropout rate.

The Texas Business and Education Coalition has prepared a guide to the AEIS Report to help interpret the information. MISD is publishing this guide as a part of the report for the convenience of the public. Copies of the report will be available at all of the district campuses, the district administration building, and the public library.

**Conservation workshop Thursday**

The Blackwater Valley Soil and Water Conservation District is holding a local workgroup at 9 a.m. Thursday in the Bailey County Coliseum to identify and assess local conservation needs or problems in Bailey County.

The meeting will help set standards and priorities for future cost share programs in Bailey County.

**Local florist earns certificate**

Betty Weuflein of Muleshoe has been awarded a Texas Master Florist Certificate after successfully completing the exams given by the Texas State Florist Association. The award of Texas Master Florist is the final achievement of the Texas Master Florist Educational Program.

The program consists of examinations in the areas of both floral design as well as management.

**Contreras inducted into honor society**

Zeke Contreras of Muleshoe was among 32 Clovis Community College students inducted recently in the Alpha Tau Nu chapter of Phi Theta Kappa national Honor Society at Clovis Community College.

The PTK Honor Society recognizes academic achievement of students attending America's two-year colleges. To be eligible for membership, students must have com-

pleted at least 12 hours at any two-year college, and have a minimum 3.5 grade point average.

**MISD staff day Nov. 11**

Muleshoe Independent School District will have a staff development day Nov. 11. There will be no school for students on that day. Teachers will spend the day attending workshops.

**Harvest Day & Bazaar Nov. 13**

EARTH — The Earth United Methodist Church will host a Harvest Day Dinner and Bazaar Nov. 13.

The bazaar opens at 4 p.m. Dinner will be served from 5-8 p.m. Tickets will be \$6 for adults and \$3 for children 10 and under. Take-out is available.

**Bailey County 4-H selling fruit**

Bailey County 4-H'ers are selling mixed fruit boxes as well as Wisconsin cheese and sausage items. If you wish to purchase, you may contact the Bailey County Extension office or any 4-H member. Orders will be taken until Nov. 12 and will be delivered by early to mid-December. Proceeds will be used to support Bailey County 4-H.

church parish hall, 401 3rd Street. Tickets are \$6 for adults and \$3 for children 6 and under.

A quilt will be also be raffled off at the dinner. Tickets for the raffle can be purchased at the dinner for \$1 each from any member of St. Ann's.

**MASH looking for volunteers**

The Muleshoe Association to Serve the Hungry is looking for volunteers for its beans and cornbread supper to be held Feb. 10, 1997.

For more information call Sharon Grant at 272-5766.

**CAFB Christmas Bazaar Dec. 7-8**

The Cannon Air Force Base Christmas Bazaar, scheduled for December 7 and 8, is being organized, and prospective vendors are encouraged to secure spaces as soon as possible.

The annual bazaar features between 150 and 200 vendors selling a wide range of holiday cheer, from art and hand-crafted knick-knacks to furniture, toys and countless other gift items.

Individuals and businesses interested in participating in this event should call (505) 784-2826 or 784 2563.

**BATTLING DOWN THE PRICES!!**

**NIKE**

**MEN'S**

Air Flight - Reg. \$79.95 ..... SALE \$65<sup>00</sup>

Air More Uptempo - Reg. \$139.95 ... SALE \$118<sup>95</sup>

Air Adjust Force - Reg. \$125.00 ..... SALE \$112<sup>00</sup>

Air Zoom Flight 96 - Reg. \$119.00 .... SALE \$101<sup>00</sup>

Colors - Black/Black-Metallic Silver, White/Navy-Metallic Gold

**WOMEN'S**

Air Adjust Force - Reg. \$125.00 ..... SALE \$112<sup>00</sup>

Air Flight - Reg. \$79.95 ..... SALE \$65<sup>00</sup>

**MOONLIGHT MADNESS SALE - Saturday, Nov. 9**

10 a.m. - 10 p.m.

Women's Jogbras ..... 20% OFF

By Champion ..... 20% OFF

Thurlo Basketball Socks .... 10% OFF

Muleshoe Jam It Shirts ..... ALL \$9<sup>95</sup>

10% OFF All Regular Priced Items

Coming Soon!  
Air Maestro  
- Air Flight  
Light

**WILLIAMS ATHLETICS**

322 Main 806-272-MULE (6853)

**Muleshoe Journal** USPS 367820

Established February 23, 1924. Published by Triple S Publishing, Inc. Every Thursday at 304 W. Second, Box 449, Muleshoe, TX 79347.

Second Class Postage paid at Muleshoe, TX.

POSTMASTER: Send address changes to the Bailey County Journal, P.O. Box 449, Muleshoe, TX 79347.

We are qualified members of:  
Panhandle Press Association, National Newspaper Association, West Texas Press Association and Texas Press Association

WEST TEXAS PRESS ASSOCIATION

PPA Panhandle Press Association

MEMBER 1996

**TEXAS PRESS ASSOCIATION**

Scot Stinnett, Publisher  
Lisa Stinnett, Vice-President/Comptroller  
Rick White, Editor  
Holly Millsap, Classifieds  
Pat Durben, Advertising

SUBSCRIPTIONS: Muleshoe Journal and Bailey County Journal  
By Carrier Yearly - \$22.00  
Bailey and surrounding counties: by mail - \$24.00  
Elsewhere - \$26.00  
Advertising Rate Cards on Application

"Advertisers should check their ad the first day of insertion. The Journals will not be liable for failure to publish an ad or for a typographical error or errors in publications except to the extent of the cost of the ad for the first day of insertion. Adjustment for errors will be limited to the cost of that portion of the ad where the error occurred."

**Special Christmas hours at North Plains Mall**

The North Plains Mall in Clovis will be observing special holiday hours for Christmas shoppers.

The special holiday schedule will kick off with "Early Shopper Days." The mall will be open 8 a.m. to 10 p.m. Nov. 29 and 30.

During the month of December, the mall will be open Sundays from 11 a.m. to 6 p.m. All other days until Dec. 23 the mall will be open 10 a.m. to 10 p.m. The mall will be open Christmas Eve from 10 a.m. to 6 p.m. and will be closed Christmas Day.

There will also be a variety of promotions for the upcoming holiday season. Wal-Mart will set up an angel tree from Nov. 27 - Dec. 16. Any individual can pick a card from the tree and buy gifts for the needy family whose name appears on the card.

Other promotions include the "Merchant Festival of Trees." Trees will be decorated by mall merchants and donated to needy families. There will also be various church and school groups



**Dewey Richardson**  
manager of North Plains Mall

singing throughout the month of December.

The mall is currently under new management. Dewey Richardson, an Idaho native, was recently named as manager at North Plains Mall.

Richardson has been married to his wife Mindy for five years. They have one son, Clayton. Richardson said that he doesn't have much time for hobbies, but he like to do woodworking and ski.

Richardson worked his way up the J.P. Realty corporate ladder. J.P. Realty, which owns malls across the western U.S., is the

owner and operator of the North Plains Mall.

Richardson says the North Plains mall is the farthest mall operation from the J.P. Realty home office, which is located in Salt Lake City. This has proven to be a challenge for Richardson, who has had to learn the market for this area on his own by visiting with local merchants. He credits his staff with making his job easier.

**THE BIGGEST BRAND SALE**

**20% OFF**

Men's Starter® Activewear Jerseys, Reg. 46.99

Men's Nike® Activewear 36.99 & 41.99

2-20 Longstreet® Fleece Sets Reg. 21.99 to 27.99 Sale 17.99 to 21.99

Men's Wrangler® Jeans 13MMWZ in Indigo, Reg. 23.99 Sale 19.99

Entire Stock Nike® Athletic Shoes on Sale

Men's Joe Boxer® Boxers & Briefs Reg. 7.99 to 12.99 24.99 Sale 12.99 - 19.99 Sale 6.99 to 10.99

Playtex® Bras Reg. 14.50 to \$25 Sale 11.99 - 15.99

**Sunday, Nov. 10TH - OPEN 1 TO 8 P.M.**

**ANTHONY'S**

**30% OFF**

Any One Regular Price Item in Stock

Excludes denim jeans and shorts, Chaps Ralph Lauren, Savanne Pants, Dr. Martens shoes, Dexter shoes, Red Wing boots, athletic shoes and Hush Puppies. May not be used in conjunction with any other offer. May not be used on existing layaways or the purchase of gift certificates.

389 Valid Nov. 10, 1996.

**ANTHONY'S**  
Family Apparel & Shoes

321 Main - Muleshoe 272-3478

Sale prices good thru Sun. Nov. 10th Monday-Saturday 9:00-6:00

**Treasures From The Heart**

2104 W. American Blvd., Muleshoe

With New Vendors & New Merchandise

OPEN 10:00-5:30 Monday thru Saturday Open until 7 p.m. on Tuesdays

**BOOTH SPACES STILL AVAILABLE.**  
CALL 806-272-4217

**Moonlight Madness Sale**  
SATURDAY, NOV. 9  
Join Us! Open Til Midnight  
— Unadvertized Specials —  
Register For Door Prizes  
to be given away December 21

Advertise It In The Muleshoe Journal Classifieds!

## Democrats

Continued from page 1

tic about the future of the Democratic party in Texas.

"Since (Lyndon) Johnson was in office, Texas has always voted Republican," Copeland said. "However, Democrats are in a 40% range this year. In another two years, we could see a big Democratic upswing in the state."

Copeland kept the coffee pots at full steam as fellow party members nervously awaited to see if Texas Speaker Pete Laney of Hale Center would fend off a challenge from Republican Hollis Cain of Springlake in District 85. Copeland tracked the race with frequent calls to Laney's office because local television coverage was limited.

Laney defeated Cain by an almost 2-1 margin to maintain his seat in the state legislature.

One less worry.

Copeland discussed the candidates and their issues between glances at the television.

Control of the both the U.S. Senate and U.S. House were still up for grabs when many of the members headed for home.

They'd have to wait until morning to see who gained control of Congress.

Those that remained celebrated the elections of Clinton and Laney.

## Democratic process

The following Democratic candidates gained Bailey County offices by running unopposed.

<b>District attorney</b>	<b>Johnny Actkinson</b>
<b>County attorney</b>	<b>Carissa Cleavinger</b>
<b>Sheriff</b>	<b>Jerry Hicks</b>
<b>County Tax Assessor</b>	<b>Kathleen Hayes</b>
<b>Commissioner, Pct. 1</b>	<b>Butch Vandiver</b>
<b>Commissioner, Pct. 3</b>	<b>Joey Kindle</b>
<b>Constable, Pct. 2</b>	<b>Curtis Hunt</b>
<b>Constable, Pct. 3</b>	<b>Gerry Pierce</b>

## Combest

Continued from page 1

ran as a write-in candidate. Also, Eight candidates gained or maintain local offices by running unopposed. All ran on the Democrat ticket. Combest was elected to his seventh term in District 19, carrying 75 percent of the vote in the county.

Democratic challenger John Sawyer, a Lubbock biostatistician, had hoped a strong showing by President Clinton and U.S. Senate nominee Victor Morales might throw the election his way.

Combest is currently chairman of the House Intelligence Committee. He was in line to become the next chairman of the House Agriculture Committee until House Speaker Newt Gingrich offered the job to former Oregon Congressman Bob Smith as an incentive for him to enter the race for an open House seat.

Combest will be at least vice-chairman of the committee now that the Republicans have maintained control of the House. Combest said he will know more later this month.

Laney, a 24-year veteran in the Texas House and a two-term speaker, earned 59 percent of the county vote against Cain, a Springlake farmer who believed many people were dissatisfied with the way the state was being run.

Early returns of all 12 precincts in District 85 showed Laney holding a 2-1 edge.

Many voters felt it was important to support Laney because of the clout he held as Speaker of the House. Cain campaigned hard for term limits which Laney openly opposed.

Cain was Laney's first opponent since 1980.

## Bogus

Continued from page 1

feiting.

The new \$100 bills contain an embedded plastic strip that is visible with a magnifying glass.

Other telling characteristics according to Livingston are the 100 on the bottom right turns from green to black when the bill is titled away and an outline of Franklin should appear above the 100 when held up to the light.

Contact the Muleshoe Police Department if you suspect deception.

Businesses will not be reimbursed for a confiscated counterfeit bills.

**HAVE A NICE DAY**

**Breakfast**

**American Legion  
Post #403 &  
VWF Post #8570**

*Invites All Veterans  
(Men & Women), Their  
Spouses, Widows and  
Widowers To Come Have  
Breakfast With Them.*

**Monday, November 11**  
serving 6 a.m. to 10 a.m.  
**American Legion Hall**  
15th & Ave. B, Muleshoe

## CREDIT MAN

Clovis, Melrose, Muleshoe & Friona Area

**Experience Counts!**  
**Call Scott or Ed For  
1 Hour Response!**



Scott Emeson Credit Man Ed Butler General Manager

8:30-6:30

**Rebuild Your Credit With A New Car!** **1-800-755-2260**  
**Strebeck Auto Network** CALL 24 HOURS A DAY

Bring this ad in for a complimentary genuine diamond necklace with credit approval.

Name: \_\_\_\_\_  
Address: \_\_\_\_\_  
City: \_\_\_\_\_ State: \_\_\_\_\_ Zip: \_\_\_\_\_  
Birthdate: \_\_\_\_\_ Phone: \_\_\_\_\_ SS #: \_\_\_\_\_  
Employer: \_\_\_\_\_ Signature: \_\_\_\_\_  
I Authorize STREBECK AUTO NETWORK to run an INSTANT credit check on myself.  
Mail to: STREBECK AUTOWORK, 2118 Mabry Dr., Clovis, NM 88101

## JVC Center Pivots

Certified Dealers - Ramon Mendoza, John Mendoza & Zack Yanis



**We Have New Equipment In Stock  
- Ready For Delivery! Come By & See!**

No Down Payment  
• Delayed First Payment Til Jan. 1998

## MENDOZA IRRIGATION

East Hwy. 84 Muleshoe 272-5511 or 272-5512

*Local news about local folks.*

## Muleshoe Journal

To subscribe, call 272-4536



Get Ready!! **FIRST TIME EVER**  
**Christmas Warehouse Sale**  
Dec. 7th - 14th  
Over 20,000 Boots,  
Thousands of Shirts  
& Blouses

1-800-658-6378 106 E. American Blvd. Muleshoe, Texas  
**And Country Junction**

## Midnite Madness Sale

Saturday, Nov. 9 OPEN TIL 12:00 MIDNITE

Play Our  
★ **"Shoot For The Stars"**  
★ Game  
★ Earn "Boot Bucks" For Our  
FREE Auction Dec. 21 For FREE Merchandise  
Valued Over \$3000!!!  
MIDNIGHT MADNESS SALES  
— Nov. 9, Nov. 29, Dec. 7 & Dec. 21

Large Group  
**Jackets** ..... Buy One, Get One **FREE**  
1 Rack  
**Ladies' Jeans** ..... **\$19.99**  
Tony Lama Panhandle Slim Full Quill  
**Ostrich Ropers** ..... **\$449**

**Country Junction**  
**10% OFF STOREWIDE**  
Excluding Yankee Candles

## TRUCKLOAD HAT SALE

PRICES GOOD THRU NOVEMBER  
Your Hat...Hand-creased to your satisfaction by Curtis!

	one hat	2 hats	3 hats
4X	\$49 ea.		
7X	\$109 ea.	\$100 ea.	\$90 ea.
10X	\$129 ea.	\$125 ea.	\$115 ea.
15X	\$179 ea.	\$165 ea.	\$150 ea.
20X	\$219 ea.	\$200 ea.	\$185 ea.
30X	\$239 ea.	\$215 ea.	\$200 ea.

**Great Prices On  
BAILEY  
FELT HATS**

**Bailey 5X Hats \$140**  
Buy One,  
Get One **FREE!**

### All Boots & Sport Lacers

(Including Sale Boots)  
go on sale at 6:00 p.m.  
6:00 p.m. — \$6 off  
7:00 p.m. — \$7 off  
8:00 p.m. — \$8 off  
9:00 p.m. — \$9 off  
10:00 p.m. — \$10 off  
11:00 p.m. — \$11 off

### RED DOT SPECIAL

Select Group Hats With Red Dots  
7X ... \$54 20X ... \$109  
10X ... \$64 30X ... \$119  
15X ... \$89

**K.J. Leather will be in the store  
Saturday, Nov. 9 with Chaps,  
Chinks, Head Stalls & Bridles  
for Christmas orders!**

### All Merchandise throughout Joe's Boot Shop

**20% OFF**

- Montana & Crumrine Buckles & Jewelry
- All Brighton Products
- Purses, Belts, Jewelry
- All Wrangler Jeans
- All Belts - Adults & Children's
- All Jackets

# State

Continued from page 1

1-2-3 at state. Defending state champion Clint is in a class by itself, but the Lady Mules have an outside shot at overtaking Brownfield.

"We're not going to be happy with just making it to state," Zollinger said. "We're going to compete and I guarantee somebody is going to finish in the top 10."

Freshman Stacy Locker finished 13th for the Lady Mules with senior Cari Faver 14th. Senior Priscilla Aguirre, hampered by a cold, finished a

disappointing 21st. Aguirre had become the Lady Mules' top runner the last month.

Zollinger wasn't too busy during Monday's interview to throw a few motivational barbs the way of Aguirre and freshman Lysie Black.

"Jesh, I can't believe some

of the runners you let beat you," Zollinger laments. "Those were runners you guys beat easily the last time you faced them."

Aguirre, who was a settler until this year, took the challenge.

"You watch coach, I'm going to run 30 seconds better and finish in the top 10," Aguirre said.

Zollinger was particularly upset that several Dimmitt runners squeezed in front of Muleshoe runners at the regional after the Lady Mules handled them with ease while winning the District 1-3A meet two weeks ago.

"That's because they were running on tradition and we were running scared," Zollinger said.

Zollinger all but concedes the championship to Clint.

But that doesn't mean she's become a settler.



## Focused

MHS freshman Stacy Locker runs near the front of the pack early in Saturday's Region I cross country meet at Mae Simmons Park in Lubbock.

## CROSS COUNTRY

Region I cross county meet at Mae Simmons Park, Lubbock Saturday, Nov. 2

### Class 3A

#### GIRLS

Team — 1. Clint 52.2, 2. Brownfield 72, 3. Muleshoe 104, 4. Dimmitt 120, 5. Abilene Wylie 138, 6. Jacksboro 147, 7. Aledo 171, 8. Breckenridge 181, 9. Lubbock Cooper 223, 10. Bowie 234.

Top 15 finishers — 1. Yvette Barrios, Clint, 11:51.3, 2. Becky Perez, Clint, 12:13.2; 3. Mary Ann Hernandez, Brownfield, 12:19.6; 4. Erica Molina, Clint, 12:25.2; 5. Wendy Sullivan, Colorado City, 12:26.6; 6. Rozanna Fain, Breckenridge, 12:27.7; 7. Linda Alvarado, Brownfield, 12:29.0; 8. Shawna Kenworthy, Dimmitt, 12:29.2; 9. Margo Moreno, Lubbock

Cooper, 12:30.9; 10. Maria Elias, Clint, 12:31.8; 11. Teresa Mathis, Jacksboro, 12:37.9; 12. Elizabeth Avila, Jacksboro, 12:38.8; 13. Stacy Locker, Muleshoe, 12:38.8; 14. Cari Faver Muleshoe, 12:43.0; 15. Angie Waters, Aledo, 12:47.8.

Other area runners — 17. Carol Summers, Dimmitt, 12:55.7, 18. Starla Cole, Sanford-Fritch, 12:56.5; 22. Priscilla Aguirre, Muleshoe, 13:03.7; 23. Lysie Black, Muleshoe, 12:07.5; 25. Taryn Hays, Dimmitt, 13:08.9; 34. Stephanie Flores, Dimmitt, 13:21.2; 35. Brandi Harrison, Muleshoe, 13:25.3; 46. Linsey Welch, Dimmitt, 13:41.1; 58. Jo Beth Gilleland, Muleshoe 14:00.0; 60. Amy Matthews, Dimmitt, 14:01.4; 71. Bobbie Benham, Muleshoe, 14:22.9.

# Mules

Continued from page 1

starts at 1:20 p.m.

Muleshoe finished behind defending state champion Clint and Brownfield, despite not having a runner finish in the top 12. Muleshoe bunched four runners between 13th and 22nd.

Clint placed four runners in the top 10, including individual champion Yvette Barrios, and finished well in front with 52 points. Brownfield, with two runners in the top 10, finished with 72 points.

Barrios cruised the hilly two-mile course in 11 minutes and 53.3 under the bright mid-day sun, nearly 22 seconds ahead of teammate Becky Perez.

Dimmitt put a mild scare into the Lady Mules, finishing fourth with 120 points and Abilene Wylie was fifth with 138. Muleshoe had beaten Dimmitt handily Oct. 26 at the District 1-3A meet.

"We had great support," Zollinger said. "Our fans were all along the backside of the course yelling their guts out. It really helped."

Running her best race of the year, freshman Stacy Locker led the Lady Mules by finishing 13th with a time of 13:38.8.

The sleek Locker got stronger throughout the race and nearly overtook a pair of Jacksboro runners at the finish line.

She still seems a little in awe of her success.

"I'm kind of surprised," Locker said. "At the beginning of the year I never thought I'd be one of the top runners."

Faver, returning to her early-season form when she was the Lady Mules' top runner, was five seconds behind Locker.

The coaching staff suspected overtraining contributed to her mid-season slump.

"Cari Faver ran great race," Zollinger said. "She's running better each week."

Muleshoe's Priscilla

Aguirre and Lysie Black limped in at 21st (13:03.7) and 22nd (13:07.5). Muleshoe's No. 5 runner, Brandi Harrison, finished 35th (13:25.3).

Aguirre crossed the finish line huffing like a two-pack smoker because of a chest cold. Black battled a painful hip flexor strain the last mile.

Aguirre had been the Lady Mules' top runner the last month and covered the same course in 12:32 during a meet three weeks earlier.

"I told them before the race that the key is to keep bunched

up and not to let anyone in-between," Zollinger said. "We tried to stay focused on Brownfield because we figured if we could stay with them we had a good chance."

Zollinger thinks the noon start might have affected her team.

"I think we had a little to much time to think. We were ready to run when we reached Sudan."

They waited. They worried. They wondered.

## 'Horns

Continued from page 4

can cost you the game," Scisson said.

Lazbuddie finished with 381 yards against a team that had been giving up 114 yards a game.

Justin St. Clair completed 7 of 17 passes for 141 yards and two touchdowns for Lazbuddie, but was intercepted twice. He added 105 yards rushing on 19 carries.

Brice Foster rushed for 100 yards on 11 carries, all in the second half when Lazbuddie managed to get its running game untracked.

Whitharral finished with 272

yards passing and 484 yards.

Whitharral 40, Lazbuddie 22

Whitharral 16 8 8 8 40

Lazbuddie 0 8 0 14 22

### SCORING SUMMARY

W — Brandon Rodgers 38 run (Rodgers kick)

W — Justin Dobrovolny 78 pass from Rodgers (Rodgers kick)

L — Adam St. Clair 2 pass from Josh Morris (Jason Thomas kick)

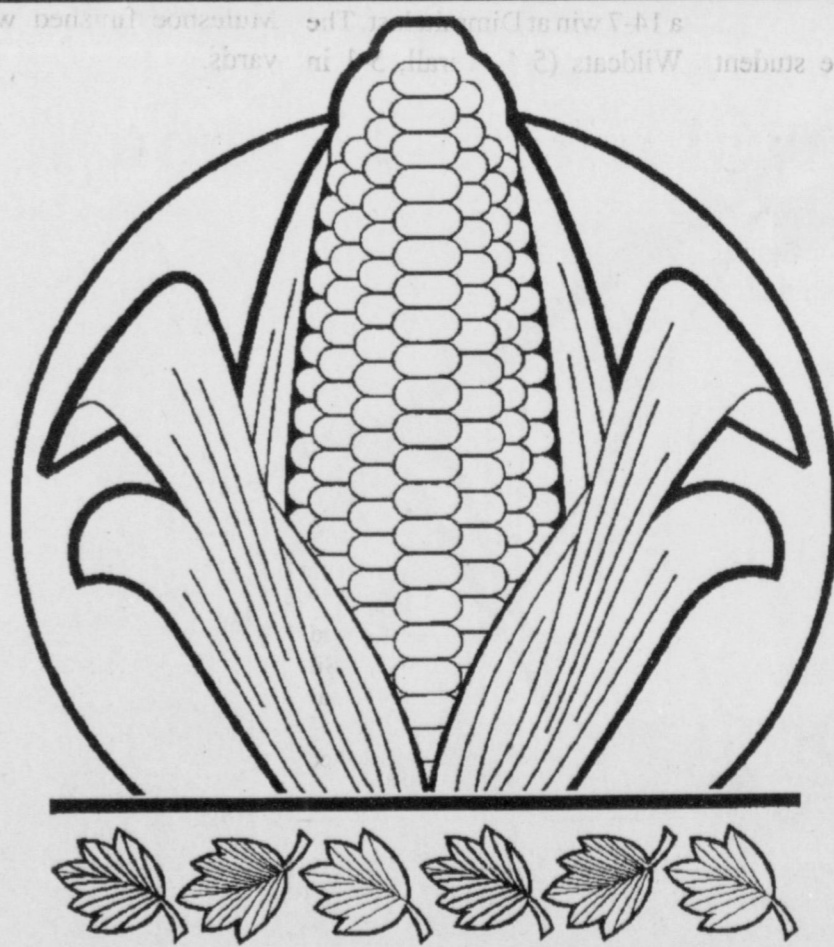
W — Dobrovolny 7 pass from Rodgers (Rodgers kick)

W — Stracener 7 pass from Rodgers (Rodgers kick)

L — Justin St. Clair 2 pass from Morris (kick failed)

W — Rodgers 12 run (Rodgers kick)

L — Brice Foster 8 pass from Justin St. Clair (Thomas kick)



## Caprock Has Marketing Options For Your 1997 Corn Crop.

THE 1997 SILAGE AND HMC CONTRACTS WILL BE INTRODUCED.

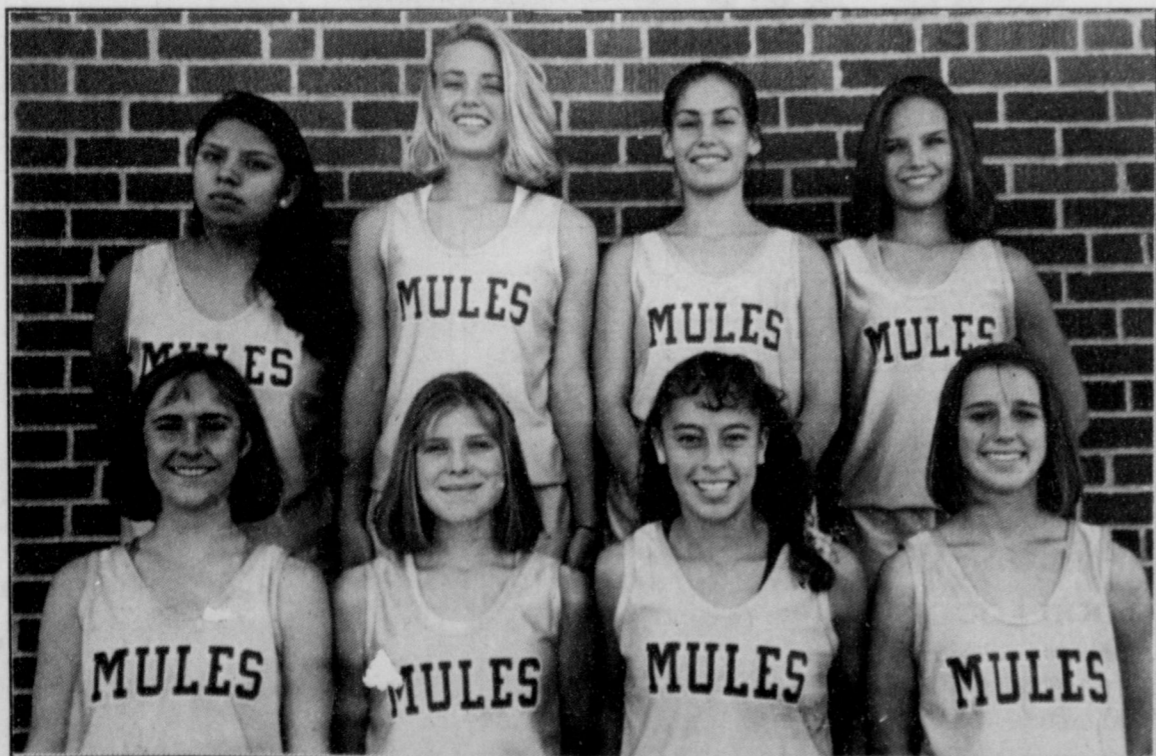
Come and have breakfast at 6:00 a.m. on Wednesday, November 13, 1996 Meeting will start at 7:00 a.m. Bovina Ambulance Building 109 3rd Street, Bovina

If you have questions, Call 806-225-4400

# Caprock Industries

## Bovina

Congratulates Muleshoe For Winning The District 1-3A Cross Country Title - Qualifying For UIL State Championship.

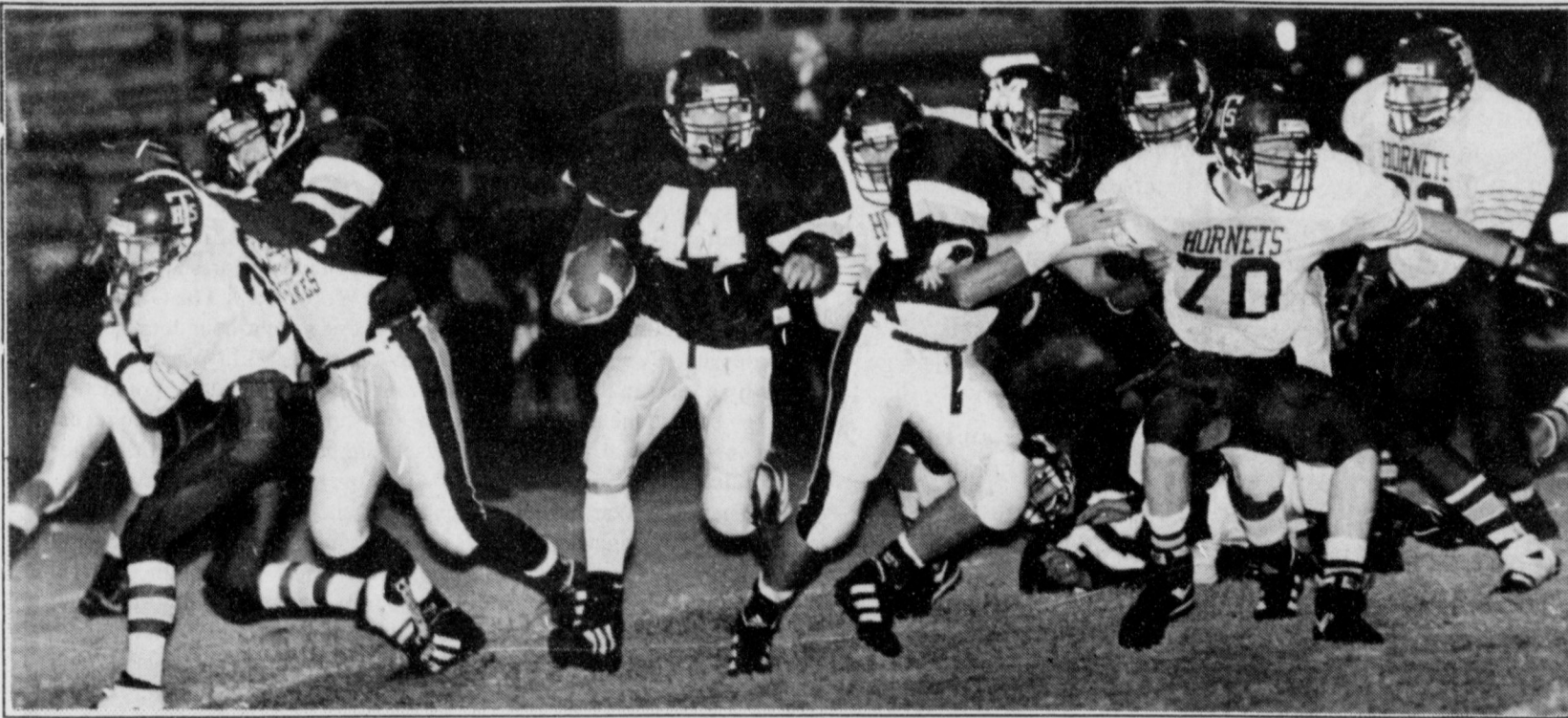


We Are Proud Of You!!!

Delton E. Wilhite & Associates

1631 W. American Blvd.

272-3652



### Carving a crease

Muleshoe junior Douglass Field has plenty of running room thanks to a seal block by Greg Pena and a kickout block by Chris Shelburne. Field scored on the play, but the Mules dropped a 34-9 decision Friday in a District 1-3A game at Benny Douglass stadium.

## Muleshoe ends season at River Road

Muleshoe had coach David Wood's bumpy ride continues Friday at Amarillo River Road.

The Mules face playoff-bound River Road in a District 1-3A game minus four players, suspended by Wood this week in connection with the unauthorized use of a gas credit card.

Several Muleshoe High School students including at least four players reportedly charged hundreds of dollars worth of gas on a charge card that had been lost by another student.

The family of the student

has not to pressed charges.

Wood declined to reveal the identity of the players.

It is the fourth game this season that at least one player has been suspended for disciplinary reasons. Three other players quit two weeks ago.

"They keep doing things that have been overlooked in the past," Wood said. "They have to start to realize the consequences of their action."

River Road clinched its second-straight playoff berth with a 14-7 win at Dimmitt last. The Wildcats (5-4 overall, 5-1 in

district) have won five of their last six games.

Wood said it is the biggest team the Mules (1-8, 1-5) have faced this season.

"They're a real solid team," Wood said. "But I'd rather go against a big team than against a quick team. But it maybe a case of them just overpowering us."

Muleshoe is coming off a 34-9 loss to Tulia. Tulia used its quickness in its front seven to bottle up the Mules all night. Muleshoe finished with 114 yards.

### SIX-MAN PREVIEW

Three Way is playing for pride. Lazbuddie is preparing for the playoffs.

Three Way (6-3, 3-3) has won two in a row and could finish in sole possession of third place if it beats Silverton (5-4, 2-2) on the road. Seniors Jesus Perez, Kyle Kindle, Lupe Landeros and Chris Soliz have started since they were freshman.

Lazbuddie (8-1, 3-1) hosts Amherst (1-8, 1-3). LHS suffered its first loss last week to top-ranked Whitharral. Lazbuddie will play the winner of Friday's game between Guthrie (8-1) and Rochester (7-2) in the bi-district playoffs.

## Whitharral wins 3-1A showdown

LAZBUDDIE — Lazbuddie coach Mark Scisson figures he might just see Whitharral again.

Brandon Rodgers accounted for 313 yards of offense and five touchdowns Friday as top-ranked Whitharral beat No. 5 Lazbuddie, 40-22, in a showdown for the District 3-1A title.

Whitharral (9-0 overall, 4-0 in district) clinched at least a share of the district title and a playoff berth.

Lazbuddie (8-1, 3-1) is also headed for the playoffs and could meet Whitharral again in the state semifinals.

"If we continue to play well, I think we have a pretty good chance of seeing them again in the semifinals," Scisson said. "And it's always hard to beat a

### 3-1A standings

	District	Overall
x-Whitharral	4-0	8-1
y-Lazbuddie	3-1	8-1
Three Way	2-2	6-3
Silverton	2-2	4-5
Amherst	1-3	1-8
Cotton Center	0-4	1-7-1

Last week's results — Whitharral 40, Lazbuddie 22; Three Way 63, Cotton Center 14; Silverton 54, Amherst 8

This week's games — Lazbuddie at Amherst; Three Way at Silverton; Cotton Center at Whitharral

x-clinched No. 1 playoff seed  
y-clinched playoff berth

team twice in a season."

The Panthers jumped out to a 16-0 first-quarter lead on Rodgers' 38-yard run and 78-yard touchdown pass to Justin Dobrovolsky.

Whitharral stretched its lead to 32-8 after three quarters.

"They were able to dominate from our mistakes and we broke down on defense in the first half," Scisson said.

Rodgers passed for 163 yards and four touchdowns and rushed for 150 yards and another touchdown on 16 carries.

Lazbuddie had three passes intercepted after throwing only one interception all year.

Twice in the second half the Longhorns came away without scoring after reaching the Panther 10-yard line. One drive ended with an interception and the other on downs.

"Against a real good football team, any kind of mistake

Continued on page 5

## Three Way gets look into future

MAPLE — The Kindle kin combined for seven touchdowns Friday as Three Way punished Cotton Center, 63-14, in a District 3-1A six-man game.

Junior Jonathan Kindle scored four touchdowns and senior cousin Kyle Kindle added three touchdowns as the Eagles won their second-straight game.

The game was halted by the 45-point rule in the third quarter.

Three Way (6-3 overall) has been eliminated from playoff contention but ends the season at Silverton with third-place at stake. Both teams are tied for third at 2-2.

The Eagles outscored Cotton Center (1-8, 0-4) 22-6 in

the second quarter en route to a 41-14 halftime lead.

"They got after us and held us at bay early," Three Way coach Danny James said. "But we pretty much took charge by the end of the first quarter."

Jonathan Kindle scored on runs of 1 and 29 yards and caught scoring passes of 3 and 22 yards.

Kyle Kindle scored on a 3-yard run and caught scoring passes of 36 and 15 yards.

Jesus Perez passed for three touchdowns and returned an interception 42 yards for a touchdown.

Junior Sammy Soliz rushed for a team-high 93 yards and a touchdown on eight carries and Jonathan Kindle finished with 48 yards on four carries.

"We got a little chance to see what we'll look like next year," said James.

Cotton Center 6 6 0 14  
Three Way 19 22 22 63

SCORING SUMMARY

TW — Jonathan Kindle 1 run (pass failed)

CC — McClure 23 pass from Land (land kick)

TW — K. Kindle 3 run (run failed)

TW — J. Kindle 3 pass from Chris Soliz (K. Kindle run)

TW — K. Kindle 36 pass from Jesus Perez (kick failed)

TW — S. Soliz 3 run (Lupe Landeros kick)

CC — Florez 20 pass from Land (kick failed)

TW — J. Kindle 22 pass from Perez (Landeros kick)

TW — Perez 42 interception return (Landeros kick)

TW — K. Kindle 15 pass from Perez (Landeros kick)

TW — J. Kindle 29 run

# GOOD TO THE LAST SCRATCH.



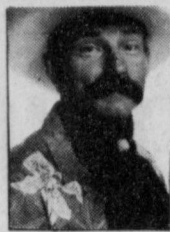
Get busy with your scratching coins, because as of November 1, 1996, you won't have these three instant games to scratch around anymore: *Monster Cash*, *Holiday Surprise* and *Happy Valentines*.

We're scratching all three games off our list on November 1, 1996, but you can still purchase any remaining tickets or claim any prizes through April 29, 1997. With *Monster Cash*, you can win up to \$2,000. *Holiday Surprise* gives you a chance to win up to \$4,000. And *Happy Valentines* has a top prize of \$1,000.

You can claim prizes up to \$599 at any Texas Lottery retailer. Prizes of \$600 or more are redeemable at one of the 24 regional Texas Lottery claim centers or by mail.

Questions? Just call the Texas Lottery Customer Service Line at 1-800-37-LOTTO (1-800-375-6886).

# Colonizing the west



**BAXTER  
BLACK**

ON THE EDGE OF COMMON SENSE

So what if President Clinton waded into Massachusetts, stood at the sight of the Boston Tea Party and announced he was signing a measure to set aside 2,656 square miles within the state to establish a National Monument.

Well, that's silly, ya say. That's 1/3 of the entire state.

In September, the President did that very thing to the state of Utah. Of course, Utah is much bigger plus the federal government already owns 67.3% of all the land in Utah. Most federal land in Utah and elsewhere is available for some commercial use so people who live there can benefit. All the president did was take 3% of the land in Utah that was already federally owned and declare it 'off limits' for the local yokels. That's what making it a national monument does. No big deal... unless you live there. But as the President and his campaign advisers know... no one does.

So to be fair in our comparison, let's say we only take 3% of the land in Massachusetts and declare it off limits to local use. 3% of Massachusetts is 235 square miles; a chunk 12 miles by 20 miles. That would include most of Boston and its suburbs, or all of Nantucket and Martha's Vineyard, or about 5% of Cape Cod. The beach front along the ocean side of Cape Cod is designated a National Seashore, so that would be the likely choice. So, we'll just take about 25 miles of Cape

Cod starting at the tip and running along the highway toward the mainland. Condemn the property and declare it off limits to the local yokels. Let it return to its natural state. That's what a national monument does. No big deal... unless you live there. But as the President and his campaign advisers know... everyone does!

This illustrates the continuing chronic frustration of people living in the part of our great country where the federal government is the slum lord. Portentious proclamations from politicians who have no personal interest other than popularity elsewhere, dictate to the locals. The West is treated by Washington D.C. the way King George treated the colonies.

All the U.S. Senators and Representatives from Utah objected to what they called, "This perverse political land grab." And not without cause. I expect the politicians from Massachusetts would be up in arms if the President and his pollsters tried a similar land grab of their precious Cape Cod. After all, it was the boys from Boston who threw the English slumlords into the bay.

It is the West's loss that the 13 colonies can't see our government is becoming the tyrant they fought so hard to depose.

## Teen Leadership new program at high school

More than 300 trick-or-treaters and their parents took advantage of Teen Leadership's rest stop provided for them on Halloween night.

The high school students in the Teen Leadership Program wanted to conduct a community service project on Halloween night to off-set the negative publicity so often given to teenagers on this night.

The rest stop provided to be a successful project. Ghosts, goblins, and their parents appreciated a break from the cold weather and warmed up with hot chocolate, hit cider, or eyeball soup (a lemonade punch with grapes) that the teenagers served.

This is the first year for the Leadership Class at Muleshoe High School.



Students are given the opportunity to learn and put into practice self-discipline, commitment, perseverance, and the consistency of living a principle-based life.

Class learning is accented with hands-on community service projects to help the young people become productive and successful individuals.

Those students participating in the Halloween rest stop

included Amanda Valdez, Robert Garner, Keisha Graves, Kimberly Dickerson, Jana Foster, Anissa Norman, Kim Villa, Rhonda Toscano, Cynthia Villareal, and Danny Griswold. Other students involved in the project were Lisa Garcia, Lizz Gonzales, Gary Jones, Sandra Faulkner, Steffan Sutton, Andrew Ruiz, and Gerardo Loya. Mrs. Carolyn Johnson teaches the class.

### Teen Leadership holds rest stop

Gerardo Loya, a student in Muleshoe High School's Teen Leadership class, serves hot refreshments to trick-or-treaters and their parents on Halloween night.

**KENW-TV**  
Public Television

## THE GREAT WAR

### and the Shaping of the 20th Century

Sarajevo erupts in violence; Germany seeks new power in Europe; Russia rocks in turmoil; new technology transforms industry and daily life; economic hardship prompts unrest among working people; and women staunchly demand equal rights. While this description summarizes many current events, strikingly similar circumstances existed in 1914 when the world was plunged into World War I. **The Great War and the Shaping of the 20th Century** is a new eight-hour documentary series that reveals the impact and importance of World War I.

Five years in the making, **The Great War** is the first TV production to go beyond the military and political history of World War I to reveal its ongoing social, cultural, and personal impact. It is also the first major documentary produced about the war in over 30 years.

The Great War introduced the use of chemical weapons. The term "homefront" originated with this war, as civilians became targets of aerial bombardment; everyone became a soldier, one way or another. World War I was also the first war ever to be fully documented on film, and it inspired the use of propaganda that told people what to think, what to do, even what to eat. The war took a terrible step further when ethnic and national hatred against Armenia mushroomed into the century's first genocide.

By the end of the war in 1918, nine million people were dead — including 52,000 Americans who died on Europe's battlefields. More than 21 million others were injured in body or spirit. Europe was in shambles, and many Americans retreated into isolationism. World War I laid the groundwork for another world war just 21 years later, and irrevocably formed the character of the 20th century. Yet today, as the 21st century approaches, many old issues are still unresolved or arising anew. There are few Americans who remember — and even fewer who understand — this most pivotal event of our time.

Actors featured as characters central to the series are Ned Beatty, Timothy Bottoms, Nastassja Kinski, Helen Mirren, Liam Neeson, Martin Sheen, and others.

A large cast of leading actors also lend their voices to the characters who shaped the time. Among them: Leslie Caron (Czarina Alexandra); Ralph Fiennes (Wilfred Owen); Louis Gossett, Jr. (W.E.B. Du Bois); Jeremy Irons (Siegfried Sassoon); Martin Landau (Woodrow Wilson); Jean Stapleton (Mrs. Edith [Woodrow] Wilson); and Michael York (Robert Graves).

**The Great War and the Shaping of the 20th Century** will be broadcast Sunday through Wednesday, November 10th—13th at 9:00 p.m. on KENW-TV.

Channel 3 Television from  
Eastern New Mexico University, Portales, New Mexico

## Home Folks Caring For Folks At Home.

# MULESHOE AREA HOME HEALTH

## Agency

### Featured Patient

Virginia Merrell was married to the late Carroll Merrell. They had three children - Bertha Rendon, Lavern Adrian and the late Jimmy Carroll. She has seven grandchildren, eighteen great grandchildren and six great-great grandchildren.

Mrs. Merrell attends the Calvary Baptist Church and belongs to the Ladies' Golden Circle. She enjoys the girls at Muleshoe Area Home Health Agency. They do very good work, and could not be any nicer.

Mrs. Merrell recovered sufficiently to no longer require intermittent skilled nursing services and was therefore subsequently dismissed.



Virginia Merrell

*To receive Home Health Services, talk with your physician or talk with hospital personnel when you are hospitalized.*

**24 Hour # 272-3346**  
Local Nurse on call 24 hours a day to offer prompt service.

We accept Medicare, Medicaid and Private Insurance  
**It Is Your Right To Choose The Home Health Agency You Prefer.**



Affiliated with  
**LUBBOCK METHODIST HOSPITAL SYSTEM**

**FREE Information On Advance Directives**  
*Also known as Living Wills or Right To Die Directives.*  
You may call our agency 272-3346 for these directives. You may also obtain these forms and assistance at 623 West 2nd Street.

## What Is A Town?

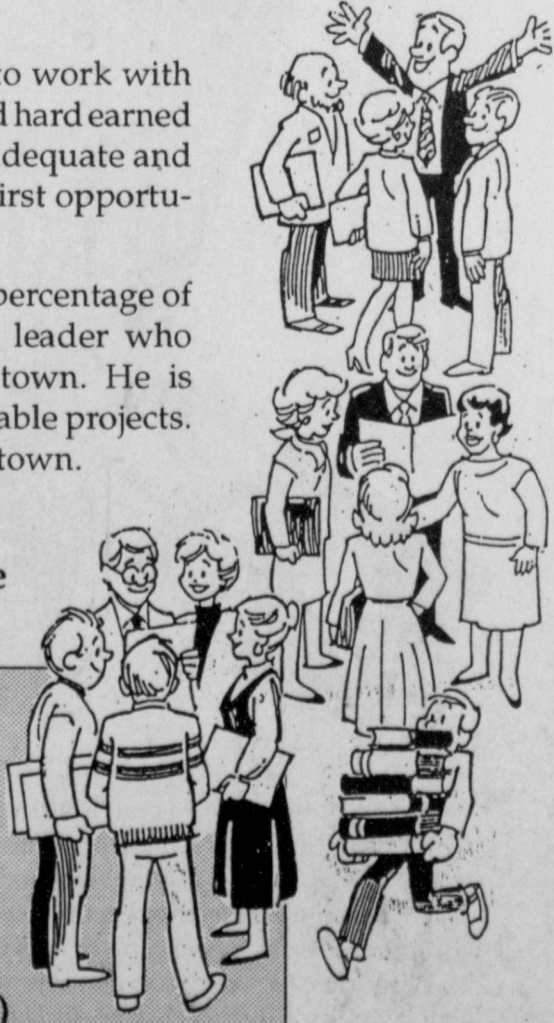
*A town is a group of people.*

It is schools. It is churches. It is industry and jobs. It is retail business. They all have to work together. All must have the support of the people. Or there is no town.

Give your local business man a chance to work with you on your business. You shouldn't spend hard earned money with him unless his selection is adequate and his price competitive. But give him the first opportunity to make the sale.

The local businessman pays the highest percentage of local taxes. He most often is the civic leader who dedicates his time and talents to his town. He is contacted first for contributions to charitable projects. Without his business firm, you have no town.

Give the local businessman a fair shake ... that's all he asks while he continues to work for our town.



**"THE FIVE AREA TELEPHONE ORGANIZATION"**  
Five Area Telephone Coop.  
West Plains Telecom, Inc.  
Plateau Cellular Network  
Five Area Systems Inc.  
Five Area Long Distance Co.  
Five Area - Com (Internet Provider)  
Five Area Community Telecommunications (Fact) (Inter-Active Video Education For Our Schools)

**Advertise It In The Muleshoe Journal Classifieds!**

# GET VARIETY & SAVINGS

ALL TYPES  
6 pack  
20 oz. btl.  
Coca-Cola,  
Sprite  
or Dr Pepper **2\$5** For

ALL TYPES  
6 pack  
12 oz. cans  
Coca-Cola,  
Sprite  
or Dr Pepper **1\$79**

## Meat

**Bar S Thick Sliced, Regular, or Low Salt Bacon**  
1 lb. pkg. **\$1 59**

**U.S.D.A. Select Beef Boneless Arm Roast**  
lb. **\$1 59**

**Assorted Pork Chops**  
lb. **\$1 59**

**Small Pack, Wafer Thin-Cut Bone-In Pork Chops**  
lb. **\$2 39**

**Value Pack, Center Cut Pork Chops**  
lb. **\$1 99**

**U.S.D.A. Select Beef Boneless Charcoal Steak**  
lb. **\$1 79**

**Hormel Cure 81 Spiral Cut Bone-In Half Ham**  
lb. **\$2 99**

**Hormel Cure 81 Mini Boneless Half Ham**  
lb. **\$3 89**

**JUST HEAT & EAT! Advance Breaded Beef Fingers or Patties** ..... 12 oz. pkg. **\$1 29**  
Sausage/Egg/Cheese, Ham/Egg/Cheese or Bacon/Egg/Cheese, Jimmy Dean

**Breakfast Biscuits** ..... 4 oz. **\$1 19**  
"Great On The Grill"

**U.S.D.A. Select Boneless Beef Short Ribs** ..... lb. **\$1 99**  
Wilson Just for Us, 2 lb. Chunk or 1.75 lb. Sliced **\$7 99**

**Ham** ..... YOUR CHOICE **\$3 99**  
Wilson Extra Lean Boneless

**Half Ham** ..... lb. **\$3 89**  
Wilson Extra Lean Boneless

**Whole Ham** ..... lb. **\$3 89**  
Bar S

**Meat Bologna** ..... 12 oz. pkg. **89¢**  
Bar S

**Meat Franks** ..... 12 oz. pkg. **79¢**

## Produce

**YOUR CHOICE Grapefruit or Oranges**  
18 lb. bag **\$3 99**

**Green Onions** ..... bunches **3/\$1**

**Red Delicious Apples** ..... lb. **69¢**

**Green Skin Avocados** ..... **2/\$1**

**Green Cabbage** ..... lbs **4/\$1**

**Potatoes**  
10 lb. bag **99¢**

**Minute Maid Assorted Orange Juice**  
64 oz. ctn. **\$1 59**

**Assorted, YOUR CHOICE Lowe's Drinks**  
3 liter or 6 pack-12 oz. cans **99¢**

**Banquet Chicken, Beef or Turkey Pot Pies**  
7 oz. pkgs. **3/\$1**

**Assorted Boys or Girls Diapers Pampers**  
22-40 ct. Sizes 1,2,3,4,5 **\$5 99**

## check out lower

**DEL MONTE ASSORTED Pineapple**  
15-15.25 oz. can **59¢**

**HONEY BOY Pink Salmon**  
15 oz. can **2 \$3**

**ASSORTED POURABLE ASSORTED Welch's Juice Makers**  
11.5 oz. can **99¢**

**Hormel Hot Chili No Beans**  
19 oz. can **99¢**

**KLEENEX COTTONELLE ASSORTED DOUBLE ROLL Bath Tissue**  
4 roll pkg. **1 89**

**ASSORTED LAY'S® OR WAVY LAY'S® Potato Chips**  
Reg. \$2.99 **2 \$4** For

**HABISCO ASSORTED Premium Crackers**  
1 lb. pkg. **1 39**

**TIDE ULTRA 2 REGULAR, WBLEACH, OR TIDE FREE Laundry Detergent**  
92-103 oz. box **5 99**

**Purina Dog Chow**  
22 lb. bag **6 99**

**SHURFINE ECONOMY Laundry Detergent**  
30 lb. pail **5 99**

**WESTERN FAMILY Fire Logs**  
5 lb. log **99¢**

**SHURFINE 25 CT. TALL KITCHEN W/DRAWSTRING OR 16 CT. Lawn & Leaf Bags**  
YOUR CHOICE **3 \$5** For

**VEGETABLE, CORN, CANOLA, BEST BLEND, OR SUNFLOWER Wesson Oil**  
48 oz. btl. **1 99**

**CAMPBELL'S MUSHROOM OR CHICKEN Cream of Soups**  
10.7 oz. can **79¢**

**ASSORTED HOME COOKIN' OR CHUNKY Campbell's Soups**  
19 oz. can **1 69**

**SHURFINE ASSORTED Soda Pop**  
2 liter btl. **59¢**

## FROZEN & DAIRY

**ASSORTED Jack's Pizza**  
16.55-20.26 oz. For **2 \$4**

**BLUE BUNNY VANILLA OR COMBO Champ! Cones**  
6 ct. pkg. For **2 \$5**

**FAT FREE FANTASIES ASSORTED TCBY Yogurt**  
5 oz. ctn. For **5 \$2**

**KRAFT GENERAL FOODS REGULAR, LIGHT, FAT FREE, OR EXTRA CREAMY Cool Whip**  
8 oz. tub **99¢**

**BUTTERBALL ASSORTED Requests**  
14 oz. pkg. **3 99**

**BLUE BUNNY ASSORTED Ice Cream**  
1/2 gal. For **2 \$4**

**INDIVIDUALLY WRAPPED BORDEN American Cheese Slices**  
16 oz. 24 ct. **2 99**

**KRAFT ASSORTED Chunk Cheese**  
8 oz. pkg. **1 59**

**AMERICAN BEAUTY WIDE, MEDIUM, OR EXTRA WIDE Egg Noodles**  
8 oz. pkg. **69¢**

**REDUCED FAT, REGULAR, STRIPED, SPRINKLED, CHERRY, OR CHUNKY Chips Ahoy! Cookies**  
14.5-18 oz. **2 28**

**REGULAR WSUGAR OR LEMONADE Nestea Iced Tea Mix**  
26.5 oz. can **2 \$5**

**REGULAR, LOW SODIUM, PICANTE, OR SPICY HOT V8 100% Vegetable Juice**  
8 packs 8.5-8 oz. **1 99**

## HEALTH & BEAUTY

**Vick's Formula**  
YOUR CHOICE **2 79**

**TYLENOL Extended Relief**  
EXTRA STRENGTH  
EXTENDED RELIEF CAPLETS, OR CAPLETS/GELCAPS/GELTAB  
Tylenol Extra Strength **2 29**

**KID'S LIGHT/NORMAL OR ASSORTED Pert Plus Shampoo**  
15 oz. btl. **2 88**

**Now On Sale!**  
**\$2 99**

**WESTERN UNION TRANSFER™**  
"The fastest way to send money"

# Lowe's MARKETPLACE

515 W. American Blvd.  
401 W. American Blvd.  
Muleshoe 272-4585  
PRICES EFFECTIVE NOV. 6-12, 1996

**Pay-n-Save**  
515 W. American Blvd.  
Muleshoe 272-4406

WE RESERVE THE RIGHT TO LIMIT QUANTITIES IN TEXAS

OPEN MONDAY-SATURDAY 7:30 A.M. - 8:00 P.M., SUNDAY 8:00 A.M. - 7:00 P.M.



**Snaring the load**

MHS Mighty 'M' band members Joseph Anguiano (left) and Andy Norris play snare drums while dressed as the grim reaper during Friday night's halftime performance at Benny Douglass Stadium.

**ENOCHS NEWS**

By Mrs. J.D. Bayless

This past week Mr. and Mrs. Bobby Adams visited her sister and husband Mr. and Mrs. Bill key.

Last Sunday the Baptist Church observed World Hunger day. They had lunch in the Fellowship Hall of the Church. Served at this lunch was: red beans, corn bread, salad, onions, pickles, jello, banana pudding, and apple & peach cobblers. The beverages served were tea and lemonade. They also took an offering for World Hunger.

Mr. and Mrs. Goldman Stroud had guests in their home. Their guests consisted of her son Mr. & Mrs. Arvin

Stroud of Brownwood Lake her sister Georgia and Morice Todd of Hilton, OK. They came to attend the services of Ernest Truell.

Mrs. Ellen Bayless was in Muleshoe on business Tuesday and decided to visit with Olive Cox in the home of her sister-in-law Mrs. Clara Coffman.

The cold front and the cloudy misty days that came through slowed down the process of the cotton and grain harvest. The farmers were excited to see the sun shining thru.

Harvey and Bonnie Blackstone visited their son

Mr. and Mrs. Thomas Blackstone in Littlefield last Sunday afternoon. They also attended Church with their family Sunday night.

Visiting Mr. & Mrs. Bud Huff Monday was their son Chester Huff from Lamesa. On Tuesday their other son Steven Huff of Lubbock also visited with his parents.

Mrs. Treva Autry of Pep, N.M. was admitted to the Littlefield Hospital Thursday. Mr. George Autry visited his sister Myrna Turney that Friday.

Mr. and Mrs. Goldman Stroud was in Lubbock Saturday and visited their daughter, Bonnie Beieu.

**Gov. Bush urges parents to get involved**

AUSTIN—Gov. George W. Bush has declared Nov. 12 as Parent Involvement Day in the State of Texas.

All Texas parents, grandparents and other family members are being encouraged to visit their child's school that day and to become actively involved in the education process.

"The primary purpose of this statewide event is to remind parents, educators and community partners of the important roles they play in the education of children," said Mike Moses, Texas commissioner of education.

Begun in 1994 as a local program of the Greater Houston Partnership's Business Promise Council, Parent Involvement Day grew this year into a statewide program as a result of a grassroots effort by parents and community and business volunteers to increase the awareness of

the importance of parental involvement in education.

As part of the initiative to get more parents involved in education, Moses created the Parent Involvement and Community Empowerment Unit at the Texas Education Agency. The unit is responsible for providing resources to education service centers, districts, parents and communities to increase parental involvement in the public schools in order to improve student achievement. Parental involvement activities are required by the federal Improving America's Schools Act.

The TEA unit, headed by Albert Black, has been instrumental in developing the state's first-ever conference on parental involvements in education, which will be held in Austin Nov. 15-16.

**SPS**

Continued from page 1

pected ongoing increase in prices of natural gas.

"The actual increase in individual customer's bills will vary, depending on the individual customer's use of electricity," Diller said. "All of our Texas retail customer classes, including industrial and commercial classes, would see similar increases in monthly bills."

The trend in prices for natural gas has been "significantly upward during the past year, and is expected to continue upward," Diller said. "We negotiate the lowest fuel costs we can, in order to keep electric energy competitive and reliable. But we cannot totally control the costs to us of the fuels we must use to generate power and energy. Thus, this increase."

Diller emphasized, "Despite fuel-cost changes, we are determined to keep our rates low."

twenty percent in the past eleven years. SPS rates are twenty percent below the national average."

And we have been successful. We have dropped our prices

Southwestern Public Service Company is a regional electric utility providing service to a population of about one million in a 52,000-square-mile area covering parts Texas, New Mexico, Colorado and Kansas.



**RED WING SHOES**  
Made in U.S.A.

**The Fair Store**  
120 Main 272-3500

**Garth Sheetmetal**

1024 W. 2nd Street  
Muleshoe, TX 79347

RANDY MORRIS is now working with our company. He can be reached at 272-3337 for winterizing evaporated air-conditioners, installing metal roofs and general sheetmetal work. Call us for your small repair jobs.

Jeanne Garth

**Horse Salve Eases Arthritis Pain**

LOUISVILLE, KY -- An ingredient derived from hot peppers that decreases inflammation in racehorse's legs, has now been approved by government researchers for human use. The ingredient has been formulated into a product called ARTH-Rx. ARTH-Rx comes in a strength designed for humans. Researchers are excited and say the formula can relieve arthritis pain for millions.

Developed by the Phillips Gulf Corporation, ARTH-Rx is a breakthrough in the treatment of painful disorders ranging from minor aches and pains to more serious conditions such as arthritis, bursitis, rheumatism, tendonitis, backache and more. Although the mechanism by which ARTH-Rx works to relieve pain is not totally clear, scientists suggest that pain is relieved because ARTH-Rx intercepts the messenger substance that sends pain signals to the brain.

ARTH-Rx is available in a convenient roll-on applicator without a prescription. According to a spokesperson for the company, due to the overwhelming demand for ARTH-Rx, supplies are sometimes limited. ARTH-Rx can also be ordered by calling 1-800-729-8446. © 1996 PGC

ARTH-Rx is available locally at:  
DAMRON DRUG STORE  
308 Main Street Muleshoe 272-4210

Please join us to honor our beloved  
**Katie Roubinek**  
on the occasion of her  
**Ninetieth Birthday**  
Sunday, the tenth day of November  
nineteen hundred ninety-six  
1:30 until 3:00 p.m.  
First United Methodist Church  
Fellowship Hall  
507 West 2nd Street  
Muleshoe, Texas  
Your presence, the only gift please

**Think Quick!**

GM Goodwrench Quick Lube Plus oil change.  
It's fast — or it's free!

Bring your car or light truck to us for a GM Goodwrench Quick Lube Plus oil change. We'll complete all of these services in 29 minutes or less or your next oil change is free:

- Refill your engine with up to 5 quarts of GM Goodwrench® Motor Oil
- Install a new ACDelco Oil Filter
- Perform a complete chassis lube
- Check fluid levels: brake fluid, differential fluid, power steering fluid, transmission fluid, windshield washer fluid, transfer case fluid (4wd vehicles)
- Inspect: drive belts, hoses, air filter, tire pressure

**SPECIAL \$17.00**

**GM Goodwrench QUICK LUBE plus**

**DOC STEWART**  
CHEVROLET • GEO • BUICK

2500 Mabry Drive  
Clovis, NM  
505-763-4465  
1-800-530-8842

**MR. COTTON PRODUCER**

Don't take a chance!  
Trust your cotton seed with  
the most experienced  
and qualified delinter,  
Levelland Delinting.



124 Years Combined Experience!



Call Levelland Delinting or your local gin to have your cotton seed delinted and we will reward you with a beautifully loomed 100% cotton "Cotton Country" Afghan! The 51" x 69" Cotton Country afghan illustrates the 7 primary steps in growing cotton.

For 22 years, Levelland Delinting has been providing:

- Quality Delinting - Both Standard and Custom
- Prompt Service and Competitive Prices
- Complete Tests on All Seed
- Free Pickup, Delivery and Storage
- Ask About Our Bulk System
- Complete Fumigation Program
- All Seed Treated With Captan & Lorsban at no charge
- All Warehouses And Seed Fully Insured

**Levelland Delinting, Inc. and All-Tex Seeds, Inc.**  
806-894-4901 • 1-800-7ALLTEX (725-5839)  
Box 1057 Levelland, Texas 79336



# Journal Classifieds

Call 272-4536

Deadlines: For Thursday, 5 p.m. Monday; for Sunday, 5 p.m. Thursday

Call 272-4536

**Get Results With Classifieds - They Work!**  
272-4536

I am not young enough to know everything.

**D&L Upholstery**  
Farm Equipment  
Auto - head liner  
Residential Commercial  
Marine  
Free Estimates  
Non-Smoking Environment

**DeAnna & Larry Rasco**  
Mulshoe, TX 79347  
(806)272-5268  
44t-4t thurs Pd

**Business Opportunity**

**PERSON WANTED** to own and operate retail candy shop in Mulshoe area. Low investment. For information call Mrs. Burden's Gourmet Candy Company, Dallas, TX (972) 991-8239  
44s-4tpd

**Real Estate**

**For Sale By Owner:** 3 bdrm, 1 3/4 bath, single garage in Richland Hills addition of Mulshoe. For more information call 806-965-2477.  
40t-tfc

**House For Sale in Sudan.** 2000 Sq. Ft., 3 Lg. Bdrm, 2 bath, 2 living areas, double garage, Call 915-572-3690.  
45s-8tc

**Garage Sale**

**Mulshoe United Methodist Youth**  
All Church Garage Sale  
Sat., Nov. 9  
8:30 a.m. - ???  
Old Wiedebush Building  
45t-1tpd

**Help Wanted**

**Route driver needed for Mulshoe area.** Top wages with house and utilities provided. Class B CDL license, Drug screen and good driving record needed. Call your Local Used Cow Dealer  
1-800-535-1388, ask for Rick.

**Automobile**

**For sale:** '93 Ford XLT Supercab 4x4 pickup. Very clean. \$9,500 OBO. 272-3102 or 925-6766.  
31s-tfc

'94 Chevy Suburban, 4x4, loaded, power seats, front and rear air conditioning and heat, 47,000 miles, \$25,300. (505) 359-1775, Portales, NM.

'94 Lincoln Continental, 4 door, program car, sunroof, factory warranty, white, 25,000 miles, \$19,995. (505) 359-0947, Portales, NM.

'94 Mercury Cougar, XR7, local owner, \$13,995. (505) 359-1775, Portales, NM.

'94 Chrysler LHS, 4 door, factory warranty, sunroof, loaded, \$17,995. (505) 359-0947, Portales, NM.

'93 Pontiac Grand Prix, 4 door, loaded, maroon, \$11,500. (505) 359-1775, Portales, NM.

**HAY FOR SALE**  
German millet hay, haygrazer and large round bales.  
Delivery available discounts on quantity.  
Call (505) 276-7522, 477-2220, 359-0947, 276-7527  
41t-tfc

**Accounting Personnel** needed. Experience required, computer background required. Send Resume to P.O. Box 132, Mulshoe, Texas 79347  
44s-4tc

**\$1000's guaranteed** stuffing envelopes from home. \$50 sign on bonus. Weekly checks. Call refundable, (972) 888-8863.  
44t-4tpd

**Wildlife/Conservation Jobs**  
Game wardens, security, maintenance, etc. No experience necessary. Now Hiring. For info call (219) 794-0010, ext. 9689.  
8 a.m. to 10 p.m., 7 days.  
45s-2tpd

**For Sale**

**Singer**  
1996 New unsold Heavy Duty School Models. Sews silk, canvas, leather, knits & Jeans. Sews straight, zigzag, buttonholes, monograms, serge seam finish. 10 year Factory warranty, \$198 w/ad; \$498 w/out. Free UPS statewide.

**Singer Sewing Center**  
5418 Slide Rd.  
Lubbock  
806-788-0608

**For Sale:** Handcrafted flint knives. Call 272-5915.  
44t-nc

**Nieman Realty**  
George Nieman, Broker 272-5285 or 272-5286

**RICHLAND HILLS**  
JUST LISTED-IMMACULATE 3-2-2 Brick Home, Geo. Heat Pump, Built-ins, FP, Nice landscaped yd., Stor. Bldg., MORE!!! \$70's!!! RH3

NICE 3-3-1 Brick, cent. Heat, Evap. Air, built-ins, 2000' + lv. area, fenced yd., stor. bldg., MORE!! \$60's!!! RH-2

NICE 3-2-2 Brick, cent. A&H, built-ins, FP, approx. 2150' lv. area, fenced yd., MORE!!! \$69K!!! RH-7

VERY NICE 3-2-1 Brick, Cent. A&H, built-ins, fans, new paint, carpet, & drapes, fenced yd. \$60K!!! RH-1

**HIGHLAND AREA**  
2 Bdrm, 1 bath home, fenced yard. \$16,500!!! HL-4

VERY NICE 3-2-2 Brick, Cent. A&H, built-ins, fenced yd., spklr. sys., MUCH MORE!!! \$60's!!! HL-1

VERY NICE 3-2-1 carport Home, heat pump, built-ins, nice carpet, fans, storage-workshop! MUCH MORE!!! \$40's!!! HL-6

NICE 3-2 Home, Heat Pump, FP, fenced yd., stor. bldg. \$30's!!! HL-3

NICELY REMODELED 3-2-1 Brick, Cent. A&H, built-ins, FP, nice carpet & tile, fenced yard, storage building, MORE!!! \$60's!!! HS-8

**COUNTRY CLUB**  
2-1-1 Carport Home, wall furnace heat, nice carpet, storm shelter, stor. bldg., fenced yd. \$20's!!!

**RURAL HOMES**  
NICE 3-2-2+2 Carport Brick Home on 2.5 acres on pavement, close to town, Heat Pump, built-ins, FP, MUCH MORE. \$70K!!! HR-3

JUST LISTED -3-2-2 Home 1.36 ac. on pavement, Cent. A&H, built-ins, freshly painted interior & exterior, fans, fenced yd., 31' x 40' barn!!! \$40's!!! HR-2

**LENAU ADDITION**  
NICE 3-2-1 Brick, Heat Pump, built-ins, fans, fenced yd., stor. bldg. \$30's!!! L-4

NICE 2-2-2 Brick, on corner lot, heat pump, fenced yard, storage bldg., MORE! \$40's!!! L-1

PRICE REDUCED 3-2-1 carport Home, geothermal heat pump, fenced yd., storage bldg. \$24,500!!! L-3

NICELY REMODELED 3-1 1/2 - 1 + 2 Carport home, Cent. A&H, DW., fenced yd., Stor.-wkshp., MORE!!! \$30's!!! L-2

**HIGH SCHOOL**  
VERY NICE 3-1-1 Brick, Heat Pump, nice carpet, fenced yd., stor. bldg. \$30's!!! HS-3

NICE 2-1-1 Brick, Heat Pump, nice carpets, well insulated, storm windows & doors. \$30's!!! HS6

JUST LISTED -2-1-1 Home, floor & wall furnace, evap. air; siding exterior, stor. bldg., fenced yard!!! \$20's!!! HS-7

JUST LISTED-NICE 2-1-1 Home, nice carpets, stove, refrig., wall furnace, covered deck, fenced yd., stor. bldg., MORE!!! \$20's!!! HS-4

**PARKRIDGE**  
NICE 3-2-2- Brick, Cent. A&H, built-ins, FP, cov. patio, fenced yd. \$50's!!!

**ASK ABOUT OUR COMMERCIAL LISTINGS!!!**  
160 acre tract, 8" well, circle spklr. w/drops, fully allotted!!!

PARMER - BAILEY CO. Area-Elevator & Cleaning Facility - 12 million lb. Capacity, Scales, Dryer, & Office on approx. 6.5 acres!!! PRICED TO SELL!!! POSSIBLE OWNER FINANCING!!!

## We've Got The Power!

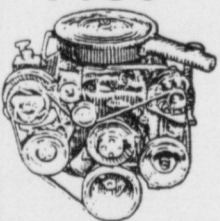
As your GM Parts supplier, we're your source for GM Goodwrench® new and remanufactured engines and new transmissions.

They're available in sizes for GM cars and light trucks, covered by limited warranties (see us for details) — and offered to you at competitive prices.

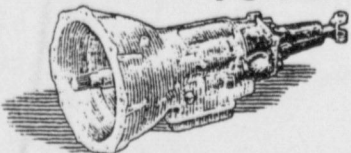
Powerful reasons, indeed, to see us for all your GM powertrain needs:

- New GM Goodwrench Engines with a 36-Month/50,000-Mile Transferable Limited Warranty
- Remanufactured GM Goodwrench Engines with a 36-Month/50,000-Mile Transferable Limited Warranty

**ENGINES FROM \$1130<sup>00</sup>**



**TRANSMISSIONS FROM \$1015<sup>00</sup>**



- New GM Goodwrench Transmissions with a 36-Month/50,000-Mile Transferable Limited Warranty

To Order Call: 1-800-530-8842 or 505-763-4465 Fax: 505-762-4270

**DOC STEWART**  
CHEVROLET • GEO • BUICK

2500 Mabry Drive - Clovis, NM  
505-763-4465 1-800-530-8842



We want your business.

**FREE DELIVERY**  
on all orders placed by 11/30/96

**Cooling System Service \$25<sup>00</sup>**

We will drain and renew coolant - up to 1 gallon coolant. Inspect belts, hoses and pressure test system.

## We Promise You: The Best Deal Anywhere!

<p><b>97 Ford F-150 SuperCab XLT</b></p> <p>• 4x2 • tilt • air • cassette • 3rd door • power windows • power door locks • cruise control • fuel injected motor</p> <p><b>\$239<sup>9</sup> per mo.</b></p>	<p><b>97 Ford F-150 SuperCab XL 4x4</b></p> <p>• tilt • air • cassette • 3rd door • cruise control • fuel injected motor</p> <p><b>\$299<sup>9</sup> per mo.</b></p>
<p><b>NEW 97 ESCORT</b></p> <p>• Air • PS • Rear Wiper • Rear Window Defrost • AM/FM Cassette • Automatic • Remote Keyless Entry. #47255</p> <p><b>\$229<sup>9</sup> Down</b></p>	<p><b>NEW 97 CONTOUR</b></p> <p>20 To Choose From Starting At</p> <p>• Air • Cruise • Tilt • Power Door Locks • Power Heated Mirrors • And Much More #67239</p> <p><b>\$249<sup>9</sup> Down</b></p>
<p><b>\$229<sup>9</sup> Month</b></p>	<p><b>\$249<sup>9</sup> Month</b></p>

## Low, Low Monthly Payments!

95 Mitsubishi Galant #11504 Was \$14,995 Now \$13,995 <b>\$238<sup>9</sup> per mo.</b>	96 Ford Aspire #11504 Was \$9,650 Now \$8,450 <b>\$127<sup>9</sup> per mo.</b>	95 Mazda B2300 #201502 Was \$12,995 Now \$11,495 <b>\$187<sup>9</sup> per mo.</b>	92 Chevy Lumina #12311 Was \$9,995 Now \$8,495 <b>\$164<sup>9</sup> per mo.</b>	96 Ford Taurus #1500 Was \$17,995 Now \$15,995 <b>\$275<sup>9</sup> per mo.</b>
96 Thunderbird #1114 Was \$17,995 Now \$16,995 <b>\$295<sup>9</sup> per mo.</b>	93 Ford Ranger Splash #112102 Was \$9,995 Now \$8,795 <b>\$142<sup>9</sup> per mo.</b>	91 Ford F-250 #112102 Was \$9,995 Now \$8,495 <b>\$163<sup>9</sup> per mo.</b>	94 Pontiac Bonneville #9936302 Was \$16,995 Now \$15,495 <b>\$265<sup>9</sup> per mo.</b>	96 Mitsubishi Mirage #1485 Was \$8,495 Now \$6,995 <b>\$105<sup>9</sup> per mo.</b>
91 Pontiac Grand Am #12391 Was \$8,995 Now \$7,495 <b>\$139<sup>9</sup> per mo.</b>	93 Ford Mustang #118102 Was \$11,995 Now \$10,495 <b>\$135<sup>9</sup> per mo.</b>	94 Ford Ranger SuperCab #1377 Was \$14,995 Now \$13,495 <b>\$226<sup>9</sup> per mo.</b>	93 Chevy Beretta #127351 Was \$10,995 Now \$9,495 <b>\$157<sup>9</sup> per mo.</b>	96 Pontiac Grand Am #1302 Was \$16,995 Now \$15,195 <b>\$260<sup>9</sup> per mo.</b>
93 Thunderbird #160591 Was \$12,995 Now \$11,495 <b>\$199<sup>9</sup> per mo.</b>	95 Toyota Corolla #17464 Was \$13,995 Now \$11,995 <b>\$197<sup>9</sup> per mo.</b>	91 Ford Club Wagon #113801 Was \$12,995 Now \$11,495 <b>\$240<sup>9</sup> per mo.</b>	91 Pontiac Grand Am #672391 Was \$8,995 Now \$7,495 <b>\$139<sup>9</sup> per mo.</b>	96 Ford Contour #1498 Was \$14,995 Now \$12,995 <b>\$216<sup>9</sup> per mo.</b>
95 Ford Windstar #1295 Was \$17,995 Now \$16,495 <b>\$285<sup>9</sup> per mo.</b>	94 GMC Sonoma #12331 Was \$12,195 Now \$10,695 <b>\$211<sup>9</sup> per mo.</b>	95 Chevy Monte Carlo #11222 Was \$15,995 Now \$14,495 <b>\$246<sup>9</sup> per mo.</b>	94 Ford Taurus #1476 Was \$9,995 Now \$8,495 <b>\$128<sup>9</sup> per mo.</b>	95 Ford Contour #1497 Was \$12,995 Now \$11,995 <b>\$197<sup>9</sup> per mo.</b>

**HAMILTON**  
**FORD** big country  
2400 Mabry Dr  
762-4427



"Where You Can Pocket Our Change!!"

Advertise In The Mulshoe Journal Classifieds!

New Trucks: 10% down, 24 month CapLease 12,000 miles per year, 15¢ each additional mile, new dealer for 60 days. New cars: 20% down, 36 month CapLease 12,000 miles per year, 15¢ each additional mile, new dealer for 60 days. \*MSRP. \*\*MSRP. \*\*\*MSRP. All payments subject to credit review. Dealer sets actual price. Excludes taxes, title, license, and other available or regionally required equipment. Dealer sets actual price. ©1996 Ford Motor Company. All rights reserved.

# Kiwanis elect Bennett president

At a recent meeting the Muleshoe Kiwanis elected R.G. Bennett III as president for the 1996-97 year. Clay Kidd was elected vice president with Sonny Bennett, secretary, Jim Lutz, Treasurer and Hugh Young as reporter.

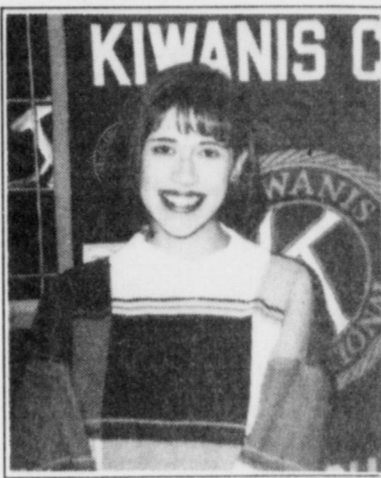
Kristi Bennett was voted at the Club Sweetheart for the coming year.

Eddy Morris and Chuck Smith were appointed to the Kiwanis board.

The Muleshoe Kiwanis club approved the projects for the

coming year. They included: the flag project and the Muleshoe putt putt. They also approved contributions to the Boys Scouts, the Girl Scouts, the Heritage Foundation, Meals on Wheels, Bailey County 4-H and the Livestock Show. Scholarships for the Youth, Little League, Volunteer Fire Dept. and the Bailey County EMS were also approved.

The Muleshoe Kiwanis Club looks forward to helping the youth and the elderly.



Kristi Bennett  
Kiwanis Club Sweetheart

## Photo ID cards available through Department of Public Safety

Many airlines now require ticket holders to present government-issued photo identification cards prior to boarding planes, and the Department of Public Safety's photo identification card can meet that requirement.

An applicant for a card must present a birth certificate, passport, or military identification

card and pay a \$10 fee. The card is valid for four years. Parents applying for cards for their children must bring one of the required documents for each child.

Security features on the identification cards are the same ones used to prevent forgeries of the driver licenses.

## Congratulations On First Division In UIL Marching Contest!



Good Luck In Concert and Sight Reading in the Spring!

Delton E. Wilhite & Associates

1631 W. American Blvd.

272-3652

## MULESHOE HERITAGE FOUNDATION

The Muleshoe Heritage Foundation board met Monday, Oct. 14, at 7:30 p.m. for its regular meeting.

Members first inspected the old Muleshoe cook house now under repairs. It was reported that work on the cook house should be completed soon. At the board meeting, some of the business discussed was upgrading the insurance at the Heritage Center, securing a security system, and getting other buildings for the Center, namely an outhouse and a Pullman railroad car. Members

decided that Christmas lights need to be in place by the first week of December.

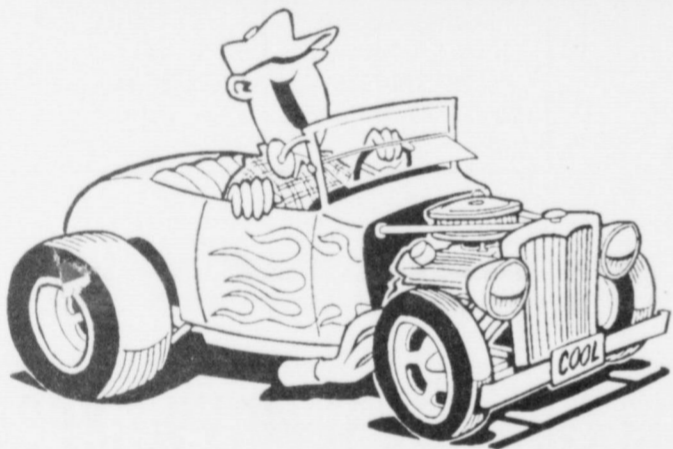
President, Robert Shafer appointed Kristy Price and Gordon Green to meet with Mule Plex representatives to decide on usage of the Center during the production of "Keepers of the Legend." A contract will be drawn up between the two entities. Kim Shafer was also appointed chairman of a committee to work out guidelines for usage of the Muleshoe Depot. Vivian White and Jean Allison volun-

teered to work on cataloguing articles at the Center.

Board members present were President Robert Shafer, Kim Shafer, Larry Nickels, Gordon Green, Chuck Smith, Terry Sowder, Charles Flowers, Kristy Price, Vivian White and Jean Allison.

Local News  
About Local  
Folks  
THE MULESHOE  
JOURNAL

## Drive A Little Farther and Save With These Portales Merchants!



Portales offers you the best in friendly service, fine dining and quality merchandise.

"THE WORKING MAN'S STORE"  
**Oscar's Western Wear & Shoe Repair**  
224 W. 2nd PORTALES 356-5272  
Men's, Ladies' and Children's Vests  
Very Reasonably Priced!!  
Pig Skin Chippewa Work Boots  
(These can be 1/2 soled)  
**New Fall Arrivals!** OPEN 8:00-5:00  
Bailey, Eddy & MONDAY-SATURDAY  
American Felt Hats Visa, Mastercard & Discover Accepted

**LaFrontera**  
113 W. 2nd Portales, NM  
505-356-2680  
Specializing in Name Brand Clothing  
— Without The High Cost  
Nike - Tommy Hilfiger - Guess - Polo - Fila  
- NFL Team Logos  
**COUPON — COUPON**  
T-Shirts \$2/\$8.99 \$5.00 OFF  
Caps \$5.99 & UP \$25 regular priced purchase or more  
**COUPON — COUPON**  
• Jackets  
• Beanies  
• Belts  
• Casual Apparel  
• Jewelry  
• Fashionable Clothing  
CLOSED SUNDAY & MONDAY  
OPEN Tuesday & Wednesday 12:30-5:30, Thursday 1:00-5:30, Friday 10:30-5:30 & Saturday 10:30-5:00

Holidays are coming soon!  
Celebrate them with a Gift Certificate!  
**Cattle Baron**  
Steak & Seafood Restaurant  
1600 S. Ave. D, Portales, NM  
82nd & Quaker, Lubbock  
• Roswell • Ruidoso • Hobbs  
• Las Cruces • El Paso

Largest Inventory Of Previously Owned Cars In Eastern NM  
1994 CHEVY ASTRO EXTENDED MINI VAN LT — Dual air and heat, loaded, brown and tan \$11,995.00  
1989 GMC EXTENDED CAB — 1/2 ton, V6, 5 speed, white \$7,995.00  
1982 FORD BRONCO 4X4 — Excellent condition \$5,295.00  
1994 CHEVY SUBURBAN 4X4 — Loaded, beautiful black \$25,300.00  
1992 FORD EXPLORER — 4 door, extra clean, silver and blue \$13,100.00  
**Trader Horn Motor Co.**  
620 S. Ave. C, Portales, NM 359-0947

Entire Stock Of Nunn Bush Men's Dress Shoes  
Values up to \$65.00 \$49.00  
See Our New Shipment of Men's & Ladies' Holiday Slippers  
**Etc. Shoe Store** The Shoe Place... in Portales  
905 W. 18th Portales, NM 356-4255

SPRING AIR®  
**"BEST BUY"**  
4-SEASONS DUCHESS  
Spring Air® 4 Seasons Mattress Sets  
\$499 FULL  
\$699 QUEEN  
\$899 KING  
**Calton Furniture**  
507 East 2nd Portales, NM 359-1442  
Financing Available - VISA-MASTERCARD ACCEPTED  
FREE Delivery - FREE Set-Up - FREE Disposal of Old Bedding

All Ladies' Jeans  
ONLY \$29.95  
**FLAINS FARM & RANCH SUPPLY**  
301 W. 18th Portales, NM  
(505) 356-6111

FREE CHAIR TABLE WITH RECLINER PURCHASE!  
**Recliners**  
"Big Goliath" - \$499  
Recliners in stock for big and tall customers  
OTHERS STARTING AT \$299.99  
**Factory Direct Furniture**  
300 S. Ave. C - Portales, NM • 356-4814  
DELIVERY AVAILABLE  
OPEN 9:00 TO 6:00 MONDAY THRU SATURDAY  
True Value Card accepted