

BRISCOE COUNTY NEWS

PUBLISHED EVERY THURSDAY AT SILVERTON, TEXAS 79257
SECOND CLASS POSTAGE PAID AT SILVERTON, TEXAS 79257

CHARLES R. SARCHET PUBLISHER
MARY ANN SARCHET EDITOR
SUBSCRIPTION RATE PER YEAR (Tax Included) \$3.50
Display Advertising Rates Available on Request
Classified and Legal Rates, Each Insertion 3c per word
(50c Minimum Charge)

MEMBER OF TEXAS PRESS ASSOCIATION AND PANHANDLE PRESS ASSOCIATION

Farm Leader Says:

Major Budget Cuts Are Imposed On Least Inflationary Segment Of Economy

A farm organization leader has charged that the Nixon Administration is unfairly imposing major budget cuts on the least inflationary segment of the economy. Texas Farmers Union president Jay Naman of Waco has appealed to President Nixon to rescind budget cutting decisions relating to farm program payments, the Rural Environmental Assistance Program, emergency disaster loans, and interest rates on rural electrification.

The farm organization leader said, "Although agriculture is obviously the least inflationary segment of the economy, it is apparent that the President has decreed that agriculture and rural people must bear the major share of

budget reductions. In so doing, the President has undermined programs that are essential for environmental preservation, necessary to keep farm families on the farm, and vital to low-cost rural electrification," Naman said.

"In three weeks, President Nixon has eliminated 1.3 billion dollars in farm program benefits, cancelled popular and time-proven, cost-sharing programs to conserve soil and water resources, removed the opportunity of farmers suffering weather disasters to make a comeback, and more than doubled the interest rate on the rural electric cooperatives," Naman said.

Naman said that the constitutional separation of power between the branches of government is at stake. He pointed out that Congress provided farm programs and the others because these programs are in the public interest and the President signed the legislation. "When a president wipes out 30 years of beneficial farm programs and programs to benefit the rural areas with a

Helps Shrink Swelling Of Hemorrhoidal Tissues

caused by inflammation

Doctors have found a medication that in many cases gives prompt, temporary relief from pain and burning itch in hemorrhoidal tissues. Then it actually helps shrink swelling of these tissues caused by inflammation. The answer is Preparation H[®]. No prescription is needed for Preparation H Ointment or suppositories.

Show Winners --

CONTINUED FROM PAGE ONE

BERKSHIRE, YORKSHIRE BARROWS

1. Kim Cornett (Yorkshire), Briscoe 4-H
2. Mike Cornett (Yorkshire), Briscoe 4-H
3. Bobby McPherson (Yorkshire), Briscoe 4-H
4. Bryan Burson (Yorkshire), Briscoe 4-H
5. Shelly Harris (Yorkshire), Briscoe 4-H
6. Shelly Harris (Berkshire), Briscoe 4-H

CROSSBRED BARROWS

1. Brent Bean, Briscoe 4-H
2. Kim Cornett, Briscoe 4-H

sweep of the pen, there is a strong question of whether or not the Executive Branch has usurped the constitutional powers of the legislative branch. It is time for Congress to question the President's arbitrary actions, and exercise the responsibilities that are accorded Congress by the Constitution," Naman said.

The farm organization leader stated that several Farmers Union sponsored "Fly-ins" to Washington in January and February have been planned to take hundreds of farmers from across the nation to the Capitol to discuss the problems of agriculture and the rural area with members of Congress, and to urge the support of Congress for the preservation of all federal programs needed to protect the family farm system of agriculture.

"The farmer fly in to Washington, D. C. is a necessary and productive program," said Beryl Long of Silverton. "It is a means of conveying our needs to the Congress and assisting in saving the farm programs, that are now being discontinued by the Nixon Administration. The cuts that have already been made are only the beginning of more to come.

"Anyone interested in going to Washington is asked to contact me for details," Log said. "It is vital that we make an effort to counteract the farm policies of Mr. Nixon—if we don't, the family farm and small towns may simply cease to exist. Think about it!"

3. Mike Cornett, Briscoe 4-H
4. Mark Patton, Briscoe 4-H
5. Roger Cantwell, Briscoe 4-H
6. Lydia Younger, Briscoe 4-H
7. James Alan Patton, Briscoe 4-H
8. Dave Francis, Briscoe 4-H
9. Lisa Younger, Briscoe 4-H
10. Brent Brannon, Briscoe 4-H
11. Kelly Comer, Briscoe 4-H

LIGHTWEIGHT BARROWS ALL BREEDS

1. Ken Wood (Chester), Silverton FFA
2. Derrel Martin (Chester), Silverton FFA
3. John Burson (Hampshire), Silverton FFA
4. Derrel Martin (Duroc), Silverton FFA
5. John Burson (Chester), Silverton FFA
6. Kathryn Bomar (Chester), Briscoe 4-H
7. Paul Brannon (Cross), Briscoe 4-H
8. Roger Cantwell (Hamp.), Briscoe 4-H
9. Shelly Harris (Berk.), Briscoe 4-H
10. Bryan Burson (Chester), Briscoe 4-H

LIGHTWEIGHT FINEWOL LAMBS

1. Ken Sarchet, Briscoe 4-H
2. Michael Hill, Briscoe 4-H
3. Annette Fleming, Briscoe 4-H
4. Kirk Durham, Briscoe 4-H
5. Shelly Harris, Briscoe 4-H
6. Kirk Durham, Briscoe 4-H
7. Earl Jarrett, Briscoe 4-H
8. Susan Payne, Briscoe 4-H
9. Shelly Harris, Briscoe 4-H
10. Tommy Perkins, Briscoe 4-H
11. Danny Perkins, Briscoe 4-H

HEAVYWEIGHT FINEWOL LAMBS

1. Kim Cornett, Briscoe 4-H
2. Mike Cornett, Briscoe 4-H
3. Ken Sarchet, Silverton FFA
4. Scotti Fleming, Briscoe 4-H
5. Greg Hill, Briscoe 4-H
6. Brenda Payne, Briscoe 4-H
7. James Jarrett, Briscoe 4-H
8. Rose Lee Perkins, Briscoe 4-H
9. Rose Lee Perkins, Briscoe 4-H
10. Walter Perkins, Briscoe 4-H
11. Danny Perkins, Briscoe 4-H
12. Tommy Perkins, Briscoe 4-H
13. Walter Perkins, Briscoe 4-H

MEDIUM WOOL LAMBS

1. Mike Cornett, Briscoe 4-H
2. Kim Cornett, Briscoe 4-H
3. Mike Cornett, Briscoe 4-H
4. Kim Cornett, Briscoe 4-H
5. Danny Perkins, Briscoe 4-H

CROSSBRED LAMBS

1. Karen Martin, Briscoe 4-H
2. Michael Hill, Briscoe 4-H

3. Karen Martin, Briscoe 4-H
4. Brenda Payne, Briscoe 4-H
5. Michael Hill, Briscoe 4-H
6. Greg Hill, Briscoe 4-H
7. Danny Perkins, Briscoe 4-H
8. Susan Payne, Briscoe 4-H
9. Rose Lee Perkins, Briscoe 4-H
10. Walter Perkins, Briscoe 4-H
11. Danny Perkins, Briscoe 4-H
12. Tommy Perkins, Briscoe 4-H
13. Walter Perkins, Briscoe 4-H

LIGHTWEIGHT STEERS

1. Cynthia Edwards, Briscoe 4-H
2. Cynthia Edwards, Briscoe 4-H
3. Sally Northcutt, Briscoe 4-H
4. Lisa Francis, Briscoe 4-H
5. Debbie Boling, Briscoe 4-H
6. Zane Mayfield, Silverton FFA
7. Ty McMurtry, Silverton FFA

HEAVYWEIGHT STEERS

1. Susan Northcutt, Briscoe 4-H
2. Brandon Jarrett, Briscoe 4-H
3. Jim Gates, Briscoe 4-H
4. Brent Brannon, Briscoe 4-H
5. Zane Reagan, Briscoe 4-H
6. Cam Forbes, Briscoe 4-H

How to get your refrigerator to cook things.



Stir the right things into Jell-O[®] Brand Gelatin and your refrigerator will fix crunchy salads, interesting fruits and new side dishes. For over 250 exciting ideas, send 25¢ (in coin) with your name, address and zip code to: Jovs of Jell-O, Box 8074, Kankakee, Illinois, 60901.

Jell-O is a registered trademark of the General Foods Corporation.

NEW HOMELITE XL2 CHAIN SAW

only saw with **TWIN TRIGGER DUAL CONTROL SYSTEM**



MAKES CUTTING TWICE-AS-EASY
\$119.95
ONLY with 12" bar & chain

*7 lbs. less bar & chain
TM—Trademark of Homelite. Look for your local Homelite dealer in the yellow pages.

CARL'S 66 SERVICE

CARL WAYNE WOODS INVITES EVERYONE TO COME BY THE PHILLIPS "66" STATION FOR SERVICE AND GOOD PHILLIPS PRODUCTS.

OPEN 7 A.M. - 7 P.M.

PHONE 823-6631

THREE REASONS

why it will pay you to save with us without worry or risk in 1973.

**INSURED SAFETY
EXCELLENT DIVIDENDS
READY AVAILABILITY**



TULIA SAVINGS AND LOAN ASSOCIATION

200 N. Maxwell

995-3521

Tulia, Texas

SHURFINE **COFFEE** 1 lb. can 79¢
DEL MONTE SLICED **PINEAPPLE** no. 2 2 FOR 79¢
SHURFINE **SALAD DRESSING** qt. 49¢



LIMIT RIGHTS RESERVED

SHURFINE 2 1/2 CAN **PORK AND BEANS** 4 FOR \$1
NO. 1 CAN **SHURFINE SALMON** \$1.09
AMERICAN BEAUTY MACARONI & **CHEESE DINNER** 7 1/4 OZ. 2 FOR 39¢
SHURFINE 6 3-4 OZ. **TOOTH PASTE** 49¢
PROTEIN 21 4 OZ. **SHAMPOO** 69¢
KLEAR 27 OZ. **FLOOR WAX** 97¢
PLEDGE 7 OZ. **SPRAY WAX** 79¢

BREVONI ONE SIZE FITS ALL **PANTY HOSE** 59¢
9 OZ. **BABY MAGIC LOTION** 89¢
***GARDEN FRESH VEGETABLES**
BANANAS lb. 10¢
CARROTS lb. 12¢
YAMS lb. 12 1/2¢
ORANGES lb. 16¢

MEAT SPECIALS LISTED IN STORE

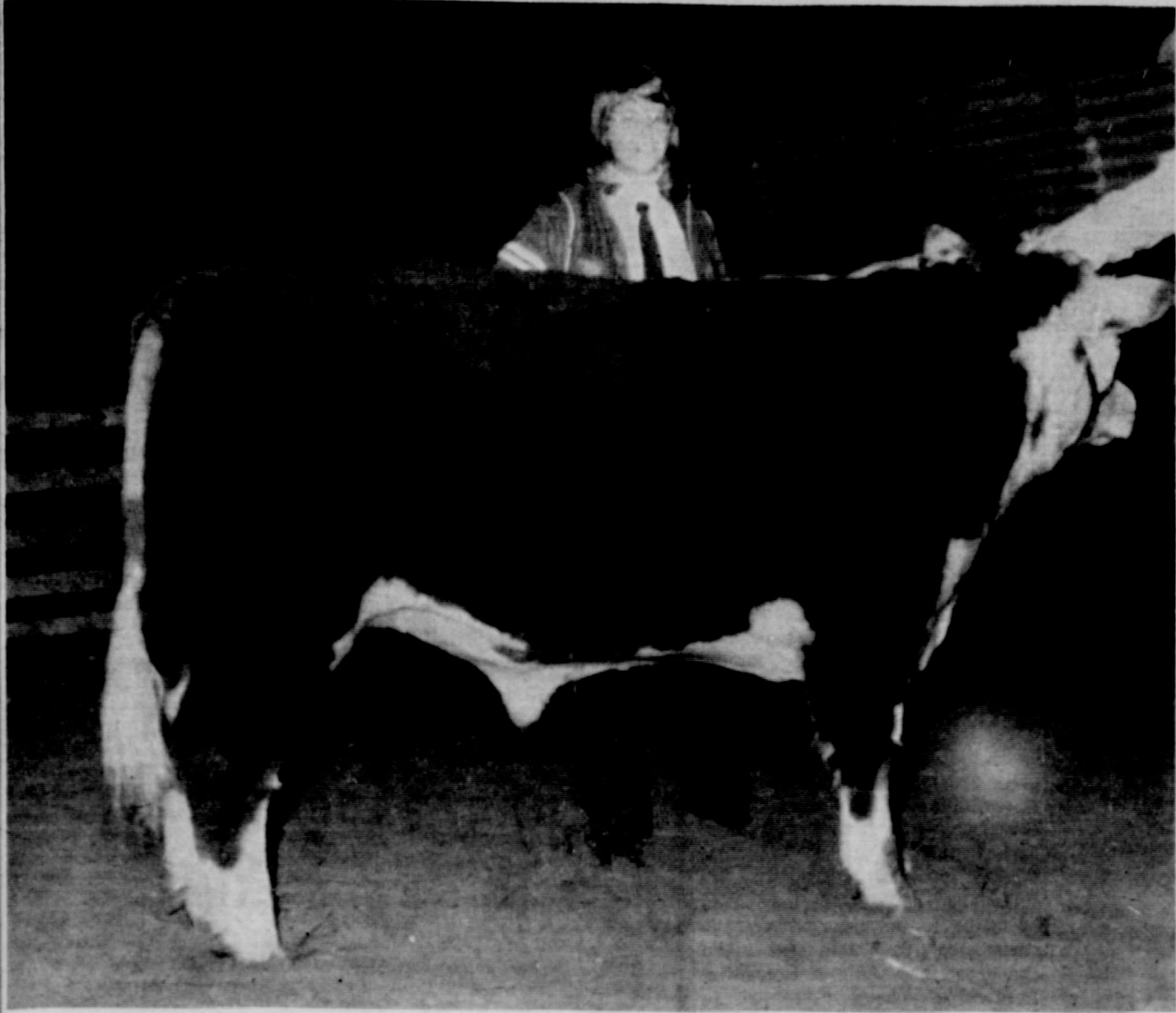
Shurfresh Milk Has That **NATURAL GOODNESS**



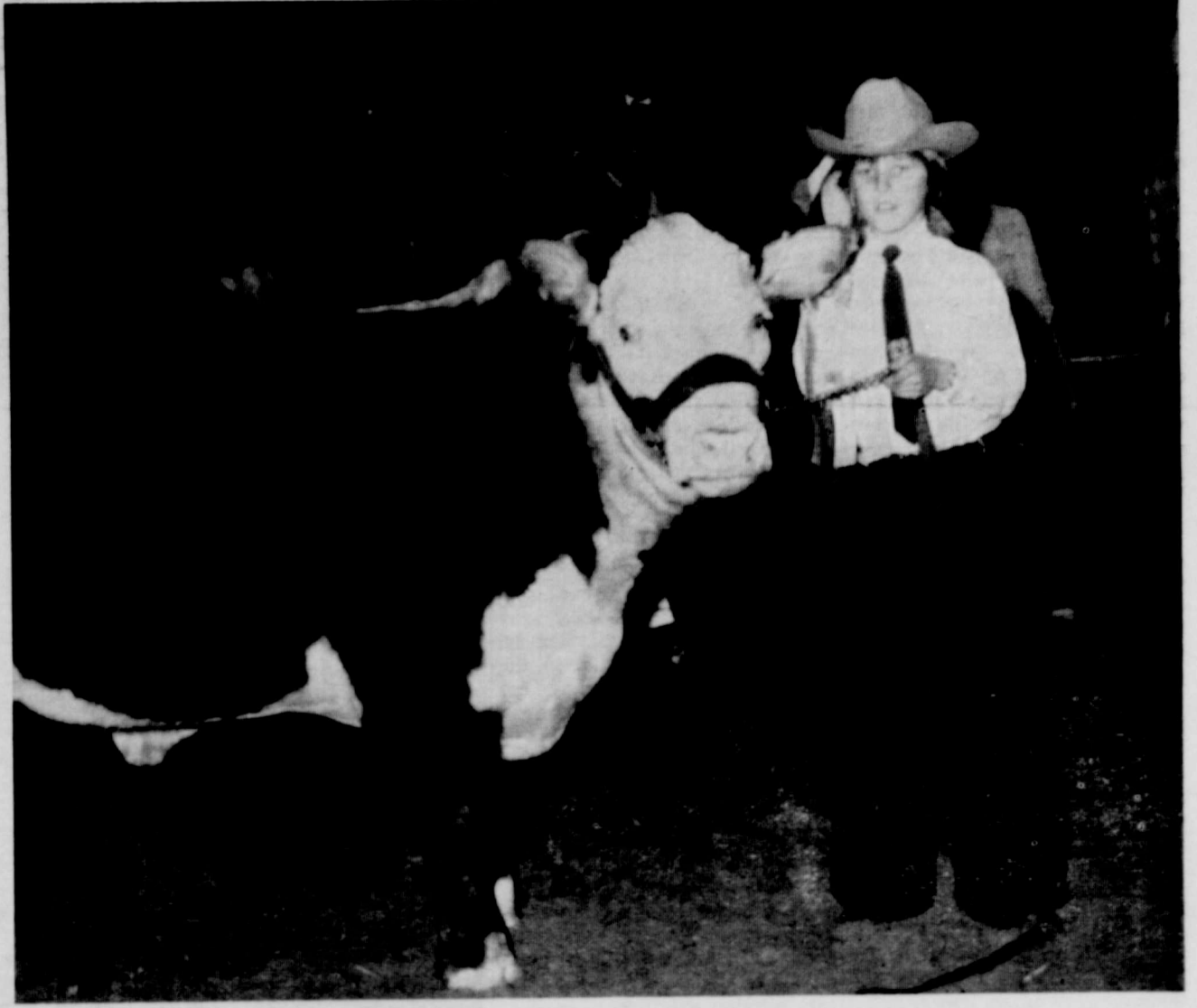
Specials For Jan 19. - 20

Nance's Food Store

SILVERTON, TEXAS



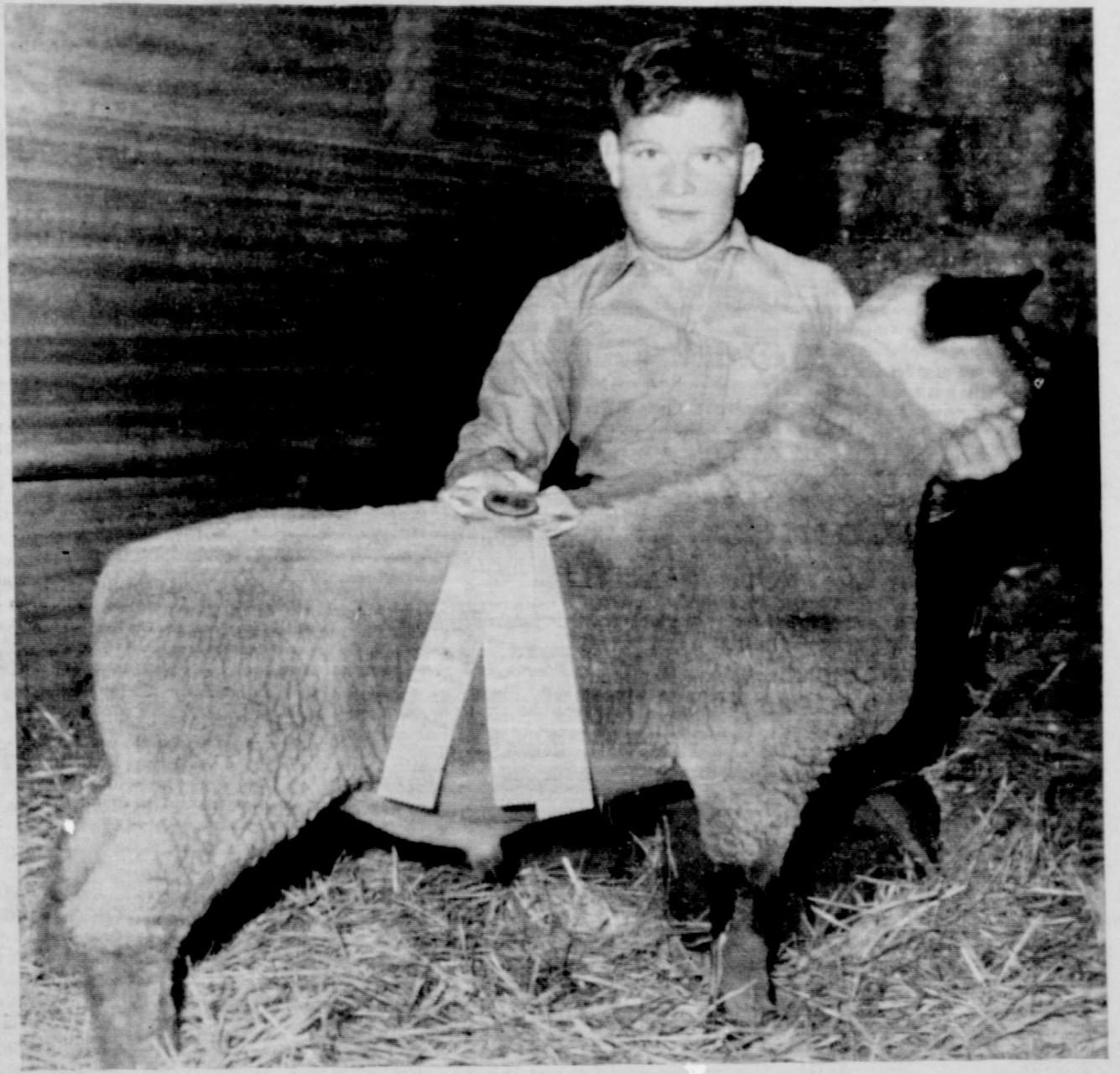
SUSAN NORTHCUTT AND HER GRAND CHAMPION STEER



CYNTHIA EDWARDS AND HER RESERVE CHAMPION STEER



KAREN MARTIN AND HER GRAND CHAMPION LAMB



MIKE CORNETT AND HIS RESERVE CHAMPION LAMB



JAMES ALAN PATTON AND HIS GRAND CHAMPION BARROW



KIM CORNETT AND HER RESERVE CHAMPION BARROW

ED
59
89
LES
10
12
21
16
OR
re

Dreams for sale.



Everybody's got a dream lurking around in the back of his mind. A dream vacation. A dream cottage. A dream car.

Dreams can be a lot more fun if you know you're doing something to make them come true.

And that's what the Payroll Savings Plan is all about. When you sign up an amount you specify is set aside from each paycheck and used to buy U.S. Savings Bonds.

Now Bonds mature in less than six years. That's the shortest maturity period ever, and makes Bonds a practical way to save for dreams you want to come true while you're still young enough to enjoy them.

See the folks in the payroll office where you work. They've got dreams for sale.



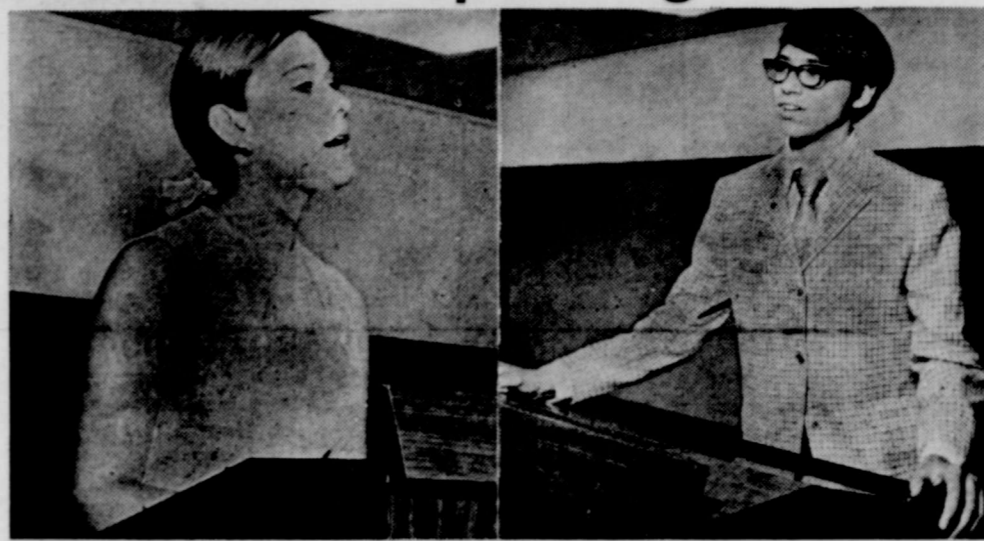
Now E Bonds pay 5 1/2% interest when held to maturity of 5 years, 10 months (4% the first year). Bonds are replaced if lost, stolen, or destroyed. When needed they can be cashed at your bank. Interest is not subject to state or local income taxes, and federal tax may be deferred until redemption.



Take stock in America.

Now Bonds mature in less than six years.

Today's 4-H'ers Learn Oldest Art — Public Speaking



SPECIAL - Public speaking is one of the oldest arts in the world. Since ancient times orators have aroused, reassured and informed audiences through their public speaking skills. Today, the art of public speaking is more alive than ever. Especially among the 183,000 young boys and girls who participate in the national 4-H public speaking program.

The program, sponsored nationally by Union Oil Company of California, helps 4-H'ers develop speaking skills that improve their self-confidence and their ability to communicate in all forms of media.

Alan Synar, of Muskogee, Okla., claims he overcame a speech defect and gained

self-confidence through the 4-H public speaking program. A national winner of \$700 scholarship from Union Oil, in 1971, young Synar remembers the first time he started in 4-H public speaking. "I had an extreme stutter, complicated by an unusually fast-talking speech with no knowledge of expression for emphasis."

Synar overcame his difficulties through coaching and hard work. He earned more than 30 trophies and honors for his speaking skills, plus trips and other awards.

Along with the satisfaction of having built self-assurance and ability to communicate with others, 4-H'ers who participate in the public speaking program receive incentive and recognition

awards. Union Oil, which has sponsored the program for over 23 years, gives four medals of honor to winners in each county. Fifty dollar U.S. Savings Bonds are awarded to the winning boy and girl public speaker in each state.

The Cooperative Extension Service then selects 18 sectional winners from among the state winners. Each of them receives an expense-paid trip to the National 4-H Congress in Chicago, Nov. 26-30.

At that event six \$700 scholarships are awarded national winners by the oil company.

For more information about the 4-H public speaking program, contact the county extension office.

Basketball Scores

CONTINUED FROM PAGE ONE

made four points.

Chapman scored 19 points for Wheeler.

Wheeler 13 32 46 64
Owls 12 21 35 55

Silverton's Junior High B-team Owls scored a 15-14 win over the Claude Colts on January 4.

Ronnie Graves scored nine points, and Bill Reid, Jim Gates and Dayne Mayfield added two points each.

Owl Junior High "B" 2 2 12 15
Claude Junior High 2 4 10 14

The Junior High Owls also played the Colts a good game, but ended up 29-21 short of a win.

Darrell Reynolds led the scoring with nine points. Jack Robertson added seven, Brent Bean put up three and Esbarido Cruz got two points.

Claude 8 18 20 29
Junior High Owls 4 10 18 21

Monday night, the junior high teams dropped a pair of games to Lakeview.

The Owl Junior High B-team was led in scoring by Jeff Jones, with nine points. Dayne Mayfield got six points, James Kitchens and Carl Wilson got four points each, and Augustin Fabela, Jim Wilson and Ronnie Graves added two points each.

Lakeview 12 18 30 32
Owl Junior High "B" 4 9 15 27

The junior high Owl "A" team played a close game again, ending up on the short end of the 48-40 score.

Jack Robertson took scoring honors with 12 points, closely followed by Darrell Reynolds with 10 points and Jackie Vaughn with 9. Brent Bean added five points and Esbarido Cruz and Brent Brannon each tossed in two points.

Adams scored 20 for Lakeview.

Lakeview 11 22 36 48
Junior High Owls 10 16 23 40

LEGAL NOTICE

CONTRACTORS' NOTICE OF TEXAS HIGHWAY CONSTRUCTION

Sealed proposals for constructing 45.520 miles of Seal Coat From FM 145, South, From FM 268 To US 287, From US 83 To FM 2530, From FM 3181 To NCL of Childress, From FM 1.0 Mile W. of FM 1547 To 5.0 Miles S. of Wheeler County Line, From Gray County Line To Collingsworth County Line, From Munday To Haskell County Line, From FM 2534 To FM 1043, From FM 684 in Roaring Springs To St. 70, From FM 1046 To St. 152, From FM 48 To US 83, From FM 1046 To St. 152, On Highway Nos. FM 284, FM 2530, FM 3181, FM 401, FM 3070, FM 3143, FM 1587, FM 3202, FM 3203, FM 48, FM 1046, FM 3182, covered by C 2531-1-5, C 2545-1-4, C 3258-1-2, C 3259-1-3, C 797-7-9, C 797-6-2, C 1512-1-7, C 3295-1-2, C 2425-3-3, C 480-1-12, C 1235-1-6, C 3260-2-2 in Briscoe, Childress, Collingsworth, Donley, Knox, Motley and Wheeler Counties, will be received at the Highway Department,

Austin, until 9:00 A.M., January 24, 1973, and then publicly opened and read.

Plans and specifications including minimum wage rates as provided by Law are available at the office of Vance L. Castleberry, Resident Engineer, Childress, Texas, and Texas Highway Department, Austin. Usual rights reserved.

2-2tc

Arthritis Sufferers:

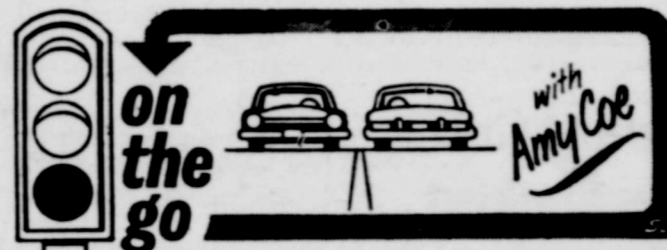
WAKE UP WITHOUT ALL THAT STIFFNESS!

New formula for arthritis minor pain is so strong you can take it less often and still wake up in the morning without all the pain's stiffness. Yet so gentle you can take this tablet on an empty stomach. It's called *Arthritis Pain Formula*. Get hours of relief. Ask for *Arthritis Pain Formula*, by the makers of *Anacin* analgesic tablets.

DENTURES

GET CLEANER ELECTRONICALLY

In just 3 minutes the SONAC Denture Cleaning System removes the stains and deposits other cleaners leave behind. 3 minute cleaning! SONAC with electro-sonic action is available at all leading drug, discount and department stores. Full one year warranty. Suggested retail only \$18.95.



TIPS ON DRIVING OUR EXPRESSWAYS

Our vast Interstate highway system is nearing completion. In fact, you can already drive virtually border-to-border without traveling a two-lane road; a far cry from just a decade ago when superhighway-building got underway in earnest.

While safe-driving rules apply on any road, the following tips are designed especially to help you drive our expressways safely.

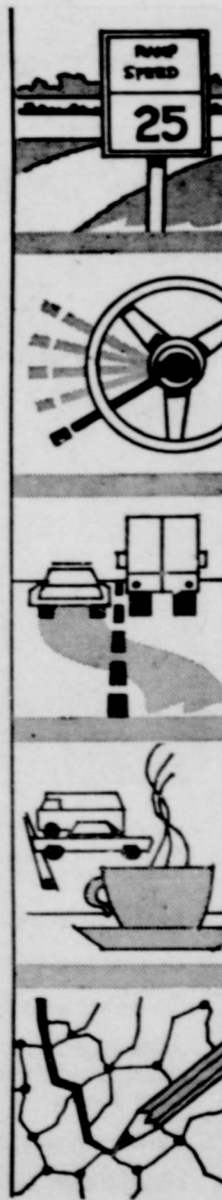
TO ENTER AND EXIT: When entering an expressway, remember — those cars are traveling at far higher speeds than on local roads. Signal your intentions, check rear-view mirrors, accelerate quickly, and blend into traffic. To exit, know when your turn-off is coming up, signal, check mirrors (and blind-spot), move to your lane, and slow down to the posted ramp speed.

NEVER STOP ON PAVEMENT: If you see you're going to miss your exit, drive on to the next one. Abruptly stopping or swerving to change lanes could cause a tragic accident. Above all, don't try to pull off the pavement and back up to your exit; it's illegal and dangerous. If an emergency develops, drive onto the shoulder and stop. Should you need help, tie a handkerchief to your door handle or radio antenna and raise the hood. At night, use flashers and/or interior lights.

SIGNALING, PASSING, TAILGATING: On expressways, stay in one lane as much as possible. If you do change lanes to pass, check mirrors, signal, accelerate and move in to your new position with plenty of time to spare. Tailgating is always dangerous, but extremely so on expressways. So keep a respectable distance away from other cars. Rule of thumb: one car length for every ten miles per hour of speed.

NEVER DRIVE WHEN DROWSY: Don't try to stay awake if tiredness sets in while driving. Stop occasionally at a service or rest area. Walk around. Stretch. Get a cup of coffee, a bottle of pop. If you're tired, take a nap. Don't try to keep awake with drugs. It's a good idea to allot ten minutes of every driving hour for a "rest stop."

PLAN YOUR TRIP: Sounds elementary. However, it refers to not only knowing your route, but making sure your car's in top shape for the trip. Unique, up-to-date highway maps are available from American Oil Company dealers, and your service station will be happy to check essentials like wipers, lights, tires, and brakes before you start out.



4-H'ers Create Own Space in Home Environment Program



4-H'ers in the 4-H home environment program create comfortable and pleasing living spaces. These 4-H'ers built a bookshelf and a mobile to improve the total environment of their rumpus room.

SPECIAL - What's in a name? Plenty, think leaders working with 4-H members in the area of home furnishings, equipment and housing.

The 4-H home improvement program has been renamed 4-H home environment in 1972. Sponsored by The S&H Foundation, Inc., new dimensions and activities have been added through the efforts of personnel of the Cooperative Extension Service and National 4-H Service Committee.

The contemporary 4-H home environment program provides numerous opportunities for creative expression. 4-H'ers in the program are encouraged to plan their home surroundings much as they would the total

environment - for beauty, comfort, health, safety and adequate space. Using the principles of basic design - form, scale, patterns and texture, color and light - the 178,000 young people in the 4-H home environment program create living spaces that are functional, comfortable and aesthetically pleasing.

Boys Can Take Part, Too

The revised program is also designed to get boys interested and involved in improving their homes. 4-H'ers from low income, minority and migrant families are also encouraged to participate and help create pleasing home environments.

Besides the satisfaction at helping to make one's home a

more enjoyable and pleasing place to live, 4-H'ers in the home environment program can gain recognition in other ways.

The S&H Foundation, Inc. provides incentive and other recognition awards for county, state and national winners in the program.

Medals of honor are awarded county winners, while one winner in each state receives an expense-paid trip to the National 4-H Congress in Chicago, Nov. 26-30. At the 4-H event, six national winners receive \$700 scholarships provided by The S&H Foundation, Inc.

For more information about the 4-H home environment program, contact the county extension office.

Year-End Clothing Sales Discussed

The alert shopper can pick up some real bargains in clothing and

basic items at end-of-year sales. But she must pay attention to what she buys—before she buys.

Mrs. Dorothy Powell, County Extension Agent, noted that there's a reason why every item is on sale.

"Before purchasing one, consider its style, condition, color, size, quality and your personal need."

First check the style. Consider whether it's on the way out and how it will look next winter. Knowing fashion trends will help the shopper pass by fads, although an item may be of value if it can give a great deal of wear immediately.

Examine the garment carefully to determine if it's shopworn, soiled, damaged or poorly constructed.

If stained, check stains carefully—certain ones can't be removed. Also consider the risk—if the stain doesn't come out, can you afford to discard the item?

On the other hand, certain things can be corrected and still be an excellent buy—such as doing simple repairs, restitching a ripped seam and replacing a zipper or button.

If the item is an irregular second, its flaws may or may not show or affect wear. Examine the garment carefully before purchase.

Color is another reason why an item is on sale. Some colors or styles are not becoming to a majority of people, so they're left at the season's end. If it's becoming to you, it may be a bargain.

Usually, very small and large sizes most often remain on the rack, she continued. If one of these less common sizes is yours, you usually can find some real bargains.

Some items are purchased by the store especially for a sale. These special purchase items may or may not be as good as the store's regular line. A regular shopper there should be able to identify such merchandise. If it meets a need, it may well be a bargain.

"If you need the garment, if it goes well with other items in your wardrobe, if it fits well and is becoming—then buy it," Mrs. Powell advised.

Red Fever: it's catching!



Maybe he's not old enough to understand about the things that make IH tractors so much better. Like longer engine life and better lugging ability.

IH Hydrostatic Drive.

Or even fast, dependable parts and service.

But he knows his dad knows.

And his dad checked out the new IH tractors at a "Red Fever" field demo. And not only knows the mechanical advantages.

But the physical ones as well.

Like the safety protection an IH protective frame cab offers. It's called "Family Life Insurance".

Even if he only uses built-in roll-over protection once. It's worth the investment.

Red Fever. It's spreading everywhere.

**red fever
red fever
red fever**



It's catching

Waiver of Finance Until March 1, 1973

BROWN - McMURTRY

IMPLEMENT COMPANY
I-H SALES AND SERVICE
SILVERTON, TEXAS 79257

Stomach Upset by Gas and Acid?

Di-Gel with Simethicone quickly relieves gassy-acid upset.

This unique discovery breaks up and removes painful gas-bubbles. Your relief is more complete because Di-Gel takes the acid and the gas out of acid indigestion. When you eat too well, demand Di-Gel. Tablets, liquid. Product of Plough, Inc.

ITCHING LIKE MAD?

Get this doctor's formula!

Zemo speedily stops torment of externally caused itching... of eczema, minor skin irritations, non-poisonous insect bites. Desensitizes nerve endings. Kills millions of surface germs. "De-itch" skin with Zemo—Liquid or Ointment.

If you're farsighted

you'll switch to electric heat

electric heating estimate



An electric heating system has staying power and maintenance is practically unheard of. It's the modern way to heat, now and in the future. Operating cost? Why not find out? Get the whole story. Call us this week for your free operating estimate. It's a real eye-opener.



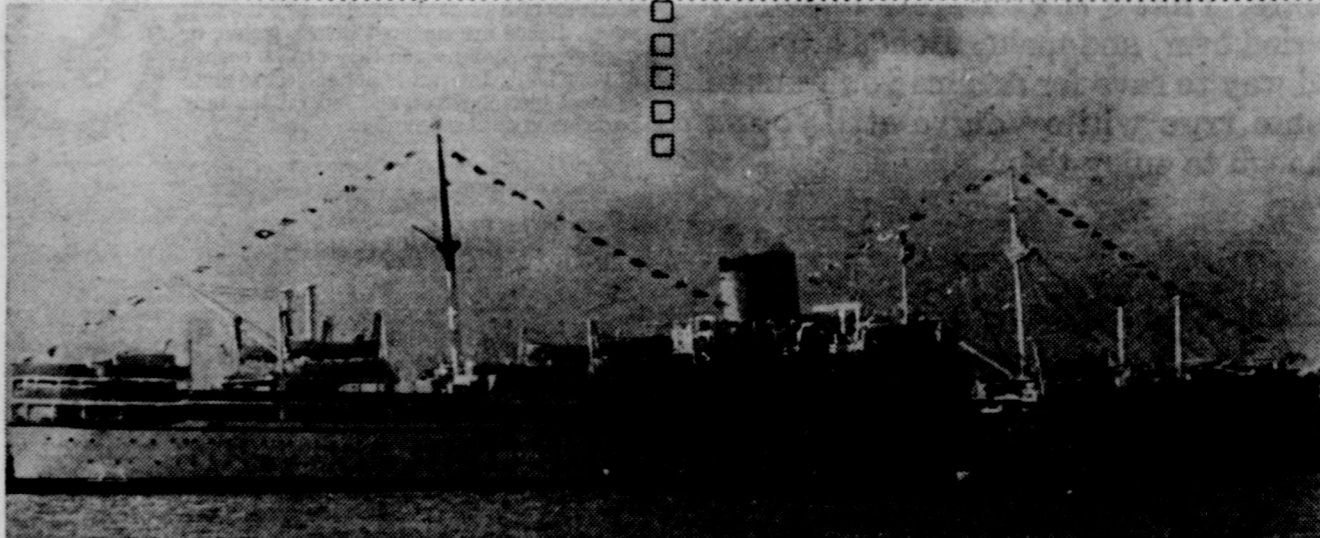
CRUISE IN THE OFF-SEASON

Although most people prefer to take their cruise during the peak of the season for all the glamour, excitement, and crowds it offers, others enjoy the quiet and restfulness of the off season cruise. Tourists are not present in such great numbers; interesting places can be visited more leisurely and at greater length.

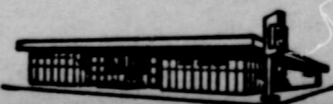
Some people prefer to pray only when they are in church or at some great public gathering where the prayers are led for them. But our Lord said to pray in the "off-season." He

said, "But thou, when thou prayest, enter into thy closet, and when thou hast shut thy door, pray to thy Father which is in secret; and thy Father which seeth in secret shall reward thee openly." The real joys of prayer are truly found when you are praying alone with God. The scripture says to be instant in season and out of season.

The church would encourage you to pray both in church and at home. Prayer can uphold, support, and strengthen our churches, ourselves, and our country.



The Church is God's appointed agency in this world for spreading the knowledge of His love for man and of His demand for man to respond to that love by loving his neighbor. Without this grounding in the love of God, no government or society or way of life will long persevere and the freedoms which we hold so dear will inevitably perish. Therefore, even from a selfish point of view, one should support the Church for the sake of the welfare of himself and his family. Beyond that, however, every person should uphold and participate in the Church because it tells the truth about man's life, death and destiny; the truth which alone will set him free to live as a child of God.



First State Bank



ASSEMBLY OF GOD

David Nuckles, Pastor

Sunday

Sunday School..... 9:45 a.m.
Worship Service..... 11:00 a.m.
Evening Service..... 7:00 p.m.

Wednesday

Worship Service..... 7:30 p.m.



CHURCH OF CHRIST SILVERTON

Keith Marshall, Evangelist

Sunday

Sunday School..... 9:45 a.m.
Morning Worship..... 10:45 a.m.
Evening Worship..... 6:00 p.m.

Wednesday

Bible Study..... 7:30 p.m.



FIRST BAPTIST CHURCH

Larry Wilson, Pastor

Sunday

Library Opens..... 9:15 a.m.
Sunday School..... 9:45 a.m.
Worship Service..... 11:00 a.m.
Library Opens..... 4:30 p.m.
Youth Choir..... 4:30 p.m.
Training Union..... 5:00 p.m.
Mission Friends, G.A. and R.A..... 5:00 p.m.
Evening Worship..... 6:00 p.m.

Second Monday

Night W. M. S..... 7:00 p.m.

Second and Fourth Tuesday

W. M. S..... 9:30 a.m.

Wednesday

Junior High Acteans..... 3:35 p.m.
High School Acteans, first and third Wednesday..... 3:35 p.m.
Mid-Week Service..... 7:00 p.m.
Choir Rehearsal..... 7:45 p.m.

Second Saturday

Baptist Men..... 7:00 a.m.

FIRST UNITED METHODIST CHURCH

James Futch, Pastor

Sunday

Sunday School..... 9:45 a.m.
Worship Service..... 11:00 a.m.
M. Y. F..... 5:00 p.m.
Evening Worship..... 6:00 p.m.

Wednesday

Choir Practice..... 6:00 p.m.



JERUSALEM BAPTIST MISSION

Dick Roehr, Pastor

Sunday

Sunday School..... 9:45 a.m.
Worship Service..... 11:00 a.m.



NEW FELLOWSHIP BAPTIST MISSION

B. F. Edmonson, Pastor

Sunday

Sunday School..... 9:45 a.m.
Worship Service..... 11:00 a.m.
Training Union..... 5:00 p.m.
Evening Service..... 6:00 p.m.

Wednesday

Choir Rehearsal..... 7:00 p.m.
Prayer Service..... 8:00 p.m.



OUR LADY OF LORETO CATHOLIC CHURCH

Sunday

Mass..... 6:00 p.m.



ROCK CREEK CHURCH OF CHRIST

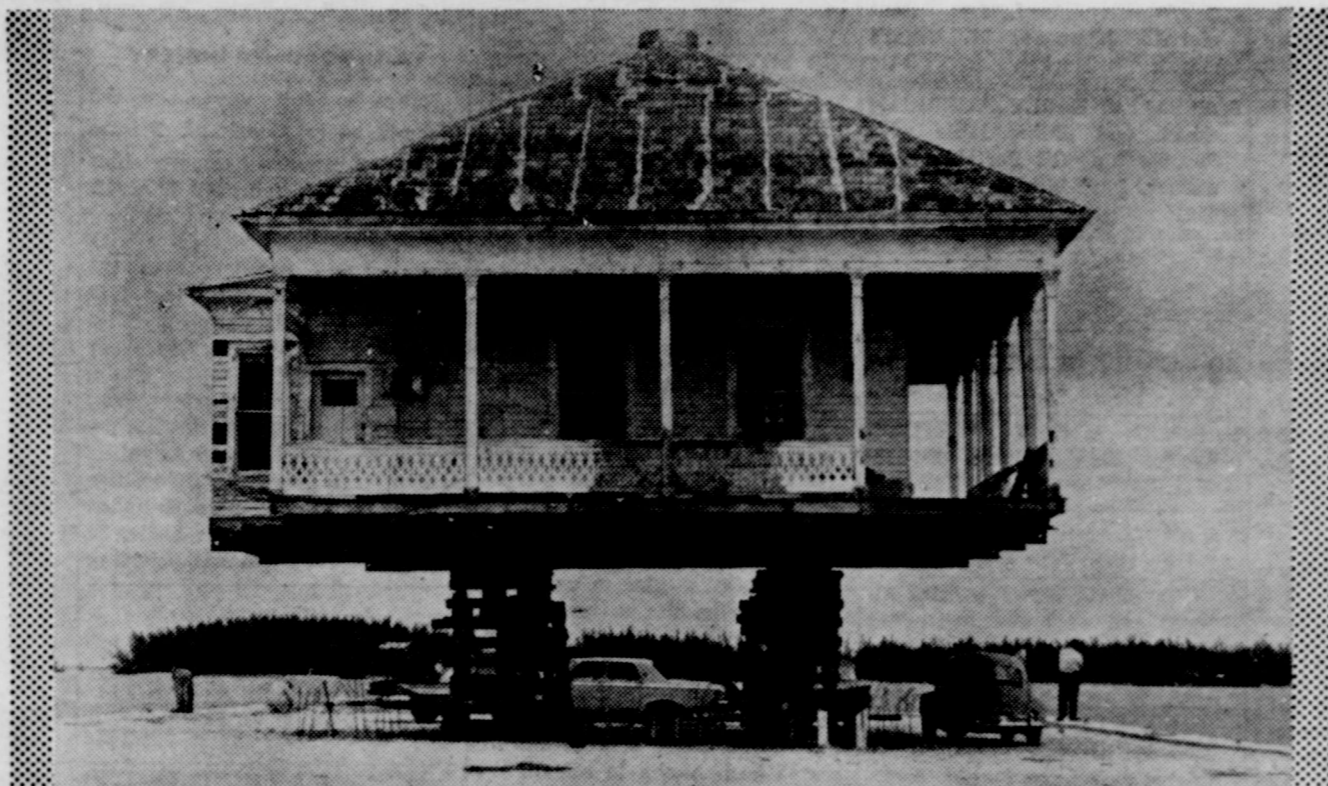
Earl Cantwell, Minister

Sunday

Worship Service..... 10:30 a.m.
Evening Worship..... 6:00 p.m.

Wednesday

Worship Service..... 7:00 p.m.



HOUSEMOVING



The Church is God's appointed agency in this world for spreading the knowledge of His love for man and of His demand for man to respond to that love by loving his neighbor. Without this grounding in the love of God, no government or society or way of life will long persevere and the freedoms which we hold so dear will inevitably perish. Therefore, even from a selfish point of view, one should support the Church for the sake of the welfare of himself and his family. Beyond that, however, every person should uphold and participate in the Church because it tells the truth about man's life, death and destiny; the truth which alone will set him free to live as a child of God.

Coleman Adv. Ser.

This house was moved to make way for a new super freeway. A city in progress creates many changes. The owners, no doubt, hated to change their location, and dreaded pulling up life-long roots. St. Paul would help in situations like these when he said, "For I have learned, in whatsoever state I am, therewith to be content." Phillipians 4:11. The Lord will help us in new situations and new surroundings. He has promised to be with us in all things.

After getting settled, it is good to find a church home with people of like faith. No new neighborhood seems lonely if you can be with people who have the love of God in their hearts.

"Not forsaking the assembling of ourselves together," (Hebrews 10:25a) is a wise saying. We invite you to attend the church in your community this week.

BROWN - McMURTRY IMPLEMENT CO.

GRABBE-SIMPSON CHEVROLET CO., INC.

PLAINVIEW PRODUCTION CREDIT ASSN.

CITY CAFE

RHODE PIPE COMPANY

ASHEL McDANIEL TEXACO

BRISCOE COOPERATIVES

SILVERTON ELEVATORS, INC.

FIRST STATE BANK

HILL FARM SUPPLY, INC.

BRISCOE COUNTY NEWS

CITY TAILORS

BUD'S GROCERY & MARKET

LALLIE'S IN & OUT DRIVE IN

VERLIN B. TOWE AGENCY

FOGERSON LUMBER & SUPPLY

JACK'S PHARMACY

T. & F. GIN, INC.

NANCE'S FOOD STORE

SILVERTON BUTANE COMPANY

BROWN HARDWARE AND FURNITURE

JONES DEPT. STORE

