

City Manager applicants includes former Denver City boss

The Muleshoe City Council had received 25 applications for the city manager position as of Tuesday.

Five of the applicants are currently city managers, including Paula Wilson of Friona. Other current managers applying for the position include Deck Shaver, Jr. of Fritch, Brad Stafford of Morton, K.M. Waterstreet of Electra, and Paul Catoe of Eastland.

Councilmen are seeking to replace current City Manager Dave Marr, whose resignation will become effective Aug. 15.

Six applicants are former city managers, including Ray Hohstadt of Denver City, who resigned amid allegations of mismanagement.

Hohstadt was the subject of considerable controversy in Denver City after residents discovered had awarded \$37,000 in bonuses to city employees without council approval.

Hohstadt left the office amid two lawsuits, one involving a consultant who claimed to never have been paid for work on the city's efforts to purchase an oil field, the other involving a resident who was suing for public information.

Hohstadt said in a sworn deposition during the second lawsuit that God had typed the city's five-year plan through the use of his fingers.

Among the list of applicants is Tommy D. Bowen, formerly of Muleshoe, who is now employed as a business consultant in Mt. Pleasant. Bowen has no apparent city administrative experience.

Applicant Kenneth Neal, who is currently employed by Wilson Manufacturing Corporation, was the former city manager of Anson and Knox City.

Neal is not the only applicant with connections to Knox City. Applicant Steven White is the city's current interim city administrator.

Continued on page 2

McElroy turns Spanish explorer

By JOANNA GALLMAN
 Journal staff writer

Spanish is a foreign language to most, but Reagan McElroy hopes it will become almost native to her by the end of a year-long stay in Argentina.

The Muleshoe senior will depart Aug. 16 on a Rotary-sponsored foreign exchange trip to the Spanish-speaking country in South America.

"It will be an experience just going to a foreign country," she said. "Not that many people get that chance."

Citing her desire to learn the Spanish language as the main reason for the exchange, McElroy said she will attend



Starting early

Tyson Turnbow, about to turn 3, looks comfortable with the putter in his hand. He was practicing his stroke on the putting green Sunday during the Muleskinner Invitational at Muleshoe Country Club. He is the son of James and Shelly Turnbow.

Ag chair turns into Republican hot seat

By Rick White
 Managing Editor

Larry Combest is just being . . . well, a politician.

In a press release late last week, the Republican Congressman from Lubbock toed the company line by "expressing confidence" that the chairmanship of the U.S. House Agriculture Committee would be determined with fairness.

Combest was reacting to a news story by the Associated Press that claims House Speaker Newt Gingrich is dangling the House Agriculture Committee chairmanship in front of former Oregon Congressman Bob Smith.

If re-elected in November, Combest was in line for the House Ag chairmanship as the returning senior Republican now serving on the committee.

Combest and Smith both began service on the

House Agriculture Committee in 1985, but Smith's term in Congress began in 1983, which gives him seniority.

In a letter obtained by the Associated Press Friday, Gingrich stated his unequivocal support for Smith for the chairmanship of the Ag Committee.

Gingrich and other GOP leaders are pressuring embattled Rep. Wes Cooley to resign and are urging Smith, who held Cooley's seat for 12 years, to run again. The party fears a Democratic victory if Cooley runs again.

Asked his view of the letter, Combest told the

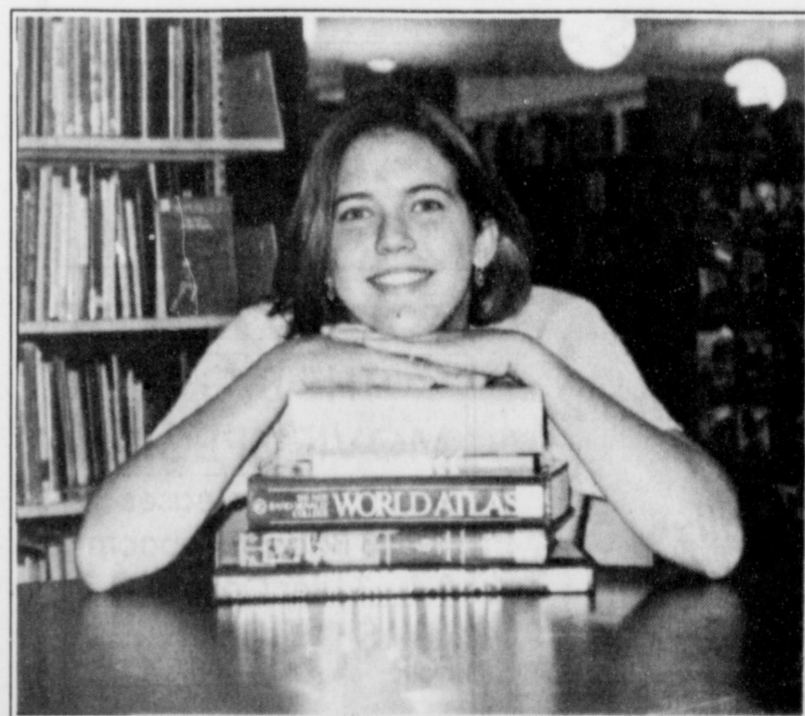
Associated Press: "Baffled, I guess is the word, that they would have sent the letter to Bob without even talking to me. But I guess we'll find out at some point."

The chairmanship offer is an attempt to make a return to Capitol Hill more desirable to Smith, who retired in 1994 and returned to Oregon for a lucrative career as a political consultant.

"If Bob Smith returns to Congress next year, his one step in seniority will make him chairman, and if that is the case, I look forward to serving with him as the committee's vice chairman," Combest said.

Combest's press secretary said Tuesday it was just an oversight, but others see the letter as not only an enticement to get Smith back into

Continued on page 2



Vamanos

Reagan McElroy of Muleshoe will spend her senior year in Argentina as part of a foreign exchange program. The trip is sponsored and partly funded by the Argentina Rotary.

Lubbock team rallies to win Muleskinner title

A birdie at 18 ended an uneventful round of 66 Sunday, which appeared to be enough to give Todd Shipman and Sid Felan to win the Muleskinner Invitational at Muleshoe Country Club.

But Lubbock's Chas Akard and Clay Hodges fired an 8-under-par 62, rallying from three strokes back and overaking the first-round leaders with an 8-under-par 62 on the tree-lined par 70 Muleshoe Country Club course

Akard and Hodges, with six birdies and an eagle at No. 8, finished the 36-hole best-ball partnership with a 12-under 128. Muleshoe's Shipman and Felan finished one back at 129 after an opening round 63 Saturday.

Four teams tied for third at 131 in the Championship Flight, including Carey Suddeth and Rick Rhoden, who combined for a 64 Sunday.

Fifty-one teams played in the tournament, which was seeded into six flights by handicaps before the first round.

Greg Couch and Manuel Jimenez won the First Flight after first-round leaders Terry Ott and Greg Davis fell apart Sunday.

Couch and Jimenez shot a 7-under 63 Sunday, finishing at 131. Ott and Davis carded a 62 Saturday, the best round in any flight, but ballooned to

Leaderboard

Here are the results of the Muleskinner Invitational Aug. 3-4 at Muleshoe Country Club. (Par 70)

Championship Flight	
Akard/Hodges	-12
First Flight	
Couch/Jimenez	-9
Second Flight	
Pruett/Lee	-10
Third Flight	
Fryar/Hedges	E
Fourth Flight	
Agee/Bethel	+2
Fifth Flight	
Wilson/Stalcup	+2

even par 70 Sunday and finished a stroke back at 132. Terry Burton and Al Bishop were at stroke back at 133.

Larry Pruiett and Steve Lee followed an opening round 66 with a 64 Sunday to win the Second Flight with a 10-under 130. John Lee and Terry Crew put pressure on the winners with a final round 65, but finished two strokes back at 132. Brad Holcomb and Randy Carroll were third at 134, including a 65 Sunday.

Steady play by Dewayne Fryar and Bob Hedges led to a three-stroke win in the Third Flight. Fryar and Hedges shot even-par 70 in both rounds, finishing at 140.

Lupe Bryan and Manuel Quintana shot a 72 Sunday, finishing second at 143. The rest of the flight shot 74 or

Continued on page 4

SPELLING
 8-78 1.0 2 AS NEVE si

The Journal will feature a four-page pull-out section in the Sunday edition outlining back to school information. It will include bus schedules, registration dates, school calendars, supply lists, and administration information.

ENGLISH
 TURE
 4-7-1

Continued on page 6

MULESHOE JOURNAL

'Project Graduation '97' slated at Muleshoe State Bank Friday

Muleshoe State Bank will be sponsoring "Project Graduation '97" Friday at 9:30 a.m. in the foyer of the bank. Homemade ice cream will be served. Donations in support of a drug and alcohol free graduation night will be appreciated.

Three Way ISD slates school board meeting Thursday

The Three Way Board of Trustees will meet Thursday at 8 p.m. in the Administration Office of the Three Way School in Maple.

Items on the agenda include discussion of semester test exemptions, drug and alcohol testing programs, and the school lunch and breakfast program. Other agenda items include personnel considerations and discussion of the school accountability report.

First Assembly of God hosting Gloria Elliott concert Sunday

The First Assembly of God Church in Muleshoe will be hosting a concert featuring Gloria Elliott Sunday night at 6:30 p.m.

Elliott has appeared on the 700 Club and other inspirational programs.

Everyone is invited to attend the concert.



Gloria Elliott

VFW Post 8570 holding quarterly District 13 meeting Aug. 10-11

VFW Post 8570 will be holding its quarterly District 13 meeting Aug. 10-11.

A meeting of all VFW members is slated for Saturday from 12-6 p.m., followed by a social hour from 6-8 p.m.

A dance will begin at 8 p.m. It will feature a live band and is open to the public.

VFW members will hold an additional meeting from 9:30 a.m. to noon on Sunday.

Featured speakers for the meeting include Eve Baldwin, President of the VFW Women's Auxiliary, and Alexander Vernon, State Commander of the VFW.

The VFW is located on the YL Highway. For more information, call Jose at 272-5049, or the VFW at 965-2626.



Eve Baldwin

United Pentecostal Lighthouse begins Sunday services Aug. 11

The United Pentecostal Lighthouse Church of Muleshoe will start 3 p.m. Sunday services Aug. 11 with a rededication service.

Sunday services will be led by Pastors Warren McKibben and Dennis Graham of the Calvary Tabernacle United Pentecostal Church in Clovis until a permanent pastor is named.

The Church, located at 202 E. Ave G, has been closed for more than a year.

A fellowship meeting and house cleaning is being held at 9 a.m. Saturday, Aug. 10.

For more information, call (505)763-5628 or (505)762-3310.

Delta Kappa Gamma Society slates Area XI workshop Aug. 10

The Delta Kappa Gamma Society will hold its biennial Area XI workshop at Sudan High School Aug. 10.

Registration for the workshop will be from 8:45-9:15 a.m.

Featured keynote speakers will include Dr. Mary Ann Waldon, second vice-president of Alpha State, and Mary Rowlette, past Alpha state president. Alpha State Necrology Chairman Carmen Camp will be in attendance as well.

Girls physicals to be given at Muleshoe High School Aug. 11

Girls physicals for the 1996-97 school year will be given Aug. 11 at 1 p.m. in the high school gym. There is no charge.

Physicals are required for all incoming 7th and 9th grade girl athletes, anyone who has been hospitalized, under a doctor's care, or who has suffered any type of injury.

Reserve seating football tickets available for pick up Aug. 12

Persons who held reserve seats for the 1995 football season can pick up the tickets at the Muleshoe High School School Business Office, located at 514 W. Ave G, Aug. 12-23.

Ticket holders may pick up their tickets in person, by mail with the ticket holder's personal check, or by third party when purchased with a ticket holder's personal check.

Reserve tickets may be purchased from 8:30 a.m. to 5 p.m.

Continued on page 5

LETTER TO THE EDITOR

Dear Editor,

I am writing this letter in regard to the recent vandalism that was done at the Old Bailey County Cemetery.

It has been many years since I lived at Muleshoe, but I do have six family members buried in that cemetery, the first one was buried there in January of 1934. Since I am the only one of the family still living, I was very concerned when I heard of the incident.

It is hard to understand how anyone could let themselves sink

so low as to do a thing like that, it is great to know that for every one who did, there was at least twenty five who were willing to give their time and hard work to make things right again. So to each and everyone who had any part in repairing and resetting the Grave Markers, I can only say a big THANK YOU and express to you my deepest appreciation.

Sincerely,
Beula Burton Parsons
321 S. E. 7th St. Apt. 13
Tulia, TX 79088

Applicants

Continued from page 1

Councilmen are reviewing applicants as they are received.

Other applicants for the position include Joseph Blackwell of Alexandria, Va., William P. Cornelius of Overton, Andrew T. Eads of

Lewisville, Thomas E. Pugh of Llano, Mike Evans of Runaway Bay, James Fisher of Castroville, John D. Hobson of Pearland, Arthur R. Jones of Clovis, N.M., and Ron Lewis of Lubbock.

Muleshoe Journal USPS 367820
Established February 23, 1924. Published by Triple S Publishing, Inc. Every Thursday at 304 W. Second. Box 449, Muleshoe, TX 79347.
 Second Class Postage paid at Muleshoe, TX.
POSTMASTER: Send address changes to the Bailey County Journal, P.O. Box 449, Muleshoe, TX 79347.
 We are qualified members of:
 Panhandle Press Association, National Newspaper Association, West Texas Press Association and Texas Press Association

WEST TEXAS PRESS ASSOCIATION MEMBER 1996

PPA PANHANDLE PRESS ASSOCIATION

TEXAS PRESS ASSOCIATION

Scot Stinnett, Publisher
 Lisa Stinnett, Vice-President/Comptroller
 Rick White, Editor
 Holly Millsap, Classifieds
 Pat Durben, Advertising

SUBSCRIPTIONS: Muleshoe Journal and Bailey County Journal
 By Carrier Yearly - \$22.00
 Bailey and surrounding counties: by mail - \$24.00
 Elsewhere - \$26.00
 Advertising Rate Cards on Application

Advertisers should check their ad the first day of insertion. The Journals will not be liable for failure to publish an ad or for a typographical error or errors in publications except to the extent of the cost of the ad for the first day of insertion. Adjustment for errors will be limited to the cost of that portion of the ad where the error occurred.

Hot Seat

Continued from page 1

Congress, but as a message sent to Combest.

Earlier this year, Combest bucked GOP leadership over farm legislation and won concessions for his district's lucrative cotton industry.

John Sawyer, Combest's Democratic opponent in District 19, views it as a payback.

"Gingrich has not forgotten," Sawyer said in a prepared statement. "He knows Combest cannot both serve the interests of his district and kowtow to the GOP

agenda for agriculture. But Gingrich figures he can put down Combest and still keep a Republican Congressman."

The Agriculture Committee's Republican ranks have been in an upheaval since Chairman Pat Roberts of Kansas resigned to run for the Senate. His decision placed Rep. Bill Emerson of Missouri next in line for the chairmanship. But Emerson, who sided with Combest on the new farm bill, died in June.

That moved Rep. Steve Gunderson of Wisconsin into the position of chairmanship.

Gunderson had already announced his retirement but then seemed to reconsider his decision after the chairmanship opened up to him. Despite heavy support, Gunderson decided not to seek re-election, suggesting that conservatives disturbed by his homosexuality would counter with a smear campaign.

All which pointed to Combest as the next Ag Chairman, as long as the Republicans maintained control of the House.

Or so he thought.

Bananas Video
 124 E. Ave. B (Next To Employment Office)

- NEW RELEASES -

- Black Sheep
- Down Periscope
- Executive Decision
- ED
- Big Bully
- Homeward Bound 2
- Othello
- City Hall
- Diabolique
- Screamers
- Rattled
- Theodore Tex
- Lawn Mower Man 2

NEW RELEASES \$249

★★★★★★★★

THE BIG 3 MOVIE SPECIAL

Rent 3 New Releases
 Get 3 Bags of Popcorn
 & 1 - 3 Liter Coke

FOR **\$8.00** + TAX

WOW - What A Deal!!

OPEN DAILY 1 P.M. - 10 P.M.

BOVINA RURAL HEALTH CLINIC

WELCOMES

Sherry Whiteaker, R.N.
Master of Science In Nursing
Family Nurse Practitioner
Women's Health Care Advanced Nurse Practitioner

as she locates her practice to this area.

As always, Bovina Rural Health Clinic provides you the best in primary health care, with emphasis on care of the whole person, family, and community.

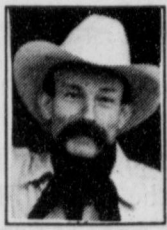
Tony Elliott, P.A.-C is still on staff but also helping at other clinic sites.

BOVINA RURAL HEALTH CLINIC
 509 Ave. I
 Bovina, Texas 79009
 806-238-1260

HOURS: 9:00 A.M.-12:00 & 1:00 P.M. - 5:00 P.M.

1-800-335-1260

Declaring open season on Avocado rustlers



BAXTER BLACK
ON THE EDGE OF COMMON SENSE

Catching avocado rustlers is sort of a cross between the Gulf War invasion and coon hunting.

"All right, come down outta that tree and drop that avocado. Frisk him Ken and don't forget to check for lemons."

In the southern California county of Ventura, you will find the occasionally fractious co-mingling of densely populated residential areas and intensive orchard and truck farming. I'm sure there was a time when farmers gladly supplied their neighbors with enough lemons, strawberries and avocados to keep 'em in guacamole and shortcake each growing season.

But as urban pressure increased, uninvited pickers began to take advantage. "I'm only takin' two or three. They'll never be missed." Unfortunately it eventually became, "I'm only takin' twelve hundred pounds. They can grow more."

Farmers complained. They reported their losses, but by the time it got to court the evidence had turned black and the district attorney's office had bigger fish to fry. "Ladies and gentlemen of the jury, my client, the defendant, is accused of stealing twelve avocados. He was having a party. Safeway was ten miles away and it was two o'clock in the morning! C'mon get serious."

The Farm Bureau organized and by working with the Sheriff's department was finally able to convince the proper politicians that the once minor shoplifting of an avocado had grown into a thriving black market and was

causing significant losses.

First they passed laws with teeth. Stealing avocados can be a felony punishable by up to one year in prison or \$5,000.

They implemented a chain-of-evidence procedure that established a value on the stolen goods immediately so the avocados did not have to sit in the evidence room until the time of trial.

Farmers signed up with the National Property Registration Service, O.A.N. It enabled them to report a theft at 3 a.m. The sheriff's office punched in their number which had been expanded to include explicit directions to any of the farmer's groves. Reflective numbered markers, like street signs were posted at the exact locations.

Sheriff's deputies, including their canine corps and helicopter could then converge on the location in a matter of minutes.

With the thumping helicopter overhead lighting the area and snarling dogs in hot pursuit, the midnight thieves soon found themselves treed, tried and trundled off to San Quentin.

Results have been better than expected. Theft is down substantially and the Farm Bureau and Sheriff's office have established a mutually beneficial relationship.

It strikes me that Ventura's example might be inspiration for other counties around the country where people think 'pick yer own' applies to them. Midnight sweet corn thieves, watermelon felons or punkin pilferers would think twice.

However, I don't think theft has ever been a problem for growers of zucchini. I know we can't give ours away. It's like givin' away kittens. I've never seen anyone try and steal one.

COTTON NEWS

Prior to the release of the next United States Department of Agriculture crop production report the actual size of the High Plains crop is very much a subject for speculation. Nobody appears to know how many acres remain or what they will produce.

According to Lubbock-based Plains Cotton Growers, USDA's first planted acreage estimate, released June 28, indicated producers would plant 3.1 million acres to the fiber crop.

A decidedly non-scientific polling of county Farm Service Agency offices in mid-July indicated initial plantings could have been even higher than the initial USDA estimate. That poll, which was done in an effort to quantify the number of failed cotton acres, indicated the 1996 crop might have initially been closer to 1995's

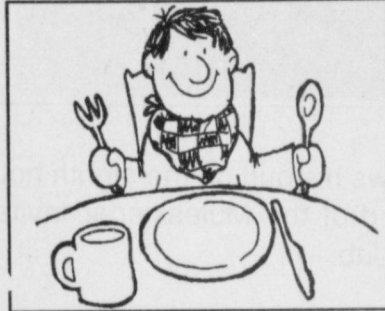
3.6 million planted acres. The poll also indicated that over 800,000 acres of cotton had been failed through mid-July. The FSA figures indicated that another 100,000 - 200,000 acres could still be lost.

"The figures that USDA releases in the August 9 crop report will be of great interest to the entire cotton industry," says PCG Executive Vice President Donald Johnson. "As a result of less acreage and lower yields in other parts of the state, the Texas crop is really hard to estimate this year. Hopefully, the report will help fill in some of the blanks."

Getting an estimate that truly reflects the yield potential of the remaining High Plains crop should be even more challenging than figuring out how many acres will get to harvest.



Hank, Texas Playboys on stage
Hank Thompson (left) and Bob Wills' Texas Playboys are among the acts performing live during the annual Curry County Fair, Aug. 12-17.



To cope with overflowing sinks of dishes, introduce your family to the Elizabethan style of dining. Give each person his or her own mug, plate, knife, fork and spoon to eat with, then wash, dry and put away.

Boy's Basketball Shoes
Air Zoom Flight Hi
Reg. \$115.00 SALE **\$65⁰⁰**
Air Versitall Low
Reg. \$70.00 SALE **\$56⁹⁵**
Women's Air Slant Low
Reg. \$74.95 SALE **\$59⁹⁵**

Select T-Shirts
SPECIAL **\$10⁰⁰ EA.**

William's Athletics
322 Main 272-MULE (6853)

Curry County Fair Aug. 12-17

If you haven't attended the Curry County Fair in a while, you'll find it isn't just steers and sheep, horses and heifers, hogs and home arts. The fair has been invaded by entertainers and plenty of them.

While the traditional livestock shows and competitions remain the nucleus, the Curry County Fair Board has made a concerted effort to make the fair a community-wide attraction. A number of name acts have been booked for the 1996 event and the great part is that there is no charge other than the cost of regular gate admission.

Among the acts booked for the fair, scheduled from August 12 to 17, are country music legends Hank Thompson and Bob Wills' Texas Playboys. Also on the schedule is up and coming star Tommy Shane Steiner and the Texas Steam Band; local talent Kim Blakey; the musical comedy combo, the Jose Brothers; genuine country and western performer Don Walser, vocalist Cindy Nix and one of Tejano music's very best, Los Palominos.

The fun begins Monday, Aug. 12, with Kim Blakey and the Jose Brothers sharing the stage at 7 p.m. at the entertainment area.

Tuesday, Aug. 13 features the legendary western swing sound of Bob Wills' Texas Playboys, featuring guitarist Tommy Allsup and vocalist Leon Rausch. The Jose Brother will also be on the stage, beginning at 7 p.m.

With such a lineup and no charge other than the regular gate admission, the Curry County Fair's \$10 season pass offer is expected to get plenty of attention. Here's a bit more on the entertainers:

99¢ 12-oz.

Cool New Flavors!

Cappuccino HEATH

FUDGE OREO

MINT m&m

Now the DQ® Blizzard® Flavor Treat and Breeze® Frozen Yogurt Treat come in three new taste sensations: Fudge Oreo, Mint M&M and Cappuccino Heath! Try these and all your favorite flavors at Dairy Queen® now for only 99¢ each. Hurry, offer ends soon!

On Sale Now August 5-25, 1996.

Dairy Queen

© Reg. TM Am. D.Q. Corp. © Tr. D.Q. Op. Coun. At participating Dairy Queen® stores.

JOE'S BOOT SHOP

We Ship Everywhere

1-800-658-6378 106 E. American Blvd. Muleshoe, Texas
And Country Junction

Get a head start on back to school. Remember to stop at the Red Lites!

4 BRAND NEW STYLES FOR CHILDREN

Full grain leather uppers are virtually care-free. Rugged outer sole with crepe middle for added comfort. Cushion insole designed to keep feet cool and dry. Steel shanks for strength and support. Available in both Children and Youth Sizes. D 8 1/2 to 13 1/2 D 1 to 6

FOR KIDS

- 210-C 210-Y Saddle Deerskin Foot and Top, 4" Lace-up Saddle Deerskin Kiltie. Covered Cushion Insole, Red Lite Unit Sole.
- 220-C 220-Y Tan Crazy Horse Foot and Top, 4" Lace-up Tan Crazy Horse Kiltie. Covered Cushion Insole, Red Lite Unit Sole.
- 200-C 200-Y Black Deerskin Foot and Top, 4" Lace-up Black Deerskin Kiltie. Covered Cushion Insole, Red Lite Unit Sole.
- 230-C 230-Y Outblood Deerskin Foot and Top, 4" Lace-up Outblood Deerskin Kiltie. Covered Cushion Insole, Red Lite Unit Sole.

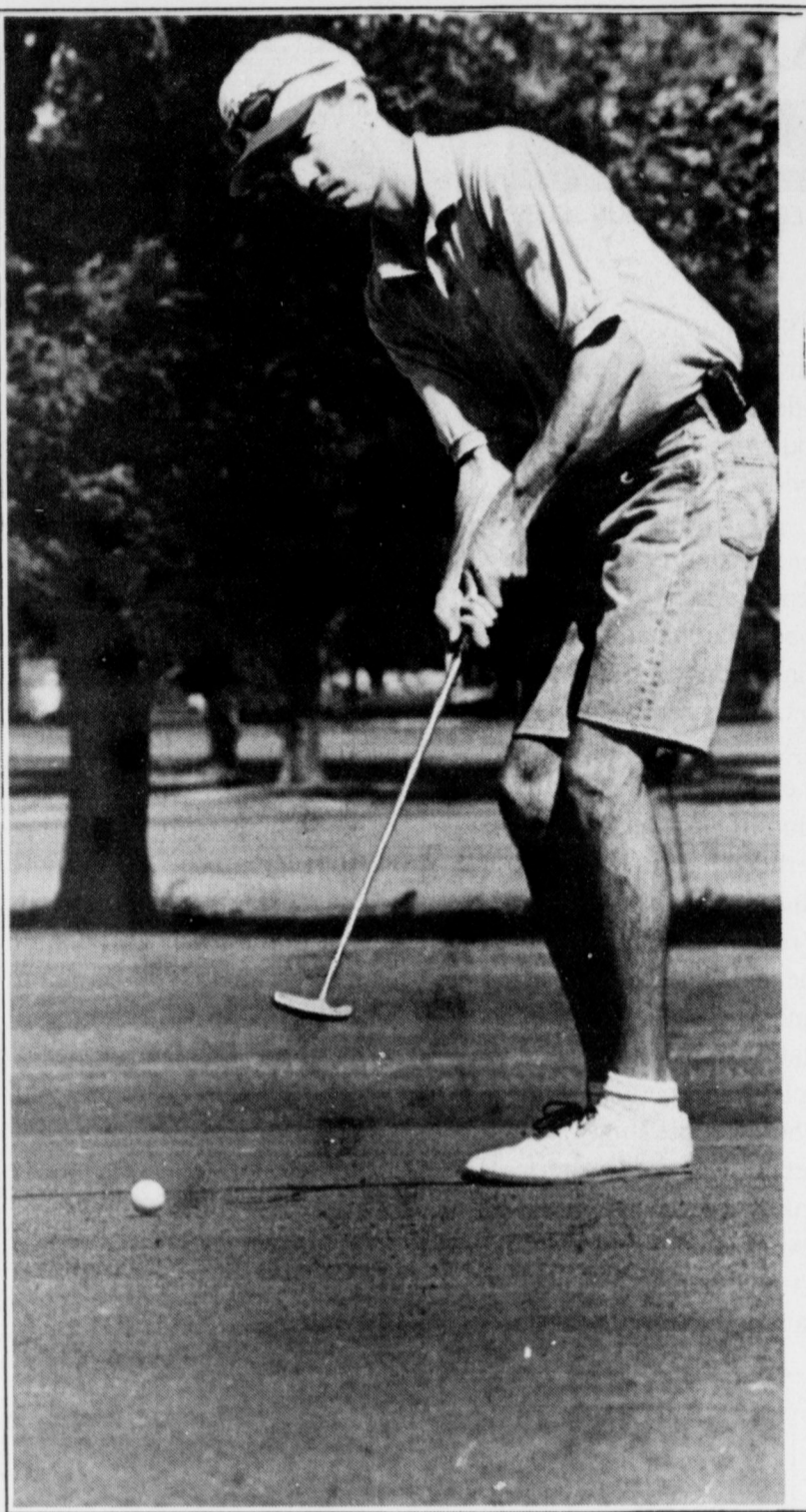
-BEGINNING AUGUST 1ST- Buy A Tony Lama Red Lite or Tony Lama Reg. Boots for Kids - **Get A FREE Tony Lama Back Pack for School!**

NEW! BOOTS FOR KIDS

Just like the kids, these Red Lites are made of the finest full grain leather uppers. Cappuccino is priced and available in mens sizes 8-13.

GOLF

- Richard McClain73-71—144
- Rodger Gajardo
- Tino S.72-74—146
- THIRD FLIGHT**
- Dewayne Fryar
- Bob Hedges70-70—140
- Lupe Bryan
- Manuel Quintana71-72—143
- Max Thoms
- Guy Ballew70-74—144
- Kurt Miller
- Irvin St. Clair71-75—146
- Joe Sowder
- Calvin Embry70-78—148
- Terry Steinbock
- Daniel Schauder71-80—151
- Jackie Johnson
- Richard McCormick ...72-79—151
- John St. Clair
- Jimmie St. Clair81-77—158
- FOURTH FLIGHT**
- John David Agee
- Royce Bethel69-73—142
- Terry Field
- Ronnie Kenmore74-70—144
- Tim Shipman
- Don Carter74-73—147
- Bill Bailey
- Don Huddleston74-75—149
- Shorty Vardeman
- Glenn Howl74-77—151
- Joe Leal
- Gabe Topia74-78—152
- Tommy Gregory
- Granny Elder73-81—154
- Sam Damron
- Jim Reese78-73—156
- FIFTH FLIGHT**
- Hack Wilson
- Charlie Stalcup68-74—142
- Roger Buhrman
- Garry Shipman70-75—145
- Amalio Garcia
- Marty Roblero74-75—149
- Doug Spradling
- Mark Washington75-74—149
- John Saylor
- Marshall Pool77-78—155
- Brett Stegall
- Frank Stegall82-74—156
- Bill Jones
- Harold Brooks75-81—156
- B.H. Wagnon
- Tommy Gunstream82-78—160
- Muleskinner Invitational**
Aug. 3-4, at Muleshoe CC
(Par 35-35—70)
- CHAMPIONSHIP FLIGHT**
- Chas Akard
- Clay Hodges66-62—128
- Todd Shipman
- Sid Felan63-66—129
- Paul Garcia
- Marc McNutt64-67—131
- Ronnie Hughes
- Mike Woodworth65-66—131
- Larry Sutton
- Scott Calvert66-65—131
- Carey Suddeth
- Rick Rhoden67-64—131
- Jessy Carrasco
- Dayyn Tapia66-67—133
- Jose Triana
- Sammy Gonzales66-71—137
- Steve Finley
- Lawrence Klenclo68-69—137
- FIRST FLIGHT**
- Greg Couch
- Manuel Jimenez68-63—131
- Terry Ott
- Craig Davis62-70—132



Rolling it close
Don Carter of Muleshoe follows his putt on the eighth hole Sunday during the final round of the Muleskinner Invitational at Muleshoe Country Club.

- Terry Burton
- Al Bishop65-68—133
- Chawn Gunstream
- Phillip York67-68—135
- Dave Jenkins
- Chas Akard
- Jim Vardeman67-68—135
- Joe Gear
- Hal Wood68-71—139
- Stanley Wilson
- Mickey Hoyl69-73—142
- Albert Aviles
- Able Longoria72-70—142
- Brian Box
- Ken Box69-74—143
- Brad Stegall
- Tommy Terrell74-71—145
- SECOND FLIGHT**
- Larry Pruiett
- Steve Lee66-64—130
- John Lee
- Terry Crew67-65—132
- Brad Holcomb
- Randy Carroll69-65—134
- James Tumbow
- Kyle Kimbrough70-71—141
- Bobby Burge
- Joe Bowman74-67—141
- Dick Johnson
- Ted Welch69-75—144
- Roy Franse

Muleshoe Booster Club meeting Thursday
The Muleshoe Athletic Booster Club will meet at 7:30 p.m. at the Muleshoe High School cafeteria. All members, officers and representatives are asked to attend.

A pessimist is one who has been compelled to live with an optimist.
Elbert Hubbard

Golf

Continued from page 1

higher in the final round.

In the Fourth Flight, John David Agee of Lazbuddie and Royce Bethel of Farwell shot an opening-round 69 and held on for a two-stroke win at 2-over 142. Terry Field and Ronnie Kenmore were second at 144 and Tim Shipman and Don Carter third at 147.

Hack Wilson and Charlie Stalcup, both of Portales, posted an easy win in the Fifth Flight, flowing an opening-round 68 with a 74 for a 36-hole total of 142. Roer Buhrman and Garry Shipman were second at 145. Two teams for third at 149.

A celebrity is one who is known to many persons he is glad he doesn't know.
—H. L. Mencken

Bailey County Propane and Hot Country KKYC
Go Out & Register To Win Tickets To See
Dwight Yoakam
In Concert With
David Ball
Tuesday, Aug. 13th
Amarillo Coliseum
Deadline to register is Saturday, Aug. 10th

Bailey County Propane
Rt. 1, Box 10 Muleshoe, TX 79346
272-4678 or 272-3319

I finally balanced the family budget.



And then I opened our auto insurance bill!

No problem ... I'll just call the people at Farm Bureau Insurance.

806-272-4567

They offer a free insurance review to determine the coverage we need at competitive rates that will fit our budget.



Texas Farm Bureau Mutual Insurance Co.
Texas Farm Bureau Underwriters
Southern Farm Bureau Casualty Insurance Co.
Southern Farm Bureau Life Insurance Co.
966TXA91

Fancy That
Ladies' Apparel

BACK TO SCHOOL SAVINGS
Entire Stock
20% OFF

Just Arrived - Dazzling Fashion Watches
\$19⁹⁵ - \$24⁹⁵

OPEN 9:30-5:30 Mon.-Sat.
517 1/2 N. Main
769-9121 Clovis, NM

NOTICE OF EFFECTIVE TAX RATE AND ESTIMATED UNENCUMBERED FUND BALANCES

This notice concerns 1996 property tax rates for the six taxing units listed below. It presents information about three tax rates for each unit. Last year's tax rate is the actual rate the taxing unit used to determine 1995 property taxes. This year's effective tax rate would impose the same total taxes as last year if you compare properties taxed in both years. This year's rollback tax rate would impose the same total taxes as last year if you compare properties taxed in both years. This year's rollback tax rate is the highest tax rate the taxing unit can set before taxpayers can start rollback procedures. In each case these rates are found by dividing the total amount of taxes by the total taxable value of taxable property with adjustments as required by law. The rates are given per \$100 of property value.

	MULESHOE ISD	THREWAY ISD	CITY OF MULESHOE	MULESHOE AREA HOSPITAL DIST.	BAILEY CO. GEN. FUND	BAILEY CO. FARM ROAD
LAST YEAR'S TAX RATE						
Last Year's Operating Taxes	2,299,026	549,810	603,958	560,981	812,378	171,361
+Last Year's Debt Taxes	-0-	-0-	-0-	-0-	-0-	-0-
=Last Year's Total Taxes	2,299,026	549,810	603,958	560,981	812,378	171,361
/Last Year's Tax Base	185,715,500	39,554,506	90,998,618	224,386,902	225,596,336	221,108,886
=Last Year's Total Tax Rate	1.2704	1.40	.6637	.25	.3601	.0775
THIS YEAR'S EFFECTIVE TAX RATE						
Last Year's Adjusted Taxes	2,219,551	543,673	601,548	558,837	810,592	170,876
/This Year's Adjusted Tax Base	177,567,021	38,510,061	92,275,890	224,888,167	224,223,500	219,819,479
=This Year's Effective Tax Rate	1.2499	1.4117	.6519	.2484	.3615	.0777
x 1.03=Maximum Rate unless the entity Publishes Notices & Holds Hearings	1.2874	1.4541	.6714	.2559	.3723	.0800
THIS YEAR'S ROLLBACK TAX RATE						
Last Year's Adjusted Operating Taxes	2,219,551	543,673	601,548	558,837	939,119	170,876
/This Year's Adjusted Tax Base(school)	177,567,021	38,510,061	92,275,890	224,888,167	224,223,500	219,819,479
=This Year's Local M&O Rate	1.2499	1.4117	.6519	.2484	.4188	.0777
xStudent Enrollment Adjustment	1.0019	1.0000	N/A	N/A	N/A	N/A
=This year's adjusted M&O Rate	1.2523	1.4117	N/A	N/A	N/A	N/A
x1.08(or +.08 for School)=Maximum Operating Rate	1.3323	1.4917	.7040	.2683	.4523	.0839
+This Year's Debt Rate	-0-	-0-	-0-	-0-	-0-	-0-
Schools:						
+Rate to recoup loss certified by Commissioner of Education	-0-	-0-	N/A	N/A	N/A	N/A
=This Year's Rollback Rate Before Adjustment	1.3323	1.4917	.7040	.2683	.4523	.0839
-Sales Tax Adjustment Rate	N/A	N/A	N/A	N/A	.0618	N/A
=Rollback Tax Rate	1.3323	1.4917	.7040	.2683	.3905	.0839

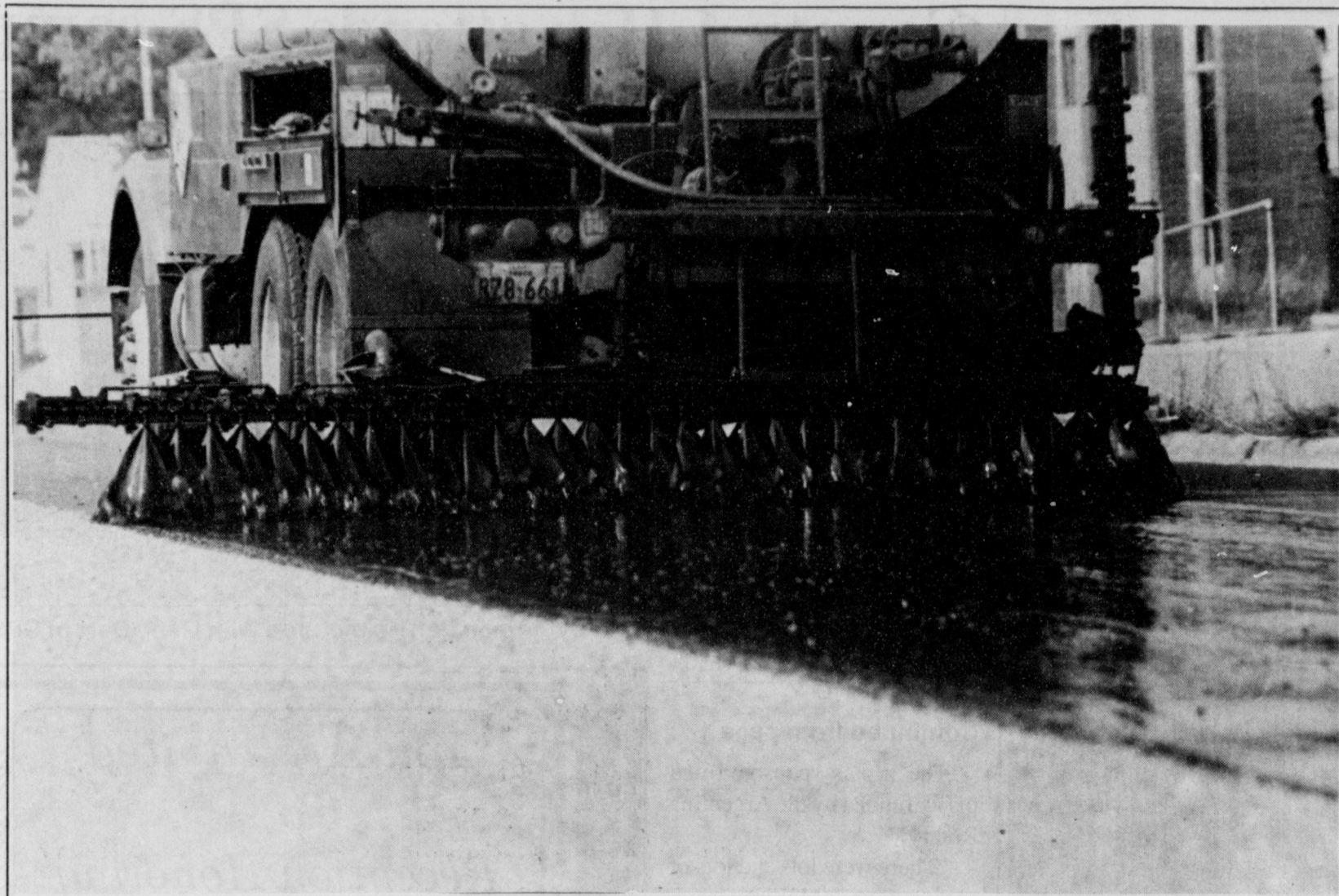
SCHEDULE A: UNENCUMBERED FUND BALANCES

The following estimated balances will be left in the taxing unit's property tax accounts at the end of the current fiscal year. These balances are not encumbered by a corresponding debt obligation.

	MULESHOE ISD	THREWAY ISD	CITY OF MULESHOE	MULESHOE AREA HOSPITAL DIST.	BAILEY CO. GEN. FUND	BAILEY CO. FARM ROAD
Maintenance & Operation of General Fund	-0-	-0-	-0-	-0-	-0-	-0-

SCHEDULE C: EXPECTED REVENUE FROM ADDITIONAL SALES TAX

	MULESHOE ISD	THREWAY ISD	CITY OF MULESHOE	MULESHOE AREA HOSPITAL DIST.	BAILEY CO. GEN. FUND	BAILEY CO. FARM ROAD
	N/A	N/A	N/A	N/A	143,438	N/A



City slickers

The City of Muleshoe was busy this week seal coating several city streets, including 2nd Street in front of the Journal office.

Muleshoe

Continued from page 2

All remaining tickets will go on sale beginning Aug. 26 on a first come, first serve basis.

The cost of a reserve season ticket for five home games will be \$17.50. Any reserve seats remaining after the season starts will be \$4 for each home game. Student season tickets are \$10, general adult admission is \$3, and general student admission is \$2.

Department of Health conducting clinic

The Texas Department of Health will be conducting an immunization clinic Wednesday, Aug. 14 in the Muleshoe High School cafeteria.

The clinic will be open from 10 a.m. to 1 p.m. and 2 p.m. to 6 p.m. Any immunizations needed will be given for a \$5 fee.

Medicaid will be accepted,

and no one will be turned away due to inability to pay.

Greg Black Memorial 10-K Run slated

The Greg Black Memorial 10-K Run, two mile run and two mile walk will be held Aug. 10 at 500 East 15th Street in Hereford. Starting time is 8 a.m. Entry fees for the race are \$8 per person in advance, and \$10 per person the day of the race. The deadline for entry in the race is 7:45 a.m. Aug. 10.

Divisions of the race include 10K male and female 13 and under, 14-19, 20-29, 30-39, 40-49, and 50 and over. The two mile run and two mile walk is open, and the wheelchair division for both men and women is also open.

To enter the races, send an \$8 entry fee to Race Director, Hereford and Vicinity YMCA, 500 East 15th Street, Hereford, TX 79045. Checks should be payable to the Hereford YMCA.



Garden spot

The flower garden in front of the home of Neal (not pictured) and Skeet Bradshaw at 1711 Ave. F was named the Jennyslippers Garden Spot of the Week.



Sidewalk Sale

UP TO **75%** OFF

Spring & Summer Fashions

For The Whole Family

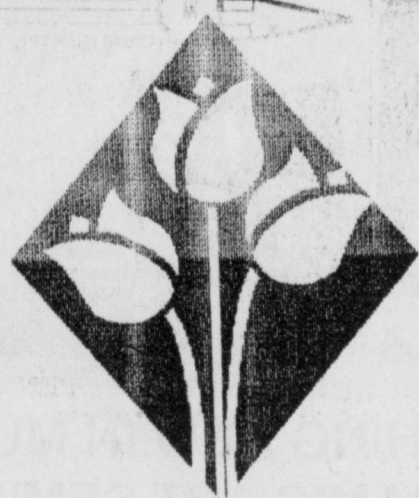
Saturday, August 10
ONE DAY ONLY 9 a.m.-5 p.m.

- Cash & Carry -
Please, No Returns or Exchanges

OPEN Monday-Friday 9:00-5:30, Saturday 9:00-5:00

Ingram's Dept. Store

705 Main Friona, TX 247-3291
VISA & MASTERCARD ACCEPTED



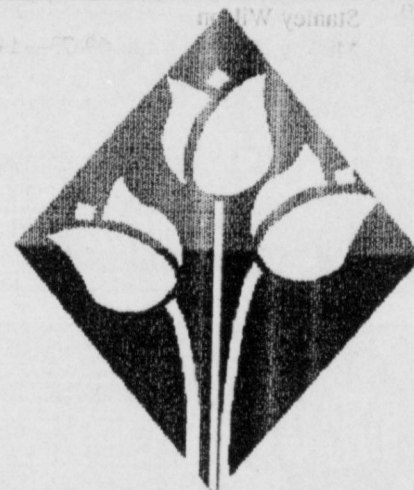
**DE MUJER A MUJER:
ESTOY PARA SERVIRLES**

Sherry Whiteaker, R.N.
MASTER OF SCIENCE IN NURSING
Women's Health Care Nurse Practitioner
Family Nurse Practitioner

BOVINA RURAL HEALTH CLINIC
509 AVE. I
BOVINA, TEXAS 79009
806-238-1260
1-800-335-1260

HOURS: 9:00 A.M.-12:00 & 1:00 P.M. - 5:00 P.M.

- Cuidado Prenatal •Ginecologia
- Cuidado General •Planificacion Familiar
- Pruebas del Cancer •Tratamiento Hormona
- Exámenes de los Cenos



**WOMAN TO WOMAN:
I'M HERE FOR YOU!**

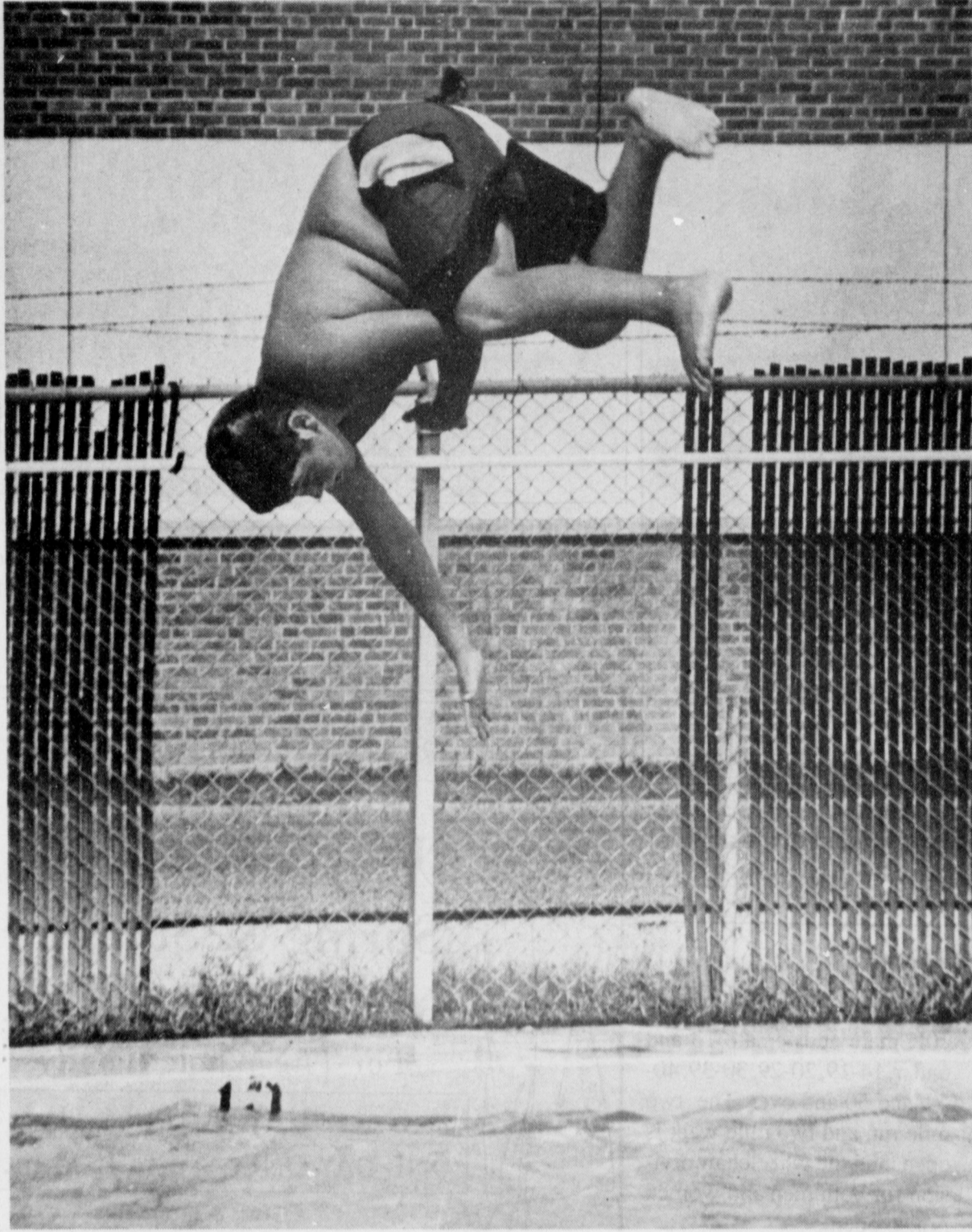
Sherry Whiteaker, R.N.
MASTER OF SCIENCE IN NURSING
Women's Health Care Advanced Nurse Practitioner
Family Nurse Practitioner

BOVINA RURAL HEALTH CLINIC
509 AVE. I
BOVINA, TEXAS 79009
806-238-1260
1-800-335-1260

HOURS: 9:00 A.M.-12:00 & 1:00 P.M. - 5:00 P.M.

- Prenatal Care •Gynecology
- General Health Concerns •Family Planning
- Pap Smear •Breast Exams •Hormone Therapy

Olympic hopeful?



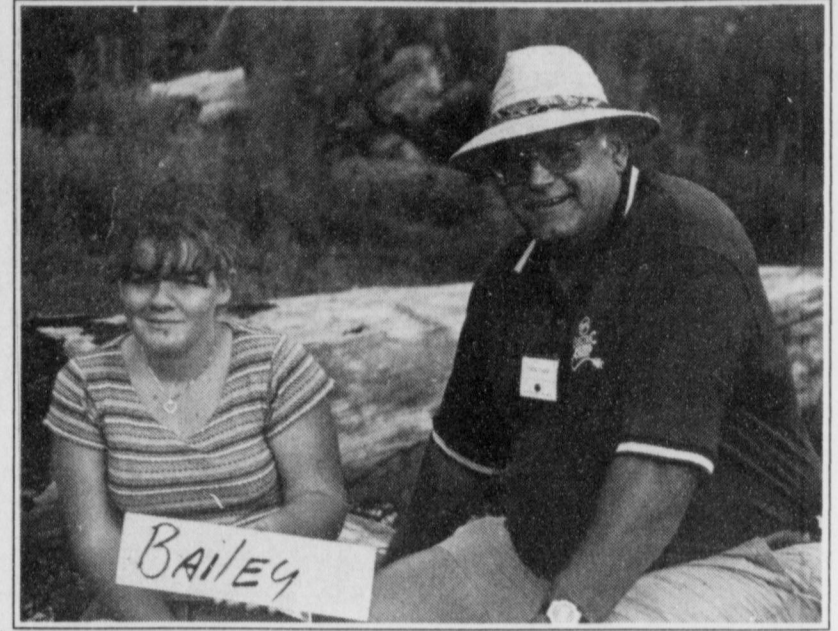
Cannonball
Michael Durben, 12, perfects his cannonball dive from the board at the Muleshoe City Pool Monday. Michael is the son of Bill and Pat Durben.

County 4-Her attends SPS camp

Bailey County 4-H member Lindsey Altman recently participated in an electricity camp sponsored by Southwestern Public Service Company.

More than 130 4-Hers and advisers from throughout the Texas Panhandle and South Plains attended the High Plains Electric Workshop July 15-19 at Camp Scott Able, near Cloudcroft, N.M.

The camp featured demonstrations and lectures on electricity, wiring, electrical terms and safety. The students also completed hands-on wiring projects.



Lindsey Altman (left) is pictured with Gene Darr of SPS

McElroy

Continued from page 1

The trip is sponsored and partly funded by the Argentina Rotary.

"There were lots and lots of applications," McElroy said. "Then they interviewed everybody. That was kind of a scary ordeal. They pick you if they think you can handle it and you're mature enough."

A German student will be studying in Muleshoe this year as part of the exchange.

McElroy says preparation is one of the hardest parts of the trip.

"I've been spending a lot of time with my friends and family. It's hard to know what to buy, pack, and what to leave behind."

If a child lives with approval, he learns to live with himself.
—Dorothy Law Nolte

You Are Invited
To A
Reception Honoring
Dave Marr Jr.
at City Hall On
Thursday, Aug. 15,
1996
3:00-5:00 p.m.

Local news
about
local folks.

Muleshoe Journal
To Subscribe, 272-4536

WEEKLY GRAND

Match 3 like prizes and win that much more. **Match 5 GRAND prizes & win \$1,000 per week for 26 weeks!**

Match 2 QUICK \$20

Match 1 WIN UP TO 3 TIMES!

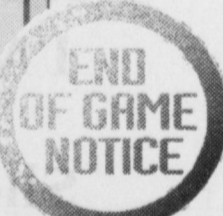
Match 2 like prizes awards, win that amount

INSTANT MILLION

Match any one of "YOUR SYMBOLS" to the "LUCKY SYMBOL" and win prize in prize box.

Win up to \$1,000,000 INSTANTLY!

Match 2 like prizes awards, win that amount



So much to win. So little time.

There are plenty of prizes left for *Instant Million* and *Weekly Grand*. But you'd better get a move on if you want to play because these games end August 1, 1996. You'll still be able to purchase any remaining tickets or claim any prizes until January 28, 1997.

You can claim any prizes of up to \$599 at any Texas Lottery retailer. Prizes of \$600 or more are redeemable at any of the 24 regional Texas Lottery claim centers or by mail.

If you have any questions, just call the Texas Lottery Customer Service Line at 1-800-37-LOTTO (1-800-375-6886).



Weekly Grand overall odds of winning, 1 in 4.56. Instant Million overall odds of winning, 1 in 4.62. Must be 18 years or older to play. ©1996 Texas Lottery

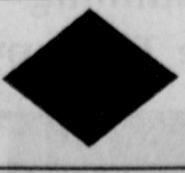


SOMETHING NEW IN MULESHOE CERAMIC ART SEMINARS

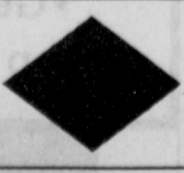
Smokie Little of Muleshoe, Texas and Karen Morris of Clovis, New Mexico hosted a *Gare* ceramic art seminar on Sunday and Monday, August 4th & 5th at the residence of Smokie and Jack Little. Twelve towns were represented by the eighteen attendees at the seminar. Ceramic shop owners and certified teachers were invited to participate. Those attending were Bettye Pierson and Margaret Boyce of Amarillo, Gina Shelton and Kathy Wilson of Borger, Kay Mauldin of Dumas, Barbara Chandler of Dalhart, Lana Timmons, Linda Lane, and Sue Hayes of Lubbock, Kay Shaw of Midland, Sue Penn of Happy, Char Hough and Virginia Hunt of Denver City, Jeanne Parrish of Eunice, NM, Janet Pino of Alamogordo, NM, Iris Johnson of Portales, NM, Kathy Jackson and Shelly Winn of Clovis, NM. Four received special awards (Bronze Keys) for reaching an advanced level in their on-going ceramic education. Those receiving Bronze Keys were Bettye Pierson, Margaret Boyce, Sue Penn, and Lana Timmons.

The ladies not only received training in a specialized ceramic product, they were treated to a tour of the Heritage Center by Vivian White, and received many gifts from Muleshoe merchants. Little was thrilled with the help that she received from the merchants. Smokie Little is a certified seminar director for *Gare* (a ceramic product line). She usually travels over three states conducting seminars, but has decided to start having some of the seminars in her Muleshoe studio (SMOKE SIGNALS). Smokie has hopes of creating an interest in ceramics and teaching local residents the art of ceramics. She does not sell supplies (greenware, paints, brushes, etc.) but provides a teaching studio and will do firing for the public. Karen Morris is the West Texas and Eastern New Mexico *Gare* distributor and also owns and operates CLOVIS CERAMICS at 1005 E. 1st, Clovis, NM. She invites all interested in ceramics to come by her shop. She will be happy to help anyone get started in this fascinating hobby.

Lunch was served both days at the Little residence. There were many drawings for door prizes presented by both Little and Morris. They plan to host more invitational two day seminars in the future. The response was so great that some had to be turned away. This was a fun and educational activity. Although this particular seminar was for shop owners and certified teachers, there will be other seminars that will include the beginner.



Subscribe Today!
Call the Muleshoe Journal
272-4536



Hernandez feted with bridal shower at Heritage Depot

Yvette Hernandez of Lubbock, formerly of Muleshoe, was honored with a wedding shower Sunday, July 28, at the Muleshoe Heritage Depot.

Hostesses included Pat Angeley, Visla Anzaldua, Tiffany Boehning, Cuca Cuevas, Noelia Flores, Ana M. Gonzalez, Selina Graves, Geazul Hernandez, Irma Leal, Jo Long, Olga Lozano, Karen

Mason, Patricia Mata, Bertha Mendoza, Ann Mount, Barbra Mutschler, Margie Silguero, Beatrice Vega.

The hostesses gift was a Eureka Vacuum Cleaner and a nine-piece Farberware Cookware set.

Special guests included Consuelo Hernandez, mother of the bride; Anna Ruiz, sister of the bride; Margret Quintana,

mother of the groom; and Lisa Renteria, the maid of honor.

Yvette is the daughter of Consuelo Hernandez of Lubbock. The prospective groom, David Quintana, Jr., is the son of David and Margaret Quintana of Muleshoe.

The couple plan to marry Saturday, Aug., at the Christ The King Church in Lubbock.



Yvette Hernandez

The Phone Company
The area telecommunications services are provided by Five Area Telephone Cooperative, Inc. and its subsidiaries.

***West Plains Telecommunications, Inc.**
Five Area Systems, Inc.
Plateau Cellular Network, Inc.

Bula	•933	Lehman	•525
*Olton	•285	*Earth	•257
Maple	•927	*Springlake	•986
Lariat	•925	*Muleshoe	•272
*Sudan	•227	Lazbuddie	•965
Needmore	•946		

The home town Phone Company
806-272-5533 or 1-800-741-6925 Office hours 8-5
Monday thru Friday
302 Uvalde St. Muleshoe, TX 79347

ENOCHS NEWS

James and Merrel Long from Dawning, Penn. and Lorena Miller of Canyon visited Mrs. Bonnie Long in Morton last week. They were dinner guests in the home of Mr. and Mrs. Bill Key. Other dinner guests included Mr. and Mrs. Bobby Adams of Morton and Mrs. Doris Huff of Three Way.

T.J. Sullivan of Dallas, who was visiting his sister, Lorna Blanton, in Lubbock, came to Enochs Thursday to see the old home place and visited former neighbor Ellen Bayless.

Visiting Mrs. Inez Sanders last Sunday were Rev. and Mrs. Donnie Howell from Littlefield.

Wanda Wheeler and a friend went to Crosbyton last weekend to see God's Country.

Rev. Harold and Kay Abney of Lockney spent two days with her mother, Mrs. Margie Peterson.

MariBell Vasquez and children have been visiting her parents, J.C. and Lilye Snitker. They drove to Dallas Friday to meet her husband, Rodney. They visited her brother, Mr.

and Mrs. Robert Zamora, before going home.

Mrs. Sandra Austin was in Lubbock last week and took her grandson, Sam Austin, to the airport to see Comcondo.

Mr. and Mrs. Bill Key were in Littlefield Thursday to visit his sister, Juanita, and husband Homer Howard.

Debbie Green and son Matthew, of Lubbock, are spending a few days with her parents, Mr. and Mrs. Bobby Adams.

Ashley and Chandler Grant of Amarillo visited their grandparents a few days last week.

REBEKAHS NEWS

By Dana Bartholf

The Rebekah club met on Tuesday, July 30. The Lodge opened in regular session with Noble Grand Mary Ann Ramirez in the chair. The secretary gave the roll call of officers and absentees were noted. Minutes of the last regular session were read. There were no additions or corrections.

There was a presentation of pins to Ina Wilemon and Chuck Bartholf for the Eagle Nest Club.

A letter from Alene Bryant was read, letting us know she will be back next Tuesday.

Dana Bartholf's daughter Barbara was in the hospital all last week.

Report from Visiting Committee: 32 phone calls, 22 cards, 14 home visits, 4 nursing home visits, 1 dish, 2 funerals, 6 gifts, 5 flowers, 1 other lodges, 3 hospital visits and 10 members

present.

There was a reading of an application for new membership. An interviewing committee consisting of Dana Bartholf, Patsy Chance, and Ina Wilemon was appointed.

There was a motion made and seconded to help Mary Ann Ramirez fix food for her mother-in-law's birthday party on September 21.

The Rebekah President will be here on August 27. A committee consisting of June

Green, Patsy Chance, Mary Ann Ramirez, and Dana Bartholf was appointed to arrange the food and decorations for the occasion.

Old business included cleaning up for garage sale next Tuesday and setting a date for our next garage sale. There were some additional suggestions for fundraisers.

There was no new business, but a lot of talk for the good of the order. The Lodge closed with love to all.

North Plains Mall
invites you to the
Clovis Kids Show
Saturday, Aug. 10, 1996 at 2:00 p.m.

See What's In Style For Back To School During Our 1st Annual Clovis Kids Fashion Show

Home Folks Caring For Folks At Home.

MULESHOE AREA HOME HEALTH Agency

Featured Employee

Kaci Miller is an L.V.N. at the Muleshoe Area Home Health Agency. She lives in Earth and is married to Scott Miller. They have two kids - Reagan and Brittany. Kaci enjoys doing crafts in her spare time. She goes to First Baptist Church in Springlake.

Kaci has just returned to work at the Muleshoe Area Home Health Agency. She worked in Lubbock at University Medical Center in Kidney Transplant & Dialysis before coming here. She enjoys working with the elderly. It's nice to be wanted and to be enjoyed so much.

To receive Home Health Services, talk with your physician or talk with hospital personnel when you are hospitalized.

24 Hour # 272-3346
Local Nurse on call 24 hours a day to offer prompt service.

We accept Medicare, Medicaid and Private Insurance
It Is Your Right To Choose The Home Health Agency You Prefer.

FREE Information On Advance Directives
Also known as Living Wills or Right To Die Directives. You may call our agency 272-3346 for these directives. You may also obtain these forms and assistance at 623 West 2nd Street.

We care for you at home

Affiliated with LUBBOCK METHODIST HOSPITAL SYSTEM

ST. MARY MOBILE SERVICES

Mobile Mammography Unit
will be here for breast cancer screenings

Friday, August 16, 1996
Bailey County Courthouse
Back Parking Lot
Please Call 1-800-388-6266
for an appointment
COST - \$60.00

(INCLUDES MAMMOGRAM, RADIOLOGIST'S READING FEE AND REPORT)

- Insurance filed, if requested.
- If payment is a problem, please contact Community Health Outreach Department at 1-800-636-2462
- THIS UNIT IS ACR ACCREDITED, TDH CERTIFIED & MEDICARE APPROVED.**

TO PARTICIPATE IN THE SCREENING PROGRAM YOU MUST MEET THE FOLLOWING CRITERIA:

- 1. You must be at least 40 years of age.**
- 2. You must not have a definite palpable lump.**
- 3. You must never have had a mastectomy or currently have breast implants.**
- 4. You must not have had any other type of breast surgery within the last 12 months.**
- 5. Must not have had a mammogram within the last 12 months.**

ST. MARY OF THE PLAINS HOSPITAL
4000 24th Street Lubbock, TX 79410 1-800-388-6266

SAFETY (and comfort) FIRST!

A	B	C	D
10-13	9-10	8-13	5-10
E	EE	EEE	
6-14	7-13	7-13	

2231

Steel toes, but with no loss of traditional Red Wing comfort, fit and good looks. Has a soft cushion insole, long-wearing SuperSole.

The Fair Store
120 Main • 272-3500
Muleshoe, Texas

RED WING SHOES
MADE IN U.S.A.

Local news about local folks.

Muleshoe Journal

To subscribe call 272-4536

OBITUARIES

Eddie Lane

MULESHOE—Graveside services for Eddie Lane, 91, of Lubbock were held Tuesday, Aug. 6, in the Muleshoe Memorial Park Cemetery with

Rev. Jimmy McGuire, Minister of hospital visitation at Lubbock's Bacon Heights Baptist Church, officiating.

Arrangements were under the direction of Franklin - Bartley Funeral Home of

Lubbock.

He died Sunday, Aug. 4, at University Medical Center.

Mr. Lane was born in Knoxville, Tenn. and grew up in the Waco area. He had been a Lubbock resident since 1970, moving there from Muleshoe. He was a retired barber.

He was a member of Bacon Heights Baptist Church, the South Plains Daylight Masonic Lodge, and the Lubbock Scottish Rite Consistory. He was a

U.S. Army Veteran.

He was married to the former Grace B. Holt on July 15, 1927 in Waco. She preceded him in death on Dec. 2, 1994.

He is survived by three sons, Eddie L. Lane of Austin, Buddy Lane of Edgewood, N.M., and Joe Lane of Electra; two daughters, Pat King of Lub-

bock and Shirley Stevens of Dimmitt; thirteen grandchildren, 28 great grandchildren and four great-great grandchildren.

The family has requested

that memorials be made to the Bacon Heights Baptist Church Building Fund, 5039 53rd Street, Lubbock, TX 79414.

Winnie Holloway

MORTON — Services for Winnie Holloway, 84, of Lubbock were held Saturday, Aug. 3, at the First United Methodist Church in Morton with the Rev. Gary Boles, pastor, officiating.

Burial was in the Morton

Memorial Cemetery under the direction of Ellis Funeral Home in Morton.

Mrs. Holloway died Aug. 1 in Lubbock. She was born July 10, 1912 in Childress. She married Gehrome Holloway Dec. 22, 1936 in Plainview. He died May 22, 1991.

Mrs. Holloway moved to Lubbock in 1990 from Morton, where she had lived since 1945. She was a member of the Delta Kappa Gamma Teacher Organization and the 1936 Study Club. She taught in the Morton Elementary School for a

number of years. She retired in 1971.

Survivors include two sons, Tom Holloway of Medicine Lodge, Kan. and Eddy Holloway of Lubbock; three daughters, Jerri Martin of Allen, Mary Hyatt of Plano, and Jane Daily of Dallas; one brother, Al Coleman of Los Angeles, Calif.; one sister, Flora Belle Soifres of Florence, Ariz.; and nine grandchildren.

The family suggest memorials be made to the First United Methodist Church of Morton, TX 79346.

Jewelry & WATCH REPAIR

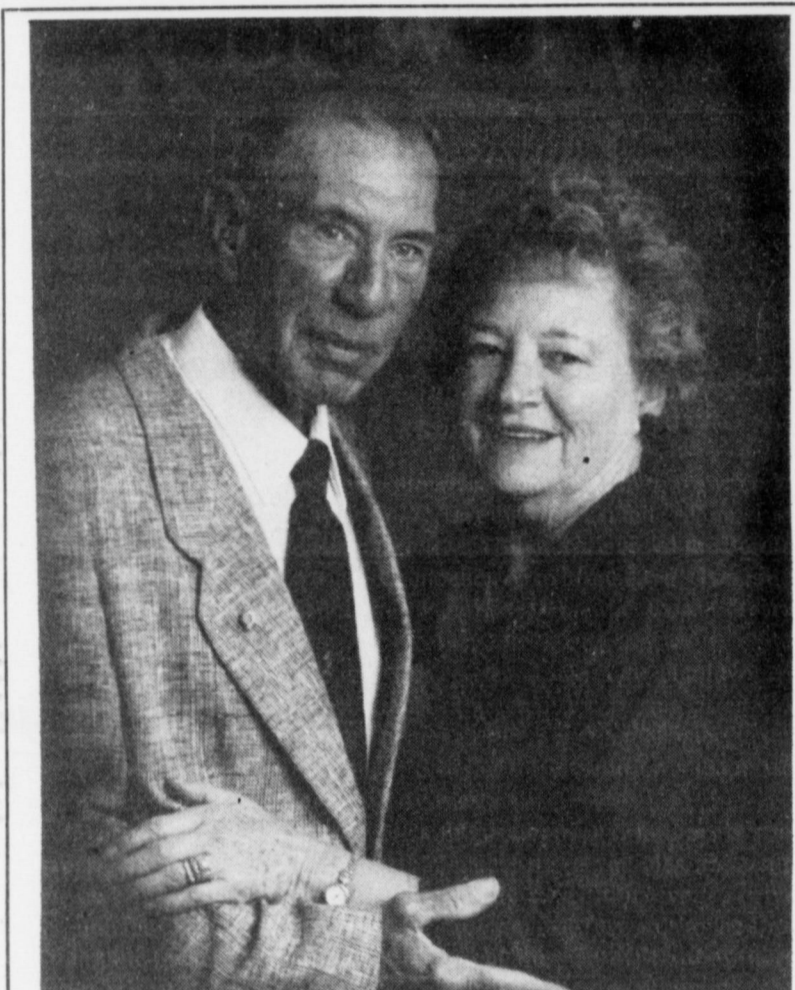
- 7 Day Ring Sizing & Repairs
- Remounting & Diamond Setting
- Full Line Watch Batteries
- Neck Chains Repaired
- Jewelry Appraised For Insurance

Faster Service



1908 N. Prince, Clovis
762-9376 (Across from K-Mart)

Have a nice day!



Mr. and Mrs. George C. Ritchie

Mr. and Mrs. George C. Ritchie of Sudan will celebrate their 50th wedding anniversary at the First Baptist Church in Sudan on Sunday, August 11, in the fellowship hall at 2:00 p.m. The event is being hosted by their children, Andrea and Arb Rylant of San Angelo, Janet and Randy Gwinnett of Dallas, Debbie and Dewayne Phillips of Farwell and Steve and Lori Ritchie of Corpus Christi. They have 11 grandchildren and four great grandchildren. All friends and relatives are invited to attend.

COPY DEADLINE
Copy deadlines for society news: wedding, anniversary, engagement and birthday announcements are 5:00 p.m. on Monday & Wednesday for the Thursday and Sunday editions.

CURRY COUNTY FAIR

Clovis • August 12-17

Live Entertainment - Free With Admission

AUG. 12 - KIM BLAKEY	AUG. 15 - LOS PALOMINOS
AUG. 13 - TEXAS PLAYBOYS	AUG. 16 - HANK THOMPSON
AUG. 14 - SOUTHERN SKY	AUG. 17 - TOMMY SHANE STEINER, DON WALSAR

* Holiday Inn **SUNWEST BANK**

Advance Tickets For Week Passes Now On Sale **ONLY \$10**

Advance Tickets Available At:

- Taco Box - Clovis Locations
- Clovis/Curry County Chamber of Commerce
- Joe's Boot Shop - Muleshoe, TX

KENW-TV

Public Television

Overland to America

Chronicles the World's Longest and Coldest Drive — from London to Manhattan in Winter

If a team of adventurers wanted to drive from London to New York, there would be only one way to go: through the Channel Tunnel to France, across Europe and Russia, Northern Siberia, the ice of the Bering Straits, Alaska, the Yukon, Canada, and then on to Manhattan. **Overland to America** is a two-hour account of the only time this extraordinary journey was undertaken.

The trip — the world's longest drive — had to be made in midwinter to use the frozen rivers of Siberia and the ice of the Bering Straits. A team of 17 began their trek in December 1993. Two months later, in the frozen treeless wastes of northern Siberia, the expedition's team had more than doubled, growing to forty two.

Overland to America chronicles the triumphs and failures of this unparalleled expedition. In nine four-wheel-drive vehicles, the team leaves London to become the first and only expedition ever to drive through the Channel Tunnel. Then the program fast-forwards to the Ural Mountains, where the party acquires eight Russian off-road military trucks winterized to -70 degrees C.

In Gulag country, with ghost camps where millions died to build the last roads in the far, far east of Siberia, the team sets out to do what no one has done before — drive 2,000 miles off-road in deep winter to the edge of the Bering Straits. To get there, they must drive on ice the length of the notorious Kolyma River.

Overland to America airs Wednesday, August 14th at 8:00 p.m. It repeats Sunday August 18th at 12:00 midnight on KENW-TV.

The Spirit of Mountain Railroading

Wednesday, 14th, 10:00 p.m., Friday, 23rd, 12:15 a.m.
Saturday, 31st, 7:00 a.m.

Experience the spirit of mountain railroading on the Durango and Silverton Narrow Gauge Railroad. See the exciting classic run-bys that are a favorite part of the photographer's excursion. Ride a double header into beautiful San Juan mountains to the historical mining town of Silverton and listen as the conductor, engineer, line crew, and avid fans share their personal railroading experiences. Part Two of this program covers the Eureka, an 1875 wood-burning steam locomotive, as it makes a historic journey along the Silverton line. It's a celebration of over 100 years of mountain railroading.

Channel 3 Television from Eastern New Mexico University, Portales, New Mexico

MULESHOE CATTLE MARKET

SATURDAY, AUGUST 3, 1996

STEERS		HEIFERS	
Weight	per #	Weight	per #
200-300	\$65-\$75	200-300	\$60-\$70
300-400	\$60-\$70	300-400	\$55-\$65
400-500	\$58-\$65	400-500	\$55-\$60
500-600	\$55-\$65	500-600	\$53-\$58
600-700	\$57-\$60	600-700	\$50-\$55
700-800	\$57-\$60	700-800	\$53-\$56

BULLS		PACKER COWS	
Others	\$38-\$45	Others	\$28-\$36

BRED COWS		PAIRS	
Others	\$350-\$425	Others	\$400-\$600

REPRESENTATIVE SALES

Seller, City	#	Type	Wt.	CWT or PH
J.R. Livestock, Hereford	1	Char. Str.	270 lbs.	at \$77.00
Claude Tippett, Anton	2	Limo Strs.	395 lbs.	at \$64.00
Chris Michaels, Levelland	4	Char. Bulls	420 lbs.	at \$64.00
Chris Michaels, Levelland	6	Char. Bulls	513 lbs.	at \$58.50
Corky Long, Levelland	2	Blk. Bulls	598 lbs.	at \$53.00
Jesse Gonzales, Plainview	1	Blk. Bull	840 lbs.	at \$51.25
Gonzalo Reyna, Bovina	1	Blk. Str.	885 lbs.	at \$59.00
Claude Tippett, Anton	1	Limo Hfr.	430 lbs.	at \$55.00
Claude Tippett, Anton	3	Char. Hfrs.	305 lbs.	at \$57.00
Chris Michaels, Levelland	2	Char. Hfrs.	330 lbs.	at \$60.00
Chris Michaels, Levelland	4	Char. Hfrs.	430 lbs.	at \$57.00
Joey Douglas, Sudan	5	Mixed Hfrs.	525 lbs.	at \$55.00
Renee Golan, Littlefield	1	Char. Hfr.	790 lbs.	at \$50.00
Bill Harmon, Muleshoe	4	Mixed Hfrs.	710 lbs.	at \$56.00
Corky Long, Levelland	2	Blk. Hfrs.	615 lbs.	at \$52.50
Jack Thompson, Dimmitt	1	Rwf. Hfr.	760 lbs.	at \$55.75
Collins Cattle, Olton	1	Blk. Pair		\$600.00
Collins Cattle, Olton	5	Blk. Pair		\$560.00
Glenn Burgett, Shallowater	1	Rwf. Pair		\$570.00
Josh Underwood, Plains	3	Blk. Cows, P6		\$410.00
Josh Underwood, Plains	1	Bwf Cow, P5		\$350.00
Jack Thompson, Dimmitt	1	Spot Cow	1570 lbs.	at \$34.75
ACU, Whiteface	1	Blk. Cow	905 lbs.	at \$34.50
7C Cattle, Bovina	1	Char Cow	1150 lbs.	at \$36.50
7C Cattle, Bovina	1	Char. Cow	1290 lbs.	at \$35.00
Melvin Malone, Hart	1	Wf. Cow	1220 lbs.	at \$33.00
Roman Vasquez, Plainview	1	Blk. Cow	1015 lbs.	at \$33.00
Collin Cattle, Olton	1	Char. Bull	2070 lbs.	at \$43.00
Tommy Lewis, Morton	1	Red Bull	2100 lbs.	at \$43.50
Primrose Cattle, Farwell	1	Char. Bull	1755 lbs.	at \$44.50

The Muleshoe Cattle Market is brought to you each week by Muleshoe Livestock Auction, located east of Muleshoe on U.S. 84. Muleshoe Livestock conducts sales every Saturday, beginning with hogs, sheep and goats at 10 a.m. and cattle following at approximately 12 noon.

FOR INFORMATION ON SALES OR TO CONSIGN CATTLE, CALL (806) 272-4201.

Journal Classifieds

Call 272-4536 Deadlines: For Thursday, 5 p.m. Monday; for Sunday, 5 p.m. Thursday Call 272-4536

For Sale

For Sale: Kenmore close dryer \$75; Built-in GE double ovens \$150; Hanging light fixture \$50. Call 272-3535. 32t-2tc

For Sale: Barely used tanning bed \$500. Call 272-5500 after 5pm. 32t-2tc

Over 100 yards Canyon red carpet, like new. Well sell highest offer. Call (806)272-4480. 32t-1tpd

For Sale: Good King size waterbed mattress, has pump and baffles. \$40 OBO. 272-3378. 32t-2tc

Miscellaneous

Round-Up Applications
Pipe-Wick mounted on high-boy. 30" or 4" rows. Cotton, Milo, Soy Beans and Corn.
Call Roy O'Bryan
806-265-3247
25t-tfc

Must move 28x24 house. Excellent for strage building or remodel. Ready to move. See at Shamrock Station in Sudan or Call Mike Hill at 227-2373 or 227-2587. 32t-4tc

Real Estate

House for Sale
3 Bedroom, 2 bath, den, kitchen, livingroom, diningroom, laundry, carpet. On 2 lots. Needs some work. \$17,500 as is. We fix it \$20,000. Call for appointment 272-4662 or 272-3162. 214 Quincy. 32t-4tc

For Sale - By owner, 3 bdrm, 1 3/4 bath, single garage in Richland Hills Addition of Muleshoe. For more info call 806-965-2477. 22s-tfc

Lost

Lost
Set of Keys. If found please call 272-4678 ask for Becky or 272-5191 ask for Aran Ray. 32t-1tpd

Estate Sale

Estate Sale
Stove, Deepfreeze, Washer and dryer, Refrigerator, Table and chairs, Dishes, Pots and Pans, Sheets, Towels, Blankets, Two Bedroom suits, Odds and ends. Everything must go.
214 Quincy
Friday and Saturday 9-6
32t-1tc

Help Wanted

Set up worker - Truck driver
Must Have CDL license and experience.
Contact Hal or Sam
272-5514

Muleshoe McDonalds
is accepting applications for crew positions. Flexible hours, performance based pay and room for advancement. Pick up applications at McDonalds or the Texas Employment Office.
31t-4tc

Churchs Chicken and Dairy Queen now accepting applications for all positions. Uniforms paid for. Insurance available. Birthdays paid. one week paid vacation after one year. Please apply in person at Churches. 31s-4tc

Wanted: Full or Part time help at Town and Country Apply in person. 31s-4tc

Elderly Care Home
State licenced family style. Good food. RN owned/operated. Daily, weekly, monthly 806-794-7603. 31s-4tc

The Classifieds Work!!

DeAnna & Larry Rasco
Muleshoe, TX 79347
(806)272-5268
29s-tfc

Wanted

\$\$\$WANTED\$\$\$
We buy used mobile homes. We pay top dollar, any year, any condition. We need your used mobile home. Please call 1-800-404-1321. 7t-tfc

Garage Sales

Garage Sale
One mile N. on Hwy. 214 West side of the road.
Saturday beginning at 9 am. 32t-1tc

Garage Sale
Microwave stand, VCR, Set of dishes, Lots of kitchen and Bath items, Clothes, Misc.
1426 W. Ave. C
Saturday, August 10th
8 am to ?
32t-1tpd

For Rent

For Rent
3/2 brick home in Country Club addition. Large fenced back yard and storm cellar. Call 965-2361. 32t-4tc

Child Care

Registered Day Care
CPR and First Aid Certified
For more information
Call 272-5866
31t-3tc

D&L Upholstery
Farm Equipment
Auto - head liner
Residential
Commercial
Marine
Free Estimates
Non-Smoking Environment

Automobile

For Sale: '93 Ford F150 XLT. Extended cab, white, loaded great condition.
806-965-2471
31s-tfc

1989 Chevy extended cab, long wide base, Silverado, red, 75,000 miles, \$9,900.00 (505) 359-0947, Portales

1993 Ford Super Cab Ranger, red, 49,000 miles, \$11,900.00 (505) 359-1775, Portales

1992 Chevy extended cab, shortwide base, 4x4, Z71 package, 60,000 miles, \$15,900.00 (505) 359-0947, Portales

For Sale: '93 Ford F150 XLT. Extended cab, white, loaded great condition.
806-965-2471
31s-tfc

PRIMESTAR
Available for your home TODAY
Call Gabriel at
272-3072 or 1-800-815-2358
pin 9240
28t-tfc

Automobile

'82 Ford XL Pickup. Tool Box, V-8 Automatic, \$1,500
272-3697

1993 Chevy Short fender side-Texan Stagecoach conversion, Rasperry color - 40,000 miles, \$14,900.00 (505) 359-0947, Portales

1991 Chevy Blazer, 4 door, 4x4, 66,000 miles, \$11,400.00 (505) 359-1775, Portales

1993 Ford XLT Supercab 4x4 pickup. Very clean. \$9,500 OBO. 272-3102 or 925-6766. 31s-tfc

1993 Ford XLT Supercab 4x4 pickup. Very clean. \$9,500 OBO. 272-3102 or 925-6766. 31s-tfc

Concealed Handgun Course
Aug. 17
8 a.m. - 6 p.m.
Muleshoe
10% discount for Pre-Registration Shooting Same Day contact
Toby Turpen
806-364-6362
31s-3tc

BETTER LIVING MOBILE HOMES

Summer Special
6 - 1800' sq. ft. Double Wides to choose from.
\$10,000 SAVINGS
WAS \$59,000
SUMMER SPECIAL
\$49,995
Hurry in - these won't last long!
Model #8952*
*Approximate
1-800-404-1321
(505)356-5448
Portales
Lic. # D00681
'Se Habla Espanol'

AUCTION

LARGE GROUP USED HOMES AVAILABLE.
View at Portales Homes or Bill Johnston Auction. FINANCING AVAILABLE.
Call For Pre-Approval at 800-867-5639.
Auction Aug. 23-24 or Immediate Delivery Available Upon Credit Approval.
PH PORTALES HOMES
Portales Homes
356-5639 or
1-800-867-5639
DL366

MUST SELL! 1995 Ford Contour

Power windows, power locks, air conditioning, AM/FM cassette, automatic, cruise, power mirrors, rear window defroster, and much more. No old contract to assume, no back payments to make, just need responsible party to make reasonable monthly payments.

Contact Freddy in the credit dept.
Friona Motors, 806-247-2701

MUST SELL! 1994 Chevrolet Silverado

4x4, Power windows, power locks, tilt, cruise, AM/FM stereo, 350 V-8, 4 speed automatic with overdrive, air conditioner, rally wheels, rear chrome bumper and much more No old contract to assume, no back payments to make, just need responsible party to make reasonable monthly payments.

Contact Freddy in the Credit Dept.,
Friona Motors, 806-247-2701

MUST SELL 1995 Ford Mustang

Convertible, power windows, power locks, AM/FM Stereo cassette, tilt steering wheel, cruise control, dual electric mirrors, aluminum wheels and much more. No old contract to assume, no back payments to make, just need responsible party to make reasonable monthly payments.

Contact Eddie in the credit dept.
Friona Motors, 806-247-2701

Subscribe to the Muleshoe Journal Today!
\$24.00 - In county
\$26.00 - Out of town
\$22.00 - Carrier
Call 272-4536

Having A Garage Sale?
Advertise It In The Muleshoe Journal Classifieds!
Deadline for Thursdays paper is 5:00 p.m. Monday
Call 272-4536

CONSIGN NOW!!!
CRUCE & FLETCHER AUCTION
25th Annual
Special Harvest Equipment Auction
AUGUST 20 THRU 24, 1996
Tuesday thru Friday -- Sale Time: 10:00 A.M. Each Day
Saturday, August 24 -- Sale Time: 9:00 A.M.
LOCATED: Plainview, Texas--South Side of Town on Interstate 27 Business Route on Hale County Airport Property (Note: If you are flying in, Sale Site close to Ainfield). Take exit 49 on 77 off I-27. Deadline for getting equipment into place is Saturday, August 17, 1996 at 6:00 p.m. -- Consignments will be accepted until August 17, 1996.
* * * * **FIVE BIG DAYS** * * * *
TUESDAY, AUGUST 20, 1996 -- SALE TIME: 10:00 A.M.
Combines--Cornheads--Headers--Attachments--Grain Carts--Augers--Combine Trailers--Grain Equip.
WEDNESDAY, AUGUST 21, 1996--SALE TIME: 10:00 A.M.
Grain Trucks--Truck Tractors--Implement Trucks--Trucks--Trailers--Float Trailers & Other Truck Pulled Trailers--Motor Homes & Mobile Homes
THURSDAY, AUGUST 22, 1996--SALE TIME: 10:00 A.M.
Cotton Strippers (Self Propelled)--Cotton Strippers (Tractor Mount)--Module Builders--Boll Buggies--Cotton Trailers--Stock Trailers--Livestock Equip.--Pipe & Irrigation Equip.--Hay Equip.--Ensilage Equip.
FRIDAY, AUGUST 23, 1996--SALE TIME: 10:00 A.M.
Tractors--Loaders--Front-End Loaders--Tractor Make-Ups--Grain Drills--Backhoes--Motor Graders--Forklifts--Crawlers--Miscellaneous Related Items
SATURDAY, AUGUST 24, 1996--SALE TIME: 9:00 A.M.
Implements & Tools--Implement Trailers--Utility Trailers--Tanks--Toolbar Make-Ups--Non-Classified
PLEASE NO SMALL MISCELLANEOUS ITEMS
NOTE: ALL EQUIPMENT MUST BE REMOVED FROM PROPERTY BY SEPTEMBER 10, 1996
COME AS BUYER OR CONSIGNOR
For more information or to consign, call:
Cruce & Fletcher
P.O. Box 609 -- Wolforth, Texas 79382
JAMES G. CRUCE
Plainview, TX
(806)296-5050
Lic. # 6704
AUCTIONEERS & REAL ESTATE BROKERS
BOBBY FLETCHER
Wolforth, TX
(806)866-4201
Lic. # 7131


Nieman Realty
116 E. Ave. C George Nieman, Broker 272-5285 or 272-5286

RICHLAND HILLS
JUST LISTED--IMMACULATE 3-2-2 Brick Home, Geo. Heat Pump, Built-ins, FP, Nice landscaped yd., Stor. Bldg., MORE!! \$70's!!! RH3
NICE 3-3-1 Brick, cent. Heat, Evap. Air, built-ins, 2000' + lv. area, fenced yd., stor. bldg., MORE !! \$60's !!! RH-2
VERY NICE 3-2-2 Brick, cent. A&H, built-ins, FP, approx. 2,000' + lv. area, auto, spklr., storage bldg., fenced yd., MORE !!! \$60's !! RH-1
NICE 3-2-2 Brick, cent. A&H, built-ins, FP, approx. 2150' lv. area, fenced yd., MORE!!! \$69K!!! RH-7
HIGHLAND AREA
VERY NICE 2-1-1 Home, wall furnace, window air, nicely decorated, storm cellar, stor. bldg. \$20's !! HL-7
2 Bdrm, 1 bath home, fenced yard. \$16,500!!! HL-4
VERY NICE 3-2-2 Brick, Cent. A&H, built-ins, fenced yd., spklr. sys., MUCH MORE!!!! \$60's !!! HL-1
3-2-2 home, Cent. A&H, built-ins, fenced yd., corner lot. \$30's !!! HL-2
VERY NICE 3-2-1 carport Home, heat pump, built-ins, nice carpet, fans, storage-workshop! MUCH MORE!!! \$40's !!! HL-6
NICE 3-2 Home, Heat Pump, FP, fenced yd., stor. bldg. \$30's!! HL-3
VERY NICE 3-11/2-2 carport home, Geothermal Heat Pump, built-ins, FP, fenced yd., Stor. Bldg. !!! HL5
COUNTRY CLUB
2-1-1 carport home, wall furnace heat, nice carpet, storm shelter, storage bldg., fenced yd. MORE!!! \$20'S.
RURAL HOMES
NICE 3- 2-2 Brick, cent. A&H, built-ins, FP, approx. 15 acres, irrig. well & equip., barns, corrals, MUCH MORE!!! \$95K!!! HR-4
NICE 3-2-2+2 Carport Brick Home on 2.5 acres on pavement, close to town, Heat Pump, built-ins, FP, MUCH MO . \$70K !!! HR-3
JUST LISTED-3-2-2 Home 1.36 ac. on pavement, Cent. A&H, built-ins, freshly painted interior & exterior, fans, fenced yd., 31' x 40' barn !!! \$40's!!! HR-2
NICE 4-3 Home on corner lot, Heat Pump, built-ins, FP, fenced yd., stor. bldg., 3100'+ Lv. area, storage basement, MORE!!!\$70's!!! HS-9
LENNAU ADDITION
Nice 2-2-2 Brick, on corner lot, heat pump, fenced yard, storage bldg., MORE! \$40's !!! L-1
NICE 3-2-1 carport Home, geothermal heat pump, fenced yd., storage bldg. \$27,500!!! L-3
NICE 3-2-1 Home, built-ins, heat pump, extra insulation, fenced yd., stor. bldg., \$30's!!! L-4
HIGH SCHOOL
NICELY REMODELED 3-2-2 carport Home, Heat Pump, built-ins, fans, fenced yd., stor. bldg., & MORE!!! \$40's !!! HS-8
NICE 2-1-1 Brick, Heat Pump, nice carpets, well insulated, storm windows & doors. \$30's!!! HS6
NCE 3-1 3/4 - 1 Brick Home, Cent. Heat, Evap. Air, Built-ins, fans, fenced yd., MORE!!! \$30's !! HS-2
JUST LISTED -2-1-1 Home, floor & wall furnace, evap. air, siding exterior, stor. bldg., fenced yard !!! \$20's !!!! HS-7
JUST LISTED-NICE 2-1-1 Home, nice carpets, stove, refrig., wall furnace, covered deck, fenced yd., stor. bldg., MORE !!! \$20's!!! HS-4
NICE 4-3 Home on corner lot, Heat Pump, built-ins, FP, fenced yd., stor. bldg., 3100'+ Lv. area, storage basement, MORE!!!\$70's!!! HS-9
ASK ABOUT OUR COMMERCIAL LISTINGS!!!
160 acre tract, 8" well, circle spklr. w/drops, fully allotted!!
PARMER - BAILEY CO. Area-Elevator & Cleaning Facility - 12 million lb. Capacity, Scales, Dryer, & Office on approx. 6.5 acres!!! PRICED TO SELL !!! POSSIBLE OWNER FINANCING!!!

NOTICE
CLASSIFIED DEADLINES
For the Thursday Muleshoe Journal,
Deadline Monday 5:00 pm
For the Sunday, Bailey County Journal,
Deadline Thursday 5:00 pm

Shurfine & Shursaving Back To School Sale

All Types
COCA-COLA, SPRITE OR DR. PEPPER
6 pack, 12 oz. cans **\$1.99**



All Types
Coca-Cola, Sprite or Dr. Pepper
6 pack, 20 oz. btl.
2/\$5

MEAT

• Sliced Bologna
• Salami • P & P Loaf
• Spiced Luncheon
• Garlic Bologna
Shurfine
Luncheon Meat
12 oz. pkg. **79¢**



Family Pack, Preferred Trim Boneless Round Steaks
\$1.19 lb.

Small Package Preferred Trim Boneless Round Steak	lb.	\$1.39
Preferred Trim Sirloin Tip Steak	lb.	\$1.99
Preferred Trim Boneless Rump Roast	lb.	\$1.99
Tenderized Beef Cube Steak	lb.	\$2.19
Fresh Ground Round	lb.	\$1.19
Pilgrim's Pride Grade A Drumsticks or Thighs	lb.	79¢
Shursaving Smoked, Boneless Whole Hams	lb.	\$1.59
Fresh Pork Butt Roast	lb.	\$1.29
Fresh Pork Steak	lb.	\$1.39
Shurfine Quality, 1 lb. pkg. Sliced Bacon		\$1.79
Shurfine Regular or Polish Smoked Sausage	lb.	\$1.39
Shurfine, 12 oz. pkg. Meat Wieners		69¢
Shurfine, 12 oz. pkg. Beef Wieners		99¢
Shurfine, 12 oz. pkg. Chopped Ham		\$2.19
Shurfine Breakfast, 11 oz. pkg. Link Sausage		99¢
Shurfine, 7.5 oz. pkg. Chicken Salad		99¢
Shurfine, 7.5 oz. pkg. Ham Salad		\$1.19
Shurfine, 12 oz. pkg. Sliced Ham or Turkey Breast		\$2.49
Shurfine, 1 lb. roll, Mild or Hot Breakfast Sausage		\$1.29

PRODUCE



Extra Large Sweet Juicy Peaches
lb. **89¢**

Dole Salad Mix
1 lb. bag **\$1.49**
BUY ONE, GET ONE FREE!

New Crop, Texas Zucchini or Yellow Squash	lb.	69¢
Fresh Crisp Stalk Celery	ea.	39¢
Fresh Hot Jalapenos	1 lb. pkg.	99¢
Sweet Valencia Oranges	4 lb. bag	\$1.29
Fresh Ruby Red Grapefruit	extra large	2/\$1
Giant Size Sno-White Cauliflower	ea.	\$1.49
Italian Sweet Red Onions	lb.	49¢
Shurfine Cereal, 14 oz. box Magic Stars		\$1.99
Shurfine Cereal, 17.3 oz. box Bran Flakes		\$1.99
Shurfine Cereal, 18 oz. box Corn Flakes		\$1.29
Assorted Varieties Hershey's Candy Bars	6 pack pkg.	\$1.99
Shursaving All Purpose Flour	5 lb. bag	79¢
Shurfine Crushed/Chunk/Sliced N'Natural Juice Pineapple	15 oz. cans	2/\$1
Shurfine, 8 oz. cans Tomato Sauce		6/\$1
Shurfine, 12 oz. can Luncheon Meat		\$1.29
Shurfine, Creamy or Crunchy Peanut Butter	18 oz. jar	\$1.39
Shurfine Ketchup	32 oz. btl.	89¢
Shurfine Asstd., 12-15 oz. boxes Instant Oatmeal		2/\$3
Shurfine, Regular or Unsalted Crackers	1 lb. box	69¢
Shurfine Gravy/Chuck Dog Food	40 lb. bag	\$7.89
Shurfine, Orig. or Hickory BBQ Sauce	18 oz. btl.	59¢
Shursaving, 12 oz. cans Evaporated Milk		2/89¢
Shursaving Napkins	250 ct. pkg.	\$1.69
Shurfine White Facial Tissue	175 ct. box	89¢
Shurfine, 150 ct. box Sandwich Bags		89¢
Shurfine Reg./Clear Tall Kitchen Bags	15 ct. box	\$1.19
Shurfine, 12"x75' roll Aluminum Foil		\$1.79
Shurfine Plastic, 100' roll Food Wrap		99¢
Shursaving Concentrated Laundry Detergent	10 lb. pail	\$3.99
Shurfine Fabric Softener Sheets	40 ct. boxes	2/\$3
Shurfine Plain or Iodized Salt	26 oz. ctns.	3/\$1
Shurfine Asstd. Deluxe Dog Food	13 oz. cans	5/\$2
Shursaving Quality Cat Litter	25 lb. bag	\$2.29
Shursaving, 200 ct. bag Coffee Filters		89¢
Shurfine Reg./Lite, 16 oz. jar Coffee Creamer		\$1.19
Shurfine With Sports Cap Spring Water	1 liter, 33.8 oz.	69¢
Shurfine Asstd., 11 oz. box Toaster Pastry		99¢
Shurfine Complete, 32 oz. box Pancake Mix		\$1.19
Shurfine Asstd. 24 oz. btl. Pancake Syrup		\$1.39

BACK TO SCHOOL VALUES!!

Shurfine, 18 oz. jar Grape Jelly	99¢	Asstd. Spagging & Spag. W/Cheese Sauce Shurfine Pasta	18 oz. cans 2/\$1
Shurfine, 18 oz. jar Apple Jelly	99¢	Asst. Spaghetti & Ravioli, With Meat Shurfine Pasta	15 oz. can 79¢
Shurfine Seedless Raisins	6 ct. pkg. 99¢	Shurfine Pitted Large Ripe Olives	6 oz. jar \$1.19
Shursaving, 25 oz. jar Apple Sauce	79¢	Shurfine Kosher Dill/Sour Pickles	32 oz. jar \$1.59
Shursaving Cocktail, 64 oz. jar Apple Juice	\$1.39	Hamburger Sliced or Whole Kosher/Dill/Sour Shurfine Pickles	22 oz. jar \$1.39
Ruby Red Tangine or Grapefruit Shurfine Juice	64 oz. btl. \$1.99	Shurfine Whole Sweet Pickles	22 oz. jar \$1.89
Shurfine, Assorted Cranberry Cocktail	64 oz. btl. 2/\$5	Shurfine Asstd. Reg. or Lite Salad Dressing	8 oz. btl. 89¢
Shursaving Pieces & Stems Mushrooms	4 oz. jar 69¢	Shurfine White Vinegar	32 oz. btl. 69¢
		Shurfine White Vinegar	128 oz. btl. \$1.69

Shurfine, 32 oz. btl. Charcoal Lighter	99¢	Shurfine, 4 roll pkg. Bath Tissue	69¢
Acco Neon Binder	ea. 79¢	Shurfine, 3 liter btl. Soda Pop	89¢
Black or Blue, Round Slic Bic Pens	10 pack 89¢	Shursaving Macaroni & Cheese Dinners	7.25 oz. boxes 5/\$1
3 Subject Mead Notebook	120 ct. 99¢	Shurfine Asstd. Varieties Potato Chips	6 oz. bag 69¢
Crayola Crayons	99¢	Shurfine All Varieties, 40 oz. bag Nacho or Tortilla Chips	\$1.99
Pointed Scissors	each 59¢	Shurfine Medium or Mild Salsa	11.5 oz. jar \$1.19
Safety Scissors	each 59¢		
Emers Chool Glue Stick - 21 oz.			
Emers School Glue - 1.25 oz.			
Small Zipper Pouch			
Yellow Pencils - 7 ct.	YOUR CHOICE 99¢		
Shurfine, Assorted Basic Med./Large Diapers	18-24 ct. bag \$3.49		

• Pork & Beans • Pinto Beans		Shurfine Asstd. Ice Cream	1/2 gal. ea. ctns. 3/\$4
• Mexican Style Chili Beans		Shurfine, 6 pk Ice Cream Sandwiches	\$1.39
• Short Cut Green Beans		Shursaving 2-Ply Paper Towels	2/89¢
• Blackeye Peas • Sauerkraut		Shurfine Liquid Bleach	gal. jug 69¢
• Golden or White Hominy		Shurfine Assorted Coffee	13 oz. can \$1.69
• C.S./W.K. Golden Corn		Shursaving All Purpose Flour	25 lb. bag \$2.99
• Sweet Peas - SHURSAVING Vegetables			
14-15.2 oz. cans	4/\$1		

Frozen Specials

Shurfine White or Pink Lemonade or Punch	12 oz. can 59¢	Shurfine Orange Juice	16 oz. can \$1.19
Shurfine Sliced Strawberries	16 oz. size \$1.39		
Shurfine Whipped Topping	12 oz. can \$1.19		
Shurfine Crinkle Cut or Regular Cut Potato Fries	32 oz. pkgs. 2/\$3		
Shurfine Nuggets/Patties or Chicken Breast Tenders	9-10 oz. size \$1.79		
*WK Golden Corn • Green Peas • Cut Green Beans • Mixed Vegetables	99¢		
Shurfine Vegetables	16 oz. bag \$1.39	Shurfine Round, Blueberry or Buttermilk Waffles	11 oz. pkg. \$1.19
Shredded Mini Corn On The Cob	8 ear pkg. \$1.39		

Dairy Specials

Shurfine Buttermilk or Butter Flavor Jumbo Biscuits	16 oz. 8 ct. 99¢		
Shurfine Jumbos Cinnamon Rolls	16 oz. can \$1.89		
Shurfine IWS American Singles	16 oz. pkgs. 2/\$5		
Shurfine Colby/Colby Jack/Longhorn Cheddar 1/2 Moon Cheese	10 oz. pkg. \$1.89		
Shurfine Brick Cream Cheese	8 oz. pkg. 89¢		
Shurfine Grated Parmesan Cheese	8 oz. can \$2.39		
Shurfine Shredded Cheddar/Cheddar Jack/Mozzarella	8 oz. can \$1.69		
Shurfine Cheese	8 oz. pkg. \$1.69		

BACK TO SCHOOL LIST

Mead Original Big Chief Tablet	115 sheets, 7 7/8x12 in.	\$1.19	Pink Eraser	3/\$1
Black, Blue, or Red Marks			Yellow No. 2 Pencils	ea. 1¢
A Lot	ea. 69¢		Eberhard Faber Yellow, 7 ct. pkgs. No. 2 Pencils	2/\$1
Wide Ruled, 40 sheets Garfield Notebook	\$1.59		Medium Black or Blue Write Bros., 2 pack Ball Pens	2/\$1
Small Zipper Pouch	ea. 39¢		Red Fine or Black Fine/Black Ultra Fine, Sharpie Markers	ea. 69¢
Mead Bond, 200 sheets Typing Paper	\$1.79		Gel or Pen Instant, .7 oz. Crazy Glue	\$1.59
Mead, 120 sheets 3 Subject Notebook	99¢		Blunt or Sharp, 5" Fiskars Scissors	ea. \$1.88
Mead Wide Ruled, 5 Subject, 180 sheets Theme Book	2/\$3		Eberhard Faber Painted or Safety Scissors	ea. 39¢
Original Trapper Keeper®	ea. \$5.99		Brite Liner Yellow	59¢
5 Tab Index Dividers	39¢		Washable, 8 ct. box Watercolors	59¢
Helping Hand Combination Padlock	ea. \$1.99		Glue-All or Regular/Gel, 4 oz. btl. Elmer's® School Glue	59¢
Portfolio Twin Pocket	2/\$1		12" Plastic Ruler	ea. 29¢
Crayola®, 96 ct. box Crayons	\$4.99		Mead 3 Broad Cover With Pockets Portfolios	5/97¢
			Elmer's®, 1.25 oz. btl. School Glue	ea. 39¢

Health & Beauty Aids

• Asstd. Baking Soda		Western Family, Med. or Soft Angle Tooth Brushes	1 ct. pkg. 79¢	
• Tarter Control Gel or Paste		Western Family Baking Soda/Peppermint or Mint Mouthwash & Gargle	24 oz. btl. \$1.49	
• Cool Fresh Flavor		*X-Strength 500 MG • X-Strength Caplets • 325 MG Tablets	Western Family Non-Aspirin	24 ct. btl. \$1.29
Western Family Tooth Paste	5-7 oz. box 99¢	• Children's Chewable • Children's Chewable With Iron	Western Family Multi Vitamins	100 ct. btl. \$2.69
		Western Family, Vitamin-COMPARE TO PRO-V Shampoo & Conditioner		13 oz. btl. \$1.99

WESTERN MONEY UNION TRANSFER™
"The fastest way to send money"

Lowes's MARKETPLACE

515 W. American Blvd., Muleshoe 272-4406

401 W. American Blvd. Muleshoe 272-4585

WE RESERVE THE RIGHT TO LIMIT QUANTITIES IN TEXAS

PRICES EFFECTIVE AUG. 7-13, 1996
OPEN MONDAY-SATURDAY 7:30 A.M. - 9:00 P.M., SUNDAY 8:00 A.M. - 8:00 P.M.