

BRISCOE COUNTY NEWS

Published every Thursday at Silverton, Texas
 Entered as second-class mail matter at the Post Office at Silverton, Texas
 under the act of Congress of March 3, 1879.
CHARLES R. SARCHET PUBLISHER
MARY ANN SARCHET EDITOR
 SUBSCRIPTION RATES PER YEAR
 In Briscoe and Adjoining Counties 2.80
 In other Texas Counties and Out of State 3.50
 Display Advertising Rates Available On Request
 Classified and Legal Advertising Rates, each insertion 3c per word
 Minimum charge per insertion for Classified and Legal 50c
 Cards of Thanks 50c
 MEMBER OF TEXAS PRESS, PANHANDLE PRESS and WEST TEXAS PRESS ASSN.

And I'll Know That You Remembered

(Submitted by one of Briscoe County's servicemen, Travis Gilkeyson)

Hello, remember me?
 Some people call me Old Glory, others call me the Stars and Stripes; also I have been referred to as the Star-Spangled Banner. But whatever they call me, I am your flag, or as I proudly state, the Flag of the United States of America.

There is something that has been bothering me, so I thought that I might talk it over with you. Because it is about you and me.

I remember some time ago—I think it was Memorial Day—people were lined up on both sides of the street to watch the parade. The town's high school band was behind me and naturally I was leading the parade.

When your Daddy saw me coming waving in the breeze, he immediately removed his hat but you were giving the right salute. They taught you in school to place your hand over your heart. Remember little sister—not to be outdone—she was saluting the same as you.

I was very proud as I came down your street. There were some soldiers home on leave and they were standing at attention giving the military salute. Ladies as well as men were all paying me the reverence that I deserve.

Now I may sound as if I am a little conceited. Well, I am. I have a right to be because I represent the finest country in the world.

the United States of America. More than one aggressive nation has tried to haul me down but they all felt the fury of this freedom-loving country. You know, you had to go overseas and defend me.

What happened? I'm still the same old Flag. Oh, I have a couple more stars added since you were a boy. A lot more blood has been shed since the Memorial Day so long ago. Dad is gone now. The old home town has a new look.

The last time I came down your street I saw that some of the old landmarks were gone, but in their place, shining majestically in the sun, were a number of new buildings and homes. Yes sir, the old town sure has changed.

But now I don't feel as proud as I used to. When I come down your street, you just stand there with your hands in your pockets and give me a small glance and then look away.

When I think of all the places I have been—Anzio, Guadalcanal, Korea—and now Vietnam. Then I see the children running around and shouting. They don't seem to know who I am. I saw one man take his hat off and then look around. He didn't see anybody else with theirs off so he quickly put his back on.

Is it a sin to be patriotic any more? Have you forgotten all the battlefields where men fought and died to keep this Nation free? When you salute me, you are actually saluting them.

Take a look at the Memorial Honor Rolls sometime. Look at the names of those who never came back. Some of them were friends or relatives of yours—probably went to the same school with some of them. That's what you are saluting, not me.

Well it won't be long until I'll be coming down your street again. So when you see me, stand straight, place your hand over your heart and you'll see me waving back—my salute to you. And I'll know that you remembered.

AIR CONDITIONER PADS SWITCHES - PUMPS - TUBING
 We will service your air conditioner if you will give us a call.
FOGERSON LUMBER & SUPPLY

FASTEST GRASS IN THE WEST



North, East and South, too! WARNING: be sure you have enough cattle to keep ahead of it. Also, Sudax Brand is excellent for green-chop, hay, haylage, and cover and plow-down. Sudax Brand Hybrids belong on your farm!

DEKALB SUDAX BRAND
 The ORIGINAL Sorghum-Sudangrass Hybrid

Let this remarkable all-around forage crop help you make more money from your forage crop acreage.

"DEKALB" and "SUDAX" are Registered Brand Names.

LEDBETTER-RHODE
 SILVERTON PHONE 4751
ALVA JASPER
 FRANCIS COMMUNITY BEAN 4470



Join our fight to keep your food costs **LOW!**

"INDEPENDENTS" DAYS

NOW UNTIL **July 4th**

We, and more than 8,000 independent supermarket owners from coast to coast, join forces to bring you savings on your food purchases all year long. Join the fight where you're the winner. Start with these extra special summer savings.

COFFEE SHURFINE VAC. PACK 1 LB. 63¢

Shurfine Sp. All Grn. Cut
ASPARAGUS 300 size 3^F/\$1^R

Shurfresh Sw.-But Milk
BISCUITS 8 oz. 12^F/\$1^R

Shurfine Fr. Shelled
BLACKEYES 300 size 7^F/\$1^R

Shurfine
FRUIT COCKTAIL 303 can 4^F/\$1^R

Shurfine 4 Sv. BL
GREEN BEANS 303 can 4^F/\$1^R

Shurfine
GRAPE JELLY 18 oz. 3^F/\$1^R

Shurfine YC Halves
PEACHES 2 1/2 size 3^F/\$1^R

Shurfine Sw. Early Harvest
PEAS 303 can 5^F/\$1^R

Shurfine Dill Sl.
PICKLES 32 oz. 2^F/\$1^R

MARGARINE SHURFRESH 1/4's 1 lb. 60¢

Shurfine
CATSUP 20 oz. 3^F/\$1^R

Energy
CHARCOAL 10 lb. 59¢

Shurfresh Sl. Am.-Pim
CHEESE 6 oz. 2^F/\$1^R 59¢

Shurfine
GRAPE JUICE 24 oz. 3^F/\$1^R

Shurfine Frozen
LEMONADE 6 oz. 10^F/\$1^R

Sunshine
VANILLA WAFFERS 10 oz. 33¢

Shurfine Canned
CANNED POP 12 oz. 12^F/\$1^R

Shurfine
PORK & BEANS 300 size 9^F/\$1^R

Shurfresh
POTATO CHIPS bag 2^F/\$1^R 89¢

SALAD DRESSING SHURFINE 32 OUNCE 39¢

Shurfine CS Golden
CORN 303 can 5^F/\$1^R

Shurfine WK Golden Vac Pak
CORN 12 oz. 5^F/\$1^R

Shurfine PA-Grft or PA-Org
DRINK 46 oz. 3^F/\$1^R 89¢

Shurfine
FLOUR 10 lb. paper bag 89¢

Shurfine
LUNCHEON MEAT 12 oz. 2^F/\$1^R

Soflin Wht.-Ass't'd.
NAPKINS 200 ct. 2^F/\$1^R 49¢

Shurfresh Vegetable
OIL 24 oz. 49¢

Shurfine Thr. Stuff Manz
OLIVES 7 1/2 oz. 2^F/\$1^R

Shurfine Strawberry
PRESERVES 18 oz. 2^F/\$1^R

Shurfine
SPINACH 303 can 7^F/\$1^R

Shurfine Chunk-Style
TUNA 6 1/2 oz. 3^F/\$1^R 89¢

Shurfine
VIENNA SAUSAGE 4 oz. 5^F/\$1^R

SHORTENING SHURFINE 3 POUND 69¢

SPRITE or COCA COLA King Size Plus Deposit 29¢

MEATS

BACON Shurfresh lb. 59¢

ARM ROAST Pound 53¢

CLUB STEAK lb. 85¢

PRODUCE

PEACHES California Lb. 19¢

SQUASH Tex St. Neck Yel. Lb. 2^F/\$1^R 25¢

POTATOES Tex No. 1 Red 10 Lb. 53¢

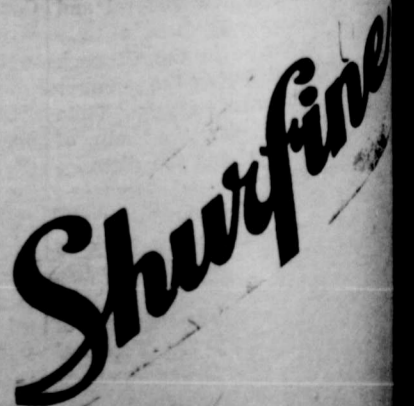
SALE ENDS JULY 4, 1968

Shurfresh Milk Has That NATURAL GOODNESS



Nance's Food Store

SILVERTON, TEXAS



THE SILVERTON

LIONS CLUB

FIREWORKS

STAND OPENS

TODAY AT 5:00 P.M.

NEAR THE HIGHWAY BARN

NEWS FROM THE

COUNTY AGENT'S DESK

Control of Iron and Zinc

Deficiency in Lawns and Gardens

Gardeners and homeowners in Briscoe County may be noting the yellowing of leaves on some of their fruit trees, ornamentals and lawn grasses during this season. This condition known as chlorosis results from iron and zinc deficiency.

Chlorosis is caused by the inability of plants to take up sufficient iron which is essential for the development of chlorophyll, the green pigment in leaves.

Primary causes of the disorder are high lime content of the soil and excessive use of phosphate fertilizer.

In addition to fruit trees, oaks and maples, ornamentals such as roses, pyracantha, abelia, hollies and photinia are also susceptible.

Regardless of the type of shrub or tree, chlorosis can be easily spotted, explains the agent. Leaves will yellow between the veins early in the growing season. Veins usually remain green but, in extreme cases, the entire leaf yellows and may be almost white in appearance.

Grass tends to turn yellow in spots and close observation may reveal a striping of the leaf with green veins and yellowing in between.

Chlorosis can be controlled by spraying the foliage until wet with a solution of iron sulfate (copperas). For trees and shrubs, use two level tablespoons of copperas per three gallons of water and include about one and one-half teaspoons of liquid household detergent to insure even coverage. For grasses, increase the amount of copperas to three level tablespoons in the same mixture. Three or four applications at weekly intervals may be required for effective control.

In addition to foliar spray, soil applications of copperas are recommended. One pound of copperas per 100 square feet of area broadcast and watered is adequate.

Chelated iron compounds are also effective for controlling chlorosis when applied as directed by the manufacturer.

Copperas will stain masonry and any other material or equipment if left in contact. Remove solutions by rinsing and sweep walks clean of material immediately after application.

Additional information on chlorosis in gardens and lawns is found in Leaflet 4-35 available at the County Extension Office.

Vani-Sol
TOILET BOWL CLEANER
Fogerson Lumber & Supply
Silverton

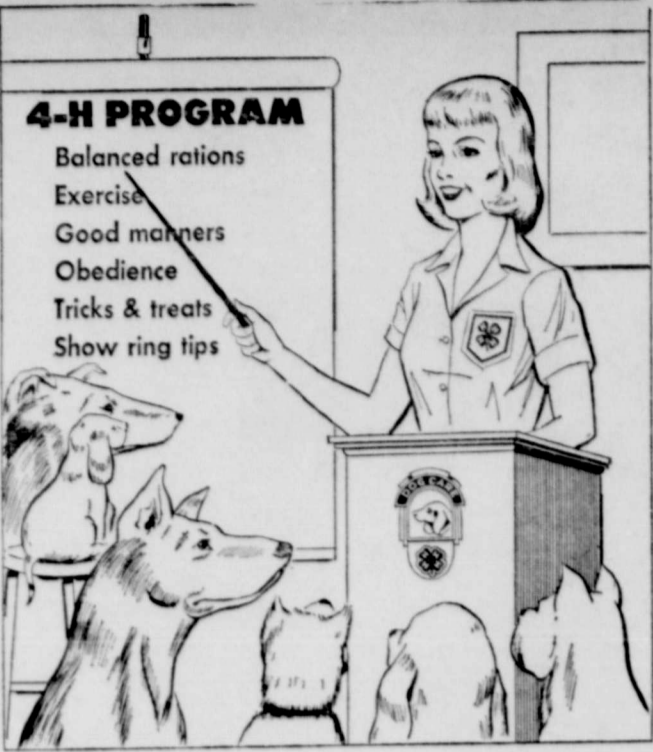
ALL PURPOSE
3-IN-ONE OIL
Oils Everything
Prevents Rust
REGULAR - OIL SPRAY - ELECTRIC MOTOR

ARTHRITIS-RHEUMATISM
When it seems that nothing will give you relief from minor arthritic or rheumatic pains, get 100 STANBACK TABLETS or 50 STANBACK POWDERS and use as directed. Experience the fast, comforting, temporary relief Stanback can give you. If you fail to get relief, return the unused part and your purchase price will be refunded. Stanback has been granted the Good Housekeeping Seal. See for yourself how helpful Stanback can be. Stanback Company, Salisbury, N. C.

Sooner or later, that day comes, the day when a woman feels she's changing. It's not a good feeling either. And she could use a good old-fashioned medicine then.

Could be you feel a little edgy, or maybe cross. You might even have what we call hot flashes and feel sad and slightly off-balance. Whatever you feel, we have something for the day you need a little comforting. Lydia E. Pinkham Tablets. They're made with gentle, natural ingredients that work to give you a better sense of well-being. With an old-fashioned problem like this, couldn't you take an old-fashioned medicine?
Lydia E. Pinkham
Tablets and Liquid Compound

GILLETTE Foamy
SHAVING CREAM
79¢
6 1/4 oz.
SO MOIST, SO RICH, SO CREAMY!



They Also Learn . . .

A dog in a 4-H household is expected to shape up, walk right and obey its master. According to hundreds of young 4-H dog fanciers throughout the state, the canine member of the family does just that.

Not without considerable effort, though, on the part of both dog and owner. The latter is enrolled in the national 4-H Dog Care and Training program sponsored by Ralston Purina Company. He or she is between 9 and 19 years of age, and has accepted complete responsibility for the animal.

If there is not a family pet available, the 4-H'er has the thrill of choosing his own dog. A lot of fun and satisfaction go along with this project, to say nothing of the love and trust that grows between dog and master. Learning about canine health, disposition, daily care and training are other factors.

Why a dog project in 4-H? So boys and girls can learn to understand animals, say 4-H leaders, particularly those who do not live on farms.

With an estimated 65,000 youngsters from coast to coast participating in the 1968 dog care program, there is bound to be a host of healthy and lovable pets added to the U.S. dog population.

The 4-H'ers are recognized for good results with their dogs. They can compete for county, state, sectional and national awards provided annually by Ralston Purina. The Cooperative Extension Service names the award winners.

Parents interested in enrolling their children in 4-H, or who would like to volunteer as a leader of a 4-H Dog Club, should contact the County Extension office.

Teacher Supply And Compensation

Texas schools are moving from a shortage of teachers to an adequate supply, from a problem of finding a teacher for every classroom to finding a quality teacher for every classroom.

Research for the Governor's Committee on Public School Education indicate that in the decade ahead school personnel officers will be able to emphasize quality in hiring teachers.

The Committee is now studying the findings of pervasive studies of the Texas schools and preparing recommendations for future action.

A report on supply and demand for professional school personnel indicates that the shortages of the past few years have been a by-product of rapid enrollment growth in the public schools, coupled with relatively low numbers of students graduating from college—potential teachers.

"We have been educating children of the war baby boom with teachers born during the Great Depression bust," the report says. This situation is changing as public school enrollments will taper off and decline with lower birth rates since 1960.

At present educational program levels the Governor's Committee staff estimates that demand for teachers will rise to slightly above 101,000 in the next few years, then drop below 96,000 near the end of the 10-year projection period.

Gross figures, however, don't tell the complete story on supply and demand of teachers, the report cautions. There will be continuing shortages at the secondary level in certain teaching fields, and some school districts—because of location or salary differentials—will be more blessed than others.

The two scientific public opinion polls taken by Belden Associates for the Governor's Commit-

tee uncovered areas of both agreement and disagreement between the general public and teachers.

Eighty-two percent of the teachers surveyed believe a teacher aid would be helpful to them with their present assignments, but most—71 percent—do not presently have such assistance. A majority of the general public, while supporting the idea of using clerical and other non-professional personnel to help teachers, said they would not be willing to pay more taxes to help provide this personnel. The general public, however, did express willingness to pay more taxes for obtaining additional teachers.

At present, there is no provision for state aid in paying the salaries of teacher aides, nor is there provision for adjusting the state aid to local districts whose schools use innovative practices such as teacher aides, team teaching, or television.

Nearly all (92 percent) of the teachers participating in the Belden Associates poll approved the paying of more than the base salary schedule for extra hours of college courses—if the work is directly related to professional assignment. Both the teachers and the general public accept the amount of college training as a determinant in teachers' pay.

Sixty percent of the teachers believe the salary schedule should be higher for teachers in districts that have a higher cost-of-living than the overall state average, but 48 percent reject extra pay for those districts which are in "less desirable living areas."

The majority of the teachers reject the idea of providing extra pay allowances for heads of household, including the suggestion of additional pay allowances for each dependent. These ideas were rejected by married men and unmarried teachers with dependents as well as by the "single" respondents. The poll also revealed that the public generally does not wish to base teacher pay on the number of dependents.

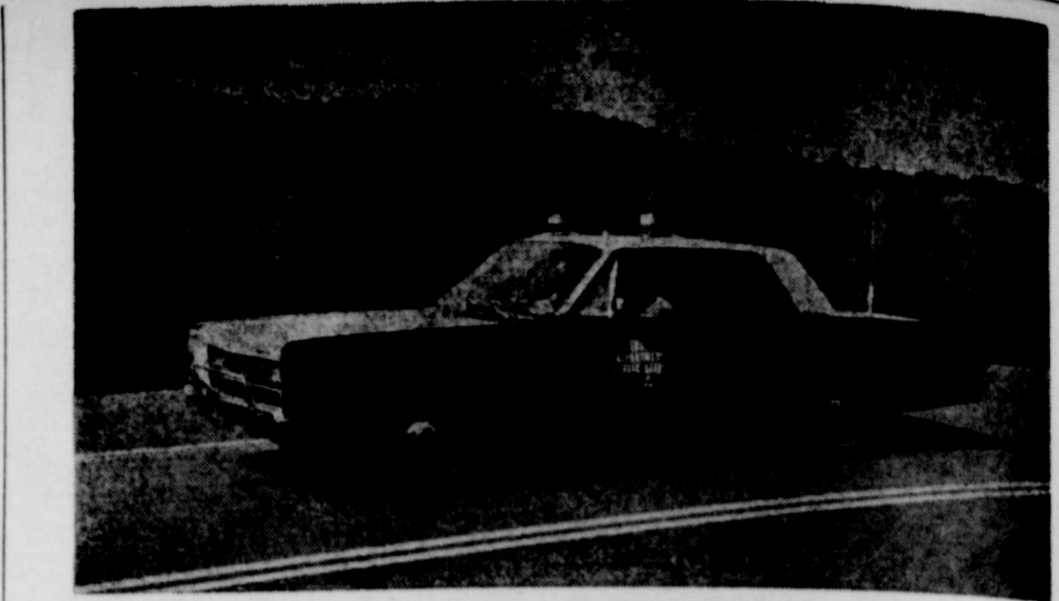
Extra pay based on performance quality ratings received support in theory, but the teachers indicated a lack of agreement in the methods for determining "quality performance." The general public accepts the concept of extra pay for superior performance, generally as measured by the principal or superintendent of the school district.

Closely related to the teacher salary discussions is the idea of summer school. Significant majorities of teachers believe the state salary schedule should include payment for regular summer school teaching and for curriculum planning and development. Summer school can attract a substantial majority of men who are presently in the school system.

Nearly nine out of ten men would be willing to teach year-round, for the additional pay of the schools were air conditioned and there were a provision for developmental leaves. Seventy-two percent of all primary breadwinners polled would be willing to teach in the summers for additional pay, with or without air conditioning or developmental leaves. However, only 44 percent of the non-primary breadwinners would be willing to do this.

Findings of the Governor's Committee research indicate that teacher shortages as well as numbers of "emergency permit" teachers are more prevalent in certain areas of the state particularly along the Mexican border—and in areas where teacher salaries remain at the state minimum.

The Committee has found that across-the-board raises in the state minimum salary schedule have failed to erase teacher shortages in the past. From research for the Committee, it has been learn-



MODERN PATROL CARS of the Texas Department of Public Safety will be cruising Texas highways in full force over the long July 4th weekend. Trained and experienced officers of the DPS will render assistance, promote a safe and smooth flow of traffic and enforce the law.

ed there are wide variations in local salary patterns within metropolitan areas and between geographical regions. In the past, school districts which already were paying above the state minimum have been encouraged to pass on all state increases in the minimum schedule. The result has been to perpetuate the existing disparities among local districts, and to leave the less affluent or less committed systems in the same position of relative disadvantage they had held before the state increase.

Lloyd Turner, chairman of the Educational Staffing Subcommittee, predicted that the Committee will recommend a salary schedule tied to a "career development plan" that will be the "best state-guaranteed compensation pattern in the country."

Sunday dinner guests in the home of Mr. and Mrs. Lark Miller were Mr. and Mrs. James Smith, Rita and Chris of Ulysses, Kansas; Mr. and Mrs. Nathan Ellis and Pearlina of Canyon, Mrs. Steve Miller and Mrs. Jerry Miller.

YOUR NEWS IS IMPORTANT!

The news about what you and your family are doing is an important part of your local newspaper. But the publishers of the Briscoe County News don't know about

Whenever you have news for your news until you tell them, your hometown paper, please call the News Office, 3381.

Mr. and Mrs. Charles Sarchet and Ken have been recent visitors at the HemisFair in San Antonio.

Mr. and Mrs. Jack Robertson, Chris and Stacy returned early this week from a vacation trip to the HemisFair.

Virginia May and Scotti Fleming have recently returned from a visit with Mr. and Mrs. Donald Fleming and family at Amistad, New Mexico. Kimberly Fleming returned home with her aunt, and is visiting relatives here this week.

Mr. and Mrs. H. B. Simpson and family recently vacationed in Ruidosa, New Mexico.

REDI-MIX CONCRETE
To supply your every need, large or small
Fogerson Lumber & Supply

CHECK OUT WITH
More Food - More Change

CUSTOM BUTCHERING & MEAT PROCESSING AT BUD'S PHONE 5371

CAMPBELLS TOMATO SOUP no. 1 2 FOR 23¢	RED POTATOES 10 lb. 53¢
LIBBY'S CUT GREEN BEANS 303 can 21¢	SANTA ROSA PLUMS lb. 23¢
KIMBELLS SPINACH 303 can 2 FOR 23¢	YELLOW SQUASH St. Neck 12¢
KRAFT MIRACLE WHIP qt. 59¢	YELLOW ONIONS Lb. 5¢
PETER PAN CRUNCH or SMOOTH PEANUT BUTTER 12 oz. 43¢	EXTRA LEAN PORK CHOPS Lb. 69¢
DEL MONTE FRUIT DRINK 46 oz. 25¢	U. S. D. A. GRADED ARM ROAST Lb. 59¢
DIAMOND OLEO Solids 2 FOR 25¢	U. S. D. A. GRADED CHUCK ROAST Lb. 49¢

BUD'S Grocery and Market

Specials Good Friday and Saturday

Silverton, Texas

DEAR EDITOR:

I am enclosing a check for the renewal of our subscription to the paper. We would not want to miss any news of our friends in Silverton. We feel that it would be of interest to your readers if you carried more news concerning crop conditions, rainfall amounts in different areas around Silverton, and progress made at harvest time. We surely would appreciate more news of this type.

We would like to invite all our friends from the Silverton area to visit us in our new home. After six months of preparation, we moved into our new house the week of graduation. Now we are anxious to see all of you. If you will let us know when you are coming, we will add a few more names to the pot.

The crops are good out our way. We have had very little rain and the farmers are irrigating. Wheat harvest is beginning.

We hope to see many of you soon.

Best regards,
The Joe Fowlers
Star Route
Bovina, Texas 79009

(EDITOR'S NOTE: Rainfall has been unusually heavy in Silverton so far this year. Briscoe County has an annual rainfall of 19.85 inches, and so far we have had 15.00 inches, 3.82 inches of it in June. Irrigation wells haven't been very busy in Briscoe County so far this year, even though the past week to ten days have been dry. Farmers are working frantically in an effort to get the wheat harvested before rains or hail can snatch this crop away from them. Lots of the dryland wheat is as pretty as the irrigated due to the rainfall. I understand (hearsay, which doesn't make a good news story) that dryland wheat is yielding from 20 to 30 bushels per acre in parts of the county—and you know how long our people have waited for a crop like this.

We have had some delay in getting the cotton and row crops planted due to the weather, but the crop damage that has been received in our area has been minimal when compared to what our neighbors in the central part of Swisher County have received

this year. Just south of Tulia there are two farms that I saw where fields of crops were completely under water following rains which overflowed eight-inch rain gauges. This was accompanied by very large hail which reduced wheat fields to straw piles—where you could drive for several miles without seeing a single head of wheat.

With a county as diversified as ours, these rains we've had are never good for all the people and are never bad for all the people. Therefore, while some are usually happy to get all the showers, others are inconvenienced and misput by the rains—and wish they could completely control the weather with the aid of irrigation wells. The ranchland is especially beautiful now—the green pastures lasting so much further into the summer than usual.

Once again as we observe the flood waters down Tule Creek we are reminded that this important natural resource is leaving our area without our having benefited from it at all. Our big job is to work together to save this water for future use and for the recreational pleasure of the people in this area.)

Host Fathers Day Luncheon Guests

Mr. and Mrs. John Turner and John David were hosts for a noon-day luncheon on Fathers Day. Present to enjoy the occasion were Mr. and Mrs. Roy Hunter of Quitaque; Mr. and Mrs. Edmond Hunter, Vicki and Ricki of Dimmitt; Mr. and Mrs. Sammy Turner and Keenan of Lubbock; Mrs. Roy Ballard, Kent, Keith and Karen of Oklahoma City; Mr. and Mrs. Donald Ray Turner, Eric and Margie of Lockney.

Private Doug Turner called home from his base at Fort Eustis, Virginia, and visited with all those present at the noon hour.

Visitors in the Turner home in the evening were Mr. and Mrs. Paul Shelton, Randy, Gary and Jimmy of Amarillo; Mr. and Mrs. Ed Shelton and children and Virginia Shelton, all of Tulia; Mrs. Mike Reeves of Winslow, Arizona; Mr. and Mrs. D. G. Shelton and Mrs. Pearl McDaniel.

**AFTER THE 18TH HOLE . . .
MAMA SANDWICHES WITH SPICY MUSHROOM GRAVY**



After the 18th hole, invite the gang back to your place for sandwiches. Keep the menu simple, but hearty, with man-sized ham and chutney burgers, curried mushroom gravy sauce, finger-food relishes, and sliced melon a la mode for dessert.

Better keep some extra sandwich fixings on hand, for one taste of the curry-sauced sandwich will rate seconds. The terrific sauce begins with canned mushroom gravy . . . a guaranteed perfectly smooth, flavorful gravy everytime you open a can. Casually dressed with onion, green pepper, and curry powder, the gravy becomes a spicy curry sauce to pour over layered ham and chutney burgers.

You'll love the easy preparation of first and second helpings when you use canned gravies.

P.S. To wives of golfers, keep several cans of beef, chicken, giblet and mushroom gravies handy for quick gravy additions to family meals. They're delicious bases for casserole and skillet dishes, too.

- 18TH HOLE SPECIAL**
- 1/4 cup chopped onion
 - 2 tablespoons chopped green pepper
 - 1/2 teaspoon curry powder
 - 2 tablespoons butter or margarine
 - 1 can (10 1/2 ounces) mushroom gravy
 - 4 hamburger buns, split and toasted
 - Chopped chutney
 - 4 slices cooked ham
 - 2 hard-cooked eggs, sliced

In saucepan, cook onion, green pepper, and curry in butter until vegetables are tender. Add gravy; heat. Meanwhile, spread 4 bun halves with chutney; top with ham. Place remaining bun halves on ham. Pour gravy over; garnish with egg. Makes 4 sandwiches.

Mrs. Roy Hunter, Donald Ray Turner and Virginia Shelton all celebrated birthdays on June 16 also.

James David Woodside, age 7, of Orange, California, has been a recent visitor with his great-aunt, Luree Burson, and with his great-grandmother, Mrs. J. H. Burson. He came with his grandparents, Mr. and Mrs. Glenn Allen of Costa Mesa, California, who also visited with the Bursons. James made a top hand on the ranch during his visit.

Mrs. A. H. Chappell entered the Lockney Hospital June 7 and received treatment there until Friday, June 14. While his wife was in the hospital, Mr. Chappell visited relatives, Mr. and Mrs. H. E. Gossett and Mrs. Ina Mae Patterson, in Portales, New Mexico. Mrs. Chappell returned to Lockney to see her doctor Saturday of last week, and is ill at her home this week.

Mr. and Mrs. Charles Sarchet and Ken visited Mr. and Mrs. Bill Shives, John, Mark and Teri in Portland last week.

STORM WINDOWS AND STORM DOORS
Fogerson Lumber & Supply
Silverton

WOMEN PAST 21 WITH BLADDER IRRITATION Suffer Many Troubles
After 21, common Kidney or Bladder Irritations affect twice as many women as men and may make you tense and nervous from too frequent, burning or itching urination both day and night. Secondly, you may lose sleep and suffer from Headaches, Backache and feel old, tired, depressed. In such irritation, CYSITEX usually brings fast, relaxing comfort by curbing irritating germs in strong, acid urine and by analgesic pain relief. Get CYSITEX at drug-gists. See how fast it can help you.

HEADACHE PAIN
STANBACK gives you FAST relief from pains of headache, neuralgia, neuritis, and minor pains of arthritis, rheumatism. Because STANBACK contains several medically-approved and prescribed ingredients for fast relief, you can take STANBACK with confidence. Satisfaction guaranteed!

Test STANBACK against any preparation you've ever used

STANBACK
POWDERS

Joedell Hutsell has recently re-enlisted in the Army, and is now stationed at Fort Leonardwood, Missouri. Mr. and Mrs. R. C. Hutsell and Joedell were in Amarillo Wednesday, and Joedell had his physical Thursday. He left Amarillo by bus for Fort Leonardwood Thursday night. Mr. and Mrs. Hutsell remained to visit his sister, Mrs. Winifred Babb until Friday, at which time they returned home.



LANE BETH THORNTON

Mr. and Mrs. J. D. Nance were in Plainview Monday to see their grandson, Rob Barrett, play baseball. Rob plays with the Senators, sponsored by K.V.O.P.

Mrs. Carl Woods of Quitaque recently accompanied Mrs. Perry Thomas, jr. to Denver, Colorado, for a visit with her son-in-law and daughter, Mr. and Mrs. Dale Rowell. Mrs. Thomas was met in Idaho Springs by Mr. and Mrs. Don Thomas of Champaign, Illinois, who were on vacation and a business trip to Denver and Boulder. They visited Mrs. Jeanette McDonald in Idaho Falls and points of interest in Colorado before Mrs. Thomas returned home last Friday. Mrs. Woods remained for an extended visit with her children.

Mrs. Warner Grabbe recently took her son, Crockett to Amarillo to emplane for Bloomington, Indiana, and spent the night with her brother, Mr. and Mrs. Wilbur Chappell and family before returning home.

Mr. and Mrs. Dozier Thornton of Happy announce the engagement and approaching marriage of their daughter, Lane Beth, to Max Stevenson, son of Mr. and Mrs. C. A. Stevenson of Silverton. The wedding vows will be solemnized at 8:00 p.m. on July 12, 1968, in the First Baptist Church in Happy.

Mr. and Mrs. Bus Wellman are moving into the McCracken house this week. Mr. and Mrs. Bill McCracken have moved to Amarillo.

HOT WATER HEATERS
Fogerson Lumber & Supply
Silverton

Mrs. Wayne Rampley, nee Pam Thompson, will be honored at a miscellaneous bridal shower soon.



SHE HAS CHOSEN
Stainless Steel Cookware and
Ashford Stainless Steel Flatware
FROM OUR SHOP

The House of Gifts

JOHN B. STAPLETON and GEORGE W. MILLER
announce the formation of a partnership for the general practice of Civil Law to be known as **STAPLETON and MILLER**
101 North Main
Floydada, Texas
Phone 983-2197

A NEW DIVIDEND QUARTER BEGINS JULY 1, 1968

Savings Received By 10th Earns From 1st Of Month

2 SAVINGS PLANS

- (1) Passbook Savings Accounts - 4.75%
Paid or Compounded Quarterly
- (2) Savings Certificates
Minimum \$5,000.00 - 1 Year 5%
Minimum \$10,000.00 - 1 Year 5 1/4%

Choose The Plan That Suits You Best and Earn More at

FEDERAL HOME LOAN BANK SYSTEM MEMBER
TULIA SAVINGS AND LOAN ASSOCIATION
200 N. Maxwell
FEDERAL SAVINGS AND LOAN INSURED
215,000
995-3521

Look!

clearance STOREWIDE SALE

WOMEN'S - CHILDREN'S - MEN'S

\$15,000 OVERSTOCK

30% 40% 50% OFF

- ☆ Cobblers
- ☆ Airstep
- ☆ Red Ball
- ☆ Buster Brown
- ☆ Miss America
- ☆ Hush Puppies
- ☆ Nunn-Bush
- ☆ Step Master
- ☆ Life Stride
- ☆ U. S. Keds
- ☆ Roblee
- ☆ Kali-Sten-iks
- ☆ Mens Western and Dress Belts
- ☆ Boys and Mens Western Boots

OUR BIGGEST SALE OF THE YEAR! DON'T MISS THIS

BATES Shoe Store
TULIA, TEXAS

All Around The Town

ALL AROUND THE TOWN—
CONTINUED FROM PAGE ONE

The Haylake Home Demonstration Club was organized with 22 members and these officers: Mrs. George Lee, president; Mrs. J. E. Wheelock, vice president; Mrs. Agnes Turner, secretary; Mrs. John Folley, council member; Mrs. Troy Ruby, demonstrator for the next meeting; Mrs. Ennis Autry, home food demonstrator; Mrs. Hugh McClendon, reporter. Others present at the organizational meeting were Meses. Walter Waters, J. J. Vardell, Tom Lemons, Edd Lemons, Austin London, C. L. McWilliams, Ralph Lemons, Will Donnell, Ruby Lowry, D. H. Yancey, Ollie Kendrick, Arthur Bingham, Molly London, and Misses Leatha London, Willie Mae McWilliams, Maxine McWilliams, Iva Walters, Mary Sue McWilliams and Geneva Meadows.

Fifteen hundred votes were cast in the first Democratic primary in Briscoe County. Absentee ballots cast numbered 150. According to the Briscoe County News, edited by Roy Hahn, "Excitement was rather strong Saturday night, even to the extent of a fist fight or two. These occurred about two o'clock and may have been due to the election—or to a little too much bottled ambition. All in all it was quite an election."

"Red" Divinye further improved his modern laundry here by adding a steam boiler in which steam was kept at all times to make it possible to boil the clothes right in the machine as they were being washed. The steam was connected to all the Maytag custom machines.

School opening was announced, with the faculty almost complete. Those employed by the school system were A. L. Kelsey, superintendent; W. E. Sherman, principal; Fern Murphy, English; Opal Cross, mathematics; W. W. Wilson, athletic coach; Mrs. Jim Busby, first grade; Anna Lee Anderson, second grade; Mrs. Alvin Redin, third grade; Faden Lee, fifth grade; Ruby Colley, sixth grade; Sadie Summers, seventh grade.

Nice Selection of
SCISSORS
FLASHLIGHTS—BATTERIES
Fogerson Lumber Company
Silverton, Texas

Home economics and vocational agriculture were added to the curriculum, with Allie Mae Tipps and Lem Weaver as the instructors. Plans were being made to send at least one bus to collect rural students each day, cost of which was to be shared by the State and the school patrons using the bus service.

1925

Flag was the name of the newest town in the Panhandle in the summer of 1925. Located 11 miles southwest of Dimmitt on land owned by Col. C. T. Herring of Amarillo, a christening celebration was held in Flag June 20, 1925. Gov. Miriam Ferguson, Congressman Marvin Jones, Hon. Lee Satterwhite, Lynch Davidson and other notable figures of the day were invited to participate in the celebration.

Later that summer, Francis was selected as the name of the newest town on the South Plains. The new town was opened by the Santa Fe Railroad on the proposed branch of the road from Plainview to Silverton. It was located on the J. L. Francis ranch 13 miles southwest of Silverton, and was named for the ranchman from whom the company had purchased the half-section of land for the townsite.

"Swat the Grasshopper" was the slogan in Texas, and farmers were being asked to broadcast a poison bran mixture in the cotton fields about sunrise when the "hoppers" were beginning to feed.

People in the Haylake community had voted to build a modern \$7,500 school after the old school building was destroyed by fire. Trustees of the school were T. C. McCutcheon, Stanton Crow and M. A. Seay.

Quitaque's school was destroyed by fire that summer also. Completed only nine months and built at a cost of \$45,000 with equipment valued at \$8,000, the building was insured for only \$22,000 and the equipment for \$3,000. The building appeared to be a total loss even though the walls were still standing. The fire was discovered at about 9:00 a.m. and in a few minutes most of the local citizenry had gathered to watch the blaze. Putting out the fire was out of the question, due to there being no fire fighting equipment available. Through the efforts of a volunteer bucket brigade, a small building west of the school was saved as were several nearby residences.

Shortly before the fire at the Quitaque school, Silverton had decided that it had no use for a fire



MR. AND MRS. L. E. PAIGE, SR.

Mr. and Mrs. Lester Paige To Celebrate Golden Wedding Anniversary Sunday

An invitation is being extended to the friends of Mr. and Mrs. Lester Paige, sr. to help them celebrate their 50th wedding anniversary at their home Sunday, June 30, 1968, from 2:00 until 5:00 p.m.

Children of the couple will host the reception. They are Mr. and

station because "there hadn't been but one fire here in 33 years so what's the use."

"If there should be another one, it would burn up everything in town whether or not, and some people say that it would be the best thing that ever happened to the town, so the city dads had the chance and rented the fire station," wrote Paul I. Odor, editor of the Briscoe County News. "It is understood that a citizen of Silverton offered to buy the fire station and fire fighting equipment a short time ago but as he only offered \$2.50 and the council decided that the entire plant was worth \$25, the deal fell through. As it is the city is deriving the munificent sum of one dollar per month from the rental of same to Ira Nix who will conduct a pop corn and peanut stand. Ira is a success as a peanut vendor and the building is more suitable for a peanut stand than it ever was for a fire station any way."

An old-time camp meeting was held in a tabernacle erected especially for the occasion. Rev. A. D. Jameson did the preaching assisted by preachers from all over the area and Rev. C. G. Spindler was in charge of the music. Eight services were held daily beginning with a sunrise prayer meeting, bible lesson at 10:00 a.m., and preaching at 11:00 a.m. A service for the little folks was held at 4:00 p.m., mens, womens and

Mrs. Lester Paige, jr. of Amarillo, Mr. and Mrs. Jack Paige of Fort Worth, Mr. and Mrs. Donald Paige of Costa Mesa, California, and Mr. and Mrs. Jim Whitfill of Rockport. They also have six grandchildren.

The former Miss Verna Quinby and Mr. Paige were married on July 2, 1918, at Neosho, Missouri. They moved to Texas in 1919 and have lived in this state since that time. They have been residents of Silverton for the past 26 years.

Mr. Paige was owner of the Farmers Produce for a number of years before his retirement. Mrs. Paige was an employee of Salem Dry Goods for seven years before her retirement in 1965.

The family asks that you do not bring gifts.

Mr. and Mrs. Grover Thomas and Donald Lynn were in California last week, and brought Mr. and Mrs. Art Hardin of San Diego here for a visit.

young peoples prayer meetings were held at various places at sundown, and a night service was conducted at 8:00 p.m.

An eight-piece orchestra was organized to play for the camp meeting. Members of the orchestra were Mrs. W. M. Gourley, piano; Clay Fowler, Eloise Morgan and Eva Lena Skeen, violins; Luther Fowler and Brice Stone, clarinets; Chester Skeen, cornet, and Paul Odor, trombone.

GARDEN HOSE
We can replace the ends on your present garden hose.
Fogerson Lumber Company
Silverton, Texas

Mrs. Steve Miller Honored At Shower

Mrs. Steve Miller, the former Miss Judy Wilkinson, was honored at a miscellaneous shower in the home of Mrs. Lee Deavenport on Saturday, June 22, from 4:00 until 6:00 p.m.

Punch and cookies were served by Misses Kathy Self and Lexie Younger. Miss Jackie Carol Tate registered the guests, and Mrs. Jerry Miller showed the gifts.

The bride's colors, yellow and white, were carried out in the decorations on the refreshment table and the corsages of the honoree and members of the houseparty. A centerpiece of yellow and white mums surrounding a candle and streamers on which were embossed "Steve and Judy" were used.

Hostesses were Mrs. Allen Kellum, Mrs. R. E. Sweek, Mrs. C. F. Tate, Mrs. Larry Jarrett, Mrs. Windie Thomas, Mrs. J. L. Self, Mrs. Riely Yates, Mrs. P. H. McKenney, Mrs. Harvey McJimsey, Jackie Carol Tate, Kathy Self, Linda Yancey, Ruby Pitchford, Lexie Younger, Mrs. Doyle Stephens, Mrs. Fred Edwards, Mrs. H. A. Cagle, Mrs. Annie Williams, Mrs. E. W. Yancey, Mrs. Charlie Parker and Mrs. Deavenport.

Attending the shower from out of town were Mrs. Mae Wilkinson of Memphis; Mrs. Grady Wilkinson of Stinnett; Mrs. Gwan L. Wilkinson of Booker, Oklahoma; Mrs. Durwood Wilkinson of Guyton, Oklahoma.

Mrs. Ralph Hill left Amarillo by plane Thursday morning of last week. She was to meet her husband in Hawaii to spend his week of R&R leave with him.

Mrs. Lily Wofford accompanied her son-in-law and daughter, Mr. and Mrs. Fred Mercer, to Dallas last week. The Mercers were the Briscoe County delegates to the State Democratic Convention. Mrs. Mercer is the new Briscoe County Democratic Chairman, having succeeded Ben Whitfill who had served in that office for several years. Mr. and Mrs. Alvin Redin were alternates from Briscoe County.

Mr. and Mrs. Marvin Reid of Kansas City, Missouri, visited Mrs. W. W. Reid and other relatives over the weekend.

MAYTAG
WASHERS AND DRYERS
Sales and Service
Fogerson Lumber & Supply

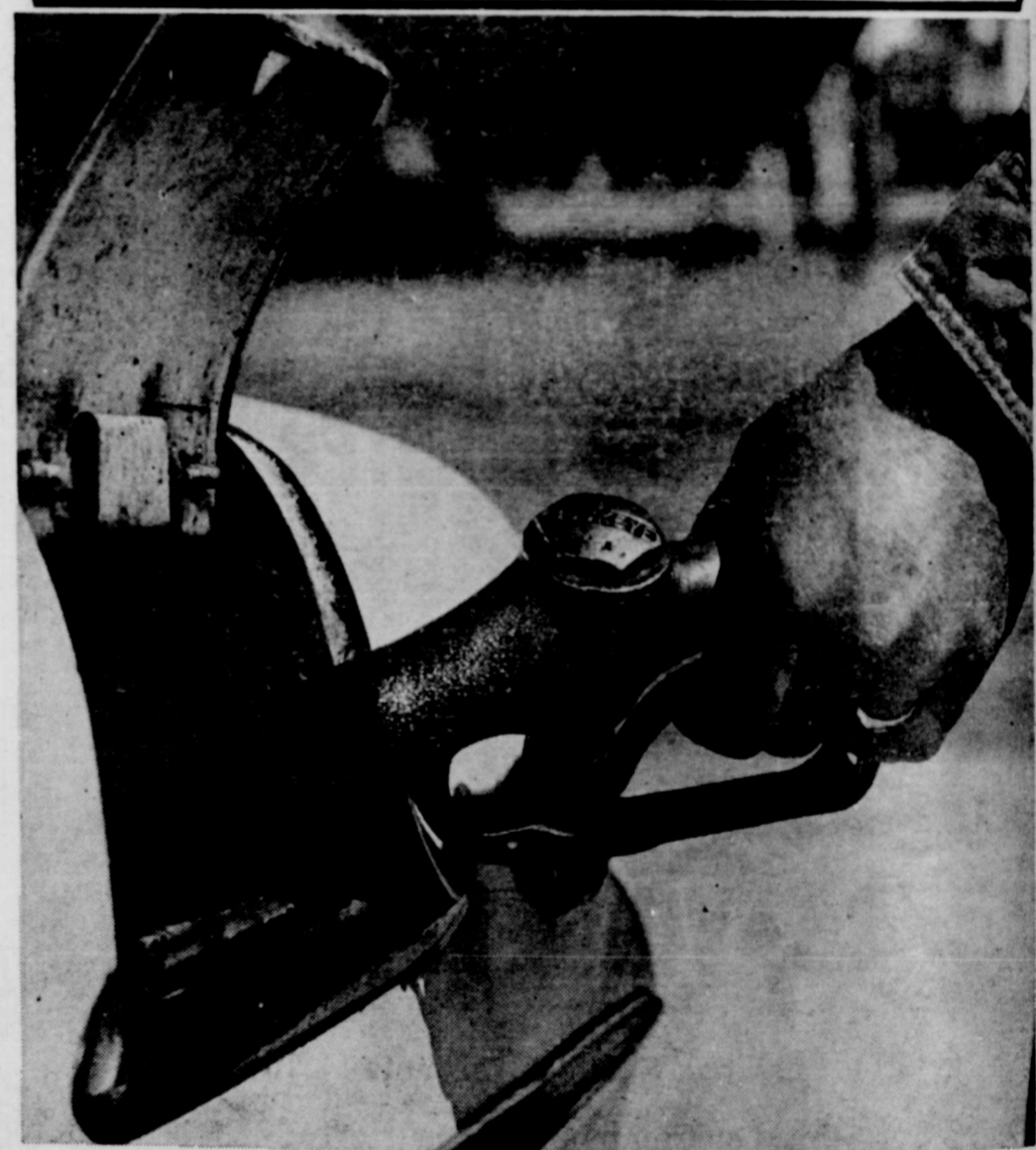


The Congregation Of The CHURCH OF CHRIST Meeting At Rock Creek

EXTENDS A GRACIOUS WELCOME TO ALL TO ATTEND ANY AND ALL OF OUR SERVICES.

SUNDAY
Morning Worship 10:30 a.m.
Evening Worship 6:00 p.m.
WEDNESDAY
Evening 7:00 p.m.

Shop in your home community



©COPYRIGHT 1968

Do discounts cover the extra cost of getting there?

Do you really save money shopping outside our home business community? When you consider gasoline, oil, tires, depreciation, repairs, parking, investment in time and money—do so-called "big city discounts" really cover the cost of getting there?

Unless you enjoy the confusion and frustration of off-ramps, on-ramps, diamond, cloverleaf and one-way directional flow interchanges, we suggest you save your tension, time and money. Shop at home.

FIRST STATE BANK
SILVERTON, TEXAS

Madeira



She will love the warm provincial feeling of bold new Madeira by Franciscan Earthenware. The rich brown body color is overlaid with a floral pattern in olive green . . . handbanding is in vivid greens. Completely oven and dishwasher safe, highly chip resistant, will never craze or fade.

May we help you select a gift of Franciscan Earthenware?

Merlene's
FLOWERS-GIFTS

GOOD SELECTION
ALL OCCASION CARDS.

Boxed GET WELL, BIRTHDAY,
SYMPATHY and

Some Designed Especially For Children

\$1.00 and \$1.25

PHONE 3381
Briscoe County News
SILVERTON, TEXAS
"FOR ALL YOUR PRINTING NEEDS"



Your Home Business Firms are
THE HIGHEST BIDDERS
for Your Shopping Dollar

**Here
 are the facts
 to prove
 it...**

Actually . . . no matter where you live . . . nobody . . . and that means **NOBODY** . . . can give you more for your dollar than your own home business firms. Let's look at the reason for this advantageous . . . to you . . . situation:

ANY MERCHANT . . . anywhere . . . is ordinarily going to sell goods for some more than he pays for them.

ON AN AVERAGE . . . when you spend a dollar in any retail store . . . here or anywhere else . . . about 70 cents of it pays for **GOODS**, and about 30 cents goes for rent, taxes, donations, hired help, etc., and a few cents (the national average is about 5 cents) pays the proprietor for his work, and for his investment in goods and equipment, credit losses, etc.

NOW . . . when you spend your dollar at home, you get the same 70 cents worth of merchandise that you would get for it anywhere else.

AND THE OTHER 30 CENTS stays here too, to help you pay for schools, churches, roads and streets; to vitalize the community so your property . . . or your job . . . is worth more; to keep more people here to share civic work and expense, and to serve **YOU** when you sometimes direly need their knowledge and their skills.

ONLY when you buy in **YOUR OWN HOME** community do you get back most of this 30-cent retail handling charge . . . and often a great deal more, as your job or your business prospers and your social life broadens with the growth of the entire community.

- | | | |
|-----------------------------------|--|--|
| BRISCOE CO-OP GIN | CROP - RITE FERTILIZER | SERVICE ELEVATOR |
| BUD'S GROCERY & MARKET | BROWN - McMURTRY IMPLEMENT CO. | FOGERSON LUMBER CO. |
| FIRST STATE BANK | JACK'S PHARMACY | SALEM DRY GOODS |
| CITY CAFE | SILVERTON CO-OP ELEVATOR | ASHEL McDANIEL TEXACO |
| REDIN OIL CO. | BROWN HDW., FURNITURE & APPL. | SUN-VUE FERTILIZERS, INC. |
| TOMLIN - FLEMING GIN | SILVERTON BUTANE COMPANY | O. C. MAPLES and SON '66' STATION |
| SILVERTON ELEVATORS, INC. | LEDBETTER - RHODE | NANCE'S FOOD STORE |
| BRISCOE COUNTY NEWS | RAY THOMPSON IMPLEMENT CO. | CITY TAILORS |

