

## Annual Bailey County Fair scheduled for Sept. 15 & 16

By Curtis Preston  
CEA - Agriculture

The 16th Annual Bailey County West Plains Fair is scheduled to be held on September 15 and 16, 1995, here in Muleshoe.

The Bailey County Extension office personnel have

managed the agricultural and home economics exhibits for the past fifteen years, and certainly plan to do it again in 1995.

As you know, the recognized achievements in the many areas of the fair are awarded ribbons or cash prizes.

Many local people are exhibitors in the Bailey County Fair who would not be able to participate at any other fair, and we feel that is important ... to us ... to our community.

In the past, until last, various civic groups were responsible for overseeing the "booth

rental" part of the fair. Last year, however, it was left to the Extension office to handle that as well.

The booth rentals have normally been offered to local vendors and businesses prior to extending invitations to others, and we want to honor that

commitment again this year; however, we need to have more response from our local community.

In order for the Fair to give cash prizes, we must have some income. Your support is needed. A booth (10' X 10') will rent for \$50 for the two-

day period (September 15-16). We are also in need of sponsors if we are to continue the cash awards for "Best of Show." Twenty dollars is awarded to the "Best of Show" in each of the seven adult and

Continued on page 3

## Finney and Mule-Plex produced a success!

Alan Finney, the producer, director and music co-writer of "Keepers of the Legend," said there would be lots of hard and fast decisions about dealing with tight management, considering how fast the outdoor drama grew.

Finney said he sees no reason at this point for not doing the outdoor drama every year. "Plans initially were to do it every year," he said.

Although there are final figures yet, the break even point was estimated at 400 spectators a night, and there were 1500 paid receipts, Finney said.

Finney, who has been a resident of Muleshoe for 24

years, spent six of those years away at college. He graduated from Texas Tech University in 1991 with a bachelor of music performance degree.

After a short stay in the Dallas area, attending the graduate school at the University of North Texas, Finney decided to make a career change, to move home to Muleshoe and go into banking. He is now assistant vice president and lending officer at Muleshoe State Bank.

He and his wife, Kerry, also serve as music directors at the First United Methodist Church in Muleshoe.

Continued on page 2



Journal Photo/Martha Toles Frost

Actors gather before production of "Keepers of the Legend." Pictured are most of the actors who participated in the play. The cast consisted of local businessmen, college students and many younger children still in Muleshoe schools. There were a few cast members from out of town. The historical outdoor drama was presented Aug. 4-8 on a stage in front of the Janes Ranch House at the Muleshoe Heritage Center.

## Around Muleshoe

### Don't miss it! Meet the Mules Friday, Aug. 18

Booster Club President David Marricle says "Meet the Mules" is scheduled for Friday night, Aug. 18 at the Benny Douglas Stadium, weather permitting.

Festivities will begin at 6 p.m. with introductions of fall participants in football and cross country events—freshmen through varsity.

The band and the cheerleaders will be there, and the Mini Mule Cheerleading Camp participants will perform. An ice cream supper will follow.

The Booster Club will be selling signature ads for a \$10 donation. Marricle says the ad entitles a fan to membership in the Booster Club.

### Reserve ticket options can still be picked up

Muleshoe Independent School District would like to remind all persons holding reserve seat tickets for the 1995 football season that they may pick up their options through Friday, Aug. 18 until 5 p.m. at the administration office.

All remaining tickets will go on sale Monday, Aug. 21 on a first come, first serve basis.

### CCC offers new student orientation

Students new to Clovis Community College can attend the fall semester orientation program Thursday, Aug. 17.

Continued on page 2



Journal Photo/L. McGonagill

### Making a difference

Special Programs Director, Georgia Pena, presented Freddy Santos and Lisa Rodriguez at the MISD school board meeting Monday night. Both students participated very successfully in St. Edward's University's summer state migrant program in Austin.

## Bailey County Fair catalogs ready at Muleshoe extension office

By Curtis Preston  
CEA - Agriculture

The Bailey County West Plain Fair Catalogs are in the mail! "It is time to begin making your plans to attend the fair," says Curtis Preston, County Extension Agent-Agriculture. School will be in motion and fall will be in the air... a perfect setting for our county fair.

Fair dates are Friday, September 15 from 1 until 7 p.m., and Saturday, September 16, from 10 a.m. until 4 p.m.

All entries must be left in place until 4 p.m. please. Judging will be held on the morning of September 15; therefore, we will be able to judge with out interruption.

Entries for the fair will be accepted on Thursday, Sep-

tember 14, from 10a.m. until 8 p.m., as noted in the catalog, page 2. Please read all of the rules of the fair and them plan to enter one or more categories as shown.

This year there are some new categories, in the fine arts division and a few new changes which we hope will encourage mor participation. Added categories are silk painting, fab-

ric painting, clay items, and enamel on copper.

In addition to those categories, a new division has been added—Division 5-jewelry and it has three classes from which to choose. In the crafts and hobbies division, an "open media" category has been added which will include any mixed media work.

Please notice that in the

its lost or not available because they have changed school systems.

Often the students are also from a single-parent home, and many times the student has had to overcome tremendous obstacles to stay in school. The program goal is to help students stay in school until they graduate, and hopefully to inspire them to continue their education.

Students at St. Edwards are also given a job during the summer. Freddy worked at the Department of Human Services and said it taught him "what kind of job I could have with an

Continued on page 2

## State program helps students

Georgia Pena, Director of Special Programs at Muleshoe High School, presented Freddy Santos and Lisa Rodriguez to school board members Monday night at the board meeting. Freddy Santos, a sophomore at South Plains Junior College, participated in St. Edward's 1993 summer program, and Lisa Rodriguez, who is a sophomore at MHS, participated in the program this summer.

According to Pena, the program is designed primarily for students whose families move often and travel for farm work. The student may need assistance with necessary cred-

## Extension service closing South Plains soils testing laboratory

LUBBOCK — After more than 35 years of providing scientifically and economically sound soil testing services to Texas High Plains producers, the South Plains Soil Testing Laboratory of the Texas Agricultural Extension Service will close Sept. 1.

The laboratory handles from

8,000 to 12,000 soil and plant samples for crop producers and homeowners each year, said Dr. Michael Hickey, Extension Service soil chemist and director of the facility here. In addition to Hickey, the lab employs an office manager, two technicians and a part-time high school student from the

cooperative agriculture program.

Escalating costs of upgrading and replacing analytical equipment and operating the laboratory, coupled with reductions in state and federal funding, has not been offset by sufficient increase in the number of samples handled, said

Dr. James R. Supak, associate head of the Department of Soil and Crop Sciences at Texas A&M University.

After Sept. 1, samples from the area now served by the Lubbock facility will be processed at the College Station laboratory. Supak said a 60-day phase down period at the

Lubbock lab will allow completion of existing projects, transfer of equipment and closing of the facility. All operations at the facility will end Nov. 1.

Crop producers, ranchers and urban residents sending soil, water or forage samples

Continued on page 3



## Keepers

Continued from page 1

Alan teaches private music lessons to some of the individuals who acted in the recent performances of the outdoor musical drama.

Besides Finney, who played trumpet and piano for the performances, other band members for "Keepers" have been recording recently at Gill Prather's "Cowboy Connection." They are musicians from Clovis, Portales and El Paso.

Johnny Mulhair played guitar, Kim Blakey was on fiddle and guitar, Roy Black played bass and Brad Billingsley was on the drums.

The lighting, sound, band and radio and television advertising were handled by the "Cowboy Connection" recording studio and advertising agency.

Many people and entities of the community played a part in the outdoor drama. The City of Muleshoe provided funds toward the promotion of the event.

The Muleshoe Squares participated in the "party" scene. The Muleshoe Chamber of Commerce and Agriculture allowed the use of their office for ticket sales.

Muleshoe Kiwanis Club cooperated in closing the Miniature Golf Course. Bailey County allowed the use of the Coliseum parking lot and restrooms as well as lots of

"dirt" for the sandhill and stage.

The Heritage Foundation provided the barbecue supper and the facilities that formed the set and background for the drama. The City of Littlefield provided bleachers.

The programs were printed by Trafton Printing. Hardcopy advertising and promotional engagements were by Holland, Merriman & Christiansen advertising agency. Photography was by Rhonda Carpenter, and tickets were printed by Bob Stovall Printing.

Paul Goad of Clovis was the engineer for the production Mule-Plex Production Company was a driving force behind the idea for the outdoor drama.

Mule-Plex Production Company began in the fall of 1988 when Arline Phelps and Pat Prater were visiting one day about ideas for bringing tourists to Muleshoe.

Some type of historical outdoor drama seemed to have possibilities. They contacted MHS drama instructor, Kerry Moore.

An open public meeting held to determine the level of community interest resulted in the gathering of a core of people to work on the project—with Prater as president and Norma Bruce as treasurer.

Melodramas and musical variety shows were directed by Moore, with the high school auditorium as a setting. The



Journal photo/Martha TolesFrost

Indians were outnumbered by cowboys in Muleshoe's outdoor drama, "Keepers of the Legend." One of the most beautiful night scenes was of Indians dancing atop a giant sandhill that symbolized the legend that sandhills drifted suddenly into the area and covered a river that ran through it.

Muleshoe Activities Committee lended its support with candy sales.

Under the guidance of Moore, Mule-Plex produced additional dramas. Lee Horsley was a special guest at a 1990 production.

An outdoor drama at the Heritage Center was written and directed by Darla Rhodes, Nelda Merriott, Billie Downing and Prater, with nearly 100 people involved.

There were horses, a stage

coach, a wagon and a carriage running through the staging area, and even a gunfight. The ambitious project was enjoyed by a large audience.

So, the idea of producing an outdoor historical drama has long been a desire of the group.

In 1994, when Alan Finney said he would produce and direct an outdoor musical for Mule-Plex, Pat Prater decided to contact Paula Paul, who was originally from this area, to see if she would be interested in

writing a script.

Paul had recently been to Muleshoe for a "Toast of Texas" celebration, and she had written the foreword in the Bailey County history book.

After visiting with Paul, Prater discovered the Albuquerque author had written numerous novels and several outdoor dramas. One of her books is being considered for a movie.

**Jewelry & WATCH REPAIR**  
 • 7 Day Ring Sizing & Repairs  
 • Remounting & Diamond Setting  
 • Full Line Watch Batteries  
 • Neck Chains Repaired  
 • Jewelry Appraised For Insurance  
 • Faster Service  
 Holmberg Jewelry  
 35 YEARS  
 1908 N. Prince, Clovis  
 762-9376 (Across from K-Mart)

**FEEL FIT!**

1177

B	C	D	E	EEE
8 1/2-10	9 1/2-11	10 1/2-12	11 1/2-13	12 1/2-14

**The Fair Store**  
 120 Main 272-3500  
 Muleshoe, Texas  
 RED WING SHOES  
 MADE IN U.S.A.

**Subscribe today!**  
 Call  
 272-4536

## Catalogs

Continued from page 1

not 19 years old by January 1, 1995.

We feel that this change will be an encouragement for more young people to enter and will be a fairer way to judge the entries. "Best of Show" awards will be once again awarded to seven adults and seven youths in seven divisions, and ribbons and rosettes will be awarded as shown on page 2 of the cata-

log.

The Muleshoe Jennyslippers will also be giving prize money to some lucky person or persons who is entered in the fair.

Commercial and exhibits areas are available as shown on page 19. We encourage anyone who is interested in reserving a space to call the extension office at 272-4583

as soon as possible. The booth areas are available on a rental basis.

So, now you know. The Bailey County West Plains Fair is just around the corner, and we hope you will make your plans now to be there.

Extension programs serve people of all ages regardless of socioeconomic level, race, color, sex, religion, disability, or national origin.

## Program

Continued from page 1

education," and he decided to go on to college.

Lisa worked this summer as a teacher's aide and also wants to continue her education after graduation from MHS.

Both students felt the program had made a real difference in their lives. Pena and high school principal, Al

Bishop, both said they were impressed by the self-confidence and positive attitudes Freddy and Lisa have.

The funds providing students this opportunity come from various sources. MISD provides only \$650 per student.

The program director said Muleshoe has been participat-

ing in this program for four years, and has sent 13 students. Their success has been very good—four have graduated, six are currently enrolled at MHS, and are due to graduate in May, two have withdrawn from MISD, and only one has dropped out. Three are presently enrolled in college.

## Around

Continued from page 1

Student may choose either of two identical session being offered from 1 to 11 a.m. or from 5:30 to 7:30 p.m. in room 409 at the college, 417 Schepps Blvd.

Each session will feature a mini-informational fair and tours of the campus.

Counseling staff, faculty members and current students will be present to answer questions and share tips on finding your way around the college.

It is an opportunity to learn about the campus facilities, special programs for adults returning to school, tutoring assistance, the skills development center and other services free to students, according to the coordinator, Bonnie Miller.

CCC T-shirts and a tuition waiver good for one course will be given at each session, and refreshment will be served.

Advance registration is requested to aid in planning.

Please call the CCC Counseling Office at 505-769-4015 to reserve your place. For ad-

ditional information, contact Miller at the same number or the marketing and public information office at 505-769-4009.

**Muleshoe Journal** USPS 367820  
 Established February 23, 1924. Published by Triple S Publishing, Inc.  
 Every Thursday at 304 W. Second, Box 449, Muleshoe, TX 79347.  
 Second Class Postage paid at Muleshoe, TX.  
 POSTMASTER: Send address changes to the Bailey County Journal, P.O. Box 449, Muleshoe, TX 79347.  
 We are qualified members of:  
 Panhandle Press Association, National Newspaper Association,  
 West Texas Press Association and Texas Press Association

WEST TEXAS PRESS ASSOCIATION

PPA Panhandle Press Association

TA TEXAS PRESS ASSOCIATION MEMBER 1995

Scot Stinnett, Publisher  
 Lisa Stinnett, Vice-President/Comptroller  
 Martha Frost, Editor  
 Holly Millsap, Classifieds  
 Pat Durben, Advertising

SUBSCRIPTIONS: Muleshoe Journal and Bailey County Journal  
 By Carrier Yearly - \$15.00  
 Bailey and surrounding counties: by mail - \$16.75  
 Elsewhere - \$18.50  
 Advertising Rate Cards on Application

\*Advertisers should check their ad the first day of insertion. The Journals will not be liable for failure to publish an ad or for a typographical error or errors in publications except to the extent of the cost of the ad for the first day of insertion. Adjustment for errors will be limited to the cost of that portion of the ad where the error occurred.

**RCA**  
 Digital Satellite System

**UP TO \$2000**

**Mail-in REBATE!**

\*Offer valid on retail purchases of RCA Brand DSS® Systems between August 10 and October 15, 1995.

**Deal #1**

**SAVE! \$100**

With Mail-in Rebate On Any RCA DSS® System.

**Complete RCA DSS® Systems start at \$599**

DS1120RW After Mail-in Rebate

RCA 18" Wide

**Deal #2**

**SAVE! \$200**

With Mail-in Rebate When you buy a Deluxe RCA DSS® System DS2430RW

And a Stand Alone Receiver DRD102RW at the same time.

**RCA DSS® Premier System**

**RCA Digital Satellite System**

**Your Cable Company Can't Offer This!**

Access To Over 175 Channels Of Programming Excitement!  
 From **DIRECTV®** and **USSB®**  
 UNITED STATES SATELLITE BROADCASTING®

Programming sold separately. Programming packages may vary by area.

**More Movies. More Sports. More Music. More Entertainment.**

DIRECTV® and DSS® are registered trademarks of DIRECTV, Inc., a unit of Hughes Electronics, Inc. USSB is official service mark of United States Satellite Broadcasting Company, a subsidiary of Hubbard Broadcasting, Inc. Trademark(s) \*Registered marca(s) Registrada(s) © 1995 Thomson Consumer Electronics, Inc.

**RCA**  
 Changing Entertainment. Again.™

**Wilson Appliance**  
 117 Main 272-5531



## Extension

Continued from page 1

to College Station will notice little difference in receipt of analyses and reports, Supak said. The College Station laboratory provides one-day turnaround upon receipt of soil samples; water and forage analyses take about a week.

"For almost four decades, the laboratory at the Texas A&M University Agricultural Research and Extension center at Lubbock has set the standards for sound soil testing services on the High Plains," Supak said. "But it is no longer feasible to equip, maintain and operate state-of-the-art facilities at both Lubbock and College Station."

The Lubbock facility was established in 1959 to serve an area that represents an estimated 43 percent of the state's total agricultural production and 54 percent of its total crop

coverage, Hickey said. The area it served produces 76 percent of the state's wheat, 75 percent of its cotton and 70 percent of its corn, he noted. It has had three directors during its continuous operation: James Valentine, Dr. Dale Pennington and Hickey.

The Lubbock lab was one of the first in the nation to recognize that nitrate nitrogen measurements in soil can be useful nitrogen fertilizer recommendations, and one of the first to incorporate that into sampling and analysis procedures, Hickey said.

"Soil testing techniques for phosphorous used by the A&M laboratories today were developed at Lubbock, in conjunction with scientists of the Texas Agricultural Experiment Station," he said.

The lab and the High Plains

Underground Water Conservation District No. 1 evaluated area soil fertility and identified that nitrogen and phosphorus were the nutrients which most limited cotton production on the Southern High Plains.

A subsequent educational program initiated by the Lubbock soil chemist, the water district and county Extension agents improved crop fertilization. Together with improved irrigation management and variety selection, this reversed the declining cotton production of the Southern High Plains, Hickey said.

For the past six years, Hickey and the Lubbock lab have been developing a cotton petiole monitoring program for area cotton producers, designed to improve the efficiency of nitrogen application. "The bottom line is, it helps them get

better use of their fertilizer and reduces environmental impact," Hickey said.

In conjunction with the Extension Service "Don't Bag It" lawn care program to reduce urban yard trash, Hickey and the Lubbock lab initiated a "Don't Bag It Soil Test Program" for urban residents. "It is designed to reduce the potential for urban environmental impact," Hickey said. The program has since been adopted by Oklahoma State University.

The lab has been working with irrigators to identify salinity problems in center pivot systems. It is involved in a cooperative program with the water district to quantify the extent and impact of that problem and find ways to alleviate it. For several years the lab has worked with the oil industry in reclaiming salt-affected soils.

## Parmer County Fair to be September 14

The Women's Department of the Parmer County Fair Board has announced what entries will be open for judging at its fair Thursday September 14-16.

The Culinary Department will consist of breads, cookies, cakes, candies and pies. Any kind of bread, cookie, cake, can or pie will be accepted.

Entries will be taken starting at 5 p.m., Thursday, September 14. However, with this category, entries will also be accepted from 8 to 9 a.m. Friday, September 15. Judging

will begin at 9 a.m. Friday.

In the Canned Products Department, all kinds of fruits, vegetables, pickles and relishes and preserves and jellies will be accepted. These entries are due September 14.

The Textiles Department will accept entries in the following areas: sewing (i.e., clothes), machine embroidery, quilting and bedspreads and decorated shirts or jackets.

The Needle Art Department will include needlepoint, smocking, knitting, tating, counted cross-stitch, crochet,

crewel embroidery, embroidery and latch hook pieces.

The Crafts and Hobbies Department will accept ceramics, porcelain, China painting, tole painting, holiday and miscellaneous entries.

All of the entries are due Thursday, September 14 between 5 and 9 p.m. A \$1 fee will be charged for all entries to defray fair expenses. All entries will be judged based on merit.

For further information, contact Debbie Pollard at (806) 481-3619.

## Fair

Continued from page 1

seven youth divisions.

This is "our county fair." We want it to continue, and to be successful, but we need your help. Please call the Extension office and reserve your booth today ... or offer to sponsor one or more of the "Best of Show" awards. Your participation will be very much appreciated.

**Don't go to college without it!**  
**Subscribe Today**  
 272-4536

*Everyone is invited to a*

**Memorial Tribute for Myke Murrah**  
**Saturday, Aug. 19, 1995**  
**10:30 a.m.**  
**Methodist Fellowship Hall**

*There will be a meal following the informal service for family and friends.*

**SIDEWALK SALE**  
**SATURDAY ONLY Beginning 9:00 A.M.**

<p><b>Lots of</b>  <b>1/2 PRICE</b>                  Dresses-Skirts-Blouses</p>	<p><b>Large Group</b>  <b>Ladies' Jeans</b>  <b>\$10<sup>00</sup> &amp; \$15<sup>00</sup></b></p>
<p><b>Men's Shirts</b> ..... <b>1/2 Price</b>                  Good Selection</p>	<p><b>Boots</b> ..... <b>1/2 Price</b></p>

**Few Straw Hats DRASTICALLY REDUCED!!**

**Men's Jeans \$5<sup>00</sup>**

*Many, many more items too numerous to mention.*  
 IN CASE OF RAIN - WE WILL HAVE THE SALE INSIDE OUR STORE!  
 No Refunds • No Layaways • No Exchanges • No Credit Cards

**Oscar's Western Wear & Shoe Repair**  
 "The Working Man's Store"  
 224 W. 2nd PORTALES 356-5272

**Have A Nice Day!!!**

"Friends Free"

Checking Accounts!

- No Service Charge
- No Activity Charge

The account will be subject to any applicable miscellaneous charges.

For More Information,  
 Call Our New  
 Accounts Personnel.

**MULESHOE STATE BANK**

101 W. American Blvd.  
 Muleshoe, TX  
 (806) 272-4561

801 Ave. A  
 Farwell, TX  
 (806) 481-9580

Each depositor insured to \$100,000 by FDIC

Home Folks Caring For Folks At Home.

MULESHOE AREA  
HOME HEALTH

Agency

Featured Patient

Dee Clements is 87 years old and is married to Ruth Clements. He has lived in Muleshoe since 1931. The Clements have had 3 children - Olan Dee Clements of Albuquerque, NM and the late Travis Clements and the late Wanda Joyce Arnold. They have 12 grandchildren and 21 great grandchildren.

Dee was the Sheriff of Bailey County for 24 years. Raised on a farm, he still has cows and enjoys going out to check on them everyday.

The Clements say the girls at Muleshoe Home Health are wonderful. They are all nice, very helpful and are willing to do anything for you. They are so good that Dee gives them a soda pop before they leave each time. It is just part of the deal for him!

Dee Clements

*To receive Home Health Services Talk with your physician or talk with hospital personnel when you are hospitalized.*

24 Hour #  
272-3346

Local Nurse on call  
24 hours a day to  
offer prompt service.

We care for you  
at home

We accept Medicare, Medicaid and Private Insurance

Affiliated with  
 LUBBOCK METHODIST HOSPITAL SYSTEM

School has started, please drive safely, protect those kids!!

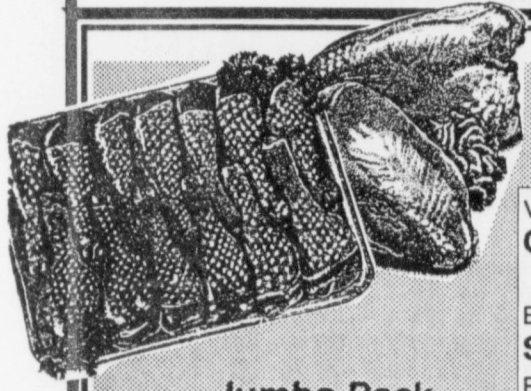


# BACK TO SCHOOL

## Specials Continue!!!



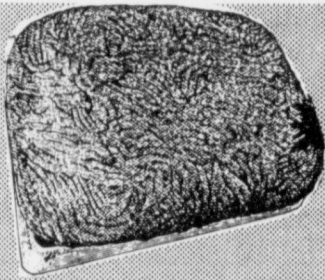
All Types  
Coca-Cola  
6 pack, 12 oz. cans  
**\$1.69**



## MEAT

Value Pack Beef Boneless  
Chuck Steaks ..... lb. **\$1.39**  
Small Pack ..... lb. **\$1.59**

Beef  
Stew Meat ..... lb. **\$1.69**  
Preferred Trim  
Chuck Eye Steaks ..... lb. **\$2.99**  
Preferred Trim Chuck  
Tender Steaks ..... lb. **\$1.99**  
Combination or Pepperoni  
Don Martino Pizza ..... 2 pack **\$2.99**  
Thorn Apple Valley  
Polish, Cheese, Spicy Or  
Smoked Sausage ... 12 oz. pkg. **99¢**



Value Pack  
Ground  
Chuck  
**\$1.39**

Jumbo Pack  
Drumsticks  
or Thighs  
**59¢**  
lb.

Corn King, 12 oz. pkg.  
Sliced Bacon ..... **89¢**



Owen's Country  
Style, 1 lb. roll  
Sausage  
**\$1.69**

Corn King Boneless  
Half Ham ..... lb. **\$1.69**  
Wilson, 12 oz. pkg.  
Meat Bologna ..... **89¢**  
Wilson Regular or Thick  
1 lb. pkg. **\$1.09**  
Wilson, 1 lb. pkg.  
Meat Bologna ..... **99¢**  
Wilson, 1 lb. pkg.  
Jumbo Franks ..... **99¢**



Value Pack  
Beef Boneless  
Chuck Roast  
**\$1.19**  
lb.  
Small Pack .... lb. **\$1.39**

## PRODUCE

Thompson White  
Seedless  
Grapes ..... lb. **79¢**

Cello Wrapped  
California  
Lettuce  
**2 for \$1**

Texas Grown  
White  
Onions ..... lb. **39¢**

Texas Grown  
Yellow  
Squash ..... lb. **79¢**

Fresh California  
Broccoli ..... lb. **59¢**

## BACK-TO-SCHOOL FAVORITES!



SNACKWELLS CHOCOLATE SANDWICH, SNACKWELLS CREME SANDWICH, NUTTER BUTTER GRANOLA BAR, OREO GRANOLA BAR, CHIPS AHOY GRANOLA BAR, OREO CHOCOLATE SANDWICH, CHIPS AHOY, FIG NEWTONS, NUTTER BUTTER PEANUT BUTTER, TEDDY GRAHAMS CINNAMON, RITZ BITS PEANUT BUTTER SANDWICH, CHEESE RITZ BITS, MINI CHIPS AHOY WHEAT THINS, MR. PHIPPS, NIPS CHEESE CHEDDAR SNACK, CHEESE RITZ CRACKER, CHEESE RITZ/PEANUT BUTTER

Nabisco  
Single Serve  
Favorites!  
**\$3.99**  
12 ct.  
Tray Pack

KRAFT SINGLES AMERICAN ..... **\$2.79**  
16 oz. pkg.

KRAFT COLBY JACK, LONGHORN CHEDDAR OR COLBY  
Halfmoon Cheese ..... **3 for \$5**  
10 oz. pkgs.

KRAFT PHILADELPHIA PHILLY FOR TOAST  
Cream Cheese ..... **\$1.39**  
8 oz. Tub

KRAFT AMERICAN CHEESE  
Deluxe Slices ..... **\$2.29**  
12 oz. pkg.

LOUIS RICH REGULAR, FAT FREE OR TURKEY BREAST  
Variety Pack ..... **\$1.99**  
9-12 oz. pkg.

LOUIS RICH RED RIND  
Turkey Bologna ..... **\$1.39**  
16 oz. pkg.

OSCAR MAYER HAM & CHEESE OR  
Chopped Ham ..... **\$2.39**  
16 oz. pkg.

LOG CABIN  
Syrup ..... **\$1.99**  
24 oz. btl.

Oreos, Mini Chips Ahoi, Ritz Bits Cheese Sandwiches ..... **\$1.99**  
8 oz. box

NABISCO Ritz Ark Animals ..... **\$1.79**  
1.75 oz. box

DIZZY GRIZZLIES ..... **\$1.99**  
10 oz. box

DELICIOUSLY LIGHT OR REGULAR ASSORTED  
Kraft Dressing ..... **\$1.39**  
8 oz. btl.

KRAFT PEANUT CHEESE CRACKERS, CHEESE PRETZELS, PEANUT BUTTER CRACKERS, OR PEANUT BUTTER GRAHAM STICKS  
Handi Snacks ..... **3 for \$1**  
1 oz. For

KRAFT LET-PUFFED OR MINIATURE  
Marshmallows ..... **\$1.29**  
16 oz. pkg.

KRAFT REGULAR, JALAPENO, OR MILD MEXICAN  
Cheez Whiz ..... **\$1.79**  
8 oz. jar

BIG COUNTRY  
Biscuits ..... **5 for \$3**  
12 oz. For

POST  
14.5 oz.  
Honey-Comb or  
18 oz. Golden Crisp  
Crisps ..... **2 for \$4**

CHEF BOYARDEE  
Spaghetti & Meat Balls ..... **\$1.19**  
15.5 oz. can

DIET LEMON, LEMON, SWEETENED, OR UNSWEETENED  
Nestea Tea ..... **99¢**  
32 oz. btl.

DEL MONTE ASSORTED  
Fruit Cups ..... **\$1.69**  
5 oz. cups

DEL MONTE ASSORTED  
Tostitos®  
Reg. \$2.99 size  
Assorted Tortilla Chips  
Tostitos® Salsa ..... **\$1.79**  
16 oz. jar

DEL MONTE ASSORTED  
Gel Snack Cups ..... **99¢**  
4 pack 3.5 oz.

## Frozen & Dairy

PATIO Dinners ..... **\$1.39**  
12-13 oz. pkg.

PILLSBURY ASSORTED  
Cookie Dough  
Orange Juice ..... **2 for \$5**  
20 oz. rolls For

JACK'S PIZZA ..... **2 for \$4**  
4 pkgs. For

JACK'S  
Blue Bonny Chocolate Sundae Bar, Orange Cool Tubes, or Strawberry Sundae Crunch ..... **\$1.69**  
6 ct. pkg.

TROPICANA  
Apple Juice ..... **\$1.79**  
64 oz. ctn.

HEINZ KETCHUP ..... **2 for \$3**  
28 oz. btl. For

LOW FAT CHOCOLATE CHIP, W/WHITE, HEATY TOFFEE, PEANUT BUTTER, SUGAR, OR CHOCOLATE CHIP

TROPICANA PLUS VITAMIN REGULAR OR HOMESTYLE  
Orange Juice ..... **\$1.79**  
64 oz. ctn.

ECONOMY PACK REGULAR OR BUTTERMILK  
Downyflake Waffles ..... **\$1.99**  
18 ct. 11 in. pkg.

CURLY QOO, TATER BABIES OR FAIRY'S  
Inland Valley Fries ..... **2 for \$3**  
32 oz. pkg.

HEINZ TOMATO KETCHUP  
Ketchup ..... **2 for \$3**  
28 oz. btl. For

La Corona  
Yogurt  
• 8 oz. Reg. Fruit of Bottom  
• 6 oz. Light N Trim  
• 5.6 oz. Yogi  
**4 for \$1**

Back-To-School BUYS

MEAD POCKET & PRONG  
Portfolio ..... **6 for \$1**  
For

CLASSIC OR ROUND BLUE OR BLACK  
Bic Stic Pens ..... **72¢**  
10 ct. pkg.

ELMER'S GLUE-ALL OR GLUE GEL  
School Glue ..... **43¢**  
4 oz. btl.

MEAD REGULAR OR NO-MARGIN SPIRAL  
3 Subject Notebook ..... **99¢**  
120 ct. sheets

CRAYOLA  
Crayons ..... **86¢**  
24 ct. box

## Health & Beauty

VIBRANCE Styling Aids ..... **\$1.99**  
7 oz. btl.

CLEAR EYES  
Clear Eyes ..... **\$2.49**  
5 oz. btl.

BENADRYL  
Benadryl ..... **\$3.89**  
24 ct. pkg.

ASSORTED SHAMPOO OR CONDITIONER  
Vibrance ..... **2 for \$5**  
15 oz. btl. For

REGULAR OR ACR  
Clear Eyes ..... **\$2.49**  
5 oz. btl.

TABLETS CAPSULES OR SOFT GEL NO DYE  
Benadryl ..... **\$3.89**  
24 ct. pkg.

QUAKER OATMEAL  
Quaker Assorted Instant Oatmeal  
11.8-15 oz. boxes  
**2 for \$4**

WESTERN UNION | MONEY TRANSFER<sup>SM</sup>  
"The fastest way to send money"

# Lowe's

MARKETPLACE

401 W. American Blvd.  
Muleshoe 272-4585

Pay-n-Save  
QUALITY AND SERVICE

515 W. American Blvd.  
Muleshoe 272-4406

WE RESERVE THE RIGHT TO LIMIT QUANTITIES IN TEXAS

Prices Effective August, 1995  
WED THUR FRI SAT SUN MON TUE  
18 17 18 19 20 21 22





**CAPITOL COMMENT**

U.S. SENATOR  
**KAY BAILEY HUTCHISON**



**BAXTER BLACK**

ON THE EDGE OF COMMON SENSE

**The Anti-Smoking Device**

**Calling the Shots on Crucial Issues**

I have promised not to send out mass mailings at taxpayer expense, using the so-called franking privilege, so I have not conducted any formal surveys of constituents through the mails.

But since this newspaper has made a commitment to inform its readers on issues affecting all of us, I am asking them to allow me to communicate with you on an informal basis by asking you to answer these questions and return this form.

- 1) Do you favor replacing the current income tax with a flat tax (one rate for everyone, regardless of income with no mortgage or charitable deductions)? Or a national sales tax or a consumption tax, which wouldn't tax you on money you save, but only what you spend?  
Flat tax:  Sales tax:  Consumption tax:
- 2) We are making difficult decisions to try to balance the federal budget. Would you support Congress balancing the budget by the year 2002 if this meant slowing the growth of Medicare spending? Medicaid spending? Social Security spending?  
Medicare:  Medicaid:  Social Security:
- 3) Do you believe that agricultural policy should look for alternatives to its income support programs? Should there be a cap on subsidies or income testing to receive agricultural subsidies?  
Alternatives:  What kind: \_\_\_\_\_  
Subsidy cap:  Income testing:
- 4) Congress has cut national defense spending by 40 percent in real terms since 1985. Do you believe that current levels of spending on defense are adequate, too low, or too high?  
Adequate:  Too low:  Too high:
- 5) Do you believe there should be a national commitment to encouraging American culture through the arts?  
Yes:  No:   
Would you support federal arts funding if procedures were reformed so that federal funds would go only toward supporting legitimate arts groups, museums and arts education?  
Yes:  No:
- 6) Do you think this Congress has taken significant steps toward making itself more accountable to the American people?  
Yes:  No:  In what areas would you like to see more progress? \_\_\_\_\_

Comments: \_\_\_\_\_

Please send your responses to me at 283 Russell Senate Office Building, Washington, D.C. 20510, and write "SURVEY" on the outside of the envelope. I look forward to hearing from you.

Dr. Erfan called to tell me his story. He's spent seventeen years inventing and testing a device to help people quit smoking. It involves a small battery operated unit that clips in your ear like a hearing aid. Whenever the smoker feels the urge to smoke, he pushes a button on the unit. It sends a micro-amp charge which stimulates a nerve in the ear. This nerve causes a release of natural body chemicals which reduce the need for a smoke.

Human trials have shown very positive results. Enough so that the device is already cleared for use in other countries. But not in the U.S. The F.D.A. is not satisfied. They are now demanding animal testing. Thus Dr. Erfan's call. His question, "Was I aware of any animals stupid enough to smoke."

Food for thought. First we would have to find a species we could teach to smoke. Then once they were addicted we'd have to teach them to push a button the size of a match head whenever they felt the urge.

Certain species, regardless of their stupidity are eliminated because of life-style. Large-

mouth bass, for instance, whales or sea anemone could never keep one lit.

Others lack suitable anatomical features necessary to smoking like prehensile lips, i.e. crocodiles, ducks or hippopotami.

Or ears in which to insert the unit. Penguins are out as are frogs, snakes, millipedes and woodpeckers.

Then the selected species would have to be physically capable of pressing the small button. As you could imagine even the most dexterous ungulate would have difficulty manipulating its cloven hoof. And I doubt the smartest rhinoceros

in the world could reach his ear with his finger.

So, that narrows it down some. I came up with three suggestions for the good doctor. The anteater, the bird-dog and the cowboy.

Even granting the anteater a modicum of intelligence, none of the three species suggested have been known for their good judgement. In addition all are creatures of habit, work close to the ground and have a symbiotic relationship with another

species which could be helpful in the collusion.

There are some who might question the anteater's ears but you gotta admit he has smoker's lips!

Dr. Erfan was kind but I could tell he thought my suggestions were ridiculous.

On a flyer I called up Dr. David Kessler, Czar and Mahatma of the F.D.A. to find out what animals he might suggest

Continued on page 10

**GET THE ALICO Advantage**

**FREE**  
SECOND SET OF PRINTS EVERY TUESDAY!

Receive a second set of 3" prints FREE with any exposure roll of 35mm, disc, 110 or 126 color print film left for developing and printing at our everyday prices! C-41 process only. Excludes larger 4" size prints, photo galaxy or kodalux finishes.

**DAILY:** 9 a.m. to 8 p.m.  
**SUNDAY:** 12 noon to 5 p.m.

1401 W. American Blvd. Muleshoe, TX.

**Muleshoe Cattle Market**  
Saturday, Aug. 12, 1995

**524 head of cattle were sold.**  
Market was steady to strong on calves and yearlings. Packer cows & bulls were \$2 lower.

STEERS		HEIFERS	
Weight	per #	Weight	per #
200-300	\$ .80-\$ .90	200-300	\$ .65-\$ .75
300-400	\$ .75-\$ .85	300-400	\$ .60-\$ .72 <sup>50</sup>
400-500	\$ .70-\$ .80	400-500	\$ .58-\$ .65
500-600	\$ .65-\$ .75	500-600	\$ .55-\$ .62
600-700	\$ .60-\$ .67	600-700	\$ .55-\$ .60

PACKER COWS	
Type	Per lb.
High Yielding	\$ .38-\$ .43
Others	\$ .30-\$ .35

PAIRS		BRED COWS	
Good & Young	\$450-\$550	Others	\$350-\$450

BULLS	
Per lb.	.....
	\$ .45-\$ .50

**REPRESENTATIVE SALES**

Seller, City	#	Type	Wt.	CWT or PH
Michelle Casarez, Morton	.....	Red MF Steer	615 lbs.	at \$65.00
Michelle Casarez, Morton	.....	MF. Bull	895 lbs.	at \$55.00
Victoria Morin, Morton	.....	Brn. Bull	310 lbs.	at \$80.00
Jose Saenz, Whiteface	.....	2 Char. Strs.	330 lbs.	at \$81.50
Jose Saenz, Whiteface	.....	Char. Steer	250 lbs.	at \$90.50
Heath Scott, Muleshoe	.....	Brown Bull	370 lbs.	at \$72.00
J.O. Bass, Olton	.....	2 Spotted Bulls	565 lbs.	at \$61.00
J.R. & Ruby Collins, Hale Center	.....	2 Hol. Str.	390 lbs.	at \$58.00
Edgar Turner, Fort Sumner, NM	.....	Red Hfr.	625 lbs.	at \$58.25
A.C.V., Morton	.....	19 Mixed Hfrs.	478 lbs.	at \$63.75
A.C.V., Morton	.....	18 Mixed Hfrs.	404 lbs.	at \$64.75
Rodney Pipkin, Seminole	.....	Blk. Hfr.	540 lbs.	at \$62.00
Jose Saenz, Whiteface	.....	2 Char. Hfr.	368 lbs.	at \$71.00
Jose Saenz, Whiteface	.....	2 Char. Hfr.	555 lbs.	at \$62.75
Duane Darling, Muleshoe	.....	WF. Bull	1055 lbs.	at \$51.00
MWK Livestock, Friona	.....	5 Hol. Strs.	737 lbs.	at \$48.50
Gary Bigham, Amherst	.....	2 Hol. Strs.	665 lbs.	at \$48.25
Jack Douglas, Littlefield	.....	Blk. Bull	460 lbs.	at \$76.00
EDR Cattle, Whiteface	.....	5 Mixed Bulls	517 lbs.	at \$67.50
Bob Sparks, Bovina	.....	Char. Bull	640 lbs.	at \$60.50
Edgar Turner, Fort Sumner, NM	.....	Char. Str.	625 lbs.	at \$63.50
Day Break Farms, Bovina	.....	Blk. Bull	1345 lbs.	at \$46.25
Jose Saenz, Whiteface	.....	2 Char. Cows	815 lbs.	at \$47.00
Bob Sparks, Bovina	.....	Red Cow	1650 lbs.	at \$43.00
Ross Caviness, Causey, NM	.....	Blk. Cow	1310 lbs.	at \$41.50
R.C. Douglas, Lubbock	.....	Blk. Cow	1155 lbs.	at \$37.50
PTO Cattle, Muleshoe	.....	Char. Cow	1125 lbs.	at \$39.00
PTO Cattle, Muleshoe	.....	Blk. Cow	885 lbs.	at \$39.75
Charles Williams, Amarillo	.....	Spot. Cow	1450 lbs.	at \$39.00
Rod Wilson, Sudan	.....	Blk. Cow	1655 lbs.	at \$38.75
Tommy Lewis, Morton	.....	Char. Bull	1545 lbs.	at \$48.50
R.C. Douglas, Lubbock	.....	Swiss Bull	1695 lbs.	at \$44.25

The Muleshoe Cattle Market is brought to you each week by Muleshoe Livestock Auction, located east of Muleshoe on U.S. 84. Muleshoe Livestock conducts sales every Saturday, beginning with hogs, sheep and goats at 10 a.m. and cattle following at approximately 12 noon.

**FOR INFORMATION ON SALES OR TO CONSIGN CATTLE, CALL (806) 272-4201.**

**KENW-TV**

Public Television

Enjoy Our "Quiet Drive"  
August 11th - 20th

**Pavarotti & Friends II**

In September of 1994 in his home town of Modena, Italy, tenor Luciano Pavarotti joined forces with the talents of five of today's leading pop and classical artists. In a concert ranging from opera favorites to well-known ballads, chart topping rock numbers, and a new "Ave Maria" composed by Pavarotti himself, the audience was enthralled with the star-studded spectacular.

In **Pavarotti & Friends II**, Pavarotti is joined by Bryan Adams, Italian pop-idol Georgia, new age harpist Andreas Vollenweider, and two of today's most celebrated young opera singers, the enchanting soprano Nancy Gustafson and the blind Italian tenor Andrea Bocelli. It's a magical evening where six friends from all walks of musical life come together for a musical celebration that delights a cheering audience.

Pavarotti begins the concert with a heart-rending solo "Il Lamento di Federico" from Cilea's "I Arlesiana," a tragic love story in which the hero kills himself rather than marry a woman he cannot love. His duets include "O Sole Mio" with Bryan Adams, a surprising combination of two very different but equally expressive styles of singing, and "Santa Lucia Luntana" with Georgia. **Pavarotti & Friends II** airs Sunday, August 20th at 9:00 p.m.

**Jack Williamson: Wonder's Child**

He refers to himself as a dreamer. He is in fact one of the true pioneers of science fiction. Jack Williamson began writing the same year the first science fiction magazine, *Amazing Stories*, appeared. In **Jack Williamson: Wonder's Child**, a half-hour documentary produced by KENW-TV, viewers will hear about and from this author, scholar, and visionary who is considered the Dean of Science Fiction. A professor in English at Eastern New Mexico University since 1957, Williamson and his work have profoundly influenced the shape of Science Fiction. He currently is Professor Emeritus at the university.

Dr. Williamson was the first to coin the terms "matter" and "anti-matter," "terra-forming," and "androids." At 87 years of age, he continues to write with an agile and questioning mind. This special program offers viewers an opportunity to meet this venerable author and hear his views on a number of interesting subjects.

The program was written and directed by David Lam, an Eastern New Mexico University graduate student. KENW-TV staff members Don Criss and Orlando Ortega helped with the videography and video editing.

**Jack Williamson: Wonder's Child** is the first full-length KENW-TV television production to be edited on the station's new non-linear editing system, the Media 100. This system allows audio and video to be edited completely on the hard drive of a computer. The finished product is then transferred to video tape.

**Jack Williamson: Wonder's Child** airs Sunday, August 20th at 10:30 p.m.

Channel 3 Television from  
Eastern New Mexico University, Portales, New Mexico





**Mini Mule cheerleading camp**

Muleshoe varsity cheerleaders teach mini mule cheerleading camp. Youths from around Muleshoe participated in the camp. The young cheerleaders will show what they learned at "Meet the Mules" Friday night at 6 p.m. The young man participating in the cheer is Daniel Gabarino, one of Muleshoes varsity football players.

**Local teachers attend annual state convention**

Over 1300 women teachers from all parts of Texas attended the 66th annual state convention of The Delta kappa Gamma Society International in mid-June in Houston. Jo Nell Lowry of Conway, Arkansas, international second vice president, attended as official representative of the international society. Margot Salinas de Resendez of Nuevo Leon, Mexico attended as Southwest Regional Director.

Dr. Dolores Akins of Hurst, state presidents, selected as convention theme, "Journeys for a Better Earth: We Can Make a World of Difference." Pre-convention tours included trips to Galveston, NASA-Space City, San Jacinto Battleground, Old Town Spring and various museums.

Convention co-chairmen included Marion Beckham, Marcile Hollingsworth and Martha Pauler, with Margaret Scott as consultant, all of Houston. The 37 Houston area chap-

ters served as hostesses and wore identifiable red cobbler's aprons featuring a red rose, the Society flower. The Wyndham Greenspoint Hotel served as the convention site.

A pre-convention workshop featured Nancy Davidson, a licensed professional counselor, who discussed "How You communicate with Others Depends on How You Communicate with Yourself." The workshop featured ideas and practical solutions to communication problems in the classroom.

During the executive board meeting on Friday, members voted on various committee recommendations. Special interest workshops for members included such topics as trends in flexible schooling, elder hostel experiences, journeys to China and Russia, computer use ideas, gender differences in oral communication, writing by published authors and taming the paper tiger. Committee workshops took place

on Friday and Saturday.

Jean Lee of Baytown, state first vice president, presided over the annual birthday luncheon. Members of fifty-plus years, scholarship recipients, and outstanding chapters and members received recognition during the luncheon.

In addition to committee workshops in the afternoon, members heard a research assistant of *True Women*, a genealogical historical novel; learned the energizing effects of humor and discussed portfolio assessment. A formal presentation of the 17 past and present state presidents, 304 chapter presidents and 17 area coordinators took place Friday evening.

Newly elected state officers installed in a ceremony preceding the final presidents' and founders' banquet on Saturday evening included Sandy Whitney of El Paso.

Delta Kappa Gamma was founded in 1929 in Austin by

Dr. Annie Webb Blanton, first woman president of the Texas State Teachers Association and the first woman elected to public office in Texas.

From the original dozen members, the organization now has chapters in 14 countries with a membership of over 176,000 women teachers on all levels from pre-kindergarten to university administrators.

The Society offers scholarships to its members for use in furthering their education and annually grants world fellowships to women in non-member countries to study in the university of their choice.

Local members attending included Georgia Pena, President of Epsilon Delta Chapter, Brenda Light, Virginia Bowers, and Jane Rudd.

**Cats may be the key weapon against fighting Aids virus**

COLLEGE STATION—They chase mice, play with balls of yarn and claw at the sofa, but researchers say household cats may also hold the key to a new weapon in the fight against AIDS.

A team of researchers in Texas A&M University's College of Veterinary Medicine are studying feline immunodeficiency virus (FIV), an organism that attacks cats' immune systems in much the same way the human immunodeficiency virus (HIV) affects humans' immune systems to cause AIDS.

They hope to find ways to fight the feline disease that would also prove effective against the human one.

They hope to find ways to fight the feline disease that would also prove effective against the human one.

**PIPE** 300 W. Commercial Portales, NM

**SOS Outlet & Royal Plastics**  
Largest Inventory of PVC Pipe Fittings & Accessories in Eastern New Mexico

CALL FOR QUOTES **505-356-8720**

*If you're grazing cattle under a center pivot... you need*

**Mattia**  
BROME GRASS

225 - 250 Days of Grazing  
16 - 26% Protein 70 - 75% TDN

Mattia is a cool season perennial that continues to grow through the summer months under center pivot. Mattia can provide more grazing days than any other forage available... with an 1800# of gain per acre potential!

"... Just like having wheat pasture from March 'til November" —Stratford, TX

The Nation's Largest Distributor Of  
**Mattia**  
BROME GRASS  
The Most Exciting New Forage of the Decade!

- ✓ Tremendous Feed Value
- ✓ Excellent Yield Potential
- ✓ Persists Under Dry Conditions
- ✓ Winter Hardiness-Growth
- ✓ Unmatched Palatability

**WIEDEBUSH & COMPANY 806-272-4281**

**PUBLIC NOTICE**

The Board of Trustees of the Muleshoe Independent School District will meet

**Monday, Aug. 28, 1995**

for the purpose of adopting a budget for the 1995-96 school year.

The meeting will begin at **7:00 p.m.** in the School Administration Building 514 W. Ave. G

Any taxpayer of the district may be present and participate in the hearing.



1-800-658-6378 106 E. American Blvd. Muleshoe, Texas

**And Country Junction**

Leal's Ranch Wagon will be on our parking lot Saturday, Sept. 2

**Back To School** -SPECIAL-  
Justin & Miller Tennis ..... **20% OFF**



**TEACHERS -**  
For Your Classroom: Many "School" Items For you to personalize your room  
•SIGNS • BELLS  
• PAPER TOWEL HOLDERS •  
BIRDHOUSES • ETC.

Get Ready For **World Championship Goat Team Roping "On Foot"**  
Joe's Boot Shop Parking Lot  
• Friday & Saturday, Sept. 1 & 2 during Mule Days  
Practice all day Friday, Sept. 1  
Competition Saturday, Sept. 2  
**NO ENTRY FEE**  
FREE American Bangora Straw Hats for 1st place in each age group  
World Championship Buckle to All-Around Winners!

Congratulations to all cast & crew members of the outdoor play "Keepers of the Legend!"  
**GREAT SHOW!!**

**WATCH FOR OUR FELT HAT SALE**  
SEPT. 1-2-4



# Muleshoe's Area Spring Business Directory



### Topped Sopaipilla

Sopaipilla topped with taco meat, cheese, lettuce, tomatoes and quacamole.

**\$4.95**

**Leal's Restaurant**

1606 W. American Blvd. 272-3294

- Flea & Tick Protection - Diazonon Crystals for your Yard
- Ford's Flea & Tick Dip for your Dog
- 7 Way Vaccine for your Dogs

**Muleshoe Feed Barn**

311 W. American Blvd. 272-5626

*Lasting Impressions*  
Welcome Back To All Teachers & Students.  
Flowers, Plants & Gifts for all occasions!  
Good Luck On The Year Before You!!  
Helen Hunter, owner  
272-4287 516 S. 1st

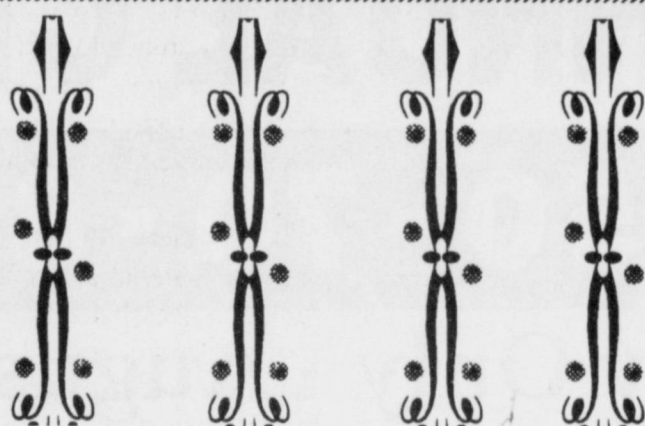
JUST BECAUSE...

Send the FTD® Big Hug® Planter



**Decorator's Floral & Gifts**

616 S. 1st  
Muleshoe 272-4340



Thank you for letting us serve you for the last 7 years. We appreciate your continuing business.

P235/75R15 Wrangler HT  
**Black Wall Tire**  
Reg. \$110  
ON SALE ..... NOW **\$87.50**

Ask About Our Road Hazard and Free Flat Repair Warranty.

**James Crane Tire Co.**

322 N. 1st Muleshoe 272-4594

We will service ALL Your Ace Pumps, and help you with all your spraying parts needs.  
Visit us at 1532 W. American Blvd. or call 272-4613  
**Scoggin Ag. Center**

*Sheree's Attic*  
Merle Norman Cosmetics  
NEW ARRIVALS FOR FALL & BACK TO SCHOOL  
Ladies' Sportswear and Separates, Purposes, Lots of New Sterling Silver Jewelry  
SALE up to 50% OFF  
ASK ABOUT OUR LAYAWAY  
Owner Sheree Hunt  
1519 W. American Blvd. 272-3459

### Hawaiian Pizza

A tropical taste sensation - Topped with ham and pineapple.

Small \$7.97 Medium \$11.57  
Large \$14.48



Delivery Available 11 a.m.-1:30 p.m. & after 5:00 p.m.  
1412 W. American Blvd.  
272-4213

**SUPERIOR MED-EQUIP**  
Suppliers of Medical & Home Care Equipment

Manager - Sherry Wisian  
623 W. 2nd St. Muleshoe, TX 79347  
806-272-3757 or 272-3600  
800-765-1160 or 800-283-8980

**We Sell, Set & Service**

**Irrigation Engines**  
300 and 460

See Loyce or William today at.....

**MULESHOE MOTOR CO., INC.**

1225 W. AMERICAN BLVD., MULESHOE  
1-800-432-7617 272-4251

We pick up and repair all types of irrigation motors, service & repair late model GM's, Fords & Dodge automobiles & trucks.

**SPECIALIZING IN GENERAL AUTOMOTIVE REPAIR WORK OF ALL KINDS.**

**Muleshoe Truck & Auto**

301 N. 1st 272-5111

**SUPERIOR MED-EQUIP**  
Suppliers of Medical & Home Care Equipment

We wish to serve you. If you have equipment from other dealers and want local service, we can transfer you easily.  
**YOU HAVE THE RIGHT TO CHOOSE YOUR SUPPLIER.**

Manager - Sherry Wisian  
623 W. 2nd St. Muleshoe, TX 79347  
806-272-3757 or 272-3600  
800-765-1160 or 800-283-8980

**WD-40**  
**\$1.99**  
Check On Other Daily Specials In Store!



"Quality & Service At The Right Price!"

**Higginbotham-Bartlett**

215 Main Muleshoe 272-3351

Thermoscan Ear Thermometer  
**\$59.79**

Oral-B Toothbrush  
**\$1.79**

BUY ONE-GET ONE FREE!

Energizers  
All Sizes **\$2.19**

**DAMRON DRUG**

308 Main 272-4210

**Henry Insurance Agency,**

"Serving Your Insurance Needs Since 1964"



Kenneth R. Henry, Certified Insurance Counselor  
Real Estate Broker  
Mike McCallum - Agent

Oil Filter Change and Lubing  
Total 4 Wheel Alignment Available  
**\$19.95**

**We Now Machine Drums, Brakes and Rotors!**

**HI-TEK AUTOMOTIVE**

215 N. 1st 272-3480



## Nursing Home News

By Joy Stancell

Hi ho! Hi ho! and off to the mall we go. Thursday morning we loaded up on the First Baptist Van and other vehicles and drove off into the West Texas - New Mexico sun for an outing at the North Plains Mall.

After having a nice lunch at Personalities, we toured the mall, enjoying the latest fashion in Pennys, to the aquariums in Wal-Mart.

Our many thanks to all the fine folks that helped make this a special day — The First Baptist for the loan of their van, to all the "wheel chair pushers" and those who took their cars. Terri Brown, bus driver or chauffeur, Vikie

Hutton, Ruth Kitchens, Jessie, Viki, Clara Lou Jones, Robin, Scott, Chiki, Lanell, Joyline — Thank you!!

Saturday afternoon, Benny and Jean O'Brien hosted our bingo party.

Each Sunday morning the Muleshoe Church of Christ directs the Communion service, and Clara Lou Jones, teaches a Sunday school class.

Sunday afternoon the Calvary Baptist Church came to direct the church services and sing a long.

Tuesday afternoon, Susan Anderson, Lanell Stancell, Beverly Wagnon, Skeet Bradshaw and the activity department shampooed the la-

dies' hair and gave nail care.

The Muleshoe Church of Christ ladies baked and brought fruit cobblers and ice cream to serve the residents and staff, following the beauty shop.

Wednesday morning Buster Kittrell and Lois Killingsworth directed our music, song and devotional time.

Glenda Jennings and Jonessa Brockman directed our weekly sing-a-long-puppet show Wednesday afternoon. Benny and Jean O'Brien and Holly Millsap were special guests at the event.

We wish to welcome our new resident, she is Ruth Lackey, she was born in Okla-

homa, Sept. 26, 1911; she is a member of the New Covenant Church. She is in room 84.

Rosia Sneed was visited by her sister, Friday.

Kathrine Rogers was visited by Clinton and Maxine Rogers and her grandchildren and great-grandchildren, Tuesday afternoon.

Guy Kendall was visited

Tuesday by Elsie Kendall and his daughter, Darla.

The monthly birthday party will be Thursday, August 24, at 3:30 p.m. Everyone is encouraged to come help the resi-

dents celebrate their birthdays.

We wish to thank the family of Cleta Williams for the beautiful bouquets of flowers, also the family of Gladys Darsey.

## Safe school zones are responsibility of Adults

We've all heard the saying, "kids say the darnedest things!" Well, kids do the darnedest things, especially around school zones. With school starting up again, there's sure to be trouble afoot. Now is the time for drivers to start thinking about the dangers this presents.

Whether you drive in school zones once a year or work there every day, you can never forget certain lessons. One is that you have to use better judgment than the 7-year olds who surround you, according to Trooper C.B. Baiza, public information officer for the Texas Department of Public Safety.

"It's important to remember that kids aren't small adults, and they don't think like adults. They lack experience with traffic, and they don't always act logically. When you sound your horn, for instance, a child may think its okay to cross the street in front of your vehicle," Baiza added.

Children also have limited perceptual skills. Sometimes they can't even tell if your vehicle is in motion or stopped. They can't accurately judge the speed and distance of vehicles or detect safe gaps in traffic.

"Elementary school aged children often aren't tall enough to be seen on the other side of a parked car, or as they move between vehicles to cross the

street when they're being picked up. School zones are not the time to light a cigarette or call the office on your car phone," Baiza says.

The key is to see children in time to avoid a collision. Search for curb to curb for kids who could enter your path. Everyone who enters the roadway is vulnerable to injury, but children on foot are even more at risk.

Many times the kid probably have their minds on school or friends, not on the vehicles moving around them. That means it's your job to be even more aware of what's going on around you. Since it's hard to predict kids' actions near schools, try to avoid these areas. Reroute your trip, if possible, to avoid peak drop-off and pick-up times and getting stuck behind a school bus.

However, if you can't avoid a drive through a school zone, the best strategy is to just slow down and stay alert. It's up to us to take precautionary steps to keep kids alive and safe.

**Complete Line  
Monuments - Markers  
Memorials  
Granites - Bronze**

**Muleshoe Memorial  
Park Cemetery, Inc.**

232 Main P.O. Box 373  
Muleshoe, TX  
272-5727 or 272-4670

**80th Birthday Celebration**  
honoring  
**Margaret Collins**  
Saturday, August 19, 1995  
2-4 p.m. Fellowship Hall  
First United Methodist Church  
507 West 2nd Street Muleshoe, Texas

Billie Jeter, Bettie Richardson, Bobbie and Donald Harrison  
Your presence only - no gifts please.



# CHOICE FURNITURE'S 1-DAY 1ST ANNUAL CLEARANCE!

**SAVE 50 - 70 - 80 %**

**Saturday Only - August 19th**  
**No Money Down - No Interest**

**Credit Personnel  
On The Premises  
For Instant Approval**

**For 6 Months  
Or 6 Months  
No Payment**



**Fabulous  
Markdowns On  
Closeouts, Selected  
Items And In-Stock  
Merchandise!**

- All Sales Final
- Free Delivery

**FREE COKES**

LIVING ROOM	DINING ROOM	BEDROOM	MISCELLANEOUS
<p><b>4 Pc. Fantasia Sectional</b> Black Reg. \$1,149. <b>Now \$799</b></p> <p><b>3 Pc. Sofa, Loveseat &amp; Wing Back Chair</b> Reg. \$1,039. <b>Now \$699</b></p> <p><b>2 Pc. Stanton Sofa &amp; Loveseat</b> Beautiful Southwest Print. Reg. \$1,099. <b>SALE \$599</b></p> <p><b>2 Pc. Sofa &amp; Loveseat</b> Marbella, Cranberry Fabric. Reg. \$1,858. <b>SALE \$799</b></p> <p><b>2 Pc. Sofa &amp; Loveseat</b> Dottie Frolic Print. Reg. \$1,598. <b>SALE \$599</b></p> <p><b>3 Pc. Sofa, Loveseat &amp; Wing Back Chair</b> Reg. \$1,199. <b>SALE \$849</b></p> <p><b>3 Pc. Sofa &amp; 2 Glider Recliners</b> Sofa Has 2 Recliners, 4 Recliners In Group. Reg. \$2,938. <b>SALE \$1,399</b></p> <p><b>6 Pc. Sofa, Rocker, Chair, 2 End Tables &amp; Coffee Table</b> 1 Only! Reg. \$1,318. <b>SALE \$499</b></p> <p><b>Upholstered Chairs</b> 3 Only! Overstuffed Style. Reg. \$558. <b>Now \$279</b></p> <p><b>Loveseat</b> Blue Striped Pattern. Reg. \$798. <b>Now \$399</b></p> <p><b>Sofa &amp; Loveseat</b> Multi-Color Print. Reg. \$499. <b>SALE \$399</b></p> <p><b>3 Pc. Sofa, Loveseat &amp; Chair</b> Reg. \$599. <b>SALE \$149</b></p> <p><b>Loveseat</b> 1 Only! Southwest Print. Reg. \$699. <b>Now \$499</b></p> <p><b>Sofa, Loveseat &amp; Chair</b> Burgundy Fabric. Reg. \$999. <b>SALE \$399</b></p>	<p><b>6 Pc. Dinette</b> Cherry Veneer, 4 Side Chairs &amp; 2 Arm Chairs. Reg. \$1,199. <b>SALE \$599</b></p> <p><b>11 Pc. Dinette</b> 1 Only! Has 4 extensions, 8 Side Chairs, &amp; 2 Arm Chairs. Reg. \$3,398. <b>SALE \$1,549</b></p> <p><b>Solid Hardwood Bar Stools</b> 24", 30", White Or Oak. Limited To Stock On Hand, No Reorders. Reg. \$59. <b>SALE \$39</b></p> <p><b>3 Pc. Dinette</b> 2 Only! Formica, With Folding Leaf. Reg. \$199. <b>SALE \$159</b></p> <p><b>9 Pc. Dinette</b> 1 Only! Beautiful Oriental Style, With Matching Hutch. Reg. \$2,199. <b>SALE \$899</b></p> <p><b>6 Pc. Bench Dinette</b> Solid Pine, Honey Finish. Reg. \$978. <b>Now \$449</b></p> <p><b>Stop Sign Dining Table</b> <del>SOLD</del> <b>now \$79</b></p> <p><b>7 Pc. Tile Top Dinette</b> Reg. \$1,698. <b>Now \$699</b></p> <p><b>5 Pc. Tile Top Dinette</b> <del>SOLD</del> owers. reg. \$1,398. <b>Now \$699</b></p> <p><b>9 Pc. Dinette</b> High Gloss Finish. Reg. \$3,598. <b>Now \$1,799</b></p>	<p><b>5 Pc. Bedroom Group</b> Black &amp; Red. Dresser, Mirror, Night Stand, Chest. Reg. \$998. <b>Now \$499</b></p> <p><b>Wardrobe Closets</b> 3 Only! Black, Brown Or White. Reg. \$478. <b>Now \$239</b></p> <p><b>Canopy Bed</b> 1 Only! Black Iron. Reg. \$489. <b>Now \$289</b></p> <p><b>Daybed</b> 1 Only! Black. <del>SOLD</del> Ma" Reg. \$199. <b>Now \$139</b></p> <p><b>6 Pc. Bedroom Group</b> Black &amp; Green. Reg. \$2,898. <b>Now \$1,449</b></p> <p><b>5 Pc. Bedroom Group</b> Gloss Black &amp; Brass. Reg. \$1,598. <b>Now \$799</b></p> <p><b>5 Pc. Bedroom Group</b> Dresser, Mirror, Head Board, Night Stand, Chest. Reg. \$998. <b>Now \$499</b></p> <p><b>3 Pc. Bedroom Group</b> Dresser, Mirror &amp; Head Board. Country Pine Finish. Reg. \$998. <b>Now \$499</b></p> <p><b>6 Pc. Bedroom Group</b> Gloss Black Or White. Reg. \$1,598. <b>Now \$799</b></p> <p><b>5 Pc. Bedroom Group</b> Brown &amp; Black Finish. Reg. \$1,298. <b>Now \$649</b></p> <p><b>4 Pc. Bedroom Group</b> Dresser, Mirror, Head Board, Chest. Black &amp; Brass Finish. Reg. \$1,038. <b>Now \$519</b></p> <p><b>3 Pc. Bedroom Group</b> Dresser, Mirror &amp; Head Board. White With Brass. Reg. \$758. <b>Now \$379</b></p>	<p><b>Assorted Head Boards</b> Starting At <b>\$29</b></p> <p><b>Terra Cotta Figures</b> Starting At <b>\$19</b></p> <p><b>Wooden Chest Of Drawers</b> <b>\$179</b></p> <p><b>Assorted Chest Of Drawers</b> Starting At <b>\$69</b></p> <p><b>White &amp; Brass Dresser</b> 1 Only! <b>\$119</b></p> <p><b>Chival Mirrors</b> Starting At <b>\$49</b></p> <p><b>Futon Mattresses</b> Starting At <b>\$129</b></p> <p><b>Lamps</b> Starting At <b>\$19</b></p> <p><b>Coat Racks</b> Starting At <b>\$18</b></p> <p><b>China Cabinets</b> Starting At <b>\$349</b></p> <p><b>Night Stands</b> Starting At <b>\$59</b></p> <p><b>Assorted Chairs</b> Starting At <b>\$39</b></p> <p><b>18.2 Cu. Ft. Refrigerator</b> 1 Only! Water &amp; Ice In Door. Reg. \$1,299. <b>Now \$999</b></p>

**Saturday,  
August  
19th**



**CHOICE FURNITURE**  
**318 Main • 762-2304**

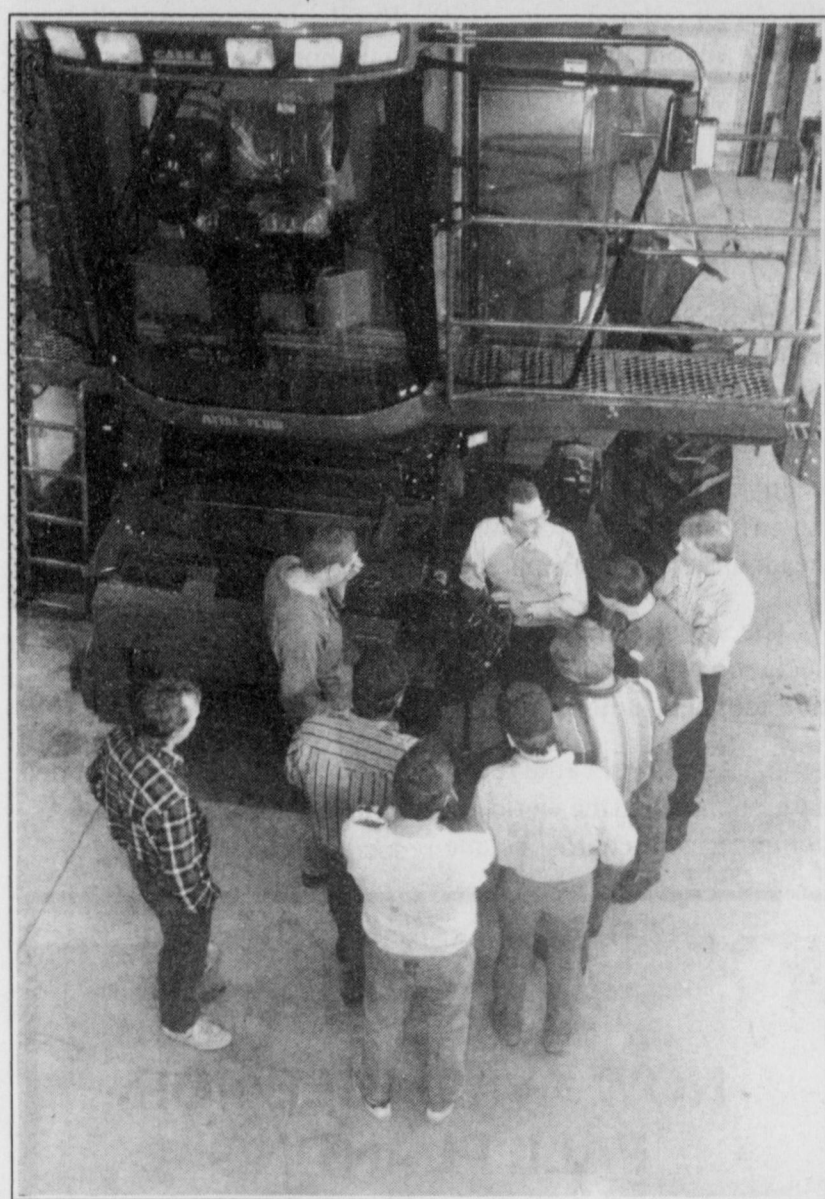
Clovis

**Saturday  
9 am to  
6 pm**



# Journal Classifieds

Call 272-4536 Deadlines: For Thursday, Noon Tuesday; for Sunday, Noon Friday Call 272-4536



**Equipment training session**  
Sam Walls of C&H Equipment in Mulshoe attended a training session like this one in servicing the hydraulic and electrical systems found in 2100 Series Axial-Flow combines.

## Early education critical to young children

Early education can be critical because of the amount of learning that takes place in the preschool years.

The Preschool Program for Children with Disabilities provides services for children ages 3-5. If you are aware of a child who is suspected of having a

disability, please contact your local school district's special education department for information about screening and evaluation services at no cost.

Public schools in Texas provide for the special education of children who have a disability. Children with identified physical, mental, perceptual, speech, language, social and/or emotional disabilities may be eligible for the program.

Children with vision and/or

hearing problems may be eligible for services beginning at birth. Districts will use information from a variety of sources to determine eligibility according to Texas Education Agency guidelines.

The services provided are developed by the Admission, Review and Dismissal Committee. This committee typically consists of the child's parents, an educator, and ad-

ministrator and someone involved with the testing. Each child's program is individualized to meet the child's needs.

For additional information and/or referrals, contact the Special Education office in the Mulshoe High School building, 272-5239, Venida Collins, director.

### Notice of Sale

The Bailey County Commissioners Court will offer for sale by means of competitive bids, a 1990 772 BH John Deere Motor Grader, 6 wheel drive, with 3200 hours, belonging to Precinct #4. It can be inspected at the Precinct #4 County Barn located at the intersection of Hwy 214 & Hwy 54.

All bids must be in writing, in sealed envelopes marked as follows: "Bid for Purchase of Motor Grader", and submitted to the County Judge's office (300 S. 1st, Mulshoe) no later than 10:00 a.m., Thursday, August 31, 1995.

The Motor Grader will sell "AS IS". The Court reserves the right to accept or reject any or all bids.  
33t-2 thurs chg

### Public Notice

Notice is hereby given that the Mulshoe Country Club is now applying for a renewal of a private club registration permit. Located at 900 Country Club Road, Mulshoe, TX 79347. Irvin St. Clair, President; Daniel H. Hart, Vice President; Mike Roberts, Secretary.  
33t-2 thurs chg

### New 3 bedroom, 2 bath for

Under \$200/ month!

Full 5 year structural warranty

Low Down Payment!

Expert financing at low interest rates!

PMH

PORTALES MOBILE HOMES

Portales

Mobile Homes

1-800-867-5639

DL336

### MUST SELL! 1993 Mercury Capri XR2

turbo convertible, AM/FM cassette with premium sound system, power windows, power mirrors, cruise control, aluminum wheels, rear deck spoiler, air conditioning, driver side air bag, 4-wheel disc brakes, red with black convertible top and much more! No old contract to assume, no back payments to make, just need responsible party to make reasonable monthly payments.

Contact Ismael in the credit dept.  
Friona Motors, 806-247-2701

### MUST SELL! 1994 Ford Bronco XLT

4x4, running boards, power windows, power door locks, cruise control, tilt steering, AM/FM stereo cassette, aluminum wheels, leather interior, overhead console and much more. No old contract to assume, no back payments to make, just need responsible party to make reasonable monthly payments.

Contact Joey in the Credit Dept.,  
Friona Motors, 806-247-2701

### MUST SELL! 1988 Toyota Pick Up, SR5

4x4 AM/FM Stereo Cassette, Air conditioning, V6, Tachometer, sliding rear window, roll bar, extended cab, one owner, nice ride and lots more!! and much more. No old contract to assume, no back payments to make, just need responsible party to make reasonable monthly payments.

Contact Ali Roder in the credit dept.  
Friona Motors, 806-247-2701

### MUST SELL! 1992 Ford Explorer XLT

4x4 Tilt steering wheel, cruise control, AM/FM cassette, air conditioning, power windows, power door locks, roof luggage rack and much, much. No old contract to assume, no back payments to make, just need responsible party to make reasonable monthly payments.

Call Ali Roder in the credit dept.  
Friona Motors, 806-247-2701

### Help Wanted

Farwell Convalescent center is looking for a certified Medication Aide for days, evenings, split shifts. Contact Sherrie (806) 481-9027. Good salary, benefits and retirement.  
17s-tfc

Town and Country Food Stores are now taking applications for Full or parttime help. Pick up applications at either store in Mulshoe.  
30s-8tc

Now Hiring! "House of Lloyd" Kit, Training, Hostess Gifts Furnished. Set own hours. Advancement, Training Available. Call 806-585-6437.  
33t-4tc

### Help Wanted!

A motivated, honest, success-oriented individual to sell new and used vehicles. Prior experience not required. Sales experience a plus. Apply in person at Mulshoe Motor Co., Inc. 1225 W. American Blvd. Mulshoe, Texas.  
31s-tfc

Insurance Agency Support Staff Needed. Established full service insurance agency has openings for life insurance and property/casualty sales people. Life producers earn up to 90% of total policy commissions, P&C producers earn higher commissions - renewals included. No experience? Will provide training and licensing if you are motivated and aggressive. If you have the desire, we have a wide range of products from several national insurance companies. Send brief resume to AGENCY Support Staff, Box 563, Mulshoe, Texas or call (806) 272-4582 for an interview appointment  
32s-4tc

### Marie's Reflexology

Relief for  
Sinus  
Back Problems  
Headache  
Stress  
Diabetes  
For Appointment  
Call  
272-4867  
32s-4tpd

### WILDLIFE/ CONSERVATION JOBS

Game wadens, security, maintenance, etc. No exp. necessary. Now Hiring. For info call (219) 794-0010 ext. 9689, 8 a.m. to 10 p.m., 7 days.  
33s-6tpd

### POSTAL JOBS

Start \$12.08hr. plus benefits. For exam and application info call 219-794-0010, ext. 9689, 8 a.m. to 10 p.m., 7 days  
33s-6tpd

Texas Sesame is now taking applications for scale operators. Please apply in person at Texas Sesame - ADM. NO PHONE CALLS!!  
33t-4tc

Now taking applications for Certified Nurse Aides. Apply in person with certificate to: Prairie Acres, 201 E. 15th, Friona, TX 79035, (806) 247-3922.  
33t-4tc

The City of Mulshoe has an opening in the Water-Waste-water Department and is accepting applications for this position. Applicants should have a high school diploma or a G.E.D., A valid drivers license, must be able to obtain a class C water and waste water certificate from TNROC. Applicant may be required to test and obtain a plumbing and building inspectors license, salary is open and will be D.O.Q. Applications may be filled out at City Hall, 215 South First Street, Mulshoe, TX. The City of Mulshoe is an equal opportunity employer.  
33t-2tc

### Real Estate

#### FOR SALE

#### LENAU ADDITION

305 East Fir Avenue, large 3 bedroom, 1 3/4 baths, auto lawn sprinkler, single garage, 2 car carport and storage. Call day or night 272-3373. D8-11s-tfc  
Country Home, 3-4-2, 3750 Sq. Ft., Large basement. Ash woodwork and lots of builtins and much more. Located on pavement, 1 1/2 miles west of Mulshoe. Call after 6 p.m., 272-4344.  
33t-tfc

For Sale: 3 bedroom, 1 bath,

#### NEEDED

#### at Mulshoe Area Home Health Agency

#### LVN

Prefer experienc in Home Health  
Call 272-3346

E.O.E.

MULSHOE AREA HOME HEALTH Agency

Agency

brick home. Newly remodeled kitchen, 806-481-3502.  
33t-tfc

Large 3 bedroom, 2 bath, kitchen, dining, den, formal living room. Shop building and apartment. 1003 W. 6th. Call 272-5032.  
33t-3tpd.

### Miscellaneous

Need your house cleaned? Call me! References available, prices negotiable. 806-272-4376.  
33t-tfc

### Garage Sales

Garage Sale, Sat, Aug. 19, 8:30 a.m. Upright deep freeze, clothing, teen sizes and ladies, 8-10, Misc. items. Turn right at animal clinic, go 1 1/4 miles, turn right 1/4 mile.  
33t-ttc

### For Sale

For Sale: Weider weight machine with stepper, exercise bike, and queen size waterbed. Call afternoons or evenings, 946-3309.  
32t-4tc

Hay for Sale: Large round bales. Wheat: \$50 bale or \$75 ton; Oat \$60 bale or \$90 ton. Quantity discounts. Delivery available. 505-359-0947, 505-276-7526, or 505-276-7522.  
31t-wp

For Sale, King trombone. Call 647-2275 or 965-2406.  
33s-2tpd

### Lost

Lost 2 Steers. Strayed from TL Gleason Farm at Lazbuddie, 1 black, 1 smoky. Branded on left hip. Please call 806-894-6533 if seen or found.  
32s-4tc

Lost, Yellow male lab, wearing blue collar, lost 4 miles west of Mulshoe. Reward offered. Call 272-5045 or 272-3061.  
33t-ttc

### Defense Driving

August 19  
Friona Junior High  
Call 806-247-8028  
33s-2tc

### NEEDED at Mulshoe Area Home Health Agency:

Registered Nurse  
Call 272-3346

E.O.E.

MULSHOE AREA HOME HEALTH Agency

Agency

### Farm For Sale

FARM FOR SALE - Castro County 160 acres irrigated - one well row watered - gravel road on south and east. To settle estate. Lazbuddie area. Bill York Realtors, 806-795-5591, 39t-17tc

### FARM FOR SALE - Castro/ Farmer County 320 acres irrigated - 1 10 tower electric sprinkler - some underground pipe - gravel road on three sides. Two wells - metal barn - small dwelling. To settle estate. Lazbuddie area. Bill York Realtors, 806-795-5591, 39t-17tc

### Automobile

1994 Ford Ranger XLT Pickup, auto transmission, 6 cylinder, low gas mileage. AM/FM stereo cassette. See at 1537 W. Ave. Borcall 272-3166 or 272-4707.  
33s-6tc

1992 Ford super cab XLT, loaded, \$10,995. (505) 359-0947, Portales

1987 Ford dually, loaded, diesel. \$9,500. (505) 359-1775, Portales

1986 Chevy Suburban, silverado, 4x4, white in color. \$6,500, (505) 359-0947, Portales.

1993 Ford Explorer, 4x4, 4 door. \$13,995. (505) 359-1775, Portales.

1995 Dodge Intrepid, loaded. 11,000 miles, factory warranty, \$15,995. A sporty car! (505) 359-0947, Portales

### Classy Paws

Dog Grooming  
1916 W. Ave. C  
Call 272-3012  
For Appointment  
Monday - Friday  
21s-tfc

### NEEDED

### at Mulshoe Area Home Health Agency

### Full time

Certified and/or Experience Home Health Aide.

Call 272-3346

Must have dependable car and home phone

E.O.E.

MULSHOE AREA HOME HEALTH Agency

Agency

### SUBSCRIPTION RATES

#### MAILED

Mulshoe (In Town): \$16.75 For The Year  
Out Of Town: \$18.50 For The Year  
College: \$13.50

#### CARRIER

Carrier: \$15.00

**Having A Garage Sale? Advertise It In The Mulshoe Journal**

**Deadline Tuesday - 12 p.m. Friday - 12 p.m.**

## Nieman Realty

116 E. Ave. C George Nieman, Broker 272-5285 or 272-5286

### HIGH SCHOOL

NICE 3-2-1 carport Home, Cent. A&H, built-ins, basement, ceiling fans, water softener, covered patio w/gas grill, fenced yd., & one bdrm. apartment. PRICE REDUCED TO \$30,000!!!! HS-12

### HIGHLAND AREA

VERY NICE 3-2-2 Brick, Cent. A&H, built-ins, fenced yd., spktr. sys., MUCH MORE!!!! \$60's !!! HL-1

Nice 4-2-1 Brick, Cent. A&H, built-ins, fans, encl. patio, man. spktr sys., gas grill, st. bldg., fenced yd. \$60's!! HL-5

JUST LISTED 3-2-2 home, Cent. A&H, built-ins, fenced yd., corner lot. \$30's !!! HL-2

NICE 3-2-2 Brick, Cent. A&H, Built-ins, FP, 1960' lv. area plus sunroom, fenced yd., auto. spktr., MUCH MORE !!! \$60's. HL-3

### LENAU ADDITION

Nice 2-1-1 Home, new interior paint, new carpet, fenced yd., storage bldg. MORE!!!! & 20's!! HL-4

JUST LISTED - Nice 2-2-2 Brick, on corner lot, heat pump, fenced yard, storage bldg., MORE! \$40's !!! L-1

VERY NICE 3-2-1 Home, Heat Pump, storm windows & doors, extra insulation, nice carpet, spktr. sys. & MORE!!! \$30's!!!! L-2

**RICHLAND HILLS** - VERY NICE 3-2-2 Brick Home on corner lot, built-ins, Cent. A&H, 2,100' + lv. area, auto spktr., fenced yd., stor-wkshp., MUCH MORE !! \$70's RH-1

### RURAL HOMES

2-2-2 Carport Mobile Home on hwy. close to town, 1.99 acres w/barn and corrals!! \$30's!! R-1

JUST LISTED - Very Nice 4-2 Home on 40 acre tract close to town, heat pump, built-in stove, nice carpet & tile. 6" irrig. well with high pressure lines, stock shed & pens, tractor & equipment. \$70's!!!!

### COUNTRY CLUB

JUST LISTED - VERY NICE 3-2 Brick, Cent. Heat, built-ins, FP, Clg. fans, cov. patio, fenced yd., cellar, stor. bldg., More !! \$60's CC4

2-1-1 carport home, wall furnace heat, nice carpet, storm shelter, storage bldg., fenced yd. MORE!!!! \$20's.

Just Listed - Nice 3-1 Home, Cent. Heat, dishwasher, nice carpet, fenced yd. \$20's !!!!!! CC-2

### ASK ABOUT OUR COMMERCIAL LISTINGS!!!!

COMMERCIAL-200' + Hwy. 84 frontage - Former Richland Hills Texaco, excellent business location. PRICED TO SELL!!!!!!



**Public Record**

**Obituaries**

**Lester Howard**

MULESHOE — Funeral services for Lester Howard, 87, of Muleshoe, were held Wednesday at the First Baptist Church with the Rev. Stacy Conner, pastor, officiating.

Burial followed in the Muleshoe Memorial Park Cemetery under the direction of the Ellis Funeral Home of Muleshoe.

Mr. Howard died Saturday, August 12 at the Muleshoe Area Medical Center after a lengthy illness.

Mr. Howard was born October 13, 1907 in Stoneburg, TX. He married Sadie Blevins, December 31, 1933 in Fort Worth, TX, she died April 7, 1988.

Mr. Howard had been a resident of the Needmore Community since 1915, moving from Stoneburg. He was a farmer and a member of the First Baptist Church of Muleshoe, where he was a deacon. He was a member of the Sons of the American Revolution and a past Republican Party Chairman for Bailey County. He was a member of the Muleshoe Senior Citizens. He had served as a board member for the Needmore Co-Op Gin Association and had been vice-president of the Plains Co-Op Oil Mill of Lubbock.

Survivors include one son, Dick Howard of North Miami Beach, FL; four grandchildren, Don Howard, Donna McKibben, Jared Howard and Sara Howard; and four great-grandchildren, Jade Tucker, Colby Tucker, Alexa Howard and Kaylee Howard.

The family suggest memorials to the American Cancer Society, 2411 73rd, Lubbock, TX 79423.

**Ethel Sanderson**

EARTH — Funeral services for Ethel Sanderson, 75, of Earth, were held Tuesday, at the First Baptist Church of Earth with the Rev. Bobby Broyles, pastor, officiating.

Burial followed in the Earth Memorial cemetery under the direction of Parson-Ellis Funeral Home of Earth.

Mrs. Sanderson died Sunday, August 13 in Earth.

She was born December 28, 1919 in Canadian, TX. She married R.J. "Sandy" Sanderson, December 4, 1938 in Hollis, OK.

Mrs. Sanderson had lived in the Lazbuddie Community for 31 years before moving to Earth in December 1994. She was a homemaker and a member of the First Baptist Church of Earth.

Survivors include her husband, R.J. "Sandy"; two sons, Don Sanderson of Odessa and Bob Sanderson of Lubbock;

one daughter, Linda Lowe of Earth; three sisters, Nita McCuthin of Amarillo, Nellie Martin of Flag and Doris Thomas of Canyon; one brother, Mac Connell of Alamogordo, NM; seven grandchildren and five great-grandchildren.

The family suggest memorials to the American Cancer Society, 2411 73rd, Lubbock, TX 79423.

The family suggest memorials to the American Cancer Society, 2411 73rd, Lubbock, TX 79423.

Arrangements were under the direction of the Ellis Funeral Home of Muleshoe.

Mr. Verner died Sunday, August 13 at his home in Muleshoe after an illness.

He was born December 2, 1932, in Kilgore, TX. He married Elizabeth Janell Williams, January 21, 1956, in Earth. He had been a resident of Muleshoe since 1987, moving from Oklahoma Lane Community where he had been a resident since 1961. He was a ham radio operator and a farmer. He was a member of the First Baptist Church of Farwell.

Survivors include his wife, Janell Verner of Muleshoe; three sons, Michael Ray Verner of Louisville, TX, Max Don Verner of Spokane, WA, and John Edward Verner of Spokane, WA; one brother, Walter E. Verner of Fair Hope, AL;

one sister, Geraldine Meeks of Farwell; and one granddaughter, Monica Janell Verner of Lewisville, TX.

**Theresa "TE" Smith**

EARTH — Graveside services for Theresa "TE" Smith, 57, of Lubbock, were held Sunday, at the Earth Memorial Cemetery, with the Rev. Kay Reed, pastor of the Earth United Methodist Church, officiating.

Arrangements were under the Parson-Ellis Funeral Home of Earth.

Mrs. Smith died Friday at the Methodist Hospital in Lubbock after an illness.

She was born August 29, 1937 in New Orleans, LA. She married Allen Wray Smith, January 10, 1953 in Spur, TX. He died November 13, 1991.

"TE" Smith had been a resident of Earth for 23 years, moving to Littlefield in 1991 and to Lubbock later. She was a homemaker.

Survivors include three sons, Chuck Smith of Littlefield, Johnny Smith of Earth and Michael Smith of Amarillo; one daughter, Lydia Smith Brock of Lubbock; two brothers, Berlin Starkey of Hammond, LA and Bobby Burgess of LA; one sister, Hope Anderson of Port Allen, LA; eight grandchildren and two great-grandchildren.

**Baxter**

Continued from page 5

that would satisfy their criteria. I understood him to be a crusading anti-smoker and I thought this might be just what the doctor ordered.

But anyone who has dealt with the F.D.A. knows they

move with the speed of a glacier. Their motto, "No decision is a good decision."

I'm still waiting for Dr. Kessler to return my call. I can only hope Phillip Morris is on hold, too.

**Triple S Cattle Company new member Angus Association**

Triple S Cattle Company, Muleshoe, is a new member of the American Angus Association, reports Dick Spader, executive vice president of the antinla organization with headquarter in St. Joseph, MO.

The American Angus Association, with over 29,000 active adult and junior members, is the largest beef cattle registry association in the world. Its computerized records include

detailed information on over 12 million registered Angus.

The Association records ancestral information and keeps record of production on individual animals for its members. These permanent records help members select and mate the best animals in their herds to produce high quality, efficient breeding cattle which are then recorded with the American Angus Association.

**"MATUA"**

**NOW AVAILABLE FOR FALL PLANTING**

- Excellent Palatability At All Stages
- High Yielding
- Rapid Recovery From Grazing

**CALL YOUR AREA DEALER FOR DETAILS**

Butch Cox 965-2495	Scoggin Ag Center 272-4613	Tom Hefner 965-2105
-----------------------	-------------------------------	------------------------

**SPECIAL PURCHASE**

94 & 95 Model

**Mercury Cougar XR7s  
Ford Thunderbird LXs**



**10 Thunderbirds & Cougars In Stock.**

**Loaded With:**

- Automatic Transmission • Air Conditioning • Power Windows • Power Door Locks
- Tilt Steering • Cruise Control • Am/Fm Cassette • Power Driver's Seat • Dual Air Bags

Starting At\*

**ONLY \$11,995**

**Similar Savings On Over 75 Used Factory Program Cars!**

**HURRY IN AND SAVE!**

\*Price excludes tax, title and license. Stock #FA139792. Subject to prior sale.

**Have a nice day**

**TEAGUE STREBECK**

(505) 356-8581 (505) 762-3845  
1115 North Chicago  
Portales, NM  
(On the first curve into Portales)

*The very best prices and service anywhere... We personally guarantee it!*

**Announcement policy**

The Muleshoe and Bailey County Journals publish engagement, wedding and anniversary announcements and photos free of charge as a service to our readers. The deadline for items to be submitted is at 5 p.m. on the preceding Monday for the Thursday edition and at 5 p.m. on the preceding Thursday for the Sunday edition.

Complete guidelines and forms are available at the Muleshoe Journal office. The Journals reserve the right to edit copy.

**Don't Let Your Pizza Get Away!!!**



2 Medium Specialty Pizzas

**\$13<sup>99</sup>**

Stuffed Crust Pizza Single Topping

**\$9<sup>99</sup>**

**Pizza Hut Delivers Great Taste!**



**Pizza Hut**

1412 American Blvd.  
Muleshoe 272-4213