

## Numbers up for Mule football

### Fall workouts open under retooled coaching staff

According to athletic director and head football coach Randy Adair, the 1995 Muleshoe Mules are expecting to have their best year in several years in football, with approximately 70 football candidates expected to participate.

For the first time in recent history, Muleshoe will field 9th, JV, and Varsity teams.

Overall size and strength of the players is better after an

outstanding off-season and spring sports year last year.

The offensive line should average over 235 lbs., and with returning All-State wide receiver, Daniel Garbarino, the team should exhibit an exciting offense, Adair said.

Defensively, the team will be young, but talented, with as many as five sophomores in

Continued on page 3



1995-96 Muleshoe football coaching staff

Pictured are the 1995-96 coaches for the Muleshoe Mules: (back row L-R) Donny Wiley, Jimmy Orr, Ron Welch, Bruce Lacefield and Randy Adair; (front row L-R) Ted Johnson, Todd Bandy, Ralph Mason, Matt Owens and Brad Hill.

## Around Muleshoe

### South Plains Association seeks minority input

A meeting to select one minority representative from the counties of Bailey, Cochran, Lamb and Yoakum to serve on the Board of Directors of South Plains Association of Governments has been set for 6:30 p.m. Monday, Aug. 14 at the Cochran County Commissioners' Courthouse in Morton.

Interested minority residents in the counties listed above are encouraged to participate in the selection process.

For more information, contact Nancy Banuelos, executive assistant, SPAG, (806) 762-8721.

### Gramm Aide delivers update

During a briefing with city leaders at the Bailey County Colosseum Monday, Hans Klingler, director of U.S. Sen. Phil Gramm's office in Lubbock, delivered an update on the Senate's legislative goals for 1995.

The Senate, under a new Republican majority, has begun work on a myriad of bills aimed at tightening the federal government's belt.

Among Gramm's proposals are a tax cut that would double the dependent exemption for children. Also, the senator is working to repeal the Clinton tax increase on Social Security benefits, and to pass a balanced budget amendment to the Constitution.

Klingler also addressed Senator Gramm's proposals for protecting private property rights and Gramm's ideas for revamping the crime bill.

### Female athletes can get physicals Sunday, Aug. 13

Physicals for female athletes in Muleshoe and area schools

Continued on page 2

## Pre-season checkups are a must for athletes

HOUSTON — High school athletes may be only "second string" without a pre-season checkup, says a sports medicine expert.

Now's the time to prepare for the upcoming athletic season and for the demands of physical education classes.

"Anyone involved in school

athletics should have an annual history and exam as a necessary step for performing optimally," said Dr. Albert C. Hergenroeder, head of Adolescent Medicine and Sports Medicine, in the department of pediatrics at Baylor College of Medicine, and Texas Children's Hospital in Hous-

ton.

Hergenroeder says young athletes often will not admit to having problems related to exercise and sports. These include old and current injuries that may not have been diagnosed and fully rehabilitated.

"The nature of athletes is to deny problems, even if they

are exercising with pain," he said. "I always tell the students to have an annual evaluation prior to the school sports season startup, to make sure they don't wind up performing poorly simply because of an injury or training problem that may be easy to fix. I ask them if they want to operate at only

80 percent of their athletic ability. The answer is always 'no.'"

Hergenroeder says not rehabilitating an old injury may make the difference between making team, being just second string, or performing

Continued on page 2

## Old cars can help drive down kidney diseases

LUBBOCK — The National Kidney Foundation Car Contribution Campaign is a community service/fundraiser that turns used cars into useful vehicles for driving down the rate of kidney disease.

The Kidney Cars Campaign is the most successful nationwide fundraiser that benefits your National Kidney Foundation.

Proceeds from the sale of donated used vehicles total more than \$5 million annually with almost every affiliate across the country participating.

It is simple, easy to do, and free... and you can receive a great charitable tax deduction!

Cars, buses, trucks, motorcycles, boats, and farm/ranch vehicles are all included and don't even have to run to join this campaign. Interested contributors simply call our toll free number to "get the wheels turning!"

How does it work? The NKF of West Texas will accept as a charitable donation any vehicle that has a title of ownership,

Continued on page 2

## Progress reunion has excellent turnout

The Progress Community Reunion was very successful as a large crowd attended the reunion held at the Muleshoe Church of Christ on July 1, 1995.

Current and former residents attending were as follows:

Dean Williams, Odessa, TX; Joan (Hill) Miller, Farmington, NM; Betty (Hill) Robinson, Garden Grove, CA; Ruby Killough and Mary (Vinson)

Thomas, and Dorothy Giles, Ft. Worth, TX; Jesse Murrach, Arba Charles and Joe Meason, Jean Yeary (Bearden), John Tucker, Barbara Wilhite, and A.C. Meason, Lubbock, TX; Donna & Bob Sanders, Bud and Coleen Kindred, Talmage and Athealee Evans McKillip, and Wayne Kindred, Amarillo, TX; R.V. and Dolores Ivy, Dimmitt, TX;

Mary (Haun) Schumann,



Safety Pup and Julian Dominguez

"Safety Pup" is the newest addition to the Muleshoe Police Department's efforts to work with local youths. Safety Pup will be working closely with the Muleshoe Police officers and will be visiting schools and children. The Safety Pup program was made possible by local sponsors who contributed to the National Child Safety Council program.

Continued on page 2

## Weeds flourishing under stress

GREENSBORO, NC — Keeping Texas pastures lush and green throughout the season is a challenge. The pressures of heavy grazing and typical Texas hot, dry summer weather become formidable foes for even the most hardy grass species.

Weeds flourish under such stress. Now Texas ranchers will be able to beat troublesome weeds to the punch with Amber, a sulfonylurea herbicide from Ciba Crop Protection. The product was recently registered by the Environmental Protection Agency for grazing pastureland. It has been used in wheat and barley crops for several years.

"By mid-summer, the greenest part of a Texas pasture is sometimes where weeds take over and crowd out desirable grasses," says Product Manager Kelly Still. "In tests with Texas A&M last summer, Amber controlled a broad spectrum of common Texas

Continued on page 2

## CCCS offers tips to cut back-to-school expenses

PLAINVIEW — As summer break draws to an end and children begin preparing to go back to school, Consumer Credit Counseling Service wants to remind parents to start planning for the sometimes forgotten costs of going back to school.

Parents often remember to plan for school supplies and

clothes, but often forget expenses such as room and board and tuition usually are planned for, but books, living supplies (i.e., linens, personal hygiene items and decorations) and pre-trip car maintenance should be considered.

"Back-to-school expenses are like the holidays, taxes, vacation or any other periodic

expenses—consumers need to plan for them in advance," said Marianne Gray, executive director of CCCS. Depending on the number of children, ages and type of schooling, this can be a major expenditure.

However, involving children in back-to-school shopping excursions is a great way to teach children the impor-

tance of budgeting and planning ahead of time for expensive purchases and gives parents an opportunity to reinforce strong money management skills.

CCCS offers the following tips to help parents avoid back-to-school expense problems:

\*Establish a realistic budget

and spending limit for each child to obtain school clothing and supplies. Determine how much money you can safely afford to spend and follow your plan as closely as possible. Parents who have children leaving for college this year should establish a budget for

Continued on page 2



## Progress

Continued from page 1

John and Mary Thompson, Bill and Martha (Thomas) Aylesworth, Clovis, NM;

Olan D. Clements, Carol (Kemp) Depperman, Oleta Bishop, Albuquerque, NM; Pat (Simnacher) Ferrell, Halton City, TX; Earl and Jean (Hogan) Henry, Levelland, TX; Dorothy Evans Morton, Edmonson, TX; Janette (Vinson) Hibben, Hugo, OK; Joe Evans Holman, Plainview, TX; Ruby Dorsey, Alanreed, TX; Sherman Presley, Shreveport, LA.

Fern Davis, Willie James, Velma Gwyn, Nelda (Redwine) Hunt, Doris Wedel, Helen (Mitchell) Head, Ernest and Mary Alice Ramm, Lucille Gross, Iva Locker, Erald and Arnold Gross, Mary Helen Talley, Bobby Hudson, Bill and Argillee (Kemp) Millen,

Velma Howell, Kenneth and Darlene Henry, Nona Griffin, Margaret Wilhite, James Meason, Jacque Baker, Jasper Pruitt, David Stovall, Cliff and Lucy Mardis, Phil and Dolores (Locker) Garrett, Billie Downing and Jarrell Pruitt, all of Muleshoe, TX.

Shirley (Holland) Savage, Murrell and Edith Waller, Littlefield, TX; Faroy and Crystal Simnacher, Houston, TX; and Wanda Jennings, Boise, SD.

Serving on the Reunion Committee were Ernest Ramm, President; Dolores Garrett, Secretary; Jacque Baker, Mary Alice Ramm, Margaret and Barbara Wilhite, Chairpersons of the hospitality and refreshments committee.

The next reunion is planned for 1997.

## Check-up

Continued from page 1

poorly. He advises having the annual evaluation three to four weeks prior to the beginning of school athletics.

"If there is a problem, they need time to rehabilitate the injury," Hergenroeder said. "For example, waiting until the day before practice starts—

knowing there is a shoulder problem—does not make good sense. Rehabilitation of that injury could keep them off the team or at least hinder their progress with the team."

Hergenroeder says that one study showed that one of the leading reasons for not par-

ticipating in school sports was old, unrehabilitated injuries.

Students not participating in high school sports could benefit from a pre-school evaluation, as well, particularly if they have old injuries, or medical problems such as obesity, asthma or chest pains.

Hergenroeder says for the majority of healthy high school students, returning to school athletics or physical education courses is no problem.

Taking steps before a health problem becomes worse is the key for students involved in high school sports or physical education.

## Cars

Continued from page 1

four wheels, and a motor. The vehicle will be towed free of charge and the donor will be given a tax deduction form. The vehicle will then either be auctioned, sold for parts, or the metal will be recycled.

All funds go immediately to the NKF of West Texas' programs for kidney dialysis and transplant patient services, community and professional education, and vital medical research!

The donation procedure is simple. Interested contributors can call (800) 488-CARS

(2277) and the NKF will mail out a packet, complete with a self addressed envelope in which to mail back signed titles and odometer statements.

In addition, all of the legal, regulatory, insurance and data management requirements are handled by our staff. When the packet is returned, the Foundation arranges for free vehicle pick up and towing.

Son, if you're not driving it, what are you waiting for? Make your car a hero...make it a Kidney Car!!!



## Texas Migrant Council

Juan Pedro Ybarra, 5, son of Guadalupe and Olivia Ybarra, slides down the slide at the Texas Migrant Council playground.

## CCCS

Continued from page 1

the entire semester and if they are allowing their child to use a credit card, a strict monthly limit should be set.

**CCCS offers tips for back-to-school shopping:**

\*Once you've established a dollar figure, let your children (with your help) list the items and prices of the things they feel are needed for school. Help them determine priorities and emphasize the idea that sticking to a budget may mean sacrificing unnecessary items.

\*Then add up the prices, compare the totals to the limit you've set for each child and share it with him/her. If the totals don't match, explain that there is a limited amount of money and it must cover all expenses. Suggest that perhaps, a \$30 pair of jeans could be substituted as an alternative for the \$60 pair that they want.

\*Shop with your children. Point out the benefits of sales, discount stores and lay-away. Discourage them from buying faddish items or shopping impulsively.

\*Try to spread purchases out over an extended period of time in order to avoid having to spend a large amount of

money at one time. Make purchases with cash whenever possible.

CCCS provides professional counseling and financial guidance to consumers

through one-on-one budget counseling sessions, educational workshops and debt re-

payment plans.

To schedule an appointment for counseling, consumers can call toll-free throughout Texas, (800) 374-2227.

## Weeds

Continued from page 1

pastureland weeds. It offers excellent residual control with low volatility, and it's one of the most economical herbicides available to ranchers.

A&M's Dr. Paul Baumann says Amber is one of several new herbicide options that fit modern ranching needs. "It has a very low use rate," he says. "Only 0.28 to 0.56 ounces of product per acre controls weeds season-long." He also notes that there's no volatile drift with Amber, so it fits in 2, 4-D restricted-use counties.

Baumann adds that because Amber is a low-rate compound, proper application is especially

important. "It's important to switch to a boom sprayer with fan-type nozzles," he explains. "Used properly, Amber can be an inexpensive option to control a variety of weeds. It offers several tank-mix options to increase the control spectrum even further."

Still says the new product offers other benefits. "Amber provides a lot of flexibility with application timing, since moisture moves the herbicide into the soil for pre-emergence benefit early in the season," she says. Still also notes that there are no grazing restrictions.

## Muleshoe Journal USPS 367820

Established February 23, 1924. Published by Triple S Publishing, Inc. Every Thursday at 304 W. Second, Box 449, Muleshoe, TX 79347.

Second Class Postage paid at Muleshoe, TX. POSTMASTER: Send address changes to the Bailey County Journal, P.O. Box 449, Muleshoe, TX 79347.

We are qualified members of: Panhandle Press Association, National Newspaper Association, West Texas Press Association and Texas Press Association

WEST TEXAS PRESS ASSOCIATION

PPA

Panhandle Press Association

TA

MEMBER 1995

TEXAS PRESS ASSOCIATION

Scot Stinnett, Publisher  
Lisa Stinnett, Vice-President/Comptroller  
Martha Frost, Editor  
Holly Millsap, Classifieds  
Pat Durben, Advertising

SUBSCRIPTIONS: Muleshoe Journal and Bailey County Journal  
By Carrier Yearly - \$15.00  
Bailey and surrounding counties: by mail - \$16.75  
Elsewhere - \$18.50  
Advertising Rate Cards on Application

\*Advertisers should check their ad the first day of insertion. The Journals will not be liable for failure to publish an ad or for a typographical error or errors in publications except to the extent of the cost of the ad for the first day of insertion. Adjustment for errors will be limited to the cost of that portion of the ad where the error occurred.

## Summer garage sales!

Advertise in the  
Muleshoe Journal  
272-4536

## Around

Continued from page 1

will be held Sunday, Aug. 13. (Free physicals for boys were held Aug. 6.)

Physicals will begin at 2 p.m. at the MHS Gym next to the football stadium at 514 West Ave. G.

Local physicians and area EMT personnel are providing services at no charge.

Physicals are required for all athletes who are going into the 7th and 9th grades, for all new students, and for anyone who has received medical treatment for an injury in the last calendar year.

It is highly recommended that all athletes get check-ups prior to the start of play or practice.

Anyone with any questions about physicals may contact Coach Randy Adair, Athletic Director for Muleshoe Schools, at 272-7571 (work) or 272-3882 (home).

## FINAL WEEK Summer Clearance

### LADIES' SHOES

One Large Group NOW

30%-50% OFF

Another Large Group ONLY

\$8<sup>99</sup> Pr.

Summer Handbags (entire selection) NOW

1/2 PRICE

### MEN'S SHOES

120 Styles

20-50% OFF

OFF

Special Group

\$16<sup>99</sup> Pr.

### CHILDREN'S SHOES

Large Group

Other Groups

30% OFF

\$9<sup>99</sup> Pr. & 1/2 PRICE

FINAL WEEK & 1 WEEK ONLY

## Randy's Shoes

410 Main St. • Downtown Clovis

1994 FORD

## AEROSTAR Extended Length - XLTs



Used Factory Program Cars

11 Aerostars In Stock At This Price.

Loaded With:

• 7 Passenger Seating • Front & Rear Air Conditioning • Automatic Transmission • Dual Air Bags  
• Power Windows • Power Door Locks • Tilt Steering • Cruise Control • Am/Fm Cassette

ONLY \$289 Down \$289 Month.

Many Other Models With Similar Savings!

• 10 - Tempos • 3 - T-Birds • 2 - Sables • 5 - Town Cars  
• 6 - 95 Cougars • 2 - 95 Grand Caravans • Plus Many Others!

Hurry In For Big Savings!

## TEAGUE STREBECK



(505) 356-8581 (505) 762-3845  
1115 North Chicago

Portales, NM

The very best prices and service anywhere...  
We personally guarantee it!

(On the first curve into Portales)



# Football

Continued from page 1

starting positions. Several returning starters who were injured last year seem to have recovered, and are expected to help the team.

In various state and area publications, the Mules are picked to finish in the upper half of District 2-3A.

Fans can view the Mules at their scrimmage here at home Thursday, August 24, 6 p.m., against Morton, followed by their first game the next week against Portales Friday, September 1, also here in Muleshoe at 8 p.m.

Todd Bandy coaches the linebackers, JV boys' basketball, and is assistant track coach. He graduated from Friona High School in 1978, and West Texas State University in 1991. Bandy, who farmed for seven years, will be in his fifth year of coaching.

He formerly coached at Pleasant Grove High-Texas, and is in his second year at Muleshoe.

He and his wife, Lori, have two children, Chelsey and Levi. Bandy enjoys fishing and water skiing and attends the Church of Christ.

Brad Hill, who is in his fifth year of coaching, coaches the wide receivers and is also head baseball coach and ninth grade girls' basketball coach.

He graduated from Portales High School in 1987 and from Lubbock Christian University in 1992. Hill coached baseball at LCU and Eastern New Mexico University at Portales, and was an assistant last year at Alderson Junior High in Lubbock.

Hill, who is single, enjoys softball, travel and attends the Baptist Church.

Ted Johnson, who is head junior high and head high school boys' track coach, graduated from Perryton High School in 1977 and Sterling College in Kansas in 1985. He has thirteen years coaching experience and coached at Booker and Muleshoe.

Johnson enjoys golf and yard work as hobbies. He and his wife Laura have two children, Michael and Kristi, and attend the First United Methodist Church in Muleshoe.

Bruce Lacefield, who is working with the offensive and defensive line, is also an assistant junior high coach.

He graduated from Aledo High School and played football and graduated from McMurry University in 1980. His 14 years experience includes Aledo, Ralls, Hawley and Grapevine.

He and his wife, Betty, have six children—Robby, Jerry, Renee, Curtis, Chaucie and Jon, and they attend church at the First Baptist Church in Muleshoe.

Lacefield enjoys fishing, hunting, and woodworking.

Ralph Mason coaches the backs and is also the head boys' basketball and golf coach. He graduated from Morton High School in 1974 and WTSU in 1978. He has coached at Morton, Gilmer and Muleshoe, with 16 years of experience.

He and his wife, Donna, have three children—Matt, Mitch and Megan, and they attend the First Baptist Church in Muleshoe. Mason enjoys golf, fishing, music and snow skiing.

Jimmy Orr is the assistant coach at junior high, working with the receivers and defensive backs. He graduated from Florence High School, played football at Texas Christian University and graduated from A&M at Kingsville in 1994. This is his second year to coach.

He and his wife, Kristy, attend the Catholic Church. Orr enjoys golf, hunting, water and snow skiing.

Matthew Owens is an assistant coach at the high school working with football and

baseball. He graduated from Seminole High School in 1988 and Texas Tech in 1995. This is his first year to coach.

He is in the Marine Corps Reserves and attends the Methodist Church. His hobbies include hunting, fishing, camping, dogs and dog shows.

Ron Welch, who works with the defensive linemen, is also 9th grade boys' basketball and assistant track coach.

He graduated from Stanton High School in 1985, and Texas Tech in 1991. This will be his fourth year to coach. He and his wife, Robin, attend the First Baptist Church in Muleshoe, and he enjoys golf and hunting.

Donny Wiley, the first assistant and defensive coordinator, coaches the defensive backs and coordinates the strength and conditioning program.

He graduated from Lockney High School in 1978, and Angelo State University in 1982. Wiley has coached at Coahoma, Rocksprings, Tulia, Lubbock-Cooper and Ruidoso, NM. This will be his 14th year of coaching.

Wiley and his wife, Donna, have four children—Ryan, Derek, Kaleigh and Keelin, and they attend the First Baptist Church in Muleshoe. He enjoys hunting, golf and gardening.

# DPS urge public to drive safe during Labor Day

Labor Day, "A tribute to our past and present workers," but for the many who will celebrate, it is the last three day weekend of the summer.

Whether your plans include a trip to the lake or a trip across the state, Trooper E. Baiza with the Texas Department of Public Safety reminds motorists that planning ahead could prevent a tragedy in the future.

Trooper Baiza, stated that driving while fatigued is one of the leading causes of collisions. Before driving this weekend, get ample rest and allow time for frequent breaks. One of our best defenses against an unsafe driver is the proper use

of safety belts, but it's only effective when all occupants are buckled up.

The Department of Public Safety will increase patrols beginning at 6 p.m., Friday, September 1, and continue through midnight, Monday, September 4. The troopers are there to help you, the motorist, by offering any assistance needed. They are also there for enforcement of traffic laws and removing unsafe drivers from the roadways. Troopers will be looking hard for intoxicated drivers and others who are out to ruin your Labor Day celebrations.

## Shafer Nursery

Late Summer and Fall Planting  
**SUMMER CLEARANCE**

**40% OFF**

Open Friday & Saturday 10:00-6:00  
**EVERYTHING MUST GO!**

**272-5802**

**801 West American Blvd.**  
(Next to Jarman Seed)

The Nursery Will Restock For  
Your Spring Planting in April.  
Thank You For Your Business.  
Robert, Kim and Annie Shafer

Christmas Trees will be in Dec. 1st.

Don't go to college without it!  
Subscribe Today  
272-4536



1-800-658-6378 106 E. American Blvd. Muleshoe, Texas

## And Country Junction

Leal's Ranch Wagon  
will be on our  
parking lot  
Saturday, Sept. 2

## Back To School -SPECIAL-

Justin & Miller  
Tennis ..... **20% OFF**



TEACHERS -  
For Your Classroom:  
Many "School" Items  
For you to personalize  
your room  
•SIGNS • BELLS  
• PAPER TOWEL  
HOLDERS •  
BIRDHOUSES • ETC.

Get Ready For  
World Championship Goat  
Team Roping "On Foot"

Joe's Boot Shop Parking Lot  
• Friday & Saturday, Sept. 1 & 2  
during Mule Days  
Practice all day Friday, Sept. 1  
Competition Saturday, Sept. 2  
**NO ENTRY FEE**

FREE American Bangora Straw Hats  
for 1st place in each age group  
World Championship Buckle to  
All-Around Winners!

Congratulations to  
all cast & crew  
members of the  
outdoor play  
"Keepers of the  
Legend!"  
GREAT SHOW!!

WATCH FOR OUR  
**FELT HAT SALE**

SEPT. 1-2-4

# "Friends Free"

## Checking Accounts!

- No Service Charge
- No Activity Charge

The account will be subject to any applicable miscellaneous charges.

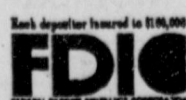
For More Information,  
Call Our New  
Accounts Personnel.



**MULESHOE STATE BANK**

101 W. American Blvd.  
Muleshoe, TX  
(806) 272-4561

801 Ave. A  
Farwell, TX  
(806) 481-9580





## Seven ideas for back to school

- \* Find the time to learn together with your children.
- \* Commit yourself and your children to challenging standards - help children reach their full potential.
- \* Limit TV viewing to no more than two hours on school nights.
- \* Read together. Its the starting point of all learning.
- \* Encourage your children to take the tougher courses at school and check their homework every day.
- \* Make sure your children go to school every day, and support community efforts to keep children safe and off the streets late at night.
- \* Set a good example for your children, and talk directly to them about the dangers of drugs and alcohol and the values you want them to have.



Posing for a group photo after a 60-mile trek over the Philmont Scout Ranch is a contingent from the El Lano Grande District, Post 226. Katie Baker of Muleshoe is pictured standing second from left.

## Katie Baker participates in 60-mile trek

A contingent of Boy Scouts from the El Lano Grande District, Post 226, recently completed a 60-mile trek at the Philmont Scout Ranch near Cimarron, NM. One Explorer Scout from Muleshoe, Katie Baker, participated in the trek. Katie is the granddaughter of Milfred Ratliff of Muleshoe. Participants from Clovis, NM included Lyn Henderson, Tracy Anspaugh, Adam Labrato, with George Crowl and Roger Rehder coordinating the group. Representing Hobbs, NM, was Tommy Farrell, Jacob Farrell, Travis Taylor, Josh Whatcott, and Arron Havens of Lovington, NM, participated as crew chief. The group's hike took in the Valle Vidal, and the north country part of Philmont, which is the largest Boy Scout facility in the world.

## Practice makes punctual when getting ready for school

TEMPLE — For children the difference between summer vacation and school days is like comparing Texas and Hawaii — an ocean of difference and several time zones. About this time of year, parents are attempting to get their school-aged child back on a regular routine after two and a half months of staying up, sleeping late and dodging school books.

In order to re-establish routines, Constance J. Fournier, Ph.D., a psychologist in the Scott & White Division of Child and Adolescent Mental Health, advises parents to plan ahead. Establish routines, stage practice run-throughs before school starts and keep the lines of communication open between children and teachers.

### Getting back on track

"Parents have to help their children adjust; parents have to move their children's schedule back a few time zones to get their systems ready for school time," said Dr. Fournier. To get youngsters back on

track she advises parents to plan ahead. First, about a week or two before school starts, parents should start encouraging their children to adjust to the schedule change by setting firm times for bedtime scheduled and routine.

That's what they are there for," she added.

Parents should ask what they can do to help their child and the teacher." They are team members in the child's education," Dr. Fournier said.

Parent involvement shows the child that parents value education and how important it is. A parent's involvement in school lays a foundation, and the understanding that as a family value is placed on education.

Even if parents are divorced, they must work together for the good of the child. Studies have shown that children of divorce adjust better when their parents can communicate about the children. That means that the custodial parent must keep the other informed about the child's activities, programs,

meetings and other school activities.

"This helps the child understand that both parents, even though they are divorced, are involved and interested," said Dr. Fournier.

### Study time for everyone

All family routines must include time for homework or study after school, Dr. Fournier said. "Parents must gauge this according to their child's needs," she said.

No matter when, study time should include no television or phone calls and a well-lighted place to study. Study time should apply to everyone. This means a time for all family members. Mom and dad can read, and younger children may engage in a quiet activity such as coloring or working puzzles. With the study time, the child still does school-related work such as read, practice math or even write letters to grandparents. Everyone benefits from the study break and children see that parents value this time.

**When to get additional help**

At the beginning of school, children can experience anxiety and a feeling of loss, mixed with excitement. It's not unusual for this to happen when children are beginning a new school. Coupled with this are the traditional rituals of buying new clothes, checking with other schoolmates to "find out what everyone is wearing". This is all part of growing up.

However, if a child is having difficulty adjusting to the newness, has trouble sleeping, appears anxious, cries too much or is having other ad-

Continued on page 8

**Dr. A. R. Ploudre**  
Open your eyes  
to vision care that works  
with your budget!

- Quality care at a reasonable cost
- Contact lenses
- Eyeglass prescriptions filled
- NM & Texas Medicaid, Medicare Assignment

We are also proud to provide special assistance to low income families in need of vision care. Families who feel they qualify are encouraged to call for more information.

Payment plan available • Se Habla Espanol

1515 Gidding St., Clovis, NM  
**(505) 762-2951**

Cleaning out your closets? Have a garage sale!  
Advertise it in the Muleshoe Journal!  
Call 272-4536.

Home Folks Caring For Folks At Home.



**MULESHOE AREA  
HOME HEALTH**

Agency

The Choice is Yours

### Featured Nurse

Laverne James is married to Willie James. They have 2 daughters—Glenda Copley of Progress, Tonya Pool of Muleshoe; and 2 sons—Bill James of Muleshoe, Tim James of Lamesa. They have 8 grandchildren. They have lived in Muleshoe for 43 years. Laverne was the Woman of the Year for 1993. Channel 11 recognized her for "The One Who Makes A Difference"

Laverne is the leader of Tops, Church Treasurer and a member for the Progress Baptist Church. Laverne likes to play games and visit with her grandchildren.

Laverne enjoys all the people she works with at Muleshoe Area Home Health.



Laverne James

To receive Home Health Services Talk with your physician or talk with hospital personnel when you are hospitalized.

**24 Hour #  
272-3346**

Local Nurse on call  
24 hours a day to  
offer prompt service.

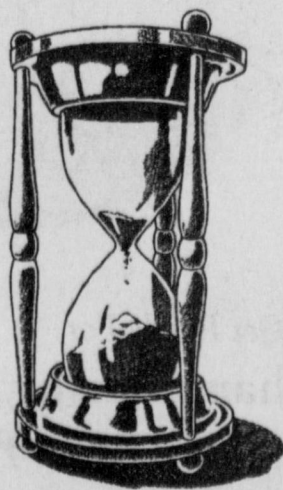


We accept Medicare, Medicaid  
and Private Insurance

Affiliated with  
LUBBOCK METHODIST HOSPITAL SYSTEM

It Is Your Right To Choose The Home Health  
Agency You Prefer.

## Want to attend college this fall?



Now is the time to prepare for your future.

CCC offers affordable, quality education in your community.

**Fall Registration  
August 22-25**

**August 22 - Returning Students Only  
August 23-25 - All Students**

Note: Any student who did not attend CCC either spring or summer semester must complete admission paperwork prior to registration.

### New Student Orientation

**August 17 • 9-11 a.m. or 5:30 - 7:30 p.m. (MST)**  
Call Counseling Office, 769-4015, by noon Aug. 15 to register

- Course schedules available at CCC and the Clovis/Curry County Chamber of Commerce
- Schedule with instructors' names will be published in the Clovis News Journal Sunday, August 20.

**Clovis  
Community  
College**

417 Schepps Blvd. • Clovis, New Mexico

For information, call 769-4009



# Back-to-class BARGAINS

ALL TYPES Pepsi 99¢  
 ALL TYPES Dr Pepper \$1.69  
 ALL TYPES Sprite \$1.29

Pepsi-Cola 2 12 pack 12 oz. cans For \$5

**Meat**

SMALL PACK \$2.19 lb.

VALUE Pack

BEEF BONELESS Top Sirloin Steaks \$1.99 lb.

VALUE Pack

FRESH Ground Beef \$1.18 lb.

88¢ lb.

**Produce**

SUPER SELECT Cucumbers LARGE

Your Choice Bell Peppers CALIFORNIA HASS Avocados

3 for \$1

EXTRA LARGE Tomatoes 59¢ lb.

Fruits & Vegetables

5 a Day-for Better Health!

FRESH HOT Jalapeno Peppers 59¢ lb.

DOLE Cole Slaw Mix 89¢ 1 lb. pkg.

BONELESS Charcoal Steaks \$1.49 lb.

SMALL PACK \$1.69 lb.

VALUE Pack

WILSON Meat Franks 69¢ 12 oz. pkg.

DECKER Bologna

DECKER MEAT OR BEEF Corn Dogs \$1.79 1 lb. pkg.

DECKER Chopped Ham \$1.99 10 oz. pkg.

88¢ 12 oz. pkg.

SMALL PACK \$2.19 lb.

WILSON 1.75 LB. SLICED OR 2 LB. CHUNK Just For Us Ham \$5.99 each

**Lowe's Valuable Coupon**

**LITTLE SIZZLERS FREE**

Good Only At Lowe's Pay N Save Marketplace Expires Aug-16, 1995

BUY 3 LBS. OR MORE OF GROUND CHUCK VALUE PACK, RECEIVE 1 - 12 OZ. PKG. OF HORMEL Little Sizzlers **FREE**

BEEF Cubed Steaks \$1.99 lb.

VALUE Pack

**BUY THIS**

3 LBS. OR MORE OF Ground Chuck

**GET THIS**

1 - 12 OZ. PKG. OF HORMEL Little Sizzlers **FREE** with coupon

ORIGINAL CRUNCH BERRIES, OR PEANUT BUTTER Cap'n Crunch's Cereal \$2.19 16 oz.

SHURFINE ASSORTED Cranberry Cocktail \$1.99 64 oz.

RAILTON Honey Almond Delight Cereal \$2.99 15 oz.

**Great Savings**

FIELD TRIAL BITE SIZE Dog Food \$3.99 20 lb. bag

PEDIGREE ASSORTED Dog Food 2 13.2 oz. cans For \$1

TIDY SCOOP Cat Litter \$2.99 16 lb. bag

Ultra Surf Liquid Detergent \$4.99 100 oz. jug

Handi-Wrap 200 FT. Handi-Wrap \$1.99

**FROZEN & DAIRY**

Tony's Pizza 12" For \$2.4

ASSORTED CITRUS PUNCH Sunny Delight 10 oz. 4-pk. For \$2.1

PHILADELPHIA CREAM CHEESE \$1.19 8 oz. 4-pk.

Hungry Jack Biscuits \$1.89 10 oz. can

ASSORTED PATIO Burrito Dinners 3 5 oz. pgs. For \$1.99

ASSORTED PATIO Burrito Dinners 3 5 oz. pgs. For \$1.99

Blue Bunny 1.2 CT. SUGAR FREE CRUNCH LITES OR 24 CT. Citrus Fruit Snack \$2.79 2 pkgs.

Blue Bunny Banana Pops \$1.19 12 pack

**Back to School SUPPLIES**

200 college

BLUE BUNNY ASSORTED Ice Cream 1/2 gallon round ctns. For \$2.5

**Lowe's Valuable Coupon**

Good Only At Lowe's Pay N Save Marketplace Expires August 16, 1995

Additional Purchases \$99

LIMIT ONE COUPON PER CUSTOMER

MEAD NOTEBOOK Filler Paper 2 200 ct. pgs. For \$1

<input checked="" type="checkbox"/> Mead Portfolio 6\$1 For	<input checked="" type="checkbox"/> Filler Paper w/coupon on front page 200 ct. pgs. \$2.1	<input type="checkbox"/> Elmer's Glue-All 4 oz. 59¢
<input type="checkbox"/> Clear View Binders 1.5" \$2.19	<input type="checkbox"/> 3 Subject Spiral Notebook 120 ct. 99¢	<input checked="" type="checkbox"/> School Glue 59¢ 4 oz. 59¢
<input type="checkbox"/> Hot Ones Poly Binder 1.5" \$89¢	<input checked="" type="checkbox"/> 5 Subject Notebook each \$1.99	<input type="checkbox"/> Pentel Smart Set Pencil & Calculator each \$3.79
<input checked="" type="checkbox"/> Colored Pencils 12 ct. pkg. \$1.99	<input type="checkbox"/> Spiral Notebook 70 ct. 59¢	<input type="checkbox"/> Sharp Scissors 77¢ each
<input type="checkbox"/> Bic Mechanical Pencil 5 ct. pkg. \$1.59	<input type="checkbox"/> Bic Stic Pens 10 ct. pack 88¢	<input checked="" type="checkbox"/> Master Assorted Color Dial Combination Locks each \$3.99
<input type="checkbox"/> Eagle Pencils 10 ct. pkg. 79¢	<input type="checkbox"/> Write Bros. Pens 10 ct. pack 99¢	<input type="checkbox"/> Crayola Crayons 24 ct. box \$1.19

**STUDY THESE SAVINGS**

ASSORTED LAY'S OR WAVY LAY'S Potato Chips 89¢ Reg. \$1.49 size

NABISCO ASSORTED Snackwell's Cookies or Crackers 5-7.75 oz. box \$1.69

LAY'S Lunch Pack or Flavor Pack \$1.88 \$2.79 size

AMERICAN BEAUTY VERMICELLI OR Large Shel-Roni 10 oz. 2\$1

HUNTS ASSORTED Pudding or Juicy Gels 4 pack 3.5-5 oz. 99¢

DEL MONTE SQUEEZE Ketchup 28 oz. 99¢

DEL MONTE SLOPPY JOE 15 oz. can 89¢

HAWAIIAN PUNCH RED, ORANGE, TROPICAL FRUIT, OR GRAPE Hawaiian Punch 3 pack 9 oz. \$1.99

GRANULATED SUGAR SUBSTITUTE Sweet'n Low 250 ct. \$2.99

**HEALTH & BEAUTY**

Neosporin Ointment \$2.99 5 oz. tube

CAPLETS Tylenol Severe Allergy \$2.99 24 ct.

ASSORTED Suave Baby Care Products \$1.88 ca.

CLAIROL ASSORTED HAIRSPRAY Condition 3-In-1 7 oz. \$1.19

WESTERN UNION | MONEY TRANSFER<sup>SM</sup>

"The fastest way to send money"

**Lowe's MARKETPLACE**

401 W. American Blvd. Muleshoe 272-4585

515 W. American Blvd. Muleshoe 272-4406

Prices Effective August, 1995

WED THUR FRI SAT SUN MON TUE 9 10 11 12 13 14 15

WE RESERVE THE RIGHT TO LIMIT QUANTITIES IN TEXAS



# Sarah Hawkins, Ruiz exchange wedding vows

Sarah Joanna Hawkins and Corporal Arturo Ruiz, Jr. were united in marriage, June 17, at the Marine Corps Recruit Depot Chapel in San Diego, CA. Chaplin Fahey of U.S.M.C. officiated.

Sarah is the daughter of David and Eileen Hawkins of Sandiego, CA. and Arturo Ruiz is the son of Maggie Martinez of Muleshoe.

The bride wore a dress of white tulle net with an off the shoulder bodice encrusted with with beads, sequins and lace. The dress was accented with a chapel length train and shoulder length veil.

The bride's bouquet consisted of pink and white roses and orchids, with a touch of purple, all intertwined with ivy.

For something old, the bride wore her mother's diamond ear rings. Something new was a pearl necklace given to her on her birthday. Some-

thing borrowed was a hankiechief borrowed from her mother, and something blue was her garter.

The groom was attired in a traditional black tux and tails, with ivory shirt and vest.

Jennifer Hawkins, sister of the bride, served as maid of honor and Guadalupe Oliveras, of Muleshoe, was best man.

Bridesmaid was Stephanie Mitten, lifelong friend of the bride. Tina Chase, close friend of the bride was flowergirl.

Groomsman was Gilbert

Reyes, of Muleshoe, a lifelong friend of the groom.

A reception followed the wedding ceremony at the home of Claudia and Peter Murphy of San Diego, CA, with El Indio Restaurant catering.

The bride is currently enrolled in San Diego State University, where she is majoring



Corporal and Mrs. Arturo Ruiz, Jr.

in physical education. She is employed at the La Jollo Chart House as a bookkeeper.

The groom is a 1992 graduate of Muleshoe High School and is currently serving with

the U.S. Marine Corps in San Diego as an administration clerk.

After a wedding trip to the Grand Canyon and Texas the couple will be at home in San Diego, CA.

# Better Business Bureau

Students that have just graduated from high school and early college students are beginning to receive postcards enticing them into calling to find out how they can get grants, loans and scholarships.

The BBB advises caution in dealing with companies that send out these postcards. All these companies offer is a list of possible places to go to get financing for a very large fee—usually \$150-\$300. You can receive good, free information from the high school counselor or financial aid office at the college of your choice.

A college education is one of the most expensive investments a family makes. It is no longer unusual for families to spend \$10,000 to \$20,000 per year, per child for college tuition and related living expenses at independent colleges.

For some good information on how to finance a college education, call the BBB at (806)763-0459 or (800)687-

7890 and ask for our free booklet called "Tips on Financial Aid for College."

Legitimate companies frequently use the telephone and the mail to solicit businesses. So do crafty swindlers. Some employ a "boiler room" full of phone sales people to contact businesses with phony offers. Using carefully prepared scripts or "pitch sheets", the slick telephone solicitors try to sell businesses almost anything.

According to what we have been able to determine, the most common fraudulent pitches are for advertising space that does not exist, vacation packages that take you for a ride, office supplies which are inferior, phony directory listings, and specialty items that turn out to be totally different from what you were told you would receive.

Don't buy from new suppliers until you verify their existence.

# WTAMU to host "Texas Originals" Aug. 13

The "Texas" Company is preparing for the presentation of the 1995 Annual Scholarship Benefit Production of "Texas Originals" to be presented on Sunday, August 13, at the branding Iron Theatre on the West Texas A&M University campus in Canyon, TX.

Two performances will be held: 3 p.m. Matinee and 8 p.m. Gala performance. Admission is by Donation.

"Texas Originals" is a creation of the unseen talents of the cast and crew of "Texas" Musical Drama. Included talents are of artistic, musical, and dramatic aspects. This year's show should prove to be very entertaining, as well as rewarding. Several performance acts were auditioned and twenty-two were selected for the performances.

In addition to the show, the "Texas Originals Art Gallery" will be displayed prior to each performance and during inter-

mission in the lounge, next to the theatre lobby.

Scholarships will be awarded to selected company members of "Texas" Musical Drama on the basis of their contribution to the show, financial need and academic achievement, following the 8 p.m. Gala performance.

You will not want to miss this fascinating, professional production, and display of talent that "Texas Originals" offers. Again, admission is by donation. If you are unable to

attend but would like to make a donation; donations can be mailed to "Texas Originals," Box 268; Canyon, TX 79015, or presented at the theatre.

Complete Line  
Monuments - Markers  
Memorials  
Granites - Bronze

**Muleshoe Memorial  
Park Cemetery, Inc.**

232 Main P.O. Box 373  
Muleshoe, TX  
272-5727 or 272-4670

**The Muleshoe Kiwanis Club  
is Sponsoring**

**GOLF TOURNAMENT**

**Monday, Aug. 14**  
**7:00 p.m.**

**2 AGE GROUPS**  
**12 & under & over 12**  
**ENTRY FEE:**  
**\$2 per person**



**For More Information,  
Contact Jim Lutz or  
Flavio Garza 272-5124  
or Eddie Morris 272-3351**

### NOTICE OF EFFECTIVE TAX RATE AND ESTIMATED UNENCUMBERED FUND BALANCES

This notice concerns 1995 property tax rates for the six taxing units listed below. It presents information about three tax rates for each unit. Last year's tax rate is the actual rate the taxing unit used to determine 1994 property taxes. This year's effective tax rate would impose the same total taxes as last year if you compare properties taxed in both years. This year's rollback tax rate would impose the same total taxes as last year if you compare properties taxed in both years. This year's rollback tax rate is the highest tax rate the taxing unit can set before taxpayers can start rollback procedures. In each case, these rates are found by dividing the total amount of taxes by the total taxable value of taxable property with adjustments as required by law. The rates are given per \$100 of property value.

	MULESHOE ISD	THREEWAY ISD	CITY OF MULESHOE	MULESHOE AREA HOSPITAL DIST.	BAILEY CO. GEN. FUND	BAILEY CO. FARM ROAD
<b>LAST YEAR'S TAX RATE</b>						
Last Year's Operating Taxes	2,286,197	562,048	585,546	624,773	782,605	165,334
+Last Year's Debt Taxes	-0-	-0-	-0-	-0-	-0-	-0-
=Last Year's Total Taxes	2,286,197	562,048	585,546	624,773	782,605	165,334
/Last Year's Tax Base	181,920,739	41,327,109	88,224,599	249,909,319	225,534,675	221,035,895
=Last Year's Total Tax Rate	1.2567	1.36	.6637	.25	.3470	.0748
<b>THIS YEAR'S TAX EFFECTIVE RATE</b>						
Last Year's Adjusted Taxes	2,136,755	554,845	583,110	621,197	779,821	164,603
/This Year's Adjusted Tax Base	173,236,763	39,548,371	89,237,056	221,684,225	222,955,464	218,477,494
=This Year's Effective Tax Rate	1.2334	1.4029	.6534	.2802	.3497	.0753
x 1.03=Maximum Rate unless the entity Publishes Notices & Holds Hearings	1.2704	1.4449	.6730	.2886	.3601	.0775
<b>THIS YEAR'S ROLLBACK TAX RATE</b>						
Last Year's Adjusted Operating Taxes	2,136,755	554,845	583,110	621,197	914,821	164,603
/This Year's Adjusted Tax Base (school)	173,236,763	39,548,371	89,237,056	221,684,255	222,955,464	218,477,494
=This Year's Local M&O Rate	1.2334	1.4029	.6534	.2801	.4103	.0753
x 1.08(or + .08 for School)=Maximum Operating Rate	1.3134	1.4829	.7056	.3026	.4431	.0813
+This Year's Debt Rate	-0-	-0-	-0-	-0-	-0-	-0-
=This Year's Rollback Rate Before Adjustment	1.3134	1.4829	.7056	.3026	.4431	.0813
-Sales Tax Adjustment Rate	N/A	N/A	N/A	N/A	.0598	N/A
=Rollback Tax Rate	1.3134	1.4829	.7056	.3026	.3833	.0813
<b>THIS YEAR'S HIGHEST RATE FOLLOWING A SUCCESSFUL ROLLBACK ELECTION</b>						
Last Year's Adjusted Operating Taxes	2,136,755	554,845	N/A	N/A	N/A	N/A
/This Year's Adjusted Tax Base	173,236,763	39,548,371	N/A	N/A	N/A	N/A
=This Year's Local M&O Rate	1.2334	1.4029	N/A	N/A	N/A	N/A
x Student Enrollment Adjustment	1.0020	1.000	N/A	N/A	N/A	N/A
=This Year's Adjusted M&O Rate	1.2358	1.4029	N/A	N/A	N/A	N/A
+\$0.08 cents=This Year's M&O Rate	1.3158	1.4829	N/A	N/A	N/A	N/A
+This Year's Debt Rate	-0-	-0-	N/A	N/A	N/A	N/A
+Rate to Recoup Loss Certified By Commissioner of Educator	-0-	-0-	N/A	N/A	N/A	N/A
+Additional Rate for Pollution Control	-0-	-0-	N/A	N/A	N/A	N/A
=This Year's Highest School Rate after a Successful Election	1.3158	1.4829	N/A	N/A	N/A	N/A

#### SCHEDULE A: UNENCUMBERED FUND BALANCES

The following estimated balances will be left in the taxing unit's property tax accounts at the end of the current fiscal year. These balances are not encumbered by a corresponding debt obligation.

Maintenance & Operation of General Fund	-0-	-0-	-0-	-0-	-0-	-0-
---	-----	-----	-----	-----	-----	-----

#### SCHEDULE C: EXPECTED REVENUE FROM ADDITIONAL SALES TAX

	N/A	N/A	N/A	N/A	135,000	N/A
--	-----	-----	-----	-----	---------	-----



# Muleshoe's Area Spring Business Directory



### Topped Sopaipilla

Sopaipilla topped with taco meat, cheese, lettuce, tomatoes and quacamole.

**\$4.95**

### Leal's Restaurant

1606 W. American Blvd. 272-3294

- Just One Bite Rat Bars
- Ford's Flea & Tick Dip
- Diazanone Crystals - Kill ticks in yard
- Amdro Fire Ant Killer
- Golden Malrin Fly Bait

"Horseshoeing Behind The Store"

Every Monday - Randy Hudson

### Muleshoe Feed Barn

311 W. American Blvd. 272-5626

*Lasting Impressions*  
Flowers, Plants  
& Gifts for all  
occasions!

Helen Hunter, owner  
272-4287 516 S. 1st

Welcome Back  
Students &  
Teachers!!



### Decorator's Floral & Gifts

616 S. 1st  
Muleshoe 272-4340



We would like to  
welcome everyone  
to Pizza Hut

Vicki, Sylvia, Betty,  
Yvette, Anna, Minnie,  
Leah, Tim, Marty,  
Martin, Balty, Frankie,  
Michael



1412 W. American Blvd.  
272-4213

**- Farmers -**

It's Time To Start Looking Over  
Your Harvest Equipment For  
Tires, Repairs or Inspection.

Bring Your Vehicles  
In & Beat The  
Rush  
Of Harvest!

**James Crane Tire Co.**  
322 N. 1st Muleshoe 272-4594

*Sheree's Attic*  
Merle Norman Cosmetics

NEW ARRIVALS  
FOR FALL &  
BACK TO SCHOOL

Ladies' Sportswear and Separates,  
Purses, Lots of New Sterling Silver  
Jewelry

Ladies' Sports Wear,  
Separates, Children's Groups,  
Toddlers, 4-6X, 7-14 Tickle Me

**SALE**  
up to 50% OFF

ASK ABOUT OUR LAYAWAY  
Owner Sheree Hunt  
1519 W. American Blvd. 272-3459

**We Sell, Set & Service**

**Irrigation Engines**  
300 and 460

See Loyce or William  
today at.....

**MULESHOE MOTOR CO., INC.**  
1225 W. AMERICAN BLVD., MULESHOE  
1-800-432-7617 272-4251

WD-40  
**\$1.99**

Check On  
Other  
Daily  
Specials  
In Store!

"Quality & Service At The Right Price!"

**Higginbotham-Bartlett**  
215 Main Muleshoe 272-3351

**Oil Filter Change  
and Lubing**

Total 4 Wheel  
Alignment Available **\$19.95**

**HI-TEK  
AUTOMOTIVE**  
215 N. 1st 272-3480

We will service **ALL**  
Your Ace Pumps,  
and help you with all your spraying  
parts needs.

Visit us at 1532 W. American Blvd. or  
call 272-4613

**Scoggin Ag. Center**

**Hawaiian Pizza**  
A tropical taste sensation  
- Topped with ham and pineapple.

Small **\$7.97** Medium **\$11.57**  
Large **\$14.48**

Delivery Available  
11 a.m.-1:30 p.m. & after 5:00 p.m.

1412 W. American Blvd.  
272-4213

We pick up and repair all types  
of irrigation motors, service & repair  
late model GM's, Fords & Dodge  
automobiles & trucks.

**SPECIALIZING IN GENERAL AUTOMOTIVE  
REPAIR WORK OF ALL KINDS.**

**Muleshoe Truck  
& Auto**  
301 N. 1st 272-5111

**SUPERIOR MED-EQUIP**  
Suppliers of Medical &  
Home Care Equipment

We wish to serve you. If you have equipment from  
other dealers and want local service, we can transfer  
you easily.

**YOU HAVE THE RIGHT TO CHOOSE YOUR SUPPLIER.**

Manager - Sherry Wisian  
623 W. 2nd St. Muleshoe, TX 79347  
806-272-3757 or 272-3600  
800-765-1160 or 800-283-8980

Kleenex  
Bathroom Tissue **79¢**

**Pepcid**  
SALE-SALE-SALE  
18 ct. tablets  
**\$6.09**

Ivory Soap  
4 bars **89¢**

**DAMRON DRUG**  
308 Main 272-4210

**Henry Insurance  
Agency,**  
"Serving Your Insurance  
Needs Since 1964"

Kenneth R. Henry, Certified Insurance  
Counselor  
Real Estate Broker  
Mike McCallum - Agent



# Magby and Beall united in marriage

Kourtnee Kanae Magby and Chad Britton Beall were united in marriage, June 3, at the Richland Hills Baptist Church in Muleshoe, with the Rev. Brad Gathright officiating.

Kourtnee is the daughter of Mr. and Mrs. Rich Magby, of Muleshoe and Chad is the son of Barbara Beall of Muleshoe.

The bride, escorted by her father, wore a traditional white satin gown with a V-neckline, set in renaissance sleeves and a fitted basque waistline that dropped into a full satin skirt. The gown was heavily decorated with handbeaded pearl appliques surrounding a large satin bow. The dress had a cathedral length train, decorated with six satin bows that graduated in size as they extended down the train. Throughout the train were intricate hand beaded cutouts.

The bride's bouquet, which was designed and created by her mother, consisted of a dozen silk burgundy roses, teal lilies, and white calalillies, intertwined with English ivy, pearls and baby's breath. Her bouquet was carried atop a white Bible that was given to her at birth by her great-grandmother, Helen Hall. She also carried a handkerchief belonging to her grandmother, Barbara Hall.

They carried pennies of one another's birth years. As something old the bride carried a Bible given to her at birth by her great-grandmother. Something new was pearl earrings, a gift from the groom. Something borrowed was a diamond pendant belonging to her mother and something blue was the traditional blue garter.

The groom's attire consisted of a black tuxedo jacket with tails, a white shirt and burgundy bow tie and cummerbund. He also wore black Wranglers and ropers. The groom's boutonniere consisted of a burgundy silk rose accented with teal leaves and baby's breath.

Kayla Magby served her sister as maid of honor. Marianne Toombs, friend of the bride and Dawnda Magby, cousin of the bride, served as bridesmaids. They wore floor length teal dresses with pearl swags across their backs and carried nosegays in chosen colors of the bride.

Mike Beall, brother of the groom, served as best man. J.B. Beall and Ric Peterson served as groomsmen. They were attired in black tuxedo jackets with black Wranglers, white shirts and teal bow ties and cummerbunds.

Ushers and candlelighters were Chase Garlington a friend



Mr. and Mrs. Chad Beall

of the bride and Greg James, cousin of the groom.

Flower girl was Kristen Magby, sister of the bride. She wore a burgundy floor length dress with white pearls swagged across the back. She carried a white basket with burgundy and teal love knots.

Kole Magby, brother of the bride, served as ringbearer. He wore a black tuxedo jacket and black Wranglers with a burgundy bow tie and cummerbund. He carried a heartshaped pillow that was used in the bride's parents wedding.

Lanelle Skaggs served as organist, and Ric and Staci Peterson sang "The Rose".

The bride is a 1995 graduate of Muleshoe High School. The groom is a 1992 graduate of McAlister High in McAlister, OK. He is currently employed by Magby Ditching in Muleshoe.

After a wedding trip to Ruidoso, NM, the couple will make their home in Lazbudie.

The grooms' mother, Barbara Beall, hosted a rehearsal supper at the Muleshoe Fire Department. An assortment of fingerfood, sandwiches, vegetable dippers, and fresh fruits were served to the wedding party.

# ATPE News examines censorship in the classroom

Attempts to censor literature, education materials and programs are on the increase, according to the People for the American Way. In the May/June issue of *ATPE News*, the official publication of the Association of Texas Professional Educators, the issue of censorship in the classroom is explored, including why some voices are more apt to be silenced than others.

Educators often find themselves in the middle of controversy if they inadvertently choose supplemental materials that might be deemed offensive. ATPE staff attorney Pam Parker Knight examines the level of educators' academic freedom and discusses ways in which educators can protect themselves before a censorship incident goes too far.

The highs and lows of the 74th Legislature also are discussed in this issue, as well as how Senate Bill 1 materialized and the effect it will have on public education in Texas.

The biannual listing of school district jobs throughout the state is also included in this issue. The job listing is updated monthly and is available to members and non-members at no charge.

ATPE is the largest independent, nonunion educators association in the state and nation. Its 70,000-membership consists mostly of classroom teachers but also includes administrators, paraprofessionals, retired educators, college students and public members.

*ATPE News* is published four times a year by ATPE. Subscriptions are available by writing to the Editor, *ATPE News*, 505 E. Huntland Drive, Suite 250, Austin, TX 78752-3992.

## Punctual

Continued from page 4

justment problems, Dr. Fournier advised parents to talk to their child's physician. There may be some other issues that are affecting the child that are interfering and follow up care may be needed.

"The more children are on a schedule, the better off they are," she said. "Setting a regular routine before school starts helps get their bodies attuned to the schedule."

Every youngster has a repertoire of stalling tactics to push bedtime: A drink of water, one more story, an interesting television show. Be firm on weekdays and flexible on the weekends, said Dr. Fournier. Thanks to the miracle of video recorders, a child's favorite show can be taped and viewed at another time.

### Practice makes punctual

Two to three days before the first day of school, have a practice morning. "Doing this a few days before gives you time to work out whatever kinks appear in the system. It's better to work out the snags ahead of time, rather than on the first day of school," Dr. Fournier advises.

The dry run should also include time schedules.

Practice sessions should also include setting aside a special place to organize books and papers the night before.

Parents and children need to renegotiate routines each year. What worked last year may be obsolete this year. "For example, routines change as a child gets older. Older students or teenagers may want to spend more time in front of a mirror for such activities as fixing their hair.

### Visiting the school

Dr. Fournier also advises parents to arrange a visit to the school before the start of the school year. This is especially beneficial for kindergartners or first graders heading to school for the first time, or when children are transferring to new schools. Children need to learn where the classrooms, play yards and cafeteria are and — especially important — know where the lavatories and water fountains are located.

### Building a team with the teacher

Dr. Fournier, a former

school teacher, encourages parents to meet early in the year with the child's teacher. "Parents usually meet the teacher on the first day of school, but that's an extremely hectic day," she said. Instead, parents should arrange to meet or telephone the teacher during a conference period, when the teacher is free for phone calls or a visit.

"This first meeting may be intimidating at first for some parents, but remember teachers teach because they really enjoy children. They want your child to have a good education.

## ROOSEVELT COUNTY FAIR

Portales, NM  
Continues thru Saturday  
Dance to the

## DESEO BAND

Saturday Night 10:00 p.m. - Armory



Enjoy dancing to Spanish, Tejano, Spanish Noreña, Country, Lation Rok, Pop Rock and Some Blues

Have A Nice Day



# AUTO PARTS

### THE ROAD TO THE CHAMPIONSHIP SALE



**NAPA NYLON RACING CAPS**  
Choose black, white, purple or jade.

3<sup>99</sup>

EACH



**NAPA PACE CAR T-SHIRT**  
100 percent cotton. Choose large or X-large.

6<sup>99</sup>

**ARMOR ALL**  
CAR WASH (16 oz.) #25160  
CAR CLEANER (20 oz.) #30200  
PROTECTANT (8 oz.) #10080

2<sup>49</sup>

**SLICK 50 ENGINE FORMULA**  
w/FREE ONE LUBE SPRAY (1 qt.) #41306032

15<sup>99</sup>

**VALVOLINE® ALL CLIMATE MOTOR OIL** 10W/30 • 10W/40  
Sole Price: ..... \$1.19  
Less Mail-in Rebate: ..... :30  
FINAL COST AFTER REBATE: 89¢/qt.

89¢

### EVERYDAY LOW PRICES!

**NAPA MILEAGE PLUS™ VOLTAGE REGULATORS** #VRJ25M, VR505M

9<sup>49</sup>

TO 21.99

**NAPA REMANUFACTURED MASTER CYLINDERS** #57-2352, 57-2344

17<sup>99</sup>

TO 79.99 w/EACH.

**NAPA UNITED BRAKE ROTORS** #85571, 86203

16<sup>99</sup>

TO 353.99

Offers good through September 30, 1995, at these participating NAPA AUTO PARTS stores:

**MULESHOE**  
C & H Equipment/NAPA AUTO PARTS  
West Highway 84  
272-5514  
**WE KEEP AMERICA RUNNING.**

Subscribe today!!  
Call The Muleshoe Journal 272-4536



# Minding Your Business

By Don Taylor

I'm convinced that it is much harder to sell a business than start one. I've visited with several business owners who were ready to sell and they tell me it is a difficult and frustrating process.

"No one wants to give me close to what my business is worth," one owner complained. Another asked, "Isn't my sweat equity worth anything?" This owner told me he spent nearly 30 years building his business and wanted to fund his retirement from it. Still another said, "I'd sell in a minute if I could get enough to pay off my debts."

On the surface these owners' desires appear reasonable enough. Building a successful small business is hard work and does take time. It is natural to think recovering what you've put into your business is a reasonable request.

However, cashing out isn't easy. Many owners tell me it is difficult to find a qualified buyer who agrees with their value of the business.

### Selling problems

The No. 1 problem in selling a business is that owners base their asking price on factors that have little bearing on the true value of the business. There is no reliable blue book for businesses as there is for automobiles. Therefore, owners usually set a price based on what they want for retirement, the amount of many they've

put into the business or enough to payoff debt and give them a nest egg. These methods of pricing a business usually result in an unrealistic value compared to the actual worth of the business.

There are several other factors that cause difficulties in selling a business. A common problem for both buyers and sellers is confusing the book value of assets with their market value. Book value reflects only the original purchase price of the assets minus allowable depreciation. This is a balance sheet number that may not be close to the current market value of the assets if sold.

Other problems include assuming that an offer made for your business five years ago is still a valid price indicator today. Some owners have trouble selling because they are getting bad advice from friends, relatives and other unqualified experts.

One owner named her price because a friend told her she had sold her business for that amount. Still another picked a price based on buying all new assets to start over. Unfortunately, it is unlikely that any of these methods will establish a fair and marketable price.

### A fair price

There are several ways to arrive at a fair selling price. Some are very sophisticated; others are simple. The best

methods consider elements of value.

Most businesses have two basic elements of value. The first is the market value of all assets owned by the business. The second is the earning power of the business.

For the sake of simplicity, let's assume a rental truck business consists of 10 trucks each worth \$10,000 in the blue book. The owner rents the building, lot and furniture used to operate the business. Therefore, the total asset value of the business is \$100,000 (ten bucks worth \$10,000 each).

You measure the second element by analyzing how you use the assets (trucks) to produce income. In this example, the owner earns \$50,000 net income each year by renting the trucks out to delivery companies, individuals and government agencies. Obviously, the business has some value above the value of the assets. You must consider both value elements to arrive at a fair price.

If you would like a free copy of our Business Value Guide send a self-addressed, stamped envelope to: Value Guide, P. O. Box 67, Amarillo, TX 79105. Good luck in cashing out.



### Pep summer graduation

Pep students patiently await their diplomas at their recent summer graduation at the Pep High School.

### Copy deadline

The deadline for news items to be submitted to the Muleshoe and Bailey County Journals is at noon on the preceding Tuesday for the Thursday edition and at noon on the preceding Friday for the Sunday edition. (Copy deadlines for society news: wedding, anniversary, engagement and birthday announcements are at 5 p.m. on Monday and Wednesday for the Thursday and Sunday editions.)

## "MATUA"

### NOW AVAILABLE FOR FALL PLANTING

- Excellent Palatability At All Stages
- High Yielding
- Rapid Recovery From Grazing

### CALL YOUR AREA DEALER FOR DETAILS

Butch Cox	Scoggin Ag Center	Tom Hefner
965-2495	272-4613	965-2105

## Clinton introduces new direct student loan program

The problem with college loans is the hassle in getting them and worrying about paying them back. Well, there's something new that can help. It's the Direct Student Loan Program created by President Clinton and the Congress. It's great for undergraduates and graduates, too.

Borrowing for college is easier and faster with the Direct Student Loan Program. It comes directly through your college — no more confusion about where to go for a loan. And you may be able to get your money in just 72 hours.

The new Direct Student Loan Program makes loans more affordable by providing lower fees and interest rates — for all types of college loans.

Another advantage is that the repayment plan is matched to your ability to pay.

That means you can start a business, do community service, or take other jobs with-

out being burdened with a big, fixed debt early in your career.

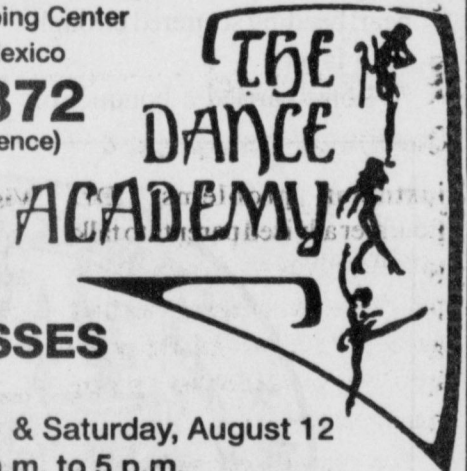
The borrower may consolidate multiple loans into a plan that better fits his budget.

More than 1,800 post-secondary schools—some in the local area—have signed up to participate in the new direct student loan program. The report indicated that the responses of the 104 first-year schools and their students have been overwhelmingly positive. The trade publication, *Education Daily*, published a recent survey noting that a "vast majority" of these schools rate the direct student loan program "exceptional."

## Dancing Makes YOU Special



Jeffie Sturman Hamar - Directress  
Hilltop Plaza Shopping Center  
Clovis, New Mexico  
**762-7372**  
762-0186 (residence)



### FALL CLASSES

Registration:  
Friday, August 11 & Saturday, August 12  
10 a.m. to 5 p.m.

- |   |   |
|---|---|
| <ul style="list-style-type: none"> <li>★ BEGINNING PRESCHOOL &amp; KINDERGARTEN</li> <li>Combination Classes Only</li> <li>Ballet • Tap • Tumbling</li> <li>★ TAP</li> <li>All Ages &amp; Levels</li> </ul> | <ul style="list-style-type: none"> <li>★ BALLET</li> <li>All Ages &amp; Levels. Pointe Classes available for advanced students.</li> <li>★ JAZZ</li> <li>3rd Grade to Adult</li> <li>Beginner through Advanced</li> </ul> |
|---|---|

#### MEMBER OF:

Texas Assoc. Teachers of Dancing,  
Professional Dance Teachers Assoc.,  
International Dance-Exercise Assoc.,  
National Dance Educator's Assoc.

Dancewear will be sold Friday, August 11 ONLY!

## EMMETT NEAL COULDN'T DECIDE IF IT WAS WORTH THE EFFORT TO BUY A TICKET. (IT ENDED UP BEING WORTH \$10.8 MILLION.)

AFTER A LONG DAY AT WORK, EMMETT NEAL WAS SO TIRED, ALL HE COULD DO WAS PLOP DOWN ON THE COUCH. "HMMM," HE THOUGHT TO HIMSELF, "SHOULD I GET UP AND GET MY LOTTO TEXAS TICKET? OR JUST STAY RIGHT HERE?" \$10.8 MILLION LATER, IT LOOKS LIKE HE MADE THE RIGHT CHOICE. NOW EMMETT'S ONE OF OVER 150 MILLIONAIRES AND STILL COUNTING.



HIS SYSTEM:  
MIXED "HOT"  
NUMBERS WITH  
"COLD" NUMBERS  
AND THEN  
PLAYED THAT  
COMBINATION  
EVERY WEEK.

WINNING NUMBERS:  
23 25 30 37 46 48

FIRST THING  
HE DID: TOLD  
HIS DAD  
TO RETIRE.

PRIZE: \$10.8 MILLION

## SAFETY

(and comfort)  
**FIRST!**

A	B	C	D
10-13	8-16	8-13	5-18
E	EE	EEE	
5-14	7-13	7-13	

2231

Steel toes, but with no loss of traditional Red Wing comfort, fit and good looks. Has a soft cushion insole, long-wearing SuperSole.

**The Fair Store**  
120 Main 272-3500  
Muleshoe, Texas

**RED WING SHOES**  
MADE IN U.S.A.



# Lorre Johnson, Darren Haseloff exchange candlelight vows

Lorre Deann Johnson and Darren Wade Haseloff were united in marriage on Saturday, June 3, 1995, at the First Baptist Church in Lazbuddie. Bro. J.L. Bass, of Brownfield, grandfather of the bride, officiated over the ceremony.

Lorre is the daughter of Mr. and Mrs. Errol Johnson of Lazbuddie. Darren is the son of Mr. and Mrs. Richard Haseloff of Farwell.

The bride, given in marriage by her father, wore a full length white satin gown complemented by a V-neck in front and back and featuring puff sleeves of organza and lace gathered above the elbow with a satin bow on each sleeve and lace extending to a point at the elbow.

The bodice and sleeves were embellished with beading and sequins highlighting the V-waistline in the front and a large satin bow at the back waistline.

The skirt, which included a flowing train, was of white satin with lace and organza insets accented with sequins, beading, and silk bows and completed with a scalloped lace edging.

To complete her attire, the bride chose a floral wreath adorned with pearl beading and sequins. The attached veil was of multi-layered waist-length tulle with finished edging and pearl beading scattered through each layer.

Lorre carried a bouquet of

white Casa Blanca lilies, white tulips, bridal white roses, stephanotis, and tiny white alstromeria lilies in a background of ferns and English ivy arranged with bridal tulle, pearls, and lace.

For something old, the bride had an old penny in her shoe. Something new was her dress. Something borrowed was her necklace from the mother and something blue was her garter.

The groom wore a black tuxedo with tails complemented by a white vest trimmed with black.

Rachel Cotton, roommate of the bride, of Miami, OK, was the maid of honor. Best man was Derrick Haseloff, brother of the groom, of Farwell.

Bridesmaids were Kaci Stephens of Farwell, Tina Dull of Waco, and Kim Giles of Bossier City, LA. Groomsman were Greg Actkinson of Lubbock, Chris Aycok of Waco, and Duane Haseloff, brother of the groom, of Farwell. Hannah Burnett of Lazbuddie was the flower girl and Will Lewis, cousin of the groom, of Preston, OK, was the ringbearer.

Candlelighters were Megan Johnson, cousin of the bride, of Farwell and Zane Drager, cousin of the groom, of Texico, NM.

Guests were registered by Heather Hensley, cousin of the bride, of Broken Arrow, OK.

Ushers were Brad Johnson, brother of the bride, of Arlington, Shannon Cook of Pampa and Marcus Sullivan of Plainview.

Organ and piano music was provided by Marcella Jennings of Lazbuddie and Mia Jennings of Dallas. Vocal selections were sung by Brad Johnson, brother of the bride, and Christi Harper of Kingwood, TX.

Following the wedding, a reception was served in the fellowship hall. Serving at the bride's table were Amanda Johnson, cousin of the bride, of Farwell, and Tina Sasser of Hitchcock, TX. Dana Scoggin, sister of the groom, of Midland, served at the groom's table and Angie Sullivan of Plainview served the punch and coffee.

Special out-of-town guests were Mr. and Mrs. J.L. Bass of Brownfield and Mr. and Mrs. Clarence Johnson of Farwell, grandparents of the groom. Also attending were Mr. Adolph Haseloff of Farwell, and Mr. and Mrs. Ohland Morton of Eufala, OK, grandparents of the groom.

The groom's parents hosted a rehearsal dinner on Friday night catered by Winkler's Meat Market, at the Bailey County Coliseum in Muleshoe.



Mr. and Mrs. Darren Haseloff

The bride was honored by a brunch given in the home of Mrs. Doyle Johnson of Farwell on Saturday morning. Hostesses for the brunch were Susan Johnson, Roberta Johnson, aunts of the bride, and Eva Dean Stephens, all of Farwell.

The couple now reside in Lubbock, TX after a honeymoon trip to Pagosa Springs, CO.

## Tops News

Tops Chapter No. 34 met at the Muleshoe Church of Christ, Thursday, August 3, at 6 p.m.

Leader Laverne James called the meeting to order. The Tops pledge was recited and the fellowship song was sung. Mrs. James led the group in prayer.

Betty Jo Davis, weight recorder, called the roll with 17 members answering with the amount they had lost or gained.

Minutes of the previous meeting were read by Aurora Mata, secretary, and were approved as read. Ruth Clements, treasurer, gave the treasurer's report.

Josie Flowers and Charlotte Campbell were named best losers for the week. Runners up, are Rose Sain, first runner-up and Yolanda Rose and Alene Bryant, second runners-up.

Monthly best losers were Laverne James, best loser, and Missy Royal, second runner-up.

The meeting was adjourned with the singing of the good night song.




**300 W. Commercial Portales, NM**

**SOS Outlet & Royal Plastics**

Largest inventory of PVC Pipe Fittings & Accessories in Eastern New Mexico

CALL FOR QUOTES **505-356-8720**



**AUGUST 14-19**  
**FAIR PROGRAM**

**Monday, August 14 - Entry Day**  
 All exhibits in place by 6:00 p.m. • Junior Livestock entries in place by 2:00 p.m.  
 Home Arts Bldg. - not open for viewing at any time on Monday. Entries 8:30 a.m. - 6:00 p.m.  
 Mayor's Cookie Jar Entries 8:30 a.m. - 6:00 p.m. - Home Arts Bldg.  
 Flower Show Entries from 8:30 a.m. - 6:00 p.m. - Home Arts Bldg.  
 Rabbits entered - 8:30 a.m. - 6:00 p.m.  
 Weigh and Classify Steers - 2:00 - 6:00 p.m. • Weigh and Classify Swine - 5:00 - 7:00 p.m.  
 Wool Lead Class - 6:00 p.m. - Indoor Arena  
 Super Bull Riding - 8:00 p.m. - Arena  
 Western Music Entertainment - Square Dance Platform - 8:00 - 10:00 p.m.

**Tuesday, August 15 - Merchants Day**  
 Exhibits open for viewing 10:00 a.m. until 10:00 p.m., except Home Arts Bldg. • Open at noon.  
 Weigh and Classify Lambs - 8:00 a.m.  
 Open Junior Horse Show - 10:00 a.m. - Rodeo Arena  
 Junior Market Swine Show - 5:00 p.m. - Swine Show Arena  
 Team Roping - 5:00 p.m. - Rodeo Arena  
 Police Dog Demonstration - 5:30 p.m. - Grass Arena  
 Hispanic Heritage Night - 6:00 p.m. - Square Dance Platform  
 Dog Obedience Demonstration - 7:00 p.m. - Grass Show Arena  
 Talent Show - 7:30 p.m. - Indoor Arena

**Wednesday, August 16 - 4-H & FFA Day**  
 Exhibits open for viewing 10:00 a.m. until 10:00 p.m.  
 Breeding Sheep Show - 8:30 a.m. - North Show Arena  
 Rabbits released 12:00 noon  
 Poultry and Broiler entries taken 3:00 - 6:00 p.m.  
 Junior Market Lamb Show - 5:00 p.m. - Grass Show Arena  
 Hispanic Heritage Night - 6:00 p.m. - Square Dance Platform  
 Little Buckaroo Rodeo - 6:00 p.m. - Rodeo Arena


**Thursday, August 17 - Parents Day**  
 Exhibits open for viewing 10:00 a.m. until 10:00 p.m.  
 Curry County Youth Horse Show - Halter - 9:00 a.m. - Grass Show Arena  
 Junior Dairy Show - 10:00 a.m. - Grass Show Arena  
 Junior Breeding Cattle Show - 5:00 p.m. - Grass Show Arena

**Friday, August 18 - Agriculture Day**  
 Exhibits open for viewing 10:00 a.m. until 10:00 p.m.  
 Junior Livestock Sale meeting - 8:00 a.m. - Indoor Arena - All Exhibitors attend  
 Curry County Youth Performance Horse Show - 9:00 a.m. - Rodeo Arena  
 Horsehoe Pitching Qualifying - 3:30 p.m. - West of Old House  
 Buyers' Reception - 6:00 p.m. - Grass Show Arena  
 4-H Home Economics and General Sweepstakes Sale - 7:00 p.m. - Grass Show Arena  
 Junior Livestock Sale - 7:00 p.m. - Grass Show Arena  
 Open Poultry Entries taken - noon-10:00 p.m. - Poultry Barn  
 Deane Timberlake - Live Music - 8:00-12:00 p.m. - Square Dance Platform  
 Elvis Impersonator - 6:30 p.m. - Square Dance Platform

**Saturday, August 19 - Pioneer Day**  
 Exhibits open for viewing 10:00 a.m. until 10:00 p.m.  
 Dairy Goat Show - 8:00 a.m. - Indoor Arena  
 Open Poultry Judged - 9:00 a.m. - Poultry Barn  
 Old Timers Celebration - 10:00 a.m. - Old House  
 CQRA Barrel Race - 9:00 a.m. - 9:00 p.m. - Arena  
 Old Timers Dinner - 12:00 noon - Old House  
 Horsehoe Pitching Championship - 2:00 p.m. - west of Old House  
 Dummy Roping - 2:00 p.m. - Grass Show Arena  
 Cabrito (Jr. Market Goat Show) - 3:00 p.m. - Swine Barn  
 Police Dog Demonstration - 6:00 p.m. - Grass Arena  
 Cattle Cutting - 5:30 - 6:30 p.m. - Rodeo Arena  
 Elvis Impersonator - 6:30 p.m. - Square Dance Platform  
 Antique Tractor Pull - 7:00 p.m. - Tractor Pull area  
 Team Penning - 7:00 p.m. - Rodeo Arena  
 Live Western Music - by River Wind - 8:00 - 12:00 p.m. - Square Dance Floor  
 Carnival - Afternoon and Evening all days

FOR MORE INFORMATION CALL (505) 762-8827, OR (505) 769-2556 AFTER THE FAIR OPENS

The Muleshoe and Bailey County Journals publish birthday announcements free of charge for babies one year old or for people ages 90 and over. A photo may also be included with the announcement. Complete guidelines and forms are available at the Muleshoe Journal office.



## Muleshoe Cattle Market

Saturday, Aug. 5, 1995

539 head of cattle were sold.

The market was \$1 to \$2 higher of all classes.

REPRESENTATIVE SALES

Seller, City	# Type	Wt.	CWT or PH
<b>HEIFER CALVES</b>			
Cochran County Farms, Morton	2 Blk. Hfrs.	410 lbs.	at \$69.00
Cochran County Farms, Morton	3 Blk Hfrs.	385 lbs.	at \$68.00
Grant & Grant, Muleshoe	3 Mixed Hfrs.	548 lbs.	at \$64.00
J.R. Rodriguez, Bula	2 Blk. Hfrs.	463 lbs.	at \$63.50
Chance Waggoner, Bledsoe	1 Blk. Hfr.	635 lbs.	at \$60.50
<b>STEER CALVES</b>			
Cochran County Farms, Morton	5 Blk. Bulls	488 lbs.	at \$66.00
Cochran County Farms, Morton	5 Mixed Bulls	455 lbs.	at \$68.00
Cochran County Farms, Morton	6 Mixed Bulls	335 lbs.	at \$83.50
Patsy Lindley, Muleshoe	5 Hol. Strs.	410 lbs.	at \$52.50
Loyd Williams, Muleshoe	Red Str.	630 lbs.	at \$64.00
Bryon West, Brownfield	3 Red Bulls	397 lbs.	at \$77.50
Bryon West, Brownfield	Red Bull	330 lbs.	at \$80.50
<b>FEEDER STEERS &amp; HEIFERS</b>			
John Bradford, Hereford	3 Mixed Strs.	955 lbs.	at \$58.00
Laverne Burnett, Causey, NM	Blk. Bull	505 lbs.	at \$65.50
Tommy Cleavinger, Levelland	2 Mixed Bulls	505 lbs.	at \$68.00
R.C. Douglas, Lubbock	7 Wf. Strs.	524 lbs.	at \$66.50
Maria Diaz, Hereford	Bwf. Bull	555 lbs.	at \$64.00
O.J. Glasscock, Earth	Wf. Str.	665 lbs.	at \$63.00
Peter Klassen, Muleshoe	5 Hol. Strs.	794 lbs.	at \$48.75
Joe Lovell, Amarillo	3 Red Hfrs.	730 lbs.	at \$58.50
<b>PACKER COWS &amp; BULLS</b>			
Roy Bussy, Littlefield	1 Pair Char. Cow & Calf		\$560.00
Roy Bussy, Littlefield	1 Par Blk. Cow & Calf		\$560.00
Laverne Burnett, Causey, NM	Mf. Cow	1135 lbs.	at \$40.00
Brian Boehning, Earth	Hol. Cow	1615 lbs.	at \$41.50
Brian Boehning, Earth	Hol. Cow	1465 lbs.	at \$40.50
R.C. Douglas, Lubbock	Wf. Bull	1700 lbs.	at \$46.50
David Greener, Morton	Red Bull	1960 lbs.	at \$48.25
David Greener, Morton	2 Blk. Cows	1090 lbs.	at \$38.50
Joe Lovell, Amarillo	Red Cow	1315 lbs.	at \$39.50
<b>COWS &amp; BULLS</b>			
Robert Meinecke, Olton	Blk. Cow Bred		\$550.00
Primrose Cattle, Farwell	2 Char. Pairs		\$610.00
Partin & Pelton, Plains	Hol. Cow	1305 lbs.	at \$39.00
Loyd Williams, Muleshoe	Red Bull	2130 lbs.	at \$47.50

The Muleshoe Cattle Market is brought to you each week by Muleshoe Livestock Auction, located east of Muleshoe on U.S. 84.

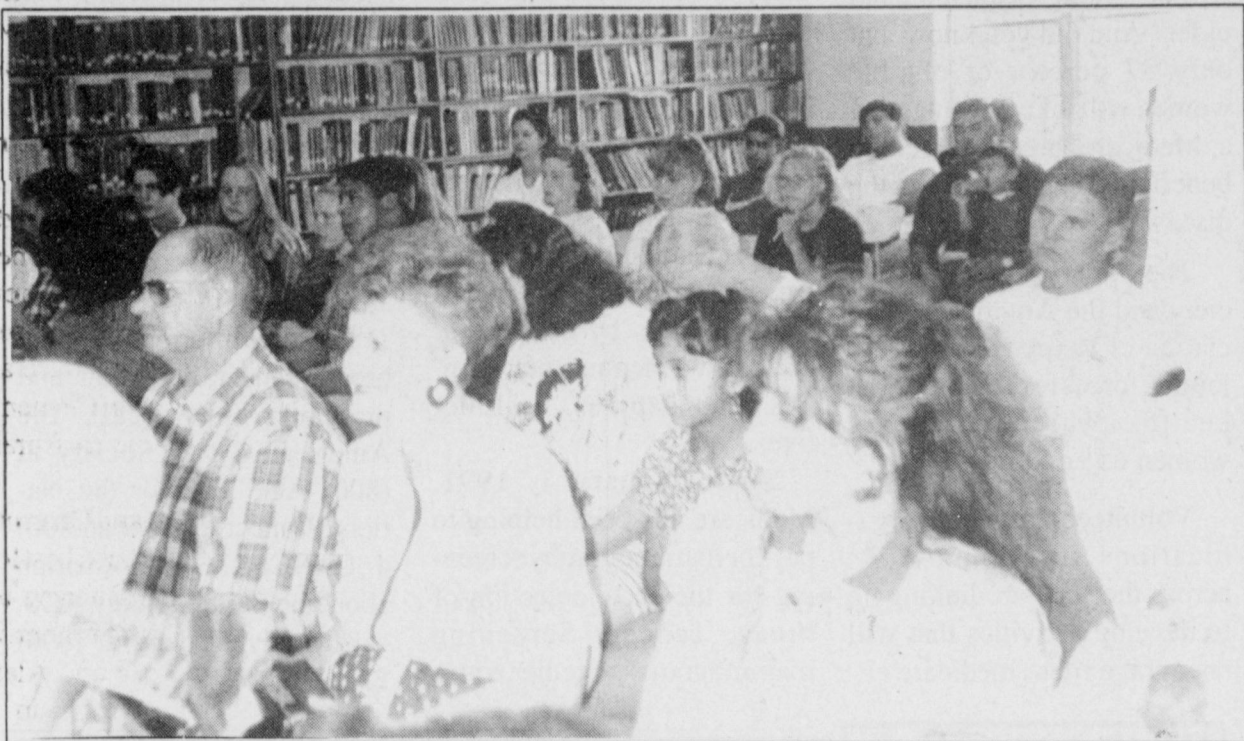
Muleshoe Livestock conducts sales every Saturday, beginning with hogs, sheep and goats at 10 a.m. and cattle following at approximately 12 noon.

FOR INFORMATION ON SALES OR TO CONSIGN CATTLE, CALL (806) 272-4201.



# Journal Classifieds

Call 272-4536 Deadlines: For Thursday, Noon Tuesday; for Sunday, Noon Friday Call 272-4536



**Parents and students watch summer graduation**  
The students and parents watch students receive their diplomas at the recent summer graduation at Pep High School.

### Help Wanted

Farwell Convalescent center is looking for a certified Medication Aide for days, evenings, split shifts. Contact Sherrie (806) 481-9027. Good salary, benefits and retirement. 17s-tfc

Town and Country Food Stores are now taking applications for Full or parttime help. Pick up applications at either store in Muleshoe. 30s-8tc

Full - time help. Must be able to work nights, weekends and holidays. Apply in person 2 to 5 p.m. at Churchs or Dairy Queen in Muleshoe. No phone calls please. 31s-4tc

### Help Wanted!

A motivated, honest, success-oriented individual to sell new and used vehicles. Prior experience not required. Sales experience a plus. Apply in person at Muleshoe Motor Co., Inc. 1225 W. American Blvd. Muleshoe, Texas. 31s-tfc

Insurance Agency Support Staff Needed. Established full service insurance agency has openings for life insurance and property/casualty sales people. Life producers earn up to 90% of total policy commissions, P&C producers earn higher commissions - renewals included. No experience? Will provide training and licensing if you are motivated and aggressive. If you have the desire, we have a wide range of products from several national insurance companies. Send brief resume to Agency Support Staff, Box 563, Muleshoe, Texas or call (806) 272-4582 for an interview appointment 32s-4tc

**New 3 bedroom,  
2 bath for  
Under \$200/ month!  
Full 5 year  
structural warranty  
Low Down Payment!  
Expert financing at  
low interest rates!**

**Portales  
Mobile Homes  
1-800-867-5639  
DL336**

**NEEDED  
at Muleshoe Area Home  
Health Agency  
Full time  
Certified and/or Experience  
Home Health Aide.  
Call 272-3346  
Must have dependable car  
and home phone  
E.O.E.**

**NEEDED at Muleshoe  
Area Home Health  
Agency:  
Registered Nurse  
Call 272-3346  
E.O.E.**

### Wanted

Wanted a job putting up fences. Call 505-359-2225, 505-359-0811, or 505-675-2396, ask for Simon Lopez. 32s-3tpd

### Real Estate

**FOR SALE  
LENAU ADDITION  
305 Easr Fir Avenue, large  
3 bedroom, 1 3/4 baths, auto**

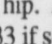
**Having A  
Garage Sale?  
Advertise It In  
The Muleshoe  
Journal  
Call  
272-4536**

lawn sprinkler, single garage, 2 car carport and storage. Call day or night 272-3373. D8-11s-tfc

House for sale - 2 bedroom, 1 bath, garage. New carpet, new paint, new roof, 2 refrigerated window A/C. Large lot. Storage building, cement cellar, trailer hook-up in back. 272-5098. 31s-4tc

Spacious country home, 3-4-2, 3750 Sq. Ft. living area, large basement, located on pavement, 1 1/2 miles west of Muleshoe, lots of extras. Call for appointment, 272-4344, after 6 p.m. 31t-4tc

### Lost

Lost 2 Steers. Strayed from TL Gleason Farm at Lazbuddie, 1 black, 1 smoky. Branded  on left hip. Please call 806-894-6533 if seen or found. 32s-4tc

### Farm For Sale

For Sale - 70.2 Acres with 6" well, west of Muleshoe on Hwy 60-84. Has small one bedroom house. Call 272-4385. 26t-13tpd

**FARM FOR SALE - Castro  
County 160 acres irrigated -  
one well row watered - gravel  
road on south and east. To settle  
estate. Lazbuddie area. Bill  
York Realtors, 806-795-5591.  
39t-17tc**

**FARM FOR SALE - Castro/  
Parmer County 320 acres irri-  
gated - 110 tower electric sprin-  
kler - some underground pipe -**

**Classy Paws  
Dog Grooming  
1916 W. Ave. C  
Call 272-3012  
For Appointment  
Monday - Friday  
21s-tfc**

**Marie's Reflexology  
Relief for  
Sinus  
Back Problems  
Headache  
Stress  
Diabetes  
For Appointment  
Call  
272-4867  
32s-4tpd**

**NEEDED  
at Muleshoe Area Home  
Health Agency  
LVN  
Prefer experienc in Home  
Health  
Call 272-3346  
E.O.E.**

gravel road on three sides. Two wells - metal barn - small dwelling. To settle estate. Lazbuddie area. Bill York Realtors , 806-795-5591. 39t-17tc

### Automobile

1991 Ford F350 XLT Lariat, 1 ton dualie crew cab, diesel, 5 speed. Good rubber, Ready to go! Only \$13,895. (505) 359-1775, Portales.

1991 Chevy S-10 pickup, extended cab, V-6, low miles. Very nice! \$8,995. (505) 359-0947, Portales.

1989 Ford F150 XLT super cab. Air, tilt, cruise, white new tires. \$6,495. (505) 359-1775, Portales.

Great School Car! 1989 Nissa Centra, 2 door, automatic, air. \$3,495. (505) 359-0947, Portales.

### General

I will have a garage sale for

**MUST SELL! 1990 Lincoln Continental**  
Leather interior, AM/FM cassette, tilt wheel, cruise control, electronic dash, power windows, power locks, power mirrors, power seats, air conditioning and much, much. No old contract to assume, no back payments to make, just need responsible party to make reasonable monthly payments.  
Call Ismael in the credit dept.  
Friona Motors, 806-247-2701

**MUST SELL! 1994 Ford Explorer**  
Automatic, push button, 4-wheel drive, power windows, power locks, poer mirrors, air conditioning, AM/FM cassette, tilt, cruise, rear defroster and wiper, aluminum wheels, and much more. No old contract to assume, no back payments to make, just need responsible party to make reasonable monthly payments.  
Contact Joey in the credit dept.  
Friona Motors, 806-247-2701

**MUST SELL! 1992 Buick Park Avenue**  
Ultra, supercharged, automatic transmission, dual zone air conditioning, dual power seats, tilt steering wheel, cruise control, power windows, power door locks, power dual mirrors, AM/FM stereo cassette and much more. No old contract to assume, no back payments to make, just need responsible party to make reasonable monthly payments.  
Contact Ali Roder in the Credit Dept.,  
Friona Motors, 806-247-2701

**MUST SELL! 1994 Lincoln Town Car**  
V-8, automatic with overdrive, dual air bags, dual 6-way power seats, dual power heated mirrors, power windows, power locks, remote keyless entry, illuminated entry, leather upholstery, electronic instrumentation, electronic AM/FM cassette with premium sound, rear air suspension system, tilt, cruise, auto headlamps, speed sensitive steering, aluminum wheels, rear defrost, dual exhaust and much more! No old contract to assume, no back payments to make, just need responsible party to make reasonable monthly payments.  
Contact Joey in the credit dept.  
Friona Motors, 806-247-2701

## KENW-TV

Public Television

Enjoy Our "Quiet Drive"  
August 11th - 20th

In August, KENW-TV will conduct its first "Quiet Membership Drive" — quiet but not silent, that is. Like past membership drives, we will ask for your support for public television (because we need it now more than ever). But unlike past drives, you will hardly know we are there! We are going to try to make our pledge messages simple, pleasant, and brief. We hope it will be a "Quiet Drive" you enjoy!

**The Oak Ridge Boys & Emmylou  
Harris in Concert**

Country music means many things to many people — it depends on who you're talking to. When the Oak Ridge Boys and special guest Emmylou Harris teamed up in **The Oak Ridge Boys and Emmylou Harris in Concert**, they decided to keep everybody happy, running the gamut from basic country to Southern Gospel and from folk to bluegrass music.

Through performances of "No Matter how High," "American Made," "Beyond Those Years," and, of course, "Elvira," the Oak Ridge Boys and the Mighty Oaks Band remind the audience why their brand of close harmony singing has made them a mainstay of American country music.

Emmylou and The Nash Ramblers perform "Roses in the Snow," "One of These Days," "Amarillo," and more.

**The Oak Ridge Boys and Emmylou Harris in Concert** will be broadcast Saturday, August 12th at 9:00 p.m.

**The Great Love Songs**

In **The Gréat Love Songs** the singers may provide the sorcery, but the songs are the stars. The beautiful melodies and lyrics of songs like "I'll See You in My Dreams" and "When I Fall in Love" gave a voice to the nation's deepest feelings and continue to be "our song" for millions of couples across the country.

Delicate nuances of meaning in each song are evoked by the warm and intimate treatment they get from five popular and enduring vocalists — Jack Jones, Maureen McGovern, John Raitt, Dionne Warwick, and Margaret Whiting. The elegant musical mastery of Skitch Henderson and the New York Pops Orchestra glide from one beautiful composition to the next.

Among the ballads featured in **The Great Love Songs** are "Till There Was You" from *The Music Man*, "I've Never Been in Love Before" from *Guys and Dolls*, and "On the Street Where You Live" from *My Fair Lady*.

**The Great Love Songs** airs Monday, August 14th at 9:00 p.m. It repeats Friday, August 18th at 11:30 p.m.

Channel 3 Television from  
Eastern New Mexico University, Portales, New Mexico

**E&J AGRI** Sudan, Texas  
and  
**TRINIDAD / BENHAM CORP.** Denver, Colorado

**- Working Together For West Texas Growers -  
Over 100 years combined experience in the  
pea and bean industry.**

**CONTRACTING  
BLACKKEYED PEAS & PINTO BEANS**

**PLANTING SEED AVAILABLE -**

We will deliver if possible  
Payment available upon delivery or day of sale  
Contact James Brown at E&J Agri  
on hwy. 84 West, Sudan, Texas  
(806) 227-2194 - (806) 227-2276

Acres Contract, Not Pounds. Act of God Clause

**James Brown of E&J Agri,  
Buyer for Trinidad/Benham  
E&J Agri - Receiving Station for Trinidad / Benham  
Ad paid for by Trinidad/Benham Corp., Denver, Colorado**

**Subscribe  
to the  
Muleshoe  
Journal  
TODAY!!!**

**MULESHOE:  
by carrier**

**\$15<sup>00</sup> year**

**by mail**

**\$16<sup>75</sup> year**

**OUT OF TOWN:**

**\$18<sup>50</sup> year**

**COLLEGE:**

**\$13<sup>50</sup> year**

**Call today!**

**272-4536**

**Nieman Realty**  
116 E. Ave. C George Nieman, Broker 272-5285 or 272-5286

**HIGH SCHOOL**  
NICE 3-2-1 carport Home, Cent. A&H, built-ins, basement, ceiling fans, water softener, covered patio w/gas grill, fenced yd., & one bdrm. apartment. PRICE REDUCED TO \$30,000!!!! HS-12

**IN CONTRACT**  
3-2-1 Brick, Cent. A&H, built-ins, workshop-storage, fenced yd. \$30's!!!! HS-4

**HIGHLAND AREA**  
VERY NICE 3-2-2 Brick, Cent. A&H, built-ins, fenced yd., spklr. sys., MUCH MORE!!! \$60's!!! HL-1

Nice 4-2-1 Brick, Cent. A&H, built-ins, fans, encl. patio, man. spklr sys., gas grill, st. bldg., fenced yd. \$60's!! HL-5

JUST LISTED 3-2-2 home, Cent. A&H, built-ins, fenced yd., corner lot. \$30's!!! HL-2

NICE 3-2-2 Brick, Cent. A&H, Built-ins, FP, 1960' lv. area plus sunroom, fenced yd., auto. spklr., MUCH MORE!!! \$60's. HL-3

**LENAU ADDITION**  
Nice 2-1-1 Home, new interior paint, new carpet, fenced yd., storage bldg. MORE!!! & 20's!! IL-4

VERY NICE 3-2-1 Home, Heat Pump, storm windows & doors, extra insulation, nice carpet, spklr. sys. & MORE!!! \$30's!!!! IL-2

**RICHLAND HILLS** — VERY NICE 3-2-2 Brick Home on corner lot, built-ins, Cent. A&H, 2,100' + lv. area, auto spklr., fenced yd., stor-wkshp., MUCH MORE!! \$70's RH-1

**RURAL HOMES**  
2-2-2 Carport Mobile Home on hwy. close to town, 1.99 acres w/barn and corrals!! \$30's!! R-1

JUST LISTED- Very Nice 4-2 Home on 40 acre tract close to town, heat pump, built-in stove, nice carpet & tile. 6" irrig. well with high pressure lines, stock shed & pens, tractor & equipment. \$70's!!!!

**COUNTRY CLUB**  
JUST LISTED - VERY NICE 3-2 Brick, Cent. Heat, built-ins, FP, Clg. fans, cov. patio, fenced yd., cellar, stor. bldg., More!! \$60's CC4

2-1-1 carport home, wall furnace heat, nice carpet, storm shelter, storage bldg., fenced yd. MORE!!!! \$20's.

Just Listed - Nice 3-1 Home, Cent. Heat, dishwasher, nice carpet, fenced yd. \$20's!!!!!! CC-2

**ASK ABOUT OUR COMMERCIAL LISTINGS!!!**

COMMERCIAL-200'+ Hwy. 84 frontage-Former Richland Hills Texaco, excellent business location. PRICED TO SELL!!!!!!



## Obituaries

### Myke Murrah

FORT COLLINS, CO. — Private memorial services for Myke Murrah, formerly of Muleshoe, will be held Saturday, August 12 in Fort Collins. Memorial services are also being planned for Muleshoe.

Myke died Sunday, August 6, at his home in Fort Collins, CO, after a year long illness.

He graduated from Muleshoe High School in 1963 and attended WTSU and Texas Tech University. He farmed in Muleshoe and later moved to Fort Collins, where he was in the construction business. He married Maryan Schotanus, August 19, 1989.

Survivors include his wife, Maryan; his son, Sandown Murrah of Fort Collins; his mother, Ada Hogan Murrah of Muleshoe; two sisters, Judy Roming of Muleshoe and Tana Murrah of Fresno, CA; and his brother, Gary Murrah of Abilene. He was preceded in death by his father, Gordon Murrah.

He is also survived by numerous relatives and friends and the Rod McWhirt family of Fort Collins.

Memorial gifts may be made to Hospice of Larimer County, care of Northern Colorado Crematory, 700 8th Street, Greeley, CO 80631.

### Teresa Campbell

LUBBOCK — Funeral services for Teresa Campbell, 91,

of Lubbock, were held Monday in the First United Methodist Church of Lubbock with Dr. Tim Sledge, of Katy, TX, a nephew of the deceased and the Rev. James G. Nunn, associate pastor of the church, officiating.

Burial followed in the Fairview Cemetery, Wellington, TX, under the direction of the Rix Funeral Home of Lubbock.

Mrs. Campbell died early Friday at her residence.

A native of Durant, OK, she moved with her family to Wellington in 1909 and graduated from Wellington High School. She married W. Tom Campbell August, 1922. He died in 1971. They had lived in Lubbock since 1951.

She was a member of the First United Methodist Church, an honorary life member of the official board, the 50/50 Sunday school class, the Lubbock Women's Club, and the Garden Club.

Survivors include one daughter, Tommie Ann Hatch, Lubbock; one son, Tim (Buck) Campbell of Muleshoe; six grandchildren, Michael Hatch, Alan Hatch, Leslie F. Hatch, Stacey C. Franklin, Kristi C. Fuqua and Scott Campbell and 12 great-grandchildren.

Pallbearers included Michael Hatch of Austin, Alan Hatch, Leslie F. Hatch and Scott Campbell, all of Lub-

bock, Kirk Franklin of Dallas and Michael Fuqua of Atlanta, GA.

The family suggest memorials be made to the T.V. Ministry of the First Methodist Church of Lubbock.

### Gladys R. Darsey

MULESHOE — Funeral services for Gladys R. Darsey, 90, of Muleshoe, were held Monday, at the Ellis Funeral Home Chapel with Dr. Herbert Bergstrom of the Sandia Baptist Church of Clovis, officiating.

Burial followed in the Muleshoe Memorial Park Cemetery under the direction of the Ellis Funeral Home of Muleshoe.

Mrs. Darsey died August 4 at Clovis, NM, after an illness.

She was born May 31, 1905 in Stephenville, TX. She married Earl N. Darsey, June 30, 1934 in Matador, TX. He died in 1964.

Mrs. Darsey had been a resident of Muleshoe since 1940, moving here from Matador. She was a homemaker and a member of the First United Methodist Church. She was preceded in death by a daughter, Sandra, in 1966.

Survivors include one daughter, Barbara Miller of Clovis, NM; five grandchildren and three great-grandchildren.

The family suggest memorials to your favorite charity.

## American Cancer Society and AARP join forces promote breast screening

Did you know that more than half of the new breast cancer cases diagnosed this year will be among women 65 and older? And did you know that only 37 percent of eligible women will take advantage of a Medicare breast screening benefit that can help detect the disease?

The American Cancer Society and the American Association of Retired Persons are joining forces to promote breast health awareness among women 65 and older.

Volunteers from both organizations in communities across the state are linking up to develop activities that will encourage more medicare eli-

gible women to take advantage of the mammography screening benefit.

"The American Cancer Society and the American Association of Retired Persons have two of the largest volunteer networks in Texas", said May Nowotny, RN, PhD, chair of the Texas Breast Cancer Detection Campaign. "Together we can help decrease breast cancer deaths by 30 percent and help women and their families lead happier, healthier lives."

Since January 1, 1991, Medicare has been helping to pay for mammography screening for the early detection of breast cancer. Screening mammograms, together with a

physician's consultation on the results, are covered by Medicare once every two years for women aged 65 and over. For other women covered by Medicare, test coverage varies by age and risk category.

Because of screening tools like mammography, breast cancer is being detected earlier and breast cancer death rates are dropping.

For more information about breast cancer detection and mammography, call the American Cancer Society at (800) ACS-2345 or the National Cancer Institute at (800) 4-CANCER. For information about the Bailey County ACS, call Marilyn Young at (806) 272-4365.

### Birthday policy

The Muleshoe and Bailey County Journals publish birthday announcements free of charge for babies one year old or for people ages 90 and over. A photo may also be included with the announcement. Complete guidelines and forms are available at the Muleshoe Journal office.

## BACK TO SCHOOL SALE

New Fall & Winter Merchandise

ALSO-  
Further Reductions On  
Summer  
Merchandise



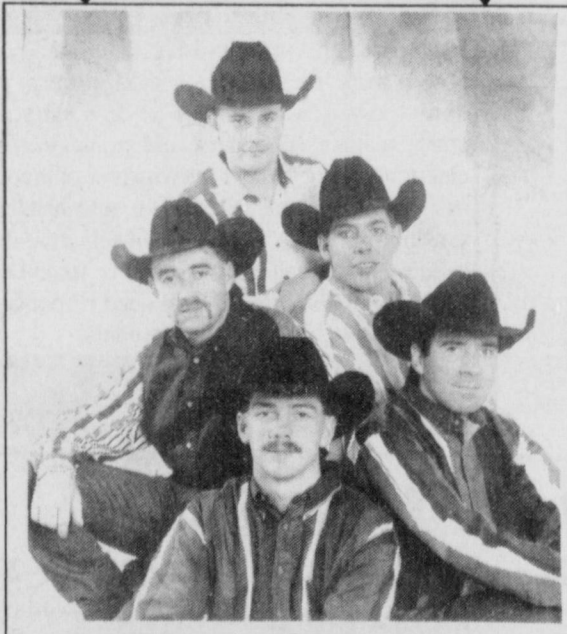
Prices Good Sat., Aug. 12-Wed., Aug. 16

**Tiffin II** 603 E. Main,  
Earth 257-2223

Classifieds Sell! Call the Journal office Today! 272-4536

## Roosevelt County Fair

AUGUST 9-12



## DANCE

Friday & Saturday Nights,  
August 11 & 12

To The Delk Brothers Band

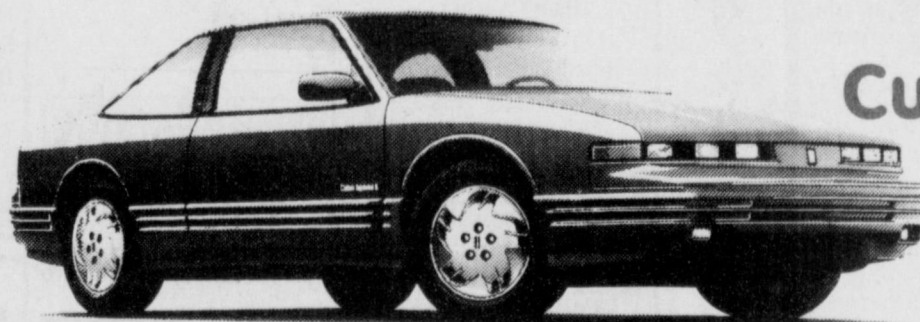
Roosevelt County Fair Grounds  
Portales, NM 9:00 p.m.

To receive your paper  
Call us today!  
at the Muleshoe Journal  
272-4536



The Best  
Selection Of GM  
Cars & Trucks  
In The Area

All 1995 Models In Stock Must Be Sacrificed!



1995 Oldsmobile  
Cutlass Supreme SL

Only  
\$239 Per Month

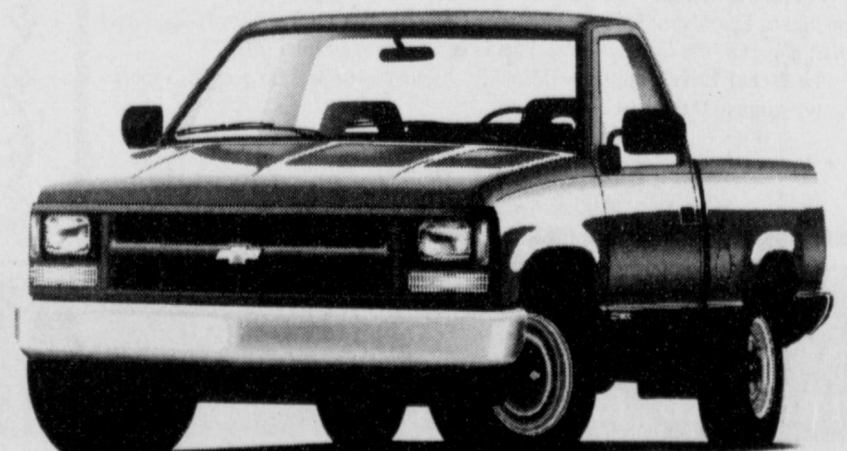
Loaded With:  
• 3.1 Liter SFI V6 • Automatic Transmission • Power Windows/Locks/Mirrors  
• Air Conditioning • Tilt Steering Wheel • Cruise Control • Am/Fm Cassette  
• PASS-Key Security System • Dual Air Bags • Anti-Lock Brakes

36 month GMAC Smart Buy @ 6.8% APR with \$1700 down-cash or trade equity. Subject to lender's approval, 15c per mile in excess of 36,000 miles and expenses beyond normal wear and tear. Stock # O6977. See dealer for other end of term options.\*

GMAC SMARTBUY For 36 Months  
Then Walk Away!

1995 CHEVROLET C2500  
Heavy-Duty 3/4-Ton

Only  
\$279 Per Month



72 months @ 9.5% APR with \$1678 down-cash or trade equity.  
Subject to lender's approval. Stock # CT2395.\*

Loaded With:  
• 5.7 Liter EFI V8 • 5-Speed Transmission With Overdrive & Deep Low  
• Engine Oil Cooling System • Air Conditioning • Tilt Steering Wheel  
• Cruise Control • Electronic Am/Fm Cassette with Seek/Scan/Clock  
• Air Bag & Anti-Lock Brakes Are Standard Equipment

DRASTIC PRICE REDUCTIONS ON ALL 95 MODELS IN STOCK!

HURRY IN AND SAVE!

STREBECK

GM AUTOPLEX

CHEVROLET

PONTIAC

GMC TRUCK

GE

Oldsmobile

BUICK

AURORA

Oldsmobile

BUICK

Clovis Highway • Portales, NM

The very best prices and service anywhere... We personally guarantee it!

(505) 356-3501 (505) 763-3501



## Muleshoe Supplies

Continued from page 5

- council for \$2.50)  
**SIXTH GRADE ART**  
 1 - bottle glue (Elmer's or school white)  
 2 - sets of map colors (Crayola brand)  
 1 - 9X12 inch drawing tablet  
**SEVENTH GRADE**  
 4 - red pencils  
 8 - folders with pockets and brads (no black folders)  
 1 - sheet white poster board  
**EIGHTH GRADE**  
 10 - folders with pockets and brads
- 2 - folders with pockets and brads,  
 1 - highlighter  
**LIFE MANAGEMENT SKILLS 7-8**  
 1 - folder with pockets and brads  
**SPANISH CLASS 6,7,8**  
 1 - folder with pockets and brads  
**SPEECH 7-8**  
 1 - folder with pockets and brads
- 1 - Elmer's glue  
 2 - sets of map colors to be kept in the art room  
 2 - erasers  
 1 - ruler  
 2 - brushes (1 watercolor small and 1 large 1/2 inch)  
**READING - 8TH GRADE**

### Three Way policy

Continued from page 3

stamp or AFDC case number for all children you are applying for, then the application must have the children's names, the names of all household members, the amount of income each person received last month and where it came from, the signature of an adult household member, and the adult's social security number or the word "NONE" if the adult does not have a social security number.

**VERIFICATION**  
 Your eligibility may be checked at any time during the school year. School officials may ask you to send papers showing that your children should get free or reduced-price meals.

#### FAIR HEARING

You may talk to school officials if you do not agree with the school's decision on your application or the results of verification. You may also ask for a fair hearing by calling or writing Mr. Robert Kindler, Jr., P.O. Box 79, Maple, TX. 79344 (806) 927-5560.

**CHANGES**  
 If your children get free or reduced-price meals because of your income, you must tell the school if your household size decreases or your income increases by more than \$50 per month or \$600 per year. If your child gets meals because you get food stamps or AFDC, you must tell the school when you are not getting AFDC or food stamps for them. You

plete an application.

#### HANDICAPPED

Meal substitutions at no additional cost for children who meet the definition of "handicapped" will be served, provided a physician has submitted a statement attesting the fact and prescribing a substitute.

**REAPPLICATION**  
 In the operation of the child feeding programs, no child will be discriminated against because of race, sex, color, national origin, age, or handicap. If you believe you have been discriminated against, write immediately to the Secretary of Agriculture.

may then fill out another application giving income information.

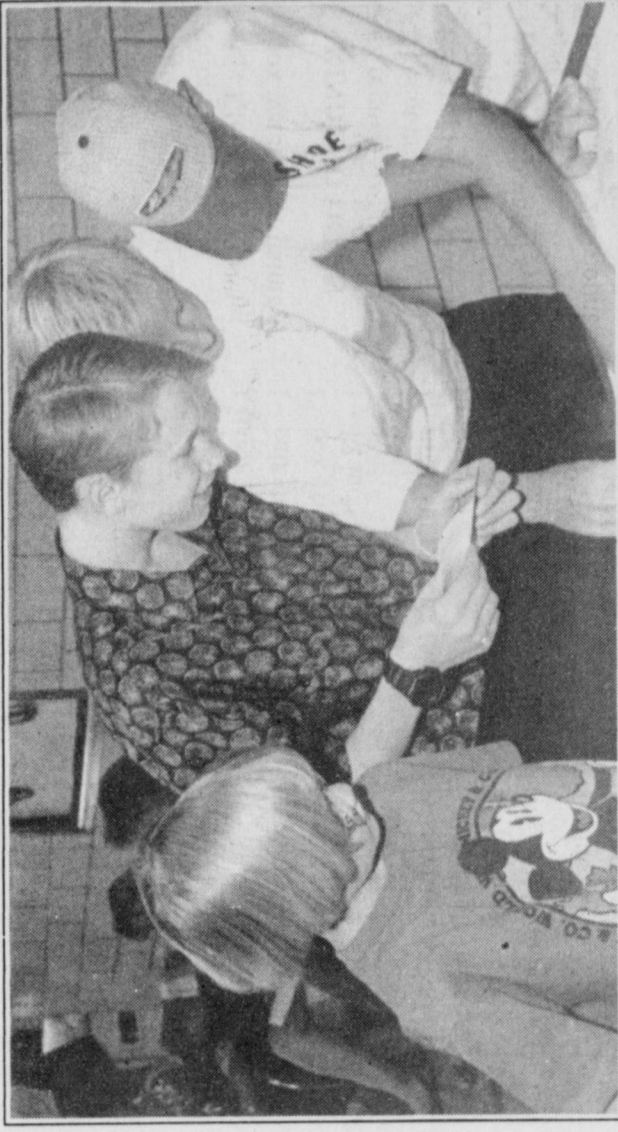
#### CONFIDENTIALITY

School officials use the information on the application only to decide if your children should get free or reduced-price meals.

You may apply for meals any time during the school year. If you are not eligible now but have a change in status, like a decrease in household income, an increase in household size, become unemployed or get food stamps or AFDC for your children, you may then com-

# Back-to-School

## Muleshoe students can expect sweeping changes this year!



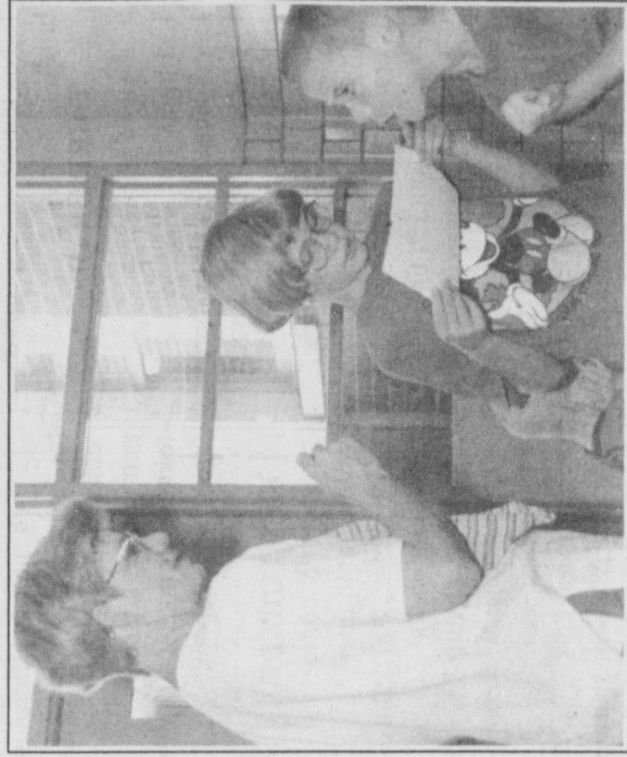
tested in writing. Students in MISD saw what is characterized by Superintendent Bill Moore as "tremendous gains". Moore said, "The first goal of this district, as set by the Board of Trustees, is to have our students performing at the state's 'exemplary' level by 1999 (90% of all groups passing TAAS). We took a giant step toward that goal last year".

The target for 1994-95 was to meet or exceed the state performance at each grade level. Moore continued, "One of the things that was determine last year was how much we would have to gain each year to be at the 90% passing standard by 1999. At every grade level, in every test, and with nearly every group of students, we exceeded the required improvement — in some cases by a very wide margin. I am very proud of the hard work by the students and teachers that these test results demonstrate. We look forward to 1995-96 as a year of even greater improvement."

This year the TAAS Exit test will be given to tenth graders on October 24-26. Additional testing dates for the Exit test are provided in the spring and summer for students who have not mastered all parts of the test. Students in grades 3-8 will take TAAS the week of April 29.

#### Campuses and Personnel

**Muleshoe High School**  
 272-7571  
 Al Bishop, Principal  
 David Jenkins, Asst. Principal



### WJHS registration

Parents and students prepare for the upcoming school year. (left) Joann Harrington is helping her daughter Terrell Harrington prepare for the change to a new school as brother Wes Harrington looks on. Ryan Hodge, James Barrett and Leonard Joyner explain some of the new rules that sixth grader Terrell Harrington will encounter at WJHS.

**Linda Marr, Counselor**  
**Janie Hughes, Secretary**  
**Beatrice Padilla, Secretary**  
**Watson Junior High School**  
 272-7521  
 Shelia Joyner, Principal  
 Ronnie Jones, Asst. Principal  
 Brian Arnold, Counselor  
 Pam Thomason, Secretary  
 Rea Morris, Secretary  
**DeShazo Elementary**  
 272-7546  
 Barbara Finney, Principal  
 Connie Kennore, Counselor  
 Liz Tipps, Nurse  
 Mary Janice Brantley, Sec.

**Brenda Bishop, Secretary**  
**Board of Education**  
 Cindy Purdy, President  
 Sam Harlan, Vice President  
 Curtis Shelburne, Secretary  
 Members: Max King, Edwin Cox, Frank Saldana, Arnold Price,  
**Administration**  
 Bill Moore, Superintendent  
 Adrian Meador, Asst. Superintendent  
 Jo Mayhugh, Business Manager

**New Teachers**  
**DeShazo Elementary**  
 Terri Bohler - Third Grade,  
 Connie Alanis - Spanish and Reading, Brenda Capps - Special Education, Jan Via - Special Education.

**Dillman Elementary**  
 Cynthia Cargile - Kindergarten, Cindi Pace - Nurse,  
 Donna Wiley - Kindergarten.  
**Muleshoe High School**  
 Sharry Jenkins - English,  
 Carolyn Johnson - Home Economics, Dan Stevenson - Spanish, Matt Owens - Special Education, Hellen Adrian - Art,  
 Brad Hill - Athletics and Social Studies, Joe Baker - Special Education.

**Dillman Elementary**  
 Cynthia Cargile - Kindergarten, Cindi Pace - Nurse,  
 Donna Wiley - Kindergarten.  
**Muleshoe High School**  
 Sharry Jenkins - English,  
 Carolyn Johnson - Home Economics, Dan Stevenson - Spanish, Matt Owens - Special Education, Hellen Adrian - Art,  
 Brad Hill - Athletics and Social Studies, Joe Baker - Special Education.

**Watson Junior High**  
 Shelly Turnbow - Athletics and LMS, Bruce Lacefield - Athletics.  
**District - Wide**  
 Sam Whalin - Facilities Coordinator, Don McElroy - Technology Coordinator.

**Watson Junior High**  
 Shelly Turnbow - Athletics and LMS, Bruce Lacefield - Athletics.  
**District - Wide**  
 Sam Whalin - Facilities Coordinator, Don McElroy - Technology Coordinator.

**Watson Junior High**  
 Shelly Turnbow - Athletics and LMS, Bruce Lacefield - Athletics.  
**District - Wide**  
 Sam Whalin - Facilities Coordinator, Don McElroy - Technology Coordinator.

# Gear Up For School

# 40% OFF ALL SCHOOL SUPPLIES

- Notebook Paper
- Folders
- Spiral Note Book
- Crayons
- Colored Pencils
- Lunch Boxes
- Glue
- Erasers
- Pencils
- Pens
- Note Books
- Back Packs
- Combination Locks
- Tennis Shoes
- Sacks
- Pencil Pouch
- Rulers
- Markers
- Big Chief Tablets
- & More!!!

Shop Early and Save!

## Ben Franklin

Our Variety Shows

2104 W. American Blvd. 272-3855

Muleshoe

OPEN MONDAY-SATURDAY 9 AM - 6 PM,  
 SUNDAY 12 NOON - 5 PM

Phillips  
*Master of Music*

118 Main CLOVIS, NM 763-3457



12 months no interest rental program risk free or transfer pain.

Low down and low monthly payment.

New & Used Instruments

- Yamaha
- Bundy
- Gemienhardt

We'll Make Your Musical Dreams A Reality!







# Pep School director expects another exciting year

Previously, Chambers was counselor at Morton High School. Her husband is a Farm Bureau agent, and they have three adult children.

Also joining the faculty this year is Patsy McCain, who will be teaching ESL/GED/Math. She received her certification and BS at Texas Tech and also attended Southwestern Oklahoma State University.

She previously taught math at Littlefield. Her husband is a retired auto mechanics teacher, and they have three adult sons.

In his second year at Pep is Jerry Knighton, who teaches social studies. He is a retired major in the USAF who is part of the Troops to Teachers program.

He received his certification and BA from the University of Texas at El Paso and

taught English in El Paso. Her husband is principal of Morton ISD. They have two daughters.

Gandy, a graduate of the original Pep School, received her certification and RN at South Plains College and Wayland. She previously worked as a registered nurse at Cochran Memorial Hospital.

She lives in Morton. Her husband is employed with Bailey County Electric. They have three children who attend school at Whiteface.

In their fourth year at Pep are Marilyn Huber (English and speech), Roy Morrison (science), Mike Goad (math), Dorothy West (food production), Joyce Hamlin (homemaking), Keith McCain (building trades) and Ricardo Valenzuela (auto mechanics and small engines).

Huber received her BA and MED at the University of Colorado. She has been chairman of the English department at Santa Fe High School and a tutor at Eastern New Mexico University.

She lives in Pep and Portales, where her husband is a retired journalist who still writes a column for several papers. One of her daughters writes romance novels under the name Marilyn Tracy, and the other illustrates children's books.

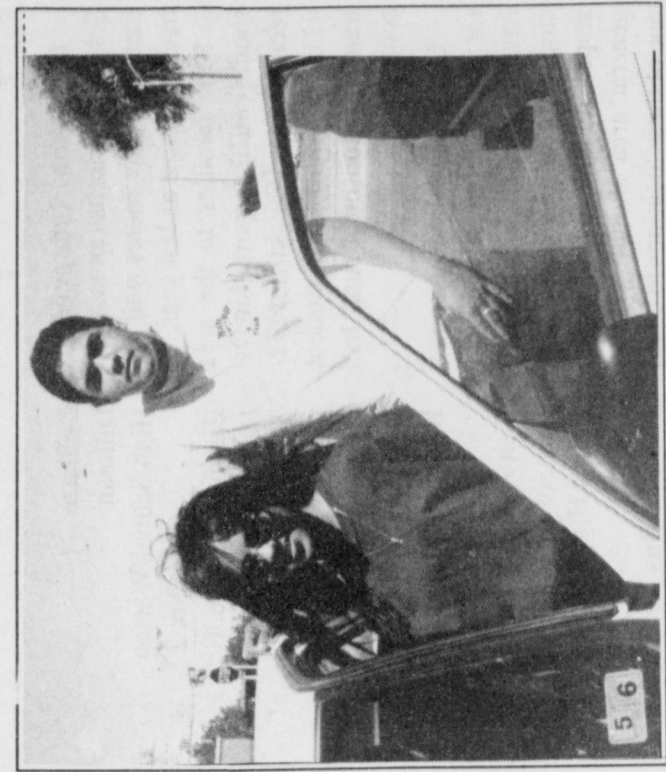
Morrison received his BS at Panhandle State University. He previously worked in research. His wife is an elementary principal at Smyer, where they live

Continued on page 7

# Three Way

## List of things for school

- KINDERGARTEN**
- 1 - Elmer's glue
  - 1 - metal scissors
  - 1 - box Kleenex
  - 1 - set markers - washable only
  - 1 - box Crayons
  - 10 - pencils
  - 1 - back pack
  - 1 - squeeze bottle for water
  - 1 - box zip lock bags
  - 1 - kinder-mat and towel
  - 1 - empty cereal box
  - Extra clothes with name on them
- FIRST GRADE**
- 1 - box Kleenex
  - 1 - box Crayons
  - 1 - bottle Elmer's glue
  - 1 - roll of paper towels
  - 1 - 3-ring notebook
  - Index dividers for notebook
  - 10 or more pencils
  - 2 - red checking pencils
  - 1 - set markers
  - 1 - pair scissors
  - 1 - box zip lock bags
  - 1 - school box
  - 1 - eraser
- SECOND GRADE**
- 1 - set map pencils
  - 1 - set markers
  - 10 - pencils
  - 1 - wide ruled notebook
  - paper-no spirals
  - 1 - school box-cigar box size
  - 1 - small school glue
  - 1 - scissors - sharp point
  - 1 - box Gladlock gallon freezer bags
  - 1 - box Kleenex
  - 1 - 3x5 card file box
  - 1 - set 3x5 alphabetical dividers
  - 2 - packages 3x5 white index cards.
- THIRD GRADE**
- 1 - package notebook paper
  - 10 - #2 pencils
  - 2 - red pencils
  - 1 - Elmer's glue
  - 1 - box crayons
  - 1 - box watercolors
  - 1 - spiral notebook
  - 3 - pocket folders
- KINDERGARTEN**
- 1 - box Kleenex
  - 1 - ruler (metric and regular)
  - 1 - eraser
- FOURTH GRADE**
- 2 - spiral notebooks-wide ruled
  - 1 - package notebook paper-wide ruled
  - 2 - #2 pencils
  - 2 - red pencils
  - 1 - box map colors
  - 1 - pair scissors
  - 1 - bottle glue
  - 1 - box Kleenex
  - 1 - 3x5 file box
  - 1 - package alphabet dividers
  - 1 - box zip lock bags
  - 10 - #2 pencils
  - 1 - package notebook paper
  - 1 - eight color water color markers
- SIXTH GRADE**
- 1 - box Crayons
  - 1 - box map pencils
  - 1 - ruler (metric & regular)
  - 2 - boxes Kleenex
  - 1 - red ink pen
  - 10 - #2 pencils
  - 1 - package notebook paper
  - 1 - eight color water color markers



**Three Way drivers education**  
Three Way students Diana Salamamca, 16, (left) and Gerald Perez, 15, took drivers education this summer from Royce McAdams (not pictured). Their training vehicle was a 1990 Plymouth Acclaim.

# Three Way explains school meal policy

The ThreeWay ISD will serve meals each school day. Children may buy lunches for 90¢ and breakfast for 45¢. Children may also get meals free or at a reduced price.

If you now receive food stamps or AFDC for your children, you must complete an application and return it to the school. An application that is not complete cannot be approved.

**HOW TO APPLY**

If you now receive food stamps or AFDC for your children, you must have the child's name, the child's "personal use" income, or AFDC case number for each child and the signature of an adult household member.

If you are applying for a foster child, the application must have the child's name, the children's names, a food stamp and an adult signature.

If you do not list a food stamp or AFDC for your child, you are applying for a meal.

**Continued on page 8**

**Back To School Special**

**Any Lunch Buy One, Get One Plate Of The Same 1/2 PRICE**  
*Bring In This Coupon*

**T.J.'s Donuts**  
328 S. Main  
Muleshoe

**COUPON**

**Back To School Savings**

**5 1/2%**

**Meat Neatbooks**  
3 or 5 subject.  
Wide or college ruled.  
Reg. \$1.99 **2/\$3**

**White School Glue**  
Stock up for school and home  
4 oz. bottle  
Reg. 79¢ **2/\$1**

**Fiskars For Kids**  
5" scissors in blunt or pointed  
Reg. 89¢ or 99¢ **2/\$1**

**Mead Fashion Portfolios**  
Exciting designs.  
Reg. 89¢ or 99¢ **2/\$1**

**Mead Assst. Report Covers**  
Reg. 35¢ ea. **8/96¢**  
Reg. 49¢ Ea. .... **5/\$1**

**Bic Stic Pens**  
Rebate Limited by MFR. Stipulations  
\$1.00 Pkg.  
-\$1.00 Mail-in Rebate  
**2/\$1** After Rebate

**2 Subject Notebook**  
6"x9.5", Reg. \$2.99 **\$1.99**  
1 Subject 8.5"x11" .... **\$2.99**  
3 Subject 8.5"x11" .... **\$3.99**

**ALLO**  
1401 W.  
American Blvd.  
Muleshoe  
272-5525

**Back To School SPECIALS**

**20% Off**

**Apparel**

**Summer Merchandise**

**50% - 75% Off**

**Playmates**  
1508 N. Prince  
Clovis, NM  
505-762-0575



Pep students enjoyed a cookout this summer. The atmosphere is relaxed and pleasant at the alternative high school.

Schooler said the school will receive a \$40,000 grant from the CH Foundation, which is funded by the Mallet Ranch near Sundown. The funds will be used to increase computerized instruction and School to Work transition efforts.

Schooler announced that two new faculty members are joining the staff at Pep. Nancy Chambers, who achieved her certification, BS and MED at Texas Tech University, will be the new school counselor.



# MISD city routes will vary, but rural routes remain unchanged

Muleshoe Independent School District has announced that rural bus routes will remain the same as last year.

New families to the area should call Transportation Director Richard Hawkins at 272-4710 to arrange for student transportation on a rural bus route.

City of Muleshoe bus routes for the 1995-96 school year have changed slightly and will stop only at the designated stops. Students living in the general area should walk to one of these locations to board the bus.

Students will ride the same bus to and from school each day. Students and parents are reminded that it is a privilege to ride the bus.

Questions about regulations and policy may be answered by Assistant Superintendent Adrian Meador at 272-3325.

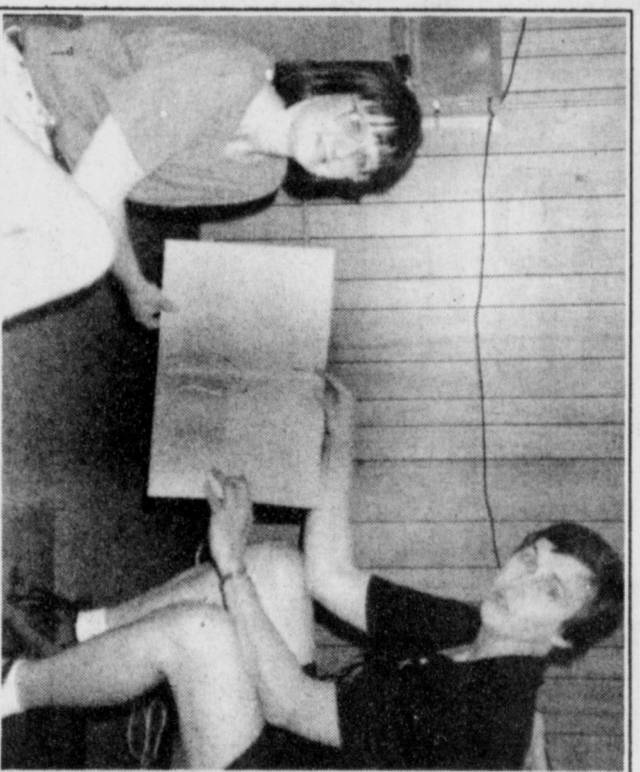
**Bus No. 1**  
301 East 6th Housing Authority Apartments  
East 6th & Ave. F

**Bus No. 2**  
DeShazo High School/Watson  
Bus. No. 2  
East 6th and Ave. F  
East 6th Housing Authority  
East 5th & Ave. D  
DeShazo  
Dillman  
High School/Watson  
Bus. No. 3  
East Austin & East Cedar  
East Austin & East Elm  
Friona Highway  
Bus. No. 5  
East 4th and Ave. F  
DeShazo  
Dillman  
High School/Watson  
Bus. No. 6  
West Birch & Chicago  
Muleshoe Cotton Compress  
West Date & Boston  
West Cedar & Dallas  
Bus. No. 7  
West Ave. 1 & South First  
West Ave. J & 8th  
East 4th & Ave. D  
East 4th & Ave. B  
DeShazo  
West 9th & Ave. D  
West 14th & Ave. D

**Bus No. 13**  
Behind the Carousel  
Reno & Ash  
Quincy & Railroad Ave.  
Pasadena (middle of the street)  
Bus. No. 27  
Behind the Dinner Bell  
Kinder Corner - West 9th & Ave. G

## Three Way lists personnel

Administration  
Don W. Parker - Superintendent; Bill Hood - Principal; Sabrina Watson - Administrative Assistant; Jean Parker - Administrative Officer; Beverly Turney - Superintendent's Secretary; Secondary Faculty  
Rowdy Bryan - Coach and Social Studies; Louise Draus - ELA, Home Ec, TAAS and TX History; Mary Furguson - English, Computer and Annual; Chry Kessler - English, Theatre Arts and TAAS; Laura Moses - Coach and Math; Howard Tooley - Vo. Ag. and Health; Michael Turner - Science; Freda Weekes - Business and Math.  
Elementary Faculty  
Elanie Walker - Kindergarten and Prekindergarten; Marsha Grahn - First Grade; Jan Tooley - Second Grade; Mary Wilson - Third Grade; Nelda White - Fourth Grade; Doris Smith - Fifth Grade; Startia Clayton - Sixth Grade; Special Programs  
Teresa Nance - Librarian; Chris Hodnett - Library and Special Ed Assistant; Armidia Martinez - Migrant Assistant and MSTRS; Cathy Martha - Teacher Assistant; Venus Holmes - Teacher Assistant.



**Folder demonstration**  
Shelia Joyner, principal, and Connie Weatherbie, nurse of Watson Junior High School, demonstrate the type of folder all junior high students should purchase for the 1995-96 school year.

## Muleshoe Independent School District 1995-96 school calendar

Students are not in attendance on staff development days or comp days.

**Aug. 14**—Teacher preparation day  
**Aug. 15**—First semester begins  
**Sept. 4**—Labor Day holiday  
**Sept. 28**—First six weeks ends for high school and junior high  
**Oct. 9**—Staff development day  
**Oct. 20**—End 1st 9 weeks for elementary  
**Oct. 24-26**—TAAS exit tests  
**Nov. 6**—Staff development day  
**Nov. 10**—Second six weeks ends for HS & JH  
**Nov. 22-24**—Thanksgiving holidays  
**Dec. 20**—First semester ends  
**Dec. 21, Jan. 2**—Christmas holidays  
**Jan. 3**—Teacher preparation day  
**Jan. 4**—Second semester begins  
**Jan. 19**—Staff development day  
**Feb. 15**—Fourth six weeks ends for HS & JH

**Feb. 16**—Holiday  
**Feb. 19**—Staff development day  
**Feb. 20**—Staff development day  
**March 4-8**—TAAS tests  
**March 8**—End 3rd 9 weeks for elementary  
**March 18-22**—Spring break  
**April 4**—Staff development day  
**April 5**—Holiday  
**April 8**—Bad weather make up day #2  
**April 12**—End fifth six weeks for HS & JH  
**April 29, May 3**—TAAS tests  
**May 10**—Bad weather make up day #1  
**May 21-23**—TAAS end of course exams  
**May 23**—Second semester ends  
**May 24**—Teacher preparation  
**April 8 and May 10** will be bad weather make-up days. If one day of school is missed for bad weather, school will be held on May 10. If two days are missed, school will be held on both April 8 and May 10.



# Muleshoe

## Things kids will need

- KINDERGARTEN**
- 2 - regular size #2 pencils
  - 2 - 4oz. Elmer's glue (not paste)
  - 2 - boxes of 8 crayons - large (not fluorescent)
  - 1 - pkg. Crayola markers - classic colors - large size
  - 1 large box of Kleenex
  - 2 - pkg. construction paper 9 X 12 - assorted
  - 1 pair metal (Fiskars brand) scissors (right or left which ever your child needs)
  - 1 complete change of clothes
  - Boys: shirt, pants, underwear, and socks.
  - Girls: Dress or pants and blouse, panties and socks.
  - 2 - pocket folders
  - 1 - kinder rest mat or large towel
- FIRST GRADE**
- 1 - Eraser
  - 2 - regular size #2 pencils
  - 2 - large boxes of Kleenex
  - 2 - medium size Elmer's glue
  - 1 - pocket folder
  - 1 - box of 8 crayons (only eight) each 6 weeks
  - 1 - small pointed scissors - Fiskars metal scissors (not plastic blades!) for kids.
  - Right-handed for right handed children
  - Left-handed for left handed children
  - 2 - pgs. construction paper 9 X 12 assorted
  - 1 - spiral bound notebook - wide rule 80 to 100 count pages
  - 1 - pkg. stickers (optional)
- MARY DESHAZO THIRD GRADE SUPPLY LIST 1995-96**
- 2 - #2 pencils
  - 1 - stick glue
  - 2 - large boxes of Kleenex
  - 2 - Notebook paper (200 count) wide ruled
  - 1 - blue notebook (Mr. Henderson's room)
  - 1 - box Crayons (24 count)
  - 1 - pair sharp pointed scissors
  - 1 - 12 inch ruler Metric/English (ish)
  - 1 - small bottle Elmer's glue
  - 3 - flat pocket folders
  - 2 - spiral notebooks
  - Additional supplies at teacher's request.
- FOURTH GRADE**
- NO Trapper Keepers or 3-ring notebooks
  - 1 - box Crayons
  - 2 - #2 pencils - NO mechanical pencils
  - 2 - red pencils
  - 2 - pgs. notebook paper - 200 ct. wide ruled.
  - 1 - pair sharp pointed scissors
  - 1 - glue (washable)
  - 1 - metric/english ruler
  - 9 - pocket folders
  - 2 - boxes Kleenex (200 ct.)
- Watson Junior High School Supply List**
- All students will need the following:  
2 - boxes Kleenex 500 count  
2 - #2 lead pencils at all times (no mechanical pencils)  
2 - blue or black pens at all times

**Welcome Back Students and Teachers**

With Gift Baskets  
Full of Sweets,  
Gift Certificates  
For Nails & Feet.  
Don't Forget Our  
Balloon Bouquet Special  
That's Really Neat  
by Darlene.

**if things get rough, try a massage**

**Jan's Unique Nails**  
and Balloons, Tanning & More  
203 S. Main 272-5827

**Bearly Used**  
Dian's Designs  
Used Clothing and Merchandise  
Upon Consignments Basis  
Painted Tuxedo Shirts

**Everything You Need For back to school**

For back to school clothing that is both in style and affordable, shop BEARLY USED in Clovis, NM. We offer gently worn clothing for the entire family.

Remember "it's not abused, it's bearly used!"

915 N. Main CLOVIS, NM  
(505) 762-7461

**Back to School TIME**

We Would Like To Remind Everyone Of Our Luncheon Specials and Our Monday Night Buffet.

1412 American Blvd.  
Muleshoe  
272-4213

**Pizza Hut**

**Continued on page 8**

- 2 - red pens at all times
- 1 - package paper, (at least) wide ruled (no college ruled)
- 1 - set map color pencils
- 1 - pencil bag for pens, pencils and eraser
- Additional supplies for each grade level include:
- SIXTH GRADE
- 2 - red pens
- 1 - eraser
- 1 - 12 inch ruler metric/standard (dart)
- 1 - 22X28 sheet white poster board
- 12 - folders with pockets and brads
- 1 - 4 oz. bottle of glue
- 1 - assignment notebook (may be purchased from student