

## July 4th full of pitchin', pullin', hometown fun

The Muleshoe Chamber of Commerce & Agriculture has announced the names of event winners in the city's Fourth of July activities.

Winners are as follows:

### Parade

**Floats** - 1. Jennyslippers 2. Muleplex 3. Muleshoe Masonic Lodge

**Equitrian** - 1. Muleshoe Young Riders 2. "Miner" & Mule Riders

**Antique autos** - 1. Rudy Garza, 1956 Buick; 2. Chad Nickels, 1957 Chevie pickup; 3. Lewis Mata, 1949 Chevrolet.

### Muleshoe pitching

**Women's division** - 1. Jama Mays 2. Shelly Turnbow 3. Jacinda Langen

**Men's division** - 1. Tom Fogarty 2. Buddy Embry 3.

James Turnbow

### Double's competition

1. Jama Mays-Kyle Embry 2. Joey Chancey 3. No entries

### Tractor pull

**Five and under** - 1. Junior Young 2. Tamer Bales 3. Cody Atwood

**Six to eight year olds** - 1. Jonathan Marlow 2. Jeffery Herrington 3. Brandon Maddox

**Nine to 10 year olds** - 1. Brandon Burris 2. Jerry Reyes 3. Chad Bales

### Shoe race

**Seven to 10 year olds** - 1. Fernando Toscano 2. Damon Mouser 3. Danielle Wilson 4. Jennifer Rempe

**Two to six year olds** - 1. **Continued on page 2**



### REVVING IT UP!

J.R. Young gives it all he's got during the 4th of July kids tractor pull at City Park. Young won a pull-off for first place in the 5-under age division.

## Around Muleshoe

### Lazbuddie kids do well on TAAS

Results of the Texas Assessment of Academic Skills (TAAS) tests have been released from the Texas Education Agency for the Lazbuddie Independent School District.

Lazbuddie I.S.D. continues to score well on this test of academic skills. The following is a percentage of students passing the TAAS test by campus.

Elementary, 3-6 grades - Writing 88% (4th grade only), Reading 73%, Math 57%.

Junior high - 7-8 grades. Writing 84% (8th grade only), Reading 94%, Math 79%.

Exit Level 10th grade - Writing 95%, Reading 85%, Math 73%.

### Spring seeded crops need to be certified by July 15

Bailey County farmers have until July 15 to certify their 1994 spring seeded crops (corn, sorghum, cotton, fruit and vegetables, etc.), no matter what the land use. They should be certified with the Bailey County Agricultural Stabilization Conservation Service (ASCS) office.

To insure their eligibility for receiving Price Support

**Continued on page 2**

## Fourth of July celebration is a sparkling success

The Fourth of July celebration in Muleshoe on Monday was a success, according to many local people.

"We were very well pleased with the event," said Mike McDearmon, president of the Muleshoe Chamber of Commerce & Agriculture. "There

was a good turnout, the weather was nice and we were very pleased."

A day-full of events was scheduled and received good response, from the July 4th parade to the grand finale, the fireworks display at City Park. Billie Downing of the

Jennyslippers, said, "Crowd-wise we had a good turnout. And with all of the activities that were also scheduled, it worked out good. It seemed like everyone had a good time and there was good music."

The Cold Country western band performed at the City Park

prior to the fireworks display.

Downing said that the Jennyslippers also received a good response from the crowd as they picked up more donations for the fireworks fund.

Additional highlights of the Fourth of July celebration, which began last Thursday,

included free entertainment at Joe's Boot Shop.

Entertainment included music from Jody Nix, the Dixie Chicks, Fiddlin' Freddie Burke and Gil Prather.

A Fourth of July favorite **Continued on page 2**

## Basketball festival to be held on July 15-16

It's the Muleshoe Jam II Three on Three Basketball Festival, set for July 15-16 at the Muleshoe Independent School District Gymnasiums.

The events are being sponsored by the Muleshoe Athletic Booster Club.

Brackets, game times and game rules will be mailed on Tuesday, July 12. If there are sufficient entries, the club will guarantee three games for the team.

Entries will be accepted for the following four youth divisions for both girls and boys:

5th and 6th grade; 7th and 8th grade; 9th and 10th grade and 11 and 12th grades.

Entries will also be accepted for the following adult divi-

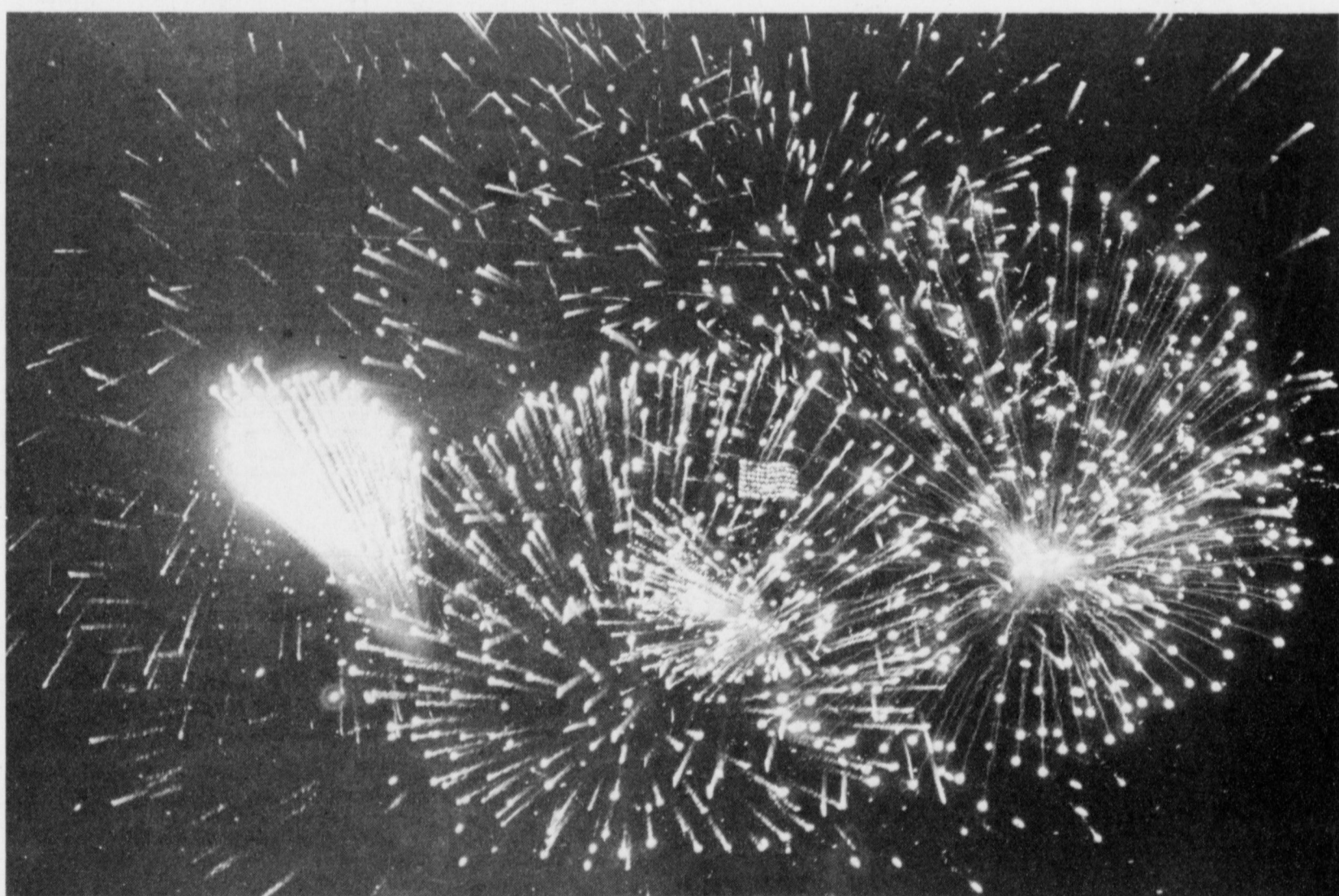
sions: Mens-grad through 29 years; mens-30 years and above and womens-grad and above. Entry fees will be charged on each team entered.

University Interscholastic League (UIL) rules will apply. Note to Texas Youth Teams -

Only three players from the same school district per team. The entry deadline is Monday, July 11.

To register teams, contact the Muleshoe Athletic Booster club. Fees may be sent to Joel Sinclair, 221 East Date, Muleshoe, Texas, 79347.

For more information call Joel Sinclair at 272-4922 (night) or Weldon Smith at 272-3552 (day or night).



**THE BIG FINISH** - A multiple exposure allows exploding fireworks to surround the American flag during the 4th of July celebration at City Park. A crowd estimated at over 2,000 viewed the fireworks, sponsored by the Jennyslippers and the Chamber of Commerce.

## Muleshoe Fire Department has busy week due to grass fires, fireworks

The Muleshoe Volunteer Fire Department has been working around the clock the past few weeks, due to nu-

merous fire calls which have been weather-related. A few fire calls on Monday night were fireworks-related.

At press time, fire chief Donald Harrison was unavailable for comment. However, Steve Clifton of the volunteer

fire department said that he knew of at least two fire calls the department got on Monday night which were fireworks-

related. He said that they were only small fires though, and there were no known injuries or major damage caused.

Clifton said one fireworks-related fire was out when the fire department arrived and another fire was extinguished

very quickly. One of the fires was located east of town and one was west, both in Bailey County.

Weather-related fires are what have kept the Muleshoe department busy this past week.

According to Jimmy Mills, fire marshal for the Muleshoe Volunteer Fire Department, the fire department had about 20

fire calls around the county last week due to the weather, many of which were due to lightning.

"The firemen have been busy, working around the clock for the past six days," Mills said.

Many of the firecalls were for grass fires. Mills said he did not know of any extensive damage done.



## July 4th

Continued from page 1

Brady Black 2. Cheyenne Stephens 3. Jenny Toscano 4. Maddison Myers

### Balloon toss

**Seven to 10 year olds** - 1. Tanner Gartin and Brandon Maddox 2. Joshua Maddox and Andelina Maddox 3. Trevor Gartin and Damon Mouser

**Three to six year olds** - 1. Morgan Smith and Cade Smith 2. Tressa Scott and Britney Williams 3. Benny Hamilton

and Danielle Mayfield

### Three legged-race

**Three to six year olds** - 1. Cade Smith and Cody Black 2. Rene Orozco and Priscilla Orozco 3. Kelsey McDearmon and Alyssa McDearmon

**Seven to 10 year olds** - 1. Calef Cox and Danielle Wilson 2. Damon Mouser and Trevor Gartin 3. Fernando Toscano and Roxanne Garcia

Happy  
18th  
Birthday  
MariAnne  
Toombs

From All Your Friends  
At The Journal!

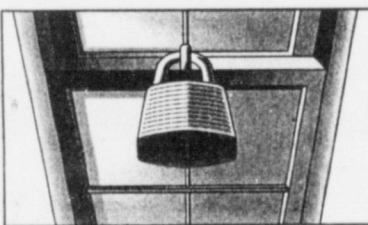


### Birthday policy

The Muleshoe and Bailey County Journals publish birthday announcements free of charge for babies one year old or for people ages 90 and over. A photo may also be included with the announcement. Complete guidelines and forms are available at the Muleshoe Journal office.

The deadline for items to be submitted is at 5 p.m. on the preceding Monday for the Thursday edition and at 5 p.m. on the preceding Thursday for the Sunday edition.

### HELP LOCK OUT HOME BURGLARS.



- Lock your windows and doors before leaving or going to bed.
- Leave lights on when you go out.
- Keep your garage door closed and locked.

For pointers on protecting your home, see me, your State Farm agent. I can also give you details on affordable homeowners and renters insurance.

Like a good neighbor, State Farm is there.®



Mark Morton  
109 S. 1st  
272-7519  
Muleshoe, Tx.

State Farm Fire and Casualty Company  
Home Office: Bloomington, Illinois

### Pool patrol

Terry Graves, a lifeguard at the Muleshoe Municipal Swimming Pool, has been spending his summer vacation catching rays and guarding lives, at the same time. The city pool will probably continue to be a popular place to escape the summer heat as forecasts call for temperatures in the high 90s over the next few days.

### Celebration

Continued from page 1

which returned this year due to popular demand was the turtle and frog races. Other popular events included the kid's tractor pull and muleshoe pitching.

With music, lots of food and

entertainment, a good time was had by both young and young at heart.

Appropriate for the occasion, the fireworks display ended with the display of the American flag.

### Muleshoe

Continued from page 1

Loans and Deficiency payment as well as other farm program benefits, producers should certify their acreages as soon as possible.

Failure to certify will result in the loss of base acres, pro-

gram benefits and could result in the loss of Federal Crops Insurance program benefits in future years. The ASCS office asks that people schedule appointments by calling 272-4538 to certify acres.

*Latrells Fashions*

**Summer Sale**

25% - 50% - 75% off

*Storewide*

Open 10 a.m. - 6 p.m. Monday-Saturday

*Latrells' Fashions*

1519 W. American Blvd. Muleshoe

1993 **FORD**

## TEMPO GL

1993 **FORD**

## TAURUS GL

Used Factory Program Cars

Loaded With:

- Automatic Transmission • Air Conditioning • AM/FM Cassette
- Power Windows • Power Door Locks
- Tilt Steering Wheel • Cruise Control • Rear Window Defroster

Starting At  
**\$189<sup>00</sup>** Per Month

**7** in Stock

**With No Money Down •**

Loaded With:

- Automatic Transmission • Air Conditioning • AM/FM Cassette
- Power Windows • Power Door Locks • Power Seat
- Tilt Steering Wheel • Cruise Control • Rear Window Defroster

Starting At  
**\$249<sup>00</sup>** Per Month

**5** in Stock

**With No Money Down •**

**Hurry In While The Selection Is Best!**

# TEAGUE STREBECK

*The very best prices and service anywhere... We personally guarantee it!*

(505) 356-8581 • (505) 762-3845

1115 North Chicago • Portales, NM

(On the first curve into Portales)

**Subscribe To The Muleshoe Journal  
And Read Your Hometown News**

## Weddings

### Rousselle, Martinez united in marriage

Cheryl Marie Rousselle and Joe Angel Martinez were married during a candlelight ceremony on June 25, 1994 at St. Genevieve Church in Slidell, La. Monsignor Michael Landry officiated at the ceremony.

A reception followed at the DeLeon residence in Lacombe, La.

The bride is the daughter of Thelma Elizabeth Chimera Billiot and Joel Henry Rousselle Jr. of New Orleans, La. The bridegroom is the son of Andrea DeLeon Jaramillo and George Martinez of Muleshoe.

The bride is a graduate of Salmen High School and the University of New Orleans, where she received a bachelor of arts degree in elementary education/early childhood. She is employed by the St. Tammany Parish Public School System.

She is the granddaughter of Mr. John Chimera and the late Thelma Debetta Chimera, the late Caroline Fonseca Rousselle and the



Mr. and Mrs. Joe Angel Martinez

late Joel Henry Rousselle Sr.

The bridegroom is a graduate of Muleshoe High School in Muleshoe. He is employed as a masonry laborer in St. Tammany Parish.

He is the grandson of Virginia Conde DeLeon and the late Antonio Garza DeLeon. The couple will reside in Slidell, La.

## Combest votes against regulating of religion

WASHINGTON, D.C.-- As a leading proponent of making the Federal Crop Insurance Corporation (FCIC) coverage a workable replacement for undependable crop disaster declarations, U.S Representative Larry Combest (R-Texas) commented with some reservations about Thursday's subcommittee version of the new FCIC legislation.

Combest's concerns result from an appropriations subcommittee taking away \$213 million from the new crop insurance program and shifting it to social programs.

Combest's agricultural subcommittee has now absorbed half of the money taken away from the new FCIC plan, but Combest has reservations about whether the full Appropriations Committee will give enough funds to make the new crop insurance plan a practical, workable program.

"We have made tremendous progress in creating a crop insurance program designed to be workable, dependable and cost-effective for farmers and taxpayers," said Combest.

"My concern is that when another committee moves the funding out from our program, they have taken away the cost-

savings to taxpayers in order to spend more money on social programs. My subcommittee is trying to correct this imbalance, but shifting hundreds of millions into social programs has made our balancing efforts complicated. At this point, I question whether the lower level of funding can produce a new crop insurance program that is attractive enough to adequately replace the haphazard process of congressional crop disaster declarations."

As ranking member of the

House Agricultural Credit Subcommittee, Combest has supported making federal crop insurance an available alternative for farmers to protect against losses from crop failures.

The \$213 million shifted away by the appropriations subcommittee funds the operating and administrative costs of private insurance companies who write each farmer's policy on behalf of the federal government.

## Creative Living

By Sheryl Borden

Information on fitting pants and helping children adjust to moving to a new location will be featured topics on "Creative Living" on Tuesday, July 12th at noon and Saturday, July 16th at 2 pm. (All times are Mountain.) "Creative Living" airs on public broadcasting station, KENW-TV, from Eastern New Mexico University in Portales, NM.

Virginia Nastiuk, Personal Patterns, will take the mystery out of pants fitting and making. She's from Bothell, Wa.

Another guest, Diana Creston, will show a new toy that is designed to help alleviate some of the fears children experience when moving to a new town or neighborhood. Creston represents Playmobil, and she's from New York City.

On Tuesday, July 12th at 9:30 p.m. and on Thursday, July 14th at noon "Creative Living" will show new uses

for household classics and also discuss ways to recycle plastic.

"Creative Living" is produced and hosted by Sheryl Borden.

The show is carried on more than 100 PBS stations in the United States, Canada, Guam, and Puerto Rico and is distributed by Pacific Mountain Network, Denver, Colo.

Viewers can request copies of materials offered on the show by sending one 29 cent

stamp for each handout requested. Send the stamps, along

with your name, address and booklets requested to: "Creative Living" Requests % KENW-TV 52 Broadcast Center Portales, NM 88130.

### Thank You

We would like to thank everyone for all the acts of kindness given to us during the illness and death of our mother and grandmother.

Louise, Don, Ryan  
and Rob Clapp

### MULESHOE AREA MEDICAL CENTER

#### ANNOUNCES

#### THE OFFICE OPENING

#### AND ASSOCIATION WITH THE MEDICAL STAFF

#### OF

ROBERT G. JOHNSON, M.D., F.A.C.S  
GENERAL SURGERY

Certified - American Board of Surgery  
Fellow - American College of Surgeons

Office Hours 9:00 a.m. - 5:00 p.m.

by Appointment

708 S. First Street, Suite 3 806/272-5976

### Muleshoe Journal

USPS 367820

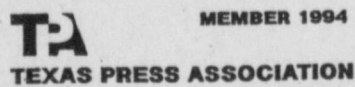
Established February 23, 1924. Published by Triple S Publishing, Inc. Every Thursday at 304 W. Second, P.O. Box 449, Muleshoe, Tx. 79347. Second Class Postage paid at Muleshoe, Tx. POSTMASTER: Send address changes to the Muleshoe Journal, P.O. Box 449, Muleshoe, Tx. 79347.

We Are Qualified Members Of:

Panhandle Press Association, National Newspaper Association, West Texas Press Association and Texas Press Association.



National Newspaper Association



Scot Stinnett, Publisher  
Lisa Stinnett, Vice-President/Comptroller  
Helena Rodriguez, News  
Laura Sanchez, Classified  
Holly Millsap, Advertising

SUBSCRIPTIONS  
Muleshoe Journal and Bailey County Journal  
By Carrier Yearly - \$15.00  
Bailey and surrounding counties  
By Mail - \$16.75  
Elsewhere - \$18.50

Advertising Rate Cards on Application

\*Advertisers should check their ad the first day of insertion. The Journals will not be liable for failure to publish an ad or for a typographical error or errors in publication except to the extent of the cost of the ad for the first day of insertion. Adjustment for errors will be limited to the cost of that portion of the ad where the error occurred.

### MULESHOE AREA MEDICAL CENTER

and

### THE MEDICAL STAFF

DR. ALLGOOD, DR. McCLANAHAN, & DR. PURDY

ANNOUNCE

THE OPENING

OF AN

## EVENING CLINIC

HOURS 5:00 p.m. - 11:00 p.m.

MONDAY, TUESDAY, WEDNESDAY, THURSDAY

STAFFED BY BOB McMULLEN, CERTIFIED PHYSICIAN ASSISTANT

708 S. FIRST STREET, SUITE 4

806/272-4938

## Joe's Boot Shop

AND COUNTRY JUNCTION

1-800-658-6378 106 E. American Blvd., Muleshoe, Tx.

## ANNUAL TENT SALE

Will Continue Until Saturday

July 9, 1994

### Unadvertised Specials Include

Hundreds of Mens Shirts and Ladies Blouses at \$15<sup>99</sup>  
Boys Shirts at \$12<sup>99</sup>

David James Rodeo Jackets (100.00 values) at \$35<sup>00</sup>

Large Selection Of "Justin" Mulehide Lacer Boots.....\$69<sup>99</sup>

"Justin" Mulehide Pull-on Crepe Sole Work Boots.....\$49<sup>00</sup>

Mens Tennis Shoes (Limited Sizes)..... \$10<sup>00</sup>

Baseball Cleats ( Sizes 6 1/2 - 10 1/2 ) ..... \$15<sup>00</sup>

### Country Junction Items:

20 piece sets of blue porcelain pots and pans \$20.00

30 piece set of porcelain camping gear \$30.00

Markdowns on many pieces of furniture, handcrafted wreaths, and decorative items.

3 1/2 X5' Area Rugs \$12.00

Quartz Watches \$2.00

(or 3 for \$5.00)



## Scientists examining new plant viruses

AMARILLO—Some familiar plant diseases have appeared in area wheat crops this year and then there are ones farmers and scientists don't see as often.

Dr. Brent Bean, Texas Agricultural Extension Service agronomist at Amarillo, who checks area fields almost daily, has observed some usual and unusual situations this year regarding viruses, old and new.

Bean says scientists are still evaluating the data on the damage from the new virus which first appeared last year in silage and sweet corn. Later, the virus was seen in wheat fields scattered across the Panhandle. Plants appeared yellowed or streaked, and stunted.

The disease outbreak was first dubbed the "mystery" virus because scientists were uncertain how it was being transmitted. In March researchers at Kansas State University discovered that the wheat curl mite was a chief vector of the virus. This is the same mite that transmits Wheat Streak Mosaic virus.

"We're also seeing increased incidence of barley yellow dwarf (BYD) virus which is transmitted by several kinds of aphids, including greenbug, oat bird-cherry aphid and corn leaf aphid among others," said Bean.

In the case of BYD, aphid contract the virus when feeding on an infected plant and spread the disease when feeding on others. According to bean, plant damage is evidenced first on the leaf tip and

the Panhandle to some degree every year, was also present in this year's wheat crop.

Producers can employ some very basic measures for control of this virus, Bean said. A prerequisite is controlling volunteer wheat during the summer.

The primary control method for SMB is planting tolerant varieties. Producers should consult a list, available through Bean or local county agents, to determine which varieties have tolerance of SBM and are adapted to this area.

Wheat streak mosaic (WSM), which can be found in margins, and later the entire leaf will turn purple and yellow.

Plants are generally stunted and have fewer tillers with smaller than normal grain heads. Damage from this virus results in reduced yields and lighter grain test weights. To date, no varieties are showing tolerance to the BYD virus.

"Dry, cool winters and lack of available soil moisture at critical periods like we experienced this year have aggravated BYD problems," said Bean.

Soil-borne mosaic virus also intensified this year. This SBM virus, seen previously on a limited basis in Dallam County, has been observed in numerous fields across the Panhandle area this year.

Infected plants exhibit yellow mottling of leaves and are stunted. Damage shows up in irregular, spotty patches throughout the field.

# RUMMAGE SALE!

## 1/2 OFF!

OF EVERY SINGLE ITEM IN OUR ENTIRE STOCK!  
Everything ORDERED SOLD to the BARE WALLS

**SELLING STARTS**

Tomorrow Morning At 9:00 a.m. SHARP Limited To Stock On Hand!

THE NEXT FEW DAYS CAN BE THE MOST IMPORTANT "SHOPPING DAYS" OF YOUR LIFE!

For during the next few days . . . until the remaining stock is sold . . . you have a "once-in-a-lifetime" buying opportunity!

YOU will be offered 50% OFF the regular price on every single item in our entire stock!

If you are looking for real bargains here is your answer. YOU CAN BUY WITH CONFIDENCE THAT YOU WILL POSITIVELY BE THRILLED WITH YOUR PURCHASES!

We are going to make this Rummage Sale the most talked-about "buying event" ever staged in this community.

This is the most amazing offer ever made . . . and there are absolutely no strings attached to it. Just think! We are offering you the opportunity to buy quality merchandise at one-half the regular price. Your 50c dollars are now worth \$1.00. \$5.00 will get you \$10.00 in merchandise . . . \$10.00 will get you \$20.00 worth of merchandise YOU SAVE ONE-HALF You can buy any amount you want and the more you buy the more you save.

YOU can't lose . . . while taking advantage of this sensational one-half price sale.

A SELLOUT IS EXPECTED, SO BETTER GET HERE EARLY!

**Perrys** 303 Main

Open 9 a.m.-6 p.m. Monday -Saturday

## Muleshoe Motor Co.

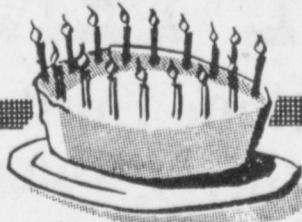
Is having a July 1994

### President's Birthday SALE!



1967  
The President of  
Muleshoe Motor is having a February

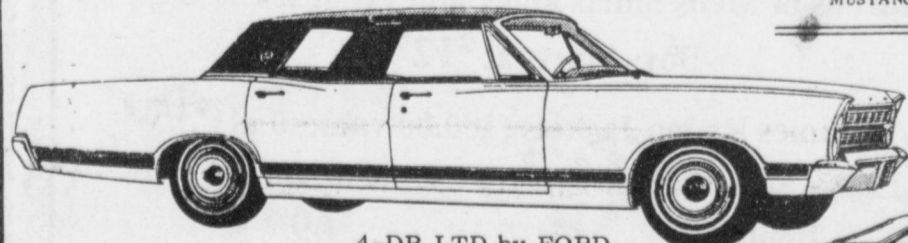
## Presidents Birthday Sale



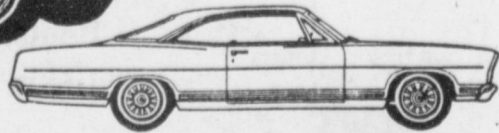
NO, it's not his birthday... but in honor of Washington's birthday, Muleshoe is giving all its customers a present of greater than ever savings!



MUSTANG HARDTOP



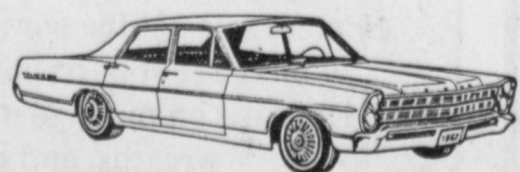
4-DR LTD by FORD



FORD 2-DR HARDTOP



FORD COUNTRY SQUIRE



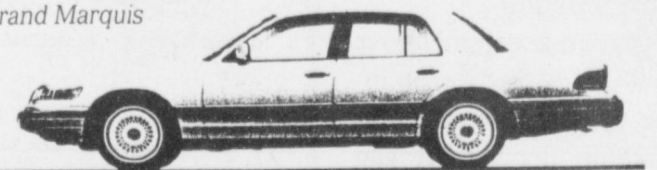
FORD GALAXIE 500 4-DR SEDAN

- Sales are great!  
Check these prices on late model trade-ins.
- 1963 OLDS 98 LOADED ..... \$1595
  - 1963 GALAXIE 500 2 DR. HARDTOP ..... \$1295
  - 1964 BUICK 4 DR. SEDAN ..... \$1195
  - 1963 BONNEVILLE PONTIAC LOADED .... \$1695
  - 1964 OLDS 88 4 DR. SEDAN LOADED ..... \$1695
  - 1964 MERCURY CYCLONE REAL CLEAN .... \$1595



**MULESHOE MOTOR CO.**  
AT THE CROSSROADS MULESHOE, TEXAS

Grand Marquis



And this time it IS his birthday!!! So We're Sell-A-Brating With unbelievable Savings!!

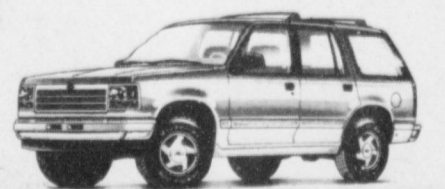
Tuesday, July 12

Stop by - Wish Hooten a Happy Birthday, have some homemade cookies & Lemonade, and register to win Door Prizes to be given away every hour from 1:00 - 6:00 p.m.

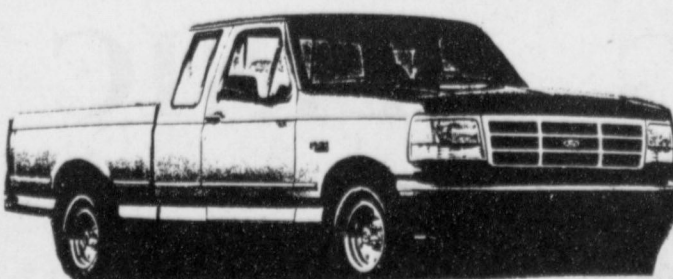


Mustang Hardtop

Buy a new car or truck in July and you will automatically be registered to win a 27" Color TV with Remote Control



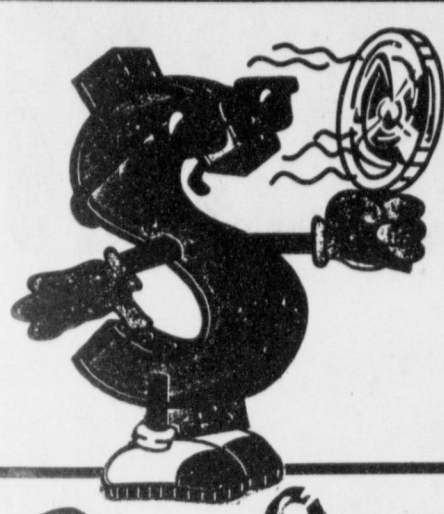
Ford Explorer



Ford F150

**Muleshoe Motor Co.**

272-4251 Muleshoe, Tx. 1225 W. American Blvd.



# The SUMMER SAVINGS Are Hot

With Lowe's Lowest Prices!

ASSTD. Coca-Cola **99¢** 2 ltr.



## Quality Meat

**Value Pack**  
BONELESS Top Sirloin Steak **\$2.29** lb.  
Single Steak **\$2.49** lb.

**Heated Prices**  
Pork Steak **\$1.29** lb.  
HORMEL QUALITY BOSTON BUTT Pork Roast **99¢** lb.  
OWENS Pork Sausage **\$1.79** 1 lb. roll.

OWENS Country Style Sausage

## Guaranteed Freshness!

Extra Large Peaches **59¢** lb.

Red Seedless Grapes **98¢** lb.

FRESH Broccoli **58¢** lb.

HOT Jalapeno Peppers **78¢** lb.

FRESH Cilantro **3 \$1** bunches

Sweet Corn **6 \$1** Ears

COUNTRY STYLE Pork Ribs **\$1.49** lb.

McCart Farms BUTTERMILK Breast Tenders **\$9.49** 3 lb. box

McCart Farms BREADED Chicken Nuggets **\$7.99** 3 lb. box

PRICE'S FINEST OR JALAPENO Cheese Spread **\$1.39** 7.5 oz.

CRISTAL FARM'S MILD CHEDDAR, COLBY, CO. JACQ, MONTEREY JACK OR MOZZARELLA Chunk Cheese **\$2.49** lb.

WILSON MEAT OR BEEF BUN LENGTH Da Dogs **\$1.99** 1 lb. pkg.

WILSON REG. OR HONEY Half Hams **\$3.29** lb.

HORMEL Chopped Ham **\$6.99** 5 lb.

HILLSHIRE FARM REGULAR, POLSKA, LITS OR TORRETT Smoked Sausage **\$1.59** lb.

## GREAT N EASY SNACK IDEAS!

Easy Cheese **2 \$5** 8 oz. tubs

Ritz Crackers **2 \$5** 15-16 oz. boxes

Squeezit Drinks **\$1.69** 3 pk. 6.47 oz.

Doritos or Doritos Thins **2 \$3** For

Bugles Corn Snacks **\$1.19** 5-6 oz.

ASSORTED Dill Chips **\$1.19** 32 oz.

CLASSIC RAMBOWDER

SCOTT TOWELS

ASSORTED Scott Towels **79¢** roll

NIAGARA REG. OR HEAVY Spray Starch **89¢** 22 oz.

BATH TISSUE 1000 SHEETS Scott Tissue **\$1.89** 4 roll pkg.

ASSTD. DISHWASHING Dawn Liquid **\$1.29** 22 oz.

WISK FREE OR WISLEACH 33-42 USE Detergent **\$5.49** 99-101 oz.

DOWNY ULTRA ASSTD. Fabric Softener **\$2.19** 20 oz.

DOW AEROSOL BATHROOM Cleaner **\$1.89** 17 oz.

ZEST 3 FACE Bath Soap **\$1.99** 5 oz.

Good Only At Lowe's Pay N Save Marketplace Expires July 13, 1994

SAVE \$1.00 off Two Kudos ANY FLAVOR

Kudos Bars **\$1.79** 7.4 pk.

BETTY CROCKER ASSTD. POTATO EXPRESS OR Specialty Potatoes **\$1.39** 5-5.25 oz. box

ASSTD. POWER-ADE Sports Drink **99¢** 32 oz.

Savings to Make Summer Bearable

SHURFINE GRADE A Large Eggs **99¢** 18 ct.

RANCH STYLE BEANS **5 \$2** 15 oz. cans

REG. OR WJALAPENOS Ranch Style Beans

FROZEN & DAIRY

3 MUSKETEERS Ice Cream Bars **\$1.49** 6 pk.

OREO Double Stuf **2 \$5** 20 oz. pkgs.

TONY'S ITALIAN 12" Pastry Pizza **\$1.99** ea.

WEIGHT WATCHERS ASSTD. DESSERTS OR Frozen Entrees **3 \$5** For

WEIGHT WATCHERS ASSTD. Breakfast Entrees **\$1.19** ea.

GREEN GIANT NIBBLERS Corn on the Cob **\$1.19** 6 ears

1/2 GALLON Shurfine Buttermilk **\$1.39**

MINUTE MAID CHILLED ASSORTED Citrus Punch or Lemonade **99¢** 64 oz. cts.

SHURSAVING 1/2 OR 2% OR LOWE'S HOMOGENIZED Milk **\$1.99** 1 GALLON

ASSTD. WEIGHT WATCHER Ultimate 90 Yogurt **3 \$1** 6 oz. ctns.

Sizzling Savings

ASSORTED Wesson Oil **\$1.99** 48 oz. bil.

SuperMoist Frosting **\$1.19** 16 oz.

BETTY CROCKER ASSTD. Cake Mix **88¢**

DEL MONTE Ketchup **88¢** 28 oz.

REFRIED BEANS

KELLIS Refried Beans **3 \$1** 16 oz. cans

BETTY CROCKER TUNA OR Hamburger Helper **\$1.39** 3-9.25 oz. box

BUY ONE GET ONE FREE

Good Only At Lowe's Pay N Save Marketplace Expires July 13, 1994

Limit one per family. This coupon may not be reproduced. Retailer send coupon to GMI Retail Coupons, P.O. Box 177, Minneapolis, MN 55480 or an authorized clearinghouse. Retailer, you are authorized to act as our agent and redeem this coupon at \$1.892 x .08 handling in accordance with our redemption policy. Supplier Code 112720. Limit One Coupon Per Family.

BETTY CROCKER MATURE VALLEY LOWFAT Granola Bars **\$2.49** 8-10 oz. box

BUY ONE GET ONE FREE

Good Only At Lowe's Pay N Save Marketplace Expires July 13, 1994

Limit one per family. This coupon may not be reproduced. Retailer send coupon to GMI Retail Coupons, P.O. Box 177, Minneapolis, MN 55480 or an authorized clearinghouse. Retailer, you are authorized to act as our agent and redeem this coupon at \$2.392 x .08 handling in accordance with our redemption policy. Supplier Code 112720. Limit One Coupon Per Family.

BETTY CROCKER ASSTD. Fruit Roll-Ups **\$2.39** 4 oz. box

BUY ONE GET ONE FREE

Good Only At Lowe's Pay N Save Marketplace Expires July 13, 1994

Limit one per family. This coupon may not be reproduced. Retailer send coupon to GMI Retail Coupons, P.O. Box 177, Minneapolis, MN 55480 or an authorized clearinghouse. Retailer, you are authorized to act as our agent and redeem this coupon at \$1.892 x .08 handling in accordance with our redemption policy. Supplier Code 112720. Limit One Coupon Per Family.

BETTY CROCKER ASSTD. OR Pop Secret Popcorn **\$1.89** 3-11.5 oz. box

BUY ONE GET ONE FREE

Good Only At Lowe's Pay N Save Marketplace Expires July 13, 1994

Limit one per family. This coupon may not be reproduced. Retailer send coupon to GMI Retail Coupons, P.O. Box 177, Minneapolis, MN 55480 or an authorized clearinghouse. Retailer, you are authorized to act as our agent and redeem this coupon at \$1.892 x .08 handling in accordance with our redemption policy. Supplier Code 112720. Limit One Coupon Per Family.

ASSORTED Jell-O Gelatin **4 \$1** 3-3 oz. box

SAVE 64¢

Good Only At Lowe's Pay N Save Marketplace Expires July 13, 1994

Limit one per family. This coupon may not be reproduced. Retailer send coupon to GMI Retail Coupons, P.O. Box 177, Minneapolis, MN 55480 or an authorized clearinghouse. Retailer, you are authorized to act as our agent and redeem this coupon at \$1.892 x .08 handling in accordance with our redemption policy. Supplier Code 112720. Limit One Coupon Per Family.

POST Raisin Bran **\$3.99** 25 oz. box

BUY 1, GET 1 FREE

Good Only At Lowe's Pay N Save Marketplace Expires July 13, 1994

Limit one per family. This coupon may not be reproduced. Retailer send coupon to GMI Retail Coupons, P.O. Box 177, Minneapolis, MN 55480 or an authorized clearinghouse. Retailer, you are authorized to act as our agent and redeem this coupon at \$1.892 x .08 handling in accordance with our redemption policy. Supplier Code 112720. Limit One Coupon Per Family.

HEALTH & BEAUTY

WESTERN FAMILY Non-Coated Aspirin **\$1.49** 250 ct.

WESTERN FAMILY Nasal Spray **\$1.99** 2.3 fl. oz.

ASSORTED Finesse Hair Products **\$1.99** ea.

JOHNSON & JOHNSON NO MORE Itchies, Ouchies, Burn **\$2.99**

Germies Soap, Germies Towelette **\$1.29**

Lowe's Pay-n-Save

MARKETPLACE

401 W. Amer. Blvd. Muleshoe 272-4585

515 W. Amer. Blvd. Muleshoe 272-4406

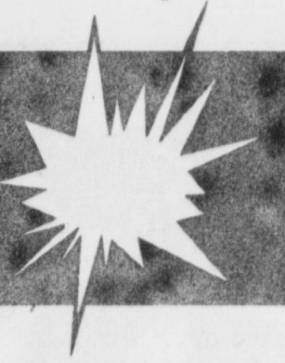
Prices Effective July 1994

THUR FRI SAT SUN MON TUE WED  
7 8 9 10 11 12 13

WE RESERVE THE RIGHT TO LIMIT QUANTITIES

Our Best to You

# Muleshoe Fourth of July blast



**JOINING THE SHOW** — Cory (left) and Coli Hunt sing the Joe's Boot Shop jingle, backed by Gil Prather (center), Bubba Cox (right) and Bubba's band.



**WINNING FORM** — Jama Mays displays the form that earned her an 18th-straight women's division title in the 4th of July muleshoe pitching.

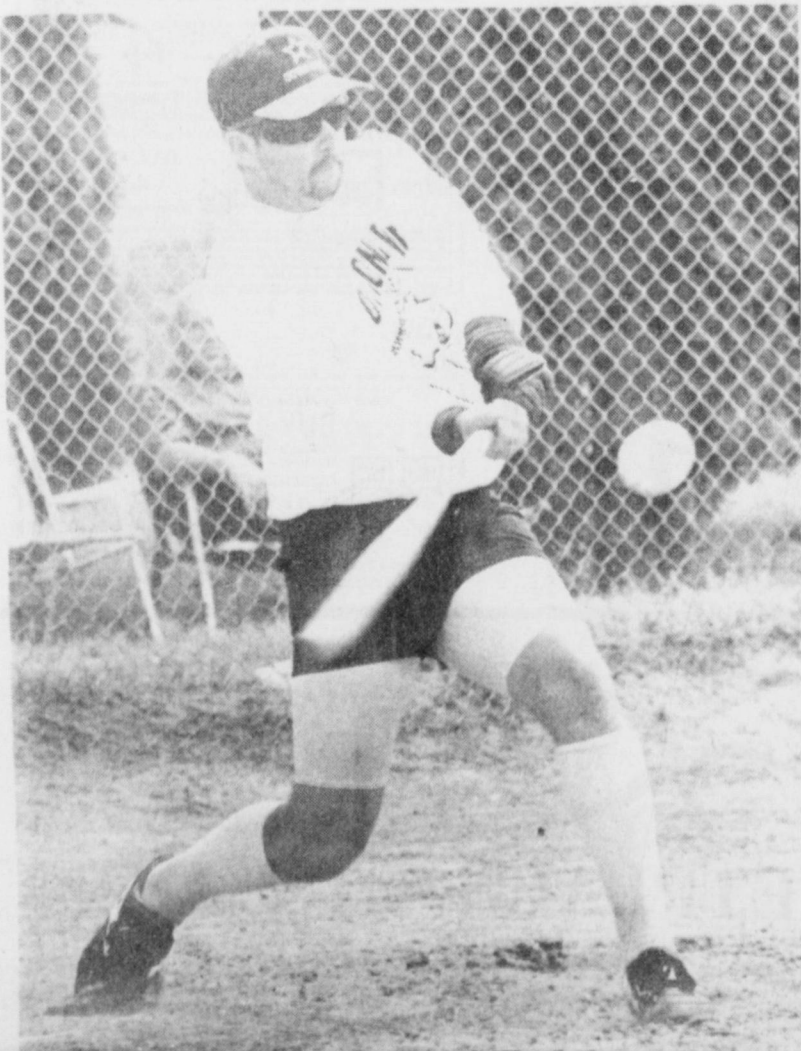


**LET'S GO LONGHORNS!** — The Lazbuddie High School cheerleaders show their stuff during the 4th of July parade. Pictured are (bottom, from left) Holly Engelking, Leah Turner, Shena Season, Shyla Johns and Kia Morris. Atop the stunt is Staci Foster.



**FEEDING THE MASSES** — Anthony Garcia of Leal's Restaurant grills fajitas during the annual Joe's Boot Shop Tent Sale.

Photos by  
Scot Stinnett



### DRIVING ONE

Mike Nichols of the "He Said, She Said" coed softball team slaps a base hit during the Leal's 4th of July softball tournament.



**FOUR-WHEELED PATRIOT** — Colt Ellis, son of Todd and Starla Ellis, flew flags on his four-wheeler during the Fourth of July parade.

# Combest uneasy about cut in crop program

WASHINGTON, D.C.-- As a leading proponent of making the Federal Crop Insurance Corporation (FCIC) coverage a workable replacement for dependable crop disaster declarations, U.S Representative Larry Combest (R-Texas) commented with some reservations about Thursday's subcommittee version of the new FCIC legislation.

Combest's concerns result from an appropriations subcommittee taking away \$213 million from the new crop insurance program and shifting it to social programs.

Combest's agricultural subcommittee has now absorbed half of the money taken away from the new FCIC plan, but Combest has reservations about whether the full Appropriations Committee will give enough funds to make the new crop insurance plan a practical, workable program.

"We have made tremendous progress in creating a crop insurance program designed to be workable, dependable and cost-effective for farmers and taxpayers," said Combest.

"My concern is that when another committee moves the

funding out from our program, they have taken away the cost-savings to taxpayers in order to spend more money on social programs. My subcommittee is trying to correct this imbalance, but shifting hundreds of

millions into social programs has made our balancing efforts complicated. At this point, I question whether the lower level of funding can produce a new crop insurance program that is attractive enough to adequately replace the haphazard process of congressional crop disaster declarations."

As ranking member of the House Agricultural Credit Subcommittee, Combest has supported making federal crop insurance an available alternative for farmers to protect against losses from crop failures.

The \$213 million shifted away by the appropriations subcommittee funds the operating and administrative costs of private insurance companies who write each farmer's policy on behalf of the federal government.

## Ag trivia quiz



### AG TRIVIA QUIZ PART 1

Circle the most correct answer:

1. *Ecosystem*
  - a. a way to eek out a living on public lands
  - b. a diet plan that frightens at away
  - c. man eats cow/cow eats grass/grass eats rain
2. *Jingle Bob*
  - a. a polyp inside the nasal sinus
  - b. mud tag on a feedlot steer
  - c. earrings for spurs
3. *Chicken Farmer*
  - a. a timid plowman
  - b. an affirmative action job for deserving poults
  - c. a busy man on a small place
4. *Lightning Strike*
  - a. a union play without a huddle
  - b. fastball pitcher
  - c. how many a cow meets her maker

5. *Hoof Nippers*
  - a. cloven feet with a drinking problem
  - b. unhandy to remove acid blisters from your tongue
  - c. blue heelers
6. *Farm Broadcaster*
  - a. an above ground fertilizer spreader
  - b. a rural person seeking a mail order bride
  - c. that small part of the media that knows where milk comes from
7. *BST*
  - a. Barely Six feet Tall
  - b. a milk cow in overdrive
  - c. the sound a mosquito makes when he hits the wall
8. *Flushing A Cow*
  - a. what dumb bird dogs do
  - b. a raid on an egg factory
  - c. an event at the Plumbing Olympics
9. *E.P.D.s*
  - a. required labeling on a bull

- b. the men in blue from Espanola, N.M.
  - c. Elusive Pregnancy Diagnosis (might be bred)
  10. *Wolf Tooth*
    - a. seat of Roosevelt County, Montana
    - b. the last thing a caribou sees
    - c. vampire dentures
  11. *Latigo*
    - a. a rash caused by too tight a cinch
    - b. a country between Belize and Tobago
    - c. a game played with slingshots and jello
  12. *Doc Bar*
    - a. where MD's stop off before going home
    - b. candy made from lamb's tails
    - c. a famous quarter horse stud
- (to be continued next column)

## MULESHOE MOTOR COMPANY

"Car Capital of The West Plains"

### July "Hot" Buys!

1993 Chev. Cavalier RS.....	\$10,895.
1991 Ford F150.....	\$9,500.
1993 Ford Mustang LX.....	\$9,999.
1992 Plymouth Sundance.....	\$7,880.
1992 Plymouth Laser RS.....	\$10,800.
1993 Mercury Cougar.....	\$15,895.
1987 Ford F150.....	\$5,875.
1991 Chevrolet S10.....	\$7,900.

Plus TT&L

1225 West American Blvd.

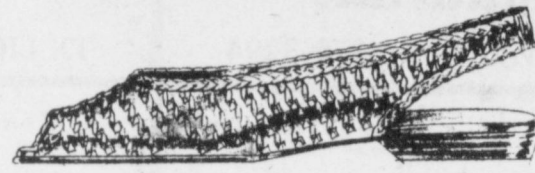
272-4251 Muleshoe, Tx. 1-800-432-7617



## Semi-Annual CLEARANCE Shoe Sale



- Dress Shoes
- Casuals
- Sandals
- Athletic Shoes
- Handbags



Sale Now in Progress

### QUALITY NAME BRANDS

- Women's
- Men's
- Children's

# 20 to 60% Savings

"The Largest Shoe Sale In Eastern New Mexico & West Texas"  
Most Major Credit Cards Accepted

## Randy's Shoes & Dayhoff Shoes

410 Main-Downtown Clovis

403 Main-Downtown Clovis

## NAPA AUTO PARTS

**NAPA MOTOR OIL**  
AS ADVERTISED ON TV!  
• 5W30  
• 10W30  
• 10W40  
• 20W50  
• SAE 30  
• SAE 40

**89¢/qt**

Limit: 2 cases per customer. Oil price does not include applicable state/local taxes or recycling fees.

**NAPA SILVER™ FILTERS**  
AS ADVERTISED ON TV!  
For most domestic and import cars and light trucks.

**OIL FILTERS**  
As Low As **\$1.99**

**AIR FILTERS**  
As Low As **\$2.99** (To \$14.99)

YOUR SATISFACTION IS OUR #1 PRIORITY!

**NAPA EVERCRAFT™ 59-PC. BONUS TOOL SET**  
Full Lifetime Guarantee. Special Purchase! #899-1670

**\$1999**

**CAMPBELL HAUSFELD 3/4 HP AIR COMPRESSOR**  
Includes 7.5-gallon tank with maximum pressure of 100 psi. Runs on 120-volt circuit. Oil-free and virtually maintenance-free. #MT5001

**\$1999**

**NAPA DISC BRAKE ROTORS**  
Precision manufactured to meet O.E. standards. #85502.71

As Low As **\$1699** (To \$174.99)

NAPA HAS OVERNIGHT AVAILABILITY ON OVER 143,000 PARTS AND ACCESSORIES!

**REMANUFACTURED LONG BLOCK ENGINES**  
Chevy 305, Chevy 350

**\$699**

Buick 231, Ford 302 \$749 EXCH. Chevy 173 \$799 EXCH.

**NAPA ACCESS ABILITY**  
America's Largest Auto Parts Inventory Plus Over 6,500 Stores Nationwide!

**AUTOLITE RESISTOR SPARK PLUGS**  
Autolite

SALE PRICE ..... \$1.99  
LESS MAIL-IN REBATE ..... -.25

**FINAL COST AFTER REBATE 74¢ EACH**

ASK US ABOUT THE NAPA NATIONAL WARRANTY PROGRAM!

**RUST KILL SPRAY PAINTS**  
Choose from 14 colors and 2 primers. (12 oz.) 70-2000 Series

Your Choice! **\$239**

**GUNK FOAMY ENGINE BRITE**  
(18 oz.) #FEF-1

**\$169**

**CRC 5-56 PENETRANT**  
(9 oz.) #765-1360

SALE PRICE ..... \$1.79  
LESS MAIL-IN REBATE ..... -1.00

**FINAL COST AFTER REBATE 79¢**

NAPA HAS OVER 6,500 STORES NATIONWIDE!

Offers good through July 31, 1994, at these participating NAPA AUTO PARTS stores:

**MULESHOE**  
NAPA Muleshoe  
West Highway 84  
272-5514

**WE KEEP AMERICA RUNNING.**

For Those Who Wait For The Best SALE OF THE YEAR.... Your Time Has Come!!

Georgia's **Jeans by Jay**

75% Off

ON ALL SUMMER MERCHANDISE!

Save On Quality Apparel For Men & Women!

30-50% Off

Georgia's **Jeans by Jay**

1015 W. 2nd PORTALES 356-3787  
Additional Parking in Back 2 Blocks from ENMU

# Muleshoe Area

# Summer Business Directory



**Bryant Special**  
Stew meat and bean burrito,  
chili and cheese  
**\$4.25**

Closed Mondays  
**Leal's Restaurant**  
1008 W. American Blvd. 272-3294

## Wilson Drilling Co.

"Complete service from the bottom of the well to the bottom of the Glass"

**Domestic \* Irrigation \* Test Holes**



**\*INSURED \* BONDED**  
W. Hwy 84

**272-5521**

TX LIC 02628W NM WD1152



Gift Selections  
of  
**Alisa Gray**  
Bride Elect of  
**Jerry Bob Graves**

**Muleshoe Art Loft**

3 - 3 Roll Pack Capri Paper Towels  
or

3 - 9 Roll Pack Capri Bath Tissue  
**\$5.50**

While Supply Lasts

**Higginbotham-Bartlett Co.**  
215 Main 272-3351

### An Open Letter From Liveoak Fuel

While reflecting on our first year in operation, I thought back to a time when one of the brags on the Muletrain News was that "Muleshoe had more churches than filling stations." That was back during the days when it seemed there was a gas station on every corner.

We've watched two other stations close during the past year, so that now we have a grand total of three remaining. It's a familiar scene all across the country: abandoned facilities that have given way to the familiar "convenience store."

This is not so much an appeal for you to do business with us, as it is an effort to raise an awareness of supporting your hometown merchants in general.

One of these days, we'll probably all be doing business with Sam's and Wal-Mart, not because we want to, but because we have to! I wonder if they'll still claim to have the lowest prices after we've helped them put their competitors out of business.

If it's worth anything to you to be able to buy a pair of jeans, a sack of flour, a TV set, or a car in your own town instead of having to go to Lubbock or Clovis -- it might be worth paying a little extra to help keep some folks in business.

Think about it!

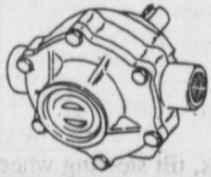
**We at Decorators SAY THANKS!**

Send the FTD® Thanks a Bunch™ Bouquet

**3rd Anniversary**



Teleflora  
**Decorator's Floral & Gifts**  
616 S. 1st 272-4340



### Spray Parts

Tips, Hose, Fittings, Pump Parts  
Repairs Done On Your Ace Pumps  
Overnight

**Scoggin Ag Center, Inc.**

"Where Fertilizer Is Our Business"  
1532 W. American Blvd. 272-4613

## Henry Insurance Agency, Inc.

"Serving Your Insurance Needs Since 1964"



Kenneth R. Henry, Certified Insurance Counselor  
Real Estate Broker  
111 W. Ave. B. 272-4581

## Liveoak Fuel

Texaco Retailers  
1914 W. American Blvd. 272-4875

## Oil, Lube & Filter Special

**\$17.95** (Most Cars)

**LIVEOAK FUEL**

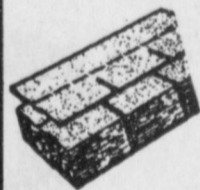
MULESHOE, TEXAS



(formerly Richland Hills Texaco)  
1914 W. Amer. Blvd / 272-4875

GP  
3 TAB Toughglass 21.72 per sq.  
3 TAB Organic 25.98 per sq.  
T-Lock 36.96 per sq.

We Deliver



**Fry & Cox**

**Lumber True Value Hardware**

401 South First 272-4511  
Mon-Sat 8 a.m. - 6 p.m. Sun 1:30 - 4:30 p.m.

We pick-up & repair all types of Irrigation Motors! We service & repair late model GM's, Fords & Dodge automobiles & trucks! We also specialize in General Automotive repair work of all kinds!

**Muleshoe Truck & Auto**  
301 N. 1st 272-5111



**SAVE UP TO 40% ON YOUR COOLING BILLS! PLUS A 10-YEAR PARTS & LABOR WARRANTY!**

Remember last summer? This season could be just as hot, so don't take a chance on a cooling system breakdown. Replace your old system with a new Carrier high-efficiency cooling or heat pump system. Save up to 40% on your cooling bills. Pay no repair costs for 10 years. Call today for details. Limited time offer.



(505) 762-0112  
**CLAIBORNE REFRIGERATION**

We're The Inside Guys.

Serving Muleshoe For Over 40 Years

## Bluebonnet® Feeds

"QUALITY IS THE BEST VALUE"

Cats Choice 20 lb. ....8.46  
Partner's Cat 10 lb. ....4.31  
Hi Pro 27% 50lb. Dog Food .....13.30  
Hi Pro 27% 25 lb. Dog Food ..... 7.55  
Chunk Style 21% 50 lb. Dog Food.10.99

**Muleshoe Feed Barn**

311 W. American Blvd. 272-5626

Choose from 3 different Sandwiches  
**Pizza Hut Supreme**  
Ham'n Cheese  
Pancho Villa

**\$3.49** each



Delivery Available  
11 a.m. - 1:30 p.m.  
& After 5:00 p.m.

1412 W. Amer. Blvd. 272-4213

## Specializing In Custom Cuts:

**Steaks For The Grill**

T-Bones - Sirloin - Ribeyes - Strip Steaks

**Muleshoe Meat Market & Deli**

506 W. American Blvd. 272-4361



Hours:  
Mon.-Fri. 5 a.m. - 4 p.m.  
Sat. - 5 a.m. - 2 p.m.

**Daily Buffet:**

Includes Salad Bar & Cobbler  
Serving Breakfast Daily  
Connie Dominguez, Owner

**Connie's Place**

121 Main 272-3126



# Journal Classifieds

Call 272-4536

Deadlines: For Thursday, Noon Tuesday; for Sunday, Noon Friday

Call 272-4536

## CLASSIFIED RATES

15 Words & Under  
Minimum Charge  
\$2.30  
Thereafter  
\$2.00  
16 Words & over

1st Insertion  
15 cents per word  
2nd Insertion  
13 cents per word

## CLASSIFIED DISPLAY RATES

\$1.75  
Per Column Inch

## DEADLINES

12 noon Tues.  
For Thursday Paper  
12 noon Friday  
For Sunday Paper

To receive the reduced rate after the first insertion, ad must run continuously.

We reserve the right to classify, revise, or reject any ad. We are not responsible for any error after ad has run once.

## Help Wanted

**HELP WANTED**  
FT/PT Openings in Muleshoe. Flexible schedules, above average pay, ideal for students (806)793-1268. W3-26s-4tc(ts)

Feedmill worker. Experience in Steam Flaking helpful. References required. Payed health insurance and profit sharing. Apply in person. Farwell Feedyards, Farwell, TX. F3-26s-tfc

**HELP WANTED CAR LIMITED**  
Truck drivers wanted. Must know how to back a semi. Notify Jerry at EXCEL in Friona call 295-3761. C3-26s-4tc

**POSTAL JOBS**  
Start \$11.41/hr. For exam and application info. Call (219) 769-8301 ext TX 759, 8AM-8PM, Sun-Fri. O3-26s-8tp

Commercial Plumbers and helpers- 2 years experience. Salary \$8.96 to \$14.93 an hour. Call (806) 358-7797. H3-26s-4tc

**HELP WANTED**  
C&H Equipment. Full time truck driver. Apply in person. 272-5514

South Plains Regional Housing Authority is currently accepting applications for landlord participation in the Section 8 Certificate program. For details and/or information contact the SPHRA Section 8 staff at 806/894-4560. SPHRA is an Equal Housing Opportunity Agency. b S3-24s-10tc(ts)

**WANTED**  
A mature, responsible individual to care for one-year old child beginning August 15. My home or yours. 272-3552. M3-26t-4tp

## Help wanted

Bookkeeper needed. Experience computer skills necessary. Agricultural background helpful. Call Glenn 272-4962. B3-25s-tfc

## Work Wanted

Mowing lots and yards. Flower planting. Reasonable call after 7 p.m. 481-9305.

## Feed

Oat hay, small bales, excellent quality. In the barn and put up right. Call (505) 355-7524 after 5 p.m. Fort Sumner, NM.

Good striped alfalfa in small bales. Call (505) 355-7524 after 5 p.m.

## FOR SALE

Items for Sale: baby play gym, changing table, baby stroller, 2 baby swings. Call 272-5713 or come by Monday - Saturday 8am-6pm. R11-27t-1tc

**FOR SALE**  
1978 Pete c/o, 1977 Wilson flat bed 40 foot. Call 272-5270.

CONSOLE/SPINET PIANO FOR SALE. TAKE ON SMALL PAYMENTS. SEE LOCALLY. 1-800-343-6494. R11-27s-2tp

Motor Guide 12V trolling motor. Brand new, in the box. Retail for \$269.00, asking \$200. Call (505) 359-1442. N/C11-26s-tfc

Emus For Sale. 1 pair 16 months old. 3 pair 4 months old. Call (806) 933-4404. A11-24s-10tc

Storage rooms available. Call Ted Barnhill. 272-4903. B11-23s-tfc

**Pat Walker Reducing Machine**  
For Sale  
Collect 1(713)448-3405. 1(409)295-6717. S11-25t-5tp.

Wheat Hay in round bales, with oats and alfalfa mix. Phone (806) 272-3732. T11-26s-4tc

**GELBIEH BULLS**  
For Sale: Five registered Gelbvieh bulls; or will pasture with your open cows on your place or mine. MULESHOE RANCH (806) 272-5085

## LOST & FOUND

Lost June 22nd. Red Heeler, 11 months old with a tail, answers to Toby, wearing a brown collar with tip and silver buckle. **REWARD** call Della 272-4528 or 272-4569.

## Miscellaneous

1994 CHRISTMAS AROUND THE WORLD Plan begins July 1. Receive \$50 free Merchandise for having a House of Loyd Party! Receive additional free gifts as you and your guests make additional purchases. Billie Downing is your Muleshoe Sales Representative. Call 272-5169, after 5 pm to schedule an exciting demonstration in your home. B15-27s-4tc

All types of fencing and corrals constructed. Call 925-6742 evenings. M15-27s-tfc

## Real Estate

### BUILDING LOT BY OWNER

Beautiful Parkridge Addition, Muleshoe. 103'x125', paved streets, utilities. Great View! Owner finance. Reduced for quick sale!! (806)795-5409 W8-38s-tfc(ts)

**FOR SALE**  
Brick Home- three bedroom, 1 3/4 bath- 2 car garage- central air and heat- fenced backyard- underground water sprinkler. Call 272-5408. R8-27s-4tc

**FOR SALE:** 3 bedroom Brick home, kitchen remodeled and nice carpet. 272-3796 C8-25t-6tc

NICE 3-1 3/4-2 All electric Brick Home on pavement. Shop, barn, corrals, many extras located on 4.5 Acres. Call 806-272-4975 for appointment. W8-25t-tfc

## HENRY REALTY

111 W. AVE. B 272-4581  
Muleshoe, Tx.  
West part of town, 3 bedroom, 1 bath, dining room, stucco, 2 car garage, storm doors and windows. Large lot. See to appreciate. \*\*\*

Near High School-3 Bedroom, 3 Bath, BV Central Heat, Ducted in Evaporative Air Cond., Carpet throughout, Large Den with rock fireplace, Top grade wood paneling throughout. Storm Windows and Doors. Insulation in ceiling. Large utility room and spacious storage area. Kitchen built-ins. \*\*\*

Country Club Addition, 2 bedroom, 1 bath, 4 carport, new roof, carpet, 2 ceiling fans. Includes vacant lot next door. Storm doors and windows. \*\*\*

Country Club Addition, 2 bedroom, 1 bath, enclosed carport, new protective siding. Carpet throughout, wood fence, storm doors and some storm windows. Ceiling fans, new front porch and new back patio. Ample storage, storm cellar. Excellent condition. \*\*\*

Excellent location, large 2 bedroom, 1 bath, dining room, large utility with hookup for washer & dryer, carpet, double carport, spacious hobby shop. Call for appointment. \*\*\*

Edge of town 3 bedroom, 2 bath, large den with fireplace, large utility room, heat pump, carpet, kitchen, builtins. Call for appointment. \*\*\*

Reduced Price - Owner ready to sell. 2 bedroom, 1 bath, 1 car garage, carpet, wood fence, storm cellar. \*\*\*

**COMMERCIAL PROPERTY**  
Ideal location on West 150' highway frontage. A great LEASE opportunity. \*\*\*

West American Boulevard 150' frontage. Priced to sell.

## Legal Notice

**PUBLIC HEARING NOTICE REGARDING THE ISSUANCE OF BONDS**  
The Red River Authority of Texas (the "Issuer") will hold a public hearing at 9:30a.m. on July 20, 1994, at 520 Hamilton Building, Wichita Falls, Texas 76301. Among the items to be discussed will be a proposal for the issuance by the Issuer of one or more series of bonds (the "Bonds") to currently refund the Issuer's Collateralized Pollution Control Revenue Bonds, 1979 Series (Southwestern Public Service Company Project) which were issued to finance certain air and water pollution control facilities at Unit No. 3 of the Harrington Plant located 5 miles northeast of Amarillo, Texas and at Unit No. 1 of the Tolk Plant located near Muleshoe, Lamb County, Texas. The maximum aggregate face amount of the Bonds is anticipated to be \$25,000,000. All persons interested in such matter are invited to submit written comments to the Issuer prior to the time set for the public hearing or to attend the public hearing and express any comments they may have regarding the Project or the Bonds.

Red River Authority of Texas  
520 Hamilton Building  
Wichita Falls, Texas 76301



**Byrd Realty**  
RONALD BYRD, GRI  
OFFICE 806/481-3848  
HOME 806/481-9318  
MOBILE 806/740-1498

**Richland Hills Addition, Approx. 2500 sq. ft. 3-2-2 Nice Brick Home, basement, fenced backyard, ref. air & central heat, lots of storage, assumable loan to qualified buyer. OWNER SAYS SELL!!! Call for appointment. Low \$80's**  
**For Rent- Large 3bdr., 2 bath, mobile home, Nice Location, Available Immediately!! For more information call (806) 481-3846**  
**FARMERS WATCH FOR OUR NEW FARM ADS IN THE NEAR FUTURE!!**

**Got something to buy or sell? Read the classifieds!**

**Real Estate FOR SALE**  
Large brick home, 3 br, 2 bath, lg closets, lg carport, fenced back yard, tile brick. HCR Real Estate Call 272-5318 after 1:00PM H8-26s-tfc

## Amarillo museum seeking turn-of-century horse toys

AMARILLO - The American Quarter Horse Heritage Center & Museum is seeking horse-related toys dating from the turn of the century to the present for the upcoming exhibit, "Playroom Pals," which is scheduled to open in October and run through April. The exhibit will explore the evolution of toys.

"Over the years, there has been a variety of equine-related playthings produced," said James May, Director of Curatorial Services. "During the past 100 years, children have played with a variety of horse toys ranging from cast iron to molded plastic."

Anyone wishing to loan a toy to the American Quarter Horse Heritage Center & Mu-

seum should send a photograph of the toy along with details of its height, width and length. The photos will not be returned unless accompanied by a self-addressed, stamped envelope. All toys used for the exhibit will be on a loan basis and will be returned after the exhibit closes.

Located along Interstate 40 at Quarter Horse Drive, the American Quarter Horse Heritage Center & Museum in Amarillo offers visitors interactive exhibits, artifacts, video presentations, scheduled American Quarter Horse demonstrations and breathtaking works of art.

For more information about "Playroom Pals," write the American Quarter Horse Heritage Center & Museum, 2601 I-40 East, Amarillo, Texas 79104, or call (806) 376-5181.

## Journal Classifieds

**SELL! SELL! SELL! SELL!**

Call 272-4536 to place your ad today!!!

**MUST SELL!! 92 MITSUBISHI GALANT**, 4 door, automatic transmission, air conditioning, power door locks, power windows, tilt steering, cruise control, AM/FM stereo cassette, rear window defroster, tachometer AND MUCH MORE!! NO OLD CONTRACT TO ASSUME, no back payments to make just need responsible party to make reasonable monthly payments, Contact **ALICERODER** in the Credit Dept., Friona Motors, 806/247-2701

**MUST SELL! 93 BUICK ROADMASTER LIMITED**, 4-door Sedan, leather seats, dual power seats, power windows, power door locks, tilt steering wheel, cruise control, electronic climate control, AM/FM stereo cassette, AND MUCH MORE!! NO OLD CONTRACT TO ASSUME, NO BACK PAYMENTS TO MAKE, just need responsible party to make reasonable monthly payments, Call **KIM HUMPHREY** in the Credit Dept., Friona Motors, 806/247-2701

**MUST SELL! 94 MERCURY SABLE GS**, automatic transmission, power windows, power door locks, AM/FM stereo cassette, tilt steering wheel, cruise control, drivers six way power seat, dual air bags, rear window defroster, AND MUCH MORE, NO OLD CONTRACT TO ASSUME, NO BACK PAYMENTS TO MAKE, just need responsible party to make reasonable monthly payments, Contact **JOE or ALICE** in the Credit Dept., Friona Motors, 806/247-2701

**MUST SELL! 93 FORD AEROSTAR, XLT**, extended van, 7 passenger seating, power windows, power door locks, front & rear air conditioning, cruise control, tilt steering wheel, AM/FM stereo cassette, AND MUCH MORE, NO OLD CONTRACT TO ASSUME, NO BACK PAYMENTS TO MAKE, just need responsible party to make reasonable monthly payments, Call **KIM HUMPHREY** in the Credit Dept., Friona Motors, 806/247-2701

Don't go out of Muleshoe! We have available any need in home furnishings: Action Recliner- Rocker by Lane; Serta Bedding, all sizes from Simplicity to eloquent pillow top sets. Best prices anywhere! Consignments on quality pre-owned furniture and appliances welcome. Currently remodeling to accommodate larger in-store inventory of new and pre-owned furnishings. We will save you money! Have a happy day. Come in and see us.

**Discount Furniture**  
414 West American Boulevard  
Wayland James Wanda

## Nieman Realty

116 E. Ave. C George Nieman, Broker 272-5286 or 272-5285

- HIGH SCHOOL**
- JUST LISTED- NICE 3-2-1 carport Home, Cent. A&H, built-ins, basement, ceiling fans, water softener, covered patio w/gas grill, fenced yd., & one bdrm. apartment. \$45K!!!! HS-12
  - JUST LISTED- NICE 3-2-2 Brick, 2150'+ lv. area, Heat pump, built-ins, Ceiling fans, nice carpets, fenced yd. MORE!! \$70K HS-6
  - 3-2-1 Brick, Cent. A&H, ceiling fans fenced y., MORE!!!! \$20's. HS-3
  - 3-1-1 Brick, Cent. A&H, built-ins, fence yd. \$20's!!! HS-1
  - 3-1-1 carport Home; heat pump, storm windows & doors. MUCH MORE. \$20's!!! HS-4
  - JUST LISTED- Large 3-2-2 Home, Cent. A&H, FP, 1800+ lv. area. fenced yd. \$30K!!!! HS-9
  - JUST LISTED 2-1-1 Home, wall furnace heat, window evap., fenced yd. \$13K!!!! HS-10
- HIGHLAND AREA**
- Nice 4-2-1 Brick, Cent. A&H, built-ins, fans, encl. patio, man. spkll. sys., gas grill, st. bldg., fenced yd. \$60's!! HL-5
- FmHA Financing To Qualified Buyer- NICE
- 3-1-1 Brick Home, Cent. A&H, ceiling fans, storage bldg., fenced yd. \$30's!!!! HL-3
- LENAU ADDITION**
- VERY NICE 3-2-1 Home, Heat Pump, storm windows & doors, extra insulation, nice carpet, spkrl. sys., & MORE!!!! \$30's!!!! L-2
  - 3-2-1 carport Home, Cent. heat, evap. air, built-ins, cov. patio, st. bldg, travel trailer cober. VERY NICE!!!! \$30's!! L-3
  - JUST LISTED-Nice 2-1-1 Home, new interior paint, new carpet, fenced yd., storage bldg. MORE!!!! & 20's!! L-4
  - JUST LISTED 2-1-1 carport Home, floor furnace heat, nice carpet, deck area, fenced yd. \$17K!!!! L-1
- RURAL HOMES**
- 3-1-2 Home on 1 1/2 acres storm cellar & storage bldg...\$20's!!!! HR-8
- ESTABLISHED BUSINESS, 40+ yrs., lot, bldg., furniture, fixtures, & inventory. Books open to qualified Buyer!!!!
- ASK ABOUT OUR COMMERCIAL LISTINGS!!!**
- JUST LISTED 40' x 300' IN CONTRACT. well, domestic water. \$30's!
  - PLEASANT VALLEY- 160 acres, 8" well Lindsey circle!!!!

# Summer Reading Club honors participants

Awards day was held Wednesday afternoon for the 1994 Summer Reading Club at the Muleshoe Area Public Library. The theme of "Far-away-places" was continued in the movie "Teddy Bear's Balloon Trip" and a vacation game was played. Concluding, the program awards that the children had earned were presented by Anne Camp and Linda Lopez.

The two highest readers (in 3 age groups) were given T-shirts with the new Muleshoe logo. The third place winners were given a new Muleshoe Cap. All the boys and girls were presented a Certificate from the Texas State Library and also gold seals that say "Outstanding Readers" and lapel pins with the Reading Club logo, according to what they had earned.

### Pre K- 1st Grade

Jessica Hall, t-shirt; Jennifer Heredia, t-shirt; Cecilio Chavez, cap; Monica Posadas, Felicia Glover, Jamie Hall, Olga Agundiz, Ramiro Agundiz, Ely Villa, Amberlee Steinbock, Matthew Richards, Denise Guterrez, Barry Morris, Andrew Padilla, Jenna Rasco, Kristen Barberi, Randie Williams, Cade Smith.

### 2nd - 3rd Grade

Natasia Chavez, t-shirt; Esther Heredia, t-shirt; Jenny Hall, cap; Cami Valdez, Sa-



**READING CLUB PARTICIPANTS REWARDED** - Summer Reading Club participants who were honored by the Muleshoe Public Library for successfully completing the program were (Back, left) D.J. Dominguez, Jenny Hall and Ester Heredia. (Middle) Monica Chavez, Jessica Hall and Natasha Chavez. (Front) Jennifer Remy, Jennifer Heredia and Cecilio Chavez.

rah Dominguez, Laura Vasquez, Latasha Glover, Adam Pierce, Brittany Fuqua, Shana Rempe, Niclas Green, Bethenie Sanchez, Ashley Guterrez, DiAnna Mendoza, Amy Hall, Jaclyn Gilleland,

Jamie Wedel, Shalisa Ladd, Mindy Gore, Andy Sain, Rachel Rudd, Timothy Villa, Veronica Flores, Erin Gallman.

### 4th - 5th Grade

Jennifer Remy, t-shirt; Monica Chavez, t-shirt; DJ

Dominguez, cap; Levi Valdez, Che Chavez, Yvette Villa, Shani Rasco, Brittany Gore, Ricky Rudd.

## Public Record

## Obituaries

### Frances Skillman

Frances Skillman, 78, of Burlington, Kan., died Sunday, June 26, 1994 at a nursing home in Topeka.

Services were held on Wednesday, June 29 at Jones Funeral Home in Burlington. Burial was held in Stringtown Cemetery near Burlington.

She was born Sept. 16, 1915 in Woodson County, the daughter of Carl C. and Ella Shannon Gallaher. She was a teacher and a licensed practical nurse.

Skillman was a member of the Bean Grange in Burlington and the Extension Homemakers Unit in the Ohumwa Community near Burlington.

She was married to Claude C. Skillman on Sept. 24, 1944 in Topeka. He died Oct. 3, 1986. A daughter, Rebecca Anne Skillman, died Sept. 27, 1963.

Survivors include a daughter, Louise Clapp of Muleshoe; a son, Charley Skillman of

Ottawa and two grandsons. Memorial contributions may be made to the COF Training Center and sent in the care of the funeral home in Burlington, Kan.

Saldana Lopez - Alejandro Jose Cruz and LaTisha Ann Orozco - Luis Carlos Morales and Margarita Ramirez - Ronald Irvin Welch and Robin Kathleen Burks - Juan Garza and Maria Duran

## Marriages

The following marriage licenses have been filed at the Bailey County Clerk's Office for the month of June:

- Hector Hugo Arzola and Rose Marie Gloria  
- Toby Gene Carpenter and Katherine Brock  
- Larry Albright and JoAnn

**Sell Those Wanted Items in the Classifieds at the Muleshoe Journal Call 272 - 4536**

## GLOVE SOFT!

8611

Soft cowhide upper, cushion insole and urethane wedge sole. Easy-going Dunoon comfort for workdays or weekends.

B	D	EE
9-12	7-14	8-11

**The Fair Store**  
120 Main 272-3500  
Muleshoe, Texas

**RED WING SHOES**  
MADE IN U.S.A.

NEW MEXICO OUTDOOR DRAMA ASSOCIATION, INC. PRESENTS

## The Real

**"BILLY THE KID"**  
NEW MEXICO'S HISTORICAL OUTDOOR DRAMA BY DON McALAVY

Friday's & Saturday's - June 17 thru August 20, 1994 at 8:00 p.m.

**CAPROCK AMPHITHEATRE**  
OUR NIGHTS ARE COOL! Bring warm jackets & blankets.  
Enjoy a spectacular view of Llano Estacado Caprock at sunset!

**SHOW TICKETS**  
Adults 13 & up - \$10.00  
Children 6 to 12 - \$5.00  
Groups of 20 or more - \$9.00 each  
All tickets are general admission and include NM sales tax. (Children 5 and under are free to performance only)

---

NEW MEXICO'S OWN BEN'S OF CLOVIS

## BAR-B-QUE TICKETS

Adults 13 & up - \$6.00  
Children 6 to 12 - \$4.00  
(Available from 6:30 until 7:45 p.m.)

FOR RESERVATIONS CALL:  
**1-800-724-0500**  
**NEW MEXICO**  
AMERICA'S LAND OF ENCHANTMENT

**Complete Line Monuments - Markers Memorials Granites - Bronze Muleshoe Memorial Park Cemetery, Inc.**  
232 Main P.O. Box 373 Muleshoe, TX  
272-5727 or 272-4670

## Hybred Pearl Millet

For Haying & Grazing of Layout Acres  
**NO Prussic Acid**  
Iron Chlorosis Tolerant  
**\$4<sup>00</sup> per acre**  
**Bamert Seed Co.**  
Muleshoe, TX 272-5506

## New! Extra-Long Chili Cheese Dog!

**\$1.49**  
Limited Time!

Big news! Get an Extra-Long Chili Cheese Dog now for just \$1.49! But hurry, it's only here for a limited time...at Dairy Queen®

On Sale at Dairy Queen® July 4-24, 1994.

With any purchase, get a "Buy two tickets, get one free" coupon\* to Fiesta Texas Theme Park in San Antonio!

\*Redeemable at Fiesta Texas park gate. Coupon good through Sept. 5, 1994.

©Reg. TM Am. D.Q. Corp. ©Tx. D.Q. Op. Coun. At participating Dairy Queen stores.

## GREAT DEALS = LOW PAYMENTS!

**1987 Pontiac Sunbird**  
Automatic, A/C, Incredibly Low Miles!

**Only \$99** Per Month

**1989 Olds Cutlass Cruiser**  
Loaded, Looks Like New!

**Only \$5995**

<b>1991 Chevrolet S-10</b> Mint Green, Super Low Miles <b>Only \$159</b> Per Month	<b>1989 Ford F-150</b> Clean, Low Miles <b>Only \$6995</b>	<b>1992 Ford Ranger</b> Bright Red, XLT Package <b>Only \$159</b> Per Month
<b>1993 Ford Escort</b> LX, 4 Door Hatchback <b>Only \$7995</b>	<b>1990 Dodge Dakota</b> V6, Long Wide Bed <b>Only \$169</b> Per Month	<b>1991 Ford Explorer</b> 4 Door, Sport Utility Vehicle <b>Only \$12,995</b>
<b>1994 Buick Century</b> Over '16,000 When New <b>Only \$14,995</b>	<b>93 Caprice Classic LS</b> Hard Loaded, Low Miles <b>Only \$299</b> Per Month	<b>1991 Buick Park Ave</b> Ultra Package, Only 28,000 Miles Every Option Available <b>Only \$15,995</b>

**No Credit ? Bad Credit ? - No Problem !**  
**JUST ASK FOR CREDIT MAN**  
**HURRY IN! These great deals will be gone soon.**

# STREBECK

**GM AUTOPLEX**

**Clovis Highway • Portales, NM**  
356-3501 763-3501

*The very best prices and service anywhere... We personally guarantee it!*