





# Muleshoe Area

# Mid-Winter '94

# Business Directory And Shopping Guide

Here Are Three Owens-Corning Pink Fiberglas Insulation Favorites. Proven Performers That Can Increase A Home's Energy-Efficiency.

R-13 FOR EXTERIOR 2 X 4 WALLS

R-25 ATTIC BLANKET



R-19 FOR FLOORS & 2 X 6 WALLS

## Higginbotham-Bartlett Co.

215 Main

272-3351

## LEAL'S SPECIAL

Enchilada (meat or cheese)  
Taco, Tamale, Beans

& Rice

**\$3.95**

Substitutions Extra



Closed Mondays

## Leal's Restaurant

1606 W. Amer. Blvd.

272-3294

# Redecorate Your Room

## Muleshoe Art Loft



WHEN THEY'VE STOLEN  
YOUR HEART AWAY...

Send the FTD® Spot in My Heart® Bouquet

## Decorator's Floral & Gifts

616 S. 1st Muleshoe 272-4340

## Henry Insurance Agency, Inc.

"Serving Your Insurance Needs Since 1964"

KENNETH R. HENRY  
CERTIFIED INSURANCE  
COUNSELOR  
REAL ESTATE BROKER

111 W. Ave. B.  
Phone 806/272-4581  
Muleshoe, Tx. 79347



Rama Smalling

## Congratulations To Rama Smalling

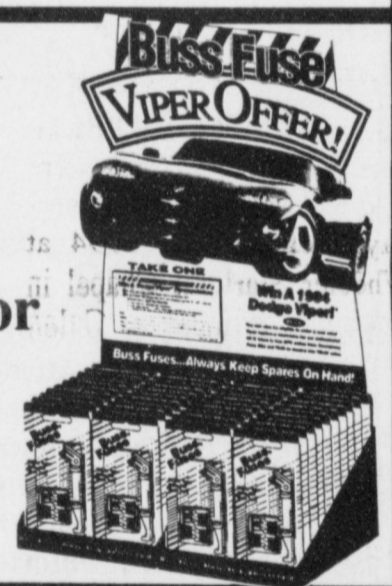
Henry Insurance Agency congratulates Rama Smalling in her completion of Continuing Education Requirements of the Society of Certified Insurance Service Representatives in Austin, Texas. Rama earned her CISR (Certified Insurance Service Representative) designation by attending five courses covering all phases of the insurance business and passing five comprehensive examinations. Rama will be required to attend annual updates in order to maintain the designation.

Rama, a six-year veteran of the industry, believes insurance consumers are best served by those who acquire and maintain a high level of professional excellence by meeting the continuing education requirements of the Certified Insurance Service Representatives Program.

AG & Auto Parts  
Headquarters  
For  
Muleshoe Area

## Bratcher Motor Supply

105-7 East Ave B  
Muleshoe  
806-272-4288



Medium Supreme  
Pizza  
For  
**\$7.99**

Delivery Available  
11 a.m. - 1:30 p.m.  
& After 5:00 p.m.



1412 W. Amer. Blvd.

272-4213

## Wilson Drilling Co.

"Complete service from the bottom of the well to the bottom of the Glass"

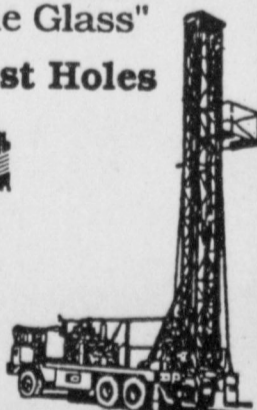
Domestic \* Irrigation \* Test Holes



\*INSURED \* BONDED  
W. Hwy 84

**272-5521**

TX LIC 02628W NM WD1152

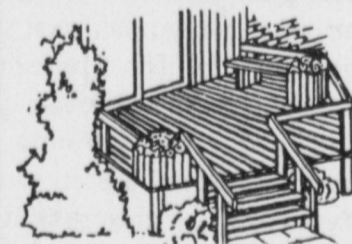


## Clarks' Central Texaco

221 W. Amer. Blvd. Muleshoe 272-3915  
Fast Oil Change

Wash Wax Charge A/C  
State Inspection Station

Bob Clark John Carrion Randy Dunn  
Experienced Service Personnel



Redwood  
In Stock!

Fry & Cox

## Lumber True Value Hardware

401 South First Muleshoe 272-4511  
Mon-Sat: 8 a.m. - 6 p.m.  
Sun 1:30 - 4:30 p.m.



WE RECOMMEND  
**ferti-lome**  
Lawn & Garden Products

Time To Use  
**ferti-lome**  
LAWN FOOD

Kearney Scoggin



Prevent summer weeds  
Kill spring weeds

**ferti-lome**

## Scoggin Ag Center, Inc.

"Where Fertilizer Is Our Business"  
1532 W. Amer. Blvd. 272-4613

Senior Citizen 10% Discounts  
Mon.-Tues.-Wed.  
Get Your Perm Now In Time  
For Valentines Day



## Main Street Beauty Salon

115 S. Main Muleshoe 272-3448



CARNE GUISADA  
(Stew Meat Mexican Style)  
with Beans, Rice and  
Corn or Flour Tortillas

**\$4.50**

Closed Tuesdays

## Viola's Restaurant

2002 W. Amer. Blvd. 272-3838



### Clifford A. Moore Services Held Tuesday

Clifford A. Moore, of Morton, TX were held Tuesday, February 1, 1994 at 2:00 p.m. at First United Methodist Church, with Rev. Ken Peterson officiating.

Burial was in Morton Memorial Cemetery, under direction of Ellis Funeral Home, Morton.

Mr. Moore died January 30, 1994 at Cochran Memorial Hospital in Morton.

He was born August 27, 1904 in Garner, TX and married Virginia Hall on August 23, 1932 in Lorenzo, TX. She died in 1961.

Mr. Moore had been a resident of Cochran County, TX since 1933. He was a farmer and a member of Morton Masonic Lodge #1245 A.F.A.M. and had served as Past Grand Master. He was also a member of 32 degree Scottish Rite, and a member of the First United Methodist Church. He was preceded in death by four sisters and one brother.

Survivors include one son, Clarence A. Moore of Merritt Island, FL; one daughter, Mary C. Tice of Roswell, NM; six grandchildren and eight great-grandchildren.

### Lorena Roselle Carter Services Held Wednesday

Services for Lorena Roselle Carter, 94, of Lubbock were held at 10:00 a.m., Wednesday, February 2, 1994 at Wheeler Starlight Chapel in Lubbock, with Rev. Galen Issacs officiating.

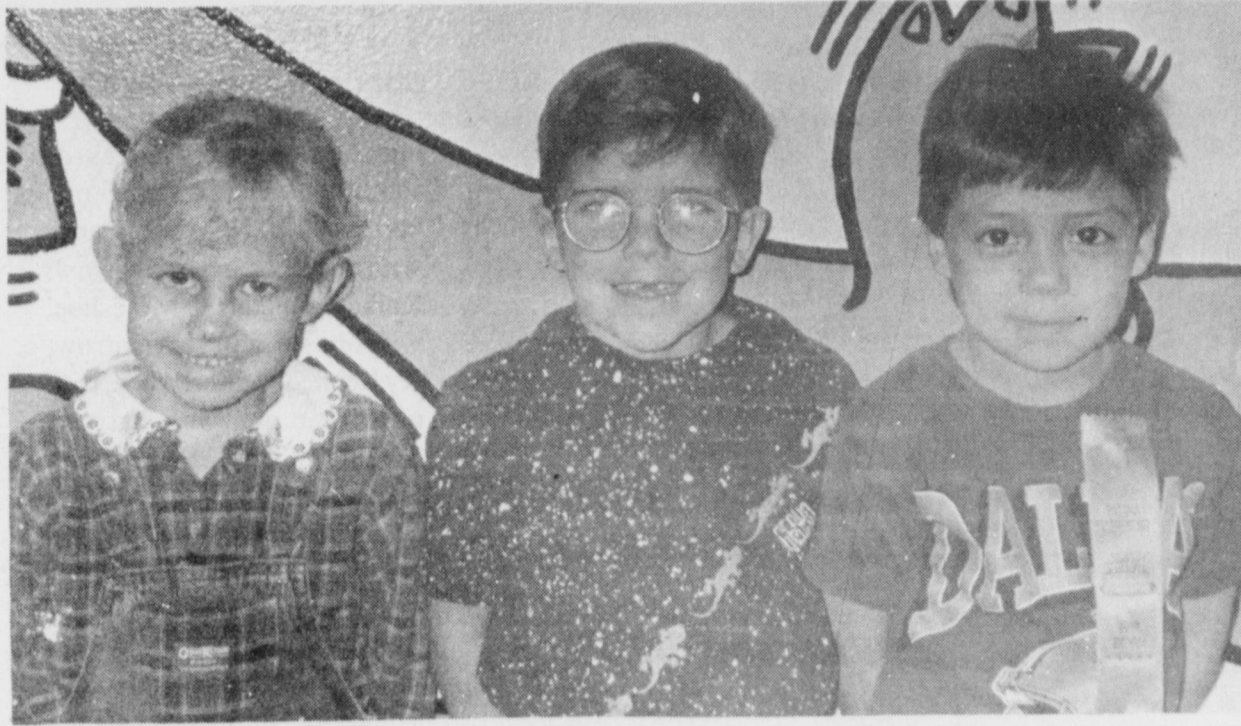
Burial was in Mt. Zion Cemetery, under direction of Wheeler Mortuary.

Mrs. Carter died at Carillon Medical Center in Lubbock, TX.

She was born in Kaufman, Texas on December 28, 1899 and married Harvey Carter in Rogers, NM on February 21, 1920.

She moved to Roosevelt County in 1903, and graduated from Portales High School in 1917. She received her degree from ENMU in 1934, and later completed her Bachelor's Degree. She taught in Rogers School for 41 years and in Three Way, TX for 16 years. She lived in Rogers until 1985 when she moved to Lubbock. She was a retired teacher and a member of Dora Baptist Church.

Survivors include her husband and three nieces, Clarinda Blakley and Pat Rodgers, both of Albuquerque, NM and Elsie Hayes of Lubbock, TX.



**DILLMAN ELEMENTARY STUDENTS**-Students of the week at Dillman Elementary for the week of December 13-17 are (not in order) Mitci Hawkins, Speech; (not pictured) Joshua Shelburne, Music; Andrew Padilla, P.E.; Priscilla Orozco, Library; and (not pictured) Coli Hunt, Computer.



**DILLMAN ELEMENTARY STUDENTS**-Students of the week at Dillman Elementary for the week of December 6-10 are (not in order) Henry Garcia, Speech; Meghan Wills, Music; Milagros Reyes, P.E.; Ashley Lopez, Library; and Kyle Yell, Computer.

### Services Held For Ray D. Terrill

Services for Ray D. Terrill, 67, of Progress were held Wednesday, February 2, 1994 in Muleshoe Church of Christ with the Rev. Gary Montgomery, pastor, officiating.

Burial was in Muleshoe Memorial Park Cemetery under the direction of Ellis Funeral Home, Muleshoe.

Terrill died Jan. 31, 1994 at his residence.

He was born April 13, 1927 in Portales, New Mexico. He married Joyce Myrtle Lancaster on August 18, 1956 in Clovis, New Mexico.

Terrill had been a resident of Bailey County since 1959, moving from Odessa, TX. He was a retired truck driver for Bailey County Electric, Co-op, and had worked for them from 1959-1989, and was a member of Muleshoe Church of Christ.

Survivors include his wife; one daughter, Betty Jean Terrill of Levelland, TX; and one sister, Aline Vincent of Lovington, NM.

Memorials may be made to Muleshoe Church of Christ, 2201 W. American Blvd., Muleshoe, TX 79347.

### Jennyslippers Continued from page 1

Installation of officers was performed by Nancy Kidd,

President; Vivian White, Vice President; Donna Kirk, Secretary; and Thursie Reid, Treasurer. The Installation began with a welcome to new officers by each officer handing over the duties of the office and a rose to each incoming officer. New officers include

Rhonda Calvery, President; Billie Downing, President Elect; Alene Bryant, Secretary; and Adela Lopez, Treasurer.

1993 projects were reviewed and an introduction of 1994 projects was presented by Nancy Kidd. They include Membership Calling, Membership Meals, Toast to Texas, Garden Spot of the Month,

Easter Egg Hunt, Walk-a-thon, Push, Muledays, Bailey County Fair, Muleshoes and Muleshoe Games, Bar-b-que & Concession, Graduate Scholarship, Financial Seminar, Floats in Parades, Ministerial Alliance Prescription, Bailey County Food Box, Muleshoe Meals on Wheels, Muleshoe Heritage Foundation, Muleshoe Boy Scouts & Girl Scouts, Friends of Library, Nursing Home Christmas Card Project (bakeless bake sale), July 4th Fireworks, and a Volleyball Tournament, the EMS Toy Project, Skating, Child Find, Immunization Program, Chamber Women's Division Seminar, Muleplex, and the Scrap Book.

The meeting was adjourned by President Rhonda Calvery.

### School Board

Continued from page 1

Accreditation Criteria by the Texas Commission on Education, saying, "It will place a great deal of accountability on each school."

"The whole idea of the plan is the state wants to give each campus and each school district a minimum passing score in order to be accredited," Moore said. So-called passing scores will be based on a school district's student scores and attendance and drop-out rates, among other criteria.

According to Moore, a final draft of the Accountability System was approved by the Texas Commissioner of Education Lionel Meno in January.

Texas has adopted the Accountability System plan for the next two years and in a couple of months, the state will adopt a plan for the next three years. Moore said, "So by the end of the school year, we will have a plan for the next five years laid out."

Under the plan, school districts which do good will receive special recognition. The Commission will also discuss fair ways to deal with small school districts, particularly since the change in the status of one or two students can have a large effect.

Other criteria in the plan include recognition of diversity in schools, system stability, local program flexibility, and the public's right to know. Some standards also include consideration of mi-

norities and disadvantaged students, in regard to drop-out and attendance rates.

Moore also gave the board of trustees an overview of a Basic Principles of a New School Finance Plan for the State of Texas. The plan was formed by ten school districts in the Dallas/Fort Worth and Valley areas who are trying to get other school districts to join them.

The group of schools is striving to achieve a 70/30 percent state/local share of the costs of public education, stating there must be an infusion of new state funds and reduction in property taxes.

The board did not take any action on this topic Monday night.

Jo Mayhugh, business manager fo Muleshoe Schools, gave a tax report. According to Mayhugh, the school district had a collection rate of 73.6 percent on real and personal property taxes for school taxes collected through Dec. 31, 1993. Mayhugh also gave a bank and funds balances report and the Trustees approved the payment of current bills.

### Around Muleshoe- Continued from page 1

a grade point average of 3.5 to 3.9 qualified for the Dean's List.

Students making the lists included: Stacie Leigh, Emilee Anne Benton, Andrew Thomas, and Kelly Kay Conklin Heidel, all of Muleshoe. Also, Brandon Wade Kirk of Bula.

**TRUST**  
**H&R BLOCK**

224 W. 2nd Muleshoe 272-3332

- We are reasonably priced.
- We are conveniently located.
- We offer complete electronic filing services.

**It's Why America Returns.**

**MEET THE CANDIDATES**

The Following People Have Announced Their Candidacy For The Positions Below In The March 8 Primary Election

**Bailey County**

County Clerk  
**Billie Downing**  
Democrat  
**Barbara McCamish**  
Democrat

Justice Of Peace Precinct 1  
**Jack Bates**  
Democrat

287th District Judge  
**Jack Young**  
Democrat

Bailey County Judge  
**Marilyn Cox**  
Democrat

County Commissioner Precinct 2  
**C.E. Grant**  
Democrat

County Commissioner Precinct 4  
**Bennie Claunch**  
Democrat

**Muleshoe Journal** USPS 367-820

Established February 23, 1924. Published by Triple S Publishing, Inc. Every Thursday at 304 W. Second, P.O. Box 449, Muleshoe, Tx. 79347. Second Class Postage paid at Muleshoe, Tx. POSTMASTER: Send address changes to the Muleshoe Journal, P.O. Box 449, Muleshoe, Tx. 79347.

We Are Qualified Members Of:

Panhandle Press Association, National Newspaper Association, West Texas Press Association and Texas Press Association.

National Newspaper Association

MEMBER 1994  
TEXAS PRESS ASSOCIATION

© 1990

Scott Stinnett, Publisher  
Lisa Stinnett, Vice-President/Comptroller  
Eveline Hania, News  
Annette Bottlesman, Society  
Holly Mulsap, Advertising

SUBSCRIPTIONS:  
Muleshoe Journal and Bailey County Journal  
By Carrier Yearly - \$15.00  
Bailey and surrounding counties  
By Mail - \$16.75  
Elsewhere - \$18.50

Advertising Rate Cards on Application

\*Advertisers should check their ad the first day of insertion. The Journals will not be liable for failure to publish an ad or for a typographical error or errors in publication except to the extent of the cost of the ad for the first day of insertion. Adjustment for errors will be limited to the cost of that portion of the ad where the error occurred.\*

**No Reasonable Offer Refused!**

**MULESHOE MOTOR CO.**

1225 W. American Blvd.  
Muleshoe, TX 79347  
806-272-4251 800-432-7617

**Winter Clearance Sale**  
Sale Ends Saturday, Feb. 5, 1994

NEW 93 Taurus SAVE \$\$\$	NEW 93 F150 Pickup V8 Engine Automatic Transmission Demo Save \$\$\$	94 Thunderbird Loaded	94 Ford Ranger V6 Engine 5 Speed	94 F150 Pickup 4X4 Regular Cab
93 Lincoln Towncar	91 Chevrolet S10 Pickup	91 Ford Ranger Pickup	94 F150 Pickup 4X4 Supercab	94 Cougar XR7
93 Ford Tempo 4 Dr	92 Ford Tempo 4 Dr	93 Ford Aerostar Wagons	93 Ford Mustang	93 Mercury Topaz 4 Dr
92 Thunderbird Low Miles	On The Spot Financing	88 Lincoln Town Car 4 Dr White	90 Ford F150 Supercab 4X4	92 Ford F150 4X4
86 GMC 1/2 Ton Pickup	93 Mercury Sable 4 Dr	92 Ford Mustang	93 Mercury XR7 Low Miles	92 Lincoln Towncar Loaded
92 Ford Probe Sporty	82 Chevy 1/2 Ton Pickup	92 Chevy 1/2 Ton Extended Cab	91 Ford Pickup XLT Gas or Propane	Top Dollar For Your Trade



## American Heart Association Met Jan. 21 At Leal's

The Bailey County Division of the American Heart Association met Friday January 21, 1994 at 12:00 noon at Leal's.

Elizabeth Watson, president of the local organization, reminded the members that February was heart Month for the Association and a time to really bear down to reach goals that have been set.

Liz Tipps, Development Chairman, and Sue Holt, Program Chairman, gave progress reports.

Dick Pylant, representative from Muleshoe First Bank, agreed to have American Heart Memorial envelopes to be put into bank statements. Bailey County Electric agreed to put memorials in statements at a later date.

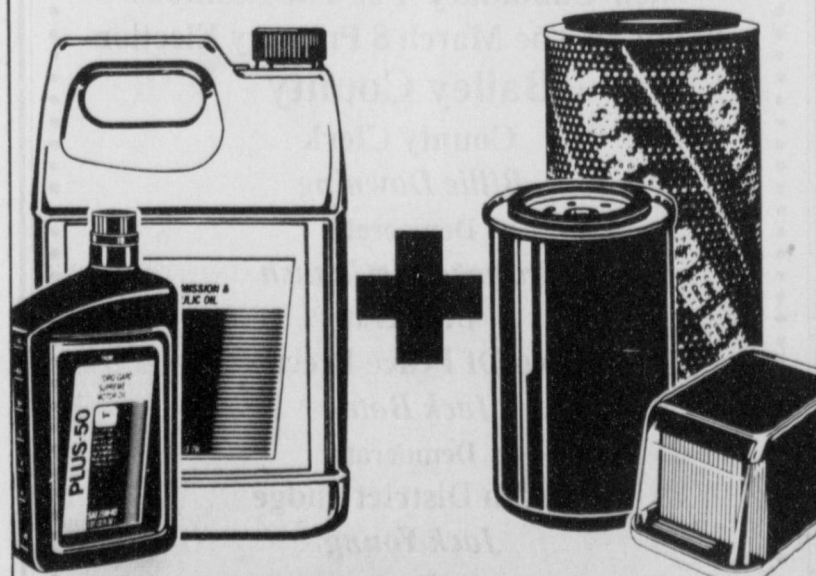
Carolyn Kennedy, Regional AHA Director, reminded the membership that the AHA has a golden opportunity to influence public policy for the health and well-being of all citizens. Perhaps the single greatest tobacco control activity we can do as an organization right now is to generate an all-out grassroots campaign to show Congress our support for a \$2.00 per pack increase in the cigarette excise tax. Studies have proven that significant increases in tobacco excise taxes greatly reduce the number of children purchasing and smoking tobacco products, as well as causing a decline in smoking among adults.

Members present were: Elizabeth Watson, Sue Holt, Glenda Powell, Liz Tipps, Sharon Grant, Dick Pylant, Annie Floyd, and Carolyn Kennedy.

"If any civic club or organization would like to have a program presented relative to maintaining a healthy heart, please contact Sue Holt at 965-2764 or 965-2842 or Liz Tipps at 272-7546 or 272-5898.

**In Case Of  
Emergency  
Call 9-1-1**

## Super Saver COMBO SALE



**GET TWICE THE VALUE...  
TWICE THE SAVINGS**

Take home a combination of John Deere lubricants and filters for all your John Deere machines and save big!

- 12% savings on selected John Deere filters
- Truckload savings on selected lubricants



**Dent & Co. of Muleshoe**  
2800 West American Blvd.  
(806) 272-4296  
Offer Expires February 28, 1994

FMA4



**NIGHT OUT ON THE TOWN**— Topping the evening off last Friday night, Bill Case and the Velvetones presented a performance of live music to a good sized crowd in the newly refurbished high School auditorium. The band took listeners "way back when" as they played many long-time brass favorites of the fifties and sixties.



**AARP INSTALLS OFFICERS**— Officers of the Bailey County AARP were installed Friday, January 28, 1994 at the Civic Center by District Director of Littlefield, Alma Faye Carter. Pictured are new officers, from left to right (front row) Katherine Sanders, President; Buster Kittrell, Vice President; Mabel Wolfe, Secretary; Clara Lou Jones, Treasurer; Alma Faye Carter, District Director, Agnes Wolf, Community Services. Back Row: Elizabeth Watson, Program Chairperson; Wanda Kittrell, Publicity; and John Smith, Legislative Chairperson.

## Seventh Grade Mules Take Friona In Stride

By Annette Bottelman

On January 31, 1994 the seventh grade Mules travelled to Friona to overturn the game winning 35-28.

Pulling out strong in the second quarter, the Mules acquired a 12-8 lead.

During the second half, they got off to a slow start, with a three point lead ending the third quarter, but the Mules kept their composure and finished

strong with a win of 35-28.

Top scorers for the game were Matt McClanahan with 10 points, followed by Manuel Campolla and Josh Pyle with eight.

Dustin Cleavinger popped in 4 points and Mason St Clair

and Jacoby Jennings, both had 2.

The seventh grade Mules now hold a 13-4 in the District.

The eighth graders held a tight game, but lost it to Friona with a score of 55-32, drop-

**Continued on page 5**

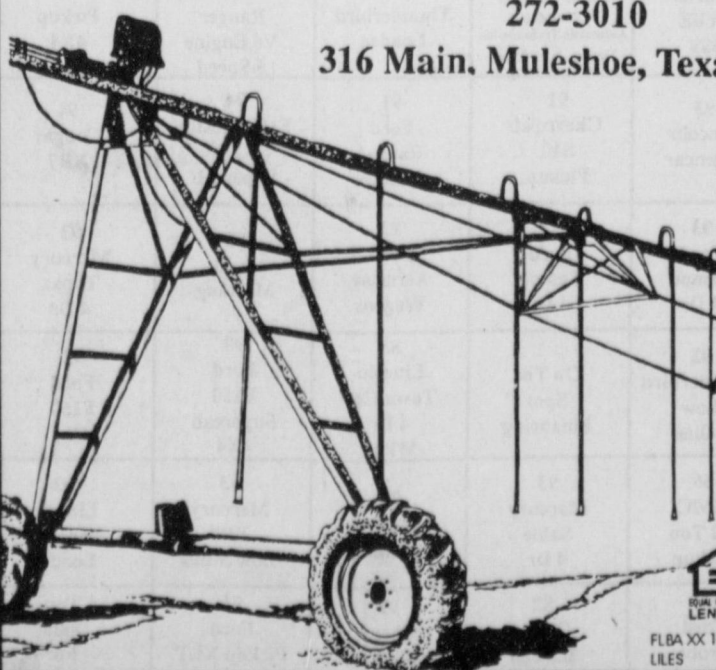
## Thinking about drilling a well or installing a CENTER PIVOT IRRIGATION SYSTEM?



Interest rates are the lowest since 1970. Our improvement loan rate is currently 6.95% fixed for 10 years. A \$35,000 center pivot financed for 15 years will have an annual payment of \$3,830 for the first 10 years. A 10 year loan would cost \$4,971 per year. You can't hire a hand to move pipe this cheap. Take advantage of low rates. Save labor; Save water! Rates change every Wednesday.

272-3010

316 Main, Muleshoe, Texas



## Livestock

Continued from page 1

one barrow; Jill Hodges of Earth, with one steer and one barrow; Suzy Hodges of Earth, with one steer and one barrow; Keila Kennedy of Muleshoe, with one steer and one barrow; Ky Kennedy of Muleshoe, with one steer and one barrow; Jonathan Kindle of Sudan with one barrow; Monty Kirby of Muleshoe, with one barrow; Audra Lee of Muleshoe, with one barrow; Justin Lee of Muleshoe, with one steer and one barrow; Greg Pena of Muleshoe, with one barrow; Russell Pollard of Maple, with one steer and one barrow; Scott Pollard of Maple, with one steer and one barrow; Ashley Pool of Muleshoe, with one barrow; Jordan Pool of Muleshoe, with one barrow; Rebecca Robertson of Maple, with one steer and one barrow; Carolyn Schuster of Muleshoe, with one lamb and one barrow; Shane Schuster of Muleshoe, with one lamb and one barrow; Joshua Tooley of Maple, with one steer, one lamb and one barrow; Robin Tooley of Maple, with one barrow; Cody Wilson of Sudan, with one steer; and Jennifer Young of Muleshoe, with one barrow, making a total of 21 steers, 6 lambs, and 37 barrows.

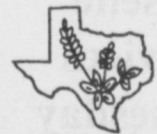
Those attending from Muleshoe FFA will be LeAnn Altman of Muleshoe, with one steer; Lindsey Altman of Muleshoe, with one steer; Jason Barrett of Muleshoe, with one barrow; Landon Black of Muleshoe, with one barrow; Russell Black of Muleshoe, with one barrow; Russell Black of Muleshoe, with one steer and one barrow; Jacen Claunch

of Muleshoe, with one steer; Bryce Embry of Muleshoe, with one steer and one barrow; Kyle Embry of Muleshoe, with one steer and one barrow; Delwyn Latham of Muleshoe, with one steer; Lance Latham of Muleshoe, with one steer and one barrow; Jonathan Kindle of Sudan with one barrow; Monty Kirby of Muleshoe, with one barrow; Jarrod Redwine of Muleshoe, with one steer and one barrow; Jeffrey Wheeler of Muleshoe, with one steer and one barrow, a total of ten steers and nine barrows entered.

Representing 878 Texas 4-H and FFA chapters, the junior show is expected to draw more than 11,000 entries this year. A variety of animals are shown in the junior show division; market steers, market swine, market sheep, market poultry, beef and dairy heifers, breeding sheep, goats, commercial steers and breeding rabbits.

The four market animal categories (steers, lambs, barrows, and poultry) represent animals raised by the exhibitor as food sources. Top animals in each of these categories are eligible for their individual market auctions.

## Texas Bluebonnet Feeds



We offer quality livestock feeds for horses, cattle, sheep, swine, exotics and pets

We also stock a large supply of animal health products and hay.

**DISCOUNTS BY  
THE TON!**

Located 1/2 mile East of Slide Road on FM 1585, Lubbock.

Call 1-806-794-7301

Complete Line  
Monuments - Markers  
Memorials  
Granites - Bronze

**Muleshoe Memorial  
Park Cemetery, Inc**

232 Main P.O. Box 373  
Muleshoe, Texas  
272-5727 or 272-4670

**DQ Treats & Eats**

**Country Basket**  
Four beef steak fingers, fries, country gravy and Texas toast. Six-piece \$2.99.

**\$1.99** 4-pc

On Sale at Dairy Queen® January 31- February 20, 1994.

©Reg. TM Am. D.Q. Corp. \*Reg. TM Tx. D.Q. Op. Coun. ©Tx. D.Q. Op. Coun. At participating Dairy Queen stores.



## Tops Club Meets

Tops Chapter No. 34 met at the Muleshoe Church of Christ, Thursday, January 27, 1994 at 6:00 p.m. Leader Laverne James called the meeting to order. The Tops pledge was recited and the fellowship song was sung. Mrs. James led the group in a prayer.

Betty Jo Davis weight recorder, called the roll with 15 members answering to the amount they had lost or gained. Minutes of the previous meeting were read by Aurora Mata secretary and they were approved as read.

Best loser for the week is Ernestine Steinbock. Runners up are Aurora Mata and Alma Robertson, first runner up and Naomi Sanchez, second runner up.

The meeting was adjourned with the singing of the good night song.



Keisha Kemp

## Muleshoe Area Retired Teachers Met Fri. Jan. 21

On Friday, Jan. 21, 1994 the Muleshoe Area Retired Teachers met at 3:00 p.m. in the Fellowship Hall of 16th and Ave. D. Church of Christ with Betty Jo Davis and Maxine Ragsdale as hostess.

The meeting was called to order by President Wilma Smith leading the group in the pledge of Allegiance to the Flag of the United States and Texas. Kerry Moore's speech students were introduced, Carlos Rojas, reading-"And Summer is Gone," by Susie Kirtchmer, Melissa Mata, reading "Was It a Dream" written by Guy De Maupassant, and Jeanne Cox, reading-"Silkie," by Joyce Carol Oatis. Each student read the prose with such expressions and enunciation that the author's words reflected a very vivid word picture of each presentation.

Joyeline Costen gave a Legislative Report.

Refreshments of pound cake, pecan bon-bon, nuts, spiced tea and coffee were served to Wilma Smith, Ann Oyler, Dorothy Beddingfield, Elizabeth Watson, Letha Patterson, Ethel Allison, Margie Moore, Mary Nell Blecker, Maude Blaylock, Joyeline Costen, Alene Bryant, Jean Moore, Mabel Wolfe, Jean Allison, and guests Jeanne Cox, Melissa Mata and Carlos Rojas.

Our next meeting will be Friday, Feb. 18 at 3:00 p.m.

## Mules

Continued from page 4 ping their record to 9-11.

The Mules got off to a slow start in the first quarter, trailing with an 18-8 lead for Friona.

In the second quarter, the Mules picked up their pace, and gave Friona a good fight. they brought the score to 21-26, with Friona still in the lead.

At the end of the third quarter, Friona still hung on to the lead, and won the game with a score of 55-32.

Top scorers for the game were Cyrus Norman with 9 points, followed by Douglas Field with 8 and Arturo Sanchez with 6.

The seventh and eighth grade Mules will meet Dimmitt here on February 7, 1994.



**EMPLOYEE OF THE MONTH**-Employee of the Month, named by the Muleshoe Chamber of Commerce, is Joyce Albertson, employee of Something Special. She was married to the late Roger Albertson, and the mother of one son, Gary Albertson and his wife Joyce, and has four grandchildren and two great grandchildren. She has been employed by owner W.B. Wagon and the late Betty Wagon since June of 1990. Joyce has the ability and willingness to take charge and manage a business. She is very much appreciated by all of her employers and patrons.



**Big Country Ford**, of Clovis, is proud to announce the addition of **CHARLES MAYHUGH** to our Sales staff. Charles comes to Big Country Ford with over 20 years experience with Ford. **CHARLES**, from Muleshoe, has lived in the surrounding area for over 48 years. He invites everyone to come by and let him help you with all your **New or Used car needs**. Stop by or give him a call soon!

**BIG COUNTRY FORD**  
2400 MABRY DRIVE  
CLOVIS, NEW MEXICO-(505) 762-4427

## Bridal Shower Held In Honor Of Keisha Kemp

A bridal shower in honor of Keisha Kemp of Pleasant Valley, was held at the Muleshoe First Assembly of God Church in Muleshoe on Saturday, January 29, 1994 from 10:00 until 11:30 a.m.

Refreshments of various types of muffins, fresh fruits, sausage balls, orange juice, coffee, and spiced tea were served by Dawnda Magby and Brittini Black from silver and crystal appointments.

The table was adorned with a white linen cloth, and accented with red and white napkins, and a red rose, baby's breath and ivy centerpiece.

Special guests were Ovis Haney, grandmother of the bride, of Muleshoe; Wanda Kemp, grandmother of the bride, of Muleshoe; Debra

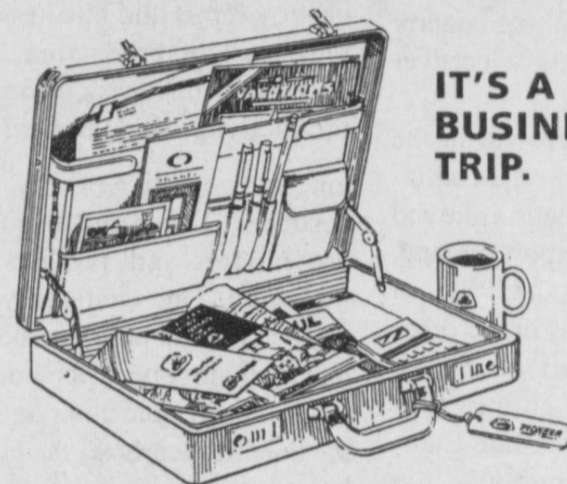
Scott of Levelland, Loretta Burton of Levelland, Joann Haney of Claude and Janice Middaugh of Amarillo, aunts of the bride; Cynthia Burton of Levelland, Jeanna Cunningham of Amarillo, and Terry Jo Youngblood of Amarillo, cousins of the bride.

Guests were greeted by Connie, Keisha and Sherry

Russell, and were registered by Jodi Morris.

Hostesses presenting the bride with a microwave oven were Cheryl Morris, Debbie Magby, Janice Bradshaw, Vickie Burch, Louise Engelking, Rhonda Kitchens, RayAn Doshier, Lavon Hunt, Joyce Scott, Vickie Morris, Sandy Turner, Pat Watson, and Judy Cox.

## PIONEER DAYS.



IT'S A BUSINESS TRIP.

From February 7-12, growers across the country will be going on a business trip. A trip that saves 5% on all Pioneer® brand products, with purchases counting toward Pioneer Quantity Savings as well. We call this business trip Pioneer Days. Come harvest time, you'll call it a smart business investment.

See or call: **Jarman Seed**  
801 W. American Blvd.  
Muleshoe, TX

272-5985  
**PIONEER.**  
BRAND PRODUCTS

All sales are subject to the terms of labeling and sale documents. Registered trademark of Pioneer Hi-Bred International, Inc., Des Moines, Iowa, U.S.A.

**SAVE 5% FEBRUARY 7-12**

**JOE'S BOOT SHOP**  
106 E. American Blvd. Muleshoe And Country Junction 272-7504

## Winter Hat Sale

January 31-February 12

**STETSON®** Hundreds Of  
4X, 5X & 6X  
Hats Only  
**\$50<sup>00</sup>**

February Special



**Tony Lama Crazy Horse Boots with 16" Blue Top**

**Sale Price \$99<sup>00</sup>**  
Regular \$149<sup>00</sup>

**Bailey Clearance Sale**

All Pastel Hats

2X, 3X, 4X, 5X Hats Only \$55<sup>00</sup>  
7X & 10X Hats Only \$70<sup>00</sup>  
15X, 20X & 30X Hats Only \$95<sup>00</sup>

Make A Hat Purchase, Get A Chance To Win A \$50.00 Stetson! 1 Hat Will Be Given Away Each Day Of The Sale!

*Nobody outfits like Joe's Outfit and We Want Your Business!*



## Cotton

Continued from page 1

taken advantage of the increase in American consumers' cotton demand, Brinkley said, with textile imports at their highest level ever for both cotton and all fibers.

Lange, the Council's Economic Services Director, said the forecast for U.S. cotton's business climate in 1994 calls for the real gross domestic product (GDP) to grow at 2.8 percent, maybe as high as 3 percent; a realistic inflation rate of 2.7-2.9 percent; and unemployment hovering at just over 6 percent.

He said the growth in the GDP is dependent on a continued moderate inflation rate and a resurgence in export demand, which depends heavily on economic growth in the other major developed countries. The potential of an increased GDP for Japan and the European Union (formerly EC)—a dramatic change from 1993—might fuel export demand.

Lange also noted that in 1994: --loan deficiency payments and marketing loan gains may be small or non-existent at harvest if the traditional relationship between the U.S. quote northern Europe, the "A" index and the contracts on the New York Cotton Exchange hold up.

--international trade developments in textiles and apparel will have a direct bearing on industry profits; NAFTA is expected to have a positive influence; GATT may be determined because this agreement increases foreign textile and apparel makers' access to

the U.S. market with inadequate reciprocal access.

--U.S. economic growth will continue to be hampered by high regulatory costs; after 11 years of decline, the cost of regulation rapidly increased in 1993 to \$850 billion—an amount equal to half of all federal tax receipts and one that exceeds the sum of corporate profit and social security taxes.

"Regulation can shrink or destroy farms and businesses, raise cost of production, reduce competitiveness, decrease productivity, and jeopardize

long-run viability of any investment," Lange said. Its costs are hidden and not easily measured. Our challenge will be to convince policy makers that regulatory benefits should always justify the costs and if the benefits accrue to the public at large the cost should be borne by the public at large."

Barr said the Council's 12th annual planting intentions survey revealed that 1994 upland cotton acreage in all four regions of the Cotton Belt would be reduced.

U.S. Cotton producers reported intentions to plant 12.95 million acres of Upland and extra long staple (ELS) cotton this spring, according to the National Cotton Council's twelfth annual Planting Intentions Survey.

Council economist Jess Barr said that the survey was mailed on December 30, 1993 with a

deadline of January 14, 1994 for returns to be considered. Therefore, the survey reflects growers' initial planting intentions.

Barr said that they survey reveals intentions to reduce Upland plantings 3.7 percent to 12.8 million acres, while ELS acreage is seen increasing 1.8 percent to 193,000 acres.

To put these changes in planted area into perspective, said Barr, the change in the Upland acreage reduction requirement from 7.5 percent in 1993 to 11 percent for 1994, would cause program-eligible acreage to decline 3.8 percent.

Barr said the slight rise in the ELS acreage reflects the lower ELS acreage reduction program for 1994 and the expectation of only moderately higher prices. The ELS acreage reduction program is changing from 20 percent in 1993 to 15 percent for 1994, which would allow acreage planted in the program to rise 6.25 percent.

Based on the early January survey, the smallest percentage reduction in Upland cotton area is planned for the Southeast. Producers in this region indicated plantings of 1.7 million acres, 1.6% fewer than in 1993. While Alabama and Georgia growers indicated a reduction in plantings, those in Florida, North Carolina, South Carolina, and Virginia planted to increase acreage.

In contrast, Mid-South producers indicated the largest percentage decline in Upland cotton area. Producers in Arkansas, Louisiana, Mississippi, Missouri, and Tennessee planned to cut acreage 4.2 percent to 4.0 million acres.

Growers in the Southwest region expect to reduce planted area by 4.0 percent to 5.7 million acres. Both Texas and Oklahoma producers planned to lower plantings by 4.0 percent but no change is anticipated for Kansas.

Growers in the Western states said plantings would decline 3.7 percent to 1.4 million acres. Producers in California and New Mexico indicated slightly larger percentage declines than those in Arizona.

Barr said that with expected abandonment, 1994 harvested acreage would approximate 12.1 million acres. The Council economist said the per-acre yield for 1994 is projected to be close to the 25-year trend of 670 pounds. Cotton production for 1994 is projected to fall within the interval of 16.2-17.5 million bales, with a midpoint of 16.85 million bales. Cottonseed production is forecast to fall between 6.0 and

"However, keep in mind that as a result of the impending GATT agreement, which would become effective January 1, 1995, potential imports of raw cotton could influence total supply," Barr noted.

\*\*\*

Muleshoe Roping Club will hold a meeting Thursday Feb. 3 at 7 p.m. at Muleshoe Livestock Auction.

## Comm. Court

Continued from page 1

comply with the ADA. I am very pleased with the county's progress in complying with ADA. We have come out pretty good," Cox said.

Cox said the county also is in the process of working on the Bailey County Coliseum to meet ADA requirements. The Commission approved funds to update the Coliseum about two years ago, so the work is already included in the county's budget, according to Cox. She also said the courthouse is currently in compliance with the ADA.

The Commissioners on Monday also approved an audit for the fiscal year 1993 for court review. The audit was conducted by Suddath, Field & Co., of Muleshoe.

An audit review was conducted by Randy Field of Suddath, Field & Co., who said, "My opinion, based on this audit, is that the county is in good financial shape."

The Commission also approved a three-year agreement with Suddath, Field & Co., who will continue to serve as auditors for the county until 1996. Suddath, Field & Co., have been serving as auditors for the county since 1990.

In other business Monday, the Commission approved soil conservation worksheets for four individuals, in accordance with Section 201.151 of the Agriculture Code. Section 201.151 allows the use of county machinery and equipment for the purpose of soil conservation and pre-

vention of soil waste through erosion. In return, the county will receive compensation for use of its equipment and machinery. Money paid to the county will be deposited into the county's road, highway or other similar funds.

The Commission also approved and ordered the payment of county bills and approved the payroll. A budget amendment was also approved, which, among other items, authorized \$1,500 in overtime for relief deputies in the Sheriff's Department. These expenditures were funded by the transfer of excess funds from workers compensation benefits and operating expenses for the Sheriff's Department. The budget amendment also included transfers of excess funds in other areas to cover additional operating expenses in other counties.

# KENW-TV

Public Television

## The High Cost of Living and Dying

Older citizens face incredulous economic hurdles that were unimaginable after World War II. Then, economic stability, growth, and security were actually attainable. **The High Cost of Retiring and Dying** reflects the real-life retirement concerns of today's mature Americans.

Although this fastest growing sector of our population is the healthiest and wealthiest of anytime in history, they are challenged with preserving wealth; changing tax structures; rising health-care costs; declining interest rates; falling real estate values; unpredictable investment cycles, higher education costs; and many are assisting their children who are victims of the 90's recession.

According to Frank Collin, a respected and leading estate planning attorney, lecturer, author, instructor, "... beyond unpredictable economic cycles, our social makeup today

makes continuous proper retirement and estate planning imperative — multiple marriages, adoption, gay couples, invitro-fertilization, single-parenting, change in a family business, even longer life... are all adding to the complexity of today's estate plan."

Over the next twenty years, the greatest transfer of wealth in American society will take place, making the need for experienced and reputable advisors extremely important. **The High Cost of Living and Dying** brings together real-life families, estate planning attorneys, financial advisors, psychologists, gerontologists, IRS representatives, journalists, sociologists, politicians, and others sharing their experiences and expertise on how to prevent the financial collapse of American families and businesses.

**The High Cost of Living and Dying** will air Tuesday, February 8th at 8:00 p.m. and 11:00 p.m.

## What's New

ALFRED I. DUPONT/  
COLUMBIA AWARDS IN  
BROADCAST JOURNALISM  
Sunday, 6th, 10:00 p.m.

Television journalist Mike Wallace hosts this 90-minute awards presentation for the best in broadcast journalism in 1992-93. Presenters at the ceremony will include Carole Simpson, ABC News correspondent; Linda Wertheimer, correspondent with NPR; Charlie Rose, PBS host of "Charlie Rose"; and Joan Konner, Dean of Columbia's Graduate School of Journalism.

TALKING WITH DAVID FROST  
"Garth Brooks"  
Friday, 11th, 9:00 p.m.  
Sunday, 13th, 3:00 p.m.

Garth Brooks has received every music award in the Country Grammys and was also named "Entertainer of the Year." Brooks represents a new departure for Frost, who has covered stage music with Andrew Lloyd Webber, pop music with Elton John, and now a distinctly American genre in country music with the leader of country singers.

Channel 3 Television from  
Eastern New Mexico University, Portales, New Mexico



## End Of Games Notice.

Cactus Cash and Fiesta, a lucky pair of instant games from the Texas Lottery, will close on February 1, 1994. That means you have until July 30, 1994 to buy the remaining tickets and redeem any winners.

Match three like dollar amounts—or two plus a "doubler"—and claim one of the 86 outstanding \$800 prizes in Fiesta. Or look for the bright orange and green, tic-tac-toe style Cactus Cash in search of the 46 unclaimed \$1,000 winners.

Between the two games, more than \$3.5 million in prizes remain to be claimed.

Claim prizes of up to \$599 at any Texas Lottery retailer. Redeem winning tickets of \$600 or more at one of the 24 regional Texas Lottery claim centers or by mail with a claim form available from any Lottery retailer.

Questions? Call the Texas Lottery Customer Service Line at 1-800-37-LOTTO.



Fiesta overall odds of winning, 1 in 4.93. Cactus Cash overall odds of winning, 1 in 4.87. Must be 18 years or older to play. © 1994 Texas Lottery

## Full Service At Discount Prices

Kyle Seth Ratliff  
(The Bosses' Boss)



Liveoak Fuel

(Formerly Richland Hills Texaco)

1914 W. Amer. Blvd. Muleshoe 272-4875



# Winter Festival Of Values!

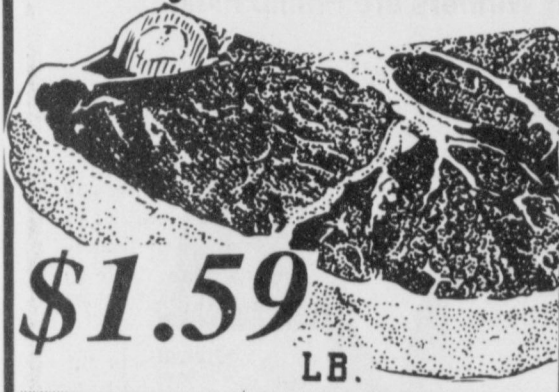
**Lowe's** **Pay-n-Save**  
**MARKETPLACE** 515 W. Amer. Blvd. Muleshoe 272-4406  
 401 W. Amer. Blvd. Muleshoe 272-4585

**ASSORTED COCA-COLA \$1.59**  
 6 PACK, 12 OZ. CANS

We Offer Only Low Low Prices Everyday!

## QUALITY MEAT

### Heavy Grain Fed Beef



**\$1.59**  
L.B.

**Split Breast \$1.19**  
L.B.

### ROUND STEAK

**Franks 69¢**  
12 OZ. PKG.

**Sausage & Biscuits \$2.09**  
JIMMY DEAN 8 OZ. PKG.

HEAVY GRAIN FED BEEF BONELESS	HEAVY GRAIN FED BEEF BONELESS	HEAVY GRAIN FED BEEF SIRLOIN	HEAVY GRAIN FED BEEF SIRLOIN	EXTRA LEAN
Round Steak	Rump Roast	Tip Steak	Tip Roast	Ground Round
\$1.79	\$2.19	\$2.49	\$2.39	\$1.99

**WRIGHT'S TRAY PAK Sliced Bacon \$1.39**  
L.B.

**WRIGHT'S Sliced Ham \$1.79**  
1-1/2 L.B. PKG.

**WILSON REGULAR OR POLSKA Smoked Sausage \$1.59**  
L.B.

**WILSON EXTRA LEAN Ham or Smoked Turkey Breast \$1.99**  
10 OZ. PKG.

**ADVANCE CHICKEN FRIED PATTIES, FINGERS OR CHUCK WAGON Patties \$1.29**  
L.B.

**Sausage \$1.99**  
1 L.B. ROLL

**JIMMY DEAN REG. HOT 2 L.B. ROLL \$3.79**

**LITE TURKEY & PORK \$1.99**  
12 OZ. ROLL

**OSCAR MAYER WIENERS - REGULAR LITE - BUN LENGTH \$1.59**  
1 L.B. PKG.

**OSCAR MAYER PEPPERONI OR DELUXE PIZZA \$3.49**  
2 PK. 48 OZ. PKG.

**OSCAR MAYER MEAT BOLOGNA \$1.59**  
1 L.B. PKG.

**OSCAR MAYER HAM & CHEESE OR CHOPPED HAM \$1.99**  
1 L.B. PKG.

**FRESH CRISP CELERY 39¢ EACH**

**YELLOW SQUASH 69¢**  
L.B.

**FRESH GREEN LEAF LETTUCE 2 BCHS FOR \$1.4**

**RIO STAR GRAPEFRUIT \$1.4**  
FOR

**FRESH KIWI FRUIT \$1.8**  
FOR

**ZUCCHINI SQUASH 69¢**  
L.B.

**RUSSET POTATOES \$1.49 EACH**  
15 L.B. BAG

**CHILEAN RED SEEDLESS GRAPES 99¢**  
L.B.

**RED DELICIOUS EXTRA FANCY APPLES 2 FOR 89¢**

**Carnation Hot Cocoa Mix \$1.39**  
10 CT. BOX

**Nestle's Chocolate Quik \$2.99**  
2 L.B. CAN

**Hills Bros. Coffee \$3.79**  
36-39 OZ. CAN

**KLEENEX ASSORTED Bathroom Tissue 79¢**  
4 ROLL PACK

**REGULAR/LIGHT Coffee-mate Creamer \$1.99**  
16 OZ. JAR

**ASSORTED FLAVORED Taster's Choice Coffee \$3.69**  
3 JAR

**ASSORTED FLAVORED Coffee-mate Creamers \$1.79**  
8 OZ. JAR

**Parkay Margarine 2.89¢**  
1/2 L.B. PKG.

**Minute Maid Orange Juice 79¢**  
6 OZ. CAN

**Del Monte Vegetables 2.99¢**  
15-15.25 OZ. CAN

**Del Monte Fruits 89¢**  
15.25-17 OZ. CAN

**LEVER 2000 Bar Soap \$1.99**  
2 BAR PKG.

**LEVER 2000 Bar Soap \$1.99**  
2 BAR PKG.

**Taster's Choice Coffee \$3.69**  
7 OZ. JAR

**SUNLIGHT-AUTO POWDER OR GEL Dish Detergent \$1.99**  
50 OZ. BOX OR BTL.

**SUNLIGHT LIQUID Dish Detergent 89¢**  
22 OZ. BTL.

**Economy Reynolds Foil \$1.99**  
12"x75" ROLL

**Fritos Corn Chips 2.69¢**  
25 OZ. CTNS

**Morton Salt 2.69¢**  
25 OZ. CTNS

**Scott's Softies Wipes \$1.59**  
48 CT. PKG.

**Viva Napkins \$1.59**  
200 CT. PKG.

**Purple or White Welch's Grape Juice \$2.39**  
48 OZ. BTL.

**Del Monte Pineapple 59¢**  
15-15.25 OZ. CAN

**Del Monte Tomato Sauce 5 OZ. 99¢**

**Del Monte Ketchup 28 OZ. 99¢**

**Del Monte Pudding Cups or Gel Cups 99¢**  
4 PACK

**Micro Cup Meals 89¢**  
7.3-7.5 OZ. CUP

**Micro Cup Meals 99¢**  
7.5 OZ. CUP

**Hormel Chili 99¢**  
19 OZ. CAN

**Hormel Beef Stew \$1.89**  
24 OZ. CAN

**Plain Pastas \$3 FOR 3**  
14.75-19 OZ. CANS

**Healthy Request \$3 FOR 3**  
18 OZ. CANS

**Home Cookin Soups \$1.59**  
19 OZ. CAN

**Noodle Soup 5 \$3 FOR 3**  
10.75 OZ. CANS

**Tomato Soup 2.99¢**  
10.75 OZ. CANS

**Vegetable Soup 5 \$3 FOR 3**  
10.75 OZ. CANS

**V-8 Juice \$1.69**  
32 OZ. BTL.

**Tomato Juice 99¢**  
32 OZ. BTL.

**12 Taco Shells \$2.99**  
12 OZ. PKG.

**12 Tostada Shells \$2.99**  
12 OZ. PKG.

**Old El Paso Taco or Tostada Shells 2 \$3**  
4.5-5.25 OZ. BKG.

**Old El Paso Taco Seasoning Mix 59¢**  
1.75 OZ. PKG.

**Old El Paso Refried Beans 69¢**  
16 OZ. CAN

**Old El Paso Thick N Chunky Picante Sauce \$1.69**  
16 OZ. JAR

**Hershey's Candy Bars \$1.89**  
4 PACK

**Hershey's Candy Bars 99¢**  
4 PACK

**Alley Cat Cat Food \$2.99**  
7 L.B. BAG

**Dog Food \$2.89**  
20 L.B. BAG

**Mighty Dog Dog Food 2.99¢**  
8 OZ. CANS

**Ultra Downy Fabric Softener \$2.19**  
20 OZ. BOTTLE

**Ultra Tide Assorted-Detergent \$5.99**  
98-118 OZ. BOX

**Peanut Butter \$1.69**  
18 OZ. JAR

**Shortening \$1.89**  
3 L.B. CAN

**Paste \$2.79**  
12 OZ. BOX

**Manwich Sauce \$1.29**  
13.5 OZ. CAN

**Spaghetti Sauce \$1.69**  
28 OZ. JAR

**Sweet Success \$5.69**  
12 OZ. BOX

**Sweet Success \$3.89**  
10 OZ. CAN

**Sweet Success \$99¢**  
10 OZ. CAN

**Sweet Success \$2.89**  
6 OZ. BOX

**Schilling Dip Mix 2.99¢**  
7.5 OZ. PKG.

**Sloppy Joes Seasoning Mix 69¢**  
1.31 OZ. PKG.

**Bacon Bits or Chips \$1.29**  
3.25 OZ. BTL.

**DAIRY SPECIALS**

**Kraft Cheese \$1.59**  
16 OZ. PKG.

**Kraft Velveeta \$3.79**  
1 L.B. BOX

**Kraft Singles \$1.99**  
12 OZ. PKG.

**Shredded Cheese \$1.59**  
8 OZ. PKG.

**Philadelphia Cream Cheese 99¢**  
8 OZ. PKG.

**HEALTH & BEAUTY**

**GILETTE Series Products \$2.29**  
EACH

**GILETTE Cartridges \$2.99**  
5 CT. PKG.

**Ultra White Toothpaste 79¢**  
8 OZ. TUBE

**Teen Spirit \$1.89**  
7-12 OZ. BTL.

**TYLENOL EXTRA STRENGTH Caplets \$3.99**  
50 CT. PKG.

**TYLENOL EXTRA STRENGTH Gellabs \$2.99**  
24 CT. PKG.

**GEL CAPS/CAPLETS/TABLETS \$3.69**  
20-24 CT. PKG.

**TYLENOL PM \$2.79**  
30 CT. PKG.

**Childrens Chewables \$3.99**  
30 CT. PKG.

**MAXIMUM STRENGTH-ASSORTED Sine-Aid \$3.99**  
20 CT. PKG.

**DOUBLE STRENGTH-MINT/CHERRY LIQUID Mylanta \$4.99**  
12 OZ. BTL.

**Mylanta \$5.99**  
12 OZ. BTL.

**Mylanta Mylicon Drops \$5.99**  
4 OZ. BTL.

**FROZEN FOOD**

**Blue Bunny Assorted Non Fat Premium Sugar Free Excluded Frozen Yogurt 2 \$5**  
10 OZ. CANS

**Sandwiches or Bars \$1.29**  
8 PACK

**Assorted Mexican Frozen Patio Dinners 3 \$4**  
11-13 OZ. BOXES

**Sanquety Assorted Fried Chicken 2 \$5**  
19-21 OZ. BKG.

**Sanquety Assorted Frozen Dinners 99¢**  
9-11 OZ. BKG.

**Banquet Chicken \$1.99**  
14 OZ. BKG.

**Patties/Waffles \$1.99**  
14 OZ. BKG.

**Cream Pies 99¢**  
14 OZ. BKG.

**Minute Maid Assorted Chilled Orange Juice \$2.69**  
16 OZ. CAN

**Lowe's**

**Pay-n-Save**

515 W. Amer. Blvd. Muleshoe 272-4406  
 401 W. American Blvd. Muleshoe, TX 79347 (806) 272-4585

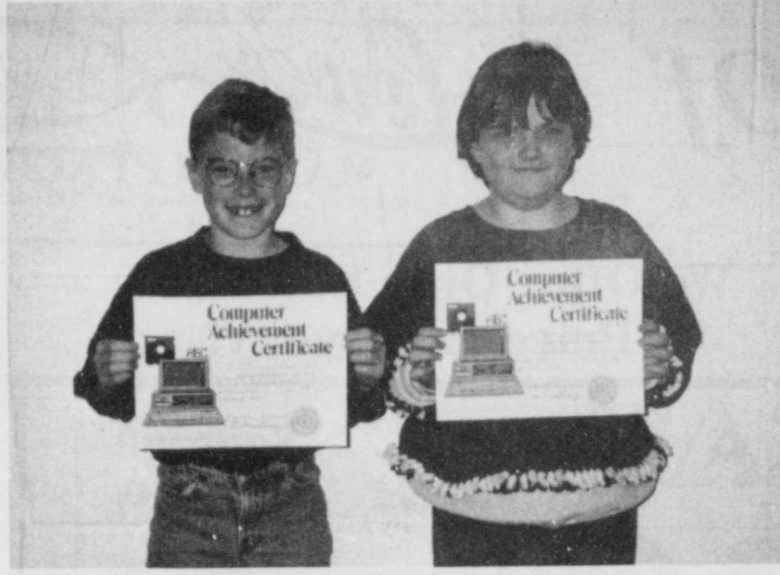
**MARKETPLACE**

PRICES EFFECTIVE FEBRUARY 3-9, 1994  
 WE RESERVE THE RIGHT TO LIMIT QUANTITIES IN TEXAS





Third Grade Music Spotlight Winners are Christopher Pena and Laura Lewis



Third Grade Computer Spotlight Winners are Jordan Dale and Jenny Hall



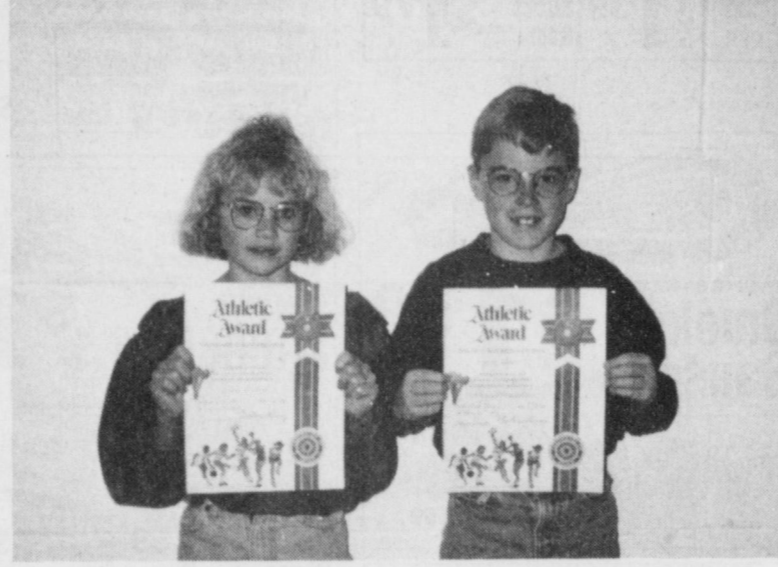
Third Grade Art Spotlight Winners are Phillip Field and Briana Velasquez

T  
H  
I  
R  
D

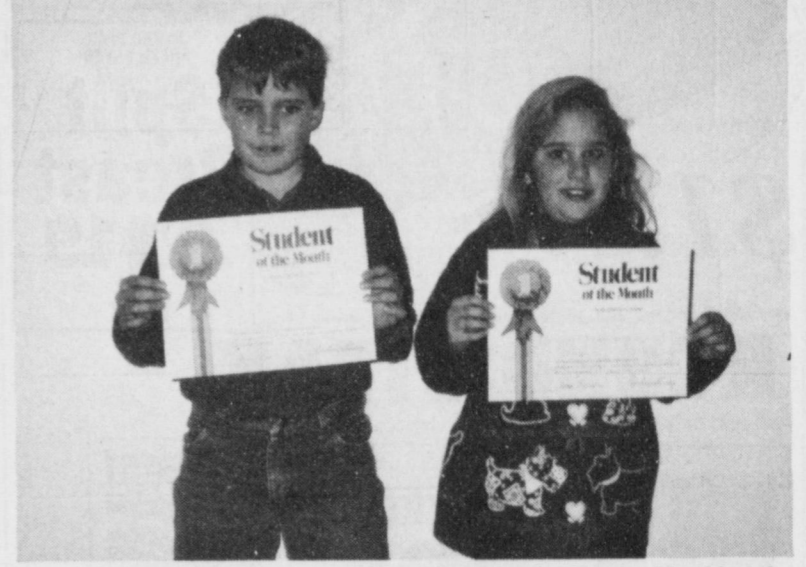
T  
H  
I  
R  
D



Third Grade Library Spotlight Winners are Christopher Pena and Laurissa Noack



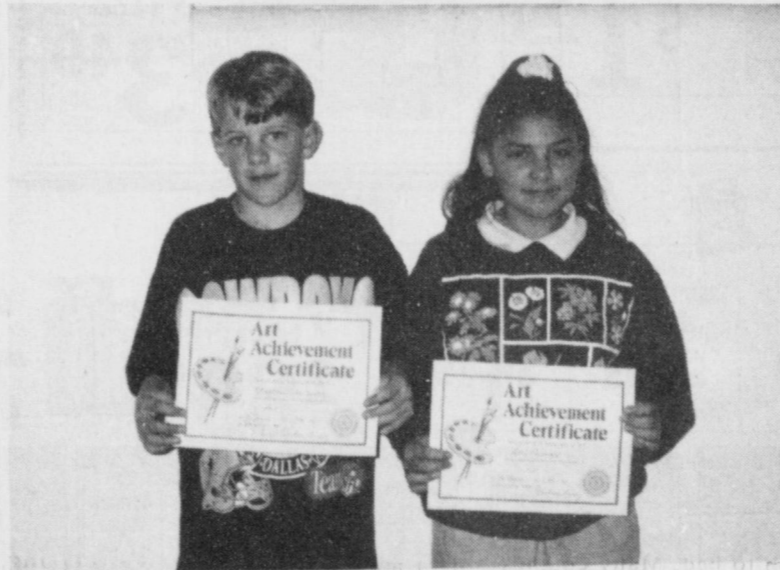
Third Grade P.E. Spotlight Winners are Jodi Hawkins and Jordan Dale



Third Grade Students of the Month are Cody Radford and Cyndi Vanderver



Fourth Grade Music Spotlight Winners are Matthew Luna and Jennifer Rempe

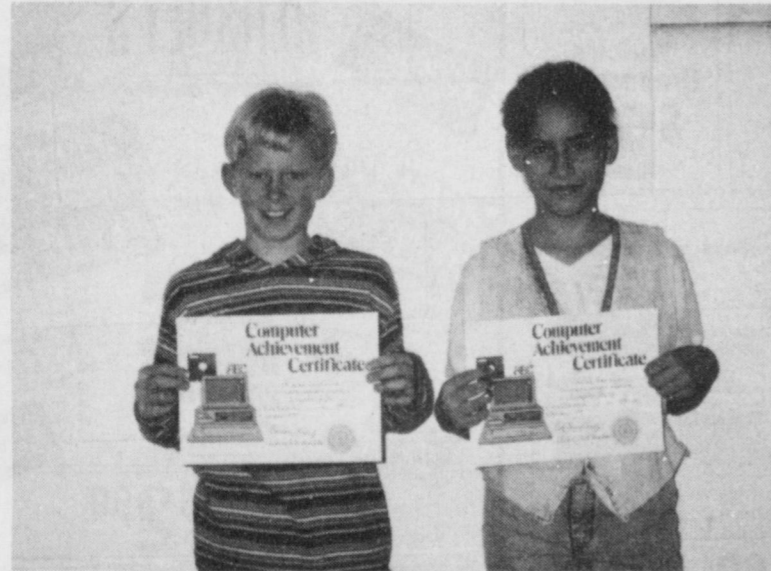


Fourth Grade Art Spotlight Winners are Jeffrey Shelburne and Atty Mendoza

F  
O  
U  
R  
T  
H

# DeShazo Elementary 3rd Six Weeks Award Winners

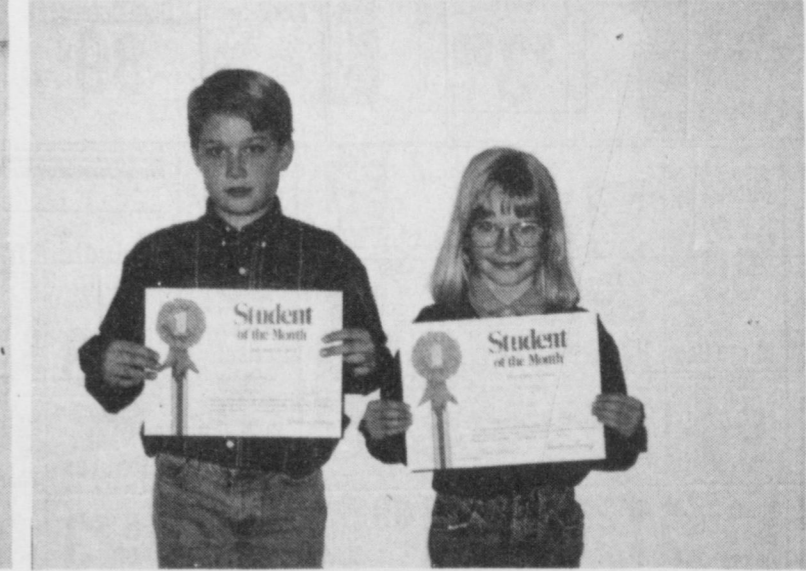
F  
O  
U  
R  
T  
H



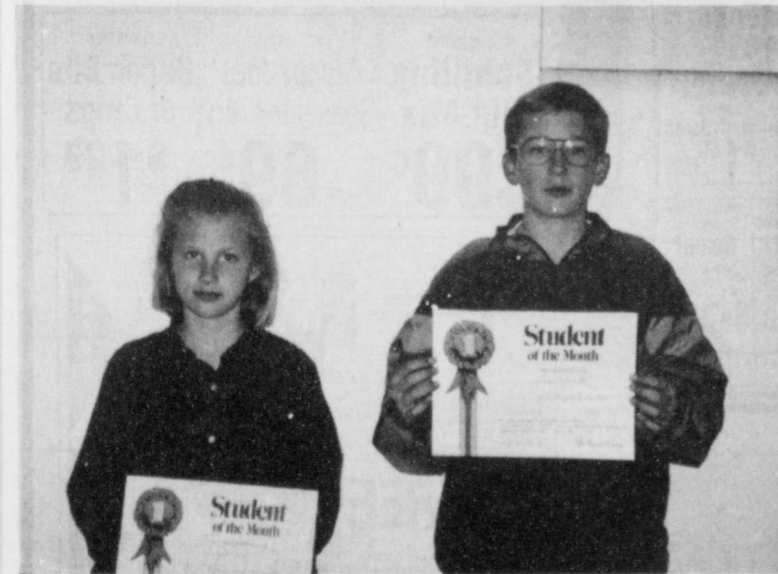
Fourth Grade Computer Spotlight Winners are Bradley Thomason and Janet Venegas



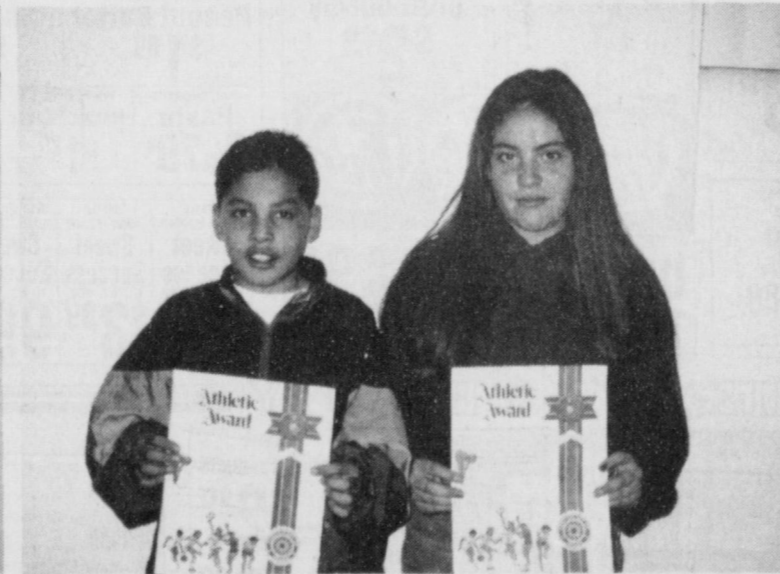
Fourth Grade Library Spotlight Award Winners are Juan Hernandez and Jennifer Rempe



Fourth Grade Students of the Month are Michael Johnson and Tyrell Herrington



Fifth Grade Students of the Month are Jennifer Young and Zach Barrett



Fifth Grade P.E. Spotlight Winner are Moises Garcia and Shari Alanis



Fifth Grade Music Spotlight Winners are Joe Adair and Megan Tipps

F  
I  
F  
T  
H

F  
I  
F  
T  
H



Fifth Grade Library Spotlight Winners are Julio Flores and Megan Tipps



Fifth Grade Art Spotlight Winners are Ryan Lewis and Michelle Parker



Fifth Grade Computer Spotlight Winners are Juanita Rank and Martin Rangel



# CLASSIFIEDS 272-4536

## CLASSIFIED RATES

15 Words & Under  
Minimum Charge  
\$2.30  
Thereafter  
\$2.00

16 Words & over

1st Insertion  
15 cents per word  
2nd Insertion  
13 cents per word

## CLASSIFIED DISPLAY RATES \$1.75

Per Column Inch

## DEADLINES

12 noon Tues.  
For Thursday Paper  
12 noon Friday  
For Sunday Paper

To receive the reduced rate after the first insertion, ad must run continuously.

We reserve the right to classify, revise, or reject any ad. We are not responsible for any error after ad has run once.

**CONCERNED About Someone's Drinking? HELP IS AVAILABLE through Al-Anon**  
Call 272-5857; 927-5110 or 965-2870 or come to visit Tuesday and Thursday nights, 8:00 p.m. & through AA call 965-2870 or come visit Tuesday nights, 8:00 at 723 W. Ave. E, Muleshoe

For more information and assistance regarding the investigation of get-rich-quick, work-at-home and other financial/business opportunities. The Muleshoe and Bailey County Journals urges its readers to contact the Better Business Bureau, 1206 14th St., #901, Lubbock, TX 79401 or call (806)763-0459.

## I. PERSONALS

**MARY KAY COSMETICS**  
Call Now!!  
Olga Chavez  
272-3907  
Gloria Agundis  
272-5225

Are you **unhappy, fat** or out of **energy**? Call 1-806-272-3738. S1-3t-5tc

## 3. HELP WANTED

### WILDLIFE/ CONSERVATION JOBS

Game wardens, security, maintenance, etc. No exp. necessary. Now hiring. For info Call (219)794-0010 ext. 9689. 8 AM to 9 PM. 7 days.

### 8. REAL ESTATE

Needed Part time and or full time help at the Muleshoe Country Club. Must be 21 years old. Apply in person Tues-Fri 9-4. M3-5s-2tc

### 4. FOR RENT

Help Wanted: Full time at Liveoak Fuel. Apply in person. 1914 W American Blvd. F3-5t-2tc

### HOUSE FOR RENT

3 Bedroom, 2 bath. Newly remodeled. Call 272-4762. 4M-5s-2tc

## 3. HELP WANTED

**MULESHOE AREA MEDICAL Center**

LVN / 3-11 SHIFT

HOUSEKEEPER (TEMPORARY)

806/272-4524 708 SOUTH FIRST STREET MULESHOE, TEXAS 79347

To get a good job, learn to show what you can bring to a company.

## A Job Search Game Plan

(NAPS)—It's really tough out there. That's what you may discover if you're a recent college graduate, now rested and ready to start a job search. If you've been searching for a few months, you already know. Fortunately, here come some helpful hints from Kiplinger to help get your career started. They can also help you if you're leaving the military or about to enter the job market after years as a homemaker.

- When answering a help wanted advertisement, call to find out as much as possible about the job, the company and the qualifications of the person the company wants. Try to get a copy of the job description and the name of the hiring executive.
- Tailor your resume and cover letter to the job requirements. Make sure they have no misspelled words, typographical errors, sloppy grammar or syntax, or confusing chronology. Make sure they make it easy for

someone to get a quick assessment of your skills and accomplishments.

- Write a cover letter that shows special interests in or unique qualifications for the job and refer to your telephone conversation.
- You can get many more tips and advice plus charts, sample letters and resumes, help in deciding what you want and how to find it in *Kiplinger's Career Starter, Your Game Plan For A Successful Job Search*, (Kiplinger Books, \$10.95). The book is by Jack O'Brien, founder of Campus Career Centers, Inc.

## 9. AUTOMOBILES

'87 **HYUNDI EXCEL GLS**  
Red/gray interior Hatchback 5-speed good condition good gas mileage new tires great school car  
Asking \$1850.  
Call Annette-(806) 272-4536 days or (806) 272-5922 eves.

## MUST SELL!!!

Large two bedroom, one bath home. Central heat, utility, garage, large fenced backyard. FmHA Financing Available.

**ALL REASONABLE OFFERS CONSIDERED**  
Phone: 272-5922 leave message. Or daytime hours, phone: 272-4536, ask for Annette

## II. FOR SALE

For Sale: Small used piano. Call 925-6439. C11-5t-2tc

For Sale: 200 yards used carpet in good condition. \$2 per yard. Call 925-6439. C11-5t-2tc

For Sale: Like new washer and dryer. \$150. Call 925-6439. C11-5t-2tc

## FOR SALE

200 Acre- 160 irrig-good well- 40 acre CRP 10 Mi East Muleshoe on Highway 70 2 1/2 North Call J. Bickel [915]365-2495. B11-4s-7tp

**Grass Hay For Sale.** Round Bales. Minimum order of 12 bales. Contact Bamert Seed Co. 272-5506. B11-4t-tfc

## 5. MISCELLANEOUS

**Major Appliance and Minor Home Repairs!**  
Call 272-4450  
**HENDERSON SERVICE, CO.**

## 8. REAL ESTATE

**LAND FOR SALE**  
320 Acres, 2 miles South of Lariat, 160 acres each side of FM1731. NW/4 of Sec. 19 and the NE/4 of Sec. 30. 4 wells, 2 pivots, \$192,000. Will split. 7.85% interest fixed for 10 years.  
Contact: The Federal Land Bank Association of Muleshoe 806/272-3010.

**Home For Sale:**  
3 Bdrm., 2 Bath, Brick Vanere home. Located 214 W. Ave. J. Near High School. \$37,000. Terms negotiable. (806)359-3654.

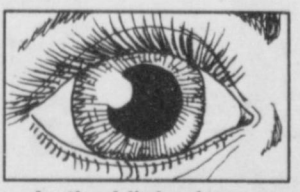
## 8. REAL ESTATE

**HOME FOR SALE**  
3-1-1 Brick, Heat Pump, Fence, and Much More. Very Reasonably Priced. FmHA Financing Available.  
808 W. 9th. 272-5687. W8-39t-tfc

**For Sale: 100 Acres!**  
Three wells with motors, house, barn, four side rolls, and various farm equipment. Next to a farm market road. Make offer to Tommy at: 806-272-4515. G8-2t-tfc

**House for Sale:**  
Beautiful, 3 Bedroom, 2 Bath, Large Kitchen and Utility, Newly Remodeled Bathroom, New Paint, and Carpet throughout, Refrigerated Air and Central Heat. Call 272-3453, after 5 or 272-4495, in day time. D8-46s-tfc

**BUILDING LOT BY OWNER**  
Beautiful Parkridge Addition, Muleshoe. 103' x 125', paved streets, utilities. Great View! Owner finance. Reduced for quick sale!! (806)795-5409. W8-38s-tfc(ITS)



In the blink of an eye may not take up much time, but all together your eyeblinks do. Over the average lifetime, a person blinks an estimated 333,000,000 times.

## Save A Life: Be Heart Smart This Year

**Facts From The American College Of Emergency Physicians**  
(NAPS)—Heart attacks are the number one killer in the United States. More than half of the daily 4,000 deaths occur outside the hospital during the first three hours of symptoms. "Overeating and drinking can be dangerous for an already overstressed individual," says William E. Baubie, III, MD, an emergency specialist in Kingston, New York.

Dr. Baubie and the American College of Emergency Physicians recommend the following tips to make this a "heart healthy" year.

- **Recognize the Warning Signs of a Heart Attack**  
People often dismiss heart attack symptoms as indigestion. Key symptoms include a heaviness, pressure or tightness in the chest or shortness of breath. This pressure can spread to the neck, shoulder, arms or back. Sweating, nausea, "heartburn" and/or fatigue are other signs.
- **Understand the Risk Factors**  
A decrease in blood flow to the heart causes heart attacks. Risk factors include high blood pressure, high cholesterol, smoking, diabetes and a family history of heart attacks. Any sudden increased demand on the heart, such as shoveling snow, excessive meals, or even grief, may cause a decreased supply of blood to the heart, which can trigger a heart attack.
- **Know How to Help a Heart Attack Victim**

Learn how to recognize the warning signs and get help quickly. Don't allow the person to deny the problem or feel embarrassed. Call 9-1-1 or your local emergency number. Remain calm and offer to accompany the person to the hospital.

- **Decrease Your Chances of Having a Heart Attack**  
Dr. Baubie recommends eating wisely, exercising and actively listening to your body. "You only have one heart, which beats 100,000 times a day. Treat it right!" he says. Be "Heart Smart" and save a life—it may even be your own. For further information regarding heart disease, contact: American Heart Association National Center (214) 373-6300. National Heart, Lung, and Blood Institute (301) 251-1222. Heartlife Hotline 1-800-241-6993.

Thrombolytic therapy, or heart attack drug treatment, can save most victims if given within a few hours of the onset of symptoms.

**Classifieds! Bigger and Better Than Ever**  
272-4536

Stay heart healthy.

## Help Keep Your Love Alive

*North American Precis Syndicate*  
Falling in love is easy—staying in love often isn't. Many couples have been able to renew their marriage—making a "good" marriage better and a "boring" relationship exciting and challenging once again—by attending a Marriage Encounter weekend.

For almost 25 years, the non-profit Marriage Encounter movement has been hailed by many as a critical turning point in their relationships. Bill and Mary Anne Boylan, part of the U.S. Secretariat Team for Worldwide Marriage Encounter, offer some tips on how to keep your love alive.

- Try to listen and to hear what is being said behind the words. Ask your spouse if what you heard was what he or she meant.
- Don't ever stop pursuing each other. Do all those little things that made your spouse feel loved in the first place.
- Protect your marriage at all costs. If you take care of your relationship, it will give you freedom, security and fulfillment.
- Recognize that all of life's stresses—your job, family, finances—don't suddenly disappear when you go to bed. Many couples look at the decline in passion and think they're falling out of love. At least recognize what's happening.
- The best gift you can give your children is to preserve your identity as a couple. Children get more security from knowing you're in love with each other than from anything else in their lives.



Recognize the importance of intimacy, emotional as well as physical. If you communicate well, everything else falls into place.

Worldwide Marriage Encounter weekends are held in hotels and retreat centers. They begin Friday evening and last until late Sunday afternoon. Meals are provided. The weekends are led by committed volunteer couples rather than counselling professionals—couples who found their marriages radically changed because of their own weekend experiences.

Described by many as a "crash course in communications," the Marriage Encounter weekend concentrates on teaching valuable relationship techniques illustrated through the personal experiences of three "team" couples and a priest or minister. Concepts from the team presentations are then explored by each couple privately.

For further information on Worldwide Marriage Encounter, call (800) 795-LOVE. Leave your name and telephone number and a volunteer couple will contact you to answer any questions you have and provide specific information on available weekends.

## HINTS FOR HOMEOWNERS

**Stretching The Family Budget**  
(NAPS)—You can often spend less and have more if you heed these hints for cutting household costs:



**Smart shoppers are turning to tea.**

- Save and use the coupons you find in this newspaper. You'd be surprised how much you can reduce your grocery bill.
- When shopping, compare unit pricing information to select the best buy.
- Saving time is important, too. With a little planning, you can prepare and freeze meals for the whole family for a week at a time.
- If you have children you can go through a lot of soft drinks every week, and that's expensive. A smarter buy: tea, a terrific natural alternative to carbonated and expensive soft drinks. Served hot or iced, anytime, tea tastes great, it's relaxing, refreshing and goes with every food you can think of! Small wonder many say tea is the smart choice.
- The four "golden rules" for a delicious cup of hot tea: 1. Bring fresh cold tap water to a full boil. 2. Use one teaspoon or one tea bag per cup. 3. Pour boiling water over ice. 4. Brew in a teapot three to five minutes—and serve!

**Stretching The Family Budget**  
(NAPS)—You can often spend less and have more if you heed these hints for cutting household costs:

## Nieman Realty

116 E. Ave. C George Nieman, Broker 272-5286 or 272-5285

- RICHLAND HILLS**  
NICE RESIDENTIAL LOTS...\$5,000 UP
- JUST LISTED-Nice 3-1 3/4-2 Brick, Cent. A&H, built-ins, fenced yard. \$40's!!!!RH-1
- HIGH SCHOOL**  
JUST LISTED- Nice 3-2-2 Brick, Cent. A&H, built-ins, FP, nice carpet, landscaped yd., & more!!!\$50's HS-11
- JUST LISTED-NICE 3-1-1 Brick, Heat Pump, nice carpets, nice landscapes yd., & More!!!! \$30's HS-12
- 3-2-2 Carport Home, Heat Pump, built-ins, fenced yd. \$30's
- 3-1-1 Brick, Cent. heat, evap. air. FmHA financing. \$20's!!!!HS-1
- NICE 3-2-2 Brick Home, FP, cov. patio, In Contract built-ins, \$50's!!!!HS-2
- PRICE REDUCED 3-2 Remodeled, heat pump, built-ins, fenced yd., storage bldg. \$23,000!! HS-3
- 3-1-1 carport Home, heat pump, storm windows & doors. MUCH MORE. \$20's!! HS-4
- 3-1 3/4 Home, wall furnace, window evap. air, built-in stove, storage bldg.!! \$13,000 Cash "AS IS"!!!! HS-5
- VERY NICE 3 bdrm. 2 bath Home, new paint, nice carpets, built-ins, Cent. A&H, fenced yd. \$40's!!!! HS-7
- IMMACULATE 3-2-2 Brick, Cent. A&H, built-ins, fenced yard, storage bldg., & MORE!!!! \$50's HS-8
- JUST LISTED- VERY NICE 3-1-1 Brick, built-ins, heat pump, fenced., & more!!!FmHA Financing Available. \$20's!!!!HS-9
- IMMACULATE-3-2-2 Home, built-ins, Cent. A&H, redwood deck, large workshop-storage. \$70's!!!! HS-10
- HIGHLAND AREA**  
3-2-1 Brick, Cent. A&H, FP, built-ins. MAKE OFFER!!!! HL-1
- FmHA Financing To Qualified Buyer -NICE 3-1-1 Brick Home, Cent. A&H, ceiling fans, storage bldg., fenced yd. \$30's!!!!HL-3
- 3-2-1 Brick, Cent. heat, evap. air, built-ins fenced yd., storage bldg. \$40K..HL-4
- LENAU ADDITION**  
PRICE REDUCED-3-1 1/2-1 Home, Cent. heat, evap. air, new roof, cov. patio, st. bldg., fenced yd. \$30's!!!! L-1
- VERY NICE3-2-1 Home, Heat Pump, storm windows & doors, extra insulation, nicecarpet, spklr. sys., & MORE!!!! \$30's!!!! L-2
- JUST LISTED-Nice 2-1-1 Home, new interior paint, new carpet, fenced yd., storage bldg., MORE!!!!&20's!!L-4
- JUST LISTED 2-1 1/2-1 Home, Heat Pump, built-ins, encl. patio, plant room, workshop-stor., fenced yd. \$30's!!!! L-3
- RURAL HOMES**  
JUST LISTED-Nice 3-2-2 Brick, approx. 2160' lv. area, on 5 acres close to town, Cent. A&H, built-ins, FP, storage bldg., fenced.-HR-1
- JUST LISTED-Nice 3-2-1 Home on 20 acres, close to town, 6" well, sideroll spklr., shop, & barns. \$50's!!!!HR-9
- 3-2-2 Brick, blt-ins, Ht. pump, FP. 2.5 acres on pavement. \$60's!!!! HR-3
- 3-2-1 on 1 acre, Cent. Heat, Evap. Air, Remodeled, \$30's!! HR-6
- LAZBUDDIE-VERY NICE 3-2-2 Brick Home on 1 acre, Cent. A&H, built-ins, FP, nice carpets, large cov. patio. \$60's!!!! HR-7
- ESTABLISHED BUISNESS, 40+ yrs., lot, bldg., furniture, fixtures, & inventory. Books open to qualified Buyer!!!!
- 3-1-2 Home on 1 1/2 acres storm cellar & storage bldg...\$20's!!!! HR-8
- ASK ABOUT OUR COMMERCIAL LISTINGS!!!**
- PLEASANT VALLEY- 160 acres, 8" well Lindsey circle!!!!



# Valentine Values

**M&M Holidays Valentine Colors**  
1 lb. bag  
**Candy**  
**\$2.49**

**I Love You Mugs**  
**\$2.99**

Large Selection  
Napkins - Tablecloths  
Cups - Plates  
**Valentine Party Supplies**

**Balloon Bouquets**  
Includes 1 Milar Balloon of Your Choice & 5 Latex  
**\$3.99**  
Get Your Order In Early To Guarantee Availability



Large Selection  
**Pangburns Heart Shaped Box Chocolate Candy**

Solid Chocolate Individual Wrapped  
5 oz. Bag  
**Heart Candy**  
**\$1.19**

**Stuffed Animals**  
2" to 2 Ft.

Premiere  
Chocolate Covered  
**Cherries**  
8 oz. box  
**\$1.00**

Large Selection For Boys & Girls  
**Boxed Valentines**

Cupcake & Cake  
**Candy Toppers**  
**\$1.49**

**Giant By American Greetings**  
18" Tall x11" Wide  
**Valentine Cards**

Large Selection  
**Heart Shaped Doilies**  
(Red & White)  
**Stick On Foil Hearts**  
**Heart Shaped Cookie Cutters**

**Strip of Pops With Valentine Sayings**  
**89¢**

AMERICAN GREETINGS  
**Large Selection American Greetings Cards For Your Sweetheart**



Artificial W/Babys  
**Breath & 12 Flowers**  
**Rose Bouquet**  
**\$5.99**

**Ben Franklin Coupon**  
Milk Duds, Whoppers, Payday, Screaming Sours, Leaf Candy.  
**3 for 87¢**  
Limit 12 With Coupon Cash Value 1/20 of 1¢

**Ben Franklin Coupon**  
TIC TAC BREATH MINTS.  
BUY TWO GET ONE FREE! Stock up now and save!  
**67¢ 3-pk.**

**Ben Franklin Coupon**  
COLORPOINT FABRIC PAINT.  
Paintstitching paint with special squeeze bottle. 108  
**1.57 ea.**  
Paintstitching Books.....2.47 & 3.57

**Ben Franklin Coupon**  
BRACH'S CONVERSATION HEARTS  
Small or large hearts with assorted messages. 39  
**87¢ bag**  
Limit 6 With Coupon Cash Value 1/20 of 1¢

**Ben Franklin Coupon**  
PLAYING CARDS.  
Poker decks in assorted covers. 84  
**3 decks \$1**

**Ben Franklin Coupon**  
12-OZ. POLY-FIL FILLER.  
Nationally recognized, high quality, name brand, 100% polyester fiber. 107  
**1.17 Bag**

**Ben Franklin Coupon**  
Bath Towel, Heavyweight 25x50-in. 100% cotton towel in assorted solid colors. Slightly irregular. 2  
**2 for \$5**  
CANNON

**Ben Franklin Coupon**  
STORK RIESEN.  
10-oz. bag of chocolate covered caramel candies. 46  
**1.97 bag**  
Limit 6 With Coupon Cash Value 1/20 of 1¢

**Ben Franklin Coupon**  
33% OFF WILLOW BASKETS.  
Save on assorted size, natural finish baskets priced from 3.97 to 7.97. 116  
**33% off**  
Limit 4 With Coupon Cash Value 1/20 of 1¢

**Ben Franklin Coupon**  
DMC EMBROIDERY FLOSS.  
6-strand, 100% cotton floss in 6.7-yard skeins. In a rainbow of colors. 98  
**4 skeins \$1**  
Limit 12 With Coupon Cash Value 1/20 of 1¢

**Ben Franklin Coupon**  
CHARMIN BATH TISSUE.  
4-rolls of soft white tissue. 3  
**97¢ 4-pk.**  
Limit 4 With Coupon Cash Value 1/20 of 1¢

**Ben Franklin Coupon**  
Act II Popcorn. Butter, Original, Lite Butter, Lite Natural and Butter Lovers microwave popcorn. 3  
**3 for \$1**

**Ben Franklin Coupon**  
Werther's Original  
12-oz. bag of the original butter flavored candy. 50  
**1.97 ea.**  
Limit 6 With Coupon Cash Value 1/20 of 1¢

**Ben Franklin Coupon**  
COATS & CLARK 100% WINTUK YARN.  
4-ply worsted wt. 3-oz. no dye lot solids, 2.5-oz. ombres. Asstd. colors. 94  
**97¢ skein**  
\*Monsanto Certification Mark  
Limit 12 With Coupon Cash Value 1/20 of 1¢



**Ben Franklin Coupon**  
MBI MDSE PHOTO ALBUM.  
Ready to decorate 100-page album in white, floral or solid covers. 81  
**3.47 ea.**  
Limit 4 With Coupon Cash Value 1/20 of 1¢

**Ben Franklin Coupon**  
TUCK DUCT OR MASKING TAPE.  
3/4-in.x30-yd. Masking  
**2 for 97¢**  
2-in.x30-yd. Duct  
**1.67 ea.**  
Limit 6 With Coupon Cash Value 1/20 of 1¢

**Ben Franklin Coupon**  
SEW EASY ASSORTED LACE.  
Your choice satin/lace ruffle or painted country floral ruffle lace in asstd. colors. 122  
**2 yards \$1**  
Limit 6 With Coupon Cash Value 1/20 of 1¢

**Ben Franklin Coupon**  
ENERGIZER BATTERIES.  
2-pk., C,D; 1-pk., 9-volt; 4-pk., AA,AAA. 83  
C,D or 9-volt AA or AAA  
**1.97 2.47**

**Ben Franklin Coupon**  
SCRIBBLES & MATCHABLES  
1-oz. squeeze bottle of fabric paint in your choice of assorted colors. 89  
**83¢ ea.**

**Ben Franklin Coupon**  
FLOUR SACK TOWELS.  
32x38-in. 100% cotton multi purpose white towel. 59  
**\$1 each**  
Limit 6 With Coupon Cash Value 1/20 of 1¢

**Ben Franklin**  
Our Variety Shows  
2104 W. Amer. Blvd Muleshoe 272-3855  
Mon. - Sat. 8 a.m. - 8 p.m. Sun. 12 - 5 p.m.