

Weather

Feb. 21 71 40
Feb. 22 62 27
Feb. 23 58 26
Feb. 24 54 25

Muleshoe Journal

'The Community Of Opportunity-Where Water Makes The Difference



Vol. 71, No. 9

Published Every Thursday At Muleshoe, Bailey County, Texas 79347

TEXAS PRESS ASSOCIATION 25¢

Thursday, February 25, 1993



GETTING THEIR DAILY EXERCISE---J.R. Copley, Bill Barker, LaNell Stancell, Rae Logan, Ann Oyler, Dorris Ashford, Wilma Smith, Mabel Wolfe and Nancy Kidd are all part of a group that walks at the Bailey County Coliseum. Kevin Smith, manager, reported that approximately 30 walkers take their daily walk around the coliseum each morning. He stated that it is one tenth of a mile around the inside of the coliseum.

(Journal Photo)

Mule-Buddies Finish Season Undefeated

The Muleshoe-Lazbuddie Kings fifth and sixth grade boys' basketball team finished the season without a loss at 7-0.

Being short handed Saturday night, playing with only five players, didn't stop the Mule-Buddies when all was said and done the Clovis Suns were not shining. The Mule-Buddies defeated them 26-15, leading to a perfect season

in the Clovis Play Inc. League.

The Mule-Buddies stopped the Suns in the first quarter allowing one point and scoring seven points to lead seven to one. In the second quarter, the Mule-Buddies only allowed one basket and led at half time 12-3. The Mule-Buddies scored nine points in the third quarter and had a 21-9 lead. In the fourth quarter, the Mule-Buddies scored five points and won 26-15.

"I was proud of the boys because they gave 110 percent on the basketball court," said Joseph Sanchez. "They played one of their better games of the season. They played extremely smart. All three coaches and parents appreciated the effort of the five players."

According to Sanchez, Mason Sinclair put out the Suns fire by almost out scoring them with 13 points. This was a season high for Mason, along with being a team high Saturday night. He also rebounded the basketball two times and passed in three assists. This season Mason averaged 8.7 points, 3.5 rebounds and 3.7 assists per game. He is a sixth grader that played an important role this season for the Mule-Buddies. "It is great to have an athlete that loves basketball as much as Mason on our team," Sanchez said. "Mason

never missed a practice or a game."

"Bret Clements played a strong game shining with 10 points and pounded the boards for eight rebounds. The eight rebounds was a team high and the 10 points was Cont. Page 6, Col. 1

Underground Water District Recognized

High Plains Underground Water Conservation District No. 1 was among the 14 water districts, four water authorities, 15 cities and The University of Texas at Austin, who were singled out for commendation for their attention to the preservation and wise use of the state's water resources, by the Texas Water Development Board.

The board recognized the High Plains Underground Water Conservation District No. 1 for its efforts to promote the conservation of the state's water resources.

The High Plains UWCD No. 1 has been a long-time friend and supporter of many Board programs. Working closely with the Board, the District has furthered the state's goals for conserving water by continuing to accept responsibility for supervising the Agricultural Water Conservation Loan Program

which, since 1986, has provided \$5.6 million in loans to 187 area farmers to purchase more efficient irrigation systems. The District has also purchased and used flow meters, surge valves, moisture meters, electronic elevation equipment, and drip irrigation demonstration projects with funds provided from the Board's Agricultural Grants to District's Program.

According to James P. Mitchell, president, of the Board of Directors, the Board appreciates the District's assistance in coordinating and promoting the recent leak detection workshop presented by the Board and the Texas Rural Water Association. The District has always been a willing partner when asked to assist with special meetings and conferences held by the Board.

"The District is to be complimented for its consistent efforts to heighten awareness of the need to conserve water," said Mitchell. "The Cross Section, public school education materials, pamphlets, technical reports, exhibits, staff presentations puppet shows, audio/visual materials, and press releases are just some of the methods the District uses to inform and enlist the support of agricultural water users, homeowners, the news media, water leaders, policy makers, public

Cont. Page 6, Col. 1

Texas Department Of Health Clinic Schedule

"Beginning March 1, 1993, we are making changes in our clinic schedule," said Jo Ann Head.

The Immunization Clinic will be the second and fourth Tuesdays only from 8 a.m. to 4 p.m.

On third Wednesday evenings, there will be a late clinic from 4 to 8 p.m. for immunizations, family planning, pregnancy testing, testing for sexually transmitted diseases, blood pressure measurements, and tuberculosis services, as well as other services.

Although drop-ins are welcome, appointments are encouraged, and will be seen first, according to Ms. Head.

She also stated that otherwise, the schedule remains the same.

Cont. Page 6, Col. 1

Pesticide Licenses Are To Be Renewed

All commercial and non-commercial pesticide applicators are reminded that the deadline for annual license renewal is February 28.

"Licensing is a safeguard to prevent pesticide mishaps from taking place," said Agriculture Commissioner Rick Perry. "It is essential that all commercial and non-commercial pesticide applicators renew their licenses before the deadline."

Renewal applications were mailed in mid-January and should

World Day Of Prayer Friday, March 5

All women are encouraged to join with the millions of Christian Women all over the world in "informed prayer and prayerful action."

You are encouraged and welcome to attend the World Day of Prayer at the First United Methodist Church in Muleshoe at 12 noon, Friday, March 5.

A covered dish luncheon will be served. For more information call 272-4869.

around muleshoe

The board of directors of Muleshoe Area Hospital District will meet in regular session on February 25 at 7 p.m. in the yellow dining room of the Muleshoe Area Medical Center with the following matters of business to be reviewed.

- I. Call to order
- II. Reading and approval of prior minutes
- III. Administrator's Reports:
 - Hospital Financial and Statistical Reports
 - Healthcare Center Financial and Statistical Reports
- IV. Old Business:
 - None
- V. New Business:
 - Order the May 1993 Election Notice
 - Board Resolution-Texas Department of Health
 - Consider Ultrasound System
 - Consider C.A.T. Scan System
 - Consider Teleradiology System
- VI. Executive Session in Accordance with V.T.C.S., Article 6252-17, Section 2, Item (g).
- VII. Board Action resulting from Executive Session
- VIII. Management Matters
- IX. Adjournment

James Anthony Crawford, a freshman at Baylor University, was among the 938 students named to the Deans' Academic Honor List for the fall 1992 semester.

To be named to the Deans' List, a student must be an undergraduate with a minimum grade-point average of 3.7 and be enrolled in a minimum of 15 semester hours.

Pvt. Jamie M. Brown has completed training at the U.S. Army Infantry School at Fort Benning, Columbus, Ga.

During the course, students received training which qualified them as light-weapons infantrymen and as indirect-fire crewmen in a rifle or mortar squad.

Instruction included weapons qualifications, tactics, patrolling, and mine warfare, field and combat operations.

He is the son of James L. and Linda K. Brown of El. Paso.

Annual Toast To Texas Celebration Tuesday

Come One Come All...Tuesday, March 2 for the annual "Toast To Texas" celebration, sponsored by the Jennyslippers. Mark your calendars and plan to be at the Bailey County Courthouse.

Due to the large turn-outs Muleshoe has had in previous years at the Toast To Texas, Muleshoe has had stories printed in Texas

Monthly Magazine.

Beginning at 2 p.m. sharp, on the courthouse lawn, the program will get underway with the toast, followed by the welcome and a touch of the history, of Bailey County, by the Mayor of Muleshoe Robert Montgomery.

Sharon Grant will sing "Texas Our Texas."

Bailey County's contribution to the great state of Texas--Saluting Agriculture will be presented by Bailey County Judge Marilyn Cox. This part of the program is planned to coincide with the theme of the annual Chamber of Commerce and Agriculture banquet, which is scheduled for March 26.

Paula Braddock and a host of other special guests will provide special entertainment. Nelda Merriott stated that she hoped to have both Boy Scouts and Girl Scouts on the program. She also hoped to have the entire fourth grade class walk over from Mary DeShazo Elementary. It has become a tradition for the fourth graders to attend the toast as a group.

Following the celebration, the Courthouse and Law Enforcement Center will hold an open house, sponsored by the Jennyslippers.

Due to cold weather in December the Boy Scouts were unable to collect their usual supply of canned food for the Food Box here in Muleshoe, so a trailer will be on the lawn if you would like to donate some canned food to the Food Box. "All food collected will stay in Muleshoe, for those facing an emergency," said Ms. Merriott. Be sure to be in Muleshoe for this big celebration, help celebrate the freedom of Texas.

Large Number Walk Daily At Coliseum

Do you ever feel cooped up on the cold winter days? Would you like to take a walk? Why not go out to the Bailey County Coliseum between 9:30 and 10:30 a.m. Monday through Friday and walk around the coliseum.

As many as 30 people (mostly senior citizens) go out to the coliseum and walk. It was reported that some are really faithful.

Each walker walks at their own pace and the number of times around is also their own choice. Each trip around the coliseum is a tenth of a mile.

Some of these walkers, like Sammie Ethridge, who stated, "I walk because it makes me feel better. I usually walk ten times around (one mile) each morning. She walks faster than I do, speaking of Rheba Barrett who was walking with Ms. Ethridge Monday morning, she usually walks around 10-15 times."

Ms. Ethridge told the Journal that she sat on the committee that got the walking started at the coliseum.

Ms. Barrett also stated that walking makes her feel better.

Some of the walkers are like these two ladies, walk because it makes them feel better, while for others it is carrying out the doctors

Cont. Page 6, Col. 1



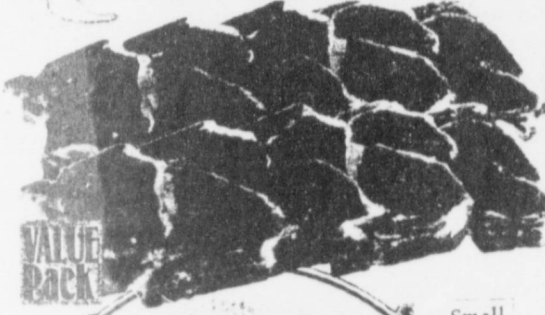
FAITHFUL WALKERS---Sammie Ethridge, left, and Rheba Barrett are both faithful walkers at the Bailey County Coliseum. They are two of approximately 30 walkers who walk daily. (Journal Photo)

DOUBLE COUPONS EVERYDAY!

See Our Stores For Details.

New Hours
Open Monday - Saturday
7:30 a.m. - 9 p.m.
Sunday 8 a.m. - 8 p.m.

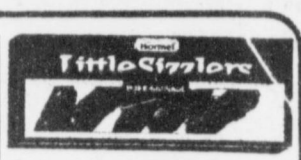
QUALITY MEAT



Assorted Pork Chops
\$1.59 lb.



Hormel Black Label Reg. Low Salt or Mesquite Bacon
\$1.89 1 lb. Pkg.



Hormel Little Sizzlers
79¢ 12 oz. Pkg.



Festive Jennie-O Whole or Half Turkey Ham
\$1.19 lb.



Owens Pork Sausage
\$1.69 1 lb. Roll



Country Style Pork Ribs
\$1.29 lb.



Chicken Leg Quarters
29¢ lb.



Super Lean Ground Beef
\$1.99 lb.

Fresh Express Pizza
2 \$5

Schooner Crunchy Cod or Flounder Fillets
\$2.79

Schooner Crunchy Perch Fillets
\$2.19

Schooner Shrimp Crunchies
\$2.79

Jumbo Pack Fryer Thighs or Drumsticks
69¢

Boneless & Skinless Fryer Breast
\$2.99

Charmin Bath Tissue
99¢ 4 Roll Pkg.

Peter Pan Peanut Butter
\$2.99 28 oz.

Señor Allens Refried Beans
3 \$1 16 oz. For

Best Maid Salad Dressing
99¢ 32 oz.

Ruffles Potato Chips
89¢ 5.14 Size Asst.

Coca Cola
\$1.79 12 oz. Cans

Texsun Orange Juice
69¢ 12 oz.

Bounty Paper Towels
\$2.29 3 Roll Pkg.

Kraft Individual Sliced Cheese
\$1.99 12 oz.

Kraft Philadelphia Cream Cheese
99¢ 8 oz.

Tree Sweet Orange Juice
\$1.99 64 oz.

Minute Maid Apple Juice
99¢ 12 oz.

banquet Fruit Pies
2 \$3 20 oz. For

Banquet Extra Helping Dinners
\$1.99 Asst.

Gorton's Fish Sticks
\$2.99 27 oz.

Eggo Waffles
\$1.39 11 oz.

Lowes MARKETPLACE

Healthy Choice Dinners
\$2.99 10.5 lb. Asst.

Ore Ida Corn-On-The-Cob
\$1.39 4 Ear

Navel Oranges
Medium Size
3 \$1 lbs. For

Fresh Green Cabbage
4 \$1 lbs. For

Red Ripe Tomatoes
69¢ ea.

Golden Delicious Apples
59¢ lb.

Fresh Green Onions
3 \$1 Bunches For

Sno White Cauliflower
99¢ ea.

We Offer Only Low Low Prices Everyday!

Nutra Sweet Spoonful
\$1.49 1 oz.

Best Maid Pickles
\$1.79 32 oz.

Hills Bros. Coffee
\$3.99 36-39 oz.

Old El Paso Picante Sauce
\$1.49 16 oz.

Purina Almond Delight
\$1.49 18 oz.

Fitti Disposable Diapers
\$4.99 Medium or Large

Coffee-Mate Flavor Creamer
\$1.89 8 oz.

Hunt's Ketchup
99¢ 24 oz.

Buy one box of Honey Almond Delight for \$1.49 with this coupon

HEALTH & BEAUTY

Playtex Ultimates Tampons
\$2.99 24 ct.

Crest Toothpaste
\$1.88 Asst.

Sinarest Tablets
\$3.29 20 ct.

Shampoo, Conditioner, Styling Aids Salon Selectives
\$1.99 Asst.

Original or Cherry Nyquil/Dayquil
\$3.99 6 ct.

Liquicaps Nyquil/Dayquil
\$3.99 12 ct.

515 W. Amer. Blvd. Muleshoe 272-4406

MARKETPLACE

401 W. American Blvd. Muleshoe, TX 79347 (806) 272-4585

Prices effective February 21 - 27, 1993

WE RESERVE THE RIGHT TO LIMIT QUANTITIES IN TEXAS

Recommendations Made To Help Small And Medium Sized High Tech Businesses

Small and medium-sized businesses employ approximately half of the Texas work force, yet they also face the greatest challenges to survival and growth. While Texas has a strong general business assistance resources in the state, small and medium-sized Texas businesses have no formal support network to address technology development, transfer or adoption needs.

The Texas Department of Commerce and the Texas Technology Extension Network Advisory Board understands this, and today recommendations to improve the delivery of technology assistance services to small and

medium-sized Texas businesses. The report, "A Call To Action for Texas Technology", was submitted to Governor Ann Richards and economic development boards for consideration.

"A Call to Action for Texas Technology" is a result of a year-long planning process involving more than 300 small business owners, technology transfer agents, government officials and community economic development organizations. The committee made the following recommendations:

*establishing a Texas Manufacturing Assistance Center Network

*expanding technology development services through a Texas Technology Extension Network built on the state's Small Business Development Centers
 *simplifying electronic access to business assistance information
 *strengthening technology transfer from federal labs and Texas universities
 *increasing risk capital for technology development
 *creating a Technology Advisory Policy Council

"The recommendations of the TTEEN Advisory Board will guide our efforts in helping Texas businesses compete in the global marketplace," said Commerce executive director Cathy Bonner. "This 'Call to Action' is another example of government and industry working together to ensure future success stories in Texas."

Spearheaded by Commerce's Office of Advanced Technology, the report was funded in part by a State Technology Extension Program grant from the National Institute of Standards and Technology. Each recommendation is explained in detail in the report. If you would like a copy of "A Call to Action", please contact Commerce's Office of Advanced Technology at 512/320-9561.

Services For Ruby Jones Held Tuesday

Services for Ruby Jones, 84, of Earth were held Tuesday, February 23, 1993 at 11:00 a.m. at the Earth United Methodist Church, with Rev. Bryan Fink, pastor officiating.

Burial was in the Earth Memorial Cemetery, under the direction of Parsons-Ellis Funeral Home.

Mrs. Jones died at 9:10 a.m. Sunday, February 21, 1993 at the Muleshoe Area Medical Center.

She was born in Vinson, Oklahoma on March 4, 1908 moving to Earth from Vinson in January of 1930.

She was a receptionist, retired from South Plains Hospital in Amherst, Texas, and a member of Earth United Methodist Church.

Survivors include three sisters, Naomi Burgess of Earth, Lessie Messamore of Amherst, Texas and Alma Moore of Almagorda, NM and two brothers, Joel Jones and W.O. Jones, both of Earth, Texas.

Memorials are suggested to the Earth Memorial Cemetery and Earth EMS, both of Earth, Texas.

Pallbearers include Glenn Bulls, Dean Jones, Jerry Jones, Todd Moore, Jomeryl Harmon and Loyd Lowery.

Patients In Muleshoe Area Medical Center

FEBRUARY 19, 1993
 Ruby Jones, Mary Edmiston, Ernest Brock, Mylissa Thompson, Juanita Bruce, Odessa Shanks, Arnold Beckett, Melgie Reinholt, Velma Howell, Joan Wilson, Sally Garcia, Josefina Estrada

FEBRUARY 20, 1993
 Ruby Jones, Ernest Brock, Maria Rosas, Juanita Bruce, Odessa Shanks, Melgie Reinholt, Velma Howell, Joan Wilson, Roy Warwick, Josefina Estrada

FEBRUARY 21, 1993
 Ernest Brock, Maria Rosas, Juanita Bruce, Odessa Shanks, Maud Young, Melgie Reinholt, Joan Wilson, Roy Warwick, Josefina Estrada

FEBRUARY 22, 1993
 Ernest Brock, Maria Rosas, Juanita Bruce, Odessa Shanks, Maud Young, Melgie Reinholt, Joan Wilson, Roy Warwick, Josefina Estrada

BIBLE VERSE



"The kingdom of heaven is like unto a grain of mustard seed, which a man took, and sowed in his field."

1. Where is this verse found?
2. Who spoke these words?
3. Where were they spoken?
4. Is this parable found elsewhere in the Bible?

- Answers:
1. Matthew 13:31.
 2. Jesus.
 3. From a boat by the seaside.
 4. See Mark 4:31 and Luke 13:19.

Let not thy will roar when thy power can but whisper.
 -Thomas Fuller.

Report From State Senator Teel Bivins

Consider this:

*During a family argument, a bottle of cologne is thrown through the TV set, making a small hole in the picture tube. The cologne spills into the tube, and when the TV is turned on, the alcohol in the cologne ignites the set and causes an explosion. The plaintiff sues the manufacturer, claiming the TV was defective.

*A man goes out to mow his lawn. He pulls on the cord to start the mower and suffers a heart attack. He sues, alleging the "excessive force" needed to start the mower caused his heart attack.

*A U.S. machinery manufacturer builds a machine in 1895 and sells it, never to see it again. The machine is bought and sold over the years by various people. Eighty-eight years later, the manufacturer is sued because the machine has become defective.

It's lawsuits like these that made Texas lawsuit heaven. We have the dubious distinction of living under one of the most anti-business products liability laws of any state. Our laws encourage consumers to sue sellers or distributors for defective products although they had nothing to do with their manufacture, and our laws penalize companies for improving the safety of their products.

This hurts the Texas economy in several ways: First, Texas businesses are cautious about introducing new products in the state, stifling economic development and dulling our competitive edge. Second, new businesses are hesitant to move to Texas. They don't want their operations in a state replete with lawsuits, so they take their jobs elsewhere. Third, the high cost of our liability system makes products more expensive, hurting Texas consumers already struggling to make ends meet.

In 1991, I sponsored a bill in the Senate to address this problem. Although the legislation didn't pass, the urgent need for reform was apparent.

This prompted Lt. Gov. Bob Bullock to initiate a vigorous effort to reach a compromise prior to the current legislative session. Months of negotiations among business representatives, consumers and

personal injury lawyers followed.

The talks were often acrimonious, but Bullock kept all sides talking. Because of his efforts, a compromise was reached.

Sen. Carl Parker (D-Port Arthur) and I are carrying a bill in the Legislature that reflects this compromise. It's a fair approach to a controversial subject that affects everyone--from consumers to retailers to manufacturers.

Senate Bill 4 addresses these problems in a manner that's fair to businesses and consumers alike:

1. It proposes more predictable rules that are easily understood and uniform with other state laws.

2. It protects product sellers from frivolous and costly lawsuits.

3. It encourages the development of new and innovative products by assuring that manufacturers who use the most economically and technologically feasible design available cannot be easily second-guessed in a lawsuit brought years later.

4. It contains the cost and encourages the development of AIDS and HIV vaccines and preventive vaccines for childhood diseases, such as polio, measles, and rubella--as long as manufacturers and sellers give all legally required warnings.

5. It weeds out frivolous lawsuits against manufacturers and sellers of ordinary consumer products, like cigarettes and alcohol, that are well-known to be potentially dangerous when used as intended and for which all appropriate warnings are given.

This bill represents a compro-

mise. No group got everything it wanted in the legislation, because Senate Bill 4 offers a balanced approach. It promotes responsible behavior on the part of manufacturers and consumers alike and reduces costs to both. That's fair.

Family Leave Law

Although the family leave bill has become a law, a Texas Christian University management professor believes Americans' attitudes toward taking time away from work for family will change slowly.

Dr. Gregory Stephens, who specializes in the study of work-family conflict, doubts employees will rush to use the provision.

"All it does is simply make that opportunity available, and whether people choose to take advantage of it is completely another issue," Stephens said.

The family leave bill debated by Congress in early February was nearly identical to plans rejected by former President Bush in 1990 and 1992. While the law applies to only five out of 100 U.S. companies, 40 % of the nation's workers are eligible to take advantage of the leave plan.

Although some corporations have provided family leave plans to both male and female employees, Stephens noted that few people have taken advantage of the option.

Muleshoe Journal

USPS 367-820

Established February 23, 1924. Published by Muleshoe Publishing Co., Inc. Every Thursday at 304 W. Second, P.O. Box 449, Muleshoe, Tx. 79347. Second Class Postage paid at Muleshoe, Tx. POSTMASTER: Send address changes to the Muleshoe Journal, P.O. Box 449, Muleshoe, Tx. 79347.

We Are Qualified Members Of:
 Panhandle Press Association, National Newspaper Association, West Texas Press Association and Texas Press Association.



National Newspaper Association

WEST TEXAS PRESS ASSOCIATION



MEMBER 1993

TEXAS PRESS ASSOCIATION

L.B. Hall, Publisher
 Sammie Hall, Vice-President/Comptroller
 Evelyn Harris, News
 Annette Bettelman, Society
 Holly Millisp, Advertising
 Diana Bernice, Classified



PANHANDLE PRESS ASSOCIATION

SUBSCRIPTIONS
 Muleshoe Journal and Bailey County Journal
 By Carrier Yearly - \$15.00
 Bailey and surrounding counties
 By Mail - \$16.75
 Elsewhere - \$18.50

Advertising Rate Cards on Application
 Advertisers should check their ad the first day of insertion. The Journals will not be liable for failure to publish an ad or for a typographical error or errors in publication except to the extent of the cost of the ad for the first day of insertion. Adjustment for errors will be limited to the cost of that portion of the ad where the error occurred.

Classifieds! Bigger & Better Than Ever!

On Public Television

TORNADO DOWN



TORNADO DOWN is the astonishingly candid account of what happened when the status of two airmen changed from attacker to prisoner.

On the first day of Operation Desert Storm in January 1991, on their first sortie, the British Tornado bomber crewed by Flt. Lt. John Peters and Flt. Lt. John Nichol went down over Iraqi territory. Captured, the airmen endured unrelenting interrogations, beatings, and torture. This is their story.

Wednesday
 March 3rd at 9:00 p.m.
 Sunday
 March 14th at 11:15 p.m.



Mike Hahn, Joe Lozano & Roger Pena

James Crane Tire Co.

Mike Hahn of James Crane Tire Co., 322 N. 1st, Muleshoe, announces the installing of a Hunter Engineering computerized wheel aligner. It's one of the first systems of its type used in this area.

The system uses the latest in microprocessor computer technology. All alignment readings are displayed on a CRT screen. The aligner automatically compares vehicle specifications against the actual condition of the vehicle and displays the difference on the screen. During vehicle adjustment, special displays on the screen show the operator exactly how much adjustment is required to bring the vehicle within specifications. It's automatic. The system even checks itself to see if everything is okay each time it's turned on.

The new aligner also features Hunter's "Total Alignment" concept which relates all four wheels to a common vehicle centerline. For this reason, instruments are used on all four wheels, not just the front.

The end result is a degree of accuracy, ease of operation, and dependability not available with a conventional wheel alignment system.

The James Crane Tire Co. invites you to call 272-4594 for an appointment to have your car or light-truck in for a "Total Alignment" using the latest equipment. Or is you're interested in just seeing how this amazing machine works, you can stop by anytime.

State Vehicle Inspection Now Available At

James Crane Tire Co., Inc.

Mike & Terri Hahn

272-4594 322 North First Muleshoe

Broadcast Of "Cavalleria Rusticana" and "Pagliacci" To Air

The double-bill of Mascagni's "Cavalleria Rusticana" and Leoncavallo's "Pagliacci" will broadcast live from the stage of the Metropolitan Opera House on February 27, 1993 at 1:30 p.m., Eastern Time, over the Texaco-Metropolitan International Radio Network.

Music Trade Show Draws Top Artists

(NU) - Welcome to the world of music, tomorrow-style.

The latest innovations in the international music products industry — everything from super noiseless cables to high-tech, environmentally friendly instruments — will be showcased at the 23rd annual Winter NAMM Music Market in Anaheim, Calif.

The January show, sponsored by the National Association of Music Merchants, heralds the newest items available for music-lovers: automatic music-reading computer software; guitars made exclusively from native California wood — no tropical timbers; and international rainsticks, bagpipes, African drums, Indian percussion, bowl gongs and Native American drums.

This year's market, centered around the theme "Celebrating the Global Marketplace," features 750 exhibitors who also will show concert grand pianos, wind and brass instruments, violins, lighting and sound equipment, and synthesizers. The show, open only to retailers, highlights products that will soon be available to consumers.

In addition to products, the market also features top recording artists. From the cool jazz of legendary percussionist Louis Belson and the jazzy riffs of Chick Corea, to the rock sounds of Nuno Bettencourt, guitarist with Extreme; Rick Nielsen, former guitarist and band leader with Cheap Trick; and Brian May, guitarist for the rock band Queen. Rounding out the roster are guitarist Peter Frampton; Chad Smith, drummer for the Red Hot Chili Peppers, and John Stamos, TV and recording artist.

Visitors are expected from the United States, Asia, Europe, Australia, Latin America, South America and Canada.

Bruce Babbit, Secretary of the Interior:

"We are going to review this-date and time of the memo," commenting on bonuses handed out by a Bush administration official minutes before President Bush left office.

Waltraud Meier will sing the role of Santuzza in "Cavalleria", with Bruno Beccaria as Turiddu, Timothy Noble as Alfino, Judith Christin as Lucia, and Wendy White as Lola. In "Pagliacci" Barbara Daniels is Nedda, Vladimir Atlantov is heard in his Texaco-Metropolitan Opera broadcast debut as Canio, Juan Pons is Tonio, Kim Josephson is Silvio, and Anthony Laciura is Beppe. Nello Santi is the conductor for both operas, and the announcer for the broadcast is Peter Allen.

During the single intermission, panelists for "Texaco's Opera Quiz" will be Christopher Purdy, an on air host for radio station WOSU-FM in Columbus, Ohio; Anthony Tommasini, a critic for the Boston Globe; and Metropolitan Opera conductor, Richard Weitch. The quizmaster will be Edward Downes.

In Fashion

Early fashion show highlights reveal that American, French, and Italian designers are showing styles reminiscent of the early seventies. Skirts are a bit longer in some styles, colors are muted, and shoulders are softer. Floral print dresses are in sheer fabric, but linen and cotton are still good.

Don't discard your western outfits for it's predicted they are "in", especially in areas where western dancing remains popular. Boots, big black hats and belts sport fancy trim.

Parenting Tips

...from your friends at De Shazo Elementary.

Help your child do something for someone else. By giving of himself/herself your child can feel a real sense of accomplishment.

From 101 Ways Parents Can Help Students Achieve.

Cigs & Booze

Since the early 1960's, the Surgeon General has warned of the health dangers in tobacco addiction; others warned of it much earlier. The same is true concerning alcoholic drinking. Everyone knows, or should know, that alcohol addiction can lead to lung disease, cancer, stomach disease, and other ailments.

No one sues the alcoholic beverage industry, and if they did, would be unlikely to collect. The question comes down to individual responsibility. One must be responsible for his or her behavior.

If one lacks the self-control to care for his health, resulting consequences must be suffered. Surely anyone who sucks smoke into the lungs knows it's not natural, and could be harmful.

Anyone who has smoked since the early sixties could and should have known it was a health risk.

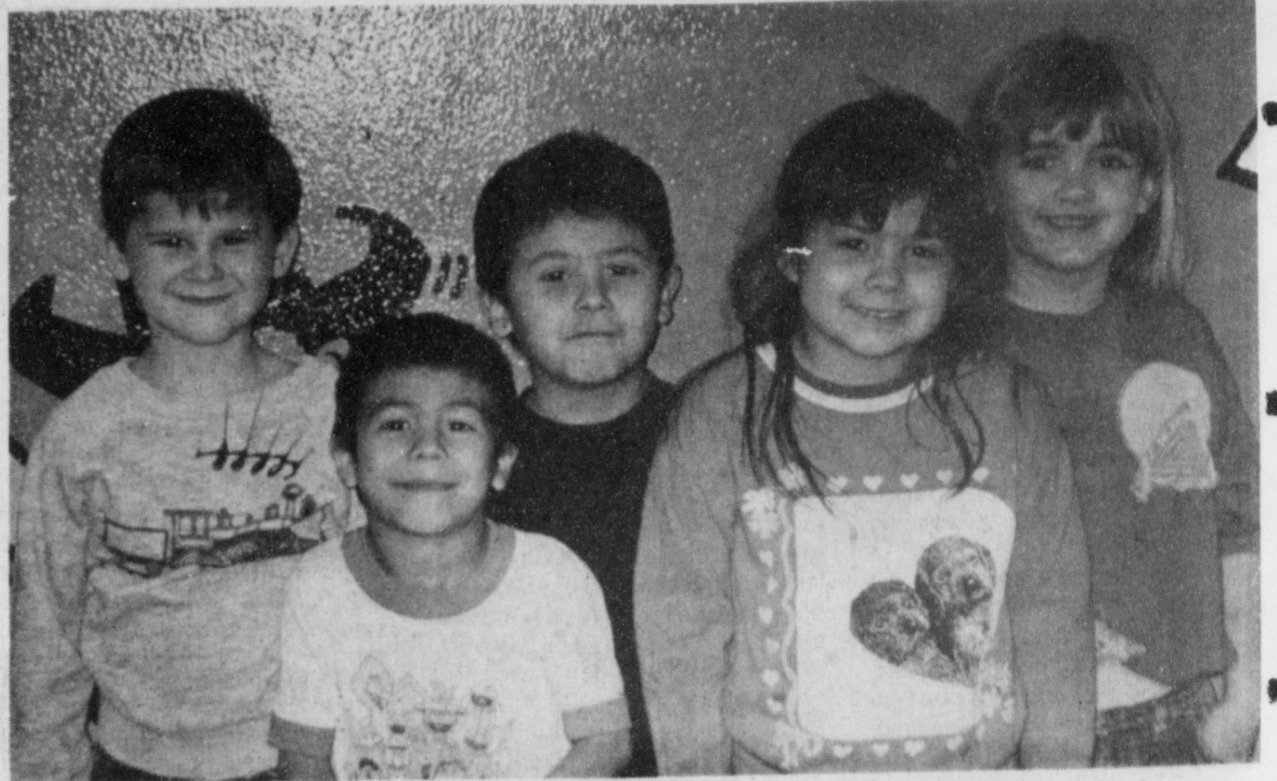
Why?

Steve Goldstein, writing in *Newsday*, asks why American high schools and college students would choose to become intellectuals, where they might earn a salary, when they can make millions if successful in sports or entertainment.

Goldstein says our priorities are wrong. The reward for being a vulgar, degenerate rock or film star, or an athlete hound-dogging around the nation, animal style, is enormous. Traditional U.S. moral norms seem not to apply.

Our national heroes should be those who help the country, society and the human race. They should be those who achieve breakthroughs in science, medicine, decent arts, etc.—not fast-track rock stars, TV showpersons, sex bombs and actor "stars."

*** A conversationalist will talk whether anyone is listening or not.



DILLMAN STUDENTS OF THE WEEK—Dillman Kindergarten students of the week for the week of January 18-22 are (not in order): Eric Newton (unavailable for photo)-music; Shana Rempe-P.E.; Nathan Villa-Library; Rita Ortiz-Chapter Lab; Ricardo Ruvalcaba-computers; and Nicolas Green-speech.

ENMU Presents Pianist In Concert

The Eastern New Mexico University School of Music will present guest artist Barbara English Maris, pianist, in recital Sunday February 28 at 4:00 p.m. in Buchanan Hall. The recital is open to the public and free of charge.

Dr. Maris is a professor of music at the Catholic University of America in Washington, D.C. She works with students from six continents, teaches piano

performance and literature, and directs master's and doctoral degree programs in piano pedagogy. Her articles about piano performance and teaching have appeared in numerous professional publications including "The American Music Teacher," "The Piano Quarterly," "Clavier," and "College Music Symposium."

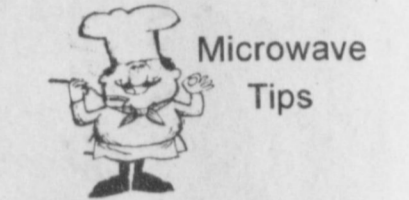
Maris first performed in Portales in 1987 when she was presented a solo recital on ENMU's Guest Artist Series. She has performed in 30 states as well as in Europe and Australia. In solo recitals and chamber music concerts, on television and radio, as a concerto soloist, and in lectures, workshops, and master classes, she brings to her performances an unusual breadth of experiences as a musician, teacher and writer.

Maris holds a graduate degree in piano performances from the University of Illinois (Urbana), Peabody Conservatory of Music (Baltimore) and the Ecole Normale de Musique (Paris) where she studied on a Fulbright Grant. She received two post-doctoral fellowships from the National Endowment for the Humanities for research in 18th and 19th century piano music, and she also has specialized in piano music of the 20th century.

Last fall, Maris was guest artist and clinician at the New Mexico

State Music Teacher's convention in Roswell. In the past decade she has presented keynote addresses at three of the National Conferences on Piano Pedagogy (Wisconsin/1982, Michigan/1986, and Illinois/1992). In June 1993, she will direct The College Music Society's Summer Institute on "Women and Music", which is designed for music faculty from colleges and universities throughout the country. Maris is a past president of the College Music Society as is her husband, Dr. David Willoughby, professor of music at ENMU.

Bill Clinton, U.S. President: "I wanted to talk (in first TV appearance on the deficit and taxes) about economic problems and the budget mess we have inherited and priorities and principles."




What is the correct, internal temperature for roasts in a microwave oven?

A general guide is 120 degrees for rare, 130 for medium, and 155 for well done.

Remember that when cooking a well done roast the outside will likely get brown enough. With rare and medium, use a browning agent, brushed on the outside before cooking.

How True
Any time you feel you would like to be young again, just think of Algebra.

Robert Dole, U.S. Senator (R-Kan): "He (President Clinton) didn't say no to anybody, and I don't see how he's going to pay for all this," referring to Clinton's economic stimulus program.



Happy 21st Le Shea!


Love,
Aunt Nettie,
Tamara, &
Brook

Bob Stout, Ed. D. Psychologist

Announces the opening of his private practice at 207 S. 25 Mile Avenue, Hereford, Texas, Wednesdays.
For appointments call: (806) 353-4372

Savings Are In The Bag At Ben Franklin®

STOP IN AND PICK UP YOUR SPECIAL SHOPPING BAG NOW AND GET READY TO SAVE BIG!



YOU COULD WIN A \$1000 SHOPPING SPREE!

REGISTER TO WIN THURSDAY, FRIDAY & SATURDAY THE WEEK OF THE CONTEST. EACH DAY OF SALE SEE BACK OF BAG FOR DETAILS.

1000 ONE THOUSAND DOLLARS

Be An Instant Winner With Savings For Future Visits Each Bag Comes With Three Special Coupons - Our Thanks To Our Valued Customer

Bring In Your Shopping Bag On Thursday March 11, Friday March 12 & Saturday March 13

AND RECEIVE 20% Off!

All The Regular Priced Items You Can Fit Within The Shopping Bag!

Ben Franklin®

Our Variety Shows

2104 W. Amer. Blvd. Muleshoe 272-3855
Mon. - Sat. 8 a.m. - 8 p.m. Sun. 12 - 5 p.m.

This Sale Excludes All Special Orders And Previously Purchased Items.



Early bird gets the WEEDS

Don't Forget!
Poynor's will furnish you a free spreader to apply...

Dacthal Pre-Emergent
Controls both broad-leaf weeds and grassy-type weeds.
Safe to apply around trees, shrubs, and 26 different vegetables.
Dacthal contains no food value but is one of our best weed controls.



Weed and Feed Special
Now's the time to apply ferti-lome's strong 20-4-4 formula that feeds your lawn and prevents future weeds and wild grass from coming up!
2,500 sq. ft. bag..... **11.00**
Free use of spreader

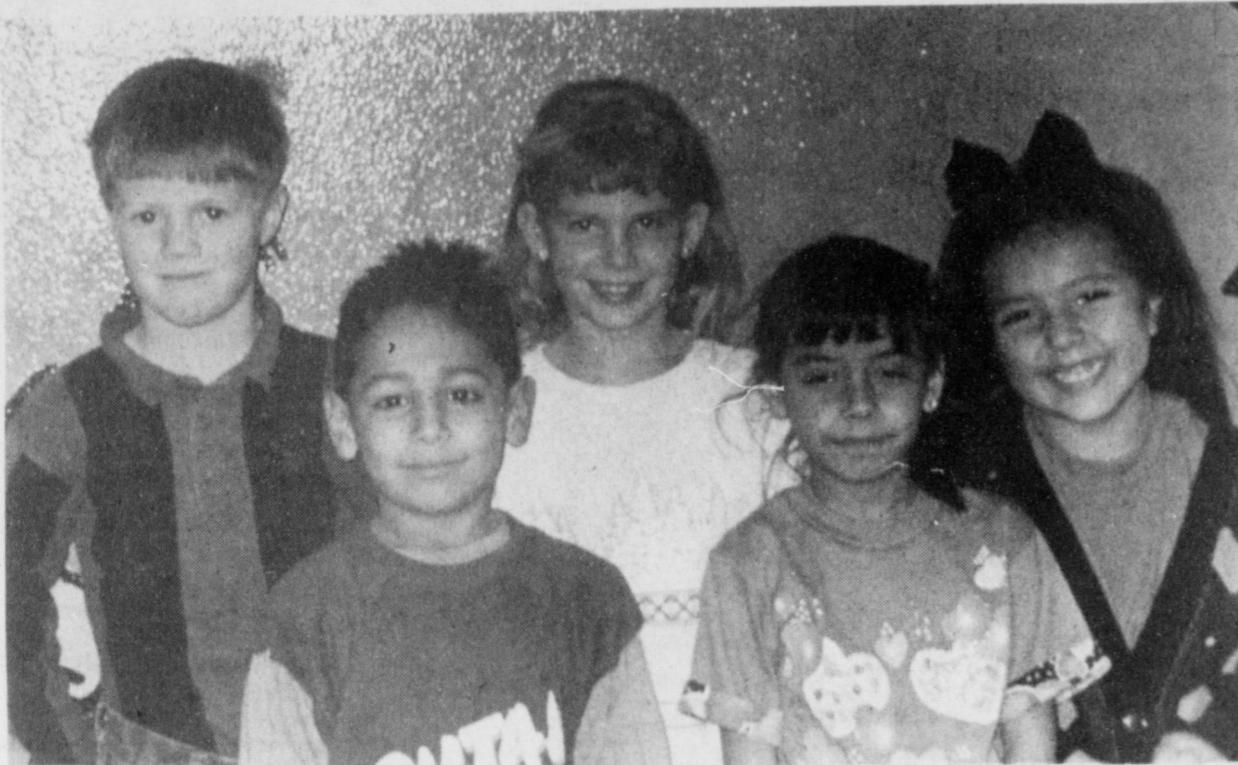


Lawn Food containing "TEAM"
New, safe pre-emergent weed control TEAM ("balan and treflan") can be applied to ALL TYPES of turf grasses including fescue!
Prevents grassy-type weeds such as crabgrass and feeds your lawn at the same time. Apply with confidence around trees and shrubs!



P O Y N O R S

103 Main Muleshoe 272-4552



DILLMAN STUDENTS OF THE WEEK-Dillman First Grade students of the week for the week of January 25-29 are (not in order): Laci Gossett-speech (unavailable for photo); Bryan King-music; Venessa Bustillos-PE; Natasia Chavez-library; Alvino Garza-Chapter Lab; and Kari Jo Copley-computers.

Calendar Offers Springtime Fun For Texans

There's just no limit to the ways Texans have fun in Spring. From the traditional to the unexpected, there's something for everyone in virtually every corner of the state. Fun-seekers will delight in the more than 1,000 happenings all found in the latest Texas Events Calendar, just released by the Texas Department of Transportation.

The information-packed calendar, spanning the months of March, April, and May, proves something most of us have long suspected. Texans love to celebrate. From a Spammarama celebrating the creation of potted meat, to more serious events honoring our fallen heroes,

there's something going on in Texas most of the time.

Texans take to the great outdoors with seaside festivities, open-air concerts, and kite-flying contests. Ragin'-Cajuns stage for fun-for-all events, complete with crawfish races, French music, and plenty of spicy Cajun foods. In March, the Irish honor St. Patrick with parades, liar's contests, and authentic Irish music and song. In May, Mexican heritage reigns at Cinco de Mayo celebrations, offering visitors a delightful south-of-the-border experience with lively mariachis and colorful ballet folklorico.

Spring blooms at dozens of flower and garden shows. And free self-guided driving tours through rural Texas countryside present spectacular views of bluebonnets and other wild flowers during their blooming peak.

Replete with Easter parades, fishing tournaments, and a host of major international events, the spring calendar is free for the asking by calling 1-800/452-9292. The toll-free number is answered by professional travel counselors at the department's Texas Travel Information Centers, and offers information on events. Texas trip planning, Texas Highways magazine subscriptions and products, and travel literature. The service is available daily to callers anywhere in the contiguous United States from 8 a.m. to 9 p.m. CST.



Know The Weather

Do the planets and stars tell us anything about the weather? Can a study of the sky at night give us clues as to tomorrow's weather?

As for the average reader, a study of the stars is of no immediate, direct use in forecasting the weather. There are astronomers who dig up clues on future weather trends through astronomy, but no system is as yet proven.

If the stars are especially bright, it will probably mean that dust is

absent from the sky, and rain might be on the way, or has perhaps only recently ended.

The stars are too far away to analyze and the nine planets which we know all circle the sun and are affected by the sun--as is the earth, which is third nearest the sun. Therefore, the sun affects the weather on the planets, but, as far as is known, none of them affect the weather on the other eight.

They Do

All men are born free and created equal, but grow up in a graduated income tax-world.

-Star, Cincinnati.

Too Late

Cynical husband: "I never appreciated real happiness until I got married--then it was too late."

-Record, Columbia, S.C.

Parents Urged To Restrain Their Kids

Parents, love your children with restraint. That is a message the Texas Department of Transportation is spreading.

Each year, more children die in car accidents than from any other cause. "More than 70 percent of these deaths could be prevented if children were properly secured in safety seats," said Arnold Oliver, executive director of the Texas Department of Transportation (TxDOT). "Parents need to buckle up their children every time they travel."

TxDOT is reminding parents that Texas law requires children younger than 2 be restrained in a federally approved child safety seat or safety belt.

Last summer, researchers at the Texas Department of Transportation Institute at Texas A&M University found only about half of the children they observed riding in cars were properly restrained. In 1991, 57 children age 4 or younger were killed in car accidents in Texas.

Nationwide last year, as many as 49,000 injuries and 455 deaths could have been prevented if every child younger than 5 had been fastened into a child safety seat, the

National Highway Traffic Safety Administration (NHTSA) estimated.

TxDOT cautions that safety seats must be used correctly to be effective. "It is important for parents to read the safety-seat manufacturer's instructions, as well as the car manufacturer's instructions, to guarantee the proper installation and use of the seat," Oliver said.

"It is equally important for parents and caregivers to determine if a safety seat has been recalled. This is especially important for parents using a second-hand seat."

Parents should know which type of seat (infant, toddler convertible or booster seat) is appropriate for each stage in a child's development, Oliver advised. They should be aware of current information about transporting low-weight and premature infants, and know how a child safety seat should be used in vehicles equipped with automatic safety belts or a passenger-side air bag.

The SafeRiders Program of the Texas Department of Health assists parents who cannot afford a child safety seat. It provides any parent with recall information and tips for

proper use of the seats. The phone number is 800/252-8255.

NHTSA's Auto Safety Hotline (800/424-9393) also has information and tips for proper use of the seats.

"Love your kids," Oliver said. "Buckle 'em up."

ENMU Hosts Workshop

Eastern New Mexico University will host the Southwestern Trombone, Euphonium, Tuba Workshop February 25-27. Don Lucas, instructor of trombone, euphonium, tuba, and assistant director of bands at ENMU, is the workshop coordinator.

Registration will start Thursday, Feb. 25. The ENMU Trombone Choir will be featured in the opening concert Thursday evening. Clinics and/or recitals will be held all day Friday and Saturday, in addition to exhibits by instrument manufacturers and music dealers. A workshop faculty recital will be held Friday evening. All concerts are open to the public and free of charge, with the exception of the Friday 4-5 p.m. recital by the New Mexico Brass Quintet. This recital is part of the workshop offerings covered by the registration fee.

The workshop will conclude Saturday evening with a feature concert by the American Classic Trombone Quartet, winners of the Keystone Brass Institute's International Brass Chamber Music Competition. The ACTQ has performed at the New York Brass Conference and the Midwest International Trombone Workshops. In addition to performances and clinics by the ACTQ, guest artists and clinicians will include euphonium and tuba soloists.

Faculty members and performing groups have been invited to participate from Texas Tech University, West Texas State University, the University of Oklahoma, the University of North Texas, Odessa/Midland Texas Public Schools, University of Texas at El Paso, Western New Mexico Symphony, trombone and tuba section, also has been invited to participate.

Workshop registration fee is \$25 per person. 505-562-2671

Health Insurance

Q:
A:

Who helps protect you from high medical costs?



Mark Morton
109 S. 1st
272-7519
Muleshoe, Tx.

State Farm Mutual
Automobile Insurance Company
Home Office
Bloomington, Illinois



Also available as an IRA

Earn

6.40 Percent

Guaranteed for one year upon issue, subject to change on policy anniversary dates.

Superior ratings by prestigious independent organizations confirm our company's financial strength—

Southern Farm Bureau Life has been rated A+ (Superior) by A.M. Best for all the 17 years such ratings have been awarded.

Weiss Research, Inc. has rated our Company A— which ranks us among the top 12 of all U.S. life and health companies with over \$1.5 billion of assets.

Information used by such independent rating services comes from each insurance company's financial statements. Such ratings are not a warranty of an insurer's ability to meet its contractual obligations.

Helping You In What We Do Best.

Our current Flex II Annuity interest rate.

The guaranteed rate is 4% for life of your Annuity.

Southern Farm Bureau Life Insurance Company offers Flex II, a Flexible Premium Retirement Annuity designed for periodic as well as single premiums. Your contributions, less any applicable maintenance fees, accumulate wealth for the future. Early surrender charges apply.

Southern Farm Bureau Life Insurance Company
Jackson, Mississippi

Bailey County Farm Bureau

David Tipps, Mgr.
1612 W. Amer. Blvd. 272-4567

2 FOR 1 SALE

Buy One Pair LENSES AND FRAMES

(At Regular Price)

Get A 2nd Pair Of Lenses & Frames*

FREE

* Select Group of frames * CR39 Lenses only
* Some restrictions apply * Tints & coating extra

- We Accept Medicaid
- Over 35 Years Filling Rx's
- We Have Our Own Grinding Lab
- Certified Opticians

ONE DAY SERVICE AVAILABLE ON MOST PRESCRIPTIONS

HOURS: MON.-FRI. 8:30-5:00; SAT. 9AM-12

720 W. 21ST (Next to Allsup's) 763-7331

10,000 Boots

4,000 Yankee Candles

2,000 Hats

12,000 Belts

AND COUNTRY JUNCTION

Biggest Little Boot Shop In Texas

106 East American Blvd Muleshoe, Texas 272-7504

February round 'em up and move 'em out mini tent sale!

Friday and Saturday, Feb. 26 and 27 * 9:30 a.m. to 6 p.m.

All Winter Merchandise Must Go!

Sat., Feb. 27, Blue Prairie Band, 2-5 p.m.

<p>ALL Men's Shirts Reg. \$38 and \$52 Now \$19.99</p> <p style="font-size: x-small;">Hundreds to choose from! First quality winter styles! Wrangler, Panhandle Slim, Roper, Capes, Brushpoppers and Navajo Prints</p>	<p>ALL Boys' Shirts Reg. \$28 to \$38 Now \$16.99</p>	<p>All Jackets 50% to 75% off</p>
<p>Men's and Ladies' Leather Jackets Reg. \$190 to \$210 Now \$95</p>	<p>Girls' Blouses Reg. \$28 and \$38 Now \$12.99</p>	<p>Ladies' Guatemalan Jackets Reg. \$45 Now \$25</p>
<p>Ladies' Jeans \$19.99</p> <p style="font-size: x-small;">Hundreds to choose from! First quality! Rocky Mountain, Silverlake, Panhandle Slim and Roper</p>	<p>Men's and Ladies' Rodeo Jackets Reg. \$95 to \$110 Now \$55</p>	<p>Ladies' Denim & Leather Jackets Reg. \$125 to \$155 Now \$28 & \$40</p>
<p>Ladies' Blouses Reg. \$38 and \$52 Now \$16.99</p>	<p>Hundreds Of Felt Hats! 2X-3X \$40 4X \$50 5X & 7X \$70 10X \$80 15X \$100 20X \$130 30X \$160</p>	

Come in and enjoy original campfire coffee and authentic chuckwagon donuts!

Mule-Buddies

Cont. from Page 1

his season high. "Like many others on the team, Bret has a love for the game. He never missed a practice, or a game, and all his effort was appreciated by everyone involved. He is a fifth grader that was consistent throughout the season. He averaged 7.4 points, 5.7 rebounds, and 0.7 assists a game," said his coach.

Josh Morris played a physical defensive game showing the Suns his strength. Josh hauled in eight rebounds off the boards, a team high and scored three points. "Josh is a fantastic athlete. He also never missed a practice, a game, always gave 100 percent, and loves to play defense. Our opponents never knew where he was, and continually frustrated them. This season he points, two rebounds, and 1.3 assists a game this season. However, the last two games he played in he averaged four assists a game," said Sanchez.

"J.T. Seaton from Lazbuddie played good defense. J.T. Played in two games due to a wrist injury and attending stock shows," Sanchez continued.

"Cade Morris was a team leader and team motivator. Cade has a tremendous amount of knowledge about basketball. He is a sixth grader from Lazbuddie that averaged three points, 5.7 rebounds, and two assists this season," continued Sanchez.

"James Barrett was one of the best passers around the Clovis league. He has the ability to find the open man. James is a fifth grader that averaged 1.7 points, 0.8 rebounds, and 0.5 assists a game

Purcell...

Cont. from Page 1

everything that the people have done."

Young also told the *Journal* that Ms. Purcell will be returning to Muleshoe early next week.

Walkers...

Cont. from Page 1

orders. Walking has been proven to be one of the best exercises people of any age can do.

Among those walkers are also J.R. Copley, Bill Barker, LaNell Stancell, Rae Logan, Ann Oyler, Dorris Ashford, Wilma Smith, Mabel Wolfe and Nancy Kidd.

In talking with Kevin Smith, manager of the coliseum, he said that this was a service made available free of charge and a number of the walkers are very faithful.

License...

Cont. From Page 1

will prevent license renewal and result in late fees.

In Texas, more than 8,000 people are licensed for commercial and non-commercial pesticide use.

For more information on licensing, contact Murray Walton, (512) 463-0013, or Elizabeth Perkins, (512) 475-1657, at TDA in Austin or your nearest TDA regional office.

Water...

Cont. From Page 1

school students, and vocational agricultural students."

The Board is the state agency mandated by the Legislature to help water managers incorporate water conservation into their water management policies and practices.

averaged 5.7 points, 9.3 rebounds, and 1.3 assists a game," responded his coach.

Jeffrey Bruns sparked the Mule-Buddies with his aggressive defense. Jeff snatched the ball that created chances for the Mule-Buddies to score. He had three rebounds and led the team with four assists. "Jeffrey's strongest points on the basketball court are his aggressive defensive skills that cause turnovers and his quickness. He loves basketball and played in every game. He is also the team comedian, his great sense of humor loosens up the Mule-Buddies and that creates a high scoring machine. He is a fifth grader that averaged 1.9 points, two rebounds, and 2.3 assists a game this season. However, the last four games of the season he averaged 3.5 assists a game," said Sanchez.

"Ky Kennedy played some of his best defense this season, Saturday night. He has shown that he is a force to be reckoned with down low. Ky pulled down three rebounds and caused several turnovers. Ky played the most important role in the game Saturday night. The Mule-Buddies only had four players to start the game which would have caused a forfeit. When Ky stepped into the gym there was a sigh of relief from his teammates and coaches. Ky had made a trip back from San Antonio early Saturday morning after attending the stock show. Ky has shown tremendous improvement with his defensive game plan. He is a sixth grader that averaged 1.5 points, 2.4 rebounds, and 0.2 assists a game this season," stated his coach.

"Judd Glover was outstanding this season. He was one of the most improved offensive players this season. He ran the baseline with precision. He averaged 3.3 this season," stated Sanchez.

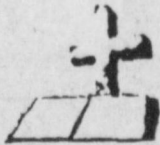
"Intimidating is what Dustin Cleavinger is to our opponents. Dustin is playing super basketball at this point of the season. He is a sixth grader averaging 10.5 points, 10.4 rebounds, and 1.6 assists a game this season," said his coach.

Dustin, Cade, James, J.T. and Judd were missed this weekend. However, according to their coach, Josh, Mason, Ky, Jeffrey and Bret showed the Suns that they were the Mighty Mule-Buddies.

Tournament play begins this week. The Mule-Buddies will play Thursday night at 8 (Texas Time) in Clovis, N.M. at Marshall Junior High (new gym).

"Special thanks go out to the following for helping Saturday night, Tucker Crawford was our manager and the following for keeping stats: Jason Crawford, Ashley Crawford, Amber Bruns and Gwen Sinclair.

BIBLE VERSE



"Know ye that the Lord he is God: it is he that hath made us, and not we ourselves."

1. Who is the author of this verse?
2. What does this verse warn us against?

Answers:
1. The Psalmist--probably King David.
2. Against the sin of worry.



LOCAL ZIMMATIC DEALER RECEIVES AWARD--- Lindsay Manufacturing Co. of Lindsay, Nebraska has named Irrigation Pumps and Power, Inc. of Muleshoe as recipient of the President's Award for Distinguished Zimmatic Sales. (From Left) Gary Parker, president L.M.C.; Tim Black, Forrest Peterson; Don McElroy and Jack Bloomer, L.M.C.

Sudan Superintendent Willie McAlpin Dies

Funeral services for Wilburn Vernel "Willie" McAlpin, 59, of Sudan will be held at 11 a.m. today, Thursday, February 25 in the Sudan High School Auditorium with the Rev. Wendell Horn, pastor of the First United Methodist Church in Olton, and the Rev. Jim Hawthorne, pastor of the First United Methodist Church of Sudan, officiating.

Another church service will be conducted at 4 p.m. in the First United Methodist Church in Canyon.

Burial will be in Dreamland Cemetery at Canyon under the direction of Ellis Funeral Home. McAlpin died at 10:12 p.m. Monday in St. Mary of the Plains Hospital in Lubbock following a sudden illness.

Born in Spur on August 20, 1933, McAlpin moved to Sudan in 1984, from Canyon. He married Jackie Lois Timberlake on September 18, 1959, in Canyon.

McAlpin had served as Superintendent of the Sudan Schools since 1984. He was a member of the First United Methodist Church of Sudan and a veteran of the U.S. Navy.

A native of Spur, McAlpin, graduated from West Texas State University. He was head football coach and athletic director of Muleshoe High School, resigning in 1967. He coached at Muleshoe for five years, the first two as an assistant. He became head coach when Muleshoe moved from Class AA to Class AAA. He then coached at Beeville ISD for the 1967-68 school year.

He began working at the Canyon Schools as an assistant football coach in 1968. He also coached baseball for Pee Wee, the Little League, Kids Inc. and the American Legion.

He was named 1982 Canyon Citizen of the year. He was a member of the Canyon Parks and Recreation Board, was a life member of Girlstown, the Eye Bank and the Crippled Children's Camp in Kerrville, Texas, where he assisted in the remodeling.

McAlpin served as Canyon Lions Club president in 1978-79, as Lions zone chairman in 1979-80;

as deputy governor in 1980-81 and the district governor in 1981-82. He retired in 1983 after a three-year term as a director of the Canyon Chamber of Commerce. He was an Administrative Assistant for the Canyon Independent School District when he accepted the Superintendents Job for Sudan Independent School District.

He was a Certified Lay Speaker in the United Methodist Church. He was Lay Director for the Llano Estacado Emmaus Community. He was representative on the UIL Legislative Council.

He was a member of the Sudan Lions Club, and the Sudan Masonic Lodge.

Survivors include his wife, Jackie Lois McAlpin; a son, Kevin Shane McAlpin of Sundown; two daughters, Stacy Rene' Gatlin of Austin and Tracy Lynn Rice of Amarillo; a brother, Chester Norman McAlpin of Abilene; his mother, Mary Frances McAlpin of Spur; three grandchildren, Celeste Spinhirne, Aspen and Colby Gatlin.

The family suggests memorials be made to the W.V. "Willie"



Sports

Quiz

By Christian Thorlund

1. What was the score of the 1992 Orange Bowl game?
2. What was the score of the 1991 Orange Bowl game?
3. In what sport is Don Nelson well known?
4. Where will soccer's world championship be played in 1994?

Answers:

1. Miami 22, Nebraska 0.
2. Colorado 10, Notre Dame 9.
3. Pro basketball, NBA coach, Golden State.
4. In the U.S., first time.

Lazbuddie To Play Whitharrel Friday

The Lazbuddie Longhorn boys basketball team will play Whitharrel Friday, February 26 at 7 p.m. at Olton for District.

McAlpin Memorial Scholarship Opportunity Plan, Inc. P.O. Box 1035 Canyon, Texas.

Thank You Bertie Purcell

and all of her family wish to thank all of Muleshoe and Bertie's dearest friends for their concerns and prayful thoughts.

For her family and relatives all over the area, your prayers, as well as ours, have been answered. All of you as friends mean so much to us.

We have never seen a love for a family such as ours, from a Community such as Muleshoe, as we have in the last few days.

God Bless each of you!

Pat Young Debbie Beauchamp
and
all of her family

TAKE PRIDE IN RIVERSIDE

Mr. Farmer:

Come By And Lets Talk About Your Fertilizer & Chemical Needs!

Herbicides
Insecticides
Fungicides
Adjuvants
Phenoxies
Micronutrients
Fertilizers
Seed Treatments
Plant Growth Regulators
Defoliant & Desiccants
Riverside & Terra Seed



We have dry fertilizer, clear liquids & a complete line of chemicals.

Custom Application Is Available Upon Request

Terra International

Clovis Hwy.

272-4203

Notice of Annual Meeting Bailey County Electric Cooperative Association

Saturday, February 27, 1993
Muleshoe High School Auditorium

Registration 9 a.m.

Meeting Begins 10 a.m.

FREE Meal of Bar-B-Q, Chicken & Fish

Will Be Served

Purpose of Meeting:

1. Financial Report, Progress Report & General Condition of the Cooperative.
2. Elect two Directors For A Term Of Three Years

District #3
Guy F. Kelley
Charlie Bailey

District #6
Jimmy Cannon
Tommy Kirk

3. Elect A Committee On Nominations, District #1 and District #2 To Be Voted Upon At the 1994 Annual Meeting

4. Consider and Take Action Upon Any Other Matters That Might Be Presented or Come Before The Meeting

Additional Nominations For Directors May Be Made At The Meeting.

Inside The Life Of A Saddle Maker

An interesting aspect of the small Texas town of Muleshoe, the Journal takes a few minutes of Clifton (Cliff) Allen's time to peek into the life of a saddlemaker.

Born in McAdoo, Dickens County, Texas, 53 year old Cliff, living the first 12 years of his life in McAdoo, moved to Muleshoe at the age of twelve, and graduated from Muleshoe High School.

Employed at the Levi plant in Amarillo, he worked his way through TSTI (Texas State Technological Institute) and graduated in 1975. He then opened his saddle making business in Muleshoe on the first Monday in November of 1976.

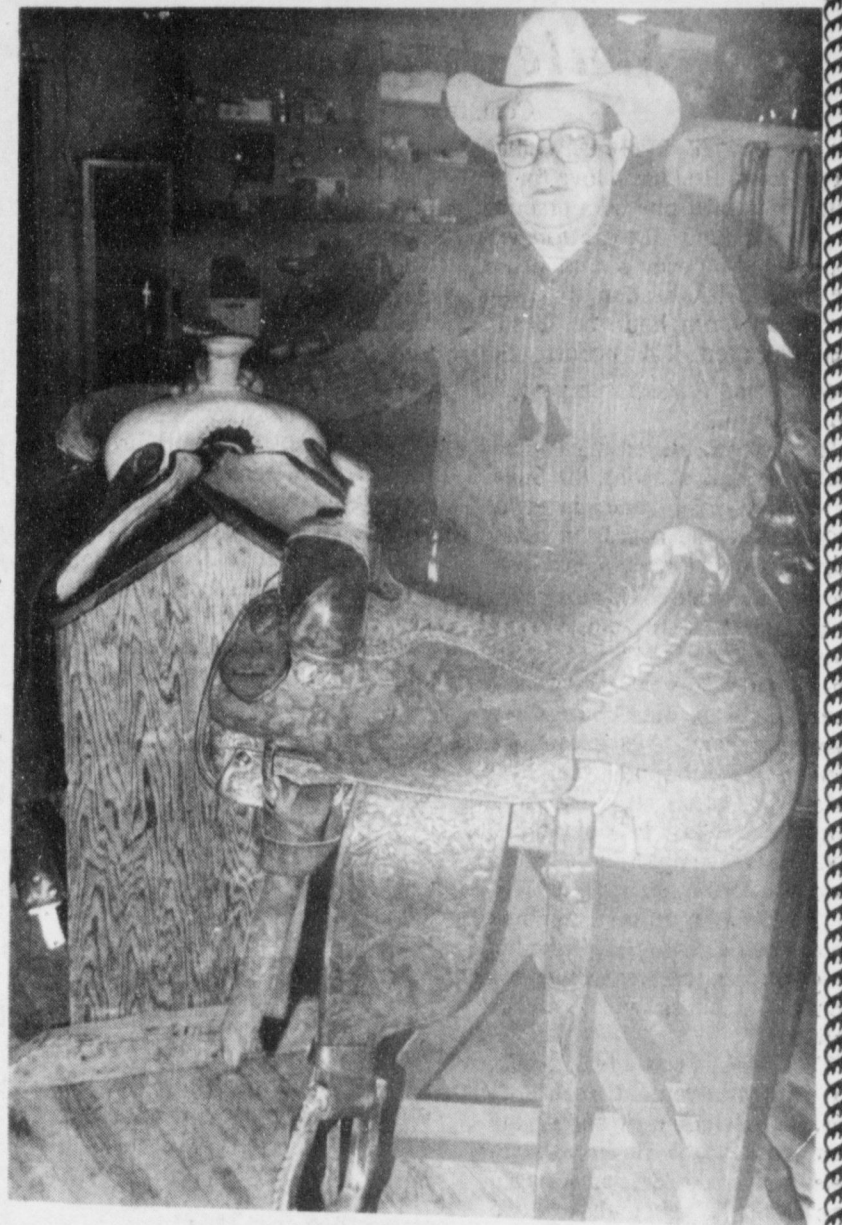
Cliff has two children, Winston Allen of Borger, Texas and Shelly Vanderburg of Windsburro, Texas.

Explaining the process of making a saddle from the very core, Cliff tells us he starts with a wooden saddle tree. The wood is reinforced with epoxy glass, and a double cover of rawhide covers the horn. A layer of rawhide then covers the whole tree. He then covers the tree with wet steer hide, which makes the best saddle leather. Sheep woolskin, which is acquired from fed lambs out of West Texas feedyards, makes the lining of the saddle. Using a round knife, a straight knife, gauge knife, lasting pliers, seat bouncer, seat rubbing stick, and a mallet, he covers the saddle with the leather. When the leather is dry, he then begins to tool the decorative design on the leather. A very slow process, it takes approximately 90 hours to make a complete saddle. Cliff tells us, "If I had nothing else to do, I could make two saddles in a month."

Besides making saddles, Cliff also makes leather chaps, repairs saddles and other leather goods.



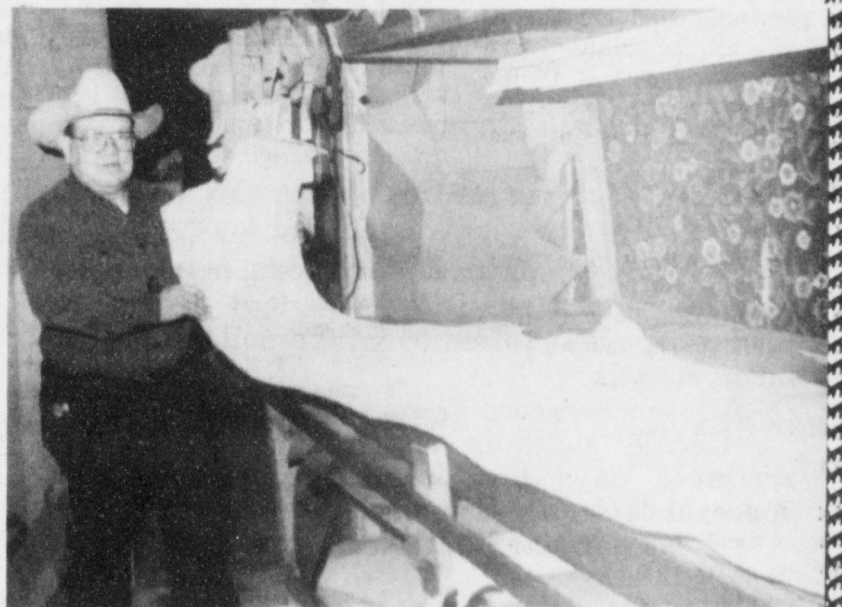
Wooden trees, the top tree is covered with epoxy glass and covered with rawhide.



Cliff shows one of his highest priced saddles-going in 1981 for \$1750



Cliff demonstrates tooling the decorative designs on the saddles



A side of steerhide (1/2 steer) makes the best saddle leather



A pair of chaps Cliff made recently of top grain 4 to 5 ounce steerhide leather (thinner than saddle leather)



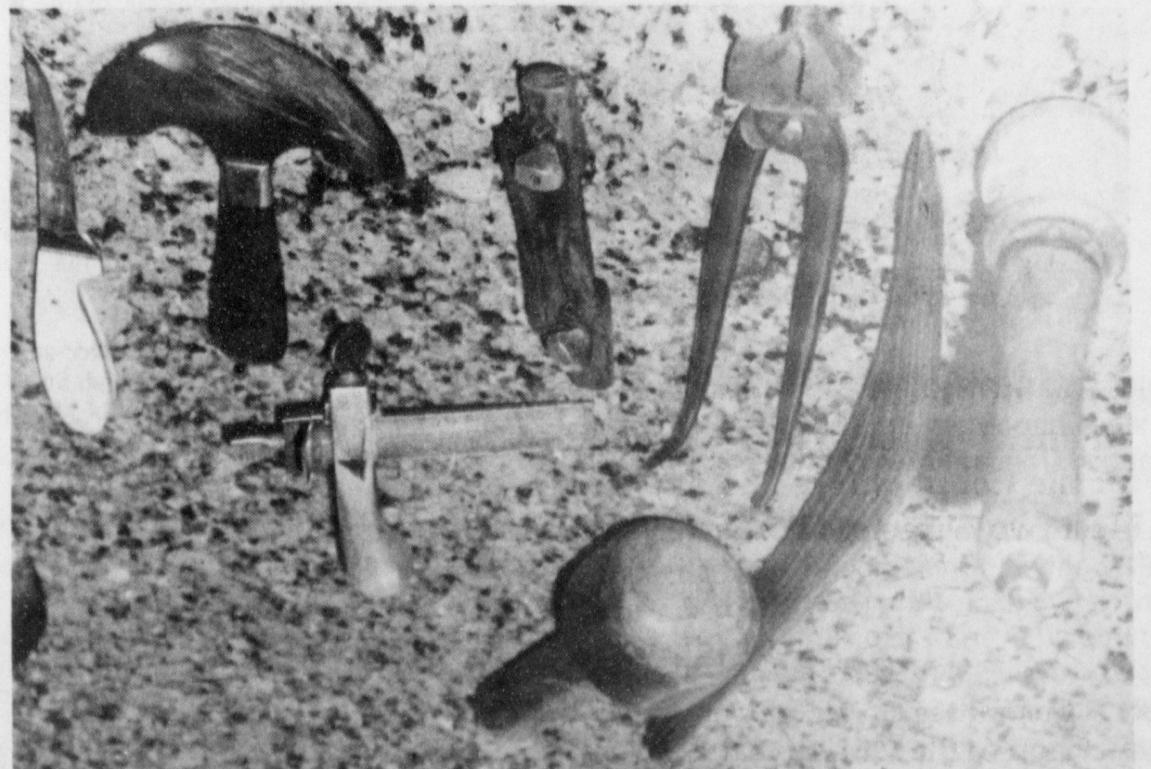
Cliff shows an example of a finished tooled saddle



Sheep woolskin, acquired from fed lambs out of feedyards in West Texas, makes the lining of the saddles.



Cliff shows us the tooling of the leather on his saddles



Tools used for the actual making of a saddle are a round knife-most used, a safety knife, being pushed away from you to prevent cutting yourself; a straight knife to cut leather strips; a gauge knife to cut the exact width of 1/4" to 4"; lasting pliers to pull the leather tight against the tree; seat bouncer to hammer or press the leather into the cantle; seat rubbing stick to rub the wrinkles out of the seat leather; and a rawhide tooling mallet used to keep from wearing out the tools.



LUBBOCK, Friday, February 19, 1993

By Shawn Wade

The sign-up period for the 1993 cotton program is rapidly approaching and more specifics about the program are being finalized according to Lubbock-based Plains Cotton Growers (PCG). Sign-up for the 1993 program will begin March 1 and continue until April 30.

Some of the provisions previously announced include the 7.5 percent Acreage Reduction Program (ARP), the estimated 1993 Deficiency Payment rate of 20.55 cents and the advance deficiency payment rate of 10.275 cents, as well as the continuation of the 72.9 cent Target Price and 52.35 cent Loan Rate.

Newly announced provisions include eligible cover crops for planting on Acreage Conservation Reserve (ACR) and Conserving Use (CU) for Pay acres. In addition to the cover crop announcement Optional Flex Acres (OFA) can be planted to any crop other than fruits and vegetables or peanuts and receive Planted and Considered Planted (P&CP) credit for the crop base that the acreage was flexed from. Limited cross compliance will not be applicable for 1993.

Eligible cover crops for ACR and CU for Pay acres are:

- Small grains disposed of before reaching hard dough;
- Small grains left standing when producer pays the required fee of ten dollars per farm;
- Forage sorghums and sweet sorghums such as haygrazer, sudan, and red top cane;
- Blackeye peas used for green manure and incorporated into the soil when producer pays required fee of ten dollars per farm;
- Close sown corn or sorghum;
- Corn or sorghum planted in rows when producer pays ten dollar fee with the approval of County Committee;
- Home gardens limited to a maximum of 2 acres in size;
- Special approval from the Texas State ASC Committee will be necessary to harvest and donate blackeye pea seed to an approved food bank on no more than 50 percent of cotton ACR and CU for Pay acres.

Cover crops of corn, sorghum and blackeye peas are not eligible to be hayed or grazed at any time during the calendar year. Producers are encouraged to contact their county ASCS office to make an appointment, if necessary to facilitate the sign-up process, and also to get clarification on specific program details.

A power over a man's subsidence amounts to a power over his will.

-Alexander Hamilton.

A power above all human responsibility ought to be above all human attainment.

-C.C. Colton.



The moon travels around the earth at more than 2,000 miles per hour.

On Public Television

TORNADO DOWN



TORNADO DOWN is the astonishingly candid account of what happened when the status of two airmen changed from attacker to prisoner.

On the first day of Operation Desert Storm in January 1991, on their first sortie, the British Tornado bomber crewed by Flt. Lt. John Peters and Flt. Lt. John Nichol went down over Iraqi territory. Captured, the airmen endured unrelenting interrogations, beatings, and torture. This is their story.

Wednesday
March 3rd at 9:00 p.m.
Sunday
March 14th at 11:15 p.m.



Cotton Organization Rebukes Environmentalist Claims On Boll Weevil Eradication

Texas Cotton Producers, Inc. has noted that the Lone Star Chapter of the Sierra Club recently released information regarding its opposition to proposed legislation that would allow Texas cotton farmers to consider participation in a national boll weevil eradication program. Texas Cotton Producers continues its strong support for the legislation (CSSB 30).

The Sierra Club release grossly misrepresents the program that is to be developed for Texas. The use of pesticides and their application to control the cotton boll weevil on many Texas farms creates one of the greatest farm operation cost outlays. Massive use of pesticides, as the Sierra Club represents, would force many farmers out of business. It is extremely doubtful that cotton growers would vote to support a program that would require purchase and application of such a magnitude of costly chemical compounds.

The environmentalist group also says that "superbugs" will evolve because of the use of pesticides in the program. "Insects have four basic life stages—the egg, pupa, larva and adult," says Roger Haldenby, High Plains Boll Weevil Program Coordinator. "Chemical resistance is developed in the larva stage of the pest's life cycle. Pesticide applications for boll weevil control are made at the adult stage where resistance is not developed," Haldenby says. "In the 30 years of the High Plains program we have closely monitored resistance of the weevil to continued applications of pesticides. The only minor instances where we have noticed

this resistance is when a chemical is absorbed into the plant when the insect is in the larva stage," he said.

The Sierra Club also refuses to acknowledge the fact that farm families are just as concerned with the environment as their urban neighbors—and in many cases more so. These agricultural families must live and work on the farm each and every day.

The environmentalist group strongly questions the use of public funds for the purchase and application of farm pesticides for boll weevil control. At the same time they say that the program will call for indiscriminate applications of pesticides and extensive spraying of land suspected of harboring boll weevils.

Actually, federal funds cannot be used for the purchase or application of pesticides. Rather these funds are used for field monitoring and data gathering, and for the purchase of equipment for that monitoring to insure that weevils are present at sufficient levels to justify treatment, whether it be chemical or otherwise. This insures that the appropriate integrated pest management strategy is implemented, and that it is placed into the management plan at the correct time.

The Sierra Club also suggests that there are no safeguards to regulate the amount and types of chemical insecticide used. The proposed enabling legislation in no way circumvents any state or federal law regarding the use of farm chemicals. All current state and national regulatory safeguards regarding agricultural pesticide use remain in place and must be observed.

The environmentalist group seemingly does not recognize that pesticide applications are already occurring on a yearly basis in Texas to control the boll weevil. Farm producers want desperately to reduce their dependence upon these pesticides from both an environmental and economic point of view. The Sierra Club's stand

could lock cotton producers into maintaining the status quo—a continued and increasing dependence on pesticides for control of the boll weevil.

Another complaint issued by the environmental group is that the proposed legislation stipulates eradication rather than control. However, the environmentalist organization failed to inform in its

NOTES, COMMENT

Progress doesn't flow from excuses.

The best years can always be ahead.

Not every salesman can prove he is a seller.

Progress doesn't come by itself; like genius, it's made.



Who Knows?

1. Name the 10th president to of the U.S.
 2. Who set the date for national elections?
 3. What was the 24th amendment to the Constitution?
 4. Where and when did Samuel Morse publicly demonstrate his telegraph?
- Answers:
1. John Tyler.
2. Congress, in 1845, set the first Tuesday after the first Monday in November.
3. Poll Tax in federal elections. Congress eliminated this amendment in 1964.
4. At Morristown, N.J., in 1838.

Three Way News

by Mrs. J.W. Garvin

Mr. and Mrs. W.T. Simpson were in Lubbock Wednesday on business.

Mr. and Mrs. Robert Kindel were in Muleshoe Friday on business.

Mr. and Mrs. Kenneth Fox from Clovis and Mr. and Mrs. James Gillentine from Lubbock spent the weekend with their mother Mrs. H.W. Garvin.

Mr. and Mrs. Obie Sanders and Millisa and Jonithan Bennet attended a show in Portales on Saturday.

The community has had snow since the past week then Saturday a bog sandstorm.

Mrs. Jack Lane and Mrs. Obie Standard and children visited Mrs. Lane's mother Mrs. Nettie Quesenbery in Muleshoe Friday.

There are several in the community with colds and flu.

Mr. and Mrs. Bill Dolle and Darla visited Bills parents the Herbert Dolles in Littlefield Sunday.

Several people from the Three Way community attended the Five Area Telephone meeting in Muleshoe Saturday. Several drew nice door prizes.

Mrs. Bill Dolle visited Mrs. H.W. Garvin Saturday afternoon.

Mrs. Robert Kindel spent Friday in Levelland visiting her sister who was in Levelland with her grandchildren.

George Tyson spent Tuesday night in Lubbock with his daughter the Tommy Durhams.

The children of Mr. and Mrs. Joe Sowder spent the weekend in Logan visiting their children the Jack McCarty's.

There was a baby shower at the Three Way Baptist Church Sunday honoring the new baby of Mr. and Mrs. Chris Lock.

Mrs. Robert Kindel and Mrs. Bob Foley were in Levelland Thursday shopping.

Mr. and Mrs. H.C. Toombs were in Lubbock Monday to attend the funeral of Mr. Gaylon Milken of Lubbock.

Harold Layton and a friend of Dell City spent Saturday night with Harold's brother, Mr. and Mrs. J.E. Layton.

CALL Mark Morton 109 S. 1st Maleshoe 272-7519

HEALTH INSURANCE

Mutual Automobile Insurance Company Home Office Birmingham, AL

FIXED RATE LOAN PLAN

7.75%*

FIXED RATE FOR FIRST 10 YEARS

- Farm and Ranch Improvement Loans
- Long-Term Loans for Home Construction and Remodeling
- Other Loan Plans Available
- Long-Term Assumable Loans Fully Amortized
- Rate Conversions Available at End of Fixed Rate Period

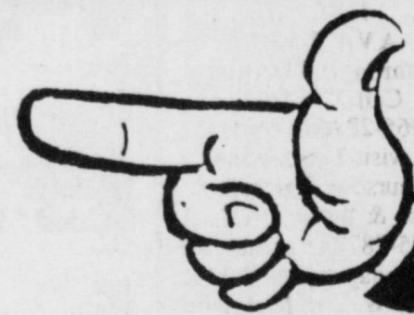
FEDERAL LAND BANK ASSOCIATION OF MULESHOE



RATES CHANGE WEEKLY
RATE CAN BE LOCKED IN BY PAYING A FEE
15 YEAR LOAN ON CENTER PIVOTS

* Annual percentage rates range between 8.06% APR and 8.13% APR depending on length of contract. APR based on rates specified during the week of February 10-17, 1993.

Mr. Farmer



Foster Fertilizer features a blend of custom mixed and applied Liquid Fertilizers

ALSO

Anhydrous Ammonia and dry fertilizer is available.

A custom service at competitive prices, for a Quality Product.

We have been serving this area for 32 years.

Let us mix and apply your fertilizer according to your specific soil requirements.

"Your Business Is Appreciated"

Foster Fertilizer

Lazbuddie, Texas 965-2421

CLASSIFIEDS 272-4536

CLASSIFIED RATES
 15 Words & Under Minimum Charge \$2.30
 Thereafter \$2.00
 16 Words & Over
 1st Insertion 15 cents per word
 2nd Insertion 13 cents per word

CLASSIFIED DISPLAY RATES
 \$1.75 Per Column Inch

DEADLINES
 12 noon Tues. For Thursday Paper
 12 noon Friday For Sunday Paper

To receive the reduced rate after the first insertion, ad must run continuously.

We reserve the right to classify, revise, or reject any ad. We are not responsible for any error after ad has run once.

1. Personals

For more information and assistance regarding the investigation of get-rich-quick, work-at-home and other financial/business opportunities, The Muleshoe and Bailey County Journals urges its readers to contact the Better Business Bureau, 1206 14th St., #901, Lubbock, TX 79401 or call (806)763-0459

CONCERNED About Someone's Drinking? HELP IS AVAILABLE through Al-Anon Call 272-2350 or 965-2870 or come to visit Tuesday and Thursday nights, 8:00 p.m. & through AA call 965-2870 or come visit Tuesday nights, 8:00 at 620 W. 2nd, Muleshoe

Will power in a bottle!
 Burns fat, increases energy, curbs appetite! All natural products. Call 272-3463. H1-5s-10tc

3. Help Wanted

CLERK-TYPIST WANTED
 Must be at least 18 yrs. old and have Computer experience. Send resume to P.O. Box 449, Muleshoe, Tx. 79347

GOVERNMENT JOBS
 \$16,000 - \$62,000 per year. Benefits, Full or Part time, FREE details, 24 hour recorded message. (215)433-6849 Dept. 21A 3-7t-6tp(ts)

NEEDED
 Representatives in Sudan Lazbuddie and Muleshoe. For more information call 272-5607
AVON
 "The Smartest Shop In Town"

PARK RANGERS
 Game wardens, security, maintenance, etc. No experience necessary. For info call (219) 769-6649 EXT 9689, 8 A.M. to 8 P.M. 7 days. 3-5s-8tp(ts)

3. Help Wanted

SALES REP
 Motivated person to call on Commercial, Industrial, and Agricultural accounts in the MULESHOE area. Excellent Commissions and Bonuses. Training provided.
HYDROTEX
 1-800-999-4712 E.O.E.

\$200-\$500 WEEKLY
 Assemble products at home. Easy! No selling. You're paid direct. Fully Guaranteed.
 FREE Information-24 Hour Hotline.
 801-379-2900 Copyright #TX034050
 3-2t-16tp(ts)

POSITIONS STILL AVAILABLE to type names and addresses from home. \$500.00 per 1000. Call 1-900-896-1666 (\$1.49 min/18 yrs.+) or Write: PASSE-P883 161 S. Lincolnway, N. Aurora, IL 60542. P3-7s-4tp

NEEDED AT ONCE!
 Beautician. Main Street Beauty Shop. 272-3448. M3-2s-tfc(S)

5. Apts. For Rent

FOR RENT:
 1 Bedroom Furnished Apartment. Water paid. Call 272-7575 P5-6t-tfc

11. For Sale Or Trade

For Sale: Good Bright Wheat Hay 4'x5' Round Bales. Call 272-3242 11-8s-3tp

Portales Mobile Homes offers the widest selection of Fleetwood homes in the area! We'll make it worth the drive to shop with us! Ask for Pati Elder - (505)-356-5639. Immediate delivery, financing available. E11-6s-8tc(S)

8. Real Estate

FOR SALE
 2100 sq. ft. 4 bedroom brick with new timberline roof. Total electric-3 year old heat pump-(heat & cool). 2 baths, double garage, lots of closets. Call 272-4793 or 5531. C8-6t-tfc

2 Sections irrigated farm land 10 miles North of Hereford. 8 wells, large grain base, lays good. Home steel shop, pipe corrals, underground lines. \$450 per acre. Owner will finance part. 409-543-5636 H8-7s-8tc

For Sale or Rent: 3 Bedroom House, 1 Car Garage, 1 Bath, Big Fenced Yard, Located at 722 W. 7th. Call 272-3992. Ask for Mark 8-8s-4tp

FOR SALE
 320 Acres--South Bailey County. \$250 per acre. OBO Call 272-4622 K8-6t-tfc

Read the Classifieds

You can't lose—or get lost—with THE ROADS OF TEXAS!



Get your copy at Muleshoe Publishing Company Only 12.95

The cookbook everyone is talking about
TEXAS COUNTRY REPORTER COOKBOOK
 256 pages of recipes from the viewers of the popular tv show hosted by Bob Phillips
\$13.95
 Pick up your copy at MULESHOE PUBLISHING CO.

15. Misc.

Major Appliance and Minor Home Repairs!
 Call 272-4450
HENDERSON SERVICE, CO.

We don't want to disappoint anyone; consequently, we make no predictions.

Classifieds!
 Bigger and Better Than Ever
 272-4536

James Hess Constructors Commercial Residential Building
 Complete Concrete Work (Foundations, driveways etc.)
 Turnkey Remodeling of all types, roofing.
 Local references/
 Free estimates 25 yrs. experience
Call 227-2539

8. Real Estate

House For Sale
 706 W. Ave. J. Call 272-5756. S8-5t-tfc

8. Real Estate

BUILDING LOT BY OWNER
 Beautiful Park Ridge Addition-Muleshoe. 103' X 125'. paved street, utilities. Great View! Consider trade-in or owner financing. For information-- (806) 795-5409. W8-6t-8tc

FOR SALE: 3-2 1/2-2 Brick. Qualifying assumable. By appointment only. 1819 W. Ave. H. 272-5097. C8-6s-6tc

What a mercy it would be if we were able to open and close our ears as easily as we open and close our eyes!
 —G.C.Lichtenberg

Would You Like To Earn Extra Money?
Then Why Not Sell AVON?
 "The Smartest Shop In Town"
No More Door to Door
If Interested Call: Holly Millsap
272-5607
After 6 p.m., Mon.- Sat.

9. Automobiles For Sale

MUST SELL! 89 Mercury Topaz GS, 4-Door, Air Conditioning, AM/FM Stereo Cassette, Tilt Steering Wheel, Rear Window Defroster. No old contract to assume, no back payments to make. Just need responsible party to make reasonable monthly payments, call Doug Hulderman in the Credit Dept., FRIONA MOTORS 806/247-2701

9. Automobiles For Sale

MUST SELL! 92 Pontiac Grand Prix LE, 4-Door, Power Windows, Power Door Locks, Cruise Control, Tilt Steering Wheel, AM/FM Stereo Cassette. No old contract to assume, no back payments to make. Just need responsible party to make reasonable monthly payments, call Doug Hulderman in the Credit Dept., FRIONA MOTORS 806/247-2701

8. Real Estate

MUST SELL 90 Ford Ranger. XLT, 5-Speed, Air Conditioning, AM/FM Stereo Cassette, Chrome Rails, Sport Wheels. No old contract to assume, no back payments to make. Just need responsible party to make reasonable monthly payments, call Doug Hulderman in the Credit Dept., FRIONA MOTORS 806/247-2701

8. Real Estate

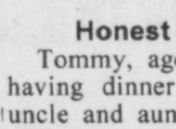
MUST SELL 90 Ford Ranger. XLT, 5-Speed, Air Conditioning, AM/FM Stereo Cassette, Chrome Rails, Sport Wheels. No old contract to assume, no back payments to make. Just need responsible party to make reasonable monthly payments, call Doug Hulderman in the Credit Dept., FRIONA MOTORS 806/247-2701

8. Real Estate

MUST SELL 90 Ford Ranger. XLT, 5-Speed, Air Conditioning, AM/FM Stereo Cassette, Chrome Rails, Sport Wheels. No old contract to assume, no back payments to make. Just need responsible party to make reasonable monthly payments, call Doug Hulderman in the Credit Dept., FRIONA MOTORS 806/247-2701

8. Real Estate

Aim High! Classify!



Enochs News

by Mrs. J.D. Bayless
 Mr. and Mrs. Bill Key attended the funeral service of Berdie Clawson Thursday February 18 at the First United Methodist Church in Littlefield. Also she visited Mrs. Lucille Johnson at Knights Nursing Home.

Meagan Pollard of Morton spent Tuesday with her great-grandmother Mrs. Roxie Stroud.

We sure had winter weather this past week with fog and freezing, the high one day was 17 degrees. The ice melted Thursday evening. Saturday we had a west Texas sandstorm. The wind was 70 miles an hour, worst sandstorm in years.

Mr. and Mrs. Bobby Adams visited their daughter and son Debbie and Glen and Matthew recently in Lubbock.

Harrie Pollard visited his brother Loyd Pollard in Littlefield Friday.

Clyde Price got to come home from the Methodist Hospital in Lubbock Tuesday afternoon.

Mr. and Mrs. Arvin Stroud of Brownwood came Friday evening and spent till Sunday afternoon with his parents Mr. and Mrs. Goldman Stroud, and another son Glenn of Muleshoe spent Sunday with them.

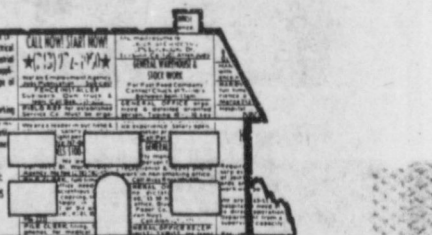
The farmers are busy plowing their land to try to stop the sand from blowing.

Honest Lad
 Tommy, aged 6, was having dinner with his uncle and aunt and had refused a second piece of strawberry shortcake.

"You seem to be suffering from loss of appetite," said his aunt.
 "It's not loss of appetite," he replied. "What I'm suffering from is politeness."

Whoever loves much, does much.
 —Thomas a Kempis

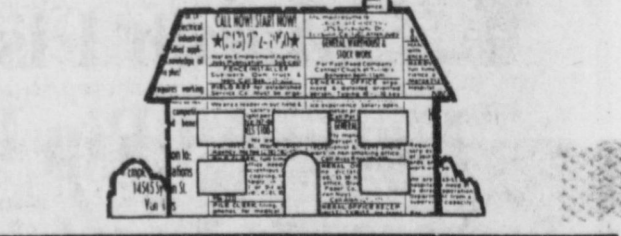
A lantern fish has organs or glands that give off light.



Classifieds! Bigger & Better Than Ever!

8. Real Estate 8. Real Estate

Classify! Call 272-4536



HENRY REALTY

111 W. AVE. B 272-4581
 Muleshoe, Tx.

Lenau Addition-4 bedroom, 2 bath, carport, central heat and air, carpet, dining area, built-in dishwasher and stove. Covered patio, wood fence, storm doors and windows, drapes and curtains. One ceiling fan. Ample storage and shed for travel trailer.

RURAL-3 bedroom, 1 bath, 2 car garage, masonite siding, carpet throughout, central heat, evap. air cond. on roof ducted to all rooms. Built-in dishwasher. New roof. Additional acres available, owner financing to qualified buyer.

2 bedroom, 1 bath, 1 car garage, brick veneer. Country Club Addition. Central heat and air. Very nice.

2 bedroom, 1 bath, detached 2 car garage, extra lot and well for garden. Country Club Addition.

Spacious 2 bedroom, 2 bath with one car garage. Fireplace. Ready to move in.

New listing-2 bedroom, 1 bath, redone for qualified buyer.

Nieman Realty
 116 E. Ave. C George Nieman, Broker 272-5286 or 272-5285
 CHECK WITH US FOR AVAILABLE HUD PROPERTIES!!!!

RICHLAND HILLS
 PRICE REDUCED 3-2-2 Brick, Cent. A&H, built-ins, FP, sunken lv. area, ceiling fans, earthtone carpets....RH-1
 NICE RESIDENTIAL LOTS...\$5,000 UP
 4-2-2 Brick, Large living/dining combined... \$50's!!! RH-5
 3-2-1 Brick, Cent A&H, with fenced yard... \$50's!!!! RH-6
 3-2-2 Brick with fireplace, 5 ceiling fans, new carpet & paint, new dual fuel heat pump, abundance of closet space...\$90's...RH-8

HIGH SCHOOL
 IMMACULATE LARGE BRICK HOME 3-2-2 Heat Pump, built-ins, Whirlpool, loads of storage, lg. shop-storage, \$70's!!! HS-2
 3-2 Remodeled, heat pump, built-ins, fenced yd., storage bldg. \$20's!! HS-3
 3-1-1 Brick, heat pump, fenced yard, current FmHA financing..Price reduced..HS-4
 JUST LISTED-3-2 Home Cent. A&H, built-ins, fans, st. bldg., fenced yd. \$30's!!!HS-5

HIGHLAND AREA
 3-2-1 Brick, Cent. A&H, FP, built-ins. MAKE OFFER!!!! HL-1
 NICE 3-2-2 Brick, Cent. A&H, built-ins, FP, sunroom, auto. spkr., fenced yd., MORE!! \$70's!!!! HL-2
 FmHA Financing To Qualified Buyer- NICE 3-1-1 Brick Home, Cent. A&H, ceiling fans, storage bldg., fenced yd. \$30's!!!!HL-3

LENAU ADDITION
 PRICE REDUCED-3-1 1/2-1 Home, Cent. heat, evap. air, cov. patio, st. bldg., fenced yd. \$30's!!! L-1
 REMODELED BRICK-3-2-1 With Cent. heat, built-ins---PRICE REDUCED!!!L-2

JUST LISTED-2-1-1 Home with Heat Pump, has extra insulation in attic & floors...\$20's...L-4
 3-2-1+carport, Brick, ceiling fans, Approx. 2060 sq. ft...\$40's!!! L-6
 2-1-1 Carport, fenced back yard, with two storage bldgs..Priced in the \$20's L-7
 4-3 Bath, Brick, on 2 acres, built-ins, FP, Geothermal Ht. pump, horse stalls, pens & tack rm. Also income producing shop on location or use for your own needs...\$80's!! PRICE REDUCED!!!!
 VERY NICE 4-2-2 Brick home on 6 ac., Cent. A&H, 2300'+lv. area, Much More!! \$70's!!HR-4
 3-2-2 Brick, blt.-ins, Ht. pump, FP, 2.5 acres on pavement. \$60's!!! HR-3
 3-2-3 Carport Mobile home on 11 ac. edge of town, MAKE OFFER!!!! HR-5
 3-2-1 on 1 acre, Cent. Heat, Evap. Air, Remodeled, \$30's!! HR-6
 3-1-2 Home on 1 1/2 acres storm cellar & storage bldg...\$20's!!!! HR-8
 3-2 home on 40 acres barn and more.. \$40's!!!! HR-9

RURAL HOMES
 NICE 3-2-2 carport Home, one acre tract, Cent. A&H, built-ins, fenced, on pavement close to town. \$40's!!! HR-2

ASK ABOUT OUR COMMERCIAL LISTINGS!!!
 JUST LISTED--Property on Hwy. 84---Can be used as residential or commercial, large shop, storm cellar, two story home, lot size 140'x100'...C-1
 Circle Back Area-177 acres of good dryland... Fully Allotted!!!!
 PLEASANT VALLEY-160 acres, 8" well. Lindsey circle!!!!
 354 ac. S. of town, good allot. & yields!!!!

HENRY REALTY
 111 W. AVE. B 272-4581
 Muleshoe, Tx.

Lenau Addition-4 bedroom, 2 bath, carport, central heat and air, carpet, dining area, built-in dishwasher and stove. Covered patio, wood fence, storm doors and windows, drapes and curtains. One ceiling fan. Ample storage and shed for travel trailer.

RURAL-3 bedroom, 1 bath, 2 car garage, masonite siding, carpet throughout, central heat, evap. air cond. on roof ducted to all rooms. Built-in dishwasher. New roof. Additional acres available, owner financing to qualified buyer.

2 bedroom, 1 bath, 1 car garage, brick veneer. Country Club Addition. Central heat and air. Very nice.

2 bedroom, 1 bath, detached 2 car garage, extra lot and well for garden. Country Club Addition.

Spacious 2 bedroom, 2 bath with one car garage. Fireplace. Ready to move in.

New listing-2 bedroom, 1 bath, redone for qualified buyer.

3 bedroom, 2 bath, carport... home outside city limits near city... Lot is 85'x402'. Metal building is 29' by... great setup for workshop.


COMMERCIAL PROPERTY
 Ideal location on West American Blvd. 150' highway frontage. A great business opportunity.
In Contract
 West American Boulevard 150' frontage. Priced to sell.
LAND
 160 acres irrigated farm land with pivot sprinkler SW of Muleshoe. 60 acres of wheat. Ideal for livestock operation. Good water.

MULESHOE AREA

Mid-Winter '93

BUSINESS DIRECTORY AND SHOPPING GUIDE

Bryant Special
Meat and Bean Burrito topped with chile & cheese
\$3.50



Closed Mondays
Leal's Restaurant
1606 W. Amer. Blvd. 272-3294

Henry Insurance Agency, Inc.

"Serving Your Insurance Needs Since 1964"

KENNETH R. HENRY
CERTIFIED INSURANCE COUNSELOR
REAL ESTATE BROKER




111 W. Ave. B.
Phone 806/272-4581
Muleshoe, Tx. 79347

NEW LAMPS



MULESHOE ART LOFT

FREE* NBA TEAM JACKET

When you buy 7 or more bags of R-13 or higher R-value Owens-Corning pink Fiberglas insulation.
Offer ends March 1, 1993



\$22.69 per roll
R-13 31/2" Thick / 15" 125.93 sq. ft. per bag

\$49.95 VALUE
Details in store.
Jacket is available in all 27 NBA teams.
*Add \$2.50 for shipping and handling.

Higginbotham-Bartlett Co.
215 Main 272-3351



Sand Puffer
(Patent Pending)

The SAND-PUFFER is a unique, simple and totally automatic flush valve. It mounts below the sand trap or at the end of the overhang. It automatically senses sand buildup and flushes each time a predetermined amount of sand accumulates.

The SAND-PUFFER requires no external controls or wiring.

The SAND-PUFFER utilizes sand level sensing device that actuates a shut off plug on a water piston.

Operating off of mainline pressures as low as 6 psi, the unit will work on any system capable of a low pressure spray package.



Pivot Products Inc.
710 E. Amer. Blvd. 272-5536

Connie's Place
121 Main 272-3126

Hours:
Mon. - Fri. 5 a.m. - 4 p.m.
Sat. - 5:00 a.m. - 2:00 p.m.

Daily Buffet:
Includes Salad Bar & Cobbler
Serving Breakfast Daily
Connie Dominguez, Owner.

Scoggin Ag Center, Inc.
"Where Fertilizer is Our Business"

To raise the bountiful harvests which feed the nation, farmers rely on top-quality agriculture service. Our farmers continue to produce the world's most abundant and safest food supply. Thanks in large part to agricultural input like fertilizer.

Scoggin Ag Center located at 1532 W. Amer. Blvd. in Muleshoe makes a commitment to all to serve our community, our farmers, and our nation to continue to make the farmer the back bone of America.

Fertilizer decisions rely on science: sophisticated soil tests show farmers precisely how much to apply. Nutrient inputs are guided by profitability. Farmers want to make money, not waste it on inputs that aren't essential.

Kearney and Jackie Scoggin are committed to stewardship regarding the proper use of all products. From field to plate, we believe everyone involved in food production must use agricultural responsibility.

Come by and just visit with Kearney or give him a call at 272-4613

A Carrousel of Good Food | 1902 W. Amer. Blvd. 272-4131

Daily Luncheon Specials **\$3.99**

Fast In! Fast Out!
Take Out Orders Welcome!
(Come As You Are)
Closed Tuesdays
We Cater - Your Place or Ours!

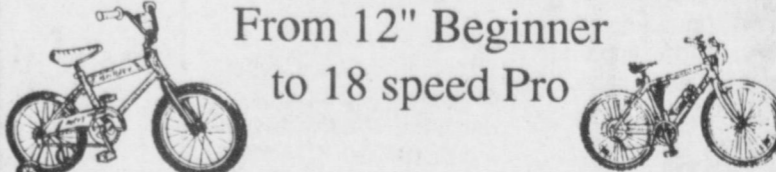


March 1 is National Pig Day

Decorator's Floral & Gifts
616 S. 1st Muleshoe 272-4340

Largest Bike Selection In Town

From 12" Beginner to 18 speed Pro



Fry & Cox True Value Lumber & Hardware
401 S. 1st 272-4511

Spring Cleaning?

Let us help you with your Spring Cleaning of Drapes, Bedspreads, etc.



Lambert Cleaners
123 Main 272-4726

We pick-up & repair all types of Irrigation motors!

We service & repair late model GM's Fords & Dodge automobiles & trucks!

We also specialize in General automotive repair work of all kinds!



Muleshoe Truck & Auto Service Center
301 N. 1st 272-5111

Chimichanga
(Meat Burrito)
Deep fried, topped with Bean Sauce and Cheese
\$3.50

Closed Tuesdays

Viola's Restaurant
2002 W. Amer. Blvd. 272-3838

LOCKWOOD

Still Going In Circles!
We can't grow you money, but we will save money for YOU!
Over 55 years of manufacturing excellence!

NON WIRE ALIGNMENT WIRE ALIGNMENT

Lockwood commitment to total customer satisfaction
Keeps Lockwood systems simple to operate and easy to repair
Lockwood systems built to perform efficiently and dependable for years


Competitive in price Just compare

Irrigation Supply

607 E. Amer. Blvd. (806) 272-4466
Muleshoe, Texas 79347 or 272-3246
Underground pipe installation Electric wire to pivot
Sideroll Repairs Surge Valves

All Irrigation parts and repairs

Now Available
NCAA Basketballs
Only **\$4.99**



Delivery Available
11 a.m. - 1:30 p.m.
& After 5:00 p.m.

1412 W. Amer. Blvd. 272-4213

WE RECOMMEND **ferti-lome**
Lawn & Garden Products

Time To Use ferti-lome LAWN FOOD



Prevent summer weeds
Kill spring weeds

Kearney Scoggin

Scoggin Ag Center, Inc.
"Where Fertilizer Is Our Business"
1532 W. Amer. Blvd. 272-4613