

Ex-student association holds 1995 class reunion

By Terri Bohler

One of the highlights of anyone's Fourth of July is always the class reunion. The residents of Muleshoe were no exception to the rule this week-end as hundreds of visitors stormed the town to reminisce and enjoy the holiday.

The Muleshoe Ex-students Association hosted the 1995 School Reunion in the Bailey County Coliseum.

Saturday, July 1, featured various reunions including classes from 1927 through 1965.

No guests from the class of 1927 were present, but there were two from the class of 1928

on hand for the celebration.

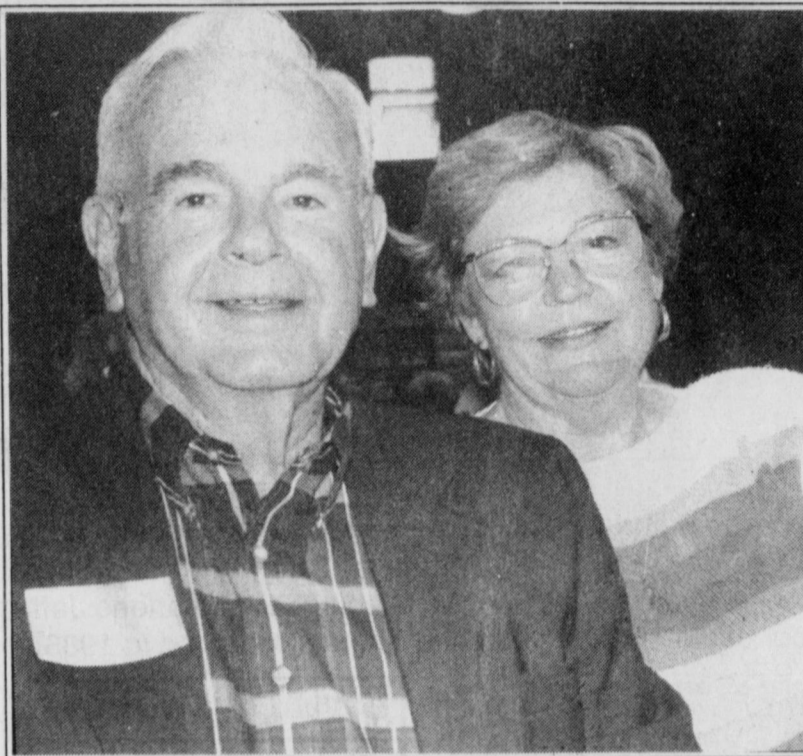
Registration began at 9 a.m. followed by a brunch and lots of "gossip."

The banquet and dance began at 7 p.m. A delicious meal was catered by River Smith's, and the music was played by "Fun Dancers."

George Neiman, president of the Muleshoe Ex-student association welcomed the guests.

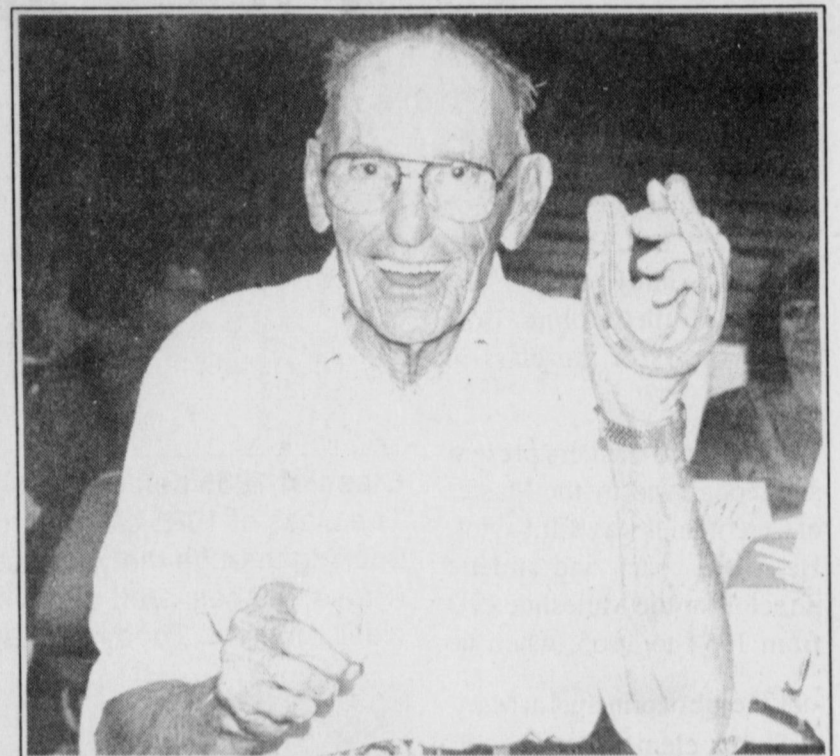
Betty Jordan Beaty served as secretary for the association and Fern Smith Warren was the treasurer. James "Sugar" Glaze is the retiring president.

Continued on page 2



Muleshoe ex-students enjoy festivities

Paul and Helen (Holt) Gardner, members of the class of 1944, traveled from their home in North Carolina to attend the 1995 Muleshoe Ex-students Reunion. The banquet was held Saturday, July 1, in the Bailey County Coliseum.



Traveling the farthest

Leon Loe received this token mule shoe for traveling from Hood River, Ore. to attend the 1995 Muleshoe Ex-students Association celebration held on July 1. He is a member of the class of 1940.

Young Guns head for national competition

By Terri Bohler

For some basketball enthusiasts, the basketball season doesn't end with that last U.I.L. district game or the State championship bout. Some athletes find a place to play all summer long. For several local girls that place has been the Young Guns organization — year-round basketball for all ages.

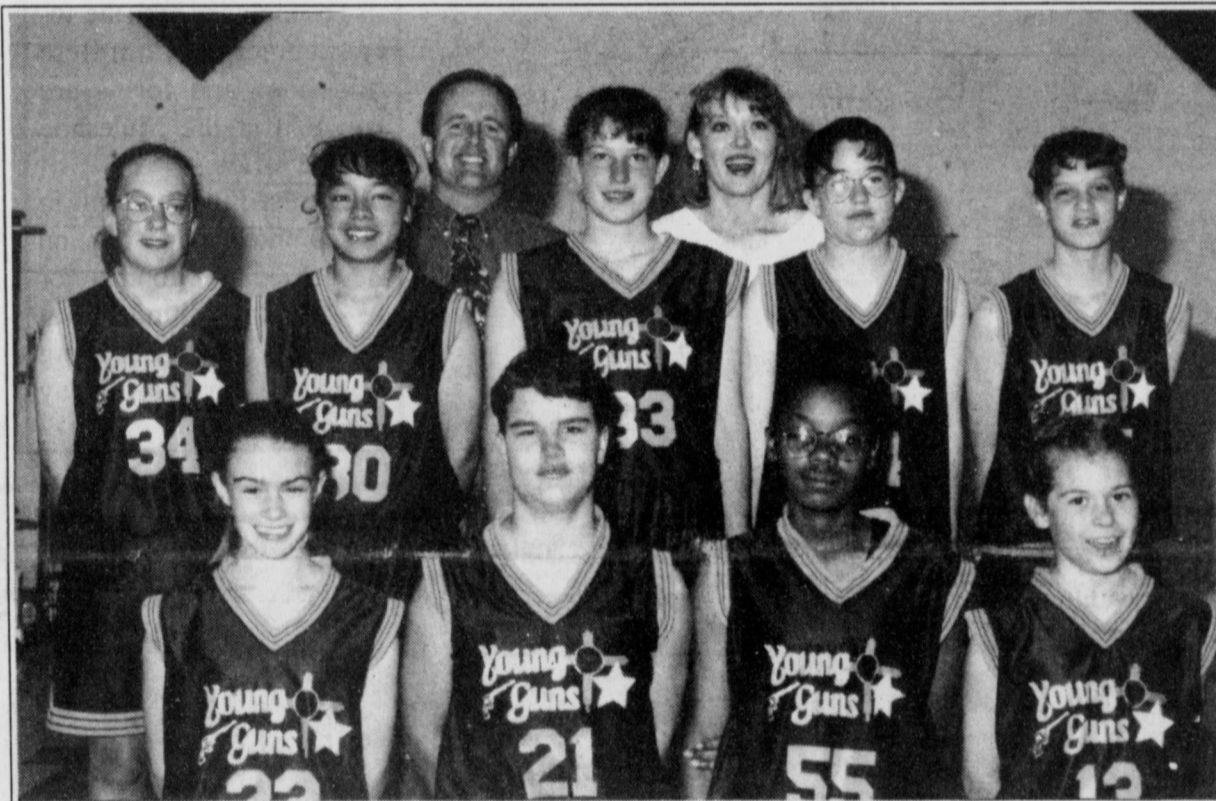
The Young Guns girl's AAU basketball team is a team designed for summer play and fun — even though they are very serious about their game. The 11 and under division team from the Young Guns organization won their age group championship in the New Mexico State tournament and will advance to the National tournament to be held the first of July in New Orleans.

Chyla Torres and Laura Via are two local players who play for the Young Guns 11 and under team. Chyla is from Muleshoe. She is the daughter of Rene and Betty Torres. Laura is the daughter of Guy Walt and Jan Via from Lazbuddie. The duo keeps the road hot between Muleshoe and Clovis in an attempt to make practices.

Other 11 and under team members from Portales, Clovis and Roswell include Summer Brownlow, Amber Shaw, Dawnne Cheadle and Lacie Lee. Lindsey Kempf, Aysha Wall and Kristie Harp also are team members.

The team, coached by Bryan Jones and Lisa Lee, will leave for New Orleans on July 7.

The Young Guns Organization qualified five of the nine teams they sponsored in the



New Mexico State AAU Champions

The Young Guns AAU basketball team qualified for national competition by taking the New Mexico State title. Team members include (front, l-r) Summer Brownlow, Amber Shaw, Dawnne Cheadle and Lacie Lee; (middle) Lindsey Kempf, Chyla Torres (Muleshoe), Laura Via (Lazbuddie), Aysha Wall and Kristie Harp; (back) Bryan Jones, coach, and Lisa Lee assistant coach.

New Mexico State tournament for the National AAU competition — one in each age division from age 11 to 15.

The 12 and under team will also make the trip to the national tournament. Local girls

Continued on page 3

AAU is largest non-professional U.S. sports program

By Mickey Graham

AAU PUBLIC RELATIONS

The Amateur Athletic Union (AAU) is the largest non-professional sports program in the nation. First founded in the 1880s, for over one hundred years the AAU has provided a forum for the youth of the nation to participate at the highest level of athletic competition.

For girls, the AAU offers

one of the very few opportunities to compete in a nationally recognized program. Girls basketball currently enrolls some 70,000 girls nation wide.

The AAU is administered through a national office, although the sports program itself is run by individual associations. While some associations are composed of entire states, many states are divided into several associations, as is

the case with Texas, which is actually divided into five separate associations. Each association conducts its own tournament to qualify teams for the national tournament.

Girls basketball is further broken down into age divisions, with qualifying tournaments held for each age. Currently, the AAU recognizes seven age divisions: 11-and-under, 12-and-under, 13-and-

under, 14-and-under, 15-and-under, 16-and-under, and 18-and-under.

National tournaments are held in July for each division, and the tournaments have become so large it now takes eight days to complete. The greatest athletes in the nation are featured in these competitions.

Teams that wish to compete in the AAU program may be formed by anyone who wants

to put a team together. The only requirement for participation is that the girls and the coach register with the AAU through their association. For a nominal charge of ten dollars per athlete, the AAU provides regulated competitions as well as secondary insurance for the players.

Local clubs are usually

Continued on page 3

Around Muleshoe

Muleshoe I.S.D. hires special education teacher

At the June 26th meeting of the Muleshoe Independent School District Board of Trustees, the board accepted the resignation of Laurel Attardi, who taught special education at DeShazo Elementary School.

Brenda Capps, a recent graduate of Eastern New Mexico University in Portales, was hired as a teacher of special education.

In other business, the board heard a report on the Texas Assessment of Academic Skills (TAAS) for 1994-95. Jean Richardson, secretary to Superintendent Bill Moore, said the report indicated over-all gains throughout the district.

The board received an updated report on the five-year facilities plan, and an extended discussion followed.

The depository contract for 1995-96 and 1996-97 was awarded to First Bank of Muleshoe. Bids are accepted from banks every other year, Richardson said.

A discussion of the 1995-96 budget continued, touching on teacher salaries, with a consensus to stay with existing local increments, Richardson

Continued on page 2

Muleshoe State Bank holds ground breaking in Farwell

FARWELL — The Muleshoe State Bank held a ground breaking ceremony for a new banking facility in Farwell, TX. The new facility will be located on the same property as the existing building.

The 3,000 square foot structure will consist of two loan offices, teller windows, a new accounts area, safe deposit boxes, a bookkeeping area, a drive-in and a conference room.

The brick building will be

constructed by Design and Interiors of Cincinnati, OH.

Michael D. Ratke, Vice President of the Muleshoe State Bank and Farwell Branch Manager, stated that he expects the new facility to be completed by this fall.

The ground breaking ceremony was attended by many of the directors, officers and employees of Muleshoe State Bank.

The directors of Muleshoe

Continued on page 2



Ground breaking

Officers, employees and directors of the Muleshoe State Bank joined Farwell Chamber of Commerce members for the ground-breaking of the new MSB branch in Farwell last week.

Ex-Student Continued from page 1

Max King, acting as Master of Ceremonies, demonstrated his superb math skills, while Maxine Harris delt out awards.

Leon Loe received the award for the ex-student who came the farthest. He is from Hood River, Ore. His twin sister, Leona Harris, was also present, coming from Illinois. They are members of the class of 1940.

Other guests traveling a good distance for the reunion were Paul and Helen (Holt) Gardner. They make their home in North Carolina. Both are members of the class of 1944.

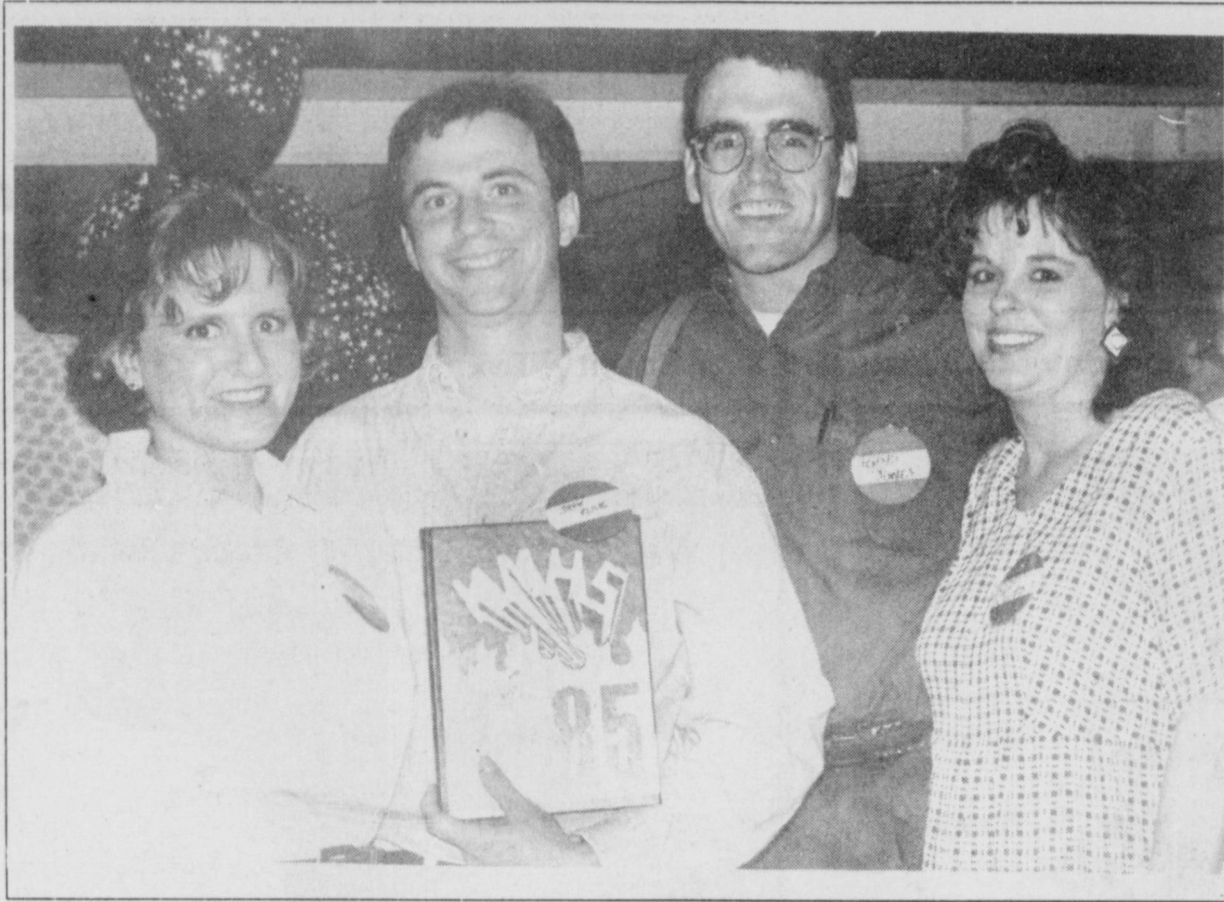
One of the teachers present and recognized by the Master of Ceremonies was Bill Taylor. He was a coach and athletic director for the Muleshoe ISD from 1954 to 1965, when he

took the job of principal at Mary DeShazo elementary school.

He served in that position until 1986, when he retired. He and his wife Margrethe are still residents of Muleshoe.

Also recognized for having taught a number of the banquet guests was Elizabeth Watson. She retired in 1992 after teaching for 40 years.

The next reunion rolls around in five years (2000) and will include the class of 1970. Make your plans early—it's a red letter year.



Class of 1985 celebration

The class of 1985 class reunion was Saturday, July 1, at the Muleshoe Country Club. Looking through the year book are Tonya Kline (left), Jeff Kline, Todd Jones and Sherri (Stovall) Jones. Jeff and his wife Tonya traveled from Middleburg, VA to attend Jeff's class reunion. Todd is a member of the class of 1985 and Sherri graduated in 1986.



Ex-coach attends class reunion celebration

Bill and Margrethe Taylor attended the 1995 Ex-student class reunion held July 1. Bill was a coach and principal in Muleshoe from 1954 to 1986.

Muleshoe

Continued from page 1

said.

An informational report by Assistant Superintendent for Instruction, Adrian Meador, on summer school pre-tests and post-tests indicated that most students showed gains.

The next school board meeting, the only one scheduled this month, will be held Monday, July 17.

South Plains at Levelland plans

July 6 registration

LEVELLAND — Registration for the second summer term at South Plains College is July 6.

Sign-up on the Levelland campus, 1401 S. College Ave., is 2-7 p.m. in the Women's Gym adjoining the Student Center.

Enrollment of the Lubbock campus, 1302 Main, is 9 a.m.-1 p.m. and 4-6 p.m., with classes also beginning July 10.

For a 1995 summer bulletin or information about late registration, contact the SPC registrar's office in Levelland at 894-9611 or SPC Lubbock at 747-0576.

Bank

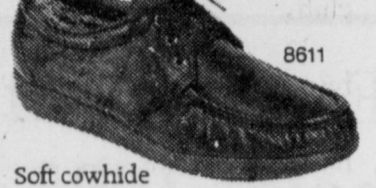
Continued from page 1

State Bank are Edwin R. Cox, Robert E. Finney, W.T. Hutton, Cal Jordan, Woodie Lambert, Fred Locker, Don McElroy, Merlyn Neel, Dr. Jerry Redwine and George Richardson.

Mike Ratke is the Farwell Branch Manager, along with Secretary and Teller, Susie Dale, and Teller-Bookkeeper, Christy Pena.

**Having A Garage Sale?
Advertise It In
The Journal
Classifieds
272-4536**

GLOVE SOFT!



Soft cowhide upper, cushion insole and urethane wedge sole. Easy-going Dunoon comfort for workdays
for weekdays
9-12 7-14 8-11

The Fair Store
120 Main 272-3500
Muleshoe, Texas



Muleshoe Journal USPS 367820

Established February 23, 1924. Published by Triple S Publishing, Inc. Every Thursday at 304 W. Second. Box 449, Muleshoe, TX 79347.

Second Class Postage paid at Muleshoe, TX.

POSTMASTER: Send address changes to the Bailey County Journal, P.O. Box 449, Muleshoe, TX 79347.

We are qualified members of:
Panhandle Press Association, National Newspaper Association,
West Texas Press Association and Texas Press Association

WEST TEXAS PRESS
ASSOCIATION



MEMBER 1995

TEXAS PRESS ASSOCIATION

PPA

Panhandle Press Association

Scot Stinnett, Publisher
Lisa Stinnett, Vice-President/Comptroller
Martha Frost, Editor
Holly Millsap, Classifieds
Pat Durben, Advertising



SUBSCRIPTIONS: Muleshoe Journal and Bailey County Journal
By Carrier Yearly - \$15.00
Bailey and surrounding counties: by mail - \$16.75
Elsewhere - \$18.50
Advertising Rate Cards on Application

Advertisers should check their ad the first day of insertion. The Journals will not be liable for failure to publish an ad or for a typographical error or errors in publications except to the extent of the cost of the ad for the first day of insertion. Adjustment for errors will be limited to the cost of that portion of the ad where the error occurred.

Birthday policy

The Muleshoe and Bailey County Journals publish birthday announcements free of charge for babies one year old or for people ages 90 and over. A photo may also be included with the announcement. Complete guidelines and forms are available at the Muleshoe Journal office.

The deadline for items to be submitted is at 5 p.m. on the preceding Monday for the Thursday edition and at 5 p.m. on the preceding Thursday for the Sunday edition.

PIPE 300 W. Commercial Portales, NM

SOS Outlet & Royal Plastics
Largest inventory of PVC Pipe Fittings & Accessories in Eastern New Mexico

CALL FOR QUOTES 505-356-8720

\$2.99

HUNGR-BUSTER COMBO

Now for a limited time, get our delicious Hungr-Buster® Combo for just \$2.99! That's our big, 1/4-lb. pure beef burger topped with the works, an order of crisp fries and cold soft drink. All for only \$2.99! On Sale July 3 - 23, 1995.

Make it a Combo Plus™ - just 39¢ more!

For just 39¢ more get your choice of a DQ® Sandwich, Dilly Bar or 5-oz. Cone with your combo.

DQ COMBO PLUS

Sizzling Summer Savings

THE BEST SELECTION OF GM CARS AND TRUCKS IN THE AREA

1995 CHEVROLET K1500
4 Wheel Drive
Only \$17,995 or Only \$299 Per Month

For 36 Months Then Walk Away!

QUALITY USED CARS AND TRUCKS - IMPORT & DOMESTIC!

1990 Isuzu Pickup Automatic, Camper Only \$5,900	1988 Lincoln LSC Mark VIII, Moon Roof Only \$6,900	1989 Honda Prelude Automatic, Moon Roof Only \$6,900
1994 Dodge Spirit Only \$7,900	1993 Ford Ranger Only \$7,900	Bad Credit? No Credit? Ask For Credit Man! We Have Bank Financing For Bad Credit!
1990 Buick Park Avenue Loaded Only \$10,900	1994 GMC Extended Cab K1500, 4x4, Z-71, Loaded Only \$19,900	

THESE CARS AND TRUCKS WILL SELL SOON - HURRY IN!

STREBECK

GM AUTOPLEX
Clovis Highway • Portales, NM
(505) 356-3501 (505) 763-3501

The very best prices and service anywhere... We personally guarantee it!

Subscribe today!!
Call The Muleshoe Journal 272-4536

Jewelry & WATCH REPAIR

- 7 Day Ring Sizing & Repairs
- Remounting & Diamond Setting
- Full Line Watch Batteries
- Neck Chains Repaired
- Jewelry Appraised For Insurance

Faster Service

Holmberg Jewelry
35 YEARS

1908 N. Prince, Clovis
762-9376 (Across from K-Mart)

Have A Nice Day

Young Guns

Continued from page 1

formed to provide the support necessary to compete in tournaments. Organization of these clubs ranges from school-based teams to city-supported teams to corporate-backed clubs.

If a team had the financial resources available, they could find AAU tournaments to play in from early May to late July, all over the nation.

Invitational tournaments

have been organized in this area since the early 1900s. The biggest of these events are held in Amarillo, Lubbock, Clovis, NM, and Altus, OK.

The national office of the AAU has a local connection. Carroll Graham, who coached for some 30 years in Clovis, NM is currently the National Chairman for Girls Basketball, the highest office in the sport.

Graham coached successful AAU teams in Clovis in the 1980s and was responsible for bringing three national tournaments to Clovis. Under his leadership, the AAU has shown

enormous growth in the last five years as the average number of entries in each national championship has reached some 60 teams per division.

AAU

Continued from page 1

playing for the Young Guns 12 and under team include Lindsey Field, daughter of Terry and Charlotte Field, of Muleshoe, and Ashley Crawford, daughter of Doug and Tanya Crawford, from Farwell (formerly of Muleshoe). They will travel to Oklahoma City as New Mexico State Champions for the National competition.

Lindsey, Ashley, Chyla, and Laura Jo were team members on the 1994 Muleshoe Little Dribbler's All-Stars team that took the National title in that league.

Andrea Roberts, daughter of Mike and Rhonda Roberts from Muleshoe, plays for the Young Guns organization in the 13 and under division. Her team won the New Mexico State tournament in that age division and will travel to Amarillo for National competition.

In the 14 and under age division of the Young Guns organization, Melissa Williams, from Muleshoe, is a two-time competitor. She is the daughter of David and Carol Wil-

liams.

The 10 and under Young Guns team also is made up of some Muleshoe athletes. Those athletes include Jessica Carpenter, daughter of Shelly and Curtis Carpenter; Rendi Hodge, daughter of Rhonda Eagle and Randy Hodge; Brittany Gartin, daughter of Lena and Gary Don Gartin; and Megan Barrett, daughter of Cindy and Bruce Barrett.

According to Russell Grider, president and co-founder of the Young Guns basketball organization, the organization began in 1991 in an attempt to find a way for young ladies to develop basketball skills at a young age. The non-profit organization has grown by leaps and bounds ever since.

The Young Guns Organizations was developed by Russell Grider and Terry Travis of Clovis. The original group was the first to host a Christmas invitational tournament for fifth and sixth grade boys and girls. Proceeds from this first tournament went to purchase special uniforms for the next

year's teams. The tournament has been an annual event since 1991.

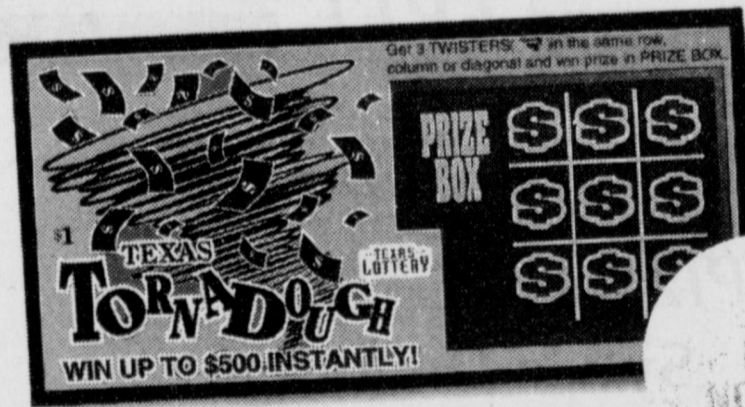
Young Guns teams can be found playing basketball year round. They play in the Clovis Girls Athletic League, then match games during the Play, Inc. season, and then on to AAU (Amateur Athletic Union) for summer action.

Girls from age 10 through high school play for the Young Guns organization. The club hosts several levels of teams in each age group. They have district teams, state teams, and national teams in the organization.

Last fall, the Young Guns organization started what Grider calls a feeder program with Portales. Portales was invited to build its own teams and compete in a nine week league competition with the Young Guns organization. This gave the Y.G. a chance to "scout" for new members for the regular season play. The feeder program will be initiated this September in Muleshoe.

Continued on page 10

THIS IS YOUR LAST TORNADO WARNING.



This Texas Tornadough won't be on the ground much longer. The official closing date for this game is July 1, 1995. But you can still spot a winning Texas Tornadough ticket and redeem it until December 28, 1995. To play Texas Tornadough, just match three twisters in a row, column or diagonal and win the prize shown in the prize box. You can win up to \$500 instantly. Prizes can be claimed wherever you see the official Texas Lottery sign or at any one of the 24 Texas Lottery Claim Centers. Questions? Call the Texas Lottery Customer Service Line at 1-800-37-LOTTO.



USED CAR BLOWOUT

The Area's Largest Inventory of Used and Factory Program Cars and Trucks!

Over 275 To Choose From - ALL SPECIALLY PRICED!

Including Over 50 Used Trucks!

1994 FORD TEMPO GLs

And Mercury Topaz GSs



Your Choice Of 10

ONLY \$189 Down
\$189 Month*

Loaded With: • Automatic Transmission • Air Conditioning
• Power Windows • Power Door Locks • Power Seat
• Tilt Steering • Cruise Control • Am/Fm Cassette

Plus Many Other Similar Values, Including...

1994 Ford Aerostar XLTs
Extended Length - Fully Loaded
Your Choice Of 15
Only \$15,995

1995 Dodge Intrepids
Loaded - Dual Air Bags
Your Choice Of 6
Only \$16,995

Ford Explorer XLTs
4 Door - 4 Wheel Drive - Fully Loaded
5 To Choose From
Starting At \$12,995

Hurry In... Don't Miss These Great Bargains!

TEAGUE STREBECK



(505) 356-8581 (505) 762-3845
1115 North Chicago
Portales, NM
(On the first curve into Portales)

The very best prices and service anywhere...
We personally guarantee it!

Georgia's Jeans by Jay

Portales, NM

30-50% OFF

ENTIRE STOCK SUMMER MERCHANDISE

Fragrances Not Included

Door Buster Select Racks
75% OFF

- Men's Shop
- Ladies' Apparel
- Junior
- Missy

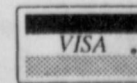
Georgia's

Jeans by Jay

1015 W. 2nd 505-356-3787

Portales

Additional Parking In Back
2 Blocks From ENMU



Texas Dept. of Public Safety now accepting applications for recruit training schools

The Texas Department of Public Safety is accepting applications for recruit training schools that will begin in October of this year and February 1996.

"Encourage any person who meets our initial screening criteria and who is interested in a career in law enforcement to consider joining what many say is one of the premier law enforcement agencies in the country," DPS Director Col. James R. Wilson said.

In order to apply, applicants must be at least 20 years of age (there is not a maximum age), have a minimum of 60 semester hours of college (for some educational require-

ments, prior law enforcement or military service can be substituted), be a U.S. citizen, pass a written examination, meet certain physical fitness standards and be willing to accept assignment anywhere in Texas.

Formally known as an All Field Service Recruit Training School, graduates of 26 week course will fill existing and anticipated vacancies in the DPS's Traffic Law Enforcement Division - Highway Patrol, Driver License, License & Weight, Safety Education and Vehicle Inspection Services.

After gaining experience in entry-level law enforcement positions in TLE, troopers can promote within TLE or to various positions in the Criminal Law Enforcement or Texas Ranger Divisions.

"Our training school is nearly twice as long as the minimum required by the state," said Lt. Curley Colquitt, who heads up the DPS's recruiting efforts. "Our classes are more in-depth, and we also teach more self-improvement, management and skills classes," he said.

During the 26 weeks of training, the trainees learn arrest, search and seizure policies, physical education, strategies of self defense, patrol procedures, crowd management, accident investigation techniques, problem solving and critical thinking, interpersonal communications and a number of other state and DPS required subjects.

Trainees stay in the DPS Training Academy dormitory

in Austin during the school. Salary during the training session is \$1,721 per month. Following graduations, probationary troopers are paid 1,983 per month.

The deadline for out-of-state applications is July 26; in-state applications will be accepted until August 25.

For full information about application requirements, interested persons can call regional recruiters at DPS offices in Garland, (214) 226-7611; Houston, (713) 957-6183; Corpus Christi, (512) 854-2681; Midland, (915) 697-2211; Lubbock, (806) 747-4491; Waco, (817) 867-4655; or Lt. Colquitt in Austin at (512) 483-5903. Applications are available at all DPS offices.

Better Business Bureau

Because of competitive price, huge selections, immediate availability and reputable reliability, millions of consumers are now buying computers by mail. To ensure your transaction goes smoothly, the BBB suggests you do some preliminary research on the type of equipment that would satisfy your needs and also consider these tips before buying a computer by mail.

Get a reliability report on

the company from the BBB where it is located. It is important to know whether the system's specifications are—How much memory and the size of the manufacturer's and vendor's warranties.

Find out if it the company offers on-site service and who is eligible. Be sure to keep a record of your order and correspondence and a log of any phone conversations. Call your BBB at (806) 763-0459 or long

distance at (806) 687-7890 if you are dissatisfied.

If you think your car may soon need service or repair, shop around now for a reliable shop and a qualified mechanic for your car. If your car needs service, first check the owner's manual to see what must be done to the car to maintain the warranty and keep the car running well. If your car is still under warranty, you may be required to bring it to an authorized franchised dealership

for warranty work. Ask friends and family for recommendations.

Check with your BBB about the shop's reliability. Look for shops that have mechanics certified through the National Institute for Automotive Service Excellence or ASE. Be sure to get an estimate for parts and labor and have the service manager explain all work done to your car. Call the BBB at (806) 763-0459 or long distance at (800) 687-7890.

KENW-TV

Public Television

The New Explorers

"Expedition Inspiration"

Five years ago, Laura Evans of Sun Valley, Idaho, was diagnosed with rapidly advancing breast cancer. Evans was told she had a fifteen percent chance of surviving the disease. Despite several different treatments, including a bone marrow transplant as primary therapy, the disease almost killed her — but not quite. In January of 1995, Evans went on to lead sixteen other breast cancer survivors on the second biggest challenge of their lives — to climb the highest mountain in the Western Hemisphere.

The New Explorers joins these brave women for every step of their 22,834 foot journey in "Expedition Inspiration."

With the help of internationally-known mountaineer, Peter Whittaker, Laura Evans decided to give other breast cancer survivors the sense of achievement and empowerment that challenging a mountain like Anconagua could instill.

Based on each individual's mountaineering experience, the team is divided into two groups. Six breast cancer survivors attempt the summit while the remaining eleven follow in support of their teammates to base camp at 14,000 feet. The New Explorers follows every rugged step of the climb, as rivers and gorges are crossed, and vast mountainscapes challenge each woman to achieve her personal goal in much the same way she confronted cancer.

Along the way, "Expedition Inspiration" looks at the epidemic of breast cancer, a disease that will attack one in eight American women. As the women progress along the steep trail, several are turned back by the extremes of the high altitude environment. But through it all, "Expedition Inspiration" is a tale of hope — a story of seventeen strong women who, having looked unflinchingly at the face of death, have empowered themselves for new, previously unaccomplished challenges. The journey is more than a mountain climb. It is an inspiration for all who suffer — or will suffer — a life-threatening disease.

"Expedition Inspiration" on The New Explorers airs Wednesday, July 12th at 8:00 p.m. on KENW-TV.

WHAT'S NEW

AMERICA'S HISTORIC STEAM RAILROADS

Saturdays, 7:00 a.m. (begins 8th)
Mondays, 11:30 p.m. (begins 17th)

Since their invention, railroads have captured the imagination of people of all ages and played a pivotal role in the industrial development of our world. Railroads grew into the backbone of the nation, and their stories are full of the folklore and legends of American history. This new seven-part series takes viewers to the most popular historic railroads in the country, from the country's oldest continually operating short-line railroad in Pennsylvania Dutch Amish Country to New Mexico's Cumbres & Toltec Scenic Railroad.

Channel 3 Television from
Eastern New Mexico University, Portales, New Mexico

Muleshoe Rural Health Clinic

708 S. 1st (Muleshoe Area Medical Center)
272-4938

OPEN 5 DAYS A WEEK
Monday-Thursday 9 a.m. - 11 p.m.
Friday 9 a.m. - 5 p.m.
No Appointment Necessary

We accept Medicare, Medicaid, Insurance & Workmans Comp.

Judy Lemon, P.A.-C.
On Duty 9 a.m. to 5 p.m.
Bob McMullen, P.A.-C.
On Duty 5 p.m. to 11 p.m.
Bruce Purdy, M.D.
Medical Director

We Are Here To Help Serve
Our Community

READ THE CLASSIFIEDS

99¢

Personal Pan
Single Topping
From 11:00 a.m. - 4:00 p.m.

Every Tuesday Night is
KIDS NIGHT
Get A Large or Medium at Regular Price,
Get Two Personal Pans

FREE

WINNERS OF
PIZZA MEALS FOR 4:
Sylvia Dominiguez
Chad Bales Bill Nelson
Amelia Villalobes
Keith Morris
Richard McDaniel

Pizza Hut
Delivers Great Taste!



Pizza
Hut.

1412 American Blvd.
Muleshoe 272-4213



Summer Sale



ALL TYPES
Coca-Cola
6 PACK
20 OZ. BTLs.

2\$5
FOR

ALL TYPES
Coca-Cola
\$1.89
3 liter
btl.

Meat



PREFERRED TRIM
BONELESS
Rib-Eye
Steaks
FOUR
\$4.59

PILGRIM'S PRIDE
GRADE A
**Whole
Fryers**

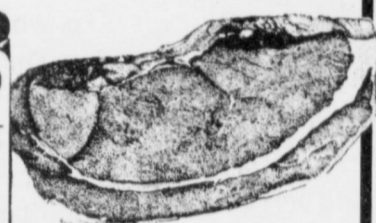
49¢



WHOLE
(IN THE BAG)
**Boneless
Rib-Eyes**
\$3.79
LB.

SUMMER VALUES!

PREFERRED TRIM BONELESS SIRLOIN TIP	\$2.19
PREFERRED TRIM BONELESS ROUND STEAK	\$1.49
PREFERRED TRIM BONELESS RUMP ROAST	\$1.69
FRESH ROUND	\$1.69
TENDERIZED BEEF CUBE STEAK	\$2.39



PREFERRED TRIM FULL CUT
Round Steak **\$1.29**
LB.

Produce

10¢ ea.
SALE

Sweet Juicy
Peaches
California Red
Plums



Jewel Green
Limes
Salad Size
Tomatoes



No. 1 Baking
Potatoes
Yellow
Onions
California
Nectarines
Golden Delicious
Lunch Box Size
Apples
Juicy Valencia
Oranges
Tropical
Kiwi

SHURFINE MEAT WIENERS 12 OZ. PKGS. 299¢	SHURFINE SMOKED SAUSAGE 1 LB. PKG. \$1.39	SHURFINE BREAKFAST SAUSAGE LINKS 11 OZ. PKG. 89¢	SHURFINE SLICED BACON 1 LB. PKG. \$1.29	SHURFINE WIENERS OR BOLOGNA 12 OZ. PKG. \$1.19	SHURFINE LUNCHEON MEAT 12 OZ. PKG. 79¢	SHURFINE CHOPPED HAM 8 OZ. PKG. \$1.29	SHURFINE COOKED HAM 6 OZ. PKG. \$1.39
SHURFINE SLICED MEATS 2.5 OZ. PKG. 39¢	SHURFINE HAM STEAK 8 OZ. PKG. \$1.79	SHURFINE TURKEY HAM 2.5 LB. AVG. \$1.39	SHURFINE TURKEY BREAST 12 OZ. PKG. \$1.99	SHURFINE HOT N' SPICY WINGS 10 OZ. PKG. \$2.59	SHURFINE PATTIES OR NUGGETS 10 OZ. PKG. \$2.39	SHURFINE POTATO SALAD 14 OZ. CTN. 79¢	SHURFINE CHEESE SPREAD 7.5 OZ. CTN. \$1.29

SHURFINE ASSTD. DECORATOR 2-PLY PAPER
Towels **299¢** ROLLS

SHURFINE WHITE / BEIGE
Bath Tissue **69¢** 4 ROLL PKG.

SHURFINE-CLEAN POWER
All Purpose Cleaner **\$1.69** 22 OZ. SPRAY BTL.

SHURFINE-ULTRA
Fabric Softener **\$1.79** 70 OZ. BTL.

SHURFINE-ASSTD.
Coffee **\$2.39** 13 OZ. CAN

SHURFINE COFFEE CREAMER **\$1.39** 12 OZ. JAR

SHURFINE FANCY CUT GREEN BEANS
SHURFINE FANCY CUT GOLDEN WHOLE KERNEL CORN

MIXED VEGETABLES
CUT OR F/S GREEN BEANS
W/K VACUUM PACKED GOLDEN SWEET CORN
C/S OR W/K GOLDEN CORN
REG./TINY SWEET PEAS

SHURFINE
Vegetables **399¢** FOR 12-15 OZ. CANS

SHURFINE CRISPY RICE CEREAL 12 OZ. BOXES 2 \$3	SHURFINE KITCHEN BAGS 15 CT. BOX 99¢	ASSORTED SHURFINE NAPKINS 100 CT. PKG. 89¢	SHURFINE-ALL PURPOSE CLEANER 22 OZ. SPRAY BTL. \$1.69
SHURFINE CHEESE DELUXE SHELLS 12 OZ. BOXES 2 \$3	SHURFINE 30 GAL. SIZE TRASH BAGS 10 CT. BOX \$1.29	SHURFINE SANDWICH BAGS 100 CT. BOX 99¢	SHURFINE FABRIC SOFTENER 70 OZ. BTL. \$1.79
SHURFINE YELLOW CORN MEAL 1 LB. BAG 99¢	SHURFINE FOAM CUPS 20 CT. BOX 89¢	SHURFINE ALUMINUM FOIL 17"X27" PKG. 69¢	SHURFINE BLENDED CAT FOOD 3.5 LB. BAG \$1.69

SHURFINE Iced Tea Mix 24 OZ. CANISTER **\$1.69**

SHURFINE WHITE OR GOLDEN SHURFINE HOMINY 15 OZ. CANS **3 99¢**

SHURFINE SWEET RELISH 16 OZ. JAR **\$1.19**

SHURFINE BLEACH 4 OZ. CAN **99¢**

SHURFINE ASSTD. FLAVORS SHURFINE DRINK MIX 8 OZ. CANISTER **\$1.69**

SHURFINE SHOESTRING POTATOES 13 OZ. CANS **3 99¢**

SHURFINE SALAD ASSORTED SHURFINE DRESSING 8 OZ. BTL. **89¢**

SHURFINE IMITATION VANILLA 8 OZ. BTL. **89¢**

SHURFINE-ASSTD. CRAN-DRINKS OR CRANBERRY JUICE 48 OZ. BTL. **\$1.89**

SHURFINE APRICOT OR PEACH PRESERVES 18 OZ. JAR **\$1.29**

SHURFINE APPLE CIDER OR APPLE JUICE 64 OZ. BTL. **\$1.59**

SHURFINE GARLIC SALT 5.25 OZ. BTL. **89¢**

SHURFINE PORK & BEANS 15.5 OZ. CANS **499¢**

SHURFINE CORN FLAKES 18 OZ. BOX **99¢**

SHURFINE BLENDING OIL 48 OZ. BTL. **\$1.89**

SHURFINE LIQUID BLEACH GAL. JUG **79¢**

SHURFINE MACARONI & CHEESE DINNERS 7.25 OZ. BOXES **599¢**

SHURFINE ASSORTED FLAVORS SODA POP 6 PK. 12 OZ. CANS **99¢**

SHURFINE FROZEN ORANGE JUICE 12 OZ. CAN **79¢**

SHURFINE CHOPPED MUSTARD OR TURNIP GREENS
SPINACH
SALERKRAUT
SLICED OR WHOLE NEW
NEW POTATOES

SHURFINE VEGETABLES 13.5-15 OZ. CANS **399¢** FOR

SHURFINE FRUIT COCKTAIL
YELLOW CLING PEACHES
HALVES / SLICES
PEAR HALVES

SHURFINE FRUIT 29 OZ. CAN **99¢**

Frozen Specials

SHURFINE CRINKLE CUT POTATO FRIES 5 LB. BAG **\$2.99**

SHURFINE HASH BROWN POTATOES 8 OZ. PKG. **\$1.39**

SHURFINE WHIPPED TOPPING 4 OZ. PKG. **69¢**

SHURFINE LEMONADE OR FRUIT PUNCH 12 OZ. CANS **2 99¢**

SHURFINE CORN ON THE COB 4 1/2 OZ. PKG. **\$1.39**

SHURFINE VEGETABLES 10 OZ. PKG. **89¢**

SHURFINE WHOLE BAY OR CUP SHURFINE OKRA 16 OZ. BAG **\$1.29**

SHURFINE CHARCOAL LIGHTER 1 QUART BTL. **99¢**

SHURFINE CHARCOAL BRIQUETS 26 LB. BAG **\$1.99**

SHURFINE GRANULATED SUGAR 4 LB. BAG **\$1.29**

Dairy Specials

SHURFINE ASSORTED BISCUITS 10 CT. CANS **6 99¢**

SHURFINE "JUMBOS" BISCUITS 8 OZ. PKG. **89¢**

SHURFINE AMERICAN SINGLES 16 OZ. PKG. **\$1.99**

SHURFINE CHEDDAR CHEESE 16 OZ. PKG. **\$1.59**

SHURFINE SHREDDED CHEESE 16 OZ. PKG. **79¢**

SHURFINE CREAM CHEESE 8 OZ. PKG. **79¢**

SHURFINE BUTTERMILK 1/2 GAL. **99¢**

SHURFINE ASSORTED VARIETIES POTATO CHIPS 6 OZ. BAG **69¢**

SHURFINE ALL PURPOSE FLOUR 5 LB. BAG **\$2.99**

SHURFINE ALL PURPOSE FLOUR 1 LB. BAG **69¢**

SHURFINE NUTTY BUDDY CONES 6 PACK **\$1.99**

SHURFINE CHOCOLATE SYRUP 14 OZ. SQUEEZE BTL. **\$1.29**

SHURFINE VAN / CHOC / STRAW ICE CREAM 5 QT. PAIL **\$2.99**

SHURFINE DRESSING 32 OZ. JAR **99¢**

SHURFINE MAYONNAISE 32 OZ. JAR **\$1.29**

SHURFINE LUNCHEON MEAT 12 OZ. CAN **99¢**

Health & Beauty

WESTERN FAMILY REG./MINT Anti-Plaque Rinse 16 oz. btl. **\$1.39**

WESTERN FAMILY TARTAR CONTROL PASTE/GEL OR BAKING SODA TOOTH PASTE 5.4 OZ. TUBE **99¢**

WESTERN FAMILY CHILDREN'S Chewable Aspirin 30 CT. BTL. **99¢**

WESTERN FAMILY'S COOL Nasal Spray Decongestant 1.7 FL. OZ. **\$1.49**

WESTERN FAMILY'S COOL Non-Coated Aspirin 30 CT. BTL. **\$1.69**

SHURFINE Soft White Light Bulbs 2 1/2" **59¢**

SHURFINE SPREAD 3 LB. TUB **99¢**

SHURFINE DOG FOOD 20 LB. BAG **\$3.49**

SHURFINE CAT FOOD 5 OZ. CANS **499¢** FOR

WESTERN UNION MONEY TRANSFER™
"The fastest way to send money"

Lowe's

MARKETPLACE

401 W. American Blvd.
Muleshoe 272-4585

515 W. American Blvd.
Muleshoe 272-4406

WE RESERVE THE RIGHT TO LIMIT QUANTITIES IN TEXAS

PRICES EFFECTIVE JULY 5-11, 1995

Using irrigation water efficiently saves money

Ground water escaping from fields as irrigation tailwater is not only costly to the producer—but it also wastes a precious natural resource.

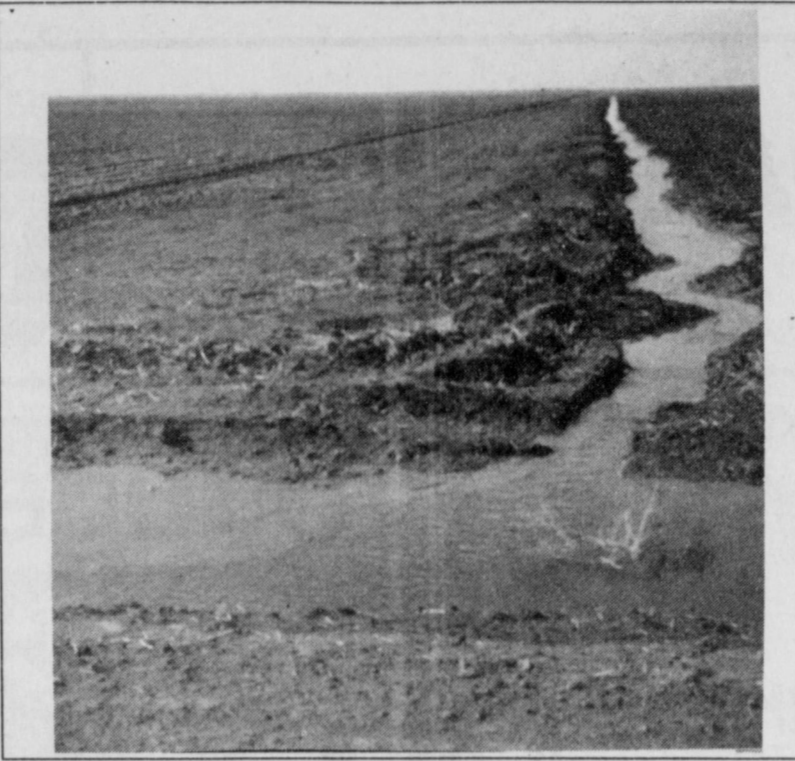
Heavier-than-normal ground water pumpage continues across the region as a result of below-average precipitation during the past two years.

The High Plains Under-

ground Water Conservation District No. 1 reminds agricultural producers to apply their water as efficiently as possible without waste during the hot summer months.

Surge irrigation, borders, terraces, and Low Energy Precision Application (LEPA)

center pivot sprinkler systems are just a few of the techniques producers can use to eliminate tailwater waste.



AARTS transcripts available to U.S. Army veterans

If you are reading this, chances are that you or someone in your family is a veteran. In fact, over 26 million Americans are veterans of the U. S. armed services.

This includes an astounding 14.5 million Army veterans who have had extensive military experience and training — training that should not go to waste upon leaving the service.

For the last nine years, the American Council on Education (ACE) has worked with the U. S. Army to help soldiers, employers, and college admissions officers understand just what military experience is worth.

The Army/American Council on Education Registry Transcript System (AARTS) offers a document that translates Army military course work and experience into civilian terms for both enlisted soldiers and National Guard personnel who entered active duty on or after October 1981.

Since its inception, AARTS has been used by thousands of Army Service members who need a permanent record of the skills and knowledge gained from their military education and training experience.

The transcript can be especially useful to Army veterans who are applying to college. As one university administrator observed, "The transcript takes the guess-work out of awarding academic credit for

service members' experience, making the whole process so easy for both the soldier and the admissions officer.

"In addition to helping college officials, the transcript also provides employers with a better understanding of the responsibilities and skills that Army service members gained on active duty.

As such, veterans often find that AARTS transcripts are excellent supplements to their resumes. As one soldier commented, "[The transcript] proved to my employer that I definitely had the essential skills needed for the job."

Eligible Army service members may obtain a transcript request form (5454R) from Army education center or college counselors or by writing to AARTS, Ft. Leavenworth, KS 66027-5073.

For further information on the Army/ACE Registry Transcript System, call (202)939-9434 or write to ARTS, Center for Adult Learning and Educational Credentials, One Dupont Circle N.W., Suite 250, Washington, DC 20036.

Complete Line Monuments - Markers Memorials Granites - Bronze
Muleshoe Memorial Park Cemetery, Inc.
 232 Main P.O. Box 373
 Muleshoe, TX
 272-5727 or 272-4670

Frontiers in Writing Conference to be held August 4 in Amarillo

AMARILLO — Research, development, and marketing will be the key words at the annual Frontiers in Writing conference, sponsored by Panhandle Professional Writers and Amarillo College, August 4 and 5 at Amarillo College in Amarillo, Texas.

"The difference between a published writer and an unpublished writer is often lack of knowledge rather than lack of talent," says Doris Meredith, Publicity Chair of Panhandle Professional Writers and author of thirteen published novels.

"The unpublished writer simply does not know how to properly conduct research, nor does he know how to develop that research into a nonfiction article, short story, or novel.

Finally, the unpublished writer does not know how to market his manuscript. This year's Frontiers in Writing Conference teaches that unpublished writer how to focus his research, how to translate the resulting information into readable narrative and finally how to sell his finished work."

The conference opens Friday, August 4, at 6:00 p.m. with a reception and autograph party at the Big Texan Steak Ranch, I-40 East and Lakeside.

A "Meet the Speakers" banquet begins at 7 p.m., followed by entertainment, and the keynote address by Sam Havens at 8:30 p.m.

A well-known Houston playwright and director, Haven is professor of drama and chairman of the drama program

at the University of St. Thomas. "Listening to Havens is the most enjoyable way I know to receive an education in how to use dialogue. He is entertaining and informative."

Registration for workshops on Saturday, August 5, begins at 8 a.m. on the fourth floor of Parcels Hall at Amarillo College. A continental breakfast will be served at that time.

Study groups begin at 8:40 a.m., and will feature Edwin Eakin, founder and president of Sunbelt Media, Inc., who will speak on "How best to market REGIONAL fiction and non-fiction;" Joyce Roach, folklorist and three-time Spur Award winner from Western Writers of America for both fiction and nonfiction, on "Turning Folklore into Com-

mercial Sales;" Anna Myers, award winning children's author, on "Writing for Children;"

Janet and Jerry Weiner, husband and wife writing team with over 350 published articles and short stories will speak on "How to Successfully Write and Sell to the National Magazine Markets."

At 9:30 a.m., Sam Havens will give his second lecture on dialogue, "How Novelists and Screen Writers Use Evocative Dialogue to Texture Their Stories and Advance Their Plots." Morning study groups will be repeated at 10:40 a.m.

Winners of the PPW writing contest will be announced at the awards luncheon at 11:30

Continued on page 8

10th Anniversary Sale
 Starts Friday, July 7
 Doors Open 9:00 a.m.

30-50% OFF

Merle Norman Cosmetics **10% OFF**
 Fragrances **10% OFF**

Large Rack 75% OFF
 Register For A FREE GIFT CERTIFICATE!

Good Friday-Saturday-Monday
 July 7-8-10
Entire Stock Dresses 40% OFF

Missy Sizes 2-20; Petite 2-12
FREE GIFTS!!!!

The fashion girl
MERLE NORMAN COSMETICS
 103 W. 2nd Portales 359-0815

Open 9:00-5:30
 Monday thru Saturday

Home Folks Caring For Folks At Home.



MULESHOE AREA HOME HEALTH

Agency

Featured Patient

Martha Young has lived in Muleshoe since 1956. She was formerly employed by the Department of Agriculture, retiring September 30th of last year. She has two children, Pam Atwood of Muleshoe and Prisca Gilbert of Hartly. She also has 3 grandsons and 1 granddaughter. Martha enjoys reading and collecting recipes. At the present time, she is putting recipes in a computer, which may or may not result in a book.



Martha Young

Martha says the people of Muleshoe Home Health are wonderful. They do anything you ask, are eager to help, and are always prompt. Martha believes Muleshoe is very fortunate to have them!

To receive Home Health Services Talk with your physician or talk with hospital personnel when you are hospitalized.

24 Hour # 272-3346
 Local Nurse on call
 24 hours a day to offer prompt service.

We accept Medicare, Medicaid and Private Insurance

Affiliated with LUBBOCK METHODIST HOSPITAL SYSTEM



Muleshoe's Area Spring Business Directory



Guadalajara
Two bean and cheese chalupas with guacamole, lettuce, tomatoes and cheese **\$4.75**

Theresa Special
Seasoned ground beef topped with melted cheese, lettuce, tomato and guacamole **\$4.75**

Leal's Restaurant
1606 W. American Blvd. 272-3294

Matua Grass Hay
Hi-Pro Acco
BlueBonnet
Feeds

Muleshoe Feed Barn
311 W. American Blvd. 272-5626

Lasting Impressions
516 S. 1st 272-4287
Helen Hunter, owner
Teleflora

Flowers, Plants & Gifts for all occasions!

SAVE YOUR ENVIRONMENT!

A lot of companies say they have "green" products — we really do! See our wide selection of healthy green plants.

Decorator's Floral & Gifts
616 S. 1st Muleshoe 272-4340

James Crane Tire Co.
322 N. 1st Muleshoe 272-4594

VACATION SPECIAL
P235/75R15 Goodyear Regatta **\$87⁵⁰** ea.
or
Goodyear P235/75R15 Wrangler at **\$97⁵⁰**

Come in and let us check your vehicle before you go to the farm or before you go on vacation. You always can keep your vehicle in tip-top shape at...

James Crane Tire Co.
322 N. 1st Muleshoe 272-4594

We will service ALL Your Ace Pumps, and help you with all your spraying parts needs.

Visit us at 1532 W. American Blvd. or call 272-4613

Scoggin Ag. Center

James Crane Tire is your full line tire, brake, alignment and state inspection center in Muleshoe. We offer a full line of Goodyear, Lee & Cooper tires, Monroe shocks and Continental batteries. We have five service trucks to keep your farm downtime to a minimum, and an excellent staff of experienced servicemen to do the job right. As always, we look forward to servicing your needs and appreciate your business.

JAMES CRANE TIRE CO.
322 N. 1st Muleshoe 272-4594

Sheree's Attic
Merle Norman Cosmetics

SALE up to 50% OFF
Ladies' Sports Wear, Separates, Children's Groups, Toddlers, 4-6X, 7-14 Tickle Me

Owner Sheree Hunt
1519 W. American Blvd. 272-3459

Pasta & Sandwiches!
Pasta - A tasty alternative to pizza. Our pasta dishes are served with piping hot garlic bread.

Meat Sauce **\$3²⁹** Meat Balls **\$3⁸⁹**
Supreme **\$3⁸⁹**

Pizza Hut.
Delivery Available 11 a.m.-1:30 p.m. & after 5:00 p.m.
1412 W. American Blvd. 272-4213

Oil Change
Includes 5 quarts of oil and a filter
\$19⁹⁵

Muleshoe Motor Co., Inc.
1225 W. AMERICAN Blvd., MULESHOE
1-800-432-7617 272-4251

We pick up and repair all types of irrigation motors, service & repair late model GM's, Fords & Dodge automobiles & trucks.

SPECIALIZING IN GENERAL AUTOMOTIVE REPAIR WORK OF ALL KINDS.

Muleshoe Truck & Auto
301 N. 1st 272-5111

SUPERIOR MED-EQUIP
Suppliers of Medical & Home Care Equipment

Carrying Orthopedic Braces from your Neck to Ankle for your convenience

Manager - Sherry Wisian
623 W. 2nd St. Muleshoe, TX 79347
806-272-3757 or 272-3600
800-765-1160 or 800-283-8980

WD-40 \$1.99

Check On Other Daily Specials In Store!
"Quality & Service At The Right Price!"

Higginbotham-Bartlett
215 Main Muleshoe 272-3351

Efferdent Plus **\$2¹⁹**
Alkamints **\$2²⁹**
Aleve 50 ct. **\$4⁴⁹**

DAMRON DRUG
308 Main 272-4210

Henry Insurance Agency, Inc.
"Serving Your Insurance Needs Since 1964"

Kenneth R. Henry, Certified Insurance Counselor
Real Estate Broker
Mike McCallum - Agent

COMING SOON
Total 4 Wheel Alignment
AC Service **\$27⁵⁰**
plus freon and parts

HI-TEK AUTOMOTIVE
215 N. 1st 272-3480

Conference

Continued from page 6

in the College Union Building. A panel discussion featuring all the speakers will follow the luncheon, with afternoon study groups to begin at 2:45 p.m.

Speakers are Sheryl Nelms, author of over 3,500 published poems will lecture on "How to Write and Sell Your Poetry;" Melanie Henry, inspirational writer, on "Hope: The Heart of

Inspirational Writing;" and Sam Brown, real life cowboy and western writer, on "Researching the Western Novel: or Cowboys Don't Kiss their Horses." Study groups will be repeated at 4:00 p.m with adjournment at 4:50.

Pre-registration for the Friday night banquet, keynote speech, and Saturday's workshop must be received by July

29. Pre-registration will not be accepted at the door Friday night.

For more information on the Frontiers in Writing Conference, send a self-addressed, stamped envelope to Frontiers in Writing, P.O. Box 19303, Amarillo, Texas 79114, or call Doris Meredith at 352-3889; Frances Clegg-Ferris at (806) 764-3458; or Loretta Harrison at 353-2814.

PCG announces '94 total bale count

Final statistics on the 1994 crop show the Texas High Plains managed to put together back-to-back 3 million plus bale crops. The figures indicate the area produced 3,067,200 480-lb. bales in 1994.

According to Lubbock-based Plains Cotton Growers (PCG), abandonment on the 1994 crop totaled only six percent and the crop's weighted average yield came to 482 pounds per harvested acre. The abandonment figure reflects a total of only 184,800 acres lost during the season out of 3.219 million acres planted to the fiber crop.

"Expectations for the 1995 crop becoming a third 3 million-plus bale crop are still out there," says PCG Executive Vice-President Donald Johnson.

Johnson acknowledges, however, that early planted cotton, especially in the southern areas of the High Plains, is hard to find and that recent weather has significantly muddled the complexion of the entire High Plains crop.

"To be honest we really do not have a good feel for how this year's crop is doing," explains Johnson. "The crop's

condition runs the gamut from just planted all they way

through cotton with five true leaves, and nobody appears to be able to predict where the 1995 crop is headed."

The 1994 crop figures were obtained from the Texas Agricultural Statistics Service (TASS).

As usual, several High Plains counties ranked as the top cotton producing counties in the state. In fact, the top 11

counties were all located on the Texas High Plains. They are Gaines, 1; Hale, 2; Lubbock, 3; Terry, 4; Lamb, 5;

Floyd, 6; Hockley, 7; Crosby, 8; Lynn, 9; Dawson, 10; and Yoakum, 11.

Obituaries

Florentino Campolla
MULESHOE— Funeral services for Florentino Campolla, Sr., 65, of Muleshoe, will be held in Mexico, with the Rev. Bernardino Hernandez officiating.

Burial will be in the Cementerio Municipal at El Porvenir D.B., Chi. under the direction of the Ellis Funeral Home of Muleshoe.

Campolla died July 1 in Lubbock, after an illness.

He was born March 26, 1930 in Mexico. He married Esperanza Mendoza, Feb. 18, 1991 in Clint, TX. He had been a resident of Muleshoe since June 1995, moving here from Ft. Hancock, TX. He was a farm laborer and a Baptist.

A son, Guadalupe Campolla, preceded him in death, December 26, 1993.

Survivors include his wife, Esperanza of the home; five sons, Marcos of Mexico, Jamie and Florentino, Jr., both of Muleshoe, Jesus of Friona and Ramon Campolla of Tucumcari, N.M.; his mother, Ilaria Barragan of Mexico; and 17 grandchildren.

Floyd Henderson
EARTH — Funeral services for Floyd Henderson, 47, of Earth, were held Monday at the First Baptist Church of Earth with the Rev. Bobby Broyles, pastor, officiating. Burial followed in the

Springlake Cemetery under the direction of the Parsons-Ellis Funeral Home of Earth.

Henderson died Saturday at his residence after an illness.

He was born September 18, 1947 in Amherst, TX. He had been a resident of Earth all his life. He was a truck driver for Winkles Trucks Inc.

Survivors include his mother, Jessie Henderson of Earth; three sons, Mark Henderson of Fayetteville, NC., Cory Henderson of Boys Ranch, TX, and Blake Henderson of Boys Ranch, TX; one brother, Wayne Henderson of Hereford, TX; and two grandchildren.

The family suggest memorials be made to Cal Farley's Boys Ranch.

Photos to give away

The Bailey County Journal and Muleshoe Journal gives away photos which are taken by the newspaper and published. Photos may be picked up after they are published. The Journals retain photos up to a year and then they are discarded.

Weather

R. G. Bennett, Muleshoe

Date	High	Low	Rain
Saturday, July 1	77	56	
Sunday, July 2	84	58	
Monday, July 3	94	59	

Have a Nice Day

Announcing...



To better serve our customers, Muleshoe State Bank is announcing the construction of a new banking facility in Farwell.

MULESHOE STATE BANK



101 W. American Blvd.
Muleshoe, TX 272-4561

&
801 Ave. A
Farwell, TX 481-9580



Each depositor insured to \$100,000
FDIC

"As your family grows, so do your life insurance needs."



CALL ME.
CALL ME.
Mark Morton
101 S. Main
Muleshoe
272-7519

State Farm
Life Insurance Company
Home Office: Bloomington, Illinois



Like a good neighbor, State Farm is there.®

HER SYSTEM:
QUICK PICK

WINNING NUMBERS:
9 18 19 22 32 39

FIRST THING
SHE DID:
TURNED 15
DIFFERENT
SHADES OF RED

PRIZE: \$27.2 MILLION



WHEN CHERYL CLICK WON LOTTO TEXAS, THE ONLY THING SHE CHANGED WAS HER ADDRESS.

CHERYL CLICK STILL HAS THE SAME SMILE. SHE STILL WEARS THE SAME BLUE JEANS AND ROPERS. AND SHE STILL LIVES IN WEST TEXAS. ONLY NOW SHE LIVES ON THE RANCH SHE'S ALWAYS WANTED. AND IF IT WEREN'T FOR THAT, YOU'D NEVER KNOW THAT CHERYL'S ONE OF OVER 150 MILLIONAIRES AND STILL COUNTING.



©1994 Texas Lottery

To enjoy home delivery of the Bailey County Journal, call 272-4536!

No DOWN PAYMENT LAYAWAY ANTHONY'S

• FOR BACK TO SCHOOL THROUGH JULY 23, 1995 •

EVERY ON EVERY JEAN SALE DAY

Journal Classifieds

Call 272-4536 Deadlines: For Thursday, Noon Tuesday; for Sunday, Noon Friday Call 272-4536

Public Notice

The annual return of The Howard Carlyle Memorial Scholarship Fund is available, at the address noted below, for inspection during normal business hours, by any citizen who so requests within 180 days after publication of this notice of its availability. Hardy Carlyle, Lazbuddie, Texas 79053. The principal manager is Hardy Carlyle, Chairman, Telephone (806) 965-2156.

The annual return of the Russell Scott Redwine Memorial Scholarship Fund is available at the address noted below, for inspection during normal business hours, by any citizen who so requests within 180 days after publication of this notice of its availability. Lazbuddie Independent School District, drawer A, Lazbuddie, Texas 79053. The principal manager is Harrol Redwine, Chairman, Telephone (806) 965-2958.

The annual return of the Walter Lee Palmer Memorial Scholarship Fund is available, at the address noted below, for inspection during normal business hours, by any citizen who so requests within 180 days after publication of this notice of its availability. Doris Palmer, 1610 West Avenue B, Muleshoe, Texas 79347. The principal manager is Doris Palmer, Chairman, telephone (806) 272-3734.

Moving Sale

Moving Sale: Everything Must Go! Come make offer! 1975 LTD, Clothes, Furniture, Dishes, etc. 6 miles East of Lazbuddie on Hwy 145, 1 mile North on 503 then 1/2 mile East. 271-11pd

Help Wanted

Farwell Convalescent center is looking for a certified Medication Aide for days, evenings, split shifts. Contact Sherrie (806) 481-9027. Good salary, benefits and retirement. 17s-tfc

Sales Manager needed for small farm and ranch store in eastern New Mexico. Must be knowledgeable of seed, feed, tillage, and irrigation. Some man-

agement and computer experience required. Salary negotiable. Send resume with references to: Residence, 799 S. Roosevelt Rd. 8, Portales, N.M. 88130. 27s-2tc

City of Lubbock C&M Worker II Water Utilities/Water Production

Requires: Any combination of education and experience equivalent to graduation from high school and one year of experience in construction and maintenance work. Knowledge of the methods, tools, and the functions of equipment used in the maintenance and construction of public works systems. Skill in the operation of various types of standard construction equipment. Ability to make minor repairs and to service motorized equipment. Ability to understand and carry out oral and written instructions. Possession of a Texas Commercial Driver's License with specific endorsements when required. Possession of, or ability to obtain within one year the required state regulatory water and/or water certificates. Requires working in outside weather conditions during all seasons. Hazards encountered during the shift are working around dangerous chemicals. Copy of Commercial Driver's

License or CDL permit must be attached to applications. All job activities are located in the Sandhills Well Field located in Bailey County near Muleshoe, Texas. Must be able to respond to emergency callback to this area within 30 minutes. Prefer possession of Class C sewer and water license. Salary: \$7.15 hourly. Closing Date: July 14, 1995 Apply to: Human Resources, 1625 13th Street, Room 104, Lubbock, Texas, 79457. E.O.E. M.F.D.V. 27s-2tc

Apply to: Human Resources, 1625 13th Street, Room 104, Lubbock, Texas, 79457. E.O.E. M.F.D.V. 27s-2tc

Apply to: Human Resources, 1625 13th Street, Room 104, Lubbock, Texas, 79457. E.O.E. M.F.D.V. 27s-2tc

Triplewides and Doublewides

Over 2000 sq. ft. on display. Tape and texture, southwest style, home show model available for sale. Price includes new digital satellite system!



PORTALES MOBILE HOMES
356-5639 OR 1-800-867-5639 DL366

Inventory Reduction Sale

All Sofas - (Reduced 20%) - \$389.00- up
Rocker Recliners (Lane) (Reduced 15%) - \$269.00- up
Queen Mirrored Bookcase Headboard, 2 Night Stands \$419.00
All Serta Bedding Reduced 10-15%
All reductions reflective from previously marked low priced.
KEMP HOME FURNISHINGS
414 West American Boulevard
Phone 272-5023

MUST SELL! 1988 Pontiac Firebird Formula
Automatic, V-8, power windows, air conditioning, AM/FM cassette, performance suspension, bucket seats, sun-screen glass, tilt, aluminum wheels and much more. No old contract to assume, no back payments to make, just need responsible party to make reasonable monthly payments.
Contact Joey in the credit dept. Friona Motors, 806-247-2701

MUST SELL 1995 Chevrolet Corsica
Automatic, AM/FM stereo, power windows, power locks, tilt, cruise, air conditioning, driver side air bag, and much more. No old contract to assume, no back payments to make, just need responsible party to make reasonable monthly payments.
Contact Ali Roder in the Credit Dept., Friona Motors, 806-247-2701

Classy Paws

Dog Grooming
1916 W. Ave. C
Call 272-3012
For Appointment
Monday - Friday
21s-tfc

Miscellaneous

Any type livestock fencing or corrals built. Call 925-6742 after 6 p.m. 12s-tfc

Looking to share aride for Tech, Fall term, to and from Lubbock. Leave name and number at Muleshoe Public School Administration office, 272-4814. 27s-4t sun pd

Automobile

Car for sale, 1988 Hyundai Excel GSL, \$750. OBO. Call 965-2322 after 6 p.m. 27s-tfc tb

1989 Ford XLT Lariat supercab. 351 automatic, fully loaded, 63,000 miles. Would consider trade-in. \$9,300. (505) 356-5509 27t-tfc-wp

1993 Ford, 1 ton single, crew cab, automatic, loaded. \$15,595. (505) 359-0947, Portales

1991 GMC extended cab, 4x4, Sierra, \$12,595. (505) 359-1775, Portales

1990 Jeep Wagoneer, white, 4x4. \$9995. (505) 359-0947, Portales

1991 Mazda 626, champagne color, \$8995. (505) 359-1775

1993 Buick Regal, 2 dr, all the buttons, red color, \$10,295. (505) 359-1775

Real Estate

FOR SALE LENAU ADDITION
305 East Fir Avenue, large 3 bedroom, 1 3/4 baths, auto lawn sprinkler, single garage, 2 car carport and storage. Call day or night 272-3373. D8-11s-tfc

Moved, need to sell to the 1st buyer, 322 W. Ave. K., nice 2 bedroom home with garage. Conv. or FmH loan, pty to fit your income. Call Now (806) 828-1830, ask for Cindy. 26s-tfc

For Sale, House in Sudan, 3 bdrm, 2 baths. Call 227-2560 or 227-2487. 27s-8tc

Farm For Sale

For Sale - 70.2 Acres with 6" well, west of Muleshoe on Hwy 60-84. Has small one bedroom house. Call 272-4385. 26i-13tpd

MUST SELL! 1994 Dodge Grand Caravan
SE, V-6, automatic, tilt, cruise, AM/FM cassette, power windows, power locks, power mirrors, rear defroster and wiper, integrated child seats, sunscreen glass, 7 passenger seating and much more. No old contract to assume, no back payments to make, just need responsible party to make reasonable monthly payments.
Contact Joey in the credit dept. Friona Motors, 806-247-2701

MUST SELL 1994 Mazda Protege
AM/FM cassette, air conditioning, low miles, driver-side air bag, passive restraint system, and much more. No old contract to assume, no back payments to make, just need responsible party to make reasonable monthly payments.
Call Ali Roder in the credit dept. Friona Motors, 806/247-2701

Subscribe To The Muleshoe Journal Today!

AVON Representatives needed in Muleshoe area. No door to door necessary. If interested call 272-5607 or 272-3208.

SUBSCRIPTION RATES MAILED

Muleshoe (In Town): \$16.75 For The Year
Out Of Town: \$18.50 For The Year
College: \$13.50

CARRIER
Carrier: \$15.00

Papers That Are Mailed Expire On The 27th Of Each Month. Notices Are Sent Out At The Beginning, The Middle, And The End Of The Month.

Need To Buy or Sell Something? Why Not Use The Classifieds In The Muleshoe or Bailey County Journals Call 272-4536

Back To School Garage Sale Special

15 words or more: \$500 Per Insertion

Deadlines:
Thursday Journal, Tuesday noon
Sunday Journal, Friday Noon

CLASSIFIED RATES

15 Words and Under, First Run: \$3.00
Every Run After The Initial Run: \$2.55
16 Words and Over: 1st Run .20 per Word
16 Words and Over: 2nd Run .17 per Word

CLASSIFIED DISPLAY RATES

\$2.00 per Column Inch

DEADLINES

For Thursday Paper, Noon Tuesday
For Sunday Paper, Noon Friday

To receive the reduced rate after the first insertion, the ad must run continuously. We reserve the right to classify, revise, or reject any ad. We are not responsible for any error after ad has run once.

Classifieds Sell! Call the Journal office Today! 272-4536

HENRY REALTY

Near High School, 3 bedroom, 1 bath, floor furnace heat, roof ducted. Evaporative air cond, storm windows & doors, equipped for washer/dryer. Fenced back yard. 80 acres in CRP with 2 bedroom, 1 bath house. 8 miles east of Muleshoe. Call for appointment

Small acreage on highway near Muleshoe. New development. Please call for information. 5 acres to 40 acres. Excellent location.

Near High School - 3 bedroom, 3 bath, BV central heat, ducted in evaporative air cond., carpet throughout., large den with rock fireplace, top grade wood paneling throughout. Storm windows and doors. Insulation in ceiling, large utility room and spacious storage area. Kitchen built-ins.

32 acres N edge of town with electric irrigation well. BV home and all metal barn 36' x 96'. Dwg all electric, heat pump, carpet, septic tank, 2 car garage, built-in dishwasher, microwave, cooktop & oven. Barn is insulated, plumbed and with electricity.

Reduced Price- Owner ready to sell. 2 bedroom, 1 bath, 1 car garage, carpet, wood fence.

-2 Bedroom, 1 bath, recently remodelled - new paint, new floor covering throughout. Wood fence. Storm doors and windows.

Four bedroom, 2 bath, 2 car garage, 2 - car carport. Refrig. air, central heat. Carpet, beautiful dining area with built-in china cabinet and paneled walls and other extras. Storm doors, storm windows and awnings. Concrete fence, front yard has automatic sprinkler. Kitchen built-ins. 1,000 sq. ft. storage. Large home with extra storage.

Country Club Addition, 2 bedrooms, 1 bath, 4 car carport, new roof, carpet, 2 ceiling fans, includes vacant lot next door. Storm doors and windows.

3 bedroom, 2 bath, carport, evap. air, 2 wall heaters, carpet, storm doors and windows, large fenced backyard, near High School. Ready for occupancy

Country Club Addition, 29- 60' lots to sell as one package, Great opportunity for apartments or single family development.

COMMERCIAL PROPERTY

4,000 sq. ft. commercial building. Ready to be occupied. West American Boulevard 150' frontage. Priced to sell.

Ideal location on west American Blvd. 150' highway frontage. A great business opportunity.

111 WEST AVE B. MULESHOE, TX 272-4581

Nieman Realty

116 E. Ave. C George Nieman, Broker 272-5285 or 272-5286

HIGH SCHOOL

NICE 3-2-1 carport Home, Cent. A&H, built-ins, basement, ceiling fans, water softener, covered patio w/gas grill, fenced yd., & one bdrm. apartment. PRICE REDUCED!!!! HS-12

NICE 3-2-2 Brick, 2150+ lv. area, Heat pump, built-ins, Ceiling fans, nice carpets, fenced yd. MORE!! \$70K HS-6

VERY NICE 30202 Brick home on corner lot, built-ins, cent. A&H, 2,100+ living area, auto spkrl., fenced yd., stor-wksp., MUCH MORE!! \$70's RH-1

3-2-1 Brick, Cent. A&H, built-ins, workshop-storage, fenced yd. \$30's!!! HS4

HIGHLAND AREA

VERY NICE 3-2-2 Brick, Cent. A&H, built-ins, fenced yd., spkrl. sys., MUCH MORE!!! \$60's!!! HL-1

Nice 4-2-1 Brick, Cent. A&H, built-ins, fans, encl. patio, man. spkrl sys., gas grill, st. bldg., fenced yd. \$60's!!! HL-5

3-2 Home, 1900+ lv. area, heat pump, st. bldg., fenced yd. \$30's!!! HL-2

HIGHLAND AREA

JUST LISTED 3-2-2 home, Cent. A&H, built-ins, fenced yd., corner lot. \$30's!!! HL-2

LENAU ADDITION

Nice 2-1-1 Home, new interior paint, new carpet, fenced yd., storage bldg. MORE!!!! & 20's!!! L-4

VERY NICE 3-1-1 Home, Cent. Heat, evap. air, nice carpets. \$20's!!! L-1

VERY NICE 3-2-1 Home, Heat Pump, storm windows & doors, extra insulation, nice carpet, spkrl. sys. & MORE!!!! \$30's!!! L-2

RURAL HOMES

2-2-2 Carport Mobile Home on hwy. close to town, 1.99 acres w/barn and corrals!! \$30's!!! R-1

JUST LISTED - Very Nice 4-2 Home on 40 acre tract close to town, heat pump, built-in stove, nice carpet & tile. 6" irrig. well with high pressure lines, stock shed & pens, tractor & equipment. \$70's!!!!!!

COUNTRY CLUB

2-1-1 carport home, w/ furnace heat, nice carpet, storm shelter, storage bldg., fenced yd. MORE!!!! \$20'S.

Just Listed - Nice 3-1 Home, Cent. Heat, dishwasher, nice carpet, fenced yd. \$20's!!!!!! CC-2

ASK ABOUT OUR COMMERCIAL LISTINGS!!!

COMMERCIAL-200+ Hwy, 84 frontage - Former Richland Hills Texaco, excellent business location. PRICED TO SELL!!!!!!

JUST LISTED 160 acres N. of Progress. Good productive farm in good water area, 8" well and Valley Sprinkler. PRICED TO SELL!!!!!!

Deaths and injuries at railroad crossings are preventable, says Railroad Commissioner

AUSTIN—Some 58 deaths and 240 injuries could easily have been prevented last year if Texans had only heeded warning signs and signals at highway-railroad crossings, according to members of the Railroad Commission of Texas.

Commission Chairman Barry Williams and Commissioners Carole Keeton Rylander and Charles R. Matthews urge motorists to focus on the danger and play it safe as they cross railroad tracks.

If more people realize how deadly car-train crashes are, they might keep themselves from becoming part of the statistics that boosted Texas to the top of the crossing crash list in 1994, the commissioners said.

"Stop, look, listen and live. It's as simple as that," Chairman Williamson said. "Please

do not try to beat a train. You can't. The train will beat you, and it will beat you badly."

Texas led the nation with 553 rail-crossing crashes in 1994, followed by Illinois (335), Indiana (281), Ohio (238) and Louisiana (225).

Within the state, Harris County topped the car-train crash list with 65, followed by Tarrant (29), Dallas (25), Webb (21) and Bexar (18).

"We can't just hope for safety at rail crossings — we must plan for it," Commissioner Rylander said.

"The next time you come to a rail crossing, remember, a few extra seconds is not too long to wait for a train when the alternative can be fatal."

Rail crossing crashes took 58 lives and caused injuries to 240 others in 1994. Another 48 people died on Texas tracks

while illegally walking on, fishing from or crossing railroad right-of-way.

Sixty-two were injured in trespass incidents. Most of the victims didn't understand the danger, or ignored warning signs, signals or safety gates, the commissioners said.

"Far too frequently we receive reports of preventable accidents and deaths at railroad crossings," Commissioner Matthews said.

"Like any other area of public safety, education is the key. The goal of our bilingual public awareness campaign is to reduce these senseless tragedies by alerting Texans to the dangerous — often deadly — consequences of ignoring the warning signs."

Railroad Commission efforts to increase awareness of rail crossing dangers include presenting crossing safety programs to schools and other groups across the state, distributing school bus driver

safety materials and providing a trucking industry awareness program.

The Commission has begun a near-collision program in which railroads report vehicles that narrowly escape crossing crashes to the Commission, which then contacts the vehicle owners.

The Commission also is supporting the U.S. Department of Transportation's "Always Expect a Train" rail-crossing safety program.

Nationally, more than 6,000 people were hit by trains in 1994 — some in cars and trucks, and others on foot.

There were 4,921 crashes at rail crossings, resulting in 610 deaths and 1,923 injuries. Trespasser casualties totaled 979 nationwide with 529 deaths and 450 injuries.

Bailey and Parmer Counties were not listed by the Railroad Commission of Texas as having grade-crossing crashes in 1994.

Beef industry beckons consumers to stores

With record supplies of all meats affecting the livestock markets, the beef industry is focusing its efforts on promotion to help move more beef through the marketing chain.

The Beef Industry Council (BIC) has a host of checkoff-funded programs that will hit newspapers, television screens, grocery store counters and restaurants across the country from May to September, the prime grilling season.

The goal of these programs is to demonstrate beef's great value to consumers while encouraging retailers, restaurant owners and other marketers to sell the product aggressively.

Simple but satisfying meals is the concept behind the promotions. New "Beef, It's What's for Dinner" television ads, which will air 1,000 times between May and September, feature 10 quick and easy beef meals.

Also included this summer is a direct marketing program

that will distribute 500,000 "30 Meals in 30 Minutes" recipe books to selected consumers who enjoy beef.

The great taste and value of beef will be communicated by the BIC public relations efforts this summer through vigorous placement of stories and recipes.

Since the beginning of fiscal year 1995, the National Live Stock and Meat Board test kitchens and editorial services have generated more than 2,000 positive beef placements in newspapers and 145 placements in magazines with a combined circulation in excess of 431 million.

"As beef producers and other industry leaders design these checkoff programs, they keep in mind the timing needs of promotion and information efforts," said Ron Curtis, a beef producer from Hastings, Iowa, and BIC chairman.

"Realizing that beef movement would be critical this time

of year, more than 65 percent of our annual promotions budget will be spent during the five-month May to September period, with the intention of giving the market as much of a boost as possible."

Supermarkets nationwide also will contribute to the beef industry's efforts. Recipe centers and recipe books featuring grilling cuts, combined with in-store coupons for ground beef, are expected to reach 20 million consumers and move significant beef tonnage during the summer months. More than 25,000 retail stores nationwide also are being encouraged to feature more beef from July to September.

These retailers and wholesalers provide the best opportunity for the beef industry to move incremental tonnage throughout the summer.

In Texas, the BIC incentive partnerships will be targeted at more than 650 stores. The Texas Beef Council will imple-

ment this BIC program across the state.

Kevin Yost, director of beef retail programs for BIC, said, "The Summer 1995 Retail Partnership will work twice as hard for producers. Retailers who move incremental beef for the industry will earn radio advertising credits. The retail incentive reinvests checkoff dollars earned into beef radio promotion during the winter months."

Summer Clearance Sale

In Progress!

Fantastic Savings In All Departments

Tiffin II

603 E. Main, Earth 257-2223

Mary Kay Cosmetics



Josie Flowers

272-3865

Summer garage sales!

Advertise in the Muleshoe Journal

272-4536

AAU
Continued from page 3
Lovington, Hobbs and Roswell for a seven week competition. The Young Guns has been a successful organization in its original goal of teaching young girl's basketball skills, but the organization offers so much more.

The girls learn cooperation, self-pride, and have an opportunity to travel with teammates they've come to love. Parents of the young ladies involved in Y.G. say that the organization has established a program that is proud of its competitors and teaches not only basketball skills, but life skills as well.

Education Notes

DALLAS — Amber Chriche Green was among more than 2,300 undergraduate and graduate students who received degrees from Southern Methodist University in its 80th annual commencement ceremony May 20.

Amber received her Bachelor of Arts degree from the Dedman College of Humanities and Sciences.

Calling All Detectives!

DISCOVERING JESUS IN THE BIBLE

GOD'S SPECIAL AGENTS

St. John Lutheran Church - Lariat Vacation Bible School

Join us for a week of fulfilling investigation!

Registration opens Sunday, July 9, at 3 p.m.

Daily Classes:
Monday, July 10 thru Friday, July 14
9:00 a.m. to 11:30 a.m.

Closing Day Picnic & Carnival
Sunday, July 16, at 3:30 p.m.

For more information, contact
St. John Lutheran Church
Highway 84 - Lariat - (806) 825-2409

Christ is the first clue!!!

Buy Now, Save Now!

Just Down the Road... at Friona Motors

1995 Family Program Cars

Payments under **190.00** mo.

Achievas • Corsicas

Exceptional values at affordable prices!

FAMILY VALUES! YOU CAN FIND LONG-TERM DURABILITY AND TROUBLE FREE PERFORMANCE IN OUR FAMILY CARS.

1988 Mazda 929
111.66 mo. Deal at \$5,995

1994 Chevy Half Ton
New Arrival!

1990 Chevy Suburban
237.74 mo. Deal at \$11,995

1994 Lincoln Continental
380.62 mo. Deal at \$21,995

1994 Chevy Corsica
175.62 mo. Deal at \$11,495

1993 Ford Mustang
149.61 mo. Deal at \$9,500

1995 Ford F150
245.15 mo. Deal at \$14,995

1992 Olds Cutlass Supreme
159.34 mo. Deal at \$9,995

1991 Mitsubishi Eclipse
184.84 mo. Deal at \$9,995

1994 Pontiac Grand Am
199.04 mo. Deal at \$12,695

1991 Olds 88
179.95 mo. Deal at \$8,187

FRIONA MOTORS
1011 GRAND, FRIONA, TEXAS, (806) 247-2701
Open Mon-Fri, 8am-7:30pm, CST, Sat, 8am-5pm, CST

FRIONA MOTORS