

Weather

Nov. 29 54 19
Nov. 30 42 19
Dec. 1 48 21
Dec. 2 56 17

Muleshoe Journal

'The Community Of Opportunity-Where Water Makes The Difference'



Vol. 70, No. 49

Published Every Thursday At Muleshoe, Bailey County, Texas 79347

TEXAS PRESS ASSOCIATION 25¢

Thursday, December 3, 1992

Christmas Parade, Bazaar This Weekend

around muleshoe

The Bailey County 4-H Exchange Group will be giving away \$200.00 on December 18. Tickets for this give-away are \$2 each or 3 for \$5. Money from this give-away will help the local 4-H'ers go to Minnesota or Pennsylvania.

The Bailey County Commissioners Court will meet in Special Session Friday, December 4 in the Bailey County Courthouse. The meeting will begin at 10 a.m. and will continue until all business is concluded, with the following items on the agenda:

1. Take action on reapportionment of County Commissioners Precincts and Voter Tabulation Districts (Election Precincts), and consolidation of Justice of the Peace Precincts.

Businesses in Muleshoe will be giving double MAC coupons now until Dec. 5, when a drawing will be held at 2 p.m. at the Civic Center. MAC Bucks and 25 turkeys will be given to the lucky winners.

The Volunteer Plus Organization plans to purchase carpet with the money donated to the Christmas Card Project this year.

Due to bad weather, the Boy Scouts were unable to pick up the bags of groceries last Saturday. Pick-up day has been re-scheduled for December 5 or if you would rather, you may take your bag of groceries to 401 N. 1st. on Tuesdays or Thursdays between 10 a.m. and 3 p.m. All groceries will go to the local Food Box.

A special two-hour, telecast of the Final Championship Round of the National Finals Rodeo, from Las Vegas, Nevada, will be sponsored locally by Earl Ladd and Sons, Inc. of Muleshoe.

Cont. Page 8, Col. 1

Erosion Control Advantage Of Terrace System

Erosion control and moisture conservation are two big advantages of having a terrace or a terrace system on your land.

In most cases, the only way to correct erosion problems is to construct a terrace.

By building a terrace, the land is using the water that normally runs off in the form of silt. This water is stored in the soil profile for crop use.

Terraces can be planted to grass or wheat and used as windstrips. Parallel terraces of today are not as big as the old contour broad base terraces built years ago.

Today's terraces have steeper side slopes and about a seven row base width. The terraces are widely spaced in row multiples that fit today's equipment.

Diversion terraces work well on steeper slopes where outside water is a problem.

Erosion occurring on part of a field can be corrected with a diversion terrace in most cases. A basin terrace is larger than a diversion terrace and is constructed where a parallel system is not feasible.

Cost share is available through the Great Plains Program and Agriculture Conservation Program. Producers with major water erosion on cropland need to have it corrected by 1993.

The 1993 deadline is the last year producers will remain eligible for all USDA benefits as dictated by the 1985 farm bill.

Producers interested in erosion control, moisture conservation and wanting further information on terraces should contact Warren Givens, Technician for the Soil Conservation Service located at 105 E. Ave D in Muleshoe.



AAD TRAVELING PREVIEW CENTER----Muleshoe I.S.D. will house an Adaptive Assistive Devices Traveling Preview Center for Region 17 Education Service Center. The preview center consists of an Apple II GS computer and various assistive devices that enable individuals with disabilities to be more independent. The preview center will be located in the Watson Jr. High library from Nov. 30 to Dec. 11. Anyone interested in visiting the preview center is encouraged to visit Watson Jr. High library from 8 a.m. to 4 p.m. Monday thru Friday during these dates. Ms. Jane Rudd, librarian, pictured with center. (Journal Photo)

Pheasant Season Opens, Big Hunt Scheduled

The 1992 Pheasant Hunt will open Saturday, December 12 and continue through Sunday, December 27. The Lazbuddie Volunteer Fire Department will be sponsoring the hunt in the Lazbuddie community.

Due to spring and summer rains, well above average, the cover is expected to be excellent. Landowners tell us they are seeing a lot of birds along the country roads and in the fields as they are being harvested.

"We will have several thousand acres available for hunting," said Glenn Lust, fire chief. "Part of the farmland has been put into the Conservation Program and has been planted to grass. There will be fields of crop stubble, playa lakes, and weed rows which will provide excellent hunting."

The Lazbuddie Fire Department will limit the number of hunters to 150 on their hunting preserve the first weekend. The department is now accepting reservations. One-third of the payment will hold your reservation.

"Our land will be licensed through the Texas Parks and Wildlife Department with posted signs around the land," Lust continued.

Hunting permits are \$75 for the full season (December 12-27), and will drop to \$50 on Monday, December 14, and \$25 on Monday, December 21.

Methodist Church Annual Blood Drive Set Dec. 10

During this holiday season, more than 100 blood donors are needed every day to meet the needs of area patients. The Muleshoe community blood drive is scheduled from 10 a.m. to 7 p.m., Thursday, December 10 in the fellowship hall of the First United Church, 507 W. Second.

Blood donors are often in shorter supply this time of year for two reasons: people who might normally volunteer to give blood become so busy with family activities, traveling and shopping, they forget to donate; and businesses are reluctant to sponsor blood drives at this time because their employees are busier than usual.

For these reasons, this blood drive is very important to area hospital patients. Blood usage remains constant throughout the year, even during months when donations drop off. In addition, many people schedule elective surgeries for December to take advantage of vacation time.

Cont. Page 8, Col. 1

Each hunter buying a permit will be given a map showing the location of all the land within the shooting preserve.

The fire department will not provide any guide service.

Daily limits are two roosters with a total of four roosters in possession.

A Texas hunting license will be required before purchasing a permit. Hunting permits may be purchased at the Lazbuddie School cafeteria during the coffee and hot roll breakfast on December 12, or at the following locations:

Trieder Electric, intersection of FM 145 and FM 1172; Wilbur Ellis-Tide, One half mile south of intersection FM 145 and FM 214; or Glenn Lust, three miles west and

Cont. Page 8, Col. 1

Lazbuddie Longhorns Advance To Semifinals

Advancing to semifinals, the Lazbuddie Longhorns will take to the field Saturday afternoon against Fort Hancock. Game time is 3 p.m. in Monahans.

In last week's six-man football action, Lazbuddie defeated Dell City 65-49 in a fast and furious game.

At one time in the game, Dell City had a 22-point lead over the Longhorns, but the Longhorns refused to give up.

Dell City jumped to a 35-19 lead after the first quarter and extended its lead to 41-19 on the first play of the second stanza when Benigno Garcia picked up a fumble by Lazbuddie quarterback Brett Thomas and ran 29 yards for the score.

The Longhorns refused to accept defeat and stormed back.

Leland Brockman began the comeback by returning the ensuing kickoff 81 yards for a touchdown.

After the Lazbuddie defense held Dell City scoreless for the first time in the half, Thomas connected on a 19-yard touchdown pass to Brockman.

Brockman provided the two point kick, and the Longhorns pulled with-in eight points of the Dell City Cougars.

Dell City responded on its next drive, marching 57 yards in five plays for the score. David Gallegos capped the drive with an 11-yard touchdown run and Raul Martos added the kick.

Following that point in the game, the Lazbuddie Longhorns held the Dell City Cougars scoreless.

Brockman pulled his team within 49-41 at halftime on a 22-yard scamper, and Jon Colby Miller helped narrow the score to 49-47

Santa Claus, Elves To Arrive

Mark your calendars, and make your plans now to be in Muleshoe next weekend, December 4 and 5, when the Christmas season will officially get off to a flying start.

The big annual Christmas parade will get underway at 10:30 a.m. Saturday, December 5.

Beginning on the south end of Main Street (Boy Scout grounds), the parade will proceed down Main Street to American Blvd. where it will turn west to South 1st. Street and proceed back to Avenue H, before turning back to the scout grounds.

Line up for the parade will be

Moonlight Madness Sale Saturday Night

Are you one of the fortunate people who have finished your Christmas shopping, or do you still need that something special for your aunt, uncle, niece, or even mother or grandmother?

The local merchants will give another opportunity Saturday night to finish your shopping. The merchants have teamed up with the Chamber of Commerce and Agriculture for another (the third) Moonlight Madness Sale Saturday night, Dec. 5.

Businesses will be open from 8 p.m. until 12 midnight with specials for everyone.

Businesses remaining open for the sale include: Anthony's Department Store, Stitches and Staff, Main Street Beauty Shop, Muleshoe Floor Covering, Discount Furniture, A&M Farm Supply and Lookin' Good.

Also J&L Fashions, Ben Franklin, Higginbotham-Bartlett Co., Muleshoe Trade Center, Poyner's, Harvey Bass Appliance, Dinner Bell, Wilson Appliance, Fry and Cox True Value, Perry's, Joe's Boot Shop and Muleshoe Art Loft.

Two more Moonlight Madness Sales will be held, Dec. 5 from 8 to 12 midnight and Dec. 19 from 7 to 12 midnight, for your shopping convenience.

Man's Death Believed To Be Accidental

The body of David Randy Baker, 25, a Lubbock County resident, was found Sunday lying near the Santa Fe Railroad tracks almost in front of Terra International Fertilizer, west of Muleshoe.

A local couple, driving on the nearby highway, discovered Baker's remains alongside the tracks that parallel U.S. 84.

Justice of the Peace Todd Ellis pronounced Baker dead at 12:55 p.m. at the scene. Ellis ordered an autopsy, which was performed in Lubbock.

Ellis has not made a ruling on Baker's death because results are not complete.

The preliminary autopsy indicated Baker died of injuries suffered when he was struck on the left side of his body, most likely during an accident. The autopsy showed Baker suffered a broken neck and head injuries.

Bailey County Sheriff Jerry Hicks told the Journal Tuesday morning that Baker's death was still under investigation, but there is no reason to suspect foul play. The case is being treated as an accident.

from 9 to 10:30 at the Boy Scout grounds.

This year's parade will be led by the Parade Marshal (not yet announced).

In addition to a large number of floats, by several different organizations, the Mighty "M" Band will be marching. Riding in the parade will be Mayor Pro-term Paul Wilbanks, the 1991 Employee of the Year (Billie Downing); 1991 Business of the Year (Joe's Boot Shop), the 1991 Farm Family (Don McGuire family), Woman of the Year (Magann Rennels), Man of the Year (Robert Hooten), the West Texas State University Buffalo, Sonic Characters, SPS's Sparkie, Five Area Telephone's giant telephone, two mule pack riders (Jack and Betty Templar), the Varsity Cheerleaders, the Muleshoe Road Riders, Cub Scout Pack 620, the Muleshoe Junior Riding Club and Moonlight Merchants will all be included in the parade.

The highlight of the parade, what the boys and girls have all been waiting for, Santa Clause and his elves will arrive on a float. Candy will be distributed for the kids.

Last minute cars, bicycles, anything you would like to enter will be welcome.

Gift certificates will be presented to first, second and third place

Billie Joann Smith Wins Grand Prize In Weekly Contest

Mrs. Joann Smith has been declared the Grand Prize Winner (\$150) in the weekly football contest.

It was very close, came right down to the last contest. Mrs. Smith had a total of 20 points, two first place wins, and this week took second place giving her four more points for a total of 24 points.

Coming in close behind was Alene Bryant who had 16 points, a first and second win, before taking second place in this week's contest, giving her a total of 22 points.

Tony Nicolas and Terry Field each had 20 points, but didn't place this week.

Franciario Torres took first place this week. Torres missed two games for ten points.

Two contenders missed three games, so the judges were forced to go to the tiebreakers again.

Alene Bryant, missed three games and was off 32 points in the tiebreakers for a second place win.

Mrs. Smith also missed three games, but was 42 points off in the tiebreakers for a third place win as well as the grand prize of \$150.

Several entries missed four games with two of these being possible winners, Tony Nicolas and Terry Field.

winners in the parade, as has been done in the past.

All of you kid's who would like to have their picture taken with Santa Claus, you will have a chance following the parade. Santa will be at his hut for 45 minutes or an hour and you may have your picture taken for one dollar.

At 7 p.m. everyone is encouraged to gather at the Bailey County Courthouse for the lighting of the Christmas Tree. Mayor Robert Montgomery will be on hand. There will also be Christmas Caroling.

Another big event next weekend will be the annual Christmas Bazaar, to be held in the Bailey County Civic Center and Coliseum Friday and Saturday, Dec. 4 and 5. Various hand made crafts, just in time for your holiday shopping. All booths are to stay in place for the duration of the bazaar, giving everyone a chance to shop at their leisure.

The Jennyslippers will hold their annual barbecue dinner Friday from 11 a.m. to 2 p.m. Tickets may be purchased in advance from any Jennyslipper member, or at the door. Tickets are \$6.00 for adults and \$3.00 for children under the age of 12. You MUST have a ticket.

Included in the menu will be: Barbecue, Beans, Potato Salad, Cole Slaw, Cobbler, and Tea.

Anyone wishing a carry-out plate is asked to go to the green room.

The Jennyslippers will also have a concession stand Saturday.

Door prizes will be given both

Cont. Page 8, Col. 2

First Letter To Santa Claus Arrives

The first letters to Santa Claus arrived in the Journal office this week. All boys and girls are reminded to get their letter to Santa into the Journal and all letters will be printed.

Dear Santa,
For Christmas I want.

A stop watch that haggas around your neck. And i want Game boy with A Game and the Game boy Games are Wheel of Fortune or homealone. And I want roller blades. Thinkyou for all the presents that you gave me last year.

Your Friend,
Candace

Dear Santa,
I want a few Ruby Red earrings and a Ruby Red ring for Christmas. I want our two four wheelers to work too. And I want Hundred dollars. I am 8 years old.

Your Friend,
Kayla Ruth Glover



GRAND PRIZE WINNER---Mrs. Joann Smith, left, was the grand prize winner in the weekly football contest. Journal employee Diana Bernea presents Mrs. Smith a check in the amount of \$150.00. (Journal Photo)

Lowe's Pay-n-Save MARKETPLACE

YOUR FAVORITE PRICES ARE LOWE PRICES

Lowe's QUALITY Pay-n-Save MARKETPLACE



Center Cut
Pork Chops
\$1.97 lb.



Super Lean Market Made
Beef Patties
\$2.17 lb.



Fryer
Split Breast
\$1.57 lb.



Boneless
Arm Shoulder Roast
\$1.97 lb.



Beef
Stew Meat
\$1.97 lb.



Small Pack
Assorted Pork Chops
\$1.37 lb.



Festive Cured Boneless
Turkey Ham
Half or Whole \$9.99 lb.

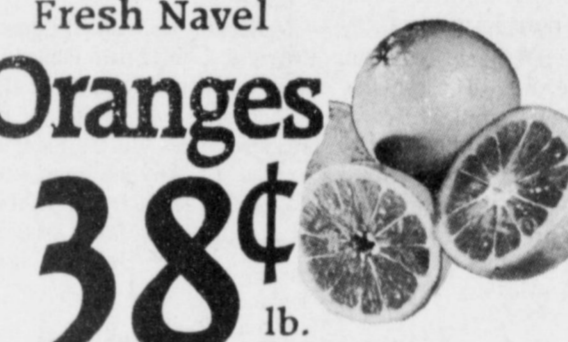
Guaranteed Freshness!



Golden Delicious
Apples 58¢ lb.



Medium
Yellow Onions
4 lbs. For \$1



Fresh Navel
Oranges 38¢ lb.



Russet Potatoes
\$1.99 20 lb. Bag

D'Anjou
Pears 68¢ lb.

Hawaiian
Pineapples \$1.79 ea.

Lowe's Pay-n-Save MARKETPLACE



6 Pack 12 oz. Cans
Coca Cola \$1.59 Asst.



Ragu
Spaghetti Sauce \$1.69 30 oz.



ALPO Dog Chow \$7.99 25 lb.



Nice N Soft White
Bath Tissue 89¢ 4 Roll



Santitas 99¢ Frito Lay Salsa \$1.69 11 oz.



Del Monte
Tomatoes 79¢ 14.5 oz. Asst.



Del Monte
Pineapple 69¢ 15.25 oz. Asst.



Del Monte
Fruit Cocktail \$1.29 30 oz.



Del Monte
Yellow Cling Peach Halves \$1.29 29 oz.



Lipton
Tea Bags \$2.99 100 ct.



Glade
Carpet & Room Deodorizer \$1.69 16 oz.



Glade
Potpourri Air Freshener 89¢ 7 oz.



MJB FAC
Coffee \$1.49 13 oz.



Ultra Surf
\$4.79 70 oz. 30 Loads



Kool Aid
Coolers \$1.99 6 pack Asst.

DAIRY

Shurfine Chilled
Orange Juice 69¢ 16 oz.



Shurfine
Crescent Rolls 99¢ ea.



Kraft Sliced American Swiss or Pimento
Cheese Singles \$2.19 12 oz.



Jell-o
Pudding \$1.99 Asst. 6 pack

FROZEN FOOD



Eggo
Waffles \$1.39 11 oz.



Corn on the Cob \$1.29 12 ears




Tombstone
Pizza \$2.69 12" Original



Blue Bunny
Frozen Yogurt \$2.49 1/2 Gal. Asst.



Post
Golden Crisp \$1.49 13 oz.



Post
Pebbles \$1.69 13 oz.



Post
Raisin Bran \$1.89 20 oz.



Wish Bone
Healthy Sensations \$1.29 Asst.

\$1.49 WITH THIS COUPON

\$1.69 WITH THIS COUPON

\$1.89 WITH THIS COUPON

Lowe's Pay-n-Save MARKETPLACE

401 W. Amer. Blvd. Muleshoe 272-4585
515 W. Amer. Blvd. Muleshoe 272-4406

Prices Effective Nov-Dec 1992
SUN MON TUE WED THUR FRI SAT
29 30 1 2 3 4 5

WE RESERVE THE RIGHT TO LIMIT QUANTITIES IN TEXAS

Our Best to You!

Breast-Feeding Moms Warned Not To Diet

Breast-feeding moms who go on calorie-slashing diets may be shortchanging their infants on protein, says a researcher at the USDA's Children's Nutrition Research Center in Houston.

"Dieting can interfere with the quantity and quality of breast milk," says Dr. Kathleen J. Motil, an associate professor of pediatrics at Baylor College of Medicine.

In a study designed to examine the protein needs of new mothers, Motil found that moms who diet have lower levels of a certain kind of nitrogen in their milk, called non-protein nitrogen, than do non-dieting moms.

Breast milk contains two types of nitrogen, the building block of protein: protein nitrogen, which makes up 83 percent of the nitrogen in milk, and non-protein nitrogen, traditionally considered a "waste product" in milk.

Mother's milk is low in nitrogen to begin with, and Motil believes this non-protein 'fraction' may be important.

"Ultimately, it may affect an infant's health and well-being," she said.

Previous studies conducted at the CNRC have shown that the current protein recommendations for lactating women may not be adequate. Dieters may undercut those needs even more.

"Diet is important for the mother's health during lactation and any restriction, even the smallest amount, may affect the milk."

According to Motil, a woman may jeopardize the quality of her milk as well as her own muscle tissue if she does not get enough protein in her diet.

"Mothers who breast-feed should heed the call of their appetite," Motil said.

Strong Earnings Reported

Strong earnings this year by the Tenth Farm Credit District are translating into competitive new loan programs for farmers and ranchers.

In its third quarter financial report released recently, the Farm Credit Bank of Texas reported net income for the district of \$16.1 million in the quarter ending September 30, 1992. Net income for the first three quarters of 1992 totaled \$43.2 million.

"These strong earnings have allowed us to lower interest rates and introduce new loan programs which, in turn, have generated new business," Bank Chief Executive Officer Arnold Henson said. In October, the bank announced a new, competitively-priced improvement loan program.

The bank's 65 affiliated lending associations in Alabama, Louisiana, Mississippi, New Mexico and Texas are seeing increased inquiries about new loans, particularly real estate loans, according to Henson. He attributed this interest to strong markets for many commodities,

favorable interest rates and stabilizing land values, among other factors.

"Many producers have experienced a good crop year and are feeling more confident to make land, equipment and improvement purchases," he said.

Henson noted that the bank's capital base and overall viability also have improved as a result of its continued strong earnings.

The Tenth Farm Credit District is composed of the Farm Credit Bank of Texas, 48 Federal Land Bank Associations in Alabama, Louisiana, Mississippi and Texas; and 17 Production Credit Associations in New Mexico and Texas. These associations have more than 200 offices located across the five states. Loan volume for the district totaled \$3.59 billion at September 30.

Nationally, the Farm Credit System reported combined net income of \$248 million for the quarter ended September 30, 1992, and \$729 million for the first nine months of 1992. This compares with \$201 million and \$624 million for the same periods last year, respectively.

In fact, she encourages nursing moms to increase their protein intake by one-third above the recommended daily allowance. For a 140-pound nursing mother, that translates to about 100 grams of protein a day compared to 65-70 grams currently recommended.

To bridge this protein gap, nursing moms can add one cup of milk or yogurt, and either two ounce meat, 1/2 cup cottage cheese or 1 cup legumes to their daily diet.

Learning More About Your Heritage

ASSE International Student Exchange programs, a nonprofit, public-benefit organization, has volunteer opportunities which can help you learn more about your heritage. As an ASSE volunteer Area Representative, you will supervise high school aged students from Scandinavia, France, Italy, Spain, Portugal, Germany, Holland, Great Britain, Poland, Czechoslovakia, Estonia, Switzerland, Mexico, Japan, Canada, Australia and New Zealand, and their American host families, as well as assist American teenagers who wish to go abroad. You will learn about different cultures and customs while at the same time, have the chance to share the American way of life with eager students from overseas. ASSE Area Representatives are reimbursed for their expenses, receive materials and training, and become a part of an "international family" of students, families, and program representatives.

If you want to explore your heritage while sharing your own culture, please call 1-800-473-0696.

Services For R.C. Williams Held Wednesday

Services for R.C. Williams, 63, of Sudan were held Wednesday, December 2, 1992 at 3:30 p.m. at the First Baptist Church in Sudan, with the Rev. Cliff Hargrove, pastor, officiating.

Burial was in Littlefield Memorial Cemetery under the direction of Ellis Funeral Home.

Williams died November 30, 1992 at his residence after a lengthy illness.

He was born April 14, 1929 in Turkey, Texas, and married Wynelle Petty May 21, 1950 in Sudan.

R.C. had been a resident of Sudan since 1939, moving here from Turkey, Texas. He had been a farmer and had owned and operated a Gulf Service Station in Sudan. He was also a contract mail carrier for the US Postal Service. He was a member of First Baptist Church in Sudan.

Survivors include his wife; one son, R. Lynn Williams of Apache Junction, Az.; one daughter, Helen Bates of Lubbock; three brothers, Milton Williams of Sudan, Willie Williams of Littlefield, and Jimmy Williams of McAllen; 2 step-brothers, Marvin Shairrick of Lubbock and Hilary Shairrick of Clovis, NM; one sister, Rosetta Polk of Whitharral, Tx.; and four grandchildren.

The family suggests memorials to Sudan Ambulance and Fire Department Fund.

Patients In Muleshoe Area Medical Center

NOVEMBER 27, 1992
Eugene Tighe, Ben Gibbs, Victor Foss, Carmen Vega, Ruby Jones, JoAnn McDonald, Antonia Cuevas.

NOVEMBER 28, 1992
Eugene Tighe, Ben Gibbs, Victor Foss, Carmen Vega, Ruby Jones, JoAnn McDonald, Antonia Cuevas.

NOVEMBER 29, 1992
Ben Gibbs, Jesus Rosales, Victor Foss, Ruby Jones, Cleo Middlebrooks, M.E. Hickman, Johnny Chappell, JoAnn McDonald, Antonia Cuevas, Joe Haskew, Rosa Sneed.

NOVEMBER 30, 1992
Ben Gibbs, Jesus Rosales, Victor Foss, Ruby Jones, Cleo Middlebrooks, M.E. Hickman, Johnny Chappell, JoAnn McDonald, Antonia Cuevas, Joe Haskew, Rosa Sneed.

No two lawyers agree on anything, it seems.

Your troubles are of little interest to others.

"Mail It" Week To Be Held Dec. 7-12 For Lung Assn.

Remember the Christmas Seal letter you received in October and stored in your desk drawer for attention when the holidays got closer? Well, the American Lung Association of Texas-The Christmas Seal People-hopes you'll get that letter out again and return your Christmas Seal contribution during "Mail It Week," December 7-12.

"It's also a good time to mail holiday cards (with Christmas Seals attached, of course) to beat the post office rush," American Lung Association of Texas President Edward Carter suggested.

Carter said his association hopes that Texans will answer their Christmas Seal letter during the week, bringing the Association closer to this 1992 Christmas Seal goal of one million dollars. So far only about \$429,600 has been raised, compared with \$522,653 raised last year at this date.

"Christmas Seal income is down significantly this year," Carter said. "We hope people will respond generously during "Mail It Week," which commemorates the 85th anniversary of the first issue of Christmas Seals. Those very first Seals, created to fight tuberculosis, had a big job to do. They still do today."

Carter said the Christmas Seals now fight all lung diseases including lung cancer, emphysema, asthma and tuberculosis, which is becoming a problem again in Texas. They support lung disease

research, stop-smoking programs, clean air advocacy, school health programs and public education programs.

The American Lung Association of Texas, founded in 1908, is dedicated to the fight against lung disease.



Christmas Sale

at

Latrell's

25% off

Shadowline Sleepwear & Lingerie Jewelry
Alyssa Carr Blouses & Separates Button Covers
Sweaters Watches Purses Belts
Joyce Cordinates Donna's Denims Hanes Hosiery
Baby Clothes Silk Reflections Alive Light
Classic Comfort Silk Opaque Lights

10:00 a.m. to 6:00 p.m.
1519 W. Amer. Blvd.
Muleshoe, Tx.
272-3459

Ben Franklin

Our Variety Shows

2104 W. Amer. Blvd. Muleshoe 272-3855

Mon. - Sat. 8 a.m. - 9 p.m. Sun. 12 - 6 p.m.

2104 W. Amer. Blvd. Muleshoe 272-3855

Mon. - Sat. 8 a.m. - 9 p.m. Sun. 12 - 6 p.m.

Price Busters Just In Time For Christmas

Open Saturday, Dec. 5, 8 a.m. to midnight

50 ct. Mini Lite Set	1.77	Silk & Metallic Bush Poinsettias	50% off
100 ct. Musical Lite Set	8.88	45" & 60" Fabric	99¢ yd.
25 ct. Outdoor Lite Set	5.97	Christmas Musical Figurines	8.99
Super Value - 30 ct. Christmas Cards	2/\$3.00	McCall's Patterns	75% off
12 ft. Extension Cord	99¢	Stuffed Mini Bears	3/\$1.00
Christmas Gift Bags	5/\$1.00	Candy Canes	12 pk. 88¢
4 ft. Canadian Pine Life-Like Artificial Tree	9.77	Personal Christmas Stockings	16" - pkg. of 59
Soft Drinks	6 pk. /\$1.00	Iron On Letters	1.69
While Supply Lasts		Scotch 1/2x450" Magic Tape	2/\$1.00
		Stick on Bows	28 Ct. 2 bags \$1.00

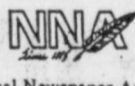
Muleshoe Journal

USPS 367-820

Established February 23, 1924. Published by Muleshoe Publishing Co., Inc. Every Thursday at 304 W. Second, P.O. Box 449, Muleshoe, Tx. 79347. Second Class Postage paid at Muleshoe, Tx. POSTMASTER: Send address changes to the Muleshoe Journal, P.O. Box 449, Muleshoe, Tx. 79347.

We Are Qualified Members Of:

Panhandle Press Association, National Newspaper Association, West Texas Press Association and Texas Press Association.



National Newspaper Association



MEMBER 1992

TEXAS PRESS ASSOCIATION

L.B. Hall, Publisher

Sammye Hall, Vice-President/Comptroller

Evelene Harris, News

Annette Botteman, Society

Holly Millisp, Advertising

Diana Berners, Classified

SUBSCRIPTIONS

Muleshoe Journal and Bailey County Journal

By Carrier Yearly - \$14.00

Bailey and surrounding counties

By Mail - \$15.75

Elsewhere - \$17.50

Advertising Rate Cards on Application

WEST TEXAS PRESS ASSOCIATION

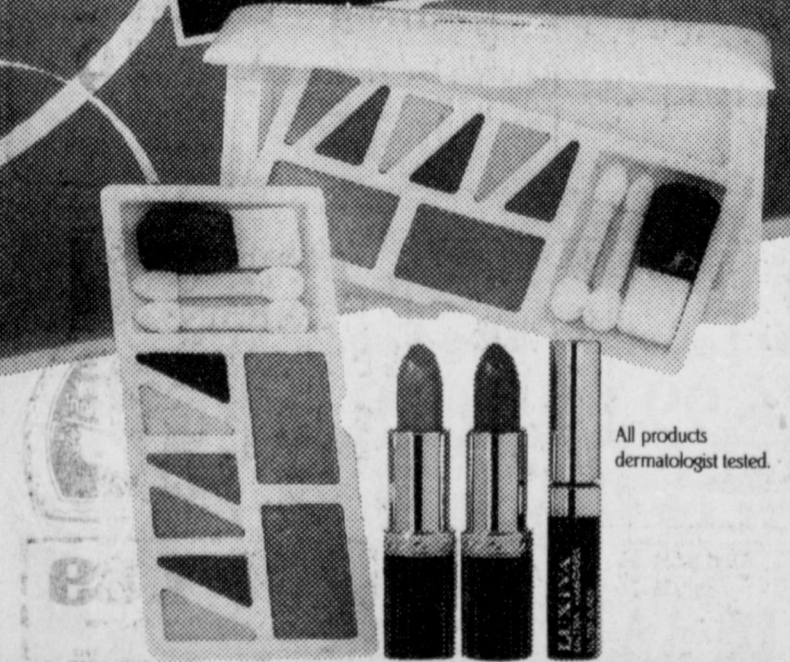


PANHANDLE PRESS ASSOCIATION

Advertisers should check their ad the first day of insertion. The Journals will not be liable for failure to publish an ad for a typographical error or errors in publication except to the extent of the cost of the ad for the first day of insertion. Adjustment for errors will be limited to the cost of that portion of the ad where the error occurred.

Elegant Options

MERLE NORMAN



All products dermatologist tested.

Who Says You Can't Have It All?

This holiday season, the choice is yours with Merle Norman's "Elegant Options" - coordinating color accents for eyes, cheeks, and lips. A total \$65 value. Now just \$25 with a \$12.50 Merle Norman cosmetic purchase.* Come in today for your free holiday makeover and take advantage of this elegant offer. Because at Merle Norman, we believe that beauty should have no limits.

MERLE NORMAN COSMETIC STUDIOS

Latrell's

1519 W. Amer. Blvd. Muleshoe, Tx. 272-3459

*While supplies last at participating Studios.

MERLE NORMAN COSMETICS 1992

Australian Visits Muleshoe

Aaron Patton, 17 year old son of Les and Kerry Patton, of Dunsborough, Western Australia, was the guest of Royce and Sandy Turner, Muleshoe, while on a tour of the United States, visiting friends he had met in Australia. Already spending time in L.A. and Anaheim, Ca., from Texas he will travel to Kansas, Pennsylvania, Minnesota, meet his aunt in Spokane, Washington, and on to British Columbia where she lives to spend a month.

Aaron is a recent 1992 graduate of Busselton Senior High School, and will return to Australia to wait notification of acceptance from Murdoch University, where he plans to major in Resource Management in January.

He comes from a family of four, having one younger sister, Karina, who is fifteen.

One of the highlights of his visit with the Turners was a trip to Joe's Boot Shop, where he purchased his first pair of 'cowboy boots and jeans'.

Aaron's comment about our

country - "It's so flat and no trees!" We were glad to meet Aaron, and wish him the best on his vacation and his future.

Children's Christmas Workshop To Be Held

Saturday, December 12, 1992 a Children's Christmas Workshop will be held at Amarillo Art Center, 2200 South Van Buren Street from 10:00 - 11:30 a.m. or 1:00 - 2:30 p.m. for children ages 4-10. The cost will be \$5.00 per child, and refreshments and Santa Claus will be provided courtesy of the Amarillo Art Alliance. Children ages 4 through 10 will make Christmas decorations, enjoy music and refreshments. Basic art concepts will be applied to a Holiday theme. All materials will be furnished. Instructors are Janette Dickerson and Patty Schneider. Space is limited. Please call 371-5050 to pre-register for holiday fun plus a visit from Mr. and Mrs. Claus.

Parenting Pointers

...from your friends at De Shazo Elementary

Find times for one-on-one conversations with your child.

From: 101 Ways Parents Can Help Students Achieve.

L.V.N.A To Meet

Licensed Vocational Nurses Association of Texas, Lubbock division 18 will meet Monday December 14, 1992 from 7:00 p.m. to 9:00 p.m. in the Amett Room of St. Mary's Hospital.

A board meeting will be held at 6:30 p.m. All board members are asked to be present.

Refreshments will be served by Interim Health Care.

Featured speaker for December will be Roy Hollis, R.N. His subject will be "Crisis Intervention Techniques". One continuing education hour will be given to those attending.

Each person attending is asked to bring a toy to this meeting as our contribution to the "Toys For Tots" program. This request is strictly voluntary and is not mandatory for attendance.

All L.V.N.'s are urged to attend all meetings of division 18. L.V.N.A.T. is your professional organization and offers benefits to you. R.N.'s are also urged to attend. Connie Hodges, R.N., B.S.N. will install officers of Division 18.

In Fashion

The wind suit is attractive and practical as it protects from the cold winds. These nylon suits come in color-blocked jackets and solid pants. Other suit jackets are of solid colors with vivid color accents.

Sweater sets of the 1950s are back but they are now fashioned for evening wear. A red cashmere pullover and cardigan over a long black satin skirt is most attractive. Some long skirts in emerald or ruby come with matching sweater sets.

Student Community Action Club Prepares For 'Old Fashioned Christmas'

The Student Community Action Club is again very active in bringing good relations between the school and the community. This club was organized in 1983 in an effort to save the Muleshoe depot, and since that time, the club has worked in close conjunction with the Muleshoe Heritage Foundation to preserve some of this area's culture.

The club is made up of Junior and senior students at Muleshoe High School who are willing to give their time to make the Muleshoe area a better place to live and to be a link between the school and the community. Since this club was first organized, its goals and activities have expanded. For instance, each month the club honors a "Citizen of the Month", some person in the community or school who gives his/her time and efforts to improve the community. So far this year, the club has honored three outstanding leaders, those who give more than expected. Stephanie Barrett was the September citizen of the month, Janelle Turner, the October citizen, and for November, the club named Sandy Chitwood as a person who gives of herself to improve the school and the community. Each of these community leaders came to the monthly SCAC meeting and spoke out about her activities and the value of community service. Each speaker commended SCAC members for the club's service to the community and the school.

This year, the club is dedicating its efforts to the goal of furnishing and decorating the little girl's room of the Janes Ranch House. Since the club was organized in 1983, all of the money made by the club has been given to Muleshoe Heritage Foundation and thus, the club has been a 'big contributor to preserve the area's heritage.'

This year, the Muleshoe Heritage Foundation has planned an "Old Fashioned Christmas" and carol of lights at the Heritage Center on December 17. The Student Community Action Club was asked to help decorate for this

event. Club members at the last SCAC meeting had a great time stringing popcorn and cranberries to prepare for decorating the Christmas tree at the Janes Ranch House. All members of the community are asked to come and join in this unique celebration. SCAC members will be there!

The next meeting of SCAC will be December 7, 1992 at 6:30 p.m. in the home of Marianne Toombs, 213 East Elm Ave. The club will bring toys and food for the needy. They will honor the December Citizen of the Month, enjoy

Christmas games, and will then proceed to the Janes Ranch House to decorate for the 'Old Fashioned Christmas.'

Sponsors of this active club are Barbara Milburn, high school librarian and Jean Allison, President is Staciae Harris; Vice-President, Mandy Shipman; Secretary, Anmnda Ashford; Treasurer, Aida Martinez; Reporter, Rebecca Green; Parliamentarian, Dustin Wilhite and Stephanie Quintana; Historian, Jodie Thomas; and Chaplain, Summer Wiley.



SCAC HONORS CITIZEN OF THE MONTH-Sandy Chitwood

Helping Stepchildren Through The Holidays

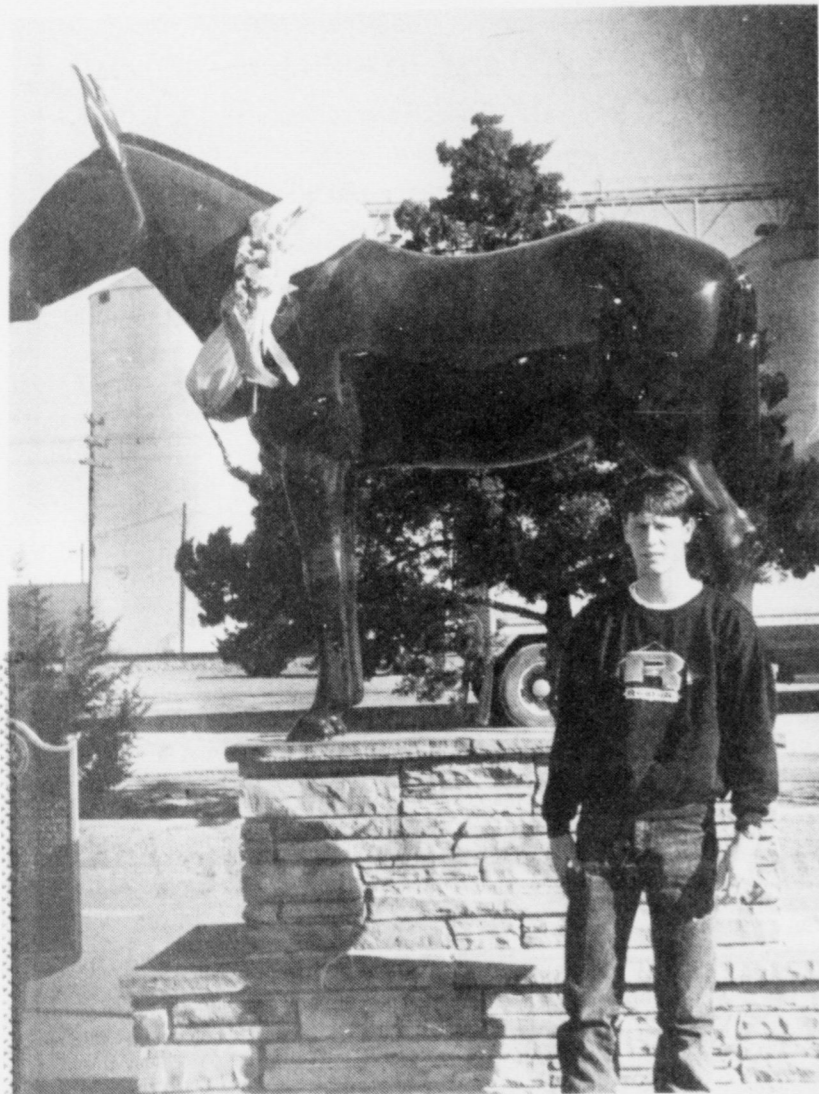
Holiday planning can be stressful for step families.

"The holidays stir up old feelings that have not been resolved," said Dr. James Bray, a psychologist at Baylor College of Medicine in Houston. "Many step-children are still upset over their parents' divorce and have not adjusted to their new family."

Bray offers these suggestions to

help resettle the nest in time for the holidays:

- * Hold a family planning meeting. Assign duties evenly among children and be sure the older children are included.
- * Create new family traditions. Rituals become shared experiences that can help solidify the family.
- * Consider alternating holiday visits from year to year.



Aaron Patton

MOON-MENTOUS

Saturday, December 5, 7-12 p.m.

RCA G25119HP 25" Console TV Reg. \$599. **\$479.95** w/t 

3 Only, 6 p.m. - 10 p.m. Small and Light, Carry It Anywhere! Realistic, Hi-Fi Sound Recording, 8x Power Zoom Lens, 3-Lux Low-Light Sensitivity, Flying Erase Head **8 mm Camcorder \$599.00**

Whirlpool 18 ft. With Ice Maker Refrigerator Reg. \$799. **\$599.00** w/t 

GE AM/FM Cassette Boombox Reg. \$59.95 **\$49.95** 

3 Pack (Limited Supply) VHS Tapes Reg. \$9.99 **\$6.29**



Wilson Appliance, Inc.

117 Main 272-5531

HOLIDAY MOONLIGHT MADNESS

Saturday, December 5, 1992

8 p.m. - 12 midnight

<p>Carhartt Brown Duck Workwear Coveralls, Bibs & Jackets 15% off</p> <p>10 p.m. - 11 p.m. ALL Walls Jackets (Brown Duck Workwear Not Included) 20% off</p>	<p>11 p.m. - 12 a.m. Men & Ladies Laredo & Durango Ropers 44.99</p> <p>8 p.m. - 9 p.m. 13MWZ Wrangler Jeans 38" Lengths 15.49 16.99</p> <p>Five Point Hi Protien 50 Lb. Bag Dog Food 9.99</p>
<p>Shelby Insulated Pigskin Gloves 6.99</p>	<p>OUTLAW Rugged Western Style Blanket Auto and Truck Seat Cover 2 Piece Indian Blanket Seat Covers With Gun Scabbard & Pouches \$21.99</p>

Register For FREE Wrangler Men's Long Sleeve Shirt To Be Given At 11 p.m. (Must Be Present To Win)

69¢ Windshield Washer Fluid

All Stores Open Monday - Saturday 7:30 am - 6:00 pm Sundays 11:00 am - 5:00 pm

A&M FARM & RANCH SUPPLY

3 AREA LOCATIONS

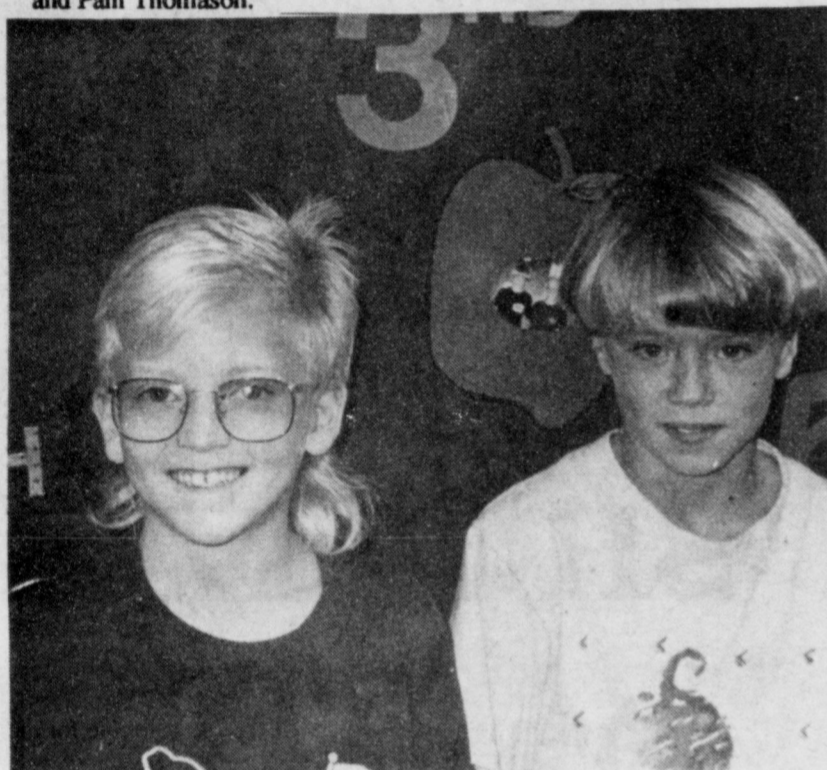
2600 Mabry Drive, Clovis, NM 1-505-762-7717 | 1601 S. Ave. D. Portales, NM 1-505-356-8543 | 1302 W. American Blvd., Muleshoe, TX 1-806-272-5571



PTA OFFICERS ELECTED-The 1992-1993 PTA officers are: President, Beverly Parker; Vice-President, Beth Mims; 1st and 2nd Vice-President, Beth Mims; Third Vice-President, Tammy Black; Third Vice-President, Glenda Powell; Third Vice-President, Linda Flores; Secretary, JoEllen Cowart; Treasurer, Vallery Hagerman; Publicity, Rena Newton; Membership, Brenda Hawkins; Lifetime Membership Committee, Juana Shelburne and Pam Thomason.



SPOTLIGHT WINNERS-DeShazo Elementary Third Grade Spotlight winners for the second six-weeks are P.E.-Kayla Glover, Tucker Crawford; music-Eric Sommaron, Ashley Hartline; Library-Carmen Flores, Jason Anzuldua; Art-Jean Lewis, Cody Turner; Computers- Shonita Hayes, Lincoln Riley.



THIRD GRADE STUDENTS OF THE MONTH
Britini Gartin and Brandon Mount

Children's Vitamin Supplement Usually Not Needed

Vitamin and mineral preparations for children provide parental peace of mind more than they provide necessary nutrients.

"Even the most finicky eater will get enough vitamins and minerals with a varied diet from the four major food groups," said Dr. Kathleen J. Motil of the USDA's Children's Nutrition Research Center at Baylor College of Medicine in Houston.

More is not always better, Motil said.

Too much iron, for example, can be fatal, and excess vitamins A and D can damage kidneys, heart and brain.

Motil recommends giving supplements to children only for specific medical reasons such as chronic illness, teen pregnancy, or eating disorders. A physician should be consulted before starting any supplemental regimen.



Cooper Dan Washington

Mark and Lynda Washington of Muleshoe are the proud parents of a new son, Cooper Dan. He was born November 25, 1992 at 7:45 a.m. at the Muleshoe Area Medical Center in Muleshoe, weighing in at 8 pounds and 13 ounces.

Cooper has one brother, Eric Alan.

Grandparents are Rosemary Bell, George and Lois Washington, and Ray and Ruby Reed, all of Muleshoe.

Parmesan Oven Fries

- 1 cup Parmesan cheese
- 1 teaspoon Italian seasoning
- 1 teaspoon garlic powder
- lengthwise paprika
- 1/2 cup bottled Italian dressing
- Makes 6 to 8 servings
- 1. Preheat oven to 425 degrees. Combine Parmesan cheese, Italian seasoning and garlic powder.
- 2. Toss wedges in Italian dressing to coat. Roll in cheese mixture and arrange on well greased round pizza pan. Sprinkle with paprika.
- 3. Bake 20-30 minutes on HIGH MIX, 425 degrees.

Spending Boost
Consumer spending powered the economy to a stronger-than-expected 2.7 percent growth rate in the July-September quarter, the government said.

Prescription Drugs
Prescription drugs cost an average of 32 percent more in the United States than in Canada, according to a congressional study release.

Use Force
The nurse in Scotland was trying to persuade Mary to take some liquid food.
"Will you take some beef tea, Mary?"
"Na," replied Mary, "I couldn't tak' it."
"Perhaps you would

care for a cup of cocoa?"
"Na, I couldnot tak' that either."
"Well, what about a glass of toddy?"
"Aye," responded the invalid, "Mak' it strong and mak' me take it."



Wilson Appliance opened in November 1967 and was located on the corner of 202 Main in Muleshoe.

Gordon Wilson, the owner and operator of Wilson Appliance, moved to Bailey County in 1943 when he was six years old with his parents, Gladys and Bay Wilson.

He graduated from Muleshoe high School in 1955. He worked for the post office in Muleshoe for eight years. He was also working part time at Poynors'. Afterwards, he and the Poynor Brothers formed a partnership known as Wilson Appliance, selling appliances and televisions. Needing more room, they purchased the old Palace Theatre in August 1972. It was remodeled and the business was moved to 117 Main where it is still located today. They became a Radio Shack dealer in November, 1973. Gordon purchased the business from the Poynors' in December, 1979. Gordon has been active in community and church activities. Because of his interest in helping his fellow man, he was given the nickname of "Kinghearted." He is a deacon in the Muleshoe Church of Christ. He belongs to the Lions Club, where he has served in many capacities. Her served two terms on the school board. He was named "Man of the Year" in 1986.

He and his wife, the former Marilyn Mitchell, have three children, Danny, Kim and Kendra. They also have five grandchildren.

Wilson Appliance Inc. has supported many civic projects in the 25 years of business in Muleshoe.

Your business is always appreciated and an open invitation is extended to all to come by for a visit.

Wilson Appliance, Inc.

117 Main Muleshoe 272-5531

Joe's Boot Shop & Country Junction
Muleshoe, Texas

106 E. Amer. Blvd. 272-7504

Christmas Midnite Sale!

"Joedolph" and all The Boot Shop Reindeer
"Darner, Duster, Najia, Feener,
Donoris, Sander, Verner & Ditzer"!

INVITE YOU To Their
Christmas Sale

Saturday, December 5th - Open Till Midnite
Sale Starts at 7:00 p.m.

1 Rack Rodeo Jackets 20% off All Others - 10% off	Rocky Mountain, Panhandle Slim Roper Jeans 19.99	ALL Men's & Boys Shirts 20% off (1 Lot) Justin Regular & Lacer Ropers 59.00
All Ladies Jeans & Tops 20% off	Rocky Mountain Blouses 16.99	

20% off ALL Unfinished Wood Items
At The Country Junction
10% off ALL Panhandle Slim Boots

Drawings For A FREE Santa Every Hour Will Be Held at the Country Junction
7:00 till midnite (Must Be Present To Win)

Register For Free \$55.00 Joe's Boot Shop Jacket
To Be Given Away at 10 p.m. (Must Be Present To Win)

Enter The Scavenger Hunt - Winner Receives a
\$500.00 Gift Certificate to be given away December 19th!

Hear "The Hill Country Band" perform
for your shopping enjoyment!

Good Luck To The Lazbuddie Longhorns, Sudan Hornets
& Springlake-Earth Wolverines!

JOE'S BOOT SHOP
AND COUNTRY JUNCTION
RIGHT "LITTLE" BOOT SHOP IN TEXAS

106 E. Amer. Blvd. 272-7504

Shop Muleshoe First!

Nacho & Janie's
Richland Hills Texaco
 Wash & Wax, Grease & Oil Change
 We Also Fix Flats

 1914 W. Amer. Blvd. 272-4875


Family Hair Salon
 213 E. AVE. B
 Pat Young
 Owner-Operator
 Melody Lewis
 BUS. 806-272-5987
 RES. 806-272-4738
 965-6416

Shop At Home With Your Local Merchants!

DECORATORS
 Betty Wuerflein
 Telephone 272-4340 616 So.
 Muleshoe, Texas 79347

Muleshoe Publishing Co., Inc.
 Publishers of the
Muleshoe & Bailey County Journals
 304 W. 2nd St. 272-4536

Thanks to all our customers, we appreciate all of you for patronizing The Snack Shack
 Mon. - Fri. 11 a.m. - 2 p.m.
 Closed Saturday & Sunday
The Snack Shack
 222 W. Ave. H. Muleshoe 272-3840

BB's Bakery
 Mexican Bread
 Mexican Bar-B-Q on Sat. & Sun.
 Open - 7 a.m. - 5 p.m.
 216 Main Muleshoe, Tx. 79347 272-5207


Viola's Restaurant
 "For The Best In Mexican Food"
 2002 W. Amer. Blvd. 272-3838

We Appreciate Your Business
Muleshoe Truck & Auto Service
 John Grippando H.E. Reeder

MULESHOE CHAMBER OF COMMERCE & AGRICULTURE
 Doing Things That Most People Think Just Happen!
 215 S. 1st 272-4268

Lowe's

 515 W. Amer. Blvd. Muleshoe 272-4406

LIFE - AUTO - FIRE - CROP - RETIREMENT - HEALTH

 DAVID R. TIPPS
 AGENCY MANAGER
 1612 W. AMERICAN BLVD. P.O. BOX 408 MULESHOE, TEXAS 79347
 OFFICE 806/272-4567
 RESIDENCE 272-5898
 MOBILE 272-6245

Connie's Place
 Hours: Mon. - Fri. - 5 a.m. - 4 p.m.
 Sat. 5 a.m. - 2 p.m.
DAILY BUFFET
 Includes Salad Bar & Cobbler
 Serving Breakfast Daily
 Connie Dominguez, Owner
 121 Main 272-3126

Phone: (806) 272-3448
Main Street BEAUTY SHOP
 115 Main Muleshoe, Texas 79347

Christmas Gifts Galore!
Patches of Paint and Sherrie's Jewelry
 101 Main

PERRYS
 No. 112
 Toys, Greeting Cards, Wrapping Paper, Fabrics, Christmas Candy, Christmas Trees, Christmas Lights & Decorations
 We Also Have \$1, \$2 & \$3 Gift Ideas For Christmas!
 303 Main 272-4620

ANTHONY'S
 Looking Better Every Day!
 321 Main 272-3478


FREE ESTIMATES REASONABLY PRICED
Throckmorton's Refinish Shop
 DIP VAT • RESILVER MIRRORS
 FURNITURE REFINISHING • SELL ANTIQUES
 DAN & MILLIE 806 / 272-5345 319 E. American Blvd. Muleshoe, Texas 79347

410 N. 1ST MULESHOE, TEXAS 79347 BUS. PH: (806) 272-4408
 NITE PHONES AC 806 GARRY 272-3318 JOE 272-3724
SHIPMAN'S BODY SHOP
 AUTO PAINTING - WRECKER SERVICE - FREE ESTIMATES
 TRACTOR GLASS & WINDSHIELDS

O's Family Dining
 Home Cooking Served Buffet
 Hrs: Mon. - Sat. 11:00-2:30 p.m. - 5:00 p.m.
 Closed Thursday Sun. 11:00 a.m. - 2:00 p.m.
 Beginning Friday, December 4th
 Open For Breakfast at 6:00 a.m.
 1008 W. Amer. Blvd.


 1633 W. Amer. Blvd. 272-3998

POYNOR'S
 HOME & AUTO STORE
 103 Main Street Muleshoe, Texas 79347
 806/272-4552 Paul Poynor Owner


 JAMES CRANE TIRE CO., INC.
 322 NORTH FIRST (806) 272-4594 MULESHOE, TEXAS 79347
 MOBILE 806/946-7501 MIKE HAHN 806/272-3594


Your Christmas Gift Headquarters!
 Gift Baskets - Garlands - Vornaments
 Great Ideas For Decorating
Muleshoe

T.V. & Appliances Sales & Service
Wilson Appliance
 RCA Whirlpool Zenith Maytag
 Gordon Wilson Radio Shack Dealer
 117 Main Muleshoe, Tx. 272-5531

Fry & Cox

Lumber & Hardware
 Store Hours:
 Mon. - Sat. 8 a.m. - 6 p.m. - Sun 1:30-4:30 p.m.
 401 S. 1st Muleshoe, Tx. 272-4511


Clark's Central Texaco
 Oil Change, Wash & Wax - State Inspection - Full & Self Serve Gas -
 221 W. Amer. Blvd. 272-3915


RONNIE HOLT INSURANCE AGENCY
 SPECIAL LIFE & HEALTH INSURANCE
 Office: Residence



SANT
"SHOP LOCAL THIS CHRISTMAS"

We owe it to our friends and family to keep all of the money we spend working for us here at home. If local dollars were spent with home town merchants our standard of living would be better and our community would be more prosperous.
 One of the most common and least sensible forms of giving is the making of donations to the growth of other communities. Part of every

LET'S KEEP ALL OF OUR MONEY

SHOP AT

Shop Muleshoe First!

DECORATORS

Floral & Gifts

Betty Wuerflein

Telephone 272-4340 616 South First
Muleshoe, Texas 79347

Shop At Home
With Your
Local Merchants!

WHOLESALE PRODUCTS



DALE OIL COMPANY, INC.
MULESHOE, TEXAS 79347

(806) 272-5576 Gary Dale - 272-4003
413 W. Amer. Blvd. Mike Dale - 272-5176

Lowes **MARKETPLACE**
Bill Gilbert
Store Manager

401 W. American Blvd.
Muleshoe, TX 79347 (806) 272-4585



SANTA SAYS...

LOCALLY

THIS CHRISTMAS"

family to keep
king for us here
spent with home
of living would
would be more
and least sensible
of donations to
s. Part of every

dollar spent goes to support the community
where it is spent -- money spent out of towns
stays out of town.

It's simple economics. The dollar we spend
at home buys about the same goods and
services that it will buy anywhere else... but
... to make every purchase at home a better
bargain, we get to share in the profit by
enjoying a better community.

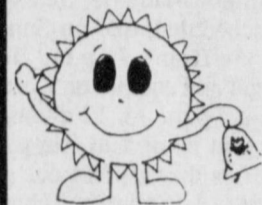
OF OUR MONEY WORKING FOR US...

AT HOME!

Lookin' Good

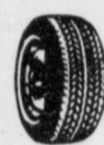
Owners:
Rosemary Bell
Linda Washington

206 Main 272-5052



**Evins Sonshine
Conoco Station**
Metal Model A
Car Kits -
1/3 off

- Snacks - Fountain Drinks - Milk -
623 W. Amer. Blvd. 272-5216



PASSENGER • TRUCK • TRACTOR
ALEX'S TIRE SERVICE
FOR SERVICE 24 HOURS A DAY
TELEPHONE 272-5012

Kumho - Monarch - Dayton
- PowerMark - Tractor Tires

ALEX AGUIRRE 302 E. AMERICAN BLVD.
MULESHOE, TEXAS 79347



Noe's Used Cars

P.O. Box 492 - 512 N. 1st
Muleshoe, Texas 79347
1-806-272-4007



Herman Morrison Home-806-965-2616
Office-806-272-4688



Morrison Oil Co. Inc.

Texaco Distributor

Box 570 Muleshoe, Texas 79347

Dinner Bell Restaurant

2103 W. Amer. Blvd. 272-5871
Muleshoe

Open 7 Days A Week 6:00 a.m. to 9:00 p.m.
- All You Can Eat -
Daily Noon Buffet - \$5.89
11 a.m. - 2 p.m.
Nightly
Steak Specials Mon. - Thurs. & Sat. - Sun.
Breakfast Served Anytime!
Friday
Fish Buffet (Catfish & Shrimp) 11 a.m. - 9 p.m.

SUDDUTH, FIELD & CO.
CERTIFIED PUBLIC ACCOUNTANTS

Randall L. Field, C.P.A.
David L. Sudduth, C.P.A.

806/272-4291
104 W. SECOND
MULESHOE, TX 79347

**Damron
Drugs**

308 Main Muleshoe, Tx. 272-4210

The Finest in Mexican Food... Since 1957

Leal's

MEXICAN FOOD RESTAURANT

1606 W. Amer. Blvd. 272-3294



Henry
Insurance
Agency, Inc.

KENNETH R. HENRY
CERTIFIED INSURANCE
COUNSELOR
REAL ESTATE BROKER

111 W. AVENUE B
PHONE 806/272-4581
MULESHOE, TEXAS 79347



LEADERSHIP
YOU CAN
COUNT ON

DENT & CO.

2800 W. Amer. Blvd. Office: 806-272-4296
Muleshoe, Tx. 79347 Home: 806-272-5643

"Where Customer Satisfaction Is Our Goal"

Bratcher MOTOR SUPPLY

107 East Avenue B Phone 806/272-4288
MULESHOE, TEXAS 79347-3609

CHARLES BRATCHER

514 East Dallas Home 272-3768

O's Family Dining

Home Cooking Served Buffet Style

Hrs: Mon. - Sat. 11:00-2:30 p.m. - 5:00-8:30 p.m.
Closed Thursday Sun. 11:00 a.m. - 2:30 p.m.

Beginning Friday, December 4th We Will Be
Open For Breakfast at 6:30 a.m.

1008 W. Amer. Blvd. 272-4254

O & A
TEX-PACK
Express

Muleshoe Trade Center

NEW FURNITURE TOO EXPENSIVE
SEE JOHN FOR GOOD USED FURNITURE

John Stevens 272-4906

130 Main

Latrell's Fashions
MERLE NORMAN COSMETICS

Monday - Saturday
10 a.m. - 6 p.m.

Owner-Latrell Hysinger
Beauty Advisors-
Kanetha Foster
Lauranette Mason
Phone 272-3459
1519 West American Blvd.
Muleshoe, Texas



**TERRY FIELD
INSURANCE AGENCY**

223 E. Ave. B
Muleshoe, Texas 79347
BUS: 806-272-5551
RES: 806-272-3252

Your Christmas
Gift Headquarters!

Gift Baskets - Garlands - Wreaths -
Ornaments
Great Ideas For Decorating!

Muleshoe Art Loft

Kearney Scoggin

Scoggin Ag. Center Inc.

"Where Fertilizer Is Our Business"

1532 W. American Blvd.
Muleshoe, TX 79347
P.O. Box 452 Ph. 806/272-4613

"QUALITY FIRST"

Bob
STOVALL Printing

MULESHOE, TEXAS 79347

BOB & EVA NELL STOVALL 221 E. AVE. B
806/272-3373

**Pizza
Hut**

1412 W. Amer. Blvd.
272-4213



**RONNIE HOLT
INSURANCE
AGENCY**

SPECIALIZING IN CROP,
LIFE & HEALTH INSURANCE

Ronnie Holt

P.O. Box 304
Western 66 Office Building
Muleshoe, Texas 79347

Office: (806) 272-3614
Residence: (806) 965-2842



FLOWERS
FOR EVERY SEASON

KRISTY'S PLANTS

Poinsettias-Centerpieces-
Order Today!!
FREE Delivery

Kristy Price
(806) 272-5536

710 E. Amer. Blvd.
Muleshoe, Tx. 79347

(806) 272-3106

QUALITY DRUGS &
PRESCRIPTIONS

WESTERN DRUG

PAUL & JUDY WILBANKS

114 Main
Muleshoe, Texas 79347

Home Phone
806-272-3571

Lambert Cleaners

Owners: Terome & Jim Ella Clemmons
**Let Us Help You Get Your
Holiday Garmets Ready!**
Alterations - Drapes - Carpets
& Upholstery Cleaning!

123 Main

272-4726

Muleshoe

Cont. from Page 1

The coverage will be broadcast on America's largest Sports network ESPN on December 13th from 4 to 6 p.m. EST.

This exciting broadcast will feature the top Professional Rodeo Cowboy Association athletes competing for world champion titles in bareback bronc riding, steer wrestling, team roping, saddle bronc riding, calf roping and bull riding, as well as Women's Professional Rodeo Association barrel racing.

Over \$2,000,000 in purse for this Super Bowl of Rodeo. Coverage of the final championship go-round is

Hunt...

Cont. from Page 1

one quarter mile south of Lazbuddie.

You may contact any of the following people for more information:

Trieder Electric, 806-965-2191; Fire Chief Glenn Lust, 806-965-2828; Asst. Chief Nicky Nickels, 806-965-2175; secretary-treasurer Doyle Weir, 806-965-2302; or captain Orin McBroom, 806-965-2305.

"Our Fire Department will be serving coffee, cinnamon rolls and doughnuts, in the Lazbuddie School Cafeteria from 6 to 8 a.m. on opening day, free of charge to those persons buying a permit," Lust continued.

Past pheasant hunts have enabled the fire department to purchase two new quick response fire trucks, a large tanker, and an additional building at Clay's Corner, six miles west of Lazbuddie. This income also plays a key role in their daily operating expenses.

"We, the Lazbuddie Volunteer Fire Department, appreciate your support," said Lust.

Blood Drive...

Cont. from Page 1

The goal for this drive is 75 units of blood. Each unit donated can be separated into components and can ultimately help as many as three patients.

Most healthy people age 17 to 80 are eligible to donate blood. It is a safe and simple procedure and takes from 30 to 45 minutes to complete.

For more information or to schedule an appointment, contact Carol Cox at 272-4396.

sponsored by Heston Corporation and participating Heston Farm Equipment dealers across the United States and Canada.

Christmas...

Cont. from Page 1

Friday and Saturday, by the Jennyslippers.

Make your plans now to get the Christmas holidays off to a good start in Muleshoe, and have a great time taking part in the activities.

The Muleshoe merchants are going that extra mile, giving everyone a chance to do their Christmas shopping. Two more Moonlight Madness Sales have been scheduled, one on Saturday, Dec. 5 from 7 p.m. to 12 midnight and another on December 19 from 7 p.m. to 12 midnight.

Shop at home and support the businesses that support our school activities, 4-H Clubs, churches, etc. Now that they have gone that extra mile, they would all appreciate your business this holiday season.

Semifinals...

Cont. from Page 1

ball off to his senior back and Lazbuddie took the lead 53-49.

The Longhorn defense forced Dell City to punt on the next drive, and Mario Zamora put the Cougars away at the 5:17 mark with a 5-yard touchdown run.

Lazbuddie scored one more time on a 6-yard run by Miller, but time had already run out on Dell City.

Thomas connected on 22 of 34 passes for 292 yards to go with his six touchdown passes. Miller added 138 rushing yards on 12 carries for the Longhorns, which moved to 13-0 for the season.

Gillegos, who was effective early, finished with 137 yards rushing and 90 yards passing for Dell City. The Cougars season ended at 9-3.

GOLDEN GLEAMS



A man of fifty is responsible for his face.

-Edwin M. Stanton.

If it was the fashion to go naked, the face would be hardly observed.

-Mary Wortlet Montagu.



BUSINESS OF THE MONTH--Mike McDearmon, president of the Chamber of Commerce and Agriculture presented Duane Castleberry a plaque Tuesday morning. K.C. Mufflers was named Business of the Month for December.

Extension Offers Farm, Ranch Seminar

Women who are interested in learning more about managing their farm or ranch business will have an opportunity to do so in early 1993. The Texas Agricultural Extension Service will offer the first sessions of a new program, "Women in Agriculture: Management Development Seminars". Lubbock and San Antonio will each hold a conference the first year.

Many educational programs dealing with farm management are attended primarily by men. "Women may not feel comfortable attending, much less asking questions about the basics of topics covered," said Danny Klinefelter, Extension Service Economist and management specialist.

"This program is designed with those women in mind," he said. "All women who are interested in learning more about farm or ranch management will benefit from this exciting educational event."

The Lubbock seminar will be held February 18-19 at the Sheraton Inn. The conference will begin with registration at 9 a.m. on the first day and conclude after lunch on the second. Information will be presented by keynote speakers, in smaller workshop settings and in informal sharing sessions.

There will be a wide variety of workshop topics, ranging from financial management, record keeping and marketing to those more family oriented.

- * Managing Family/Business Relationships
- * Your Farm/Ranch in the Year 2000: How Big?
- * Basic ASCS Information
- * Understanding and Working with Lenders
- * Thinking Globally and the North American Free Trade Agreement
- * Agriculture and Environmental Regulation
- * Developing a Management Information/Record keeping System
- * Understanding Financial Statements
- * The essentials of Labor Laws
- * Estate Planning
- * Protecting Your Farm & Your Future: The Role of Insurance
- * Marketing Basics

Participants in the seminars can expect to learn practical management and marketing skills, gain confidence in participating in new roles on the farm and meet other women with similar interests.

The cost of the conference is \$95, which includes three meals.

One's Choice
One's destiny is never determined by chance. It is determined by one's choices all through life.

-Grit.

Bad Checks Lead Arrests By City Police

Issuance of bad checks leads the arrests (a total of 13 persons) made by the Muleshoe City Police Department over the past two weeks.

Other arrests made include: one person for no drivers license; one for speeding and FTA, two on Capias Warrants; FTA Warrant; disorderly conduct, and unreasonable noise.

Complaints logged included: one subject been in fight; broken storm door; sister ran away; attempted burglary, door broken by BB, burglary of vehicle; window shot out; criminal mischief, shoplifting, suspects assaulted complaint's daughter; and one for stolen license plate.

On Crime

The amount of crime reported to police declined 2 percent in the first half of 1992 compared to the same period the previous year, the FBI said.

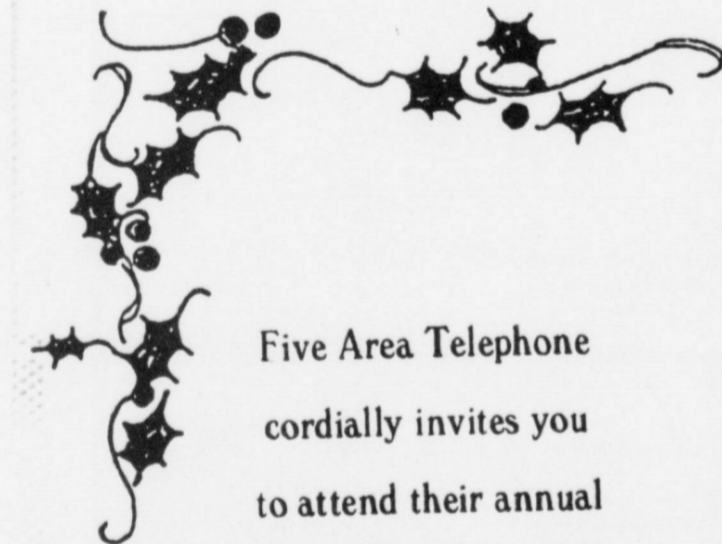
the Civic Center.

For more information or to register, contact your local county agent or call Junice Baldwin at

(409) 845-7171, Joe Bryant, Extension Communications Specialist, (806) 746-6101.



EMPLOYEE OF THE MONTH--Tuesday morning Missy McClure, an employee of Muleshoe State Bank, was presented a plaque and travelling trophy, by Mike McDearmon, president of the Muleshoe Chamber of Commerce and Agriculture. Ms. McClure has been named Employee of the Month.



Five Area Telephone cordially invites you to attend their annual Christmas Open House

to be held

Tuesday

December 15th

10:00 a.m. - 4:00 p.m.

Snacks Provided!!

See You There!!

Five Area Telephone Cooperative, Inc.
302 Uvalde
Muleshoe, Texas

GLOVE SOFT!

8611

Soft cowhide upper, cushion insole and urethane wedge sole. Easy-going Dunoon comfort for weekdays or weekends.

A	D	E	E	E
10-14	6-16	8-13	7-13	7-13

The Fair Store
120 Main 272-3500

RED WING SHOES
Made in U.S.A.

We Have Gift Certificates Available

Order Your Christmas Meat Gifts Today!

Order Your Hams & Turkeys Early!

<p>1/2 Beef \$1.51 lb. Locally raised grain fed Cut & Wrapped To Your Specifications</p>	<p>Dry Cured Bone-In Hams \$2.49 lb.</p>
<p>K.C. Strips \$3.99 lb. Limit 2 Strips</p>	<p>Whole Pork Loins \$1.69 lb. Limit 2 Cut & Wrapped To Your Specifications</p>
<p>Boneless Hams \$2.79 lb.</p>	<p>Let Us Smoke Your Turkey For \$6.00 (Or We Can Get One For You)</p>

Winkler Meat Co.

Have A Merry Christmas
401 Main Muleshoe 272-4703

Pep High School Graduates One

John Wes Wall, a Muleshoe student who once thought that he would probably never receive his high school diploma, graduated with pride during a community open house held at once abandoned school building at Pep.

Teachers, administrators and well-wishers looked on as Wall, the very first graduate of the newly formed PEP High School, held up his diploma.

Wall had dropped out of high school time and time again.

There is something quite different about this particular school miles from his Muleshoe home. It was a place where he could get a fresh start--a second shot at a high school education and his future dreams.

It's been only three months since Wall enrolled in PEP High, which can best be described by its principal Fredda Schooler.

"PEP is an acronym for preparing for the future with education and pride in accomplishments," says the former homemaking teacher. Schooler has extensive experience developing curriculum in the Morton school district. However, Schooler's success in pulling together a coalition of superintendents from eight independent school districts is less of a matter of experience or even skill, she says. It simply involved a few key educations and community leaders who desired to make a difference in the lives of students who need a break.

"It's not a one person dream," Schooler said. "The people in the Pep community have taken up where we have left off. Everyone has said 'we want to help you.' It's a real team effort. But it was each of these school district superintendents who garnered support from their boards as well as the public who championed the idea."

PEP High School, which

opened in sync with regular Hockley County public schools in August is set up to accommodate students ranging in ages from 14-35, grades 9-12. The alternative school for "at risk" students is designed for students who have dropped out of junior or senior high school, are considering dropping out of school or are two or more years behind in school. The main focus is to provide students with a sound academic education while teaching them marketable job skills in vocational area, says Schooler.

PEP High school operates under the same calendar and general guidelines as district schools within the consortium including Anton, Amherst, Morton, Muleshoe, Sudan, Three Way, Whiteface and Whitharral. The educational emphasis is unique, however, with the curriculum and class schedule modified to fit the particular needs of the students who attend there.

According to Schooler, there are a number of things that make PEP different from a traditional high school. The number of credits needed to earn a high school diploma varies from district to district. Texas requires 21 credits to graduate, and so will PEP school. If students meet state eligibility guidelines, they may participate in University Interscholastic League events in their home districts.

"I'm very pleased to see the progress the school is making in such a short period of time," Moore said. "It is wonderful to see a student like John complete his requirements for graduation. I especially appreciate the patience and dedication of Fredda Schooler. She deserves much of the credit."



FIRST TO GRADUATE FROM PEP HIGH SCHOOL---John Wall was the first person to graduate from the PEP High School. Pictured (From Left) Cindy Purdy, MISD school board president; John Wall; Virginia Wall, Wall's wife; and Bill Moore, MISD superintendent. (Journal Photo)

Know The Weather

What is an occluded front? What causes them to form? An occluded front is always formed when a cold front (which travels up to 35 m.p.h. or sometimes even faster) overtakes the slower-moving warm front.



The cold air mass pushes the warm, often moist, air upward and there is a mixing process which may confuse the observer on the ground and even the professional in his forecasting of- fice.



DRAWING THE WINNING TICKET---Cecelio Chavez drew the winning tickets Monday afternoon, in a drawing sponsored by the Texas Migrant Council. The Council is giving away a large turkey, a small turkey and a ham. The money raised from the project will go toward costumes and decorating a float for the Christmas parade. Lucky winners are Oscar Hernandez, first; Sensio Leal, second; and Pefas A., third. (Journal Photo)



Who Knows?

1. Which continent has no desert areas?
2. What is pyromania?
3. The Erie Canal connects what two bodies of water?
4. What is an "Indenture"?
5. What office did Henry L. Stinson hold in 1940?

- Answers:
1. Europe.
 2. A persistent compulsion to start destructive fires.
 3. Lake Erie and the Hudson River.
 4. A sealed agreement between two parties.
 5. Secretary of War.

Best of Press

Equal Right
A democracy is a country in which everyone has an equal right to feel superior to the other fellow.
-Tribune, Chicago.

Who's Poor
There are folks who think it's a recession when they can't afford a new car to tow their new boat.
-Gazette, Emporia, Kan.

Anticipation
The things we do tomorrow help us to live through today.
-Times, Thomaston, Ga.

National Drunk, Drugged Driving Awareness Week

On Friday, December 4, the Texas Department of Public Safety in this area in cooperation with Operation C.A.R.E. will begin the National Drug & Drugged Driving Awareness Week. To kick off this awareness week, Operation C.A.R.E. has designated the first twelve (12) hours of the week as National D-Day.

There will be a combined enforcement effort by all forty-nine (49) state police agencies to enforce the D.W.I. laws. Highway Patrol Captains in this area and throughout the State of Texas will schedule the maximum enforcement efforts possible during this period.

National D-Day will begin at 6 p.m., Friday, December 4 and run through 6 a.m., Saturday, December 5.

Bailey County EMS Sponsors Toys For Tots

The Bailey County EMS are sponsoring the Toys-For-tots again this year and need the help of the entire community.

"We will need lots of toys, and can goods which will be distributed to the children in the area," said Larry Rasco.

Donations may be taken to the EMS office, behind Muleshoe Area Medical Center.

Applications can be filled out at the EMS office at 715 W. 2nd. from 8 a.m. to 5 p.m. Monday through Friday.

Application forms are available now, but no applications will be accepted after the December 15 deadline.

"We would like to say THANKS to those who have made Christmas a little happier for the children," Rasco continued.

Holiday Open House

THURSDAY, DEC. 3, 8AM-8PM

Come See All Kinds of Holiday Decorating & Gift Ideas

- Doorstop Dolls • Copper 20% Off
- Beautiful Artificial Trees
- Luminarias - \$17⁹⁹ • Porta Dishes
- Rug Barn Throws - 30% Off
- Unique Bird Houses - 30% Off
- Chandeliers & Ceiling Fans 30% Off (or more)
- Southwest Design Sandstone Wall Hangings
- Candles & Potpourri

Refreshments Will Be Served
Come Join Us

Layaway for Christmas

Lighting Accents

217 Sycamore - Clovis - 769-1470

"We're Not Just Lights"

Great Holiday Gift Giving is "in the Bag!"



Requires:
New service activation.
Available on selected rate plans.
Not good with any other offer.
Subject to credit approval.

Tis the season... to open up everyone's line of communications --with a cellular phone from Liberty!

And right now you can get the perfect gift at the perfect price! --Just \$79 for a Motorola high quality cellular phone.

Call or stop by to see us or one of our nearest authorized agents today! With a Motorola Cellular Tote Phone, holiday gift giving is truly "in the bag!"

LIBERTY CELLULARPHONE NETWORK

Assuring You Quality Equipment and Quality Service After the Sale!



—Authorized Agent—

Wilson Appliance 272-5531

Finding The Mother Load

by: Keith R. Warren

We have all heard fishing tales of fishermen finding a honey hole and just loading the boat. More often than not, these stories are true. Sure, as in all stories, the story teller may exaggerate a bit, but to him (or her) it was like finding the pot of gold at the end of the rainbow.

Discovering the fishing spot of a lifetime is often luck, but to professional fishermen, it is the reward they receive from using all the information provided to them properly.

Successful tournament bass fishermen seem to find these spots more often than not. They are successful because they follow a system that eliminates unproductive water as quickly as possible. Thus, resulting in finding the best water to spend their fishing time in.

In order for bass fishermen to find the most productive water, they must follow a system. Recently, I had the opportunity to ask a room full of bass fishermen what system they used. One thing they all agreed on is that you should not try to cover too much water.

First, you should select a portion of a lake that is not too large. Select a creek arm, river section, lower end or a place that offers fish (and you) what they may be looking for. Make a commitment to fish only that area. Many of these areas are like a reservoir system in itself. They have shallow water, deep water, ridges, ditches and much more.

By limiting yourself to one area, you spend more of your day with your bait in the water. When fishing the area, cover the water quickly and thoroughly with fish locating baits.

Once one area has been covered, move to the next, then the next. I suggest having a minimum of four rod and reel combinations rigged. One with a worm or jig, a spinnerbait, a diving crankbait and a rattling crank bait like a Rat-L-Trap. Of course, if it is spring through fall, I will use two more

outfits, both topwater; a buzz bait and a popping topwater bait. These six outfits will help eliminate all possible non-productive spots quickly. An angler must have knowledge of which rod to throw, and when. This knowledge only come with time, study and practice.

Your trolling motor is as important as any piece of equipment on your boat. Using it properly, you will put more hours on it in a day of fishing than your outboard. Your batteries need to be charged properly to sand up to a day of fishing. Without your trolling motor to move you quietly to the next spot, you are out of business. When trying to find fish, I rarely turn my trolling motor off. I run it constantly looking for isolated targets (a fallen tree, grass bed, rock pile, etc.) that will hold fish. But while I'm looking for that target area, I'm still casting different baits trying for a strike. I will constantly be switching to a different rod. Once a fishy looking area has been spotted, slow down only enough to fish it thoroughly. Almost always, I'll throw my faster moving baits to the target first. If this doesn't result in a strike, I'll drop my worm or jig in the spot. Often, you will find a target that just looks too good to not have a fish on it. Remember where that spot is. Come back and check it later. It may be that the fish were just spooked off by another boat. I will give an area I have chosen to fish an entire day at times. Sure this is frustrating, if you are not catching fish, but you are storing away valuable information that can be used later.

Finding the mother load requires time, concentration, skill and luck. You need to keep moving like a machine, cover as much water as possible as efficiently as possible. Learn from each fish and treat each cast as if it were your last of the day. I call it "milking my cast" to get every possible drop out of it. Enthusiasm and a positive attitude need to be kept all day long.

Aggressive bass fishermen will cast between 2 and 4 times per minute. Just calculate that they may cast 3,000 times or more in a day. The more casts you make, the higher your odds of catching will be. If you are unsuccessful in finding that spot of a lifetime, don't be disappointed or give up. You should look at the bright side, you

now know what not to do. Go to a different area of the lake the next time. By using this method, you will know the lake as well as if you were a guide there, and just maybe, you'll find the spot of your lifetime!

For more information contact The Texas Angler at 512-625-3474.

Vitamin Can Reduce Birth Defects

A common vitamin can dramatically reduce certain birth defects that annually afflict as many as 3,000 U.S. babies, many of them poor Hispanics.

The B-vitamin folic acid can reduce neural tube defects by as much as half, said Dr. Edward McCabe of Baylor College of Medicine in Houston who chaired a scientific advisory committee investigating such defects in the Rio Grande Valley of Texas.

Neural tube defects include anencephaly, spina bifida and encephalocele. Anencephaly is an absence of all or part of the brain, spina bifida a spinal deformation and encephalocele a brain hernia.

"Folic acid is an easy solution to a terrible problem," McCabe said. "If each woman of child-bearing age who had never had such a pregnancy took four-tenths of a milligram of folic acid daily, we could eliminate half the neural tube defects."

The women could get that dosage simply by taking over-the-counter multi-vitamin that included folic acid.

And if each woman who has had an affected baby took 4 milligrams daily, recurrence could drop 70 percent, McCabe said.

The previously affected women, however, would need to use specific folic-acid preparations to avoid potential overdose of other ingredients in the multi-vitamin preparations.

McCabe stressed that folic acid must be taken prior to pregnancy.

"Once a woman knows she is pregnant, it's too late," he said. "The damage will already have been done."

Folic acid is available in a wide variety of foods including beans and meat, but it is destroyed by cooking.

"Because of that," McCabe said, "a person cannot reliably obtain the necessary dosage from her diet."

In 1991, an unusual number of anencephalic babies were born in the Rio Grande Valley.

For reasons not yet known, Hispanics have a higher incidence of neural tube defects than do non-Hispanic whites, McCabe said. African-Americans have fewer still.

In Texas' heavily Hispanic Cameron County, there were six anencephalic deliveries at one Brownsville hospital between March and May 1991. The southernmost Texas county had three such births in one hospital during one 36-hour period in April 1991 alone.

"We are investigating environmental pollution as a possible factor in neural tube defects," McCabe said, "but folic acid for all child-bearing women is something we can do right now that we know will be effective."

McCabe said there also seems to be a connection, possibly dietary, between poverty and neural tube defects.

Particularly high incidences occurred in the U.S. during the 1930s Depression and in Ireland during the 1840s potato famine.

NEWS VIEWS

Tony Blankley, aide to Cong. Gingrich (R-Ga):

"Clinton campaigned as a centrist. We would like to help him govern from the center or right of center."

Bobby Joe Leaster, wrongly jailed for 15 years:

"I don't have time for bitterness and hostility. I'm a positive thinker. I knew this day would come," commenting on his release and million dollar compensation.

Handwashing Prevents Colds

If you catch a cold this fall or winter, remember to wash your hands a lot.

"Although most colds are contracted by breathing virus-filled droplets, many colds result from rubbing the nose or eyes with fingers that have picked up a virus from hand-to-hand contact," said Dr. Christine Matson, an associate professor of clinical family medicine at Baylor College of Medicine in Houston. "If you catch a cold, add frequent hand-washing to your list of remedies."

Millions of people at some time or another fall victim to the common cold bug. Americans catch a total of about one billion colds each year caused by one of 200 different viruses. Children are often vulnerable to colds, sometimes getting up to 10 colds per year, since they pass on different viruses to each other.

"When people with colds cough and sneeze into their hands," Matson said, "they tend to touch

objects at home, work and school, leaving colds-causing viruses behind."

In addition to frequent hand-washing, tissues and handkerchiefs can also lessen or even prevent the passing of colds to others because they can contain the germs associated with coughing and sneezing.

"Obey how you feel and treat only what is bothering you the most," Matson said. "You can take fewer drugs and lessen the chance of unfavorable side effects. A stuffy, runny nose may only call for an

A Holiday Gift For The Birds

Looking for a holiday gift that will encourage your child's interest in nature or satisfy the person who has everything? *Fifty Birds of Town and City*, a colorful book by the U.S. Fish and Wildlife Service, could be the gift that will stimulate a lifelong interest in birds.

The book features color paintings and short descriptions of 50 birds you are likely to see where you live - birds like the barn swallow, cardinal, goldfinch, nighthawk, green heron, and yellow warbler. The 50-page hardcover book with illustrations by wildlife artist Bob Hines is a great first bird book for kids or for people who are interested in birds but don't want a complex field guide.

You can add to your gift by purchasing a good quality bird feeder or a birdbath, and then see how many of the "50 birds" come to your yard.

And while you're enjoying the birds, you might want to know that they are there -- in part -- because the American people have gone to a lot of trouble to conserve them. In fact, in 1992 the United States will celebrate the 75th anniversary of its major conservation law that protects birds the Migratory Bird Treaty Act. Before this farsighted law was enacted in 1918, egrets and many other birds were being slaughtered to provide feathers for ladies' hats and other clothing. The Migratory Bird Treaty Act ended the indiscriminate killing of birds and was the cornerstone of later laws that established hundreds of National Wildlife Refuges for migrating birds.

You can order *Fifty Birds of Town and City* for \$7.50 from the Superintendent of Documents, Washington, D.C. 20402 (Stock Number 024-010-00382-1).

Beware of the man who tells you what a Christian life he leads.

Smart advertisers will stress the buy-at-home theme.

Thank You

I would like to thank the Jennyslippers for the beautiful reception they gave me as former mayor. Gayle & I appreciated it very much.

Thank you also to the many friends who came by.

With Love,

Darrell & Gayle Turner

antihistamine, and a nagging cough may only require a cough suppressant.

The most effective at-home treatment is plenty of rest and lots of fluids.

Bothersome cold symptoms are actually a positive sign that your

body is fighting off the cold virus. They can also be the sign of a more serious problem.

"A cold can aggravate an asthma problem," she said. "Coughing and wheezing could be the beginning of a respiratory problem that needs immediate medical attention."

PUBLIC NOTICE

GTE Southwest Incorporated (GTSW) and Contel of Texas Inc. (Contel) have filed an application with the Public Utility Commission of Texas to seek approval to provide two new private line services and to change rates for existing services. GTE's intraexchange DS1 Service will be offered pursuant to the rates proposed with this filing and will no longer be available through concurrence with GTE's interLATA access tariff rates which are lower. Contel's intraexchange DS1/DDS Service will be offered pursuant to the rates proposed with this filing and will no longer be available through Contel's current private line tariff rates. Existing customers with DS1/DDS Services will not be affected by these rate changes. DS1 1.544 Megabits per second (Mbps) Service and Digital Data Service (DDS) will normally be used for the transmission of data communications or large volumes of voice communications between two locations. These services are optional and will not affect the existing rates of customers who do not order these services. The estimated annual effect on GTE-SW's revenues in the first year is \$1,080,567. The estimated annual effect on Contel's revenues in the first year are \$42,383.

DS1 Service

DS1 Service is an intraLATA Private Line Service which provides a dedicated, high capacity channel which may be used for simultaneous two-way transmission of voice data or other digitally encoded customer information signals. DS1 Service provides a transmission speed of 1.544 Mbps and is designed to provide an average performance of at least 95 percent error-free seconds of transmission over a continuous 24-hour period.

DS1 Service is available in and between all exchanges of GTE-SW and Contel where digital facilities exist. DS1 Service is available on a point-to-point intraLATA basis between two Customer Designated Locations (CDL), between a Serving Wire Center (SWC) and a CDL, between a CDL and a point of connection with another service provider or between two SWCs.

IntraLATA DS1 Private Line Service is comprised of three rate elements: DS1 Local Loop, DS1 Transport and DS1 Transport Termination. Each element is described below.

DS1 Local Loop

This rate element is for the cable facilities from the CDL to the SWC. The customer has two payment options for the purchase of DS1 Local Loops. There is a month-to-month plan or term contract Optional Payment Plan (OPP).

The month-to-month payment basis allows the customer to establish and disconnect DS1 Services, without penalty, other than to meet the minimum service interval of one month's service, as needed. Under the month-to-month service, the additional DS1 Local Loop rate applies only when the additional DS1 Local Loop (s) is (are) ordered at the same time and between the same two CDLs as the first DS1 Local Loop.

The OPP plan allows the customer to select a term of service (1 YR, 3 YR and 5 YR) with lower monthly rates associated with longer term contracts. If the customer selects an OPP, additional DS1 Local Loops may be ordered and installed at the Additional DS1 Local Loop rate between any SWC and CDL covered by the OPP, at any time during the term of that OPP.

DS1 Transport

This rate element is for the mileage sensitive charges for transporting a DS1 signal between Serving Wire Centers. Transport occurs only when the two CDLs being connected are served by two different SWCs.

DS1 Transport Termination

This rate element is for the equipment to terminate DS1 Transport at the SWCs. This charge applies only when DS1 Transport is required for the service configuration of the customer. One transport termination charge applies at each end of the DS1 Transport.

Proposed Rates and Charges for DS1 Service are as follows:

	Nonrecurring Charge	Monthly Rates
DS1 Local Loop		
Month-to-Month		
First System	\$ 1,000.00	\$ 298.00
12-month term		
First System	-0-	\$ 283.00
36-month term		
First System	-0-	\$ 255.00
60-month term		
First System	-0-	\$ 226.00
Additional System	\$ 130.00	\$ 130.00
DS1 Transport		
Per airline mile	-0-	\$ 16.00
DS1 Transport Termination		
Per Termination	-0-	\$ 40.00

Digital Data Service

Digital Data Service (DDS) is an intraLATA Private Line service which supports synchronous, full-duplex transmission between the CDL and the SWC or the point of connection with another telephone company at transmission speeds of 2.4, 4.8, 9.6, 19.2 and 56 kilobits per second (Kbps). DDS provides a transmission path for digital data signals within the same LATA.

DDS Service is available in and between all exchanges of GTE-SW and Contel where digital facilities exist. DDS Service is available on a point-to-point intraLATA basis between two CDLs or between a CDL and a point of connection with another service provider.

IntraLATA DDS Private Line Service is comprised of three rate elements: DDS Local Loop, DDS Transport and DDS Transport Termination. Each element is described below.

DDS Local Loop

This rate element is for the cable facilities from the CDL to the SWC. The customer may establish and disconnect DDS Local Loops without penalty other than the minimum service interval of one month's service, as his/her needs demand.

DDS Transport

This rate element is for the mileage sensitive charges for transporting a DDS signal between SWCs. Transport occurs only when the two CDLs being connected are served by two different SWCs.

DDS Transport Termination

This rate element is for the equipment to terminate DDS Transport at the SWCs. This charge applies only when DDS Transport is required for the service configuration of the customer. One transport termination charge applies at each end of the service.

Proposed rates and charges for DDS are as follows:

	Nonrecurring Charge	Monthly Rates
DDS Local Loop		
2.4, 4.8, 9.6, & 19.2 Kbps	\$ 85.00	\$ 85.00
56 Kbps	\$ 85.00	\$ 95.00
DDS Transport		
Per airline mile		
2.4, 4.8, 9.6 & 19.2 Kbps	-0-	\$ 1.60
56 Kbps	-0-	\$ 3.20
DDS Transport Termination		
2.4, 4.8, 9.6, 19.2 & 56 Kbps	-0-	\$ 20.00

This filing has been assigned Consolidated Docket Nos. 11408/11435. The deadline to intervene in this docket is January 1, 1993.

Persons who wish to intervene or otherwise participate in these proceedings should notify the Commission. A request to intervene, participate, or for further information, should be mailed to the Public Utility Commission of Texas, 7800 Shoal Creek Boulevard, Suite 400N, Austin, Texas, 78757. Further information may also be obtained by calling the Public Information Division of the Public Utility Commission at (512) 458-0256, or (512) 458-0221 teletypewriter for the deaf.



HEALTH INSURANCE
CALL Mark Morton 109 S. 1st Muleshoe 272-7519

Home for the Holidays

Register for a \$50.00 Gift Certificate or Items at these 1992 HOME FOR THE HOLIDAYS PARTICIPATING BUSINESSES

- Albertson's
- Baldock & Sons
- McDaniel's Furniture
- The Blue Room
- C&D Bicycles
- Clovis News Journal
- Dayhoff Shoes
- Ealy Furniture
- El Monterrey Restaurant
- Golden Corral Restaurant
- Green Thumb Nursery
- Holiday Inn
- Holmberg Jewelry
- JC Penney
- John Burns Hardware
- Juanito's Restaurant
- K'Bob's Restaurant
- Leal's Mexican Restaurant
- Lighting Accents
- Connie's Choices
- Master's Books & Gifts
- Phillips House of Music
- Poor Boy's Steakhouse
- Clovis Floral & Greenhouse
- The Office Center
- Queens & Teens
- R&F Steakhouse
- Randy's Shoes
- Roden Smith
- S&S Supermarket
- Sears Roebuck & Co.
- Sutton's Bakery
- Taco Box
- Tankersley's
- Tarpley's Music Co.
- Travel Center
- Triangle Home Center
- Wal-Mart

Plus

- * New Mexico Get-Aways including Carlsbad Caverns with lodging at White City
- Ski Santa Fe with lodging at Picachos
- Ski Taos with lodging at Sun God Lodge

* Clovis Shopping Dollars \$250, \$150 and \$100

Drawings to be held December 18th Must be 18 or older to register.

CLOVIS/CURRY COUNTY CHAMBER 215 Main • 763-3435

NEW MEXICO AMERICA'S LAND OF ENCHANTMENT



CLASSIFIEDS 272-4536

CLASSIFIED RATES

15 Words & Under
Minimum Charge
\$2.30
Thereafter
\$2.00
16 Words & Over
1st Insertion
15 cents per word
2nd Insertion
13 cents per word

CLASSIFIED
DISPLAY RATES
\$1.75
Per Column Inch

DEADLINES
12 noon Tues.
For Thursday Paper
12 noon Friday
For Sunday Paper

To receive the reduced
rate after the first
insertion, ad must run
continuously.

We reserve the right to
classify, revise, or reject
any ad. We are not
responsible for any error
after ad has run once.

1. Personals

CONCERNED
About Someone's
Drinking?
HELP IS
AVAILABLE
through Al-Anon
Call 272-2350 or
965-2870 or come to
visit Tuesday and
Thursday nights, 8:00
p.m. & through AA call
965-2870 or come visit
Tuesday nights, 8:00 at
620 W. 2nd, Muleshoe

For more information and
assistance regarding the
investigation of get-rich-
quick, work-at-home and
other financial/business
opportunities, The
Muleshoe and Bailey
County Journals urges its
readers to contact the
Better Business Bureau,
1206 14th St., #901,
Lubbock, TX 79401
or call (806)763-0459

3. Help Wanted

MAJOR
TELEPHONE
COMPANY
Now hiring. Technicians,
installers, Acct/Serv.
Reps, Operators. No
experience necessary. For
information, call 1-219-
736-9807. Ext. F8265 8
am-8 pm--7 days.
C3-49t-4tp(ts)

TRUCK & TRACTOR
DRIVERS WANTED:
Monthly salary, lots of
travel. Job runs March-
December. Contact Scott
or Charles at SCB
Farms, Inc. in Bovina,
TX---(806) 238-1206
S3-44s-tfc

Bailey County Precinct
#4 is now taking
applications for a Road
Hand. Class "A" CDL
required. Application in
County Judge's Office.
C3-49t-2tc

NOTES, COMMENT

Regular exercise is
the secret of old age.

Never argue with
friends over a non-
essential.

People who are
always tired should take
a vacation.

Too often habits
make men instead of
men making habits.

5. Apts. For Rent

2 Bdrm. furnished or
unfurnished apartments.
Good location. Water
paid. Call 272-7575.
P5-44s-tfc

1 Bedroom furnished
apartment. Water paid.
Good location. Call
272-7575.
P4-44s-tfc

7. Wanted To Rent

WANTING to rent or
lease 2 or 3 circles of
land 272-5385.
L7-47s-8tc

11. For Sale Or Trade

AKC YELLOW
LABRADOR
PUPPIES -
READY NOW!
CALL
272-4805

15. Misc.

Major Appliance
and Minor Home
Repairs!
Call 272-4450
HENDERSON
SERVICE, CO.

2 Sections irrigated farm
land 10 miles North of
Hereford. 8 wells, large
grain base, lays good.
Home, steel shop, pipe
corrals, underground
lines, \$450 per acre.
Owner will finance part.
409-543-5636
H8-45s-8tc

3-1-1 Brick, \$1000 cash
allowance with assump-
tion of 8.5% loan. 1424
W. Ave. C. 272-5234.
S8-44s-tfc

FOR SALE
2100 sq. ft. 4 bedroom
brick with new timber-
line roof. Total electric-3
year old heat pump (heat
& cool). 2 baths, double
garage, lots of closets.
Call 272-4793 or 5531.
C8-45t-tfc

In
Fashion

Nothing gives one a
cozier feeling than a
sweater when the weather
turns cool. For a
pullover choose a sweater
with several colors and
patterns for solid skirts
and pants. A solid
sweater needs a colorful
scarf for variety.

Knit dresses are a
wise choice because they
are virtually wrinkle free.
The knit dress will take
you from day to night
and still look fresh. Col-
orful cardigans add a va-
riety of choices in turtle-
necks when worn with
skirts or pants.

To be able to read is
not the same as to
know what to read.

Ignorance, perpetual
and profound, is the
worst sin of man.

People who hurry
through life meet death
that much earlier.

Hope springs eternal
in the hearts of those
who have eternal hope.

15. Misc. 15. Misc.

James Hess Constructors
Commercial Residential Building
Complete Concrete Work
(Foundations, driveways etc.)
Turnkey Remodeling of all types, roofing.
Local references/
Free estimates 25 yrs. experience
Call 227-2539

JOHNSON CATERING
Now booking holiday banquets, parties, & open houses.
Full meals or standup catering. Also all kinds of holiday
cakes, candies, etc. Weddings-Quinceaneras. Free 4x6
individual or family pix included for each banquet
scheduled. 272-5746

Johnson Photography
Seniors, Weddings, Portraits, Groups, Quinceaneras.
1-8x10, 4-5x7.8 wallet--\$25.95 Portrait Christmas cards
& gift certificates 10% discount. Your home or mine.
272-5746

ACTION VIDEO
123 MAIN STREET
MULESHOE, TEXAS
NEW RELEASES
"LADY MOBSTER"
"THREE DAYS TO A KILL"
"KICK BOXER III"
"BLOODFIST IV"
"GRAVEYARD SHIFT"
Open 11 a.m.-10 p.m. Monday-Sunday
47t-2tc

**Custom Cowboy
Services**
Gathering-
Processing-Doctoring
All Phases Of Cattle Work
Also Professional Horseshoeing
Wheat Cattle Available
Experienced- Professional
Jim Bohler
965-2322
Muleshoe

8. Real Estate 8. Real Estate 8. Real Estate 8. Real Estate

Bingham & Nieman Realty
116 E. Ave. C George Nieman, Broker 272-5286 or 272-5285

RICHLAND HILLS
PRICE REDUCED 3-2-2 Brick, Cent. A&H,
built-ins, FP, sunken lv. area, ceiling fans,
earthtone carpets....RH-1

3-3-1 car carport-Large Brick home with built-
ins, 2 fireplaces, extra storage, Priced in the
\$60's!!! RH-3

NICE RESIDENTIAL LOTS...\$5,000 UP
4-2-2 Brick, Large living/dining combined...
\$50's!!! RH-5

3-2-1 Brick, Cent A&H, with fenced yard...
\$50's!!!! RH-6

3-2-2 Brick with fireplace, 5 ceiling fans, new
carpet & paint, new dual fuel heat pump,
abundance of closet space...\$90's....RH-8

HIGH SCHOOL
3-2-1 carport Brick, built-ins, lg. isolated master
bdm., covered patio...\$40's...HS-1

IMMACULATE LARGE BRICK HOME 3-2-2
Heat Pump, built-ins, Whirlpool, loads of
storage, lg. shop-storage, \$70's!!! HS-2

3-2 Remodeled, heat pump, built-ins, fenced yd.,
storage bldg. \$20's!!! HS-3

3-1-1 Brick, heat pump, fenced yard, current
FmHA financing..Price reduced..H-4

4-2-2 Brick, Built-ins, Cent. A&H, ceiling
fans...\$40's!!! HS-5

FmHA financing to a qualified buyer 3-1 1/2-1
Brick in tip-top shape...\$20's!!! H-6

HIGHLAND AREA
3-2-1 Brick, Cent. A&H, FP, built-ins.
MAKE OFFER!!!! HL-1

LENAU ADDITION
3-1-1 car carport-Den with fireplace, floor furnace
heat. Low \$20's!!!L-8

REMODELED BRICK-3-2-1 With Cent.
heat, built-ins---PRICE REDUCED!!!L-2

3-1-1 Carport home, Cent. A&H, built-ins, FP
fenced yd. \$20's!!!! L-3

JUST LISTED-2-1-1 Home with Heat Pump,
has extra insulation in attic & floors...\$20's...L-4

3-2-1 carport Neat & Clean, built-ins, A&H,
cov. patio, storage bldg...\$30's!!! L-5

3-2-1+carport, Brick, ceiling fans, Approx. 2060
sq. ft...\$40's!! L-6

2-1-1 Carport, fenced back yard, with two
storage bldgs..Priced in the \$20's L-7

4-3 Bath, Brick, on 2 acres, built-ins, FP,
Geothermal Ht. pump, horse stalls, pens & tack rm.
Also income producing shop on location or use for
your own needs...\$80's!! PRICE REDUCED!!!!

VERY NICE 4-2-2 Brick home on 6 ac., Cent.
A&H, 2300'+lv. area, Much More!!! \$70's!HR-4

3-2-2 Brick, blt.-ins, Ht. pump, FP, 2.5 acres
on pavement. \$60's!!! HR-3

3-2-3 Carport Mobile home on 11 ac. edge of
town, MAKE OFFER!!!! HR-5

3-2-1 on 1 acre, Cent. Heat, Evap. Air,
Remodeled, \$30's!! HR-6

3-1-2 Home on 1 1/2 acres storm cellar &
storage bldg...\$20's!!!! HR-8

3-2 home on 40 acres barn and more..
\$40's!!!! HR-9

ASK ABOUT OUR COMMERCIAL LISTINGS!!!

JUST LISTED--Property on Hwy. 84---Can be
used as residential or commercial, large shop,
storm cellar, two story home, lot size
140'x100'...C-1

Circle Back Area-177 acres of good dryland...
Fully Allotted!!!!

PLEASANT VALLEY-160 acres, 8" well.
Lindsey circle!!!!

354 ac. S. of town, good allot. &
yields!!!!

No Place For Sugar!

At Christmas, visions of
sugarplums may dance in children's
heads but sugar in their diets should
be kept to a moderate level, says a
nutritionist at the USDA's
Children's Nutrition Research
Center in Houston.

"There is a place for sugar in
children's diets. They need sugar,
vitamins, and minerals for energy.
But parents should watch for
'hidden sugars' in foods," said
Janice Stuff, a research instructor at
Baylor College of Medicine.
"Moderation is the key."

Children who learn to prefer
sweet-tasting foods may face
problems down the line, she said.

For example, a high-calorie diet
can lead to weight gain in some
youngsters. Although most
children burn the extra calories
received from sugar through daily

activity, some do not and may
eventually end up overweight, said
Stuff.

Also, dental problems such as
tooth decay and unhealthy gums
can be reduced by limiting sugar in
the diet.

Stuff warns that food manu-
facturers often add sugar to their
snack products, especially micro-
wavable foods.

"Parents can promote healthier
snacks and decrease sugar intake by
making snacks at home," said
Stuff.

She offers the following
suggestions to reduce sugar:

*Drink unsweetened fruit juices and
avoid soft drinks containing sugar.
Read the labels. Words such as
"punch", "fruit drinks", and "10%
juice" mean the drink has a high
sugar content.

*When preparing juice from
concentrate, dilute the juice with
additional water to cut the
sweetness.

*Use fresh fruit purees with
chopped fruit to add natural
sweetness to baked goods or low-fat
plain yogurt.

*Make your own frozen fruits bars
by freezing juice (orange juice is
especially good).

*Flavor pancakes, waffles, muffins,
and hot cereals with spices such as
cinnamon or nutmeg, or with
extracts - - vanilla, almond, orange,
or maple.

*Use 2/3 to 3/4 of the sugar called
for in recipes.

*Replace cocoa with carob powder
in baked goods. This will decrease
sugar by 25%.

*Pack lunches with individual
servings of unsweetened applesauce
or fruit in water-packed or light
syrup.

*Devise a plan with your child to
limit candy or candy bars to once or
twice a week.

"These guidelines can be used in
the battle against high-calorie
diets," she said. "Promoting a
healthy diet is one of the greatest
gifts you can give your child during
the holidays and throughout the
new year."

Poems Wanted

The National Library of Poetry
has announced that \$12,000 in
prizes will be awarded this year to
over 250 poets in the North
American Open Poetry Contest.
The deadline for the contest is
December 31, 1992. The contest is
open to everyone and entry is
FREE.

Any poet, whether previously
published or not, can be a winner.
Every poem entered also has a
chance to be published in a deluxe,
hardbound anthology.

To enter, send ONE original
poem, any subject and any style,
to The National Library of Poetry,
11419 Cronridge Dr., P.O. Box
704-ZW, Owings Mills, MD
21117. The poem should be no
more than 20 lines, and the poet's
name and address should appear on
the top of the page. Entries must
be postmarked by December 31,
1992. A new contest opens January
1, 1993.

The cookbook everyone
is talking about
**TEXAS COUNTRY
REPORTER
COOKBOOK**
256 pages of recipes from the
viewers of the popular tv show
hosted by Bob Phillips
\$13.95
Pick up your copy at
Muleshoe Publishing Co.

You can't lose---or
get lost---with
**THE ROADS OF NEW
MEXICO**



Get your copy at
The Muleshoe Journal
Only \$12.95



TAKE THE KEYS
CALL A BAR
TAKE A STAND



DRINKING AND DRIVING
CAN ADD UP.

HENRY REALTY

111 W. AVE. B 272-4581
Muleshoe, Tx.

2 bedroom, 1 bath, 1 car garage, brick veneer. Country
Club Addition. Central heat and air. Very nice.

2 bedroom, 1 bath, detached 2 car garage, extra lot and
well for garden. Country Club Addition.

Spacious 2 bedroom, 2 bath with one car garage.
Fireplace. Ready to move in.

New listing-2 bedroom, 1 bath, redone for qualified
buyer.

3 bedroom, 2 bath, carport, spacious home outside city
limits near city on highway. Lot is 85'x402'. Metal
building is 29' by 40'. Great setup for workshop.

FOR LEASE-3 bedroom, carpet, spacious
living area, fenced yard. Near high school.
COMMERCIAL PROPERTY
Ideal location on West American Blvd. 150' highway
frontage. A great business opportunity.

West American Boulevard 150' frontage. Priced to sell.
LAND

160 acres irrigated farm land with pivot sprinkler SW of
Muleshoe. 60 acres of wheat. Ideal for livestock
operation. Good water.

240 acres irrigated farm west of Muleshoe. Equipped
with sprinkler pivot pad, underground electricity.
Underground pipe for aerolls or big gun sprinklers.
Priced to sell.

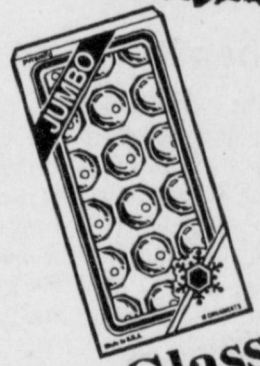
BULLETIN To BULLETIN

Fry & Cox

From The North Pole

Santa Claus has asked Nick to help him magically at Fry & Cox, Friday, December 5, at 7:30 p.m., as he wants to visit with the boys and girls!

Black's Magic & Illusion



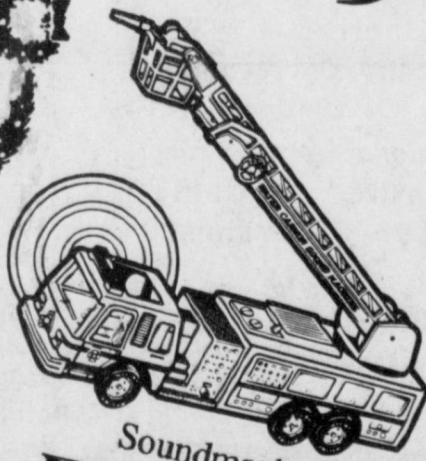
Glass Ornaments 1.89



100 String to String Lite Sets #67-552 3.79



Tree Toppers Angel or Santa 068254 068239 9.99



Soundmachine Fire Truck 45.00

Buy 1 Get 1 Free Ornamotion Collectibles



6 1/2 ft. Christmas Tree 55.00



Your Choice Water Babies Softina Doll Patti Cake 15.49



3-Roll Christmas Gift Wrap in asst'd prints. 2.49

Lots Of Magical Bargains Throughout The Store

Fry & Cox

Lumber



Hardware

401 S. First Muleshoe

Mon. - Sat. 8 a.m.-6 p.m. Sunday 1:30-4:30 p.m.