

WEATHER

Oct. 18 79 37
Oct. 19 71 56
Oct. 20 82 45
Oct. 21 83 50

Muleshoe Journal

'The Community Of Opportunity-Where Water Makes The Difference'



Vol. 70, No. 43

Published Every Thursday At Muleshoe, Bailey County, Texas 79347

TEXAS PRESS ASSOCIATION 25¢

Thursday, October 22, 1992

around muleshoe

The Lazbuddie EMS will be sponsoring a chili supper Friday, October 23. The supper will consist of chili, beans, salad, relish tray, homemade dessert, tea or coffee.

Serving times will be from 5:30 to 7 p.m. and again after the football game.

Tickets are \$5.00 for adults and \$3.00 for children 10 and under.

The Muleshoe Rotary Club is sponsoring Christmas in November again this year, with a clothes drive for the needy in Mexico. Anyone with good used clothing they would like to donate may drop them by either of the banks or contact any Rotary member from now to October 30.

A Halloween Costume Contest is being planned for 2 p.m. Saturday, October 31 for youngsters from toddlers through fifth grade.

Prizes will be awarded the winners. Additional information will be available at a later date.

Cub Pack meeting will be held October 27 at 7 p.m. in the First United Methodist Church.

"Tigers, Cubs, Parents and family, please come and start a New Year," said Betty Griswold.

Becky Allison, daughter of Larry and Gwen Allison of Lamesa, is acting a role in "A Midsummer Nights Dream", at South Plains College in Levelland at 8 p.m. on Friday and Saturday, October 23 and 24 at 2 p.m. and on Sunday the 25. Also on Oct. 30 and 31 at 8 p.m. and Sunday, Nov. 1 at 2 p.m.

Poppy Halsey, Silver Haired Legislature, will speak on the House Bill Health Care Bill, at the October 29 AARP meeting.

Everyone is urged to join the AARP members in the green room of the Civic Center at 6 p.m.. The program is open to the public.

Coffee and cookies will be served.

Ms. Allison is a freshman at South Plains College and a Television Production Major. She is the granddaughter of Ethel Allison and the late Gerald Allison of Muleshoe.

Kelly Green Commodities, Inc., formerly Protein Processors Plant, east of Muleshoe is open for this

Police Recover Bicycles

By Wayne Holmes
Muleshoe
Chief of Police

Every year a number of bicycles are recovered by the Muleshoe Police Dept. We have no way of knowing who the bikes belong to. We end up giving these bikes to a youth school, such as Boy's Town.

I now have a number of unclaimed bikes. If you are missing a bike, contact me, Chief Wayne Holmes, at the Muleshoe Police Dept., 215 E. Ave. B., 272-4569, Mon. thru Fri. from 8 a.m. to 5 p.m., and give me a description of your bike; i.e. color, brand name, size, identification markings or any other identifying marks.

All bikes should be marked. The best way to mark a bike is by engraving a driver's license number or ID card number onto the frame of the bike in the area of the peddle housing and on each wheel, near the valve stem. If we find an item with a driver's license number engraved on it, we can identify that number and who it belongs to in a matter of seconds. There is no way we can check any other number except a driver's license or an ID card. If you or your parents do not have a driver's license or an ID card, use the D.L. or I.D. number of a close friend.



GOING IN FOR A TOUCHDOWN--Muleshoe Mule Eric McElroy goes in for a touchdown during Friday night's football game with the Littlefield Wildcats. (Journal Photo)

Mules-Bobcats To Meet Friday Night

The Muleshoe Mules will travel to Dimmitt Friday night to take on the Dimmitt Bobcats in their last out of town game of the season.

In last week's football action, the Mules tangled with the Littlefield Wildcats at Littlefield. Even though the Mules racked up several first downs, picking up good yardage in the air, they were defeated 58 to 14 by the Wildcats.

Dimmitt played the Tulia Hornets last Friday night and were defeated 30 to 0.

The Mules scored 67 first downs in their first six games of the season and had 169 rushing attempts gaining 692 yards.

In the same six games they completed 58 of their 147 passing

attempts for a total of 690 yards. The Mules total offense was 1382.

The Mules punted 27 times for 896 yards with an average of 33.1 yards per punt, in the first six games of the season.

In these six games, Marvin Lewis scored four touchdowns, Ruben Gonzales, one; Jesus Flores, two; Chad Freeman, two; Rashad Kirven, Bryan Rasco and Pedro Nunez, one each for a total of 12 touchdowns. Adding the touchdowns to their extra points, the Mules scored a total of 82 points.

Ruben Gonzalez was the leading rusher with 266 yards; Marvin Lewis had 104; Pedro Nunez 89; Jimmy Gauna 87; Rashad Kirven 56; David Lewis 53; and Jesus Flores 37.

Receivers for these six games were: Chad Freeman, 122 yards; Jesus Flores 88; Pedro Nunez 95; Rashad Kirven 59; Eric McElroy 52; Edward Rodriguez 93; Bryan Rasco 67; Juan Jaime 51; Gage Angeley 18; Americo Aguirre 11; and Jason McClannahan 18.

The top five offensive players included: Pedro Nunez, Ruben Gonzalez, Kalam Puckett, Edward Rodriguez and Bryan Rasco and Jesus Flores tied.

Be sure and go out and back the Mules as they take on the Dimmitt Wildcats. The Mules and their coaches work hard and would appreciate all the support their fans can give them.

Lazbuddie Schools Begin Screening For G/T Program

The Lazbuddie schools are beginning the screening process for the Gifted and Talented program. This program is designed to help students develop skills in creative/critical thinking and problem solving.

Some characteristics of the gifted/talented student are being able to demonstrate, singly or in combination, above-average achievement or potential in such areas as general intellectual ability, specific subject matter aptitude, ability in creative and productive thinking and leadership ability.

Students may be nominated for the program by teachers, parents, counselors, or other interested persons. Assessment tools to be used to determine eligibility may include: 1) achievement tests, 2) IQ tests, 3) behavioral checklist completed by teachers and parents, 4) teacher nominations based on

Cont. Page 6, Col. 2

FmHA Programs Assist Rural Texas

Nelda Hunt Takes First Place In Contest

Three new names came into the winners circle this week in the weekly football contest. The first, second and third place winners all tied with missing five games.

With all three of the winners missing five games, the Journal judges were forced to go to the tiebreakers.

Nelda Hunt missed five games and was two points off on the tiebreakers, giving her a first place win.

Richard Orozco also missed five games and was close behind Mrs. Hunt with only being seven points off on the tiebreakers.

Coming in close behind Orozco was his wife, Alma, who also missed five games and was 11 off in the tie breakers.

The contest is still anyone's, a winner is far from being decided. Four contestants have placed in the contest two times each and are: Wade Cargile, has two third place wins and eight points;

Rosa Hernandez also has two wins, a third and first place, for a total of 14 points; Tony Nicolas has a first and second place win for a total of 16 points. Terry Field also has two wins, a third and first place for a total of 14 points.

Remember it is still early and anyone can become the winner. Fill out those contest, either bring them by the Journal office by 5 p.m. on Friday or mail them in, must be post marked no later than 5 p.m. Friday.

Longtime Rotarian Moves To Lubbock

A long time Rotarian, Olan Burrows and his wife, Frances, who are moving to Lubbock visited the local Rotary Club at noon Tuesday. David Tipps presented them a pot plant and wished them luck before turning the floor over to Burrows. "I'm going to miss you, this is the most wonderful club there is," Burrows said. "I have been a member of the Muleshoe Rotary Club thirty years, I joined in May 1962. We will probably join one of the Rotary Clubs in Lubbock, I understand there are three. I want to wish each of you good luck."

Curtis Shelburne provided piano music for the noon meal.

Moonlight Sales Begin This Week

Have you given it any thought what you might buy for your mother, father, brother, sister or anyone on your shopping list? To make this decision a little bit easier, the merchants in Muleshoe will once again hold four Moonlight Madness Sales, beginning October 24th from 8 p.m. until midnight. Three more Moonlight Madness sales will be held on November 27, December 5 from 8 p.m. to midnight and December 19, from 7 p.m. to midnight.

The following merchants are participating in the sales in order to make it a little bit easier for you to do your Christmas shopping as well as having a lot of fun:

Anthony's Department Store, Stitches and Stuff, Main Street Beauty Shop, Muleshoe Floor Covering, Discount Furniture, A&M, Lookin' Good, J&L Fashions, Ben Franklin, Higginbotham-Bartlett Co., Muleshoe Trade Center, Poyner's, Harvey Bass Appliance, Dinner Bell, Wilson Appliance, Fry and Cox True Value, Wilson Appliance, Perry's, Joes Boot Shop and Muleshoe Art Loft.

"The Community Programs Division of the Texas Farmers Home Administration's (FmHA) State Office is proud to announce the success of fiscal year 1992," according to Neal Sox Johnson, State Director for FmHA.

Eighty-five loans and grants have been obligated to Texas communities with amounts totaling over 41.8 million dollars. These funds were used to assist rural water and sanitary sewer systems serving more than 47 thousand residential connections with a collective rural population of 138 thousand persons.

Community Facility Insured Loans were obligated to assist a variety of essential facilities such as volunteer fire departments, drug awareness facilities, city streets, hospital repairs and a natural gas system.

These loans, totaling almost 1.9 million dollars, served approximately 45 thousand families in the rural areas of Texas.

Additionally, FmHA obligated three Industrial Development Grants totaling 668 thousand dollars. One grant provided FmHA with a unique opportunity to assist in the financing of a demonstration facility to construct a fresh water shrimp farm in Burleson County.

FmHA has increased its emphasis on guaranteed loan programs. The guarantee program helps borrowers establish a relationship with commercial lenders and assists their transition to provide sector credit. Guaranteed loans totaling nearly 445 thousand dollars were obligated for water and waste disposal and community facilities.

The group sang "America" and "Home on the Range". David Tipps, president called the meeting to order and recognized the guests, Marie Bass and Olan and Frances Burrows.

Tipps also reminded the group of the Christmas in November program going on in Rotary. He asked everyone to clean out their closets gathering clothes to take to Mexico. Clothes may be taken to either of the banks.

The group was also reminded of the MHS Theatre Departments plays that are to be presented on Monday and Tuesday nights.

Tipps read a thank you note from Nelda Merriott, thanking Rotary for their support of the Girl Scouts.

Todd Ellis was in charge of the

Cont. Page 6, Col. 1

President Bush's budget for fiscal year 1993, as recently approved by Congress, has authorized 990 million dollars nationally for rural water and waste program loans and grants and 100 million dollars for essential community facility programs. In addition, the President's budget has authorized 35 million dollars for guaranteed water and waste loans and 10-0 million dollars for guaranteed community facilities loans.

"The Texas Community Programs Division looks forward to an allocation of approximately 40.1 million dollars in the direct water and waste programs for loans and grants, and 4.1 million dollars in direct essential community facilities funding to assist rural Texans in fiscal year 1993. Approximately 3.9 million dollars for guaranteed community facility program funds will be available to serve eligible rural applicants in Texas in fiscal year 1993," Johnson said.

"I am pleased to announce that the Business and Industry Division has assisted rural Texas businesses in creating 187 new jobs and maintaining 56 existing jobs in fiscal year 1992.

In Texas, loan guarantees for business and industry customers totaled almost four million dollars last fiscal year.

Another loan was completed in Wise County, which enabled the opening of a medical center employing 27 people. Falls County was the beneficiary of a loan for a newly constructed restaurant which created eight jobs.

A loan guarantee was issued for a retail and wholesale fuel distributor in Crosby County which created two positions and maintained seven others. Starr County will have a super market under construction later this year with a FmHA loan guarantee of 1.2 million dollars and will employ approximately 235 new jobs and preserve 160 existing

Cont. Page 6, Col. 4

Elementary Schools Set Jump-a-thon

Students at Mary DeShazo and Dillman Elementary's are all geared up and ready for their annual Jump-a-thon, Saturday, October 24. The event will be hosted by DeShazo Elementary.

Jumping will get underway at 9 a.m. and continue until 12 noon, at Watson Junior High.

Funds raised from the Jump-a-thon will go to the American Heart Association.


Although the schools have teamed up together, DeShazo has set their goal at \$2,000 this year.



ROTARIAN MOVES--David Tipps, president of the Rotary Club, presented Mr. and Mrs. Olan Burrows a pot plant as a going away gift from the club. Mr. and Mrs. Burrows are moving to Lubbock.

(Journal Photo)

In Case Of
Emergency
Call 9-1-1



1606 W. Amer. Blvd. 272-3294

Backing The Mules 100%

Closed Mondays

California vs. Arizona

Higginbotham-Bartlett Co.

215 Main 272-3351



Eureka Upright


- Powerful, Lifetime-Lubricated Motor
- Carpet Height Adjustment
- Edge Kleener™
- On Both Sides
- Use Genuine Eureka Bags — Style F & G

SAVE \$30 **69⁹⁵**

Model 1432

Miami, OH vs. Toledo

Bailey County Farm Bureau



David R. Tipps, Agency Manager

For All Your Insurance Needs

*LIFE *CROP
*AUTO *HOME

"Helping You Is What We Do Best"


1612 W. Amer. Blvd. 272-4567

Rice vs. T.C.U.

Stacey and Staff

Backing The Mules

100%



1412 W. Amer. Blvd. 272-4213

Colorado State vs. Wyoming



Henry Insurance Agency, Inc.

Kenneth R. Henry
Certified Insurance Counselor
Real Estate Broker

111 E. Ave. B 272-4581

Muleshoe vs. Dimmitt

FOOTBALL CONTEST

Grand Prize: \$150.00

Weekly Prizes

1st - \$10 2nd - \$7.50
3rd - \$5.00

Weekly Winners

1st. Nelda Hunt 2nd. Richard Orozco
3rd. Alma Orozco

Contest Rules:

1. IN EACH ADVERTISEMENT YOU WILL FIND A GAME LISTED. CIRCLE THE TEAM YOU THINK WILL WIN. The person's score that most closely matches the TIE BREAKER will be declared the winner. If several persons are still tied the prize money will be split.
2. The contestant must be 12 years of age or older.
3. Only one entry per person may be made for any one contest.
4. Bring your entry by the Journal Office by 5:00 p.m. Friday, or if mailed, the entry must be postmarked no later than 5:00 p.m. Friday. Write "FOOTBALL CONTEST" on the mailed entry, and mail to P.O. Box 449, Muleshoe, Texas 79347.
5. In the Tiebreaker Games WRITE IN THE SCORE of the tiebreaker games. This score will be used to break weekly as well as determine the Grand Prize winner. Decision of *The Journal's* scoring judges will be final.
6. Winners will receive 10 points for first place, 6 points for second place and 4 points for third place.
7. To be eligible for the Grand Prize, entries must be on Official Entry Blanks printed in the newspaper.
8. Employees of *The Journal's* are not eligible to enter any one contest.



Decorator's Floral & Gifts

Backing The Mules

100%

Betty Wuerflein, Owner

616 S. First Muleshoe 272-4340

Nevada-Reno vs. New Mexico State

Linda's Kitchen


(located in Damron Drug)

Closed Saturday & Sunday

100% Beef Homemade
Hamburger Patties
- Sandwiches - Salads -
- Drinks -
- Homemade Pies -

308 Main 272-4210

Pittsburgh vs. East Carolina



The Spudnut Shop

The Upper Crust of the Donut World
The Original Potato Flour Donut

Check Our Weekly Luncheon Specials

Mon. - Sat. 5 a.m. - 2 p.m.

328 South Main Street
Muleshoe, Tx. 272-3542

Southern Mississippi vs. Cincinnati

Western Drug Co.

114 Main 272-3106

"For All Your Prescription Needs Visit The Friendly People At Western Drug"

Supporting The Mules All The Way!

Iowa State vs. Oklahoma State

We Support The Mules

100%

Let Us Help You Get Those Fall Garments Ready For School and any other Social Functions!

at
Lambert Cleaners

123 Main Muleshoe 272-3840

Duke vs. Maryland

Connie's Place

121 Main 272-3126

Hours:
Mon. - Fri. - 5:00 a.m. - 4:00 p.m.
Sat. - 5:00 a.m. - 2:00 p.m.

Daily Buffet:
Includes Salad Bar & Cobbler

Serving Breakfast Daily
Connie Dominguez, Owner

Tulia vs. Floydada

Dinner Bell Restaurant

2103 W. Amer. Blvd. 272-5871
Muleshoe

Open 7 Days A Week 6:00 a.m. to 9:00 p.m.

Daily Noon Buffet -
11 a.m. - 2 p.m.
- All You Can Eat -
(includes Salad Bar, Cobbler, Ice Cream & Homemade Bread) **\$5.89**

Nightly Friday
Steak Specials Fish Buffet
Mon. - Thurs. & (Catfish & Shrimp)
Sat. - Sun. 11 a.m. - 9 p.m.

Breakfast Served Anytime!
North Carolina vs. Georgia Tech

Wilson Drilling & Southwestern Geothermal

Box 405 272-5521
Stanley Wilson Dee Puckett

Tx. Lic. 02628W
N.M. Lic. WD1152

Ohio State vs. Michigan State

MULESHOE MULES Varsity Schedule	JUNIOR VARSITY Schedule	FRESHMEN Schedule
Sept. 4 MORTON T 8:00	Sept. 10 IDALOU H 7:30	Sept. 4 MORTON T 5:30
Sept. 11 IDALOU T 8:00	Sept. 17 COOPER H 7:00	Sept. 10 TBA 5:30
Sept. 18 COOPER T 8:00	Sept. 24 ROOSEVELT T 7:00	Sept. 17 COOPER H 5:30
Sept. 25 ROOSEVELT H 8:00	Oct. 1 TBA 7:00	Sept. 24 ROOSEVELT T 5:30
Oct. 2 COLORADO CITY T 8:00	Oct. 8 FLOYDADA* T 7:00	Oct. 1 SHALLOWATER H 5:30
Oct. 9 FLOYDADA* H 7:30	Oct. 15 LITTLEFIELD* H 7:00	Oct. 8 FLOYDADA* T 5:30
Oct. 16 LITTLEFIELD* T 7:30	Oct. 22 DIMMITT* H 7:00	Oct. 15 LITTLEFIELD* H 5:30
Oct. 23 DIMMITT* T 7:30	Oct. 29 TULIA* T 7:00	Oct. 22 DIMMITT* H 5:30
Oct. 30 TULIA* H 7:30	Nov. 5 FRIONA* T 7:00	Oct. 29 TULIA* T 5:30
Nov. 6 FRIONA** H 7:30		Nov. 5 FRIONA* T 5:30

* Homecoming ** Parents Night
* District Games

Bob Stovall Printing

No Job Too Large Or Too Small!

Come By And Visit With Us For All Your Commercial Printing!

221 E. Ave. B. 272-3373

Texas vs. Houston

Viola's Restaurant

For The Best Mexican Food Come To Viola's!

Open 11:00 a.m. - 9:30 p.m.
Closed Tuesdays

2002 W. Amer. Blvd. 272-3838

Indiana vs. Wisconsin

Sudduth Field & Co.

David L. Sudduth, CPA
Randall L. Field, CPA

Backing The Mules

100%

104 W. 2nd Muleshoe 272-4291

U.C.L.A. vs. Arizona State

Kearney Scoggin

Scoggin Ag Center, Inc.

"Where Fertilizer Is Our Business"

1532 W. Amer. Blvd. Muleshoe, Tx. 79347
P.O. Box 452 272-4613

North Carolina State vs. Clemson

We want to wish everyone Good Luck in the upcoming school year!

Thanks to all our customers, we appreciate all of you for patronizing The Snack Shack

Go Mules! Go Mules!

Mon. - Fri. 11 a.m. - 2 p.m.
Closed Saturday & Sunday

The Snack Shack

222 W. Ave. H. Muleshoe 272-3840

Eastern Michigan vs. Ohio U.

Services For Carrie Lee Bishop Held Wednesday

Services for Carrie Lee Bishop, 85, of Muleshoe were held Wednesday at the First Baptist Church in Muleshoe, with the Rev. Stacy Conner, Pastor, officiating.

Burial will be in the Mountain View Cemetery at 2:00 p.m. Thursday in Pueblo, Co.

Mrs. Bishop died on October 18, 1992 at 11:10 p.m. at Edmond Nursing Center, Edmond, OK after a lengthy illness.

She was born May 10, 1907 in Port Lavaca, Tx. She married John Gaston Bishop, a graduate of Western Kentucky College and Colorado State Agriculture College on July 24, 1928 in Sudan, TX. He died in 1934.

Carrie Lee had recently moved to Edmond, OK from Muleshoe where she had been a resident since 1971. She was formerly of Lubbock.

Distinction; Who's Who of American College Presidents and Deans; Who's Who in the South and Southwest; Personalities of the South; Listed in the West Texas Women of Distinction. Her Publications were "Home and Family Education in Low-Rent Housing Projects" and Forecast For Home Economics LXV.

She held an Honorary Membership in Texas State Future Homemaker awarded on May 4, 1951; Honorary Member of Alpha Lambda Delta, Texas A&I Univ. in 1969; and Texas A&I University in 1969.

Carrie L. Bishop is survived by one daughter, Cara Juan Bishop Schuster of Muleshoe; one son,

Velma Mae Weddington Services Held Today

Services for Velma Mae Weddington, 87, of Albany, Ga. are scheduled to be held today at 4:00 p.m. at Graveside with Rev. Stacy Conner, Pastor of First Baptist Church, officiating.

Mrs. Weddington died October 16, 1992 at Albany, Ga. after a lengthy illness.

She was born July 20, 1905 in Crawford County, KS., and was preceded in death by her husband, Clarence Weddington in 1965.

Mrs. Weddington was a member of the Albany Baptist Church. She was a native of Crawford, KS and had lived in Muleshoe from 1940 to 1976. She had been a resident of Albany, GA since 1976.

Services were held in Kimbrell-Stern Mortuary at 5:00 p.m., Monday 10/19/92 in Albany, GA.

She is survived by one daughter, Gloria W. Lowry of Albany, GA and one granddaughter, Dalia (Dru) Lowry of Albany, Ga.

James Gaston Bishop of Oklahoma City, OK; one brother, C.E. Carruth of Andrews; three sisters Edna Bellamy of Wichita Falls, Lillie Mae Pettyjohn of Fort Worth, and Catherine Barteel of Tupelo, MS; five grandchildren; and five great-grandchildren.

The family suggests memorials to the Muleshoe Heritage Foundation, c/o Jeny McVickers, Box 201, Muleshoe, TX.

Mrs. Bishop was an educator. She graduated from Sudan High School in 1925 as Salutatorian, attended college at Texas Tech University with a B.S. degree in 1941 and an M.S. degree in 1949. She taught Elementary School at Fairview School Rural, TX in 1927-28; Elementary and Junior High in 1936-37 at Circle Back, TX; Elementary at Longview in 37-40; Homemaking at Roaring Springs in 41-42; Homemaking at Seagraves from 1942-45; Adult Education in Lubbock from 45-49; Homemaking from 49-50 in Lubbock; Texas Education Agency Supervisor of Homemaking Area 10, Headquarters A&I College, Kingsville in 50-51; and Dean of Women, Texas A&I University, Kingsville from 1951-72.

Mrs. Bishop had been a member of First Baptist Church in Muleshoe for 20 years. Prior to that, she became a charter member of Sudan First Baptist Church in 1921, a member of Kingsville First Baptist Church in 1950, serving on the Building Committee and Personnel Committee for 12 years.

She served on the Kenedy

Kleberg T.B. Association for 6 years, was a member of the National Association of Women Deans and Counselors; Texas Association of Deans and Counselors, holding offices of Secretary-Reporter, and serving on the Nominating, Placement, and Finance committees and served as host to the State Conference; Texas State Teachers Association; American Association of University Women, holding offices of President and Vice President, serving on Program Planning and State Legislative Committees; Delta Kappa Gamma member by Gamma Lambda Chapter, Lamesa, holding office of President; Business and Professional Women's Club; Kleberg Kenedy County T.B. Association Board; Community Council; Federated Music Club; Texas Personnel and Guidance Association. She held offices in Delta Kappa Gamma, transferring from Lubbock to Kingsville in 1950, as First Vice-President.

Mrs. Bishop is listed in the Dictionary of International Biography, London, England; Who's Who of American Women, First Edition; Texas Women of



Carrie Lee Bishop

Texas A&M To Defend Southwest Title

The Arizona Wildcats may not win the Pacific-10 Conference, but they could have a lot to say about who will and also who will be invited to post-season bowls. Arizona came within a hair of upsetting Miami in September, losing 3-7, then pounced on U.C.L.A. the following week 23-3. The 'Cats are coming off a big one at Stanford last week and they take on California in Berkeley Saturday. Their all-important contest will be the first week in November when they host Washington. The Bears meanwhile lost to Washington two weeks ago, 35-16, and they played Southern

California last week. California just got by Arizona last year 23-21, and the game may be that close Saturday. We favor the Bears.

Penn State didn't pull off the upset against Miami, losing 17-14. This week it's West Virginia for the powerful Lions. The Mountaineers began their 3-week nightmare last Saturday vs Syracuse and continue with Penn State and Miami. West Virginia was 3-0-2 before meeting Syracuse, but will have more trouble against the visiting Lions. Possible upset, but we'll stick with Penn State.

The unpredictable predicting percentage continued to smile. Through games of October 10, our average climbed to .752 based on 848 right and 279 wrong.

Staying in strong contention in the Atlantic Coast Conference, Georgia Tech travels to North Carolina to take on the Tar Heels. A 55-24 shellacking from Virginia is the only blur on the Yellow Jacket conference record with wins over Clemson and Maryland. North Carolina met Florida State two weeks ago and Virginia last week, so the Tars may have difficulty getting up for a third straight toughie. However, we're picking North Carolina to upset the Jackets.

Texas A&M's first shot at defending its Southwest Conference title three weeks ago against Texas Tech almost turned into disaster, the Aggies barely pulling it out 19-17. Inconsistent Baylor is the challenger Saturday.. A&M should survive.

Help For Headaches

Experts believe the cause of migraine and cluster headaches is associated with the blood vessels in the head. When these vessels constrict, blood doesn't flow properly and pressure builds up which leads to intense pain. These types of headaches respond well to a group of medications called beta blockers.

It's been a long day and you finally make your way to the couch and prop your feet up. Just as you begin to lay down, you experience an intense throbbing in your head which feels as though you've been hit by a truck.

The pain you're experiencing is felt by millions of people everyday and is known as a headache. Why do headaches occur and what can we do to prevent them? According to Howard Morgan, M.D., neurosurgeon at Methodist Hospital, there are three basic types of headaches:

* Migraines-these headaches are divided into two categories: classic, with symptoms of disturbed vision, drowsiness, cravings and depression; and common, where pain builds up and lasts for hours and even days.

* Cluster-these headaches occur most often in men and begin with a sharp pain in one area of the head which spreads to other areas.

* Tension or Muscle Contraction-these headaches cause a tight feeling of the head and or neck.

Letter To Editor

October 7, 1992

Dear Editor,

Doesn't it seem that Christmas gets earlier every year? Please help the American Lung Association of Texas by using the enclosed materials in your publication. Enclosed are drop-in public service announcements for the 1991 Christmas Seal Campaign for the American Lung Association of Texas, which is now under way.

Today, money raised from Christmas Seals fight all lung diseases and their related causes, including smoking, air pollution, and occupational lung hazards. The American Lung Association of Texas sponsors research and health education programs like:

*Smoke-Free Class of 2000

All types of headaches have shown to be closely related to stress, diet and other environmental factors. "Although our first response to a headache is medication, it is not the only solution," said Dr. Morgan. For more information on chronic headaches, consult a physician.

Texas Trails Of The Red River War

The entire Texas Panhandle was once a battlefield on which raged seven fierce battles that changed the course of United States history. The events of this national military campaign, what happened and where the battles were located are outlined in the book, *Texas Trails of the Red River War* written by local author Bob Izzard.

For five dollars you may purchase the book at any of the Amarillo Public Library outlets. Better yet, you can attend the October 18th meeting of The Independent Scholars, meet Izzard in person and hear his detailed account of the war.

While speaking to civic groups across the Panhandle, Izzard realized that many people were not aware of the famous Indian Scout Billy Dixon and of the various monuments dotting the Texas

Panhandle in tribute to the men who fought in the Red River War. At work on a biography of Billy Dixon, Izzard took time out to organize maps of the battle sites (already produced by his son for the Dixon book), included highway information and a brief outline of

the war and his "Texas Trails" book came into being.

And why was the war important to the United States? The time was 1874. The Civil war was over. The East Coast was settled and developed and thanks to the Gold Rush, so was the West Coast. The problem was that in between was a vast land inhabited by unfriendly Indians.

Trade and transportation routes across this area were perilous. Izzard reports that some people were so intimidated by the dangers of the journey that they actually went to Boston, got on a ship and sailed into the Gulf of Mexico in an effort to reach the West.

A fanatic is simply an individual who knows that he is right.

There is great danger that what we consider important is unimportant.

If everybody would stop hurrying, life would move along

MOO-LIGHT MADNESS Saturday, October 24 7 p.m. - 12 Midnight PERRYS 303 MAIN MULESHOE 272-4620

THE BOB HARMON FORECAST

Table with 2 columns: Major Colleges - Div. 1-AA and Other Games - South & Southwest. Lists various college names and their predicted scores.

Proudly Presented By: Paco Feed Yard

Patients In Muleshoe Area Medical Center

OCTOBER 16, 1992

Kyle Whatley, Tawney Coates, Martha Quezada, Victor Foss, Frank Rangel, Carlota Sigala, Cecil Davis.

OCTOBER 17, 1992

Victor Foss, Carlota Sigala, Cecil Davis, Dale Buhrman, Alda Odom, Martha Quezada and Baby Boy Quezada.

OCTOBER 18, 1992

Bethany Thomas, Victor Foss, Carlota Sigala, Cecil Davis, Alda Odom.

OCTOBER 19, 1992

Bethany Thomas, Victor Foss, Carlota Sigala, Cecil Davis, Maria Alfaro, Alda Odom.

Muleshoe Journal USPS 367-820. Established February 23, 1924. Published by Muleshoe Publishing Co., Inc. Every Thursday at 304 W. Second, P.O. Box 449, Muleshoe, Tx. 79347. Second Class Postage paid at Muleshoe, Tx. POSTMASTER: Send address changes to the Muleshoe Journal, P.O. Box 449, Muleshoe, Tx. 79347. We are Qualified Members Of: Panhandle Press Association, National Newspaper Association, West Texas Press Association and Texas Press Association.



HALLOWEEN IS DRAWING CLOSE-The sights around Muleshoe are getting **VERY SPOOKY!**



SPOOKY WINNERS-Halloween Poster winners from DeShazo Elementary are fifth grade; James Barret-3rd, Jennifer Barnes-2nd, Lela Hancock-1st, fourth grade; Chris Noriega-3rd, Stephanie Kirk-2nd, Bobby Guerro-1st; Third Grade, Shasta Copley-1st, Jessica Carpenter-2nd, and Jana Skaggs-3rd. You can see their posters shown in stores in Muleshoe.

Four Generations Honor McMurry's On 60th Anniversary

Four generations were present to honor Lee and Clyette McMurry on their 60th Wedding Anniversary at a reception held Saturday, October 17, 1992 at the Heritage Depot in Muleshoe.

The reception was hosted by the McMurry's sons and daughters. Their granddaughters served refreshments of cake, nuts, mints, and punch from a serving table draped with a lace tablecloth over a purple underlay. An arrangement of pink and purple flowers in a crystal vase accented the table, and matching flowers dressed the cake



Lee and Clyette McMurry

top. Lee and Clyette McMurry met at a dance in Silverton at a very young age, Clyette was still in school and Lee had already graduated. They married October 21, 1932 in Clovis, NM, lived in the Muleshoe area since 1976, and

Reserve Booths For Christmas Bazaar

The third annual "Christmas Bazaar" will be held in the Lamb County Ag and Community Center Saturday, Dec. 5, and now is the time to get booths reserved for the Dec. 1 deadline.

Door prizes will be given throughout the day, at 10 a.m., 2 and 4 p.m. and names drawn must be present to win.

First, second and third-place ribbons will be awarded for the most attractive booths.

Children will be excited to see the "World's Largest Sleigh" with Santa on board.

Churches, organizations, and individuals are invited to participate in the bazaar.

Set-up time will be from 7:30 to

9 a.m., and show time starts at 9 a.m., continuing to 5 p.m.

Booth fee will be \$10 for a 10' by 12' space, and deadline for reserving spaces will be Tuesday, Dec. 1

Crafts, baked goods, candies, etc. are among the things to be included.

A special attraction for the day will be Ed Parker. Christmas carols, along with other music, artists, etc. will be heard. Also, some Bluegrass, Country and Gospel music will be staged at 7 p.m. that night in the same building.

For more information, call Eva McDonald at 385-3476, or June Armistead at 385-3540.

Muleshoe High School Honor Roll

First Six Weeks NINTH GRADE

Dacia Stewart, Holly Hutton, Robbie Clapp, Suzy Hodges, Mandy Seales, Samantha Caswell, Candelar Garcia, Lauri Puckett, William Harlan, Chad Johnson, Rebecca Viss, Russell Reyes, Koy Wilhite, Daniel Garbarino, Amanda Cleavinger, Samuel Villarreal, and Rebecca Snell.

TENTH GRADE

Russell McGuire, Latonya Payne, Jodie Foster, Jesus Flores, Julie Gilleland, Misty Richardson, Angela Crawford, Jonathan Flores, Rebecca Warren, Chris Edwards, Stephani Perez, Lisa Provence (Yeary), Lacey Lloyd, and Jason Barrett.

ELEVENTH GRADE

Mason Conklin, Shawna Delaney, Kristin Holmans, Jeanne Cox, Shawn Wheeler, Lori Hodges, Stephani Quintana, Emily Harris, Donna Puckett, Brooke Sinclair, Sonya Smith, James Rogers, and Chad Montgomery.

TWELFTH GRADE

Angie King, Stacie Harris, Jody Thomas, Summer Wiley, Rebecca Green, Jonrobin Watkins, Tera Keller, Rosemari Gloria, Dustin Wilhite, Kristin Chitwood, Courtney Williams, Sonya Cisneros and Kyle Kenmore.



Hayden Kent Neel

Michael and Diane Neel of Amarillo, TX are proud to announce the birth of a new son, Hayden Kent. He was born October 3, 1992, at 3:26 a.m. at the Northwest Texas Hospital in Amarillo. He weighed 8 pounds and 3/4 ounce, and was 21 1/2 inches long.

Haydens grandparents are Gary and Kay Knowlton and Merlyn and Jo Dean Neel, all of Muleshoe and Gradene Enos of Lubbock.

Great-Grandparents are Orby and Juanita Jarman and R.B. and Melba Cunningham all of Muleshoe. Harvy and Wanda Neel of Ranger, and Herman Enos of Morton.

Great-Great Grandmother is Gladys Flippin of Mineral Wells, TX.



KIDS DRAW SPOOKS-Halloween Poster Winners At Dillman Elementary are back row: second grade; Cory Hunt-3rd, Gradee Adrian, Jody Hawkins-2nd; first grade, Cody Altman-2nd, Theran Edler-1st, and not pictured Lacy Gossett-3rd; Kindergarten, Trissy Herrington-1st, Barry Morris-2nd, and Jessica Hall-3rd. Observe their posters hung in stores in town.

Look Who's Having Another Birthay Happy Birthday Mom your family

MOONLIGHT SPECIALS

Saturday, October 24
7 p.m. - 12 Midnight

Wind Suits 20% off

Mens and Ladies
Missy and Petits

Lookin' Good

206 Main Phone 272-5052
MULESHOE, TEXAS 79347

moved to Muleshoe permanently in 1981, when they sold their place at Texline.

Phenomenon!
Men are funny--pat them on the back and their heads will swell.

-Duty Call, San Diego.

There is nothing harder than the softness of indifference.
—Juan Montalvo

Could you make your house payments if you were sick or hurt and couldn't work?

Ask About Health Insurance The State Farm Way

CALL ME.
Mark Morton
109 S. 1st
272-7519
Muleshoe, Tx.

Like a good neighbor, State Farm is there.

State Farm Mutual
Automobile Insurance Company
Home Office: Bloomington, Illinois
Call for details on coverage, costs, restrictions and renewability.

Joe's Boot Shop & Country Junction
Muleshoe, Texas

Save Into The Wee Hours During
MOONLIGHT MADNESS

Saturday, Oct. 24th
Open 9:30 a.m. 'til 12 Midnight
Sale Starts 7 p.m.

Over 500 Pairs Rocky Mountain Jeans \$19.99	Men's & Ladies Leather Lacer Ropers \$49.00	
1 Lg. Rack Men's Wrangler, Panhandleslim, Roper, and Ruddock Shirts in New Styles and Colors, in Capes, Brushpopper, and Southwest Designs ONLY \$29.00 From 7-9 p.m. (This Rack Buy 1 Get 2nd Shirt 1/2 Price! 10-12 p.m.)		
Full Quill Ostrich Ropers \$399.00	All Other Men's & Boys Shirts 20% off	1 Rack Ladies Wear 50% off

For Your Shopping Enjoyment Hear Los 3 Caballeros Band Who Perform Impersonations Of Hank Williams, Ernest Tubb, Buck Owens & More!

Meet Artist Gary Spells Who Personalizes and Paints Southwest & Rodeo Designs On Your Shirt or Blouse & Will Be Painting In Our Shop All Day & Will Take Your Custom Orders For Christmas.

Enter Our Scavenger Hunt On Each Of The 4 Midnight Madness Sale Nights. Winner To Be Announced Dec. 19th For A \$500.00 Gift Certificate.

Register To Win A \$185.00 Jewelry Cabinet To Be Given Away At The Country Junction At 8 p.m. (Must Be Present To Win)

Save Ticket Purchases From Each Midnight Madness Sale For Peanut Dollars Toward Peanut Auction For Boots, Sculpture, Rodeo Jacket & More On Dec. 19th Midnight Madness Night!!

JOE'S BOOT SHOP AND COUNTRY JUNCTION
BIGGEST LITTLE BOOT SHOP IN TEXAS

Muleshoe, Texas
106 E. Ave. B. 272-5074

Characterizations From The Desks Of The MHS Creative Writing Class

by Angie King

When we first met I thought it was no big deal. But, as four years went by, she became increasingly important in my life. I am not sure if she affected me this strongly because I wanted her to, or because it was forced upon me. Nevertheless, Cyndi has become a very special part of my life.

When she was first presented to my family, I thought she was pretty and nice. However, I immediately concluded that she would not survive in my family. This was due to the fact that she was shy, and my dad's own brand of humor had dominated every conversation. In fact, he picked on her continuously. At first, the personality of my family seemed to intimidate her, but soon she taught us that the saying, "If you can dish it, you can take it," held true. Her dry wit and timidity won our hearts. As the holidays began to approach, I accepted her place at the table. I even smiled when my mom presented her with Christmas gifts. She was moving in on my territory, but for some reason, I did not mind.

Her physical features reveal her precise personality. Her large-boned build and big bulky clothes, portray her dry and somewhat pointed sense of humor. They also reveal her modesty. On the other hand, her Spanish eyes reveal a sense of sincerity and love. She has shoulder-length blonde hair which is almost always fixed just right. Her present pregnant state is another portrayal of her true beauty. Because of her pregnancy, she exemplifies the term "mood swings," but she is usually bearable. Her personality and beauty are a perfect match; therefore, when someone meets her, the real Cyndi is revealed.

At the end of April, her meaning of life increased when she officially became a part of my family: my sister-in-law. As I watched her turn the corner toward the aisle, I remembered all of the unsure feelings I had felt the first time we met. But, now I noticed that those feelings had left me and she was going to be the sister I never had. I observed her and my brother looking into each other's eyes; his love for her was evident. At that point I realized that I would now have to share his heart. I was not losing it; I was just going to have to share it. That day, when my brother made the girl that I had felt threatened by Mrs. Cyndi King, a special place in my heart opened for her.

Having Cyndi as my sister-in-law has contributed to many laughs and good times. It is hard for me to imagine that my life could have ever been as meaningful without her. She acts as my confidant and friend, not to mention she gives me good advice that keeps me out of trouble. When she began that short walk down the aisle and in to my family, her importance in our lives increased with every step. Whether seeing her walk toward me in her beautiful white dress that day, or watching her waddle toward me in her maternity clothes today, Cyndi always has the same sweet smile that touches my heart. She will always remain my first sister, and the one I had wished for all my life.

High Voltage

No wonder she's magnetic-- everything she's got on is charged.

-Coast Guard Magazine.

Definetly

A reckless driver is one who passes you on the highway in spite of all your car can do.

-W.O.W. Magazine.

Full--Empty

Many people who are too polite to talk with full mouths think nothing of talking with empty heads.

-Gospport, Pensacola.

Jonathan
by Woody Villa

It's logical that my brother and I are closer to each other than we are to our other siblings. We are only a year apart and have really grown up together. We have wonderful memories with each other from our younger years.

There were many things we did together, such as always playing sports together. While he was playing varsity football, I would always watch him play. I guess I learned by watching him on the field every Friday night because I played on JV the night before. Now that I am on varsity, things are different. He's not there to help me correct my mistakes. He is still there, though, yelling at me from the stands to correct me or to cheer our team on in a game, especially a tough game.

Jonathan is not only a big brother to me, but I still consider him as my best friend. He was always there for me, not only on the field, but anywhere else. He was always there to lend me a hand. There is one thing I will never forget about him; he'll always be there for me.

My Aunt-My Friend
by Amy Garcia

As I walked into her home, I felt like a confused and lonely young lady. I did not know what to expect. I did not know if she was going to be strict or lenient, loving or harsh, patient or impatient. As days passed, I got to know her better and found her to be a lenient, loving, patient person. She is a person with so much love; love that one could only dream of.

She's a petite woman, full of grace. This joyful, honest woman has taught me alot about how to live life through relating to me her experiences. I never thought that living with her would draw us so close, or that I could learn this much from her experiences. She never thought that living with a teenager would be so hard. She never knew about how a teenager would be, because she was tied down so young and was not able to live her life as a teenager, since she became a teenage mother. However, I am a teenager, and she is an adult, and we are both in the process of learning new experiences.

I never thought that I would learn so much about life, but learning is easy when it comes from a loveable, special person-my Aunt Mary.

by Cari Turner

Tall, mysterious, and seemingly shy... Right off the bat he caught my eye. A few months later, he was my closest friend. Our friendship seemed would never end.

If ever I needed it, his shoulder was there. And he told me he loved me-he'd always care. He stuck by me when times were rough. Finding a better friend could be impossible tough. His heart's as big as Texas-believe it if you dare. And despite his outward "rough-guy" act, He's just a big teddy bear. I've loved this guy, almost from the start. And even now, though we're apart, I know I could call on him if ever need be. To cheer me up or keep me company. This special guy claimed a part of me That will be his for eternity.

In Fashion

Fashion directs a return to the 80's with vests, crisp white shirts and pants that are more tailored than in recent years. The well-dressed woman knows quality clothes in this trend lasts more than one season.

Tailored silk, linen and lightweight wool are all season fabrics that soften the tailored look.

by Veronica Gonzales

Jack is not his real name; It's only a game we play I wish that I could see him, but he's not here today. He's busy at another place, trying to do his best, changing his life, improving himself

just to be like the rest. We write each other often, to pass the time of day. Sooner or later, I know quite soon, that he'll be here to stay. He's a person that I talk to when I am feeling sad; Just to hear his warm caring voice makes me feel real glad. He helps me understand the world and the terrible life some live; I now feel that I understand why he will often give. He probably doesn't know it, but he's helped me in many ways. The building of trust and self-confidence helped me through can't make it days. I don't think I could ever repay him For he has done a lot. He'd always lend a helping hand whether I needed it or not. I will never forget him, for he means too much to me. He has that "certain something" that only I can see.

Knowledge is of two kinds. We know a subject ourselves, or we know where we can get information upon it.

—Samuel Johnson

Java Olives

2 ounces cream cheese
1/4 teaspoon curry powder, or more to taste
1 to 2 tablespoons finely chopped chutney
1 1/2 cups whole, pitted Colossal California ripe olives
Blend together cream cheese, curry powder and chutney. Spoon mixture into a pastry bag fitted with a star tip. Slice off the bottom of olives so they stand. Pipe filling into center of olives. Allow about 1/2 to 3/4 teaspoon per olive. Makes about 2 dozen.

Salami Roll-Ups

18 to 24 thin slices of salami
1 1/2 cups whole, pitted colossal California ripe olives
4 ounces sliced pimentos
parsley
Cut and fold each salami slice to form a cone by cutting from the center of the salami slice to the edge and overlapping cut edges. Secure olives in the cone with a toothpick. Stuff center of each olive with a pimento slice. Garnish with parsley. Makes 18 to 24.

Olives Pesto

1/4 cup pesto sauce
2 tablespoons ricotta cheese or sour cream
1 1/2 cups whole, pitted Colossal California ripe olives
Combine pesto and ricotta cheese; mix until smooth. Slice off the bottom of olives so they stand. Stuff center of olives with mixture. Makes about 2 dozen.

Dreams are the touchstones of our characters.
—Henry David Thoreau

Science increases our power in proportion as it lowers our pride.
—Claude Bernard

Allison Funderland
Has Openings For Full or Parttime Children Ages 2 Years and Up
Call **Dianne Allison** 272-3304

MOON-MENTOUS
Saturday October 24 7-12 p.m.

RCA G25119HP 25" Console TV Reg. \$599. **\$478.00**

Whirlpool Matching Washer & Dryer Reg. \$899.90 **\$678.00**

Whirlpool 18 ft. With Ice Maker Refrigerator Reg. \$799. **\$599.00**

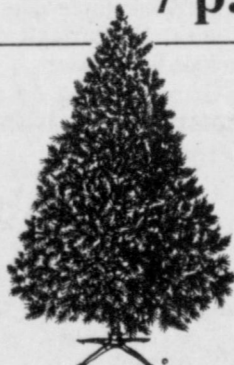







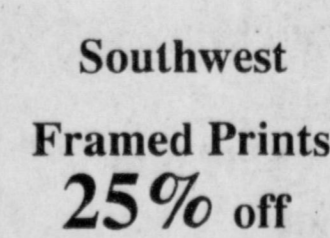
GE AM/FM Cassette Boombox Reg. \$59.95 **\$48.00**

3 Pack (Limited Supply) VHS Tapes Reg. \$9.99 **\$6.29**

Wilson Appliance, Inc.
117 Main 272-5531

Ben Franklin
Better quality for less
Mon-Sat 8 a.m.-8 p.m. Sun. 12-5 p.m.
2104 W. Amer. Blvd. 272-3855

MOONLIGHT MADNESS
Saturday, October 24
7 p.m. - 12 Midnight

 6 Ft. Reg. 69.99 Christmas Trees 32.00	 5 Lb. Bulk Pack Reg. 13.49 Poly Fill 8.88
 C-9 1/4 Reg. 8.99 25 Ct. Outdoor Lights 5.99	 Red Heart 4 Ply Reg. 1.37 Classic Yarn 99¢
 Reg. 8.99 Stocking W/Teddy Bear 6.99	 2 Ft. Reg. 3.99 Christmas Tree 2.99
 Large Selection Toys On Sale	 Parachute Plush 16" Reg. 9.99 Santa W/Bag 7.77
 Halloween Print Glow In Dark Sweat Shirts 25% off	 All Halloween Costumes, Masks Novelty Items 1/2 Price
 Southwest Framed Prints 25% off	 Fabric Dizzle Paints Reg. 2.49 77¢
Fabric 10p.m.-12 Midnight Only Reg. 99¢ 77¢ Per Yard	
Convenient Lay-A-Way Plan NO Service Charge	

GOING OUT BUSINESS
20% TO 75% OFF STOREWIDE
ALL COATS 30% OFF ALL BLAZERS 30% OFF
EVAN PICONE HOSE-Buy 2-Get 1 FREE
Lady You Nique
470 Main Street, Clovis

Utility Commission To Review Electric Rates

Southwestern Public Service Company said that the Public Utility Commission of Texas has initiated a procedural filing to review the electric utility's rates.

The review is based on the commission staff's semi-annual Earnings Monitoring Report that says SPS's revenues for 1991 appeared higher than necessary to earn an appropriate rate of return.

SPS residential rates have declined 20 percent since 1983 and are currently among the lowest in the state for investor-owned utilities. The average of SPC's retail rates--which include residential, commercial and industrial rates--is 29.7 percent below the average of the retail rates of all other Texas electric utility companies.

SPS strongly believes its earnings are reasonable, and are primarily the result of efficient and cost-effective operations, said Gerald Diller, SPS group manager

TS&GRA Absentee Voting Underway

Absentee voting for the October 29 Texas Sheep and Goat Raisers Association's (TS&GRA) Sheep and Goat Referendum is under way. All sheep and goat producers who would be required to pay the assessment within the 111 West and Central Texas counties involved in the referendum are eligible to vote.

Absentee voting will be done by mail. Ballots must be postmarked prior to midnight, October 26. Absentee ballots may be obtained from the local County Extension office or from the TS&GRA office in San Angelo. Ballots are to be mailed in a pre-addressed envelope to TS&GRA, P.O. Box 2290, San Angelo, Texas 76902.

If passed, the referendum would provide a source of funds to supplement ongoing predator control efforts. Providing the referendum passes, producers will also be selecting three directors for the three districts (111 counties) to represent them on a Commodity Producers Board. These nine elected directors will determine how the funds are to be spent.

The funds for the referendum will be obtained through a levy not to exceed \$0.20 (twenty cents) per head on sheep and goats at their first point of sale. This money, to be paid by the seller, would affect producers not wishing to contribute funds in the referendum if it passes, could apply for a full refund.

Those not needing to vote absentee may stop by their County Extension office from 7 a.m. to 7 p.m. October 29. Producers may vote in either the county of their residence if it is within the referendum area, or the county in which their ranching interests are headquartered.

For further information contact the TSS&GRA office at (915) 655-7388.

Rotary...

Cont. from Page 1 program and he showed a humorous film "Unbelievable Sports Plays".

Funny segments of ping pong, basketball, hockey, football, basketball, base ball and racing were shown.

Congress votes to limit underground nuke tests.

of rates and regulations.

The filing did not indicate a target amount of reduction. However, based on previously awarded returns on equity allowed other utilities in Texas, the company does not believe this filing will have a substantial financial impact.

"We're proud of the competitive electric rates we have for our service area," Diller said, "and we anticipate a fair and equitable examination of our costs and revenues."

In Texas, cities have original jurisdiction over rates. Rates can be adjusted by the PUCT for unincorporated areas. Each city would have the option to adopt similar adjustments for customers within its city limits.

"We will be working with the cities we serve in Texas to keep them informed as we develop the rate case required by the commissioner review," Diller said.

SPS is a regional electric utility that primarily provides electric service to a population of about one million people in a 52,000-square-mile area comprising eastern and southeastern New Mexico, the South Plains and Panhandle of Texas, the Oklahoma Panhandle and southwestern Kansas. The company serves 75 communities in Texas.

Corporate headquarters is in Amarillo.

Muleshoe...

Cont. from Page 1 soybeans, and grain sorghum.

Willard Tibbets is the general manager.

A North American Indian Art Show will be held Friday, Saturday, and Sunday, November 20, 21 and 22 in the Amarillo Civic Center.

The show will be open from 2 to 7 p.m. on Friday, 10 a.m. to 7 p.m. Saturday and 10 a.m. to 5 p.m. Sunday.

Admission for all three days is \$5.00 for ages 12 through 59; \$4.00 for anyone 60 and over.

There will be dancing by the Alabama Coushatta Indians from Livingston, Texas.

The local chapter of AARP will meet at 11:30 Friday, October 22 for a covered dish luncheon. Mary Alice Ramm will give the program.

Army Cadet Adelaido Godinez III has graduated from the school from U.S. Military Academy Preparatory School.

The school is designed to assist students in meeting the strict academic and physical requirements of the academy. Students received extensive instruction in English, mathematics, physical education, and military training.


This summer, graduates will enter the academy to begin four years of study leading to a bachelor's degree and a commission in the U.S. Army.

G/T Program...

Cont. from Page 1, classroom observations and 5) Torrance Test of Creativity. Parent nominations will be received until October 30, 1992.

Government: Working wives spell success for black families.

State Capital



HIGHLIGHTS

By Lyndell Williams
TEXAS PRESS ASSOCIATION

AUSTIN - The re-entry of Dallas billionaire Ross Perot into the presidential arena makes Texas, more than ever, a key electoral battleground.

To observers across the nation, Perot might as well have flown a blimp shaped like a big, black question mark over the Lone Star State.

USDA Benefits Texas Farmers, Ranchers

"I am pleased to announce another successful year for the Farmer Programs Division of the Texas FmHA," said Neal Sox Johnson, State Director of the United States department of Agriculture (USDA) Texas Farmers Home Administration (FmHA).

Texas FmHA made 1,877 direct operating loans totaling more than 91.7 million dollars to farmers and ranchers in Texas to finance operating and living expenses. In addition, the agency also guaranteed 1,021 farmer program operating loans made by private lenders totaling over 125 million dollars.

In excess of 4.2 million dollars in direct farm ownership and more than 13.3 million dollars in guaranteed loans were granted. Funds from these loans were used to purchase and improve farm and ranch land in Texas.

As result of Texas FmHA programs in fiscal year 1992, 3,015 farm and ranch families continued to work in the ranching business or to become owner/operators of family farms.

President Bush's budget for fiscal year 1993, as recently approved by Congress, has authorized 3.3 million dollars nationally to continue to meet the needs of our nation's farmers and ranchers. "Texas FmHA looks forward to an allocation of approximately 250 million dollars to assist eligible Texas farmers and ranchers in fiscal year 1993," Johnson said.

The Farmers Home Administration assists rural America by guaranteeing private sector loans and by providing temporary supervised direct loans to farm and housing borrowers who have a reasonable chance for success, and whose current needs cannot be met at reasonable rates and terms by commercial sources. The Agency is committed to excellence in providing the services.

Lazbuddie Remains Undefeated

In six man football action Friday night the Lazbuddie Longhorns defeated the Three Way Eagles 50 to 0 and remained undefeated for the season.

Lazbuddie raised its district mark to 2-0, while Three Way dropped to 2-5 and 0-2.

Brett Thomas paved the way offensively for Lazbuddie as he had a hand in four Longhorn touchdowns. Thomas first hauled in an eight-yard touchdown pass from Matt Cozby that started the scoring, and then hit Leland Brockman on a 21-yard scoring toss, Troy McBroom on a six-yard touchdown strike and Mario Zamora on a 11-yard touchdown pass.

Lazbuddie racked up three other touchdowns. Leland Brockman returned an interception adding more scores to the Longhorns lead. Miller ran 6 yards for a touchdown and then returned an interception for still more scores on the score board.

Lazbuddie's tough defense held Three Way to only 40 yards total offense.



ANTHONY'S

321 Main Muleshoe 272-3478

Campaign students keen on historical footnotes might want to note that the home bases of President Bush, Perot and Gov. Clinton draw a tight geographical triangle between Houston, Dallas and Little Rock.

Here in his home state, Perot may have more influence; as one veteran Democrat said: "Perot hurts Clinton in other states, but he hurts Bush in Texas."

A scenario having Perot winning Texas and one other key state, say recession-plagued California, ends with Bush or Clinton denied a majority of electoral votes, throwing the election into Congress.

There, each state gets one vote, decided in caucus by its newly-elected House members; 26 votes are needed to become president.

Six months ago, political pundits were predicting an easy Clinton win, since Democrats control most state delegations about 2 to 1.

This week, the picture is less clear.

A Cleaner House?

The number of congressional incumbents not returning is already more than 25 percent, thanks in no small part to Perot, who has been drumming up a "clean House" movement. "Clean out the barn," he often said.

If Perot's candidacy energizes his war against Congress, the congressional turnover can only climb higher.

With regard to Congress, it's a whole new ballgame now, and historians may well note that Perot's biggest impact was to increase the number of new faces in Washington.

Texas' Top Slot

In Texas, where the top state race on the ballot is for railroad com-

FmHA...

Cont. from Page 1

jobs.

President Bush's budget, as recently passed by Congress, has allocated 100 billion dollars nationally for loan guarantees to assist local lenders in meeting their local community's credit needs for the creation and preservation of jobs in rural America.

"Texas Business and Industry Division looks forward to an initial allocation for fiscal year 1993 of approximately four million dollars to assist rural Texans preserve and create jobs," Johnson said.

Farmers Home Administration is an Equal Employment Lender. Complaints of discrimination should be sent to: Secretary of Agriculture, Washington, D.C. 20250.

missioner, Gov. Ann Richards held a private reception at the Governor's Mansion for her beleaguered protege, Lena Guerrero.

Guerrero resigned as commission chairman two weeks ago, apologizing for falsely claiming to be a University of Texas honors graduate.

Outside the Mansion, about 40 protesters demonstrated against the reception, paid for by the well-financed Guerrero campaign.

Guerrero began her million-dollar media buy last week with commercials airing her apology.

Bullet Train Woes

The Texas High Speed Rail Authority, formerly chaired by Guerrero, can't raise the \$170 million needed to start the "bullet train" project by its December deadline.

The other two railroad commissioners also sit on the authority, and one, Bob Krueger, accused private companies of not delivering on promises to contribute.

The other, Jim Nugent, said he could see "the strong possibility of lawsuits over the project's derailment."

The Authority suffered charges of overspending and mismanagement this summer, and the executive director resigned.

More Prison Expenses

A federal judge slapped a ruling on the state prison system last week, ordering it to pay stiff fines for "stiffing" county jails housing state prisoners.

The judge ordered the state to pay \$50 per day for each prisoner lingering in Harris County jail because of overcrowded state prisons.

County officials called it a "complete victory."

Lawmakers had been reluctant to reimburse counties for full expenses of housing inmates awaiting transfer to state prisons.

Sen. John Montford, finance committee chairman, estimated additional costs now at \$42 million a year, for Houston alone.

Gov. Richards, Lt. Gov. Bob Bullock and Attorney General Dan Morales met to decide whether Morales should appeal.

Health Coverage Report

Gov. Richards' Texas Health Policy Task Force last week recommended that the state provide medical care for every child and pregnant woman in Texas, a first step toward what the panel hopes will be universal health coverage for all 17 million Texans.

After 10 months of work, the panel completed its report on how to improve care in a state where one of every four residents lacks health insurance. The Legislature

will consider the recommendations in January.

The panel also voted for reforms -- recommending that the state regulate health insurance and standardize forms.

The task force said the long-range goal should be a Canadian-style "single payer" system in which the state provides basic health insurance for every resident.

Other Highlights

■ A spokesman for Morales corrected a statement in a recent Highlights column which reported that the attorney general wants to strike down the state's anti-sodomy law. Two courts have already declared the law unconstitutional. It is Morales' constitutional duty to appeal when state statutes are challenged.

■ The national media isn't likely to let voters forget that Perot dropped out of the presidential race in July: some have dubbed him "The Yellow Ross of Texas."

■ The number of crimes dropped five percent in the first half of 1992; Houston showed the largest decrease with 16 percent.

Comment on Sports

BASEBALL ****

By Pete Fritchie

One of the unmentioned features of Major League baseball today is the shoddy fielding on so many teams by so many players.

A realistic guess is that there are five or more mental or playing errors per game in the Majors. Half of these are covered up by generous scorers--batters being given hits in many cases when the defensive player muffs his play.

In many games there are as many as ten errors. Fielders dropping easy fly balls, booted ground balls, errant throws, stupid mistakes, and other lapses--in every game. Part of the reason is that players today don't spend eight or ten years in the minor leagues. The best ones get to the Majors quicker--and collect big bucks.

The average salary for Major Leaguers today is a million dollars! Such bloated salaries result from the revenue clubs realize from television. Teams today play before millions of fans, not fifty or forty or sixty thousand, in Major League parks.

FALL CAR LOAN SALE



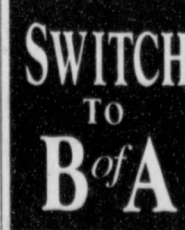
A good reason to put a car loan on your shopping list.

Get up to 1% off our published rate during our one and only Fall Car Loan Sale. For a few short weeks, we're discounting our auto loans on new and used cars! That adds up to big savings over the life of the loan. It could even be enough to pay for a year's worth of gas!

You'll get fast approvals at Bank of America. We'll give you an answer the very next business day. Getting approved in advance means you'll have the advantage of knowing exactly how much you can afford before you shop.

And you can even select the day your payments are due. Visit any branch. But hurry. this sale ends November 14!

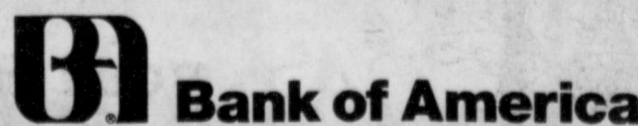
BANKING ON AMERICA.



To apply by phone, call 1-800-527-5165.

Muleshoe
304 Main Street, 272-5527

Farwell
203 Avenue D, 481-3353



Clark's Central

 **Texaco**

221 W. Amer. Blvd. Muleshoe
272-3915

Open 7:30 a.m. - 6:30 p.m.
Mon.-Sat.

Offers:

Oil Change (no appointment necessary),
Lube, Wash & Wax,
State Inspections,
Flat Repair, Minor Repairs,
Full or Self Service Gas
It Is Time To Check Your
Anti-Freeze.

Grapes Conservative In Water Usage

The Texas Grape Growers Association has a bumper sticker that says, "Conserve Texas Water, Drink Texas Wine." Following the suggestion would conserve water in more than just the obvious way.

The grapevine is far less thirsty than its neighbor, the cotton plant, according to studies on water utilization of grapes conducted at the Texas Agricultural Experiment Station in Lubbock.

Dr. Robert Lascano, associate professor of soil physics at the station, said that until recently water use by grapes had never been directly measured. Traditional methods conducted studies at the leaf, plant and field levels. However, instruments could not accurately measure what actually happened to the vines in field conditions. The instrumental shortcomings could, at best, only estimate water use, he said.

Transpiration is now measured successfully by the stem flow gauge, an instrument invented by Japanese scientists. It measures the water use of plants in field conditions in a nondestructive manner, Lascano said.

The gauge consists of an insulated sleeve attached to the stem of the plant. It operates on the heat balance method, or the heat going into and coming out of a system. A small heater is placed inside the gauge, and measurements are taken both above and below the heater.

Previously used on plants such as cotton, rice and soybeans, the gauge had never been used with grapevines, Lascano said. Experiment station researchers conducted a study in 1990 using stem flow gauges on grapevines in the Pheasant Ridge Vineyard in Lubbock County. Measurements were collected for 100 days between flowering and harvesting when water use by grapes is greatest.

Simultaneously, the water content of the soil over the growing season was monitored. The water balance of the vineyard was given by the amount of rainfall and irrigation received and the amount of water lost by evapotranspiration (ET), Lascano said. ET is the sum of soil evaporation and plant transpiration.

A weather station set up 20 to 30 feet from the plants calculated the potential ET, which indicated the demand of water by the vines.

Results revealed that the stem flow gauges worked well and were a suitable means for measuring the water use by grapes, Lascano said.

The gauges also showed that grapes used only eight-hundredths of an inch of water each day. In comparison, cotton needed two-tenths of an inch of water each day. The total amount of water used by grapes over the 100-day experiment was approximately five inches, he said.

However, ET over the same period was approximately 21 inches. The additional 16 inches of water was lost by soil evaporation, Lascano said. A large portion of the soil was not in the shade of the plant and therefore, open to more sunlight. Also, surface irrigation was used.

Depositing water directly around the vines by a drip irrigation system would decrease ET because soil exposed to sunlight is never wetted, he said. A drip irrigation system increases the efficient use of water by decreasing the amount of water lost to evaporation while increasing the amount used in transpiration.

"From a production point of view, grapes are drought tolerant and a drip irrigation system works best," Lascano said.

Knowing the water usage of grapes can assist growers in deciding when and how much to irrigate. In the United States, grapes are irrigated to maximize the

production of the best quality berry for wine. A quality wine is based upon the sugar content in the berry, he said.

The sugars also tell when to harvest. A delay in sugar accumulation, caused by too much water, will push harvest back. Therefore, some producers quit irrigating three to eight weeks before harvest to allow the berries to attain the appropriate amount of sugar, Lascano said.

"Wine making is an art as much as it is a science," he said.

Additional experiments on water use by grapes are being conducted. In one experiment, Experiment Station researchers and other scientists at Texas A&M are studying the amount of water used by the grapevines and the amount of energy required to evaporate water from the soil.

The Delaney Vineyards in Lamesa are the site for the three-year experiment which began in June. In the experiment's second and third years, researchers hope to measure the amount of water flowing into and out of growing grape clusters and design a computer simulation model.

Larry Combest Reports

U.S. Rep. Larry Combest of Texas has been named "Guardian of Small Business" by the nation's largest small-business advocacy organization, the National Federation of Independent Business.

NFIB, which represents nearly 600,000 small and independent firms in all 50 states including more than 41,000 in Texas, honors U.S. lawmakers who provide consistent support for free enterprise by voting favorably on key small-business issues at least 70 percent of the time during a two-year session of Congress.

Rep. Combest's small-business voting record during the 102nd Congress, based on 10 recorded votes, was 100 percent. Among crucial issues for entrepreneurs this session were legislative proposals dealing with balancing the federal budget, reducing government regulations, protecting small businesses from frivolous lawsuits, limiting taxes and restricting government intervention into small-business operations.

NFIB, nearing its 50th anniversary, is a non-profit, non-partisan organization which lobbies federal and state legislatures on behalf of small business. Small businesses comprise about 99 percent of all American employers hire nearly 60 percent of the workforce and create some two-thirds of all new jobs.

Three Way News

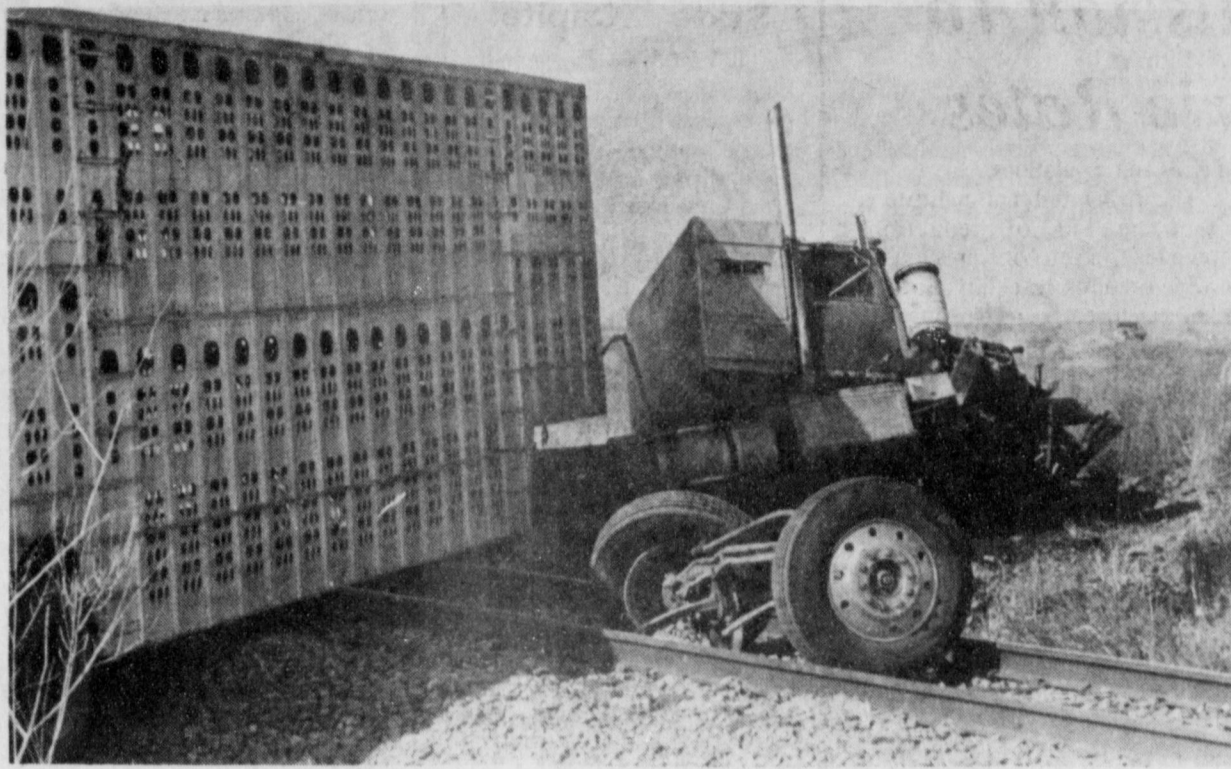
by: Mrs. H.W. Garvin

Three Way football boys played Cotton Center Friday night, losing the game to Cotton Center. It was Three Way's homecoming. The Seniors served supper before and after the game.

Mrs. Doris Huff and Mrs. Mary Kindle visited Mrs. Garvin Saturday afternoon and covered her air conditioner up. Mrs. Garvin has been in ill health.

Several men from the community are in Colorado hunting.

Mr. and Mrs. Dolle and their daughter, Darla spent the week end in Lubbock attending a birthday party.



ACCIDENTAL MISHAP-An accident took place about 1/4 mile West of Lariat Sunday afternoon. No injuries were sustained.

Christmas Seals Fight Lung Disease

A lot has changed about Christmas since 1904. Christmas trees are as apt to come from a factory as a forest; nutcrackers have given way to Nintendo games in children's stockings. One thing that hasn't changed is Christmas Seals.

The colorful seals can still be found on millions of cards and packages each year. And they're still the country's leading source of funds for fighting lung disease.

The American Lung Association has just mailed the 1992 Christmas Seals to some 35 million homes in the U.S., including 600,000 homes here in Texas. This year's campaign aims to raise \$35 million nationwide and \$3 million locally for programs to combat asthma, emphysema, lung cancer, and other forms of lung disease, which together represent the third leading cause of death in America.

The 1992 seal was actually chosen a year ago by Americans participating in a series of test campaigns. Designated by artist Lynn McKernan of the Franklin Mint, the seal reflects a continuing fondness for traditional Christmas images. It depicts a pair of cardinals in a holly tree with a stone snow-covered farmhouse in the background.

But there's a part of the Christmas Seal tradition the lung Association would just as soon end. Funds from the first campaign were used to fight tuberculosis, which was then the leading killer in America. The fight which once seemed all but won continues, as outbreaks of drug-resistant TB have raised the specter of deadly epidemics.

"It's not too late to end the threat from TB in America," says Dr. Lee

Reichman, the president of the American Lung Association and a leading authority on tuberculosis. "However, we need a lot of help to eradicate the disease. If people support Christmas Seals today, there's less chance they'll have to worry about tuberculosis tomorrow."

Dr. Reichman says the next few years could bring significant gains in lung disease research: "New therapies are saving an increasing number of babies born with respiratory problems. We're also close to unraveling the genetic causes of asthma. With success in these areas and continued progress against air pollution and smoking, tens of thousands of lives could be saved each year."

However, more resources are

desperately needed. In recent years, the death rate from lung disease has been rising faster than that of any other leading killer. Dr. Reichman says that, "With more resources, we can not only stop the alarming rise in deaths from lung disease, we can reserve it. That's what Christmas Seals are all about."

If you don't receive your Christmas Seals in the mail by the end of October, call the ALA of Texas at 1-800-252-LUNG.

NOTES, COMMENT

Making money easy is the hard way.

Many a life of the party is a washout at home.

Liberty Cellularphone Network Keeps You In Touch Automatically—With NationLinkSM.



NationLink—The National Call Delivery Service is now available to all Liberty Cellularphone Network customers. NationLink will automatically find you in any of its 246 major city or rural markets (includes LUBBOCK).

- No More Worries about Missing Calls as you travel
- No More Complicated Roaming Port Numbers

And this service is automatically yours with no monthly service charge. So see your Liberty Cellularphone Network Agent now and find out more about NationLink and how it can work for you!

*NationLinkSM is a trademark owned by McCaw Cellular Communications, Inc.

Special Introductory Offer for New Customers:
Mention this NationLink advertisement and we will waive your Initial Activation Fee—

- Limited to first 50 new customers
- Not available with any other offer
- Offer good until November 15th



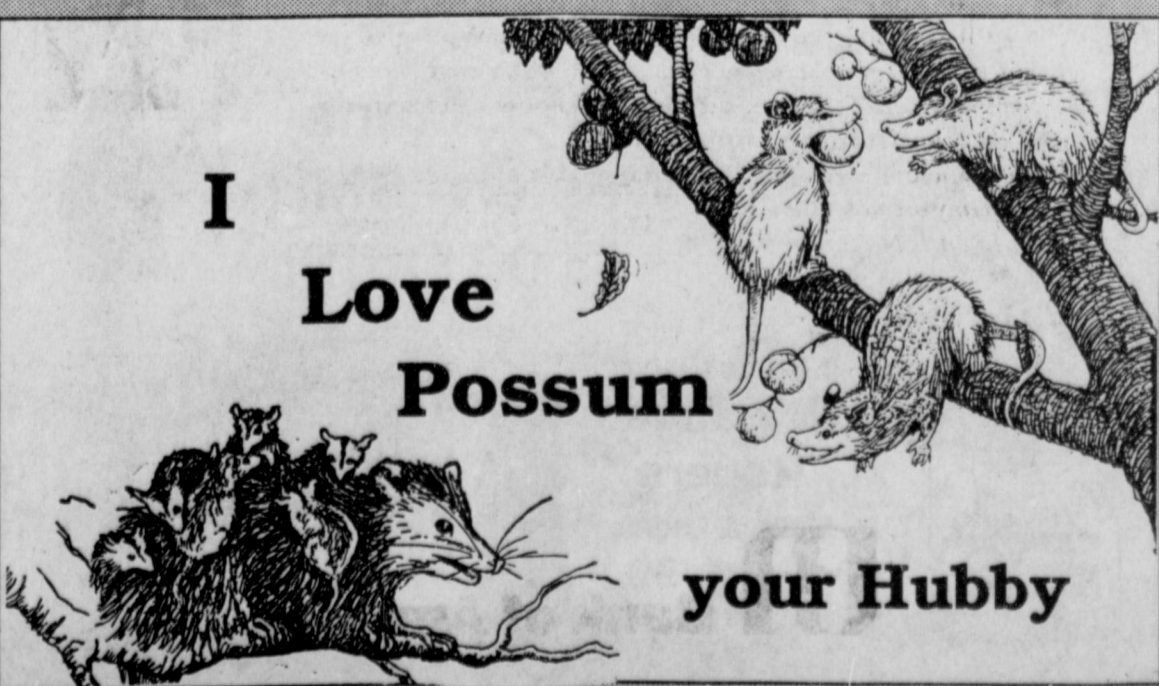
LIBERTY CELLULARPHONE NETWORK

Assuring You Quality Equipment and Quality Service After the Sale!

Liberty Cellularphone Network • 303 Avenue H • Levelland, TX 79336
PHONE: 894-8004

I Love Possum

your Hubby



October Food Market Watch

The biggest marketing effort for supermarkets in October will be on a food product that many people do not even eat.

Shortly after the first of the month, massive displays of pumpkins began to appear in supermarkets, according to Dr. Richard Edwards, economist with the Texas Agricultural Extension Service.

Those who buy early will have the best selection, and prices should be around 19 cents a pound, about the same as last year.

Edwards said pumpkins bought for later use should be stored in a cool dry location.

"Never store them for any length of time on the ground or garage floor," he said.

Growers in Floyd, Hale, and Bailey counties planted about 1,500 acres of pumpkins this year and are just beginning to harvest their crop, said Dr. Roland Roberts, Extension vegetable specialist.

Spring and summer rains inflicted diseases on fields, but "we still have some good pumpkins out there," he said. "Unfortunately, you have to be actually loading them to tell how high the quality is."

Pumpkins do not have to be used just for jack-o-lanterns; they have a high nutritional value, said Dr. Mary K. Dielamowicz, Extension nutrition specialist. The meat is low in calories (only 24 in a 1/2 cup boiled serving), and high in Vitamin A and potassium. Pumpkin can be used in pies, cookies, breads, fritters, and soups, and cooked similar to acorn squash, she said. Seeds can be soaked in salt water and baked for a snack similar to sunflower seeds.

Other Halloween promotions in the produce department will include caramel wrapping for candied apples and 3- and 5-pound bags of apples for trick or treaters. Apple prices will vary from 59 to 79 cents per pound, depending on size and variety, Edwards said.

While pumpkins may not be eaten as part of the Halloween

celebration, candy will. Sales on specially designed packages of candies will begin early in the month.

"The cautious and thrifty consumer will pay attention to the size and piece count in these special packages," Edwards said. "Occasionally, the specials on Halloween candies are less of a value than similar products sold during the rest of the year."

Red meat will offer the consumer the best food value during October. "The best buys will definitely be on pork products."

Pork production is up about 15 percent from last year and prices that farmers receive for live animals is down about 20 percent, he said.

Although prices at the retail level have not dropped to this degree, regular retail prices for pork have dropped about 10 percent. Additionally, when pork items are on special, prices are discounted another 15 percent to 20 percent, he said.

Most of the specials will be products that are the most heavily consumed during the cooler months of fall. Bacon will be less than \$1 per pound, stuffed sausage will run \$1.30 to \$1.50 per pound, and pork chops will sell between \$1.29 and \$1.49 per pound.

Poultry products also will sell at lower prices. The low production caused by the stress of summer heat has propped up prices during the past four months, he said. Production will be back to normal during October, and prices will decline.

Chicken won't go down as steeply as pork, but prices should drop about a 10 to 15 percent. Ten-pound bulk packs of the leg-thigh cuts will be marked at 25 to 29 cents per pound and whole fryers will be available for 45 to 49 cents per pound.

"Beef will have a hard time keeping up with pork and poultry as cattle prices have remained relatively steady over the past six months," he said. Specials will be on chuck steaks, roasts, and stew meat. The best prices will be on chuck roast, from \$1.25 to \$1.39 per pound.

Specials on seafood will increase with cooler weather, favorable for catching more fish, he said. Sales will be on flounder, orange roughy, king crab, cod and salmon. Harvest increases will not impact the best buy on seafood -- shrimp. Medium-sized shrimp at \$3.50 per pound provide the best value, he said.

In the grocery section, special situations will cause considerable discounts on some items. Manufacturers will mark down frozen okra, corn on the cob and chopped broccoli due to large surpluses in inventory.

Emus Represent Economic Diversity

It's a face only a mother could love. But to a number of producers in Texas, long-legged emus, a five-foot-high cousin of the ostrich, represent economic potential.

Approximately 12,000 emus, more than half of the nation's emu population, are being raised in Texas. Estimated value of the Texas inventory is about \$12.5 million. But the economic impact for the state is even greater when you factor in the potential of value-added processing and diversification.

While virtually all of the bird is marketable-- from meat to feathers--the highly penetrating oil rendered from a layer of fat surrounding an emu's body is what makes this particular species extremely valuable. The oil, which can be almost totally absorbed by the skin, can be used in cosmetic and pharmaceutical products.

"Breeding and processing emus represent a new direction for Texas agriculture," said Agriculture Commissioner Rick Perry, who has made food and fiber processing a major thrust of his administration.

In July, Emu Ranchers Inc. of Richardson introduced the first line of American produced skin care products made from emu oil. The cosmetics line was unveiled at the American Emu Association's annual meeting in New Orleans. Marketed under the Emuri name, the cosmetics line includes a nighttime revitalizing cream and daytime skin treatment.

Currently, the products are sold through a telephone sales line at Emu Ranchers Inc., but several boutiques and department stores have expressed interest in carrying the Emuri line.

"Texas is the nucleus of the nation's emu industry, so it's only natural that we launch the first line of skin care products made from emu oil," said Cyndi Grossman, cooperative publicity director.

Emu oil is rendered at a processing plant near Montgomery then shipped in drums made of a special plastic to Atlantis Laboratories in Conroe for manufacturing.

"This is a product that is raised, processed and manufactured right here in Texas," Perry said, "which means we are keeping jobs, opportunities and dollars at home working for all Texans."

GTE Offers Mastercard

The GTE MasterCard is being issued by Associates National Bank (Delaware). GTE Card Services, a unit of GTE corp., is responsible for card marketing. GTE Telephone Operations is responsible for all telephone-charge functions of the card.

"We are pleased to work with The Associates and MasterCard to offer this superior value to our customers," said Kent B. Foster, president of GTE Telephone Operations. "The card helps fulfill our strategic objective of providing enhanced consumer products and services wherever possible."

The initial offering of the GTE MasterCard is being mailed to customers in 29 states where GTE provides telephone service. A card offering in 11 additional states where GTE provides phone service, California, will be made in 1993. Consumers in non-GTE telephone operating areas and international areas are not being solicited.

Features Include No Annual Fee and 10 Percent Cash-back.

GTE MasterCard features include no annual fee and a credit limit of up to \$7,500. As a part of its agreement with GTE Associates National Bank will provide card holders with 10 percent cash-back, up to \$50 a year, on phone charges generated using the calling-card feature. The introductory interest rate is in effect until April 30, 1993. After this date the interest rate will be the prime rate plus 10.4 percent (currently 16.4 percent). "We know card users will appreciate the convenience of using a single card for phone calling and credit purchases, while paying no annual card fee," Foster said.

Associates National Bank is responsible for all credit, card issuance and billing for the MasterCard features. Telephone charges generated from using the calling-card feature will be mailed separately by GTE. Phone calls may be charged to a user's MasterCard account only when using certain "cardswipe" phones. The current GTE Calling Card, used for phone charges only, will continue to be available to GTE-area customers.

GTE Telephone Operations is the largest U.S.-based, local-telephone, company, providing phone service through more than 20 million access lines in 40 states and three foreign countries. GTE Card Services

provide card-marketing services. GTE Corp. is the fourth-largest publicly owned telecommunications company in the world.

Associates National Bank (Delaware) is an affiliate of The Associates, a consumer and commercial finance company with

assets of over \$25 billion. The Associates, part of the Financial Services Group of Ford Motor Company, is among the top dozen issuers of MasterCard and VISA credit cards in the United States, with more than three million customers.

MasterCard International represents 20,000 member financial institutions and has more than 171 million cards in circulation. Worldwide dollar volume in 1991 was nearly \$221 billion, with global acceptance in nearly 10 million acceptances locations.

Read the Classifieds

Thank You

The family of Bob Henderson would like to thank our friends and loved ones from the Muleshoe Area for the wonderful support they gave us at such a difficult time in our lives. We moved 4 years ago but Muleshoe is still our home and we had looked forward to coming back to retire. Its a great place to live and we were reminded once again how great the people are. Words cannot say what is in our hearts but this just about tells it all.

*Perhaps you sent a lovely card,
Or sat quietly in a chair.
Perhaps you sent a funeral spray,
If so we saw it there.
Perhaps you spoke the kindest words,
As any friend could say;
Perhaps you were not there at all,
Just thought of us that day,
Whatever you did to console our hearts,
We thank you so much whatever the part.*

And to all the lovely ladies who brought food to feed our large family and loved ones. We want to say a special thank you.

God Bless You All
Ruby
Bobby, Sammye & Jay
Jim Henderson

Thank You

We would like to express our thanks to everyone who sent flowers, cards, and food. We appreciate your thoughtfulness and kind words during this difficult time.

God Bless You
The Clifford C. Snitker Family



STROKE OF BAD LUCK-This pickup was one of two involved in an accidental mishap occurring Sunday afternoon 1/4 mile West of Lariat.



Staying Safe - As Easy As

A B C
ALWAYS BE CAREFUL

Moonlight **MARKDOWN** Madness

Saturday, October 24, 1992

8:00 p.m. to 12:00 a.m.

#7751 Navy, #7750 Brown, #34011 Black, #34011 Grey

FREE Pepsi

13MWZ
Cowboy Cut Jeans

38" Inseam

14.99 \$16.99

Full Fit Jeans
Wrangler

Starting Fluid

89¢

7.5 oz. Can. By: Polar

Shelby Pigskin
Gloves

Shepra Lining Mfg. #356111

\$7.99

Five Point
Anti-Freeze

1 gal. \$3.09

55 gal drum \$149.95

Quilted Duck Jacket

Sizes Small to X-Large, Regular & Talls

\$28.99

\$34.99

Walls

Mfg. #37084, Sizes 38-54, Reg. & Talls

Reg. \$32.99SALE

\$20.99

Reg. \$25.99 SALE

\$22.99

Reg. \$27.99 SALE

\$24.99

ALL Mens
Western Shirts

\$5.00 Off!!!!

Durango
Ropers

Mens & Ladies

\$42.99

Asst. Colors

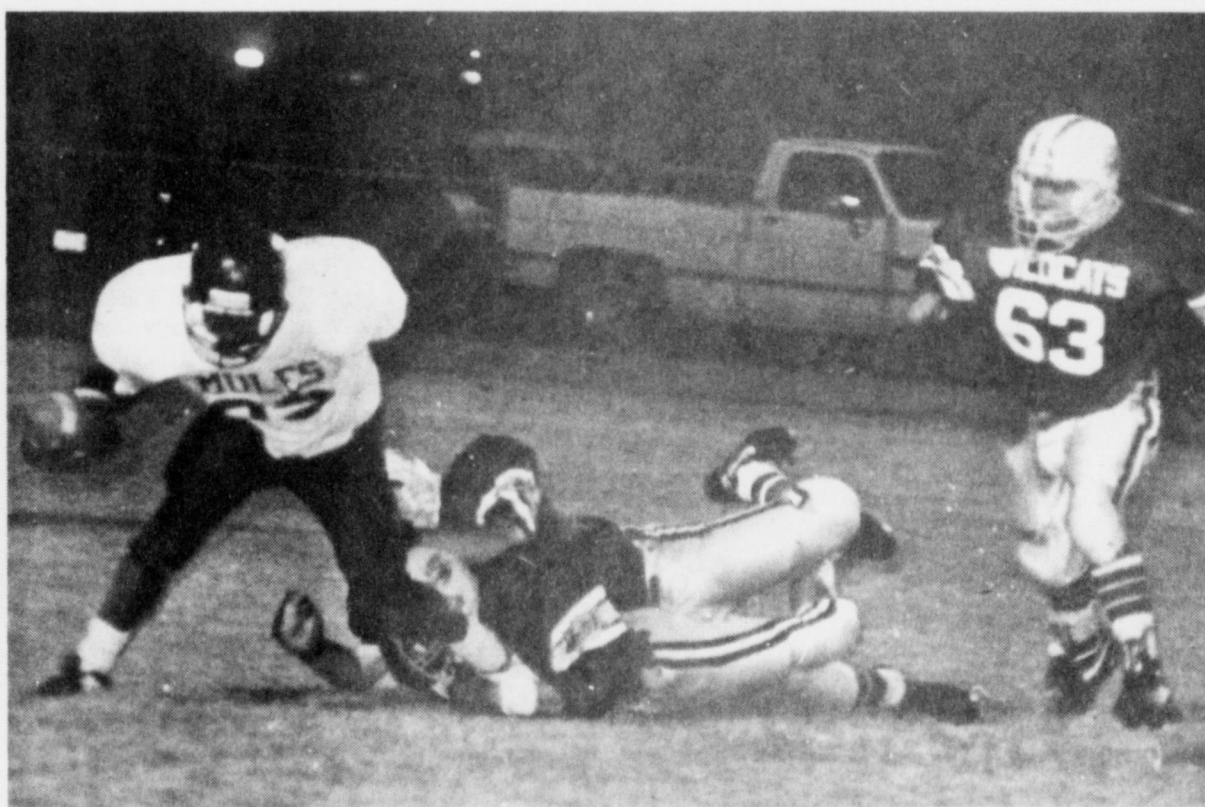
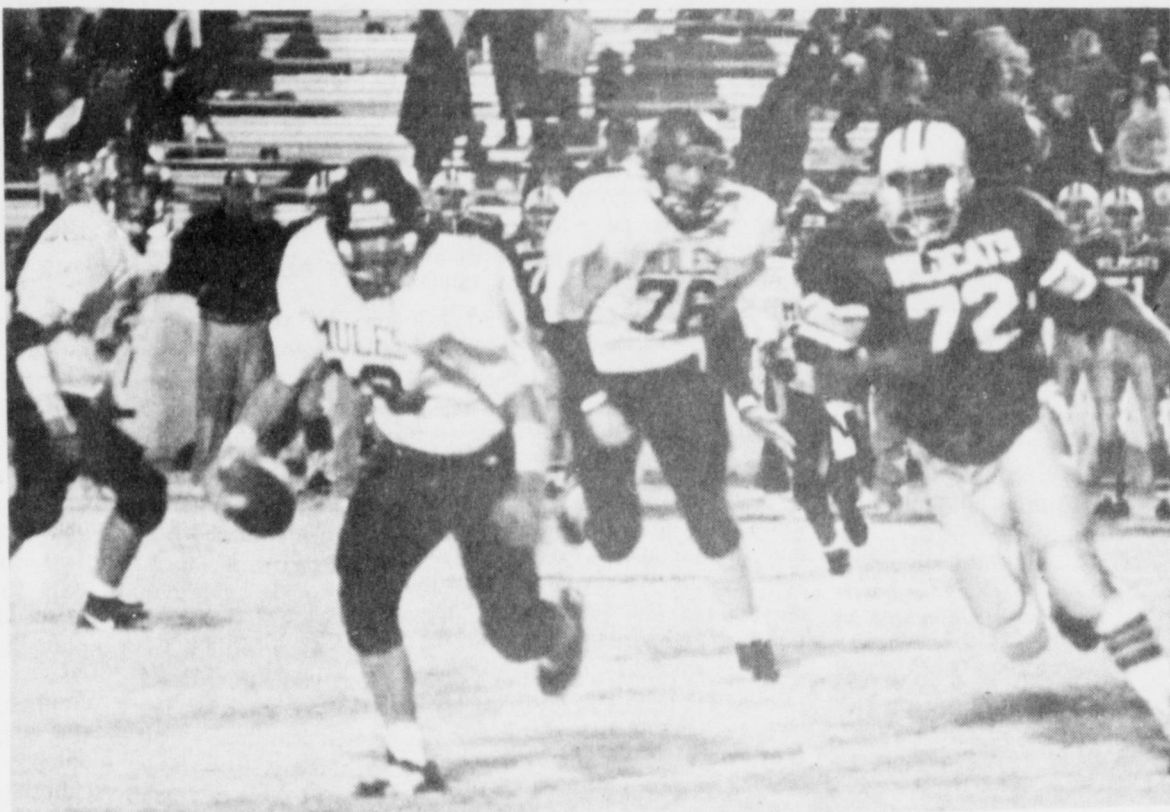
Laredo
Ropers

Mens & Ladies


\$44.99

Asst. Colors

Friday Night Football



State Capital



HIGHLIGHTS

By Lyndell Williams
TEXAS PRESS ASSOCIATION

AUSTIN — Amid the debates and headline warfare last week, Texas opened its early voting program.

As reporters watched, Gov. Ann Richards officially cast the first ballot at an East Austin grocery store to announce and underscore how easy it is to vote in Texas.

"This is the first vote in Texas cast for Bill Clinton, I'll tell you that," Richards said.

This is also the front line for electoral votes and Richards and her Democrats appear poised to win it in Texas.

Texas Democrats plan to score 1.75 million votes during the early voting period; Texas Republicans are just as serious. They are phoning reminders to voters.

Mobile Voting Stations

Texas Secretary of State John Hannah said mobile early voting sites — in motor homes and station wagons — can be used.

That means a vehicle can roll into a neighborhood and start collecting ballots, all supervised, of course.

But as opponents of the program point out, in these days of massive welfare fraud and other "credentials" crimes, how easy will it be to commit voter fraud?

Special Session Nov. 10

It's official. Gov. Richards has chosen Nov. 10 as the date legislators meet in special session on school finance.

Press secretary Bill Cryer said the date, a week from the November elections, would give lawmakers time to prepare.

The Texas Supreme Court three times has overturned school finance laws, ruling that they discriminated against property-poor districts.

Richards said she, Lt. Gov. Bob Bullock and House Speaker Gib Lewis are working on a new plan to present to lawmakers next month.

The last legislative effort created higher property taxes which the Texas Supreme Court ruled unconstitutional, but allowed to be collected.

Back Into Court

The Texas Supreme Court began hearing arguments on whether the Texas Constitution mandates that all citizens have equal access to public colleges and universities.

In January, Brownsville judge Benjamin Euresi reversed a jury and ruled Texas has discriminated against Hispanics in the Rio Grande Valley by not building enough colleges there.

Attorney General Dan Morales appealed Euresi's decision; his staff lawyers argued last week that the Constitution makes no mandate for higher education equal access.

Attorneys for Hispanics in the Valley argued that the Constitution's "efficiency" requirement for lower public school systems also applies to higher education.

Euresi, in pushing aside the jury's finding of no discrimination, gave the Legislature until May 1, 1993 to draft a remedy or face a court-ordered halt of all higher education funding.

Mauzy, Enoch Duel

Allegations of misuse of public funds surfaced last week for opposing candidates in a race for Texas Supreme Court.

First, a former secretary for 5th Court of Appeals judge Craig Enoch alleged she did campaign work on state time. Enoch, a Republican challenger, denied it, then later wrote the state a check for about \$570 to cover it.

That prompted Democrat incumbent Justice Oscar Mauzy, a former state senator, to comment the allegations "raised serious questions about Judge Enoch's suitability to serve on the state's highest court."

The ink was barely dry on Mauzy's quote when one of his former secretaries popped up with similar charges, that Mauzy required her to do his personal clerical work on state time.

Enoch has been asked by the Public Integrity Unit to supply documents; it is assumed Mauzy will be asked to do the same.

Latest Texas Poll

According to a Texas Poll survey for Oct. 1-8, Republican Barry Williamson has overtaken scandal-plagued Democrat Lena Guerrero in their railroad commission battle.

Williamson leads Guerrero by five points, 37 percent to 32 percent, with some 31 percent

undecided.

Guerrero resigned from the commission last month, apologizing for making false claims on her resumes and biographies. Her negative rating in the poll was 50 percent.

The poll also reported that Gov. Richards has a 59 percent approval rating, down from 72 percent in August.

Stop Sludge Dumping

Attorney General Dan Morales urged the Texas Water Commission to immediately halt a company from spreading sludge in West Texas.

Morales told the commission last week to revoke permission granted to MERCO Joint Venture to spread New York City sludge on a ranch near Sierra Blanca, about 70 miles southeast of El Paso.

Morales said the MERCO project does not meet state regulations.

Other Highlights

Gov. Richards took Morales' advice and appointed a prosecutor to head the state prison board: former district attorney Carol Vance of Houston. Vance, who already sits on the board, replaces Sheldon Hale, who resigned last month; Morales said then that a prosecutor would negotiate a prison lawsuit settlement tougher on prison inmates.

Richards asked the State Board of Insurance to adopt a plan to use independent information to set auto insurance rates, not data supplied by insurance companies. Industry representatives said the new plan would drive up premiums.

Fortune magazine ranked Houston second behind Seattle in a list of best U.S. cities for business.

MONEY TALK

Kay Bailey Hutchison
Texas State Treasurer



Editor's Note: Texas State Treasurer Kay Bailey Hutchison addresses various issues related to personal finance and state government. However, these views are not intended to replace the advice of reputable financial advisers or other professional counselors.

Q. While I was out-of-town my wallet was stolen with all of my credit cards in it. When I called to cancel my cards I found out that a substantial amount had been charged to my accounts. Am I liable?

A. Legally, a credit card company may hold an individual liable for the first \$50 of unauthorized charges. However, many companies waive this fee. Visa and MasterCard credit cards are issued by individual banks. Each bank has its own rules and regulations governing the amount of liability, if any, a customer is subject to in the event his or her credit card is lost or stolen. It is advisable for you to check with the bank or credit card company to determine their respective policy.

When you report a lost or stolen card and unauthorized charges have been made to your account, the credit card company will nor-

NEWS

Do You Know These Facts About Breast Cancer?

Average-size breast lump found by regular breast self-examination

October is National Breast Cancer Awareness Month, a good time to get the facts. To find out more about breast cancer, ask your family doctor, or call these toll-free numbers: American Cancer Society at (800) ACS-2345 or the National Cancer Institute at (800) 4-CANCER. For information free of charge, write to the ICI Pharmaceuticals Group Breast Cancer Education Center, PO Box 57424, Washington, D.C. 20036.

How much do you know about breast cancer? The answer is probably "not enough," because few people like to think about the subject. But your health, and your life or the life of a woman close to you, may depend on knowing a few simple facts.

- Did you know that...
- One out of every nine American women will develop breast cancer in her lifetime.
 - Breast cancer can occur without any warning signs, and more than 80% of breast lumps are *not* cancerous.
 - If breast cancer is diagnosed and treated early, the five-year survival rate is more than 90%.
 - Modern mammography can reveal small breast cancers up to two years

mally conduct its own investigation into the matter. Some credit card companies will ask you to sign a notarized affidavit stating that the charges listed were not made by you or anyone else authorized to use your credit card. The company may also contact the merchants where the unauthorized charges were incurred and ask for copies of the sales slips. In a few cases, a photograph will be shown to these merchants to verify that the credit card holder was not the individual who made the unauthorized charges.

If you lose your credit cards or if they are stolen it is important that you notify the credit card companies immediately. I strongly suggest that you keep a list of your credit cards along with your account numbers and the phone numbers of the banks or credit card companies in a place separate from your wallet.

Once you report your credit card as missing or stolen your account will be canceled, preventing further unauthorized charges. You usually will be issued a new credit card within two to seven business days.

ON HEALTH

Do You Know These Facts About Breast Cancer?

before they can be felt.

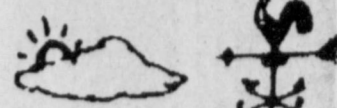
Average-size breast lump found by getting regular mammograms

There is no need to be afraid to learn about breast cancer. The facts are encouraging and reassuring. If you remember only one thing about breast cancer, it should be this: **your best protection is early detection.** Early detection provides the best opportunity to treat breast cancer successfully, and a diagnosis often does not mean removal of the breast.

Doctors recommend this three-step early detection program: **Schedule regular mammograms—your first screening mammogram by**

age 40, one every year or two to age 49, and every year after 50; **Practice monthly breast self-examination—your doctor can show you the proper method; See your doctor for regular breast examinations—at least every three years until age 40, then every year.**

Know The Weather



Is the hurricane season over? Why do these storms strike only in the east?

No, the hurricane season is not over. These storms often occur in October and even into November. By December they are usually a thing of the past.

Hurricanes strike the eastern United States and occasionally the middle states via the Gulf because they spawn over water. Their course is either north or

northeast, though they sometimes move northwest out of the Gulf.

They seldom if ever strike the west coast of the United States and should they do so the Rocky Mountains protect the western states acting as a barrier which breaks up such storms as they move eastward.

Thus, the western states are usually free from tropical-bred maritime cyclones.

Bush proposes 10 percent cut in his salary and others.

Among industrial nations, U.S. spends average amount on education.

FIXED RATE LOAN PLAN

Long-term Rural Real Estate

Fixed Rate for First 10 Years

8.20%*

*Annual percentage rates are 8.42% to 8.58% depending on length of contract; after 10-year fixed rate period. Variable rates are subject to change.

LIMITED FUNDS AVAILABLE AT THESE RATES

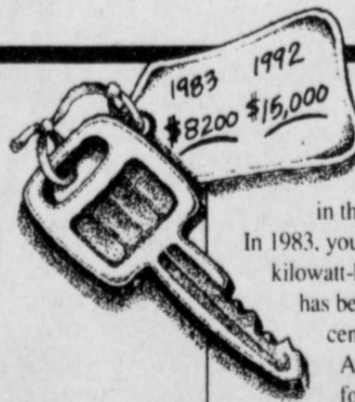
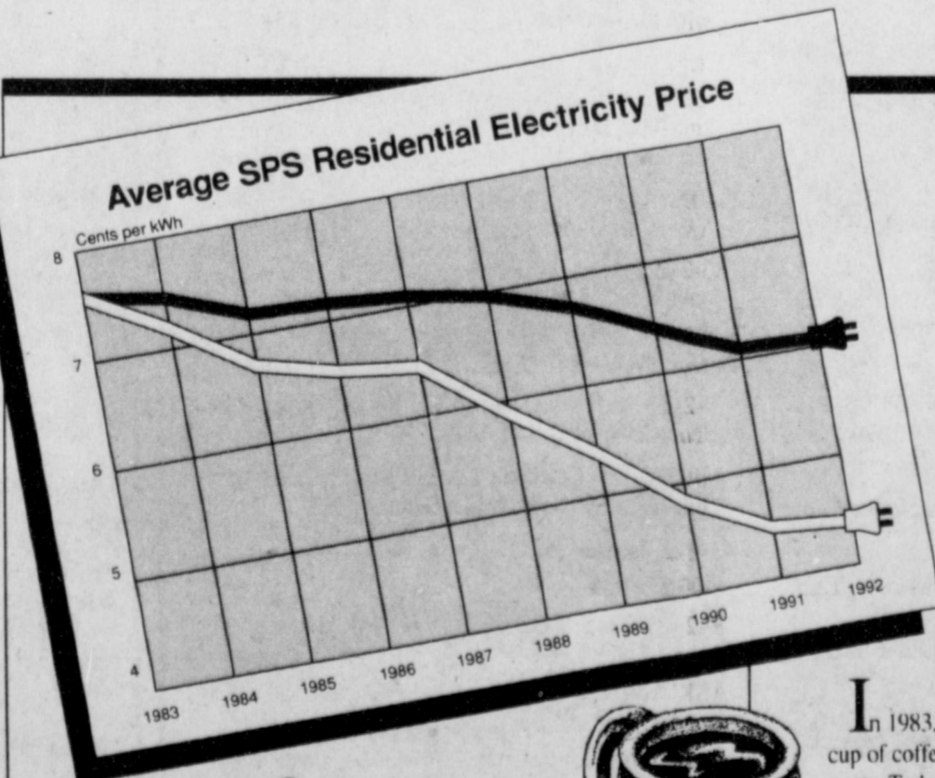
- NEW PURCHASES ONLY
- LONG-TERM LOANS FULLY AMORTIZED
- ASSUMABLE
- RATE CONVERSIONS AVAILABLE AT END OF FIXED RATE PERIOD
- OTHER LOAN PLANS AVAILABLE

FEDERAL LAND BANK ASSOCIATIONS IN TEXAS



Did You Know You Are Paying 20% Less For Electricity Than You Did Nine Years Ago?

(94% of our customers didn't.)



Compare this to the average residential cost of electricity in the SPS service area. In 1983, you paid 7.59 cents per kilowatt-hour. Today that rate has been reduced to 6.08 cents. That is 20% less! And, when you adjust for inflation, the real cost has been reduced 42%!

home electrically. That is much less than the national average for electric home heating.

And, because industrial and commercial rates, as well as residential ones, have come down, the area as a whole benefits. SPS' low rates can help attract new industry and encourage local companies to stay in our area.

Our heating rate has been significantly reduced, too. Today, you pay only 2.92 cents per kilowatt-hour to heat your



ELECTRICITY FROM SPS. A GREAT BUY THAT KEEPS GETTING BETTER.



SOUTHWESTERN PUBLIC SERVICE COMPANY



In 1983, you could buy a cup of coffee for about 25 cents. Today, you pay around 75 cents. An automobile that carried a sticker price of \$8,200 is now listed for \$15,000.

CLASSIFIEDS 272-4536

CLASSIFIED RATES
 15 Words & Under Minimum Charge \$2.30 Thereafter \$2.00
 16 Words & Over 1st Insertion 15 cents per word 2nd Insertion 13 cents per word

CLASSIFIED DISPLAY RATES
 \$1.75 Per Column Inch

DEADLINES
 12 noon Tues. For Thursday Paper 12 noon Friday For Sunday Paper

To receive the reduced rate after the first insertion, ad must run continuously.

We reserve the right to classify, revise, or reject any ad. We are not responsible for any error after ad has run once.

3. Help Wanted

Truck Driver Wanted:
 Retired person preferred. CDL required approximately 100 hours a month. Contact Harry Landsperg at 505-762-7717 in Clovis. A3-42s-tfc

Organ/Piano
 player needed for Sunday Worship, one Wednesday Evening a month, and for funeral services. Sudan United Methodist Church. Call (806)227-2015. F3-42s-2tc

WANTED
 Home Health Aide wanted in Muleshoe and Friona area. Requirements: Must have worked in a hospital or Nursing Home within the last 2 years or have a current aide certificate. Call 806-364-0217 or write to Outreach Health Services, 902 Lea, Hereford, Tx. 79045. 03-40t-8tc

1. Personals

CONCERNED About Someone's Drinking? HELP IS AVAILABLE
 through Al-Anon Call 272-2350 or 965-2870 or come to visit Tuesday and Thursday nights, 8:00 p.m. & through AA call 965-2870 or come visit Tuesday nights, 8:00 at 620 W. 2nd, Muleshoe.

TRUCK & TRACTOR DRIVERS WANTED:
 Monthly salary, lots of travel. Job runs March-December. Contact Scott or Charles at SCB Farms, Inc. in Bovina, TX--(806)238-1206 S3-40t-tfc

For more information and assistance regarding the investigation of get-rich-quick, work-at-home and other financial/business opportunities. The Muleshoe and Bailey County Journals urges its readers to contact the Better Business Bureau, 1206 14th St., #901, Lubbock, TX 79401 or call (806)763-0459

FOR RENT:
 Newly Remodeled 2 Bedroom House. Good Location. 272-4762. M4-42s-2tc

FOR RENT:
 1982 Ford XLT Lariat Pickup With Short Bed, Extended Cab And Matching Camper

3. Help Wanted

WANTED:
 Relief driver for Senior Citizens Van. Apply at Bailey County Courthouse. C3-43t-2tc

The City of Muleshoe is now taking applications for the position of meter reader. Applications may be filled out at City Hall, 215 S. First Street, 8:00 A.M. to 5:00 P.M. High School Diploma or G.E.D. Required. The city of Muleshoe is an equal opportunity employer. C3-43t-2tc

9. Automobiles For Sale

FOR SALE:
 1987 Ford XLT Aerostar Van Has All The Options

Both In Excellent Condition!
 Call 272-5109 after 6:30 p.m. B9-42s-tfc

CHEAP! FBI/U.S. SEIZED
 89 MERCEDES.....\$200
 87 VW.....\$50
 87 MERCEDES.....\$100
 65 MUSTANG.....\$50
 Choose from thousands starting \$25.
FREE Information-24 Hour Hotline. 801-379-2929 Copyright # Tx340JC A9-39t-16tp

PARK RANGERS
 Game wardens, security, maintenance, etc. No experience necessary. For info call (219) 769-6649 EXT 9689, 8 a.m. to 8 p.m. 7 days. 3-40t-8tp

WANTED: LVN wanted in Muleshoe and Friona area. Requirements: Must have worked in a hospital or Nursing Home within the last two years or have a current aide certificate. Call (806)364-0217 or write to Outreach Health Services, 902 Lea, Hereford, TX 79045 03-41t-8tc

11. For Sale Or Trade

FOR SALE
 Camper shell for long wide Ford. See at Five Area Telephone. T11-42t-4tc

You can't lose--or get lost--with THE ROADS OF TEXAS!
 Get your copy at Muleshoe Publishing Only 12.95

15. Misc.

COUNTRY GARAGE SALE:
 8 families cleaned out!!! Too many items to list. Friday and Saturday 23 & 24, 8:00-? 2 LOCATIONS--- 6 1/2 miles W. on FM 1760 and 7 miles W. on FM 1760. Worth the Drive!!! (Watch for signs) H15-43t-ltc

PLEASE AVOID DWI TAKE THE KEYS CALL A CAB TAKE A STAND.

You can't lose--or get lost--with THE ROADS OF NEW MEXICO
 Get your copy at the newspaper office. Only \$12.95

You can't lose--or get lost--with THE ROADS OF ARKANSAS
 Get your copy at Muleshoe Publishing Co. Only \$12.95

Major Appliance and Minor Home Repairs!
 Call 272-4450 HENDERSON SERVICE, CO. tfc

Assume Loan
 3-1-1 Brick, Blinds, Fans, Central Heat, Fenced Yard. 1424 West Avenue C. 272-5234. S8-40t-tfc

FOR RENT:
 Large Self Storage rooms with 24 hour a day access. Call J & J Self Storage at 272-4307. S15-40t-tfc

15. Misc. 15. Misc.

GARAGE SALE
 Saturday Oct. 24, 9 am-5pm 1714 West Ave. G. No Early Birds. Please. Household items, appliances, linens, pillows, blankets, lawn chairs, luggage, 2 bicycle scooters (like new), Xmas tree and decorations, books, toys, 2 VCR's with remote controls, men's and women's clothes, children shoes 7 1/2-9 1/2, clothes 8-14, wood work, tools. M15-43t-ltc

Johnson Photography
 Seniors, Weddings, Portraits, Groups, Quinceaneras. 1-8x10, 4-5x7, 8 wallet--\$25.95 Portrait Christmas cards & gift certificates 10% discount. Your home or mine. 272-5746

JOHNSON CATERING
 Now booking holiday banquets, parties, & open houses. Full meals or standup catering. Also all kinds of holiday cakes, candies, etc. Weddings-Quinceaneras. Free 4x6 individual or family pix included for each banquet scheduled. 272-5746 tfc

Would You Like To Earn Extra Cash For Christmas??
Why Not Join The AVON Family?
"The Smartest Shop In Town"
 No More Door to Door--- Sell To Family and Friends!

Earn Extra Money Besides Fabulous Gifts For Yourself!
 Your Cost--- Only \$20. To Get Started!
 Call:
 Holly at 272-5607 (after 6 p.m.)
 Rose at 272-4972 (after 6 p.m.)
 or Nettie at 272-3208

8. Real Estate

FOR SALE:
 2 Bedroom, 1 bath house. Large lot, outside city limit on improved road. Private well. Plenty of room for expansion. Ph. 272-5169 D8-41t-tfc

2 Sections irrigated farm land 10 miles North of Hereford. 8 wells, large grain base, lays good. Home, steel shop, pipe corrals underground lines, \$450 per acre. Owner will finance part. 409-543-5636. H8-39s-8tc

Custom Cowboy Services

Gathering- Processing-Doctoring All Phases Of Cattle Work

Wheat Cattle Available Experienced- Professional
 Jim Bohler
 272-3540
 Muleshoe

No argument is answered by an epithet. Almost anyone can tell you how to live your life. A good neighbor is one who loans but never borrows. All buyers want price control; all sellers are against it.

The cookbook everyone is talking about TEXAS COUNTRY REPORTER COOKBOOK
 256 pages of recipes from the winners of the popular tv show hosted by Bob Phillips \$13.95 Pick up your copy at the newspaper office.

9. Automobiles For Sale 9. Automobiles For Sale

MUST SELL! '89 Buick Regal Custom, 2-Door Coupe, V-6, Automatic Transmission, Am/Fm Stereo Cassette, Power Windows, Power Door Locks, Cruise Control, Tilt Steering Wheel. No old contract to assume, no back payments to make. Just need responsible party to make reasonable monthly payments, call Doug Hulderman in the Credit Dept., FRIONA MOTORS 806/27-2701

MUST SELL! '92 FORD Aerostar XL, Extended Base, 7-passenger, Dual Air Conditioning, Automatic Transmission, Captains Chairs, Drivers Air Bag, Power Windows, Power Door Locks, Tilt Steering Wheel, Cruise Control, AM/FM Stereo Cassette, Power Mirrors. No old contract to assume, no back payments to make. Just need responsible party to make reasonable monthly payments, call Doug Hulderman in the Credit Dept., FRIONA MOTORS 806/247-2701

MUST SELL! '91 FORD F150 XLT Lariat, Long Bed, Automatic Transmission, Air Conditioning, AM/FM Stereo Cassette, Power Windows, Power Door Locks, Tilt Steering Wheel, Cruise Control, Bed Liner, Dual Gas Tanks, Sport Wheels. No old contract to assume, no back payments to make. Just need responsible party to make reasonable monthly payments, call Doug Hulderman in the Credit Dept., FRIONA MOTORS 806/247-2701

Bingham & Nieman Realty
 116 E. Ave. C George Nieman, Broker 272-5286 272-5285

RICHLAND HILLS
 PRICE REDUCED- 3-2-2 Brick, Cent. A&H, built-ins, FP, sunken lv. area, ceiling fans, earhstone carpets..... RH-1
 3-3-1 Carport, Cent. A&H, built-ins, FP, abundant storage, covered patio!!!! RH-3
 NICE RESIDENTIAL LOTS.....\$5,000 UP
 4-2-2 Brick, Large living/dining combined... \$50's!!!! RH-5
 3-2-1 Brick, Cent A&H, with fenced yard...\$50's! RH-6
 3-2-2 Brick with fireplace, 5 ceiling fans, new carpet & paint, new dual fuel heat pump, abundance of closet space...\$90's..RH8
HIGH SCHOOL
 3-2-1 carport Brick, built-ins, lg. isolated master bdrm., covered patio...\$40's...HS-1
 VERY NICE 2-2-1+1 carport, Cent. A&H, built-ins, low maintenance lawn, Much More!! \$30's! HS-1
 IMMACULATE LARGE BRICK HOME 3-2-2 Heat Pump, built-ins, Whirlpool, loads of storage, lg. shop-storage, \$70's!!!! HS-2
 3-2 Remodeled, heat pump, built-ins, fenced yd., storage bldg. \$20's!!!! HS-3
 4-2-2 Brick, Built-ins, Cent A&H, ceiling fans...\$40's!!!! HS-5
 FmHA financing to a qualified buyer-3-1 1/2-1-1 Brick in tip-top shape...\$20's..H-6
HIGHLAND AREA
 3-2-1 Brick, Cent. A&H, FP, built-ins. MAKE OFFER!!!! HL-1
 3-2-1 Home, wall furnace heat, window evap. air. \$20's!!!! HL-2
LENAU ADD.
 3-1-1 car carport-Den with fireplace, floor furnace heat. Low \$20's...L-8
 REMODELED BRICK 3-2-1 with Cent. heat, built-ins--- PRICE REDUCED!!!! L-2

3-1-1 carport Home, Cent. A&H, built-ins, FP, fenced yd. \$20's!!!! L-3
 3-1 1/2-1 Cent. heat, evap. air, cov. patio fenced yd. L-4
 3-2-1 carport Neat & Clean, built-ins, A&H, cov. patio, storage bldg...\$30's!!!! L-5
 3-2-1+carport, Brick, ceiling fans, Approx. 2060 sq. ft...\$40's L-6
 JUST LISTED-2-1-1 carport, fenced back yard, with two storage bldgs...Priced in the \$20's...L-7
 4-3 Bath, Brick, on 2 acres built-ins, FP, Geothermal Ht. Pump, horse stalls, pens & tack rm...Also income producing shop on location or use for your own needs...\$80's!!!! Price Reduced! HR-4
 VERY NICE 4-2-2 Brick Home on 6 ac., Cent. A&H, 2300+lv. area, MUCH MORE!!!! 70's!!!! HR-4
 3-2-2 Brick, blt-ins, Ht. pump, FP. 2.5 acres on pavement. \$60's!!!! HR-3
 3-2-3 Carport Mobile Home on 11 ac. edge of town, MAKE OFFER!!!!!! HR-5
 3-2-1 on 1 acre, Cent. Heat, Evap. Air, Remodeled. \$30's!!!! HR-6
 NICE 3-2-2 Brick on 1 ac. on hwy., Cent. A&H, built-ins, fenced yd. Make Offer!!!! HR-7
 3-1-2 Home on 1 1/2 acres storm cellar & storage bldg...\$20's...HR-8
 3-2 Home on 40 acres barn and more...\$40's...HR-9
 ASK ABOUT OUR COMMERCIAL LISTINGS
 JUST LISTED--Property on Hwy. 84--Can be used as residential or commercial, large shop, storm cellar, two story home, lot size 140'x100'...C-1
 Circle Back Area-177 acres of good dryland...Fully Alotted!!!!
 PLEASANT VALLEY--160 acres, 8" well, Lindsey circle!!!!
 354 ac. S. of town, good allot. & yields!!!!!!

8. Real Estate 8. Real Estate

HENRY REALTY
 111 W. AVE. B 272-4581
 Muleshoe, Tx.
 2 bedroom, 1 bath, 1 car garage, brick veneer. Country Club Addition. Central heat and air. Very nice.

2 bedroom, 1 bath, detached 2 car garage, extra lot and well for garden. Country Club Addition.

Spacious 2 bedroom, 2 bath with one car garage. Fireplace. Ready to move in.

New listing-2 bedroom, 1 bath, redone for qualified buyer.

3 bedroom, 2 bath, carport, spec home outside city limits near city on CONTRACT Lot is 85'x402'. Metal building is 21'x40'. Great setup for workshop.

FOR LEASE-3 bedroom, 2 bath, carpet, spacious living area, fenced yard. Near high school. COMMERCIAL PROPERTY
 Ideal location on West American Blvd. 150' highway frontage. A great business opportunity.

Brick veneer restaurant 150 seating. Over 5000 sq. ft. with modern equipment. LEASED operation. Located on U.S. Highway 84, Muleshoe. 7,000 sq. ft paved parking. Excellent financing available for qualified buyer.

West American Boulevard 150' frontage. Priced to sell. LAND
 160 acres irrigated farm land with pivot sprinkler SW of Muleshoe. 60 acres of wheat. Ideal for livestock operation. Good water.

240 acres irrigated farm west of Muleshoe. Equipped with sprinkler pivot pad and ground electricity. Underground pivot controls or big gun sprinklers. Priced to sell.

Classify! Call 272-4536

Lowes Pay-n-Save MARKETPLACE

HALLOWEEN TREATS FROM LOWE'S



Coca Cola 2 liter \$1.39



20 pack 20 oz. **Coca Cola 2 \$5** Asst. For

Lowes Pay-n-Save MARKETPLACE QUALITY

 <p>Outs Rich Turkey Variety Pak 99¢ 12 oz.</p>	 <p>Value Pack Boneless Arm Charcoal Steak \$1.77 lb. Small Pack \$1.97</p>	 <p>Value Pack Boneless Arm Roast \$1.67 lb. Small Pack \$1.87</p>
 <p>Boneless Short Ribs \$1.97 lb. Small</p>	 <p>Boneless Beef Stew Meat \$1.97 lb. Small</p>	 <p>Wilson Smoked Pork Chops \$2.47 lb.</p>
 <p>Oscar Mayer Beef Franks \$1.67 1 lb. Pkg.</p>	 <p>Meat Bologna \$1.47 1 lb. Pkg.</p>	 <p>Fresh Fryer Leg Quarters 10 lb. Bag 27¢ lb.</p>
 <p>Sigman Cotto Salami Spiced Luncheon German Bologna \$1.27 12 oz.</p>		
 <p>All Varieties Classic Delight Sandwiches 88¢ Pkg.</p>		

Guaranteed Freshness!

 <p>Extra Fancy Red Delicious Apples 58¢ lb.</p>	 <p>Fresh Tender Broccoli 68¢ Bunch</p>	 <p>Pumpkins \$1.29 lb. Average</p>
 <p>Caramel Apples or Candy Apples 68¢ ea.</p>		 <p>Fresh Green Extra Large Bell Peppers 3 \$1 For</p>

 <p>Oscar Mayer Beef Franks \$1.67 1 lb. Pkg.</p>	 <p>Meat Bologna \$1.47 1 lb. Pkg.</p>	 <p>Fresh Fryer Leg Quarters 10 lb. Bag 27¢ lb.</p>
---	--	---

Lowes Pay-n-Save MARKETPLACE

 <p>Assorted Wesson Oil \$1.88 48 oz.</p>	 <p>Kleenex Bath Tissue 79¢ 4 Roll</p>	 <p>OREO Nabisco Treats \$2.49 20 oz.</p>
 <p>Delta Paper Towels 3 \$1 For</p>		

HEALTH & BEAUTY

 <p>Finesse \$1.99 ea. Asst.</p>	 <p>Life Savers Fun Size \$1.99 Asst.</p>
--	---

 <p>Wisk Power Scoop \$6.99 101 oz.</p>	 <p>Alpine Cider \$1.69 10 ct. Pkg.</p>	 <p>Caramels \$1.69 14 oz.</p>
---	---	--

 <p>Degree Anti-Perspirant \$1.79 1.75 oz.</p>	 <p>Hershey's Halloween Candy \$1.97</p>
 <p>Cough Decongestant \$2.99 4 oz.</p>	 <p>Saline Solution \$1.59 12 oz.</p>
 <p>Shurfine Grade "A" Large Eggs 69¢ Dozen</p>	

DAIRY

 <p>Yogurt 3 \$1 8 oz. Asst. For</p>	 <p>Land O Lakes Margarine Quarters 2 \$1 For</p>	 <p>Minute Maid Orange Juice \$1.99 Asst. 64 oz.</p>
 <p>Kraft American or Pimento Singles \$1.89 8 oz.</p>		 <p>Homo Milk \$2.09 Gallon</p>

FROZEN FOOD

 <p>Cool Whip 99¢ 12 oz.</p>	 <p>Van De Kamp's Fish Fillets or Sticks \$2.49 11 oz.</p>
 <p>Green Giant Corn on Cob 99¢ 6 ears</p>	 <p>Ore-Ida Crinkle or Golden Fries \$1.49 2 lb.</p>
 <p>Heath Ice Cream Bars \$1.99 6 pk.</p>	

Lowes Pay-n-Save MARKETPLACE

515 W. Amer. Blvd. Muleshoe 272-4406
401 W. Amer. Blvd. Muleshoe 272-4585

Prices Effective October 18 - 24, 1992

WE RESERVE THE RIGHT TO LIMIT QUANTITIES IN TEXAS

Our Best to You!