

WEATHER

Aug. 30 94 69 .2
Aug. 31 85 60
Sept. 1 77 57 .73
Sept. 2 85 60

Muleshoe Journal

The Community Of Opportunity-Where Water Makes The Difference



Vol. 70, No. 36

Published Every Thursday At Muleshoe, Bailey County, Texas 79347

TEXAS PRESS ASSOCIATION 20c

Thursday, September 3, 1992

Mules, Indians Clash In Season Opener

Game Time 8 p.m. Friday At Morton

Labor Day Pledge Center Scheduled Here

For the first time in a number of years, Muleshoe will have a Pledge Center for the 27th Annual Jerry Lewis Telethon. Everyone is encouraged to support the telethon and the fight against muscle diseases.

The Pledge Center will be located in the Town and Country Food Store, Crossroads, with Forrest Shannon as Pledge Center Coordinator.

The Telethon will be broadcast live from the Sahara Hotel in Las Vegas, and KLBK-TV 13 in Lubbock. Over 200 stations across the country and several stations in Canada will air this special event.

The show will begin Sunday, September 6 at 8 p.m. and continue 22 hours through Monday, September 7 at 6 p.m. Hosting this year's local portion will be Rick Gilbert and Jane Price Jones.

The Jerry Lewis Labor Day Telethon is watched by approximately 50 million people every year and is a leader in the Nielson ratings. The 1991 local telethon raised over \$154,000 in pledges and fund-raising events.

Call or go by the Muleshoe Pledge Center and make your donation to help "Jerry's Kids", and don't forget to stay up with Jerry and watch the stars come out this Labor Day!

Kerry Moore Semi-Finalist In State Competition

The 1993 Regional teacher of the Year award recipients have been announced by the Region 17 Education Service

Kerry Grant Moore, Muleshoe Independent School District and Deanna Piniirsch from the Shallowater independent School District have been selected to represent this Region as semi-finalists in the state Teacher of the Year Competition along with representatives from the other 19 Education Service Center regions.

Both teachers will receive a \$500 cash award from the Southwestern Bell Foundation.

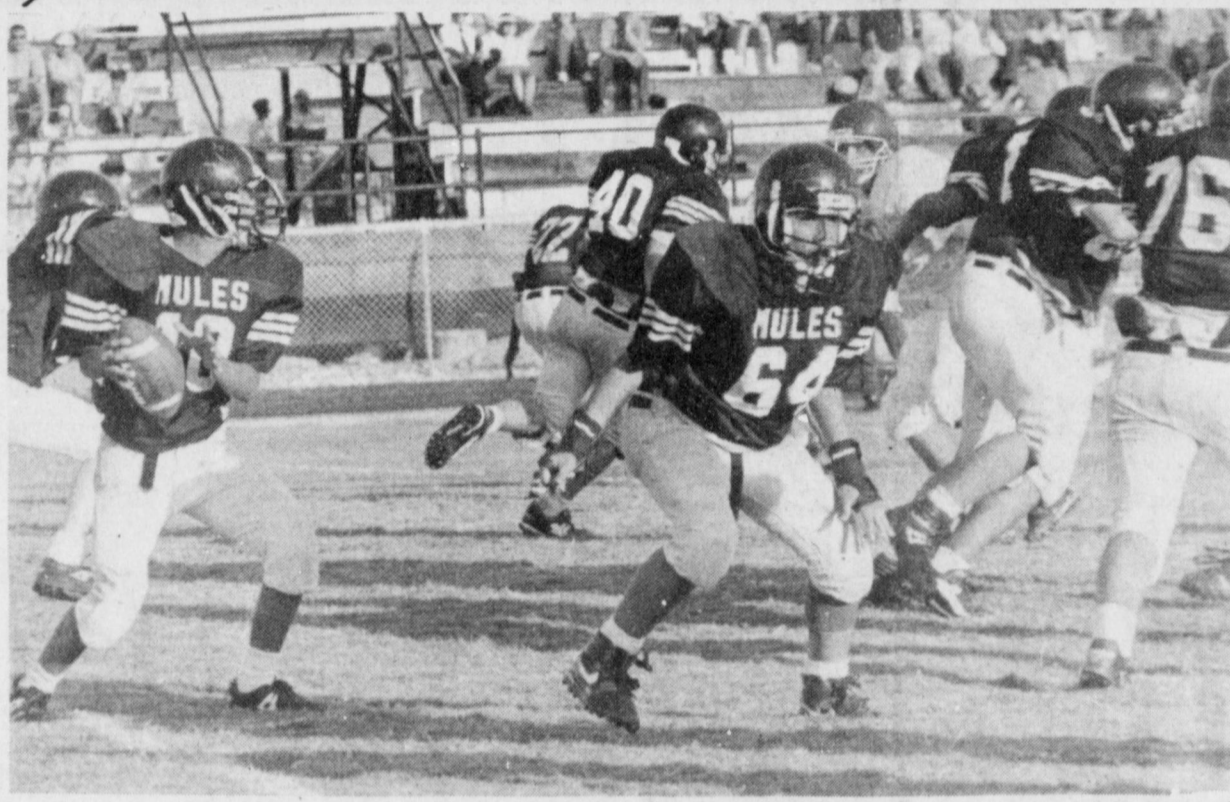
Moore is a 32-year, teaching veteran and has spent all of those years in Muleshoe Independent School District. He teaches speech and theatre arts to students in grades nine through 12 and has sponsored the district's chapter of Future Teachers of America every year of his career. In 1987 he was recognized as the Texas Speech Communication Association's most outstanding speech teacher.

Moore has also took his One Act Play cast to state competition the past several years.

Ms. Piniirsch was selected as the regional elementary teacher of the year award.

She began her career in education nine years ago at Christ the King School in Lubbock. In 1988 she accepted a position at Shallowater Intermediate School and has been teaching fifth grade science at the school since that time.

The state elementary and
Cont. Page 6, Col. 3



ITS THAT TIME OF YEAR--The Junior Varsity Mules scrimmaged River Road Friday night, gearing up for the real thing this week. Alfredo Gonzales prepares to throw a pass to a fellow team member. (Journal Photo)

International District Governor Visits Rotary

Brett McCasland called the Rotary meeting to order at noon Tuesday and recognized the visitors, including Rotary International District 5730 Governor Dr. Cliff Breaud and his wife, Moggie of Lubbock.

In making the introduction of Governor Breaud, McCasland stated that Breaud was a member of the Lubbock Rotary Club, a pilot from 1940 to 1947, attended Texas Tech University in 1946-47, and received his degree in dentistry in 1951. He

Football Contest Begins This Week

For all of you football fans, it's time once again for the Merchants weekly football contest.

All you have to do to enter is mark the official entry blank, found in Thursday's edition of the Muleshoe Journal for the teams you think will win that week.

You may drop the entries off at the Journal office no later than 5 p.m. Friday afternoon.

Entries mailed in must be post marked no later than Friday to be eligible to win. Employees of the Muleshoe and Bailey County Journals are not eligible to enter.

The decision of the Journal Judges is final and winners will be announced each week.

First place winner each week in the contest will receive a check in the amount of \$10; second place \$7.50; and third place \$5.

At the end of the contest the person with the most points receives a check in the amount of \$150.00.

Merchants sponsoring the contest are: Western Drug, Lambert Cleaners, Spudnut Shop, Pizza Hut, Wilson Drilling, Linda's Kitchen, Bob Stovall Printing, Scoggin Ag Center, Farm Bureau, Leal's Restaurant, Henry Insurance, Connie's Restaurant, Viola's Restaurant, Decorators Floral and Gift, Dinner Bell Restaurant, Higginbotham Bartlett, Snack Shack and Sudduth Field and Co.

The Bob Harmon Football Forecast, one of the country's most popular sport's features, will appear in the Muleshoe Journal each week during the 1992 football season starting today, Thursday, September 3.

Now in his 36th year of football forecasting, Bob Harmon's prognostications are published in over 300 newspapers in 45 states.

Harmon uses a formula to arrive at the rating for each of the more than 640 football teams that he follows each fall. And, though, boasting a college forecasting accuracy equal to any in the nation, The Harmon Forecast makes no wild claims of unbelievable
Cont. Page 6, Col. 2

is a member of various organizations. He and his wife have two sons.

Governor Breaud spoke to the Rotarians concerning Rotary International. He stated that the local Rotary officers along with a Rotarian from Levelland, his wife and himself had a good club assembly in the home of J.D. and Julie Cage Monday night.

He complimented the local club on their work here, stating that they were doing a good job.

Breaud spoke to the group about the April District Assembly and the 75th anniversary of Rotary. He stated that it was brought up at the district assembly that Rotary needed to establish a fund so that they might do the things they should be doing. "Rotary International has a budget of \$100,000 this year, we need to support the foundation," Breaud said. "I ask each member give a special donation, in addition to your local dues. We have five clubs at the present time who have 100 percent participation."

He made the statement that the Christmas in November project last year was a little late. It was getting a little cold by that time last year in Mexico. He recommended it being done in either late September or October.

A trip to South Africa is being planned and Breaud stated that any member who is free to be gone six weeks is welcome to make the trip.

Breaud stated that each year a Rotary International President is selected and he has been selected as the 1992-93 president. His theme for this year is "Real Happiness Is Helping Others."

"Rotary performs miracles all over the world, for instance the Polio Plus, where each member

Senior Citizens Offered Local Pass Card

The Muleshoe Independent School district will once again offer the Muleshoe ISD Local Pass card to senior citizens in the community who wish to receive one. To be eligible to receive the MISD Local Pass card, a person must be a resident of the Muleshoe Independent School District and must be over the age of 65.

The MISD Local Pass card entitles the holder to free general admission to athletic events and covers only one admittance. The pass card is non-transferable and is not acceptable for activities such as dinner theater productions, suppers department activities, etc.

Senior citizens wishing to obtain a pass card for the 1992-93 school year may go by the school administration office, 514 West Avenue G and see Jean Richardson.

contributes one dollar a week, provides vaccinations for children overseas who need them. "What we need now is food for these people," Breaud said. "We need dehydrated food."

"When a Rotarian gets real satisfaction from helping others we call them 'Real Rotarians.' We should never forget we are working for a good team, Rotary Club.

Breaud received a standing ovation from the local chapter.

McCasland stated that Ed Self from the Rotary Foundation will be the speaker next week.

Next week David Tipps will fill the position of president of the local Rotary Club.

Council Names Montgomery New Mayor of Muleshoe

In a special meeting of the Muleshoe City Council on Tuesday, September 1 at the City Hall, Robert Montgomery was appointed Mayor, filling the unexpired term of Darrell Turner, who resigned effective August 31, and is moving to Plainview. Paul Wilbanks, Mayor Pro-tem, administered the oath of office.

Montgomery and his wife, Sharon, are the parents of Chad, age 16 and Amy, age 20.

They moved to Muleshoe in 1977 and he holds the position of Executive Vice President at Muleshoe State Bank.

Montgomery attended West Texas State University and is a graduate of the New Mexico School of Banking at the University of New Mexico.

He is a member of the American Blvd. Church of Christ.

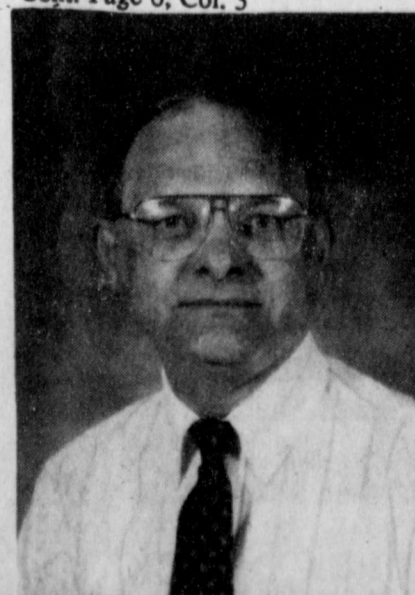
Having been active in many civic functions he is the past president of the Muleshoe Chamber of Commerce and Agriculture and currently serves on the board of directors.

In accepting the appointment,


Montgomery stated that he has always been impressed with the cooperative spirit of Muleshoe people. "We have a very progressive and well managed city and I look forward to being involved in the capacity of Mayor and working for the continued progress of our fine community.Æ



TAKING THE OATH OF OFFICE--Paul Wilbanks, right, administered the oath of office to Robert Montgomery during city council Tuesday morning. The City Council appointed Montgomery to the office of Mayor, filling the unexpired term vacated by the resignation of Darrell Turner. (Journal Photo)



KERRY MOORE



1606 W. Amer. Blvd. 272-3294


**Backing
The Mules
100%**

Closed Mondays

Georgia vs. South Carolina

**Higginbotham-
Bartlett Co.**

215 Main 272-3351



WD-40
\$1.99

We Support The Mules
100%

Tulsa vs. Houston

**Bailey County
Farm Bureau** 

David R. Tipps, Agency Manager

For All Your Insurance Needs


*LIFE *CROP
*AUTO *HOME

"Helping You Is What We Do Best"

1612 W. Amer. Blvd.
272-4567

Southern California vs. San Diego State

Stacey and Staff
Backing The Mules
100%



1412 W. Amer. Blvd.
272-4213

Air Force vs. Rice



**Henry Insurance
Agency, Inc.**

Kenneth R. Henry
Certified Insurance Counselor
Real Estate Broker

111 E. Ave. B 272-4581

Oregon vs. Hawaii

FOOTBALL CONTEST

Grand Prize: \$150.00

Weekly Prizes

1st - \$10 2nd - \$7.50
3rd - \$5.00

Weekly Winners

Contest Rules:

1. IN EACH ADVERTISEMENT YOU WILL FIND A GAME LISTED. CIRCLE THE TEAM YOU THINK WILLWIN. The person's score that most closely matches the TIE BREAKER will be declared the winner. If several persons are still tied the prize money will be split.
2. The contestant must be 12 years of age or older.
3. Only one entry per person may be made for any one contest.
4. Bring your entry by the *Journal* Office by 5:00 p.m. Friday, or if mailed, the entry must be postmarked no later than 5:00 p.m. Friday. Write "FOOTBALL CONTEST" on the mailed entry, and mail to P.O. Box 449, Muleshoe, Texas 79347.
5. In the Tiebreaker Games WRITE IN THE SCORE of the tiebreaker games. This score will be used to break weekly as well as determine the Grand Prize winner. Decision of *The Journal's* scoring judges will be final.
6. Winners will receive 10 points for first place, 6 points for second place and 4 points for third place.
7. To be eligible for the Grand Prize, entries must be on Official Entry Blanks printed in the newspaper.
8. Employees of *The Journal's* are not eligible to enter any one contest.



**Decorator's
Floral & Gifts**

Backing The Mules
100%

Betty Wuerflein, Owner
616 S. First 272-4340
Muleshoe
Kansas vs. Oregon State

Linda's Kitchen
(located in Damron Drug)

Closed Saturday & Sunday

100% Beef Homemade
Hamburger Patties
- Sandwiches - Salads -
- Drinks -
- Homemade Pies -

308 Main 272-4210

Tulane vs. S.M.U.



**The
Spudnut Shop**

The Upper Crust of the Donut World
The Original Potato Flour Donut

Check Our Weekly
Luncheon Specials

Mon. - Sat. 5 a.m. - 2 p.m.

328 South Main Street
Muleshoe, Tx.
272-3542

Syracuse vs. East Carolina

Western Drug Co.

114 Main 272-3106

"For All Your Prescription
Needs Visit The Friendly
People At Western Drug"

**Supporting The Mules
All The Way!**

Eastern Michigan vs. Akron

We Support The Mules
100%

Let Us Help You Get Those
Fall Garments Ready
For School and any
other Social Functions!

at
Lambert Cleaners

123 Main Muleshoe 272-3840
Auburn vs. Mississippi

Connie's Place

121 Main 272-3126

Hours:
Mon. - Fri. - 5:00 a.m. - 4:00 p.m.
Sat. - 5:00 a.m. - 2:00 p.m.

Daily Buffet:
Includes Salad Bar & Cobbler

Serving Breakfast Daily
Connie Dominguez, Owner

Nevada-Reno vs. Wyoming

Dinner Bell Restaurant

2103 W. Amer. Blvd. 272-5871
Muleshoe

Open 7 Days A Week 6:00 a.m. to 9:00 p.m.

Daily Noon Buffet -
11 a.m. - 2 p.m.
- All You Can Eat -
(includes Salad Bar, Cobbler,
Ice Cream & Homemade Bread) **\$5.89**

Nightly Friday
Steak Specials Fish Buffet
Mon. - Thurs. & (Catfish & Shrimp)
Sat. - Sun. 11 a.m. - 9 p.m.

Breakfast Served Anytime!
Memphis State vs. South'n Mississippi

Official Entry Blank

Name _____

Address _____

Phone _____

TIEBREAKERS

Muleshoe vs. Morton

Mississippi State vs. Texas



Support The Muleshoe Mules As They Travel To Morton Friday, September 5 For Their Season Opener Against The Morton Indians!!!



**Wilson Drilling
&
Southwestern
Geothermal**

Box 405 272-5521
Stanley Wilson Dee Puckett

Tx. Lic. 02628W
N.M. Lic. WD1152

Washington State vs. Montana

Bob Stovall Printing

No Job Too Large
Or Too Small!

Come By And Visit
With Us For All Your
Commercial Printing!

221 E. Ave. B. 272-3373
Temple vs. Boston U.

Viola's Restaurant

For The Best Mexican Food
Come To Viola's!

Open 11:00 a.m. - 9:30 p.m.
Closed Tuesdays

2002 W. Amer. Blvd.
272-3838

Brigham Young vs. Texas-El Paso

**Sudduth
Field & Co.**

David L. Sudduth, CPA
Randall L. Field, CPA

Backing The Mules
100%

104 W. 2nd 272-4291
Muleshoe
Toledo vs. Arkansas State

Kearney Scoggin

**Scoggin Ag Center,
Inc.**

"Where Fertilizer Is Our Business"

1532 W. Amer. Blvd.
Muleshoe, Tx. 79347
P.O. Box 452 272-4613

Miami, FL vs. Iowa

We want to wish everyone Good
Luck in the upcoming school year!

Thanks to all our customers,
we appreciate all of you
for patronizing
The Snack Shack

Go Mules! Go Mules!

Mon. - Fri. 11 a.m. - 8 p.m.
Closed Saturday & Sunday

The Snack Shack
222 W. Ave. H. Muleshoe 272-3840
Baylor vs. Louisiana Tech

Patients in Muleshoe Area Medical Center

AUGUST 28, 1992

Ruby Stickney, Ruth McCarty, Raymond Jacinto, Wanda Walker, Anna Jasso, Johnny Cisneros, Tommy Huley, Greta Armstrong, Velma Warmuth, Lillie Wuerflein, Alene Weiss, Susan York, Valentina Cruz, Linda Thomas, Baby Girl Thomas.

AUGUST 29, 1992

Ruby Stickney, Ruth McCarty, Raymond Jacinto, Leroy Hughes,

Wanda Walker, Johnny Cisneros, Tommy Haley, Greta Armstrong, Velma Warmuth, Lillie Wuerflein, Alene Weiss, Linda Thomas, Baby Girl Thomas.

AUGUST 30, 1992

Ruby Stickney, Ruth McCarty, Raymond Jacinto, Leroy Hughes, Tommy Haley, Greta Armstrong, Velma Warmuth, Lillie Wuerflein, Alene Weiss.

AUGUST 31, 1992

Ruby Stickney, Ruth McCarty, Raymond Jacinto, Leroy Hughes, Marcos Reyes, Tommy Haley, Greta Armstrong, Velma Warmuth, Lillie Wuerflein, Alene Weiss.

\$7 million restoration starts on Jerusalem monument.

1992 College Football Season Opens Saturday

Washington opens defense of its national title by taking on a tough Pac-10 Conference opponent, Arizona State, on the first Saturday of the 1992 football season. The powerful Huskies, in posting an 8-0 league record and an overall 11-0 season in 1991, ran up 461 points while allowing only 101. Last fall, the Sun Devils of Arizona State lost a one-sided affair to the Huskies in Seattle 44-16. This year the game is in Tempe. Washington climaxed its regular season national championship by whipping Big Ten champion Michigan in the Rose Bowl 34-14. The Huskies are favored over State.

Runner-up in our final college rankings in 1991, the Hurricanes of Miami travel to Iowa City to battle the Hawkeyes. Iowa was the #2 team in the Big Ten last season, finishing at 10-1. Brigham Young tied the Hawks in the Holiday Bowl last December 13-13. Miami topped

off its undefeated season in '91 with a 22-0 shutout of Nebraska in the Orange Bowl. Iowa City is a prime place for upsets, but we'll go with the 'Cane.

An interesting match-up takes place in Austin, Texas, Saturday night between the Southeast and Southwest Conferences. Mississippi State, a surprise team last fall, comes in after a 4th place finish in their league. The bulldogs nipped Texas in last year's season-opener for both teams 13-6. Mississippi State fell heavily to the Air Force in the 1991 Liberty Bowl 38-15. Even though it'll be played on foreign soil, we're picking the Bulldogs over the Horns.

Florida State, ranked 5th in our final ratings last fall, hosts Duke in the first for both teams. Duke posted a 4-6-1 season in '91 while the Seminoles finished 10-2, and then held off an upset-minded Texas A&M team in the Cotton Bowl in a defensive struggle 10-2.

Letter To The Editor

SPECIAL THANKS

On behalf of the Muleshoe Chamber of Commerce and Agriculture, we wish to say, "Special Thanks" to the people of this community that donated their time, knowledge, past experiences and donations of special funds to revive Muledays in Muleshoe, Texas.

We have heard, to this date, only praise and congratulations on the success of all events during the celebration. We have been informed by people from other communities, heavily involved in Muledays celebrations across the United States, this is the place to hold the World Championship Muledays and were willing to work with us to obtain this goal. We are already working on Muledays 1993.

Again, "Thank You" for everyone's cooperation, to KMUL, Channel 6, The West Texas Ranger and The Muleshoe Journal as well as all News Medias. Thank you for your help.

Chamber of Commerce and Agriculture
Muleshoe, Texas.

August 28, 1992

Evelene Harris, Editor
The Bailey County Journal
P.O. Box 44
Muleshoe, Texas 79347-0449

Dear Ms. Harris:

Our boys and girls are putting the finishing touches on this year's

**#1 FIT
#1 COMFORT
#1 WEAR
#1 SATISFACTION**

ANTHONY'S
321 Main Muleshoe 272-3478

Boys Ranch Rodeo. Final rehearsals, to be held this evening, will be attended by many members of the media who have helped publicize this 48th annual extravaganza. We especially appreciate the fine assistance given by The Bailey County Journal this year.

On the chance that you or others may wish to attend the rodeo on

Score Seeks New Members

The Lubbock Chapter of Score (The Service Corps of Retired Executives) is looking for new members to join the Lubbock chapter.

There will be a membership drive meeting at 9:00 a.m. in the conference room of the U.S. Small Business Administration, 1611-10th Street, Suite 200, in Lubbock on September 4, 1992. The meeting will last no more than one hour. Persons who might be interested in joining Score are encouraged to attend and can obtain more information by calling Score at 743-7462.

Score members are retired volunteers with a background of small business ownership or public service who donate their time to counseling or training small business owners or people who want to start their own business.

Score is sponsored by the Small Business Administration.

Gorbachev asks U.S. for aid for countrymen.

Sunday or Monday, September 6 or 7, I am sending a pass that will insure general admission. We especially hope to see any members of your staff who may be able to report on this event, and look forward to providing interviews or information Sunday or Monday.

Should you have a chance to add some additional publicity this next week, I am sending a final news release. Although ticket sales seem

to be going well, we do see to have plenty of good seats still available.

Again, I appreciate your fine help in letting people know about our rodeo. Our doors are always open for your personal visit whenever possible. With much gratitude in advance of a successful rodeo, I am

Sincerely yours
Carl McMillen
Public Information Director

Muleshoe Journal

USPS 367-820
Established February 23, 1924. Published by Muleshoe Publishing Co., Inc. Every Thursday at 304 W. Second, P.O. Box 449, Muleshoe, Tx. 79347. Second Class Postage paid at Muleshoe, Tx. POSTMASTER: Send address changes to the Muleshoe Journal, P.O. Box 449, Muleshoe, Tx. 79347.



L.B. Hall, Publisher
Sammye Hall, Vice-President/Comptroller
Evelene Harris, News
Annette Bottleman, Society
Holly Millsap, Advertising
Diana Bermea, Classified

SUBSCRIPTIONS
Muleshoe Journal and Bailey County Journal
By Carrier Yearly - \$14.00
Bailey and surrounding counties
By Mail - \$15.75
Elsewhere - \$17.50

Advertising Rate Cards on Application
"Advertisers should check their ad the first day of insertion. The Journals will not be liable for failure to publish an ad or for a typographical error or errors in publication except to the extent of the cost of the ad for the first day of insertion. Adjustment for errors will be limited to the cost of that portion of the ad where the error occurred."

THE BOB HARMON FORECAST

Thurs., Sept. 3 - Major Colleges - Div. 1-A	Other Games - East
Oklahoma 24	Texas Tech 14
Sat., Sept. 5	
Air Force 27	Rice 21
Alabama 23	Vanderbilt 14
Arizona 27	Utah State 17
Arkansas 28	Citadel 10
Auburn 23	Mississippi 20
Baylor 24	Louisiana Tech 17
Boston College 24	Rutgers 13
Bowling Green 23	Western Michigan 14
Brigham Young 27	Texas-El Paso 14
California 27	San Jose State 10
Clemson 34	Ball State 7
Colorado 35	Colorado State 13
Eastern Michigan 21	Akron 20
Florida State 38	Duke 7
Fresno State 28	Pacific 14
Fullerton State 26	Northridge 17
Georgia 27	South Carolina 20
Illinois 38	Northern Illinois 8
Iowa State 30	Ohio U. 10
Kansas 27	Oregon State 13
Kentucky 24	Central Michigan 15
Memphis State 28	South'n Mississippi 21
Miami, FL 28	Iowa 17
Mississippi State 24	Texas 22
Nebraska 40	Utah 10
Nevada-Reno 23	Wyoming 7
North Carolina 21	Wake Forest 13
North Carolina State 30	Appalachian State 14
Notre Dame 33	Northwestern 7
Ohio State 33	Louisville 6
Oklahoma State 30	Indiana State 15
Oregon 23	Hawaii 21
Penn State 35	Cincinnati 7
Pittsburgh 21	Kent State 10
Southern California 24	San Diego State 17
Syracuse 26	East Carolina 23
T.C.U. 26	New Mexico 13
Temple 21	Boston U. 14
Tennessee 42	SW Louisiana 7
Texas A & M 24	L.S.U. 10
Toledo 26	Arkansas State 14
Tulane 24	S.M.U. 21
Tulsa 28	Houston 27
Virginia 41	Maryland 10
Virginia Tech 28	James Madison 7
Washington 34	Arizona State 10
Washington State 23	Montana 10
Weber State 30	New Mexico State 13
West Virginia 28	Miami, OH 13
Major Colleges - Div. 1-AA	
Alcorn 23	Grambling 14
Bloomberg 27	Bucknell 20
Boise State 26	Tennessee-Chattanooga 14
Central Florida 33	Gardner-Webb 6
Connecticut 28	New Haven 10
Delaware State 49	Cheyney State 6
Eastern Illinois 31	Austin Peay 7
Eastern Kentucky 31	Western Kentucky 13
Furman 30	Liberty 12
Georgia Southern 30	Florida A & M 14
Idaho 28	St. Cloud 13
Idaho State 38	Mesa 7
Illinois State 24	SW Minnesota State 23
Jackson State 23	Tuskegee 10
Marshall 40	Morhead State 10
McNeese 23	SW Missouri 20
Middle Tennessee 28	Tennessee State 7
Morehouse 21	Howard 20
NE Louisiana 24	Nichols State 10
New Hampshire 33	Maine 14
North Carolina A & T 49	North Carolina Central 10
North Texas 31	Abilene Christian 12
NW Louisiana 26	Mississippi College 21
S.F. Austin 27	Arkansas-Monticello 7
Sacramento State 23	Montana State 21
Samford 30	West Georgia 10
Savannah State 24	Bethune-Cookman 21
SE Missouri 40	Murray State 24
South Carolina State 33	Newberry 7
Southern Utah 28	Northern Arizona 21
SW Texas 27	Texas A & I 14
Texas Southern 49	Prairie View 6
Troy 24	Southern Illinois 20
V.M.I. 24	East Tennessee 17
Villanova 48	West Chester State 7
Western Carolina 31	Mars Hill 6
Western Illinois 40	Missouri Western 10
Youngstown 31	Claron 10

Proudly Presented By:
WES-TEX FEED YARDS, INC.
CUSTOM CATTLE FEEDING
272-7555

WE'VE GOT THE HOMETOWN Spirit

We Have The Experience You Need
We Have The Services You Expect

- Checking Accounts
- Savings Accounts
- Cashier Checks
- Money Orders
- Travelers Checks
- Bonds (Series EE)
- Certificates Of Deposit (substantial penalty for early withdrawal)
- Individual Retirement Accounts (substantial penalty for early withdrawal)
- Simplified Employee Pension Plans (substantial penalty for early withdrawal)
- Safety Deposit Boxes
- Loans for: Farmers, Business, Residential, Home Improvement, Community Development, Vehicles, Household Goods, Students & others

Tenemos La Experiencia Que Usted Necesita Tenemos Los Servicios Que Usted Espera

- Cuentas de Cheque
- Cuentas de Ahorro
- Cheques Bancarios
- Jiro Postal
- Cheques Viajeros
- Bonos (Serie EE)
- Certificados de Deposito
- Cuentas de Retiro Individual
- Planes Simples de Pension
- Caja de Segurided
- Prastamos Para: Agricultura, Negocio, Residencial, Mejoramiento de Casa, Desarrollos de Comunidad, Vehiculos, Muebles para Casa, Estudiantes, Y Otros

No discriminamos por razon de color, origen nacional, sexo, incapacidad fisica, estado familiar (se tiene ninos menores de 18 anos de edad) estado matrimonial, edad (bajo condicion que el aplicante tenga la capacidad de entrar en contrato legal); por razon de que el aplicante reciba entrado, en total o en parte, de cualquier programa de asistencia publica; o por razon de que el aplicante haya demostrado en buena fe sus derechos bajo la ley titulada Consumer Credit Protection Act.

1ST BANK MULESHOE

202 South First
Muleshoe, TX 79347
806-272-4515

Member F.D.I.C.

101 N. 3rd
Bovina, TX 79009
806-238-1442



WELCOME BACK! - Joy Stancell, Activity Director of the Muleshoe Area Health Care Center, was honored with a surprise "Welcome Back" party after returning from her vacation last week. Refreshments, provided by Mrs. Embry, of watermelon and cantaloup, were served from a table completed by a white linen tablecloth and silver appointments. "Welcome back, Joy, you were missed very much."

Senior Companions Meet

The Senior Companions from Bailey, Cochran, Garza, Hockley, Lamb, Terry, and Yoakum counties met in Levelland at St. Michaels's Parish Hall for their monthly in-service meeting. All companions are required to attend their monthly in-service as a continuation of training.

A short business meeting was held and then the guest speaker was introduced. Lt. Tony Cowan from Levelland Police Dept. spoke to the 81 attendees concerning "Safety". He showed three separate slide presentations concerning home security measures, the neighborhood watch program, and fraud awareness.

Lt. Cowan also spoke about Operation Identification. Most police departments and sheriff's departments in this area have electric engraving tools that can be borrowed by the public to mark their belongings for identification if stolen. People are encouraged to use their Texas driver's license number as the identifying mark. If a senior citizen, or any other citizen, does not have a driver's license, they may apply for an identification card through the local driver's license bureau. This I.D. card resembles a license, the number is kept on file, and can be accessed by computer through local law enforcement departments within minutes as a license number can. Using a social security number can take up to a month or longer to trace and return your recovered property.

The companions appreciated the time spent and the information that was shared with them. These



Kirsty Cruz

Victor and Valentina Cruz, of Muleshoe, would like to announce the birth of a daughter, Kirsty. She was born August 31, 1992 at 10:54 a.m. at Muleshoe Area Medical Center. Kirsty weighed 6 pounds 4 ounces. Her grandparents are Reyes and Edilia Valdez of Friona, Texas, and Manuel and Maricela Cruz.

Bethany Ann Thomas

Steven and Linda Thomas, of Bovina, are the proud parents of a new baby girl, Bethany Ann. She was born August 27, 1992 at 3:46 p.m., and weighed 8 pounds and 11 ounces. Her grandparents are E.D. and Alice Kelly of Briscoe, Texas, and Frank and Jean Thomas of Ft. Worth, Texas. Her Great-Grandmother is Clairra Parrott of Ft. Worth, Texas.

Stephanie Guillen

Juana and Jose Pablo Guillen would like to announce the birth of a baby girl, Stephanie. She was born August 31, 1992 at 10:42 a.m., and weighed 6 pounds and 11 ounces.

Michael Durben Becomes A Brother

Michael Durben, son of Pat and Billy Durben is a proud brother. His sister, Caitlyn BreAnn was born Saturday, August 1, 1992 at 3:00 p.m. at University Medical Center in Lubbock, Texas. She weighed 6 pounds and 9 ounces and was 19 1/4 inches long.

Her maternal grandparents are Chalmer and Mary Davis of Muleshoe. Paternal grandparents are Margaret Durben of Muleshoe, and Mike Durben of Clovis, N.M. "I'm proud. Finally I'm a brother", was Michael's comment about his new sister.

NEWS VIEWS

Ross Perot, jack-in-box politician:
"There is no question in my mind we left men behind (in Vietnam) and I think I can prove it."

George Bush, U.S. President:
"The American people think we're in a recession and we're not."

topics are of interest to all citizens. Any of the local law enforcement departments should be contacted by other groups if they wish to have a program over such topics.

Nurses To Meet

Licensed Vocational Nurses Association of Texas-Lubbock Division number 18, will meet Monday September 14, 1992. The meeting time is 7:00-9:00 p.m. The meeting place is in the Amet Room of St. Mary's Hospital.

September featured speaker will be Norman S. Anderson-RPH. He will speak to "Narcotic Analgesics." One (1) contact hour will be earned by those attending. Upcoming months will be very informative for all nurses attending Division 18 meetings. Contact hours for each meeting. Each meeting is approved by LVNAT for contact hours. Twenty (20) contact hours must be earned by each L.V.N. in a two (2) year period for license renewal. Division 18 is here to help achieve this and to keep L.V.N.'s informed on legislative happenings.

A workshop on "Pain Control" is upcoming in November. Three (3) contact hours will be earned by those attending. Further information later. Contact: W.M.Covendell-President, 828-4565.

Publish Or Perish?

What's the best school from which to get a law education in America?

According to one recent study, it depends on how often their professors write articles for leading law journals, not how well they teach or how their graduates succeed at the bar.

On this basis, the University of Chicago and Yale University took first and second place. No Texas school was even in the running!

BREAST CANCER DETECTION UNIT AVAILABLE TO AREA WOMEN



WEDNESDAY, SEPTEMBER 9th
MULESHOE AREA MEDICAL CENTER
708 South 1st
MULESHOE

A Service of
Transamerican Diagnostic Services
(Providing Mammography Services for over 5 years)

CALL 272-4524 FOR APPOINTMENT

According to the American Cancer Society, one out of ten women in the United States will develop breast cancer sometime in her lifetime. It is currently estimated that over 37,000 women die each year as the result of breast cancer.

Ninety percent of breast cancers are diagnosed by women or their physicians finding a lump in the breast. Women who are diagnosed with a lump large enough to feel have a 50 percent five year survival rate. A woman who is diagnosed as having breast cancer by mammography, before a lump can be felt, has a 97% five year survival rate and a 90% 10 year survival rate.

A mammogram can detect a cancer this small, even before it can be felt.

Guidelines For Screening Mammography Established by the American Cancer Society.

- I. 35-40 years of age - One baseline mammogram.
- II. 40-50 years of age - A mammogram every 1-2 years depending on breast type and risk factor.
- III. 50 years of age and over - An annual physical examination and annual mammogram.
- IV. Asymptomatic women under 50 years of age with significant high risk factors should be examined at appropriate intervals. These risk factors include previous breast cancer and family history of cancer.

V. A symptomatic woman should have a mammogram at any age when she experiences a mass, nipple discharge, skin changes or unexplained breast pain.

A screening mammogram is an x-ray of the breast using extremely low dosages of radiation (usually comparable to dental x-rays) and is designed to find very early cancers.

A female technologist who is highly trained in mammography will perform the examination.

The charge for the screening mammogram is \$70.00. The Unit accepts cash, check, Visa, Mastercard and American Express.

NOW ACCEPTING MEDICARE AND MEDICAID



BIRTHDAY PARTY CELEBRATED-This month's birthday greetings at the Muleshoe Health Care Center went out to Eloida Reyna, born August 14, 1928, Nell Parkinson, born August 19, 1915, and Reyna Tharp, born August 29, 1912. Party hosts for the occasion were members of the Needmore Community Club, and entertainment was provided by Mr. and Mrs. J.C. Shanks and the Needmore Club. Decorator's Floral provided the flowers.

Health News

"Parenting is tough, especially during the start of the school year," said Dr. James Bray, an associate professor of family medicine at Baylor. "One of the hardest tasks is getting the child back into the daily routine."

The first month of school can be a stressful adjustment period for 6 to 11 year olds, Bray said. Leisure summer days are replaced by school days when children must get up earlier.

School rules can be difficult for some children to follow. By creating a few rules at home, parents can prepare their child for their classroom. Bray says many parents fail to set guidelines at home.

"School presents a different set of expectations, such as lining up or raising the hand to speak in turn," he says. "Parents should re-evaluate the home life and make discipline consistent."

However, high expectations can sometimes aggravate the problem. Bray recommends not overly pressuring children. He believes that parents should learn to respect children's individual strengths and not feel guilty about their performance.

"Treat each child as an equal individual," he said. "You may have one math whiz and one artist. Beware of comparing your children to their siblings and friends."

Bray says by acknowledging the child's good behavior, parents can help build self-esteem.

"Adults do not like to see their children having problems, because they are a reflection of themselves," Bray said. "Catch your child being good. Positive reinforcement works better than punishment."

For a successful school year, Bray suggests that parents:

- Get involved in the child's school work. For example, share in the homework - but don't do it for them. Applaud the child's good grades and offer encouragement if the grades are below average
- Attend a parent-teacher organization meeting or arrange a private meeting with the child's teacher to check progress.
- Form a strong parent-teacher bond. Teachers are more apt to help a child when they know the parents want to help.
- Look for warning signs, such as a "stomach ache." It could result from the stress problems at school or at home, or it could be attributed to a learning difficulty or a physical problem.
- Teach them the social skills to help them get along better with their schoolmates. Talk with the teacher, or, if the problem worsens, consult a mental health professional.



MICROWAVE TIPS

Scrambling eggs (and their cholesterol) is easy. Melt butter for 45 seconds in casserole (on High), add eggs and milk and scramble with fork.

Microwave on High half total time (2-3 minutes for four eggs). Break up eggs by stirring edges into middle of casserole and resume the last half of microwaving.

Remove dish from microwave and let stand for a couple of minutes. In that time cooking will continue and eggs will dry or set, having been moist when first removed from oven.

Creative Living

by: Sheryl Borden

Information on care and repair of zippers and quilting will be the featured topics on "Creative Living" on Tuesday, September 1 at 12 noon and Saturday, September 5 at 2:00 p.m. "Creative Living" airs on public broadcasting station, KENW-TV, from Eastern New Mexico University.

Ed Clements, representative for Frostline Kits, will demonstrate how to easily repair and care for zippers to prolong the life of the garment or zippered item. Clements is from Grand Junction, Co.

Margaret Prina, co-owner of Quilt Works, will demonstrate what supplies are needed to get started on a quilt project as well as show how to do some traditional quilting stitches. Mrs. Prina is from Albuquerque, N.M.

On Tuesday, Sept. 1 at 9:30

p.m., and on Thursday, Sept. 3 at 12 noon "Creative Living" will present information on craft projects, conservation framing and quick-fix decorating.

Donna Wilder, representative of Fairfield Processing Corp., will demonstrate how to currently fill homemade crafts with Poly-Fill to give them a professional look. Ms. Wilder is from Danbury, Ct.

Jim Nye, representative of Deck The Walls, will explain the do's and don'ts for conservation framing and show examples of items that should be framed with this technique. Nye is from Houston, Tx.

Deborah Durham, Creative Consultant with J.C. Penny Home, will demonstrate some simple yet attractive ways to decorate on a budget. Ms. Durham is from New York City.

I speak truth, not so much as I would, but as much as I dare; and I dare a little thus more as I grow older.

-Montaigne



106 E. Amer. Blvd. Muleshoe, Tx. 272-7504

End Of Summer Labor Day Sale Fri., Sat. & Mon. Sept. 4, 5 & 7th

ALL Men's & Boy's Shirts 20% off

ALL Short Sleeve Shirts \$10.99

1 Group Long Sleeve Shirts \$24.99

1 Rack Ladies Jackets & Summer Items 50% off

1 Large Group Ladies Justin Ropers & Lace-Up Ropers \$69.99

Tony Lama Ropers \$79.00



Mr. and Mrs. Delbert Watson

Watsons Celebrate 45th Wedding Anniversary

Mr. and Mrs. Delbert Watson celebrated their 45th wedding anniversary at a chuckwagon cookout hosted by their children, Tom and Mary Watson of Lubbock and Jim and Sandy Watson of East Palatka, Florida.

Also in attendance were their five grandchildren, Sarah, Daniel, Jim, John, and Thomas.

The festivities took place at the Delbert Watson family home just northwest of Baileyboro on Saturday, August 15, 1992. The meal was prepared in authentic chuckwagon style by Tom Watson. Everyone feasted on a meal of

grilled steaks, Ranger beans, cowboy potatoes, corn on the cob, and dutch oven cobbler.

Beth and Delbert were also presented an anniversary cake. After the meal, the grandchildren entertained with a fireworks display.

The celebration concluded with the viewing of a video of the occasion that had been taped by Jim and Sandy. Beth and Delbert were married on August 31, 1947, in Maple, Texas. They have lived on the South Bailey County homestead all of their married life.

Grimsleys Celebrate 64 Years

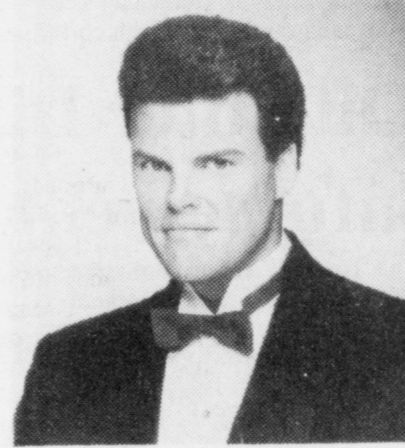


CELEBRATING 64 YEARS-Mr. and Mrs. Floyd Grimsley, 310 West 9th Street, Muleshoe, will be celebrating their 64th Wedding Anniversary September 4, 1992. "HAPPY 64TH ANNIVERSARY, MATTIE AND FLOYD!"

Harpist In "Concert" Scheduled At First Baptist Church

Greg Buchanan, a world class harpist, is scheduled to be in concert at the First Baptist Church in Muleshoe on September 9, 1992. The concert, which starts at 7:00 p.m., will feature a variety of musical styles including: jazz, pop, classical, and gospel. Greg has played the harp since age nine, and spent four years with the United States Navy Band in Washington, D.C. His playing is so masterful that the makers of the world famous "Salvi" Harp asked Greg to endorse their fine instrument. He has played at most of the major Christian gatherings of our day, including the Gospel Music Association's Dove Awards and two Billy Graham Crusades. He has recorded six religious albums, and received the Gospel Music Association's Dove Award for his album, "Peaceful Meditation", in 1988. During concert performance, Greg plays not only the Salvi Arianna concert grand harp, but also includes selections on the Kinnor (David's

Harp) and a Celtic Irish-Folk harp. There is no admission charge for the concert, and the public is invited to attend.



Greg Buchanan

Beware of Bugs & Poisonous Plants

Sunburns are not the only hazard your skin may face during the summer. You also need protection for bugs and poisonous plants.

Certain insects are potentially dangerous because they can transmit diseases such as St. Louis encephalitis, spread by the Culex mosquito, and Lyme disease, caused by ticks.

Dr. John Wolf, a dermatologist at

Baylor College of Medicine in Houston, recommends these summertime tips:

*Wear insect repellent. If allergic to bee and fire ant stings, avoid insect-attracting perfumes or scented soaps.

*If camping or hiking, wear long-sleeved shirts and long pants or knee-high socks.

*Do not panic or swat at flying insects. Instead, walk slowly away.

*Carry a first-aid kit containing cotton balls, alcohol, pain medicine, calamine lotion and bandages.

*Discard garbage immediately so as not to attract insects.

Popcorn Party Mix

- | | |
|---------------------------------|------------------------------|
| 1/4 Cup butter or margerine | 1/8 teaspoon Tobasco |
| 1/2 teaspoon garlic salt | 2 quarts popped popcorn |
| 1/2 teaspoon onion salt | 1 cup pretzel sticks |
| 1/2 teaspoon celery salt | 1 1/2 cups salted mixed nuts |
| 1 1/2 Tablespoon Worcestershire | |

Melt butter in small saucepan. Add seasonings; mix thoroughly. Spread popped popping corn, pretzel sticks, and nuts in large shallow baking pan. Pour seasoned butter over all; toss to mix. Bake at 275 degrees for 1 hour. Stir 4 or 5 times. Store in tightly covered container. Makes 2 quarts.

Cheddar Toss 'N Heat

- 4 Quarts Popped popcorn
- 1/3 Cup butter or margarine, melted
- 1/2 teaspoon ea. garlic and onion salt
- 2 cups shredded sharp cheddar cheese

Empty popped corn into an oven proof mixing bowl. Add margarine, salts, and cheese (a small amount at a time) and toss. Place in 325 degree oven for 5 to 10 minutes to melt cheese; stir gently once or twice. Makes 4 quarts.

Creative Christmas Set For Sept. 19

Creative Christmas, an annual one day event focused on holiday preparations, will be held this year on Sept. 19, at the Ollie Liner Center in Plainview. It is sponsored by the Plainview Daily Herald and Hale County Extension Homemakers.

Over-all chairmen are Colleen Chadwick, Hale County Extension Agent-Home Economics, and Niki Logan, Lifestyles editor, Plainview Daily Herald. Marlene Willis of Petersburg and Darlene Hayes of Plainview, Extension Homemakers Chairman, are in charge of the program and workshops.

Included in the popular event will be in the Creative Christmas Marketplace which is a bazaar showing local merchants and craftsmen from the area.

Some of the workshops planned include ribbon stitchery, pencil people ceramics, lace angels, holiday buffet table settings, quilting, gift baskets, country items and seminars entitled "Your Money" and "How To Market Your Crafts."

Extension Homemakers will offer refreshments and a noon meal, one of the group's annual fundraisers.

Admission to the event, as in the past, will be a can of food to be donated to the 4-H Kids Fight Kid's Hunger, a drive organized by 4-Her's to provide food for children who may not have enough food to eat at home.

To make reservations for the marketplace, call Mrs. Logan at the Herald, 296-1362. For other information, call Colleen Chadwick at 293-0219.

Announcing More Reduced Prices!!

New 1/4 Lb. Hamburger
Every Day Price **\$1.79**

New Daily Luncheon Special only **\$3.99**
Monday thru Friday
-Closed Wednesday-
Sept. 6

New Sunday Buffet \$6.99

Kids 6-12.....\$3.99
Kids 5-Under.....Free

- A. Baked Ham
- B. Chicken Spaghetti Casserole
- C. Scalloped Potatoes
- D. Vegetable of the Day
- E. Assorted Salads
- F. Assorted Fruit Bowl
- G. Rolls
- H. White Mountain Cake
- I. Drinks Included

Call In Orders Welcome!!

A Carrousel Of Good Food	1902 W. American Blvd. 272-4131
------------------------------------	------------------------------------

**#1 FIT
#1 COMFORT
#1 WEAR
#1 SATISFACTION**

1104

AA	A	B	C	D	E	EE	EEE
10-14	10-13	8-9	8-13	5-9	7-14	7-14	6-14

The Fair Store
120 Main 272-3500

RED WING SHOES
Made in U.S.A.
Comfort and dependability trusted for generations.

ANTHONY'S

EXTRA 50% OFF

All Yellow Ticket Summer Clearance Merchandise

Extra 50% Off will be taken at the register.

SAVE UP TO 75%

Off the Original Ticket Price

Look for the Yellow Ticket and SAVE!

\$20

Original Ticket Price

\$9.99

Yellow Ticket Price

\$4.99

After Extra 50% Off

Intermediate markdowns may have been taken. Sorry, quantities limited to stock on hand. No rainchecks. Selection will vary by store.

SEMI-ANNUAL CLEARANCE... Check the Savings!

LABOR DAY WEEKEND SALE

Wrangler

Lee

Levi's

TODAY THRU MONDAY

ALL JEANS ON SALE

- MEN
- WOMEN
- JUNIORS
- BOYS
- GIRLS
- TODDLERS

321 Main Muleshoe 272-3478



DISTRICT GOVERNOR VISITS---District 5730 Governor Dr. Cliff Broad, left, visited the local Rotary Club at noon Tuesday. He was introduced by Brett McCasland, president. (Journal Photo)

RAAM Bicyclists Finish Race, Winners Announced

The RAAM (Race Across America) bicyclists who came through Muleshoe a few weeks ago have finished their trek across the United States.

Rob Kish, 37 years of age, from Port Orange, FL was the first to finish the race in the mens division.

Kish also set the RAAM Record. Ed Kross was named Rookie of the Year.

Other riders in the men's division and their placing are: Bob Fournery, 34 of Denver, CO, second; Gerry Tatrai, 28, from Sydney Australia, third; Rick Kent, 35, of Houston, fourth; and David Kees, 37 of Auburn, CA, fifth.

Philippe Vetterli, 40, of Birmensdorf, Switzerland, sixth; Pat Ward, 33, San Jose, CA, seventh; Ed Kross, 33, Farmingham, MA (rookie); Hubert Schwarz, 37, Roth, Germany; and Paul Black, 43, Ames, LA (Rookie).

Honorable Mention Finishers, who finished beyond 48 hour cut-off included: Tom Davi's 48, Magalia, CA.

The Men's Division had ten official finishers out of 23 entrants (43.4 percent) and in the Men's Rookie Division there were two official finishers out of eight entrants (20 percent).

Twelve of the men who entered the race did not finish. One of these men, Darrell Bowles, 32, of Tempe, AZ raced a total of 2828 miles before dropping out.

Others who didn't finish the race included: Matt Bond, 31, Dayton, OH; Bert Gfeller, 46, Uster,

Story Hour Begins At Library

Story Hour began at the Muleshoe Public Library Wednesday morning, Sept. 2 for all pre-school age children (three years and older).

Stories, old and new, songs, games, movies, and other activities such as honoring the children on their birthdays will be on the programs. Children are encouraged to use the library and have books read to them, with the hope that they will develop a love for books and learning.

Librarian Anne Camp stated that the boys and girls can make friends with books and make friends with one another by attending Story Hour at the library.

New fall books are arriving almost daily at the library. Mrs. Camp also said that if you wanted a special book (old or new) you could all and they would reserve it and all when it is available, or if they don't have it, they will be glad to let it on loan from another library. This is a service of the West Texas library system.

Some of Johanna Gartin's aintings are on display at the library. She is the Artist of the Month.

They also have a large display case filled with some hand-made quilts and booties by Ann Oyler. In the small display case they are howing their collection of Mules, with one new gift, a mule given to the library by Irene Dilts. "If you ave an extra mule figurine and would like to donate to the library, Mrs. Camp said that they would like to add it to their collection. They always show their mules during the Mule-Days celebration.

Switzerland (Rookie); John Stoneman, 30, Bozeman, MT; Jim Courtney, 33, Chandler, AZ (Rookie); Brian Thomas, 32, Muncie, IN (Rookie); Paul Solon, 38, San Francisco, CA; Kenneth Bell, 44, Roseville, CA; Jeff Bom, 38, Santa Ross CA (Rookie); E. Thomas McFall, 32, Columbia, MO (Rookie); Al Muldoon, 36, St. Joseph, MI; and Willi Zuber, 52, Pfaffikon, Switzerland (Rookie).

In the Women's Division they were all Rookies. Seana Hogan, 32, of San Jose, CA came in first; Debbie Turner, 41, Mobile, AL, second; and Bonnie Allison, 50, Oklahoma City, OK. Rookie of the Year and winner was Ms. Hogan.

Amy Regan, 33, of Hollis, NH and Beth Dawson, 30, of Saratoga, CA did not finish the race, due to their knees.

In the Menstandem Division, Dr. Bob Breedlove, 40, of DeMoines, IA and Lon Haldeman, 34, of Harvard, IL finished first and set a RAAM record. Nick Gerlich, 33, and Roger Mankus, 34, of Canyon, Texas didn't finish the race.

Winning first place in the Mixed Tandem Division were, Antoinette, 36 and Shawn Addison, 30, Menlo Park, CA. Clare Rietman, 35 of Irving and Rick Wilson 38 of Arlington came in second.

In the four person team division the Team Manheim, Jim Kennedy, 44; Chris Poucher, 38, both of Atlanta; Michael Zoeliner 38 of Marietta, GA and Steven Simberg, 39, of Atlanta, GA was the first place winners.

Teamultimate Athlete winners were Chuck Pena, 32, Arlington, VA; Sam Bishop, 34, Springfield, VA; Paul Cascio, 34, and David Cascio, 29, both of Reston, VA.

Special Entry Teamsor winners were Bill Bonner, Jr. 39; Les Campbell, 46; Ron Chamberlin, 53; Jim Davis, 60; Chuck Hanson, 61; Mike Orem, 35; Oscar Stankov, 61; and Penny L. Wadley, 37.

Competing in their own division, some of these team members belong to the Cardiac cyclists in Whittier, CA. (Individuals who have undergone open heart surgery as a result of a heart attack and have totally recovered by riding a bicycle).

Contest...

Cont. From Page 1

guessing percentages. Harmon has a proven accuracy over the past 35 years of between 73.6 percent and 77.9 percent. His pro forecasting average is between 61.0 percent and 74.2 percent

Bob is a graduate of University of Minnesota. He lives just outside Middletown in Circleville, New York.

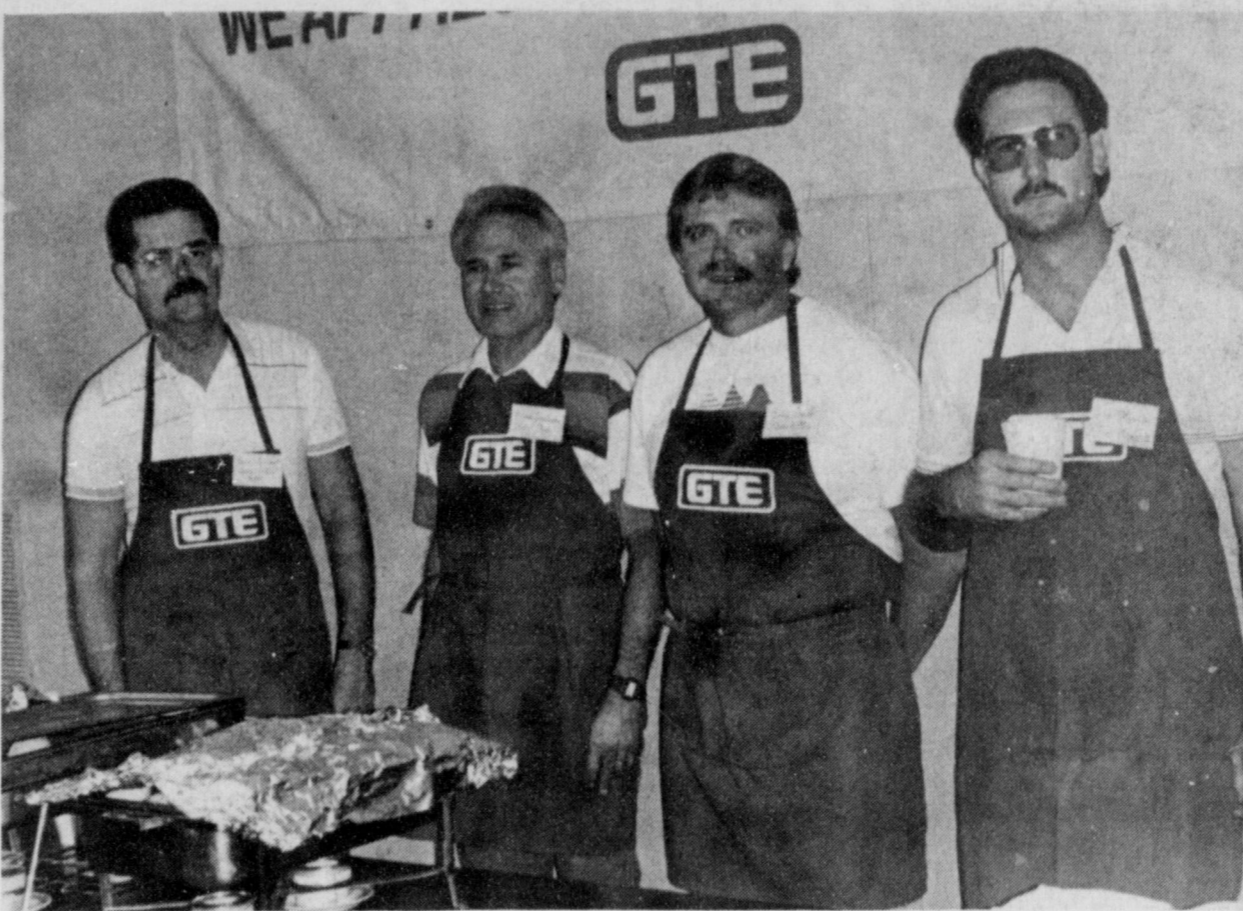
Football...

Cont. From Page 1

attack in 1992 and hopes of taking advantage of its main strength --- speed.

Gills said that there won't be many fancy plays, but they will utilize their speed. "We'll try to hit the hole quick on the inside and outrun people on the flank," Gill said.

All Muleshoe fans are encouraged to go to Morton and back the Mules as they strive for a win in their season opener.



SHOWING THEIR APPRECIATION---If you slept late Monday morning and didn't attend the breakfast hosted by General Telephone you missed a real treat. Showing General Telephone's appreciation to their customers, Paul Rinehart, Frank Goodman, Terry Smith and Obie Manning cooked breakfast consisting of sausage, bacon, biscuits and gravy served with coffee, milk or juice. (Journal Photo)

Oil Filter Disposal Enforcement Begins

The Texas Water Commission (TWC) will begin enforcement September 1 of a new state law that prohibits the disposal of used oil filters in Texas landfills. The law is aimed at eventually halting the disposal of an estimated 50 million used oil filters buried annually in landfills across the state.

The measure will be implemented in the larger counties first, but in all counties within two years. Implementation is being staggered to ensure that there are sufficient used oil filter collection centers, transporters and processors in each area of the state to support the program. The September 1 enforcement date will apply to the state's four largest populated counties: Harris, Dallas, Bexar and Tarrant.

"We estimate Texas landfills are being soaked with about three million gallons of oil each year from the used oil filters that are buried," said TWC Chairman John Hall. "This poses a significant threat to our water supplies, increases landfill construction costs and is a waste of scrap metal that is readily recyclable."

All businesses in Texas that

Moore...

Cont. From Page 1
secondary teachers' of the Year are selected by a panel of judges, composed primarily of teachers selected by teacher organizations, who select three finalists for each award. The six finalists are interviewed by a panel of judges composed of representatives of professional associations, the State Board of Education and the 1991-92 Texas Teachers of the Year. The panel selects the two winners, who will each receive a \$2,500 cash award from the Southwestern Bell Foundation. Also, the panel selects one of the two finalists to represent Texas in the National Teacher of the Year Contest. The final judging is tentatively scheduled for October 10 in Austin, and a news release from the Texas Education Agency will announce the winners on October 12.

The two State Teachers of the Year and all Regional Teachers of the Year for 1992-93 will be honored by the State Board of Education at a recognition ceremony and reception tentatively scheduled for November 12. The National Teacher of the Year contest is conducted by the Council of chief State School Officers in Washington, D.C., which will announce the four finalists in January 1993.

handle used oil filters such as service stations, quick-change oil operations and car repair shops, have been required since June 1, 1992, to remove excess oil from used filters--before putting the filters in the trash.

Now, businesses in the four affected counties must not only remove the oil from filters, but must have the filters picked up for delivery to a registered processor or end user (manufacturer) for recycling.

"The Commission approved rules on August 26 setting standards for the program," said Susan Kaderka, manager of the TWC's recycling and waste minimization program. "The rules provide details such as the manner in which used filters must be packaged for transporting, and the record-keeping required to track their movement from the collection center through the recycling process"

Transporters and processors who wish to participate in the program must register with the TWC. Registration forms can be obtained by calling the TWC's Environmental and Recycling Information Center at 1-800-458-9796.

Meanwhile, the TWC will begin recruiting businesses to serve as collection centers for used oil filters. Generally it is felt that businesses that accept used oil will also accept used oil filters. Establishing an adequate number of collection centers will be especially important because effective April 1, 1994, it becomes illegal for anyone in Texas to throw used oil filters in the trash. Texas citizens who change their own oil will have to take used filters to a collection center.

"This program, like most recycling programs, will depend entirely on each individual Texan," Hall said. "That's the real key for all Clean Texas 2000 programs for protecting the Texas environment; each of us taking personal responsibility for the pollution we generate."

Clean Texas 2000 is a pro-active effort by the TWC to reduce pollution in the state.

The used oil filter recycling program is the fourth automotive recycling program implemented by the TWC this year under mandates from Senate Bill 1340. The TWC has also developed and is implementing statewide recycling programs for tires, batteries and used motor oil.

Fringe Benefit

Having a college or university in the community can be a financial boom to public schools.

Midland-Odessa taxpayers discovered that recently when the number of minority students exceeded the number of Anglos. The school districts weren't prepared to meet the educational needs of this changing student population.

The University of Texas of the Permian Basin in Odessa was prepared however. It created a special program to provide bilingual teachers to the area schools.

A grant from the United States Department of Education enabled the university to subsidize tuition, fees and books for undergraduate Hispanic students seeking training in English as a second Language. These students are helping out as teachers in local schools.



NEW PRESIDENT TAKES OFFICE---David Tipps, right, will begin his term as Rotary Club president next week. Brett McCasland, left, former president resigned. He is moving from Muleshoe and Tuesday was his last day to preside over the Rotary meeting. (Journal Photo)

Three Way News

by: Mrs. H.W. Garvin

George Tyson spent Monday and Tuesday in Lubbock with his daughter, the Tommy Durhams.

Bobby Kindle underwent surgery in Methodist Hospital Monday.

Mr. and Mrs. Rodney Gotey from Abeline, spent the past week end with her grandparents the M.C. Toombs.

The teachers and staff trustees of Three Way Schools honored the community with a hamburger cookout Friday night at the school. A very large crowd attended.

Mr. and Mrs. H.C. Toombs and grandchildren enjoyed a cookout in Muleshoe Saturday evening in the home of Gary Macks Toombs.

George Tyson attended the U.S. Air Force Day at Cannon Air Force Base in Clovis, Saturday.

Mr. and Mrs. Bill Dolle and Darla were in Lubbock and visited their daughter the Scott Austin family.

Mrs. Nettie Quesenberry from Muleshoe spent the first part of the week with her daughter, the Jackie Lane family.

The Kindle family all had lunch Sunday with their parents the Robert Kindles.

Mr. and Mrs. Bill Dolle and Darla visited Mrs. H.W. Garvin Saturday afternoon.

Several college students attending South Plains College in Levelland spent the weekend at home. Those going are Symphy Bennett, Denise Duarte, Marce Tucker, Larry Robison. Efrain Guillen is going to West Texas State.

Wednesday night the community received rain measuring from 1/4 to over 2 inches.

Texas Sesame
Will be buying new crop milo and soybeans along with our food and feed corn at all locations.

Come by or call our office for current contracts and pricing information.

We are also offering several storage programs for your 1992 crop.

Texas Sesame
(division of ADM)

Mark Glawe, V.P. - Mgr.
272-4231 Muleshoe office
647-2133 Flag Office

Thank You

The outpouring of love and concern we have experienced during our recent loss has been tremendous. We have been so touched by all of your gestures including food, visits, phone calls, flowers, cards, memorials, and especially countless prayers. Although we couldn't possibly be aware of every deed each person has done, we certainly felt all of you reaching out to us. Although accepting the loss of our beloved Rowena is very difficult, knowing how much she was loved and how many lives she enriched is a great comfort to us all. We thank each and everyone of you for your love, caring, and concern. May God strengthen us all with the memories of her wonderful life.

Orville Cleavinger
Jan Leonhard and Family
Mike Cleavinger and Family
Pat Ulysal and Family



NEW LAW OFFICE---The Chamber of Commerce and Agriculture recently held a ribbon cutting ceremony at the new law office of Chris Cleavenger. Mike McDearmon also presented Ms. Cleavenger her first dollar of profit as family members, employees and members of the Chamber of Commerce look on. (Journal Photo)



RIBBON CUTTING HELD--- The Muleshoe Chamber of Commerce and Agriculture recently held a ribbon cutting ceremony at the new office of Dr. Mark McClanahan, as office workers and members of the chamber look on. Mike McDearmon, president of the chamber, also presented Dr. McClanahan his first dollar of profit in his new building. (Journal Photo)

Bladder Cancer Being Studied At Baylor

Finding out whether a special gene is "on or off" may help physicians treat bladder cancer and possibly increase chances for survival says a study at Baylor College of Medicine and The University of Texas M.D. Anderson Cancer Center in Houston.

"The retinoblastoma (RB) gene regulates cell growth and occurs normally in all cells," said Dr. William Benedict, professor of biotechnology at Baylor's Center for Biotechnology.

"In bladder cancer, testing for RB gene function may become a standard tool for determining treatment, and more aggressive treatment for some patients may mean increased chance of survival."

RB gene function is involved in some of the most common cancers -- lung, breast, bladder and prostate. Bladder cancer diagnoses alone number 50,000 each year.

When the gene stops functioning, or turns "off", a cell loses the ability to shut down growth. Benedict and colleague Dr. Christopher Logothetis, chief of genitourinary oncology at M.D. Anderson Cancer Center, feel that this loss of ability to control cell growth may affect a cancer's progression.

In this study of 43 patients with late-stage bladder cancer, researchers found that only 20

percent of the patients who had lost RB function survived longer than three years. By contrast, 50 percent of the persons with normal RB function were alive after three years.

Researchers used an antibody and techniques developed at the Center for Biotechnology by Dr. Hong-Ji Xu, Benedict and Dr. Shi-Xue Hu to detect the presence or absence of RB gene protein in pieces of tumor encased in paraffin. The study also included standard tests used to determine bladder cancer progression and prognosis.

More studies need to be done, but Benedict believes that one day doctors will use the results of RB testing to help tailor treatments.

"Currently early bladder cancer is treated by tumor removal, leaving the bladder intact, and follow-up visits," Benedict said. "I think doctors may begin to consider chemotherapy, or even bladder removal, for their patients who have lost RB function."

Results of this study appeared in the August 19 issue of the Journal of the National Cancer Institute.

Best of Press



Trial and Error

He who never makes a mistake actually never makes a discovery either.

--- Grit.

Enochs News

by: Mrs. J.D. Bayless

Guests in the home of Mr. and Mrs. Bill Key Sunday were sister-in-law Mrs. Ophelia Fort and daughter Patsy Battues of Brownwood, sisters Mr. and Mrs. Bobby Adams of Morton and their daughter Mrs. Debbie Green and son, Matthew of Lubbock, Mrs.

Ronie Long of Morton, Mrs. Martha Meek of Canadian, and daughter Cindy Hartsfield of Canyon, Doris and Bud Huff of Three Way, and a friend Mrs. Nelda Mill and daughter of Enochs.

Mr. and Mrs. Dale Nichols were in Littlefield Saturday, August 22, as his aunt, Loda Hardin passed away. I express my sympathy to them and her family.

We were proud to have our visitors from Morton Sunday morning and

two brought the special music. They were Brenda Gordover, Nell Willow, and Cynthia Jones, who led the singing.

Mrs. Margie Peterson and sisters Mrs. Lucille Smith of Hart, Mrs. Johnnie Houghton of Saratoga, and Mrs. Martha Leake all visited a week with another sister, Mrs. Charlene Lewis and children of Littlefield.

Visiting Mr. and Mrs. Bob Newton Saturday, were their sons, Mr. and

Mrs. Dennis Newton and sons Patrick and Cory of Hereford, and Mr. and Mrs. Tom Newton, Barry, and Amanda of Morton. Patrick was on his way to college at A & M.

N. Korea turns over 15 U.S. war dead.

HEALTH INSURANCE

CALL Mark Morton 109 S. 1st Muleshoe 272-7519

State Farm Mutual Automobile Insurance Company Home Office Bloomington, Illinois

GOLD STAR PIT STOP SERVICE

When You Need On-The-Farm Tire Service In A Hurry, Just Call Us. We Can Cut Your Downtime Down To Size!

GOODYEAR

The American Farmer & Goodyear

The Partnership Continues Growing

JAMES CRANE TIRE CO., INC.

Mike & Terri Hahn

Office 806/272-4594 - Home 272-3594

Mobile 806/946-7501

322 North First Muleshoe, Texas

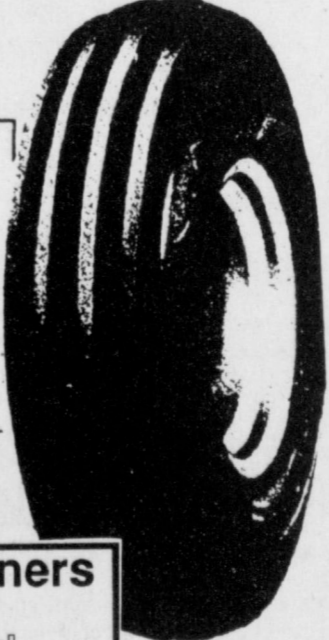
Dyna Rib

- Designed for higher horsepower two-wheel-drive tractors.
- Better mobility and more uniform pressure distribution than three-rib design.
- Bead area protected by thick rubber shield.
- Excellent flotation and mobility; smooth ride, uniform ride.

\$128⁵⁰

* Price includes mounting

11.00-16 TL 8 ply rating



AQUATRED RADIALS Only From Goodyear!

- Amazing aqua-channel plus deep connecting grooves pump road water out of the way fast.
- Exclusive new rubber compound delivers road-hugging traction and longer tire life.
- Steel belted strength, all season tread design.
- 60,000 Mile Treadlife Warranty

Pickup & Suburban Owners

Special Buy on

Goodyear Invicta GA Owl

60,000 Mile Warranty

Reg. 118.50 Sale Priced \$87.50

HARVEST TIME

During the up-coming harvest time is going to be one of the most important factors on your side. When you have a tire problem you are not going to be able to wait. That's why we at James Crane Tire have stocked up on all your harvest time needs. From hard to find grain cart equipment to a full line of combine tires. Our experienced staff can get to your field and have you up and running quickly.

For Pit Stop Service - Call Us 24 Hours A Day!!

GOODYEAR

*1 in FARM TIRES

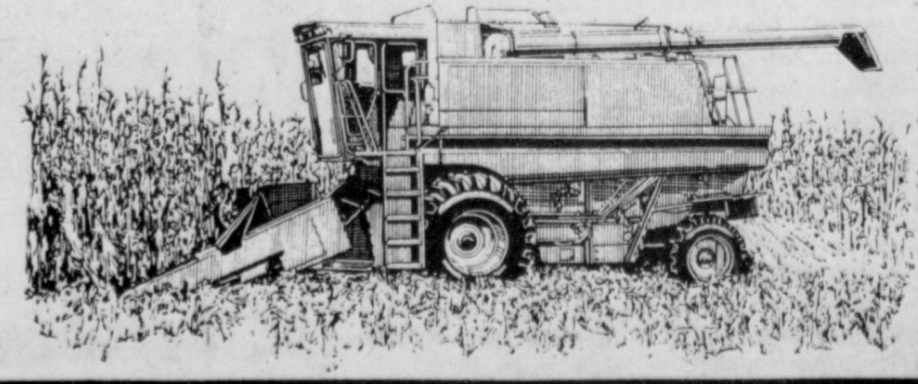
A GROWING PARTNERSHIP

GOODYEAR AND AMERICAN FARMERS

Learn how the selection and maintenance of farm tires can save you time and money. Stop by our dealership today to get your free copy of the *Goodyear Farm Tire Handbook*

THE PIT STOP PROMISE

- We are equipped and committed to handling emergency or service calls in one visit. And every effort will be made to solve problems the first time out.
- We will give every customer upon request, free of charge, an annual tire inspection of every vehicle on his farm.
- We are committed to fast, efficient service and dedicated to a round-the-clock response.
- We are committed to handling calls with a minimum demand on the customer's time. In almost every case, we are equipped to handle problems without supervision or assistance.
- We are committed to repair rather than replacement. Only if repair is impossible or uneconomical will we replace a tire.



1992 Duck Fall Flight Forecast

The number of ducks migrating south this fall is expected to be similar to the last two years, according to the 1992 "fall flight forecast" issued by the Interior Department's U.S. Fish and Wildlife Service.

The 1992 projection of 62 million is based on surveys of duck breeding populations and estimates of brood production rates.

"Spring came late this year, causing many geese and some ducks to nest late or not nest at all. Although we can't improve weather conditions, we can improve habitat conditions. By continuing our efforts under the North American Waterfowl Management Plan, we can restore habitat desperately needed by waterfowl," said Fish and Wildlife Service Director John Turner.

There is a projected increase in the fall flight of ducks in the Atlantic Flyway in 1992, while no change is expected in the Pacific, Central, and Mississippi Flyways.

Stable to lower fall flights are expected in 1992 for most goose and swan populations in North America compared to last year. Surveys of spring habitat conditions in northern Canada and Alaska suggested that goose nesting areas become free of snow approximately one to three weeks later than last year. In general, this delay in nest-site availability is expected to reduce production for most North American goose populations in 1992.

This year's index of the Atlantic Population of Canada geese is the lowest in the last 23 years and continues a downward trend in Canada goose populations in the Atlantic Flyway. The Mississippi Valley population of Canada geese is faced with the second consecutive decline since the record-high index in 1989. A reduced fall flight is

expected for the Eastern Prairie Population of Canada geese, which winters near Swan Lake National Wildlife Refuge. There was an unexpected decline from last year's record giant Canada goose index, but this year's is still the fourth-highest on record. Numbers of dusky Canada geese are expected to increase this fall while lesser and cackling Canada geese are projected to be equal to 1991.

The fall flight of greater white-fronted geese is expected to be equal to last year's in the Pacific Flyway. Numbers of eastern mid-continent whitefronts, wintering mostly in Louisiana, are expected to be lower than last year, while the western population index predicts a fall flight similar to last year's.

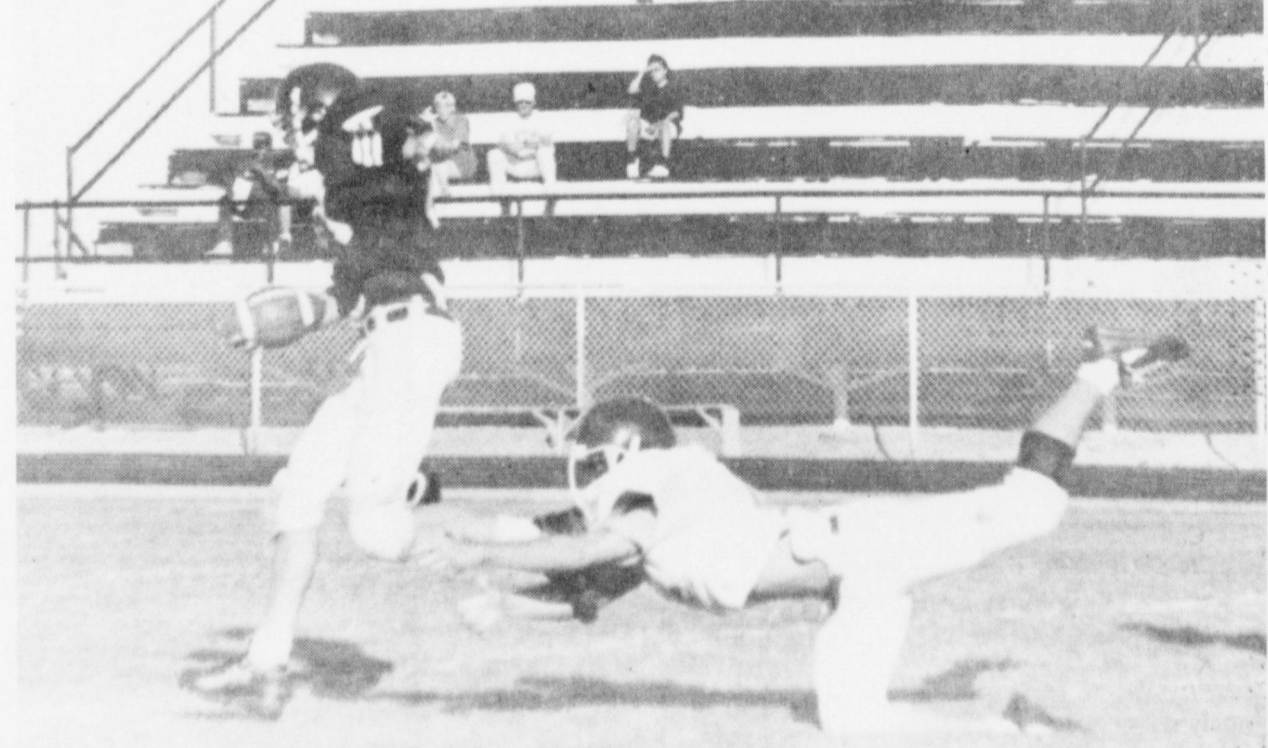
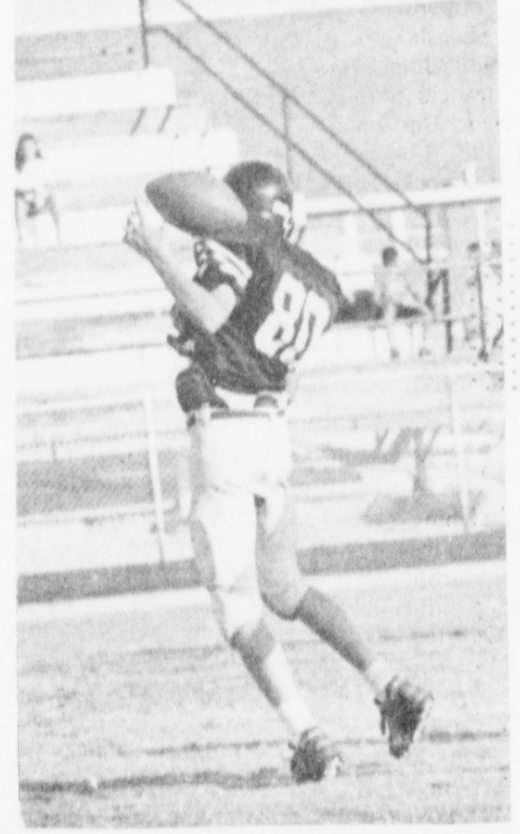
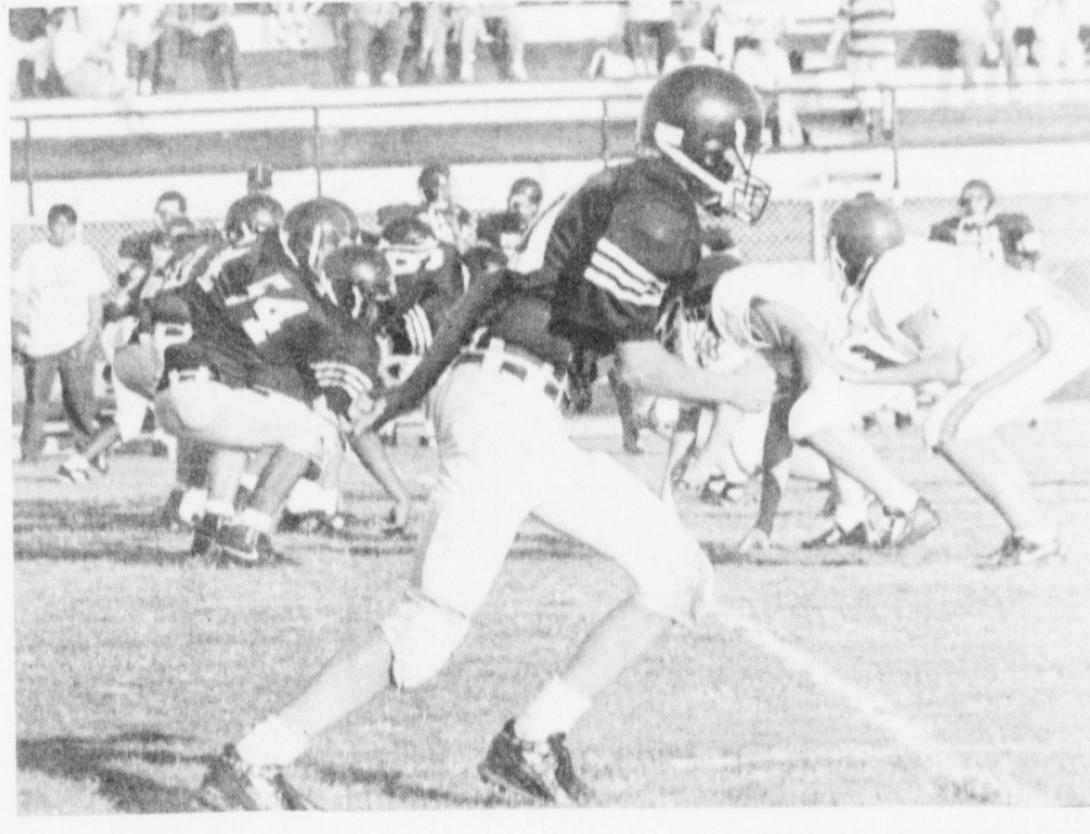
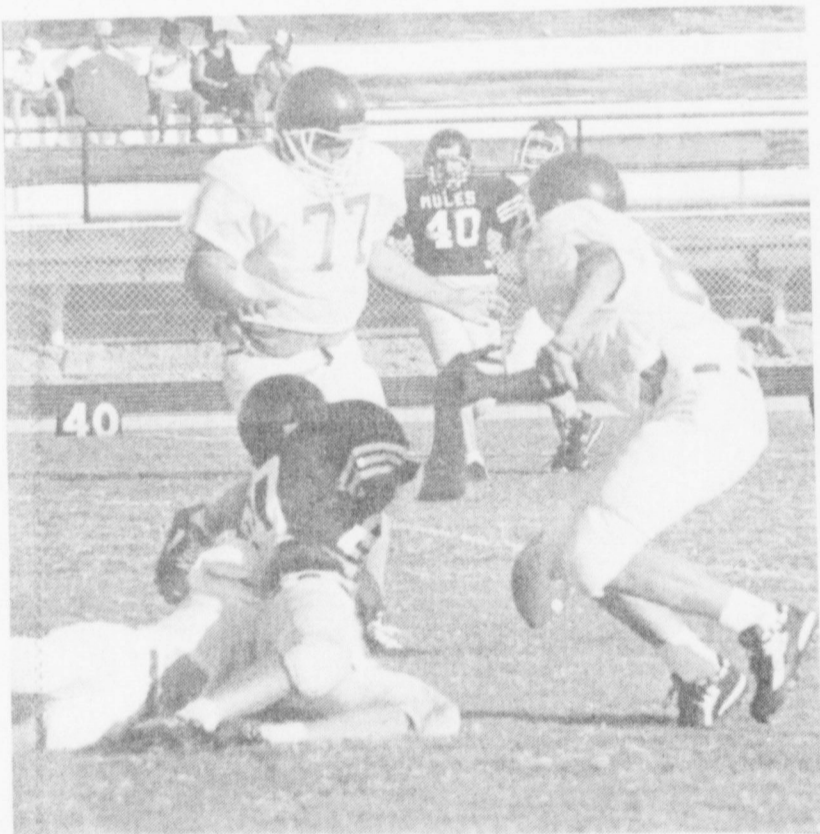
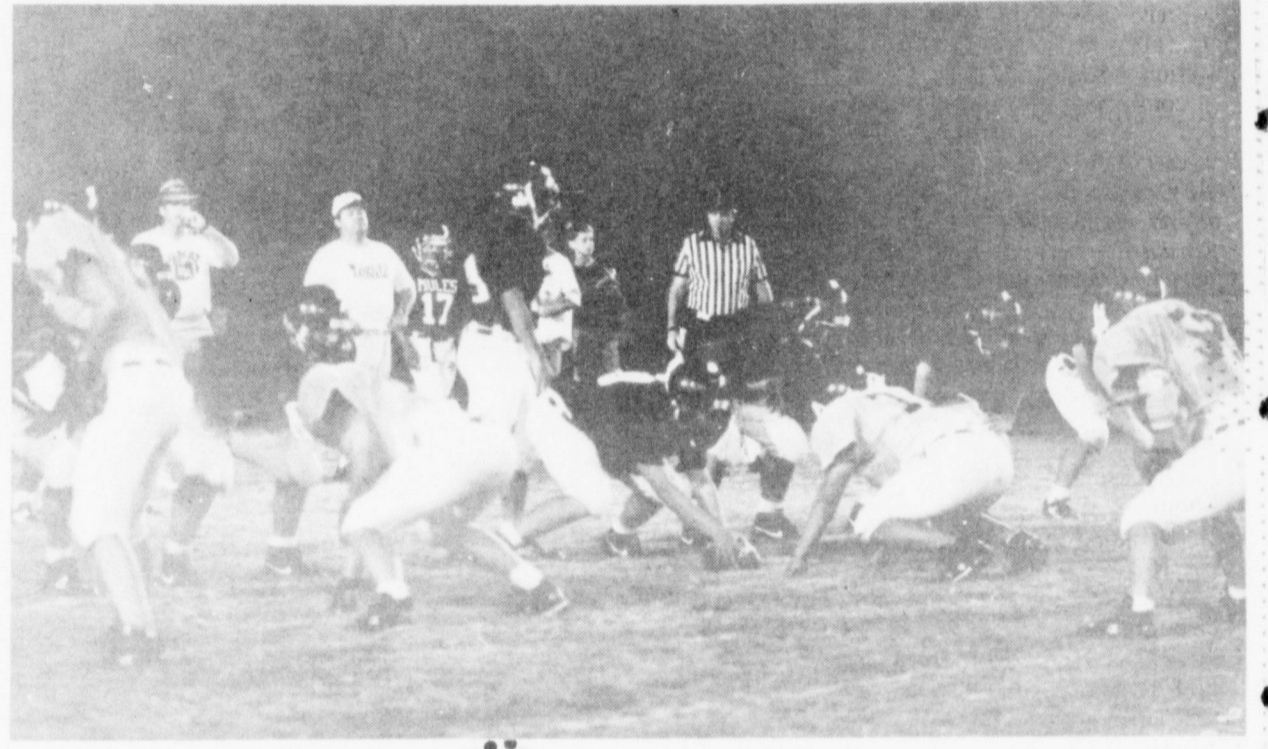
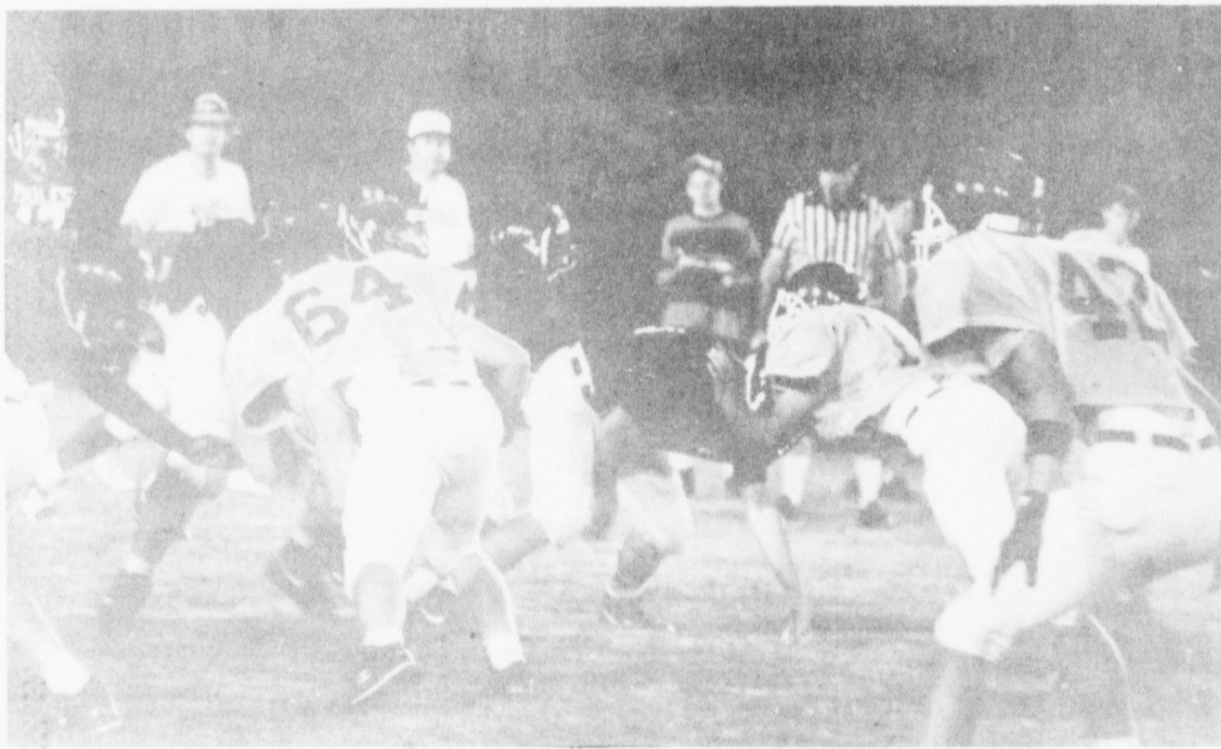
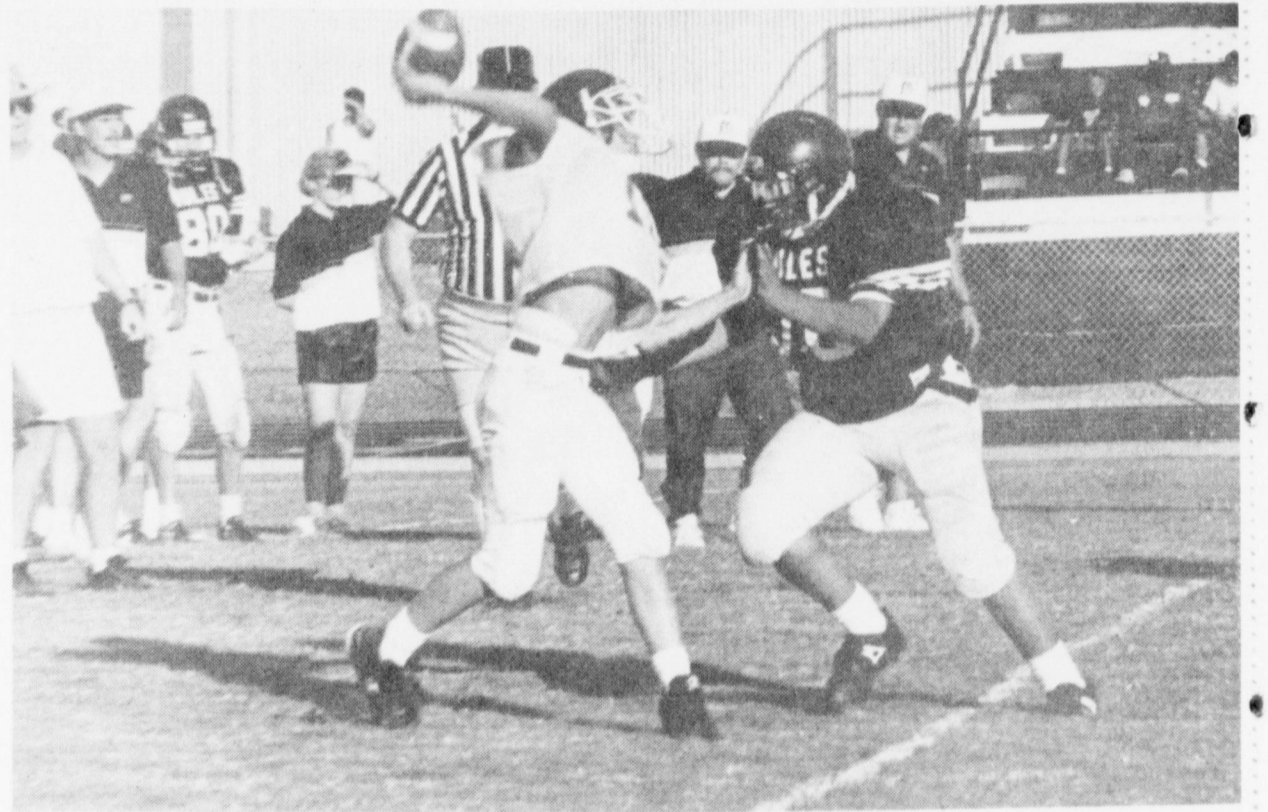
A reduced fall flight of greater snow geese is expected due to a late spring on Bylot Island, Canada, where the largest known colony nests. Numbers of lesser snow geese are also expected to be lower than last year's. The mid-continent population of lesser snow geese is expected to be lower than last year but is still the second-highest index on record. The western Central Flyway, the western Canadian arctic, and the Wrangel Island populations are expected to be average to slightly below average this year while Ross; goose populations are expected to be similar to last year's.

Both the eastern and western populations of tundra swans are expected to have fall flights equal to or slightly lower than last year's. The late spring suggests that there will be a lower than average nesting effort among swans.

The 1992 *Status of Waterfowl and Fall Flight Forecast* will serve as a management document in the development of waterfowl harvest regulations or the 1992-93 hunting season.

Mules Get Ready For Sept. 4th Season Opener

Scrimmaging Against River Road



CLASSIFIEDS 272-4536

CLASSIFIED RATES

15 Words & Under
Minimum Charge
\$2.30
Thereafter
\$2.00
16 Words & Over
1st Insertion
15 cents per word
2nd Insertion
13 cents per word

CLASSIFIED DISPLAY RATES

\$1.75
Per Column Inch
DEADLINES
12 noon Tues.
For Thursday Paper
12 noon Friday
For Sunday Paper

To receive the reduced rate after the first insertion, ad must run continuously.

We reserve the right to classify, revise, or reject any ad. We are not responsible for any error after ad has run once.

1. Personals

CONCERNED
About Someone's Drinking?
HELP IS AVAILABLE
through Al-Anon
Call 272-2350 or 965-2870 or come to visit Tuesday and Thursday nights, 8:00 p.m. & through AA call 965-2870 or come visit Tuesday nights, 8:00 at 620 W. 2nd, Muleshoe.

For more information and assistance regarding the investigation of get-rich-quick, work-at-home and other financial/business opportunities, The Muleshoe and Bailey County Journals urges its readers to contact the Better Business Bureau, 1206 14th St., #901, Lubbock, TX 79401 or call (806)763-0459

2. Lost & Found

STRAYED:
One Hereford Cow. Weighing approximately 1,053 lbs. and 3 mixed yearlings weighing approximately 250 lbs. Branded on right hip-W-Bar-B. If found, call 272-4097

REWARD OFFERED!!
Tea-cup apricot male poodle. Answers to Skipper. Lost from Muleshoe Animal Clinic. Work-272-7504--Home 272-5328, ask for Nadia.

3. Help Wanted

Part-Time Help Wanted.
Must be able to iron well. Call 272-3963. L3-36t-2tc

TRUCK & TRACTOR DRIVERS WANTED:
Monthly salary, lots of travel. Job runs March-December. Contact Scott or Charles at SCB Farms, Inc. in Bovina, TX--(806)238-1206 S3-31s-tfc

3. Help Wanted

WANTED:
ROOFERS! Call GRAHAM CONSTRUCTION, INC. Clovis. 505-762-2838

SECRETARY WANTED: STRONG BACKGROUND WORD PERFECT & LOTUS A MUST. SALARY COMMENSURATE TO ABILITY. SEND RESUME IN CONFIDENCE TO PO BOX 1006 FARWELL TX 79325 M3-36t-2tc

NEEDED!
AVON Representatives in Muleshoe Area, including Three Way, Needmore and Lazbuddie. Call 272-5607, 272-3208 or 272-4972.

\$200-\$500 WEEKLY
Assemble products at home. Easy! No selling. You're paid direct. Fully guaranteed. FREE Information-24 Hour Hotline. 801-379-2900 Copyright # Tx 340DH A3-31t-16tp

9. Automobiles For Sale

FOR SALE: 1980 Ford Thunderbird. Gets good gas mileage. New battery and starter. For more information call (806)272-3153 (Susie).
CHEAP! FBI/U.S. SEIZED
89 MERCEDES.....\$200
86 VW.....\$50
87 MERCEDES.....\$100
65 MUSTANG.....\$50
Choose from thousands starting \$25.
FREE Information-24 Hour Hotline. 801-379-2929 Copyright # Tx340JC A9-31t-16tp

FOR SALE:
1986 Celebrity Chevrolet. 4-Door, V-6. \$2,850.00. 601 W. 6th. Phone 272-4867. 9-36t-1tp

11. For Sale Or Trade

FOR SALE: Bagged and Cleaned Triticale Seed. Discount on volume. Call 1-800-257-2955. W11-34s-4tc
FOR SALE: TOMATOES AND PEPPERS across from John Deere house on the 84 bypass in Littlefield. B.E. Turner. 385-5980. T11-36t-tfc

2 Cemetery Lots FOR SALE
Muleshoe Memorial Park Call (806)355-8384 after 5:30 p.m.

Two side-by-side-cemetery lots for sale near rose garden in Muleshoe Memorial Cemetery. \$400.00 each. If interested, call (918) 773-8946 or write Freeman Davis, Rt. 1 Box 203 AA, Vian, OK 74962. 11-34s-4tp

15. Misc.

GARAGE SALE:
This Friday and Saturday. 8:30-5:30. Also brand new painted suits for sale. 1820 W. Ave. B S15-36t-1tc

FOR RENT:
Large Self Storage rooms with 24 hour a day access. Call J & J Self Storage at 272-4307. S15-27s-tfc

MAJOR APPLIANCE AND MINOR HOME REPAIRS--CALL 272-4450 HENDERSON SERVICE CO.

GOT WEEDS ON CRP? CALL JACK LITTLE FOR FREE ESTIMATE ON COST OF CUTTING WEEDS! SATISFACTION GUARANTEED! CALL 806-272-4805 MULESHOE
L15-30t-tfc

8. Real Estate

Assume Loan
3-1-1 Brick, Blinds, Fans, Central Heat, Fenced yard. 1424 West Ave. C. 272-5234 S8-33s-tfc

HOUSE FOR SALE:
3 bedroom, brick, 1 1/2 bath, double garage. Close to school, nice neighborhood. Low down payment. Owner will carry papers. 227-2367 8-36t-8tp

The Estate settlement 172 acres located near Morton. Farmland with pasture, two wells suitable for livestock, and/or irrigation. Call (806)894-2133 F8-33t-8tc

Bingham & Nieman Realty

116 E. Ave. C., George Nieman, Broker 272-5286 272-5285

RICHLAND HILLS
PRICE REDUCED- 3-2-2 Brick, Cent. A&H, built-ins, FP, sunken lv. area, ceiling fans, earthtone carpets..... RH-11
3-3-1 Carport, Cent. A&H, built-ins, FP, abundant storage, covered patio!!!! RH-3
NICE RESIDENTIAL LOTS.....\$5,000 UP
JUST LISTED 4-2-2 Brick, Large living/dining combined...\$50's!!!! RH-5
3-2-1 Brick, Cent A&H, with fenced yard...\$50's! RH-6
JUST LISTED- 3-2-2 Brick with fireplace, 5 ceiling fans, new carpet & paint, new dual fuel heat pump, abundance of closet space...\$90's..RH-8
HIGH SCHOOL
VERY NICE 2-2-1+1 carport, Cent. A&H, built-ins, low maintenance lawn, Much More!! \$30's! HS-1
IMMACULATE LARGE BRICK HOME 3-2-2 Heat Pump, built-ins, Whirlpool, loads of storage, lg. shop-storage, \$70's!!!! HS-2
3-2 Remodeled, heat pump, built-ins, fenced yd., storage bldg. \$20's!!!! HS-3
4-2-2 Brick, Built-ins, Cent A&H, ceiling fans...\$40's!!!! HS-5
FmHA financing to a qualified buyer-3-1 1/2-1-1 Brick in tip-top shape...\$20's..H-6


HIGHLAND AREA
3-2-1 Brick, Cent. A&H, FP, built-ins. MAKE OFFER!!!! HL-1
3-2-1 Home, wall furnace heat, window evap. air, \$20's!!!! HL-2
LENAU ADD.
3-1-1 car carport-Den with fireplace, floor furnace heat. Low \$20's...L-8
REMODELED BRICK 3-2-1 with Cent. heat, built-ins---- \$20's!!!! L-2

Kiwanis News

By R.A. Bradley

Ten Kiwanians, five guests, and our new Sweetheart, Summer Wiley, met this morning at the Dairy Queen for breakfast. Our guests this morning were four gentlemen, Stacey Johnson, Weldon Hacker, Don Hansford, and Lt. Gov. Chuck Parr from the Hi Plains Kiwanis Club from Amarillo. These gentlemen have to get up pretty early to get here by 6:30 a.m. Another guest, who is no longer a guest, but a new member is Jack Wilson. Jack is the manager of the Muleshoe Chamber of Commerce -- Jack, we

The cookbook everyone is talking about
TEXAS COUNTRY REPORTER COOKBOOK
256 pages of recipes from the viewers of the popular tv show hosted by Bob Phillips
\$13.95
Pick up your copy at MULESHOE PUB CO

You can't lose--or get lost--with THE ROADS OF TEXAS!

Get your copy at MULESHOE PUB CO. Only 12.95

19. Work Needed
G&S
*Trees Removed *Demolition *Roofing
*Yard Leveling *Painting *Landscaping
*Concrete Work *Fences *Dump Truck Work
*Backhoe Work *Remodeling
*Certified Septic Tank & Lateral Line Installer
George Gallegos 385-3304
Insured 1-800-658-992 Bonded

8. Real Estate

say welcome to the Muleshoe Kiwanis Club. Someone else new this morning was our new sweetheart, Summer Wiley. Summer is the daughter of Kent and Wanda Wiley of Muleshoe. She is a senior at Muleshoe High School, and has lots of time on her hands. She is a member of the High School Band, Leadership Muleshoe, SCAC, NHS, PALS, and now the sweetheart of the Muleshoe Kiwanis Club. Her hobby is writing. Summer, welcome to the Kiwanis Club. We look forward to a wonderful and fun year.

In the absence of President Larry Parker, who is sick, V.P. Randy Lewis called the meeting to order. Keith Turner led the club in the pledge to our flag. Byron Morris gave the invocation. Lyndon Huckaby, when he wasn't picking on our new sweetheart, gave the friendship coin to Jim Lutz. Good luck, Jim, maybe you can find a friend. Jack Watson, our newest member, brought the program this morning. He showed a video about the company he used to work for, "Halaburton". This was a very enjoyable film about a company who in the last 50 years has grown from a dream to one of the largest and most specialized oil field services there is. They operate world wide, and do about everything to an oil well, except drill the hole. They are so technical that there is no way this writer can describe it. You need for Jack to show you this film. Jack, thanks for a good program, and welcome to Kiwanis.

Lt. Gov. stated that he would like to help build Division 33 into

a stronger division. He wasn't interested in building any new clubs, but making the clubs we have now stronger.

Summer, Welcome to Kiwanis, we look forward to seeing your lovely face and wonderful personality every Friday morning.

Nontoxic Shot Needed For Teal Hunting

Texans will be able to shoot teal during a nine-day September season (Sept. 12-20) for the first time since 1987 and some questions have been raised about when nontoxic shot may be needed or possessed by a hunter.

Capt. Jim Robertson, TPWD game warden, said nontoxic shot, which includes steel shot, is required only for hunting migratory waterfowl. If a hunter possesses lead shot while hunting teal, other ducks, geese, and coots, he is in violation of the law. However, both lead and steel shot may be used to hunt doves.

When a hunter plans to hunt teal and doves in the same area, the best solution is to possess and hunt only with nontoxic shot. The hunter also could decide which game bird he wants to hunt. The hunter may hunt doves with lead shot as long as he does not shoot waterfowl.

Classify! Call 272-4536

9. Automobiles For Sale

Muleshoe Motor Company
"Car Capitol of the West Plains"
Phone: 806-272-4251 1225 W. American Blvd. Muleshoe, Texas 79347

1987 Chevy Celebrity (Air, Automatic, Stereo-Loaded) **\$197** a month
1990 Ford Escort 2 dr. (Air, Automatic, Stereo -Extra Nice) **\$171** a month
1988 Plymouth Reliant 4 dr. (Must See) **\$4,888**
1992 Ford Mustang (Automatic, Factory Warranty -Loaded) **\$222** a month
1992 Mercury Topaz 4 dr. **\$217.95** a month (Factory Warranty - Loaded)
1991 Ford F-150 Pickup **\$7999** Extra Nice

8. Real Estate

HENRY REALTY

111 W. AVE. B 272-4581
Muleshoe, Tx.
2 bedroom, 1 bath, 1 car garage, brick veneer. Country Club Addition. Central heat and air. Very nice.
2 bedroom, 1 bath, detached 2 car garage, extra lot and well for garden. Country Club Addition.
Spacious 2 bedroom, 2 bath with one car garage. Fireplace. Ready to move in.
New listing-2 bedroom, 1 bath, redone for qualified buyer.
3 bedroom, 2 bath, carport, spacious home outside city limits near city on highway. Lot is 85'x402'. Metal building is 29' by 40'. Great setup for workshop.
FOR LEASE-3 bedroom, 2 bath, carpet, spacious living area, fenced yard. Near high school.
COMMERCIAL PROPERTY
Ideal location on West American Blvd. 150' highway frontage. A great business opportunity.
Brick veneer restaurant 150 seating. Over 5000 sq. ft. with modern equipment. Ready for operation. Located on U.S. Highway 84 in Muleshoe. 7,000 sq. ft paved parking. Excellent financing available for qualified buyer.
West American Boulevard 150' frontage. Priced to sell.
LAND
150 acre irrigated farm with sprinkler on highway NW of Muleshoe. Allotted acres with good yields. Two wells. Corners are in CRP. Owner financed.
240 acres irrigated farm. Equipped with sprinkler. Underground electricity. Undergro. siderolls or big gun sprinklers. Priced to sell.

Call 272-4536 Classify!

Lowe's Pay-n-Save National Brands Sale

MARKETPLACE



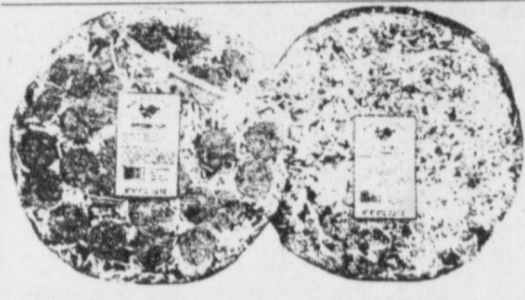
PILGRIM'S PRIDE
U.S.D.A. GRADE 'A'
Whole Fryers
49¢
LB.

HEAVY GRAIN FED BEEF
Whole Rib Eye
12 TO 15 LB. AVG. IN THE BAG
\$3.00
LB.
Rib Eye Steaks \$4.49
LB.



WRIGHTS TRAY PACK
Sliced Slab Bacon
\$1.19
LB.
FULLY COOKED BONELESS
Master Cure Ham
95% LEAN
\$1.99
LB.

Standard Bulbs 100 75
SYLVANIA SYLVANIA
75 60
Sylvania Standard Light Bulbs
PKG. OF 2
79¢
40, 60, 75, 100 WATT



MAMA ROSA'S
Deluxe or Pepperoni Pizza
\$3.49
14 INCH 2-PACK

Smoked Sausage
GOOCH GERMAN
12 OZ. PKG.
\$1.29

Gooch Hot Links
LB.
\$1.79

Pedro's
TAMALES
MILD OR SPICY
\$3.49
12 PACK



DEL MONTE ASSTD. REG. OR LITE
Canned Fruits
16 TO 17-OZ. CANS
89¢

Louis Rich
Turkey Franks
12 OZ. PKG.
99¢

Louis Rich
Turkey Bacon
12 OZ. PKG.
\$1.69

Louis Rich
Variety Pack
12 OZ. TURKEY OR 9 OZ. TURKEY BREAST
\$1.89
EA.

Peyton
Chorizo
8 OZ. PKG.
99¢

Peyton
Meat Franks
12 OZ. PKG.
49¢

Peyton
Meat Bologna
12 OZ. PKG.
79¢

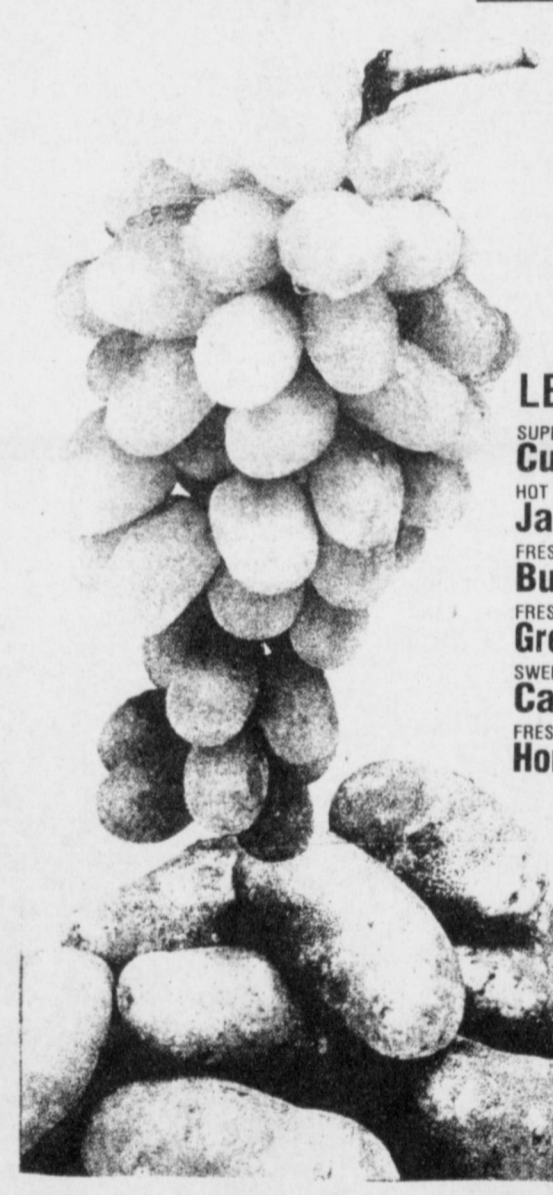
ASSORTED
Pillsbury Biscuits
10 CT. CANS
4.99¢

GREEN GIANT
Corn on the Cob
6 EAR PKG.
\$1.29

STILLWELL
Breaded Okra
24 OZ. PKG.
\$1.29

MRS. PAULS BREADED
Fish Sticks or Fillets
10.6 TO 13.9 OZ. BOX
\$2.69

APPLE-PEACH-CHERRY
Mrs. Smiths Fruit Pies
8 INCH 26 OZ. BOX
\$2.99



THOMPSON
Seedless Grapes
LB.
39¢
SUPER SELECT
Cucumbers 3 EA \$1
HOT
Jalapeno Peppers LB. 69¢
FRESH
Bunch Radishes EA. 49¢
FRESH BUNCH
Green Onions 4 EA \$1
SWEET JUICY
Cantaloupes LB. 39¢
FRESH SWEET
Honeydew Melons LB. 49¢

Light or Regular
Parkay Margarine
16-OZ. QTRS.
2.99¢
FOR

PARKAY
Light Margarine
10-OZ. PKG.
\$1.89

KRAFT
Colby, Monterey Jack or Mild Cheddar Halfmoon Cheese
10-OZ. PKG.
\$1.89

KRAFT
Regular or Light Kraft Velveeta
2-LB. BOX
\$4.69

KRAFT
American, Swiss, Pimento Kraft Singles
12-OZ. PKG.
\$1.99

PARKAY
Soft Spread
3-LB. TUB
\$1.89

ASSTD. FLAVORS
Blue Bunny Ice Cream
5 QT. PAIL
\$3.99

Jolly Time
REG. AND LIGHT Jolly Time Microwave Popcorn
3 PK. CTN.
\$1.49



Kingsford Charcoal 10-LB. BAG \$2.99
Imperial Sugar EXTRA FINE GRANULATED 4-LB. BAG \$1.39
Brown or Powdered Sugar IMPERIAL BRAND 2-LB. BAG \$1.19
Pinto Beans GREEN GIANT BRAND 3 15-OZ. CANS 99¢
Blackeye Peas GREEN GIANT BRAND 3 15-OZ. CANS 99¢
Picante Sauce OLD EL PASO THICK & CHUNKY ASSORTED 16-OZ. JAR \$1.49
Spaghetti Sauce RAGU BRAND ASSORTED 28-OZ. TO 30-OZ. JAR \$1.89
Elbo Roni AMERICAN BEAUTY 2 10-OZ. PKGS. 99¢
Long/Thin Spaghetti AMERICAN BEAUTY 2 10-OZ. PKGS. 99¢

Check Our Circular in Today's Bailey County Journal For More Grocery Specials!

Selsun
Shampoo Gold For Women or Blue Assorted
7 OZ. BTL.
Sale Price \$4.99
Less Mfg. Rebate 2.00
Your Final Cost **\$2.99**

REGULAR OR LIGHT
Kraft Mayonnaise
32 OZ. JAR
\$1.49
WITH COUPON BELOW
\$2.24 WITHOUT COUPON
75¢
SAVE 75¢
when you buy one 32 oz. or larger jar of KRAFT Mayonnaise, regular or light.
101774
LIMIT ONE COUPON PER ONE ITEM PURCHASED
CA2-143
75¢ Store Coupon 5 21000 42050 1

REGULAR OR LIGHT
Kraft Miracle Whip
32 OZ. JAR
\$1.49
WITH COUPON BELOW
\$1.99 WITHOUT COUPON
50¢
SAVE 50¢
when you buy one 32 oz. or larger jar of MIRACLE WHIP Salad Dressing, regular or light.
101774
LIMIT ONE COUPON PER ONE ITEM PURCHASED
CA2-140
50¢ Store Coupon 5 21000 42050 1

Lowe's Pay-n-Save
MARKETPLACE
PRICES EFFECTIVE
AUG. 30-SEPT. 5, 1992
ALL FLAVORS
COCA-COLA
6 PACK, 12 OZ. CANS
\$1.59
3 LTR. BTL.
\$1.79
WE RESERVE THE RIGHT TO LIMIT QUANTITIES IN TEXAS
AFFILIATED FOODS INC. MEMBER STORE