



Back to School SALE

AMERICAS FAVORITE BRAND!

ALL FLAVORS
COCA-COLA
2 LTR. BTL.
\$1.19

Fresh Meats

HEAVY GRAIN FED BEEF
Round Steak
\$1.59
L.B.

HEAVY GRAIN FED BEEF
Boneless Round Steak
\$1.79
L.B.

SHURFINE FULLY COOKED
95% LEAN-5 TO 8 L.B. AVG.
Whole Boneless Hams
\$1.99
L.B.

SHURFINE BOLONNA-P&P-SALAMI
SHURFINE
 Luncheon Meats
 Cooked Ham
 Ham Salad
 Chicken Salad
SHURFINE JALAPENO OR PIMENTO
 Cheese Spread
SHURFINE PIMENTO
 Cheese Spread

SHURFINE REG. OR HOT
 Whole Hog Pork Sausage
\$1.39
1 L.B. ROLL

SHURFINE REG. OR HOT
 Boneless Rump Roast
EXTRA LEAN
 Ground Round
\$2.09
\$1.99
L.B.

SHURFINE MEAT
 Meat Wieners
\$0.69
12 OZ. PKG.

HEAVY GRAIN FED BEEF
 Sirloin Tip Steak or Roast
\$2.39
L.B.

SHURFINE READY TO HEAT & SERVE
 Hot & Spicy Wings
\$1.99
L.B.

Meat Balls
\$1.79
L.B.

Chicken Breast Patties
\$2.09
L.B.

Chicken Breast Nuggets
\$2.19
L.B.

It's easy to pack a healthy lunch

START SMART

AFFILIATED FOODS MEMBER STORES MAKE SENSE FOR SCHOOL

RIPE GOLDEN
Bananas
4\$1
LBS.

Why go bananas thinking up a healthy way to jazz up your kids lunch box? Bananas are easy to pack in a lunch box and delicious to eat.

"Kids love to snack on crunchy vegetables, either at lunch or after school. Yummy apple slices or crunchy carrots... your kids will love them."

FRESH CRISP
 Dole Carrots
 Stalk Celery
SNO-WHITE
 Cauliflower
 White Onions

3 1-LB. CELLO BAGS
\$1.39
EA.
\$0.89
EA.
\$0.29
L.B.

NEW CROP
 Texas Potatoes
10-LB. BAG
\$1.29

SWEET JUICY
 Peaches
39¢
L.B.

WASHINGTON EXTRA FANCY RED DELICIOUS
 Apples
LUNCH BOX SIZE
5\$1
FOR

Three Brad Pocket Folders
\$1.59
FOR

Elmers School Glue OR Glue All
4-OZ. BTL.
\$1.59

Crayola Crayons
BOX OF 16
89¢

70 CT. Theme Book
39¢

ASSTD. SCHOOL Lunch Kits
EACH
\$5.99

Gold Seal OR Snappy Pencils
8-CT. PKG.
2\$1

FOR LOCKERS AND BIKES
 Master Combination Lock
EACH
\$2.99

SHURFINE
 Liquid Bleach
GAL. JUG
79¢

PUPPY - GRAVY - CHUNK
 Shurfine Dog Food
20 L.B. BAG
\$3.79

SHURFINE
 Evaporated Milk
12 OZ. CANS
2 89¢

SHURFINE ASSTD.
 Potato Chips
7 OZ. BAG
69¢

SHURFINE
 Paper Towels
ROLLS FOR
299¢

SHURFINE FROZEN
 Orange Juice
12 OZ. CAN
69¢

SHURFINE
 Bath Tissue
9-ROLL PKG.
\$1.89

SHURFINE ASSTD. BOYS OR GIRLS
 Ultra Diapers
CONV. PACK
\$5.99

GRANULATED
 Shurfine Sugar
4 L.B. BAG
\$1.29

SHURFINE
 Asstd. Coffee
39 OZ. CAN
\$3.69

SHURFINE ASSTD.
 Soda Pop
2 LITER BTL.
2 59¢

SHURFINE
 Saltine Crackers
16 OZ. BOX
59¢

SHURFINE CREAMY/CHUNKY
 Peanut Butter
18 OZ. JAR
\$1.29

ALL PURPOSE
 Shurfine Flour
25 L.B. BAG
\$2.99

SHURFINE
 Macaroni and Cheese Dinner
7.25 OZ. BOXES
6 99¢

SHURFINE
 Cream Style or Whole Kernel Golden Corn, or Cut Green Beans
15 OZ. CANS
3 99¢

SHURFINE REG. /LITE NAT. /BUTTER
 Pork and Beans
15.5 OZ. CANS
4 99¢

CHOPPED MUSTARD OR TURNIP GREENS, FRESH SHELLED BLACK EYE PEAS, NEW POTATOES WHOLE & SLICED, SAUERKRAUT
 Shurfine Canned Vegetables
15 TO 16 OZ. CANS
\$1.99

SHURFINE
 Tomato Sauce
8 OZ. CANS
6 99¢

CHEESE OR REG.
 Shursaving Nacho Chips
3 L.B. BAG
\$1.99

SHURFINE
 Margarine
16 OZ. QTRS.
3 99¢

SHURFINE
 Microwave Popcorn
3 PK.
99¢

SHURFINE
 Elbo Macaroni or Long Spaghetti
12 OZ. PKGS.
2 99¢

SHURFINE
 Tomato Ketchup
28-OZ. SQUEEZE BTL.
99¢

SHURFINE ASSTD.
 Spaghetti Sauce
30 OZ. JAR
\$1.29

SHURFINE
 Salad Dressing
32 OZ. JAR
99¢

REG. OR LITE FRUIT COCKTAIL, REG. OR LITE HALVES OR SLICED PEACHES
 Shurfine Canned Fruits
16 OZ. CAN
69¢

SHURFINE
 Cranberry Juice Cocktail
48-OZ. BTL.
\$1.99

SHURFINE CRANAPPLE OR CRANRASPBERRY DRINK
 Shurfine Jelly
18-OZ. JAR
99¢

DAMSON PLUM-GRAPE-OR APPLE
 Waffle/Pancake Syrup
24-OZ. BTL.
\$1.29

SHURFINE
 Complete Pancake Mix
32-OZ. BOX
\$1.29

SHURFINE
 Black Pepper
4-OZ. CAN
\$1.29

SHURFINE
 Soda Pop
2 LITER BTL.
2 59¢

SHURFINE
 Saltine Crackers
16 OZ. BOX
59¢

SHURFINE CREAMY/CHUNKY
 Peanut Butter
18 OZ. JAR
\$1.29

SHURFINE
 Paper Towels
ROLLS FOR
299¢

SHURFINE FROZEN
 Orange Juice
12 OZ. CAN
69¢

GRANULATED
 Shurfine Sugar
4 L.B. BAG
\$1.29

SHURFINE
 Asstd. Coffee
39 OZ. CAN
\$3.69

SHURFINE ASSTD.
 Soda Pop
2 LITER BTL.
2 59¢

SHURFINE
 Saltine Crackers
16 OZ. BOX
59¢

SHURFINE CREAMY/CHUNKY
 Peanut Butter
18 OZ. JAR
\$1.29

ALL PURPOSE
 Shurfine Flour
25 L.B. BAG
\$2.99

SHURFINE
 Macaroni and Cheese Dinner
7.25 OZ. BOXES
6 99¢

SHURFINE
 Cream Style or Whole Kernel Golden Corn, or Cut Green Beans
15 OZ. CANS
3 99¢

BUTTERMILK OR SWEET MILK
 Shurfine Biscuits
6 CT. CANS
99¢

SHURFINE
 Orange Danish Rolls
11 OZ. CAN
\$1.29

SHURFINE MILD CHEDDAR-COLBY-CHEDDAR
 Half Moon Cheese
16 OZ. PKG.
\$2.89

SHURFINE
 American Singles
16 OZ. PKG.
\$2.29

SHURFINE CHEDDAR OR MOZZARELLA
 Shredded Cheese
4 OZ. PKG.
79¢

SHURFINE
 Chilled Orange Juice
64 OZ. JUG
\$1.89

Colored Map Pencils
12-CT. BOX
79¢

Bic Round Stic
16-CT. PKG.
99¢

Paper Mate Pens
10-CT. PKG.
99¢

Blunt or Pointed Scissors
4 1/2 INCH PAIR
2\$1

Shop Lowe's Marketplace & Pay-n-Save for Low Low Prices!!!

Health and Beauty

WESTERN FAMILY PASTE OR GEL
 Tartar Control Toothpaste
4.4 OZ. TUBE
99¢

WESTERN FAMILY REGULAR
 Non-Aspirin Tablets
100 CT. BTL.
\$1.69

WESTERN FAMILY EXTRA STRENGTH
 Non-Aspirin Caplets
100 CT. BTL.
\$1.99

WESTERN FAMILY
 Sleep Tablets
16 CT. BTL.
\$1.89

WESTERN FAMILY ASSORTED ANGLED, OR
 Tuft Toothbrushes
SHURFINE 60-75-100 WATT
 Standard Light Bulbs
16 OZ. PKG.
99¢
69¢

Frozen

REG. OR PINK
 Shurfine Lemonade
12 OZ. CAN
59¢

SHURFINE
 Whole Strawberries
16 OZ. PKG.
\$1.39

SHURFINE
 Whipped Topping
12 OZ. TUB
99¢

SHURFINE
 Corn on the Cob
EAR PKG.
\$1.39

CRINKLE CUT OR HASH BROWN
 Shurfine Potatoes
2 L.B. PKG.
\$1.39

BRUSSEL SPROUTS-CAULIFLOWER-BROCCOLI CUTS
 Shurfine Vegetables
16 OZ. PKG.
\$1.19

Lowe's

Pay-n-Save

MARKETPLACE

401 W. Amer. Blvd. Muleshoe 272-4585

515 W. Amer. Blvd. Muleshoe 272-4406

Prices effective August 2 - 8, 1992

WE RESERVE THE RIGHT TO LIMIT QUANTITIES IN TEXAS

Our Best to you!



MARRIAGE ANNOUNCED—Kirk Lewis and Cheryl Williams wish to announce their marriage. They were married July 24 in the backyard of Cliff and Carren Black's home. Mrs. Lewis is the daughter of Mr. and Mrs. Cliff Crabtree and Lewis is the son of Mr. and Mrs. Leon Lewis. The bride is a graduate of Muleshoe High School and is employed at the ASCS office. She has two children, Rachel and Chanse, of the home. Lewis is a graduate of Muleshoe High School and Texas A&M University. He has a son, Ky, of Austin.

(Journal Photo)

Exchange Program, Unique Family Opportunity

Want to know more about the world and its people, but haven't the time or funds to travel? Try bringing a bit of the world to you. Invite an exchange student to share your home and become a part of your family.

Families who have participated in an exchange program have reported a new appreciation for other cultures and a great satisfaction in opening their home and hearts to an

international visitor. Family members not only learn of another country, but become better acquainted with their own sense of nationalism, history and traditions. Participants have said, "It is the most wonderful learning opportunity I could give my family."

INTERNATIONAL STUDENT EXCHANGE, INC., (ISE), is presently seeking host families for students from seventeen different countries. Students between the ages of 15 and 18 are carefully screened by ISE for suitability. They bring their own spending money and are covered by health insurance.

While living with you, a student attends the local high school and is expected to bear his or her share of household responsibilities. The length of stay can range from three months to a full year, depending on your wishes. An ISE representative will help you select a student from numerous student applications which include family photos and biographical essays.

For more information on being an ISE host family or on sending a son or daughter abroad, phone ISE's Regional Office nearest you.

Western (CA) 800-233-HOST
Bakersfield (CA) 800-688-HOST
Eastern (MA) 800-456-6335
Great Lakes (MI) 800-333-5357

Muleshoe Journal USPS 6-5820
Established February 23, 1924. Published by Muleshoe Publishing Co., Inc. Every Thursday at 324 W. Second, Box 449, Muleshoe, Texas, 79447. Second Class. Postage Paid at Muleshoe, Texas, 79447.

MEMBER 1992
TEXAS PRESS ASSOCIATION

U.B. Hall, Publisher
Sammye Hall, Vice-President/Comptroller
Evelyn Harris, News
Joyce Adams, Society
Hollie Milburn, Advertising
Diana Bernice, Classified
SUBSCRIPTIONS
Muleshoe Journal and Bales County Journal
Bales and surrounding counties
By Mail \$15.25
Muleshoe Journal and Bales County Journal
Elsewhere
\$17.50
Muleshoe Journal and Bales County Journal
By Carrier Yearly
\$14.00

Advertising Rate Card on Application
Advertisers should check their ad the first day of insertion. The Journal will not be liable for failure to publish an ad or for a typographical error or error in publication except to the extent of the cost of the ad for the first day of insertion. Adjustment for errors will be limited to the cost of that portion of the ad where the error occurred.

Hyperthermia Can Result From Prolonged Heat

Summer heat, combined with humidity, poses a potentially deadly threat to Texans.

Health officials warn that heat stress, or hyperthermia, causes about 200 deaths and thousands of illnesses each year in the U.S. The victims are usually the elderly, the very young, or people weakened by other illnesses, although prolonged heat stress can be fatal to anyone.

Dr. Erik K. Svenkerud, medical consultant for the Bureau of Disease Control and Epidemiology at the Texas Department of Health (TDH), said that high temperature alone is physically tolerable to most people. Combined with high humidity though, heat can cause a person's natural cooling system, perspiration to work overtime. "If a person fails to replace fluids and salts they lose during perspiration," Dr. Svenkerud said, dehydration can follow.

The symptoms of dehydration include muscle cramps, dizziness, nausea, low blood pressure and headaches. "These are serious warning signs," Dr. Svenkerud said. "Anyone with these symptoms should immediately find shade, ventilation and fluids—preferably water—to drink until the symptoms subside."

He explained that if fluids are not soon replaced, heat stroke can follow, causing sudden weakness, headache, confusion leading to loss of consciousness, brain damage and death.

To avoid overheating, Dr. Svenkerud said, people should wear light-colored, loose-fitting clothing and drink more than their normal intake of water. Those with heart or respiratory conditions or who take medications should be alert to any signs of physical problems.

Children can develop dehydration, especially quickly during hot, humid weather, and also need increased fluids and light clothing. In addition, they, as well as pets, should not be left in cars or hot buildings.

"One of the best ways to know whether to take special precautions on a given day is to follow a local weather forecast. Although forecasts cannot be exact, meteorologists usually are accurate enough to predict approximate temperatures and humidity," Dr. Svenkerud added.

Forecasters often refer to a "heat stress index," a numeric table

which reflects how hot the air will feel to humans. A heat stress reading of 105 degrees is considered very dangerous, yet it can occur while thermometer readings are still in the mid-80s.

Poems Wanted For Contest, Anthology

A grand prize of \$500 is being offered for the best poem in a new contest sponsored by Sparrowgrass Poetry Forum. Thirty-four other cash prizes will also be awarded. There is no cost to enter.

The rules are simple: each poet may enter one poem only, 20 lines or less, in any style, on any subject. Contest closes Sept. 30, but poets are encouraged to submit their work as soon as possible. Winners will be notified by Nov. 30, 1992.

"The contest is open to everyone. But new poets, especially, are urged to enter, because we are always hoping to encourage and reward new talent," says Jerome P. Wilch, publisher.

"The poem you send for the contest also will be considered for publication in *Treasured Poems of America*, a hardcover anthology." Book purchase may be required to ensure publication, but is not required to be eligible for the contest.

Poems should be sent to: Sparrowgrass Poetry Forum, Dept. JG, 203 Diamond St., Sistersville, WV 26175.

New Center For Alzheimer's Patients

The Lubbock Alzheimer's Family Care Center is a new adult day care program in Lubbock designed for the specific needs of individuals with Alzheimer's Disease and other dementia disorders. The National Institute on Aging predicts Alzheimer's Disease affects 4 million of the nation's population. Approximately 10% of this area's population each year will be diagnosed as having a dementia disorder. Other than institutionalized in a Nursing Home, this is the only program being offered specifically for persons suffering from Dementia.



MELINDA TURNEY

Bridal Show Honors Melinda Turney

A bridal shower for Melinda Turney, bride-elect of Chris Locke, was held Sunday, July 12 in the Home Ec Room of Three Way High School. Guests were registered by Debbie Mason, sister of the groom.

The serving table was covered with a white lace tablecloth and featured an arrangement of greenery and white silk roses.

A variety of cookies, nuts and mints were served along with punch.

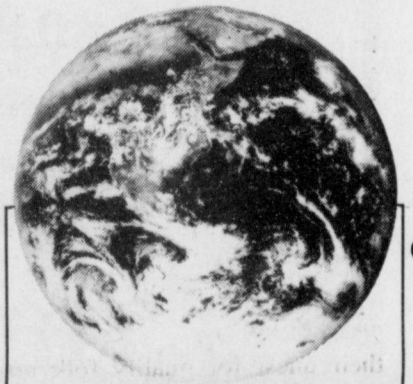
Special guests were Beverly Turney, mother of the bride, Myrna Turney, grandmother of the bride, and Wanda Locke, grandmother of the groom.

The hostesses presented a vacuum cleaner to Miss Turney as their gift. Hostesses were Jean Parker, Annetta Byrd, Jeanette Tucker, Sammie Simpson, Frances Duarte, Rose Nichols, Louise Newton, Joyce Beasley, Elaine Foote, Mary Kindle, Paula Foley and Freda Lowe.

Rugged

Rugged individualist: One who can eat chicken with his fingers without making any excuses.

—News, Buffalo.

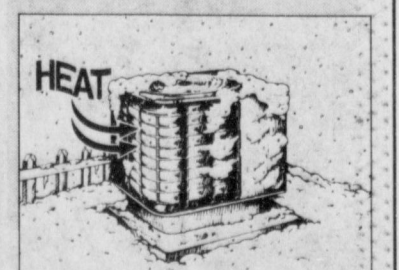


THE WARMTH OF THE EARTH

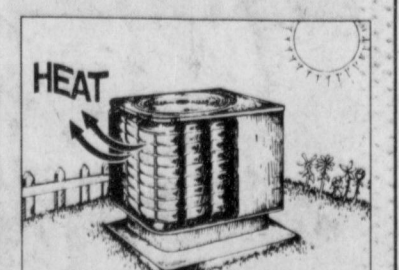
The heat pump captures it to heat and cool your home naturally.

The Dual Fuel Heat Pump uses existing heat to keep your home comfortable...naturally. Because it doesn't have to create heat, it's very efficient. For each unit of energy it uses, the Dual Fuel Heat Pump creates two or three units of heat.

Dual Fuel Heat Pump owners say it costs them less to operate than other systems. And, because it's electric, the Dual Fuel Heat Pump is cleaner.



There is heat in the air on the coldest days. The heat pump captures it to warm your home.



In summer, it becomes a high efficiency air conditioner. During hot weather, the heat pump captures the heat inside the home and takes it outside.

Contact your heat pump dealer or Southwestern Public Service Company for more information.

Dual Fuel Heat Pump

BIG DQ DEALS!

Full Meal Deal \$2.99
1/4 lb. Hungr-Buster® Fries, 16-oz. Drink, Sundae

DQ KIDS' MEAL \$1.99
Your Choice Of: Hamburger, Steak Fingers & Gravy, Corn Dog or Hot Dog. Plus Fries, Drink, Choice of Treats and a Free Prize!

Dairy Queen

ON SALE JULY 27 - AUGUST 9, 1992!

At participating Dairy Queen stores.
© Reg. U.S. Pat. & Tm. Off. Am. D.Q. Corp. *TM Reg. U.S. Pat. & Tm. Tx. D.Q. Corp. © Tx. D.Q. Corp. *Pre-cooked weight

Check Us Out For Free.

Bank of America is proud to be in Texas, so we'd like to celebrate. And you're invited. Drop by any Bank of America Texas branch and open a personal checking account. Free. That's right. There will be no monthly fee all the way through September 15, 1993. And you'll get your first order of checks free, too.

While you're there, pick up an application for a BankAmericard® VISA® or MasterCard® credit card. Upon credit approval, you'll get all the benefits of a BankAmericard and you'll pay no annual fee for the first year. And best of all, you'll have the security that comes with being part of the Bank of America family, one of the nation's largest and strongest groups of financial institutions.

Like all good things, this one won't last forever. So, hurry. We're looking forward to welcoming you.

Muleshoe 304 Main Street, 272-5527
Farwell 203 Avenue D, 481-3353

Bank of America



Rodriguez Twins Celebrate 15th Birthday

Fernando Noe and D'Ann Rodriguez, twin son and daughter of Fernando and Noelia Rodriguez of Littlefield, were honored with a 15 birthday party (Quincianera) Saturday night. Father Pat Maher officiated at a mass celebrated at 5 p.m.

Grandparents are Noe and Viola Anzaldua of Muleshoe and Jose Rodriguez of Littlefield.

Uncles attending were: Mr. and Mrs. Alfredo Noe Anzaldua and Mr. and Mrs. Roy Anzaldua, all of Muleshoe, and Mr. and Mrs. Juan Fco Garza of Clovis, N.M.

Cousins attending were: Audree Anzaldua of Muleshoe; Juan Fco Garza, Jr., Albert Garza, and Amanda Garza, all of Clovis, N.M.; Jason Anzaldua and Kimberly Anzaldua, both of Muleshoe; Jessica Rodriguez, sister of Littlefield.

Other family members attending were from Muleshoe, and Mercedes.

Anzalduas' Celebrate Anniversary

Noe and Viola Anzaldua celebrated their 39th wedding anniversary recently.

The Anzalduas' moved to Muleshoe in 1957 and all of their children graduated from Muleshoe High School.

All of the Anzaldua family are associated in the Mexican Food business.

Freddie Anzaldua is associated with El Jacalito Tortillas in Muleshoe; Noe and Viola and Roy Garza of Viola's Mexican Restaurant; Juan and Noemi Garza, Juenito's Mexican Restaurant in Clovis, N.M.; and Fernando and Noelia Rodriguez, Rodriguez Mexican Food in Littlefield.

GOLDEN GLEAMS



The deal is everything, not the glory.

-J. W. Goethe.

The paths of glory lead but to the grave.

-Thomas Grey.



OWEN FAMILY

Owens Family Reunion Held

The Owen family reunion was held July 25 and 26 at the Bailey County Civic Center.

Daughters of the late A.H. and Pallie Owen attending were Pearl Carter, Ozell Cherry, Naomi Black, all of Muleshoe and Dovie Easter of Palestine.

Sons attending were Elmo Owen of Muleshoe and Arie Owen (Pretty) of Wells, Nevada.

There were 120 family members attending and 8 guests registered.

How quickly passes away the glory of this world.

-Thomas A. Kempis.

Enochs News by: Mrs. J.D. Bayless

Dinner guests in the home of Mr. and Mrs. Bonnie Blackstone Sunday were Nancy Piece, and Kim, Jaclyn and Tyler of Friona, Kim McDonald of Pampa.

Harvey and Bonnie, Kim McDonald, Jaclyn Piece all went to Levelland Sunday afternoon to help a grandson Seth Blackstone celebrate his first birthday at the home of his other grandparents, James and Amy Bridges home. Seth is the son of Mr. and Mrs. Thomas Blackstone of Odessa.

Dorothy's Sidewalk Sale



August 6, 7 & 8
Save Up To 50% or more

Drastic Reductions On Dresses, Sportswear, Decorated T-Shirts (as low as \$15) and Much More! Rock Bottom Prices and Great Selections On Sale!

Gabriel Shopping Center
1511 W. 5th St.

1-806-296-2135
Plainview, Tx.

Country Peddler Show Coming To Lubbock

Folk art keeps traditions alive in decor and design at the Country Peddler Show, coming to the Lubbock Memorial Civic Center in Lubbock on September 11, 12 and 13.

Show hours are Friday 4 to 9 p.m., Saturday 9 a.m. to 6 p.m., and Sunday 11 a.m. to 5 p.m. Admission is \$4 for adults; children under 12 get in free. A special admission of \$2 is offered to senior citizens.

Home and family values are traditional American themes celebrated at every Country Peddler Show, the Original Folk Art and Decorator Show.

Traditional values never change. Unending and enduring, they link the past to the future. This is the very foundation of the Country Peddler Show.

Every year thousands attend over 20 shows in any of 14 cities in their quest for quality folk art. Along the way, they discover the experience of the Country Peddler Show is unequalled, and a rare treat, in today's mass-produced world.

This Original Folk Art and Decorator Show has been described as the perfect street of shops. Excited shoppers sweep past rows of vendors, all displaying their finest wares in the folk art theme. The sound of sweet music fills the air. Guests are welcome to reach out and touch the fabrics, to feel the wood and to try on fashions.

Countless collections of pottery, jewelry, fashion, folk art, woodwork, metalwork, fabrics, potpourris and other handmade crafts offer exciting ways to recreate any home in the folk art style. Shams, pillowcases, quilts, furnishings, lamps and shades

inspire endless variations to fill the home with the happiness and warmth of remembered pasts.

The popular appeal of the Country Peddler Show is reflected most in its wholesome values. Every item is lovingly handmade by the artist. Many craftsmen borrow from century-old patterns which are proven in beauty and timeless in elegance. Every detail is carefully worked to produce a quality piece that will find a place in any home for generations.

Our family of exhibitors adheres to a standard of excellence, painstakingly nurtured since we created the modern folk art genre in 1978. Each craftsman is selected according to reputation and quality of work. Their craftsmanship keeps the show's standards the highest of all folk art shows. This makes sense because the Country Peddler Show is the first and finest show of its kind in the country.

Today's Country Peddler Show is the best place to find the perfect gift, to start or add to a collection, to discover a special item for your home, to help decorate for the holidays.

Discover your own tradition of excellence, by becoming a regular visitor to the Country Peddler Show.

For more information contact American Country Shows, P.O. Box 706, Port Aransas, Texas 78373, 512-749-5449.

Founded in 1978 as a new opportunity for leading designers and craftspeople to offer their original wares, the Country Peddler Show now attracts over 200,000 visitors annually. It has earned a reputation as the most respected show of its kind in the nation.

Originally emphasizing the country look, today's Country Peddler Shows have expanded into many popular styles, including Americana, Southwest, Victorian and French Country. The emphasis is on original fine-quality home accessories, collectibles and fashion items.

Every Country Peddler Show features this quality look with a pleasing variety of merchandise on display and for sale. Exhibitors are chosen from among the leading artists and designers in the nation, based on quality, adherence to the country theme, and attractive presentation.

Visitors at a typical show will discover furniture, pottery, baskets, textiles, lighting, carvings, stencils, paintings and potpourri, as well as fashion items like original-design dresses, vests, jackets, hats, collars, sweaters and jewelry. It is the perfect shopping opportunity for collecting, home decorating, and gift buying. No strollers, please.

American Country Shows, Inc. is based in DeWitt, Michigan and will produce over two dozen Country Peddler Shows this year. The shows are managed by founder Robin Ely.

For further information, contact: The Country Peddler Show, 512-749-5449.

Old-Timer

An old-timer is the one who can remember when all members of the family had breakfast at the same time.

-Herald, Greensboro, Ga.

How True

The peculiarity about a law is the amazing amount of breakage it can undergo and still exist.

-News, Tribune, Duluth.

Dedicated To
The Discovery Of Our Heritage
August 20th-30th
Amarillo, Texas

- Music • Dancing
- Cowboy Poets • Rodeos
- Kwahadi Indian Dancers
- Gunfighters • Chili Cook-off
- Parade • Exhibits
- Kid Activities
- Craft & Trade Shows
- Antique Show
- Collectable Fair
- Folk Festival

Old West Days

SOUTHWEST AIRLINES
Just Plane Smart
Official airline for Old West Days.

For a schedule or specific event information call Civic Amarillo at (806) 378-4297 or The Convention and Visitors Council at 1-800-692-1338

Come on in and get your Mystik JT-8 Super Heavy Duty Motor Oil...



It's formulated to take the intense stress of heavy duty service. From the smallest gasoline engine to the largest diesel powered equipment, Mystik JT-8 will give you superior performance.

\$4.98 Gallon
Sale Price

Mystik.

Western "66" Company

Earth Hwy

Muleshoe

272-4556

Cato Oil and Grease Company

405-270-8200 • Oklahoma City, OK 73128 • BARNHART OIL COMPANY



MULESHOE Spring/Summer '92 AREA



BUSINESS DIRECTORY AND SHOPPING GUIDE

Bryant Special
Meat and Bean Burrito topped with Chile and Cheese
\$3.50



Closed Mondays
Leal's Restaurant
1606 W. Amer. Blvd. Muleshoe 272-3294



Henry Insurance Agency, Inc.



"Serving Your Insurance Needs Since 1964"

KENNETH R. HENRY
CERTIFIED INSURANCE COUNSELOR
REAL ESTATE BROKER

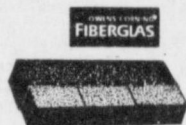


111 W. Ave. B.
Phone 806/272-4581
Muleshoe, Tx. 79347

Gift Selections

of
Wendy Jarman
bride-elect of
Dwayne Wollard

Muleshoe Art Loft



Cash & Carry
3-Tab Shingles - **\$6.65** per bundle
Felt Paper - **\$8.55** per roll
T-Lock Shingles - **\$12.43** per bundle

Higginbotham-Barlett Co.
"Quality & Service At The Right Price"
215 Main Muleshoe 272-3351



Mr & Mrs. Jesse Leal

Mr. and Mrs. Jesse Leal, family and employees wish to take this opportunity to express our most sincere thanks to our many friends and customers, for the great and continued support you have given us during our 35 years in business.

We owe our success to you.

We consider it an honor and privilege serving you. We hope and pray that you will continue to let us serve you. We enjoy it very much.

We feel blessed, and thank the Lord for folks such as you.

We will always strive to merit your trust in us.

There are at present 4 family-owned Leal restaurants to serve you. We hope to see you soon at any one of our locations.

Muleshoe, Tx., Clovis, N.M., Hobbs, N.M. and Whitesboro, Tx.



1606 W. Amer. Blvd.
272-3294

Wilson Drilling Co.

"Complete service from the bottom of the well to the bottom of the Glass"

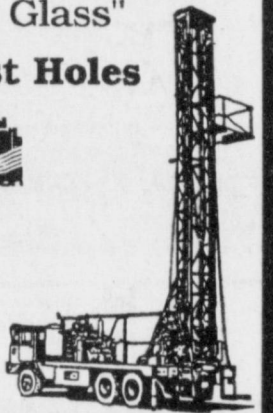
Domestic * Irrigation * Test Holes



*INSURED * BONDED
W. Hwy 84

272-5521

TX LIC 02628W NM WD1152



Dinner Bell Restaurant

Open 7 days - 6 a.m. - 9 p.m.

Daily Noon Buffet
11 - 2 p.m.

Friday Fish Buffet
11 - 9 p.m.

Homemade Bread & Desserts Made To Order
2103 W. Amer. Blvd. Muleshoe 272-5871

Monday Night Buffet

All You Can Eat
6p.m. - 8 p.m.

\$3.99



Delivery Available
11:30 am - 1:30 pm
& After 5:00 pm



1412 W. Amer. Blvd. **272-4213**

We Still Have A Wide Assortment of Lawn and Garden Chemicals and Fertilizers.

Some Bedding Plants & Shrubs Still Available

Kristy's Plants

710 E. Amer. Blvd. Muleshoe 272-5536

Tired of Cleaning?



Let us help you with your cleaning of your Carpet, Upholstery, Drapes & Bedspreads

at
Lambert Cleaners

123 Main Muleshoe 272-4726

COUPON

Pattymelt

with a large order of french fries and small drink

\$3.00 plus Tax

New Hours:
Mon. - Sat. - 11 a.m. - 8 p.m.
Closed Sundays

The Snack Shack

222 W. Ave. H. Muleshoe 272-3840

Coupon Good Until August 12th!



Weed 'Em Out!
With quality products from ferti-lome

WEED OUT™ Plus Lawn Fertilizer

Three weed killers in one great fertilizer. Kills all broadleaf weeds and feeds your lawn a "balanced meal" at the same time. Safe to apply on all types of turf grasses.



Kearney Scoggin
Scoggin Ag Center, Inc.
"Where Fertilizer Is Our Business"
1532 W. Amer. Blvd. Muleshoe 272-4613

Combination Motors & Salvage

We specialize in Motor Repairs and Rebuilding!
New & Used Parts Available
Wrecker Service - 24 hours a day!

272-4458

End of Season Sale

Gazebo Kit
\$1,850.00



Reg. \$2436.15

Your Choice



Pavillion



Picnic Table

\$99.99



Glider

Hours: Mon. - Sat. 8 a.m. - 6 p.m. - Sun. 1:30 p.m. - 4:30 p.m.

Fry & Cox True Value

Hardware, Lumber & Building Materials
401 S. 1st Muleshoe 272-4511