



MHS students bring home UIL victory
Page 2



Muleshoe ISD track, field photographs...
Page 12



Lazbuddie science bowl winners
Page 3, 10

Muleshoe Journal



Striving to be your source for local news

75¢

Volume 91, No. 14

www.muleshoejournal.com

Muleshoe, Texas

April 8, 2010

MAHD board hires Park View administrator

By Larry Thornton
Managing Editor

A new administrator for Park View Nursing Care Center will be taking over in May, according to Jason Anglin, CEO of the Muleshoe Area Hospital District.

After interviewing four candidates for the position on Thursday, April 1, the MAHD board of directors voted to offer the position to Meagan Chisholm of Lubbock. She was contacted the following day, and accepted the position.

Although recently licensed as a nursing home administrator, it was noted that Chisholm has been employed in various positions, starting “at the ground” as a rehabilitation aide and working in billing and nursing home finance.

Currently, she is employed as an admissions coordinator.

Anglin said the hospital district is excited about Chisholm’s acceptance of the position, and said there were several things about her background

Covenant ‘opts out’ of management agreement

that will be beneficial for Park View.

The interviews and action regarding the new administrator was the only business items acted upon during Thursday’s special meeting, according to MAHD officials.

At a special meeting on Tuesday, March 30, discussion of the position

and responsibilities of the district’s chief financial officer was tabled until a special meeting on Thursday, April 8, at which time it has been scheduled for a closed session.

In other MAHD-related business, Anglin said Covenant Health Systems has exercised its option concerning management

or “borrowed employee” agreement with the hospital district.

Covenant has several agreements in place with MAHD, including an affiliation agreement, and providing the services of Dr. Grant Nitzel.

Through the agreement on which Covenant is “opting out” MAHD has been providing administrative services for Muleshoe Area Medical Center and a CEO for the district.

The problems between Covenant and MAHD

surfaced in March, during the hospital district’s strategic planning session in Lubbock, when Steve Beck of Covenant addressed the issue of the large sum of monies — more than \$540,000 — owed Covenant for the services of an administrator and Dr. Nitzel.

At that time, Beck noted that some of the other hospitals with similar agreements had decided to employ their administrators

Continued on page 2



POD people sought in Bailey County

By Larry Thornton
Managing Editor

Kids are often overjoyed to adopt a kitten or puppy, public entities are often adopting policies, and various civic organizations have been known to adopt a highway, but right now the Muleshoe community is being encouraged to “adopt a pod.”

No, it’s not an idea for a new science fiction movie, and even though it involves people... it has nothing to do with an alien takeover of Earth — not even the one located 18 miles to the east.

The Texas Department of State Health Services is attempting to set up a “Point of Dispensing” or POD in Muleshoe to help combat a “large scale disease outbreak.”

During an outbreak, members of the community would receive the necessary medications, pills or shots, necessary to resist

a potential epidemic at the POD.

Currently, the Muleshoe Independent School District has an agreement in place with the state health department to provide the facilities necessary for a POD, but according to Roy Ramos, a public health preparedness program specialist, a community the size of Muleshoe needs as many as 60 volunteers, both medical and non-medical, to staff the POD.

While 60 volunteers are needed, Ramos said training sessions can be set up with as few as 30 volunteers.

Additional information, or applications for individuals interested in volunteering their services may be obtained at the website www.adoptapod.com, or the Muleshoe Journal.

Ramos can be contacted at 806-783-6453.



Tagged!

Whether coming or going, Muleshoe players showed they had the stuff to make the right moves during recent ball games. Pictured above, Mule Saul Elizalda chases down a Friona runner. Pictured on the left, Lady Mule’s catcher Tori Alvarado delivers a “coup de gras” at home plate to a Childress lady wildcat.

For game stories and additional sports photographs, turn to pages 6-7

Photographs by Stacy Conner

Republican runoff early voting is under way

By Larry Thornton
Managing Editor

Early voting for the May 8 election doesn’t start until April 26, and will continue until May 4, but early voting for the Bailey County

Republican runoff is currently under way.

In the runoff election for Bailey County Precinct 2, incumbent C. E. Grant is facing off against candidate James Brown.

On the same ballot, is the runoff for Texas Supreme Court Justice, place 3, between Rick Green and Deborah Lehrmann.

The Republican runoff early vote — which is being conducted at the Bailey County Courthouse, ends Friday, April 9.

In the May 8 election, voters will be casting ballots for positions on the Muleshoe city council, the Muleshoe Area Hospital District

Continued on page 3

‘Aging Well in West Texas’ conference set for April 17

No two people will experience aging in the same way.

Everyone wants to age gracefully, with good health, and with few worries, but doing so isn’t easy... it takes planning.

Planning and attempting to anticipate future needs for yourself or a family member will allow you to be more in control of

the situation when aging issues arise.

Most aging issues involve health, work, finances and relationships.

“Taking steps to plan for your future or the future of an aging family member will allow all involved to enjoy the future to the fullest,” said Kathy Carr, Bailey County extension agent.

The Texas Cooperative

Extension of Bailey County and Park View Nursing Care Center are hosting the an elder care conference entitled “Aging Well in West Texas” on Saturday, April 17, from 8:30 a.m. until 1 p.m., at the Onieta Wagon Senior Citizen Center, located at 319 S. Main, in Muleshoe.

Speakers and topics at the event will include:

- Muleshoe Police

Chief Brian Freida — Providing a Safe and Convenient Living Environment

• Wendi Edwards — Making Your House Safe for the Elderly

• Ken Horn — Aging Issues

Exhibitors at this years conference will include: Samaritan Hospice, Interim Health Care, Support Medical Co., Legacy of Love Hospice,

IntegraCare, and Rightway Shoes.

Lunch will be provided.

For more information on aging well or the elder care conference, contact Kathy Carr, county extension agent — Family and Consumer Sciences, Texas Cooperative Extension, Bailey County at 806-272-4583.

FIRST BANK First Bank is proud to announce our new MasterCard Debit Card.
FIRST BANK ONLINE www.fbmmuleshoe.com
 202 S. First • Muleshoe, TX 79347 • 806-272-4515



MISD fine arts' "Night to Shine"

The MISD Fine Arts Booster Club's annual Fine Arts Night To Shine is set for Monday, April 12, at 6 p.m. This year's event will include a brisket dinner, and features the talents of the school district's fine arts students. Adult tickets are \$8 and a child's ticket is \$5.

During the meal, entertainment will be provided by choir and band ensembles, art exhibits and speech performances. At approximately 7:30 p.m., the One Act Play will perform this year's play, "Mother Courage and Her Children."

AA meeting set

Those looking for help with problem drinking can do so at open AA and Al-Anon meetings being held at 7 p.m. each Friday at the First United Methodist Church, at 507 W. Second.

Please use the west side entrance. For information about these meetings call 806-965-2870.

Alzheimer's support group

Bailey County's Alzheimer's Support Group meets at noon on the second Thursday of each month at Park View Nursing Care Center. Lunch is provided, and anyone is welcome.

First United Methodist revival set

The First United Methodist Church of Muleshoe will be hosting a revival with evangelist Wesley Putnam April 18-21.

MHS students bring home another UIL Dist. 2-AA trophy

Muleshoe High School captured the 2010 Dist. 2-AA UIL Academic championship, held in Friona, on Wednesday, March 31.

According to Superintendent Dr. Gene Sheets, this is a great accomplishment for Muleshoe High School which has taken either first or second place in the UIL Academic Meet for the last 16 years.

Muleshoe's UIL Academic coaches include Dr. Moore, Chris Mardis, Debbie Conner, Vickie Burch, Anita Escobar, Loretta Ray, Valton Acree and Jim Daniel. April Smith is the MHS UIL Academic coordinator.

According to the UIL website, the results of the Dist. 2-AA UIL Academic Meet are as follows: Muleshoe, with 418 points; Friona, 344; Tulia, 75; Childress, 108; Floydada, 349; and Dimmitt, 162.

The Muleshoe students who placed in the district UIL meet include:

Accounting — Sarahi Regalado, second; Calculator applications — Ali Eagle, third; Current issues — Steven Richards, first, Cole

Hawkins, second, Austin Bamert, third, Adrian Chacon, fourth; Computer applications — Jessica Behrends, fourth, Frank Recio, sixth; Computer science — Caleb Conner, first, Jessica Behrends, second, Ali Eagle, third, Jonathan Perez, fourth; Editorial writing — Michael Martinez, fourth, Sheridan White, sixth; Headline writing — Michael Martinez; Informative speaking — Xavier Mora, first, Walter Bartholf, third, Frank Recio, fourth; Lincoln-Douglas debate — Sarah Whitworth, first, Robert Brewster, second; Number sense — Eddie Herrera, fifth; Persuasive speaking — Sarah Whitworth, first, Austin Bamert, second, Ryan Johnson, third; Poetry interpretation — Roper Kerby, first, Louis Guzman, second; Prose interpretation—Matthew Ambriz, Natalie Head, second; Ready reading — Andrew Villarreal, sixth; Chemistry — Cole Hawkins, first; Science — Cole Hawkins, second; Belinda Pacheco, fourth, Andrew Villarreal, fifth; Social studies — Belinda Pacheco, first, Jenna Whitworth, second.

God sent a Savior, not a legal expert

Not long ago my wife and I were away for a couple of days at a hotel in the Dallas area for a training seminar. For almost 20 years, I was the one attending the classes and she was the spouse along for the ride. For a number of years now, the shoe has been on the other foot.

I'm not a rocket scientist, so it may have taken me 10 minutes to figure out that the job description of "the spouse" on such trips is by far the better part, even if, as is usually the case, the spouse under my hat ends up taking work along on the trip. (Occasionally, I'm envious of folks whose companies makes widgets and keep on making widgets whether they're on site or not.)

I definitely relax some, but I usually end up writing or editing or sermonizing or...

But I also try to do some work that I really enjoy and should do a lot more of at home: reading. It's nice to be able to read in the room, or at a "by yourself" breakfast or lunch, or, as was the case on one afternoon in Dallas, by the pool.

It was a pretty day, and I had the pool pretty much to myself. I didn't want in it; I just wanted by it. And by it is where I sat at a table under the shade as I read a book. The whole thing. No real interruptions. Amazing.

I was also near the "spa," the hot tub. I hadn't been reading long until I happened to look up and read something else — the lawyer litter on a sign near the hot tub.

I'll do the folks who own the hotel the honor of assuming that they'd really not like for a guest to drown, or stroke out, or be boiled by their hot tub. But I guarantee you what they'd really not like is to be sued by someone succumbing to one of the above-mentioned calamities.

Add in a few city codes and you have ample reason for them to post the sign by the tank.

"Not recommended for pregnant women, older people, diabetics, people recovering from illness or with a heart

MAHD...

Continued from page 1 directly, an option that Anglin said Muleshoe's hospital district board will have to act upon at some time during the next couple of months.

Beck met with the MAHD board in closed session during its March regular meeting, but no action was taken upon the board's return to open session.



Latest videos include:

- Entertainment from the Muleshoe Chamber of Commerce & Agriculture's annual banquet.
- Muleshoe school board's tour of the work at the DeShazo Elementary and Muleshoe High School campuses.



Focus On Faith
Curtis Shelburne

condition." No problem there. I'm young and vigorous.

"Children under 14 are prohibited." I'm not that young.

"Do not use spa alone." Whatever.

"Use while consuming or under the influence of alcohol, narcotics, drugs or medicines is prohibited." Okey dokey.

Then came one I had to read several times: "Prolonged use of the spa is not prohibited." Hmm.

On the basis of that particular lawyer dropping, as long as I was a registered hotel guest, I guess I could stay in the hot tub over spring break and Easter and have meals brought to tub-side?

I'm pretty sure they didn't mean what they'd engraved in plastic. But I made a note to ask my wife if she'd learned anything regarding sign regulations.

On the other hand, I'm more than sure that God did indeed mean the rules he once carved into tables of stone. "Prolonged" experience has shown that we, his children, spend most of our time breaking them.

Thank God that, seeing our sad plight, he didn't send a legal expert. He sent a Savior.

McDaniel's APPLIANCE 1020 Main Street, Clovis, NM
505-762-4481 or 800-682-7891

Time for new appliances?
WE ARE YOUR HOMETOWN WHIRLPOOL DEALER.

WE NOW CARRY SPEED QUEEN!

Names and Numbers
272-4536
www.namesandnumbers.com

Whirlpool

Lance Insurance

Competitive Rates, Variety of Leading Companies
For Home, Auto, Commercial and Crop

806-227-2466

WE'VE GOT THE KEY!

AFFORDABLE BAIL BONDS

Muleshoe
806-272-6820

Farwell
806-481-3281

Toll Free
800-687-0897

We take all major credit cards and payment arrangements can be made

Janice Clement
New Bail Agent
serving
Bailey and Parmer
Counties

Brighten Your Smile For The School Year!

Come in and see
J.W. Haltom,
Jessica Haltom,
Amber Garcia,
and
Erika Trotter.

• Patient Financing • Nitrous Oxide Available
• Insurance Welcome • Emergencies Seen Promptly

\$50 OFF Crowns, Dentures, and Partials (With this coupon. Limit 1 per person)

\$25 OFF Complete Exam and Cleaning (With this coupon. Limit 1 per person)

\$150 OFF Bleaching Trays (With this coupon. Limit 1 per person)

DR. J.W. HALTOM 320 E. 8th Street, Littlefield
Office Hours: Mon. - Thurs. 8-5 / Fri. 8 to noon
FAMILY DENTISTRY For Appt.: 385-6935

Muleshoe Journal USPS 367820
Established Feb. 23, 1924 Published by Panhandle Weeklies, LLC.
Every Thursday at 201 W. Ave. C, P.O. Box 449, Muleshoe, TX 79347.
Periodicals paid at Muleshoe, TX.
Postmaster: Send address changes to the Muleshoe Journal, P.O. Box 449, Muleshoe, TX 79347.
We are qualified members of the Panhandle Press Association, West Texas Press Association and Texas Press Association

Sandra Aven, Publisher © 2010
saven@hearstnp.com

Larry Thornton, Managing Editor
editor@muleshoejournal.com

Terry Brewster, Ad Representative
adsales@muleshoejournal.com

Ad Design / Classified Advertising
advertising@muleshoejournal.com
classifieds@muleshoejournal.com

Subscriptions:
By Carrier Yearly — \$27
Bailey County, by mail — \$29
Elsewhere — \$40
By E-mail — \$22

Advertising rate cards on request

West Texas Press Association

WIRELESS THAT COSTS LESS. PERIOD.

Get Spring's BEST Cell Phone SAVINGS!

Come to Plateau Wireless and SAVE on these great phones!
We've got sliders, touchscreens and smartphones so you're sure to find the phone with the features you need to stay in touch.

Acer E101 \$69.95
Smartphone with touchscreen!
• 3.2" touchscreen
• Customizable home screen
• Scroll wheel
• Touch QWERTY keyboard
• Bluetooth
• 2 MP Camera and video

Samsung Strike \$99.95

While supplies last.

OUR BEST PLAN IS ONLY \$39.95 mo

- 1000 Anytime Minutes with FREE Nationwide Long Distance
- FREE Unlimited Night & Weekend Minutes with FREE Nationwide Long Distance
- FREE Unlimited Mobile-to-Mobile
- FREE Carryover Minutes
- FREE Loyalty Minutes

Great phone at an amazing price!
• Full QWERTY keyboard
• EASY text messaging
• Bluetooth
• MP3 player
• Multiple messaging options
• 1.3 MP camera
• 60MB memory, and more!

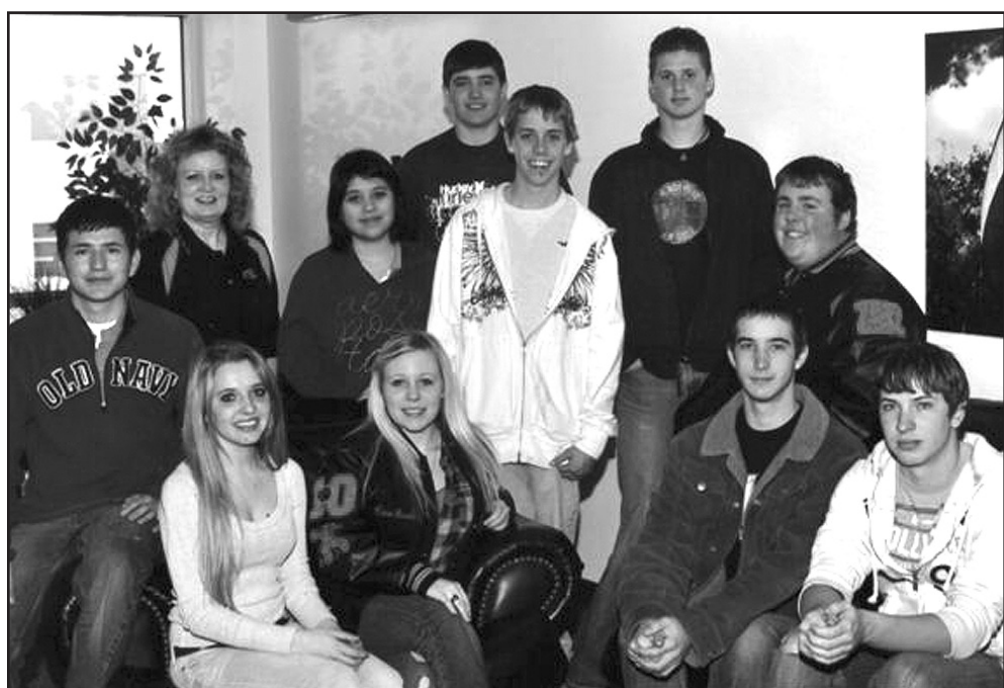
www.plateauwireless.com 877-PLATEAU (752-8328)

PLATEAU Wireless

VISIT PLATEAU TODAY AND SAVE RIGHT AWAY!

Muleshoe Five Area Telephone Coop. 302 Uvalde (806) 272-7700	Friona WT Services 1010 Columbia (806) 250-5555
--	---

Contract Term: Two years. Early termination fees: \$100 per year, maximum of \$200 and is prorated. Night and Weekend hours are Monday through Thursday 7:00 PM through 6:59 AM and Friday 7:00 PM through Monday 6:59 AM. Free Long Distance and Night & Weekend Minutes apply to calls made within the Plateau Area. When outside the designated home area, Roaming \$3.50 per minute with Free Long Distance. Additional taxes, fees, and surcharges may apply. Free Mobile-to-Mobile calls between Plateau mobile phones within the Plateau Area. Carryover Minutes: unused plan minutes are carried over month to month. Loyalty Minutes: 30 minutes after one year of service, 60 minutes after three years of service and 100 minutes after five years of service. Carryover and Loyalty Minutes are removed on the date of disconnect and/or forfeited in the event of suspension/termination for nonpayment. Plan only available on GSM phones. Phone offer requires 2-yr. agreement. Internet access for the E101 requires an additional data plan. Certain restrictions apply. Offer valid through 4/30/10.



LISD students compete in science bowl

Lazbuddie High School students recently competed in the Department of Energy Science Bowl contest sponsored by B&W Pantex at WTAMU in Canyon. The students competed well in six "Jeopardy©- style" format contests in the morning round robin, but did not make it to the afternoon single elimination contest. In the picture from left to right: Elias Ramos, sponsor Debbie Weir, Cassidy Lowe, Crystal Macias, Carrie Beth Gilly, Colton Weaver, Jarrod Jesko, Riley Smith, Darin Ivy, Todd Nichols, Ethan Frieda

Early elections...

Continued from page 1
board and the Muleshoe school board. Both the regular voting, and the early voting, for the May 8 election is being held at Muleshoe City Hall.

At the city council, the candidates for Dist. 1 are incumbent Richard Orozco and candidate Isidoro Trevino.

Dist. 2 incumbent Irene Mason is unopposed in her bid for reelection. The election for her seat will be cancelled, according to Muleshoe City Secretary LeAnn Gallman, who is handling all three of the May 8 elections.

At the hospital district, Travis Copley, Lori Davis and Herb Ramage will face off for the Place 1 seat currently held by Bob Donaldson.

Bill Liles, place 3

incumbent, and Zona Gatewood, place 5 incumbent, are both unopposed. The election for their seats will be cancelled, Gallman said.

In the school board election, the two "trustee at large" positions are being sought by three candidates, Earl Behrends, Jay Cage and Kelly Kettner.

According to Gallman, the two candidates with the highest vote totals will claim the seats.

Have a story or photo ideas? Let us know! 272-4536

Baby Shower

Morris baby shower held

A baby shower in honor of Jill Morris, the wife of Josh Morris, was held in the home of Jana St. Clair on Sunday, March 28.

Hostesses for the shower included Sharon Agee, April Coker, Sarah Black, Vicki Burch, Stephanie Foster, Robin Friskup, Sherri Kennedy, Sheryl Engelking, JoAnn McDonald, Chrystal Martin, Linda Martin, Cindy Meeks, Marcia Morris, Mandy Seaton, Terry Thomas and Debbie Weir.

Among the gifts were

a basket full of items for the baby and a western picture frame for the parents, a stroller car seat combo.

Special guests included Irene Morris, Pat Luna, Vicki Morris, Sherri Gunstream, Jamie Myers, Holly Agee and Presley Agee.



Jill Morris

Subscribe!

FREE MEDIUM TOTS
WITH PURCHASE OF ANY
SUPERSONIC CHEESEBURGER
LIMITED TIME ONLY!

NEW
CHED'R PEPPERS SUPERSONIC
WITH CHIPOTLE MAYO, LETTUCE AND TOMATO

AVAILABLE AT ALL SONIC DRIVE-INS
LIMITED TIME ONLY! SuperSonic Cheeseburger must be purchased at regular price. Contains 2 peppers. Add-ons extra. Not good in conjunction with combos or any other offers.

THE GREATEST SOURCE OF RENEWABLE ENERGY FOR ANY COMMUNITY IS THE PASSION OF ITS PEOPLE.

The true energy in a community comes from people who are willing to give of their time and talents. That's why Xcel Energy is actively supportive of our employees and other community leaders who get involved in the causes, organizations and institutions that enrich the communities we serve. Their energy and commitment is an inspiration to us all.

Wallace Hill, Regional Community Manager: 378-2916
Mike Grant, Community Service Manager: 363-7312



ResponsibleByNature.com © 2010 XCEL ENERGY INC.

Prices Good Thru 4/17/10

BLUE BUNNY ASST. FLAVORS 56 OZ. ICE CREAM \$3.99 SQ.

BLUE BUNNY TURTLE SUNDAE BAR OR BIG BOPPER ICE CREAM SANDWICH BLUE BUNNY NOVELTIES \$1.99 EACH OR 2 \$3.00 FOR 3

Store #34
312 W. American Blvd.
Muleshoe, Texas 79347
806-272-4862

MTN. DEW OR 8 PKGS. PEPSI 2 \$5.00 FOR 5

MTN DEW OR 20 OZ. BTL PEPSI 2 \$2.50 FOR 2

MTN DEW OR 2 LITER BTL PEPSI 2 \$3.00 FOR 3

LANCE'S ASSORTED SUNFLOWER SEEDS OR NUTS 2 \$1 FOR 1

CORN CHIPS, HOT FRIES, NACHO TORTILLA, BACON CHEDDAR FRIES, NACHO RINGS, PUFFED CHEEZERS AND SMOKIN HOT BBQ FRIES. TOM'S SNACKS REGULAR \$2.49 2 \$4 FOR 4

ORIG. HOT, PUFFS OR JALAPENO CHEETOS® REGULAR \$1.29 99¢

32 OZ. FOUNTAIN DRINK TALLSUP 89¢

REGULAR OR SUGAR FREE 12 OZ. CAN RED BULL ENERGY DRINK 1 AT REG. PRICE OR 2 \$5.00 FOR 5

BUY 12 GALLONS OF FRESH ALLSUP'S MILK... GET ONE FREE!

MORE SPECIALS

ALLSUP'S SANDWICH BREAD 24 OZ. / 79¢ OR	2 for \$1.29
ALLSUP'S WHEAT BREAD 24 OZ. / 99¢ OR	2 for \$1.49
ALL CANDY BARS REGULAR SIZE	79¢
CHEEZ-ITS ORIGINAL OR WHITE CHEDDAR 3 OZ. PKG.	99¢
SHURFINE GRADE A EGGS DOZEN	\$1.39
ORBIT MIST ASSORTED FLAVORS REGULAR \$2.19	\$1.59
WRIGLEY'S 5 ASSORTED FLAVORS EACH	\$1.59
PLAINS FRUIT DRINK GALLON	\$1.29
JACK LINK'S JERKY ASSORTED 3.25 OZ. BAG	\$5.99
COLORTEX BATHROOM TISSUE 4 ROLL PKG	99¢
COLORTEX MOPPER TOWELS SINGLE ROLL PKG.	99¢

Senior Citizen News

By Laverne Winn

Easter Sunday was a beautiful day. Isn't it great to live in Muleshoe, where all the good people live.

We give thanks everyday for all our blessings.

Monday, April 12, the center's board of directors will hold its monthly meeting.

The meeting will be here in the senior center beginning at 12:30 p.m.

The meetings are open to the public and the board invites any one to come and bring new constructive ideas to help the center.

Tuesday, April 13, is senior dance night. Call

a friend and come out for a night of fun and fellowship.

The dance begins at 7 p.m., with a pot luck supper break at 8:30 p.m., and ends at 10 p.m. We invite some of you to bring your senior mom, dad, aunt, uncle, or friend. It is a good enjoyable night out in Muleshoe.

Wednesday, April 14, the Senior Companion group will have lunch with us. We welcome them. It is a pleasure to have them with us each month.

Thursday, April 15, is the center's monthly birthday party.

You should have

received a phone call from our lovely lady, Alene, inviting you to the party.

Come and enjoy the lunch and let us honor you for another year.

Thursday at 1:30 is bingo time. Everyone has a great time. If you need to get out of the house for a while, just come down and join the group.

Friday, April 16, the retired teachers will meet at the center at 10 a.m. We invite all retired teachers to come and enjoy the meeting.

Saturday, April 17, beginning at 8:30, an elder care conference, "Aging Well in West Texas," will be held at the senior center.

There will be booths with special needs for the seniors, speakers, door prizes, entertainment, and a free lunch at

noon.

Come by the center and pick up a registration form and make plans to have a good Saturday morning in Muleshoe.

Menu for April 12 - 16:

Monday, April 12 — Chicken pot pie with biscuits, salad, apple sauce and cookies.

Tuesday, April 13 — Hamburgers, ranch beans, cheese, lettuce, tomato, onion, pickle, chips and pudding.

Wednesday, April 14 — Grilled steak, gravy, mashed potatoes, green beans, salad, wheat rolls and peach cobbler.

Thursday, April 15 — Taco salad, beans, rice, chips, salsa and iced angel food cake.

Friday, April 16 — Fish or chicken strips, gravy, beans, coleslaw, cornbread and fruit salad.

Come See us today!!
See our assortment of:

- Reptiles
- Fish
Fresh and Salt Water
- Puppies
Shitzu, Dachsund, Poms, Silk Shires, Malti Poos
- Hamsters
- Handfed Birds

1312 North Main
575-762-6300

Mon - Fri
10 - 6
Sat 10 to 4
Closed Sunday



Winter Clearance
\$5.00 Sack Sale
April 9 & 10

All you can put in a brown paper sack for \$5.00

Heritage Thrift Shop

402 S. Main
272-5683

Latest Journal videos:

- Chamber of commerce banquet
- School board tours construction sites

www.muleshoejournal.com

BAILEY COUNTY DEVOTIONAL PAGE

"THE FIVE AREA TELEPHONE COOPERATIVE, INC."
West Plains Telecommunications, Inc.
Five Area Systems, Inc. • Plateau Wireless
Five Area Long Distance • Five Area Internet
302 Uvalde Muleshoe, USA (806) 272-5533

Serve Wholeheartedly, as if you were serving the Lord, not men.
MULESHOE VALLEY INC.
2601 W. American Blvd. P.O. Box 631 Muleshoe, Texas
(806) 272-4266
Mobile (806) 946-8763
mviinc@fivearea.com

MCDONALD'S OF MULESHOE
1315 W. American Blvd. • 272-3333
Open at 5 AM every day! i'm lovin' it

PAGO FEED YARD, INC.
Commercial Cattle Feeders
P.O. Box 956, Friona 265-3281
Feller Hughs - Mgr.

MAPLE COOP GIN
927-5501
Maple, Texas

1412 W. American Blvd. Muleshoe • 272-4213
Open: Sun.-Mon. 11AM-11PM
Lunch Buffet: Sun.-Fri. 11:30 AM-1:30PM
Monday Night Buffet: 6-8PM
PIZZA HUT WING STREET IS HERE!
"Gather round the Good Stuff"

2800 West American Blvd. Muleshoe 272-4296
Ray Lee EQUIPMENT CO., LTD.

MULESHOE PEA & BEAN, INC.
1680 CR 1044, Muleshoe • 272-5589
Nicky Nickels

United Supermarkets

IRRIGATION PUMPS & POWER

Zimmatic W. Hwy. 84
CENTER PIVOTS 272-5597


Muleshoe Journal
www.muleshoejournal.com
201 W. Ave. C, Muleshoe
806.272.4536 FAX 806.272.3567

Interim HEALTH CARE
110 E. Ave. C Muleshoe 272-5549
www.InterimHealthcare.com
LeAnn Altman • Olivia Barrera • Sandra Trillo CSR
James Baie PT • Brenda Testerman RN • Kimberly Burt LVN

Lowe's MARKETPLACE
401 W. American Blvd. • Muleshoe • 272-4585

Facts About The BIBLE BY JOHN LEHTI

"LET'S GO HUNTING!" IN TODAY'S LANGUAGE THAT PHRASE BRINGS TO MIND A PLEASANT DAY IN THE FIELDS WITH A GOOD DOG, THE TAKING OF A PHEASANT OR TWO—FINE SPORT! NOT SO IN BIBLICAL TIMES! TOO OFTEN IT WAS A CALL TO THE UNPLEASANT DUTY OF RIDING THE COUNTRYSIDE OF SOME BEAST OF PREY—USUALLY THE FEROCIOUS LION! THE BOOKS OF THE BIBLE CONTAIN MANY REFERENCES TO THE LION AND ALTHOUGH HARDLY A ONE CAN BE FOUND TODAY, A WHAT IS TERMED THE BIBLE LANDS, THE AREA ASCRIBED WITH THEM IN THOSE TIMES.



ANCIENT WRITINGS, PAINTINGS, AND SCULPTURE, HAVE REVEALED MANY RECORDS OF LION HUNTS. THE PLENTITUDE OF YOUNG KIDS, LAMBS, ELDERLY PEOPLE, AND SMALL CHILDREN ALL EASY PREY, ATTRACTED THESE BEASTS AND WHEN THEIR DEPRECIATIONS BECAME TOO NUMEROUS, A LION HUNT WAS ORGANIZED TO WIPE THEM OUT, OR AT LEAST DRIVE THEM OUT OF THE AREA.

THIS DUTY USUALLY FELL TO ROYALTY AND THE UPPER CLASSES BECAUSE THEY HAD HORSES AND CHARIOTS AND PLENTY OF SOLDIERS OR SERVANTS WHO WERE EXPERT WITH BOW AND ARROW. ALTHOUGH HORSE RACING HAS BEEN CALLED "THE SPORT OF KINGS" YOU MAY BE SURE THAT LION HUNTING EARNED THIS TITLE LONG BEFORE—EXCEPT UNFORTUNATELY AT TIMES, IT WAS FAR FROM WHAT WE TODAY WOULD CALL SPORT!

SAVE THIS FOR YOUR SUNDAY SCHOOL SCRAP-BOOK

This devotional & directory is made possible by these businesses who encourage all of us to attend worship services.

<p>ASSEMBLY OF GOD FIRST ASSEMBLY OF GOD Pastor Ryan Pate 521 South First Street 272-3017 S.S. 9:45 am, W.S. 10:30 am & 6:00 pm, Wed. 7:00 pm</p> <p>EL BUEN PASTOR 415 E. Ave. F - 272-5455 Pastor Domingo Luna - 272-4542 S.S. 9:45 am, W.S. 11 am & 6 pm; Wed. 7 pm</p> <p>BAPTIST CALVARY BAPTIST 1733 W. Ave. C. Rev. Jeff Coffman CIRCLE BACK BAPTIST Intersection FM 3397 & FM 298</p> <p>FIRST BAPTIST 220 West Ave. E Dr. Stacy Conner FIRST BAPTIST Lazbuddie • 965-2126 PRIMERA IGLESIA BAUTISTA 223 E. Ave. E Interim Rev. Troy Smith PRIMITIVE BAPTIST 621 South First Elder Bernard Gowens, Min.</p> <p>PROGRESS BAPTIST Progress, TX PROGRESS SECOND BAPTIST Arthur Hays, Min. - 1st & 3rd Sundays</p> <p>RICHLAND HILLS BAPTIST Bro. Larry Thornton 17th & West Ave. D S.S. 10 am; W.S. 11 am & 6 pm; Women's Bible Study Thurs. 6 pm www.rhbc-muleshoe.org</p> <p>TRINITY BAPTIST 314 E. Ave. B - Bennie Wright, Min.</p>	<p>CATHOLIC IMMACULATE CONCEPTION CATHOLIC CHURCH 805 E. Hickory Leonardo Pahamtang, Min.</p> <p>EPISCOPAL - CHARISMATIC ST. CLEMENTS CHURCH COMMUNION OF CHRIST THE REDEEMER Hwy. 214 South • 272-5954 Father Sergio Leal Sun. W.S. 10:30 am</p> <p>CHRISTIAN TRINITY CHRISTIAN CENTER 1723 W. American Blvd. 272-3877 Reydon Stanford, Pastor Sun. W.S. 10:30 am</p> <p>CENTRO CRISTIANO 117 E. Birch St. Hermanos Barron S.S. 10 a.m.; W.S. 11 a.m. & 6 p.m.; Wed. 7 p.m.</p> <p>CHURCH OF CHRIST LARIAT CHURCH OF CHRIST Wesley Roach, Min. S.S. 10 a.m.; W.S. 11 a.m. & 6 p.m.; Wed. 7:30 p.m.</p> <p>LAZBUDDIE CHURCH OF CHRIST Nathan Crawford, Min. S.S. 9:30 am; W.S. 10:20 am & 5 pm; Wed. 7 pm</p> <p>MULESHOE CHURCH OF CHRIST 22nd & W. American Blvd. S.S. 9:30 am; W.S. 10:20 am & 6 pm; Wed. 7:30 pm</p> <p>16th & AVE. D CHURCH OF CHRIST Curtis Shelburne, Min. 272-4619 S.S. 9:30 am; W.S. 10:30 am; Growth Gr. 1:30 pm; Wed. 7:00 pm</p>	<p>LUTHERAN ST. JOHN LUTHERAN Lariat, TX • David Symm, Min. S.S. 10:30 am; W.S. 9:30 am</p> <p>METHODIST FIRST UNITED METHODIST 507 W. 2nd St. S.S. 9:45; W.S. 11:00; Praise & Prayer 6 PM; First Sunday of Month 4 PM Parkview Nursing Home Service Mon. 9 AM Ladies Bible Stdy; Tues. 6 PM Adult Bible Stdy; Pastor Monty Leavell, 272-5517</p> <p>LAZBUDDIE METHODIST S.S. 9:30 am; W.S. 10:30 am Pastor Ken Peterson 965-2121</p> <p>EL DIVINO SALVADOR U.M.C. 619 E. 5th Street & Ave. G, Fernando Sanchez, Pastor 272-6888</p> <p>PENTECOSTAL UNITED PENTECOSTAL LIGHTHOUSE 207 East Ave. G 1-800-454-6051 S.S. 10 am; Thursday, Bible Study 7 pm</p> <p>INTER DENOMINATIONAL NEW COVENANT Plainview Hwy. Steve Claybrook, Pastor W.S. 10 am; Wed. 7 pm</p> <p>MULESHOE COWBOY FELLOWSHIP 710 E. American Blvd. Steve Friskup, Minister 272-5199 Service: 7:30 p.m. Thursday</p>
---	--	---

God Bless You!

Antiques & Fine Things
2104 W. American Boulevard
Muleshoe • 272-4217

Trollbeads
every story has a bead!

**TEXAS FARM BUREAU
INSURANCE CO.** FARM BUREAU INSURANCE
1612 W. American Blvd., Muleshoe • 272-4567

**CENTRAL COMPRESS
& WAREHOUSE**
SUDAN, TEXAS

**Deaf Smith
County Grain, Inc.**
Cliff A. Skiles, Jr.
Jeb S. Skiles

McCORMICK SEEDS, INC.
400 East Ash • 272-3156
Muleshoe, Texas
A COMPLETE LINE OF FIELD SEEDS
Tim McCormick

ST BANK MEMBER FDIC
202 South First 272-4515

**Lal's TORTILLA
FACTORY**
105 E. Ash St., Muleshoe • 272-5772
Phillipians 4; "I can do all things through
Christ who strengthens me."

MULESHOE ANIMAL CLINIC
GENERAL PRACTICE
MVS MULESHOE VET SUPPLY
1430 US Hwy. 84, Muleshoe Office: 272-3061

To place your ad here,
call Terry
at the Journal
272-4536

**BOEHNING
DAIRY**
690 CR 45, Earth
"MILK - A PART OF EVERYTHING
THAT IS GOOD!"

BCEC BAILEY COUNTY ELECTRIC COOPERATIVE ASSOCIATION
A Touchstone Energy Cooperative
Muleshoe — 272-4504 Morton — 266-8600

**WAYNE COPLEY
TRUCKING**
CALICHE, SAND & ROCK PRODUCTS
P.O. Box 63 (806) 272-3697
Muleshoe, Texas 79347 Mobile: (806) 946-8072

J&S Dairy
1260 CR 1038, Muleshoe
272-7706

BAILEY COUNTY DEVOTIONAL PAGE

Obituaries

Donald Lee Gilreath

Funeral services for Donald Lee Gilreath, 80, of Dimmitt were held on Monday, March 15, at the First Baptist Church of Dimmitt with Clint Young officiating. Burial followed at the West Lawn Memorial Park Cemetery.

Gilreath was born on July 30, 1929, in Circleback, to Charlie and Minnie Gilreath. He grew up in Circleback, and attended school in both Circleback and Sudan.

Gilreath married Jean Onstead on Sept. 11, 1952, in Clovis, N. M. They were married for 57-1/2 years.

He farmed in the Bethel Community and Lazbuddie for many years, and retired a year ago.

He was a member of the First Baptist Church in Dimmitt.

Survivors include his wife — Jean Gilreath of Dimmitt; a daughter — Donna Vertreese and Greg Hummel of Red River, N. M.; a daughter and her husband — Judy and Larry Pierce



Donald Lee Gilreath

of Littlefield; four grandchildren — Amanda Lambert, Beau Lambert, Aimee and Ashley Vertreese; two step-grandchildren — Chad Pierce of Gravette, Ark., and Sherri Hadley of Celina; two great-grandchildren — Stormi and Skylar Pierce of Gravette, Ark.; one sister-in-law — Ila Ruth Gilreath; and one nephew — Ricky Gilreath.

He was preceded in death by his parents; three brothers — Marvin Curtis Gilreath, Loyd Gilreath and Boyd Gilreath; and a sister — Lurlene Tiller.

You may go online at colonialfuneralhome.org and sign the guest book.

Aurelio Salas

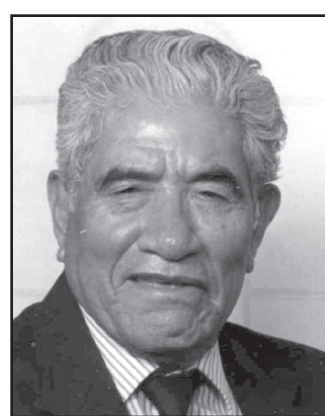
Church services for Aurelio Gallegos Salas, 89, of Muleshoe, were held on Saturday, April 3, at the First United Methodist Church with the Rev. Monty Leavell, the Rev. Rafael Cordero and the Rev. Steve Claybrook officiating.

Burial followed in Bailey County Cemetery.

Salas died on Tuesday, March 30, in Muleshoe. He was born on June 16, 1920, to Luz and Monica Gallegos in Mexico, and married Socorro Rivera in Mexico on Aug. 24, 1947.

Salas had lived in Muleshoe since 1965, having moved from Mexico. He was a member of the First United Methodist Church in Muleshoe.

Survivors include his

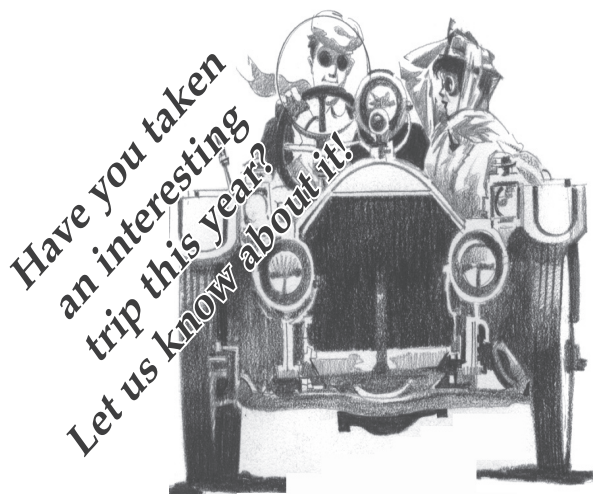


Aurelio Gallegos Salas

wife — Socorro of the home; a son — Leonardo Gallegos of Muleshoe; two daughters — Martha Pedrosa of Evanston, Wyo., and Rebeca Lozano of Muleshoe; 12 grandchildren, 38 great-grandchildren and two great-great-grandchildren.

Memorials may be sent to the Bailey County Meals on Wheels, 300 S. First, Muleshoe, Texas 79347.

Muleshoe on the Move



Have you taken an interesting trip this year? Let us know about it!

"Muleshoe on the Move" is a reader-based column in the *Muleshoe Journal*. Our readers have the opportunity to tell about their "unique" vacation experiences, include one or two photographs, and even a short video to be included on the *Journal's* web page.

Charles Oil & Gas, Inc.



DOT Inspections on semi trucks and trailers
Hwy. 60
Bovina, Texas
251-1284

Weddings

Petree, Wilson exchange wedding vows

Heather Lee Petree and Landon Hill Wilson were united in marriage on Saturday, March 6, 2010, in the Chapel of the Mediterranean Villa in Arlington.

Terry Wilson, father of the groom, officiated the double ring ceremony.

The bride is the daughter of Jackie and Treena Petree of Idalou. She is the granddaughter of Wanda Akin of Lubbock, and the late Donal Akin, and the late Betty Lou Petree and the late Billie Gene Petree.

The groom is the son of Terry and DeAnn Wilson of Sudan. He is the grandson of Margaret Slayton of Ft. Worth and the late Bill Slayton, Mr. and Mrs. Sam Wilson of Coleman, and the late Doyle Roberts.

Given in marriage by her father, the bride wore a strapless A-line silhouette Romance Ivory satin gown featuring an elegant champagne cuff and chic lace-up back.

She carried a bouquet of red roses with accents of white cala lillies wrapped in black satin and accented with baby pearls.

The bride was also honored to wear a diamond drop necklace and earrings that belonged to two of her great-grandmothers, Annie Cone and Joyce Short. She wore an eternity ring that was borrowed from Tommy Blair.

Tiffany Eubank of Lubbock was the maid of honor. Alicia Sherrill of Austin was bridesmaid. The bride's attendants wore black A-line dresses with layered cuts and diamond cut back.



Mr. and Mrs. Landon Wilson

Tierni Green was the flower girl. She wore a full length satin champagne dress.

The groom and his attendants wore black tuxedos trimmed in black satin lapels.

The groom wore a red satin tie with a white cala lillie boutonniere accentuating the bride's bouquet.

Barry Morris of Muleshoe served as best man, and Kory Atwood of Muleshoe and Josh Bartlett of Lubbock were ushers.

The traditional double-ring ceremony included pianist Debbie Bertrand playing the time-honored wedding procession as the bride and her father entered.

The mother of the groom and the mother of the bride lit the single unity candles.

A reception was held following the ceremony

roses, and embellished with splashes of ornate chocolate.

The groom's tiramasu cake was decorated as a Titleist golf ball with kahlua filling.

The rehearsal dinner was hosted by the groom's parents at the Saltgrass Steak House in Fort Worth.

The bride is a 2008 graduate of Idalou High School and is currently a pre-medicine major at South Plains College.

The groom is a 2005 graduate of Muleshoe High School and is currently a student at Lubbock Christian University majoring in humanities with specialization in math, physics, and computers.

Following a honeymoon in Las Vegas, Nev., the couple reside in Lubbock.

Plateau's Safety & Security Plan

USF Offering **ONLY \$19⁹⁵!**

The Plateau Safety & Security Plan includes:

- 100 Local Anytime Minutes
- FREE Nationwide Long Distance
- Caller ID
- Detailed Billing
- Carryover Minutes

Plateau is proud to participate in the USF Lifeline and Link Up programs. These programs assist eligible consumers to establish and maintain telephone service. For information on eligibility, please go to www.plateauwireless.com/usf_offering.asp or visit any Plateau store for details.

www.plateauwireless.com
877-PLATEAU (752-8328)

PLATEAU
Wireless

Muleshoe
Five Area Telephone Coop.
302 Uvalde
(806) 272-7700

Frona
WT Services
1010 Columbia
(806) 250-5555

Contract Term: One (1) year. Activation Fee: \$25. Early termination fees: \$100 per year, maximum of \$200 and is prorated. A flat rate of \$50 per minute (includes Roaming and Long Distance) will apply when outside the rate plan's designated home area. Overage rate is \$50 per minute. Free Nationwide Long Distance is only available from the Local Plateau Calling Area. Additional taxes, fees, and surcharges may apply. This service includes voice grade access to the public switched network, tone dialing, access to interexchange service, access to operator services and directory assistance, telecommunications relay service, and 911 emergency service. Offer not available in all markets.

¿Varias exenciones contributivas podrían reducir los impuestos de su hogar!

Una exención contributiva para su hogar de residencia disminuye el valor imponible de la propiedad, reduciendo así los impuestos a pagar sobre la misma. Si su residencia está valorada en \$50,000 y usted recibe una exención de \$15,000, usted pagará los impuestos residenciales de una propiedad valorada en \$35,000.

¿Quién es elegible para recibir una exención contributiva?

Los dueños de una propiedad utilizada como residencia principal comenzando el 1ero de enero tienen derecho, desde esa fecha, a recibir la exención contributiva de \$15,000 para reducir los impuestos escolares a pagar este año. Sea la residencia una casa, condominio, o una casa móvil, puede ser elegible para la exención. Los condados, las ciudades y los distritos imposables especiales también pueden ofrecerle exenciones contributivas para su residencia.

¿Existen otras exenciones disponibles?

Si usted está incapacitado o tiene 65 años o más, tiene derecho a recibir una exención adicional de \$10,000 de los impuestos escolares para su residencia. Si es elegible para exención contributiva como incapacitado o tiene 65 años o más, también tiene derecho a obtener un límite permanente de los impuestos escolares basado en los impuestos actuales. (El condado, la ciudad o la universidad comunitaria pueden establecer un límite y congelar los impuestos del 2010 para los propietarios incapacitados o mayores de 65 años.) El límite de los impuestos escolares para las personas de 65 años o más son transferidos al cónyuge sobreviviente de 55 años o más al momento del fallecimiento del propietario si es el cónyuge sobreviviente dueño y residente de la propiedad. Los dueños de 65 años o más o los cónyuges sobrevivientes de 55 años o más pueden también transferir el porcentaje de los impuestos escolares pagados a una nueva residencia basado en el límite establecido en la vivienda anterior.

Si usted es un veterano incapacitado que recibe de la Administración de Veteranos: 1) el 100 por ciento de su pensión por incapacidad relacionada a su servicio militar y 2) es considerado 100 por ciento incapacitado o, la Administración determinó que no puede trabajar, usted tiene derecho a una exención de impuestos del valor total tasado de su residencia. El cónyuge sobreviviente no es elegible.

¿Debo solicitar la exención todos los años?

No. Si recibió una exención contributiva por su residencia en el 2009, no hay necesidad de solicitarla en el 2010—a menos que se lo pida su jefe de tasaciones. Sin embargo, si no ha recibido una exención por su residencia actual—o si ha cambiado de domicilio tendrá que solicitar una exención para el 2010. Si cumple 65 años durante este año, puede solicitar una nueva exención hasta un año después de la fecha de su cumpleaños. Si resultó incapacitado, tendrá que solicitar la exención para personas incapacitadas.

¿Dónde y cuándo debo solicitar mis exenciones?

Debe presentar su solicitud a la oficina local del distrito de tasaciones antes del 30 de abril. Si necesita más tiempo, puede contactarnos a:

BAILEY CENTRAL APPRAISAL DISTRICT
302 S MAIN ST
MULESHOE, TEXAS 79347
806-272-5501



Escriba a:
Texas Comptroller Susan Combs
Property Tax Assistance Division
P.O. Box 13528
Austin, Texas 78711-3528

Llame al: (800) 252-9121, Ext. 1.

Visite: www.window.state.tx.us/taxinfo/proptax/

A variety of homestead exemptions could lower your property taxes!

A homestead exemption lowers the property taxes on your home by lowering its taxable value. If your home is valued at \$50,000 and you receive a \$15,000 homestead exemption, your home will be taxed as if it were worth \$35,000.

Who qualifies for an exemption?

Anyone who owns a home on Jan. 1 and uses it as a primary residence on that date is entitled to a \$15,000 homestead exemption to lower school taxes this year...and it doesn't matter if your home is a house, condominium or mobile home. Counties, cities and special taxing districts may also offer homestead exemptions.

Are other exemptions available?

If you're *disabled*—or if you're *65 years old* or older—you are entitled to an *additional \$10,000 school tax exemption* on your home. And if you qualify for the *65 or older* or *disabled exemption*, you're also entitled to a permanent, locked-in "ceiling" on the school property taxes on your home. (The county, city or junior college may adopt a tax ceiling to lock in 2010 taxes as the highest amount for 65 and older or disabled homeowners.) The *age 65 or older homeowners school tax ceiling* transfers to the surviving spouse, if the spouse is 55 years of age or older at the time of death and lives in and owns the home. The *age 65 or older homeowners* (or their surviving spouses 55 years of age or older) also may transfer the percentage of school tax paid, based on their former home's school tax ceiling, to a new home.

If you're a *disabled veteran* who receives from the Veterans Affairs (VA)—(1) 100 percent disability compensation due to a service connected disability and (2) a rating of 100 percent disabled or a determination of individual unemployability, you are entitled to an exemption from taxation of the total appraised value of your resident homestead. A surviving spouse does not qualify.

Do I have to apply each year?

No. If you had a homestead exemption on your home in 2009, you won't need to reapply for 2010 unless your chief appraiser requires it. However, if you haven't received an exemption on your present home—or if you've moved to a new home—you'll need to file for an exemption for 2010. If you are 65 this year, you may file for the age 65 or older exemption up to one year after the date you turned 65. And if you became *disabled*, you need to file for the disabled person's exemption.

When and where should I file?

File applications by **April 30** at your appraisal district office. If you need more time, contact us at:

BAILEY CENTRAL APPRAISAL DISTRICT
302 S MAIN ST
MULESHOE, TEXAS 79347
806-272-5501

Or contact:



Texas Comptroller Susan Combs
Property Tax Assistance Division
P.O. Box 13528
Austin, Texas 78711-3528
or call: (800) 252-9121, Ext. 1

or on the Web at: www.window.state.tx.us/taxinfo/proptax/

Sports

Muleshoe baseball takes down Dimmitt, Friona

By Delton Wilhite
Sportswriter

The 1-1 Mules caged the 0-2 Dimmitt Bobcats Tuesday with a score of 9-7. The Mules jumped out early and took advantage of eight free passes issued by Dimmitt pitchers. It seemed the Mules had an answer each time Dimmitt scored.

The Mules scored all nine of their runs in the first four innings.

Saturday the Mules traveled to Friona and fell behind 4-0 in the first two innings and then exploded for five runs in the third inning. Friona came back with two runs in the bottom of the third inning and six in the fourth to lead the Mules 12-6 after four innings.

Friona never scored again but the Mules came roaring back with seven runs in the top of seventh to finally take the lead for good.

"It may take me a while to really digest exactly what happened in the seventh inning," said Mule baseball coach Lee Fletcher. "I was so upset at the way we had played through about the first six batters that I really do not know what happened."

"But when it was all over I can say I have never been prouder of the way a team pulled together and made the most of every opportunity in that final inning. It was a great win for us and I hope we can use it to propel us through the rest of this season."

"We will see how we



Photograph by Stacy Conner

Mule Jonathan Garcia lays down a bunt during the game against Dimmitt.

respond when we play Tulia," concluded Coach Fletcher.

Dameon Snell, DJ Atwood and Adrian Chacon all walked with two outs to load the bases. Matthew Ambriz ripped a triple to the fence in left field bring them all home for a 3-0 Mule lead after one inning.

The Bobcats tied the game in the top of third inning on two hits, a walk and a sacrifice for a 3-3 tie after one and a half innings. The Mules converted two walks to runs with a passed ball and a sacrifice to regain the lead at 5-3.

Neither team could produce a run in the third inning but Dimmitt pushed across three runs in the top of the fourth to briefly take the lead. The Mules answered with four runs in the bottom of the inning to retake the lead.

Saul Elizalde hit a fly ball to right field and the

ball bounced out of the glove of the right fielder as he raced to second base. Jared Skipworth singled to center field to bring Elizalde home.

Caleb Conner singled to left and Snell walked to load the bases. Skipworth scored on a wild pitch and Conner and Snell advanced on the wild pitch. Adrian Chacon singled up the middle to score Conner and Snell. The Mules led 9-6 after four innings.

Dimmitt scored their final run in the top of the seventh but that was not enough to extend the game.

Friona scored two runs in each of the first two innings to lead the Mules 4-0.

The Mules took the lead in top of third inning when they exploded for five runs. Chris Anguiano sent a ground ball past the second baseman for a lead-off single. Conner ripped a ground ball past

the first baseman for a single.

Saul Elizalde singled to left to score Anguiano. Snell reached on a fielder's choice that force Elizalde at second and brought Conner home. DJ Atwood turned on a fast ball and drove it over the left field fence for a two-run home run.

Chacon singled to right and advanced to second base. He was forced home when Anguiano was hit by a pitch and the bases were loaded with Mules. The Mules briefly led 5-4.

Friona scored two runs in the bottom of the inning to take a 6-5 lead after three complete innings.

The Mules did not score in the fourth inning

but Friona sent 12 batters to the plate in the bottom half of the inning. They scored six runs to lead the Mules 12-5 after four innings.

Jonathan Garcia singled and scored on a fly ball sacrifice by Conner for the Mule's only run in the top of the fifth. Neither team scored in the sixth inning.

The Mules came to the plate in the top of the seventh needing six runs to tie and seven to take the lead. Juan Sanchez battled back from two strikes to reach on an error by the shortstop with one out. Conner walked and Elizalde singled to center to load the bases with Mules.

Snell went down

swinging for the Mules second out and they had yet to score. Atwood was hit by a pitch to force Sanchez home. Chacon hit a sky high fly ball into the wind and the short stop back peddled into shallow right field.

A last second gust changed the direction of the ball and the shortstop was not able to adjust and the error allowed Conner and Elizalde to score.

Ryan DeLeon and Sanchez walked to reload the bases. Garcia singled to center and the Mules were off and running on the crack of the bat with two out. Chacon, DeLeon and Sanchez all raced home to put the Mules on top to stay 13-12.

Roos

NOW OPEN

Facial/Manicure Salon

Ronda Box Manicure Pedicare	Thena Ramesh Skincare Analysis Facials/Waxing
-----------------------------------	---

806-781-1123
1408 West American Boulevard, Muleshoe



Photograph by Stacy Conner

Mule DJ Atwood makes a great play on a Foul ball against Dimmitt.

INVEST IN HIGH-QUALITY FARMING EQUIPMENT

Ask About Our **NEW** Round Bale Transport & Post Pounder/Puller!

FOR SALE

LATE "82" JD 4440 ENG. OH
JD 2640 W / LDR.
873 BOBCAT W/ GRAPPLE BUCKET
MF 135 D. 45HP
JD IND. 302C W / LDR
JD 14 ft 3 pt 960 FIELD CULTIVATOR

GEDONNE WILLIAMS
806-272-4133 or 817-368-3016
MULESHOE, TX

Support the Boosters Who Support Our Teams, Schools and Community!

<p>MULESHOE ANIMAL CLINIC & MULESHOE VET SUPPLY</p> <p>1430 US HWY. 84, MULESHOE 272-3061 OR 272-4990</p>	<p>FIVE AREA TELEPHONE COOPERATIVE</p> <p>302 Uvalde Muleshoe, TX 272-5533</p>	<p>Irrigation Pumps & Power</p> <p>www.drippi.com West Hwy. 84 Muleshoe • 272-5597</p> <p>Zimmatic CENTER-PIVOTS</p>	<p>HARTLINE HEATING & A/C</p> <p>FACTORY AUTHORIZED DEALER Carrier Turn to the Experts</p> <p>(806) 272-7762 TACLB 023739e</p>	<p>T&S CONCRETE, INC.</p> <p>Two Locations Muleshoe • 272-4501 Friona • 250-5066</p> <p>Terry Copley Shannon Cochran</p>	<p>BCEC</p> <p>BAILEY COUNTY ELECTRIC COOPERATIVE ASSN. 305 E. Ave. B, Muleshoe 272-4504</p>
<p>WESTCARD 66</p> <p>Western "66" 607 N. 1st St. Muleshoe • 272-4556</p>	<p>LOWE'S MARKETPLACE</p> <p>401 W. American Blvd., Muleshoe</p>	<p>2601 W. American Blvd. P.O. Box 631 Muleshoe, Texas (806) 272-4266 Mobile (806) 946-8763 mviinc@fivearea.com</p>	<p>Leal's RESTAURANT</p> <p>1010 W. American Blvd. Muleshoe, Texas 272-3294 "The Original - Since 1957"</p>	<p>McDONALD'S OF MULESHOE</p> <p>1315 W. American Blvd. 806-272-3333</p>	<p>CHS</p> <p>Clovis Hwy. West Muleshoe • 272-4203 Bruce Bruns, Location Mgr.</p>
<p>Muleshoe Tire</p> <p>107 Main Street, Muleshoe 272-4594</p>	<p>Support Medical of Muleshoe Brandi Angeley BRANCH MANAGER</p> <p>Oxygen Motorized Wheelchairs Home Medical Equipment Scrubs</p> <p>RETAIL SHOWROOM 103 S. Main Street (806) 272-7552 • Fax (806) 272-7561 www.supportmedical.com</p>		<p>1.800.687.1258</p>	<p>Hwy. 84 E. of Muleshoe • 272-5545</p>	

GO MULES AND LADY MULES - We're Behind You All The Way!!!!

Sports

Varsity Lady Mules wrap up week with big wins

By Delton Wilhite
Sportswriter

The Lady Mules had a big week to wrap up their first round of District 2-2 competition.

They traveled to Floydada Tuesday and tamed the Lady Winds down to a gentle breeze with a 14-2 win.

Dom Mata gave up three hits, seven walks, struck out four and the Lady Mules committed no errors.

The win over the Lady Wins put the Lady Mules in contention for a state playoff spot.

The Lady Mules played the Childress Lady Cats in the final game of the first round. Mata gave up six runs on 10 hits. She walked six, struck out six and the Lady Mules committed one error.

It was feast of famine for the Lady Cat pitcher as she struck out 12 Lady Mules but gave up eight walks and three clutch hits by the Lady Mules.

The Lady Mules held on for a 7-6 win to improve their district record to 3-2.

"I truly believe we are the best fielding team in the district," said Lady Mule softball coach Jason Cole. "We have to throw strikes and force the other team to swing the bat. If they make contact we do a great job of fielding."

"It is very unusual for a team to get out hit 10-3 like we did today and still win the game. But that speaks well for our team as the girls did a great job of running the bases and taking advantage of their mistakes. We had clutch hits by Brenda Rodriguez, Val Olivas and Tori Alvarado today."

"Erika Rodriguez is always a threat to score any time she gets on base. She is one of our best base runners and makes great decisions while moving from base to base."

"I am really proud of how we played this



Photograph by Stacy Conner

Lady Mule Sarah Johnson makes a diving catch against Childress.

week. We are now in the thick of things in the district race with two big games coming up next week," concluded Coach Cole.

All of Floydada's runs came in the third inning when they scored two runs on two hits and a walk.

The Lady Mules jumped out to an early lead in the first inning when E. Rodriguez banged a single to left field and went to third on an error by the left fielder.

BreAnn Baca took the count full before drawing a walk and promptly stole second on the first pitch to Olivas.

Alvarado doubled to left to score E. Rodriguez. Baca and Alvarado scored on a sacrifice to third by B. Rodriguez.

The Lady Mule's led 3-0 going into the bottom half of the first inning.

Mata walked the first Whirlwind she faced but Alvarado threw a strike to Olivas covering second base for the first out. Mata fanned the next two batters she faced.

The Lady Mules added two more runs in the top of third inning with E. Rodriguez walking and moving to second on a passed ball.

Baca singled off a hard hit ball off the glove of the short stop. E. Rodriguez

and Baca both advanced on a passed ball to get in scoring position.

E. Rodriguez and Baca both went home when Olivas' ground ball to short was scoped cleanly but over thrown to first.

The error cost Floydada two runs and the Lady Mules led 5-2 after three innings.

The Lady Mules exploded for eight runs in the top of the fourth inning on one hit, five walks and three Lady Wind errors.

Alvarado doubled in the top of the fifth inning and went to third on a passed ball. She went home on a sacrifice by Samantha Reyna for the Lady Mule's final run of the game.

Mata struck out three of the first four batters she faced from Childress Friday afternoon to hold the Lady Cats scoreless.

E. Rodriguez took the count full before walking and went to second on a wild pitch. She caught the pitcher napping and stole third base.

She then went home on an over throw to third by the pitcher to put the Lady Mules up 1-0 after one inning.

Childress scored one run in the second inning on two base hits. They appeared ready to score two runs but E. Rodriguez fired a strike to home

inning. E. Rodriguez walked, stole second and went to third on a passed ball.

Baca walked after taking the count full. A wild pitch allowed E. Rodriguez to score and Baca to move to second.

Baca went to third and scored on a throwing error by the catcher. Olivas and Alvarado both walked and scored on a single to left field by Brenda Rodriguez.

The four runs put the Lady Mules up 4-2.

Childress scored two in the top of the fifth inning but the Lady Mules came back with two runs of their own to hang on to a 7-4 lead going into the sixth inning.

Olivas singled to right field before Alvarado blasted a home run to left.

Childress scored two in the top of the sixth on four hits to cut the Lady Mule lead to 7-6. The Lady Mules did not

score in the bottom of the sixth.

Olivas scoped up a slow roller to short and gunned the ball to B. Rodriguez for the first out of the seventh inning.

Alvarado scrambled out of the catchers box to make the catch on a head high pop fly half way between home and the pitching circle.

Baca scoped up a soft tap down the third base line and fired a strike to B. Rodriguez for the final out.

The 3-2 Lady Mules hosted the 4-1 Littlefield Lady Cats Tuesday.

The Lady Lopes host the Lady Mules Saturday.

The Lady Mules return home April 13 to host the Dimmitt Bobbies.

**Have a story
or photo ideas?
Let us know!
272-4536**

Re-Elect

C. E. Grant

Bailey County Commissioner
Precinct 2

V O T E

- ★ Proven Ability
- ★ Proven Dependability
- ★ Proven Work Ethic

Early Voting Begins
April 5
Election Day
April 13

Paid for by C.E. Grant

Give the M.O.S.T. Treasured Gift of All... An Education. MULESHOE OPPORTUNITY SCHOLARSHIP TRUST

Beginning today, every Muleshoe High School graduate should have the opportunity to pursue an education beyond the high school level. The M.O.S.T. Scholarship fund is designed to help make that possible.

But we need your help to make this program a reality for our 2009 graduates and beyond. Your generosity is the key. Through your contributions, honorariums, gifts, and memorials, all 2009 Muleshoe High School Graduates who attend a trade school, college, or university will benefit from the M.O.S.T. scholarship fund.

Remember, even a small amount, when pooled with others, can make a difference.

**OUR GOAL IS TO RAISE \$20,000
BY MAY 28, 2010.**

**M.O.S.T. c/o Muleshoe ISD
514 W. Ave. G
Muleshoe, Texas 79347**

Please join us in providing an opportunity for our graduates to make the M.O.S.T. of their education. Your generosity will be appreciated and acknowledged in a published thank-you and your donation is fully tax deductible.

Note: Honorariums and Memorial donations are welcome at all times.

THE CLEAN AIR COMFORT ZONE



TACL80023759 LJ06547

272 - 7762

🔧 \$1500 Energy Tax Credit

🔧 \$1100 Carrier Cool Choices Factory Rebate on Qualifying Systems



Call today for free in-home estimate to find out how you can save up to 50% of your utility costs.

Free Barbeque Grill
with a Purchase of a new Heating and Air Conditioning System.

\$79.95 System Tune-up Special
Make sure your system is running it's best!



We Install, Repair & Service All Brands
Ask about our Preventative Maintenance Agreements.



www.hartlinehvac.com



Do you know that Echo the dolphin's... ...name is from "echolocation?" Look it up!

Newspaper Fun!

www.readingclubfun.com Annimills LLC © 2010 V7-N15

Happy 110th, U.S. Submarine Service!

This crossword has sets of clues for kids and grown-ups too! Work together to see how fast you can fill in the puzzle!

On April 11, 1900 the U.S. Navy commissioned its first submarine. Since then, many kinds of submarines have been developed and added to the Navy's force. Many skilled and qualified people in the Navy have volunteered to work on the submarines. Our submarine force is now 110 years strong!

<p>1. job you must do</p> <p>2. Navy buildings, stores</p> <p>3. go below surface of the sea</p> <p>4. lets sub crew look above water</p> <p>5. underwater ship</p> <p>6. sailors on a submarine</p> <p>7. person in the Navy</p> <p>8. used to send or listen to messages</p> <p>9. fleet of ships</p> <p>10. used to locate objects by bouncing radio waves</p> <p>11. sailor's suit</p>	<p>12. watertight door</p> <p>13. order</p> <p>14. hand-to-hat greeting</p> <p>15. daily record</p> <p>16. used to measure ship's speed</p> <p>17. Captain of Nautilus in famous story</p> <p>18. person who commands</p> <p>19. bed</p> <p>20. used to locate things underwater</p> <p>21. need to breathe this</p> <p>22. friendly sea mammal</p>	<p>Kid's Clues</p> <p>1. obligation</p> <p>2. fortified installation</p> <p>3. submerge</p> <p>4. sub's "eye"</p> <p>5. submersible</p> <p>6. hands</p> <p>7. salt</p> <p>8. transceiver</p> <p>9. seagoing force</p> <p>10. radio detecting and ranging</p> <p>11. common dress</p>	<p>Adult's Clues</p> <p>12. scuttle</p> <p>13. top of chain</p> <p>14. handy courtesy</p> <p>15. watch's diary</p> <p>16. one nautical mile</p> <p>17. Verne's Nautilus C.O.</p> <p>18. brass</p> <p>19. rack</p> <p>20. sound navigation ranging</p> <p>21. O</p> <p>22. finned mammal</p>
---	--	--	---

To be part of a "Navy family" is to be sharing an exciting experience with your family. Everyone in a Navy family knows that teamwork is the key to success! Use the signal flag key below to learn about:

Navy Families:

These friendly and intelligent animals are Navy favorites! Connect the dots to see it!

Check out our free 5th Anniversary extra puzzles this week: Spring Sports, Earth Day and Choosing Snacks Wisely. The reading log and certificate set are ready for you to print out too: www.readingclubfun.com

World Famous Submarines!

Today's submarines are the result of many ideas and trials of people around the world. Can you unscramble the letters to name the submarines below that are famous in American submarine history?

- This was the first American submarine. It was built by David Bushnell of Connecticut. It was made of oak and shaped like a coconut!

R E T L T U

The _____
- This was the first submarine commissioned into the U.S. Navy in 1900. It is named after its designer and builder.

A H N O

USS _____

(Hint: his name is the same as the country famous for these.)
- This was the first nuclear submarine. Its forerunner had the first fish-shaped hull of modern submarines.

U S T L N A Y

USS _____

It's not too late to return your 2010 Census form

People can still complete and mail back their 2010 Census forms after April 1 to ensure that their questionnaires will be received soon enough to avoid a visit by a census taker to gather the information in person. All 2010 Census forms ask households to list living in their homes, apartments or mobile homes as of April 1, 2010. The date is not a deadline but the point in time at which everyone is to be counted where they live and sleep most of the time.

"The April 1 date is when a statistical 'snapshot' of America is taken," Gabriel Sanchez, director of the Dallas Regional Census Center. "Information reflected on April 1 will help draw a complete portrait of America."

By law, the Census Bureau must collect and compile a nationwide tally and present it to the president by Dec. 31. If the Census Bureau doesn't receive questionnaires from households by early to mid April, however, census takers will go door-to-door to collect information the Census Bureau is obliged to collect.

The process is more expensive — costing an average of \$57 per household, compared to the 44 cents required to mail it back. As of March 31, only about 52 percent of all U.S. households had mailed back their census forms. Across the Dallas census region, in Texas, the participation rate was 46 percent; in Louisiana, the rate was 45 percent; the rate was 47 percent in Mississippi.

"If you don't want someone knocking on your door in May, complete and mail back your Census questionnaire today," Sanchez said. "It takes about 10 minutes to complete and will affect the next 10 years of your community's life."

The purpose is to apportion seats in the U.S. House of Representatives among the states. Census figures are also used for a host of other planning and funding purposes, including the disbursement of more than \$400 billion in federal funds annually to states and communities. Responding to the Census is a foundational act of endorsement in our democracy and one of the few civic duties of people living in the United States, said a Census bureau official.

MULESHOE CATTLE MARKET

The Muleshoe Cattle Market is brought to you each week by Muleshoe Livestock Auction, located east of Muleshoe on U.S. 84. Muleshoe Livestock conducts sales every Saturday, beginning with hogs, sheep and goats at 10 a.m. and cattle following at approximately noon.

REPRESENTATIVE SALES - SAT., APRIL 3, 2010

520 head of cattle, 124 hogs and 275 sheep and goats for a total of 919 livestock. Fewer receipts due to Easter Holiday. Market steady - 2 lower.

FOR INFO. ON SALES OR TO CONSIGN CATTLE - 272-4201

Seller, City	#	Type	Wt	CWT or PH
SWIRL CATTLE, PLAINVIEW	2	MXD STRS	355	\$139.00
JESSE CARRION, LEVELLAND	1	BLK STR	390	\$132.00
B&M, LUBBOCK	3	BLK STRS	457	\$135.00
B&M, LUBBOCK	5	BLK STRS	484	\$130.00
LESBORDO ORTEGA, MULESHOE	1	RED BULL	485	\$125.00
OMAR MUNIZ, MULESHOE	1	CHAR STR	525	\$122.00
JCL, INC., SUDAN	6	BLK STRS	525	\$129.00
WEAVER FARMS, MULESHOE	4	BLK BULLS	530	\$124.00
BRANDON BIRD, LUBBOCK	2	BLK STRS	623	\$119.00
B&M, LUBBOCK	4	MXD HFRS	374	\$120.00
B&M, LUBBOCK	6	MXD HFRS	463	\$114.00
JCL, INC., SUDAN	8	BLK HFRS	512	\$116.00
JOHN HALL, SEMINOLE	18	MXD HFRS	542	\$116.00
MIKE RAMAGE, PLAINVIEW	1	BLK COW	P8	\$68.00
BOB MOBERLY, FRIONA	1	BLK COW	1325	\$68.00
BOB MOBERLY, FRIONA	3	BLK COWS	1075	\$67.75
TOMMY LEWIS, MORTON	1	BWF COW	1235	\$67.50
WEAVER FARMS, MULESHOE	1	CHAR COW	1410	\$66.75
SHANNON WEAVER, MULESHOE	1	BLK COW	1270	\$65.00
JOHN HALL, SEMINOLE	1	RWF COW	1180	\$57.50
TRIPLE H AG, MULESHOE	1	CHAR BULL	2120	\$74.25

Cake decorating class to be offered

South Plains College will offer an advanced cake decorating class featuring Royal Icing techniques from 7 to 9:30 p.m. on April 13 in Room 108 of the Law Enforcement building. This class will deal exclusively with Royal (meringue) Icing technique including string work, color flow techniques and royal icing frosting. Students will learn to make roses, daisies, mums, bachelor's buttons, pansies, daffodils, lilies and others. It is not mandatory for the participants to have taken the Basic Cake Decorating Class to enroll in this one. The course costs \$40 plus supplies. Sandy Israel will be the instructor. For more information, call the SPC Division of Continuing and Distance Education (806) 716-2341.

Subscribe today! Call 272-4536 for details

It's Time for the 16th Annual Teacher of the Year Awards

The Muleshoe ISD will be presenting the Award at the General Faculty Meeting on May 28 in the High School Auditorium.

Teachers at Dillman Elementary and DeShazo Elementary will be eligible for the Elementary award and Watson Junior High and Muleshoe High School teachers will be eligible for the Secondary Award.

To be selected, the nominee must be a full-time classroom teacher. Anyone in Muleshoe ISD - employee, student, parent, community member - may nominate a teacher for the award.

If you would like to nominate a teacher for one of these honors, please send a brief letter stating why he/she should be Teacher of the Year to the Superintendent's office at 514 W. Ave. G. no later than 4:00 p.m. Friday, April 23, 2010.

REMEMBER TO Thank those who've made a difference in your life.

SHOP THESE MULESHOE MERCHANTS!

NEWTON APPLIANCE

Heating
Air Conditioning
New and Used Appliances
Sales • Service • Installation

"We can beat the competitor's prices" Call Presley for your heating and air conditioning needs.

Locally Owned since 1989
215 Main St., Muleshoe
Open Tues.-Fri. 10-5
806-272-3272

BAILEY COUNTY ELECTRIC COOPERATIVE ASSOCIATION

305 E. Ave. B
Muleshoe, Texas
272-4504

Lowe's MARKETPLACE

401 W. American Blvd.
Muleshoe, Texas
272-4585

FARMERS

Julie DeBruin
Agent

Call for a free quote
AUTO • LIFE HOME • BUSINESS

1602 W. American Blvd.
Muleshoe, Texas
272-7548
jdebruin@farmersagent.com

ALVARADO PARTY RENTALS

INFLATABLE BOUNCER
Safe • Affordable
Fun For Kids!
BEST PRICES AROUND

272-5588

2 Hrs. \$50 - 4 Hrs. \$75 - 6 Hrs. \$100
8 Hrs. \$125

Birthday Parties • School Functions • Special Events
DELIVERY, SETUP & PICKUP
SE HABLA ESPANOL. EDDIE & RACHEL ALVARADO
DJ SERVICES ALSO AVAILABLE

1105

RED WING SHOES
Made in USA

The Fair Store
120 Main 272-3500

Businesses property tax renditions due April 15

Texas Comptroller Susan Combs Tuesday reminded Texas businesses to render their property with county appraisal districts by April 15.

To render means to list the taxable inventory, furniture and fixtures, machinery and equipment and other property a business owned or managed as of Jan. 1.

Appraisal districts may use the information to set property values.

"Rendition helps county appraisal districts appraise business property fairly and accurately," Combs said. "If some businesses are

not paying their fair share of property tax, it places a greater tax burden on other business owners and homeowners."

Rendition allows property owners to record their opinion of their property's value and ensures that the appraisal district sends them a notice before changing a value on their property.

Rendition is not required for exempt property, such as church property or a farmer's equipment used for farming.

If more than one appraisal district appraises a property, the property owner should

render in each appraisal district office. Failure to render property carries a penalty of 10 percent of the taxes due.

Property owners who need more time to file their renditions may file a written request with the chief appraiser on or before April 15 to receive an automatic extension to May 15.

The state comptroller also reminded owners whose property was damaged by a storm, flood or fire last year that they may file a special decreased value report that could lower their tax bill.

Property owners have until April 15 to file the

decreased value report, which indicates their property's condition on Jan. 1, 2010.

For more information about rendering property, deadline extensions, penalties and rendition forms, contact their county appraisal district office.

Taxpayers may also e-mail the Comptroller's Property Tax Assistance Division at ptd.cpa@cpa.state.tx.us or call the property tax hotline at (800) 252-9121.

The Comptroller's forms are available online at www.window.state.tx.us/taxinfo/taxforms/02-forms.html.

Publication of Obituaries

Obituaries printed in the Muleshoe Journal are printed free of charge and contain the following types of information: date and details of funeral and place of burial; date and place of birth and parents names; date of marriage; limited biographical information, including the highest level of schooling achieved, service in the Armed Forces, profession (and retirement information if applicable); names of relatives who have preceded the person in death; names of survivors, including the spouse, parents, brothers, sisters, grandparents and children. Only the number of grandchildren, great-grandchildren and great-great-grandchildren will be included; and where memorials may be directed. We will run a one column black and white photo at no charge. A larger photo, color photo, or content that varies from that listed above will cause the obit to be paid. Please keep in mind that obituary information must be submitted by the funeral home.



Specializing in Aerial Spraying - Insecticide, Herbicide & Seeding - Field Scouting Service

Johnny King

Home (806) 227-2211

P.O. Box 189

Fax (806) 946-3659

Sudan, Texas 79371

Mobile (806) 946-7309

Business (806) 946-3399

Vernon Office (940) 552-6102

State Farm®

Providing Insurance and Financial Services
Home Office, Bloomington, Illinois 61710



Nobody takes care of you like State Farm®

Jan McCrary

Agent

324 Phelps, P.O. Box 1189

Littlefield, Texas 79339

Bus: 806-385-4986

Fax: 806-385-4012

jan.mccrary.b32x@statefarm.com



The Sudan Buzz

Sudan city council to handle lengthy agenda

The Sudan City Council will meet Thursday, April 8, at 6 p.m., to handle items on a rather lengthy agenda. These agenda items include:

- Review of the city's

ordinance on utility service rates, including changes to the application of step rates for water usage.

- Consolidation and revisions to ordinances

regarding parking inside the city limits.

- The city's collection option with Official Payments Corporation.

- Consideration of a resolution for buy board participation.

- A resolution regarding vehicle parking on EDC property.

- Consideration of a request to renew the amusement permit issued to Maria Delgado.

- Consideration of a request for an amusement permit from Maria Garcia for a street dance on May 15, and a request from Garcia to close the 100 block of East First Ave. for the street dance.

- Review and

discussion of police department policies and procedures.

- Consideration of a reserve officer for police department.

- Reviewing curfew Ordinance #174.

- Consider repairs to hotel roof due to wind damage.

- Consider developing a My Space™ page for the city.

- Consider a resolution to establish and set rules and guidelines for the code enforcement subcommittee.

Subscribe!

Buzzing away...

By Norma Burnett



Well I hope everyone had a wonderful Easter. The weather was beautiful for all to hunt Easter eggs.

I think Spring is on it's way the trees are in full bloom and I have several different kinds of birds in my backyard eating from my bird feeder.

My apricot trees have been in full bloom so I hope that I will get some apricots this year.

Doesn't seem like there is much going on around here have seen some people working in their yards and getting flower beds ready to plant their flowers.

I have got to get the weeds out of mine before I can plant flowers, all though I already have some of those little flowers that have the yellow blooms on them coming up every where.

I hope all that are not feeling well are doing better soon.

We have a very dear friend in Muleshoe who isn't feel well, Donald Prather hope you get to

feeling better real soon!

To all that have lost loved ones I extend my deepest sympathy. Last but not least to all that are having birthday's. I wish you a very Happy Birthday.

God bless all of you and I will see you all next week.

Buzz-A-Licious" Recipes

Sad Cake

1 lb. light brown sugar
4 sgg, well beaten
1/2 cup vegetable oil
2 cups Bisquick™ Biscuit Mix
1 tsp. vanilla
1 cup chopped pecans
1 (7oz.) pkg. flaked coconut

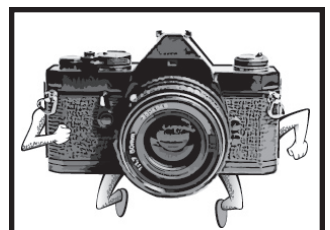
Mix sugar with eggs; stir in oil, then add biscuit mix a little at a time, until all ingredients are well

mixed.
Add vanilla, pecans and coconut. Mix well.

Bake in greased 9 x 13 inch pan at 325 degrees for 45 minutes.

Note: Do not be alarmed if cake looks strange. It is called "Sad Cake" because it rises fairly high, then caves in the middle.

Can be served warm with whipped cream or ice cream.



Don't forget your photographs

Have some of your photographs "run off?"

Photographs that have been submitted for publication in the Muleshoe Journal may be picked up during regular business hours.

At this time, a large number of photographs have been accumulated, and may include your missing photographs.

SUDAN ISD
EXCELLENCE
IN
EDUCATION
WWW.SUDANISD.NET
HWY. 303 PHONE: (806) 227-2431
SUDAN, TX 79371 FAX: (806) 227-2146

SUDAN VETERINARY SERVICES
S&S
CHRIS LARSON D.V.M.
♦Specializing in Dairy Medicine♦
♦Small Animal & Equine♦
♦Same Day Minor Surgery♦
♦Farm & House Calls♦
♦Climate Controlled Boarding♦
♦Services by Appointment Only♦
208 Ormand Street
806-227-2444 806-241-1915

AN AUCTION OF ONLY FINE ANTIQUES SATURDAY APRIL, 10TH, 10:30 AM MST (from the collection of Cherelle Dartt) AT THE AUCTION HOUSE (SOUTH PRINCE AND BRADY, CLOVIS, NM)

Northwoods Glass Opalescent Brides Basket With Silver Gutter Basket, Antique Strawbetty Box, Large Cloth Banner "Tydol Gas" Signed Cranshaw (Approx 5'X7'), Large Eagle Stamp Sign (Approx 5'X3'), 2 Civil War Era Ladies Parasols 1860'S (1 Childs Lace, 1 Geisha Silk), 1 Mahogany And Maple Veneer Tea Chest With Ivory Handles Circa 1790-1830'S, Civil War Era Pettie Coats And Wwii Bride And Bridesmaid Dresses, Vintage Linens And Dollies, Boot Hook Collection (Framed), Rhinestone Lornettes And Spectacles With Cases, 15 Dresden And Other Ballarina Figurines, 1 1890'S Red Fenton Hobnail Flared Lip Vase, 1 Yellow Fenton Hobnail Flared Lip Vase, 1 Wrought Iron Colonial Rush Light, 3 "Betty" Lamps, 1 Whale Oil Lamp (Hand Blown-Rare), 1 Parlor "Gwtw" Oil Lamp, 1 Aladdin Oil Lamp W/ Screen, Wick Cleaner And Extra Wick With Rare Lamp Shade, 1 Washington Drape Oil Lamp, 1 Lincoln Drape Oil Lamp, 1 Little Buttercup Finger Lamp, A Miniature Blue Willow Oil Lamp With Shade, 1 Civil War Camp Oil Lamp, 1 Vaasocresoline Lamp (1870-80) With Bottles And Instruction Booklet, 1 Set Blue Glass "Out Door Lamps" With Reflectors By Three Star, 1 Large English Brass Wall Oil Lamp With Large Reflector- 1830-60'S, 2 Miniature Oil Lamps, 6 Mirror Plateau (Victorian Oil Drips For Oil Lamps) Very Ornate, 1 6 Pc. Set Crystal Victorian Salt Dips, Several Victorian And Older Salt Dips, Delft, Amber, Porcelain, Etc...., 3 Antique Wall Pockets (1-1890'S, 2-1930'S), 1 Rare Bermuda "Marble Stopper" Bottle, 1 Torpedo Bottle, 1 Glass "Pistol" Candy Container, 1 "Boot" Candy Container, 1 3 In. 1880'S Child's Doll Bottle W/Nipple Intact, 1 Late 1880'S 3 In. "Bay Rum" Character Shaped Bottle, 1 1850-70 Asparagus Jar- Rare, Assorted "Hen-On-Nest" From Fenton, Westmoreland, Hazel Atlas And Indiana Glass-Blue Carnival, Caramel Swirl Slag Pink Depression, Milglass, Etc...., 6 Antique Ink Bottles; Crock, Vitorian, Glass, Wood, Austrain Pocket Traveler, 1in. Beehive, 1 1920-40'S Full Bottle Of "Parker Quink", 2 Complete Pin Cushion Dolls, 5 Germain Half Dolls, 1 Japanese Geisha Half Doll, Collection Of Antique Cosmetic Jars Of Porcelain, Toothpaste, Ladies Cosmetics, Etc...., Small Collection Of Germain "Elfinware" (Approx 8-10 Pieces), 1 Extremely Rare Porcelain Lighter, Civil War Era Octorinas-Folk Pottery Whistle Birds, 7th Calvary Bulge Saw Service From 1868-1882, In Service During The Indian Wars Of The West And Was At Wounded Knee-Sgt. Foster Of Montgomery Missouri-Listed On Rouser As Wounded(Statement Enclosed Of Guarantee), Assorted Vintage Lighter Collection, Pin-Up Girl Calendar Collection (Elgren, Vargas, Assorted Celebrity Nudes, Naughty Playing Cards, Etc...., Several 1830-1880 Bisque, Paper Mache' And Porcelain Figurines (All Germain Or Italian), "Sauvre" And Portrait Plates, Victorian Toy Horse On Wheels-1880-90'S, Mccoy, Hull, Maddox, Etc...., All Signed Pottery Pieces, Planters, Teapots, Pitchers, Tv Lamps, Etc...., 1 Pottery Hen-On-West Covered Dish (Early 1800'S), Collection Of Antique Salt And Peppers (40 Plus; 1850'S-1960'S), Several Pieces Of Murrano Glass, Milk Glass- Spanish Lace, Silver Crest, Grape Cluster- By Fenton, And Westmoreland, Etc...., Phoenix Teaset And Teacaddy Ginger Jar, Antique Art; 1 Triple Glass Paned "Butterfly" W/Guilt Wood Frame, 2 Silhouette Under Glass Pictures, 1 Set Boy And Girl Silhouettes, 1 "Grandma Moses" Framed Original Period Print, 1 Walnut Wood "Eastlake" Oak Leaf Cornered Frame With Victoria Period Print Of Beautify Long Haired Lady, Set Of 2- 1868 Concaved Glass Wood Framed Fashion Ladies- Original, Set Of 2 Tatted "SnowflakEs" In Glass- 1880'S, 2 Dated 1860'S Currier And Ives 3 Piece Set, 1 Framed Buggy Race Print, Large Collection Of Advertizing Ephemera And Premium Items, Antique Tea Pot Sets Of Lamoges, Maddox, Mccoy, Etc...., Antique Russian "Nesting Dolls" Collection, 1 Lamp Set-German Bisque With Dancing Girl W/ Satin And Bows Shade, 1 Lamp Set Of Crystal And Blue Depression Glass W/Shade, Antique Mustard Collection, Collection Of Several Molds-Icecream, Chocolate, Bread, Sushi, Butter, Etc...., New England 1850-70'S FisHermans Glass Ball- Large, Crystal Ships Decanter W/ 4 Glasses, Cordial Set W/ Shot Silver Design, 2 Set Of English Mojicala Ewres- Early 1800'S, Art Deco Perfume Bottles Very Ornate And Some Rare, Antique Print Setters Set- Complete In Wood Box- 1870-90'S, Crystal And Cut Glass Cruets, Wood Gout Chair, Fishing Reel W/ Bamboo Rod, Tea Tins, Old Books (100 Yrs Plus), Art Deco Items, Miniature Bird Collection- Lefton, Goebel, Bavaria, Napco, Etc...., Antiqu Book Ends, Victorian Tip Trays, Bakelite Items, TobacCo Tins And Other Tobacco Items, Rs Prussia, A&W Glass Collection, Drugstore Glass Candy Containers And Jars, Tiffin-Kings Crown 6 Piece Wine Glass Set, Crock Galore; Jugs, Bowls, Crocks From 1 Gal To 10 Gal. And Butter Churn, Lefton Angel Collection, Match Box Cover Collection, And Eisenhower Carpain Button.

Antique Purses And Jewelry Designer And High Quality!

Vintage Purse Collection-1930'S-1960; 3 Authentic Marlynn Monroe Purses-Extremly Rare, 1 1950'S "I Love Lucy" Cabanna Triangle Purse-Rare-As SeEn On Episode In 1950, Bakelite Purses, Lucite Purses, Box Purses, Assorted Vintage Purses, Bakelite Jewelry, Rhinestones, Silver And Gold, Etc...., Sets, Brooches, Rings, Bracelettes, Etc...., Antique Purse Collection 1830'S-1930'S- Gorman Silver, Sterling, Czech Beaded, Compacts And Dance Purses, Jewelry From 1830'S-1960'S-250 Plus Pieces Including Men's Cuffs From Each Period And Mason's Too, Many Sterling Silver Pieces, Haskel, Juliana, Vendome, Kramer-Over 10 Top Designer Names From 1930-60'S With Older And Victorian And Art Deco Pieces.

Larger Additional Items

Colonial Candle Dryer Stand, Tilt Top Tea Table, Tilt Top Candle Stick Table, 10 Gallon Blue Band Butter Churn, 1900-20 Needle Point Chair, Cigar Dryer From, 1920'S Tiger Maple Oval 8 Leg Table, Waterfall Dresser With Moon Back Mirror, Modern Iron Dress Form, Maroon Channel Back Chair, 1840-60 Secretary-Solid Walnut, "Pop Goes The Weasel" Skein Winder(Like A Spinning Wheel)-Inscribed On Side"1747 Narraganset Bay Paid For 2 1.79", New Full Size MatTress, Box Springs And Frame, 4 End Tables (Not Matching), Vintage Pyrex, 1 Persian Rug With Blue Design, 2 Piece Persain Rug Set With Maroon Design, 3 Piece Rug Set With Red And White Block Design (1-5x7, 1 Runner And 1 Throw- All Matching), Small Appliances, Large Shop Vac, Vintage Kitchen Gadgets, And So Much More!!!

From the collection of Cherelle Dartt - All Items In Pristine/Mint Condition!

• View website for current listings and pics:
www.diamondbauctions.com

Info: Monty Black
575-218-3598 or 575-309-3830

* All items are sold as is where is. Diamond B Auctions act as agents only. All items must be paid for day of sale. Terms: Cash or Check.



4-H Style Show winners

The Bailey County 4H style show winners were: Pictured above, far right, first place — Junior Construction Speciality-pajama pants, Lizzy Puckett; first — Junior Construction Dressy--Easter Dres, Amelia Symm; first — Intermediate Buying Dressy-Dress, Bailey Bales; first, Buying Dressy-Easter Dress, Keeley Dunham; first — Junior Construction Casual-Skirt and Top, Tori Beckerink.

They will all go to the district fashion show in Abernathy on Tuesday, April 13.

Picture above is 4H Style Show winner Intermediate Buying casual, McKenna Dunham who also tok first place.

Thanks for reading!



Lazbuddie Jr. High bowl winners

Lazbuddie Junior High students recently competed in the Department of Energy Science Bowl contest sponsored by B&W Pantex at West Texas A&M University. The students competed in six "Jeopardy©-style" format contests in the morning round robin, but did not advance to the afternoon single elimination contest. The eighth grade team won three matches, and missed the afternoon round by a tiebreaker score. The seventh grade team won two matches and competed very well for their first time. In the picture, standing left to right, are: Haley Ivy, Haldon Ivy, Cutter Glover, Albert Moran. Sitting, left to right, are: Allison Weaver, Shyann Rainey, Haley Beasley and sponsor Debbie Weir

We look forward to ginning your cotton in 2010!

DODD COTTON GIN

2912 County Road 504
Muleshoe, TX 79347
806-965-2311 Office
806-965-2328 Office
806-965-2896 Fax

Please call Beverly for your planting seed needs.

Check out the videos on www.muleshoejournal.com

We're at Your Service
Visit the following local businesses for quality service and customer satisfaction

CABINETS LOOKING
Wills Doors & More
Ronnie Wills 806-441-0931
Richard Wills 806-773-1550
A LITTLE TIRED?
Custom Cabinetry & Remodeling
New Cabinets • Refacing Cabinets
Remodel Kitchens • Remodel Baths

If we can't fix it, throw it away!
Sheetrock, Drywalling, Tape & Bed, Patch Up Jobs, Acoustic & Paneling, Small Concrete Jobs, Picket Fences, Bathroom Remodeling, Floor Tile, Sky Lights, Carports, Garage Doors, Insulation, Etc. Add On's and Roofing - References Available
Handy Randy
We will travel!
Pager: 766-9342 Home: 806-385-3103 Member of BBB of Lubbock Cell: 806-632-5261 Littlefield, TX

MORE METAL BUILDING & METAL ROOFING
George Martinez
457 CR 163
Muleshoe, Texas 79347
Telephone (806)566-8300
Car Ports Portable Welding

NOTICE OF GENERAL ELECTION

To the Registered Voters of the Muleshoe Area Hospital District:
(A los votantes registrados del Muleshoe Area Hospital District)

Notice is hereby given that the polling places listed below will be open from 7:00 a.m. to 7:00 p.m., on May 8 2010 for voting in a general election to elect:

- Board Member Place 1
- Board Member Place 3
- Board Member Place 5

(Notifiquese, por las presente, que las casillas elect orales sitados abajo se abriran desde las 7:00 a.m. hasta las 7:00 p.m. el May 8, 2010 para votar en la Eleccion General para elegir:

- Membro de la Meza Directiva para lugar uno
- Membro de la Meza Directiva para lugar tres
- Membro de la Meza Directiva para lugar cinco

LOCATIONS OF POLLING PLACES
(DIRECCION(ES) DE LAS CASILLAS ELECTORALES)

City Hall, 215 S. First, Muleshoe, TX

Early voting by personal appearance will be conducted each weekday at:
(La votacion adelantada en persona se llevara a cabo de Lunes a Viernes en)

City Hall, 215 S First, Muleshoe, TX

Between the hours of 8:00 a.m. and 5:00 p.m. beginning on April 26, 2010
(entre las 8:00 a.m. de la mañana y las 5:00 p.m. de la tarde empezando el)

and ending on May 4, 2010. (y terminado el May 4, 2010)

Early voting hours are extended from 7:00 A.M. to 7:00 P.M.. on April 27, 2010 and May 4, 2010 as required under Section 85.005 (d) of the Election Code.
(las horas de votar temprano estan estendidas de las 7:00 de la mañana a las 7:00 de la tarde el 27 de April 2010 y el 4 de Mayo 2010 es requerido por la seccion 85.005 del Codigo de Eleccion.)

Applications for ballot by mail shall be mailed to:
(Las solicitudes para boletas que se votaran en ausencia por correo deberan enviarse a:)

LeAnn Gallman
(Name of Early Voting Clerk) (Nombre del Secretaria de la Votacion Adelantada)
215 S First
(Address) (Direccion)
Muleshoe, TX 79347
(City) (Ciudad) (Zip Code) (Zona Postal)

Applications for ballot by mail must be received no later than the close of business on
(Las solicitudes para boletas que se votaran en ausencia por correo deberan recibirse para el fin de las horas de negocio el)
April 30, 2010.
(date) (fecha)

Issued this the2nd day of February, 2010.
(Emitada este dia 2nd deFebruary, 2010.)

/s/ Bill Liles
Signature of Presiding Officer (Firma del Oficial que Preside)

NOTICE OF GENERAL ELECTION

To the Registered Voters of the City of Muleshoe:
(A los votantes registrados del City of Muleshoe)

Notice is hereby given that the polling places listed below will be open from 7:00 a.m. to 7:00 p.m., on May 8 2010 for voting in a general election to elect:

- Council member District 1
- And
- Council member District 2

(Notifiquese, por las presente, que las casillas elect orales sitados abajo se abriran desde las 7:00 a.m. hasta las 7:00 p.m. el May 8, 2010 para votar en la Eleccion General para elegir:

- Council member District 1
- And
- Council member District 2

LOCATIONS OF POLLING PLACES
(DIRECCION(ES) DE LAS CASILLAS ELECTORALES)

City Hall, 215 S. First, Muleshoe, TX

Early voting by personal appearance will be conducted each weekday at:
(La votacion adelantada en persona se llevara a cabo de Lunes a Viernes en)

City Hall, 215 S First, Muleshoe, TX

Between the hours of 8:00 a.m. and 5:00 p.m. beginning on April 26, 2010
(entre las 8:00 a.m. de la mañana y las 5:00 p.m. de la tarde empezando el)

and ending on May 4, 2010. (y terminado el May 4, 2010)

Early voting hours are extended from 7:00 A.M. to 7:00 P.M.. on April 27, 2010 and May 4, 2010 as required under Section 85.005 (d) of the Election Code.
(las horas de votar temprano estan estendidas de las 7:00 de la mañana a las 7:00 de la tarde el 27 de April 2010 y el 4 de Mayo 2010 es requerido por la seccion 85.005 del Codigo de Eleccion.)

Applications for ballot by mail shall be mailed to:
(Las solicitudes para boletas que se votaran en ausencia por correo deberan enviarse a:)

LeAnn Gallman
(Name of Early Voting Clerk) (Nombre del Secretaria de la Votacion Adelantada)
215 S First
(Address) (Direccion)
Muleshoe, TX 79347
(City) (Ciudad) (Zip Code) (Zona Postal)

Applications for ballot by mail must be received no later than the close of business on
(Las solicitudes para boletas que se votaran en ausencia por correo deberan recibirse para el fin de las horas de negocio el)
April 30, 2010.
(date) (fecha)

Issued this the2nd day of February, 2010.
(Emitada este dia 2nd deFebruary, 2010.)

/s/ Cliff Black
Signature of Presiding Officer (Firma del Oficial que Preside)

Muleshoe captures Area 5 Academic Challenge honors

Recently, Muleshoe High School competed in an academic contest that resembled an athletic contest. Teams from across the South Plains and West Texas area competed in the Area 5 Academic Challenge, sponsored by the Texas Association of Community Schools.

The contest was held at the Muleshoe High School Gymnasium.

Each team consisted of three high school students (three levels based on GPA averages). There are four rounds of five questions each that are asked of each team member. The students have 15 seconds to answer each question. The competition gets intense and exciting as students compete for college scholarships.

The top five teams from each of the six area contests held around the state qualify for the state contest in April held at The University of Mary Hardin-Baylor in Belton.

The next five highest scoring teams in the state also qualify for the State Contest as "at-large" teams. Gene Sheets, superintendent of Muleshoe ISD, is the State Director for the Academic Challenge.

April Smith, Business & Technology teacher at Muleshoe High School, was the area contest director. Assisting Smith in conducting the contest were MHS teachers Staci Buie, Vickie Burch, and Belinda Head.

Judges for the contest included retired MHS

English teacher Sharry Jenkins, Federal Programs Director Dave McNeill, MHS Science teacher Lorretta Ray, and MHS Social Studies teacher Val Acree.

Muleshoe High School had three teams qualify for the State Contest at the University of Mary Hardin-Baylor in Belton on April 11. MHS entered three teams. One team won third place. Team members included Xavier Cuevas, Ali Eagle, and Carlos Bustillos. A second team from MHS won 4th Place. Team members included Cole Hawkins, Israel Cortez, and Steven Richards.

The third team qualified for the state contest as an at-large team. Five teams from across the state

qualify for the state contest because their scores were the next highest scores in the state after the top five teams in each area contest. Team members included Jessica Behrends, Alyssa Martinez, and BreAnn Baca. Sponsors for the Muleshoe teams were April Smith and Vickie Burch.

Results for the first through fifth places and total amount of scholarships won for each team: First place — Alpine High School, Team I, \$1,932.44; second — Denver City High School, Team I, \$1,610.37; third — Muleshoe High School, Team I, \$1,288.30; fourth — Muleshoe High School, Team Q, \$ 966.22; fifth — Olton High School, Team I, \$ 644.15.



Third Place Team — Xavier Cuevas, Ali Eagle, Carlos Bustillos, and Vickie Burch (Sponsor)



Fourth Place Team — Cole Hawkins, Israel Cortez, Steven Richards, and April Smith (Sponsor). Pictured on the far left of both photographs is Dr. Gene Sheets.

CLASSIFIEDS

Deadline is Monday at 5 PM to place a Classified ad. Call 272-4536.

LEGAL/PUBLIC NOTICE

Lee Lewis Construction, Inc. will receive proposals for the High School Football Stadium Concessions and Restrooms, Muleshoe Independent School District, Muleshoe Texas. Proposals are due by 4:00pm, Thursday, April 22, 2010. No proposals will be accepted after this time. We specifically invite Small Business Concerns and Women Owned Business Concerns, and Small Business Concerns Owned/Controlled by Socially and Economically Disadvantaged Individuals.

Plans are available from: Lee Lewis Construction, Inc. 7810 Orlando Ave. Lubbock, Texas 79423 806-797-8400.

Plans are available for viewing in the following locations: Lee Lewis Job Site Trailer - Muleshoe High School AGC Plan Room - Lubbock Dodge Plan Room - Lubbock Dodge - Scan

Published in the Muleshoe Journal April 8, 2010 and April 15, 2010.

HELP WANTED

The City of Muleshoe is taking applications for a worker in the Public Works Department. High school graduate/GED required. Upon employment, subject may be required to pass a drug test. Applications can be picked up at City Hall, 215 South First, Muleshoe, TX. Position open until

filled. EOE, ADA. The City of Muleshoe is accepting applications for lifeguards and concession stand workers for the new water park. upon employment, subject may be required to pass a drug test. Applications can be picked up at City Hall, 215 South First, Muleshoe, TX. EOE, ADA.

Security Officers, Friona, TX area, \$8.00 HR Full /PT Time, Pdvacation/Matching 401K after 1 year if full time, clear criminal record/pre-drug screening, Call Jerry 806-295-8357 or 806-206-9459, Silverhawk Security, EOE/M/F/D/.

Mystery Shoppers needed. Receive \$500 grocery voucher get paid every shop. Call 877-737-7547.

Three temp positions: Farm work general, 04/04/2010 to 12/31/2010 @ \$12.76 p/hr. Housing provided, 48 hrs p/wk. ¼ guarantee, and transportation and subsistence expenses to worksite paid after 50% completion of contract. Tools, equipment provided at no cost. Min. 3 months experience. Duties: Maintenance and repair of equipment, Hauling of Grain to town, Hauling fertilizer to farm, 3 months exp, basic literacy and math skills required. Brian Bendickson Farm Garrison, ND. Apply at ND Job Service job listing # 212766.

Temporary seasonal farm workers (2) needed (04/25/10-12/01/10) Bruce Williams, Gettysburg, SD. Operate and maintain

equipment to plant, spray and harvest crops, transport products and general farm duties including maintaining equipment and farm buildings. 6 months exp., \$11.17 p/h, free housing, tools, supplies, equipment, transportation. 3/4ths work period guaranteed. Transportation and subsistence expenses from place of recruitment reimbursed upon completion of 50% of work contract or earlier. Apply for this job at the nearest South Dakota State Workforce Agency office using job listing number SD1479860.

Consumer loan company to open in this area. Experience very helpful, but not required. Must be bilingual. Need Manager and Assistant Manager. Call 830-534-2316 for more details.

FOR SALE
SPA -HOT TUB, 2010 model lounge, maintenance - free cabinet warranty, locking safety cover. MSRP \$4900.00, forfeit \$2500.00. 806-535-0835.

G E N U I N E
LEATHER sofa and loveseat set, (soft) BRAND NEW, all wood frame, mfg. warranty. \$600. 3-pc table set \$125. 806-438-0081.

KING SIZE plush top mattress & foundation, brand new in plastic. Yours for \$275. King metal roller frame. \$65. 806-438-0081.

Sectional, great color, brand new with original tags. List \$2980, sacrifice \$590. Must sell quickly, 806-438-0081.

C O M P L E T E
bedroom suite, brand new, still boxed, will transport easily, fits full/queen, must see. \$575. 806-549-3110.

MUST SELL - plush top queensize mattress & foundation, new in wrapper. \$175. Hollywood frame, \$45. 806-438-0081.

Piano, spinet style, great for beginner needs tuned. \$150.00 Full size bed w/footboard & headboard. \$65.00. 806-272-4117.

AUTOMOTIVE
2005 Ford F250, Lariat Edition, Diesel, auto, 4WD, 147,000 miles. \$18,500. Call Jacob 806-965-2705 or 575-749-0933.

FOR LEASE OR RENT
OFFICE — 1604 W. American Blvd. OFFICE SPACE with reception area, large private office, and restroom, \$450.00 per month, including utilities. WAREHOUSE — 1602 W. American Blvd (rear) Well built hollow-tile warehouse. It is 40 ft. X 100 ft. for a total of 4,000 square feet, two large overhead doors. Located behind office building. \$600.00 per month. Will lease together or separately. Contact Bill Hatchett 1-806-794-6336.

HOUSE FOR SALE BY OWNER
Very nice home for sale by owner on 16 acres, 3 bedroom, 1 bath, 806-549-9243.
1006 W. 6th St. 3/2 Approx. 2,000 sq. ft. Den, lvg. room, utility. Lg. bedrooms w/X-Lg. walk-in closets, large master bath. Kitchen- ceramic tile/double oven. 2 water heaters, Cent. H&A, spr. sys. 14x24 workshop/storage. Asking \$89,900. Call Annette 272-4943.

HOUSE FOR SALE BY OWNER

SERVICES

REX LOWERY PAINTING
Painting in Muleshoe area over 40 years! FREE ESTIMATES Cell 789-9142

REAL ESTATE

Brokers/Real Estate Agents List your Properties Here!!!

BUYING, SELLING, INVESTING, RELOCATING?
Looking for someone who will net sellers the most \$/SqFt?
Looking for someone who believes in buyer representation?
Looking for someone who keeps her clients informed?
Looking for someone who is local AND a member of Lubbock MLS?
Eve Darling is the professional for you!
Call today - 806-787-0558.

KELLER WILLIAMS REAL ESTATE
EVE DARLING REALTOR
4747 S. LOOP 289, #110 LUBBOCK, TX 79424
OFFICE: (806) 771-7710
CELL: (806) 787-0558
FAX: (806) 771-7700
E-MAIL: evedarling@kw.com
www.evedarling.com

ERA Courtyard REAL ESTATE
42/2 two story country home with unique appeal — 1972 sq. ft. living area 5 M. SW of Sudan on FM 298. New stucco on exterior, central heat and air (electric) with formal dining room den, living room, laundry room along with 2 room unfinished basement (not included as living area). Large front and back yard with established trees. Unattached garage with extra room that could be used for game room, apt. or storage. **Priced Reduced \$116,000 \$102,000.**
3-2-2 Carport approx. 1572 sq. ft. Located at 505 Main, Sudan this is a great home with even better location only ½ block from Sudan ISD Campus, central heat & a/c, steel roof, formal living room and den, storm cellar, built in carport and good yard w/established trees. Well built and neat. \$70,000 will consider offers.
Monty Edwards, Agent
(806) 786-5426

Byrd Realty
Ronald Byrd 575-760-1495 Licensed Broker
Crista Bass 806-946-7261 Sales Associate
Carleton Johnson 806-789-4289 Sales Associate
228 Main Street, Muleshoe, Texas
Check all of our listings at www.byrdrealestate.net

Vic Coker Land Co.
Agricultural Real Estate
440 acres of C.R.P. — in Bula — Circleback area. Lays in both Bailey and Lamb Counties, in two tracts. Three payments left on two contracts. Good farmland.
Bailey County
1083 acres of grassland — Trophy Mule Deer area. Good quail & dove hunting. 2 bedroom 2 bath home with fireplace. 2 bedroom bunkhouse with one bath, horse stall & pens, tack room/shop area and garage.
354 acres of expired C.R.P. — good grass cover, good improved pasture or return to dryland production.
Near Muleshoe — 90 acres grass seed farm, 2 center pivots, popular varieties of foundation seed.
West Camp — 320 acres non-irrigated on pavement, 1 stock well, 3 other wells located on property.
Lamb County
Northwest of Earth — 160 acres, excellent soil, lays good, 3 wells, center pivot, good set of pens.
320 Acres Near Earth — 2 sprinklers, 5 wells all tied together lays perfect, excellent soil, good fertility.
Springlake area — 320 acres, good soil, 4 wells, 2 sprinklers, good direct payment.
Castro County
Dodd area — 156 acres. 600 g.p.m., excellent soils, lays good, good pivot, on pavement.
316 Main Street • Muleshoe, Texas
Office: 806-272-3100 Home: 806-965-2468
Website: www.vicoland.com

Nieman Realty

116 E. Ave. C • George Nieman, Broker • 272-5285 or 272-5286
CHECK OUR LISTING INFO., PHOTOS, ETC. ON-LINE AT WWW.NIEMANREALTY.COM
COM HAVE BUYERS! NEED HOME AND LAND LISTINGS!!

HIGH SCHOOL AREA

- NICE 3-2-2 Brick Home, corner lot, built-ins, FP, Cent. A&H, storm windows & doors, sunroom, fenced yard, stor. bldg.!! MORE!! 95K!!
- VERY NICE 3-2-2 Brick Home, Cent. A&H, built-ins, FP, approx. 2336' lvg. area, auto. splkr, fenced yd, MORE!! \$125K!!
- VERY NICE 3-3-2 CARPORT Home, Cent. A&H, built-ins, fireplace, approx. 2653' living area, covered deck & patio, workshop/storage, cellar!! Auto.splkr. (front yd.) \$140,000!!
- 2-2-1 Carport Home, Cent. A&H, FP, DW, stove, refrig., lg. utility, whirlpool tub, fenced yd., stor. bldg.!! \$59.5K!!

RICHLAND HILLS • PARKRIDGE • HIGHLAND

- NICE 2-1-3 Carport Home, carpet, tile, fans, fenced yd., storage bldg. MORE!! \$45K!! REDUCED TO \$35K!!
- 2 NICELY REMODELED DUPLEX UNITS & 1 NEW Duplex unit!! PRICED TO SELL!!
- NICELY REMODELED 3-2-2 Brick, new Cent. A&H, built-ins, FP, 3125' lvg. area, splkr. sys., fenced yard, MORE!! REDUCED \$195K!! MAKE OFFER!!
- NICE 3-2-1 Brick Home, Cent. A&H, built-ins, FP, office, auto. splkr., fenced yd., garage/workshop/storage bldg. in back yd.!! \$117,000 PRICE REDUCED \$110,000.00!!
- 4 bedroom, 5.5 bath, 2 car garage, geothermal (cent. A&H), built-ins, FP, approx. 5100', loads of storage, workshop/storage, RV port, auto. splkr., REDUCED TO \$185K!!
- 2 bedroom, 1.5 bath, 2 car garage, Cent. A&H, built-ins, basement, fenced yard!! \$79,900!! PRICE REDUCED \$74,900!! MAKE OFFER!!
- VERY NICE 3-1 3/4-2 Brick home, Cent. A&H, built-ins, fireplace, thermal windows & doors, metal trim, workshop/storage, fenced yd., MUCH MORE!! \$139,500!!
- VERY NICE 3-2-2 Brick, Cent. A&H, built-ins, FP, fans, basement, cov. patio, 26' x 30' metal insulated bldg. w/A&H, fenced yd.!! \$169K!! MAKE OFFER!!
- VERY NICE 3-2-2 brick home, Cent. A&H, built-ins, FP, corner lot, MUST SEE!! \$130K!!
- 3-2-1 Brick Home, Cent. A&H, built-ins, covered patio, fenced yd., stor. bldg.!! \$76K!!

RURAL

- VERY NICE CUSTOM BUILT 3 Bedroom, 3 Bath, 2 car garage home, at edge of town on 80 acres!! Geothermal heat & air, built-ins, fp, ash cabinets,

RURAL - continued

- approx. 2544' main lvg. area plus 625' finished basement w/safe & storage, splkr system, beautiful trees and landscaping, circle splkr, 5 wire barbwire fence, 36' x 48' metal insulated bldg w/2 12' doors!! MUCH MORE!!
- VERY NICE 4-3 doublewide (2006) on 7.38 acres, Cent. A&H, built-ins, FP, fenced yd., 25' x 40' Metal Bldg. septic system, domestic well, on pavement close to town!! \$152K \$130K!! MAKE OFFER
- Nice 3-2 Home at edge of town on .8 acre tract, Cent. A&H, built-ins, FP, efficiency apt. or guest cottage, horse barn & corral!! PRICE REDUCED!! \$82,500
- NICE 4.8 acre homesites, close to town, deed restricted!! \$17,500!!
- CLAY'S CORNER - VERY NICE 3-2 3/4-2 Home on 5 acres, approx. 2500' lvg. area, remodeled, Cent. A&H, built-ins, FP, whirlpool tub, fenced yard, 600' workshop/storage!! \$185K !!
- 3-1 3/4-2 Home on 80 acres, Geothermal Heat & Air, 2-10 hp. sub. IN CONCRETE across east side. Good productive soil!! \$130K!!
- 3-3-2 Brick home on 5.57 acres on FM 298 W. of Sudan, approx. 2668 living area, Cent. A&H, built-ins, 2 wells, 40' x 80' barn, MUCH MORE!! \$135K!!

COMMERCIAL

- NICE commercial bldg. w/approx. 3300' plus 1040' upstairs, Cent. A&H, 2 restrooms, MORE!! \$39,500!! MAKE OFFER!!
- NICE OFFICE/SHOP/WAREHOUSE on .7 acre on N. Hwy. 214, Cent. A&H, insulated shop & warehouse, has 1-3/4 bath & 1-1/2 bath!! MUCH MORE!! PRICED TO SELL!! \$85K!!
- 1900' Off. Bldg., 106' x 140' lot on Hwy. 70 and 84!! \$79.5K!! PRICE REDUCED \$62K!!
- VERY NICE CHURCH BLDG. WITH PARSONAGE - Possible Owner Finance!! Price Reduced!!
- GOOD INCOME PROPERTY-LONG TERM LEASE-Approx. 8,075' office bldg. w/ approx. 20,000' paved parking area!! PRICE REDUCED \$350K.
- 4.2 acre tract at edge of town, 40' x 60' metal insulated bldg., 2 other sheet iron bldgs., chainlink fenced area, numerous uses!! \$59K!! MAKE OFFER!!
- Approx. 1080' metal building including an office and 3 bay garage/workshop area plus chain link fenced area!! \$39,500!!

Want To Earn Some Extra Money?

Need some quick cash for vacation? Deliver the new YELLOWBOOK in: Plainview, Floydada, Abernathy, Brownfield, Crosbyton, Lamesa, Levelland, Littlefield, Morton, Muleshoe, Post, Slaton, and Lubbock

Temporary Positions Must be 18 years of age
Must have valid driver's license Insured dependable auto

Call Today 1.800.373.3280
MONDAY THRU FRIDAY 7:30 am to 7:00 pm CT

Visit us on the web at [www.muleshoejournal.com!!!](http://www.muleshoejournal.com)

Muleshoe Track & Field



Photographs by Stacy Conner



VOTE
for
James L. Brown
Republican candidate for
Bailey County Commissioner Precinct 2

REMEMBER
Early Voting begins April 5 thru 9
Special Election Day, Tuesday, April 13

Paid for by James L. Brown

WE SPECIALIZE IN TAXES, YOUR TAXES.

At H&R Block we specialize in taxes. Our professionals are expertly trained and always up to date with the changes in tax laws. Which is why they can help you prepare an accurate return, assuring you what you want most, peace of mind.

Get it Right.SM

Click, call or come over.
hrblock.com | 800-HRBLOCK

©2009 HRB Tax Group, Inc.



APRIL 15 IS FAST APPROACHING
HAVE YOU DONE YOUR TAX RETURN
YET?

H&R Block
ACROSS FROM CITY HALL
104 E AVE C
MULESHOE, TX 79347
Phone: 806-272-3332
Fax: 806-272-5309
Mon-Fri 9 a.m. - 6:00 p.m.
Sat. 9 a.m. - 5:00 p.m.
Early or late appointments also available.

NOTICE OF GENERAL ELECTION

To the Registered Voters of the Muleshoe Independent School District:
(A los votantes registrados del Muleshoe Independent School District)

Notice is hereby given that the polling places listed below will be open from 7:00 a.m. to 7:00 p.m., on May 8 2010 for voting in a general election to elect:

Trustee at Large
And
Trustee at Large

(Notifiquese, por las presente, que las casillas elect orales sitados abajo se abriran desde las 7:00 a.m. hasta las 7:00 p.m. el May 8, 2010 para votar en la Eleccion General para elegir:

Trustee at Large
And
Trustee at Large

LOCATIONS OF POLLING PLACES
(DIRECCION(ES) DE LAS CASILLAS ELECTORALES)

City Hall, 215 S. First, Muleshoe, TX

Early voting by personal appearance will be conducted each weekday at:
(La votacion adelantada en persona se llevara a cabo de Lunes a Viernes en)

City Hall, 215 S First, Muleshoe, TX

Between the hours of 8:00 a.m. and 5:00 p.m. beginning on April 26, 2010
(entre las 8:00 a.m. de la mañana y las 5:00 p.m. de la tarde empezando el)

and ending on May 4, 2010. (y terminado el May 4, 2010)

Early voting hours are extended from 7:00 A.M. to 7:00 P.M. on April 27, 2010 and May 4, 2010 as required under Section 85.005 (d) of the Election Code.
(las horas de votar temprano estan estendidas de las 7:00 de la mañana a las 7:00 de la tarde el 27 de April 2010 y el 4 de Mayo 2010 es requerido por la seccion 85.005 del Codigio de Eleccion.)

Applications for ballot by mail shall be mailed to:
(Las solicitudes para boletas que se votaran en ausencia por correo deberan enviarse a:

LeAnn Gallman
(Name of Early Voting Clerk) (Nombre del Secretaria de la Votacion Adelantada)
215 S First
(Address) (Direccion)
Muleshoe, TX 79347
(City) (Ciudad) (Zip Code) (Zona Postal)

Applications for ballot by mail must be received no later than the close of business on
(Las solicitudes para boletas que se votaran en ausencia por correo deberan recibirse para el fin de las horas de negocio el)
April 30, 2010.
(date) (fecha)

Issued this the 8th day of February, 2010.
(Emitada este dia 8th de February, 2010.)

/s/ Thurman Myers
Signature of Presiding Officer (Firma del Oficial que Preside)

5A BROADBAND

"Where You and High-Speed Meet"

A new service brought to you by

West Plains Telecom., Inc.

New Broadband Internet speeds and prices are here



- If you are on fiber 768K DSL, your speed will now be 1 meg, and your bill is lowered by \$10 per month.
- If you are on copper 768K DSL, your speed will now be 960K, and your bill is lowered by \$10 per month.
- We also now offer 3 meg and 6 meg speeds

For more information about this new service call 806-272-5533

Not available in all areas-some limitations may apply