



WEATHER

	Soil	
	Temp.	
May 3	75 48 T	72-66
May 4	74 54 1/10	70-65
May 5	79 45 T	69-64
May 6	83 46	72-63

Muleshoe Journal

The Community Of Opportunity-Where Water Makes The Difference

Vol. 70, No. 20

Published Every Thursday At Muleshoe, Bailey County, Texas 79347

20¢

Thursday, May 7, 1992

Annual Car Show Has Large Turnout

around
muleshoe

The Earth Junior Rodeo will be held Friday and Saturday, May 8 and 9. Starting time on Friday will be 8 p.m. and on Saturday the rodeo will get underway at 7 p.m.

The local Cub Pack 620 won a number of awards at Camp Post over the weekend. Twenty-five Cub Scouts and 23 adults attended.

They won first place in Action Bowling, first place in Ping Pong, second place in Ring Toss and String Pull; and third place in Elephant Walk and Bun Boy Throw.

At the request of parents and citizens of the community, Muleshoe High School's Theatre Department will present its State One Act Contest Play, *Hamlet*, on Tuesday, May 12 at 8 p.m. The cost will be \$2.00 per person.

Greg Combs of Muleshoe has been elected treasurer of the student body at Western Texas College for the 1992-93 school year.

He is the son of Larry and Berta Combs of Muleshoe. Combs is majoring in drama and his minor is electrical engineering. He was a member of the Student Senate this past year and Phi Theta Kappa.

The Student Senate plans a variety of activities for WTC students during the year. This work is organized through committees headed by the various officers.

Air Force Staff Sgt. Richard A.W. Woodring has arrived for duty at Barksdale Air Force Base, Bossier City, La.

Woodring, a munitions systems technician, is the son of Twyla Woodring of Plainview and Richard Woodring of Earth.

The sergeant is a 1986 graduate of Springlake-Earth High School.

Pvt. David Orozco has completed a unit supply specialist course at Fort Jackson, S.C.

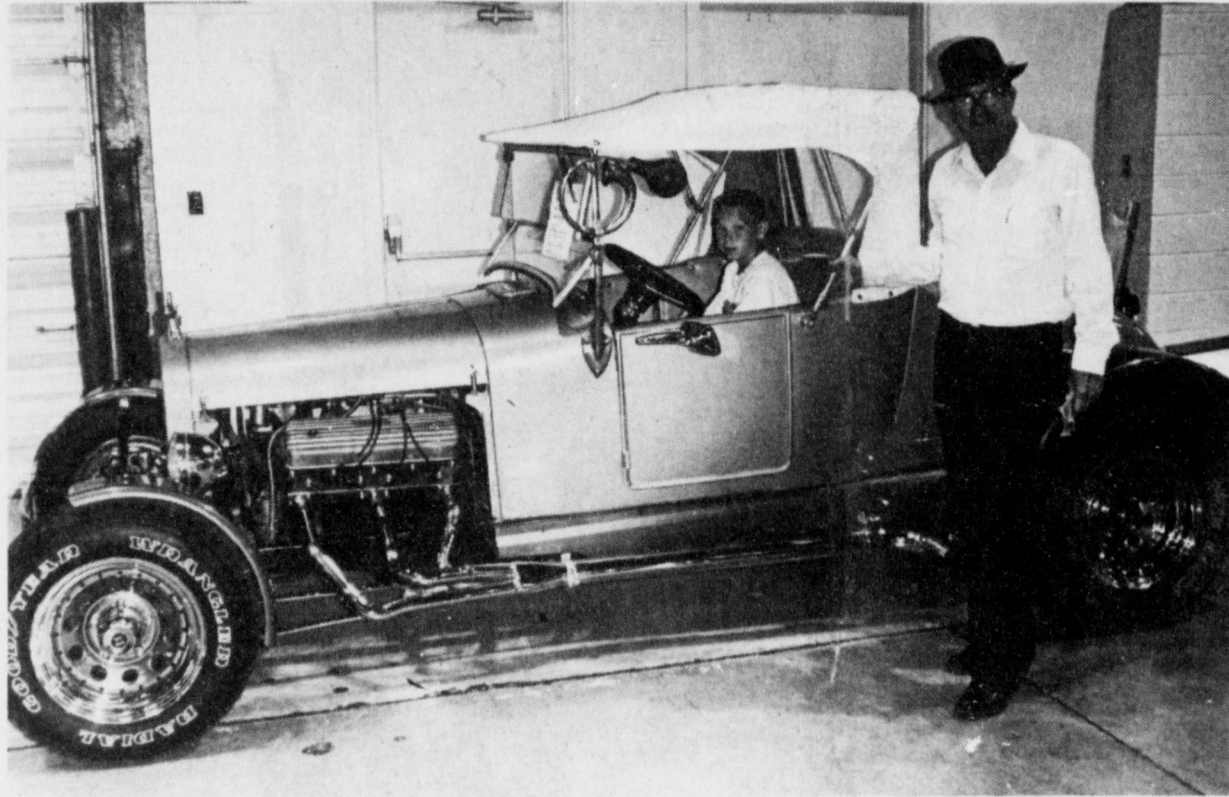
Chavez, Wood, King, Trevino, Jennings, King, Cox Elected

In the local elections held Saturday for three places on the hospital board, two places on the school board and two seats on the City Council, all incumbents were re-elected with the exception of one on the City Council.

Jo King was elected to Place One on the hospital board. He will replace W.B. Wagnon, who chose not to seek re-election. King received 28 votes.

In the race for Place Three on the hospital board, incumbent Raul Trevino defeated his opponent, Cordy Aguirre. Trevino received 30 votes to Trevino's 27.

Darrell Jennings, running unopposed for Place Five on the



OLDEST CAR--- Guy Huckabee gives a youngster a chance to set in and get a close look at the oldest car in the Lions Club Car Show Saturday. The car is a 1927 roadster, which won the trophy for being the oldest car in the show. (Journal Photo)

Winners Presented Large Trophies

If you missed the Car Show and Model Car Contest, sponsored by the Lions Club, you missed a good show. The Bailey County Coliseum was filled with cars and pick-ups of all ages and descriptions, all polished and shined to perfection for the event.

As you entered, music by "The Moon Man", Doug Christie, back by popular demand, could be heard. As the music played, hula hoops whirled providing something for the youngsters.

A coloring contest was also held, with competition being divided into five categories.

Winners in these divisions were presented their award at 7 p.m.

Those winning in the Coloring Contest were: Allyson Alve of Lubbock, pre-school; Tylor Jones of Amarillo, kindergarten; Three to Five years old, Amanda Messenger, Muleshoe; Six to Eight years old, Joshua Ottwell, Muleshoe; and adult, Terry Villanova.

It was announced that Dick Bennett of California won the Poker Run, held Friday night. Each of the entries received a trophy.

Receiving the trophy for the Oldest Car was Guy Huckabee of Santa Fe, N.M. with a 1927 Roadster.

School Sets Public Hearing

A Public Hearing to provide any interested person an opportunity to make recommendations regarding the use of 1992-93 Chapter Two funds at Muleshoe ISD has been scheduled for Tuesday, May 12 at 7 p.m. in the Federal Programs Office at Muleshoe High School for the purpose of encouraging parents to become actively involved in the education of their children and to hear any recommendations made on the use of Chapter Two funds.

Federal guidelines mandate that these funds must be used in one or more of the following categories:

- * Programs for At Risk students
- * Acquisition and Use of Instructional Materials.
- * Effective School Program Design & Implementation
- * Professional Staff Development
- * Programs to Enhance Personal Excellence for students
- * Innovative Projects to Make School wide Improvements
- * Other Innovative Projects to enhance The Educational Program and Climate of the School.

Large Crowd Attends Lazbuddie Banquet

Justin Johnson, 1992-93 president of the Lazbuddie FFA Chapter gave the welcome and welcomed the guests at the FFA banquet Monday night. The banquet was held in the Lazbuddie school cafeteria. Jody Copp gave the invocation.

Led by the president, the FFA officers called the roll and gave the opening ceremonies. Twenty members and approximately 52 guests were present.

Jodi Morris and Dawnda Magby presented Greenhand pins to Brandon Walker and Bobby Weaver.

Chapter Farmer Pins were presented by Justin Johnson to Shawna Boatman, Jody Copp, Jody Hargrove, Dawnda Magby, Troy McBroom, Jodi Morris, Chad Nickels, Jarah Redwine, Tex Smier, Chad Weaver and Brett

Thomas. Larry Bills, Ag teacher presented Proficiency Awards to Chad Nickels, Ag Mechanics; Jarah Redwine, Beef Production; Livestock, Clent Hurst; Farm and Home Improvement Shawna Bomer; Horse, Jodi Morris; Sheep, Jody Copp; Swine, Brett Thomas; and Turf and Landscape, Troy McBroom.

It was announced that Clent Hurst and Justin Johnson were the Lone Star Candidates and will attend the Area Convention in Amarillo.

Brandon Walker, freshman, received the Star Greenhand Farmer Award, presented by Brett Thomas.

This year's Lazbuddie Star Chapter Farmer Award went to Brett Thomas. Justin Morris made the presentation.

The Honorary Chapter Award went to Ricky Black and was presented by Jody Copp.

Justin Morris recognized the Judging Teams.

Bills presented the Outstanding Agriculture Award to Justin

Morris. He also announced that this year's District Star Chapter Farmer Award went to Jody Copp.

"I would like to thank all of the people who helped with the banquet, including the cafeteria ladies, who prepared the meal; the decorating committee and all of the FFA members," said Bills.

Bills also recognized the Junior FFA members. "We have a good FFA Chapter now and just think what kind of a chapter we will have in four or five years when these students become members of the FFA chapter."

The 1992-93 officers were recognized and include: Justin Johnson, president; Brett Thomas, vice-president; Chad Nickels, secretary; Jodi Morris, treasurer; Dwanda Magby, reporter; and Jody Copp, sentinel.

The 1991-92 officers were: Justin Morris, president; Jody Copp, vice-president; Brett Thomas, secretary; Justin Johnson, sentinel; Dwanda Magby, treasurer; and Jodi Morris, reporter.

Cont. Page 6, Col. 1

Mrs. Johnson Prevention Services Coordinator

Carolyn Johnson has been named Prevention Services Coordinator for the State of New Mexico, working with Mental Health Resources, Inc. Accountable to the State Department of Health and Environment in Santa Fe. Mrs. Johnson will serve Eastern New Mexico including the counties of Union, Harding, Quay, Guadalupe, De Baca, Roosevelt, and Curry. As Prevention Services coordinator,

she will work with the deputy executive director to implement prevention programs which focus on providing information, education, and alternatives to Drug and Alcohol Abuse, Teen Pregnancy, Aids, Crime, ETC.

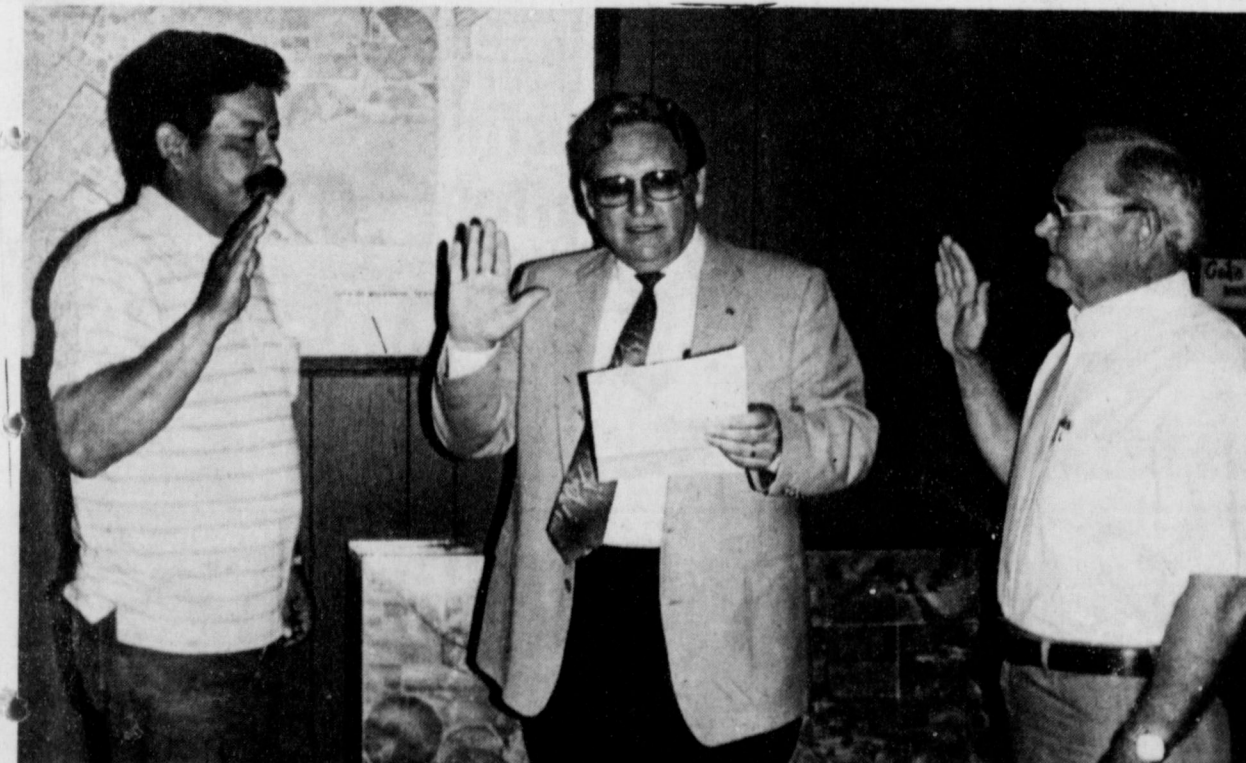
Priority will be given to "High Risk" youth but will also include Parenting Workshops, Community Awareness Programs, and Special Populations training. She is already scheduled to teach a summer course for Clovis Community College to assist parents of troubled teens called, "Today's Youth--A Generation At Risk"!

Mrs. Johnson resides in Muleshoe where her husband, Roald "Buck" Johnson is assistant superintendent of schools. She was highly recommended to her position by Charly Skaggs, National President of the U.S. Juvenile Detention Association who had worked with her on a Drug/Crime Prevention Program funded by the Governor's Office, in Texas.

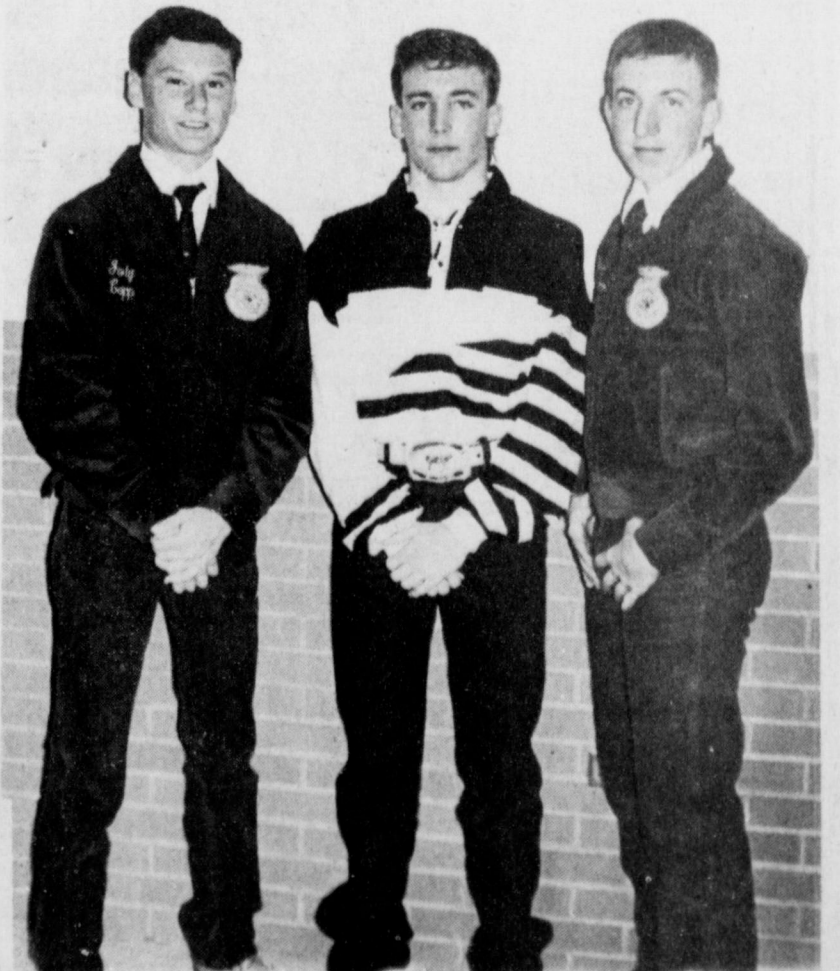
She has over 10 years of experience in the field of High Risk Behavior Prevention. In addition to the above mentioned program in Texas, she has worked as a consultant for the Drug Free Schools and Communities Program, U.S. Office of Education, Washington.

Mrs. Johnson recently resigned from being the Muleshoe Chamber of Commerce manager.

"We think the "One" upstairs must Cont. Page 6, Col. 1



ADMINISTERS THE OATH OF OFFICE---Mayor Darrell Turner administered the oath of office to A.V. Wood, right, and Juan Chavez, left, at the City Council Meeting Tuesday morning. Wood received 40 votes in the election Saturday and was returned to his seat on the council, District 2. Chavez received 89 votes and was elected to District 1. (Journal Photo)



LAZBUDDIE FFA BANQUET---Justin Johnson and Clent Hurst are the Lone Star Candidates for the Lazbuddie FFA Chapter and will attend Area Convention in Amarillo. Jody Copp is the District Star Chapter Farmer for the chapter. (Journal Photo)

Lowe's
MARKETPLACE

Pay-n-Save
QUALITY AND SERVICE

SPRING SALE

SHUR FINE

COKE
ALL FLAVORS
6 PK./12 OZ. CANS
\$1.79

HEAVY GRAIN FED BEEF
ROUND STEAK
LB. **\$1.69**

SHURFINE REG OR HOT
PORK SAUSAGE
1 LB. ROLL **\$1.39**

SHURFINE FULLY COOKED BONELESS 6-8 LB. AVG.
WHOLE HAMS
LB. **\$1.99**

SHURFINE FULLY COOKED BONELESS
Half Hams **\$2.09**
1.70-4.68 LB. AVG.

SHURFINE SLICED **BACON** 1 LB. PKG. **\$1.29**

Texas 1015 Super Sweet
YELLOW ONIONS
LB. **39¢**

Us. No. 1
RUSSET POTATOES
79¢

HEAVY GRAIN FED BEEF Boneless Round Steak LB. \$1.89	HEAVY GRAIN FED BEEF Boneless Bottom Round OR Rump Roast LB. \$2.39	HEAVY GRAIN FED BEEF Sirloin Tip Steak LB. \$2.59
HEAVY GRAIN FED BEEF Boneless Round Steak LB. \$1.89	HEAVY GRAIN FED BEEF Boneless Bottom Round OR Rump Roast LB. \$2.39	HEAVY GRAIN FED BEEF Sirloin Tip Steak LB. \$2.59

HEAVY GRAIN FED BEEF Sirloin Tip Roast LB. \$2.49	Extra Lean Ground Round LB. \$1.99	Shurfine Quality Meat Franks 12 OZ. PKG. 69¢
HEAVY GRAIN FED BEEF Sirloin Tip Roast LB. \$2.49	Extra Lean Ground Round LB. \$1.99	Shurfine Quality Meat Franks 12 OZ. PKG. 69¢

FLORIDA SUPER Sweet Corn 4 EARS FOR \$1	FRESH Green Beans LB. 79¢	NEW Red Potatoes LB. 49¢	New Crop Cantaloupe LB. 49¢
Dole Carrots 2 LB. BAG 59¢	Zucchini Squash LB. 59¢	Juicy Mangos EA. 59¢	Green Onions or Bunch Radishes BUN 279¢

SPRING SALE



SHURFINE
Pork & Beans, Fancy Cut Green Beans or Cs/Wk Golden Corn
3.99¢
15.5 TO 16 OZ. CANS

SHURFINE
Paper Towels
JUMBO ROLL
2.99¢
FOR

SHURFINE
Orange Juice
12-OZ. CAN **79¢**

SHURFINE
Macaroni & Cheese Dinners
7.25-OZ. BOX
6.99¢
FOR

2-PLY Unscented
Petal Soft Bathroom Tissue
EXTRA Thick
36

2-PLY Unscented
Petal Soft Bathroom Tissue
EXTRA Thick
24
Baby Clean Ups **\$2.79**

SHURFINE
Elastic Leg Diapers
CONVENIENCE PACK
\$3.99

SHURFINE
Petal Soft Bath Tissue
9-ROLL PKG.
\$1.89

SHURFINE
Shurfine Coffee
REG. ELECTRIC PERK OR DRIP
13-OZ. CAN **\$1.29**

SHURFINE
Shurfine Sugar
GRANULATED
4-LB. BAG **\$1.29**

FROZEN FOODS

SHURFINE
Chocolate Syrup
24-OZ. SQZ. BTL. **\$1.19**

ASSORTED Shurfine Ice Cream 1/2 GAL. SQ. **\$1.19**

ASSORTED FLAVORS Shurfine Twin Pops PKG. OF 6 **69¢**

HASH BROWN OR CRINKLE CUT Shurfine Potatoes 2-LB. BAG **\$1.19**

SHURFINE Whole or Cut Okra 16-OZ. BAG **\$1.19**

WHOLE KERNEL CORN - GREEN PEAS - CUT BROCCOLI Shurfine Vegetables 16-OZ. BAG **99¢**

SHURFINE Frozen Raspberries 18-OZ. CAN **\$1.49**

SHURFINE Whipped Topping 12-OZ. TUB **99¢**

Lowe's MARKETPLACE
401 W. Amer. Blvd. Muleshoe 272-4585

Pay-n-Save
515 W. Amer. Blvd. Muleshoe 272-4406

PRICES EFFECTIVE MAY 3-9, 1992

WE RESERVE THE RIGHT TO LIMIT QUANTITIES IN TEXAS

Our Best to You!

Greater Texas Program Assist Unemployed

"We are bringing a very unique two-day conference to Lubbock," Texas Employment Commissioner Mary Scott Nabers said. *Greater Texas*, a two-day statewide program designed to assist both employers and the unemployed, will be at the Lubbock Memorial Civic Center April 29 and 30. Officials from 19 state agencies will be on hand to assist participants.

"We will do two things before the conference ends," Nabers said. "On day one, we will conduct a Jobs for Texans teaching seminar that is guaranteed to give unemployed and underemployed individuals a competitive advantage in today's labor market. Then, on day two, we will hold a seminar for employers that will provide a great amount of assistance in the area of business."

The first day of the conference, Jobs for Texans Today and Tomorrow, designed to help individuals find jobs, will feature statewide experts. The Jobs conference will be held at the Lubbock Memorial Civic Center April 29. Topics of instruction include "Who Gets Hired and Why," "Self Evaluation and Job Analysis" and "Communication Skills and Interviewing." Participants will also have the opportunity to hear from local employers what they look for when they hire job candidates. Local TEC officials stressed that this is not a job fair, but rather a teaching conference. Attendance is free, but reservations are imperative due to limited seating.

Employment counselors, community colleges, proprietary schools and state agencies that assist the unemployed will be on hand to answer specific questions on dealing with today's job market. The Jobs for Texans Today and Tomorrow seminar will focus on self-sufficiency and making the most of an independent job search.

The second day of the program, the Texas Business Council, will be held at the civic center on April 30. The Texas Business Council

will provide assistance to business owners, managers and economic development planners. Participants will learn about the legal issues of hiring, firing, sexual harassment, insurance and workers' compensation, dealing with regulatory agencies, reducing taxes, incorporating new laws into business practice, discovering new means for economic development and utilizing state resources.

The Texas Business Council also offers local employers an opportunity to attend special breakout sessions to ask state agency representatives specific questions pertaining to their individual businesses. There will be a \$35 conference charge to cover breakfast, lunch and all materials.

As an added bonus, Texas Business Council coordinators will provide economic development leaders with labor market information previously unavailable to communities. This type of data will place dramatic focus on what is happening in Lubbock.

Ruth Parker

Funeral Services

To Be Held Today

Graveside services for Ruth Parker, 75, of Earth will be held at 10 a.m. today in the Earth Memorial Cemetery with Jack Tiffin and Warren Meeks officiating.

She died at 6 a.m. May 5 in her residence. She was born in Germany, moving to Earth in 1962. She married A.W. Parker in Plainview September 18, 1962. She was a homemaker and a member of Jehovah's Witness in Muleshoe.

Survivors include her husband, A.W. Parker; one daughter, Ingrid Boteler of Post and two grandchildren.

The family suggests memorials to the Hospice of the Plains, 4416 Olton Rd., Plainview, Texas 79072.

James Latimer, local TEC spokesman said that the *Greater Texas* initiative is the most comprehensive effort to date. "We intend to help a lot of local people in these two days and the assistance provided should have a positive impact on the local economy."

To register for Jobs for Texans, go by a local TEC office. For information on the Texas Business Council, call 1-800-222-4835, or to order a registration form, write 638 TEC Building, 101 E. 15th St., Austin, Texas 78778-0001.

Jobs for Texans participants are able to attend day one for free due to the generosity of several local sponsors. Area sponsors include Industrial Molding Company, Lubbock National Bank, Lubbock Job Service Employer Committee, Lubbock Power and Light and Water, Plains National Bank, Texas Instruments and University Medical Center.

To date, there are 15 statewide corporate sponsors of the project including Xerox, Tandy Corporation/Radio Shack, Texas Instruments, Andersen Consulting Drake Beam Morin, McLane Company, Southwestern Bell Telephone, Mobil Exploration and Producing, IBM Corporation, Southwest Airlines, RGK Foundation, Women's Foundation of Texas, 3-M, Continental Airlines, Conquest Airlines and The Perot Group.

The *Greater Texas* statewide touring team includes representatives of the Comptroller of Public Accounts, Governor's Committee on People With Disabilities, Texas Department of Insurance, Texas Association of Private Industry Councils, Texas Commission on Human Rights, Texas Department of Commerce, Texas Department of Human Services, General Land Office,

Horace C. Burris Funeral

Services Held Today

Funeral services for Horace C. Burris, 67, will be held at 11 a.m. today in the First Assembly of God Church with the Rev. Dean Reid, pastor, officiating.

Burial will take place in the Muleshoe Cemetery under the direction of Ellis Funeral Home. He died at 1:10 a.m. May 4 in the Southern Manor Nursing Home in Lubbock.

He was born in Estellene, Texas. He lived in Ardmore, Oklahoma before moving to Muleshoe in 1934. He was a cotton ginner and a veteran of World War II. He served in the U.S. Marine Corps. He was a member of the First Assembly of God Church.

Survivors include one son, Steve Burris of Burelson; two brothers, Bobby Burris of Muleshoe and Herman Burris of Sanger, California; one grandson, Dameon Burris.



Horace C. Burris

Muleshoe Journal USPS 067-820
 Established February 23, 1924. Published Bi-Weekly. Muleshoe Publishing Co., Inc. Every Thursday at 304 W. Second, Box 449, Muleshoe, Texas, 79402. Second Class Postage Paid at Muleshoe, Texas, 79402.

MEMBER 1992
TEXAS PRESS ASSOCIATION

L.R. Hall, Publisher
 Sammie Hall, Vice-President/Computer
 Evelyn Harris, News
 Joyce Adams, Secretary
 Holly Milbapp, Advertising
 Diana Bernice, Classified

SUBSCRIPTIONS:
 Muleshoe Journal and Rules County Journal
 Rules and surrounding counties
 By Mail \$18.75
 Muleshoe Journal and Rules County Journal
 Elsewhere \$17.50
 Muleshoe Journal and Rules County Journal
 B. Carter Yearly \$14.00

Advertising Rate Card on Application
 Advertisers should check their ad the first day of insertion. The Journal will not be liable for failure to publish an ad or for a typographic error or error in publication except in the event of the cost of the ad for the first day of insertion. Advertisers for errors will be limited to the cost of that portion of the ad where the error occurred.

**#1 FIT
 #1 COMFORT
 #1 WEAR
 #1 SATISFACTION**

ANTHONY'S
 321 Main Muleshoe 272-3478

Texas Education Agency, Texas Employment Commission, Texas Higher Education Coordinating Board, Texas Rehabilitation Commission, Texas State Technical College, Texas Water Commission, General Services Commission, Texas Department of Transportation, Workers' Compensation Commission, Internal Revenue Service and Office of the Lieutenant Governor/Secretary of State.

Mary Adelyn Swafford

Funeral Services

Held Monday

Funeral services for Mary Adelyn Swafford, 99, of Plainview were held at 11 a.m. Monday in First United Methodist Church with the Rev. Max Browning, pastor, officiating.

Burial was in Plainview Memorial Park under direction of Lemons Funeral Home.

Mrs. Swafford died at 7:30 p.m. Friday in Central Plains Regional Hospital after a lengthy illness.

She was born in Bexar County and had lived in Mullin and Muleshoe before moving to Plainview. She married Scott Swafford on October 15, 1920, in Corsicana. He died on July 1, 1980. She was a retired teacher and had been a PTA president. She had also been president of the Muleshoe Friendship Club and was a member of the Muleshoe Retired Teachers Association and First Baptist Church of Muleshoe.

Survivors include a daughter, Scottie Morris of Plainview; a son, Porter of Peru, Ind.; three grandchildren and four great-grandchildren.

The loud talker substitutes volume for intellect.

A grown-up is someone able to keep from talking.

There are a few things in life we understand, we think.

HEALTH INSURANCE CALL Mark Morton 109 S. 1st Muleshoe 272-7519

State Farm
 Mutual Automobile Insurance Company
 Home Office Bloomington, Illinois

BIBLE VERSE

Father, forgive them: for they know not what they do.

1. Who made the above request?
2. Upon what occasion?
3. Who were "they"?
4. Where may his verse be found?

Answers:
 1. Jesus.

2. As he hung on the cross on Golgotha.

3. The Roman soldiers, who crucified Him specifically, but generally to the Jewish leaders who had caused his death.

4. Luke 23:34. A hard task is eased by the application of immediate energy.

Not what you read but how you read it is the key to knowledge.

A little confidence in a person can often produce great results.

Invest In Futures.

When our kids grow up, there's no telling what they'll be. But before they can become the leaders of tomorrow, they need proper health care today. Now, you can invest in a child's future. When you buy a DQ[®] Miracle Meal, we'll donate 50¢ to the Children's Miracle Network, which provides hospital funding for children in your area.

DQ[®] MIRACLE MEAL
 Country Basket[®] & 16-oz. Coke[®] \$2.99
 Offer good May 4-24

Dairy Queen
 Proud Sponsor of the Children's Miracle Network

SAVINGS JUST KEEP STACKING UP...

...with the Dual Fuel Heat Pump.

Two reasons why it can save you money:

High Efficiency. The Dual Fuel Heat Pump makes the most of every energy dollar. It is as much as twice as efficient as your old air conditioner. So, you start saving money the moment you switch on your Dual Fuel Heat Pump.

Low Electric Rates. Residential prices for electricity are 21% lower in the SPS service area than they were nine years ago. (Can you think of anything else that costs that much less than it did in 1983?) Our prices are among the lowest in the nation.

Dual Fuel Heat Pump

WE LOVE MOMS!

RCA 25" diagonal ColorTrak[®] TV

- 24-Button ChanneLock[™] Digital Remote
- AutoProgramming 178-Channel Cable Tuning[®]
- 110° Reduced Depth Big-Screen Picture Tube
- Hi-Con[™] Screen
- On-Screen Clock, Sleep and Alarm Timer

* Check your cable company's compatibility requirements

\$499.95 w/t

RCA Model G25119HP 25" diagonal

Motorola Tote Phone

\$99.95*

*Requires Activation.

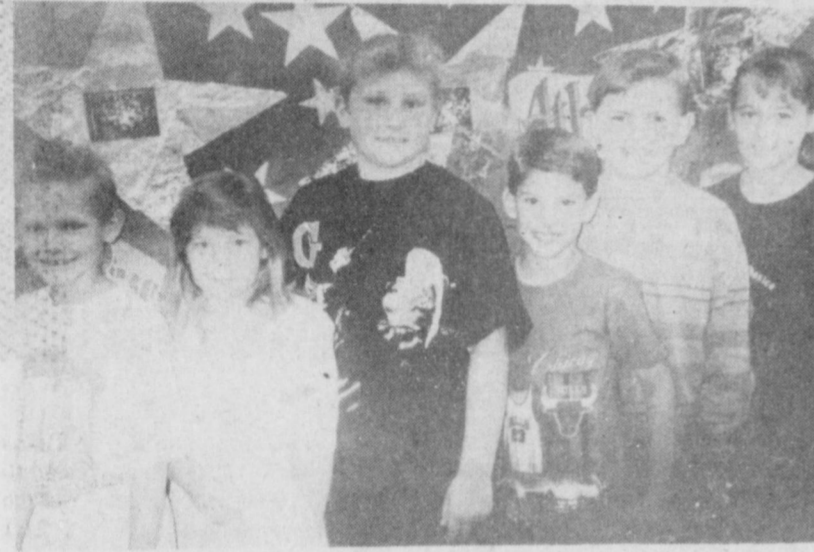
Wilson Appliance, Inc.

Liberty Cellular Agent

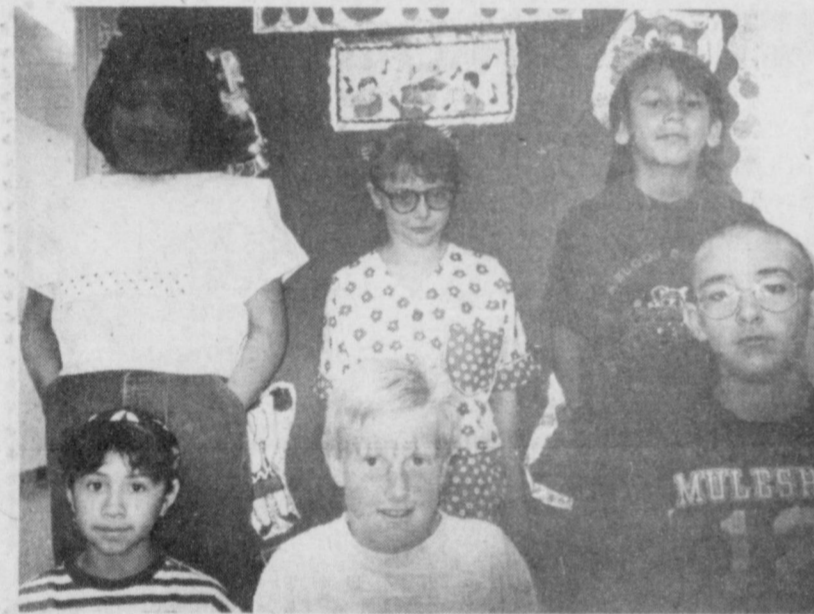
117 Main Muleshoe 272-5531



HONORED--in connection with Nurses' Week at the Muleshoe Area Healthcare Center are these employees: (back row) Nancy Patterson, Certified Nurse's Aide; Ottie Chester, LVN Charge Nurse; Dorena Woodruff, Certified Nurse's Aide; Dora Gonzales, Nurse's Aide; Margie Spencer, Nurse's Aide; (front row) Maria Flores, Certified Nurse's Aide; Velma Lovvorn, R.N., Director of Nursing; Evagelina Leal, Certified Nurse's Aide; Delma Espinoza, Certified Nurse's Aide. (Journal Photo)



STUDENTS OF THE MONTH--at DeShazo Elementary this month are (left to right) Penny Churchman, Drew Robinson (3rd grade); Kim Dickerson, Bryce Embry (4th grade); Kelly Morris, Josh Kitchens (5th grade). (Journal Photo)



COMPUTER AND P.E. SPOTLIGHT--award winners at DeShazo Elementary are (back row--Computer): Tommie Hernandez, Stephanie Marlow and Bobby Ellis; (front row--P.E.): Carmen Ruiz, James Barrett and Joseph Quintana. (Journal Photo)



LIBRARY AND ART SPOTLIGHT--award winners at DeShazo Elementary are (back row--Library): Lisa Johnson, Dusty Kidd and Alma Gonzales; (front row--Art): Darrell Lewis, Leisha Wallace, Kika Olivarez. (Journal Photo)

CAI Lab Names Student Of Month

Monica Gallegos, Muleshoe High School sophomore, was named Student of the Month for April in the CAI computer lab, according to Mrs. Kim Silhan, CAI instructor. The CAI lab was established as part of the Job Training Partnership Act. Monica was chosen for this honor because of her diligent performance of the skills for which the lab is designed. Her selection was based on (1) the overall performance on the computer for the month; (2) attitude in class.

The CAI lab is part of the student's regular classroom assignments in their math or English classes. They are referred by the classroom teacher for reinforcement of skills that are presented in English and math. The students come into the lab two days a week for 20 minutes each session; they work on the computers at their own level.

The monthly goal established for each student in the CAI lab it to achieve 250 correct answers each month. The students that have achieved their goal of 2000 correct answers for the month of April include: Yolanda Galindo, Filemon Olivarez, Monica Gallegos, Edgar Lopez, Juan Lopez, Berlinda Cavoza, Scott Moore, Sonia Sigala, Jame Barron, Margaret Crawford, Mandy Edwards, Clifton Finch, David Lewis, Wally Guerra, Albert Marquez, Angie Rincon, Stephanie Gilliam, Erma Flores, Sean Lindt, Justin Gardner and Lenny Pineda.

May is National Foster Care Month, and the Texas Department of Human Services (DHS) would like to take this opportunity to recognize its more than 3,000 Texas heroes who are foster parents across the state.

DHS is proud of the families who have accepted the challenge of taking foster children into their hearts. The children of Texas are our future. Through patience, acceptance, and understanding, foster parents give children who have been unable to live with their birth parents the joy of a loving home.

For more information, contact the foster parent recruiter at you local DHS office at 385-6481 or call the "Dare to Love" hotline at 1-800-233-3405.

Human Services Needs Foster Parents

Today there are more than 40,000 infants, children and youth in foster care.

They are infants testing positive for the virus which causes AIDS, addicted to crack, cocaine or alcohol, or have other serious medical problems. They are abused or neglected children. They are pregnant teens, teen mothers and youths with little schooling and no job skills.

For each of these, there are foster parents who voluntarily provide shelter, support, care and love. These foster parents work with human service agencies and birth parents to help strengthen family life and play a vital role in permanency planning for the children in their care.

But foster parents must have the support and commitment of the national, state and local communities to carry out their responsibilities.

May has been proclaimed Foster Care Month in Bailey County. This month honors the individuals involved in the Foster Care Program. There is a need for more foster families in Bailey County. For more information call 385-6481.

CALENDAR OF EVENTS

Thursday, May 7

- 12 noon-American Cancer Society
- 2 p.m.-Muleshoe Hobby Club
- 6:30 p.m.-TOPS
- 7:30 p.m. Muleshoe Mule Skinners

Friday, May 8

- 6:30 a.m.-Kiwanis
- 7:30 p.m.-Three Way Jr.-Sr. Banquet

Tuesday, May 12

- 12 noon-Rotary
- 12 noon-Jennyslippers
- 7:30 p.m.-Muleshoe Athletic Boosters
- 7:30 p.m.-Rebekah Lodge

Wednesday, May 13

- 12 noon-Lions Club

*In the late 1970s, Texas became one of the first states to recognize May as Foster Care Month--a tradition that has since caught on nationwide.



SCAC CITIZEN--of the month named April 27 is Carolyn Johnson, center. Galin Latham, left, and Patricia Del Toro make the presentation. Johnson spoke to the group on statistics relating to teenage deaths and ways to develop leadership skills. (Journal Photo)

A good neighbor knows how to live and let other people alone.

The greatest show on earth--nature at work in the spring!

Honre a su Madrecita con una tarjeta La Flor para el Día de las Madres.

Ben Franklin
Mon-Sat 8 a.m.-8 p.m.
Sun. 12-5 p.m.
2104 W. Amer. Blvd. 272-3855

LA FLOR

Remodeling Our Freezers!

Please Pick Up Your Meat!!

<p>1/2 Beef \$1.55 lb. Cut & Wrapped To Your Specifications!!</p>	<p>Larry's Home Cured Bone-in Winkler's Special Hams \$1.99 lb.</p>
<p>KC Strips \$3.99 lb. Cut & Wrapped To Your Specifications!!</p>	<p>Pork Ribs \$1.29 Cut & Wrapped To Your Specifications!!</p>
<p>B-B-Q Links German Sausage \$2.19 lb.</p>	<p>Pork Chops By The Loin \$1.69 lb.</p>

Winkler Meat Co.
401 Main Let Us Cater Your Next Party! 272-4703

Just add love

Send the **FTD Mother's Love Bouquet.**

Or the **FTD Spring Garden Bouquet.** Just call or visit us today. Mother's Day is Sunday, May 10.

Decorators Floral & Gift
616 S. 1st Muleshoe 272-4340

It's as easy as



FIELD TRIP--to Kristy's Plants May 1 brought together nine first grade classes from Dillman Elementary for explanations on fruit trees, shade trees, and evergreen trees, the shadehouse and the greenhouse at Kristy's. The talks were given by Kristy and Arnold Price, owners of the nursery. Here Arnold Price explains some details about flowers to the children. (Journal Photo)

Share Care To Gain Time

By A. Carman Clark

There's an old tale about a cook who quit after years of faithful service because the job was too "daily." That's a good term for the repeated tasks of maintaining a home. Cooking, dishwashing and tidying are daily. Cleaning and laundry are never done and finished. Cleanliness and orderliness differ. A home may be clean but in a state of disorder. It can also be orderly and dirty. What's your personal goal? How can it be accomplished and leave time to squander in the spring sunshine?

Get help--free or paid. Unless you live alone or are focused on training family members to live forever as guests, there must be some free help on the premises. A six-year-old can wield a sponge mop. The first moppings may not meet your standards, but weekly practice (as with the soccer or basketball teams) will develop skills.

Window washing improves when it's done to music. Waltzes might give more swing into the corners, but the latest tapes may get the job done faster every time.

The hands that scatter popcorn before the TV are able to plug in the vacuum cleaner and suck up that mess and others. Inexperienced workers (regardless of age, sex and past habits) may try doing a lousy job so they won't get asked to help again. This tactic has been employed since 800 B.C. However, sharing home chores helps every family member to be able to live in a reasonably clean home, being responsible for sharing tasks as well as the food and shelter.

There are times when paid help may be a wise investment, even when the budget is tight. Coming home to a house that's been vacuumed, dusted and mopped takes off some pressure, and it might result in everyone's being able to do a better job at the office or at school that week.

A person with no personal or emotional ties to the house can probably zap through routine cleaning twice as fast as you can.

They won't use any time thinking of Aunt Hattie's birthday card that should be written, sighing over junior's outgrown sweater or checking each book and magazine.

Simplify routines to save time. Eliminate stuff that has to be lifted and dusted. Give lessons in proper loading of the washer and dryer to anyone not yet doing their own laundry. Buy casters or rollers for beds that don't have them so each person can more easily move that piece of furniture for making the bed and changing the sheets. Decide on new, up-to-date family pickup rules. Foster the one about "Whoever cooks does not have to do the dishes."

There's an old housekeeping adage: "A good sweep is better than a hasty mop," good to remember when unexpected company is about to arrive. But every day you and your family arrive at the door. When you share the care, no one person has to dread the ever-present evil of work that's never done. More time for everyone. More peace of mind in a tidy home.

True
One nice thing about egotists; they don't talk about other people.
-The National Observer.

COTTAGE POTATO SALAD

- 1/2 C. buttermilk
- 1/4 C. mayonnaise or salad dressing
- 1/4 C. plain yogurt
- 1/2 of a 1 oz. envelop (2 T.) onion flavor dry salad dressing mix
- 2 pounds new or small red potatoes
- 1 12 oz. carton cream-style cottage cheese, drained
- 1/2 C. cubed Wisconsin Colby cheese (2 oz.)
- 1/2 C. thinly sliced radishes
- 2 T. thinly sliced green onion
- 1/4 t. salt
- 1/4 t. pepper
- 2 hard-cooked eggs, thinly sliced
- 1 C. of thinly sliced celery

In a small mixing bowl combine the buttermilk, mayonnaise and yogurt. Use wire whisk or fork to stir in the salad dressing mix. Set aside.

In a large saucepan cook the potatoes in enough boiling salted water to cover; drain. In a large mixing bowl combine the cottage cheese, celery, Colby cheese, radishes, green onion, salt and pepper. Toss lightly to mix. Gently fold in salad dressing; cover and chill. At serving time, garnish with hard cooked eggs. Makes 8 to 10 servings. Preparation time: 40 minutes plus chilling.



MUSIC SPOTLIGHT--award winners at DeShazo Elementary are Darrell Lewis, Phillip Hardt and Linda Underwood. (Journal Photo)

Matthews Wins Scholarship

Tory Matthews, of Dimmit High School was awarded the Frances Larkin McCommon Scholarship to attend The Savannah College of Art and Design. The scholarship was awarded after a review of work submitted for the 1992 International Competition for Student Artists in January.

Applicants from 32 states and 17 countries entered in the following categories: architecture, computer graphics, drawing, fashion design, fiber arts and textile design, graphic design, illustration, jewelry, mixed media, painting, photography, printmaking and video. A panel of eight international artists selected the 90 winning pieces from over 1000 entries received.

The Savannah College of Art and Design is a private, non-profit, accredited institution, selected as one of the 150 best buys in American higher education by the College Research Group, and ranked in the top 10 percent of all colleges and universities by Peterson's Competitive Colleges. SCAD grants the four-year Bachelor of Fine Arts degree and the two-year Master of Fine Arts degree in art history, computer art, fashion, fibers, graphic design, historic preservation, illustration, interior design, painting, photography and video, as well as the five-year Bachelor of Architecture degree. SCAD is accredited by the Commission on Colleges, Southern Association of Colleges and Schools. The B.Arch. program is additionally accredited by the National Architectural Accrediting Board.

Tory is the daughter of Derrell and Treena Matthews, formerly of Muleshoe, granddaughter of Don Matthews and Mary Anna Bryant and Junior and Barbara Matthews of Lazbuddie and great granddaughter of Nola Ivy, formerly of Lazbuddie.

Caring for a child with disabilities takes more than a big heart. It takes courage, time and hard work. Maybe that's why so few people think of doing it. But the many who do accept the challenge--through foster parenting or adoption--wouldn't trade their experiences for anything. What do they know that you don't? Learn more about sharing your home. Call 1-800-233-3405. "Dare to Love." Become a Texas hero.



Tory Matthews

*High-fat diets are likely to be high-calorie diets. Fat-loaded calories most likely will mean a weight gain, especially if a person is not getting much exercise. Obesity, defined as being 40 percent or more overweight, could increase the risk of colon, breast, and uterine cancers.

*In 1991, the number of Texas children in foster care rose to 7,861--a 9 percent increase over the previous year and a rise of 21.1 percent from 1989.

*Use less butter, margarine, and oils. Instead, use more herbs and spices to flavor meats and vegetables.

Now Open For Business Country Cutter



Owner

Jana StClair

Full Service Hair Salon

Open Wednesday, Thursday

and Friday

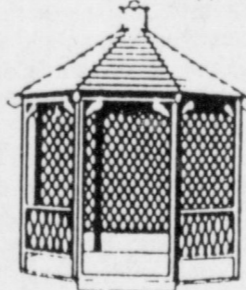
Call 925-6767

For Appointment



Fry & Cox True Value Hardware & Lumber
401 S. 1st Muleshoe 272-4511

For Mother's Special Day



Build Her That Special "Honey Do"
She's Been Wanting For A Longtime!!

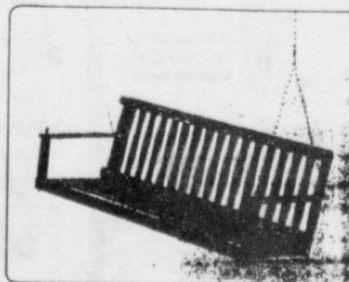
Shop Our Lumber For
Lots Of Ideas



Great Selections Throughout
The Store!!



5ft.
Porch
Swing
\$35.00



White Rattan
TRINKET
BOXES

387
Each



The Bread
Machine

\$169.99

Hours: Mon. - Sat. 8 a.m. - 6 p.m. Sun. 1:30 p.m. - 4:30 p.m.

Fry & Cox True Value
Hardware, Lumber & Building Materials
401 S. 1st Muleshoe 272-4511



NEW SINGER School Machines

WITH PROFESSIONAL SERGING STITCH

Our Singer Education Department placed factory orders in anticipation of large school sales. Some of these machines remain unsold. They cannot be held over but will be liquidated to the public!

These NEW 1991 machines feature simplicity of operation and have built in stitches including: straight sewing, zig zag, buttonholes, elastic stitch, invisible blind-hem, monogram, satin stitch, embroidery, applique, sew on buttons, top stitching, serging, and special sweatshirt applique. No old fashioned cams needed. Manufacturer's Warranty. These machines are heavy duty. They will hem jeans and sew all fabrics from sheer nylon to leather without pressure adjustments.

Your price with this ad is \$198

Without this ad \$419.00

Your check, MC, Visa, Discover, Lay-a-way welcome.

ONE DAY ONLY!

Wednesday, May 13 - 10 a.m.-6 p.m.

BEN FRANKLINS

2104 West American Blvd. - Muleshoe

Car Show

Cont. From Page 1

of Amarillo won second place. Third place went to Delbert Dillard of Dumas.

In the Mild Custom Division, Daniel Hara of Clovis won first place and Doug Keesee of Plainview won second place.

Kristi and Grady Adrian of Muleshoe won first place in the Open Class Division. Second place went to Herta of Plainview and Rael Williams won third place.

In the Classic Chevrolet Division, Sonny Smith of Clovis won first place, Gene McWilliams of Brownfield, second and William Jones of Amarillo third place.

Randy Smith of Muleshoe received first place in the Antique Division. Darrell Sawyer of Earth received second place, and Alton Garner of Levelland received third place.

In the Classic Mustang Division, Bill Gates of Clovis received first place; Bill Nowell, second place; and Allen Mount of Muleshoe, third place.

Billy Franklin of Denver City took first place in the Classic Pick-up Division, and Mike Hanes of Friona, second.

In the Pick-up Custom Division, Dave Wolsey of Clovis won second place; and Tom Spiggin of Farwell, third place.

Carlos Pena took third place in the Mild Pick-up Division, second place went to Jessie Suveto of Dimmitt, and Ricky Phillips received first place.

Robert Garcia received the Best Engine Award, Christy and Grady Muleshoe...

Cont. From Page 1

During the course, students received instruction in the maintenance of stock records and the procedures necessary to receive, store, issue and ship supplies and material.

Orozco is the son of Mr. and Mrs. Elidoro Orozco of Muleshoe.

Banquet...

Cont. From Page 1

The meeting was closed with the pledge of allegiance to the flag.

A meal consisting of roast beef, baked potato, green beans, hot rolls and tea was served.

Johnson...

Cont. From Page 1

be watching over us to send Carolyn our way", stated Dr. Dick Walsh, executive director, Mental Health Resources. "Her varied experiences in the field of prevention and her special talents with youth will be real assets to our agency", he added.

Mrs. Johnson began her responsibilities on April 21.

Adrian had the Best Display, Randy Smith, Best Paint Job; Glenn McWilliams, Best Interior; and the People's Choice Award went to Randy Smith.

The Best of Show trophy went to Robert Garcia.

Trophies were awarded to the winners in each division. "A special thanks goes to Low's Market Place, First Bank and Five Area Telephone for their help in sponsoring the Car Show.

Heart Association Holds Annual Meeting

The Muleshoe Heart Association held their annual meeting Friday, May 1 at the 16th and D Church of Christ. Laura Seales, president, was in charge of the meeting.

Mrs. Seales introduced and welcomed the guests, Dee and Patti Puckett; Magann Rennels, Channel 6; Evelene and Wayland Harris, Muleshoe and Bailey County Journals; Kay and Kimberley Griswold; Carolyn Kennedy; and Dr. Tom Tenner of Texas Tech.

Dr. Tenner, speaker, thanked the local group for inviting him back to their annual meeting. He stated that he was in Muleshoe for the annual meeting in 1983, and enjoyed it. "I am involved in and very supportive of the Heart Association," Dr. Tenner said. "Due to research we have come a long way in treatment of the heart. In 1945, there was no drug for hypertension (high blood pressure). Over the years a number of medications have been found. A lot of research has gone into cholesterol and the scientists are still studying it."

Dr. Tenner went over a list of things found for heart healthy living. The following items are listed among the things each generation needs for heart healthy living:

Do not smoke. This may be the single best step toward improving health.

Find out if you have high blood pressure. If you have high blood pressure, follow your doctor's advice.

Eat a diet low in saturated fats and cholesterol. To prevent the development of a high cholesterol level.

Engage in regular physical activity. People of all ages are encouraged to develop a physical active lifestyle.

Know the signs of a heart attack. The warning signs are:

Jr. High Students Win District U.L.L. Meet

Junior high and elementary students from MISD participated in the District UIL and Literary Events held at Floydada on May 2. Muleshoe won the competition with 360 and one third points.

Friona came in second with 343 and a third points, Tulia, third, 327 points; Littlefield, fourth, 266

points; Dimmitt, fifth 266 points; and Floydada, sixth, 234 and a half points.

Individual junior high results include:

READY WRITING
Sixth Grade: Shelbi Robinson, sixth place

Seventh Grade: Jo Beth Gilleland, third; and Heather Hooten, sixth

Eighth Grade: Dacia Stewart, fourth, and Irene Logan, fifth

NUMBER SENSE
Seventh Grade: John Bryan Cowart, fourth; and Colby Latham, fifth

Eighth Grade: Dacia Stewart, fifth

SPELLING
Sixth Grade: Steven Madrid, first

Lazbuddie

PRINCIPAL'S 'A' HONOR ROLL FIRST GRADE

Lucas DeLeon, Isidro Galvan, Andy Martin, Brady Mimms, and Brittney Chapman

SECOND GRADE

Savannah Black, Jodie Coker, Kayla Copp, Kelsey Jones, and Kayla Kimbrough

THIRD GRADE

Kati Mimms

FOURTH GRADE

Bobby Martha and Leah Turner

FIFTH GRADE

Seth Black, Jacoby Jennings, Michael Jones, Josh Morris, Kia Morris and Cade Morris

PRINCIPAL'S 'A-B' HONOR ROLL FIRST GRADE

Lucinda Guzman, Andrew Martinez, Michelle Puckett, Tobin Redwine and Tyrel Templar

SECOND GRADE

Melicia Franco, Trevor Gartin, Jorge Mendoza, Trey Nickels, Candice Randolph, Shannon Redwine, Jorge Reyes, Colt Richardson and Jay Seaton

THIRD GRADE

Kendra Gallman, Maria Godinez, Fabian Guzman, Clifton Harris, Sarah Jennings, Sunshine Luevas, Cole St.Clair and Laura Via

FOURTH GRADE

Scottie Brown, Staci Foster, Tyler Gartin, Jason Jesko, Garrett

*Uncomfortable pressure, fullness, squeezing or pain in the center of the chest for more than two minutes.

*Pain that spreads to the shoulders, neck and arms.

*Severe pain, dizziness, fainting, sweating, nausea or shortness of breath.

"These are not just a list of things someone just thought up, they are things that have come out of years and years of research," Dr. Tenner said.

Following Dr. Tenner's speech, Mrs. Seales said, "In spite of the sagging economy, the Muleshoe Heart Association has had a good year. In January The Jump For Heart Jump-a-thon brought in \$6,800 and then we had a good Radio Day Auction." Hugh Young was in charge of Radio Day.

Certificates of Appreciation were presented to Howard and Judy Watson, West Texas Ranger; Evelene Harris, Bailey County and Muleshoe Journals; Magann Rennels, Channel 6; Tom Crane, KMUL; Brett McCasland, Stacey Conners, Carolyn Johnson, and Five Area Telephone. These certificates were presented by Hugh Young and Dorothy Bowers.

Mrs. Seales presented certificates to Patti Puckett, Sages Restaurant; Hugh Young, Radio Day; Virginia Bowers, Communications; Dorothy Turner, 10 years service; and Anne Floyd, Nominee Chairman.

Judge Cox Speaks To Jennyslippers

Bailey County Judge Marilyn Cox spoke at the Jennyslippers quarterly meeting Monday night at the Depot.

Using Muleshoe as her subject, Mrs. Cox spoke to those attending about the school, hospital and volunteer organizations. She also mentioned the Parades, Mule Days, and July 4th Celebration.

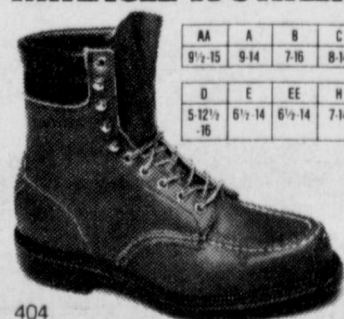
One of the ways that Judge Cox stated she thought that the Jennyslippers could help the community was educating the people on the election system. She also encouraged the people to let their opinions be known. "Contact their Legislatures and let elected officials know your ideas."

Judge Cox was raised on a farm at Amherst and graduated from Amherst High School. She attended West Texas State University for one year, then married her high school sweetheart whom she had started school with in the first grade. Her husband, Reagan, is an electrician.

They moved to Muleshoe 24 years ago. Reagan works at the Tolk Station. They have three children and two grandchildren. All three children started school and graduated from the Muleshoe school system.

Judge Cox owned and operated the Chick-n-Dock restaurant three years ago. Then she decided she wanted to run for County Judge. She started back to college in Clovis working on a Legal Studies degree. She began her first term as County Judge one year ago in January and says she loves it.

MIRACLE WORKER.



404
Sink your workin' feet into 8 inches of Red Wing soft... Red Wing support... and Red Wing fit. It's a miracle in all-day comfort.

The Fair Store
120 Main 272-5500



Made in U.S.A.
Craftsmen and dependability reserved for generations.

Seventh Grade: Stephanie Guerrero, second; Jo Beth Gilleland, fourth; and Jennifer Patterson, sixth

CALCULATOR

Seventh Grade: Carlos Rojas, third; and Stefan Sutton, fourth

Eighth Grade: Robbie Clapp, third

SCIENCE

Eighth Grade: Samuel Villarreal, fourth

ORAL READING

Sixth Grade: Aaron Purdy, second; and Katie Black, second;

Diana Harrison, sponsor, Reagan McElroy, first; Jamie Bohler, fourth, and Megan, Harlan, sixth. Margaret Gleason, sponsor; Junior High Boys: Robbie Clapp, first; Mark McGuire, second; and Jeffrey Wheeler, sixth. Sponsor was Myrlene Read.

ONE ACT PLAY
Muleshoe won first place. Daniel Garbarino was named Best Actor.

ALL-STAR CAST
Clay Myers, and Becky Viss; Honorable Mention went to Riley Byers and Allyson Field.



HEART ASSOCIATION SPEAKER---Laura Seales introduced Dr. Tenner, speaker at the Heart Association meeting Friday night. Mrs. Seales is president of the local chapter and Dr. Tenner is from Lubbock. (Journal Photo)

Garage Sale

Sponsored By

Lazbuddie Senior Class

Sat., May 9, 1992

9 a.m. - 5 p.m.

At Jarman Seed

801 W. Amer. Blvd. Muleshoe

To Mom,
With LOVE

Come By & See Our
Large Selection Of
Bedding Plants!

We Have In Our Greenhouse:

Hanging Baskets

Clay Pots - planted with Blooming Plants
(and Bring Your Own Container
and we will Custom Plant It For You!)

We Also Have In Stock:

Rose Bushes

Miniature Rose Bushes

Snow Ball Bushes

Lilacs

& Beautiful Mock Orange

Patio Bushes

FREE Delivery

Kristy's Plants

710 E. Amer. Blvd. Muleshoe 272-5536

May Specials!

40 Month
Battery
370
\$34.99

Champion Spark Plugs
Small engine plugs not included.
Resistor or Non-Resistor

\$1.89

Brake Pads or Shoes, Your Choice
Disc Brake Pads, 4 pads per set for 2 wheel installation. (740-5020 thru 5699)
Relined Bonded Brake Shoes, 4 shoes per set. With Exchange. (740-7307 thru 7992)

From \$13.99

POYNORS

103 Main Muleshoe 272-1552

Texas Oil & Gas Report

Texas Railroad Commission Chairman Lena Guerrero announced today the formation of a special committee to determine ways to increase demand for Texas natural gas products.

"The proration issue is nearing resolution," said Guerrero. "The focus must now shift to how we increase demand for natural gas products produced here in Texas. That is the critical issue if we are to create jobs in Texas, increase revenues to pay for public education, and significantly reduce air pollution."

The Chairman's Committee on Natural Gas Marketing is made up of representatives from all the segments of the energy industry including large and small producers, pipelines, local distribution companies, environmentalists, and state government officials.

"I appreciate these leaders serving in this capacity," said Guerrero. "This is a very aggressive, and action oriented, group of individuals who agree that we need to act this year on this critical issue."

Texas produces approximately 27 percent of all the natural gas consumed in the United States. It is estimated that, on a btu basis, proven natural gas reserves in the United States is almost equal to the proven oil reserves of Saudi Arabia.

"Increasing demand for natural gas products can lessen our dependence on unstable foreign sources of oil," said Guerrero. "But, even more importantly, increased demand will create jobs in Texas for an industry that has lost most jobs in the last decade than the auto and steel industries combined."

"This partnership, between the private and public sector, will enable Texas to coordinate our efforts on natural gas issues," Guerrero said. "The key to our success is working together."

Committee members who met with Guerrero on Monday included: T. Boone Pickens, Mesa; Frank Pitts, Pitts Energy; Rex Fuller, Fuller Oil and Gas; Kim Vaughn, Westchester Oil and Gas; Tom Coffman, Thomas D. Coffman; Peter Kelley, Southern Union Gas; Charles Vaughn, Atmos Corp.; Raymond Lewis, American Methanol Institute; David Bernsen,

Texas Dept. of Transportation; John Poulard, General Services Commission; Gary Compton, Kinkle, Cox, Eaton Coffield and Hensley; Howard Bell, Entex; David Killam, Killam Oil;

Dennis Loughridge, BHP Petroleum; Corbin Robertson, Jr.; Quintanna Minerals Corp.; Tony Sanchez, Jr., Sanchez and O'Brien; Erle Nye, Texas Utilities; David Biegler, Enserch; Michelle Foss, University of Houston; Cathy Bonner, Texas Dept. of Commerce; Ken Kramer, Sierra Club; Rex Fuller, Fuller Oil and Gas; and Wayne Johnson, United Texas Transmission Company.

Money Talk

by Kay Bailey Hutchison

Editor's Note: Texas State Treasurer Kay Bailey Hutchison addresses various issues related to personal finance and state government. However, these views are not intended to replace the advice of reputable financial advisors or other professional counselors.

"Mutual funds" are one of the most popular forms of investment today. They are collections of stocks, bonds, or other securities purchased by groups of investors and managed by investment companies. Investors' money flows into or out of a fund as they buy or sell shares. Like stockholders, investors in mutual funds become part owners of them. The net asset value, or "NAV," of a fund's shares depends on the market value of the fund's investment portfolio of securities at any given time. Most mutual funds are defined as "open-end" funds because an investment company deals directly with its investors, and because, by federal law, they must always stand ready to buy or sell their shares.

A mutual fund can be either a "load fund" or a "no-load fund." If you buy a "load fund," a sales charge, or "load," is deducted from your investment company and no fee is charged. When redeeming shares in a mutual fund, most redemptions are made at current net asset value per share, which means the actual dollars and cents value of each share. Be aware that some mutual fund companies may charge deferred sales charges, or "back-end loads," or redemption fees when you decide to "cash in" your shares.

Cancer Program Approved By College Of Surgeons

The American College of Surgeons Commission on Cancer has granted three-year approval to the Cancer Program at Scott and White Memorial Hospital in Temple, Scott and White first received such an approval for its Cancer Program in 1933. This is one of the oldest continued approved Cancer Programs in Texas.

Established by the American

College of Surgeons in 1932, the Approvals Program encourages participants to equip and staff themselves so that they are able to provide the best in diagnosis and treatment of cancer. Recognizing that cancer is a complex group of diseases, the program promotes consultation among family physicians, surgeons, medical oncologist, radiation oncologists, diagnostic radiologists, pathologists, and other cancer specialists. This multidisciplinary cooperation results in improved patient care.

An approval of a cancer program demonstrates that the necessary elements are in place and are functioning. The Cancer Program at Scott and White was commended for exceeding these guidelines.

Two patient care evaluation studies annually are required. Patient care evaluation has two primary goals: to improve the quality of patient care and to reduce the high cost of health care due to over-utilization of diagnostic tests, improper use of diagnostic and therapeutic measures, and under-utilization of early interventions which lead to increased morbidity and even increased costs. The Cancer Program at Scott and White participated in five such studies for

1991. The Cancer Program at Scott and White participates in the newly formed National Cancer Data Base (NCDB). The goal of NCDB is to present an annual summary of patient care for each site of cancer diagnosed and treated at participating hospitals. Such evaluations will enable physicians to appraise trends in specific treatments and survival of cancer; and to permit individual contributing hospitals to compare their results with state, regional and national figures.

The American Cancer Society estimates that 1,130,000 cases of cancer will be diagnosed in the United States during 1992. Although only one-fifth of the country's hospitals have approved cancer programs, over 70 percent of patients who are newly diagnosed with cancer are treated in these hospitals.

SMILES

Remarkable! Teacher--If Shakespeare were alive today, would he still be regarded as a remarkable man? Pupil--I'd think so, for he'd be over 300 years old.

NOTES, COMMENT

Life would be simple if everyone were sincere.

The best speaker is even better when he is brief.

Life is too short for a complete education.

The truth hurts people who do not like to face facts.

Cash Rewards Up To \$1,000 For Information! Call Bailey County Crime Line 272-HELP

Read the Classifieds

Shop Muleshoe First

Report Of Condition Muleshoe State Bank

Member F.D.I.C.

PUBLICATION COPY - COMMERCIAL AND SAVINGS BANKS CONSOLIDATED REPORT OF CONDITION (Including Domestic and Foreign Subsidiaries)

STATE 035 (3/91)

LEGAL TITLE OF BANK Muleshoe State Bank [379] PO Box 1010 Muleshoe, Texas 79347	STATE BANK NO. 1631-21
CITY Muleshoe	FEDERAL RESERVE DISTRICT NO. 11 13 16793
COUNTY BAILEY	CLOSE OF BUSINESS DATE 03/31/1992
STATE Texas	
ZIP CODE 79347	

		Dollar Amounts in Thousands			
		Bil	Mil	Thou	
ASSETS					
1. Cash and balances due from depository institutions:	a. Noninterest-bearing balances and currency and coin		1	608	1.a
	b. Interest-bearing balances		198		1.b
2. Securities			6	584	2.
3. Federal funds sold & securities purchased under agreements to resell in domestic offices of the bank & of its Edge & Agreement subsidiaries, & in IBFs:	a. Federal funds sold		5	875	3.a
	b. Securities purchased under agreements to resell		0		3.b
4. Loans and lease financing receivables:					
a. Loans and leases, net of unearned income		17	332		4.a
b. LESS: Allowance for loan and lease losses			379		4.b
c. LESS: Allocated transfer risk reserve			0		4.c
d. Loans and leases, net of unearned income, allowance, and reserve (item 4.a minus 4.b and 4.c)			16	953	4.d
5. Assets held in trading accounts			0		5.
6. Premises and fixed assets (including capitalized leases)			607		6.
7. Other real estate owned			1	163	7.
8. Investments in unconsolidated subsidiaries and associated companies			0		8.
9. Customers' liability to this bank on acceptances outstanding			0		9.
10. Intangible assets			0		10.
11. Other assets			700		11.
12. a. Total assets (sum of items 1 through 11)			33	688	12.a
b. Loans deferred pursuant to 12 U.S.C. 1823(j)			N/A		12.b
c. Total assets and losses deferred pursuant to 12 U.S.C. 1823(j) (sum of items 12.a and 12.b)			33	688	12.c
LIABILITIES					
13. Deposits:			30	693	13.a
(1) Noninterest-bearing		5	017		13.a(1)
(2) Interest-bearing		25	676		13.a(2)
b. In foreign offices, Edge and Agreement subsidiaries, and IBFs			0		13.b
(1) Noninterest-bearing			0		13.b(1)
(2) Interest-bearing			0		13.b(2)
14. Federal funds purchased and securities sold under agreements to repurchase in domestic offices of the bank & of its Edge & Agreement subsidiaries, & in IBFs:	a. Federal funds purchased		0		14.a
	b. Securities sold under agreements to repurchase		0		14.b
15. Demand notes issued to the U.S. Treasury			0		15.
16. Other borrowed money			31		16.
17. Mortgage indebtedness and obligations under capitalized leases			0		17.
18. Bank's liability on acceptances executed and outstanding			0		18.
19. Subordinated notes and debentures			0		19.
20. Other liabilities			255		20.
21. Total liabilities (sum of items 13 through 20)			30	979	21.
22. Limited - life preferred stock and related surplus			0		22.
EQUITY CAPITAL					
23. Perpetual preferred stock and related surplus (No. of shares outstanding		0		0	23.
24. Common stock (No. of shares	a. Authorized	50,000			24.
	b. Outstanding	50,000		1,000	24.
25. Surplus (exclude all surplus related to preferred stock)				1,000	25.
26. a. Undivided profits and capital reserves				720	26.a
b. LESS: Net unrealized loss on marketable equity securities				11	26.b
27. Cumulative foreign currency translation adjustments					27.
28. a. Total equity capital (sum of items 23 through 27)				2,709	28.a
b. Losses deferred pursuant to 12 U.S.C. 1823(j)				N/A	28.b
c. Total equity capital and losses deferred pursuant to 12 U.S.C. 1823(j) (sum of items 28.a & 28.b)				2,709	28.c
29. Total liabilities, limited - life preferred stock, equity capital, and losses deferred pursuant to 12 U.S.C. 1823(j) (sum of items 21, 22, and 28.c)				33,688	29.

MEMORANDA: Amounts outstanding as of Report of Condition date:
1. a. Standby letters of credit. Total
1. b. Amount of Standby letters of credit in memo 1.a. conveyed to others through participations

NOTE: This report must be signed by an authorized officer(s) and attested by not less than three directors other than the officer(s) signing the report.
I, the undersigned officer(s), do hereby declare that this Report of Condition has been prepared in conformance with official instructions and is true and correct to the best of my (our) knowledge and belief.

SIGNATURE OF OFFICER(S) AUTHORIZED TO SIGN REPORT
DATE SIGNED
APRIL 30, 1992

NAME AND TITLE OF OFFICER(S) AUTHORIZED TO SIGN REPORT
AREA CODE/PHONE NO.
806-272-4561

We, the undersigned directors, attest the correctness of this Report of Condition and declare that it has been examined by us and to the best of our knowledge and belief has been prepared in conformance with official instructions and is true and correct.

SIGNATURE OF DIRECTOR SIGNATURE OF DIRECTOR SIGNATURE OF DIRECTOR

(MAKE MARK FOR NOTARY'S SEAL) MARGARET HAMILTON 30TH day of APRIL 19 92
My Comm. Exp. May 12, 1993

Patients in Muleshoe Area Medical Center

- APRIL 1
Callie Dyck, Carol Copeland, Diana Cadena, H.A. Douglas, Christopher Vela, Lillie Gatlin, Mary Rosas, Iva Smith, Marie Lenau, Jack Lynch
- APRIL 2
Callie Dyck, Carol Copeland, H.A. Douglas, Christopher Vela, Lillie Gatlin, Mary Rosas, Iva Smith, Marie Lenau, Jack Lynch
- APRIL 3
Callie Dyck, Carol Copeland, Christopher Vela, Lillie Gatlin, Mary Rosas, Iva Smith, Marie Lenau
- APRIL 4
Callie Dyck, Carol Copeland, Christopher Vela, Lillie Gatlin, Mary Rosas, Iva Smith, Marie Lenau

Count on me to provide the best Homeowners insurance value in town.



CALL ME.
Mark Morton
109 S. 1st
272-7519
Muleshoe, Tx.

State Farm
Fire and Casualty Company
Home Office: Bloomington, Illinois



Like a good neighbor, State Farm is there.

Tender, Thoughtful and Caring--Mother's Day Cards from Forget Me Not

Ben Franklin

Mon-Sat. 8 a.m.-8 p.m.
Sun. 12-5 p.m.

2104 W. Amer. Blvd. 272-3588

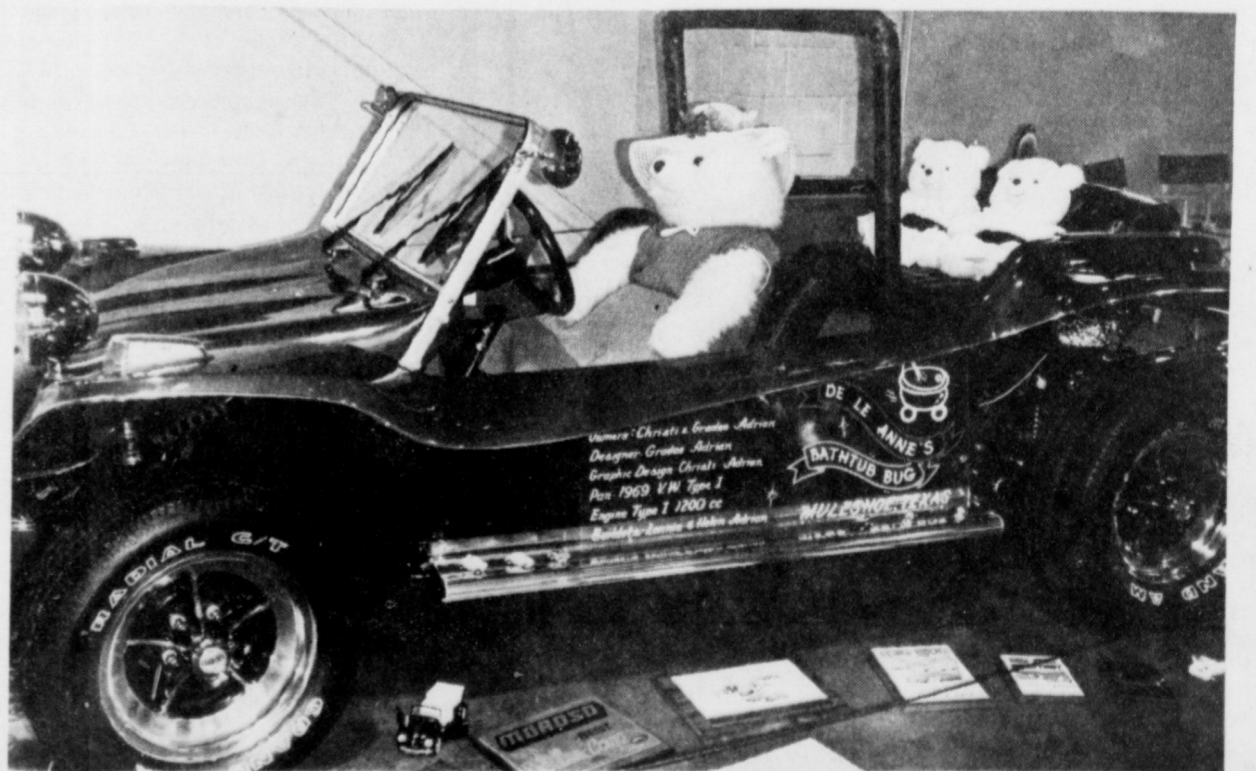
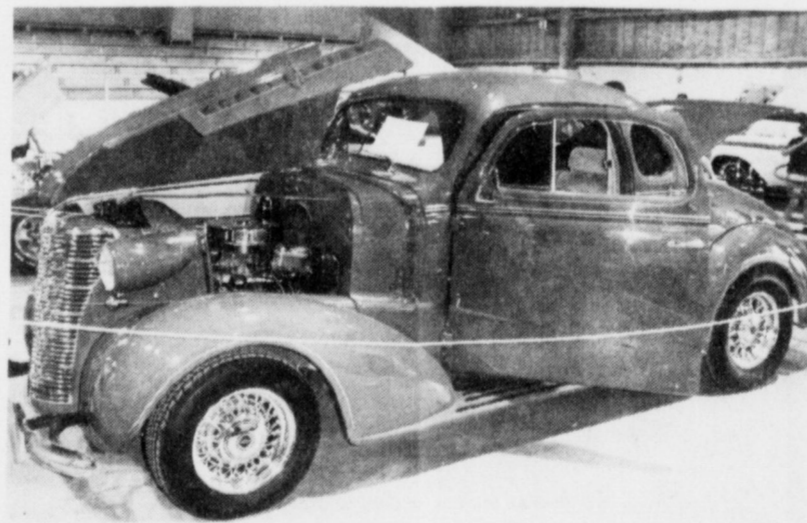
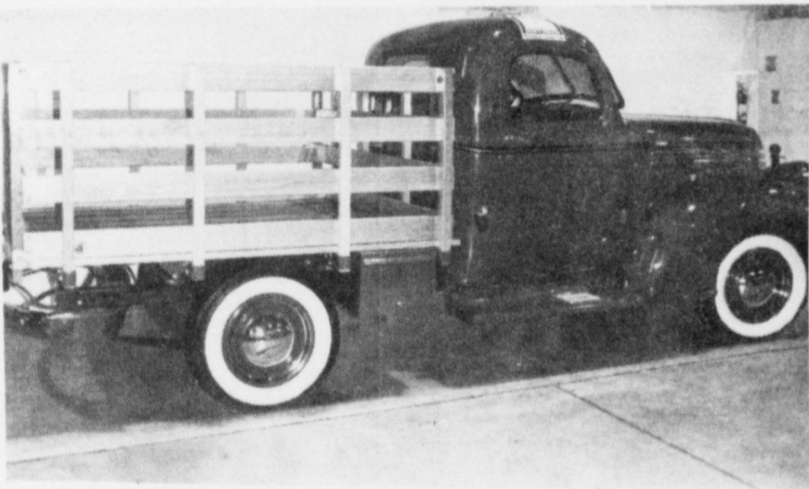
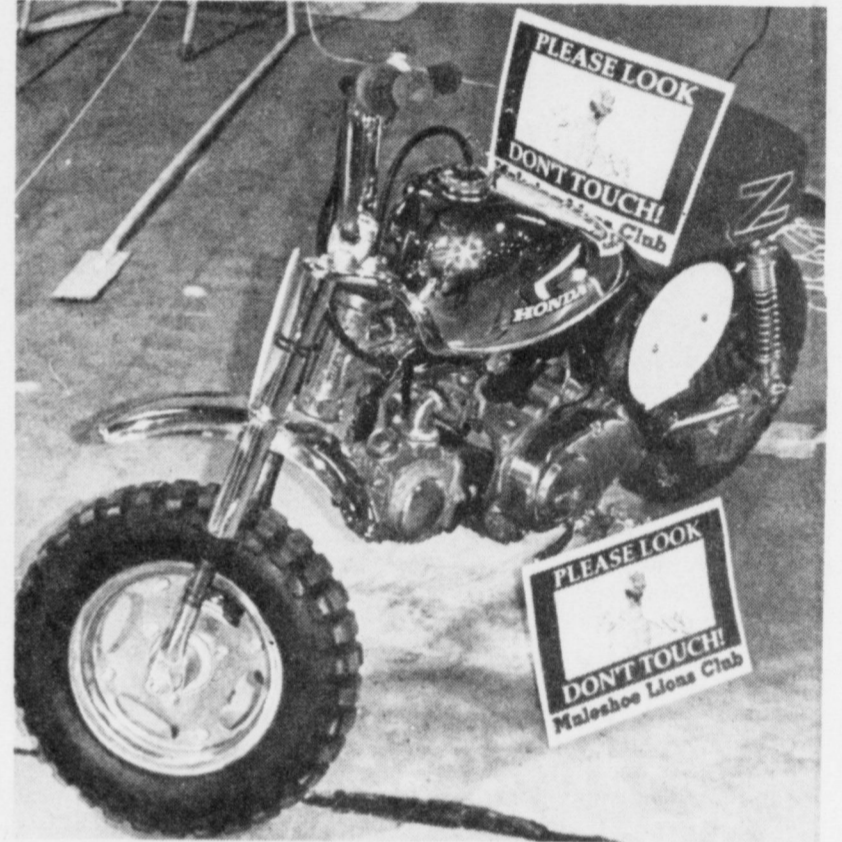
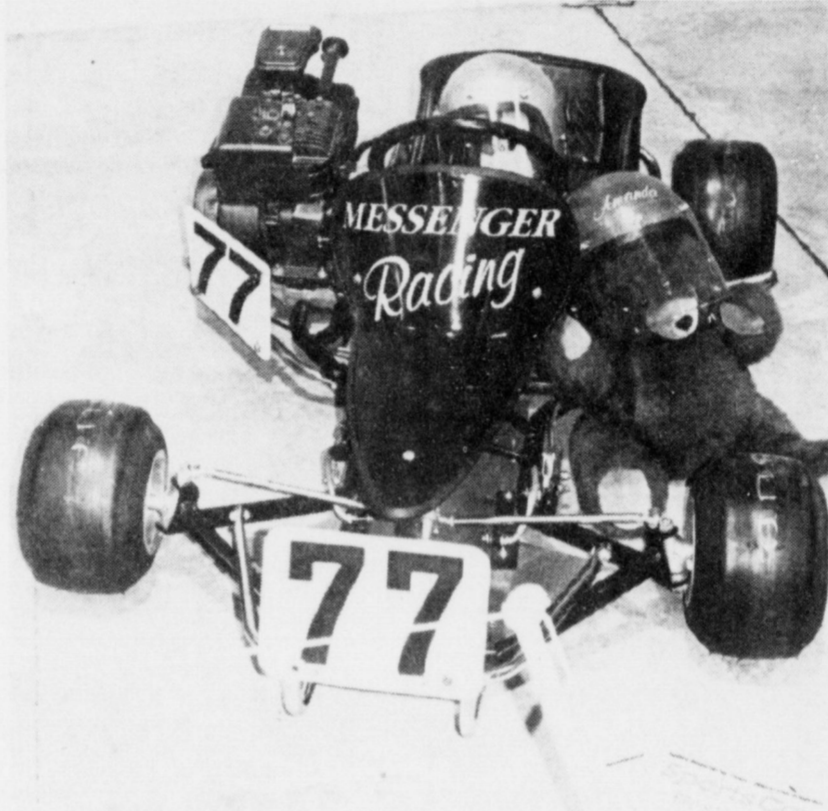
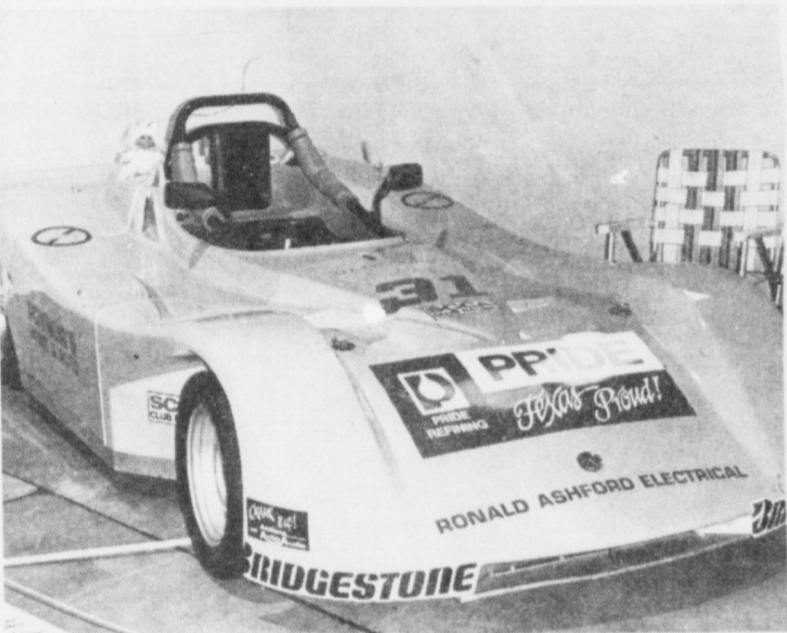


Always the right sentiment. Always a complete selection.

FORGET ME NOT AMERICAN GREETINGS

Muleshoe Lions Club Annual Car Show

Held Friday & Saturday May 1-2



CLASSIFIEDS 272-4536

CLASSIFIED RATES

15 Words & Under
Minimum Charge
\$2.30
Thereafter
\$2.00
16 Words & Over
1st Insertion
15 cents per word
2nd Insertion
13 cents per word

CLASSIFIED DISPLAY RATES

\$1.75
Per Column Inch

DEADLINES

12 noon Tues.
For Thursday Paper
12 noon Friday
For Sunday Paper

To receive the reduced rate after the first insertion, ad must run continuously.

We reserve the right to classify, revise, or reject any ad. We are not responsible for any error after ad has run once.

1. Personals

CONCERNED
About Someone's Drinking?
HELP IS AVAILABLE
through Al-Anon
Call 272-2350 or 965-2870 or come to visit Tuesday and Thursday nights, 8:00 p.m. & through AA call 965-2870 or come visit Tuesday nights, 8:00 at 620 W. 2nd, Muleshoe.

3. Help Wanted

Applications are being accepted for part-time sales clerk. Apply in person-Muleshoe Fina. 102 W. Amer. Blvd. Muleshoe or call 272-5278 F3-18s-2tc

TRUCK & TRACTOR DRIVERS WANTED: Monthly salary, lots of travel. Job runs March-December. Contact Scott or Charles at SCB Farms, Inc. in Bovina, TX--(806)238-1206 S3-10s-tfc

5. Apts. For Rent

FOR RENT: 2 Bedroom Apartments. Call 272-4622 K5-17s-tfc

APARTMENTS FOR RENT: Good location, 1 or 2 bedroom, furnished or unfurnished. Water paid. 272-7575 P5-13t-tfc

BRIEFS

Two Keating co-defendants agree to \$87 million settlement.
U.S. speeds shipments of food, aid to Russia.
Atlantis completes successful environmental mission.
Yeltsin turns back bid to trim his power.
U.S.: Japan, 42 others unfair to U.S. goods.
Study: Heart medicine not linked to depression.

11. For Sale Or Trade

FOR SALE:
Fan-Tailed Guppies.
Call 272-3607.
D11-16s-8tc

86 Chevy Pickup, 3/4 ton, 4 wheel drive.
Call 272-3413
R11-12t-tfc

FOR SALE:
32 foot, 1981 Dodge Cruise-Air Motorhome; 33,000 miles. \$17,000.
Call 806/272-3373.
EvaNell Stovall
S11-16t-8tc

'92--35 foot Vagabond Fifth Wheel. Slide-out, central air, washer, dryer, stereo, awning. Matching tow vehicle available.
791-0345
D11-16s-6tc

FOR SALE:
1976 12 ft. Rockwood. Fold out camper-sleeps 8-needs work. Call 272-5607

FOR SALE:
1975 Cadillac Coup DeVille. Good running condition, new tires. \$700. Call 965-2488.
H11-19t-3tc

15. Misc.

Garage Sale for the R.D. Nix Estate. 306 Commerce Street, Sudan. Starts 9:00 a.m. Saturday 9th. One day only!
N18-19t-1tc

Want To Lease
Grassland Year-Round or Summer. Large or Small Acreage. Bailey County Area Preferred.
Call 806-946-3336
P15-17t-8tc

FOR RENT:
Large Self Storage rooms with 24 hour a day access. Call J & J Self Storage at 272-4307.
S15-13t-tfc

CASH FOR YOUR REAL ESTATE LIEN NOTE
If you are collecting payments, CALL 1-800-333-8323 FOR A FREE QUOTE.

Do you need CASH for school, investments, IRS, a new car? Are you tired of collecting payments? Put CASH in the bank. CALL TODAY! WE ARE DIRECT BUYERS!
15-15s-8tp

18. Legals

The Muleshoe Independent School District is accepting bids for aluminum and/or plastic materials to retrofit the east stadium at Benny/Douglas Field. Specifications for bids may be secured by writing or calling Buck Johnson, Asst. Supt./Operations, Muleshoe I.S.D., 514 West Ave. G, Muleshoe, TX 79347, phone 806-272-3911. Bids must be submitted in writing before 4:00 p.m. on May 22, 1992. M.I.S.D. reserves the right to accept or reject all bids.
M18-19t-2tc



AVON
has openings for Representatives in MULESHOE. For information, Call 272-5607

20. Public Notice

PUBLIC NOTICE
The Undersigned hereby gives Notice of application to the Texas Alcoholic Beverage Commission, Austin, Texas, for a Private Club Exemption Certificate Permit and Beverage Cartage Permit to be located at: UCRD BAI South Side 1 mile North & 1 mile West INT Hwy. 70 & FM 3269, Muleshoe, Bailey County, Texas. Said Business to be operated under the name Walter A. Moeller, Post 8570 Veterans of Foreign Wars of the United States, Muleshoe, Texas, a Texas Corporation. Hugh Young, Commander; Epimenio Salinas, Jr., Quartermaster; Jose Ambriz, Adjutant; Alexander Garcia, Sr, Vice Commander.

8. Real Estate

PRICE REDUCED-IMMACULATE 3-2-2 Brick, Cent. A&H, built-ins, newly remodeled kitchen, FP, sunken lv. area w/cathedral ceiling, ceiling fans, earthtone carpets, storage!!!!

3-2-2 Brick, Cent. A&H, built-ins, FP, fenced yd., \$50's!!!

3-3-2 Brick, Cent. A&H, built-ins, FP, Spklr. sys., storage-wkshp., fenced yd. Much more!!!!

3-3-1 CP HOME, Cent. A&H, built-ins, FP, spacious lv. area, loads of closets & storage, cov. patio, fenced yd., 2 st. bldgs.!!!!

MOTIVATED SELLER WILL PAY ALL CLOSING COSTS PLUS \$1,000 DRAPERY ALLOWANCE--3-2-2 Brick, Heat Pump, built-ins, FP, fenced yd. & MORE!!!!

NICE RESIDENTIAL LOTS/\$5,000 UP.....

Nice 3-2-1 Home, built-ins, heat pump, fans, storm windows, & doors, workshop-storage, fenced yd., & more. \$30's!!!!

HIGH SCHOOL
Possible Owner Financing 3-1-2 Home, wall & floor furnace heat, evap. air, \$18,000!!!!

JUST LISTED-IMMACULATE 3-2-2 Brick, Heat Pump, built-ins, whirlpool, 2200' + lv. area, loads of storage, large shop-storage, fenced yd. \$70's!!!!

NICE 3-2 Home, nicely remodeled, heat pump, built-ins, carpet, fenced yd., storage bldg. & more!!! \$20's!!!!

NICE 3-2-1 Brick, Cent. A&H, built-ins, fans, st. bldg., fenced yd--\$30's!!!!

2-1 home, nicely remodeled kitchen & den, Cent., heat, fenced yd., large garage-shop. \$20's!!!

HIGHLAND AREA
3-2-1 Brick, Cent. A&H, built-ins, FP, Fenced yd. 2100+ lv. area, fenced yd., & st. bldg. MAKE OFFER!!!!

3-2-1 Home, wall furnace, window evap. fenced yd. \$20's!!!!

LENAU ADD.
3-2-1 Home, Geothermal Heat Pump, built-ins, FP, greenhouse, shop, cellar, storage, fenced yd., MUCH MORE!!!!

3-2-1 + 2CP HOME, storm windows & doors, built-ins, fans, MUCH MORE!!!!

JUST LISTED-NICE 4-2-2 carport Home, Cent. heat, Evap. air, built-ins, fireplace, 1900'+lv. area, fenced yd., workshop-storage bldgs. \$30's!!!

8. Real Estate

LOT FOR SALE:
140 ft. by 140 ft. In Richland Hills Addition. Call after 6 at 272-4344. R8-14s-tfc

8. Real Estate

NICE REMODELED 3-2-1 Brick, Cent. heat, built-ins, MUCH MORE. \$30's!!!!

3-1-1 carport Home, Cent. A&H, built-ins, fireplace, fenced yd. \$20's!!!!

JUST LISTED 3-1 1/2-1 Home, Cent. heat, evap. air, nice carpets, cov. patio, fenced yd. st. bldg.!!!!

JUST LISTED-4 Bdrm. 2 Bath Brick Home, nicely decorated & landscaped, built-ins, FP, Geothermal Heat Pump, on 2 acres edge of town, horse stalls & pen, tack room. Also has income producing shop on location or use for your own needs. \$90,000.00!!!!

3-2-4 Carport home, Heat pump, built-ins, 29 acres on pavement close to town with hog barns, & MORE!!!

3-2-2 Brick, built-ins, heat pump, FP, 2.5 acres on pavement close to town. Nice. \$60's!!!

VERY NICE 4-2-2 Brick Home on 6 ac., Cen. A&H, 2300'+lv. area, storage-shop bldg., MUCH MORE!!!!!!!!!!!! 70's!!!

3-2-3 Carport Home on 11 ac. edge of town, Cent. A&H, built-ins, cellar, barns & corral. MAKE OFFER!!!!!!!!!!!!

3-2-2 carport Brick on 2 acres at edge of town, possible owner financing. \$30,000!!!!

NICE 3-2-1 home on 1 acre close to town, Cent. Heat, Evap. Air, Nice Carpets, Remodeled. \$30's!!!!

NICE 3-2-2 Brick on 1 ac. tract of hwy. close to town, Cent. A&H, built-ins, fenced yd. & more!! Make Offer!!!!

JUST LISTED--3-2 Home on 1 acre on pavement close to town, 2100+ lv. area, Cent. A&H, built-ins, more!!! \$32,000 or MAKE AN OFFER, "AS IS"

GYMNASTICS STUDIO-BLDG., & Equipment PRICED TO SELL!!!!

COMMERCIAL TRACT 175'x100' (HWY. 70 & 84, RR spur access, approx. 1200 sq. ft. bldg. PRICED TO SELL!!!!

320 acres good dryland, good allotments, Three Way area. Reduced. \$225 per acre!!!

PLEASANT VALLEY--160 acres, 8" well, Lindsey circle, domestic well, on pavement!!!!

354 ac. S. of city, good allot. & yields!!!!!!!!!!!!

8. Real Estate

FOR SALE:
3-2-2 Brick Home, Central Air and Heat, Large Storage Bldg. / Workshop, Brick Fireplace, Large Fenced Backyard, Built-ins. Country Club Addition.
272-4887
S8-13t-tfc

Priced To Sell: By Owner. 3 Bed., 1 3/4 bath, carport, large utility. 272-3113 272-5038. Near Schools!!!
W8-19t-6tc

8. Real Estate

House For Sale- AS IS! House needs some work. Asking \$10,000 or very BEST OFFER!
Call 272-5810 8-18s-6tp

FOR SALE: 60 Ft. lot in Harvey Addition. On paved road. BEST OFFER!! Lillian Carr 5814 Gateshead Drive Austin, Tx. 78745 (512)447-7506 or Rebecca Nichols (512)447-7506 C8-18s-2tc

Snub

Jones--Good morning, my dear friend. Yesterday I met your wife, but she didn't see me.

Smart Lad
Teacher--Joe, name two documents that have contributed heavily to our government.
Joe--Form 1040 and 1040A.

Neighorly
"How did that naughty little boy of yours get hurt?"
Neighbor--"That good little boy of yours hit him with a brick."

Speedy
"Have you ever been pinched for going too fast?"
"No, but I've been slapped."

Not So Good
"Is it true that it costs a lot to have your family tree looked up?"
"Well, not exactly. I paid a small sum to have it looked up and a large sum to have it hushed up."

All Headaches Are Not Created Equal

(NU) - Headaches are one of the most common complaints for which people seek medical advice. But because headaches have various causes, they should be cared for in different ways. The key is being able to determine the type of headache one may be experiencing.
Here are some tips from NARD, the national association representing the nation's 40,000 independent retail pharmacies.
Tension headaches, also known as muscle contraction headaches, account for 90 percent of all headaches, and can be identified by the characteristic "hatband" pattern of pain around the head.

Lying down in a dimly lit room and placing a coldpack to the forehead sometimes is sufficient to relieve a tension headache. Neck and shoulder massage and/or heat applications to these muscles may also be helpful. The nonprescription analgesics, aspirin, acetaminophen and ibuprofen, can bring fast pain relief. A pharmacist can offer advice on these medications.

Sinus headaches are another common type of headache, caused by irritation and swelling of the mucous membranes lining the sinuses. A runny or stuffy nose may be present, as well as a sensation of sinus pressure. A nonprescription antihistamine/decongestant combination may bring dramatic relief of sinus congestion and pain. A pharmacist can recommend a product.

About 20 percent of the population suffers from migraine headaches, with women affected twice as often as men. Pain often begins with a dull ache, but can become intense -- lasting for hours or days.

Good advice for migraine sufferers is to obtain medical help and learn coping techniques.



Thanks to all of those who helped with the planting of trees in the East Side City Park

- Guadalupanas
- Hector Flores
- Association DeCharros
- Caballeros DeCadlon
- First Bank
- Hombres DeLa Iglesia Catholica
- Association De Politecas Para Menorias
- Noe's Used Cars
- Violas Restaurant
- Muleshoe State Bank
- Needmore Co-Op Gin
- Frank Saldana Plumbing
- Leal's
- Cursillistas
- Hugh Young
- G.C. Lewis
- Lester Howard
- Jose Ambriz
- Jose Villarreal
- Bob Clark
- Chicanos Unidos Campesinos
- Bratcher Motor Supply
- San Francisco Tortilla Factory
- Jose T. Rodriguez
- Wilson Appliance
- West Texas Ranger
- Rotary Club
- Jennyslippers
- Kiwanis Club
- V.F.W.
- Connie's Place
- Mayor Darrell Turner
- Harvey Bass Appliance
- Thriftway
- Chamber of Commerce
- Poynor's Home & Auto
- Muleshoe Publishing Co.

8. Real Estate

LOT FOR SALE:
140 ft. by 140 ft. In Richland Hills Addition. Call after 6 at 272-4344. R8-14s-tfc

8. Real Estate

FOR SALE:
3-2-2 Brick Home, Central Air and Heat, Large Storage Bldg. / Workshop, Brick Fireplace, Large Fenced Backyard, Built-ins. Country Club Addition.
272-4887
S8-13t-tfc

8. Real Estate

House For Sale- AS IS! House needs some work. Asking \$10,000 or very BEST OFFER!
Call 272-5810 8-18s-6tp

FOR SALE: 60 Ft. lot in Harvey Addition. On paved road. BEST OFFER!! Lillian Carr 5814 Gateshead Drive Austin, Tx. 78745 (512)447-7506 or Rebecca Nichols (512)447-7506 C8-18s-2tc

8. Real Estate

FOR SALE:
3-2-2 Brick Home, Central Air and Heat, Large Storage Bldg. / Workshop, Brick Fireplace, Large Fenced Backyard, Built-ins. Country Club Addition.
272-4887
S8-13t-tfc

House For Sale- AS IS! House needs some work. Asking \$10,000 or very BEST OFFER!
Call 272-5810 8-18s-6tp

FOR SALE: 60 Ft. lot in Harvey Addition. On paved road. BEST OFFER!! Lillian Carr 5814 Gateshead Drive Austin, Tx. 78745 (512)447-7506 or Rebecca Nichols (512)447-7506 C8-18s-2tc

8. Real Estate

FOR SALE:
3-2-2 Brick Home, Central Air and Heat, Large Storage Bldg. / Workshop, Brick Fireplace, Large Fenced Backyard, Built-ins. Country Club Addition.
272-4887
S8-13t-tfc

House For Sale- AS IS! House needs some work. Asking \$10,000 or very BEST OFFER!
Call 272-5810 8-18s-6tp

FOR SALE: 60 Ft. lot in Harvey Addition. On paved road. BEST OFFER!! Lillian Carr 5814 Gateshead Drive Austin, Tx. 78745 (512)447-7506 or Rebecca Nichols (512)447-7506 C8-18s-2tc

HENRY REALTY

111 W. AVE. B 272-4581
Muleshoe, Tx.
Just Listed-2 bedroom, 1 bath, carport, large utility room and large storage shed. Carpet. Highland Addition. \$20,000.00
Spacious 2 bedroom, 2 bath with one car garage. Fireplace. Ready to move in.
New listing-2 bedroom, 1 bath, redone for qualified buyer.
3 bedroom, 2 bath, carport, spacious home outside city limits near city on highway. Lot is 85'x402'. Metal building is 29' by 40'. Great setup for workshop.

COMMERCIAL PROPERTY

FOR LEASE-3 bedroom, 2 bath, carpet, spacious living area, fenced yard. Near high school.
Ideal location on West American Blvd. 150' highway frontage. A great business opportunity.
Brick veneer restaurant 150 seating. Over 5000 sq. ft. with modern equipment. Ready for operation. Located on U.S. Highway 84 in Muleshoe. 7,000 sq. ft paved parking. Excellent financing available for qualified buyer.
West American Boulevard 150' frontage. Priced to sell.
LAND
150 acre irrigated farm with sprinkler on highway NW of Muleshoe. Allotted acres with good yields. Two wells. Corners are in CRP. Owner financed.
240 acres irrigated farm west of Muleshoe. Equipped with sprinkler pivot pad and underground electricity. Underground pipe for siderolls or big gun sprinklers. Priced to sell.

MULESHOE AREA

Mid-Winter '92

BUSINESS DIRECTORY AND SHOPPING GUIDE

HUEVOS RANCHEROS
2 eggs topped with Sauce, Beans & Corn Tortillas
\$3.00
with flour tortillas...\$3.35



Closed Mondays

Leal's Restaurant

1606 W. Amer. Blvd. 272-3294



Henry Insurance Agency, Inc.



"Serving Your Insurance Needs Since 1964"

KENNETH R. HENRY
CERTIFIED INSURANCE COUNSELOR
REAL ESTATE BROKER



111 W. Ave. B.
Phone 806/272-4581
Muleshoe, Tx. 79347

Clear Gazpacho
Soup:
2 pounds tomatoes, peeled and chopped
2 cans (2 1/4 ounces each) sliced ripe olives
3/4 cup finely diced celery
3/4 cup thinly sliced green onions
3/4 cup chopped cucumbers
2 cloves garlic, minced
6 tablespoons red wine vinegar
2 teaspoons Worcestershire sauce
6 to 8 drops hot pepper sauce
1 1/2 tablespoons olive oil
2 cans (14 1/2 ounces each) chicken broth
3/4 cup dry white wine
Salt and pepper to taste

Optional Garnishes:
Croutons
Fresh chives
Avocado slices

Lime slices
Cilantro

Combine soup ingredients and chill at least 1/2 hour or overnight. Serve in clear glass bowls with your choice of garnishes. Yields 8 cups.

The Muleshoe Art Loft

Wilson Drilling Co.
"Complete service from the bottom of the well to the bottom of the Glass"
Domestic * Irrigation * Test Holes
GOULDS WATER SERVICE
GOULDS Water Systems
*INSURED * BONDED
W. Hwy 84
272-5521
TX LIC 02628W NM WD1152



Throckmorton Refinishing Shop
We can make your old furniture look like new!
We also can Resilver your Mirrors as well!
Antiques For Sale!
Free Estimates
319 E. Amer. Blvd. 272-5345

1*2*3 Lunch Special
1) Your choice of a single topping Personal Pizza (Pan or New Thin Crust) or a Pasta Dish with meat sauce (Spaghetti or Cavatini®)
2) A trip through the Salad Bar
3) Your choice of Iced Tea or a Medium Soft Drink.
All For Only **\$3.89**
Delivery Available 11:30 am - 1:30 pm & After 5:00 pm
Pizza Hut 272-4213
1412 W. Amer. Blvd.

This unique, patented, double-banded steel wheel gives flotation equal to the standard rubber tire. Its open center and straight traction lugs allows movement of soil from the pressure of the bands to flow inward. This soil then remains untouched by the mini-MAX TRAX which builds a bridge between the two bands.
Pivot Products Distributors, Inc.
710 E. Amer. Blvd. 272-5536



shop-vac
Wet/Dry Vacuum
Household and Workshop Use
6 gal. **\$49.97**
12 gal. **\$89.99**
Higginbotham-Bartlett Co.
215 Main 272-3351

Time to get those prom dresses ready for those banquets & proms coming up. Bring your dresses to Esther, and she will do a professional job of pressing it for you.



The Tux's are still 10% off through May 16th. Also register to win a 7" poster of Michael Jordan when you place your Tux order.



Remember Lamberts for all your cleaning & pressing whether it be dresses, formals, wedding dresses, suits, drapes or bed-spreads, they will make them look like new.

Lambert Cleaners
123 Main Muleshoe 272-4726

Spring Cleaning?

Let us help you with your Spring Cleaning of Drapes, Bedspreads, etc.

Lambert Cleaners
123 Main 272-4726



DELICIOUS HOMEMADE TAMALES
Order of 4 topped with Chili Con Carne
\$3.45

Open 11:00 a.m. - 9:30 p.m.
Closed Tuesdays

Viola's Restaurant
2002 W. Amer. Blvd. 272-3838

Inlaid Congoleum Vinyl Flooring
15% off
April 24 - June 8
Some Styles of Vertical Blinds-**50% off**
Warner Wallpaper- **20% off**
Muleshoe Floor Covering
122 S. Main Curtis Carpenter 272-3555

Gifts for the Graduate!
Hair Dryers
Alarm Clocks
Curling Irons
Telephones
Multiple Outlet Strips
Flashlights
Desk Fans
Hours: Mon. - Sat. 8 a.m. - 6 p.m. Sun. 1:30 p.m. - 4:30 p.m.
Fry & Cox True Value
Hardware, Lumber & Building Materials
401 S. 1st Muleshoe 272-4511

Combination Motors & Salvage
We specialize in Motor Repairs and Rebuilding!
New & Used Parts Available
Wrecker Service - 24 hours a day!
272-4458

Weed 'Em Out!
With quality products from ferti-lome
WEED OUT™ Plus Lawn Fertilizer
Three weed killers in one great fertilizer. Kills all broadleaf weeds and feeds your lawn a "balanced meal" at the same time. Safe to apply on all types of turf grasses.
Kearney Scoggin
Scoggin Ag Center, Inc.
"Where Fertilizer Is Our Business"
1532 W. Amer. Blvd. 272-4613

