



# Muleshoe Journal

'The Community Of Opportunity-Where Water Makes The Difference'



Vol. 69, No. 43

Published Every Thursday At Muleshoe, Bailey County, Texas 79347

MEMBER TEXAS PRESS ASSOCIATION 20¢ THURSDAY, NOVEMBER 7, 1991

## Prison Issue Gets Nod Of Approval

around  
muleshoe

The Annual Veterans Day breakfast will be held Monday, Nov. 11 from 6:30 to 8:30 a.m. at the Post 403 American Legion Hall in Muleshoe.

The breakfast is for veterans and veterans wives and widows of veterans.

Basketball season tickets for adults and students are now on sale in the business office of Muleshoe I.S.D., 514 W. Ave G, Muleshoe. Tickets are \$7.50 for students and \$15.00 for adults. These tickets will enable the holder entrance to All home basketball games for Jr. High and High School. This is a tremendous savings for those planning to attend several games.

The Muleshoe Rotary Club will sponsor the Punt-Pass-Kick Saturday, Nov. 9 at 1 p.m. at the football field.

Boys and girls will compete together and may sign up at Poyner's. Advance sign ups are \$4.00 and sign up that day is \$5.00.

There will be three age divisions: Division 1, 7-8 year olds; Division 2, 9-10 Year Olds; and Division 3, 11 and 12 Year Olds.

Awards will be given for first, second and third place in each division.

There will be no seventh grade athletes.

Scott Brown received 106 votes for a seat on the Lazbuddie Independent School District and Dave Engelking received 47 votes. Brown and Engelking were seeking a place vacated by a board member who resigned.

Pre kindergarten at Lazbuddie is off to a great start. The children are very excited about school and each day they are as enthusiastic as the day before.

Scarecrows and Pumpkins were used as the theme for October. Scarecrows were made while learning body parts and

Cont. Page 6, Col. 3

## MAIF Meets With Local Officials

The Muleshoe Industrial Foundation board of directors met Monday evening, November 4 in the City Council Chambers at City Hall with the members of the Bailey County Commissioners, Marilyn Cox, Bailey County Judge; City Council Members, the mayor of Muleshoe; the city manager, MISD superintendent, MAHD administrator, and the Muleshoe Chamber of Commerce and Agriculture manager.

The meeting was called to update these individuals on the status of the project undertaken in recent weeks by the MAIF--to submit a proposal for a prison site to be located in this area.

With a work session following the update, each entity represented was to assess the immediate impact of the proposal on their particular area of interest, and to offer suggestions and solutions to any possible areas of compromise.

The City of Muleshoe was asked to assess the immediate impact such a facility would have on water and sewer capacity.

Bailey County was asked about the impact upon the



VETERANS MONUMENT--A group of veterans gathered at the veterans memorial monument site, at the Bailey County courthouse, Friday afternoon to lend-a-hand in placing the granite slabs in the monument. (Journal Photo)

## Lazbuddie Longhorns Defeat Amherst Bulldogs 74-39

It was a cold night for football last Friday night, but the Lazbuddie Longhorns didn't seem to mind as they played the Amherst Bulldogs in the Longhorn Stadium. The Longhorns cinched a playoff berth, with their victory over the Bulldogs. They are tied with Silverton for first place.

The 3-A six man championship will be decided next week when the Longhorns play Silverton at Silverton.

The Longhorns stand (9-0 overall and 4-0 in district). Amherst dropped to (5-4 and 2-2).

Jason Miles of Amherst ran 60 yards for the first score of the night, with Matt Tyson kicking the extra point. Lazbuddie's Kirk Jesko got a safety, putting Lazbuddie on the scoreboard.

Kent Sherrill caught a 25 yard pass from Jason Miles, putting more scores on the scoreboard for Amherst. Tyson kicked the extra point.

Lazbuddie Longhorn Eric Williams caught a 44 yard pass from Paul Williams adding more scores to the scoreboard.

Gonzales kicked the extra point.

If this wasn't enough Eric Williams caught a 44 yard pass from Paul Williams and again Gonzales kicked the extra point.

More points were added to the scoreboard for Lazbuddie as Matt Cozby caught a 30 yard pass from Paul Williams. Gonzales kicked the extra point.

The first quarter ended 17-16 Lazbuddie.

Putting the ball into action in the second quarter, Cozby caught a 32 yard pass from Paul Williams. Gonzales kicked the

extra point, increasing Lazbuddie's lead.

Miles, from Amherst, didn't

Cont. Page 6, Col. 2

## Johnie E. Cox Named Muleshoe Energas Manager

Johnie E. Cox has been named to the position of manager of the local Energas Company.

Cox, formerly office manager in Littlefield, joined the company in September, 1961, in Odessa. During his tenure with the company, he has held various supervisory and management positions.

Cox, a native of Comanche, TX, received a Certificate of Technology in Refrigeration and Air Conditioning from Odessa College and attended Texas A&I. Throughout his career, Cox has been active in civic and community affairs. Currently he serves on the Plumbing Board for the Littlefield City Council and is the second vice president of the Littlefield Noon Lions Club. He is also a member of the Littlefield Chamber of Commerce.

In making the announcement, Senior Vice President of Operations Robert W. Kirk stated that Cox would be responsible for the total operations of the City of Muleshoe and surrounding area, and will report to District Manager John Jacobs, Littlefield. He replaces Jess Winn, who is retiring.

Cox and his wife, Linnie, will reside in Muleshoe.

Energas Company, a division of Atmos Energy Corporation of Dallas, provides natural gas service to over 310,000 customers in West Texas.



JOHNIE E. COX

## Prisons, Lottery Student Loans Approved In County

A total of 1,089 Bailey County voters turned out Tuesday to cast their votes on the 13 constitutional amendments on the ballot.

Bailey County showed strong support for Amendment Number 4, authorizing the issuance of up to \$1.1 billion in general obligation bonds for acquiring construction or equipping new prisons. A total of 857 voters said yes to 218 against. The issue carried in five of the seven boxes as well as the absentee box. The other two boxes, Bula and Needmore had 16 for 16 against and 14 for and 14 against, respectively.

Amendment Number 1, allowing home rural cities with a population of 5,000 or less to amend their charters by popular vote, also carried by a large margin. A total of 758 voted for and 270 against the amendment.

Amendment Number 2, mandating the repayment to the Department of Transportation of monies expended to assist the Texas Turnpike Authority in the construction maintenance and operation of turnpikes, toll roads and toll bridges, failed to carry the county. Seven hundred and thirteen voters voted against the amendment to 508 for.

Bailey County voters also said no to Amendment Number 3, authorizing the Legislature to further implement and enhance the administration of the Veterans Housing and Assistance and Land Programs and to expand the investment authority of the Veterans Land Board.

A total of 637 voted against the issue and 379 voted for.

Amendment Number 5, authorizing the exemption from Ad Valorem Taxes of certain property in an enterprise zone also failed to carry Bailey County. A total of 709 voters said no to 300 who voted for the amendment.

Amendment Number 6, creating the Texas Ethics Commission and authorizing the commission to recommend the salary for members of the Legislature and the Lieutenant Governor subject to voter

Cont. Page 6, Col. 3

## Cross-Country Teams Win District

The girls and boys Cross-Country teams both won district, and each won quiet handsly. The meet was held in Lubbock on the frigid Saturday afternoon of Nov. 2. The boys had a near-perfect score of 16 points, had the first four finishers, and all seven of the runners placed in the top ten. The girls finished with 23 points and had the first three places.

Shane Schuster placed first in the (2 miles) with 12:48. Others placing included: Rebecca Green, second, 13:03; Julie Gilleland, third, 13:17; Keetha Glover, seventh, 14:03; and Gloria Mendoza, 11th, 14:17.

In the (3 miles) Andy Crawford was first, 16:43; Adrian Pineda, second, 16:50; Corley Hutton, third, 17:12; Ricky Diaz, fourth, 17:14; Eric Cisneros, sixth, 17:24; Shawn Wheeler, seventh, 17:25; Mason Conklin, tenth, 18:25; Rusty Black, 11th, and Tommy Day.

The teams will compete at the regional meet on Saturday, Nov. 9, at Mae Simmons Park in Lubbock. The boys' race should start at approximately 9:30 a.m., followed immediately by the girls.

According to school officials, State contention is a possibility for both teams.

## Summer Rains Create Wetland Habitat For Wildlife

Intense thunderstorms from July through September have created or enhanced wetland habitat in literally thousands of playa lakes--important havens for wildlife on the Southern Great Plains--according to Harvey Miller of the U.S. Fish and Wildlife Service. Migrating waterfowl and other wildlife will gain a much-needed reprieve from a decade of drought and habitat loss throughout the central United States and Canada.

"The heavy but typically spotty rains we saw this summer may have filled as many as half of the 25,000 playas in the region," said Miller. "Although most dried up since September, many have seen a dramatic increase in plants favored by wildlife for food and cover."

Playa lakes are shallow, circular drainage basins scattered throughout the Texas Panhandle, eastern New Mexico, western Oklahoma and Kansas, and extreme southeastern Colorado. Most are seasonal wetlands dependent on rainfall or

snow melt, existing until evaporation, drainage, and/or pumping removes their water. Normally less than one percent of playas (less than 250) hold water permanently, all year-round.

This year, surveys by the Texas Parks and Wildlife Department in early May found about four percent of the playas in the Panhandle held water. By late July, after several rainstorms raked the region, this number rose to about 40 percent. After an especially intense week of thunderstorms in mid-September, more than half the playas in Texas held water--an amazing 10,000+ lakes--ranging in size from less than an acre to more than 500 acres.

By early October the number of playas holding water declined to about 25 percent--around 5,000 lakes--but still about 10 times the "normal" for this late

Cont. Page 6, Col. 1

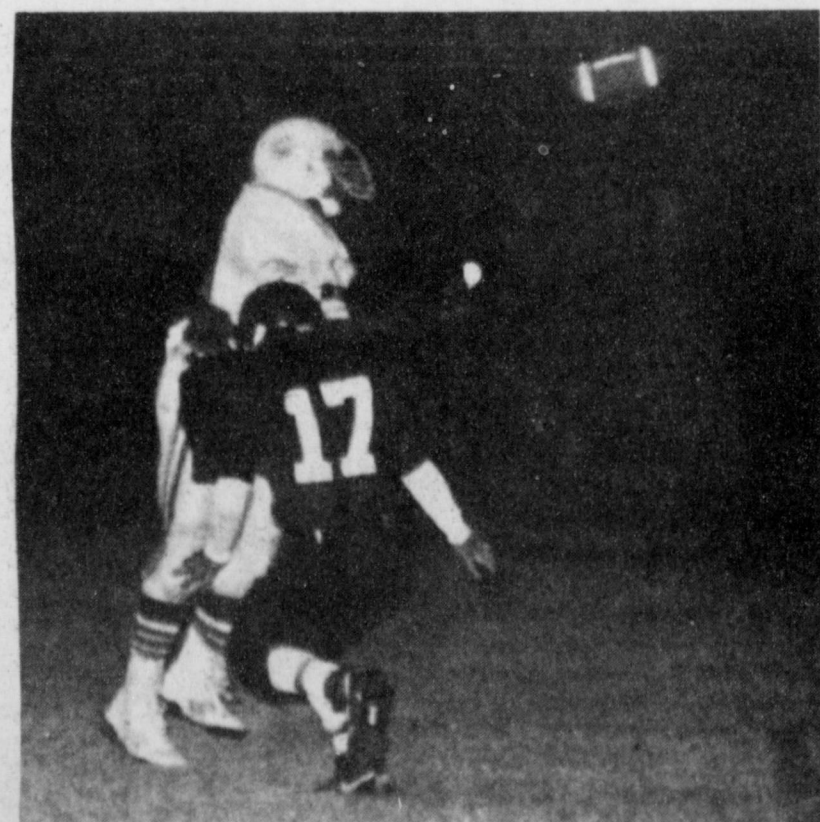
## South Plains Wildlife Symposium Set November 13

The South Plains Wildlife Symposium will be held on Wednesday, November 13th at the Lubbock Research and Extension Center according to Curtis Preston, Bailey County Extension Agent.

The Symposium is co-sponsored by the Texas Parks and Wildlife Department, Texas Agriculture Extension Service, Texas Tech University, USDA, and Quail Unlimited.

Registration begins at 8 a.m. and will conclude at 4 p.m. Registration is \$6.00 per person and is due November 8th.

For registration forms and further information, contact the Bailey County Extension Office or the Bailey County Soil Conservation Service.




COVERING THE RECEIVER--Mule No. 17 Ricky Flores tackles the receiver in Friday nights football game between Littlefield and Muleshoe. Friday night the Mules will play the Friona Chieftons at Friona. (Journal Photo)



**Higginbotham -Bartlett Co.**  
 215 Main 272-3351  
 Dearborn Heaters at Special Prices  
 Lazbuddie vs. Silverton




**MISSION CABLE**  
 208 W. 2nd (806)272-3310  
 Muleshoe, Texas 79347  
 Donate to Mission Cable's "Empty Stocking Fund" Nov. 1 - Dec. 22  
 Call for more information  
 Kansas State vs. Iowa State



**Church's CHICKEN**  
 1411 W. Amer. Blvd. 272-5581  
 We Support The Muleshoe Mules 100%  
 Tulane vs. Navy



Ask Us About Family Insurance Review!  
 Call Ricky Barrett or David Tipps  
**FARM BUREAU TEXAS**  
**Bailey County Farm Bureau**  
 • LIFE • CROP  
 • AUTO • HOME  
 1612 W. Amer. Blvd. 272-4567  
 Three Way vs. Cotton Center




**The Spudnut Shop**  
*The Upper Crust of the Donut World*  
 THE ORIGINAL POTATO FLOUR DONUT  
 Check Our Weekly Luncheon Specials  
 Mon. - Sat. 5 a.m. - 2 p.m.  
 328 South Main Street Muleshoe, Tx. 272-3542  
 Texas-El Paso vs. Hawaii




**FOOTBALL CONTEST**  
**Grand Prize: \$150<sup>00</sup>**  
**Weekly Prizes**  
 1st **\$10** 2nd **\$750** 3rd **\$500**  
**Weekly Winners**  
 1st. Alma Orozco  
 2nd. Richard Orozco 3rd. Dot Long


**Leal's**  
 1606 W. Amer. Blvd. 272-3294  
 Backing The Mules 100%!  
 Closed On Mondays  
 North Carolina State vs. Virginia



**Bailey Gin Co.**  
 946-3397  
 -owners-  
 Don Heathington  
 Peanut Hawkins  
 Doyce Turner  
 Peanut Hawkins, mgr.  
 Iowa vs. Indiana



**Western Drug Co.**  
 114 Main 272-3106  
 "For All Your Prescription Needs Visit The Friendly People At Western Drug"  
 U.C.L.A. vs. Stanford




**Henry Insurance Agency, Inc.**  
 KENNETH R. HENRY  
 CERTIFIED INSURANCE COUNSELOR  
 REAL ESTATE BROKER  
 111 W. Ave. B 272-4581  
 Tulia vs. Dimmitt




**Contest Rules:**  
 1. IN EACH ADVERTISEMENT YOU WILL FIND A GAME LISTED. CIRCLE THE TEAM YOU THINK WILL WIN. The person's score that most closely matches the TIE BREAKER SCORE will be declared the winner. If several persons are still tied the prize money will be split.  
 2. The contestant must be 12 years of age or older.  
 3. Only one entry per person may be made for any one contest.  
 4. Bring your entry by the *The Journal* office by 5:00 p.m. Friday, or if mailed, the entry must be postmarked no later than 5:00 p.m. Friday. Write "FOOTBALL CONTEST" on the mailed entry, and mail to P.O. Box 449, Muleshoe, Texas 79347.  
 5. Circle the Winners and WRITE IN THE SCORE of the tiebreaker games. This score will be used to break weekly as well as determine the grand prize winner. Decision of *The Journal's* scoring judges will be final.  
 6. Check the team you think will win; 10 points for first place, 6 points for second place and 4 points for third place.  
 7. To count for the grand prize, entries must be on official blank printed in the paper.


**Stacey, JoAnn and Staff**  
 Backing The Mules 100%  
**Pizza Hut**  
 1412 W. Amer. Blvd. 272-4213  
 Sudan vs. O'Donnell



**Viola's Restaurant**  
 For The Best Mexican Food  
 Come To Viola's  
 Open 11:00 a.m. - 9:30 p.m.  
 Closed On Tuesdays  
 2002 W. Amer. Blvd. 272-3838  
 San Diego State vs. Colorado State



**Wilson Drilling & Southwestern Geothermal**  
 Box 405 272-5521  
 Stanley Wilson Dee Puckett  
 Tx. Lic. 02628W  
 NM. Lic. WD1152  
 Arizona State vs. Oregon



**Bob Stovall Printing**  
 221 E. Ave. B. 272-3373  
 No Job Too Large Or Too Small!  
 Come By And Visit With Us For All Your Commercial Printing!  
 Illinois vs. Purdue



**Official Entry Blank**

Name \_\_\_\_\_  
 Address \_\_\_\_\_  
 Phone \_\_\_\_\_

**TIEBREAKERS**

Texas vs. Houston  
 Texas Tech vs. Arkansas

MULESHOE MULES Varsity Schedule	JUNIOR VARSITY Schedule	FRESHMEN Schedule
Sept. 6 BROWNFIELD H 8:00	Sept. 5 BROWNFIELD T 7:00	Sept. 5 BROWNFIELD T 5:00
Sept. 13 IDALOU T 8:00	Sept. 12 IDALOU H 6:00	Sept. 12 FRIONA T 5:30
Sept. 20 DENVER CITY** H 8:00	Sept. 19 DENVER CITY T 6:30	Sept. 19 DENVER CITY T 5:00
Sept. 27 COOPER T 8:00	Sept. 26 COOPER H 6:30	Sept. 26 COOPER H 5:00
Oct. 4 RIVER ROAD H 8:00	Oct. 3 RIVER ROAD T 6:30	Oct. 3 RIVER ROAD T 5:00
Oct. 11 DIMMITT** H 7:30	Oct. 10 DIMMITT* T 7:00	Oct. 10 DIMMITT* T 5:30
Oct. 18 TULIA* T 7:30	Oct. 17 TULIA* H 7:00	Oct. 17 TULIA* H 5:30
Oct. 25 FLOYDADA* T 7:30	Oct. 24 FLOYDADA* H 7:00	Oct. 24 FLOYDADA* H 5:30
Nov. 1 LITTLEFIELD* H 7:30	Oct. 31 LITTLEFIELD* T 7:00	Oct. 31 LITTLEFIELD* T 5:30
Nov. 8 FRIONA* T 7:30	Nov. 7 FRIONA* H 7:00	Nov. 7 FRIONA* H 5:30

\* Homecoming  
 \*\* District Games \*\* Parents Night

**MT services inc.**  
 319 E. American Blvd.  
 MULESHOE, TEXAS 79347  
**Mobile Communications Two-Way Radio Repair**  
 GARY PARKER Technician  
 Muleshoe - 806-272-4888  
 Hereford - 806-364-7311  
 Notre Dame vs. Tennessee



**Combination Motors And Salvage**  
 Gerry Pierce  
 Day: 806-272-4458  
 Night: 806-272-5057  
 Rt. Box 240 Muleshoe, Tx. 79347  
 Muleshoe vs. Friona



**Scoggin Ag Center, Inc.**  
 1532 W. Amer. Blvd. 272-4613  
 Kearney Scoggin  
**Anti Freeze \$350 gal.**  
 Wisconsin vs. Michigan State

**Muleshoe Floor Covering**  
 122 Main St. 272-3555  
**Congoleum**  
**Fabulous Floors Sale Save 20%**  
 Sale Ends November 9th  
 Clemson vs. North Carolina



**Connie's Place**  
 121 Main 272-3126  
 Hrs: 5 a.m. - 4 p.m. Mon. - Fri.  
 Sat. 5 a.m. - 2 p.m.  
**Daily Buffet**  
 Includes Salad Bar & Cobbler  
 Serving Breakfast Daily  
 Connie Dominguez, Owner  
 Littlefield vs. Floydada





**Top Ten Songs For The Week**

- RADIO REPORT**
1. Anymore By Travis Tritt
  2. New Way To Light Up Old Flame by Joe Diffie
  3. Someday by Alan Jackson
  4. Keep It Between The Lines by Ricky Van Shelton
  5. Brotherly Love by Keith Whitley & Earl Thomas Conley
  6. Mirror, Mirror by Diamond Rio
  7. Ball & Chain by Paul Overstreet
  8. The Walk by Sawyer Brown
  9. Tempted by Marty Stuart
  10. A Picture Of Me Without You by Lorrie Morgan

- CONCERT CALENDAR**
- Bellamy Bros. Nov. 9 at Brazoria, Tx.  
Canyon Nov. 15 at Collyville, Tx.  
Travis Tritt Nov. 10 at Belton  
Steve Wariner Nov. 22 at Ft. Worth  
Steve Wariner Nov. 23 at San Antonio  
Louise Mandrell Nov. 15 at Dallas

- BIRTHDAY BOOK**
- Floyd Tillman Born Dec. 8, 1914  
Johnny Rodriguez Born Dec. 10, 1952  
Barbara Mandrell Born Dec. 25, 1948

- CALENDAR NOTES**
- Roy Orbison died Dec. 6, 1988  
Roy Rogers and Dale Evans married Dec. 31, 1947  
Bob Wills & The Texas Playboys debut at the opry Dec. 30, 1944  
Johnny Hortons "Battle of New Orleans" goes gold Dec. 20, 1966

The CMAT held a showcase in Salado at Bo's Barn & Danchall, Oct. 20th. Julie hatcher from Killeen and a new band called Rodeo Revolution from Austin performed for the crowd of central Texas country music fans. Oct. 25th the CMAT held a membership drive at J.D.'s West in Austin. Our total membership is nearing 4,000 now. For your free membership, and a chance to vote in our awards this year write to us at: C.M.A.T. P.O. Box 505, Salado, Tx. 76571. We are currently organizing a country music hall of fame for Texas fans. If you have any information about country music stars in Texas during the 50's or 60's please write to us for more details...until next week. Lee Fisher.

Government: Packers must record all cattle sales.

Teacher wage increase smallest in 18 years.

**Horizon Living Care Benefit Rider Introduced**

One in three older Americans who enters a nursing home can end up in poverty. With the number of U.S. citizens 65 and older rising, and nursing home costs averaging \$30,000 a year, people are realizing the importance of long-term care insurance.

Many, however, have never considered long-term care insurance because they find the plans too comprehensive and expensive for their immediate needs.

To help those looking for a more flexible long-term care plan, Aid Association for Lutherans (AAL) has recently introduced the Horizon Living Care Benefit rider in Texas.

AAL members who purchase this supplement to their Horizon universal life certificate can use half of their life insurance benefits for nursing home or in-home care needs. AAL is the first fraternal benefit society to offer this long-term care insurance alternative.

According to Larry Peterson, vice president of life products at AAL, "This new rider was developed after we asked our consumers what they wanted in long-term care insurance. They asked for flexibility and security. They were looking for a

solution to their long-term care needs while still leaving funds for their beneficiaries.

"The Living Care Benefit rider is a composite of their suggestions and requests. We think it provides a large segment of our consumers with options that reflect their needs," Peterson said.

AAL will provide 2 percent of the total death benefits for nursing home care and 1 percent for home care directly to the member each month. For example, someone who has a certificate for \$150,000 can receive up to \$3,000 a month for nursing home care or \$1,500 a month for home care.

The rider also ensures that an AAL member who uses the benefits for long-term care will not depreciate the entire certificate. Fifty percent of the funds will be protected for beneficiaries.

With the Living Care Benefit rider, insurance costs are waived while the member is receiving monthly benefits.

Anyone between the age of 21-80 who holds a Horizon life insurance certificate is eligible to apply for the Living Care Benefit rider where it is available.

AAL, based in Appleton,

Wisconsin, is the nation's largest fraternal benefit society in terms of assets (\$8.7 billion) and insurance in force (\$59.8 billion).

AAL provides 1.5 million members in 7,710 branches with fraternal benefits, while its affiliated companies offer members other financial services. In addition, members are offered volunteer opportunities to help others in their own communities. There are 58,924 AAL members living in Texas.

**Patients in Muleshoe Area Medical Center**

NOVEMBER 1

Socorro Flores, Eloy Cardenas, Mike Doyle  
NOVEMBER 2

Christopher Shufelberger, Socorro Flores, Eloy Cardenas, Mike Doyle  
NOVEMBER 3

Socorro Flores, Fred Mapes, Eloy Cardenas, Mike Doyle, Johnnie Copeland, Francisco Sanchez, Marlene Martha, B. boy Martha, Gloria Navarro, Baby boy Navarro  
NOVEMBER 4

Socorro Flores, Fred Mapes, Eloy Cardenas, Mike Doyle, Johnnie Copeland, Francisco Sanchez, Marlene Martha, B. Boy Martha, Gloria Navarro, B. boy Navarro

**Enochs News**  
by: Mrs. J.D. Bayless

The late Luke and Flo Nichols children had their family reunion the past week. They met at a motel in Mena, Arkansas. All of the children but Mr. and Mrs. Quinton Nichols were present. Mr. and Mrs. Dale Nichols of Enochs, Mrs. Norma Jean Davis of Shallowater and Harold Dean Nichols of Idalou, Merlene Nichols and her friend Jo Ann Cole of San Antonio and Sammie Nichols of Claremore, Oklahoma. They enjoyed visiting and getting family history, they went up on top of Rich Mountain, and the Nichols Mountain where their great-grandfather lived and they found his grave at the bottom of the mountain near a church.

A former pastor of Dale and Rose in our area, A. C. Lyles of Hatfield came over and visited with them.

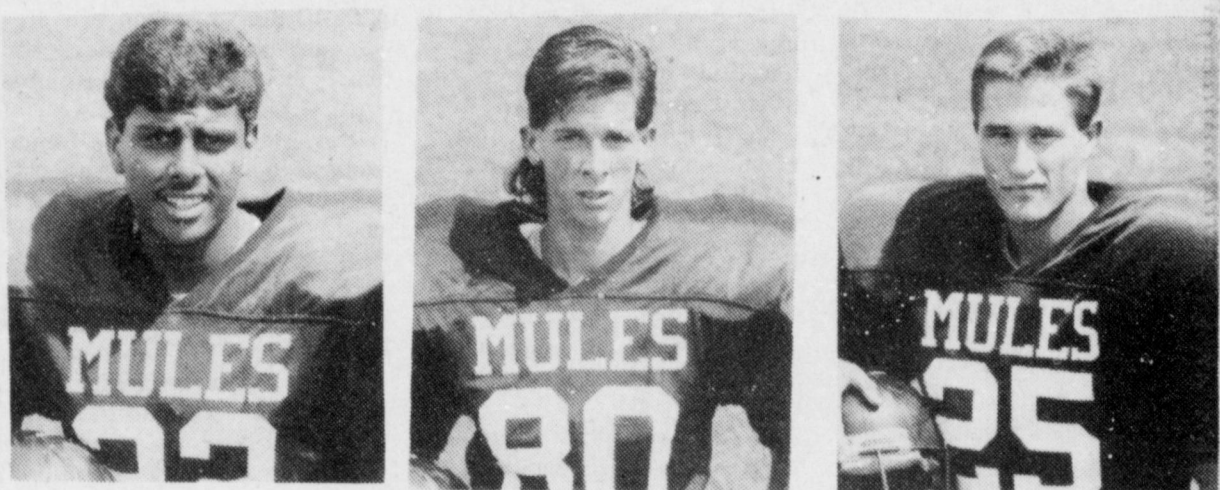
**Who Knows?**

1. What was the former name of the Hoover Dam?
2. Name the first U.S. secretary of the Treasury.
3. Who laid the cornerstone of the Washington Monument?

- Answers:**
1. Boulder Dam.
  2. Alexander Hamilton.
  3. President James K. Polk, on July 4, 1848.

**Muleshoe High School**

**Players Of The Week**  
Muleshoe-Littlefield Game



22-Brent Hernandez

80-Dustin Elliott

25-Kip McCall

**Paco Feed Yard**

265-3281

**THE BOB HARMON FORECAST**

Sat., Nov. 9 - Major Colleges - Div. 1-A		Other Games - East	
* Air Force	23	Army	10
* Alabama	34	* L.S.U.	13
* Arizona State	21	* Oregon	17
* Auburn	27	* SW Louisiana	8
* Boston College	23	* Temple	21
* Bowling Green	27	* Kent State	10
* Brigham Young	30	* Wyoming	21
* California	40	* Oregon State	7
* Clemson	26	* North Carolina	14
* Colorado	38	* Oklahoma State	7
* Duke	20	* Wake Forest	7
* East Carolina	24	* South'n Mississippi	14
* Eastern Michigan	24	* Ohio U.	17
* Florida	28	* Georgia	13
* Florida State	34	* South Carolina	10
* Fresno State	30	* Pacific	14
* Georgia Tech	31	* Furman	14
* Illinois	27	* Purdue	20
* Iowa	28	* Indiana	21
* Kansas State	23	* Iowa State	17
* Memphis State	26	* Louisville	10
* Miami, FL	38	* West Virginia	7
* Miami, OH	24	* Western Michigan	20
* Michigan	33	* Northwestern	7
* Middle Tennessee	24	* Cincinnati	21
* Nebraska	31	* Kansas	10
* New Mexico State	28	* Long Beach State	26
* North Carolina State	26	* Virginia	24
* Notre Dame	27	* Tennessee	24
* Ohio State	27	* Minnesota	7
* Oklahoma	30	* Missouri	10
* Penn State	34	* Maryland	7
* Pittsburgh	28	* Rutgers	14
* Rice	30	* S.M.U.	13
* San Diego State	28	* Colorado State	20
* San Jose State	40	* Fullerton State	6
* Texas	28	* Houston	16
* Texas A & M (Nov. 7)	27	* T.C.U.	13
* Texas Tech	21	* Arkansas	20
* Texas-El Paso	24	* Hawaii	23
* Toledo	22	* Ball State	14
* Tulane	21	* Navy	21
* U.C.L.A.	27	* Stanford	23
* Utah	30	* New Mexico	7
* Utah State	20	* Nevada-Las Vegas	13
* Vanderbilt	26	* Kentucky	21
* Virginia Tech	40	* Akron	13
* Washington	34	* Southern California	14
* Washington State	24	* Arizona	16
* Wisconsin	24	* Michigan State	22

Major Colleges - Div. 1-AA		Other Games - Midwest	
* Alabama State	20	* Grandblum	10
* Alcorn	21	* Mississippi Valley	10
* Appalachian State	24	* Mississippi College	23
* Boise State	24	* Montana State	7
* Boston U.	27	* Maine	20
* Central Florida	29	* Liberty	14
* Dartmouth	28	* Columbia	7
* Delaware	33	* Connecticut	14
* Eastern Illinois	27	* Western Kentucky	23
* Eastern Kentucky	41	* Murray State	6
* Eastern Washington	22	* Idaho State	21
* Florida A & M	26	* Southern U.	21
* Harvard	23	* Brown	13
* Holy Cross	37	* Bucknell	7
* Howard	23	* Towson	17
* Idaho	31	* Northern Arizona	12
* James Madison	28	* Youngstown	21
* Lafayette	20	* Fordham	17
* Lehigh	26	* Colgate	14
* Louisiana Tech	35	* Southern Illinois	13
* Marshall	24	* Citadel	15
* Massachusetts	24	* Richmond	21
* McNeese	24	* S.F. Austin	10
* Morehead State	24	* SE Missouri	20
* Nevada-Reno	31	* Montana	10
* Nichols State	27	* North Texas	21
* North Carolina A & T	28	* Delaware State	14
* Northeastern	26	* Rhode Island	17
* Northern Iowa	33	* Indiana State	13
* Princeton	21	* Pennsylvania	10
* Sam Houston	22	* NW Louisiana	14
* South Carolina State	54	* Charleston Southern	7
* SW Missouri	28	* Illinois State	20
* Texas	49	* Prairie View, TX	21
* Tennessee Tech	24	* Tennessee State	16
* Tenn.-Chattanooga	24	* East Tennessee	13
* Tennessee-Martin	23	* Austin Peay	21
* Texas Southern	24	* Jackson State	20
* Troy	24	* Arkansas State	17
* V.M.I.	23	* Western Carolina	10
* Valparaiso	21	* New Hampshire	14
* Weber State	48	* New Mexico Highlands	6
* Western Illinois	38	* Morgan State	6
* Yale	24	* Cornell	14

Other Games - Midwest		Other Games - South & Southwest	
* Anderson	13	* Albany, GA	27
* Ashland	30	* Angelo State	21
* Augustana, IL	28	* Arkansas-Monticello	17
* Baker	23	* Carson-Newman	24
* Baldwin-Wallace	37	* Catawba	10
* Benedictine	30	* Catawba	10
* Bethany, KS	45	* Central Arkansas	24
* Butler	24	* Central Connecticut	20
* Cameron	20	* Centre	20
* Carthage	20	* Clark	22
* Central Methodist	22	* Concord	23
* Central Missouri	21	* Delta State	17
* Central Oklahoma	27	* Elon	27
* East Central Oklahoma	28	* Ferrum	30
* Emporia State	26	* Gardner-Webb	23
* Evangel	24	* Hardaway, KY	45
* Gustavus Adolphus	27	* Greenville	10
* Heidelberg	33	* Guilford	30
* Hofstra	27	* Hampden-Sydney	22
* Iowa Wesleyan	30	* Hardaway, KY	45
* Kansas Wesleyan	28	* Jacksonville State	34
* Mankato	21	* Lenoir-Rhyne	27
* Minnesota-Duluth	37	* Livingston	23
* Muskegon	23	* Millsaps	24
* NE Oklahoma	27	* Millsaps	24
* North Dakota State	34	* Ouachita	26
* North Dakota U.	24	* Randolph-Macon	23
* Northwestern, IA	26	* Savannah State	27
* Ottawa	25	* Seawanee	30
* Pittsburg	49	* Shepherd	30
* Saginaw Valley	24	* Texas A & I	28
* SE Oklahoma	17	* West Georgia	24
* St. Joseph	24	* West Virginia Wesleyan	23
* SW Baptist	28	* Wolford	28
* SW Minnesota State	28		
* Wheaton	28		
* William Jewell	17		
* Wittenberg	21		

Other Games - Far West	
* Cal Poly	24
* Cal-Davis	25
* Chico State	27
* Eastern New Mexico	30
* LaVerne	28
* Linfield	24
* Mesa	26
* Northern Colorado	31
* Portland State	27
* San Diego	24
* Sonoma	23
* Southern Oregon	31
* St. Marys, CA	49
* Whittier	23

Presented By:

**WES-TEX FEED YARDS, INC.**  
CUSTOM CATTLE FEEDING 272-7555

**Football Highlights**

Georgia is still embarrassed. Its only conference loss until three weeks ago had been on the short end of a fine 10-0 defensive battle with Alabama. Possibly looking ahead to November contests, the Bulldogs woofed their way to Nashville in mid-October where the Commodores of Vanderbilt, already 5-time losers, shocked them 27-25. That may put league-leading Florida on the spot this week in Jacksonville. Georgia's no longer in the title picture, so with no pressure and with a chance to be a spoiler, the Bulldogs could make things difficult for the high-flying Gators. 'Course Florida did manhandle Georgia last year 38-7, and it's favored to win again. However...

Two major challengers remain on the 1991 schedule for the Irish of Notre Dame. Tennessee comes to South Bend Saturday, and the following week, the Irish go on the road to play Penn State. But first things first. Michigan handed Notre

Dame its only loss, 24-14, in Ann Arbor in the second game of the season. Since then, the Irish have had things their own way and hold an 8-1 record. Tennessee has been beaten twice, both losses coming against teams in the Southeast Conference, Alabama and Florida. Last year's contest was a classic. The Irish beat the Volunteers in Knoxville 34-29. It's an outstanding match-up again...Notre Dame.

Our prediction percentage happily is still holding close to 75 percent. Through games of Saturday, October 26, winners continue to out number losers 1,159 to 398 for a .744 average.

As if facing Stanford, Notre Dame and California on successive weekends weren't tough enough, the Trojans of Southern California have to entertain the powerful Washington Huskies. Last season, Washington 31, Southern Cal 0. Might be close to a repeat.

Florida State should continue undefeated, the Seminoles favored over tough South Carolina. And could Kansas, playing at home, upset Nebraska? Kansas State came close.

**Muleshoe Journal** USPS #67-820  
Established February 23, 1924. Published By Muleshoe Publishing Co., Inc. Every Thursday at 304 W. Second, Box 449, Muleshoe, Texas, 79347. Second Class Postage Paid at Muleshoe, Texas, 79347.

**MEMBER 1991**  
**TEXAS PRESS ASSOCIATION**

L.B. Hall, Publisher  
Sammy Hall, Vice-President/Comptroller  
Evelene Harris, News  
Joyce Adams, Society  
Holly Millispaw, Advertising  
Diana Bermea, Classified

**SUBSCRIPTIONS**  
Muleshoe Journal and Bailey County Journal  
Bailey and surrounding counties  
By Mail \$15.75  
Muleshoe Journal and Bailey County Journal  
Elsewhere  
\$17.50  
Muleshoe Journal and Bailey County Journal  
By Carrier Yearly  
\$14.00

Advertising Rate Card on Application  
\$14.00  
Advertisers should check their ad the first day of insertion. The Journal will not be liable for failure to publish an ad or for a typographical error or error in publication except to the extent of the cost of the ad for the first day of insertion. Adjustment for errors will be limited to the cost of that portion of the ad where the error occurred.

**GO WESTERN TO WORK...**  
in all-day comfort.

1177 Fair Store  
120 Main 272-3500

**RED WING SHOES**  
Made in U.S.A.  
Comfort and dependability tested for generations.

**JOIN THE MEXICAN FIESTA**

ON SALE AT DAIRY QUEEN OCT. 28 - NOV. 10, 1991

**3 BIG, ALL-BEEF TACOS \$1.49**

**TACO SALAD \$2.49**

**DQ IS VALUE/COUNTRY**

Reg. U.S. Pat. & Tm. Off. Am. D.Q. Corp. © Tx. D.Q. Op. Coun. At participating Dairy Queen stores.

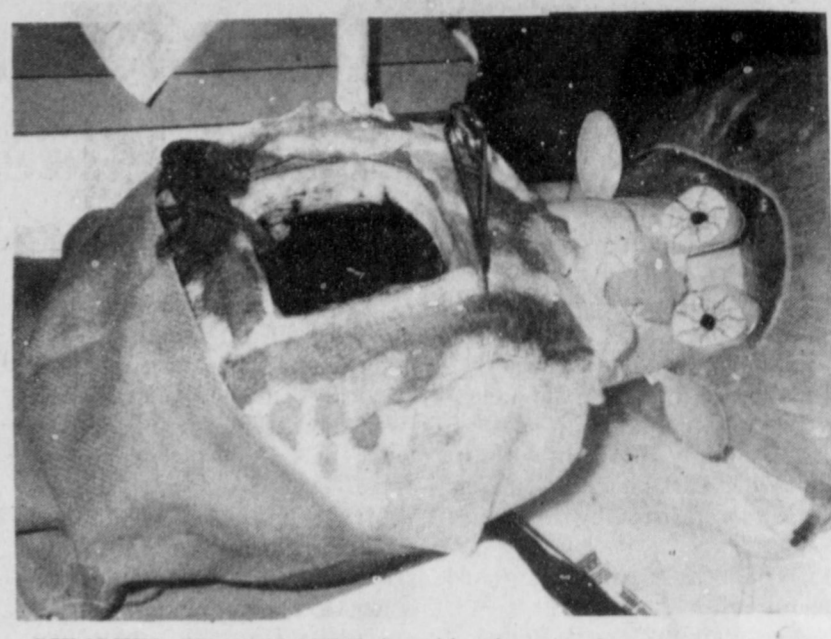




**HOSPITAL EMPLOYEES IN COSTUME**--for Halloween are these individuals (left to right): Judy Garcia, LaRhonda Hill, Debra McIntire, Michelle Herriage, Peggy Buhrman and front row (left to right): Anita Bonham and Mechele Edwards. (Journal Photo)

### TEA Receives Grant From Foundation

The Texas Education Agency has received a \$180,000 grant from the Carnegie Corporation of New York for continued implementation of state policy reforms in middle schools. The two-year grant will be used to design teacher training materials and to inaugurate the Texas Middle School Network. The network will be composed of 15 to 20 middle schools which will serve as examples of innovative campus planning and programs. The model schools will be selected by the Agency in November.



**PUMPKIN IN SURGERY**--is this imaginative entry in the Muleshoe Area Healthcare Center and Muleshoe Area Medical Center's recent pumpkin decorating contest. (Journal Photo)

### Breast Cancer Detection Unit Receives Certification

The Mobile Breast Cancer Detection Unit of Odessa, which services Muleshoe today received the certification of the American College of Radiology Mammography Accreditation Program.

Mammography is an X-ray examination of the breast, which the American Cancer Society and other medical experts see as the best means for the early detection of breast cancer.

The program is voluntary and is designed to insure that women receive optimum quality mammographic examinations. The process is done through a peer review evaluation of the facility's staff qualifications, equipment, quality control and quality assurance programs, image quality, and breast dose. The accreditation must be renewed every three years.

The accreditation program was instituted because of the concerns of radiologists, other national medical organizations, and the public that qualified personnel perform and interpret mammograms and that dedicated mammographic equipment be used. The American College of Radiology received an American Cancer Society Control

Grant which was used to pilot test the Accreditation Program.

Breast cancer will strike one in 10 American women. The American Cancer Society predicts that about 41,000 women will die of breast cancer this year. As there is no way to prevent the disease, early detection and treatment offer the greatest hope for survival.

The American Cancer Society recommends that women do monthly breast self-exams and have regular physical breast exams by a doctor. It further recommends mammography on the following schedule:

A baseline mammogram for reference between age 35 and 39.

A mammogram every one or two years between age 40 and 49.

An annual mammogram from age 50.

The Breast Cancer Detection Unit will be in Muleshoe on Tuesday, November 12. You may call 272-4524 for an appointment.

### Seminar Announced

How will the tax changes made by the Texas Legislature affect business owners in the Lubbock area? State Comptroller John Sharp is sending a tax expert from the State Comptroller's Office to conduct a free seminar on these changes and more on Thursday, November 14.

Kay McCall, from the Comptroller's field office in Lubbock, will be at the Godeke Library, 6601 Quaker Avenue, in Lubbock from 3 p.m. to 4:30 p.m. Kay McCall will be on hand to discuss changes in the state franchise tax, the new sales tax on boats and motor vehicles, the motor fuels tax and the new recycling fees on tires and batteries.

"While this seminar is geared particularly to new business operators, certainly anyone is welcome to attend," Sharp said. "The Comptroller's Office is available to assist Lubbock businesses with questions on collecting the correct tax, filing appropriate reports and other tax matters."

For those unable to attend the seminar, the State Comptroller's Office has a toll-free line available to assist Texas taxpayers. That number is 1-800-252-5555.

For more information about the upcoming seminar, contact the Comptroller's Lubbock field office at 806-745-7971.

### ENMU Offers Visit To New York

Eastern New Mexico University is offering through University Outreach a visit to New York City, March 14-22.

Included in the "New York Theatre Tour" are tickets to six Broadway, off-Broadway and off-off-Broadway shows, visits to the studios and workshops of a theatrical costume-maker, guided tours of the Library of Performing Arts, The Players Club and much more.

There will be extra time to visit leading tourist attractions, such as The United Nations, Statue of Liberty, World Trade Center and many others.

The price of the tour will be \$1,275, which includes airfare, transportation, hotel accommodations, theatre tickets and theatre seminars. Food and miscellaneous expenses are not included.

To register, contact University Outreach, Station 9, ENMU, Portales, NM 88130 or 562-2165, or Dr. J. Richard Waite at 752-9149.

### ENMU Hosts Dance Group

The Eastern New Mexico University Cultural Art Series for 1991-1992 begins with TZIGANKA on November 7 at 7:30 p.m. in the Campus Union Building Ballroom.

TZIGANKA has toured throughout the United States, Europe and the United Kingdom with its performances of Russian song and dance. This Russian Gypsy company performs tender ballads sung in Russian to gymnastic leaping of foot-stomping ferocity.

The series will continue on Feb. 1 with the Dutton Family, then the Davinci String Quartet on Feb. 24. On March 6, Some Enchanted Evening-The Songs of Rogers and Hammerstein will be performed in the University Theatre Center. The series will end on April 3 with Lazer Vaudeville.

Individual tickets may be purchased in the Campus Union Building Housing Office from 8 a.m. to 5 p.m. Season tickets are available to the general public for \$25, ENMU faculty/staff and senior citizens for \$20, and ENMU students and children under 17 for \$10.

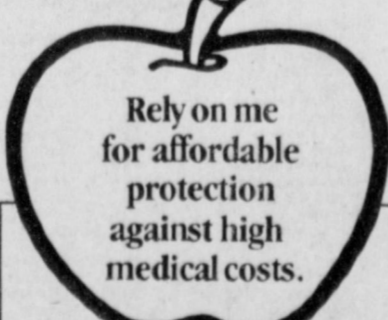
For more information, call 562-2631 or go by the CUB information center in the lobby of the Campus Union Building.

### 200 Prizes In Poetry Contest

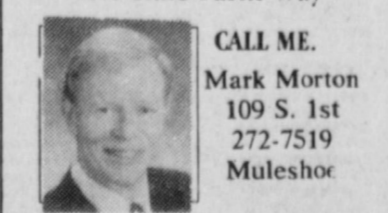
A \$1,000 grand prize is being offered in World of Poetry's Free Poetry Contest, open to everyone. There are 200 prizes in all, totaling over \$15,000! The deadline for entering is November 15. Winners will be notified by January 31, 1992 and a winner's list sent to all entrants.

Says Editor and Publisher John Campbell: "Even if you have written only one poem--or have never entered a contest before--this is your big chance. I want this contest to help me discover new poets!"

Send one poem (21 lines or less) to Free Poetry Contest, Dept. PR, 701 Dixieanne, Sacramento, CA 95815.



Ask About Health Insurance The State Farm Way



Like a good neighbor, State Farm is there



State Farm Mutual Automobile Insurance Company Home Office: Bloomington, Illinois

### Medical Center Sponsors Breast Cancer Detection Unit

According to the American Cancer Society, one out of every ten women in the United States will develop breast cancer sometime during her lifetime. Every year over 37,000 women die as a result of Breast Cancer.

According to a spokesman from the regional breast care center at Women's and children's hospital in Odessa, Texas "The death rate from breast cancer could be drastically reduced if women would have mammograms done before a problem exists." By using modern state of the art X-ray equipment breast cancers can be found when they are about the size of a grain of rice and well before the cancer can be felt.

A woman who is diagnosed with breast cancer at this early stage has a 90-97 percent survival rate. However, a woman who is not diagnosed until a lump can be felt has approximately a 50 percent survival rate in five years.

In an effort to find cancers at the earliest possible stage and prevent unnecessary deaths, a mobile breast cancer detection unit will be made available to local women on Tuesday, November 12.

The mobile unit will be parked at the Muleshoe Area Medical Center, 708 South 1st.

**Basic Health Insurance**  
In an unprecedented move, leaders of the conservative American Medical Association urged the federal government to guarantee basic medical insurance to all people.

Appointments may be made by calling 272-4524.

For more information you may call the regional breast care center at women's and children's hospital at 915-334-8888 or 561-9999.

### Word Perfect To Be Offered

The Lifelong Learning Center at Wayland Baptist University is offering an introduction to the WordPerfect word processing program beginning November 22.

The class will include an introduction to DOS, the difference between typing and word processing and an introduction to word processing.

Don Dyess, who is an assistant registrar at Wayland, will instruct the class. He knows several different computer programs and enjoys sharing his knowledge in the classroom.

Classes will be held Nov. 22, Dec. 6 and Dec. 13 from 6:30 p.m. to 9:30 p.m.

Cost is \$45 per person. Pre-registration is required by noon, Wed., Nov. 20 in room 101-C of the Muncy Building at 708 Yonkers. Enrollment is limited to 15 students on a first-come, first served basis.

For more information, contact the Lifelong Learning Center at 296-4734.

**Trade Deficit Lower**  
The U.S. trade deficit narrowed sharply to \$4.05 billion in March, the lowest level in nearly eight years, as the recession cut further into import demand.

# WANTED:

A 50 yr. old Hispanic Male, is 5' 3",  
weighs 163 lbs., has short Black hair with  
some Gray showing and also has a Mustache!



**Crime Committed:**  
Turned **50 yrs. old** Today,  
November 7th.

**Be carfeul, if you happen to see this man out  
and about town wish him a Happy 50th Birthday!**

**This man is also lovable, caring and full of energy**

Thank You

I would like to thank everyone for their cards,  
flowers, visits and prayers during my stay in the  
hospital. A special thanks to Dr. Purdy and  
staff and the hospital staff.

God Bless You  
Myrtle Creamer





ONE OF THE ENTRIES--in the Muleshoe Area Medical Center and Muleshoe Area Healthcare Center pumpkin decorating contest judged October 31 is this design. (Journal Photo)



PICTURED WITH SOME OF THE ENTRIES--at the Muleshoe Area Healthcare Center and Muleshoe Area Medical Center pumpkin decorating contest is Richard Murphy, hospital administrator. The contest was judged October 31. (Journal Photo)

### MICROWAVE TIPS

One of the better snacks which can be prepared in a microwave is made with two gra-

ham crackers, a slice of milk chocolate and a marshmallow.

Put the slice of chocolate in the center of a graham cracker, which is itself on a paper towel. Place marshmallow on chocolate. Microwave on High for 15 to 30 seconds.

When marshmallow has expanded, take out and put the other cracker on top, mashing down and flattening the marshmallow.

was also seen pushing kids who were three times her size around in their wheelchairs.

"You know we've really gone through a lot," said Watson, who began her career as an airline stewardess three years ago. She said she wanted to give her daughter a little more room to grow.

Porterfield says she has become more independent although she still has a little trouble like more teenagers getting her hair to turn out the way it should. However, she likes the fact that she can do many things by herself now, such as getting dressed--even if it takes a little longer.

"Paige is just Paige," Watson said. "We don't look at her as having a disability. She just has a small obstacle to overcome."

This fall, the sophomore is busy getting involved in activities at a new school, Fort Worth Christian High, and is looking forward to joining the 4-H Club in Tarrant County.

"For us, the 4-H experience has really been rewarding," Watson said. "I hope that Paige can serve as an example not only to those who are disabled, but others who don't think they can accomplish their goals. Maybe her accomplishments can encourage them to try a little bit more."

### Who Knows?

1. Name the 13th Cabinet Agency.
  2. Who discovered the planet Neptune?
- Answers:  
1. Department of Education.  
2. Johann Gottfried Galle, German astronomer, in 1846.

## 4-H Member Rides Through Her Handicap

When Paige Porterfield rides into a horse show arena, she's driven by a greater desire than the need to win.

At age 13, when she captured first place in an English pleasure class at the Fort Worth Exposition and Rodeo, she received a standing ovation. Her mother cried.

"I guess the crowd could tell a little bit about her disability because of her head control," said Susie Watson of Keller. "When they stood up and cheered for her, it made me cry."

Porterfield, 15, suffers from cerebral palsy, a disability caused at birth by damage to the brain and resulting in muscular incoordination and speech disturbances.

Doctors didn't expect Porterfield to walk or talk. However, when she was only 18 months old, her parents, who were involved in horse training, racing and showmanship, bought her a pony. Unknowingly, the Watsons had introduced their daughter to hippotherapy--which relies on the motion of the horse's hind legs to strengthen a person's muscles to improve motor coordination.

The technique is especially helpful for people with cerebral palsy, multiple sclerosis, neurological problems and head injuries, said Terri Barnes, physical therapist and director at Rocky Top Therapy Center in Keller.

When a person rides a horse, "the pelvis is being moved as if that person is actually walking," she said. "This gives the patient a lot of rotation and increases trunk muscles--from the shoulders to the pelvis, abdominal and back muscles--even if that person is in a wheelchair." Patients improve their movements and patterns and have more control over their lives.

There are not many hippotherapy centers in the United States, according to Barnes, who studied the technique in Germany. However, there are almost 1,000 horse programs that help those with disabilities. The North American Riding for the Handicapped Association operates 27 centers in Texas.

Porterfield, who keeps her

horse, TJ Bar, at Rocky Top, has her own riding routine. Since she joined the 4-H Club in Montague County at age 9, "it's been quite a metamorphosis to see a child who was once loose in her posture and head control make such significant improvements," her mother said.

"In physical therapy, we would work for 45 minutes rolling a ball," Watson said. "When I took Paige to the barn, she was doing so much more--sweeping and cleaning stalls and brushing the horse. Taking care of TJ helped motivate her."

"The neatest thing is that when I started working with Paige in July I asked what were her capabilities and limitations," said Stephanie Lynn, a horse trainer in Argyle. "There have been no limitations." The only thing she needs help with is getting the saddle on the horse, Lynn said.

According to Lynn, Porterfield "probably has more motivation and tries harder" than other riders in training. "She may have to work a little harder to accomplish something, and she does."

Good horsemanship requires the ability to sit up straight, exhibit style, communicate well and appear as a unit with the animal. Porterfield knows this.

"When I won (at Fort Worth) I was so excited, so happy," she said. Yet, being able to sit straight in the saddle meant more to her. "I have people come up and tell me after shows that they didn't know I had cerebral palsy," she said.

Porterfield is unable to compete in other sports.

"But in horses, she's right in there competing at the top level with other kids," according to Watson. "She can accomplish something that comes from the hard work she puts into it."

Porterfield gets lots of encouragement from Texas Agricultural Extension county agents, volunteer leaders, 4-H members and their parents.

"Constantly, as we go to the horse shows, people are so wonderful and encouraging," Watson said. "They recognize, even more than I, how her riding skills have improved."

But learning how to be a better rider is only a small part of what 4-H has meant to Porterfield.

"I learned more than just riding," she said. "I learned about grooming, hard work and cleaning stalls. I learned how to be in front of a crowd by riding in different events, like when I was chosen as Miss Jim Bowie Days and 4-H sweetheart and rode in the parade last year." This year, she also was chosen as Montague County 4-H sweetheart.

Porterfield has done well in all-around riding events. In July, she was the high-point winner of the district horse show in Abilene.

During these competitions, she relies on her horse of four years quite a bit, but admits he could advance a little more, be more of a challenge.

"Sometimes, he just sits there and won't move," she said, laughing.

"Whether it's win, lose or draw," her daughter has the best time of her life at 4-H state competition, Watson said. She likes the camaraderie and the popularity.

"It's so special," Porterfield said. "I made some really neat friends at state. It seems like everyone knows me. They wave and call me by name."

Watson said what she likes most about 4-H is that "the whole family is there, together."

"That says a lot about what you get out of it--not the ribbons or the awards, but the fact that the children see that the parents have a deep interest in their goals. And regardless if they win anything, that parent participation means a lot."

Porterfield wants to advance to state competition as many times as possible, make it to the southern regional and eventually to national competition one day. However, she's looking farther ahead.

"I want to go to Texas A&M University, maybe, and get a teaching degree, study physical therapy and business communications," she said. "I want to open my own private school for the handicapped."

Porterfield had the opportunity to work with disabled young people at Camp Soroptomist in Argyle last summer. She was responsible for assisting five youngsters.

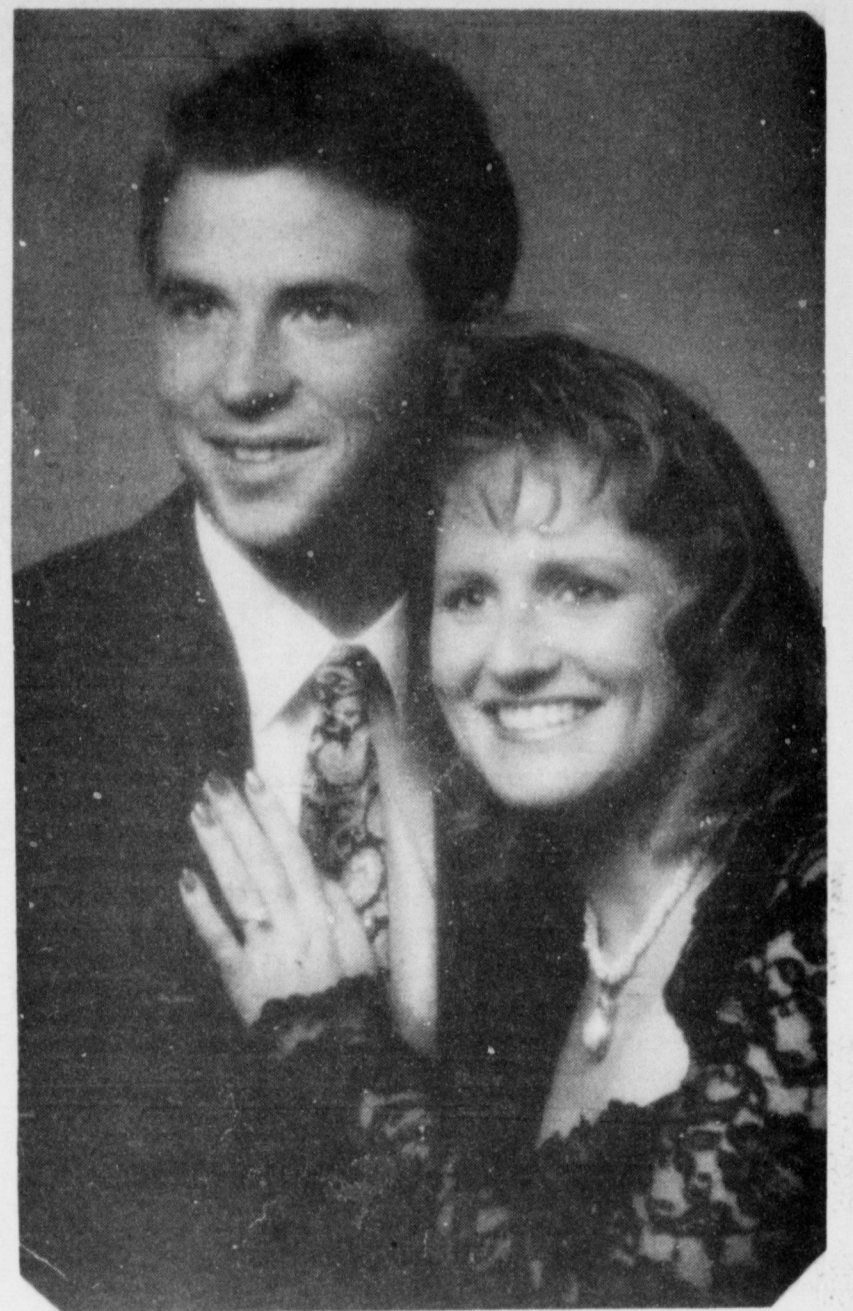
"I brushed teeth, washed faces and it was really neat," she said. The petite youngster

**Thank You**

The family of Helen Irene Pruitt would like to express our sincere appreciation for all the flowers, cards, prayers, and all other acts of kindness shown to us in our time of sorrow.

William Charles Pruitt, Jr. & family	
Dorothy Pruitt & family	Jarrell Pruitt & family
Odis Pruitt & family	Mary Byford & family
James E. Pruitt & family	Carroll Pruitt & family
Jasper Pruitt & family	Carolyn Gross & family
	Howard Pruitt & family

**Avon +  
Christmas  
Equals  
An Earning  
Opportunity  
Call Today  
Holly Millsap  
272-5607**



ENGAGEMENT ANNOUNCED--Ms. Pamela Rose Sexton of San Antonio announces the engagement and approaching marriage of her daughter, Tanya Lee Sexton, to Jeffrey Michael Kline, son of Ms. Jo Ann Kline of Muleshoe. The couple will wed Saturday, November 9 at 7:30 p.m. in Chapel One at Randolph Air Force Base in San Antonio. Tanya is a May graduate of Texas A&M University where she earned a degree in accounting. Jeffrey graduated from Texas A&M University in 1989 and received his master's degree in aerospace engineering from the University of Texas at Austin in August. He is a 1985 graduate of Muleshoe High School. (Guest Photo)

## What To Do About Those Aching Joints

Aching joints could indicate the presence of arthritis, a term used to refer to the effects of more than 100 related diseases described as "rheumatic." James Burke, M.D., an orthopedic surgeon on staff at Methodist Hospital, identifies forms and symptoms of arthritis as the following.

**Osteoarthritis** is a form of arthritis associated with the degeneration of the smooth, weight-bearing surfaces of the joints. Osteoarthritis usually develops after age 40, and it may be the result of either wear-and-tear on the mechanical parts of the joint or of injury. Obesity and heredity also may contribute to its development. The hips, knees, and ankles and hands are most vulnerable to osteoarthritis.

**Rheumatoid arthritis** is a systemic disease characterized by chronic inflammation in the synovial membrane, the thin layer of tissue which lines the joint. It can affect many joints

simultaneously and is a disease of both the young and the old. Heredity may be a factor in the development of rheumatoid arthritis, but it can be treated successfully. See your physician if you experience one or more of the following symptoms:

1. Swelling in one or more joints.
2. Early morning stiffness
3. Recurring pain or tenderness in any joint
4. Inability to move a joint normally
5. Obvious redness and warmth in a joint
6. Unexplained weight loss, fever or weakness accompanied by joint pain
7. Symptoms like these which persist for more than two weeks

**HEALTH INSURANCE**

CALL Mark Morton  
109 S. 1st Muleshoe  
272-7519

State Farm  
Mutual Automobile  
Insurance Company  
Home Office  
Bloomington, Illinois

Accredited by the American College of Radiology

## BREAST CANCER DETECTION UNIT AVAILABLE TO AREA WOMEN

**Tuesday, November 12th  
Muleshoe Area Medical Center  
708 South 1st.  
Muleshoe, Texas**

A Service of  
Transamerican Diagnostic Services  
(Providing Mammography Services for over 5 years)

**CALL 272-4524 FOR APPOINTMENT**

According to the American Cancer Society, one out of ten women in the United States will develop breast cancer sometime in her lifetime. It is currently estimated that over 37,000 women die each year as the result of breast cancer.

Ninety percent of breast cancers are diagnosed by women or their physicians finding a lump in the breast. Women who are diagnosed with a lump large enough to feel have a 50 percent five year survival rate. A woman who is diagnosed as having breast cancer by mammography, before a lump can be felt, has a 97% five year survival rate and a 90% 10 year survival rate.

A mammogram can detect a cancer this small, even before it can be felt.

**Guidelines For Screening Mammography Established by the American Cancer Society.**

- I. 35-40 years of age - One baseline mammogram.
- II. 40-50 years of age - A mammogram every 1-2 years depending on breast type and risk factor.
- III. 50 years of age and over - An annual physical examination and annual mammogram.
- IV. Asymptomatic women under 50 years of age with significant high risk factors should be examined at appropriate intervals. These risk factors include previous breast cancer and family history of cancer.

V. A symptomatic woman should have a mammogram at any age when she experiences a mass, nipple discharge, skin changes or unexplained breast pain.

A screening mammogram is an x-ray of the breast using extremely low dosages of radiation (usually comparable to dental x-rays) and is designed to find very early cancers.

A female technologist who is highly trained in mammography will perform the examination.

The charge for the screening mammogram is \$65.00. The Unit accepts cash, check, Visa, Mastercard and American Express.

**Now filing Medicare**  
(for your reimbursement)





**BEST OVERALL**---Robert Montgomery, president of the Muleshoe Chamber of Commerce, presented Joe and Darla Rhodes with a plaque for the Best Overall Participation in the Moonlight Madness Sale Friday night. The next Moonlight Madness sale will be on November 15. (Journal Photo)

## Orozco Wins Weekly Contest

First and second place winners in this week's football contest were a husband and wife team. Alma Orozco missed only one game for a first place win and 10 points toward the grand prize. Add this week's win to the 16 points from previous wins and Mrs. Orozco has a total of 26 points. She also takes the lead in the contest.

Richard Orozco was the only contestant to miss three games. Orozco came in, in second place and received six points. Orozco had two previous wins and with adding those points to this week's points he has a total of 16 points.

A new name, Dot Long was added to the winning list. Ms. Long was the only person to miss four games.

Last week the name of Jimmie Chapman was inadvertently left off the list of those having 10 points.

Its still anyone's game, its not to late for you to be a winner, so keep those entries coming in.

## Lazbuddie...

Cont. from Page 1

want to be outdone and he ran one yard into the endzone. Tyson kicked the extra point.

Cosbey came right back, catching a 31 yard pass from Paul Williams. Gonzales kicked the extra point.

At halftime the score was Lazbuddie Longhorns 33 and Amherst Bulldogs 24.

Amherst put the ball into action in the second half and Miles ran 54 yards into the endzone. Tyson kicked the extra point.

The next two touchdowns belonged to Lazbuddie. Cosbey caught a 33 yard pass from Mario Zamora and Gonzales kicked the extra point. Leland Brockman caught an 18 yard pass from Zamora and Gonzales kicked the extra point.

The third quarter ended Lazbuddie 49, Amherst 31.

Lazbuddie's Eric Williams blocked a punt and got a safety in the opening play of the third quarter.

Jesko scored for Lazbuddie on a 53 yard pass from Terry Darling. Gonzales kicked the extra point.

Cosbey scored for Lazbuddie on a 20 yard interception and Gonzales kicked the extra point.

Amherst's Miles scored on a 16 yard run and Tyson kicked the extra point.

Brockman scored the final touchdown in the game for Lazbuddie on a 49 yard pass from Zamora. Gonzales kicked the extra point.

The game ended Lazbuddie 74, Amherst 39.

The Longhorns will play Silverton this week in what promises to be a good game, neither team has lost a game this season.

## Bailey County Votes

Con't from page 1

approval and to set the per diem for those officials subject to a limit also failed to carry the county, 616 against and 405 for.

Eight hundred and seven voters voted against Amendment No. 7, allow the board of trustees of a statewide public retirement system to invest funds of the system in a manner that the board considers prudent. Two hundred twenty nine voted against.

Amendment Number 8, authorizing the voters of this state to consider state debt questions in the form of ballot propositions that must clearly

describe the amounts, purposes, and sources of payment of the debt only after approval of the propositions by a two-thirds vote of each house of the Legislature, carried by a large margin, 635 for and 367 against.

Bailey County voters turned down Amendment Number 9, authorizing the commissioner of the General Land Office to issue patents for certain public free school land held in good faith under color of title for at least 50 years. Five hundred forty two voted against and 453 for.

Amendment Number 10 also failed in the county, 524 against authorizing the Legis-

lature to exempt from Ad Valorem Taxes certain property of a nonprofit corporation that supplies water or provides wastewater service, and 473 voted for the amendment.

Five hundred and sixty eight Bailey County voters voted for Amendment Number 11, the constitutional amendment authorizing a state lottery, and 507 voted against the amendment.

Amendment Number 12, to

increase from 20 percent to 50 percent the percentage of Texas Water Development Bonds previously authorized by Texas voters that may be issued for economically distressed areas.

Bailey County voted for Amendment Number 13, providing for the issuance of General Obligation Bonds not to exceed \$300 million to continue existing programs to provide educational loans to students, by a large margin 712 for and 331 against.

## Squirrel Hunters Have

### Higher Success Rate

Squirrel hunters on the Engeling Wildlife Management Area in Anderson County and on the Keechi WMA in Leon County had higher success than the past few years during early October hunts.

During 13 days of hunting on the 10,941-acre Engeling WMA, 446 hunters averaged 2.5 squirrels per day, up from 2.5 last spring and only .38 per hunter last fall, said Don Frels, Jr., area wildlife biologist.

Kay Fleming, wildlife biologist at the Keechi WMA, said during four days of hunting during the first two weekends of October, 69 hunters averaged

5.3 squirrels per hunter, compared to 4.2 during the spring and 2.25 last fall.

Eighty to 90 percent of the squirrels killed were gray squirrels with the rest being fox squirrels. Gray squirrels prefer the large, mature hardwoods present in the creek bottoms that are present on both WMAs.

"Squirrels, as well as many other wildlife species, rely heavily on acorns for food during the fall and winter months," said Hayden Hauke, manager of the Engeling WMA. "Reproductive success is in direct relationship to the oak mast crop. That is why bottomland hardwoods are so important and vital to maintaining wildlife populations of so many species here in East Texas."

Spring squirrel populations should be improved, too. This fall, after checking 1,200 individual mast producing trees (oaks, hickories and pecans), 78 percent of these mature trees had mast in the bottomland while only 36 percent of the upland hardwoods had mast present, Hauke said. "Water and willow oaks were the best producers in the bottomland while red oaks were the best in the upland sites."

## George Elder

### Memorial Services Held Wednesday

Memorial services for George Davis Elder, 60, of Lubbock were held at 2 p.m. Wednesday in First United Methodist Church of Dimmitt with the Rev. Vernon O'Kelley, pastor, officiating.

Cremation will be under direction of Foskey Funeral Home.

Elder died at 10:20 p.m. Monday in Methodist Hospital in Lubbock after a lengthy illness.

He was born in Fisher County and had lived in Dimmitt for 33 years before moving to Lubbock 19 months ago. He married Bessie Griffing on September 15, 1950, in Muleshoe. He was a farmer and a member of First United Methodist Church.

Survivors include his wife; a son Mike of Dallas; a daughter, Linda Claborn of Lubbock; three brothers, Gerald of Sweetwater, James of Muleshoe and Thurman of Portales, N.M.; a sister, Freda Long of Muleshoe; and two grandchildren.

The family suggests memorials to Hospice of Lubbock, P.O. Box 53276, Lubbock 79453.

## Muleshoe...

Cont. from Page 1

they pretended to be scarecrows as they learned directional and positional concepts.

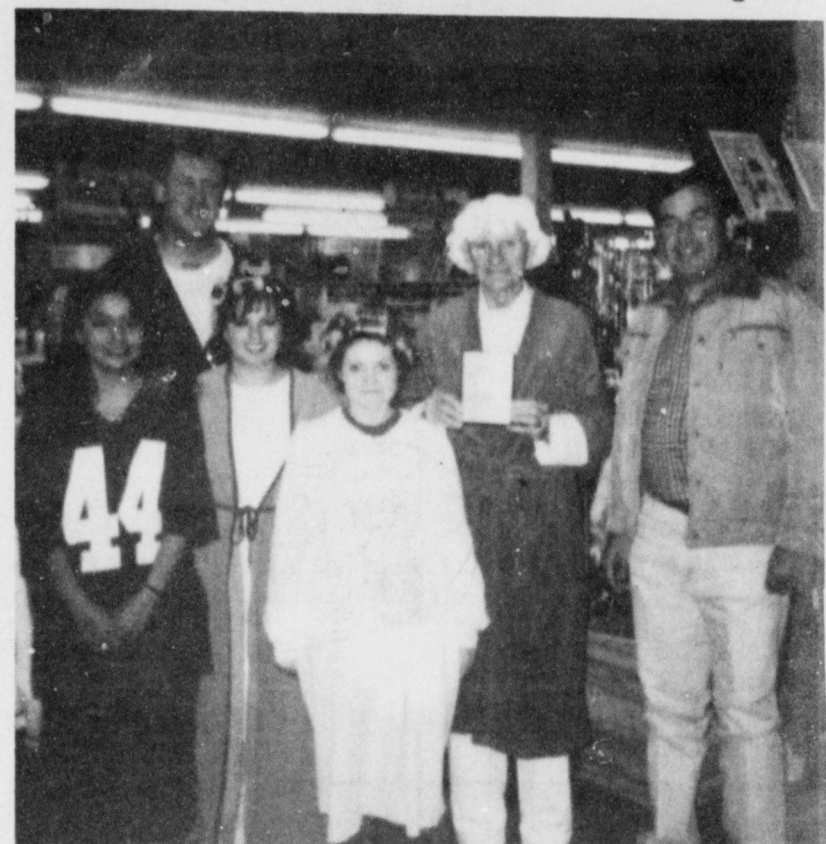
"One of the most exciting things that we have done was our visit to Ronnie and Kia Puckett's pumpkin patch (on the coldest day this year)" said a spokesperson from the school.

A Jack-O-Lantern was made from one of the pumpkins. The class learned how the pumpkins grow and how they are harvested. "We are looking forward to more exciting days and a very good year."

Eleven Southwestern Public Service Company employees from Muleshoe will be recognized for their years of service to the customers in the region.

Awards will be presented at the SPS Southern Division and Production Department awards dinner, Nov. 14, in Lubbock.

Employees in Muleshoe being honored are: Edward L. Huff, 40 years; Charles Gist, 35 years; Tom Mason, 30 years; Lawrence Coone, Jim Haynes, Ricky L. Pwell and John Underwood, 15 years; Gary Gilleland and Robert Hardt, 10 years; and Florinda Almanza and Larry K. Chapman, five years. These employees are among 371 employees of the company and subsidiaries being recognized through a series of award dinners.

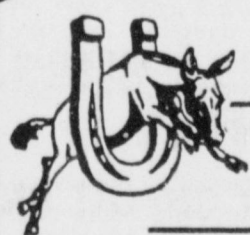


**BEN FRANKLIN'S WIN PLAQUE**---Robert Montgomery, president of the Muleshoe Chamber of Commerce, presented the Best Dressed Store Award to Ben Franklin's Friday night during the Moonlight Madness sale. (Journal Photo)

## Thank You

We would like to thank all our friends for their cards, visits, flowers and prayers during Dee's stay in the hospital.

Dee & Ruth Clements



## Muleshoe

### Pheasant Club



Here's what the MULESHOE PHEASANT CLUB offers you!

**Remember!! Double Daily Limit!  
4 Birds Per Day Guaranteed!**

Cost For This Hunt Is \$200.00 Per Day, Per Hunter

You may reserve your hunting date by remitting only 1/2 (\$100.00) per day, per hunter!! Act Now!! **Limited Number Of Hunters**  
Deposits Are Non-Refundable

Name \_\_\_\_\_  
Address \_\_\_\_\_  
Telephone \_\_\_\_\_  
Number Of Hunters \_\_\_\_\_  
Date (s) Desire To Hunt \_\_\_\_\_  
Second Choice \_\_\_\_\_

We also have Incredibly Delicious Smoked Pheasant For Sale!  
Great For Special Occasions!  
Ideal Gifts for the Impossible to buy for:  
Favorite Aunts Mother-in-laws Grandmothers, etc.



Checks should be made payable to.

## Muleshoe Pheasant Club

Texas Hunting Licenses Available For Out-Of-State Residents At A Nominal Fee. (\$25.00 -- 5 Day Permit)

You May Obtain Additional Information Or Pre-Register By Completing The Form And Return.

Special Season by State Permit Beginning Nov. 15

**Group Rates For 15 Or More Hunters!**

LIMITED NUMBER OF HUNTERS ALLOWED.

Call now for more information:

Walter B. "Jack" Little

Home: 806-272-4805  
(or leave message for call back)

Mobile: 806-272-4086  
1-800-548-7738

or write to:  
P.O. Box 525  
Muleshoe, TX 79347

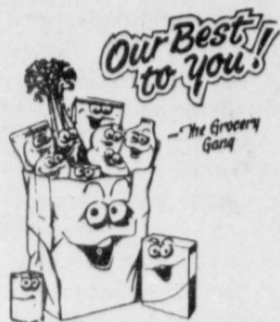
## PUBLIC NOTICE

On April 16, 1991, GTE Corporation ("GTE") and Contel Corporation ("Contel") filed a joint petition for declaratory relief with respect to the obligations or requirements of GTE or Contel and/or any of its subsidiaries relating to the merger of GTE and Contel. GTE and Contel have requested a ruling from the Public Utility Commission of Texas that neither GTE nor Contel is required to report the merger of GTE and Contel pursuant to Section 63 of the Public Utility Regulatory Act ("PURA"), TEX. REV. CIV. STAT. ANN. art. 1446c (Vernon Supp. 1991), that no investigation of the merger by the Commission is required. In the alternative, GTE and Contel seek a determination that the merger is consistent with the public interest.

The Commission is investigating the merger between GTE and Contel Corporations to determine whether the merger is consistent with the public interest. In reaching its determination, the Commission shall take into consideration the reasonable value of the property, facilities or securities to be acquired, disposed of, merged or consolidated. If the Commission finds that the merger is not in the public interest, the Commission shall take the effect of the transaction into consideration in GTE Southwest Incorporated's and Contel of Texas, Inc.'s next rate-making proceeding and disallow the effect of such transaction if it will unreasonably affect rates or services.

This filing has been assigned Docket No. 10212. Persons who wish to intervene or otherwise participate in these proceedings should notify the Commission. A request to intervene, participate, or for further information, should be mailed by 3 p.m., December 31, 1991, to the Public Utility Commission of Texas, 7800 Shoal Creek Blvd., Suite 400N, Austin, TX, 78757. Further information may also be obtained by calling the Public Information Division of the Public Utility Commission at (512) 458-0256, or (512) 458-0221 teletypewriter for the deaf.





# TREAT YOURSELF to These LOW PRICES

WILSON'S  
**SLICED BACON**  
1 LB. PKG.  
**99¢**



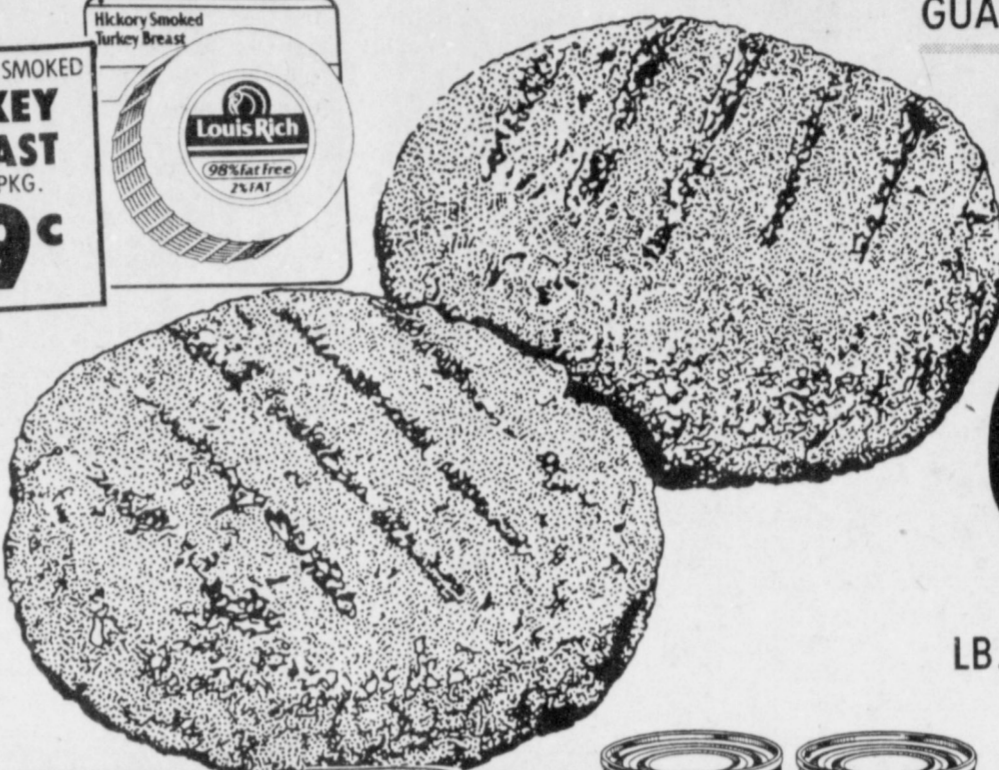
LOUIS RICH SMOKED  
**TURKEY BREAST**  
6 OZ. PKG.  
**99¢**



GUARANTEED 73% LEAN FRESH

**GROUND BEEF**  
FAMILY PACK

**99¢**  
LB.



OWEN'S REGULAR/  
HOT/MILD/SAGE  
**COUNTRY SAUSAGE**  
1 LB. ROLL  
**\$1.79**  
REG./HOT  
2 LB. ROLL **\$3.57**



DISH DETERGENT

**SUNLIGHT LIQUID**

22 OZ. BTL.

**99¢**



SHURSAVING

**HOMO MILK**

1/2 GAL. JUG

**99¢**



GRANULATED

**IMPERIAL SUGAR**

4 LB. BAG

**\$1.39**



PLAIN/ W/ BEANS

**WOLF CHILI**

19 OZ. CAN

**99¢**



ALL TYPES

**DR. PEPPER**

2 LITER BTL.

**99¢**



**Unforgettable Nights and Days**

Eau de Cologne Spray .1 oz.  
Eau de Parfum Spray .4 oz.

**While They Last \$9.99**  
\$30.00 Value for



WITH COUPON AT RIGHT  
12 OZ. PERFECT BALANCE/  
13 OZ. REGULAR

**HILLS BROS. COFFEE \$1.69**  
**BUY ONE GET ONE FREE**

**IN-AD COUPON**

RETAILER: You will be reimbursed for the face value of this coupon plus \$0.8 if submitted in compliance with Nestle Beverage Co. Redemption Policy incorporated herein by reference. Good only in U.S.A. Consumer must pay sales tax. Void where prohibited, taxed, or restricted. Cash value 1/10th mil.

For redemption mail to:  
Nestle USA In-Ads  
24024 Humphries Road, Building 2  
Tosca, CA 91980

COUPON GOOD THRU 11-13-91

ONLY AT THRIFTWAY/LA TIENDA

H0829045

**FREE COFFEE**  
BUY ONE, GET ONE FREE AT CHECKOUT  
Hills Bros. 13 oz. Regular, 12 oz. Perfect Balance

MAXIMUM COUPON VALUE \$1.69



**Charlie Two Ways About It**

Concentrated Cologne .1 oz.  
Concentrated Cologne Spray .47 oz.

\$18.50 Value for  
**\$6.99**

**While They Last**

RED RIPE  
**TOMATOES**  
LARGE SIZE  
**37¢**  
LB.

U.S. NO. 1 RUSSET  
**POTATOES**  
5 LB. BAG  
**59¢**

STARKIST OIL/ WAT PAK  
**CHUNK TUNA**  
6.25 OZ. CAN  
**59¢**

LAY'S® ASSTD.  
**POTATO CHIPS**  
1.49 SIZE BAG  
**99¢**

ASSORTED  
**GATORADE DRINK**  
64 OZ. BTL.  
**\$1.69**

FABRIC SOFTENER  
21.5 OZ. CTN. REFILL OR  
**DOWNY LIQUID**  
64 OZ. BTL.  
**\$1.99**

EACH

WASHINGTON EXTRA FANCY RED DELICIOUS  
**APPLES** 3 FOR \$1.00  
ANJOU  
**PEARS** 3 FOR \$1.00  
JEWEL  
**GREEN LIMES** 6 FOR 49¢

COUPON GOOD THRU 11-13-91

**Save \$1.35**  
on ONE 15 oz. ONLY.

CONSUMER OFFER IS LIMITED TO ONE COUPON PER PURCHASE. RETAILER: KELLOGG SALES COMPANY. \*Redeem this coupon in accordance with our redemption policy. Copies available upon request. Cash value 1/100¢ and where prohibited, taxed or restricted by law. Mail coupon to: KELLOGG'S CEREAL DEPT. 38999 ONE HAWKETT DRIVE, DEL. RID. TX 78840

Good only at THRIFTWAY/LA TIENDA

COUPON GOOD THRU 11-13-91

**Save 50¢**  
on ONE 12 oz. ONLY.

CONSUMER OFFER IS LIMITED TO ONE COUPON PER PURCHASE. RETAILER: KELLOGG SALES COMPANY. \*Redeem this coupon in accordance with our redemption policy. Copies available upon request. Cash value 1/100¢ and where prohibited, taxed or restricted by law. Mail coupon to: KELLOGG'S CEREAL DEPT. 38999 ONE HAWKETT DRIVE, DEL. RID. TX 78840

Good only at THRIFTWAY/LA TIENDA

IN-AD COUPON

**\$200 OFF ANY 20 LB. BAG**

**Gaines Gravy Train**  
DOG FOOD

RETAILER MAIL TO: GAINES COMPANY, 1000 W. 10TH ST., DALLAS, TX 75208

COUPON GOOD THRU 11-13-91  
Only at THRIFTWAY/LA TIENDA

5 51316 91382 4

BEEF FLAVORED DOG FOOD

**GRAVY TRAIN**  
20 LB. BAG

WITH COUPON AT LEFT  
**\$5.99**

COLGATE ASSORTED  
**SHAVE CREAM**  
11 OZ. CAN  
**79¢**

EXTRA STRENGTH  
**TYLENOL TABLETS**  
60 CT. BTL.  
**\$3.99**



401 W. Amer. Blvd. Muleshoe 272-4585

**AT AFFILIATED FOODS INC.**  
MEMBER STORE

WE ACCEPT FOOD STAMPS...  
WE RESERVE THE RIGHT TO LIMIT

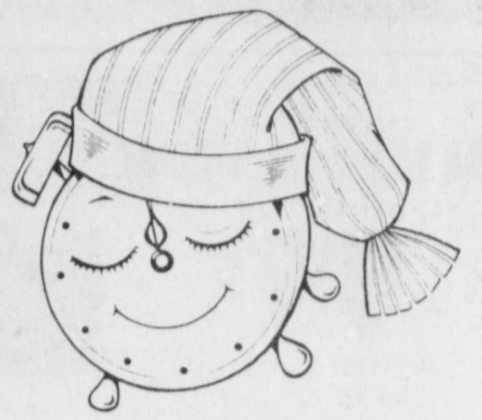
PRICES EFFECTIVE  
NOVEMBER 3-9, 1991

YOUR CHOICE  
WITH COUPONS  
ABOVE

KELLOGG'S  
**CORN FLAKES**  
12 OZ. BOX  
**89¢**

KELLOGG'S  
**FROSTED FLAKES**  
15 OZ. BOX  
**89¢**

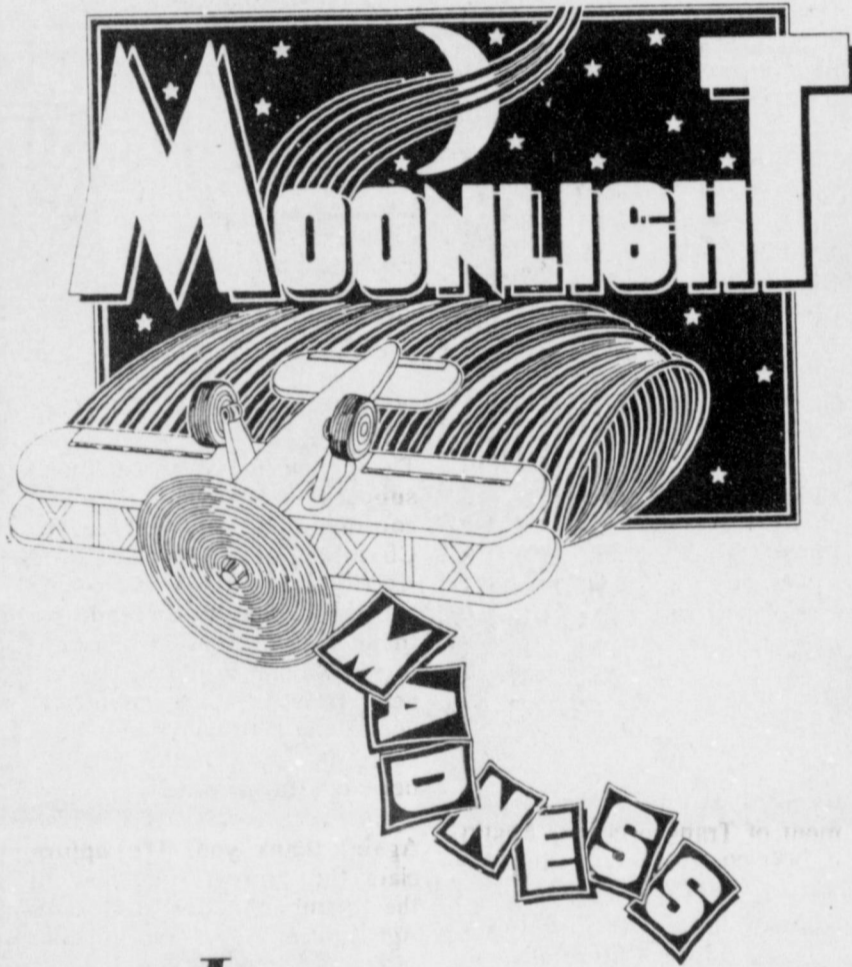




**MOONLIGHT MADNESS**--Randy Lewis and employees of Perry Brothers were all dressed up Friday night for the first of five "Moonlight Madness" sales to be held in Muleshoe before Christmas. Tom Gray (Back Right) and his band played music in front of the store for all the shoppers to enjoy. (Journal Photo)



**THIS IS HOW ITS DONE**--Joe Rhodes at Joe's Boot Shop took time out from the Moonlight Madness sale Friday night to show a group of youngsters how to rope these miniature cows. (Journal Photo)



In  
Muleshoe

Friday, November 1, 1991



**GREETING YOU AT ANTHONY'S**--Shoppers at Anthony's Department Store Friday night were greeted by Eloy Perez and employees, dressed in their P.J.'s for the Moonlight Madness sale. (Journal Photo)



**DRESSED FOR THE OCCASION**--Jim Hailey and employees of Ben Franklins' wore their P.J.'s Friday night for the Moonlight Madness sale. Four more Moonlight Madness sales will be held before Christmas. (Journal Photo)



**WINS BACHELOR'S CHAIR**--Keith Topper was the lucky winner of a Bachelor's Chair Friday night at the Country Junction, during the Moonlight Madness sale. (Journal Photo)



# CLASSIFIEDS 272-4536

## CLASSIFIED RATES

15 Words & Under Minimum Charge \$2.30  
Thereafter \$2.00  
16 Words & Over 1st Insertion 15 cents per word  
2nd Insertion 13 cents per word

CLASSIFIED DISPLAY RATES \$1.75  
Per Column Inch

DEADLINES  
12 noon Tues.  
For Thursday Paper  
12 noon Friday  
For Sunday Paper

To receive the reduced rate after the first insertion ad must run continuously.

We reserve the right to classify, revise, or reject any ad. We are not responsible for any error after ad has run once.

## 1. Personals

### CONCERNED

About Someone's Drinking? HELP IS AVAILABLE through Al-Anon Call 272-2350 or 965-2870 or come to visit Tuesday and Thursday nights, 8:00 p.m. & through AA call 965-2870 or come visit Tuesday nights, 8:00 at 620 W. 2nd, Muleshoe.

FREE PUPPIES! Only two left. Very Cute! Call 965-2717 1-45t-1tp

## 2. Lost & Found

REWARD Missing since 11/3 from Three Way School Yellow male Lab with faded yellow collar and green rabies tag. Answers to Jake. 927-5507 or 927-5315. M2-45t-1tc

## 3. Help Wanted

BARTENDERS/CASINO WORKERS/DECK HANDS/Hostesses, Etc. Positions Aboard Cruise Ships. \$300 / \$900 Wkly. Free Travel. Caribbean, Hawaii, Bahamas. No Exp. Necessary.

1-206-736-7000 Ext. 9119N 3-45t-1tp

Full time RN opening for Special Care Unit. Experience in critical care preferred. ACLS certification required within one year of employment. Excellent benefits and working environment. SCU differential. Salary commensurate with experience. Contact Brenda Williams, Director of Nursing, Roosevelt General Hospital, 1700 S Ave O, Portales, NM 88130, 356-4411, Ext. 203 EOE. R3-44s-4tc

## 3. Help Wanted

KUWAIT, SAUDI WORKERS NEEDED \$35.00 & up per hour. Tax Free. Both skilled & unskilled. For info. Call 615-779-5505 Ext. K-1104. 3-44t-4tp(T)

## 5. Apts. For Rent

Apartments For Rent Good location, 1 or 2 bedroom, furnished or unfurnished, water paid. 272-7575 P5-43s-tfc

## 11. For Sale Or Trade

FAN-TAILED GUINNEYS. Call 946-3624 D11-41s-8tc

FOR SALE: Blue '79 Chevy Shortbed. New paint job--New tires and rims. Come and see! Call 925-6723 after 5:00.

PERFECT retirement place near Ruidoso, New Mexico, near Bonito and Alto Lakes, three bedroom house, guest house, barn with mill. About 25 acres, 8 acres cultivated. Cherry and apple trees, on highway. Trade for irrigated farm, CRP, or grass. Write to HC 67, Box 75-Nogal, N.M. 88341 or 505-354-2413. F-44t-6tc

FIREWOOD For Sale Pinon, Cedar, Juniper, Oak Amherst Grain & Fertilizer 246-3612 A11-43t-tfc

## 15. Misc.

FOR RENT: Large Self Storage rooms with 24 hour a day access. Call J & J Self Storage at 272-4307. S15-44s-tfc

## 8. Real Estate

FOR SALE: Approx. 6 Acres on the highway, just outside of city limits. 272-4975 W8-45t-tfc

NICE 1 Bedroom Unfurnished Apartment. Call 272-3107. M8-45t-tfc

FOR SALE: Approx. 17 Acres on Clovis Highway with well and high pressure line 272-4975 W8-45t-tfc

FOR SALE BY OWNER Beautiful country home with or without 145 acres irrigated land. Call, see, and make offer! 946-3440. E8-44t-tfc



## 18. Legals

### REQUEST FOR BIDS ON TEXAS HIGHWAY CONSTRUCTION

Sealed proposals for 372.734 miles of seal coat on various limits on US 385, Spur 331, US 70, US 62, SH 207, SH 214, FM 54, FM 26, FM 300, FM 303, Loop 289, FM 651, FM 303, FM 651, FM 145, FM 179, FM 1328, FM 835, FM 827, FM 596, FM 746, FM 1064, FM 2051, FM 1780, FM 1424, FM 2130, FM 1729, FM 928, FM 1622, FM 1843, FM 1294, FM 1622, FM 2053, FM 1172, FM 2901, FM 3020, FM 3306, FM 1760 & BS 214A in Castro, Lubbock, Floyd, Crosby, Garza, Bailey, Dawson, Hockley, Terry, Parmer, Lynn, Cochran, Hale, Lamb, Yoakum & Gaines Counties, covered by CPM 226-6-23, CPM 53-1-81, CPM 145-7-28, CPM 453-2-13, CPM 453-5-9, CPM 461-7-10, CPM 563-1-8, CPM 637-1-7, CPM 721-1-11, CPM 721-1-12, CPM 783-1-64, CPM 806-2-17, CPM 806-1-9, CPM 820-8-4, CPM 820-9-7, CPM 880-4-18, CPM 881-7-4, CPM 933-1-25, CPM 959-2-6, CPM 968-1-3, CPM 968-2-3, CPM 1084-1-9, CPM 1255-1-9, CPM 1255-2-6, CPM 1481-2-6, CPM 1629-2-5, CPM 1630-1-10, CPM 1623-3-7, CPM 1635-1-15, CPM 1635-2-4, CPM 1637-1-4, CPM 1716-1-8, CPM 1749-1-5, CPM 1783-1-4, CPM 1866-1-22, CPM 1866-2-3, CPM 1910-1-5, CPM 1966-3-6, CPM 2419-1-4, CPM 2444-1-4, CPM 2931-1-3, CPM 3003-2-2, CPM 3273-1-3, CPM 3501-4-3, CPM\* 1634-3-9 and CPM 168-13-12 will be received at the Texas Department of Transportation, Austin, until 1:00 P.M., November 14, 1991, and then publicly opened and read.

Plans and specifications, including minimum wage rates as provided by Law, are available for inspection at the office of

Jim Combs Resident Engineer, Brownfield, Texas, and at the Texas Department of Transportation, Austin, Texas. Bidding proposals are to be requested from the Division of Construction and Contract Administration, D.C. Greer State Highway Building, 11th and Brazos Streets, Austin, Texas 78701. Plans are available through commercial printers in Austin, Texas, at the expense of the bidder.

The Texas Department of Transportation hereby notifies all bidders that it will insure that bidders will not be discriminated against on the ground of race, color, sex or national origin, in having full opportunity to submit bids in response to this invitation, and in consideration for an award. Usual rights reserved.

## Letter To The Editor

October 31, 1991  
Evelyn Harris  
Muleshoe Journal  
304 West 2nd  
Muleshoe, Texas 79347

Dear Evelyn:

Thank you for your continued support through the excellent coverage you provide for the Chamber of Commerce and Agriculture. As our Halloween activities come to an end, we thank you for your involvement in all of them. We know you are very busy and we appreciate you taking time out of your busy schedule to provide positive news coverage for us.

Again, thank you. We appreciate the support you show to the Chamber of Commerce and Agriculture.

Sincerely,  
Robert Montgomery, President  
Carolyn Johnson, Manager

## Preventing Back Pain

Back pain can be caused by simple movements, such as bending, lifting or reaching, if you don't use your body correctly. While minor muscular aches may resolve within a few days without treatment, medical attention is often required for back pain to avoid surgery and prevent disability.

Surgery involving disc removal is generally a last resort for back pain, even when discs are out of place. According to Paul Meyer, M.D., neurological surgeon on staff at Methodist Hospital, 80 percent of Americans suffer from back pain at one time or another. For most forms of back pain, surgical treatment will not lead to a cure. Therefore, conservative therapy should always be tried first. The discs in the back serve as shock absorbers, and as people get older, the discs thin out, leading to arthritis which may cause back pain. Dr. Meyer recommends that we don't abuse our backs when we are young by unnecessarily lifting heavy objects. Prudent exercise and weight loss also are recommended by Dr. Meyer. Alternatives to surgery include living with the pain, physical medicine and rehabilitation.

Some general suggestions offered by healthcare professionals for avoiding unnecessary back pain include:  
Posture: Check your posture

periodically. With your head and back against the wall, roll your pelvis backward, then bend your knees so that your back touches the wall. Walk away in this position.

Standing: If you must stand for a long period of time, elevate one foot slightly and switch every 30 minutes.

Sitting: Sit straight, your knees level with your hips, and your back against the chair. Avoid sitting for extremely long periods of time.

Sleeping: Choose a firm mattress. If you tend to sleep on your back, place a pillow under your knees. If you sleep on your side, bend your knees. Avoid sleeping on your stomach, it places unnecessary strain on your back.

Lifting: Place your feet apart for stability. Bend at the knees, not from the waist. Tighten your stomach muscles for good back support. Lift with your legs, not your back. Hold the load close to your body. Don't twist your torso while you're lifting or carrying a heavy load. Don't lift objects above your chest.

Preventing back pain will be the main topic on "Health Matters" on Sunday, November 3, at 4:30 p.m. on KCBD TV Channel 11. The special guests will be Dr. Meyer and Richard Smith, M.D., an orthopedic surgeon on staff at Methodist Hospital.

## 8. Real Estate

FARM FOR SALE 1281 acres, eight irrigation wells, good water, underground lines, 900 acre grain base, home, steel barn, pipe corrals, price reduced, owner finance part. 10 miles north of Hereford. (409)543-5636. H8-43s-8tc

## 8. Real Estate

BAILEY COUNTY IRRIGATED LAND FOR SALE With irrigation equipment. Fall wheat planted. Owner will finance. 385-4487 day 385-5613 night

## 8. Real Estate

## 8. Real Estate

## 8. Real Estate

## 8. Real Estate

## Bingham & Nieman Realty

116 E. Ave. C. George Nieman, Broker 272-5285 272-5286

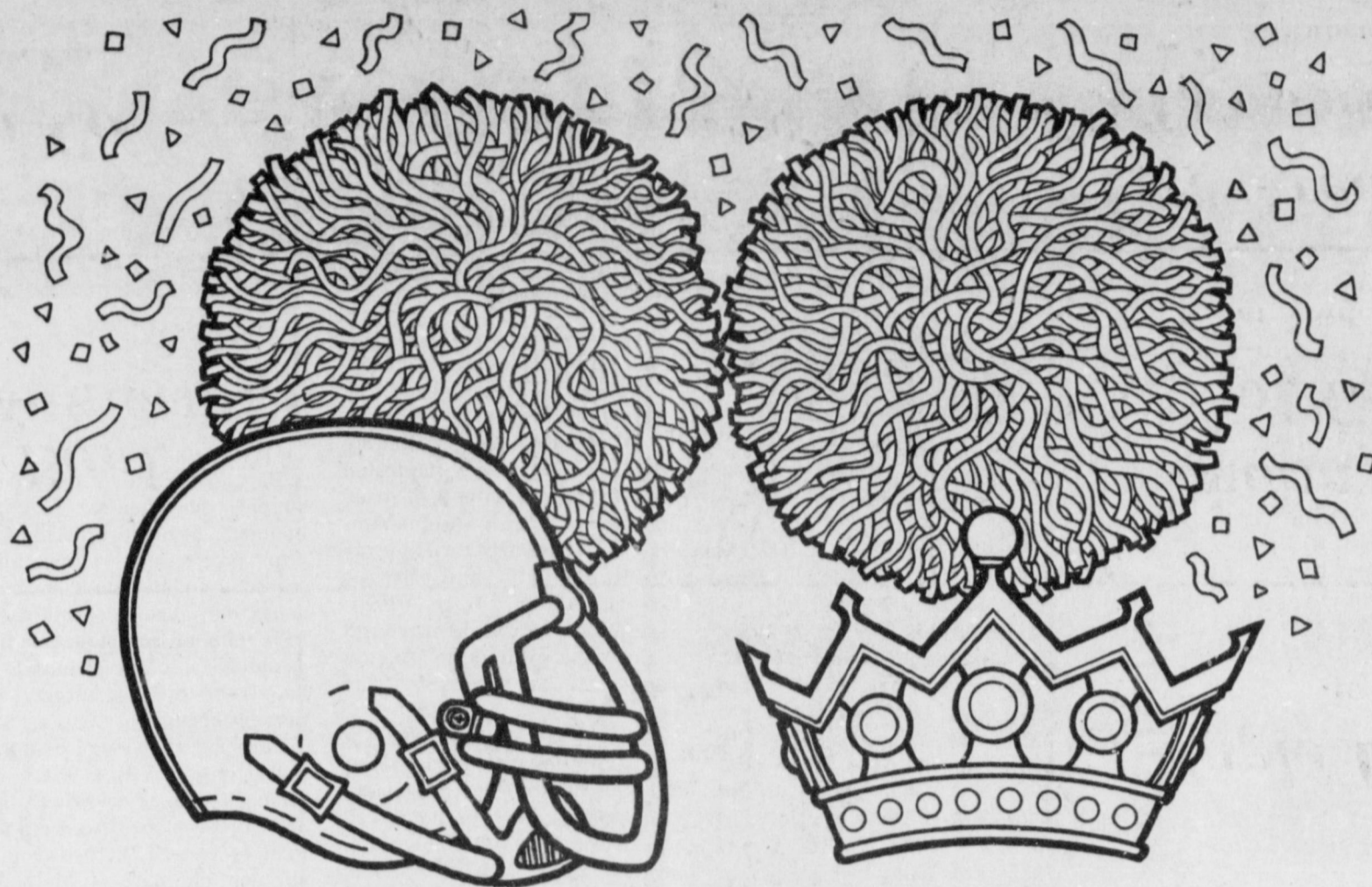
**RICHLAND HILLS**  
PRICE REDUCED-IMMACULATE 3-2-2 Brick, Cent. A&H, built-ins, newly remodeled kitchen, FP, sunken lv. area w/cathedral ceiling, ceiling fans, earhtone carpets, storage !!!!!!!!!!!!!!!  
3-3-2 Brick, Cent. A&H, built-ins, FP, Spklr. sys., storage-wkshp., fenced yd. much more!!!!!!  
PRICED REDUCED-ASSUMABLE LOAN 9 1/2 A.P.R.-3-2-2 Brick, Cent. A&H, built-ins, FP, fans, workshop-storage, fenced yd. Make Offer  
3-3-1CP HOME, Cent. A&H, built-ins, FP, spacious lv. area, loads of closets & storage, cov. patio, fenced yd., 2 st. bldgs.!!!!!!  
3-2-2 Brick, Heat pump, FP built-ins, fenced yd. Much More. \$30's!!!!  
NICE RESIDENTIAL LOTS/ \$5,000 UP....  
Nice-3-2-1 Home, built-ins, heat pump, fans, storm windows, & doors, workshop-storage, fenced yd., & more. \$30's!!!!!!  
PARKRIDGE-IMMACULATE 3-2-2 Brick, Heat Pump, built-ins, FP, nice finished basement, cov. patio, insul. & wired st.-workshop, fenced yd. GREAT VIEW!!!! HIGH SCHOOL  
Possible Owner Financing-3-1-2 Home, wall & floor furnace heat, evap. air. \$18,000!!!!!!  
JUST LISTED-IMMACULATE 3-2-2 Brick, Heat Pump, built-ins, whirlpool, 2200' + lv. area, loads of storage, large shop-storage, fenced yd. \$70s!!!!  
NICE 3-2 Home, nicely remodeled, heat pump, built-ins, carpet, fenced yd., storage bldg. & more!!! \$20's!!!!  
3-3 Bdrm. Brick Homes-FmHA financing to qualified Buyers, Priced to Sell!!!!  
2-1 Home, nicely remodeled kitchen & den, Cent., heat, fenced yd., large garage-shop. \$20's!!!!!!  
HIGHLAND AREA  
3-2-1 Brick, Cent. A&H, built-in, FP, Fenced yd. 2100+ lv. area, fenced yd., & st. bldg. MAKE OFFER!!!!!!  
3-2-1 Home, wall furnace, window evap. fenced yd. \$20's!!!!

## Henry Realty

111 W. Ave. B. 272-4581 Muleshoe, Tx.

Just listed-2 bedroom, 1 bath, carport, large utility room and large storage attached. Carpet. Highland Addition. \$20,000.00. \*\*\*  
2 bedroom, 1 bath, 1 car garage, fireplace, fenced yard, carpet, Lenau Addition \$15,000.00. \*\*\*  
Spacious 2 bedroom, 2 bath with one car garage. Fireplace. Ready to move in. \*\*\*  
New listing-2 bedroom, 1 bath, redone for qualified buyer. \*\*\*  
3 bedroom, 2 bath, carport, spacious home outside city limits near city on highway. Lot is 85' X 402'. Metal building is 29' by 40'. Great setup for workshop. \*\*\*  
FOR LEASE - 3 bedroom, 2 bath, carpet, spacious living area, fenced yard. Near high school. \*\*\*  
COMMERCIAL PROPERTY  
Ideal location on West American Blvd. 150' highway frontage. A great business opportunity. \*\*\*  
Brick veneer restaurant 150 seating. Over 5000 sq. ft. with modern equipment. Ready for operation. Located on U.S. Highway 84 in Muleshoe. 7,000 sq. ft. paved parking. Excellent financing available for qualified buyer. \*\*\*  
West American Boulevard 150' frontage. Priced to sell. \*\*\*  
Commercial building 30'x52' located on 12th Street. Lot is 97' x 140' and paved. Come by for appointment to see. \*\*\*  
LAND  
150 acre irrigated farm with sprinkler on highway NW of Muleshoe. Allotted acres with good yields. Two wells. Corners are in CRP. Owner financed. \*\*\*  
240 acres irrigated farm South of Lazbuddie with excellent water. 98 acres in CRP. Three wells. Owner financed. **SOLD!**

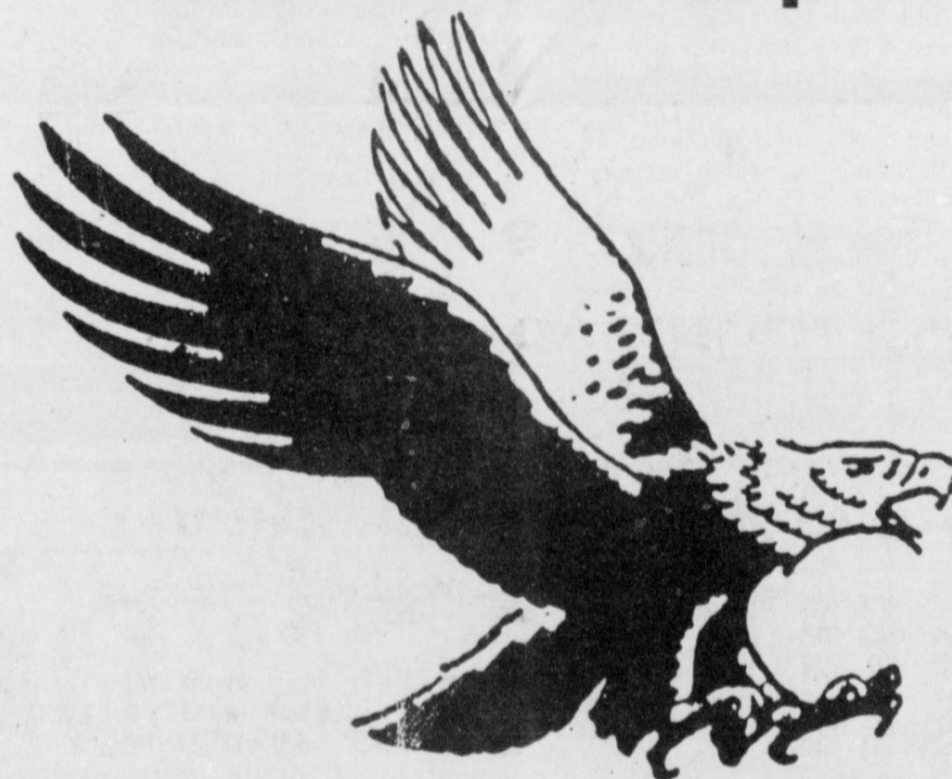
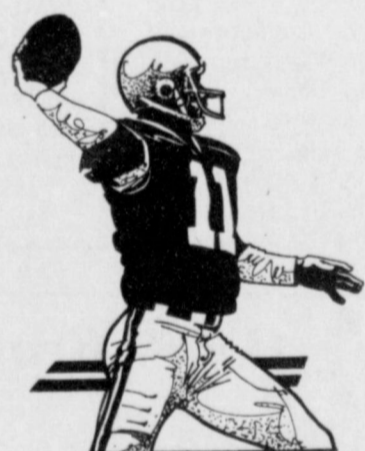




**1991 Three Way**

**HOMECOMING**

**Friday, November 8  
Game Time - 7:30 p.m.**



**Three Way vs. Cotton Center**

This Page Proudly Sponsored By The Following Businesses:

<p><b>Cox Auto Supply Co.</b> Morton, Tx. 266-8811</p>	<p><b>Bula Gin Co.</b> 933-4421</p>	<p><b>Maple Butane Co.</b> 927-5555</p>
<p><b>First State Bank</b> Member F.D.I.C. 266-5511 Morton, Tx.</p>	<p><b>Maple Co-op Gin</b> Marvin McCaul, Mgr. 927-5501</p>	<p><b>Sunmark Grain of Goodland</b> Joe &amp; Pat Sowder 927-5562</p>
<p><b>Bailey Gin Co.</b> Peanut Hawkins, Mgr. 946-3397</p>	<p><b>Farmer's Co-op Gin Assn of Earth</b> Bob Newton, Mgr. 927-5511</p>	<p><b>Five Area Telephone Cooperative, Inc.</b> Hubert Kidd, Mgr. 272-5533</p>