



The Foreman Company
Box 68
Monmouth, Ill. 61462

Muleshoe Journal

The Community Of Opportunity-Where Water Makes The Difference



Vol. 69, No. 37

Published Every Thursday At Muleshoe, Bailey County, Texas 79347

MEMBER
TEXAS PRESS ASSOCIATION 20¢

THURSDAY, SEPTEMBER 12, 1991

Rains Cover Wide Area For A Week

around
muleshoe

Jack Holloway, 10 years old son of former residents, Wilburn and Harriett Holloway showed the grand champion steer at the Delta Country Colorado fair in Hotchkiss, Colorado.

The 1206 pound Maine Anjou, Angus cross steer also won the rate of gain contest the county had and was one of the steers in the champion pen of three steers. He placed tenth in the carcass contest.

There will be a revival meeting Friday, September 20 at the Civic Center meeting room at 7:30 p.m.

Elizabeth Pruitt will be the evangelist.

Army Sgt. Gary L. Cox has returned to his home station from Desert Storm.

Cox, a crane operator deployed to Saudi Arabia, is homebased at Fort Lewis, Tacoma, Wash., with the 864th Engineer Battalion.

He is the son of James G. and Judy Cox of Muleshoe. His wife, Kimberly, is the daughter of Gordon A. and Marilyn Wilson also Muleshoe.

There will be a meeting of senior class parents on Wednesday, September 18 in the high school library at 4 p.m.

The purpose of the meeting will be to prepare for pre-game meal on October 11 which will
Cont. Page 6, Col. 1

ASCS Issues Reminder

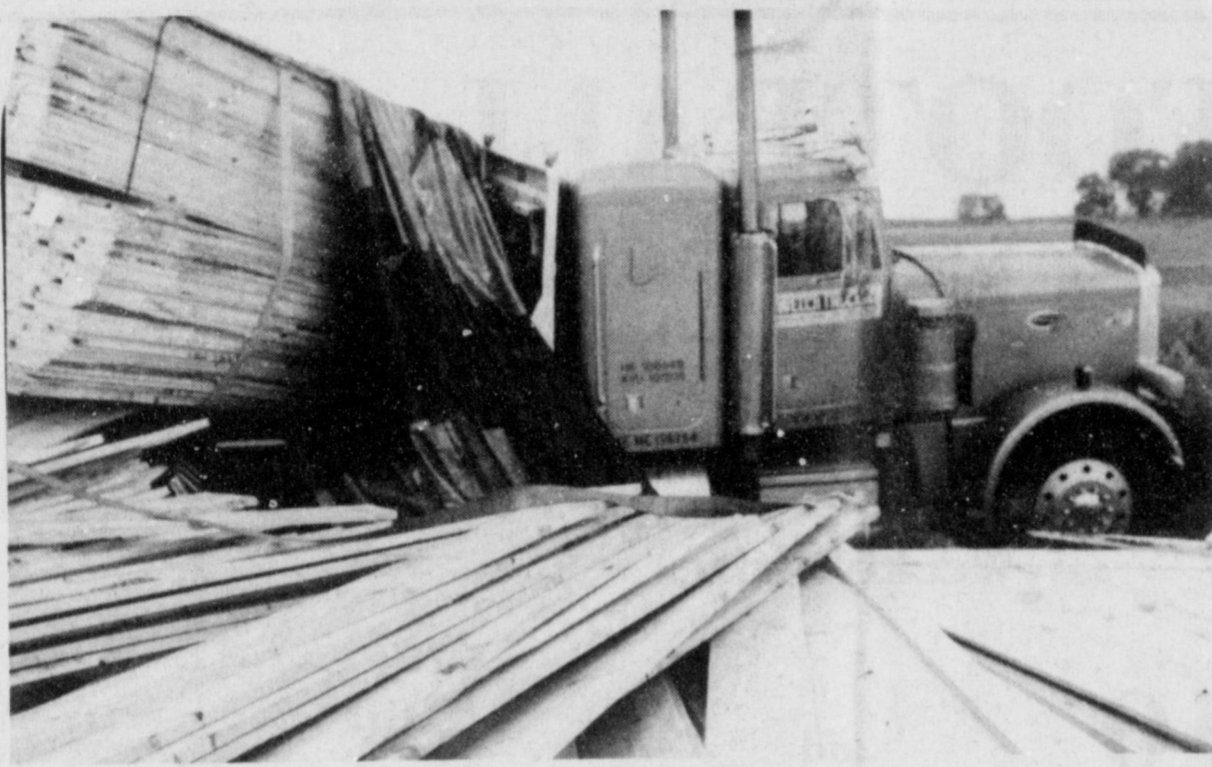
Farm Program Updates

Danny Noble of the local ASCS office has issued the following reminder to area farmers:

1991 ADVANCED PAYMENTS
If you did not request advanced payments for the 1991 crop year, you may request them at this time, but no later than September 16, 1991.

MEASURING SERVICE
Remember!!! As soon as we get your farm measured, you will be notified of the measured acreage and you only have five workdays in which to adjust (if any) and certify your acres in this office. Please notify this office if you have to adjust prior to destroying anything. We should have all requests measured within the next two weeks.

FAILED ACRES
Any program crop that has failed due to drought, excessive moisture, hail, or for any other reason beyond the producer's control must be certified and an ASCS-574 (Disaster Application) filed BEFORE the crop is disturbed in order to be eligible



LARGE PILE OF LUMBER---Bruce Lehr of McIntosh, N.M. and Bobby Fritzgerald of Lovington were both coming from Portales, N.M. on Farm Road 1760, on their way to Nacogdoches when the first truck, driven by Lehr slowed for a slow moving tractor on a wet road. The second truck fishtailed and spun around and jackknifed. The second truck spun around and its center hit the back of the first trailer. The first truck lost the rear portion of a load of Lumber. The second truck turned over and lost all except two bales of Lumber.

(Guest Photo)

Mules, Idalou Wildcats Play Friday At Idalou

The Muleshoe Mules will travel to Idalou Friday night to take on the Idalou Wildcats for both teams second game of the season and one of the teams first win. Idalou lost their first game to Olton last Friday night 20-7 and Muleshoe lost their season opener to Brownfield

21-0.
During the third quarter of play last week, Olton scored 14 points in a 1:29 span to come from behind and beat Idalou.

In the first quarter, Chad Snider got the Mustangs on the board with a 20 yard scoring run and helped Olton put the game away.

Then Idalou took a 7-6 lead late in the first half when quarterback Ty Harmon found Toby Lynn open in the end zone for the Wildcats lone score in the game. The 14 yard strike held up until Arturo Aviles' 2-yard run at the 2:25 mark of the third stanza gave Olton a 14-6 lead they would never relinquish.

Muleshoe just could not get things going their way in the Brownfield game last week. Their best scoring opportunity

Commissioners

Accepts Holmes

Resignation

Judge Marilyn Cox called the Commissioners Court to order Monday morning in the commissioners court room.

Routine bills were paid and minutes of the previous meeting were approved as read. Dorothy Turner reviewed the county treasurer's report.

Judge Cox read a letter from Joyce Holmes, manager of the Bailey County Civic Center and Coliseum. Mrs. Holmes submitted her resignation effective Dec. 1. Following a discussion the commissioners voted to accept her resignation.

Cont. Page 6, Col. 2

Cont. Page 6, Col. 1

Some Up To 6 Inches

Rain, Rain and more Rain! Anyone who thinks its dry in West Texas should be here now. It has rained every day for the past week and the National Weather Service out of Lubbock says we have more coming.

Rain has ranged from 1.91 to six inches.

C.E. Grant told the Journal Tuesday afternoon that he had received a total of six inches of rain at his farm near the old West Camp School. He stated that his cotton had got hailed out earlier and the alternate crop he planted wasn't being hurt by the rain, but he noted

that some of the cotton in that area is hurting from all the moisture.

The Muleshoe National Wildlife Refuge reported that they had received .81 inch of rainfall Monday and had received a total of 1.91 for the week.

Mrs. Bennie Claunch stated that at the school (at Enochs) they received an inch and half of rain on Monday and for the week they had probably received four inches.

A spokesperson at Foster Fertilizer at Lazbuddie stated that they had received at least two inches this week. He noted that its not hurting the wheat but is delaying corn harvest in the Lazbuddie area.

Evaristo Sanchez at Clay's Corner Gin said that they had received nearly five inches of
Cont. Page 6, Col. 4

Longhorns

Win 36-33

Over McLean

It may have looked like the cards were all stacked against the Lazbuddie Longhorns last Friday night when they played McLean.

Lazbuddie's varsity quarterback, Paul Williams was out of action due to a break in his collarbone in a previous game and the two other quarterbacks could not play due to disciplinary matters at school. But Brett Thomas, Junior Varsity quarterback came through with flying colors and led the group on to a 36 to 33 victory.

McLean was the first to score when Don Harris ran eight yards for a touchdown and Christian Looney kicked the extra score.

Kirk Jesko of Lazbuddie scored on a 35 yard pass from Brett Thomas and Leland Brockman's kick was good.

Don Harris scored on a seven yard run for McLain and the kick was good.

Keeping the scoring pretty even to this point, Kirk Jesko scored on a 54 yard pass from Brett Thomas and the again the
Cont. Page 6, Col. 3

SPS Returns

Credit To

Utility Bills

Residential, commercial, industrial and other Texas retail customers of Southwestern Public Service Company are sharing this month in approximately \$1 million in credits on their bills.

The September credit is in addition to a previously announced credit of 11.3 million for these customers, expected to be approved by the Public Utility Commission of Texas in time for October bills.

"There could be some confusion because of these different credits," said Gerald Diller, SPS's group manager of rates and regulation. "We don't want customers to mistake this smaller credit for the larger one they may be expecting."

For a residential customer using 1,000 kilowatt hours of electricity during the month, the September credit will amount to \$1.14, while the expected October credit will be \$1.14.
Cont. Page 6, Col. 2

Burgess Wins First Football Contest

Well, the first week of the Muleshoe Merchants' Football Contest is history, with several contestants having a little trouble with the games -- but don't despair! It's still a long season, you really have a chance and come back and "Be in the money".

For the first week, Tom Burgess was the first place winner. He missed just four games in the contest. He wins \$10 for his efforts along with 10 points toward the grand prize.

In determining the second and third places, the tiebreakers were used to determine the winners. Each of the contestant missed five games.

In second place was Jimmie Chapman who was 21 points off the tiebreakers. For her efforts, she will receive a check for \$7.50 and 6 points. John Graves was determined the third place winner and the recipient of a \$5 check and 4 points toward the grand prize.

Be sure to keep those entries coming in. You still have as much chance as anyone else at winning the \$150. grand prize at the end of the 1991 Football Contest.



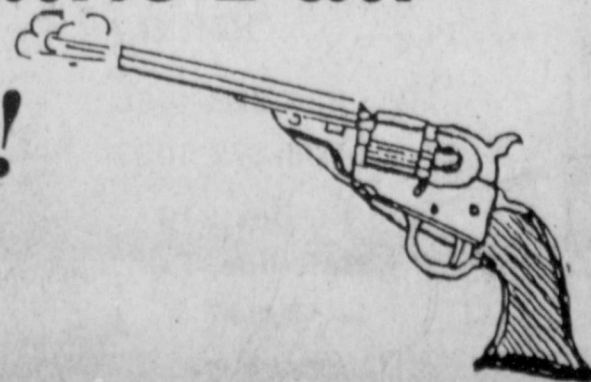
TRYING TO GAIN SOME YARDS---Mule No. 29, Ramiro Alarcon tries to stop a Brownfield Cub from gaining more yardage in last Friday nights game in Benny Douglas Stadium. The Mules were overpowered by the Brownfield Cubs by a score of 21-0.

(Journal Photo)

Attend The Bailey County West Plains Fair & Mule Days Celebration!

Thursday, Friday & Saturday

September 12, 13 & 14



Higginbotham -Bartlett Co.
 215 Main 272-3351

MACCO Liquid Nail
 Everyday Low Price
\$1.59
 Muleshoe vs. Idalou

MISSION CABLE
 208 W. 2nd (806)272-3310
 Muleshoe, Texas 79347
FALL '91 CABLE EXPRESS!
 • FREE Connection to HBO or HBO & Cinemax
 • 30-Day FREE Trial of HBO or HBO & Cinemax!
 • Big Savings on Great Entertainment! expires October 11, 1991
 Arizona vs. Stanford

Church's CHICKEN
 1411 W. Amer. Blvd. 272-5581
We Support The Muleshoe Mules 100%
 Air Force vs. Utah

Ask Us About Family Insurance Review!
 Call Ricky Barrett or David Tipps
Bailey County Farm Bureau
 • LIFE • CROP
 • AUTO • HOME
 1612 W. Amer. Blvd. 272-4567
 New Home vs. Three Way

The Spudnut Shop
The Upper Crust of the Donut World
 THE ORIGINAL POTATO FLOUR DONUT
 Check Our Weekly Luncheon Specials
 Mon. - Sat. 5 a.m. - 2 p.m.
 328 South Main Street Muleshoe, Tx. 272-3542
 Arizona State vs. Oklahoma State

FOOTBALL CONTEST
Grand Prize: \$150⁰⁰
 Weekly Prizes

Leal's
 1606 W. Amer. Blvd. 272-3294
Backing The Mules 100%
 Closed On Mondays
 Vanderbilt vs. S.M.U.

Bailey Gin Co.
 946-3397
 -owners-
 Don Heathington
 Peanut Hawkins
 Doyce Turner
 Peanut Hawkins, mgr.
 Auburn vs. Mississippi

1st **\$10** 2nd **\$750** 3rd **\$500**
Weekly Winners
 1st. Tom Burgess
 2nd. Jimmie Chapman 3rd. John Graves

Western Drug Co.
 114 Main 272-3106
"For All Your Prescription Needs Visit The Friendly People At Western Drug"
 Syracuse vs. Maryland

Henry Insurance Agency, Inc.
 KENNETH R. HENRY
 CERTIFIED INSURANCE COUNSELOR
 REAL ESTATE BROKER
 111 W. Ave. B 272-4581
 Tulsa vs. Kansas

Contest Rules:
 1. IN EACH ADVERTISEMENT YOU WILL FIND A GAME LISTED. CIRCLE THE TEAM YOU THINK WILL WIN. The person's score that most closely matches the TIE BREAKER SCORE will be declared the winner. If several persons are still tied the prize money will be split.
 2. The contestant must be 12 years of age or older.
 3. Only one entry per person may be made for any one contest.
 4. Bring your entry by the *The Journal* office by 5:00 p.m. Friday, or if mailed, the entry must be postmarked no later than 5:00 p.m. Friday. Write "FOOTBALL CONTEST" on the mailed entry, and mail to P.O. Box 449, Muleshoe, Texas 79347.
 5. Circle the Winners and WRITE IN THE SCORE of the tiebreaker games. This score will be used to break weekly as well as determine the grand prize winner. Decision of *The Journal's* scoring judges will be final.
 6. Check the team you think will win; 10 points for first place, 6 points for second place and 4 points for third place.
 7. To count for the grand prize, entries must be on official blank printed in the paper.

Stacey, JoAnn and Staff
Backing The Mules 100%
Pizza Hut
 1412 W. Amer. Blvd. 272-4213
 Dimmitt vs. Brownfield

Viola's Restaurant
For The Best Mexican Food
Come To Viola's
 Open 11:00 a.m. - 9:30 p.m.
 Closed On Tuesdays
 2002 W. Amer. Blvd. 272-3838
 Colorado vs. Baylor

Official Entry Blank

Name _____
 Address _____
 Phone _____

TIEBREAKERS

Michigan vs. Notre Dame
 Oregon vs. Texas Tech

Wilson Drilling & Southwestern Geothermal
 Box 405 272-5521
 Stanley Wilson Dee Puckett
 Tx. Lic. 02628W
 NM. Lic. WD1152
 Rice vs. Northwestern

Bob Stovall Printing
 221 E. Ave. B. 272-3373
No Job Too Large Or Too Small!
Come By And Visit With Us For All Your Commercial Printing!
 East Carolina vs. Memphis State

MULESHOE MULES Varsity Schedule	JUNIOR VARSITY Schedule	FRESHMEN Schedule
Sept. 6 BROWNFIELD H 8:00	Sept. 5 BROWNFIELD T 7:00	Sept. 5 BROWNFIELD T 5:00
Sept. 13 IDALOU T 8:00	Sept. 12 IDALOU H 6:00	Sept. 12 FRIONA T 5:30
Sept. 20 DENVER CITY** H 8:00	Sept. 19 DENVER CITY T 6:30	Sept. 19 DENVER CITY T 5:00
Sept. 27 COOPER T 8:00	Sept. 26 COOPER H 6:30	Sept. 26 COOPER H 5:00
Oct. 4 RIVER ROAD H 8:00	Oct. 3 RIVER ROAD T 6:30	Oct. 3 RIVER ROAD T 5:00
Oct. 11 DIMMITT** H 7:30	Oct. 10 DIMMITT* T 7:00	Oct. 10 DIMMITT* T 5:30
Oct. 18 TULIA* T 7:30	Oct. 17 TULIA* H 7:00	Oct. 17 TULIA* H 5:30
Oct. 25 FLOYDADA* T 7:30	Oct. 24 FLOYDADA* H 7:00	Oct. 24 FLOYDADA* H 5:30
Nov. 1 LITTLEFIELD* H 7:30	Oct. 31 LITTLEFIELD* T 7:00	Oct. 31 LITTLEFIELD* T 5:30
Nov. 8 FRIONA* T 7:30	Nov. 7 FRIONA* H 7:00	Nov. 7 FRIONA* H 5:30

* District Games * Homecoming ** Parents Night

W.T. SERVICES INC.
 319 E. American Blvd. MULESHOE, TEXAS 79347
Mobile Communications Two-Way Radio Repair
 GARY PARKER Technician
 Muleshoe - 806-272-4888
 Hereford - 806-364-7311
 Penn State vs. Southern California

Combination Motors And Salvage
 Gerry Pierce
 Day: 806-272-4458
 Night: 806-272-5057
 Rt. Box 240 Muleshoe, Tx. 79347
 Lazbuddie vs. Valley

Scoggin Ag Center, Inc.
 1532 W. Amer. Blvd. 272-4613
 Kearney Scoggin
 FOR YEAR - ROUND PROTECTION AGAINST BUGS, USE THE PROVEN INSECTICIDE
CIA
 A Latex Insecticide coating, goes on like paint, stays where it is applied and keeps working for up to two years.
 Florida vs. Alabama

Muleshoe Floor Covering
 122 Main St. 272-3555
Come By And See Curtis or Shelli Carpenter For All Your Floor And Wall Needs!
 Minnesota vs. San Jose State

Connie's Place
 121 Main 272-3126
 Hrs: 5 a.m. - 4 p.m. Mon. - Fri.
 Sat. 5 a.m. - 2 p.m.
Daily Buffet
 Includes Salad Bar & Cobbler
 Serving Breakfast Daily
 Connie Dominguez, Owner
 Abernathy vs. Littlefield

**Jose Reyes
Mass Held
Tuesday**

Mass for Jose Guadalupe Reyes, 67, was held at 11 a.m. Tuesday, September 10 at Immaculate Conception Catholic Church with Father Pat Maher officiating.

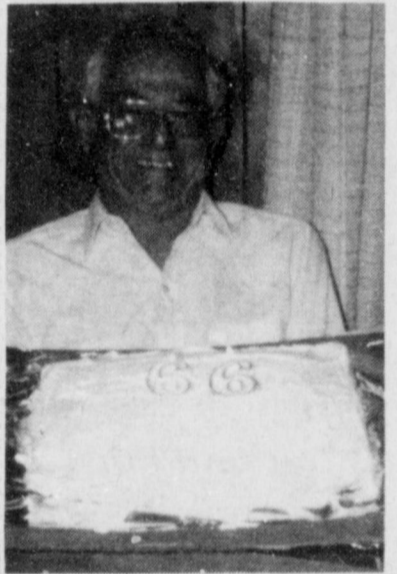
Burial was in Muleshoe Cemetery under direction of Ellis Funeral Home.

He died at 10:37 a.m. Saturday at Methodist Hospital in Lubbock after a lengthy illness.

He was born on the Santa Rita Ranch in South Texas. He lived in Hargill until 1974, when he moved to Muleshoe. He married Josefina Reyes in June, 1955, in Edinburg. She died in May, 1990. He was a farmer and a member of Immaculate Conception Catholic Church.

Survivors include a son, Rene of Amarillo; five daughters, Elva Anzaldua and Blanca Anzaldua, both of Lariat, Anne Zamarron and Linda Ballin, both of Weslaco, and Orfelinda Vasquez of Notus, Idaho; a brother, Filimon Reyes of Fort Worth; a sister, Lupita Garza Reyes of Tillamook, Ore.; 18 grandchildren and 10 great-grandchildren.

The family suggests memorials be made to the American Cancer Society.



JOSE REYES

Paying debts should be a pleasure to an honest person.

**Joe Guerrero
Funeral Services
Held Monday**

Funeral services for Joe Guerrero, 91, of Earth were held at 2 p.m. Monday, September 9 at Kingdom Hall, Littlefield with the Rev. Armando Unzueta, minister from Littlefield, officiating.

Burial was in Springlake Cemetery under the direction of Parsons-Ellis Funeral Home. Guerrero died at 10:10 p.m. Friday, September 6 at his residence after a lengthy illness.

**Aurelio Arguello
Mass Held Sunday**

Rosary for Aurelio G. Arguello, 81, of Slaton was recited at 7 p.m. Saturday, September 7 in the chapel of Englund's Funeral Services.

Mass was celebrated at 2 p.m. Sunday in Our Lady of Guadalupe Catholic Church with Monsignor Antonio Gonzales officiating.

He died at 2:14 a.m. Friday in Lubbock's Methodist Hospital after a lengthy illness.

He was born in Arroyo, M.L., Mexico, and had lived in Waelder and San Patricio before moving to Slaton. He married Juana Quintero on December 16, 1928, in San Patricio. He was a retired farmer and a charter member of Our Lady of Guadalupe Catholic Church.

Survivors include his wife; six sons, Felix, Max, Tony, Gene and David, all of Slaton, and Abel of Muleshoe; four daughters, Rachal Reyes, Maria Flores and Nieves Arguello, all of Slaton, and Irene Cardenes of Houston; a brother, Bermabe of Monterey, Mexico; a sister, Lupe Quiniones of Mateaguala, San Luis, Potosi, Mexico; 31 grandchildren; and 30 great-grandchildren.

He was a farm laborer and member of Jehovah Witness in Littlefield. He married Santitos Sanchez in 1918 in Laredo.

Survivors include two sons, Wally Guerrero of Hereford and Lecio Guerrero of Edmonson; eight daughters, Licha Villegas of Yuba City, Calif., Delia Perez of Laredo, "Triny" Castillo of Houston, Gloria Hernandez of Littlefield, Ophelia Monreal of Earth, Irma Hopper of Sutter, Calif., Anita Munoz of Earth, and Janie Cantu of Borger; one nephew, Hector Saldibar of Houston and one niece, Emma Serna of San Marcos; 63 grandchildren, numerous great grandchildren and numerous great great grandchildren.

**Patients In
Muleshoe Area
Medical Center**

SEPTEMBER 6

Michael Richards, Celia Martinez, Delfina Torres, Christopher Recio, Jo Miller, Thelma Stearns, Peggy Buhrman, Joe Blaylock, Joann Hall, Baby Girl Hall

SEPTEMBER 7

Michael Richards, Delfina Torres, Christopher Recio, Comedito Coleson, Jo Miller, Thelma Stearns, Hazel New, Peggy Buhrman, Drew Robinson, Joe Blaylock, Robbie Seals

SEPTEMBER 8

Stephen Dominguez, Delfina Torres, Christopher Recio, Comedito Coleson, Jo Miller, Thelma Stearns, Hazel New, Drew Robinson, Robbie Seals

SEPTEMBER 9

Stephen Dominguez, Delfina Torres, Christopher Recio, Comedito Coleson, Jo Miller, Thelma Stearns, Hazel New, Drew Robinson, Robbie Seals

Regular exercise is one secret of old age.

Flattery can move mountains and gullible people.

Suspicion leads many people into mistakes.

Helping The Eye Heal Itself

Walking through the forest, a twig grazes your eye, scratching the surface of the cornea. Unless it's more than a superficial scratch, or becomes infected, the cornea will heal itself very quickly.

Minute quantities of a natural compound, called Substance P, influence the healing of wounds, such as bed sores, burns, and ulcerations of the corneal surface. According to Research to Prevent Blindness (RPB), corneal injuries alone number more than 1.7 million each year.

Substance P is produced in nerve fibers and carries messages between nerve cells. It also stimulates the growth and migration of tissue-building cells to promote healing.

Ophthalmology Professor Ted Reid, Ph.D., of the University of California, Davis, has found that the opposite is also true. The lack of Substance P "may also be the reason that non-healing ulcers develop in the eye and other parts of the body."

The nerves may not produce sufficient amounts of this healing substance for a variety of reasons. Age may be responsible. Or, Dr. Reid suspects, a burn or other damage to the nerve may contribute toward depletion of the compound. "For instance," he said in an interview, "this may be the cause of bed sores where you have pressure on a nerve for a long period of time, which damages the nerve and does not

allow it to release Substance P."

A veterinary ophthalmologist on Dr. Reid's team has found that this chemical plays the same healing role in dogs. In preliminary experiments, eye-drops containing Substance P helped heal stubborn corneal ulcers in four canine patients.

Researchers have produced a synthetic compound with basically the same chemical structure. The synthetic is more stable than the natural compound. Dr. Reid reports that, in test tube experiments, "it seems to work even better than Substance P."

The results in the laboratory and in clinical trials with dogs, suggest to Dr. Reid that Substance P is "possibly part of a three-pronged approach to wound healing," interacting with the white blood cells and the normal growth factors in the blood stream.

This line of investigation could lead to an improved method to speed recovery after corneal surgery, and to a more successful therapy for sight-threatening corneal ulcers that resist current forms of treatment.

Optimists

Apparently a great many of our present-day juries are composed of persons who can see no evil in anything.

-Banner, Nashville.

Football Highlights

Florida had the best won-lost league record in the Southeast Conference last year, 6 and 1 (9 and 2 overall), but was ineligible for the title. Alabama, Auburn, Mississippi and Tennessee all happily took the Gators' place in post-season bowl games. However, happiness was short-lived for the Tide and the Rebels as they took embarrassing losses from Louisville and Michigan respectively. But it's a new season. Florida hosts Alabama Saturday, trying to repeat last year's 17-13 win over the tide. The Gators are favored to do it again.

Speaking of outstanding records, the only undefeated team in Division I-A last fall was Georgia Tech. The Rambling Wreck posted a 10-0-1 season in winning the Atlantic Coast Conference title, then beat up on Nebraska in the Citrus Bowl 45-21. Tech lost to Penn State at the Meadowlands, in New Jersey on August 28th, but for its opponent Saturday, Boston College, this will be game #3 B.C., the freshman home of one of my grandsons, hosted Michigan last Saturday and this week is at home against Georgia Tech. The Eagles appear to be in over their heads.

Notre Dame nipped Michigan last fall 28-24, but it was actually a third straight nipping. In 1989, it was 24-19, Notre Dame.. In 1988, 19-17, the Irish. It seems this should be the Wolverines' year. Michigan started 1991 with a very impressive 35-3 shelling of Mississippi in the Gator Bowl January 1st. Notre Dame, on the road, will be the nippee this year.

Finally, two intersectional contests headline Saturday's schedule. Tennessee hosts U.C. L.A., and Southern California is at home against Penn State. The Vols and Bruins didn't meet in 1990, the Trojans beating the Nittany Lions 19-14. Southern Cal was edged by Michigan State in the John Hancock Sun Bowl 17-16 while Penn State was a 24-17 loser to Florida State in the Blockbuster Bowl. Saturday's winners: Tennessee and Penn State.

Finally, two intersectional contests headline Saturday's schedule. Tennessee hosts U.C. L.A., and Southern California is at home against Penn State. The Vols and Bruins didn't meet in 1990, the Trojans beating the Nittany Lions 19-14. Southern Cal was edged by Michigan State in the John Hancock Sun Bowl 17-16 while Penn State was a 24-17 loser to Florida State in the Blockbuster Bowl. Saturday's winners: Tennessee and Penn State.

THE BOB HARMON FORECAST

Sat., Sept. 14 - Major Colleges - Div. 1-A

Air Force	27	Utah	24
Arizona	24	Stanford	23
Arizona State	23	Oklahoma State	20
Army	27	Colgate	24
Auburn	23	Mississippi	11
Boise State	27	Long Beach State	13
California	27	Purdue	10
Colorado	28	Baylor	14
Duke	28	Rutgers	20
East Carolina	24	Memphis State	21
Florida	24	Alabama	21
Florida State	49	Western Michigan	6
Georgia Tech	34	Boston College	10
Hawaii	34	New Mexico	7
Illinois	26	Missouri	13
Iowa	31	Iowa State	13
Kansas State	27	Idaho State	8
Miami, FL (Sept. 12)	33	Houston	27
Miami, OH	23	Eastern Michigan	10
Michigan	27	Notre Dame	24
Michigan State	35	Central Michigan	10
Minnesota	24	San Jose State	22
Mississippi State	24	Tulane	14
Nebraska	30	Colorado State	13
North Carolina	38	Cincinnati	7
North Carolina State	40	Kent State	10
Northern Illinois	23	Arkansas State	13
Ohio State	26	Louisville	14
Ohio U.	26	Tennessee Tech	21
Oklahoma	42	North Texas	7
Oregon	27	Texas Tech	20
Oregon State	27	Nevada-Las Vegas	17
Penn State	30	Southern California	15
Pittsburgh	27	Temple	21
Rice	30	Northwestern	20
San Diego State	40	Pacific	7
South Carolina	28	West Virginia	17
Syracuse	20	Maryland	17
T.C.U.	24	Ball State	10
Tennessee	31	U.C.L.A.	20
Texas A & M	28	L.S.U.	15
Texas El Paso	34	New Mexico State	13
Tulsa	22	Kansas	20
Vanderbilt	24	S.M.U.	20
Virginia	41	Navy	10
Wake Forest	38	Western Carolina	6
Washington State	26	Fresno State	24
Wisconsin	31	Western Illinois	10
Wyoming	28	SW Louisiana	21

Other Games - East

24 Albany NY	23
21 Juniata	14
21 Canisius	10
24 Southern Connecticut	21
21 Waynesburg	17
35 Hofstra	7
49 Indiana U., PA	0
38 St. Lawrence	10
30 Siena	7
24 Mansfield	20
20 Franklin & Marshall	14
27 California State, PA	22
49 Massachusetts Maritime	7
38 Stony Brook	6
23 Bloomsburg	14
27 Muhlenberg	8
26 Worcester Tech	17
24 Delaware Valley	17
22 American International	21
28 Clarion	12
23 Gettysburg	17

Other Games - Midwest

21 Heidelberg	13
26 Washburn	20
45 North Central	6
21 Wittenberg	10
30 St. Joseph's	10
28 Carthage	6
24 Carleton	20
28 John Carroll	10
20 Anderson	13
23 Muskegon	21
33 Northwood	10
24 Ashland	23
40 Macalester	6
31 East Central Oklahoma	10
41 Valparaiso	7
33 NW Missouri	7
22 Alma	21
24 St. Norbert	12
23 Central Methodist	20
49 Elmhurst	7
28 Benedictine	14
36 Harding	14
24 Kearney	21
28 Grand Valley	13
34 Moorhead	10
30 Indianapolis	17
30 Sterling	6
27 Grinnell	6
27 Wayne State, MI	14
24 Southern Arkansas	22
26 Coe	14
24 Central Oklahoma	17
31 Winona State	6
35 Augsburg	6
38 Minnesota State	7
47 Concordia, NE	7
21 Aurora	20
23 Hastings	23
23 Wisconsin-Stevens Point	14

Other Games - South & Southwest

49 Albany, GA	7
22 Arkansas Tech	21
40 Arkansas-Monticello	6
31 Capital	6
21 Centre	20
24 Clark	10
23 Cumberland	20
20 Delta State	14
24 East Texas	22
27 Elizabeth City	13
41 Elon	20
24 Emory & Henry	6
21 Ferrum	6
24 Fort Valley	13
23 Guilford	6
23 Iowa Wesleyan	21
22 Knoxville	20
22 Lenoir-Rhyne	14
24 Livingston	23
28 Millsaps	23
24 Mississippi College	23
21 Norfolk	6
41 Ouachita	17
26 Randolph-Macon	14
27 Rhodes	6
27 Sewanee	7
28 Tennessee-Martin	13
28 Troy	10
23 Tuskegee	20
28 Virginia State	7
24 West Virginia Tech	13
26 Western Maryland	13

Other Games - Far West

21 Austin	20
27 Cal Poly	14
26 Claremont	21
23 Eastern New Mexico	21
23 Cal Lutheran	20
20 Colorado Mines	6
30 Abilene Christian	7
22 Colorado College	20
14 Missouri Southern	12
24 LaVerne	10
24 San Francisco State	14
27 Sonoma	10
27 Humboldt	13
26 Menlo Park	7

Friday & Saturday

at Joe's Boot Shop

September 13 & 14

Featuring:

Sliced & Chopped Bar B.Q.

Sausage-on-a-Stick & Beef Fajita's

Breakfast Burritos

Fresh Lemonade

Let us handle your Parties and Custom Catering!

Winkler's Meat Co.

401 Main

272-4703

Winkler's Bar B.Q. Wagon is smoking again!



Presented By:

WES-TEX FEED YARDS, INC.

CUSTOM CATTLE FEEDING

272-7555



JOINING TO CELEBRATE--Robbie Damron's 90th birthday with a reception September 7 are her children, Jayne Reese of Odessa, Sam Damron and his wife Elaine, and Billie Joan Smith. The honoree is second from left. (Journal Photo)

Robbie Damron Celebrates 90th Birthday

Eighty-five friends and family members joined Mrs. Joe Damron recently to celebrate her 90th birthday. Hosting the celebration were her children and their spouses, Sam and Elaine Damron, Jayne and Jim Reese and Billie Joan and John Smith.

The party was held Saturday, September 7 from 3-5 p.m. in the home of Sam and Elaine Damron, 1815 W. Ave. G in Muleshoe. Known affectionately by her friends as Robbie and by her family as "Moma Rob," Mrs. Damron greeted guests and family members during the reception.

When asked how it feels to be 90, Mrs. Damron replied that "it's a good feeling to know that I have lived this long and at the same time realize that one's health is such a blessing."

Modestly, Mrs. Damron claims that in order to reach the age of 90 she has no secrets for living such a long life, but that she just "stumbled through it."

Mrs. Damron has seven grandchildren, twelve great grandchildren and two great great grandchildren. She and her late husband Joe, first owner of Damron Drug Store here, moved to Muleshoe in 1932. She taught the primary Sunday school class at First Baptist Church for several years.

One of her fondest memories of the early days in Muleshoe is the "Red Tie" Christmas parties once held at First Baptist. At these events, men wore suits with red ties and women wore red dresses.

For many years Robbie was a member of the Friendship Club organized through First Baptist. She also participated actively in the Sewing Club when it was organized in this community.

When her daughter Jayne was asked what her mother has taught her, she simply said: "Everything I know. And, of course, she taught me how to cook. I remember the chocolate pies and lemon pies--we would

always have a pie on laundry day."

"My mother taught me the value of living one day at a time," says daughter Billie Joan. "She taught me the beauty of life and that family was very important."

Robbie has passed on an affection for travel to all of her children and their children. She herself has had the opportunity to travel in 20 different foreign countries and all the middle and eastern United States. "I like to see the different customs that other peoples observe. It's fun to travel through the various landscapes, and I especially like to learn more about the different types of food that others in far parts of the world serve," Robbie commented.

Out of town guests at the 90th birthday celebration were Mrs. Damron's sister-in-law and her husband, Mr. and Mrs. Vern Thompson of Sedalia, Missouri and their son Vern J.; from Amarillo, Mr. and Mrs. Irving J. Hawkins and Mr. and Mrs. Jet Naples; from Oklahoma City, I.H. Faught; from Dallas, Rocky Reese; from Midland, Mr. and Mrs. Bill Rigney; from Clovis, Aaron and Cleo Stallings; from Lubbock, Stephen Smith; from Canyon, Robin Perez; and Dana Marney, who lives aboard the Norwegian cruise line Skyward.

Her friends agree that Robbie Damron is a pioneer, one of the people who really started Muleshoe, and that she continues to be a joy to be around.

NEWS VIEWS

George Bush, U.S. President: "The recession is ending and the recovery is underway."

John Norquist, mayor of Milwaukee:

"I understand the rage that exists...especially in the area most devastated by the killer. The desire to lash out and fix blame is strong. But we must remember one man killed his victims."



SCHOOL DAYS SINGALONG--was provided for residents of the Muleshoe Area Healthcare Center by Avis and Harold Carpenter of the Oklahoma Lane community September 6. After the sing-a-long the Carpenters led a discussion on reminiscing about school days. (Journal Photo)

Lane Family Holds Reunion

The annual Lane Family reunion was held over the Labor Day weekend Saturday, August 31 through Sunday, September 1 at the Littlefield Club House.

On Saturday, the Jack Still family hosted their traditional fish fry. After lunch on Saturday a game of water Splash Out and the annual water balloon volleyball was enjoyed by everyone. Favorite table games and cards were also enjoyed.

Sunday the Jack and Jimmy Lane families hosted the Sunday morning breakfast with homemade biscuits and all the trimmings.

The Lonzo Pierce families hosted the bar-b-que dinner Sunday with Lonzo's famous barbecued brisket, chicken and sausage.

Sunday was T-Shirt Day with everyone wearing their "Sunday Best" T-shirt.

The annual auction of homemade items made by family members was held Sunday evening. Roger Hatcher, Clovis, N.M. was the auctioneer and Mutt Still, Littlefield won the prize for "Highest Bid" on a

painting she had painted.

Those attending from Littlefield were: Verge and Ruby Lane, Jack and Mutt Still, Shannon Busbea and Shane, Liz Polk, Allen and Sam.

Other family members attending were: Lonzo and Ardyce Pierce, Jo Ann Stephenson, Keith and Kamie, Lana Pierce, Dennis and Nancy Reeves and Kelsee, and Charley Timmons, all of Lubbock; Jack and Anna B. Lane, Cynthia, Melissa and Jonathan Bennett, Stegall; Joe and JoeAnn Lane, Link Lane, Jamie, Ashleigh and Bobbie, Shawn and Tonya Batchelor, Kristen and Brandon, all of Arlington; Jimmy and Linda Lane, Kara, Tammy Lane and Matthew, Jody and Mandy Meason, all of Amarillo; Roger and Danette Hatcher, Lakin and Kalee, Clovis; David and Betty Terrell, Garland.

Also attending were: Burl Wingo, Muleshoe; Cody Wilson, Goodland; Duane Burleson, Lubbock; Emil and Nadine Macha, Sandra Enriquez, Rosanna and Anthony, all of Littlefield.



BACK TO SCHOOL MEMORIES--were brought to mind when Muleshoe Area Healthcare Center residents saw this table. It was part of the Back to School party held at the Center September 6. The table was designed by volunteer Lona Embry, pictured here. Joy Stancell, Activities Director, assisted her. (Journal Photo)

Attention Poets

Twelve thousand dollars in prizes will be awarded this year to over 250 poets in the North American Open Poetry Contest sponsored by the National Library of Poetry. The deadline for the contest is September 30, 1991. The contest is open to everyone and entry is FREE.

Any poet, whether previously published or not, can be a winner. Every poem entered also has a chance to be published in a deluxe, hard-bound anthology.

To enter, send ONE original poem, any subject and any style, to the National Library of Poetry, 5-E Gwynns Mill Ct., P.O. Box 704-PD, Owings Mills, MD 21117. The poem should be no more than 20 lines and the poet's name and address should appear on the top of the page. Entries must be post-marked by September 30, 1991.



IT'S 99¢ TIME AT DAIRY QUEEN! THESE ITEMS 99¢ EACH!



BANANA SPLIT



BREEZE® FROZEN YOGURT TREAT 12-OZ.

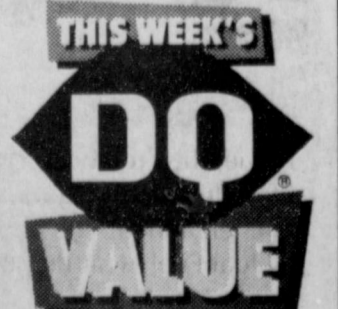


TWO TACOS



NEW! SEASONED CURLY FRIES

ALL ON SALE SEPT. 9-29, 1991



Reg. U.S. Pat. & Tm. Off. Am. D.Q. Corp. TM Reg. U.S. Pat. & Tm. D.Q. Op. Coun. © Tx. D.Q. Op. Coun. At participating Dairy Queen stores.

Muleday Funtime Activities

Saturday, September 14th

FRIDAY SEPTEMBER 13th
Heritage Foundation-Tours

SATURDAY SEPTEMBER 14th
7:00 am Registration for 2 mile & 10K run
Sidewalk breakfast

8:00 am Run begins
8:30 am Registration for Mule shoe pitching
Kid's activities

9:00 am Mule shoe pitching begins
MULEDAY FUNTIME PARADE LINEUP

10:00 am Parade begins
WEST PLAINS FAIR CIVIC CENTER

11:00 am ACTIVITIES BEGIN ON THE LOT OF THE BAILEY COUNTY CIVIC CENTER
Ugly leg contest
Watermelon seed spitin contest
Dunkin' tank
Mule-pattie bingo
Pet show

1:00 pm Turtle race
2:00 pm Tractor pull
Putt-putt golf

This is a tentative schedule. There is more on the planning table.

Be Sure To Attend The
West Plains Fair
September 12, 13 & 14th
at the
Bailey County Civic Center

MULESHOE STATE BANK
MEMBER FDIC
101 West American Blvd. Phone 806/272-4561
MULESHOE, TEXAS 79347

Latrell's Fashions

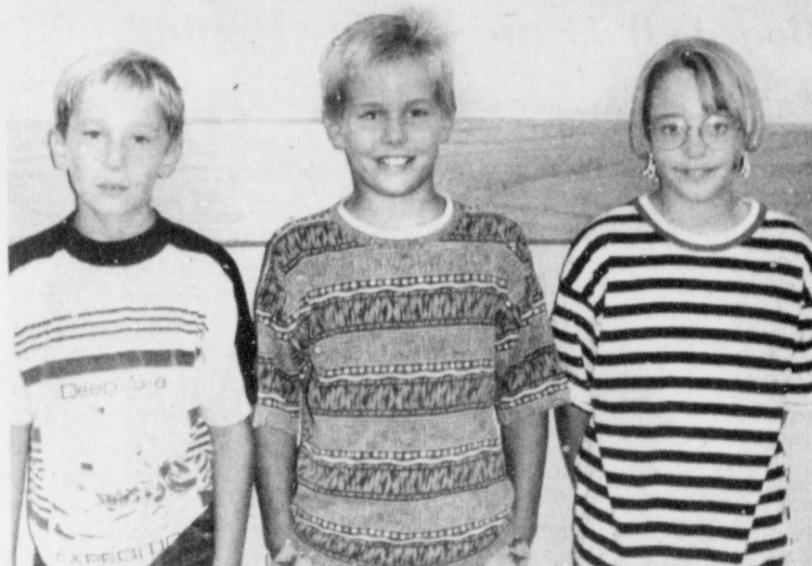
CLEARANCE SALE

1/2 PRICE

Latrell's Fashions

Phone 272-3459
1513 West American Boulevard

DeShazo Names Spotlight Award Winners



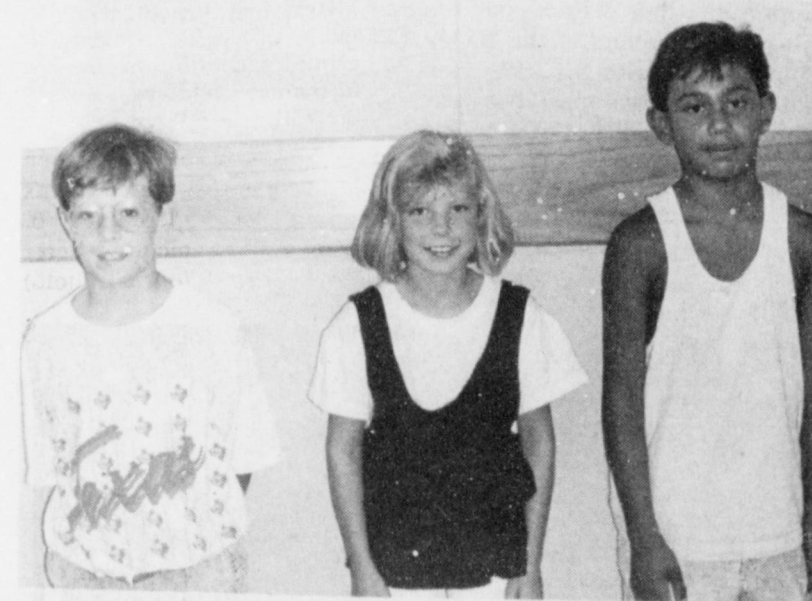
COMPUTER SPOTLIGHT--of the month winners are Zach Barrett, 3rd grade; Toby Kitchens, 4th grade and Amber Bruns, 5th grade. (Journal Photo)



LIBRARY SPOTLIGHT--of the month winners are Kayla Claybrook, 3rd grade; Delwyn Lathan, 4th grade and Ashley Pool, 5th grade. (Journal Photo)



CHAIRPERSONS--to improve the west entrance of the Muleshoe Area Healthcare Center Sammie Ethridge (at left) and Joyline Costen (center) are joined by Rachel Snider, administrator of the Center. The current phase of the project is now complete. The addition of sidewalks and curbing for the parking area at the entrance was funded by individuals who donated over \$2000 to the effort in lieu of sending local Christmas cards. This phase of the project was started Christmas of 1990. The overall effort was organized 20 years ago. (Journal Photo)



P.E. SPOTLIGHT--of the month winners are Jordan Pool, 3rd grade; Ashley Crawford, 4th grade; and Manuel Campolla, 5th grade. (Journal Photo)



ART SPOTLIGHT--of the month winners are (not pictured) Ruby Sigala, 3rd grade; Blake Mount, 4th grade and (not pictured), Joseph Mata, 5th grade. (Journal Photo)

SCAC Holds Planning Meeting

The Student-Community Action Club met Tuesday, August 27, for a short planning meeting. Secretary Courtney Graves, reported on the proceeds from the 4th of July cornbread and bean lunch.

The next meeting will be held at the home of Melissa Tombs, located at 213 E. Elm on September 16 at 7 p.m. At that time there will be a guest speaker and the citizen of the month will be recognized.

All members were reminded that dues need to be paid in September to the treasurer Lashelle Scoggin.



MICROWAVE TIPS

One can prepare appetizers in a microwave in 30 seconds if the first steps are taken earlier. Use toast and crisp bacon prepared earlier. Just before guests arrive, place a slice of two of tomato on each piece of toast, then bacon and then a slice of cheese.

Microwave on high for about thirty seconds and cut into finger sandwiches. The cheese will have melted nicely. The appetizers will remain warm for some time.

World Bank Lending

New loans approved by the World Bank, the largest source of aid for the Third World, hit a record \$24.2 billion in the past year.



We carry Red Wing Shoes in 125 different sizes and widths to make sure you "feel fit" and feel comfortable all day long. Stop in soon.

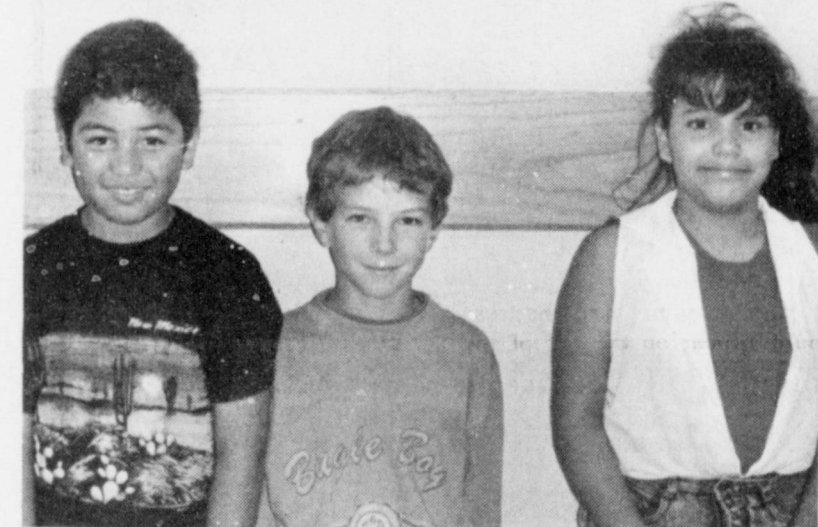
AM	M	B	R	C	D	E	EE	EEE
9 1/2	9 1/4	9 1/8	9 1/4	9 1/4	9 1/4	9 1/4	9 1/4	9 1/4

Fair Store

120 Main
272-3500

RED WING SHOES
Made in U.S.A.

Customer and dependability tested for generations.



MUSIC SPOTLIGHT--of the month winners are Robert Vidaurri, 5th grade; Drew Ramm, 4th grade and Ruby Ortega, 3rd grade. (Journal Photo)

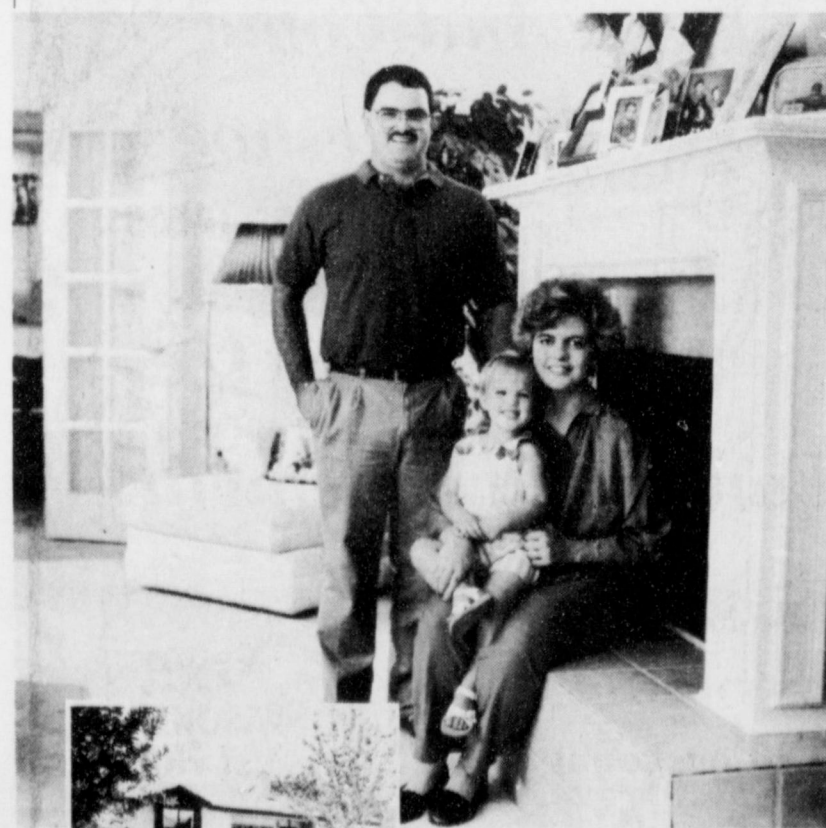
Tom Hayden, liberal California Democrat assemblyman:

"We need to see nature as having a sacred quality, so we revere it and are in awe of it. That forms a barrier to greed and exploitation and overuse..."

Jim Stenella, of Warminster, Pa., passenger on wrecked Silver Star train in South Carolina:

"They tried to handcuff me and take my tape...they said they would send it back to us, but they didn't take our names."

"We're enjoying our remodeled home and the economy of the Dual Fuel Heat Pump."



The Vests of Levelland

After a fire damaged the interior of the Vests' home, they remodeled to fit their personal tastes and lifestyle. The living room was enlarged and a new kitchen added. The home is heated and cooled with a Dual Fuel Heat Pump.

Dual Fuel Heat Pump

Right for any home.

MULE DAYS CELEBRATION SALE

THURSDAY, FRIDAY & SATURDAY

September 12, 13 & 14

Sasson Leather Oxfords

Sizes 11 to 2 1/2 Reg. \$18.00

Reg. \$20.00 Sizes 5 1/2 to 10

Now \$11.99 2 for \$23.00

Now \$12.99 2 for \$25.00

Womens Select

Justin Boots

Assorted Styles & Sizes

\$39.99

Reg. \$99.00

Braxton Stretch

Designer Jeans

Black & Indigo Denim

Now \$12.99

2 for \$25.00

Reg. \$16.00

Assorted Styles & Sizes

Select Group Jeans

Now \$19.99

Values to \$35.00

Heavy Weight

Irregular & Assorted Colors

Bath Towels

3 for \$10

Reg. \$4.99

Ladies

Panty Hose & Knee Highs

3 for \$4.00

Reg. \$1.69

Boys

Muscle Pants

Sizes 4 to 7 Reg. \$9.00 2 for \$14

Sizes 8 to 20 Reg. \$12.00 2 for \$18

Women's

Pocket T-Shirts

Reg. \$8.00

Now \$5.99 or 2 for \$10

Slightly Irregular

Boys Levis

Sizes 8 to 14

Now Student \$11.99
Sizes 25 to 30

Men's Western Shirts

Now \$11.99

Reg. \$17.00 or 2 for \$23

Many Other

In-Store Specials To

Numerous To Mention



Be Sure To Attend The West Plains Fair & Mule Days Celebration Sept. 12 - 14th!

ANTHONY'S
We're Good at Making You Look Great!

321 Main

Muleshoe

272-3478

Multi-Peril Crop Insurance Update Offered To Advisers

Changes and prospects for multiple peril crop insurance for 1991-92 will be examined during the one-day workshop in Halfway Sept. 12 and repeated Sept. 13. In addition to providing insurance agents and farm advisers an update on provisions for the 1990 federal farm bill, most of the course will provide hands-on experience with two computer decision models for selecting crop insurance.

The workshop will be held at the Texas A&M University

Muleshoe...

Cont. from Page 1

be sponsored by the senior class. Alice Liles at 272-5200 or Barbara Milbune at 272-3814.

This is the only school sponsored fund raising activity for the senior class, so it is important that the senior class all be present.

The Bailey County Commissioners Court will meet in Special Session in the Bailey County Courthouse, Friday, Sept. 6.

The meeting will begin at 10:00 a.m., and will continue until all business is concluded, with the following items on the agenda:

1. Conduct budget workshop.
2. Conduct Public Hearing regarding redistricting (reapportionment). -5:30 p.m.

Commissioners...

Cont. from Page 1

Jackey Wayne Burris, with the Bailey County Ambulance Service, met with the commissioners and gave a report of their activities. During the month of August they took in a total of \$6,011.54. He stated that they had had 19 emergency calls, 12 transfers, 10 no transfers, 1 DOA, and two rodeos. The commissioners and Burris discussed a change in the basic rate for advanced life support calls from \$150.00 to \$175.00. Burris stated that this was in line with other ambulance services.

All other basic rates will remain the same.

System Computer Training and Education Center. It is in the Moody Building of the Texas Agriculture Experiment Station facility, 14 miles west of Plainview on U.S. Hwy. 70.

"The 1990 Farm Bill enhanced the role of multiple peril crop insurance (MPCI) as a production risk management option for crop growers," said Dr. Ashley Lovell, economist and management specialist with the Texas Agricultural Extension Service, Stephenville.

"The workshop will look at

SPS...

Cont. from Page 1

over credit will be \$11.15.

The September credit represents the customers' share of profits from certain wholesale power sales made by SPS to other electric utilities on the spot market for June and July 1991. Under the program regulating these sales, 75 percent of the proceeds are passed along as credits of \$5.3 million for Texas retail customers since April 1990.

The expected October credit significantly lower prices for natural gas during the past several months. Diller said, along with somewhat lower prices for low-sulphur coal.

In New Mexico, Oklahoma and Kansas, where SPS also serves, the fuel have forms of automatic fuel-cost adjustments.

ASCS...

Cont. from Page 1

contracts for additional peanuts is September 15, 1991.

INTEREST RATE
The loan interest rate for September is 6.000 percent.

SODBUSTER/SWAMPBUSTER PROVISIONS
Under no condition should any producer break out any land without first consulting with SCS and ASCS Producers that break out highly erodible land are not eligible for any program benefits on that farm or any other farm in which the producer has an interest if a conservation plan has not been established.

OFFICE CLOSED
This office will be closed Monday, Oct. 14, 1991 in observance of Columbus Day.

the latest prospects for MPCI within the context of the 1991-92 farm program provisions," Lovell said. "And it will offer hands-on computer experience which should enable participants to determine which yield and price elections for various crops may be appropriate for clientele in their areas."

Lovell said the course is designed for persons who deliver MPIC to growers. It also will be helpful for commercial lenders, farm consultants and Farm Trust managers, Extension Service agricultural agents, and personnel of Farmers Home Administration, Agricultural Stabilization and Conservation Service, and the Farm Credit System.

The workshop will begin at 8:30 a.m. with a review by Lovell of the farm bill and the role of MPCI as a risk management tool. Dottie Sampley, area claims specialist with the Federal Crop Insurance Corporation, will explain changes in MPCI for 1991-92 and answer related questions.

Lovell then will provide an overview of the Crop Insure software and describe a representative farm and insurable crop enterprises. Participants will run their own examples on

Lazbuddie...

Cont. from Page 1

kick was good. At this point, instead of McLean making the next score Lazbuddie did. Frank Gonzales scored with a 65 yard pass from Brett Thomas. Leland Brockman's kick was good.

Lazbuddie also scored on a safety.

Tanner Hess scored with a five yard run but the point was blocked. Tanner Hess also had a four yd run and the kick was no good.

At half time the score was Lazbuddie 24 and McLain 20.

Matt Cozley scored for Lazbuddie with a 31 yard pass from Brett Thomas and they missed the extra point. Don Harris scored with a 38 yard run for McLain.

Kirk Jesko scored the final score of the game for Lazbuddie when Kirk Jesko scored on a 5 yard run and the punt was missed. The final score for the game was Lazbuddie 36 and McLain 33.

Following the game their coach was hurt to say "It was a good game, I'm real proud of the boys."

the computers.

Lovell and Greg Allen, Extension Service associate in farm management, will explain the Crop Insurance Risk Management Analyzer (CIRMAN). Participants then will run exercises to find recommendations for representative High Plains crops of wheat and sorghum.

Results and generalizations will be interpreted and participants will modify and re-run their exercises.

The workshop will repeat for a second class of participants the following day. The workshop

Mules...

Cont. from Page 1

Jackson was held to three carries and eight yards in the first half, but gained 104 yards on nine attempts and scored two second-half touchdowns.

Eddie Hooper said, "Eric came through when things had to be done."

The Cubs were leading 7-0 early in the second half and Jackson running from the tailback position in the I-formation offense, took a pitch from quarterback Noel Garcia, broke a couple of tackles and then outraced the secondary into the end zone for a 53 yard touchdown.

Penalties hurt both the Mules and Cubs last Friday night. The Cubs had two touchdowns called back due to penalties.

Rain...

Cont. from Page 1

rain. He said that it (the rain) is not helping the cotton and its delaying corn harvest in that area. The farmers had expected to be in the fields cutting corn this week.

The city of Muleshoe has unofficially received 4.1 inches of rain this far in September and 17.5 inches for the year. Even though this is unofficial every one in the area will agree that its not dry in the Muleshoe area.

One might call this the era of the investigation.

Big words do not always convey big thoughts.

sponsored by the Extension Service, FCIC and Extension Service USDA.

The \$50 registration includes a catered lunch, workshop

Board Of Trustees Holds Meeting

The Board of Trustees of the Muleshoe Independent School District set its 1991-92 tax rate at \$3.39 per hundred dollars evaluation on September 9 at its regular meeting. This, when combined with the \$.70 tax rate set by the County Education District, means that MISD taxpayers will have a total tax rate of \$1.09--the same as the 1990-91 district tax rate.

Superintendent Bill Moore said, "We are very fortunate to be able to remain constant with our tax rate when so many districts are facing significant tax increases this year."

At the same meeting, the Board re-elected Sam Harlan to represent the district on the Board of Directors of the Bailey County Appraisal District. Harlan will begin a new two-year term on January 1, 1992.

In other action, the Board

materials and refreshments. Due to limited seating and computers, preregistration is required.

approved the process used to appraise administrators in the district. The process was developed over the last several months using guidelines from the Texas Education Agency.

In final action, the Board approved the substitute teacher list for 1991-92 and set the substitute teacher pay rate at \$40 when substituting for professional employees and \$32 when substituting for a teacher's assistant.

Violent Crime

The nation's capital remained the U.S. murder capital in 1990, but Miami had the greatest rate of all violent crime, according to information released by the FBI.



HARVESTING TIME--This pile of ensilage was grown and harvested in this area and will be used to help feed local cattle. (Journal Photo)

West Plains Fair & Mule Days

**Thursday, Friday & Saturday
September 12, 13 & 14**

*Roundup Everyone
And Come
To Muleshoe
For A
Weekend Of
Fun And Excitement!*

There Will Be Something
For Everyone,
Whether Old or Young.




**Wes-Tex
Feed Yards, Inc.**

272-7555



Muleshoe Area Farmers

King Grain Is Ready To Serve You This Fall!

**Keep Us In Mind For Buying or
Storing Your Corn, Milo or Soybeans!**

For Price Quotes Call
Max King or Joe Bob Stevenson
at 272-4541



GRAIN COMPANY, INC.

120 N. 1st
Muleshoe
272-4541

Extension Service Develops Survey For Texas Communities

Texas towns that depend on festivals or popular attractions for revenue could benefit by learning more about event goers.

A new survey program developed by the Texas Agricultural Extension Service, working with the department of recreation, park and tourism sciences at Texas A&M University, helps communities evaluate festivals, attractions and events.

"The 'Self-Surv' Visitor Information System is designed to help Texas communities conduct basic marketing research even though they have limited funds and expertise," said Julia Hamilton, Extension assistant and survey program coordinator. Results from last year's pilot surveys already have provided vital information to festival organizers.

"The survey information has been invaluable in targeting publicity and helping us meet the needs of our audience," said Sheila Brandon, marketing director of the Texas Gatorfest in Anahuac. "We found that people wanted more drinking water, more alligator food and that the parking situation could be improved."

"Last year, we learned that 88 percent of our audience came from Houston," she said. "So, we are doing heavy advertising with billboards, newspapers and television in that area strictly because the survey said this is our market."

As a result of the survey, this year's Gatorfest will offer free rides to children, free parking and plenty of alligator food, Brandon said. The festival brought in 23,000 people last year and is expected to attract at least 35,000 this September.

Before a survey is conducted, Extension representatives meet with community leaders to discuss expectations and the resources available, Hamilton said. Survey participants are selected randomly as they go through the festival gate. If there's not a gate, another way to select the sample is devised. Participants are given questionnaires in pre-addressed, post-marked envelopes to mail back once they return home. Postcards are usually sent as reminders to return forms.

"This system of gathering visitor information relies heavily on community involvement to reduce the costs normally associated with conducting a research project," Hamilton said. "Local volunteers are trained to conduct the survey, which costs between \$2,500 and \$5,000--less than fees charged by private consultants."

Communities are encouraged to obtain survey sponsors from local businesses such as utility companies that could benefit from the information gathered.

The best thing about the self-administered survey is that it is adaptable to the needs of each community, Hamilton said. "Each community identifies its needs and selects questions tailored to that particular event."

Sometimes communities just want to know who's coming to

an event, she said.

"It's important to know what type of audience an event is attracting--younger or older groups--and to try to design the product to meet the interest of that audience."

"We were curious about what people thought of the Watermelon Thump Festival, where they were coming from and why they came," said Linda Moore of Luling, the Caldwell County development director. "also, we wanted to know the impact of dollars and cents--and this was a real eye-opener."

The Luling survey showed that people were spending more money than expected on shopping, she said. Out-of-town festival goers were interested in buying local arts and crafts. Organizers are now considering commissioning local people to produce items to be sold during the festival.

The community gets a first-class report, complete with graphics that they would not ordinarily have the resources to produce, Hamilton said. Festival coordinators have a better feel for what's going on by allowing local people to do their own coding of data on specially desig software.

Also, folks in the community learn how to obtain research

information, and the Extension staff helps with its interpretation, she said. The result is a data base that can be used statewide by community tourism directors, attraction managers, or special event planners.

"For example, Anahuac charged \$2 for admission," Hamilton said. "They found out that most of their clients were coming from Houston where the average admission price is much higher. So, Anahuac decided to raise their admission to \$4 and drop the fee for parking."

Luling wanted to institute a price for the Watermelon Thump, she said. The average charge for festivals was \$2.50. Luling decided to charge \$2. Vendors were paying twice as much to set up arts and crafts across the state. Therefore, Luling could raise vendors' fee.

Doing the survey is a good idea for any community that wants to know more about its events, Moore said.

Communities interested in gathering information about their events should contact the Extension Service in the department of recreation, park and tourism sciences at Texas A&M. Planning for the survey should start at least two months before the event.

Teachers Recognize Suicidal Tendencies In Students

Teachers sometimes go beyond the ABC's--they are often the first to recognize suicidal tendencies in their students.

Suicide is the third leading cause of death in young adults, averaging 5,000 each year in the United States, and is becoming more common in young children, said an assistant professor of psychiatry at Baylor College of Medicine in Houston.

"Statistics from the U.S. Department of Health and Human Services show that approximately 12,000 young children are hospitalized each year for intentionally injuring themselves," said Dr. Letha Cole.

Children express their emotions in several ways. Joy, sorrow, anger or depression can be seen through their art, music and the way they play. Parents and teachers should pay particular attention to these activities.

"Children and teenagers unknowingly tell us what they are feeling through their school-work," Cole said. "Children who draw pictures of death or who write about it in a paper may be asking for help."

Parents and teachers should be aware of other warning signs of suicidal behavior such as: prolonged periods of sadness or loneliness, withdrawing from family and friends, showing no interest in activities, episodes of anger or irritability for more than one week, low self-esteem, unwillingness to cooperate, risky behaviors that could result in physical injury.

Not all children exhibiting these signs will commit suicide,

but they should be taken seriously, Cole added.

If a child has made previous suicide attempts, has a plan to commit suicide or has a preoccupation with death, Cole advises that a child psychiatrist be contacted immediately.

Many times, troubled students will confide in teachers who can assist them in getting the help they need. Cole recommends that school personnel establish and maintain contacts with local mental health professionals.

School personnel can also help families follow through with recommended treatment and help the child adjust to the classroom. They can play a key role in maintaining the child's educational progress.

"Parents and teachers should not assume that a child in trouble is just going through a phase," Cole said. "Know the warning signs, take immediate action and, most importantly, support the child through the healing process."

Laser Sugery?

The magazine *Consumer Reports* contains an article on laser sugery this month which those contemplating use of this new exotic medical treatment would do well to read.

In short, the study found that the use of lasers is a chaotic process in this country with little, and often no, regulation.

It found that in most hospitals there have been laser accidents by many who don't know how to use lasers, that too much is being claimed by laser manufacturers and that some

claims about laser treatment are not legitimate.

On page 537 of the August issue one can find a picture chart listing the legitimate, established uses for lasers and a list of other uses which are questionable.

But the main point for prospective laser patients is that lasers are not better than the person using them. And there's no standard, required training for those using lasers.

Any doctor can buy a \$100,000 laser, or more expensive one, and go into business with very little training--perhaps mostly from

the firm selling him the laser device.

The conclusion of this consumer study is that laser treatments have enjoyed an exotic press, and little criticism or questioning. For some treatments, however, lasers are dangerous, not as good as claimed, or as good as other methods. And there have been some unhappy results.

Too much has been claimed too soon. Laser companies have regularly been going out of business and merging in the three decades since laser surgery first appeared.

NOTICE

Bailey County Farm Bureau

Will Hold Their

Annual Meeting

Saturday, September 14

Dinner of BBQ and Home Grown

Vegetables Will Be Served

Beginning At 6:30 p.m.

The Meeting Will Begin At 7:45 p.m.

At The

Muleshoe High School Cafeteria

(400 Block W. Ave G)

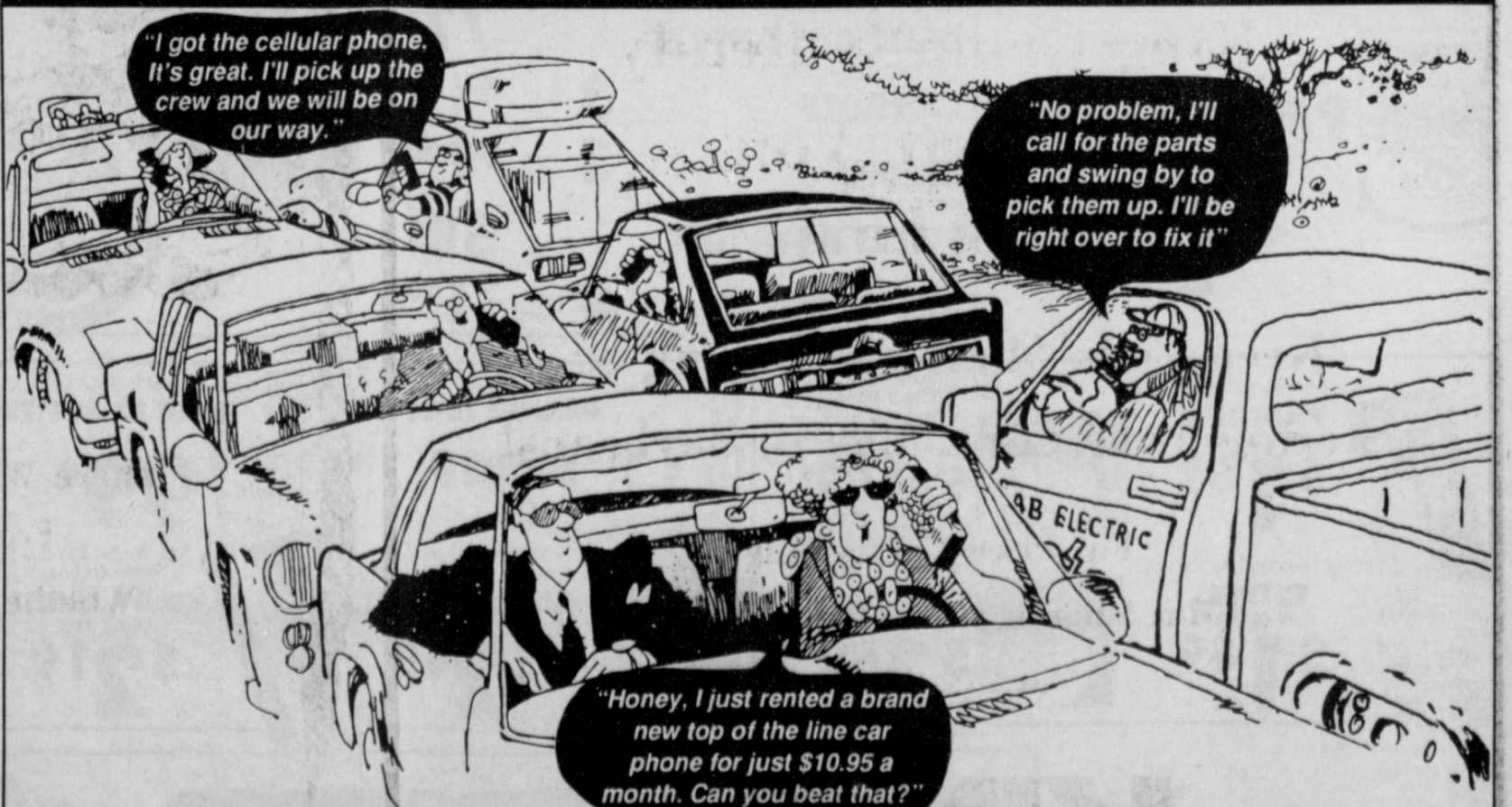
Students Who Attended the Citizenship Seminar Will Be Speaking.

4 Directors Will Be Elected

Door Prizes Will Be Given

See You There!

LIBERTY CELLULARPHONE: CAR PHONES As Low As \$10.95 per month



Mobile phones - \$10.95 per month
Bag phones - \$12.95 per month

Call Now For Details
1-800-234-LIBERTY
And Remember To Ask
About Our Special
Rent-To-Own Opportunity

LIBERTY CELLULARPHONE
NETWORK

Now you too can have the convenience of a cellular phone for a low monthly rental price*. That's right - there is no large cash outlay.

* Annual Service Contract & Set-up Fee Required
Monthly Access & Airtime Fees Not Included

Authorized Agents:
Wilson Appliance 272-5531

Playmates 21st Birthday Party

Starts Friday, Sept. 13, 10 AM - 6 PM
Saturday, Sept. 14, 10 AM - 6 PM
Sunday, Sept. 15, 1 PM - 4 PM

NEW STORE HOURS: 10 AM - 6 PM Monday - Saturday
1 - 4 PM Sunday

To Celebrate...

Select Racks Of Fall Merchandise

20%-25%-30% OFF & MORE

Boys' Infants-Size 7, Girls' Infant - Young Jrs. - Missy Sizes

All In Stock

Pageant Dresses

50% OFF

Register For Gift Certificate Drawing

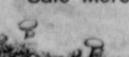
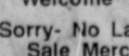
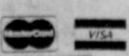
START YOUR CHRISTMAS SHOPPING EARLY!!

Playmates

Youth Apparel

224 Main

Downtown Clovis



Welcome

Sorry - No Layaway On Sale Merchandise

Well-Studied SAVINGS

Congratulations To Alice Elliott For Winning A \$100 Shopping Spree From Thriftway!!

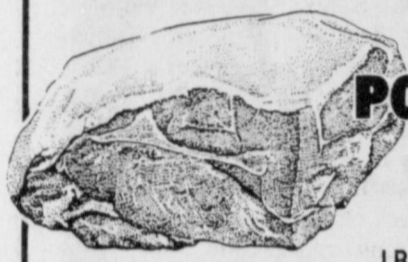


WIN A FABULOUS TRIP FOR FOUR TO Disney World

Just Register to win at any participating Thriftway Store. There's no purchase necessary. Your trip includes airfare, hotel accommodations, tickets to Disney World Parks and spending money. Just look for the special Coca-Cola display in Thriftway for all the rules and details.

REGISTER TO WIN \$100 Shopping Spree FROM THRIFTWAY

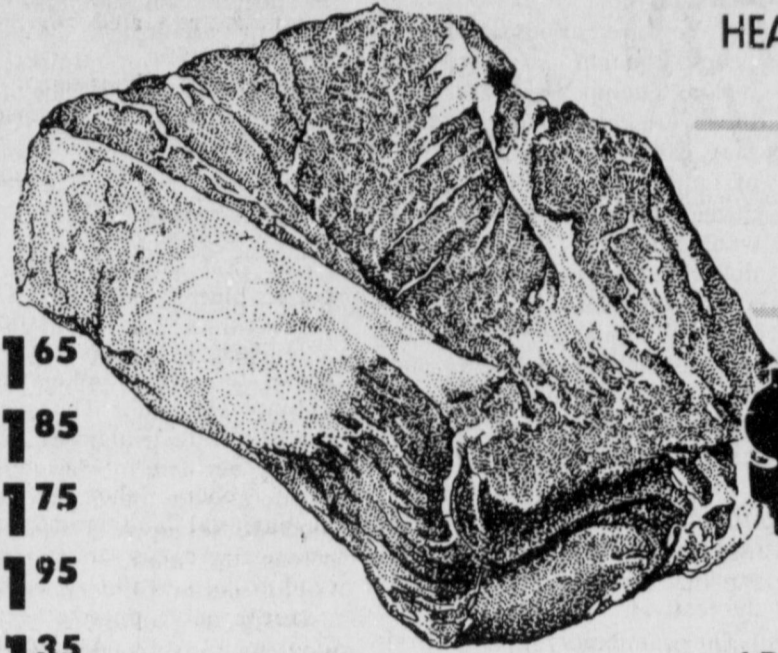
Each participating THRIFTWAY Store will be giving away Four \$100 Shopping Certificates. Drawings will be held in each Thriftway the weeks of August 18, August 25, September 1 and September 8, 1991.



FAMILY PACK LEAN TRIM FRESH PORK BUTT
PORK ROAST
LB. **\$1.25**

FAMILY PACK EXTRA LEAN
GROUND BEEF
\$1.75

- HEAVY GRAIN FED BEEF BONELESS FAMILY PACK **CHUCK STEAK** LB. **\$1.65**
- HEAVY GRAIN FED BEEF BONELESS ARM FAMILY PACK **CHARCOAL STEAK** LB. **\$1.85**
- HEAVY GRAIN FED BEEF BONELESS FAMILY PACK **ARM ROAST** LB. **\$1.75**
- LEAN BEEF CUBES BONELESS FAMILY PACK **STEW MEAT** LB. **\$1.95**
- PILGRIM'S PRIDE JUMBO PACK SPLIT **FRYER BREASTS** LB. **\$1.35**
- BEEF BONELESS **CALIFORNIA ROAST** LB. **\$1.75**



FAMILY PACK HEAVY GRAIN FED BEEF BONELESS
CHUCK ROAST
LB. **\$1.35**



ALL TYPES

COCA-COLA

2 LTR. BTL.

99¢

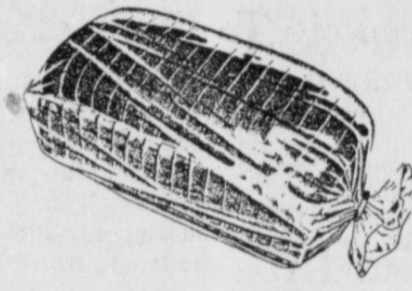


BATH

COTTONELLE TISSUE

4 ROLL PKG.

89¢

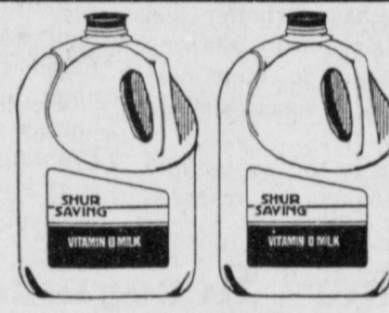


ALWAYS FRESH

WHITE BREAD

1 1/2 LB. LOAF

2 89¢
FOR



SHURSAVING

HOMO MILK

GALLON JUG

\$1.89



SHURFINE ASSTD.

ICE CREAM

1/2 GAL. SQ. CTN.

99¢

WITH THIS COUPON
FIRST 1/2 GAL. SQ. CTN. FOR 99¢
THEREAFTER \$1.29 EACH
ONE COUPON PER FAMILY
COUPON EXPIRES SEPT. 18, 1991

THRIFTWAY/LA TIENDA COUPON



\$1.99 SIZE FRITO'S®

CORN CHIPS

\$1.49



JUMBO ROLL ABSORBENT

SCOTT TOWELS

69¢



28 OZ. JAR RAGU ASSTD.

SPAGHETTI SAUCE

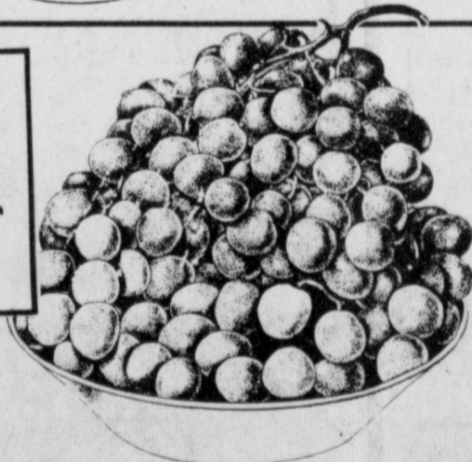
\$1.69



AUNT JEMIMA LITE SYRUP 24 OZ. BTL.

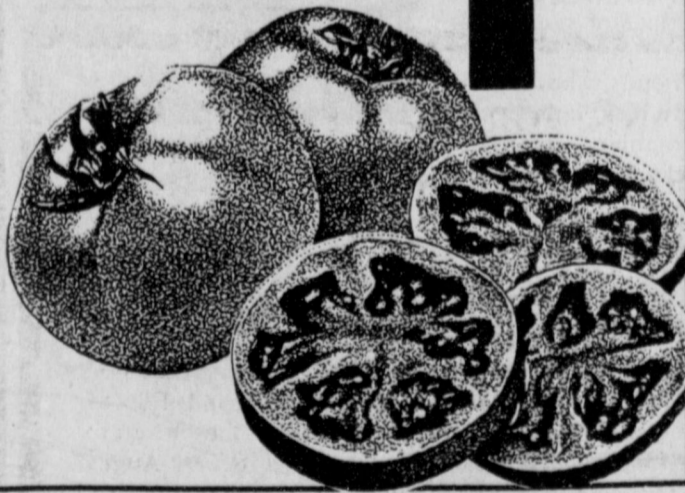
\$2.69

THOMPSON SEEDLESS GRAPES LB. **58¢**



RED RIPE TOMATOES

3 \$1
LBS.



SHURFINE LONG SPAGHETTI 24 OZ. PKG.

99¢



AUNT JEMIMA COMPLETE BUTTERMILK PANCAKE MIX 2 LB. BOX

\$1.49

- NEW CROP CALIFORNIA APPLES 3 LB. BAG **\$1.37**
- NEW CROP WASHINGTON GOLDEN DELICIOUS APPLES LB. **77¢**
- DOLE CELLO FRESH CRISP CARROTS 3 1 LB. BAG **\$1.00**
- YELLOW ONIONS 3 LBS. **\$1.00**
- EAST TEXAS SWEET POTATOES LB. **58¢**
- FRESH GREEN ONIONS 4 FOR **\$1.00**



ASSORTED FEMINE PADS NEW FREEDOM 24 CT. BOX **\$2.99**



DISH DETERGENT DOVE LIQUID 22 OZ. BTL. **99¢**



PILLSBURY MICRO BUTTERMILK PANCAKES 15.2 OZ. BOX

\$1.69



STOFFERS FRENCH BREAD PIZZA 11-12 OZ. BOX

\$2.69



CITRUS HILL ASSTD. ORANGE JUICE 96 OZ. JUG

\$2.49



KRAFT SPREAD TOUCH OF BUTTER 1 LB. TUB

99¢

SPORT FRESH/ ORIGINAL RIGHT GUARD 10 OZ. CAN

\$2.49

ASSTD. AERO/ ANTI-PERSP. RIGHT GUARD 6 OZ. CAN

\$2.49

TABLETS/ CAPLETS EXCEDRIN 100 CT. BTL.

\$5.99



BUDGET GOURMET ASSTD. REG. ENTREES 10 OZ. BOX

\$1.49



STOFFERS ASSTD. ROUND PIZZA 8.75 OZ. BOX

\$2.69

KRAFT 100% NATURAL 1/2 MOON COLBY/ COLBY JACK/ CHEDDAR CHEESE 10 OZ. PKG.

\$2.19

KRAFT LIGHT NATURAL 1/2 MOON CHEDDAR/ COLBY CHEESE 10 OZ. PKG.

\$2.19

ASSTD. TOOTHPASTE COLGATE 4.6 OZ. TUBE

\$1.49

2 PACK BTL. SELSUN BLUE ASSTD. SHAMPOO BUY ONE GET ONE

FREE

AERO A/P ASSTD. SOFT & DRI 6 OZ. CAN

\$2.49



ORE-IDA CRISPERS/ COUNTRY STYLE DINNER FRIES

POTATOES 20-24 OZ. BOX **\$1.49**



401 W. Amer. Blvd.

Muleshoe

272-4585



WE ACCEPT FOOD STAMPS... WE RESERVE THE RIGHT TO LIMIT

PRICES EFFECTIVE SEPTEMBER 8-14, 1991



INSTANT ASSTD. QUAKER OATS 12 OZ. BOX

\$2.49

Panhandle South Plains Fair Offer Prizes and Entertainment

Area farmers and vocational agriculture students will be vying for more than \$7,000 in prize money during crop and agriscience events at the 74th annual Panhandle South Plains Fair, Sept. 21-28.

Competition in the open crop division is open to everyone.

Entries will be accepted Sept. 20 from 3 p.m. to 7 p.m. and Sept. 21 from 8 a.m. to noon.

Exhibitors are limited to one entry in each class, and all entries must have been grown in the South Plains area during the current crop year.

Cotton growers can enter

stalks in four classes this year: tallest cotton stalk, most bolls per plant, best commercially adapted stalk and best 20 opened bolls.

Classes are also open for grains and seeds, sheaf grains and seeds, grain sorghum heads, baled hay, corn, vegetables, fruit and nuts and miscellaneous crops. Crop premiums are scaled from \$4.00 to \$15.00.

Agriscience Educational exhibits will also be on display with 10 booths in the Ag. Building. Exhibits are judged on general appearance, interest and educational value.

The first three places will receive blue rosettes and \$350; the next three places will collect red rosettes and \$300 while the next four places will get white rosettes and \$250.

Livestock and farm equipment, general shop projects, recreational and home convenience projects and finished wood projects can be entered by students at approved high schools in the Agriscience Agricultural Mechanics Exhibits division.

Judging of these entries will

begin at noon Sept. 21, and the entry deadline is Sept. 19.

Plaques and cash awards will be awarded to entries judged as best over-all large metal project, best over-all small metal project, and best over-all finished wood project.

Payoffs vary, but range from \$20 for fourth place to \$100 for first.

In addition to the excitement of competition, fair-goers can expect to find thrills on Gene Ledel's "Million Dollar Midway" and top-notch entertainers in Fair Park Coliseum.

The line-up for paid coliseum shows this year includes Don Williams, Ricky Van Shelton, The Texas Tornados and the Oak Ridge Boys. Area sponsors are offering free shows by Little Joe Y La Familia, Michael James Murphy, Vince Vance and the Valiants and Diamond Rio.

Tickets for these free shows are being distributed by the sponsors through participating merchants.

Tickets for paid shows are on sale at Luskeys, Ralphs Records & Tapes and the South Plains Fair Office. For mail order information call 744-9557.

News From Bob Bullock

Lieutenant Governor Bob Bullock on Sunday applauded passage of legislation committing close to \$1 billion to an anti-crime package that includes construction of thousands of new state prison beds, \$150 million in relief for counties holding state prisoners and, for the first time ever, a massive state commitment to treating prisoners addicted to drugs.

"Final passage of this bill is a monumental relief to the state and county governments that have literally been under siege," Bullock said.

"I am proud to say once and for all, the state will be rightfully bound by law to take the responsibility for inmates that belong in state prison system," said Bullock, noting the new bill will require the state to take responsibility for all of its inmates by 1995.

Bullock said the plan, which will be phased in over a three-year period, calls on the state to add 25,300 prison beds—including 12,000 beds designed for the drug abuse treatment of non-violent offenders.

Bullock said counties will receive \$150 million in state payments over the next two years to relieve overcrowding in their jail systems due to the prolonged retention of state inmates and reward the performance of local community justice programs designed to deter offenders. The plan includes additional funding for new initiatives that will seek to control the future prison population, such as pre-sentence investigations in felony offenses and funding for an interim Commission on Sentencing Reform.

Bullock praised the Senate authors of the bill—Ted Lyon of Rockwall and Jim Turner of Crockett—and the Senate's Harris County delegation, led by the Dean of the Texas Senate, Chet Brooks. Both groups work-

ed with Bullock to reach a compromise that will settle the longstanding dispute between the state and Harris County.

"These Senators have worked long and hard on this legislation," Bullock said. "They deserve our thanks and our appreciation for a job well-done."

The legislation next goes for the Governor for her signature.

Sudan News

by Ann Gaston

Lubbock's Senior Citizen Jamboree revived the Roaring 20's for some 1,400 plus Senior Citizens from across the South Plains Thursday, August 15 at the Lubbock Memorial Civic Center.

Fifteen members of the Sudan Area Senior Citizens enjoyed the day-long Seventh Annual Jamboree. Each center's "Outstanding Senior of the Year" was recognized and presented awards. Harold May received the "Outstanding Older Texan" award from the Sudan Senior citizens organization.

This year's event was sponsored by St. Mary's Hospital, Lubbock Senior Citizens Program, and South Plains Association of Government's Aging Program.

The meeting was opened with the banner competition, followed by the welcome from Mayor B. C. "Peck" McMinn, of Lubbock.

Competition got underway at 10 a.m. with Domino and Skip-Bo tournaments, and other competitive events included horse shoe-pitch, gangster's ring, men's walk-a-thon, women's walk-a-thon, balloon relay, and wheelchair race. Winners took home gold, silver, and bronze medals. Door prizes were given throughout the day.

Activities of the afternoon included a western dance demonstration and contest. A Roaring 20's Carnival, with prizes galore, was enjoyed by all the participants.

The awards ceremony wrapped up the activities of the day.



LUBBOCK, Saturday, September 7, 1991

The 38th annual meeting of the Plains Ginner's Association was held today at the Lubbock Plaza Hotel. Lubbock-based Plains Cotton Growers, Inc., once again contributed to the meeting with two of its officer's speaking to the organizations membership.

Topics discussed at the meeting included air pollution problems and regulations, the electronic title system, and module averaging for strength. Also held was a style show sponsored by the Lubbock Cotton Auxiliary.

PCG President Larry Nelson, of Tulia, and PCG Secretary/Treasurer Frank Jones, of Lamesa, addressed the Saturday meeting. The PCG officer's discussed a wide range of topics relating to the cotton industry.

Nelson discussed current activities of both PCG and Cotton Incorporated as well as the latest developments in the numerous trade negotiations that threaten to affect the cotton industry. Jones, current Chairman of the National Cotton Council's Environmental Task Force, presented a discussion of agriculture and its role in environmental issues.

Nelson began by commenting on the recent passage of the referendum on amendments to the Cotton Research and Promotion Order. Some of the changes he discussed included the removal of the refund provision for domestic producers and the assessment of imported cotton and the raw cotton equivalent of imported textile products.

One of the most notable changes to come about from the referendums passage was the new way in which State Support Funds would be allocated.

Nelson explained that beginning with the 1991-crop five percent of CI's annual budget would be returned to the states for use in research and promotion activities on the state level. Under the new guidelines Texas is expected to receive around \$500,000 in State Support Funds.

Jones addressed several environmental issues currently facing agriculture and the cotton industry. Among them were the new wetlands delineation manual and the proposed NCC publication on current environmental programs and regulations.

He also noted that the Council is developing recommendations for the new delineation manual for wetlands as well as the Coastal Zone Management Act since they both may have an impact on cotton production practices.

Jones also offered a brief overview of the background of the Environmental Task Force and the purpose of the group.

"This group was put together in order to give cotton producers a vehicle that enables them to take a pro-active stance toward the many environmental issues facing the cotton industry," explains Jones. "Cotton producers are seeing that they can no longer ignore the activities of the environmentalists in our country and must get involved in these types of legislative activities."

Immediately following Jones' speech the meeting was adjourned for lunch, sponsored by PCG, Plains Co-op Oil Mill, Southern Cotton Oil Co. in Lubbock and Levelland, and Chickasha Cotton Oil of Lamesa.

Smokers Respond To Gallup Poll

According to a recent Gallup Poll of smokers and non-smokers:

80 percent of smokers say they wish they'd never started smoking; 70 percent say they'd like to quit.

93 percent of smokers say smoking is bad for their health.

Only 27 percent of Americans still smoke.

49 percent of Americans say they'd like to see a complete ban on cigarette advertising.

6 in 10 nonsmokers say they would ask a person not to smoke in their home or at the table during meals.

30 percent of Americans would like a total ban of smoking in restaurants; 66 percent say restricting smoking to a special area is sufficient.

51 percent of Americans would like to see smoking banned in public places.

For smokers wanting to quit, Methodist Hospital offers

**Cash Rewards
Up To \$1,000
For Information!
Call
Bailey County
Crime Line
272-HELP**

NOTICE TO POSSIBLE CLAIMANTS FOR GRAIN STORED AT FARMERS COOPERATIVE ELEVATOR OF MULESHOE, TEXAS

The United States Department of Agriculture (USDA) under authority of the United States Warehouse Act and with permission of the Board of Directors took control of the grain inventory of Farmers Cooperative Elevator of Muleshoe, Texas, (Including Clays Corner and Enochs, Texas) on July 9, 1991. The grain inventory is being liquidated for the benefit of the owners of the grain. All persons are hereby notified that they must file a claim with the USDA by August 15, 1991, if they believe they are entitled to participate in the distribution of money received from the sale of the grain. The claim must be on a notarized Proof of Claim form provided by the USDA and must be supported by copies of documents specifying the claim or establishing that the claimant delivered grain for storage at the Farmers Cooperative Elevator of Muleshoe, Texas. Copies of the Proof of Claim form may be obtained during normal business hours from the Kansas City Commodity Office at the address listed below, the Bailey County ASCS Office, the Texas State ASCS Office, or at the office of this publication. Claims must be received by the License Compliance Branch, Licensing Authority Division, Kansas City Commodity Office, Post Office Box 419205, Kansas City, Missouri 64141-6205 by the close of business on August 15, 1991. Claims received after that time will not be considered. Grain depositors who are believed to have claims based on a review of the warehouse records have been notified by letter. Persons filing claims in response to that letter need not file additional claims based on this notice.

The proceeds from the sale of the grain, plus interest accrued thereon, will be distributed to persons who own grain stored at Farmers Cooperative Elevator of Muleshoe, Texas, as of close of business on July 9, 1991, as determined by USDA.

Grain Funds will be kept separate by commodity. Each fund will be distributed to persons with valid claims on a pro-rata basis. Claims may be filed against the warehouse bond for losses, if any, not fully covered by the grain funds.

Persons who have sold or agreed to sell grain delivered to Farmers Cooperative Elevator of Muleshoe, Texas, are not eligible to participate in this grain fund or claim against the bond. They should contact the Texas Department of Agriculture (409) 542-3691, regarding any rights they might have under the Texas Law.

4.9%
Financing Available Now Until Sept. 30



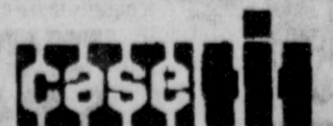
**Used
Magnum
Tractors**

On Selected Units Only

C & H Equipment

West Highway 84, Muleshoe, Texas 79347

Phone (806) 272-5514



Report From State Senator Teel Bivins

It ended sooner than most people expected. The second special session of the 72nd Legislature adjourned sine die Sunday, August 25. Though I got run over by the Democrat majority in my efforts to draw sensible lines and keep West Texas cities such as Amarillo together, the redistricting battle is far from over, and I believe we still have a good chance of prevailing in court. Being home with my family is the best way I know of to recover from the wounds sustained in the redistricting battle.

On a more positive note, I am pleased to report to you that in my view the state of Texas has taken a major step forward in our war against crime and drugs. Legislation passed in the second special session will settle the jail-overcrowding lawsuit filed by counties against the state. In the process, I believe that Texas has become a leader for a change in the war on drugs.

Over 85 percent of inmates currently serving time in the Texas Department of Corrections Institutional Division (prisons) are there directly or indirectly because of their own drug use. Yet under current law, there is no system in place to require these offenders to undergo any type of drug treatment.

The vast majority of crimes committed in this state are committed by repeat offenders. The sad reality is that the average convicted felon in Texas serves only 20 percent of the time they were sentenced to. This revolving door is at the heart of the criminal-justice crisis that continues to exist in Texas. The first duty of any government is to protect its citizens. Texas has not been doing the job.

Because of that and because Texas has a duty to 254 counties to end housing of felons in county jails, the Legislature enacted a measure that will create 25,000 new prison beds. This major construction project will be financed by a bond issue to be voted on by the people of Texas on November 5. I

stongly support the passage of that bond issue.

While every Texas needs to be concerned about the increasing amount of state debt, there are certain types of state expenditures that are properly financed with long-term debt. A prison which has a useful life of 60 to 70 years is a prime example of an asset that is well suited for long-term debt financing.

Some have argued that we cannot "build our way out of our criminal-justice-system crisis." They argue that the long-term solutions to the criminal-justice crisis are to be found in early childhood development, combatting the drop-out rate and winning the war on drugs. Their arguments have merit. At the same time, however, the state has a duty to citizens to create the capacity to keep truly violent criminals off the streets. With such a short average length of stay in TDC, the state is not fulfilling that duty. Moreover, we have created a situation where incarceration is simply not a deterrent to crime.

This new legislation charts a new course in our methods of dealing with that vast majority of prisoners whose crimes are drug related. Of the 25,000 new beds, 12,000 will be built as regional prisons to be dispersed throughout the state. Their main purpose will be to require intensive drug treatment as part of prisoner's incarceration. These will be full lockdown facilities, but the difference between them and our traditional prisons will be the emphasis on drug treatment.

The theory is this: Most of these drug-related prisoners are in prison for crimes committed to support their drug habits. Once in prison under the current system, they serve their time; but when they hit the streets again, they go right back to drugs and crime to support their habits. This a vicious cycle, one that plays a major role in the revolving door at TDC. Worst of all, it costs Texans literally hundreds of millions of dollars a year. What we have been doing clearly has not worked. This new direction in Texas penology could be the beginning of the end of this vicious cycle.

Under the new law, a judge will have discretion to sentence

a convicted felon either to traditional incarceration or, if the judge believes it appropriate to sentence the offender to one of the newly created regional drug prisons. Another obvious benefit of this approach is that we will free up prisons beds in our maximum security units for those violent and truly incorrigible offenders who need to serve the full amount of their sentences behind bars.

Once these 12,000 beds are constructed, Texas will become a national leader in the war on drugs. No other state has undertaken a program that even approaches the magnitude of this new legislation.

Three Way News

by: Mrs. H.W. Garvin

R. L. Davia visited George Tyson Wednesday afternoon.

Mrs. Bobby Kindle spent a few days in Roswell visiting her daughter Stacy.

Mr. and Mrs. Jerry Simpson from Lake Charles, La. spent the weekend with his mother Mrs. Jim Simpson.

Mr. and Mrs. Scott Austin of Lubbock spent the weekend with her parents, the Bill Dolles.

Mr. and Mrs. R. L. Davis spent the weekend in Livingston visiting her sister, the Truman Davis family.

Mr. and Mrs. W. T. Simpson attended the Shallowater school reunion the past Saturday.

Robin Kindle from Lamesa spent the weekend with her parents, the Bobby Kindles. Robin is teaching school in Lamesa.

The Three Way football team had a scrimmage game with Loop at Loop Thursday evening with Three winning.

Mr. and Mrs. Robert Kindle spent Saturday in Roswell, N.M. visiting her and back to Hobbs and Seminole visiting her sisters.

Banking And The Reinvestment Act

Plainview residents this week wrote five area Plainview banks and savings and loans, and asked them to increase the amount of credit and services they provide to the whole community. The request is based upon the banks' obligations under the federal Community Reinvestment Act. This law requires banks and savings and loans to address the credit needs of the entire community, including low and moderate income neighborhoods. The Community Reinvestment Act requires banks which take in deposits from the whole community to make credit and other banking services available to the whole community.

These residents believe that the credit and banking service needs of the entire community are not being met. For example, they are concerned over the number of loans being made for home improvement and home purchase in the whole community. Too often individuals in Plainview who either want to improve the conditions of their home or purchase a new home cannot obtain loans from banks or savings and loans, and are left to obtain loans from high-interest credit companies or "fly-by-night" financiers with no ties to the community. Also, many area residents wish to start small businesses or begin to farm, yet are unable to obtain services from area banks and savings and loans. The Community Reinvestment Act requires credit institutions to address these kind of needs.

The Plainview residents are suggesting that the banks and saving and loans take several steps which will lead to greater credit and banking services for the whole community. Among other things, the residents desire these credit institutions to create a pool of low-interest, long-term loans for home improvement and home purchase for individuals with no readily available source of liquid capital or previous credit experience, yet have a steady job. Also, the

residents are asking that more help be provided with small business lending, and that more assistance be provided with efforts by area residents to obtain loans from federal and state programs. And, the residents ask that the banks and savings and loans keep accurate and meaningful records of loan denials by neighborhoods and income status, and provide Spanish speaking loan officers.

"The banks and savings and loans in Plainview have recently done many good things towards greater investment in the whole community, like banking seminars in their lobbies," said Amy Hall, a lawyer with Texas Rural Legal Aid which is representing the Plainview residents. "However, it should be possible, consistent with the safe and sound operations of the banks and savings and loans, to do more for the entire community. These residents of Plainview simply want the banks and savings and loans to provide more credit and services as required by the Community

Reinvestment Act, and in that way help create more jobs and more opportunity for all residents."



ONE MINUTE SPORTS QUIZ

By Christian Thorlund

1. Who won the Preakness at Baltimore recently?
2. With whom do the Chicago Bears open their 1991 season?
3. In 24 years, how many times did Ty Cobb strike out?
4. How many times did Pete Rose strike out?

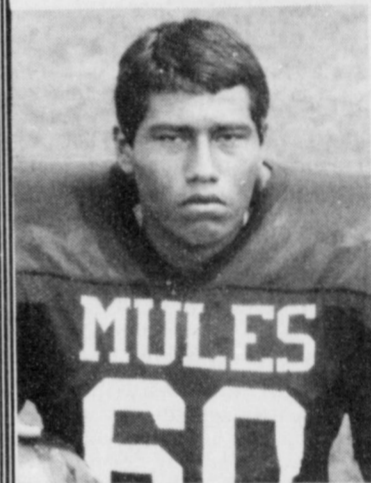
Answers:

1. Hansel, a 2-year old.
2. Chicago hosts the Vikings Sept. 1st.
3. Only 357 times.
4. 1077.

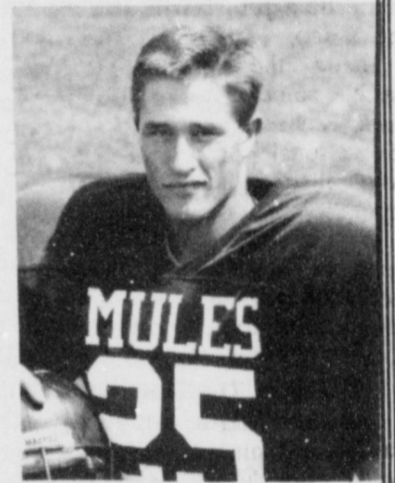
Muleshoe High School

Players of the Week

Muleshoe vs. Brownfield game



60-David Serrano



25-Kip McCall

Bailey Gin Co.

946-3397

SPECIAL NOTICE: Payment for publishing the constitutional amendments will be made **ONLY** if your newspaper meets all the statutory requirements of VATS Art. 28A (2) below.

Definition of Legal Publication

Art. 28A. Legal Publication, Definitions.

"The following terms shall, unless the context indicates otherwise, have the following respective meanings:

"(1) The term 'publication' shall mean any proclamation, notice, citation, advertisement, or other matter required or authorized by law to be printed in a newspaper or newspapers by any institution, board, commission, department, officer, agent, representative, or employee of the state or of any subdivision or department of the state, or of any county, political subdivision, or district of whatever nature within the state, whether to be paid for out of public funds or charged as costs or fees.

"(2) The term 'newspaper' shall mean any newspaper devoting not less than twenty-five per cent (25%) of its total column lineage to the carrying of items of general interest, published not less frequently than once each week, entered as second-class postal matter in the county where published, and having been published regularly and continuously for not less than twelve (12) months prior to the making of any publication mentioned in this Act, except that any weekly newspaper shall be allowed to omit two (2) publication issues in twelve (12) months and still retain its status as a newspaper eligible to make any publication mentioned in this Act.

"(3) The term 'political subdivision' shall include cities, towns, and villages, but this definition shall not be exclusive.

"(4) The term 'district' shall include school districts of every kind, road districts, drainage districts, irrigation districts, levee improvement districts, conservation and reclamation districts, and improvement districts of every kind, but this definition shall not be exclusive.

"(5) The term 'shall' whenever used in

this Act shall be construed as indicating mandatory provisions in this Act.

"(6) The officer, employee, agency, or persons charged with the duty of inserting any publication in a newspaper or newspapers shall select the newspaper or newspapers in which such publication is to be inserted."

Effective August 23, 1963

(VATS Art. 28A.)

Texas Press Association

Supplement to Legal Publication Laws of Texas



You're Invited

To The

Mule Days Celebration

September 13 & 14th

And The

West Plains Fair

September 12, 13 & 14th

Paco Feed Yard

Hub, Texas

265-3281

STATE CAPITAL



HIGHLIGHTS

By Lyndell Williams
TEXAS PRESS ASSOCIATION

AUSTIN - Gov. Ann Richards may have signaled Democrats nationwide last week when she promised to call a special session next year to reduce health insurance premiums.

Richards, who quietly signed the new tax bill into law last week, rode the insurance issue to an upset victory in 1990.

In the wake of Dessert Storm and the dismantling of the new Communist empire, Democrats seeking to oust President George Bush in next year's election must concentrate on domestic policies.

With potential candidates declining left and right, Democrats desperately need to hit a nerve center with the American voter.

Enter Ann Richards, who did just that in 1990, overcoming a mint of GOP dollars by promising lower insurance rates.

National Springboard?

Richards probably just wants to keep that campaign promise, but it could be a promise heard around the nation.

Using the health insurance issue, some Capitol observers think Richards could springboard to national prominence as a political strategist to meld with her reputation as a compelling orator.

With a solid Democrat majority in both chambers, Richards can feel confident the Texas Legislature will not throw egg on her face in front of the nation.

Follow The Timing

Richards' timing will be interesting: will she schedule the session during the spring primaries, or wait until summer to give Democrats an edge in the general election?

One speculation has her waiting until the end of a long, hot summer - say, August - so that Democrats can ride a fresh horse up to the November election.

More than a few skeptics believe that government cannot actually force lower prices in a free market, but the '92 elections will be over before voters realize that premiums may not go down.

In the meantime, mounting evidence suggests that Democrats nationwide plan to borrow from Richards' political genius and use the medical insurance issue which upset Republicans in Texas last year.

Morales Sues Feds

Attorney General Dan Morales sued the U.S. government last week for \$1 billion in federal aid he says will be lost due to a faulty census count that missed 600,000 Texans.

"This is our money," Morales said, of the revenues expected to be lost over the next 10 years because of the "fictional census."

Morales said many uncounted citizens are blacks and Hispanics from big cities in South Texas.

Critics say Morales, federal money aside, seeks to force the feds to increase the minority population count so that more political seats can be drawn for minorities.

Default The Election?

Former Texas Agriculture Com-

missioner John C. White, now a Washington, D.C. political consultant, said he is concerned that Democrats could "default the election" next year unless U.S. Sen. Lloyd Bentsen seeks the party's nomination.

Reports indicate Bentsen is being urged, along with New York Gov. Mario Cuomo, to try for the big brass ring.

So far, Bentsen is pushing the plate away, saying he has no desire to run.

A Bentsen-Cuomo, or Cuomo-Bentsen, ticket would surely cause the GOP to think twice about keeping Vice President Dan Quayle on the slate.

Extra Expense Money

Fifty-nine House members, including a handful of Republicans, have claimed more than \$150,000 in \$85-a-day expense money privileges permitted by a controversial opinion by the attorney general.

The estate of the late Larry Evans, D-Houston, will receive his payments of almost \$3,000. Evans died during the special session of cocaine-related causes.

In the Sept. 24 election to fill Evans' seat, 11 candidates, all Democrats, filed in Houston last

Pay Raises for Some

State employees' on-again, off-again pay raise is on again, at least for some workers.

Comptroller John Sharp has notified state agency heads that they have the authority to grant pay increases of at least 3.4 percent to state workers if they can find the money in their individual budgets.

This means workers in some state agencies probably will see pay increases, while workers in other agencies will not.

Other Highlights

Gov. Richards has nominated Jack Kyle, 60, as chairman of the state Board of Pardons and Paroles. Kyle was assistant director of the Texas Department of Corrections for 19 years and warden of the Ferguson Unit in Huntsville from 1959 to 1965.

State district judges in Cleburne and Sweetwater have ruled that education districts can legally levy and collect property taxes and redistribute the revenues to local school districts. Both judges refused to grant temporary injunctions that would have halted tax collections.

Enochs News

by: Mrs. J.D. Bayless

Mr. and Mrs. Rodney Vasquez of Ft. Worth are the parents of a daughter who was born Saturday, July 31. She weighed 3 pounds and 4 oz. Her name is Marissa. She has two brothers. Grandparents are Mr. and Mrs. J. C. Snitker of Enochs. Mr. and Mrs. Ralph Vasquez of Houston.

Mitch Autry and children Kevin and Kyle and Amy of Plainview celebrated Mitch's birthday.

Mrs. Darlene Alexander of Littlefield has been staying with her mother, Mrs. Faye Jones as she had knee surgery.

Melinda Turney from Canyon who is going to West Texas State College spent the holiday weekend with her parents, Mr.

and Mrs. Dennis Turner and brother Monty.

Mrs. Oleta Burris and a friend from Wellman spent Friday August 23 with Oleta's sister and husband, Wanda and J.E. Layton and drove to Show Low, AZ. The next day and visited Oleta and Wanda's brother Cleo and Leta Hall. The friend visited with her friend there. They returned Saturday, August 31.

Even a good thing has a tendency to come to an end.



MICROWAVE TIPS

Can you microwave crumb-coated pork chops?

It's easy. Shake chops in package with crumbs, as usual. Use a 9-inch square baking dish and cover with wax paper, to prevent spattering.

Microwave for half the recommended time. Then rearrange so that less cooked areas are toward outside of dish. Don't turn chops over. Microwave remainder of time or until chops or no longer pink.

Bailey County Clerk's Office

New Office Hours

Effective September 30, 1991

8:00 a.m. to 12:00 noon

1:00 p.m. to 3:00 p.m.

(Due to Reduced Staff)

PUBLIC NOTICE
BRIEF EXPLANATORY STATEMENTS
OF PROPOSED
CONSTITUTIONAL AMENDMENTS
SPECIAL ELECTION
NOVEMBER 5, 1991

**PROPOSITION NO. 1
ON THE BALLOT**

House Joint Resolution 114 proposes a constitutional amendment that would authorize home rule cities having a population of 5,000 or fewer inhabitants to amend their city charters by a majority vote of a city's qualified voters at an election held for that purpose. The amendment makes clear that home rule cities that have declined in population below the population required to initially adopt a charter may nevertheless continue to amend their charters.

The proposed amendment will be described on the ballot as follows: "The constitutional amendment allowing home-rule cities with a population of 5,000 or less to amend their charters by popular vote."

**PROPOSITION NO. 2
ON THE BALLOT**

House Joint Resolution 10 proposes a constitutional amendment that would allow the legislature to authorize the Texas Department of Transportation to expend money, from any source available, for the costs of the turnpikes, toll roads, or toll bridges of the Texas Turnpike Authority, provided that any monies expended from the state highway fund shall be repaid to the fund from tolls or other turnpike revenue.

The proposed amendment will be described on the ballot as follows: "The constitutional amendment mandating the repayment to the Department of Transportation of monies expended to assist the Texas Turnpike Authority in the construction, maintenance, and operation of turnpikes, toll roads and toll bridges."

**PROPOSITION NO. 3
ON THE BALLOT**

Senate Joint Resolution 26 proposes a constitutional amendment that would authorize the Veterans' Land Board to invest, as authorized by law, moneys of the Veterans' Land Fund which are not immediately committed to the payment of principal and interest on bonds issued by the Veterans' Land Board, the purchase of lands, or the payment of expenses. Investment of such moneys would no longer be restricted to investments in bonds or obligations of the United States. The proposed amendment would also authorize the Veterans' Land Board to invest, as authorized by law, moneys of the Veterans' Housing Assistance Fund which are not immediately committed to the payment of principal and interest on general obligation bonds issued by the Veterans' Land Board for the benefit of the Veterans' Housing Assistance Fund, the making of home mortgage loans, or the payment of expenses. Investment of such moneys would no longer be restricted to investments in bonds or obligations of the United States. The proposed amendment gives the legislature power to implement the amendment and to delegate such duties and authority to the Veterans' Land Board as it deems necessary.

The proposed amendment will be described on the ballot as follows: "The constitutional amendment to authorize the legislature to further implement and enhance the administration of the veterans' housing assistance and land programs and to expand the investment authority of the Veterans' Land Board."

**PROPOSITION NO. 4
ON THE BALLOT**

Senate Joint Resolution 4 proposes a constitutional amendment that would allow the legislature to authorize the issuance of a maximum of \$1.1 billion in general obligation bonds. The proceeds of the bonds are to be used to acquire, construct, or equip new prisons and substance abuse felony punishment facilities, mental health and mental retarda-

tion institutions, and youth corrections institutions, to repair and renovate existing facilities of those institutions and to acquire, repair, or renovate other facilities for use as state prisons or substance abuse felony punishment facilities. The \$1.1 billion is in addition to the \$900 million currently authorized by the constitution to be expended on bond issues for facilities of correctional and mental health and mental retardation institutions. The bonds would constitute a general obligation of the state. The bonds and interest on the bonds would be paid from the first money coming into the state treasury that is not otherwise appropriated by the constitution, less any amount in a sinking fund at the end of the preceding fiscal year that is pledged to payment of the bonds or interest.

The proposed amendment will be described on the ballot as follows: "The constitutional amendment authorizing the issuance of up to \$1.1 billion in general obligation bonds for acquiring, constructing, or equipping new prisons or other punishment facilities to confine criminals, mental health and mental retardation institutions, and youth corrections institutions, for major repair or renovation of existing facilities of those institutions, and for the acquisition of, major repair to, or renovation of other facilities for use as state prisons or other punishment facilities."

**PROPOSITION NO. 5
ON THE BALLOT**

Senate Joint Resolution 39 proposes a constitutional amendment that would allow a county, junior college district, or municipality to exempt tangible personal property from ad valorem taxation if: (1) the property is acquired or brought into the state in an enterprise zone to be forwarded outside the state, (2) the property is assembled, stored, repaired, maintained, manufactured, processed, or fabricated in the enterprise zone, (3) the property is transported outside the state not later than 175 days after being acquired or brought into an enterprise zone, and (4) the person who acquired or brought the property into an enterprise zone is a qualified business. A county, junior college district, or municipality may exempt such property by entering into a written agreement with a qualified business that states the duration of the exemption and the terms on which the exemption is granted. Any action to exempt property must be taken before April 1 of the first year in which the property would otherwise be taxed. The term "enterprise zone" means an area that (1) has been designated as such by a state agency responsible for economic development, and (2) has pervasive poverty, unemployment, and economic distress. The term "qualified business" means a business that meets the qualification established by general law, and requires that the qualified business is actively engaged in a new business in the enterprise zone or is expanding a business that is already active in the enterprise zone. An enterprise zone is created to foster economic development in an area of pervasive poverty and unemployment.

The proposed amendment will be described on the ballot as follows: "The constitutional amendment authorizing the exemption for ad valorem taxes of certain property in an enterprise zone."

**PROPOSITION NO. 6
ON THE BALLOT**

Senate Joint Resolution 8 proposes a constitutional amendment that would establish a Texas Ethics Commission with the powers and duties provided by law. The commission would consist of eight appointed members selected as follows: two members of different political parties appointed by the governor from a list of at least ten names submitted by the members of the house of representatives from each major political party; two

members of different political parties appointed by the governor from a list of at least ten names submitted by the members of the senate from each major political party; two members of different political parties appointed by the speaker of the house of representatives from a list of at least ten names submitted by the members of the house from each major political party; and two members of different political parties appointed by the lieutenant governor from a list of at least ten names submitted by the members of the senate from each major political party. A major political party is a political party required by law to hold a primary. With the exception of the initial appointees, commission members would serve for four-year terms. A member who has served for one term and any part of a second term would not be eligible for reappointment. The commission would be authorized to recommend the salary of the members of the legislature and may recommend that the salary of the speaker of the house of representatives and the lieutenant governor be set at an amount higher than that of other members. If the commission recommends a change in salary, the voters would be authorized to accept or reject the salary change at the next general election for state and county officers. If the voters approve the recommended salary, that salary would take effect January 1 of the next odd-numbered year; if the voters reject the recommended salary, no change in salary would occur. The commission would set the per diem of the members of the legislature and of the lieutenant governor. The per diem could be raised or lowered biennially as necessary to pay members' costs, but could not exceed the amount allowed as of January 1 that year as a federal income tax deduction for living expenses incurred in a legislative day in connection with a member's business as a legislator, disregarding any federal income tax exception for legislators residing near the Capitol. The commission would have other powers and duties provided by the commission's enabling act (Senate Bill 1, 72nd Legislature, Regular Session). The amendment would also provide that an increase in the emoluments of the office of Lieutenant Governor would not make a legislator ineligible to serve in the office of Lieutenant Governor.

The proposed amendment will be described on the ballot as follows:

"The constitutional amendment creating the Texas Ethics Commission and authorizing the commission to recommend the salary for members of the legislature and the lieutenant governor, subject to voter approval, and to set the per diem for those officials, subject to a limit."

**PROPOSITION NO. 7
ON THE BALLOT**

Senate Joint Resolution 6 proposes a constitutional amendment that would allow the board of trustees of each statewide public retirement system to invest the funds of the system in such manner as the board considers prudent. The board would no longer be limited to investing the funds of the system in securities.

The proposed amendment will be described on the ballot as follows:

"The constitutional amendment to allow the board of trustees of a statewide public retirement system to invest the funds of the system in a manner that the board considers prudent."

**PROPOSITION NO. 8
ON THE BALLOT**

Senate Joint Resolution 21 proposes a constitutional amendment that would permit the legislature to create debt by or on behalf of the state if the legislature submitted the debt question to the voters of the state in the form of a proposition and a majority of those voting approved the proposition. The legislature may call the election, by joint resolution approved by at least two-thirds of the members of each house, during any regular session or during any special session if the subject of the proposition is included in the Governor's proclamation for that special session. A proposition must clearly describe the amount and purpose for which debt is to be created and must describe the source of payment for the debt. The amount of debt stated in the proposition may

not be exceeded and may not be renewed unless the right to exceed or renew is stated in the proposition. The legislature may enact laws necessary to implement the authority granted by a proposition. A law enacted in anticipation of the election on a proposition is valid if, by its terms, it is enacted subject to approval of the related proposition. State debt that is created following voter approval of a proposition and that is approved by the Attorney General is incontestable for any reason.

The proposed amendment will be described on the ballot as follows:

"The constitutional amendment authorizing the voters of this state to consider state debt questions in the form of ballot propositions that must clearly describe the amounts, purposes, and sources of payment of the debt only after approval of the propositions by a two-thirds vote of each house of the legislature."

**PROPOSITION NO. 9
ON THE BALLOT**

Senate Joint Resolution 11 proposes a constitutional amendment that would authorize the commissioner of the General Land Office to issue patents for certain public free school fund land for which there is not a valid transfer of title from either the State or the Republic of Texas to a private party. A patent is a document of title issued by the state. On application to the School Land Board, a person is entitled to receive a patent if: (1) the land is surveyed public free school fund land, (2) the land was not patentable under the law before the adoption of this proposed amendment, (3) the person acquired the land without knowledge of the title defect out of the State of Texas or the Republic of Texas and held the land under color of title, the chain of which dates from at least January 1, 1941, (4) the person has a recorded deed on file in the county courthouse and, in conjunction with his predecessor in interest, has claimed the land for at least fifty years as of January 1, 1991, and (5) the person, in conjunction with his predecessor in interest, for at least 50 years has paid taxes on the land together with all interest and penalties associated with any delinquency. If the applicant is denied a patent, the applicant may file suit against the School Land Board in a district court in the county where the land is located within 60 days from the date of denial. The proposed amendment does not apply to beach land, submerged land, or islands, and may not be used to resolve a boundary dispute. The proposed amendment also does not apply to land found by a court to be state-owned or to land on which the state has given a mineral lease that is in effect when a patent is sought. A patent under this proposed amendment for land within five miles of mineral production shall reserve minerals to the state in the manner provided by law for reservations of minerals in sales to claimants of unsurveyed school land within five miles of production. An application for a patent under this proposed amendment must be filed with the School Land Board before January 1, 1993.

This proposed constitutional amendment is similar to the version of article VII, section 4A, that was in effect between 1981 and 1990. The main difference is that under the earlier version the applicant for a patent to land had to have a chain of title that dated back to at least as early as January 1, 1932.

The proposed amendment will be described on the ballot as follows:

"The constitutional amendment authorizing the commissioner of the General Land Office to issue patents for certain public free school fund land held in good faith under color of title for at least 50 years."

**PROPOSITION NO. 10
ON THE BALLOT**

Senate Joint Resolution 15 proposes a constitutional amendment that would allow the legislature to pass general laws to exempt property owned by a nonprofit corporation organized to supply water or provide wastewater service from ad valorem taxation. A nonprofit corporation would be eligible for the exemption if its bylaws provide that

on dissolution, the assets remaining after the discharge of the corporation's indebtedness will be transferred to an entity providing water supply or wastewater service, or both, which is exempt from ad valorem taxation. The transferred assets must be property that is reasonably necessary for and used for water supply and wastewater services.

The proposed amendment will be described on the ballot as follows:

"The constitutional amendment authorizing the legislature to exempt from ad valorem taxes certain property of a nonprofit corporation that supplies water or provides wastewater service."

**PROPOSITION NO. 11
ON THE BALLOT**

House Joint Resolution 8 proposes a constitutional amendment that would allow the legislature to pass laws to authorize the State of Texas to operate lotteries and to enter into a contract with one or more legal entities that will operate lotteries on behalf of the State of Texas.

The proposed amendment will be described on the ballot as follows:

"The constitutional amendment authorizing a state lottery."

**PROPOSITION NO. 12
ON THE BALLOT**

Senate Joint Resolution 34 proposes a constitutional amendment that would increase the total amount of bonds that may be issued by the Texas Water Development Board to provide wholesale and retail water and wastewater facilities to economically distressed areas of the state. The proposed amendment increases the maximum principal amount of the bonds from 20 percent to 50 percent of the \$500 million amount authorized by article III, section 49-d-7, of the Texas Constitution. The proposed amendment would increase the maximum aggregate dollar amount of bonds that the Texas Water Development Board could issue from \$100 million to \$250 million.

The proposed amendment will be described on the ballot as follows:

"The constitutional amendment to increase from 20 percent to 50 percent the percentage of Texas water development bonds previously authorized by Texas voters that may be issued for economically distressed areas."

**PROPOSITION NO. 13
ON THE BALLOT**

Senate Joint Resolution 2 proposes a constitutional amendment that would allow the legislature to pass general laws authorizing Texas Higher Education Coordinating Board or its successor to issue and sell up to \$300 million of general obligation bonds to finance education loans to students. The maximum net effective interest rate to be borne by the bonds would be set by law. The amendment would also authorize the legislature to provide for the investment of bond proceeds and to establish an interest and sinking fund to pay the bonds and provide for the investment of such fund. Bonds authorized under this amendment would be paid from the first money coming into the treasury in each fiscal year that is not otherwise appropriated by the constitution, less any amount in an interest and sinking fund established at the end of the preceding year that is pledged to the payment of the bonds or interests.

The proposed amendment will be described on the ballot as follows:

"The constitutional amendment providing for the issuance of general obligation bonds not to exceed \$300,000,000 to continue existing programs to provide educational loans to students, with repayments of student loans applied toward retirement of the bonds."

Estos son los informes explicatorios sobre las enmiendas propuestas a la constitucion que apareceran en la boleta el dia 5 de noviembre de 1991. Si usted no ha recibido una copia de los informes en español, podrá obtener una gratis por llamar al 1/800/252/8883 o por escribir al Secretario de Estado, P.O. Box 12060, Austin, Texas 78711.

Published by the office of the Secretary of State of Texas

"Confused about life insurance? Rely on me to help you make the right choices."



CALL ME.

Mark Morton
109 S. 1st
272-7519
Muleshoe



State Farm
Life Insurance Company
Home Office: Bloomington, Illinois



Like a good neighbor, State Farm is there.

TP & W Replies To Southwest Outdoors Column

Much misinformation about fish and fishing in the Panhandle and about the Texas Parks and Wildlife Department has been written this summer in the Southwest Outdoors column written by Mel Phillips and carried in several area newspapers. I would like to take this opportunity to reply to some of those comments.

Mel has said that no fish are caught at Lake Meredith during summer months. In reality, more than 1,000 game fish were caught and retained by anglers from July 1 to September 30, 1990. That harvest compares favorably with similar-sized lakes throughout Texas and doesn't count released fish.

Mel also said striped bass should be stocked to create good summer fishing. Strippers would have to compete with white bass, walleye and crappie, which sustain their own numbers through reproduction and are the most popular species at Meredith. Strippers have to be stocked every year at considerable expense to fishermen, and for every pound of striped bass established in the lake there would be one less pound of our other predator fish. Also, sophisticated equipment is the norm for striper anglers—most successful fishing trips involve guides, so the average fisherman would benefit little from introducing strippers.

Mel said fishermen should go to New Mexico or Oklahoma instead of Lake Meredith because they have better fishing. That recommendation will hardly help tourism in the Panhandle. Texas stocks more fish than any other state and our fishing compares favorably with the states mentioned. New Mexico stocks no black bass in any of their lakes and does not stock striped bass or hybrid striped bass in the lakes on the Canadian River.

About the Texas Parks and Wildlife Department, Mel said: the department should work for tourism at Lake Meredith; if Meredith was located near Austin the fishing conditions would have improved years ago; cove kills have hurt the fishing at Lake Meredith; and no cove kills have been conducted at

Lake Baylor.

Regarding tourism, four times during 1987-90 TPWD assisted and guided outdoor writers from such cities as Dallas, Fort Worth, Houston, San Angelo, Oklahoma City, Denton and Amarillo. All wrote highly complimentary articles on the fishing opportunity, success and variety available at Meredith and recommended in their columns that anglers should try the lake. We also assisted with the filming of a show aired on "Fishing Texas."

Other examples of our efforts to promote area fishing include: working with Borger Chamber of Commerce and Cabela's In-Fisherman Professional Walleye Trail to get Lake Meredith on the national walleye tournament circuit; and working with Mercury Marine and nationally known walleye fishing experts promoting the excellent walleye fishing opportunities at the lake.

About being located nearer Austin, Lake Meredith and the Panhandle's other lakes receive as much or more attention and stockings as any lakes in the state. The department has stocked more than 6.5 million fish in Meredith, including more than 1.7 million black bass.

Cove rotenone surveys are designed to monitor the forage fish population and reproductive success rates of select game fish. They affect less than 0.0019 percent of the lake area and have no impact on future fishing success other than resulting in the collection of useful data for improving fishing at the lake. TPWD has conducted cove kills across the state for the past 15 years, including all Panhandle lakes, even Baylor. Most of the stocking and other management recommendations for Lake Meredith were justified from data collected during cove rotenones.

Mel has criticized most of our research studies at Lake Meredith. Research studies have resulted in:

- the introduction of smallmouth bass. Lake Meredith now has the strongest population and the best fishing for smallmouths anywhere in the state.
- the imposition of a 10-inch length limit on crappie. That

limit has dramatically improved the population of crappie in the lake and Meredith now provides the best crappie fishing in northwest Texas.

- the imposition of a 16-inch length limit on walleye. This limit has resulted in a significant increase in the numbers of small walleye in the lake. Meredith has the best walleye population in the state and is being strongly considered for the 1993 Professional Walleye Trail National Championship Tournament, the BASSMasters Classic of walleye fishing.

- the imposition of first a 12-inch then a 14-inch minimum length limit for black bass. These limits have increased the stocks of both largemouth and smallmouth bass in the lake.

Last year, Mel was a proponent of Lake Meredith in his articles, and even bragged about bass tournament success at the lake. His articles spread the word that good numbers of large bass were present in 1990 and that publicity might have resulted in anglers harvesting most of them.

Lakes in the Panhandle are unique and have a lot to offer to hometown fishermen and visitors traveling through our area. The habitat is not always suited for largemouth bass, but when water levels rise and conditions are right, good numbers of largemouth bass are produced. Lake Meredith is one of the most intensively managed lakes in the state. Fishing is extremely good, given the adverse conditions. The lake will never be a Lake Sam Rayburn or Lake Toledo Bend because conditions are very different.

My job is to make overall fishing at Meredith as good as it can be for the species suited for its environment. If promoting Lake Meredith is your goal, then take advantage of the good things it provides.

Joe Kraai
District Fisheries Biologist
Texas Parks and Wildlife Department
P.O. Box 835
Canyon, Texas 79015
806-655-4341

Its Time To Change The Texas Franchise Tax

by Representative James Hury
Chairman of the House
Ways and Means Committee

The Texas Legislature has before it an historic challenge. While other states have faced lockouts at state parks, state employee layoffs and burgeoning tax bills, Texas is seeking to forge a new path. But there are two roads before us. One is the old route laid out by the present method of taxation. The other is the approach that promises a more efficient and responsive government.

First, the Legislature must act aggressively on Comptroller John Sharp's Performance Review and make government leaner and more responsive. The second step is to make sure the current tax system reflects the New Texas, and to craft a Texas solution to meet our needs.

During the regular session, the Texas House considered a bill to revamp the state's franchise tax, the business tax that helps support state government. The bill, with some modifications, is before the Legislature again. The changes are needed so that the business tax burden will be distributed throughout the business community, so that all segments of major industry in Texas will pay their fair share.

Some in the state don't want to share the burden, but they should know a revamped franchise tax would not apply to small business owners in Texas.

But, they hope to raise the concern of thousands of small businesses in the state in order that those persons who presently do not pay a franchise tax will retain their exemption.

There are certain business entities, such as attorneys, doctors and other professionals whose money-making partnerships yield millions in profits each year. (For example, a recent study showed that the top 25 law firms in Texas

earned \$1.7 billion last year and yet paid no franchise taxes.) And they also include some of the wealthiest Texans who have made hundreds of millions of dollars and built vast individual business fortunes. Many of these individuals have not paid a penny of the state's business tax, but have reaped the benefits of the state's rich resources.

Opponents have chosen to use arguments to provoke opposition to franchise tax reform. They cry out that unincorporated businesses bear the financial burden of increased liability, and so should not be treated under the tax laws the same as corporations.

The liability differential between corporation and non-corporate business entities is not a real issue. In fact, the organization of an entity for business purposes, whether it be a corporation, partnership or proprietorship, is done for financial reasons. Lawyers routinely "pierce the corporate veil" in pursuing shareholders. Corporate immunity in liability cases is not a reality in courts today.

The simple fact is that the franchise tax bill will broaden the tax base, making it more representative of the New Texas economy. But, it will not bring in "Mom and Pop" businesses. In fact, the number of taxpayers will actually be reduced and the burden will remain primarily on large businesses. It will exclude small business. Period.

During the recent hard economic times in Texas, small, entrepreneurial businesses pulled the state out of the economic doldrums. If the franchise tax is not expanded and revamped within the context of taxing all large business, it is likely there will be an effort to broaden the sales tax.

We can create an efficient state government that stands out as an example in our nation. We can reform the franchise tax

so that all major business entities pay their fair share. By building on traditional Texas methods, we can stand out as a forward-looking state with a strong tradition of economic vitality.

J&S Ministries Strengthens Christianity

One of the basic tenets of the ministries of J and S Ministries is to strengthen the foundations of Christianity through the understanding of its Judaic heritage. To do so is fulfilling a mitzvah, a commandment. To fulfill a mitzvah is not only a privilege and an act of obedience, but more importantly, it is a blessing. Because of this, we are happy to announce the formation of Rose of Sharon Judeo-Christian Fellowship.

The Rose of Sharon Judeo-Christian Fellowship primarily makes available to the Jewish believer in Yeshua Hamaschich, Jesus the Christ, a place to worship and to study God's Word in a Messianic setting. Additionally, it makes available to all who seek a deeper understanding of their faith in Christ by understanding their Judaic roots. We know that the greater Lubbock area has within its boundaries many who are in need of such a fellowship.

Rose of Sharon Judeo-Christian Fellowship offers a time of worship each Friday evening at 7:30 p.m.—temporarily meeting at the House of Israel, one block west of Tahoka Highway on FM 1585. Also available are mid-week opportunities for the study of God's Word and a time of intercessory prayer.

HEALTH INSURANCE

CALL Mark Morth 109 S. 1st Muleshoe 272-7519

State Farm Mutual Automobile Insurance Company Home Office Bloomington, Illinois

We Are Conoco Now!!

Ken Evins Sonshine Conoco Station

623 W. Amer. Blvd. Muleshoe 272-5216

We Are Honoring The Competition But Only For A Short Time

Unleaded
Gasoline
99⁹c
per gallon
Limit *30 Purchase
Per Day

TOUGH PROTECTION AT AN UNBEATABLE PRICE!

99⁹c qt.
12 qt. Case... \$11⁸⁸

Prices Good Thursday, Friday & Saturday
(Sept. 12, 13 & 14) 8 a.m. - 6 p.m.

Purchase Gasoline For Vehicles Only!!
With Major Credit Cards Listed Below

(No Cash Sales At These Prices)

-Mobile-Diamond Shamrock - Fina - Exxon - Shell - Texaco -
-Mastercard - Visa - Discover - American Express -

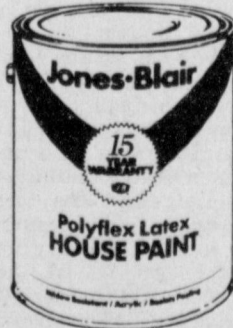


Charge it on your
Conoco credit card!

SUPER SIZZLING PAINT SALE

**POLYFLEX LATEX
HOUSE PAINT**

**16³⁹
GAL**



Mfg. sugg. retail price \$26²⁵
Super Premium Quality Exterior Paint
• Sunfast colors cover brick, wood and masonry surfaces
• Resists flaking, peeling and blistering
• Dries in 30 minutes
• Durable, long lasting acrylic finish
• Mildew resistant

**DECORATOR ACRYLIC
LATEX HOUSE PAINT**

**12³⁹
GAL**



Mfg. sugg. retail price \$22⁵¹
Premium Quality Exterior Paint
• For exterior wood and masonry surfaces
• Resists flaking, peeling and blistering
• Easy to apply
• Dries in 30 minutes to a beautiful low luster
• Colorfast, mildew resistant

**SATIN-X INTERIOR LATEX
FLAT WALL PAINT**

**13³⁹
GAL**



Mfg. sugg. retail price \$21¹⁷
Super Premium Quality Interior Flat Paint
• Use on interior wall surfaces
• Spatter resistant
• Good touch-up
• One coat coverage
• Dries in 30 minutes
• Washable
• Spot and fade resistant

**DECORATOR INTERIOR
LATEX FLAT WALL PAINT**

**9⁵⁹
GAL**



Mfg. sugg. retail price \$16²²
Premium Quality Interior Wall Paint
• For all interior wall surfaces
• Excellent touch-up and coverage
• Good washability
• Easy to apply
• Spot resistant, fade resistant, spatter resistant

Custom colors slightly higher.

Sale Ends Sept. 20, 1991



Higginbotham-Bartlett Co.

"Quality & Service At The Right Price"

215 Main

272-3351

CLASSIFIEDS 272-4536

CLASSIFIED RATES

15 Words & Under
Minimum Charge \$2.30
Thereafter \$2.00
16 Words & Over
1st Insertion 15 cents per word
2nd Insertion 13 cents per word

CLASSIFIED DISPLAY RATES \$1.75

Per Column Inch
DEADLINES
12 noon Tues.
For Thursday Paper
12 noon Friday
For Sunday Paper

To receive the reduce rate after the first insertion ad must run continuously.

We reserve the right to classify, revise, or reject any ad. We are not responsible for any error after ad has run once.

1. Personals

CONCERNED
About Someone's Drinking?
HELP IS AVAILABLE

through Al-Anon
Call 272-2350 or 965-2870 or come to visit Tuesday and Thursday nights, 8:00 p.m. & through AA call 965-2870 or come visit Tuesday nights, 8:00 at 620 W. 2nd, Mulshoe.

Lose weight now, feel terrific with The Micro Diet, it's safe, affordable and it works. Call Independent Advisor--Ruth 1-800-858-7413.

Reward for information on whereabouts and recovery of a 1000 lb. black steer with white face. Lost 1 mile east of Mulshoe on August 24, 1991. Call (806) 894-3573. F1-36s-4tc

3. Help Wanted

Secretarial Position
With the Bailey County Extension Service. Applicants **MUST** be experienced in general office procedures and have excellent typing abilities. Experience with operating computers is preferred. Applications may be obtained in person at the Extension office in the Bailey County Courthouse, 300 South First Street, Mulshoe. **NO PHONE CALLS PLEASE.** Deadline for applications is Tuesday, September 10, 1991. Equal Employment Opportunity. C3-36t-3tc

4. Houses For Rent

HOUSE IN COUNTRY FOR RENT-3-4 bedrooms, 3 baths, den with fireplace, double garage, approx. 2,000 sq. ft. Call 806-435-5578 or 806-965-2758 after 6 p.m. M4-36t-8tc

11. For Sale Or Trade

PIANO FOR SALE
Wanted: Responsible party to take on small monthly payments on piano. See locally. Call Manager at 800-635-7611. M11-37t-6tc

FOR SALE
1976 Le Mans Sport Coupe Pontiac
Wurlitzer Spinnet Piano--Call 272-4480

11-36s-2tp

FOR SALE: Wheat Seed--Cleaned & Sacked-60 lb. sacks. \$5.50/bushel. Call 965-2193 or 965-2776 11-29t-8tp

15. Misc.

WANTED!
Wheat Pasture. We will provide caretaker.
a.m.
806-354-8936
p.m.
806-372-8018

Bill

FOR RENT: Large Self Storage rooms with 24 hour a day access. Call J & J Self Storage at 272-4307. S15-37t-tfc

FILLING SCHEDULE
for Fall Piano Lessons. Beginner thru Advanced. Ann Johnson 272-5746 J15-31s-tfc

BIRD DOG PUPPIES TO GIVE AWAY TO A GOOD HOME.

272-3540

Classify!

8. Real Estate

FARM FOR SALE
160 acres: two wells, circle sprinkler. 1833 sq. ft. home. 2000 sq. ft. insulated barn--call (806) 225-6325. 8-37t-8tp

For Sale By Owner:
Quiet country living with unbelievable amenities. 3-2-2, Central A&H, 2 living areas, Den with cathedral wood plank ceiling, skylights, rock fireplace, barn, workshop, oversized garage, orchard, satellite dish. Home with 4 acres or with 149 acres. South of Mulshoe. Phone: 946-3440. E8-37t-tfc

FOR SALE
Irrigated Farm close to Mulshoe; 159 acres. Valley Circle Sprinkler. Ready to plow for wheat crop. \$325 per acre. Good terms to right person. 946-3484. C8-34t-8tc

NEW LISTING
For Sale--3,547 sq. ft. remodeled and renovated brick residence featuring spa and sunroom, located at 622 West 7th Street. Call Mike Caldwell at 272-7535 or 272-5146 for information. C8-32s-tfc

15. Misc.

Fresh Vegetables

DVJ FARMS

6 Miles South of Farwell on State Line Road 348
CALL (806) 825-3420

We grow tomatoes, chili peppers, watermelon, green beans, pickling and slicing cucumbers, squash, okra and cantalope.

EMPTY NEST SYNDROME DON'T WORRY BE HAPPY

Olan Mills will pay you to travel (5 days and 5 nights per week) and talk on the telephone.

1. On the job training.
2. Major medical insurance.
3. Life insurance.
4. Retirement plan.
5. Travel expense.
6. Paid motel.

For more information call TOLL FREE 800-543-5940. CALL IMMEDIATELY FOR AN INTERVIEW. Call Mon. Sept. 9 thru Thurs. Sept. 12 - 10 a.m. - 7:30 PM. Ask for Betty Hines.
E.O.E. M/F

THE SENIOR CITIZEN RESIDENT CENTER

WILL OFFER FOR SALE THE FOLLOWING ITEMS ONE DAY ONLY...Sept 14th

8:00 AM to 5:00 PM (Saturday)

HOSPITAL BEDS WITH MATTRESSES,

OVER-BED HOSPITAL TRAYS,

PHYSICIANS EXAMINING TABLE,

WHEELED RECLINERS (GERI CHAIRS)

2210 Mabry Drive Clovis, NM

(behind Newholland Ford)

(505) 762-8052 for information (8:00 to 5:00 only)

8. Real Estate

8. Real Estate

8. Real Estate

8. Real Estate

Bingham & Nieman Realty

116 E. Ave. C.

George Nieman, Broker

272-5285

RICHLAND HILLS
PRICE REDUCED-IMMACULATE 3-2-2 Brick, Cent. A&H, built-ins, newly remodeled kitchen, FP, sunken lv. area w/cathedral ceiling, ceiling fans, earthtone carpets, storage !!!!!!!!!!!!!

3-3-2 Brick, Cent. A&H, built-ins, FP, Spklr. sys., storage-wkshp., fenced yd., much more!!!!!!!!!!!!

PRICED REDUCED-ASSUMABLE LOAN 9 1/2 A.P.R.-3-2-2 Brick, Cent. A&H, built-ins, FP, fans, workshop-storage, fenced yd. Make Offer ***
3-3-1CP HOME, Cent. A&H, built-ins, FP, spacious lv. area, loads of closets & storage, cov. patio, fenced yd., 2 st. bldgs.!!!!!!

3-2-1 Brick, Cent. A&H, built-ins, fans, fenced yd. \$40!!!!

NICE RESIDENTIAL LOTS/ \$5,000 UP....
Nice-3-2-1 Home, built-ins, heat pump, fans, storm windows, & doors, workshop-storage, fenced yd., & more. \$30's!!!!!!!!!!!!

NICE 3-3-2 Brick, Heath Pump, built-ins, FP, gameroom, sunroom, finished basement, 2,800sq. ft. of lv. area, fenced yd. & more. \$80's!!!!

PARKRIDGE-IMMACULATE 3-2-2 Brick, Heat Pump, built-ins, FP, nice finished basement, cov. patio, insul. & wired st.-workshop, fenced yd. GREAT VIEW!!!!

HIGH SCHOOL
FmHA FINANCING to qualified buyer-3-1-1 Brick, Cent. A&H, built-ins, carpet, st. bldg., fenced yd.!!!!!!

2-1 Home, nicely remodeled kitchen & den, Cent., heat, fenced yd., large garage-shop. \$20's!!!!!!!!!!!!

HIGHLAND AREA
3-2-1 Brick, Cent. A&H, built-in, FP, Fenced yd. 2100sq. ft. area, fenced yd., & st. bldg. MAKE OFFER!!!!!!!!!!!!

3-2-1 Home, wall furnace, window evap. fenced yd. \$20's!!!!

Nice 3-1-1, heat pump, nice carpets, fenced yd. Much More. \$30's Price Reduced

SMILES

Marked
"That fellow must live in a very small apartment."
"How can you tell?"
"Why, haven't you noticed that his dog wags his tail up and down instead of side ways."

No Chance
"Are you married?" inquired the census man.
"Oh, dear, no," said the little lady, blushing. "I've never ever been married."

18. Legals

LEGAL NOTICE
THE CITY COUNCIL WILL MEET AT 8:30 A.M. ON TUESDAY, SEPTEMBER 17, 1991 IN THE COUNCIL CHAMBERS AT CITY HALL, 215 SOUTH FIRST STREET, MULESHOE, TEXAS, TO HOLD A PUBLIC HEARING FOR THE PURPOSE OF ADOPTING A BUDGET FOR THE FISCAL YEAR BEGINNING OCTOBER 1, 1991 AND ENDING SEPTEMBER 30, 1992.
C18-37t-1tc

15. Misc.

AVON
has openings for Representatives in MULESHOE
For information, Call 272-5607

Dieters Beware

The old saying you can never be "too thin or too rich" makes many people laugh, but improper dieting can lead to serious complications and the long-term effects can be life threatening. The belief that thinness is somehow healthy -- let alone required for acceptance by others -- is both peculiar and dangerous.

Americans are notorious dieters, primarily due to the notion that "thin is in" as portrayed in print advertising, on television and in motion pictures. Many try fad diets and fasting as ways to achieve this "ideal" image. Fad diets and fasting may be good ways to lose weight quickly, but they also are good ways to lose other things... like calcium from your bones. Most diets are extremely low in calcium and, of course, if dieters are fasting they get no calcium at all. Improper dieting over a long period can mean a decrease in the amount of calcium to the body and a deterioration of the bone structure.

According to the Food and Nutrition Board of the National Academy of Sciences, it is difficult to get most of the vitamins and nutrients the body needs, including calcium, on a diet of 1,800 to 2,000 calories. Many popular fad diets call for 1,200 calories or less. Dieters tend to avoid the richest source of dietary calcium, dairy products, because of the perception that they are "fattening."

A study published in the Journal of the American Dietetic Association evaluated 15 popular well-known diets. The study showed that the nutrients most often below recommended levels included thiamine, B-6, vitamin B-12, iron, zinc, magnesium and calcium. In further review of calcium the study found that, out of 15 diets, only four of them met the RDA of 800 mg.

Another report printed in the American Journal for Clinical Nutrition studied ten obese adolescents on a protein-sparing modified fasting diet (PSMF). In this group of PSMF dieters, the calcium intake declined significantly by 53 percent. This drop was due mostly to the decreased consumption of dairy products, which most dieters remove from their weight loss program. The report went on to say that a calcium supplement should be included in the diet to ensure an adequate intake. The study concluded that "... calcium



intake should be increased to ensure sufficient dietary calcium for maintenance and adolescent growth."

If you want to lose weight, the best advice is to consult your doctor, eat sensibly and begin a proper exercise program. Here are some precautions and tips that will help to ensure proper nutrition while dieting:

- Eat nutritionally balanced meals.
- Choose lean meat, fish, poultry and dry beans and peas as protein sources.
- Limit your use of fats and oils.
- Choose foods that are nutrient packed.

• Maintain a proper calcium balance. If dairy foods such as milk, ice cream and cheese are being eliminated from the diet, make sure you maintain between 800 and 1,000 mg of calcium daily. A calcium supplement, one that is scientifically proven to dissolve and be absorbed by the body, such as Os-Cal® 500, twice a day will help to ensure a proper balance.

• Exercise. Dieters can add calories to their diet and burn them off with exercise. Exercise will make it easier to meet nutritional requirements and even speed up weight loss. One hour of good exercise burns 300 calories and stimulates the body's metabolism to burn off even more calories when resting.

Always remember to consult a physician or dietician before beginning any weight-loss or exercise program. By using a little common sense and sticking to a proper nutritional program, dieters can keep from taking a ride on the too familiar diet "roller coaster."

For a free booklet on calcium and osteoporosis, send a written request to: Calcium Nutrition, P.O. Box 32080, Kansas City, MO 64111.

There are more football experts than the art of learning from players.

Pretty soon we'll be sorry summer is gone.

8. Real Estate

For Sale: 640 acres of irrigated land in Lariat area. Call 925-6654. B8-36s-2tc(S)

Henry Realty
111 W. Ave. B. 272-4581
Mulshoe, Tx.

2 bedroom, 1 bath, 1 car garage, fireplace, fenced yard, carpet, Lenau Addition \$15,000.00.

Spacious 2 bedroom, 2 bath with one car garage. Fireplace. Ready to move in.

New listing- 2 bedroom, 1 bath, redone for qualified buyer.

3 bedroom, 2 bath, carport, spacious home outside city limits near city on highway. Lot is 85' X 402'. Metal building is 29' by 40'. Great setup for workshop.

COMMERCIAL PROPERTY
Ideal location on West American Blvd. 150' highway frontage. A great business opportunity.

Brick veneer restaurant 150 seating. Over 5000 sq. ft. with modern equipment. Ready for operation. Located on U.S. Highway 84 in Mulshoe. 7,000 sq. ft. paved parking. Excellent financing available for qualified buyer.

West American Boulevard 150' frontage. Priced to sell.

Commercial building 30'x52' located on 12th Street. Lot is 97' x 140' and paved. Come by for appointment to see.



You're Invited To
Attend The Annual
West Plains Fair

Thursday, Friday & Saturday
September 12, 13 & 14, 1991

And The
Mule Days Celebration

Friday & Saturday
September 13 & 14th

At The
Bailey County Civic Center
Lots of Activities For Everyone!

- PARADE
- Chili Cook-Off
- Kids Activities
- Watermelon Seed Spittin' Contest
- Dunkin' Tank
- Mule-Shoe Pitching
- Tractor Pull
- Mule-Pattie Bingo
- Heritage Foundation Tours
- Turtle Race
- Mule-Shoe Pitching
- Putt-Putt Golf
- Pet Show
- 2 mile & 10K Run
- Ugly Leg Contest

See You in Muleshoe

This Page Proudly Sponsored By The Following Civic-Minded Businesses:

- The Spudnut Shop*
- Mission Cable*
- Glenna's Beauty Retreat*
- Ronald Ashford Electric Inc.*
- American Valley Inc.*
- Muleshoe Livestock Auction, Inc.*
- Richland Hills Texaco*
- Bingham & Nieman Realty*
- A & M Farm & Ranch Supply, Inc.*
- Family Hair Salon*
- Church's Fried Chicken*
- Wilson Drilling*
- Terry Field Insurance*
- Viola's Restaurant*
- Sudduth Field & Co.*
- Main Street Beauty Salon*
- James Crane Tire Co.*
- Bailey County Electric Cooperative Association*
- Connie's Place*
- Bob Stovall Printing*
- Lookin' Good*
- Williams Bros. Office Supply*
- Posada's Radiator*
- Irrigation Pumps & Power*
- Muleshoe Diagnostic Lab*
- Decorator's Floral & Gifts*
- Lambert Cleaners*
- Leal's Restaurant*
- Ana's House of Beauty*
- Dairy Queen*